



USACEPDM

MSMR

Medical Surveillance Monthly Report

Table of Contents

Chemical agent exposure, Germany	3
Selected notifiable conditions	4
Notifiable sexually transmitted diseases	6
Influenza-like illness, Ft Benning	7
ARD update	8
Supplement #1: 1994 Hospitalization Summary	
Active Duty Hospitalizations	10
Hospitalization rates	11
Total Hospital Sickdays	12
Non-Effective Rates	13
Supplement #2: 1994 Reportable Disease Summary	
Reports submitted by MTF	14
Notifiable sexually transmitted diseases	15
All notifiable conditions	16
Heat / Cold weather injuries	18
Force strength (December 1994)	19

Data in the MSMR is provisional, based on reports and other sources of data available to the Medical Surveillance Activity. Notifiable conditions are reported by date of onset (or date of notification when date of onset is absent). Only cases submitted as confirmed are included.

Report Documentation Page

Form Approved
OMB No. 0704-0188

Public reporting burden for the collection of information is estimated to average 1 hour per response, including the time for reviewing instructions, searching existing data sources, gathering and maintaining the data needed, and completing and reviewing the collection of information. Send comments regarding this burden estimate or any other aspect of this collection of information, including suggestions for reducing this burden, to Washington Headquarters Services, Directorate for Information Operations and Reports, 1215 Jefferson Davis Highway, Suite 1204, Arlington VA 22202-4302. Respondents should be aware that notwithstanding any other provision of law, no person shall be subject to a penalty for failing to comply with a collection of information if it does not display a currently valid OMB control number.

1. REPORT DATE APR 1995	2. REPORT TYPE	3. DATES COVERED 00-00-1995 to 00-00-1995	
4. TITLE AND SUBTITLE Medical Surveillance Monthly Report (MSMR). Volume 1, Number 1, April 1995		5a. CONTRACT NUMBER	
		5b. GRANT NUMBER	
		5c. PROGRAM ELEMENT NUMBER	
6. AUTHOR(S)		5d. PROJECT NUMBER	
		5e. TASK NUMBER	
		5f. WORK UNIT NUMBER	
7. PERFORMING ORGANIZATION NAME(S) AND ADDRESS(ES) U.S. Army Center for Health Promotion and Preventive Medicine, Armed Forces Health Surveillance Center (AFHSC), 2900 Linden Lane, Suite 200, Silver Spring, MD, 20910		8. PERFORMING ORGANIZATION REPORT NUMBER	
9. SPONSORING/MONITORING AGENCY NAME(S) AND ADDRESS(ES)		10. SPONSOR/MONITOR'S ACRONYM(S)	
		11. SPONSOR/MONITOR'S REPORT NUMBER(S)	
12. DISTRIBUTION/AVAILABILITY STATEMENT Approved for public release; distribution unlimited			
13. SUPPLEMENTARY NOTES			
14. ABSTRACT			
15. SUBJECT TERMS			
16. SECURITY CLASSIFICATION OF:			17. LIMITATION OF ABSTRACT
a. REPORT unclassified	b. ABSTRACT unclassified	c. THIS PAGE unclassified	Same as Report (SAR)
			18. NUMBER OF PAGES 20
			19a. NAME OF RESPONSIBLE PERSON

The Medical Surveillance Monthly Report (MSMR): A Mirror on the Health, Fitness, and Medical Readiness of America's Army

General Sullivan, chief of staff of the Army, has stated, "Information is power." This clear and simple statement has provided challenges and abundant opportunities to the Army Medical Department. In part, the AMEDD has responded by establishing the Army Medical Surveillance Activity in the US Army Center for Health Promotion and Preventive Medicine (USACHPPM). The Medical Surveillance Monthly Report (MSMR) is one of the first widely visible products of the new Medical Surveillance Activity.

The MSMR will be a principal vehicle for disseminating medical surveillance information of broad interest. It will routinely publish summaries of notifiable diseases, trends of illnesses of special surveillance interest, and field reports describing outbreaks and case occurrences with significance beyond the setting in which they occurred. Initially, we anticipate that the MSMR will appeal primarily to medical audiences. As time passes, we hope it will gain interest among troop leaders who have ultimate responsibility for the health, fitness, and readiness of their commands. The ultimate goal in summarizing surveillance data is to provide readily available information necessary to inform, motivate, and empower commanders, their surgeons, and medical staffs to design, implement, and resource programs that enhance health, fitness, and readiness.

Readers will notice that much information in the current MSMR is incomplete. Obviously, the information in the MSMR will always reflect the completeness and accuracy of underlying data sources. If the MSMR acts as a mirror on the health and disease experience of the Army, the clarity of the mirror's reflection depends, to a great extent, on the effort of the viewers to focus and refine the image. We hope the MSMR will encourage and justify more complete and reliable reporting to medical data systems.

If the MSMR is not useful to its readers, it will have no value. In this light, the MSMR's success or failure can be judged only by its readers. We solicit suggestions, comments, and criticisms. We also solicit positive comments so we will not be tempted to fix something that works well.

Finally, we gratefully acknowledge the enormous, largely unheralded contributions of individuals and organizations that collect, store, and share the data that are the basis of MSMR summaries. If the MSMR has value, it derives from their efforts.

John Brundage, MD

Executive Editor

John F. Brundage, MD, MPH
Director Epidemiology and
Disease Surveillance, USACHPPM

Editor

Mark V. Rubertone, MD, MPH
Chief, Army Medical Surveillance
Activity, USACHPPM

Managing Editor

Vacant

Writers / Editorial staff

Bruce H. Jones, MD, MPH
Vincent P. Fonseca, MD, MPH
Sharon L. Ludwig, MD, MPH

Prepared by the Medical Surveillance Activity, Directorate of Epidemiology and Disease Surveillance, United States Army Center for Health Promotion and Preventive Medicine. Inquiries regarding content or material to be considered for publication should be directed to the editor, MAJ Mark Rubertone, Walter Reed Army Institute of Research, Bldg T-20, Rm 213, Washington DC, 20307-5100, DSN 662-1335, commercial (202) 782-1335. E-mail: "rubertone@wrair-emh1.army.mil".

Publishing office is the Executive Communications Division, U.S. Army Center for Health Promotion and Preventive Medicine, Aberdeen Proving Ground, Maryland 21010-5422, telephone 1-800-222-9698, DSN 584-2088, Commercial 410 671-2088. FAX 410 671-2084.

Views and opinions expressed are not necessarily those of the Department of the Army.

Report from the Field**CS Powder Exposure, Baumholder, Germany**

On the morning of 2 February 1995 soldiers of the 29th Medical Detachment in Baumholder, Germany, were conducting NBC training when they came upon an unmarked can. A soldier opened the can and soon realized the can contained CS powder. CS powder is a mucous membrane irritant commonly used in conjunction with M-17 Mask training (see below). In the course of events some of the powder became airborne.

The soldier exited the area and began opening windows to enhance ventilation of the area. Unfortunately, this led to drafting of a small amount of the powder into the adjacent clinic. The clinic was ventilated, but a total of 27 persons (9 active duty Army, 10 Army family members, and 8 DA civilians) were potentially exposed to the CS powder. The exposure was characterized as minor, with most patients displaying no symptoms whatsoever. All patients were evaluated in the acute care clinic and

released. No patients were hospitalized.

The EUR-HSSA Environmental Science Officer (ESO) was notified and traveled to the clinic the same day. He evaluated the incident and recommended the following:

- 1) Inventory of all hazardous materials within the clinic.
- 2) Turn in of all NBC chemicals.
- 3) Initiation of a HAZCOM program.
- 4) Notification to the community Base Support Battalion (BSB) Environmental Office and Safety Officer for completion of appropriate incident reports.

Submitted by James E. Cook, MAJ, MC, Epidemiology Consultant(CHPPM-EUR).; DSN 486-8113/8800/8546, commercial 011-49-6371-86-8113, FAX 486-7198, email "cookj@landstuhl-lab.army.mil".

Health effects, and treatment for CS Exposure

CS gas is a chemical agent used primarily for riot control. There are a number of manufacturers and a variety of combinations of ingredients. In this incident, the canister containing the CS powder was unmarked so the exact components could not be determined. However, the brand thought to be most commonly used in this area contains 2-chloroacetophenone as the principal ingredient. The Material Safety Data Sheet (MSDS) characterizes the compound as a mucous membrane irritant with routes of entry being inhalation (primary), skin and ingestion. Overexposure may cause cough, pulmonary edema and coma. There is no carcinogenic risk. Emergency first aid consists of removal from the environment, ventilation, flushing of eyes with water (for eye contact), removal of clothing and soap and water cleansing (for skin contact). In cases of ingestion it is recommended that subjects be given water and induced to vomit, if conscious. When handling material above the Permissible Exposure Limit set by OSHA (0.05 ppm) it is recommended that workers wear respiratory protection, chemical safety goggles and chemical gloves and that an eye wash station be readily available.

Information regarding CS gas was obtained from the Industrial Hygiene Division, Center for Health Promotion and Preventive Medicine - Europe

TABLE I. Cases of selected notifiable conditions, United States Army.*
March, 1995

Reporting MTF/Post**	Total number of reports submitted this period	Environmental Injuries			Viral Hepatitis			Malaria	Varicella	
		Active Duty		CO intox.	A	B	C	Active Duty	Active Duty	Other Adult
		Heat	Cold							
		Cum. 1995	Cum. 1995	Cum. 1995	Cum. 1995	Cum. 1995	Cum. 1995	Cum. 1995	Cum. 1995	Cum. 1995
NORTH ATLANTIC HSSA										
Walter Reed AMC	13	-	-	-	-	2	-	-	-	-
Aberdeen Prov. Ground	2	-	-	-	-	-	-	-	-	-
FT Belvoir, VA	16	-	-	-	-	-	-	-	-	-
FT Drum, NY	24	-	21	-	-	-	-	-	11	-
FT Eustis, VA	13	-	-	-	-	-	-	-	-	-
FT Knox, KY	61	-	-	-	-	-	-	-	-	-
FT Lee, VA	14	-	-	-	-	-	-	-	7	-
FT Meade, MD	0	-	-	-	-	-	-	-	-	-
USMA, West Point, NY	0	-	-	-	-	-	-	-	-	-
CENTRAL HSSA										
Fitzsimons AMC	0	-	-	-	-	-	-	-	-	-
FT Carson, CO	69	-	-	-	-	-	-	-	4	-
FT Leonard Wood, MO	32	-	1	-	-	1	-	-	19	2
FT Leavenworth, KS	0	-	-	-	-	-	-	-	-	-
FT Riley, KS	0	-	-	-	-	-	-	-	-	-
SOUTH CENTRAL HSSA										
Brooke AMC	0	-	-	-	-	-	-	-	-	-
FT Hood, TX	129	-	-	-	-	1	-	-	15	1
FT Polk, LA	0	-	-	-	-	-	-	-	-	-
FT Sill, OK	0	-	-	3	-	-	-	-	-	-
Panama	15	2	-	-	2	1	-	-	-	-
SOUTHEAST HSSA										
Eisenhower AMC	29	-	-	-	-	-	1	-	1	-
FT Benning, GA	0	-	10	-	-	-	-	-	-	-
FT Bragg, NC	0	-	-	-	-	-	-	-	-	-
FT Campbell, KY	95	-	-	-	-	-	-	-	2	-
FT Jackson, SC	24	-	-	-	-	-	-	-	4	-
FT McClellan, AL	0	-	-	-	-	-	-	-	-	-
FT Rucker, AL	0	-	-	-	-	-	-	-	-	-
FT Stewart, GA	0	-	-	-	-	-	-	-	-	-
SOUTHWEST HSSA										
Wm Beaumont AMC	8	-	-	-	-	-	-	-	3	2
FT Huachuca, AZ	0	-	-	-	-	-	-	-	-	-
FT Irwin, CA	0	-	-	-	-	-	-	-	-	-
NORTHWEST HSSA										
Madigan AMC	0	-	-	-	-	-	-	-	-	-
FT Wainwright, AK	23	-	16	-	-	-	-	-	-	-
PACIFIC HSSA										
Tripler AMC	75	-	-	-	-	-	-	4	-	-
OTHER LOCATIONS										
Europe	15	-	4	1	-	-	-	-	-	-
Korea	0	-	-	-	-	-	-	-	1	-
Total	657	2	52	4	2	5	1	4	67	5

* Based on date of onset.

** Reports are included from parent and daughter clinics. Not all sites reporting.

Date of Report: 7-Apr-95

**TABLE I. Cases of selected notifiable conditions, United States Army* (continued).
March, 1995**

Reporting MTF/Post**	Salmonellosis			Shigella			Campylobacteriosis			Tuberculosis	
	Active Duty	Other		Active Duty	Other		Active Duty	Other		Active Duty	Other
		Adult	Child		Adult	Child		Adult	Child		
Cum. 1995	Cum. 1995	Cum. 1995	Cum. 1995	Cum. 1995	Cum. 1995	Cum. 1995	Cum. 1995	Cum. 1995	Cum. 1995	Cum. 1995	Cum. 1995
NORTH ATLANTIC HSSA											
Walter Reed AMC	-	-	-	-	-	-	-	-	-	-	-
Aberdeen Prov. Ground	-	-	-	-	-	-	-	-	-	-	-
FT Belvoir, VA	-	1	1	-	-	-	-	-	-	-	-
FT Drum, NY	-	-	-	-	-	1	-	-	-	-	-
FT Eustis, VA	-	-	-	-	-	-	-	-	-	-	-
FT Knox, KY	-	-	-	-	-	-	-	-	-	-	-
FT Lee, VA	-	-	-	-	-	-	-	-	-	-	-
FT Meade, MD	-	-	-	-	-	-	-	-	-	-	-
USMA, West Point, NY	-	-	-	-	-	-	-	-	-	-	-
CENTRAL HSSA											
Fitzsimons AMC	-	-	-	-	-	-	-	-	-	-	-
FT Carson, CO	-	1	1	-	-	-	-	-	1	-	-
FT Leonard Wood, MO	-	-	1	-	-	-	-	-	-	-	-
FT Leavenworth, KS	-	-	-	-	-	-	-	-	-	-	-
FT Riley, KS	-	-	-	-	-	-	-	-	-	-	-
SOUTH CENTRAL HSSA											
Brooke AMC	-	-	-	-	-	-	-	-	-	-	-
FT Hood, TX	-	-	-	-	1	-	-	-	-	-	-
FT Polk, LA	-	-	-	-	-	-	-	-	-	-	-
FT Sill, OK	-	-	-	-	-	-	-	-	-	-	-
Panama	2	2	5	-	1	-	-	2	7	-	-
SOUTHEAST HSSA											
Eisenhower AMC	-	-	-	-	-	-	-	-	-	-	-
FT Benning, GA	-	-	-	-	-	-	-	-	-	-	-
FT Bragg, NC	1	1	1	-	-	-	1	-	-	-	-
FT Campbell, KY	-	-	-	1	-	2	-	-	-	-	-
FT Jackson, SC	-	-	-	-	-	-	-	-	-	2	-
FT McClellan, AL	-	-	-	-	-	-	-	-	-	-	-
FT Rucker, AL	-	-	-	-	-	-	-	-	-	-	-
FT Stewart, GA	-	-	-	-	-	-	-	-	-	-	-
SOUTHWEST HSSA											
Wm Beaumont AMC	-	-	-	-	-	-	-	-	-	-	-
FT Huachuca, AZ	-	-	-	-	-	-	-	-	-	-	-
FT Irwin, CA	-	-	-	-	-	-	-	-	-	-	-
NORTHWEST HSSA											
Madigan AMC	-	-	-	-	-	-	-	-	-	-	-
FT Wainwright, AK	-	-	-	-	-	-	-	-	-	-	-
PACIFIC HSSA											
Tripler AMC	-	-	1	-	-	-	3	-	-	-	-
OTHER LOCATIONS											
Europe	-	-	1	-	-	-	1	1	-	-	-
Korea	-	-	-	-	-	-	-	-	-	-	-
Total	3	5	11	1	2	3	5	3	8	2	0

* Based on date of onset.

** Reports are included from parent and daughter clinics. Not all sites reporting.

Date of Report: 7-Apr-95

**TABLE II. Cases of notifiable sexually transmitted diseases, United States Army.
March, 1995**

Reporting MTF/Post**	Chlamydia		Gonorrhea		Herpes Simplex		Syphilis Prim/Sec		Syphilis Latent		Urethritis non-spec.		Other STDs**	
	Cur. Month	Cum. 1995	Cur. Month	Cum. 1995	Cur. Month	Cum. 1995	Cur. Month	Cum. 1995	Cur. Month	Cum. 1995	Cur. Month	Cum. 1995	Cur. Month	Cum. 1995
NORTH ATLANTIC HSSA														
Walter Reed AMC	-	-	-	-	-	-	-	-	-	-	-	-	-	2
Aberdeen Prov. Ground	4	18	-	8	-	-	-	-	-	-	-	2	-	-
FT Belvoir, VA	4	4	2	6	2	2	-	1	-	-	-	-	1	1
FT Drum, NY	5	12	2	9	2	7	-	-	-	-	-	6	-	-
FT Eustis, VA	-	6	-	6	-	-	-	-	-	-	-	-	-	-
FT Knox, KY	22	22	3	3	2	2	-	-	-	-	-	-	-	-
FT Lee, VA	1	5	3	18	-	1	-	-	-	-	1	1	-	-
FT Meade, MD	-	-	-	-	-	-	-	-	-	-	-	-	-	-
USMA, West Point, NY	-	-	-	-	-	-	-	-	-	-	-	-	-	-
CENTRAL HSSA														
Fitzsimons AMC	-	-	-	-	-	-	-	-	-	-	-	-	-	-
FT Carson, CO	29	84	9	38	3	18	-	-	-	-	22	92	-	1
FT Leonard Wood, MO	6	20	6	14	1	1	1	2	-	-	3	14	-	1
FT Leavenworth, KS	-	-	-	-	-	-	-	-	-	-	-	-	-	-
FT Riley, KS	-	-	-	-	-	-	-	-	-	-	-	-	-	-
SOUTH CENTRAL HSSA														
Brooke AMC	-	-	-	-	-	-	-	-	-	-	-	-	-	-
FT Hood, TX	25	177	8	98	-	5	-	3	1	6	2	26	-	2
FT Polk, LA	-	-	-	-	-	-	-	-	-	-	-	-	-	-
FT Sill, OK	-	-	-	-	-	-	-	-	-	-	-	-	-	-
Panama	-	-	-	4	-	-	3	5	-	-	-	-	-	1
SOUTHEAST HSSA														
Eisenhower AMC	7	23	3	11	4	5	-	1	-	-	1	2	-	1
FT Benning, GA	-	-	-	-	-	-	-	-	-	-	-	-	-	-
FT Bragg, NC	-	-	-	-	-	-	-	-	-	-	-	-	-	-
FT Campbell, KY	38	101	9	36	4	6	-	1	-	-	13	51	-	-
FT Jackson, SC	14	41	3	12	2	7	-	-	-	1	-	-	-	1
FT McClellan, AL	-	-	-	1	-	-	-	-	-	-	-	-	-	-
FT Rucker, AL	-	-	-	-	-	-	-	-	-	-	-	-	-	-
FT Stewart, GA	-	8	-	-	-	2	-	-	-	-	-	5	-	1
SOUTHWEST HSSA														
Wm Beaumont AMC	-	-	-	-	-	-	-	-	-	-	-	-	-	-
FT Huachuca, AZ	-	-	-	-	-	-	-	-	-	-	-	-	-	-
FT Irwin, CA	-	-	-	-	-	-	-	-	-	-	-	-	-	-
NORTHWEST HSSA														
Madigan AMC	-	-	-	-	-	-	-	-	-	-	-	-	-	-
FT Wainwright, AK	2	9	-	5	-	-	-	-	1	1	-	-	-	-
PACIFIC HSSA														
Tripler AMC	16	51	8	20	18	29	-	-	-	-	-	-	-	-
OTHER LOCATIONS														
Europe	-	11	-	-	-	1	-	-	-	-	-	-	-	-
Korea	-	-	-	-	-	-	-	-	-	-	-	-	-	-
Total	173	592	56	289	38	86	4	13	2	8	42	199	1	11

* Reports are included from parent and daughter clinics. Not all sites reporting.

Date of Report: 7-Apr-95

** Other STDs: (a) Chancroid (b) Granuloma Inguinale (c) Lymphogranuloma Venereum (d) Syphilis unsp. (e) Syph, tertiary (f) Syph, congenital

Report from the Field**Influenza Outbreak in Basic Trainees, Fort Benning, GA**

During the period from 20 January - 27 January 1995, 63 basic trainees were admitted to Martin Army Hospital for acute respiratory disease (ARD). The ARD rate for all basic trainees during the week was 1.9%. Two battalions, 1/38 Infantry Regiment and 2/54 Infantry Regiment had the highest rates, 1.8% and 4.8% respectively. One company, A Company, 2/54 Infantry Regiment had an ARD rate of 14.7%, which was greater than any other company.

The epidemic curve for cases in the outbreak is depicted in Figure 1. The clinical presentation for all soldiers began with abrupt onset of fever as high as 103.2°F. Other symptoms beginning with the most frequent were dry cough, headache, myalgias, nausea, dizziness and pharyngitis. Two soldiers had chest x-rays consistent with viral pneumonia. None of the 48 strep cultures obtained during the outbreak period were positive.

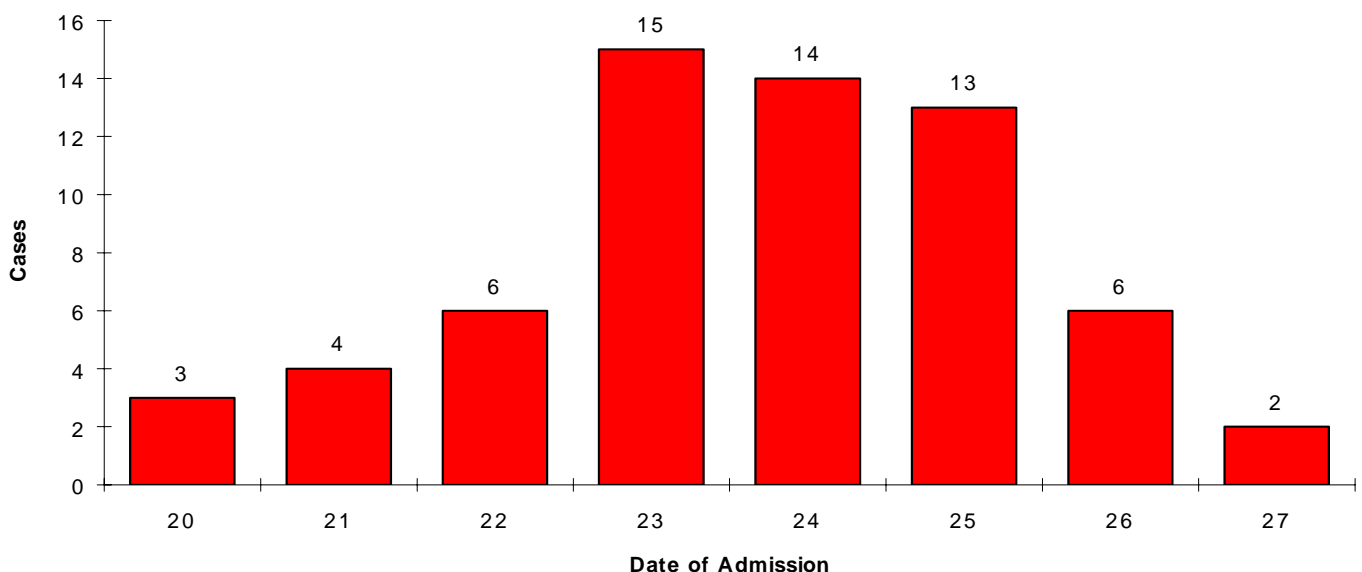
Viral cultures were obtained for 33 of the 63 affected soldiers. Two cultures were positive for

influenza, type A. No culture was positive for adenovirus. Later in the outbreak it was determined that none of the soldiers in 1/38 Infantry Regiment or 2/54 Infantry Regiment had received annual influenza immunizations.

Based on similar case presentations and two positive cultures, we believe that influenza A was the most likely cause of this outbreak. Two other outbreaks of influenza A have been reported in the state of Georgia during the 1994-1995 influenza season. The low yield on cultures for influenza A may have been due to a delay in receiving viral culture media. The optimal time for collecting influenza cultures is during the acute febrile period, and some soldiers were beyond this period when the cultures were obtained.

Submitted by Daniel R. Davidson, LTC, MC, Chief, Preventive Medicine Service, Fort Benning, GA 31905-6100; DSN 835-1144/4140, commercial 706 545-1144, FAX 835-1449, email "bennpms@ftbenning-amedd.army.mil".

Figure 1. Number of ARD Admissions per Day, January 1995



ARD Update**Adenovirus Vaccine Shortage**

Since 1971, vaccines for adenoviruses types 4 and 7 have been administered to new basic trainees as part of their initial medical in-processing. Before the vaccine was available, 600-800 adenovirus admissions per week (1) were not unusual at some basic training installations during the winter. In some cases tents had to be set up outside the hospital to accommodate the overflowing ARD wards. The impact of these outbreaks was tremendous.

The initiation of adenovirus vaccination, along with meningococcal vaccination and Acute Respiratory Disease (ARD) surveillance (permitting early outbreak intervention), are thought to be responsible

for a notable decrease in ARD rates among basic trainees over the years. Although still a cause of significant morbidity, wintertime ARD rates have dropped from 5 to 8% of trainees per week in the 1960's (2) to 0.35% per week in the 1990's (3). This decrease represents a Preventive Medicine victory, but not a reason for complacency.

In December the CHPPM became aware of a shortage of adenovirus vaccine at basic training posts that began as early as May 1994. There was great concern about entering the winter without protection from this historically severe threat to trainee health and mission accomplishment.

With input from the CHPPM's Directorates of Clinical Preventive Medicine (DCPM) and Epidemiology and Disease Surveillance (DEDS), the MEDCOM issued a policy on adenovirus surveillance and outbreak response for the six basic training posts (4). The ARD surveillance guidelines were

modified to increase vigilance for upward trends in overall ARD rates, and decrease the threshold used to detect epidemics (from 1.5% of trainees per week for two weeks to 1.5% per week for one week). When the rates exceeded this threshold, specific laboratory and inpatient surveillance measures were to be instituted. Epidemic Consultation (EPICON) assistance was offered for outbreaks that might exceed the capabilities of local and regional preventive medicine assets.

This winter there has been only one ARD epidemic. It was short (no more than two weeks)

(Continued on next page)

Top 10 Corner**Top 10 diagnostic categories* among US soldiers hospitalized in Saudi Arabia during Operation Desert Storm/Shield.**

ICD9 code	Diagnostic category	n	%
724	Other/unspecified disorders of back	988	4.02
558	Other noninfective gastroenteritis/colitis	946	3.85
959	Injury, other or unspecified	590	2.40
493	Asthma	542	2.21
786	Symptoms involving respiratory system or other chest symptoms	485	1.98
722	Intervertebral disc disorders	461	1.88
836	Dislocation of knee	427	1.74
592	Calculus of kidney or ureter	415	1.69
844	Sprains or strains of knee or leg	398	1.62
780	General symptoms	358	1.46

* Excludes follow-up examinations and encounters for administrative purposes

Source: Individual Patient Data System, USA Patient Administration Systems and Biostatistical Activity, Fort Sam Houston, TX.

ARD update continued

and apparently not due to adenovirus (see report from the field). The high risk season, however, is not over, and large spring and summer adenovirus outbreaks have been documented. A one year's supply of the vaccines is now in stock.

Submitted by Sharon L. Ludwig, MAJ, MC, Respiratory Disease Project Officer, USACHPPM, Aberdeen Proving Ground, MD, 31905-6100; DSN 662-1303, commercial (202) 782-1303, FAX 662-0745, email "ludwig@wrair-emh1.army.mil".

References

- (1) Top, FH Jr. Control of adenovirus acute respiratory disease in US Army trainees. *Yale J Biol Med*, 1975;48:185-95.
- (2) Gaydos, CA and JC Gaydos. Adenovirus vaccines in the US military: A success story threatened. In press.
- (3) Brundage, JF et al. Epidemiology and control of febrile acute respiratory disease and group A beta hemolytic streptococcus in military trainee populations: Recent US Army Experience. In press.
- (4) Memorandum, HQ MEDCOM, MCHO-CL, 25 January 1995, subject: Acute Respiratory Disease (ARD) and Adenovirus Surveillance Programs.

Notice to Readers

The following tables and supplements are additions to the current volume.

Hospitalization Summary: IPDS data for Army active duty soldiers will be summarized quarterly with an annual summary appearing in the April issue.

Reportable Disease Summary: Case reports submitted from MTFs through Preventive Medicine Services on reportable diseases/conditions will be summarized annually in the April issue.

Force Strength: Based on data from the Defense Manpower Data Center (DMDC) this table will be produced quarterly.

Supplement #1 (Hospitalization Summary, 1994)**TABLE S1. Active Duty Hospitalizations, United States Army, 1994**

ICD-9 Category	Males							Females							All
	< 20	20-24	25-29	30-34	35-39	>= 40	Total M	< 20	20-24	25-29	30-34	35-39	>= 40	Total F	
Infectious and Parasitic Diseases	509	919	335	172	134	86	2155	201	250	81	36	27	15	610	2765
Neoplasms	28	219	174	144	211	324	1100	15	92	98	131	148	121	605	1705
Endocrine, Nutritional, and Metabolic Disease and Immunity Disorders	26	76	60	54	58	78	352	13	40	31	19	17	23	143	495
Diseases of the Blood and Blood-Forming Organs	10	40	27	17	14	20	128	11	15	9	4	8	4	51	179
Mental Disorders	382	1730	909	561	505	315	4402	162	350	174	164	78	44	972	5374
Diseases of the Nervous System and Sense Organs	115	405	324	229	251	314	1638	52	101	84	66	67	68	438	2076
Diseases of the Circulatory System	52	275	235	233	358	703	1856	10	55	40	39	49	54	247	2103
Diseases of the Respiratory System	981	1537	617	404	317	278	4134	279	384	141	103	59	37	1003	5137
Diseases of the Digestive System	412	2444	1247	872	908	1062	6945	166	584	267	147	137	132	1433	8378
Diseases of the Genitourinary System	98	463	326	252	245	257	1641	135	638	412	339	280	199	2003	3644
Complications of Pregnancy, Childbirth, and the Puerperium*	-	-	-	-	-	-	-	403	3657	1756	867	322	22	7027	7027
Diseases of the Skin and Subcutaneous Tissue	165	491	227	152	110	82	1227	36	66	42	39	31	24	238	1465
Diseases of Musculoskeletal System and Connective Tissue	802	3078	2211	1815	1657	1399	10962	191	626	396	313	273	226	2025	12987
Congenital Abnormalities	65	172	99	48	40	28	452	7	32	22	12	10	2	85	537
Symptoms, Signs, and ill-Defined Conditions	148	489	319	266	398	479	2099	60	167	108	65	63	57	520	2619
Injury and Poisoning	563	2730	1436	767	474	339	6309	88	281	122	92	76	49	708	7017
Disease, not fully coded	331	1292	824	652	605	615	4319	195	758	475	296	186	148	2058	6377
Injury, not fully coded	11	90	53	19	20	10	203	4	5	6	3	4	2	24	227
All Hospitalizations	4698	16450	9423	6657	6305	6389	49922	2028	8101	4264	2735	1835	1227	20190	70112

* Includes normal delivery

Source: Individual Patient Data System, USA Patient Administration Systems and Biostatistical Activity, Fort Sam Houston, TX

TABLE S2. Active Duty Hospitalization Rates, United States Army, 1994*

ICD-9 Category	Males							Females							All
	< 20	20-24	25-29	30-34	35-39	>= 40	Total M	< 20	20-24	25-29	30-34	35-39	>= 40	Total F	
Infectious and Parasitic Diseases	31.0	6.0	3.1	2.1	2.0	1.7	4.5	70.7	10.7	4.8	2.9	3.1	2.7	8.7	5.0
Neoplasms	1.7	1.4	1.6	1.7	3.2	6.5	2.3	5.3	3.9	5.8	10.5	16.9	21.4	8.6	3.1
Endocrine, Nutritional, and Metabolic Disease and Immunity Disorders	1.6	0.5	0.5	0.7	0.9	1.6	0.7	4.6	1.7	1.8	1.5	1.9	4.1	2.0	0.9
Diseases of the Blood and Blood-Forming Organs	0.6	0.3	0.2	0.2	0.2	0.4	0.3	3.9	0.6	0.5	0.3	0.9	0.7	0.7	0.3
Mental Disorders	23.3	11.4	8.3	6.8	7.6	6.3	9.2	57.0	15.0	10.3	13.1	8.9	7.8	13.8	9.8
Diseases of the Nervous System and Sense Organs	7.0	2.7	3.0	2.8	3.8	6.3	3.4	18.3	4.3	5.0	5.3	7.7	12.1	6.2	3.8
Diseases of the Circulatory System	3.2	1.8	2.1	2.8	5.4	14.1	3.9	3.5	2.4	2.4	3.1	5.6	9.6	3.5	3.8
Diseases of the Respiratory System	59.8	10.1	5.6	4.9	4.7	5.6	8.6	98.1	16.4	8.3	8.2	6.7	6.6	14.3	9.3
Diseases of the Digestive System	25.1	16.0	11.4	10.5	13.6	21.3	14.5	58.4	25.0	15.8	11.7	15.7	23.4	20.4	15.2
Diseases of the Genitourinary System	6.0	3.0	3.0	3.0	3.7	5.1	3.4	47.5	27.3	24.3	27.0	32.0	35.3	28.5	6.6
Complications of Pregnancy, Childbirth, and the Puerperium**	-	-	-	-	-	-	-	141.7	156.5	103.6	69.2	36.8	3.9	100.1	12.8
Diseases of the Skin and Subcutaneous Tissue	10.1	3.2	2.1	1.8	1.6	1.6	2.6	12.7	2.8	2.5	3.1	3.5	4.3	3.4	2.7
Diseases of Musculoskeletal System and Connective Tissue	48.9	20.2	20.1	21.9	24.8	28.0	22.9	67.1	26.8	23.4	25.0	31.2	40.1	28.8	23.6
Congenital Abnormalities	4.0	1.1	0.9	0.6	0.6	0.6	0.9	2.5	1.4	1.3	1.0	1.1	0.4	1.2	1.0
Symptoms, Signs, and ill-Defined Conditions	9.0	3.2	2.9	3.2	6.0	9.6	4.4	21.1	7.1	6.4	5.2	7.2	10.1	7.4	4.8
Injury and Poisoning	34.3	17.9	13.1	9.2	7.1	6.8	13.2	30.9	12.0	7.2	7.3	8.7	8.7	10.1	12.8
Disease, not fully coded	20.2	8.5	7.5	7.9	9.1	12.3	9.0	68.6	32.4	28.0	23.6	21.3	26.2	29.3	11.6
Injury, not fully coded	0.7	0.6	0.5	0.2	0.3	0.2	0.4	1.4	0.2	0.4	0.2	0.5	0.4	0.3	0.4
All Hospitalizations	286.6	108.0	85.8	80.2	94.4	127.9	104.2	713.0	346.7	251.6	218.2	209.8	217.5	287.5	127.5

* Rates are calculated per 1000 soldiers per year based on mid-interval 1994 DMDC Data.

** Includes normal delivery

Source: Individual Patient Data System, USA Patient Administration Systems and Biostatistical Activity, Fort Sam Houston, TX

TABLE S3. Total Active Duty Hospital Sickdays, United States Army, 1994*

ICD-9 Category	Males							Females							All
	< 20	20-24	25-29	30-34	35-39	>= 40	Total M	< 20	20-24	25-29	30-34	35-39	>= 40	Total F	
Infectious and Parasitic Diseases	2025	4083	2691	1879	1775	1494	13947	555	834	374	1202	372	110	3447	17394
Neoplasms	326	7020	3657	1863	3095	7311	23272	56	756	928	1451	3300	1599	8090	31362
Endocrine, Nutritional, and Metabolic Disease and Immunity Disorders	121	867	256	1371	625	3889	7129	38	148	409	161	127	147	1030	8159
Diseases of the Blood and Blood-Forming Organs	80	607	477	46	157	326	1693	18	262	34	266	31	57	668	2361
Mental Disorders	3773	34141	25115	16456	15321	12486	107292	971	4038	3459	3667	2507	1682	16324	123616
Diseases of the Nervous System and Sense Organs	978	7416	8097	6859	3447	4810	31607	348	729	1718	494	561	336	4186	35793
Diseases of the Circulatory System	168	3039	2692	2955	4188	12205	25247	8	375	205	291	801	412	2092	27339
Diseases of the Respiratory System	3104	6659	3805	3358	2558	1584	21068	694	1686	1198	391	302	506	4777	25845
Diseases of the Digestive System	1936	11345	6115	5394	4722	7674	37186	482	1994	2940	959	778	654	7807	44993
Diseases of the Genitourinary System	295	2253	1910	1537	2173	831	8999	565	2503	2651	1864	1575	1461	10619	19618
Complications of Pregnancy, Childbirth, and the Puerperium**	-	-	-	-	-	-	-	3131	30658	14492	6540	2429	182	57432	57432
Diseases of the Skin and Subcutaneous Tissue	784	2998	2969	521	408	784	8464	164	296	454	155	312	163	1544	10008
Diseases of Musculoskeletal System and Connective Tissue	2322	35272	26160	21436	23665	25312	134167	225	5983	4960	4252	4188	2953	22561	156728
Congenital Abnormalities	110	1675	1388	864	444	1015	5496	18	468	69	38	694	1	1288	6784
Symptoms, Signs, and ill-Defined Conditions	315	4446	4408	2163	1846	2561	15739	287	1006	539	781	677	216	3506	19245
Injury and Poisoning	5103	35098	17144	7537	6255	6038	77175	521	2360	712	840	1021	553	6007	83182
Disease, not fully coded	1598	18540	10590	11950	7132	8663	58473	1912	7750	5234	3502	2153	1929	22480	80953
Injury, not fully coded	51	1455	2071	215	163	52	4007	39	45	61	4	29	5	183	4190
All Hospitalizations	176914		86404		97035		10032	40437		21857		174041			
	23089		119545		77974		580961	61891		26858		12966		755002	

* Includes bed days, convalescent sickdays and medical hold days

** Includes normal delivery

TABLE S4. Non-Effective Rates, Active Duty Hospitalization, United States Army, 1994*

ICD-9 Category	Males							Females							All
	< 20	20-24	25-29	30-34	35-39	>= 40	Total M	< 20	20-24	25-29	30-34	35-39	>= 40	Total F	
Infectious and Parasitic Diseases	123.5	26.8	24.5	22.6	26.6	29.9	29.1	195.1	35.7	22.1	95.9	42.5	19.5	49.1	31.6
Neoplasms	19.9	46.1	33.3	22.5	46.3	146.4	48.6	19.7	32.4	54.8	115.8	377.3	283.4	115.2	57.0
Endocrine, Nutritional, and Metabolic Disease and Immunity Disorders	7.4	5.7	2.3	16.5	9.4	77.9	14.9	13.4	6.3	24.1	12.8	14.5	26.1	14.7	14.8
Diseases of the Blood and Blood-Forming Organs	4.9	4.0	4.3	0.6	2.4	6.5	3.5	6.3	11.2	2.0	21.2	3.5	10.1	9.5	4.3
Mental Disorders	230.1	224.2	228.7	198.3	229.3	250.0	224.0	341.4	172.8	204.1	292.6	286.6	298.1	232.4	224.9
Diseases of the Nervous System and Sense Organs	59.7	48.7	73.7	82.7	51.6	96.3	66.0	122.3	31.2	101.4	39.4	64.1	59.5	59.6	65.1
Diseases of the Circulatory System	10.2	20.0	24.5	35.6	62.7	244.4	52.7	2.8	16.0	12.1	23.2	91.6	73.0	29.8	49.7
Diseases of the Respiratory System	189.3	43.7	34.7	40.5	38.3	31.7	44.0	244.0	72.1	70.7	31.2	34.5	89.7	68.0	47.0
Diseases of the Digestive System	118.1	74.5	55.7	65.0	70.7	153.6	77.6	169.4	85.3	173.5	76.5	88.9	115.9	111.2	81.8
Diseases of the Genitourinary System	18.0	14.8	17.4	18.5	32.5	16.6	18.8	198.6	107.1	156.5	148.7	180.1	258.9	151.2	35.7
Complications of Pregnancy, Childbirth, and the Puerperium**	-	-	-	-	-	-	-	1100.7	1312.0	855.3	521.8	277.7	32.3	817.8	104.5
Diseases of the Skin and Subcutaneous Tissue	47.8	19.7	27.0	6.3	6.1	15.7	17.7	57.7	12.7	26.8	12.4	35.7	28.9	22.0	18.2
Diseases of Musculoskeletal System and Connective Tissue	141.6	231.6	238.3	258.3	354.3	506.8	280.2	79.1	256.0	292.7	339.3	478.8	523.3	321.2	285.1
Congenital Abnormalities	6.7	11.0	12.6	10.4	6.6	20.3	11.5	6.3	20.0	4.1	3.0	79.3	0.2	18.3	12.3
Symptoms, Signs, and ill-Defined Conditions	19.2	29.2	40.1	26.1	27.6	51.3	32.9	100.9	43.1	31.8	62.3	77.4	38.3	49.9	35.0
Injury and Poisoning	311.3	230.5	156.1	90.8	93.6	120.9	161.2	183.2	101.0	42.0	67.0	116.7	98.0	85.5	151.3
Disease, not fully coded	97.5	121.7	96.5	144.0	106.8	173.5	122.1	672.2	331.7	308.9	279.4	246.1	341.9	320.1	147.3
Injury, not fully coded	3.1	9.6	18.9	2.6	2.4	1.0	8.4	13.7	1.9	3.6	0.3	3.3	0.9	2.6	7.6
All Hospitalizations	1408	1162	1089	1041	1167	1943	1213	3527	2649	2386	2143	2499	2298	2478	1373

* Rates are calculated as lost duty days per 1000 soldier per year based on mid-interval 1994 DMDC data.

** Includes normal delivery

Source: Individual Patient Data System, USA Patient Administration Systems and Biostatistical Activity, Fort Sam Houston, TX

Supplement #2 (Reportable Disease Summary, 1994)**TABLE S5. Cases of notifiable conditions reported through Medical Surveillance System***

Reporting MTF/Post**	Pilot Phase	May '94	Jun '94	Jul '94	Aug '94	Sep '94	Oct '94	Nov '94	Dec '94	Total
NORTH ATLANTIC HSSA										
Walter Reed AMC	11	9	8	5	10	3	8	8	16	78
Aberdeen Prov. Ground	-	-	-	-	-	-	-	-	-	0
FT Belvoir, VA	-	-	8	-	16	1	17	6	15	63
FT Drum, NY	30	1	1	2	19	15	2	18	8	96
FT Eustis, VA	-	21	1	-	12	-	14	-	21	69
FT Knox, KY	-	-	-	48	307	40	-	-	-	395
FT Lee, VA	-	13	32	19	19	15	-	-	-	98
FT Meade, MD	-	-	-	-	-	-	-	-	-	0
USMA, West Point, NY	-	-	-	-	-	-	-	-	-	0
CENTRAL HSSA										
Fitzsimons AMC	-	-	4	1	10	-	-	-	-	15
FT Carson, CO	-	-	1	171	112	121	89	99	124	717
FT Leonard Wood, MO	-	-	-	18	24	15	22	16	10	105
FT Leavenworth, KS	-	1	-	-	-	2	-	-	-	3
FT Riley, KS	-	-	-	-	-	-	-	-	-	0
SOUTH CENTRAL HSSA										
Brooke AMC	103	3	-	-	-	-	-	-	-	106
FT Hood, TX	-	-	-	-	-	-	47	2	-	49
FT Polk, LA	-	-	-	-	-	-	-	-	-	0
FT Sill, OK	-	-	-	-	3	1	-	-	1	5
Panama	-	2	1	1	3	5	16	27	15	70
SOUTHEAST HSSA										
Eisenhower AMC	-	-	-	-	-	-	-	-	-	0
FT Benning, GA	-	5	7	7	-	-	8	-	-	27
FT Bragg, NC	5	-	4	1	1	1	3	3	4	22
FT Campbell, KY	-	-	-	1	1	34	60	43	22	161
FT Jackson, SC	8	9	33	71	46	33	30	30	8	268
FT McClellan, AL	-	-	55	1	-	-	-	-	-	56
FT Rucker, AL	-	-	-	-	6	10	-	-	-	16
FT Stewart, GA	211	46	67	27	63	41	50	35	-	540
SOUTHWEST HSSA										
Wm Beaumont AMC	-	-	-	-	-	-	-	-	-	0
FT Huachuca, AZ	-	-	-	-	-	-	-	-	-	0
FT Irwin, CA	-	-	-	-	-	-	-	-	-	0
NORTHWEST HSSA										
Madigan AMC	35	2	2	3	8	1	6	-	4	61
FT Wainwright, AK	-	-	1	15	10	11	8	5	25	75
PACIFIC HSSA										
Tripler AMC	-	14	35	32	25	43	47	37	9	242
OTHER LOCATIONS										
Europe	105	-	8	55	66	29	11	-	1	275
Korea	-	1	-	-	-	-	13	-	-	14
Total	508	127	268	478	761	421	451	329	283	3626

* Based on date of receipt.

** Reports are included from parent and daughter clinics. Not all sites reporting.

TABLE S6. Cases of notifiable sexually transmitted diseases, United States Army, 1994*

Reporting MTF/Post**	Chlamydia				Urethritis non-spec.				Gonorrhea				Herpes Simplex				Syphilis Prim/Sec				Syphilis Latent			
	Active Duty		Other		Active Duty		Other		Active Duty		Other		Active Duty		Other		Active Duty		Other		Active Duty		Other	
	M	F	M	F	M	F	M	F	M	F	M	F	M	F	M	F	M	F	M	F	M	F	M	F
NORTH ATLANTIC HSSA																								
Walter Reed AMC	-	-	-	-	-	-	-	-	-	-	-	-	-	-	-	-	-	-	-	-	-	-	-	
Aberdeen Prov. Ground	-	-	-	-	-	-	-	-	-	-	-	-	-	-	-	-	-	-	-	-	-	-	-	
FT Belvoir, VA	2	-	2	21	-	-	-	-	2	1	1	7	-	1	1	2	-	-	-	-	1	-	-	1
FT Drum, NY	10	2	-	3	9	-	-	-	14	-	-	2	1	-	-	-	1	-	-	1	1	1	-	-
FT Eustis, VA	7	6	1	2	-	-	-	-	21	8	3	8	-	-	-	-	1	-	-	-	-	-	-	-
FT Knox, KY	104	41	17	115	-	-	-	-	58	4	9	11	20	19	4	30	-	-	-	1	3	-	-	1
FT Lee, VA	11	28	2	16	3	-	-	-	18	12	5	2	-	2	-	-	-	-	-	-	-	-	-	-
FT Meade, MD	-	-	-	-	-	-	-	-	-	-	-	-	-	-	-	-	-	-	-	-	-	-	-	-
USMA, West Point, NY	-	-	-	-	-	-	-	-	-	-	-	-	-	-	-	-	-	-	-	-	-	-	-	-
CENTRAL HSSA																								
Fitzsimons AMC	-	1	-	4	-	-	-	-	-	-	-	1	-	-	-	-	-	-	-	-	-	-	-	-
FT Carson, CO	98	49	7	90	256	-	11	1	96	26	6	27	18	12	-	19	1	-	-	-	-	1	-	-
FT Leonard Wood, MO	6	3	4	14	27	-	3	-	15	2	-	3	1	1	-	-	-	-	-	-	-	-	-	-
FT Leavenworth, KS	-	-	-	-	-	-	-	-	-	-	-	-	-	-	-	-	-	-	-	-	-	-	-	-
FT Riley, KS	-	-	-	-	-	-	-	-	-	-	-	-	-	-	-	-	-	-	-	-	-	-	-	-
SOUTH CENTRAL HSSA																								
Brooke AMC	-	-	-	-	-	-	1	-	-	-	-	-	-	-	-	-	-	-	-	-	-	-	-	-
FT Hood, TX	38	30	2	29	15	-	-	-	47	9	3	6	2	-	-	1	1	1	-	-	3	1	-	3
FT Polk, LA	-	-	-	-	-	-	-	-	-	-	-	-	-	-	-	-	-	-	-	-	-	-	-	-
FT Sill, OK	-	-	-	-	-	-	-	-	-	-	-	-	-	-	-	-	-	-	-	-	-	-	-	-
Panama	-	-	-	-	-	-	-	-	9	3	4	3	-	1	-	1	-	-	-	1	-	-	-	-
SOUTHEAST HSSA																								
Eisenhower AMC	-	-	-	1	-	-	-	-	-	-	-	-	-	1	-	-	-	-	-	-	-	-	-	-
FT Benning, GA	-	-	-	-	-	-	-	-	-	-	-	-	-	-	-	-	-	-	-	-	-	-	-	-
FT Bragg, NC	-	-	-	-	-	-	-	-	-	-	-	-	-	-	-	-	-	-	-	-	-	-	-	-
FT Campbell, KY	16	58	1	47	78	2	2	-	32	9	-	9	1	-	-	-	1	-	-	-	-	-	-	-
FT Jackson, SC	15	96	10	31	1	-	-	-	15	26	6	8	-	17	3	4	1	-	-	1	-	-	-	-
FT McClellan, AL	-	-	-	-	-	-	-	-	-	-	-	-	-	-	-	-	-	-	-	-	-	-	-	-
FT Rucker, AL	1	-	-	-	-	-	-	-	1	-	-	-	-	-	-	-	-	-	-	-	-	-	-	-
FT Stewart, GA	4	31	-	50	224	-	9	1	107	3	4	4	21	11	1	13	-	1	-	-	1	-	-	-
SOUTHWEST HSSA																								
Wm Beaumont AMC	-	-	-	-	-	-	-	-	-	-	-	-	-	-	-	-	-	-	-	-	-	-	-	-
FT Huachuca, AZ	-	-	-	-	-	-	-	-	-	-	-	-	-	-	-	-	-	-	-	-	-	-	-	-
FT Irwin, CA	-	-	-	-	-	-	-	-	-	-	-	-	-	-	-	-	-	-	-	-	-	-	-	-
NORTHWEST HSSA																								
Madigan AMC	-	-	-	-	-	-	-	-	-	-	-	-	-	-	-	-	-	-	-	-	-	-	-	-
FT Wainwright, AK	16	12	3	21	-	-	-	-	8	2	-	2	-	-	-	-	-	-	-	-	-	-	-	-
PACIFIC HSSA																								
Tripler AMC	51	28	6	42	-	-	-	-	55	12	-	10	21	8	-	14	1	-	-	-	3	-	-	-
OTHER LOCATIONS																								
Europe	33	23	-	41	-	-	-	-	28	4	-	2	-	-	1	-	-	-	-	-	-	-	-	-
Korea	-	1	-	1	-	-	-	-	4	1	-	1	-	-	-	2	-	-	-	-	-	-	-	-
Sub-Total	412	409	55	528	613	2	26	2	530	122	41	106	85	73	10	86	7	2	0	4	12	3	0	5
Total	821	583	615	28	652	147	158	96	9	4	15	5												

* Incomplete data January - May, 1994. Active Duty refers to Army Active Duty only.

** Reports are included from parent and daughter clinics. Not all sites reporting.

TABLE S7. Notifiable conditions reported through Medical Surveillance System*

Diagnosis	Jan '94 - Apr '94**	May '94	Jun '94	Jul '94	Aug '94	Sep '94	Oct '94	Nov '94	Dec '94	Total
Amebiasis	2	-	2	-	-	-	-	1	1	6
Anthrax	-	-	-	-	-	-	-	-	-	0
Arboviral fever, unsp	-	-	-	-	-	-	-	-	-	0
Asbestosis	-	-	-	-	-	-	-	-	-	0
Botulism (adult)	-	-	-	-	-	-	-	-	-	0
Botulism (infant)	-	-	-	-	-	-	-	-	-	0
Bruceellosis	-	-	-	-	-	-	-	-	-	0
Campylobacteriosis	3	3	6	5	6	8	3	7	3	44
Carbon monoxide intx	-	-	-	-	-	-	-	-	10	10
Chancroid	1	-	-	1	-	-	-	-	-	2
Chemical agent exp	4	-	-	1	-	-	-	-	-	5
Chlamydia	181	76	163	131	155	153	197	210	149	1415
Cholera	-	-	-	-	-	-	-	-	-	0
Coccidioidomycosis	1	-	-	-	-	-	-	-	-	1
CWI, unspecified	7	-	-	-	-	-	-	-	-	7
CWI, frostbite	1	1	-	-	-	-	-	11	13	26
CWI, hypothermia	-	-	-	-	-	-	1	-	-	1
CWI, immersion type	-	-	-	-	-	-	-	-	-	0
Dengue fever	-	-	-	-	-	-	1	3	-	4
Diphtheria	-	-	-	-	-	-	-	-	-	0
Ehrlichiosis	-	-	-	-	-	-	-	-	-	0
Encephalitis	-	-	-	-	1	-	-	-	-	1
Fatality, trainee	-	1	-	1	-	-	-	-	-	2
Fatality, occupat.	-	-	-	-	-	-	-	-	-	0
Giardiasis	2	2	1	3	5	4	3	3	1	24
Gonorrhea	101	56	88	90	116	75	99	92	90	807
Granuloma Inguinale	-	-	-	-	-	-	-	-	-	0
Guillain-Barre Syn	1	-	-	1	-	-	-	-	3	5
H. influenzae, inv	-	-	-	-	-	1	1	2	2	6
Heat exhaustion	3	4	16	10	10	5	2	1	2	53
Heat stroke	2	-	10	5	4	2	1	-	-	24
Hemorrhagic fever	-	-	-	-	-	-	-	-	-	0
Hepatitis A, Acute	-	-	1	4	4	1	2	1	4	17
Hepatitis B, Acute	7	5	4	7	4	4	2	4	3	40
Hepatitis C, Acute	1	-	-	2	1	-	-	-	1	5
Hepatitis, unspec	-	-	-	-	1	3	-	3	1	8
Herpes Simplex	59	16	24	27	32	30	23	23	20	254
Influenza, unspec.	-	-	-	-	-	-	-	-	-	0
Influenza, type A	-	-	-	-	-	-	-	-	14	14
Influenza, type B	-	-	-	-	-	-	-	-	-	0
Kawasaki syndrome	1	-	-	-	-	-	-	-	-	1
Lead poisoning	-	-	-	-	-	-	-	1	-	1
Legionellosis	1	-	-	-	-	-	1	-	1	3
Leish, unspecified	1	-	-	-	-	-	-	-	-	1
Leish, cutaneous	2	-	-	1	-	1	1	-	4	9
Leish, mucocutaneous	-	-	-	-	-	-	-	-	-	0
Leish, visceral	-	1	-	-	-	-	-	-	-	1
Leish, viscerotropic	-	-	-	-	-	-	-	-	-	0
Leprosy	1	-	-	-	-	-	-	-	-	1
Leptospirosis	-	-	-	-	-	-	-	-	-	0
Listeriosis	-	-	-	-	1	-	-	-	-	1
Lyme disease	1	-	1	1	-	-	-	2	-	5
Lymphogranuloma Vnrm	-	1	2	2	4	3	-	1	1	14

(Continued)

TABLE S7. Notifiable conditions reported through Medical Surveillance System* (continued).

Diagnosis	Jan '94 - Apr '94**	May '94	Jun '94	Jul '94	Aug '94	Sep '94	Oct '94	Nov '94	Dec '94	Total
Malaria, unspecified	6	1	-	-	2	-	-	1	-	10
Malaria, vivax	11	3	2	3	3	2	-	2	1	27
Malaria, falciparum	-	-	-	-	-	-	-	-	-	0
Malaria, malariae	-	-	-	-	-	1	-	-	-	1
Malaria, ovale	-	-	-	-	-	-	-	-	-	0
Measles	-	-	-	-	-	-	-	-	1	1
Meningitis, Viral	2	2	1	1	1	1	2	1	1	12
Meningitis, Bact.	1	4	2	-	2	1	2	2	7	21
Mercury intoxication	-	-	-	-	-	-	-	-	-	0
Mumps (adults only)	-	-	-	-	-	-	-	-	-	0
Mycobacterial inf.	-	-	-	1	-	-	-	-	-	1
Pertussis	-	-	-	3	1	-	-	-	-	4
Plague	-	-	-	-	-	-	-	-	-	0
Pneumococcal pneum.	-	-	1	-	-	-	-	-	1	2
Poliomyelitis	-	-	-	-	-	-	-	-	-	0
Psittacosis	-	-	-	-	-	-	1	-	-	1
Q fever	-	-	1	-	-	-	-	-	-	1
Rabies, human	-	-	-	-	-	-	-	-	-	0
Radiation, ionizing	-	-	-	-	-	-	-	-	-	0
Radiation, non-ion.	-	47	-	-	-	-	-	-	-	47
Relapsing fever	-	-	-	-	-	-	-	-	-	0
Reye syndrome	-	-	-	-	-	-	-	-	-	0
Rhabdomyolysis	-	1	2	3	4	1	3	2	2	18
Rheumatic fever	-	-	-	-	-	-	-	-	-	0
Rift Valley Fever	-	-	-	-	-	-	-	-	-	0
RMSF	-	3	-	-	-	-	1	-	1	5
Rubella	-	-	-	-	-	-	-	-	-	0
Salmonellosis	1	11	7	16	7	14	10	6	6	78
Schistosomiasis	-	-	-	-	-	-	-	-	-	0
Shigellosis	11	2	15	20	16	9	20	11	4	108
Smallpox	-	-	-	-	-	-	-	-	-	0
Syphilis, unspec.	3	2	-	2	-	-	1	-	1	9
Syphilis, prim/sec	1	-	2	-	3	2	2	1	2	13
Syphilis, latent	6	-	4	1	1	-	5	3	-	20
Syphilis, tertiary	-	-	-	-	-	-	-	-	-	0
Syphilis, congenital	-	-	-	-	-	-	-	-	-	0
Tetanus	-	-	-	-	-	-	-	-	-	0
Toxic shock syndrome	-	-	-	-	-	-	-	-	-	0
Toxoplasmosis	1	-	-	-	-	-	-	-	-	1
Trichinellosis	-	-	-	-	-	-	-	-	-	0
Trypanosomiasis,Afr	-	-	-	-	-	-	-	-	-	0
Trypanosomiasis,Amer	-	-	-	-	-	-	-	-	-	0
Tuberculosis (TB)	2	-	2	4	1	-	1	1	-	11
TB, multi-drug res	-	-	-	-	-	-	-	-	-	0
Tularemia	-	-	-	-	-	-	-	-	-	0
Typhoid fever	-	-	-	-	-	-	-	-	-	0
Typhus fever	-	-	-	-	-	-	-	-	-	0
Urethritis, Non-Spec	91	35	62	81	72	89	76	57	82	645
Vaccine advrs event	-	1	1	1	2	4	2	2	-	13
Varicella,adult only	-	4	4	1	-	-	-	1	3	13
Yellow fever	-	-	-	-	-	-	-	-	-	0
Total	519	282	424	429	459	414	463	455	435	3880

* Based on date of onset.

** Incomplete data prior to May 1994.

Date of report: 7-Apr-95

TABLE S8. Cases of Heat and Cold Weather Injuries, United States Army, 1994*

Reporting MTF/Post**	Heat Injuries				Cold Weather Injuries							
	Heat Exhaustion		Heat Stroke		Frostbite		Hypothermia		Immersion		Unspecified	
	M	F	M	F	M	F	M	F	M	F	M	F
NORTH ATLANTIC HSSA												
Walter Reed AMC	-	-	-	-	-	-	-	-	-	-	-	-
Aberdeen Prov. Ground	-	-	-	-	-	-	-	-	-	-	-	-
FT Belvoir, VA	-	-	-	-	-	-	-	-	-	-	-	-
FT Drum, NY	-	-	-	-	3	-	-	-	-	-	-	-
FT Eustis, VA	-	-	1	-	-	-	-	-	-	-	-	-
FT Knox, KY	3	-	-	-	-	-	-	-	-	-	-	-
FT Lee, VA	-	-	1	-	-	-	-	-	-	-	-	-
FT Meade, MD	-	-	-	-	-	-	-	-	-	-	-	-
USMA, West Point, NY	-	-	-	-	-	-	-	-	-	-	-	-
CENTRAL HSSA												
Fitzsimons AMC	-	-	-	-	-	-	-	-	-	-	-	-
FT Carson, CO	-	-	-	-	2	-	-	-	-	-	-	-
FT Leonard Wood, MO	1	-	1	-	-	-	1	-	-	-	-	-
FT Leavenworth, KS	-	-	-	-	-	-	-	-	-	-	-	-
FT Riley, KS	-	-	-	-	-	-	-	-	-	-	-	-
SOUTH CENTRAL HSSA												
Brooke AMC	-	-	-	-	-	-	-	-	-	-	-	-
FT Hood, TX	-	-	-	-	-	-	-	-	-	-	-	-
FT Polk, LA	-	-	-	-	-	-	-	-	-	-	-	-
FT Sill, OK	1	-	-	-	-	-	-	-	-	-	-	-
Panama	3	1	-	-	-	-	-	-	-	-	-	-
SOUTHEAST HSSA												
Eisenhower AMC	-	-	-	-	-	-	-	-	-	-	-	-
FT Benning, GA	4	-	4	-	-	-	-	-	-	-	-	-
FT Bragg, NC	-	-	-	-	-	-	-	-	-	-	-	-
FT Campbell, KY	-	-	-	-	-	-	-	-	-	-	-	-
FT Jackson, SC	1	-	1	-	-	-	-	-	-	-	-	-
FT McClellan, AL	-	-	-	-	-	-	-	-	-	-	-	-
FT Rucker, AL	3	2	2	-	-	-	-	-	-	-	-	-
FT Stewart, GA	-	-	-	-	-	-	-	-	-	-	-	-
SOUTHWEST HSSA												
Wm Beaumont AMC	-	-	-	-	-	-	-	-	-	-	-	-
FT Huachuca, AZ	-	-	-	-	-	-	-	-	-	-	-	-
FT Irwin, CA	-	-	-	-	-	-	-	-	-	-	-	-
NORTHWEST HSSA												
Madigan AMC	-	-	-	-	-	-	-	-	-	-	-	-
FT Wainwright, AK	-	-	-	-	14	4	-	-	-	-	-	-
PACIFIC HSSA												
Tripler AMC	2	-	2	-	-	-	-	-	-	-	-	-
OTHER LOCATIONS												
Europe	-	-	-	-	-	-	-	-	-	-	-	-
Korea	2	-	-	-	-	-	-	-	-	-	-	-
Total	20	3	12	0	19	4	1	0	0	0	0	0

* Incomplete data January - May, 1994. Army active duty cases only.

** Reports are included from parent and daughter clinics. Not all sites reporting.

Date of Report: 7-Apr-95

TABLE S9. Active Duty Force Strength by MTF, United States Army, Dec 1994*

MTF/Post**	Males							Females							All
	< 20	20-24	25-29	30-34	35-39	>= 40	Total M	< 20	20-24	25-29	30-34	35-39	>= 40	Total F	
NORTH ATLANTIC HSSA															
Walter Reed AMC	68	1575	1477	1680	2053	3730	10583	6	445	598	564	515	601	2729	13312
Aberdeen Prov. Ground	274	528	354	472	536	445	2609	47	137	95	60	46	32	417	3026
FT Belvoir, VA	2	392	436	394	375	439	2038	3	141	131	101	98	73	547	2585
FT Drum, NY	238	3844	2400	1428	1034	644	9588	11	386	194	127	73	40	831	10419
FT Eustis, VA	241	1446	1112	1087	964	991	5841	37	394	300	221	152	93	1197	7038
FT Knox, KY	953	3157	1986	1861	1753	1176	10886	41	329	303	213	182	101	1169	12055
FT Lee, VA	450	920	636	638	621	513	3778	200	423	240	195	138	61	1257	5035
FT Meade, MD	12	936	1169	1069	1014	1320	5520	3	333	292	278	239	170	1315	6835
USMA, West Point, NY	12	823	747	969	931	871	4353	4	163	137	159	122	103	688	5041
CENTRAL HSSA															
Fitzsimons AMC	26	187	252	231	258	280	1234	4	93	123	66	68	74	428	1662
FT Carson, CO	228	5486	4244	2715	1794	1192	15659	25	768	583	305	195	104	1980	17639
FT Leonard Wood, MO	436	1805	1013	1040	1000	566	5860	153	397	218	198	109	80	1155	7015
FT Leavenworth, KS	23	329	330	496	989	810	2977	7	87	84	75	122	48	423	3400
FT Riley, KS	212	4839	3313	2137	1517	913	12931	19	603	370	249	167	81	1489	14420
SOUTH CENTRAL HSSA															
Brooke AMC	190	901	1015	1055	1030	1194	5385	148	379	379	419	351	350	2026	7411
FT Hood, TX	740	12909	9321	5905	4426	2810	36111	95	2095	1490	865	555	312	5412	41523
FT Polk, LA	173	4005	2717	1874	1296	714	10779	14	502	331	194	135	85	1261	12040
FT Sill, OK	953	4777	2729	1923	1525	973	12880	18	457	310	228	135	84	1232	14112
Panama	18	1452	1510	1084	897	726	5687	8	257	202	157	122	71	817	6504
SOUTHEAST HSSA															
Eisenhower AMC	731	2036	1445	1273	1592	1486	8563	173	576	466	396	325	279	2215	10778
FT Benning, GA	1159	5190	3352	2362	1661	1011	14735	15	402	336	239	142	78	1212	15947
FT Bragg, NC	444	13482	9914	6943	4826	2950	38559	38	1539	1183	738	451	223	4172	42731
FT Campbell, KY	306	7327	5782	3505	2311	1337	20568	24	944	631	364	217	105	2285	22853
FT Jackson, SC	817	1900	738	825	689	426	5395	513	980	368	307	164	74	2406	7801
FT McClellan, AL	369	855	572	730	715	609	3850	93	268	183	165	119	66	894	4744
FT Rucker, AL	41	1002	1253	891	633	622	4442	20	211	172	108	69	43	623	5065
FT Stewart, GA	308	6677	4698	2871	2010	1205	17769	30	757	655	384	205	131	2162	19931
SOUTHWEST HSSA															
Wm Beaumont AMC	322	3585	2764	1882	1614	1530	11697	46	659	444	288	200	196	1833	13530
FT Huachuca, AZ	131	1351	1196	1028	854	695	5255	56	389	247	219	164	102	1177	6432
FT Irwin, CA	72	1424	980	779	593	380	4228	5	193	131	79	48	32	488	4716
NORTHWEST HSSA															
Madigan AMC	292	5812	4364	3135	2254	1802	17659	53	1044	735	457	305	260	2854	20513
FT Wainwright, AK	39	2207	1749	1153	780	430	6358	3	274	203	178	93	65	816	7174
PACIFIC HSSA															
Tripler AMC	228	5948	4398	2881	2038	1384	16877	17	720	639	460	319	233	2388	19265
OTHER LOCATIONS															
Europe	490	20640	17410	12288	9279	5993	66100	71	3139	2495	1755	1253	711	9424	75524
Korea	587	9100	6376	4585	3838	2522	27008	110	1617	1063	750	518	296	4354	31362
Unknown	267	3921	4453	6454	5587	4821	25934 [§]	62	635	726	777	648	369	3320 [§]	29951 [§]
Total	11852	142768	108205	81643	65287	49510	459696	2172	22736	17057	12338	8764	5826	68996	529389

* Based on duty zip code. Does not account for TDY.

§ Includes unknown age groups and unknown gender.

** Includes any subordinate catchment areas not listed separately.

Source: Defense Manpower Data Center (DMDC)

DEPARTMENT OF THE ARMY
U.S. Army Center for Health Promotion
and Preventive Medicine (Provisional)
Aberdeen Proving Ground, MD 21010-5422

OFFICIAL BUSINESS
MCHB-DD-A