

UNCLASSIFIED

AD NUMBER

ADA492532

CLASSIFICATION CHANGES

TO: UNCLASSIFIED

FROM: SECRET

LIMITATION CHANGES

TO:
Approved for public release; distribution is unlimited. Document partially illegible.

FROM:
Distribution authorized to DoD only; Foreign Government Information; AUG 1951. Other requests shall be referred to British Embassy, 3100 Massachusetts Avenue, NW, Washington, DC 20008. Document partially illegible.

AUTHORITY

DSTL ltr dtd 15 Feb 2007; DSTL ltr dtd 15 Feb 2007

THIS PAGE IS UNCLASSIFIED

BRITISH SECRET Equals
UNITED STATES SECRET

~~SECRET~~

~~CONFIDENTIAL~~

ROYAL AIRCRAFT ESTABLISHMENT

FARNBOROUGH, HANTS

TECHNICAL NOTE No: MECH. ENG. 79

847354

COMPARISON OF BLAST DAMAGE EFFECTS OF H.E./I AND H.E. CHARGES: NOTE ON TRIALS, AT GROUND LEVEL, WITH 2 oz. FILLINGS DETONATED STATICALLY IN AIRCRAFT WINGS

by

G. SIMM, A.M.I.Mech.E., A.F.R.Ae.S.

BY AUTHORITY OF
Instructions Vol 12, 59
DATED, 11/27 BY [Signature]

1. THIS INFORMATION IS DISCLOSED FOR OFFICIAL USE BY THE RECIPIENT GOVERNMENT. DISCLOSURE TO ANY OTHER GOVERNMENT OR RELEASE TO THE PRESS OR IN ANY OTHER WAY WOULD BE A BREACH OF THIS CONDITION.

2. THE INFORMATION SHOULD BE SAFEGUARDED UNDER RULES DESIGNED TO GIVE THE SAME STANDARD OF SECURITY AS THAT MAINTAINED BY HIS MAJESTY'S GOVERNMENT IN THE UNITED KINGDOM.

3. THE INFORMATION CONTAINED IN THIS REPORT SHOULD NOT BE CIRCULATED OUTSIDE GOVERNMENT DEPARTMENTS WITHOUT THE PRIOR PERMISSION OF THE MINISTRY OF SUPPLY.

MINISTRY OF SUPPLY

THIS DOCUMENT IS THE PROPERTY OF H.M. GOVERNMENT AND ATTENTION IS CALLED TO THE PENALTIES ATTACHING TO ANY INFRINGEMENT OF THE OFFICIAL SECRETS ACT, 1911-1939.

It is intended for the use of the recipient only, and for communication to such officers under him as may require to be acquainted with its contents in the course of their duties. The officers exercising this power of communication are responsible that such information is imparted with due caution and reserve. Any person other than the authorised holder, upon obtaining possession of this document, by finding or otherwise, should forward it, together with his name and address, in a closed envelope to:-

THE SECRETARY, MINISTRY OF SUPPLY, MILLBANK, LONDON, S.W.1.

Letter postage need not be prepaid, other postage will be refunded. All persons are hereby warned that the unauthorised retention or destruction of this document is an offence against the Official Secrets Act.

~~SECRET~~
~~CONFIDENTIAL~~

20081208326

REVIEW ON
Aug 81
EXV. 00

(1)
846998

1364868

CONTENTS

ADDED ENTRIES

- 1. Blast effects.
- 2. Airplanes - Blast effects.
- 3. High explosive projectiles - Blast effects.
- 4.
- 5.

Serino, H.

V Project No.

VI Contract No.



SECRET

ORDNANCE TECHNICAL INTELLIGENCE AGENCY
UNITED STATES ARMY
ARLINGTON HALL STATION
ARLINGTON 12, VIRGINIA

Miss Perry/2278

3719

13 March 1959

IN REPLY REFER TO:

ORDLI-CD

SUBJECT: Transmittal of Report

TO: Commanding Officer
Picatinny Arsenal
Dover, N. J.
ATTN: Tech Info Unit

1. Ref ltr, PA, 24 Feb 59, ORDBB-TH8-461 (R4373), subj:
Request for Report.

2. Inclosed is OTIA ID 847354 (S). This is a Royal Aircraft
Establishment Technical Note No: Mech. Eng. 79, entitled "Com-
parison of Blast Damage Effects of H.E./1 and H.E. Charges: Note
on Trials, at Ground Level, with 2 oz. Fillings Detonated Stat-
ically in Aircraft Wings," by G. Simm. This document may be
retained.

1 Incl
OTIA ID 847354 (S)

Robert G. Blaylock
ROBERT G. BLAYLOCK
Lt Col, Ord Corps
Commanding

SECRET

Reg 1364869

Handwritten signature/initials

847354

SECRET

Gt. Brit.

R-2398-51
Comparison of Blast Damage Effects of H.E./I and H.E. Charges
OARMA-London

June 1951

28 September 1951

1

JOHN L. ATKINS, Research Analyst

RAE

Transmitted herewith is Royal Aircraft Establishment Technical Note No. Mech. Eng. 79 by G.W.Simm. It was required to establish whether the substitution of an H.E./I. filling in place of an H. E. filling for small D.A. fuzed shell would give an enhanced blast effect against aircraft structures. This Note describes a series of static detonation trials against Spitfire wing targets to check the relative blast damage effect with various H.E./I. and H.E. filling compositions. From the results of the trials it appears that H.E./I. fillings will give appreciably greater blast effect than plain H.E. fillings in small D.A. fuzed shell, under ground-level conditions. This superiority may be influenced to some extent by the scarcity of oxygen at high altitudes, and trials have been arranged to check this effect. The trials showed also that there is little difference in blast effect between a number of H. E./I. fillings. In order to determine the best type of H.E./I. filling it may be necessary to make comparative incendiary trials.

COMMENT: This report will be of interest to ORD TQ and ORD TB. The U.S. Naval and Air Attaches, London, receive copies of the inclosure.

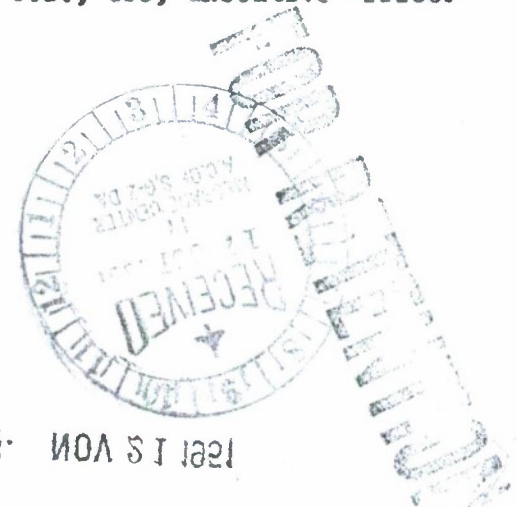
1 Incl - As above (5 cys)

APPROVED, FOR THE ARMY ATTACHE:

CLAUDE L. CRAWFORD, Lt. Col., GSC, Executive Officer

SECRET

R-2398-51



Handwritten note: Reg # 1364868

RECEIVED C. & E. NOV 5 1951

~~CONFIDENTIAL~~
~~CONFIDENTIAL~~

U.D.C. No. 623.451 : 623.565.33 : 629.13

Addendum to

3 Technical Note No. Mech. Eng. 79

6 August, 1951

Gt. Brit.)

2 ROYAL AIRCRAFT ESTABLISHMENT, FARNBOROUGH

Further trials to compare the blast damage effect of experimental H.E. shell fillings detonated statically in aircraft wings

by

5 G. Simm

R.A.E. Ref: ME.7/9045/GS/63

In R.A.E. Technical Note No. Mech. Eng. 79 a series of trials was reported in which a number of experimental H.E./I. and H.E. fillings of 2 oz weight, in metal canisters, were detonated in Spitfire wings to check the variation in blast damage effect with changes in the filling composition. In these trials, the only H.E. filling included was R.D.X./T.N.T. (55/45). Two canisters remained from these trials and it was decided to fill these with C.E. and to detonate them in the same type of target (i.e. Spitfire wing leading edge, 7 ft outboard of wing root, at mid-depth and 3 in. forward of main spar).

As a result of the previous trials a suggestion was put forward that the method of initiation of the fillings would affect the damage effects. Lead azide/PETN was used to initiate the poured fillings and lead azide/C.E. was used to initiate the pressed fillings, and it was thought that the lead azide/PETN detonator might produce a higher degree of detonation and thus give greater blast damage effects. In order to check this contention, the two available canisters were both press-filled with C.E., and both fitted with an F.85 igniter, but one was fitted with a lead azide/PETN detonator and the other with a lead azide/C.E. detonator.

The trials with these two canisters were made at the Proof and Experimental Establishment, Shoeburyness, on the 3rd July, 1951.

The details of damage are given in the following table:-

~~CONFIDENTIAL~~

/Table I

~~SECRET~~

~~SECRET~~
~~CONFIDENTIAL~~

Addendum to Tech. Note No. Mech. Eng. 79

CONFIDENTIAL

TABLE I

| RD NO | Filling | Detonator | Details of Damage | Figure of Merit |
|-------|---------------------|---------------------|--|-----------------|
| 19 | 2 oz C.E. - pressed | Lead azide/ C.E. | 3½ ft span leading edge blown out. 4 ft span outboard ballooned and dished. 7 in. x 4 in. hole in spar web. | 90 |
| 20 | 2 oz C.E. - pressed | Lead azide/ PETN | 3 ft span leading edge blown out. 2 ft span outboard ballooned and dished and nose joint opened, and further 2 ft ballooned. | 100 |

Thus, irrespective of the means of initiation, the C.E. Filling appears to give a damage effect of the same order as the H.E./I. fillings (i.e. Types A, C, G, H, J and K in the previous trials). This conflicts with the evidence of an earlier series of trials (Ref.1), when 20 mm shell, containing 0.4 oz of filling were detonated statically in Beaufighter wings. (In these trials the C.E. filling was markedly inferior to two types of H.E./I. filling). It is possible, therefore, that increasing the weight of the filling may tend to eliminate any difference between the damage effects of different filling compositions. Another possible explanation for the similarity of damage may be the size of the enclosed structure. Fig.3 of Ref.1 indicates a tendency for the damage effects to approach parity as the depth of the wing becomes less. Thus the relatively shallow depth of the Spitfire wing for the weight of filling used may have influenced the result.

Regarding the effect of the means of initiation, the canister initiated by lead azide/PETN (Rd. No.20) inflicted slightly greater damage than did the one initiated by lead azide/C.E. (Rd. No.19) (Figure of merit 100 compared to 90). The variation in detonator composition could, of course, account for this difference but, considering that greater differences were recorded previously between two identical fillings with the same detonator composition, it is considered that no great significance should be attached to these two results.

Since it is believed that lead azide/PETN will give a greater degree of reliability in detonation of fillings than lead azide/C.E., and at least equal effectiveness in causing blast damage to aircraft structures, the use of the lead azide/PETN detonator would appear preferable.

~~CONFIDENTIAL~~

~~CONFIDENTIAL~~

~~CONFIDENTIAL~~

Addendum to Tech. Note No. Mech. Eng. 79

CONFIDENTIAL

REFERENCES

| <u>No.</u> | <u>Author</u> | <u>Title, etc.</u> |
|------------|---------------|---|
| 1 | T. L. Hughes | Trials to determine the blast damage to aircraft wings from 20 mm shell with fillings of (a) Laminated H.E./I. (b) H.E. and (c) H.E./I. R.A.E. Tech. Note No. Mech. Eng. 70. April, 1951. (Reproduced in O.B.Proc. No. Q6894 (Special), 8th May, 1951). |

Advance Distribution:

- D Arm RD (Air) Action copy
- DD Arm RD (G)
- DARD
- DMARD
- Sec, Ordnance Board (2)
- CEAD
- CSAR
- ORS Bomber Command
- TPA3/TIB (60)
- Director, RAE
- DIRAE(A)
- DIRAE(E)
- Guided Weapons Dept
- Armament Dept
- Sec, RAE Vulnerability and Lethality Working Party
- RAE Library (2)
- NAE Library

CONFIDENTIAL

~~CONFIDENTIAL~~

~~SECRET~~

~~CONFIDENTIAL~~

U.D.C. No: 623.451:623.565.33:629.13

Technical Note No. Mech Eng. 79

June, 1951

ROYAL AIRCRAFT ESTABLISHMENT, FARNBOROUGH

Note on trials to compare the blast damage effects, at ground level, of various H.E./I and H.E. fillings, of 2 oz weight, detonated statically in aircraft wings

by

G. Simm, A.M.I. Mech E., A.F.R.Ae.S.

R.A.E. Ref: ME7/9045/GS/41

SUMMARY

It was required to establish whether the substitution of an H.E./I. filling in place of an H.E. filling for small D.A. fuze shell would give an enhanced blast effect against aircraft structures. This Note describes a series of static detonation trials against Spitfire wing targets to check the relative blast damage effect with various H.E./I. and H.E. filling compositions.

From the results of the trials it appears that H.E./I. fillings will give appreciably greater blast effect than plain H.E. fillings in small D.A. fuze shell, under ground-level conditions. This superiority may be influenced to some extent by the scarcity of oxygen at high altitudes, and trials have been arranged to check this effect. The trials showed also that there is little difference in blast effect between a number of H.E./I. fillings.

In order to determine the best type of H.E./I. filling it may be necessary to make comparative incendiary trials.

~~CONFIDENTIAL~~

~~SECRET~~

LIST OF CONTENTS

| | <u>Page</u> |
|-----------------------------|-------------|
| 1 Introduction | 3 |
| 2 Description of Ammunition | 3 |
| 3 Trials procedure | 4 |
| 4 Results of trials | 4 |
| 5 Discussion of results | 4 |
| 6 Conclusions | 4 |
| 7 Further developments | 5 |
| Advance Distribution | 5 |

LIST OF TABLES

| | <u>Table</u> |
|---|--------------|
| Details of composition of experimental shell fillings | I |
| Damage effects against Spitfire wings of experimental shell fillings. | II |
| Summary of results in order of merit | III |

LIST OF ILLUSTRATIONS

| | <u>Fig.</u> |
|---|-------------|
| Effects of Addition of Aluminium to R.D.X./T.N.T. Mixtures | 1 |
| Effects of H.E./I. Mixtures and Reduction of Explosive Weight | 2 |

1 Introduction

A series of trials to determine whether a laminated H.E./I. shell filling gave a higher blast effect than conventional H.E. or H.E./I. fillings was made at the Proof and Experimental Establishment, Shoeburyness in March, 1951 (Ref.1). These trials showed that the degree of superiority of the laminated H.E./I. filling over the conventional H.E./I. filling was slight, but that both these types of filling gave an enhanced blast effect compared with a plain H.E. filling. Oerlikon shell with a filling weight of approximately 0.4 oz were used for the comparison.

As an extension of this investigation, it was required to establish whether, in larger D.A. fuze shell which are normally filled H.E., the substitution of an H.E./I. filling would give enhanced blast effect, particularly with regard to fillings for 30 mm and 40 mm calibre shell.

Arrangements were made, therefore, by the Ordnance Board, for trials with canisters containing just over 2 oz of filling, to compare the blast effect of a number of experimental fillings against aircraft targets.

These trials were made at the Proof and Experimental Establishment, Shoeburyness on the 21st May, 1951. This Note records the conditions and results of the trials.

2 Description of ammunition

The ammunition supplied for the trials comprised steel cylindrical canisters, each with an internal diameter of 1.00 inch, an internal length of 2.75 inches and a wall thickness of 0.20 inch, fitted with a screwed plug at each end. The fillings for the canisters were described as follows:-

- A. Laminated C.E./E.D.1.
- B. Laminated C.E./E.D.1. with common salt in the lower $\frac{1}{5}$ of the cavity.
- C. C.E./S.R.379.
- D. C.E./S.R.379, with common salt in the lower $\frac{1}{5}$ of the cavity.
- E. Torpex (poured), R.D.X./T.N.T./Al. (40/45/15).
- F. R.D.X./T.N.T. (55/45).
- G. C.E./Al. (90/10)/S.R.379.
- H. R.D.X./Amm. Nitrate/T.N.T./Al. (30/10/45/15).
- J. C.E./Al. (90/10)/E.D.1.
- K. Torpex (pressed), R.D.X./T.N.T./Al. (40/45/15).

Canisters of types E, F. and H. were fitted with 2 gm. booster pellets of P.E.T.N. to ensure detonation of these fillings, which were poured. The canisters were filled by C.S.A.R., and full details of each filling, as supplied by C.S.A.R., are given in Table I.

Fillings B and D were included in the trials to check what reduction in blast effect would result if it were found possible to fill only 80% of the available capacity of a shell by the pressing method.

3 Trials procedure

For the purpose of the trials an igniter, electric, F.85 and a 6gr. ZY detonator were fitted in a hole in the top screwed plug of each canister, and each round was detonated statically in the leading edge of a Spitfire wing. The position of detonation within the wing was chosen to represent an attack from 20° below ahead, and was 7 ft. outboard of the root end of the wing. Each round was placed at mid-depth of the leading edge, approximately 3 inches forward of the main spar.

One specimen of each type of filling was checked first, and the extent of damage recorded. Check firings were then made with eight of the fillings (types B and J being omitted).

4 Results of trials

The detailed results of the trials are given in Table II, and Table III summarises the results in order of merit. Some illustrations of the damage effects are given in Figures 1 and 2.

5 Discussion of results

In order to differentiate more closely between the damage effects caused by the various fillings, a figure of merit has been assessed for each of the rounds fired. These values relate to the extent of damage inflicted, and are to the same standard as that adopted in previous trials against Spitfire wings (Ref.2).

Using these figures of merit as a criterion of the blast effect of the fillings against aircraft targets, it appears that the poured Torpex (Type E) filling is slightly superior to any of the others. The remaining six full-capacity H.E./I. fillings (Types A, C, G, H, J and K) all produced very similar damage effects and, since results from only two rounds of each are available, it would be unwise to consider any one of these types as superior to another.

In the earlier trials against Beaufighter wings (Ref.1), plain C.E. was used to represent the filling of an H.E. shell. In the present series of trials, the only H.E. shell filling used was type F (R.D.X./T.N.T.), and, as in the earlier trials, the H.E. type proved to be inferior to any of the H.E./I. fillings.

With an effective filling of only 80% of the available cavity (Types B and D) the blast effect was considerably reduced, the assessed effectiveness being of the order of 60% of that of the full charge.

6 Conclusions

For explosive shell of up to about 40 mm calibre, the addition of an incendiary mixture (or element) in the high explosive filling will apparently enhance the blast effect, and thereby increase the damage effect on aircraft structures, under ground level conditions.

Of the seven types of H.E./I. filling included in the investigation, the poured Torpex (Type E) shows a slight but definite advantage over the broadly similar performance of the other six. All seven H.E./I. fillings gave significantly greater blast damage effects than the plain H.E. (R.D.X./T.N.T.).

The effect of partially filling the available cavity appears to reduce the damage effects to a greater extent than would be expected from the proportional reduction in filling weight.

7 Further developments

Ordnance Board trials are being arranged to check whether, of the fillings under review (all of which are oxygen deficient and are thus expected to give a degraded performance in rarified air), any one type will show marked superiority in blast damage effect under high altitude conditions.

Before final recommendations - based on the results of the investigation - are made, it would appear necessary to check that the main requirement (maximum blast effect) is not being obtained at the expense of a serious reduction in incendiary effect.

REFERENCES

| <u>No.</u> | <u>Author</u> | <u>Title, etc.</u> |
|------------|---------------|---|
| 1 | T. L. Hughes | Trials to determine the blast damage to aircraft wings from 20 mm shell with fillings of (a) Laminated H.E./I (b) H.E. and (c) H.E./I. R.A.E. Tech Note No. Mech Eng. 70 April, 1951. (Reproduced in O. B. Proc. No. Q6894 (Special), 8th May, 1951.) |
| 2 | - | Further lethality trials of small contact-fuzed shell. R.A.E. Note, Ref. ME7/9032/GS/72, dated 1st September, 1950. |

Attached:

Tables I to III
Figs. 1 and 2
Neg Nos. 93782 - 93783.

Advance Distribution:

| | | |
|---------------------|--------------|----------------------------|
| D Arm RD (Air) | Action copy. | Director, RAE |
| DD Arm RD (G) | | DDRAE (A) |
| DARD | | DDRAE (E) |
| DMARD | | Guided Weapons Dept. |
| Sec. Ordnance Board | (2) | Armament Dept. |
| CEAD | | Sec. RAE Vulnerability and |
| CSAR | | Lethality Working Party. |
| ORS Bomber Command | | RAE Library (2) |
| TPA3/TIB | (60) | NAE Library |

TABLE I

DETAILS OF COMPOSITION OF FILLINGS

| Filling | Method of Filling | Pellet Thickness mm. | Filling Composition | Total Wt. of Filling gm. |
|---------|---------------------|----------------------|--|--------------------------|
| A | Pressed (Laminated) | 10 | 9.0 gm. E.D.1. | 60 |
| | | 12.5 | 10.5 gm. C.E. | |
| | | 12.5 | 10.5 gm. C.E. | |
| | | 10 | 9.0 gm. E.D.1. | |
| | | 12.5 | 10.5 gm. C.E. | |
| B | Pressed (Laminated) | 14 | 13.5 gm. common salt | 48 (excluding salt) |
| | | 8 | 7.0 gm. E.D.1. | |
| | | 10 | 8.5 gm. C.E. | |
| | | 10 | 8.5 gm. C.E. | |
| | | 8 | 7.0 gm. E.D.1. | |
| C | Pressed | 12 | 12.0 gm. S.R. 379 | 62 |
| | | 12 | 12.0 gm. S.R. 379 | |
| | | 23 | 19.0 gm. C.E. | |
| | | 23 | 19.0 gm. C.E. | |
| D | Pressed | 14 | 13.5 gm. common salt | 50 (excluding salt) |
| | | 9 $\frac{1}{2}$ | 9.5 gm. S.R. 379 | |
| | | 9 $\frac{1}{2}$ | 9.5 gm. S.R. 379 | |
| | | 18 $\frac{1}{2}$ | 15.5 gm. C.E. | |
| | | 18 $\frac{1}{2}$ | 15.5 gm. C.E. | |
| E | Poured | - | 59 gm. RDX/TNT/Al. (40/45/15) with booster pellet 2 gm. PETN/Wax (90/10). | 61 |
| F | Poured | - | 56 gm. RDX/TNT (55/45) with booster pellet 2 gm. PETN/Wax (90/10) | 58 |
| G | Pressed | 12 | 12 gm. S.R. 379 | 62 |
| | | 12 | 12 gm. S.R. 379 | |
| | | 23 | 19 gm. C.E./Al (90/10) | |
| | | 23 | 19 gm. C.E./Al (90/10) | |
| H | Poured | - | 58 gm. RDX/Amm. nitrate/TNT/Al. (30/10/45/15) with booster pellet 2 gm. PETN/Wax (90/10) | 60 |
| J | Pressed | 12 | 11 gm. E.D.1. | 60 |
| | | 12 | 11 gm. E.D.1. | |
| | | 23 | 19 gm. C.E./Al. (90/10) | |
| | | 23 | 19 gm. C.E./Al. (90/10) | |
| K | Pressed | 14 | 11.5 gm. RDX/TNT/Al. (40/45/15) | |
| | | 14 | 11.5 gm. RDX/TNT/Al. (40/45/15) | |

TABLE I (Contd.)

| Filling | Method of Filling | Pellet Thickness mm. | Filling Composition | Total Wt. of Filling gm. |
|-------------|-------------------|----------------------|-----------------------------------|--------------------------|
| K contd. | Pressed | 14 | 11.5 gm.RDX/TNT/Al. (40/45/15) | 57.5 |
| | | 14 | 11.5 gm.RDX/TNT/Al. (40/45/15) | |
| | | 14 | 11.5 gm.RDX/TNT/Al. (40/45/15) | |

Notes

- (a) All pellets were pressed 4 tons dead load.
- (b) S.R.379 comprises
 50% Mg. Al. alloy
 47% Ba (NO₃)₂
 3% Paraffin wax.
- (c) E.D.1 comprises
 30% Al.
 30% Mg.
 40% KC10₄.

/Table II

TABLE II
DAMAGE EFFECTS AGAINST SPITFIRE WINGS
OF EXPERIMENTAL SHELL FILLING

POSITION OF DETONATION:- 7 ft. inboard of root end of wing, at mid-depth of leading edge and 3 inches forward of main spar.

| Type of Filling | Details of Damage to Leading Edge | Figure of Merit |
|---|--|-----------------|
| A. Laminated C.E./E.D.1. | Rd. No.3 2½ ft. span disrupted. 1½ ft. span inboard top skin torn open and bottom skin ballooned severely, and further 2 ft. span ballooned slightly. 4 ft. span outboard ballooned and dished severely. | 120 |
| | Rd. No.15 3 ft. span blown out. 4 ft. span outboard ballooned and dished and nose joint opened. | 100 |
| B. Laminated C.E./E.D.1. filled 4/5 capacity. | Rd. No.14 34 in. x 14 in. hole in top skin and 24 in. x 14 in. hole in bottom skin. 4 ft. span outboard ballooned. | 55 |
| C. Pressed C.E./S.R.379 | Rd. No.2 4 ft. span disrupted. 4 ft. span inboard ballooned slightly. 3½ ft. span outboard ballooned and dished and nose joint opened. | 100 |
| | Rd. No.12 3 ft. span blown out. 2 ft. span inboard ballooned slightly. 4 ft. span outboard ballooned and dished and nose joint opened. Further 1 ft. span ballooned slightly. | 100 |
| D. Pressed C.E./S.R.379 filled 4/5 capacity. | Rd. No.5 29 in. x 15 in. hole in top skin and 36 in. x 12 in. hole in bottom skin. 4 ft. span outboard ballooned and dished. | 60 |
| | Rd. No.13 3 ft. span of top and bottom skin opened out. 4 ft. span outboard ballooned and dished. | 60 |
| E. Torpex (Poured) | Rd. No.1 4 ft. span blown out. 4 ft. span inboard ballooned and dished severely. 2½ ft. span outboard disrupted and further 2 ft. span ballooned slightly. | 125 |
| | Rd. No.10 4½ ft. span blown out. 4 ft. span inboard ballooned slightly. 2 ft. span outboard top skin torn open and bottom skin ballooned severely, and further 2½ ft. span ballooned slightly. | 125 |
| F. R.D.X./T.N.T. (55/45) | Rd. No.4 2 ft span disrupted. 4½ ft. span outboard ballooned and dished. | 65 |
| | Rd. No.16 2 ft. span blown out. 1 ft. span outboard disrupted and further 4 ft. span ballooned and dished severely. | 80 |

CONFIDENTIAL

Technical Note No. Mech Eng. 79

TABLE II (Contd.)

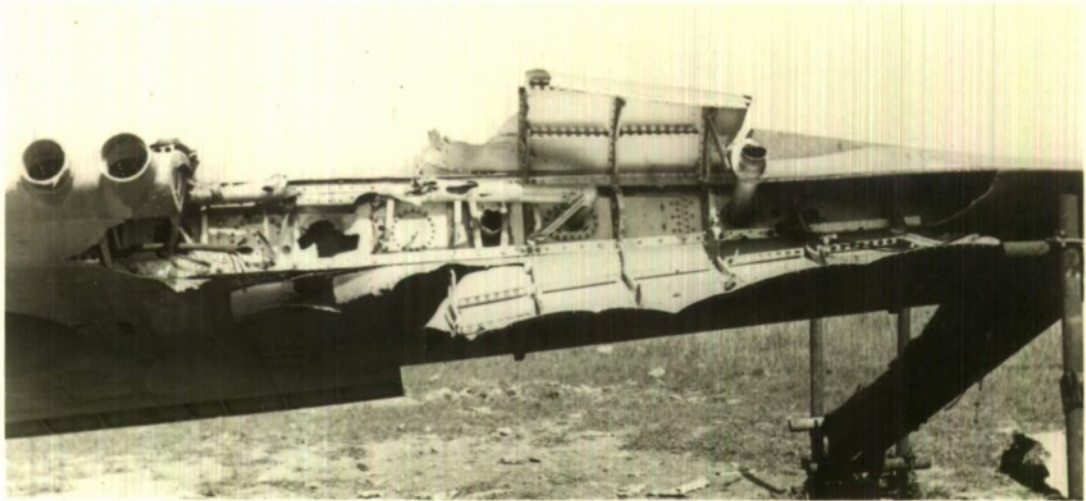
| Type of Filling | Details of Damage to Leading Edge | Figure of Merit |
|---------------------------------|---|-----------------|
| G. C.E/Al/SR.379 | Rd. No.7 3 ft. span disrupted. 3 ft. span inboard ballooned slightly. 2 ft. span outboard ballooned and dished and nose joint opened, and further 4 ft. span ballooned and dished severely. | 100 |
| | Rd. No.17 3 ft. span disrupted. 3 ft. span inboard ballooned and dished. 4 ft. span outboard ballooned and dished and nose joint opened, and further 1 ft. span ballooned slightly. | 100 |
| H. R.D.X./Amm. Nitrate/T.N.T/Al | Rd. No.9 3 ft. span blown out. 4 ft. span outboard ballooned and dished severely. | 100 |
| | Rd. No.18 3 ft. span blown out. 1 ft span inboard ballooned slightly. 4 ft. span outboard ballooned and dished and nose joint opened. | 100 |
| J. C.E/Al/E.D.1. | Rd. No.8 3 ft. span blown out. 3 ft. span outboard ballooned and dished and nose joint opened, and further 1½ ft. span ballooned slightly. | 95 |
| K. Torpex (pressed) | Rd. No.6 3 ft. span blown out. 4 ft. span outboard ballooned and dished severely. | 90 |
| | Rd. No.11 3 ft. span blown out. 2 ft. span inboard ballooned slightly. 4 ft. span outboard ballooned and dished and nose joint opened. | 100 |

CONFIDENTIAL

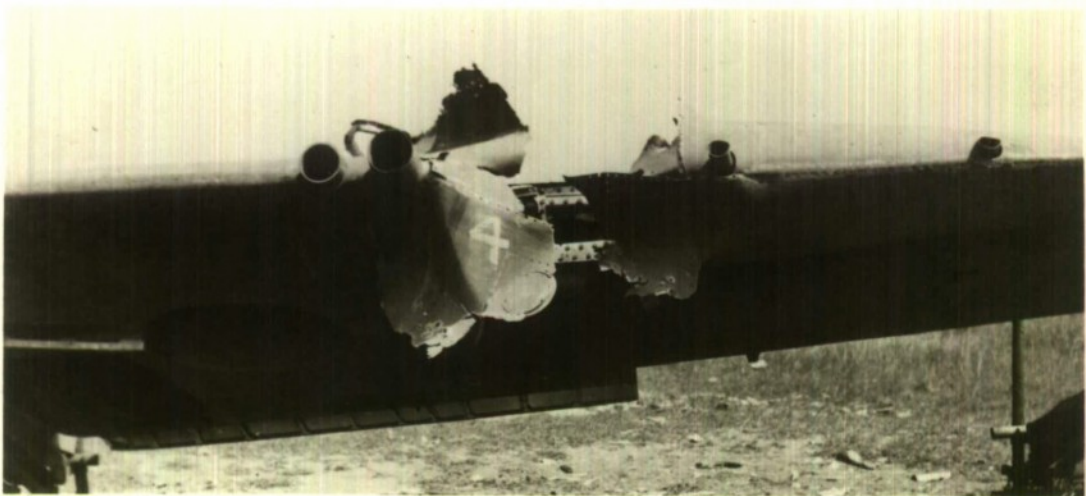
TABLE III

SUMMARY OF RESULTS IN ORDER OF MERIT

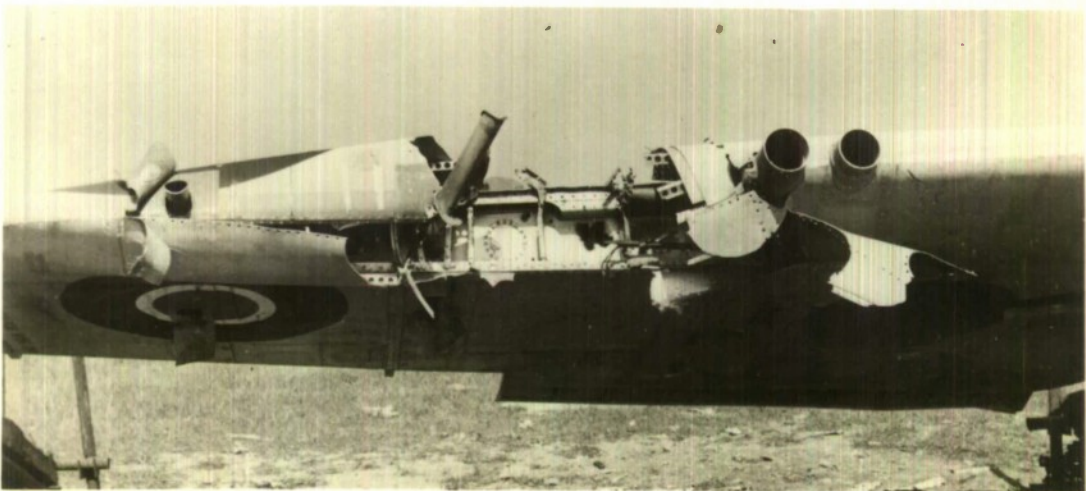
| TYPE OF FILLING | FIGURE OF MERIT | | |
|-------------------------------------|-----------------|---------------|---------|
| | FIRST FIRING | SECOND FIRING | AVERAGE |
| E. Torpex (Foued) | 125 | 125 | 125 |
| A. Laminated C.E./E.D.1. | 120 | 100 | 110 |
| C. C.E./S.R.379 (British H.E./I.) | 100 | 100 | 100 |
| G. C.E./Al./S.R.379 | 100 | 100 | 100 |
| H. R.D.X./Amm.Nitrate/T.N.T/Al. | 100 | 100 | 100 |
| J. C.E./Al./E.D.1. | 95 | - | 95 |
| K. Torpex (Pressed) | 90 | 100 | 95 |
| F. R.D.X./T.N.T. | 65 | 80 | 72.5 |
| D. C.E./S.R.379 (80% cavity filled) | 60 | 60 | 60 |
| B. C.E./E.D.1. (80% cavity filled) | 55 | - | 55 |



FILLING E. Poured TORPEX, RDX/TNT/al (40/45/15)
FIGURE OF MERIT:- 125

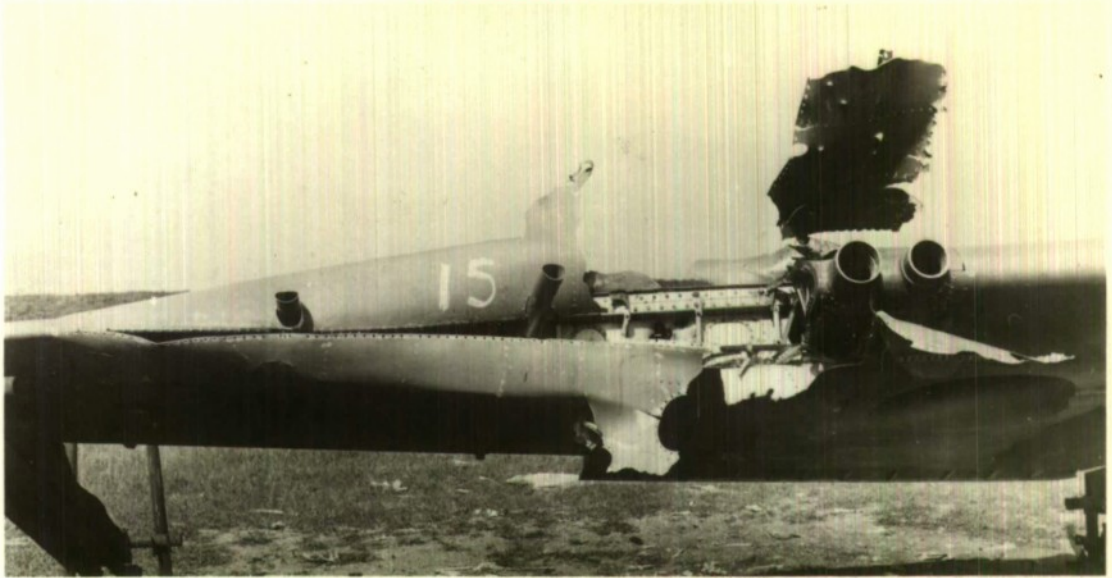


FILLING F. RDX/TNT (55/45)
FIGURE OF MERIT:- 65

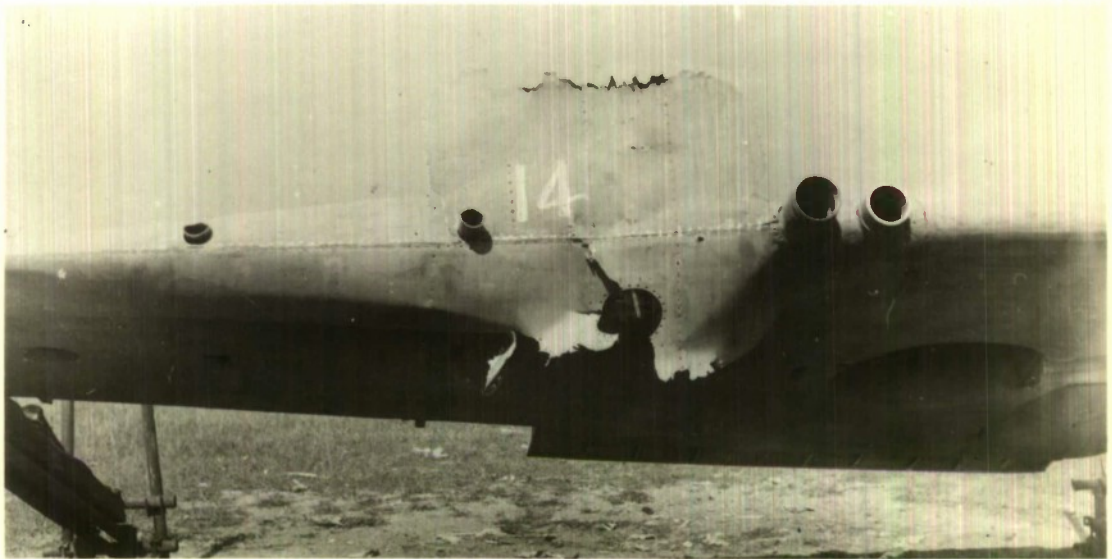


FILLING K. PRESSED TORPEX, RDX/TNT/al (40/45/15)
FIGURE OF MERIT:- 100

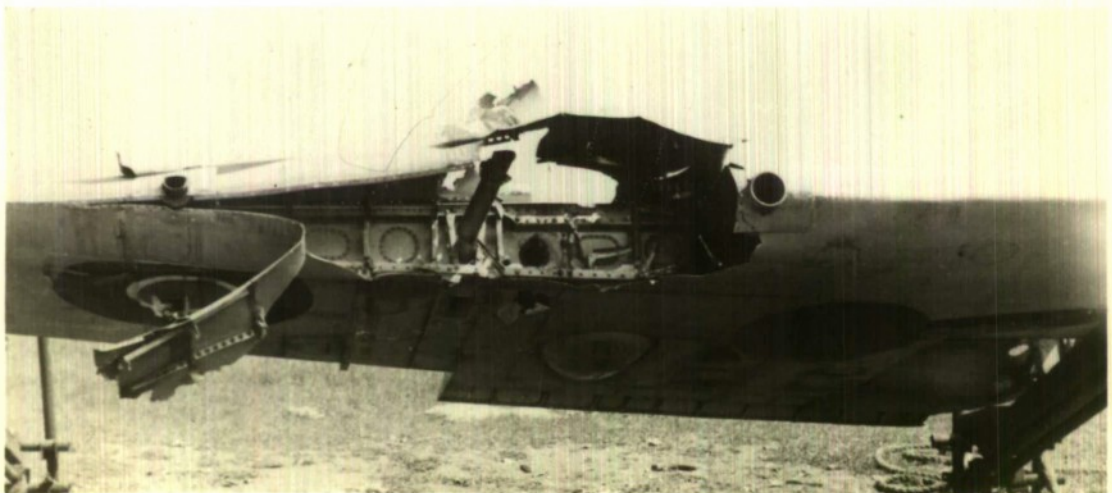
FIG. 1. EFFECTS OF ADDITION OF ALUMINIUM
TO R.D.X./T.N.T. MIXTURES



FILLING A. LAMINATED C.E./E.D.1
FIGURE OF MERIT:- 100



FILLING B. LAMINATED C.E./E.D.1 (1/5 CAPACITY FILLED)
FIGURE OF MERIT:- 55



FILLING C. C.E. S.R.379
FIGURE OF MERIT:- 100

FIG.2. EFFECTS OF H.E. / I MIXTURES AND
REDUCTION OF EXPLOSIVE WEIGHTS

RAE: 93782 51

Defense Technical Information Center (DTIC)
8725 John J. Kingman Road, Suit 0944
Fort Belvoir, VA 22060-6218
U.S.A.

AD#:
Date of Search: 15 February 2007

Record Summary:

Title: Comparison of blast damage effects of HE/1 and HE charges: note on trials at ground level with 2oz fillings detonated statically in aircraft wings
Covering dates 1951
Availability Open Document, Open Description, Normal Closure before FOI Act: 30 years
Former reference (Department) TN ME 79
Held by The National Archives, Kew

This document is now available at the National Archives, Kew, Surrey, United Kingdom.

DTIC has checked the National Archives Catalogue website (<http://www.nationalarchives.gov.uk>) and found the document is available and releasable to the public.

Access to UK public records is governed by statute, namely the Public Records Act, 1958, and the Public Records Act, 1967.
The document has been released under the 30 year rule.
(The vast majority of records selected for permanent preservation are made available to the public when they are 30 years old. This is commonly referred to as the 30 year rule and was established by the Public Records Act of 1967).

This document may be treated as UNLIMITED.