

Statistical Characteristics of the Global Surface Current Speeds Obtained from Satellite Altimetry and Scatterometer Data

Peter C. Chu

Department of Oceanography, Naval Postgraduate School, Monterey, CA93943, USA
(pcchu@nps.edu, tel: 831-656-3688, fax: 831-656-3686)

Report Documentation Page

Form Approved
OMB No. 0704-0188

Public reporting burden for the collection of information is estimated to average 1 hour per response, including the time for reviewing instructions, searching existing data sources, gathering and maintaining the data needed, and completing and reviewing the collection of information. Send comments regarding this burden estimate or any other aspect of this collection of information, including suggestions for reducing this burden, to Washington Headquarters Services, Directorate for Information Operations and Reports, 1215 Jefferson Davis Highway, Suite 1204, Arlington VA 22202-4302. Respondents should be aware that notwithstanding any other provision of law, no person shall be subject to a penalty for failing to comply with a collection of information if it does not display a currently valid OMB control number.

1. REPORT DATE 2008		2. REPORT TYPE		3. DATES COVERED 00-00-2008 to 00-00-2008	
4. TITLE AND SUBTITLE Statistical Characteristics of the Global Surface Current Speeds Obtained from Satellite Altimetry and Scatterometer Data				5a. CONTRACT NUMBER	
				5b. GRANT NUMBER	
				5c. PROGRAM ELEMENT NUMBER	
6. AUTHOR(S)				5d. PROJECT NUMBER	
				5e. TASK NUMBER	
				5f. WORK UNIT NUMBER	
7. PERFORMING ORGANIZATION NAME(S) AND ADDRESS(ES) Department of Oceanography, Naval Postgraduate School, Monterey, CA, 93943				8. PERFORMING ORGANIZATION REPORT NUMBER	
9. SPONSORING/MONITORING AGENCY NAME(S) AND ADDRESS(ES)				10. SPONSOR/MONITOR'S ACRONYM(S)	
				11. SPONSOR/MONITOR'S REPORT NUMBER(S)	
12. DISTRIBUTION/AVAILABILITY STATEMENT Approved for public release; distribution unlimited					
13. SUPPLEMENTARY NOTES					
14. ABSTRACT					
15. SUBJECT TERMS					
16. SECURITY CLASSIFICATION OF:			17. LIMITATION OF ABSTRACT	18. NUMBER OF PAGES	19a. NAME OF RESPONSIBLE PERSON
a. REPORT unclassified	b. ABSTRACT unclassified	c. THIS PAGE unclassified			

Abstract

Near-real time ocean surface currents derived from satellite altimeter (JASON-1, GFO, ENVISAT) and scatterometer (QSCAT) data on $1^\circ \times 1^\circ$ resolution for world oceans (60° S to 60° N) are available online as “Ocean Surface Current Analyses – Real Time (OSCAR)”. The probability distribution function (PDF) of the current speeds (w), constructed from global OSCAR data from 1992 to 2008, satisfies the two-parameter Weibull distribution reasonably well, and such a PDF has little seasonal and interannual variations. Knowledge on PDF of w will improve the ensemble horizontal flux calculation, which contributes to the climate studies.

1. Introduction

The world oceans contribute significantly to the global redistribution of heat necessary to maintain the earth's thermal equilibrium. Surface layer horizontal fluxes of momentum, heat, water mass and chemical constituents are typically nonlinear in the speed^{[1][2]}, so the space or time average flux is not generally equal to the flux that would be diagnosed from the averaged current speed. In fact, the average flux will generally depend on higher-order moments of the current speed, such as the standard deviation, skewness, and kurtosis. From both diagnostic and modeling perspectives, there is a need for parameterizations of the probability distribution function (PDF) of the current speed w (called w -PDF here).

Recent study on the equatorial Pacific^[3] showed that the w -PDF satisfies the two-parameter Weibull distribution in the upper layer (0 – 50 m) after analyzing the hourly Acoustic Doppler Current Profiler (ADCP) data (1990-2007) at all the six stations along during the Tropical Atmosphere Ocean (TAO) project. Question arises: Can such a result (e.g., the Weibull distribution for the equatorial Pacific surface current speeds) be extended to global oceans? To answer this question, we use the 5-day Ocean Surface Currents Analyses – Real-time (OSCAR) data to construct the observational w -PDF for the global ocean surface circulation. Special characteristics of the statistical parameters such as mean, standard deviation, skewness, and kurtosis will also be identified.

2. The OSCAR Data

The OSCAR data are available for the world oceans from 60°N to 60°S on 1° × 1° grid to a broad-based user community via a web-based interactive data selection interface on a time base with exactly 72 steps per year (about 5 day interval) starting from October 1992 (Fig. 1). The velocity is automatically computed from gridded fields of surface topography and wind derived on the base of the

Ekman dynamics from satellite altimeter (JASON-1, GFO, ENVISAT) and scatterometer (QSCAT) vector wind data. See website: <http://www.oscar.noaa.gov/> for detailed information.

3. Stochastic Differential Equations for Surface Currents

Let (x, y) be the horizontal coordinates and z be the vertical coordinate. Vertically averaged horizontal velocity components (u, v) from the surface to a constant scale depth (h) of surface mixed layer are given by ^[3]

$$\frac{\partial u}{\partial t} = \frac{1}{h} \Lambda_u - \frac{K}{h^2} u, \quad (1)$$

$$\frac{\partial v}{\partial t} = \frac{1}{h} \Lambda_v - \frac{K}{h^2} v, \quad (2)$$

where

$$\Lambda_u \equiv fV_E + \frac{\tau_x}{\rho}, \quad \Lambda_v \equiv -fU_E + \frac{\tau_y}{\rho}, \quad (3)$$

represent the residual between the Ekman transport and surface wind stress. Here, K is the eddy viscosity; f is the Coriolis parameter; (τ_x, τ_y) are the surface wind stress components; and (U_E, V_E) are Ekman transports computed by

$$(U_E, V_E) = \int_{-h}^0 (\tilde{u} - u_g, \tilde{v} - v_g) dz, \quad (4)$$

where (\tilde{u}, \tilde{v}) are the vertically varying horizontal velocity components; and (u_g, v_g) are the geostrophic velocity components. With absence of horizontal pressure gradient, e.g., $u_g = v_g = 0$, Equations (1) and (2) reduce to the commonly used wind-forced slab model ^[4]. For the sake of convenience, we assume that the residual between the Ekman transports (U_E, V_E) and surface wind stress does not depend on the horizontal current vector (u, v) . Away from the equator, this approximation is similar to a small Rossby number approximation ^[5]. If the forcing (Λ_u, Λ_v) is fluctuating around some mean value,

$$\Lambda_u(t) = \langle \Lambda_u \rangle + \dot{W}_1(t)h\Sigma, \quad \Lambda_v(t) = \langle \Lambda_v \rangle + \dot{W}_2(t)h\Sigma, \quad (5)$$

where the angle brackets represent ensemble mean and the fluctuations are taken to be isotropic and white in time:

$$\langle \dot{W}_i(t_1)\dot{W}_j(t_2) \rangle = \delta_{ij}\delta(t_1 - t_2), \quad (6)$$

with a strength that is represented by Σ . Note that the Ekman transport is determined by the surface wind stress for time-independent case, and therefore the ensemble mean values of (Λ_u, Λ_v) are zero,

$$\langle \Lambda_u \rangle = 0, \quad \langle \Lambda_v \rangle = 0. \quad (7)$$

Substitution of (5)-(7) into (1) and (2) gives

$$\frac{\partial u}{\partial t} = -\frac{K}{h^2}u + \dot{W}_1(t)\Sigma, \quad (8)$$

$$\frac{\partial v}{\partial t} = -\frac{K}{h^2}v + \dot{W}_2(t)\Sigma, \quad (9)$$

which is a set of stochastic differential equations for the surface current vector. The joint PDF of (u, v) satisfies the Fokker-Planck equation,

$$\frac{\partial p}{\partial t} = \left(\frac{\Sigma^2}{2} \right) \left(\frac{\partial^2 p}{\partial u^2} + \frac{\partial^2 p}{\partial v^2} \right) + \frac{\partial}{\partial u} \left[\left(\frac{K}{h^2}u \right) p \right] + \frac{\partial}{\partial v} \left[\left(\frac{K}{h^2}v \right) p \right], \quad (10)$$

which is a linear second-order partial differential equation with the depth scale (h) taken as a constant. Transforming from the orthogonal coordinates (u, v) to the polar coordinates (w, φ) respectively the current speed and direction,

$$u = w \cos \varphi, \quad v = w \sin \varphi. \quad (11)$$

The joint PDF of (u, v) is transformed into the joint PDF of (w, φ) ,

$$p(u, v)du dv = p(u, v)w dw d\varphi = \tilde{p}(w, \varphi)dw d\varphi. \quad (12)$$

Integration of (12) over the angle φ from 0 to 2π yields the marginal PDF for the current speed alone,

$$p(w) = \int_0^{2\pi} \tilde{p}(w, \varphi) d\varphi. \quad (13)$$

For a constant eddy viscosity (K) at $z = -h$, the steady state solution of equation (10) is given by

$$p(u, v) = A \exp\left[-\frac{K}{\Sigma^2 h^2} (u^2 + v^2)\right], \quad (14)$$

where A is a normalization constant. Substitution of (14) into (12) and use of (13) yield the Rayleigh distribution

$$p(w) = \frac{2w}{a^2} \exp\left[-\left(\frac{w}{a}\right)^2\right], \quad a \equiv \frac{\Sigma h}{\sqrt{K}}, \quad (15)$$

with the scale parameter a . The basic postulation of constant K may not be met always at the upper ocean. Hence we require a model that can meet the twin objectives of (a) accommodating Rayleigh distribution whenever the basic hypothesis (constant K) that justifies it is satisfied and (b) fitting data under more general conditions. This requirement is supposed to be satisfied by the Weibull probability density function,

$$p(w) = \frac{b}{a} \left(\frac{w}{a}\right)^{b-1} \exp\left[-\left(\frac{w}{a}\right)^b\right], \quad (16)$$

where the parameters a and b denote the scale and shape of the distribution. This distribution has been recently used in investigating the ocean model predictability ^{[6][7]}.

4. Parameters of the Weibull Distribution

The four parameters (mean, standard deviation, skewness, and kurtosis) of the Weibull distribution are calculated by ^[8],

$$\text{mean}(w) = a \Gamma\left(1 + \frac{1}{b}\right), \quad (17)$$

$$\text{std}(w) = a \left[\Gamma\left(1 + \frac{2}{b}\right) - \Gamma^2\left(1 + \frac{1}{b}\right) \right]^{1/2}, \quad (18)$$

where Γ is the gamma function. The parameters a and b can be inverted ^[9] from (17) and (18),

$$b \simeq \left[\frac{\text{mean}(w)}{\text{std}(w)} \right]^{1.086}, \quad a = \frac{\text{mean}(w)}{\Gamma(1+1/b)}. \quad (19)$$

The skewness and kurtosis are computed by

$$\text{skew}(w) = \frac{\Gamma\left(1+\frac{3}{b}\right) - 3\Gamma\left(1+\frac{1}{b}\right)\Gamma\left(1+\frac{2}{b}\right) + 2\Gamma^3\left(1+\frac{1}{b}\right)}{\left[\Gamma\left(1+\frac{2}{b}\right) - \Gamma^2\left(1+\frac{1}{b}\right)\right]^{3/2}}, \quad (20)$$

$$\begin{aligned} \text{kurt}(w) &= \frac{\Gamma\left(1+\frac{4}{b}\right) - 4\Gamma\left(1+\frac{1}{b}\right)\Gamma\left(1+\frac{3}{b}\right)}{\left[\Gamma\left(1+\frac{2}{b}\right) - \Gamma^2\left(1+\frac{1}{b}\right)\right]^2} \\ &+ \frac{6\Gamma^2\left(1+\frac{1}{b}\right)\Gamma\left(1+\frac{2}{b}\right) - 3\Gamma^4\left(1+\frac{1}{b}\right)}{\left[\Gamma\left(1+\frac{2}{b}\right) - \Gamma^2\left(1+\frac{1}{b}\right)\right]^2} - 3, \end{aligned} \quad (21)$$

which depend on the parameter b only [see (20) and (21)] for the Weibull distribution. The relationship between the kurtosis and skewness can be determined from (20) and (21).

5. Observational w -PDF

The data depicted in Section 2 are used to investigate the statistical features of the global surface current speeds (w). The four parameters (mean, standard deviation, skewness, and kurtosis) can also be calculated from the observational data (w)

$$\text{mean}(w) = \frac{1}{N} \sum_{i=1}^N w_i, \quad \text{std}(w) = \sqrt{\text{mean}[w - \text{mean}(w)]},$$

$$\text{skew}(w) = \frac{\text{mean}\{[w - \text{mean}(w)]^3\}}{\text{std}^3(w)},$$

$$\text{kurt}(w) = \frac{\text{mean}\{[w - \text{mean}(w)]^4\}}{\text{std}^4(w)} - 3, \quad (22)$$

for the each grid point. The mean, standard deviation, skewness, and kurtosis fields of w estimated from the OSCAR data are displayed in Fig. 2. Large values of $\text{mean}(w)$ occur in the western boundaries such as in the Gulf Stream, Kuroshio, and Somali Current, Malvinas Current and; secondary maxima in the equatorial zones especially in the western and central equatorial Pacific. Minima of $\text{mean}(w)$ occur in the subtropical horse latitudes. The standard deviation of w is also large near the western boundaries and in the equatorial zones. In general, w is positively skewed in the most part of the global oceans and negatively skewed in the equatorial zones and Southern Ocean. The kurtosis field is much noisier than those of $\text{mean}(w)$, $\text{std}(w)$, or $\text{skew}(w)$.

The Weibull parameters (a , b) were calculated from $\text{mean}(w)$ and $\text{std}(w)$. The distribution of the parameter a over the global oceans (Fig. 3a) is quite close to the distribution of $\text{mean}(w)$, i.e., with large values in western boundaries and equatorial zone. The distribution of the Weibull parameter b is shown in Fig. 3b. Thus, a four-parameter dataset has been established each location. The scatter diagrams were drawn for global oceans during all or different time periods.

The relationships between $\text{skew}(w)$ and $\text{mean}(w)/\text{std}(w)$ (representing the parameter b) and between the $\text{kurt}(w)$ and the $\text{skew}(w)$ may be used to identify the fitness of the Weibull distribution for observational w -PDFs. The solid curve on these figures shows the relationship for a Weibull variable. Fig. 4 shows the kernel density estimates of joint PDFs of $\text{mean}(w)/\text{std}(w)$ versus $\text{skew}(w)$ and $\text{kurt}(w)$ versus $\text{skew}(w)$ for January (left panels) and July (right panels) OSCAR data from 1992 to 2008. Fig. 5 shows the similar items from the OSCAR data during (a) 1993-1997 (b) 1998-2002, and (c) 2003-2007. The contour intervals are logarithmically spaced. The thick black line is the theoretical curve for a Weibull variable.

For the observational surface current speeds (w), the $\text{skew}(w)$ is evidently a concave function of the ratio $\text{mean}(w)/\text{std}(w)$ (the same as the Weibull distribution), such that the theoretical function is positive for small values of this ratio and negative for large values. However, for the core of the kernel with the joint probability higher than 0.32, $\text{mean}(w)/\text{std}(w)$ is always less than 2.2 and $\text{skew}(w)$ is always positive (Fig. 4, upper panes). Similarly, the relationship between $\text{skew}(w)$ and $\text{kurt}(w)$ in the observations is similar to that for a Weibull variable (Fig. 4, lower panels) with smaller kurtosis. These features are almost the same between January (Fig. 4a) and July (Fig. 4b), and among three time periods: 1993-1997 (Fig. 5a), 1998-2002 (Fig. 5b), and 2003-2007 (Fig. 5c). The agreement between the moment relationships in the OSCAR data and those for a Weibull variable reinforces the conclusion that these data are Weibull to a good approximation.

6. Conclusions

This study has investigated the probability distribution function of the surface current speeds (w), using long-term (1992-2008) 5 day “Ocean Surface Current Analyses – Real Time (OSCAR)” (OSCAR) data; and theoretically, using a stochastic model derived using upper boundary layer physics. The following results were obtained.

(1) Probability distribution function of the global surface current speeds (w) approximately satisfies the two-parameter Weibull distribution. In the upper ocean with a constant eddy viscosity K , the probability distribution function satisfies a linear second-order partial differential equation (i.e., the Fokker-Planck equation) with an analytical solution – the Rayleigh distribution (special case of the 2 parameter Weibull distribution).

(2) Four moments of w (mean, standard deviation, skewness, kurtosis) have been characterized. It was found that the relationships between $\text{mean}(w)/\text{std}(w)$ and $\text{skew}(w)$ and between $\text{skew}(w)$ and $\text{kurt}(w)$ from the data are in fairly well agreement with the theoretical Weibull distribution for the

upper (0 - 50 m) tropical Pacific for the whole period. The OSCAR data also show that the ratio $\text{mean}(w)/\text{std}(w)$ is generally less than 2.2 and the skewness is generally positive for the whole global oceans.

(3) The Weibull distribution provides a good empirical approximation to the PDF of global ocean surface current speeds with little seasonal and interannual variations. This may improve the representation of the horizontal fluxes that are at the heart of the coupled physical–biogeochemical dynamics of the marine system.

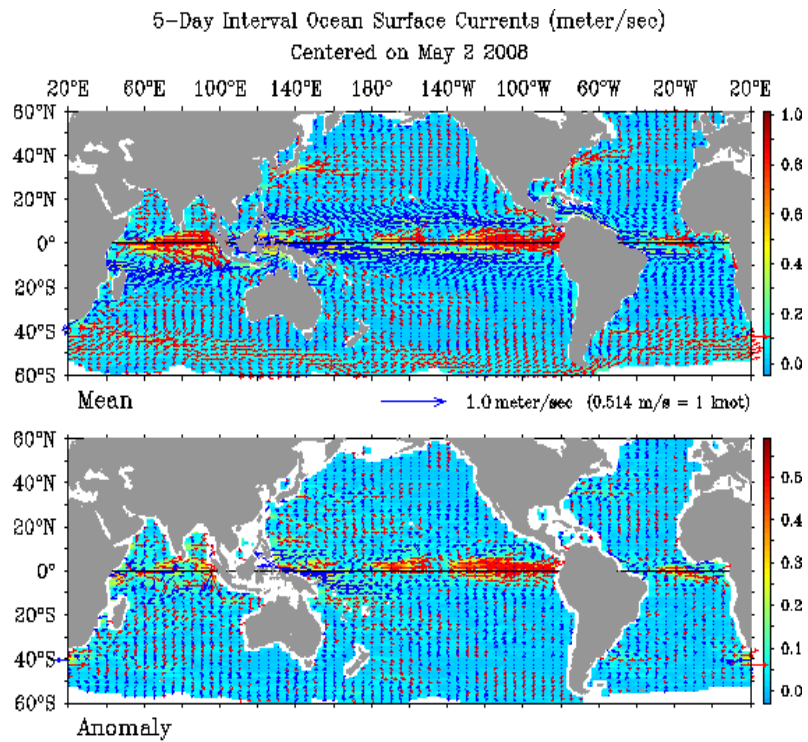
Acknowledgments

This research was supported by the Office of Naval Research, Naval Oceanographic Office, and Naval Postgraduate School.

References

- [1] G. Galanis, P. Louka, P. Katsafados, G. Kallos I. Pytharoulis, Applications of Kalman filters based on non-linear functions to numerical weather predictions. *Ann. Geophys.*, **24**, 2451-2460, 2005.
- [2] C. J. Lozano, A.R. Robinson, H.G. Arrango, A. Gangopadhyay, Q. Sloan, P. J. Haley, L. Anderson, and W. Leslie, “An interdisciplinary ocean prediction system: assimilation strategies and structured data models,” in: *Modern Approaches to Data Assimilation in Ocean Modeling*, edited by P. Malanotte-Rizzoli, 413-452, Elsevier, Amsterdam, 1996.
- [3] P.C. Chu, “Probability distribution function of the upper equatorial Pacific current speeds,” *Geophysical Research Letters*, 35, doi:10.1029/2008GL033669, 2008.
- [4] R.T. Pollard, and R. C. Millard, “Comparison between observed and simulated wind-generated inertial oscillations,” *Deep Sea Research*, 17, 795-812, 1970.
- [5] A.E. Gill, “*Atmosphere-Ocean Dynamics*,” Academic Press, San Diego, 662 pp, 1982.

- [6] L.M. Ivanov,, and P.C. Chu, “On stochastic stability of regional ocean models to finite-amplitude perturbations of initial conditions,” *Dynamics of Atmosphere and Oceans*, 43, 199-225, doi:10.1016/j.dynatmoce.2007.03.001, 2007a.
- [7] L.M. Ivanov, and P.C. Chu, “On stochastic stability of regional ocean models with uncertainty in wind forcing,” *Nonlinear Processes of Geophysics*, 14, 655-670, 2007b.
- [8] N. Johnson, S. Kotz, and N. Balakrishnan, “Continuous Univariate Distributions,” Vol. 1. Wiley, 756 pp, 1994.
- [9] A.H. Monahan, “The probability distribution of sea surface wind speeds. Part-1: theory and SeaWinds observations,” *Journal of Climate*, 19, 497-519. 2006.



NEOSIS/NOAA

May 7 2008

Fig. 1. Global ocean surface current vectors (5-day mean and anomaly) derived from satellite altimeter and scatterometer data. The data can be downloaded from the website: <http://www.oscar.noaa.gov/>.

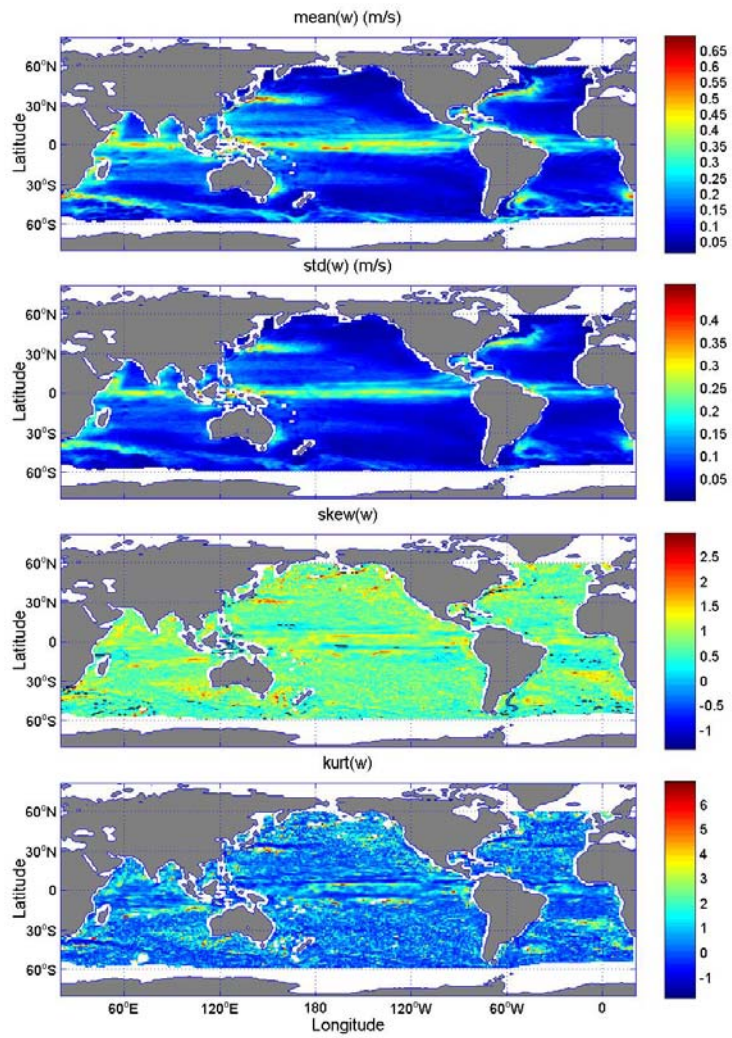


Fig. 2. First four parameters of the surface current speeds calculated from the OSCAR data (1992-2008).

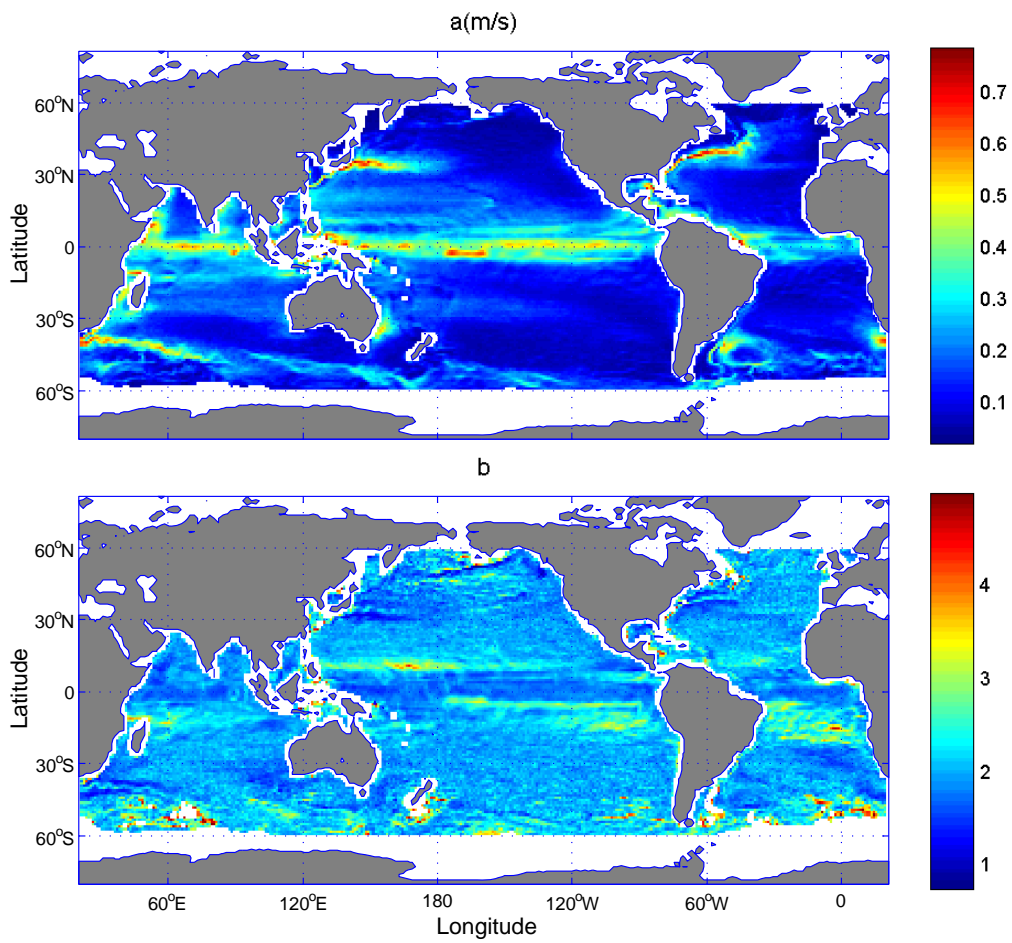


Fig. 3. Same as in Fig. 2, but for Weibull parameters (a , b).

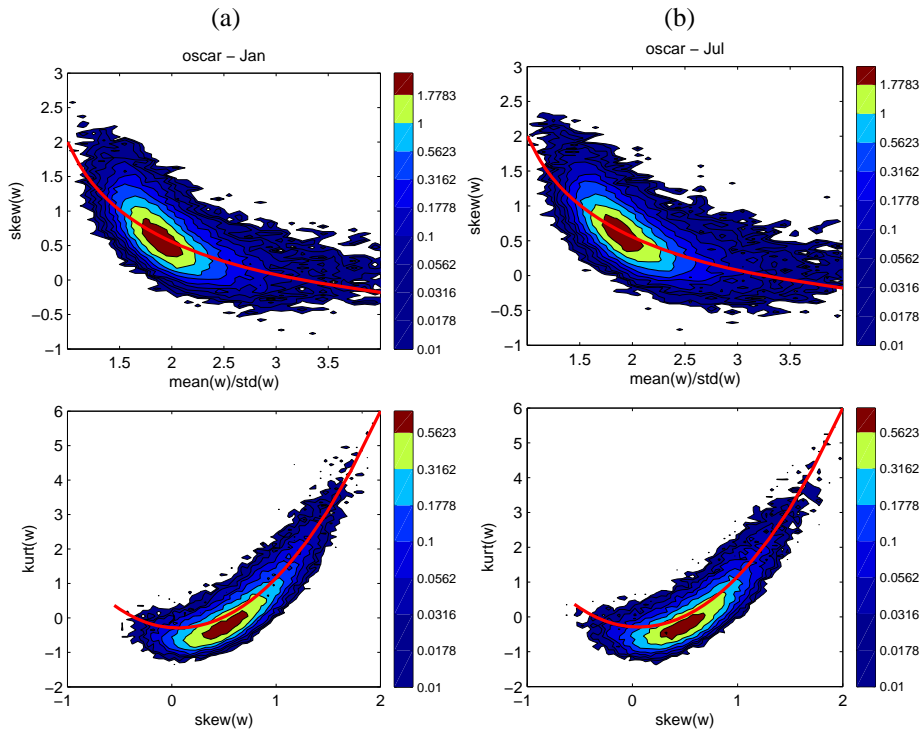


Fig. 4. Kernel density estimates of joint PDFs of (top) $\text{mean}(w)/\text{std}(w)$ and $\text{skew}(w)$ and (bottom) $\text{skew}(w)$ and $\text{kurt}(w)$ for (left) for (a) January and (b) July OSCAR data from 1992 to 2008. The contour intervals are logarithmically spaced. The thick black line is the theoretical curve for a Weibull variable.

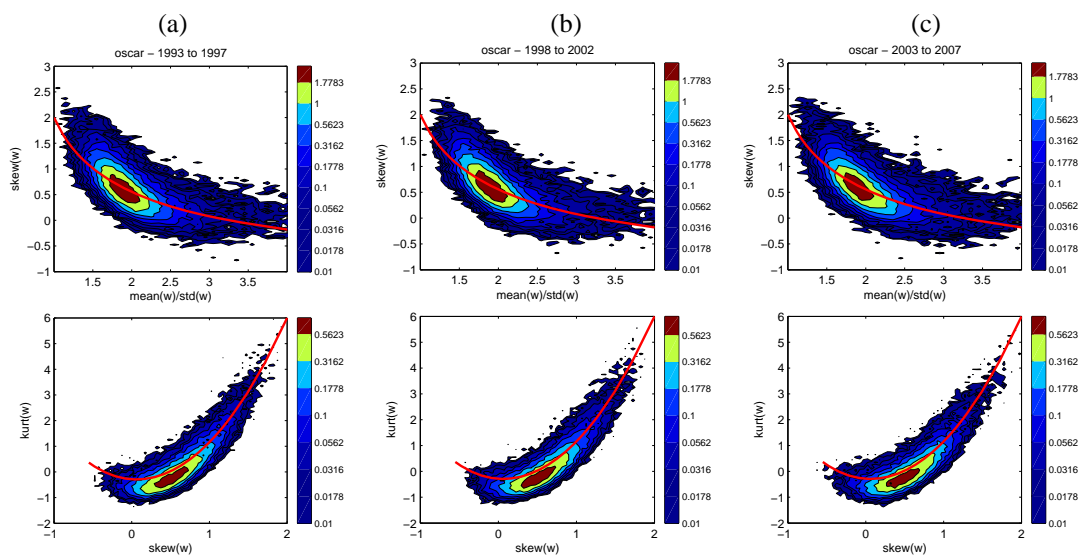


Fig. 5. Kernel density estimates of joint PDFs of (top) $\text{mean}(w)/\text{std}(w)$ and $\text{skew}(w)$ and (bottom) $\text{skew}(w)$ and $\text{kurt}(w)$ for (left) from the OSCAR data during (a) 1993-1997 (b) 1998-2002, and (c) 2003-2007. The contour intervals are logarithmically spaced. The thick black line is the theoretical curve for a Weibull variable.