

ERDC/CERL SR-04-31

Construction Engineering
Research Laboratory



US Army Corps
of Engineers®
Engineer Research and
Development Center

Planning Composer User's Guide

Through Beta Version 0.22

Susan D. Nachtigall and Beth A. Brucker

November 2004

The cover features a central graphic with a blue sky background and a grid pattern. A large black circle with a crosshair is centered over a 3D architectural rendering of a building complex. The text 'on target for building excellence' is written in a serif font across the middle of the graphic. At the top, 'Facility Composer Suite' is written in white on a black background. At the bottom, 'Suite of Criteria/Requirements-Based Design Tools' and the URL 'ERDC / CERL http://bc.cecer.army.mil/' are written in white on a black background.

Facility Composer Suite

Planning Composer

on target for
building excellence

Suite of Criteria/Requirements-Based Design Tools
ERDC / CERL <http://bc.cecer.army.mil/>

Planning Composer User's Guide: Through Beta Version 0.22

Susan D. Nachtigall and Beth A. Brucker

*Construction Engineering Research Laboratory
PO Box 9005
Champaign, IL 61826-9005*

Final Report

Approved for public release; distribution is unlimited.

Prepared for U.S. Army Corps of Engineers
Washington, DC 20314-1000

ABSTRACT: Over the past several years, the Architectural Engineering and Construction (AEC) industry has been making a substantial effort to create a standard facility modeling format known as the Industry Foundation Class (IFC), which has now made it possible to capture criteria and requirements during planning and design, and then to reuse this data during the life cycle of the facility. This research effort is part of the “Fort Future” program, which is developing a capability to model, simulate, assess, and optimize installation capabilities to support the Objective Force. The Facility Acquisition component of Fort Future, Facility Composer, will shorten the time required to acquire facilities while ensuring that Objective Force and Future Combat Systems (FCS) criteria and requirements are met. Facility Composer tools support capturing and tracking of facility criteria and requirements, planning and design charrettes, and associated planning and design analyses. *Planning Composer* is one of the primary tools in the Facility Composer application suite, which helps users create an architectural program and to set values for project specific criteria. This work contains a User Guide for the *Planning Composer* software.

DISCLAIMER: The contents of this report are not to be used for advertising, publication, or promotional purposes. Citation of trade names does not constitute an official endorsement or approval of the use of such commercial products. All product names and trademarks cited are the property of their respective owners. The findings of this report are not to be construed as an official Department of the Army position unless so designated by other authorized documents.
DESTROY THIS REPORT WHEN IT IS NO LONGER NEEDED. DO NOT RETURN IT TO THE ORIGINATOR.

Contents

List of Figures	iv
Conversion Factors	vi
Preface.....	vii
1 Introduction	1
Background.....	1
Objective	2
Approach	2
Mode of Technology Transfer	2
2 Introduction to Facility Composer.....	3
Description	3
Tools.....	5
3 Planning Composer	6
Installation.....	6
<i>System Requirements</i>	<i>6</i>
<i>Running the Install Program</i>	<i>7</i>
Using Planning Composer	11
<i>Starting the Program.....</i>	<i>11</i>
<i>Creating/Opening a Project</i>	<i>11</i>
<i>Project Composition Panel</i>	<i>16</i>
<i>Working with Function Templates</i>	<i>18</i>
<i>Project Requirements Panel</i>	<i>20</i>
<i>Additional Functionality.....</i>	<i>27</i>
4 Conclusion.....	33
Glossary	34
Report Documentation Page.....	36

List of Figures

Figures

1	Facility Composer data flow	3
2	Installation introduction dialog	7
3	Choose install folder	8
4	Location browser dialog	8
5	Choose projects directory location dialog	9
6	Choose shortcut location dialog	9
7	Installation progress dialog	10
8	Install complete dialog	10
9	Main <i>Planning Composer</i> screen	11
10	New project dialog box	12
11	Facility requirements selection dialog box	12
12	Main <i>Planning Composer</i> screen after opening a new project	14
13	Open project dialog	14
14	Error setting up library	15
15	Import Facility Composer XML	15
16	Project composition panel	16
17	Add function instance dialog	17
18	Import button for adding functions	18
19	“Add Function Template” dialog box	19
20	Main program grid with added architectural templates	20
21	Example blank project program grid	21
22	Project area showing total planned area and total actual area	21
23	Example program grid for the building level	22
24	Function program grid	23
25	Area desired dialog box	23
26	Choices for added planned area at the function level	23
27	“Area desired” dialog box – “Occupancy per person” option	24
28	Properties panel	25
29	Example of modifying criteria/requirements	26

30	Add Project Requirements Dialog Box.....	27
31	Create alternative dialog box	28
32	Create alternative dialog	28
33	Open alternative dialog box	28
34	Export model dialog	29
35	Export to IFC XML 2.X dialog box.....	30
36	Programmed area report.....	31
37	Report output dialog.....	32

Conversion Factors

Non-SI* units of measurement used in this report can be converted to SI units as follows:

Multiply	By	To Obtain
acres	4,046.873	square meters
cubic feet	0.02831685	cubic meters
cubic inches	0.00001638706	cubic meters
degrees (angle)	0.01745329	radians
degrees Fahrenheit	$(5/9) \times ({}^{\circ}\text{F} - 32)$	degrees Celsius
degrees Fahrenheit	$(5/9) \times ({}^{\circ}\text{F} - 32) + 273.15$	kelvins
feet	0.3048	meters
gallons (U.S. liquid)	0.003785412	cubic meters
horsepower (550 ft-lb force per second)	745.6999	watts
inches	0.0254	meters
kips per square foot	47.88026	kilopascals
kips per square inch	6.894757	megapascals
miles (U.S. statute)	1.609347	kilometers
pounds (force)	4.448222	newtons
pounds (force) per square inch	0.006894757	megapascals
pounds (mass)	0.4535924	kilograms
square feet	0.09290304	square meters
square miles	2,589,998	square meters
tons (force)	8,896.443	newtons
tons (2,000 pounds, mass)	907.1847	kilograms
yards	0.9144	meters

* *Système International d'Unités* ("International System of Measurement"), commonly known as the "metric system."

Preface

This study was conducted for Headquarters, U.S. Army Corps of Engineers (HQUSACE) under Project “Fort Future”; Work Unit LK6K75-N, “Fort Future Facilities.” The technical monitors were Paul A. Howdyshell, CEERD-CF-M and Michael P. Case, CEERD-CF-N, Special Projects Officer for Fort Future.

The work was performed by the Engineering Processes Branch (CF-N) of the Facilities Division (CF), Construction Engineering Research Laboratory (CERL). The CERL Project Manager was Beth A. Brucker. Recognition is due to Jeff Heckel, Wayne Smith, Russ Northrup, William Zwicky and Van Woods for their contribution to the development of the Facility Composer Suite of Tools. Also special recognition is due to Matthew R. Geaman and Ronnie B. Pride, Research Assistants from the University of Illinois, for contribution to this document. The technical editor was William J. Wolfe, Information Technology Laboratory. Donald K. Hicks is Chief, CEERD-CF-N, and L. Michael Golish is Chief, CEERD-CF. The associated Technical Director was Paul A. Howdyshell, CEERD-CF-M. The Director of CERL is Dr. Alan W. Moore.

CERL is an element of the U.S. Army Engineer Research and Development Center (ERDC), U.S. Army Corps of Engineers. The Commander and Executive Director of ERDC is COL James R. Rowan, and the Director of ERDC is Dr. James R. Houston.

1 Introduction

Background

The Architectural Engineering and Construction (AEC) industry has been making a substantial effort over the past several years to create a standard facility modeling format that better enables their different software applications to work together. This emerging standard, known as the Industry Foundation Class (IFC), is being developed by the International Alliance for Interoperability (IAI) and can be found in recent releases of commercial AEC software.

The evolution of this facility modeling standard, has now made it possible to capture criteria and requirements during planning and design, and then to reuse this data during the life cycle of the facility. Providing interoperability among planning, design, construction, operations and maintenance, and recycling software applications will reduce the time necessary to process information about the facilities.

This research effort is part of the “Fort Future” program being conducted by the U.S. Army Engineer Research and Development Center (ERDC) in support of the Office of the Assistant Chief of Staff for Installation Management (OASCIM) and the Installation Management Agency (IMA). The key objective of Fort Future is to develop a capability to model, simulate, assess, and optimize installation capabilities to support the Objective Force. Fort Future users at the installation, regional, or national level will be able to set up planning scenarios, conduct dynamic analysis over a period of up to 30 years, and compare scenario results using a virtual installation.

Before Objective Force brigades can be deployed, installations must conduct analyses to determine their facility requirements. The difficulty of this task is compounded by the fluid state of information about the Future Combat System (FCS) and the long lead time (5 to 7 years for large facilities) built into the Military Construction, Army (MCA) and National Environmental Policy Act (NEPA) processes. Installations designated for Stryker Brigade Combat Teams (SBCTs) have been overloaded with requirements to produce large numbers of planning documents in a very short time. Under the Unit Set Fielding process, future

combat systems cannot be fielded until supporting facilities are in place. This requirement that puts yet more pressure on the MCA process.

The Facility Acquisition component of Fort Future, *Facility Composer*, will shorten the time required to acquire facilities while ensuring that Objective Force and FCS criteria and requirements are met. Facility Composer tools support capturing and tracking of facility criteria and requirements, planning and design charrettes, and associated planning and design analyses. *Planning Composer* is one of the primary tools in the *Facility Composer* application suite, which helps users create an architectural program and to set values for project specific criteria.

Objective

The overall objective of this work is to design and produce a suite of tools for use by facility planners, designers, and engineers during the initial phases of facility planning and design. The specific objective of this part of the project is to devise and publish a User Guide for the *Planning Composer* software.

Approach

This document is meant to serve as an overall user guide to accompany the *Planning Composer* software. It includes:

1. A general description of the program and its tools (p 3)
2. System requirements and installation instructions (p 6)
3. Step-by-step program instructions for principal program functions (pp 11–32)
4. A glossary of technical terminology (p 34)

Mode of Technology Transfer

This report will be made accessible through the World Wide Web (WWW), as a laboratory publication through the CERL website, at URL:

<http://www.cecer.army.mil>

and directly to users through the *Facility Composer* website, at URL:

<https://ff.cecer.army.mil/fc>

2 Introduction to Facility Composer

Description

Facility Composer is a suite of tools for use by facility planners, designers, and engineers during the initial phases of facility planning and design. While originally developed to support the design of government facilities, *Facility Composer* is based on the general concepts of: (1) providing a method to effectively and creatively create and use criteria libraries, (2) providing support for architectural programming and project specific criteria specification during interactive design charrettes or at the designer's desktop, and (3) supporting the creative and analytical aspects of architectural conceptual design involving the creation of one or many solutions from the specified criteria in an intuitive design environment. While not enforcing any particular design process, *Facility Composer* is designed to be able to support the process flow shown in Figure 1.

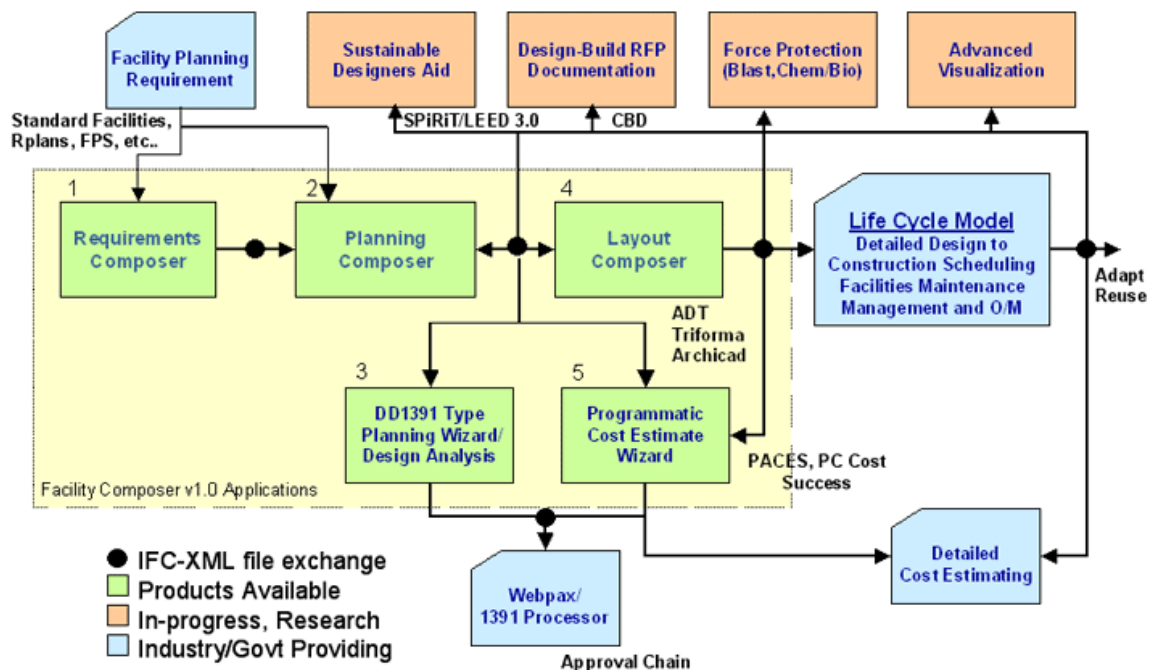


Figure 1. Facility Composer data flow.

The most important concept of *Facility Composer* is that **customer-specific and computable criteria are** associated with a growing facility model that continues throughout the life cycle of the facility. While many volumes of government design criteria exist in the form of design guides, regulations, technical manuals, and web pages, few, if any, of these are expressed in a computable format. In addition, current design systems do not provide a way to directly interact with these criteria, nor do they provide an efficient way to extend the functionality of an application to directly support criteria usage. With the evolution of facility modeling standards, these restrictions will be overcome by emerging design systems.

In *Facility Composer*, criteria can be associated with different project elements based on the appropriate level of detail, from the **project** to the **site**, the **building**, **story**, **function**, and down to the individual **space**. For example, *Facility Composer* allows one to specify that a target schedule and cost be associated with a project, that masonry exterior walls and a steel structure be used on a building, that 32-Watt T-8 florescent lights be used in corridors and 50 foot-candles be maintained in the offices, and that a particular room will have VCT flooring. *Facility Composer's* ability to maintain a linkage between criteria and project elements (site, building, story, etc.) provides many benefits:

- It helps ensure that critical criteria are followed, and that desired characteristics are recorded and addressed.
- It helps organize criteria and makes it available at its point of use. It helps in defining criteria and can help in recording its rationale.
- It simplifies creation, maintenance, and distribution of new criteria. For example, as requirements that better implement sustainable design principles are developed, these are added to an organization's standard library for use in subsequent projects. These libraries are typically organized around facility type, but are not required to be.

It helps support rapid conceptual and detailed design and analysis (cost, structural, HVAC, energy, electrical, O&M, etc.) either directly or through standards, such as the [International Alliance for Interoperability's Industry Foundation Classes \(IAI-IFC\)](#) and [Building Lifecycle Interoperable Software \(BLIS\)](#).

Owners with numerous facility holdings, in particular, reap benefits from this approach as it helps ensure the initial design satisfies their corporate criteria, shortening the review process and avoiding "design by review." All of these benefits result in cost and time savings by reducing user changes late in the design process or during construction. Design quality is also enhanced, as many alternatives can be explored rapidly.

Tools

The primary tools in the *Facility Composer* application suite include:

- **Requirements Composer**, a web-based application that helps in the development of corporate and building specific criteria libraries
- **Planning Composer**, which helps users create an architectural program and to set values for project specific criteria
- **Layout Composer**, provides an environment for the designer/user to rapidly create 2D and 3D conceptual facility designs solutions
- **Wizards** that provide support for various discipline specific issues and assist in the completion of individual design tasks and calculations.

3 Planning Composer

Planning Composer is used to develop a facility “architectural” program and to add and set project specific criteria. This includes traditional information such as the total project area and allocation of area to specific architectural functions such as circulation and offices. It also contains discipline-specific criteria such as requirements for structural, electrical, HVAC, lighting, and plumbing. The level of detail in the architectural program varies from project to project, and can be specified as such in the system.

With just a few parameters set, the information in *Planning Composer* is sufficient to prepare a preliminary cost estimate and schedule. For example, it is acceptable to create a project that contains a list of architectural functions and their allocated areas without deciding how many buildings will be required. On the other hand, the planner may create a project with detailed information such as the number of buildings and the number of stories in each building. Obviously, the latter cost estimate will be more accurate. Typically, the planner will not create such a detailed program from scratch, but will copy it from a similar project and tailor it to suit the current customer’s needs. Users benefit from *Planning Composer* not only because it provides a method to capture, use, and reuse this explicit criteria, but also because it can often assist designers by providing a deeper understanding of the rationale behind certain decisions, from which other, better, solutions could be considered.

This guide will explain currently functionality within the system. For Documentation and specific examples on how to use the software for developing a project, please see ERDC/CERL SR-04-30, *Planning Composer: Tutorial* (Construction Engineering Research Laboratory [CERL], November 2004).

Installation

System Requirements

- *Planning Composer* requires approximately 35 MB of hard disk space.
- Your computer must be capable of running Java Virtual Machine 1.22.
- Microsoft Access database drivers must be installed on your computer.

Running the Install Program

Planning Composer is delivered on CD or via the Web at the [Facility Composer Website](http://ff.cecer.army.mil/fc/download.jsp) (<http://ff.cecer.army.mil/fc/download.jsp>). You may choose to install the program directly from either source, or you can first save the compressed installation file on your hard drive.

If you choose to install directly, the install file will automatically decompress and start the install process. If you have saved the install file to your hard drive, double click on it to start the install. In either case, the Installation Introduction dialog (Figure 2) will appear.

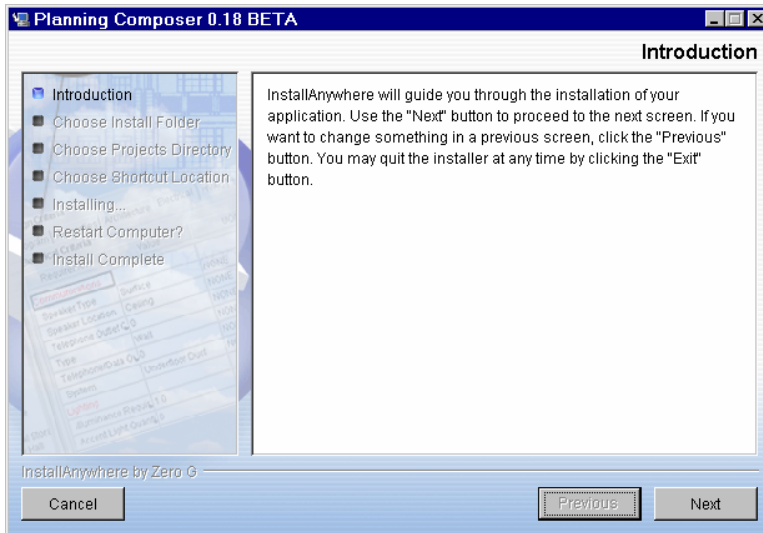


Figure 2. Installation introduction dialog.

The installer will lead you through the process as follows.

Click the **[Next]** button. (As you proceed, you may use the **Previous** button to go back and change settings made earlier in the process.) The Choose Install Folder dialog (Figure 3) should now appear.

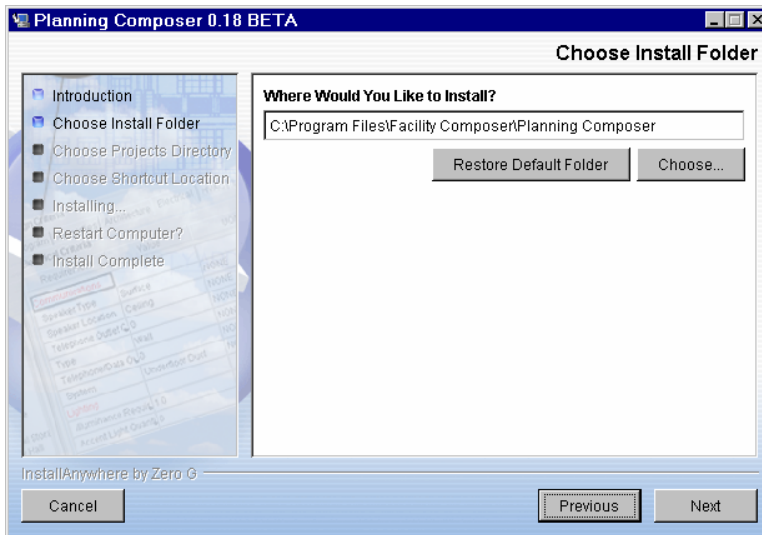


Figure 3. Choose install folder.

The default installation location is displayed in the edit box. To select a location other than the default, you can type it in the edit box or click the **[Choose...]** button. A file browser dialog (Figure 4) will appear, allowing you to select a different location. To go back to the default location originally listed in the Choose Install Folder dialog, click the **[Restore Default Location]** button.

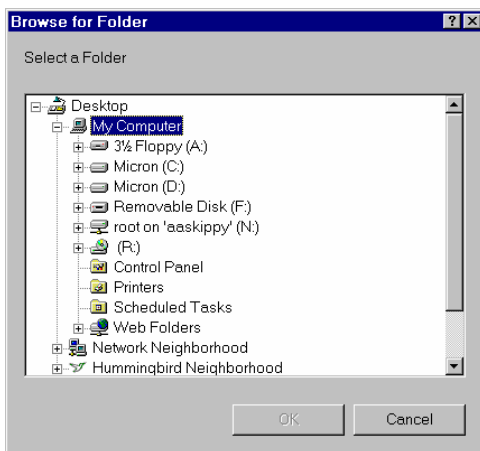


Figure 4. Location browser dialog.

Once you have selected a location, click the **[Next]** button. The Choose Projects Directory dialog box should appear. The default installation location is displayed in the edit box. To select a location other than the default, you can type it in the edit box or click the **[Choose...]** button. A file browser dialog (Figure 5) will appear, allowing you to select a different location. To go back to the default location originally listed in the Choose Install Folder dialog, click the **[Restore Default Location]** button.

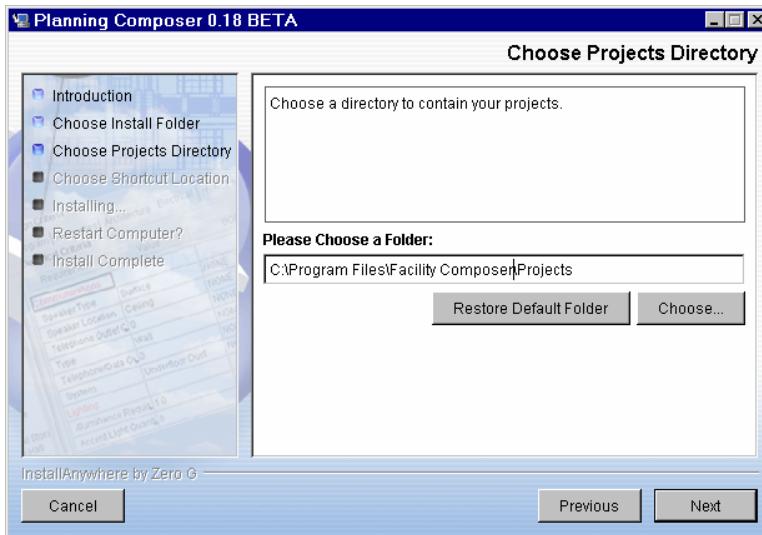


Figure 5. Choose projects directory location dialog.

Once you have selected a location, click the **[Next]** button. The Choose Shortcut Location dialog box (Figure 6) should appear.

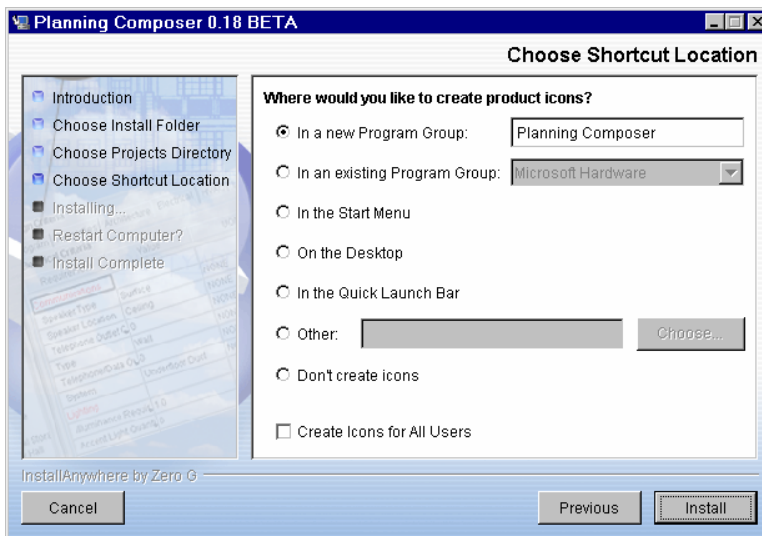


Figure 6. Choose shortcut location dialog.

Use the radio buttons to designate where application icons or shortcuts should go. If you create a new program group, its default name will be *Planning Composer*, but you can type in a new name in the edit box. If you select an existing program group, use the dropdown menu to the right of the radio button to select the desired group. If you select **Other**, use the adjacent edit box to enter a path and location, or click the **[Choose...]** button to display a browser dialog that will allow you to select a different location. When finished, click **[Install]**. A progress

dialog containing the Facility Composer splash screen (Figure 7) will appear during the installation process, which will take a few moments.

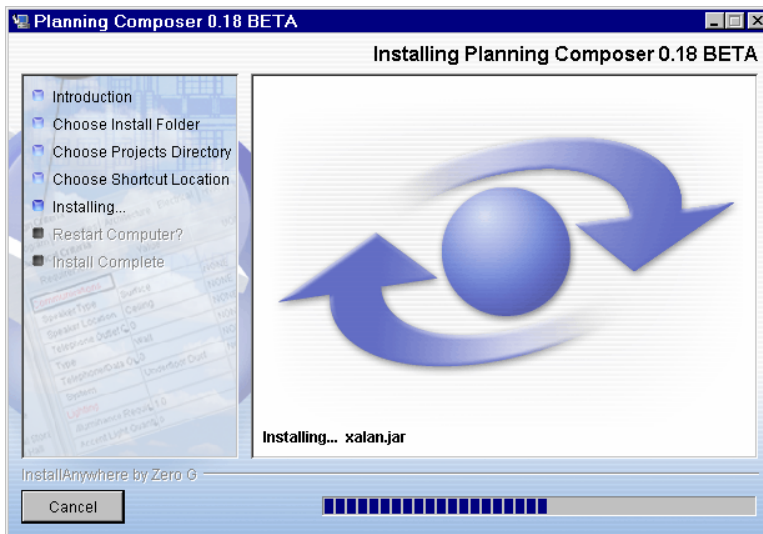


Figure 7. Installation progress dialog.

When installation is complete, the Install Complete dialog (Figure 8) will appear.

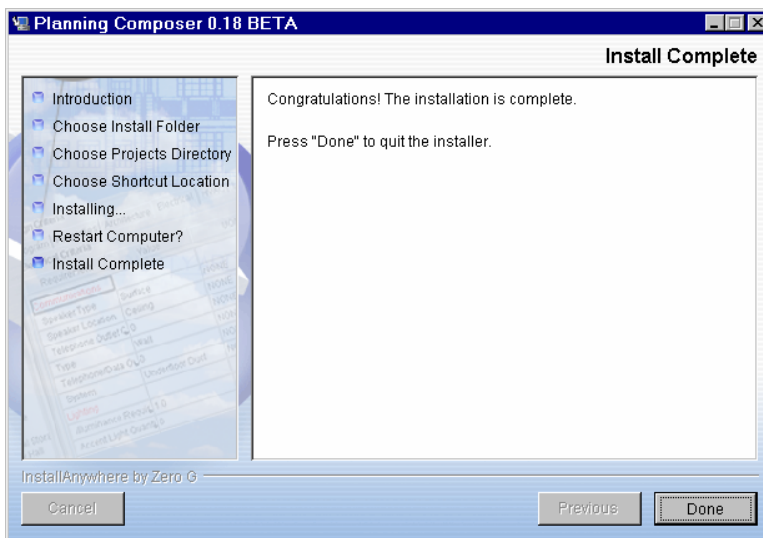


Figure 8. Install complete dialog.

When the Install Complete dialog appears, click **[Done]** to complete the installation. One more dialog will appear briefly with the message “Install Anywhere Is Cleaning Up.”

Using Planning Composer

Starting the Program

Start *Planning Composer* by clicking on the desktop startup icon:



Result: The Main *Planning Composer* screen (Figure 9) appears.

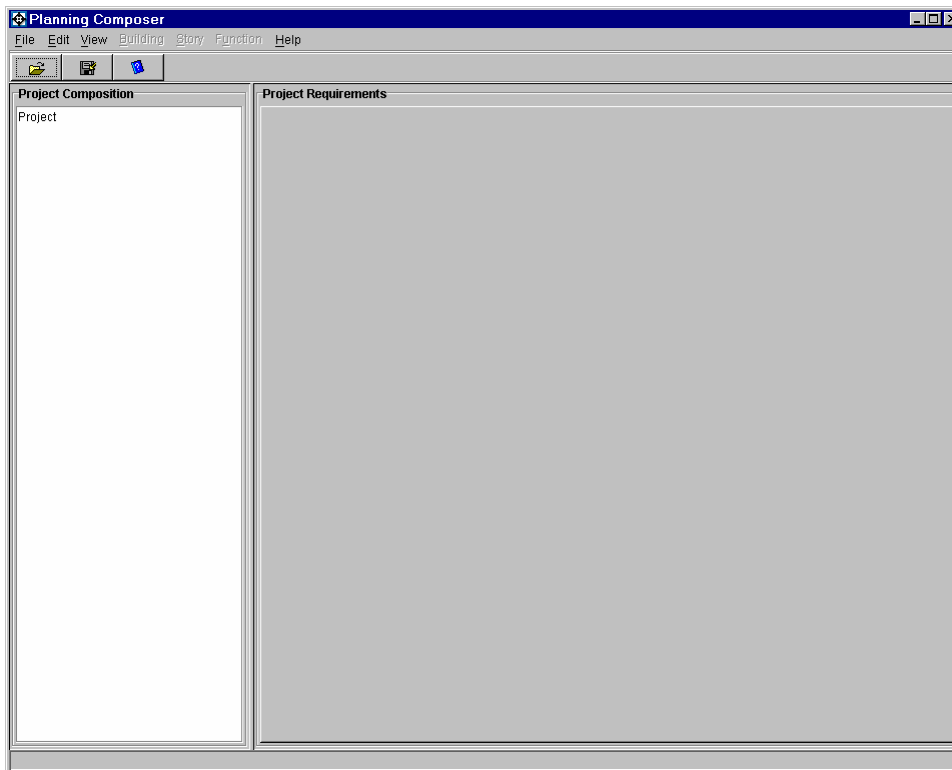


Figure 9. Main *Planning Composer* screen.

Creating/Opening a Project

Creating a New Project

From the **F**ile menu, choose **N**ew, and then **P**roject...

Result: The **New Project** dialog box (Figure 10) opens.

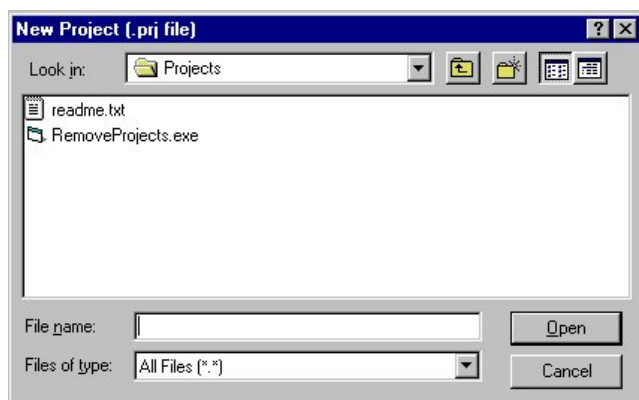



Figure 10. New project dialog box.

Enter a meaningful file name for your new project and click the  button. (The name that you choose will be assigned to the project file. In addition, a directory will be created using this name to hold the project data.)

Setting the Default Library

The new project may take a moment or two to load. Then the **Facility Requirements Selection** dialog box (Figure 11) will appear.

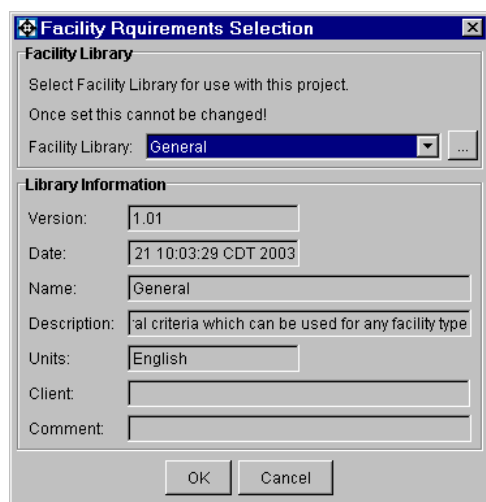

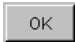


Figure 11. Facility requirements selection dialog box.

Here you will select the Facility Library for use with this project. At your site, you may have access to a number of libraries containing object criteria and function templates. The pull-down menu will display your options. If you have saved libraries, that do not appear in the pull down bar, click the  button next to the pull down bar to manually browse for your library. Once you have chosen a default or baseline facility library and committed by clicking the **[OK]** button, this

library is permanently linked to your project and may not be changed at a later time, although additional libraries may be added over the course of the project through the addition of Components. If you need to access a different base library at some future date, you will need to create a new project.

The bottom portion of the **Facility Requirements Selection** dialog box displays the **Library Information**. Select a library in the top portion of the screen and view the information about this library here. Make special note of the **Units** field. This field specifies the unit of measure that is used for the criteria/requirements in this library. If the unit is set to Metric, then all linear measurements will be in millimeters and all area measurements will be in square meters; if the unit is English, then all linear measurements will be in feet and all area measurements will be in square feet. This is an important consideration and may not be changed later, so choose a library whose units are appropriate for your project.

Click the  button to complete the selection.

As stated previously, once the Facility Library has been set for the project, it cannot be changed.

Result: The main screen (Figure 12) opens again. This time the **Project** and **Site** are displayed in the **Project Composition** panel. The name of the open project file appears across the top of the window, along with the base Unit and the Alternative name. (Alternatives will be discussed later in the manual.)

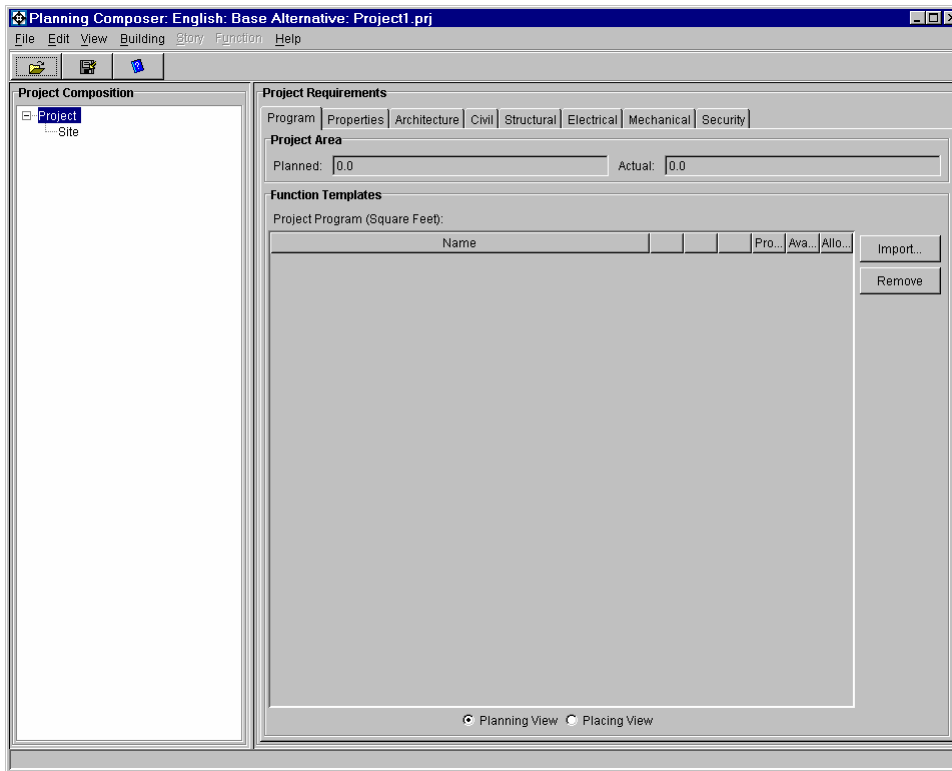


Figure 12. Main *Planning Composer* screen after opening a new project.

Opening an Existing Project

From the **File** menu, choose **Open Project...**

Result: The **Open Project** dialog box (Figure 13) opens.

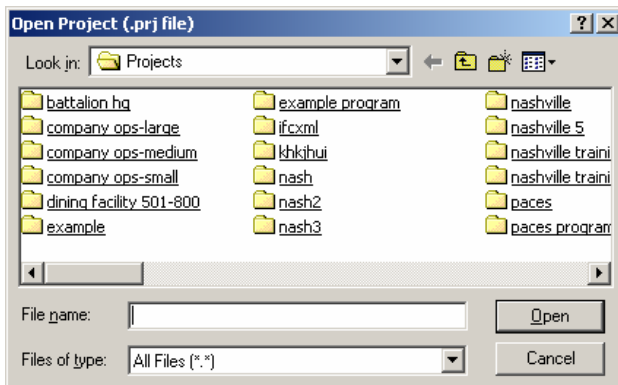
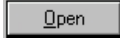


Figure 13. Open project dialog.

Select the project you wish to open and click the  button. The file will have the extension *.prj. The corresponding project will then load into the Main *Planning Composer* Screen.

Note: Should you receive the following error (Figure 14) indicating that a new library needs to be selected simply click the [OK] button and select a new library for the project. Refer to the section “Setting the Default library” for more information.

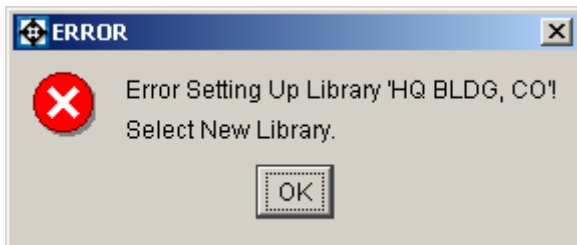


Figure 14. Error setting up library.

Importing a Project

This file format is used specifically for the Facility Composer Suite of tools. Should you receive a new version of the software, you may be required to open your old projects using this method instead of selecting the *.prj file.

From the File menu, choose Import, and then Import Model from Facility Composer XML...

Result: Import Facility Composer XML Model Dialog (Figure 15) opens

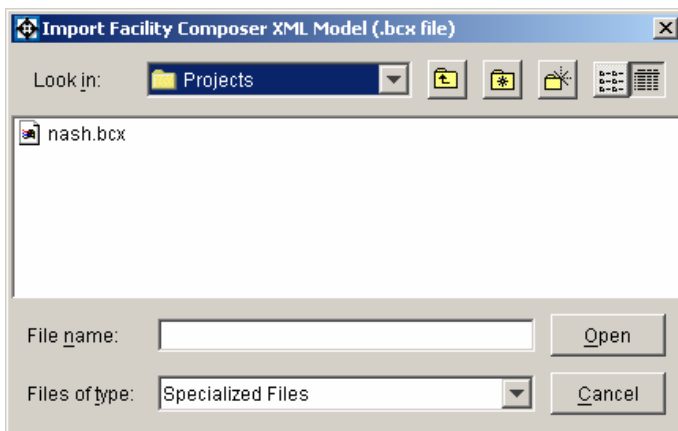



Figure 15. Import Facility Composer XML.

Using the dialog, browse to find the project you wish to import. This file will have the extension *.bcx and will be located in the [\\Projects\<project name>\base](#) directory. Click the  button to continue.

Next you will be prompted to enter a new project name. This is the same process as creating a new blank project.

Project Composition Panel

Composition Tree

The Project Composition Panel (Figure 16) is where the hierarchy of the project is displayed. When a new project is started, the Project level and Site level are the only items which are displayed in this panel. As you develop and refine your project, more elements i.e., Buildings, Stories, and Function Instances will be displayed in this area.

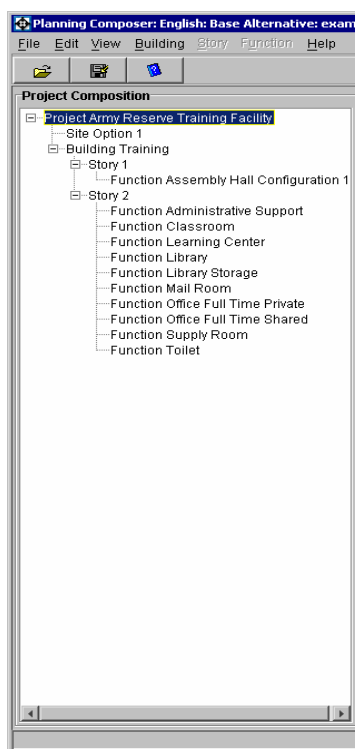


Figure 16. Project composition panel.

Adding and Removing Buildings

Highlight the Project Level in the **Project Composition** Panel. From the **Building** menu, choose **Add Building**. Another method is to Right Mouse Click the Project Level and select **Add Building** from the pop-up menu. Buildings can only be added to Projects. There is no limit on the number of Buildings that can be added to a Project.

To remove a Building from the project, simply select the Building in the tree and either choose **Remove Building** from the **Building** menu or right mouse click and select **Remove Building** from the pop-up menu.

Adding and Removing Stories

To add a Story, highlight the Building object in the Project Composition Panel. From the **Story** menu, choose **Add Story**. There is no limit on the number of Stories, but Story Objects can only be added to Buildings.

Removing a Story is similar to removing a Building.

Adding and Removing Function Instances

To add a Function Instance, highlight the Site or Story which you wish to add the Instance to. From the **Function** menu, choose **Add Function**. There are no limits on the number for Function Instances that can be added to the Site Object or Story Objects.

Result: The Add Function Instance Dialog appears (Figure 17).

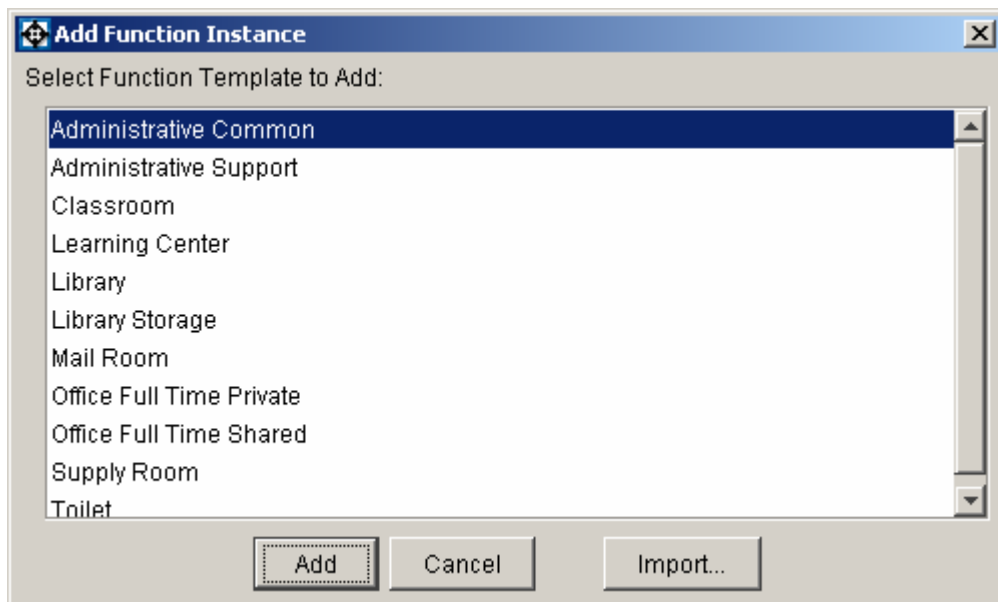



Figure 17. Add function instance dialog.


If Function Templates have already been associated with the project (See “Working with Function Templates”), they will be displayed in the dialog box. Simply highlight the Function Template you wish to add to the project and click on the **[Add]** button. You may select more than one Function Template at a time by

using either the <Shift> or <CTRL> keys. If the template you wish to add is not in the list, click the  button and the bottom right of the Function Instance dialog box (Figure 17), then follow the procedures listed in the following section to add new templates.

Removing a Function Instance is similar to removing a Building or Story.

Working with Function Templates

Importing a Function Template

Click the  button next to the **Function Templates** grid.

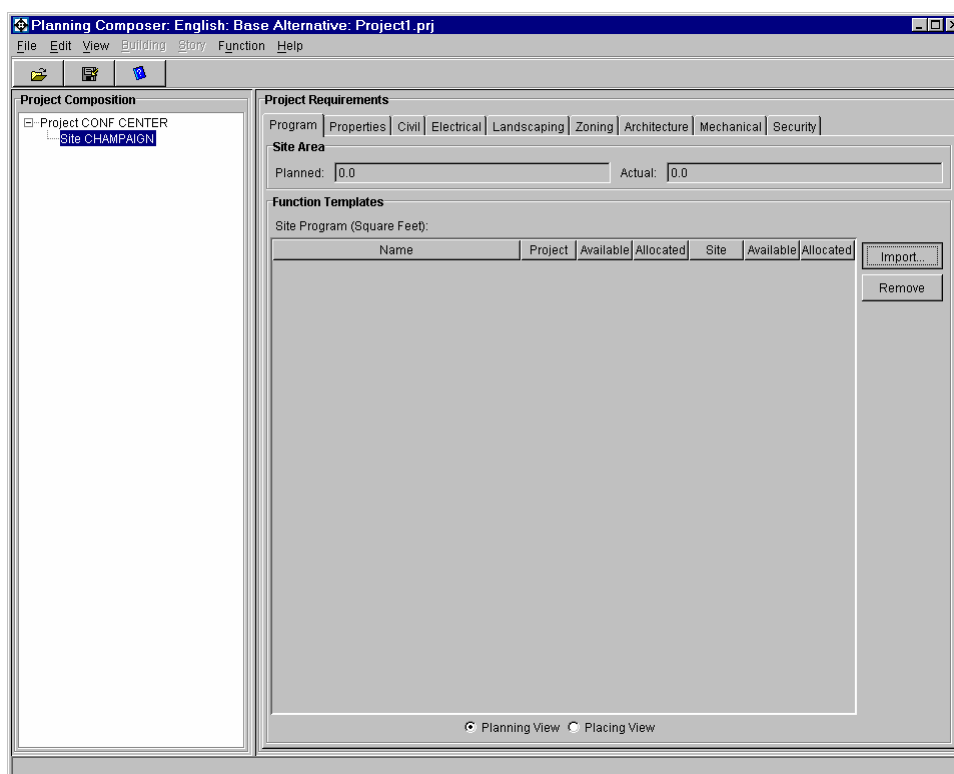


Figure 18. Import button for adding functions.

Result: The Add Function Template dialog box (Figure 19) appears.

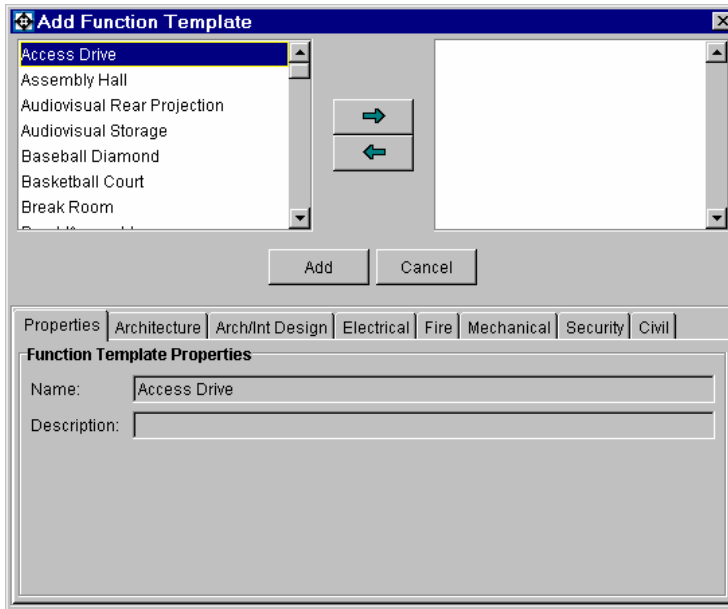
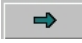



Figure 19. “Add Function Template” dialog box.

The left window displays the list of function templates that are contained in the facility requirements library associated with the current project. Click on one of the templates to select it and notice that the panel on the bottom of the screen changes. Click on the tabs to display the criteria/requirements that come “pre-loaded” with this template. The **Properties** tab displays the basic descriptors for the chosen template. The **Discipline** tabs (Architecture, Electrical, etc.) contain criteria/requirements specific to that particular discipline for the function highlighted.

Templates are added by using the scroll bars, arrow keys, and/or **PgUp/PgDn** keys to locate the function template desired. Once your selection has been made in the left panel, click on the  button or simply double-click the function template name in the left panel.

Click the  button to add all the function templates listed in the right panel of the dialog box.

The **Program Grid** on the main screen (Figure 20) will be updated to display the function templates, which have been added. This can be done at all levels from the Project, Site, Building or Story.

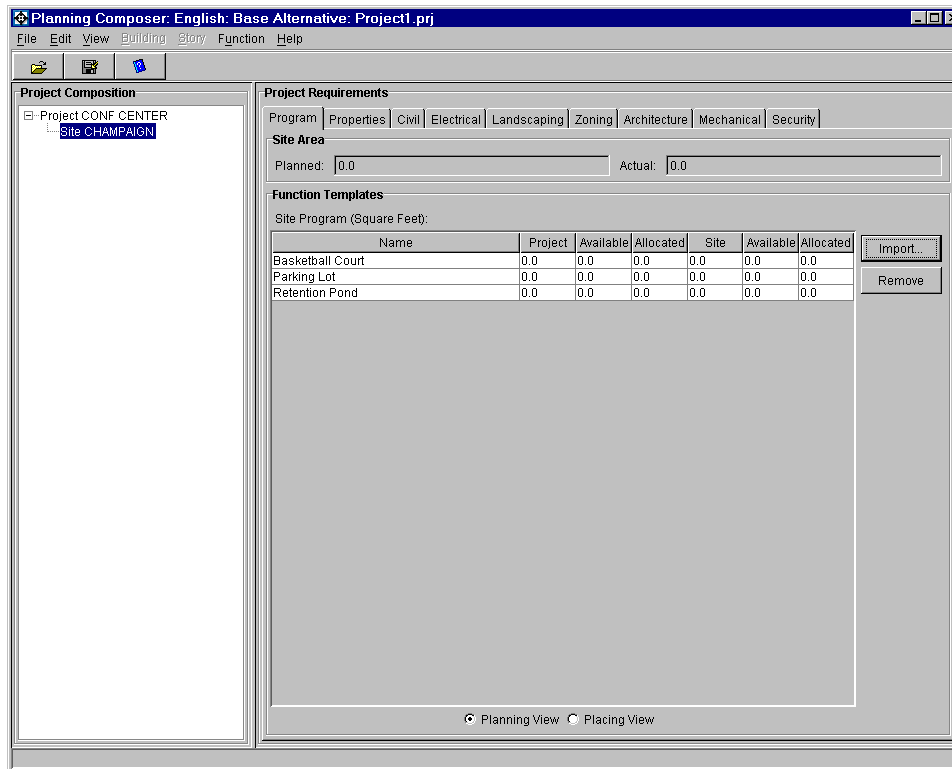


Figure 20. Main program grid with added architectural templates.

Removing a Function Template

To remove a function template simply highlight the function within the Function Template grid and click the **[Remove]** button. This will remove the Function from the current level and those below but not from the levels above. For example if you remove a Function Template from the Building Level, it will also be removed on any stories it was on below, but will not be removed from the overall Project level.

Project Requirements Panel

Working in the Program Grid

Programming information may be added at any level of the project.

At the Project level (highlight the Project in the **Project Composition** Tree), you will notice three blank columns followed by a **Project** column, **Available** column, and an **Allocated** column in the Project Program grid (Figure 21).

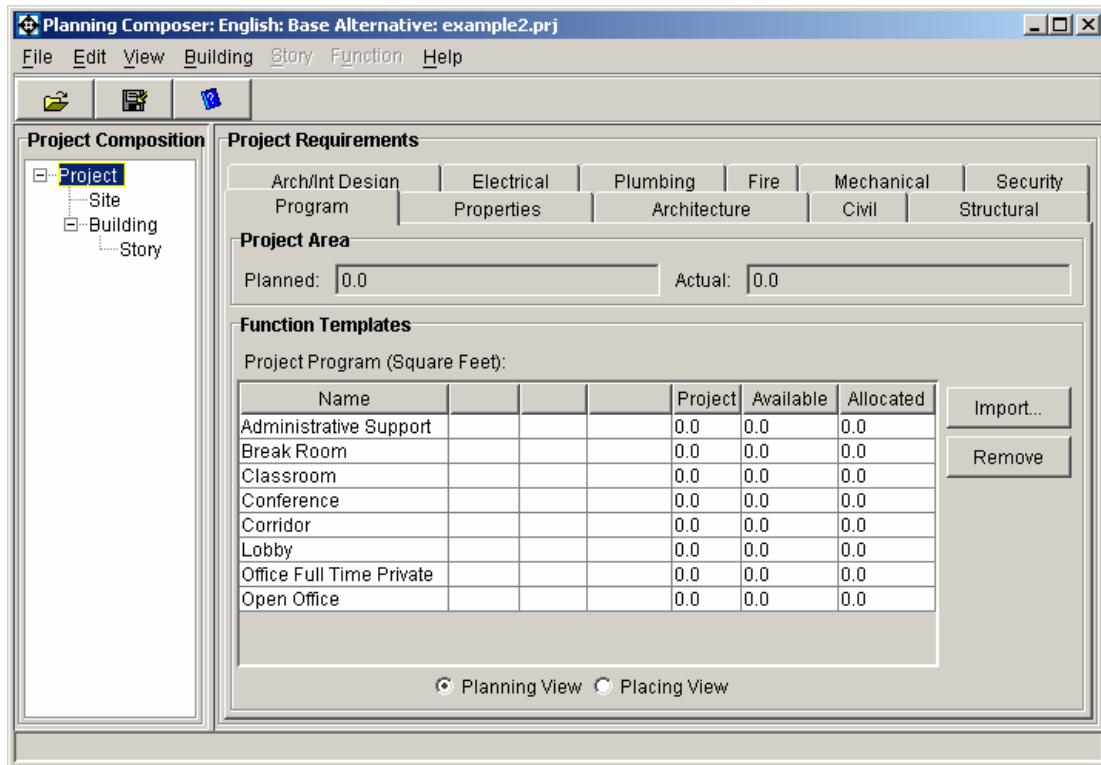


Figure 21. Example blank project program grid

Note: Below the program grid you will notice two radio buttons, one for Planning View and one for Placing View. Placing View is used once actual spaces have been placed. This is used within Layout Composer.

To assign a planned square footage for a function, simply double-click in the **Project** column in the row of the function that you wish to add a planned area. Next backspace to clear the field, and then type in a value. (If you need to widen a column to see the entire column entry or label, then position your mouse cursor over the vertical bar between columns until the arrow appears. Hold down the left mouse button and slide the bar to the desired width.) After typing in each value, hit the <ENTER> key. Notice that the **Planned** field in the **Project Area** portion of the screen reflects the total area that has been planned so far in all of the functional areas (Figure 22).

(The **Actual Area** will remain at 0 (zero) until you place space objects. Placing space objects will be performed in **Layout Composer**.)



Figure 22. Project area showing total planned area and total actual area.

The process is similar for assigning planned area to Site, Buildings, and Stories. One item to note is that the column identifiers will change as you select different levels in the **Project Composition Tree**. For example, highlight the Building level. Notice that the right three columns (Building, Available & Allocated) refer to the space usage for the building level, while the left three columns (Project, Available & Allocated) refer to the space usage for the project level (Figure 23).

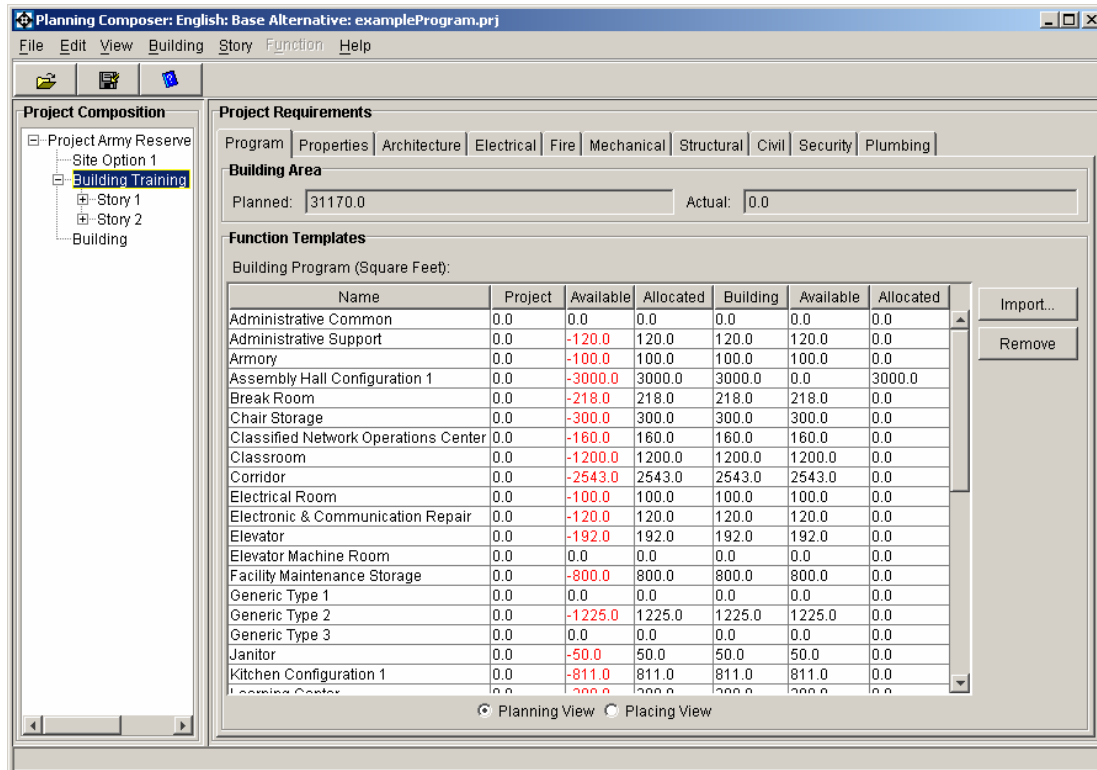


Figure 23. Example program grid for the building level

In the figure above, notice that the values in the **Available** column appear in red. This reminds us that we are currently underplanned at the **Project** level. To resolve this, double-click in the **Project** column of the grid, backspace to clear the field and enter a value. Hit the <ENTER> key or click in a different cell and the **Available** changes.

To assign planned areas to specific Function Instances, the **Area Desired** dialog box provides the user a great deal of flexibility.

Select a Function on a Story.

Result: The Function Program grid (Figure 24) appears.

Function Program (Square Feet):						
Name	Story	Available	Allocated	Function	Available	Actual
Office Shared	1500.0	1500.0	0.0	0.0	0.0	0.0

Figure 24. Function program grid.

Click the mouse over the “0.0” in the Function column in the grid.

Result: The **Area Desired** dialog box (Figure 25) opens.

Figure 25. Area desired dialog box.

Click on the arrow in the **Target (=)** dropdown list box and observe the choices for entering planned area (Figure 26).

Figure 26. Choices for added planned area at the function level.

Depending on which method you choose for entering values, the dialog box will change to reflect the information required to execute that method. An example of “Area Desired” is show in Figure 27.

Figure 27. “Area desired” dialog box – “Occupancy per person” option.

Assigning and Modifying Properties

Click the **Properties** tab in the **Requirements** panel. In this panel you can enter information specific to the Object that is highlighted in the Project Composition Tree. For example, if the Project level is highlighted, you may enter values for **Project Number**, **Fiscal Year**, **Prepared Date**, and **Prepared By**. The **Unit** field is already populated based on the library that you had previously chosen. Hit the <ENTER> key to update the **Project Composition** tree.

In the **Project Composition** tree in the left portion of the screen, click the **Site** object. (Bear in mind that the right panel of the screen, **Requirements**, is directly linked to the current (or selected) object in the **Project Composition** tree or left panel of the screen. If **Site** is chosen, then the **Requirements** panel displays information specific to the site (Figure 28). If the **Project** is chosen, then the **Requirements** panel displays information that applies to the entire project.)

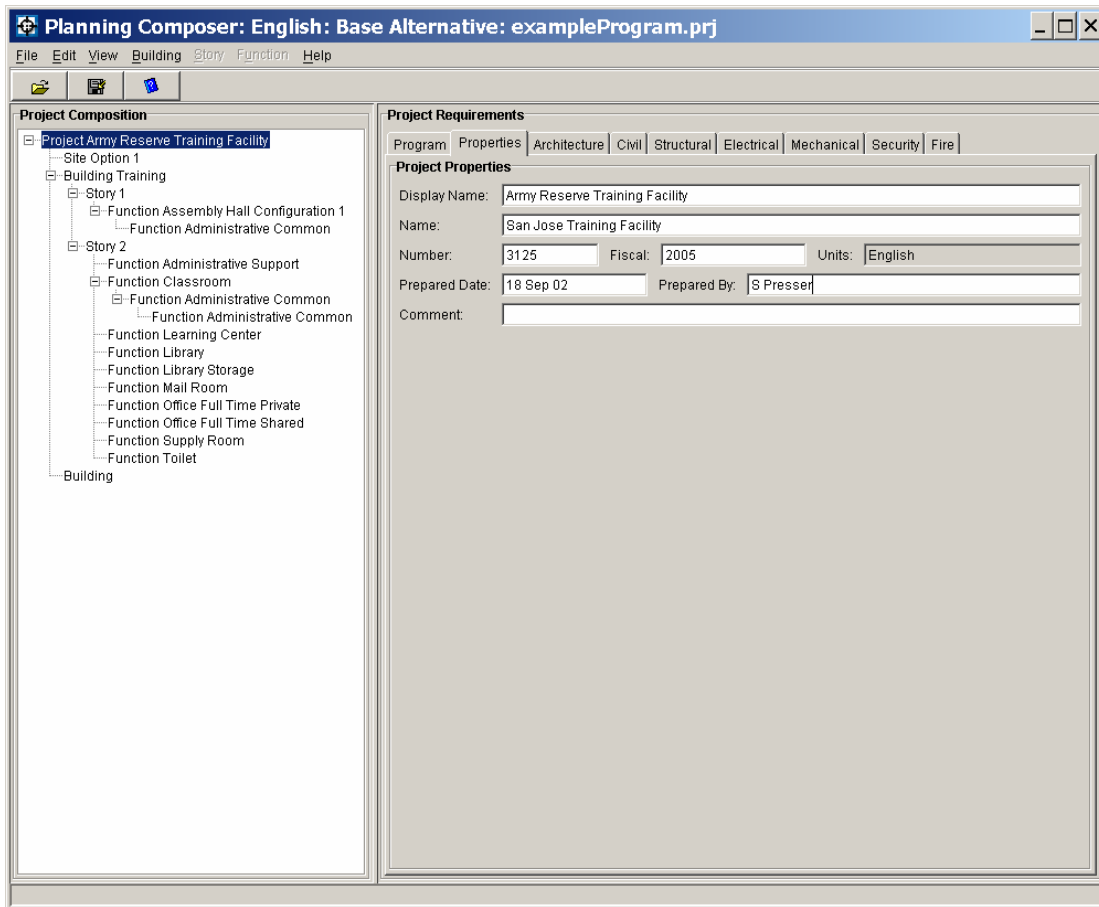


Figure 28. Properties panel.

Working in the Criteria/Requirements Panels

It is worth noting some special properties of the criteria grid. These properties are true for criteria that the user adds as well as for criteria that come from a library. The criteria grid displays the **Category** name in red. Values that appear in black are editable. Generally speaking for criteria that comes from the startup library, the **Value** column and **Comment** column are editable, while the **UOM** and **Source** columns are not. A noneditable field appears in gray on the grid. The **Comment** field provides a place for the user to add any additional information about the requirement. It is especially useful for annotating the reason when a user decides to override the default value from a library with a project-specific value.

Modifying Criteria

In the **Project Requirements** panel, you will notice that there are additional tabs other than **Program** and **Properties**. These tabs are used to store crite-

ria/requirements in any of these different disciplines or categories. Depending on the library that you loaded at project creation, you may have inherited some specific criteria/requirements. You may click the discipline tabs to browse this data if it exists. These may change depending on which level of the Project Composition Tree is selected. More information on the creation of these can be found in ERDC/CERL SR-04-29, *Requirements Composer: User's Manual* (Construction Engineering Research Laboratory [CERL], October 2004).

To modify criteria, simply browse the preloaded criteria/requirements (Figure 29) and make any necessary changes by either entering a new value or making another selection.

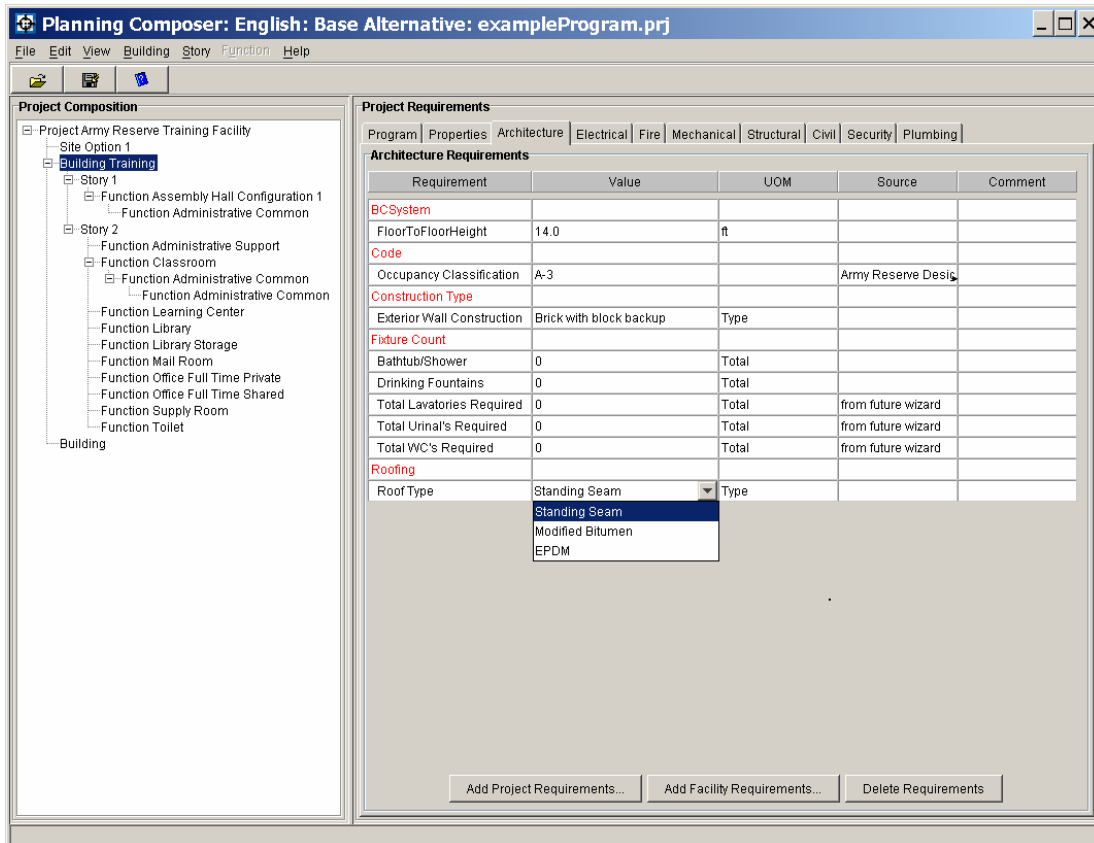


Figure 29. Example of modifying criteria/requirements.

Adding Project Specific Requirements


It is possible to add criteria/requirements after a project has been created.

Click the  button.

Result: The Add Project Requirements dialog box (Figure 30) opens.

Figure 30. Add Project Requirements Dialog Box.

Choose the discipline tab from the pulldown menu for **Discipline Name** on which you wish the new requirement to appear (or enter a new name). Decide on a name for this **Category**. Enter a descriptive **Name** for the **Requirement**. Next select the **data type** radio button. The data type choices include: (1) **Text** for textual data such as “Incandescent,” (2) **Decimal** for numerical values that will include decimal places such as “0.00056,” (3) **Whole Number** for numerical values without decimal places such as “100” or “-50,” and (4) **True/False** where the only allowed values are either “True” or “False.” Enter the criteria **Value** and enter the **UOM** (unit of measure) in which the value is recorded. The **Source** field can be used to designate the source or regulation that has initiated this requirement. The **Comment** field provides a place to document any additional information about the requirement.

Click the  button when field entry is complete.

Deleting Criteria

To delete unneeded criteria/requirements, simply highlight the criteria in the criteria grid and click the **[Delete Requirements]** button at the bottom of the tab.

Additional Functionality

Creating Alternatives

Planning Composer allows the user to store multiple alternate plans or options all within the same project. These options are called **Alternatives**. Each new

alternative is based on the **Base** plan. The **Base Alternative** is the name given to the initial alternative at project startup/creation. With this feature, you can let the current plan be the base alternative and then branch off into a couple of different directions from there.

From the **File** menu, choose **Create Alternative ...**

Result: The **Create Alternative** dialog box (Figure 31) opens.

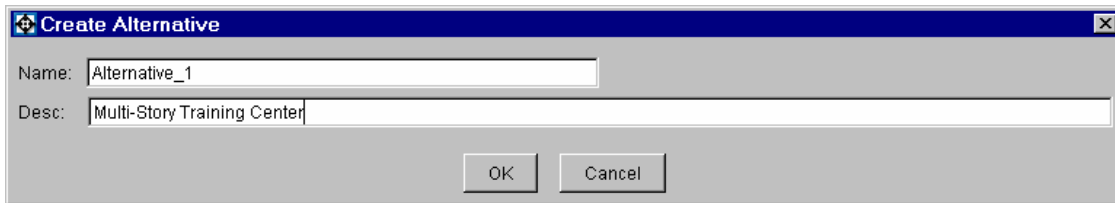
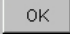


Figure 31. Create alternative dialog box.

The alternative is given a default Name of Alternative 1, but you may change it if you wish by typing in the name of your choice. In the **Desc** field, add a description that will distinguish this plan from any other alternatives. Click the  button to continue.

Result: A confirmation box (Figure 32) informs us the alternative was created.



Figure 32. Create alternative dialog.

Next, choose **Open Alternative** from the **File** menu.

Result: The **Open Alternative** dialog box (Figure 33) opens.

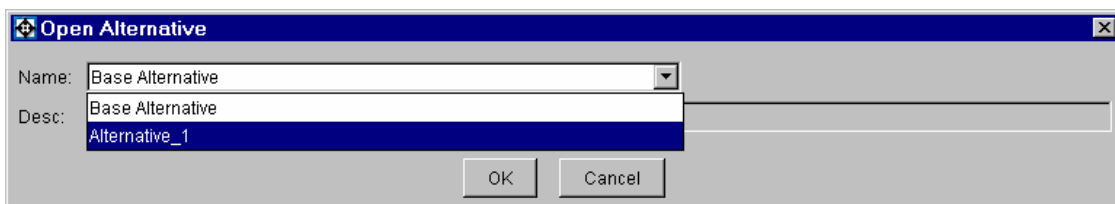


Figure 33. Open alternative dialog box.

Click the arrow on the pulldown menu in the **Name** field. Notice that the choices are **Alternative_1** and the **Base Project**. Choose the alternative you want with to work with and then click the button.

Importing and Exporting

Import Model from Facility Composer XML

See section Importing a Project of this document.

Export Model to Facility Composer XML

If you have completed the planning process in *Planning Composer* and wanted to begin laying out the proposed project in *Layout Composer*, you will need to export the project to a special XML file. This file can then be read into *Layout Composer*.

From the **File** menu, choose **Export**, and then **Export Model to Facility Composer XML...**

Result: Export to Facility Composer XML Model dialog (Figure 34) displays

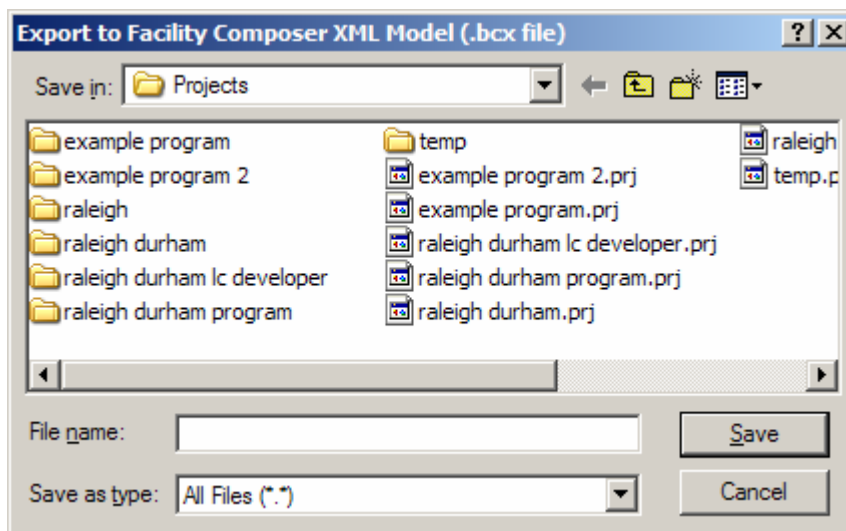


Figure 34. Export model dialog.

Browse to the location where you would like to save the file. Enter an appropriate file name and select the Save button.

Export Model to IFC-XML 2.x

Facility Composer has been designed to enable the sharing of project information via the developing object model standard called the Industry Foundation Class. This allows the user to import the project information into other software packages such as PACES cost estimating tool; MicroStation; etc. for further work or analysis. The current working standard is IFC 2.x. It is import for the user to make sure that the software package they would like to use after *Planning Composer* supports IFC 2.x and that it supports the ifcXML format.

From the **F**ile menu, choose **E**xport, and then **E**xport Model to IFC-XML 2.X...

Result: Export to Facility Composer XML Model dialog (Figure 35) displays.

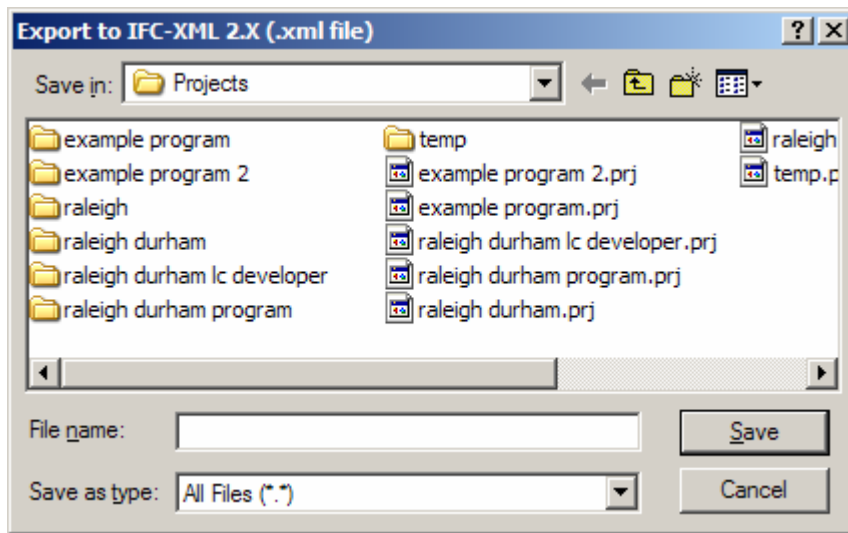


Figure 35. Export to IFC XML 2.X dialog box.

It is very import to remember that depending on the size of the project, this process could take some time so please be patient.

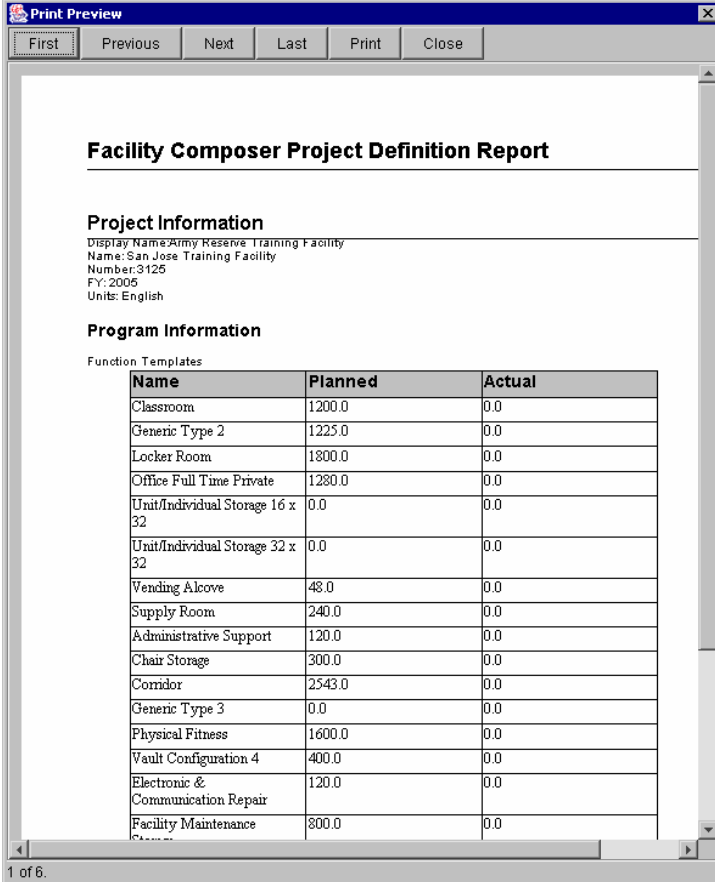
Reports

There are three standard reports which can be generated at this time. They are a Programmed Area Report, a Function Usage Report, and a Full Project Listing Report

Programmed Area Report

From the **File** menu, choose **Report**, and then **Programmed Area Report...**

Result: Programmed Area Report Dialog box (Figure 36) appears.



Facility Composer Project Definition Report

Project Information
 Display Name: Army Reserve Training Facility
 Name: San Jose Training Facility
 Number: 3125
 FY: 2006
 Units: English

Program Information

Function Templates

Name	Planned	Actual
Classroom	1200.0	0.0
Generic Type 2	1225.0	0.0
Locker Room	1800.0	0.0
Office Full Time Private	1280.0	0.0
Unit/Individual Storage 16 x 32	0.0	0.0
Unit/Individual Storage 32 x 32	0.0	0.0
Vending Alcove	48.0	0.0
Supply Room	240.0	0.0
Administrative Support	120.0	0.0
Chair Storage	300.0	0.0
Corridor	2543.0	0.0
Generic Type 3	0.0	0.0
Physical Fitness	1600.0	0.0
Vault Configuration 4	400.0	0.0
Electronic & Communication Repair	120.0	0.0
Facility Maintenance	800.0	0.0

1 of 6.

Figure 36. Programmed area report.

Next Click the **[Print]** button at the top of the dialog and select a location to save the report.

Note: Make sure when you name the file to save as that you also enter the extension *.pdf. You will need a copy of Adobe Acrobat Reader to view this document.

Function Usage Report

This particular report simply lists what function templates have been added to the project, their associated planned areas and at what level of the project (i.e., Project, Site, Building, Story) is associated with the template.

From the **File** menu, choose **Report**, and then **Function Usage.xls...**

Result: Report Output dialog box (Figure 37) appears.

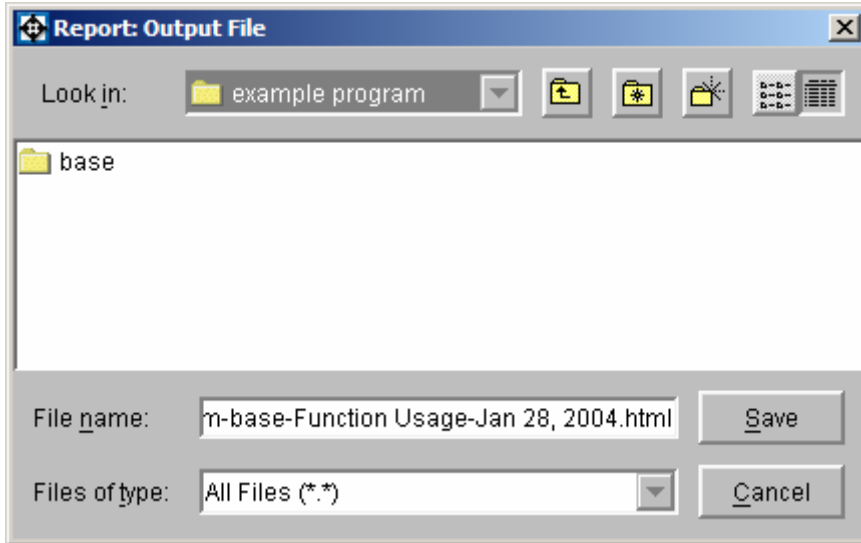


Figure 37. Report output dialog.

Select the file name and location where you would like to save the report file. The default setting is to save the file in the current project directory. An example of the standard file naming convention is:

example program-base-Function Usage-Jan 28, 2004.html

The file is saved in an HTML format so it can be viewed using your standard web browser.

Full Project Listing Report

The full project listing report is similar to the function usage report, but will display all relevant information regarding the project. It lists the same information as the function usage report, but expands on that by listing what function instances have been added and all criteria/requirements associated with the project as well.

Simply follow the steps in creating a Function Usage Report above except for selecting the **Full Project Listing.xsl** on the **Report** menu.

4 Conclusion

This work has composed a User Guide for the *Planning Composer* software. As one of the primary tools in the *Facility Composer* application suite, *Planning Composer* helps users create an architectural program and to set values for project specific criteria. The most important concept of *Facility Composer* is that customer-specific and computable criteria are associated with a growing facility model that continues throughout the life cycle of the facility. *Facility Composer's* ability to maintain a linkage between criteria and project elements (site, building, story, etc.) provides many benefits:

- It helps in defining criteria and can help in recording their rationale.
- It helps ensure that critical criteria are followed, and that desired characteristics are recorded and addressed.
- It helps organize criteria and makes them available at their point of use.
- It simplifies creation, maintenance, and distribution of new criteria. For example, as requirements that better implement sustainable design principles are developed, these are added to an organization's standard library for use in subsequent projects. These libraries are typically organized around facility type, but are not required to be.

Glossary

Term	Definition
Actual Area (Placing View)	(Compare to Planned Area) The area of the selected object as determined by Facility Composer; it calculates this value by totaling the areas of all spaces placed at this object level.
Allocated Area (Planning View)	The total area that has been allocated (assigned) to a function for a particular level of project hierarchy. For example, the total area allocated to a particular function might be different for the story level, building level, and project level.
Assigned Function	(See Function) A function that was explicitly added to a program by the user.
Attribute	(Compare to Requirement) Physical characteristics of an object; for example, the name, height, and elevation of a story.
Building	An object in the Project Composition hierarchy. A building object contains information related to a single freestanding physical structure and can be further broken down by stories, functions and spaces.
Function	A function can be related to other functions through three different means: <ul style="list-style-type: none"> • A specialization relationship can exist where one function is the parent function and the other function is the child function, for example, the relationship between an office and private office. A private office is a specialization of the office. The office is the parent function and the private office is the child function. • A spatial containment relationship can exist where one function physically contains another function, for example, the relationship between a lobby and the reception area. The lobby is the super-function and the reception area is the sub-function. • The final relationship is that of assigned and unassigned functions. This type of relationship supports the 'roll-up' capability through item programs.
Function Template	A Function definition from a library. Templates are the parents of specific function instance objects added to project elements (site, story, etc.)
Function Instance	Function objects created from function templates and assigned to project elements. All function instances created from the same function template aggregate their areas for project planning purposes.
Object	An element (or node) in the Project Composition structure. Since there is a hierarchical relationship between all objects in this structure the structure is often referred to as a "tree." The PROJECT object occupies the highest level of the hierarchy. From highest level to lowest level, the other objects include: BUILDING (and SITE), STORY, FUNCTION, and SPACE.
Planned Area	The total area for the selected project element or for a specific function at a particular level in the project hierarchy (project, building, etc.) as determined and entered by the user. This value expresses the estimated and desired area for this object. In later stages of project development when spaces have been placed, the Actual Area value will be compared to the Planned Area value to determine how closely the project layout is meeting the initial plan.

Term	Definition
Program	A group of function templates added to a Project, Site, Building or Story project element for planning purposes. Planned areas are typically assigned during program development.
Project	A set of information pertaining to a building/construction project. In Facility Composer, the project object occupies the highest level of the Project Composition tree. All information for a Facility Composer project is stored in a PRJ file and directory that the user names on project creation. In Facility Composer, only one project may be opened at a time.

REPORT DOCUMENTATION PAGE*Form Approved*
OMB No. 0704-0188

Public reporting burden for this collection of information is estimated to average 1 hour per response, including the time for reviewing instructions, searching existing data sources, gathering and maintaining the data needed, and completing and reviewing this collection of information. Send comments regarding this burden estimate or any other aspect of this collection of information, including suggestions for reducing this burden to Department of Defense, Washington Headquarters Services, Directorate for Information Operations and Reports (0704-0188), 1215 Jefferson Davis Highway, Suite 1204, Arlington, VA 22202-4302. Respondents should be aware that notwithstanding any other provision of law, no person shall be subject to any penalty for failing to comply with a collection of information if it does not display a currently valid OMB control number. PLEASE DO NOT RETURN YOUR FORM TO THE ABOVE ADDRESS.

1. REPORT DATE (DD-MM-YYYY) 11-2004		2. REPORT TYPE Final		3. DATES COVERED (From - To)	
4. TITLE AND SUBTITLE Planning Composer User's Guide: Through Beta Version 0.22				5a. CONTRACT NUMBER	
				5b. GRANT NUMBER	
				5c. PROGRAM ELEMENT NUMBER	
6. AUTHOR(S) Susan D. Nachtigall and Beth A. Brucker				5d. PROJECT NUMBER	
				5e. TASK NUMBER	
				5f. WORK UNIT NUMBER LK6K75-N	
7. PERFORMING ORGANIZATION NAME(S) AND ADDRESS(ES) U.S. Army Engineer Research and Development Center (ERDC) Construction Engineering Research Laboratory (CERL) PO Box 9005 Champaign, IL 61826-9005				8. PERFORMING ORGANIZATION REPORT NUMBER ERDC/CERL SR-04-31	
9. SPONSORING / MONITORING AGENCY NAME(S) AND ADDRESS(ES) Headquarters, U.S. Army Corps of Engineers (HQUSACE) 441 G Street, NW. Washington, DC 20314-1000				10. SPONSOR/MONITOR'S ACRONYM(S) CEERD-CV-ZT	
				11. SPONSOR/MONITOR'S REPORT NUMBER(S)	
12. DISTRIBUTION / AVAILABILITY STATEMENT Approved for public release; distribution is unlimited.					
13. SUPPLEMENTARY NOTES Copies are available from the National Technical Information Service, 5285 Port Royal Road, Springfield, VA 22161.					
14. ABSTRACT <p>Over the past several years, the Architectural Engineering and Construction (AEC) industry has been making a substantial effort to create an standard facility modeling format known as the Industry Foundation Class (IFC), which has now made it possible to capture criteria and requirements during planning and design, and then to reuse this data during the life cycle of the facility. This research effort is part of the "Fort Future" program, which is developing a capability to model, simulate, assess, and optimize installation capabilities to support the Objective Force. The Facility Acquisition component of Fort Future, Facility Composer, will shorten the time required to acquire facilities while ensuring that Objective Force and Future Combat Systems (FCS) criteria and requirements are met. Facility Composer tools support capturing and tracking of facility criteria and requirements, planning and design charrettes, and associated planning and design analyses. Planning Composer is one of the primary tools in the Facility Composer application suite, which helps users create an architectural program and to set values for project specific criteria. This work contains a User Guide for the Planning Composer software.</p>					
15. SUBJECT TERMS fort future facility composer facility design facility planning planning software					
16. SECURITY CLASSIFICATION OF:			17. LIMITATION OF ABSTRACT	18. NUMBER OF PAGES	19a. NAME OF RESPONSIBLE PERSON Susan D. Nachtigall
a. REPORT Unclassified	b. ABSTRACT Unclassified	c. THIS PAGE Unclassified			19b. TELEPHONE NUMBER (include area code) 217-373-4579