

# NASA Facts

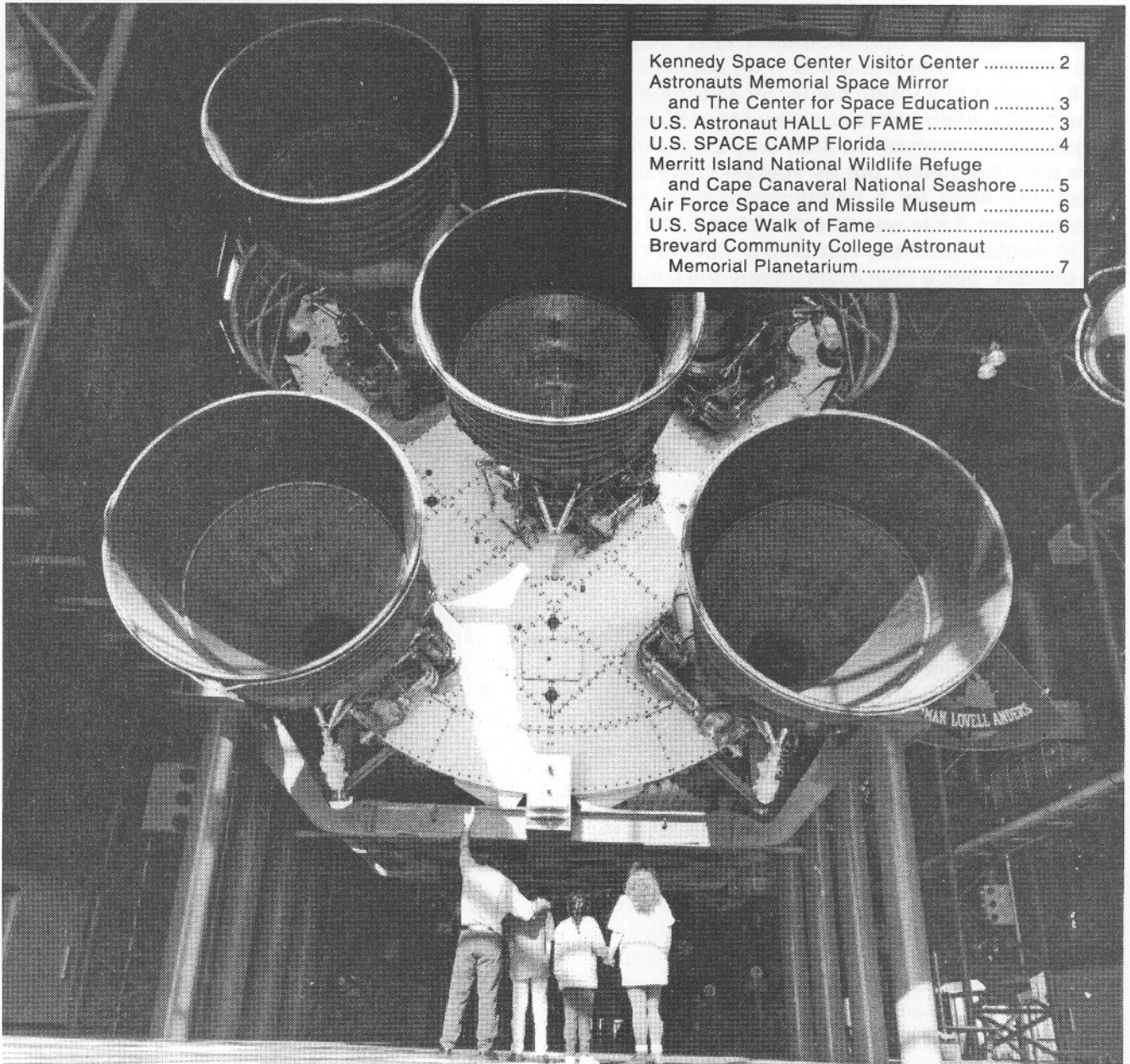


National Aeronautics and  
Space Administration

**John F. Kennedy Space Center**  
Kennedy Space Center, Florida 32899  
AC 407 867-2468

KSC Release No. 92-131  
February 1993  
(Revised March 1997)

## KSC and Space-Related Area Attractions



Kennedy Space Center Visitor Center .....	2
Astronauts Memorial Space Mirror and The Center for Space Education .....	3
U.S. Astronaut HALL OF FAME .....	3
U.S. SPACE CAMP Florida .....	4
Merritt Island National Wildlife Refuge and Cape Canaveral National Seashore .....	5
Air Force Space and Missile Museum .....	6
U.S. Space Walk of Fame .....	6
Brevard Community College Astronaut Memorial Planetarium .....	7

*Apollo/Saturn V Center at Kennedy Space Center*

**REPORT DOCUMENTATION PAGE**

*Form Approved  
OMB No. 0704-0188*

The public reporting burden for this collection of information is estimated to average 1 hour per response, including the time for reviewing instructions, searching existing data sources, gathering and maintaining the data needed, and completing and reviewing the collection of information. Send comments regarding this burden estimate or any other aspect of this collection of information, including suggestions for reducing the burden, to Department of Defense, Washington Headquarters Services, Directorate for Information Operations and Reports (0704-0188), 1215 Jefferson Davis Highway, Suite 1204, Arlington, VA 22202-4302. Respondents should be aware that notwithstanding any other provision of law, no person shall be subject to any penalty for failing to comply with a collection of information if it does not display a currently valid OMB control number.

**PLEASE DO NOT RETURN YOUR FORM TO THE ABOVE ADDRESS.**

1. REPORT DATE (DD-MM-YYYY)		2. REPORT TYPE		3. DATES COVERED (From - To)	
4. TITLE AND SUBTITLE				5a. CONTRACT NUMBER	
				5b. GRANT NUMBER	
				5c. PROGRAM ELEMENT NUMBER	
6. AUTHOR(S)				5d. PROJECT NUMBER	
				5e. TASK NUMBER	
				5f. WORK UNIT NUMBER	
7. PERFORMING ORGANIZATION NAME(S) AND ADDRESS(ES)				8. PERFORMING ORGANIZATION REPORT NUMBER	
9. SPONSORING/MONITORING AGENCY NAME(S) AND ADDRESS(ES)				10. SPONSOR/MONITOR'S ACRONYM(S)	
				11. SPONSOR/MONITOR'S REPORT NUMBER(S)	
12. DISTRIBUTION/AVAILABILITY STATEMENT					
13. SUPPLEMENTARY NOTES					
14. ABSTRACT					
15. SUBJECT TERMS					
16. SECURITY CLASSIFICATION OF:			17. LIMITATION OF ABSTRACT	18. NUMBER OF PAGES	19a. NAME OF RESPONSIBLE PERSON
a. REPORT	b. ABSTRACT	c. THIS PAGE			19b. TELEPHONE NUMBER (Include area code)

## INSTRUCTIONS FOR COMPLETING SF 298

**1. REPORT DATE.** Full publication date, including day, month, if available. Must cite at least the year and be Year 2000 compliant, e.g. 30-06-1998; xx-06-1998; xx-xx-1998.

**2. REPORT TYPE.** State the type of report, such as final, technical, interim, memorandum, master's thesis, progress, quarterly, research, special, group study, etc.

**3. DATES COVERED.** Indicate the time during which the work was performed and the report was written, e.g., Jun 1997 - Jun 1998; 1-10 Jun 1996; May - Nov 1998; Nov 1998.

**4. TITLE.** Enter title and subtitle with volume number and part number, if applicable. On classified documents, enter the title classification in parentheses.

**5a. CONTRACT NUMBER.** Enter all contract numbers as they appear in the report, e.g. F33615-86-C-5169.

**5b. GRANT NUMBER.** Enter all grant numbers as they appear in the report, e.g. AFOSR-82-1234.

**5c. PROGRAM ELEMENT NUMBER.** Enter all program element numbers as they appear in the report, e.g. 61101A.

**5d. PROJECT NUMBER.** Enter all project numbers as they appear in the report, e.g. 1F665702D1257; ILIR.

**5e. TASK NUMBER.** Enter all task numbers as they appear in the report, e.g. 05; RFO330201; T4112.

**5f. WORK UNIT NUMBER.** Enter all work unit numbers as they appear in the report, e.g. 001; AFAPL30480105.

**6. AUTHOR(S).** Enter name(s) of person(s) responsible for writing the report, performing the research, or credited with the content of the report. The form of entry is the last name, first name, middle initial, and additional qualifiers separated by commas, e.g. Smith, Richard, J, Jr.

**7. PERFORMING ORGANIZATION NAME(S) AND ADDRESS(ES).** Self-explanatory.

**8. PERFORMING ORGANIZATION REPORT NUMBER.** Enter all unique alphanumeric report numbers assigned by the performing organization, e.g. BRL-1234; AFWL-TR-85-4017-Vol-21-PT-2.

**9. SPONSORING/MONITORING AGENCY NAME(S) AND ADDRESS(ES).** Enter the name and address of the organization(s) financially responsible for and monitoring the work.

**10. SPONSOR/MONITOR'S ACRONYM(S).** Enter, if available, e.g. BRL, ARDEC, NADC.

**11. SPONSOR/MONITOR'S REPORT NUMBER(S).** Enter report number as assigned by the sponsoring/monitoring agency, if available, e.g. BRL-TR-829; -215.

**12. DISTRIBUTION/AVAILABILITY STATEMENT.** Use agency-mandated availability statements to indicate the public availability or distribution limitations of the report. If additional limitations/ restrictions or special markings are indicated, follow agency authorization procedures, e.g. RD/FRD, PROPIN, ITAR, etc. Include copyright information.

**13. SUPPLEMENTARY NOTES.** Enter information not included elsewhere such as: prepared in cooperation with; translation of; report supersedes; old edition number, etc.

**14. ABSTRACT.** A brief (approximately 200 words) factual summary of the most significant information.

**15. SUBJECT TERMS.** Key words or phrases identifying major concepts in the report.

**16. SECURITY CLASSIFICATION.** Enter security classification in accordance with security classification regulations, e.g. U, C, S, etc. If this form contains classified information, stamp classification level on the top and bottom of this page.

**17. LIMITATION OF ABSTRACT.** This block must be completed to assign a distribution limitation to the abstract. Enter UU (Unclassified Unlimited) or SAR (Same as Report). An entry in this block is necessary if the abstract is to be limited.

The following is a listing of visitor facilities on Kennedy Space Center or nearby that are related to space exploration.

## Kennedy Space Center Visitor Center

Kennedy Space Center, FL 32899

(407) 452-2121

TDD for hearing-impaired: (407) 454-4198

Current launch information: 1-800-KSC-INFO  
(in Florida only)

The Kennedy Space Center Visitor Center is operated for NASA by concessioner Delaware North Parks Services of Spaceport, Inc. It is located between the Kennedy Space Center (KSC) Industrial Area on Merritt Island and U.S. 1 on the mainland.

The origins of a visitor center for KSC date back to the 1960s when public curiosity about the space program mushroomed. At first, only drive-through tours were permitted, but as interest continued to mount, the need for a permanent visitors center became clear. A site was selected in the mid-1960s, and in August 1967 the first official visitors center was opened. Since then it has undergone a number of expansions and upgrades.

The visitor center features a wide variety of exhibits and activities related to the space program, including guided bus tours of KSC and Cape Canaveral Air Station. The Galaxy Center offers the only back-to-back twin IMAX theater complex in the world, showcasing four IMAX movies incorporating footage shot by Shuttle astronauts on a screen five-and-a-half stories tall. *The Dream is Alive* allows the viewer to experience the sights and sounds of a Shuttle liftoff; *The Blue Planet* takes a serious environmental look at Planet Earth from a vantage point 200 miles (322 kilometers) high; *Destiny in Space* delves into the challenges of space exploration and presents first-time views of the Shuttle orbiting the Earth; and *First City in Space*, which features astounding three-dimensional special effects incorporating actual NASA footage to depict life in a future space settlement.

The Space Station exhibit depicts living and laboratory quarters complete with experiment setups and a crew shower to give visitors an idea of what living on a space station might be like. *Satellites and You* is a 45-minute exhibit that incorporates animatronics and audiovisual effects to show how satellites affect daily life. The Rocket Garden and outdoor exhibits contain authentic rockets and spacecraft. Younger visitors can explore the new space playground, complete with a one-fifth scale Space Shuttle/Space Station gym. *Explorer*, a full-scale model of a Space Shuttle orbiter, features a walk-through exhibit of the crew compartment and

cargo bay. Located adjacent to this are full-scale solid rocket boosters and a Launch Status Dome with live briefings. A moon rock and other historical exhibits on human spaceflight are on display in the Gallery of Space Flight exhibit hall.

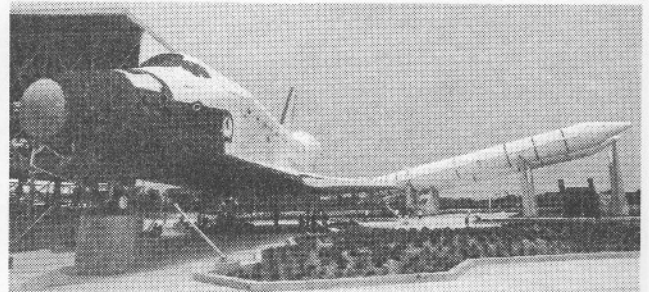
The Apollo/Saturn V Center is NASA's newest attraction for visitors to KSC. The centerpiece of the 100,000-square-foot complex is one of only three moon rockets still in existence. The huge Saturn V launch vehicle was recently moved from its outdoor location adjacent to the KSC Vehicle Assembly Building after undergoing a thorough refurbishment to restore it to its original sparkling colors.

Exhibits and films at the Apollo/Saturn V Center capture the emotion of those extraordinary times: The building and testing of the massive Saturn rocket, the training of the astronauts, the triumphs and setbacks along the way, and the ultimate success of landing on the moon and returning safely to Earth.

The Firing Room Theater recreates the atmosphere of the original firing room as it existed during the Apollo era. A preshow will draw guests into the drama of Apollo with a multiscreen presentation reflecting the energy and uncertainty of the lunar landing missions. The second theater, called the Lunar Surface Theater, dramatizes the fateful moments of the flight of Apollo 11, when astronauts Neil Armstrong and Buzz Aldrin first walked on the moon in 1969.

**Hours and Admission:** Admission to the KSC Visitor Center is free. There is a nominal charge for the bus tours and the IMAX films. Reservations are required for large groups wishing to take the bus tour. Special assistance is available for hearing-impaired and physically challenged visitors. Free wheelchairs are provided; all exhibits and tours are accessible to individuals with disabilities.

The KSC Visitor Center is open every day of the year except Christmas. It opens at 9 a.m. Closing time will vary depending on the time of year; typically it is later in the summer. Launch day opening and closing times vary depending on the mission. Visitors should call ahead for information, using the phone numbers provided above.



A full-scale model of a Shuttle orbiter and two solid rocket boosters are on display at the Kennedy Space Center Visitor Center.

# Astronauts Memorial Space Mirror and The Center for Space Education

Kennedy Space Center Visitor Center  
Kennedy Space Center, FL 32899

Built and operated by:  
The Astronauts Memorial Foundation, Inc.  
The Center for Space Education  
Mail Code: AMF  
Kennedy Space Center, FL 32899  
Information: (407) 452-2887

Also at the KSC Visitor Center are the Astronauts Memorial Space Mirror and The Center for Space Education. Located on 13.5 acres (5.5 hectares) of land provided by NASA, they were built and are operated by The Astronauts Memorial Foundation, a nonprofit organization.

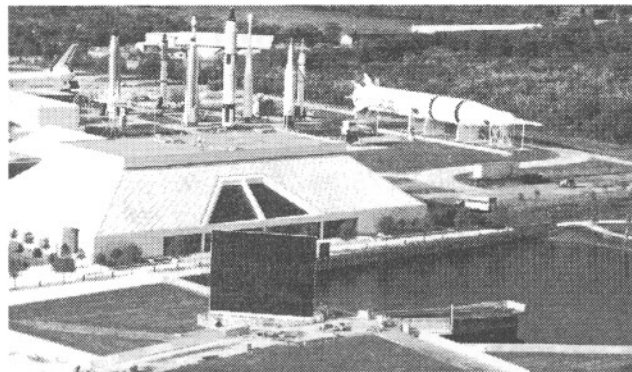
The Astronauts Memorial Space Mirror is a 42.5-foot (13-meter) high by 50-foot (15.2-meter) wide black granite national memorial. Engraved through the mirror-finished surface of the memorial are the names of 16 American astronauts who have given their lives to the quest to explore space. By means of a computer program, the memorial rotates and tilts to track the sun during daylight hours. Sunlight projected through the astronauts' names appears to emblazon them against a reflection of the sky.

The Center for Space Education is a "living memorial" to the honored astronauts. Located on six acres to the west of the Space Mirror, the facility encompasses 44,000 square feet (4,088 square meters) of state-of-the-art conference, classroom and instructional technology display areas.

The center houses the foundation's Educational Technology Institute that provides training in instructional technology for educators and serves as a demonstration platform for cutting-edge instructional technology. In the facility's Instructional Technology Evaluation Center (ITEC), educators have an opportunity to assess the latest instructional technology tools available.

Also located in the center are NASA's educational programs at KSC, including the Educators Resource Center and Exploration Station. The former provides scientific and aerospace videos, text materials and 35mm slides which can be copied by teachers (only) for use in the classroom, and the latter provides programs for student groups and a hands-on science activities room open to anyone.

**Hours and Admission:** The Center for Space Education is open Monday through Saturday from 9 a.m. to 5 p.m. The Instructional Technology Evaluation Center is open to educators Monday and Friday from 9 a.m. to 5 p.m., and Tuesday, Wednesday and Thursday, 9 a.m. to 12 noon. Admission to The Center for Space Education is free.



Astronauts Memorial Space Mirror on display at the Kennedy Space Center Visitor Center.

## U.S. Astronaut HALL OF FAME

S.R. 405  
Titusville, FL  
Information: (407) 269-6100

The U.S. ASTRONAUT HALL OF FAME is dedicated to telling the stories of America's astronauts. Personal artifacts such as Apollo 11 astronaut Buzz Aldrin's report card, film footage and real space hardware like early space traveler Wally Schirra's Mercury capsule bring the astronauts' stories to life.

Inside the U.S. ASTRONAUT HALL OF FAME theater, guests can watch *Reach for the Stars*, a film that recounts how the space program shaped American history.

Interactive exhibits and simulators allow guests to experience for themselves the thrill of flight. The G-force trainer centrifuge takes guests on a jet fighter training run, where they can pull up to "3-G's" — three times the pull of gravity. They also can float in virtual reality weightlessness, assist with the repair of the Skylab space station, squeeze inside a Mercury capsule, and test a Shuttle landing simulator.

They can enter the world of aerial combat in the 3-D 360, a ride that allows the would-be pilot to execute soaring, banking and 360-degree barrel roll maneuvers. Then, visitors can climb aboard *The Shuttle to Tomorrow*, a full-scale Shuttle mockup that takes them on a multimedia trip into the future.

The U.S. ASTRONAUT HALL OF FAME is the joint venture of the Mercury Seven Foundation and the U.S. SPACE CAMP Foundation. Both are nonprofit organizations dedicated to encouraging science and technical education.

**Hours and Admission:** Open every day except Christmas Day, from 9 a.m. to 5 p.m., with extended summer hours. There is a nominal admission fee, with reduced rates for children and members of the American Association of Retired Persons (AARP) and the American Automobile Association (AAA). Group discounts also are available.

# U.S. SPACE CAMP Florida

6225 Vectorspace Blvd.  
Titusville, FL 32780-8040  
Information: 1-800-897-5798 or  
(407) 267-3184

The first SPACE CAMP opened in Huntsville, Ala., in 1982. The program was so popular that it was expanded to Florida on a site adjacent to Kennedy Space Center. More than 30,000 children have attended U.S. SPACE CAMP Florida since it opened in 1988. The variety of programs offered by SPACE CAMP are aimed at encouraging young people to study aerospace, science and math by exposing them to space technology.

SPACE CAMP introduces young people to the exciting possibilities of space. Participants learn about space science, study rocket propulsion, experience astronaut training simulators from different eras of the space program, and participate in simulated Space Shuttle missions using realistic Shuttle and mission control mock-ups. Participants also have the opportunity to perform experiments in physics, chemistry and space science.

U.S. SPACE CAMP Florida is the joint venture of the U.S. SPACE CAMP Foundation and the Mercury Seven Foundation. Both nonprofit educational foundations share the mutual goal of supporting space science education in America.

## SPACE CAMP Programs

For more information on the following programs, call 1-800-63SPACE:

- **SPACE CAMP:** The original five-day residential program for children in 4th-7th grades. Sessions begin every Sunday from February through

December. Cost for the program includes room, meals and all program supplies.

- **Parent/Child SPACE CAMP:** A chance for parents and children (ages 7-10 years) to experience the excitement of SPACE CAMP together during a three-day weekend program. Parent/Child SPACE CAMP is offered on selected weekends throughout the year. Cost covers tuition, room, meals and program supplies for one adult and one child.

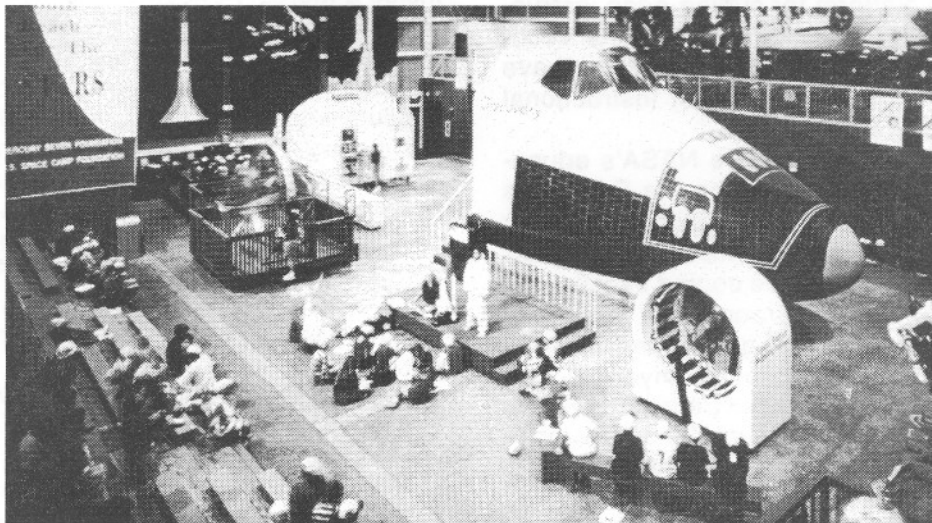
- **SPACE CAMP for Professional Educators:** A five-day program designed especially for teachers is offered in conjunction with NASA and the Astronaut Memorial Foundation (*see next listing also*). This program couples the hands-on excitement of SPACE CAMP with space science curriculum planning and development. Teachers participating in the program may apply for continuing education credit through their individual school districts.

## SPACE CAMP Programs for Groups

- **SPACE CAMP Action Tours:** A fast-paced, three-hour tour of SPACE CAMP offered to youth groups primarily September through May. Each child has the opportunity to try an astronaut training simulator and learn about the space program, past and present.

- **Outerspace Adventure:** Designed for school, church and scout groups, this two-night adventure serves as a general introduction to the space program. It includes the SPACE CAMP Action Tour described above, building and launching model rockets, and many other group activities. Offered primarily September through March, the program cost covers two-nights accommodations, four meals and admission to the Kennedy Space Center tour and movie.

For more information, including the cost, on any of the programs listed above, call either of the phone numbers provided above at the beginning of the SPACE CAMP listing.



*A variety of programs are offered at SPACE CAMP for students, children and their parents, and educators.*

# Merritt Island National Wildlife Refuge and Cape Canaveral National Seashore

*Kennedy Space Center, FL*

Much of the 140,000 acres comprising KSC is a wildlife refuge. Launch pads, as well as facilities where hazardous rocket propellants are processed, must be located well away from inhabited areas. When KSC was first established, NASA bought all of northern Merritt Island to provide the needed isolation, leaving huge tracts of undeveloped land in their natural condition. In 1963, in cooperation with NASA, the U.S. Fish and Wildlife Service established the Merritt Island National Wildlife Refuge. Canaveral National Seashore was created in 1975 and is managed by the National Park Service. The refuge is one of the finest in the United States, while the seashore boasts the last extended stretch of undeveloped beach on Florida's east coast.

## Refuge

*Refuge Information:  
Refuge Manager, Merritt Island  
National Wildlife Refuge  
P.O. Box 6504  
Titusville, FL 32782  
(407) 861-0667*

Refuge Headquarters and a Visitor Information Center are located on KSC, on S.R. 402 four miles east of Titusville. Talks, exhibits and walks are offered on a seasonal basis. There are several self-guided walking trails and one driving trail on the refuge. Each Christmas, the Audubon Society conducts a count of the abundant bird population, many of which have migrated from points north. Fishing and duck hunting are permitted in season in certain areas; restrictions apply.

**Hours and Admission:** There is no charge for visiting the refuge.

Refuge Visitor Information Center: November through March, 8 a.m. - 4:30 p.m., Monday through Friday, and 9 a.m. - 5 p.m., Saturday and Sunday. April through October, hours are same as above, except closed Sundays.

*Great Blue Herons and many other types of birds make their home on the Merritt Island National Wildlife Refuge.*

## Seashore

*Seashore information:  
Canaveral National Seashore Headquarters  
308 Julia St.  
Titusville, FL 32796-3521  
Seashore Headquarters (Titusville):  
407 267-1110  
Seashore Visitor Information Center  
(New Smyrna):  
(904) 428-3384*

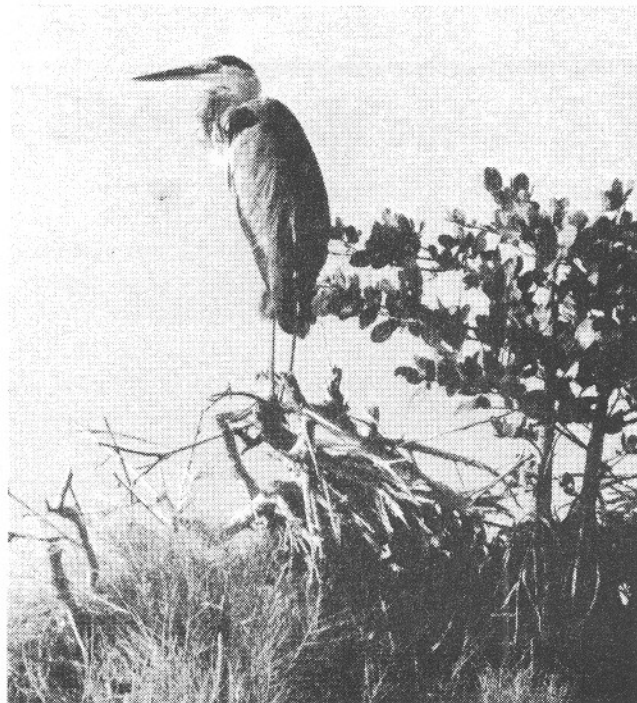
Co-located with the refuge on KSC is the Canaveral National Seashore, a pristine stretch of undeveloped beach extending from just north of Pad 39B to a little south of New Smyrna Beach. Swimming, surfing and surf fishing are permitted. There are no lifeguards.

Elsewhere, crabbing, clamming and shrimping are popular activities; fishing may require a state license. Boat-launching sites provide access to Mosquito Lagoon and the Indian River.

There are two backcountry campsites along a self-guided canoe trail about two miles long which circles through the seashore area south of Turtle Mound. Other backcountry sites are located on islands in Mosquito Lagoon and on the beach (winter only).

**Hours and Admission:** Beach: The beach is open free of charge. Beach hours match up with daylight-saving time: 8 a.m. - 6 p.m., from the last Sunday in October until the first Sunday in April; 6 a.m. - 8 p.m. from the first Sunday in April until the last Sunday in October.

Seashore Headquarters: Located at 308 Julia Street, Titusville. Hours are 8 a.m. - 4:30 p.m., Monday through Friday.



# Air Force Space and Missile Museum

## *Museum information:*

*Museum Curator*

*191 Museum Circle*

*Patrick Air Force Base, FL 32925-2535*

*Information: (407) 853-3245 or 853-9171*

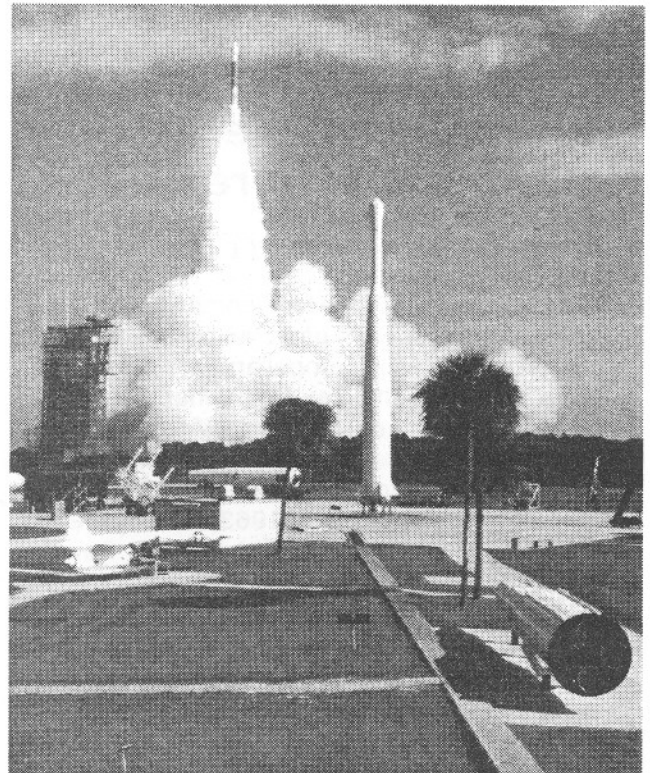
The Air Force Space and Missile Museum at Cape Canaveral Air Station encompasses both Air Force and NASA facilities. It is located off Light-house Road, about one mile east of Phillips Park-way. The museum is staffed by volunteers and operated by the 45th Space Wing and the USAF Museum Program.

Two historic launch complexes, Complex 26 and Complex 5/6, are located here. Complex 26 was the site of the first successful American satellite launch (Explorer I) in 1958. The blockhouse contains original computers, consoles and launch equipment. An adjacent exhibit hall features numerous space-related exhibits, including a Gemini space capsule.

An extensive display of rockets and missiles is located in the Rocket Garden behind the blockhouse. Complex 5/6 is located to the south, and is the site of Mercury astronaut Alan Shepard's historic suborbital flight in 1961. NASA oversees this complex.

**Hours and Admission:** Admission to the museum is free; donations are welcome to support upkeep of the historic rockets and launch facilities.

The museum is open to the general public Monday through Friday, 10 a.m. - 2 p.m., and weekends, 10 a.m. - 4 p.m. Visitors must enter through the



*The Air Force Space and Missile Museum is located close to launch pads still in use today.*

South Gate (Gate 1) of Cape Canaveral Air Station, located north of the Bee Line Expressway (S.R. 528) and Highway A1A. They will be given a visitors placard at the guard gate, which must be displayed in the windshield of their vehicle. Visitors are advised to call first for an update on museum hours, as it may be closed in the event of launch operations on the Cape.

---

## U.S. Space Walk of Fame

*North Indian River Avenue*

*Titusville, FL*

*Information: (407) 267-7241 (Loys Ward Associates, founding member, U.S. Space Walk of Fame Foundation, Titusville, Florida)*

The U.S. Space Walk of Fame is located at Space View Park, along north Indian River Avenue in Titusville. A tribute to the astronauts and workers of America's human spaceflight programs, the Space Walk of Fame features a promenade of walkways, seating areas, outdoor displays and educational and interpretive stations that explore the specific achievements of space pioneers. The first exhibit, Project Mercury, was unveiled in May 1995 and includes a 20-foot (six-meter) sculpture depicting the astronomical symbol of the planet Mercury

which was used as the Project Mercury emblem. The exhibit also features bronze tablets with handprints and signatures from the Mercury astronauts as well as flight data.

Exhibits honoring the human spaceflight programs succeeding Mercury are being opened. These include projects Gemini, Apollo, Skylab and the Space Shuttle.

In addition to the outdoor displays, the riverwalk provides excellent public viewing areas of the Shuttle launch pads located almost directly due east on Kennedy Space Center. Restaurants and antique stores are located nearby and the Space Walk also is conveniently close to the Merritt Island National Wildlife Refuge, the Canaveral National Seashore, U.S. SPACE CAMP and Kennedy's Visitor Center.

**Hours and Admission:** The Space Walk is a public attraction open at all times. There is no admission charge.



# Brevard Community College Astronaut Memorial Planetarium

*Brevard Community College  
1519 Clearlake Road  
Cocoa, FL 32922  
Information: (407) 634-3732*

The Brevard Community College (BCC) Astronaut Memorial Planetarium has been hailed as the world's leading planetarium. Located on BCC's Cocoa campus, it incorporates ground-breaking technological advances that have yielded unparalleled images of the solar system.

Visitors to the Planetarium productions are treated to a view which is almost identical to that seen by astronauts orbiting the Earth hundreds of miles above its surface. Unimpaired by Earth's distort-

ing atmosphere, the resulting in-depth view is crisp and accurate.

The 51,455-square-foot (4,780-square-meter) planetarium also offers several other unique ways to explore outer space. Underneath its 70-foot-high (21-meter) aluminum dome, the building houses the International Hall of Space Explorers honoring space explorers from around the world; a fully accessible observatory; the Science Quest Demonstration Hall featuring hands-on exhibits and displays; and a movie theater. The observatory features the largest publicly-accessible telescope in Florida, a 24-inch (61-centimeter) adapted-Casagrain telescope for observing dim objects and deep space.

**Hours and Admission:** Please call the phone number provided at the beginning of the listing for days and times of shows. There is a nominal charge for the planetarium shows. The museum, observatory and demonstration hall are open free of charge.



*The BCC Astronaut Memorial Planetarium offers spectacular images of the solar system.*

### ATTRACTION KEY

- A** Canaveral National Seashore
- B** Merritt Island National Wildlife Refuge
- C** U.S. Space Walk of Fame
- D** U.S. Space Camp and Astronaut Hall of Fame
- E** The Center for Space Education
- F** Kennedy Space Center Visitor Center and Astronauts Memorial Space Mirror
- G** Air Force Space and Missile Museum
- H** Brevard Community College Astronaut Memorial Planetarium

