

REPORT DOCUMENTATION PAGE

Form Approved
OMB No. 0704-0188

Public reporting burden for this collection of information is estimated to average 1 hour per response, including the time for reviewing instructions, searching existing data sources, gathering and maintaining the data needed, and completing and reviewing this collection of information. Send comments regarding this burden estimate or any other aspect of this collection of information, including suggestions for reducing this burden to Department of Defense, Washington Headquarters Services, Directorate for Information Operations and Reports (0704-0188), 1215 Jefferson Davis Highway, Suite 1204, Arlington, VA 22202-4302. Respondents should be aware that notwithstanding any other provision of law, no person shall be subject to any penalty for failing to comply with a collection of information if it does not display a currently valid OMB control number. PLEASE DO NOT RETURN YOUR FORM TO THE ABOVE ADDRESS.

| | | | | | |
|--|------------------------------------|--|--|---|--|
| 1. REPORT DATE (DD-MM-YYYY) 2006 | | 2. REPORT TYPE Open Literature | | 3. DATES COVERED (From - To) | |
| 4. TITLE AND SUBTITLE The effects of repeated low-dose sarin exposure | | | | 5a. CONTRACT NUMBER | |
| | | | | 5b. GRANT NUMBER | |
| | | | | 5c. PROGRAM ELEMENT NUMBER | |
| 6. AUTHOR(S) Shih, T-M., Hulet, SW, McDonough, JH | | | | 5d. PROJECT NUMBER | |
| | | | | 5e. TASK NUMBER | |
| | | | | 5f. WORK UNIT NUMBER | |
| 7. PERFORMING ORGANIZATION NAME(S) AND ADDRESS(ES) US Army Medical Research Institute of Chemical Defense ATTN: MCMR-CDR-P 3100 Ricketts Point Road | | | | 8. PERFORMING ORGANIZATION REPORT NUMBER USAMRICD-P05-011 | |
| 9. SPONSORING / MONITORING AGENCY NAME(S) AND ADDRESS(ES) US Army Medical Research Institute of Chemical Defense ATTN: MCMR-CDZ-P 3100 Ricketts Point Road | | | | 10. SPONSOR/MONITOR'S ACRONYM(S) | |
| | | | | 11. SPONSOR/MONITOR'S REPORT NUMBER(S) | |
| 12. DISTRIBUTION / AVAILABILITY STATEMENT Approved for public release; distribution unlimited | | | | | |
| 13. SUPPLEMENTARY NOTES Published in Toxicology and Applied Pharmacology, 215, 119-134, 2006. | | | | | |
| 14. ABSTRACT See reprint. | | | | | |
| 15. SUBJECT TERMS Organophosphate, nerve agent, sarin, cholinesterase inhibitors, repeated exposure, acetylcholinesterase, functional observation battery, body weight, seizures, electroencephalogram, acetylcholine, choline, in vivo microdialysis, pathology | | | | | |
| 16. SECURITY CLASSIFICATION OF: | | | 17. LIMITATION OF ABSTRACT UNLIMITED | 18. NUMBER OF PAGES 16 | 19a. NAME OF RESPONSIBLE PERSON Tsung-Ming Shih |
| a. REPORT UNCLASSIFIED | b. ABSTRACT UNCLASSIFIED | c. THIS PAGE UNCLASSIFIED | | | 19b. TELEPHONE NUMBER (include area code) 410-436-3414 |

The effects of repeated low-dose sarin exposure[☆]

T.-M. Shih^{*}, S.W. Hulet¹, J.H. McDonough

Pharmacology Branch, Research Division, U.S. Army Medical Research Institute of Chemical Defense, 3100 Ricketts Point Road, Aberdeen Proving Ground, MD 21010-5400, USA

Received 10 December 2005; revised 6 February 2006; accepted 10 February 2006
Available online 23 March 2006

Abstract

This project assessed the effects of repeated low-dose exposure of guinea pigs to the organophosphorus nerve agent sarin. Animals were injected once a day, 5 days per week (Monday–Friday), for 2 weeks with fractions (0.3×, 0.4×, 0.5×, or 0.6×) of the established LD₅₀ dose of sarin (42 μg/kg, s.c.). The animals were assessed for changes in body weight, red blood cell (RBC) acetylcholinesterase (AChE) levels, neurobehavioral reactions to a functional observational battery (FOB), cortical electroencephalographic (EEG) power spectrum, and intrinsic acetylcholine (ACh) neurotransmitter (NT) regulation over the 2 weeks of sarin exposure and for up to 12 days postinjection. No guinea pig receiving 0.3, 0.4 or 0.5 × LD₅₀ of sarin showed signs of cortical EEG seizures despite decreases in RBC AChE levels to as low as 10% of baseline, while seizures were evident in animals receiving 0.6 × LD₅₀ of sarin as early as the second day; subsequent injections led to incapacitation and death. Animals receiving 0.5 × LD₅₀ sarin showed obvious signs of cholinergic toxicity; overall, 2 of 13 animals receiving 0.5 × LD₅₀ sarin died before all 10 injections were given, and there was a significant increase in the angle of gait in the animals that lived. By the 10th day of injection, the animals receiving saline were significantly easier to remove from their cages and handle and significantly less responsive to an approaching pencil and touch on the rump in comparison with the first day of testing. In contrast, the animals receiving 0.4 × LD₅₀ sarin failed to show any significant reductions in their responses to an approaching pencil and a touch on the rump as compared with the first day. The 0.5 × LD₅₀ sarin animals also failed to show any significant changes to the approach and touch responses and did not adjust to handling or removal from the cage from the first day of injections to the last day of handling. Thus, the guinea pigs receiving the 0.4 and 0.5 × LD₅₀ doses of sarin failed to habituate to some aspects of neurobehavioral testing. Spectral analysis of EEG data suggested that repeated sarin exposure may disrupt normal sleeping patterns (i.e., lower frequency bandwidths). While these EEG changes returned to relative normalcy 6 days after the last injection in animals receiving 0.4 × LD₅₀ sarin, these changes were still observed in the animals that received 0.5 × LD₅₀ sarin. Ten to twelve days after the last sarin injection (in 0.4 × LD₅₀ group only), neurochemical data showed that striatal choline levels were reduced in comparison to the saline group. At this time, atropine sulfate (5 mg/kg, i.p.) challenge resulted in a transient elevation in striatal ACh levels in animals exposed to repeated 0.4 × LD₅₀ sarin as well as in control animals. No evidence of brain or heart pathology was found in any guinea pig that survived all 10 sarin injections.

Published by Elsevier Inc.

Keywords: Organophosphate; Nerve agent; Sarin; Cholinesterase inhibitors; Repeated exposure; Acetylcholinesterase; Functional observational battery; Body weight; Seizures; Electroencephalogram; Acetylcholine; Choline; In vivo microdialysis; Pathology

Abbreviations: ACh, acetylcholine; AChE, acetylcholinesterase; CWNA, chemical warfare nerve agent; DFP, diisopropylfluorophosphate; DOPAC, 3,4-dihydroxyphenylacetic acid; EEG, electroencephalographic activity; FOB, functional observational battery; HPLC, high pressure liquid chromatograph; HVA, homovanillic acid; i.m., intramuscular; i.p., intraperitoneal; LC₅₀, median lethal concentration; LD₅₀, median lethal dose; MTD, maximum tolerated dose; NT, neurotransmitter; OP, organophosphorus compound; RBC, red blood cell; s.c., subcutaneous.

[☆] Research was conducted in compliance with the Animal Welfare Act and other Federal statutes and regulations relating to animals and experiments involving animals and adheres to principles stated in the *Guide for the Care and Use of Laboratory Animals*, National Research Council, 1996. The facility where this research was conducted is fully accredited by the Association for Assessment and Accreditation of Laboratory Animal Care International. The opinions or assertions contained herein are the private views of the authors, and are not to be construed as reflecting the views of the Department of the Army or the Department of Defense.

^{*} Corresponding author. Fax: +1 410 436 2072.

E-mail address: tsungming.a.shih@us.army.mil (T.-M. Shih).

¹ Current address: Research and Technology Directorate, US Army Edgewood Chemical and Biological Center, Aberdeen Proving Ground, MD 21010, USA.

Introduction

Chemical warfare nerve agents (CWNAs), such as sarin, soman, and VX, are organophosphorus compounds (OPs). They disrupt normal nervous system transmissions through the irreversible inhibition of acetylcholinesterase (AChE), the enzyme that breaks down the cholinergic neurotransmitter (NT) acetylcholine (ACh). The buildup of ACh in response to a large exposure to nerve agents can lead, unless promptly treated, to muscle weakness, increased secretions (i.e., lacrimation, rhinorrhea, salivation), convulsions and seizures, respiratory depression, coma, and death (Taylor, 2001). The progression of signs, their neuropharmacological basis, and toxic consequence elicited from acute high-dose exposures have been well characterized (McDonough and Shih, 1993, 1997; Shih et al., 2003). However, much less is known about the long-term effects of repeated low-dose CWNA exposure. Comprehensive reviews of the available literature on the long-term health effects of exposure to low level CWNAs have been published (Panel on Anticholinesterase Chemicals, 1982; Coordinating Subcommittee, 1985; Moore, 1998; Romano et al., 2001). In general, exposure to low-level CWNAs is a potential emerging health hazard that requires further investigation (Romano et al., 2001).

In the great majority of the available literature on repeated low-dose exposure to CWNAs, soman is the OP studied most often. Repeated low-dose soman exposure has been investigated in mice (Sterri et al., 1981), rats (Sterri et al., 1980; Dulaney et al., 1985; Hymowitz et al., 1985; Kerenyi et al., 1990; Shih et al., 1990; Howerton et al., 1991), guinea pigs (Sterri et al., 1981, 1982), and primates (Gause et al., 1985; Blick et al., 1991, 1994). The effects of the repeated soman exposures, cited above, ranged from performance decrements on a well-learned compensatory tracking task (Blick et al., 1994) to development of attention deficits (Gause et al., 1985) to hyper-reactive responses to handling (Shih et al., 1990).

Unlike soman, the nerve agent sarin has been used previously by extreme terrorist groups (e.g., 1995 Tokyo subway incidence; Nozaki et al., 1995) and on the battlefield (Macilwain, 1993; Brown and Brix, 1998). More than 98,000 Persian Gulf War veterans have been notified that they were potentially exposed to a plume of sarin when American forces destroyed an ammunition depot shortly after the end of the 1991 Gulf War (Enserink, 2001). The amount of literature regarding the effects of repeated low-level exposure to sarin is rather sparse and, at times, conflicting. Burchfiel et al. (1976) exposed rhesus monkeys to repeated low levels of sarin (1 $\mu\text{g}/\text{kg}$, i.m.) once per week for 10 weeks. Despite increases in high frequency beta activity upon electroencephalographic (EEG) analysis, there were no signs of adverse health or long-term behavioral effects. In contrast, when sarin was administered subcutaneously (s.c.) to rats once per day for up to 85 days, doses less than $0.3 \times \text{LD}_{50}$ resulted in significant reductions in body weight gains by as early as the 7th day of injections while a dose of approximately $0.36 \times \text{LD}_{50}$ resulted in the death of 4 out

of 11 animals by the 10th day of injections (Dulaney et al., 1985). Husain et al. (1993), using a repeated inhalation protocol (5 $\text{mg}/\text{min}/\text{m}^3$ for 20 min per day for 10 days) in mice, reported that sarin exposure amounting to less than $0.2 \times \text{LC}_{50}/\text{day}$ resulted in delayed (14th day after exposure) muscle twitching, weakness in the extremities, and slight ataxia. It has been observed in rats and mice that intraperitoneal (i.p.) injections of subtoxic doses of sarin or soman decreased locomotor activity, altered behavior on the plus-maze, and elevated horizontal bridge tests (Sirikka et al., 1990; Nieminen et al., 1990; Baille et al., 2001). Kassa et al. (2001a, 2001b) concluded that repeated low-level sarin inhalation in rats at clinically asymptomatic doses was disruptive to neurophysiological function and caused long-term memory impairments. Whereas, Conn et al. (2002) reported that low-level sarin inhalation exposure did not change body temperature and locomotor activity during exposure or for 1 month postexposure.

It was hypothesized by Metcalf and Holmes (1969) that exposure to OPs can induce irreversible or slowly reversible brain dysfunction. Indeed, this theory has been supported by studies investigating EEG changes in response to high dose or repeated, low-level, asymptomatic OP exposures in both non-human primates (Burchfiel et al., 1976;) and humans (Metcalf and Holmes, 1969; Duffy et al., 1979; Wadia et al., 1974).

Changes in both extracellular NT levels measured by *in vivo* microdialysis techniques and total NT levels measured in brain homogenates, following exposure to high (e.g., near lethal) doses of CWNAs, have been documented in animal studies. Upon exposure to CWNAs, increases in brain ACh levels occur rapidly, but return to baseline levels extracellularly within 90 min of seizure onset (Shih, 1982; Shih and McDonough, 1997; Shih et al., 1993; Fosbraey et al., 1990, 1991; Lallement et al., 1992). Increases in extracellular glutamate levels as well as dopamine metabolites, i.e., 3,4-dihydroxyphenylacetic (DOPAC) and homovanillic acid (HVA), are also evident in brain following onset of CWNA-induced seizure activity (Lallement et al., 1991; Shih and McDonough, 1997; McDonough and Shih, 1997). Whether there are changes in brain NT levels upon repeated low-dose exposure to CWNA is less clear. Although it has already been shown that chronic exposure to nerve agent may result in down-regulation of cholinergic receptors (Churchill et al., 1984), the effects that chronic elevation of extracellular NTs, such as ACh and glutamate, might have on receptor numbers or on responses to agonists have yet to be defined.

The objective of the current study was to expand on a previously reported model for repeated sarin exposure in the guinea pig that did not elicit severe signs of OP intoxication when injected once per day (Monday–Friday) over a 2-week period (Atchison et al., 2004). We hypothesized that the long-term abnormalities associated with repeated exposure to low-dose OPs, previously identified in EEG spectra (Burchfiel et al., 1976), are most likely linked with alterations in normal neuropharmacological homeostasis. Therefore, we investigated

what effect this dosing regimen has on EEG power spectra and determined whether the animals exhibit predictable neurochemical changes in response to drugs that result in changes in the intrinsic NT regulation. In addition, we assessed whether subtle neurobehavioral and/or physical deficits developed as a result of the 2 weeks of sarin exposures. As a positive control, a dose group that did.

Materials and methods

Animals

Male Hartley guinea pigs (Cri:(HA)BR; Charles River Labs, Kingston, NY; 290–430 g starting weight) were used for these studies. They were individually housed in polycarbonate cages in temperature ($21 \pm 2^\circ\text{C}$) and humidity ($50 \pm 10\%$) controlled animal quarters maintained on a 12-h light–dark full spectrum lighting cycle with lights on at 0600 h. Laboratory chow and water were freely available whenever the animals were in home cages. The research environment and protocols for animal experimentation were approved by the institutional animal care and use committee. The animal care program at this Institute is fully accredited by the Association for Assessment and Accreditation of Laboratory Animal Care International.

Surgery

Guinea pigs were anesthetized with isoflurane and surgically implanted with cortical screw electrodes using standard small animal aseptic surgical techniques (Shih and McDonough, 1999). Small burr holes were drilled in the skull to accept stainless steel screw electrodes (equidistance between bregma and lambda and 3 mm lateral to the midline suture) and an intracerebral guide cannula (BAS #MD-2250) for a microdialysis probe. The tip of the guide cannula was lowered into the coordinates (AP = +11.4; L = +3.6; Depth = -4.6) for caudate nucleus (Lupparello, 1968). The electrode leads were connected to a miniature connector plug. The wire, screws, plug, and guide cannula were held in place using cranioplastic cement. The guinea pigs were administered buprenorphine (0.03 mg/kg, s.c.) for pain management immediately following surgery and allowed to recover for 10–14 days before experiments began.

Materials

Sarin was obtained from the US Army Edgewood Chemical Biological Center (Aberdeen Proving Ground, MD). It was diluted in saline in concentrations to deliver injection volumes = 0.5 ml/kg, and the diluted solution was maintained on ice prior to administration. The Institute's historic database indicated that the LD₅₀ for sarin in the guinea pig to be 42 µg/kg (s.c.); subsequent dosing was based on this value. Atropine sulfate (Sigma-Aldrich Co., St. Louis, MO) was diluted in saline (0.5 ml/kg) before administration. Pentobarbital (Nembutal) was purchased from Abbott Laboratories (Chicago, IL). Isoflurane (Attane, USP) was obtained from Minrad, Inc. (Bethlehem, PA). O-phosphoric acid (85%, HPLC grade), disodium ethylenediamine tetraacetate (EDTA), and 10% neutral buffered formalin were purchased from Fisher Scientific (Pittsburgh, PA). Neostigmine bromide, acetylcholine chloride, and choline chloride were purchased from Sigma-Aldrich Co. All other chemicals used were analytical reagent grades.

Experimental protocol

Guinea pigs were administered selected doses of sarin or saline (as control) once per day, 5 days per week (Monday–Friday) for 2 weeks. The injections were administered s.c. under the skin of the back in a volume of 0.5 ml/kg body weight. The s.c. route of administration was chosen based on the fact that there is minimal first-pass detoxification of the agent by the liver by this route (Dulaney et al., 1985; Shih et al., 1990; Sterri et al.,

1980, 1981, 1982). A pilot study was first performed to determine what dose of sarin could be repeatedly injected over the 2-week period that did not elicit signs of nerve agent intoxication. The doses of sarin tested in this pilot study were 0.3, 0.4, 0.5, and $0.6 \times \text{LD}_{50}$ ($n = 4$ animals at each dose). Baseline EEG recordings were taken for 10 min prior to all sarin injections, and EEG recordings were continued for an additional 40 min following sarin injections. In the pilot study, the guinea pigs were monitored for epileptiform EEG activity, changes in body weight, and red blood cell (RBC) AChE levels. From the results obtained in the pilot study, the $0.4 \times \text{LD}_{50}$ and $0.5 \times \text{LD}_{50}$ doses of sarin were chosen as the doses to be injected in the full experiment, along with saline for the controls. In the full study, guinea pigs were randomly assigned to treatment groups (saline, $0.4 \times \text{LD}_{50}$ or $0.5 \times \text{LD}_{50}$ sarin). The experiment was run in a series of replications, with each replication consisting of 8–10 guinea pigs randomly distributed between the 3 treatment conditions. In the full experiment, the same regimen of sarin dosing and monitoring of EEG, body weight, and RBC AChE was used. In addition, the animals were evaluated with a functional observational battery (FOB) to determine neurobehavioral function. FOB evaluation was performed on the animals prior to the 1st sarin or saline injection (baseline) and then after the sarin or saline injections on the 3rd, 5th, 6th, 8th, and 10th days. It was also performed on the 4th and 6th days following termination (recovery period) of injections. FOB was performed immediately after the EEG evaluation, 40–50 min after injections on exposure days. Blood was drawn for RBC AChE determinations prior to the 1st and 6th (following weekend recovery) sarin or saline injections and 2–3 h after the 2nd, 5th, 7th, and 10th injections. The animals were allowed to recover for 21 days after the last injection with RBC AChE measurements taken on the 4th, 7th, 14th, and 21st days of recovery. To minimize animal discomfort, the blood draws were staggered such that blood was not drawn from every animal on every day of blood collection.

AChE assay

Approximately 0.5 ml of blood was collected via toe-nail clip (Vallejo-Freire, 1951). This sample was prevented from clotting by the addition of 15 µl EDTA (4 g/l) and separated into plasma and RBC by centrifugation (11 min, $14,000 \times g$). RBC AChE activity was determined, using acetylthiocholine iodide as a substrate, by an automated Ellman et al. (1961) method modified by a COBAS/FARA clinical chemistry analyzer (Roche Diagnostics Inc., Nutley, NJ) by Hobson et al. (1988).

Neurobehavioral (FOB) testing

The FOB is a sequence of rapid tests used to assess neurological functions (Bowen and Balster, 1997; Moser et al., 1988; Tegeris and Balster, 1994; Youssef and Santi, 1997). Two technicians, who were unaware of the treatment of the animals, performed all FOB scoring. The order of animal selection for the neurobehavioral testing was performed randomly by the scorer. The scoring sheet (see Appendix A) was adapted from those previously published (Moser et al., 1988; Youssef and Santi, 1997), with slight modifications for guinea pigs. The specific sequence of testing was as follows.

Home cage. While in the home cage, the guinea pigs were scored positive or negative for the presence of agitation, chewing, tremors, facial dysmorphia, and vocalizations. They were graded for ease of removal, ease of handling and presentation of physical signs, such as fur appearance (piloerection), emaciation, lacrimation, and salivation.

Open field. The animals were placed on top of a lab cart and latency to first movement was timed. The animals were then allowed to move freely for 2 min. During this time, the animals were scored on their gait description and their level of arousal. The number of grooms, urine spots, fecal matter, and rears was counted and recorded.

Reflexes. The guinea pig's responses to an approaching pencil, a tap on the rear, and a loud click behind the head were graded. Righting reflex was then

measured by placing the animal on its back and recording the time it took for the guinea pig to get to its feet. For the drop reflex, the guinea pig was then dropped, from a supine position, from a height of 30 cm onto a soft landing area. The ease of the landing was scored.

Splay and gait. The guinea pig's hindlimbs were painted with water-based tempura paint. Hindlimb foot splay was obtained by dropping the guinea pig, from a prone position, from approximately 30 cm high onto a sheet of paper placed on the countertop. The distance between the middle toes of each footpad was measured. The footpads were then repainted and the guinea pigs were placed on a new sheet of paper and allowed to walk freely. The testing was concluded when the guinea pigs maintained forward movement for a minimum of 3 successive steps in a straight path. The angle from the first footstep to the second and third steps was measured.

EEG recording and power spectral analysis

Instrumented animals were placed in individual chambers (45 cm H × 30 cm W × 25 cm D) and connected to the EEG recording apparatus. EEG recordings were made using amplifiers and software supplied by Neurodata Inc. (Pasadena, CA) (low frequency filter = 0.3 Hz; high frequency filter = 40 Hz; sampling rate = 128 Hz) and displayed on a computer monitor. Baseline EEG recordings were taken for 10 min prior to all sarin injections, and continued for an additional 40 min following sarin injections. After sarin injections were terminated (recovery period), EEGs were recorded on day 6 of recovery. Development of epileptiform seizure activity was operationally defined as the appearance of ≥10 s of rhythmic high amplitude spikes or sharp wave activity in the EEG.

For power spectral analysis, each recording session of 50 min was divided into 7 time periods as follows: BL = the baseline period before injections; IN = 0–6 min following injection; P1 = 6–12 min following injection; P2 = 12–18 min following injection; P3 = 18–24 min following injection; P4 = 24–30 min following injection; and P5 = 30–36 min following injection. Within each time period, a contiguous 120-second time snippet was taken for analysis. Each 120-s time snippet was taken as close to the beginning of the time period as possible (with the exception being the BL time period where the snippet was taken in the 120 s just prior to the injection being given). The total EEG cortical power consisted of bandwidth powers over 5 different frequency ranges as follows: Delta = 1–3.5 Hz; Theta = 4–7.5 Hz; Alpha = 8–12.5 Hz; Beta I = 13–20.5 Hz; and Beta II = 21–31.5 Hz. Analysis was done on total EEG power as well as on the 5 different frequency bandwidth powers. The means of spectral powers for a particular day, time point, and treatment were calculated.

In vivo microdialysis

Ten to twelve days following the last sarin or saline injection, a brain microdialysis probe (BR-2 probe, 2 mm membrane, BAS #MD-2200) was inserted into the intracerebral guide cannula. Baseline microdialysis samples were collected (15 min per fraction) from the conscious freely moving guinea pigs for a minimum of 1.5 h, while infusing the caudate nucleus with saline containing 2 μM neostigmine at 3 μl/min. The animals were then injected (i.p.) with 5 mg/kg of atropine sulfate. Microdialysis samples were collected for an additional 2 h and analyzed for ACh and choline levels.

Determination of ACh and choline

A BAS200 high-pressure liquid chromatograph (HPLC) with electrochemical detector (Bioanalytical Systems, Inc. (BAS), West Lafayette, IN) was used for determination of ACh and choline in the microdialysates (Huang et al., 1995). Twenty microliters of the collected microdialysis perfusates was injected directly into the HPLC at a flow rate of 0.05–0.1 ml/min in an isocratic mobile phase that consisted of 14.65 M phosphoric acid (pH 8.5) and 5 ml/l Kathon CG reagent (BAS #CF-2150) in deionized water. An ACh microbore column (1 × 530 mm ID, 10 μm UniJet, BAS #MF-8904) coupled with AChE/choline oxidase immobilized enzyme reactor (BAS #MF-8903)

was used to separate ACh and choline. A "biosensor" was created by coating a glassy carbon electrode with a redox polymer film containing horseradish peroxidase (BAS Peroxidase Electrode Kit, Item No. MF-2095) and operated at +100 mV vs. Ag/AgCl. The redox polymer electrically "wires" the peroxidase to the electrode for the reduction of hydrogen peroxide that was generated from the immobilized enzyme reactor. The detector was set at (–)1.0 and (–)5.0 nanoamps for optimum ACh and choline detection, respectively. The cell temperature was set at 35 °C and the back pressure of this system was at 2000 PSI under optimal conditions. Retention times were approximately 10 min for ACh and 12 min for choline. Samples were quantified using BAS Report Software.

Pathology evaluation

Within 1 month of the animals' last sarin or saline injection, the guinea pigs were deeply anesthetized with pentobarbital (75 mg/kg, i.p.) and then perfused through the aorta with saline followed by 10% neutral buffered formalin. The fixed brains and hearts were then removed, sectioned, and stained with hemotoxylin and eosin (H&E) to assess tissue damage and to verify the location of the tip of microdialysis guide cannula. Brain and heart pathology was analyzed as previously published (McDonough et al., 1995). Animal tissues were evaluated by a board-certified veterinary pathologist who was unaware of the experimental history of a given subject.

Data analysis

For RBC AChE data and numerical data in the FOB, a one-way analysis of variance (ANOVA) was used to determine whether significant differences existed. For body weight change data, gait angle data, and foot splay data, a two-way (treatment × day) repeated measures ANOVA was used. Post hoc Tukey tests were then further used to identify significant effects. For the results of the categorically scored (yes-no) parts of the FOB, Kruskal–Wallis ANOVA on ranks (Hollander and Wolfe, 1973) was used to detect whether there were significant differences between baseline group scores. A Wilcoxon signed-rank test was then used to detect statistical differences between the same individual animals before and after sarin treatment. A difference of $P < 0.05$ was considered significant. The EEG power spectra data were graphed as a function of day of injections with time period reflected on the z-axis. Each bar reflects the mean for that particular day and time period taken over 120-s time snippet within the time period. A two-factor ANOVA (group: saline vs. sarin exposure; time: 15, 30, 45, 60, 75, 90, 105, and 120 min after atropine dosing), with repeated measures on the time factor, was used for analysis of the ACh microdialysis data.

Results

Pilot study

None of the lower doses of sarin (0.3, 0.4, and 0.5 × LD₅₀) elicited epileptiform seizure activity during periods of EEG recordings in any of the animals in either the pilot study or main experiment. However, there were noticeable signs (hyperexcitability, muscle tremors, piloerection, chewing) of nerve agent intoxication in all animals receiving the 0.6 × LD₅₀ sarin dose ($n = 4$) by the 2nd day of injections. The 0.6 × LD₅₀ sarin dose caused seizures in 2 of the 4 guinea pigs by the 4th day of injections and death in 3 of 4 guinea pigs before the final day of injections. Thus, the 0.6 × LD₅₀ dose of sarin did not meet the predetermined criterion and was disqualified for use in further studies. The 0.4 and 0.5 × LD₅₀ sarin doses were chosen for full experimentation because they were the highest possible doses that did not elicit cortical EEG seizures nor produce death when given over the 2 weeks of daily injections. The weight gain and

RBC AChE data from the 4 animals in each pilot study treatment group (saline, $0.4 \times LD_{50}$, and $0.5 \times LD_{50}$) were added to the data obtained from the animals in the full experiment. This was done to increase the overall number of animals available for statistical analysis of weight gain and RBC AChE data only. In the full experiment, there were 24 animals that received saline or $0.4 \times LD_{50}$ sarin (final total $n = 28$ for saline and $n = 28$ for $0.4 \times LD_{50}$) and 9 animals that received $0.5 \times LD_{50}$ sarin in the full experiment (final total $n = 13$). The reason for the lower number of guinea pigs receiving $0.5 \times LD_{50}$ sarin is explained below.

Neurotoxicity

While all 4 guinea pigs receiving $0.5 \times LD_{50}$ sarin in the pilot study survived without seizures for the 10 injections, this was not the case in the full experiment, where 2 of the 9 guinea pigs receiving $0.5 \times LD_{50}$ sarin died before the 2 weeks of injections were completed. These 2 animals never showed signs of EEG epileptiform seizures. Therefore, while the $0.5 \times LD_{50}$ sarin dose given in the pilot study met predetermined criteria, the same dose in the full experiment did not. For this reason, we terminated further use of the $0.5 \times LD_{50}$ dose of sarin, and the total number of animals given this dose was 13 (4 from the pilot study + 9 from the full experiment).

Weight changes

The guinea pigs showed dose–response changes in body weight over the 2 weeks of injections (Fig. 1). The overall average weight gains (calculated as the animal's weight on the 10th day of injections minus the animal's weight prior to the

first injection) for the animals receiving saline, $0.4 \times LD_{50}$ and $0.5 \times LD_{50}$ sarin were 56.89 ± 2.36 , 51.6 ± 2.81 , and 30.09 ± 5.25 (mean \pm SEM) g, respectively. The two-way ANOVA, with repeated measures on days, showed significant main effects for treatment ($F_{(2,64)} = 8.18$, $P < 0.001$), days ($F_{(8,512)} = 263.39$, $P < 0.001$), and the treatment \times days interaction ($F_{(8,512)} = 8.81$, $P < 0.001$). Both the saline control and $0.4 \times LD_{50}$ sarin groups gained significantly greater amounts of weight than did the $0.5 \times LD_{50}$ sarin group throughout the 10-day exposure period. These weight differences first reached significance on day 5, and became even more notable over the next week, with the $0.5 \times LD_{50}$ sarin group gaining significantly less weight than either the saline controls or the $0.4 \times LD_{50}$ sarin group on injection days 6–10. There was no significant difference between the weight gains of the saline controls and the $0.4 \times LD_{50}$ sarin group on any day during the dosing period.

RBC AChE changes

As shown in Fig. 2, by the 2nd day of sarin injections, RBC AChE in the guinea pigs receiving $0.5 \times LD_{50}$ sarin had dropped to 14% of baseline values, which was significantly ($P < 0.001$) lower than the 35% of baseline RBC AChE levels in animals receiving $0.4 \times LD_{50}$ sarin. However, by the 10th day of sarin injections, RBC AChE levels had dropped to near identical levels (11% vs. 12% of baseline values, respectively) in the 0.4 and $0.5 \times LD_{50}$ animals. The average 2-day weekend (Saturday–Sunday) RBC AChE recovery between the 2 weeks of sarin injections was 17% and 20%, respectively, for the 0.4 and $0.5 \times LD_{50}$ sarin groups. Even 21 days after termination of the injections, the RBC AChE levels of the

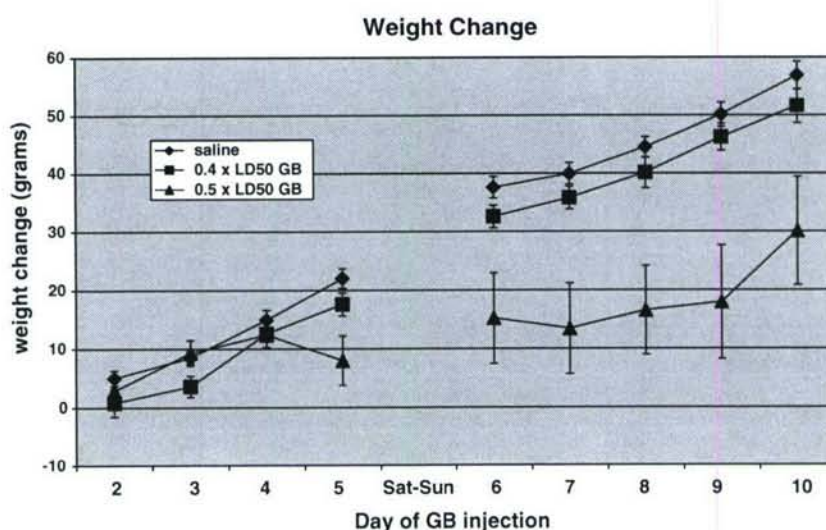


Fig. 1. Weight change vs. day of sarin injection. The animals were weighed prior to the first sarin injection and then before each subsequent day's injection. Data are graphed as the change between the initial weight and the weight prior to each day's sarin injections. Values are expressed as means \pm SEM. $n = 28$ for saline group, $n = 28$ for $0.4 \times LD_{50}$ sarin group, $n = 11$ for $0.5 \times LD_{50}$ sarin group. (There were 13 guinea pigs in total, but 2 guinea pigs died before the 8th day of injections and thus were not able to be included in statistical analysis using a two-way repeated measures ANOVA.) There is a dose–response change in weight in relation to the dose of sarin given. The animals receiving the $0.5 \times LD_{50}$ dose of sarin showed significantly less overall weight gain ($P < 0.005$) than the animals receiving either saline or $0.4 \times LD_{50}$ sarin.

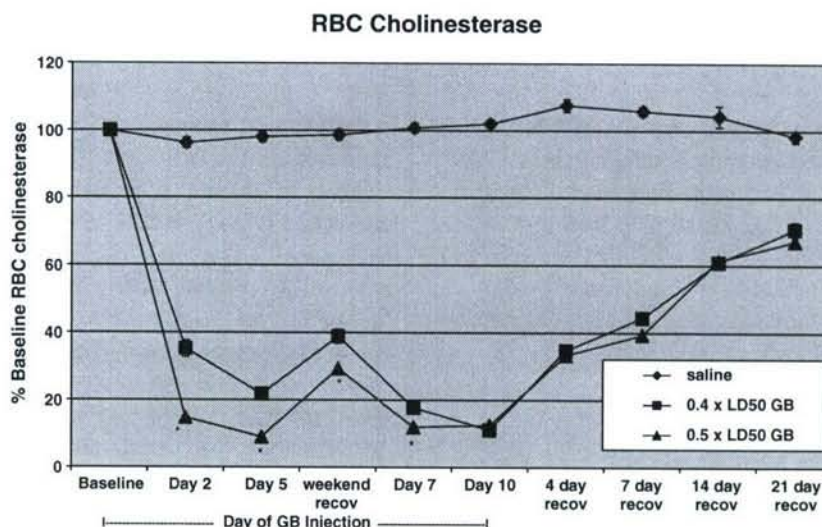


Fig. 2. RBC AChE levels vs. day of sarin injection. Blood was taken via toe-nail clip at different times during the sarin injections, and RBC AChE levels were determined by standard methods. To reduce animal discomfort, blood was not drawn from every animal on every occasion except for baseline values. Values are expressed as means \pm SEM with a minimum $n = 7$ RBC samples (each run in triplicate) for each data point. By the 2nd day of sarin injections, RBC AChE in the animals receiving $0.5 \times \text{LD}_{50}$ sarin injections dropped to significantly ($P < 0.001$) lower levels than in the $0.4 \times \text{LD}_{50}$ sarin animals. However, by the 10th day of sarin injections, RBC AChE levels were nearly identical (11% vs. 12% of baseline values) in the $0.4 \times \text{LD}_{50}$ and $0.5 \times \text{LD}_{50}$ sarin groups. At 21 days recovery, RBC AChE levels in the animals receiving $0.4 \times \text{LD}_{50}$ and $0.5 \times \text{LD}_{50}$ sarin had returned to 68% and 67% of baseline values, respectively. * $P < 0.01$ vs. $0.4 \times \text{LD}_{50}$ sarin group.

animals receiving 0.4 and $0.5 \times \text{LD}_{50}$ sarin remained at 68% and 67% of control values, respectively; still significantly lower than the control AChE levels.

Neurobehavioral (FOB) testing

Both the guinea pigs receiving saline and those receiving $0.4 \times \text{LD}_{50}$ sarin became significantly ($P < 0.05$) easier to remove from their cages when comparing FOB scores after the 10th injection with those scores obtained at baseline (Table 1). The average “cage removal” score (mean \pm SEM on a scale from 1 to 3) went from 1.50 ± 0.13 to 1.04 ± 0.04 and from 1.83 ± 0.2 to 1.0 ± 0.0 for the saline and $0.4 \times \text{LD}_{50}$ sarin animals, respectively. The guinea pigs receiving saline and $0.4 \times \text{LD}_{50}$ sarin also became significantly ($P < 0.05$) easier to handle over the same time period. The average “handling” score (mean \pm SEM on a scale from 1 to 4) went from 2.54 ± 0.15 to 2.04 ± 0.04 for the animals receiving saline and from 2.50 ± 0.12 to 1.96 ± 0.04 for the animals receiving $0.4 \times \text{LD}_{50}$ sarin. The guinea pigs receiving saline also developed significantly ($P < 0.05$) decreased approach (2.04 ± 0.19 to 1.29 ± 0.14 on a scale from 1 to 6) and touch (2.21 ± 0.2 to 1.46 ± 0.2 on a scale from 1 to 6) responses over the same period. In contrast, the animals receiving $0.4 \times \text{LD}_{50}$ sarin failed to show any significant decreases in their approach and touch response scores when comparing their baselines with their scores after the 10th sarin injection. The $0.5 \times \text{LD}_{50}$ sarin animals failed to show significant changes in removal from cage, touch response, and approach response, and they did not adjust to handling. No significant changes in FOB scoring were observed for any of the other measurements in any of the three groups (Table 1).

A two-way repeated measures ANOVA of gait angles revealed significant main effects for treatment group ($F_{(2,52)} = 16.05$, $P < 0.001$) and days ($F_{(7,364)} = 2.04$, $P = 0.05$); the treatment group \times days interaction was not significant. These data are displayed in Fig. 3. The $0.5 \times \text{LD}_{50}$ sarin group had significantly greater gait angles than did the saline controls or the $0.4 \times \text{LD}_{50}$ sarin group; there was no difference between the gait angles of the animals receiving saline and those receiving $0.4 \times \text{LD}_{50}$ sarin. In general, the guinea pigs injected with $0.5 \times \text{LD}_{50}$ sarin tended to keep their hindfeet parallel to each other and hop rather than alternate steps as did the saline control and $0.4 \times \text{LD}_{50}$ sarin guinea pigs. This is illustrated by measuring the angle between consecutive footprints (Fig. 4). Additionally, the drop reflex was impaired in 2/9 guinea pigs treated with $0.5 \times \text{LD}_{50}$ sarin; this was never observed in the saline controls or animals receiving $0.4 \times \text{LD}_{50}$ sarin. It was also observed that the animals receiving $0.5 \times \text{LD}_{50}$ sarin showed obvious muscle tremors upon attempts to move. In contrast, muscle tremors were never observed in the animals receiving the $0.4 \times \text{LD}_{50}$ dose of sarin. There were no differences between any of the groups in hindlimb foot splay at any time (Fig. 5).

EEG spectral analysis

The total EEG power recorded during the baseline period of each day of exposure, as well as on the 6th day of recovery, was not different between the saline, $0.4 \times \text{LD}_{50}$ sarin and $0.5 \times \text{LD}_{50}$ sarin groups (Fig. 6A). For the most part, on any given day of injection or recovery, the total EEG power would generally increase, when compared with the baseline power, as the recording periods moved further

Table 1
Summary of the observed changes in functional observational battery scoring after 2 weeks of sarin dosing

| | Saline | 0.4 × LD ₅₀ | 0.5 × LD ₅₀ |
|--------------------------------|------------------------|------------------------|------------------------|
| Cage removal ^f | ↓ (easier to remove)** | ↓ (easier to remove)* | No sig. change |
| Handling ^f | ↓ (easier to handle)* | ↓ (easier to handle)* | No sig. change |
| Lacrimation ^f | No significant change | No significant change | No significant change |
| Salivation ^f | No significant change | No significant change | No significant change |
| Fur appearance ^f | No significant change | No significant change | No significant change |
| Latency to move ⁿ | No significant change | No significant change | No significant change |
| # grooms ⁿ | No significant change | No significant change | No significant change |
| # rears ⁿ | No significant change | No significant change | No significant change |
| Arousal ^f | No significant change | No significant change | No significant change |
| Gait ^f | No significant change | No significant change | No significant change |
| Fecal boluses ⁿ | No significant change | No significant change | No significant change |
| Urine spots ⁿ | No significant change | No significant change | No significant change |
| Click response ^f | No significant change | No significant change | No significant change |
| Approach response ^f | ↓ (less reactive)* | No significant change | No significant change |
| Touch response ^f | ↓ (less reactive)* | No significant change | No significant change |
| Righting reflex ^f | No significant change | No significant change | No significant change |
| Drop reflex ^f | No significant change | No significant change | No significant change |

Summary of the observed changes in functional observational battery scoring after the last day of sarin injections as compared with those scores obtained before the first injection (baseline scores). For the ranked data, (r) Kruskal–Wallis ANOVA on ranks was used to detect that there were no significant differences between baseline group scores. A Wilcoxon signed-rank test was then used to detect statistical differences between the same individual animals before and after nerve agent treatment. One-way ANOVA was used to analyze numerical data (n) for significance. Guinea pigs that received saline (n = 24) became significantly easier to remove from their cages and handle. They also became significantly less reactive to an approaching pencil and to a touch on the rear. In short, they became “habituated” to some aspects of the testing. The average (mean ± SEM) baseline scores and scores after the 10th day of injections obtained for each significant score change are referenced within Results. The guinea pigs receiving 0.4 × LD₅₀ sarin (n = 24) failed to show any significant decreases in the approach response and touch response. The guinea pigs receiving 0.5 × LD₅₀ sarin (n = 9 for baseline but 2 animals died before injections were complete) failed to show any significant changes in cage removal, approach response, and touch response and did not adjust to handling.

* P < 0.05.

from the same individual groups of animals during the same time period on the first day of injections. The total powers, during the P5 period, on the 6th day of recovery for the animals receiving saline, 0.4 and 0.5 × LD₅₀ sarin were 8959.22, 6714.52, and 2965.58, respectively. These values amount to 167, 131, and 59% of the power values obtained from the same individual groups of animals during the same time period on the first day of injections. There were noticeable differences in total spectral EEG power for the saline, 0.4 × LD₅₀ sarin and 0.5 × LD₅₀ sarin groups. When total power was broken down into frequency bandwidths, the most striking changes were in the delta (Fig. 6B) and theta (Fig. 6C) bands, with some changes in the alpha (Fig. 6D) and beta I (Fig. 6E) bands. Most notably, the delta and theta activity of 0.5 × LD₅₀ sarin group did not display any increase over the daily recording period (P1–P5) on the 10th day of injections or the 6th day of recovery, while such an increase was quite prominent in the saline and 0.4 × LD₅₀ sarin groups. There was a significant increase (P < 0.05), when compared to the same period on day 1, in high-frequency beta II activity (Fig. 6F) during the baseline period on day 10 and after 6 days of recovery in all treatment groups.

Neurochemistry

While choline levels were initially elevated in saline-treated animals in the microdialysis phase of the study relative to the sarin-treated animals, this difference never reached significance at any time (Fig. 7). The initial elevation and trend towards a reduction in choline from the start of fraction collection in the saline-treated animals could be attributed to a gradual decrease in remaining endogenous AChE activity in the brain due to the inclusion of neostigmine in the perfusion buffer. The neostigmine (a carbamate AChE inhibitor) prevents the breakdown of ACh into choline. In the sarin-treated animals, AChE activity was already inhibited because of the actions of the nerve agent. Therefore, there was a resulting decrease in choline formed as a byproduct of ACh breakdown.

Baseline levels of ACh (calculated as the average of the last 2 fractions before atropine sulfate injection) were slightly higher, although not significantly, in the sarin-treated animals than in saline-treated animals (data not shown). Analysis of the ACh data showed no significant group effect, nor group × time interaction. There was, however, a significant effect of time, with significant increases in ACh values at the 45-, 60-, 75-, and 90-min time points relative to the 15-min time point (Fig. 8). This demonstrates the stimulating effects of atropine on ACh output. In addition, simple main effect tests showed that the sarin-treated group contributed the most to this increase; there were no significant differences in ACh levels of the saline-treated group over the 8 time points, while for the sarin-treated group, ACh was significantly elevated above their 15 min levels at the 60- and 90-min samples (P < 0.05) and the 75-min sample elevation just missed the conventional level of significance (P < 0.07).

away from the injection time (i.e., P5 > P4 > P3 > P2 > P1). The average total powers for the P5 period (30–36 min after saline or sarin injection) on the 10th day of injections were 8510.97, 4759.43, and 2058.33 for the saline, 0.4 × LD₅₀ and 0.5 × LD₅₀ sarin animals, respectively. These values amount to 159, 93, and 41% of the power values obtained

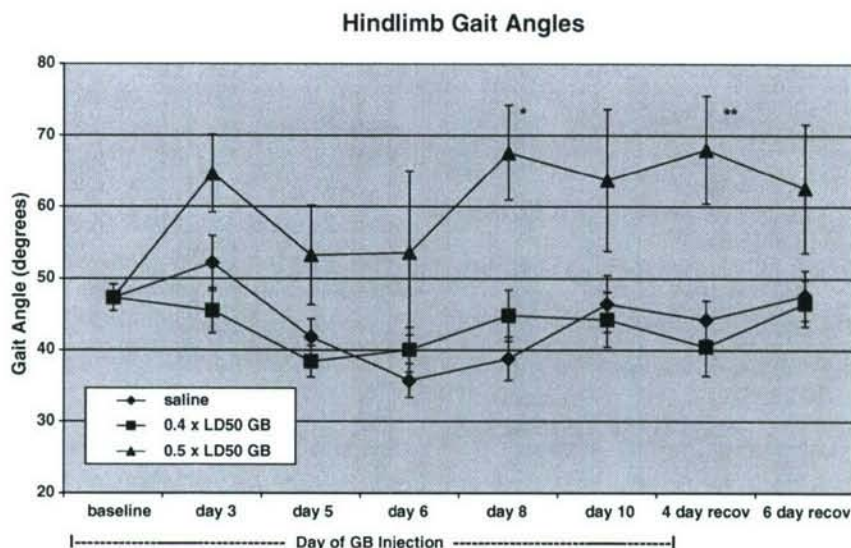


Fig. 3. Gait angle vs. day of sarin injection. This figure shows the changes in the guinea pig's angle of gait vs. the day of injections for saline and the different concentrations of sarin ($0.4 \times LD_{50}$ and $0.5 \times LD_{50}$). The gait angle is measured as described in Materials and methods. Values are expressed as means \pm SEM. $n = 24$ for saline group, $n = 24$ for $0.4 \times LD_{50}$ sarin group, $n = 7$ for $0.5 \times LD_{50}$ sarin group. (There were 9 guinea pigs in total, but 2 guinea pigs died before the 8th day of sarin injections and thus were not able to be included in statistical analysis using a two-way repeated measures ANOVA.) A repeated measures ANOVA showed that overall (main effect) the $0.5 \times LD_{50}$ sarin group had significantly greater gait angle than the saline controls or the $0.4 \times LD_{50}$ sarin group, which did not differ from one another. The average angle between hindlimb steps is exaggerated in the $0.5 \times LD_{50}$ sarin group because they tended to hop rather than walk.

ACh release was measured in the presence of neostigmine ($2 \mu M$) to increase the detectability of baseline ACh levels. Part of the measured increase in ACh levels after atropine in both treatment groups (Fig. 8) may be due to the neostigmine-

elevated basal ACh dialysate levels (de Boer et al., 1990; Kawashima et al., 1991). As a result, atropine-stimulated ACh levels could potentially be higher for both treatment groups if neostigmine were not used. However, the underlying ACh release pattern should not be affected because atropine-stimulated release would again be normalized to basal levels for each respective group.

Pathology

No evidence of brain or heart pathology was found in any guinea pig that survived all 10 sarin (0.3 , 0.4 or $0.5 \times LD_{50}$) injections. Animals that died during experimentation were not submitted for postmortem examination, because they died overnight and were not found until the next morning. It was verified in each case that the tip of the brain microdialysis probe was within the caudate nucleus.

Discussion

One of the objectives of the current set of experiments was to establish a dose of sarin to be utilized in a model for further study of the effects of low-dose repeated exposure to sarin in the guinea pig model. A primary requirement of the model was to determine a dose of sarin that could be given over a 2-week period without causing identifiable cholinergic signs of toxicity. Although no guinea pigs in the $0.5 \times LD_{50}$ sarin group showed signs of epileptiform seizures, 2 of 13 (15%) animals died before all 10 sarin injections were given. This dose also caused a rapid decrease in RBC AChE levels to approximately 10% of baseline values by the 2nd day of sarin injections. Additionally, there were noticeable signs of sarin intoxication (chewing, hyperactivity, muscle tremor),

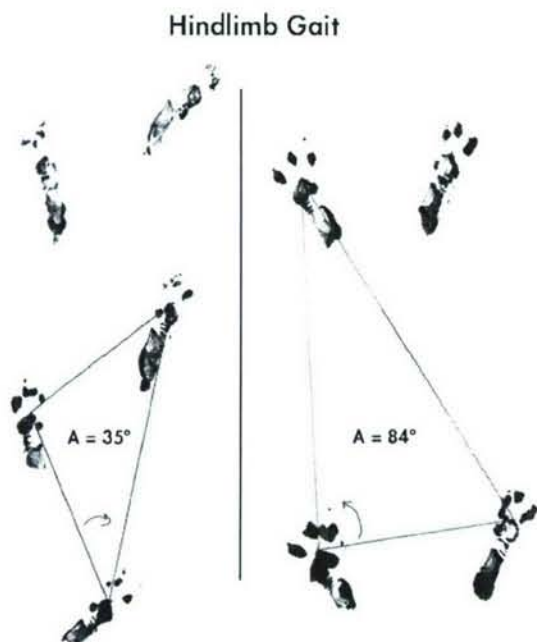


Fig. 4. Hindlimb gait. These figures are representative samples of guinea pig hindlimb gaits. The footprints on the left are from a saline control guinea pig after the 6th day of injections. The footprints on the right are from a guinea pig that had received 10 injections of $0.5 \times LD_{50}$ sarin. The animals were required to walk in a relatively straight line for a minimum of 3 successive steps. Lines were drawn from a similar point on each foot, and the angle that is formed between the furthest foot back, the opposite foot, and the next step of the first foot was measured with a protractor.

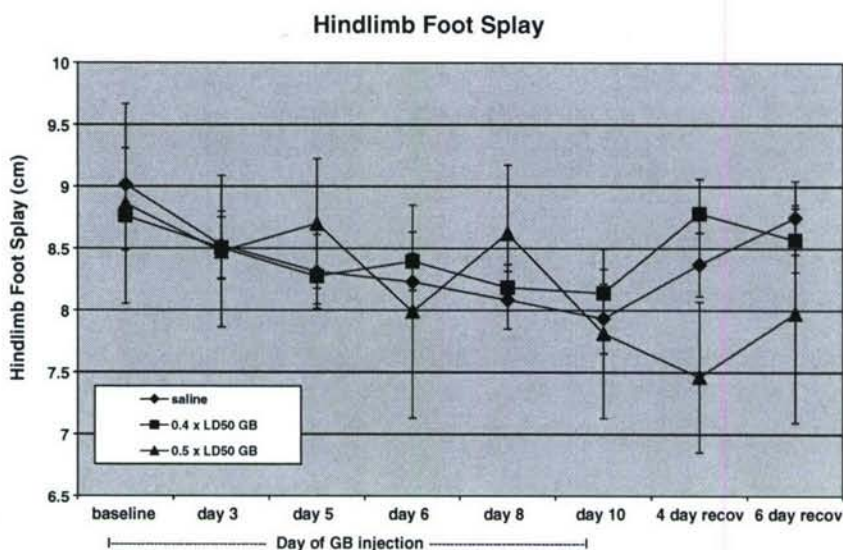


Fig. 5. Hindlimb foot splay vs. day of sarin injection. This figure shows the hindlimb foot splay (in cm) vs. the day of sarin injections for the saline, 0.4 and 0.5 \times LD₅₀ sarin groups. The animal's feet were painted with tempura paint, and the animal was dropped from approximately 30 cm onto a piece of paper. The distance between the footpads under the middle toe on each foot was measured. Each drop was performed in duplicate and averaged ($n = 24$ for saline group, $n = 24$ for 0.4 \times LD₅₀ sarin group, and $n = 7$ for 0.5 \times LD₅₀ sarin group). The values are expressed as means \pm SEM. There are no statistical differences between the hindlimb splay of the guinea pigs injected with saline vs. those injected with either 0.4 or 0.5 \times LD₅₀ sarin.

alterations in angle of gait (Fig. 3), and impaired drop reflexes in some of the guinea pigs receiving 0.5 \times LD₅₀ sarin. Youssef and Santi (1997) showed that multiple low-dose injections of either acrylamide or methanol, both known neurotoxicants, resulted in changes in the angle of gait similar to those observed in the study presented here. Moser (1995) used similar neurobehavioral screening batteries after a single acute dose of 7 different AChE inhibitors and concluded that altered gait could be considered a "cardinal sign of toxicity for cholinesterase inhibitors." The gait problems identified in the animals receiving 0.5 \times LD₅₀ sarin were accompanied by significant reductions in body weight gains over the same periods. Since our experiments did not include a group solely to look at the effect of weight loss on gait, we cannot completely rule out its potential contribution to this effect. In contrast to 0.5 \times LD₅₀ sarin group, the animals receiving 0.4 \times LD₅₀ sarin showed no signs of toxicity. This finding confirmed the report of Atchison et al. (2004) that in guinea pigs dosed once daily for 2 weeks with 0.4 \times LD₅₀ for sarin displayed no signs of toxicity. The fact that we found no evidence of brain pathology in any of the animals that received all 10 sarin (0.3, 0.4, or 0.5 \times LD₅₀) injections (cumulative doses of 3, 4, and 5 \times LD₅₀, respectively) indirectly supports prior studies showing that nerve agent-induced brain pathology is primarily seizure-mediated (McDonough et al., 1989, 1995; Shih et al., 2003) and not due to the total dose of nerve agent.

By the 2nd day of sarin injections, RBC AChE levels in animals receiving the 0.5 \times LD₅₀ dose had dropped significantly lower (14% of baseline values) than the RBC AChE levels in animals receiving 0.4 \times LD₅₀ sarin (Fig. 2). The parallels between the onset of signs following the second 0.5 \times LD₅₀ sarin injection and the rapid reduction of

the RBC AChE levels to approximately 14% of control values after the 2nd injection are consistent with the results of Grob and his associates. They found that the onset of signs upon human exposure to DFP (Grob et al., 1947) or sarin (Grob and Harvey, 1958) was correlated with rapid decreases of RBC AChE levels to 30 and 22% of baseline values, respectively. However, when the OPs were administered at lower doses over several days, there was no correlation between the onset of signs and RBC AChE levels (Grob et al., 1947). This is consistent with our studies in which RBC AChE in the animals receiving 0.4 \times LD₅₀ sarin had dropped to 11% of baseline values by the 10th day of sarin injections, yet showed no obvious signs of nerve agent intoxication despite RBC AChE levels identical to those of 0.5 \times LD₅₀ sarin group. It is commonly accepted that the only way that RBC AChE can be replaced once it is irreversibly inhibited by nerve agents is by de novo synthesis (Harris et al., 1971) of new RBCs, which is thought to occur at the rate of 1–2% per day (Grob and Harvey, 1958). Therefore, we must rule out the possibility that daily replenishment alone of RBC AChE is accounting for the failure of RBC AChE levels in our animals to fall below 10% of baseline values. The failure of RBC AChE to fall below 10% of baseline levels is most likely a combination of de novo RBC AChE synthesis (Grob and Harvey, 1958; Harris et al., 1971) and an increasing rate of spontaneous reactivation of RBC AChE associated with repeated exposures to nerve agents (Lanks et al., 1977).

The increase in EEG spectral power that the saline animals showed from the time of injection (BL) to 30–36 min after injection (P5) was more pronounced at the lower frequency bandwidths (delta, theta, and, to a lesser extent, alpha). It is most likely that the increase in EEG power from the time of injection

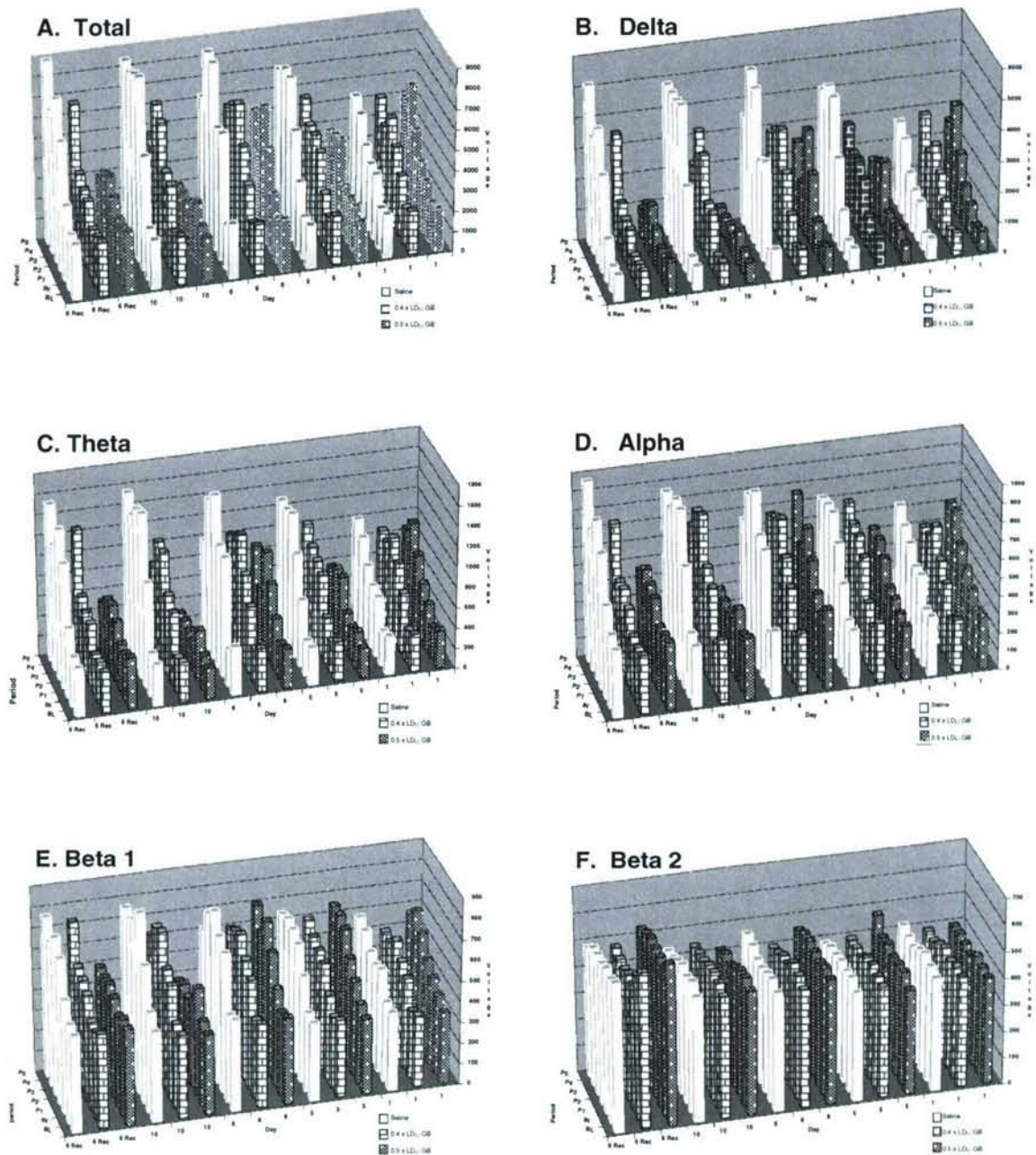


Fig. 6. (A–F) EEG total and band powers. The EEG power spectra are graphed as a function of day of injections with time period reflected on the z-axis. Each bar reflects the mean for that particular day and time period taken over a 120-s time snippet within the time period. Each 120-s time snippet was taken as close to the beginning of the time period as possible (with the exception being the BL time period where the snippet was taken in the 120 s prior to the injection being given). The time periods were as follows: BL = the baseline period before injections; IN = 0–6 min following injection; P1 = 6–12 min following injection; P2 = 12–18 min following injection; P3 = 18–24 min following injection; P4 = 24–30 min following injection; and P5 = 30–36 min following injection. The total EEG cortical power consisted of bandwidth powers over 5 different frequency ranges as follows: Delta = 1–3.5 Hz; Theta = 4–7.5 Hz; Alpha = 8–12.5 Hz; Beta I = 13–20.5 Hz; and Beta II = 21–31.5 Hz. For each of the EEG spectral graphs, the white bars, bricked bars, and dotted bars are the average powers from animals receiving saline, $0.4 \times LD_{50}$ sarin, and $0.5 \times LD_{50}$ sarin, respectively. On days 1, 5, 6, and 10, $n = 30$ for the animals receiving saline or $0.4 \times LD_{50}$ sarin. On the 6th day of recovery, $n = 15$ for both the saline and $0.4 \times LD_{50}$ sarin groups. In the $0.5 \times LD_{50}$ sarin group, $n = 16$ for day 1, $n = 12$ for days 5 and 6, $n = 11$ for day 10, and $n = 7$ for 6 day recovery.

to 36 min after injections was a result of the animals falling asleep. Unlike the animals that received saline, animals that received $0.5 \times LD_{50}$ sarin for 10 exposures showed no increases in power over the time periods during the later sarin exposures, while the changes in the $0.4 \times LD_{50}$ sarin-treated group were intermediate between that of the saline and $0.5 \times LD_{50}$ sarin

group. The differences in total and lower frequency band powers between the $0.5 \times LD_{50}$ sarin animals and the saline animals persisted into the 6th day of recovery. While our findings of significant changes in high frequency beta II spectra support purported changes in beta II powers reported by Burchfiel et al. (1976), we also saw similar changes in animals

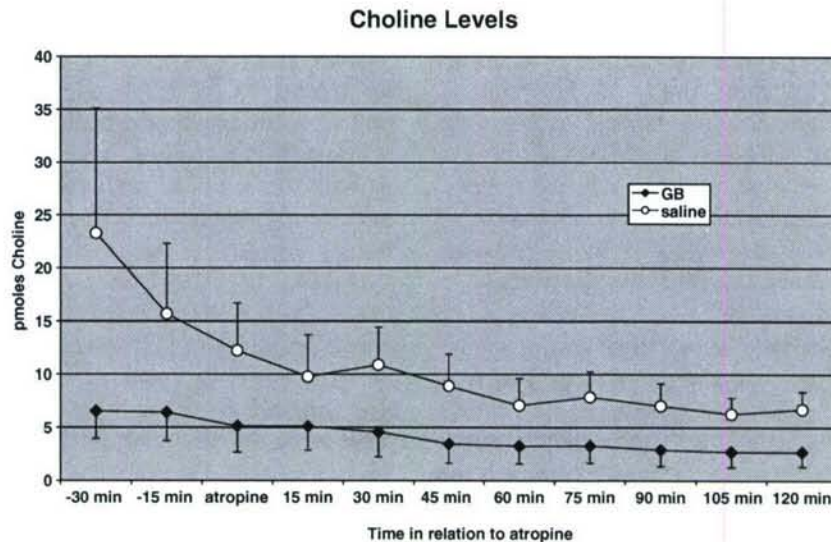


Fig. 7. Striatal choline levels in sarin-treated vs. saline-treated guinea pigs. Saline- (○) and $0.4 \times LD_{50}$ sarin-(◆) treated guinea pigs were allowed to recover for 10–12 days before undergoing microdialysis collection from the caudate nucleus. The amount (pmol) of choline (mean \pm SEM), contained in one 15-min fraction (3 μ l/min) of dialysate, is graphed against the time of the fraction in relation to the injection of atropine sulfate (5 mg/kg, i.p.). While there is a measurable difference between the mean (\pm SEM) values of choline in the sarin-treated animals as compared with the saline-treated animals, the difference fails to reach significance at any time. The trend towards a reduction in choline from the start of fraction collection in the saline-treated animals can be attributed to a gradual decrease in remaining endogenous AChE activity in the brain due to the inclusion of neostigmine in the perfusion buffer. The neostigmine prevents the breakdown of ACh into choline. In the sarin-treated animals, AChE activity is already inhibited because of the actions of the nerve agent. Therefore, there is a resulting decrease in choline formed as a byproduct of ACh breakdown.

that had received saline. Overall, these data suggest that repeated low-dose sarin exposures may disrupt normal cortical EEG sleeping patterns. While these disruptions were able to return to relative normalcy 6 days after the last injection in the animals receiving $0.4 \times LD_{50}$ sarin, this change persisted in the

$0.5 \times LD_{50}$ sarin group for at least 6 days after the last injection. Changes in sleep have been prominently mentioned in clinical reports of individuals exposed to high doses of sarin or soman (Sidell, 1974; Nozaki et al., 1995) as well as less toxic levels of exposure (Metcalf and Holmes, 1969).

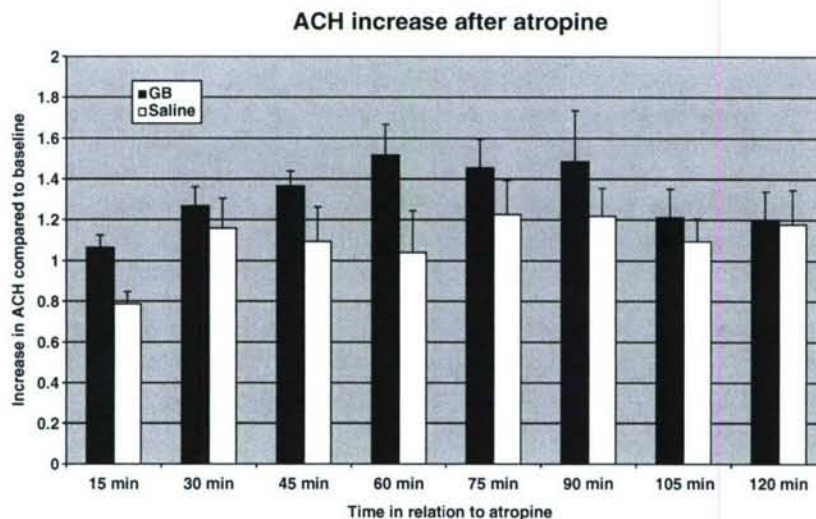


Fig. 8. ACh in sarin-treated vs. saline-treated guinea pigs. The increase in measurable ACh (mean \pm SEM) as compared with baseline values before atropine sulfate injection has been graphed for the $0.4 \times LD_{50}$ sarin- (dark bars) and saline- (light bars) treated guinea pigs vs. time after atropine sulfate (5 mg/kg, i.p.) injection. The data have been normalized to take into account the differences between baseline ACh values between the 2 groups. Therefore, a value of 1 on the y-axis is equal to a value of ACh (pmol) that is 100% of the baseline measurements prior to atropine injection. Analysis of the ACh data showed no significant group effect nor group \times time interaction. There was a significant increase in ACh levels in both groups as a function of time; ACh levels at 45-, 60-, 75-, and 90-min were elevated relative to the 15-min sample. Simple main effects showed that the sarin-treated group contributed most to this effect; the samples of the 60- and 90-min time points being significantly elevated compared to the 15-min sample. Only at the 15-min time point was there a significant increase in ACh levels of the sarin-treated group relative to the saline controls.

Repeated sarin exposure had no effect on many of the FOB measures (Table 1). However, the 0.4 and 0.5 \times LD₅₀ sarin-treated animals showed decreased ability to habituate to certain aspects of the neurobehavioral testing, unlike their saline control counterparts. The guinea pigs used for the experiments were handled very minimally prior to the first day of injections. Thus, the significant decreases observed in removal from cage and handling were due to the guinea pigs becoming acclimated to being handled by the technician scoring the FOB. It is also most likely that the saline-treated guinea pigs became less reactive to an approaching pencil (approach response) and to a touch on the rump (touch response) because of this habituation. In contrast, the animals receiving 0.4 or 0.5 \times LD₅₀ sarin failed to acclimate to some aspects of the FOB testing (approach and touch responses for the 0.4 \times LD₅₀ sarin dose, and handling, cage removal, and approach and touch responses for the 0.5 \times LD₅₀ sarin dose). It is worthy of noting that the FOB scores after the 10th day of sarin injections, for both the 0.4 and 0.5 \times LD₅₀ sarin doses, were not "worse" than they were at baseline measurements. In short, the animals receiving sarin did not habituate to certain subtest of the FOB compared to the guinea pigs receiving saline. It was interesting to note that, in our previous study (Shih et al., 1990) in which rats were injected (s.c.) with 0.4 \times LD₅₀ of soman 3 times (M, W, F) a week for up to 6 weeks, the animals became hyper-reactive to normal handling procedures and demonstrated exaggerated startle responses to air puffs.

Thus, guinea pigs receiving 0.4 \times LD₅₀ sarin for 2 weeks of daily repeated exposure (Mondays–Fridays) were virtually indistinguishable in gross behavior and body weight changes from those that received saline over the same time period. In spite of these observations, animals that received 0.4 \times LD₅₀ sarin showed a decrease of their RBC AChE to approximately 10% of baseline levels by day 10. The 0.4 \times LD₅₀ sarin dose inhibited RBC AChE to levels equivalent of the 0.5 \times LD₅₀ group without producing the overt signs of acute sarin exposure (gait impairment, tremor) observed in this group. However, the FOB revealed that both groups showed very subtle neurobehavioral changes. The understanding of whether these subtle neurobehavioral changes can last for extended postexposure periods and whether these neurobehavioral changes can progress in severity may be important for investigating the potential health hazards of low level, asymptomatic, exposure to CWNA. One factor to possibly consider is the potential relationship between agent-induced disturbances in sleep and these subtle neurobehavioral changes.

By the basic nature of an OP nerve agent's ability to inhibit AChE activity both peripherally and centrally, one would suspect that there would be a measurable elevation of ACh within the brain, even 10–12 days after the final sarin exposure (based on RBC AChE recovery data shown in Fig. 2). However, in our studies, there was no statistical difference between the levels of striatal ACh from animals that had received 0.4 \times LD₅₀ sarin injections vs. those that had received saline injections. Two possible explanations for this

come to mind: (1) the 10–12 days between the last sarin injection and the taking of the dialysate samples was sufficient for striatal AChE levels to return to normal, or (2) the prolonged inhibition of extracellular AChE led to a prolonged increase in extracellular ACh. The prolonged availability of ACh in the synaptic cleft results in feedback inhibition on muscarinic, presynaptic autoreceptors to decrease further ACh release (Russell et al., 1985). Should the latter of these hypotheses be correct then we would expect that a sudden release of the feedback inhibition would result in a rapid release of ACh into the cleft. Indeed, this may be the case. Atropine works as a competitive ACh antagonist at both pre- and postsynaptic receptors and, therefore, is able to terminate presynaptically the controls of feedback inhibition. Within 15 min after the atropine injection, there was a substantial (approximately 1.5 times) increase in ACh in the striatal dialysate of the sarin-treated group relative to the increase in ACh dialysate from saline controls. This greater ACh increase in the sarin exposed group may be due to the known down-regulation of muscarinic receptors in response to chronic OP exposure (Churchill et al., 1984) and the resultant supersensitivity to cholinergic blocking agents such as atropine (Modrow and McDonough, 1986). The observable trend of a reduction in measurable choline in the animals receiving sarin compared with those receiving saline is most likely due to the decrease in AChE in the cleft of animals treated with sarin. This would lead to a decrease in ACh breakdown and, therefore, a reduction in measurable choline. Indeed the initial high choline measurements, evident in the animals that had received saline, begin to decrease to approximately the same choline levels seen in the animals that had received sarin, as more neostigmine was infused with the dialysate buffer. Neostigmine was thus acting in the same manner as the nerve agent; decreasing the breakdown of ACh results in a decrease of its breakdown products, the major component being choline. These trends of neurochemical results at 10–12 days after 2 weeks of chronic 0.4 \times LD₅₀ sarin injections led us to suggest that the normal brain NT and receptor homeostasis are still disrupted at this time, at least in the striatum, but most probably throughout the whole cholinergic system in the brain. It is, therefore, speculated that these prolonged sarin-induced alterations in brain chemistry may be the pharmacological basis for the neurobehavioral and EEG changes observed in the present study.

Acknowledgments

This research was supported by a National Research Council Research Associateship to Dr. S. W. Hulet from January 2000 to September 2001. The authors express their great appreciation to Mrs. T. Rowland and Ms. L. Rechen for serving as scorers on the functional observational battery testing and to Dr. S. M. Duniho, D.V.M. for pathological evaluation. The authors would also like to thank Mr. J. Barnwell, Ms. M. Zilka, Mr. J. McMonagle, Mr. A. Benjamin, and Mrs. C. Clark for their excellent technical assistance.

Appendix A

FUNCTIONAL OBSERVATIONAL BATTERY SCORE SHEET

Date _____
Scoring code _____Guinea pig # _____
Time started _____Weight _____
Scorer _____Home Cage Assessment

Agitated ___yes ___no
 Chewing ___yes ___no
 Facial Dysmorphia ___yes ___no
 Tremors ___yes ___no
 Vocalizations ___yes ___no

Animal handling

Ease of removal from cage: (R) (choose one)

1. Easy; little or no vocalization, without resistance
2. Moderately Easy; animal jumpy, initial movement followed by settling, with or without vocalizations
3. Difficult; runs around cage, is hard to grab, with and without vocalizations

Ease of Handling Guinea Pig in hand: (R) (choose one)

1. Easy, but lethargic
2. Easy, but alert, limbs may be pulled against body
3. Moderately easy; vocalizations, little or no squirming
4. Difficult, squirming, twisting, attempting to bite, with or without vocalizations

Lacrimation: (R)

1. none
2. slight
3. severe

Salivation: (R)

1. none
2. slight
3. severe

Fur Appearance: (R) (choose one for each)

1. normal
2. slightly soiled/diseveled
3. very soiled/crusty
4. rough

Open Field Checklist (2 minutes)

Latency to the first movement (sec) _____

Total # of rears (C) _____

Total # of grooming episodes (C) _____

Arousal: (R) (choose one)

1. Very low (little or absent)
2. Low (some head or body movement)
3. Somewhat low (some exploratory movements with period of immobility)
4. Normal (alert, exploratory movements)
5. Somewhat high (slight excitement, sudden darting or freezing)
6. Very high (hyper-alert, excited, sudden bouts of running or body movements)

Gait description: (D) (choose one)

1. No movement
2. Normal
3. Impairment
 - a. Uncoordinated movement (ataxia)
 - b. Walking on toes
 - c. Splayed hind limbs
 - d. Exaggerated hind limb flexion
 - e. Staggered gait
 - f. Dragging hind limbs
 - g. Unable to walk

Total # of fecal boluses (C) _____

Total # of urine spots (C) _____

Reflexes

Click Response: (R) (choose one)

1. no reaction
2. slight reaction, ear flick or some evidence that sound was heard
3. more energetic response than (2); may include vocalization
4. jumps, seems startled
5. freezes, actual muscle contraction
6. bizarre reaction: bites, attacks

Approach response: (R) (choose one)

1. no reaction
2. slow approach, sniffing or turning away
3. more energetic response than (2), possible vocalizations
4. jumps, makes efforts to avoid object
5. freezes, actual muscle contraction
6. bizarre reaction: bites, attacks

Touch Response: (R) (choose one)

1. no reaction
2. slowly turns, walks away
3. more energetic response than (2), possible vocalizations
4. jumps, makes efforts to avoid object
5. freezes, actual muscle contraction
6. bizarre reaction: bites, attacks

Gait scoring: (C) (1 trial)

- Stride length (cm)
- Stride width (cm)
- Angle

Foot Splay Measurements (2 trials)

trial 1 (cm) _____ trial 2 (cm) _____

Righting Reflex: (R)

1. normal (immediately rights itself)
2. slightly impaired (>1 sec)
3. impaired (>2 sec)
4. totally impaired (remains on back)

Drop Reflex: (R)

1. normal
2. slightly uncoordinated
3. lands on side
4. lands on back

COMMENTS:

References

- Atchison, C.R., Sheridan, R.E., Duniho, S.M., Shih, T.-M., 2004. Development of a guinea pig model for low-dose, long-term exposure to organophosphorus nerve agents. *Toxicol. Mech. Methods* 14, 183–194.
- Baille, V., Dorandeu, F., Carpentier, P., Bizot, J.-C., Filliat, P., Four, E., Denis, J., Lallement, G., 2001. Acute exposure to a low or mild dose of soman: biochemical, behavioral and histopathological effects. *Pharmacol. Biochem. Behav.* 69, 561–569.
- Blick, D.W., Kerenyi, S.Z., Miller, S., Murphy, M.R., Brown, G.C., Hartgraves, S.L., 1991. Behavioral toxicity of anticholinesterases in primates: chronic pyridostigmine and soman interactions. *Pharmacol. Biochem. Behav.* 38, 527–532.
- Blick, D.W., Weathersby Jr., F.R., Brown, G.C., Murphy, M.R., 1994. Behavioral toxicity of anticholinesterases in primates: effects of daily repeated soman exposure. *Pharmacol. Biochem. Behav.* 48, 643–649.
- Bowen, S.E., Balster, R.L., 1997. A comparison of the acute behavioral effects of inhaled amyl, ethyl, and butyl acetate in mice. *Fundam. Appl. Toxicol.* 35, 189–196.
- Brown, M.A., Brix, K.A., 1998. Review of health consequences from high-, intermediate- and low-level exposure to organophosphorus nerve agents. *J. Appl. Toxicol.* 18, 393–408.
- Burchfiel, J.L., Duffy, F.H., Sim, V.M., 1976. Persistent effects of sarin and diethyltin upon the primate electroencephalogram. *Toxicol. Appl. Pharmacol.* 35, 365–379.
- Churchill, L., Pazdernik, T.L., Jackson, J.L., Nelson, S.R., Samson, F.E., McDonough, J.H., 1984. Topographical distribution of decrements and recovery in muscarinic receptors from rat brains repeatedly exposed to sublethal doses of soman. *J. Neurosci.* 4, 2069–2079.
- Conn, C.A., Dokladny, K., Menache, M.G., Barr, E.B., Kozak, W., Kozak, A., Wachulec, M., Rudolph, K., Kluger, M.J., Henderson, R.F., 2002. Effects of sarin on temperature and activity of rats as a model for Gulf war syndrome neuroregulatory functions. *Toxicol. Appl. Pharmacol.* 184, 77–81.
- Coordinating Subcommittee. 1985. Possible Long Term Health Effects of Short Term Exposure to Chemical Agents, Vol. I.II., Final Report, Current Health Status of Test Subjects. Committee on Toxicology, Board on Toxicology and Environmental Health Hazards, Assembly of Life Sciences National Academy, National Academy Press, Washington, DC.

- de Boer, P., Westerink, B.H.C., Horn, A.S., 1990. The effect of acetylcholinesterase inhibition on the release of acetylcholine from the striatum in vivo: interaction with autoreceptor responses. *Neurosci. Lett.* 116, 357–360.
- Duffy, F.H., Burchfiel, J.L., Bartels, P.H., Gaon, M., Sim, V.M., 1979. Long-term effects of an organophosphate upon the human electroencephalogram. *Toxicol. Appl. Pharmacol.* 47, 161–176.
- Dulaney Jr., M.D., Hoskins, B., Ho, I.K., 1985. Studies on low dose sub-acute administration of soman, sarin and tabun in the rat. *Acta Pharmacol. Toxicol.* 57, 234–241.
- Ellman, G.L., Courtney, K.D., Andres Jr, V., Featherstone, R.M., 1961. A new and rapid colorimetric determination of acetylcholinesterase activity. *Biochem. Pharmacol.* 7, 88–95.
- Enserink, M., 2001. Gulf war illness: the battle continues. *Science* 291, 812–817.
- Fosbraey, P., Wetherall, J.R., French, M.C., 1990. Neurotransmitter changes in guinea-pig brain regions following soman intoxication. *J. Neurochem.* 54, 72–79.
- Fosbraey, P., Wetherall, J.R., French, M.C., 1991. Effect of acute physostigmine–hyoscine pretreatment on the neurochemical changes produced by soman in the guinea pig. *Neurochem. Int.* 18, 265–273.
- Gause, E.M., Hartmann, R.J., Leal, B.Z., Geller, I., 1985. Neurobehavioral effects of repeated sublethal soman in primates. *Pharmacol. Biochem. Behav.* 23, 1003–1012.
- Grob, D., Harvey, J.C., 1958. Effects in man of the anticholinesterase compound sarin (isopropyl methylphosphonofluoridate). *J. Clin. Invest.* 37, 350–368.
- Grob, D., Harvey, A.M., Langworthy, O.R., Lilienthal Jr., J.L., 1947. The administration of diisopropylfluorophosphates (DFP) to man. *Johns Hopkins Hosp. Bull.* 81, 257–266.
- Harris, L.W., Yamamura, H.I., Fleisher, J.H., 1971. De novo synthesis of acetylcholinesterase in guinea pig retina after inhibition by pinacolylmethylphosphonofluoridate. *Biochem. Pharmacol.* 20, 2927–2930.
- Hobson, D.W., Joiner, R.L., Dill, G.S., 1988. Pre-Task Pilot Study 87-10: Technicon and COBAS/FARA Analytical Method Comparison for the Determination of Erythrocyte Acetylcholinesterase in the Primate. Battelle Laboratories, Columbus, OH.
- Hollander, M., Wolfe, D.A., 1973. *Nonparametric Statistical Methods*, 125. Wiley, New York, pp. 115–119.
- Howerton, T.C., Murphy, M.R., Miller, S.A., Hartgraves, S.L., 1991. Differential sensitivity of CNS regions to acetylcholinesterase inhibition following chronic low-dose soman treatment in the rat. *Psychopharmacology* 105, 400–406.
- Huang, T., Yang, L., Gitzen, J., Kissinger, P.T., Vreeke, M., Heller, A., 1995. Detection of basal acetylcholine in the rat brain microdialysate. *J. Chromatogr. B.* 670, 323–327.
- Husain, K., Vijayaraghavan, R., Pant, S.C., Raza, S.K., Pandey, K.S., 1993. Delayed neurotoxic effect of sarin in mice after repeated inhalation exposure. *J. Appl. Toxicol.* 13, 143–145.
- Hymowitz, N., Brezenoff, H.E., McGee, J., Campbell, K., Knight, V., 1985. Effect of repeated intraperitoneal injections of soman on schedule-controlled behavior in the rat. *Psychopharmacology* 86, 404–408.
- Kassa, J., Koupilova, M., Herink, J., Vachek, J., 2001a. The long-term influence of low-level sarin exposure on behavioral and neurophysiological functions in rats. *Acta Med. (Hradec Kralove)* 44, 21–27.
- Kassa, J., Koupilova, M., Vachek, J., 2001b. The influence of low-level sarin inhalation exposure on spatial memory in rats. *Pharmacol. Biochem. Behav.* 70, 175–179.
- Kawashima, K., Hayakawa, T., Kashima, Y., Suzuki, T., Fujimoto, K., Oohata, H., 1991. Determination of acetylcholine release in the striatum of anesthetized rats using in vivo microdialysis and a radioimmunoassay. *J. Neurochem.* 57, 882–887.
- Kerenyi, S.Z., Murphy, M.R., Hartgraves, S.L., 1990. Toxic interactions between repeated soman and chronic pyridostigmine in rodents. *Pharmacol. Biochem. Behav.* 37, 267–271.
- Lallement, G., Carpentier, P., Collet, A., Pernot-Marino, I., Baubichon, D., Blanchet, G., 1991. Effects of soman-induced seizures on different extracellular amino acid levels and on glutamate uptake in rat hippocampus. *Brain Res.* 563, 234–240.
- Lallement, G., Carpentier, P., Collet, A., Baubichon, D., 1992. Extracellular acetylcholine changes in rat limbic structures during soman-induced seizures. *Neurotoxicology* 13, 557–568.
- Lanks, K.W., Lieske, C.N., Papirmeister, B., 1977. Spontaneous reactivation of acetylcholinesterase following organophosphate inhibition. *Biochim. Biophys. Acta* 483, 320–330.
- Lupparello, T.J., 1968. *Stereotaxic Atlas of the Forebrain of the Guinea Pig*. Saunders, New York.
- Macilwain, C., 1993. Study proves Iraq used nerve gas. *Nature* 363, 3.
- McDonough, J.H., Shih, T.-M., 1993. Pharmacological modulation of soman-induced seizures. *Neurosci. Biobehav. Rev.* 17, 203–215.
- McDonough, J.H., Shih, T.-M., 1997. Neuropharmacological mechanisms of nerve agent induced seizure and neuropathology. *Neurosci. Biobehav. Rev.* 21, 559–579.
- McDonough, J.H., Jaax, N.K., Crowley, R.A., Mays, M.Z., Modrow, H.E., 1989. Atropine and/or diazepam therapy protects against soman-induced neural and cardiac pathology. *Fundam. Appl. Toxicol.* 13, 256–276.
- McDonough, J.H., Dochterman, L.W., Smith, C.D., Shih, T.-M., 1995. Protection against nerve agent-induced neuropathology, but not cardiac pathology, is associated with the anticonvulsant action of drug treatment. *Neurotoxicology* 15, 123–132.
- Metcalfe, D.R., Holmes, J.H., 1969. EEG, psychological and neurological alterations in humans with organophosphorus exposure. *Ann. N. Y. Acad. Sci.* 160, 357–365.
- Modrow, H.E., McDonough, J.H., 1986. Change in atropine dose effect curve after subacute soman administration. *Pharmacol. Biochem. Behav.* 24, 845–848.
- Moore, D.H., 1998. Health effects of exposure to low doses of nerve agent—A review of present knowledge. *Drug Chem. Toxicol.* 21 (Suppl. 1), 123–130.
- Moser, V.C., 1995. Comparisons of the acute effects of cholinesterase inhibitors using a neurobehavioral screening battery in rats. *Neurotoxicol. Teratol.* 17, 617–625.
- Moser, V.C., McCormick, J.P., Creason, J.P., MacPhail, R.C., 1988. Comparison of chlordimeform and Carbaryl using a functional observational battery. *Fundam. Appl. Toxicol.* 11, 189–206.
- Nieminen, S.A., Lecklin, A., Heikkinen, O., Ylitalo, P., 1990. Acute behavioral effects of the organophosphates sarin and soman in rats. *Pharmacol. Toxicol.* 67, 36–40.
- Nozaki, H., Aikawa, N., Shinozawa, Y., Hori, S., Fujishima, S., Takuma, K., Sagoh, M., 1995. Sarin poisoning in Tokyo subway. *Lancet* 345, 980–981.
- Panel on Anticholinesterase Chemicals. Possible Long Term Health Effects of Short Term Exposure to Chemical Agents, Vol. I., Anticholinesterases and anticholinergics. Committee on Toxicology and Environmental Health Hazards, Assembly of Life Sciences National Academy, National Academy Press, Washington, DC, 1982.
- Romano Jr., J.A., McDonough, J.H., Sheridan, R., Sidell, F.R., 2001. Health effects of low-level exposure to nerve agents. In: Somani, S.M., Romano Jr., J.A. (Eds.), *Chemical Warfare Agents: Toxicity at Low Levels*. CRC press, Boca Raton, pp. 1–25.
- Russell, R.W., Booth, R.A., Jenden, D.J., Roch, M., Rice, K.M., 1985. Changes in presynaptic release of acetylcholine during development of tolerance to the anticholinesterase, DFP. *J. Neurochem.* 45, 293–299.
- Shih, T.-M., 1982. Time course effects of soman on acetylcholine and choline levels in six discrete areas of the rat brain. *Psychopharmacology* 78, 170–175.
- Shih, T.-M., McDonough, J.H., 1997. Neurochemical mechanisms in soman-induced seizures. *J. Appl. Toxicol.* 17, 255–264.
- Shih, T.-M., McDonough, J.H., 1999. Organophosphorous nerve agents-induced seizures and efficacy of atropine sulfate as anticonvulsant treatment. *Pharmacol. Biochem. Behav.* 64, 147–153.
- Shih, T.-M., Lenz, D.E., Maxwell, D.M., 1990. Effects of repeated injection of sublethal doses of soman on behavior and on brain acetylcholine and choline concentrations in the rat. *Psychopharmacology* 101, 489–496.
- Shih, T.-M., Capacio, B.R., Cook, L.A., 1993. Effects of anticholinergic–antiparkinsonian drugs on striatal neurotransmitter levels of rats intoxicated with soman. *Pharmacol. Biochem. Behav.* 44, 615–622.

- Shih, T.-M., Duniho, S.M., McDonough, J.H., 2003. Control of nerve agents-induced seizures is critical for neuroprotection and survival. *Toxicol. Appl. Pharmacol.* 188, 69–80.
- Sidell, F.R., 1974. Soman and sarin: clinical manifestations and treatment of accidental poisoning by organophosphates. *Clin. Toxicol.* 7, 1–17.
- Sirkka, U., Nieminen, S.A., Ylitalo, P., 1990. Neurobehavioral toxicity with low doses of sarin and soman. *Methods Find. Exp. Clin. Pharmacol.* 12, 245–250.
- Sterri, S.H., Lyngaas, S., Fonnum, F., 1980. Toxicity of soman after repetitive injection of sublethal doses in rat. *Acta Pharmacol. Toxicol.* 46, 1–7.
- Sterri, S.H., Lyngaas, S., Fonnum, F., 1981. Toxicity of soman after repetitive injection of sublethal doses in guinea pig and mouse. *Acta Pharmacol. Toxicol.* 49, 8–13.
- Sterri, S.H., Kloster, O., Valdal, G., 1982. Reduction of blood cholinesterase activities following administration of soman by different routes in guinea-pig. *Acta Pharmacol. Toxicol.* 50, 326–331.
- Taylor, P., 2001. Anticholinesterase agents. In: Hardman, J.G., Limbird, L.E., Gilman, A.G. (Eds.), *Goodman and Gilman's The Pharmacological Basis of Therapeutics*, 10th ed. McGraw-Hill, New York, pp. 175–191.
- Tegeris, J.S., Balster, R.L., 1994. A comparison of the acute behavioral effects of alkylbenzenes using a functional observational battery in mice. *Fundam. Appl. Toxicol.* 22, 240–250.
- Vallejo-Freire, A., 1951. A simple technique for repeated collection of blood samples from guinea pigs. *Science* 114, 524–525.
- Wadia, R.S., Sadagopan, C., Amin, R.B., Sardesai, H.V., 1974. Neurological manifestations of organophosphorus insecticide poisoning. *J. Neurol., Neurosurg. Psychiatry* 37, 841–847.
- Youssef, A.F., Santi, B.W., 1997. Simple neurobehavioral functional observational battery and objective gait analysis validation by the use of acrylamide and methanol with a built-in recovery period. *Environ. Res.* 73, 52–62.