

## Link Analysis for Dynamic Planning and Scheduling

**Sherry E. Marcus**  
21<sup>st</sup> Century Technologies  
Inc.  
11675 Jollyville Rd suite 300,  
Austin, TX 78759  
sem@21technologies.com

**Albert G. Frantz**  
Air Force Research Laboratory/  
Info. Sys. Concepts & Applications  
Branch, AFRL/IFSA  
525 Brooks Road  
Rome, NY 13441-4505  
Albert.Frantz@rl.af.mil

**John A. Beyerle**  
C3I Associates  
110 North Willow Street  
Oneida  
NY 13421  
John.Beyerle@rl.af.mil

### Abstract

This paper discusses an innovative approach to military campaign planning and resource allocation, and scheduling based on link analysis and mixed integer programming. Link analysis explores relations among large numbers of similar or different types of objects. Mixed integer programming solves problems containing both integer variable constraints, like aircraft numbers, as well as linear (real) variable constraints like probability of destruction or risk to aircraft.

ATO Link (Air Tasking Order Link Analysis) combines these software technologies to more optimally use resources throughout all phases of the air campaign planning and execution process. These two mature, matrix-based and computationally well behaved technologies (link analysis and mixed integer programming) have the potential to scale to very large plans, while more optimally allocating and scheduling limited resources. The ATO Link prototype is implementing an effects-based operations (EBO) concept for the air campaign-planning domain. This effort has the potential to significantly accelerate the military campaign planning and execution replanning process. The planner will be able to rapidly explore more courses of action, resulting in more dynamic planning and execution to achieve full spectrum dominance in military operations more responsive to the strategic goals of the NCA (National Command Authority).

### Introduction

*“On the timetable we’d promised the President, that would mean a seven-thousand-mile shift of five and one third divisions, or 120,000 troops, in four months. ...The science of logistics had come so far since WWII ... **In theory all I had to do was push a button.** ... But, there was a big problem. Since we’d been in the middle of revising Central Command’s [CENTCOM’s] battle plan when the crisis broke [Iraq invading Kuwait 2 August 1990 - Desert Storm], we hadn’t entered the data into the computer banks—a painstaking process that under normal circumstances takes a full year. ...I had never dealt with anything so complex, nor had to make*

# Report Documentation Page

Form Approved  
OMB No. 0704-0188

Public reporting burden for the collection of information is estimated to average 1 hour per response, including the time for reviewing instructions, searching existing data sources, gathering and maintaining the data needed, and completing and reviewing the collection of information. Send comments regarding this burden estimate or any other aspect of this collection of information, including suggestions for reducing this burden, to Washington Headquarters Services, Directorate for Information Operations and Reports, 1215 Jefferson Davis Highway, Suite 1204, Arlington VA 22202-4302. Respondents should be aware that notwithstanding any other provision of law, no person shall be subject to a penalty for failing to comply with a collection of information if it does not display a currently valid OMB control number.

1. REPORT DATE <b>JUN 2002</b>		2. REPORT TYPE		3. DATES COVERED <b>00-00-2002 to 00-00-2002</b>	
4. TITLE AND SUBTITLE <b>Link Analysis for Dynamic Planning and Scheduling</b>				5a. CONTRACT NUMBER	
				5b. GRANT NUMBER	
				5c. PROGRAM ELEMENT NUMBER	
6. AUTHOR(S)				5d. PROJECT NUMBER	
				5e. TASK NUMBER	
				5f. WORK UNIT NUMBER	
7. PERFORMING ORGANIZATION NAME(S) AND ADDRESS(ES) <b>21st Century Technologies Inc,11675 Jollyville Road Suite 300,Austin,TX,78759</b>				8. PERFORMING ORGANIZATION REPORT NUMBER	
9. SPONSORING/MONITORING AGENCY NAME(S) AND ADDRESS(ES)				10. SPONSOR/MONITOR'S ACRONYM(S)	
				11. SPONSOR/MONITOR'S REPORT NUMBER(S)	
12. DISTRIBUTION/AVAILABILITY STATEMENT <b>Approved for public release; distribution unlimited</b>					
13. SUPPLEMENTARY NOTES <b>2002 Command and Control Research and Technology Symposium</b>					
14. ABSTRACT					
15. SUBJECT TERMS					
16. SECURITY CLASSIFICATION OF:			17. LIMITATION OF ABSTRACT	18. NUMBER OF PAGES <b>15</b>	19a. NAME OF RESPONSIBLE PERSON
a. REPORT <b>unclassified</b>	b. ABSTRACT <b>unclassified</b>	c. THIS PAGE <b>unclassified</b>			

*so many decisions so quickly, in my life.*” pp 359-362. General H. Norman Schwarzkopf<sup>1</sup>

*“Strategic art is the essence of joint operation planning. Without mastery of strategic art, the joint operation planner cannot craft military plans that are in synergy with the strategic goals of the United States. ... Lieutenant General Richard in 1996 defined strategic art as “The skillful balancing of ends (objectives), ways (courses of action), and means (resources).”*” **Joint Staff Officers Guide, 2000, Joint Forces Staff College Publication 1<sup>2</sup>, also known as “The Purple Book”**.

This definition and General Schwarzkopf’s “push one button” theory identify a common misconception that joint operation planning should be much simpler to automate than it in fact is. The basis of this difficulty is in the computational complexity and the current state of computer planning algorithms. This introduction briefly explains military planning as well as the complexity of planning and briefly reviews the concept of effects based operations.

Military campaign planning is likely one of the most challenging problems facing humans today because of its complexity, uncertainty and potential risk for any loss of life. For the purpose of this paper, we define planning as, determining the objectives and effects to achieve the goal(s) desired through the application of objectives (courses of action) and then the decomposition of objectives into achievable sub objectives and eventually specific tasks to achieve that goal. Military planning focuses on the military options, where crisis action planning can use the full spectrum of political, economic, social and military options.

From a computer perspective, planning, resource allocation and scheduling are all known to be intractable, computationally very hard, “NP-Complete”, or stated simply not always solvable in polynomial time, proportional to the size of the problem. To find the “optimal” solution to these problems the time required by these computer algorithms contain the size of the problem in the exponent of the solution time. A problem of size  $n$  requiring  $10^n$  seconds to solve optimally requires 100 seconds ( $10^2$ ) to solve for size two and may require  $10^{100}$  seconds for size 100. This number is longer than the theoretical age of the universe of 6 billion years.

Although good optimal approximation algorithms exist for resource allocation and scheduling problems, the planning problem (decomposition of goals to tasks to achieve that goal) is in an even harder subclass of intractable, NP-Complete, problems known as “PSPACE”, Polynomial-Space Complete problems (polynomial-storage space required to solve is bounded by a polynomial in the size of the input)<sup>3</sup>. The bottom line, extensive research in the planning field, i.e. the ARPI<sup>4</sup> Program, has yet to achieve effective planning algorithms that can generate plans

---

<sup>1</sup> General H. Norman Schwarzkopf<sup>1</sup> **The Autobiography, It Doesn’t Take a Hero.**

<sup>2</sup> [http://www.jfsc.ndu.edu/jsog\\_pub/jsogpub\\_1\\_2000.pdf](http://www.jfsc.ndu.edu/jsog_pub/jsogpub_1_2000.pdf)

<sup>3</sup> Combinatorial Optimization by Chistos H. Papadimitriou and Kenneth Steiglitz pp. 399-400

<sup>4</sup> (D)ARPI the Defense Advanced Research Agency & AFRL Information Directorate Planning Initiative

as well as humans for even fairly small planning problems, likely because of the “PSPACE” complexity of planning.

Understanding this complexity of automated planning and combining the current strengths of the human planners and their computers is the key to more effective planning and scheduling<sup>5</sup>:

- Humans understand the context of plans, goals and objectives (often referred to as knowledge about the environment, including what we call common sense). Humans also bring intuition, expertise and strategic knowledge to plan decision-making, evaluation and risk assessment.
- Computers excel at generating visualizations and tracking the details of plans like the allocation and scheduling of resources (in this case aircraft, weapons, fuel, etc.) to aid the human planner. Computers also bring quantitative methods to decision-making, evaluation and risk assessment for the human to use.

ATO Link will combine these strengths of the human planners and computers to more effectively do dynamic planning, scheduling and execution monitoring. At the start of the ARPI program in early 1990, Dr. Northrup Fowler (current Air Force Research Laboratory/Information Directorate Chief Scientist), proposed a concept called “*Interleaved Planning and Scheduling*”, basically allocation and scheduling of resources, while the automated planning was occurring. As we found out in ARPI, planning was computationally too complex to entirely automate and the raw computing power required for background computing to do resource allocation and scheduling was likely not available yet. In the past twelve years computing power has roughly increased more than 100 fold, making this a potential possibility now. Using the human planners to plan high level strategy and objectives, they can rapidly explore potential courses of action (*means*) to achieve objectives (*ends*) as the computers track the details, scheduling and allocation (*resources*). While the human planner is exploring options the computer can visually present the quantitative results for the planner to evaluate options, assess risks and make decisions.

Link analysis explores associations between large numbers of similar or different objects. Link analysis has been used for many years in law enforcement and tracking of credit card fraud. It has become an extremely important antiterrorist tool since the 9/11 terrorist attacks. A typical application in law enforcement would be to use email records to determine who a suspect emailed, then track who those individuals emailed (computationally, any transitive closure). Then looking for associations with other databases like other known criminals, airline ticket and other credit card purchases to build a case against the suspect. Computationally, link analysis can use either or both multi-connected graphs or matrix based data structures.

This approach so far looks very promising because link analysis and mixed programming, the

---

<sup>5</sup> Summarized from a Mixed-Initiative briefing by James Allen of the University of Rochester

two technologies underlying ATO Link, have their basis in matrix mathematics, which scales very well to large problems and is computationally fairly well behaved. Applying link analysis as a front end helps to limit the breadth of search for potential options in the plan thus limiting the search for use of resources during computational optimization.

21st Century Technologies Inc. did the initial proof of concept experimentation of this technique as part of a Small Business Innovative Research (SBIR) Phase I contract for the Air Force Research Laboratory's Information Systems Division's Systems Concepts and Applications Branch (AFRL/IFSA). 21<sup>st</sup> Century has been selected to continue this project including scaling and development of the algorithms and concepts explored in the Phase I in a follow on Phase II SBIR contract awarded in February 2002. C3I Associates is providing Subject Domain Expertise on military crisis action and air campaign planning. The focus of this effort is primarily in the air campaign-planning domain, although we feel the techniques apply to any general planning and resource allocation problem since the problem is represented in matrices.

As a result of the September 11<sup>th</sup> attack, the ability to optimize and mine plans becomes crucial in our ability to engage in this new fast paced type of war on terrorism. The enemy we are fighting is not the cold war enemy of the Soviet Union. Nor is it war with "rogue states" where one can at least track their military and strategic assets. In this new war on terrorism, the enemy is not a nation state but an informal group of individuals without physical assets. Therefore, *crisis action planning* technologies are particularly essential in the successful execution of this campaign against an asymmetric warfare enemy. We believe the technologies in ATO Link could also accelerate *deliberate planning*, and the resulting military plans and defense budget projections, but that is not the focus of this effort.

Air campaigns have to be developed and executed more quickly based on real time land, air, and space intelligence, a concept referred to as "Rapid Dominance" in **Joint Vision 2020**<sup>6</sup>. The limited resources assigned to these campaigns will have to be assigned more optimally in order to satisfy real time constraints. We are developing ATO Link using an effects-based operations (EBO) concept of operations (CONOPS) to achieve more optimal resource use. We agree with Major General (USAF) David A. Deptula's definition of EBO in his paper "**Effects-Based Operations: Change in the Nature of Warfare**"<sup>7</sup>. He defines effects-based operations using the term *parallel warfare* as a construct of warfare based on achieving specific effects, not absolute destruction of target lists using simultaneous (time) application of force across each level of war uninhibited by geography (space). The focus of EBO becomes one of not destroying an opposing force using a prioritized list of critical targets, but compelling an ultimate purpose of a positive political outcome, by using all means available: political, economic, social and military. Instead of the historical air campaign approach of sequentially suppressing enemy air defenses, to then gain air superiority, to then service critical targets, EBO is different. In

---

<sup>6</sup> <http://www.dtic.mil/jv2020/jvpub2.htm>

<sup>7</sup> <http://www.aef.org/pub/papers.asp>

EBO we simultaneously attack in parallel; the key leadership, essential industries, transportation, connectivity with population, and military forces. Stealth aircraft and precision-guided munitions have made this kind of parallel attack possible. No longer do you have to suppress air defenses and gain air superiority to attack highly defended targets. Precision-guided weapons allowed us to destroy more targets on the first day of Desert Storm were destroyed by the entire 8<sup>th</sup> Air Force in World War II. Although disputed in some EBO circles, we believe that EBO is not a new approach, but a logical continuation of the strategy-to-task decomposition planning we saw first automated in the 1990s. The change we see is that we just have never had the automated tools to fully exploit an EBO planning capability previously. C3I Associates' author Gary Illingworth will publish a history of EBO in the Defense Intelligence Agencies Journal this summer.

Currently fielded aerospace planning capabilities were not designed to best incorporate this new EBO CONOPS. New metric tools will be required to assist planners in planning and determining whether the "effects-based operation" is being achieved and when it has been successful. Furthermore, tools can provide visibility into the effects-based operation decision-making process during campaign planning that will provide valuable insight for next generation EBO technologies.

### **ATO Link Technology Overview**

In this paper, we outline link analysis tools/mixed programming tools that can perform the following functionalities:

1. The ability to identify if a target, mission, package or other plan element will support the overall desired effect and/or identify if it negatively impacts the desired effects. (EBO Planning)
2. The capability for a planner to identify, for example, a set of targets that aid in obtaining the desired effect (end state). Link analysis technology shall recommend aircraft/SCL, routes, etc, that shall optimally support the desired effects without negatively impacting others.
3. The capability to determine if all the requisite resources are available to execute a plan prior to its execution. If there are currently not enough resources, a trigger can be set to warn that planner when the necessary resources are not available to achieve a plan. This is a very important capability, as currently planners may have to traverse down a long path with current tools such as the Theatre Air Planning system (TAP), only to find that there are not enough resources to execute the plan or that previous decisions have used the necessary resource where other choices were possible.
4. The ability to track the desired effects over different ATO cycles. Suppose it is determined the destruction of targets A, B, C, D causes effect E. How do we track the obtainment of this effect over different ATO periods and determine if the destruction of

other targets have caused a deleterious effect? For example, during  $ATO_1$  we might have destroyed target A and gained the effect E. At  $ATO_2$  we might have also planned to destroy target B that was originally part of the strategy to gain effect E, however this may no longer be a requirement and the assets planned for target B could be re-planned for another target and effect. Target F may also have been destroyed with a negative effect on E. The status of reaching a desired “effect” can quickly be extracted and linked through various ATO periods. This information can also be used as a factor in optimizing plans based on determining when an effect has been realized. Thus, if targets attacked previously appear to not support the obtainment of the desired effect E up to the current ATO period, then in the next ATO all targets associated with meeting effect E might be given a higher priority. Link analysis provides a “history” as a factor in the planning and execution, not just constraint-based satisfaction ability.

One of the goals of link analysis in the ATO context is to map effects to plans. To perform such an analysis, one requires “ground truth”. Ground truths are essentially atomic propositions we know to be true or false and from which we can draw conclusions about more complex information.

For our purposes, ground truth exists in Joint Targeting Toolkit/Theatre Air Planning JTT/TAP target databases. The atomic propositions we are interested in are whether or not a mission can be linked to an effect. This mapping would be implemented as a data structure where row and columns consist of effects and targets of a matrix.

Thus, if we have the relationships

- “To gain effect E, choose target T” would be represented as a “1” in the  $E^{\text{th}}$  row and  $T^{\text{th}}$  column of the matrix.
- “Target T would negatively impact effect F would be represented as a “-1” in the “ $T^{\text{th}}$  row” and “ $F^{\text{th}}$  column”.
- “Target T is neutral with respect to effect G” would be represented as 0 in the “ $T^{\text{th}}$  row and  $G^{\text{th}}$  column”.

Up to this point, we have only considered link analysis in the context of EBO. We now consider how link analysis can be used in the context of determining “ripple effects” in the reallocation of resources from supporting missions. Reallocation would occur in order to optimize a mission’s probability of destruction (PD) rate.

With ATO 98 one can identify how missions directly support each other by using the “support for” and “support to” sets. We shall build matrices that identify information such as mission id “alpha” supports mission id “beta. Thus, a “1” would be in the alpha and beta row and column of the matrix respectively as shown in figure 1. It could turn out that mission beta supports mission gamma. We would traverse the path identified in the matrix to identify the next dependencies until there are no more. An entry of “0” would identify the end of a dependency.

	alpha	beta	gamma	etc	etc	etc
alpha		1	0			
beta	0		1			
gamma	0	0				
etc						
etc						
etc						

**Figure 1 Mission Support Dependency Matrix. We can track mission dependencies in the matrix efficiently.**

Once we identify the mission dependencies we can determine if reallocation will cause a change of effects. We can also determine if a reallocation of assets will diminish PD rates, increase attrition, and so on. Such factors will be inserted into the optimizer that can maximize (or minimize) parameters for relevant missions. This capability would also play a role in developing an interleaved planning and scheduling capability.

The last element that needs explanation is the ability to track effects in real time over different ATO cycles. This is an important capability because it provides planners a concrete and objective status into the effect during the actual air campaign. Once we know whether a mission has been successfully executed (or not) within an ATO cycle, we can enter this information into a time N targeting  $ATO_N$  matrix where a “1” means success, a “- 1” means that action has been taken and the target has a negative effect and 0 means action has been taken and has not yet succeeded. If the entry is empty, it means that no action has been taken. We are tracking targets versus effects over different ATO cycles. We can easily track missions versus effects should that capability be required.

Tracking the effects over multiple ATO cycles is necessary because the desired effects may be time phased. Thus, it may be informative to the planner to see how an effect is evolving over the course of the air campaign. This can also be represented with three-dimensional matrices that tracks targets and overall effects over time of the ATO cycles. The algorithm would traverse each of the matrices by effect and retrieve overall probabilities of how well effects have been achieved.

During the optimization process one can see how much of an effect has been satisfied over the course of the ATO cycle. Thus, one can develop “rules” such as if 50% of an effect has not been satisfied (perhaps by not yet destroying 50% of their targets), then the destruction of those targets (and the associated effect) might be given higher priority than other effects. At this stage, we identified how link analysis can be applied to Theatre Air Planning (TAP) to add effects based operations.



## **ATO Link Technology Details**

Before we begin our discussion on optimizations, we provide a high level description of the master execution algorithm of ATO Link.

Steps A to C provide the basic logic used to execute the link analysis and optimizations to be performed within TAP.

**Step A:** Link analysis will determine if the current plan can be mapped to an effect. If this is true, then perform an optimization between multiple effects using an operations research constraint-based approach OR suggest a NEW target, if it exists, that has a mapped effect.

**Step B:** If we do continue with the plan then perform an interactive and dynamic optimization of resources with the planner. This can be done on single or multiple plan phases.

**Step C:** If during the interactive optimization a different resource (such as SCL) is recommended in order to maximize factors such as PD rate, then use link analysis to identify if the reallocation of resources will have a deleterious impact on other dependent plans effects. Using link analysis, suggest a comparable resource that will not have any deleterious effects, if they exist. If all reallocations of resources result in a negative effect then perform an optimization against desired effects. That is, determine if the reallocation will negatively impact other plans' PD rates/attrition rate/etc and desired effect. If yes, assign resources to maximize effects and planning priorities (PD rates)

In step A, the effect is immediately identified using the "ground truth" matrix. One can merely check if the target has a negative effect. One can also identify available targets that satisfy desired effect, if they exist, using ATO snapshot matrices. If no appropriate target is found, an optimization is then performed to determine if this effect outweighs other effects. This uses a constraint-based approach. If the resulting "score" is low, then the target's destruction does not outweigh the effects of existing plans, and the plan currently being developed terminates.

In steps B and C, We perform constraint-based optimization to determine the optimal resources to apply to the plan. Once we choose the optimal resources, we analyze the effect using link analysis. In the case of choosing an SCL, we would determine the set of other effected targets, through the coordinates of the target and the capability of the SCL/aircraft. That set of effected targets would be compared against the ground truth matrix and the values inserted into the EBO target matrix. We shall also plan to develop a query language where the planner can request targets minimize certain effects and maximize others while trying maximizing tactical objectives such as PD rate.

## **Interleaved Planning and Scheduling**

A high risk, but potentially very high payoff will be to explore a mixed-initiative, interleaved-planning and scheduling algorithm using link analysis. Combining the planning strength of the

human and resource allocation and scheduling (bean counting) strength of the computer working collaboratively generates an entire new approach to planning.

A technical approach to solving a problem algorithmically may look something like this. As the planner begins decomposing the objectives into sub-objectives and effects visually, the computer would examine potential targets previously developed by Combat Strategy intelligence personnel to satisfy these objectives and effects. The computer could use a combination of least commitment and link analysis algorithms to determine the feasibility of achieving the objectives and effects by doing detailed allocation and scheduling computations in the background with given resources and constraints. The least-commitment algorithm would not commit to specific target/ aircraft/ SCL combinations until absolutely required to do so by planner's choice of objectives/effects and constraints. If better choices are available in the current planning state visualizations being maintained by the computer can help the planner to make changes in his plan permitting more optimal use of resources. Since both planning and execution would utilize the same essential algorithms, this represents a novel approach to achieving dynamic planning and execution.

An interesting aspect of the link analysis approach is that for a deliberate planning, realistic cost figures could be used to better predict budget requirements for various theater scenarios for planning the defense budget. Using link-analysis techniques for constraint-propagation for a existing resource-constrained CONOPS is achievable, but link analysis could also be used to select the best resources to deploy to achieve an Expeditionary Air Force/Effects-Based Operations CONOPS of the future.

### **An Operational Example of Optimized Decision Making Within TAP**

**To execute a direct attack on a ground target, two types of fighter squadrons (F1 and F2) require mid air refueling. There are two types of aerial tankers (T1 and T2) available for mid air refueling.**

If a squadron of aerial tankers of type T1 is totally dedicated to refueling fighter type F1, then it can refuel 40 of these fighter types before having to return to base. If T1 is completely dedicated to refueling F2, then T1 squadron can refuel 60 of these fighter types before having to return to base. Similarly, the T2 aerial tanker squadron can service 50 fighter types F1, and 50 F2's before having to return to base for the day.

Both fighters are part of a package directed toward the same target. If fighter type F1 can carry only type 2 SCLs of type I and fighter type F2 can carry twice as many, four of the same SCL.

**Problem: Assuming that the aerial tankers will be depleted of fuel during these missions, what is the maximum amount of SCL's that can service the target and which aircraft are optimally suited to deliver the ordnance?**

**Solution:** First notice that this problem is an optimization problem. Our objective is to identify the aircraft that can deliver the maximum amount of ordnance to a target. Furthermore, we are going to maximize this number by adjusting the number of aircraft that get refueled based on fighter type. Therefore, the refueling assignments become the control/decision factors, the values that we are trying to determine.

In the analytical formulation of the problem, modeling them as the problem decision variables captures the role of these factors:

**$X_1$  = Number of F1's to be refueled per deployment**

**$X_2$  = Number of F2's to be refueled per deployment**

In the light of the above discussion, the problem objective can be expressed analytically as:

$$\text{Max } F(x_1, x_2) := 2X_1 + 4X_2$$

The above equation will be called the objective function of the problem, and the coefficients 2 and 4 that multiply the decision variables in it, will be called the objective function coefficients.

Furthermore, any decision regarding the daily refueling for air missions must realize the refueling capacity of the air tankers. Hence, our next step in the problem formulation seeks to introduce these technological constraints in it. Let's focus first on the constraint that expresses the refueling capacity of the air tanker. Regarding this constraint, we know that one-day of dedicated refueling work for T1 can result in 40 refuelings of a fighter type F1, while the same period dedicated to 60 refuelings of fighter F2. Assuming that refueling of each fighter takes a constant amount of time, then refueling 1 fighter F1 can take  $p_{11} = \frac{1}{60}$  of available fuel and refueling fighter F2 can take  $p_{12} = \frac{1}{40}$  of available fuel. The total capacity required for refueling per deployment of  $X_1$  by T1 and  $X_2$  by T1 is equal to  $\frac{1}{50}X_1 + \frac{1}{50}X_2$ . Hence, the technological constraint imposing the condition that our total refueling capability should not exceed its capacity, is analytically expressed by:

$$\frac{1}{40}X_1 + \frac{1}{60}X_2 \leq 1$$

In this case, the right hand side of the equation represents the total amount of refuelings per deployment. Following the same reasoning, the additional constraint representing the finite refueling capacity of tanker T2 is represented by

$$\frac{1}{50}X_1 + \frac{1}{50}X_2 \leq 1$$

Finally, to the above constraints we must add the requirement that any permissible value for variables  $X_1, X_2$  must be nonnegative, i.e.  $X_j > 0$  for  $j = 1, 2, \dots$  since these values express number of refuelings. These constraints are known as the variable sign restrictions.

Combining these equations, our analytical formulation is now:

$$\text{Max } F(x_1, x_2) := 2 X_1 + 4 X_2$$

such that

$$\frac{1}{40} X_1 + \frac{1}{60} X_2 \leq 1$$

$$\frac{1}{50} X_1 + \frac{1}{50} X_2 \leq 1$$

$$X_j > 0 \text{ for } j = 1, 2..$$

At this stage, we have set up the equations necessary to compute a solution. We do now describe below what the solution space should consist of.

- The Linear Programming (LP) Solution Space for Inequality Constraints

A single inequality constraint is of the form

$$aX_1 + bX_2 \leq C$$

The solution space for the above inequalities is identified in the shaded area of figure 2.

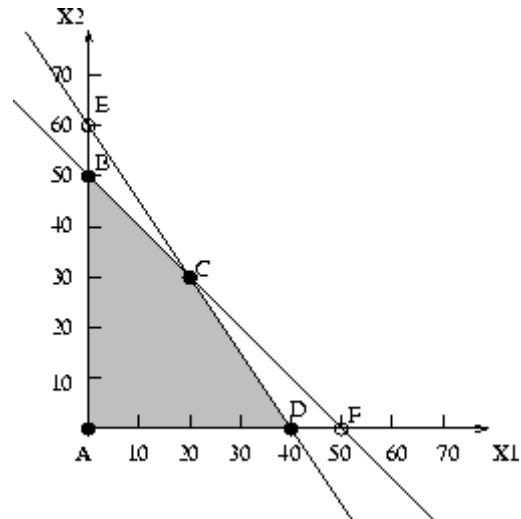


Figure 2 Solution Space of the types of constraint as shown above (single inequality constraint) is represented as half plane.

#### Representing the Objective Function in LP solution space

In linear programming, the objective function will always be a straight line. The optimal solution for our scenario is represented in figure 2. In the linear programming case and in our example, the optimal solution will be one of the points “B”, “C”, “D”, “E” and so on shown in the above figure. From this figure, it follows that the optimal daily values are given by the coordinates of

the point corresponding to the intersection of line  $\frac{1}{50}X_1 + \frac{1}{50}X_2 = 0$  with the  $X_2$ -axis, i.e.,  $X_1^{opt} = 0$  and  $X_2^{opt} = 50$ . This is point B. Therefore, the maximum number of SCL Is that can be delivered is 200.  $\text{Max } F(x_1, x_2) := 2 * 0 + 4 * 50 = 200$ . The optimal point is point B as shown in the figure 3. We refer to this point as the “extreme” point.

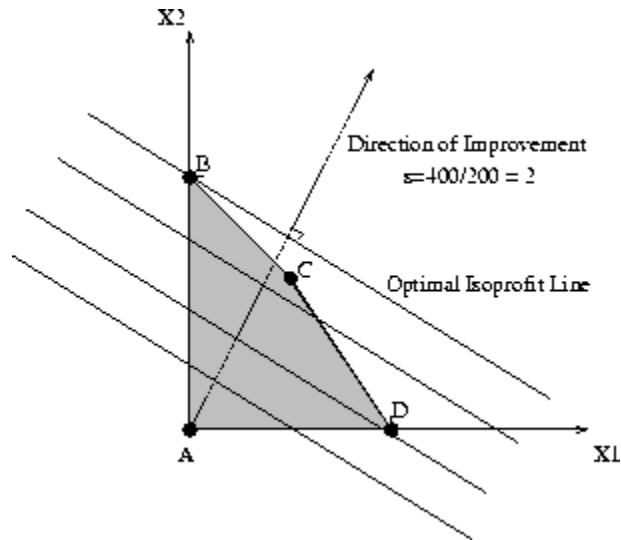


Figure 3 Optimal Objective Function Line is line intersecting point “B”.

### The SIMPLEX METHOD

One of the classic methods for determining optimality in the linear case is the simplex method. To describe the solution, we need to modify our set of equations into “standard” form.

$$\text{Max } F(x_1, x_2) := 2 X_1 + 4 X_2$$

such that

$$\frac{1}{40} X_1 + \frac{1}{60} X_2 + S_1 = 1$$

$$\frac{1}{50} X_1 + \frac{1}{50} X_2 + S_2 = 1$$

$$X_j, S_k > 0 \text{ for } k, j = 1, 2, \dots$$

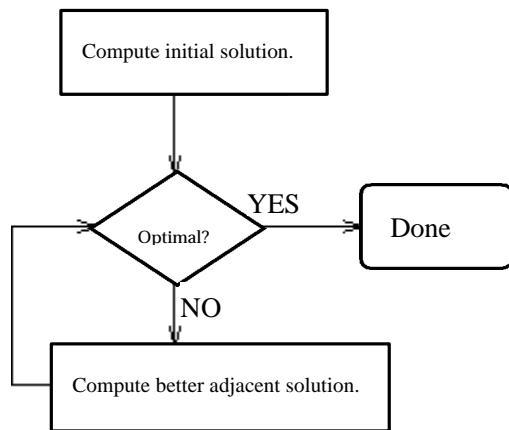
This formulation involves four variables and two technological constraints. By definition, a “basic” solution will be defined by selecting a basis of two variables, with the remaining two being set equal to zero. To find point B which is the optimal solution of this example, set  $\{X_1, S_2\}$  as the basis and therefore  $X_2 = S_1 = 0$ . We can compute the values for these variables by solving the system of equations to return point B.

$$\frac{1}{60} \mathbf{X}_2 + \mathbf{S}_1 = 1$$

$$\frac{1}{50} \mathbf{X}_2 = 1$$

One might think that a (naive) approach to the problem would be to enumerate the entire set of extreme points, compare their corresponding objective values, and eventually select one which minimizes the objective function over this set. For example, a small LP with 10 variables (in “standard form”) and 3 technological constraints can have up to 120 extreme points, while an LP with 100 variables and 20 constraints can have up to 2000 extreme points.

Hence, we need a more systematic approach to organize the search so that we manage the complexity resulting from the size of the search space. The Simplex algorithm provides such a systematic approach. The basic logic of the algorithm is depicted in the figure 4 below.



**Figure 4 Simplex Algorithm Logic**

The algorithm starts with an initial basic solution and tests its optimality. If some optimality condition is verified, then the algorithm terminates. Otherwise, the algorithm identifies an adjacent basic solution, with a better objective value. The optimality of this new solution is tested again, and the entire scheme is repeated, until an optimal basic solution is found. Since every time a new basic solution is identified the objective value is improved and the set of basic solutions is finite, it follows that the algorithm will terminate in a finite number of steps (iterations).

It is also interesting to examine the geometrical interpretation of the behavior of Simplex algorithm. Given the above description of the algorithm and the correspondence of basic solutions to extreme points, it follows that Simplex essentially starts from some initial extreme point, and follows a path along the edges of the feasible region towards an optimal extreme point, such that all the intermediate extreme points visited are improving (more accurately, not worsening) the objective function.

The simplex in the simplex algorithm is the collection of vertices that support the convex region that represents the feasible set of solutions. These vertices are connected along edges that along with the vertices are at the boundary of the feasible set. The simplex algorithm is the traversal from one vertex to another along connected vertices in such a manner that the objective function increases during the traversal. The algorithm terminates when all edges from a point results in reduced objective function. The collection of vertices constitutes the set from which the solution is found.

### **Other Optimization Algorithms**

The simplex method is one of many solutions available in linear programming. We shall investigate a number of open source software solutions. The Simplex algorithm is the starting point of a variety of algebra based optimization algorithms. The other class of optimization algorithms is based on calculus.

Integer programming: Integer programming differs from linear programming in that the decision space is confined to integers for some of the variables.

We need to solve integer programs because we may have (as we do in many plans) a case where we have to make choices about what things to take. For example we may be choosing one from a variety of SCL's or we may be taking several. So we cannot talk about a fractional SCL. We take integers of SCLs or nothing at all. The plan then needs to tell us how many we will take.

One may be tempted to solve this problem by assuming that the variables are continuous and find the nearest integer solution. However there is no guarantee that an optimal integer solution is in any neighborhood of the optimal continuous solution. It is very easy to generate integer programming problems where the solution obtained by rounding the linear programming solution is infeasible while the optimal solution is as far as we like either in the value of the maximized cost function or in terms of distance in solution space.

The branch and bound method is used with the general linear programming solution to solve integer-programming problems. It is essentially a divide and conquer routine, where the feasible region is partitioned into more manageable sub-regions. In addition, any feasible integer solution represents a lower bound on the objective function, allowing us to avoid linear programming computations in regions where we already have obtained a better solution. The solution of the continuous solution represents an upper bound on the feasible region. The regions are divided along integer boundaries that surround the continuous solution until either no feasible region exists or a sub-optimal integer solution is found in some subdivision. All of the solutions along the generated tree are compared to get the optimal answer.

The integer programs are known to be NP-Complete. While this would give one pause when attempting to solve these problems, these kinds of problems are solved on a regular basis and should not be a hindrance to the use of integer programming solutions. In general however even

with machines that are far beyond what anyone could have sitting on their desk a couple of years ago, it may be necessary to abandon the goal of a provable optimum; by terminating a integer programming code prematurely, you can often obtain a high-quality solution along with a provable upper bound on its distance from optimality. A solution for the objective value within some fraction of 1% of optimal may be all that is required. In contrast to methods for ordinary linear programming, procedures for integer programming may not be able to prove a solution to be optimal until long after the optimal solution has been found.

There are concepts that cannot be expressed well in a linear program. For example we may need to compare two of one asset compared to two different assets. Its hard to make this comparison in a linear program but easy to make this comparison in a non linear program. In particular quadratic programming allows a more sophisticated optimization criteria given the same constraints as the linear program.

### **Conclusion:**

This paper presents an innovative approach to military resource planning, allocation, and scheduling based on link analysis and mixed programming (mixed integer linear programming problem). ATO Link (Air Tasking Order - Link Analysis) will associate and more optimally identify the resources throughout the aerospace campaign planning and execution phases using an effects-based operations (EBO) approach. ATO Link so far looks very promising because link analysis and mixed programming, the two technologies underlying it, have their basis in matrix mathematics, which scales very well to large problems and is computationally fairly well behaved. Applying link analysis as a front end to the optimization helps to limit the breadth of search for potential options in the plan thus limiting the search for resources. A high risk, but potentially very high payoff experiment will be to explore a mixed-initiative, interleaved-planning and scheduling algorithm using link analysis and optimization techniques. The human planer will concentrate on goals, strategy and courses of action, while the computer calculates the feasibility of these courses of action against available resources using background processing. Combining the planning strength of the human planners with the resource allocation, scheduling, and constraint propagation strengths of the computer backing up his decisions generates an innovative approach to planning.