

AD _____

Award Number: W81XWH-04-1-0741

TITLE: Association Between Microtubule Associated Protein -2 and the EGRF
Signaling in Breast Cancer

PRINCIPAL INVESTIGATOR: Vaqar M. Adhami, Ph.D.

CONTRACTING ORGANIZATION: University of Wisconsin
Madison, WI 53706

REPORT DATE: September 2005

TYPE OF REPORT: Annual

PREPARED FOR: U.S. Army Medical Research and Materiel Command
Fort Detrick, Maryland 21702-5012

DISTRIBUTION STATEMENT: Approved for Public Release;
Distribution Unlimited

The views, opinions and/or findings contained in this report are those of the author(s) and should not be construed as an official Department of the Army position, policy or decision unless so designated by other documentation.

REPORT DOCUMENTATION PAGE

Form Approved
OMB No. 0704-0188

Public reporting burden for this collection of information is estimated to average 1 hour per response, including the time for reviewing instructions, searching existing data sources, gathering and maintaining the data needed, and completing and reviewing this collection of information. Send comments regarding this burden estimate or any other aspect of this collection of information, including suggestions for reducing this burden to Department of Defense, Washington Headquarters Services, Directorate for Information Operations and Reports (0704-0188), 1215 Jefferson Davis Highway, Suite 1204, Arlington, VA 22202-4302. Respondents should be aware that notwithstanding any other provision of law, no person shall be subject to any penalty for failing to comply with a collection of information if it does not display a currently valid OMB control number. **PLEASE DO NOT RETURN YOUR FORM TO THE ABOVE ADDRESS.**

1. REPORT DATE (DD-MM-YYYY) 01-09-2005		2. REPORT TYPE Annual		3. DATES COVERED (From - To) 31 Aug 2004 – 30 Aug 2005	
4. TITLE AND SUBTITLE Association Between Microtubule Associated Protein -2 and the EGFR Signaling in Breast Cancer				5a. CONTRACT NUMBER	
				5b. GRANT NUMBER W81XWH-04-1-0741	
				5c. PROGRAM ELEMENT NUMBER	
6. AUTHOR(S) Vaqar M. Adhami, Ph.D. E-mail: vmadhami@wisc.edu				5d. PROJECT NUMBER	
				5e. TASK NUMBER	
				5f. WORK UNIT NUMBER	
7. PERFORMING ORGANIZATION NAME(S) AND ADDRESS(ES) University of Wisconsin Madison, WI 53706				8. PERFORMING ORGANIZATION REPORT NUMBER	
9. SPONSORING / MONITORING AGENCY NAME(S) AND ADDRESS(ES) U.S. Army Medical Research and Materiel Command Fort Detrick, Maryland 21702-5012				10. SPONSOR/MONITOR'S ACRONYM(S)	
				11. SPONSOR/MONITOR'S REPORT NUMBER(S)	
12. DISTRIBUTION / AVAILABILITY STATEMENT Approved for Public Release; Distribution Unlimited					
13. SUPPLEMENTARY NOTES					
14. ABSTRACT Microtubule associated proteins (MAP)-2 a component of the MAP family, is a marker for neurons and its immunoreactivity has been demonstrated in several neoplasms. We hypothesized that MAP-2 expression is deregulated in EGFR overexpressing breast cancers thus rendering them resistant to conventional therapy. Here we show that loss of MAP-2 expression in breast cancer cells during sustained activation of the EGFR results in resistance to chemotherapeutic drugs. We observed higher expression of MAP-2 in EGFR overexpressing cells than in non-EGFR overexpressing cells both at protein and mRNA levels. MCF-7 and MCF-10A cells were challenged with increasing doses of EGF (25-150 ng/ml) and examined for the expression of phosphorylated EGFR. We observed that expression of MAP-2 in cell lines challenged with EGF increased with increasing doses of EGF, however, its expression was almost completely lost at concentrations >100 ng/ml of EGF treatment. This observation suggested a possible mechanism of resistance in breast cancer patients with EGFR overexpression. We also found increasing resistance to growth inhibition by docetaxel in cells that were challenged with higher concentrations of EGFR (>50 ng/ml). This suggested that over expression of EGFR signaling in breast cancers could, in fact, be responsible for resistance to therapeutic agents. The loss of MAP-2 expression could have implications in treatment of breast cancers overexpressing the EGFR and exhibiting resistance to conventional therapy.					
15. SUBJECT TERMS No subject terms provided.					
16. SECURITY CLASSIFICATION OF:			17. LIMITATION OF ABSTRACT	18. NUMBER OF PAGES	19a. NAME OF RESPONSIBLE PERSON
a. REPORT	b. ABSTRACT	c. THIS PAGE			USAMRMC
U	U	U	UU	11	19b. TELEPHONE NUMBER (include area code)

Table of Contents

Cover.....	1
SF 298.....	2
Table of Contents.....	3
Introduction.....	4
Materials and Methods.....	5
Results and Discussion.....	7
Reportable Outcomes.....	11
Conclusion.....	11
References.....	11

Annual Report for Award Number W81XWH-04-1-0741

Title: Association between microtubule associated protein-2 and the EGFR signaling in breast cancer.

Summary: Epidermal growth factor receptor (EGFR)/HER1 is expressed at high levels in ~20% of breast cancers and correlates with poor disease prognosis. One mechanism that contributes to the generation and maintenance of cancerous cells is the disruption of the cellular cytoskeleton. Microtubule associated proteins (MAPs) are major components of cytoskeleton proteins associated with microtubule assembly and its stabilization. MAP-2, a component of the MAP family, is a marker for neurons and its immunoreactivity has been demonstrated in several neoplasms. We hypothesized that MAP-2 expression is deregulated in EGFR overexpressing breast cancers thus rendering them resistant to conventional therapy. Here we show that loss of MAP-2 expression in breast cancer cells during sustained activation of the EGFR results in resistance to chemotherapeutic drugs. We first evaluated the expression of MAP-2 in a range of breast cancer cells and found that all cell lines expressed varying degrees of MAP-2. However when compared on the basis of their EGFR status, we observed higher expression of MAP-2 in EGFR overexpressing cells than in non-EGFR overexpressing cells both at protein and mRNA levels. To investigate whether the expression of MAP-2 is regulated by the expression of EGFR we selected two cell lines based on their responsiveness to EGF. MCF-7 and MCF-10A cells were challenged with increasing doses of EGF (25-150 ng/ml) and examined for the expression of phosphorylated EGFR. We observed that MCF-7 cells were weakly and MCF-10A cells were strongly stimulated when challenged by increasing doses of EGF. We next examined the expression of MAP-2 in cell lines challenged with EGF and observed that although MAP-2 expression increased with increasing doses of EGF, its expression was almost completely lost at concentrations >100 ng/ml of EGF treatment. This observation suggested a possible mechanism of resistance in breast cancer patients with EGFR overexpression. Based on these observations we conclude that with constant EGF stimulation, cells lose their MAP-2 expression that is required for microtubule stabilization and subsequent cell cycle arrest. In next series of experiments we sought to understand how cells would respond to microtubule disrupting agents after they are challenged with increasing doses of EGF. We found increasing resistance to growth inhibition by docetaxel in cells that were challenged with higher concentrations of EGFR (>50 ng/ml). This suggested that over expression of EGFR signaling in breast cancers could, in fact, be responsible for resistance to therapeutic agents. The loss of MAP-2 expression could have implications in treatment of breast cancers overexpressing the EGFR and exhibiting resistance to conventional therapy.

INTRODUCTION:

The primary determinants that govern the growth and differentiation of breast cancer cells are largely unknown. One mechanism that contributes to the generation and maintenance of cancerous cells is the disruption of the cellular cytoskeleton. Microtubule associated proteins (MAPs) are major components of cytoskeleton proteins associated with microtubule assembly that are developmentally regulated and function in stabilization and *in vitro* assembly of microtubules (1). It has been suggested that MAPs function as linkers between microtubules and

cellular structures including other cytoskeleton elements. Microtubule associated protein-2 (MAP-2), a component of the MAP family, has been shown to be expressed in neuronally differentiated cells, and has been previously used as a sensitive and specific marker for neurons (2). Immunoreactivity of MAP-2 has been demonstrated in several neoplasms of skin, lung, brain and malignant melanomas, and it has observed in some cancers that MAP-2 expression is high in tumors sensitive to microtubule disrupting agents (MDA) (3), however the expression and role of MAP-2 in breast cancer cells has not been evaluated.

While microtubule disruption remains an important therapeutic modality against breast cancer, the subsequent development of resistance and the inevitability of escape from effectiveness of MDA has been a stumbling block. Understanding the mechanism of resistance to MDA may lead to devising effective strategies against breast cancer refractory to MDA. Epidermal growth factor receptor (EGFR)/HER1 is expressed at high levels in at least 20% of breast cancers and MAP-2 also serves as a substrate for EGFR kinases (4). A possible association between MAP-2 and EGFR expression in breast cancer seems plausible.

This proposal aims at investigating the role of MAP-2 in breast cancer hitherto unknown and is designed to examine its critical role in drug resistance. It is also possible that high expression of MAP-2 in cancer cells may lead to microtubule stabilization and consequent withdrawal from cell cycle and subsequent induction of apoptosis. This could lead to escape from apoptosis of malignant breast cancer cells that express MAP-2. Those cells that escape this control may continue to proliferate and metastasize. Since experimental and clinical findings suggest that aberrant activation of tyrosine receptor kinases, such as HER1 pathway, play a causal role in the development of resistance in breast cancer this proposal will investigate association between MAP-2 and the EGFR pathway. Understanding how MAP-2 expression changes course in breast cancer could have therapeutic implications.

MATERIALS AND METHODS:

Cells: Normal human mammary epithelial cells were obtained from Cambrex Bioscience (Baltimore, MD). All breast cancer cells were purchased from ATCC (Manassas, VA). Cells were grown in appropriate media as recommended by the vendors. Epidermal growth factor, MTT and Docetaxel were purchased from Sigma Chemical Co. (St. Louis, MO). Antibodies against MAP-2, EGFR, Erk1/2, β -Actin were purchased from Sigma (St. Louis, MO), Cell Signaling (Beverly, MA) and Upstate (Charlottesville, VA).

Immunoblot Analysis. Cells were homogenized in lysis buffer (50 mM Tris-HCl, 150 mM NaCl, 1 mM EGTA, 1 mM EDTA, 20 mM NaF, 100 mM Na_3VO_4 , 0.5% NP40, 1% Triton X-100, 1 mM PMSF, 10 $\mu\text{g}/\text{ml}$ aprotinin, and 10 $\mu\text{g}/\text{ml}$ leupeptin, pH 7.4) at 4 °C to prepare lysates. The protein concentration was determined by BCA-protein assay kit and following the manufacturer's protocol (Pierce, Rockford, IL). Appropriate amount of protein (25-50 μg) was resolved over 8-14% Tris-Glycine polyacrylamide gel and then transferred onto the nitrocellulose membrane. The blots were blocked using 5% non-fat dry milk and probed using appropriate primary antibody in blocking buffer overnight at 4 °C. The membrane was then incubated with secondary antibody horseradish peroxidase (HRP) conjugate (Amersham Life Sciences Inc., Arlington Heights, IL) followed by detection using chemiluminescence ECL kit

(Amersham Life Sciences Inc., Arlington Heights, IL). Equal loading of protein was confirmed by stripping the membrane and re-probing it with β -Actin primary antibody (Sigma, St. Louis, MO) and appropriate secondary HRP conjugate.

RNA Isolation and Reverse Transcription. Total RNA was isolated from the cells using the RNeasy Total RNA isolation kit (Qiagen, Valencia, CA) and was checked for its purity and concentration. Two μ g of total RNA was reverse transcribed using murine MLV- reverse transcriptase and oligo dT (12-18) primer from GIBCO-BRL (Life Technologies Inc., Gaithersburg, MD) for cDNA synthesis.

Semi Quantitative PCR for MAP-2. Two μ l of the RT-product was subjected to PCR in 25- μ l reaction mixture containing 10 mM Tris-HCl (pH 8.3), 50 mM KCl, 1.5 mM MgCl₂, 0.2 mM each dNTP, 2.5 units of Amplitaq polymerase and 40 pmoles of each primer for MAP-2 (sense primer, 5'-ATCAAATGGTCCACTAGGCG-3' anti-sense primer, 5'-GCACTTCAAGGGAAG-CTGAT-3') obtained from Oxford Biomedical Research, Inc. (Rochester Hills, MI). About 10- μ l aliquots (having equal RNA) of the reverse transcribed cDNA samples were added to the reaction mix and coamplified for 35 cycles: denaturation at 94 °C for 1 min, annealing at 53°C for 1 min, extension at 72 °C for 2 min, and final extension at 72°C for 10 min. A constitutively expressed gene, b-Actin (sense 5' ATCTGGCACCACACCTTCTACAATGAG-CTGCG 3'; antisense 5' CGTCATACTCCTGCTTGCTGATCCAC ATCTGC 3') was used as an internal control. Ten μ l of PCR products were loaded on 1.5% agarose gels and visualized by ethidium bromide staining. Negative control of MAP-2, which contained no reverse transcriptase, showed no PCR products.

Immunofluorescence: Breast cancer cells MCF-7 and MCF-10A were grown on Falcon culture slides (Franklin Lakes, NJ). Cells were fixed in 3 % paraformaldehyde in PBS for 15 min at room temperature and permeabilized by dipping cells for 10 seconds in 100 % methanol (-20°C). After 3 washes in PBS each for 5 minutes the cells were incubated in 1% BSA, PBS pH 7.5 for 30 min to block unspecific binding of the antibodies. The cells were incubated with primary antibody in 1% BSA, PBS pH 7.5 over night at 4 °C and washed with PBS pH 7.5, 3-times for 10 min. The cells were then incubated with secondary antibody conjugated with green fluorescent protein, in 1% BSA, PBS pH 7.5 for 60 min at room temperature followed by 3 washes with PBS pH 7.5 each for 10 min. After brief rinses with PBS the cells were mounted in anti-fade medium (Molecular probes, Eugene, OR) and observed under a fluorescent microscope.

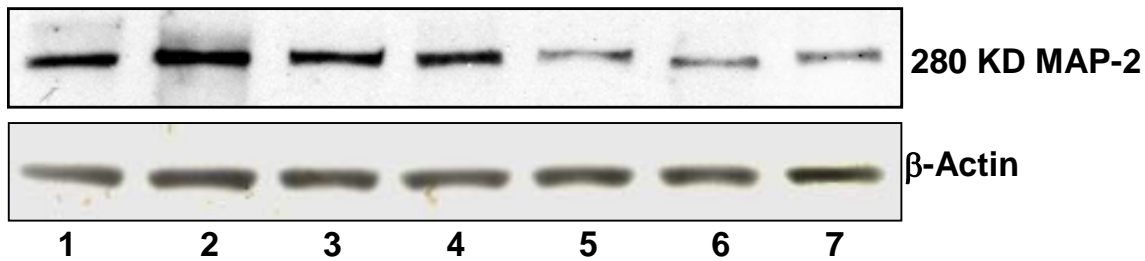
Cell growth/cell viability by MTT assay: The effect of docetaxel on the viability of cells challenged with EGF (50-150 ng/ml) was determined by 3-(4,5-dimethylthiazol-2-yl)-2,5-diphenyltetrazolium bromide (MTT) assay. The cells were plated at 2×10^5 cells/well in 200 μ l of DMEM complete medium in a 96-well microtiter plate. Twenty four hours later cells were serum starved for 24 h and then challenged with EGF. Twelve hours later cells were treated with 100 ng/ml docetaxel. Each treatment was repeated in 10 wells and the plate incubated for 24 h at 37 °C in a humidified chamber. Following 24 h of incubation, 4 μ l of MTT reagent (5 mg/ml in PBS) was added to each well and the plate incubated for 2 h. The plate was centrifuged at 1800 rpm for 5 min at 4 °C. The MTT solution was removed from the wells by aspiration and the Formazan crystals were dissolved in 150 μ l of DMSO. Absorbance was recorded on a microplate

reader at 540 nm wavelength. The effect of doxorubicin on growth inhibition was assessed as percentage cell viability where vehicle-treated cells were taken as 100% viable.

RESULTS AND DISCUSSION:

Protein and mRNA expression of MAP-2 in breast cancer cells: Since these were first studies to define the role of microtubule associated protein-2 (MAP-2) in breast cancer, we first evaluated the expression of MAP-2 in a range of breast cancer cell lines. MAP-2 is primarily expressed in the neuronal cells where it stabilizes the cytoskeletal structure during assembly of the microtubules. All cells were grown till 70-80% confluent at which time they were harvested for preparation cell lysates and extraction of RNA followed by western blot analysis and RT-PCR. We observed that the expression of MAP-2 was higher in cells that over expressed the EGFR receptor. All breast cancer cells examined were found to express varying degrees of MAP-2, however when compared on the basis of their EGFR status, we observed that breast cancer cells that over expressed EGFR also had higher expression of MAP-2. This observation on the expression of MAP-2 was examined at both protein and mRNA levels with similar results (Fig. 1 A & B).

(A)



(B)

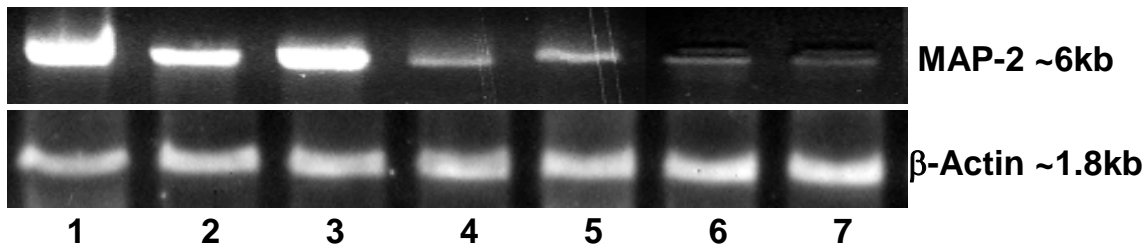


Figure 1: Protein (A) and mRNA (B) expression of MAP-2 in normal and human breast cancer cells. Lanes: (1) Normal human breast epithelial cells (2) HCC-38 (3) HCC-70 (4) MCF-7 (5) AU-565 (6) HCC-1419 (7) MCF-10A.

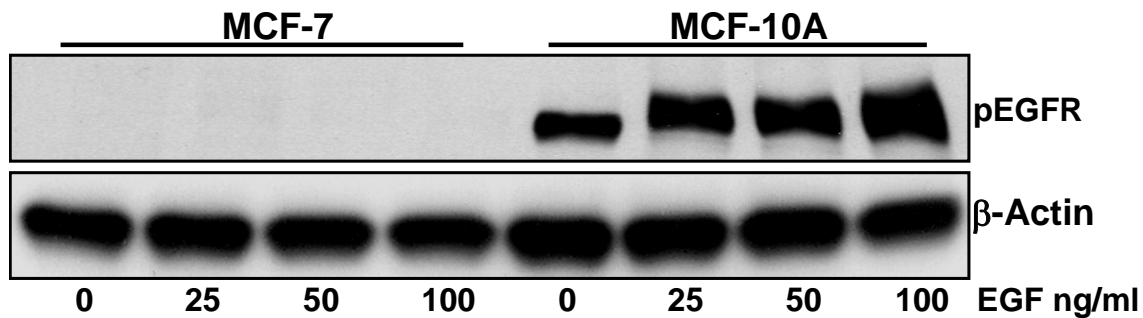
MAP-2 expression in breast cancer cells is regulated by EGFR: In order to investigate whether the expression of MAP-2 is regulated by the expression of EGFR we selected two cell lines from among the range of breast cancer cells based on their responsiveness to epidermal growth factor (EGF). Two cell lines MCF-7 and MCF-10A were serum starved for 24 h and then challenged with increasing doses of EGF (25, 50 and 100 ng/ml). Twelve hours post EGF

treatment cells were harvested and examined for the expression of phosphorylated EGFR, Erk1/2 and MAP-2. Additionally, cells were grown on culture slides for examination of MAP-2 by immunofluorescence.

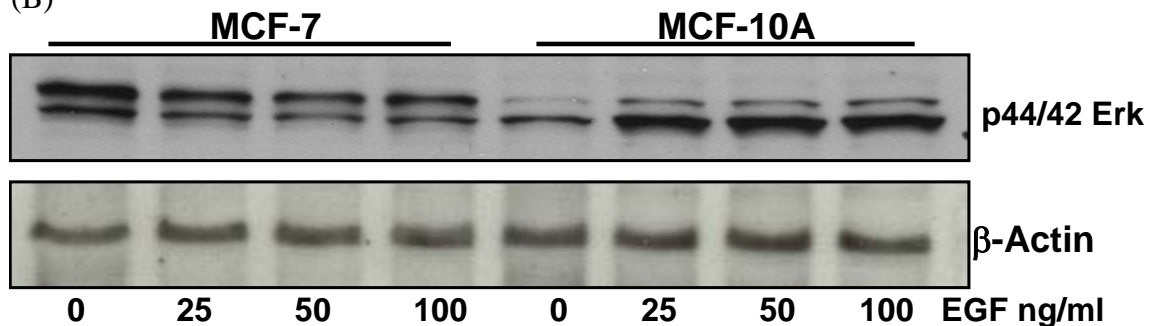
We observed that MCF-7 cells were weakly stimulated by EGF whereas MCF-10A was strongly stimulated when challenged by increasing doses of EGF. Responsiveness to EGF stimulation was evaluated by expression of phosphoEGFR and downstream MAPK Erk1/2. Phospho EGFR expression was not observed in MCF-7 cells challenged with EGF, however, MCF-10A cells responded with a dose-dependent increase in EGFR phosphorylation and downstream activation of Erk1/2. We next examined the expression of MAP-2 in the cell lines challenged with EGF and observed that although MAP-2 expression increased with increasing doses of EGF, its expression was almost completely lost at higher concentrations of EGF treatment (Fig. 2, A-D).

This was an interesting observation that pointed out towards a possible mechanism of resistance in breast cancer patients with EGFR over expression. Based on these observations we believe that with constant EGF stimulation, cells lose their MAP-2 expression that is required for microtubule stabilization and subsequent cell cycle arrest. It would have been of interest to examine the expression of MAP-2 in tissues of breast cancer patients over-expressing the EGFR receptor; however this study was beyond the scope of the present investigation. The loss of MAP-2 expression would have implications in treatment of breast cancers over expressing the EGFR receptor and resistant to conventional therapy.

(A)



(B)



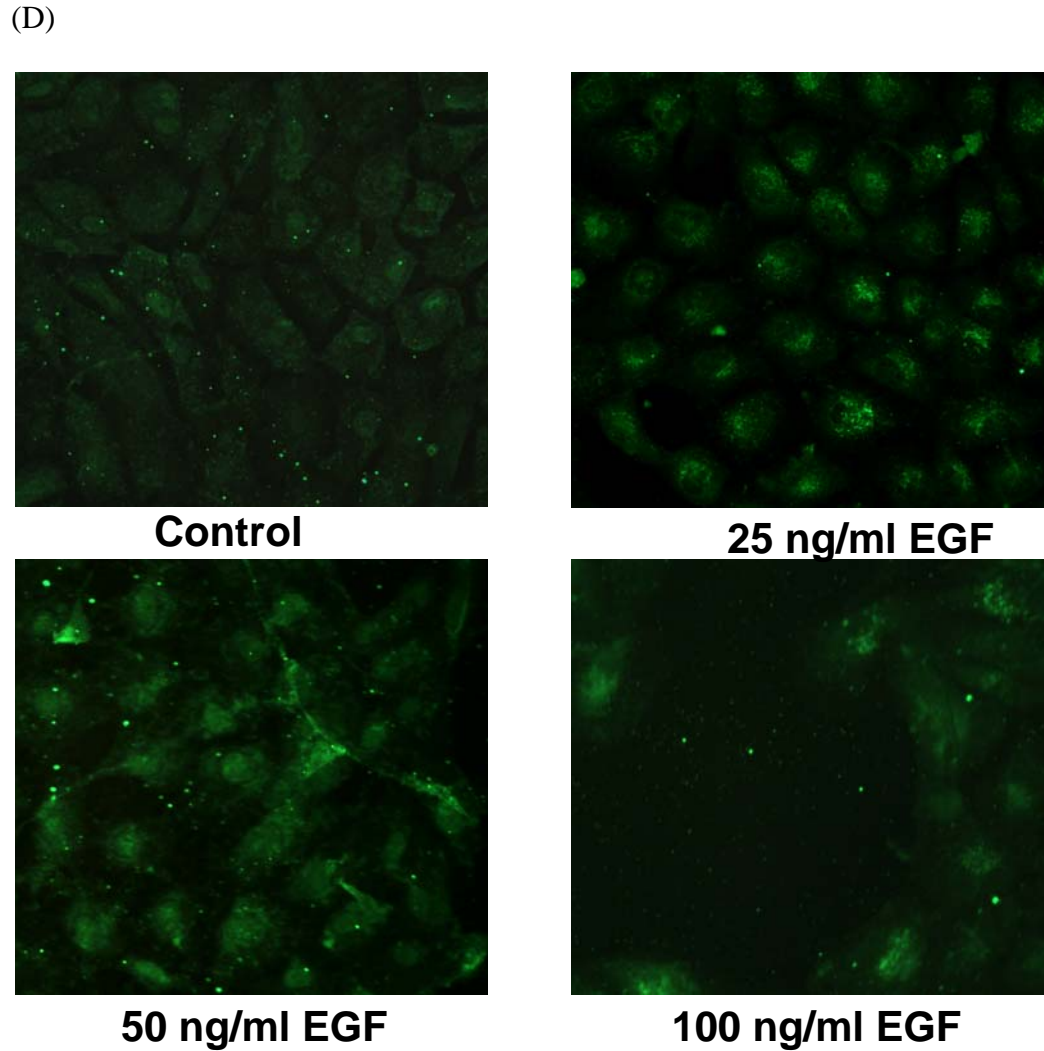
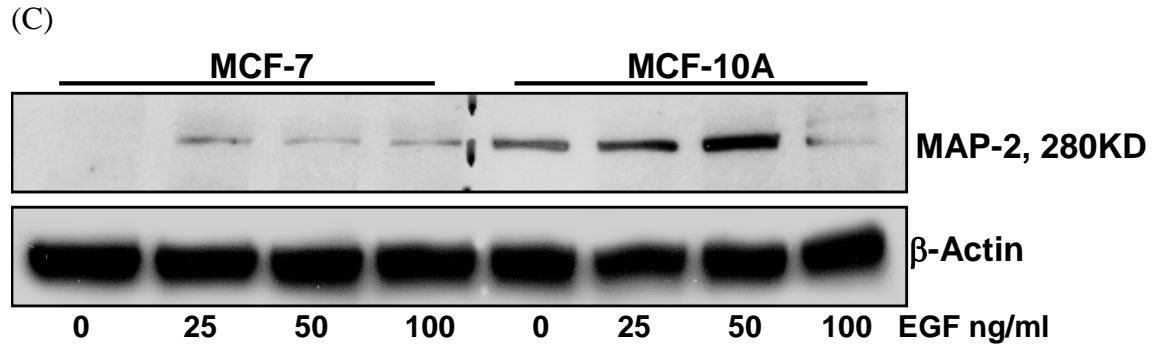


Fig. 2 (A-D). Effect of EGF stimulation on the expression of phosphor-EGFR, Erk1/2 and MAP-2 in breast cancer cells MCF-7 and MCF-10A. Cells were serum starved for 24 h and then challenged with increasing doses of EGF (25, 50 and 100 ng/ml). Twelve hours post EGF treatment cells were harvested and examined for the expression of phosphorylated EGFR, Erk1/2 and MAP-2. Additionally, cells were grown on culture slides for examination of MAP-2 by immunofluorescence (D).

Effect of Docetaxel treatment on cells challenged with EGF: In our next series of experiments we sought to understand how cells would respond to microtubule disrupting agents after they are challenged with increasing doses of EGF. MCF-10A cells were serum starved in 96-well microtiter plates, followed for EGF challenge and then treated with docetaxel. We found increasing resistance to growth inhibition by docetaxel in cells that were challenged with higher concentrations of EGFR (Fig. 3). This suggested that over expression of EGFR signaling results in loss of MAP-2 in breast cancers could and this could in fact be responsible for resistance to therapeutic agents.

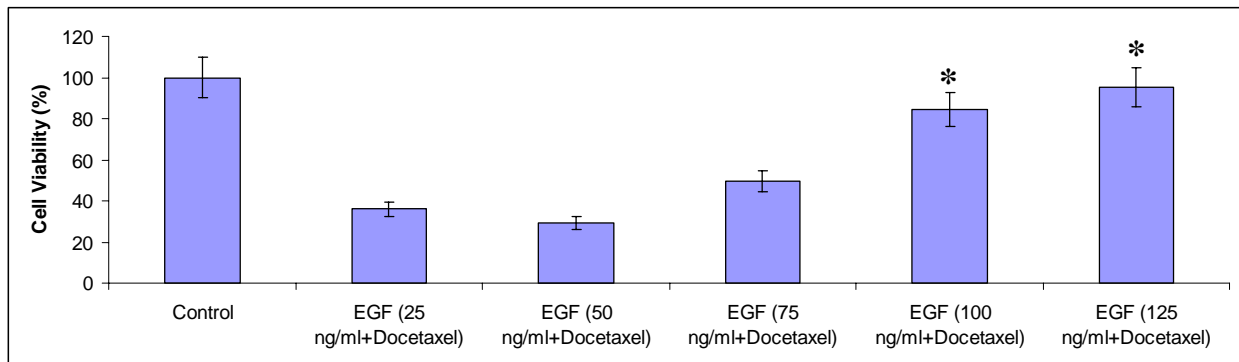


Fig. 3. Effect of docetaxel treatment on cell growth in breast cancer cells challenged with increasing doses of EGF. With increasing doses of EGF cells become refractory to doxetaxel treatment. Students t-test, * $p < 0.001$ compared to control.

Significance and future studies:

Development and progression of breast cancer is associated with the accumulation of changes involving number of genes. One such change is the increased resistance to therapeutic drugs a phenomenon dreaded by the patient and the physician alike. Several factors have been found to be involved in the development of this resistance; however, no clear benefit for patients treated with 'resistance-modifier' agents has yet been demonstrated. Understanding how breast cancer cells escape this control could result in better management of the disease. This study identifies a potential role of MAP-2 expression in breast cancers over expressing the EGFR receptor. Data outlined in these studies suggest that over expression of EGFR signaling in breast cancers could, in fact, be responsible for resistance to therapeutic agents. The loss of MAP-2 expression could have implications in treatment of breast cancers overexpressing the EGFR and exhibiting resistance to conventional therapy. Results of these studies could have long term therapeutic implications against breast cancer.

Studies are ongoing to understand how MAP-2 expression is lost during sustained activation of the EGF receptor. To achieve this we are studying activities of kinases in breast cancer cells challenged with EGF. We are also studying the possible consequences of inhibiting MAP-2 by siRNA and also of overexpressing MAP-2

REPORTABLE OUTCOMES:

ABSTRACTS

1. Adhami VM and Mukhtar, H. Association between microtubule associated protein-2 and the EGFR signaling in breast cancer. Presented at the 2005 Era of Hope meeting, June 8-11, Pennsylvania Convention Center, Philadelphia, PA, 2005.
2. Adhami VM, Zaman N, Sarfaraz S and Mukhtar H. Loss of MAP-2 during sustained activation of egfr in breast cancer cells leads to resistance to conventional chemotherapeutic drug docetaxel. Submitted for presentation at the 97th Annual meeting of the American Association for Cancer Research, April 1-5, Washington, DC, 2006.

CONCLUSIONS

This study identifies a potential role of MAP-2 expression in breast cancer cells over expressing the EGFR receptor. Data outlined in these studies suggest that over expression of EGFR signaling in breast cancers could, in fact, be responsible for resistance to therapeutic agents. As a result of sustained activation of the EGFR, MAP-2 expression is lost. The loss of MAP-2 expression could have implications in treatment of breast cancers overexpressing the EGFR and exhibiting resistance to conventional therapy.

REFERENCES:

1. Maccioni RB and Cambiazo V. Role of microtubule-associated proteins in the control of microtubule assembly. *Physiol Rev.*, 75:835-864, 1995.
2. Kosik KS and Caceres A. Tau protein and the establishment of an axonal morphology. *J Cell Sci.*, 15(Suppl):69-74, 1991.
3. Veitia R, David S, Vantard M, Gounon P, Bissery MC and Fellous A. Proteolysis of microtubule associated protein 2 and sensitivity of pancreatic tumors to docetaxel. *Br J Cancer*, 83:544-549, 2000.
4. Nishida E, Hoshi M, Miyata Y, Sakai H, Kadowaki T, Kasuga M, Saijo S, Ogawara H and Akiyama T. Tyrosine phosphorylation by the epidermal growth factor receptor kinase induces functional alterations in microtubule-associated protein 2. *J Biol Chem.*, 262:16200-4, 1987