



AD NO. _____
DTC PROJECT NO. 8-CO-160-UXO-021
REPORT NO. ATC-8973



STANDARDIZED
UXO TECHNOLOGY DEMONSTRATION SITE
OPEN FIELD SCORING RECORD NO. 231

SITE LOCATION:
U.S. ARMY ABERDEEN PROVING GROUND

DEMONSTRATOR:
HUMAN FACTORS APPLICATIONS INC.
8 JAY GOULD COURT, UNIT D
WALDORF, MD 20602

TECHNOLOGY TYPE/PLATFORM:
MAGNETOMOETER SCHONSTEDT/HAND HELD

PREPARED BY:
U.S. ARMY ABERDEEN TEST CENTER
ABERDEEN PROVING GROUND, MD 21005-5059

JULY 2005



Prepared for:
U.S. ARMY ENVIRONMENTAL CENTER
ABERDEEN PROVING GROUND, MD 21010-5401

U.S. ARMY DEVELOPMENTAL TEST COMMAND
ABERDEEN PROVING GROUND, MD 21005-5055

DISTRIBUTION UNLIMITED, JULY 2005.

DISTRIBUTION STATEMENT A
Approved for Public Release
Distribution Unlimited

DISPOSITION INSTRUCTIONS

Destroy this document when no longer needed. Do not return to the originator.

The use of trade names in this document does not constitute an official endorsement or approval of the use of such commercial hardware or software. This document may not be cited for purposes of advertisement.

REPORT DOCUMENTATION PAGE			Form Approved OMB No. 0704-0188		
<p>The public reporting burden for this collection of information is estimated to average 1 hour per response, including the time for reviewing instructions, searching existing data sources, gathering and maintaining the data needed, and completing and reviewing the collection of information. Send comments regarding this burden estimate or any other aspect of this collection of information, including suggestions for reducing the burden, to Department of Defense, Washington Headquarters Services, Directorate for Information Operations and Reports (0704-0188), 1215 Jefferson Davis Highway, Suite 1204, Arlington, VA 22202-4302. Respondents should be aware that notwithstanding any other provision of law, no person shall be subject to any penalty for failing to comply with a collection of information if it does not display a currently valid OMB control number.</p> <p>PLEASE DO NOT RETURN YOUR FORM TO THE ABOVE ADDRESS.</p>					
1. REPORT DATE (DD-MM-YYYY) July 2005		2. REPORT TYPE Final		3. DATES COVERED (From - To) (See item 13)	
4. TITLE AND SUBTITLE STANDARDIZED UXO TECHNOLOGY DEMONSTRATION SITE OPEN FIELD SCORING RECORD NO. 231 (HUMAN FACTORS APPLICATIONS, INC.)			5a. CONTRACT NUMBER		
			5b. GRANT NUMBER		
			5c. PROGRAM ELEMENT NUMBER		
			5d. PROJECT NUMBER 8-CO-160-UXO-021		
6. AUTHOR(S) Overbay, Larry; Robitaille, George The Standardized UXO Technology Demonstration Site Scoring Committee			5e. TASK NUMBER		
			5f. WORK UNIT NUMBER		
			8. PERFORMING ORGANIZATION REPORT NUMBER ATC-8973		
7. PERFORMING ORGANIZATION NAME(S) AND ADDRESS(ES) Commander U.S. Army Aberdeen Test Center ATTN: CSTE-DTC-AT-SL-E Aberdeen Proving Ground, MD 21005-5059			10. SPONSOR/MONITOR'S ACRONYM(S)		
9. SPONSORING/MONITORING AGENCY NAME(S) AND ADDRESS(ES) Commander U.S. Army Environmental Center ATTN: SFIM-AEC-ATT Aberdeen Proving Ground, MD 21005-5401			11. SPONSOR/MONITOR'S REPORT NUMBER(S) Same as item 8		
			12. DISTRIBUTION/AVAILABILITY STATEMENT Distribution unlimited.		
13. SUPPLEMENTARY NOTES 15-18, 28-30 June and 1, 2, 6, 7 and 12-16 July 2004					
14. ABSTRACT This scoring record documents the efforts of Human Factors Applications, Inc. to detect and discriminate inert unexploded ordnance (UXO) utilizing the APG Standardized UXO Technology Demonstration Site Open Field. The scoring record was coordinated by Larry Overbay and by the Standardized UXO Technology Demonstration Site Scoring Committee. Organizations on the committee include the U.S. Army Corps of Engineers, the Environmental Security Technology Certification Program, the Strategic Environmental Research and Development Program, the Institute for Defense Analysis, the U.S. Army Environmental Center, and the U.S. Army Aberdeen Test Center.					
15. SUBJECT TERMS Human Factors Applications, Inc., UXO, Standardized Site, APG, Standardized UXO Technology Demonstration Site Program, Open Field, Magnetometer Shonstedt/Hand Held					
16. SECURITY CLASSIFICATION OF:			17. LIMITATION OF ABSTRACT UL	18. NUMBER OF PAGES	19a. NAME OF RESPONSIBLE PERSON
a. REPORT Unclassified	b. ABSTRACT Unclassified	c. THIS PAGE Unclassified			19b. TELEPHONE NUMBER (Include area code)

ACKNOWLEDGEMENTS

Authors:

Larry Overbay Jr.

Matthew Boutin

Military Environmental Technology Demonstration Center (METDC)

U.S. Army Aberdeen Test Center (ATC)

U.S. Army Aberdeen Proving Ground (APG)

Rick Fling

Christina McClung

Aberdeen Test and Support Services (ATSS)

Sverdrup Technology, Inc.

U.S. Army Aberdeen Proving Ground (APG)

Contributor:

George Robitaille

U.S. Army Environmental Center (AEC)

U.S. Army Aberdeen Proving Ground (APG)

TABLE OF CONTENTS

	<u>PAGE</u>
ACKNOWLEDGMENTS	i
 <u>SECTION 1. GENERAL INFORMATION</u> 	
1.1 BACKGROUND	1
1.2 SCORING OBJECTIVES	1
1.2.1 Scoring Methodology	1
1.2.2 Scoring Factors	2
1.3 STANDARD AND NONSTANDARD INERT ORDNANCE TARGETS	3
 <u>SECTION 2. DEMONSTRATION</u> 	
2.1 DEMONSTRATOR INFORMATION	5
2.1.1 Demonstrator Point of Contact (POC) and Address	5
2.1.2 System Description	5
2.1.3 Data Processing Description	6
2.1.4 Data Submission Format	6
2.1.5 Demonstrator Quality Assurance (QA) and Quality Control (QC)	6
2.1.6 Additional Records	6
2.2 APG SITE INFORMATION	6
2.2.1 Location	6
2.2.2 Soil Type	7
2.2.3 Test Areas	7
 <u>SECTION 3. FIELD DATA</u> 	
3.1 DATE OF FIELD ACTIVITIES	9
3.2 AREAS TESTED/NUMBER OF HOURS	9
3.3 TEST CONDITIONS	9
3.3.1 Weather Conditions	9
3.3.2 Field Conditions	10
3.3.3 Soil Moisture	10
3.4 FIELD ACTIVITIES	10
3.4.1 Setup/Mobilization	10
3.4.2 Calibration	10
3.4.3 Downtime Occasions	10
3.4.4 Data Collection	11
3.4.5 Demobilization	11
3.5 PROCESSING TIME	11
3.6 DEMONSTRATOR'S FIELD PERSONNEL	11
3.7 DEMONSTRATOR'S FIELD SURVEYING METHOD	11
3.8 SUMMARY OF DAILY LOGS	11

SECTION 4. TECHNICAL PERFORMANCE RESULTS

	<u>PAGE</u>
4.1 ROC CURVES USING ALL ORDNANCE CATEGORIES	13
4.2 ROC CURVES USING ORDNANCE LARGER THAN 20 MM	13
4.3 PERFORMANCE SUMMARIES	13
4.4 EFFICIENCY, REJECTION RATES, AND TYPE CLASSIFICATION	15
4.5 LOCATION ACCURACY	15

SECTION 5. ON-SITE LABOR COSTS

SECTION 6. COMPARISON OF RESULTS TO BLIND GRID DEMONSTRATION

6.1 SUMMARY OF RESULTS FROM BLIND GRID DEMONSTRATION	19
6.2 COMPARISON OF ROC CURVES USING ALL ORDNANCE CATEGORIES	19
6.3 COMPARISON OF ROC CURVES USING ORDNANCE LARGER THAN 20 MM	19
6.4 STATISTICAL COMPARISONS	19

SECTION 7. APPENDIXES

A TERMS AND DEFINITIONS	A-1
B DAILY WEATHER LOGS	B-1
C SOIL MOISTURE	C-1
D DAILY ACTIVITY LOGS	D-1
E REFERENCES	E-1
F ABBREVIATIONS	F-1
G DISTRIBUTION LIST	G-1

SECTION 1. GENERAL INFORMATION

1.1 BACKGROUND

Technologies under development for the detection and discrimination of unexploded ordnance (UXO) require testing so that their performance can be characterized. To that end, Standardized Test Sites have been developed at Aberdeen Proving Ground (APG), Maryland and U.S. Army Yuma Proving Ground (YPG), Arizona. These test sites provide a diversity of geology, climate, terrain, and weather as well as diversity in ordnance and clutter. Testing at these sites is independently administered and analyzed by the government for the purposes of characterizing technologies, tracking performance with system development, comparing performance of different systems, and comparing performance in different environments.

The Standardized UXO Technology Demonstration Site Program is a multi-agency program spearheaded by the U.S. Army Environmental Center (AEC). The U.S. Army Aberdeen Test Center (ATC) and the U.S. Army Corps of Engineers Engineering Research and Development Center (ERDC) provide programmatic support. The program is being funded and supported by the Environmental Security Technology Certification Program (ESTCP), the Strategic Environmental Research and Development Program (SERDP) and the Army Environmental Quality Technology Program (EQT).

1.2 SCORING OBJECTIVES

The objective in the Standardized UXO Technology Demonstration Site Program is to evaluate the detection and discrimination capabilities of a given technology under various field and soil conditions. Inert munitions and clutter items are positioned in various orientations and depths in the ground.

The evaluation objectives are as follows:

- a. To determine detection and discrimination effectiveness under realistic scenarios that vary targets, geology, clutter, topography, and vegetation.
- b. To determine cost, time, and manpower requirements to operate the technology.
- c. To determine demonstrator's ability to analyze survey data in a timely manner and provide prioritized "Target Lists" with associated confidence levels.
- d. To provide independent site management to enable the collection of high quality, ground-truth, geo-referenced data for post-demonstration analysis.

1.2.1 Scoring Methodology

- a. The scoring of the demonstrator's performance is conducted in two stages. These two stages are termed the RESPONSE STAGE and DISCRIMINATION STAGE. For both stages, the probability of detection (P_d) and the false alarms are reported as receiver-operating

characteristic (ROC) curves. False alarms are divided into those anomalies that correspond to emplaced clutter items, measuring the probability of false positive (P_{fp}), and those that do not correspond to any known item, termed background alarms.

b. The RESPONSE STAGE scoring evaluates the ability of the system to detect emplaced targets without regard to ability to discriminate ordnance from other anomalies. For the blind grid RESPONSE STAGE, the demonstrator provides the scoring committee with a target response from each and every grid square along with a noise level below which target responses are deemed insufficient to warrant further investigation. This list is generated with minimal processing and, since a value is provided for every grid square, will include signals both above and below the system noise level.

c. The DISCRIMINATION STAGE evaluates the demonstrator's ability to correctly identify ordnance as such and to reject clutter. For the blind grid DISCRIMINATION STAGE, the demonstrator provides the scoring committee with the output of the algorithms applied in the discrimination-stage processing for each grid square. The values in this list are prioritized based on the demonstrator's determination that a grid square is likely to contain ordnance. Thus, higher output values are indicative of higher confidence that an ordnance item is present at the specified location. For digital signal processing, priority ranking is based on algorithm output. For other discrimination approaches, priority ranking is based on human (subjective) judgment. The demonstrator also specifies the threshold in the prioritized ranking that provides optimum performance, (i.e. that is expected to retain all detected ordnance and rejects the maximum amount of clutter).

d. The demonstrator is also scored on EFFICIENCY and REJECTION RATIO, which measures the effectiveness of the discrimination stage processing. The goal of discrimination is to retain the greatest number of ordnance detections from the anomaly list, while rejecting the maximum number of anomalies arising from non-ordnance items. EFFICIENCY measures the fraction of detected ordnance retained after discrimination, while the REJECTION RATIO measures the fraction of false alarms rejected. Both measures are defined relative to performance at the demonstrator-supplied level below which all responses are considered noise, i.e., the maximum ordnance detectable by the sensor and its accompanying false positive rate or background alarm rate.

e. Based on configuration of the ground truth at the standardized sites and the defined scoring methodology, there exists the possibility of having anomalies within overlapping halos and/or multiple anomalies within halos. In these cases, the following scoring logic is implemented:

(1) In situations where multiple anomalies exist within a single R_{halo} , the anomaly with the strongest response or highest ranking will be assigned to that particular ground truth item.

(2) For overlapping R_{halo} situations, ordnance has precedence over clutter. The anomaly with the strongest response or highest ranking that is closest to the center of a particular ground truth item gets assigned to that item. Remaining anomalies are retained until all matching is complete.

(3) Anomalies located within any R_{halo} that do not get associated with a particular ground truth item are thrown out and are not considered in the analysis.

f. All scoring factors are generated utilizing the Standardized UXO Probability and Plot Program, version 3.1.1.

1.2.2 Scoring Factors

Factors to be measured and evaluated as part of this demonstration include:

a. Response Stage ROC curves:

- (1) Probability of Detection (P_d^{res}).
- (2) Probability of False Positive ($P_{\text{fp}}^{\text{res}}$).
- (3) Background Alarm Rate (BAR^{res}) or Probability of Background Alarm ($P_{\text{BA}}^{\text{res}}$).

b. Discrimination Stage ROC curves:

- (1) Probability of Detection (P_d^{disc}).
- (2) Probability of False Positive ($P_{\text{fp}}^{\text{disc}}$).
- (3) Background Alarm Rate (BAR^{disc}) or Probability of Background Alarm ($P_{\text{BA}}^{\text{disc}}$).

c. Metrics:

- (1) Efficiency (E).
- (2) False Positive Rejection Rate (R_{fp}).
- (3) Background Alarm Rejection Rate (R_{BA}).

d. Other:

- (1) Probability of Detection by Size and Depth.
- (2) Classification by type (i.e., 20-, 40-, 105-mm, etc.).
- (3) Location accuracy.
- (4) Equipment setup, calibration time and corresponding man-hour requirements.
- (5) Survey time and corresponding man-hour requirements.

- (6) Reacquisition/resurvey time and man-hour requirements (if any).
- (7) Downtime due to system malfunctions and maintenance requirements.

1.3 STANDARD AND NONSTANDARD INERT ORDNANCE TARGETS

The standard and nonstandard ordnance items emplaced in the test areas are listed in Table 1. Standardized targets are members of a set of specific ordnance items that have identical properties to all other items in the set (caliber, configuration, size, weight, aspect ratio, material, filler, magnetic remanence, and nomenclature). Nonstandard targets are inert ordnance items having properties that differ from those in the set of standardized targets.

TABLE 1. INERT ORDNANCE TARGETS

Standard Type	Nonstandard (NS)
20-mm Projectile M55	20-mm Projectile M55
	20-mm Projectile M97
40-mm Grenades M385	40-mm Grenades M385
40-mm Projectile MKII Bodies	40-mm Projectile M813
BDU-28 Submunition	
BLU-26 Submunition	
M42 Submunition	
57-mm Projectile APC M86	
60-mm Mortar M49A3	60-mm Mortar (JPG)
	60-mm Mortar M49
2.75-inch Rocket M230	2.75-inch Rocket M230
	2.75-inch Rocket XM229
MK 118 ROCKEYE	
81-mm Mortar M374	81-mm Mortar (JPG)
	81-mm Mortar M374
105-mm HEAT Rounds M456	
105-mm Projectile M60	105-mm Projectile M60
155-mm Projectile M483A1	155-mm Projectile M483A
	500-lb Bomb

JPG = Jefferson Proving Ground
 HEAT = high-explosive antitank

SECTION 2. DEMONSTRATION

2.1 DEMONSTRATOR INFORMATION

2.1.1 Demonstrator Point of Contact (POC) and Address

POC: Mr. Scott Hemstreet
301-705-5044
shemstreet@hfactors.com

Address: Human Factors Applications, Inc.
8 Jay Gould Court, Unit D
Waldorf, MD 20602

2.1.2 System Description (provided by demonstrator)

Schonstedt 52Cx Ordnance Locator. Schonstedt Magnetometers are ferrous metal locators and will only detect “iron” or magnetic materials. The size and orientation of the target and the soil characteristics of the work area limit the depth of detection. The instrument is not capable of classifying the anomaly; it will only indicate the presence or absence of a magnetic anomaly.

Schonstedt Magnetometers do not require calibration. They have a simple battery function test and a “Go”/“No Go” field operational check. The magnetometers will be set in accordance with the manufacturer’s handbook to the sensitivity required to detect subsurface anomalies on the project site.



Figure 1. Demonstrator’s system, Magnetometer Schonstedt/hand held.

2.1.3 Data Processing Description (provided by demonstrator)

The HFA UXO team will place a plastic pin flag in the ground to record the location of a subsurface anomaly. ATC personnel will survey in the location of this flag to determine the accuracy of the “MAG and Flag” process.

2.1.4 Data Submission Format

Data were submitted for scoring in accordance with data submission protocols outlined in the Standardized UXO Technology Demonstration Site Handbook. These submitted data are not included in this report in order to protect ground truth information.

2.1.5 Demonstrator Quality Assurance (QA) and Quality Control (QC) (provided by demonstrator)

Magnetometer(s) will be tested daily before starting UXO operations in the morning. The UXO Technician III will perform random checks during daily operations to ensure the equipment is operating and being operated properly. If a magnetometer does not pass the daily check, it will be repaired or replaced.

The Master Rated UXO Technician (UXO Technician III) will perform a random QC survey over the entire project site. This random survey will include a 100 percent survey of a 10’ radius around all sites where ordnance items have been located. If an ordnance item is discovered during the QC survey, 100 percent of the site will be resurveyed

Overview of Quality Assurance (QA): Test site to compare flagged anomaly locations to known locations of test items.

2.1.6 Additional Records

The following record(s) by this vendor can be accessed via the Internet as MicroSoft Word documents at www.uxotestsites.org. The Blind Grid counterpart to this report is Scoring Record No. 237.

2.2 APG SITE INFORMATION

2.2.1 Location

The APG Standardized Test Site is located within a secured range area of the Aberdeen Area. The Aberdeen Area of APG is located approximately 30 miles northeast of Baltimore at the northern end of the Chesapeake Bay. The Standardized Test Site encompasses 17 acres of upland and lowland flats, woods and wetlands.

2.2.2 Soil Type

According to the soils survey conducted for the entire area of APG in 1998, the test site consists primarily of Elkton Series type soil (ref 2). The Elkton Series consist of very deep, slowly permeable, poorly drained soils. These soils formed in silty aeolin sediments and the underlying loamy alluvial and marine sediments. They are on upland and lowland flats and in depressions of the Mid-Atlantic Coastal Plain. Slopes range from 0 to 2 percent.

ERDC conducted a site-specific analysis in May of 2002 (ref 3). The results basically matched the soil survey mentioned above. Seventy percent of the samples taken were classified as silty loam. The majority (77-percent) of the soil samples had a measured water content between 15- and 30-percent with the water content decreasing slightly with depth.

For more details concerning the soil properties at the APG test site, go to www.uxotestsites.org on the web to view the entire soils description report.

2.2.3 Test Areas

A description of the test site areas at APG is included in Table 2.

TABLE 2. TEST SITE AREAS

Area	Description
Calibration Grid	Contains 14 standard ordnance items buried in six positions at various angles and depths to allow demonstrator to calibrate their equipment.
Blind Test Grid	Contains 400 grid cells in a 0.2-hectare (0.5 acre) site. The center of each grid cell contains ordnance, clutter or nothing.
Open Field	A 4-hectare (10-acre) site containing open areas, dips, ruts and obstructions that challenge platform systems or hand held detectors. The challenges include a gravel road, wet areas and trees. The vegetation height varies from 15 to 25 cm.

SECTION 3. FIELD DATA

3.1 DATE OF FIELD ACTIVITIES (15 through 18 and 28 through 30 June, and 1, 2, 6, 7, and 12 through 16 July 2004)

3.2 AREAS TESTED/NUMBER OF HOURS

Areas tested and total number of hours operated at each site are summarized in Table 3.

TABLE 3. AREAS TESTED AND NUMBER OF HOURS

Area	Number of Hours
Calibration Lanes	3.33
Open Field	103.75

3.3 TEST CONDITIONS

3.3.1 Weather Conditions

An APG weather station located approximately one mile west of the test site was used to record average temperature and precipitation on a half hour basis for each day of operation. The temperatures listed in Table 4 represent the average temperature during field operations from 0700 to 1700 hours while precipitation data represents a daily total amount of rainfall. Hourly weather logs used to generate this summary are provided in Appendix B.

TABLE 4. TEMPERATURE/PRECIPITATION DATA SUMMARY

Date, 2004	Average Temperature, °F	Total Daily Precipitation, in.
June 15	82.61	0.00
June 16	80.71	0.00
June 17	82.60	0.18
June 18	84.72	0.00
June 28	78.60	0.00
June 29	72.46	0.03
June 30	78.69	0.00
July 1	79.14	0.00
July 2	84.18	0.00
July 6	79.96	0.00
July 7	81.65	0.34
July 12	76.69	3.56
July 13	74.89	0.00
July 14	75.09	1.12
July 15	77.74	0.00
July 16	78.06	0.00

3.3.2 Field Conditions

HFA surveyed the open field 15 through 18 and 28 through 30 June as well as, 1, 2, 6, 7, and 12 through 16 July 2004. The Open Field had several muddy areas due to rain prior and during testing.

3.3.3 Soil Moisture

Three soil probes were placed at various locations within the site to capture soil moisture data: Calibration, Mogul, and Wooded areas. Measurements were collected in percent moisture and were taken twice daily (morning and afternoon) from five different soil depths (1 to 6 in., 6 to 12 in., 12 to 24 in., 24 to 36 in., and 36 to 48 in.) from each probe. Soil moisture logs are included in Appendix C.

3.4 FIELD ACTIVITIES

3.4.1 Setup/Mobilization

These activities included initial mobilization and daily equipment preparation and break down. A two-person crew took 15 minutes to perform the initial setup and mobilization. There was 33 hours and 42 minutes of daily equipment preparation and end of the day equipment break down lasted 4 hours and 25 minutes.

3.4.2 Calibration

HFA spent a total of 3 hours and 20 minutes in the calibration lanes, 1-hour and 20 minutes of which was spent collecting data.

3.4.3 Downtime Occasions

Occasions of downtime are grouped into five categories: equipment/data checks or equipment maintenance, equipment failure and repair, weather, Demonstration Site issues, or breaks/lunch. All downtime is included for the purposes of calculating labor costs (section 5) except for downtime due to Demonstration Site issues. Demonstration Site issues, while noted in the Daily Log, are considered non-chargeable downtime for the purposes of calculating labor costs and are not discussed. Breaks and lunches are discussed in this section and billed to the total Site Survey area.

3.4.3.1 Equipment/data checks, maintenance. Equipment data checks and maintenance activities accounted for no site usage time. These activities included changing out batteries and routine data checks to ensure the data was being properly recorded/collected. HFA spent an additional 14 hours and 28 minutes for breaks and lunches.

3.4.3.2 Equipment failure or repair. No time was needed to resolve equipment failures that occurred while surveying the Open Field.

3.4.3.3 Weather. No weather delays occurred during the survey.

3.4.4 Data Collection

HFA spent a total time of 103 hours and 45 minutes in the Open Field area, 51 hours and 10 minutes of which was spent collecting data.

3.4.5 Demobilization

The HFA survey crew went on to conducted a full demonstration of the site. Therefore, demobilization did not occur until 20 July 2004. On that day, it took the crew 10 minutes to break down and pack up their equipment.

3.5 PROCESSING TIME

HFA submitted the raw data from the demonstration activities on the last day of the demonstration, as required. The scoring submittal data was also provided within the required 30-day timeframe.

3.6 DEMONSTRATOR'S FIELD PERSONNEL

Mr. Bob Dyminski
Mr. Joe Curtis
Mr. Rusty Mitchell
Mr. Al Wittington

3.7 DEMONSTRATOR'S FIELD SURVEYING METHOD

HFA began surveying the Open Field in the grids starting with the driest and working to the wetter areas. HFA surveyed the Open Field area in a linear fashion. HFA set up 50 by 50 meter grids and swept them using a line spacing of 5 ft.

An ATC team provided surveying support to HFA (which is not included in the overall time breakdown). The HFA team's purpose was to locate and flag all items found.

3.8 SUMMARY OF DAILY LOGS

Daily logs capture all field activities during this demonstration and are located in Appendix D. Activities pertinent to this specific demonstration are indicated in highlighted text.

SECTION 4. TECHNICAL PERFORMANCE RESULTS

4.1 ROC CURVES USING ALL ORDNANCE CATEGORIES

(Not applicable for this technology)

4.2 ROC CURVES USING ORDNANCE LARGER THAN 20 MM

(Not applicable for this technology)

4.3 PERFORMANCE SUMMARIES

Results for the Open Field test, broken out by size, depth and nonstandard ordnance, are presented in Tables 5a and 5b (for cost results, see section 5). Results by size and depth include both standard and nonstandard ordnance. The results by size show how well the demonstrator did at detecting/discriminating ordnance of a certain caliber range (see app A for size definitions). The results are relative to the number of ordnances emplaced. Depth is measured from the geometric center of anomalies.

The RESPONSE STAGE results are derived from the list of anomalies above the demonstrator-provided noise level. The results for the DISCRIMINATION STAGE are derived from the demonstrator's recommended threshold for optimizing UXO field cleanup by minimizing false digs and maximizing ordnance recovery. The lower 90-percent confidence limit on probability of detection and probability of false positive was calculated assuming that the number of detections and false positives are binomially distributed random variables. All results in Table 5a and 5b have been rounded to protect the ground truth. However, lower confidence limits were calculated using actual results.

The overall ground truth is composed of ferrous and non-ferrous anomalies. Due to limitations of the magnetometer, the non-ferrous items cannot be detected. Therefore, the summary presented in Table 5a exhibits results based on the subset of the ground truth that is solely the ferrous anomalies. Table 5b exhibits results based on the full ground truth. All other tables presented in this section are based on scoring against the ferrous only ground truth. The response stage noise level and recommended discrimination stage threshold values are provided by the demonstrator.

TABLE 5a. SUMMARY OF OPEN FIELD RESULTS (FERROUS ONLY)

Metric	Overall	Standard	Nonstandard	By Size			By Depth, m		
				Small	Medium	Large	< 0.3	0.3 to <1	>= 1
RESPONSE STAGE									
P _d	0.50	0.55	0.45	0.50	0.50	0.55	0.70	0.45	0.25
P _d Low 90% Conf	0.48	0.52	0.38	0.42	0.45	0.48	0.67	0.36	0.16
P _d Upper 90% Conf	0.55	0.62	0.50	0.55	0.57	0.64	0.77	0.49	0.31
P _{fp}	0.50	-	-	-	-	-	0.50	0.50	0.55
P _{fp} Low 90% Conf	0.47	-	-	-	-	-	0.47	0.45	0.38
P _{fp} Upper 90% Conf	0.52	-	-	-	-	-	0.53	0.51	0.74
BAR	0.75	-	-	-	-	-	-	-	-
DISCRIMINATION STAGE									
P _d	N/A	N/A	N/A	N/A	N/A	N/A	N/A	N/A	N/A
P _d Low 90% Conf	N/A	N/A	N/A	N/A	N/A	N/A	N/A	N/A	N/A
P _d Upper 90% Conf	N/A	N/A	N/A	N/A	N/A	N/A	N/A	N/A	N/A
P _{fp}	N/A	-	-	-	-	-	N/A	N/A	N/A
P _{fp} Low 90% Conf	N/A	-	-	-	-	-	N/A	N/A	N/A
P _{fp} Upper 90% Conf	N/A	-	-	-	-	-	N/A	N/A	N/A
BAR	N/A	-	-	-	-	-	-	-	-

Response Stage Noise Level: 0.50

Recommended Discrimination Stage Threshold: 0.50

TABLE 5b. SUMMARY OF OPEN FIELD RESULTS (FULL GROUND TRUTH)

Metric	Overall	Standard	Nonstandard	By Size			By Depth, m		
				Small	Medium	Large	< 0.3	0.3 to <1	>= 1
RESPONSE STAGE									
P _d	0.45	0.50	0.40	0.35	0.50	0.55	0.60	0.40	0.20
P _d Low 90% Conf	0.42	0.44	0.34	0.30	0.45	0.48	0.54	0.33	0.15
P _d Upper 90% Conf	0.49	0.53	0.46	0.40	0.57	0.64	0.64	0.45	0.30
P _{fp}	0.50	-	-	-	-	-	0.50	0.45	0.55
P _{fp} Low 90% Conf	0.46	-	-	-	-	-	0.46	0.44	0.38
P _{fp} Upper 90% Conf	0.50	-	-	-	-	-	0.52	0.50	0.74
BAR	0.75	-	-	-	-	-	-	-	-
DISCRIMINATION STAGE									
P _d	N/A	N/A	N/A	N/A	N/A	N/A	N/A	N/A	N/A
P _d Low 90% Conf	N/A	N/A	N/A	N/A	N/A	N/A	N/A	N/A	N/A
P _d Upper 90% Conf	N/A	N/A	N/A	N/A	N/A	N/A	N/A	N/A	N/A
P _{fp}	N/A	-	-	-	-	-	N/A	N/A	N/A
P _{fp} Low 90% Conf	N/A	-	-	-	-	-	N/A	N/A	N/A
P _{fp} Upper 90% Conf	N/A	-	-	-	-	-	N/A	N/A	N/A
BAR	N/A	-	-	-	-	-	-	-	-

Response Stage Noise Level: 0.50

Recommended Discrimination Stage Threshold 0.50

Note: The recommended discrimination stage threshold values are provided by the demonstrator.

No discrimination algorithm was applied. Therefore, the discrimination stage results are not applicable.

4.4 EFFICIENCY, REJECTION RATES, AND TYPE CLASSIFICATION

Due to technical limitations of the system used for this demonstration, no attempt was made to discriminate. Therefore, the following tables presented in this section are not applicable.

Efficiency and rejection rates are calculated to quantify the discrimination ability at specific points of interest on the ROC curve: (1) at the point where no decrease in P_d is suffered (i.e., the efficiency is by definition equal to one) and (2) at the operator selected threshold. These values are reported in Table 6.

TABLE 6. EFFICIENCY AND REJECTION RATES

	Efficiency (E)	False Positive Rejection Rate	Background Alarm Rejection Rate
At Operating Point	N/A	N/A	N/A
With No Loss of P_d	N/A	N/A	N/A

At the demonstrator’s recommended setting, the ordnance items that were detected and correctly discriminated were further scored on whether their correct type could be identified (table 7). Correct type examples include “20-mm projectile, 105-mm HEAT Projectile, and 2.75-inch Rocket”. A list of the standard type declaration required for each ordnance item was provided to demonstrators prior to testing. For example, the standard type for the three example items are 20mmP, 105H, and 2.75in, respectively.

TABLE 7. CORRECT TYPE CLASSIFICATION OF TARGETS CORRECTLY DISCRIMINATED AS UXO

Size	Percentage Correct
Small	N/A
Medium	N/A
Large	N/A
Overall	N/A

4.5 LOCATION ACCURACY

The mean location error and standard deviations appear in Table 8. These calculations are based on average missed depth for ordnance correctly identified in the discrimination stage. Depths are measured from the closest point of the ordnance to the surface. For the Blind Grid, only depth errors are calculated, since (X, Y) positions are known to be the centers of each grid square.

TABLE 8. MEAN LOCATION ERROR AND STANDARD DEVIATION (M)

	Mean	Standard Deviation
Northing	-0.03	0.15
Easting	0.00	0.17
Depth	N/A	N/A

Note: Demonstrator did not attempt to declare depth of detection.

SECTION 5. ON-SITE LABOR COSTS

A standardized estimate for labor costs associated with this effort was calculated as follows: the first person at the test site was designated “supervisor”, the second person was designated “data analyst”, and the third and following personnel were considered “field support”. Standardized hourly labor rates were charged by title: supervisor at \$95.00/hour, data analyst at \$57.00/hour, and field support at \$28.50/hour.

Government representatives monitored on-site activity. All on-site activities were grouped into one of ten categories: initial setup/mobilization, daily setup/stop, calibration, collecting data, downtime due to break/lunch, downtime due to equipment failure, downtime due to equipment/data checks or maintenance, downtime due to weather, downtime due to demonstration site issue, or demobilization. See Appendix D for the daily activity log. See section 3.4 for a summary of field activities.

The standardized cost estimate associated with the labor needed to perform the field activities is presented in Table 9. Note that calibration time includes time spent in the Calibration Lanes as well as field calibrations. “Site survey time” includes daily setup/stop time, collecting data, breaks/lunch, downtime due to equipment/data checks or maintenance, downtime due to failure, and downtime due to weather.

TABLE 9. ON-SITE LABOR COSTS

	No. People	Hourly Wage	Hours	Cost
Initial Setup				
Supervisor	1	\$95.00	0.25	\$23.75
Data Analyst	0	57.00	0.25	0.00
Field Support	1	28.50	0.25	7.13
SubTotal				\$30.88
Calibration				
Supervisor	1	\$95.00	3.33	\$316.35
Data Analyst	0	57.00	3.33	0.00
Field Support	1	28.50	3.33	94.91
SubTotal				\$411.26
Site Survey				
Supervisor	1	\$95.00	90.25	\$8,573.75
Data Analyst	0	57.00	90.25	0.00
Field Support	1	28.50	90.25	2,572.13
SubTotal				\$11,145.88

See notes at end of table.

TABLE 9 (CONT'D)

	No. People	Hourly Wage	Hours	Cost
Site Survey 4 People				
Supervisor	1	\$95.00	13.50	\$1,282.50
Data Analyst	0	57.00	13.50	0.00
Field Support	3	28.50	13.50	1,154.25
SubTotal				\$2,436.75
Demobilization				
Supervisor	1	\$95.00	0.17	\$16.15
Data Analyst	0	57.00	0.17	0.00
Field Support	3	28.50	0.17	14.54
Subtotal				\$30.69
Total				\$14,055.46

Notes: Calibration time includes time spent in the Calibration Lanes as well as calibration before each data run.

Site Survey time includes daily setup/stop time, collecting data, breaks/lunch, downtime due to system maintenance, failure, and weather.

SECTION 6. COMPARISON OF RESULTS TO BLIND GRID DEMONSTRATION
(BASED ON FERROUS ONLY GROUND TRUTH)

6.1 SUMMARY OF RESULTS FROM BLIND GRID DEMONSTRATION

Table 10 shows the results from the Blind Grid survey conducted prior to surveying the Open Field during the same site visit in July of 2004. Due to the system utilizing magnetometer type sensors, all results presented in the following section have been based on performance scoring against the ferrous only ground truth anomalies. For more details on the Blind Grid survey results reference section 2.1.6.

**TABLE 10. SUMMARY OF BLIND GRID RESULTS FOR THE
MAG SCHONSTEDT/HAND HELD (FERROUS ONLY)**

Metric	Overall	Standard	Nonstandard	By Size			By Depth, m		
				Small	Medium	Large	< 0.3	0.3 to <1	>= 1
RESPONSE STAGE									
P _d	0.60	0.65	0.45	0.55	0.60	0.70	0.70	0.65	0.15
P _d Low 90% Conf	0.50	0.56	0.30	0.42	0.45	0.45	0.59	0.50	0.04
P _d Upper 90% Conf	0.67	0.76	0.59	0.68	0.70	0.88	0.83	0.76	0.36
P _{fp}	0.70	-	-	-	-	-	0.65	0.75	0.60
P _{fp} Low 90% Conf	0.62	-	-	-	-	-	0.56	0.63	0.25
P _{fp} Upper 90% Conf	0.75	-	-	-	-	-	0.75	0.83	0.89
P _{ba}	0.15	-	-	-	-	-	-	-	-
DISCRIMINATION STAGE									
P _d	N/A	N/A	N/A	N/A	N/A	N/A	N/A	N/A	N/A
P _d Low 90% Conf	N/A	N/A	N/A	N/A	N/A	N/A	N/A	N/A	N/A
P _d Upper 90% Conf	N/A	N/A	N/A	N/A	N/A	N/A	N/A	N/A	N/A
P _{fp}	N/A	-	-	-	-	-	N/A	N/A	N/A
P _{fp} Low 90% Conf	N/A	-	-	-	-	-	N/A	N/A	N/A
P _{fp} Upper 90% Conf	N/A	-	-	-	-	-	N/A	N/A	N/A
P _{ba}	N/A	-	-	-	-	-	-	-	-

6.2 COMPARISON OF ROC CURVES USING ALL ORDNANCE CATEGORIES

(Not applicable for this technology)

6.3 COMPARISON OF ROC CURVES USING ORDNANCE LARGER THAN 20 MM

(Not applicable for this technology)

6.4 STATISTICAL COMPARISONS

Statistical Chi-square significance tests were used to compare results between the Blind Grid and Open Field scenarios. The intent of the comparison is to determine if the feature introduced in each scenario has a degrading effect on the performance of the sensor system.

However, any modifications in the UXO sensor system during the test, like changes in the processing or changes in the selection of the operating threshold, will also contribute to performance differences.

The Chi-square test for comparison between ratios was used at a significance level of 0.05 to compare Blind Grid to Open Field with regard to P_d^{res} , P_d^{disc} , P_{fp}^{res} and P_{fp}^{disc} , Efficiency and Rejection Rate. These results are presented in Table 11. A detailed explanation and example of the Chi-square application is located in Appendix A.

TABLE 11. CHI-SQUARE RESULTS - BLIND GRID VERSUS OPEN FIELD

Metric	Small	Medium	Large	Overall
P_d^{res}	Not Significant	Not Significant	Not Significant	Not Significant
P_d^{disc}	N/A	N/A	N/A	N/A
P_{fp}^{res}	Not Significant	Not Significant	Not Significant	Not Significant
P_{fp}^{disc}	-	-	-	N/A
Efficiency	-	-	-	N/A
Rejection rate	-	-	-	N/A

SECTION 7. APPENDIXES

APPENDIX A. TERMS AND DEFINITIONS

GENERAL DEFINITIONS

Anomaly: Location of a system response deemed to warrant further investigation by the demonstrator for consideration as an emplaced ordnance item.

Detection: An anomaly location that is within R_{halo} of an emplaced ordnance item.

Emplaced Ordnance: An ordnance item buried by the government at a specified location in the test site.

Emplaced Clutter: A clutter item (i.e., non-ordnance item) buried by the government at a specified location in the test site.

R_{halo} : A pre-determined radius about the periphery of an emplaced item (clutter or ordnance) within which a location identified by the demonstrator as being of interest is considered to be a response from that item. If multiple declarations lie within R_{halo} of any item (clutter or ordnance), the declaration with the highest signal output within the R_{halo} will be utilized. For the purpose of this program, a circular halo 0.5 meters in radius will be placed around the center of the object for all clutter and ordnance items less than 0.6 meters in length. When ordnance items are longer than 0.6 meters, the halo becomes an ellipse where the minor axis remains 1 meter and the major axis is equal to the length of the ordnance plus 1 meter.

Small Ordnance: Caliber of ordnance less than or equal to 40-mm (includes 20-mm projectile, 40-mm projectile, submunitions BLU-26, BLU-63, and M42).

Medium Ordnance: Caliber of ordnance greater than 40-mm and less than or equal to 81 mm (includes 57-mm projectile, 60-mm mortar, 2.75 in. Rocket, MK118 Rockeye, 81-mm mortar).

Large Ordnance: Caliber of ordnance greater than 81-mm (includes 105-mm HEAT, 105-mm projectile, 155-mm projectile, 500-pound bomb).

Shallow: Items buried less than 0.3 meter below ground surface.

Medium: Items buried greater than or equal to 0.3 meter and less than 1 meter below ground surface.

Deep: Items buried greater than or equal to 1 meter below ground surface.

Response Stage Noise Level: The level that represents the point below which anomalies are not considered detectable. Demonstrators are required to provide the recommended noise level for the Blind Grid test area.

Discrimination Stage Threshold: The demonstrator selected threshold level that they believe provides optimum performance of the system by retaining all detectable ordnance and rejecting the maximum amount of clutter. This level defines the subset of anomalies the demonstrator would recommend digging based on discrimination.

Binomially Distributed Random Variable: A random variable of the type which has only two possible outcomes, say success and failure, is repeated for n independent trials with the probability p of success and the probability $1-p$ of failure being the same for each trial. The number of successes x observed in the n trials is an estimate of p and is considered to be a binomially distributed random variable.

RESPONSE AND DISCRIMINATION STAGE DATA

The scoring of the demonstrator's performance is conducted in two stages. These two stages are termed the RESPONSE STAGE and DISCRIMINATION STAGE. For both stages, the probability of detection (P_d) and the false alarms are reported as receiver operating characteristic (ROC) curves. False alarms are divided into those anomalies that correspond to emplaced clutter items, measuring the probability of false positive (P_{fp}) and those that do not correspond to any known item, termed background alarms.

The RESPONSE STAGE scoring evaluates the ability of the system to detect emplaced targets without regard to ability to discriminate ordnance from other anomalies. For the RESPONSE STAGE, the demonstrator provides the scoring committee with the location and signal strength of all anomalies that the demonstrator has deemed sufficient to warrant further investigation and/or processing as potential emplaced ordnance items. This list is generated with minimal processing (e.g., this list will include all signals above the system noise threshold). As such, it represents the most inclusive list of anomalies.

The DISCRIMINATION STAGE evaluates the demonstrator's ability to correctly identify ordnance as such, and to reject clutter. For the same locations as in the RESPONSE STAGE anomaly list, the DISCRIMINATION STAGE list contains the output of the algorithms applied in the discrimination-stage processing. This list is prioritized based on the demonstrator's determination that an anomaly location is likely to contain ordnance. Thus, higher output values are indicative of higher confidence that an ordnance item is present at the specified location. For electronic signal processing, priority ranking is based on algorithm output. For other systems, priority ranking is based on human judgment. The demonstrator also selects the threshold that the demonstrator believes will provide "optimum" system performance, (i.e., that retains all the detected ordnance and rejects the maximum amount of clutter).

Note: The two lists provided by the demonstrator contain identical numbers of potential target locations. They differ only in the priority ranking of the declarations.

RESPONSE STAGE DEFINITIONS

Response Stage Probability of Detection (P_d^{res}): $P_d^{\text{res}} = (\text{No. of response-stage detections}) / (\text{No. of emplaced ordnance in the test site})$.

Response Stage False Positive (fp^{res}): An anomaly location that is within R_{halo} of an emplaced clutter item.

Response Stage Probability of False Positive (P_{fp}^{res}): $P_{fp}^{\text{res}} = (\text{No. of response-stage false positives}) / (\text{No. of emplaced clutter items})$.

Response Stage Background Alarm (ba^{res}): An anomaly in a blind grid cell that contains neither emplaced ordnance nor an emplaced clutter item. An anomaly location in the open field or scenarios that is outside R_{halo} of any emplaced ordnance or emplaced clutter item.

Response Stage Probability of Background Alarm (P_{ba}^{res}): Blind Grid only: $P_{ba}^{\text{res}} = (\text{No. of response-stage background alarms}) / (\text{No. of empty grid locations})$.

Response Stage Background Alarm Rate (BAR^{res}): Open Field only: $BAR^{\text{res}} = (\text{No. of response-stage background alarms}) / (\text{arbitrary constant})$.

Note that the quantities P_d^{res} , P_{fp}^{res} , P_{ba}^{res} , and BAR^{res} are functions of t^{res} , the threshold applied to the response-stage signal strength. These quantities can therefore be written as $P_d^{\text{res}}(t^{\text{res}})$, $P_{fp}^{\text{res}}(t^{\text{res}})$, $P_{ba}^{\text{res}}(t^{\text{res}})$, and $BAR^{\text{res}}(t^{\text{res}})$.

DISCRIMINATION STAGE DEFINITIONS

Discrimination: The application of a signal processing algorithm or human judgment to response-stage data that discriminates ordnance from clutter. Discrimination should identify anomalies that the demonstrator has high confidence correspond to ordnance, as well as those that the demonstrator has high confidence correspond to nonordnance or background returns. The former should be ranked with highest priority and the latter with lowest.

Discrimination Stage Probability of Detection (P_d^{disc}): $P_d^{\text{disc}} = (\text{No. of discrimination-stage detections}) / (\text{No. of emplaced ordnance in the test site})$.

Discrimination Stage False Positive (fp^{disc}): An anomaly location that is within R_{halo} of an emplaced clutter item.

Discrimination Stage Probability of False Positive (P_{fp}^{disc}): $P_{fp}^{\text{disc}} = (\text{No. of discrimination stage false positives}) / (\text{No. of emplaced clutter items})$.

Discrimination Stage Background Alarm (ba^{disc}): An anomaly in a blind grid cell that contains neither emplaced ordnance nor an emplaced clutter item. An anomaly location in the open field or scenarios that is outside R_{halo} of any emplaced ordnance or emplaced clutter item.

Discrimination Stage Probability of Background Alarm (P_{ba}^{disc}): $P_{ba}^{disc} = (\text{No. of discrimination-stage background alarms})/(\text{No. of empty grid locations})$.

Discrimination Stage Background Alarm Rate (BAR^{disc}): $BAR^{disc} = (\text{No. of discrimination-stage background alarms})/(\text{arbitrary constant})$.

Note that the quantities P_d^{disc} , P_{fp}^{disc} , P_{ba}^{disc} , and BAR^{disc} are functions of t^{disc} , the threshold applied to the discrimination-stage signal strength. These quantities can therefore be written as $P_d^{disc}(t^{disc})$, $P_{fp}^{disc}(t^{disc})$, $P_{ba}^{disc}(t^{disc})$, and $BAR^{disc}(t^{disc})$.

RECEIVER-OPERATING CHARACTERISTIC (ROC) CURVES

ROC curves at both the response and discrimination stages can be constructed based on the above definitions. The ROC curves plot the relationship between P_d versus P_{fp} and P_d versus BAR or P_{ba} as the threshold applied to the signal strength is varied from its minimum (t_{min}) to its maximum (t_{max}) value.¹ Figure A-1 shows how P_d versus P_{fp} and P_d versus BAR are combined into ROC curves. Note that the “res” and “disc” superscripts have been suppressed from all the variables for clarity.

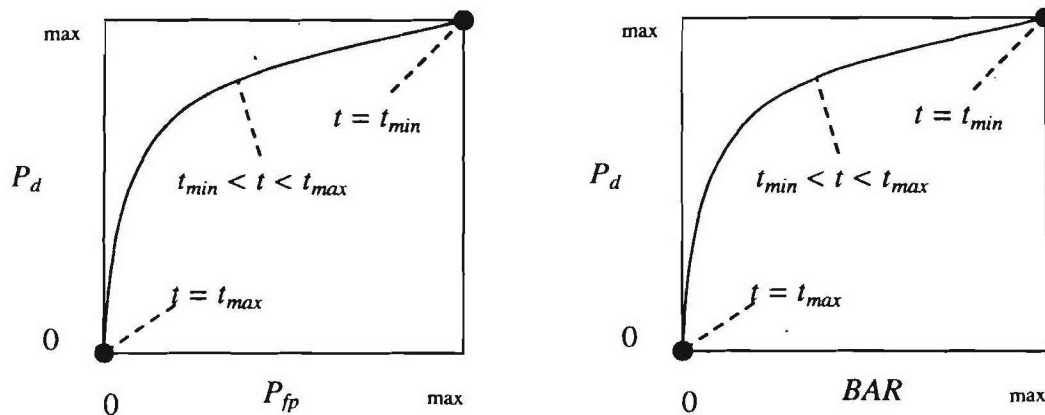


Figure A-1. ROC curves for open field testing. Each curve applies to both the response and discrimination stages.

¹Strictly speaking, ROC curves plot the P_d versus P_{ba} over a pre-determined and fixed number of detection opportunities (some of the opportunities are located over ordnance and others are located over clutter or blank spots). In an open field scenario, each system suppresses its signal strength reports until some bare-minimum signal response is received by the system. Consequently, the open field ROC curves do not have information from low signal-output locations, and, furthermore, different contractors report their signals over a different set of locations on the ground. These ROC curves are thus not true to the strict definition of ROC curves as defined in textbooks on detection theory. Note, however, that the ROC curves obtained in the Blind Grid test sites are true ROC curves.

METRICS TO CHARACTERIZE THE DISCRIMINATION STAGE

The demonstrator is also scored on efficiency and rejection ratio, which measure the effectiveness of the discrimination stage processing. The goal of discrimination is to retain the greatest number of ordnance detections from the anomaly list, while rejecting the maximum number of anomalies arising from nonordnance items. The efficiency measures the amount of detected ordnance retained by the discrimination, while the rejection ratio measures the fraction of false alarms rejected. Both measures are defined relative to the entire response list, i.e., the maximum ordnance detectable by the sensor and its accompanying false positive rate or background alarm rate.

Efficiency (E): $E = P_d^{disc}(t^{disc})/P_d^{res}(t_{min}^{res})$; Measures (at a threshold of interest), the degree to which the maximum theoretical detection performance of the sensor system (as determined by the response stage t_{min}) is preserved after application of discrimination techniques. Efficiency is a number between 0 and 1. An efficiency of 1 implies that all of the ordnance initially detected in the response stage was retained at the specified threshold in the discrimination stage, t^{disc} .

False Positive Rejection Rate (R_{fp}): $R_{fp} = 1 - [P_{fp}^{disc}(t^{disc})/P_{fp}^{res}(t_{min}^{res})]$; Measures (at a threshold of interest), the degree to which the sensor system's false positive performance is improved over the maximum false positive performance (as determined by the response stage t_{min}). The rejection rate is a number between 0 and 1. A rejection rate of 1 implies that all emplaced clutter initially detected in the response stage were correctly rejected at the specified threshold in the discrimination stage.

Background Alarm Rejection Rate (R_{ba}):

Blind Grid: $R_{ba} = 1 - [P_{ba}^{disc}(t^{disc})/P_{ba}^{res}(t_{min}^{res})]$.

Open Field: $R_{ba} = 1 - [BAR^{disc}(t^{disc})/BAR^{res}(t_{min}^{res})]$.

Measures the degree to which the discrimination stage correctly rejects background alarms initially detected in the response stage. The rejection rate is a number between 0 and 1. A rejection rate of 1 implies that all background alarms initially detected in the response stage were rejected at the specified threshold in the discrimination stage.

CHI-SQUARE COMPARISON EXPLANATION:

The Chi-square test for differences in probabilities (or 2 x 2 contingency table) is used to analyze two samples drawn from two different populations to see if both populations have the same or different proportions of elements in a certain category. More specifically, two random samples are drawn, one from each population, to test the null hypothesis that the probability of event A (some specified event) is the same for both populations (ref 3).

A 2 x 2 contingency table is used in the Standardized UXO Technology Demonstration Site Program to determine if there is reason to believe that the proportion of ordnance correctly detected/discriminated by demonstrator X's system is significantly degraded by the more challenging terrain feature introduced. The test statistic of the 2 x 2 contingency table is the

Chi-square distribution with one degree of freedom. Since an association between the more challenging terrain feature and relatively degraded performance is sought, a one-sided test is performed. A significance level of 0.05 is chosen which sets a critical decision limit of 2.71 from the Chi-square distribution with one degree of freedom. It is a critical decision limit because if the test statistic calculated from the data exceeds this value, the two proportions tested will be considered significantly different. If the test statistic calculated from the data is less than this value, the two proportions tested will be considered not significantly different.

An exception must be applied when either a 0 or 100 percent success rate occurs in the sample data. The Chi-square test cannot be used in these instances. Instead, Fischer's test is used and the critical decision limit for one-sided tests is the chosen significance level, which in this case is 0.05. With Fischer's test, if the test statistic is less than the critical value, the proportions are considered to be significantly different.

Standardized UXO Technology Demonstration Site examples, where blind grid results are compared to those from the open field and open field results are compared to those from one of the scenarios, follow. It should be noted that a significant result does not prove a cause and effect relationship exists between the two populations of interest; however, it does serve as a tool to indicate that one data set has experienced a degradation in system performance at a large enough level than can be accounted for merely by chance or random variation. Note also that a result that is not significant indicates that there is not enough evidence to declare that anything more than chance or random variation within the same population is at work between the two data sets being compared.

Demonstrator X achieves the following overall results after surveying each of the three progressively more difficult areas using the same system (results indicate the number of ordnance detected divided by the number of ordnance emplaced):

	Blind Grid	Open Field	Moguls
P_d^{res}	100/100 = 1.0	8/10 = .80	20/33 = .61
P_d^{disc}	80/100 = 0.80	6/10 = .60	8/33 = .24

P_d^{res} : BLIND GRID versus OPEN FIELD. Using the example data above to compare probabilities of detection in the response stage, all 100 ordnance out of 100 emplaced ordnance items were detected in the blind grid while 8 ordnance out of 10 emplaced were detected in the open field. Fischer's test must be used since a 100 percent success rate occurs in the data. Fischer's test uses the four input values to calculate a test statistic of 0.0075 that is compared against the critical value of 0.05. Since the test statistic is less than the critical value, the smaller response stage detection rate (0.80) is considered to be significantly less at the 0.05 level of significance. While a significant result does not prove a cause and effect relationship exists between the change in survey area and degradation in performance, it does indicate that the detection ability of demonstrator X's system seems to have been degraded in the open field relative to results from the blind grid using the same system.

P_d^{disc} : BLIND GRID versus OPEN FIELD. Using the example data above to compare probabilities of detection in the discrimination stage, 80 out of 100 emplaced ordnance items were correctly discriminated as ordnance in blind grid testing while 6 ordnance out of 10 emplaced were correctly discriminated as such in open field-testing. Those four values are used to calculate a test statistic of 1.12. Since the test statistic is less than the critical value of 2.71, the two discrimination stage detection rates are considered to be not significantly different at the 0.05 level of significance.

P_d^{res} : OPEN FIELD versus MOGULS. Using the example data above to compare probabilities of detection in the response stage, 8 out of 10 and 20 out of 33 are used to calculate a test statistic of 0.56. Since the test statistic is less than the critical value of 2.71, the two response stage detection rates are considered to be not significantly different at the 0.05 level of significance.

P_d^{disc} : OPEN FIELD versus MOGULS. Using the example data above to compare probabilities of detection in the discrimination stage, 6 out of 10 and 8 out of 33 are used to calculate a test statistic of 2.98. Since the test statistic is greater than the critical value of 2.71, the smaller discrimination stage detection rate is considered to be significantly less at the 0.05 level of significance. While a significant result does not prove a cause and effect relationship exists between the change in survey area and degradation in performance, it does indicate that the ability of demonstrator X to correctly discriminate seems to have been degraded by the mogul terrain relative to results from the flat open field using the same system.

APPENDIX B. DAILY WEATHER LOGS

TABLE B-1. WEATHER LOG

Date & Time	Average Temp (°F)	Maximum Temp (°F)	Minimum Temp (°F)	Relative Humidity (%)	Total Precip (in)
06/14/2004 00:00:00	67.2	67.6	66.6	77.77	0
06/14/2004 01:00:00	66.9	67.2	66.5	80.6	0
06/14/2004 02:00:00	66.9	67.4	66.5	81.8	0
06/14/2004 03:00:00	67.1	67.5	66.8	83.2	0
06/14/2004 04:00:00	66.4	67.1	65.9	88.5	0
06/14/2004 05:00:00	66.3	66.9	65.8	93.7	0
06/14/2004 06:00:00	69.4	72.4	66.2	93.8	0
06/14/2004 07:00:00	72.8	73.7	71.9	87.3	0
06/14/2004 08:00:00	73.2	73.7	72.9	86.3	0
06/14/2004 09:00:00	73.9	74.9	73.1	85.8	0
06/14/2004 10:00:00	75.8	77.4	74	82.2	0
06/14/2004 11:00:00	77.4	78.2	76.8	78.82	0
06/14/2004 12:00:00	78.6	79.5	77.1	77.58	0
06/14/2004 13:00:00	80.1	81.7	78.4	75.74	0
06/14/2004 14:00:00	82.4	83.6	80.5	72.69	0
06/14/2004 15:00:00	83.9	85.2	83	70.52	0
06/14/2004 16:00:00	84	85.2	83.2	70.64	0

Date & Time	Average Temp (°F)	Maximum Temp (°F)	Minimum Temp (°F)	Relative Humidity (%)	Total Precip (in)
06/14/2004 17:00:00	83.3	85.2	81.5	72.5	0
06/14/2004 18:00:00	81	82	80.1	76.21	0
06/14/2004 19:00:00	80	80.7	79.4	78.29	0
06/14/2004 20:00:00	73.2	79.9	69.8	92.2	1.85
06/14/2004 21:00:00	70.3	70.8	69.8	100	0
06/14/2004 22:00:00	70.9	71.7	70.2	100	0.17
06/14/2004 23:00:00	70.8	71.2	70.1	100	0
06/15/2004 00:00:00	71	71.7	70.2	100	0
06/15/2004 01:00:00	72	72.5	71.2	100	0
06/15/2004 02:00:00	72.3	72.7	71.5	100	0
06/15/2004 03:00:00	73.2	73.8	72.1	100	0
06/15/2004 04:00:00	73.1	73.7	72.6	100	0
06/15/2004 05:00:00	73.2	73.7	72.7	100	0
06/15/2004 06:00:00	73.9	74.8	73.1	99.4	0
06/15/2004 07:00:00	75.3	76.3	74.4	96.8	0
06/15/2004 08:00:00	76.6	77.3	75.8	93.7	0
06/15/2004 09:00:00	78.6	80.2	76.4	89.4	0
06/15/2004 10:00:00	79.9	80.7	78.9	86.6	0
06/15/2004 11:00:00	81.9	83.2	80.3	82.5	0

Date & Time	Average Temp (°F)	Maximum Temp (°F)	Minimum Temp (°F)	Relative Humidity (%)	Total Precip (in)
06/15/2004 12:00:00	84	85.1	82.9	78.82	0
06/15/2004 13:00:00	85.4	86.9	84.4	75.77	0
06/15/2004 14:00:00	87.2	88.1	86.1	70.49	0
06/15/2004 15:00:00	87.9	88.6	87.2	69.52	0
06/15/2004 16:00:00	87	87.7	86.3	72.75	0
06/15/2004 17:00:00	84.9	87.1	83.3	76.41	0
06/15/2004 18:00:00	83.6	85	82.5	78.85	0
06/15/2004 19:00:00	82.5	83	81.5	78	0
06/15/2004 20:00:00	80.9	82.1	79.7	81.9	0
06/15/2004 21:00:00	79	80.3	78.1	88.4	0
06/15/2004 22:00:00	77.8	78.6	77.4	91.5	0
06/15/2004 23:00:00	76.8	78	75.8	91.8	0
06/16/2004 00:00:00	75.1	76.3	73.7	95.9	0
06/16/2004 01:00:00	74.4	75.6	73.3	96.8	0
06/16/2004 02:00:00	73.7	74.4	72.8	98.3	0
06/16/2004 03:00:00	73.9	75.1	72.9	96.1	0
06/16/2004 04:00:00	73.1	73.7	72.7	98	0
06/16/2004 05:00:00	72.7	73.2	72	97	0
06/16/2004 06:00:00	73.1	75	72.1	97.7	0

Date & Time	Average Temp (°F)	Maximum Temp (°F)	Minimum Temp (°F)	Relative Humidity (%)	Total Precip (in)
06/16/2004 07:00:00	76.1	77.1	74.7	92.2	0
06/16/2004 08:00:00	77	77.5	76.6	92.1	0
06/16/2004 09:00:00	77.8	78.5	77.1	91.8	0
06/16/2004 10:00:00	78.2	78.7	77.8	91	0
06/16/2004 11:00:00	79.4	80.6	78	87.9	0
06/16/2004 12:00:00	80.7	82	80.1	84.2	0
06/16/2004 13:00:00	82.7	83.4	81.5	78.53	0
06/16/2004 14:00:00	82.6	83.2	82	78.06	0
06/16/2004 15:00:00	83.9	85.2	82.6	74.85	0
06/16/2004 16:00:00	85.2	86.7	84	69.76	0
06/16/2004 17:00:00	84.2	85.1	83.2	73.41	0
06/16/2004 18:00:00	81.9	84.3	80.1	81.2	0
06/16/2004 19:00:00	79.4	80.6	77.7	88.2	0
06/16/2004 20:00:00	77.2	78.3	76.3	93.9	0
06/16/2004 21:00:00	75.9	76.8	75.1	96.6	0
06/16/2004 22:00:00	74.8	75.5	73.9	98.3	0
06/16/2004 23:00:00	74.7	75.4	73.9	99.6	0
06/17/2004 00:00:00	75.3	75.8	74.8	99.6	0
06/17/2004 01:00:00	75.5	76	75	99.5	0

Date & Time	Average Temp (°F)	Maximum Temp (°F)	Minimum Temp (°F)	Relative Humidity (%)	Total Precip (in)
06/17/2004 02:00:00	75.7	76.2	75.2	99.6	0
06/17/2004 03:00:00	75.9	76.3	75.6	99.8	0
06/17/2004 04:00:00	75.9	76.3	75.6	100	0
06/17/2004 05:00:00	76.1	76.6	75.8	100	0
06/17/2004 06:00:00	76.5	77.3	76.1	100	0
06/17/2004 07:00:00	77.7	78.6	76.8	97.9	0
06/17/2004 08:00:00	79.3	79.8	78.2	91.4	0
06/17/2004 09:00:00	80.6	81.9	79.5	86.9	0
06/17/2004 10:00:00	82.6	83.8	81.3	81.8	0
06/17/2004 11:00:00	83.9	85.1	83	78.97	0
06/17/2004 12:00:00	85.6	86.8	84.1	76.97	0
06/17/2004 13:00:00	86.5	88	84.7	76.58	0
06/17/2004 14:00:00	87.4	88.7	85.9	73.27	0
06/17/2004 15:00:00	85	88.3	82.2	79.42	0.01
06/17/2004 16:00:00	79.4	83.6	75.1	92.4	0.1
06/17/2004 17:00:00	80.6	81.9	78.4	92.7	0
06/17/2004 18:00:00	78.9	79.5	78.3	88.9	0
06/17/2004 19:00:00	76.8	79.1	75.5	90.4	0
06/17/2004 20:00:00	75.5	76.2	75	93.5	0

Date & Time	Average Temp (°F)	Maximum Temp (°F)	Minimum Temp (°F)	Relative Humidity (%)	Total Precip (in)
06/17/2004 21:00:00	75.1	76	74.5	97.9	0.07
06/17/2004 22:00:00	74.5	75.1	74	99.1	0
06/17/2004 23:00:00	74.4	74.9	73.7	99.4	0
06/18/2004 00:00:00	73.6	74	73	99.8	0
06/18/2004 01:00:00	73	73.7	72.1	100	0
06/18/2004 02:00:00	73.9	75.1	72.6	99.9	0
06/18/2004 03:00:00	74.9	75.3	74.4	99.5	0
06/18/2004 04:00:00	74.2	74.9	73.2	99.9	0
06/18/2004 05:00:00	73.4	73.9	72.7	100	0
06/18/2004 06:00:00	74.2	75.6	73.2	98.9	0
06/18/2004 07:00:00	75.9	76.3	75.1	94.3	0
06/18/2004 08:00:00	76.7	77.7	75.5	92.5	0
06/18/2004 09:00:00	80.5	83	77.5	82.3	0
06/18/2004 10:00:00	83.1	84.8	82.1	73.33	0
06/18/2004 11:00:00	85.2	86.3	84.2	68.18	0
06/18/2004 12:00:00	87.3	88.7	85.5	64.59	0
06/18/2004 13:00:00	88.2	89.3	87	61.76	0
06/18/2004 14:00:00	89.5	90.7	87.5	59.42	0
06/18/2004 15:00:00	89	90.7	87.6	65.78	0

Date & Time	Average Temp (°F)	Maximum Temp (°F)	Minimum Temp (°F)	Relative Humidity (%)	Total Precip (in)
06/18/2004 16:00:00	88.8	89.5	88.2	65.74	0
06/18/2004 17:00:00	87.7	89.2	86.3	67.75	0
06/18/2004 18:00:00	86.4	88.1	84.5	72.47	0
06/18/2004 19:00:00	83.9	85	82.7	77.62	0
06/18/2004 20:00:00	80.7	83	79.5	91.1	0
06/18/2004 21:00:00	78.6	79.7	77.2	95.2	0
06/18/2004 22:00:00	76.9	77.7	75.9	98.5	0
06/18/2004 23:00:00	76.6	77.3	75.7	99	0
06/19/2004 00:00:00	74.9	76	74.2	99.6	0
06/19/2004 01:00:00	74.9	75.5	74.2	99.8	0
06/19/2004 02:00:00	74.9	75.6	74.3	89.3	0
06/19/2004 03:00:00	74.9	76.1	73.7	82.9	0
06/19/2004 04:00:00	75	75.8	74	76.03	0
06/19/2004 05:00:00	73.9	74.9	72.7	75.79	0
06/19/2004 06:00:00	73.1	73.7	72.7	77.58	0
06/19/2004 07:00:00	74	74.9	73.2	74.54	0
06/19/2004 08:00:00	75.4	76.3	74.5	70.92	0
06/19/2004 09:00:00	77	78.2	76	64.99	0
06/19/2004 10:00:00	78.1	78.9	77.2	57.07	0

Date & Time	Average Temp (°F)	Maximum Temp (°F)	Minimum Temp (°F)	Relative Humidity (%)	Total Precip (in)
06/19/2004 11:00:00	80	81.2	78.1	50.11	0
06/19/2004 12:00:00	80.9	82	79.9	48.06	0
06/19/2004 13:00:00	81.9	82.9	80.1	49.74	0
06/19/2004 14:00:00	81.9	83.1	81	51.08	0
06/19/2004 15:00:00	80.1	82.5	78.5	57.58	0
06/19/2004 16:00:00	79.4	80.5	78.4	61.63	0
06/19/2004 17:00:00	81.1	82	79.6	57.19	0
06/19/2004 18:00:00	80.7	81.7	79.5	54.59	0
06/19/2004 19:00:00	78.9	80	77.6	59.91	0
06/19/2004 20:00:00	76	77.7	74.3	64.53	0
06/19/2004 21:00:00	73.1	74.9	71.5	59.41	0
06/19/2004 22:00:00	71.7	72.5	71	52.03	0
06/19/2004 23:00:00	69.8	71.7	68.3	51.63	0
06/20/2004 00:00:00	67.3	69	65.5	50.29	0
06/20/2004 01:00:00	65.3	66.3	63.8	51.44	0
06/20/2004 02:00:00	63.6	64.8	62.4	54.52	0
06/20/2004 03:00:00	62	62.8	60.9	57.6	0
06/20/2004 04:00:00	59.8	61.3	58.3	62.44	0
06/20/2004 05:00:00	56.5	58.5	54.5	72.25	0

Date & Time	Average Temp (°F)	Maximum Temp (°F)	Minimum Temp (°F)	Relative Humidity (%)	Total Precip (in)
06/20/2004 06:00:00	56.8	59	55.7	77.01	0
06/20/2004 07:00:00	60.3	62.4	58.6	66.05	0
06/20/2004 08:00:00	62.7	64.2	61.3	59.57	0
06/20/2004 09:00:00	64.2	65.5	63.1	56.01	0
06/20/2004 10:00:00	65.9	67.6	64.4	53.45	0
06/20/2004 11:00:00	67.7	69	66.5	49.93	0
06/20/2004 12:00:00	68.9	70	67.8	45.85	0
06/20/2004 13:00:00	70.6	71.7	69.6	45.35	0
06/20/2004 14:00:00	71.9	73.1	71.1	42.42	0
06/20/2004 15:00:00	73.3	74.4	71.8	41.09	0
06/20/2004 16:00:00	73.5	75	72.2	45.98	0
06/20/2004 17:00:00	72.7	73.3	72	50.78	0
06/20/2004 18:00:00	72.7	73.4	71.9	51.08	0
06/20/2004 19:00:00	71.1	72.1	69.4	53.47	0
06/20/2004 20:00:00	67.4	70	64.1	63.07	0
06/20/2004 21:00:00	63.1	64.5	60.6	76.34	0
06/20/2004 22:00:00	59.7	61.2	59	88.9	0
06/20/2004 23:00:00	58.5	59.4	57.3	92.3	0
06/21/2004 00:00:00	57	57.9	56.2	96.3	0

Date & Time	Average Temp (°F)	Maximum Temp (°F)	Minimum Temp (°F)	Relative Humidity (%)	Total Precip (in)
06/21/2004 01:00:00	56	56.8	54.6	98.2	0
06/21/2004 02:00:00	55	56	53.9	99.4	0
06/21/2004 03:00:00	54	54.6	53.4	100	0
06/21/2004 04:00:00	54.1	54.7	53.5	100	0
06/21/2004 05:00:00	54.1	54.8	53.3	100	0
06/21/2004 06:00:00	56.2	59	53.5	99.5	0
06/21/2004 07:00:00	62.8	65.7	58.6	87.9	0
06/21/2004 08:00:00	68.7	70.8	65.2	70.21	0
06/21/2004 09:00:00	71.5	72.9	70	72.26	0
06/21/2004 10:00:00	73.2	74.9	71.2	61.88	0
06/21/2004 11:00:00	74.6	76.3	73.8	54.52	0
06/21/2004 12:00:00	75.5	76.7	74.2	49.3	0
06/21/2004 13:00:00	77.1	78.1	76.2	44.27	0
06/21/2004 14:00:00	77.9	79.1	76.9	47.03	0
06/21/2004 15:00:00	78	78.9	77.2	53.29	0
06/21/2004 16:00:00	78.3	78.9	77.5	55.27	0
06/21/2004 17:00:00	77.9	78.8	77.3	56.98	0
06/21/2004 18:00:00	77.2	77.9	76.3	61.32	0
06/21/2004 19:00:00	75.7	76.5	74.6	64.78	0

Date & Time	Average Temp (°F)	Maximum Temp (°F)	Minimum Temp (°F)	Relative Humidity (%)	Total Precip (in)
06/21/2004 20:00:00	73.6	75	72.7	69.06	0
06/21/2004 21:00:00	73.5	73.9	73	68.37	0
06/21/2004 22:00:00	73.4	74.5	72.6	71.87	0
06/21/2004 23:00:00	73.2	74.3	71.5	75.78	0
06/22/2004 00:00:00	70.7	71.9	69.6	81.9	0
06/22/2004 01:00:00	68.9	70	68.2	87.6	0
06/22/2004 02:00:00	68.9	69.4	68.2	88.2	0
06/22/2004 03:00:00	69	73.1	67.6	87.5	0
06/22/2004 04:00:00	73.7	74.2	73	75.15	0
06/22/2004 05:00:00	73.6	74	73	74.95	0
06/22/2004 06:00:00	73.3	74	72.9	74.67	0
06/22/2004 07:00:00	74.7	75.6	73.7	71.38	0
06/22/2004 08:00:00	76	77.3	75	67.23	0
06/22/2004 09:00:00	76.4	77.3	75.6	68.5	0
06/22/2004 10:00:00	77.6	79.2	76.1	68.89	0
06/22/2004 11:00:00	78.9	80.3	77.5	69.4	0
06/22/2004 12:00:00	80.2	81.8	79.4	69.91	0
06/22/2004 13:00:00	81.1	82.7	80	68.25	0
06/22/2004 14:00:00	83	83.8	82.1	66.24	0

Date & Time	Average Temp (°F)	Maximum Temp (°F)	Minimum Temp (°F)	Relative Humidity (%)	Total Precip (in)
06/22/2004 15:00:00	84.1	86.1	82.7	65.96	0
06/22/2004 16:00:00	83.4	84.9	82.5	68.75	0
06/22/2004 17:00:00	82.2	82.9	80.5	73.26	0
06/22/2004 18:00:00	78.5	81.1	72.4	75.28	0.1
06/22/2004 19:00:00	71.8	72.6	70.6	95.4	0.14
06/22/2004 20:00:00	70.8	71.9	69.9	98.2	0
06/22/2004 21:00:00	69.8	70.4	69.3	99.9	0
06/22/2004 22:00:00	69.8	70.5	69	100	0
06/22/2004 23:00:00	69.9	71	68.8	100	0
06/23/2004 00:00:00	70.2	71.3	69.4	100	0
06/23/2004 01:00:00	70.8	71.9	69.6	100	0
06/23/2004 02:00:00	71	71.5	70.2	100	0
06/23/2004 03:00:00	71.3	71.8	70.8	100	0
06/23/2004 04:00:00	71.5	71.8	71	97.5	0
06/23/2004 05:00:00	70.8	71.3	70.2	96	0
06/23/2004 06:00:00	70.5	71.3	70	95.2	0
06/23/2004 07:00:00	71.7	73	70.8	89.1	0.01
06/23/2004 08:00:00	72.9	73.7	72.1	79.54	0
06/23/2004 09:00:00	72.5	73.5	71.9	76.87	0

Date & Time	Average Temp (°F)	Maximum Temp (°F)	Minimum Temp (°F)	Relative Humidity (%)	Total Precip (in)
06/23/2004 10:00:00	74.9	76.9	73.1	65.72	0
06/23/2004 11:00:00	76.2	76.8	75.6	60.85	0
06/23/2004 12:00:00	76.7	78.2	75.7	60.51	0
06/23/2004 13:00:00	77.4	78.3	76.5	58.85	0
06/23/2004 14:00:00	77.9	78.7	77.2	59.2	0
06/23/2004 15:00:00	76.9	77.8	75.9	61.33	0
06/23/2004 16:00:00	76.9	78.4	76.2	62.38	0
06/23/2004 17:00:00	77.7	78.4	76.8	57.65	0
06/23/2004 18:00:00	77.6	78.2	76.5	60	0
06/23/2004 19:00:00	75.8	76.9	74.4	71.75	0
06/23/2004 20:00:00	72.8	74.6	70.7	82.8	0
06/23/2004 21:00:00	69.5	70.9	67.5	91.9	0
06/23/2004 22:00:00	66.9	67.7	65.8	97.7	0
06/23/2004 23:00:00	66.4	67	65.8	99.2	0
06/24/2004 00:00:00	65.8	66.3	65.4	99.9	0
06/24/2004 01:00:00	64.9	65.6	64.2	100	0
06/24/2004 02:00:00	64	65.1	62.7	100	0
06/24/2004 03:00:00	62.9	63.7	62.4	100	0
06/24/2004 04:00:00	62.3	62.8	61.6	100	0

Date & Time	Average Temp (°F)	Maximum Temp (°F)	Minimum Temp (°F)	Relative Humidity (%)	Total Precip (in)
06/24/2004 05:00:00	61.5	62.4	60.7	100	0
06/24/2004 06:00:00	62.3	63.8	60.8	100	0
06/24/2004 07:00:00	67.1	70.5	63.4	99.9	0
06/24/2004 08:00:00	72.4	73.8	70.4	89.8	0
06/24/2004 09:00:00	75.7	77.4	73.6	81	0.02
06/24/2004 10:00:00	78.6	80	77.3	75.18	0
06/24/2004 11:00:00	80.3	81.4	79	68.22	0
06/24/2004 12:00:00	81.4	82.4	80.3	62.91	0
06/24/2004 13:00:00	83.1	83.9	81.8	54.11	0
06/24/2004 14:00:00	84.3	85	83.3	50.54	0
06/24/2004 15:00:00	84.7	85.2	84.1	46.56	0
06/24/2004 16:00:00	84.4	85.2	83.7	49.49	0
06/24/2004 17:00:00	83.6	84.1	83.1	51.02	0
06/24/2004 18:00:00	82.2	83.3	81.4	54.35	0
06/24/2004 19:00:00	80.2	81.6	78.5	60.7	0
06/24/2004 20:00:00	77.5	79.1	75.2	67.35	0
06/24/2004 21:00:00	73.6	76.2	72.1	79.11	0
06/24/2004 22:00:00	72.8	73.9	71.3	82.4	0
06/24/2004 23:00:00	70.8	71.7	69.8	88.7	0

Date & Time	Average Temp (°F)	Maximum Temp (°F)	Minimum Temp (°F)	Relative Humidity (%)	Total Precip (in)
06/25/2004 00:00:00	70.3	71.8	69.4	89.8	0
06/25/2004 01:00:00	69	69.9	68.3	93.5	0
06/25/2004 02:00:00	68.4	69.1	67.7	95.5	0
06/25/2004 03:00:00	67.8	68.3	67.3	98.3	0
06/25/2004 04:00:00	67.7	68.6	67	99.3	0
06/25/2004 05:00:00	68	68.5	67.3	99.4	0
06/25/2004 06:00:00	68.6	70.8	67.4	100	0
06/25/2004 07:00:00	73	75.1	70.5	94	0.01
06/25/2004 08:00:00	77.1	77.8	74.8	84.1	0
06/25/2004 09:00:00	77.9	78.9	77	82.3	0
06/25/2004 10:00:00	78.6	79.7	77.6	83.2	0
06/25/2004 11:00:00	80.8	81.8	79.5	78.08	0
06/25/2004 12:00:00	80.8	82.4	79.9	81.1	0
06/25/2004 13:00:00	82.9	84.3	81.5	76.88	0
06/25/2004 14:00:00	83.1	83.8	82.5	76.67	0
06/25/2004 15:00:00	84	85	83.1	70.26	0
06/25/2004 16:00:00	83.4	84.3	82.5	72.37	0
06/25/2004 17:00:00	77.7	82.8	72.1	78.4	0
06/25/2004 18:00:00	70	72.3	69	94.3	0

Date & Time	Average Temp (°F)	Maximum Temp (°F)	Minimum Temp (°F)	Relative Humidity (%)	Total Precip (in)
06/25/2004 19:00:00	69.8	70.8	69	97.5	0
06/25/2004 20:00:00	70.6	71.1	70.3	96.4	0
06/25/2004 21:00:00	70	70.8	69.4	98.1	0
06/25/2004 22:00:00	69.9	70.4	69.4	99.5	0
06/25/2004 23:00:00	69.6	70.2	69	99.3	0
06/26/2004 00:00:00	69.5	70	69	100	0
06/26/2004 01:00:00	69.2	69.6	68.9	100	0
06/26/2004 02:00:00	69.3	69.6	68.8	100	0
06/26/2004 03:00:00	69.2	69.8	68.7	100	0
06/26/2004 04:00:00	68.7	69.4	68	100	0
06/26/2004 05:00:00	68.2	68.6	67.7	100	0
06/26/2004 06:00:00	68.8	69.4	68.2	100	0
06/26/2004 07:00:00	69.7	71.1	69	100	0.01
06/26/2004 08:00:00	72.5	73.3	70.7	95.5	0
06/26/2004 09:00:00	74	75.2	72.7	86.3	0
06/26/2004 10:00:00	75.6	76.9	74.4	79.59	0
06/26/2004 11:00:00	77	78.1	76.2	75.19	0
06/26/2004 12:00:00	78	78.7	77.3	69.48	0
06/26/2004 13:00:00	78.6	79.5	77.6	67.09	0

Date & Time	Average Temp (°F)	Maximum Temp (°F)	Minimum Temp (°F)	Relative Humidity (%)	Total Precip (in)
06/26/2004 14:00:00	80	82.3	77.7	63.7	0
06/26/2004 15:00:00	80.3	82.7	78.8	57.93	0
06/26/2004 16:00:00	81.1	82	80	45.06	0
06/26/2004 17:00:00	80.3	81.2	79.4	39.62	0
06/26/2004 18:00:00	78.7	80	77.6	38.02	0
06/26/2004 19:00:00	76.6	78.1	74.9	40.65	0
06/26/2004 20:00:00	73.1	75.1	71.2	46.97	0
06/26/2004 21:00:00	68.3	71.5	65.1	60.11	0
06/26/2004 22:00:00	65.2	66.3	64.3	68.34	0
06/26/2004 23:00:00	63.7	65.2	62.7	71.14	0
06/27/2004 00:00:00	63.4	64.9	60.6	69.32	0
06/27/2004 01:00:00	61.5	63.2	59.5	74.63	0
06/27/2004 02:00:00	58.9	60.9	56.9	81.2	0
06/27/2004 03:00:00	56.2	57.7	54.8	92.1	0
06/27/2004 04:00:00	54.8	55.7	53.8	95.6	0
06/27/2004 05:00:00	53.7	54.6	53.2	98.4	0
06/27/2004 06:00:00	54.9	57	53.4	96.2	0
06/27/2004 07:00:00	61.7	65.9	56.8	83.3	0
06/27/2004 08:00:00	68	70.6	65.5	64.91	0

Date & Time	Average Temp (°F)	Maximum Temp (°F)	Minimum Temp (°F)	Relative Humidity (%)	Total Precip (in)
06/27/2004 09:00:00	71.9	73.5	70.1	49.27	0
06/27/2004 10:00:00	73.9	75.3	72.9	45.04	0
06/27/2004 11:00:00	75.8	77	74.5	45.89	0
06/27/2004 12:00:00	76.6	77.6	75.3	46.85	0
06/27/2004 13:00:00	78	79.3	76.3	48.53	0
06/27/2004 14:00:00	79.6	81.1	78	39.6	0
06/27/2004 15:00:00	80.5	81.7	79.4	37.7	0
06/27/2004 16:00:00	80.5	82.5	78.2	39.48	0
06/27/2004 17:00:00	79.1	80.5	78.1	39.21	0
06/27/2004 18:00:00	79.3	80.8	77.7	38.93	0
06/27/2004 19:00:00	77.8	79.2	76.2	43.44	0
06/27/2004 20:00:00	73.9	76.3	70.6	55.21	0
06/27/2004 21:00:00	67.6	71.2	65	73.97	0
06/27/2004 22:00:00	64.9	65.4	64.1	82.3	0
06/27/2004 23:00:00	62.8	64.8	61.6	89.7	0
06/28/2004 00:00:00	61.4	62.5	60.6	94.4	0
06/28/2004 01:00:00	60.6	61.2	59.9	96.7	0
06/28/2004 02:00:00	59.5	60.2	58.7	97.4	0
06/28/2004 03:00:00	58.7	59.6	57.7	98.9	0

Date & Time	Average Temp (°F)	Maximum Temp (°F)	Minimum Temp (°F)	Relative Humidity (%)	Total Precip (in)
06/28/2004 04:00:00	58.1	58.7	56.9	99.6	0
06/28/2004 05:00:00	56.9	57.6	56.3	100	0
06/28/2004 06:00:00	60.3	62.9	57.1	93.8	0
06/28/2004 07:00:00	67.5	72.9	62.5	83	0
06/28/2004 08:00:00	73.8	76.1	71.8	68.08	0
06/28/2004 09:00:00	77.1	80.7	75.1	57.26	0
06/28/2004 10:00:00	79.4	80.3	78.3	50.14	0
06/28/2004 11:00:00	79.1	80	78.4	49.64	0
06/28/2004 12:00:00	80.1	81.5	78.8	46.01	0
06/28/2004 13:00:00	80.3	81.5	79.5	45.88	0
06/28/2004 14:00:00	81.3	82.6	80	43.27	0
06/28/2004 15:00:00	82.1	83	80.9	43.71	0
06/28/2004 16:00:00	82.3	83.1	81.6	44.52	0
06/28/2004 17:00:00	81.6	82.7	79.7	42.77	0
06/28/2004 18:00:00	80.3	81.3	78.8	45.12	0
06/28/2004 19:00:00	78.9	80.5	77.6	53.84	0
06/28/2004 20:00:00	76.2	77.9	74.3	63.59	0
06/28/2004 21:00:00	73.4	74.8	71.3	73.87	0
06/28/2004 22:00:00	70	71.9	67.8	82.4	0

Date & Time	Average Temp (°F)	Maximum Temp (°F)	Minimum Temp (°F)	Relative Humidity (%)	Total Precip (in)
06/28/2004 23:00:00	67.6	68.6	66.7	89.3	0
06/29/2004 00:00:00	67.8	69.3	67	90.2	0.01
06/29/2004 01:00:00	66.1	67.9	65.2	96.8	0.02
06/29/2004 02:00:00	65.1	65.8	64.5	97	0
06/29/2004 03:00:00	63.9	65	63	95.5	0
06/29/2004 04:00:00	62.1	63.2	61.3	96.1	0
06/29/2004 05:00:00	61	61.5	60.4	95.6	0
06/29/2004 06:00:00	61.5	62.8	60.6	91.5	0
06/29/2004 07:00:00	63.8	64.9	62.5	84.8	0
06/29/2004 08:00:00	65.7	66.5	64.6	79.5	0
06/29/2004 09:00:00	67.7	69.2	66.2	74.82	0
06/29/2004 10:00:00	69.4	70.8	67.9	70.32	0
06/29/2004 11:00:00	71.9	73.6	70.3	64.49	0
06/29/2004 12:00:00	73.6	75.5	72.4	59.88	0
06/29/2004 13:00:00	75.3	76.9	74.2	55.3	0
06/29/2004 14:00:00	76.5	77.8	74.9	51.87	0
06/29/2004 15:00:00	77.2	78.8	75.7	49.11	0
06/29/2004 16:00:00	78	79.5	76.9	46.67	0
06/29/2004 17:00:00	78	79.4	76.6	46.98	0

Date & Time	Average Temp (°F)	Maximum Temp (°F)	Minimum Temp (°F)	Relative Humidity (%)	Total Precip (in)
06/29/2004 18:00:00	78	79.1	76.6	45.85	0
06/29/2004 19:00:00	76.9	78.2	74.6	46.35	0
06/29/2004 20:00:00	71.2	75.1	68.2	61.99	0
06/29/2004 21:00:00	65.8	68.4	63.5	79.42	0
06/29/2004 22:00:00	63.3	64.4	62	87.5	0
06/29/2004 23:00:00	61.3	62.2	60.8	93.6	0
06/30/2004 00:00:00	60.4	61.2	59.6	95.7	0
06/30/2004 01:00:00	58.9	60	57.7	97.6	0
06/30/2004 02:00:00	58.3	59.5	57.3	97.5	0
06/30/2004 03:00:00	57.7	58.4	56.6	98.8	0
06/30/2004 04:00:00	57.8	58.4	57.1	99.3	0
06/30/2004 05:00:00	57.4	58.4	56.8	99.6	0
06/30/2004 06:00:00	58.5	60.9	57.4	98.8	0
06/30/2004 07:00:00	64.9	67.6	60.7	88.4	0
06/30/2004 08:00:00	70.5	74.1	67.4	72.77	0
06/30/2004 09:00:00	75.3	77.3	73.1	61.62	0
06/30/2004 10:00:00	78.9	80.1	77.1	53.13	0
06/30/2004 11:00:00	80.8	82	79.6	48.2	0
06/30/2004 12:00:00	81.6	82.5	80.3	47.46	0

Date & Time	Average Temp (°F)	Maximum Temp (°F)	Minimum Temp (°F)	Relative Humidity (%)	Total Precip (in)
06/30/2004 13:00:00	82.4	83.6	81.6	47.31	0
06/30/2004 14:00:00	82.6	83.1	81.8	48.13	0
06/30/2004 15:00:00	83.1	83.9	82	47.64	0
06/30/2004 16:00:00	83	83.7	82.5	46.45	0
06/30/2004 17:00:00	82.5	83.1	82	47.04	0
06/30/2004 18:00:00	81.3	82.3	80	51.73	0
06/30/2004 19:00:00	79	80.3	77.2	63.29	0
06/30/2004 20:00:00	74.8	77.3	73.1	78.71	0
06/30/2004 21:00:00	72.9	73.9	72	89.1	0
06/30/2004 22:00:00	71.5	72.5	70.6	93.8	0
06/30/2004 23:00:00	70.4	71.5	69	97.3	0
07/01/2004 00:00:00	69.5	70.6	68.8	99.5	0
07/01/2004 01:00:00	68.3	69.9	66.5	99.6	0
07/01/2004 02:00:00	67.3	68.9	65.6	100	0
07/01/2004 03:00:00	66.2	67.7	65.1	100	0
07/01/2004 04:00:00	66.3	68	64.9	100	0
07/01/2004 05:00:00	65.1	65.6	64.5	100	0
07/01/2004 06:00:00	66.7	68.2	64.8	100	0
07/01/2004 07:00:00	70.3	72.3	67.9	97.1	0

Date & Time	Average Temp (°F)	Maximum Temp (°F)	Minimum Temp (°F)	Relative Humidity (%)	Total Precip (in)
07/01/2004 08:00:00	73.2	74.4	72	92.3	0
07/01/2004 09:00:00	76.2	78.7	74	87.1	0
07/01/2004 10:00:00	79.4	80.2	78.4	77.68	0
07/01/2004 11:00:00	80.7	82	79.4	75.52	0
07/01/2004 12:00:00	82.3	84.3	80.9	71.53	0
07/01/2004 13:00:00	83.5	84.6	82.5	68.25	0
07/01/2004 14:00:00	83.3	84.7	81.9	70.27	0
07/01/2004 15:00:00	81.2	83	80.3	67.08	0
07/01/2004 16:00:00	79.8	81.8	78.4	78.23	0
07/01/2004 17:00:00	80.6	81.9	78.8	73.83	0
07/01/2004 18:00:00	78.8	79.6	78.2	72.48	0
07/01/2004 19:00:00	77.8	79.5	76.6	74.01	0
07/01/2004 20:00:00	75.8	77.1	73.4	80.6	0
07/01/2004 21:00:00	73.9	74.8	73.4	89.6	0
07/01/2004 22:00:00	72.7	73.7	71.7	93.2	0
07/01/2004 23:00:00	71.4	72	70.8	95.6	0
07/02/2004 00:00:00	70.4	71.2	69.3	97.4	0
07/02/2004 01:00:00	69	69.6	68.3	99.1	0
07/02/2004 02:00:00	68.4	69.5	67.5	99.9	0

Date & Time	Average Temp (°F)	Maximum Temp (°F)	Minimum Temp (°F)	Relative Humidity (%)	Total Precip (in)
07/02/2004 03:00:00	67.9	68.5	67.4	100	0
07/02/2004 04:00:00	67.8	68.6	67.3	100	0
07/02/2004 05:00:00	67.9	68.5	66.9	100	0
07/02/2004 06:00:00	68.8	71.1	67.1	100	0
07/02/2004 07:00:00	72.9	74.7	70.8	92.9	0
07/02/2004 08:00:00	76.6	79.3	74.4	81.4	0
07/02/2004 09:00:00	80.5	82.6	78.6	68.37	0
07/02/2004 10:00:00	83.7	85	82	56.3	0
07/02/2004 11:00:00	85.7	86.9	84.5	48.98	0
07/02/2004 12:00:00	86.8	87.9	86.1	38.44	0
07/02/2004 13:00:00	87.5	88.7	86.7	37.64	0
07/02/2004 14:00:00	88.3	89.3	87.2	34.62	0
07/02/2004 15:00:00	88.9	90.1	87.5	36.35	0
07/02/2004 16:00:00	87.8	88.3	87.1	41.41	0
07/02/2004 17:00:00	87.3	88.1	86.3	42.47	0
07/02/2004 18:00:00	86	87	84.5	45.22	0
07/02/2004 19:00:00	83.8	84.9	81.9	52.23	0
07/02/2004 20:00:00	77.7	82.1	75.1	65.32	0
07/02/2004 21:00:00	74.1	76.6	72.2	72.79	0

Date & Time	Average Temp (°F)	Maximum Temp (°F)	Minimum Temp (°F)	Relative Humidity (%)	Total Precip (in)
07/02/2004 22:00:00	70.9	72.8	69.3	84	0
07/02/2004 23:00:00	70	71	69.3	87.2	0
07/03/2004 00:00:00	68.7	70.6	67.6	90.6	0
07/03/2004 01:00:00	67.7	68.6	66.9	94.4	0
07/03/2004 02:00:00	68.7	71	66.9	90.5	0
07/03/2004 03:00:00	71.1	73.3	68.2	81.1	0
07/03/2004 04:00:00	72.4	73	71.6	69.53	0
07/03/2004 05:00:00	71.8	73	70.7	65.62	0
07/03/2004 06:00:00	71	71.4	70.6	65.79	0
07/03/2004 07:00:00	71.6	72.4	70.8	64.24	0
07/03/2004 08:00:00	73.6	75.1	72.2	62.16	0
07/03/2004 09:00:00	75.8	76.9	74.7	58.5	0
07/03/2004 10:00:00	76.5	78	75.3	58.29	0
07/03/2004 11:00:00	78.6	80.1	77.3	56.37	0
07/03/2004 12:00:00	80.6	81.8	79.4	53.06	0
07/03/2004 13:00:00	82.2	83.2	81.3	49.88	0
07/03/2004 14:00:00	83.8	84.6	82.7	45.92	0
07/03/2004 15:00:00	84.6	85.2	83.9	43.99	0
07/03/2004 16:00:00	85.2	86.4	84.5	44.28	0

Date & Time	Average Temp (°F)	Maximum Temp (°F)	Minimum Temp (°F)	Relative Humidity (%)	Total Precip (in)
07/03/2004 17:00:00	84.8	85.6	84.1	49.75	0
07/03/2004 18:00:00	84.2	84.7	83.4	52.94	0
07/03/2004 19:00:00	82.2	83.8	79.5	61.31	0
07/03/2004 20:00:00	78.4	79.9	77.2	70.72	0
07/03/2004 21:00:00	76.6	78.1	74.9	68.45	0
07/03/2004 22:00:00	73.7	75	71.9	74.19	0
07/03/2004 23:00:00	71.2	72.4	70.6	82.4	0
07/04/2004 00:00:00	70.1	71.2	68.6	87	0
07/04/2004 01:00:00	68.7	69.9	67	93.4	0
07/04/2004 02:00:00	67.8	68.7	66.9	97.7	0
07/04/2004 03:00:00	67.9	68.8	66.9	99.3	0.02
07/04/2004 04:00:00	68.5	69.4	67.6	98.8	0
07/04/2004 05:00:00	69.9	70.6	69.1	98.6	0
07/04/2004 06:00:00	71.1	71.8	70.4	97.3	0
07/04/2004 07:00:00	71.4	72	71	97.5	0
07/04/2004 08:00:00	72.6	73.2	71.5	95.6	0
07/04/2004 09:00:00	73.1	73.9	72.5	94.2	0
07/04/2004 10:00:00	77	80	73.6	84.4	0
07/04/2004 11:00:00	80.2	81.2	79.3	78.13	0

Date & Time	Average Temp (°F)	Maximum Temp (°F)	Minimum Temp (°F)	Relative Humidity (%)	Total Precip (in)
07/04/2004 12:00:00	82.8	84.4	80.7	69.93	0
07/04/2004 13:00:00	83.9	84.9	82.7	66.69	0
07/04/2004 14:00:00	82.3	83.2	81.4	70.92	0
07/04/2004 15:00:00	80.9	82.5	77.8	74.8	0.01
07/04/2004 16:00:00	76.7	78.5	74.5	89.7	0.03
07/04/2004 17:00:00	75.5	76.6	74.3	96.4	0.06
07/04/2004 18:00:00	76	76.6	74.5	93.6	0.17
07/04/2004 19:00:00	74.6	75	74.2	98.7	0.18
07/04/2004 20:00:00	74.6	75.1	74	97.5	0
07/04/2004 21:00:00	74.6	75	74	98.2	0
07/04/2004 22:00:00	75	75.5	74.5	98.1	0
07/04/2004 23:00:00	75.6	76.1	75	97.2	0
07/05/2004 00:00:00	75.7	76.2	75.2	97	0.05
07/05/2004 01:00:00	75.5	75.8	75.1	98	0
07/05/2004 02:00:00	75.5	75.8	75	98.7	0
07/05/2004 03:00:00	75.3	75.6	74.9	99.8	0
07/05/2004 04:00:00	75.5	75.8	75	100	0.01
07/05/2004 05:00:00	75.2	75.7	74.9	100	0
07/05/2004 06:00:00	75.2	76.2	74.5	100	0

Date & Time	Average Temp (°F)	Maximum Temp (°F)	Minimum Temp (°F)	Relative Humidity (%)	Total Precip (in)
07/05/2004 07:00:00	76.8	77.9	75.7	98.4	0
07/05/2004 08:00:00	78.5	79.6	77.5	92.5	0
07/05/2004 09:00:00	80.5	81.7	79.5	87.9	0
07/05/2004 10:00:00	83.1	84.8	81.5	82.7	0
07/05/2004 11:00:00	85.6	86.7	84.3	75.92	0
07/05/2004 12:00:00	87.8	89.1	86.4	66.68	0
07/05/2004 13:00:00	89.6	90.8	88.3	58.16	0
07/05/2004 14:00:00	90.5	91.2	89.5	54.36	0
07/05/2004 15:00:00	90.8	91.7	89.4	53.36	0
07/05/2004 16:00:00	84.3	91	76.2	70.32	0.23
07/05/2004 17:00:00	81.5	84.1	79.2	83.6	0
07/05/2004 18:00:00	81	83.7	75.3	82.9	0.02
07/05/2004 19:00:00	75.1	76.3	73.5	84.3	0
07/05/2004 20:00:00	72.9	73.9	72.2	91.6	0
07/05/2004 21:00:00	72.5	73.8	71.3	93.3	0
07/05/2004 22:00:00	71.5	72.1	70.8	97.1	0
07/05/2004 23:00:00	71.7	72.3	71.1	97.9	0
07/06/2004 00:00:00	71.9	72.8	71.1	97.9	0
07/06/2004 01:00:00	72	72.6	71	98	0

Date & Time	Average Temp (°F)	Maximum Temp (°F)	Minimum Temp (°F)	Relative Humidity (%)	Total Precip (in)
07/06/2004 02:00:00	71.7	72.8	70.7	94.9	0
07/06/2004 03:00:00	70.5	71.8	69.2	92.9	0
07/06/2004 04:00:00	72.7	73.8	71.4	81.7	0
07/06/2004 05:00:00	72.2	73.1	71.2	80.6	0
07/06/2004 06:00:00	72.9	73.5	72	78.94	0
07/06/2004 07:00:00	74	74.9	73.1	76.58	0
07/06/2004 08:00:00	75.4	76.7	74.4	73.35	0
07/06/2004 09:00:00	76.4	77.8	75.8	66.2	0
07/06/2004 10:00:00	76.9	78	75.8	65.49	0
07/06/2004 11:00:00	78.1	79.3	77.1	62.91	0
07/06/2004 12:00:00	79.6	80.6	78.3	60.72	0
07/06/2004 13:00:00	81.4	82.5	80	57.94	0
07/06/2004 14:00:00	83.1	84.9	81.9	55.34	0
07/06/2004 15:00:00	84.3	85.2	83.4	52.46	0
07/06/2004 16:00:00	85	85.6	84.5	50.13	0
07/06/2004 17:00:00	85.4	85.9	85	47.1	0
07/06/2004 18:00:00	85.5	86.1	84.9	46.52	0
07/06/2004 19:00:00	84.3	85.9	81.8	50.45	0
07/06/2004 20:00:00	78.9	82	75.8	66.41	0

Date & Time	Average Temp (°F)	Maximum Temp (°F)	Minimum Temp (°F)	Relative Humidity (%)	Total Precip (in)
07/06/2004 21:00:00	75	76	74	78.75	0
07/06/2004 22:00:00	72.3	74.3	71.2	86.8	0
07/06/2004 23:00:00	70.6	71.7	69.3	92	0
07/07/2004 00:00:00	69.4	70.1	68.6	95.8	0
07/07/2004 01:00:00	68.2	69	67.2	97.7	0
07/07/2004 02:00:00	67.7	68.2	66.9	98.8	0
07/07/2004 03:00:00	66.9	67.6	66.3	99.6	0
07/07/2004 04:00:00	67.1	67.6	66.6	99.8	0.01
07/07/2004 05:00:00	66.8	67.3	66.3	99.9	0
07/07/2004 06:00:00	67.3	70	66.3	99.9	0
07/07/2004 07:00:00	74.1	77.1	70	87.8	0
07/07/2004 08:00:00	78.2	79.4	76.8	73.2	0
07/07/2004 09:00:00	80.4	81.5	79.2	67.38	0
07/07/2004 10:00:00	82.4	83.7	81.2	62.88	0
07/07/2004 11:00:00	84.7	86.2	82.9	61.9	0
07/07/2004 12:00:00	86.7	88.1	85.4	59.66	0
07/07/2004 13:00:00	87.8	88.6	87.2	60.02	0
07/07/2004 14:00:00	88.6	89.9	87.8	61.18	0
07/07/2004 15:00:00	85.2	88.4	81.6	71.04	0

Date & Time	Average Temp (°F)	Maximum Temp (°F)	Minimum Temp (°F)	Relative Humidity (%)	Total Precip (in)
07/07/2004 16:00:00	76.5	81.9	74.1	90.4	0.01
07/07/2004 17:00:00	73.5	74.6	72.7	92.9	0.09
07/07/2004 18:00:00	72.6	73.9	71.9	97.3	0.23
07/07/2004 19:00:00	73.6	73.9	73.1	98.2	0
07/07/2004 20:00:00	73.4	74	72.7	98.6	0
07/07/2004 21:00:00	72.5	73	71.8	99.9	0
07/07/2004 22:00:00	72.3	72.9	71.8	100	0
07/07/2004 23:00:00	72.7	73.3	72.1	99.9	0
07/08/2004 00:00:00	72.8	73.3	72	99	0
07/08/2004 01:00:00	71.6	72.6	70.6	99.9	0
07/08/2004 02:00:00	70.7	71.3	70	100	0
07/08/2004 03:00:00	70	70.5	69.4	100	0
07/08/2004 04:00:00	69.5	70	68.8	100	0
07/08/2004 05:00:00	69.1	69.6	68.7	100	0
07/08/2004 06:00:00	69.6	71.1	68.7	100	0
07/08/2004 07:00:00	72.5	74.1	70.7	98.4	0
07/08/2004 08:00:00	75.9	77.3	73.8	89.3	0
07/08/2004 09:00:00	78.7	80.7	76.9	80.6	0
07/08/2004 10:00:00	81.6	82.9	80.2	70.35	0

Date & Time	Average Temp (°F)	Maximum Temp (°F)	Minimum Temp (°F)	Relative Humidity (%)	Total Precip (in)
07/08/2004 11:00:00	82.7	83.9	81.2	64.79	0
07/08/2004 12:00:00	84.3	85.4	83.4	58.92	0
07/08/2004 13:00:00	85.4	86.4	83.9	50.26	0
07/08/2004 14:00:00	86.4	87.2	85	46.7	0
07/08/2004 15:00:00	86.3	87.7	84.6	46.14	0
07/08/2004 16:00:00	85.4	86.8	84.3	49.45	0
07/08/2004 17:00:00	84.9	87.1	83.9	51.58	0
07/08/2004 18:00:00	85.6	86.9	83.6	51.54	0
07/08/2004 19:00:00	83.6	84.6	82	55.82	0
07/08/2004 20:00:00	78.2	82.2	74.5	62.29	0
07/08/2004 21:00:00	73.5	75	70.6	80.2	0
07/08/2004 22:00:00	69.7	71.2	67.4	89	0
07/08/2004 23:00:00	67.9	69.4	67.2	90	0
07/09/2004 00:00:00	67.5	69	66.1	88.4	0
07/09/2004 01:00:00	67.6	68.2	66.2	85.5	0
07/09/2004 02:00:00	65.9	67.5	64.9	89	0
07/09/2004 03:00:00	66.6	67.3	65.7	85	0
07/09/2004 04:00:00	68.8	71.9	65.6	78.73	0
07/09/2004 05:00:00	73.5	74.7	71.7	67.34	0

Date & Time	Average Temp (°F)	Maximum Temp (°F)	Minimum Temp (°F)	Relative Humidity (%)	Total Precip (in)
07/09/2004 06:00:00	72.1	73.5	70.8	72.55	0
07/09/2004 07:00:00	74.1	75	72.9	68.51	0
07/09/2004 08:00:00	75.7	76.8	74.9	61.92	0
07/09/2004 09:00:00	76.8	78.1	75.7	55.58	0
07/09/2004 10:00:00	78.4	79.2	77.5	52.32	0
07/09/2004 11:00:00	79	79.7	78.3	48.99	0
07/09/2004 12:00:00	80.2	81.3	79.1	50.57	0
07/09/2004 13:00:00	81.2	81.9	80.3	49.02	0
07/09/2004 14:00:00	81.7	82.5	80.1	48.69	0
07/09/2004 15:00:00	81.9	83.2	80.7	48.66	0
07/09/2004 16:00:00	82.8	84.3	81.3	49.11	0
07/09/2004 17:00:00	83	83.9	82.2	48.19	0
07/09/2004 18:00:00	82.2	83.3	80.8	50.02	0
07/09/2004 19:00:00	79.3	81.1	77.1	57.24	0
07/09/2004 20:00:00	76.2	77.5	74.5	63.23	0
07/09/2004 21:00:00	73.6	74.9	71.7	69.04	0
07/09/2004 22:00:00	71.3	72	70.4	73.48	0
07/09/2004 23:00:00	68.6	71.7	66.6	80.9	0
07/10/2004 00:00:00	66.2	68	64.5	88.7	0

Date & Time	Average Temp (°F)	Maximum Temp (°F)	Minimum Temp (°F)	Relative Humidity (%)	Total Precip (in)
07/10/2004 01:00:00	64.8	66.7	63.4	92	0
07/10/2004 02:00:00	63.7	64.5	62.8	95.1	0
07/10/2004 03:00:00	62.5	63.2	61.5	96.5	0
07/10/2004 04:00:00	61.6	62.2	60.8	98.6	0
07/10/2004 05:00:00	60.7	62	60.1	99.2	0
07/10/2004 06:00:00	61.1	62.6	60.3	99.4	0
07/10/2004 07:00:00	66.5	70.5	62.3	91.8	0
07/10/2004 08:00:00	73.2	76.4	70.5	70.8	0
07/10/2004 09:00:00	76.7	77.9	75.6	59.01	0
07/10/2004 10:00:00	78.4	80.1	76.9	55.96	0
07/10/2004 11:00:00	79.5	80.7	78.3	54.68	0
07/10/2004 12:00:00	81.1	82.3	79.7	52.92	0
07/10/2004 13:00:00	82	82.8	81.3	53.37	0
07/10/2004 14:00:00	83.2	84.6	81.9	54.34	0
07/10/2004 15:00:00	83.6	84.5	83	53.88	0
07/10/2004 16:00:00	84.6	86.1	83	52.56	0
07/10/2004 17:00:00	84	85.4	83	51.28	0
07/10/2004 18:00:00	83.4	84.3	82.5	53.88	0
07/10/2004 19:00:00	81.9	84.8	78.9	61.95	0

Date & Time	Average Temp (°F)	Maximum Temp (°F)	Minimum Temp (°F)	Relative Humidity (%)	Total Precip (in)
07/10/2004 20:00:00	77.5	79.1	76.2	73.71	0
07/10/2004 21:00:00	74	76.5	73	83.8	0
07/10/2004 22:00:00	72.5	73.8	71.5	89	0
07/10/2004 23:00:00	71.9	73	70.1	90.9	0
07/11/2004 00:00:00	69.9	70.5	68.3	95.8	0
07/11/2004 01:00:00	68.8	69.4	68.2	97.9	0
07/11/2004 02:00:00	68.2	68.9	67.7	98.3	0
07/11/2004 03:00:00	67.6	68.5	66.8	98.6	0
07/11/2004 04:00:00	67.2	67.7	66.5	99.4	0
07/11/2004 05:00:00	66.9	67.3	66.4	99.6	0
07/11/2004 06:00:00	67.2	68.2	66.1	99.1	0
07/11/2004 07:00:00	72.3	75.9	68	93.2	0
07/11/2004 08:00:00	76.9	77.9	75.5	84.6	0
07/11/2004 09:00:00	78.5	79.2	77.5	80.5	0
07/11/2004 10:00:00	78.7	80.6	77.7	75.71	0
07/11/2004 11:00:00	81.2	83.1	80	67.88	0
07/11/2004 12:00:00	83.4	84.3	82.3	64.04	0
07/11/2004 13:00:00	84.8	85.7	83.6	61.65	0
07/11/2004 14:00:00	86.1	87.1	85.1	56.7	0

Date & Time	Average Temp (°F)	Maximum Temp (°F)	Minimum Temp (°F)	Relative Humidity (%)	Total Precip (in)
07/11/2004 15:00:00	86.6	87.4	85.7	56.12	0
07/11/2004 16:00:00	85.7	86.9	84.1	59.45	0
07/11/2004 17:00:00	83.3	84.4	82.7	70.15	0
07/11/2004 18:00:00	81.8	83.7	80.2	73.07	0
07/11/2004 19:00:00	81.4	82	80.1	69.67	0
07/11/2004 20:00:00	80.9	81.5	80.1	65.92	0
07/11/2004 21:00:00	80	80.7	79.5	67.11	0
07/11/2004 22:00:00	79.4	80.1	78.8	73.07	0
07/11/2004 23:00:00	78.5	79.2	77.6	79.84	0
07/12/2004 00:00:00	77.8	78.2	77.1	83	0
07/12/2004 01:00:00	76.8	77.7	76	84.5	0
07/12/2004 02:00:00	75.8	76.3	75.3	86.2	0
07/12/2004 03:00:00	75.6	76	75.2	86.1	0
07/12/2004 04:00:00	75.4	75.7	75	86.5	0
07/12/2004 05:00:00	75	75.4	74.6	87.2	0
07/12/2004 06:00:00	75	75.8	74.4	87.3	0
07/12/2004 07:00:00	75.9	76.8	75.5	85.3	0
07/12/2004 08:00:00	77.3	78	76.3	84.5	0
07/12/2004 09:00:00	77.6	78.5	76.9	85.8	0

Date & Time	Average Temp (°F)	Maximum Temp (°F)	Minimum Temp (°F)	Relative Humidity (%)	Total Precip (in)
07/12/2004 10:00:00	78	79.1	77.3	87.4	0
07/12/2004 11:00:00	78.8	79.4	77.4	88.5	0.08
07/12/2004 12:00:00	76.4	77.6	75.8	97.5	0.4
07/12/2004 13:00:00	76.6	79.2	75.1	97.4	0.09
07/12/2004 14:00:00	76	78.2	74.5	97.7	0.08
07/12/2004 15:00:00	77.5	79.2	75.2	94.7	0
07/12/2004 16:00:00	75.5	78.8	73.9	97.2	0.36
07/12/2004 17:00:00	74	74.6	73.4	99.6	1.81
07/12/2004 18:00:00	74	74.6	73.6	100	0.16
07/12/2004 19:00:00	74	74.6	73.5	100	0.28
07/12/2004 20:00:00	73.8	74.4	73.1	99.9	0
07/12/2004 21:00:00	73.2	73.7	72.9	100	0
07/12/2004 22:00:00	73	73.3	72.5	100	0
07/12/2004 23:00:00	73.3	73.8	72.7	100	0.3
07/13/2004 00:00:00	73	73.6	72.6	100	0
07/13/2004 01:00:00	72.7	73.1	72.4	100	0
07/13/2004 02:00:00	72.3	72.9	71.8	100	0
07/13/2004 03:00:00	72.2	72.9	71.5	100	0
07/13/2004 04:00:00	72.2	72.6	71.5	100	0

Date & Time	Average Temp (°F)	Maximum Temp (°F)	Minimum Temp (°F)	Relative Humidity (%)	Total Precip (in)
07/13/2004 05:00:00	71.4	72	70.8	99.8	0
07/13/2004 06:00:00	71.1	71.4	70.8	100	0
07/13/2004 07:00:00	71.1	71.4	70.7	100	0
07/13/2004 08:00:00	71.4	71.8	71	99.6	0
07/13/2004 09:00:00	71.2	71.7	70.8	98.5	0
07/13/2004 10:00:00	71.2	72.4	70.6	97.2	0
07/13/2004 11:00:00	74.1	75.8	72.1	88.7	0
07/13/2004 12:00:00	75.2	76.8	74.2	85.7	0
07/13/2004 13:00:00	76	76.8	75.2	83	0
07/13/2004 14:00:00	77.3	78.9	76.3	79.39	0
07/13/2004 15:00:00	78.3	79.4	77.2	76.45	0
07/13/2004 16:00:00	79.1	80	78.2	74.57	0
07/13/2004 17:00:00	78.9	79.7	78.2	75.76	0
07/13/2004 18:00:00	78.9	80	78.2	76.26	0
07/13/2004 19:00:00	77.8	79.9	76.3	79.96	0
07/13/2004 20:00:00	74.1	76.6	71.8	87.9	0
07/13/2004 21:00:00	71.3	72.5	70.4	95.9	0
07/13/2004 22:00:00	70.1	71.1	69.2	99.2	0
07/13/2004 23:00:00	69.4	70	68.6	100	0

Date & Time	Average Temp (°F)	Maximum Temp (°F)	Minimum Temp (°F)	Relative Humidity (%)	Total Precip (in)
07/14/2004 00:00:00	68.4	69.3	67.6	100	0
07/14/2004 01:00:00	68.7	69.4	67	100	0
07/14/2004 02:00:00	69.2	69.5	68.6	99.8	0
07/14/2004 03:00:00	69.8	70.4	69	98.5	0.02
07/14/2004 04:00:00	69.2	69.9	68.6	99.1	0
07/14/2004 05:00:00	68.1	69	67.2	99.8	0.01
07/14/2004 06:00:00	68.8	70.1	68	98.7	0
07/14/2004 07:00:00	70.2	70.8	69.6	96.7	0
07/14/2004 08:00:00	71.9	73.3	70.4	94.2	0
07/14/2004 09:00:00	73.8	75.5	72.5	90.2	0
07/14/2004 10:00:00	75.3	75.8	74.6	87.9	0
07/14/2004 11:00:00	75.8	76.4	75	88.6	0
07/14/2004 12:00:00	77.8	80.5	75.9	87.9	0
07/14/2004 13:00:00	81.4	84.2	79.6	83.4	0
07/14/2004 14:00:00	80.1	83.9	72.3	87	0.31
07/14/2004 15:00:00	73.2	76	69	85.1	0.75
07/14/2004 16:00:00	72.9	74.8	71.8	93.4	0.03
07/14/2004 17:00:00	73.6	74.2	73	92.4	0
07/14/2004 18:00:00	73.5	73.9	73	92.9	0

Date & Time	Average Temp (°F)	Maximum Temp (°F)	Minimum Temp (°F)	Relative Humidity (%)	Total Precip (in)
07/14/2004 19:00:00	72.7	73.3	72	95.9	0
07/14/2004 20:00:00	72.7	73.5	72	95	0
07/14/2004 21:00:00	71.5	72.7	70.6	94.1	0
07/14/2004 22:00:00	69.8	71	68.8	95.3	0
07/14/2004 23:00:00	68.6	69.2	67.8	99	0
07/15/2004 00:00:00	67.6	68.8	66.8	99	0
07/15/2004 01:00:00	65.8	67.2	64.5	99.8	0
07/15/2004 02:00:00	65.7	66.8	64.4	99.5	0
07/15/2004 03:00:00	65.2	66.2	64.2	98.7	0
07/15/2004 04:00:00	65	65.5	64.4	94	0
07/15/2004 05:00:00	64.3	65.2	63.1	94.3	0
07/15/2004 06:00:00	64.3	66.4	63.2	96.3	0
07/15/2004 07:00:00	70	72.6	66.2	83.5	0
07/15/2004 08:00:00	73.8	75.3	72.3	73.41	0
07/15/2004 09:00:00	76.1	77	74.9	67.63	0
07/15/2004 10:00:00	77.3	78.3	76.3	63.09	0
07/15/2004 11:00:00	78.2	79.3	76.8	59.55	0
07/15/2004 12:00:00	79.6	80.5	78.1	56.39	0
07/15/2004 13:00:00	79.9	81.3	78.4	53.85	0

Date & Time	Average Temp (°F)	Maximum Temp (°F)	Minimum Temp (°F)	Relative Humidity (%)	Total Precip (in)
07/15/2004 14:00:00	79.4	80.6	78.3	57.05	0
07/15/2004 15:00:00	80.2	81.9	78.7	55.95	0
07/15/2004 16:00:00	80	81.7	78.7	54.4	0
07/15/2004 17:00:00	80.6	81.8	79.1	53.42	0
07/15/2004 18:00:00	79.6	81.5	78.1	53.77	0
07/15/2004 19:00:00	77.1	78.7	75.3	58.29	0
07/15/2004 20:00:00	74	76.2	71.9	66.14	0
07/15/2004 21:00:00	70.6	72.4	68	74.25	0
07/15/2004 22:00:00	66.7	68.3	65.4	87.1	0
07/15/2004 23:00:00	70.2	72.1	65.5	71.28	0
07/16/2004 00:00:00	67	69.5	64.8	77.03	0
07/16/2004 01:00:00	64.4	65.2	63.7	87.9	0
07/16/2004 02:00:00	63	64.8	61.6	91.9	0
07/16/2004 03:00:00	61.6	62.6	60.1	96.1	0
07/16/2004 04:00:00	63.2	65.1	59.8	95.4	0
07/16/2004 05:00:00	65.4	66.1	64.8	90.3	0
07/16/2004 06:00:00	66.4	67.3	65.8	86.5	0
07/16/2004 07:00:00	68.9	71.1	66.8	79.2	0
07/16/2004 08:00:00	72.7	73.8	70.7	70.26	0

Date & Time	Average Temp (°F)	Maximum Temp (°F)	Minimum Temp (°F)	Relative Humidity (%)	Total Precip (in)
07/16/2004 09:00:00	76.2	78.4	73.2	63.88	0
07/16/2004 10:00:00	78.7	80	77.6	57.69	0
07/16/2004 11:00:00	80	80.1	79.6	56.86	0
07/16/2004 12:00:00	79.1	80.7	78.1	58.3	0
07/16/2004 13:00:00	79.1	81.1	78.1	59.92	0
07/16/2004 14:00:00	79.6	80.5	78.8	59.09	0
07/16/2004 15:00:00	80.4	82.6	78.2	58.89	0
07/16/2004 16:00:00	81.8	83.1	80.5	56.4	0
07/16/2004 17:00:00	82.2	83	81.4	56.39	0
07/16/2004 18:00:00	81.6	82.7	80.9	57.42	0
07/16/2004 19:00:00	80.1	81.7	78.2	61.6	0
07/16/2004 20:00:00	75.6	78.5	73.2	71.78	0
07/16/2004 21:00:00	72.9	73.7	72	83.4	0
07/16/2004 22:00:00	71.5	72.4	70.9	86.5	0
07/16/2004 23:00:00	69.7	71.9	68.8	90.8	0
07/17/2004 00:00:00	68.8	69.4	68.2	95.5	0
07/17/2004 01:00:00	68	68.6	67.4	96.2	0
07/17/2004 02:00:00	66.9	68.2	65.9	94.9	0
07/17/2004 03:00:00	66	67.7	64.9	94.4	0

Date & Time	Average Temp (°F)	Maximum Temp (°F)	Minimum Temp (°F)	Relative Humidity (%)	Total Precip (in)
07/17/2004 04:00:00	64.6	65.7	63.9	98.2	0
07/17/2004 05:00:00	64	64.9	63	98.7	0
07/17/2004 06:00:00	64	65.8	62.7	99.3	0
07/17/2004 07:00:00	69	74.4	65.5	90.9	0
07/17/2004 08:00:00	75.9	78.1	73.5	73.03	0
07/17/2004 09:00:00	78.9	80.5	77.5	67.48	0
07/17/2004 10:00:00	81.8	82.7	79.9	62.15	0
07/17/2004 11:00:00	83.1	84.2	81.9	55.45	0
07/17/2004 12:00:00	84	84.8	83.2	55.59	0
07/17/2004 13:00:00	84.5	85.4	83.6	56.61	0
07/17/2004 14:00:00	85.1	85.9	83.9	53.33	0
07/17/2004 15:00:00	85	85.9	84.1	50.57	0
07/17/2004 16:00:00	83.4	85.1	81.6	54	0
07/17/2004 17:00:00	80.6	82	80	57.79	0
07/17/2004 18:00:00	80	80.9	78.3	64.67	0
07/17/2004 19:00:00	77.7	78.7	75.8	70.35	0
07/17/2004 20:00:00	75.2	76.4	73.7	82.5	0
07/17/2004 21:00:00	74.9	77.2	73.2	84.9	0
07/17/2004 22:00:00	75.8	77.2	74.6	77.06	0

Date & Time	Average Temp (°F)	Maximum Temp (°F)	Minimum Temp (°F)	Relative Humidity (%)	Total Precip (in)
07/17/2004 23:00:00	74.3	75.6	73.1	79.91	0
07/18/2004 00:00:00	72.6	73.5	71.8	86.9	0
07/18/2004 01:00:00	71.7	72.3	71.1	90.3	0
07/18/2004 02:00:00	70.6	71.3	69.6	94.9	0
07/18/2004 03:00:00	70.1	70.6	69.6	96.8	0
07/18/2004 04:00:00	69.9	70.5	69.4	98.4	0.02
07/18/2004 05:00:00	69.5	70	68.9	99.5	0.02
07/18/2004 06:00:00	69.3	69.6	68.9	99.4	0
07/18/2004 07:00:00	69.6	69.9	69.2	98	0.01
07/18/2004 08:00:00	69.7	70.4	69.2	98.6	0.04
07/18/2004 09:00:00	69.7	70.2	69	96.9	0.11
07/18/2004 10:00:00	69.4	69.8	69	96.3	0.18
07/18/2004 11:00:00	68.7	69.6	68	97.9	0.5
07/18/2004 12:00:00	67.3	68.2	66.9	99	0.31
07/18/2004 13:00:00	68.9	70.6	67.1	98.6	0.04
07/18/2004 14:00:00	70.5	71.2	70	98.8	0.04
07/18/2004 15:00:00	71	71.4	70.4	97.5	0.01
07/18/2004 16:00:00	71.4	72.1	70.7	96.1	0
07/18/2004 17:00:00	72.3	72.9	71.8	94.3	0

Date & Time	Average Temp (°F)	Maximum Temp (°F)	Minimum Temp (°F)	Relative Humidity (%)	Total Precip (in)
07/18/2004 18:00:00	71.7	72.6	70.8	92.7	0
07/18/2004 19:00:00	70.5	71.1	69.9	94	0
07/18/2004 20:00:00	69.8	70.5	69.4	95.5	0
07/18/2004 21:00:00	69.4	69.9	68.8	96.5	0
07/18/2004 22:00:00	68.7	69.3	68.2	97.7	0
07/18/2004 23:00:00	68.1	68.7	67.7	97.7	0
07/19/2004 00:00:00	67.7	68.2	67.4	98.4	0
07/19/2004 01:00:00	67.8	68.2	67.4	97.4	0
07/19/2004 02:00:00	67.4	67.7	67.1	97.7	0
07/19/2004 03:00:00	67.4	67.7	67	97.8	0
07/19/2004 04:00:00	67.4	67.7	67.1	98	0
07/19/2004 05:00:00	67.3	67.6	66.9	98	0
07/19/2004 06:00:00	67.2	68	66.8	97.9	0
07/19/2004 07:00:00	68.3	69.2	67.4	95.7	0
07/19/2004 08:00:00	69	69.6	68.6	92.8	0
07/19/2004 09:00:00	70.3	73.5	69	88.9	0
07/19/2004 10:00:00	72.4	73.1	71.8	83	0
07/19/2004 11:00:00	74.3	75.5	72.6	77.41	0
07/19/2004 12:00:00	76	77.6	74.6	73.81	0

Date & Time	Average Temp (°F)	Maximum Temp (°F)	Minimum Temp (°F)	Relative Humidity (%)	Total Precip (in)
07/19/2004 13:00:00	78.5	79.7	76.6	69.28	0
07/19/2004 14:00:00	80.7	82.7	79.4	64.85	0
07/19/2004 15:00:00	80	82.6	77.8	70.85	0
07/19/2004 16:00:00	80.3	81.5	78.6	70.93	0
07/19/2004 17:00:00	80.2	81.4	79	68.77	0
07/19/2004 18:00:00	80.5	81.3	80	69.71	0
07/19/2004 19:00:00	78.4	80.7	76	76.78	0
07/19/2004 20:00:00	74.6	76.5	73.5	88.1	0
07/19/2004 21:00:00	72.8	73.9	71.2	93.3	0
07/19/2004 22:00:00	71.2	72	70.6	97.1	0
07/19/2004 23:00:00	70.2	71	69.6	98.9	0
07/20/2004 00:00:00	70	71.1	69.2	98.9	0
07/20/2004 01:00:00	70.4	71.4	69.8	96	0
07/20/2004 02:00:00	70.2	70.6	69.5	95.8	0
07/20/2004 03:00:00	69	70.5	67.4	93.3	0
07/20/2004 04:00:00	68	69.4	67	90.2	0
07/20/2004 05:00:00	68.3	69.3	65.8	86.2	0
07/20/2004 06:00:00	66.3	67.4	65.5	93.5	0
07/20/2004 07:00:00	69.4	71.9	66.6	90.9	0

Date & Time	Average Temp (°F)	Maximum Temp (°F)	Minimum Temp (°F)	Relative Humidity (%)	Total Precip (in)
07/20/2004 08:00:00	74.2	76.6	71.9	79.38	0
07/20/2004 09:00:00	77.3	79.4	75.8	72.4	0
07/20/2004 10:00:00	80	80.9	78.5	68.48	0
07/20/2004 11:00:00	80.8	82.3	79.5	66.7	0
07/20/2004 12:00:00	82.9	84.5	81.7	61.09	0
07/20/2004 13:00:00	83.9	85.4	82.7	55.91	0
07/20/2004 14:00:00	83.4	85.1	80.9	66.25	0
07/20/2004 15:00:00	83.4	84.7	81.9	64.91	0
07/20/2004 16:00:00	83.8	84.5	82.8	63.73	0
07/20/2004 17:00:00	83.4	84.5	81.9	62.8	0
07/20/2004 18:00:00	82.7	83.3	81.8	63	0
07/20/2004 19:00:00	81	82.5	78.1	67.93	0
07/20/2004 20:00:00	75.7	78.1	73.7	83.8	0
07/20/2004 21:00:00	72.6	74.4	71.8	91.2	0
07/20/2004 22:00:00	70.8	72.2	69.9	96.3	0
07/20/2004 23:00:00	70.2	70.8	69	98.3	0

APPENDIX C. SOIL MOISTURE

Demonstrator: HFA

Date: 6/14/2004

Times: 0800 hours, 1600 hours

Probe Location:	Layer, in.	AM Reading, %	PM Reading, %
Wet Area	0 to 6		
	6 to 12		
	12 to 24		
	24 to 36		
	36 to 48		
Wooded Area	0 to 6		
	6 to 12		
	12 to 24		
	24 to 36		
	36 to 48		
Open Area	0 to 6		
	6 to 12		
	12 to 24		
	24 to 36		
	36 to 48		
Calibration Lanes	0 to 6		
	6 to 12		
	12 to 24		
	24 to 36		
	36 to 48		
Blind Grid/Moguls	0 to 6	3.5	3.4
	6 to 12	24.7	25.1
	12 to 24	39.5	39.1
	24 to 36	35.7	36.3
	36 to 48	39.9	40.0

Demonstrator: HFA

Date: 6/15/2004

Times: 0800 hours, 1600 hours

Probe Location:	Layer, in.	AM Reading, %	PM Reading, %
Wet Area	0 to 6	65.3	65.2
	6 to 12	75.1	75.3
	12 to 24	79.2	79.7
	24 to 36	55.8	55.6
	36 to 48	51.7	52.0
Wooded Area	0 to 6		
	6 to 12		
	12 to 24		
	24 to 36		
	36 to 48		
Open Area	0 to 6	22.3	22.2
	6 to 12	6.5	6.7
	12 to 24	19.7	19.4
	24 to 36	26.4	26.2
	36 to 48	52.3	52.1
Calibration Lanes	0 to 6		
	6 to 12		
	12 to 24		
	24 to 36		
	36 to 48		
Blind Grid/Moguls	0 to 6		
	6 to 12		
	12 to 24		
	24 to 36		
	36 to 48		

Demonstrator: HFA

Date: 6/16/2004

Times: 0800 hours, 1600 hours

Probe Location:	Layer, in.	AM Reading, %	PM Reading, %
Wet Area	0 to 6	65.4	65.3
	6 to 12	75.1	75.5
	12 to 24	79.5	79.7
	24 to 36	55.8	56.2
	36 to 48	52.2	52.4
Wooded Area	0 to 6		
	6 to 12		
	12 to 24		
	24 to 36		
	36 to 48		
Open Area	0 to 6	22.7	22.6
	6 to 12	6.9	7.0
	12 to 24	19.2	19.0
	24 to 36	26.5	26.3
	36 to 48	52.6	52.9
Calibration Lanes	0 to 6		
	6 to 12		
	12 to 24		
	24 to 36		
	36 to 48		
Blind Grid/Moguls	0 to 6		
	6 to 12		
	12 to 24		
	24 to 36		
	36 to 48		

Demonstrator: HFA

Date: 6/17/2004

Times: 0800 hours, 1600 hours

Probe Location:	Layer, in.	AM Reading, %	PM Reading, %
Wet Area	0 to 6	65.4	65.3
	6 to 12	75.7	76.1
	12 to 24	80.4	80.1
	24 to 36	56.8	57.0
	36 to 48	52.1	52.0
Wooded Area	0 to 6		
	6 to 12		
	12 to 24		
	24 to 36		
	36 to 48		
Open Area	0 to 6		23.0
	6 to 12	23.1	7.1
	12 to 24	7.3	19.3
	24 to 36	19.1	25.8
	36 to 48	26.7	53.3
Calibration Lanes	0 to 6		
	6 to 12		
	12 to 24		
	24 to 36		
	36 to 48		
Blind Grid/Moguls	0 to 6		
	6 to 12		
	12 to 24		
	24 to 36		
	36 to 48		

Demonstrator: HFA
 Date: 6/18/2004
 Times: 0800 hours, 1600 hours

Probe Location:	Layer, in.	AM Reading, %	PM Reading, %
Wet Area	0 to 6	65.2	65.0
	6 to 12	76.4	76.3
	12 to 24	79.7	80.2
	24 to 36	57.3	57.5
	36 to 48	52.1	52.5
Wooded Area	0 to 6		
	6 to 12		
	12 to 24		
	24 to 36		
	36 to 48		
Open Area	0 to 6	22.7	22.4
	6 to 12	7.3	7.3
	12 to 24	19.4	19.5
	24 to 36	25.9	26.1
	36 to 48	53.7	54.1
Calibration Lanes	0 to 6		
	6 to 12		
	12 to 24		
	24 to 36		
	36 to 48		
Blind Grid/Moguls	0 to 6		
	6 to 12		
	12 to 24		
	24 to 36		
	36 to 48		

Demonstrator: HFA

Date: 6/28/2004

Times: 0800 hours, 1600 hours

Probe Location:	Layer, in.	AM Reading, %	PM Reading, %
Wet Area	0 to 6	63.2	63.1
	6 to 12	72.8	73.0
	12 to 24	78.1	78.3
	24 to 36	60.2	60.4
	36 to 48	50.2	50.0
Wooded Area	0 to 6		
	6 to 12		
	12 to 24		
	24 to 36		
	36 to 48		
Open Area	0 to 6	20.2	19.9
	6 to 12	5.8	6.0
	12 to 24	19.9	19.9
	24 to 36	25.0	25.2
	36 to 48	56.7	56.7
Calibration Lanes	0 to 6		
	6 to 12		
	12 to 24		
	24 to 36		
	36 to 48		
Blind Grid/Moguls	0 to 6		
	6 to 12		
	12 to 24		
	24 to 36		
	36 to 48		

Demonstrator: HFA

Date: 6/29/2004

Times: 0800 hours, 1600 hours

Probe Location:	Layer, in.	AM Reading, %	PM Reading, %
Wet Area	0 to 6	63.0	63.0
	6 to 12	73.2	73.1
	12 to 24	78.5	78.4
	24 to 36	60.1	60.2
	36 to 48	50.5	50.9
Wooded Area	0 to 6		
	6 to 12		
	12 to 24		
	24 to 36		
	36 to 48		
Open Area	0 to 6	20.1	20.2
	6 to 12	5.9	6.3
	12 to 24	19.8	20.2
	24 to 36	25.0	25.5
	36 to 48	56.9	57.2
Calibration Lanes	0 to 6		
	6 to 12		
	12 to 24		
	24 to 36		
	36 to 48		
Blind Grid/Moguls	0 to 6		
	6 to 12		
	12 to 24		
	24 to 36		
	36 to 48		

Demonstrator: HFA

Date: 6/30/2004

Times: 0800 hours, 1600 hours

Probe Location:	Layer, in.	AM Reading, %	PM Reading, %
Wet Area	0 to 6	62.5	62.7
	6 to 12	73.0	73.1
	12 to 24	78.1	78.3
	24 to 36	60.0	60.4
	36 to 48	51.3	51.5
Wooded Area	0 to 6		
	6 to 12		
	12 to 24		
	24 to 36		
	36 to 48		
Open Area	0 to 6	20.0	20.2
	6 to 12	6.0	6.3
	12 to 24	20.7	20.9
	24 to 36	25.6	26.1
	36 to 48	57.5	57.7
Calibration Lanes	0 to 6		
	6 to 12		
	12 to 24		
	24 to 36		
	36 to 48		
Blind Grid/Moguls	0 to 6		
	6 to 12		
	12 to 24		
	24 to 36		
	36 to 48		

Demonstrator: HFA

Date: 7/1/2004

Times: 0800 hours, 1600 hours

Probe Location:	Layer, in.	AM Reading, %	PM Reading, %
Wet Area	0 to 6	62.5	62.4
	6 to 12	73.5	73.8
	12 to 24	78.0	77.9
	24 to 36	60.9	60.7
	36 to 48	51.3	51.7
Wooded Area	0 to 6		
	6 to 12		
	12 to 24		
	24 to 36		
	36 to 48		
Open Area	0 to 6	20.0	20.0
	6 to 12	6.6	6.8
	12 to 24	21.5	22.1
	24 to 36	26.8	27.0
	36 to 48	57.2	57.4
Calibration Lanes	0 to 6		
	6 to 12		
	12 to 24		
	24 to 36		
	36 to 48		
Blind Grid/Moguls	0 to 6		
	6 to 12		
	12 to 24		
	24 to 36		
	36 to 48		

Demonstrator: HFA

Date: 7/2/2004

Times: 0800 hours, 1600 hours

Probe Location:	Layer, in.	AM Reading, %	PM Reading, %
Wet Area	0 to 6	62.1	61.9
	6 to 12	74.2	74.0
	12 to 24	78.2	78.1
	24 to 36	60.5	60.4
	36 to 48	51.5	51.5
Wooded Area	0 to 6		
	6 to 12		
	12 to 24		
	24 to 36		
	36 to 48		
Open Area	0 to 6	19.7	19.6
	6 to 12	6.9	6.9
	12 to 24	22.5	22.4
	24 to 36	26.8	26.9
	36 to 48	57.5	57.9
Calibration Lanes	0 to 6		
	6 to 12		
	12 to 24		
	24 to 36		
	36 to 48		
Blind Grid/Moguls	0 to 6		
	6 to 12		
	12 to 24		
	24 to 36		
	36 to 48		

Demonstrator: HFA
 Date: 7/6/2004
 Times: 0800 hours, 1600 hours

Probe Location:	Layer, in.	AM Reading, %	PM Reading, %
Wet Area	0 to 6	63.4	63.3
	6 to 12	74.7	74.6
	12 to 24	78.9	79.0
	24 to 36	60.1	60.3
	36 to 48	52.7	53.1
Wooded Area	0 to 6		
	6 to 12		
	12 to 24		
	24 to 36		
	36 to 48		
Open Area	0 to 6	20.9	20.7
	6 to 12	7.7	7.9
	12 to 24	22.9	23.1
	24 to 36	26.5	26.3
	36 to 48	57.6	57.9
Calibration Lanes	0 to 6		
	6 to 12		
	12 to 24		
	24 to 36		
	36 to 48		
Blind Grid/Moguls	0 to 6		
	6 to 12		
	12 to 24		
	24 to 36		
	36 to 48		

Demonstrator: HFA
 Date: 7//2004
 Times: 0800 hours

Probe Location:	Layer, in.	AM Reading, %	PM Reading, %
Wet Area	0 to 6	63.8	
	6 to 12	74.4	
	12 to 24	79.8	
	24 to 36	60.0	
	36 to 48	52.5	
Wooded Area	0 to 6		
	6 to 12		
	12 to 24		
	24 to 36		
	36 to 48		
Open Area	0 to 6	20.5	
	6 to 12	7.9	
	12 to 24	23.5	
	24 to 36	26.0	
	36 to 48	58.3	
Calibration Lanes	0 to 6		
	6 to 12		
	12 to 24		
	24 to 36		
	36 to 48		
Blind Grid/Moguls	0 to 6		
	6 to 12		
	12 to 24		
	24 to 36		
	36 to 48		

Demonstrator: HFA

Date: 7/8/2004

Times: 0800 hours, 1600 hours

Probe Location:	Layer, in.	AM Reading, %	PM Reading, %
Wet Area	0 to 6		
	6 to 12		
	12 to 24		
	24 to 36		
	36 to 48		
Wooded Area	0 to 6	15.0	14.9
	6 to 12	6.0	6.3
	12 to 24	5.9	5.8
	24 to 36	54.8	54.7
	36 to 48	56.9	57.2
Open Area	0 to 6		
	6 to 12		
	12 to 24		
	24 to 36		
	36 to 48		
Calibration Lanes	0 to 6		
	6 to 12		
	12 to 24		
	24 to 36		
	36 to 48		
Blind Grid/Moguls	0 to 6		
	6 to 12		
	12 to 24		
	24 to 36		
	36 to 48		

Demonstrator: HFA

Date: 7/9/2004

Times: 0800 hours, 1600 hours

Probe Location:	Layer, in.	AM Reading, %	PM Reading, %
Wet Area	0 to 6		
	6 to 12		
	12 to 24		
	24 to 36		
	36 to 48		
Wooded Area	0 to 6	14.5	14.4
	6 to 12	6.0	6.1
	12 to 24	5.9	5.9
	24 to 36	54.4	54.1
	36 to 48	57.5	57.3
Open Area	0 to 6		
	6 to 12		
	12 to 24		
	24 to 36		
	36 to 48		
Calibration Lanes	0 to 6		
	6 to 12		
	12 to 24		
	24 to 36		
	36 to 48		
Blind Grid/Moguls	0 to 6		
	6 to 12		
	12 to 24		
	24 to 36		
	36 to 48		

Demonstrator: HFA
 Date: 7/12/2004
 Times: 0800 hours

Probe Location:	Layer, in.	AM Reading, %	PM Reading, %
Wet Area	0 to 6	63.3	
	6 to 12	74.9	
	12 to 24	79.3	
	24 to 36	59.5	
	36 to 48	52.9	
Wooded Area	0 to 6		
	6 to 12		
	12 to 24		
	24 to 36		
	36 to 48		
Open Area	0 to 6	20.8	
	6 to 12	8.3	
	12 to 24	23.9	
	24 to 36	26.5	
	36 to 48	58.0	
Calibration Lanes	0 to 6		
	6 to 12		
	12 to 24		
	24 to 36		
	36 to 48		
Blind Grid/Moguls	0 to 6		
	6 to 12		
	12 to 24		
	24 to 36		
	36 to 48		

Demonstrator: HFA

Date: 7/13/2004

Times: 0800 hours, 1600 hours

Probe Location:	Layer, in.	AM Reading, %	PM Reading, %
Wet Area	0 to 6	65.8	65.5
	6 to 12	76.9	77.0
	12 to 24	79.9	80.3
	24 to 36	61.7	61.4
	36 to 48	55.8	56.2
Wooded Area	0 to 6		
	6 to 12		
	12 to 24		
	24 to 36		
	36 to 48		
Open Area	0 to 6	22.6	22.5
	6 to 12	9.0	9.2
	12 to 24	25.8	26.1
	24 to 36	27.6	27.7
	36 to 48	59.7	60.0
Calibration Lanes	0 to 6		
	6 to 12		
	12 to 24		
	24 to 36		
	36 to 48		
Blind Grid/Moguls	0 to 6		
	6 to 12		
	12 to 24		
	24 to 36		
	36 to 48		

Demonstrator: HFA

Date: 7/14/2004

Times: 0800 hours, 1300 hours

Probe Location:	Layer, in.	AM Reading, %	PM Reading, %
Wet Area	0 to 6	65.3	65.2
	6 to 12	77.2	77.2
	12 to 24	80.0	80.4
	24 to 36	61.5	61.7
	36 to 48	56.3	56.5
Wooded Area	0 to 6		
	6 to 12		
	12 to 24		
	24 to 36		
	36 to 48		
Open Area	0 to 6	22.3	22.2
	6 to 12	9.0	9.0
	12 to 24	26.2	26.3
	24 to 36	27.9	28.0
	36 to 48	60.2	60.4
Calibration Lanes	0 to 6		
	6 to 12		
	12 to 24		
	24 to 36		
	36 to 48		
Blind Grid/Moguls	0 to 6		
	6 to 12		
	12 to 24		
	24 to 36		
	36 to 48		

Demonstrator: HFA

Date: 7/15/2004

Times: 0800 hours, 1600 hours

Probe Location:	Layer, in.	AM Reading, %	PM Reading, %
Wet Area	0 to 6	65.5	65.4
	6 to 12	77.7	77.5
	12 to 24	80.0	79.5
	24 to 36	62.6	62.9
	36 to 48	56.9	57.1
Wooded Area	0 to 6		
	6 to 12		
	12 to 24		
	24 to 36		
	36 to 48		
Open Area	0 to 6	22.0	22.0
	6 to 12	9.3	9.2
	12 to 24	26.5	26.4
	24 to 36	28.4	28.5
	36 to 48	60.0	59.7
Calibration Lanes	0 to 6		
	6 to 12		
	12 to 24		
	24 to 36		
	36 to 48		
Blind Grid/Moguls	0 to 6		
	6 to 12		
	12 to 24		
	24 to 36		
	36 to 48		

Demonstrator: HFA
 Date: 7/16/2004
 Times: 0800 hours

Probe Location:	Layer, in.	AM Reading, %	PM Reading, %
Wet Area	0 to 6	65.0	
	6 to 12	77.2	
	12 to 24	79.7	
	24 to 36	62.8	
	36 to 48	57.6	
Wooded Area	0 to 6		
	6 to 12		
	12 to 24		
	24 to 36		
	36 to 48		
Open Area	0 to 6	21.8	
	6 to 12	9.4	
	12 to 24	26.0	
	24 to 36	28.1	
	36 to 48	59.9	
Calibration Lanes	0 to 6		
	6 to 12		
	12 to 24		
	24 to 36		
	36 to 48		
Blind Grid/Moguls	0 to 6		
	6 to 12		
	12 to 24		
	24 to 36		
	36 to 48		

Demonstrator: HFA

Date: 7/19/2004

Times: 0800 hours, 1600 hours

Probe Location:	Layer, in.	AM Reading, %	PM Reading, %
Wet Area	0 to 6		
	6 to 12		
	12 to 24		
	24 to 36		
	36 to 48		
Wooded Area	0 to 6		
	6 to 12		
	12 to 24		
	24 to 36		
	36 to 48		
Open Area	0 to 6		
	6 to 12		
	12 to 24		
	24 to 36		
	36 to 48		
Calibration Lanes	0 to 6		
	6 to 12		
	12 to 24		
	24 to 36		
	36 to 48		
Blind Grid/Moguls	0 to 6	4.6	4.9
	6 to 12	4.5	4.2
	12 to 24	7.8	7.2
	24 to 36	37.7	37.1
	36 to 48	39.5	39.6

Demonstrator: HFA
 Date: 7/20/2004
 Times: 0800 hours

Probe Location:	Layer, in.	AM Reading, %	PM Reading, %
Wet Area	0 to 6		
	6 to 12		
	12 to 24		
	24 to 36		
	36 to 48		
Wooded Area	0 to 6		
	6 to 12		
	12 to 24		
	24 to 36		
	36 to 48		
Open Area	0 to 6		
	6 to 12		
	12 to 24		
	24 to 36		
	36 to 48		
Calibration Lanes	0 to 6		
	6 to 12		
	12 to 24		
	24 to 36		
	36 to 48		
Blind Grid/Moguls	0 to 6	4.4	
	6 to 12	4.7	
	12 to 24	7.3	
	24 to 36	37.0	
	36 to 48	39.8	

Date	No. of People	Area Tested	Status Start Time	Status Stop Time	Duration, min	Operational Status	OP Stat Code	Operational Status - Comments	Track Method	Track Method=Other Explain	Pattern	Field Conditions
6/14/04	2	CALIBRATION LANE	910	925	15	INITIAL MOBILIZATION	1	INITIAL MOBILIZATION	NA	SCHONSTEDT	LINEAR	SUNNY MUDDY
6/14/04	2	CALIBRATION LANE	925	930	5	COLLECT DATA	4	COLLECT DATA	NA	SCHONSTEDT	LINEAR	SUNNY MUDDY
6/14/04	2	CALIBRATION LANE	930	1015	45	DOWNTIME MAINTENANCE CHECK	7	CHANGE BATTERIES	NA	SCHONSTEDT	LINEAR	SUNNY MUDDY
6/14/04	2	CALIBRATION LANE	1015	1030	15	BREAK/LUNCH	5	BREAK/LUNCH	NA	SCHONSTEDT	LINEAR	SUNNY MUDDY
6/14/04	2	CALIBRATION LANE	1030	1145	75	COLLECT DATA	4	COLLECT DATA	NA	SCHONSTEDT	LINEAR	SUNNY MUDDY
6/14/04	2	CALIBRATION LANE	1145	1245	60	BREAK/LUNCH	5	BREAK/LUNCH	NA	SCHONSTEDT	LINEAR	SUNNY MUDDY
6/14/04	2	BLIND TEST GRID	1245	1430	105	COLLECT DATA	4	COLLECT DATA	NA	SCHONSTEDT	LINEAR	SUNNY MUDDY
6/14/04	2	BLIND TEST GRID	1430	1505	35	DAILY START STOP	3	BREAKDOWN END OF ACTIVITIES	NA	SCHONSTEDT	LINEAR	SUNNY MUDDY
6/15/04	2	OPEN FIELD	905	1145	160	DAILY START STOP	3	SET UP GRID	NA	SCHONSTEDT	LINEAR	SUNNY MUDDY
6/15/04	2	OPEN FIELD	1145	1230	45	BREAK/LUNCH	5	BREAK/LUNCH	NA	SCHONSTEDT	LINEAR	SUNNY MUDDY
6/15/04	2	OPEN FIELD	1230	1330	60	COLLECT DATA	4	COLLECT DATA	NA	SCHONSTEDT	LINEAR	SUNNY MUDDY
6/15/04	2	OPEN FIELD	1330	1340	10	DAILY START STOP	3	MOVE STRING ALONG GRID	NA	SCHONSTEDT	LINEAR	SUNNY MUDDY

Note: Activities pertinent to this specific demonstration are indicated in highlighted text.

Date	No. of People	Area Tested	Status Start Time	Status Stop Time	Duration, min	Operational Status	OP Stat Code	Operational Status - Comments	Track Method	Track Method=Other Explain	Pattern	Field Conditions
6/15/04	2	OPEN FIELD	1340	1420	40	COLLECT DATA	4	COLLECT DATA	NA	SCHONSTEDT	LINEAR	SUNNY MUDDY
6/15/04	2	OPEN FIELD	1420	1440	20	BREAK/LUNCH	5	BREAK/LUNCH	NA	SCHONSTEDT	LINEAR	SUNNY MUDDY
6/15/04	2	OPEN FIELD	1440	1500	20	DAILY START STOP	3	MOVE STRING ALONG GRID	NA	SCHONSTEDT	LINEAR	SUNNY MUDDY
6/15/04	2	OPEN FIELD	1500	1515	15	DAILY START STOP	3	BREAKDOWN END OF ACTIVITIES	NA	SCHONSTEDT	LINEAR	SUNNY MUDDY
6/16/04	2	OPEN FIELD	745	800	15	DAILY START STOP	3	START OF OPERATIONS	NA	SCHONSTEDT	LINEAR	CLOUDY MUDDY
6/16/04	2	OPEN FIELD	800	840	40	COLLECT DATA	4	COLLECT DATA	NA	SCHONSTEDT	LINEAR	CLOUDY MUDDY
6/16/04	2	OPEN FIELD	840	850	10	DAILY START STOP	3	MOVE STRING ALONG GRID	NA	SCHONSTEDT	LINEAR	CLOUDY MUDDY
6/16/04	2	OPEN FIELD	850	930	40	COLLECT DATA	4	COLLECT DATA	NA	SCHONSTEDT	LINEAR	CLOUDY MUDDY
6/16/04	2	OPEN FIELD	930	935	35	BREAK/LUNCH	5	BREAK/LUNCH	NA	SCHONSTEDT	LINEAR	CLOUDY MUDDY
6/16/04	2	OPEN FIELD	935	1040	55	DAILY START STOP	3	SET UP GRID	NA	SCHONSTEDT	LINEAR	CLOUDY MUDDY
6/16/04	2	OPEN FIELD	1040	1115	35	COLLECT DATA	4	COLLECT DATA	NA	SCHONSTEDT	LINEAR	CLOUDY MUDDY
6/16/04	2	OPEN FIELD	1115	1145	30	DAILY START STOP	3	MOVE STRING ALONG GRID	NA	SCHONSTEDT	LINEAR	CLOUDY MUDDY

Note: Activities pertinent to this specific demonstration are indicated in highlighted text.

Date	No. of People	Area Tested	Status Start Time	Status Stop Time	Duration, min	Operational Status	OP Stat Code	Operational Status - Comments	Track Method	Track Method=Other Explain	Pattern	Field Conditions
6/16/04	2	OPEN FIELD	1145	1220	35	BREAK/LUNCH	5	BREAK/LUNCH	NA	SCHONSTEDT	LINEAR	CLOUDY MUDDY
6/16/04	2	OPEN FIELD	1220	1310	50	COLLECT DATA	4	COLLECT DATA	NA	SCHONSTEDT	LINEAR	CLOUDY MUDDY
6/16/04	2	OPEN FIELD	1310	1330	20	DAILY START STOP	3	MOVE STRING ALONG GRID	NA	SCHONSTEDT	LINEAR	CLOUDY MUDDY
6/16/04	2	OPEN FIELD	1330	1400	30	COLLECT DATA	4	COLLECT DATA	NA	SCHONSTEDT	LINEAR	CLOUDY MUDDY
6/16/04	2	OPEN FIELD	1400	1415	15	DAILY START STOP	3	MOVE STRING ALONG GRID	NA	SCHONSTEDT	LINEAR	CLOUDY MUDDY
6/16/04	2	OPEN FIELD	1415	1430	15	COLLECT DATA	4	COLLECT DATA	NA	SCHONSTEDT	LINEAR	CLOUDY MUDDY
6/16/04	2	OPEN FIELD	1430	1440	10	DAILY START STOP	3	BREAKDOWN END OF ACTIVITIES	NA	SCHONSTEDT	LINEAR	CLOUDY MUDDY
6/17/04	2	OPEN FIELD	715	800	45	DAILY START STOP	3	START OF OPERATIONS	NA	SCHONSTEDT	LINEAR	SUNNY MUDDY
6/17/04	2	OPEN FIELD	800	850	50	DAILY START STOP	3	SET UP GRID	NA	SCHONSTEDT	LINEAR	SUNNY MUDDY
6/17/04	2	OPEN FIELD	850	900	10	BREAK/LUNCH	5	BREAK/LUNCH	NA	SCHONSTEDT	LINEAR	SUNNY MUDDY
6/17/04	2	OPEN FIELD	900	1015	75	COLLECT DATA	4	COLLECT DATA	NA	SCHONSTEDT	LINEAR	SUNNY MUDDY
6/17/04	2	OPEN FIELD	1015	1025	10	DAILY START STOP	3	MOVE STRING ALONG GRID	NA	SCHONSTEDT	LINEAR	SUNNY MUDDY

Note: Activities pertinent to this specific demonstration are indicated in highlighted text.

Date	No. of People	Area Tested	Status Start Time	Status Stop Time	Duration, min	Operational Status	OP Stat Code	Operational Status - Comments	Track Method	Track Method=Other Explain	Pattern	Field Conditions
6/17/04	2	OPEN FIELD	1025	1040	15	BREAK/LUNCH	5	BREAK/LUNCH	NA	SCHONSTEDT	LINEAR	SUNNY MUDDY
6/17/04	2	OPEN FIELD	1040	1130	50	COLLECT DATA	4	COLLECT DATA	NA	SCHONSTEDT	LINEAR	SUNNY MUDDY
6/17/04	2	OPEN FIELD	1130	1140	10	DAILY START STOP	3	MOVE STRING ALONG GRID	NA	SCHONSTEDT	LINEAR	SUNNY MUDDY
6/17/04	2	OPEN FIELD	1140	1225	45	BREAK/LUNCH	5	BREAK/LUNCH	NA	SCHONSTEDT	LINEAR	SUNNY MUDDY
6/17/04	2	OPEN FIELD	1225	1320	55	COLLECT DATA	4	COLLECT DATA	NA	SCHONSTEDT	LINEAR	SUNNY MUDDY
6/17/04	2	OPEN FIELD	1320	1335	15	DAILY START STOP	3	MOVE STRING ALONG GRID	NA	SCHONSTEDT	LINEAR	SUNNY MUDDY
6/17/04	2	OPEN FIELD	1335	1350	15	COLLECT DATA	4	COLLECT DATA	NA	SCHONSTEDT	LINEAR	SUNNY MUDDY
6/17/04	2	OPEN FIELD	1350	1355	5	DAILY START STOP	3	MOVE STRING ALONG GRID	NA	SCHONSTEDT	LINEAR	SUNNY MUDDY
6/17/04	2	OPEN FIELD	1355	1410	15	COLLECT DATA	4	COLLECT DATA	NA	SCHONSTEDT	LINEAR	SUNNY MUDDY
6/17/04	2	OPEN FIELD	1410	1415	5	BREAK/LUNCH	5	BREAK/LUNCH	NA	SCHONSTEDT	LINEAR	SUNNY MUDDY
6/17/04	2	OPEN FIELD	1415	1500	45	DAILY START STOP	3	SET UP GRID	NA	SCHONSTEDT	LINEAR	SUNNY MUDDY
6/17/04	2	OPEN FIELD	1500	1515	15	DAILY START STOP	3	BREAKDOWN END OF ACTIVITIES	NA	SCHONSTEDT	LINEAR	SUNNY MUDDY

Note: Activities pertinent to this specific demonstration are indicated in highlighted text.

Date	No. of People	Area Tested	Status		Duration, min	Operational Status	OP Stat Code	Operational Status - Comments	Track Method	Track		Field Conditions
			Start Time	Stop Time						Method=Other	Explain	
6/18/04	2	OPEN FIELD	715	720	5	DAILY START STOP	3	START OF OPERATIONS	NA	SCHONSTEDT	LINEAR	SUNNY MUDDY
6/18/04	2	OPEN FIELD	720	830	70	COLLECT DATA	4	COLLECT DATA	NA	SCHONSTEDT	LINEAR	SUNNY MUDDY
6/18/04	2	OPEN FIELD	830	1000	90	DAILY START STOP	3	SET UP GRID	NA	SCHONSTEDT	LINEAR	SUNNY MUDDY
6/18/04	2	OPEN FIELD	1000	1010	10	BREAK/LUNCH	5	BREAK/LUNCH	NA	SCHONSTEDT	LINEAR	SUNNY MUDDY
6/18/04	2	OPEN FIELD	1010	1023	13	COLLECT DATA	4	COLLECT DATA	NA	SCHONSTEDT	LINEAR	SUNNY MUDDY
6/18/04	2	OPEN FIELD	1023	1031	8	DAILY START STOP	3	MOVE STRING ALONG GRID	NA	SCHONSTEDT	LINEAR	SUNNY MUDDY
6/18/04	2	OPEN FIELD	1031	1103	32	COLLECT DATA	4	COLLECT DATA	NA	SCHONSTEDT	LINEAR	SUNNY MUDDY
6/18/04	2	OPEN FIELD	1103	1112	9	DAILY START STOP	3	MOVE STRING ALONG GRID	NA	SCHONSTEDT	LINEAR	SUNNY MUDDY
6/18/04	2	OPEN FIELD	1112	1123	11	BREAK/LUNCH	5	BREAK/LUNCH	NA	SCHONSTEDT	LINEAR	SUNNY MUDDY
6/18/04	2	OPEN FIELD	1123	1148	25	COLLECT DATA	4	COLLECT DATA	NA	SCHONSTEDT	LINEAR	SUNNY MUDDY
6/18/04	2	OPEN FIELD	1148	1215	27	BREAK/LUNCH	5	BREAK/LUNCH	NA	SCHONSTEDT	LINEAR	SUNNY MUDDY
6/18/04	2	OPEN FIELD	1215	1300	45	COLLECT DATA	4	COLLECT DATA	NA	SCHONSTEDT	LINEAR	SUNNY MUDDY

Note: Activities pertinent to this specific demonstration are indicated in highlighted text.

Date	No. of People	Area Tested	Status Start Time	Status Stop Time	Duration, min	Operational Status	OP Stat Code	Operational Status - Comments	Track Method	Track Method=Other Explain	Pattern	Field Conditions
6/18/04	2	OPEN FIELD	1300	1330	30	DAILY START STOP	3	BREAKDOWN END OF ACTIVITIES	NA	SCHONSTEDT	LINEAR	SUNNY MUDDY
6/28/04	2	OPEN FIELD	750	930	100	DAILY START STOP	3	SET UP GRID	NA	SCHONSTEDT	LINEAR	SUNNY MUDDY
6/28/04	2	OPEN FIELD	930	945	15	BREAK/LUNCH	5	BREAK/LUNCH	NA	SCHONSTEDT	LINEAR	SUNNY MUDDY
6/28/04	2	OPEN FIELD	945	1100	75	COLLECT DATA	4	COLLECT DATA	NA	SCHONSTEDT	LINEAR	SUNNY MUDDY
6/28/04	2	OPEN FIELD	1100	1110	10	DAILY START STOP	3	MOVE STRING ALONG GRID	NA	SCHONSTEDT	LINEAR	SUNNY MUDDY
6/28/04	2	OPEN FIELD	1110	1200	50	COLLECT DATA	4	COLLECT DATA	NA	SCHONSTEDT	LINEAR	SUNNY MUDDY
6/28/04	2	OPEN FIELD	1200	1240	40	BREAK/LUNCH	5	BREAK/LUNCH	NA	SCHONSTEDT	LINEAR	SUNNY MUDDY
6/28/04	2	OPEN FIELD	1240	1305	25	COLLECT DATA	4	COLLECT DATA	NA	SCHONSTEDT	LINEAR	SUNNY MUDDY
6/28/04	2	OPEN FIELD	1305	1315	10	DAILY START STOP	3	SET UP GRID	NA	SCHONSTEDT	LINEAR	SUNNY MUDDY
6/28/04	2	OPEN FIELD	1315	1445	90	COLLECT DATA	4	COLLECT DATA	NA	SCHONSTEDT	LINEAR	SUNNY MUDDY
6/28/04	2	OPEN FIELD	1445	1455	10	DAILY START STOP	3	MOVE STRING ALONG GRID	NA	SCHONSTEDT	LINEAR	SUNNY MUDDY
6/28/04	2	OPEN FIELD	1455	1515	20	DAILY START STOP	3	BREAKDOWN END OF ACTIVITIES	NA	SCHONSTEDT	LINEAR	SUNNY MUDDY

Note: Activities pertinent to this specific demonstration are indicated in highlighted text.

Date	No. of People	Area Tested	Status Start Time	Status Stop Time	Duration, min	Operational Status	OP Stat Code	Operational Status - Comments	Track Method	Track Method=Other Explain	Pattern	Field Conditions
6/29/04	2	OPEN FIELD	720	730	10	DAILY START STOP	3	START OF OPERATIONS	NA	SCHONSTEDT	LINEAR	SUNNY MUDDY
6/29/04	2	OPEN FIELD	730	915	105	COLLECT DATA	4	COLLECT DATA	NA	SCHONSTEDT	LINEAR	SUNNY MUDDY
6/29/04	2	OPEN FIELD	915	935	20	BREAK/LUNCH	5	BREAK/LUNCH	NA	SCHONSTEDT	LINEAR	SUNNY MUDDY
6/29/04	2	OPEN FIELD	935	1005	30	DAILY START STOP	3	SET UP GRID	NA	SCHONSTEDT	LINEAR	SUNNY MUDDY
6/29/04	2	OPEN FIELD	1005	1145	100	COLLECT DATA	4	COLLECT DATA	NA	SCHONSTEDT	LINEAR	SUNNY MUDDY
6/29/04	2	OPEN FIELD	1145	1155	10	DAILY START STOP	3	MOVE STRING ALONG GRID	NA	SCHONSTEDT	LINEAR	SUNNY MUDDY
6/29/04	2	OPEN FIELD	1155	1250	55	BREAK/LUNCH	5	BREAK/LUNCH	NA	SCHONSTEDT	LINEAR	SUNNY MUDDY
6/29/04	2	OPEN FIELD	1250	1415	85	COLLECT DATA	4	COLLECT DATA	NA	SCHONSTEDT	LINEAR	SUNNY MUDDY
6/29/04	2	OPEN FIELD	1415	1450	35	DAILY START STOP	3	SET UP GRID	NA	SCHONSTEDT	LINEAR	SUNNY MUDDY
6/29/04	2	OPEN FIELD	1450	1505	15	COLLECT DATA	4	COLLECT DATA	NA	SCHONSTEDT	LINEAR	SUNNY MUDDY
6/29/04	2	OPEN FIELD	1505	1515	10	DAILY START STOP	3	BREAKDOWN END OF ACTIVITIES	NA	SCHONSTEDT	LINEAR	SUNNY MUDDY
6/30/04	2	OPEN FIELD	730	740	10	DAILY START STOP	3	START OF OPERATIONS	NA	SCHONSTEDT	LINEAR	SUNNY MUDDY

Note: Activities pertinent to this specific demonstration are indicated in highlighted text.

Date	No. of People	Area Tested	Status Start Time	Status Stop Time	Duration, min	Operational Status	OP Stat Code	Operational Status - Comments	Track Method	Track Method=Other Explain	Pattern	Field Conditions
6/30/04	2	OPEN FIELD	740	800	20	COLLECT DATA	4	COLLECT DATA	NA	SCHONSTEDT	LINEAR	SUNNY MUDDY
6/30/04	2	OPEN FIELD	800	810	10	DAILY START STOP	3	MOVE STRING ALONG GRID	NA	SCHONSTEDT	LINEAR	SUNNY MUDDY
6/30/04	2	OPEN FIELD	810	825	15	COLLECT DATA	4	COLLECT DATA	NA	SCHONSTEDT	LINEAR	SUNNY MUDDY
6/30/04	2	OPEN FIELD	825	840	15	DAILY START STOP	3	MOVE STRING ALONG GRID	NA	SCHONSTEDT	LINEAR	SUNNY MUDDY
6/30/04	2	OPEN FIELD	840	900	20	COLLECT DATA	4	COLLECT DATA	NA	SCHONSTEDT	LINEAR	SUNNY MUDDY
6/30/04	2	OPEN FIELD	900	930	30	DAILY START STOP	3	SET UP GRID	NA	SCHONSTEDT	LINEAR	SUNNY MUDDY
6/30/04	2	OPEN FIELD	930	955	25	BREAK/LUNCH	5	BREAK/LUNCH	NA	SCHONSTEDT	LINEAR	SUNNY MUDDY
6/30/04	2	OPEN FIELD	955	1010	15	COLLECT DATA	4	COLLECT DATA	NA	SCHONSTEDT	LINEAR	SUNNY MUDDY
6/30/04	2	OPEN FIELD	1010	1015	5	DAILY START STOP	3	MOVE STRING ALONG GRID	NA	SCHONSTEDT	LINEAR	SUNNY MUDDY
6/30/04	2	OPEN FIELD	1015	1025	10	COLLECT DATA	4	COLLECT DATA	NA	SCHONSTEDT	LINEAR	SUNNY MUDDY
6/30/04	2	OPEN FIELD	1025	1030	5	DAILY START STOP	3	MOVE STRING ALONG GRID	NA	SCHONSTEDT	LINEAR	SUNNY MUDDY
6/30/04	2	OPEN FIELD	1030	1040	10	COLLECT DATA	4	COLLECT DATA	NA	SCHONSTEDT	LINEAR	SUNNY MUDDY

Note: Activities pertinent to this specific demonstration are indicated in highlighted text.

Date	No. of People	Area Tested	Status Start Time	Status Stop Time	Duration, min	Operational Status	OP Stat Code	Operational Status - Comments	Track Method	Track Method=Other Explain	Pattern	Field Conditions
6/30/04	2	OPEN FIELD	1040	1045	5	DAILY START STOP	3	MOVE STRING ALONG GRID	NA	SCHONSTEDT	LINEAR	SUNNY MUDDY
6/30/04	2	OPEN FIELD	1045	1105	20	COLLECT DATA	4	COLLECT DATA	NA	SCHONSTEDT	LINEAR	SUNNY MUDDY
6/30/04	2	OPEN FIELD	1105	1125	20	DAILY START STOP	3	MOVE STRING ALONG GRID	NA	SCHONSTEDT	LINEAR	SUNNY MUDDY
6/30/04	2	OPEN FIELD	1125	1135	10	COLLECT DATA	4	COLLECT DATA	NA	SCHONSTEDT	LINEAR	SUNNY MUDDY
6/30/04	2	OPEN FIELD	1135	1150	15	DAILY START STOP	3	SET UP GRID	NA	SCHONSTEDT	LINEAR	SUNNY MUDDY
6/30/04	2	OPEN FIELD	1150	1240	50	BREAK/LUNCH	5	BREAK/LUNCH	NA	SCHONSTEDT	LINEAR	SUNNY MUDDY
6/30/04	2	OPEN FIELD	1240	1330	50	COLLECT DATA	4	COLLECT DATA	NA	SCHONSTEDT	LINEAR	SUNNY MUDDY
6/30/04	2	OPEN FIELD	1330	1340	10	DAILY START STOP	3	MOVE STRING ALONG GRID	NA	SCHONSTEDT	LINEAR	SUNNY MUDDY
6/30/04	2	OPEN FIELD	1340	1430	50	COLLECT DATA	4	COLLECT DATA	NA	SCHONSTEDT	LINEAR	SUNNY MUDDY
6/30/04	2	OPEN FIELD	1430	1440	10	BREAK/LUNCH	5	BREAK/LUNCH	NA	SCHONSTEDT	LINEAR	SUNNY MUDDY
6/30/04	2	OPEN FIELD	1440	1455	15	COLLECT DATA	4	COLLECT DATA	NA	SCHONSTEDT	LINEAR	SUNNY MUDDY
6/30/04	2	OPEN FIELD	1455	1505	10	DAILY START STOP	3	MOVE STRING ALONG GRID	NA	SCHONSTEDT	LINEAR	SUNNY MUDDY

Note: Activities pertinent to this specific demonstration are indicated in highlighted text.

Date	No. of People	Area Tested	Status Start Time	Status Stop Time	Duration, min	Operational Status	OP Stat Code	Operational Status - Comments	Track Method	Track Method=Other Explain	Pattern	Field Conditions
6/30/04	2	OPEN FIELD	1505	1515	10	DAILY START STOP	3	BREAKDOWN END OF ACTIVITIES	NA	SCHONSTEDT	LINEAR	SUNNY MUDDY
7/1/04	2	OPEN FIELD	720	730	10	DAILY START STOP	3	START OF OPERATIONS	NA	SCHONSTEDT	LINEAR	SUNNY MUDDY
7/1/04	2	OPEN FIELD	730	845	75	COLLECT DATA	4	COLLECT DATA	NA	SCHONSTEDT	LINEAR	SUNNY MUDDY
7/1/04	2	OPEN FIELD	845	910	25	BREAK/LUNCH	5	BREAK/LUNCH	NA	SCHONSTEDT	LINEAR	SUNNY MUDDY
7/1/04	2	OPEN FIELD	910	945	35	DAILY START STOP	3	SET UP GRID	NA	SCHONSTEDT	LINEAR	SUNNY MUDDY
7/1/04	2	OPEN FIELD	945	1015	30	BREAK/LUNCH	5	BREAK/LUNCH	NA	SCHONSTEDT	LINEAR	SUNNY MUDDY
7/1/04	2	OPEN FIELD	1015	1045	30	COLLECT DATA	4	COLLECT DATA	NA	SCHONSTEDT	LINEAR	SUNNY MUDDY
7/1/04	2	OPEN FIELD	1045	1055	10	DAILY START STOP	3	MOVE STRING ALONG GRID	NA	SCHONSTEDT	LINEAR	SUNNY MUDDY
7/1/04	2	OPEN FIELD	1055	1125	30	COLLECT DATA	4	COLLECT DATA	NA	SCHONSTEDT	LINEAR	SUNNY MUDDY
7/1/04	2	OPEN FIELD	1125	1130	5	DAILY START STOP	3	MOVE STRING ALONG GRID	NA	SCHONSTEDT	LINEAR	SUNNY MUDDY
7/1/04	2	OPEN FIELD	1130	1150	20	COLLECT DATA	4	COLLECT DATA	NA	SCHONSTEDT	LINEAR	SUNNY MUDDY
7/1/04	2	OPEN FIELD	1150	1250	60	BREAK/LUNCH	5	BREAK/LUNCH	NA	SCHONSTEDT	LINEAR	SUNNY MUDDY

Note: Activities pertinent to this specific demonstration are indicated in highlighted text.

Date	No. of People	Area Tested	Status Start Time	Status Stop Time	Duration, min	Operational Status	OP Stat Code	Operational Status - Comments	Track Method	Track Method=Other Explain	Pattern	Field Conditions
7/1/04	2	OPEN FIELD	1250	1415	85	COLLECT DATA	4	COLLECT DATA	NA	SCHONSTEDT	LINEAR	SUNNY MUDDY
7/1/04	2	OPEN FIELD	1415	1445	30	DAILY START STOP	3	SET UP GRID	NA	SCHONSTEDT	LINEAR	SUNNY MUDDY
7/1/04	2	OPEN FIELD	1445	1500	15	COLLECT DATA	4	COLLECT DATA	NA	SCHONSTEDT	LINEAR	SUNNY MUDDY
7/1/04	2	OPEN FIELD	1500	1510	10	DAILY START STOP	3	BREAKDOWN END OF ACTIVITIES	NA	SCHONSTEDT	LINEAR	SUNNY MUDDY
7/2/04	2	OPEN FIELD	725	745	20	DAILY START STOP	3	START OF OPERATIONS	NA	SCHONSTEDT	LINEAR	SUNNY MUDDY
7/2/04	2	OPEN FIELD	745	830	45	COLLECT DATA	4	COLLECT DATA	NA	SCHONSTEDT	LINEAR	SUNNY MUDDY
7/2/04	2	OPEN FIELD	830	845	15	DAILY START STOP	3	MOVE STRING ALONG GRID	NA	SCHONSTEDT	LINEAR	SUNNY MUDDY
7/2/04	2	OPEN FIELD	845	1000	75	COLLECT DATA	4	COLLECT DATA	NA	SCHONSTEDT	LINEAR	SUNNY MUDDY
7/2/04	2	OPEN FIELD	1000	1015	15	DAILY START STOP	3	MOVE STRING ALONG GRID	NA	SCHONSTEDT	LINEAR	SUNNY MUDDY
7/2/04	2	OPEN FIELD	1015	1030	15	COLLECT DATA	4	COLLECT DATA	NA	SCHONSTEDT	LINEAR	SUNNY MUDDY
7/2/04	2	OPEN FIELD	1030	1105	35	DAILY START STOP	3	SET UP GRID	NA	SCHONSTEDT	LINEAR	SUNNY MUDDY
7/2/04	2	OPEN FIELD	1105	1205	60	BREAK/LUNCH	5	BREAK/LUNCH	NA	SCHONSTEDT	LINEAR	SUNNY MUDDY

Note: Activities pertinent to this specific demonstration are indicated in highlighted text.

Date	No. of People	Area Tested	Status Start Time	Status Stop Time	Duration, min	Operational Status	OP Stat Code	Operational Status - Comments	Track Method	Track Method=Other Explain	Pattern	Field Conditions
7/2/04	2	OPEN FIELD	1205	1345	100	COLLECT DATA	4	COLLECT DATA	NA	SCHONSTEDT	LINEAR	SUNNY MUDDY
7/2/04	2	OPEN FIELD	1345	1400	15	DAILY START STOP	3	MOVE STRING ALONG GRID	NA	SCHONSTEDT	LINEAR	SUNNY MUDDY
7/2/04	2	OPEN FIELD	1400	1415	15	DAILY START STOP	3	BREAKDOWN END OF ACTIVITIES	NA	SCHONSTEDT	LINEAR	SUNNY MUDDY
7/6/04	2	OPEN FIELD	730	745	15	DAILY START STOP	3	START OF OPERATIONS	NA	SCHONSTEDT	LINEAR	SUNNY MUDDY
7/6/04	2	OPEN FIELD	745	915	90	COLLECT DATA	4	COLLECT DATA	NA	SCHONSTEDT	LINEAR	SUNNY MUDDY
7/6/04	2	OPEN FIELD	915	930	15	DAILY START STOP	3	SET UP GRID	NA	SCHONSTEDT	LINEAR	SUNNY MUDDY
7/6/04	2	OPEN FIELD	930	950	20	COLLECT DATA	4	COLLECT DATA	NA	SCHONSTEDT	LINEAR	SUNNY MUDDY
7/6/04	2	OPEN FIELD	950	1015	25	DAILY START STOP	3	SET UP GRID	NA	SCHONSTEDT	LINEAR	SUNNY MUDDY
7/6/04	2	OPEN FIELD	1015	1050	35	BREAK/LUNCH	5	BREAK/LUNCH	NA	SCHONSTEDT	LINEAR	SUNNY MUDDY
7/6/04	2	OPEN FIELD	1050	1220	90	COLLECT DATA	4	COLLECT DATA	NA	SCHONSTEDT	LINEAR	SUNNY MUDDY
7/6/04	2	OPEN FIELD	1220	1315	55	BREAK/LUNCH	5	BREAK/LUNCH	NA	SCHONSTEDT	LINEAR	SUNNY MUDDY
7/6/04	2	OPEN FIELD	1315	1410	55	COLLECT DATA	4	COLLECT DATA	NA	SCHONSTEDT	LINEAR	SUNNY MUDDY

Note: Activities pertinent to this specific demonstration are indicated in highlighted text.

Date	No. of People	Area Tested	Status Start Time	Status Stop Time	Duration, min	Operational Status	OP Stat Code	Operational Status - Comments	Track Method	Track Method=Other Explain	Pattern	Field Conditions
7/6/04	2	OPEN FIELD	1410	1415	5	DAILY START STOP	3	MOVE STRING ALONG GRID	NA	SCHONSTEDT	LINEAR	SUNNY MUDDY
7/6/04	2	OPEN FIELD	1415	1510	55	COLLECT DATA	4	COLLECT DATA	NA	SCHONSTEDT	LINEAR	SUNNY MUDDY
7/6/04	2	OPEN FIELD	1510	1520	10	DAILY START STOP	3	BREAKDOWN END OF ACTIVITIES	NA	SCHONSTEDT	LINEAR	SUNNY MUDDY
7/7/04	2	OPEN FIELD	730	740	10	DAILY START STOP	3	START OF OPERATIONS	NA	SCHONSTEDT	LINEAR	SUNNY MUDDY
7/7/04	2	OPEN FIELD	740	815	35	DAILY START STOP	3	SET UP GRID	NA	SCHONSTEDT	LINEAR	SUNNY MUDDY
7/7/04	2	OPEN FIELD	815	900	45	COLLECT DATA	4	COLLECT DATA	NA	SCHONSTEDT	LINEAR	SUNNY MUDDY
7/7/04	2	OPEN FIELD	900	915	15	DAILY START STOP	3	MOVE STRING ALONG GRID	NA	SCHONSTEDT	LINEAR	SUNNY MUDDY
7/7/04	2	OPEN FIELD	915	1015	60	COLLECT DATA	4	COLLECT DATA	NA	SCHONSTEDT	LINEAR	SUNNY MUDDY
7/7/04	2	OPEN FIELD	1015	1030	15	DAILY START STOP	3	MOVE STRING ALONG GRID	NA	SCHONSTEDT	LINEAR	SUNNY MUDDY
7/7/04	2	OPEN FIELD	1030	1035	5	BREAK/LUNCH	5	BREAK/LUNCH	NA	SCHONSTEDT	LINEAR	SUNNY MUDDY
7/7/04	2	OPEN FIELD	1035	1115	40	COLLECT DATA	4	COLLECT DATA	NA	SCHONSTEDT	LINEAR	SUNNY MUDDY
7/7/04	2	OPEN FIELD	1115	1120	5	DAILY START STOP	3	MOVE STRING ALONG GRID	NA	SCHONSTEDT	LINEAR	SUNNY MUDDY

Note: Activities pertinent to this specific demonstration are indicated in highlighted text.

Date	No. of People	Area Tested	Status Start Time	Status Stop Time	Duration, min	Operational Status	OP Stat Code	Operational Status - Comments	Track Method	Track Method=Other Explain	Pattern	Field Conditions
7/7/04	2	OPEN FIELD	1120	1210	50	COLLECT DATA	4	COLLECT DATA	NA	SCHONSTEDT	LINEAR	SUNNY MUDDY
7/7/04	2	OPEN FIELD	1210	1225	15	DAILY START STOP	3	BREAKDOWN END OF ACTIVITIES	NA	SCHONSTEDT	LINEAR	SUNNY MUDDY
7/8/04	2	WOODS	800	810	10	DAILY START STOP	3	START OF OPERATIONS	NA	SCHONSTEDT	LINEAR	SUNNY MUDDY
7/8/04	2	WOODS	810	915	75	DAILY START STOP	3	SET UP GRID	NA	SCHONSTEDT	LINEAR	SUNNY MUDDY
7/8/04	2	WOODS	915	930	15	BREAK/LUNCH	5	BREAK/LUNCH	NA	SCHONSTEDT	LINEAR	SUNNY MUDDY
7/8/04	2	WOODS	930	1000	30	COLLECT DATA	4	COLLECT DATA	NA	SCHONSTEDT	LINEAR	SUNNY MUDDY
7/8/04	2	WOODS	1000	1020	20	DAILY START STOP	3	MOVE STRING ALONG GRID	NA	SCHONSTEDT	LINEAR	SUNNY MUDDY
7/8/04	2	WOODS	1020	1100	40	COLLECT DATA	4	COLLECT DATA	NA	SCHONSTEDT	LINEAR	SUNNY MUDDY
7/8/04	2	WOODS	1100	1120	20	DAILY START STOP	3	MOVE STRING ALONG GRID	NA	SCHONSTEDT	LINEAR	SUNNY MUDDY
7/8/04	2	WOODS	1120	1205	45	COLLECT DATA	4	COLLECT DATA	NA	SCHONSTEDT	LINEAR	SUNNY MUDDY
7/8/04	2	WOODS	1205	1250	45	BREAK/LUNCH	5	BREAK/LUNCH	NA	SCHONSTEDT	LINEAR	SUNNY MUDDY
7/8/04	2	WOODS	1250	1305	15	DAILY START STOP	3	SET UP GRID	NA	SCHONSTEDT	LINEAR	SUNNY MUDDY

Note: Activities pertinent to this specific demonstration are indicated in highlighted text.

Date	No. of People	Area Tested	Status Start Time	Status Stop Time	Duration, min	Operational Status	OP Stat Code	Operational Status - Comments	Track Method	Track Method=Other Explain	Pattern	Field Conditions
7/8/04	2	WOODS	1305	1510	125	COLLECT DATA	4	COLLECT DATA	NA	SCHONSTEDT	LINEAR	SUNNY MUDDY
7/8/04	2	WOODS	1510	1520	10	DAILY START STOP	3	BREAKDOWN END OF ACTIVITIES	NA	SCHONSTEDT	LINEAR	SUNNY MUDDY
7/9/04	2	WOODS	725	735	10	DAILY START STOP	3	START OF OPERATIONS	NA	SCHONSTEDT	LINEAR	SUNNY MUDDY
7/9/04	2	WOODS	735	820	45	DAILY START STOP	3	SET UP GRID	NA	SCHONSTEDT	LINEAR	SUNNY MUDDY
7/9/04	2	WOODS	820	955	95	COLLECT DATA	4	COLLECT DATA	NA	SCHONSTEDT	LINEAR	SUNNY MUDDY
7/9/04	2	WOODS	955	1015	20	DAILY START STOP	3	MOVE STRING ALONG GRID	NA	SCHONSTEDT	LINEAR	SUNNY MUDDY
7/9/04	2	WOODS	1015	1100	45	COLLECT DATA	4	COLLECT DATA	NA	SCHONSTEDT	LINEAR	SUNNY MUDDY
7/9/04	2	WOODS	1100	1120	20	DAILY START STOP	3	MOVE STRING ALONG GRID	NA	SCHONSTEDT	LINEAR	SUNNY MUDDY
7/9/04	2	WOODS	1120	1200	40	COLLECT DATA	4	COLLECT DATA	NA	SCHONSTEDT	LINEAR	SUNNY MUDDY
7/9/04	2	WOODS	1200	1235	35	BREAK/LUNCH	5	BREAK/LUNCH	NA	SCHONSTEDT	LINEAR	SUNNY MUDDY
7/9/04	2	WOODS	1235	1255	20	COLLECT DATA	4	COLLECT DATA	NA	SCHONSTEDT	LINEAR	SUNNY MUDDY
7/9/04	2	WOODS	1255	1325	30	DAILY START STOP	3	SET UP GRID	NA	SCHONSTEDT	LINEAR	SUNNY MUDDY

Date	No. of People	Area Tested	Status Start Time	Status Stop Time	Duration, min	Operational Status	OP Stat Code	Operational Status - Comments	Track Method	Track Method=Other Explain	Pattern	Field Conditions
7/9/04	2	WOODS	1325	1400	35	COLLECT DATA	4	COLLECT DATA	NA	SCHONSTEDT	LINEAR	SUNNY
7/9/04	2	WOODS	1400	1410	10	DAILY START STOP	3	BREAKDOWN END OF ACTIVITIES	NA	SCHONSTEDT	LINEAR	SUNNY
7/12/04	2	OPEN FIELD	730	740	10	DAILY START STOP	3	START OF OPERATIONS	NA	SCHONSTEDT	LINEAR	RAIN
7/12/04	2	OPEN FIELD	740	810	30	DAILY START STOP	3	SET UP GRID	NA	SCHONSTEDT	LINEAR	RAIN
7/12/04	2	OPEN FIELD	810	845	35	COLLECT DATA	4	COLLECT DATA	NA	SCHONSTEDT	LINEAR	RAIN
7/12/04	2	OPEN FIELD	845	850	5	DAILY START STOP	3	MOVE STRING ALONG GRID	NA	SCHONSTEDT	LINEAR	RAIN
7/12/04	2	OPEN FIELD	850	930	40	COLLECT DATA	4	COLLECT DATA	NA	SCHONSTEDT	LINEAR	RAIN
7/12/04	2	OPEN FIELD	930	945	15	DAILY START STOP	3	MOVE STRING ALONG GRID	NA	SCHONSTEDT	LINEAR	RAIN
7/12/04	2	OPEN FIELD	945	1130	105	COLLECT DATA	4	COLLECT DATA	NA	SCHONSTEDT	LINEAR	RAIN
7/12/04	2	OPEN FIELD	1130	1400	150	WEATHER	8	WEATHER RAIN	NA	SCHONSTEDT	LINEAR	RAIN
7/12/04	2	OPEN FIELD	1400	1410	10	DAILY START STOP	3	BREAKDOWN END OF ACTIVITIES	NA	SCHONSTEDT	LINEAR	RAIN
7/13/04	2	OPEN FIELD	840	850	10	DAILY START STOP	3	START OF OPERATIONS	NA	SCHONSTEDT	LINEAR	CLOUDY

Note: Activities pertinent to this specific demonstration are indicated in highlighted text.

Date	No. of People	Area Tested	Status Start Time	Status Stop Time	Duration, min	Operational Status	OP Stat Code	Operational Status - Comments	Track Method	Track Method=Other Explain	Pattern	Field Conditions
7/13/04	2	OPEN FIELD	850	900	10	DAILY START STOP	3	MOVE STRING ALONG GRID	NA	SCHONSTEDT	LINEAR	CLOUDY MUDDY
7/13/04	2	OPEN FIELD	900	1005	65	COLLECT DATA	4	COLLECT DATA	NA	SCHONSTEDT	LINEAR	CLOUDY MUDDY
7/13/04	2	OPEN FIELD	1005	1020	15	DAILY START STOP	3	MOVE STRING ALONG GRID	NA	SCHONSTEDT	LINEAR	CLOUDY MUDDY
7/13/04	2	OPEN FIELD	1020	1100	40	COLLECT DATA	4	COLLECT DATA	NA	SCHONSTEDT	LINEAR	CLOUDY MUDDY
7/13/04	2	OPEN FIELD	1100	1140	40	DAILY START STOP	3	SET UP GRID	NA	SCHONSTEDT	LINEAR	CLOUDY MUDDY
7/13/04	2	OPEN FIELD	1140	1220	40	BREAK/LUNCH	5	BREAK/LUNCH	NA	SCHONSTEDT	LINEAR	CLOUDY MUDDY
7/13/04	2	OPEN FIELD	1220	1240	20	COLLECT DATA	4	COLLECT DATA	NA	SCHONSTEDT	LINEAR	CLOUDY MUDDY
7/13/04	2	OPEN FIELD	1240	1250	10	DAILY START STOP	3	MOVE STRING ALONG GRID	NA	SCHONSTEDT	LINEAR	CLOUDY MUDDY
7/13/04	2	OPEN FIELD	1250	1310	20	COLLECT DATA	4	COLLECT DATA	NA	SCHONSTEDT	LINEAR	CLOUDY MUDDY
7/13/04	2	OPEN FIELD	1310	1315	5	DAILY START STOP	3	MOVE STRING ALONG GRID	NA	SCHONSTEDT	LINEAR	CLOUDY MUDDY
7/13/04	2	OPEN FIELD	1315	1330	15	COLLECT DATA	4	COLLECT DATA	NA	SCHONSTEDT	LINEAR	CLOUDY MUDDY
7/13/04	2	OPEN FIELD	1330	1345	15	DAILY START STOP	3	MOVE STRING ALONG GRID	NA	SCHONSTEDT	LINEAR	CLOUDY MUDDY

Note: Activities pertinent to this specific demonstration are indicated in highlighted text.

Date	No. of People	Area Tested	Status Start Time	Status Stop Time	Duration, min	Operational Status	OP Stat Code	Operational Status - Comments	Track Method	Track Method=Other Explain	Pattern	Field Conditions
7/13/04	2	OPEN FIELD	1345	1420	35	COLLECT DATA	4	COLLECT DATA	NA	SCHONSTEDT	LINEAR	CLOUDY/MUDDY
7/13/04	2	OPEN FIELD	1420	1435	15	DAILY START STOP	3	MOVE STRING ALONG GRID	NA	SCHONSTEDT	LINEAR	CLOUDY/MUDDY
7/13/04	2	OPEN FIELD	1435	1450	15	BREAK/LUNCH	5	BREAK/LUNCH	NA	SCHONSTEDT	LINEAR	CLOUDY/MUDDY
7/13/04	2	OPEN FIELD	1450	1515	25	COLLECT DATA	4	COLLECT DATA	NA	SCHONSTEDT	LINEAR	CLOUDY/MUDDY
7/13/04	2	OPEN FIELD	1515	1530	15	DAILY START STOP	3	BREAKDOWN END OF ACTIVITIES	NA	SCHONSTEDT	LINEAR	CLOUDY/MUDDY
7/14/04	2	OPEN FIELD	725	740	15	DAILY START STOP	3	START OF OPERATIONS	NA	SCHONSTEDT	LINEAR	RAIN
7/14/04	2	OPEN FIELD	740	820	40	DAILY START STOP	3	SET UP GRID	NA	SCHONSTEDT	LINEAR	RAIN
7/14/04	2	OPEN FIELD	820	850	30	COLLECT DATA	4	COLLECT DATA	NA	SCHONSTEDT	LINEAR	RAIN
7/14/04	2	OPEN FIELD	850	915	25	DAILY START STOP	3	MOVE STRING ALONG GRID	NA	SCHONSTEDT	LINEAR	RAIN
7/14/04	2	OPEN FIELD	915	935	20	COLLECT DATA	4	COLLECT DATA	NA	SCHONSTEDT	LINEAR	RAIN
7/14/04	2	OPEN FIELD	935	950	15	DAILY START STOP	3	MOVE STRING ALONG GRID	NA	SCHONSTEDT	LINEAR	RAIN
7/14/04	2	OPEN FIELD	950	1005	15	BREAK/LUNCH	5	BREAK/LUNCH	NA	SCHONSTEDT	LINEAR	RAIN

Note: Activities pertinent to this specific demonstration are indicated in highlighted text.

Date	No. of People	Area Tested	Status Start Time	Status Stop Time	Duration, min	Operational Status	OP Stat Code	Operational Status - Comments	Track Method	Track Method=Other Explain	Pattern	Field Conditions
7/14/04	2	OPEN FIELD	1005	1035	30	COLLECT DATA	4	COLLECT DATA	NA	SCHONSTEDT	LINEAR	RAIN MUDDY
7/14/04	2	OPEN FIELD	1035	1045	10	DAILY START STOP	3	MOVE STRING ALONG GRID	NA	SCHONSTEDT	LINEAR	RAIN MUDDY
7/14/04	2	OPEN FIELD	1045	1120	35	COLLECT DATA	4	COLLECT DATA	NA	SCHONSTEDT	LINEAR	RAIN MUDDY
7/14/04	2	OPEN FIELD	1120	1150	30	DAILY START STOP	3	SET UP GRID	NA	SCHONSTEDT	LINEAR	RAIN MUDDY
7/14/04	2	OPEN FIELD	1150	1230	40	BREAK/LUNCH	5	BREAK/LUNCH	NA	SCHONSTEDT	LINEAR	RAIN MUDDY
7/14/04	2	OPEN FIELD	1230	1240	10	COLLECT DATA	4	COLLECT DATA	NA	SCHONSTEDT	LINEAR	RAIN MUDDY
7/14/04	2	OPEN FIELD	1240	1300	20	DAILY START STOP	3	MOVE STRING ALONG GRID	NA	SCHONSTEDT	LINEAR	RAIN MUDDY
7/14/04	2	OPEN FIELD	1300	1345	45	COLLECT DATA	4	COLLECT DATA	NA	SCHONSTEDT	LINEAR	RAIN MUDDY
7/14/04	2	OPEN FIELD	1345	1400	15	DAILY START STOP	3	MOVE STRING ALONG GRID	NA	SCHONSTEDT	LINEAR	RAIN MUDDY
7/14/04	2	OPEN FIELD	1400	1415	15	DAILY START STOP	3	BREAKDOWN END OF ACTIVITIES	NA	SCHONSTEDT	LINEAR	RAIN MUDDY
7/15/04	4	OPEN FIELD	725	740	15	DAILY START STOP	3	START OF OPERATIONS	NA	SCHONSTEDT	LINEAR	RAIN MUDDY
7/15/04	4	OPEN FIELD	740	815	35	COLLECT DATA	4	COLLECT DATA	NA	SCHONSTEDT	LINEAR	RAIN MUDDY

Note: Activities pertinent to this specific demonstration are indicated in highlighted text.

Date	No. of People	Area Tested	Status Start Time	Status Stop Time	Duration, min	Operational Status	OP Stat Code	Operational Status - Comments	Track Method	Track Method=Other Explain	Pattern	Field Conditions
7/15/04	4	OPEN FIELD	815	830	15	DAILY START STOP	3	MOVE STRING ALONG GRID	NA	SCHONSTEDT	LINEAR	SUNNY MUDDY
7/15/04	4	OPEN FIELD	830	840	10	COLLECT DATA	4	COLLECT DATA	NA	SCHONSTEDT	LINEAR	SUNNY MUDDY
7/15/04	4	OPEN FIELD	840	915	35	DAILY START STOP	3	SET UP GRID	NA	SCHONSTEDT	LINEAR	SUNNY MUDDY
7/15/04	4	OPEN FIELD	915	935	20	COLLECT DATA	4	COLLECT DATA	NA	SCHONSTEDT	LINEAR	SUNNY MUDDY
7/15/04	4	OPEN FIELD	935	945	10	DAILY START STOP	3	MOVE STRING ALONG GRID	NA	SCHONSTEDT	LINEAR	SUNNY MUDDY
7/15/04	4	OPEN FIELD	945	1000	15	COLLECT DATA	4	COLLECT DATA	NA	SCHONSTEDT	LINEAR	SUNNY MUDDY
7/15/04	4	OPEN FIELD	1000	1005	5	DAILY START STOP	3	MOVE STRING ALONG GRID	NA	SCHONSTEDT	LINEAR	SUNNY MUDDY
7/15/04	4	OPEN FIELD	1005	1015	10	COLLECT DATA	4	COLLECT DATA	NA	SCHONSTEDT	LINEAR	SUNNY MUDDY
7/15/04	4	OPEN FIELD	1015	1030	15	BREAK/LUNCH	5	BREAK/LUNCH	NA	SCHONSTEDT	LINEAR	SUNNY MUDDY
7/15/04	4	OPEN FIELD	1030	1050	20	DAILY START STOP	3	SET UP GRID	NA	SCHONSTEDT	LINEAR	SUNNY MUDDY
7/15/04	4	OPEN FIELD	1050	1105	15	COLLECT DATA	4	COLLECT DATA	NA	SCHONSTEDT	LINEAR	SUNNY MUDDY
7/15/04	4	OPEN FIELD	1105	1125	20	DAILY START STOP	3	MOVE STRING ALONG GRID	NA	SCHONSTEDT	LINEAR	SUNNY MUDDY

Note: Activities pertinent to this specific demonstration are indicated in highlighted text.

Date	No. of People	Area Tested	Status Start Time	Status Stop Time	Duration, min	Operational Status	OP Stat Code	Operational Status - Comments	Track Method	Track Method=Other Explain	Pattern	Field Conditions
7/15/04	4	OPEN FIELD	1125	1145	20	COLLECT DATA	4	COLLECT DATA	NA	SCHONSTEDT	LINEAR	SUNNY MUDDY
7/15/04	4	OPEN FIELD	1145	1200	15	DAILY START STOP	3	MOVE STRING ALONG GRID	NA	SCHONSTEDT	LINEAR	SUNNY MUDDY
7/15/04	4	OPEN FIELD	1200	1235	35	BREAK/LUNCH	5	BREAK/LUNCH	NA	SCHONSTEDT	LINEAR	SUNNY MUDDY
7/15/04	4	OPEN FIELD	1235	1305	30	COLLECT DATA	4	COLLECT DATA	NA	SCHONSTEDT	LINEAR	SUNNY MUDDY
7/15/04	4	OPEN FIELD	1305	1340	35	DAILY START STOP	3	SET UP GRID	NA	SCHONSTEDT	LINEAR	SUNNY MUDDY
7/15/04	4	OPEN FIELD	1340	1435	55	COLLECT DATA	4	COLLECT DATA	NA	SCHONSTEDT	LINEAR	SUNNY MUDDY
7/15/04	4	OPEN FIELD	1435	1505	30	DAILY START STOP	3	BREAKDOWN END OF ACTIVITIES	NA	SCHONSTEDT	LINEAR	SUNNY MUDDY
7/16/04	4	OPEN FIELD	730	750	20	DAILY START STOP	3	START OF OPERATIONS	NA	SCHONSTEDT	LINEAR	SUNNY MUDDY
7/16/04	4	OPEN FIELD	750	755	5	DAILY START STOP	3	MOVE STRING ALONG GRID	NA	SCHONSTEDT	LINEAR	SUNNY MUDDY
7/16/04	4	OPEN FIELD	755	810	15	COLLECT DATA	4	COLLECT DATA	NA	SCHONSTEDT	LINEAR	SUNNY MUDDY
7/16/04	4	OPEN FIELD	810	820	10	DAILY START STOP	3	MOVE STRING ALONG GRID	NA	SCHONSTEDT	LINEAR	SUNNY MUDDY
7/16/04	4	OPEN FIELD	820	830	10	COLLECT DATA	4	COLLECT DATA	NA	SCHONSTEDT	LINEAR	SUNNY MUDDY
7/16/04	4	OPEN FIELD	830	845	15	DAILY START STOP	3	SET UP GRID	NA	SCHONSTEDT	LINEAR	SUNNY MUDDY
7/16/04	4	OPEN FIELD	845	855	10	COLLECT DATA	4	COLLECT DATA	NA	SCHONSTEDT	LINEAR	SUNNY MUDDY

Note: Activities pertinent to this specific demonstration are indicated in highlighted text.

Date	No. of People	Area Tested	Status Start Time	Status Stop Time	Duration, min	Operational Status	OP Stat Code	Operational Status - Comments	Track Method	Track Method=Other Explain	Pattern	Field Conditions
7/16/04	4	OPEN FIELD	855	910	15	DAILY START STOP	3	MOVE STRING ALONG GRID	NA	SCHONSTEDT	LINEAR	SUNNY MUDDY
7/16/04	4	OPEN FIELD	910	930	20	COLLECT DATA	4	COLLECT DATA	NA	SCHONSTEDT	LINEAR	SUNNY MUDDY
7/16/04	4	OPEN FIELD	930	940	10	DAILY START STOP	3	MOVE STRING ALONG GRID	NA	SCHONSTEDT	LINEAR	SUNNY MUDDY
7/16/04	4	OPEN FIELD	940	950	10	DAILY START STOP	3	SET UP GRID	NA	SCHONSTEDT	LINEAR	SUNNY MUDDY
7/16/04	4	OPEN FIELD	950	1010	20	BREAK/LUNCH	5	BREAK/LUNCH	NA	SCHONSTEDT	LINEAR	SUNNY MUDDY
7/16/04	4	OPEN FIELD	1010	1130	80	DAILY START STOP	3	SET UP GRID	NA	SCHONSTEDT	LINEAR	SUNNY MUDDY
7/16/04	4	OPEN FIELD	1130	1140	10	COLLECT DATA	4	COLLECT DATA	NA	SCHONSTEDT	LINEAR	SUNNY MUDDY
7/16/04	4	OPEN FIELD	1140	1200	20	DAILY START STOP	3	BREAKDOWN END OF ACTIVITIES	NA	SCHONSTEDT	LINEAR	SUNNY MUDDY
7/19/04	4	MOGULS	815	835	20	DAILY START STOP	3	START OF OPERATIONS	NA	SCHONSTEDT	LINEAR	SUNNY MUDDY
7/19/04	4	MOGULS	835	950	75	DAILY START STOP	3	SET UP GRID	NA	SCHONSTEDT	LINEAR	SUNNY MUDDY
7/19/04	4	MOGULS	950	1010	20	COLLECT DATA	4	COLLECT DATA	NA	SCHONSTEDT	LINEAR	SUNNY MUDDY
7/19/04	4	MOGULS	1010	1030	20	DAILY START STOP	3	MOVE STRING ALONG GRID	NA	SCHONSTEDT	LINEAR	SUNNY MUDDY

Note: Activities pertinent to this specific demonstration are indicated in highlighted text.

Date	No. of People	Area Tested	Status Start Time	Status Stop Time	Duration, min	Operational Status	OP Stat Code	Operational Status - Comments	Track Method	Track Method=Other Explain	Pattern	Field Conditions
7/19/04	4	MOGULS	1030	1040	10	COLLECT DATA	4	COLLECT DATA	NA	SCHONSTEDT	LINEAR	SUNNY MUDDY
7/19/04	4	MOGULS	1040	1050	10	DAILY START STOP	3	MOVE STRING ALONG GRID	NA	SCHONSTEDT	LINEAR	SUNNY MUDDY
7/19/04	4	MOGULS	1050	1110	20	DAILY START STOP	3	SET UP GRID	NA	SCHONSTEDT	LINEAR	SUNNY MUDDY
7/19/04	4	MOGULS	1110	1125	15	COLLECT DATA	4	COLLECT DATA	NA	SCHONSTEDT	LINEAR	SUNNY MUDDY
7/19/04	4	MOGULS	1125	1145	20	DAILY START STOP	3	MOVE STRING ALONG GRID	NA	SCHONSTEDT	LINEAR	SUNNY MUDDY
7/19/04	4	MOGULS	1145	1205	20	COLLECT DATA	4	COLLECT DATA	NA	SCHONSTEDT	LINEAR	SUNNY MUDDY
7/19/04	4	MOGULS	1205	1215	10	DAILY START STOP	3	MOVE STRING ALONG GRID	NA	SCHONSTEDT	LINEAR	SUNNY MUDDY
7/19/04	4	MOGULS	1215	1250	35	BREAK/LUNCH	5	BREAK/LUNCH	NA	SCHONSTEDT	LINEAR	SUNNY MUDDY
7/19/04	4	MOGULS	1250	1315	25	COLLECT DATA	4	COLLECT DATA	NA	SCHONSTEDT	LINEAR	SUNNY MUDDY
7/19/04	4	MOGULS	1315	1330	15	DAILY START STOP	3	MOVE STRING ALONG GRID	NA	SCHONSTEDT	LINEAR	SUNNY MUDDY
7/19/04	4	MOGULS	1330	1350	20	COLLECT DATA	4	COLLECT DATA	NA	SCHONSTEDT	LINEAR	SUNNY MUDDY
7/19/04	4	MOGULS	1350	1410	20	DAILY START STOP	3	MOVE STRING ALONG GRID	NA	SCHONSTEDT	LINEAR	SUNNY MUDDY

Date	No. of People	Area Testid	Status Start Time	Status Stop Time	Duration, min	Operational Status	OP Stat Code	Operational Status - Comments	Track Method	Track Method=Other Explain	Pattern	Field Conditions
7/19/04	4	MOGULS	1410	1440	30	BREAK/LUNCH	5	BREAK/LUNCH	NA	SCHONSTEDT	LINEAR	SUNNY MUDDY
7/19/04	4	MOGULS	1440	1450	10	COLLECT DATA	4	COLLECT DATA	NA	SCHONSTEDT	LINEAR	SUNNY MUDDY
7/19/04	4	MOGULS	1450	1500	10	DAILY START STOP	3	BREAKDOWN END OF ACTIVITIES	NA	SCHONSTEDT	LINEAR	SUNNY MUDDY
7/20/04	4	MOGULS	740	800	20	DAILY START STOP	3	START OF OPERATIONS	NA	SCHONSTEDT	LINEAR	SUNNY MUDDY
7/20/04	4	MOGULS	800	830	30	COLLECT DATA	4	COLLECT DATA	NA	SCHONSTEDT	LINEAR	SUNNY MUDDY
7/20/04	4	MOGULS	830	905	35	DAILY START STOP	3	MOVE STRING ALONG GRID	NA	SCHONSTEDT	LINEAR	SUNNY MUDDY
7/20/04	4	MOGULS	905	915	10	COLLECT DATA	4	COLLECT DATA	NA	SCHONSTEDT	LINEAR	SUNNY MUDDY
7/20/04	4	MOGULS	915	925	10	DAILY START STOP	3	MOVE STRING ALONG GRID	NA	SCHONSTEDT	LINEAR	SUNNY MUDDY
7/20/04	4	MOGULS	925	940	15	COLLECT DATA	4	COLLECT DATA	NA	SCHONSTEDT	LINEAR	SUNNY MUDDY
7/20/04	4	MOGULS	940	955	15	DAILY START STOP	3	MOVE STRING ALONG GRID	NA	SCHONSTEDT	LINEAR	SUNNY MUDDY
7/20/04	4	MOGULS	955	1010	15	COLLECT DATA	4	COLLECT DATA	NA	SCHONSTEDT	LINEAR	SUNNY MUDDY
7/20/04	4	MOGULS	1010	1025	15	DAILY START STOP	3	SET UP GRID	NA	SCHONSTEDT	LINEAR	SUNNY MUDDY

Date	No. of People	Area Tested	Status Start Time	Status Stop Time	Duration, min	Operational Status	OP Stat Code	Operational Status - Comments	Track Method	Track Method=Other Explain	Pattern	Field Conditions
7/20/04	4	MOGULS	1025	1040	15	COLLECT DATA	4	COLLECT DATA	NA	SCHONSTEDT	LINEAR	SUNNY MUDDY
7/20/04	4	MOGULS	1040	1055	15	DAILY START STOP	3	MOVE STRING ALONG GRID	NA	SCHONSTEDT	LINEAR	SUNNY MUDDY
7/20/04	4	MOGULS	1055	1105	10	COLLECT DATA	4	COLLECT DATA	NA	SCHONSTEDT	LINEAR	SUNNY MUDDY
7/20/04	4	MOGULS	1105	1115	10	DEMOBILIZATION	10	DEMOBILIZATION	NA	SCHONSTEDT	LINEAR	SUNNY MUDDY

Note: Activities pertinent to this specific demonstration are indicated in highlighted text.

APPENDIX E. REFERENCES

1. Standardized UXO Technology Demonstration Site Handbook, DTC Project No. 8-CO-160-000-473, Report No. ATC-8349, March 2002.
2. Aberdeen Proving Ground Soil Survey Report, October 1998.
3. Data Summary, UXO Standardized Test Site: APG Soils Description, May 2002.
4. Yuma Proving Ground Soil Survey Report, May 2003.

APPENDIX F. ABBREVIATIONS

AEC	=	U.S. Army Environmental Center
APG	=	Aberdeen Proving Ground
ASCII	=	American Standard Code for Information Interchange.
ATC	=	U.S. Army Aberdeen Test Center
EM	=	electromagnetic
EMI	=	electromagnetic interference
EMIS	=	Electromagnetic Induction Spectroscopy
ERDC	=	U.S. Army Corps of Engineers Engineering Research and Development Center
ESTCP	=	Environmental Security Technology Certification Program
EQT	=	Army Environmental Quality Technology Program
GPS	=	Global Positioning System
JPG	=	Jefferson Proving Ground
POC	=	point of contact
QA	=	quality assurance
QC	=	quality control
ROC	=	receiver-operating characteristic
RTK	=	real time kinematic
RTS	=	Robotic Total Station
SERDP	=	Strategic Environmental Research and Development Program
UXO	=	unexploded ordnance
YPG	=	U.S. Army Yuma Proving Ground

APPENDIX G. DISTRIBUTION LIST

DTC Project No. 8-CO-160-UXO-021

<u>Addressee</u>	<u>No. of Copies</u>
Commander U.S. Army Environmental Center ATTN: SFIM-AEC-ATT (Mr. George Robitaille) Aberdeen Proving Ground, MD 21010-5401	2
Human Factors Applications, Inc. ATTN: (Mr. Scott Hemstreet) 8 Jay Gould Court, Unit D Waldorf, MD 20602	1
SERDP/ESTCP ATTN: (Ms. Anne Andrews) 901 North Stuart Street, Suite 303 Arlington, VA 22203	1
Commander U.S. Army Aberdeen Test Center ATTN: CSTE-DTC-SL-E (Mr. Larry Overbay) (Library) CSTE-DTC-AT-CS-R Aberdeen Proving Ground, MD 21005-5059	1 1 1
Defense Technical Information Center 8725 John J. Kingman Road, STE 0944 Fort Belvoir, VA 22060-6218	2

Secondary distribution is controlled by Commander, U.S. Army Environmental Center,
ATTN: SFIM-AEC-ATT.