

Recent Trend on Application of Piezoactive Polymers to Acoustics

E.Fukada*, M.Date, and H.Kodama

Kobayasi Institute of Physical Research, Tokyo, Japan

Abstract

Noble sound shielding system is developed by the combination of a curved piezoelectric polymer film and a negative capacitance circuit. Incident sound produces the in-plane strain and polarization in the piezoelectric film. The charge induced on the electrode by polarization is amplified and fed-back to the electrode. The resulting electric field produces the inverse piezoelectric strain. The strain of the film is thus the sum of the sound-induced strain and the field-induced strain and can be arbitrarily increased or decreased by changing the feed back voltage. Subsequently the reflection and transmission of sound can be controlled. The complete isolation of sound is attained at a single frequency. The agreement of the value of the capacitance and its frequency dependence between the film and the capacitor in the circuit is required to achieve the sound shielding over a broad frequency range. Combining two PVDF films, about 50 dB transmission loss is observed from 200 Hz to 1000 Hz. The efficiency of shielding is more effective at the lower frequencies in contrast to the ordinary sound absorbing materials.

Introduction

A number of investigation have been published on the application of piezoelectric polymers to acoustics. Lerche et al. reported a microphone utilizing a curved film of polyvinylidene fluoride (PVDF) [1]. Tamura et al. succeeded to commercialize headphones and tweeters using curved PVDF films [2]. Ohigasi [3] and Sussner [4] succeeded to produce ultrasound transducers in MHz range using thin PVDF films. Toda [5] recently reported an ultrasound transducer at the 10-100 kHz range using a curved PVDF film.

Date discovered an original method to superpose the direct and inverse piezoelectric effects on the piezoelectric materials [6]. Let us consider an electroded piezoelectric sample film with a capacitance C_s . On application of mechanical stress the charge Q is generated in the electrode of the sample due to piezoelectric polarization. If the sample is connected in parallel to a capacitance C , a part of charge Q flows into the capacitance C from the sample C_s . However, if a capacitor with a negative capacitance $C (< 0)$ is connected, a part of charge in the electrode flows into the sample from the capacitance. The charge in the electrode induces the electric field in the material, which generates the strain by the inverse piezoelectric effect. The strain is the sum of the stress-induced strain and the

Report Documentation Page

*Form Approved
OMB No. 0704-0188*

Public reporting burden for the collection of information is estimated to average 1 hour per response, including the time for reviewing instructions, searching existing data sources, gathering and maintaining the data needed, and completing and reviewing the collection of information. Send comments regarding this burden estimate or any other aspect of this collection of information, including suggestions for reducing this burden, to Washington Headquarters Services, Directorate for Information Operations and Reports, 1215 Jefferson Davis Highway, Suite 1204, Arlington VA 22202-4302. Respondents should be aware that notwithstanding any other provision of law, no person shall be subject to a penalty for failing to comply with a collection of information if it does not display a currently valid OMB control number.

1. REPORT DATE 00 JUN 2003	2. REPORT TYPE N/A	3. DATES COVERED -	
4. TITLE AND SUBTITLE Recent Trend on Application of Piezoactive Polymers to Acoustics		5a. CONTRACT NUMBER	
		5b. GRANT NUMBER	
		5c. PROGRAM ELEMENT NUMBER	
6. AUTHOR(S)		5d. PROJECT NUMBER	
		5e. TASK NUMBER	
		5f. WORK UNIT NUMBER	
7. PERFORMING ORGANIZATION NAME(S) AND ADDRESS(ES) Kobayasi Institute of Physical Research, Tokyo, Japan		8. PERFORMING ORGANIZATION REPORT NUMBER	
9. SPONSORING/MONITORING AGENCY NAME(S) AND ADDRESS(ES)		10. SPONSOR/MONITOR'S ACRONYM(S)	
		11. SPONSOR/MONITOR'S REPORT NUMBER(S)	
12. DISTRIBUTION/AVAILABILITY STATEMENT Approved for public release, distribution unlimited			
13. SUPPLEMENTARY NOTES See also ADM001697, ARO-44924.1-EG-CF, International Conference on Intelligent Materials (5th) (Smart Systems & Nanotechnology)., The original document contains color images.			
14. ABSTRACT			
15. SUBJECT TERMS			
16. SECURITY CLASSIFICATION OF:			17. LIMITATION OF ABSTRACT
a. REPORT unclassified	b. ABSTRACT unclassified	c. THIS PAGE unclassified	UU
			18. NUMBER OF PAGES 10
			19a. NAME OF RESPONSIBLE PERSON

field-induced strain and thus can be controlled by the amount of the charge Q , which flows from the negative capacitance $C (< 0)$ into the sample C_s . If $Q > 0$, the charge in the electrode increases and the strain decreases, leading to the increase of the apparent elastic constant. If $Q < 0$, the charge in the electrode decreases and the strain increases, leading to the decrease of the apparent elastic constant.

A circuit with the negative capacitance has been constructed using an operational amplifier. The significant change of Young's modulus of a piezoelectric film of polyvinylidene fluoride (PVDF) connected to such circuit has been observed [6].

The reflection and transmission of airborne sound by a film is governed by the difference of acoustic impedance between the air and the film material. The latter is represented by $(\rho Y)^{1/2}$, where ρ is the density and Y is the Young's modulus of the material. It is anticipated, therefore, that if the Young's modulus of the film is arbitrarily controlled, the reflection and transmission of sound by a piezoelectric film is also arbitrarily controlled.

Based on this electrical control of elasticity of piezoelectric film, a new sound shielding system has been proposed [7,8]. The present paper will describe the recent developments on this investigation.

In the previous applications for the acoustic transducers such as microphone and headphone, a curved round film of piezoelectric PVDF is installed in the device, being clamped in its periphery. The incident sound pressure generates the in-plane strain in the curved film. The piezoelectric polarization is thus generated in the thickness direction. The piezoelectric constant d_{31} is effective in this type of electromechanical transduction. On the other hand, the ordinary ultrasonic transducers utilize the resonance vibration in the thickness direction of the piezoelectric film. The piezoelectric constant d_{33} is effective in such applications.

Acoustic Tube Experiment

As a standard apparatus for measuring the transmission loss and absorption of sound through polymer films, the acoustic tube experiment has been employed. As shown in Fig. 1, a PVDF film with the thickness of $28 \mu\text{m}$ is installed in the middle of an acrylic tube of 43 mm diameter and 1 m length. The film is backed by a thin urethane foam layer and a steel wire mesh to maintain the curved form. The periphery of the film is clamped to the tube. The electrodes of both surfaces of the film are connected to the negative capacitance circuit.

Using the two microphone method the correlations between the pressure of incident sound p_i , the pressure of reflected sound p_r , and the pressure of transmitted sound p_t are determined [7]. The transmission loss (TL) and absorption coefficient (AC) are defined by the following equations.

$$\text{TL} = 10 \log_{10} (p_i^2 / p_r^2) \quad (1)$$

$$\text{AC} = 1 - (p_r^2 / p_i^2) \quad (2)$$

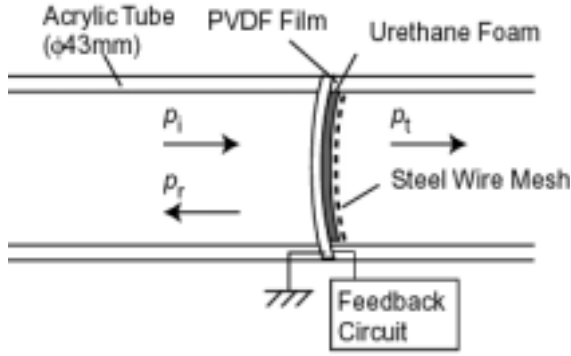


Fig.1 Acoustic tube experiment



Fig.2 Geometry of curved film

Theoretical Background

The theoretical equation for the transmission loss through a curved membrane has been derived by Mokry [9]. For simplicity we assume uniform vibration of the curved film as shown in Fig.2. The sinusoidal displacement of the film in the radial direction is expressed as $w(t) = W \exp(i\omega t)$ and the acoustic pressure difference between the film is expressed as $\delta p(t) = P \exp(i\omega t)$. The relation between W and P is given by

$$W = \frac{R^2}{h} \frac{P}{Y - \rho\omega^2 R^2} \quad (3)$$

where R is the radius of curvature, h the thickness, ρ the density, ω the angular frequency and Y the Young's modulus of film. It is seen that W approaches infinity at the critical angular frequency $\omega_0 = (1/R)\sqrt{Y/\rho}$. Since the acoustic impedance Z of the film is given by $\delta p/v$,

where v is the velocity in the radial direction, we have,

$$Z = \frac{P}{i\omega W} = i\omega\rho h \left(1 - \frac{Y}{\rho\omega^2 R^2} \right) \quad (4)$$

Transmission loss (TL) is given by

$$TL = 10 \log_{10} \left(1 + \frac{Z}{2\rho_0 c_0} \right)^2 \quad (5)$$

where ρ_0 is the density of the air and c_0 the sound velocity of the air. From Eqs. (4) and (5) we have,

$$TL = 10 \log_{10} \left[1 + \frac{Y''}{\omega\zeta} + \frac{(Y'')^2 + (Y' - \rho\omega^2 R^2)^2}{(2\omega\zeta)^2} \right] \quad (6)$$

where $\zeta = c_0 \rho_0 R^2 / h$ and $Y = Y' + i Y''$ is the complex Young's modulus.

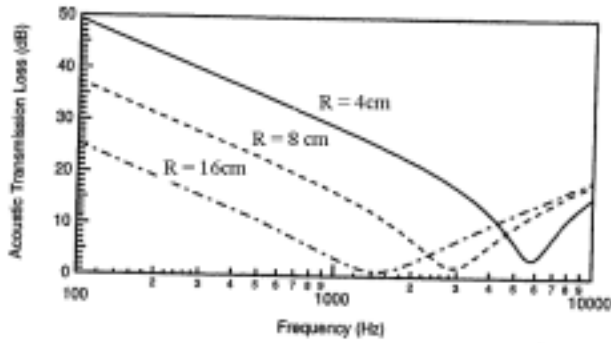


Fig.3 Theoretical curves for the transmission loss vs. frequency for a curved film.

Figure 3 shows the examples of the frequency dependence of TL calculated by Eq. (6) for a curved film of PVDF. The following values are assumed: $h = 50 \mu\text{m}$, $R = 4, 8$ and 16 cm , $\rho = 1770 \text{ kgm}^{-3}$, $Y = 3.7 \text{ GPa}$, and $Y''/Y' = 0.1$. For air the normal values $\rho_0 = 1.293 \text{ Kgm}^{-3}$ and $c_0 = 331 \text{ ms}^{-1}$ are assumed.

It is noted from Eq. (6) and Fig.3 that the value of TL increases with increasing Y' , Y'' and h and with decreasing R and ω . It is remarkable that TL is higher at the lower frequencies. The efficiency of most sound absorbing materials is very low at the frequency range near 100 Hz. However, the predicted value of TL in Fig.3 attains 40 dB at 100 Hz for $R = 8\text{cm}$ which is the ordinary value for the modulus of curvature used in experiments. It is also important to note that the 10 times increase of Young's modulus Y' causes 20 dB increase of TL over all frequencies. That is the reason why the control of elasticity of piezoelectric polymer films is useful to control the transmission loss TL.

Negative capacitance circuit

Figure 4 shows the negative capacitance circuit to increase the effective Young's modulus of the piezoelectric film and is named as the circuit H. The sample film is connected to the non-inverted (+) input of an operational amplifier. The output voltage is divided by a variable resistor R_2 and R_1 and the divided voltage is led to the inverted (-) input, which is then fed back to the electrode of the sample, because the two inputs are nearly equal-potential or virtually connected.

The output voltage V_{out} is related to the input voltages V_{in}^+ , V_{in}^- by $V_{out} = G (V_{in}^+ - V_{in}^-)$, where the amplification factor G is about 10^5 . The value of $V_{in}^+ - V_{in}^-$ is extremely small compared to V_{out} and we can put $V_{in}^+ = V_{in}^- = V$. Thus we have

$$V = \frac{R_1}{R_1 + R_2} V_{out} \quad (7)$$

The charge δQ in the capacitance C_0 is given by

$$\delta Q = C_0(V - V_{out}) \quad (8).$$

It is seen that the sign of δQ is negative. From Eqs. (7) and (8), the effective capacitance C of the circuit is given by

$$C = \frac{\delta Q}{V} = -C_0 \frac{R_2}{R_1} \quad (9).$$

The input voltage from the piezoelectric sample finally results in the storage of charge $-\delta Q$ in the capacitance C_0 and the flow of charge δQ into the sample capacitance C_s . It will then lead to the decrease of the strain in the piezoelectric film and the increase of the transmission loss.

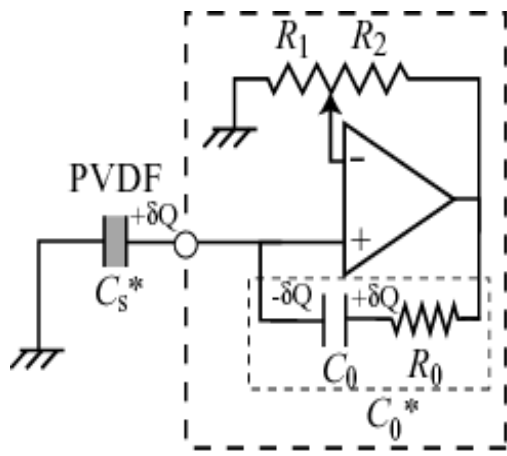


Fig. 4. Negative capacitance circuit H

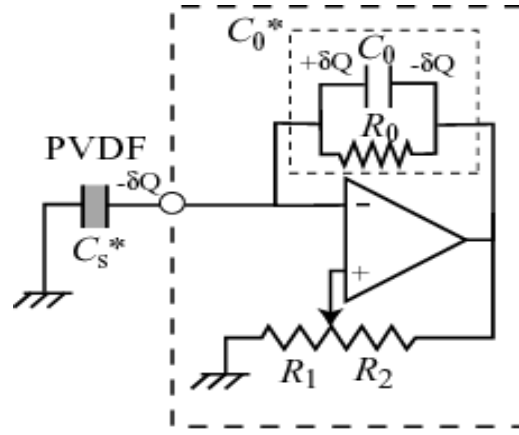


Fig.5 Negative capacitance circuit S

Figure 5 shows the negative capacitance circuit to decrease the effective Young's modulus of the piezoelectric film and named as the circuit S. Here, the sample film and the capacitance of the circuit C_0 are connected to the inverted (-) input of an operational amplifier. Eqs. (7)-(9) also hold in this case. However, owing to the nature of the operational amplifier, the phase of V_{out} is 180° inverted with respect to V_{in} . Therefore the charge δQ stored in the capacitance C_0 in Eq. (8) is positive and thus the negative charge $-\delta Q$ flows into the sample. It will lead to the increase of the strain in the piezoelectric film and the decrease of the transmission loss.

Elasticity Control of Piezoelectric Films

Let us consider the case that a piezoelectric film with a capacitance C_s is connected in parallel to a capacitor with a capacitance C . The rectangular coordinates assigned to the piezoelectric film is as follows: the 1-axis is the direction of orientation of polymer molecules, the 2-axis is perpendicular to the 1-axis and lies on the plane of the film, the 3-axis vertical to the plane of the film. The electric displacement D_3 is produced by the stress T_1 and their coefficient is the piezoelectric constant d_{31} . The constitutive equations for the strain S_1 , the stress T_1 , the electric displacement D_3 , and the electric field

E_3 are:

$$S_1 = s_{11}^E T_1 + d_{31} E_3 \quad (10),$$

$$D_3 = d_{31} T_1 + \epsilon_{33}^T E_3 \quad (11),$$

where s_{11}^E the elastic compliance and ϵ_{33}^T the dielectric constant.

When the stress dT_1 is applied to the film with the area A and thickness h , the charge $dQ_1 = -AdD_3$ appears in the electrode of the film due to the direct piezoelectric effect. Then the charge $dQ_2 = -dQ_1$ is induced in the capacitor C and generates the voltage change $dV = dQ_2 / C$. This dV is fed back to the film and induces the strain change $dS_1 = -d_{31}dV / h$ by the inverse piezoelectric effect. From Eqs.(10) and (11)

$$dS_1 = s_{11}^E dT_1 - d_{31}dV / h \quad (12)$$

$$dQ_1 = -A d_{31}dT_1 + CsdV \quad (13)$$

From Eqs. (12) and (13) we get the equation for the effective elastic compliance s_{11} :

$$s_{11} = s_{11}^E \left(1 - \frac{k_{31}^2}{1 + C / C_s} \right) \quad (14).$$

The effective Young's modulus $Y = 1 / s_{11}$ is also obtained:

$$Y = Y_0 \left(1 + \frac{k_{31}^2}{1 - k_{31}^2 + C / C_s} \right) \quad (15),$$

where $Y_0 = 1 / s_{11}^E$ is the ordinary value of Young's modulus. Since $k_{31} = 0.1$ for PVDF, when $C/C_s = -(1 - k_{31}^2) = -0.99$, $Y = \pm \infty$ occurs. Practically, when C/C_s approaches -1 , the sharp increase or decrease of the Young's modulus Y is observed.

From Eq.(9) we get,

$$\frac{C}{C_s} = -\frac{C_0}{C_s} \frac{R_2}{R_1} \quad (16)$$

Thus the value of Y can be controlled by adjusting R_2/R_1 in the circuit if C_0/C_s is constant. The experimental results for the dependence of Y on C/C_s for a PVDF film is shown in Figure 6. As the frequency is changed, the values of C and C_s vary with frequency. Both C and C_s should be expressed as the complex quantities including the loss factor.

To take into account the frequency dependence of Y , we must represent C_s as $C_s^* = C_s' (1 - i \tan \delta_s)$, where $\tan \delta_s$ is the dielectric loss of the film. Correspondingly we should connect a resistance R_0 in series to the capacitance C_0 and represent C as $C^* = C_0(1 - i \tan \delta) / (1 + \tan^2 \delta)$, where $\tan \delta = 2\pi f C_0 R_0$. The agreement of $\tan \delta_s$ and $\tan \delta$ occurs only at a frequency f_0 , where $\tan \delta_s = 2 f_0 C_0 R_0$. Thus we have the formula for C^* / C_s^* neglecting $\tan^2 \delta$ compared to 1

$$\frac{C^*}{C_s^*} = -\frac{C_0}{C_s'} \frac{R_2}{R_1} \{1 + i(\tan \delta_s - 2\pi f C_0 R_0)\} \quad (17)$$

$$= -\frac{C_0}{Cs'} \frac{R_2}{R_1} \left\{ 1 + i \tan \delta_s \left(1 - \frac{f}{f_0} \right) \right\} \quad (18).$$

Eq.(18) indicates that the imaginary part of C^*/Cs^* changes its sign at a frequency f_0 . In the frequency dependence of the transmission loss, which will be shown in Figure 10, a sharp peak followed by a dip appears at the frequency of this phase reversal.

Control of Young's modulus

Dynamic Young's modulus of a rectangular film of PVDF with a size 25 x 5 x 0.05 mm was measured as a function of C/C_s and frequency by Rheograph-Solid (Toyo-Seiki). Figure 8 shows the results measured at 9.8 Hz. C/C_s was varied by changing the ratio R_2/R_1 in Eq.(17). If C/C_s is close to -1 , the sharp increase and decrease of Y is observed in accord with Eq.(15).

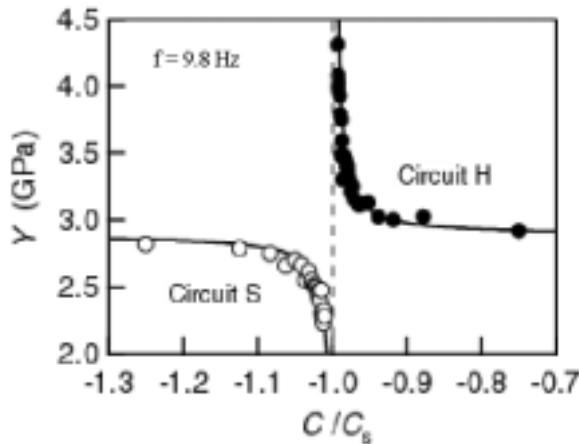


Fig.8 Y vs. C/C_s

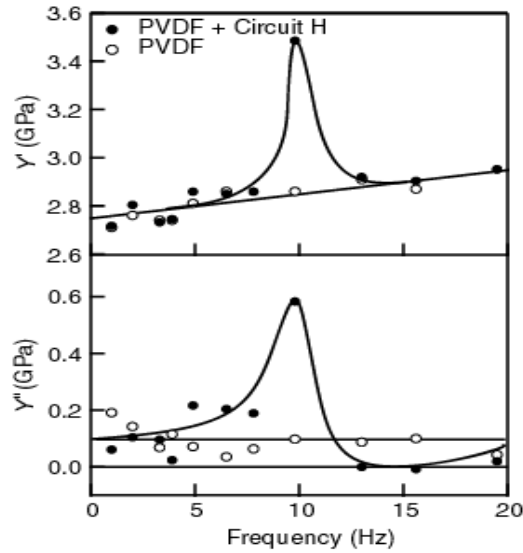


Fig.9 Y' and Y'' vs. frequency

Figure 9 shows the variation of the real part Y' and the imaginary part of Y'' of the Young's modulus in the frequency range between 1 and 20 Hz as the circuit H is connected.. The value of C/C_s was fixed at -0.988 and $f_0 = 9.8$ Hz was chosen. Y' shows a peak at f_0 and Y'' a peak below f_0 and a dip above f_0 suggesting the phase reversal of vibration at f_0 . When the circuit S is connected, Y'' showed a dip and Y' showed a minimum and a maximum with increasing frequency around f_0 .

Transmission loss

Figure 10 illustrates the frequency dependence of the transmission loss (TL) through a curved PVDF film. The circuit H was tuned at 1 kHz. , TL increases with increasing the feed back voltage. Figure 11 indicates the output voltage of a microphone placed behind the film plotted against the feed back voltage. The output voltage decreases to zero and then increases with the reversed phase with

increasing the feed back voltage. The strain of the film is the sum of the strain induced by the incident

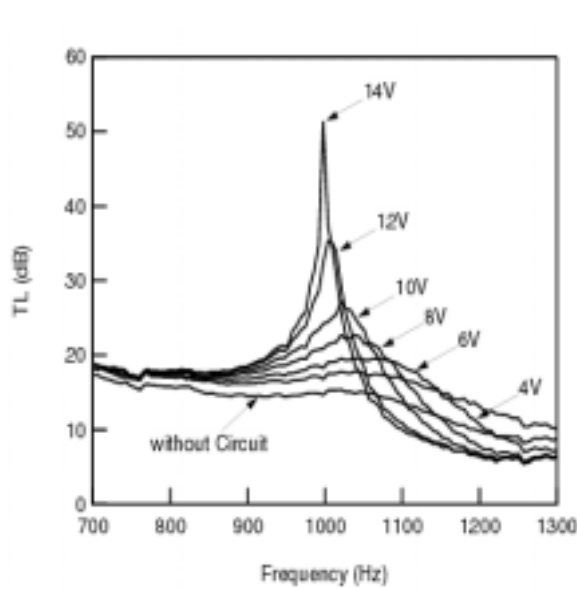


Fig. 10 The increase of TL at a frequency 1 kHz

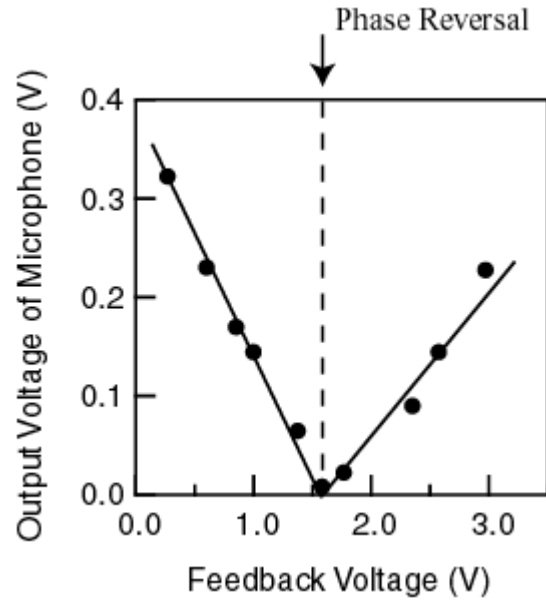


Fig. 11 Transmission vs. feedback

sound and the strain induced by the feed back voltage. The latter cancels the former with increasing feed back voltage, but above a certain value of the feed back voltage the latter exceeds the former resulting the phase reversal of vibration. Figure 12 shows the change of the transmission loss as the circuit S is connected. TL decreases at the tuned frequency 1 kHz.

Sound shield over a broad frequency range

For practical applications the attenuation of sound over a broad range of frequency is necessary. The increase of transmission loss, which is the result of the increase of the Young's modulus of the film, is achieved by adjusting C/C_s as close as -1 . Because C and C_s have different frequency character, the critical condition is obtained only at one frequency f_0 shown in Eq.(18). The values of $\tan\delta$ and $\tan\delta_s$

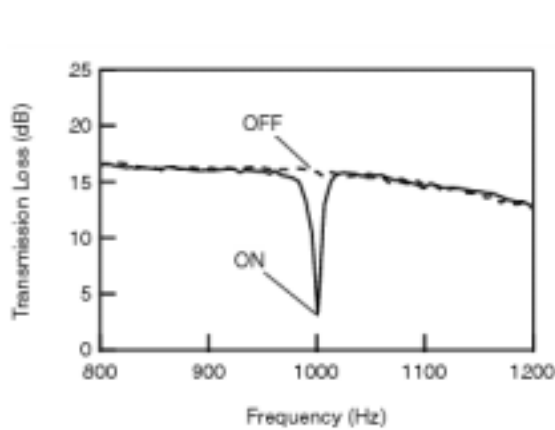


Fig.12 The decrease of TL with the circuit S

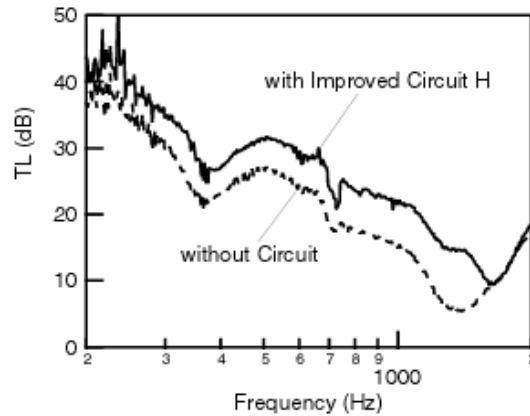


Fig.13 The increase of TL at 200 –2000 Hz.

are different at frequencies other than f_0 . In other words, the magnitude and loss factor of C and Cs should have the same frequency dependence for all frequencies.

The attempt was made to construct a combined network of capacitors and resistors with the distribution of the relaxation time as same as Cs, but only partially successful. The solution to obtain the frequency independent C/Cs was to employ a PVDF film to replace C_0 and R_0 . Figure 13 illustrates one example of the transmission loss vs. frequency curves measured from 200 Hz to 2 kHz. About 7 dB increase of TL was observed for all frequencies.

In another attempt, two PVDF films were installed to obtain the further increase of TL. The output voltage of the circuit H connected to the first film was amplified again and led to the second film, so that the canceling effect is more increased. About 30 dB increase of TL was easily observed over a frequency range from 200 Hz to 2 kHz.

Conclusions

Superposition of the direct and inverse piezoelectric effects is realized by means of simple circuits employing an operational amplifier. The remarkable change of the elastic constant of piezoelectric materials can be induced. The acoustic impedance of piezoelectric films can be also controlled by this technique. Employing a curved structure of piezoelectric PVDF film, controllable sound shielding systems have been demonstrated. The transmission loss can be increased or decreased under control at any frequency.

The remarkable feature of the proposed sound shielding system is that the transmission loss increases with decreasing frequency of sound. In most ordinary sound absorbing materials, the transmission loss decreases with decreasing frequency. Therefore, the shielding of low frequency noise has been a difficult task in engineering.

The present work describes some basic knowledge and experimental results on PVDF films with a small area 4 x 4 cm. Future studies should be directed to the construction of sound shielding systems with a much larger area. The feature of such completed systems would be low weight, low cost and the effectiveness at low frequencies.

The elastic properties of piezoelectric ceramics are also controllable by connecting negative capacitance circuits to them. The considerable decrease of resonant frequency has been demonstrated for a system combining a piezoelectric PZT plate and a metal cylinder [8]. This technique should also be useful for the prevention of vibration through solid materials.

Acknowledgments

The authors are grateful to Drs. K.Yamamoto, K.Kimura and T.Okubo of Kobayasi Institute of

Physical Research and Dr. P.Mokry of Technical University of Liberec, Czech Republic for their kind cooperation and useful discussions.

References

- [1] R.Lerch and G.M.Sessler, J.Acoust. Soc. Am. **67**, 1379 (1980)
- [2] M.Tamura, T.Yamaguchi, T.Oyaba and T.Yoshimi, J. Audio. Eng. Soc. **23**, 21 (1975)
- [3] H.Ohigashi and R.Shigenari, Jpn. Patent Application 47-128115 (1972)
- [4] H.Sussner, D.Michas, A.Assfay, S.Hunklinger and K.Dransfeld, Phys. Lett. **45A**, 475 (1973)
- [5] M.Toda and S.Toshima, IEEE Trans. Ultras. Ferro. Freq. Cont, **47**,1421 (2000)
- [6] M.Date, M.Kutani, S.Sakai, J.Appl. Phys.**87**, 863 (2000)
- [7] T.Okubo, H.Kodama, K.Kimura, K.Yamamoto, E.Fukada and M.Date, Proc. Int. Cong. Acous, Rome (2001)
- [8] H.Kodama, T.Okubo, M.Date and E.Fukada, Mat. Res. Soc. Symp. Proc. **698**,43 (2002)
- [9] P.Mokry, E.Fukada and K.Yamamoto, J. Appl. Phys. in print (2003)