

Award Number: DAMD17-02-1-0385

TITLE: Regulation and Functions of the Ipl1/Aurora Kinase

PRINCIPAL INVESTIGATOR: Stephanie Buvelot
Sue Biggins, Ph.D.

CONTRACTING ORGANIZATION: Fred Hutchinson Cancer Research Center
Seattle, Washington 98109-1024

REPORT DATE: May 2003

TYPE OF REPORT: Annual Summary

PREPARED FOR: U.S. Army Medical Research and Materiel Command
Fort Detrick, Maryland 21702-5012

DISTRIBUTION STATEMENT: Approved for Public Release;
Distribution Unlimited

The views, opinions and/or findings contained in this report are those of the author(s) and should not be construed as an official Department of the Army position, policy or decision unless so designated by other documentation.

20030805 058

REPORT DOCUMENTATION PAGE

Form Approved
OMB No. 074-0188

Public reporting burden for this collection of information is estimated to average 1 hour per response, including the time for reviewing instructions, searching existing data sources, gathering and maintaining the data needed, and completing and reviewing this collection of information. Send comments regarding this burden estimate or any other aspect of this collection of information, including suggestions for reducing this burden to Washington Headquarters Services, Directorate for Information Operations and Reports, 1215 Jefferson Davis Highway, Suite 1204, Arlington, VA 22202-4302, and to the Office of Management and Budget, Paperwork Reduction Project (0704-0188), Washington, DC 20503

1. AGENCY USE ONLY
(Leave blank)

2. REPORT DATE
May 2003

3. REPORT TYPE AND DATES COVERED
Annual Summary (1 May 2002 - 30 Apr 2003)

4. TITLE AND SUBTITLE

Regulation and Functions of the Ipl1/Aurora Kinase

5. FUNDING NUMBERS

DAMD17-02-1-0385

6. AUTHOR(S)

Stephanie Buvelot
Sue Biggins, Ph.D.

7. PERFORMING ORGANIZATION NAME(S) AND ADDRESS(ES)

Fred Hutchinson Cancer Research Center
Seattle, Washington 98109-1024

E-Mail: sbuvelot@hotmail.com

8. PERFORMING ORGANIZATION
REPORT NUMBER

9. SPONSORING / MONITORING

AGENCY NAME(S) AND ADDRESS(ES)

U.S. Army Medical Research and Materiel Command
Fort Detrick, Maryland 21702-5012

10. SPONSORING / MONITORING
AGENCY REPORT NUMBER

11. SUPPLEMENTARY NOTES

Original contains color plates: All DTIC reproductions will be in black and white.

12a. DISTRIBUTION / AVAILABILITY STATEMENT

Approved for Public Release; Distribution Unlimited

12b. DISTRIBUTION CODE

13. ABSTRACT (Maximum 200 Words)

Ipl1p is the budding yeast member of the Aurora family of protein kinases, critical regulators of genomic stability that are required for chromosome segregation, the spindle checkpoint and cytokinesis. We had previously found that Ipl1p localized at the midzone in anaphase cells. Using time lapse microscopy, we found that Ipl1-GFP localizes to kinetochores from G1 to metaphase, transfers to the spindle after metaphase and accumulates at the spindle midzone late in anaphase. As the spindle disassembles, Ipl1p follows the plus ends of the depolymerizing spindle microtubules. This prompted us to test whether Ipl1p played a role in mitotic spindle disassembly. We found that it was the case and we further showed that this new function is separable from its previously identified roles. In addition *ipl1* mutants can stabilize fragile spindles. Many Ipl1p substrates co-localize with Ipl1p to the spindle midzone, identifying additional proteins that may regulate spindle disassembly. We propose that Ipl1p regulates both the kinetochore and interpolar microtubule plus ends to regulate its various mitotic functions. We found that Ipl1p acts in the same pathway that the microtubule destabilizing kinesin, Kip3p. And Chitra Kotwaliwale the graduate student taking over the project is currently testing whether Ipl1p regulates Kip3p.

14. SUBJECT TERMS

Cell biology, cell cycle, genomic instability, Ipl1/AuroraB, budding
Yeast, spindle, Shokat mutant, GST library

15. NUMBER OF PAGES

17

16. PRICE CODE

17. SECURITY CLASSIFICATION
OF REPORT

Unclassified

18. SECURITY CLASSIFICATION
OF THIS PAGE

Unclassified

19. SECURITY CLASSIFICATION
OF ABSTRACT

Unclassified

20. LIMITATION OF ABSTRACT

Unlimited

Table of Contents

Cover.....	1
SF 298.....	2
Table of Contents.....	3
Introduction.....	4
Body.....	4
Key Research Accomplishments.....	5
Reportable Outcomes.....	5
Conclusions.....	5
References.....	6
Appendices.....	7

Introduction

Accurate cell division depends upon the proper segregation of chromosomes into daughter cells. Defects in chromosome segregation can lead to genetic instability and aneuploidy that are correlated with cancer and birth defects. When chromosomes replicate during S-phase, cohesion between the sister chromatids is established and must be maintained while chromosomes condense and align on the mitotic spindle (for review, see (Nasmyth, 2002)). Chromosomes attach to the mitotic spindle by their kinetochores (Hyman and Sorger, 1995) (Lechner and Carbon, 1991), specialized protein structures that are assembled on centromeric DNA sequences. Once all the chromosomes are correctly aligned on the mitotic spindle, the cohesion between sister chromatids must dissolve promptly at anaphase to allow the sister chromatids to rapidly segregate to opposite poles of the mitotic spindle (Uhlmann et al., 1999) (Funabiki et al., 1996) (Ciosk et al., 1998).

The Biggins' laboratory focuses on understanding the mechanisms of chromosome segregation in the budding yeast, *Saccharomyces cerevisiae*. Since chromosome segregation is highly conserved among all eukaryotes, studies in the yeast system will provide a fundamental understanding of chromosome segregation. Many of the key cell cycle regulators and machinery, originally discovered in budding yeast, have been shown to be conserved in higher eukaryotes.

Ipl1p is the budding yeast member of the highly conserved Ipl1/Aurora protein kinase family that is implicated in oncogenesis (Bischoff and Plowman, 1999) (Bischoff et al., 1998) (Kimura et al., 1997). It has been isolated in screens for chromosome segregation defect (Biggins et al., 1999) (Chan and Botstein, 1993). Biggins and colleagues determined that *ipl1* mutants are defective in regulating the interaction between kinetochores and microtubules (Biggins et al., 1999). Two human *aurora* genes are amplified in many colorectal and breast cancers (Bischoff et al., 1998). In addition, it has been shown that the ectopic expression of an activated *aurora2* mutant can transform human (NIH 3T3) cells as well as cause tumors in nude mice (Bischoff et al., 1998). The Ipl1/Aurora homologues associate with mitotic structures such as the spindle and the protein levels are cell cycle regulated in all organisms. Ipl1p homologues appear to have functions in centrosome separation, spindle formation and cytokinesis.

Body

We had previously found that Ipl1p localized at the midzone in anaphase cells. We first thought that this might reflect a role for Ipl1p in spindle elongation, which we suggested analyzing in aim 3 of the proposal. Using time lapse microscopy, we found that Ipl1-GFP localizes to kinetochores from G1 to metaphase, transfers to the spindle after metaphase and accumulates at the spindle midzone late in anaphase. As the spindle disassembles, Ipl1p follows the plus ends of the depolymerizing spindle microtubules. As this was a very unusual localization pattern, it prompted us to test whether Ipl1p played a role in mitotic spindle disassembly. By live microscopy techniques, we found that *ipl1* mutants have a spindle disassembly defect. We decided to explore this new function of the Ipl1 protein kinase in spindle disassembly and we further showed this new function is separable from its previously identified roles. In addition, *ipl1* mutants can stabilize fragile spindles. Many Ipl1p substrates co-localize with Ipl1p to the spindle midzone, identifying additional proteins that may regulate spindle disassembly and suggesting that

the midzone is a kinetochore-like structure. We found that Ipl1p acts in the same pathway as the microtubule destabilizing kinesin, Kip3p. Kip3p localizes to the midzone in late anaphase. For personal reasons I left the lab in October. For this reason I did not have time to make progress on aim 1 and 2 of the proposal. I defended my thesis in Switzerland at the end of January and am now undertaking postdoctoral research in Switzerland. Chitra Kotwaliwale, another graduate student is taking over the project as well as the fellowship. She is focusing her attention on determining whether Kip3p is regulated by Ipl1p. Preliminary experiments suggest that Kip3p is a phosphoprotein and that the regulation might regulate its spindle disassembly function. Further communication concerning this project should be addressed to her.

Key Research Accomplishments

- Ipl1p localizes to the kinetochores from G1 to metaphase, transfers to the spindle and accumulates at the midzone late in anaphase. It then follows the plus end of the depolymerizing spindle
- Ipl1p plays a role in spindle disassembly
- Ipl1p's role in spindle disassembly is independent from its role in chromosome segregation and in the spindle checkpoint
- *ipl1* mutants have hyperstable microtubules
- Some Ipl1p substrates localize to the spindle midzone, a kinetochore-like structure
- Ipl1p acts in the same pathway as Kip3p in spindle disassembly. Our current work focuses on determining whether Kip3p is an Ipl1p substrate in vivo.

See the attached paper for details.

Reportable Outcomes

This work has been published in the Journal of cell biology, Volume 160, Number 3, February 3, 2003 p. 329-339 (see appendixes).

Conclusions

Ipl1p localizes to the midzone late in anaphase. It then follows the plus ends of the depolymerizing spindle back to the poles. Consistent with this localization, we have identified a new function for Ipl1p in spindle disassembly. We have also found that several Ipl1p substrates localize at the midzone in anaphase. Those proteins are kinetochore components, therefore suggesting that the midzone is a kinetochore-like structure. An intriguing possibility is that the microtubule plus ends at the spindle midzone are regulated in anaphase similarly to the kinetochore-microtubule attachments in prometaphase. As Ipl1p plays a role both in setting up bi-orientation in metaphase and in spindle disassembly, we propose that Ipl1p is a general microtubule plus end regulator. Future work will address what Ipl1p regulates to promote spindle disassembly.

References

- Biggins, S., Severin, F. F., Bhalla, N., Sassoon, I., Hyman, A. A., and Murray, A. W. (1999). The conserved protein kinase Ipl1 regulates microtubule binding to kinetochores in budding yeast. *Genes Dev* 13, 532-544.
- Bischoff, J. R., Anderson, L., Zhu, Y., Mossie, K., Ng, L., Souza, B., Schryver, B., Flanagan, P., Clairvoyant, F., Ginther, C., *et al.* (1998). A homologue of *Drosophila* aurora kinase is oncogenic and amplified in human colorectal cancers. *Embo J* 17, 3052-3065.
- Bischoff, J. R., and Plowman, G. D. (1999). The Aurora/Ipl1p kinase family: regulators of chromosome segregation and cytokinesis. *Trends Cell Biol* 9, 454-459.
- Chan, C. S., and Botstein, D. (1993). Isolation and characterization of chromosome-gain and increase-in-ploidy mutants in yeast. *Genetics* 135, 677-691.
- Ciosk, R., Zachariae, W., Michaelis, C., Shevchenko, A., Mann, M., and Nasmyth, K. (1998). An ESP1/PDS1 complex regulates loss of sister chromatid metaphase to anaphase transition in yeast. *Cell* 93, 1067-1076.
- Funabiki, H., Yamano, H., Kumada, K., Nagao, K., Hunt, T., and Yangida, M. (1996). Cut2 proteolysis required for sister-chromatid separation in fission yeast. *Nature* 381, 438-441.
- Hyman, A. A., and Sorger, P. K. (1995). Structure and function of kinetochores in budding yeast. *Ann Rev Cell Dev Biol* 11, 471-495.
- Kimura, M., Kotani, S., Hattori, T., Sumi, N., Yoshioka, T., Todokoro, K., and Okano, Y. (1997). Cell cycle-dependent expression and spindle pole localization of a novel human protein kinase, Aik, related to Aurora of *Drosophila* and yeast Ipl1. *J Biol Chem* 272, 13766-13771.
- Lechner, J., and Carbon, J. (1991). A 240 Kd multisubunit complex, CBF3, is a major component of the budding yeast centromere. *Cell* 64, 717-725.
- Nasmyth, K. (2002). Segregating sister genomes: the molecular biology of chromosome separation. *Science* 297, 559-565.
- Uhlmann, F., Lottspeich, F., and Nasmyth, K. (1999). Sister-chromatid separation at anaphase onset is promoted by cleavage of the cohesin subunit Scc1 [see comments]. *Nature* 400, 37-42.

Article

The budding yeast Ipl1/Aurora protein kinase regulates mitotic spindle disassembly

Stéphanie Buvelot,^{1,2} Sean Y. Tatsutani,¹ Danielle Vermaak,¹ and Sue Biggins¹

¹Fred Hutchinson Cancer Research Center, Seattle, WA 98109

²University of Fribourg, 1700 Fribourg, Switzerland

Ipl1p is the budding yeast member of the Aurora family of protein kinases, critical regulators of genomic stability that are required for chromosome segregation, the spindle checkpoint, and cytokinesis. Using time-lapse microscopy, we found that Ipl1p also has a function in mitotic spindle disassembly that is separable from its previously identified roles. Ipl1-GFP localizes to kinetochores from G1 to metaphase, transfers to the spindle after metaphase, and accumulates at the spindle midzone late in anaphase.

Ipl1p kinase activity increases at anaphase, and *ipl1* mutants can stabilize fragile spindles. As the spindle disassembles, Ipl1p follows the plus ends of the depolymerizing spindle microtubules. Many Ipl1p substrates colocalize with Ipl1p to the spindle midzone, identifying additional proteins that may regulate spindle disassembly. We propose that Ipl1p regulates both the kinetochore and interpolar microtubule plus ends to regulate its various mitotic functions.

Introduction

The proper regulation of mitotic spindle dynamics is a fundamental aspect of chromosome segregation and is crucial for the maintenance of genetic information. During S phase, chromosomes replicate and linkage is established between the sister chromatids. The mitotic spindle forms, and microtubules attach to chromosomes via kinetochores, multiprotein complexes that assemble onto centromeric DNA. Once the sister kinetochores attach to microtubules from opposite poles, the linkage between the sister chromatids is dissolved and the chromosomes segregate, resulting in two daughter cells with identical genomes.

Mitotic spindles consist of two types of microtubules: those that bind to kinetochores (kinetochore microtubules) and those that interdigitate with each other (interpolar microtubules) (for review see Desai and Mitchison, 1997). The microtubule minus ends are bound to the microtubule organizing center, whereas the dynamic plus ends either capture kinetochores or interdigitate. In budding yeast, the mitotic spindle is formed after separation of the duplicated spindle pole bodies (SPBs)* (for review see Winey and O'Toole,

2001). During metaphase, cytoplasmic microtubules ensure that the nucleus migrates to the bud neck (nuclear migration) and the spindle aligns parallel to the mother-bud axis (spindle orientation) (for review see Segal and Bloom, 2001). Anaphase then occurs in two phases. In anaphase A, the sister chromatids move toward the SPBs, and in anaphase B a rapid phase of spindle elongation is followed by a second slow phase that drives the SPBs apart (Yeh et al., 1995; Straight et al., 1997). When the spindle has reached its maximal length of ~10 μ m, it disassembles exclusively from the plus ends at the midzone, the site of overlap between the interpolar microtubules (Maddox et al., 2000). Proper regulation of microtubule dynamics is critical for chromosome segregation and is performed in part by motor and nonmotor microtubule-associated proteins.

The fidelity of spindle assembly is monitored by the spindle checkpoint that prevents cells from separating their sister chromatids until kinetochore attachment is complete and kinetochores are under tension (for review see Millband et al., 2002). Spindle checkpoint arrest is achieved through inhibition of the anaphase-promoting complex (APC), a multiprotein ubiquitin ligase that catalyzes proteolysis of the mitotic inhibitor proteins Pds1 and Clb2 (for review see Peters, 2002). When the APC targets Pds1p for degradation, the Esp1 protease is liberated to cleave the cohesin Mcd1/Scclp, resulting in sister chromatid separation (for review see Nasmyth, 2002).

The Ipl1/Aurora protein kinases are key regulators of chromosome segregation and cytokinesis (for reviews see

The online version of this article contains supplemental material.

Address correspondence to Fred Hutchinson Cancer Research Center, P.O. Box 19024, 1100 Fairview Ave., N. (A2-168), Seattle, WA 98109-1024. Tel.: (206) 667-1351. Fax: (206) 667-6526. E-mail: sbiggins@fhcr.org

*Abbreviations used in this paper: APC, anaphase-promoting complex; INCENP, inner centromere protein; SPB, spindle pole body.

Key words: Ipl1/Aurora protein kinase; spindle; mitosis; microtubule; budding yeast

Shannon and Salmon, 2002; Stern, 2002). In mammals, the kinases can be subdivided into three families: Aurora A, B, and C (for review see Nigg, 2001). Aurora A localizes to centrosomes and is required to maintain the separation of centrosomes and to form a bipolar spindle (Glover et al., 1995). Aurora B exhibits a "chromosomal passenger" localization pattern, where it localizes to the chromosomes and kinetochores, transfers to the spindle, and eventually accumulates at the spindle midzone and midbody (Bischoff et al., 1998; Schumacher et al., 1998; Terada et al., 1998; Petersen et al., 2001; Murata-Hori et al., 2002). Aurora B is in a complex with the chromosomal passenger proteins INCENP (inner centromere protein) and Survivin/Bir1 (Kim et al., 1999; Adams et al., 2000; Kaitna et al., 2000; Spe-liotes et al., 2000; Morishita et al., 2001; Rajagopalan and Balasubramanian, 2002).

In budding yeast, there is a single essential Aurora protein kinase, Ipl1 (Chan and Botstein, 1993; Francisco et al., 1994). In *ipl1* mutant cells, sister chromatids are pulled to the same spindle pole instead of opposite poles (Biggins et al., 1999; Kim et al., 1999). Experiments in vitro and in vivo suggest that this defect is due to an inability of *ipl1* mutants to release monooriented kinetochore-microtubule attachments in order to make the correct bioriented attachments (Biggins et al., 1999; Tanaka et al., 2002). *ipl1* mutants also fail to activate the spindle checkpoint when kinetochores are not under tension (Biggins and Murray, 2001). Like mammalian homologues, Ipl1p localizes to kinetochores and the mitotic spindle (Biggins et al., 1999; Biggins and Murray, 2001; He et al., 2001; Kang et al., 2001; Tanaka et al., 2002). Several Ipl1p/Aurora substrates have been identified in various organisms. CENP-A, the human histone centromeric H3 variant, is an Aurora B kinase substrate, and nonphosphorylatable CENP-A mutants have cytokinesis defects (Zeitlin et al., 2001). In budding yeast, three kinetochore proteins are substrates either in vivo and/or in vitro and are good candidates for essential Ipl1p targets: the INCENP homologue (Sli15p), the Dam1 protein, and the CBF3 component Ndc10p (Biggins et al., 1999; Kang et al., 2001; Cheeseman et al., 2002; Li et al., 2002).

Here we show that the Ipl1p kinase has a role in spindle disassembly that is independent from its previously identified functions. There is a dynamic relocation of Ipl1p in anaphase, and Ipl1p tracks the plus ends of depolymerizing microtubules. We propose that Ipl1p regulates microtubule plus ends to promote chromosome segregation and spindle disassembly.

Results

Ipl1 localization is similar to chromosomal passenger proteins

Ipl1p is required for chromosome segregation and the spindle checkpoint when kinetochores are not under tension. To learn more about Ipl1p functions, we examined the localization of an endogenous Ipl1p fusion to GFP at the COOH terminus in living cells using bud size as a marker for cell cycle stage (Fig. 1). In unbudded G1 cells, Ipl1-GFP localizes as a dot or small line. In small budded S phase cells,

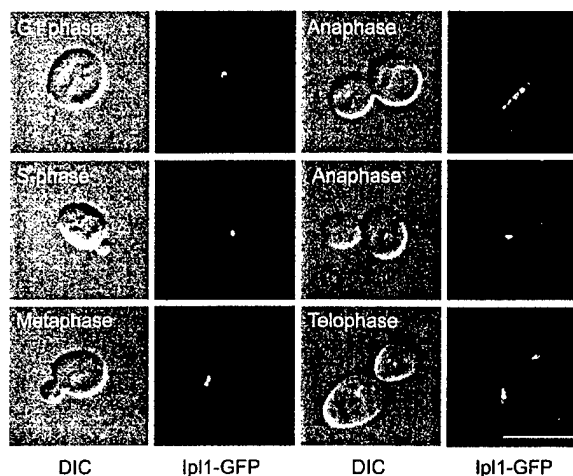


Figure 1. Ipl1 localization is similar to chromosomal passenger proteins. Live microscopy was performed on cells containing Ipl1-GFP (SBY556). DIC pictures are shown to the left of each corresponding fluorescence picture. In G1, S phase, and metaphase cells, Ipl1p localizes in a discrete dot corresponding to kinetochores. In anaphase and telophase cells, Ipl1p localizes along the whole spindle (top right), at the spindle midzone (middle right), or near the spindle poles (bottom right). Bar, 10 μ m.

Ipl1p localizes as a distinct dot that separates into two discrete dots in medium budded metaphase cells and corresponds to precociously separated kinetochores (Goshima and Yanagida, 2000; He et al., 2000, 2001; Tanaka et al., 2000; Biggins and Murray, 2001; Pearson et al., 2001). In large budded cells, Ipl1-GFP exhibits dynamic localization patterns. In some cells, Ipl1-GFP is on the whole spindle but absent from the kinetochores that are clustered at the poles as reported previously (Tanaka et al., 2002). We also found two sites of Ipl1p localization that had not been seen before. Ipl1-GFP is found at the spindle midzone and in small tufts that vary in shape near the spindle poles at telophase. This likely represents Ipl1p bound to the remnants of depolymerized microtubules (Winey et al., 1995). Since the Ipl1-GFP fusion created a temperature-sensitive protein, we also localized endogenous Ipl1p. Immunofluorescence with anti-Ipl1p antibodies on chromosome spreads showed the same localization patterns as the Ipl1-GFP fusion protein (Loidl et al., 1998) (Fig. S1 available at <http://www.jcb.org/cgi/content/full/jcb.200209018/DC1>). Therefore, Ipl1p localization is similar to Aurora B and other "chromosomal passenger" proteins.

Ipl1p localizes to kinetochores under tension

We found previously that Ipl1p localizes to kinetochores that are not under tension and that it is required for the spindle checkpoint at this time (Biggins and Murray, 2001). Once tension is established, Ipl1p likely needs to be inactivated to allow cell cycle progression. Although it was reported that Ipl1p no longer colocalizes with the kinetochore protein Ndc10p at metaphase (Tanaka et al., 2002), we always found Ipl1p localized in discrete dots. Therefore, we repeated their Ipl1-YFP and Ndc10-CFP colocalization experiment. In asynchronously growing cells, Ipl1-YFP and

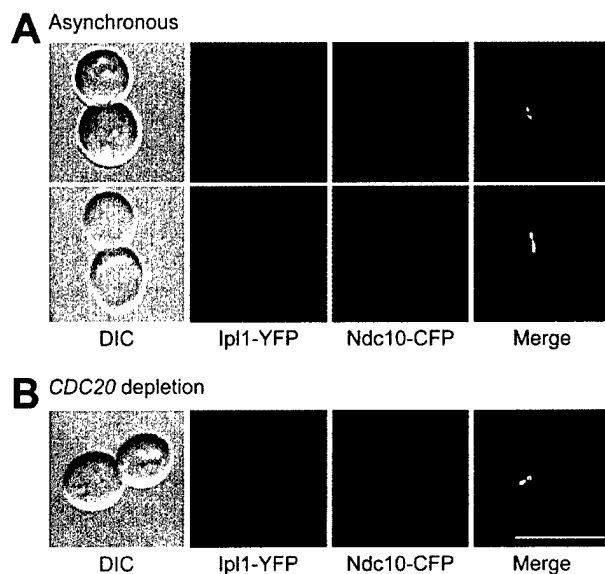


Figure 2. Ipl1p localizes to metaphase kinetochores that are under tension. (A) Microscopy was performed on cells containing Ipl1-YFP (green) and Ndc10-CFP (red) (SBY1246). DIC pictures are shown on the far left. The merged image (yellow, far right) shows that Ipl1p and Ndc10p colocalize in metaphase cells where kinetochores are precociously separated (top). Some cells also show Ipl1p and Ndc10p costaining on the short spindle (bottom). (B) *pGAL-CDC20* cells containing Ipl1-YFP and Ndc10-CFP (SBY1246) were arrested in metaphase by shifting the cells to glucose medium. The merged microscopy images show that Ipl1p and Ndc10p also colocalize in metaphase-arrested cells. Bar, 10 μ m.

Ndc10-CFP always colocalized as characteristic kinetochore dots in metaphase cells (Fig. 2 A, top). In addition, they also colocalized as a line that looks like a short spindle in some cells (Fig. 2 A, bottom). Since the pole to pole distance is longer than a metaphase spindle, it likely represents cells that are initiating anaphase. We also analyzed Ipl1p localization in a population of metaphase-arrested cells by depleting the Cdc20 protein that activates the APC and found that Ipl1-YFP and Ndc10-CFP always colocalize (Fig. 2 B). Although the majority of cells show two distinct dots that represent the kinetochores, approximately one third of the cells exhibit colocalization in a line similar to the asynchronous population (unpublished data). This may mean that Ipl1p can transfer to the spindle in this arrest or that these cells do not have clustered kinetochores. Therefore, although Ipl1p leaves kinetochores after metaphase, it is still bound to kinetochores that are under tension.

ipl1-321 mutant cells are defective in spindle disassembly

The dynamic localization of Ipl1p on spindles suggested that it might regulate spindle function. To test this, we performed live cell imaging of wild-type and *ipl1-321* mutants containing Tub1-GFP. Cells were synchronized in G1 with α -factor and then released to 35°C to inactivate Ipl1-321p, and time-lapse images were captured every minute. The start of spindle elongation was used as a reference for anaphase initiation and examples of the time-lapse data for a wild-type (video 1 available at <http://www.jcb.org/cgi/content/full/jcb.200209018/DC1>) and

an *ipl1-321* mutant cell (video 2 available at <http://www.jcb.org/cgi/content/full/jcb.200209018/DC1>) are shown in Fig. 3 A. Spindle elongation was quantified by measuring the length of the spindle every minute after the initiation of anaphase B (Fig. 3 B). In wild-type cells, we observed biphasic spindle elongation (Yeh et al., 1995; Straight et al., 1997). Wild-type spindles reach ~ 8.4 μ m in length ~ 14 min after the initiation of anaphase B and then disassemble. In *ipl1-321* mutant cells, spindle elongation occurs with kinetics similar to wild-type cells. However, the spindle continues to grow to a length of ~ 10.4 μ m, delaying spindle disassembly for ~ 6 min, a 42% increase in the duration of anaphase B. In two of the ten cells analyzed, the spindle is forced to bend when reaching the cell membrane (Fig. 3 A, A*). Since these phenotypes are not seen in wild-type cells and are similar to mutants in the motor protein Kip3 (Straight et al., 1998), we also analyzed spindle elongation and breakdown kinetics in *ipl1-321*, *kip3 Δ* , and *kip3 Δ ipl1-321* mutants and found they exhibit similar delays in spindle breakdown (unpublished data). Therefore, Ipl1p and Kip3p may act in the same pathway to promote spindle disassembly.

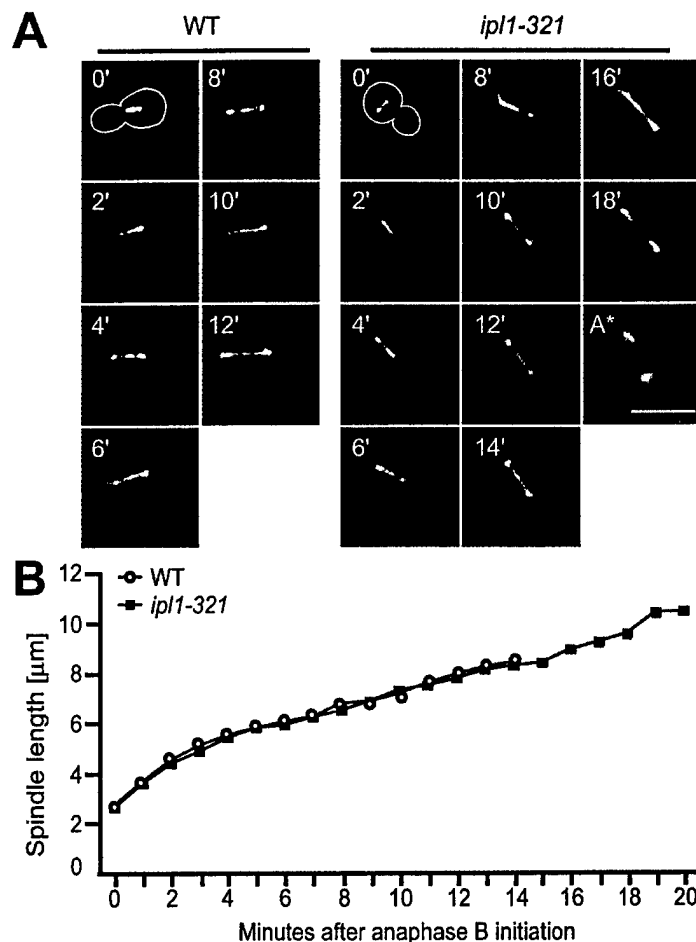
The *ipl1-321* mutant cells also exhibit a spindle orientation defect that we quantified by measuring the angle between the spindle axis and the mother-bud axis every minute starting at metaphase. In wild-type cells, it takes less than 6 min for the spindle to orient itself on the mother-bud axis, whereas it takes more than 11 min in *ipl1-321* mutant cells (Fig. 3 A).

The role of Ipl1p in spindle disassembly is an independent function

Since Ipl1p is required for chromosome segregation and the spindle checkpoint, we tested whether the spindle disassembly delay was a consequence of defects in these functions. We showed previously that if bipolar spindle assembly occurs before Ipl1p inactivation, chromosome segregation is normal (Biggins and Murray, 2001). Therefore, we arrested cells containing Tub1-GFP in metaphase by depleting the Cdc20 protein, shifted the cells to the restrictive temperature to inactivate Ipl1p, and then released them into the cell cycle. Aliquots were taken every 5 min, and cells with a pole to pole distance corresponding to a late anaphase cell (equal or greater than 9 μ m) were analyzed for the presence or absence of a spindle. Since tubulin is always at the SPB, the pole to pole distance can be measured regardless of whether a spindle is present. Spindle disassembly occurred in 68% of Cdc20-depleted cells compared with only 36% of the Cdc20-depleted *ipl1-321* double mutant cells (Fig. 4 A). In addition, there was no defect in spindle elongation in either strain. This result suggests that the spindle breakdown defect in *ipl1-321* mutants is independent from Ipl1p's role in chromosome segregation.

The spindle disassembly defect in the *ipl1-321* mutant cell population also occurred when chromosome segregation was defective. We analyzed this by synchronizing wild-type and *ipl1-321* mutant cells containing Tub1-GFP in α -factor, releasing them to 37°C, and analyzing spindle disassembly as described above. Whereas 78% of the wild-type cells underwent spindle breakdown, only 40% of *ipl1-321* mutant cells had disassembled their spindles (Fig. 4 B). There-

Figure 3. *ipl1-321* mutants are defective in spindle disassembly. (A) Live microscopy was performed on wild-type (SBY130, left) and *ipl1-321* mutant cells (SBY97, right) containing Tub1-GFP that were released from α -factor at 35°C. Eight z sections at 0.5- μ m intervals were acquired every minute. Images of the spindle in a single cell are shown every 2 min after the initiation of anaphase (time 0'). An outline of the cell is shown at time 0'. Spindle disassembly is delayed in *ipl1-321* cells, and the spindle orientation changes during the initial phases of anaphase. A hyperelongated spindle in an *ipl1-321* mutant cell is shown in A*. See also videos 1 and 2 available at <http://www.jcb.org/cgi/content/full/jcb.200209018/DC1>. Bar, 10 μ m. (B) The spindle length at each time point was measured, and the averages of 10 cells for each strain are graphed. Spindles disassemble in wild-type cells (○) 14 min after anaphase B initiation, whereas *ipl1-321* mutant cells (■) take 20 min.



fore, the spindle disassembly defect occurs in *ipl1-321* mutants when chromosome segregation is normal or defective.

Since mutants defective in the mitotic exit network exhibit a spindle breakdown delay (Stegmeier et al., 2002), we tested whether *ipl1-321* mutant cells delayed mitotic exit by monitoring the destruction of Clb2p, the major mitotic B-type cyclin. Cells from the experiment described in Fig. 4 A were collected every 5 min and then immunoblotted with anti-Clb2p antibodies (Fig. 4 C). Clb2p degradation occurred with similar kinetics in wild-type and *ipl1-321* mutant cells, indicating Ipl1p is not required for mitotic exit.

Ipl1p also has a function in the spindle checkpoint when kinetochore tension is not generated (Biggins and Murray, 2001) so we tested whether other spindle checkpoint genes are also required for spindle disassembly. We found that the dynamics of spindle elongation and breakdown in wild-type, *mad1 Δ* , and *mad2 Δ* strains containing Tub1-GFP were similar (Fig. S2 available at <http://www.jcb.org/cgi/content/full/jcb.200209018/DC1>). Therefore, a function in spindle disassembly is not a general property of all checkpoint proteins. Together, these data suggest that Ipl1p's role in spindle disassembly is independent from its roles in chromosome segregation and the spindle checkpoint and identifies a previously unknown function for this protein kinase.

ipl1-321 mutant cells can stabilize fragile spindles

Since *ipl1-321* mutants are defective in spindle breakdown, we tested whether they could stabilize fragile spindles that result from loss of sister chromatid cohesion in metaphase. When sister chromatid cohesion is released in the absence of APC function by a mutation in the Mcd1/Scc1 cohesion protein, spindle elongation occurs in the presence of high levels of the Pds1 and Clb2 proteins (Michaelis et al., 1997). This leads to fragile spindles where the spindle elongates but breaks down abnormally fast, creating an "anaphase-like prometaphase" (Severin et al., 2001b). Therefore, we tested whether the addition of an *ipl1-321* mutation could stabilize the fragile spindles. We used a *cdc26 Δ* strain, which leads to temperature-sensitive inactivation of the APC, in combination with the cohesin mutation *mcd1-1* to create fragile spindles. *cdc26 Δ mcd1-1* and *cdc26 Δ mcd1-1 ipl1-321* mutant cells containing Tub1-GFP were arrested in G1 using α -factor, released to the restrictive temperature, and monitored for budding, spindle formation, and spindle breakdown. As reported previously, 93% of *cdc26 Δ mcd1-1* mutants underwent spindle breakdown within 150 min of release from G1 (Fig. 4 D) (Severin et al., 2001b). However, only 48% of *cdc26 Δ mcd1-1 ipl1-321* mutant cells had undergone spindle breakdown at this time, indicating that the *ipl1-321* mutation stabilizes the fragile spindles.

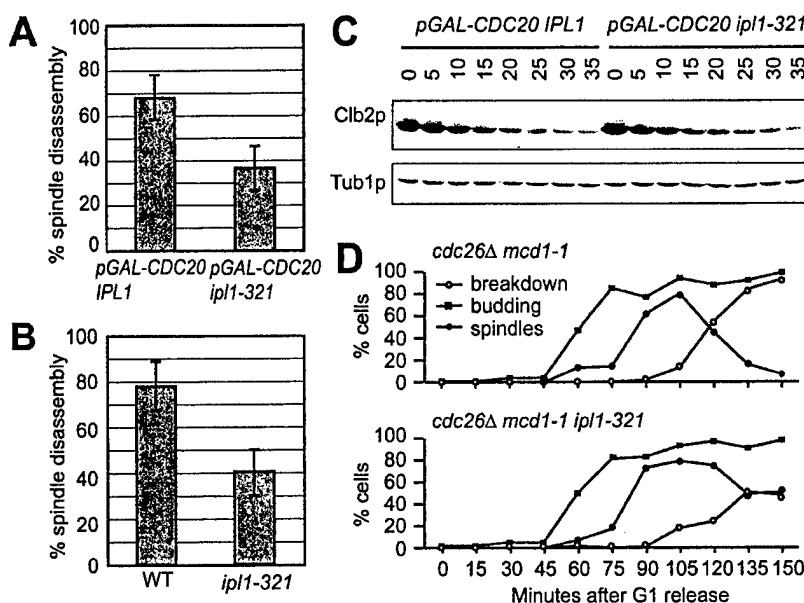


Figure 4. Ipl1p's role in spindle disassembly is independent from its role in chromosome segregation. (A) *pGAL-CDC20* (SBY952) and *pGAL-CDC20 ipl1-321* (SBY943) cells containing Tub1-GFP were shifted to glucose to arrest cells in metaphase and then shifted to 37°C to inactivate Ipl1-321p. Cells were then released into galactose medium at 37°C to restore Cdc20 protein synthesis in the presence of α -factor to arrest cells in the following G1. The percentage of cells with a pole to pole distance $\geq 9 \mu\text{m}$ were monitored for the presence or absence of a spindle. Spindle disassembly occurred in 68% of *pGAL-CDC20* cells compared with 36% of *pGAL-CDC20 ipl1-321* mutant cells released from metaphase. (B) Wild-type (SBY130) and *ipl1-321* (SBY97) cells containing Tub1-GFP were released from α -factor ($T = 0$) into the restrictive temperature (37°C). Time points were taken at 60, 70, and 80 min after release and monitored for the presence or absence of a spindle as in A. In wild-type

cells, 78% of the spindles have depolymerized compared with only 40% of *ipl1-321* mutant spindles. The bars represent the 95% confidence interval. (C) Cells from A were taken every 5 min, and Clb2p and Tub1p (loading control) protein levels were monitored by immunoblotting. Clb2p levels decline with similar kinetics in both strains, indicating that *ipl1-321* mutant cells exit mitosis normally. (D) *ipl1-321* mutants have hyperstable microtubules. *cdc26Δ mcd1-1* (SBY965) and *cdc26Δ mcd1-1 ipl1-321* (SBY2066) cells were arrested in G1 using α -factor then released into the cell cycle at the restrictive temperature (37°C). Cells were monitored for budding index, spindle formation, and spindle breakdown. 93% of *cdc26Δ mcd1-1* mutant cells underwent spindle disassembly by 150 min compared with only 48% of *cdc26Δ mcd1-1 ipl1-321* cells.

Ipl1p kinase activity increases when spindles disassemble

To analyze Ipl1p kinase activity when spindles disassemble, we developed a kinase assay using antibodies generated against a recombinant GST-Ipl1 fusion protein. The affinity-purified antibodies specifically recognize a single major band in yeast lysates that migrates just above 45 kD (Fig. S3 available at <http://www.jcb.org/cgi/content/full/jcb.200209018/DC1>). The antibodies were used to immunoprecipitate wild-type Ipl1p and the Ipl1-321 protein that has reduced kinase activity at high temperatures (Biggins et al., 1999). The majority of Ipl1p present in the yeast lysates (Fig. 5 A, pre) was depleted by the antibody (Fig. 5 A, post). The immunoprecipitates (Fig. 5 A, IP) were then incubated with the histone-fold domain of the kinetochore protein Cse4 in a kinase reaction in vitro. Cse4p was radiolabeled in the presence of wild-type Ipl1p but not the kinase inactive Ipl1-321 protein (Fig. 5 A, right), showing that the assay specifically reflects an Ipl1p-associated kinase activity.

We analyzed Ipl1p kinase activity as cells exited mitosis by releasing cells arrested in metaphase by Cdc20p depletion and taking time points every 10 min. Ipl1p was immunoprecipitated, and the kinase activity was monitored against the substrate Cse4p (Fig. 5 B). To determine the cell cycle position, we monitored the budding index and spindle disassembly (Fig. 5 C). We quantified the total kinase activity, which represents the protein and its corresponding kinase activity (Fig. 5 C). The Ipl1p kinase activity increases as cells leave metaphase, peaking just before spindle disassembly. Although we do not know whether this increase is due to regulation of the protein levels and/or specific activity,

the data is consistent with Ipl1p kinase activity being required for spindle breakdown.

Ipl1p's substrates localize to the spindle midzone, and Ipl1p follows the plus ends of the depolymerizing spindle microtubules

The novel midzone localization pattern for Ipl1p led us to test whether proteins that Ipl1p regulates also localize to the spindle midzone. First, we tested Cse4p which we have shown here is an Ipl1p substrate in vitro. Localization of a Cse4-GFP fusion showed that it does not transfer to the spindle (unpublished data). We next analyzed the localization of COOH-terminal GFP fusions to the Ndc10, Sli15, and Dam1 proteins (Fig. 6 A). Ndc10-GFP localized to the midzone in late anaphase cells in addition to the previously reported spindle and kinetochore localization (Lechner and Carbon, 1991; Goh and Kilmartin, 1993). We found that Sli15-GFP also accumulates at the spindle midzone and exhibits the same localization pattern as Ipl1p throughout the entire cell cycle (Fig. 6 A; unpublished data). Various labs have reported that Dam1p localizes to kinetochores throughout the cell cycle and to the mitotic spindle (Hofmann et al., 1998; He et al., 2001; Jones et al., 2001). Here we show that Dam1-GFP also localizes to the spindle midzone in anaphase cells. Therefore, the majority of known Ipl1p substrates localize to the spindle midzone, providing several potential candidates for Ipl1p regulation of spindle disassembly.

To learn more about how Ipl1p might regulate spindle disassembly, we analyzed the various Ipl1-GFP anaphase

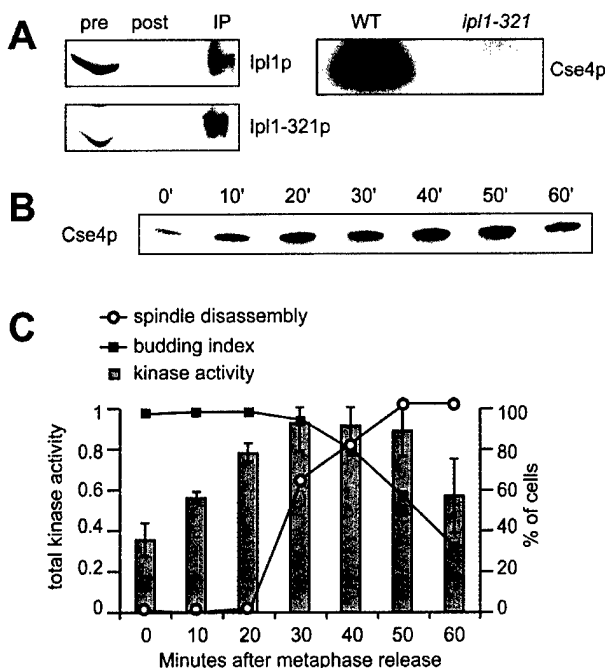


Figure 5. Ipl1p kinase activity increases before spindle disassembly. (A) Ipl1p was immunoprecipitated from a wild-type (SBY3) and a *ipl1-321* mutant strain (SBY322) and then incubated with the histone-fold domain of the Cse4 kinetochore protein in a kinase reaction *in vitro*. The majority of Ipl1p present in the lysates before the immunoprecipitation (pre) was removed (post), and similar amounts of protein were used in the kinase assay (IP). The autoradiogram (right) shows that Cse4p is radiolabeled in the presence of wild-type Ipl1p but not Ipl1-321 mutant protein. (B) *pGAL-CDC20* cells expressing Tub1-GFP (SBY952) were synchronized in metaphase by growth in glucose for 3 h. They were then released into galactose medium, and aliquots were taken every 10 min, and kinase assays were performed with the substrate Cse4p *in vitro*. The autoradiogram shows the phosphate incorporated into Cse4p in one experiment. (C) Microscopy was performed to determine the percent budding (■) and the percent spindle disassembly (○). The total Ipl1p kinase activity is shown in gray bars (arbitrary units) for three experiments with the standard deviation indicated. Ipl1p kinase activity increases before spindle breakdown.

localization patterns more precisely by performing time-lapse microscopy (video 3 available at <http://www.jcb.org/cgi/content/full/jcb.200209018/DC1>). At anaphase, Ipl1-GFP is distributed along the entire spindle length in a punctate pattern. Ipl1p then accumulates at the spindle midzone, splits into two distinct dots, and then travels back to the poles.

Since Ipl1p localizes to the spindle midzone very late in anaphase and then travels back to the poles, we tested whether it was following the plus ends of the depolymerizing spindle microtubules. Live microscopy was performed on cells coexpressing Tub1-CFP (tubulin) and Ipl1-GFP. Although CFP and GFP have overlapping spectrums, the Ipl1-GFP and Tub1-CFP signals were easily discernible (Fig. 6 B). It was not possible to use the nonoverlapping spectrum of YFP because the Ipl1-YFP signal was not strong enough to perform time-lapse imaging of cells. We started imaging a cell when Ipl1p (Fig. 6 B, green) localized to the midzone of a long spindle (Fig. 6 B, red, 0'). After 1 min,

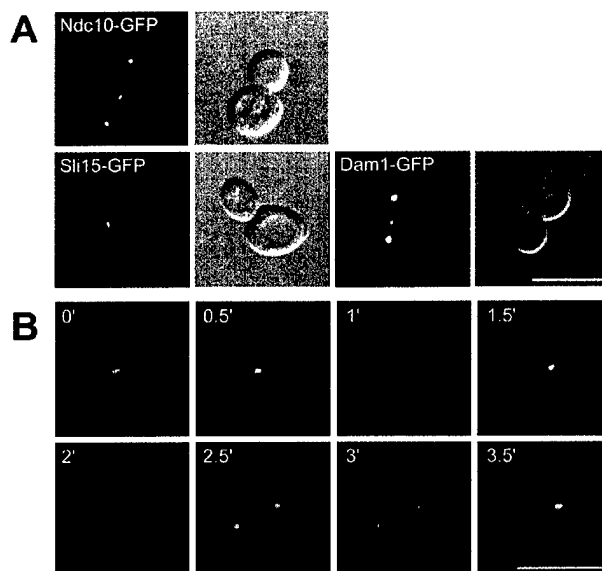


Figure 6. Ipl1p's substrates localize to the spindle midzone, and Ipl1p follows the plus ends of the depolymerizing spindle. (A) Microscopy was performed on strains containing endogenous Ndc10-GFP (SBY539), Sli15-GFP (SBY875), or Dam1-GFP (SBY1115). The fluorescence images show that all three Ipl1p substrates localize to the spindle midzone. The corresponding DIC pictures are shown (right). (B) Live image analysis was performed on cells expressing Ipl1-GFP and Tub1-CFP (SBY1036). Every 30 s, five z sections at 0.5- μ m intervals were acquired while alternating between the two channels (FITC and CFP). The deconvolved video shows tubulin in red, Ipl1p in green, and the overlapping signal in yellow. Before spindle disassembly, Ipl1p localizes to the spindle midzone (0'). When the spindle starts breaking down (1'), the Ipl1p signal splits and then follows the plus ends of the depolymerizing spindle (2') until it reaches the spindle poles (3.5'). Video 3 showing Ipl1p localization is available at <http://www.jcb.org/cgi/content/full/jcb.200209018/DC1>. Bars, 10 μ m.

the Ipl1p signal split and there was no longer any tubulin signal in the center of the spindle, indicating that the spindle is starting to break down. As the spindle depolymerized toward the poles, the Ipl1p signal always localized near the plus end of the microtubules (Fig. 6 B, 2'). At the end of spindle disassembly, the remaining tubulin at the pole colocalized with Ipl1p (Fig. 6 B, 3.5'). Therefore, Ipl1p accumulates at the spindle midzone in late anaphase and then follows the plus end of the depolymerizing microtubules back to the poles, suggesting it may specifically regulate the microtubule plus ends.

Discussion

We found that the Ipl1/Aurora protein kinase has a role in spindle microtubule disassembly that is not a consequence of a delay in mitotic exit or a prior defect in chromosome segregation. In addition, it is unlikely to be due to a defect in the spindle checkpoint, since the *mad1* and *mad2* checkpoint mutants exhibited normal spindle disassembly. Ipl1p localizes to the spindle midzone in anaphase and tracks the plus ends of the depolymerizing spindle microtubules, suggesting it may directly regulate microtubule plus ends. We found that several kinetochore proteins localize to the midzone,

suggesting the plus ends of the interpolar microtubules may be regulated in a manner similar to kinetochores. In addition, we found that *ipl1* mutants have a spindle orientation defect that may also reflect a role in cytoplasmic microtubule plus end function. Therefore, we propose that Ipl1p is a general microtubule plus end regulator and that its function in spindle disassembly in anaphase is similar to its function in promoting biorientation in prometaphase.

Ipl1p leaves the kinetochores after tension is established

We show here that Ipl1p exhibits a localization pattern similar to chromosomal passenger proteins, making it likely that Ipl1p is an Aurora B homologue. The dynamic localization of Ipl1p reflects its various mitotic functions. During prometaphase, Ipl1p monitors kinetochore tension and promotes microtubule release of monooriented kinetochore attachments, thus ensuring that sister kinetochores establish biorientation before chromosome segregation (Biggins and Murray, 2001; Tanaka et al., 2002). The proposal that Ipl1p might delocalize from kinetochores at metaphase provided an attractive mechanism for inactivating the kinase when tension and biorientation are established (Tanaka et al., 2002). However, we found that both Ipl1-GFP and endogenous Ipl1p localize to kinetochores in metaphase. Our data agrees with the observation that a mammalian Aurora B-GFP fusion protein left kinetochores 0.5 min after the initiation of anaphase, well after tension was established (Murata-Hori et al., 2002). K. Tanaka and T.U. Tanaka recently found that Ipl1p is on metaphase kinetochores by chromatin immunoprecipitation, thus reconciling our data (personal communication). To understand how tension regulates Ipl1p, we are actively trying to elucidate the mechanisms that control Ipl1 protein stability and kinase activity, since these may be alternative modes of regulation at metaphase.

Functions of the Ipl1/Aurora B protein kinase family

We show that the localization of Ipl1p to the mitotic spindle is correlated with spindle disassembly in budding yeast. Since Aurora B localizes to the spindle midzone in all organisms, this may be another conserved function of the Ipl1/Aurora B protein kinase family. Alternatively, this may reflect similarity to the role of Aurora A, since it regulates spindle function and phosphorylates the Eg5 motor protein in frog egg extracts (Giet et al., 1999; Giet and Prigent, 2000). In other organisms, Aurora B is required for cytokinesis, and this may be coupled to defects in spindle microtubule depolymerization that have not been noticed previously. In human cells, cytokinesis is regulated by the phosphorylation of CENP-A by Aurora B (Zeitlin et al., 2001). We report here that the budding yeast histone variant Cse4p is also a good substrate for Ipl1p in vitro. Further analysis of the effects of Cse4p phosphorylation by Ipl1p may reveal more details about spindle disassembly and/or cytokinesis in budding yeast. We show that the dynamics of spindle elongation are not altered in *ipl1* mutant cells, unlike mutants in the Aurora-INCENP-Survivin complex in *Schizosaccharomyces pombe* (Morishita et al., 2001; Rajagopalan and Balasubramanian, 2002). This difference may be due to the number of kinetochore microtubule-binding sites in each organism. In *S. pombe*, there are multiple binding

sites, which results in lagging chromosomes if biorientation is not achieved. In budding yeast where there is a single microtubule binding site, defects in biorientation cannot generate lagging chromosomes. However, when a conditional dicentric chromosome is activated in budding yeast, thus creating a lagging chromosome, spindle elongation is delayed (Yang et al., 1997). Our study in budding yeast had the advantage that defects in biorientation do not interfere with spindle dynamics. To determine whether the spindle disassembly function of Ipl1p is conserved, spindle dynamics will need to be analyzed in situations where chromosome segregation is normal.

Consistent with a role in spindle disassembly, we found that Ipl1p kinase activity increases just before spindle breakdown. Few studies have looked at the regulation of Ipl1p homologues. In *Drosophila* and rat tissues, Aurora B protein levels and kinase activity peak during mitosis (Bischoff et al., 1998; Terada et al., 1998). However, the time points were not close enough in those studies to determine whether the peak of kinase activity corresponds to spindle breakdown. In fission yeast, Aurora B is not cell cycle regulated (Petersen et al., 2001; Leversen et al., 2002), making it unclear whether there are conserved mechanisms that regulate Ipl1/Aurora B protein levels and kinase activity. Our study also revealed that Ipl1p kinase activity is low when cells are arrested in metaphase with kinetochores under tension. This may reflect an active mechanism that regulates Ipl1p stability and/or activity once tension is established. Future work will be needed to elucidate the mechanisms that lead to changes in Ipl1p kinase activity during mitosis.

How does Ipl1p regulate spindle disassembly?

In support of a role for Ipl1p in direct regulation of microtubules, we found that *ipl1* mutants are able to alleviate the spindle fragility of *apc mcd1* mutant cells. However, since the mechanism that leads to fragile spindles is not known, it is not clear how Ipl1p stabilizes spindles. Although mutations in Ipl1p affect spindle breakdown, they do not do this by grossly altering the structure of the spindle midzone, since all the midzone proteins we tested still localized in an *ipl1* mutant.

Our studies using live microscopy revealed a previously unidentified localization pattern for Ipl1p. At anaphase, Ipl1p is transported along the spindle to the midzone and then tracks the plus ends of the depolymerizing spindle microtubules back to the poles. To our knowledge, the only other protein in budding yeast that exhibits this localization pattern is the Ipl1p substrate Ndc10p and suggests regulated transport of these proteins on microtubules in anaphase, possibly by motor proteins (D. Bouck and K. Bloom, personal communication). The localization to the plus ends may indicate that Ipl1p directly destabilizes microtubules like catastrophe factors, such as the KINI family of motor proteins (Desai et al., 1999). However, although Ipl1p binds microtubules in vitro (Kang et al., 2001), we have not been able to induce microtubule depolymerization with bacterial Ipl1p in vitro (unpublished data). Therefore, Ipl1p may directly promote microtubule depolymerization in a manner that we have not yet detected, or it may instead control a microtubule-binding protein.

There are two nonessential proteins known to be involved in spindle microtubule disassembly in budding yeast: the motor protein Kip3 and the microtubule-associated protein Ase1 (Juang et al., 1997; Straight et al., 1998). Ipl1p and Kip3p may act in the same spindle disassembly pathway because the double mutant exhibits the same spindle breakdown defect as each single mutant. However, we have yet to obtain evidence that Ipl1p regulates Kip3p (unpublished data). There are other potential candidates for Ipl1p regulation that will need to be investigated, such as the midzone protein Stu2 that opposes the Kip3 protein and the Esp1p/Pds1p cell cycle regulation complex that is also found at the midzone and has a function stabilizing spindles during anaphase (Uhlmann et al., 2000; Jensen et al., 2001; Severin et al., 2001a). We also found that three known Ipl1p substrates are at the spindle midzone: Ndc10p, Sli15p, and Dam1p. It is interesting to note that Dam1p was originally identified for its role in regulating spindle dynamics (Hofmann et al., 1998; Jones et al., 1999). Therefore, several potential Ipl1p substrates localize to the spindle midzone, and it will need to be determined whether any of these candidates also promote spindle disassembly.

The spindle midzone: a kinetochore-like structure?

Several kinetochore proteins are now known to localize to the spindle midzone in anaphase, including Stu2p, Slk19p, and the motor protein Cin8 (Hoyt et al., 1992; Zeng et al., 1999; Kosco et al., 2001). Here we show four additional kinetochore proteins localizing to the midzone: the Ipl1/

Aurora protein kinase, the INCENP homologue Sli15p, Dam1p, and Ndc10p. Since midzone staining is difficult to detect, it may have been overlooked in several other localization studies and many more kinetochore proteins may be present at the midzone. Most of the spindle midzone proteins have been implicated in the regulation of spindle dynamics in anaphase by either promoting spindle elongation or spindle disassembly. An intriguing possibility is that the microtubule plus ends at the spindle midzone are regulated in anaphase similarly to the kinetochore-microtubule attachments in prometaphase. Future work will determine whether the Ipl1/Aurora protein kinase and other spindle midzone proteins are global regulators of microtubule plus ends.

Materials and methods

Microbial techniques

Media and genetic and microbial techniques were essentially as described (Sherman et al., 1974; Rose et al., 1990). All experiments where cells were released from G1 arrest were performed by adding 1 μ g/ml α -factor (stock: 10 mg/ml in DMSO; United Biochemical Research Inc.) at the permissive temperature for 3 h, washing the cells twice in α -factor-free medium, and resuspending them in fresh medium. α -Factor was added back to 1 μ g/ml after cells had budded to prevent cells from entering the next cell cycle. Galactose induction was performed by growing cells in 2% raffinose and adding galactose to a final concentration of 4%. All experiments were repeated at least twice with similar results.

Yeast strain construction

Yeast strains are listed in Table 1 and were constructed by standard genetic techniques. Diploids were isolated on selective medium and subsequently sporulated at 23°C. All strains containing the *pGAL-CDC20* con-

Table 1. Yeast strains used in this study

Strain	Genotype
SBY3	<i>MATa ura3-1 leu2-3,112 his3-11 trp1-1 can1-100 ade2-1 bar1Δ</i>
SBY97	<i>MATa ura3-1:TUB1-GFP:URA3 leu2-3,112 his3-11:pCUP1-GFP12-lacI12:HIS3 trp1-1:lacO:TRP1 lys2Δ ade2-1 bar1Δ can1-100 ipl1-321</i>
SBY130	<i>MATa ura3-1:TUB1-GFP:URA3 leu2-3,112 his3-11:pCUP1-GFP12-lacI12:HIS3 trp1-1:lacO:TRP1 lys2Δ ade2-1 bar1Δ can1-100</i>
SBY322	<i>MATa ura3-1 leu2-3,112 his3-11:pCUP1-GFP12-lacI12:HIS3 trp1-1:lacO:TRP1 lys2Δade2-1 bar1Δ can1-100 ipl1-321</i>
SBY539	<i>MATa ura3-1 leu2-3,112 his3-11 trp1-1 can1-100 ade2-1 bar1Δ NDC10-GFP:KAN</i>
SBY554	<i>MATa ura3-1:pGAL-IPL1:URA3 leu2-3,112 his3-11 trp1-1 can1-100 ade2-1 bar1Δ</i>
SBY556	<i>MATa ura3-1 leu2-3,112 his3-11 trp1-1 ade2-1 bar1Δ can1-100 IPL1-GFP:KAN</i>
SBY617	<i>MATa ura3-1 leu2-3,112 his3-11 trp1-1 ade2-1 bar1Δ can1-100 CSE4-myc12:URA3</i>
SBY736	<i>MATa ura3-1:pGAL-myc13-IPL1:URA3 leu2-3,112 his3-11 trp1-1 can1-100 ade2-1 bar1Δ</i>
SBY875	<i>MATa ura3-1 leu2-3,112 his3-11 trp1-1 can1-100 ade2-1 bar1Δ Sli15-GFP:HIS3</i>
SBY943	<i>MATa ura3-1:TUB1-GFP:URA3 leu2-3,112 his3-11 trp1-1 ade2-1 can1-100 cdc20::LEU2 ipl1-321 [pGAL(low)-CDC20-HIS3(CEN)]</i>
SBY952	<i>MATa ura3-1:TUB1-GFP:URA3 leu2-3,112 his3-11 trp1-1 ade2-1 can1-100 cdc20::LEU2 (pGAL[low]-CDC20-HIS3(CEN))</i>
SBY965	<i>MATa ura3-1 leu2-3,112:TUB1-GFP:LEU2 his3-11:pCUP1-GFP12-lacI12:HIS3 trp1-1:lacO:URA3:TRP1 lys2Δ ade2-1 mcd1-1 cdc26::KAN</i>
SBY1036	<i>MATa ura3-1:TUB1-CFP:URA3 leu2-3,112 his3-11 trp1-1 ade2-1 bar1Δ can1-100 IPL1-GFP:KAN</i>
SBY1115	<i>MATa ura3-1 leu2-3,112 his3-11 trp1-1 can1-100 ade2-1 bar1Δ DAM1-GFP:TRP1</i>
SBY1246	<i>MATa ura3-1 leu2-3,112 his3-11,15 trp1-1 ade2-1 can1-100 cdc20::LEU2 IPL1-YFP:HIS3 NDC10-CFP:KAN (pGAL[low]-CDC20-HIS3(CEN))</i>
SBY1422	<i>MATa ura3-1:TUB1-GFP:URA3 leu2-3,112 his3-11:pCUP1-GFP12-lacI12:HIS3 trp1-1:lacO:TRP1 lys2Δ ade2-1 bar1Δ can1-100 mad2::KAN</i>
SBY1423	<i>MATa ura3-1:TUB1-GFP:URA3 leu2-3,112 his3-11:pCUP1-GFP12-lacI12:HIS3 trp1-1:lacO:TRP1 lys2Δ ade2-1 bar1Δ can1-100 mad1::KAN</i>
SBY2066	<i>MATa leu2-3,112 his3-11:LacI12:HIS3 trp1-1:LacO:TRP1 lys2Δ bar1Δ ipl1-321 mcd1-1 cdc26::KAN</i>

All strains are isogenic with the W303 strain background. Plasmids are indicated in parentheses.

struct were obtained through crosses with SLJ577, a gift from S. Jaspersen and M. Winey (University of Colorado, Boulder, Colorado). SBY1036 was created by integration of *TUB1-CFP:URA3* (a gift from K. Bloom, University of North Carolina at Chapel Hill, Chapel Hill, NC) with *Stul* at the *URA3* locus. Strains containing *CSE4-myc12* were obtained by integrating pSB246 cut with *Clal* at the *CSE4* locus. Strains containing *TUB1-GFP:LEU2* were obtained by integrating plasmid pSB340 cut with *AgeI* at the *LEU2* locus and *TUB1-GFP:URA3* by integrating plasmid pMAS27 (a gift from M. Shonn, Tufts University, Boston MA) cut with *Stul* at the *URA3* locus. SBY554 was obtained by integrating pSB164 (*pGAL-IPL1:URA3* [Biggins et al., 1999]) cut with *Stul* at the *URA3* locus. SBY736 was obtained by integrating pSB257 (*pGAL-myc12-IPL1:URA3*) cut with *Stul* at the *URA3* locus. Deletions in yeast genes and GFP, CFP, and myc epitope tags were made using the PCR-based integration system (Longtine et al., 1998). YFP epitope tags were made using pDH5, a gift from T. Davis (University of Washington, Seattle, WA). Specific primer sequences are available upon request. All deletions and epitope tags were confirmed by PCR.

Plasmid constructions

A clone that encoded Cse4p internally tagged with 12 copies of the myc epitope (pSB246) was constructed by PCR amplification of the myc tag from pSB162 (Biggins et al., 1999) using primers SB84 and SB85. The PCR product was digested with *SpeI* and ligated into the *XbaI* site of pSB241 (*CSE4*, *URA3* integrating vector). pSB241 was created by digesting a genomic clone containing *CSE4* with *EcoRI* and *PstI*, and the resulting 1.7-kb fragment was ligated into *ypIac211* (Gietz and Sugino, 1988) digested with *EcoRI* and *PstI*. To create *TUB1-GFP:LEU2*, pMAS27 was digested with *EagI*, and the *TUB1-GFP* fragment was ligated into the *EagI* site of pRS305 to create pSB340. To create a *pGAL-myc12-IPL1* clone, *IPL1* was PCR amplified from genomic DNA, digested with *SpeI* and *SacI*, and then ligated into pSB209 (*pGAL-myc12*, *URA3* integrating vector) digested with the same enzymes to create pSB257.

Protein and immunological techniques

Protein extracts were made and immunoblotted as described (Minshull et al., 1996). Anti-Tub1p antibodies were obtained from Accurate Chemical and Scientific and used at a 1:1,000 dilution, anti-Clb2p antibodies (a gift from A. Rudner, Harvard Medical School, Boston, MA) were used as described (Rudner et al., 2000), and anti-Ipl1p antibodies were used at 1:1,000. To generate anti-Ipl1p antibodies, GST-Ipl1p was injected into rabbits at Cocalico Biological Inc. For the fourth and fifth boosts, boiled protein was injected. The antibodies were affinity purified by coupling GST-Ipl1p to Sulfolink Coupling gel (Pierce Chemical Co.).

Microscopy

For live microscopy to analyze GFP fusion proteins, cells were grown in yeast media, pH 7.0, washed, and resuspended in 1/10 volume minimal medium with casamino acids. For live microscopy at RT, 1.5 μ l of cell preparation was put on a 2% agarose pad containing minimal medium with casamino acids. The slide was then sealed with VALAP (1:1:1, vaseline:lanolin:paraffin) and imaged. For live microscopy at 35°C, prepared cells were mounted directly onto a heated stage (Bioptechs). Images were collected through an Olympus 1X17 60 \times objective with a CH350 CCD camera (Roper Scientific) using the Softwox 2.5 (Applied Precision) software. The same software was used for deconvolution. At least 10 cells were analyzed for all reported experiments.

Chromosome spreads were performed as described (Loidl et al., 1991; Michaelis et al., 1997). Lipso1 was obtained from Lip Ltd. 9E10 antibodies that recognize myc tag were used at a 1:500 dilution and obtained from Covance. Anti-Tub1p antibodies (Accurate Chemical and Scientific) were used at a 1:500 dilution. Anti-Ipl1p antibodies were used at a 1:250 dilution. Alexafluor-594 and Alexafluor-488 secondary antibodies were obtained from Molecular Probes and used at a 1:250 dilution.

Cse4 histone fold domain purification

The histone fold domain of *CSE4* (encoding aa 121–229) was PCR amplified from *Saccharomyces cerevisiae* genomic DNA and cloned into a T7 expression vector of the pCRTL/CT TOPO TA cloning kit (Invitrogen). The resulting expression plasmid (pT7Cse4c) was transformed into BL21-CodonPlus (DE3)-RIL cells (Stratagene), and 2 liters were induced with ITPG to 0.2 mM for 2.5 h at 37°C, and Cse4 was purified under denaturing conditions as described (Gelbart et al., 2001). The Cse4 histone fold domain purity was verified by SDS-PAGE and dialyzed against water. A substantial portion of the protein was not soluble in water, but solubility was adequate for kinase assays in vitro.

Ipl1p kinase assays

40-ml cultures of mid-log cells were collected and resuspended in 500 μ l lysis buffer (100 mM NaCl, 50 mM Tris, pH 7.5, 50 mM NaF, 50 mM β -glycerophosphate, pH 7.4, 2 mM EDTA, 2 mM EGTA, 0.1% Triton X-100), 2 mM NaVO₄, 2 mM PMSF, 10 μ g/ml LPC (leupeptin, pepstatin, and chymostatin; Chemicon), 1 mM DTT, 0.1 μ g/ml microcystin (Calbiochem) were added fresh. All subsequent steps were performed at 4°C. Cells were lysed with glass beads in a beater (Biospec Products Inc.) for 30 s and then centrifuged for 10 min. 400 μ l supernatant was added to 5 μ l magnetic protein G beads (Dyna1 Biotech Inc.) and 4 μ l anti-Ipl1p antibodies for 2 h. The beads were washed three times with 400 μ l lysis buffer and once with 100 μ l kinase buffer without ATP (50 mM Tris, pH 7.4, 1 mM DTT, 25 mM β -glycerophosphate, 5 mM MgCl₂) and then resuspended in buffer with 10 μ M ATP, 5 μ Ci [³²P]ATP and 5 μ g Cse4p for 30 min at 30°C. 2 \times sample buffer was added, and reactions were separated on SDS-PAGE and subjected to autoradiography using a Phosphorimager Screen (Molecular Dynamics). Kinase assays were quantified using ImageQuant (Molecular Dynamics) software.

Online supplemental material

Videos 1–3 and Figs. S1–S3 are available at <http://www.jcb.org/cgi/content/full/jcb.200209018/DC1>. Video 1 displays wild-type cells expressing Tub1-GFP from metaphase to anaphase. Video 2 shows *ipl1-321* cells expressing Tub1-GFP that are delayed in spindle disassembly. Video 3 shows Ipl1-GFP localization during late anaphase. Fig. S1 shows endogenous Ipl1 localization on chromosome spreads. Fig. S2 demonstrates that the spindle checkpoint mutants *mad1 Δ* and *mad2 Δ* do not have spindle disassembly defects. Fig. S3 shows the Ipl1p antibody specificity.

We are grateful to Adrian Quintanilla and David McDonald for help with the microscopy, Steve Henikoff for the Cse4p construct, and Delia M. Pinto-Santini for preliminary experiments. We thank members of the Biggins' laboratory and Linda Breeden, Adrian Ferré-D'Amaré, Christian Frei, and Marion Shonn for critical reading of the manuscript and discussions. We thank the following people for strains, plasmids and advice: Kerry Bloom, Trisha Davis, Sue Jaspersen, Kim Nasmyth, Mark Roth, Marion Shonn, Bodo Stern, and Mark Winey. We are grateful to Kerry Bloom and Tomo Tanaka for sharing data prior to publication. We thank Andreas Conzelmann for support.

This work was supported by grants from the Roche Research Foundation and the Department of Defense of the Army to S. Buvelot, a Damon Runyon Cancer Research Foundation fellowship (DRG-1554) to D. Verma, and a Sidney Kimmel Scholar award and National Institutes of Health grant to S. Biggins.

Submitted: 4 September 2002

Revised: 2 December 2002

Accepted: 24 December 2002

References

- Adams, R.R., S.P. Wheatley, A.M. Gouldsworthy, S.E. Kandels-Lewis, M. Carmena, C. Smythe, D.L. Gerloff, and W.C. Earnshaw. 2000. INCENP binds the aurora-related kinase AIRK2 and is required to target it to chromosomes, the central spindle and cleavage furrow. *Curr. Biol.* 10:1075–1078.
- Biggins, S., and A.W. Murray. 2001. The budding yeast protein kinase Ipl1/Aurora allows the absence of tension to activate the spindle checkpoint. *Genes Dev.* 15:3118–3129.
- Biggins, S., F.F. Severin, N. Bhalla, I. Sassoon, A.A. Hyman, and A.W. Murray. 1999. The conserved protein kinase Ipl1 regulates microtubule binding to kinetochores in budding yeast. *Genes Dev.* 13:532–544.
- Bischoff, J.R., L. Anderson, Y. Zhu, K. Mossie, L. Ng, B. Souza, B. Schryver, P. Flanagan, F. Clairvoyant, C. Ginther, et al. 1998. A homologue of *Drosophila* aurora kinase is oncogenic and amplified in human colorectal cancers. *EMBO J.* 17:3052–3065.
- Chan, C.S., and D. Botstein. 1993. Isolation and characterization of chromosome-gain and increase-in-ploidy mutants in yeast. *Genetics*. 135:677–691.
- Cheeseman, I.M., S. Anderson, M. Jwa, E.M. Green, J. Kang, J.R. Yates, C.S. Chan, D.G. Drubin, and G. Barnes. 2002. Phospho-regulation of kinetochore-microtubule attachments by the Aurora kinase Ipl1p. *Cell*. 111:163–172.
- Desai, A., and T.J. Mitchison. 1997. Microtubule polymerization dynamics. *Annu. Rev. Cell Dev. Biol.* 13:83–117.
- Desai, A., S. Verma, T.J. Mitchison, and C.E. Walczak. 1999. Kin I kinesins are microtubule-destabilizing enzymes. *Cell*. 96:69–78.

- Francisco, L., W. Wang, and C.S. Chan. 1994. Type 1 protein phosphatase acts in opposition to Ipl1 protein kinase in regulating yeast chromosome segregation. *Mol. Cell Biol.* 14:4731–4740.
- Gelbart, M.E., T. Rechsteiner, T.J. Richmond, and T. Tsukiyama. 2001. Interactions of Isw2 chromatin remodeling complex with nucleosomal arrays: analyses using recombinant yeast histones and immobilized templates. *Mol. Cell Biol.* 21:2098–2106.
- Giet, R., and C. Prigent. 2000. The *Xenopus laevis* aurora/Ipl1p-related kinase pEg2 participates in the stability of the bipolar mitotic spindle. *Exp. Cell Res.* 258:145–151.
- Giet, R., R. Uzbekov, F. Cubizolles, K. Le Guellec, and C. Prigent. 1999. The *Xenopus laevis* aurora-related protein kinase pEg2 associates with and phosphorylates the kinesin-related protein XIEg5. *J. Biol. Chem.* 274:15005–15013.
- Gietz, R.D., and A. Sugino. 1988. New yeast—*Escherichia coli* shuttle vectors constructed with in vitro mutagenized yeast genes lacking six-base pair restriction sites. *Gene* 74:527–534.
- Glover, D.M., M.H. Leibowitz, D.A. McLean, and H. Parry. 1995. Mutations in aurora prevent centrosome separation leading to the formation of monopolar spindles. *Cell* 81:95–105.
- Goh, P.Y., and J.V. Kilmartin. 1993. *NDC10*: a gene involved in chromosome segregation in *Saccharomyces cerevisiae*. *J. Cell Biol.* 121:503–512.
- Goshima, G., and M. Yanagida. 2000. Establishing biorientation occurs with precocious separation of the sister kinetochores, but not the arms, in the early spindle of budding yeast. *Cell* 100:619–633.
- He, X., S. Asthana, and P.K. Sorger. 2000. Transient sister chromatid separation and elastic deformation of chromosomes during mitosis in budding yeast. *Cell* 101:763–775.
- He, X., D.R. Rines, C.W. Espelin, and P.K. Sorger. 2001. Molecular analysis of kinetochore-microtubule attachment in budding yeast. *Cell* 106:195–206.
- Hofmann, C., I.M. Cheeseman, B.L. Goode, K.L. McDonald, G. Barnes, and D.G. Drubin. 1998. *Saccharomyces cerevisiae* Duo1p and Dam1p, novel proteins involved in mitotic spindle function. *J. Cell Biol.* 143:1029–1040.
- Hoyt, M.A., L. He, K.K. Loo, and W.S. Saunders. 1992. Two *Saccharomyces cerevisiae* kinesin-related gene products required for mitotic spindle assembly. *J. Cell Biol.* 118:109–120.
- Jensen, S., M. Segal, D.J. Clarke, and S.I. Reed. 2001. A novel role of the budding yeast separin Esp1 in anaphase spindle elongation. Evidence that proper spindle association of Esp1 is regulated by Pds1. *J. Cell Biol.* 152:27–40.
- Jones, M.H., J.B. Bachant, A.R. Castillo, T.H. Giddings, Jr., and M. Winey. 1999. Yeast Dam1p is required to maintain spindle integrity during mitosis and interacts with the Mps1p kinase. *Mol. Biol. Cell* 10:2377–2391.
- Jones, M.H., X. He, T.H. Giddings, and M. Winey. 2001. Yeast Dam1p has a role at the kinetochore in assembly of the mitotic spindle. *Proc. Natl. Acad. Sci. USA* 98:13675–13680.
- Juang, Y.L., J. Huang, J.M. Peters, M.E. McLaughlin, C.Y. Tai, and D. Pellman. 1997. APC-mediated proteolysis of Ase1 and the morphogenesis of the mitotic spindle. *Science* 275:1311–1314.
- Kaitna, S., M. Mendoza, V. Jantsch-Plunger, and M. Glotzer. 2000. INCENP and an Aurora-like kinase form a complex essential for chromosome segregation and efficient completion of cytokinesis. *Curr. Biol.* 10:1172–1181.
- Kang, J., I.M. Cheeseman, G. Kallstrom, S. Velmurugan, G. Barnes, and C.S. Chan. 2001. Functional cooperation of Dam1, Ipl1, and the inner centromere protein (INCENP)-related protein Sli15 during chromosome segregation. *J. Cell Biol.* 155:763–774.
- Kim, J.H., J.S. Kang, and C.S. Chan. 1999. Sli15 associates with the Ipl1 protein kinase to promote proper chromosome segregation in *Saccharomyces cerevisiae*. *J. Cell Biol.* 145:1381–1394.
- Kosco, K.A., C.G. Pearson, P.S. Maddox, P.J. Wang, I.R. Adams, E.D. Salmon, K. Bloom, and T.C. Huffaker. 2001. Control of microtubule dynamics by Stu2p is essential for spindle orientation and metaphase chromosome alignment in yeast. *Mol. Biol. Cell* 12:2870–2880.
- Lechner, J., and J. Carbon. 1991. A 240 Kd multisubunit complex, CBF3, is a major component of the budding yeast centromere. *Cell* 64:717–725.
- Leverson, J.D., H.K. Huang, S.L. Forsburg, and T. Hunter. 2002. The *Schizosaccharomyces pombe* aurora-related kinase Ark1 interacts with the inner centromere protein Pic1 and mediates chromosome segregation and cytokinesis. *Mol. Biol. Cell* 13:1132–1143.
- Li, Y., J. Bachant, A.A. Alcasabas, Y. Wang, J. Qin, and S.J. Elledge. 2002. The mitotic spindle is required for loading of the DASH complex onto the kinetochore. *Genes Dev.* 16:183–197.
- Loidl, J., K. Nairz, and F. Klein. 1991. Meiotic chromosome synapsis in a haploid yeast. *Chromosoma* 100:221–228.
- Loidl, J., F. Klein, and J. Engebrecht. 1998. Genetic and morphological approaches for the analysis of meiotic chromosomes in yeast. *Methods Cell Biol.* 53:257–285.
- Longtine, M.S., A. McKenzie, III, D.J. Demarini, N.G. Shah, A. Wach, A. Brachat, P. Philippsen, and J.R. Pringle. 1998. Additional modules for versatile and economical PCR-based gene deletion and modification in *Saccharomyces cerevisiae*. *Yeast* 14:953–961.
- Maddox, P.S., K.S. Bloom, and E.D. Salmon. 2000. The polarity and dynamics of microtubule assembly in the budding yeast *Saccharomyces cerevisiae*. *Nat. Cell Biol.* 2:36–41.
- Michaelis, C., R. Ciosk, and K. Nasmyth. 1997. Cohesins: chromosomal proteins that prevent premature separation of sister chromatids. *Cell* 91:35–45.
- Millband, D.N., L. Campbell, and K.G. Hardwick. 2002. The awesome power of multiple model systems: interpreting the complex nature of spindle checkpoint signaling. *Trends Cell Biol.* 12:205–209.
- Minshull, J., A. Straight, A. Rudner, A. Dernburg, A. Belmont, and A.W. Murray. 1996. Protein phosphatase 2A regulates MPF activity and sister chromatid cohesion in budding yeast. *Curr. Biol.* 6:1609–1620.
- Morishita, J., T. Matsusaka, G. Goshima, T. Nakamura, H. Tarebe, and M. Yanagida. 2001. Bir1/Cut17 moving from chromosome to spindle upon the loss of cohesion is required for condensation, spindle elongation and repair. *Genes Cells* 6:743–763.
- Murata-Hori, M., M. Tatsuka, and Y.L. Wang. 2002. Probing the dynamics and functions of Aurora B kinase in living cells during mitosis and cytokinesis. *Mol. Biol. Cell* 13:1099–1108.
- Nasmyth, K. 2002. Segregating sister genomes: the molecular biology of chromosome separation. *Science* 297:559–565.
- Nigg, E.A. 2001. Cell division mitotic kinases as regulators of cell division and its checkpoints. *Nat. Rev. Mol. Cell Biol.* 2:21–32.
- Pearson, C.G., P.S. Maddox, E.D. Salmon, and K. Bloom. 2001. Budding yeast chromosome structure and dynamics during mitosis. *J. Cell Biol.* 152:1255–1266.
- Peters, J.M. 2002. The anaphase-promoting complex: proteolysis in mitosis and beyond. *Mol. Cell* 9:931–943.
- Petersen, J., J. Paris, M. Willer, M. Philippe, and I.M. Hagan. 2001. The *S. pombe* aurora-related kinase Ark1 associates with mitotic structures in a stage dependent manner and is required for chromosome segregation. *J. Cell Sci.* 114:4371–4384.
- Rajagopalan, S., and M.K. Balasubramanian. 2002. *Schizosaccharomyces pombe* Birp, a nuclear protein that localizes to kinetochores and the spindle midzone, is essential for chromosome condensation and spindle elongation during mitosis. *Genetics* 160:445–456.
- Rose, M.D., F. Winston, and P. Hieter. 1990. Methods in Yeast Genetics. Cold Spring Harbor Laboratory Press, Cold Spring Harbor, New York. 198 pp.
- Rudner, A.D., K.G. Hardwick, and A.W. Murray. 2000. Cdc28 activates exit from mitosis in budding yeast. *J. Cell Biol.* 149:1361–1376.
- Schumacher, J.M., A. Golden, and P.J. Donovan. 1998. AIR-2: an Aurora/Ipl1-related protein kinase associated with chromosomes and midbody microtubules is required for polar body extrusion and cytokinesis in *Caenorhabditis elegans* embryos. *J. Cell Biol.* 143:1635–1646.
- Segal, M., and K. Bloom. 2001. Control of spindle polarity and orientation in *Saccharomyces cerevisiae*. *Trends Cell Biol.* 11:160–166.
- Severin, F., B. Habermann, T. Huffaker, and T. Hyman. 2001a. Stu2 promotes mitotic spindle elongation in anaphase. *J. Cell Biol.* 153:435–442.
- Severin, F., A.A. Hyman, and S. Piatti. 2001b. Correct spindle elongation at the metaphase/anaphase transition is an APC-dependent event in budding yeast. *J. Cell Biol.* 155:711–718.
- Shannon, K.B., and E.D. Salmon. 2002. Chromosome dynamics: new light on aurora B kinase function. *Curr. Biol.* 12:R458–R460.
- Sherman, F., G. Fink, and C. Lawrence. 1974. Methods in Yeast Genetics. Cold Spring Harbor Laboratory Press, Cold Spring Harbor, New York. 174 pp.
- Speliotes, E.K., A. Uren, D. Vaux, and H.R. Horvitz. 2000. The survivin-like *C. elegans* BIR-1 protein acts with the Aurora-like kinase AIR-2 to affect chromosomes and the spindle midzone. *Mol. Cell* 6:211–223.
- Stegmeier, F., R. Visintin, and A. Amon. 2002. Separase, polo kinase, the kinetochore protein Slk19, and Spo12 function in a network that controls Cdc14 localization during early anaphase. *Cell* 108:207–220.
- Stern, B.M. 2002. Mitosis: aurora gives chromosomes a healthy stretch. *Curr. Biol.* 12:R316–R318.
- Straight, A.F., W.F. Marshall, J.W. Sedat, and A.W. Murray. 1997. Mitosis in living budding yeast: anaphase A but no metaphase plate. *Science* 277:574–578.
- Straight, A.F., J.W. Sedat, and A.W. Murray. 1998. Time-lapse microscopy reveals

- unique roles for kinesins during anaphase in budding yeast. *J. Cell Biol.* 143: 687–694.
- Tanaka, T., J. Fuchs, J. Loidl, and K. Nasmyth. 2000. Cohesin ensures bipolar attachment of microtubules to sister centromeres and resists their precocious separation. *Nat. Cell Biol.* 2:492–499.
- Tanaka, T.U., N. Rachidi, C. Janke, G. Pereira, M. Galova, E. Schiebel, M.J. Stark, and K. Nasmyth. 2002. Evidence that the Ipl1-Sli15 (Aurora kinase-INCENP) complex promotes chromosome bi-orientation by altering kinetochore-spindle pole connections. *Cell* 108:317–329.
- Terada, Y., M. Tatsuka, F. Suzuki, Y. Yasuda, S. Fujita, and M. Otsu. 1998. AIM-1: a mammalian midbody-associated protein required for cytokinesis. *EMBO J.* 17:667–676.
- Uhlmann, F., W. Wernek, M.-A. Poupart, E. Koonin, and K. Nasmyth. 2000. Cleavage of cohesin by the CD clan protease separin triggers anaphase in yeast. *Cell* 103:375–386.
- Winey, M., and E.T. O'Toole. 2001. The spindle cycle in budding yeast. *Nat. Cell Biol.* 3:E23–E27.
- Winey, M., C.L. Mamay, E.T. O'Toole, D.N. Mastronarde, T.H. Giddings, Jr., K.L. McDonald, and J.R. McIntosh. 1995. Three-dimensional ultrastructural analysis of the *Saccharomyces cerevisiae* mitotic spindle. *J. Cell Biol.* 129: 1601–1615.
- Yang, S.S., E. Yeh, E.D. Salmon, and K. Bloom. 1997. Identification of a mid-anaphase checkpoint in budding yeast. *J. Cell Biol.* 136:345–354.
- Yeh, E., R.V. Skibbens, J.W. Cheng, E.D. Salmon, and K. Bloom. 1995. Spindle dynamics and cell cycle regulation of dynein in the budding yeast, *Saccharomyces cerevisiae*. *J. Cell Biol.* 130:687–700.
- Zeidin, S.G., R.D. Shelby, and K.F. Sullivan. 2001. CENP-A is phosphorylated by Aurora B kinase and plays an unexpected role in completion of cytokinesis. *J. Cell Biol.* 155:1147–1157.
- Zeng, X., J.A. Kahana, P.A. Silver, M.K. Morpew, J.R. McIntosh, I.T. Fitch, J. Carbon, and W.S. Saunders. 1999. Slk19p is a centromere protein that functions to stabilize mitotic spindles. *J. Cell Biol.* 146:415–425.