

AD _____

Award Number: DAMD17-00-1-0653

TITLE: Sialyltransferase in Breast Cancer

PRINCIPAL INVESTIGATOR: Joseph T. Y. Lau, Ph.D.

CONTRACTING ORGANIZATION: Health Research, Incorporated
Buffalo, New York 14263

REPORT DATE: September 2002

TYPE OF REPORT: Final

PREPARED FOR: U.S. Army Medical Research and Materiel Command
Fort Detrick, Maryland 21702-5012

DISTRIBUTION STATEMENT: Approved for Public Release;
Distribution Unlimited

The views, opinions and/or findings contained in this report are those of the author(s) and should not be construed as an official Department of the Army position, policy or decision unless so designated by other documentation.

20030328 304

REPORT DOCUMENTATION PAGE

Form Approved
OMB No. 074-0188

Public reporting burden for this collection of information is estimated to average 1 hour per response, including the time for reviewing instructions, searching existing data sources, gathering and maintaining the data needed, and completing and reviewing this collection of information. Send comments regarding this burden estimate or any other aspect of this collection of information, including suggestions for reducing this burden to Washington Headquarters Services, Directorate for Information Operations and Reports, 1215 Jefferson Davis Highway, Suite 1204, Arlington, VA 22202-4302, and to the Office of Management and Budget, Paperwork Reduction Project (0704-0188), Washington, DC 20503

1. AGENCY USE ONLY (Leave blank)		2. REPORT DATE September 2002	3. REPORT TYPE AND DATES COVERED Final (1 Sep 00 - 31 Aug 02)	
4. TITLE AND SUBTITLE Sialyltransferase in Breast Cancer			5. FUNDING NUMBERS DAMD17-00-1-0653	
6. AUTHOR(S) : Joseph T. Y. Lau, Ph.D.				
7. PERFORMING ORGANIZATION NAME(S) AND ADDRESS(ES) Health Research, Incorporated Buffalo, New York 14263 e-mail: joseph.lau@roswellpark.org			8. PERFORMING ORGANIZATION REPORT NUMBER	
9. SPONSORING / MONITORING AGENCY NAME(S) AND ADDRESS(ES) U.S. Army Medical Research and Materiel Command Fort Detrick, Maryland 21702-5012			10. SPONSORING / MONITORING AGENCY REPORT NUMBER	
11. SUPPLEMENTARY NOTES				
12a. DISTRIBUTION / AVAILABILITY STATEMENT Approved for Public Release; Distribution Unlimited			12b. DISTRIBUTION CODE	
13. ABSTRACT (Maximum 200 words) ABSTRACT Alterations in sialylation are well documented in breast cancer as well as other epithelial cancers. A principal enzyme implicated in this process is the sialyltransferase ST6Gal, which mediates the synthesis of the sialyl α 2,6-anomeric linkage to terminal lactosamine structures on glycoproteins, and high levels have been linked to a poor prognosis especially among patients with locally advanced stage III breast cancer. Transcription of the ST6Gal gene is regulated by selective use of multiple promoters in a tissue- and developmental-specific manner. We documented the existence of a breast-specific promoter that is recruited de novo to allow high ST6Gal gene expression during late pregnancy and lactation in mouse mammary glands. However we failed to detect an equivalent breast-specific promoter operative in humans. Examination in a number of murine breast cancer models also failed to detect recruitment of this promoter in ST6Gal expression.				
14. SUBJECT TERMS breast cancer			15. NUMBER OF PAGES 10	
			16. PRICE CODE	
17. SECURITY CLASSIFICATION OF REPORT Unclassified	18. SECURITY CLASSIFICATION OF THIS PAGE Unclassified	19. SECURITY CLASSIFICATION OF ABSTRACT Unclassified	20. LIMITATION OF ABSTRACT Unlimited	

Table of Contents

Cover	Page 1
SF 298	Page 2
Table of Contents	Page 3
Introduction	Page 4
Body	Page 4
Key Research Accomplishments	
Reportable Outcomes	
Conclusions	Page 4
References	Page 4
Appendices	Page 4

U.S. Army Medical Research and Materiel Command, Aberdeen Report Page 5

Report of Laboratory and Subcontractors Page 6

INTRODUCTION

Alterations in sialylation are well documented in breast cancer as well as other epithelial cancers. In particular, elevated cell surface sialylation may mask tumor cells from immune surveillance. Of equally importance to the long-term survival of breast cancer patients, increased cell surface sialylation may decrease intercellular adhesion, directly contributing to the ability of tumor cells to metastasize. A principal enzyme implicated in this process is the sialyltransferase ST6Gal, which mediates the addition of sialic acid via an α 2,6-anomeric linkage to terminal lactosamine structures on glycoproteins. High levels of ST6Gal have been linked to a poor prognosis especially among patients with locally advanced stage III breast cancer^{1,2}. In normal individuals, serum and mammary gland ST6Gal levels are also elevated during late pregnancy and lactation. Among all animal species examined, including human, bovine, rat, and mouse, transcription of the ST6Gal gene is regulated by the selective use of multiple promoters in a tissue- and developmental-specific manner.

BODY

This work was initiated by our original finding that a novel ST6Gal mRNA form is expressed in the lactating mammary glands of the mouse. This prompted our hypothesis that the novel mRNA form originates from a heretofore unique ST6Gal promoter. Further, we reasoned that a human homologue of this "lactation-specific" may exist and that its inappropriate utilization may generate the elevated ST6Gal expression during breast cancer.

The key research accomplishments to this concept award are as follows:

1. We have successfully characterized the murine "lactation-specific" ST6Gal mRNA. We conclusively demonstrated that it originates from a unique promoter/transcription regulatory region that is expressed only in mammary glands and only during late pregnancy and lactation. We have mapped this promoter region on the murine ST6Gal gene, *Siat1*. These findings have been published³.
2. We established that elevated ST6Gal mRNA during lactation is not due to contribution of lymphocytes during this process since an identical increase was also observed in lactating mammary glands of SCID mice.
3. We examined the expression of ST6Gal in a number of mouse breast cancer models, including mouse breast carcinoma lines 410.4, SHI, N2O2-neu, and BF-C3. Further we also experimentally induced mouse mammary tumors using polyomavirus middle-T antigen. In none of these cases were we able to observe utilization of this novel ST6Gal promoter.
4. We examine mRNA derived from normal and lactating human breasts. After exhaustive search, using RT-PCR and 5'-RACE, we failed to detect an equivalent human form of the murine lactogenic ST6Gal mRNA form.

CONCLUSION

Our findings are not consistent with the utilization of a unique promoter in the over-expression of ST6Gal during breast cancer. So far, we have no evidence for the human equivalent of the novel transcription promoter documented in the mouse.

REFERENCES

1. Dao, T. L., Ip, C., Patel, J. K., and Kishore, G. S. (1986) *Progress in Clinical & Biological Research* **204**, 31-43
2. Recchi, M. A., Hebbar, M., Hornez, L., Harduin-Lepers, A., Peyrat, J. P., and Delannoy (1998) *Cancer Res.* **58**, 4066-4070
3. Dalziel, M., Huang, R.-A., Dall'Olio, F., Morris, J. R., Taylor-Papadimitriou, J., and Lau, J. T. Y. (2001) *Glycobiol* **11**, 407-412

APPENDICES

- 1 reprint: Dalziel et al, *Glycobiology* **11**, 407-412 (2001).

Mouse ST6Gal sialyltransferase gene expression during mammary gland lactation

Martin Dalziel², Rueda Yea Huang³, Fabio Dall'Olio⁴,
Joanna R. Morris², Joyce Taylor-Papadimitriou², and
Joseph T.Y. Lau^{1,3}

²Breast Cancer Biology Group, Imperial Cancer Research Fund, Guy's Hospital, London, U.K., ³Department of Molecular and Cellular Biology, Roswell Park Cancer Institute, Elm and Carlton Streets, Buffalo, NY 14263, USA, and ⁴Dipartimento di Patologia Sperimentale, Via S. Giacomo 14, 40126 Bologna, Italy

Received on November 6, 2000; revised on January 12, 2001; accepted on January 16, 2001

The sialyltransferase ST6Gal mediates the biosynthetic addition of sialic acid, via an α 2,6 linkage, to the nonreducing end of terminal lactosamine structures. Transcription of the murine ST6Gal gene, *Siat1*, is regulated by the selective use of multiple promoters in a tissue- and development-specific manner. Here we report that *Siat1* mRNA expression is dramatically elevated in lactating (relative to virgin) mouse mammary gland. The predominant ST6Gal mRNA species expressed in lactating mammary gland is a heretofore undocumented isoform containing a unique 5'-untranslated region originating from the mouse *Siat1* genetic region, now defined as Exon L, residing 549-bp 5' of the previously characterized Exon X₂. Thus, the novel ST6Gal mRNA form initiates transcription from the region designated as p4 and incorporates the unique sequence from Exon L in 5'-juxtaposition to commonly shared sequences encoded on Exon I to Exon VI. In contrast, cells derived from virgin mammary tissue expressed only the housekeeping mRNA form derived from p3, with Exon O sequence preceding Exons I–VI. The Exon L-containing, p4 class of mRNA was also not detected in a survey of eight other mouse tissues.

Previous reports have indicated a strong correlation between mammary cancers and elevated ST6Gal expression in rats and in human patients. However, we uncovered neither elevated expression of ST6Gal mRNA nor appearance of p4 class in mouse breast carcinomas experimentally induced by transformation with the polyoma-middle T oncogene. A number of established breast carcinoma cell lines were also examined, with ST6Gal mRNA and activity generally low. Moreover, with the exception of the Shionogi cell line, p4 class of ST6Gal mRNA was not expressed in any of the mouse breast carcinoma specimens examined.

Taken together, our data indicate that murine ST6Gal induction during lactation is achieved by *de novo* recruitment of a normally silent promoter. Furthermore, the data provide no support for elevated *Siat1* expression on the mRNA level in association with murine mammary gland carcinogenesis. With the single exception of the Shionogi cell line, the p3 class remains the predominant ST6Gal mRNA expressed in all other murine mammary carcinoma cells examined.

Key words: lactation/mammary gland/mouse/sialyltransferase/ST6Gal

Introduction

The sialyltransferase ST6Gal (CMP-Neu5Ac:Gal β 1,4GlcNAc- α 2,6-sialyltransferase) (Tsuji *et al.*, 1996) is responsible for the biosynthetic addition of sialic acid (Sia) from CMP-Sia to the lactosamine termini (Gal β 1,4GlcNAc) of glycoproteins in an α 2,6 anomeric linkage. Significant homology exists between cloned human, bovine, rat, and mouse genes coding for ST6Gal (Mercier *et al.*, 1999). In mouse, this gene, *Siat1*, is located on chromosome 16 (Kalcheva *et al.*, 1997) and is the only gene encoding a glycosyltransferase that synthesizes the SA(α 2,6) to Gal β 1,4GlcNAc-R structure (Hennet *et al.*, 1998). The *Siat1* encodes an open reading frame spanning five separate exons, and, in addition, a complex array of 5' untranslated exons exist upstream of these coding regions. These 5'UT exons are utilized in a tissue-specific manner as the result of usage of multiple promoter regions (Hu *et al.*, 1997; Wuensch *et al.*, 2000).

During lactation, sialyltransferase enzymatic activity is significantly elevated in the serum of rat (Bushway *et al.*, 1979) and bovine (Sherblom *et al.*, 1986) but not human (Rajan *et al.*, 1983). In rat, high sialyltransferase activity in the mammary gland during proliferation and involution accompanies the high activity found in serum (Ip, 1980). Elevated serum and tumor sialyltransferase activity has been reported in human breast carcinoma (Abecassis *et al.*, 1984; Dao *et al.*, 1986), and high ST6Gal levels have been linked to a poor prognosis (Recchi *et al.*, 1998b). Elevated serum and tumor sialyltransferase activity has also been experimentally reproduced in rat breast carcinomas (Fox *et al.*, 1981).

We report here that ST6Gal is dramatically induced in the mouse mammary gland during lactation. This ST6Gal mRNA induction is mediated by recruitment of a novel 5'UT exon, exon L, probably driven by a lactogenic promoter, tentatively named P4.

¹To whom correspondence should be addressed

Results

A novel ST6Gal mRNA isoform is expressed in mammary gland during lactation.

Members of the ST6Gal mRNA family differ only in their 5'-UT domains but share identical downstream sequences (including the protein coding domain) encoded on Exons I to VI (see Figure 1). A 5'-RACE (rapid amplification of cDNA ends) strategy was devised to qualitatively assess differential expression of the ST6Gal mRNA family. RNA from lactating mammary gland of a day 9 postpartum FVB × (FVB(C57 × CBA)) mouse (sample LM) was reverse-transcribed using mSTI-P1, an anti-sense primer complementary to a region in the shared Exon II. The reverse-transcribed 5' ends to ST6Gal mRNAs were polymerase chain reaction (PCR) amplified using a nested primer, mSTI-md11, complementary to a region in Exon I. The major product, visualized by ethidium bromide staining, migrated at around 300 bp (Figure 2, bottom, lane 1), consistent with a divergent region 5' of Exon I-encoded domain.

Eighteen clones representing the md11-derived PCR product were selected at random and sequence analyzed. All 18 clones were derived from ST6Gal mRNA as evidenced by the presence of Exon I sequence. The majority of these clones (15) contain a novel sequence immediately 5' of Exon I. This novel 5'-UT sequence originates from the mouse *Siat1* genetic region, now defined as Exon L, located only 549 bp 5' of the previously characterized Exon X₂ (Wuensch *et al.*, 2000). Exon

```

tgtccatttt ttttccctgc ttcattgactg tcacctatag agcagtgttt
tagtcagggt ttttattcct gcacaaacat catgaccaag aagcaagttg
gggaggcaag ggtttatttg gcttacactt ccatactgct gttcatcacc
aaaggaagcc aggactggaa ctcaagcagg tcaggaagca gggactgatg
cagaggccat ggagggatgt tctttactgg cttgcttccc cgggcttgct
cagcctgctc ttttatagaa ccaagaatac cagcccagag atggtcccac
ccacaagggg cctttccccc ttgatcacta attgagaaaa tgccttacag
ttggatctca tggaggcatt tcctcaactg aagctctttt ctctgtgata
actccagctg tgccaagtgg acacaaaacc agccagtaca agcaggtaga
ggcttttggt ttcgcagctc ctngaagtga gctcagttac tggccctgca
gtcatttggt gctcccacat ctgtaaatag ctgcaggctt tggcaagcct
gggtgcatga tctntggagg aaggagatgg ggtgagctga gtacagtgtc
cagatttgac aggtcctgtg aagtcagggg acctgactgg ggtagggaaa
tgaaggccag cgGCCAGGGA GCAATGCGAG AGTGAAGGG ACTATGGGTT
CTAAGGACGG TACAGCTTGG CGGGTGGGGA GGAAAGCGTG TACTGCTCTT
GCCTGCTAAG CTGAGAAATT TCAACAGGGC AGATTAACA TAGAGACTGT
TTTAAGCGTC TGAGGCACTT TTGATTCTTC AGAGCTAGTT TTGAGTGAGA
CTTCATCTGG TACAGgtaag gcatttgatg cagaggttgg ttaggaggct
gtggtgaggg tcttgaaggt aggtatggtt ctggttcttc ttcctctctt
gggagtctgg tgctctggca caccagtttg tagaagacag ggccaagcat
    
```

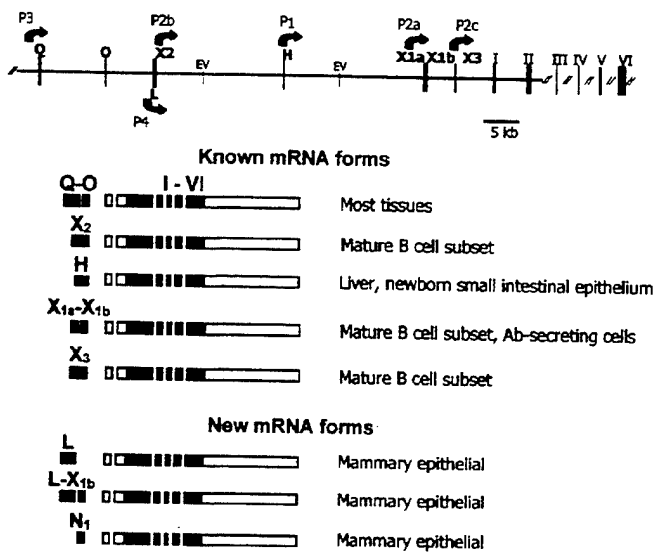


Fig. 1. Genomic organization of the mouse ST6Gal gene, *Siat1*, and summary of known ST6Gal mRNA forms. The top panel schematically represents the genomic organization of the mouse ST6Gal gene, *Siat1*. Exon sequences are denoted by vertical bands. Invariant exons shared among all ST6Gal mRNA forms are labeled in roman numerals (I–VI); the remainder of the exons (Q, O, L, H, X1a, X1b, X2, X3) specify the divergent 5'-untranslated regions of the ST6Gal mRNA family. Curved arrows indicate the transcription initiation points and putative promoters regulating the differential expression of the ST6Gal mRNA forms. A summary of the known ST6Gal mRNA forms is shown in the middle panel. The lower panel summarizes the structure of the novel mRNA forms reported here.

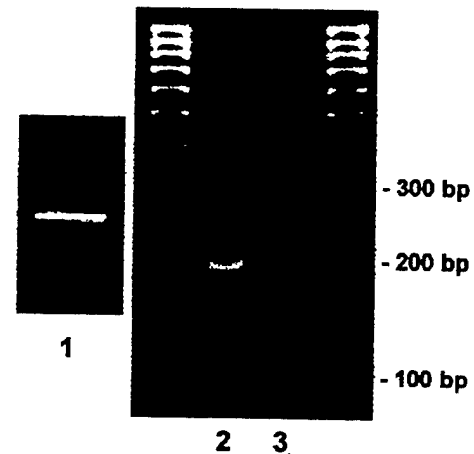


Fig. 2. Determination of transcription initiation of Exon L-containing mRNA form. The genomic sequence flanking the putative transcription initiation site for Exon L-containing ST6Gal mRNA form is shown. Sequence shown in capital letters denote the transcribed Exon L region; sequences in lowercase letters are the flanking 5'- and 3'-regions. The predicted transcription initiation point is the junction between the 5'-flanking sequence and the Exon L sequence. The EtBr visualized gel illustrated on the bottom is the 5'RACE and primer extension analysis of the Exon L-mRNA form. Lane 1 is the RACE analysis of *Siat1* mRNA from day 9 lactating mammary gland (LM) using primers md11 and AP1 (see *Materials and methods*), generating predominately a 300-bp product. The RACE product was sequence-analyzed after cloning into pCR22.1 and confirmed the dominant presence of Exon L as the *Siat1* mRNA 5' leader region (see Table I). Lanes 2 and 3 are primer extension/5'RACE products using primers mSTI-LP-1 and mSTI-LP-2 on the LM sample (see *Materials and methods*). The products from primer extensions with primers mSTI-LP-1 or mSTI-LP-2 are 200 bp and 215 bp ± 5bp, are shown in lanes 2 and 3, respectively, and are consistent with the predicted transcription initiation point as shown in the genomic sequence above. The annealing sites for primers mSTI-LP-1 and mSTI-LP-2 are as shown.

X₂ contributes to a another 5'-UT motif in a B cell-specific ST6Gal mRNA species (see Figure 1). Exon L resides 48 kb 5' of Exon I and 18 kb 5' of the liver-specific Exon H. Among the three remaining RACE clones that do not contain Exon L, one contained the Exon O sequence found in the constitutively

expressed P3-mRNA form. Another clone specified an Exon X_{1b} sequence interrupting between Exon L and Exon I sequences. The last RACE clone contained another novel sequence of 86 nts 5' of Exon I, tentatively termed N₁. At present, the origin of the N₁ sequence is not known.

Three other RNA samples of mouse mammary epithelial origin were also subjected to the identical 5'-RACE procedure; the results are summarized in Table I. One of them, an immortalized cell line derived from normal mouse mammary gland (NMG), yielded 17 RACE clones. In striking contrast to RACE clones derived from lactating mammary gland, there were no Exon L forms among these 17 clones. Instead, the vast majority (12) were Exon O-containing P3 forms. Among the remaining five clones, four represented N₁ forms, and one represented the Exon H-containing P1 (hepatic) form. Another RNA sample was from the mouse breast carcinoma line 410.4, from which 14 RACE clones were generated and analyzed. The 5'-RACE profile of 410.4 was similar to that of cells derived from normal mammary epithelium; 12 410.4 clones were Exon O-containing P3 forms and the remaining two were Exon L forms. However, the *Siat1* mRNA profile of Shionogi (SHI), another mouse breast carcinoma cell line, was similar to that of lactating mammary gland. Eight SHI-derived RACE clones were sequence analyzed; all eight clones represented the Exon L form.

To more precisely define the 5' end of this Exon L-containing ST6Gal mRNA species, primer extension coupled with PCR amplification (5'-RACE) was performed using new primers that would require only minimal extension by the reverse transcriptase. For this purpose, mST1-LP-1 and mST1-LP-2, both complementary to Exon L, were designed. A 200 (± 5)-bp product resulted when mST1-LP-1 was used as specific primer for both the reverse transcription and PCR steps. In contrast, a 215 (± 5)-bp product results when mST1-LP-2 was used. Taking into account the contribution of the synthetic 5' universal primer (45 bp), both mST1-LP-1 and mST1-LP-2 predict a 200 (± 5)-bp Exon L. The transcription initiation of the Exon L-mRNA species as shown in Figure 2 (top) specifies a 203-bp Exon L predicted from the longest 5'-RACE product that was sequence analyzed.

P4-form of ST6Gal mRNA is restricted to mammary glands during lactation

The data shown up to this point was derived from mouse strain FVB × [FVB(C57×CBA)]. To confirm that the novel P4 (Exon L-containing) mRNA form is expressed during lactation in a different mouse strain, the mouse strain CBA was examined. Mammary gland RNA was isolated from virgin, day 14 preg-

nancy and day 5 postpartum CBA animals. As assessed by a probe against the shared Exon II, there was a striking increase (over fivefold) in overall ST6Gal mRNA levels postpartum (Figure 3A). Mammary gland from day 14 pregnant animals, on the other hand, showed only a modest increase (around twofold) when compared to mammary gland from a virgin animal. When subjected to 5'-RACE analysis, virgin mammary gland expressed only P3 form, commonly regarded as the constitutively expressed ST6Gal mRNA form, and only P4-type (Exon L-containing) clones were recovered from mammary gland of day 5 postpartum animals. A mixture of P3 and P4 clones was recovered from 5'-RACE analysis of mammary glands from animals in the 14th day of pregnancy (Figure 3C).

Mammary gland during lactation expresses high levels of ST6Gal mRNA, the bulk of which are from *de novo* appearance of the P4-mRNA form. The level of ST6Gal mRNA during lactation is higher than that seen with resting liver and around two thirds of that seen in turpentine mediated acute phase liver (Dalziel *et al.*, 1999).

A Northern blot panel of mouse tissues was used to assess the range of P4-mRNA expression (Figure 4). The level of overall ST6Gal mRNA expression, as measured by a probe against the shared Exon II, varied among tissues examined. The P4 form, as visualized by a probe against Exon L, was present only in lactating mammary gland (Figure 4). In contrast, the constitutively expressed P3 form, as visualized by

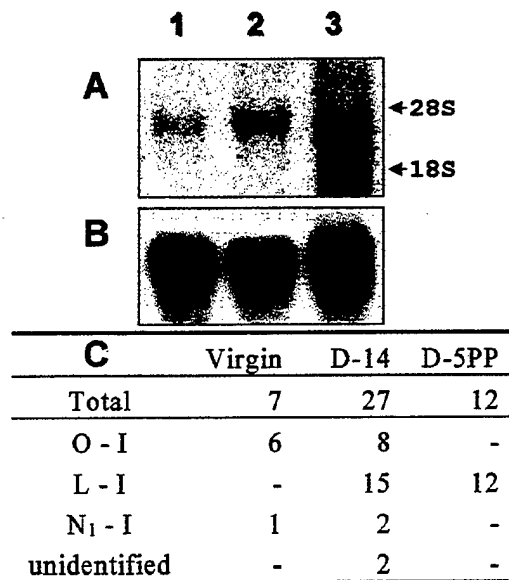


Fig. 3. Regulated expression of *Siat1* in mammary gland during pregnancy and lactation. (A) A northern blot profile of ST6Gal mRNA expression in mammary glands of virgin (lane 1), day 14 pregnant (lane 2), and day 5 postpartum (lane 3) strain CBA mice. Thirty micrograms of RNA is analyzed in each lane; the blot was hybridized using *Siat1* 0.75 kb Exon II probe, which visualizes all ST6Gal mRNA forms. Migration points of the 28S and 18S rRNA bands are indicated. (B) is the same blot stripped and rehybridized with a mouse 18s cDNA probe to control for equal loading of the lanes. The same panel of mammary gland RNA was subjected to 5'RACE using mST1-MD11 and AP1, the products of which were cloned and subjected to sequence analysis as described in *Materials and methods*. (C) summarizes the resultant 5'RACE clones based on sequence distribution of the region in 5'-juxtaposition to Exon I sequence.

Table I. Composition of ST6Gal cDNA from 5'-RACE

Type	LM	NMG	SHI	410.4
Total clones	18	17	8	14
O-I	1	12	0	12
L-I	15	0	8	2
L-X _{1b} -I	1	0	0	0
H-I	0	1	0	0
N ₁ -I	1	4	0	0

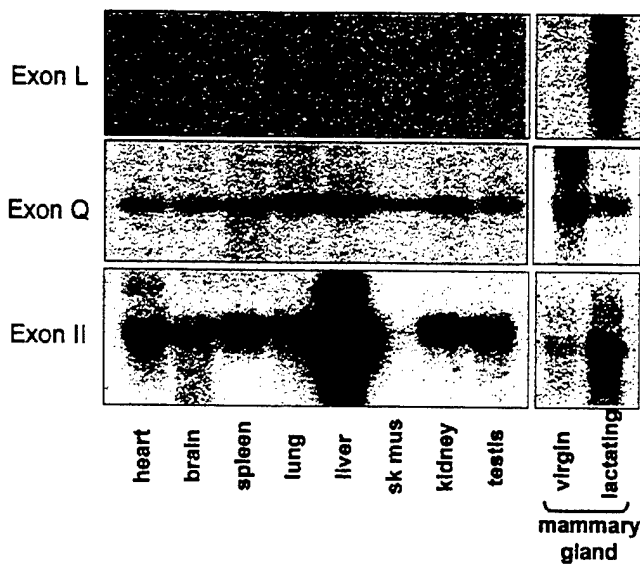


Fig. 4. Tissue specificity of Exon L-containing ST6Gal mRNA forms. Multiple mouse tissue mRNA blots (Clontech Laboratories) were probed for sequences unique to (from top to bottom panels) Exon L, Exon Q, or Exon II. The right panels were parallel analysis of RNA from virgin and lactating mammary glands. Differential probes for Exons L, Q, and Exon II were synthesized against PCR-generated fragments of the respective exon sequences and labeled with 32 P]-dATP or 32 P]-dCTP.

a probe against Exon Q, was present in all tissues surveyed, including virgin mammary gland (Figure 4).

ST6Gal expression in mouse breast cancer

Table II summarizes a survey of ST6Gal expression in a number of mouse cell lines. Lactating mammary gland (LM) and the human hepatoma cell line, HepG2, were included as references. The normal mammary epithelial line, NMG, and the mouse breast carcinoma lines 410.4, SHI, N202-neu, and BF-C3 were examined. All mammary-derived cell lines except N202-neu expressed low levels of ST6Gal mRNA, as assessed by a probe for Exon II sequences. The measured ST6Gal enzymatic activity, in general, was commensurate with ST6Gal mRNA levels. The only deviation was NMG, exhibiting a higher enzymatic activity with only 28% of the mRNA level measured in N202-neu. It was also significant that none of the cell lines examined except for one (SHI) expressed the novel P4-mRNA form. Though the overall level of ST6Gal expression was unremarkable in SHI, the P4-mRNA form was the major constituent in SHI ST6Gal mRNA pool (see Table I).

To further explore the relationship between ST6Gal expression and mammary tumorigenesis, mouse mammary tumors were experimentally induced using polyomavirus middle T-antigen. Six separate tumors were harvested and analyzed on Northern blots and by 5'-RACE for ST6Gal mRNA expression. None of the six specimens exhibited elevated ST6Gal mRNA expression when probed for Exon L or for Exon II sequences (data not shown).

Discussion

Consistent with early reports of elevated mammary gland sialyltransferase activity accompanying lactation (Bushway *et al.*, 1979; Ip, 1980), we document a dramatic elevation of ST6Gal mRNA expression in mouse mammary during late

Table II. Expression of ST6Gal mRNA and enzymatic activity in murine cells

Cell line	ST6Gal mRNA ^a (Exon II) ^a	ST6Gal activity ^b	Major mRNA form ^c
NMG	0.25	30,900	P3
410.4	0.15	10,040	P3
SHI	0.10	4,040	P4
N202	0.90	25,800	P3
TSA-MC	0.05	2,370	P3
BFC3 (undiff)	0.10	7,860	P3
BFC3 (diff)	0.10	7,250	P3
HepG2	ND ^d	154,340	P1 ^e
LM ^f	(1.00)	ND	P4

^aMeasured by northern blots probed for Exon II.

^bMeasured against asiloferritin as exogenously supplied acceptor and expressed as dpm/h/mg protein.

^cAssessed by 5'-RACE. P3, Exon L-containing; P4, Exon O-containing.

^dND, not done.

^ePreviously reported in Dalziel *et al.* 1999.

^fLM, RNA from whole lactating mammary gland used for reference.

pregnancy and lactation. Tissue differences in ST6Gal expression can be attributed to a significant degree by differential usage of multiple and independently operating transcription initiation sites. Here we report a novel form of ST6Gal mRNA expressed only in mouse mammary gland and only during late pregnancy and lactation. *De novo* accumulation of this mRNA form accounts for the elevated level of *Siat1* expression in lactating mammary glands.

In contrast to a previous report of high levels of ST6Gal mRNA in mouse mammary gland (Takashima *et al.*, 1999), our findings indicate that only a low basal level is present in virgin mammary glands (see Figures 3 and 4). This basal level is maintained by expression of the ubiquitously expressed P3 form. The novel mRNA form is not detectable in virgin mammary gland either by Northern blot or by the more sensitive reverse transcriptase PCR analysis (data not shown). This unique mRNA form, designated as P4 to be consistent with the chronological reporting of the mouse *Siat1* forms described to date (Hu *et al.*, 1997; Wuensch *et al.*, 2000), differs by a unique 5'-untranslated region derived from an upstream exon, Exon L, in the *Siat1* locus. The data is consistent with transcription initiation of the P4-form at the 5' juncture of Exon L (Figure 2). The expression pattern of the P4 mRNA form is consistent with that of a lactogenic-responsive gene. However, it is noteworthy that a STAT5 consensus motif of lactogenic promoters (Groner and Gouilleux, 1995; Kazansky *et al.*, 1995; Liu *et al.*, 1995) is not found within 2 kb of the predicted P4 transcription initiation site (data not shown).

Elevated ST6Gal mRNA has been reported in human breast cancer, particularly in woman with histoprognostic grade III cancer (Recchi *et al.*, 1998a), raising the intriguing possibility of aberrant recruitment of the lactogenic ST6Gal promoter in tumorigenesis. However, in a survey of a number of mammary gland carcinoma cell lines, as well as several virally induced *in vivo* tumours studied, there was no evidence for an increase in ST6Gal transcripts or for elevated enzyme activity. The rationale for this apparent discrepancy is not clear, although it should be kept in mind that this limited panel of cell lines is

unlikely to represent all normal and pathological states of mammary cells. In support of this, only one cell line, SHI, has been found to express the P4 form that predominates *in vivo* in lactating mammary glands. Moreover, the steady state level of ST6Gal mRNA in SHI is extremely low, measuring only one-tenth that observed in lactating mammary gland, and one-third to one-half that observed in the nonlactating mammary gland line, NMG.

An additional interesting observation arising from the survey of ST6Gal expression is the inconsistent correlation between ST6Gal mRNA level and the measurable enzymatic activity (see Table II). The cell line NMG, for example, exhibits enzymatic activity equivalent to that of N202-neu while maintaining a three- to fourfold lower steady-state ST6Gal mRNA level. Indeed, differential posttranscriptional regulation as a consequence of unique 5'-UTR domains in the mRNA isoforms has been proposed (Aasheim *et al.*, 1993; Dall'Olio *et al.*, 1999). However, this mechanism is unlikely to participate here because both N202-neu and NMG recruit the P3 form as the predominantly expressed ST6Gal mRNA. Considered together, the data suggest multiple mechanisms are operative in dictating ST6Gal expression in mammary glands.

The functional significance of ST6Gal elevation in the lactating mammary gland can only be speculated at this point. The obvious reason is to address demands for elevated synthesis of SA α 2,6Gal β 1,4GlcNAc structure, present both as free oligosaccharide in milk and also as covalent modifications in cellular and milk glycoproteins (Kobata *et al.*, 1969). Moreover, ST6Gal may also be capable of elaborating the synthesis of SA α 2,6GalNAc β 1,4GlcNAc-R (Nemansky and Van den Eijnden, 1992), another structure found in abundance in colostrum (Coddeville *et al.*, 1992; Nakata *et al.*, 1993; Girardet *et al.*, 1995). Moreover, the enzyme itself may be secreted into colostrum (Paulson *et al.*, 1977) in a manner analogous to enhanced deposition of ST6Gal enzyme from liver into serum during the hepatic inflammatory response (Kaplan *et al.*, 1983; Jamieson *et al.*, 1993).

Coincident with elevated ST6Gal expression in mammary gland of lactating animals, high levels of ST6Gal are also present in the intestinal epithelium of newborn animals while nursing, and weaning is concomitant with a conversion of terminal sialylation to fucosylation (Biol *et al.*, 1991; Hamr *et al.*, 1993; Vertino-Bell *et al.*, 1994). Although the physiologic significance of these events is far from clear, a tantalizing postulate is a contribution of milk and intestinal epithelial ST6Gal to innate immunity in the newborn animals. Many of the Sia-binding pathogens exhibit a preference for the α 2,3-sialyl linkage (Karlsson, 1995), but the contribution of elevated α 2,6-sialyl linkage to innate immunity may be as "decoys" or "smoke screens" to foil potential pathogens (Gagneux and Varki, 1999).

Materials and methods

Materials

α ³²P-dCTP was from ICN (UK). Mega Prime kit was from Amersham. Plasmid pCR2.1 was from Invitrogen. Trizol was from Gibco BRL. Marathon RACE kit was from Clontech. PolyA+ isolation kit and miniprep kits were from Qiagen.

Cell lines and tissues

Cell lines NMG and SHI were obtained from central cell services, Imperial Cancer Research Fund. Cell line 410.4 was an established in-house line. All lines were grown in E4/10% fetal calf serum/pen/strep/0.5% Amphotericin B. LM was obtained from a day 9 postpartum FVB \times [FVB(C57 \times CBA)] mouse, sacrificed, with all four glands removed and snap frozen. CBA mammary gland tissue taken from virgin, day 14 pregnancy, and day 5 postpartum were provided by Clive Dickson, ICRF. Cell lines N202-neu (Nanni *et al.*, 2000), TSA-MC and BFC3 were kindly provided by P. L. Lollini, Department of Experimental Pathology (University of Bologna, Italy). N202-neu cells over-express *neu* oncogene, TSA-MC are derived from spontaneous tumorigenesis in Balb/c mice, and BFC3 result from insertional mutagenesis of MMTV. The latter cell line can differentiate *in vitro* after postconfluent culture.

Mice bearing the MMTV LTR fused to the polyomavirus middle-T oncogene were generated by Guy *et al.* (1992) on a FVB background. Four heterozygous males were obtained from the Beatson Institute and crossed with Poly-T negative females (C57 \times CBA) and progeny screened for Poly-T via PCR. Mammary gland tumors were isolated from Poly-T homozygous animals and snap frozen.

RNA and enzymatic analysis

For 5'-RACE analysis unless otherwise stated, 1 μ g of polyA+ RNA was annealed to the primer mST1-P1 (5'-GATGATGGCAAACAGGAGAA-3') and reverse transcribed. MST1-P1 is complementary to a region in Exon II, such that authentic reverse-transcription events of ST6Gal mRNA must span at least the Exon I-Exon II boundary. The resultant cDNA was ligated to the marathon adaptor sequence as per instructions and subjected to PCR on a Perkin Elmer thermo-cycler, using the Touchdown program as recommended by Clontech (Oxford, UK), using the anchor primer AP1 (5'-CCATCCTAATACGACTCACTATAGGGC-3') and the ST6Gal exon I anti-sense primer md11 (5'-CTGCTTCTGGCTAATCTTCTGGGGTTGG-3'). PCR amplification of ST6Gal sequence from contaminating genomic DNA is not possible because ST6Gal gene does not contain sequences that will specifically anneal the anchor primer. Touchdown PCR parameters are 94°C for 1 min, 5 cycles of 94°C for 30 s, 72°C for 4 min, 5 cycles of 94°C for 30 s, 70°C for 4 min, and finally 25 cycles of 94°C for 20 s, 68°C for 4 min. The PCR products were cloned into the plasmid vector pCR2.1 (Invitrogen) and sequenced.

For primer extension/5'-RACE analysis shown in Figure 2, primers mST1-LP-1 or mST1-LP-2 were used instead of mST1-P1 for reverse transcription. PCR amplification was achieved using the anchor primer AP1 and either mST1-LP-1 or mST1-LP-2. The sequences for mST1-LP-1 and mST1-LP-2 are denoted in Figure 2. 5'-RACE products were routinely cloned into pCR2.1. Clones were selected at random and sequence analyzed. For sialyltransferase enzymatic assays, the activity of total cell homogenates toward asialotransferrin was determined in the range of linearity with respect to protein concentration, determined according to the Lowry method as previously described (Dall'Olio *et al.*, 1996).

Acknowledgments

We are grateful to the technical support provided by Mark Dennis. We are especially grateful to Dr. Michelle Appenheimer for frequent and insightful discussions of this work. This work was supported by an ICRF fellowship awarded to MD and U.S. Army DAMD170010653 to JTYL, core grant CA16056-21 to Roswell Park Cancer Institute.

Abbreviations

LM, lactating mouse gland; NMG, normal mouse mammary gland; PCR, polymerase chain reaction; RACE, rapid amplification of cDNA ends; SHI, Shionogi; Sia, sialic acid.

References

- Aasheim, H.C., Aas-Eng, D.A., Deggerdal, A., Blomhoff, H.K., Funderud, S., and Smeland, E.B. (1993) Cell-specific expression of human beta-galactoside alpha 2, 6-sialyltransferase transcripts differing in the 5' untranslated region. *Eur. J. Biochem.*, **213**, 467-475.
- Abecassis, J., Collard, R., Eber, M., Pusel, J., Fricker, J.P., and Methlin, G. (1984) Proteinases and sialyltransferase in human breast tumors. *Int. J. Cancer*, **33**, 821-824.
- Biol, M.C., Pintori, S., Mathian, B., and Louisot, P. (1991) Dietary regulation of intestinal glycosyl-transferase activities: relation between developmental changes and weaning in rats. *J. Nutr.*, **121**, 114-125.
- Bushway, A.A., Park, C.S., and Keenan, T.W. (1979) Effect of pregnancy and lactation on glycosyltransferase activities of rat mammary gland. *Int. J. Biochem.*, **10**, 147-154.
- Coddeville, B., Strecker, G., Wieruszkeski, J.M., Vliegenthart, J.F., van Halbeek, H., Peter-Katalinic, J., Egge, H., and Spik, G. (1992) Heterogeneity of bovine lactotransferrin glycans. Characterization of alpha-D-Galp-(1->3)-beta-D-Gal and alpha-NeuAc-(2->6)-beta-D-GalpNAc-(1->4)-beta-D-GlcNAc-substituted N-linked glycans. *Carbohydr. Res.*, **236**, 145-164.
- Dall'Olio, F., Malagolini, N., Guerrini, S., Lau, J.T.Y., and Serafini-Cessi, F. (1996) Differentiation-dependent expression of human beta-galactoside alpha 2, 6-sialyltransferase mRNA in colon carcinoma CaCo-2 cells. *Glycoconj. J.*, **13**, 115-121.
- Dall'Olio, F., Chiricolo, M., and Lau, J.T.Y. (1999) Differential expression of the hepatic transcript of beta-galactoside alpha-2, 6-sialyltransferase in human colon cancer cell lines. *Int. J. Cancer*, **81**, 243-247.
- Dalziel, M., Lemaire, S., Ewing, J., Kobayashi, L., and Lau, J.T.Y. (1999) Hepatic acute phase induction of murine beta-galactoside alpha2, 6 sialyltransferase (ST6Gal-1) is IL-6 dependent and mediated by elevation of Exon H-containing class of transcripts. *Glycobiology*, **9**, 1003-1008.
- Dao, T.L., Ip, C., Patel, J.K., and Kishore, G.S. (1986) Serum and tumor sialyltransferase activities in women with breast cancer. *Prog. Clin. Biol. Res.*, **204**, 31-43.
- Fox, O.F., Kishore, G.S., and Carubelli, R. (1981) Sialic acid metabolism in nutritionally modulated mammary gland carcinogenesis. *Cell. Mol. Biol.*, **27**, 473-482.
- Gagneux, P. and Varki, A. (1999) Evolutionary considerations in relating oligosaccharide diversity to biological function. *Glycobiology*, **9**, 747-755.
- Girardet, J.M., Coddeville, B., Plancke, Y., Strecker, G., Campagna, S., Spik, G., and Linden, G. (1995) Structure of glycopeptides isolated from bovine milk component PP3. *Eur. J. Biochem.*, **234**, 939-946.
- Groner, B. and Gouilleux, F. (1995) Prolactin-mediated gene activation in mammary epithelial cells. *Curr. Opin. Genetics Devel.*, **5**, 587-594.
- Guy, C.T., Cardiff, R.D., and Muller, W.J. (1992) Induction of mammary tumors by expression of polyomavirus middle T oncogene: a transgenic mouse model for metastatic disease. *Mol. Cell. Biol.*, **12**, 954-961.
- Hamr, A., Vlasakova, V., and Kolinska, J. (1993) Alpha 2, 6-sialyltransferase predominates in cultured jejunum of suckling rats: it is up-regulated by dexamethasone and secreted during cultivation. *Biochem. Biophys. Acta*, **1157**, 285-289.
- Hennet, T., Chui, D., Paulson, J.C., and Marth, J.D. (1998) Immune regulation by the ST6Gal sialyltransferase. *Proc. Natl Acad. Sci. USA*, **95**, 4504-4509.
- Hu, Y.P., Dalziel, M., and Lau, J.T.Y. (1997) Murine hepatic beta-galactoside alpha 2, 6-sialyltransferase gene expression involves usage of a novel upstream exon region. *Glycoconj. J.*, **14**, 407-411.
- Ip, C. (1980) Changes in tissue and serum sialyltransferase activities as related to proliferation and involution of the rat mammary gland. *Biochim. Biophys. Acta*, **628**, 249-254.
- Jamieson, J.C., McCaffrey, G., and Harder, P.G. (1993) Sialyltransferase: a novel acute-phase reactant. *Comp. Biochem. Physiol. B*, **105**, 29-33.
- Kalcheva, I., Elliott, R.W., Dalziel, M., and Lau, J.T.Y. (1997) The gene encoding beta-galactoside alpha2, 6-sialyltransferase maps to mouse chromosome 16. *Mamm. Genome*, **8**, 619-620.
- Kaplan, H.A., Woloski, B.M.R.N.J., Hellman, M., and Jamieson, J.C. (1983) Studies on the effect of inflammation on rat liver and serum sialyltransferase: Evidence that inflammation causes release of Gal beta1-4 GlcNAc alpha2-6 sialyltransferase from liver. *J. Biol. Chem.*, **258**, 11505-11509.
- Karlsson, K.A. (1995) Microbial recognition of target-cell glycoconjugates. *Curr. Opin. Struct. Biol.*, **5**, 622-635.
- Kazansky, A.V., Raught, B., Lindsey, S.M., Wang, Y.F., and Rosen, J.M. (1995) Regulation of mammary gland factor/Stat5a during mammary gland development. *Mol. Endocrinol.*, **9**, 1598-1609.
- Kobata, A., Ginsburg, V., and Tsuda, M. (1969) Oligosaccharides of human milk. I. Isolation and characterization. *Arch. Biochem. Biophys.*, **130**, 509-513.
- Liu, X., Robinson, G.W., Gouilleux, F., Groner, B., and Hennighausen, L. (1995) Cloning and expression of Stat5 and an additional homologue (Stat5b) involved in prolactin signal transduction in mouse mammary tissue. *Proc. Natl Acad. Sci. USA*, **92**, 8831-8835.
- Mercier, D., Wierinckx, A., Oulmouden, A., Gallet, P.F., Palcic, M.M., Harduin-Lepers, A., Delannoy, P., Petit, J.-M., Leveziel, H., and Julien, R. (1999) Molecular cloning, expression and exon/intron organization of the bovine beta-galactoside alpha2,6-sialyltransferase. *Glycobiology*, **9**, 851-863.
- Nakata, N., Furukawa, K., Greenwalt, D.E., Sato, T., and Kobata, A. (1993) Structural study of the sugar chains of CD36 purified from bovine mammary epithelial cells: occurrence of novel hybrid-type sugar chains containing the Neu5Ac alpha 2->6GalNAc beta 1->4GlcNAc and the Man alpha 1->2Man alpha 1->3Man alpha 1->6Man groups. *Biochemistry*, **32**, 4369-4383.
- Nanni, P., Pupa, S.M., Nicoletti, G., De Giovanni, C., Landuzzi, L., Rossi, I., Astolfi, A., Ricci, C., De Vecchi, R., Invernizzi, A.M., and others (2000) p185(neu) protein is required for tumor and anchorage-independent growth, not for cell proliferation of transgenic mammary carcinoma. *Int. J. Cancer*, **87**, 186-194.
- Nemansky, M., and Van den Eijnden, D.H. (1992) Bovine colostrum CMP-NeuAc:Gal beta(1->4)GlcNAc-R alpha(2->6)-sialyltransferase is involved in the synthesis of the terminal NeuAc alpha(2->6)GalNAc beta(1->4)GlcNAc sequence occurring on N-linked glycans of bovine milk glycoproteins. *Biochem. J.*, **287**, 311-316.
- Paulson, J.C., Rearick, J.I., and Hill, R.L. (1977) Enzymatic properties of beta-D-galactoside alpha2 leads to 6 sialyltransferase from bovine colostrum. *J. Biol. Chem.*, **252**, 2363-2371.
- Rajan, R., Sheth, A.R., and Rao, S.S. (1983) Sialic acid, sialyltransferase and neuraminidase levels in maternal plasma, urine and lymphocytes during pregnancy and post-partum period—a longitudinal study in women. *Eur. J. Obstet. Gynecol. Reprod. Biol.*, **16**, 37-46.
- Recchi, M.A., Harduin-Lepers, A., Boilly-Marer, Y., Verbert, A., and Delannoy, P. (1998a) Multiplex RT-PCR method for the analysis of the expression of human sialyltransferases: application to breast cancer cells. *Glycoconj. J.*, **15**, 19-27.
- Recchi, M.A., Hebbbar, M., Hornez, L., Harduin-Lepers, A., Peyrat, J.P., and Delannoy (1998b) Multiplex reverse transcription polymerase chain reaction assessment of sialyltransferase expression in human breast cancer. *Cancer Res.*, **58**, 4066-4070.
- Sherblom, A.P., Smagula, R.M., Moody, C.E., and Anderson, G.W. (1986) Immunosuppression, sialic acid, and sialyltransferase of neonatal and maternal bovine serum. *J. Reprod. Immunol.*, **9**, 365-375.
- Takashima, S., Tachida, Y., Nakagawa, T., Hamamoto, T., and Tsuji, S. (1999) Quantitative analysis of expression of mouse sialyltransferase genes by competitive PCR. *Biochem. Biophys. Res. Commun.*, **260**, 23-27.
- Tsuji, S., Datta, A.K., and Paulson, J.C. (1996) Systematic nomenclature for sialyltransferases. *Glycobiology*, **6**, 5-7.
- Vertino-Bell, A., Ren, J., Black, J.D., and Lau, J.T.Y. (1994) Developmental regulation of beta-galactoside alpha2, 6-sialyltransferase in small intestinal epithelium. *Dev. Biol.*, **165**, 126-136.
- Wuensch, S.A., Huang, R.-A., Ewing, J., Liang, X.L., and Lau, J.T.Y. (2000) Murine B Cell differentiation is accompanied by programmed expression of multiple novel beta-galactoside alpha2, 6-sialyltransferase mRNA forms. *Glycobiology*, **10**, 67-75.