

REPORT DOCUMENTATION PAGE

Form Approved
OMB No. 0704-0188

The public reporting burden for this collection of information is estimated to average 1 hour per response, including the time for reviewing instructions, searching existing data sources, gathering and maintaining the data needed, and completing and reviewing the collection of information. Send comments regarding this burden estimate or any other aspect of this collection of information, including suggestions for reducing the burden, to Department of Defense, Washington Headquarters Services, Directorate for Information Operations and Reports (0704-0188), 1215 Jefferson Davis Highway, Suite 1204, Arlington, VA 22202-4302. Respondents should be aware that notwithstanding any other provision of law, no person shall be subject to any penalty for failing to comply with a collection of information if it does not display a currently valid OMB control number.
PLEASE DO NOT RETURN YOUR FORM TO THE ABOVE ADDRESS.

1. REPORT DATE (DD-MM-YYYY) 11-04-2002	2. REPORT TYPE Conference Proceeding	3. DATES COVERED (From - To) 9-13 Jul 2001
--	--	--

4. TITLE AND SUBTITLE An Evaluation of the PIPS 2.0 Ice cover Versus SSMI Ice Concentration from 1992-2000	5a. CONTRACT NUMBER
	5b. GRANT NUMBER
	5c. PROGRAM ELEMENT NUMBER PE 0603207N

6. AUTHOR(S) Ruth H. Preller and Pamela G. Posey	5d. PROJECT NUMBER
	5e. TASK NUMBER
	5f. WORK UNIT NUMBER

7. PERFORMING ORGANIZATION NAME(S) AND ADDRESS(ES) Naval Research Laboratory Oceanography Division Stennis Space Center, MS 39529-5004	8. PERFORMING ORGANIZATION REPORT NUMBER NRL/PP/7320/01/0004
--	--

9. SPONSORING/MONITORING AGENCY NAME(S) AND ADDRESS(ES) Office of Naval Research 800 N. Quincy St. Arlington, VA 22217-5660	10. SPONSOR/MONITOR'S ACRONYM(S)
	11. SPONSOR/MONITOR'S REPORT NUMBER(S)

12. DISTRIBUTION/AVAILABILITY STATEMENT
approved for public release; distribution is unlimited

20020617 157

13. SUPPLEMENTARY NOTES
International Geosciences and Remote Sensing Symposium

14. ABSTRACT
The Polar Ice Prediction System 2.0 (PIPS 2.0) is a coupled ice-ocean model developed by the Naval Research Laboratory for the prediction of ice thickness, ice drift and ice concentration. The model has been run operationally by the U.S. Navy at the Fleet Numerical Meteorology and Oceanography Center (FNMOC) since the mid-1990's and produces a 120-hour forecast of ice conditions in the Arctic and its marginal seas. PIPS 2.0 is driven by the atmospheric forecast fields from the Navy Operational Global Atmospheric Prediction System (NOGAPS). In an operational mode, PIPS 2.0 assimilates SSMI derived ice concentration each day. In a research mode, the SSMI ice concentration data is not assimilated, rather it is used for model metrics (validation). PIPS 2.0 results are presented as a time series for the period 1992-2000. Model results are correlated to the atmospheric forcing and evaluated against SSMI ice coverage data. In addition, the atmospheric forcing is evaluated against Sheba observations taken in 1997-1998. Biases in the model derived ice fields directly related to biases in the atmospheric forcing fields.

15. SUBJECT TERMS
SSMI, PIPS 2.0, FNMOC

16. SECURITY CLASSIFICATION OF:			17. LIMITATION OF ABSTRACT SAR	18. NUMBER OF PAGES 3	19a. NAME OF RESPONSIBLE PERSON Ruth H. Preller
a. REPORT Unclassified	b. ABSTRACT Unclassified	c. THIS PAGE Unclassified			19b. TELEPHONE NUMBER (Include area code) 228-688-5444

PUBLICATION OR PRESENTATION RELEASE REQUEST

Division 7300 Pub Key:

1. REFERENCES AND ENCLOSURES	2. TYPE OF PUBLICATION OR PRESENTATION	3. ADMINISTRATIVE INFORMATION
Ref: (a) NRL Instruction 5600.2 (b) NRL Instruction 5510.40D Encl: (1) Two copies of subject paper (or abstract)	<input type="checkbox"/> Abstract only, published <input type="checkbox"/> Book <input type="checkbox"/> Conference Proceedings (refereed) <input type="checkbox"/> Invited speaker <input type="checkbox"/> Journal article (refereed) <input type="checkbox"/> Oral Presentation, published <input type="checkbox"/> Other, explain _____	<input type="checkbox"/> Abstract only, not published <input type="checkbox"/> Book Chapter <input checked="" type="checkbox"/> Conference Proceedings (not refereed) <input type="checkbox"/> Multimedia report <input type="checkbox"/> Journal article (not refereed) <input type="checkbox"/> Oral Presentation, not published
		STRN <u>PP/7320--01-0004</u> Route Sheet No. _____ Job Order No. _____ Classification <u> </u> u <u> </u> C Sponsor _____ approval obtained <u> </u> yes <u> </u>

4. AUTHOR

Title of Paper or Presentation

An Evaluation of the PIPS 2.0 Ice Cover versus SSMI Ice Concentration from 1992-2000

Author(s) Name(s) (First, Mi, Last), Code, Affiliation if not NRL

Ruth H. Preller and Pamela G. Posey, Code 7322

It is intended to offer this paper to the IGARSS - International Geoscience and Remote Sensing Symposium
(Name of Conference)
9-13 Jul 2001, Sydney, Australia
(Date, Place and Classification of Conference)

and/or for publication in _____
(Name and Classification of Publication) (Name of Publisher)

After presentation or publication, pertinent publication/presentation data will be entered in the publications data base, in accordance with reference (a).

It is the opinion of the author that the subject paper (is _____) (is not) classified, in accordance with reference (b). This paper does not violate any disclosure of trade secrets or suggestions of outside individuals or concerns which have been communicated to the Laboratory in confidence. This paper (does _____) (does not) contain and militarily critical technology. This subject paper (has _____) (has never) been incorporated in an official NRL Report.

Ruth H. Preller, Code 7322. *Ruth H. Preller*
Name and Code (Principal Author) (Signature)

CODE	SIGNATURE	DATE	COMMENTS
Author(s) R.H. Preller, Code 7322	<i>Ruth H. Preller</i>	4/13/01	
Section Head Preller or Acting	<i>Ruth H. Preller</i>	4/13/01	
Branch Head Harding or Acting	<i>[Signature]</i>	4/13/01	
Division Head, Acting PAYNE Dr. W.J. Jobst	<i>[Signature]</i>	4/16/01	1. Release of this paper is approved. 2. To the best knowledge of this Division, the subject matter of this paper (has _____) (has never <input checked="" type="checkbox"/>) been classified.
Security, Code 7030.1	<i>[Signature]</i>	4/17/01	1. Paper of abstract was released. 2. A copy is filed in this office. <u>58-110-01</u>
Office of Counsel, Code 1008.3	<i>[Signature]</i>	4/23/01	
ADOR/Director NCST			
Public Affairs (Unclassified/ Unlimited Only), Code 7030.4	<i>[Signature]</i>	4/18/01	<i>add acknowledgments</i>
Division, Code			
Author, Code			

Key 2878

6. DISTRIBUTION STATEMENTS (Author to check appropriate statement and fill reason as required)

A - Approved for public release, distribution is unlimited.

B - Distribution authorized to U.S. Government agencies only (check reason below):

- | | | |
|---|--|--|
| <input type="checkbox"/> Foreign Government Information | <input type="checkbox"/> Contractor Performance Evaluation | <input type="checkbox"/> Critical Technology |
| <input type="checkbox"/> Proprietary Information | <input type="checkbox"/> Administrative/Operational Use | <input type="checkbox"/> Premature Dissemination |
| <input type="checkbox"/> Test and Evaluation | <input type="checkbox"/> Software Documentation | <input type="checkbox"/> Cite "Specific Authority" _____ |

Date statement applied _____ (Identification of valid documented authority)

Other requests for this document shall be referred to _____ (Insert Controlling DOD Office*)

C - Distribution authorized to U.S. Government agencies and their contractors (check reason below):

- | | | |
|---|---|--|
| <input type="checkbox"/> Foreign Government Information | <input type="checkbox"/> Software Documentation | <input type="checkbox"/> Cite "Specific Authority" _____ |
| <input type="checkbox"/> Administrative/Operational Use | <input type="checkbox"/> Critical Technology | |

Date statement applied _____ (Identification of valid documented authority)

Other requests for this document shall be referred to _____ (Insert Controlling DOD Office*)

D - Distribution authorized to DOD and DOD contractors only (check reason below):

- | | |
|---|--|
| <input type="checkbox"/> Foreign Government Information | <input type="checkbox"/> Critical Technology |
| <input type="checkbox"/> Software Documentation | <input type="checkbox"/> Cite "Specific Authority" _____ |
| <input type="checkbox"/> Administrative/Operational Use | |

Date statement applied _____ (Identification of valid documented authority)

Other requests for this document shall be referred to _____ (Insert Controlling DOD Office*)

E - Distribution authorized to DOD components only (check reason below):

- | | | | |
|---|--|--|--|
| <input type="checkbox"/> Proprietary Information | <input type="checkbox"/> Premature Dissemination | <input type="checkbox"/> Critical Technology | <input type="checkbox"/> Direct Military Support |
| <input type="checkbox"/> Foreign Government Information | <input type="checkbox"/> Software Documentation | <input type="checkbox"/> Test and Evaluation | <input type="checkbox"/> Cite "Specific Authority" _____ |
| <input type="checkbox"/> Administrative/Operational Use | <input type="checkbox"/> Contractor Performance Evaluation | | |

Date statement applied _____ (Identification of valid documented authority)

Other requests for this document shall be referred to _____ (Insert Controlling DOD Office*)

F - Further dissemination only as directed by _____ (Insert Controlling DOD Office*)

Date statement applied _____ or higher DOD authority _____

X - Distribution authorized to U.S. Government agencies and private individuals or enterprises eligible to obtain export-controlled technical data in accordance with regulations implementing 10 U.S.C. 140c.

Date statement applied _____

Other requests for this document shall be referred to _____ (Insert Controlling DOD Office*)

*For NRL publications, this is usually the Commanding Officer, Naval Research Laboratory, Washington, DC 20375-5320

7. OTHER LIMITATION

- Classification NOFORN DTIC exempt (explain) _____

Classification Review
(initial/Date)

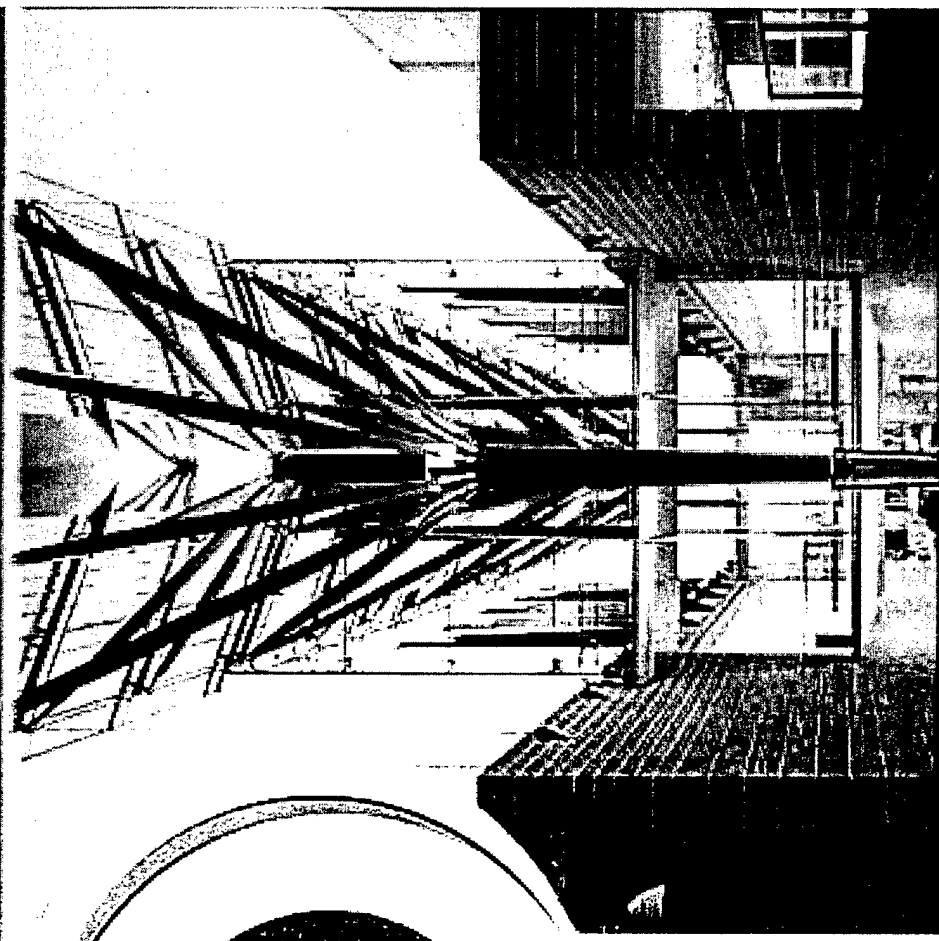
Substantive changes made in this document after approval by Classification Review and Public Release invalidate these reviews. Therefore, if any substantive changes are made by the author, Technical Information, or anyone else, the document must be returned for another Classification Review and Public Release.

8. INSTRUCTIONS

Author completes and submits this form with the manuscript via line channels to the division head for review and approval according to the routing in section 4.

1. **NRL Reports** Submit the diskette (if available), manuscript, typed double-spaced, complete with tables, illustrations, references, draft SF 298, and proposed distribution list.
2. **NRL Memorandum Reports** Submit a copy of the original, typed manuscript complete with tables, illustrations, references, draft SF 298, and proposed distribution list.
3. **NRL Publications or other books, brochures, pamphlets, proceedings, or any other printed publications.** Handled on a per case basis by Site Technical Information Office.

IGARSS 2001



IEEE



Welcome

Getting Started

Sessions

Bibliography

Authors

Search

INTERNATIONAL GEOSCIENCE AND REMOTE SENSING SYMPOSIUM

An Evaluation of the PIPS 2.0 Ice Cover versus SSMI Ice Concentration from 1992-2000

Ruth H. Preller, Pamela G. Posey
Naval Research Laboratory
Stennis Space Center, MS 39529
Tony Beesley
National Ice Center
4251 Suitland Road, FOB #4
Washington, D.C. 20395

Abstract- The Polar Ice Prediction System 2.0 (PIPS 2.0) is a coupled ice-ocean model developed by the Naval Research Laboratory for the prediction of ice thickness, ice drift and ice concentration. The model has been run operationally by the U.S. Navy at the Fleet Numerical Meteorology and Oceanography Center (FNMOC) since the mid-1990's and produces a 120-hour forecast of ice conditions in the Arctic and its marginal seas. PIPS 2.0 is driven by the atmospheric forecast fields from the Navy Operational Global Atmospheric Prediction System (NOGAPS). In an operational mode, PIPS 2.0 assimilates SSMI derived ice concentration each day. In a research mode, the SSMI ice concentration data is not assimilated, rather it is used for model metrics (validation). PIPS 2.0 results are presented as a time series for the period 1992-2000. Model results are correlated to the atmospheric forcing and evaluated against SSMI ice coverage data. In addition, the atmospheric forcing is evaluated against Sheba observations taken in 1997-1998. Biases in the model-derived ice fields directly related to biases in the atmospheric forcing fields.

INTRODUCTION

Since the late 1980's, Arctic ice forecasting systems developed by the Naval Research Laboratory have been running operationally at the Navy's Fleet Numerical Meteorology and Oceanography Center. The first of these forecast systems, the Polar Ice Prediction System (PIPS) began operational forecasting in 1987 over a region that included the central Arctic, the Barents and the Greenland Seas. This system consisted of the Hibler ice model driven by ocean climatological currents and heat fluxes and the Navy Operational Global Atmospheric Prediction System (NOGAPS) winds and heat fluxes. The grid resolution of this system was 127 km and it was run each day generating a 120-hour forecast of ice thickness, ice drift and ice coverage (concentration). In June 1989, a higher resolution version of PIPS adapted to the Barents Sea began operational

forecasting. The Regional Polar Ice Prediction System-Barents Sea (RPIPS-B) covered the Barents Sea and the western Kara Sea with a grid resolution of 25 km. In October 1991, a similar regional system for the Greenland Sea (RPIPS-G), using 20 km resolution, was made operational. However, it became obvious that more accurate forecasts required improved temporal variability in the oceanic forcing fields and improved spatial variability everywhere in the Arctic. To meet this need, the Naval Research Laboratory developed PIPS 2.0, a coupled ice-ocean system covering most of the ice-covered regions of the Northern Hemisphere. This ice-ocean model uses a horizontal resolution of 0.25 degrees and 15 vertical levels to define the ocean. Similar to the other forecast systems, PIPS 2.0 generates forecasts of ice thickness, drift and concentration.

A key to the accuracy of these forecasts is the accuracy of the forcing fields that drive the ice-ocean model. Validation of the atmospheric forcing is difficult do to considering the limited number of observations, particularly those relating to atmospheric heat fluxes. The SHEBA data set is an example of recent observations of atmospheric fluxes that may be used for model evaluation. In addition, the "accuracy" of the atmospheric forcing may be indirectly evaluated by comparing the ice-ocean model results to observations of ice extent and thickness where possible. Temporal and spatial variability in these fields will be largely due to the variability of the atmospheric forcing. As such, NRL has conducted a series of experiments using the "research" version of the PIPS 2.0 model driven by 9 years of NOGAPS forcing (1992-2000). Results from the research version are not modified by the assimilation of any observations. Therefore the variability of the modeled results will reflect the atmospheric forcing as well as the ice-ocean model parameterizations only.

The following information is presented in this paper: 1) model description, 2) model simulation and results, and 3) summary.

PIPS 2.0 MODEL DESCRIPTION

The PIPS 2.0 coupled ice-ocean model consists of the Hibler ice model [1] coupled to the Bryan and Cox ocean model [2]. The ice model was rewritten in spherical coordinates to be consistent with the Cox ocean model and to define a more realistic grid at the lower latitudes included in the model domain [3]. The domain extends from the pole to approximately 30° N latitude and includes the marginal seas of the Pacific, the Sea of Okhotsk, the Japan/East Sea and the Yellow Sea and the marginal seas of the north Atlantic, the Labrador Sea and the Gulf of St. Lawrence. Fig. 1 shows the model grid and the domain covered by PIPS 2.0.

The ice model uses a time step of 2 hours while the ocean model uses a time step of 0.5/0.05 hours for the temperature and salinity/velocity equations. For both the ice and ocean models, the lateral boundaries are defined as solid walls and placed far enough away from any sea-ice covered regions to avoid possible contamination of any forecast regions of interest.

The ocean model temperature and salinity fields are loosely constrained to the Levitus climatological data set. The bathymetry used by the ocean model is derived from the Navy Digital Bathymetry Data Base 5' X 5' (DBDB5). These data were interpolated to the PIPS 2.0 grid using a cubic spline function that

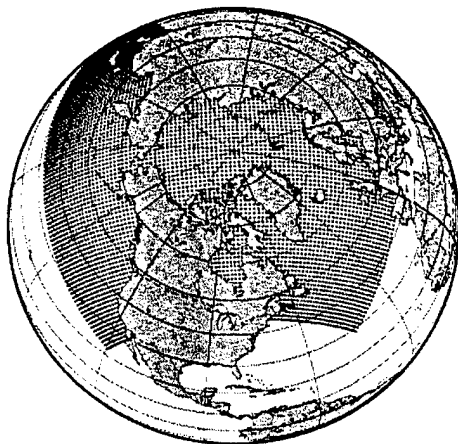


Fig. 1. PIPS 2.0 model domain and grid.

was integrated and averaged over nine adjacent grid squares.

The ice and ocean models are coupled in the following manner: the ocean model passes currents, salinity and heat fluxes (temperatures) to the ice model while the ice model passes surface stresses as well as salinity and temperature changes due to the growth and decay of sea ice. Direct interaction between the ice and ocean models occurs in the first level of the ocean. This level is 30 m deep and represents the ocean's mixed layer.

The NOGAPS fields used to drive the ice-ocean model are: surface air temperature, surface pressure, surface vapor pressure, net shortwave radiation, and downwelling longwave radiation. The surface air temperature, in conjunction with the ice temperature and geostrophic winds, is used to calculate the sensible heat flux. The surface vapor pressure and the surface air pressure are used to calculate specific humidity that, in conjunction with the geostrophic winds, is used to calculate the latent heat flux.

Model output fields consist of ice thickness, ice concentration and ice drift. In addition, ocean temperature and salinity fields are also available as output.

MODEL SIMULATION AND RESULTS

A 9-year simulation of the PIPS 2.0 ice-ocean model was generated using the 6-hourly forcing fields from the NOGAPS model for the years 1992-2000. Output from the model was viewed in two different ways. Horizontal "snapshots" of model results were used to gain a general concept of the ice coverage while time series plots of results at specific locations demonstrated the temporal variability of the modeled ice fields.

Fig. 2 is a time series of NOGAPS forcing fields from a location in the Central Arctic (~89°N, 90°W). The time series extends from 1992-2000. Note that the winter air temperatures from the fall of 1993 through the winter of 1998 were considerably warmer (10°–15° C) than temperatures from the fall of 1998-2000. These warm winter temperatures were responsible for a reduction in winter ice growth and overall ice thickness as shown in Fig. 3. Winter ice growth increased in the

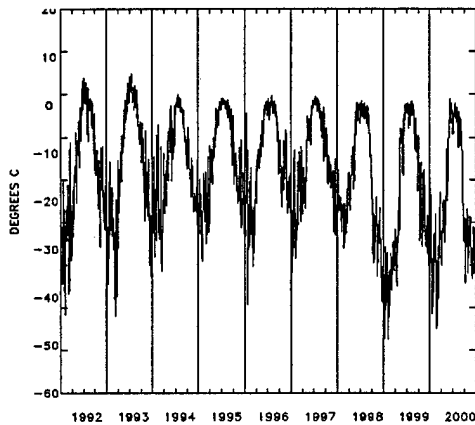


Fig. 2. Central Arctic NOGAPS surface air temperature from 1992-2000

fall of 1998 and continued through the winter of 2000. The ice concentration for this location follows a similar temporal trend with the lowest concentration values appearing in the summer of 1997 and then a increase in coverage in the summer of 1999 and 2000.

A comparison of the surface air temperature data from the SHEBA experiment and the surface air temperatures from the NOGAPS model was performed. The comparison showed that for the winter of 1997-1998, the atmospheric forcing had a warm bias of approximately 9°C . If this warm bias is indicative of a similar warm bias in the NOGAPS fields in the previous 3-4 years, then the averaged modeled ice thickness during those years could be biased too thin by as much as 1m.

Ice extent in the Arctic basin during this 9-year period indicated that the summer of 1995 was the most ice free of this 9-year period with the entire

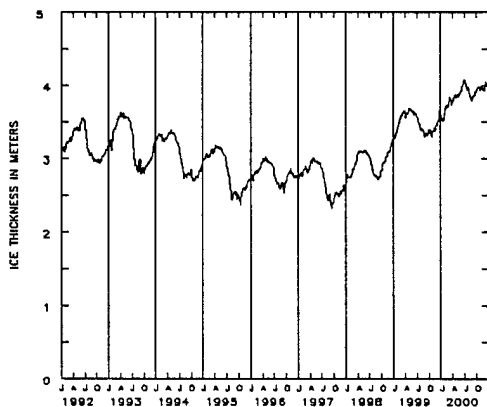


Fig. 3. PIPS 2.0 Central Arctic Ice thickness from 1992-2000.

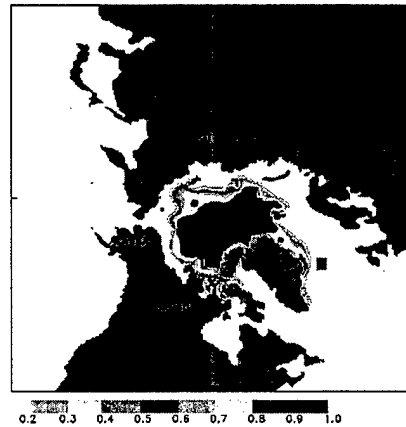


Fig. 4. PIPS 2.0 ice concentration in percent for September, 1995.

Russian coast ice free as shown in Fig. 4. The Russian coast was also nearly ice free in the summer of 1997. These trends are in good agreement with the ice coverage show by Special Scanning Microwave Imager (SSM/I) data available for viewing at the following website:

<http://polar.wwb.noaa.gov/seaice/Historical.html>

Summary

The PIPS 2.0 model, driven by 6-hourly forcing from the Navy atmospheric forecast model, NOGAPS, shows tendencies for a progressive thinning of sea ice from 1993-1998 and then an increase in ice thickness from late 1998 through 2000. These trends correlate closely to trends in the winter time surface air temperatures produced by NOGAPS. These tendencies also produce summer sea ice extent that shows good qualitative agreement with SSM/I observations. A comparison of NOGAPS air temperature indicates that the NOGAPS temperatures have a large warm bias in the winter, at least during the SHEBA year. This could imply that although trends in ice extent agree with observations, the mean ice thickness of the PIPS 2.0 could be biased thin by as much as a meter of ice thickness.

REFERENCES

- [1] Hibler, W.D. III, "Modeling a variable thickness sea ice cover," *Mon. Wea. Rev.*, 108, pp 1943-1973, 1980.
- [2] Cox, M., "A primitive equation, 3-dimensional model of the ocean," GFDL Ocean Group Technical Report, Geophysical Fluid Dynamics Laboratory, Princeton, NJ, p 1141, 1984.
- [3] Cheng, A. and R.H. Preller, "The development of an ice-ocean coupled model in the northern hemisphere," NRL/FR/7322-95-9627, Naval Research Laboratory, SSC, MS, p. 61, 1999.