

**UNCLASSIFIED**

NAVAL AIR WARFARE CENTER AIRCRAFT DIVISION  
PATUXENT RIVER, MARYLAND



**TECHNICAL REPORT**

REPORT NO: NAWCADPAX/TR-2001/9

**FLASHJET® QUALIFICATION TESTING FOR  
LIFECYCLE DEPAINTING OF ROTARY WING FUSELAGE SKINS**

by

**Joseph Kozol  
Steven Hartle  
Paul Raley  
Thomas Berkel, The Boeing Company**

**6 April 2001**

**20010518 070**

Approved for public release; distribution is unlimited.

**UNCLASSIFIED**

DEPARTMENT OF THE NAVY  
NAVAL AIR WARFARE CENTER AIRCRAFT DIVISION  
PATUXENT RIVER, MARYLAND

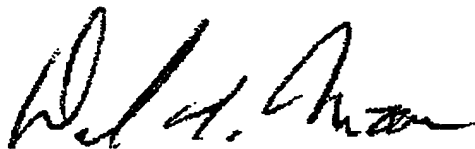
NAWCADPAX/TR-2001/9  
6 April 2001

**FLASHJET® QUALIFICATION TESTING FOR LIFECYCLE  
DEPAINTING OF ROTARY WING FUSELAGE SKINS**

by

**Joseph Kozol  
Steven Hartle  
Paul Raley  
Thomas Berkel, The Boeing Company**

**RELEASED BY:**



6 Apr 2001

---

DALE MOORE / AIR-4.3.4 / DATE  
Director, Materials Engineering, Air Vehicle Department  
Naval Air Systems Command

| REPORT DOCUMENTATION PAGE  |                                    |              | Form Approved<br>OMB No. 0704-0188                                  |                     |   |
|--|------------------------------------|--------------|---|---------------------|---|
| Public reporting burden for this collection of information is estimated to average 1 hour per response, including the time for reviewing instructions, searching existing data sources, gathering and maintaining the data needed, and completing and reviewing this collection of information. Send comments regarding this burden estimate or any other aspect of this collection of information, including suggestions for reducing this burden, to Department of Defense, Washington Headquarters Services, Directorate for Information Operations and Reports (0704-0188), 1215 Jefferson Davis Highway, Suite 1204, Arlington, VA 22202-4302. Respondents should be aware that notwithstanding any other provision of law, no person shall be subject to any penalty for failing to comply with a collection of information if it does not display a currently valid OMB control number. <b>PLEASE DO NOT RETURN YOUR FORM TO THE ABOVE ADDRESS.</b> |                                    |              |   |                     |   |
| 1. REPORT DATE<br>6 April 2001   | 2. REPORT TYPE<br>Technical Report |              | 3. DATES COVERED  |                     |   |
| 4. TITLE AND SUBTITLE<br><br>FLASHJET® Qualification Testing for Lifecycle Depainting of Rotary Wing Fuselage Skins  |                                    |              | 5a. CONTRACT NUMBER   |                     |   |
|  |                                    |              | 5b. GRANT NUMBER  |                     |   |
|  |                                    |              | 5c. PROGRAM ELEMENT NUMBER  |                     |   |
| 6. AUTHOR(S)<br><br>Joseph Kozol<br>Paul Raley;<br><br>Steven Hartle<br>Thomas Berkel, The Boeing Company  |                                    |              | 5d. PROJECT NUMBER  |                     |   |
|  |                                    |              | 5e. TASK NUMBER   |                     |   |
|  |                                    |              | 5f. WORK UNIT NUMBER  |                     |   |
| 7. PERFORMING ORGANIZATION NAME(S) AND ADDRESS(ES)<br><br>Naval Air Warfare Center Aircraft Division<br>22347 Cedar Point Road, Unit #6<br>Patuxent River, Maryland 20670-1161   |                                    |              | 8. PERFORMING ORGANIZATION REPORT NUMBER<br><br>NAWCADPAX/TR-2001/9 |                     |   |
| 9. SPONSORING/MONITORING AGENCY NAME(S) AND ADDRESS(ES)<br><br>Naval Air Systems Command<br>47123 Buse Road Unit IPT<br>Patuxent River, Maryland 20670-1547  |                                    |              | 10. SPONSOR/MONITOR'S ACRONYM(S)                                    |                     |   |
|  |                                    |              | 11. SPONSOR/MONITOR'S REPORT NUMBER(S)                              |                     |   |
| 12. DISTRIBUTION/AVAILABILITY STATEMENT<br><br>Approved for public release; distribution is unlimited.   |                                    |              |   |                     |   |
| 13. SUPPLEMENTARY NOTES  |                                    |              |   |                     |   |
| 14. ABSTRACT<br><br>This program evaluated the effects of FLASHJET® life cycle paint stripping on the high cycle fatigue behavior of two aluminum alloys used for fatigue critical helicopter structure. Based on the completion of five repeat paint and strip cycles, the fatigue life of 0.025 in. thick 2024-T3 or 7075-T6 aluminum is not degraded by stripping to the substrate with the FLASHJET® paint stripping process, when operated within the process parameters operating range tested.  |                                    |              |   |                     |   |
| 15. SUBJECT TERMS<br><br>FLASHJET®; painting; stripping; aluminum alloys   |                                    |              |   |                     |   |
| 16. SECURITY CLASSIFICATION OF:  |                                    |              | 17. LIMITATION OF ABSTRACT  | 18. NUMBER OF PAGES | 19a. NAME OF RESPONSIBLE PERSON                             |
| a. REPORT  | b. ABSTRACT                        | c. THIS PAGE |   |                     | Joseph Kozol  |
| Unclassified   | Unclassified                       | Unclassified | SAR   | 27                  | 19b. TELEPHONE NUMBER (include area code)<br>(301) 342-8068 |

## ACKNOWLEDGEMENTS

This work was funded by the U.S. Naval Aviation Pollution Prevention Program sponsored by the Office of the Chief of Naval Operations (N-45) in cooperation with the Environmental Security Technology Certification Program sponsored by the Deputy Under-Secretary of Defense (Environmental Security).

The authors are grateful for the significant assistance and support provided by the U.S. Navy Multimission Helicopters program office (PMA-299).

The authors wish to thank Mr. Joe Bilko for preparing the fatigue specimens and Mr. Henry Sanders for conducting the fatigue tests.

The authors also wish to thank Mr. Marty Munsell for his assistance and support in conducting the 5-cycle strip/NDT/repaint/processing.

Contents

|   | <u>Page No.</u> |
|---|-----------------|
| Introduction .....                              | 1               |
| Objective.....                                  | 1               |
| Panel Preparation .....                         | 1               |
| FLASHJET® Stripping Procedure (Cycles 1-5)..... | 2               |
| Hardness/Conductivity History .....             | 4               |
| Heat Damage to Aluminum Alloys.....             | 6               |
| Fatigue Testing Procedure.....                  | 6               |
| Fatigue Test Results.....                       | 7               |
| <br>  |                 |
| Summary/Conclusions .....                       | 17              |
| <br>  |                 |
| References.....                                 | 19              |
| <br>  |                 |
| Distribution .....                              | 21              |

## INTRODUCTION

The effects of the Boeing FLASHJET<sup>®</sup> paint removal process on aircraft substrates have been evaluated by U.S. Air Force and Navy programs teaming with the Boeing Company (references 1, 2, 3, and 4). Test results showed that the process can be used with no damaging impact on the mechanical properties of thin structural aluminum alloys or on graphite/epoxy composite structures. With the accumulation of an extensive data base, NAVAIRSYSCOM authorized use of the process for the removal of organic coatings from metallic and monolithic polymer matrix composite fixed wing aircraft surfaces.

The Environmental Security Technology Certification Program awarded the U.S. Army Environmental Center a program to demonstrate and validate the FLASHJET<sup>®</sup> process on multiservice rotary wing and ground vehicle applications. In support of this effort, the Materials Division at NAWCAD Patuxent River, Maryland, conducted high cycle fatigue tests on 0.016 and 0.025 in. aluminum alloys after FLASHJET<sup>®</sup> stripping. Results were acceptable to allow a one time FLASHJET<sup>®</sup> strip of an operational SH-60 helicopter, in accordance with the parameters used in the strip tests. This report describes high cycle fatigue testing to support the life cycle (5-strip cycles) use of the FLASHJET<sup>®</sup> process on 0.025 in., 7075-T6 and 2024-T3 aluminum alloys.

## OBJECTIVE

The objective of this program is to support qualification of the FLASHJET<sup>®</sup> process for life cycle paint stripping of fatigue critical H-60 helicopter airframe structure. The test program addresses the high cycle fatigue behavior of 0.025 in. thick 7075-T6 and 2024-T3 aluminum alloys after five cycles of painting and stripping. The S-N fatigue life will be compared to that of unpainted, unstripped material.

## PANEL PREPARATION

Materials used in this program, representative of H-60 helicopter fuselage skin, were as follows:

- a. 0.025 in. aluminum alloy alclad 7075-T6
- b. 0.025 in. aluminum alloy alclad 2024-T3

Eight inch square panels were sheared from large sheets at NAWCAD Patuxent River and the rolling direction marked to orient the longitudinal axis of fatigue test specimens. Panels were identified as 7 (for 7075) or 2 (for 2024) and serialized. All panels were solvent cleaned, chromate conversion coated per MIL-C-5541 Class 1a and divided into two groups identified as:

- a. Group A Control - This group received the same thermal aging treatment applied to the test group but was not painted and not stripped.
- b. Group C Paint and Strip - Initial painting was performed at NAVAIRSYSCOM as follows:
  - (1) Epoxy Primer, Waterborne, MIL-PRF-85582C, Ty I, 1.0 ±0.2 mils
  - (2) Polyurethane Topcoat, MIL-PRF-85285C, Ty I, 2.0 ±0.2 mils, color No. 36375

Painted panels were air dried for 7 days at ambient temperature and aged (along with Group A panels) for 7 days at 150°F. The Group C panels were then sent to Boeing-St. Louis for 5 stripping cycles, with paint to be removed to the substrate at each strip cycle as a worst case condition. After each stripping, panels were solvent cleaned and painted at Boeing-St. Louis with the same thicknesses of epoxy primer and polyurethane topcoat as described above. Following repaint, panels were again air dried at ambient temperature for 7 days followed by an artificial aging cycle for 7 days at 150°F. Average paint thicknesses are shown in table 1.

Table 1: Average Prestrip Coating Thickness (mils)<sup>(1)</sup>

| Paint/Strip Cycle | 2024-T3 Panels | 7075-T6 Panels |
|-------------------|----------------|----------------|
| 1                 | 2.12           | 2.15           |
| 2                 | 4.48           | 4.54           |
| 3                 | 3.74           | 3.81           |
| 4                 | 3.16           | 3.63           |
| 5                 | 3.76           | 4.04           |

NOTE: (1) Coating thickness measured with QuaNix 1500 coating thickness gage.

**FLASHJET® STRIPPING PROCEDURE (CYCLES 1-5)**

Panels were mounted to the stripping table and clamped in place along the two edges of the panel corresponding to each end of the rolling direction. FLASHJET® pass direction was perpendicular to the rolling direction of the panels so that the FLASHJET® process was focused on the test area of the subsequently machined fatigue test specimens.

Paint was removed to the substrate on each of the five stripping cycles. Removal to the substrate for these aluminum panels consisted of removal to a maximum of 0.0002 in. (0.2 mil) paint film. Paint is normally removed to primer with the FLASHJET® process. Stripping to substrate represents a more severe condition than actual practice.

FLASHJET<sup>®</sup> stripping parameters were developed on spare, practice panels. Although there is a wide range of acceptable stripping energy, panels were processed using high input voltage to expand the allowable FLASHJET<sup>®</sup> stripping parameters on rotary wing fuselage skins and demonstrate the lack of thermal damage to the aluminum substrates without limiting the associated short pulse peak temperature. Processing parameters used maximum input voltage on the initial pass(es) to remove the topcoat, and were reduced to 2,000 - 2,100 V for the final pass(es) to the substrate. For most stripping cycles, one pass was made at 2,300 V and a second pass was made at 2,000 V. Strip cycle No. 1 required a third 2,000 V pass on 2 panels to achieve the required substrate condition. Strip cycle No. 2 required two initial passes at 2,300 V on all panels and a third pass at 2,000-2,100 V on some panels to achieve the substrate condition. Other parameters remained constant through the five stripping cycles, including a 3 Hz flash repetition rate, 0.75 in./sec stripping head traverse rate, 47.5 ±2.5% CO<sub>2</sub> feeder rate, and 150 ±10 PSI pelletizer pressure. Adhesive-backed temperature indicator stickers that change color at predetermined temperatures were applied to the backside of panels to provide a simple method of measuring, monitoring, and documenting temperatures. A maximum of 12 FLASHJET<sup>®</sup> passes were needed on some panels to complete 5 FLASHJET<sup>®</sup> depainting cycles. Of those 12 passes, 8 resulted in peak substrate temperatures greater than 300°F. The highest peak temperature recorded on any one pass was 370-400°F (three panels, strip cycle No. 1, second pass).

A summary of the FLASHJET<sup>®</sup> stripping parameters, number of stripping passes and resultant temperatures are shown in table 2.



Table 2: FLASHJET® Stripping Parameters

| Strip Cycle      | First Pass    |   | Second Pass            |  | Final Paint Thickness <sup>(5)</sup> |
|------------------|---------------|---|------------------------|--|--------------------------------------|
|                  | Input Voltage | Peak Temp (°F) <sup>(1)</sup>   | Input Voltage          | Peak Temp (°F) <sup>(1)</sup>  |                                      |
| 1 <sup>(3)</sup> | 2,300 V       | 250 – 270°F (12%) <sup>(2)</sup><br>270 – 300°F (82%)<br>300 – 330°F (6%) | 2,000 V <sup>(3)</sup> | 330 – 350°F (75%)<br>370 – 400°F (25%)   | < 0.2 mils                           |
| 2 <sup>(4)</sup> | 2,300 V       | 200 – 230°F (33%)<br>230 – 250°F (67%)                                    | 2,300 V <sup>(4)</sup> | 200 – 230°F (17%)<br>250 – 270°F (33%)<br>270 – 300°F (25%)<br>300 – 330°F (25%) | .07 mils<br>(avg.)                   |
| 3                | 2,300 V       | 200 – 230°F (50%)<br>230 – 250°F (50%)                                    | 2,000 V                | 330 – 350°F (50%)<br>350 – 370°F (50%)   | .06 mils<br>(avg.)                   |
| 4                | 2,300 V       | 200 – 230°F (100%)  | 2,000 V                | 300 – 330°F (13%)<br>330 – 350°F (31%)<br>350 – 370°F (56%)                      | .04 mils<br>(avg.)                   |
| 5                | 2,300 V       | 200 – 230°F (38%)<br>230 – 250°F (50%)<br>250 – 270°F (12%)               | 2,000 V                | 300 – 330°F (25%)<br>330 – 350°F (63%)<br>350 – 370°F (12%)                      | .04 mils<br>(avg.)                   |

- NOTES: (1) Hermet® temperature indicator points (°F) – 200 / 230 / 250 / 270 / 300 / 330 / 350 / 370 / 400.  
(2) Temperature range 250 – 270°F (12%) means that the Hermet® temperature point at 250°F was triggered, but the 270°F point was not, and that 12% of the panels achieved this same peak temperature range.  
(3) Cycle No. 1 third pass at 2,000 V required on panels 7-2 and 7-4 to achieve substrate condition (peak temp 330-350°F).  
(4) Cycle No. 2 third pass required on 10 panels to achieve substrate condition:  
2,000 V (panel 7-8) Peak temperature range 300 – 330°F  
2,050 V (panels 2-4, 2-5, 2-6, 2-8, 2-9, 7-6, and 7-9) Peak temperature range 300 - 330°F (43%)  
Peak temperature range 330 – 350°F (29%)  
Peak temperature range 350 – 370°F (29%)  
2,100 V (panels 2-2, 2-3) Peak temperature range 330 – 350°F  
(5) Paint thickness measured by QuaNix 1500 coating thickness gage.

### HARDNESS/CONDUCTIVITY HISTORY

Aluminum panels 2-1 (2024-T3) and 7-1 (7075-T6) were designated as hardness/conductivity test panels. They were processed with all the fatigue test panels simultaneously, going through five paint/age/strip cycles. However, before and after each FLASHJET® strip cycle, the two panels were tested for hardness and electrical conductivity. Hardness measurements were taken using a Digital Versitron, 15-T scale. Conductivity measurements were taken with a Zetec M1Z-22, except poststrip cycle No. 3 measurements were taken with an NDT-17. Panels 2-13 and 7-13 were used to “backup” the 2-1 and 7-1 test panels to provide a 0.50 in. effective thickness. Figure 1 graphically displays the average hardness and “stacked” conductivity readings of the test panels before, during and after the 5-cycle processing. Each hardness reading represents the average of 24 individual readings and each conductivity reading represents the average of 8 individual readings. No stacked conductivity readings were taken at poststrip cycle No. 1. The hardness and conductivity history profiles do not indicate that any heat damage has occurred. All

All hardness and conductivity readings were within requirements for the materials, and showed no discernible increasing or decreasing trend during the 5-cycle paint/strip history.

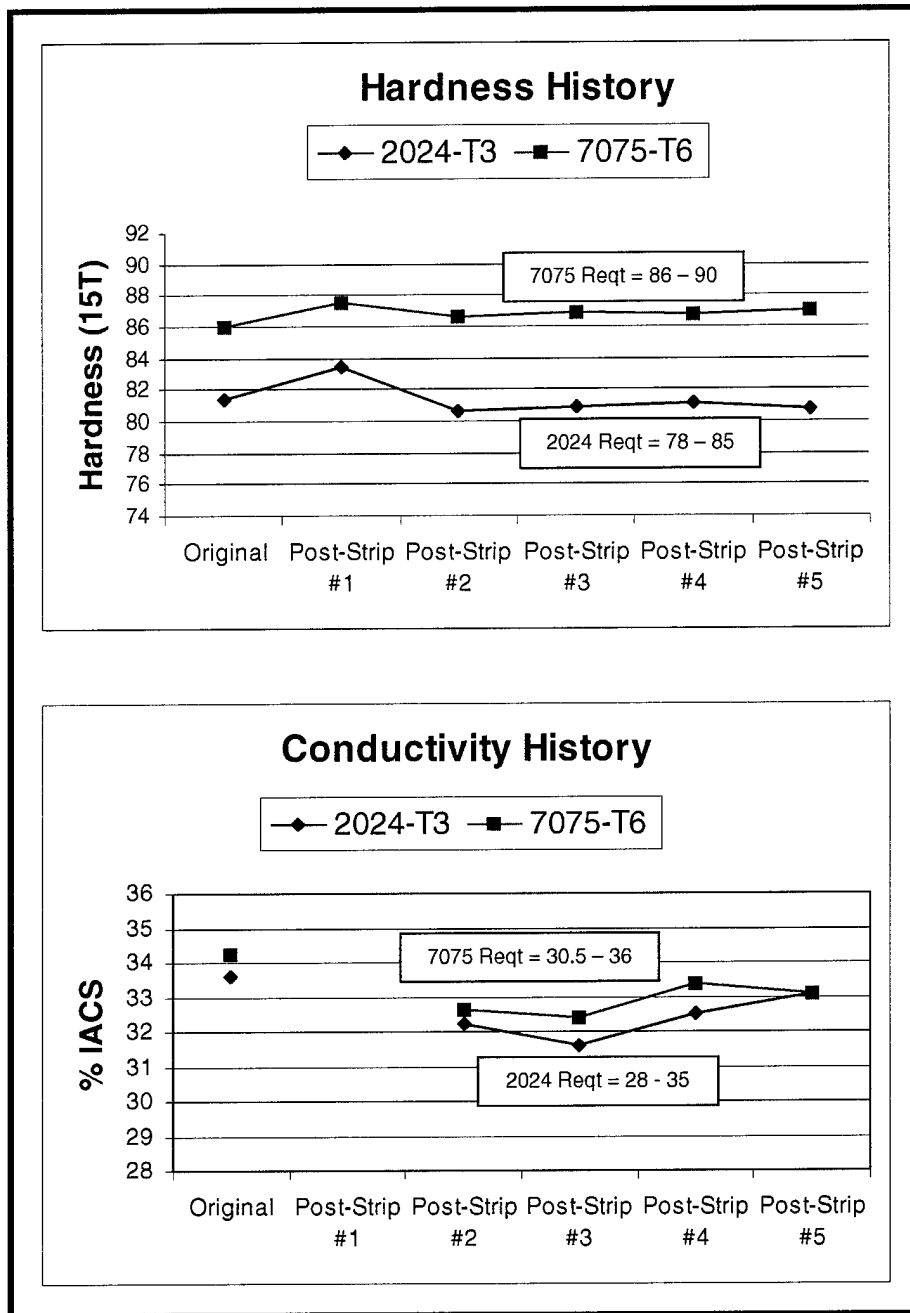


Figure 1: Hardness and Conductivity of Stripped Panels

## **HEAT DAMAGE TO ALUMINUM ALLOYS**

There is reference material that substantiates the relationship between conductivity, hardness, and strength to allow evaluation of heat damage of aluminum alloys as related to exposure time and exposure temperature. Heating 2024-T3 and 7075-T6 aluminum alloys above 300°F for sufficient time results in a drop in hardness and strength and a rise in conductivity. For 7075-T6 alloy, it takes 2 min cumulative exposure time at 400°F or 78 min at 325°F to observe a slight change in hardness; and it takes about 1 hr at 400°F and 100 hr at 325°F before hardness drops below minimum acceptable values (reference 5). For 2024-T3 alloy, it takes 100 hr at 400°F for the material to degrade to the minimum acceptable ultimate tensile strength, and over 1,000 hr at 300°F (references 5 and 6).

Each pass with FLASHJET<sup>®</sup> heats the substrate for only a few seconds, so that many repeated painting/depainting cycles would still heat the substrate for far less cumulative time than that required for damage, as confirmed by the hardness and conductivity profiles. The peak substrate temperature from each FLASHJET<sup>®</sup> pass is achieved in about 2 msec (.002 sec) and takes only a few seconds for cooling to hand-touch temperature. For the panels stripped in this phase, 8 of 12 passes made in the 5 FLASHJET<sup>®</sup> stripping cycles reached a peak temperature between 300-400°F. Total exposure time above 300°F was an estimated 40 sec, (worst case) maximum. Total exposure time above 370°F (one pass) was on the order of 5 sec, (worst case) maximum. So the total exposure time at high temperatures due to many, repeated FLASHJET<sup>®</sup> passes does not approach the exposure time needed to initiate hardness or strength degradation.

## **FATIGUE TESTING PROCEDURE**

Upon completion of five strip cycles at Boeing-St. Louis, panels were returned to NAWCAD Patuxent River and machined into 2 x 8 in. longitudinal dogbone type specimens, with drilled and reamed center holes of 0.100 in. diameter, as shown in figure 2. Constant amplitude, tension-tension fatigue testing was performed according to ASTM E466, at stress ratios of 0.1 and 0.5 and a frequency of 40 Hz. Failure condition was specimen fracture. Run out was in excess of 10 million cycles.

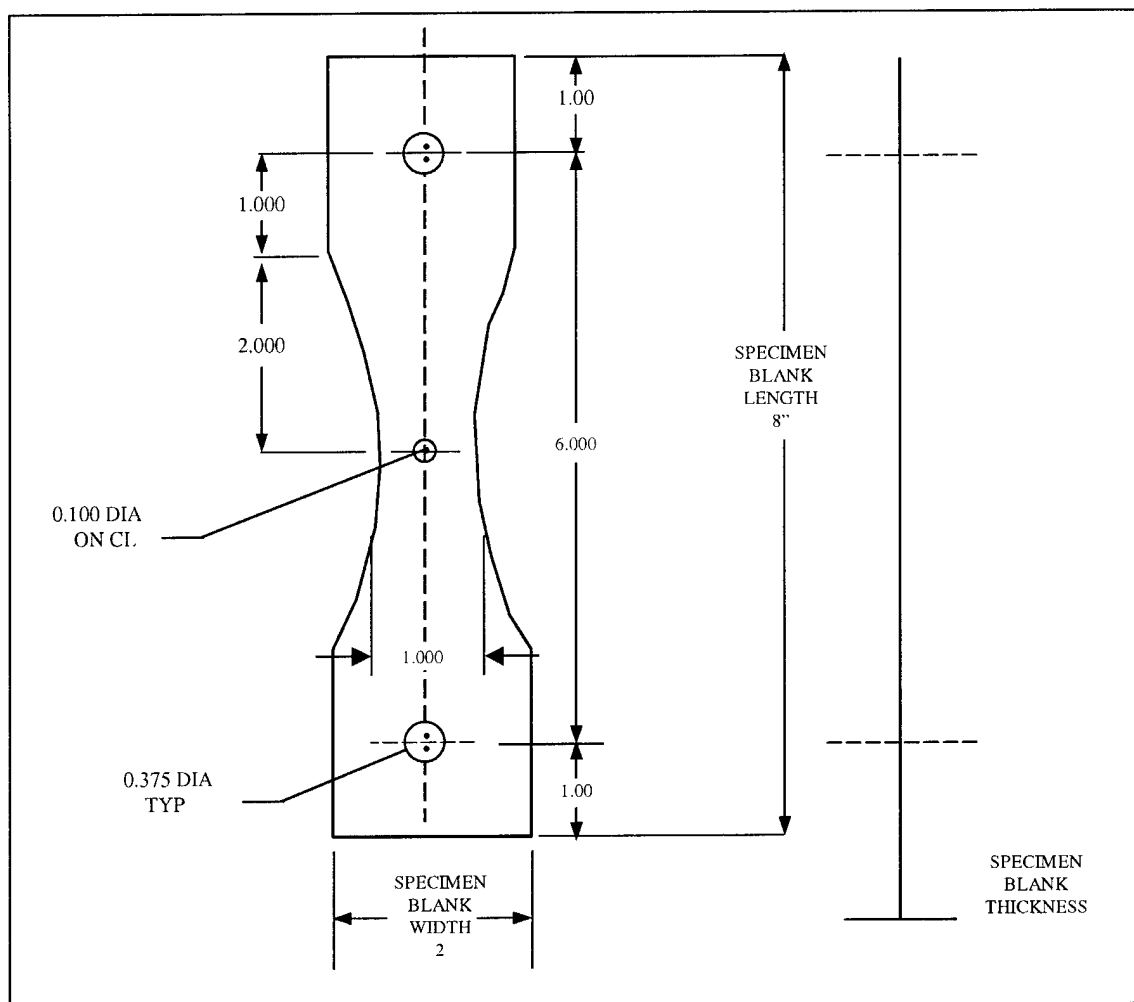


Figure 2: A Schematic of the Notched Specimen Design with a Drilled Central Hole of 0.100 in. Diameter

### FATIGUE TEST RESULTS

Center hole fatigue test data for the Clad Al 2024-T3 at stress ratios (R) = +0.1 and +0.5 are presented in tables 3 and 4. The corresponding data for Clad Al 7075-T6 are presented in tables 5 and 6. Data are shown graphically in figures 3, 4, 5, and 6. The distribution of the data on these S-N diagrams shows similar behavior for both the FLASHJET<sup>®</sup> and the baseline specimens. In most cases, the FLASHJET<sup>®</sup> specimen lives fall within the scatter of the baseline tests. In order to better quantify the comparison, a statistical evaluation was performed using the Students T-test at a confidence interval of 95%. The results of these tests for all four data sets are presented in table 7. The data passed the T-test for all of the 2024-T3 specimens and for the three lower stress amplitudes for the 7075-T6. This means that within a 95% confidence interval, neither group has a higher mean value; i.e., the FLASHJET<sup>®</sup> stripped group and the corresponding baseline group have equivalent fatigue lives. For the highest stress amplitude (40Ksi) 7075-T6 group, the stripped specimens show a higher value than the baseline. It should

be noted that typical rotary wing fatigue methodology uses a “scatter factor” of 2 on fatigue strength to account for the scatter observed in typical test data. The FLASHJET<sup>®</sup> data will be bounded by this criteria as well. In summary, the FLASHJET<sup>®</sup> life cycle stripped specimens showed similar fatigue behavior to the baseline material and did not show any statistically significant degradation in fatigue life.

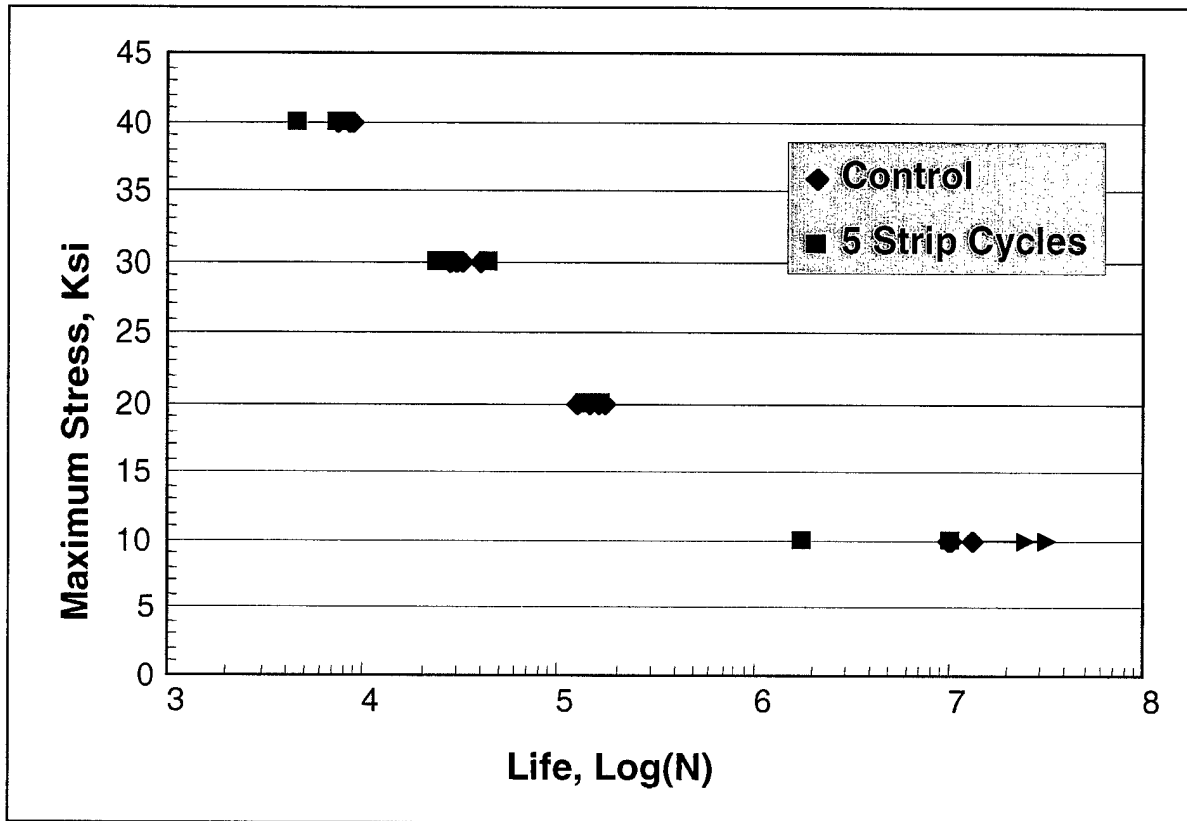


Figure 3: Aluminum 2024-T3 Center Hole Fatigue Life, R = 0.1

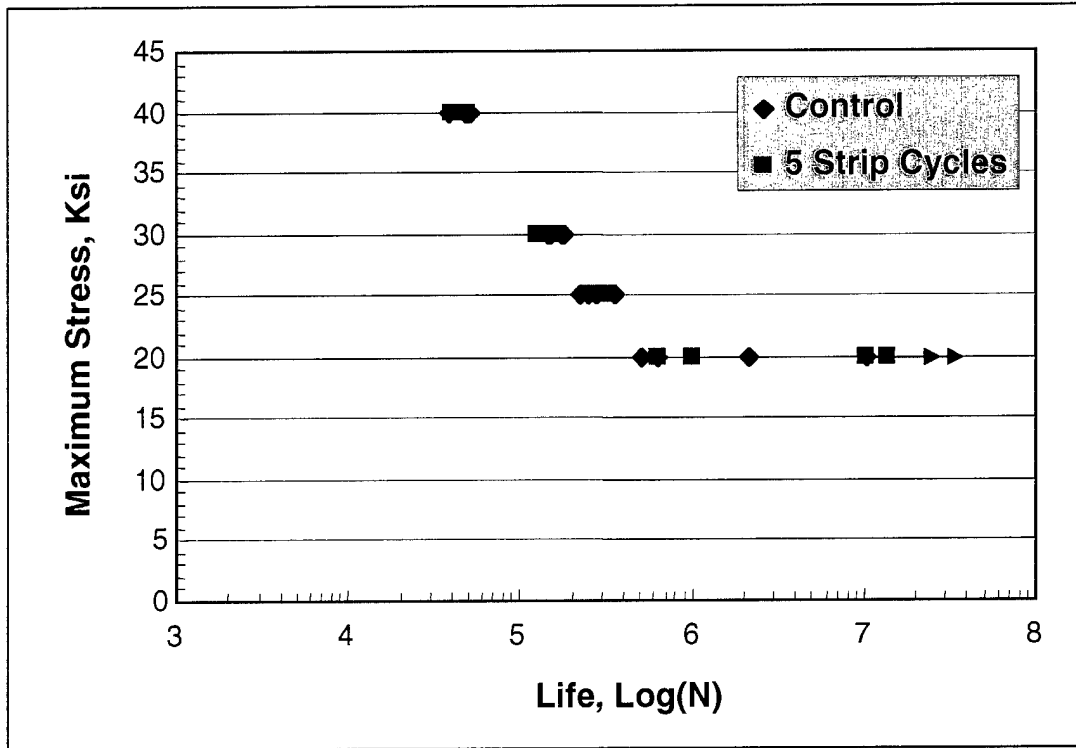


Figure 4: Aluminum 2024-T3 Center Hole Fatigue Life, R = 0.5

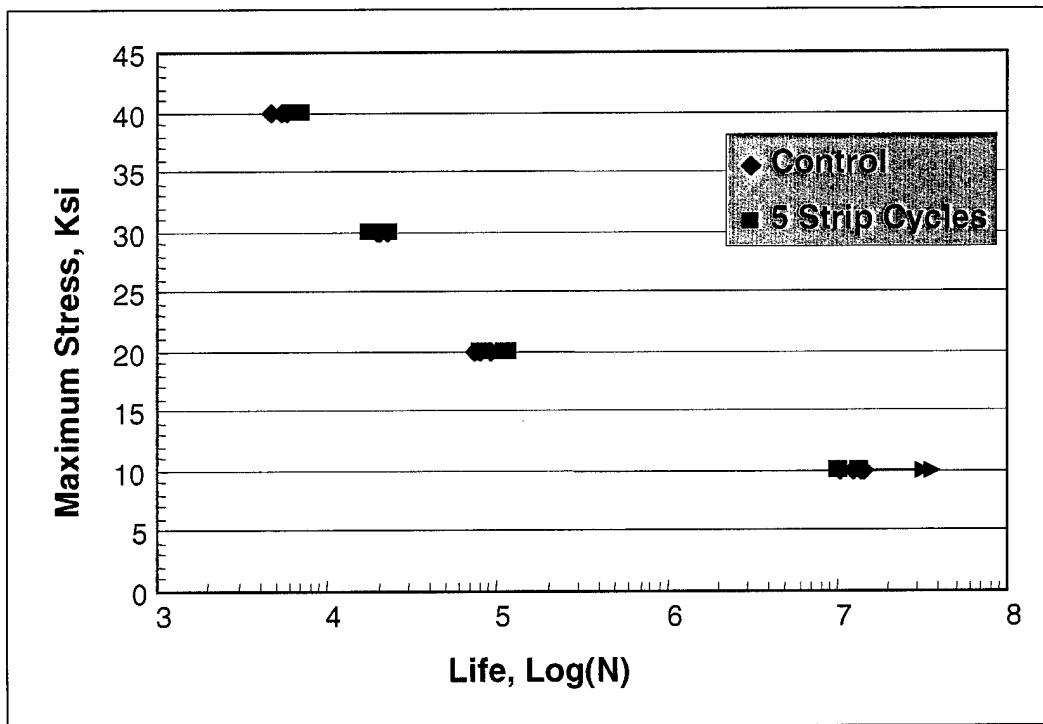


Figure 5: Aluminum 7075-T6 Center Hole Fatigue Life, R = 0.1

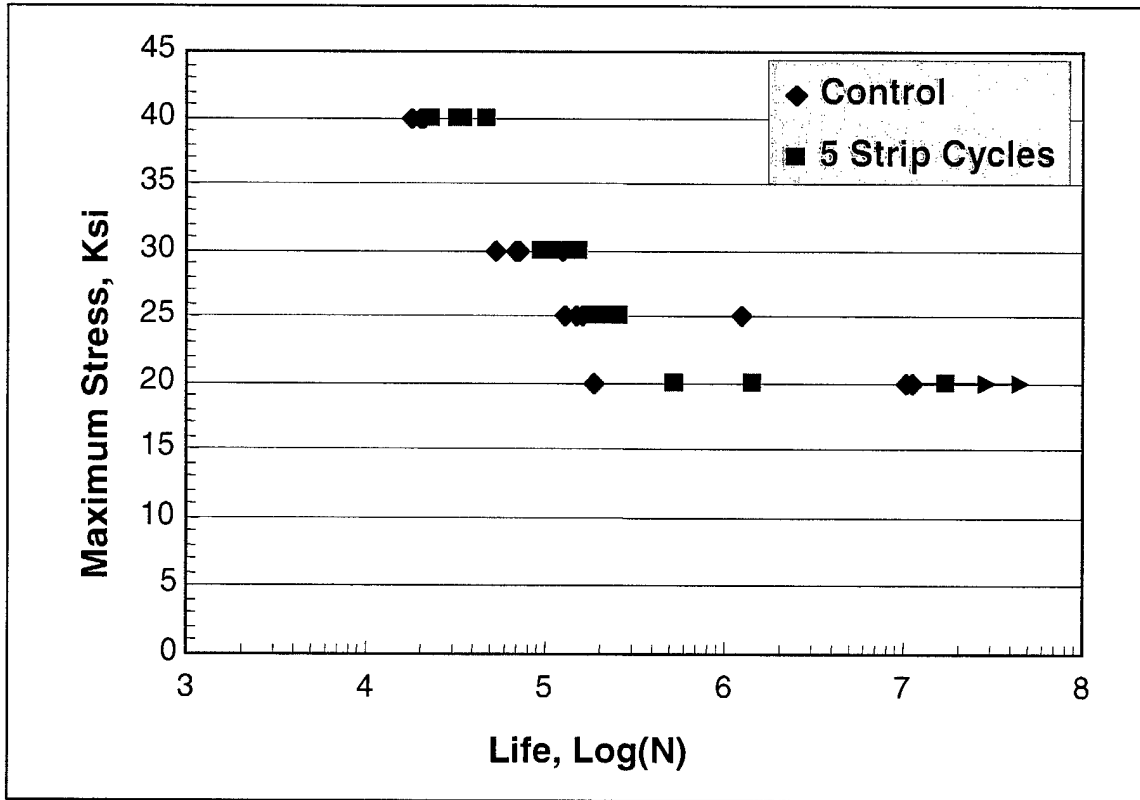


Figure 6: Aluminum 7075-T6 Center Hole Fatigue Life, R = 0.5

Table 3: Center Hole Fatigue Test Results, 2024 Al, R=0.1

| Paint Condition | Maximum Stress | Maximum Load (lb) | Minimum Load (lb) | Specimen ID | Cycles at 40 Hz |
|-----------------|----------------|-------------------|-------------------|-------------|-----------------|
| A-Control       | 40             | 1,005             | 101               | 2-2A-2      | 7,442           |
|                 |                | 1,004             | 100               | 2-5A-2      | 8,972           |
|                 |                | 1,006             | 101               | 2-7A-2      | 8,627           |
|                 |                | 1,006             | 101               | 2-3A-2      | 8,857           |
| C-Stripped 5X   | 40             | 1,006             | 101               | 2-2C-4      | 4,741           |
|                 |                |                   |                   | 2-8C-1      | 7,410           |
|                 |                |                   |                   | 2-5C-2      | 7,847           |
|                 |                |                   |                   | 2-2C-3      | 7,714           |
|                 |                |                   |                   | 2-13C-4     | 7,127           |
| A-Control       | 30             | 754               | 74                | 2-6A-3      | 39,929          |
|                 |                | 755               | 75                | 2-9A-1      | 30,408          |
|                 |                | 755               | 75                | 2-9A-4      | 27,608          |
|                 |                | 755               | 75                | 2-8A-2      | 32,025          |
| C-Stripped 5X   | 30             | 755               | 75                | 2-8C-4      | 24,666          |
|                 |                |                   |                   | 2-8C-2      | 30,615          |
|                 |                |                   |                   | 2-9C-1      | 44,508          |
|                 |                |                   |                   | 2-3C-2      | 28,100          |
| A-Control       | 20             | 503               | 50                | 2-10A-4     | 126,649         |
|                 |                |                   |                   | 2-9A-3      | 173,515         |
|                 |                |                   |                   | 2-1A-3      | 163,970         |
|                 |                |                   |                   | 2-1A-1      | 147,424         |
| C-Stripped 5X   | 20             | 503               | 50                | 2-3C-4      | 141,938         |
|                 |                |                   |                   | 2-5C-1      | 168,236         |
|                 |                |                   |                   | 2-4C-3      | 153,498         |
|                 |                |                   |                   | 2-3C-2      | 143,788         |
| A-Control       | 10             | 252               | 25                | 2-8A-1      | 10,230,164      |
|                 |                |                   |                   | 2-4A-4      | 13,554,939      |
|                 |                |                   |                   | 2-4A-3      | 10,503,763      |
|                 |                |                   |                   | 2-4A-2      | 10,332,741      |
| C-Stripped 5X   | 10             | 252               | 25                | 2-13C-1     | 10,608,870      |
|                 |                |                   |                   | 2-9C-2      | 1,772,338       |
|                 |                |                   |                   | 2-8C-4      | 10,325,921      |



Table 4: Center Hole Fatigue Test Results, 2024A1, R=0.5

| Paint Condition | Maximum Stress | Maximum Load (lb) | Minimum Load (lb) | Specimen ID | Cycles at 40 Hz |
|-----------------|----------------|-------------------|-------------------|-------------|-----------------|
| A-Control       | 40             | 1,006             | 503               | 2-7A-3      | 38,586          |
|                 |                |                   |                   | 2-6A-1      | 48,136          |
|                 |                |                   |                   | 2-6A-4      | 49,157          |
|                 |                |                   |                   | 2-7A-2      | 52,180          |
| C-Stripped 5X   | 40             | 1,006             | 503               | 2-9C-4      | 40,676          |
|                 |                |                   |                   | 2-4C-1      | 49,722          |
|                 |                |                   |                   | 2-13C-3     | 40,182          |
|                 |                |                   |                   | 2-4C-2      | 50,412          |
| A-Control       | 30             | 755               | 377               | 2-9A-2      | 177,583         |
|                 |                |                   |                   | 2-1A-3      | 152,160         |
|                 |                |                   |                   | 2-1A-4      | 153,824         |
|                 |                |                   |                   | 2-2A-1      | 180,124         |
| C-Stripped 5X   | 30             | 755               | 377               | 2-8A-3      | 146,237         |
|                 |                |                   |                   | 2-2C-2      | 128,473         |
|                 |                |                   |                   | 2-6C-1      | 151,659         |
|                 |                |                   |                   | 2-8C-3      | 155,252         |
| A-Control       | 25             | 629               | 314               | 2-5C-4      | 154,512         |
|                 |                |                   |                   | 2-10A-2     | 355,833         |
|                 |                |                   |                   | 2-10A-1     | 222,672         |
|                 |                |                   |                   | 2-2A-3      | 254,720         |
| C-Stripped 5X   | 25             | 629               | 314               | 2-7A-4      | 274,353         |
|                 |                |                   |                   | 2-9C-3      | 336,183         |
|                 |                |                   |                   | 2-4C-4      | 288,209         |
|                 |                |                   |                   | 2-3C-1      | 259,735         |
| A-Control       | 20             | 503               | 252               | 2-6C-2      | 269,400         |
|                 |                |                   |                   | 2-5A-3      | 10,377,420      |
|                 |                |                   |                   | 2-3A-4      | 2,146,244       |
|                 |                |                   |                   | 2-8A-4      | 520,210         |
| C-Stripped 5X   | 20             | 503               | 252               | 2-4A-1      | 644,783         |
|                 |                |                   |                   | 2-2C-1      | 641,270         |
|                 |                |                   |                   | 2-6C-3      | 10,333,541      |
|                 |                |                   |                   | 2-3C-3      | 13,788,111      |
|                 |                |                   |                   | 2-13C-2*    | 1,019,112       |

\*Specimen (2-13C-2) not used in statistical analysis. Test stopped prior to failure.

Table 5: Center Hole Fatigue Test Results, 7075A1, R=0.1

| Paint Condition | Maximum Stress | Maximum Load (lb) | Minimum Load (lb) | Specimen ID | Cycles at 40 Hz |
|-----------------|----------------|-------------------|-------------------|-------------|-----------------|
| A-Control       | 40             | 946               | 95                | 7-2A-4      | 5,474           |
|                 |                |                   |                   | 7-8A-3      | 4,746           |
|                 |                |                   |                   | 7-9A-2      | 5,885           |
|                 |                |                   |                   | 7-3A-1      | 5,737           |
| C-Stripped 5X   | 40             | 946               | 95                | 7-13C-2     | 7,093           |
|                 |                |                   |                   | 7-13C-1     | 6,938           |
|                 |                |                   |                   | 7-4C-4      | 7,231           |
|                 |                |                   |                   | 7-9C-3      | 6,068           |
| A-Control       | 30             | 709               | 71                | 7-3A-4      | 20,614          |
|                 |                |                   |                   | 7-9A-3      | 19,573          |
|                 |                |                   |                   | 7-8A-2      | 20,639          |
|                 |                |                   |                   | 7-9C3       | 22,254          |
| C-Stripped 5X   | 30             | 709               | 71                | 7-8C-1      | 17,811          |
|                 |                |                   |                   | 7-9C-2      | 20,000          |
|                 |                |                   |                   | 7-13C-4     | 18,134          |
|                 |                |                   |                   | 7-8C-3      | 23,727          |
| A-Control       | 20             | 473               | 47                | 7-1A-1      | 91,787          |
|                 |                |                   |                   | 7-4A-4      | 78,845          |
|                 |                |                   |                   | 7-7A-3      | 78,900          |
|                 |                |                   |                   | 7-3A-2      | 73,585          |
| C-Stripped 5X   | 20             | 473               | 47                | 7-2C-2      | 82,389          |
|                 |                |                   |                   | 7-2C-1      | 116,427         |
|                 |                |                   |                   | 7-6C-4      | 79,536          |
|                 |                |                   |                   | 7-13C-3     | 110,634         |
| A-Control       | 10             | 236               | 24                | 7-10A-1     | 12,418,411      |
|                 |                |                   |                   | 7-1A-2      | 13,777,141      |
|                 |                |                   |                   | 7-8A-4      | 10,349,908      |
|                 |                |                   |                   | 7-3A-3      | 14,177,322      |
| C-Stripped 5X   | 10             | 236               | 24                | 7-9C-4      | 13,449,139      |
|                 |                |                   |                   | 7-5C-1      | 10,205,523      |
|                 |                |                   |                   | 7-8C-2      | 13,818,446      |
|                 |                |                   |                   | 7-7C-3      | 10,268,125      |

Table 6: Center Hole Fatigue Test Results, 7075A1, R=0.5

| Paint Condition | Maximum Stress | Maximum Load (lb) | Minimum Load (lb) | Specimen ID | Cycles at 40 Hz |
|-----------------|----------------|-------------------|-------------------|-------------|-----------------|
| A-Control       | 40             | 946               | 473               | 7-1A-3      | 18,455          |
|                 |                |                   |                   | 7-2A-2      | 18,298          |
|                 |                |                   |                   | 7-4A-1      | 21,068          |
|                 |                |                   |                   | 7-7A-4      | 20,141          |
| C-Stripped 5X   | 40             | 946               | 473               | 7-5C-4      | 32,660          |
|                 |                |                   |                   | 7-2C-4      | 23,788          |
|                 |                |                   |                   | 7-7C-2      | 48,204          |
|                 |                |                   |                   | 7-4C-1      | 34,916          |
| A-Control       | 30             | 709               | 355               | 7-5A-3      | 72,765          |
|                 |                |                   |                   | 7-8A-1      | 68,147          |
|                 |                |                   |                   | 7-11A-2     | 123,308         |
|                 |                |                   |                   | 7-11A-4     | 53,287          |
| C-Stripped 5X   | 30             | 709               | 355               | 7-6C-1      | 144,862         |
|                 |                |                   |                   | 7-4C-3      | 111,668         |
|                 |                |                   |                   | 7-6C-2      | 153,653         |
|                 |                |                   |                   | 7-7C-4      | 96,696          |
| A-Control       | 25             | 589               | 295               | 7-4A-3      | 164,504         |
|                 |                |                   |                   | 7-10A-2     | 1,227,813       |
|                 |                |                   |                   | 7-10A-4     | 128,257         |
|                 |                |                   |                   | 7-2A-1      | 149,307         |
| C-Stripped 5X   | 25             | 589               | 295               | 7-6C-3      | 184,414         |
|                 |                |                   |                   | 7-8C-4      | 2,844,216       |
|                 |                |                   |                   | 7-4C-2      | 262,047         |
|                 |                |                   |                   | 7-7C-1      | 243,930         |
|                 |                |                   |                   | 7-2C-4      | 204,830         |
| A-Control       | 20             | 473               | 236               | 7-5A-2      | 10,199,918      |
|                 |                |                   |                   | 7-9A-4      | 187,901         |
|                 |                |                   |                   | 7-10A-3     | 10,986,714      |
| C-Stripped 5X   | 20             | 473               | 236               | 7-5C-5      | 17,190,968      |
|                 |                |                   |                   | 7-5C-2      | 1,453,952       |
|                 |                |                   |                   | 7-9C-1      | 539,214         |

Table 7: - Summary of Confidence Intervals and T-Test Results

**2024 Al, R=0.5**

| Alloy   | Stress Ratio | Max. Stress | Paint/Strip Condition | Cycles to Failure |               | 95% Confidence Interval |         | T-Test Result (95% Confidence) |
|---------|--------------|-------------|-----------------------|-------------------|---------------|-------------------------|---------|--------------------------------|
|         |              |             |                       | Mean Log          | Std. Dev. Log | Minimum                 | Maximum |                                |
| 2024 Al | 0.5          | 40          | Baseline              | 4.669             | 0.057         | 4.578                   | 4.761   | OK                             |
|         |              |             | Stripped 5X           | 4.653             | 0.054         | 4.568                   | 4.739   |                                |
| 2024 Al | 0.5          | 30          | Baseline              | 5.208             | 0.042         | 5.156                   | 5.260   | OK                             |
|         |              |             | Stripped 5X           | 5.167             | 0.039         | 5.105                   | 5.230   |                                |
| 2024 Al | 0.5          | 25          | Baseline              | 5.436             | 0.086         | 5.300                   | 5.572   | OK                             |
|         |              |             | Stripped 5X           | 5.458             | 0.050         | 5.379                   | 5.537   |                                |
| 2024 Al | 0.5          | 20          | Baseline              | 6.218             | 0.597         | 5.269                   | 7.168   | OK                             |
|         |              |             | Stripped 5X           | 6.492             | 0.682         | 5.407                   | 7.577   |                                |

**2024 Al, R=0.1**

| Alloy   | Stress Ratio | Max. Stress | Paint/Strip Condition | Cycles to Failure |               | 95% Confidence Interval |         | T-Test Result (95% Confidence) |
|---------|--------------|-------------|-----------------------|-------------------|---------------|-------------------------|---------|--------------------------------|
|         |              |             |                       | Mean Log          | Std. Dev. Log | Minimum                 | Maximum |                                |
| 2024 Al | 0.1          | 40          | Baseline              | 3.927             | 0.038         | 3.867                   | 3.987   | OK                             |
|         |              |             | Stripped 5X           | 3.836             | 0.091         | 3.723                   | 3.949   |                                |
| 2024 Al | 0.1          | 30          | Baseline              | 4.508             | 0.068         | 4.400                   | 4.616   | OK                             |
|         |              |             | Stripped 5X           | 4.494             | 0.110         | 4.319                   | 4.669   |                                |
| 2024 Al | 0.1          | 20          | Baseline              | 5.181             | 0.060         | 5.086                   | 5.277   | OK                             |
|         |              |             | Stripped 5X           | 5.180             | 0.034         | 5.127                   | 5.234   |                                |
| 2024 Al | 0.1          | 10          | Baseline              | 7.044             | 0.059         | 6.951                   | 7.138   | OK                             |
|         |              |             | Stripped 5X           | 6.763             | 0.445         | 5.656                   | 7.869   |                                |

**7075 Al, R=0.5**

| Alloy   | Stress Ratio | Max. Stress | Paint/Strip Condition | Cycles to Failure |               | 95% Confidence Interval |         | T-Test Result (95% Confidence) |
|---------|--------------|-------------|-----------------------|-------------------|---------------|-------------------------|---------|--------------------------------|
|         |              |             |                       | Mean Log          | Std. Dev. Log | Minimum                 | Maximum |                                |
| 7075 Al | 0.5          | 40          | Baseline              | 4.289             | 0.030         | 4.242                   | 4.336   | Stripped > Baseline            |
|         |              |             | Stripped 5X           | 4.529             | 0.126         | 4.329                   | 4.729   |                                |
| 7075 Al | 0.5          | 30          | Baseline              | 4.878             | 0.153         | 4.634                   | 5.122   | OK                             |
|         |              |             | Stripped 5X           | 5.095             | 0.095         | 4.944                   | 5.246   |                                |
| 7075 Al | 0.5          | 25          | Baseline              | 5.397             | 0.464         | 4.659                   | 6.135   | OK                             |
|         |              |             | Stripped 5X           | 5.567             | 0.499         | 4.948                   | 6.187   |                                |
| 7075 Al | 0.5          | 20          | Baseline              | 6.441             | 1.011         | 3.930                   | 8.953   | OK                             |
|         |              |             | Stripped 5X           | 6.377             | 0.774         | 4.453                   | 8.300   |                                |

Note: 1 - "Stripped>Baseline" means that we are 95% confident that the interval from .082 to .398 contains the difference of the mean logarithms between stripped and baseline specimen groups.

**7075 Al, R=0.1**

| Alloy   | Stress Ratio | Max. Stress | Paint/Strip Condition | Cycles to Failure |               | 95% Confidence Interval |         | T-Test Result (95% Confidence) |
|---------|--------------|-------------|-----------------------|-------------------|---------------|-------------------------|---------|--------------------------------|
|         |              |             |                       | Mean Log          | Std. Dev. Log | Minimum                 | Maximum |                                |
| 7075 Al | 0.1          | 40          | Baseline              | 3.736             | 0.042         | 3.669                   | 3.802   | Stripped > Baseline            |
|         |              |             | Stripped 5X           | 3.834             | 0.034         | 3.779                   | 3.888   |                                |
| 7075 Al | 0.1          | 30          | Baseline              | 4.317             | 0.023         | 4.280                   | 4.353   | OK                             |
|         |              |             | Stripped 5X           | 4.296             | 0.057         | 4.206                   | 4.387   |                                |
| 7075 Al | 0.1          | 20          | Baseline              | 4.906             | 0.041         | 4.841                   | 4.970   | OK                             |
|         |              |             | Stripped 5X           | 4.982             | 0.085         | 4.846                   | 5.118   |                                |
| 7075 Al | 0.1          | 10          | Baseline              | 7.100             | 0.062         | 7.002                   | 7.198   | OK                             |
|         |              |             | Stripped 5X           | 7.072             | 0.072         | 6.958                   | 7.187   |                                |

**Other General Notes:**

- "OK" means that with 95% confidence, neither group has a higher mean value.
- T-Test determines confidence interval for difference in means assuming equal variances.

THIS PAGE INTENTIONALLY LEFT BLANK

### SUMMARY/CONCLUSIONS

This program evaluated the effects of FLASHJET<sup>®</sup> life cycle paint stripping on the high cycle fatigue behavior of two aluminum alloys used for fatigue critical helicopter structure. Based on the completion of five repeat paint and strip cycles, the fatigue life of 0.025 in. thick 2024-T3 or 7075-T6 aluminum is not degraded by stripping to the substrate with the FLASHJET<sup>®</sup> paint stripping process, when operated within the process parameters operating range tested.

THIS PAGE INTENTIONALLY LEFT BLANK

REFERENCES

1. D. Breihan, "Xenon Flashlamp and Carbon Dioxide Advanced Coatings Removal Prototype Development and Evaluation Program," MDC92B0479, of 1992.
2. D. Breihan, J. Reily, "Xenon Flashlamp and Carbon Dioxide Advanced Coatings Removal Development and Evaluation Program, U.S. Navy Add-On Program," MDC93B0341, of Jul 1993.
3. T. Berkel, "Xenon Flashlamp and Carbon Dioxide Advanced Coatings Removal Development and Evaluation Program, U.S. Navy Follow-On Program; MDA95X0019, of Jun 1996.
4. T. Berkel, "Acoustic Fatigue Testing of the FLASHJET® Process," Boeing-STL99 X0017, of Aug 1999.
5. D. J. Hagemaiier, "Evaluation of Heat Damage to Aluminum Aircraft Structure", Douglas Aircraft Paper 7120 presented to 1981 ATA Nondestructive Testing Forum, Phoenix, AZ, of Sep 1981.
6. D. Kelley, "Lack of Thermal Damage to Substrates by FLASHJET® Stripping," Boeing Memo JDK-13-95, of 5 May 1995.



THIS PAGE INTENTIONALLY LEFT BLANK

DISTRIBUTION:

CNO (N-45) (1)  
2000 Navy Pentagon, Washington, D.C. 20350-2000

CNO (N-451, 452, 457) (3)  
2000 Navy Pentagon, Washington, D.C. 20350-2000

NAVAIRSYSCOM (AIR-4.3.4), Bldg. 2188 (25)  
48066 Shaw Road, Patuxent River, MD 20670-1547

NAVAIRSYSCOM (AIR-4.3.3), Bldg. 2187 (5)  
48110 Shaw Road, Patuxent River, MD 20670-1547

NAVAIRSYSCOM (AIR-8.4), Bldg. 404 (1)  
22145 Arnold Circle, Patuxent River, MD 20670-1547

NAVAIRSYSCOM (PMA-299), Bldg. 2272, Room 156 (1)  
47123 Buse Road, Patuxent River, MD 20670-1547

NAVAVNDEPOT (AIR-6.0, AIR-4.3.4) (2)  
NAS North Island, San Diego, CA 92135

NAVAVNDEPOT (AIR-6.0, AIR-4.3.4) (2)  
PSD, Box 8021, Cherry Point, NC 28533-0021

NAVAVNDEPOT (AIR-6.0, AIR-4.3.4) (2)  
Naval Air Station, Jacksonville, FL 32212

Warner Robins Air Logistics Center (WR-ALC/TIEDM) (3)  
Attn: Randall Ivey, Robins Air Force Base, GA 31098-1640

DCM Boeing (1)  
P.O. Box 516, 5775 Campus Parkway, St. Louis, MO 63166-0516

Headquarters Department of the Army (Attn: SFFM-CA-CP) (1)  
1421 Jefferson Davis Highway, Suite 9002, Arlington, VA 22202-3259

U.S. Army Environmental Center (1)  
5179 Hoadley Road, Aberdeen Proving Ground, MD 21010-5401

NAVAIRWARCENACDIV (4.11), Bldg. 304, Room 102 (3)  
22541 Millstone Road, Patuxent River, MD 20670-1606

NAVAIRWARCENACDIV (7.2.5.1), Bldg. 405, Room 108 (1)  
22133 Arnold Circle, Patuxent River, MD 20670-1551

NAVAIRWARCENACDIV (55TW01A), Bldg. 304, Room 200 (1)  
22541 Millstone Road, Patuxent River, MD 20670-1606

DTIC (1)  
8725 John J. Kingman Road, Suite 0944, Ft. Belvoir, VA 22060-6218