

AD \_\_\_\_\_

Award Number: DAMD17-94-J-4306

TITLE: Cell-Matrix Interactions in Breast Carcinoma Invasion

PRINCIPAL INVESTIGATOR: Anna Maria Curatola, Ph.D.

CONTRACTING ORGANIZATION: New York University Medical Center  
New York, New York 10016

REPORT DATE: January 2000

TYPE OF REPORT: Final

PREPARED FOR: U.S. Army Medical Research and Materiel Command  
Fort Detrick, Maryland 21702-5012

DISTRIBUTION STATEMENT: Approved for public release;  
distribution unlimited

The views, opinions and/or findings contained in this report are those of the author(s) and should not be construed as an official Department of the Army position, policy or decision unless so designated by other documentation.

DTIC QUALITY INSPECTED 4  
20010216 036

<small>Public reporting burden for this collection of information is estimated to average 1 hour per response, including the time for reviewing instructions, searching existing data sources, gathering and maintaining the data needed, and completing and reviewing this collection of information. Send comments regarding this burden estimate or any other aspect of this collection of information, including suggestions for reducing this burden to Washington Headquarters Services, Directorate for Information Operations and Reports, 1215 Jefferson Davis Highway, Suite 1204, Arlington, VA 22202-4302, and to the Office of Management and Budget, Paperwork Reduction Project (0704-0188), Washington, DC 20503</small>			<small>OMB NO. 074-0100</small>
<b>1. AGENCY USE ONLY (Leave blank)</b>	<b>2. REPORT DATE</b> January 2000	<b>3. REPORT TYPE AND DATES COVERED</b> Final (15 Dec 94 - 14 Dec 99)	
<b>4. TITLE AND SUBTITLE</b> Cell-Matrix Interactions in Breast Carcinoma Invasion		<b>5. FUNDING NUMBERS</b> DAMD17-94-J-4306	
<b>6. AUTHOR(S)</b> Anna Maria Curatola, Ph.D.			
<b>7. PERFORMING ORGANIZATION NAME(S) AND ADDRESS(ES)</b> New York University Medical Center New York, New York 10016  <b>E-MAIL:</b> curata01@mcmbox.med.nyu.edu		<b>8. PERFORMING ORGANIZATION REPORT NUMBER</b>	
<b>9. SPONSORING / MONITORING AGENCY NAME(S) AND ADDRESS(ES)</b>  U.S. Army Medical Research and Materiel Command Fort Detrick, Maryland 21702-5012		<b>10. SPONSORING / MONITORING AGENCY REPORT NUMBER</b>	
<b>11. SUPPLEMENTARY NOTES</b>			
<b>12a. DISTRIBUTION / AVAILABILITY STATEMENT</b> Approved for public release; distribution unlimited			<b>12b. DISTRIBUTION CODE</b>
<b>13. ABSTRACT (Maximum 200 Words)</b>  <p>Recent evidence suggests that EGF may influence human breast cancer progression via migratory pathways that, at least in part, appear to be dissociated from the proliferative pathways. We have shown previously that activation of the EGF receptor (EGFR) leads to tyrosine phosphorylation of the <math>\beta 4</math> subunit of <math>\alpha 6 \beta 4</math> integrin, followed by disruption of hemidesmosomes and promotion of cell migration. The results reported here indicate that a fraction of EGFR is constitutively associated with <math>\alpha 6 \beta 4</math>. We also found that the tyrosine kinase Fyn mediates EGFR induced phosphorylation of the <math>\beta 4</math> cytoplasmic tail and disruption of the hemidesmosomes. Inhibition of Fyn activity leads to stabilization of hemidesmosomes and suppresses migration and invasion by breast carcinoma cells. These findings suggest that EGFR-mediated disruption of hemidesmosomes is a prerequisite for normal cell migration and tumor invasion.</p>			
<b>14. SUBJECT TERMS</b> Integrins, Extracellular Matrix, Fibronectin, Cell Adhesion, Laminin, Tumor Invasion, Breast Cancer			<b>15. NUMBER OF PAGES</b> 15
			<b>16. PRICE CODE</b>
<b>17. SECURITY CLASSIFICATION OF REPORT</b> Unclassified	<b>18. SECURITY CLASSIFICATION OF THIS PAGE</b> Unclassified	<b>19. SECURITY CLASSIFICATION OF ABSTRACT</b> Unclassified	<b>20. LIMITATION OF ABSTRACT</b> Unlimited

NSN 7540-01-280-5500

Standard Form 298 (Rev. 2-89)  
Prescribed by ANSI Std. Z39-18  
298-102

## FOREWORD

Opinions, interpretations, conclusions and recommendations are those of the author and are not necessarily endorsed by the U.S. Army.

\_\_\_ Where copyrighted material is quoted, permission has been obtained to use such material.

\_\_\_ Where material from documents designated for limited distribution is quoted, permission has been obtained to use the material.

\_\_\_ Citations of commercial organizations and trade names in this report do not constitute an official Department of Army endorsement or approval of the products or services of these organizations.

AKE X In conducting research using animals, the investigator(s) adhered to the "Guide for the Care and Use of Laboratory Animals," prepared by the Committee on Care and use of Laboratory Animals of the Institute of Laboratory Resources, national Research Council (NIH Publication No. 86-23, Revised 1985).

N/A For the protection of human subjects, the investigator(s) adhered to policies of applicable Federal Law 45 CFR 46.

AKE X In conducting research utilizing recombinant DNA technology, the investigator(s) adhered to current guidelines promulgated by the National Institutes of Health.

AKE X In the conduct of research utilizing recombinant DNA, the investigator(s) adhered to the NIH Guidelines for Research Involving Recombinant DNA Molecules.

AKE X In the conduct of research involving hazardous organisms, the investigator(s) adhered to the CDC-NIH Guide for Biosafety in Microbiological and Biomedical Laboratories.

 1/12/2000  
PI - Signature Date

## **Table of Contents**

Front Cover	1
Report Documentation Page	2
Foreword	3
Table of Contents	4
Introduction	5 - 6
Body	6 - 8
Key Research Accomplishments	9
Reportable Outcomes	9
Conclusions	9
References	10
Appendices	11 - 15

## **Introduction**

Normal cell migration and tumor invasion both depend on changes in cytoskeletal organization and integrin function (1). Contraction of actin filaments and release of integrin attachments are both required for cell movement. Whereas  $\beta 1$  and  $\alpha v$  integrins are connected to the actin cytoskeleton (2) and their role in migration and invasion is well characterized (3), the integrin  $\alpha 6 \beta 4$  is associated with the keratin filaments (4, 5) and its role in the pathogenesis of invasive carcinoma is poorly understood. The integrin  $\alpha 6 \beta 4$ , a receptor for the laminins, is a component of hemidesmosomes (HDs), stable adhesion structures that anchor the basal layer of stratified epithelia to the underlying basement membrane (6). A number of modifications have been reported in  $\alpha 6$  and  $\beta 4$  distribution pattern in most common histotypes of mammary tumors (7). Modifications include downregulation of the integrin or its redistribution over the plasma membrane of tumor cells. Other studies have indicated that the expression of the  $\alpha 6 \beta 4$  integrin is associated with poor breast cancer prognosis, mainly in the laminin-producing tumor subset, suggesting that the interaction between  $\alpha 6 \beta 4$  and laminin mediates signals that promote cell proliferation and/or invasion (8). Moreover, high levels of  $\alpha 6 \beta 4$  integrin have been shown in many tumor cells that do not form stable adhesive contacts with the basement membrane, but rather exhibit the typical migratory ability of invasive carcinoma (9, 10). These findings suggest that the role of the integrin  $\alpha 6 \beta 4$  in invasive tumors may be distinct from its well established function of anchoring the epithelial cells to the basement membrane. The understanding of the signaling pathway activated by this integrin during tumor progression should provide important insight into the mechanism of invasion.

It has been recently reported that EGF may influence human breast cancer progression via migratory pathways that, at least in part, appear to be dissociated from the proliferative pathways (11). Previous studies from our lab have shown that activation of the EGF receptor (EGFR) leads to tyrosine phosphorylation of the  $\beta 4$  subunit,

followed by disruption of HDs and promotion of cell migration (12). We have investigated in more detail the molecular mechanisms by which EGF stimulation affects  $\alpha 6\beta 4$  cellular functions and how the uncontrolled cross-talk between the two receptors can influence the progression of breast carcinoma. The results reported here indicate that a fraction of EGFR is constitutively associated with  $\alpha 6\beta 4$ . We also found that EGFR induces the activation of the tyrosine kinase Fyn, and this activation is required for the phosphorylation of the  $\beta 4$  cytoplasmic tail and disruption of the HDs. Inhibition of Fyn activity leads to stabilization of the HDs and suppresses migration and invasion by breast carcinoma cells. These findings suggest that EGFR-mediated disruption of HDs is a prerequisite for normal cell migration and tumor invasion.

### **Body**

Previous studies had shown that exposure to physiological concentrations of EGF induces phosphorylation of multiple tyrosine residues within the cytoplasmic domain of  $\beta 4$  in a variety of normal and transformed cells (12). To investigate in more detail the activation of  $\beta 4$  by EGFR and the biological significance of this event in breast cancer progression, experiments of co-immunoprecipitation, followed by immunoblotting with specific antibodies, were performed. Total extracts were prepared from unstimulated as well as EGF-stimulated breast carcinoma cells, immunoprecipitated with a monoclonal anti- $\beta 4$  antibody (3E1) and subjected to SDS/PAGE, followed by immunoblotting using specific antibodies (Fig. 1). Immunoblot with an anti-EGFR antibody showed that a significant fraction of the EGFR is constitutively bound to  $\alpha 6\beta 4$ . This association is specific, since no association of  $\beta 4$  with Erb-2, another member of the EGFR family, was detected. Immunoblot with anti-phosphotyrosine (anti-P-Tyr) antibody showed that, upon EGF stimulation,  $\beta 4$  as well as the  $\beta 4$ -associated EGFR fraction become phosphorylated. Moreover, western blot analysis with anti-EGFR antibody showed that no further association of EGFR with  $\beta 4$  is induced by EGF treatment.

Since previous studies had shown that the EGFR does not phosphorylate  $\beta 4$  directly in vitro (12), we decided to identify the tyrosine kinase responsible for EGF-induced phosphorylation of  $\beta 4$ . By using increasing amounts of the newly described src-family kinase specific inhibitors PP1 and PP2 (13), we observed a decrease in  $\beta 4$  tyrosine phosphorylation in response to EGF stimulation (Fig. 2A, B). The treatment with the inhibitors does not affect EGFR activation. These results suggested that a src-family kinase is activated by EGF and is, at least in part, responsible for subsequent  $\beta 4$  phosphorylation. In order to identify the src-kinase responsible for  $\beta 4$  activation, cotransfection experiments were performed. A plasmid expressing  $\alpha 6\beta 4$  was transiently introduced, together with single src-family kinases, in 293T cells. Cell lysates were immunoprecipitated with specific antibodies anti- $\beta 4$ , or anti-fyn or anti-src and immuno-complexes subjected to an in vitro kinase assay. Results in Fig. 3 show that the tyrosine kinase fyn strongly binds to  $\alpha 6\beta 4$ , while no association of src tyrosine kinase is found, suggesting that fyn may be the tyrosine kinase that phosphorylates  $\beta 4$  in response to EGF. In order to verify this assumption, we stably transfected the squamous carcinoma cell line 804G, which forms HDs in vitro, with vectors expressing dominant negative fyn or src kinases (DNfyn, DNsrc). Several clones expressing DNfyn (F1, F2, F3) or DNsrc (S1, S2) were isolated (Fig. 4A). We observed that tyrosine phosphorylation of  $\beta 4$  after EGF treatment is decreased in clones expressing DNfyn but not in control or in DNsrc-expressing clones (Fig. 4B). In addition, immunofluorescence staining with 3E1 antibody revealed an increased number of HDs in DNfyn-expressing clones, compared to the control and DNsrc-expressing clones. Moreover, in the presence of DNfyn, HDs become more stable and are only partially disassembled after EGF stimulation. Taken together, these results suggested that fyn tyrosine kinase is the signaling molecule mediating the cross-talk between EGFR and  $\beta 4$ . It is responsible for  $\beta 4$  activation upon EGF stimulation and it is specifically involved in the HDs turnover induced by the growth factor. These functions of fyn on  $\beta 4$  integrin can not be substituted by any other src-family kinase.

We then examined whether the increase in HDs number and stability promoted by DNfyn could affect cellular responses stimulated by EGF, such as cell migration and invasion. A wound assay on the 804G clones revealed that DNfyn reduced EGF-stimulated cell migration to a greater extent than DNsrc. An invasion assay, through a reconstituted basement membrane (Matrigel), showed that either DNfyn or DNsrc strongly inhibited cell invasion induced by EGF. In order to verify the role of src-family kinases in cell invasion, breast carcinoma cells were tested for their ability to migrate through Matrigel, in response to EGF, in the presence of the src-family inhibitor PP1. We found that EGF-induced invasion ability of breast carcinoma cells was strongly inhibited by PP1, confirming a role for the src kinases in tumor invasion.

#### Discussion:

Taken together, our results demonstrate that the src-family member fyn mediates signaling between the EGF receptor and the laminin receptor  $\alpha 6\beta 4$ . We demonstrated that Fyn induces activation of  $\beta 4$  upon EGF stimulation and HD disruption, which is a prerequisite for tumor progression. We also show that both fyn and src kinase activities appear to be required for breast carcinoma invasion stimulated by EGF. These findings suggest a mechanism by which deregulated cross-talk between the two receptors can promote breast carcinoma progression.



## **Key Research Accomplishments**

- EGF receptor associates with the integrin  $\alpha 6 \beta 4$
- Fyn tyrosine kinase is activated by EGF receptor
- Fyn kinase activity is required for phosphorylation of  $\beta 4$  in response to EGF receptor activation
- Fyn kinase activity is required for hemidesmosome disruption after EGF stimulation
- Disruption of hemidesmosomes by Fyn activity is a prerequisite for EGF stimulated cell migration and invasion

## **Reportable Outcomes**

Development of squamous carcinoma 804G cells expressing dominant-negative Fyn or dominant-negative Src

## **Conclusions**

Our results demonstrate a role for the src-family member fyn in the signaling between the EGF receptor and the laminin receptor  $\alpha 6 \beta 4$ . EGF stimulation induces activation of Fyn, which in turn phosphorylates  $\beta 4$  causing disruption of hemidesmosomes. As disruption of hemidesmosomes is a prerequisite for tumor progression, these results suggest that suppression of Fyn activation may inhibit tumor invasion. In agreement with this, we also find that both fyn and src kinase activities are required for breast carcinoma invasion stimulated by EGF. Our findings suggest a mechanism by which deregulated cross-talk between the two receptors can promote breast carcinoma progression and suggest that development of drugs that suppress this signaling may provide novel tumor therapies.

## **References**

- 1) Giancotti, F.G., Mainiero, F. 1994, Bioch. Bioph. Acta, 1198, 47-64
- 2) Pardi, R. et al. 1992, J. Cell Biol., 116,1211-1220
- 3) Sanders, R.J., et al. 1998, Cancer Invest., 16, 329-44;
- 4) Carter, W.G, et al. 1990, J. Cell Biol., 111, 3141-3154;
- 5) Sonnenberg, A. et al. 1991, J. Cell Biol., 113, 907-917;
- 6) Borradori, L. and Sonnenberg, A., 1996, Curr. Opin. Cell Biol., 8, 647-656;
- 7) Natali, P.G., et al. 1992, Br. J. Cancer, 66, 318-322;
- 8) Tagliabue, E., et al. 1998, Clinical Cancer Research, 4, 407-410;
- 9) Falcioni, R., et al. 1986, Cancer Res., 46, 5772-5778;
- 10) Van Waes, C, 1991, Cancer Res., 51, 2395-2402;
- 11) Price, J.T., 1999, Cancer Res., 59, 5475-8;
- 12) Mainiero, F., et al., 1996, J Cell Biol., 134, 241-53;
- 13) Osterhout, D.J., et al. 1999, J. Cell Biol.,145, 1209-18.

## **Appendices**

4 figures

Final Report: At present there have been no publications or abstracts as a result of this research. No personnel received pay from these funds.

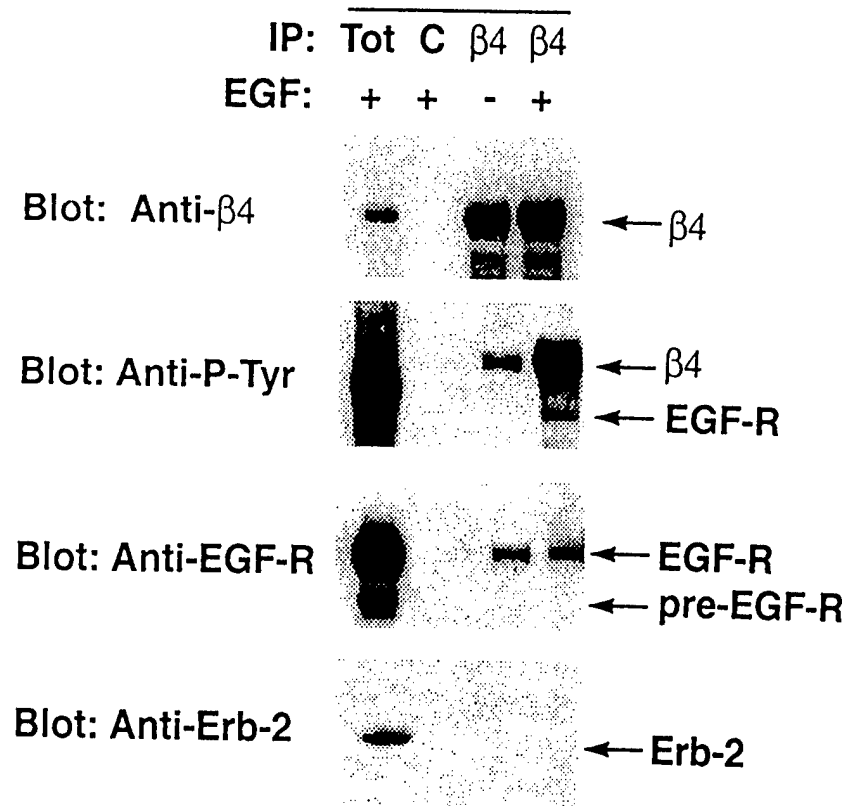
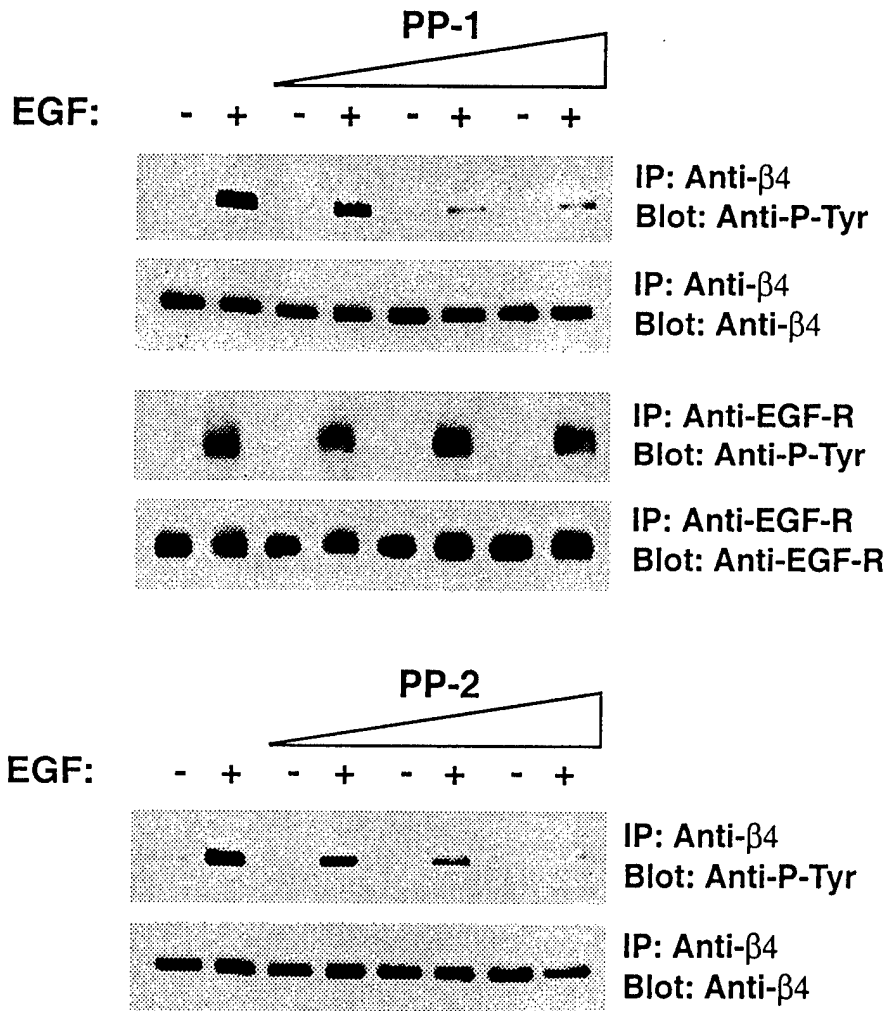


Fig. 1 Association of EGFR with the integrin  $\alpha 6 \beta 4$  and activation of  $\alpha 6 \beta 4$  after EGF treatment. Lane 1: total extract; lane 2: IP with a non specific antibody; lanes 3 and 4: IP with the 3E1 monoclonal antibody . The association between EGFR and  $\alpha 6 \beta 4$  was determined by immunoblotting with anti EGFR antibody. The activation of  $\beta 4$  was determined by immunoblotting with an anti-phosphotyrosine antibody.

# A



# B

Fig. 2 Effects of PP1 and PP2 src-family kinase inhibitors on  $\beta 4$  phosphorylation upon EGF stimulation. Cells were stimulated with EGF in presence or absence of increasing concentration (0.1, 1.5, and 10  $\mu$ M) of PP1 (panel A) or PP2 (panel B) inhibitors and phosphorylation of  $\beta 4$  and EGFR determined by immunoblotting with anti-P-Tyr antibody. Blots with anti- $\beta 4$  and anti-EGFR antibodies were performed as loading control.

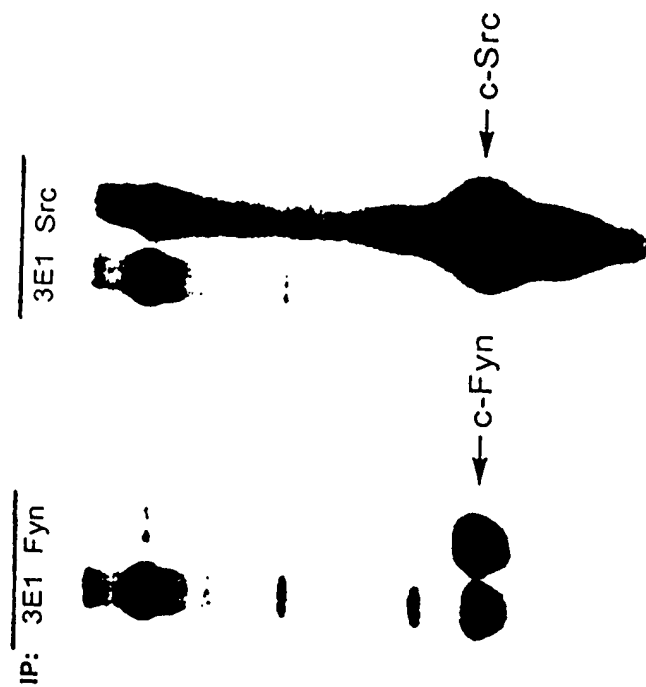
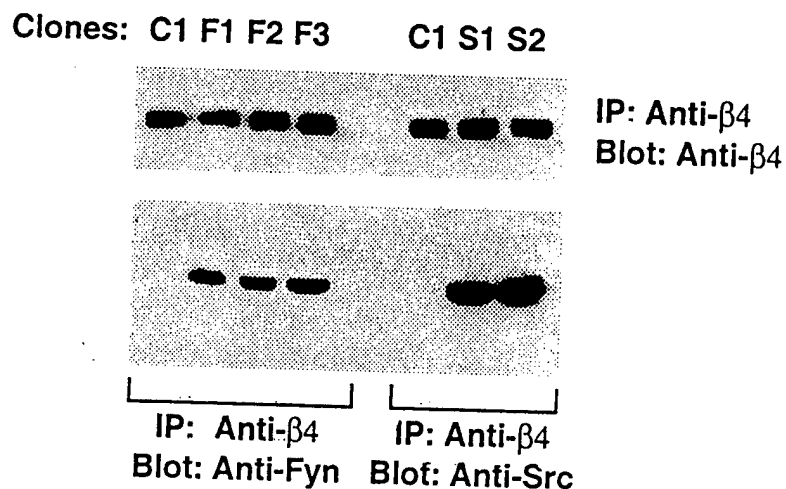


Fig. 3 In vitro kinase assay showing the association of Fyn with  $\alpha 6 \beta 4$  in transfected 293T cells. Transiently transfected cells were immunoprecipitated with the 3E1 antibody or an anti-Fyn antibody or an anti-src antibody. The immuno-complexes were incubated with  $^{32}\text{P}$ - $\gamma\text{ATP}$ , before SDS-PAGE analysis.

# A



# B

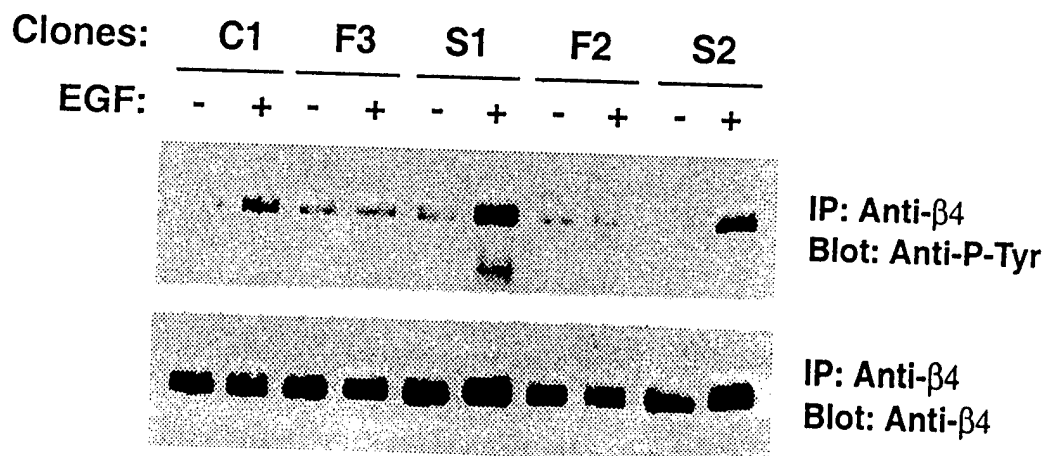


Fig. 4 Panel A: 804G clones expressing DNfyn and DNsrc. F1, F2, F3 are clones expressing DNfyn. S1 and S2 are clones expressing DNsrc. C1 is the parental cell line transfected with the vector alone. Expression of DNfyn or DNsrc in the different clones was determined by immunoblot. Panel B: Phosphorylation of  $\beta$ 4 upon EGF stimulation in DNfyn and DNsrc clones. Tyrosine phosphorylation of  $\beta$ 4 is significantly reduced in DNfyn expressing clones.