

ARMY RESEARCH LABORATORY



# Evaluation and Characterization of Ceramic Bearing Materials

by Paul J. Huang, Clifford W. Hubbard,  
Gary A. Gilde, and Jeffrey J. Swab

ARL-TR-1910

March 1999

19990330 106

Approved for public release; distribution is unlimited.

The findings in this report are not to be construed as an official Department of the Army position unless so designated by other authorized documents.

Citation of manufacturer's or trade names does not constitute an official endorsement or approval of the use thereof.

Destroy this report when it is no longer needed. Do not return it to the originator.

# **Army Research Laboratory**

Aberdeen Proving Ground, MD 21005-5069

---

---

**ARL-TR-1910**

**March 1999**

## **Evaluation and Characterization of Ceramic Bearing Materials**

**Paul J. Huang, Clifford W. Hubbard, Gary A. Gilde, and Jeffrey J. Swab**  
Weapons and Materials Research Directorate, ARL

---

---

Approved for public release; distribution is unlimited.

---

---

---

---

## **Abstract**

---

This report discusses the findings from one phase of our ongoing work to evaluate materials for Army bearing systems. The objective of this phase is to determine the response and longevity of various silicon nitride ( $\text{Si}_3\text{N}_4$ ) materials to rolling contact fatigue (RCF) using hybrid and all-ceramic systems. Tests were conducted under regular lubrication and lubrication-starved conditions for extended periods. A correlation between RCF life and the hardness, strength, and microstructure of each silicon nitride is made. The various silicon nitride materials evaluated in these RCF tests were selected on the basis of providing a varied response to the RCF parameters and conditions used.

## **Acknowledgments**

The authors wish to thank R. Middleton and G. Gazza, the initiators of this study, for their guidance and dedication to the Army's research.

INTENTIONALLY LEFT BLANK.

# Table of Contents

	<u>Page</u>
<b>Acknowledgments</b> .....	iii
<b>List of Figures</b> .....	vii
<b>List of Tables</b> .....	ix
<b>1. Introduction</b> .....	1
<b>2. Materials and Experimental Procedure</b> .....	2
2.1 Materials.....	2
2.2 RCF .....	2
2.3 Characterization .....	5
<b>3. Results</b> .....	6
3.1 Ceramic vs. Steel.....	6
3.2 Ceramic vs. Ceramic .....	6
3.3 Diametral Compression.....	8
<b>4. Discussion</b> .....	9
4.1 RCF Test .....	9
4.2 Diametral Compression Test.....	10
4.3 Microscopy.....	10
4.3.1 <i>Optical Microscopy</i> .....	10
4.3.2 <i>Electron Microscopy</i> .....	11
<b>5. Conclusion</b> .....	13
<b>6. References</b> .....	15
<b>Distribution List</b> .....	17
<b>Report Documentation Page</b> .....	25

INTENTIONALLY LEFT BLANK.



# List of Figures

<u>Figure</u>		<u>Page</u>
1.	RCF Test Rig.....	3
2.	Schematic of Tester.....	4
3.	Micrographs of Si <sub>3</sub> N <sub>4</sub> Specimens Using SEM.....	7
4.	Fractography Micrographs of Diametral Compression Specimens Using SEM.....	8

INTENTIONALLY LEFT BLANK.

## List of Tables

<u>Table</u>		<u>Page</u>
1.	Materials Information.....	3
2.	Conditions for RCF Testing.....	4
3.	Lifetime Data - Tests Conducted With Ceramic Rod on Steel Balls.....	9
4.	Diametral Compression Test Data.....	9
5.	Lifetime Data - Tests Conducted With Ceramic Rod on Ceramic Balls.....	10

INTENTIONALLY LEFT BLANK.

# 1. Introduction

The pursuit to improve tribological performance of bearings has taken us to examine the use of hybrid and all-ceramic systems. The effort to improve lifetimes of bearing components is propelled by (1) the requirement for drive-train components to survive higher loads, temperatures, and speeds, necessitated in advanced emerging Army systems, and (2) the need to reduce surface degradation of current system components from environmental effects.

Current ceramic bearing materials being considered today fail in the same noncatastrophic mode as steel elements, which is an important consideration for their acceptability (Katz 1995). Other reasons why silicon nitride ( $\text{Si}_3\text{N}_4$ ) is being considered for replacing steel elements are high hardness, low density, corrosion resistance, high operating temperatures, and high bend strength. Hardness is important for wear and abrasion resistance. Lower density allows for higher rotational speeds, and the other desired properties need no further elaboration (Katz 1993).

Silicon nitride has been intensely studied for more than 20 yr as an alternative for many metallic structural applications at room and elevated temperatures. Many of these applications have centered on high-temperature materials for engines. Other applications have included cutting tools, electronic packaging, bearings, low-density structural materials, and wear components.

Silicon nitride components are difficult to fabricate. Typically, parts are densified from silicon nitride starting powders; although, for a few applications (such as electronic), silicon nitride is applied by chemical vapor deposition. Because silicon nitride is a covalently bonded material and has a low self-diffusion coefficient, it takes a large amount of energy to promote densification through diffusion. This can only be accomplished at extremely high temperatures and pressures. Because of this difficulty, densification aids are added to promote sintering at low temperatures. These densification aids react with the silica inherently present on the surface of each silicon nitride particle to form a liquid phase. This liquid phase allows some densification through particle rearrangement. More significantly, it allows for the silicon nitride to be sintered

through a solution reprecipitation mechanism. Because of the presence of these densification aids, it is best to think of silicon nitride as an alloy, since the choice of densification aids greatly affects the final properties of the material. In most cases, the densification aids react with the silica to form a second phase that can be either crystalline or amorphous and is usually located at the grain boundaries. SiAlONs are a special case where alumina is added along with other densification aids. The alumina goes into solid solution with the silicon nitride, with the aluminum and oxygen substituting for the silicon and nitrogen, respectively.

Because of the many different densification aids that can be used, different silicon nitride alloys can be developed to maximize materials property for specific applications. Densification aids can be chosen to allow sintering of silicon nitride at temperatures below its decomposition temperature without the aid of pressure. The selection of densification aids determines the processing technique (i.e., gas-pressure sintered [S], hot isostatically pressed [HIPed], or hot pressed), which, in turn, determines the microstructural features. HIPed silicon nitrides tend to have finer grain sizes and higher strengths, whereas, in sintered materials, a duplex microstructure can be developed, which can lead to a higher toughness.

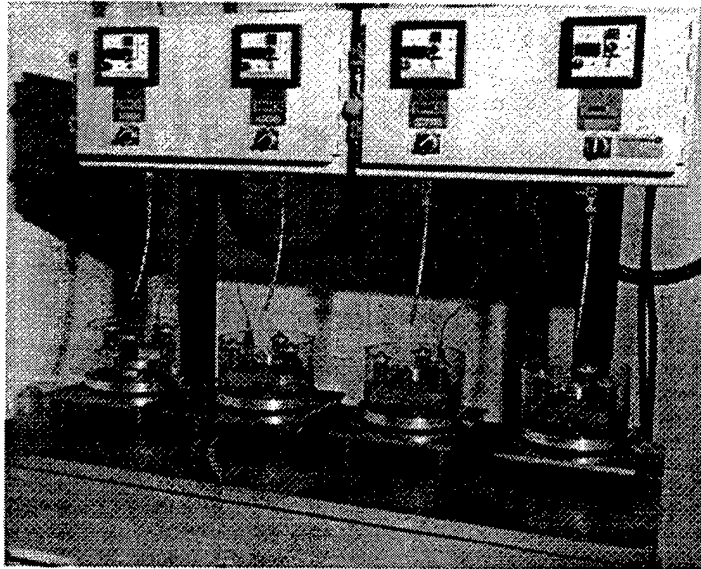
## **2. Materials and Experimental Procedure**

**2.1 Materials.** Various silicon nitride materials (Table 1) were selected for evaluation in rolling contact fatigue (RCF) tests using hybrid and all-ceramic systems. The materials were selected on the basis of providing a varied response to the RCF parameters and conditions used, not solely for a comparison of bearing quality. Most, if not all, of the materials have since been replaced by their manufacturers with upgraded or modified versions. One material, Allied-Signal GN10 was not developed for bearing material applications but rather as a high-temperature structural ceramic.

**2.2 RCF.** All RCF testing for the present effort was performed on a ball/rod rig as seen in Figure 1 (developed by Federal-Mogul and now produced by NTN) under the conditions listed in Table 2.

**Table 1. Materials Information**

Supplier	Densification Method	Additive	Density (g/cm <sup>3</sup> )	Knoop Hardness at 1,000 g (GPa)	Phase Content
Norton Advanced Ceramics (Cerbec)	HIP	MgO	3.23	15.65	25% $\alpha$ 75% $\beta$
ESK-EK9980 HIP	HIP	MgO	3.17	14.51	$\beta$ phase
ESK-EK9980 S	S	La <sub>2</sub> O <sub>3</sub> /Al <sub>2</sub> O <sub>3</sub>	3.26	13.77	$\beta$ phase
Allied-Signal GN10	HIP	Y <sub>2</sub> O <sub>3</sub> /SrO	3.31	—	>95% $\beta$



**Figure 1. RCF Test Rig.**

The RCF operates under the basic principle (as illustrated in Figure 2) and consists of a rotating cylindrical test specimen alternately stressed by rolling contact with three radially loaded balls. The three balls, separated by a retainer, are radially loaded against the test specimen by two tapered bearing cups thrust-loaded by three compression springs (Glover 1982).

Replacing the balls, as necessary, during RCF testing with hybrid systems provides further information on whether or not spalling or wear might be life limiting for a silicon nitride bearing material.

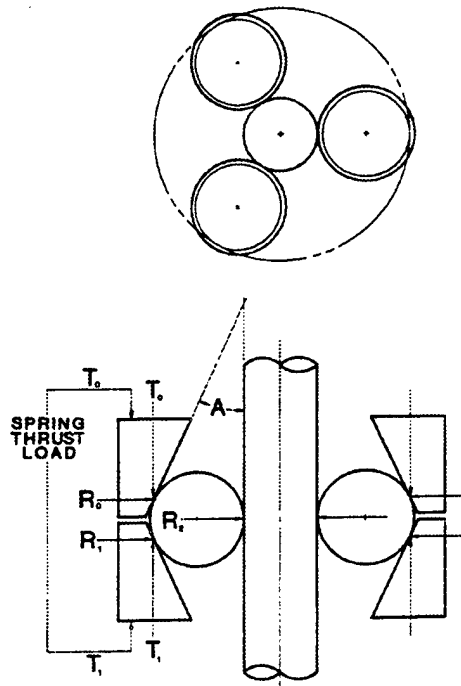
**Table 2. Conditions for RCF Testing**

Hertzian Stress	6.07 GPa (865 ksi) for condition 1 <sup>a</sup> 6.40 GPa (911 ksi) for condition 2 <sup>b</sup>
Rotational Speed	3,600 rpm
Lubrication Supply	8–10 drops/min
Lubrication Type	MIL-PBF-23699 <sup>c</sup>
Specimen Length	76.2 mm +0.025/–0.000 in
Specimen Diameter	9.52 mm +0.0000/–0.00005 in
Surface Finish	0.05 to 0.10 $\mu\text{m}$ AA
Temperature	20–25° C

<sup>a</sup> Ceramic rod with steel balls.

<sup>b</sup> Ceramic rod with ceramic balls.

<sup>c</sup> U.S. Department of Defense (1997).



**Figure 2. Schematic of Tester.**

All four stations of the RCF tester were operated simultaneously to speed up acquisition of the RCF data. At least three wear tracks and associated fatigue spalls were obtained for each specimen condition, and the specimens were alternated among the test stations to minimize any



systematic experimental error. During the ceramic-on-steel tests, the balls were 52,100 steel balls and the rods were the silicon nitride materials. In the ceramic-on-ceramic tests, the ceramic balls were NBD 100 grade 5 silicon nitride, while the rods were the silicon nitride materials indicated in the specific tests. On the all-ceramic system test, lubrication (MIL-PRF-23699 [U.S. Department of Defense 1997]) was provided for the first 24 hr and then discontinued for the remainder of the test.

**2.3 Characterization.** The room-temperature tensile strength of each material was determined by diametrically compressing a right circular cylinder between two flat platens. Tests were conducted in air using a crosshead speed of 0.5 mm/min. A single piece of a manila file folder was placed between the platen and the specimen at each loading point to provide appropriate stress distribution. The specimens had a diameter-to-thickness ratio of 4 to 1, with a nominal diameter of 9.5 mm and a thickness of 2.4 mm. The diameter was the same as that of the RCF specimens. All specimens were machined from a single RCF rod of each silicon nitride. No additional machining was done to the circumference of any cylinders, but both flat surfaces were machined to a 20.3- $\mu$ m RMS finish or better. The tensile strength was calculated using equation (1):

$$\sigma_T = 2P/\pi dt, \quad (1)$$

where

$\sigma_T$  = tensile strength (MPa),

$P$  = applied load (N),

$d$  = specimen diameter (mm), and

$t$  = specimen thickness (mm).

Hardness was determined using a Knoop diamond indenter with a 1,000-g load.

Samples were prepared for microstructural characterization by sectioning RCF rods with a diamond saw and mounting the sections in acrylic. The samples were then rough-ground with silicon carbide abrasives and ground for 12 hr with 9- $\mu\text{m}$  diamond media on lead platens using kerosene as a lubricant. The samples were given a final polish using 0.05- $\mu\text{m}$  silica with a nylon cloth on a vibratory polisher.

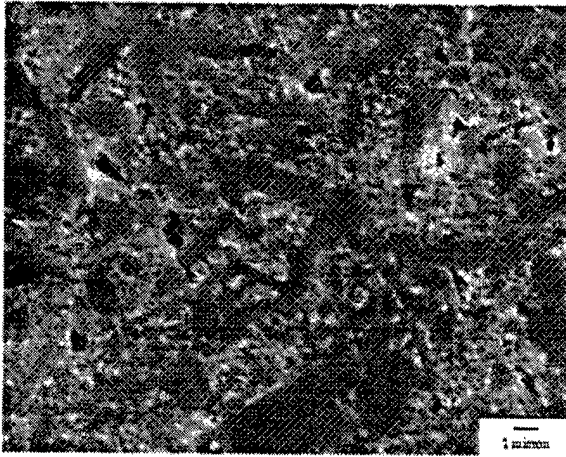
Optical microscopy was conducted to examine the distribution of the phases and the homogeneity of the material. Samples were etched with a boiling 40% HF solution for 10 min and then coated with 4 nm of a gold/palladium alloy. Scanning electron microscopy (SEM) was also used to examine the microstructure and fracture surfaces as seen in Figures 3 and 4. X-ray diffraction (XRD) was performed for phase analysis.

### **3. Results**

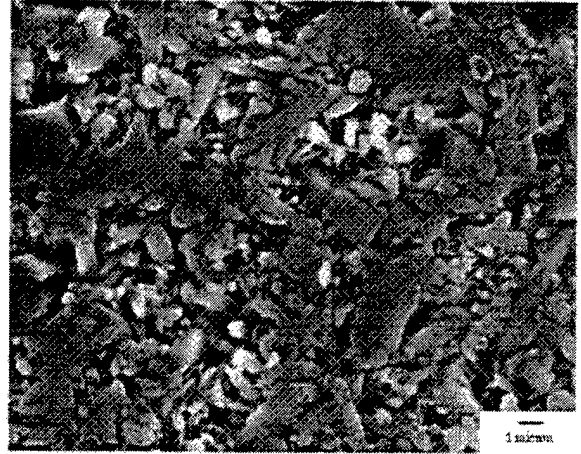
**3.1 Ceramic vs. Steel.** In the hybrid tests (i.e., silicon nitride rods and steel balls), the steel balls failed before the ceramics. When the steel balls failed, they were replaced and the test was continued until the ceramic rods failed.

As can be seen in Table 3, of the four ceramics that were run to failure, the ESK sintered material had a substantially longer fatigue life than the other materials tested. ESK HIPed had the second longest lifetime. Both of these materials greatly exceeded the lifetimes of the Cerbec and GN10 materials.

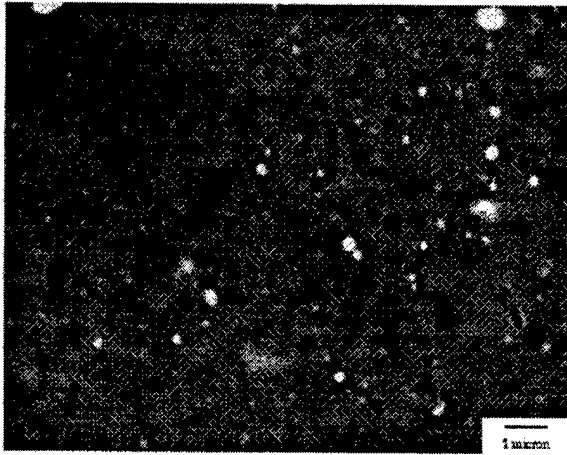
**3.2 Ceramic vs. Ceramic.** Tests were done on Cerbec and GN10 specimens, where, after 24 hr, the lubrication feed was stopped with the idea of accelerating the test in a more severe condition. It was observed that the lubrication-starved condition had a higher temperature than the lubricated condition. Retained lubrication was observed when testing was concluded, which prevented the steel raceway from seizing during the tests.



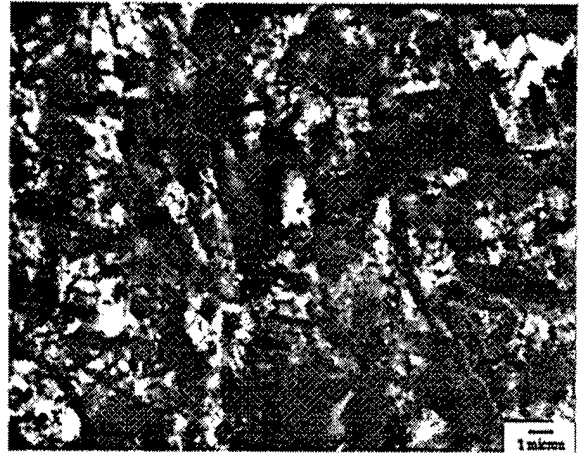
**(a) ESK Sintered at 5,000x.**



**(b) ESK HIPed at 5,000x.**



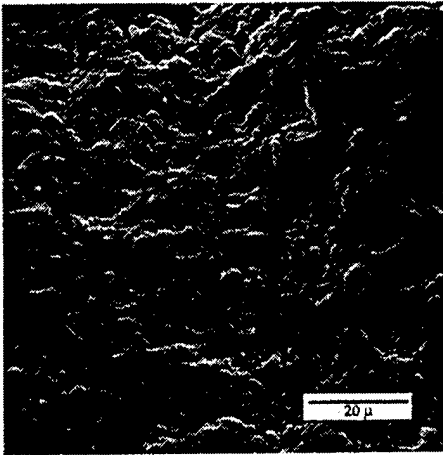
**(c) Cerbec at 9,000x.**



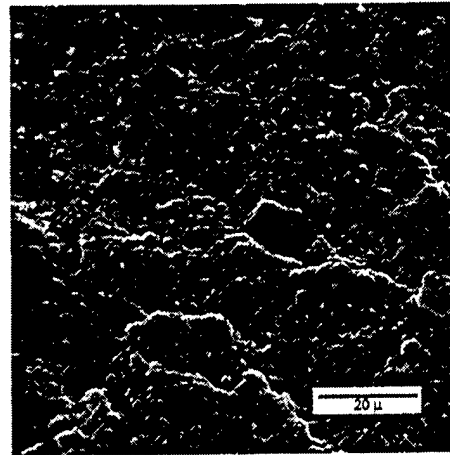
**(d) GN10 at 5,000x.**

**Figure 3. Micrographs of  $\text{Si}_3\text{N}_4$  Specimens Using SEM.**

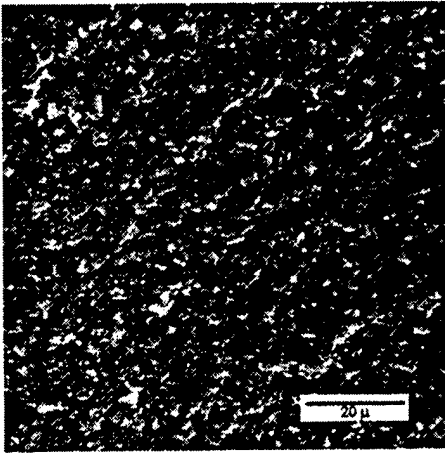
The Cerbec material had a runout at 586.6 and 1,179.1 hr, while the GN10 specimens produced failures at 31.1 and 87.9 hr and a runout at 473.4 hr. Typical spallation occurred in all the materials except for GN10. Spallation is when material chips/spalls off the specimen in a fashion similar to metallic bearing materials. While failure was not the result of chipping or spallation for GN10, a smooth elliptical depression, which acted like a spall, was formed in the wear track, thereby



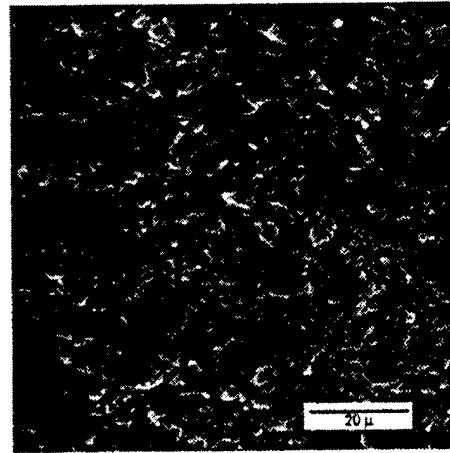
(a) ESK Sintered at 2,000 $\times$ .



(b) ESK HIPed at 2,000 $\times$ .



(c) Cerbec at 2,000 $\times$ .



(d) GN10 at 2,000 $\times$ .

**Figure 4. Fractography Micrographs of Diametral Compression Specimens Using SEM.**

terminating the test. It was confirmed by the preliminary profilometry data that the surface was smooth at the point of failure, whereas traditional failures have a very rough surface profile. This indicates that GN10 is not a bearing-grade material.

**3.3 Diametral Compression.** The results of the diametral compression testing can be seen in Table 4.

**Table 3. Lifetime Data - Tests Conducted With Ceramic Rod on Steel Balls**

Ceramics ( $\text{Si}_3\text{N}_4$ ): With 52,100 Balls	B10( $\times 10^6$ )	B50( $\times 10^6$ )	Slope
ESK-EK9980 S (with 4 pts.)	264.21	404.49	4.42
ESK-EK9980 HIP (with 6 pts.)	108.71	366.86	1.55
Cerbec (with 9 pts.)	14.47	63.02	1.28
Allied-Signal GN10 (with 9 pts.)	6.56	30.38	1.23
M50 Steel Baseline (Middleton et al. 1992)	2.74	7.91	2.93

**Table 4. Diametral Compression Test Data**

Material	Mean $\sigma_T$ (MPa)	No. of Specimens Tested	Standard Deviation
Allied-Steel GN10	772	11	55
ESK-EK9980 S	709	12	91
ESK-EK9980 HIP	708	12	92
Cerbec	589	12	134

## 4. Discussion

**4.1 RCF Test.** The results of the RCF test are shown in Tables 3 and 5. It can be seen by comparing Tables 1 and 3 that there is a trend between having low hardness and longer RCF lifetime for the three materials designed specifically as bearing materials. Lower hardness materials distribute the load over a greater area and reduce the stress on the material. Comparison of hybrid tests and all-ceramic tests showed a significant improvement over steel systems (Middleton et al. 1991). In the all-ceramic systems tested here under lubrication-starved conditions, the ceramic-on-ceramic systems showed that they could continue to perform when lubrication was discontinued. The runouts of these tests were discontinued because the length of time of the test did not justify the continuation of the test until the ceramic rod failed. Runout refers to the ability of the material to not fail in a reasonable time.

**Table 5. Lifetime Data - Tests Conducted With Ceramic Rod on Ceramic Balls**

Ceramics (Si <sub>3</sub> N <sub>4</sub> ): With Ceramic (Si <sub>3</sub> N <sub>4</sub> ) Balls	B10( $\times 10^6$ )	B50( $\times 10^6$ )	Slope
GN10 (With 14 pts.) With NBD 100 Balls	0.95	82.03	0.42
Cerbec With NBD 100 Balls	no data, all runouts <sup>a</sup>	—	—

<sup>a</sup> Runout tests that are discontinued before failure of the ceramic rod occurred.

**4.2 Diametral Compression Test.** The diametral compression test was used to determine the tensile strength of these materials because of the similarity in the specimen geometry between this technique and the RCF test. This technique has been previously used to determine the tensile strength of ceramics, having been first used to test concrete in the early 1950s (Carneiro and Barcellos 1953) and since then for advanced monolithic ceramics (e.g., Si<sub>3</sub>N<sub>4</sub> and Al<sub>2</sub>O<sub>3</sub>) (Rudnick, Hunter, and Holden 1963; Marion and Johnstone 1977; Ovri and Davies 1987; 1988). Failure of ceramic bearings typically occurs due to spallation that results from the development, growth, and coalescence of microcracks at or very near the surface. Table 4 summarizes the tensile strength of each material. There does not appear to be a correlation between strength and RCF lifetime. GN10 had the highest strength and the lowest standard deviation, yet had the shortest RCF lifetime. This is not surprising since GN10 was developed for structural and not bearing applications. There was essentially no difference in strengths between the two ESK materials and yet the sintered material had a substantially greater lifetime in RCF.

### 4.3 Microscopy.

**4.3.1 Optical Microscopy.** Optical microscopy showed that the two ESK silicon nitrides had a more uniform distribution of a second phase and a more homogeneous microstructure than either the Cerbec or GN10 materials. In the Cerbec and GN10 materials, there were large pockets of second phase, while, in both ESK materials, the second phase was uniformly distributed. There also appeared to be preferential polishing of the second phase in the ESK materials, indicating that this second phase was not as hard as the silicon nitride.

**4.3.2 Electron Microscopy.** The scanning electron micrographs taken of the polished and etched samples (Figure 3) show the microstructure and distribution of grain boundary phase. The ESK materials are marked by having larger acicular grains (with a high length-to-diameter [L/D] ratio) surrounded by smaller equiaxed grains. The grain boundary phase is distributed evenly along the grains. There are no large pockets of it. This is in contrast to the GN10 material, where there are large pockets of the grain boundary phase. This microstructure is marked by having a more uniform grain size, and the large grains that are forming do not have as large an L/D ratio as the ESK materials. The Cerbec material has a fine equiaxed grain size. This is to be expected, given that it was processed at temperatures low enough to keep some of the alpha-phase silicon nitride from reacting to form the beta-phase silicon nitride. The fine grain size and alpha phase are what give the Cerbec silicon nitride its high hardness. Pockets of grain boundary phase can be seen to be nonuniformly distributed within this material.

The two ESK materials had similar microstructures that appear to be advantageous in RCF. Although fracture toughness was not measured here, it is believed that the microstructures of the ESK materials would give higher fracture toughness than the GN10 or Cerbec material. This could result in longer RCF lifetimes. Clearly, the grain boundary phase in the ESK materials was more evenly distributed. Under high Hertzian loads, these large pockets of grain boundary phase could act as flaws. When the grain boundary phase is more evenly distributed, the loads are carried by the stronger silicon nitride phase. Although this explains why the two ESK materials performed better than the Cerbec and GN10 materials, it does not explain the significant differences between the ESK sintered and ESK HIPed. The ESK HIPed had a density of  $3.17 \text{ g/cm}^3$ , which is lower than the theoretical density of silicon nitride, which is  $3.22 \text{ g/cm}^3$ . Residual porosity was not removed during the HIPing process, which could explain the difference between the ESK materials. The scanning electron micrographs of the fracture surface clearly show that the ESK HIPed material has more porosity than the sintered material. More work is needed to positively determine the amount of porosity in the ESK HIPed material. The longer lifetimes of the ESK materials appear to be due, in part, to the presence of a softer, more uniformly distributed second phase, which allows for greater stress distribution of the Hertzian stresses. The lower porosity of the ESK sintered compared to the ESK HIPed may account for

the different lifetimes of these similar silicon nitrides. In fact, all the HIPed materials seem to have a higher degree of porosity than the sintered material.

The all-ceramic systems exhibited greater RCF endurance than the hybrid systems, and extraordinary RCF life was observed for lubrication-starved all-ceramic systems. The Cerbec material performed better than the GN10 material in the all-ceramic system. Not surprisingly, the Cerbec material also performed better than the GN10 in the hybrid bearing systems.

For the hybrid bearing systems the ESK sintered material was substantially better than any of the other materials tested.

More work is needed to determine whether a large-grained duplex microstructure, fine-grained duplex microstructure, or intermediate-grained microstructure is best. Work is under way at this time to determine which is the best microstructure and to determine the influence of fracture toughness.

As expected, the nature and distribution of the grain boundary phase have an important effect on the RCF lifetimes. More work to understand the nature of the grain boundary phase is also under way. Transmission electron microscopy (TEM) is being carried out to determine the chemistry and crystallinity of the grain boundary phase. Use of a nanoindenter to determine the hardness of the grain boundary phase is being explored. It was noted that the grain boundary phase of the ESK sintered was much more resistant to the hydrofluoride (HF) etch than the ESK HIPed, which, given the same etch conditions, was overetched as compared to the sintered material. This made it hard to evaluate the porosity of the ESK HIPed material and compare it to the other materials. Additional work is needed to determine the porosity of the different materials tested.

Materials to be used for bearing should have the minimum amount of porosity possible. Even a small amount of fine porosity greatly affects the RCF lifetimes.



Sintering may be a better way to densify bearing materials than HIPing. During the HIP cycle, residual porosity is squeezed until the pressure in the pore equals the HIP pressure; then, there is no more pore removal. Sintering is usually a slower process and uses a greater amount of liquid phase. This can result in more complete pore removal. This work is part of an ongoing effort to evaluate bearing materials and to understand the attributes that make them good so that better bearing materials can be designed. Future work will include evaluation of different silicon nitrides, as well as other materials.

## **5. Conclusion**

A duplex microstructure consisting of large acicular grains with a high L/D ratio surrounded by smaller grains gives the best RCF lifetime.

A homogeneous fine distribution of the grain boundary phase with no large pockets of grain boundary phase gives the best RCF performance.

Low hardness materials seem to perform better than high hardness materials.

Small amounts of porosity degrade RCF performance without affecting strength and hardness.

INTENTIONALLY LEFT BLANK.

## 6. References

- Carneiro, F. L. L. B., and A. Barcellos. "Concrete Tensile Strength." *Union of Testing and Research Laboratories for Materials and Structures*, no. 13, March 1953.
- Glover, D. "A Ball-Rod Rolling Contact Fatigue Tester." ASTM-STP-771, J. Hoo (editor), pp. 107-124, 1982.
- Katz, R. N. *Friction and Wear of Ceramics*. S. Jahanmir (editor), p. 315, New York: Marcel Dekker, Inc., 1993.
- Katz, R. N. "Applications of Silicon Nitride Based Ceramics, Ceramics: Charting The Future." P. Vincenzini (editor), pp. 2299-2310, 1995.
- Marion, R. H., and J. K. Johnstone. *American Ceramic Society Bulletin*. Vol. 56, no. 11, pp. 998-1002, 1977.
- Middleton, R. M., P. J. Huang, M. G. H. Wells, and R. A. Kant. "Surface Engineering." Vol. 7, no. 4, pp. 319-326, 1991.
- Middleton, R. M., P. J. Huang, M. G. H. Wells, and R. A. Kant. "The Effect of Tin Coatings on the Rolling Contact Fatigue Behavior of M50 Bearing Steel." ARL-TR-40, p. 15, U.S. Army Research Laboratory, Aberdeen Proving Ground, MD, 1992.
- Ovri, J. E. O., and T. J. Davies. *Materials Science Engineering*. Vol. 96, pp. 109-116, 1987.
- Ovri, J. E. O., and T. J. Davies. "Science of Ceramics 14." The Institute of Ceramics, pp. 607-613, D. Taylor (editor), United Kingdom, 1988.
- Rudnick, A., A. R. Hunter, and F. C. Holden. *Materials Research Standardization*. Vol. 3, no. 4, pp. 283-289, 1963.
- U.S. Department of Defense. "Lubricating Oil, Aircraft Turbine Engine, Synthetic Base." Nato Code Number O-156, MIL-PRF-23699F, 21 May 1997.

INTENTIONALLY LEFT BLANK.

<u>NO. OF COPIES</u>	<u>ORGANIZATION</u>
2	DEFENSE TECHNICAL INFORMATION CENTER DTIC DDA 8725 JOHN J KINGMAN RD STE 0944 FT BELVOIR VA 22060-6218
1	HQDA DAMO FDQ D SCHMIDT 400 ARMY PENTAGON WASHINGTON DC 20310-0460
1	OSD OUSD(A&T)/ODDDR&E(R) R J TREW THE PENTAGON WASHINGTON DC 20301-7100
1	DPTY CG FOR RDE HQ US ARMY MATERIEL CMD AMCRD MG CALDWELL 5001 EISENHOWER AVE ALEXANDRIA VA 22333-0001
1	INST FOR ADVNCD TCHNLGY THE UNIV OF TEXAS AT AUSTIN PO BOX 202797 AUSTIN TX 78720-2797
1	DARPA B KASPAR 3701 N FAIRFAX DR ARLINGTON VA 22203-1714
1	NAVAL SURFACE WARFARE CTR CODE B07 J PENNELLA 17320 DAHLGREN RD BLDG 1470 RM 1101 DAHLGREN VA 22448-5100
1	US MILITARY ACADEMY MATH SCI CTR OF EXCELLENCE DEPT OF MATHEMATICAL SCI MAJ M D PHILLIPS THAYER HALL WEST POINT NY 10996-1786

<u>NO. OF COPIES</u>	<u>ORGANIZATION</u>
1	DIRECTOR US ARMY RESEARCH LAB AMSRL D R W WHALIN 2800 POWDER MILL RD ADELPHI MD 20783-1145
1	DIRECTOR US ARMY RESEARCH LAB AMSRL DD J J ROCCHIO 2800 POWDER MILL RD ADELPHI MD 20783-1145
1	DIRECTOR US ARMY RESEARCH LAB AMSRL CS AS (RECORDS MGMT) 2800 POWDER MILL RD ADELPHI MD 20783-1145
3	DIRECTOR US ARMY RESEARCH LAB AMSRL CI LL 2800 POWDER MILL RD ADELPHI MD 20783-1145
	<u>ABERDEEN PROVING GROUND</u>
4	DIR USARL AMSRL CI LP (305)

<u>NO. OF</u> <u>COPIES</u>	<u>ORGANIZATION</u>
1	NGIC LANG TMT W F MARLEY CHARLOTTESVILLE VA 22902-5396
1	USA TACOM AMSTA RGRD E E SCHWARZ WARREN MI 48397-5000
2	ARMY TROOP SUPPORT CMD AMSAT REPD M JUEDE AMSAT REPT D HUTSON 4300 GOODFELLOW BLVD ST LOUIS MO 63120-1798
12	DEFNS IND SUPPLY CTR DISC HAC M LETTER DISC CBU HAA T CARONIA DISC HBB T ESSIG CBU HC D GUERRA DISC HAB T KELLER D MORESI H KLEIN CBU HBC J MCCARTY DISC HCB32 T OSGOOD DISC HCA L PELL DISC ECB V TURKOV DISC EC R STRANG 700 ROBBINS AVE PHILADELPHIA PA 19111-5096
2	CC ARMY DEPOT DIR COMP PDN 5WL50 STOP 90 AMSAT I MEDP CORPUS CHRISTI TX 78419-5260

<u>NO. OF</u> <u>COPIES</u>	<u>ORGANIZATION</u>
1	ITT AEROSPACE COMM DIV D RICHARDS 1919 W COOK RD PO BOX 3700 FORT WAYNE IN 46801
1	CORPUS CHRISTI ARMY DEPOT CCAD MS 22 SDSCC QLM METALLURGICAL BR CORPUS CHRISTI TX 78419-6040
1	FT BELVOIR RD & E I S RAEE CTR CODE STRBE FL FT BELVOIR VA 22060-5006
1	NAVAL AIR WARFARE CTR AIRCRAFT DIV J MEINER CODE 4 5 6 2 MS 60 6000 EAST 21ST ST INDIANAPOLIS IN 46219-2190
1	NAVAL SURFACE WARFARE CTR J WONG 3A LEGGETT CIRCLE ANNAPOLIS MD 21402
1	NAVAL INVENTORY CTRL POINT PHILA J TROUTMAN 700 ROBBINS AVE PHILADELPHIA PA 19111
2	NAVAL AVIATION DEPOT NORTH ISLAND CODE 434 MTRL ENGINEERING LAB T DURAZO D CROWLEY BLDG 469 SAN DIEGO CA 92135-7058

NO. OF  
COPIES ORGANIZATION

1 NAVAL AVIATION DEPOT  
R RIVERA  
CODE 6 3 4  
BLDG 101 U  
NAS JACKSONVILLE FL 32212

1 NAVAL RSRCH LAB  
R L MOWERY  
CODE 6176  
4555 OVERLOOK AVE SW  
WASHINGTON DC 20375

1 NAVAL AVIATION DEPOT  
J DEVEREAUX  
CODE 4 3 4 1  
NAS JACKSONVILLE FL  
32212-0016

1 NAVAL AVIATION DEPOT  
M GOULART  
BLDG 469  
SAN DIEGO CA 92135-5112

1 NAVAL AVIATION DEPOT  
NORTH ISLAND  
M CHASE  
SAN DIEGO CA 92135-5112

1 NAVAL AIR WARFARE CTR  
R J ABANTO  
CODE 4 1 4 2 HWY 547  
LAKEHURST NJ 08733-5100

2 NAVAL AVIATION DEPOT  
L HALL  
PSC BOX 8021 CODE 341  
D SMITH  
CODE 390  
CHERRY POINT NC  
28533-0021

1 USAF CASC LGHE  
B JONES  
74 N WASHINGTON AVE  
STE 8  
BATTLE CREEK MI  
49017-3094

1 HQ CASC LGBC  
J NOVELLI  
BATTLE CREEK MI 49017-3094

NO. OF  
COPIES ORGANIZATION

1 WR ALC LKJE  
J CHANCELLOR  
460 2ND ST STE 221  
WARNER ROBBINS AFB GA  
31098-5330

3 WR ALC TINRGA  
R B REID SR  
R MASSENGL  
WRALC TINPPP  
D MIMMS  
480 2ND ST STE 100  
WARNER ROBBINS AFB GA  
31098-1640

2 C S DRAPER LAB INC  
F MARCHAND  
J R WILLIAMS  
555 TECHNOLOGY SQ  
MS 42  
CAMBRIDGE MA 01239-3539

2 DRAPER LAB PRINCIPAL  
MEMBER  
W KELLEHER  
A HYNES  
555 TECHNOLOGY SQUARE  
CAMBRIDGE MA 02139-3563

1 UNIV OF STHRN MISSISSIPPI  
MISSISSIPPI POLYMEX INST  
R D SUDDUTH  
PO BOX 10003  
HATTIESBURG MS 39406

1 CTR FOR CERAMIC RSRCH  
D E NIESZ  
PO BOX 909  
PISCATAWAY NJ 08855-0909

1 TECHLGY ASSESSMENT  
AND TRNSFR INC  
L FEHRENBACHER  
133 DEFENSE HWY STE 212  
ANNAPOLIS MD 21401

1 DU PONT LANXIDE  
COMPOSITES INC  
J E GARNIER  
1300 MARROWS RD  
PO BOX 6077  
NEWARK DE 19714-6077

<u>NO. OF</u> <u>COPIES</u>	<u>ORGANIZATION</u>
2	ENCERATEC W F MANDLER JR 810 BROWN ST COLUMBUS IN 47201
1	NTN TECH CTR M J LISTON 3980 RESEARCH PARK DRV ANN ARBOR MI 48108
1	HUGHES AIRCRAFT CO K J CHRISTOPOLOUS BLDG E01 MS D125 EL SEGUNDO CA 90245
2	NORTON ADVNCD CERAMICS A BIZON A TAGLIALAVORE 10 AIRPORT PARK RD E GRANBY CT 06026
1	HOOVER PRECISION T ADAMS 1390 INDUSTRIAL PARK DRV SAULT CITY MI 49783
1	BOEING COMMERCIAL B ROBERTS PO BOX 3707 MS 73 42 SEATTLE WA 98124-2207
4	MRC BEARINGS R BLOOM G TOMLIN R BAUS J WICKWIRE 402 CHANDLER ST PO BOX 280 JAMESTOWN NY 14701
1	ALLIED SIGNAL ENGINES J ROWAN 111 S 34TH ST PO BOX 52181 PHOENIX AZ 85072-2181
1	AEMETEK AEROSPACE PRODUCTS INC L BELL 50 FORDHAM RD WILMINGTON MA 01887

<u>NO. OF</u> <u>COPIES</u>	<u>ORGANIZATION</u>
1	MESSINGER BEARING CORP GOVERNMENT CONTRACTS 3901 31 D STREET PHILADELPHIA PA 19124-0570
1	KLUBER LUBRICATION D LAUER S MAZZOLA 54 WENTWORTH AVE LONDONDERRY NH 05053-7437
1	PHILLIPS ENVIRONMENTAL RHO CHEM DIV R GUSTAFSON 425 ISIS AVE ENGLEWOOD CA 91301
1	BRANSON ULTRASONICS B CHIARELLA 41 EAGLE RD DANBURY CT 06810
1	KAYDON CORP M PURCHASE 2860 MCCRACKEN ST MUSKEGEON MI 49443
1	ALLISON GAS TURBINE DIV J ALLEN 2001 S TIBBS AVE PO BOX 420 INDIANAPOLIS IN 46206-0420
1	MCGILL MFG CO INC K COE 909 N LAFAYETTE ST VALPRAISO IN 46383-4210
1	PT COMPONENTS INC LINK BELT BEARING DIV B WOODS 7601 ROCKVILLE RD INDIANAPOLIS IN 46206
1	RAE BEARING CORP B BERRINGER 170 E ELLIOTT ST PO BOX 14180 HARTFORD CT 06114-1517



NO. OF  
COPIES ORGANIZATION

1 ROLLWAY BEARING DIV  
T MORRISSET  
7600 MORGAN RD  
LIVERPOOL NY 13088-3433

1 ALLIED SIGNAL FLUID SYS  
R MARTINEZ  
1300 W WARNER RD  
PO BOX 22200  
TEMPE AZ 85285-2200

2 HOOVER PRECISION PRODUCTS  
J PARKER  
N SEELEN  
35 KRIPES RD  
E GRANBY CT 06026

1 SPLIT BALLBEARING DIV  
D BARKER  
336 MECHANICS ST  
LEBANON NH 03766-2627

1 DCMC BOSTON  
D HERRICK  
336 MECHANICS ST  
LEBANON NH 03766-2627

1 TRW SPACE AND ELECTRONICS  
R SOBCHIK  
BLDG R9 MS 1960  
1 SPACE PARK  
REDONDO BEACH CA  
90278-1001

1 NASA MARSHALL SPACE  
FLIGHT CENTER  
M CLARK INGRAM  
MAIL CODE EH 42  
MSFC AL 35812

2 BARDEN CORP  
A CONTI  
C V GEREG  
200 PARK AVENUE  
DANBURY CT 06818-2449

1 DCMC  
CO BARDEN CORP  
D GERAMITA QAR  
PO BOX 2449  
200 PARK AVE  
DANBURY CT 00813-2449

NO. OF  
COPIES ORGANIZATION

2 BEARING INSPECTION INC  
H BOSLER  
D BAKER  
10041 SHOEMAKER AVE  
SANTE FE SPRINGS CO  
90670-3498

2 NEW HAMPSHIRE BALL  
BEARING  
J CANGRO  
A VO  
9727 DESOTO AVE  
CHATSWORTH CA 91311-4410

2 JPM COMPANY  
A CASSIDY  
M TABOR  
291 LAMBERT RD  
ORANGE CT 06477

1 TORRINGTON FAFNIR  
D FRICK  
3975 STEVE REYNOLDS BLVD  
NORCROSS GA 30093-3062

1 ENTROPIC SYS  
R KAISER  
PO BOX 397  
WINCHESTER MA 01890-0597

1 HACKMAN BEARINGS INC  
K HACKMAN  
13987 PIONEER RD  
APPLE VALLEY CA 92307

1 FURON  
M LEARY  
356 METACOM AVE  
BRISTOL RI 02809

1 DUPONT DE NEUMORS  
AND COMPANY INC  
A MERCHANT  
CHESTNUT RUN PLAZA 711F  
WILMINGTON DE 19880-0711

1 HONEWELL INC  
SSO STAFF ENGINEER  
L MILLER  
MAIL STOP 2510  
PO BOX 52199  
PHOENIX AZ 85022-2199

<u>NO. OF</u> <u>COPIES</u>	<u>ORGANIZATION</u>
3	SPAULDING COMPOSITES J MURRAY J GUERTIN R A BROWN PO BOX 1748 1 MONOGRAM PL ROCHESTER NH 03866-1748
3	MPB CORP S LAFALAM P A WARD QAR GFMOA PW WELCH PRECISION PARK KENNE NH 03431-0543
1	HUGHES AIRCRAFT CO L LIPP PO BOX 902 MS F150 BLDG E01 EL SEGUNDO CA 93045-0902
1	MICRONAUTICS A J MAZER 615B WREN SONG RD YARDLEY PA 19067
1	ACTIONPAK INC J F MCBRIDE SR PO BOX 557 2550 PEARL BUCK ROAD BRISTOL PA 19007
1	HUGHES SPACE AND COMM H METZLER PO BOX 902 MS D148 BLDG E01 EL SEGUNDO CA 90245-0902
2	THE BEARING CONSULTANT R PRICE H E SINGER 1063 TURNPIKE ST STOUGHTON MA 02072
1	SKF SPECIALTY PRODUCTS H ROBINSON 1530 VALLEY CTR PARKWAY BETHLEHEM PA 18017

<u>NO. OF</u> <u>COPIES</u>	<u>ORGANIZATION</u>
2	NEW HAMPSHIRE BALL BEARING S SZYDLO W TAYLOR ROUTE 202 S PETERBOROUGH NH 03458-0805
1	DCMAO BUFFALO C O MRC J WICKWIRE 402 CHANDLER ST JAMESTOWN NY 14701
1	ABMA G T SATTERFIELD 1200 19TH ST NW STE 300 WASHINGTON DC 20036-2422
1	FORWARD TECHNOLOGY P VASINA 136 GUINEVERE RIDGE CHESIRE CT 06410
1	GEO CENTERS INC M WILSON 1755 JEFFERSON DAVID HWY STE 910 ARLINGTON VA 22302
1	PSE ASSOCIATES MANUFACTURERS AGENTS J J AIELLO 441 SOUTH HOOP POLE RD GUILFORD CT 06437
1	ROCKWELL INT M C GE22 D W JONES 3370 MIRALOMA AVE ANAHEIM CA 92803
1	KLUBER LUBRICATION N FERRI 115 MAIN ST SCYREVILLE NJ 08872
1	SKF USA INC G HUSTED 1100 FIRST AVE KING OF PRUSSIA PA 19406-3352

NO. OF  
COPIES ORGANIZATION

1 DCMC STRATFORD  
H MORRIS  
550 MAIN ST  
STRATFORD CT 06497-7574

1 LITTON G & CS DIV  
R L JENKINS  
2211 WEST NORTH TEMPLE  
SALT LAKE CITY UT 84116

1 THE TORRINGTON CO  
P DRECHSLER  
59 FIELD ST  
TORRINGTON CT 06790

1 JPM COMPANY  
W E TABER JR  
601 W L RUNNELS DR  
HATTIESBURG MS 39401

1 MOOG INC  
J BAILEY  
20263 WESTERN AVE  
TORRENCE CA 90501

1 SOCIETY OF AUTOMOTIVE  
ENGINEERS INC  
R VAN DAME  
400 COMMONWEALTH DRV  
WARRENDALE PA 15096-0001

1 STORAGE TECHNOLOGY CORP  
C WACHENDORFEH  
2270 SOUTH 88 STREET  
LOUISVILLE CO 80028-5253

1 OMNITEK PRODUCTS INC  
J GRAFFIGNA  
213 B WEST HUDGINS  
GRAPEVINE TX 76051

1 DCMAO VAN NUYS  
C SALAZAR  
22024 LASSEN ST 116  
CHATSWORTH CA 91311

1 AGA CHEMICALS INC  
S LEVIN  
26396 LOMBARDY ROAD  
MISSION VIEJO CA 92692

NO. OF  
COPIES ORGANIZATION

1 J STEMNISKI  
19 WALNUT ROAD  
SWAMPSCOTT MA 01907

1 D STANLEY  
6905 GLENFLORA AVE  
SAN DIEGO CA 92119-2945

INTENTIONALLY LEFT BLANK.

REPORT DOCUMENTATION PAGE			Form Approved OMB No. 0704-0188		
Public reporting burden for this collection of information is estimated to average 1 hour per response, including the time for reviewing instructions, searching existing data sources, gathering and maintaining the data needed, and completing and reviewing the collection of information. Send comments regarding this burden estimate or any other aspect of this collection of information, including suggestions for reducing this burden, to Washington Headquarters Services, Directorate for Information Operations and Reports, 1215 Jefferson Davis Highway, Suite 1204, Arlington, VA 22202-4302, and to the Office of Management and Budget, Paperwork Reduction Project (0704-0188), Washington, DC 20503.					
1. AGENCY USE ONLY (Leave blank)		2. REPORT DATE March 1999	3. REPORT TYPE AND DATES COVERED Final, 1995 - 1998		
4. TITLE AND SUBTITLE Evaluation and Characterization of Ceramic Bearing Materials			5. FUNDING NUMBERS D650		
6. AUTHOR(S) Paul J. Huang, Clifford W. Hubbard, Gary A. Gilde, and Jeffrey J. Swab					
7. PERFORMING ORGANIZATION NAME(S) AND ADDRESS(ES) U.S. Army Research Laboratory ATTN: AMSRL-WM-MC Aberdeen Proving Ground, MD 21005-5069			8. PERFORMING ORGANIZATION REPORT NUMBER ARL-TR-1910		
9. SPONSORING/MONITORING AGENCY NAMES(S) AND ADDRESS(ES)			10. SPONSORING/MONITORING AGENCY REPORT NUMBER		
11. SUPPLEMENTARY NOTES					
12a. DISTRIBUTION/AVAILABILITY STATEMENT Approved for public release; distribution is unlimited.			12b. DISTRIBUTION CODE		
13. ABSTRACT (Maximum 200 words)  This report discusses the findings from one phase of our ongoing work to evaluate materials for Army bearing systems. The objective of this phase is to determine the response and longevity of various silicon nitride Si <sub>3</sub> N <sub>4</sub> materials to rolling contact fatigue (RCF) using hybrid and all-ceramic systems. Tests were conducted under regular lubrication and lubrication-starved conditions for extended periods. A correlation between RCF life and the hardness, strength, and microstructure of each silicon nitride is made. The various silicon nitride materials evaluated in these RCF tests were selected on the basis of providing a varied response to the RCF parameters and conditions used.					
14. SUBJECT TERMS rolling contact fatigue, ceramic, bearing material, Si <sub>3</sub> N <sub>4</sub>			15. NUMBER OF PAGES 28		
			16. PRICE CODE		
17. SECURITY CLASSIFICATION OF REPORT UNCLASSIFIED	18. SECURITY CLASSIFICATION OF THIS PAGE UNCLASSIFIED	19. SECURITY CLASSIFICATION OF ABSTRACT UNCLASSIFIED	20. LIMITATION OF ABSTRACT UL		

INTENTIONALLY LEFT BLANK.

**USER EVALUATION SHEET/CHANGE OF ADDRESS**

This Laboratory undertakes a continuing effort to improve the quality of the reports it publishes. Your comments/answers to the items/questions below will aid us in our efforts.

1. ARL Report Number/Author ARL-TR-1910 (Huang) Date of Report March 1999

2. Date Report Received \_\_\_\_\_

3. Does this report satisfy a need? (Comment on purpose, related project, or other area of interest for which the report will be used.) \_\_\_\_\_  
\_\_\_\_\_  
\_\_\_\_\_

4. Specifically, how is the report being used? (Information source, design data, procedure, source of ideas, etc.) \_\_\_\_\_  
\_\_\_\_\_  
\_\_\_\_\_

5. Has the information in this report led to any quantitative savings as far as man-hours or dollars saved, operating costs avoided, or efficiencies achieved, etc? If so, please elaborate. \_\_\_\_\_  
\_\_\_\_\_  
\_\_\_\_\_

6. General Comments. What do you think should be changed to improve future reports? (Indicate changes to organization, technical content, format, etc.) \_\_\_\_\_  
\_\_\_\_\_  
\_\_\_\_\_  
\_\_\_\_\_

**CURRENT  
ADDRESS**

\_\_\_\_\_  
Organization

\_\_\_\_\_  
Name

\_\_\_\_\_  
E-mail Name

\_\_\_\_\_  
Street or P.O. Box No.

\_\_\_\_\_  
City, State, Zip Code

7. If indicating a Change of Address or Address Correction, please provide the Current or Correct address above and the Old or Incorrect address below.

**OLD  
ADDRESS**

\_\_\_\_\_  
Organization

\_\_\_\_\_  
Name

\_\_\_\_\_  
Street or P.O. Box No.

\_\_\_\_\_  
City, State, Zip Code

(Remove this sheet, fold as indicated, tape closed, and mail.)  
**(DO NOT STAPLE)**

---

DEPARTMENT OF THE ARMY

OFFICIAL BUSINESS



NO POSTAGE  
NECESSARY  
IF MAILED  
IN THE  
UNITED STATES

**BUSINESS REPLY MAIL**  
FIRST CLASS PERMIT NO 0001,APG,MD

POSTAGE WILL BE PAID BY ADDRESSEE

DIRECTOR  
US ARMY RESEARCH LABORATORY  
ATTN AMSRL WM MC  
ABERDEEN PROVING GROUND MD 21005-5069

