

REPORT DOCUMENTATION PAGE			Form Approved OBM No. 0704-0188	
Public reporting burden for this collection of information is estimated to average 1 hour per response, including the time for reviewing instructions, searching existing data sources, gathering and maintaining the data needed, and completing and reviewing the collection of information. Send comments regarding this burden or any other aspect of this collection of information, including suggestions for reducing this burden, to Washington Headquarters Services, Directorate for Information Operations and Reports, 1215 Jefferson Davis Highway, Suite 1204, Arlington, VA 22202-4302, and to the Office of Management and Budget, Paperwork Reduction Project (0704-0188), Washington, DC 20503.				
1. AGENCY USE ONLY (Leave blank)		2. REPORT DATE 1997		3. REPORT TYPE AND DATES COVERED Book
4. TITLE AND SUBTITLE General Techniques for SEM Observation			5. FUNDING NUMBERS Job Order No. 573505206 Program Element No. 0601153N Project No. Task No. Accession No.	
6. AUTHOR(S) Dennis Lavoie, Ricky Ray and Brenda Little				
7. PERFORMING ORGANIZATION NAME(S) AND ADDRESS(ES) Naval Research Laboratory Oceanography Division Stennis Space Center, MS 39529-5004			8. PERFORMING ORGANIZATION REPORT NUMBER NRL/BA/7333--95-0006	
9. SPONSORING/MONITORING AGENCY NAME(S) AND ADDRESS(ES) Office of Naval Research 800 North Quincy Street Arlington, VA 22217-5000			10. SPONSORING/MONITORING AGENCY REPORT NUMBER	
11. SUPPLEMENTARY NOTES Procedures in Electron Microscopy, Chapter 14 John Wiley & Sons				
12a. DISTRIBUTION/AVAILABILITY STATEMENT Approved for public release. Distribution is unlimited.			12b. DISTRIBUTION CODE	
13. ABSTRACT (Maximum 200 words) This minimization procedure is only necessary for samples that must be viewed in the hydrated state without prior drying. A more direct installation sequence may be used for initially dry samples. For some samples, it may be important to avoid dehydration, but the presence of additional water is not a problem. In such cases it is recommended that the sample be covered in excess water before using the optimized installation sequence.				
14. SUBJECT TERMS ESEM (environmental scanning electron microscope), microbiology, biofilms, cathodoluminescence imaging, high-pressure SEM, bacteria, algae, fungus, and polymers			15. NUMBER OF PAGES 25	
			16. PRICE CODE	
17. SECURITY CLASSIFICATION OF REPORT Unclassified	18. SECURITY CLASSIFICATION OF THIS PAGE Unclassified	19. SECURITY CLASSIFICATION OF ABSTRACT Unclassified	20. LIMITATION OF ABSTRACT SAR	

DTIC QUALITY INSPECTED 4

19980105067

Procedures in Electron Microscopy

Principal Editors

**Professor A.W. Robards
Dr A.J. Wilson**

Centre for Cell & Tissue Research

The University

York, UK

**This Document Contains Missing
Page/s That Are Unavailable In
The Original Document**

JOHN WILEY & SONS

Chichester · New York · Brisbane · Toronto · Singapore

Copyright © 1993 by John Wiley & Sons Ltd,
Baffins Lane, Chichester,
West Sussex PO19 1UD, England

All rights reserved.

No part of this book may be reproduced by any means,
or transmitted, or translated into a machine language
without the written permission of the publisher.

Other Wiley Editorial Offices

John Wiley & Sons, Inc., 605 Third Avenue,
New York, NY 10158-0012, USA

Jacaranda Wiley Ltd, G.P.O. Box 859, Brisbane,
Queensland 4001, Australia

John Wiley & Sons (Canada) Ltd, 22 Worcester Road,
Rexdale, Ontario M9W 1L1, Canada

John Wiley & Sons (SEA) Pte Ltd, 37 Jalan Pemimpin #05-04,
Block B, Union Industrial Building, Singapore 2057

We have made every effort to mark as such all words that we
believe to be trademarks. However, the presence of a word in the
manual, whether marked or unmarked, in no way affects its legal
status as a trademark.

British Library Cataloguing in Publication Data

A catalogue record for this book is available from the British Library

ISBN 0 471 92853 4

Typeset in 11/13pt Times by Page Bros (Norwich) Ltd.
Printed and bound in Great Britain by Orbital Press, Letchworth.

14

General Techniques for SEM Observation

14:1 DETECTORS FOR SEM IMAGING	14:1.1
14:2 SECONDARY ELECTRON IMAGING*	
14:3 BACKSCATTERED ELECTRON IMAGING	14:3.1
Procedure: SEM operation in EC mode	14:3.4
Support Procedure: Interpretation of EC images	14:3.6
Support Procedure: Specimen preparation for EC	14:3.13
14:4 CATHODOLUMINESCENCE IMAGING	14:4.1
Support Procedure: Specimen preparation	14:4.4
Procedure: Basic cathodoluminescence imaging	14:4.5
Procedure: Cathodoluminescence imaging and spectroscopy	14:4.9
14:5 LOW-ENERGY SEM	14:5.1
Procedure: Detection of material contrast	14:5.4
Procedure: Detection of topographic contrast	14:5.5
Support Procedure: Calibration of material contrast	14:5.6
14:6 SPECIMEN CURRENT IMAGING*	
14:7 SELECTED AREA DIFFRACTION PATTERNS AND THEIR INTERPRETATION	14:7.1
Procedure: Obtaining a pattern	14:7.5
Support Procedure: Setting up of camera control unit	14:7.5
Support Procedure: Background subtraction	14:7.6
Support Procedure: Calibration of system for pattern interpretation	14:7.7
14:8 STRAINING/DYNAMIC EXPERIMENTS	14:8.1
Procedure: Tensile testing of conductive specimens	14:8.1
Alternative Procedure: Tensile testing of nonconductive specimens	14:8.3

14:9	HIGH-TEMPERATURE MICROSCOPY*	
14:10	HIGH-PRESSURE SEM (HPSEM)	14:10.1
	Procedure: Minimizing sample evaporation in the environmental scanning electron microscope	14:10.15
	Support Procedure: Constructing a loose lid	14:10.18
	Procedure: Examination of hydrated, nonconductive biofilms in ESEM	14:10.20
14:11	IMAGE RECORDING AND INTERPRETATION	14:11.1
14:12	STEREOSCOPIC OBSERVATION	14:12.1
	Procedure: Preparation of a stereopair by tilting the specimen	14:12.2
14:13	MICROSCOPE MAINTENANCE	14:13.1
	Towards a Preventative Maintenance Program	14:13.8
	Support Procedure: Preparation of resolution test specimen	14:13.8
	Support Procedure: Preparation of drift and contamination rate specimen	14:13.9
	Procedure: Confirmation of resolving power	14:13.10
	Procedure: Determination of contamination rate	14:13.11
	Procedure: Determination of stage drift rate	14:13.11
14:14	CALIBRATION OF MAGNIFICATION IN THE SEM	14:14.1
	Support Procedure: Preparation of the copper mesh standard	14:14.1
	Support Procedure: Preparation of diffraction grating replica mounted on a TEM grid	14:14.2
	Procedure: Calibration	14:14.2

* Not yet published.

Background Information

This minimization procedure is only necessary for samples that must be viewed in the hydrated state without prior drying. A more direct installation sequence may be used for initially dry samples.

For some samples, it may be important to avoid dehydration, but the presence of additional water is not a problem. In such cases it is recommended that the sample be covered in excess water before using the optimized installation sequence.

Troubleshooting

The response of the Peltier stage may not be sufficiently fast to keep the sample at a constant 3 °C during the optimized installation sequence, because of the heat changes due to evaporation and condensation. This is a limitation of the equipment and is difficult to correct. The more efficient the control system of the Peltier stage is, the better the optimization will be.

☐ Procedure**Examination of hydrated, nonconductive biofilms in ESEM**

Characklis & Marshall (1990) define biofilms in the following terms:

- They are composed of microbial cells (principally bacteria, algae and fungi) immobilized at a substratum
- The cells of a biofilm may or may not be embedded in an organic polymer matrix of microbial origin
- They are surface accumulations that are not necessarily uniform in time or space
- They may contain a significant fraction of inorganic or abiotic substances held together by a matrix of biotic origin

These definitions are sufficiently broad to include a range of situations, from microorganisms growing on moist, subaerial surfaces to fully developed slime layers on submerged surfaces. Biofilms are a difficult class of specimens to examine with conventional scanning electron microscopy (SEM) because they are highly hydrated ($\geq 95\%$ water) and nonconductive.

Desiccation procedures necessary for conventional SEM cause collapse or dissolution of biofilm constituents. Artifacts introduced by a typical dehydration protocol (Little *et al.*, 1991) are illustrated in Plates 14:10.6a and b. Certain HPSEM technologies, such as the ElectroScan[®] ESEM, avoid desiccation artifacts by using a water vapor atmosphere in the specimen chamber to produce a signal. Not only can the sample be maintained at virtually any degree of water saturation, but local electron charge build-up is dissipated by the water vapor, and the need for a heavy-metal coating that interferes with energy dispersive X-ray spectroscopy (EDXS) is eliminated. In most cases, specimens may be viewed in ESEM with little preparation.

Equipment

- ☐ ESEM
- ☐ Peltier cooling stage
- ☐ Specimen stub for cooling stage (concave on one end)
- ☐ Containers, tubes or plates (to hold specimen for rinsing)
- ☐ Pipettes
- ☐ Tweezers

Reagents

- T ■ 2–4% glutaraldehyde in buffer (0.1 M cacodylic acid or natural or artificial seawater at ambient salinity (as needed)
- T ■ 5% solution of osmium or ruthenium tetroxide (as needed)
 - ☐ Distilled water
 - ☐ Salinity series, from ambient salinity to distilled water (as needed)

T toxic

Method

The basic procedure assumes that the specimen has excessive salts or nutrients, has been fixed with buffered glutaraldehyde and is small enough to fit in the concavity of the Peltier cooling stage stub. Other situations will be discussed below.

1. Rinse salts, fixatives or excess nutrients from the specimen by immersing or covering it with distilled water for several minutes. If the specimen is from marine waters, pass it through a series of decreasing salinity rinses, e.g. 100% seawater, 75% seawater:25% distilled water, 50:50, 75:25 and, finally, 100% distilled water. Use chilled solutions.
2. Pre-chill the Peltier cooling stage in a freezer for 30 min. Chill the specimen in a refrigerator.

3. Transfer the Peltier stage to the chamber. Read the temperature of the stage on the temperature controller (the temperature will have risen from 0 °C to about 2–3 °C), and set the controller to this temperature or slightly lower.
4. Load the specimen into the concavity of the stub and cover with distilled water.
5. Close the chamber door. Set the desired end pressure to ~5 Torr (~665 Pa) using the vapor pressure gauge and the 'set' button to initiate pumpdown.
6. When the pre-set pressure is reached, the isolation valve will automatically open and an image will be displayed on the monitor. The overlying layer of water will be visible.
7. Use the manual pressure fine control to slowly decrease pressure (0.5 Torr or ~65 Pa increments) to remove the overlying water (too rapid a pumpdown when the sample is at 0–3 °C may freeze the specimen by evaporative cooling). Monitor the live image closely during pumpdown. The specimen will slowly emerge without distortion until it is completely uncovered (see, for example, Plates 14:10.7a–c).
8. Once the desired amount of overlying water has been removed from the specimen, press the 'set' button to automatically maintain the chamber pressure. Adjust the chamber pressure using the pressure fine control only to change the hydration of the specimen. If examination must be interrupted, the specimen can easily be flooded again to prevent dehydration by injecting water vapor into the chamber using the fine control or the 'flood' button.
9. Operating parameters—use nominal or default microscope operating parameters: an accelerating voltage of 20 keV, default spot size, beam current at filament saturation, a detector distance of ~14 mm and a scan rate of ~2 frames per second. The final chamber pressure for adequate image resolution will be ~4 Torr (~530 Pa) at a specimen temperature of ~3 °C.
10. Bring the specimen stage up to ~7–8 mm from the ESD detector to increase the resolution, and adjust the brightness and contrast as necessary to give a good image.
11. Use the digital image 'integrate' or 'add' function to increase the resolution or to record the image rather than slowing the scan rate.

Applications

The following list with examples gives some idea of the range of specimens to which this technique can be applied:

- Algal biofilms on stone (Plate 14:10.7c)
- Biofilms on painted surfaces (Plate 14:10.8)
- Biofilms on metal surfaces, e.g. cooling/heat exchanger tubing (Plates 14:10.6 and 14:10.9)
- Suspended marine aggregates ('marine snow') (Plate 14:10.10)
- Mixed biofilms on organic synthetics (Plate 14:10.11)
- Algal biofilms on vascular plants (Plate 14:10.12)
- Fungi on agar (Plate 14:10.13)
- Internal organelles and parasites (Plate 14:10.14)

Commentary

The basic considerations for viewing hydrated, nonconductive specimens in ESEM are as follows:

- (a) Sample preparation.
- (b) Control of specimen temperature.
- (c) Microscope operating parameters.

Specimens requiring no pretreatment

Subaerial biofilms and biofilms that developed in a freshwater environment may be inserted directly into the ESEM chamber without fixation or other preparation. As noted below, some distortion may occur due to localized heating and dehydration.

Fixed versus unfixed specimens

Unfixed specimens containing microorganisms that have a rigid structure, such as diatoms and many bacteria, may be viewed in ESEM with no damage, but microorganisms having less rigid cell walls, such as fungi, may show some collapse (Plate 14:10.13). If the analysis is compromised by this effect, a lower beam current or accelerating voltage must be used that generates less localized heating, or the sample must be fixed to toughen cell walls.

If preservation of cellular and matrix morphology is important, the sample must be fixed. Glutaraldehyde is the fixative of choice (see Module 5:1). Glutaraldehyde kills microorganisms, and it cross-links organic polymers, both in the biofilm matrix and cell walls, thereby increasing the mechanical strength of these structures without the shrinkage associated with formaldehyde. Electron microscopy grade glutaraldehyde is recommended to minimize the presence of polymerized glutaraldehyde (see Module 5:1). Polymerization is encouraged by heat, so glutaraldehyde and samples immersed in glutaraldehyde solution should be stored under refrigeration.

Glutaraldehyde solution is slightly acidic and should be buffered with 0.1 M sodium cacodylate. For marine biofilms 0.22 µm-filtered natural or artificial seawater may be used. The carbonate system naturally present in seawater provides the buffering action.

- ! Further fixation of the sample may be provided by exposing it to osmium tetroxide solution or vapor (see Module 5:1). An alternative fixative is ruthenium tetroxide, the EDXS peak of which interferes only with chlorine, as opposed to osmium, the EDXS peaks of which interfere with silicon and potassium (Lavoie, 1992). These heavy metal oxides are even more toxic than glutaraldehyde, and they are strong oxidizers of organics such as plastics, paper and skin. They should always be ordered with a material safety data sheet and be handled carefully.

Rinsing

If the specimen has been fixed, or is from a marine or brackish environment, or has a high concentration of nutrients and salts, it must be rinsed before being inserted into the microscope. Salts will crystallize as water is withdrawn from the sample, and glutaraldehyde (and cacodylate) will slowly polymerize under the electron beam to form a continuous, obscuring coating over the specimen. This latter effect is shown in Plate 14:10.15. Osmotic shock from rinsing specimens from concentrated ionic media directly in distilled water does not seem to be a problem, but standard protocol calls for putting this type of specimen through a series of decreasingly concentrated solutions.

Microorganisms associated with biofilms are generally adapted to cope with low or changing osmolarity in their immediate environment. Build-up of internal pressure due to inward diffusion of water that could lead to cell lysis is prevented by rigid cell walls. Bacteria typically found in biofilms may have internal osmotic pressures as high as 10–25 atmospheres (Characklis *et al.*, 1990). The fact that ionic concentration (and thus osmolarity) can vary radically throughout typical biofilms indicates that the biofilm constituents (exopolymers and microbes) would not be present if they could not withstand osmotic extremes. Osmotic damage to microorganisms due to rinsing with distilled water should be visible as burst cells, although this condition has never been observed, even in dealing with biofilms generated in marine environments. Likewise, biopolymers, when present, are heterogeneous and cross-linked, creating a robust structure (Christensen & Characklis, 1990). Biofilms are variable, however, and the prudent researcher will experiment with fixation and rinsing procedures to produce optimum results.

Pumpdown and specimen hydration

Biofilm specimens from aqueous environments can be conveniently immersed in distilled water in the concave end of the specimen stub. Larger, flat specimens may be placed on the flat end of the inverted stub for more contact area and covered with distilled water. If the specimen is such that it does not permit standing water, the operator will have to work as quickly as possible to avoid dehydration of the specimen. Dehydration is minimized in any case, because the specimen chamber is automatically maintained at water vapor saturation during pumpdown from atmospheric pressure to working pressure. Once the working pressure is fixed using the 'set' button, the instrument periodically injects water vapor into the chamber to automatically maintain that pressure. During the final stage of the removal of overlying water, the live image is the best gauge of specimen hydration during pumpdown and should be closely monitored.

Specimen cooling, localized heating

Sample temperature is critical to sample hydration and is modulated by an electronically cooled Peltier stage. This device has a limited cooling rate and capacity. Small specimens that fit into the concave stub can be temperature-controlled for extended periods. The ability of the Peltier stage to keep a larger specimen cooled depends on the specimen size, thermal conductivity and initial temperature. Specimen size and thermal conductivity determine the rate at which heat produced by the electron beam arrives at the stage for removal. Thermal conductivity and initial temperature determine how long the specimen can be viewed before localized heating becomes a problem. Localized heating will be exacerbated if the specimen substratum is not thermally conductive. In addition, some substrata, such as ceramics, efficiently convert electron beam energy to heat as well, possibly overwhelming the capacity of the Peltier stage to extract heat.

The operator can monitor localized heating only visually. The chamber pressure and stage temperature are only proximal readings. Especially in larger specimens, the temperature of the irradiated portion of the specimen will always be somewhat above the stage temperature reading. In severe situations, even fixed specimens will exhibit distortion from dehydration or boiling due to localized heating. Pre-chilling will delay localized heating and will permit better control of specimen saturation through chamber pressure manipulation. The beam current, the accelerating voltage, the spot size, the scan rate, the magnification and time under the beam all have an effect on localized heating.

Finally, in some models of the ElectroScanTM ESEM, a lighted viewing port is mounted in the chamber for visually monitoring samples (the environmental secondary detector—ESD—is not sensitive to light). The viewing light should be used sparingly, as it introduces noticeable heat into the chamber.

Microscope operating parameters

Operating parameters should be chosen to use the minimum energy necessary to obtain a usable image. Any increase of electron energy into the sample may exacerbate localized heating. To begin, the spot size and beam (emission) current should be set to nominal or default values. The spot size may be decreased to improve resolution or penetration to image internal features. Deeper penetration may also be accomplished by increasing the accelerating voltage and/or beam current (by means of the bias control) over that required for saturation. All three actions increase energy input to the specimen.

A slow scan rate may improve resolution (especially at low signal strengths), but will also put more energy into the sample per unit time. A scan rate of ~ 2 frames per second is adequate for surveying a specimen. For better resolution of a particular field when viewing or recording, the digital 'integrate' or 'add' function should be used rather than slowing the scan rate. Note that the standard function for recording an image on photographic film involves a slow scan rate, and, in susceptible specimens, thermally induced movement during recording may result in smeared lines in the micrograph. To photograph the digital image, one must expose the film to the digital image more than once to build up the image on the film or increase the recording CRT brightness to capture the image in one exposure.

The distance between the detector and the sample should be maximized during pumpdowns to prevent liquid water from being drawn up into the column (there is a constant flow of atmosphere from the chamber into the differentially pumped column). After the specimen is exposed, the working distance is reduced to decrease scattering of the electron beam by water molecules and thereby increase signal strength and resolution.

Aside from the operating parameters mentioned above, sample chamber pressure is the most important parameter under operator control. The environmental secondary detector (ESD) in ESEM is also a pressure-limiting aperture between the specimen chamber and the first portion of the differentially pumped electron column. The larger the detector aperture is, the lower the possible magnification. A detector with a $1000\text{ }\mu\text{m}$ aperture allows magnifications as low as $250\times$ with specimen chamber pressures theoretically as high as 10 Torr (1330 Pa); however, excessive scattering of the electron beam by water molecules at pressures this high yields low signal strength, so lower pressure is recommended for better resolution and a reasonably fast scan rate. Theoretical temperature and pressure combinations that yield saturation for water vapor are given in Table 14:10.1.

Table 14:10.1 Temperature versus pressure to maintain a saturated water vapor atmosphere (after Weast & Astle, 1980)

Temperature (°C)	Vapor pressure (Pa)	Vapor pressure (Torr)
9	1145	8.6
8	1071	8.0
7	999	7.5
6	932	7.0
5	870	6.5
4	811	6.1
3	757	5.7
2	704	5.3
1	656	4.9
0	609	4.6
-1	563	4.2
-2	519	3.9
-3	465	3.5

In practice, for a given Peltier stage temperature, the chamber pressure will have to be lower than that for water vapor saturation to expose the specimen for observation. Again, the best gauge is visual monitoring of the sample during pumpdown. The parameters given above provide a good balance between resolution, scan rate and sample hydration.

EDXS Analysis

EDXS must be performed at lower pressures than those used for viewing, especially if element X-ray maps are desired. Although the ESD detector requires water vapor to generate an image signal, X-rays emitted by the specimen are absorbed by water molecules. In addition, depending on the chamber geometry, the sample may require tilting from horizontal (the viewing angle) toward the X-ray detector to increase the acceptance angle. This requires the stage to be moved away from the ESD detector, increasing the beam path length and beam scattering, and resulting in decreased X-ray production and spatial resolution (Griffin *et al.*, 1994). The accelerating voltage may be increased to compensate. For all these reasons, chamber pressures of ≤ 2 Torr (≤ 265 Pa) are necessary for adequate X-ray count rates and spatial resolution (Griffin *et al.*, 1994); unfortunately, some specimens may exhibit signs of dehydration at such a low pressure. In practical terms, these considerations mean that observations should be completed first and X-ray analyses second.

Viability, Sample Desiccation and Viewing Time

Short viewing times in ESEM may not necessarily kill microorganisms within biofilms. Fungi and bacteria may remain viable and be re-examined with multiple viewings for time-series studies (Plate 14:10.13).

Desiccation, either during observation in the ESEM or during storage, may not do irretrievable damage to many types of biofilms. Some shriveling of biopolymer matrix may be observed, but with some specimens this may be totally reversed upon rehydration. Lavoie *et al.* (1995) reported marine snow samples that were observed through several desiccation-rehydration cycles. Glutaraldehyde-fixed, dehydrated biofilms have been stored and rehydrated for viewing several times with no gross differences noted in bacterial or biopolymer distribution and morphology.

The time for which a specimen can be viewed in ESEM is largely determined by its heat transfer characteristics. Typically, biofilms on metal substrata can be viewed without visible damage for as long as 45 min using the operating conditions stated. Lingering in one spot for long periods or at high magnifications exacerbates localized heating.

Expected Results

The answer to the most important question, 'What can we expect to see?', depends largely upon the nature of the biofilm. If the biopolymer is discontinuous or very thin, as in Plates 14:10.7c, 14:10.8, 14:10.9 and 14:10.10, most particulate constituents will be visible along with any tenuous polymer strands. Thick or continuous polymers, however, will show little of the particulate constituents, as in Plate 14:10.11, because, like conventional SEM technology, ESEM generally is limited to imaging the specimen surface. Some specimens may appear to be partially transparent (Plates 14:10.8 and 14:10.9), and, in particular, some internal features may be revealed (Plate 14:10.14). It also may be possible to view internal structures by using heavy metal stains and the backscatter signal. Collins *et al.* (1993) reported successful viewing of internal cellular organelles in this manner.

Key References

- Bowls WE (1938) The effect of cathode material on the second Townsend's coefficient for ionization by collision in pure and contaminated N_2 gas. *Physical Review* 53: 293-301.
- Cameron RE & Donald AM (1994) Minimising sample evaporation in the environmental scanning electron microscope. *Journal of Microscopy* 173: 227-237.
- Characklis WG & Marshall KC (1990) Biofilms: a basis for an interdisciplinary approach. In: Characklis WG & Marshall KC (eds) *Biofilms* pp. 3-15. John Wiley, New York.
- Characklis WG, Marshall KC & McFeeters GA (1990) The microbial cell. In: Characklis WG & Marshall KC (eds) *Biofilms* pp. 131-159. John Wiley, New York.
- Christensen BE & Characklis WG (1990) Physical and chemical properties of biofilms. In: Characklis WG & Marshall KC (eds) *Biofilms* pp. 93-130. John Wiley, New York.
- Collins SP, Pope RK, Scheetz RW, Ray RI, Wagner PA & Little BJ (1993) Advantages of environmental scanning electron microscopy in studies of microorganisms. *Microscopy Research and Technique* 25: 398-405.
- Danilatos GD (1988) Foundations of environmental scanning electron microscopy. *Advances in Electronics and Electron Physics* 71: 109-250.
- Danilatos GD (1990) Theory of the gaseous detector device in the environmental scanning electron microscope. *Advances in Electronics and Electron Physics* 78: 1-102.
- Danilatos GD (1993) Introduction to the ESEM instrument. *Microscopy Research and Technique* 25: 354-361.
- Durkin R & Shah JS (1993) Amplification and noise in high pressure scanning electron microscopy. *Journal of Microscopy* 169: 33-51.
- Farley AN & Shah JS (1990a) Primary considerations for image enhancement in high pressure scanning electron microscopy. I. Electron beam scattering and contrast. *Journal of Microscopy* 158: 379-388.
- Farley AN & Shah JS (1990b) Primary considerations for image enhancement in high pressure scanning electron microscopy. II. Image contrast. *Journal of Microscopy* 158: 389-401.
- Griffin BJ, van Riessen A, Egerton-Warburton L, Hatch J & Tautman RL (1994) A review of EDS X-ray microanalysis and element mapping in high pressure SEM (ESEM). In: Friel J (ed.) *Microbeam Analysis: Proceedings of the 28th Annual MAS Meeting, New Orleans, LA, July 31-August 5, 1994* p. 245. Microbeam Analysis Society, VCH Publishers, Deerfield Beach, FL.
- Lavoie DM (1992) Computerized oceanic particle characterization using heavy metal staining, SEM, EDXS, and image analysis. *Deep-Sea Research* 39(9):1655-1658.
- Lavoie DM, Little BJ, Ray RI, Bennett RH, Lambert MW, Asper V & Baerwald RJ (1995) Environmental scanning electron microscopy of marine aggregates. *Journal of Microscopy* 178:101-106.
- Little BJ, Wagner PA, Ray RI, Pope R & Scheetz R (1991) Biofilms: an ESEM evaluation of artifacts introduced during SEM preparation. *Journal of Industrial Microbiology* 8: 213-222.
- Rao MV, Gault NFS & Kennedy S (1989) Variations in water holding capacity due to changes in fiber diameters, sarcomere length and connective tissue morphology of some beef muscles under acidic conditions below the ultimate pH. *Meat Science* 26: 19-37.
- Robinson VNE (1976) The examination of hydrated biological specimens in a scanning electron microscope environmental cell. *Proceedings of the 6th European Conference on Electron Microscopy*.
- Shah JS (1977) Improvements in or relating to specimen stages for electron beam instruments. British Patent No. 1477458.
- Shah JS (1990) High pressure scanning electron microscopy. *Laboratory Practice* 39(12): 65-73.

- Shah JS & Beckett A (1979) A preliminary evaluation of moist environment ambient temperature scanning electron microscopy. *Micron* 10: 13-23.
- Shah JS & Durkin R (1991) A theoretical and experimental basis of fixing operating parameters for HPSEM. In: Humphrys FJ (ed.) *Institute of Physics Conference Series* 119: EMAG 1991: 169-172. IOP, Bristol.
- Shah JS & Farley AN (1990) Specimen current detection for non-conducting materials in high pressure scanning electron microscopy (HPSEM). In: Elder HY (ed.) *Transactions of the Royal Microscopic Society New Series* 1: Micro 90: 35-39. Adam Hilger, Bristol.
- Shah J, Durkin R, Li JP, Beckett A & Farley AN (1990) Electron beam damage to hydrated biological materials. A preliminary study of *Narcissus* sp. by HPSEM. In: Elder HY (ed.) *Transactions of the Royal Microscopic Society New Series* 1: Micro 90: 173-176. Adam Hilger, Bristol.
- Weast RC & Astle MJ (eds) (1980) *CRC Handbook of Chemistry and Physics*. CRC Press, Boca Raton.
- *Contributed by* RE Cameron and AM Donald, University of Cambridge; DM Lavoie, RI Ray and BJ Little, Stennis Space Center; JS Shah, University of Bristol

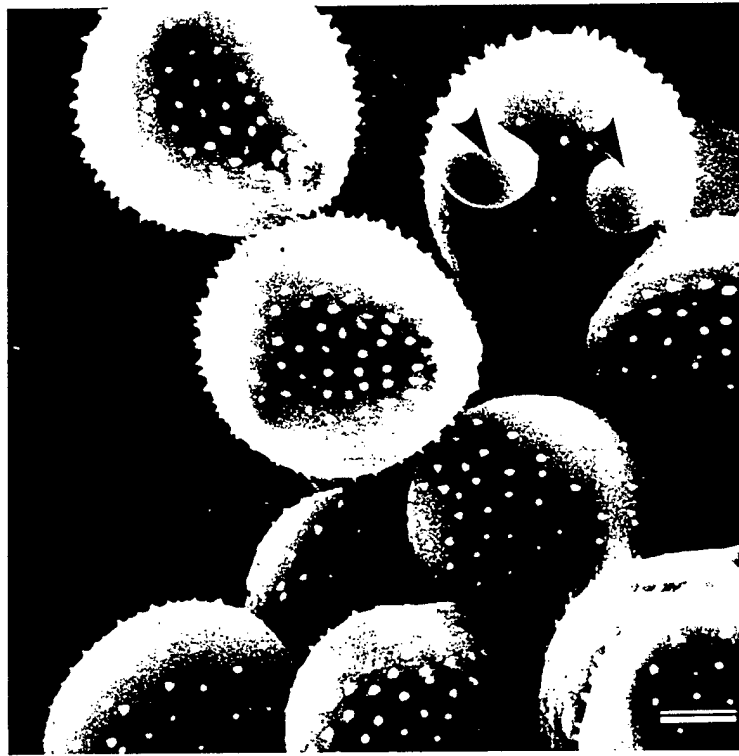


Plate 14:10.3 Secretion of fluid (arrows) from uredospores of the bean rust fungus *Uromyces viciae-fabae* (MEATSEM). Bar = 10 μ m.

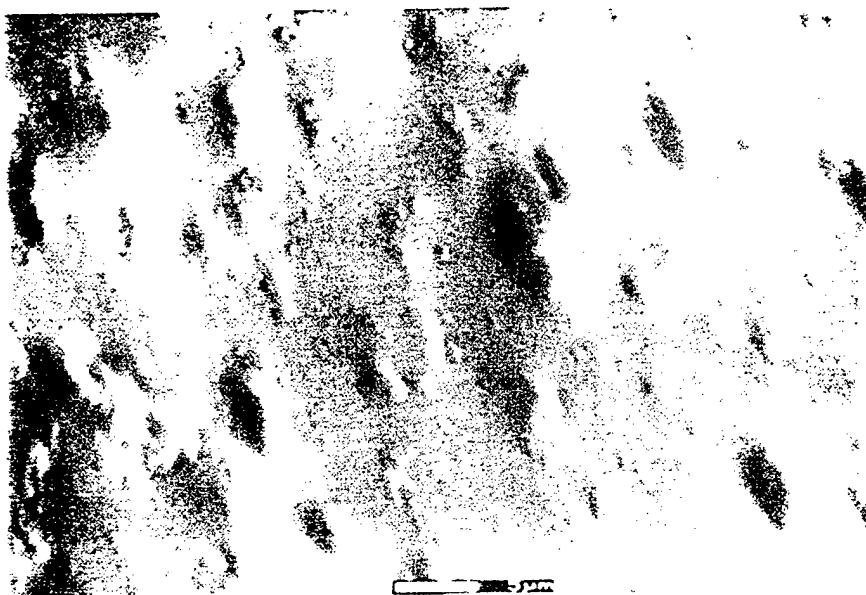


Plate 14:10.4 A micrograph of double cream taken 10 minutes after completing the installation sequence described. Bar = 5 μm . From Cameron & Donald (1994); reproduced by permission of *The Royal Microscopical Society*.

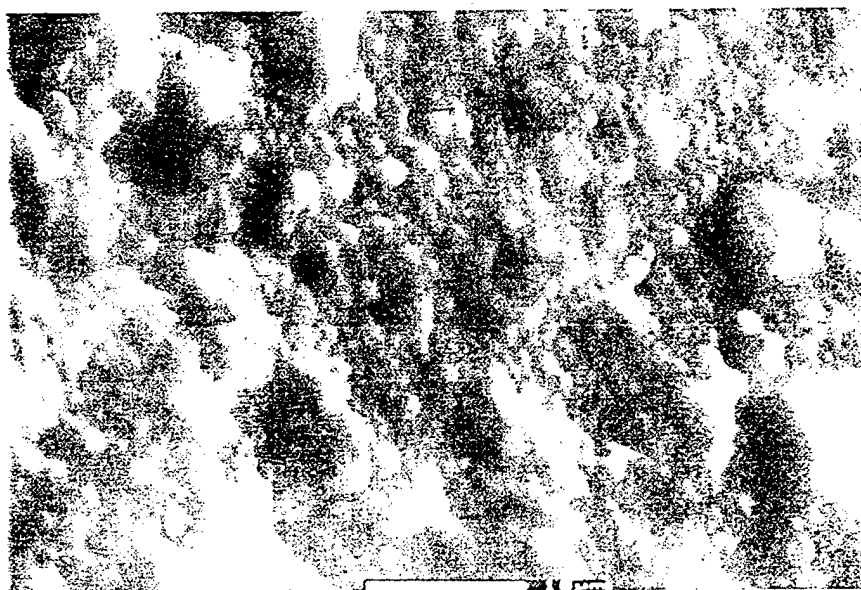


Plate 14:10.5 A micrograph of double cream taken 10 minutes after completing a nonoptimized installation sequence suggested in the manual. Bar = 10 μm . From Cameron & Donald (1994); reproduced by permission of *The Royal Microscopical Society*.

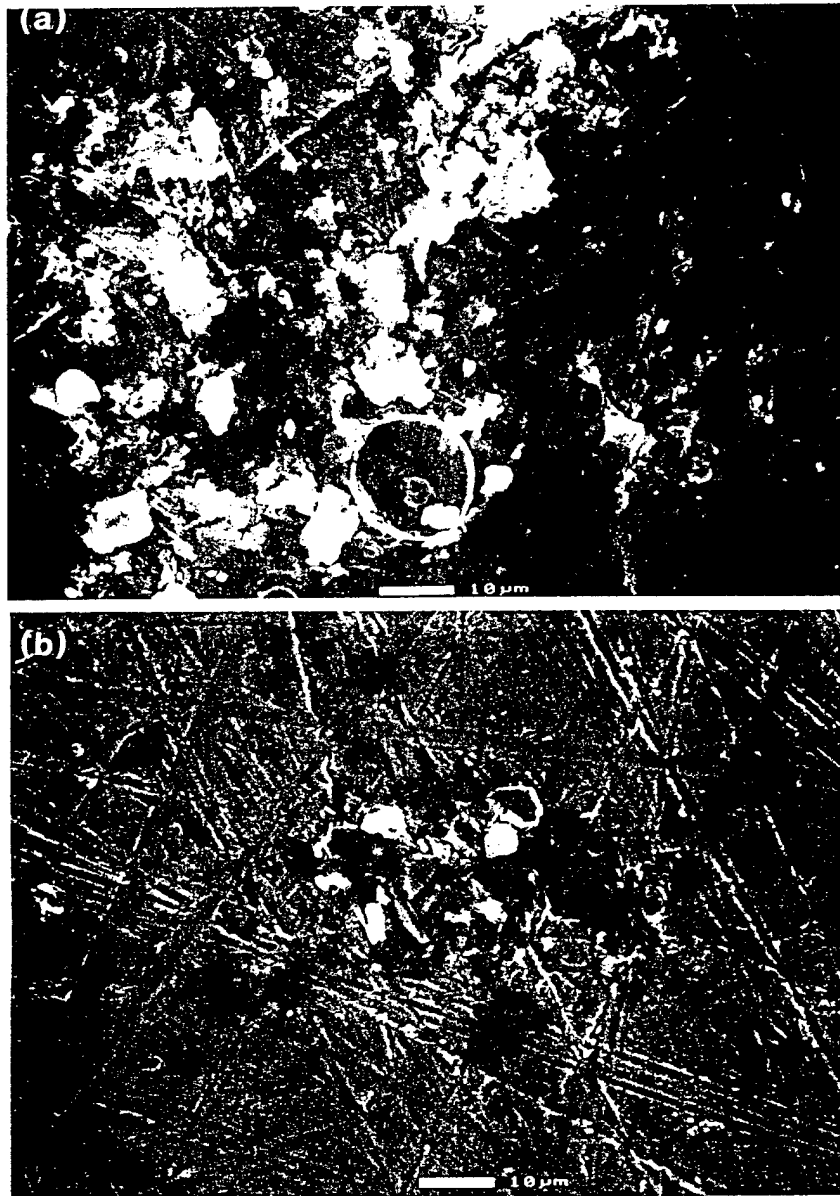


Plate 14:10.6 The effect of the conventional chemical dehydration procedure. (a) An ESEM image of wet estuarine biofilm on stainless steel substratum; (b) an ESEM image of the same sample after standard treatment with acetone and xylene. Bars = 10 μm.

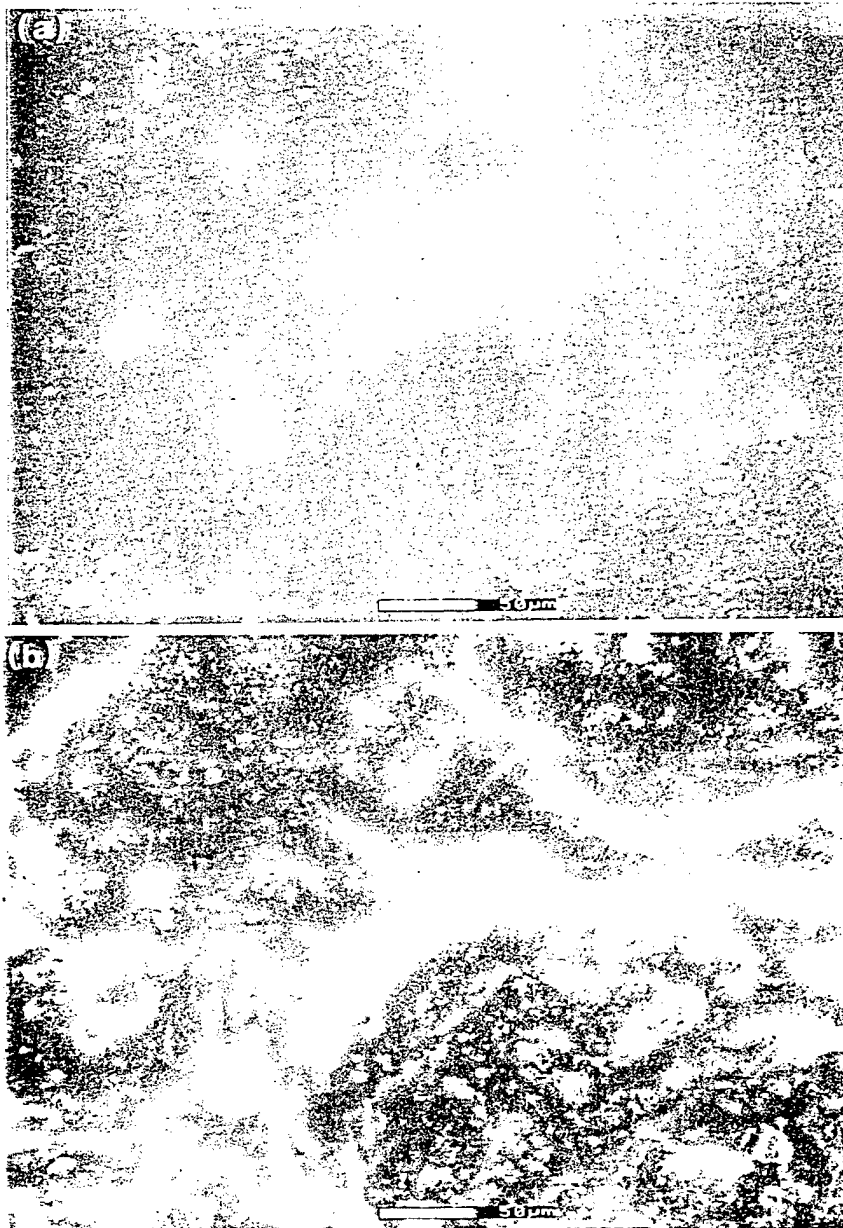


Plate 14:10.7 Typical images during a pumpdown sequence, natural biofilm on stone, unfixed sample. (a) Features just visible beneath overlying water, 6.2 Torr (824 Pa); (b) salient features visible, with dark areas of liquid water in depressions, 4.5 Torr (603 Pa); (c) features fully exposed in the stable hydration state, 4.1 Torr (550 Pa). Bars = 50 μ m.

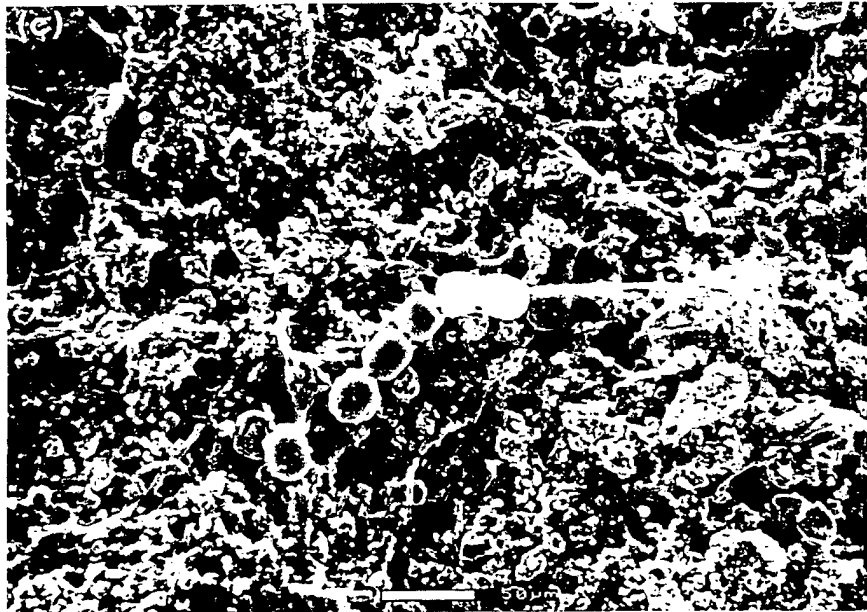


Plate 14:10.7—*continued*.

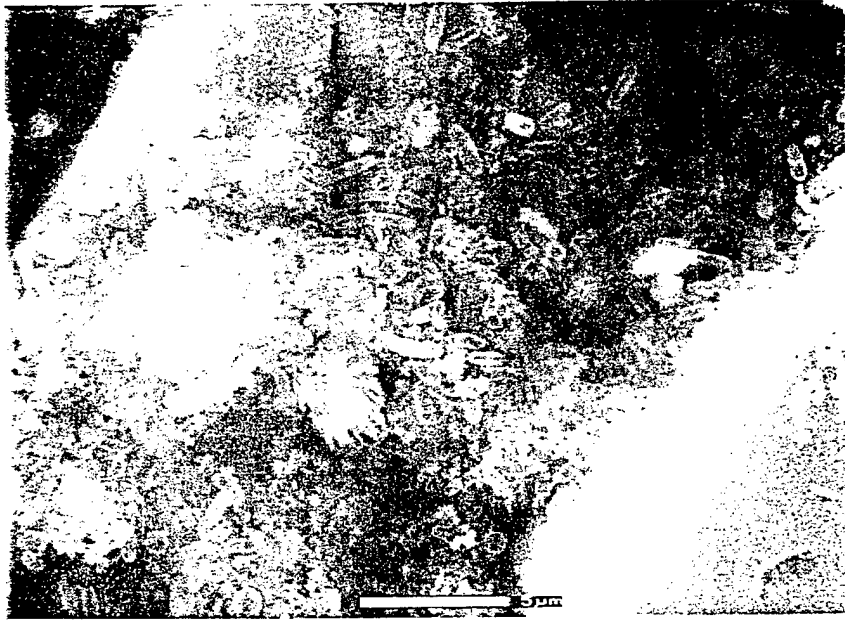


Plate 14:10.8 A laboratory-grown biofilm on painted metal, consisting mostly of bacteria: grown in nutrient enriched medium and fixed with buffered glutaraldehyde. Note that the cells tend to be semitransparent in ESEM under these conditions. Bar = 5 μ m.

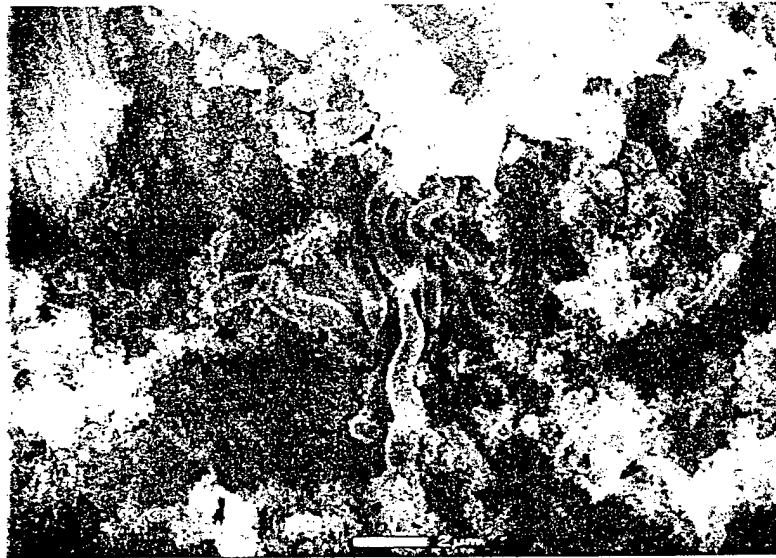


Plate 14:10.9 A laboratory-grown biofilm consisting of bacteria of the genus *Oceanospirillum* and polymer matrix growing on copper in unenriched artificial seawater: fixed with buffered glutaraldehyde. Bar = 2 μ m.

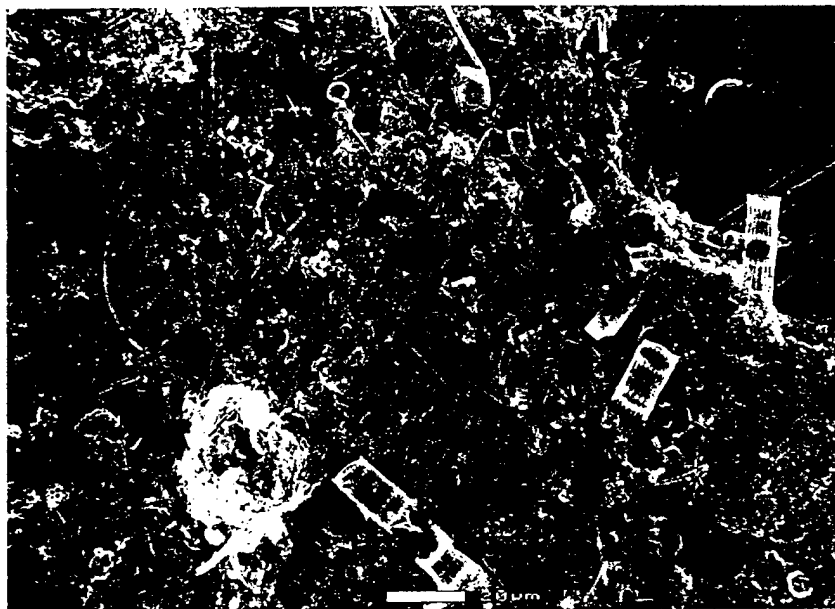


Plate 14:10.10 'Marine snow', i.e. marine suspended particulate. A very thin polymer matrix connects a heterogeneous collection of inorganic and biological particles: fixed with buffered glutaraldehyde. Bar = 20 μm .

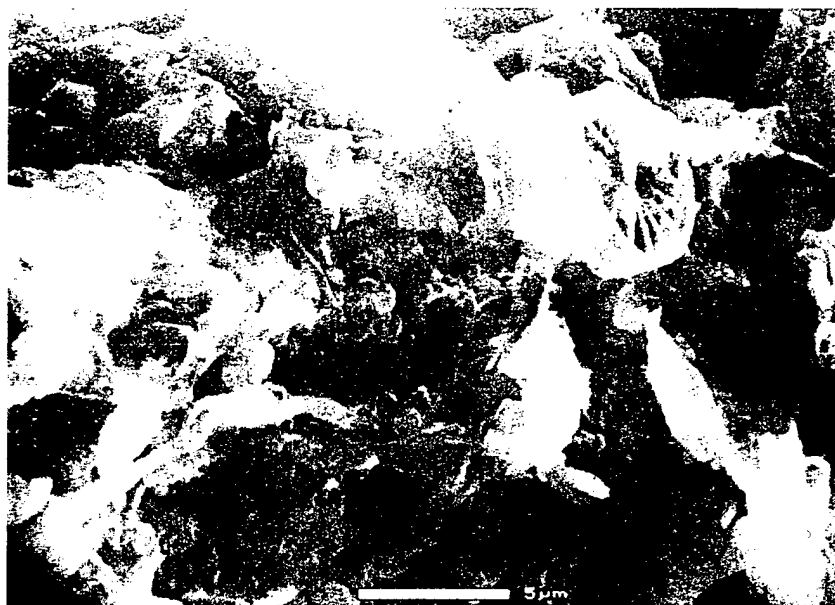


Plate 14:10.11 A natural biofilm on Nylon[®] rope: heavy biopolymer matrix, unfixed sample. Bar = 5 μm .



Plate 14:10.12 The surface of marsh grass, showing (from left to right) leaf nodules, a diatom and biopolymer; unfixed sample. Bar = 5 μ m.

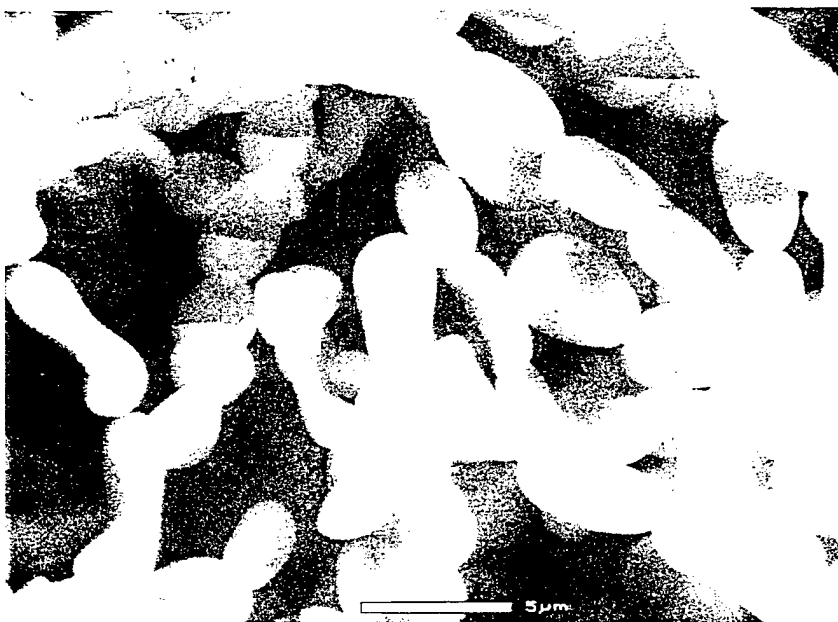


Plate 14:10.13 Fungus of the genus *Hormecium* on agar: live specimen. Note the collapse of the conidia. This specimen maintained viability (as evidenced by continued growth) after ESEM examination. Bar = 5 μ m.

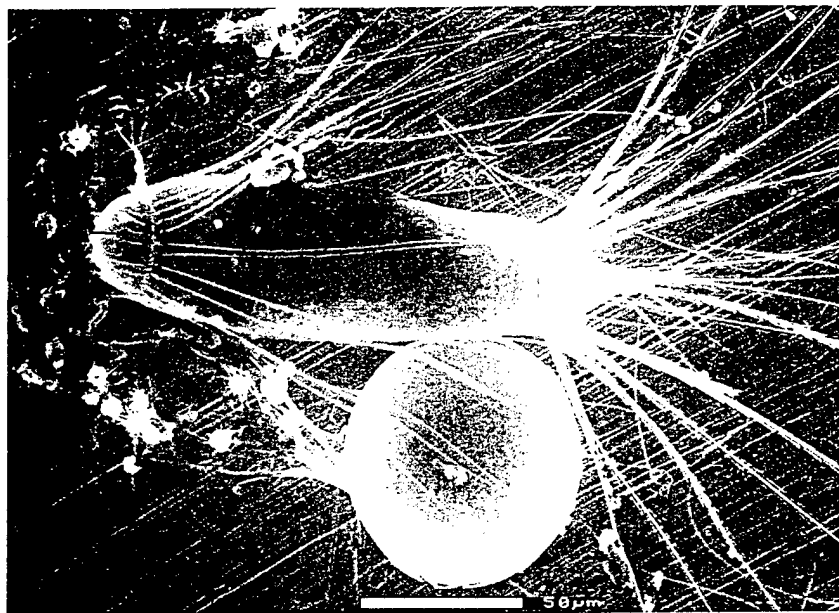


Plate 14:10.14 Marine zooplankton, fixed with buffered glutaraldehyde. Note numerous bacterial cells visible just beneath its surface. Bar = 50 μm.

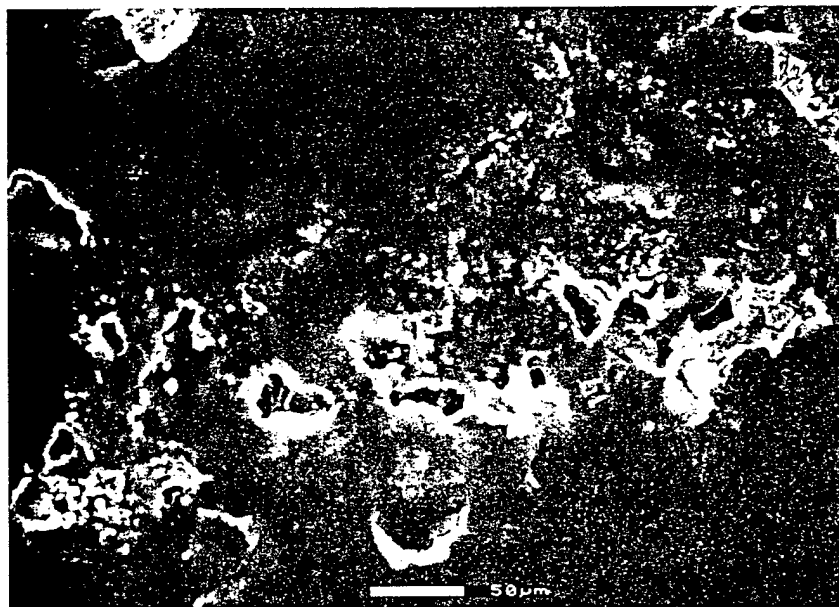


Plate 14:10.15 The result of not rinsing a fixed, marine sample. Note the heavy coating of polymerized glutaraldehyde over the emerging salt crystals. Bar = 50 μm.

Professor T Inoué, Department of Anatomy, Faculty of Medicine, Tottori University, Yonago 683, Japan

Dr BP Jakstys, University of Illinois, Center for EM, Room 74, Bevier Hall, 905 S Goodwin Avenue, Urbana, IL 61801, USA

Dr CE Jeffree, Institute of Cell & Molecular Biology, University of Edinburgh, Daniel Rutherford Building, King's Buildings, Mayfield Road, Edinburgh EH9 3JH, UK

JEOL Ltd, 1-2 Musashino 3-chome, Akishima, Tokyo 196, Japan

Drs H Jones & R Philpott, Technical Services, Anotec Separations Ltd, Wildmere Road, Banbury OX16 7JU, UK

Dr HB Jones, Zeneca Pharmaceuticals, Mereside, Alderley Park, Macclesfield SK10 4TG, UK

Professor DC Joy, F239 Walters Life Sciences Building, University of Tennessee, Knoxville, TN 37996-0810, USA

Dr W Kaeser, Botanisches Institut der Tierärztlichen Hochschule, Bünteweg 17d, Westfalenhof, D-3000 Hannover 71, Germany

Mr AS King, VG Microtech Ltd, Bellbrook Business Park, Bell Lane, Uckfield TN22 1QZ, UK

Dr DP Knight, Biological Sciences, King Alfred's College, Sparkford Road, Winchester SO22 4NR, UK

Professor Dr EJ Kucera, Professor für Holzwissenschaften, ETH-Zentrum, CH-8092 Zürich, Switzerland

Dr H Kushida, Tokai University School of Medicine, 8-12-1-610 Takashimadaira, Itabashi-ku, Tokyo 175, Japan

Mr DR Laferty Jr, Leica Cambridge Ltd, Clifton Road, Cambridge CB1 3QH, UK

Mr I Lamswood, Leica UK Ltd, Davy Avenue, Knowlhill, Milton Keynes MK5 8LB, UK

→ Drs DM Lavoie, RI Ray & BJ Little, Code 7333, Naval Research Laboratory, Stennis Space Center, MS 39529-5004, USA

Dr JR Lawton [retired], University of Durban-Westville, Private Bag X54001, Durban 4000, South Africa

Professor Dr H Lehmann, Botanisches Institut der Tierärztlichen Hochschule, Bünteweg 17d, Westfalenhof, D-3000 Hannover 71, Germany

Dr SW Leonard, Department of Physics, Stirling Hall, Queen's University, Kingston, Ontario, Canada K7L 3N6

Drs LS Levy & HJ Cross, Institute of Occupational Health, University of Birmingham, Edgbaston, Birmingham B15 2TT, UK

Dr PR Lewis, Physiological Laboratory, Cambridge University, Downing Street, Cambridge CB2 3EG, UK