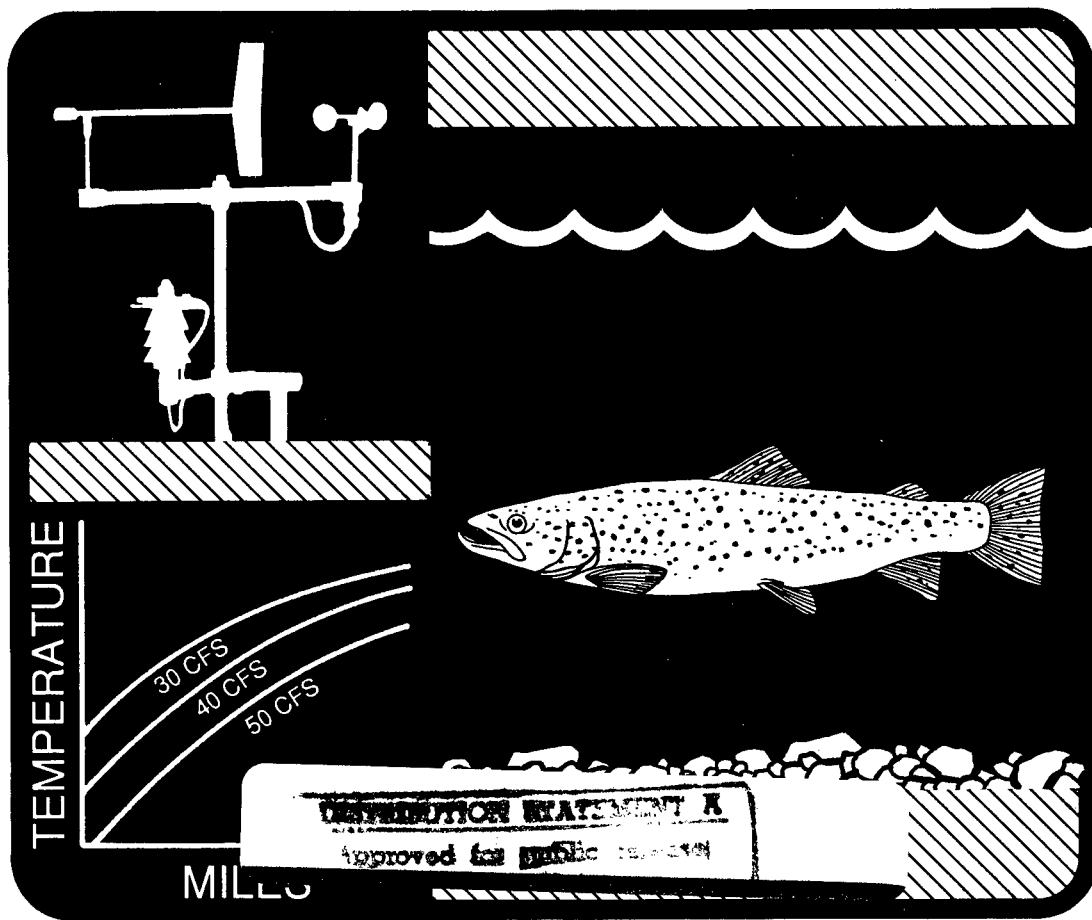


# Evaluating Temperature Regimes for Protection of Brown Trout



19970319 034

U.S. DEPARTMENT OF THE INTERIOR  
NATIONAL BIOLOGICAL SURVEY / *Resource Publication 201*

## Technical Report Series

### National Biological Survey

The National Biological Survey publishes five technical report series. Manuscripts are accepted from Survey employees or contractors, students and faculty associated with cooperative research units, and other persons whose work is sponsored by the Survey. Manuscripts are received with the understanding that they are unpublished. Manuscripts receive anonymous peer review. The final decision to publish lies with the editor.

### Editorial Staff

MANAGING EDITOR

Paul A. Opler

ASSISTANT BRANCH LEADER

Paul A. Vohs

WILDLIFE EDITOR

Elizabeth D. Rockwell

FISHERIES EDITOR

James R. Zuboy

TECHNICAL EDITOR

Deborah K. Harris

VISUAL INFORMATION SPECIALIST

Constance M. Lemos

EDITORIAL CLERK

Donna D. Tait

### Series Descriptions

*Biological Report* ISSN 0895-1926

Technical papers about applied research of limited scope. Subjects include new information arising from comprehensive studies, surveys and inventories, effects of land use on fish and wildlife, diseases of fish and wildlife, and developments in technology. Proceedings of technical conferences and symposia may be published in this series.

*Fish and Wildlife Leaflet* ISSN 0899-451X

Summaries of technical information for readers of non-technical or semitechnical material. Subjects include topics of current interest, results of inventories and surveys, management techniques, and descriptions of imported fish and wildlife and their diseases.

*Fish and Wildlife Research* ISSN 1040-2411

Papers on experimental research, theoretical presentations, and interpretive literature reviews.

*North American Fauna* ISSN 0078-1304

Monographs of long-term or basic research on faunal and floral life histories, distributions, population dynamics, and taxonomy and on community ecology.

*Resource Publication* ISSN 0163-4801

Semitechnical and nonexperimental technical topics including surveys; data, status, and historical reports; handbooks; checklists; manuals; annotated bibliographies; and workshop papers.

Copies of this publication may be obtained from the Publications Unit, U.S. Fish and Wildlife Service, 1849 C Street, N.W., Mail Stop 130, Webb Building, Washington, D.C. 20240, or may be purchased from the National Technical Information Service (NTIS), 5285 Port Royal Road, Springfield, Virginia 22161 (call toll free 1-800-553-6847).

# **Evaluating Temperature Regimes for Protection of Brown Trout**

By Carl L. Armour

U.S. DEPARTMENT OF THE INTERIOR  
NATIONAL BIOLOGICAL SURVEY  
*Resource Publication 201*  
Washington, D.C. • 1994

# Contents

	Page
Abstract . . . . .	1
Conceptual Approaches . . . . .	2
General Considerations . . . . .	16
Cited Literature . . . . .	18

# Evaluating Temperature Regimes for Protection of Brown Trout

by

Carl L. Armour

*National Biological Survey  
Midcontinent Ecological Science Center  
4512 McMurry Avenue  
Fort Collins, Colorado 80525*

**Abstract.** Geographic distribution and population success of brown trout (*Salmo trutta*) are affected by temperature regimes. Concepts are presented for evaluating alternative temperature regimes for brown trout based on published temperature information and professional judgment. Temperature information from the literature is included for spawning runs, spawning, egg and larval development, growth, and other subjects. The objective is to aid biologists in evaluating alternative temperature regimes so as to select those that will protect and enhance environmental quality for brown trout.

**Key words:** Alternative temperature regimes, brown trout, *Salmo trutta*, water temperature.

---

The brown trout (*Salmo trutta*) is not a native species. It was introduced to North America in 1883 and is distributed widely in the United States and Canada (Lee et al. 1980). The brown trout is an important sport fish, and there is public demand for protecting and improving its habitat. Water temperature is one of several environmental factors affecting success of brown trout throughout its range (Fig. 1). Water temperature directly affects spawning, egg and larval development, and growth of fry and older life stages. Indirect effects of temperature include influences on food abundance, toxicity of water-borne pollutants, oxygen concentrations in water, and biochemical oxygen demand.

Temperature effects on brown trout cannot be documented completely because of complex interactions, including synergism with other variables. Nonetheless, management decisions must be made, and biologists are required to use available

information and professional judgment in recommending appropriate temperature regimes. The objective of this report is to assist biologists in designing site-specific procedures for evaluating alternative temperature regimes. For example, one might want to evaluate the temperature regimes that would result from varying water releases below a reservoir. General information regarding habitat requirements for brown trout is addressed in a habitat suitability index model (Raleigh et al. 1986). Additional information on habitat requirements of salmonids in streams can be found in Bjornn and Reiser (1991).

Information in this report was compiled from the literature, including studies under natural field conditions and controlled experiments. Care should be taken in extrapolating experimental results to field situations. For example, brown trout growth is affected by temperature, other

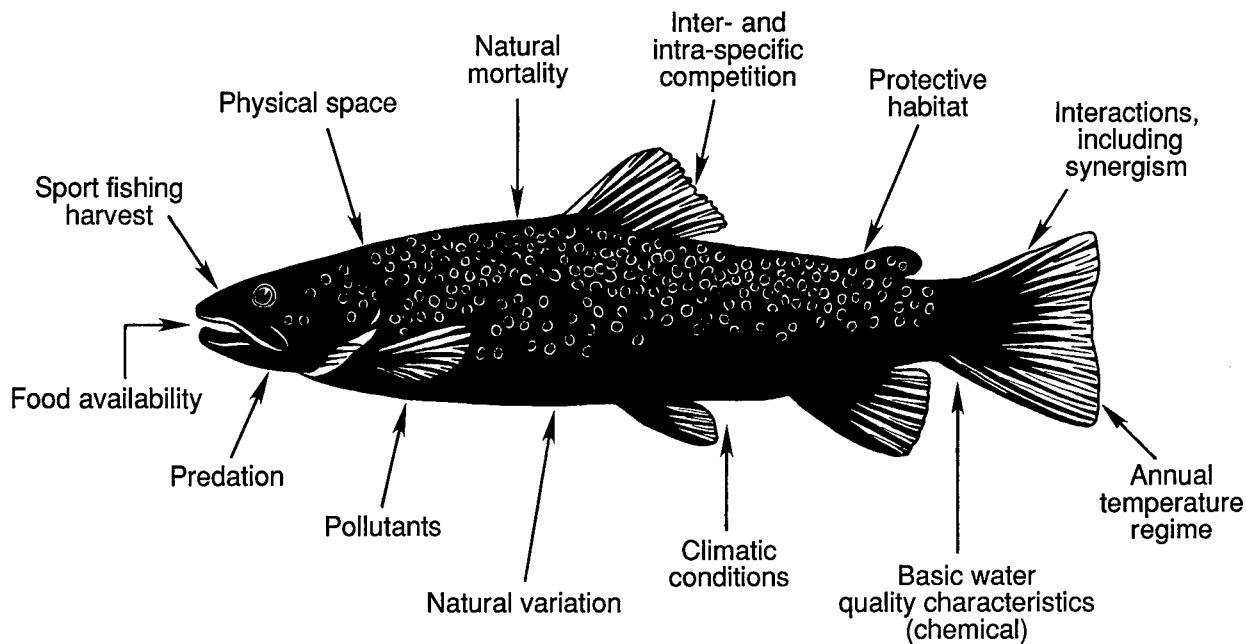


Fig. 1. Variables that affect brown trout populations.

water quality variables, and environmental factors, including food availability whereas spawning and egg incubation success are controlled more directly by temperature. Hence, even if spawning substrate, oxygen concentration, and water quality variables other than temperature meet brown trout habitat criteria, success of egg incubation still depends on water temperature (Jungsworth and Winkler 1984).

This report does not include all possible approaches for evaluating alternative temperature regimes. Final decisions on which approaches to use should be made collaboratively with experts knowledgeable about brown trout in the geographic areas where the temperature studies will be performed.

## Conceptual Approaches

Conceptual approaches for evaluating alternative temperature regimes for brown trout are similar to those for fish in general (Armour 1991), smallmouth bass (*Micropterus dolomieu*; Armour 1992a), and walleye (*Stizostedion vitreum*; Armour 1992b; Table 1). These approaches include

use of simulated temperature curves and temperature envelopes for evaluating the suitability of temperature regimes for specific life stages. The temperature envelope approach requires use of a standard envelope in the U.S. Environmental Protection Agency data base (Biesinger et al. 1979; Hokanson et al. 1990). Information from throughout the range of brown trout in North America was used to develop the temperature envelopes. Temperatures for alternative regimes for specific life stages are compared with the envelope, and temperatures that fall within the envelope are assumed to be acceptable.

Armour (1991) presented methods applicable to brown trout for using experimentally derived temperature tolerance information to evaluate alternative temperature regimes. The methods pertain to estimates of maximum weekly average temperatures that should not be exceeded, short-term maximum survival temperatures, and estimation of lethality of an exposure time. Table 2 contains information for use in the computations.

Following is an example of a method that does not require the use of curves or envelopes (Table 3). Suppose that the primary concern for a site is temperatures during the incubation period, where other water quality parameters and habitat

**Table 1.** Brown trout temperature data compiled from literature.

Attribute	Observation <sup>a</sup>	Reference and fish source	Comments
<b>Spawning</b>			
Range was 8.9 to 12.8° C	GS	Piper et al. (1982), general observation	Reported that eggs develop well in hard water at 10.0° C
Mean temperatures ranged from 3.8 to 7.4° C	GS	Elliott (1984), Black Brows Beck, English Lake District	Mean water temperatures during egg development ranged from 3.3 to 6.7° C
Range was 6.1 to 11.1° C	F	Johnson et al. (1966), artificial spawning channel, Owens River, California	The earliest date observed for redds was 30 October compared with 11 December for the last redds observed
Peak spawning was in 6.1 to 12.8° C range	GS	Reiser and Wesche (1977), locations for observations unstated	The information was from literature sources. The authors reported that the mean temperature at first spawning was 8.3° C for Douglas Creek, Wyoming
<b>Fertilization, incubation, and hatching</b>			
Required 835–850 degree-days from egg deposition to emergent fry stage	E	Elliott (1988), Wilfin Beck, United Kingdom	Laboratory temperatures ranged from 5.2 to 6.6° C. Egg weight had no effect on degree-day requirements. The author (Elliott 1984) stated that fry emergence required 852 degree-days (50% hatching) at another location. A degree-day is defined as a day when temperatures are above freezing
Normal trout larvae were raised from eggs incubated at 2.8 to 13° C without high mortality	E	Gray (1928)	Observation based on constant temperatures
Eggs developed normally in water up to 10° C	GS	Markus (1962), general statement for hatcheries	After feeding begins, best growth seems to be at 12.8° C
$y = \frac{a}{(x-b)^c}$ <p>where y = days to hatching, x = incubation temperature (° C), and a, b, and c are constants</p>	E	Jungsworth and Winkler (1984). Adult stock was from the Lunzer Untersee River, Austria	For the Belehrádek equation, the value for a = 746, b = -0.5323, and c = 1.2233. X values were for the mean incubation temperature. Experiments were conducted to derive values for the constants. For the regression equation, 99.93% of the total variance was explained (p < 0.01%). The range of temperatures for the experiment was 2 to 16° C
A good proportion of eggs hatched at a range of 5 to 13° C	GS	Frost and Brown (1967), British Isles	The optimum temperature for development was 7 to 12° C. Outside the range, alevins were smaller because more yolk is used for energy requirements instead of growth
Brown trout had poor reproductive success in water with maximum summer temperatures of	F	Kaya (1977b), Firehole River, Yellowstone National Park	Gonadal maturation was impaired. In the geothermally heated part of the river, rainbow trout outnumbered brown trout by three to one. Rainbow trout reproduced

Table 1. Continued.

Attribute	Observation <sup>a</sup>	Reference and fish source	Comments
28.0 to 28.8° C for 5 consecutive days			successfully but spawned in the fall instead of the spring. Kaya (1978) reported that the wild rainbow trout did not seem capable of acclimating to higher water temperatures more than hatchery strains. The same limitation probably applies to brown trout. This indicates the risk of making assumptions about genetic differences of trout to tolerate higher temperatures
Equation for use in estimating hatching time in the field:	E	Elliott (1984), Black Brows Beck in English Lake District	I assumed that "T" represented the mean temperature for the incubation period. The equation pertains to an estimate for 50% hatching to the alevin stage. The equation was also used to estimate the duration of the alevin stage by substituting 0.031° C for T <sub>0</sub> and 852 for D. Throughout the study, temperatures were usually in the 4.0 to 19.0° C range required for feeding and growth, and critical limits of 0 to 25° C were not exceeded
d = D/(T-T <sub>0</sub> )			
where d = time in days after fertilization			
D = degree days = 444			
T = mean water temperature (° C)			
T <sub>0</sub> = threshold temperature (° C) above which hatching occurs = 0.007			
Eggs incubated at 2.8 to 13° C will develop into normal trout larvae	E	Gray (1928), assumed to be British Isles fish	The author reported high mortality above 15° C. Specific mortality rates were not given. For eggs with transparent membranes incubated at 10° C, exposure to temperatures in the 15 to 17° C range caused hatching in a few hours. However, eggs incubated at 5° C and exposed to the same temperatures did not hatch for 3 days
Survival of eggs was less than 1% in Vibert boxes buried 15 cm in substrate and covered by 12 to 20 cm of flowing water. Causes were low water temperatures and in situ freezing of redds	E	Reiser and Wesche (1979), Daniel State Fish Hatchery, Wyoming	Twenty of 60 boxes were recovered. Eleven of the 20 boxes were within criteria defined for spawning, i.e., water depth 9 cm or more, water velocity 14–16 cm/s. The experiment was in the Laramie plains, where the mean monthly air temperatures from November to March ranged from -5.1 to 0.0° C. Freezing of substrate was attributed to effects of reduced velocity of super-cooled water
Lower limit was <1° C compared with an upper limit of about 10 to 16° C. Optimum was about 5° C,	E	Humpesch (1985), spawners were collected in Austrian waters	Results are from laboratory experiments for a range (1.4 to 15.4° C) of constant water temperature treatment. In experiments with eggs placed in gravels



Table 1. Continued.

Attribute	Observation <sup>a</sup>	Reference and fish source	Comments
for which hatchery success was at least 80%			in streams, maximum hatching occurred at mean temperatures of about 5° C
In the range of 2.8 to 12.0° C, the expression for time from fertilization to the median swim-up ( $D_3$ ) stage in days = $bD_2 + a$ , where $b = 1.660 \pm 0.103$ and $a = 5.4 \pm 10.05$ . $P < 0.001$	E	Crisp (1988), used published literature to obtain data for the calculations	$D_2$ = days from fertilization to median hatch and $\log D_2 = b \log (T - \alpha + \log a)$ , where $b = -13.9306 \pm 0.4769$ , $\alpha = -80.0$ , and $\log a = 28.8392 \pm 0.9206$ . The equation was derived for the 1.89 to 11.24° C range (Crisp 1981). "T" would be assumed to equal mean temperature Days from fertilization to median eyed stage (Crisp 1988) = $0.455D_2 + 5.0$
Days and (degree-days) by stage	E	Grande and Andersen (1990), domesticated Norwegian brown trout	In the colder water, more days and degree-days were required to reach a stage. At swim-up, feeding was initiated
<u>Eyed</u>	<u>Hatch*</u>	<u>Swim-up</u>	
126(195)	176(250)	204(387)	
49(273)	126(406)	194(273)	
*50% hatching			
<b>Growth</b>			
3.8 to 19.5° C was the approximate range for growth	E	Elliott (1975b), assumed to be British Isles fish	Trout in the 5–281-g range were used in experiments with constant and fluctuating temperatures
Maximum energy available for growth was optimal at 13 to 14° C	E	Elliott (1981), British Isles trout	The range applied to all sizes but the scope for growth is maximal at about 18° C, where energy available for growth was less because of loss in feces and other excretions
Computed final weight (g) was inversely proportional to the annual range (about 8.5 to 17.5° C) of monthly mean temperatures and directly proportional to the mean annual temperature, about 6.9 to 12.0° C	E	Edwards et al. (1979), British Isles streams	The equation for final weight ( $W_t$ ) with 95% confidence limits = $100.2 - 7.69 (\pm 1.13)T_v + 10.1 (\pm 1.70)\bar{T}$ where $T_v$ = annual range of monthly mean temperatures, and $\bar{T}$ = annual mean temperature. Existing temperature data were used for the computations, and maximum rations were assumed to be available. Within the range of 11 to 13° C for $T_v$ , there was variation in $W_t$ . The authors speculated that differences were attributed to mean annual temperatures. For instantaneous growth ( $G_w$ ) rates, actual mean rates were less than computed rates, with use of the instantaneous growth rate equation
Growth was maximum at 10 to 15.6° C	E	Pentelow (1939), British Isles hatchery fish	One- and 2-year-old trout were fed <i>Gammarus pulex</i> . Appetite increased as temperature rose to 15.6° C but dropped at higher temperatures. Between 4.4 and

Table 1. Continued.

Attribute	Observation <sup>a</sup>	Reference and fish source	Comments
Temperatures for rapid growth at constant and changing temperature environments were bimodal (7 to 9° C and 16 to 19° C)	E	Brown (1946), Midland Fishery, Nailsworth Gloucestershire	10.0° C, growth was proportional to amount of food consumed Experiments were conducted on 2-year-old fish. Surplus amounts of an unspecified kind of meat were fed to the trout
Occurred in the 3.9 to 19.5° C range, with an optimum of 13° C	E	Elliott (1975a), fish from a hatchery at Pickering, Yorkshire	Feeding was at maximum rations. Live weights of experimental fish ranged from 5 to 300 g. Temperatures were fairly constant
The mean size of brown trout ranged from 49.1 to 54.6 mm for a hypolimnion release zone (compared with a range of 57.3 to 68.1 mm in an upriver zone unaffected by coolwater release)	F	Saltveit (1990), Surma River, Norway	The data pertain to the end of the summer growth period for 1984–88. In 1987 and 1988 maximum temperatures exceeded 15° C for extended periods during the summer above the hypolimnion release zone, where temperatures never exceeded 14° C
At a 11.5° C constant temperature, there was a winter check in growth	E	Frost and Brown (1967), assumed to be trout from British waters	There was a winter and autumn check in growth, and a maximum growth period in the spring. The experiment involved exposure to artificial light for 12 h per day. The author suggested that the patterns are under control of a physiological "rhythm." I assumed that the information was for brown trout. Two-year-old fish were used in the experiment
Slow outside range of 7 to 19° C; general conclusion that growth is maximum within this range	E	Frost and Brown (1967), British Isles fish	Two-year-old brown trout grew most rapidly between 7 and 9° C and less at 11.5° C, but the average growth rate was higher between 16 and 19° C. The length of the photoperiod can be a factor affecting growth (i.e., there was a positive effect in early spring with increased day lengths). Decreased day length in fall had a negative effect
Maintenance ration ( $D_{\text{main}}$ ) in mg dry weight per day = $aW^{b_1}e^{b_2T}$	E	Elliott (1975b), assumed to be British Isles hatchery fish	$D_{\text{main}}$ represents the ration that merely maintains a fish without any weight changes. The experiment usually involved use of <i>Gammarus pulex</i> as the food. $D_{\text{main}}$ is positively correlated with water temperature. The fish for the experiment weighed 10–300 g

where a and b are constants for two temperature ranges:

	3.8–6.6° C	6.6–19.5° C
a	1.390	2.711
$b_1$	0.716	0.737
$b_2$	0.22	0.105

and W = mean weight (g)

Table 1. Continued.

Attribute	Observation <sup>a</sup>	Reference and fish source	Comments
Temperatures from 11.1 to 14.4° C provided rapid growth in rearing ponds	GS	Davis (1953), no reference to geographic locations	I assume that the recommended range applies to brown trout
Maximum growth was at 12° C	E	Swift (1961), British Isles hatchery brown trout	Yearlings were used in the experiment. Treatments involved fish directly from a hatchery and those that were stocked into the wild
The predicted final weight $W_t = (W_0 0.33 + G_S t)^3$ , where $W_t$ is the final weight in grams, $W_0$ is the initial weight in grams, $G_S$ = average daily temperature in ° C/1,000, and $t$ = days reared at the average temperature	GS	Iwama and Tautz 1981, data reported in the literature were used to derive the equation	By rearranging the equation, the estimated time to raise a fish of a specified size (g) to a larger size can be predicted:  $t = \text{days} = \frac{W_t 0.33 - W_0 0.33}{G_S}$ Also, the average daily temperature required to raise a fish to a larger size in a specified time ( $t$ in days) can be estimated: $T = \text{average daily temperature (° C)} = \frac{G_S}{\times 1,000}$ where $G_S = \frac{W_t 0.33 - W_0 0.33}{t}$  The equations were developed for hatchery conditions for salmonids, including brown trout; 4 to 18° C was the range for normal operations
Brown trout from the 1939 and 1940 year classes from a New Zealand stream grew more rapidly below 13° C than fish from Britain, and the growth for New Zealand trout was also greater in the 13 to 19.5° C range	E	Allen (1985), wild fish from stock introduced in New Zealand in 1868	Allen compared his results with those from experiments of Elliott (1975a, 1975b) with fish from Britain. Allen thought that the New Zealand trout grew when temperatures exceeded 19.5° C. This was the reported limit for growth for British fish. It is uncertain if differences for the New Zealand fish were genetically caused. The difference may have been caused by feeding conditions because the British fish were held under laboratory conditions
Maximum growth was at 14.9° C	F	Jensen (1990), Norwegian rivers	Actual growth was compared with predicted growth using Elliott's (1975a) model for excess rations, which was applicable to constant and fluctuating temperatures. Actual growth in 12 streams was between 76% and 136% of predicted growth. In autumn the growth rate was lower than in spring at the same temperature; causes were possibly from diminished availability of aquatic insects and a decreased rate of feeding in autumn

Table 1. Continued.

Attribute	Observation <sup>a</sup>	Reference and fish source	Comments
Equation for estimating growth in weight	E	Elliott (1975a), Pickering, Yorkshire hatchery in England	The equation is for maximum rations for brown trout weighing 5–300 g and temperatures of 3.8 to 19.5° C. Values for the constants are as follows:
$W_t = [b_1(a + b_2T)t + W_0^{b_1}]^{1/b}$ where			° C
$W_t$ = final weight in grams,			range
$W_0$ = initial weight in grams,			a
t = time lapse in days,			b <sub>1</sub>
T = temperature in ° C assumed to be appropriate for average conditions, and a, b <sub>1</sub> , b <sub>2</sub> = constants			b <sub>2</sub>
			3.8–12.8
			–0.0100
			0.3250
			0.0029
			13.6–19.5
			0.0820
			0.2917
			0.0042
			The equation seemed suitable for application to wild and hatchery fish for various foods. $W_t$ is for theoretical conditions. The growth rate ( $G_W\%$ day <sup>-1</sup> ) was greatest at 12.8–13.6° C. The equation for $W_t$ was applicable for constant and fluctuating temperatures
Optimal temperatures for maximum growth rates were 10 to 15.5° C	GS	Jobling (1981), reported from the literature	The author reported that the growth optimum and final preferendum temperatures correlate, that is, $Y = 1.05X - 0.53$ where X = the growth optimum, and Y = the final preferendum r = 0.937
<b>Fishing</b>			
Within the range of temperatures in which fishing occurred (about 8 to 25° C) catch rates tended to diminish with increasing temperatures	E	McMichael and Kaya (1991), Madison River, Montana	At temperatures of about 19° C and higher, unsatisfactory catch rates occurred
<b>Selection temperature</b>			
The modal temperatures selected on an annual basis for adults was 12° C when ambient Lake Michigan temperatures ranged from 1 to 17° C and discharge temperatures ranged from 11 to 31° C	E	Spigarelli et al. (1983), Point Beach Nuclear Power Plant discharge. Two Creeks, Lake Michigan	In late summer, tagged females selected 18° C, and tagged males selected 15° C. In October males selected 18° C compared with 12° C for females
When mean daily summer temperatures exceeded 24° C, or the daily maximum exceeded 25° C, cooler temperatures were sought	F	Kaya et al. (1977a), Firehole River in Yellowstone National Park	Geothermal waters caused temperatures to rise 12° C. During hot periods trout entered Sentinel Creek, which had temperatures 6 to 10° C lower than the Firehole River
Selected 18 to 19° C in winter and 16° C in summer	F and E	Nyman (1975), Stenugsund Power Station Outlet, Sweden	Fish sizes ranged from 31 to 44 mm, and fish were tracked with ultrasonic tags
Preferred temperature minimum was 10.3° C at	E	Reynolds and Casterlin (1979), wild trout	The 24-h mean preference was 12.2° C. The range of accessible temperatures

Table 1. *Continued.*

Attribute	Observation <sup>a</sup>	Reference and fish source	Comments
1400 h. Maximum temperature was 13.7° C between 2200 and 2300 h		in Pennsylvania	was 0 to 35° C. Feeding was not permitted during the experiments
<b>Response to exposure temperatures</b>			
Exposing fertilized eggs to heat shock of 29° C for 10 min from 5 to 45 min after fertilization resulted in 77–91% triploid embryos	E	Arai and Wilkins (1987), the trout were from a hatchery in Parteen, Ireland	After experimental treatments, eggs were incubated at 3.5 to 9.0° C. Triploidy was 91% when the heat shock exposure lasted for 15 min
In summer, fingerlings survived for 10 days at temperatures exceeding 25° C and for 3 days at temperatures exceeding 26.7° C	E	Embody (1921), hatchery fish at the Cornell University experimental hatchery	Seventy-five fingerlings were stocked in June, and counts were made the following April; there were 37 survivors. In July and August, temperatures ranged from 20.6 to 27.5° C. The author reported the limiting factor for brown trout in streams is 28.3° C, and I interpret this to mean an exposure temperature of short duration. Information regarding how long the trout could tolerate the temperature was not stated. However, in an experiment in which temperatures rose to 27.1° C and increased to 29.7° C, in 5 days there was 50% mortality. One day later the temperatures rose to 30.6° C, and all of the trout died. The preceding information was presented as a paper. In notes from a discussion following the presentation, one commentor stated that it would be unwise to try to propagate trout where temperatures would be 21.1 to 23.3° C for a month
The critical thermal maximum (CTM) was 28.96 ± 0.41° C for a 10° C acclimation compared with 29.85 ± 0.58° C for a 20° C acclimation	E	Lee and Rinne (1980), Ord Creek, Arizona	CTM was defined as the exposure temperature at which a fish loses its ability to escape lethal conditions. The fish were 15–20 cm in total length and were acclimated for 2 weeks. During the experiment, temperatures were increased at the rate of 0.02° C/min
Number of circuli and the rate of circuli formation were higher for fry incubated at 7° C compared with 2° C	E	Skurdal and Anderson (1985), Norway	Eggs and alevins were incubated at temperatures of 2 and 7° C. The respective ranges in numbers of circuli for the two treatments were 2–9, and 5–14. Following the exposure period, brown trout in the 7° C treatment were reared at 3 to 5° C. Afterwards, temperatures for both treatments were

Table 1. Continued.

Attribute	Observation <sup>a</sup>	Reference and fish source	Comments
Larvae tolerated 20° C for a 7-day period	E	Bishai (1959), Dove Marine Laboratory, England	the same (5 to 10° C). Because there were differences in circuli numbers for the two treatments, manipulation of incubation temperatures was recommended as a way to mark hatchery fish The trout eggs had incubated at an average temperature of 7.5° C and were introduced into tanks of water at 6° C. The temperature was elevated to 20° C in 4–6 h. At 10 and 20° C acclimation temperatures, mortality was not observed for test temperatures of 22, 22.5, and 23° C for a 7-day period. For the same acclimation temperatures, 100% mortality occurred in 168 h at a test temperature of 24° C
Upper tolerance limits seemed to be 22.5 to 25.3° C	E	Frost and Brown (1967), assumed to be for British brown trout	Results were from exposures up to 7 days in tank experiments
Fry began to show stress at 25° C	E	Rushton (1926), British Isles fish	Within 2 h after the temperature was reached, 80% of fry died. The author recommended 25° C as a safety limit that should not be exceeded for fry
Critical range: Lower = 0–4° C Upper = 19–30° C	GS	Elliott (1981), trout source unstated	Visible thermal stress can occur in the two ranges. The lower value for the upper range approximates the avoidance, restlessness, or disturbing temperature. The higher temperature in the range is the maximum temperature at which fish can survive for brief periods
<b>Physical response</b>			
The $Q_{10}$ for the relation between temperature (° C) and incubation was 4.9 for temperatures from 2 to 11° C	E	Emboly (1934), New York hatchery	The $Q_{10}$ is a rate of development, over an increment of 10° C, during incubation based on the Arrhenius (Emboly 1934) equation: $Q_{10} = \frac{T_2}{T_1} \times \frac{10}{O_1 - O_2}$ where $T_1$ and $T_2$ are days for temperatures $O_1$ and $O_2$ , respectively
The mean rate coefficient ( $\lambda$ ) for heat gain for brown trout = 0.11 with a range of 0.03–0.37. This compares with a mean of 13.6 and a range of 2.6 to 31.4 for heat loss	E	Spigarelli et al. (1977), Lake Michigan brown trout	The rate coefficient is a component of the equation: $T_f = (T_b + T_o - T_b)e^{-\lambda t}$ where $T_f$ = instantaneous body temperature at any time, $T_b$ = exposure temperature (° C) at time $t$ , $T_o$ = initial body temperature (° C), and $T$ = time of exposure in minutes

Table 1. Continued.

Attribute	Observation <sup>a</sup>	Reference and fish source	Comments
			The mathematical expression for $\lambda$ is: $-\ln \frac{(T_f - T_b)}{T_o - T_b} + t$ The equation for $t_{1/2}$ , the time required for half the heating to occur is $\log t_{1/2} = -0.10 + 0.70 \log wt$ , and for cooling it is $\log t_{1/2} = -0.56 + 0.50 \log wt$ . On a log-log plot, $t_{1/2}$ in minutes is directly proportional to $wt$ in g, the independent variable
Mean freezing temperature of brown trout was $-0.81^\circ \text{C} \pm 0.022 \text{ SE}$	E	Fletcher et al. (1988), streams near Bay Bulls Big Pond, Newfoundland	The freezing temperature was designated when brown trout exhibited convulsions. They died unless they were transferred to water $>0.5^\circ \text{C}$ . The mean weight of the experimental fish was $252 \pm 33 \text{ g}$ (SE). The freezing temperature was less than the plasma freezing temperature, which suggests that there is some "antifreeze" component to account for the difference
In the $9.4$ to $20.5^\circ \text{C}$ range, the following equation pertains to the mean $\text{O}_2$ concentration (Y) in ppm that is lethal $\log Y = 0.01248X - 0.46056$ where X = temperature ( $^\circ \text{F}$ )	F	Burdick et al. (1954), fish from the Rome, New York, hatchery	The fish were yearlings
<b>Habitat quality-related</b>			
Fry of two sizes (32 and 43 mm total length) preferred gravel in the 50- to 70-mm range in two experiments of $12.9$ to $18.1^\circ \text{C}$ and $6.0$ to $6.9^\circ \text{C}$	E	Heggenes (1988), NIVA fish hatchery, Norway	Fry could choose between three size classes of gravel (8–16, 20–30, and 50–70 mm). Experiments were in artificial stream channels. Fry hide in substrate more in the daytime and at low temperatures. The degree of preference for substrate size was influenced by fry size, water temperature, night versus day, and water velocities. Smaller fish (32 mm) had a weaker preference for the coarse substrate and generally had fewer diurnal preferences
Stream rating for maximum summer temperatures ( $^\circ \text{C}$ )	E	Binns and Eiserman (1979), data from Wyoming streams	Maximum summer temperature was one of nine variables in a multiple regression model for predicting standing crop for four fish species, including brown trout

Stream rating

0 (worst)	1	2	3	4 (best)
<6	6–8	8.1–10.3	10.4–12.5	
or	or	or	or	12.6–18.6
>26.4	24.2–26.3	21.5–24.1	18.7–21.4	

Table 1. Continued.

Attribute	Observation <sup>a</sup>	Reference and fish source	Comments
Maximum average summer temperatures of water should be near 18.9° C, with maximum short-term temperatures less than 22.8 to 23.9° C	GS	Tebo (1974), general observations from the literature	The author cited data for six states for which 20° C was stipulated as the allowable maximum except for one state (North Carolina), where the maximum was 21.7° C for put-and-take waters. The information is for trout in general
Optimum water temperature was 18.3 to 23.9° C	N	Mansell (1966), Ontario streams	For the best streams, the range was 11.7–22.8° C, and temperatures never exceeded 27.2° C
Survived temperatures up to 27.2° C	GS	Needham (1969), general statement	The author specified the value as the highest limiting water temperature. The time of tolerable exposure was unstated
<b>Activity and feeding</b>			
Brown trout were caught in 0° C water, and they were active throughout the winter	E	Maciolek and Needham (1952), Convict Creek, California	Surface feeding was observed when aerial insects were present at temperatures of 1.7–5.6° C. At least 50% of the food fed to fish in an experiment was digested in 14 h at temperatures ranging from 0 to 1.7° C. Brown trout were reluctant to migrate at temperatures below 5.6° C
Brown trout were most active between 18.3 and 23.9° C	GS	Brynildson et al. (1963), observation for Wisconsin	At 20° C, the minimum tolerated dissolved oxygen concentration was 5 ppm. At lower temperatures, lower concentrations could be tolerated
Appetite was maximum between 10 and 19° C	E	Frost and Brown (1967), British Isles fish	Appetite fell off sharply outside the range. Results were for fish maintained in tanks
Appetite was maximum between 13.3 and 18.4° C	E	Elliott (1975c), British Isles hatchery fish	Relatively constant treatment temperatures ranged from 3.8 to 21.6° C. Most trout readily fed at 6–19° C. They were inactive yet reluctant to feed at <6° C and were active and reluctant to feed above 19° C. Trout in the experiments ranged from 1 to 300 g
The maximum rate of feeding increased from 3.8 to 6.8° C, remained fairly constant in the 6.8 to 19.3° C range, and decreased markedly above 19.3° C	E	Elliott (1975d), assumed to be British Isles hatchery fish	The equation: $N = \frac{(24)}{a} e^{bT} = Ae^{bT}$ <p>is the expression for the number of meals (N) per day where a, A, and b are constants and T is temperature (° C). The maximum weight (mg dry weight) of food consumed per meal (Q) is represented by <math>Q = aW^{b_1}e^{b_2T}</math> where a, b<sub>1</sub>, and b<sub>2</sub> are constants, W = live weight of trout in grams, and T = temperature (° C). The maximum weight of food (mg dry weight) consumed per day = <math>D = A_D W^{b_1}e^{b_2T}</math> where A<sub>D</sub>, b<sub>1</sub>, and b<sub>2</sub> are constants, and T = temperature (° C). The experimental food was dried <i>Gammarus</i></p>



**Table 1.** *Continued.*

Attribute	Observation <sup>a</sup>	Reference and fish source	Comments
The relation between rate of feeding (F) and water temperature (T in °C) was $F = \log e^c + dT$ where c and d are constants	E	Elliott (1975d), assumed to be British Isles hatchery fish	The value of F increased rapidly from 3.8 to 6.8° C and remained relatively constant to 19.3° C, when it declined. The author stated that the equation was suitable for a wide variety of experimental food items
Shore fishing success for stocked fish declined at temperatures >18° C	F	Taylor (1978), Eye Brook, Leicestershire	Apparently the brown trout sought out cooler water in addition to having reduced appetite
Feeding rate optimal at 7 to 19° C	E	Elliott (1981), assumed to be British Isles trout	The optimum range was 13–18° C for voluntary food intake and satiation time for 50-g (live weight) British Isles trout

<sup>a</sup>GS = general statement; F = natural field conditions; E = experimental.

**Table 2.** Data for brown trout for selected responses to experimental temperatures.

Attribute	Comment
Upper ultimate incipient lethal temperature (UUILT) was >29° C <sup>a</sup>	Calculations of UUILT from Jobling's (1981) equations results in a value of 28.0° C for a final preferendum (FP) of 17.6° C compared with 26.3° C for a growth optimum (GO) of 16.4° C
UUILT was 25 to 30° C <sup>b</sup>	Assumed to apply to brown trout 10–25 cm long and 10–185 g. Survival was 10 min for acclimation temperature of 0–27.5° C
Critical thermal maximum (CTM) = 28.96° C for 10° C acclimation and 29.76° C for 20° C acclimation <sup>c</sup>	The values represent median temperatures for equilibrium loss
Growth optimum (GO) = 16.4° C <sup>a</sup>	The author listed a range of 10 to 21° C for different diets, life stages, and seasons
Zero net gain (ZNG) ranges: Lower: <2.0 to 3.8° C Upper: 19.5 to >21.2° C <sup>a</sup>	ZNG is defined as conditions when instantaneous growth and mortality rates for populations are equal. This is when increases in biomass of surviving individuals are offset by losses in biomass from mortality
Physiological optimum (PO) = 17.0° C <sup>a</sup>	Physiological optimum is defined as the temperature under experimental conditions approximating that for optimum growth, heart performance, and other physiological functions
Final preferendum (FP) = 12.4–20.0° C <sup>a</sup>	The author also listed 17.6° C as a single value. Cherry et al. (1977) reported a range of 12.0 to 17.8° C from literature sources. Ferguson (1958) reported a range of 12.4 to 17.6° C from the literature
Acclimation temperature (° C)	Regression coefficients
	a                      b
6	36.1429      -1.4286
15	21.5714      -0.7143
20	17.6667      -0.5556 <sup>d</sup>
	The data are for juvenile brown trout. Data for fry and smolts are in the same source

<sup>a</sup>Hokanson (1990a).

<sup>b</sup>Elliott (1981).

<sup>c</sup>Lee and Rinne (1980).

<sup>d</sup>Brungs and Jones (1977).

**Table 3.** Temperature and egg development relations for brown trout for alternative temperature regimes.

Variable	Alternative temperature regime		
	A	B	C
Temperature range (° C)	6–11	1.5–11	4–17
Average temperature (° C)	10.8	4.0	12.0
Estimated egg mortality (%)	40 <sup>a</sup>	24	80
Estimated days till hatching	36 <sup>b</sup>	104	<34

<sup>a</sup> Value obtained from Fig. 2 for the average temperature of 10.8° C.

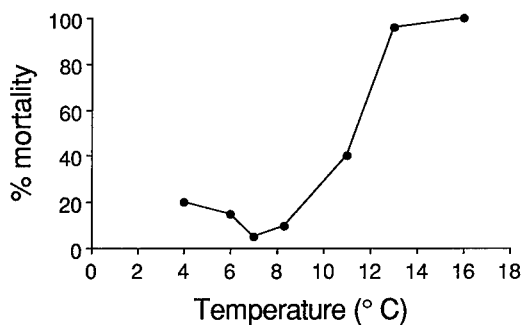
<sup>b</sup> Value obtained from Fig. 3 for the average temperature of 10.8° C.

requirements are acceptable. Also, assume that the temperature range of 2.8–13° C (Table 1; Gray 1928) is acceptable for incubation. Alternatives A and B should suffice; however, if egg mortality is a concern, alternative B, with an estimated mortality rate of 24% (Fig. 2), would be preferable. Also, days until hatching could be estimated from experimental results (Fig. 3). Because brown trout are fall spawners, a decision would be needed about the preferability of alternative B over A regarding time of hatching. For example, there could be a problem with synchronization of food availability for alternative A because after 36 days midwinter hatching would be predicted.

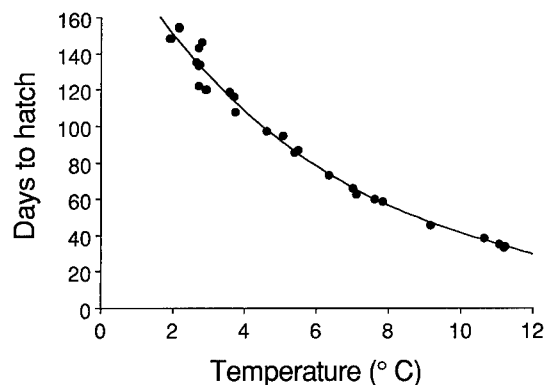
Growth might be another concern. Variables affecting brown trout growth fall into physicochemical and biotic categories (Wingfield 1940). In the first category, water temperature and water chemistry are probably most important; in the

second, food availability seems to be most important (Wingfield 1940). From a growth potential perspective, I hypothesize that results from temperature experiments would be most useful in comparing alternative temperature regimes. Reliance on experimental data, however, should be confined to theoretical rankings. Accordingly, if an alternative is ranked higher than another, the distinction would be qualitative. For spawning and egg incubation success, which are more directly linked to temperatures than to biotic factors, assuming that all other habitat criteria are met, there would be a higher probability that reproductive success in the field would resemble results from temperature experiments.

Another example involves the use of Elliott's (1975a) equation (equation 1) for final weights. If Elliott's equation were used to evaluate the alternative temperature regimes in Table 4, the inter-



**Fig. 2.** Relation between constant incubation temperatures and mortality rates for brown trout eggs (Jungsworth and Winkler 1984). A similar relation is assumed to apply for average temperatures during incubation.



**Fig. 3.** Relation between mean incubation temperatures and hatching days for brown trout (Emboly 1934).

**Table 4.** Final weights of brown trout for alternative flow regimes.

Variable	Alternative flow regime	
	A	B
Average temperature (° C)	10	13
Initial weight (W <sub>0</sub> ) in grams	10	10
Growth period (days)	45	50
a	-0.0100	0.0820
b <sub>1</sub>	0.3250	0.2917
b <sub>2</sub>	0.0029	-0.0042
Final weight (W <sub>t</sub> ) <sup>a</sup> in grams	14.6	18.9

$$\begin{aligned}
 {}^a W_t &= [(b_1(a + b_2 T)t + W_0^{b_1})^{1/b_1}] \\
 &= [0.3250((-0.01 + (0.0029)10))45 + 10^{0.3250}]^{1/0.3250} \\
 &= [0.27788 + 10^{0.3250}]^{3.07692} \\
 &= 2.39137^{3.07692} \\
 &= \text{antilog } 3.07692 \log 2.39137 \\
 &= \text{antilog } 1.165076 = 14.6 \text{ g}
 \end{aligned}$$

pretation of results would be that, from a theoretical perspective, regime B provides more potential for growth.

$$W_t = [b_1 (a + b_2 T)t + W_0^{b_1}]^{1/b_1} \quad (1)$$

where

W<sub>t</sub> = final weight (g); a, b<sub>1</sub>, and b<sub>2</sub> are constants;  
 T = average temperature (° C); and  
 W<sub>0</sub> = initial weight (g).

Site-specific growth responses could differ from those predicted from the equation because it was derived for experimental conditions with maximum rations. Another possibility would be to use Iwama and Tautz's (1981) equation (equation 2) to evaluate the theoretical time required for a brown trout to attain a designated weight for alternative temperature regimes (Table 5). This method requires use of average temperatures during a prescribed period

**Table 5.** Ranking of alternatives according to the least time required for a 15-g brown trout to attain 100 g.

Variable	Alternative temperature regime		
	A	B	C
Average temperature (° C)	5	7	13
Initial weight (W <sub>0</sub> ) in grams	15	15	15
Final weight (W <sub>t</sub> ) in grams	100	100	100
G <sub>s</sub> = ° C/1,000	0.005	0.007	0.013
Days to attain W <sub>t</sub>	425 <sup>a</sup>	304	164
Rank	3	2	1

$$\begin{aligned}
 {}^a t &= \frac{W_t^{0.33} - W_0^{0.33}}{G_s} = \frac{100^{0.33} - 15^{0.33}}{0.005} \\
 &= \frac{\text{antilog } 0.33 \log 100 - \text{antilog } 0.33 \log 15}{0.005} \\
 &= \frac{\text{antilog } 0.66 - \text{antilog } 0.3881}{0.005} \\
 &= \frac{4.5709 - 2.4440}{0.005} \\
 &= \frac{2.1269}{0.005} = 425 \text{ days}
 \end{aligned}$$

(e.g., a summer growing season). Alternative C, with 164 days, would be ranked first. Because the equation was derived for hatchery conditions, with maximum rations, the times estimated to attain a designated weight would be relative.

$$t = \frac{W_t^{0.33} - W_o^{0.33}}{G_s} \quad (2)$$

where

$t$  = estimated time in days to attain a specified weight,

$W_t$  = designated final weight (g),

$W_o$  = initial weight (g), and

$G_s$  = average temperature in °C/1,000.

An option would be to use a modified form of Iwama and Tautz's (1981) equation (equation 3) and to solve for  $T$  (°C)—the average theoretical temperature (i.e.,  $T = G_s \times 1,000$ ).

$$G_s = \frac{W_t^{0.33} - W_o^{0.33}}{t} \quad (3)$$

where

$t$  = time in days (e.g., length of growing season).

Other expressions are the same as in equation 2.

Alternatives would be ranked relative to the theoretical temperature required to attain a specified weight in a designated period (Table 6). For

example, alternative A, with an average temperature of 13° C for the 180-day period, would rank first. The approach would not be restricted to alternatives with equal growing seasons. However, for alternatives with different lengths of growing season, the criterion would have to be the ultimate weight—not the shortest period for its attainment.

When temperatures are simulated for alternative regimes, ranges of predicted temperatures should be used instead of averages because averaging can result in failure to consider harmful temperatures outside of tolerance limits.

## General Considerations

Ideally, evaluating temperature regimes for fish species should be a "cookbook" process. For the foreseeable future, however, such studies will rely on existing information and professional judgment, which emphasizes the need for a sound problem analysis process (Fig. 4) for studies. Prior to proceeding from one step to another in the problem analysis process, the rationale for decisions should be carefully documented, for two reasons. First, the thought processes for decisions will be available to all concerned with a project. Second, because the

**Table 6.** Ranking of alternative temperature regimes for proximity of the average daily temperature to a theoretical temperature for attainment of 15-g brown trout to 100 g in 180 days.

Variable	Alternative temperature regime			
	A	B	C	D
Time (t) in days for growing season	180	180	180	180
Final weight ( $W_t$ ) in grams	100	100	100	100
Initial weight ( $W_o$ ) in grams	15	15	15	15
$G_s^a$	0.0118 <sup>a</sup>	0.0118	0.0118	0.0118
Average daily temperature (°C)	13	17	16	14
Theoretical temperature ( $T$ °C)	11.8 <sup>b</sup>	11.8	11.8	11.8
Rank	1	4	3	2

<sup>a</sup>  $G_s$  = Average daily temperature (°C)/1,000

$$\begin{aligned} &= \frac{W_t^{0.33} - W_o^{0.33}}{t} \\ &= \frac{\text{antilog } 0.33 \log 100 - \text{antilog } 0.33 \log 15}{180} \\ &= \frac{4.5709 - 2.4440}{180} = \frac{2.1269}{180} = 0.0118 \end{aligned}$$

<sup>b</sup>  $T = G_s \times 1,000 = 11.8$

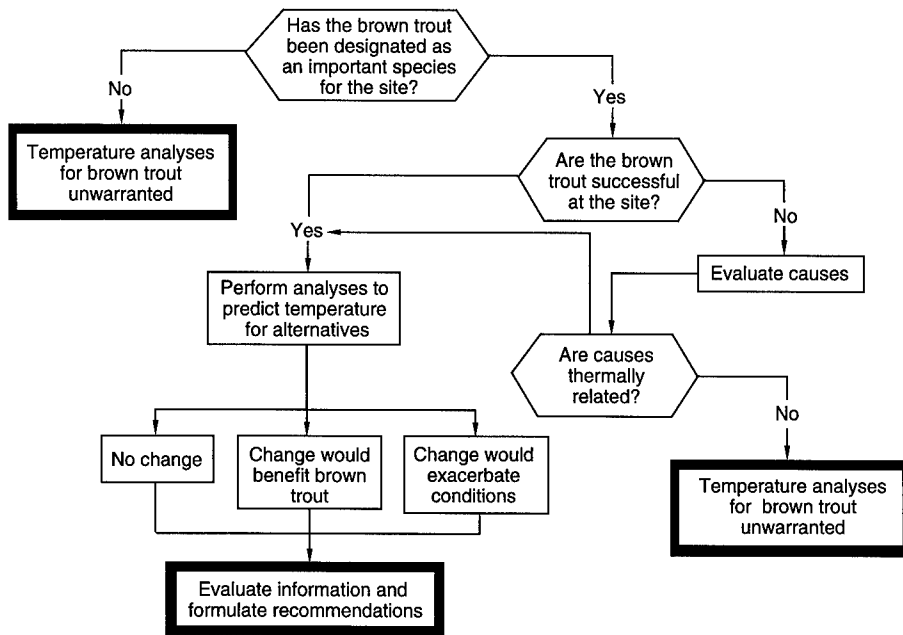


Fig. 4. Flowchart for the temperature analysis process.

rationale for the entire process is documented, the probability of resolving conflicts with those who might interpret information differently will be enhanced.

A special challenge will be to account for water quality problems that temperatures might exacerbate, for example, at a site where alternative flows are proposed but a toxicant is present. Temperature alterations in either direction may cause an increase, decrease, or no change in toxicity for aquatic organisms, depending on the toxicant (Rand and Petrocelli 1985). For some toxicants, there is a relation between concentration and decreased ability of fish to withstand thermal stress. Channel catfish (*Ictalurus punctatus*), for example, exhibit an inverse relation between critical thermal maxima and concentration of nitrite; as nitrite increases, the oxygen binding capacity of methemoglobin decreases to cause methemoglobinemia (Watenpaugh and Beiting 1985). Figure 5 shows the effects of nickel on rainbow trout temperature tolerance. The time to loss of equilibrium decreases as concentration of the toxicant increases even though water temperatures are lower.

It exceeds the scope of this report to discuss details about effects of toxicants in conjunction with temperatures. Suggested sources of basic water

quality information include the National Academy of Sciences and Engineering (1972) "blue book" and the U.S. Environmental Protection Agency (1976) "red book." Information relevant to water quality and fish kills can be found in the U.S. Fish and Wildlife Service (1990).

Short-term extreme temperatures and exposure periods are important considerations when evalu-

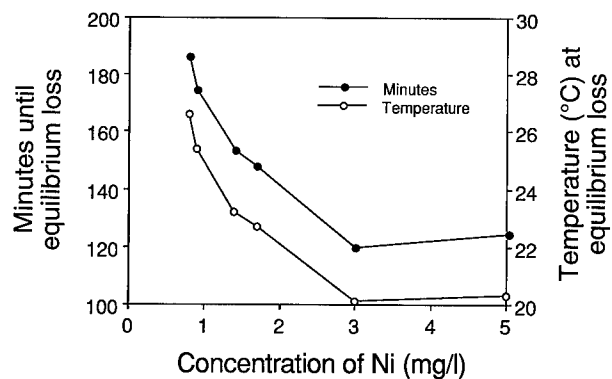


Fig. 5. Relation between time of equilibrium loss and temperature at different nickel concentrations for rainbow trout (*Oncorhynchus mykiss*; Becker and Wolford 1980).

ating alternative temperature regimes (Brungs and Jones 1977; Armour 1991) because tolerance to temperatures depends on acclimation temperatures and the magnitude and duration of exposure periods. Short-term temperature tolerance information might be unavailable for a particular life stage. In this case, assume that any temperature, regardless of the exposure time, outside the range observed for successful populations would be detrimental.

## Cited Literature

- Allen, K. R. 1985. Comparison of the growth rate of brown trout (*Salmo trutta*) in a New Zealand stream with experimental fish in Britain. *Journal of Animal Ecology* 54:487-495.
- Arai, K., and N. P. Wilkins. 1987. Triploidization of brown trout (*Salmo trutta*) by heat shocks. *Aquaculture* 64:97-103.
- Armour, C. L. 1991. Guidance for evaluating and recommending temperature regimes to protect fish. U.S. Fish and Wildlife Service Biological Report 90(22). 13 pp.
- Armour, C. L. 1992a. Evaluating temperature regimes for protection of smallmouth bass. U.S. Fish and Wildlife Service Resource Publication 192. 27 pp.
- Armour, C. L. 1992b. Evaluating temperature regimes for protection of walleye (*Stizostedion vitreum*). U.S. Fish and Wildlife Service Resource Publication 195. 22 pp.
- Becker, C. D., and M. G. Wolford. 1980. Thermal resistance of juvenile salmonids sublethally exposed to nickel determined by the critical thermal maximum method. *Environmental Protection* 21:181-189.
- Biesinger, K. E., R. P. Brown, C. R. Bernick, G. A. Flittner, and K. E. F. Hokanson. 1979. A national compendium of freshwater fish and water temperature data. Volume I. U.S. Environmental Protection Agency, Environmental Research Laboratory, Duluth, Minn. 207 pp.
- Binns, A. N., and F. M. Eiserman. 1979. Quantification of fluvial trout habitat in Wyoming. *Transactions of the American Fisheries Society* 108:215-228.
- Bishai, H. M. 1959. Upper lethal temperatures for larval salmonids. *Journal du Conseil pour L'Exploration de la Mer*. 25(1):129-133.
- Bjornn, T. C., and D. W. Reiser. 1991. Habitat requirements of salmonids in streams. Pages 83-138 in W. R. Meehan, editor. *Influences of forest and rangeland management on salmonid fishes and their habitats*. American Fisheries Society Special Publication 19. Bethesda, Md.
- Brown, M. E. 1946. The growth of brown trout (*Salmo trutta* Linn.). III. The effect of temperature on the growth of two-year-old trout. *Journal of Experimental Biology* 22:145-155.
- Brungs, W. A., and B. R. Jones. 1977. Temperature criteria for freshwater fish: Protocol and procedures. U.S. Environmental Protection Agency Research Laboratory, Duluth, Minn. EPA-600/3-77-061. 129 pp.
- Brynildson, O. M., V. A. Hacker, and T. A. Klick. 1963. Brown trout: Its life history, ecology and management. Wisconsin Conservation Department, Publication 234. Madison.
- Burdick, G. E., M. Lipschuetz, H. J. Dean, and E. F. Harris. 1954. Lethal oxygen concentrations for trout and smallmouth bass. *New York Fish and Game Journal* 1(1):84-97.
- Cherry, D. S., K. L. Dickson, and J. Cairns, Jr. 1977. Preferred, avoided, and lethal temperatures of fish during rising temperature conditions. *Journal of the Fisheries Research Board of Canada* 34:239-246.
- Crisp, D. T. 1981. A desk study of the relationship between temperature and hatching time for the eggs of five species of salmonid fishes. *Freshwater Biology* 11:361-368.
- Crisp, D. T. 1988. Prediction, from temperature, of eyeing, hatching and 'swim-up' times for salmonid embryos. *Freshwater Biology* 19:41-48.
- Davis, H. S. 1953. *Culture and diseases of game fishes*. University of California Press, Berkeley and Los Angeles. 332 pp.
- Edwards, R. W., J. W. Densem, and P. A. Russell. 1979. An assessment of the importance of temperature as a factor controlling the growth rate of brown trout in streams. *Journal of Animal Ecology* 48:501-507.
- Elliott, J. M. 1975a. The growth rate of brown trout (*Salmo trutta* L.) fed on maximum rations. *Journal of Animal Ecology* 44:805-821.
- Elliott, J. M. 1975b. The growth rate of brown trout (*Salmo trutta* L.) fed on reduced rations. *Journal of Ecology* 44:823-841.
- Elliott, J. M. 1975c. Weight of food and time required to satiate brown trout, *Salmo trutta* L. *Freshwater Biology* 5:51-64.
- Elliott, J. M. 1975d. Numbers of meals in a day, maximum weight of food consumed in a day and maximum rate of feeding for brown trout, *Salmo trutta* L. *Freshwater Biology* 5:287-303.
- Elliott, J. M. 1981. Some aspects of thermal stress on freshwater teleosts. Pages 209-245 in A. D. Pickering, editor. *Stress and fish*. Academic Press, New York.

- Elliott, J. M. 1984. Numerical changes and population regulation in young migratory trout *Salmo trutta* in Lake District streams, 1966–83. *Journal of Animal Ecology* 53:327–350.
- Elliott, J. M. 1988. Growth, size, biomass, and production in contrasting populations of trout *Salmo trutta* in two Lake District streams. *Journal of Animal Ecology* 57:40–60.
- Embury, G. C. 1921. Concerning high water temperatures and trout. *Transactions of the American Fisheries Society* 51:58–64.
- Embury, G. C. 1934. Relation of temperature to the incubation periods of eggs of four species of trout. *Transactions of the American Fisheries Society* 64:281–292.
- Ferguson, R. G. 1958. The preferred temperature of fish and their midsummer distribution in temperate lakes and streams. *Journal of the Fisheries Research Board of Canada* 15:604–607.
- Fletcher, G. L., M. H. Kao, and B. Dempson. 1988. Lethal freezing temperatures of Arctic char and other salmonids in the presence of ice. *Aquaculture* 72:369–378.
- Frost, W. E., and M. E. Brown. 1967. *The trout*. Collins Publishers. St. James Place, London. 286 pp.
- Grande, M., and S. Anderson. 1990. Effect of two temperature regimes from a deep and a surface water release on early development of salmonids. *Regulated Rivers: Research and Management* 5:355–360.
- Gray, J. 1928. The growth of fish. III. The effects of temperature on the development of the eggs of *Salmo fario*. *Journal of Experimental Biology* 6:125–130.
- Heggenes, J. 1988. Substrate preferences of brown trout fry (*Salmo trutta*) in artificial stream channels. *Canadian Journal of Fisheries and Aquatic Sciences* 45:1801–1806.
- Hokanson, K. E. F. 1990a. A national compendium of freshwater fish and water temperature data. Volume 2. Temperature requirements for 30 fishes. Archive of laboratory data base available from Technical Information Office, Document No. ERL-DUL-2338, Environmental Research Laboratory, Duluth, Minn. 178 pp.
- Hokanson, K. E. F., B. E. Goodno, and J. G. Eaton. 1990. Evaluation of field and laboratory-derived fish thermal requirements for global climate warming impact assessments. Archives of field data base available from Technical Information Office, Internal Report No. 600/X-90/070. Environmental Research Laboratory, Duluth, Minn. 199 pp.
- Humpesch, U. H. 1985. Inter- and intra-specific variation in hatching success and embryonic development of five species of salmonids and *Thymallus thymallus*. *Archiv fuer Hydrobiologie* 104(1):129–144.
- Iwama, G. K., and A. F. Tautz. 1981. A simple growth model for salmonids in hatcheries. *Canadian Journal of Fisheries and Aquatic Sciences* 38:649–656.
- Jensen, A. J. 1990. Growth of young migratory brown trout *Salmo trutta* correlated with water temperature in Norwegian rivers. *Journal of Animal Ecology* 59:603–614.
- Joblings, M. 1981. Temperature tolerance and final preferendum—rapid methods for the assessment of optimum growth temperatures. *Journal of Fisheries Biology* 19:439–455.
- Johnson, R. L., P. E. Giguere, and E. P. Pister. 1966. A progress report on the Pleasant Valley spawning channel, Inyo County. Report No. 66–4. California Department of Fish and Game. 13 pp.
- Jungsworth, M., and H. Winkler. 1984. The temperature dependence of embryonic development of grayling (*Thymallus thymallus*), Danube salmon (*Hucho hucho*), Arctic char (*Salvelinus alpinus*), and brown trout (*Salmo trutta fario*). *Aquaculture* 38:315–327.
- Kaya, C. M., L. R. Kaeding, and D. E. Burkhalter. 1977a. Use of a cold-water refuge by rainbow trout in a geothermally heated stream. *Progressive Fish-Culturist* 39(1):37–39.
- Kaya, C. M. 1977b. Reproduction biology of rainbow and brown trout in a geothermally heated stream: The Firehole River of Yellowstone National Park. *Transactions of the American Fisheries Society* 100(3):354–361.
- Kaya, C. M. 1978. Thermal resistance of rainbow trout from a permanently heated stream, and of two hatchery strains. *Progressive Fish-Culturist* 40:138–142.
- Lee, R. M., and J. N. Rinne. 1980. Critical thermal maxima of five trout species in the southwestern United States. *Transactions of the American Fisheries Society* 109:632–635.
- Lee, D. S., C. R. Gilbert, C. H. Hocutt, R. E. Jenkins, D. E. McAllister, and J. R. Stauffer, Jr. 1980. *Atlas of North American freshwater fishes*. North Carolina Biological Survey Publication No. 1980-12. 854 pp.
- Maciolek, J. A., and P. R. Needham. 1952. Ecological effects of winter conditions on trout and trout foods in Convict Creek, California, 1951. *Transactions of the American Fisheries Society* 81:202–217.
- Mansell, W. D. 1966. Brown trout in southwestern Ontario. *Ontario Fish and Wildlife Review* 5(2):3–8.
- Markus, H. C. 1962. Hatchery-reared Atlantic salmon smolts in 10 months. *Progressive Fish-Culturist* 24(3):127–130.
- McMichael, G. A., and C. M. Kaya. 1991. Relations among stream temperature, angling success for rainbow and brown trout, and fisherman satisfaction. *North American Journal of Fisheries Management* 11:190–199.

- National Academy of Sciences and Engineering. 1972. Blue book. Water quality criteria. Washington, D.C. 296 pp.
- Needham, P. R. 1969. Trout streams. Holden-Day, San Francisco, Cambridge, London, Amsterdam. 241 pp.
- Nyman, L. 1975. Behavior of fish influenced by hot water effluents as observed by ultrasonic tracking. Institute Freshwater Research. Drottningholm 54:63-74.
- Pentelov, F. T. K. 1939. The relation between growth and food consumption in the brown trout (*Salmo trutta*). Journal Experimental Biology 16(4):446-473.
- Piper, R. G., I. B. McElwain, L. E. Orme, J. P. McCraren, L. G. Fowler, and J. R. Leonard. 1982. Fish hatchery management. U.S. Fish and Wildlife Service, Washington, D.C. 517 pp.
- Raleigh, R. F., L. D. Zuckerman, and P. C. Nelson. 1986. Habitat suitability index models and instream flow suitability curves: Brown trout, revised. U.S. Fish and Wildlife Service Biological Report 82(10.124). 65 pp.
- Rand, G. M., and S. R. Petrocelli. 1985. Fundamentals of aquatic toxicology. Hemisphere Publishing, New York. 666 pp.
- Reiser, D. W., and T. A. Wesche. 1977. Determination of physical and hydraulic preferences of brown and brook trout in the selection of spawning locations. Completion report for Project C-7002. Water Resources Institute, University of Wyoming. 100 pp.
- Reiser, D. W., and T. A. Wesche. 1979. In situ freezing as a cause of mortality in brown trout eggs. Progressive Fish-Culturist 41(2):58-63.
- Reynolds, W. W., and M. E. Casterlin. 1979. Thermoregulatory behavior of brown trout, *Salmo trutta*. Hydrobiologia 62:79-80.
- Rushton, W. 1926. Biological notes. Salmon and Trout Magazine 45:377-385.
- Saltveit, S. J. 1990. Effect of decreased temperature on growth and smoltification of juvenile Atlantic salmon (*Salmo salar*) and brown trout (*Salmo trutta*) in a Norwegian regulated river. Regulated Rivers: Research and Management 5:295-303.
- Skurdal, J., and R. Anderson. 1985. Influence of temperature on number of circuli of first year scales of brown trout, *Salmo trutta* L. Journal of Fisheries Biology 26:363-366.
- Spigarelli, S. A., M. M. Thommes, and T. L. Beiting. 1977. The influence of body weight on heating and cooling of selected Lake Michigan fishes. Comparative Biochemistry and Physiology 56(1):51-57.
- Spigarelli, S. A., M. M. Thommes, W. Prepejchal, and R. M. Goldstein. 1983. Selected temperatures and thermal experience of brown trout *Salmo trutta* in a steep thermal gradient in nature. Environmental Biology of Fishes 8(2):137-149.
- Swift, D. R. 1961. The annual growth-rate cycle in brown trout (*Salmo trutta* Linn.) and its cause. Journal of Experimental Biology 38:595-604.
- Taylor, A. H. 1978. An analysis of the trout fishing at Eye Brook—a eutrophic reservoir. Journal of Animal Ecology 47:407-423.
- Tebo, L. B., Jr. 1974. Review of selected parameters of trout stream quality. Pages 20-32 in Symposium on trout habitat research and management. September 5-6, 1974. Western Carolina University, Cullowhee, N.C.
- U.S. Environmental Protection Agency. 1976. Quality criteria for water. Washington, D.C. 256 pp.
- U.S. Fish and Wildlife Service. 1990. Field manual for the investigation of fish kills. F. P. Meyer and L. A. Barclay, editors. U.S. Fish and Wildlife Service, Washington, D.C. 119 pp.
- Watenpaugh, D. E., and T. L. Beiting. 1985. Temperature tolerance of nitrite-exposed channel catfish. Transactions of the American Fisheries Society 114:274-278.
- Wingfield, C. A. 1940. The effect of certain environmental factors on the growth of brown trout (*Salmo trutta*). Journal of Experimental Biology 17(4):435-448.



*Current Resource Publications :*

178. Section 404 and Alterations in the Platte River Basin of Colorado, by Douglas N. Gladwin, Mary E. Jennings, James E. Roelle, and Duane A. Asherin. 1992. 19 pp.
179. Hydrology of the Middle Rio Grande From Velarde to Elephant Butte Reservoir, New Mexico, by Thomas F. Bullard and Stephen G. Wells. 1992. 51 pp.
180. Waterfowl Production on the Woodworth Station in South-central North Dakota, 1965–1981, by Kenneth F. Higgins, Leo M. Kirsch, Albert T. Klett, and Harvey W. Miller. 1992. 79 pp.
181. Trends and Management of Wolf–Livestock Conflicts in Minnesota, by Steven H. Fritts, William J. Paul, L. David Mexch, and David P. Scott. 1992. 27 pp.
182. Selection of Prey by Walleyes in the Ohio Waters of the Central Basin of Lake Erie, 1985–1987, by David R. Wolfert and Michael T. Burr. 1992. 14 pp.
183. Effects of the Lampricide 3-Trifluoromethyl-4-Nitrophenol on the Pink Heelsplitter, by Terry D. Bills, Jeffrey J. Rach, Leif L. Marking, and George E. Howe. 1992. 7 pp.
184. Methods for Detoxifying the Lampricide 3-Trifluoromethyl-4-Nitrophenol in a Stream, by Philip A. Gilderhus, Terry D. Bills, and David A. Johnson. 1992. 5 pp.
185. Group Decision-making Techniques for Natural Resource Management Applications, by Beth A. Coughlan and Carl L. Armour. 1992. 55 pp.
186. DUCKDATA: A Bibliographic Data Base for North American Waterfowl (Anatidae) and Their Wetland Habitats, by Kenneth J. Reinecke and Don Delnicki. 1992. 7 pp.
187. Dusky Canada Goose: An Annotated Bibliography, by Bruce H. Campbell and John E. Cornely. 1992. 30 pp.
188. Human Disturbances of Waterfowl: An Annotated Bibliography, by Robert B. Dahlgren and Carl E. Korshgen. 1992. 62 pp.
189. Opportunities to Protect Instream Flows and Wetland Uses of Water in Nevada, by James L. Bingham and George A. Gould. 1992. 33 pp.
190. Assessment of Habitat of Wildlife Communities on the Snake River, Jackson, Wyoming, by Richard L. Schroeder and Arthur W. Allen. 1992. 21 pp.
191. Evaluating Temperature Regimes for Protection of Smallmouth Bass, by Carl L. Armour. 1993. 26 pp.
192. Sensitivity of Juvenile Striped Bass to Chemicals Used in Aquaculture, by Terry D. Bills, Leif L. Marking, and George E. Howe. 1993. 11 pp.
193. Introduction of Foxes to Alaskan Islands—History, Effects on Avifauna, and Eradication, by Edgar P. Bailey. 1993. 53 pp.
194. Distribution and Abundance of Predators that Affect Duck Production—Prairie Pothole Region, by Alan B. Sargeant, Raymond J. Greenwood, Marsha A. Sovada, and Terry L. Shaffer. 1993. 96 pp.
195. Evaluating Temperature Regimes for Protection of Walleye, by Carl L. Armour. 1993. 22 pp.
196. Evaluation of Five Anesthetics on Striped Bass, by Carol A. Lemm. 1993. 10 pp.
197. Standardization of Roadside Counts of Columbids in Puerto Rico and on Vieques Island, by Frank F. Rivera-Milán. 1993. 26 pp.
198. Herpetofaunal Diversity of the Four Holes Swamp, South Carolina, by Russell J. Hall. 1994. 43 pp.
199. Migrations and Management of the Jackson Elk Herd, by Bruce L. Smith and Russell J. Robbins. 1994. 61 pp.
200. Effects of Section 404 Permits on Wetlands in North Dakota, by Natalie R. Sexton. 1994. 16 pp.

## U.S. Department of the Interior National Biological Survey

As the Nation's principal conservation agency, the Department of the Interior has responsibility for most of our nationally owned public lands and natural resources. This responsibility includes fostering the sound use of our lands and water resources; protecting our fish, wildlife, and biological diversity; preserving the environmental and cultural values of our national parks and historical places; and providing for the enjoyment of life through outdoor recreation. The Department assesses our energy and mineral resources and works to ensure that their development is in the best interests of all our people by encouraging stewardship and citizen participation in their care. The Department also has a major responsibility for American Indian reservation communities and for people who live in island territories under U.S. administration.