

BROWN UNIVERSITY
DEPARTMENT OF COMPUTER SCIENCE

A Probabilistic Analysis of the Power
of Arithmetic Filters

Olivier Devillers and Franco Preparata

Department of Computer Science
Brown University
Providence, Rhode Island 02912

CS-96-27
September 1996

DISSEMINATION STATEMENT #

Approved for public release;
Distribution Unlimited

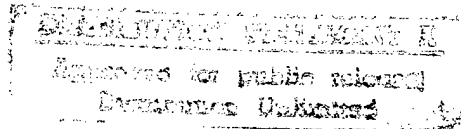
CENTER
FOR
GEOMETRIC
COMPUTING

**A Probabilistic Analysis of the Power
of Arithmetic Filters**

Olivier Devillers and Franco Preparata

Department of Computer Science
Brown University
Providence, Rhode Island 02912

CS-96-27
September 1996



19961125 119

REPORT DOCUMENTATION PAGE			Form Approved OMB NO. 0704-0188	
Public reporting burden for this collection of information is estimated to average 1 hour per response, including the time for reviewing instructions, searching existing data sources, gathering and maintaining the data needed, and completing and reviewing the collection of information. Send comment regarding this burden estimate or any other aspect of this collection of information, including suggestions for reducing this burden, to Washington Headquarters Services, Directorate for Information Operations and Reports, 1215 Jefferson Davis Highway, Suite 1204, Arlington, VA 22202-4302, and to the Office of Management and Budget, Paperwork Reduction Project (0704-0188), Washington, DC 20503.				
1. AGENCY USE ONLY (Leave blank)	2. REPORT DATE	3. REPORT TYPE AND DATES COVERED <i>Technical</i>		
4. TITLE AND SUBTITLE A Probabilistic Analysis of the Power of Arithmetic Filters		5. FUNDING NUMBERS <i>DAAH04-96-1-0013</i>		
6. AUTHOR(S) Olivier Devillers, Franco Preparata				
7. PERFORMING ORGANIZATION NAME(S) AND ADDRESS(ES) Center for Geometric Computing Department of Computer Science Brown University Box 1910, Providence, RI 02912-1910		8. PERFORMING ORGANIZATION REPORT NUMBER CS-96-27		
9. SPONSORING / MONITORING AGENCY NAME(S) AND ADDRESS(ES) U.S. Army Research Office P.O. Box 12211 Research Triangle Park, NC 27709-2211		10. SPONSORING / MONITORING AGENCY REPORT NUMBER <i>ARO34990.4/MA-MUR</i>		
11. SUPPLEMENTARY NOTES The views, opinions and/or findings contained in this report are those of the author(s) and should not be construed as an official Department of the Army position, policy or decision, unless so designated by other documentation.				
12a. DISTRIBUTION / AVAILABILITY STATEMENT Approved for public release; distribution unlimited.		12 b. DISTRIBUTION CODE		
13. ABSTRACT The assumption of real-number arithmetic, which is at the basis of conventional geometric algorithms, has been seriously challenged in recent years, since digital computers do not exhibit such capability. A geometric predicate usually consists of evaluating the sign of some algebraic expression. In most cases, rounded computations yield a reliable result, but sometimes rounded arithmetic introduces errors which may invalidate the algorithms. The rounded arithmetic may produce an incorrect result only if the exact absolute value of the algebraic expression is smaller than some (small) ϵ , which represents the largest error that may arise in the evaluation of the expression. The threshold ϵ depends on the structure of the expression and on the adopted computer arithmetic, assuming that the input operands are error-free. A pair (arithmetic engine, threshold) is an <i>arithmetic filter</i> . In this paper we develop a general technique for assessing the efficacy of an arithmetic filter. The analysis consists of evaluating both the threshold and the probability of failure of the filter. To exemplify the approach, under the assumption that the input points be chosen randomly in a unit ball or unit cube with uniform density, we analyze the two important predicates "which-side" and "insphere". We show that the probability that the absolute values of the corresponding determinants be no larger than some positive value V , with emphasis on small V , is $\Theta(V)$ for the which-side predicate, while for the insphere predicate it is $\Theta(V^{\frac{2}{3}})$ in dimension $n-1$, $O(V^{\frac{1}{2}})$ in dimension 2, and $O(V^{\frac{1}{2}} \ln \frac{1}{V})$ in higher dimensions. Constants are small, and are given in the paper.				
14. SUBJECT TERMS Computational geometry, robustness, arithmetic filters. signs of determinants		15. NUMBER OF PAGES		
		16. PRICE CODE		
17. SECURITY CLASSIFICATION OR REPORT UNCLASSIFIED	18. SECURITY CLASSIFICATION OF THIS PAGE UNCLASSIFIED	19. SECURITY CLASSIFICATION OF ABSTRACT UNCLASSIFIED	20. LIMITATION OF ABSTRACT UL	

A Probabilistic Analysis of the Power of Arithmetic Filters*

Olivier Devillers[†] Franco P. Preparata[‡]

September 25, 1996

Abstract

The assumption of real-number arithmetic, which is at the basis of conventional geometric algorithms, has been seriously challenged in recent years, since digital computers do not exhibit such capability. A geometric predicate usually consists of evaluating the sign of some algebraic expression. In most cases, rounded computations yield a reliable result, but sometimes rounded arithmetic introduces errors which may invalidate the algorithms. The rounded arithmetic may produce an incorrect result only if the exact absolute value of the algebraic expression is smaller than some (small) ϵ , which represents the largest error that may arise in the evaluation of the expression. The threshold ϵ depends on the structure of the expression and on the adopted computer arithmetic, assuming that the input operands are error-free. A pair (arithmetic engine, threshold) is an *arithmetic filter*. In this paper we develop a general technique for assessing the efficacy of an arithmetic filter. The analysis consists of evaluating both the threshold and the probability of failure of the filter. To exemplify the approach, under the assumption that the input points be chosen randomly in a unit ball or unit cube with uniform density, we analyze the two important predicates "which-side" and "insphere". We show that the probability that the absolute values of the corresponding determinants be no larger than some positive value V , with emphasis on small V , is $\Theta(V)$ for the which-side predicate, while for the insphere predicate it is $\Theta(V^{\frac{2}{3}})$ in dimension 1, $O(V^{\frac{1}{2}})$ in dimension 2, and $O(V^{\frac{1}{2}} \ln \frac{1}{V})$ in higher dimensions. Constants are small, and are given in the paper.

1 Introduction

The original model of Computational Geometry rests on real-number arithmetic, and under this assumption the issue of precision is irrelevant. However, the reality that computer

*This work was partially supported by ESPRIT LTR 21957 (CGAL) and by the U.S. Army Research Office under grant DAAH04-96-1-0013. This work was done while O. Devillers was visiting Brown University. This document is being simultaneously released by I.N.R.I.A as Report 2971.

[†]INRIA, BP93, 06902 Sophia Antipolis, (France). Olivier.Devillers@sophia.inria.fr

[‡]Brown Univ., Dep. of Computer Science, Providence, RI 02912-1910 (USA). franco@cs.brown.edu.

calculations have finite precision has raised an increasing awareness of its effect on the quality and even the validity of geometric algorithms conceived within the original model, in the sense that algorithm correctness does not automatically translate into program correctness. In recent years this issue has been amply debated in the literature (see, e.g., [BKM⁺95, FV93, Yap96]). In particular, it has been observed that while some degree of approximation may be tolerated in geometric constructions, the evaluation of predicates (the "tests " carried out in the execution of programs, - such as which-side, incircle, insphere -) must be exact to ensure the structural (topological) correctness of the results [BMS94, Yap96, LPT96].

In principle, error-free predicate evaluation is achievable for error-free input operands, if the latter are treated as integers and the arithmetic is carried out with whatever operand length is required to express the intermediate results. Such safe approach, however, if adopted in its crudest form, would involve enormous overheads and would be nearly impracticable, since the execution time of some operation (such as multiplication) may increase quadratically with the length of the representation.

As a time-saving alternative to exact arithmetic, it has been customary to resort to rounded (approximate) arithmetic (for example, floating-point arithmetic). Such practice can be modeled as follows. Evaluation of a predicate P typically involves computing the value μ of some expression, built using rational operations. The value of μ can be mapped to one of three values: positive, zero, negative (referred to here as the "sign" of μ), which defines the predicate P . Let \mathcal{E} denote an evaluator for P , and let $\mu(\mathcal{E})$ denote the numerical value computed by \mathcal{E} . In general, \mathcal{E} is an approximate evaluator of μ , so that its use involves the adoption of a device, called a *certifier*, intended to validate the correctness of the evaluation. The pair (evaluator, certifier) is what has been referred to as a *filter* in the literature [FV93, MN94]. Typically, the certifier for \mathcal{E} compares $|\mu(\mathcal{E})|$ with a fixed threshold $\varepsilon(\mathcal{E}) \geq 0$. If $|\mu(\mathcal{E})| \geq \varepsilon(\mathcal{E})$, then the sign of $\mu(\mathcal{E})$ is reliable. Otherwise, the certifier is unable to validate the result and we have a *failure* of the filter. In such event recourse to a more powerful filter is in order. This suggests the need to develop a family of filters of increasing precision (and complexity), to be used in sequence until failure no longer occurs. The last item of this sequence is the exact evaluator, for which the certifier is vacuous (i.e., $\varepsilon(\mathcal{E}) = 0$). Such approach, with an obvious trade-off between efficacy and efficiency, embodies the notion of *adaptive precision*.

From a practical standpoint it is therefore very important to gauge the efficacy of very simple filters, that is, their probability of success. If it turn out that if a filter has a high probability of success, then recourse to a more time-consuming filter (or exact computations) will be a rather rare event. Of course, any such estimate of efficacy rests on some arbitrary hypotheses on the *a priori* probability of problem instances. This is an important *caveat*; however, under reasonable hypotheses (uniform distributions), we submit that the obtained estimates will be a significant contribution to the assessment of the validity of such approaches.

In this paper we analyze two specific predicates, "which-side" and "insphere". Both predicates consist of computing the signs of appropriate $\delta \times \delta$ determinants, whose entries are specified with a fixed number of bits. Depending upon the adopted evaluation scheme (the choice of an equivalent expression for a given function) and upon the precision of the input operands (for example, only a fixed-length prefix of their representation may be used in the evaluation), only a prefix of the computed value is reliable. This means that if the absolute value of the determinant is above a known threshold ε , then its sign is also reliable.

Our objective is therefore two-fold:

1. To compute the value of the threshold ε for a given determinantal evaluation technique;
2. To compute the probability that the absolute value of the result of the evaluation does not exceed ε , i.e., the probability of filter failure.

We recall that when evaluating the determinant of a $\delta \times \delta$ matrix A (a δ -determinant, for short) we are computing the *signed* measure of a hyperparallelepiped defined by the δ vectors corresponding to the rows of A . Since each of the components of these vectors is an integer in the range $[-2^{b-1}, 2^{b-1} - 1]$, a generic vector is (applied to the origin and) defined by its free terminus at grid points in a δ -dimensional cube \mathcal{C}_δ of sidelength 2^b centered at the origin.

Our probability model assumes that all grid points within \mathcal{C}_δ have identical probability. Our analysis aims at estimating (a majorization of) the distribution of the volume of the hyperparallelepiped described above. To obtain the desired result, we introduce some simplifications consistent with the objective to majorize the probability. Specifically, while our assumption is a discrete uniform distribution within \mathcal{C}_δ , we begin by considering a continuous uniform distribution within the ball \mathcal{B}_δ , the δ -dimensional ball of radius 1. The obtained results are then used to bound from above the distribution of the volume for uniform density within the cube \mathcal{C}_δ (the δ -fold cartesian product of interval $[-1, 1]$), and are finally extended to the target case of uniform discrete distribution. We shall recognize that the initial simplification (uniform density in \mathcal{C}_δ) closely approximates the more realistic situation.

The paper is organized as follows. We begin with the "which-side" predicate (referred to as "determinant"), i.e., in Section 2 we carry out the probabilistic analysis in \mathcal{B}_δ , for $\delta = 1, 2, 3$ and arbitrary δ (detailed considerations of the low-dimensional cases has an obvious pedagogical motivation). In Section 3, we extend the results from the continuous ball to the discrete cube. In Section 4 we carry out an analogous analysis for the "insphere" predicate, which illustrates the adverse effect of dependencies among the determinant entries. Finally, in Section 7 we evaluate the precision of determinant evaluation by recursive expansion, and illustrate the efficacy/efficiency tradeoff.

2 Probabilistic analysis within unit ball

Throughout this section we adopt the following notation: We let $x_1, x_2, \dots, x_\delta$ be the coordinates of δ -space, and $p_1, p_2, \dots, p_\delta$ be δ points in the unit ball of dimension δ . We also denote by $|p_1, p_2, \dots, p_j|$ the absolute value of the determinant defined by points p_1, p_2, \dots, p_j . This quantity, which is the volume of the hyperparallelogram defined by the origin and by points p_1, p_2, \dots, p_j , will also be denoted a_j .

We begin by examining in some detail the cases of low-dimension determinants. Since the analysis is done in a visualizable geometric setting ($\delta \leq 3$), it is preparatory to the more abstract higher-dimensional cases.

2.1 1-and 2-determinant

Obviously, if p_1 is uniformly distributed between -1 and 1, then

$$Prob(|p_1| \leq R) = R$$

Less trivial is the analysis of the two-dimensional case. We will study the probability for $|p_1, p_2|$ to be smaller than a constant A when p_1 and p_2 are distributed uniformly in the unit disk.

Once p_1 is chosen (due to the circular symmetry, p_1 is represented by a single parameter a_1 , its distance from the origin), p_2 will yield an area between a_2 and $a_2 + da_2$ if it belongs to one of the two strips of width $\frac{da_2}{a_1}$ depicted in Figure 1.

We then have

$$Prob(|p_1, p_2| \leq A) = \int_0^1 Prob(|p_1, p_2| \leq A | a_1) p(a_1) da_1.$$

Since the density function of a_1 is $p(a_1) = \frac{2\pi a_1}{\pi} = 2a_1$, and the density of a_2 conditional on a_1 is $p(a_2 | a_1) da_2 = \frac{1}{\pi} 4 \sqrt{1 - \left(\frac{a_2}{a_1}\right)^2} \frac{da_2}{a_1}$ ($\frac{1}{\pi}$ is the density in the unit disk, and $4\sqrt{1 - \left(\frac{a_2}{a_1}\right)^2}$ is the total length of the two strips) we have

$$\begin{aligned} Prob(|p_1, p_2| \leq A) &= \int_{a_1=0}^1 \int_{a_2=0}^{\min(A, a_1)} 2a_1 da_1 da_2 \\ &= \int_0^A \left(\int_a^1 \frac{4}{\pi a_1} \sqrt{1 - \left(\frac{a_2}{a_1}\right)^2} \cdot 2a_1 da_1 \right) da_2 \\ &= \int_0^A \frac{8}{\pi} da_2 \left| \sqrt{a_1^2 - a_2^2} - a_2 \arccos \frac{a_2}{a_1} \right|_{a_2}^1 \end{aligned}$$

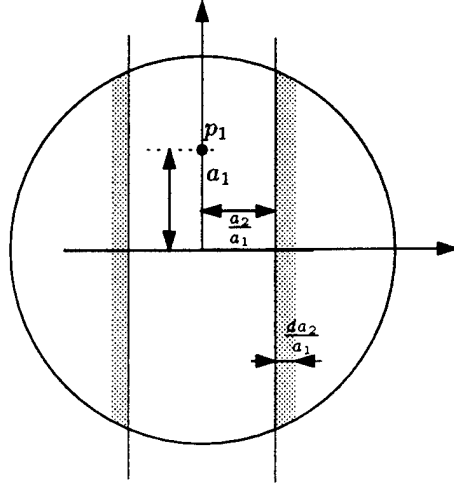


Figure 1: For the analysis of the 2-determinant

$$\begin{aligned}
 &= \int_0^A \frac{8}{\pi} da_2 \left(\sqrt{1 - a_2^2} - a_2 \arccos a_2 \right) \\
 &= \frac{8}{\pi} \left| \frac{3}{4} a_2 \sqrt{1 - a_2^2} + \frac{1}{4} \arcsin a_2 - \frac{1}{2} a_2^2 \arccos a_2 \right|_0^A \\
 &= \frac{6}{\pi} A \sqrt{1 - A^2} + \frac{2}{\pi} \arcsin A + \frac{4}{\pi} A^2 \arccos A
 \end{aligned}$$

One can easily verify that the value of the last expression is 1 for $A = 1$, which is the maximum attainable value for the area of the parallelogram.

2.2 3-determinant

Again we assume that points are uniformly distributed in the unit ball, and compute the probability that this volume is smaller than a constant $V \geq 0$.

To compute the volume of the parallelepiped defined by O, p_1, p_2 , and p_3 , we begin by considering the parallelogram defined by O, p_1 , and p_2 , evaluate its area, and then consider the distance of p_3 from the plane containing the parallelogram.

Distance Op_1 is between a_1 and $a_1 + da_1$ if p_1 belongs to a spherical crown of thickness da_1 and area $4\pi a_1^2$. Therefore the probability density of a_1 is $p(a_1) = \frac{3\pi}{4} 4\pi a_1^2 = 3a_1^2$ (note that $\frac{3\pi}{4}$ is the density in the unit sphere).

Once p_1 has been chosen, the area of the parallelogram defined by O, p_1 and p_2 is between a_2 and $a_2 + da_2$ if p_2 belongs to the crown of thickness $\frac{da_2}{a_1}$ of a cylinder of radius

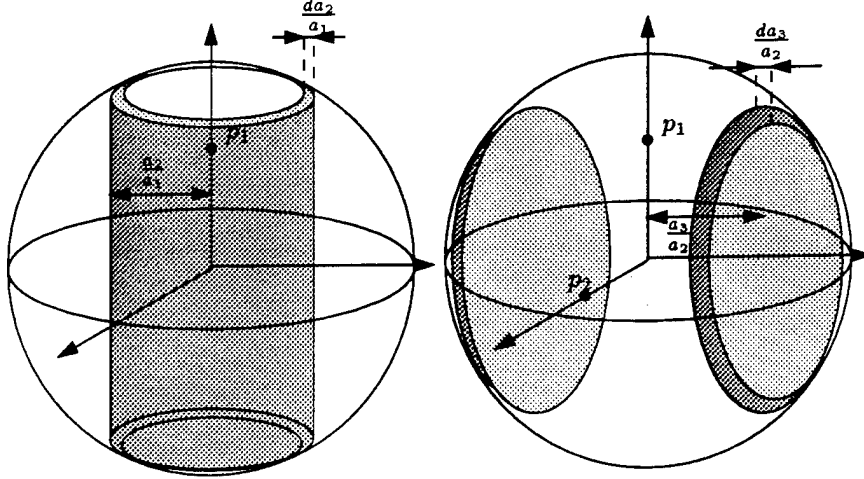


Figure 2: For the analysis of the 3-determinant

$\frac{a_2}{a_1}$ whose axis contains Op_1 (see Figure 2a). Therefore the distribution of a_2 conditional on a_1 is given by

$$p(a_2|a_1)da_2 = \frac{3}{4\pi} \cdot 2\pi \frac{a_2}{a_1} \cdot 2\sqrt{1 - \left(\frac{a_2}{a_1}\right)^2} \cdot \frac{da_2}{a_1} = \frac{3a_2}{a_1^2} \sqrt{1 - \left(\frac{a_2}{a_1}\right)^2} da_2 \quad (a)$$

Finally, once p_1 and p_2 have been chosen, the volume of the parallelepiped is between a_3 and $a_3 + da_3$ if p_3 belongs to one of the two spherical slices of width $\frac{da_3}{a_2}$, parallel to the plane containing O, p_1 , and p_2 , and at distance $\frac{a_3}{a_2}$ from it (see Figure 2b). Therefore the distribution of a_3 conditional on a_2 is given by

$$p(a_3 | a_2)da_3 = \frac{3}{4\pi} \cdot 2 \cdot \pi \left(1 - \left(\frac{a_3}{a_2}\right)^2\right) \cdot \frac{da_3}{a_2} = \frac{3}{2a_2} \left(1 - \left(\frac{a_3}{a_2}\right)^2\right) da_3 \quad (b)$$

On the basis of this analysis, we can say

$$\begin{aligned} \text{Prob}(|p_1, p_2, p_3| \leq V) &= \int_{a_1=0}^1 \int_{a_2=0}^{a_1} \int_{a_3=0}^{\min(V, a_2)} p(a_1)p(a_2 | a_1)p(a_3 | a_2)da_1 da_2 da_3 \\ &= \int_0^V \left(\int_{a_3}^1 \left(\int_{a_3}^{a_1} p(a_3 | a_2)p(a_2 | a_1)p(a_1)da_2 \right) da_1 \right) da_3 \\ &= \int_0^V \frac{27}{2} da_3 \int_{a_3}^1 da_1 \int_{a_3}^{a_1} \frac{\sqrt{a_1^2 - a_2^2}}{a_1} - a_3^2 \frac{\sqrt{a_1^2 - a_2^2}}{a_1 a_2^2} da_2 \\ &= \int_0^V \frac{27}{2} da_3 \int_{a_3}^1 da_1 \left| \frac{a_2 \sqrt{a_1^2 - a_2^2}}{a_1} + \frac{a_1}{2} \arcsin \frac{a_2}{a_1} \right|_{a_3}^{a_1} + a_3^2 \left| \frac{\sqrt{a_1^2 - a_2^2}}{a_2 a_1} + \frac{1}{a_1} \arcsin \frac{a_2}{a_1} \right|_{a_3}^{a_1} \end{aligned}$$

$$\begin{aligned}
&= \int_0^V \frac{27}{4} da_3 \int_{a_3}^1 da_1 \left(\frac{\pi}{2} da_1 + \pi \frac{a_3^2}{a_1} - \sqrt{a_1^2 - a_3^2} \frac{3a_3}{a_1} - a_1 \arcsin \frac{a_3}{a_1} - 2 \frac{a_3^2}{a_1} \arcsin \frac{a_3}{a_1} \right) \\
&= \int_0^V \frac{27}{4} da_3 \left(-\pi V^2 \ln a_3 - \frac{7}{2} a_3 \sqrt{1 - a_3^2} + (3a_3^2 + \frac{1}{2}) \arccos a_3 - 2a_3^2 \int_{a_3}^1 \frac{1}{a_1} \arcsin \frac{a_3}{a_1} da_1 \right) \\
&= \left| + \frac{3\pi}{4} a_3^3 - \frac{9\pi}{4} a_3^3 \ln a_3 - \frac{27}{8} \sqrt{1 - a_3^2} - \frac{27}{4} a_3^2 \sqrt{1 - a_3^2} + \frac{27}{8} \sqrt{1 - a_3^2}^3 \right. \\
&\quad \left. + \frac{27}{8} a_3 \arccos a_3 + \frac{27}{4} a_3^3 \arccos a_3 \right|_0^V - 2 \int_0^V \int_{a_3}^1 \frac{a_3^2}{r} \arcsin \frac{a_3}{a_1} da_1 da_3
\end{aligned}$$

The latter integral is not elementarily computable. Since the integrand is always positive, so is the integral. To neglect it corresponds to majorizing the probability. Therefore we write

$$\text{Prob}(|p_1, p_2, p_3| \leq V) \leq \frac{27\pi}{16} V - \frac{27}{8} V \arcsin V - \frac{81}{8} V^2 \sqrt{1 - V^2} + \frac{33\pi}{8} V^3 - \frac{9\pi}{4} V^3 \ln V - \frac{27}{4} V^3 \arcsin V$$

If we set $V = 1$, then the neglected term can be evaluated exactly to $\frac{3\pi}{4} - 1$ by exchanging the order of integration, and we correctly obtain the value 1 for the probability.

The preceding analysis, in its simplicity, reveals the essential items for the evaluation of the relevant conditional probability densities. Specifically, referring concretely to the case $\delta = 3$, due to the assumption of uniform distribution of the points in the unit sphere, the conditional probability density $p(a_i | a_{i-1}) da_i$ of a_i given a_{i-1} , $i = 2, 3$, is proportional (through the value of the density in the unit sphere) to the volume of some three-dimensional domain. The latter is a thin crown (of thickness $\frac{da_i}{a_{i-1}}$) of a three-dimensional surface $\mathcal{S}_{3,i}$ which is the locus of the points at a distance between $\frac{a_i}{a_{i-1}}$ and $\frac{a_i}{a_{i-1}} + \frac{da_i}{a_{i-1}}$ from the flat \mathcal{F}_{i-1} spanned by variables x_1, \dots, x_{i-1} . Surface $\mathcal{S}_{3,i}$ has a very simple structure. Let (u, v) be a pair of points realizing the distance $\frac{a_i}{a_{i-1}}$, with $u \in \mathcal{F}_{i-1}$ and $v \in \mathcal{S}_{3,i}$. Point v belongs to the boundary of a $(4-i)$ -dimensional ball of radius $\frac{a_i}{a_{i-1}}$ of which point u is the center: therefore this entire boundary belongs to $\mathcal{S}_{3,i}$ (in the discussion above, this boundary consists of a circle for $i = 2$ and of two points for $i = 3$). Moreover, since u belongs to a flat \mathcal{F}_{i-1} , any translate of v within the unit sphere in a flat parallel to \mathcal{F}_{i-1} also belongs to $\mathcal{S}_{3,i}$. These translates form the intersection of the unit sphere with a flat at distance $\frac{a_i}{a_{i-1}}$ from the center of the sphere, and therefore are an $(i-1)$ -dimensional ball of radius $\sqrt{1 - \left(\frac{a_i}{a_{i-1}}\right)^2}$ (in the discussion above this ball consists of a segment for $i = 2$ and of a disk for $i = 3$). We conclude that $\mathcal{S}_{3,i}$ is the cartesian product of the boundary of a $(4-i)$ -dimensional ball of radius $\frac{a_i}{a_{i-1}}$ (the "boundary" term) and of an $(i-1)$ -dimensional ball of radius $\sqrt{1 - \left(\frac{a_i}{a_{i-1}}\right)^2}$ (the "domain" term). The expression for the conditional probability density consists of four factors: the density

within the unit sphere, the measure of the boundary term, the measure of the domain term, and the thickness of the crown. These four items (in the order given) are evidenced in (a) and (b).

2.3 Higher-dimensional determinant

We now extend the preceding analysis to arbitrary dimension δ . If we assume for a one-dimensional volume (a distance) the conventional degree of 1, then the volume and the surface of a j -dimensional domain have respective degrees j and $j - 1$. Let $v_j(r)$ and $s_j(r)$ respectively denote volume and surface of a j -dimensional ball of radius r . We recall that[Ber87. 9.12.4.6]

$$v_i(r) = \frac{\pi^{\frac{i}{2}}}{\frac{i!}{2}} r^i \text{ for } i \text{ even} \quad v_i(r) = \frac{2^i \pi^{\frac{i-1}{2}} (\frac{i-1}{2})!}{i!} r^i \text{ for } i \text{ odd.}$$

The probability density $p(a_1)da_1 = Prob(a_1 \leq |Op_1| \leq a_1 + da_1)$ is obviously given by $\frac{s_\delta(a_1)}{v_\delta(1)} da_1$. Referring next to the observations at the end of the preceding subsection, the conditional probability density $p(a_i | a_{i-1})da_i$ of a_i after p_1, p_2, \dots, p_{i-1} have been chosen (conventionally in the flat described by coordinates x_1, x_2, \dots, x_{i-1}) to realize the value a_{i-1} , has the following expression:

$$p(a_i | a_{i-1})da_i = \frac{1}{v_\delta(1)} \cdot s_{\delta-i+1} \left(\frac{a_i}{a_{i-1}} \right) \cdot v_{i-1} \left(\sqrt{1 - \left(\frac{a_i}{a_{i-1}} \right)^2} \right) \cdot \frac{da_i}{a_{i-1}}$$

Therefore, since $v_i(r) = v_i(1) \cdot r^i$ and $s_i(r) = i \cdot v_i(1) \cdot r^{i-1}$, we have

$$\begin{aligned} p(a_1) \prod_{i=2}^{\delta} p(a_i | a_{i-1}) da_i \\ &= \frac{\delta v_\delta(1) a_1^{\delta-1}}{v_\delta(1)} \prod_{i=2}^{\delta} \frac{1}{v_\delta(1)} \cdot (\delta - i + 1) v_{\delta-i+1}(1) \cdot \left(\frac{a_i}{a_{i-1}} \right)^{\delta-i} \cdot v_{i-1}(1) \cdot \left(\sqrt{1 - \left(\frac{a_i}{a_{i-1}} \right)^2} \right)^{i-1} \cdot \frac{da_i}{a_{i-1}} \\ &= \frac{\delta!}{v_\delta(1)^{\delta-1}} \left(\prod_{i=2}^{\delta} v_{\delta-i+1}(1) v_{i-1}(1) \right) \left(\prod_{i=2}^{\delta} \frac{a_i^{\delta-i}}{a_{i-1}^{\delta-i+1}} \left(\sqrt{1 - \left(\frac{a_i}{a_{i-1}} \right)^2} \right)^{i-1} da_i \right) \end{aligned}$$

In the rightmost term above the product of the powers of the a_i 's simplifies to $\frac{1}{a_1^{\delta-1}}$, so that

$$= \frac{\delta! \left(\prod_{i=1}^{\delta-1} v_i(1) \right)^2}{v_\delta(1)^{\delta-1}} \prod_{i=2}^{\delta} \left(\sqrt{1 - \left(\frac{a_i}{a_{i-1}} \right)^2} \right)^{i-1} da_i$$

The last expression contains a constant depending only on δ , which will be denoted

$$k_\delta \triangleq \frac{\delta! \left(\prod_{i=1}^{\delta-1} v_i(1) \right)^2}{v_\delta(1)^{\delta-1}}$$

Now we can write the probability for the absolute value of the determinant to be no larger than V

$$\begin{aligned} \text{Prob}(|p_1 \cdot p_2 \dots p_\delta| \leq V) &= k_\delta \int_{a_1=0}^1 \int_{a_2=0}^{a_1} \dots \int_{a_{\delta-1}=0}^{a_{\delta-2}} \int_{a_\delta=0}^{\min(V, a_{\delta-1})} \prod_{i=2}^{\delta} \left(\sqrt{1 - \left(\frac{a_i}{a_{i-1}} \right)^2} \right)^{i-1} da_i \quad (c) \\ &= k_\delta \int_{a_1=0}^1 \int_{a_2=0}^{a_1} \dots \int_{a_{\delta-1}=0}^{a_{\delta-2}} \left(\int_{a_\delta=0}^{\min(V, a_{\delta-1})} \left(\sqrt{1 - \left(\frac{a_\delta}{a_{\delta-1}} \right)^2} \right)^{i-1} da_\delta \right) \prod_{i=2}^{\delta-1} \left(\sqrt{1 - \left(\frac{a_i}{a_{i-1}} \right)^2} \right)^{i-1} da_i \end{aligned}$$

We now observe that the integral

$$\int_{a_\delta=0}^{\min(V, a_{\delta-1})} \left(\sqrt{1 - \left(\frac{a_\delta}{a_{\delta-1}} \right)^2} \right)^{i-1} da_\delta$$

is trivially bounded by V . Therefore we obtain the following upper bound:

$$\text{Prob}(|p_1 \cdot p_2 \dots p_\delta| \leq V) \leq k_\delta V \int_0^1 \dots \int_0^{a_{\delta-2}} \prod_{i=2}^{\delta-1} \left(\sqrt{1 - \left(\frac{a_i}{a_{i-1}} \right)^2} \right)^{i-1} da_i$$

Since the latter integral does not depend on V , its value is another constant, which we denote \mathcal{I}_δ and which depends only on δ . However, when $V = 1$, Equation (c) yields $\text{Prob}(|p_1 \cdot p_2 \dots p_\delta| \leq 1) = k_\delta \mathcal{I}_{\delta+1}$ and, since $\text{Prob}(|p_1 \cdot p_2 \dots p_\delta| \leq 1) = 1$, we get $\mathcal{I}_\delta = \frac{1}{k_{\delta-1}}$. Finally, we conclude

$$\begin{aligned} \text{Prob}(|p_1 \cdot p_2 \dots p_\delta| \leq V) &\leq k_\delta \mathcal{I}_\delta V \\ &\leq \delta \frac{v_{\delta-1}(1)^\delta}{v_\delta(1)^{\delta-1}} V \triangleq \sigma_\delta V \end{aligned}$$

For small δ , the bounds are given below. For $\delta = 1, 2, 3$ the bounds coincide with the values previously found, that is,

$$\begin{aligned} \sigma_1 &\leq V \\ \sigma_2 &\leq \frac{2^3}{\pi} \approx 2.5 \end{aligned}$$

$$\begin{aligned}
\sigma_3 &\leq \frac{3^3 \pi}{2^4} \approx 5.3 \\
\sigma_4 &\leq \frac{2^{13}}{3^4 \pi^2} \approx 10 \\
\sigma_5 &\leq \frac{3^4 5^5 \pi^2}{2^{17}} \approx 19 \\
\sigma_6 &\leq \frac{2^{24}}{5^6 \pi^3} \approx 35
\end{aligned}$$

3 From continuous ball to discrete cube

3.1 From continuous ball to continuous cube

The above calculations have been carried out for points uniformly distributed inside the δ -dimensional ball of radius 1, referred to as \mathcal{B}_δ . This assumption may not seem to model the real situation for two reasons: (i) points manipulated by computers have discrete rather than continuous coordinates, and (ii) points are more reasonably assumed to be uniformly distributed in a cube than in a ball (as in the case when each coordinate is independently and uniformly selected).

We will first show that the previous result relative to the ball \mathcal{B}_δ induces a similar result for uniform density in the unit cube $\mathcal{C}_\delta = [-1, 1]^\delta$.

Note that \mathcal{C}_δ is contained within a δ -dimensional ball of radius $\sqrt{\delta}$, denoted $\sqrt{\delta}\mathcal{B}_\delta$. First, we consider points of \mathcal{C}_δ as points of $\sqrt{\delta}\mathcal{B}_\delta$ and apply a homothety with a factor $\frac{1}{\sqrt{\delta}}$, thereby obtaining

$$\text{Prob}(|p_1, p_2 \dots p_\delta| \leq V \mid p_i \in \sqrt{\delta}\mathcal{B}_\delta) = \text{Prob}(|p_1, p_2 \dots p_\delta| \leq \sqrt{\delta}^{-\delta} V \mid p_i \in \mathcal{B}_\delta) \leq \frac{\sigma_\delta}{\sqrt{\delta}^\delta} V$$

Next, we wish to restrict the points to belong to \mathcal{C}_δ , i.e., we consider the event $p_i \in \sqrt{\delta}\mathcal{B}_\delta$, $i = 1, \dots, \delta$, as the union of the event $p_i \in \mathcal{C}_\delta, i = 1, \dots, \delta$, and its negation. The probability of this event is clearly $\left(\frac{2^\delta}{v_\delta(1)\sqrt{\delta}^\delta}\right)^\delta$, so that

$$\text{Prob}(|p_1, p_2 \dots p_\delta| \leq V \mid p_i \in \sqrt{\delta}\mathcal{B}_\delta) \geq \left(\frac{2^\delta}{v_\delta(1)\sqrt{\delta}^\delta}\right)^\delta \text{Prob}(|p_1, p_2 \dots p_\delta| \leq V \mid p_i \in \mathcal{C}_\delta)$$

which gives us an upper bound to the probability in question. Specifically

$$\text{Prob}(|p_1, p_2 \dots p_\delta| \leq V \mid p_i \in \mathcal{C}_\delta) \leq \left(\frac{v_\delta(1)\sqrt{\delta}^\delta}{2^\delta}\right)^\delta \frac{\sigma_\delta}{\sqrt{\delta}^\delta} V \leq \frac{\delta v_\delta(1) v_{\delta-1}(1)^\delta \sqrt{\delta}^{\delta(\delta-1)}}{2^{\delta^2}} \triangleq \psi_\delta V$$

Practically, for small values of δ we get:

$$\begin{aligned}
 \psi_1 &= 1 \\
 \psi_2 &= \pi \approx 3.2 \\
 \psi_3 &= \frac{27}{128} \pi^4 \approx 21 \\
 \psi_4 &= \frac{32}{81} \pi^6 \approx 380 \\
 \psi_5 &= \frac{9765625}{402653184} \pi^{12} \approx 23000 \\
 \psi_6 &= \frac{19683}{125000} \pi^{15} \approx 4.5 \cdot 10^6
 \end{aligned}$$

The previous computation can probably be generalized to other kinds of domains provided that the ratio between the volumes of the inscribed ball and of the circumscribing ball is bounded.

3.2 From continuous cube to discrete cube

In this section we shall discuss why the obtained results for continuous density of points are still useful for discrete probability, i.e., when points belong to a regular grid of $\frac{1}{\eta^\delta}$ points inside \mathcal{C}_δ .

Notice that the preceding results are clearly incorrect for discrete probabilities, since in the latter instance the probability for V to be 0 is non-zero. For example, in two dimensions, when p_1 is chosen, the probability that p_2 coincides either with p_1 or with the origin is $2\eta^2$, and, for a less trivial case, the probability that p_1 has both coordinates smaller than $\frac{1}{2}$ is $\frac{1}{4}$ and thus the probability that p_2 is twice as large as p_1 is $\frac{\eta^2}{4}$. However we can still prove that $Prob(|p_1 \dots p_\delta| \leq V) = O(V)$ when η is smaller than V .

If $p_1 \dots p_\delta$ is a set of points in \mathcal{C}_δ whose determinant is not larger than V , we will map it to a the nearest set of grid points $p'_1 \dots p'_\delta$ whose determinant is not too large. More precisely, if $\mathcal{P} = (p_1, \dots, p_\delta)$, $\mathcal{P}' = (p'_1, \dots, p'_\delta)$ and $\mathcal{D} = \mathcal{P}' - \mathcal{P} = (d_1, \dots, d_\delta)$, we have

$$|\mathcal{P}'| = |\mathcal{P} + \mathcal{D}| = \sum_{I \subset \mathbb{Z}_\delta, I \neq \emptyset} |\mathcal{P}\mathcal{D}_I|$$

where I is a nonempty subset of $\{1, 2, \dots, \delta\}$ and $|\mathcal{P}\mathcal{D}_I|$ is the determinant obtained by replacing, for each $i \in I$, p_i with d_i in $|\mathcal{P}|$. The above result follows from the multilinearity of the determinant. If the cardinality of I is j , we can bound from above the absolute value of $|\mathcal{P}\mathcal{D}_I|$ by the product of the norms of its vector. Since $\|p_i\| \leq \sqrt{\delta}$ and $\|d_i\| \leq \sqrt{\delta} \frac{\eta}{2}$

we have $|\mathcal{PD}_I| \leq \sqrt{\delta^\delta \frac{\eta^j}{2^j}}$. By grouping the $\binom{\delta}{j}$ terms with identical value of j we get:

$$\left| |\mathcal{P}'| - |\mathcal{P}| \right| \leq \sqrt{\delta^\delta} \left[\left(1 + \frac{\eta}{2}\right)^\delta - 1 \right] \lesssim \delta \sqrt{\delta^\delta} \frac{\eta}{2}$$

Referring now to the δ^δ -dimensional space whose points are the sets $p_1 \dots p_\delta$, the determinant $|\mathcal{P}'|$ is no larger than V only if all the points \mathcal{P} in the hypervoxel (in δ^δ dimensions) have determinant $|\mathcal{P}|$ no larger than $V + \delta \sqrt{\delta^\delta} \frac{\eta}{2}$. Since, clearly, a random point \mathcal{P} for the continuous distribution can be in any voxel with the same probability, we conclude that

$$\begin{aligned} \text{Prob} \left(|p_1 \dots p_\delta| \leq V \mid \begin{array}{c} \text{discrete} \\ \text{distribution in } \mathcal{C}_\delta \end{array} \right) &\leq \text{Prob} \left(|p_1 \dots p_\delta| \leq V + \delta \sqrt{\delta^\delta} \frac{\eta}{2} \mid \begin{array}{c} \text{continuous} \\ \text{distribution in } \mathcal{C}_\delta \end{array} \right) \\ &\leq \psi_\delta \left(V + \delta \sqrt{\delta^\delta} \frac{\eta}{2} \right) \end{aligned}$$

4 The insphere test

In the preceding analysis of the "which-side" predicate, the points defining the hyperparallelogram were assumed to be independent and equally distributed. In this section we consider a case for which there exist dependencies among the coordinates of the points: the "insphere" predicate. This predicate, referred to as δ -insphere for short, tests whether in δ dimensions the origin lies inside the hypersphere defined by $(\delta + 1)$ other arbitrary points $p_i = (x_{i,1}, x_{i,2}, \dots, x_{i,\delta})$, $i = 1, 2, \dots, \delta + 1$.

It is well known that the δ -dimensional insphere test is embodied in the sign of the determinant

$$\Delta_\delta \triangleq \begin{vmatrix} x_{11} & x_{12} & \dots & x_{11}^2 + x_{12}^2 + \dots + x_{1\delta}^2 & 1 \\ x_{21} & x_{22} & \dots & x_{21}^2 + x_{22}^2 + \dots + x_{2\delta}^2 & 1 \\ \dots & \dots & \dots & \dots & \dots \\ x_{\delta+2,1} & x_{\delta+2,2} & \dots & x_{\delta+2,1}^2 + x_{\delta+2,2}^2 + \dots + x_{\delta+2,\delta}^2 & 1 \end{vmatrix}$$

Without loss of generality, one of these points ($p_{\delta+2}$) can be chosen as the origin, so that the above determinant becomes

$$\Delta_\delta = \begin{vmatrix} x_{11} & x_{12} & \dots & x_{11}^2 + x_{12}^2 + \dots + x_{1\delta}^2 & \\ x_{21} & x_{22} & \dots & x_{21}^2 + x_{22}^2 + \dots + x_{2\delta}^2 & \\ \dots & \dots & \dots & \dots & \\ x_{\delta+1,1} & x_{\delta+1,2} & \dots & x_{\delta+1,1}^2 + x_{\delta+1,2}^2 + \dots + x_{\delta+1,\delta}^2 & \end{vmatrix}$$

These $\delta + 1$ points are assumed to be evenly distributed in the unit cube \mathcal{C}_δ .

4.1 1-insphere test

We can model the problem as follows. The origin O and u define the 1-dimensional sphere; v is the query point. Parameters u and v are independent and uniformly distributed in $[-1, 1]$, and we wish to evaluate the probability of the following event:

$$|\Delta_1| \leq A \quad \text{with } \Delta_1 = \begin{vmatrix} u & u^2 \\ v & v^2 \end{vmatrix}$$

We can view the above determinant as defined by two points (u, v) and (u^2, v^2) in the u, v plane. Clearly the choice of point (u, v) completely determines the determinant value. Point (u, v) is uniformly distributed in the square $[-1, 1] \times [-1, 1]$. Since $uv(u - v)$ is the determinant value, the determinant is null on the three lines $u = 0$, $v = 0$ and $u = v$; its values are symmetric with respect to the line $u = -v$ and antisymmetric with respect to $u = v$. Therefore for any value of $0 \leq A \leq 2$ it is sufficient to evaluate the probability in the quadrant $-u \leq v \leq u, 0 \leq u \leq 1$ (fully shaded quadrant in Figure 3) and multiply it by 4. In the upper semiquadrant (where the determinant is negative) the contour lines have equations:

$$v = \frac{u}{2} \pm \frac{1}{2} \sqrt{u^2 - 4\frac{A}{u}}$$

The two curves for fixed A join with a common vertical tangent at the point $(\mu, \frac{\mu}{2})$ where $\mu \triangleq (4A)^{\frac{1}{3}}$ (notice that such curves exist only for $A < \frac{1}{4}$). In the lower semiquadrant (where the determinant is positive) contour lines have equations:

$$v = \frac{u}{2} - \frac{1}{2} \sqrt{u^2 + 4\frac{A}{u}} \quad \text{and} \quad v = -u$$

and intersect the line $v = -u$ at point $(\nu, -\nu)$, where $\nu \triangleq \frac{1}{2}(4A)^{\frac{1}{3}} = \frac{1}{2}\mu$. The probability of the event described above is given by the heavily shaded area in the Figure 3 (in fact this area should be multiplied by 4 since there are four quadrants, and normalized, dividing by 4, since 4 is the area of the square). The area is also 1 minus the area of the lightly shaded region. The latter area, which we want to bound from below is given by:

$$\mathcal{I} \triangleq \int_{\nu}^1 \left(\frac{3}{2}u - \frac{u}{2} \sqrt{1 + 4\frac{A}{u^3}} \right) du + 2 \int_{\mu}^1 \frac{u}{2} \sqrt{1 - 4\frac{A}{u^3}} du$$

We now observe that

$$\frac{3}{2} - \frac{1}{2} \sqrt{1 + 4\frac{A}{u^3}} \geq 1 - \frac{A}{u^3}$$

and (for $A \leq \frac{1}{4}$)

$$\sqrt{1 - 4\frac{A}{u^3}} \geq 1 - 4\frac{A}{u^3}$$

so that

$$\begin{aligned} \mathcal{I} &\geq \int_{\nu}^1 u du - A \int_{\nu}^1 \frac{1}{u^2} du + \int_{\mu}^1 u du - 4A \int_{\mu}^1 \frac{1}{u^2} du \\ &= \frac{1}{2} - \frac{\nu^2}{2} + A - \frac{A}{\nu} + \frac{1}{2} - \frac{\mu^2}{2} + 4A - \frac{4A}{\mu} \end{aligned}$$

If we now use the fact the fact that $2\nu = \mu = (4A)^{\frac{1}{3}}$, then we obtain:

$$Prob(|\Delta_1| \leq A) \leq \frac{17\sqrt[3]{2}}{4} A^{\frac{2}{3}} - 5A \leq 5.355A^{\frac{2}{3}}$$

A direct numerical calculation gives $Prob(|\Delta_1| \leq \frac{1}{4}) = 0.7$, while the value of the above bounding expression for the same value of A is 0.85 (an excellent agreement considering the rather high value of A). For $A \geq \frac{1}{4}$, the lightly-shaded region in the upper semi-quadrant disappears yielding

$$Prob(|\Delta_1| \leq A) \leq 3\sqrt[3]{2}A^{\frac{2}{3}} - 4A \leq 3.78A^{\frac{2}{3}}$$

but, considering the high range of A , this expression has little practical interest.

Alternatively, we may consider the following formulation. Rather than lifting point v to the parabola $y = v^2u - u^2v$ (for fixed positive u), we lift it to the parabola $y = v^2 - uv \triangleq F(v)$ (which intersects the v -axis at 0 and u) so that

$$Prob(|\Delta| \leq A) = Prob(|F(v)| \leq \frac{A}{u})$$

This formulation will be useful when considering the multidimensional case in Section 4.2.2

4.2 Higher dimensional insphere test

By elementary columns operation the determinant Δ_{δ} can be transformed into one where the last column has zero entries except in the last row, i.e.,

$$\Delta_{\delta} = \begin{vmatrix} x_{11} & x_{12} & \dots & x_{1\delta} & 0 \\ x_{21} & x_{22} & \dots & x_{2\delta} & 0 \\ \vdots & \vdots & & \vdots & \vdots \\ x_{\delta 1} & x_{\delta 2} & \dots & x_{\delta\delta} & 0 \\ x_{\delta+1,1} & x_{\delta+1,2} & \dots & x_{\delta+1,\delta} & W \end{vmatrix}.$$

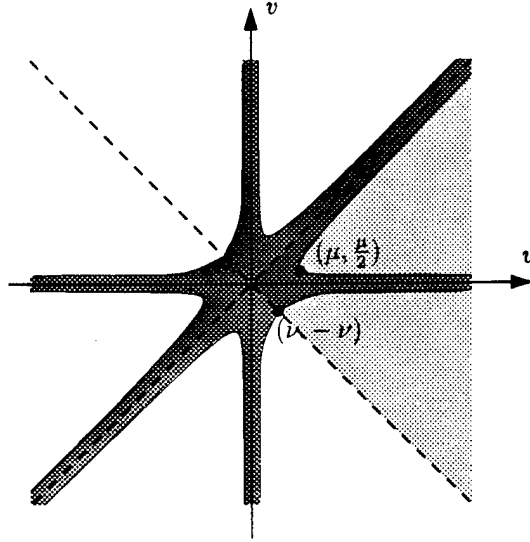


Figure 3: The (u, v) -region defining $(|\Delta| \leq A)$ in the 1-insphere test

The determinant of the intersection of the first δ rows and columns of the above matrix gives the signed volume v of the hyperparallelogram defined by the first δ points and W has the dimension of a length and is the value of the function

$$F(x_1, \dots, x_\delta) = x_1^2 + x_2^2 + \dots + x_\delta^2 - c_1 x_1 - \dots - c_\delta x_\delta \quad (d)$$

evaluated at point $p_{\delta+1}$. In the expression (d), which is 0 on the circumsphere S of p_1, \dots, p_δ . $(\frac{c_1}{2}, \dots, \frac{c_\delta}{2})$ is the center of the above circumsphere and $u^2 \triangleq \frac{1}{4}(c_1^2 + \dots + c_\delta^2)$ is the square of the sphere radius. Notice also that $x_{\delta+1} = F(x_1, \dots, x_\delta)$ is the equation of a hyperparaboloid \mathcal{H} in $(\delta + 1)$ -dimensional space, so that $F(x_{\delta+1,1}, \dots, x_{\delta+1,\delta}) = F(p_{\delta+1})$ is the signed height of the point obtained by lifting $p_{\delta+1}$ from the hyperplane $x_{\delta+1} = 0$ (to which it belongs) to \mathcal{H} . Notice that hyperplane $x_{\delta+1} = 0$ contains the hypersphere S .

We now wish to bound from above the probability of the event $|F(p_{\delta+1})| \leq V$, for some constant V .

Assuming as usual constant density, this probability is the volume of a sphere S'' of radius $u'' = \sqrt{V + u^2}$ minus the volume of a concentric sphere S' of radius $u' = \sqrt{-V + u^2}$, whenever the latter is defined. (These spheres are intersected with \mathcal{C}_δ and normalized by its volume.) In general dimension, since the above radii depend upon the points $p_1, p_2, \dots, p_\delta$, the evaluations of the volumes of the above spheres is problematic. However, we shall show that an interesting simplification occurs for $\delta = 2$.

Below we shall use the following bounding technique. Let Δ_δ be expressed as the

product of two continuous random variables

$$\Delta_\delta = ab$$

Given a constant α we have:

$$\begin{aligned} \text{Prob}(ab \leq V) &\leq \text{Prob}\left(a \leq \alpha \text{ or } b \leq \frac{V}{\alpha}\right) \\ &\leq \text{Prob}\left(a \leq \alpha\right) + \text{Prob}\left(b \leq \frac{V}{\alpha}\right) - \text{Prob}\left(a \leq \alpha \text{ and } b \leq \frac{V}{\alpha}\right) \end{aligned}$$

that is:

$$\text{Prob}(ab \leq V) \leq \text{Prob}\left(a \leq \alpha\right) + \text{Prob}\left(b \leq \frac{V}{\alpha}\right) \quad (\text{e})$$

4.2.1 2-insphere test

In this case the volumes of S'' and S' are respectively $\pi(V + u^2)$ and $\pi(-V + u^2)$, so that, if S' is defined, then their difference becomes $\pi 2V$, otherwise (i.e., when $u^2 \leq V$) $\pi(V + u^2) \leq \pi 2V$. After normalization (since 4 is the measure of the unit square) we have

$$\text{Prob}(|F(p_3)| \leq V) \leq \frac{\pi V}{2}.$$

Given that $|\Delta_2| = |p_1 p_2| F(p_3)$ inequality (e) becomes

$$\begin{aligned} \text{Prob}(|\Delta_2| \leq V) &\leq \text{Prob}(|p_1 p_2| \leq \alpha) + \text{Prob}\left(|F(p_3)| \leq \frac{V}{\alpha}\right) \\ &\leq \psi_2 \alpha + \frac{\pi V}{2\alpha}. \end{aligned}$$

From Section 3 we know that $\psi_2 = \pi$. Choosing a suitable value of α we have

$$\text{Prob}(|\Delta_2| \leq V) \leq 5.55\sqrt{V}$$

4.2.2 δ -insphere test ($\delta > 2$)

As for the two-dimensional case, we shall prove that, in general, the probability that $|F(p_{\delta+1})|$ is no larger than W is sufficiently small.

Again, inequality (e) becomes:

$$\text{Prob}(|\Delta_\delta| \leq W) \leq \text{Prob}\left(|p_1 \dots p_\delta| \leq \frac{W}{\alpha}\right) + \text{Prob}\left(|F(p_{\delta+1})| \leq \alpha\right) \quad (\text{f})$$

We know, from the results of Section 3, that

$$\text{Prob}(|p_1 \dots p_\delta| \leq \frac{W}{\alpha}) \leq \psi_\delta \frac{W}{\alpha}$$

Therefore, there remains to bound from above $\text{Prob}(|F(p_{\delta+1})| \leq \alpha)$. Recall that $|F(p_{\delta+1})|$ is the distance from the plane $x_{\delta+1} = 0$ of the point $p_{\delta+1}$ lifted to the hyperparaboloid \mathcal{H} , of equation $F(p) = 0$, which intersects $x_{\delta+1} = 0$ in a δ -dimensional sphere passing by the origin with center $q = (\frac{c_1}{2}, \dots, \frac{c_\delta}{2})$. We define point $p_{\delta+1}^*$ such that it lies on a line l passing by O and q and such that $\text{length}(p_{\delta+1}^*, q) = \text{length}(p_{\delta+1}, q)$ and among the two possible choices, we select the one closest to O (see Figure 4). It is immediate that $|F(p_{\delta+1})| = |F(p_{\delta+1}^*)|$ and that $\text{length}(Op_{\delta+1}^*) \leq \sqrt{\delta}$.

Thus, our problem is reduced to a one-dimensional instance, closely related to the one we studied in Section 4.1 (here $u = 2\text{length}(Oq)$ and v is the signed value of $\text{length}(Op_{\delta+1}^*)$). There are however, some significant differences. There, we were evaluating the probability of the event $|uF(v)| \leq V$, and variables u and v were uniformly distributed in $[-1, 1]$. Here, on the other hand, we wish to evaluate the probability of the event $|F(v)| \leq \alpha$, "radius" u varies between 0 and ∞ , and "distance" v varies between $-\sqrt{\delta}$ and $\sqrt{\delta}$. Moreover, the densities $p_1(u)$ and $p_2(v)$ of u and v respectively are not constant; however, as we shall see, they are bounded by constants q_1 and q_2 .

Next, we observe that

$$\begin{aligned} \text{Prob}(|F(p_{\delta+1})| \leq \alpha) &= \int_{u=0}^{\infty} \int_{v=-\sqrt{\delta}}^{\sqrt{\delta}} p_1(u)p_2(v) \text{Prob}(|F(p_{\delta+1})| \leq \alpha | u, v) dv du \\ &= 2 \int_{u=0}^{\infty} \int_{v=0}^{\sqrt{\delta}} p_1(u)p_2(v) \text{Prob}(|F(p_{\delta+1})| \leq \alpha | u, v) dv du \end{aligned}$$

Since the function $F(p_{\delta+1})$ has the expression $v^2 - uv$, the right-hand-side of the above equation is just the integral of $p_1(u)p_2(v)$ on the domain (shown in Figure 5) bounded by the curves $v^2 - uv = \pm\alpha$. This integration domain can be split into four subdomains A,B,C,D, as shown in Figure 5. This split depends on a parameter $\beta \leq \sqrt{\alpha}$ which will be chosen later. In detail we have:

- Domain A is defined by $\beta \leq v \leq \sqrt{\delta}$ and $v - \frac{\alpha}{v} \leq u \leq v + \frac{\alpha}{v}$. $p_1(u)p_2(v) \leq q_1q_2$ and thus

$$\iint_A p_1(u)p_2(v) dv du \leq q_1q_2 \int_{\beta}^{\sqrt{\delta}} \frac{2\alpha}{v} dv \leq q_1q_2 \left(\ln \delta + 2 \ln \frac{1}{\beta} \right) \alpha$$

- Domain B is a rectangle defined by $0 \leq v \leq \beta$ and $\beta - \frac{\alpha}{\beta} \leq u \leq \beta + \frac{\alpha}{\beta}$. $p_1(u)p_2(v) \leq q_1q_2$ and thus

$$\iint_B p_1(u)p_2(v) dv du \leq q_1q_2 \beta \frac{2\alpha}{\beta} \leq 2q_1q_2\alpha$$

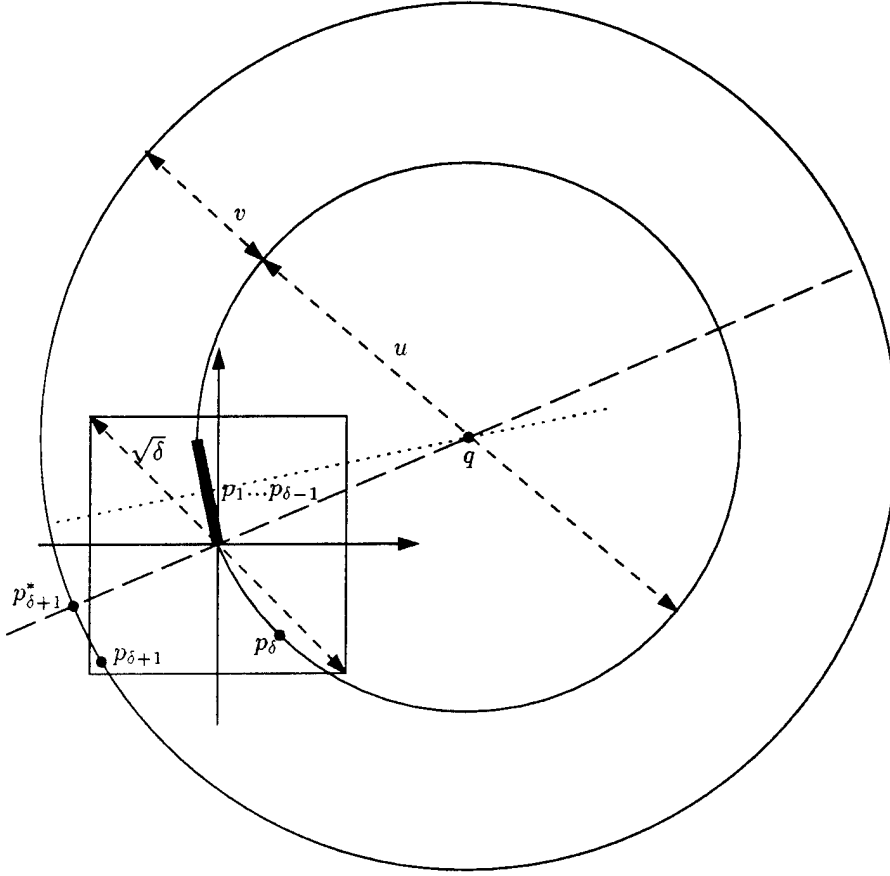


Figure 4: Definition of $p_{\delta+1}^*$, u and v , using a 2-dimensional instantiation

- Domain C is defined by $0 \leq v \leq \beta$ and $\beta + \frac{\alpha}{\beta} \leq u \leq v + \frac{\alpha}{v}$. $p_2(v) \leq q_2$ and since $\int p_1(u) du \leq 1$ on any domain, we get

$$\iint_C p_1(u)p_2(v)dvdu \leq q_2\beta$$

- Domain D is analogous to domain C,

$$\iint_D p_1(u)p_2(v)dvdu \leq q_2\beta$$

These results yield:

$$Prob(|F(p_{\delta+1})| \leq \alpha) = 2q_1q_2\alpha \left(\ln \delta + 2 \ln \frac{1}{\beta} + 2 \right) + 4q_2\beta. \quad (g)$$

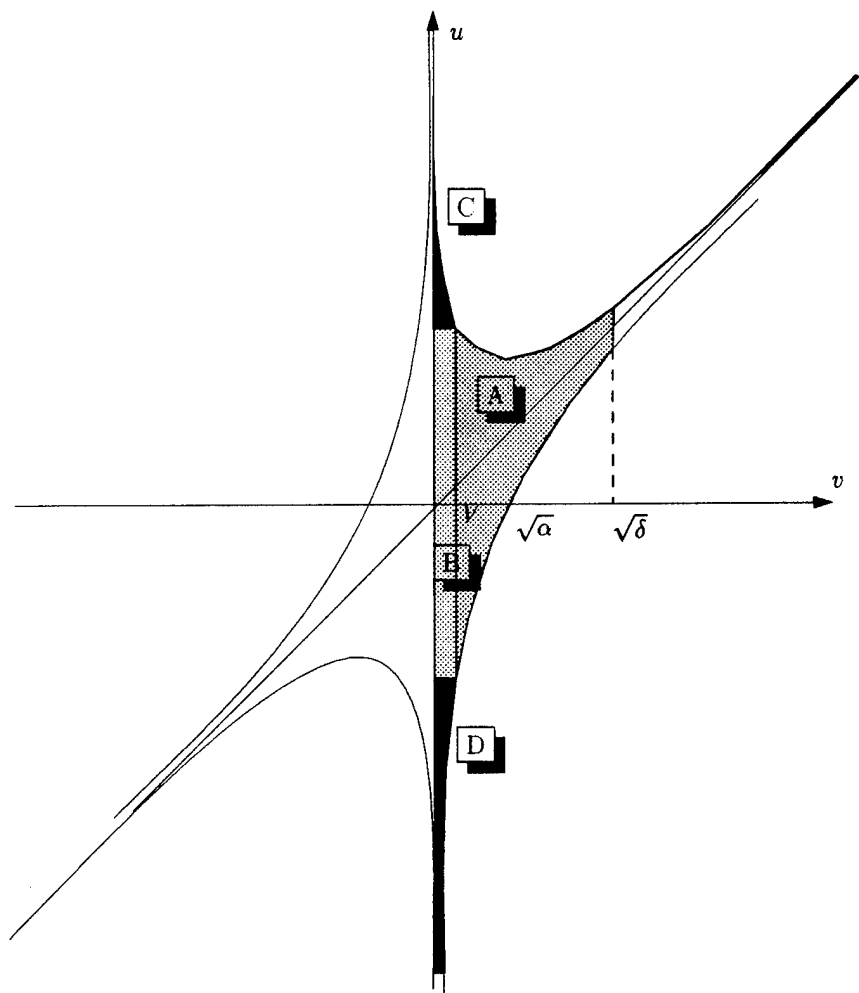


Figure 5: Integration domain

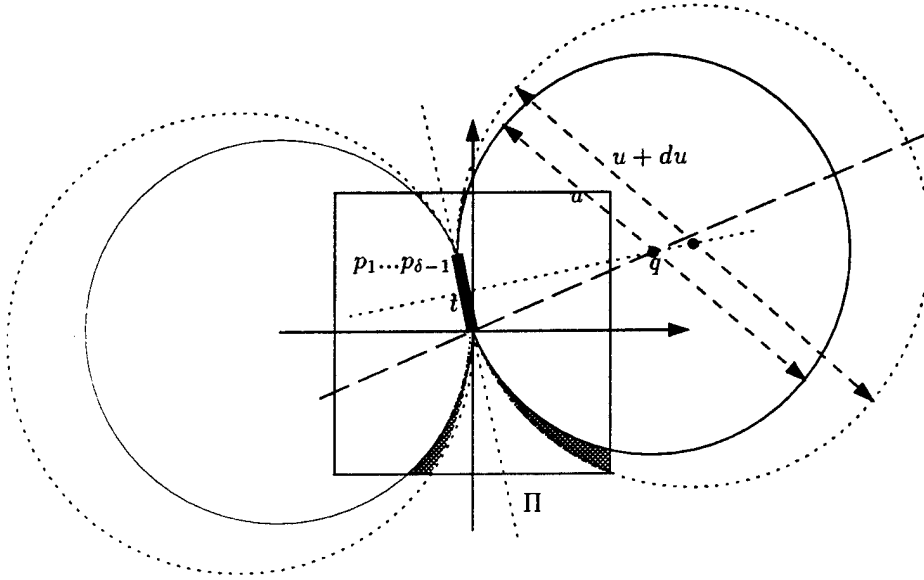


Figure 6: For the analysis of $p_1(u)$

To obtain values for q_1 and q_2 , we observe:

1. With reference to $p_1(u)$, consider the $(\delta-1)$ -dimensional sphere passing by $O, p_1 \dots p_{\delta-1}$ in the flat Π defined by these points (see Figure 6 for an illustration), and let t be its center. Consider the family \mathcal{F} of δ -dimensional spheres passing through the origin and whose centers project to t in Π . Point p_δ will determine a δ -dimensional sphere of radius between u and $u + du$ if it lies between a pair of spheres of \mathcal{F} (or its symmetric pair with respect to Π) of radii u and $u + du$. The volume $p_1(u)du$ of this region (normalized by the volume 2^δ of \mathcal{C}_δ) is $\leq \frac{2}{2^\delta} \mathcal{A}_\delta du$, where \mathcal{A}_δ is the maximum of the measure of the surface of a δ -dimensional sphere passing by the origin and intersected with \mathcal{C}_δ . A trivial upper bound on \mathcal{A}_δ is the measure $2\delta 2^{\delta-1}$ of the surface of \mathcal{C}_δ . Therefore

$$p_1(u) \leq \frac{2}{2^\delta} \cdot 2\delta 2^{\delta-1} = 2\delta \triangleq q_1$$

2. With reference to $p_2(v)$, we observe that once p_δ is fixed, the choice of $p_{\delta+1}$ will produce a value between v and $v + dv$ if $p_{\delta+1}$ belongs to the shaded region in Figure 7. The volume of this region is dv times the surface of the sphere of radius v inside \mathcal{C}_δ . This surface is clearly less than the surface of \mathcal{C}_δ , so that we get

$$p_2(v) \leq \frac{1}{2^\delta} \cdot 2\delta 2^{\delta-1} = \delta \triangleq q_2$$

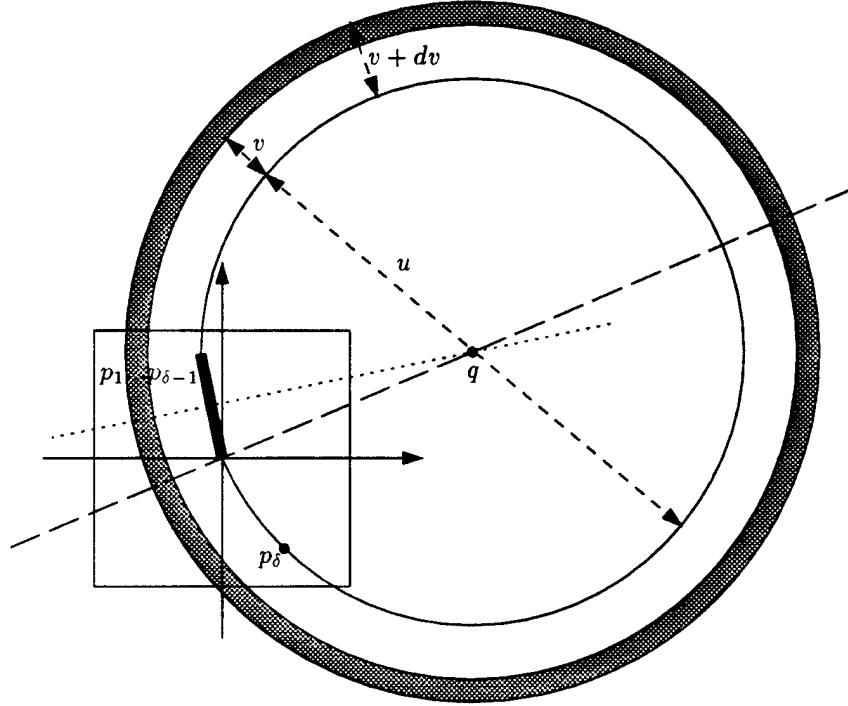


Figure 7: For the analysis of $p_2(v)$

Substituting $q_1 = 2\delta$ and $q_2 = \delta$ into (g) and choosing $\beta = \frac{\alpha}{2} < \sqrt{\alpha}$ we obtain:

$$Prob(|F(p_{\delta+1})| \leq \alpha) \leq 8\delta^2 \alpha \ln \frac{1}{\alpha} + (4\delta^2 \ln \delta + 8\delta^2 \ln 2 + 8\delta^2 + \delta) \alpha \triangleq \tau_{\delta} \alpha \ln \frac{1}{\alpha} + \theta_{\delta} \alpha$$

(Small values of τ_{δ} and θ_{δ} are $\tau_3 = 72$, $\theta_3 = 164.5$, $\tau_4 = 128$, $\theta_4 = 309.4$, $\tau_5 = 200$, $\theta_5 = 504.6$, $\tau_6 = 288$ and $\theta_6 = 751.6$.) Inequality (f) becomes:

$$Prob(|\Delta_{\delta}| \leq W) \leq \psi_{\delta} \frac{W}{\alpha} + \tau_{\delta} \alpha \ln \frac{1}{\alpha} + \theta_{\delta} \alpha$$

so that, setting $\alpha = \sqrt{\frac{\psi_{\delta} W}{\tau_{\delta} + \theta_{\delta}}}$

$$\begin{aligned} Prob(|\Delta_{\delta}| \leq W) &\leq \sqrt{\psi_{\delta}(\tau_{\delta} + \theta_{\delta})} \sqrt{W} \left(\ln \frac{1}{W} - \ln \frac{\tau_{\delta} + \theta_{\delta}}{\psi_{\delta}} + 1 \right) \\ &\triangleq \phi_{\delta} \sqrt{W} \ln \frac{1}{W} + \chi_{\delta} \sqrt{W} \end{aligned}$$

$$\begin{aligned}
\phi_3 &\approx 70 & \chi_3 &= -100 \\
\phi_4 &\approx 408 & \chi_4 &= 350 \\
\phi_5 &\approx 3970 & \chi_5 &= 18000 \\
\phi_6 &\approx 68500 & \chi_6 &= 640000
\end{aligned}$$

4.3 Discrete distribution

As for the case of the which-side test, also for the insphere test we can map each point to the nearest grid point, and evaluate the ensuing effect on the determinant to be computed. Generalizing the notation of Section 3.2, we have that the norm $\|p_i^\dagger\|$ of the lifted point is bounded by $\sqrt{\delta + \delta^2}$ and that $\|d_i^\dagger\| \leq \sqrt{\delta} \sqrt{2\frac{\eta^2}{4} + 2\frac{\eta}{2}} \leq \frac{\sqrt{\delta}}{\sqrt{2}} \sqrt{\eta + \eta^2}$. Therefore, grouping the errors term, we get

$$\begin{aligned}
\left| |\mathcal{P}'^\dagger| - |\mathcal{P}^\dagger| \right| &\leq \left[\sqrt{\delta + \delta^2} + \frac{\sqrt{\delta}}{\sqrt{2}} \sqrt{\eta + \eta^2} \right]^{\delta+1} - \sqrt{\delta + \delta^2}^{\delta+1} \\
&\lesssim (\delta + 1) \sqrt{\delta + \delta^2}^{\delta+1} \cdot \frac{\sqrt{\delta}}{\sqrt{2} \sqrt{\delta + \delta^2}} \sqrt{\eta + \eta^2}
\end{aligned}$$

and considering η small

$$\left| |\mathcal{P}'^\dagger| - |\mathcal{P}^\dagger| \right| \lesssim (\delta + 1) \sqrt{\frac{\delta}{2}} \sqrt{\delta + \delta^2}^\delta \cdot \sqrt{\eta}$$

5 The efficacy of arithmetic filters

To complete the analysis, in this section we wish to assess, under the given statistical assumptions, the probability of failure of a given arithmetic filter for determinant sign evaluation (i.e., the probability that the filter is unable to certify the correctness of the computed sign). This probability is a quantitative measure of the efficacy of the filter. If $|p_1 \dots p_\delta| > \varepsilon_\delta$, then the result of the computation is reliable, and so is its sign. Plugging ε_δ in place of V in the expression above, we obtain the condition:

$$\text{Prob} \left(|p_1 \dots p_\delta| \leq \varepsilon_\delta \mid \begin{array}{c} \text{discrete} \\ \text{distribution in } C_\delta \end{array} \right) \leq \psi_\delta \cdot (\varepsilon_\delta + \delta \sqrt{\delta}^\delta \frac{\eta}{2}) \triangleq \rho_\delta$$

where we have used the result (Section 3) that $\text{Prob}(|p_1 \dots p_\delta| \leq V) \leq \psi_\delta V$. The parameter ρ_δ introduced here is therefore the sought measure of filter efficacy.

To exemplify this approach, we shall compute ρ_δ for the evaluation of determinants, for the case where the coordinates of the points are floating-point numbers in the interval $[-1, 1]$, the computations are carried out using floating-point arithmetic with b bits of mantissa, and the determinant is evaluated by standard expansion with respect to one of its columns (recursive evaluation).

To this end, it is necessary to compute the parameter ε_δ . We introduce the following notation:

- $\mathcal{E}[M, m]$ denotes the set of numbers whose absolute value is bounded by M and whose error is bounded by m . Original entries belong to $\mathcal{E}[1, 0]$.
- \overline{M} denotes $2^{\lceil \log M \rceil}$.

With this notation, if $x_1 \in \mathcal{E}[M_1, m_1]$ and $x_2 \in \mathcal{E}[M_2, m_2]$, then we have:

$$x_1 + x_2 \in \mathcal{E}[M_1 + M_2, 2^{-b-1} \cdot \overline{M_1 + M_2} + m_1 + m_2]$$

$$x_1 \cdot x_2 \in \mathcal{E}[M_1 \cdot M_2, 2^{-b-1} \cdot \overline{M_1 \cdot M_2} + m_1 \cdot M_2 + m_2 \cdot M_1]$$

These rules express the mechanics of b -bit mantissa normalizing floating-point operations with round-off. After transforming variable y to an $\mathcal{E}[M, m]$ pair, we shall express the above rules as an arithmetics on such pairs, as follows:

1. $\mathcal{E}[M_1, m_1] + \mathcal{E}[M_2, m_2] = \mathcal{E}[M_1 + M_2, 2^{-b-1} \cdot \overline{M_1 + M_2} + m_1 + m_2]$
2. $\mathcal{E}[M_1, m_1] \cdot \mathcal{E}[M_2, m_2] = \mathcal{E}[M_1 \cdot M_2, 2^{-b-1} \cdot \overline{M_1 \cdot M_2} + m_1 \cdot M_2 + m_2 \cdot M_1]$

The results given below are obtained in an Appendix to this paper by the mechanical application (with a few noted exceptions) of the above two rules to the recursive evaluation of a determinant. Using a b -bit mantissa, the results are:

- $\varepsilon_2 = 2 \cdot 2^{-b}$
- $\varepsilon_3 = 13 \cdot 2^{-b}$
- $\varepsilon_4 = 76 \cdot 2^{-b}$
- $\varepsilon_5 = 576 \cdot 2^{-b}$
- $\varepsilon_6 = 3672 \cdot 2^{-b}$
- $\varepsilon_7 = 27304 \cdot 2^{-b}$
- $\varepsilon_8 = 226624 \cdot 2^{-b}$

For example, using the IEEE norm on $b = 53$ bits, we can therefore estimate the corresponding probability of failure. The pertinent values of ε_δ , $\delta\sqrt{\delta} \frac{\eta}{2}$, and ρ_δ are displayed below:

- $\varepsilon_2 = 2.2 \cdot 10^{-16}$
- $\delta\sqrt{\delta} \frac{\eta}{2} = 1.6 \cdot 10^{-16}$
- $\rho_2 = 1.2 \cdot 10^{-15}$
- $\varepsilon_3 = 1.4 \cdot 10^{-15}$
- $\delta\sqrt{\delta} \frac{\eta}{2} = 8.7 \cdot 10^{-16}$
- $\rho_3 = 4.8 \cdot 10^{-14}$

$$\begin{array}{lll}
\bullet \varepsilon_4 = 8.4 \cdot 10^{-15} & \bullet \delta\sqrt{\delta}^{\frac{\delta}{2}} \frac{\eta}{2} = 7.1 \cdot 10^{-15} & \bullet \rho_4 = 5.9 \cdot 10^{-12} \\
\bullet \varepsilon_5 = 5.7 \cdot 10^{-14} & \bullet \delta\sqrt{\delta}^{\frac{\delta}{2}} \frac{\eta}{2} = 7.8 \cdot 10^{-14} & \bullet \rho_5 = 3.0 \cdot 10^{-9} \\
\bullet \varepsilon_6 = 8.3 \cdot 10^{-13} & \bullet \delta\sqrt{\delta}^{\frac{\delta}{2}} \frac{\eta}{2} = 1.1 \cdot 10^{-12} & \bullet \rho_6 = 8.7 \cdot 10^{-6}
\end{array}$$

Finally, it is important to evaluate the efficiency of the examined filter. We observe here that a careful implementation of the "recursive evaluation technique" in reality should not be purely recursive (since this would require $\delta!$ operations). In fact, the recursive evaluation involves $\binom{\delta}{i}$ minors of dimension i . In turn each such minor involves $(2i - 1)$ arithmetic operations (i multiplication and $i - 1$ additions), whose operands are either minors of smaller dimension or original coefficients (for $i = 2$, where the recursion stops). Thus, the total number of operations is:

$$r_\delta = \sum_0^{\delta-2} \binom{\delta}{i} (2(\delta - j) - 1) = (\delta - 1)(2^\delta - 1) \sim \delta 2^\delta.$$

For $\delta \leq 7$ we obtain $r_1 = 0, r_2 = 3, r_3 = 14, r_4 = 45, r_5 = 124, r_6 = 315, r_7 = 762$ and $r_8 = 1785$.

It must be pointed out that, for the same function considered above (determinant value), one may choose alternative evaluation schemes (corresponding to different expressions of the given function, such as other expansion rules, Gaussian elimination, etc.) and/or different arithmetic engines. Each such choice would embody a filter, whose efficacy and efficiency can be assessed with the outlined method.

6 Summary of results and conclusions

In this paper we have developed a general approach to the assessment of the efficacy of arithmetic filters, under some reasonable probability assumptions. As an important example, we have considered the efficacy of filters for the evaluation of signs of determinants, both for a case where all entries are independent (the "which-side" predicate) and for a case where dependencies exist (the "insphere" predicate). This analysis, in general, consists of two parts.

The first part aims at computing the threshold for certification by the filter (i.e., the maximum error which can be generated by the evaluation process), and does not rest on any assumption about the distribution of the data. As an example, we have carried out this threshold analysis for the so-called recursive evaluation procedure, which computes a determinant by expanding it with respect to one of its columns.

The second part, which is considerably more subtle, aims at establishing the probability of failure of the filter, i.e., the probability that the result of the computation falls below

the threshold. This analysis rests on *a priori* assumptions on the distribution of the input data, which we have taken as uniform within their representation range, and has been carried out for the two important geometric tests mentioned above. With the notations introduced in the preceding sections, the results are summarized below.

$$\begin{aligned}
\text{Prob}(|p_1, p_2 \dots p_\delta| \leq V \mid p_i \text{ continuous in } \mathcal{B}_\delta) &\leq \sigma_\delta V \\
\text{Prob}(|p_1, p_2 \dots p_\delta| \leq V \mid p_i \text{ continuous in } \mathcal{C}_\delta) &\leq \psi_\delta V \\
\text{Prob}(|p_1, p_2 \dots p_\delta| \leq V \mid p_i \in \eta\text{-grid in } \mathcal{C}_\delta) &\leq \psi_\delta (V + \alpha_\delta \eta) \\
\text{Prob}(|\Delta_1| \leq W \mid p_i \text{ continuous in } \mathcal{C}_1) &\leq 4.1W^{\frac{2}{3}} \\
\text{Prob}(|\Delta_\delta| \leq W \mid p_i \text{ continuous in } \mathcal{C}_\delta) &\leq \phi_\delta \sqrt{W} \ln \frac{1}{W} + \chi_\delta \sqrt{W} \\
\text{Prob}(|\Delta_i| \leq W \mid p_i \in \eta\text{-grid in } \mathcal{C}_\delta) &\leq \phi_\delta \sqrt{W + \beta_\delta \sqrt{\eta}} \ln \frac{1}{W + \beta_\delta \sqrt{\eta}} + \chi_\delta \sqrt{W + \beta_\delta \sqrt{\eta}}
\end{aligned}$$

Below we repeat for synoptic convenience the definitions of the relevant constants and a tabulation of their values for small δ .

$$\begin{aligned}
\sigma_\delta &= \delta \frac{v_{\delta-1}(1)^\delta}{v_\delta(1)^{\delta-1}} \\
\psi_\delta &= \frac{\delta v_\delta(1) v_{\delta-1}(1)^\delta \sqrt{\delta}^{\delta(\delta-1)}}{2^{\delta^2}} \\
\phi_\delta &= \sqrt{\psi_\delta \left(2\delta^2 \ln \delta + 4\delta^2 \ln 2 + 8\delta^2 + \frac{\delta}{2} \right)} \\
\chi_\delta &= \phi_\delta \left(1 - \ln \frac{2\delta^2 \ln \delta + 4\delta^2 \ln 2 + 8\delta^2 + \frac{\delta}{2}}{\psi_\delta} \right) \\
\alpha_\delta &= \frac{\delta \sqrt{\delta}^\delta}{2} \\
\beta_\delta &= (\delta + 1) \sqrt{\frac{\delta}{2}} \sqrt{\delta + \delta^{2\delta}}
\end{aligned}$$

The values for small δ are

δ	σ_δ	ψ_δ	ϕ_δ	χ_δ	α_δ	β_δ
1	1	1			0.5	2
2	2.5	3.2		5.6	2	18
3	5.3	21	70	-100	7.8	200
4	10	380	408	350	32	2800
5	19	23000	3970	18000	140	47000
6	35	$4.5 \cdot 10^6$	68500	640000	648	900000

The above values are tight only for the constant σ . Due to data interdependencies, the analysis of the insphere predicate is considerably more involved than that of the which-side predicate, and the adverse effect of the dependencies is manifest in the larger values of the probability of failure.

Such analysis is particularly valuable for estimating the time required to test the determinant sign. Under the given probability assumptions, we may conclude that for small dimension (≤ 6) straightforward floating-point filters (i.e., floating-point evaluators) are extraordinarily effective.

References

- [Ber87] M. Berger. *Geometry (vols. 1-2)*. Springer-Verlag, 1987.
- [BKM⁺95] Christoph Burnikel, Jochen Konnemann, Kurt Mehlhorn, Stefan Näher, Stefan Schirra, and Christian Uhrig. Exact geometric computation in LEDA. In *Proc. 11th Annu. ACM Sympos. Comput. Geom.*, pages C18–C19, 1995.
- [BMS94] C. Burnikel, K. Mehlhorn, and S. Schirra. How to compute the Voronoi diagram of line segments: Theoretical and experimental results. In *Proc. 2nd Annu. European Sympos. Algorithms (ESA '94)*, volume 855 of *Lecture Notes in Computer Science*, pages 227–239. Springer-Verlag, 1994.
- [FV93] S. Fortune and C. J. Van Wyk. Efficient exact arithmetic for computational geometry. In *Proc. 9th Annu. ACM Sympos. Comput. Geom.*, pages 163–172, 1993.
- [LPT96] G. Liotta, F. P. Preparata, and R. Tamassia. Robust proximity queries in implicit Voronoi diagrams. Research Report CS-96-16, Brown University, Providence, RI, 1996.

- [MN94] K. Mehlhorn and S. Näher. The implementation of geometric algorithms. In *Proc. 13th World Computer Congress IFIP94*, volume 1, pages 223–231, 1994.
- [Yap96] C. Yap. Towards exact geometric computation. *Comput. Geom. Theory Appl.*, 1996. to appear.

7 Appendix. Error evaluation

D_i represents a generic determinant of dimension i , and x a generic original coordinate. It must be pointed out that the recursive evaluation technique yields an upper bound of $\delta!$ for D_δ because dependencies among data are not exploited. However, smaller values of such bound are known: Since the determinant value is bounded by the product of the norms of its δ components, $\sqrt{\delta}^\delta$ is an upper bound on D_δ , which is attained when δ is a power of two (Hadamard matrices). For small values of δ the following bounds have been obtained (some by exhaustive calculation): $D_1 \leq 1$, $D_2 \leq 2$, $D_3 \leq 4$, $D_4 \leq 16$, $D_5 \leq 48$, $D_6 \leq 160$. $D_7 \leq 576$ and $D_8 \leq 4096$. Whenever applicable, we shall use these results below to obtain tighter estimates. These estimates have the form

$$D_\delta \in \mathcal{E}[G_\delta, \varepsilon_\delta]$$

where ε_δ is the object of the analysis and G_δ , the largest value attainable by D_δ , is only needed to carry out the analysis.

1. $D_1 \in \mathcal{E}[1, 0]$. by definition.
2. $D_2 \in \mathcal{E}[2, 2^{-b+1}]$. In fact $D_2 = x \cdot D_1 + x \cdot D_1$, $x \in \mathcal{E}[1, 0]$ and $D_1 \in \mathcal{E}[1, 0]$. Therefore

$$\mathcal{E}[1, 0] \cdot \mathcal{E}[1, 0] + \mathcal{E}[1, 0] \cdot \mathcal{E}[1, 0] = \mathcal{E}[1, 2^{-b-1}] + \mathcal{E}[1, 2^{-b-1}] = \mathcal{E}[2, 2^{-b+1}]$$

3. $D_3 \in \mathcal{E}[4, 13 \cdot 2^{-b}]$. In fact, $D_3 = (x \cdot D_2 + x \cdot D_2) + x \cdot D_2$. Therefore:

$$\begin{aligned} D_3 &\in (\mathcal{E}[1, 0] \cdot \mathcal{E}[2, 2^{-b+1}] + \mathcal{E}[1, 0] \cdot \mathcal{E}[2, 2^{-b+1}]) + \mathcal{E}[1, 0] \cdot \mathcal{E}[2, 2^{-b+1}] \\ &= \mathcal{E}[4, 2^{-b-1} \cdot 4 + 6 \cdot 2^{-b}] + \mathcal{E}[2, 3 \cdot 2^{-b}] \\ &= \mathcal{E}[4, 2^{-b-1} \cdot 4 + 11 \cdot 2^{-b}] = \mathcal{E}[4, 13 \cdot 2^{-b}] \end{aligned}$$

where we have used the fact $D_4 \leq 4$.

4. $D_4 \in \mathcal{E}[16, 19 \cdot 2^{-b+2}]$. The result is obtained by applying the previous rules and $x \in \mathcal{E}[1, 0]$, $D_3 \in \mathcal{E}[4, 13 \cdot 2^{-b}]$ to the following evaluation scheme:

$$D_4 = (x \cdot D_3 + x \cdot D_3) + (x \cdot D_3 + x \cdot D_3).$$

5. $D_5 \in \mathcal{E}[48, 129 \cdot 2^{-b+2}]$. The result is obtained by applying the previous rules and $x \in \mathcal{E}[1, 0]$, $D_4 \in \mathcal{E}[16, 19 \cdot 2^{-b+2}]$ to the following evaluation scheme:

$$D_5 = ((x \cdot D_4 + x \cdot D_4) + x \cdot D_4) + (x \cdot D_4 + x \cdot D_4).$$

making also use of the fact $D_5 \leq 48$.

6. $D_6 \in \mathcal{E}[160, 459 \cdot 2^{-b+3}]$. The result is obtained by applying the previous rules and $x \in \mathcal{E}[1, 0]$, $D_5 \in \mathcal{E}[48, 125 \cdot 2^{-b+2}]$ to the following evaluation scheme:

$$D_6 = (((x \cdot D_5 + x \cdot D_5) + (x \cdot D_5 + x \cdot D_5)) + (x \cdot D_5 + x \cdot D_5))$$

making also use of the fact $D_6 \leq 160$.

7. $D_7 \in \mathcal{E}[576, 3413 \cdot 2^{-b+3}]$. The result is obtained by applying the previous rules and $x \in \mathcal{E}[1, 0]$, $D_6 \in \mathcal{E}[160, 459 \cdot 2^{-b+3}]$ to the following evaluation scheme:

$$D_7 = (((x \cdot D_6 + x \cdot D_6) + (x \cdot D_6 + x \cdot D_6)) + ((x \cdot D_6 + x \cdot D_6) + x \cdot D_6))$$

making also use of the fact $D_7 \leq 576$.

8. $D_8 \in \mathcal{E}[4096, 3541 \cdot 2^{-b+6}]$. Again, the result is obtained by applying the previous rules and $x \in \mathcal{E}[1, 0]$, $D_7 \in \mathcal{E}[576, 3413 \cdot 2^{-b+3}]$ to the following evaluation scheme:

$$D_8 = (((x \cdot D_7 + x \cdot D_7) + (x \cdot D_7 + x \cdot D_7)) + ((x \cdot D_7 + x \cdot D_7) + (x \cdot D_7 + x \cdot D_7)))$$

making also use of the fact $D_8 \leq 4096$.

REMARK. If the original values do not belong to $\mathcal{E}[1, 0]$ but to $\mathcal{E}[1, \epsilon]$ and ϵ is small enough, then the final error on D_i must be increased by $i!\epsilon$. ϵ small enough means that the error on M does not affect the value \overline{M} , in particular if all the manipulated sets are of the form $\mathcal{E}[M, m]$ with $\overline{M} = \overline{M} + m$, then adopting a first-order approximation is legitimate.