

AD-A265 576



**S A**  
DTIC  
ELECTE  
JUN 01 1993  
**D**

**DEPARTMENT OF THE  
AIR FORCE**

**FY 1994 BUDGET ESTIMATE  
SUBMITTED TO CONGRESS APRIL 1993**

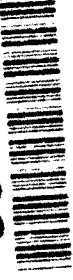


This document has been approved  
for public release and sale; its  
distribution is unlimited.

**NATIONAL GUARD PERSONNEL, AIR FORCE**

**93 5 28 02 71**

**93-12144**



2

NATIONAL GUARD PERSONNEL - AIR FORCE

TABLE OF CONTENTS

PAGE

<u>Section 1 - Summary of Requirements by Budget Program</u> .....	1.01
<u>Section 2 - Introduction</u> .....	2.01-2.02
<u>Section 3 - Summary Tables</u>	
Summary of Personnel .....	3.01
Reserve Component Personnel on Tours of Active Duty .....	3.02
Monthly Personnel Plans:	
FY 1994 Strength Plan .....	3.03
FY 1993 Strength Plan .....	3.04
FY 1992 Strength Plan .....	3.05
Schedule of Gains and Losses to Paid Selected Reserve Strengths .....	3.06-3.07
Summary of Entitlements by Subactivity .....	3.08-3.10
Analysis of Appropriation Changes and Supplemental Requirements - FY 1993 .....	3.11-3.14
Summary of Basic Pay and Retired Pay Accrual Costs .....	3.15
Summary of Basic Allowance for Quarters (BAQ) and Variable Housing Allowance (VHA) Costs .....	3.16
Summary of Travel Costs .....	3.17
Schedule of Increases and Decreases .....	3.18-3.20

Section 4 - Detail of Military Personnel Entitlements:

Budget Activity One - Unit and Individual Training	4.01-4.12
Training - Pay Group A .....	4.13-4.16
Training - Pay Group F .....	4.17-4.20
Training - Pay Group P .....	
Budget Activity Two - Other Training Support	4.21-4.29
School Training .....	4.30-4.41
Special Training .....	4.42-4.61
Administration and Support .....	4.62-4.64
Education Benefits .....	

Section 5 - Special Analyses:

Incentive Programs .....	5.01-5.13
Full-time Support Personnel .....	5.14-5.16

DUE TO QUALITY INSURANCE 2

Dist. A per telecon Mr. M. Novel  
 SAF/FMBIM  
 Pentagon  
 Wash., DC 20330  
 6-1-93 - CG

Approved	
Prepared	<input checked="" type="checkbox"/>
Reviewed	<input type="checkbox"/>
Approved	<input type="checkbox"/>
By	per call
Date	
	A-1

SUMMARY OF REQUIREMENTS BY BUDGET PROGRAM  
NATIONAL GUARD PERSONNEL, Air Force  
(In Thousands of Dollars)

	<u>FY 1992</u>	<u>FY 1993</u>	<u>FY 1994</u>
<u>DIRECT PROGRAM</u>			
Unit and Individual Training	\$ 568,441	\$ 578,661	\$ 581,827
Other Training and Support	<u>611,199</u>	<u>589,339</u>	<u>616,065</u>
TOTAL Direct Program	\$1,179,640	\$1,168,000	\$ 1,197,892
<u>REIMBURSABLE PROGRAM</u>			
Unit and Individual Training	\$ 1,117	\$ 1,819	\$ 1,655
Other Training and Support	<u>2,457</u>	<u>5,581</u>	<u>5,747</u>
TOTAL Reimbursable Program	\$ 3,574	\$ 7,400	\$ 7,402
<u>TOTAL PROGRAM</u>			
Unit and Individual Training	\$ 569,558	\$ 580,480	\$ 583,482
Other Training and Support	<u>613,658</u>	<u>594,920</u>	<u>621,812</u>
TOTAL Obligations	\$1,183,214	\$1,175,400	\$ 1,205,294

## National Guard Personnel, Air Force

### INTRODUCTION

The National Guard Personnel, Air Force appropriation provides the required funding to assure accomplishment of the Air National Guard (ANG) mission; to provide trained units to selectively augment the Active Force. The FY 1994 President's Budget Request is based on an average strength of 118,300 Guardsmen in FY 1994 who will be assigned to ANG flying and mission support units. In addition to annual 15-day tours and 48 drill periods, tours of active duty will provide training for selected ANG personnel. Included in the above average strengths for FY 1994 are 9,222 for full-time active duty ANG personnel.

As the active forces continue to draw down, so does the ANG; decreasing end strength by 1,600 in FY 1994. This decrease is a net reduction which includes an increase of 263 end strength for full-time ANG personnel. Although our request increases 2.6%, .7% of the increase is for approved price growth projections and program growth only increases 1.9%. Our program growth is consistent with the ANG accepting increased responsibility and even new missions as the active force draws down. We did the same in FY 1993 despite negative program growth which caused us to execute an unacceptably low average strength program as well as school and special training programs. Our FY 1994 request only partially resolves these problems. School Training increases modestly to reinforce our enlisted manpower as part of the Air Force Year of Training initiative. We have absorbed the cost of softening the blow on those being forced to separate early and those in the 15 to 19 year category choosing early retirement. Even though the ANG is downsizing we continue to modernize. One tanker unit gets reengineered KC-135's, an F-16 unit upgrades from A/B's to C/D's and two A-10 units convert to F-16's. Finally, as part of our dedication to flight safety we have increased Special Training funding to provide additional operational training flights.

This budget request represents the minimum level of funding required to accomplish the Air National Guard share of the National Defense mission. With the resources requested the ANG will provide nearly 32% of the total Air Force flying combat capability, ranging from 100% of the Interceptor and reconnaissance capability, to over 8% of the Strategic Airlift capability. Further the ANG will provide mission support capability, ranging from over 77% in Engineering Installation to 1% in Electronic Security. Finally, we will start to assume a new ANG mission with B-1 bombers.

The Air National Guard served proudly in Operations DESERT SHIELD and DESERT STORM, and validated the credibility of our training programs. As the active force is restructured, the Air National Guard continues to accept new and increased National Defense challenges. We have been very successful in accepting these challenges in the past, and can continue to do so with full funding of this request.

The following are the economic assumptions employed in pricing the approved programs.

EFFECTIVE 1 JANUARY

FICA rates	FY 1992	FY 1993	FY 1994
Maximum Pay Base	7.65%	7.65%	7.65%
Military Pay Increases (MPI)	\$55,500	\$57,900	\$61,800
Variable Housing	4.20%	3.70%	0%
	2.80%	2.40%	0%

EFFECTIVE ENTIRE FISCAL YEAR

Non-Pay inflation	FY 1992	FY 1993	FY 1994
Retired Pay Accrual, Full-time	2.8%	2.4%	2.4%
Retired Pay Accrual, Part-time	42.7%	36.4%	36.0%
G.I. Bill per capita	13.3%	10.6%	10.6%
	\$689.00	\$689.00	\$401.00

**SUMMARY OF PERSONNEL  
NATIONAL GUARD PERSONNEL - AIR FORCE**

	Number of Drills	Number of Active Duty Days Training	FY 1992		FY 1993		FY 1994	
			Begin	End	Average	End	Average	End
<u>Personnel In Paid Status</u>								
<u>Selected Reserve</u>								
<u>Paid Drill/Individual Training</u>								
Pay Group A - Officers	48	15	12,625	12,778	12,765	12,825	12,911	12,691
Pay Group A - Enlisted	48	15	93,933	94,691	94,385	94,733	93,654	97,604
Subtotal Pay Group A			106,558	107,669	107,150	107,558	106,605	105,695
Pay Group F - Enlisted	--	--	1,183	1,130	1,086	1,416	1,086	1,416
Pay Group P - Enlisted - Pay	1-36	--	1,146	1,180	1,061	1,000	1,187	1,000
Pay Group P - Enlisted - Monpay	--	--	80	62	87	200	200	200
Subtotal Pay Group F/P			2,409	2,372	2,234	2,616	2,473	2,616
Subtotal Paid Drill/Individual Training			108,967	110,041	109,384	110,174	109,078	108,311
<u>Full-Time Active Duty</u>								
Officers			1,453	1,547	1,560	1,543	1,538	1,557
Enlisted			7,177	7,495	7,486	7,583	7,684	7,832
Subtotal Full-Time			8,630	9,042	9,046	9,126	9,222	9,389
<u>Total Selected Reserve</u>								
Officer			14,116	14,325	14,325	14,368	14,449	14,446
Enlisted			103,670	104,758	104,105	104,932	103,851	103,752
Total			117,786	119,083	118,430	119,300	118,300	117,700
<u>Reimbursable Strength Reflected Above:</u>								
<u>Selected Reserve</u>								
Pay Group A - Officers			10	10	20	20	17	17
Pay Group A - Enlisted			83	85	217	217	182	182
Subtotal Pay Group A			93	95	257	237	199	198
<u>Full-Time Active Duty</u>								
Officers			12	12	37	37	37	37
Enlisted			27	27	52	52	52	52
Subtotal Full-Time			39	39	89	89	89	89
<u>Total Selected Reserve</u>								
Officers			22	22	57	57	57	57
Enlisted			112	112	269	269	234	234
Total			134	134	326	326	288	288

3.01

RESERVE COMPONENT PERSONNEL ON TOURS OF ACTIVE DUTY  
STRENGTH BY GRADE

NATIONAL GUARD PERSONNEL, AIR FORCE

	<u>FY 1992 Strength</u>	<u>End</u>	<u>FY 1993 Strength</u>	<u>End</u>	<u>FY 1994 Strength</u>	<u>End</u>
	<u>Average</u>		<u>Average</u>		<u>Average</u>	
<u>Commissioned Officers:</u>						
0-9 Lieutenant General	1	1	1	1	1	1
0-8 Major General	1	1	1	1	1	1
0-7 Brigadier General	1	1	1	1	2	2
0-6 Colonel	101	104	137	157	175	200
0-5 Lieutenant Colonel	424	468	491	523	542	562
0-4 Major	531	546	539	512	509	507
0-3 Captain	383	364	337	303	280	255
0-2 First Lieutenant	38	44	36	32	18	20
0-1 Second Lieutenant	20	18	17	13	10	9
<b>Total Officers</b>	<b>1,500</b>	<b>1,547</b>	<b>1,560</b>	<b>1,543</b>	<b>1,538</b>	<b>1,557</b>
<u>Enlisted Personnel:</u>						
E-9 Chief Master Sergeant	180	203	211	226	250	275
E-8 Senior Master Sergeant	578	629	639	658	675	698
E-7 Master Sergeant	2,115	2,194	2,185	2,176	2,187	2,206
E-6 Technical Sergeant	2,427	2,464	2,438	2,429	2,412	2,406
E-5 Staff Sergeant	1,769	1,741	1,617	1,904	1,983	2,077
E-4 Sergeant	211	231	183	180	167	160
E-3 Airman First Class	25	26	12	10	10	10
E-2 Airman	5	6	1	0	0	0
E-1 Airman Basic	1	1	0	0	0	0
<b>Total Enlisted</b>	<b>7,311</b>	<b>7,495</b>	<b>7,486</b>	<b>7,583</b>	<b>7,684</b>	<b>7,832</b>
<b>Total Personnel</b>	<b>8,811</b>	<b>9,042</b>	<b>9,046</b>	<b>9,126</b>	<b>9,222</b>	<b>9,389</b>

**FY 1994 STRENGTH PLAN  
NATIONAL GUARD PERSONNEL, AIR FORCE**

	Pay Group A		Total	Reserve			Paid Drill/Rep	Full-Time		Total Selected Reserve
	Officer	Enlisted		Pay Group F	Enlistment Program	Pay Group P - Non-Paid		Officer	Enlisted	
September 30, 1993	12,825	94,733	107,558	1,416	1,000	200	110,174	1,543	7,583	119,300
October	12,855	94,538	107,393	1,245	1,000	200	109,838	1,539	7,593	118,970
November	12,880	94,349	107,229	960	1,110	200	109,489	1,535	7,605	118,310
December	12,901	94,167	107,068	740	1,150	200	109,158	1,533	7,619	118,219
January	12,917	93,990	106,907	745	1,200	200	109,052	1,532	7,635	118,247
February	12,930	93,820	106,750	815	1,300	200	109,065	1,530	7,652	118,189
March	12,938	93,657	106,595	865	1,325	200	108,985	1,532	7,672	118,232
April	12,945	93,499	106,444	940	1,420	200	109,004	1,534	7,694	118,192
May	12,940	93,348	106,288	1,120	1,300	200	108,908	1,536	7,718	118,162
June	12,934	93,202	106,136	1,300	1,200	200	108,836	1,540	7,743	118,119
July	12,924	93,060	105,984	1,455	1,150	200	108,789	1,545	7,771	118,105
August	12,909	92,931	105,840	1,435	1,100	200	108,575	1,550	7,800	117,925
September 30, 1994	12,891	92,804	105,695	1,416	1,000	200	108,311	1,557	7,832	117,700
Average Strength	12,911	93,694	106,605	1,086	1,187	200	109,078	1,538	7,684	118,300



FY 1993 STRENGTH PLAN  
NATIONAL GUARD PERSONNEL, AIR FORCE

	Pay Group A		Reserve		Paid Drill/ Rep	Full-Time		Total Selected Reserve
	Officer Enlisted	Total	Pay Group F	Enlistment Program		Officer Enlisted	Active Duty Total	
September 30, 1992	12,778	94,891	1,130	1,180	110,041	1,547	7,495	119,083
October	12,741	95,010	1,159	1,079	110,046	1,544	7,442	119,032
November	12,744	95,026	1,078	1,091	109,997	1,548	7,413	118,958
December	12,768	94,899	926	1,039	109,696	1,546	7,461	118,703
January	12,724	94,701	945	974	109,403	1,551	7,446	118,400
February	12,741	94,460	893	990	109,137	1,568	7,450	118,155
March	12,750	94,270	899	995	108,968	1,568	7,466	118,002
April	12,760	94,085	976	1,100	109,016	1,570	7,475	118,061
May	12,770	93,840	1,106	1,200	109,041	1,575	7,490	118,106
June	12,780	93,810	1,181	1,100	108,996	1,580	7,525	118,101
July	12,790	93,800	1,256	1,050	108,996	1,570	7,550	118,116
August	12,810	93,915	1,336	1,025	109,211	1,555	7,570	118,336
September 30, 1993	12,825	94,733	1,416	1,000	110,174	1,543	7,583	119,300
Average Strength	12,765	94,385	1,086	1,061	109,384	1,560	7,486	118,430

FY 1992 STRENGTH PLAN  
NATIONAL GUARD PERSONNEL, AIR FORCE

	Pay Group A		Total	Reserve Enlistment Program			Paid Drill/Rep	Full-Time		Total Selected Reserve	
	Officer Enlisted	Enlisted		Pay Group F	Pay Group P - Pay	Pay Group P - Non-Paid		Officer Enlisted	Active Duty		
September 30, 1991	12,663	94,084	106,747	1,183	1,146	80	109,156	1,453	7,177	8,630	117,786
October	12,685	93,827	106,512	1,163	1,117	89	108,881	1,472	7,253	8,725	117,606
November	12,707	93,891	106,598	1,022	1,222	104	108,946	1,490	7,262	8,752	117,698
December	12,723	93,978	106,701	884	1,375	105	109,065	1,490	7,277	8,767	117,832
January	12,641	93,842	106,483	996	1,426	100	109,005	1,484	7,287	8,771	117,776
February	12,659	93,790	106,449	1,079	1,538	102	109,168	1,497	7,308	8,805	117,973
March	12,645	93,949	106,594	1,116	1,633	111	109,454	1,505	7,328	8,833	118,287
April	12,678	94,033	106,711	1,089	1,680	116	109,596	1,515	7,349	8,864	118,460
May	12,703	94,095	106,798	1,013	1,652	111	109,574	1,512	7,336	8,848	118,422
June	12,733	94,132	106,865	1,136	1,450	99	109,550	1,504	7,319	8,823	118,373
July	12,703	94,386	107,089	1,132	1,464	88	109,773	1,507	7,329	8,836	118,609
August	12,760	94,689	107,449	1,158	1,370	76	110,053	1,522	7,348	8,870	118,923
September 30, 1992	12,778	94,831	107,609	1,130	1,180	62	110,041	1,547	7,495	9,042	119,083
Average Strength	12,696	94,092	106,788	1,079	1,424	98	109,389	1,500	7,311	8,811	118,200

SCHEDULE OF GAINS AND LOSSES TO SELECTED RESERVE STRENGTHS  
NATIONAL GUARD PERSONNEL, AIR FORCE  
FY 1994 PRESIDENT'S BUDGET

	<u>OFFICERS</u>		
	<u>FY 1992</u>	<u>FY 1993</u>	
	<u>FY 1992</u>	<u>FY 1994</u>	
Begin Strength	14,116	14,325	14,368
<u>Gains:</u>			
Non-Prior Service:	63	75	75
Male	39	50	50
Female	24	25	25
(ROTC Graduates Included)			
Prior Service Personnel:	1,234	1,098	1,135
Civilian Life	33	30	30
Active Component	102	100	100
Enlisted Commissioning Programs	504	420	420
Other Reserve Status/Component	595	548	585
All Other	-	-	-
Full-Time Active Duty	-	-	-
TOTAL Gains	1,297	1,173	1,210
<u>Losses</u>			
Civilian Life	72	75	75
Active Component	-	-	-
Retired Reserves	-	-	-
Other Reserve Status/Component	882	890	890
All Other	163	165	165
Full-Time Active Duty	-	-	-
TOTAL Losses	1,117	1,130	1,130
Accounting Adjustment	+29		
End Strength	14,325	14,368	14,448

**SCHEDULE OF GAINS AND LOSSES TO SELECTED RESERVE STRENGTHS  
NATIONAL GUARD PERSONNEL - AIR FORCE  
FY 1994 PRESIDENT'S BUDGET**

	<u>FY 1992</u>	<u>ENLISTED FY 1993</u>	<u>FY 1994</u>
Begin Strength	103,670	104,758	104,932
<u>Gains:</u>			
Non-Prior Service:	<u>3,749</u>	<u>3,920</u>	<u>3,840</u>
Male	2,985	3,135	3,070
Female	764	785	770
(ROTC Graduates Included)			
Prior Service Personnel:	<u>28,793</u>	<u>25,094</u>	<u>23,320</u>
Civilian Life	1,542	1,200	800
Active Component	2,022	2,000	1,500
Reenlistment/Extensions	20,621	18,000	18,000
Other Reserve Status/Component	3,912	3,400	2,720
All Other	696	494	300
Full-Time Active Duty	-	-	-
TOTAL Gains	32,542	29,014	27,160
<u>Losses</u>			
Expiration of Selected REserve Service	2,290	2,000	2,000
Active Component	6	-	-
To Officer Status	519	420	420
Retired Reserves	-	-	-
Reenlistment/Extensions	20,621	18,000	18,000
Attrition	1,315	1,520	1,520
Other Reserve Status/Component	4,471	4,500	4,500
All Other	2,269	2,400	2,400
Full-Time Active Duty	-	-	-
TOTAL Losses	31,491	28,840	28,840
Accounting Adjustment	+37		
End Strength	104,758	104,932	103,252
			<b>3.07</b>

**SUMMARY OF ENTITLEMENTS BY SUBACTIVITY  
NATIONAL GUARD PERSONNEL, AIR FORCE  
(In Thousands of Dollars)**

	FY 1992		FY 1993		FY 1994		Page Number	
	Officers	Enlisted	Officers	Enlisted	Officers	Enlisted		
<b>UNIT AND INDIVIDUAL TRAINING</b>								
<b>PAY GROUP A</b>								
Active Duty Training	\$ 31,695	\$ 117,661	\$ 32,386	\$ 120,086	\$ 33,016	\$ 120,437	\$ 153,453	4.04
Inactive Duty Training								
Unit Training Assemblies	84,107	241,606	85,919	246,629	87,771	245,842	333,613	4.05-.06
Flight Training	27,978	4,812	28,988	5,338	28,874	5,380	34,254	4.05-.06
Training Period Preparation Assemblies	334	219	396	412	407	419	826	4.05-.06
Clothing	59	8,230	49	8,462	50	8,593	8,643	4.07-.08
Subsistence of Enlisted Personnel								
Travel	7,028	11,715	7,112	11,865	7,202	11,834	19,036	4.09-.10
TOTAL Direct Obligations	\$151,201	\$389,895	\$154,850	\$398,090	\$157,320	\$398,167	\$555,487	
<b>PAY GROUP E</b>								
Active Duty Training	\$ 18,352	\$ 18,352		\$ 18,891		\$ 19,122	\$ 19,122	4.15
Clothing	3,848	3,848		2,220		2,273	2,273	4.15
Subsistence of Enlisted Personnel								
Travel	1,182	1,182		1,219		1,247	1,247	4.16
TOTAL Direct Obligations	\$ 25,067	\$ 25,067		\$ 23,997		\$ 24,391	\$ 24,391	

3.06

**SUMMARY OF ENTITLEMENTS BY SUBACTIVITY  
NATIONAL GUARD PERSONNEL, AIR FORCE  
(In Thousands of Dollars)**

	FY 1992		FY 1993		FY 1994		Page Number
	Officers	Enlisted	Officers	Enlisted	Officers	Enlisted	
<b>UNIT AND INDIVIDUAL TRAINING (Con't)</b>							
<b>PAY GROUP P</b>							
Inactive Duty (Unit Training)		\$ 2,153		\$ 1,628		\$ 1,893	4.19
Clothing	73	73	56	56	64	64	4.19
Subsistence of Enlisted Personnel	52	52	40	40	46	46	4.20
<b>TOTAL Direct Obligations</b>		\$ 2,278		\$ 1,724		\$ 1,949	
<b>TOTAL UNIT AND INDIVIDUAL TRAINING</b>	\$151,201	\$417,240	\$154,850	\$423,811	\$157,320	\$424,507	\$581,827
<b>OTHER TRAINING AND SUPPORT</b>							
<b>SCHOOL TRAINING</b>							
Career Development Initial	2,238	3,711	2,275	3,781	2,297	3,815	4.23
Skill Acquisition Officer Candidate School	15,511	28,683	8,351	24,672	8,428	24,876	4.24
Refresher and Proficiency Undergraduate Pilot and Navigator Unit Conversion	366	1,563	371	1,714	377	1,730	4.25
	8,403	8,743	7,684	5,911	8,910	12,498	4.26
	9,408	476	9,543	483	9,624	488	4.27
	6,396	10,564	2,639	4,320	2,660	4,353	4.28
<b>TOTAL Direct Obligations</b>	\$ 42,322	\$ 53,740	\$ 30,863	\$ 40,881	\$ 32,296	\$ 47,760	\$ 80,056

**SUMMARY OF ENTITLEMENTS BY SUBACTIVITY  
NATIONAL GUARD PERSONNEL, AIR FORCE  
(In Thousands of Dollars)**

Page  
Number

	FY 1992		FY 1993		FY 1994		
	Officers	Enlisted	Officers	Enlisted	Officers	Enlisted	Total

**SPECIAL TRAINING**

	Officers	Enlisted	Total	Officers	Enlisted	Total	Officers	Enlisted	Total	Page Number
Competitive Events	\$ 713	\$ 907	\$ 1,620	\$ 723	\$ 921	\$ 1,644	\$ 727	\$ 927	\$ 1,654	4.32
Command/Staff	450	129	579	459	134	593	461	135	596	4.33
Supervision	1,841	1,794	3,635	1,870	1,822	3,692	1,865	1,837	3,722	4.34
Management Support	3,736	7,586	11,332	7,653	13,894	21,547	8,144	13,956	22,100	4.35
Exercises	3,619	2,987	6,606	3,710	3,071	6,781	5,008	4,142	9,150	4.36
Operational Training										
Service Mission/	15,948	7,753	23,701	20,312	6,474	26,786	20,469	6,525	26,994	4.37
Mission Support	2,698	4,451	7,149	1,462	2,388	3,850	1,472	2,407	3,879	4.38
Unit Conversion	6,286	24,446	30,732	0	0	0	0	0	0	4.39
Drug Interdiction	1,601	1,983	3,584	1,662	2,011	3,633	1,635	2,025	3,660	4.40
AOSW										
TOTAL Direct Obligations	\$ 36,892	\$ 52,046	\$ 88,938	\$ 37,811	\$ 30,715	\$ 68,526	\$ 39,801	\$ 31,954	\$ 71,755	

**ADMINISTRATION AND SUPPORT**

Active Guard	\$117,848	\$291,007	\$408,855	\$125,293	\$303,292	\$428,585	\$128,045	\$314,876	\$442,921	4.50-.51
Clothing	17	33	50	17	34	51	17	35	52	4.52
Travel	232	222	454	259	149	408	316	507	823	4.53-.54
Death Gratuities	45	36	81	12	90	102	12	90	102	4.55
Disability and Hospitalization Benefits	470	1,555	2,025	348	1,245	1,593	364	1,300	1,664	4.55
SGLI Payments	48	364	412	39	294	333	40	293	333	4.55
Reserve Incentives	134	7,588	7,722	171	11,116	11,287	396	12,800	13,196	4.56-.59
Variable Separation Incentive/ Special Separation Bonus							365	893	1,258	
TOTAL Direct Obligations	\$118,794	\$300,805	\$419,599	\$126,139	\$316,220	\$442,359	\$129,190	\$331,159	\$460,349	

**EDUCATIONAL BENEFITS**

(GI Bill) Benefit-Accrual	\$ 656	\$ 5,944	\$ 6,600	\$ 732	\$ 5,978	\$ 6,710	\$ 426	\$ 3,479	\$ 3,905	4.62-.64
---------------------------	--------	----------	----------	--------	----------	----------	--------	----------	----------	----------

**TOTAL OTHER TRAINING AND SUPPORT**

	\$198,664	\$412,535	\$611,199	\$195,545	\$393,794	\$589,339	\$201,713	\$414,352	\$616,065	
--	-----------	-----------	-----------	-----------	-----------	-----------	-----------	-----------	-----------	--

**TOTAL DIRECT PROGRAM**

	\$349,865	\$829,775	\$1,179,640	\$350,395	\$817,605	\$1,168,000	\$359,033	\$838,859	\$1,197,892	
--	-----------	-----------	-------------	-----------	-----------	-------------	-----------	-----------	-------------	--

3.10

ANALYSIS OF APPROPRIATION CHANGES AND SUPPLEMENTAL REQUIREMENTS  
 NATIONAL GUARD PERSONNEL, AIR FORCE  
 FY 1993  
 (In Thousands of Dollars)

	FY 1993 AMENDED PRESIDENT'S BUDGET	CONGRESSIONAL ACTION	SUB TOTAL	INTERNAL REALIGNMENT/ REPROGRAMMING	SUBTOTAL	OTHER PRICE/ PROGRAM CHANGES	FY 1993 REQUEST
<b><u>UNIT AND INDIVIDUAL TRAINING</u></b>							
<b><u>PAY GROUP A</u></b>							
Active Duty Training	\$ 145,036	-4,793	140,243	12,229	152,472	-	\$ 152,472
Inactive Duty Training:							
Unit Training Assemblies	359,654	-14,359	345,295	-13,047	332,248	-	332,248
Flight Training	33,916	-1,121	32,795	1,531	34,326	-	34,326
Training Period							
Preparation Assemblies	760	-25	735	73	808	-	808
Clothing	8,258	+2,500	10,758	-2,247	8,511	-	8,511
Subsistence of Enlisted Personnel	3,544	-	3,544	2,054	5,598	-	5,598
Travel	17,738	-	17,738	1,239	18,977	-	18,977
TOTAL Direct Obligations	\$ 568,906	-17,798	551,108	1,832	552,940	-	\$ 552,940
<b><u>PAY GROUP F</u></b>							
Inactive Duty Training (Unit)							
Active Duty Training	\$ 19,554	-304	19,250	-359	18,891	-	\$ 18,891
Clothing	2,440	-	2,440	-220	2,220	-	2,220
Subsistence of Enlisted Personnel	1,140	-	1,140	79	1,219	-	1,219
Travel	2,739	-	2,739	-1,072	1,667	-	1,667
TOTAL Direct Obligations	\$ 25,873	-304	25,569	-1,572	23,997	-	\$ 23,997



**ANALYSIS OF APPROPRIATION CHANGES AND SUPPLEMENTAL REQUIREMENTS  
NATIONAL GUARD PERSONNEL, AIR FORCE  
FY 1993  
(In Thousands of Dollars)**

	<u>FY 1993 AMENDED PRESIDENT'S BUDGET</u>	<u>CONGRESSIONAL ACTION</u>	<u>SUB TOTAL</u>	<u>INTERNAL REALIGNMENT/ REPROGRAMMING</u>	<u>SUBTOTAL</u>	<u>OTHER PRICE/ PROGRAM CHANGES</u>	<u>FY 1993 REQUEST</u>
<u>UNIT AND INDIVIDUAL TRAINING (Cont'd):</u>							
<u>PAY GROUP P</u>							
Inactive Duty (Unit)	\$ 1,853	-24	1,829	-201	1,628	-	\$ 1,628
Clothing	91	-	91	-35	56	-	56
Subsistence of Enlisted Personnel	64	-	64	-24	40	-	40
TOTAL Direct Obligations	\$ 2,008	-24	1,984	-260	1,724	-	\$ 1,724
TOTAL UNIT AND INDIVIDUAL TRAINING	\$ 596,787	-18,126	578,661	-0-	578,661	-	\$ 578,661
<u>OTHER TRAINING AND SUPPORT</u>							
<u>SCHOOL TRAINING:</u>							
Career Development Training	\$ 7,738	-102	7,636	-1,580	6,056	-	\$ 6,056
Initial Skill Acquisition Training	28,140	-120	28,020	5,003	33,023	-	33,023
Officer Candidate School Refresher and Proficiency Training	2,541	-34	2,507	-422	2,085	-	2,085
Retention Training	7,614	-101	7,513	6,082	13,595	-	13,595
Undergraduate Pilot and Navigator Training	393	-5	388	-388	-0-	-	-0-
Unit Conversion Training	10,699	-142	10,557	-531	10,026	-	10,026
TOTAL Direct Obligations	4,095	-54	4,041	2,918	6,959	-	6,959
TOTAL Direct Obligations	\$ 61,220	-558	60,662	11,082	71,744	-	\$ 71,744

ANALYSIS OF APPROPRIATION CHANGES AND SUPPLEMENTAL REQUIREMENTS  
 NATIONAL GUARD PERSONNEL, AIR FORCE  
 FY 1993  
 (In Thousands of Dollars)

	FY 1993 AMENDED PRESIDENT'S BUDGET	CONGRESSIONAL ACTION	SUB TOTAL	INTERNAL REALIGNMENT/ REPROGRAMMING	SUBTOTAL	OTHER PRICE/ PROGRAM CHANGES	FY 1993 REQUEST
<b>OTHER TRAINING AND SUPPORT</b>							
<b>SPECIAL TRAINING</b>							
Command/Staff Supervision	\$ 731	-16	715	-122	593	-	\$ 593
Competitive Events	1,751	-40	1,711	-67	1,644	-	1,644
Exercises	14,222	-328	13,894	7,653	21,547	-	21,547
Management Support	3,966	-91	3,875	-183	3,692	-	3,692
Operational Training	9,177	-211	8,966	-2,185	6,781	-	6,781
Service Mission/Mission Support	25,240	1,155	26,395	-1,509	24,886	1,900	26,786
Unit Conversion Training	3,779	-87	3,692	158	3,850	-	3,850
Active Duty For Special Work	7,454	-172	7,282	-3,649	3,633	-	3,633
Drug Interdiction	-	-	-	-	-	-	-
TOTAL Direct Obligations	\$ 66,320	210	66,530	96	66,626	1,900	\$ 68,526
<b>ADMINISTRATION AND SUPPORT</b>							
Active Guard	\$ 443,008	-4,226	438,782	-10,197	428,585	-	\$ 428,585
Clothing	51	-	51	-	51	-	51
Travel	1,034	-	1,034	-626	408	-	408
Death Gratuities	102	-	102	-	102	-	102
Disability and Hospitaliza- tion Benefits	2,085	-	2,085	-492	1,593	-	1,593
SGI Payments	183	-	183	150	333	-	333
Reserve Incentives-Enlisted	8,392	-	8,392	2,895	11,287	-	11,287
TOTAL Direct Obligations	\$ 454,855	-4,226	450,629	-8,270	442,359	-	\$ 442,359

ANALYSIS OF APPROPRIATION CHANGES AND SUPPLEMENTAL REQUIREMENTS  
 NATIONAL GUARD PERSONNEL, AIR FORCE  
 FY 1993  
 (In Thousands of Dollars)

	FY 1993 AMENDED PRESIDENT'S BUDGET	CONGRESSIONAL ACTION	SUB TOTAL	INTERNAL REALIGNMENT/ REPROGRAMMING	SUBTOTAL	OTHER PRICE/ PROGRAM CHANGES	FY 1993 REQUEST
OTHER TRAINING AND SUPPORT (CONT'D)							
EDUCATION BENEFITS (GI BILL)							
BENEFIT ACCRUAL	\$ 9,618	-	9,618	-2,908	6,710	-	\$ 6,710
TOTAL OTHER TRAINING AND SUPPORT	\$ 592,013	-4,574	587,439	-0-	587,439	1,900	\$ 589,339
TOTAL DIRECT PROGRAM	\$ 1,188,800	-22,700	1,166,100	-0-	1,166,100	1,900	\$1,168,000
TRANSFERS IN:							
TOTAL DIRECT PROGRAM AVAILABLE	\$ 1,188,800	-22,700	1,166,100	-0-	1,166,100	1,900	\$1,168,000

NATIONAL GUARD PERSONNEL, AIR FORCE  
SUMMARY OF BASIC PAY AND RETIRED PAY ACCRUAL COSTS  
(In Thousands of Dollars)

	FY 1992		FY 1993		FY 1994	
	Basic Pay	Retired Pay	Basic Pay	Retired Pay	Basic Pay	Retired Pay
<u>Pay Group A</u>						
Officers	\$109,427	\$ 14,554	\$114,572	\$ 12,145	\$116,498	\$ 12,350
Enlisted	258,125	34,331	284,849	30,194	284,833	30,193
Total	\$367,552	\$ 48,885	\$399,421	\$ 42,339	\$401,331	\$ 42,543
<u>Pay Group E</u>						
Enlisted	\$ 11,173	\$ 1,466	\$ 11,681	\$ 1,238	\$ 11,848	\$ 1,256
<u>Pay Group P</u>						
Enlisted	\$ 1,780	\$ 237	\$ 1,337	\$ 146	\$ 1,555	\$ 165
<u>School Training</u>						
Officers	\$ 24,849	\$ 3,304	\$ 18,519	\$ 1,962	\$ 19,394	\$ 2,056
Enlisted	28,544	3,798	21,860	2,316	25,621	2,716
Total	\$ 53,393	\$ 7,102	\$ 40,379	\$ 4,278	\$ 45,015	\$ 4,772
<u>Special Training</u>						
Officers	\$ 24,072	\$ 3,201	\$ 26,003	\$ 2,757	\$ 27,133	\$ 2,875
Enlisted	30,473	4,053	20,651	2,190	21,537	2,283
Total	\$ 54,545	\$ 7,254	\$ 46,280	\$ 4,947	\$ 48,670	\$ 5,158
<u>Administration and Support</u>						
Officers	\$ 63,305	\$ 26,944	\$ 69,873	\$ 25,385	\$ 72,040	\$ 25,885
Enlisted	148,228	62,957	158,440	57,447	164,704	59,058
Total	\$211,533	\$ 89,901	\$228,313	\$ 82,832	\$236,744	\$ 84,943
<u>Total Direct Program</u>						
Officers	\$221,653	\$ 48,003	\$228,967	\$ 42,249	\$235,065	\$ 43,166
Enlisted	478,323	106,862	498,858	93,531	510,098	95,671
Total	\$699,976	\$154,865	\$727,825	\$135,780	\$745,163	\$138,837

NATIONAL GUARD PERSONNEL, AIR FORCE  
SUMMARY OF BASIC ALLOWANCE FOR QUARTERS (BAQ) AND VARIABLE HOUSING ALLOWANCE (VHA) COSTS  
(In Thousands of Dollars)

	FY 1992		FY 1993		FY 1994	
	BAQ	VHA	BAQ	VHA	BAQ	VHA
<u>Pay Group A</u>						
Officers	\$ 3,401	\$ 0	\$ 3,530	\$ 0	\$ 3,570	\$ 0
Enlisted	<u>22,144</u>	<u>0</u>	<u>23,691</u>	<u>0</u>	<u>23,517</u>	<u>0</u>
Total	\$ 25,545	\$ 0	\$ 27,221	\$ 0	\$ 27,087	\$ 0
<u>Pay Group F</u>						
Enlisted	\$ 1,437	\$ 27	\$ 1,527	\$ 27	\$ 1,529	\$ 27
<u>Pay Group P</u>						
Enlisted	\$ 0	\$ 0	\$ 0	\$ 0	\$ 0	\$ 0
<u>School Training</u>						
Officers	\$ 2,772	\$ 67	\$ 1,770	\$ 52	\$ 1,901	\$ 55
Enlisted	<u>3,973</u>	<u>34</u>	<u>2,990</u>	<u>27</u>	<u>3,340</u>	<u>28</u>
Total	\$ 6,745	\$ 101	\$ 4,760	\$ 79	\$ 5,241	\$ 83
<u>Special Training</u>						
Officers	\$ 2,374	\$ 0	\$ 2,285	\$ 0	\$ 2,310	\$ 0
Enlisted	<u>4,614</u>	<u>0</u>	<u>1,458</u>	<u>0</u>	<u>1,535</u>	<u>0</u>
Total	\$ 6,988	\$ 0	\$ 3,743	\$ 0	\$ 3,845	\$ 0
<u>Administration and</u>						
Support						
Officers	\$ 11,301	\$ 3,236	\$ 12,378	\$ 3,494	\$ 12,500	\$ 3,543
Enlisted	<u>31,896</u>	<u>9,164</u>	<u>34,055</u>	<u>9,661</u>	<u>35,104</u>	<u>9,970</u>
Total	\$ 43,197	\$ 12,400	\$ 46,433	\$ 13,155	\$ 47,604	\$ 13,513
<u>Total Direct Program</u>						
Officers	\$ 19,848	\$ 3,303	\$ 19,963	\$ 3,546	\$ 20,281	\$ 3,598
Enlisted	<u>64,064</u>	<u>9,225</u>	<u>63,723</u>	<u>9,715</u>	<u>65,025</u>	<u>10,025</u>
Total	\$ 83,912	\$ 12,528	\$ 83,686	\$ 13,261	\$ 85,306	\$ 13,623

**NATIONAL GUARD PERSONNEL AIR FORCE  
BUDGETARY OF TRAVEL AND TRANSPORTATION COSTS**  
(In Thousands of Dollars)

	<u>FY 1992</u>	<u>FY 1993</u>	<u>FY 1994</u>
<u>Pay Group A</u>			
<u>Officers</u>	\$ 7,028	\$ 7,112	\$ 7,202
<u>Enlisted</u>	<u>11,715</u>	<u>11,865</u>	<u>11,834</u>
<u>Total</u>	\$ 18,743	\$ 18,977	\$ 19,036
<u>Pay Group F</u>			
<u>Enlisted</u>	\$ 1,685	\$ 1,667	\$ 1,749
<u>School Training</u>			
<u>Officers</u>	\$ 7,417	\$ 5,751	\$ 6,464
<u>Enlisted</u>	<u>11,976</u>	<u>9,248</u>	<u>10,140</u>
<u>Total</u>	\$ 19,393	\$ 14,999	\$ 16,604
<u>Special Training</u>			
<u>Officers</u>	\$ 5,014	\$ 4,192	\$ 4,791
<u>Enlisted</u>	<u>8,519</u>	<u>4,297</u>	<u>4,409</u>
<u>Total</u>	\$ 13,533	\$ 8,489	\$ 9,200
<u>Administration and Support</u>			
<u>Officers</u>	\$ 232	\$ 259	\$ 316
<u>Enlisted</u>	<u>202</u>	<u>149</u>	<u>507</u>
<u>Total</u>	\$ 434	\$ 408	\$ 823
<u>Total Travel</u>			
<u>Officers</u>	\$ 19,691	\$ 17,314	\$ 18,773
<u>Enlisted</u>	<u>34,117</u>	<u>27,226</u>	<u>28,639</u>
<u>Total</u>	\$ 53,808	\$ 44,540	\$ 47,412

3.17

National Guard Personnel, Air Force

SCHEDULE OF INCREASES AND DECREASES  
(In Thousands of Dollars)

Amount  
\$1,168,000

FY 1993 DIRECT PROGRAM-----

Increases:

Price Growth:

- Annualization of FY 1993 pay raise of 3.7% effective 1 Jan 1993. +10,527
- Commercial travel price growth based on projected 2.4% inflation rate for FY 1994. +340
- Clothing price growth based on a projected 2.4% inflation rate for FY 1994. +255
- Subsistence-In-Kind (SIK) rate increase based on a projected 2.4% inflation rate for FY 1994. +161
- Increase in pay base for calculating government's social security contribution from \$57,900 in FY 1993 to \$61,800 in FY 1994. +53

Total Price Growth----- +11,336

Program Growth:

- Force Structure changes (+442 average; +151 workyears). +15,223
- Refresher and Proficiency training (+66,803 workdays). +7,653
- Prior Year Growth (+342 average; +65 workyears). +6,520
- Security police conversion to fulltime (+92 workyears). +3,997
- Incentive program increased anniversary payments. +1,909
- Operational training to enhance flying safety (+15,270 workdays). +2,292
- Variable Separation Incentive/Special Separation Bonus/15 year Retirement. +1,258

National Guard Personnel, Air Force

SCHEDULE OF INCREASES AND DECREASES  
(In Thousands of Dollars)

- KC-135 Alert decreased causing fulltime crew to revert to Drill status (+96 average).	+1,017
- Combat Communications change to meet current requirements (+13 workyears).	+723
- Exercises return from fiscally constrained FY 1993 level.	+369
- F-46 Wild Weasel increase crew ratio (+3 workyears).	+289
- Congressional add of instructors for drug program (+5 workyears).	+217
- Pay Group P increased entrants.	+206
- Pay Group F increase in separations.	+117
- C-130 maintenance positions for new defensive system (+20 average).	+89

Total Program Growth-----+41,879

Total Increases-----+53,215

Decreases:

Price Decrease:

- Retired Pay Accrual (RPA) Normal Cost Percentage (MCP) change from 36.4% in FY 1993 to 36.0% in FY 1994 for full-time personnel.	-925
- Per Capita normal cost decreased from \$689 in FY 1993 to \$410 in FY 1994.	-2,805

Total Price Decreases----- -3,730

Program Decreases:

- Decrease in alert requirements (-88 average; -96 workyears).	-6,795
- Fighter rebust and accelerate inactivations (-227 average).	-2,500

3.19



National Guard Personnel, Air Force

- Consolidation of KC-135 support (-270 average; -17 workyears).	-2,187
- Further Replacement Training Unit reduction (-37 workyears).	-1,709
- Operational Support Airlift reduced (-71 average; -17 workyears).	-1,502
- Enlisted Unit Training Assembly participation rate decrease.	-1,492
- F-16 training unit conversion (-270 average).	-1,372
- Recruiters (-16 workyears).	-743
- Combat Communications realignment (-160 average).	-716
- Convert aircraft security to fulltime (-90 average).	-403
- Travel, clothing, subsistence decrease.	-174
Total Program Decreases-----	-19,593
Total Decreases-----	-23,323

FY 1994 DIRECT PROGRAM----- \$1,197,892

Appropriation: National Guard Personnel, Air Force  
Budget Program 1: Unit and Individual Training  
Budget Activity 1A: Training, Pay Group A

ACTUAL	REVISED ESTIMATE	ESTIMATE
FY 1992	FY 1993	FY 1994
\$541,096	\$552,940	\$555,487

PART I - PURPOSE AND SCOPE

This budget activity provides for pay and allowances including government's social security contributions, retired pay accrual, clothing, subsistence and travel for Air National Guard officers and enlisted assigned in Pay Group A. These personnel are authorized 15 days paid annual training and 48 paid inactive duty drill periods each fiscal year, additional flying training periods for personnel on flying status, and training period preparation assemblies for traditional Guardsmen with trainer responsibilities.

Program requirements are based on average strength and training participation rates for each fiscal year. The dollar rates used for pricing the program requirements are based on actual experience and reflect the applicable approved economic assumptions identified on page 2.02.

National Guard Personnel, Air Force Training, Pay Group A (continued)

SCHEDULE OF INCREASES AND DECREASES  
(In Thousands of Dollars)

Amount  
\$552,940

FY 1993 DIRECT PROGRAM-----

Increases:

Price Growth:

- Annualization of FY 1993 pay raise of 3.7% effective 1 Jan 1993. +5,176
- Clothing price increase based on a projected 2.4% inflation rate for FY 1994. +197
- Subsistence-in-Kind (SIK) rate increase based on a projected 2.4% inflation rate for FY 1994. +130
- Commercial Travel price growth based on a projected 2.4% inflation rate for FY 1994. +102
- Total Price Growth----- +5,605

Program Growth:

- Supports prior year growth which carries over into FY 1994 (+342 average strength). +2,853
- Force changes. One F-16 unit converts to KC-135 and six KC-135 units robust, one congressionally directed. +2,285  
One F-16 training unit converts to bomber missions and a prior year robust of an A-10 unit is completed. Conversely two RF-4 units convert to air refueling and one F-16 unit converts to airlift causing small offsetting decreases (+442 average strength).
- KC-135 alert decreased causing fulltime crews to revert to drill status (+96 average strength). +1,017
- Funds maintenance positions for newly procured defensive system on C-130 aircraft +(20 average strength). +89

Total Program Growth----- +6,244

Total Increases----- +11,849

National Guard Personnel, Air Force Training, Pay Group A (continued)

SCHEDULE OF INCREASES AND DECREASES  
(In Thousands of Dollars)

Program Decreases:	
- Debust fighter squadrons and accelerate retirements (-227 average strength).	-2,500
- Participation rate decrease for enlisted Unit Training Assemblies.	-1,492
- KC-135 consolidation developed support for three co-located units (-270 average strength).	-1,372
- An F-16 training unit has converted to a new mission reducing drill personnel (-270 average strength).	-1,372
- Requirements for KC-135 crew personnel reduced (-67 average strength).	-708
- Realignment of combat communications mission requirements (-160 average strength).	-716
- Operational support airlift mission reduced (-71 average strength).	-489
- Drill status security personnel converted to fulltime status (-90 average strength).	-403
- Travel, clothing and subsistence decrease due to average strength decline.	-174
- Change in Air Defense alert requirements lowers number of crews and reverts support personnel from fulltime to drill status (-6 average strength).	-76
Total Program Decreases-----	-9,302
Total Decreases-----	-9,302
FY 1994 DIRECT PROGRAM-----	\$555,487

National Guard Personnel Air Force Training, Pay Group A (continued)

Pay and Allowances Active Duty for Training, Officer: These funds provide pay and allowances for officers attending active duty for training. Program requirements are based on average officer Pay Group A strength and training participation rates for each fiscal year. The dollar rates used in computing requirements include basic pay, retired pay accrual, government's social security contributions, Basic Allowances for Subsistence (BAS), Basic Allowance for Quarters (BAQ), and special and incentive pay as authorized.

(Amounts in Thousands)

	FY 1992		FY 1993		FY 1994	
	Strength	Rate	Strength	Rate	Strength	Rate
Average Strength	12,686		12,745		12,894	
Participation Rate	96.5%		96.5%		96.5%	
Paid Participants	12,242	\$2,589.04	12,309	\$2,631.08	12,449	\$2,652.10
		\$31,695		\$32,386		\$33,016

Pay and Allowances Active Duty for Training, Enlisted Personnel: These funds provide pay and allowances for enlisted personnel attending active duty training. Program requirements are based on average enlisted Pay Group A strength and training participation rates for each fiscal year. The dollar rates used in computing requirements include basic pay, retired pay accrual, government's social security contributions, BAS, BAQ, and special and incentive pay as authorized.

(Amounts in Thousands)

	FY 1992		FY 1993		FY 1994	
	Strength	Rate	Strength	Rate	Strength	Rate
Average Strength	94,007		94,168		93,512	
Participation Rate	95.0%		95.1%		95.1%	
Paid Participants	89,307	\$1,319.73	89,585	\$1,340.47	88,929	\$1,354.31
		\$117,861		\$120,086		\$120,437

National Guard Personnel, Air Force Training, Pay Group A (continued)

Pay, Inactive Duty Training, Officers. These funds provide pay and allowances for officers attending inactive duty for training including unit training assemblies, training period preparation assemblies, and additional flying training perios for officer personnel on flying status. Program requirements are based on average officer Pay Group A strength and training participation rates for each fiscal year. The dollar rates used in computing the requirements include basic pay, retired pay accrual, government's social security contributions, and incentive pay as authorized.

(Amounts in Thousands)

	FY 1992		FY 1993		FY 1994	
	Strength/ Assemblies	Rate	Strength Assemblies	Rate	Strength/ Assemblies	Rate
Unit Training:						
Average Strength	12,686		12,745		12,894	
Participation Rate	93.5%		93.5%		93.5%	
Paid Participants	11,860	\$ 7,091.65	11,925	\$ 7,204.95	12,061	\$ 7,277.26
Additional Training Assemblies:						
Flight Training	178,056	\$ 157.13	181,656	\$ 159.58	179,424	\$ 160.93
Training Period Preparation Assemblies	2,100	\$ 159.05	2,448	\$ 161.76	2,496	\$ 163.06
TOTAL		\$ 112,419		\$ 115,303		\$ 117,052

National Guard Personnel, Air Force Training, Pay Group A (continued)

Pay, Inactive Duty Training, Enlisted: These funds provide pay and allowances for enlisted personnel attending inactive duty for training including unit training assemblies, training period preparation assemblies, and additional flying training periods for enlisted personnel on flying status. Program requirements are based on average enlisted Pay Group A strength and training participation rates for each fiscal year. The dollar rates used in computing the requirements include basic pay, retired pay accrual, government's social security contributions, and incentive pay as authorized.

(Amounts in Thousands)

	FY 1992		FY 1993		FY 1994	
	Strength/ Assemblies	Rate Amount	Strength/ Assemblies	Rate Amount	Strength/ Assemblies	Rate Amount
Unit Training:						
Average Strength	94,007		94,168		93,512	
Participation Rate	91.1%		91.3%		90.8%	
Paid Participants	85,650	\$2,820.85	\$241,606	85,964	\$2,865.49	\$246,329
Additional Training Assemblies:						
Flight Training	63,036	\$ 76.34	\$ 4,812	68,976	\$ 77.39	\$ 5,338
Training Period Preparation Assemblies	2,834	\$ 77.28	\$ 219	5,248	\$ 78.51	\$ 412
TOTAL		\$246,637		\$252,079		\$251,641

National Guard Personnel Air Force Training, Pay Group A (continued)

Individual Clothing and Uniform Allowances, Officers: These funds provide for the initial payment and supplemental allowances under the provisions of Section 415 and 416 of Title 37, United States Code for the purchase of required uniforms. Section 415 authorizes a one-time initial allowance of not more than \$200 as reimbursement for the purchase of required uniforms and equipment upon completing at least 14 days of active duty as a member of a reserve component. Section 416 provides for uniform allowances of not more than \$50 upon completion of each four years of service in one or more reserve components. The number of uniform allowances in this estimate is based on programmed drill strength.

(Amounts in Thousands)

	FY 1992		FY 1993		FY 1994	
	Number	Rate	Number	Rate	Number	Rate
Initial Uniform Allowance	75	\$ 200.00	50	\$ 200.00	50	\$ 200.00
Additional Uniform Allowance	874	\$ 50.00	782	\$ 50.00	791	\$ 50.00
TOTAL		\$ 59		\$ 49		\$ 50



**National Guard Personnel Air Force Training, Pay Group A (continued)**

**Individual Clothing and Uniform Allowances. Enlisted:** These funds provide clothing for enlisted personnel. Section 418 of Title 37 United States Code authorizes the President to prescribe the quantity and type of clothing necessary for enlisted members of the armed forces or the National Guard.

(Amounts in Thousands)

	FY 1992		FY 1993		FY 1994	
	Number	Rate Amount	Number	Rate Amount	Number	Rate Amount
Initial (Partial) Issue to Prior Service Personnel -- Men	5,744	\$442.16 \$2,540	5,762	\$453.35 \$ 2,612	5,720	\$463.64 \$ 2,652
Initial (Partial) Issue to Prior service Personnel -- Women	874	\$474.29 \$ 415	877	\$485.58 \$ 426	871	\$497.33 \$ 433
Replacement Issue -- Men	57,711	\$ 78.60 \$4,536	57,891	\$ 80.57 \$ 4,664	57,467	\$ 82.42 \$ 4,736
Replacement Issue -- Women	<u>8,526</u>	<u>\$ 86.71 \$ 739</u>	<u>8,553</u>	<u>\$ 88.84 \$ 760</u>	<u>8,490</u>	<u>\$ 90.92 \$ 772</u>
TOTAL		\$ 8,230		\$ 8,462		\$ 8,593

National Guard Personnel Air Force Training, Pay Group A (continued)

Subsistence of Enlisted Personnel: These funds provide for subsistence-in-kind to enlisted personnel on active duty training and inactive duty training for eight hours or more in any one calendar day. Subsistence-in-kind requirements are based on active duty and inactive duty workdays as programmed for each fiscal year. Appropriate deductions are made for enlisted personnel who will receive a monetary allowance in lieu of subsistence. The dollar rates reflect approved inflation assumptions. Meal authorization chits, contract catering, operational rations, field dining halls, and other service mess halls are also used for individuals and units performing duty at locations where ANG dining halls are not available.

(Amounts in Thousands)

	FY 1992		FY 1993		FY 1994	
	Number	Rate	Number	Rate	Number	Rate
<u>Active Duty Requirements:</u>						
<u>Subsistence-in-kind:</u>						
Total Enlisted Work-days	1,339,605		1,343,775		1,333,935	
Less provided for elsewhere:						
On Monetary Allowance	1,138,242		1,141,785		1,133,424	
Total Enlisted to be Subsisted	201,363		201,990		200,511	
Percent Present Subsisted	95.0%		95.0%		95.0%	
Total Number of Enlisted Personnel Subsisted	191,295	\$ 6.79	191,891	\$ 6.95	190,486	\$ 7.12
		\$ 1,299		\$ 1,334		\$ 1,356
Total Active Duty Requirements						
		\$ 1,299		\$ 1,334		\$ 1,356

4.09

National Guard Personnel, Air Force  
Training, Pay Group A (continued)

Subsistence of Enlisted Personnel (continued)

(Amounts in Thousands)

	FY 1992		FY 1993		FY 1994	
	Number	Rate	Number	Rate	Number	Rate
<u>Inactive Duty Periods of Eight Hours or More:</u>						
Total Entitled	2,142,010		2,148,687		2,132,924	
to be Subsisted	<u>89.3%</u>		<u>89.3%</u>		<u>88.9%</u>	
Percent Present						
Total Number of Personnel Subsisted	1,913,672	\$ 2.17	1,920,712	\$ 2.22	1,896,810	\$ 2.27
		\$ 4.153		\$ 4.264		\$ 4.306
Total Inactive Duty Requirements		\$ 4,153		\$ 4,264		\$ 4,306
TOTAL		\$ 5,452		\$ 5,598		\$ 5,662

4.10

National Guard Personnel Air Force Training, Pay Group A (continued)

Travel, Active Duty for Training, Officers: These funds provide for transportation and per diem allowances for officers to perform active duty training. Program requirements are based on the number of officers programmed to participate in active duty training during each fiscal year. Average travel rate per individual is developed based on actual experience. For those individuals requiring commercial transportation during active duty training, the dollar rates reflect approved inflation assumptions.

(Amounts in Thousands)					
FY 1992		FY 1993		FY 1994	
Number	Rate	Number	Rate	Number	Rate
12,242	\$574.09	12,309	\$577.79	12,449	\$578.52
	\$7,028		\$7,112		\$7,202

Travel, Active Duty for Training, Enlisted: These funds provide for transportation and per diem allowances for enlisted personnel to perform active duty training. Program requirements are based on the number of enlisted personnel programmed to participate in active duty training during each fiscal year. Average travel rate per individual is developed based on actual experience. For those individuals requiring commercial transportation during active duty training, the dollar rates reflect approved inflation assumptions.

(Amounts in Thousands)					
FY 1992		FY 1993		FY 1994	
Number	Rate	Number	Rate	Number	Rate
89,307	\$131.18	89,585	\$132.44	88,929	\$133.07
	\$11,715		\$11,865		\$11,834

National Guard Personnel Air Force  
Training, Pay Group A (continued)

Reimbursable Requirements: Sale of meals to officers from enlisted messes and manpower to support foreign military sales.

(Amounts in Thousands)

	FY 1992		FY 1993		FY 1994	
	Number	Rate	Number	Rate	Number	Rate
<u>Officer Meals:</u>						
	99,411	\$ 6.47	99,411	\$ 6.62	99,411	\$ 6.78
		\$ 643		\$ 658		\$ 674
<u>Foreign Military Sales (FMS):</u>						
Officers	10	\$11,900.00	20	\$12,140.00	17	\$12,194.00
Enlisted	85	\$ 4,175.00	217	\$ 4,221.00	182	\$ 4,253.00
Total FMS		\$ 474		\$1,161		\$ 981

**Total Reimbursable Requirement \$1,117 \$1,819 \$1,655**

Appropriation: National Guard Personnel, Air Force  
 Budget Program 1: Other Training and Support  
 Budget Activity 1F: Training, Pay Group F

ACTUAL	ESTIMATE	ESTIMATE
FY 1992	FY 1993	FY 1994
\$25,067	\$23,997	\$24,391

PART I - PURPOSE AND SCOPE

This budget activity provides for pay and allowances including government's social security contributions, retired pay accrual, clothing, subsistence, and travel for Air National Guard enlisted personnel assigned to the non-prior service program. The purpose of this program is to recruit and train non-prior service personnel to fill specific unit vacancies not attainable from prior service enlisted sources. Individuals receive basic and technical and/or on-the-job training, depending upon their aptitudes and Air Force specialties.

Program requirements are based on the average number of trainees attending initial active duty training. The dollar rates used for pricing the program requirements are based on actual experience and reflect the approved economic assumptions identified on page 2.02.

National Guard Personnel, Air Force  
Training, Pay Group F (continued)

SCHEDULE OF INCREASES AND DECREASES  
(In Thousands of Dollars)

Amount  
\$23,997

FY 1993 DIRECT PROGRAM-----

Increases:

Price Growth:

- Annualization of FY 1993 pay raise of 3.7% effective 1 Jan 1993. +164
- Clothing price increase based on a projected 2.4% inflation rate for FY 1994. +53
- Commercial travel price growth based on a projected 2.4% inflation rate for FY 1994. +32
- Subsistence-in-Kind (SIK) rate increase based on a projected 2.4% inflation rate for FY 1994. +28

Total Price Growth-----+277

Program Growth:

- Increased separation pay due in increase in number of people separating from Pay Group F. +67
- Increased travel associated with increase number of assessments plus separations. +50

Total Program Growth-----+117

Total Increases-----+394

FY 1994 DIRECT PROGRAM-----

\$24,391

National Guard Personnel Air Force Training, Pay Group F (continued)

Pay and Allowances, Active Duty for Training, Enlisted: These funds provide for pay and allowances of enlisted personnel attending initial active duty for training. This program will support an input of 3,600 non-prior service enlisted into initial active duty during FY 1993, FY 1994 and FY 1995. The dollar rates used in computing the requirements include basic pay, retired pay accrual, government's social security contributions, subsistence, quarters allowances and Variable Housing Allowance (VHA) when authorized.

(Amounts in Thousands)

	FY 1992			FY 1993			FY 1994		
	Avg. No. Trainees	Rate	Amount	Avg. No. Trainees	Rate	Amount	Avg. No. Trainees	Rate	Amount
	3,237	\$5,669.45	\$18,352	3,256	\$5,798.34	\$18,891	3,258	\$5,869.25	\$19,122

Individual Clothing and Uniform Allowance, Enlisted: These funds provide clothing and uniforms for enlisted personnel attending initial active duty for training. Clothing issues are based on the number of non-prior service enlistees that will enter initial active duty. Clothing dollar rates are based on experience and reflect approved inflation assumptions.

(Amounts in Thousands)

	FY 1992			FY 1993			FY 1994		
	Number	Rate	Amount	Number	Rate	Amount	Number	Rate	Amount
Initial Issue--Male	5,859	\$586.60	\$3,437	3,118	\$600.68	\$1,873	3,116	\$615.10	\$1,918
Initial Issue--Female	585	\$702.56	\$411	482	\$719.42	347	482	\$736.69	\$355
TOTAL	6,444	\$597.14	\$3,848	3,600	\$616.67	\$2,220	3,600	\$631.39	\$2,273



National Guard Personnel Air Force Training, Pay Group F (continued)

Subsistence, Enlisted Personnel: These funds provide for subsistence-in-kind for enlisted personnel attending initial active duty training. Subsistence-in-kind requirements are based on total workdays programmed for each individual fiscal year. Appropriate deductions are made for enlisted personnel who will receive a monetary allowance in lieu of subsistence or per diem allowances.

(Amounts in Thousands)

	FY 1992		FY 1993		FY 1994	
	Number	Rate	Number	Rate	Number	Rate
Total Enlisted Workdays	388,440		390,960		390,960	
Less Provided for Else-where:						
On Monetary Allowance	60,208		60,599		60,599	
Travel	6,960		6,760		6,960	
Total Entitled Workdays to be Subsisted	321,272		323,601		323,401	
Percent Present	73.0%		73.0%		73.0%	
Total Number of Enlisted Workdays Subsisted	234,529	\$ 5.04	236,229	\$ 5.16	236,083	\$ 5.28
						\$ 1,247

Travel, Active Duty for Training, Enlisted: These funds provide for transportation and per diem allowances for enlisted personnel to perform initial active duty training. Program requirements are based on the number of non-prior service enlistees that will enter, complete or wash out of training and that require commercial transportation to and from training.

(Amounts in Thousands)

	FY 1992		FY 1993		FY 1994	
	Number	Rate	Number	Rate	Number	Rate
	6,960	\$242.10	6,760	\$246.60	6,960	\$251.29
		\$1,685		\$1,667		\$1,749

Appropriation: National Guard Personnel, Air Force  
Budget Program 1: Unit and Individual Training  
Budget Activity 1P: Training, Pay Group P

ACTUAL	REVISED ESTIMATE	ESTIMATE
FY 1992	FY 1993	FY 1994
\$2,278	\$1,724	\$1,949

PART I - PURPOSE AND SCOPE

This budget activity provides for pay of enlisted personnel participating in multiple drill assemblies and/or weekend training for up to 36 paid drills prior to entering Initial active duty training (IADT). These enlistees must enter IADT within nine months of enlisting.

Program requirements are based on average strength and training participation rates for each fiscal year. The dollar rates used for pricing the program requirements are based on actual experience and reflect the applicable approved economic assumptions identified on page 2.02.

NATIONAL GUARD PERSONNEL, AIR FORCE  
Training, Pay Group P (continued)

SCHEDULE OF INCREASES AND DECREASES  
(In Thousands of Dollars)

AMOUNT  
\$1,724

FY 1993 DIRECT PROGRAM-----

Increases:

Price Growth:

- Annualization of FY 1993 pay raise of 3.7% effective 1 Jan 1993. +17
- Clothing price increase based on a projected 2.4% inflation rate for FY 1994. +1
- Subsistence-in-kind (SIK) price growth based on the projected 2.4% inflation rate FY 1994. +1
- Total Price Growth----- +19

Program Growth:

- Increased number of participants (+126 average strength). +206
- Total Program Growth----- +206

Total Increases-----

+225

FY 1994 DIRECT PROGRAM-----

\$1,949

National Guard Personnel Air Force Training, Pay Group P (continued)

Pay, Inactive Duty Training, Enlisted: These funds provide for pay of enlisted personnel attending inactive duty for training while awaiting initial active duty training. Basic pay, retired pay accrual, and government's social security contributions are included in computing requirements.

(Amounts in Thousands)

	FY 1992		FY 1993		FY 1994	
	Strength/ Assemblies	Rate Amount	Strength/ Assemblies	Rate Amount	Strength/ Assemblies	Rate Amount
Average Strength	1,424		1,061		1,187	
Participation Rate	100%		100%		100%	
Paid Participants	1,424	\$1,511.94	1,061	\$1,534.40	1,187	\$1,549.28
		\$2,153		\$1,628		\$1,839

Unit Training:

Individual Clothing and Uniform Allowances, Enlisted: These funds provide for individual clothing issued to enlisted personnel who are performing inactive duty training while awaiting initial active duty training. Section 418 of Title 37, U.S.C. authorizes the President to provide the quantity and type of clothing necessary for enlisted members of the Armed Forces or the National Guard. The number of issues are based on average Pay Group P strength. The dollar rates are based on actual experience and reflect the approved inflation assumptions.

(Amounts in Thousands)

	FY 1992		FY 1993		FY 1994	
	Number	Rate Amount	Number	Rate Amount	Number	Rate Amount
	1,424	\$51.37	1,061	\$ 52.60	1,187	\$53.86
		\$73		\$56		\$64

National Guard Personnel - Air Force Training, Pay Group P (continued)

Subsistence of Enlisted Personnel: These funds provide for subsistence-in-kind (SIK) for enlisted personnel participating in inactive duty periods of 8 hours or more in any one calendar day. The Air National Guard (ANG) mess hall rates are established to defray the cost of operating ANG dining facilities on a part-time basis during the fiscal year. Meal authorization chits, contract catering, operational rations, field dining halls, and other service mess halls are also used for individuals performing duty at locations where ANG dining halls are not available.

(Amounts in Thousands)

	FY 1992		FY 1993		FY 1994	
	Number	Rate	Number	Rate	Number	Rate
Total SIK (meals)	34,176	\$ 1.52	25,464	\$ 1.56	28,488	\$ 1.60
		\$ 52		\$ 40		\$ 46

Appropriation: National Guard Personnel, Air Force

Budget Program 2: Other Training and Support  
Budget Activity 2R: School Training

ACTUAL	REVISED ESTIMATE	ESTIMATE
FY 1992	FY 1993	FY 1994
\$96,062	\$71,744	\$80,056

Part I - Purpose and Scope

This budget activity provides for pay and allowances, including the government's social security contributions, retired pay accrual, clothing, subsistence, variable housing allowance, travel, and per diem for Air National Guard officers and enlisted personnel performing tours of paid active duty for formal school training. This program is designed to increase the mobilization potential and readiness of Guardsmen through training at military service schools. This school training improves individual proficiency and cross trains individuals into critical skill career fields. The length of each course includes the actual period of instruction, travel time as prescribed by appropriate travel regulations, and accrued leave at a rate of 2-1/2 days per month when training is in excess of 30 days.

School tours are programmed and budgeted in six separate categories as follows:

- (1) Career Development Training
- (2) Initial Skill Acquisition Training
- (3) Officer Candidate School
- (4) Refresher and Proficiency Training
- (5) Undergraduate Pilot and Navigator Training
- (6) Unit Conversion Training

The following pages present the requirements for each of the six categories and describe more precisely what is included in each category. The dollar rates used for pricing the program requirements are based on actual experience and reflect the approved economic assumptions identified on page 2.02.

National Guard Personnel, Air Force  
School Training (continued)

SCHEDULE OF INCREASES AND DECREASES  
(In Thousands of Dollars)

Amount  
\$71,744

FY 1993 DIRECT PROGRAM-----

Increases:

Price Growth:

- Annualization of FY 1993 pay raise of 3.7% effective 1 Jan 1993. +508
- Commercial travel price growth based on a projected 2.4% inflation rate for FY 1994. +146
- Subsistence-in-kind (SIK) rate increase based on a projected 2.4% inflation rate for FY 1994. +2
- Clothing price increase based on a projected 2.4% inflation rate for FY 1994. +3

Total Price Growth----- + 659

Program Growth:

- Refresher and Proficiency (+66,803 workdays). +7,653
- Supports Air Force wide "Year of Training" initiative which requires mandatory in-residence seven level training.

Total Program Growth----- +7,653

Total Increases----- +8,312

FY 1994 DIRECT PROGRAM----- \$80,056

National Guard Personnel, Air Force  
School Training (continued)

DETAIL OF REQUIREMENTS--SCHOOL TRAINING  
 (Amounts in Thousands)

Career Development: This program includes speciality or general military training related to professional development or career enhancement including senior military schools. The average rates used in computing the requirements include pay and allowances, including governments social security contributions, retired pay, clothing, transportation and per diem as authorized. The dollar rates used for pricing the program requirements are based on actual experience and reflect approved economic assumptions identified on page 2.02.

	FY 1992				FY 1993			
	Partici- pants	Tour Length (Avg)	Work- days	Rate (Avg) Amount	Partici- pants	Tour Length (Avg)	Work- days	Rate (Avg) Amount
Officers	388	30.8	11,943	\$187.39	388	30.8	11,943	\$190.49
Enlisted	1,440	25.5	36,716	101.07	1,440	25.5	36,716	102.98
Subtotal	1,828	26.6	48,659	\$122.26	1,828	26.6	48,659	\$124.46
				\$ 2,238				\$ 2,275
				3,711				3,781
				\$ 5,949				\$ 6,056

	FY 1994			
	Partici- pants	Tour Length (Avg)	Work- days	Rate (Avg) Amount
Officers	388	30.8	11,943	\$192.33
Enlisted	1,440	25.5	36,716	103.91
Subtotal	1,828	26.6	48,659	\$125.61
				\$ 2,297
				3,815
				\$ 6,112



National Guard Personnel - Air Force  
School Training (continued)

DETAIL OF REQUIREMENTS--SCHOOL TRAINING  
(Amounts in Thousands)

Initial Skill Acquisition Training: This program provides training necessary to acquire initial military and/or military specialty skills. It includes the initial training of newly commissioned officers, initial skill training of officers and prior service enlisted personnel and the retraining of officers and enlisted personnel into another military specialty. The average rates used in computing the requirements include pay and allowances, including the government's social security contributions, retired pay accrual, clothing, transportation and per diem as authorized. The dollar rates used for pricing the program requirements are based on actual experience and reflect the approved economic assumptions identified on page 2.02.

	FY 1992				FY 1993			
	Partici- pants	Tour Length (Avg)	Work- days	Rate (Avg)	Partici- pants	Tour Length (Avg)	Work- days	Rate (Avg)
Officers	1,553	68.1	105,776	\$146.64	819	68.1	55,792	\$149.68
Enlisted	4,511	70.7	318,900	89.94	3,798	70.7	268,562	91.87
Subtotal	6,064	70.0	424,676	\$104.07	4,617	70.3	324,354	\$101.81
			\$15,511				\$ 8,351	
			28,683				24,672	
			\$44,194				\$33,023	

	FY 1994			
	Partici- pants	Tour Length (Avg)	Work- days	Rate (Avg)
Officers	819	68.1	55,792	\$151.06
Enlisted	3,798	70.7	286,562	92.63
Subtotal	4,617	70.3	324,354	\$102.68
				\$ 8,428
				24,876
				\$33,304

National Guard Personnel, Air Force  
School Training (continued)

DETAIL OF REQUIREMENTS--SCHOOL TRAINING  
 (Amounts in thousands)

Officer Candidate School: This program includes the commissioning programs of the Air National Guard (AMG) Academy of Military Science (AMS). The source of officer candidates is either directly from civilian life or prior enlisted service. The average rates used in computing the requirements include pay and allowances including the government's social security contributions, retired pay accrual, clothing, subsistence-in-kind, transportation and per diem, as authorized. The dollar rates used for pricing the program requirements are based on actual experience and reflect the approved economic assumptions identified on page 2.02.

	FY 1992				FY 1993				
	Partici- pants	Tour Length (Avg)	Work- days	Rate (Avg)	Partici- pants	Tour Length (Avg)	Work- days	Rate (Avg)	Amount
Officers	(454)	5.0	2,271	\$ 161.16	(454)	5.0	2,271	\$ 163.36	\$ 371
Enlisted	454	39.3	17,829	87.67	454	39.3	17,829	96.14	1,714
Subtotal	454	44.3	20,100	\$ 95.97	454	44.3	20,100	\$ 103.73	\$ 2,085

	FY 1994				
	Partici- pants	Tour Length (Avg)	Work- days	Rate (Avg)	Amount
Officers	(454)	5.0	2,271	\$ 166.01	\$ 377
Enlisted	454	39.3	17,829	97.03	1,730
Subtotal	454	44.3	20,100	\$ 104.83	\$ 2,107

National Guard Personnel, Air Force  
School Training (continued)

DETAIL OF REQUIREMENTS--SCHOOL TRAINING  
 (Amounts in Thousands)

Refresher and Proficiency Training: This program provides training necessary to attain and maintain the needed level of proficiency in the military specialty for which a member has been initially qualified. The average rates used in computing this requirement include pay and allowances, including the government's social security contributions, retired pay accrual, clothing, transportation and per diem as authorized. The dollar rates used for pricing the program are based on actual experience and reflect the approved economic assumptions identified on page 2.02.

	FY 1992				FY 1993				
	Partici- pants	Tour Length (Avg)	Work- days	Rate (Avg)	Partici- pants	Tour Length (Avg)	Work- days	Rate (Avg)	Amount
Officers	1,798	31.6	56,825	\$147.88	1,626	31.5	51,223	\$149.98	\$ 7,684
Enlisted	1,851	44.0	81,436	107.36	1,211	44.5	53,897	109.67	5,911
Subtotal	3,649	37.9	138,261	\$124.01	2,837	37.1	105,130	\$129.32	\$13,595

	FY 1994				
	Partici- pants	Tour Length (Avg)	Work- days	Rate (Avg)	Amount
Officers	1,870	31.5	58,932	\$151.19	\$ 8,910
Enlisted	2,565	44.1	113,001	110.60	12,498
Subtotal	4,435	38.8	171,933	\$124.51	\$21,408

National Guard Personnel, Air Force  
School Training (continued)

DETAIL OF REQUIREMENTS--SCHOOL TRAINING  
 (Amounts in thousands)

Undergraduate Pilot & Navigator Training: This program includes the initial flying training programs for Undergraduate Pilot Training (UPT), Undergraduate Navigator Training (UNT) and Undergraduate Helicopter Training. The average rates used in computing the requirements include pay and allowances, including the government's social security contributions, retired pay accrual, clothing, transportation and per diem as authorized. The dollar rates used for pricing the program requirements are based on actual experience and reflect the approved economic assumptions identified on page 2.02.

	FY 1992				FY 1993			
	Partici- pants	Tour Length (Avg)	Work- days	Rate (Avg)	Partici- pants	Tour Length (Avg)	Work- days	Rate (Avg)
Officers	287	315.8	90,629	\$103.81	287	315.8	90,629	\$105.30
Enlisted	224	24.0	5,376	88.54	224	24.0	5,376	89.84
Subtotal	511	187.9	96,005	\$102.95	511	187.9	96,005	\$104.43
			\$ 9,408				\$ 9,543	
			476				483	
			\$ 9,884				\$10,026	

	FY 1994		
	Partici- pants	Tour Length (Avg)	Rate (Avg)
Officers	287	315.8	\$106.19
Enlisted	224	24.0	90.77
Subtotal	511	187.9	\$105.33
			\$9,624
			488
			\$10,112

National Guard Personnel, Air Force  
School Training (continued)

DETAIL OF REQUIREMENTS--SCHOOL TRAINING  
(Amounts in Thousands)

Unit Conversion Training: This program provides for training as a result of changes in the type of aircraft, type of unit, changes in unit mission, or new equipment. Examples include officer and enlisted advanced and lateral training, aircrew requalification training, combat crew training, and Field Training Detachment (FTD) training. The average rates used in computing the requirement include pay and allowances, including the government's social security contributions, retired pay accrual, transportation and per diem as authorized. The dollar rates used for pricing the program requirements are based on actual experience and reflect the approved economic assumptions identified on page 2.02.

	FY 1992				FY 1993				
	Partici- pants	Tour Length (Avg)	Work- days	Rate (Avg)	Partici- pants	Tour Length (Avg)	Work- days	Rate (Avg)	Amount
Officers	870	45.7	39,774	\$160.81	355	45.7	16,213	\$162.77	\$ 2,639
Enlisted	1,909	55.4	105,380	100.25	754	55.2	41,650	103.72	4,320
Subtotal	2,779	52.2	145,154	\$116.84	1,109	52.2	57,863	\$120.27	\$ 6,959

	FY 1994				
	Partici- pants	Tour Length (Avg)	Work- days	Rate (Avg)	Amount
Officers	355	45.7	16,213	\$164.07	\$ 2,660
Enlisted	754	55.2	41,650	104.51	4,353
Subtotal	1,109	52.2	57,863	\$121.20	\$ 7,013

National Guard Personnel, Air Force  
School Training (continued)

DETAIL OF REQUIREMENTS--SCHOOL TRAINING  
 (Amounts in thousands)

TOTAL SCHOOL TRAINING

	FY 1992			FY 1993						
	Partici- pants	Tour Length (Avg)	Work- days	Rate (Avg)	Amount	Partici- pants	Tour length (Avg)	Work- days	Rate (Avg)	Amount
Officers	4,896	62.7	307,218	\$137.76	\$42,322	3,475	65.6	228,081	\$135.32	\$30,863
Enlisted	10,389	54.4	565,637	95.01	53,740	7,881	53.8	424,030	96.41	40,881
Subtotal	15,285	57.1	872,855	\$110.05	\$96,062	11,356	57.4	652,111	\$110.02	\$71,744

	FY 1994				
	Partici- pants	Tour Length (Avg)	Work- days	Rate (Avg)	Amount
Officers	3,719	63.4	235,780	\$136.98	\$32,296
Enlisted	9,235	52.3	483,134	98.85	47,760
Subtotal	12,954	55.5	718,914	\$111.36	\$80,056

Reimbursable Requirements: Sale of meals in enlisted messes to officers in school training status.

	FY 1992		FY 1993	
	Number	Rate	Number	Rate
Officer Meals:	92,034	\$6.47	74,811	\$6.62
		\$595		\$495

	FY 1994	
	Number	Rate
Officer Meals:	77,336	\$6.78
		\$524

Appropriation: National Guard personnel, Air Force  
 Budget Program 2: Other Training and Support  
 Budget Activity 2S: Special Training

ACTUAL	ESTIMATE	ESTIMATE
FY 1992	FY 1993	FY 1994
\$88,938	\$68,526	\$71,555

PART I - PURPOSE AND SCOPE

This budget activity provides for pay and allowances including retired pay, government's Social Security contributions, subsistence, travel and per diem for Air National Guard (ANG) officers and enlisted personnel who will perform tours of paid active duty other than those covered by Pay Groups A, F, P and School Training. These tours include ANG Air Defense and Strategic Air Command Alerts Joint Chiefs of Staff Exercises, United States Air Force Mission Support, conversions and other special training necessary to improve combat proficiency or to increase mobilization readiness of Air National Guard units.

The special tours are programmed and budgeted in nine categories as follows:

- (1) Competitive Events
- (2) Command/Staff Supervision
- (3) Management Support
- (4) Exercises
- (5) Operational Training
- (6) Service Mission/Mission Support
- (7) Unit Conversion Training
- (8) Drug Interdiction
- (9) Active Duty for Special Work

The following pages present the requirements in each of the nine categories and describe more precisely what is included in each category. The dollar rates used for pricing the program requirements are based on actual experience and reflect the approved economic assumptions identified on page 2.02.

National Guard Personnel, Air Force  
Special Training (continued)

SCHEDULE OF INCREASES AND DECREASES  
(In Thousands of Dollars)

Amount  
\$68,526

FY 1993 DIRECT PROGRAM-----

Increases:

Price Growth:

- Annualization of FY 1993 pay raise of 3.7% effective 1 Jan 1993. +533

- Commercial travel price growth based on a projected 2.4% inflation rate for FY 1994. +35

Total Price Growth----- +568

Program Growth:

- Operational Training (+15,270 workdays). +2,292

-- Increased to enhance flying safety level/Crew Resource Management (CRM) training and additional fighter continuation training.

- Exercises +369

-- Return to more normal level of activity from fiscally constrained FY 1993.

Total Program Growth----- +2,661

Total Increases----- +3,229

FY 1994 DIRECT PROGRAM-----

\$71,755



National Guard Personnel, Air Force  
Special Training (continued)

DETAIL OF REQUIREMENTS--SPECIAL TRAINING  
 (Amounts in Thousands)

Competitive Events This program provides support for Air National Guard (ANG) participation in service sponsored competitions. The dollar rates used in computing the requirements include pay and allowances, including the government's social security contributions, retired pay accrual, transportation and per diem as authorized. The dollar rates used for pricing the program requirements are based on actual experience and reflect the approved economic assumptions identified on page 2.02.

	FY 1992			FY 1993				
	Partici- pants	Tour Length (Avg)	Work- days	Partici- pants	Tour Length (Avg)	Work- days	Rate (Avg)	Amount
Officers	351	10.0	3,510	351	10.0	3,510	\$205.98	\$ 723
Enlisted	860	10.0	8,600	860	10.0	8,600	107.09	921
Subtotal	1,211	10.0	12,110	1,211	10.0	12,110	\$135.76	\$ 1,644

	FY 1994				
	Partici- pants	Tour Length (Avg)	Work- days	Rate (Avg)	Amount
Officers	351	10.0	3,510	\$207.12	\$ 727
Enlisted	860	10.0	8,600	107.79	927
Subtotal	1,211	10.0	12,110	\$136.58	\$ 1,654

National Guard Personnel, Air Force  
Special Training (continued)

DETAIL OF REQUIREMENTS--SPECIAL TRAINING  
 (Amounts in Thousands)

Command/Staff Supervision: This program provides for workdays for conferences, seminars, and visits made by headquarters personnel to subordinate units. It includes planning, orientation and training conferences. The rates used in computing the requirements include pay and allowances, including the government's social security contribution, retired pay accrual, transportation and per diem as authorized. The dollar rates used for pricing the program requirements are based on actual experience and reflect the approved economic assumptions identified on page 2.02.

	FY 1992				FY 1993					
	Partici- pants	Tour Length (Avg)	Work- days	Rate (Avg)	Amount	Partici- pants	Tour Length (Avg)	Work- days	Rate (Avg)	Amount
Officers	483	4.5	2,175	\$206.90	\$ 450	483	4.5	2,175	\$211.03	\$ 459
Enlisted	294	4.1	1,207	106.88	129	294	4.1	1,207	111.02	134
Subtotal	777	4.4	3,382	\$171.20	\$ 579	777	4.4	3,382	\$175.34	\$ 593

	FY 1994				
	Partici- pants	Tour Length (Avg)	Work- days	Rate (Avg)	Amount
Officers	483	4.5	2,175	\$221.95	\$ 461
Enlisted	294	4.1	1,207	111.85	135
Subtotal	777	4.4	3,382	\$176.23	\$ 596

National Guard Personnel - Air Force  
Special Training (continued)

DETAIL OF REQUIREMENTS--SPECIAL TRAINING  
 (Amounts in Thousands)

Management Support: This program supports activities not directly related to other special training categories such as special physicals, accident boards, special investigations, base defense, disaster preparedness and airlift support. The rates used in computing the requirements include pay and allowances, including the government's social security contributions, retired pay accrual, transportation and per diem as authorized. The dollar rates used for pricing the program requirements are based on actual experience and reflect the approved economic assumptions identified on page 2.02.

	FY 1992				FY 1993			
	Partici- pants	Tour Length (Avg)	Work- days	Rate (Avg)	Partici- pants	Tour Length (Avg)	Work- days	Rate (Avg)
Officers	1,132	7.2	8,153	\$ 225.81	1,132	7.2	8,153	\$ 229.36
Enlisted	4,373	4.1	17,931	100.05	4,373	4.1	17,931	101.61
Subtotal	5,505	4.7	26,084	\$ 139.36	5,505	4.7	26,084	\$ 141.54
				\$ 1,841				\$ 1,870
				1,794				1,822
				\$ 3,635				\$ 3,692

	FY 1994			
	Partici- pants	Tour Length (Avg)	Work- days	Rate (Avg)
Officers	1,132	7.2	8,153	\$ 231.20
Enlisted	4,373	4.1	17,931	102.45
Subtotal	5,505	4.7	26,084	\$ 142.69
				\$ 1,885
				1,837
				\$ 3,722

National Guard Personnel, Air Force  
Special Training (continued)

DETAIL OF REQUIREMENTS--SPECIAL TRAINING  
 (Amounts in Thousands)

Exercises: This program provides training required for Air National Guard (ANG) participation in joint training exercises. The rates used in computing the requirements include pay and allowances, including the government's social security contributions, retired pay accrual, transportation and per diem as authorized. The dollar rates used for pricing the program requirements are based on actual experience and reflect the approved economic assumptions identified on page 2.02.

	FY 1992				FY 1993			
	Partici- pants	Tour Length (Avg)	Work- days	Rate (Avg)	Partici- pants	Tour Length (Avg)	Work- days	Rate (Avg)
Officers	1,113	14.8	16,468	\$ 226.86	1,932	14.8	28,601	\$ 267.58
Enlisted	3,986	14.8	58,990	128.77	6,217	14.8	92,016	151.00
Subtotal	5,099	14.8	75,458	\$150.18	8,149	14.8	120,617	\$178.64
			\$ 3,736					\$ 7,653
			7,596					13,894
			\$11,332					\$21,547

	FY 1994			
	Partici- pants	Tour Length (Avg)	Work- days	Rate (Avg)
Officers	1,932	14.8	28,601	\$284.75
Enlisted	6,217	14.8	92,016	151.67
Subtotal	8,149	14.8	120,617	\$183.22
				\$ 8,144
				13,956
				\$22,100

National Guard Personnel, Air Force  
Special Training (continued)

DETAIL OF REQUIREMENTS--SPECIAL TRAINING  
 (Amounts in Thousands)

Operational Training: This program provides training for individuals to achieve and maintain a level of readiness commensurate with demands of programmed wartime tasks. The rates used in computing the requirements include pay and allowances, retired pay, transportation and per diem as authorized. The dollar rates used for pricing the program requirements are based on actual experience and reflect the approved economic assumptions identified on page 2.02.

	FY 1992				FY 1993				
	Partici- pants	Tour Length (Avg)	Work- days	Rate (Avg)	Partici- pants	Tour Length (Avg)	Work- days	Rate (Avg)	Amount
Officers	4,177	4.5	18,795	\$192.55	4,177	4.5	18,795	\$197.39	\$ 3,710
Enlisted	4,624	5.7	26,357	113.33	4,624	5.7	26,357	116.52	3,071
Subtotal	8,801	5.1	45,152	\$146.31	8,801	5.1	45,152	\$150.18	\$ 6,781

	FY 1994				
	Partici- pants	Tour Length (Avg)	Work- days	Rate (Avg)	Amount
Officers	5,589	4.5	25,151	\$199.12	\$ 5,008
Enlisted	6,188	5.7	35,271	117.43	4,142
Subtotal	11,777	5.1	60,422	\$151.43	\$ 9,150

National Guard Personnel, Air Force  
Special Training (continued)

DETAIL OF REQUIREMENTS--SPECIAL TRAINING  
 (Amounts in Thousands)

Service Mission/Mission Support: This program provides direct Air National Guard support of the activity military forces. Included are functions such as Air Defense Alert, Air Combat Command (ACC) Alert/Tanker Task Force, C-130 Rotations and United States Air Force mission support. The rates used in computing the requirements include pay and allowances, retired pay, subsistence-in-kind, transportation and per diem as authorized. The dollar rates used for pricing the program requirements are based on actual experience and reflects the approved economic assumptions identified on page 2.02.

	FY 1992			FY 1993						
	Partici- pants	Tour Length (Avg)	Work- days	Rate (Avg)	Amount	Partici- pants	Tour Length (Avg)	Work- days	Rate (Avg)	Amount
Officers	3,092	25.0	77,309	\$206.29	\$15,948	3,834	25.0	95,858	\$211.90	\$20,312
Enlisted	3,292	22.2	73,088	106.08	7,753	2,678	22.2	59,450	108.90	6,474
Subtotal	6,384	23.6	150,397	\$157.59	\$23,701	6,512	23.8	155,308	\$172.47	\$26,786

	FY 1994				
	Partici- pants	Tour Length (Avg)	Work- days	Rate (Avg)	Amount
Officers	3,834	25.0	95,858	\$213.53	\$20,469
Enlisted	2,678	22.2	59,450	109.76	6,525
Subtotal	6,512	23.8	155,308	\$173.81	\$26,994

National Guard Personnel - Air Force  
Special Training (continued)

DETAIL OF REQUIREMENTS--SPECIAL TRAINING  
 (Amounts in Thousands)

Unit Conversion Training: This program provides training required by personnel in units converting from one weapon system to another. The rates used in computing the requirements include pay and allowances, including the government's social security contributions, retired pay accrual, transportation and per diem as authorized. The dollar rates used for pricing the program requirements are based on actual experience and reflect the approved economic assumptions identified on page 2.02.

	FY 1992				FY 1993			
	Partici- pants	Tour Length (Avg)	Work- days	Rate (Avg) Amount	Partici- pants	Tour Length (Avg)	Work- days	Rate (Avg) Amount
Officers	2,160	6.5	14,043	\$192.12 \$ 2,698	1,150	6.5	7,500	\$194.93 \$ 1,462
Enlisted	8,319	6.7	55,738	79.86 4,451	4,400	6.7	29,400	81.22 2,388
Subtotal	10,479	6.7	69,781	\$102.45 \$ 7,149	5,550	6.6	36,900	\$104.34 \$ 3,850

	FY 1994			
	Partici- pants	Tour Length (Avg)	Work- days	Rate (Avg) Amount
Officers	1,150	6.5	7,500	\$196.27 \$ 1,472
Enlisted	4,400	6.7	29,400	81.87 2,407
Subtotal	5,550	6.6	36,900	\$105.12 \$ 3,879

National Guard Personnel, Air Force  
Special Training (continued)

DETAIL OF REQUIREMENTS--SPECIAL TRAINING  
(Amounts in Thousands)

Drug Interdiction: This program provides for all drug interdiction support for both Continental United States (State Plans) and outside the Continental United States operations. The rates used in computing this requirement include pay and allowances, retired pay, transportation and per diem as authorized. The dollar rates used for pricing the program requirements are based on actual experience and reflects the approved economic assumptions identified on page 2.02.

	FY 1992			FY 1993						
	Partici- pants	Tour Length (Avg)	Work- days	Rate (Avg)	Amount	Partici- pants	Tour Length (Avg)	Work- days	Rate (Avg)	Amount
Officers	2,943	9.4	27,609	\$227.68	\$ 6,286	0	0	0	\$ 0	\$ 0
Enlisted	16,690	15.0	249,871	97.83	24,446	0	0	0	0	0
Subtotal	19,633	14.1	277,480	\$110.75	\$30,732	0	0	0	\$ 0	\$ 0

	FY 1994				
	Partici- pants	Tour Length (Avg)	Work- days	Rate (Avg)	Amount
Officers	0	0.0	0	\$ 0.00	\$ 0
Enlisted	0	0.0	0	\$ 0.00	\$ 0
Subtotal	0	0.0	0	\$ 0.00	\$ 0



National Guard Personnel, Air Force  
Special Training (continued)

DETAIL OF REQUIREMENTS--SPECIAL TRAINING  
 (Amounts in Thousands)

Active Duty for Special Work: This program provides for resources for personnel in active duty status to support study groups, to accomplish short-term mission projects and to perform administrative or support functions. The average rates used in computing this requirement include pay and allowances, including the government's social security contributions, retired pay accrual and transportation as authorized. The dollar rates used for pricing the program are based on actual experience and reflect the approved economic assumptions identified on page 2.02.

	FY 1992				FY 1993			
	Partici- pants	Tour Length (Avg)	Work- days	Rate (Avg)	Partici- pants	Tour Length (Avg)	Work- days	Rate (Avg)
Officers	78	120.3	9,382	\$ 170.65	78	120.3	9,382	\$ 172.88
Enlisted	197	120.1	23,663	83.80	197	120.1	23,663	84.98
Subtotal	275	120.2	33,045	\$ 108.46	275	120.2	33,045	\$ 109.94
				\$ 3,584				\$ 3,633

	FY 1994			
	Partici- pants	Tour Length (Avg)	Work- days	Rate (Avg)
Officers	78	120.3	9,382	\$ 174.27
Enlisted	197	120.1	23,663	85.58
Subtotal	275	120.2	33,045	\$ 110.76
				\$ 3,660

National Guard Personnel, Air Force  
Special Training (continued)

DETAIL OF REQUIREMENTS--SPECIAL TRAINING  
(Amounts in Thousands)

TOTAL SPECIAL TRAINING

	FY 1992				FY 1993			
	Partici- pants	Tour Length (Avg)	Work- days	Rate (Avg)	Partici- pants	Tour Length (Avg)	Work- days	Rate (Avg)
Officers	15,529	11.4	177,444	\$207.91	13,137	13.2	173,974	\$217.34
Enlisted	42,635	12.1	515,445	100.97	23,643	10.9	258,624	118.76
Subtotal	58,164	11.9	692,889	\$128.36	36,780	11.8	432,598	\$158.41
			\$ 36,892				\$37,811	
			52,046				30,715	
			\$ 88,938				\$68,526	

	FY 1994			
	Partici- pants	Tour Length (Avg)	Work- days	Rate (Avg)
Officers	14,549	12.4	180,330	\$220.71
Enlisted	25,207	10.6	267,538	119.44
Subtotal	39,756	11.3	447,868	\$160.21
			\$39,801	
			31,954	
			\$71,755	

Appropriation: National Guard Personnel, Air Force  
 Budget Program 2: Other Training and Support  
 Budget Activity 21: Administration and Support

ACTUAL	REVISED ESTIMATE	ESTIMATE
FY 1992	FY 1993	FY 1994
\$419,599	\$442,359	\$460,349

PART I - PURPOSE AND SCOPE

These funds provide for pay and allowances, clothing, government contribution for social security, retired pay accrual, and permanent change of station travel for Air National Guard personnel called to full-time duty.

Funds are also included to provide death gratuity payments to beneficiaries of Air National Guard Personnel who die of injury received or disease contracted while participating in active or inactive duty training; for pay and allowances during periods of disability; for hospitalization for members of the Air National Guard who suffer injury or contract a disease in the line of duty while participating in active or inactive duty training; for payment of Enlistment Bonuses, Reenlistment Bonuses, Educational Assistance, Selective Affiliation Bonuses and Student Loan Repayments to selected members; and to provide for the uncollected Serviceman's Group Life Insurance premiums which are payable to the Veterans Administration.

The dollar rates used for pricing the program requirements are based on actual experience and reflect the applicable approved economic assumptions identified on page 2.02.

SCHEDULE OF INCREASES AND DECREASES  
(In Thousands of Dollars)

Amount  
\$442,359

FY 1993 DIRECT PROGRAM-----

Increases:

Price Growth:

- Annualization of prior year pay raise of 3.7% effective 1 Jan 1993. +4,129
- Increase in pay base for calculating government's social security contribution from \$57,900 in FY 1993 to \$61,800 in FY 1994. +53
- Commercial travel price growth based on projected 2.4% inflation rate for FY 1994. +25
- Clothing price growth based on a projected 2.4% inflation rate for FY 1994. +1

Total Price Increases----- +4,208

Program Growth:

- Forces (+151 workyears). +12,938

-- One air defense unit and two RF-4C units convert to KC-135 and a KC-135 unit is robusted by congressional direction. One F-16 training unit converts to bomber missions. Current mobility force has additional manning validated and a C-130E unit is converted from the Air Defense mission.

- Security Police (+92 workyears). +3,997

-- Provides funding to bring fulltime security for wartime tasked aircraft to the standard required by Air Force Regulations.

- Prior year growth (+95 workyears). +3,667

-- Supports full year impact of approved FY 1993 growth.

- Incentive Programs +1,909

-- Increase in anniversary payment and slight increase in initial payment to increase hard to fill critical skill manning.

- Involuntary Separation Benefits (VSI/SSB) +1,258

-- Funds Variable Separation Incentive/Special Separation Bonuses

National Guard Personnel, Air Force  
Administration and Support (continued)

SCHEDULE OF INCREASES AND DECREASES  
(In Thousands of Dollars)

- Combat Communications (+13 workyears).	+723	
-- Funds validated increase to fulltime support necessary to meet current requirements.		
- F-4G Wild Weasel (+3 workyears).	+289	
-- Funds increased crew ratio to provide required training.		
- Instructors (+5 workyears).	+217	
-- Provides for Congressionally directed increase to support the drug reduction program.		
Total Program Increases-----	+24,998	
Total Increases-----		+29,206
Decreases:		
Price Decrease:		
- Retired Pay Accrual (RPA) Normal Cost Percentage (MCP) change from 36.4% in FY 1993 to 36.0% in FY 1994 for full-time personnel.		-925
Total Price Decrease-----		-925
Program Decreases:		
- KC-135 Alert (-52 workyears).		-3,904
-- Reduction in Air refueling alert requirements.		
- Replacement Training Unit (-37 workyears).		-1,709
-- Reduction in F-16 crew training requirements.		
- Detached Air Defense Alert (-27 workyears).		-1,331
-- Detached alert sites will be closing due to decreased requirements for alert capability.		

National Guard Personnel, Air Force  
Administration and Support (continued)

SCHEDULE OF INCREASES AND DECREASES  
(In Thousands of Dollars)

- Operational Support Airlift (-17 workyears).	-1,013	
-- Thirteen C-12 aircraft were reduced.		
- KC-135 Consolidation (-17 workyears).	-815	
-- Support functions at three KC-135 locations will be consolidated.		
- Air Defense Alert (-17 workyears).	-776	
-- Several home station alert requirements are being eliminated.		
- Recruiting and Retention (-16 workyears).	-743	
-- ANG Production recruiters have been reduced.		
Total Program Decreases-----		-10,291
Total Decreases-----		-11,216
FY 1994 TOTAL DIRECT PROGRAM-----		\$460,349

National Guard Personnel, Air Force  
Administration and Support (continued)  
Reserve Component Personnel on Tours of Active Duty

Section 265: Participation of reserve officers in preparation and administration of reserve affairs.

Provides that within such numbers and in such grades and assignments as the Secretary concerned may prescribe, each armed force shall have officers of its reserve components on active duty (other than for training) at the seat of government, and at headquarters responsible for reserve affairs, to participate in preparing and administering the policies and regulations affecting those reserve components. While so serving, such an officer is an additional member of any staff with which he is serving.

	FY 1992 Strength		FY 1993 Strength		FY 1994 Strength	
	Average	End	Average	End	Average	End
Officers	76	75	79	79	79	79
Total	76	75	79	79	79	79

Section 678: Organizing, administering, recruiting, instructing or training reserve components.

Provides for officers and/or enlisted personnel to be placed on active duty to support Air Reserve Force activities for more than 360 days. The primary function is to work directly with organizing, administering, recruiting, instructing, or training the reserve component.

	FY 1992 Strength		FY 1993 Strength		FY 1994 Strength	
	Average	End	Average	End	Average	End
Enlisted	12	13	13	13	13	13
Total	12	13	13	13	13	13

Section 8021: Participation of reserve officers in the policies and regulations for the government of reserve components of the Air Force.

Provides for officers of the Air National Guard of the United States and the Air Force Reserve to be placed on duty with the Air Staff to participate in the formulation of policies and regulations directly affecting those reserve components, one-half of whom will be from each component. These officers shall be considered as additional members of the Air Staff while on that duty.

	FY 1992 Strength		FY 1993 Strength		FY 1994 Strength	
	Average	End	Average	End	Average	End
Officers	6	5	5	5	5	5
Total	6	5	5	5	5	5

National Guard Personnel, Air Force Administration and Support (continued)  
Reserve Component Personnel on Tours of Active Duty

Section 8496: Participation of Air National Guard officers in National Guard Bureau duties.

Provides for the appointment of Air National Guard officers to active duty in the National Guard Bureau.

	FY 1992 Strength		FY 1993 Strength		FY 1994 Strength	
	Average	End	Average	End	Average	End
Officers	36	36	37	37	37	37
Total	36	36	37	37	37	37

Section 708: United States Property and Fiscal Officers.

Provides for the appointment by the governor of each State and Territory, Puerto Rico, Canal Zone, Guam, and the Virgin Islands and the Commanding General of the National Guard of the District of Columbia, subject to the approval of the Secretary of the Army and the Secretary of the Air Force, a qualified commissioned officer of the National Guard of the jurisdiction who is also a commissioned officer of the Army National Guard of the United States or the Air National Guard of the United States, as the case may be, to be the United States Property and Fiscal Officer of the jurisdiction.

	FY 1992 Strength		FY 1993 Strength		FY 1994 Strength	
	Average	End	Average	End	Average	End
Officers	6	6	5	5	5	5
Total	6	6	5	5	5	5

Recruiting and Retention: This program provides for a full-time Air National Guard recruiting/retention force to enable attainment of programed strength objectives.

	FY 1992 Strength		FY 1993 Strength		FY 1994 Strength	
	Average	End	Average	End	Average	End
Officers	7	6	9	9	8	8
Enlisted	523	519	528	543	513	513
Total	530	525	537	552	521	521



National Guard Personnel, Air Force Administration and Support (continued)  
Reserve Component Personnel on Tours of Active Duty (continued)

Air National Guard (ANG) Administration and Support: This program is required to accommodate military staffing at the ANG Readiness Center, Andrews AFB, Maryland; the National Guard/Air Force Reserve Test Center at Tucson, Arizona; the medical function at Norton AFB, California; and operating locations at Buckley ANGB, Colorado and Andrews AFB, DCANG.

	FY 1992 Strength		FY 1993 Strength		FY 1994 Strength	
	Average	End	Average	End	Average	End
Officers	166	182	150	136	136	136
Enlisted	261	286	245	229	229	229
Total	427	468	395	365	365	365

ANG Training: This program is required to provide instructors and support personnel for the ANG Professional Military Education Center (PMEC), for ANG Replacement Training units, at the C-130 Tactics School, for the Marksmanship Program at Camp Robinson, Arkansas, and to provide liaison at Air Training Command Technical Training Centers. It also provides for the reimbursable foreign military sales training program at Tucson, Arizona.

	FY 1992 Strength		FY 1993 Strength		FY 1994 Strength	
	Average	End	Average	End	Average	End
Officers	236	239	240	236	230	224
Enlisted	734	732	680	637	611	580
Total	970	971	920	873	841	804

USAF Mission Support: This program provides direct full-time active duty support of the active military forces. Included are functions such as Detached Interceptor and Tanker Alert; C-130 rotations in Panama; Defense Systems Evaluation Support for U.S. Army Operational Training and Evaluation requirements at Fort Bliss, Texas, and White Sands Missile Range, New Mexico; and Weapons System Security at Air Combat Command and Air Defense ANG Units.

	FY 1992 Strength		FY 1993 Strength		FY 1994 Strength	
	Average	End	Average	End	Average	End
Officers	42	42	47	47	44	41
Enlisted	980	966	970	970	1,038	1,105
Total	1,022	1,008	1,017	1,017	1,082	1,146

National Guard Personnel, Air Force Administration and Support (continued)  
Reserve Component Personnel on Tours of Active Duty (continued)

Combat Readiness Training Center: This program is required to accommodate military staffing at Air National Guard (ANG) Combat Readiness Training Centers and air to ground gunnery ranges.

	FY 1992 Strength		FY 1993 Strength		FY 1994 Strength	
	Average	End	Average	End	Average	End
Officers	45	43	43	43	43	43
Enlisted	321	310	310	310	310	310
Total	366	353	353	353	353	353

ANG Direct Unit Support: This program provides for military full-time active duty in support of direct unit requirements.

	FY 1992 Strength		FY 1993 Strength		FY 1994 Strength	
	Average	End	Average	End	Average	End
Officers	880	913	945	946	951	979
Enlisted	4,480	4,670	4,740	4,881	4,970	5,082
Total	5,360	5,583	5,685	5,827	5,921	6,061

National Guard Personnel, Air Force Administration and Support (continued)

Pay and Allowances of Officers: These funds provide for pay and allowances for officers serving on active duty as authorized by Sections 265, 678, 8021, and 8496 of Title 10 U.S.C. and Sections 502 and 708 of Title 32. The dollar rate used in computing these requirements includes basic pay, retired pay accrual, government's social security contributions, subsistence and quarters allowances, Variable Housing Allowances (VHA), and incentive pay as authorized. The dollar rates used for pricing the program requirements are based on actual experience and reflects the approved economic assumptions identified on page 2.02.

	FY 1992			FY 1993			FY 1994		
	Average	Rate	Amount	Average	Rate	Amount	Average	Rate	Amount
	(Amounts in Thousands)								
Headquarters Activities	124	\$95,589	\$ 11,853	127	\$ 96,591	\$ 12,267	126	\$ 98,317	\$ 12,388
Recruiting and Retention	7	72,429	507	9	71,333	642	8	74,875	599
ANG Administration and Support	166	82,205	13,646	150	85,800	12,870	136	90,059	12,248
ANG Training	224	79,750	17,864	228	81,588	18,602	230	82,196	18,905
USAF Mission Support	42	77,738	3,265	47	82,213	3,864	44	83,523	3,675
Combat Readiness Training Center	45	80,489	3,622	43	84,209	3,621	43	86,047	3,700
ANG Direct Unit Support	880	76,240	67,091	945	77,701	73,427	951	80,473	76,530
TOTAL	1,488	-	\$117,848	1,549	-	\$125,293	1,538	-	\$128,045

National Guard Personnel - Air Force  
Administration and Support (continued)

Pay and Allowances of Enlisted Personnel: These funds provide for pay and allowances for enlisted personnel serving on active duty as authorized by Section 678 of Title 10, U.S.C. and Section 502 of Title 32, U.S.C. The dollar rate used in computing these requirements includes basic pay, retired pay accrual, government's social security contributions, subsistence and quarters allowances, Variable Housing Allowance, (VHA) and incentive pay, as authorized. The dollar rates used for pricing the program requirements are based on actual experience and reflects approved economic assumptions identified on page 2.02.

	FY 1992			FY 1993			FY 1994		
	Average	Rate	Amount	Average	Rate	Amount	Average	Rate	Amount
	(Amounts in Thousands)								
Headquarters Activities	12	\$ 47,417	\$ 569	13	\$ 47,769	\$ 621	13	\$ 47,692	\$ 620
Recruiting and Retention	523	44,759	23,409	528	45,301	23,919	513	45,938	23,566
ANG Administration and Support	261	43,943	11,469	245	45,800	11,221	229	47,633	10,908
ANG Training	707	38,446	27,181	653	38,956	25,438	611	39,232	23,971
USAF Mission Support	980	36,862	36,125	970	37,630	36,501	1,038	37,623	39,053
Combat Readiness Training Center	321	40,841	13,110	310	41,561	12,884	310	42,065	13,040
ANG Direct Unit Support	4,480	39,988	179,144	4,740	40,656	192,708	4,970	40,990	203,718
TOTAL	7,284	-	\$291,007	7,459	-	\$303,292	7,684	-	\$314,876

National Guard Personnel, Air Force Administration and Support (continued)

Uniform Allowances. Officers: These funds provide for supplemental clothing allowances under the provisions of Section 416 of Title 37, United States Code for the purchase of required uniforms. Section 416 provides for a uniform allowance of not more than \$100 each time an officer enters active duty for a period of more than 90 days.

	FY 1992			(Amounts in Thousands) FY 1993			FY 1994		
	Number	Rate	Amount	Number	Rate	Amount	Number	Rate	Amount
Active Duty Uniform Allowance	170	\$100.00	\$17	170	\$100.00	\$17	170	\$100.00	\$17

Uniform Allowances. Enlisted: These funds provide for Active Guard/Reserve (AGR) staffing allowances under the provisions of Section 418 of Title 37, United States Code for the purchase of prescribed clothing authorized by the Secretary of Defense.

	FY 1992			(Amounts in Thousands) FY 1993			FY 1994		
	Number	Rate	Amount	Number	Rate	Amount	Number	Rate	Amount
Initial Clothing Allowance	19	\$ 99.04	\$ 2	19	\$102.31	\$ 2	19	\$105.69	\$ 2
Basic Clothing Maintenance Allowance	0	100.19	2	17	103.50	2	17	106.92	2
Standard Clothing Maintenance Allowance	168	142.80	24	168	147.51	25	168	152.38	26
Special Supplementary Clothing Allowance	25	200.39	5	25	207.00	5	25	213.83	5
TOTAL	229	-	\$33	229	-	\$34	229	-	\$35

**National Guard Personnel, Air Force  
Administration and Support (continued)**

**Travel Officers:** These funds are requested to provide travel for personnel serving on extended active duty. Included are permanent change of station costs, movement and storage of household goods, and dependent travel.

	FY 1992		FY 1993		FY 1994	
	Number	Amount	Number	Amount	Number	Amount
Headquarters Activities	3	\$ 8,326	1	\$ 8,357	1	\$ 8,633
Recruiting and Retention	1	8,326	1	8,357	1	8,633
ANG Administration and Support	3	8,326	10	8,357	2	8,633
ANG Training	3	8,326	1	8,357	2	8,633
USAF Mission Support	1	8,326	2	8,357	1	8,633
Combat Readiness Training Centers	1	8,326	1	8,357	1	8,633
ANG Direct Unit Support	16	8,326	15	8,357	29	8,633
TOTAL	28	\$ 232	31	\$ 259	37	\$ 316

National Guard Personnel, Air Force Administration and Support (continued)

Travel. Enlisted: These funds are requested to provide travel for personnel serving on extended active duty. Included are permanent change of station costs, movement and storage of household goods, and dependent travel.

	FY 1992			FY 1993			FY 1994		
	Number	Rate	Amount	Number	Rate	Amount	Number	Rate	Amount
Headquarters Activities	1	\$3,931	\$ 4	1	\$3,741	\$ 4	0	\$3,865	\$ 0
Recruiting and Retention	1	3,931	4	1	3,741	4	5	3,865	19
ANG Administration and Support	4	3,931	15	5	3,741	19	6	3,865	23
USAF Mission Support	2	3,931	8	10	3,741	37	12	3,865	45
Combat Readiness Training Center	3	3,931	12	4	3,741	15	14	3,865	54
ANG Direct Unit Support	1	3,931	4	3	3,741	11	0	3,865	0
	45	3,931	175	16	3,741	59	96	3,865	366
<b>TOTAL</b>	<b>57</b>	<b>-</b>	<b>\$ 222</b>	<b>40</b>	<b>-</b>	<b>\$ 149</b>	<b>133</b>	<b>-</b>	<b>\$ 507</b>

National Guard Personnel, Air Force Administration and Support (continued)

Death Gratuities, Disability and Hospitalization Benefits and Serviceman's Group Life Insurance Payment: These funds provide for death gratuity payments to beneficiaries of Air National Guard (ANG) personnel who die of injury received or disease contracted while participating in active or inactive duty training; for pay and allowances during periods of disability and hospitalization to members of the ANG who suffer injury or contract disease in the line of duty while participating in active or inactive duty training; and to provide for the uncollected Serviceman's Group Life Insurance premiums due the Veterans Administration. Death gratuities are composed of six months basic pay, basic allowances for quarters and basic allowance for subsistence, the sum of which is not to exceed \$3,000. Disability and hospitalization benefits consist of basic pay, retired pay accrual, Basic Allowance for Quarters (BAQ), Variable Housing Allowance (VHA), Basic Allowance for Subsistence (BAS), government's Social Security contributions and Incentive Pay, if authorized.

	(Amounts in Thousands)					
	FY 1992		FY 1993		FY 1994	
	Number	Rate	Number	Rate	Number	Rate
<u>Death Gratuities</u>						
Officer	15	\$ 3,000	4	\$ 3,000	4	\$ 3,000
Enlisted	12	3,000	30	3,000	30	3,000
Total	27	-	34	-	34	-
<u>Disability and Hospitalization Benefits</u>						
Officer	152	\$ 3,092	152	\$ 2,289	152	2,395
Enlisted	685	2,270	685	1,818	685	1,898
Total	837	-	837	-	837	-
<u>Serviceman's Group Life Insurance Payments</u>						
Officer	-	\$ -	-	\$ -	-	\$ 40
Enlisted	-	-	-	-	-	293
Total	-	-	-	-	-	333



**National Guard Personnel - Air Force Administration and Support (continued)**

**Non-Prior Service Enlistment Bonus:** These funds will provide bonus payments to non-prior service enlistees who agree to serve in Air National Guard established critical career fields for a term of six years. Cash bonuses are given in amounts of \$2,000. One half of the total bonus is provided upon completion of initial active duty for training and all qualifications and requirements for award of the three or five skill level. On the second, third, and fourth anniversary of their enlistment, anniversary payments ranging from \$250 to \$500 are provided.

	FY 1992		FY 1993		FY 1994	
	Number	Amount	Number	Amount	Number	Amount
New Payments	851	\$ 851	1,069	\$1,069	1,090	\$1,090
Anniversary Payments	2,869	932	2,952	959	4,052	1,242
Total Non-Prior Service Enlistment Bonus	3,720	\$1,783	4,021	\$2,028	5,152	\$2,332

\*Average enlisted bonus payment.

**Prior Service Enlistment Bonus:** These funds provide bonus payments to prior service members who enlist in an established critical skill career field and who have completed their military service obligation but have less than 10 years of total military service, received an honorable discharge at the conclusion of their military service, are not being released from active service for the purpose of enlistment in a reserve component, and have not previously been paid a bonus for enlistment, reenlistment, or extension of enlistment in a reserve component. Effective 1 October 1988, applicants meeting all criteria may enlist for a term six years and receive a bonus of \$2,500 respectively. An initial payment of \$900 for a six year enlistment is payable upon commencement of the enlistment term. The remainder is paid at the satisfactory completion of each year of the term of enlistment in increments as follows:

6 year Reenlistment	FY 1992		FY 1993		FY 1994	
	Number	Amount	Number	Amount	Number	Amount
First Anniversary		\$225		\$275		\$300
Second Anniversary		\$225		\$275		\$300
Third Anniversary				\$275		\$300
Fourth Anniversary				\$275		\$300
Fifth Anniversary				\$300		\$300
Sixth Anniversary						\$300

(Amounts in Thousands)

New Payments	FY 1992		FY 1993		FY 1994	
	Number	Amount	Number	Amount	Number	Amount
Anniversary Payments	330	\$ 297	558	\$ 900	569	\$ 900
Total Non-Prior Service Enlistment Bonus	2,271	606	3,686	267	4,307	256
	2,601	\$ 903	4,244	\$1,463	4,876	\$1,616

\*Average enlisted bonus payment.

National Guard Personnel, Air Force Administration and Support (continued)

Reenlistment Bonus: These funds will provide reenlistment bonus payments to prior-service enlisted personnel who enlist or extend in Air National Guard established critical career fields provided they hold grades commensurate with billet vacancies. Members meeting all criteria may reenlist for a term of six years and receive a bonus of \$2,500. An initial payment of \$900 for a six year reenlistment is payable upon commencement of the reenlistment term. The remainder to be paid at the satisfactory completion of each year of the term of reenlistment in increments as follows:

	First Anniversary \$225	Second Anniversary \$225	Third Anniversary \$275	Fourth Anniversary \$275	Fifth Anniversary \$300	Sixth Anniversary \$300
6 year Reenlistment						

	FY 1992		FY 1993		FY 1994	
	Number	Rate* Amount	Number	Rate* Amount	Number	Rate* Amount
New Payments	646	\$ 900 \$ 582	1,444	\$ 900 \$1,300	1,473	\$ 900 \$1,326
Anniversary Payments	3,366	267 899	5,725	267 1,469	7,085	267 1,772
Total Reenlistment Bonus	4,012	\$1,481	7,169	\$2,769	8,558	\$3,098

\*Average reenlistment/extension payment.

Educational Assistance: These funds will provide educational assistance payments to non-prior service (NPS) enlistees who met the criteria for a NPS enlistment bonus and agreed to serve in Air National Guard established critical career fields for a term of six years prior to 1 July 1985. Upon meeting all qualifications and requirements of enlistment, individuals are entitled to receive educational assistance not to exceed \$1,000 in any twelve month period for a total of \$4,000 within the period of enlistment. New educational assistance payments under this program will not be authorized for non-prior service personnel enlisting after 30 June 1985.

	FY 1992		FY 1993		FY 1994	
	Number	Rate* Amount	Number	Rate* Amount	Number	Rate* Amount
New Payments	-	\$ - \$ -	-	\$ - \$ -	-	\$ - \$ -
Anniversary Payments	12	1,000 12	25	1,000 25	25	1,000 25
Total Reenlistment Bonus	12	\$ 12	25	\$ 25	25	\$ 25

\*Average educational assistance payment.

**National Guard Personnel, Air Force Administration and Support (continued)**

**Affiliation Bonus:** A reserve affiliation bonus may be paid to enlisted personnel who are serving on active duty, are eligible for reenlistment or for an extension of their active duty status and whom, upon release from active duty, will have a reserve service obligation under the Selective Service Act. These individuals qualify for a bonus payment if they affiliate with a unit and are currently qualified in a critical Air Force specialty. Effective 1 July 1986, members who meet the eligibility criteria may be awarded a bonus calculated on a basis of \$50 a month for each month of remaining Military Service Obligation (MSO).

	FY 1992		FY 1993		FY 1994	
	Number	Amount	Number	Amount	Number	Amount
New Payments	138	\$ 131	77	\$ 73	79	\$ 75
Anniversary Payments	108	102	79	75	81	77
Total Affiliation Bonus	246	\$ 233	156	\$ 148	160	\$ 152

\*Average affiliation bonus payment.

**Medical Officers Student Loan Repayments:** Repayment of any loan made, insured, or guaranteed under Parts B and E of the Higher Education Act of 1965 after 1 October 1975, and Part C of the Health Service Act may be repaid providing member performs satisfactory service as an officer in the Air National Guard and possesses professional qualifications in a health profession that the Secretary of Defense has determined to be needed critically in order to meet identified wartime combat medical skill shortages. The amount of the loan repaid under this section shall be determined on the basis of each complete year of satisfactory commissioned service in the ANG. The amount of the loan to be repaid may not exceed \$3,000 for each year of service nor shall the total amount that may be repaid exceed \$20,000. This bonus shall apply only to persons first appointed as a commissioned officer in the ANG before 1 October 1990.

	FY 1992		FY 1993		FY 1994	
	Number	Amount	Number	Amount	Number	Amount
New Payments	3	\$ 10	36	\$ 108	75	\$ 225
Anniversary Payments	9	27	21	63	57	171
Total Medical Officer Student Loan Repayment	12	\$ 37	57	\$ 171	132	\$ 396

National Guard Personnel - Air Force  
Administration and Support (continued)

Enlisted Student Loan Repayment: Repayment of any loan made, insured or guaranteed under Part B of the Higher Education Act of 1965 or any loan made under Part E of such act, after 1 October 1975, may be repaid providing a member enlists or reenlists in an Air National Guard unit in a designated critical speciality. The amount of the loan to be repaid is 15 percent of the loan and accrued interest not paid by the Department of Education or \$500, whichever is greater, for each year of satisfactory service. In no case will payment exceed the amount required to liquidate the loan.

	FY 1992		FY 1993		FY 1994	
	Number	Rate*	Number	Rate*	Number	Rate*
New Payments	449	\$ 1,050	419	\$ 1,050	461	\$ 1,050
Anniversary Payments	2,576	1,050	4,041	1,050	4,850	1,050
Total Enlisted Loans Repayments	3,025	3,176	4,460	4,683	5,311	5,577

\*Average enlisted student loan repayment.

Nurse Test Bonus Program:

	FY 1992		FY 1993		FY 1994	
	Number	Rate	Number	Rate	Number	Rate
New Payments	-	\$ -	-	\$ -	-	\$ -
Anniversary Payments	16	6,000	-	-	-	-
Total Nurse Test Bonus Program	16	\$ 97	-	\$ -	-	\$ -

TOTAL RESERVE INCENTIVES

	FY 1992		FY 1993		FY 1994	
	Number	Rate	Number	Rate	Number	Rate
New Payments	2,417	\$966	3,603	\$969	3,747	\$991
Anniversary Payments	11,227	476	16,529	472	20,467	463
Total	13,644	7,722	20,132	\$11,287	24,214	\$13,196

National Guard Personnel, Air Force  
Administration and Support (continued)

Reimbursable Requirements: Manpower to support Dutch F-16 pilot training at the ANG Replacement Training Unit (RTU) school, Tucson, Arizona. These are full-time active positions financed via an FMS (Foreign Military Sales) case. Manpower is also included to support a classified mission.

	(Amounts in Thousands)								
	FY 1992		FY 1993		FY 1994				
	Number	Rate	Number	Rate	Number	Rate			
Officer	12	\$78,679	\$ 787	37	\$80,493	\$2,978	37	\$83,471	\$3,088
Enlisted	27	39,839	1,075	52	40,539	2,108	52	41,049	2,135
Travel & Other	-	-	0	-	-	0	-	-	0
Total	39		\$1,862	89		\$5,086	89		\$5,223

National Guard Personnel, Air Force  
Administration and Support (continued)

Enlisted Incentive Career Fields: The following are Air National Guard enlisted critical skill Air Force Specialty Career Fields associated with payment of reserve incentives.

<u>Title</u>	<u>FY 1992</u>	<u>FY 1993</u>	<u>FY 1994</u>	<u>FY 1995</u>
Air Crew Operations	yes	yes	yes	yes
Air Crew Protection	yes	yes	yes	yes
Intelligence Operations	yes	yes	yes	yes
Imagery Production	yes	yes	yes	yes
Weather	yes	yes	yes	yes
Operations Resource Management	yes	yes	yes	yes
Air Traffic Control	yes	yes	yes	yes
Command and Control	yes	yes	yes	yes
Tactical Air Command and Control	yes	yes	yes	yes
Aerospace Control and Warning Systems	yes	yes	yes	yes
Space Systems Operations	yes	yes	yes	yes
Communications and Electronic Systems	yes	yes	yes	yes
Telephone/Missile Control Comm Systems	yes	yes	yes	yes
Manned Aerospace Maintenance	yes	yes	yes	yes
Munitions and Weapons	yes	yes	yes	yes
Vehicle Maintenance	yes	yes	yes	yes
Communications - Computer Systems	yes	yes	yes	yes
Mechanical / Electrical	yes	yes	yes	yes
Structural / Pavements	yes	yes	yes	yes
Sanitation	yes	yes	yes	yes
Fire Protection	yes	yes	yes	yes
Transportation	yes	yes	yes	yes
Services	yes	yes	yes	yes
Fuels	yes	yes	yes	yes
Supply	yes	yes	yes	yes
Security	yes	yes	yes	yes
Medical Services	yes	yes	yes	yes
Medical Administration	yes	yes	yes	yes
Medical Material	yes	yes	yes	yes
Biomedical Equipment Maintenance	yes	yes	yes	yes

Appropriation: National Guard Personnel, Air Force  
Budget Program 2: Other Training and Support  
Budget Activity 2U: Education Benefits

ACTUAL	REVISED ESTIMATE	ESTIMATE
FY 1992	FY 1993	FY 1994
\$ 6,600	\$ 6,710	\$ 3,905

PART I - PURPOSE AND SCOPE

Funds are for payment to the Department of Defense Education Benefits Fund, a trust fund. The program is governed by Title 10 U.S.C., Chapter 106. This program will fund educational benefit payments in their entirety for eligible individuals in the Selected Reserve. This program is budgeted on an actuarial basis. Actual payments to individuals are made by the Veterans Administration with funds transferred from the trust account.

National Guard Personnel, Air Force  
Educational Benefits (Continued)

SCHEDULE OF INCREASES AND DECREASES  
(In Thousands of Dollars)

FY 1993 DIRECT PROGRAM-----	\$6,710
Decrease:	
Price Decrease:	
- Per capita normal cost decreased from \$689 in FY 1993 to \$410 in FY 1994.	-2,805
Total Price decrease-----	-2,805
Total decrease-----	-2,805
FY 1994 DIRECT PROGRAM-----	\$3,905



National Guard Personnel, Air Force Educational Benefits, (Continued)

PART II - JUSTIFICATION OF FUNDS REQUESTED

All individuals enlisting, reenlisting, or extending for not less than six years in the Selected Reserve after 1 July, 1985, except those who have received a commission from a service academy or completed an ROTC scholarship program, are eligible to receive educational assistance unless they are entitled for assistance under Chapter 30 of Title 38 U.S.C. The individuals must also meet initial training and high school diploma or equivalency requirements. Cost estimates are actuarially based and reflect eligibility estimates adjusted by an estimate of ultimate benefit utilization and partially offset by an estimate of interest earned on investments of the Education Benefits Fund. The program will provide funds adequate to allow for one of three levels of assistance. These levels are \$140.00 per month for full-time educational pursuit, \$105.00 for three quarter time pursuit and \$70.00 for half time pursuit. The maximum total benefit that can be paid is \$5,040.00.

The following table displays the actuarially based estimates and the per capita dollar rate for each fiscal year:

(Amounts in Thousands)

	FY 1992		FY 1993		FY 1994	
	Eligibles	Rate	Eligibles	Rate	Eligibles	Rate
	9,579	\$689	9,739	\$689	9,739	\$401
		\$6,600		\$6,710		\$3,905
		Amount		Amount		Amount

NON-PRIOR SERVICE ENLISTMENT BONUS  
 NATIONAL GUARD PERSONNEL, AIR FORCE  
 (DOLLARS IN THOUSANDS)

	FY 92		FY 93		FY 94	
	Number	\$ Amount	Number	\$ Amount	Number	\$ Amount
<u>PRIOR OBLIGATIONS</u>	2,869	932	2,952	959	3,011	979
<u>ACCELERATED PAYMENTS</u>						
<u>FY 1992</u>						
Initial & Subsequent						
Anniversary Payments	851	851	-	-	1,051	263
<u>FY 1993</u>						
Initial & Subsequent						
Anniversary Payments	-	-	1,069	1,069	-	-
<u>FY 1994</u>						
Initial & Subsequent						
Anniversary Payments	-	-	-	-	1,090	1,090
<u>FY 1995</u>						
Initial & Subsequent						
Anniversary Payments						
<u>TOTAL</u>						
Initial Payments	851	851	1,069	1,069	1,090	1,090
Anniversary Payments	2,869	932	2,952	959	4,062	1,242
TOTAL	3,720	1,783	4,021	2,028	5,152	2,332

NON-PRIOR SERVICE ENLISTMENT BONUS (Continued)  
NATIONAL GUARD PERSONNEL, AIR FORCE  
(DOLLARS IN THOUSANDS)

	FY 95		FY 96		FY 97		FY 98		TOTAL	
	Number	\$ Amount	Number	\$ Amount	Number	\$ Amount	Number	\$ Amount	Number	\$ Amount
<u>PRIOR OBLIGATIONS</u>	3,071	998	-	-	-	-	-	-	11,903	3,868
<u>ACCELERATED PAYMENTS</u>										
<u>FY 1992</u>										
Initial & Subsequent	1,051	263	1,051	526	-	-	-	-	4,004	1,903
Anniversary Payments										
<u>FY 1993</u>										
Initial & Subsequent	1,069	267	1,069	267	1,069	535	-	-	4,276	2,138
Anniversary Payments										
<u>FY 1994</u>										
Initial & Subsequent	-	-	1,090	273	1,090	273	1,090	545	4,360	2,181
Anniversary Payments										
<u>FY 1995</u>										
Initial & Subsequent	1,112	1,112			1,112	278	1,112	278	3,336	1,668
Anniversary Payments										
<u>TOTAL</u>										
Initial Payments	1,112	1,112	-	-	-	-	-	-	4,122	4,122
Anniversary Payments	5,191	1,528	3,210	1,066	3,271	1,086	2,202	823	23,757	7,636
TOTAL	6,303	2,640	3,210	1,066	3,271	1,086	2,202	823	27,879	11,758

PRIOR SERVICE ENLISTMENT BONUS  
NATIONAL GUARD PERSONNEL, AIR FORCE  
(DOLLARS IN THOUSANDS)

	<u>FY 92</u>		<u>FY 93</u>		<u>FY 94</u>	
	<u>Number</u>	<u>\$ Amount</u>	<u>Number</u>	<u>\$ Amount</u>	<u>Number</u>	<u>\$ Amount</u>
<u>PRIOR OBLIGATIONS</u>	2,271	606	3,139	838	3,202	855
<u>ACCELERATED PAYMENTS</u>						
<u>FY 1992</u>						
Initial & Subsequent	330	297	547	123	547	123
Anniversary Payments						
<u>FY 1993</u>						
Initial & Subsequent	-	-	558	502	558	126
Anniversary Payments						
<u>FY 1994</u>						
Initial & Subsequent	-	-	-	-	569	512
Anniversary Payments						
<u>FY 1995</u>						
Initial & Subsequent	330	297	558	502	569	512
Anniversary Payments	2,271	606	3,686	961	4,307	1,104
<u>TOTAL</u>	2,601	903	4,244	1,463	4,876	1,616

PRIOR SERVICE ENLISTMENT BONUS (Continued)  
NATIONAL GUARD PERSONNEL, AIR FORCE  
(DOLLARS IN THOUSANDS)

	FY 95		FY 96		FY 97		FY 98		TOTAL	
	Number	Amount	Number	Amount	Number	Amount	Number	Amount	Number	Amount
<u>PRIOR OBLIGATIONS</u>	3,202	855	-	-	-	-	-	-	11,814	3,154
<u>ACCELERATED PAYMENTS</u>										
<u>FY 1992</u>										
Initial & Subsequent Anniversary Payments	547	150	547	150	547	164	547	164	3,612	1,171
<u>FY 1993</u>										
Initial & Subsequent Anniversary Payments	558	126	558	153	558	153	558	167	3,348	1,227
<u>FY 1994</u>										
Initial & Subsequent Anniversary Payments	569	128	569	128	569	157	569	157	2,845	1,082
<u>FY 1995</u>										
Initial & Subsequent Anniversary Payments	580	522	580	131	580	131	580	160	2,320	944
<u>TOTAL</u>	580	522	-	-	-	-	-	-	2,037	1,833
Initial Payments	4,876	1,259	2,254	562	2,254	605	2,254	648	21,902	5,745
Anniversary Payments	5,456	1,781	2,254	502	2,254	605	2,254	648	23,939	7,578

REENLISTMENT BONUS  
NATIONAL GUARD PERSONNEL, AIR FORCE  
(DOLLARS IN THOUSANDS)

	<u>FY 92</u>		<u>FY 93</u>		<u>FY 94</u>	
	<u>Number</u>	<u>Amount</u>	<u>Number</u>	<u>Amount</u>	<u>Number</u>	<u>Amount</u>
		\$		\$		\$
<u>PRIOR OBLIGATIONS</u>	3,366	899	4,300	1,148	4,216	1,126
<u>ACCELERATED PAYMENTS</u>						
<u>FY 1992</u>						
Initial & Subsequent						
Anniversary Payments	646	582	1,425	321	1,425	321
<u>FY 1993</u>						
Initial & Subsequent						
Anniversary Payments	-	-	1,444	1,300	1,444	325
<u>FY 1994</u>						
Initial & Subsequent						
Anniversary Payments	-	-	-	-	1,473	1,326
<u>FY 1995</u>						
Initial & Subsequent						
Anniversary Payments						
<u>TOTAL</u>						
Initial Payments	646	582	1,444	1,300	1,473	1,326
Anniversary Payments	3,366	899	5,725	1,469	7,085	1,772
TOTAL	4,012	1,481	7,169	2,769	8,558	3,098

REENLISTMENT BONUS (Continued)  
NATIONAL GUARD PERSONNEL, AIR FORCE  
(DOLLARS IN THOUSANDS)

	FY 95		FY 96		FY 97		FY 98		TOTAL	
	Number	Amount	Number	Amount	Number	Amount	Number	Amount	Number	Amount
<u>PRIOR OBLIGATIONS</u>	3,486	930	3,408	910	3,408	910	-	-	22,184	5,923
<u>ACCELERATED PAYMENTS</u>										
<u>FY 1992</u>										
Initial & Subsequent										
Anniversary Payments	1,425	392	1,425	392	1,425	428	1,425	428	9,196	2,864
<u>FY 1993</u>										
Initial & Subsequent										
Anniversary Payments	1,444	325	1,444	397	1,444	397	1,444	433	8,664	3,177
<u>FY 1994</u>										
Initial & Subsequent										
Anniversary Payments	1,473	331	1,473	331	1,473	405	1,473	405	7,365	2,798
<u>FY 1995</u>										
Initial & Subsequent										
Anniversary Payments	1,502	1,352	1,502	338	1,502	338	1,502	413	6,008	2,441
<u>TOTAL</u>										
Initial Payments	1,502	1,352	-	-	-	-	-	-	5,065	4,560
Anniversary Payments	7,828	1,978	9,252	2,368	9,252	2,478	5,844	1,679	48,352	12,643
TOTAL	9,330	3,330	9,252	2,368	9,252	2,478	5,844	1,679	53,417	17,203

EDUCATIONAL ASSISTANCE  
NATIONAL GUARD PERSONNEL, AIR FORCE  
(DOLLARS IN THOUSANDS)

	FY 92		FY 93		FY 94		Total	
	Number	Amount	Number	Amount	Number	Amount	Number	Amount
<u>PRIOR OBLIGATIONS</u>	12	12	25	25	25	25	62	62
<u>ACCELERATED PAYMENTS</u>								
<u>FY 1991</u>								
Initial & Subsequent								
Anniversary Payments								
<u>FY 1992</u>								
Initial & Subsequent								
Anniversary Payments								
<u>FY 1993</u>								
Initial & Subsequent								
Anniversary Payments								
<u>TOTAL</u>								
Initial Payments	12	12	25	25	25	25	62	62
Anniversary Payments								
TOTAL	12	12	25	25	25	25	62	62



**AFFILIATION BONUS  
NATIONAL GUARD PERSONNEL, AIR FORCE  
(DOLLARS IN THOUSANDS)**

	FY 92		FY 93		FY 94		TOTAL	
	Number	\$ Amount	Number	\$ Amount	Number	\$ Amount	Number	\$ Amount
<b>PRIOR OBLIGATIONS</b>	138	131	77	73	79	75	294	279
<b>ACCELERATED PAYMENTS</b>								
<b>FY 1992</b>								
Initial & Subsequent Anniversary Payments	108	102	-	-	-	-	108	102
<b>FY 1993</b>								
Initial & Subsequent Anniversary Payments	-	-	79	75	-	-	79	75
<b>FY 1994</b>								
Initial & Subsequent Anniversary Payments	-	-	-	-	81	77	81	77
<b>FY 1995</b>								
Initial & Subsequent Anniversary Payments	-	-	-	-	-	-	83	79
<b>TOTAL</b>								
Initial Payments	108	102	79	75	81	77	268	254
Anniversary Payments	138	131	77	73	79	75	294	279
TOTAL	246	233	156	148	160	152	562	533

MEDICAL OFFICER STUDENT LOAN REPAYMENT  
NATIONAL GUARD PERSONNEL, AIR FORCE  
(DOLLARS IN THOUSANDS)

	FY 92		FY 93		FY 94		FY 95	
	Number	Amount	Number	Amount	Number	Amount	Number	Amount
<u>PRIOR OBLIGATIONS</u>	9	27	9	27	9	27	9	27
<u>ACCELERATED PAYMENTS</u>								
<u>FY 1992</u>								
Initial & Subsequent	3	10	12	36	12	36	12	36
Anniversary Payments	-	-	36	108	36	108	36	108
<u>FY 1993</u>								
Initial & Subsequent	-	-	-	-	75	225	75	225
Anniversary Payments	-	-	-	-	-	-	-	-
<u>FY 1994</u>								
Initial & Subsequent	-	-	-	-	-	-	-	-
Anniversary Payments	-	-	-	-	-	-	-	-
<u>FY 1995</u>								
Initial & Subsequent	3	10	36	108	75	225	75	225
Anniversary Payments	9	27	21	63	57	171	132	396
<u>TOTAL</u>	<u>12</u>	<u>47</u>	<u>57</u>	<u>171</u>	<u>132</u>	<u>396</u>	<u>207</u>	<u>621</u>

MEDICAL OFFICER STUDENT LOAN REPAYMENT (Continued)  
NATIONAL GUARD PERSONNEL, AIR FORCE  
(DOLLARS IN THOUSANDS)

	FY 96		FY 97		FY 98		TOTAL	
	Number	Amount	Number	Amount	Number	Amount	Number	Amount
<u>PRIOR OBLIGATIONS</u>								
<u>ACCELERATED PAYMENTS</u>								
<u>FY 1992</u>								
Initial & Subsequent	12	36	12	36	12	36	36	108
Anniversary Payments								
<u>FY 1993</u>								
Initial & Subsequent	36	108	36	108	36	108	216	648
Anniversary Payments								
<u>FY 1994</u>								
Initial & Subsequent	75	225	75	225	75	225	375	1125
Anniversary Payments								
<u>FY 1995</u>								
Initial & Subsequent	75	225	75	225	75	225	300	900
Anniversary Payments								
<u>TOTAL</u>	<u>198</u>	<u>594</u>	<u>198</u>	<u>594</u>	<u>198</u>	<u>594</u>	<u>189</u>	<u>568</u>
							<u>813</u>	<u>2,439</u>
							<u>1,002</u>	<u>3,007</u>

**ENLISTED STUDENT LOAN REPAYMENT  
NATIONAL GUARD PERSONNEL, AIR FORCE  
(DOLLARS IN THOUSANDS)**

	FY 92		FY 93		FY 94	
	Number	Amount	Number	Amount	Number	Amount
<b>PRIOR OBLIGATIONS</b>	2,576	2,705	3,660	3,843	4,050	4,253
<b>ACCELERATED PAYMENTS</b>						
<b>FY 1992</b>						
Initial & Subsequent Anniversary Payments	449	471	381	400	381	400
<b>FY 1993</b>						
Initial & Subsequent Anniversary Payments	-	-	419	440	419	440
<b>FY 1994</b>						
Initial & Subsequent Anniversary Payments	-	-	-	-	461	484
<b>FY 1995</b>						
Initial & Subsequent Anniversary Payments	-	-	-	-	-	-
<b>TOTAL</b>						
Initial Payments	449	471	419	440	461	484
Anniversary Payments	2,576	2,705	4,041	4,243	4,850	5,093
TOTAL	3,025	3,176	4,460	4,683	5,311	5,577

ENLISTED STUDENT LOAN REPAYMENT (Continued)  
NATIONAL GUARD PERSONNEL, AIR FORCE  
(DOLLARS IN THOUSANDS)

	FY 95		FY 96		FY 97		FY 98		TOTAL	
	Number	\$ Amount	Number	\$ Amount	Number	\$ Amount	Number	\$ Amount	Number	\$ Amount
<u>PRIOR OBLIGATIONS</u>	4,500	4,725	-	-	-	-	-	-	14,786	15,526
<u>ACCELERATED PAYMENTS</u>										
<u>FY 1992</u>										
Initial & Subsequent Anniversary Payments	381	400	381	400	318	400	381	400	2,735	2,871
<u>FY 1993</u>										
Initial & Subsequent Anniversary Payments	419	440	419	440	419	440	419	440	2,514	2,640
<u>FY 1994</u>										
Initial & Subsequent Anniversary Payments	461	484	461	484	461	484	461	484	2,305	2,420
<u>FY 1995</u>										
Initial & Subsequent Anniversary Payments	470	494	470	494	470	494	470	494	1,880	1,976
<u>TOTAL</u>	470	494	470	494	470	494	470	494	1,799	1,889
Initial Payments	5,761	6,049	1,731	1,818	1,731	1,818	1,731	1,818	22,421	23,544
Anniversary Payments	6,231	6,543	1,731	1,818	1,731	1,818	1,731	1,818	24,220	25,433
TOTAL										

NURSE TEST BONUS PROGRAM  
NATIONAL GUARD PERSONNEL, AIR FORCE  
(DOLLARS IN THOUSANDS)

	FY 92		FY 93		FY 94		TOTAL	
	Number	Amount	Number	Amount	Number	Amount	Number	Amount
<u>PRIOR OBLIGATIONS</u>	16	97	0	0	0	0	22	132
<u>ACCELERATED PAYMENTS</u>								
<u>FY 1992</u>								
Initial & Subsequent								
Anniversary Payments								
<u>FY 1993</u>								
Initial & Subsequent								
Anniversary Payment								
<u>FY 1994</u>								
Initial & Subsequent								
Anniversary Payments								
<u>TOTAL</u>								
Initial Payments	16	97	-	-	-	-	16	97
Anniversary Payments								
TOTAL	16	97					16	97

National Guard Personnel, Air Force  
Full-time Support Personnel (End Strength) (continued)

Assignment	FY 1994						
	AGR/TAR Officers	AGR/TAR Enlisted	AGR/TAR Total	Military Technicians	Active Military	Civilian	Total
Individuals	-	-	-	-	-	-	-
Pay/Personnel Center	-	2	2	-	-	2	4
Recruiting/Retention	8	513	521	-	-	4	525
Subtotal	8	515	523	-	-	6	529
<u>Units:</u>							
Units	996	6,218	7,214	23,276	911	-	31,401
RC Unique Mgmt Hqs	61	91	152	492	-	-	644
Unit Spt-Navy RC	-	-	-	-	-	-	-
Maint Act (Non-unit)	-	-	-	-	-	-	-
Subtotal	1,057	6,309	7,366	23,768	911	-	32,045
<u>Training:</u>							
RC Non-unit Institutions	249	833	1,082	483	-	4	1,569
RC Schools	18	57	75	-	-	10	85
ROTC	-	-	-	-	-	-	-
Subtotal	267	890	1,157	483	-	14	1,654
<u>Headquarters:</u>							
Service Hqs	28	-	28	-	-	-	28
AC Hqs	56	-	56	-	-	-	56
AC Instal/Activities	-	-	-	-	-	-	-
RC Chiefs Staff	37	13	50	-	56	65	171
Others	-	-	-	-	-	-	-
Subtotal	121	13	134	-	56	65	255
Others*	104	105	209	-	24	1,669	1,902
Total	1,557	7,832	9,389	24,251	991	1,754	36,385

\*Other includes base operating support and direct reporting units.

National Guard Personnel, Air Force  
Full-time Support Personnel (End Strength) (continued)

Assignment	FY 1993					Active Military	Civilian	Total
	AGR/TAR Officers	AGR/TAR Enlisted	AGR/TAR Total	Military Technicians	Military			
Individuals	-	-	-	-	-	-	-	-
Pay/Personnel Center	-	2	2	-	-	-	2	4
Recruiting/Retention	9	543	552	-	-	-	4	556
Subtotal	9	545	554	-	-	-	6	560
<u>Units:</u>								
Units	979	5,882	6,851	23,740	876	-	-	31,467
RC Unique Mgmt Hqs	51	91	152	497	-	-	-	649
Unit Spt-Navy RC	-	-	-	-	-	-	-	-
Maint Act (Non-unit)	-	-	-	-	-	-	-	-
Subtotal	1,030	5,973	7,003	24,237	876	-	-	32,116
<u>Training:</u>								
RC Non-unit Institutions	261	895	1,156	1,187	-	4	4	2,347
RC Schools	18	52	70	-	-	10	10	80
ROTC	-	-	-	-	-	-	-	-
Subtotal	279	947	1,226	1,187	-	14	14	2,427
<u>Headquarters:</u>								
Service Hqs	28	-	28	-	-	-	-	28
AC Hqs	56	-	56	-	-	-	-	56
AC Instal/Activities	-	-	-	-	-	-	-	-
RC Chiefs Staff	37	13	50	-	56	69	69	175
Others	-	-	-	-	-	-	-	-
Subtotal	121	13	134	-	56	69	69	259
Others*	104	105	209	-	24	1,851	1,851	2,084
Total	1,543	7,583	9,126	25,424	956	1,940	1,940	37,446

\*Other includes base operating support and direct reporting units.



National Guard Personnel, Air Force  
Full-time Support Personnel (End Strength) (continued)

Assignment	FY 1992					Active Military	Civilian	Total
	AGR/TAR Officers	AGR/TAR Enlisted	AGR/TAR Total	Military Technicians	Military			
Individuals	-	-	-	-	-	-	-	-
Pay/Personnel Center	-	2	2	-	-	-	2	4
Recruiting/Retention	6	519	525	-	-	-	7	532
Subtotal	6	521	527	-	-	-	9	536
<u>Units:</u>								
Units	936	5,676	6,612	23,079	829	-	-	30,520
RC Unique Mgmt Hqs	66	91	157	486	-	-	-	643
Unit Spt-Navy RC	-	-	-	-	-	-	-	-
Maint Act (Non-unit)	-	-	-	-	-	-	-	-
Subtotal	1,002	5,767	6,769	23,565	829	-	-	31,163
<u>Training:</u>								
RC Non-unit Institutions	265	984	1,259	1,176	-	-	6	2,441
RC Schools	17	48	65	-	-	-	9	74
ROTC	-	-	-	-	-	-	-	-
Subtotal	282	1,042	1,324	1,176	-	-	15	2,515
<u>Headquarters:</u>								
Service Hqs	28	-	28	-	-	-	-	28
AC Hqs	56	-	56	-	-	-	-	56
AC Instal/Activities	-	-	-	-	-	-	-	-
RC Chiefs Staff	37	13	50	-	56	-	75	181
Others	-	-	-	-	-	-	-	-
Subtotal	121	13	134	-	56	-	75	265
Others*	136	152	288	-	24	-	1,787	2,099
Total	1,547	7,495	9,042	24,741	909	-	1,886	36,578

\*Other includes base operating support and direct reporting units.