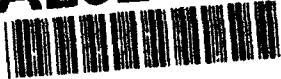


AD-A262 160



AD \_\_\_\_\_

GRANT NO: DAMD17-92-J-2013

TITLE: SEVENTH ANNUAL CONFERENCE ON HUMAN RETROVIRUS TESTING

PRINCIPAL INVESTIGATOR: Jerome R. Cordts

CONTRACTING ORGANIZATION: Association of State & Territorial  
Public Health Laboratory Directors  
12211 Connecticut Ave., NW, Suite 508  
Washington, DC 20036

REPORT DATE: April 5, 1993

TYPE OF REPORT: Final Proceedings

DTIC  
ELECTE  
MAR 29 1993  
S E D

PREPARED FOR: U.S. ARMY MEDICAL RESEARCH AND DEVELOPMENT COMMAND  
Fort Detrick, Frederick, Maryland 21702-5012

DISTRIBUTION STATEMENT: Approved for public release;  
distribution unlimited

The findings in this report are not to be construed as an  
official Department of the Army position unless so designated by  
other authorized documents.

98 3 26 022

93-06251



42P8

5 April 1993 Final Proceedings

Seventh Annual Conference on Human Retrovirus Testing

Grant No.  
DAMD17-92-J-2013

6. AUTHOR(S)

Jerome R. Cordts

Association of State & Territorial  
Public Health Laboratory Directors  
12211 Connecticut Ave., NW, Suite 508  
Washington, DC 20036

U.S. Army Medical Research & Development Command  
Fort Detrick  
Frederick, Maryland 21702-5012

Conference held March 3-5, 1992, Chicago, Illinois

Approved for public release; distribution unlimited

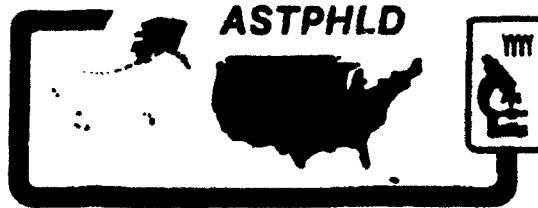
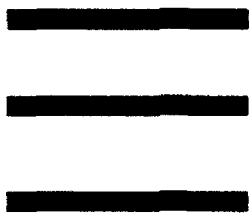
Conference; Humans; Test; Aids; Biotechnology  
RA I

Unclassified

Unclassified

N/A

NA



**SEVENTH ANNUAL CONFERENCE  
ON  
HUMAN RETROVIRUS TESTING**

**REPORT**

**March 3-5, 1992**

**Chicago, Illinois**

DTIC QUALITY INSPECTED 1

Accession For	
NTIS CRA&I	<input checked="" type="checkbox"/>
DTIC TAB	<input checked="" type="checkbox"/>
Unannounced	<input type="checkbox"/>
Justification .....	
By .....	
Distribution /	
Availability Codes	
Dist	Avail and/or Special
A-1	

*The views, opinions and/or findings contained herein are those of the author(s) and should not be construed as an official Department of the Army position or decision unless so designated by other documentation.*

## **ASTPHLD**

*The Association of State and Territorial Public Health Laboratory Directors is an organization representing state and territorial public health laboratory directors throughout the United States. The Association maintains a Headquarters office and seven Area Resource Offices, and operates a National Laboratory Training Network that forms alliances among federal, state, and local health agencies and private sector organizations to develop and promote the delivery of localized laboratory training programs based on documented need. The Association also organizes and presents scientific conferences and symposia relevant to the testing activities of public health laboratories. ASTPHLD operates exclusively as a scientific and educational organization.*

### **President:**

*Jon Counts, Dr.P.H., Washington*

### **Executive Committee:**

*Ronald Cada, Dr.P.H., Colorado*

*David F Carpenter, Ph.D., Illinois*

*Philip Haines, Dr.P.H., Maine*

*Loris W Hughes, Ph.D., New Mexico*

*Michael W Kimberly, Dr.P.H., Tennessee*

*Veronica C Malmberg, New Hampshire*

### **Executive Director:**

*Jerome Cordts, Washington D.C.*

***ASTPHLD Committee on Human Retrovirus Testing: David F. Carpenter, Ph.D., Chairman; Arthur F. DiSalvo, M.D.; J. Mehsen Joseph, Ph.D.; James Pearson, Dr.P.H.; Michael Volz, Ph.D.***

***Conference Planning Committee: Robert Lindner, M.D., Ph.D., Chairman; Michael Ascher, M.D. ; Lt Col Chester Roberts, Ph.D.; Chyang Fang, Ph.D.; Charles Schable, M.S.; Judith Wethers, M.S.; Judith Wilber, Ph.D.***

*This conference was supported, in part, by a financial grant from the Department of the Army, U S Army Medical Research and Development Command.*

## Table of Contents

Survey results .....	1 - 5
Participating Individuals .....	6 - 7
Panel Session I Recommendations .....	8 - 9
Panel Session I Attendees .....	10 - 11
Panel Session II Recommendations .....	12 - 14
Panel Session II Attendees .....	15
Panel Session III Recommendation .....	16 - 17
Panel Session III Attendees .....	18
Panel Session IV Recommendations .....	19
Panel Session IV Attendees .....	20 - 21
Flow Cytometry Workshop and Attendees .....	22
Conference Abstracts .....	23 - 25
Index to Abstract Authors .....	26 - 27
Conference Attendees .....	28 - 36

# The Seventh Annual Conference on Human Retrovirus Testing

The importance of retrovirus testing in today's society demands that every effort be made to conduct testing in as rigid and uncompromising a manner as possible. As the complexity of retrovirus testing increases, the necessity for standardization also increases. The Seventh Annual Conference on Human Retrovirus Testing, sponsored by the Association of State and Territorial Public Health Directors (ASTPHLD) and held in Chicago, Illinois on March 3-5, 1992, recognized and addressed many of the issues relevant to retrovirus testing.

The conference serves as a forum for the exchange of ideas about retrovirus testing and provides an opportunity to make recommendations to ASTPHLD.

This year's conference was attended by nearly 350 participants from public health laboratories, industry, and the private sector. Eight plenary session speakers spoke on a diverse range of issues. The exhibit area accommodated 54 poster presentations and 15 exhibitors. Four panel sessions were conducted.

The CDC-proposed change in the criteria for AIDS case definition based upon the CD4<sup>+</sup> lymphocyte count presented the conference attendees with an opportunity to present their views on this subject. The introduction of combination kits leads to the need for new testing algorithms and criteria for HIV-2 and HTLV-I/II. A special highlight of the conference was quantitation of CD4<sup>+</sup> lymphocytes by flow cytometric methods. A supplemental flow cytometry lecture and workshops were presented with the collaboration of three vendors of flow cytometry equipment. Approximately sixty people attended these workshops.

**Panel Session I - Testing: The Serologic Diagnosis of HIV** - comprised HIV 1/2 combination kits, ASTPHLD/Centers for Disease Control Interpretive Criteria, proficiency testing and dried blood spot testing. The panel also proposed a testing algorithm for use with combination HIV-1/2 EIA kits.

**Panel Session II - Testing: Lymphocyte Subset Quantitation** - covered flow cytometric techniques and monitoring of antiviral therapy. It also addressed the issues associated with initiating a flow cytometry program.

**Panel Session III - Testing: Non-Serologic Testing Methods** - encompassed polymerase chain reaction (PCR), p24 antigen, beta-2-microglobulin, and culture methods.

**Panel Session IV - Testing: Special Topics** - included topics such as urine testing, saliva testing, HTLV-I/II and HIV in newborns. The panel made recommendations concerning Western blot interpretation for HTLV- I/II.

In conjunction with the conference a survey was sent to all 54 ASTPHLD members. Forty seven members returned the survey which asked for Fiscal Year 91 data (July 1, 1990 to June 30, 1991). This report reflects information obtained from that survey. In contrast to last year, data from California local health departments and clinical laboratories are not included. Table 1 indicates the routine testing performed by the members of ASTPHLD who responded to the survey. Table 2 indicates the testing done for the CDC Family of Serosurveys. A total of 3,699,796 HIV-1 test specimen results were reported on the survey.

**Table 1**  
Survey Data

	HIV-1	HIV-2	HTLV-I/II	Total
Enzyme ImmunoAssay	1,315,677	1,014	3,623	1,316,378
Western blot	44,991	12	3,623	48,626
Indirect Fluorescent Antibody	16,611	23	689	17,323
Polymerase Chain Reaction	1,281		2,873	4,154
Flow Cytometry	3,711			3,711
Culture	1,583			1,583
Total	1,383,854	1,049	10,808	1,395,711

**Table 2**  
Family of Serosurvey Results

	Number Tested	Number Confirmed
Child-bearing women	2,111,871	3,952
All others	204,071	6,452
Total	2,315,942	10,404

**Table 3**  
HIV-1 Retrovirus Testing

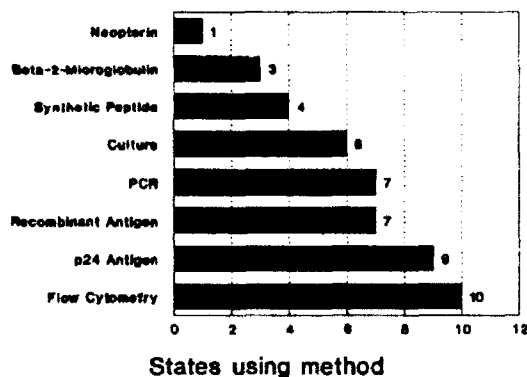
Testing Method	Specimens			
	Tested	Reactive	Non-reactive	Indeterminate
Enzyme ImmunoAssay	1,315,677	55,910		
Western Blot	44,991	38,113	3,721	3,157
Indirect Fluorescent Antibody	16,611	12,113	4,131	367
Polymerase Chain Reaction	1,281			
Flow Cytometry	3,711			
Tissue culture	1,583	306		

Testing for HIV-1 is the predominant retrovirus test and the principal screening test method is Enzyme ImmunoAssay (EIA); over 1.3 million specimens were tested for HIV-1 using EIA. Although HIV-1/2 combination kits are available, only eight states reported testing for HIV-2 and this accounted for only 1,014 specimens tested - of which 49 were reactive for HIV-2. Eight of the twelve Western blot tests performed for HIV-2 were reactive. Five states reported that testing for HIV-2 was done on all specimens which were EIA reactive and failed to confirm for HIV-1. Almost 45,000 Western blot tests were performed on the over 55,000 reactive EIA tests. (See Table 3.) The number of indeterminates resolved by Polymerase Chain Reaction (PCR) testing is not known. The overall reactivity rate for this year's data is 4.2% as compared to 3% last year (on the survey conducted for last year's conference). A major reason for this elevated rate may be the absence of the large amount of California data which were included in last year's survey.

procedures listed. The increase in the use of surrogate markers as a diagnostic tool has increased from eight states last year to 13 states this year. Last year the use of these procedures was listed a total of 31 times by the respondents, this year 46 instances were indicated by the respondents. Testing as a medical management tool is becoming increasingly important. Some of these methods, notably flow cytometry and polymerase chain reaction (PCR), are used primarily to monitor the course of infection in the infected individual. Culture methods, although reported by the same number of respondents as last year, may increase significantly with the development of micro methods.

Flow cytometry, a testing method of increasing interest, is used in eight states, one territory and New York City, and accounts for 3,711 specimens tested during FY91. This method, along with PCR testing, is used for confirmation of HIV-1 positivity and for clarification of questionable test results. A survey conducted in December, 1991 (See table 4.) indicated an additional four states were about to initiate flow cytometric analysis. The survey also indicated that, although most were following the manufacturer's recommended procedures, some were also following those of CDC and/or NCCLS. The survey results confirmed that laboratories using flow cytometry need to expend considerable time and effort to ensure that proficiency testing, training, etc. are adequately addressed. Eight of these laboratories indicated they are providing continuing education for their employees. The reasons indicated by survey respondents for NOT having flow cytometry included funding, laboratory space, and lack of trained personnel.

## ALTERNATE TESTING METHODS



**Figure 1** The total number of these alternate testing methods has increased from 31 to 46 in the last year.

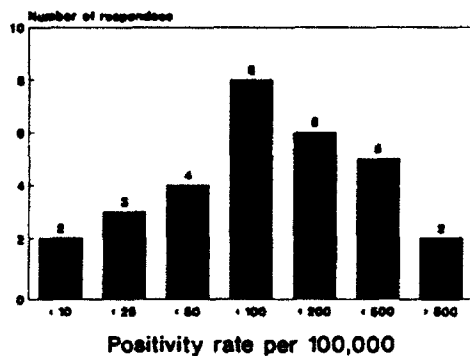
Retrovirus testing procedures are becoming more complex as the need for better control of the spread of infection and management of the disease in the patient increases. Figure 1 shows the number of responding states which utilize each of the

The CDC coordinates a very extensive survey for HIV-1 in various populations. The largest population tested, by far, is child-bearing women - 2,111,871 out of a total 2,315,942 tests for FY91. (REMEMBER: the data presented here are the results of this survey and may differ from those published by CDC.) These tests are performed on dried blood spots collected from the newborn, generally required by law for metabolic disease screening, and are an



indication of the presence of maternal antibodies. The positivity rate distribution for 30 states is shown in Figure 2. The positivity rate of this population is considered a reflection of the rate in the general population. Other patient populations tested include those from sexually transmitted disease clinics, drug treatment centers, TB clinics, women's health clinics and correctional institutions. These high-risk groups (8.8% of the tested population) contained a disproportionate number (62.0%) of confirmed

### CHILD-BEARING WOMEN



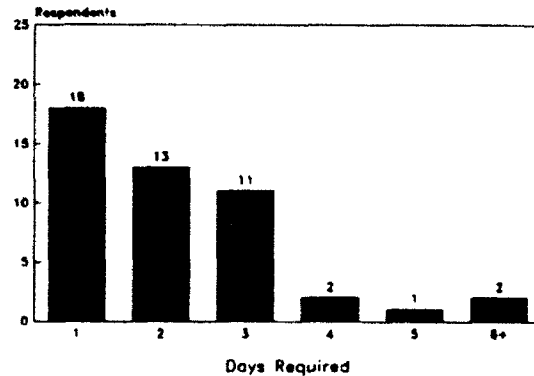
**Figure 2** The HIV-1 positivity rate of child-bearing women corresponds to that of the general non-high risk population.

positives. (See Table 2.) Thirty seven states indicated participation in this survey. Some states participate by contracting with other state laboratories to perform the testing. Six states participate in the Family of Serosurveys but do not test child-bearing women. It should be noted that the increase in the last few years of the incidence of Multiple-Drug Resistant Tuberculosis is believed by many to be tied to the increase of HIV-1 infection.

Figures 3 and 4 indicate the turnaround time for screening and confirmatory testing. As can be seen, 42 out of the 47 respondents had a turnaround time of three days or less for negative screening tests. In contrast, when the specimen was EIA reactive and needed to be confirmed, it took up to seven days for 43 of the respondents to report a confirmed specimen.

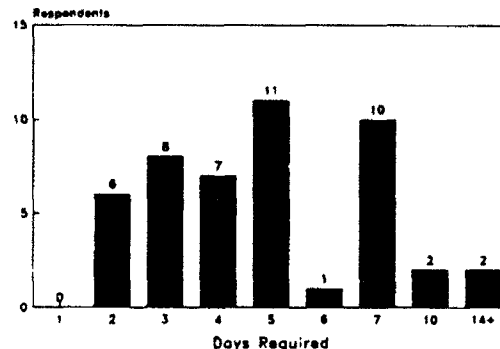
This extended period of time is a constant source of concern between testing facilities and counseling programs in the various program authorities.

### TURNAROUND TIME-SCREENING



**Figure 3** Forty two of the 47 respondents reported a turnaround time of three days or less for a negative screening test.

### TURNAROUND TIME-CONFIRMATORY



**Figure 4** Turnaround time varies greatly for confirmation of a reactive specimen compared to that for a negative test.

Tables 5 and 6 summarize survey data submitted by those states testing for HIV-2 and HTLV-I/II. As concerns about other retrovirus-induced infections increase, the testing resources of Public Health entities are being directed toward efforts to gather the needed information. Data in 1990 indicated 6 laboratories testing for HIV-2 and 11 laboratories testing for HTLV-I/II. The 1991 Survey data indicate this number has changed to 8 and 7 laboratories respectively.

There are several indications that this trend of increasing tests for retrovirus other than HIV-1 will continue into the immediate foreseeable future.

The CDC is coordinating a study to gather data on research HIV-2 Western blot kits. This study will provide states with a confirmatory HIV-2 testing procedure and will assist states which are using HIV-1/2 combination kits to develop an acceptable algorithm.

**Table 4**  
Flow Cytometry Survey

States/Territories/Cities Not Using Flow Cytometry		33
States/Territories/Cities Using Flow Cytometry		10
Instrumentation	Becton Dickinson	3
	Coulter Electronics	6
	Ortho Diagnostic	1
Procedure	Manufacturer	8
	CDC/NCCLS	7
Proficiency Testing	CDC	5
	CAP	9
	FAST	1
Training	Manufacturer	10
	CDC Course	5
	In-house	2
Sample Analysis	Single color	0
	Dual color	10
	Three color	1

**Table 5**  
HTLV-I/II Retrovirus Testing

Testing Method	Specimens Tested	Reactive Specimens	Indeterminate Specimens
Enzyme ImmunoAssay	3623	986	
Western blot	689	407	34
Indirect Fluorescent Antibody	2873	779	

**Table 6**  
HIV-2 Retrovirus Testing

Testing Method	Specimens Tested	Reactive Specimens	Indeterminate Specimens
Enzyme Immunoassay	1014	49	
Western blot	12	8	0
Indirect Fluorescent Antibody	23		

---

---

## PARTICIPATING INDIVIDUALS

---

---

**Col. Donald Burke, M.D.**, Department of Virus Diseases, Walter Reed Army Institute of Research, Rockville, Maryland

**David F Carpenter, Ph.D.**, Chief, Division of Laboratories, Illinois Department of Public Health, Springfield, Illinois

**Carllyn Collins, M.D.**, Chief, Division of Laboratory Systems, Centers for Disease Control, Atlanta, Georgia

**James Curran, M.D.**, Assistant Surgeon General, Deputy Director (HIV), Centers for Disease Control, Atlanta, Georgia

**Arthur F DiSalvo, M.D.**, Director, Bureau of Laboratory Services, Nevada Division of Health, Reno, Nevada

**Jay Epstein, M.D.**, Acting Deputy Director, Division of Transfusion Science, Center for Biologics Evaluation and Research, Food and Drug Administration, Bethesda, Maryland

**Chyang Fang, Ph.D.**, Director, National Reference Laboratory for Infectious Diseases, American Red Cross, Rockville, Maryland

**Dana Gallo, M.S.**, Public Health Microbiologist, California Department of Health Services, Berkeley, California

**Wanda Jones, Dr. P. H.**, Special Assistant for Science, Office of the Deputy Director (HIV), Centers for Disease Control, Atlanta, Georgia

**J Mehseu Joseph, Ph.D.**, Director, Laboratories Administration, Maryland Department of Health and Mental Hygiene, Baltimore, Maryland

**Jonathan M Kagan, Ph.D.**, Chief, Clinical Sciences Section, Treatment Research Program, Division of Acquired Immune Deficiency Syndrome (AIDS), National Institutes of Allergies and Infectious Diseases, National Institute of Health, Bethesda, Maryland

**Alan Landay, Ph.D.**, Chief, Department of Virology, Rush-Presbyterian-St. Luke's Medical Center, Chicago, Illinois

**Mariano F LaVia, M.D.**, Professor of Pathology and Laboratory Medicine, Medical University of South Carolina, Charleston, South Carolina

**John R Lumpkin, M.D.**, Director, Illinois Department of Public Health, Springfield, Illinois

**Janet K A Nicholson, Ph.D.**, Center for Infectious Diseases, Centers for Disease Control, Atlanta, Georgia

**Chin-Yih Ou, Ph.D.**, Division of HIV/AIDS, Centers for Disease Control, Atlanta, Georgia

**Herbert F Polesky, M.D.**, Director, Memorial Blood Center, Minneapolis, Minnesota

**Lt Col Chester Roberts, Ph.D.**, Chief, Diagnostic Retrovirology, Walter Reed Army Institute of Research, Rockville, Maryland

---

---

## PARTICIPATING INDIVIDUALS

---

---

**Alfred Saah, M.D.**, Associate Professor of Epidemiology, School of Hygiene and Public Health, Johns Hopkins University, Baltimore, Maryland

**Charles Schable, M.S.**, Chief, Diagnostic Serology Section, Division of HIV/AIDS, Centers for Disease Control, Atlanta, Georgia

**Haynes W (Chip) Sheppard, Ph.D.**, Research Scientist, California Public Health Foundation, Berkeley, California

**John Sninsky, Ph.D.**, Senior Director, Diagnostics Division, PCR Division, Cetus Corporation

**Thomas R Thleme, Ph.D.**, Senior Scientist, Epitope, Inc., Beaverton, Oregon

**Barbara Welblen, M.S.**, Senior Scientist, Newborn HIV Project, Theobald Smith Research Institute, Jamaica Plain, Massachusetts

**Judith Wilber, Ph.D.**, Manager, Clinical Micro, Nucleic Acid Chemistry, Chiron Corporation, Emeryville, California

---

## PANEL SESSION I TESTING: THE SEROLOGIC DIAGNOSIS OF HIV

---

**PANEL CHAIR:**

**J Mehsen Joseph, Ph.D.**, Director, Laboratories Administration, Maryland Department of Health and Mental Hygiene, Baltimore, Maryland

**PANEL MEMBERS:**

**Chyang Fang, Ph.D.**, Director, National Reference Laboratory for Infectious Diseases, American Red Cross, Rockville, Maryland; **Lt Col Chester Roberts, Ph.D.**, Chief, Diagnostic Retrovirology, Walter Reed Army Institute of Research, Rockville, Maryland; **Charles Schable, M.S.**, Chief, Diagnostic Serology Section, Division of HIV/AIDS, Centers for Disease Control, Atlanta, Georgia

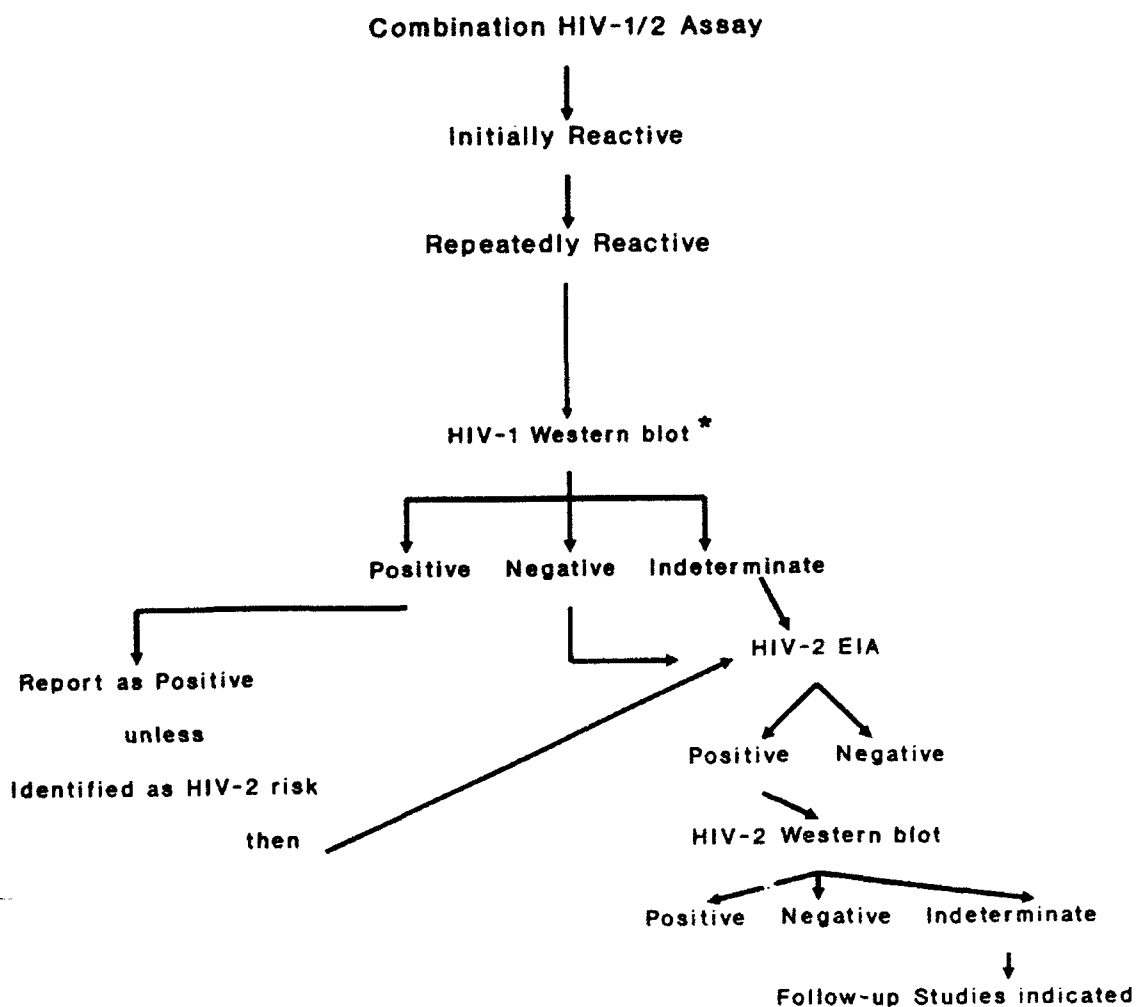
**RAPPORTEUR:**

**Cynthia Cossen, M.S.**, Public Health Microbiologist, Viral and Rickettsial Diseases Laboratory, California Department of Health, Berkeley, California

### PANEL RECOMMENDATIONS

- 1.01** Additional data presented at this conference support the ASTPHLD/CDC interpretative criteria for Western blot evaluation. Nevertheless, concern was expressed about positive Western blot patterns with env only and those with weakly reactive bands.
- 1.02** A small number of samples with env reactivity only, meeting ASTPHLD/CDC criteria for positive Western blot interpretations have been demonstrated to occur in apparently uninfected individuals. Weak or incomplete Western blot patterns resembling seroconversion samples can result from cross contamination. To assess the significance of such patterns, follow up specimens should be obtained whenever possible to establish infection status or progression. Individual laboratories should collect such information for submission to the ASTPHLD Retrovirus Committee for review.
- 1.03** It was re-emphasized that for all first time positive samples/patients a second follow-up dedicated sample be requested and tested to verify the result. The need for a follow-up sample should be indicated in the laboratory report.
- 1.04** There are concerns about basing laboratory proficiency testing on programs that use testing panel samples prepared from pooled materials which can cause technical variation. It is recommended that pooled materials not be used to prepare proficiency panels.
- 1.05** Each state public health laboratory must determine whether to use the combination HIV-1/2 EIA screening for HIV infection based on epidemiologic data pertinent to their region. If the combination assay is adopted, the following algorithm is recommended pending the development of a licensed combination Western blot and other confirmatory tests that can be incorporated in the algorithm. (See following page.)
- 1.06** It is suggested that the algorithm be modified upon development and approval of combination HIV-1/2 Western Blot and other supplemental assays.
- 1.07** The development of combination HIV-1/2 Western Blot and other supplemental assays for the confirmation for HIV-1/2 testing is encouraged.
- 1.08** It was recommended that the ASTPHLD Retrovirus Committee initiate a validation study of the newly licensed IFA test kit for HIV-1. The findings of such a study should be reported to the conferees at the 1993 meeting.
- 1.09** The development and licensure of a confirmatory procedure for use with dried blood spots is encouraged.

## Testing Algorithm for Use With Combination HIV-1/2 Assay



\* An immunofluorescence assay (IFA) for HIV-1 antibodies has recently been licensed by the FDA and can be used instead of Western blot (WB). Positive and negative IFA results should be handled in the same manner as similar results from WB. IFA INDETERMINATES should first be tested by HIV-1 WB and then the results should be treated as indicated by the WB results in the algorithm.

## ATTENDEES

Sandra Aarnaes  
Steve Alexander  
Kim Anderson  
Lillie Anderson  
Mary Beth Baker  
Arthur Back  
Jeanne Baldwin  
J Dean Barry, M.S.  
Bonnie Bean, M.D.  
Janice Beasley  
Dr Sara T Beatrice  
Gerald A Beltz  
Susan Best  
Pete Betzelus  
Bill Black  
Dr Anne Bodner  
John A Boffa  
Robin Botchlet  
Brad Brazell  
Laurence C Briggs  
Lynn Bromstedt  
David A Bruckner, Sc.D.  
Kay Buchanan, Ph.D.  
Nerissa Cabrera, MT(ASCP)  
Barbara Cahoon-Young  
Thomas H Callaway, M.D.  
Laurie Cartwright  
Jack Cassoria  
Celeste Chenet  
Mary Christensen  
Anne Marie Comeau, Ph.D.  
Jeanne Connelly  
Dr Niel T Constantine  
Cynthia Cossen  
Raul R Cuadrado, Dr. P.H.  
Sandra Currin  
Valerie R Dada  
Massoud Davale-Markazi  
Dr Elizabeth M Dax  
Stephen P Day, Ph.D.  
Richard Decker  
Donna DeLong  
P David Dotson, Jr  
Michael Douglas  
Harold Dowda, Ph.D.  
Dr Robert J Dwyer  
Richard Egan, Ph.D.  
Julie Essmann

Robert Falcon  
Chyang Fang, Ph.D.  
Dennis V Ferrero, M.P.H.  
Dr Bagher Forghani  
Dana Gallo  
Loretta Gaschler  
J Ronald Geneule  
J Richard George, Ph.D.  
Jane P Getchell, Ph.D.  
Elizabeth Gibson  
Marjorie Giles  
Charles Ginsburgh  
Helene Gravel  
Dr Brigitte Griffith  
Peggy Guidinger  
Kamlesh Gupta  
Louis E Guskey, Ph.D.  
Wyman H Hagler  
Nancy J Haley, Ph.D.  
Laurel Halfpap  
Gwendolyn V Halle-Steele  
Richard Heberling, Ph.D.  
Sharon Henderson  
Denis R Hendrad  
Gerald L Hoff, Ph.D.  
Lynne Homrich  
William Janda  
Steve Jones  
J Mehsen Joseph, Ph.D.  
Dr Stephen Josephson  
William Kabat  
Howard I Kim  
Leanne M Kiriharju  
Amy R Kite  
Matt Klamrzynski  
Dori Klass  
Dr Bruce Kleger  
Kevin M Knigge  
Glenn Kobayashi  
Jerry Kudlac  
Martial Lacroix  
Sandra Lainio  
Kelly Lammons  
Debbie Lepine  
Bill Link  
Jim Mahony, Ph.D.  
Carol Major  
Kathy Mandel

David Marshman  
Allyson May  
Donald Mayo, Sc.D.  
Bruce J McCreedy, Ph.D.  
J Todd McPherson  
Stanley E Micek, III  
Frank J Michalski, Ph.D.  
Rick Moody  
David Mueller  
Tommie F Munro  
Friedah Nehmadi  
Naziha Nuwayhid, Ph.D.  
Dr Thomas A O'Brien  
Gary W Oty  
Elizabeth K Parker  
Marcia Parker, Ph.D.  
John R Pfister  
Jack Phillips  
Dr John V Parry  
David Pickhardt  
Kathryn Anne Pittman  
Jay H Plick  
Herbert Polesky  
Wolf Prensky, Ph.D.  
Max R Proffitt, Ph.D.  
Michael Ramirez  
Glenn Ramsey, M.D.  
Barry Reed, M.D.  
Bill Roberts  
Lt Col Chester Roberts, Ph.D.  
Jeanette V Roman  
Gene F Robertson, Ph.D.  
Jill Sargeant  
Ed Saunders  
Charles Schable, M.S.

Nicholas R Schmitz  
Betsy Sears  
Bob Shea  
Roger Schuller  
Mark M Sieczkarek  
Margarita Gardia Silva  
Prema M Singa, M.D.  
Mel Smith  
Stacey Sprague  
Steve Sproul  
Richard Steece, Ph.D.  
Miriam Stella  
Chip Stephens  
John Stephens  
Jane M Stevens  
Robert L Sprout, Ph.D.  
Howard F Taswell, M.D.  
Brad Therell, Ph.D.  
Thomas R Thieme, Ph.D.  
Rigmor Thorstensson, Ph.D.  
Howard Urnovitz  
Adi Virji, Ph.D.  
Katherine von Alt  
Trevor Wall  
J Scott Webber  
Marianne Weinell  
Barbara G Werner, Ph.D.  
Jane Westerman  
Judith Wethers, M.S.  
Julianne Wiese  
Helen Wiprud  
JoAnn L Yee  
Madonna Young  
Suzanne Zanto, MT(ASCP)  
Maan Zrein



---

## PANEL SESSION II

### TESTING: LYMPHOCYTE SUBSET QUANTITATION

---

#### PANEL CHAIR:

**Mariano F LaVia, M.D.**, Professor of Pathology and Laboratory Medicine, Medical University of South Carolina, Charleston, South Carolina

#### PANEL MEMBERS:

**Arthur F DiSalvo, M.D.**, Director, Bureau of Laboratory Services, Nevada Division of Health, Reno, Nevada; **Jonathan M Kagan, Ph.D.**, Chief, Clinical Sciences Section, Treatment Research Program, Division of Acquired Immune Deficiency Syndrome (AIDS), National Institute of Allergies and Infectious Diseases, National Institute of Health, Bethesda, Maryland; **Alan Landay, Ph.D.**, Chief, Department of Virology, Rush-Presbyterian-St. Luke's Medical Center, Chicago, Illinois; **Janet K A Nicholson, Ph.D.**, National Center for Infectious Diseases, Centers for Disease Control, Atlanta, Georgia (*Rapporteur*)

### PANEL RECOMMENDATIONS

Immunophenotyping of peripheral blood lymphocytes is the principal laboratory technique for monitoring the course of HIV infection. The following recommendations are provided to assist laboratories which are considering flow cytometry testing.

- 2.01** Each public health laboratory should evaluate the need to establish flow cytometry capability based on an assessment of criteria including: prevalence of HIV infection and cumulative incidence of AIDS within the area served, ability to monitor and evaluate the quality of flow cytometry and pertinent hematology results, cost effectiveness, and the availability of other early HIV intervention services. Additional data are needed before specific recommendations can be made on non-retroviral public health and environmental applications of flow cytometry.
- 2.02** Flow cytometry training should be mandatory for all relevant personnel including instrument operators, laboratory supervisors and laboratory directors.
- (a) All instrument operators should, in addition to flow cytometer manufacturer's training, receive supplementary training through additional courses or workshops offered by independent organizations. In-house training at experienced laboratories may be an acceptable alternative.
  - (b) Clinical flow cytometry training courses specific for laboratory directors and supervisors should be developed.
  - (c) The feasibility of certification programs for laboratory technicians trained in flow cytometry should be investigated.
  - (d) The development and implementation of accreditation standards for all training courses and workshops in clinical flow cytometry is recommended.
  - (e) Information about clinical flow cytometry training courses and workshops by CDC and other organizations should be provided and updated as necessary.
- 2.03** Before accepting specimens for clinical flow cytometric analysis, each laboratory must have in place a comprehensive quality assurance protocol that includes standardization, quality control procedures, and proficiency testing.
- (a) Standardization of instrument optical alignment, spectral sensitivity, and fluorescence compensation must be performed daily.

- (b) Quality control includes daily monitoring and recording of instrument performance and cell preparation methodologies. Reagent stability should be assessed with lot changes and as otherwise needed.
- (c) Proficiency testing within a nationally recognized program on a quarterly basis is required as an integral component of comprehensive quality assurance.

**2.04** The following guidelines are endorsed: the National Committee for Clinical Laboratory Standards (NCCLS) Proposed Guideline, H42-T - Clinical Applications of Flow Cytometry: Quality Assurance and Immunophenotyping of Peripheral Blood Lymphocytes, and the CDC guideline - Guidelines for the Performance of CD4<sup>+</sup> T Cell Determinations in Persons with Human Immunodeficiency Virus Infections.

**2.05** The determination of absolute counts for lymphocyte subsets requires both hematologic and flow cytometric measures.

For hematologic measures:

- (a) Determination of the absolute lymphocyte count requires both a white blood cell count (WBC) and a differential (including percent lymphocytes). The NCCLS Tentative Standard (1984), H20-T, Leukocyte Differential Counting is endorsed. The optimal specimen for these hematologic measures is EDTA-preserved whole blood (lavender top tube) less than six hours old.
- (b) Recognizing that laboratories may receive hematologic specimens more than 6 hours old, the Panel recommends consideration of the following options:
  - (1) Hematologic analysis may be performed within six hours locally and a second specimen (drawn simultaneously) for flow cytometry may be transported to the flow cytometry laboratory. It may be desirable to obtain a fresh smear for quality assurance.

- (2) Laboratories can verify the maximum age of specimens (both HIV positive and HIV negative) for which hematologic results are comparable to fresh specimens.

- (c) The laboratory performing the hematology should maintain a documented intra-laboratory coefficient of variation less than five percent for the white blood cell (WBC) count.
- (d) Laboratories should evaluate and characterize intra-laboratory bias and establish confidence intervals for the WBC and the differential lymphocyte counts.
- (e) Automated differentials are strongly recommended. Manual differentials should count at least 400 cells.

For flow cytometric measures:

- (a) The optimal specimen for lymphocyte immunophenotyping by flow cytometry is either an EDTA-preserved whole blood specimen less than six hours old or a heparinized whole blood specimen less than 24 hours old.
- (b) Recognizing that laboratories may receive suboptimal (old) flow cytometric specimens, it is recommended that laboratories verify the maximum age of specimens for which immunophenotyping results are comparable to fresh specimens.
- (c) Optimally, specimens should be maintained at room temperature (18-22 C) until tested.

**2.06** Whole blood lysis and two-color immunofluorescence are the methods of choice for flow cytometric immunophenotyping.

**2.07** The following two-color monoclonal antibody panel for routine immunophenotyping is recommended:

See table next page

Monoclonal Antibody Combination <sup>a</sup>	Cell Type Enumerated
1. IgG1/IgG2 <sup>a</sup>	Isotype controls
2. CD45/CD14	% lymphocytes in gating region <sup>b</sup>
3. CD3/CD4	T-helper/inducer subset <sup>c</sup>
4. CD3/CD8	T-suppressor/cytotoxic subset <sup>c</sup>
5. CD3/CD16 + CD56	Total T cells/Total NK cells <sup>d</sup>
6. CD19	Total B-Cells

<sup>a</sup> FITC/PE-labeled reagents

<sup>b</sup> Lymphocytes will be CD45<sup>bright</sup>CD14<sup>negative</sup>

<sup>c</sup> Indicated cell type will be positive for both antibodies

<sup>d</sup> Total T cells = all cells expressing CD3; Total NK cells = all cells which are CD3<sup>negative</sup> but positive for CD16 and/or CD56.

**2.08** Lymphocyte light scatter gates must be validated by anti-CD45 (pan-leukocyte) and anti-CD14 (monocyte) reactivity.

(a) Optimally, non-lymphocyte contamination within the gate should not exceed 5 percent. 85% is the lowest limit of acceptable lymphocyte representation in the lymphocyte gate.

(b) At least 95 percent of lymphocytes should be contained within the light scatter gate.

**2.09** Lymphocyte subset percentage values from the flow cytometer should be corrected by dividing the observed percentage by the percentage of lymphocytes (CD45<sup>bright</sup>CD14<sup>negative</sup>) in the lymphocyte gating region.

**2.10** For most specimens, the total of the corrected CD3<sup>positive</sup> (Total T), CD19<sup>positive</sup> (Total B), and CD3<sup>negative</sup> CD56<sup>positive</sup> &/or CD16<sup>positive</sup> (Total NK) percentages should sum to between 95 and 105 percent.

**2.11** Each laboratory must establish age- and population-appropriate reference ranges in accordance with validated statistical criteria. It should be noted that pediatric reference ranges differ substantially from the reference ranges for adult populations.

**2.12** The manufacturers of flow cytometry instrumentation and reagents are urged to cooperatively expedite the development of:

- (a) Improved lymphocyte gating reagents
- (b) Automated sample preparation technology
- (c) Flow cytometers capable of determining absolute numbers for lymphocyte subsets
- (d) Improved laboratory quality control reagents
- (e) Anticoagulants and preservatives suitable for both hematologic and flow cytometric measurements

**2.13** Laboratory reports should optimally include lymphocyte subset percentages, absolute values and laboratory reference ranges.

(a) Laboratory reports should specify the immunophenotype (CD designation) for all lymphocyte subsets reported therein (e.g., T-helper/inducer = CD3<sup>positive</sup>/CD4<sup>positive</sup>).

(b) Values for lymphocyte subsets should be corrected for the lymphocyte representation in the gating region.

(c) Absolute values for lymphocyte subsets should be reported unless hematologic results are suspect.

**2.14** The efforts by the Centers for Disease Control to continue a national lymphocyte immunophenotyping performance evaluation program including training and education programs is strongly supported.

**2.15** The efforts of the NCCLS, the NIAID Flow Cytometry Advisory Committee, and the CDC in setting guidelines for clinical flow cytometric immunophenotyping is strongly supported.

**2.16** The continued development of alternative (non-flow cytometric) methods for the enumeration of CD4<sup>+</sup> lymphocytes through CDC, NIH and WHO is encouraged.

**2.17** The universal precautions and the flow cytometry safety guidelines as outlined in the following documents is endorsed: NCCLS document H42-T: Clinical Applications of Flow Cytometry: Quality Assurance and Immunophenotyping of Peripheral Blood Lymphocytes and the CDC guideline: Guidelines for the Performance of CD4<sup>+</sup> T Cell Determinations in Persons with Human Immunodeficiency Virus Infections.

## ATTENDEES

*Richard C Alexander*  
*Marion Alleman*  
*Jeremy Abbs*  
*Dr Daniel Amsterdam*  
*Jim Bailey*  
*Carol J Bell*  
*Stanton Berberich, Ph.D.*  
*Brett Cinicotti*  
*Caryln Collins, M.D., M.P.H.*  
*James M Conroy*  
*G David Cross*  
*Frances Pouch-Downes, Dr.P.H.*  
*Dr Harry Hannon*  
*Doug Harding*  
*John Hartley*  
*Dr Patrick Hays*  
*Jerry Hindman*  
*Stanley L Inhorn, M.D.*  
*Wanda K Jones, Dr.P.H.*  
*Jonathan M Kagan, Ph.D.*  
*Gail Y Kunimoto*  
*Tom Kreuger*  
*George Latzanich*  
*Keith J Lawrence*  
*James P Lugo*  
*Ron Lynch*  
*Sue MacRae*

*Jeffrey P Massey*  
*Douglas F Moore*  
*Mara Neal-Ends*  
*Myriam Garcia Negron*  
*Sherian Nestor*  
*Richard H Newhouse*  
*Janet K A Nicholson, Ph.D.*  
*Maurice R G O'Gorman, Ph.D.*  
*Michael Peddecord*  
*Catherine Phillips*  
*Audrey Prieve*  
*Carol D Reid*  
*John Ridderhof, Dr.P.H.*  
*Maria Rios*  
*Rosanna Rumbough*  
*Teresa Salas*  
*Earl Smith*  
*Ralph Timpert*  
*Elda Margarita Duran Urcina*  
*Jay E Valinsky*  
*Dolores Villareal*  
*Anne Marie Ward*  
*William Welsh*  
*Verna Willis*  
*Dennis Wolf*  
*Ted Woytowicz*

---

---

**PANEL SESSION III**  
**TESTING: NON-SEROLOGIC TESTING METHODS**

---

---

**PANEL CHAIR:**

**Haynes W (Chip) Sheppard, Ph.D.**, Research Scientist, California Public Health Foundation, Berkeley, California

**PANEL MEMBERS :**

**Chin-Yih Ou, Ph.D.**, Division of HIV/AIDS, Centers for Disease Control, Atlanta, Georgia; **John Sninsky, Ph.D.**, Senior Director, Diagnostics Research, PCR Division, Cetus Corporation, Emeryville, California; **Judith Wilber, Ph.D.**, Manager, Clinical Micro, Nucleic Acid Chemistry, Chiron Corporation, Emeryville, California

**RAPPORTEUR:**

**Michael Ascher, M.D.**, Deputy Chief, Viral and Rickettsial Disease Laboratory, California Department of Health, Berkeley, California

**PANEL RECOMMENDATIONS**

- 3.01 For specimens obtained "on site", with same day processing, whole blood specimens with EDTA, Heparin, or ACD are suitable for PCR testing. For specimens which are shipped from another site, ACD may be suitable for up to 5 days. For tubes with EDTA or heparin, the maximum transport time is 48 hours.
- 3.02 Every effort should be made to obtain whole blood samples 24-48 hrs after venipuncture. Samples should be transported at room temperature.
- 3.03 Dried blood spots appear to be suitable for PCR testing and may be stable for long periods of time. Further data are awaited regarding the sensitivity and specificity of PCR testing from dried blood spots.
- 3.04 Each laboratory should optimize critical components of its PCR protocols (e.g. magnesium concentration, annealing and extension conditions, etc.) for optimum sensitivity and specificity as determined by proficiency test results.
- 3.05 Solution hybridization with radioactive oligonucleotide probes is a highly sensitive and specific method and is recommended for detection of PCR products. However, a variety of non-radioactive detection methods are now available and those with comparable sensitivity and specificity are also recommended.
- 3.06 In order to obtain the authority to perform and report PCR results, the PCR sub-committee recommends continuation of discussions with those who hold patents affecting the use of PCR for the purpose of insuring continuation of public health investigations of the diagnosis, etiology, and pathogenesis of diseases of public health importance.
- 3.07 Primers with documented sensitivity and specificity should be selected and used under optimum conditions.
- 3.08 A minimum of two separate PCR reactions (two primer pairs or duplicates of one primer pair) should be performed for each specimen. Splitting of the original specimen is recommended when possible.
- 3.09 Discrepant results should be resolved by additional analysis of the original specimen using the same or different primer pairs. If discrepant results cannot be resolved by repeat testing, the results should be reported as indeterminate and another specimen should be requested.
- 3.10 The overall interpretation of PCR testing should be reported as HIV-1 DNA detected, HIV-1 DNA not detected, or Indeterminate.
- 3.11 Complete testing algorithms need not be reported.

- 3.12 Appropriate positive, negative, and reagent controls should be included with every PCR test. HLA controls may be used to validate specimen integrity.
- 3.13 All published guidelines for minimizing the contamination of specimens with amplified PCR product should be rigorously followed.
- 3.14 Biochemical sterilization of PCR products should be instituted in all PCR laboratories as soon as possible.
- 3.15 The committee recommends that each laboratory performing PCR conduct validation studies on an appropriate number of well characterized test samples and maintain appropriate records of such test results.
- 3.16 The development of validation panels for distribution to PCR laboratories by the private sector, NIH, and CDC is recommended.
- 3.17 The development of standardized reagents and controls in the form of commercial kits is encouraged.
- 3.18 The immediate initiation of a proficiency testing program for PCR is recommended.
- 3.19 The application of PCR, in combination with other tests, to the diagnosis of infants born to seropositive mothers is recommended. Additional studies on the use of PCR in the first three months of life are needed.
- 3.20 The use of PCR for retroviral diagnosis in "high risk" seronegative adults and for the resolution of indeterminate serology in adults is not recommended as a routine procedure. PCR can be helpful as a supplemental test in these situations if used judiciously and in the full laboratory and clinical context.
- 3.21 PCR may be helpful in the diagnosis of rare individuals with defective antibody production.
- 3.22 PCR is useful for the differentiation of viral sub-types (e.g., HTLV-I/II or HIV-1 vs HIV-2).
- 3.23 The determination of viral burden by PCR may be helpful in the prognosis of HIV disease. However, quantitative PCR requires complex procedures which are not established in most laboratories.
- 3.24 The use of PCR to monitor the effects of antiviral therapy on viral burden is an important area of future study but has not been validated at this time.
- 3.25 Based on review of published and presented data, the consensus of the panel is that the detection of HIV-1 by PCR or culture in antibody-negative individuals is restricted to the seroconversion window which is less than six months (95% confidence interval). The Retrovirus Committee could play an important role in disseminating this information to the community to clarify a continuing misunderstanding.

## ATTENDEES

Jeremy Abbs  
Sandra Aarnaes  
Marion Alleman  
Dr Daniel Amsterdam  
Arthur Back  
J Dean Barry, M.S.  
Janice Beasley  
Dr Sara T Beatrice  
Susan Best  
Laurence C Briggs  
David A Bruckner, Sc.D.  
Barbara Cahoon-Young  
Thomas H Callaway, M.D.  
Celeste Chenet  
Lorraine Clark  
Anne Marie Comeau, Ph.D.  
James M Conroy  
Sandra Currin  
Valerie R Dada  
Massoud Davaie-Markazi  
Stephen P Day, Ph.D.  
Frances Pouch-Downes, Dr.P.H.  
L A Durgin  
Micheline Fauvel  
Tim Flowers  
P E Garrett  
Carol Gibson  
Elizabeth Gibson  
Carl Good  
Samuel Gregorio  
Dr Brigitte Griffith  
Kamlesh Gupta  
Vasken Hajakian  
Susan Harrington  
Patrick Hays  
Richard Heberling, Ph.D.  
Sharon Henderson  
Denis R Hendrad  
Timothy Holzer  
Lynne Homrich  
Stanley L Inhorn, M.D.  
William Kabat  
Howard I Kim  
Glenn Kobayashi  
Marion Kritzler  
Mariano LaVia  
Sue MacRae  
Jeffrey P Massey  
Bruce J McCreedy, Ph.D.  
J Todd McPherson  
Stanley E Micek, III  
Frank J Michalski  
Doug Michels  
Tommie F Munro  
Miriam Garcia Negron  
Naziha Nuwayhid Ph.D.  
Chin-Yih Ou, Ph.D.  
Jack Phillips  
Susan Piotrowski  
Kathryn Anne Pittman  
Wolf Prensky, Ph.D.  
Michael Ramirez  
Glenn Ramsey, M.D.  
Carol D Reid  
Stanley Reimer  
Carol Richards  
Maria Rios  
Bill Roberts  
Teresa Salas  
Ed Saunders  
Charles Schable, M.S.  
Haynes W Sheppard, Ph.D.  
Prema M Singa, M.D.  
Robert E Sltuburg  
Edith Smith  
John Sninsky, Ph.D.  
Robert L Sprout, Ph.D.  
Howard F Taswell, M.D.  
Ralph Timperi  
Elda Margarita Duran Urcina  
Jay E Valinsky  
Katherine von Alt  
Anne Marie Ward  
William Welch  
Helen Wiprud  
Dennis Wolf  
Ted Woytowicz  
Madonna Young  
Suzanne Zanto, MT(ASCP)

---

## PANEL SESSION IV TESTING: SPECIAL TOPICS

---

**PANEL CHAIR:**

**J Mehsen Joseph, Ph.D.**, Director, Laboratories Administration, Maryland Department of Health and Mental Hygiene, Baltimore, Maryland

**PANEL MEMBERS:**

**Jay Epstein, M.D.**, Chief, Retrovirology Laboratory, Division of Blood and Blood Products, Food and Drug Administration, Bethesda, Maryland; **Dana Gallo, M.S.**, Public Health Microbiologist, California Department of Health Services, Berkeley, California; **Thomas R Thieme, Ph.D.**, Senior Scientist, Epitope, Inc., Beaverton, Oregon; **Barbara Weiblen, M.S.**, Senior Scientist, Newborn HIV Project, Theobald Smith Research Institute, Jamaica Plain, Massachusetts

**RAPPORTEUR:**

**Cynthia Cossen, M.S.**, Public Health Microbiologist, Viral and Rickettsial Diseases Laboratory, California Department of Health, Berkeley, California

### PANEL RECOMMENDATIONS

- 4.01** At the present time, based on several concerns, the use of urine or saliva for HIV-1 antibody testing is not recommended. These include the assurance of sample adequacy at the time of collection, the increased frequency of indeterminate Western blots and suitability of various HIV-1 EIA assays for antibody screening.
- 4.02** The nature of oral samples needs to be assessed as to subclasses of IgG detected and the amount of IgG present. Manufacturers need to include a marker or method of sample adequacy in their collection devices. Further testing needs to be done to assess the utility of oral samples for HIV-1 testing.
- 4.03** Interested investigators and manufacturers should continue to collect data supporting the use of saliva and urine for HIV-1 antibody testing and supply these data to appropriate agencies for approval.
- 4.04** It is recommended that the interpretative criteria for HTLV-III Western blot be changed due to the under-reporting of true positive results using the current criteria. A positive test should include at least one gag (p19,p24) band and one env band. Bands used for interpretation should be consistent with manufacturers recommendations.



## ATTENDEES

Richard C Alexander  
Steve Alexander  
Kim Anderson  
Lillie Anderson  
Mary Beth Baker  
Jeanne Baldwin  
Jim Bailey  
Lisa Baumar  
Carol J Bell  
Gerald A Beltz  
Darcel Bigelow  
Vincent L Blatt  
Sharon Blumer  
Anne Bodner  
John A Boffa  
Rosemary Boker  
Robin Botchlet  
Karl Brackmann  
Brad Brazell  
Lynn Bromstedt  
Kay Buchanan, Ph.D.  
Nerissa Cabrera, MT(ASCP)  
Laurie Cartwright  
Jack Cassorla  
Jinton Chen  
Celeste Chenet  
Brett Clinicotti  
Patrick Coleman  
Carlyn Collins, M.D., M.P.H.  
Jeanne Connelly  
Dr Niel T Constantine  
Cynthia Cossen  
G David Cross  
Raul R Cuadrado, Dr. P.H.  
Elizabeth M Dax  
Donna DeLong  
P David Dotson, Jr  
Harold Dowda, Ph.D.  
Kenneth Dressler  
Dr Robert J Dwyer  
Richard Egan, Ph.D.  
Julie Essmann  
Robert Falcon  
Chyang Fang, Ph.D.  
Dennis V Ferrero, M.P.H.  
Dana Gallo  
Loretta Gaschler  
J Ronald Genevie  
J Richard George, Ph.D.

Jane P Getchell, Ph.D.  
Marjorie Giles  
Charles Ginsburgh  
Andrew Goldstein  
Helene Gravel  
Bruce Gray  
Samuel Gregorio  
Peggy Guidinger  
Louis E Guskey, Ph.D.  
Wyman H Haigler  
Nancy J Haley, Ph.D.  
Laurel Halfpap  
Gwendolyn V Halle-Steele  
Larry Harbles  
W Hausler  
Jerry Hindman  
Gerald L Hoff, Ph.D.  
William Janda  
J Mehsen Joseph, Ph.D.  
Dr Stephen Josephson  
Leanne M Kiriharju  
Amy R Kite  
Matt Klamrzynski  
Dori Klass  
Dr Bruce Kleger  
Kevin M Knigge  
Jerry Kudlac  
Martial Lacroix  
Sandra Lainio  
Mariano LaVia  
Kelly Lammons  
Debbie Lepine  
Bill Link  
Ron Lynch  
Jim Mahony, Ph.D.  
Carol Major  
Kathy Mandel  
David Marshman  
Mary Matheu  
Allyson May  
Donald Mayo, Sc.D.  
Rick Moody  
David Mueller  
Friedah Nehmadi  
Joseph Niedbalski  
Gary W Oty  
Elizabeth K Parker  
Marcia Parker, Ph.D.  
Dr John V Parry

*Jeanette Pelletier  
John R Pflster  
Catherine Phillips  
David Pckhardt  
Jay H Plick  
Audrey Prieve  
Max R Proffitt, Ph.D.  
G Ramsey  
Barry Reed, M.D.  
Jeanette V Roman  
Jill Sargeant  
Ed Saunders  
Keith Sayre  
Nicholas R Schmitz  
Richard T Schumacher  
Eugene Seymour  
Ken Shockley  
Betsy Sears  
Bob Shea  
Mark M Stieczkarek  
Jacqueline Sheffield  
Margarita Gardia Silva*

*Mel Smith  
Stacey Sprague  
Steve Sproul  
Catherine Sprull  
Richard Steece, Ph.D.  
Miriam Stella  
Chip Stephens  
John Stephens  
Jane M Stevens  
H Tamashiro  
Brad Therell, Ph.D.  
Thomas R Thieme, Ph.D.  
Rigmor Thorstensson, Ph.D.  
Howard Urnovitz  
Adi Virji, Ph.D.  
J Scott Webber  
Marianne Weinell  
Barbara G Werner, Ph.D.  
Jane Westerman  
Judith Wethers, M.S.  
Jullanne Wiese  
Maan Zrein*

## FLOW CYTOMETRY WORKSHOP

### MODERATOR:

Dr Mariano LaVia, Professor of Pathology and Laboratory Medicine, Medical University of South Carolina, Charleston, South Carolina

### LECTURERS:

Rosanne Fidelus-Gort, Ph.D., Manager, Immunology, SmithKline Beecham Clinical Laboratory; Stanton Berberich, Ph.D., Molecular Biologist, Hygienic Laboratory, University of Iowa, Iowa City, Iowa

### COMPANIES:

Becton-Dickinson Laboratories

Coulter Electronics

Ortho Diagnostic

## ATTENDEES

Bonnie Bean, M.D.  
Stanton Berberich, Ph.D.  
Rosemary Boker  
David F Carpenter, Ph.D.  
Jerome Cordts  
David G Cross  
Raul R Cuadardo, Dr.P.H.  
Sandra Currin  
Valerie R Dada  
Dr Elizabeth Dax  
Arthur DiSalvo, Ph.D.  
Francis Pouch-Downes, Dr.P.H.  
Gloria Echeverria de Perez  
Micheline Fauvel  
Dr Bagher Forghani  
Jane P Getchell, Ph.D.  
Loretta Gaschler  
Samuel Gregorio  
Jerry Hindman  
Mildred Hilliard  
Mary Jane Isaac  
Tom Kreuger  
William Rabat  
Glenn Kobayashi  
Keith J Lawrence  
Robert Lindner, M.D.,Ph.D.  
James P Lugo  
Sue MacRae  
Gail Y Kunimoto

George Latzanick  
Douglas F Moore  
Sherian Nestor  
Naziha Nuwayhid, Ph.D.  
Myrian Garcia Negron  
Elizabeth Parker  
Michael Peddecord  
Maurice R G O'Gorman, Ph.D.  
Gary W Oty  
Kathryn Anne Pittman  
Audrey Prieve  
Catherine Phillips  
Carol D Reid  
Rosanna Rumbough  
John Ridderhof, Dr.P.H.  
Haynes W Sheppard, Ph.D.  
Margarita Garcia Silva  
Richard Steece, Ph.D.  
Robert Stout, Ph.D.  
Ralph Timperi  
Trevor Wall  
Dr Howard Urnovitz  
Dolores Villareal  
Katherine von Alt  
Verna Willis  
Barbara G Werner, Ph.D.  
William D Welch, Ph.D.  
JoAnn L Yee  
Suzanne Zanto, MT(ASCP)

---

---

## CONFERENCE ABSTRACTS

---

---

- 1 Use of Recommended HIV-1/HIV-2 Testing Algorithm with FDA-Licensed HIV-1/HIV-2 EIA • C. Fererra, D Fortenberry, M Hanson, T Sutherland, G Tegmeier
- 2 Whole-Blood Spot Specimens Collected on Filter Paper and Tested with Genetic Systems HIV-1/HIV-2 EIA • P. Stewart, HIV-1/HIV-2 EIA DBS Study Group, M Krieger
- 3 Comparison of LAV and HIV-1 Viral Lysate EIA for Detection of HIV-1 Antibody • Robin Botchlet, Jerry Kudlac, Garry L McKee
- 4 Comparative Evaluation of Six Rapid Serological Tests for HIV-1 Infection • J. D. Malone, E S Smith, J Sheffield, D Bigelow, K C Hyams, S G Beardsley, R S Lewis, C R Roberts
- 5 HIV-1 Western Blot Interpretive Criteria Revisited • L P Layug, S G Sandler, C. T. Fang
- 6 Development of a Combination Assay for the Detection of HIV-1 and HIV-2 Antibodies • R. Bauer, A Alonso, C Benoit, J Carten, J Connelly, J Johnson, S Lambert, Y Devash •
- 7 Optimal Pool Size for Determination of HIV-1 Antibody Prevalence in Low Risk Populations • B. Cahoon-Young, Ph. D.; A Chandler, MPA; R Benjamin, MD; James Wiley, Ph.D.
- 8 A Combination Screening EIA for the Simultaneous Detection of HIV-1 and HIV-2 Antibodies in Serum or Plasma • Miriam Stella, Teresa Chan, Annelie Wilde, Gary Mantha
- 9 Immune Complex Disruption in HIV-1 Antigen Testing • S. Piotrowski, C Przybylski, D Wiesner, J Stewart, S Stramer
- 10 Evaluation of a Highly Sensitive and Specific Assay for Rapid Detection of HIV-1 p24 Antigen • S. Harrington, J Leete, J Stewart, S Mehta, R Gilcher
- 11 Comparison of Three Western Blot Interpretive Criteria: Data from the National HIV Seroprevalence Surveys. • Martha A Redus, Catherine L Spruill, Marta Gwinn, Ida M Onorato, Charles A Schable, Gerald J Shochetman, J Richard George
- 12 Evaluation of an Enzyme Immunoassay for the Simultaneous Detection of Anti-HIV-1/HIV-2 • D. Liu, R LaPrade, D Nichols, J Overman, A Wancho, C Sapan
- 13 A Combination Screening EIA for the Simultaneous Detection of HBsAg and Antibodies to HIV-1 and HIV-2 • W. Black, J Guckenberger, N Kanani, J Staser
- 14 Early Detection of Antibody to HIV-1 Using an HIV-1/HIV-2 Antigen Sandwich Immunoassay Correlates with the Presence of IgM Antibody • James L. Gallarda, Denis R Henrard, Douglas Liu, Susan Harrington, Susan L Stramer, Jay Valinsky, Ping Wu
- 15 Canadian Multicentre Evaluation of Combination HIV-1/HIV-2 EIA Kits for Detection of Antibodies to HIV-1 • K. Gupta, M Fauvel, R Galli, M V O'Shaughnessy
- 16 Evaluation of Stability and Detectability of HIV RNA by Viral Capture in Serum and Plasma • William F Mehaffey, Robert Coombs, Thomas C Quinn, Denis R Henrard
- 17 Combination of Anti-p24 Antibody and Beta 2-Microglobulin Measurements for the Prediction of Progression to AIDS • Denis R Henrard, Yvette McCarter, Haynes Sheppard, Don Mayo
- 18 A Rapid Automated Immunoassay for the Detection of Antibodies to HIV-1 and HIV-2 Utilizing Recombinant Antigens • Charles Ginsburgh, G Hall-Steele, K Nordmark, J Pawlowski, R Stumpf, S Webber, S Stramer

- 19 Abbott Matrix: An Objective Immunoassay System for HIV Confirmation • Kevin Knigge, J Stephens, B Braun, C Daluga, M Whiteside, W Schulze
- 20 Simultaneous Detection of Antibodies to HIV-1, HIV-2, HTLV-I or HTLV-II: DETECT-PLUS<sup>sm</sup>; A New Generation of Multiscreening Immunoassay • M Zrein, R Dwyer, M Lacroix
- 21 Use of and HIV Combination Assay to Screen STD Clinic Populations: Increase in Initial Reactive Samples Compared with an HIV-1 Assay for Antibody • Barbara G Werner, Lauri C Gibbons
- 22 Application of the Polymerase Chain Reaction to Guthrie Cards for Identification of HIV Infection at Birth • Anne Comeau, Ho-Wen Hsu, Mark Schwerzler, Galina Mushinsky, George Grady
- 23 Evaluation of a New Generation Combination Synthetic Peptide Assay Designed to Detect Antibodies to HIV-1, HIV-2, HTLV-I, and HTLV-II Simultaneously • Niel T Constantine, X Zhang, J Bansal, J Callahan
- 24 Accuracy and Precision of T-Lymphocyte Immunophenotyping: Results of a Blind Inter-laboratory Survey • K M Peddecord, R S Garfein, D P Francis, G D Cross, W O Schalla, A S Benenson, L K Hofherr
- 25 Shopping for a TLI Reference Laboratory - Criteria for Selecting the Best • D P Francis, K M Peddecord, A F Back, R S Garfein, L K Hofherr, A S Benenson, G D Cross, R N Taylor
- 26 Evaluation of Three Manufacturers' FDA-Licensed HIV EIA Kits on Indeterminate Serum Specimens • Adi S Virji, Warren L Kleinsasser, Robert S Shea, Betsy R Sears, Kimberlee Anderson
- 27 Human T-Lymphocyte Virus Antibody Screening of Paid Serum Donors • Barbara J Weiblen, Patricia E Garrett, Leanna Durgin, Richard T Schumacher
- 28 Testing for HTLV Antibody: Results of the Centers for Disease Control HTLV Survey Questionnaire • S O Blumer, W O Schalla, J S Hancock, A L Branch, R J Fehd
- 29 The Testing of Saliva for Presence of Antibodies to HIV-1 • Robert L Stout, Ph. D.; Mark Magee
- 30 Urine Testing • Robert L Stout, Ph. D.; John Boffa; Mark Magee
- 31 Testing Saliva for Antibodies to HIV Using Specimens Collected with the Omnisal Saliva collection Device • Dawn Fitzgibbons, BS, MT(ASCP); Eugene Seymour, M.D., M.P.H.; Sharon Adair, B.S., MT(ASCP)
- 32 Evaluation of Laboratory Performance of T-Lymphocyte Immunophenotyping in Support of Early HIV-1 Intervention and Prevention • G David Cross, W O Schalla, J S Hancock, T L Hearn
- 33 Comparison of Sensitivity of Three Anti HIV-1/2 Kits: Whole Cell Viral Lysate (VL) - Genetic Systems; Synthetic Peptides (SP) - IAF BioChem; Recombinant Protein (RP) - Abbott Laboratories • K Gupta, P Gill, B K Buchner, M V O'Shaughnessy
- 34 Monospecific Polyclonal Reactivity to HIV-1 gp41 as the Cause of HIV-1 Western Blot False Positive Test • K Sayre, MS; G Tegtmeier, Ph.D.; W Bayer, M.D.; S Alexander, Ph.D.
- 35 Identification of HTLV-II Infection among Amerindians in Venezuela • Gloria Echeverria de Perez, M.D.; Nicolas Bianco, M.D.
- 36 HIV Antibody Testing on Saliva collected with the Omni-Sal Device • Carol Major, Stanley Read, Peggy Millson, Randall Coates, Dale Dematteo, Liviana Calzavara, Janet Rigby, Margaret Fearon, Michael O'Shaughnessy
- 37 A Chemiluminescence Immunoassay (CIA) for Detection of Antibodies to Human T-Lymphotropic Viruses Types I and II • Eugene Robertson, Anne Chang, Michelle Edwards, Peggy Guidinger, Robert Rosenlof, Cynthia Tate, John Weare, Bruce Phelps

- 38 An Automated Chemiluminescent Immunoassay for Detection of Antibodies to HIV-1 and HIV-2 • A Kite, S Lainio, D Montgomery, J Wiese, B Phelps, J Pilch, B Peterson
- 39 Neonatal Dried Blood Screening: Factors Found to be Critical to Achieving High Performance with an HIV-1 Antibody ELISA Test • J W D Kay, J V Roman, G R Jones, T Wilson, C McKellar, T Farrar
- 40 Feasibility Studies for Elimination of ELISA(+)/Western Blot(-) Reactivities in an HIV-1 MicroELISA Test • G R Jones, J V Roman, J W D Kay
- 41 HIV-2 Modification of a High Performance FDA-Licensed HIV-1 ELISA System for Detection of Antibodies to HIV-1 and HIV-2 in Serum and Plasma • J W D Kay, J V Roman, G R Jones, F V Crout, O E Varnier, F Lillo
- 42 Performance Characteristics of Vironostika HTLV-I MicroELISA System • C Chetty, P Scruggs, B Horvath
- 43 HIV Testing in Australia: National Quality Control Data 1990 • Thomas A Vandebelt, Elizabeth M Dax
- 44 Southern Blot Hybridization of PCR Products Using a Non-radioactively Labeled Probe • Susan J Best
- 45 Evaluation of Two Commercial Assays for Human Immunodeficiency Virus Antibodies in Dried Blood Specimens • Frances Pouch Downes, Louis Guskey
- 46 Comparison of HIV-1 Serological and Polymerase Chain Reaction Results from Infants Born to Seropositive Mothers • Jeff Massey, Frances Downes, Robert Martin, David Johnson, Elizabeth Gath
- 47 Analysis of Genetic Variability of HIV-1 by Restriction Analysis of Amplified Proviral DNA • Jeffrey Massey, Frances Downes, Robert Martin, Dan Havlichek
- 48 HIV-1 Western Miniblot Testing: New Developments • Cynthia K Cossen, Shirley J Hagens, Bagher Forghani, Michael S Ascher
- 49 Parallel Evaluation of a Viral Lysate-based and a Recombinant Antigen EIA Screening Test for Antibodies to HIV-1 • M R Proffitt, S Schindler, M Hui, C Starkey, C Osting, B Yen-Lieberman
- 50 HIV-Antibody Testing of Matched Serum, Saliva and Urine Specimens from 12 HIV-Infected Patients • Richard T Schumacher, Patricia E Garrett, Julie D Howard, Barbara J Weiblen
- 51 Confirmation and Differentiation of Antibodies to Human Immunodeficiency Virus 1 and 2 with a Recombinant Strip Immunoblot • J Wethers, MS; K Sayre, MS
- 52 PCR Amplification for the Detection of HIV-1 Infection in Newborns • Bruce J McCreedy, Sharon L Connell, Tom H Callaway, Janet E Squires, Ellen Moore, Flossie Cohen
- 53 A Comparison of Four HIV-1 Western Blot Kits using Four Seroconverter Panels • Bill Link, Janice Diggs, Cynthia Cossen, Michael Ascher
- 54 Evaluation of an EIA for the Combined Detection of Antibodies to HIV-1 HTLV I and HTLV II • Lindsay McAlpine, John V Parry, Jennifer HC Tosswill

## INDEX TO ABSTRACT AUTHORS

Adair, Sharon, B.S., MT(ASCP) . . . . .	31	Dwyer, R . . . . .	20
Alexander, S, Ph.D. . . . .	34	Edwards, Michelle . . . . .	37
Alonso, A . . . . .	6	Fang, C T . . . . .	5
Anderson, Kimberlee . . . . .	26	Farrar, T . . . . .	39
Anne Comeau, . . . . .	22	Fauvel, M . . . . .	15
Ascher, Michael S . . . . .	48, 53	Fearon, Margaret . . . . .	36
Back, A F . . . . .	25	Fehd, R J . . . . .	28
Bansal, J . . . . .	23	Fererra, C . . . . .	1
Bauer, R, . . . . .	6	Fitzgibbons, Dawn, BS, MT(ASCP) . . . . .	31
Bayer, W, M.D. . . . .	34	Forghani, Bagher . . . . .	48
Beardsley, S G . . . . .	4	Fortenberry, D . . . . .	1
Benenson, A S . . . . .	24, 25	Francis, D P . . . . .	24, 25
Benjamin, R, MD . . . . .	7	Gallarda, James L . . . . .	14
Benoit, C . . . . .	6	Galli, R . . . . .	15
Best, Susar J . . . . .	44	Garfein, R S . . . . .	24, 25
Bianco, Nicolas, M.D. . . . .	35	Garrett, Patricia E . . . . .	27, 50
Bigelow, D . . . . .	4	Gath, Elizabeth . . . . .	46
Black, W . . . . .	13	George, J Richard . . . . .	11
Blumer, S O . . . . .	28	Gibbons, Lauri C . . . . .	21
Boffa, John . . . . .	30	Gilcher, R . . . . .	10
Botchlet, Robin . . . . .	3	Gill, P . . . . .	33
Branch, A L . . . . .	28	Ginsburgh, Charles . . . . .	18
Braun, B . . . . .	19	Grady, George . . . . .	22
Buchner, B K . . . . .	33	Guckenberger, J . . . . .	13
Cahoon-Young, B, Ph. D. . . . .	7	Guidinger, Peggy . . . . .	37
Callahan, J . . . . .	23	Gupta, K . . . . .	15, 33
Callaway, Tom H . . . . .	52	Guskey, Louis . . . . .	45
Calzavara, Liviana . . . . .	36	Gwinn, Marta . . . . .	11
Carten, J . . . . .	6	Hagens, Shirley J . . . . .	48
Chan, Teresa . . . . .	8	Hall-Steele, G . . . . .	18
Chandler, A, MPA . . . . .	7	Hancock, J S . . . . .	28, 32
Chang, Anne . . . . .	37	Hanson, M . . . . .	1
Chetty, C . . . . .	42	Harrington, S . . . . .	10, 14
Coates, Randall . . . . .	36	Havlichek, Dan . . . . .	47
Cohen, Flossie . . . . .	52	Hearn, T L . . . . .	32
Connell, Sharon L . . . . .	52	Henrard, Denis R . . . . .	14, 16, 17
Connelly, J . . . . .	6	HIV-1/HIV-2 EIA DBS Study Group . . . . .	2
Constantine, Niel T . . . . .	23	Hofherr, L K . . . . .	24, 25
Coombs, Robert . . . . .	16	Horvath, B . . . . .	42
Cossen, Cynthia K . . . . .	48, 53	Howard, Julie D . . . . .	50
Cross G David . . . . .	24, 25, 32	Hsu, Ho-Wen . . . . .	22
Crout, F V . . . . .	41	Hui, M . . . . .	49
Daluga, C . . . . .	19	Hyams, K C . . . . .	4
Dax Elizabeth M . . . . .	43	Johnson, David . . . . .	46
de Perez, Gloria Echeverria, M.D. . . . .	35	Johnson, J . . . . .	6
Dematteo, Dale . . . . .	36	Jones, G R . . . . .	39, 40, 41
Devash, Y . . . . .	6	Kanani, N . . . . .	13
Diggs, Janice . . . . .	53	Kay, J W D . . . . .	39, 40, 41
Downes, Frances Pouch . . . . .	45, 46, 47	Kite, A . . . . .	38
Durgin, Leanna . . . . .	27	Kleinsasser, Warren L . . . . .	26

Knigge, Kevin	19	Rosenlof, Robert	37
Krieger, M	2	Sandler, S G,	5
Kudlac, Jerry	3	Sapan, C	12
Lacroix, M	20	Sayre, K, MS	34, 51
Lainio, S	38	Schable, Charles A	11
Lambert, S	6	Schalla, W O	24, 28, 32
LaPrade, R	12	Schindler, S	49
Layug, L P	5	Schochetman, Gerald J	11
Leete, J	10	Schulze, W	19
Lewis, R S	4	Schumacher, Richard T	27
Lillo, F	41	Schwerzler, Mark	22
Link, Bill,	53	Scruggs, P	42
Liu, D	12, 14	Scars, Betsy R	26
Magee, Mark	29, 30	Seymour, Eugene, M.D., M.P.H.	31
Major, Carol	36	Shea, Robert S	26
Malone, J D	4	Sheffield, J	4
Mantha, Gary	8	Sheppard, Haynes	17
Martin, Robert	46, 47	Smith, E S	4
Massey, Jeffrey	46, 47	Spruill, Catherine L	11
Mayo, Don	17	Squires, Janet E	52
McAlpine, Lindsay	54	Starkey, C	49
McCarter, Yvette	17	Staser, J	13
McCree dy, Bruce J	52	Stella, Miriam,	8
McKee, Garry L	3	Stephens, J	19
McKellar, C	39	Stewart, J	9, 10
Mehaffey, W F	16	Stewart, P,	2
Mehta, S	10	Stout, Robert L, Ph. D.	29, 30
Millson, Peggy	36	Stramer, Susan L	9, 14, 18
Montgomery, D	38	Stumpf, R	18
Moore, Ellen	52	Sutherland, T	1
Mushinsky, Galina	22	Tate, Cynthia	37
Nichols, D	12	Taylor, R N	25
Nordmark, K	18	Tegtmeier, G	1, 34
O'Shaughnessy, M V	15, 33, 36	Tosswill, Jennifer HC	54
Onorato, Ida M	11	Valinsky, Jay	14
Osting, C	49	Vandenbelt, Thomas A	43
Overman, J	12	Varnier, O E	41
Parry, John V	54	Virji, Adi S	26
Pawlowlski, J	18	Wancho, A	12
Peddecord, K M	24, 25	Weare, John	37
Peterson, B	38	Webber, S	18
Phelps, B	37, 38	Weiblen, Barbara J	27, 50
Pilch, J	38	Werner, Barbara G	21
Plotrowski, S	9	Wethers, J, MS	51
Proffitt, M R	49	Whiteside, M	19
Przybylski, C	9	Wiese, J	38
Quinn, Thomas C	16	Wiesner, D	9
Read, Stanley	36	Wilde, Annelie	8
Redus, Martha A	11	Wiley, James, Ph.D.	7
Richard T Schumacher	50	Wilson, T	39
Rigby, Janet	36	Wu, Ping	14
Roberts, C R	4	Yen-Lieberman, B	49
Robertson, Eugene	37	Zhang, X	23
Roman, J V	39, 40, 41	Zrcin, M	20



## CONFERENCE ATTENDEES

- Sandra Aarnæs**, Supervisor, Microbiology, University of California Irvine Medical Center
- Jeremy Abbs**, Ortho Diagnostic Systems, Inc.
- Richard C. Alexander**, Laboratory Director, San Bernardino County Public Health Laboratory
- Steve Alexander**, Cambridge Biotech Corp.
- Marion Alleman**, Lab Manager, Louisiana Dept of Public Health
- John Amat**, Director Corporate Sales, Sanofi Diagnostics Pasteur
- Dr. Daniel Amsterdam**, Professor/Director Microbiology & Immunology, ECMC/SUNY at Buffalo
- Diane Anderson**, Organon Teknika
- Kim Anderson**, Lead Technologist - HIV, Osborn Laboratories
- Lille Anderson**, Microbiologist II, New Jersey State Health Department Public Health & Environmental Labs
- Steve Anderson**, Coulter Corporation
- Michael Ascher**, M.D., Viral & Rickettsial Disease Laboratory, California Department of Health
- Arthur Back**, Dr. P.H., Lab Director, San Francisco Department of Public Health
- Jim Bailey**, PHP Specialist, HIV Counseling & Testing Program, Illinois Department of Public Health
- Mary Beth Baker**, RM (AAM), Virology Supervisor, Pathology Associates Medical Laboratories
- Jeanne Baldwin**, Product Manager, Abbott Laboratories
- J Dean Barry**, M.S., Laboratory Manager, Virus Reference Laboratory
- Richard Bauer**, Ortho Diagnostic Systems, Inc.
- Lisa Bauman**, Technical Service Representative, Genetic Systems
- Bonnie Bean**, M.D., Director, Clinical Microbiology, Humana Hospital - Michael Reese
- Janice Beasley**, MT(ASCP), Scott Air Force Base, Medical Center Lab
- Dr. Sara T. Beatrice**, Director, Retrovirology & Immunology Division, New York City Department of Health, Bureau of Laboratories
- Carol J. Bell**, Project Administrator, ISQAL, Centers for Disease Control
- Cathy Belleville**, New York Blood Center
- Gerald A. Beltz**, Director of Research, Cambridge Biotech Corp.
- Stanton Berberich**, Ph.D., Molecular Biologist, Hygienic Laboratory, University of Iowa
- Jayne Berglund**, Sales Representative, Sanofi Diagnostics Pasteur
- Susan Best**, National HIV Reference Laboratory, Fairfield Hospital
- Peter Betzelos**, Territory Manager, Sanofi Diagnostics Pasteur
- Vinit S Bhatt**, BioGenex Laboratories, Inc.
- Darcel T Bigelow**, Health Science Specialist, Navy HIV Program, National Naval Medical Center
- Bill Black**, Project Manager, Abbott Laboratories
- Sharon Blumer**, Health Scientist, Center for Disease Control
- Dr Anne Bodner**, Director, Product Development, Cambridge Biotech Corporation
- John A Boffa**, VP Technical Services, GIB Laboratories
- Rosemary Boker**, Supervisor, Virology/STD Laboratory, Illinois Department of Public Health
- Robin Botchlet**, Supervisor, Oklahoma State Department of Health, Public Health Laboratory

- Karl Brackmann**, Technical Procedure Development, Genetic Systems/Sanofi Diagnostics Pasteur
- Brad Brazell**, Product Manager, Bio-Rad Laboratories
- Laurence C Briggs**, Supervising Microbiologist, Colorado Department of Health, Laboratory Division
- Louisa Brodrecht**, Sales Representative, Bio-Rad Laboratories
- Lynn Bromstedt**, Group Marketing Manager, Abbott Laboratories
- David A Bruckner**, Sc.D., UCLA Medical Center
- Kay Buchanan**, Ph.D., Lab Director, North American Lab Group
- Col Donald Burke**, M.D., Director, Division of Retrovirology, Department of Virus Diseases, Walter Reed Army Institute & Research
- Don Bussiere**, Boston Biomedica
- Nerissa Cabrera**, MT(ASCP), Home Office Reference Laboratory
- Barbara Cahoon-Young**, Ph.D., Senior Micro/Virus Section, Alameda County Public Health Laboratory
- Thomas H Callaway**, M.D., Director of Scientific Affairs, Roche Molecular Systems
- Maureen Carlin**, Organon Teknika
- Glenn E Carlisle**, Technical Product Manager, Abbott laboratories
- David F Carpenter**, Ph.D., Chief, Division of Laboratories, Illinois Department of Public Health
- Laurie Cartwright**, Product Manager, Syva Company
- Jack Cassoria**, Director, Regulatory Affairs, Cambridge BioTech
- Jintao Chen**, BioGenex Laboratories, Inc.
- Celeste Chenet-Monte**, Cambridge Biotech
- Mary Christensen**, Ph.D., Director of Virology, Children's Memorial Hospital
- Brett Cimioti**, Sales Representative, Coulter Corporation
- Lorraine M. Clarke**, Ph.D., Director of Virology, SUNY Health Science Center
- Shaw Clifton**, Becton Dickinson Immunocytometry Systems
- Dr. Patrick Coleman**, Senior Program Manager, Genetic Systems
- Carlyn Collins**, M.D., M.P.H., Director, Division of Laboratory Systems, PHPPO, Centers for Disease Control
- Anne Marie Comeau**, Ph.D., Co-Principal Investigator, HIV Project, Theobald Smith Research Institute
- Jeanne Connelly**, Technical Marketing Specialist, Ortho Diagnostic Systems
- James M Conroy**, Research Scientist, New York State Department of Health, WCLR
- Jeff Conroy**, Cambridge Biotech Corporation
- Dr. Niel T Constantine**, Director, Clinical Immunology, University of Maryland Medical Systems
- Jerome R Cordts**, Executive Director, ASTPHLD
- Cynthia Cossen**, Viral & Rickettsial Disease Laboratory, California Department of Health
- G David Cross**, Health Scientist, Centers for Disease Control
- Raul R Cuadrado**, Dr.P.H., Chairman, Latin America, United Way International/United Way-America
- James Curran**, M.D., Assistant Surgeon General, Deputy Director (HIV), Centers for Disease Control
- Sandra Currin**, Section Chief, Virginia State Laboratory
- Valerie R Dada**, MT(ASCP), Cambridge Biotech Corporation
- Doug Danne**, Organon Teknika
- Massoud Davael-Markazi**, Supervisor, HIV Lab, Cook County Hospital
- Dr. Elizabeth M Dax**, National HIV Reference Laboratory, Fairfield Hospital

- Stephen P Day, Ph.D.**, Chief, Molecular Biology, Wisconsin State Laboratory of Hygiene
- Richard H Decker**, Director, Diagnostic Biological Resources, Abbott Laboratories
- Donna DeLong**, Director of Marketing, Genetic Systems/Sanofi Diagnostics Pasteur
- Lee DesRosiers**, IAF BioChem International
- Denise Dienes**, Organon Teknika
- Arthur F DiSalvo, M.D.**, Laboratory Director, Nevada State Public Health Laboratory
- P David Dotson, Jr.**, Chief, Virology-Immunology, Indiana State Department of Health
- Harold Dowda, Ph.D.**, Director, South Carolina, Department of Health and Environmental Control, Bureau of Labs
- Frances Pouch-Downes, Dr.P.H.**, Virology Section Chief, Michigan Department of Public Health
- Kenneth P Dressler, Ph.D.**, New York Blood Center
- Elaine J Dubesa**, Vice President, Regulatory Affairs, Epitope, Inc.
- Lee-Ann Durgin**, Senior Technologist, Boston Biomedica, Inc.
- Dr. Robert J Dwyer**, Director, Diagnostic Development, IAF Biochem International
- Gloria Echeverria de Perez**, Chief, Retroviral Program, Institute of Immunology
- Richard Egan, Ph.D.**, Development Manager, Syva Company
- Donald Ellmore**, National Program Manager, Becton - Dickinson Co.
- Jay Epstein, M.D.**, Acting Deputy Director, Division of Transfusion Science, Center for Biologics, Evaluation & Research
- Julle Essmann**, Product Manager, Abbott Laboratories Diagnostics Division
- Robert Falcon**, Retrovirus Quality Assurance, Abbott Laboratories
- Chyang Fang, Ph.D.**, Director, NRLID, American Red Cross
- Micheline Fauvel**, Assistant Director, Quebec Public Health Labs
- Dennis V Ferrero, M.P.H.**, Director, Laboratory, San Joaquin Co. Public Health Services
- John Fitcher, MD**, Vice President, R & D, Epitope, Inc.
- Tim Flowers**, Scientist II, Murex Corporation
- Dr. Bagher Forghani**, Research Scientist, California State Department of Health Services
- Dana Gallo**, Microbiologist, California State Department Health Services
- Patricia Garrett**, Boston Biomedica
- Loretta Gaschler**, Clinical Lab Certification Supervisor, Kansas Health & Environmental Laboratory
- J Ronald Genevie**, Chief of Microbiology, Ohio Department of Health Laboratory
- J Richard George, Ph.D.**, Chief, Developmental Technology Section, Centers for Disease Control, DHA, NCID
- Jane P Getchell, Dr.P.H.**, Assistant Director, Hygienic Lab, University of Iowa
- Carol Gibson**, PHP Coordinator, AIDS-HIV Counseling & Testing Program, Illinois Department of Public Health
- Elizabeth Gibson**, Executive Director, Northern Illinois Blood Bank
- Marjorie Giles**, Public Health Microbiologist
- Charles Ginsburgh, Ph.D.**, Senior Biologist, Abbott Laboratories
- Robert K. Gleeson, M.D.**, Medical Director, Northwestern Mutual Life Insurance Co.
- Andrew S. Goldstein**, Vice President, Epitope, Inc.
- Carl Good**, Cambridge Biotech Corporation
- Helene Gravel**, Technical Specialist, Serologicals, Inc.
- Bruce Gray**, Genetic Systems/Sanofi Diagnostics
- Samuel Gregorio, Dr. P.H.**, Microbiology Branch Manager, Div. of Lab Services

- Dr. Brigitte Griffith**, Associate Professor, Yale University, VA Medical Center
- Joe Quackenberger**, Research Scientist, Abbott Laboratories
- Peggy Guidinger**, Abbott Laboratories
- Kamlesh Gupta**, Scientific Evaluator, Health and Welfare Canada
- Louis E Guskey**, Ph.D., Unit Chief, Michigan Department of Public Health
- Wyman H Haigler**, Acct. Manager, Public Health, Abbott Diagnostics
- Vasken Hajaklan**, Medical Technologist, Rush Presbyterian-St. Lukes Medical Center
- Nancy J Haley**, Ph.D., Director, Metropolitan Life Insurance Company
- Laurel Halfpap**, Product Manager, Epitope, Inc.
- Gwendolyn V Hall-Steele**, Biochemist, Abbott Laboratories
- Larry Hambleton**, Genetic Systems/Sanofi Diagnostics
- Dr. Harry Hannon**, Chief, Clinical Biochemistry Branch, Centers for Disease Control
- Doug Harding**, Exhibits Manager, Coulter Corporation
- Susan Harrington**, Product Manager, Abbott Laboratory
- Wm J Hausler**, Ph.D., Director, Hygienic Lab, University of Iowa
- Dr. Patrick Hays**, Senior Lab Scientist, Kansas Health & Environment Laboratory
- Tom Hearn**, Chief, Lab Practice Branch, CDC, PHPPO
- Richard L Heberling**, Ph.D., Virus Reference Laboratory, Inc.
- Sharon Henderson**, Medical Technologist, Community Blood Center of Kansas City
- Denis R. Henrard**, Ph.D., Abbott Laboratories, Medical Affairs
- Mildred N Hildred**, Microbiologist Supervisor, Arkansas Department of Health
- Jerry R Hindman**, Microbiologist, Tennessee Department of Health, Laboratory Services
- Gerald L Hoff**, Ph.D., Epidemiologist, Kansas City Health Department
- Timothy Holzer**, Ph.D., Clinical Products Manager, Abbott Laboratories
- Lynne Homrich**, Director, Sales & Marketing, Serologicals, Inc.
- Doug House**, Cambridge Biotech
- Stanley L Inhorn**, M.D., Medical Director, Wisconsin State Laboratory of Hygiene
- Mary Jane Isaac**, Chief, Virology/STD, Illinois Department of Public Health
- William Janda**, Associate Director, Clinical Micro Laboratory, University of Illinois Hospital
- Phil Jennings**, Ortho Diagnostic Systems, Inc.
- Valerie Johnson**, Training Advisor, National Laboratory Training Network
- Steve Jones**, Cambridge Biotech
- Wanda K Jones**, Dr.P.H., Special Assistant for Science, Office Deputy Director (HIV), Centers for Disease Control
- J Mehseu Joseph**, Ph.D., Director, Laboratories Administration, State Department of Health & Mental Hygiene
- Dr Stephen Josephson**, Director, Clinical Microbiology & Virology, Rhode Island Hospital & Brown University
- William Kabat**, Supervisor, Infectious Disease Lab, Children's Memorial Hospital
- Jonathan M Kagan**, Ph.D., Chief, Clinical Sciences Section, Treatment Research Program, Division of AIDS, NIAID, National Institute of Health
- Grace Kaplafka**, Technical Project Coordinator, Life Source
- Dr. J W D Kay**, HIV Program Director, Organon Teknika
- Howard I Kim**, Technical Director, Damon Laboratories

- Amy R Kite**, Associate Biochemist, Abbott Laboratories
- Leanne M Kloinarju**, Lab Program Manager, Arizona State Laboratory Services
- Matt Klamrzynski**, Manager, Regulatory Affairs, Abbott Laboratories
- Dori Klass**, Senior Product Manager, Abbott Laboratories
- Dr. Bruce Kleger**, Director, Division of Clinical Microbiology, Pennsylvania Department of Health Labs.
- Kevin M Knigge**, Senior Biologist, Abbott Laboratories
- Glenn Kobayashi**, Chief, Medical Micro, Hawaii State Department of Health
- Marian Kritzler**, Medical Technologist, Rush Presbyterian-St. Lukes Medical Center
- Tom Krueger**, Marketing Specialist, Bio-Rad Laboratories
- Jerry Kudlac**, Director, Oklahoma State Department of Health
- Gail Y Kunimoto**, Supervisor, Virology, State of Hawaii Department of Health
- Mariano F La Via**, M.D., Medical University of South Carolina
- Martial Lacroix**, Head, Diagnostics Research, BioChem-Diagnostics
- Sandra Lainio**, R & D Technician II, Abbott Laboratories
- Kelly Lammons**, Medical Technologist, Mississippi Department of Health Laboratory
- Alan Landay**, Director Clinical Immunology, Rush Medical Center
- Cheryl Laske**, Sales Representative, BioRad
- George Latzanich**, MPH, Assistant Project Director, Georgia State University, VCD Department
- Kelth J Lawrence**, Administrator, Retrovirus & Immunology Division, New York City Department of Health, Bureau of Laboratories
- Debbie Lepine**, Biologist, Health and Welfare Canada
- Robert Lindner**, M.D., Ph.D., Medical Director, Division of Laboratories, Illinois Department of Public Health
- Bill Link**, Group Leader, Bio-Rad Laboratories
- Douglas Liu**, Product Manager, Abbott Laboratories
- James P Lugo**, Product Manager, Bio Rad Laboratories
- John Lumpkin**, M.D., Director, Illinois Department of Public Health
- Ronald C Lynch**, President, Cognitive Management
- Chuck MacBlane**, Genetic Systems
- Sue MacRae**, Virology Supervisor, New Hampshire Public Health Laboratory
- Mark Magee**, Vice President Laboratory Operations, Clinical Reference Laboratory
- Jim Mahony**, Ph.D., Virologist, St. Joseph's Hospital
- Carol Major**, Head, HIV Laboratory, Ontario Ministry of Health
- Eugene Malone**, Division of Laboratories, Illinois Department of Public Health
- Kathy Mandel**, Acting Supervisor, STD Lab, University of Illinois Hospital
- David Marshman**, Product Manager, Genetic Systems/Sanofi Diagnostics
- Sandy Marubio**, Area Resource Director, National Laboratory Training Network
- Jeffrey P Massey**, Microbiologist, Michigan Department of Public Health
- Mary Mathieu**, Associate Scientist, Abbott Laboratories
- Allyson May**, Technical Services Representative, Epitepe, Inc.
- Donald Mayo**, Sc.D., Chief, State of Connecticut Public Health Laboratory
- Doug McAleer**, Genetic Systems/Sanofi Diagnostics
- Bruce J McCreedy**, Ph.D., Director of Infectious Diseases, Roche Biomedical Laboratories

- J Todd McPherson**, Director, Indiana State Department of Health, Disease Control Lab
- Stanley E Micek, III**, HIV Product Manager, Abbott Laboratories
- Frank J Michalski, Ph.D.**, Director, Diagnostic Virology, Metpath
- Douglas A Michels**, Director, Ortho Diagnostic Systems Inc.
- Paul A Mied, Ph.D.**, FDA/CBER
- Rick Moody**, Director, Serology, Alabama Department of Public Health
- Douglas F. Moore**, Director, Orange County Public Health Laboratory
- David Mueller**, Micro Supervisor, The Monroe Clinic
- Tommie F Munro**, Lab Manager, Georgia Public Health Laboratory
- Mara Neal-Ends**, Sales Representative, Coulter Corporation
- Myriam Garcia Negron**, Medical Technologist, Puerto Rico Department of Health
- Friedah Nehmadl**, Clinical Researcher, Abbott Laboratories
- Sherian Nestor**, Supervisor/Serology, West Virginia Department of Health, Office of Laboratory Services
- Richard H Newhouse, V.P.**, Research and Development, Serologicals
- Janet K A Nicholson, Ph.D.**, National Center for Infectious Diseases, Centers for Disease Control
- Joseph S Niedbalski**, Section Head, Abbott Laboratories
- Margie Nixon**, Great Lakes Sales Region, Syva Company
- Naziha Nuwayhid, Ph.D.**, Associate Director, VA Medical Center
- Dr. Thomas A. O'Brien**, Director, AIDS/Hepatitis Technical Marketing, Ortho Diagnostic Systems
- Maurice R O O'orman, Ph.D.**, Director, Diagnostic Immunology, Children's Memorial Hospital
- Gary W Oty**, Supervisor, Virology/Serology, New Mexico Department of Health
- Chin-Yih Ou, Ph.D.**, Division of HIV/AIDS, Centers for Disease Control
- Elizabeth K. Parker**, Supervisor, Diagnostic Serology, South Carolina Department of Health & Environmental Control
- Marcia Parker, Ph.D.**, Director, Special Projects, Serologicals, Inc.
- Dr. John V. Parry**, Public Health Laboratory Service, PHLS Virus Reference Laboratory
- James Pearson, Dr.P.H.**, Director, North Dakota Department of Health Laboratories
- Michael Peddecord**, Professor, Graduate School of Public Health, San Diego State University
- Jeanette A Pelletier**, Clinical Lab Supervisor I, Division of Laboratories, Illinois Department of Public Health
- Bryan Peterson, Ph.D.**, Abbott Laboratories
- John R Pfister**, Microbiologist Supervisor, Wisconsin State Laboratory of Hygiene
- Bruce H Phelps, Ph.D.**, Abbott Laboratories
- Catherine A Phillips**, Director, Special Clinical Immunology Lab, VA Medical Center
- Jack Phillips**, Molecular Biologist, Abbott Laboratories
- David Pickhardt**, Retrovirus Quality Assurance, Abbott Laboratories
- Susan Piotrowski**, Product Manager, Abbott Laboratories
- Kathryn Anne Pittman**, Medical Technologist II, North Carolina State Public Health Lab
- Jay H Plich**, R & D Technician, Abbott Laboratories
- Herbert Polesky, M.D.**, Department of Pathology, War Memorial Blood Center
- Wolf Prensky, Ph.D.**, Laboratory Head, St. Clare's Hospital & Health Center
- Audrey Prieve**, Microbiologist, Wisconsin State Laboratory of Hygiene

- Max R Proffitt**, Ph.D., Director, Clinical Virology Section, The Cleveland Clinic Foundation
- Steven Raia**, Boston Biomedica
- Michael Ramirez**, Public Health Microbiologist, Hygienic Lab., University of Iowa
- Glenn Ramsey**, M.D., Medical Director, United Blood Service
- Barry Reed**, M.D., Vice President, Medical Underwriting, Metropolitan Life Insurance Company
- Carol D Reid**, Staff Scientist, Dupont Merck Pharmaceutical Co.
- Stanley M Reimer**, Ph.D., Assistant Commissioner, New York City Dept of Health
- Lynda Reynolds**, Organon Teknika
- Rejean Rheaume**, IAF Biochem
- Bob Rhoades**, Organon Teknika
- Karen Richards**, Clinical Coordinator, Syva Company
- John Ridderhof**, Dr.P.H., Deputy Director, Delaware Public Health Laboratory
- Maria Rios**, Ph.D., The New York Blood Center
- Bill Roberts**, Executive Vice President Operations, Home Office Reference Lab
- Lt Col Chester Roberts**, Ph.D., Chief, Diagnostic Retrovirology, Walter Reed Army Institute of Research
- Gene F Robertson**, Ph.D., Abbott Laboratories
- Jeanette V Roman**, Organon Teknika
- Rebecca Rorapaugh**, Abbott Diagnostics
- Rosanna Rumbough**, Serology Branch Head, NC State Laboratory of Public Health
- Alfred Saah**, M.D., Associate Professor of Epidemiology, School of Hygiene and Public Health, Johns Hopkins University
- Teresa Salas**, Biologist, Health & Welfare, Tunney's Pasture
- Sam J Gregorio**, Contract QA Specialist, Ortho Diagnostic Systems, Inc.
- Ed Saunders**, Product Manager, Bio-Rad Laboratories
- Kelth Sayre**, Retrovirus Product Manager, Ortho Diagnostic Systems
- Charles Schable**, M.S., Chief, Diagnostic Serology Section, Division of HIV/AIDS, Centers for Disease Control
- William O. Schalla** Acting Chief - Lab Performance Evaluation Section, PHPPO, Centers for Disease Control
- Roger Schaller**, Marketing Manager, Syva Company
- Nicholas R Schmitz**, HIV Supervisor, Home Office Reference Laboratory
- Gerald Schochetman**, Ph.D., Centers for Disease Control
- Richard Schumacher**, Boston Biomedica
- Betsy Sears**, Laboratory Supervisor, Osborn Laboratories
- Jill Sergeant**, Transfusion Trans. Disease Control Tech., Mayo Foundation
- Eugene Seymour**, MD, MPH, President, Saliva Diagnostic Systems
- Bob Shea**, Vice President, Sales & Marketing, Osborn Laboratories
- Jacqueline M Sheffield**, Head, Serodiagnostic Lab, Navy HIV Program, National Naval Medical Center
- Haynes W Sheppard**, Ph.D., Research Scientist, VRDL-CDHS
- Ken Shockley**, Ph.D., Director, Infectious Diseases R&D, Murex Corp.
- Mark M Siczak**, Vice President, General Manager, Genetic Systems/Sanofi Diagnostics Pasteur
- Margarita Garcia Silva**, Medical Technologist, Puerto Rico Department of Health
- Prema M. Singa**, M.D., Director, Blood Bank, Cook County Hospital
- Edward Slocum**, New York Blood Center
- Robert E Situburg**, Technologist, HIV Lab, Rush Presbyterian-St. Lukes Medical Center

- Edith S H Smith**, Head, Serodiagnostic Div., Navy HIV Program, National Naval Medical Center
- Mel Smith**, Lab Supervisor, Nebraska State Health Laboratory
- John Sninsky**, Ph.D., Senior Director, Diagnostics Division, PCR Division, Cetus Corporation
- Stacey Sprague**, Med. Tech. Specialist, Warde Medical Laboratory
- Steve Sproul**, Marketing Manager, Genetic Systems/Sanofi Diagnostics Pasteur
- Catherine Sprull**, Public Health Analyst, Centers for Disease Control
- Richard Steece**, Ph.D., Assistant Director, Public Health Laboratory Division
- Miriam Stella**, Section Manager, Cambridge Biotech
- Chip Stephens**, Director, Regulatory/Clinicals, Genetic Systems/Sanofi Diagnostics Pasteur
- John Stephens**, Biologist, Abbott Laboratories
- Jane M Stevens**, Manager, Clinical Micro Lab, University of Illinois Hospital
- James Stewart**, Retrovirus Product Development, Abbott Laboratories
- Robert L Stout**, Ph.D., Director, Clinical Reference Laboratory, Inc.
- Dr. Hiko Tamashiro**, Chief, DIA/RES/GPA, World Health Organization
- Howard F Taswell**, M.D., Mayo Foundation
- Brad L Therrell**, Ph.D., Director, Chemistry Div., Texas Department of Health
- Thomas R Thleme**, Ph.D., Senior Scientist, Epitope, Inc.
- Rigmor Thorstensson**, Ph.D., National Bacteriological Lab
- Ralph Timperl**, Director, Massachusetts State Laboratory
- Bill Turner**, Great Lakes Sales Region, Syva Company
- Anne J. Ulm**, Meetings Manager, ASTPHLD
- Elda Margarita Duran Urcina**, Research Assistant, New York Blood Center
- Dr. Howard Urnovitz**, President, Calypte Biomedical Corporation, Inc.
- Jay E Valinsky**, Associate Director, New York Blood Center
- Dennis VanderWerff**, Ortho Diagnostic Systems, Inc.
- Marl Verdum**, Becton Dickinson Immunocytometry Systems
- Dolores B Villareal**, Microbiologist, Wash. State Department of Public Health Lab
- Adl Virji**, Ph.D., Laboratory Director, Osborn Laboratories
- Katherine von Alt**, Microbiologist III, Texas State Health Department
- Trevor Wall**, Regulatory Affairs Specialist, Bio-Rad Laboratories
- Anne Marie Ward**, Immunology Supervisor, Allied Clinical Labs
- Barry Warren**, Organon Teknika
- J Scott Webber**, Biochemist, Abbott Laboratories
- Barbara Weiblen**, M.S., Senior Scientist, Newborn HIV Project, Theobald Smith Research Institute, Massachusetts State Laboratory
- Marianne Weinel**, Department Head, Nichols Institute Serology Laboratory
- Steve Weiss**, Abbott Laboratories
- William D Welch**, Ph.D., Technical Director, MetWest, Inc.
- Barbara O Werner**, Ph.D., Director, Virology/Clinical Investigation Division, Massachusetts State Laboratory Institute
- Jane Westerman**, Director, Technical Services, Organon Teknika
- Judith Wethers**, M.S., Director of Testing Services, Retrovirology Lab., New York State Department of Health
- Jullanne Wiese**, Associate Scientist, Abbott Laboratories
- Judith Wilber**, Ph.D., Manager, Clinical Micro, Nucleic Acid Chemistry, Chiron Corporation



**Verna Willis, Ph.D., Project Director, Georgia State University, VCD Department**

**Helen Wlprud, Microbiologist, Oregon Public Health Laboratory**

**Dennis Wolf, Sales Manager, Coulter Corporation**

**Ted Woytowicz, Coulter Corporation**

**JoAnn L Yee, Supervisor, University of California, Davis, Department of Medical Pathology**

**Madonna Young, Supervisor, Nichols Institute**

**Susanne Zanto, MT(ASCP), Virology Supervisor, Montana Public Health Laboratory**

**Maan Zrein, Projects Leader, BioChem-Diagnostics**

Additional copies of this report are available from ASTPHLD. Price is \$25 each. A mailing list of conference attendees is also available by contacting ASTPHLD at the address below.

**ASTPHLD  
1211 Connecticut Avenue, NW  
Suite 608  
Washington D C 20036**

**TELEPHONE: 202-822-5227**