

2

AD-A257 370



TECHNICAL REPORT BRL-TR-3409

**BRL**

USE OF A CHARGE COUPLED DEVICE (CCD)  
ARRAY AS A MEDIUM-SPEED STREAK CAMERA

RICHARD A. BEYER

SEPTEMBER 1992

DTIC  
SELECTED  
NOV 03 1992  
S B D

92-28668



050 750

23 p/r

APPROVED FOR PUBLIC RELEASE; DISTRIBUTION IS UNLIMITED.

U.S. ARMY LABORATORY COMMAND

BALLISTIC RESEARCH LABORATORY  
ABERDEEN PROVING GROUND, MARYLAND

## NOTICES

Destroy this report when it is no longer needed. DO NOT return it to the originator.

Additional copies of this report may be obtained from the National Technical Information Service, U.S. Department of Commerce, 5285 Port Royal Road, Springfield, VA 22161.

The findings of this report are not to be construed as an official Department of the Army position, unless so designated by other authorized documents.

The use of trade names or manufacturers' names in this report does not constitute indorsement of any commercial product.

# REPORT DOCUMENTATION PAGE

Form Approved  
OMB No. 0704-0188

Public reporting burden for this collection of information is estimated to average 1 hour per response, including the time for reviewing instructions, searching existing data sources, gathering and maintaining the data needed, and completing and reviewing the collection of information. Send comments regarding this burden estimate or any other aspect of this collection of information, including suggestions for reducing this burden, to Washington Headquarters Services, Directorate for Information Operations and Reports, 1215 Jefferson Davis Highway, Suite 1204, Arlington, VA 22202-4302, and to the Office of Management and Budget, Paperwork Reduction Project (0704-0188), Washington, DC 20503.

1. AGENCY USE ONLY (Leave blank)	2. REPORT DATE <b>September 1992</b>	3. REPORT TYPE AND DATES COVERED <b>Final, Feb 91 - Aug 91</b>
----------------------------------	---	---

4. TITLE AND SUBTITLE <b>Use of a Charge Coupled Device (CCD) Array as a Medium-Speed Streak Camera</b>	5. FUNDING NUMBERS  <b>PR: IL161102AH43</b>
6. AUTHOR(S)  <b>Richard A. Beyer</b>	

7. PERFORMING ORGANIZATION NAME(S) AND ADDRESS(ES)	8. PERFORMING ORGANIZATION REPORT NUMBER
--	--

9. SPONSORING/MONITORING AGENCY NAME(S) AND ADDRESS(ES)  <b>U.S. Army Ballistic Research Laboratory ATTN: SLCBR-DD-T Aberdeen Proving Ground, MD 21005-5066</b>	10. SPONSORING/MONITORING AGENCY REPORT NUMBER  <b>BRL-TR-3409</b>
---	--

11. SUPPLEMENTARY NOTES

12a. DISTRIBUTION/AVAILABILITY STATEMENT  <b>Approved for public release; distribution is unlimited.</b>	12b. DISTRIBUTION CODE
--	------------------------

13. ABSTRACT (Maximum 200 words)

A 14-bit scientific Charge Coupled Device (CCD) camera has been used as a medium-speed streak camera through software modifications that preserve the high dynamic range and excellent sensitivity characteristic of these cameras. Line shift speeds as short as 8.1  $\mu$ s are found to have no detrimental effects on image quality as long as light intensity is kept below saturation levels. Examples of streak images from shock tube studies of reactive systems are presented.

14. SUBJECT TERMS  <b>streak cameras, charge coupled devices, shock waves</b>	15. NUMBER OF PAGES <b>20</b>
	16. PRICE CODE

17. SECURITY CLASSIFICATION OF REPORT <b>UNCLASSIFIED</b>	18. SECURITY CLASSIFICATION OF THIS PAGE <b>UNCLASSIFIED</b>	19. SECURITY CLASSIFICATION OF ABSTRACT <b>UNCLASSIFIED</b>	20. LIMITATION OF ABSTRACT <b>SAR</b>
--	---	--	--

# TABLE OF CONTENTS

	<u>Page</u>
LIST OF FIGURES .....	v
1. INTRODUCTION .....	1
2. DESCRIPTION OF EXPERIMENT .....	1
3. OBSERVATIONS .....	3
3.1 Open Air Shocks .....	3
3.2 Short Time-Delay Detonation .....	5
3.3 Charge Smear .....	5
4. DISCUSSION .....	7
5. FUTURE STUDIES .....	8
6. CONCLUSION .....	9
7. REFERENCES .....	11
DISTRIBUTION .....	13

DTIC QUALITY INSPECTED

<b>Accession For</b>	
NTIS GRA&I	<input checked="" type="checkbox"/>
DTIC TAB	<input type="checkbox"/>
Unannounced	<input type="checkbox"/>
Justification	
By _____	
Distribution/	
<b>Availability Codes</b>	
Dist	Avail and/or Special
A-1	

INTENTIONALLY LEFT BLANK.

## LIST OF FIGURES

<u>Figure</u>		<u>Page</u>
1.	Schematic Diagram of the Optical System Across the End of the Shock Tube . . . . .	2
2.	(a) Photograph and (b) Hidden-Line Plot of Record of Open Air Shock Wave Propagation (1,024 × 600 Pixels) . . . . .	4
3.	Plot of Single Vertical Line Intensity From Figure 2a. . . . .	5
4.	Photograph of Streak Image Record From Incident and Reflected Shocks Through Explosive Mixture and Subsequent Strong Reaction or Detonation (1,024 × 575 Pixels) . . . . .	6
5.	Vertical Line Profiles of Three Main Shocks at Fixed Position Near the Center of Figure 4. . . . .	6
6.	Photograph of Streak Image of Explosive Mixture With Prompt Reaction at Excessive Light Intensity Level (600 × 500 Pixels) . . . . .	7
7.	Vertical Line Profile From Near Center of Figure 6 Showing Effect of Charge Smearing on Peak Shapes . . . . .	8

INTENTIONALLY LEFT BLANK.

## 1. INTRODUCTION

There exist many laboratory studies in the areas of ignition, pulsed plasmas, and chemical kinetics that require the recording of a linear array of data with time resolution on the order of microseconds. Examples are spectra from a rapidly changing system and the propagation of shock waves in shock tubes and pulsed plasma devices. The off-the-shelf choices for instrumentation of such studies are film and electronic streak cameras. The latter are optimized for much faster studies and provide limited spatial resolution and dynamic range. The film systems, while made more useful by recent developments in higher sensitivity film, retain the disadvantages of time for processing, limited useful dynamic range, and chemical handling and waste disposal. Other obvious electronic imaging possibilities such as a high-speed, multiple-output linear array are not yet commercially available as cost effective systems.

Earlier applications of Charge Coupled Device (CCD) cameras have demonstrated faster frame rates either through on-chip storage of smaller images or through binning and modification of the camera controls. In the present study, we have evaluated the application of a CCD array in which only a limited number of rows are illuminated and the rest of the device is used for charge storage. This configuration allows slow, high resolution digitization without any custom components. A major goal for our applications is rapid analysis of data to determine the parameters of the next experiment. Another advantage predicted for this approach is increased useful dynamic range. In imaging of shock data, for example, it is desirable to observe smaller, secondary shocks that are often lost in a film record; the need for dynamic range in spectroscopy is often critical. In addition, the digital records allow rapid interface to computer programs for making measurements from the records using the full image information via least-squares fitting or other techniques. Although not fully explored in the present study, it is anticipated that improved accuracy can be obtained in much less time with better analysis techniques than used previously in our laboratory with film. The digital records also allow for cosmetic operations, such as minimizing noise due to laser speckle or window defects, which can help in visual understanding of processes.

## 2. DESCRIPTION OF EXPERIMENT

The measurements made in the present study are density gradients due to shock waves and chemical reactions in a 6.2-m-long shock tube. The shock tube is typically driven by helium which is pressurized sufficiently to burst a mylar diaphragm. The subsequent shock wave raises pressure and temperature and



is used to study chemical kinetics and heat transfer. On the side wall near the end of the tube are 20 cm-long windows. A schlieren optical system is set up through these windows to record the gradients during the event. A schematic of the optical layout is shown in Figure 1. The main components are a nominal 5-mW HeNe laser (632.8 nm), a pair of 20-cm-diameter  $f/6$  mirrors, the window-length slit at the windows, and two lenses for beam expansion and imaging onto the detector. A cylindrical lens was used to focus the light from the laser to a line near the focal point of the first mirror in order to fill the mirror and provide parallel light through the region which includes the end of the shock tube. The second mirror re-images the source onto the wire, which blocks all light except when there is a density gradient change in the region between the two mirrors. This arrangement is commonly referred to as *dark-field schlieren photography*. The final lens images the long slit at the shock tube window onto the detector. This lens was changed to vary the magnification—primarily to change the length of the window/slit in the field of view. A 12.5-cm focal length lens gave approximately full coverage.

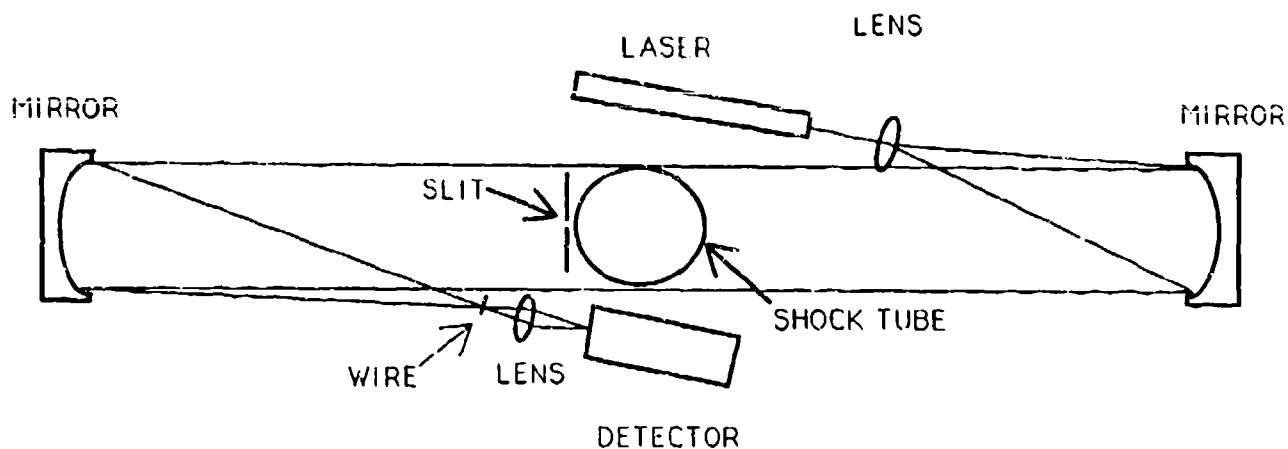


Figure 1. Schematic Diagram of the Optical System Across the End of the Shock.

The detector system is a commercial (Photometrics LTD, Tucson, AZ), thermoelectrically cooled, scientific CCD camera with a Thompson THX31156 sensor. The CCD is a 1,024 x 1,024 array of 19- $\mu$ m square pixels. For the images shown here, the chip temperature was near -35C. Full well depth on this particular chip was measured at 348 Ke. Signals are digitized with 14-bit accuracy (16,384 counts full scale). The drive software has been modified to allow a parallel register shift every 8.1  $\mu$ s or slower

during illumination, starting with an external trigger. In our measurements, the slit near the shock tube window is imaged onto approximately five rows of the chip. No masking was done on the detector.

Since the slit is imaged near the top of the CCD and a relatively slow (5- $\mu$ s opening) leaf shutter was mounted on the camera, it was necessary to lock open the camera shutter prior to the event. A fast-acting shutter was placed near the laser source where the beam diameter was small and laser illumination was provided only while the CCD was parallel shifting, which avoided saturation and blooming. Because the camera shutter was open for relatively long periods—up to a few seconds—a narrow bandpass dielectric filter was required at the detector entrance to reject ambient light.

### 3. OBSERVATIONS

3.1 Open Air Shocks. The first set of experiments was done in a windowless configuration in order to remove any constant schlieren streaks due to window imperfections. The main purpose of this step was to avoid masking possible streaking from charge transfer problems as the camera was operated. A photograph of a typical event record taken from the computer screen is shown in Figure 2a. In this picture, time goes from top to bottom. As with all of the images shown here, the CCD was shifted at its maximum rate, corresponding to 8.1  $\mu$ s/shift. The incident shock wave enters the field of view from the right and reflects off an object just out of the field of view to the left. Although they are difficult to see in the photograph, the wave bounces back and forth at least one more time. Two later waves are seen which are slower flows of gases out of the tube. Although the image does not convey the full dynamic range of the record, it can be seen that there are no serious image lag or streaking problems due to the rapid charge shift (i.e., we are operating in a comfortable range for the chip). A hidden-line plot of the negative of this image is shown in Figure 2b.

Figure 3 shows the intensity values from a single vertical line near the center of the image (i.e., it gives the signals seen at one position as the waves pass that point). Apparent are the excellent signal to noise, good symmetry of peaks, and the useful dynamic range. The base of the left-hand peak suggests an interference pattern from the laser diffracting through the slit at the window. The other major laser effect is the speckle pattern which causes some of the light and dark variations across the image. The laser speckle pattern does not change appreciably during an image, and can be readily removed or minimized. There are also well-established techniques for eliminating laser speckle from the original image when required.

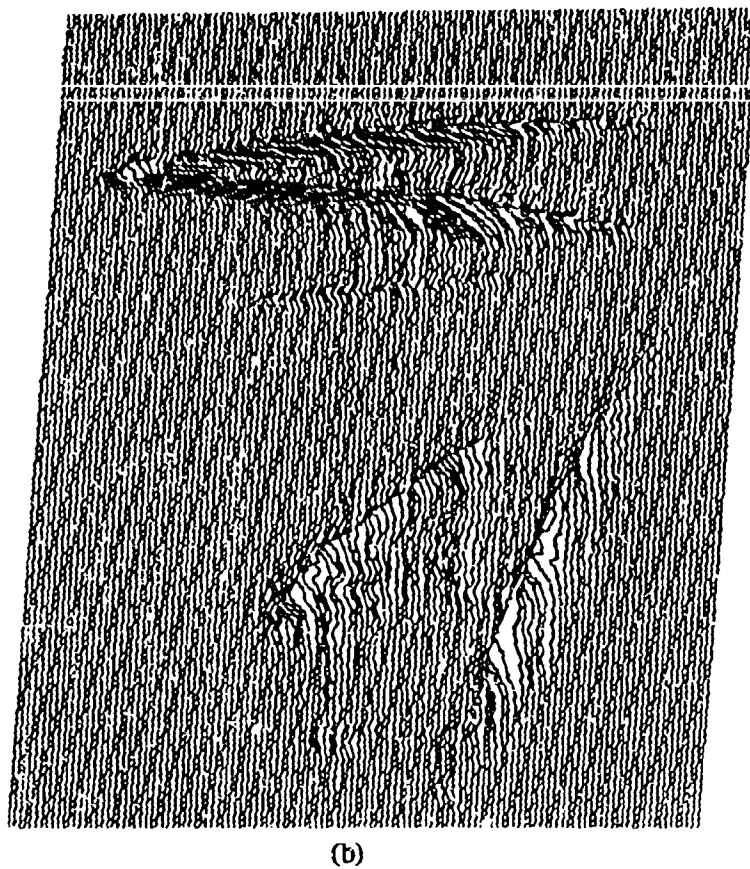
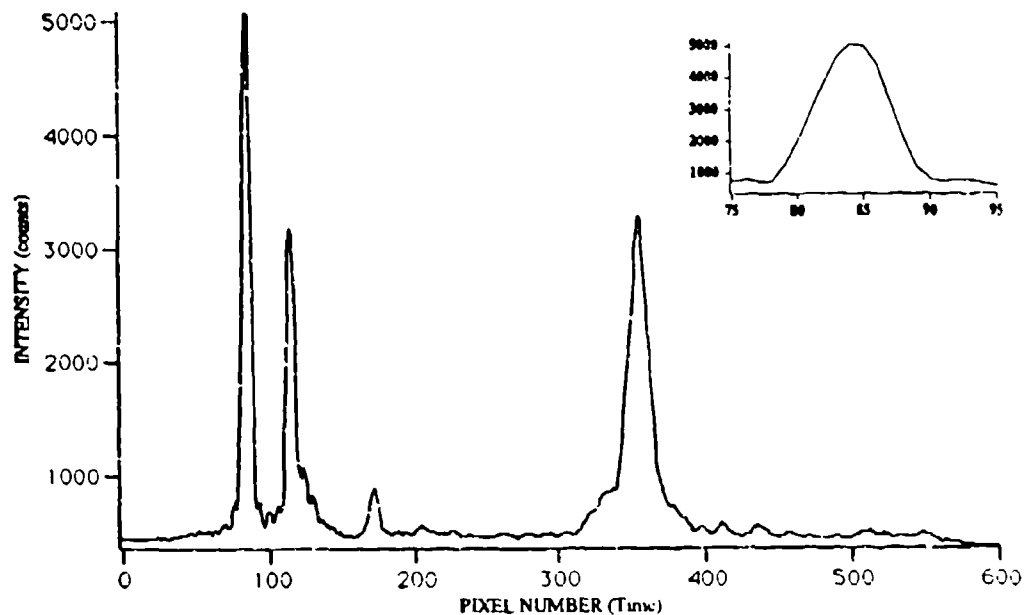


Figure 2. (a) Photograph and (b) Hidden-Line Plot of Record of Open Air Shock Wave Propagation.  
(1,024 x 600 Pixels).



Note: Inset shows an expanded profile of the left-most peak.

Figure 3. Plot of Single Vertical Line Intensity From Figure 2a.

3.2 Short Time-Delay Detonation. Figure 4 shows an event through the windows of the shock tube where a mixture of hydrogen, oxygen, and argon are subjected to incident and reflected shocks which heat the gases past the ignition point. A sharp reaction wave then propagates to the right from an ignition point near the end wall, which is on the left in the image. Later in time other events are seen taking place, including the cooling of the gas by heat transfer to the end wall. Figure 5 shows an intensity plot of the three sharp waves near the middle of the window. Of interest to the person studying these reactions is the relative widths of the waves. The reaction wave is almost as narrow as the incident shock (7 pixels FWHM and 6 pixels FWHM, respectively), indicating the vigorous reaction characteristic of a detonation wave.

3.3 Charge Smear. To this point, the images appear to be easily satisfactory with excellent dynamic range. Problems quickly arose when image intensity was increased in order to fill the dynamic range of the CCD. In Figure 6 is shown the result of having peak signals at a level near 9,000 counts as recorded; since the charge is clearly smeared over many pixels, full charge capacity was probably approached or exceeded at some locations. The degree of smearing is clearly much worse in a few places where the laser

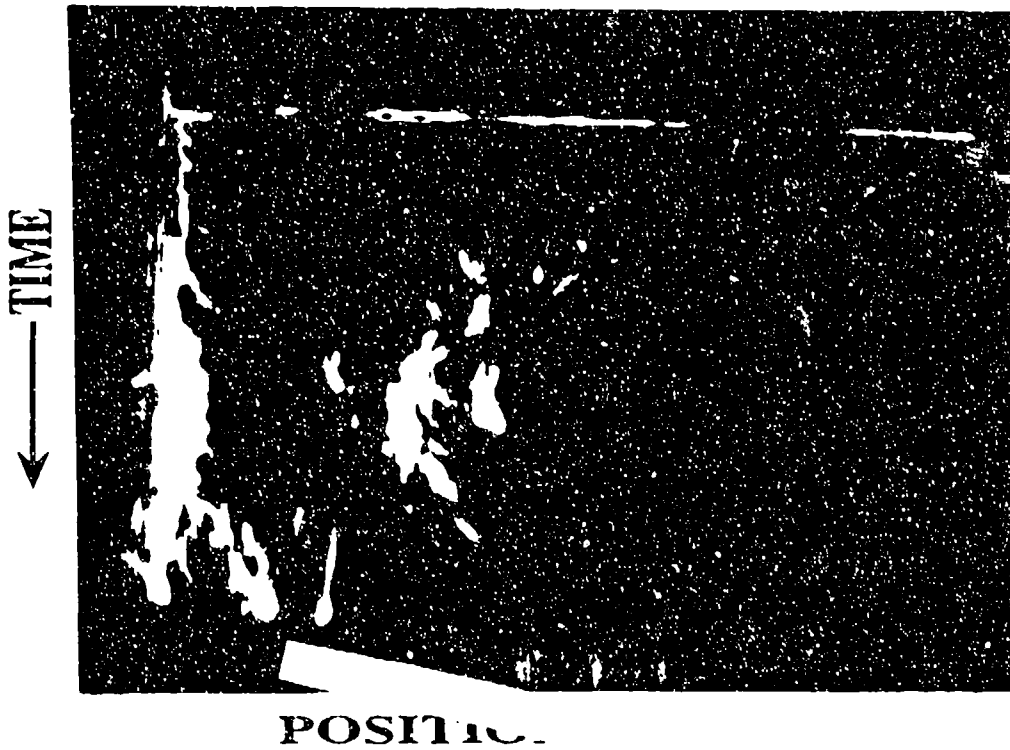


Figure 4. Photograph of Streak Image Record From Incident and Reflected Shocks Through Explosive Mixture and Subsequent Strong Reaction or Detonation. (1,024 x 575 Pixels).

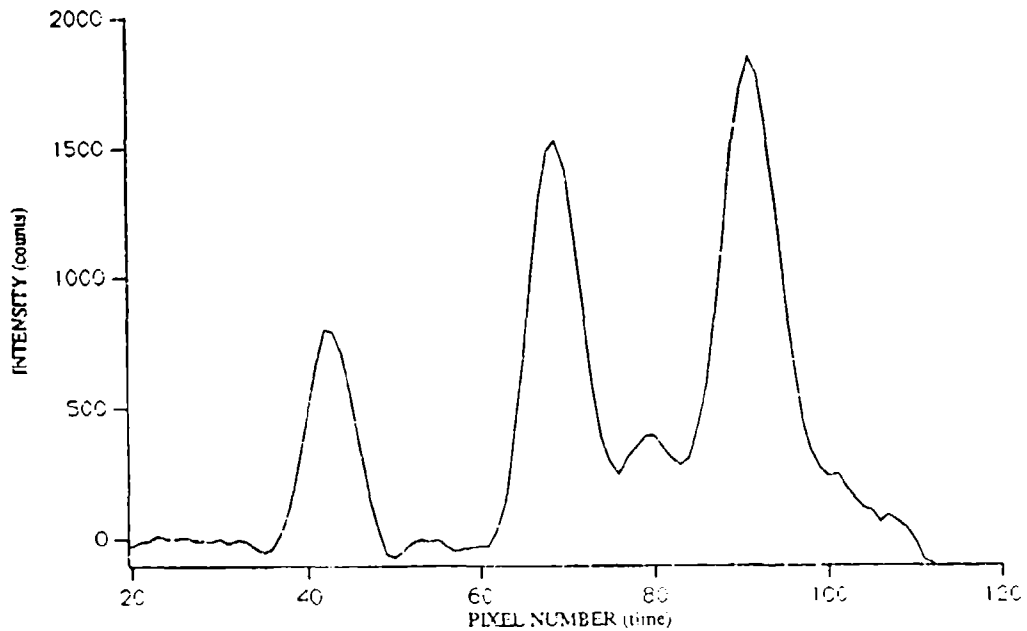


Figure 5. Vertical Line Profiles of Three Main Shocks at Fixed Position Near the Center of Figure 4.



Figure 6. Photograph of Streak Image of Explosive Mixture With Prompt Reaction at Excessive Light Intensity Level. (600 x 500 Pixels).

was brightest. The degradation of wave intensities is shown in Figure 7, which is the intensity plot of a vertical line just to the right of picture center. As can be seen, all three of the lines are asymmetric, although the detonation wave is affected the most. The advantage of digital imaging is that, if necessary, time-of-arrival measurements could be made from even this poor quality data by using the leading edges of the waves.

#### 4. DISCUSSION

The first measurements that are of interest from images such as those above are the linearity and slope of the incident and reflected shocks. From these values and knowledge of the preshock temperature and pressure, thermochemical calculations are performed to obtain the temperature and pressure of the post-shock gases. Note that pressure can be measured readily, and it is used as a check of the conditions. In the other images with detonation waves, the delay time and point of origin of the detonation are the additional values to be measured. All of these parameters are readily obtainable from these images with sufficient accuracy.

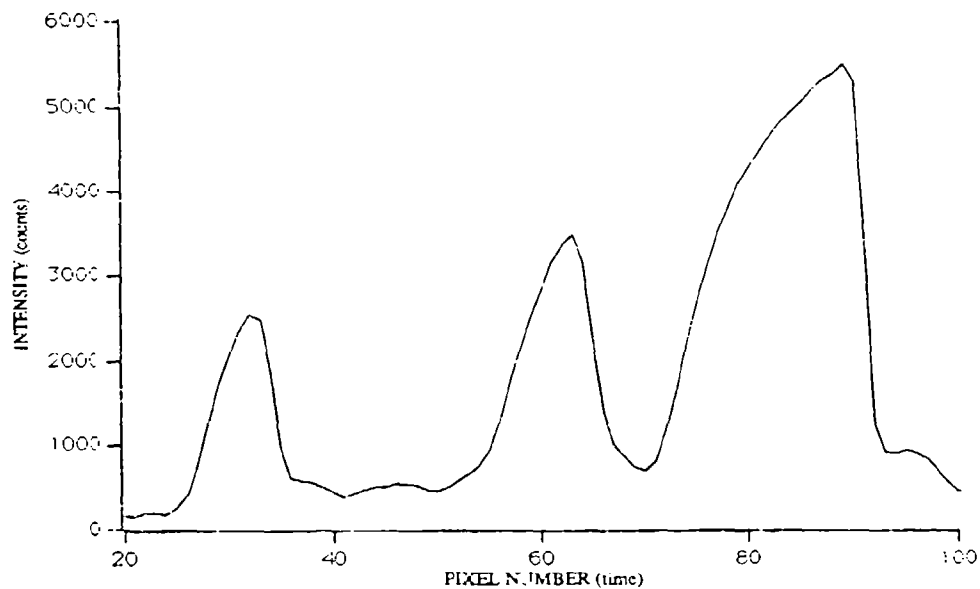


Figure 7. Vertical Line Profile From Near Center of Figure 6 Showing Effect of Charge Smearing on Peak Shapes.

## 5. FUTURE STUDIES

The second major application of this technique in our laboratory is in the rapid recording of spectra from transient events. These events include both studies of the chemical kinetics behind the shocks imaged above and atomic spectroscopy for temperature mapping in pulsed plasmas. Preliminary studies have been done to demonstrate that imaging the spectra onto a few rows of an unmasked CCD chip is not a major barrier. There are some interference effects of the laser as it passes through the slit at the shock tube windows, as seen in Figure 3; these can be reduced significantly with modest effort. In the case of the plasma, intensity is clearly sufficient. For the chemical kinetics, absorption measurements are required for quantitative measurements. The effect of constant, bright illumination of the chip or possible charge transfer or blooming problems need to be studied in detail. It appears that chemical ignition/combustion reactions may not have sufficient emission intensity for recording in this manner.

For many studies of interest, one would like a 1- $\mu$ s time resolution. This rate of shift had been our goal at the start of the present study. Preliminary designs of specially fabricated chips that can shift

charge at significantly faster rates, and yet retain cost effectiveness, dynamic range, and large number of pixels, are presently being pursued under contract.

## 6. CONCLUSION

The application of a scientific grade CCD camera as a medium-speed streak camera has been demonstrated successfully in the imaging of shock phenomena. Dynamic range is excellent. The advantages of rapid visualization and analysis of data are obvious.



INTENTIONALLY LEFT BLANK.

## 7. REFERENCES

- Aikens, R. S., P. M. Epperson, and M. B. Denton. "Techniques for Operating Charge Coupled Devices (CCD's) in Very High Speed Framing Mode." Paper 501-04, SPIE Proceedings, 1984.
- Lasser-Ross, N., H. Miyakawa, V. Lev-Ram, S. R. Young, and W. N. Ross. "High Time Resolution Fluorescence Imaging With a CCD Camera." J. Neuroscience Meth., vol. 36, pp. 253-261, 1991.

INTENTIONALLY LEFT BLANK.

<u>No. of Copies</u>	<u>Organization</u>	<u>No. of Copies</u>	<u>Organization</u>
2	Administrator Defense Technical Info Center ATTN: DTIC-DDA Cameron Station Alexandria, VA 22304-6145	1	Commander U.S. Army Tank-Automotive Command ATTN: ASQNC-TAC-DIT (Technical Information Center) Warren, MI 48397-5000
1	Commander U.S. Army Materiel Command ATTN: AMCAM 5001 Eisenhower Ave. Alexandria, VA 22333-0001	1	Director U.S. Army TRADOC Analysis Command ATTN: ATRC-WSR White Sands Missile Range, NM 88002-5502
1	Commander U.S. Army Laboratory Command ATTN: AMSLC-DL 2800 Powder Mill Rd. Adelphi, MD 20783-1145	1	Commandant U.S. Army Field Artillery School ATTN: ATSF-CSI Ft Sill, OK 73503-5000
2	Commander U.S. Army Armament Research, Development, and Engineering Center ATTN: SMCAR-IMI-I Picatinny Arsenal, NJ 07806-5000	(Class. only) 1	Commandant U.S. Army Infantry School ATTN: ATSH-CD (Security Mgr.) Fort Benning, GA 31905-5660
2	Commander U.S. Army Armament Research, Development, and Engineering Center ATTN: SMCAR-TDC Picatinny Arsenal, NJ 07806-5000	(Unclass. only) 1	Commandant U.S. Army Infantry School ATTN: ATSH-CD-CSO-OR Fort Benning, GA 31905-5660
1	Director Benet Weapons Laboratory U.S. Army Armament Research, Development, and Engineering Center ATTN: SMCAR-CCB-TL Watervliet, NY 12189-4050	1	WL/MNOI Eglin AFB, FL 32542-5000
(Unclass. only) 1	Commander U.S. Army Rock Island Arsenal ATTN: SMCRI-TL/Technical Library Rock Island, IL 61299-5000		<u>Aberdeen Proving Ground</u>
1	Director U.S. Army Aviation Research and Technology Activity ATTN: SAVRT-R (Library) M/S 219-3 Ames Research Center Moffett Field, CA 94035-1060	2	Dir. USAMSA ATTN: AMXS-D AMXS-MP, H. Cohen
1	Commander U.S. Army Missile Command ATTN: AMSMI-RD-CS-R (DOC) Redstone Arsenal, AL 35898-5010	1	Cdr, USATECOM ATTN: AMSTE-TC
		3	Cdr, CRDEC, AMCCOM ATTN: SMCCR-RSP-A SMCCR-MU SMCCR-MSI
		1	Dir, VLAMO ATTN: AMSLC-VL-D
		10	Dir, USABRL ATTN: SLCBR-DD-T

<u>No. of Copies</u>	<u>Organization</u>	<u>No. of Copies</u>	<u>Organization</u>
1	HQDA (SARD-TC, C.H. Church) WASH DC 20310-0103	5	Commander Naval Research Laboratory ATTN: M.C. Liu J. McDonald E. Oran J. Shour R.J. Doyle, Code 6110 Washington, DC 20375
4	Commander US Army Research Office ATTN: R. Ghirardelli D. Mann R. Singleton R. Shaw P.O. Box 12211 Research Triangle Park, NC 27709-2211	i	Commanding Officer Naval Underwater Systems Center Weapons Dept. ATTN: R.S. Lazar/Code 36301 Newport, RI 02840
2	Commander US Army Armament Research, Development, and Engineering Center ATTN: SMCAR-AEE-B, D.S. Downs SMCAR-AEE, J.A. Lannon Picatinny Arsenal, NJ 07806-5000	2	Commander Naval Weapons Center ATTN: T. Boggs, Code 388 T. Parr, Code 3895 China Lake, CA 93555-6001
1	Commander US Army Armament Research, Development, and Engineering Center ATTN: SMCAR-AEE-BR, L. Harris Picatinny Arsenal, NJ 07806-5000	1	Superintendent Naval Postgraduate School Dept. of Aeronautics ATTN: D.W. Netzer Monterey, CA 93940
2	Commander US Army Missile Command ATTN: AMSMI-RD-PR-E, A.R. Maykut AMSMI-RD-PR-P, R. Betts Redstone Arsenal, AL 35898-5249	3	AL/LSCF ATTN: R. Corley R. Geisler J. Levine Edwards AFB, CA 93523-5000
1	Office of Naval Research Department of the Navy ATTN: R.S. Miller, Code 432 800 N. Quincy Street Arlington, VA 22217	1	AFOSR ATTN: J.M. Tishkoff Bolling Air Force Base Washington, DC 20332
1	Commander Naval Air Systems Command ATTN: J. Ramnarace, AIR-54111C Washington, DC 20360	1	OSD/SDIO/IST ATTN: L. Caveny Pentagon Washington, DC 20301-7100
1	Commander Naval Surface Warfare Center ATTN: J.L. East, Jr., G-23 Dahlgren, VA 22448-5000	1	Commandant USAFAS ATTN: ATSF-TSM-CN Fort Sill, OK 73503-5600
2	Commander Naval Surface Warfare Center ATTN: R. Bernecker, R-13 G.B. Wilmot, R-16 Silver Spring, MD 20903-5000	1	F.J. Seiler ATTN: S.A. Shackleford USAF Academy, CO 80840-6528

<u>No. of Copies</u>	<u>Organization</u>	<u>No. of Copies</u>	<u>Organization</u>
1	University of Dayton Research Institute ATTN: D. Campbell AL/PAP Edwards AFB, CA 93523	1	Exxon Research & Eng. Co. ATTN: A. Dean Route 22E Annandale, NJ 08801
1	NASA Langley Research Center Langley Station ATTN: G.B. Northam/MS 168 Hampton, VA 23365	1	General Applied Science Laboratories, Inc. 77 Raynor Avenue Ronkonkoma, NY 11779-6649
4	National Bureau of Standards ATTN: J. Hastie M. Jacox T. Kashiwagi H. Semerjian US Department of Commerce Washington, DC 20234	1	General Electric Ordnance Systems ATTN: J. Mandzy 100 Plastics Avenue Pittsfield, MA 01203
1	Applied Combustion Technology, Inc. ATTN: A.M. Varney P.O. Box 607885 Orlando, FL 32860	1	General Motors Rsch Labs Physical Chemistry Department ATTN: T. Sloane Warren, MI 48090-9055
2	Applied Mechanics Reviews The American Society of Mechanical Engineers ATTN: R.E. White A.B. Wenzel 345 E. 47th Street New York, NY 10017	2	Hercules, Inc. Allegheny Ballistics Lab. ATTN: W.B. Walkup E.A. Yount P.O. Box 210 Rocket Center, WV 26726
1	Atlantic Research Corp. ATTN: R.H.W. Waesche 7511 Wellington Road Gainesville, VA 22065	1	Alliant Techsystems, Inc. Marie Systems Group ATTN: D.E. Broden/MS MN50-2000 600 2nd Street NE Hopkins, MN 55343
1	AVCO Everett Research Laboratory Division ATTN: D. Stickler 2385 Revere Beach Parkway Everett, MA 02149	1	Alliant Techsystems, Inc. ATTN: R.E. Tompkins 7225 Northland Drive Brooklyn Park, MN 55428
1	Battelle ATTN: TACTEC Library, J. Huggins 505 King Avenue Columbus, OH 43201-2693	1	IBM Corporation ATTN: A.C. Tam Research Division 5600 Cottle Road San Jose, CA 95193
1	Cohen Professional Services ATTN: N.S. Cohen 141 Channing Street Redlands, CA 92373	1	IIT Research Institute ATTN: R.F. Reinaly 10 West 35th Street Chicago, IL 60616

<u>No. of Copies</u>	<u>Organization</u>	<u>No. of Copies</u>	<u>Organization</u>
2	Director Lawrence Livermore National Laboratory ATTN: C. Westbrook M. Costantino P.O. Box 808 Livermore, CA 94550	1	Rockwell International Corp. Rocketdyne Division ATTN: J.E. Flanagan/HB02 6633 Canoga Avenue Canoga Park, CA 91304
1	Lockheed Missiles & Space Co. ATTN: George Lo 3251 Hanover Street Dept. 52-35/B204/2 Palo Alto, CA 94304	4	Director Sandia National Laboratories Division 8354 ATTN: R. Cattolica S. Johnston P. Mattern D. Stephenson Livermore, CA 94550
1	Director Los Alamos National Lab ATTN: B. Nichols, T7, MS-B284 P.O. Box 1663 Los Alamos, NM 87545	1	Science Applications, Inc. ATTN: R.B. Edelman 23146 Cumorah Crest Woodland Hills, CA 91364
1	National Science Foundation ATTN: A.B. Harvey Washington, DC 20550	3	SRI International ATTN: G. Smith D. Crosley D. Golden 333 Ravenswood Avenue Menlo Park, CA 94025
1	Olin Ordnance ATTN: V. McDonald, Library P.O. Box 222 St. Marks, FL 32355-0222	1	Stevens Institute of Tech. Davidson Laboratory ATTN: R. McAlevy, III Hoboken, NJ 07030
1	Paul Gough Associates, Inc. ATTN: P.S. Gough 1048 South Street Portsmouth, NH 03801-5423	1	Sverdrup Technology, Inc. LERC Group ATTN: R.J. Locke, MS SVR-2 2001 Aerospace Parkway Brook Park, OH 44142
2	Princeton Combustion Research Laboratories, Inc. ATTN: N.A. Messina M. Summerfield Princeton Corporate Plaza Bldg. IV, Suite 119 11 Deerpark Drive Monmouth Junction, NJ 08852	1	Sverdrup Technology, Inc. ATTN: J. Deur 2001 Aerospace Parkway Brook Park, OH 44142
1	Hughes Aircraft Company ATTN: T.E. Ward 8433 Fallbrook Avenue Canoga Park, CA 91303	1	Thiokol Corporation Elkton Division ATTN: S.F. Palopoli P.O. Box 241 Elkton, MD 21921

<u>No. of Copies</u>	<u>Organization</u>	<u>No. of Copies</u>	<u>Organization</u>
3	Thiokol Corporation Wasatch Division ATTN: S.J. Bennett P.O. Box 524 Brigham City, UT 84302	1	University of California, Berkeley Chemistry Department ATTN: C. Bradley Moore 211 Lewis Hall Berkeley, CA 94720
1	United Technologies Research Center ATTN: A.C. Eckbreth East Hartford, CT 06108	1	University of California, San Diego ATTN: F.A. Williams AMES, B010 La Jolla, CA 92093
1	United Technologies Corp. Chemical Systems Division ATTN: R.R. Miller P.O. Box 49028 San Jose, CA 95161-9028	2	University of California, Santa Barbara Quantum Institute ATTN: K. Schofield M. Steinberg Santa Barbara, CA 93106
1	Universal Propulsion Company ATTN: H.J. McSpadden 25401 North Central Avenue Phoenix, AZ 85027-7837	1	University of Colorado at Boulder Engineering Center ATTN: J. Daily Campus Box 427 Boulder, CO 80309-0427
1	Veritay Technology, Inc. ATTN: E.B. Fisher 4845 Millersport Highway P.O. Box 305 East Amherst, NY 14051-0305	2	University of Southern California Dept. of Chemistry ATTN: S. Benson C. Wittig Los Angeles, CA 90007
1	Brigham Young University Dept. of Chemical Engineering ATTN: M.W. Beckstead Provo, UT 84058	1	Cornell University Department of Chemistry ATTN: T.A. Cool Baker Laboratory Ithaca, NY 14853
1	California Institute of Tech. Jet Propulsion Laboratory ATTN: L. Strand/MS 125-224 4800 Oak Grove Drive Pasadena, CA 91109	1	University of Delaware ATTN: T. Brill Chemistry Department Newark, DE 19711
1	California Institute of Technology ATTN: F.E.C. Culick/MC 301-46 204 Karman Lab. Pasadena, CA 91125	1	University of Florida Dept. of Chemistry ATTN: J. Winfordner Gainesville, FL 32611
1	University of California Los Alamos Scientific Lab. P.O. Box 1663, Mail Stop B216 Los Alamos, NM 87545	3	Georgia Institute of Technology School of Aerospace Engineering ATTN: E. Price W.C. Strahle B.T. Zinn Atlanta, GA 30332



<u>No. of Copies</u>	<u>Organization</u>	<u>No. of Copies</u>	<u>Organization</u>
1	University of Illinois Dept. of Mech. Eng. ATTN: H. Krier 144MEB, 1206 W. Green St. Urbana, IL 61801	1	Purdue University School of Aeronautics and Astronautics ATTN: J.R. Osborn Grissom Hall West Lafayette, IN 47906
1	The Johns Hopkins University Chemical Propulsion Information Agency ATTN: T.W. Christian 10630 Little Patuxent Parkway, Suite 202 Columbia, MD 21044-3200	1	Purdue University Department of Chemistry ATTN: E. Grant West Lafayette, IN 47906
1	University of Michigan Gas Dynamics Lab Aerospace Engineering Bldg. ATTN: G.M. Faeth Ann Arbor, MI 48109-2140	2	Purdue University School of Mechanical Engineering ATTN: N.M. Laurendeau S.N.B. Murthy TSPC Chaffee Hall West Lafayette, IN 47906
1	University of Minnesota Dept. of Mechanical Engineering ATTN: E. Fletcher Minneapolis, MN 55455	1	Rensselaer Polytechnic Inst. Dept. of Chemical Engineering ATTN: A. Fontijn Troy, NY 12181
3	Pennsylvania State University Applied Research Laboratory ATTN: K.K. Kuo H. Palmer M. Micci University Park, PA 16802	1	Stanford University Dept. of Mechanical Engineering ATTN: R. Hanson Stanford, CA 94305
1	Pennsylvania State University Dept. of Mechanical Engineering ATTN: V. Yang University Park, PA 16802	1	University of Texas Dept. of Chemistry ATTN: W. Gardiner Austin, TX 78712
1	Polytechnic Institute of NY Graduate Center ATTN: S. Lederman Route 110 Farmingdale, NY 11735	1	Virginia Polytechnic Institute and State University ATTN: J.A. Schetz Blacksburg, VA 24061
2	Princeton University Forrestal Campus Library ATTN: K. Brezinsky I. Glassman P.O. Box 710 Princeton, NJ 08540	1	Freedman Associates ATTN: E. Freedman 2411 Diana Road Baltimore, MD 21209-1525

## USER EVALUATION SHEET/CHANGE OF ADDRESS

This Laboratory undertakes a continuing effort to improve the quality of the reports it publishes. Your comments/answers to the items/questions below will aid us in our efforts.

1. BRL Report Number BRL-TR-3409 Date of Report September 1992

2. Date Report Received \_\_\_\_\_

3. Does this report satisfy a need? (Comment on purpose, related project, or other area of interest for which the report will be used.) \_\_\_\_\_  
\_\_\_\_\_  
\_\_\_\_\_

4. Specifically, how is the report being used? (Information source, design data, procedure, source of ideas, etc.) \_\_\_\_\_  
\_\_\_\_\_  
\_\_\_\_\_

5. Has the information in this report led to any quantitative savings as far as man-hours or dollars saved, operating costs avoided, or efficiencies achieved, etc? If so, please elaborate. \_\_\_\_\_  
\_\_\_\_\_  
\_\_\_\_\_

6. General Comments. What do you think should be changed to improve future reports? (Indicate changes to organization, technical content, format, etc.) \_\_\_\_\_  
\_\_\_\_\_  
\_\_\_\_\_  
\_\_\_\_\_

### CURRENT ADDRESS

\_\_\_\_\_  
Name

\_\_\_\_\_  
Organization

\_\_\_\_\_  
Address

\_\_\_\_\_  
City, State, Zip Code

7. If indicating a Change of Address or Address Correction, please provide the New or Correct Address in Block 6 above and the Old or Incorrect address below.

### OLD ADDRESS

\_\_\_\_\_  
Name

\_\_\_\_\_  
Organization

\_\_\_\_\_  
Address

\_\_\_\_\_  
City, State, Zip Code

(Remove this sheet, fold as indicated, staple or tape closed, and mail.)