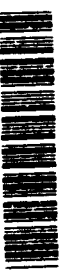




AD-A255 676



12

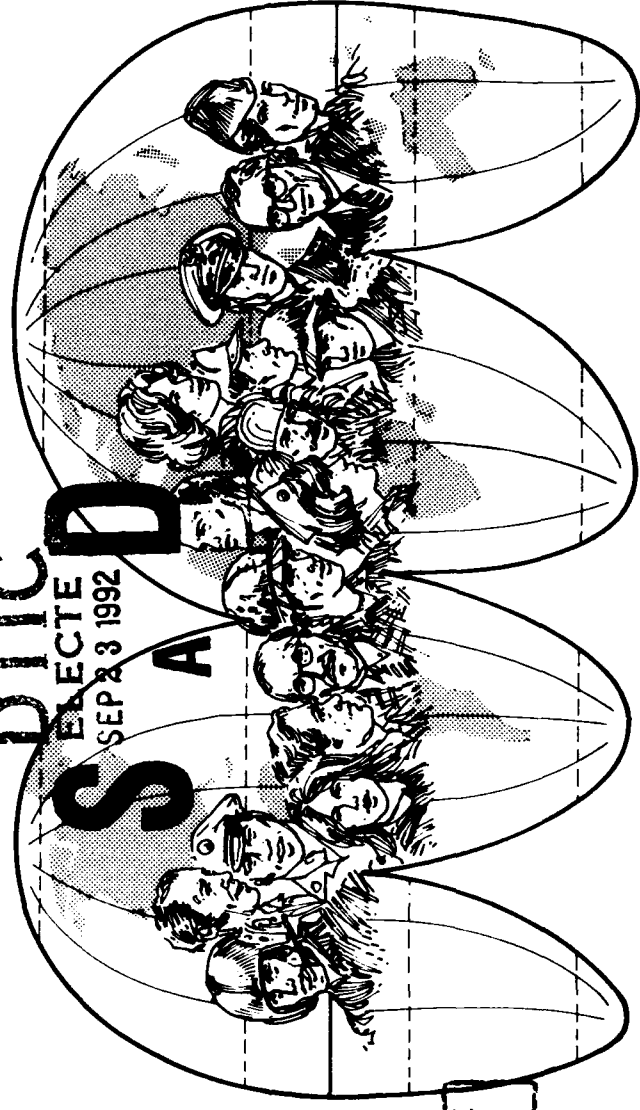
M05

Department of Defense

# WORLDWIDE MANPOWER DISTRIBUTION BY GEOGRAPHICAL AREA

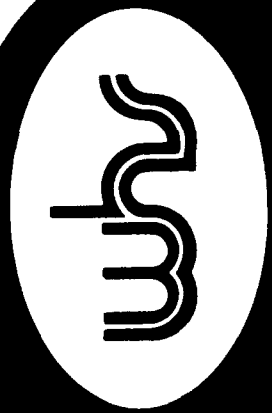
March 31, 1992

**S A D**  
DTIC  
ELECTE  
SEP 23 1992



This document has been approved  
for public release and sale; its  
distribution is unlimited.

92 9 22 072



DIRECTORATE FOR INFORMATION  
OPERATIONS AND REPORTS (DIOR)

9111H

DEFENSE TECHNICAL INFORMATION CENTER

9225641

98

98

OSD WASHINGTON HEADQUARTERS SERVICES

**Department of Defense  
Worldwide Manpower Distribution  
by Geographical Area**

**March 31, 1992**

Department of Defense  
Washington Headquarters Services  
Directorate for Information  
Operations and Reports

~~FOR SALE BY THE SUPERINTENDENT OF DOCUMENTS  
U.S. GOVERNMENT PRINTING OFFICE  
WASHINGTON, D.C. 205402~~

Accession For:	NTIS CRA&I
	DTIC TAB
	Unannounced
	Justification
By	
Distribution/	
Availability Codes	
Dist	A-1
Avail and/or	
Special	

DTIC and NTIS identification number for this publication is DIOR/M05-92/02.

DTIC QUALITY INSPECTED 3

## FOREWORD

*Worldwide Manpower Distribution by Geographical Area* is published quarterly and contains summary data on the worldwide distribution of Department of Defense (DoD) active duty military and civilian personnel and their dependents by country and DoD component.

## TABLE OF CONTENTS

<b>SECTION I. MILITARY, CIVILIAN, AND DEPENDENT STRENGTHS BY REGIONAL AREA AND BY COUNTRY - SUMMARY</b>	
A. TABLE 309 - Total Military, Civilian, and Dependent Strengths by Regional Area and by Country - Summary.....	3
<b>SECTION II. ACTIVE DUTY MILITARY PERSONNEL STRENGTHS BY REGIONAL AREA AND BY COUNTRY</b>	
A. FIGURE 1 - Active Duty Military Personnel - Worldwide.....	15
B. TABLE 309A - Active Duty Military Personnel Strengths by Regional Area and by Country.....	17
<b>SECTION III. CIVILIAN PERSONNEL STRENGTHS BY REGIONAL AREA AND BY COUNTRY</b>	
<b>MILITARY FUNCTIONS</b>	
A. FIGURE 2 - Civilian Personnel Strengths - Worldwide.....	29
B. TABLE P309B - Civilian Personnel Strengths by Regional Area and by Country - Military Functions	
Total.....	31
ARMY.....	36
Navy.....	40
AIR FORCE.....	43
Other DoD Organizations.....	46

SECTION IV. DEPENDENTS OF MILITARY AND CIVILIAN PERSONNEL

A. TABLE P14 - Summary of Dependents of Military and  
Civilian Personnel.....53

B. TABLE 309C - Dependent Strengths by Regional Area  
and by Country

Total Military and Civilian Employees.....55

Active Duty Military.....63

Command Sponsored.....70

Non Command Sponsored.....77

U.S. Citizen Civilian Employees.....80

GLOSSARY OF TERMS .....85

**SECTION I**

**DEPARTMENT OF DEFENSE  
TOTAL MILITARY, CIVILIAN, AND DEPENDENT  
STRENGTHS BY REGIONAL AREA AND BY COUNTRY - SUMMARY**

TABLE 309

DEPARTMENT OF DEFENSE  
TOTAL MILITARY, CIVILIAN, AND DEPENDENT  
STRENGTHS BY REGIONAL AREA AND BY COUNTRY - SUMMARY

MARCH 31, 1992

REGIONAL AREA/COUNTRY	TOTAL	MILITARY	CIVILIAN A/ DEPENDENTS B/	CS MIL. DEPENDENTS B/	NCS MIL. DEPENDENTS C/	CIVILIAN DEPENDENTS D/
U. S. TERRITORIES AND SPECIAL LOCATIONS						
CONTINENTAL UNITED STATES (CONUS)	2,064,295	1,201,343	862,952	#N/R	#N/R	#N/R
ALASKA	57,830	23,104	4,750	29,287	188	501
HAWAII	115,748	46,455	18,404	48,693	1,373	823
AMERICAN SAMOA	14	0	1	12	1	0
FEDERATED STATES OF MICRONESIA	26	26	0	0	0	0
GUAM	21,665	7,250	4,505	9,333	107	470
JOHNSTON ATOLL	495	446	38	0	0	11
MARSHALL ISLANDS	219	50	110	3	0	56
MIDWAY ISLANDS	8	7	0	1	0	0
PALAU	13	13	0	0	0	0
NORTHERN MARIANAS ISLANDS	1	0	1	0	0	0
PUERTO RICO	11,204	4,056	2,894	3,918	65	271
U. S. VIRGIN ISLANDS	124	5	101	17	0	1
WAKE ISLAND	7	7	0	0	0	0
TRANSIENTS	43,833	43,833	0	0	0	0
AFLOAT	187,841	187,841	0	0	0	0
TOTAL-U. S. TERR. & SPECIAL LOCATIONS	2,503,323	1,514,436	893,756	91,264	1,734	2,133

\*N/R NOT REPORTED

Prepared by: Washington Headquarters Services  
Directorate for Information  
Operations and Reports

TABLE 309

DEPARTMENT OF DEFENSE  
TOTAL MILITARY, CIVILIAN, AND DEPENDENT  
STRENGTHS BY REGIONAL AREA AND BY COUNTRY - SUMMARY

MARCH 31, 1992

REGIONAL AREA/COUNTRY	TOTAL	MILITARY	CIVILIAN A/ DEPENDENTS B/	CS MIL. DEPENDENTS B/	NCS MIL. DEPENDENTS C/	CIVILIAN DEPENDENTS D/
EUROPE						
AUSTRIA	55	38	1	15	0	1
BELGIUM*	7,206	2,307	1,399	3,195	23	282
BULGARIA	20	13	0	7	0	0
CYPRUS	19	13	0	6	0	0
CZECHOSLOVAKIA	19	16	0	3	0	0
DENMARK*	141	69	7	65	0	0
FINLAND	36	23	0	6	7	0
FRANCE*	168	84	21	56	1	6
GERMANY*	469,209	167,821	69,485	216,385	3,720	11,798
GIBRALTAR	11	5	0	6	0	0
GREECE*	2,940	1,277	353	1,176	34	100
GREENLAND*	155	153	2	0	0	0
HUNGARY	28	15	2	11	0	0
ICELAND*	7,026	3,549	1,044	2,351	22	60
IRELAND	19	9	0	10	0	0
ITALY*	33,240	13,399	4,679	13,919	153	1,090
LUXEMBOURG*	67	10	43	2	0	12
MALTA	6	6	0	0	0	0
NETHERLANDS*	7,175	2,662	1,164	3,163	34	152
NORWAY*	594	234	56	292	9	3

Prepared by: Washington Headquarters Services  
Directorate for Information  
Operations and Reports



TABLE 309

DEPARTMENT OF DEFENSE  
TOTAL MILITARY, CIVILIAN, AND DEPENDENT  
STRENGTHS BY REGIONAL AREA AND BY COUNTRY - SUMMARY

MARCH 31, 1992

REGIONAL AREA/COUNTRY	TOTAL	MILITARY	CIVILIAN A/ DEPENDENTS	CS MIL. DEPENDENTS B/	NCS MIL. DEPENDENTS C/	CIVILIAN DEPENDENTS D/
POLAND	23	16	0	7	0	0
PORTUGAL*	4,793	1,627	1,096	1,920	9	141
ROMANIA	17	12	0	5	0	0
SPAIN*	13,903	4,729	2,770	5,485	91	828
SWEDEN	29	15	0	14	0	0
SWITZERLAND	45	29	2	10	0	4
TURKEY*	9,445	4,819	746	3,618	27	235
UNITED KINGDOM**	60,099	23,065	3,619	31,166	435	1,814
VATICAN CITY	6	6	0	0	0	0
YUGOSLAVIA	29	17	0	12	0	0
AFLOAT	16,701	16,701	0	0	0	0
TOTAL-EUROPE	633,224	242,739	86,489	282,905	4,565	16,526
NATO COUNTRIES						
RUSSIA -- EURASIA						
RUSSIA	75	48	0	27	0	0
TAJIKISTAN	11	7	0	4	0	0
TOTAL - RUSSIA -- EURASIA	86	55	0	31	0	0

Prepared by: Washington Headquarters Services  
Directorate for Information  
Operations and Reports

TABLE 309

DEPARTMENT OF DEFENSE  
TOTAL MILITARY, CIVILIAN, AND DEPENDENT  
STRENGTHS BY REGIONAL AREA AND BY COUNTRY - SUMMARY

MARCH 31, 1992

REGIONAL AREA/COUNTRY	TOTAL	MILITARY	CIVILIAN A/ DEPENDENTS B/	CS MIL. DEPENDENTS B/	NCS MIL. DEPENDENTS C/	CIVILIAN DEPENDENTS D/
EAST ASIA AND PACIFIC						
AUSTRALIA	1,508	680	187	611	8	22
BURMA	20	10	0	10	0	0
CHINA	64	38	0	26	0	0
FIJI	38	38	0	0	0	0
HONG KONG	61	29	0	32	0	0
INDONESIA	150	39	73	35	3	0
JAPAN *	119,635	47,132	21,861	41,289	5,558	3,795
KAMPUCHEA	1	1	0	0	0	0
KOREA, REPUBLIC OF	66,415	39,402	14,980	5,640	4,656	1,737
LAOS	12	12	0	0	0	0
MALAYSIA	61	22	4	24	0	11
NEW ZEALAND	139	60	14	47	5	13
PAPUA NEW GUINEA	1	1	0	0	0	0
PHILIPPINES	19,437	5,432	9,524	3,393	216	872
SINGAPORE	171	72	16	65	2	16
THAILAND	515	280	159	75	0	1
VIETNAM	1	1	0	0	0	0
AFLDAT	16,372	16,372	0	0	0	0
TOTAL-EAST ASIA & PACIFIC	224,601	109,621	46,818	51,247	10,448	6,467

Prepared by: Washington Headquarters Services  
Directorate for Information  
Operations and Reports

TABLE 309

DEPARTMENT OF DEFENSE  
TOTAL MILITARY, CIVILIAN, AND DEPENDENT  
STRENGTHS BY REGIONAL AREA AND BY COUNTRY - SUMMARY

MARCH 31, 1992

REGIONAL AREA/COUNTRY	TOTAL	MILITARY	CIVILIAN A/ DEPENDENTS B/	CS MIL. DEPENDENTS B/	NCS MIL. DEPENDENTS C/	CIVILIAN DEPENDENTS D/
N. AFRICA, NEAR EAST AND SOUTH ASIA						
ALGERIA	13	10	0	3	0	0
BAHRAIN	435	287	71	46	17	14
BANGLADESH	26	25	0	1	0	0
DIEGO GARCIA	1,027	969	58	0	0	0
EGYPT	1,071	631	297	87	3	53
ETHIOPIA	2	0	0	2	0	0
INDIA	49	28	3	18	0	0
IRAQ	2	2	0	0	0	0
IRAQ-SAUDI ARABIA NEUTRAL ZONE	2	2	0	0	0	0
ISRAEL	242	82	26	36	0	98
JORDAN	39	22	2	15	0	0
KUWAIT	295	291	4	0	0	0
LEBANON	1	1	0	0	0	0
MOROCCO	84	45	5	27	4	3
NEPAL	11	8	0	3	0	0
OMAN	32	27	1	4	0	0
PAKISTAN	74	37	14	22	0	1
SAUDI ARABIA	3,472	2,899	296	132	2	143
SEYCHELLES	11	5	0	6	0	0
SRI LANKA	56	11	41	4	0	0

Prepared by: Washington Headquarters Services  
Directorate for Information  
Operations and Reports

TABLE 309

DEPARTMENT OF DEFENSE  
 TOTAL MILITARY, CIVILIAN, AND DEPENDENT  
 STRENGTHS BY REGIONAL AREA AND BY COUNTRY - SUMMARY

MARCH 31, 1992

REGIONAL AREA/COUNTRY	TOTAL	MILITARY	CIVILIAN A/ DEPENDENTS	CS MIL. DEPENDENTS B/	NCS MIL. DEPENDENTS C/	CIVILIAN DEPENDENTS D/
SYRIA	11	10	0	1	0	0
TUNISIA	49	21	3	24	0	1
UNITED ARAB EMIRATES	58	49	4	1	1	4
WESTERN SAHARA	2	2	0	0	0	0
YEMEN	19	10	3	6	0	0
AFLOAT	12,395	12,395	0	0	0	0
TOTAL-N. AFRICA, NEAR EAST & S. ASIA	19,478	17,869	828	438	26	317
SUB-SAHARAN AFRICA						
ANGOLA	2	2	0	0	0	0
BOTSWANA	11	8	2	1	0	0
BURKINA FASO	5	5	0	0	0	0
BURUNDI	7	6	0	1	0	0
CAMEROON	23	11	1	11	0	0
CENTRAL AFRICAN REPUBLIC	7	6	0	1	0	0
CHAD	12	9	0	3	0	0
CONGO	12	8	0	4	0	0
DJIBOUTI	9	9	0	0	0	0
ETHIOPIA	6	6	0	0	0	0
GABON	7	7	0	0	0	0

Prepared by: Washington Headquarters Services  
 Directorate for Information  
 Operations and Reports

TABLE 309

DEPARTMENT OF DEFENSE  
TOTAL MILITARY, CIVILIAN, AND DEPENDENT  
STRENGTHS BY REGIONAL AREA AND BY COUNTRY - SUMMARY

MARCH 31, 1992

REGIONAL AREA/COUNTRY	TOTAL	MILITARY	CIVILIAN A/ DEPENDENTS B/	CS MIL. DEPENDENTS B/	NCS MIL. DEPENDENTS C/	CIVILIAN DEPENDENTS D/
GHANA	14	6	0	8	0	0
GUINEA	11	7	0	4	0	0
IVORY COAST	41	20	0	21	0	0
KENYA	54	29	6	16	0	3
LIBERIA	11	11	0	0	0	0
MADAGASCAR	11	8	0	3	0	0
MALAWI	9	3	0	6	0	0
MALI	6	6	0	0	0	0
MAURITANIA	7	6	0	1	0	0
MAURITIUS	8	7	0	1	0	0
MOZAMBIQUE	12	6	0	6	0	0
NAMIBIA	5	0	0	5	0	0
NIGER	9	9	0	0	0	0
NIGERIA	20	13	1	6	0	0
SENEGAL	15	11	1	3	0	0
SIERRA LEONE	7	6	0	1	0	0
SOMALIA	9	0	3	6	0	0
SOUTH AFRICA	29	22	0	7	0	0
ST. HELENA (INCLUDES ASCENSION ISLAND)	3	2	0	1	0	0
SUDAN	15	12	2	1	0	0
TANZANIA, UNITED REPUBLIC OF	7	7	0	0	0	0

Prepared by: Washington Headquarters Services  
Directorate for Information  
Operations and Reports

TABLE 309

DEPARTMENT OF DEFENSE  
 TOTAL MILITARY, CIVILIAN, AND DEPENDENT  
 STRENGTHS BY REGIONAL AREA AND BY COUNTRY - SUMMARY

MARCH 31, 1992

REGIONAL AREA/COUNTRY	TOTAL	MILITARY	CIVILIAN A/ DEPENDENTS B/	CS MIL. DEPENDENTS B/	NCS MIL. DEPENDENTS C/	CIVILIAN DEPENDENTS D/
TOGO	5	5	0	0	0	0
UGANDA	6	6	0	0	0	0
ZAIRE	25	14	0	11	0	0
ZAMBIA	6	6	0	0	0	0
ZIMBABWE	17	8	0	9	0	0
TOTAL - SUB-SAHARAN AFRICA	463	307	16	137	0	3
WESTERN HEMISPHERE						
ANTIGUA	131	75	1	55	0	0
ARGENTINA	55	23	4	24	1	3
BAHAMAS, THE	98	48	10	25	2	13
BARBADOS	21	13	0	8	0	0
BELIZE	168	159	1	6	0	2
BERMUDA	2,862	1,108	409	1,033	17	295
BOLIVIA	59	21	8	16	3	11
BRAZIL	96	57	5	32	0	2
CANADA	1,451	587	228	552	36	48
CHILE	54	20	3	19	7	5
COLOMBIA	68	46	7	10	0	5
COSTA RICA	24	13	3	5	0	3

Prepared by: Washington Headquarters Services  
 Directorate for Information  
 Operations and Reports

TABLE 309

DEPARTMENT OF DEFENSE  
TOTAL MILITARY, CIVILIAN, AND DEPENDENT  
STRENGTHS BY REGIONAL AREA AND BY COUNTRY - SUMMARY

MARCH 31, 1992

REGIONAL AREA/COUNTRY	TOTAL	MILITARY	CIVILIAN A/ DEPENDENTS B/	CS MIL. DEPENDENTS B/	NCS MIL. DEPENDENTS C/	CIVILIAN DEPENDENTS D/
CUBA (GUANTANAMO)	6,457	3,321	808	1,944	29	355
DOMINICAN REPUBLIC	30	13	6	8	0	3
ECUADOR	48	20	3	13	0	12
EL SALVADOR	123	99	4	16	0	4
GUATEMALA	47	17	4	10	0	16
GUYANA	9	6	0	3	0	0
HAITI	20	14	1	5	0	0
HONDURAS	836	800	10	18	0	8
JAMAICA	18	12	0	6	0	0
MEXICO	73	31	8	30	3	1
Nicaragua	33	16	0	17	0	0
PANAMA	25,499	11,327	5,469	5,672	182	2,849
PARAGUAY	36	12	3	10	0	11
PERU	109	34	46	22	0	7
SURINAME	10	7	0	3	0	0
TRINIDAD AND TOBAGO	9	6	0	3	0	0
URUGUAY	17	13	0	4	0	0
VENEZUELA	87	38	6	28	3	12
AFLDAT	1,868	1,868	0	0	0	0
TOTAL-WESTERN HEMISPHERE	40,416	19,824	7,047	9,597	283	3,665

Prepared by: Washington Headquarters Services  
Directorate for Information  
Operations and Reports

TABLE 309

DEPARTMENT OF DEFENSE  
 TOTAL MILITARY, CIVILIAN, AND DEPENDENT  
 STRENGTHS BY REGIONAL AREA AND BY COUNTRY - SUMMARY

MARCH 31, 1992

REGIONAL AREA/COUNTRY	TOTAL	MILITARY	CIVILIAN A/ DEPENDENTS	CS MIL. DEPENDENTS B/	MCS MIL. DEPENDENTS C/	CIVILIAN DEPENDENTS D/
ANTARCTICA	59	59	0	0	0	0
UNDISTRIBUTED	2,221	2,221	0	0	0	0
TOTAL FOREIGN COUNTRIES	920,548	392,695	141,198	344,355	15,322	26,978
TOTAL WORLDWIDE	3,423,871	1,907,131	1,034,954	435,619	17,056	29,111

A/ REFLECTS THE SUM OF DIRECT AND INDIRECT HIRE EMPLOYEES.

B/ COMMAND SPONSORED DEPENDENTS.

C/ NON COMMAND SPONSORED DEPENDENTS.

D/ DEPENDENTS OF CIVILIAN EMPLOYEES EXCLUDES DEPENDENTS OF U.S. CITIZEN CIVILIANS IN ALASKA, HAWAII, AND U.S. TERRITORIES WHO ARE PERMANENT RESIDENTS AND EMPLOYED IN THE STATE OR TERRITORY OF THEIR RESIDENCE.

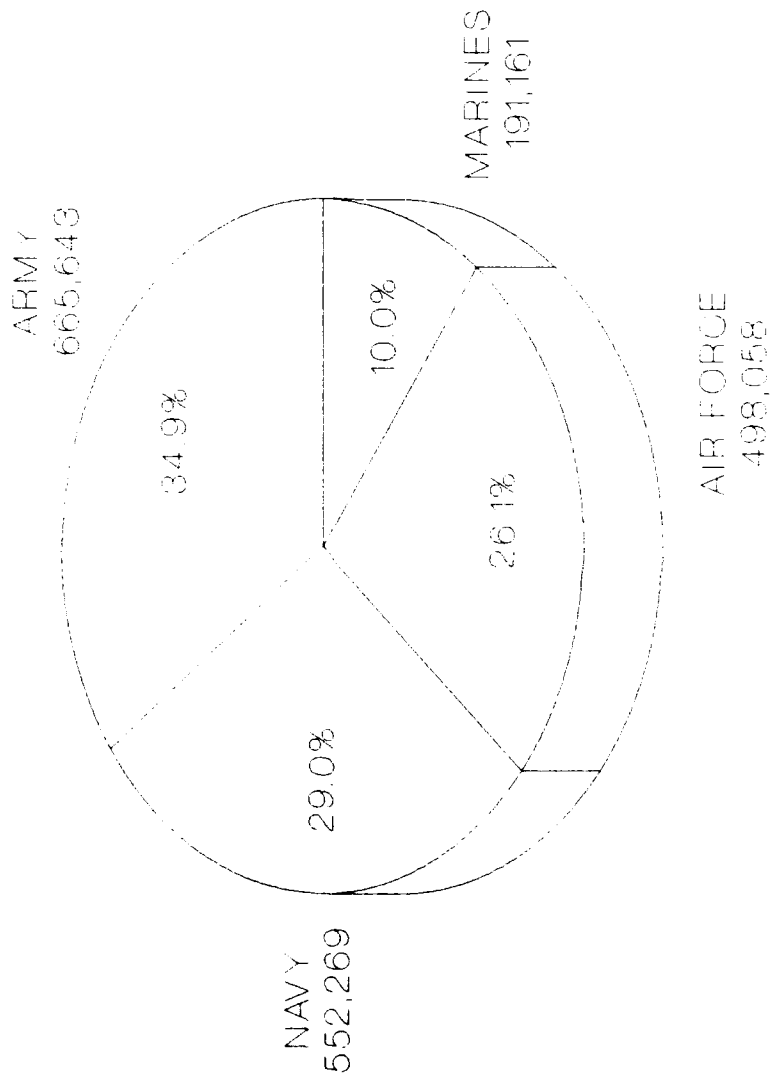
Prepared by: Washington Headquarters Services  
 Directorate for Information  
 Operations and Reports



**SECTION II**

**DEPARTMENT OF DEFENSE  
ACTIVE DUTY MILITARY PERSONNEL STRENGTHS  
BY REGIONAL AREA AND BY COUNTRY**

**DEPARTMENT OF DEFENSE ACTIVE DUTY  
MILITARY PERSONNEL - WORLDWIDE  
MARCH 31, 1992**



Washington Headquarters Services  
Directorate for Information  
Operations and Reports

FIGURE 1

TABLE 309A

DEPARTMENT OF DEFENSE  
ACTIVE DUTY MILITARY PERSONNEL STRENGTHS BY REGIONAL AREA AND BY COUNTRY

MARCH 31, 1992

REGIONAL AREA/COUNTRY	TOTAL	ARMY	NAVY	MARINE CORPS	AIR FORCE
U S. TERRITORIES AND SPECIAL LOCATIONS					
CONTINENTAL UNITED STATES (CONUS)	1,201,343	427,538	257,387	139,452	376,966
ALASKA	23,104	9,466	2,007	53	11,578
HAWAII	46,455	19,020	12,599	9,483	5,353
FEDERATED STATES OF MICRONESIA	26	0	13	0	13
GUAM	7,250	31	4,357	413	2,449
JOHNSTON ATOLL	446	432	2	0	12
MARSHALL ISLANDS	50	50	0	0	0
MIDWAY ISLANDS	7	0	7	0	0
PALAU	13	0	13	0	0
PUERTO RICO	4,056	319	3,531	153	53
U.S. VIRGIN ISLANDS	5	4	0	0	1
WAKE ISLAND	7	0	0	0	7
TRANSIENTS	43,833	16,478	13,022	6,978	7,355
AFLOAT	187,841	0	187,217	624	0
TOTAL-U.S. TERR. AND SPECIAL LOCATIONS	1,514,436	473,338	480,155	157,156	403,787
FOREIGN COUNTRIES					
EUROPE					
AUSTRIA	38	11	0	23	4
BELGIUM*	2,307	1,572	119	33	583
BULGARIA	13	2	0	9	2

Prepared by: Washington Headquarters Services  
Directorate for Information  
Operations and Reports

TABLE 308A

DEPARTMENT OF DEFENSE  
ACTIVE DUTY MILITARY PERSONNEL STRENGTHS BY REGIONAL AREA AND BY COUNTRY

MARCH 31, 1992

REGIONAL AREA/COUNTRY	TOTAL	ARMY	NAVY	MARINE CORPS	AIR FORCE
CYPRUS	13	3	0	10	0
CZECHOSLOVAKIA	16	2	0	10	4
DENMARK*	69	19	18	8	24
FINLAND	23	4	2	14	3
FRANCE*	84	20	14	34	16
GERMANY*	167,821	138,557	338	113	28,813
GIBRALTAR	5	0	5	0	0
GREECE*	1,277	98	188	15	976
GREENLAND*	153	0	0	0	153
HUNGARY	15	4	0	10	1
ICELAND*	3,549	5	2,138	99	1,307
IRELAND	9	2	0	7	0
ITALY*	13,399	3,901	5,332	177	3,989
LUXEMBOURG*	10	4	0	6	0
MALTA	6	0	0	6	0
NETHERLANDS*	2,662	801	20	11	1,830
NORWAY*	234	36	39	35	124
POLAND	16	4	1	10	1
PORTUGAL*	1,627	55	392	10	1,170
ROMANIA	12	3	0	8	1
SPAIN*	4,729	17	3,308	174	1,230
SWEDEN	15	1	2	7	5

Prepared by: Washington Headquarters Services  
Directorate for Information  
Operations and Reports

TABLE 309A

DEPARTMENT OF DEFENSE  
ACTIVE DUTY MILITARY PERSONNEL STRENGTHS BY REGIONAL AREA AND BY COUNTRY

MARCH 31, 1992

REGIONAL AREA/COUNTRY	TOTAL	ARMY	NAVY	MARINE CORPS	AIR FORCE
SWITZERLAND	29	3	1	23	2
TURKEY*	4,819	901	121	18	3,779
UNITED KINGDOM**	23,065	185	2,331	395	20,154
VATICAN CITY	6	0	0	6	0
YUGOSLAVIA	17	3	1	10	3
AFLD <sup>AT</sup>	16,701	0	11,628	5,073	0
TOTAL-EUROPE	242,739	146,213	25,998	6,354	64,174
*(EUROPEAN NATO)	(225,805)	(146,171)	(14,358)	(1,128)	(64,148)
(EUROPEAN NATO PERMANENTLY ASSIGNED)	(228,228)	(146,318)	(14,300)	(1,134)	(66,476)
RUSSIA -- EURASIA					
RUSSIA	48	8	3	37	0
TAJIKISTAN	7	0	0	0	7
TOTAL RUSSIA -- EURASIA	55	8	3	37	7
EAST ASIA AND PACIFIC					
AUSTRALIA	680	24	372	7	277
BURMA	10	3	0	6	1
CHINA	38	6	2	26	4
FIJI	38	0	37	1	0
HONG KONG	29	6	10	8	5
INDONESIA	39	5	13	11	10

Prepared by: Washington Headquarters Services  
Directorate for Information  
Operations and Reports

**TABLE 309A**  
**DEPARTMENT OF DEFENSE**  
**ACTIVE DUTY MILITARY PERSONNEL STRENGTHS BY REGIONAL AREA AND BY COUNTRY**  
**MARCH 31, 1992**

REGIONAL AREA/COUNTRY	TOTAL	ARMY	NAVY	MARINE CORPS	AIR FORCE
JAPAN *	47,132	1,696	7,197	22,317	15,922
KAMPUCHEA	1	0	0	1	0
KOREA, REPUBLIC OF	39,402	29,727	342	75	9,258
LAOS	12	12	0	0	0
MALAYSIA	22	6	1	7	8
NEW ZEALAND	60	1	46	6	7
PAPUA NEW GUINEA	1	1	0	0	0
PHILIPPINES	5,432	114	4,296	967	55
SINGAPORE	72	16	12	7	37
THAILAND	280	213	12	19	36
VIETNAM	1	1	0	0	0
AFLD	16,372	0	16,296	76	0
TOTAL-EAST ASIA & PACIFIC	109,621	31,831	28,636	23,534	25,620
*(NORTHEAST ASIA TROOP STRENGTH)	( 86,534)	( 31,423)	( 7,539)	(22,392)	(25,180)
N. AFRICA, NEAR EAST AND SOUTH ASIA					
ALGERIA	10	1	1	7	1
BAHRAIN	287	13	255	10	9
BANGLADESH	25	14	0	11	0
DIEGO GARCIA	969	4	852	89	24
EGYPT	631	506	38	41	46

Prepared by: Washington Headquarters Services  
Directorate for Information  
Operations and Reports

TABLE 309A

DEPARTMENT OF DEFENSE  
ACTIVE DUTY MILITARY PERSONNEL STRENGTHS BY REGIONAL AREA AND BY COUNTRY

MARCH 31, 1992

REGIONAL AREA/COUNTRY	TOTAL	ARMY	NAVY	MARINE CORPS	AIR FORCE
INDIA	28	5	4	14	5
IRAQ	2	0	0	2	0
IRAQ-SAUDI ARABIA NEUTRAL ZONE	2	0	0	2	0
ISRAEL	82	33	8	22	19
JORDAN	22	9	0	8	5
KUWAIT	291	270	7	11	3
LEBANON	1	1	0	0	0
MOROCCO	45	9	2	25	9
NEPAL	8	2	0	6	0
OMAN	27	2	1	8	16
PAKISTAN	37	11	2	18	6
SAUDI ARABIA	2,899	2,587	45	45	222
SEYCHELLES	5	0	0	0	5
SRI LANKA	11	0	3	8	0
SYRIA	10	3	0	7	0
TUNISIA	21	10	2	7	2
UNITED ARAB EMIRATES	49	39	1	7	2
WESTERN SAHARA	2	2	0	0	0
YEMEN	10	2	0	7	1
AFLOAT	12,395	0	10,190	2,205	0
TOTAL-N. AFRICA, NEAR EAST & S. ASIA	17,869	3,523	11,411	2,560	375
SUB-SAHARAN AFRICA					

Prepared by: Washington Headquarters Services  
Directorate for Information  
Operations and Reports

TABLE 309A

DEPARTMENT OF DEFENSE  
ACTIVE DUTY MILITARY PERSONNEL STRENGTHS BY REGIONAL AREA AND BY COUNTRY

MARCH 31, 1992

REGIONAL AREA/COUNTRY	TOTAL	ARMY	NAVY	MARINE CORPS	AIR FORCE
ANGOLA	2	2	0	0	0
BOTSWANA	8	2	0	6	0
BURKINA FASO	5	0	0	5	0
BURUNDI	6	0	0	6	0
CAMEROON	11	4	0	6	1
CENTRAL AFRICAN REPUBLIC	6	0	0	6	0
CHAD	9	3	0	6	0
CONGO	8	2	0	6	0
DJIBOUTI	9	3	0	6	0
ETHIOPIA	6	0	0	6	0
GABON	7	0	0	7	0
GHANA	6	0	0	6	0
GUINEA	7	0	0	7	0
IVORY COAST	20	3	1	14	2
KENYA	29	8	3	16	2
LIBERIA	11	1	1	8	1
MADAGASCAR	8	0	2	6	0
MALAWI	3	3	0	0	0
MALI	6	0	0	6	0
MAURITANIA	6	0	0	6	0
MAURITIUS	7	0	0	7	0
MOZAMBIQUE	6	0	0	6	0
NIGER	9	3	0	6	0

Prepared by: Washington Headquarters Services  
Directorate for Information  
Operations and Reports



TABLE 309A

DEPARTMENT OF DEFENSE  
ACTIVE DUTY MILITARY PERSONNEL STRENGTHS BY REGIONAL AREA AND BY COUNTRY

MARCH 31, 1992

REGIONAL AREA/COUNTRY	TOTAL	ARMY	NAVY	MARINE CORPS	AIR FORCE
NIGERIA	13	1	0	10	2
SENEGAL	11	1	3	7	0
SIERRA LEONE	6	0	0	6	0
SOUTH AFRICA	22	2	1	15	4
ST. HELENA (INCLUDES ASCENSION ISLAND)	2	0	0	0	2
SUDAN	12	4	0	8	0
TANZANIA, UNITED REPUBLIC OF	7	0	0	7	0
TOGO	5	0	0	5	0
UGANDA	6	0	0	6	0
ZAIRE	14	4	1	6	3
ZAMBIA	6	0	0	6	0
ZIMBABWE	8	2	0	6	0
TOTAL - SUB-SAHARAN AFRICA	307	48	12	230	17
WESTERN HEMISPHERE					
ANTIGUA	75	0	72	0	3
ARGENTINA	23	5	6	7	5
BAHAMAS, THE	48	22	19	7	0
BARBADOS	13	4	3	6	0
BELIZE	159	158	1	0	0
BERMUDA	1,108	1	1,065	42	0
BOLIVIA	21	8	2	8	3
BRAZIL	57	11	11	26	9

Prepared by: Washington Headquarters Services  
Directorate for Information  
Operations and Reports

**TABLE 309A**  
**DEPARTMENT OF DEFENSE**  
**ACTIVE DUTY MILITARY PERSONNEL STRENGTHS BY REGIONAL AREA AND BY COUNTRY**

**MARCH 31, 1992**

REGIONAL AREA/COUNTRY	TOTAL	ARMY	NAVY	MARINE CORPS	AIR FORCE
CANADA	587	74	384	12	117
CHILE	20	4	3	11	2
COLOMBIA	46	18	4	12	12
COSTA RICA	13	3	0	10	0
CUBA (GUANTANAMO)	3,321	622	1,906	791	2
DOMINICAN REPUBLIC	13	3	0	8	2
ECUADOR	20	7	2	6	5
EL SALVADOR	99	68	4	23	4
GUATEMALA	17	9	1	6	1
GUYANA	6	0	0	6	0
HAITI	14	3	0	10	1
HONDURAS 1/	800	764	3	13	20
JAMAICA	12	0	3	9	0
MEXICO	31	10	3	12	6
NICARAGUA	16	4	0	11	1
PANAMA	11,327	8,229	532	204	2,362
PARAGUAY	12	3	1	7	1
PERU	34	7	13	11	3
SURINAME	7	2	0	5	0
TRINIDAD AND TOBAGO	6	0	0	6	0
URUGUAY	13	5	0	7	1
VENEZUELA	38	12	4	9	13

1/ NUMBER INCLUDES MILITARY PERSONNEL ON TDY TO PLAN AND CONDUCT EXERCISES. Prepared by: Washington Headquarters Services  
 Directorate for Information Operations and Reports

TABLE 309A

DEPARTMENT OF DEFENSE  
ACTIVE DUTY MILITARY PERSONNEL STRENGTHS BY REGIONAL AREA AND BY COUNTRY

MARCH 31, 1992

REGIONAL AREA/COUNTRY	TOTAL	ARMY	NAVY	MARINE CORPS	AIR FORCE
AFLOAT	1,868	0	1,863	5	0
TOTAL-WESTERN HEMISPHERE	19,824	10,056	5,905	1,290	2,573
ANTARCTICA	59	0	59	0	0
UNDISTRIBUTED					
ASHORE (INCLUDES TEMPORARILY SHORE-BASED)	2,221	626	90	0	1,505
TOTAL-UNDISTRIBUTED	2,221	626	90	0	1,505
TOTAL FOREIGN COUNTRIES	392,695	192,305	72,114	34,005	94,271
ASHORE (INCLUDES TEMPORARILY SHORE-BASED)	345,359	192,305	32,137	26,646	94,271
AFLOAT	47,336	0	39,977	7,359	0
TOTAL WORLDWIDE	1,907,131	665,643	552,269	191,161	498,058
ASHORE (INCLUDES TEMPORARILY SHORE-BASED)	1,671,954	665,643	325,075	183,178	498,058
AFLOAT	235,177	0	227,194	7,983	0

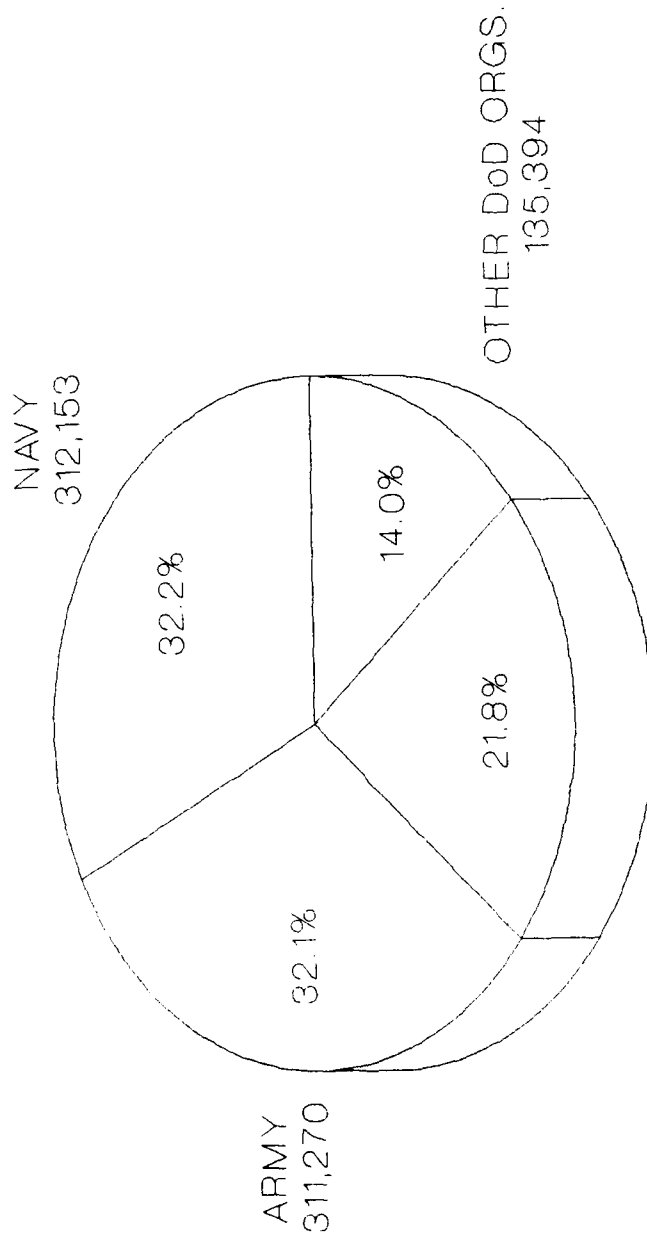
2/ NUMBER INCLUDES 141 ENLISTED RESERVE PERSONNEL CALLED TO ACTIVE DUTY UNDER 10 USC 637(b).

Prepared by: Washington Headquarters Services  
Directorate for Information  
Operations and Reports

**SECTION III**

**DEPARTMENT OF DEFENSE  
CIVILIAN PERSONNEL STRENGTHS  
BY REGIONAL AREA AND BY COUNTRY  
MILITARY FUNCTIONS**

**DEPARTMENT OF DEFENSE  
CIVILIAN PERSONNEL STRENGTHS - WORLDWIDE  
MARCH 31, 1992**



AIR FORCE  
211,435

Washington Headquarters Services  
Directorate for Information  
Operations and Reports

FIGURE 2

TABLE P309B

DEPARTMENT OF DEFENSE  
 TOTAL CIVILIAN PERSONNEL STRENGTHS BY REGIONAL AREA AND BY COUNTRY  
 MILITARY FUNCTIONS - SUMMARY

MARCH 31, 1992

REGIONAL AREA/COUNTRY	TOTAL DIRECT HIRE	TOTAL FOREIGN NATIONALS	U.S. CITIZENS DIRECT HIRE	FOREIGN NATIONALS	
				DIRECT HIRE	INDIRECT HIRE
U. S. TERRITORIES AND SPECIAL LOCATIONS					
CONTINENTAL UNITED STATES (CONUS)	862,952	140	862,812	140	0
ALASKA	4,750	0	4,750	0	0
HAWAII	18,404	0	18,404	0	0
AMERICAN SAMOA	1	0	1	0	0
GUAM	4,501	15	4,490	11	4
JOHNSTON ATOLL	38	0	38	0	0
MARSHALL ISLANDS	110	0	110	0	0
NORTHERN MARIANAS ISLANDS	1	0	1	0	0
PUERTO RICO	2,894	0	2,894	0	0
U.S. VIRGIN ISLANDS	101	0	101	0	0
TOTAL-U.S. TERR. AND SPECIAL LOCATIONS	893,752	155	893,601	151	4
EUROPE					
AUSTRIA	1	0	1	0	0
BELGIUM*	606	794	605	1	793
DENMARK*	7	5	2	5	0
FRANCE*	15	6	15	0	6
GERMANY*	27,808	41,686	27,799	9	41,677
GREECE*	235	118	235	0	118

Prepared by: Washington Headquarters Services  
 Directorate for Information  
 Operations and Reports

TABLE P309B

DEPARTMENT OF DEFENSE  
 TOTAL CIVILIAN PERSONNEL STRENGTHS BY REGIONAL AREA AND BY COUNTRY  
 MILITARY FUNCTIONS - SUMMARY

MARCH 31, 1992

REGIONAL AREA/COUNTRY	TOTAL DIRECT HIRE	TOTAL FOREIGN NATIONALS	U.S. CITIZENS DIRECT HIRE	FOREIGN NATIONALS		FOREIGN NATIONALS	
				DIRECT HIRE	INDIRECT HIRE	DIRECT HIRE	INDIRECT HIRE
GREENLAND*	2	0	2	0	0	0	0
HUNGARY	2	0	2	0	0	0	0
ICELAND*	1,044	808	236	808	0	0	0
ITALY*	4,678	2,855	1,824	2,854	1	1	1
LUXEMBOURG*	17	26	17	0	0	26	26
NETHERLANDS*	464	707	457	7	7	700	700
NORWAY*	56	42	14	42	0	0	0
PORTUGAL*	1,096	906	190	906	0	0	0
SPAIN*	968	1,802	968	0	0	1,802	1,802
SWITZERLAND	2	0	2	0	0	0	0
TURKEY*	744	341	405	339	2	2	2
UNITED KINGDOM**	3,531	1,041	2,578	953	88	88	88
TOTAL-EUROPE	41,276	51,137	35,352	5,924	45,213	45,213	45,213
*NATO COUNTRIES							
EAST ASIA AND PACIFIC							
AUSTRALIA	186	161	26	160	1	1	1
INDONESIA	73	70	3	70	0	0	0
JAPAN *	5,158	16,724	5,137	21	16,703	16,703	16,703
KOREA, REPUBLIC OF	12,214	12,867	2,113	10,101	2,766	2,766	2,766
MALAYSIA	1	3	1	0	3	3	3

Prepared by: Washington Headquarters Services  
 Directorate for Information  
 Operations and Reports

TABLE P309B

DEPARTMENT OF DEFENSE  
 TOTAL CIVILIAN PERSONNEL STRENGTHS BY REGIONAL AREA AND BY COUNTRY  
 MILITARY FUNCTIONS - SUMMARY

MARCH 31, 1992

REGIONAL AREA/COUNTRY	TOTAL DIRECT HIRE	TOTAL FOREIGN NATIONALS	U.S. CITIZENS DIRECT HIRE	FOREIGN NATIONALS		FOREIGN NATIONALS	
				DIRECT HIRE	INDIRECT HIRE	DIRECT HIRE	INDIRECT HIRE
NEW ZEALAND	14	2	12	2	0	0	0
PHILIPPINES	9,515	8,843	681	8,834	9	0	9
SINGAPORE	16	0	16	0	0	0	0
THAILAND	159	147	12	147	0	0	0
TOTAL-EAST ASIA & PACIFIC	27,336	38,817	8,001	19,335	19,482	0	0
N. AFRICA, NEAR EAST AND SOUTH ASIA							
BAHRAIN	71	15	56	15	0	0	0
DIEGO GARCIA	58	54	4	54	0	0	0
EGYPT	296	227	70	226	1	1	1
INDIA	2	1	2	0	1	0	1
ISRAEL	26	16	8	18	0	0	0
JORDAN	2	0	2	0	0	0	0
KUWAIT	4	1	3	1	0	0	0
MOROCCO	5	0	5	0	0	0	0
OMAN	1	1	0	1	0	0	0
PAKISTAN	14	12	2	12	0	0	0
SAUDI ARABIA	296	18	278	18	0	0	0
SRI LANKA	41	41	0	41	0	0	0
TUNISIA	3	0	3	0	0	0	0
UNITED ARAB EMIRATES	4	2	2	2	0	0	0

Prepared by: Washington Headquarters Services  
 Directorate for Information  
 Operations and Reports



TABLE P3098

DEPARTMENT OF DEFENSE  
 TOTAL CIVILIAN PERSONNEL STRENGTHS BY REGIONAL AREA AND BY COUNTRY  
 MILITARY FUNCTIONS - SUMMARY

MARCH 31, 1982

REGIONAL AREA/COUNTRY	TOTAL DIRECT HIRE	TOTAL FOREIGN NATIONALS	U.S. CITIZENS DIRECT HIRE	FOREIGN NATIONALS		FOREIGN NATIONALS INDIRECT HIRE
				DIRECT HIRE	INDIRECT HIRE	
YEMEN	3	3	0	3	0	0
TOTAL-N. AFRICA, NEAR EAST & S. ASIA	826	393	435	391	2	2
SUB-SAHARAN AFRICA						
BOTSWANA	2	0	2	0	0	0
CAMEROON	1	0	1	0	0	0
KENYA	6	3	3	3	0	0
NIGERIA	1	0	1	0	0	0
SENEGAL	1	0	1	0	0	0
SOMALIA	3	3	0	3	0	0
SUDAN	2	2	0	2	0	0
TOTAL - SUB-SAHARAN AFRICA	16	8	8	8	0	0
WESTERN HEMISPHERE						
ANTIGUA	1	0	1	0	0	0
ARGENTINA	4	1	3	1	0	0
BAHAMAS, THE	10	0	10	0	0	0
BELIZE	1	0	1	0	0	0
BERMUDA	409	93	316	93	0	0
BOLIVIA	8	2	6	2	0	0
BRAZIL	5	2	3	2	0	0

Prepared by: Washington Headquarters Services  
 Directorate for Information  
 Operations and Reports

TABLE P308B

DEPARTMENT OF DEFENSE  
TOTAL CIVILIAN PERSONNEL STRENGTHS BY REGIONAL AREA AND BY COUNTRY  
MILITARY FUNCTIONS - SUMMARY

MARCH 31, 1992

REGIONAL AREA/COUNTRY	TOTAL	TOTAL	U.S.	FOREIGN	FOREIGN	FOREIGN
	DIRECT HIRE	FOREIGN NATIONALS	CITIZENS DIRECT HIRE	NATIONALS DIRECT HIRE	NATIONALS DIRECT HIRE	NATIONALS INDIRECT HIRE
CANADA	227	167	61	166	1	0
CHILE	3	2	1	2	0	0
COLOMBIA	7	2	5	2	0	0
COSTA RICA	3	1	2	1	0	0
CUBA (GUANTANAMO)	808	311	497	311	0	0
DOMINICAN REPUBLIC	6	5	1	5	0	0
ECUADOR	3	2	1	2	0	0
EL SALVADOR	4	0	4	0	0	0
GUATEMALA	4	1	3	1	0	0
HAITI	1	1	0	1	0	0
HONDURAS	10	2	8	2	0	0
MEXICO	8	2	6	2	0	0
PANAMA	5,469	3,414	2,055	3,414	0	0
PARAGUAY	3	1	2	1	0	0
PERU	46	41	5	41	0	0
VENEZUELA	6	3	3	3	0	0
TOTAL-WESTERN HEMISPHERE	7,046	4,053	2,994	4,052	1	1
TOTAL FOREIGN COUNTRIES	76,500	94,408	46,790	29,710	64,698	64,698
TOTAL WORLDWIDE	970,252	94,563	940,391	29,861	64,702	64,702

NOTE: EXCLUDES SPECIAL EMPLOYMENT CATEGORIES FOR STUDENTS AND DISADVANTAGED YOUTH. Prepared by: Washington Headquarters Services, Directorate for Information Operations and Reports

TABLE P309B

DEPARTMENT OF DEFENSE  
 ARMY CIVILIAN PERSONNEL STRENGTHS BY REGIONAL AREA AND BY COUNTRY  
 MILITARY FUNCTIONS

MARCH 31, 1992

REGIONAL AREA/COUNTRY	TOTAL	U.S.		FOREIGN		FOREIGN	
	DIRECT HIRE	CITIZENS DIRECT HIRE	NATIONALS DIRECT HIRE	NATIONALS DIRECT HIRE	NATIONALS INDIRECT HIRE	INDIRECT HIRE	INDIRECT HIRE
U. S. TERRITORIES AND SPECIAL LOCATIONS							
CONTINENTAL UNITED STATES (CONUS)	267,456	267,456	0	0	0	0	0
ALASKA	2,587	2,587	0	0	0	0	0
HAWAII	5,136	5,136	0	0	0	0	0
AMERICAN SAMOA	1	1	0	0	0	0	0
GUAM	14	14	0	0	0	0	0
JOHNSTON ATOLL	38	38	0	0	0	0	0
MARSHALL ISLANDS	107	107	0	0	0	0	0
NORTHERN MARIANAS ISLANDS	1	1	0	0	0	0	0
PUERTO RICO	1,009	1,009	0	0	0	0	0
U. S. VIRGIN ISLANDS	100	100	0	0	0	0	0
TOTAL-U.S. TERR. AND SPECIAL LOCATIONS	276,449	276,449	0	0	0	0	0
EUROPE							
BELGIUM*	375	375	748	0	0	748	0
DENMARK*	2	2	0	0	0	0	0
FRANCE*	10	10	0	0	0	0	0
GERMANY*	16,936	16,936	35,363	0	0	35,363	0
GREECE*	11	11	0	0	0	0	0
ITALY*	1,474	1,474	1,042	0	0	1,042	0

Prepared by: Washington Headquarters Services  
 Directorate for Information  
 Operations and Reports

TABLE P309B

DEPARTMENT OF DEFENSE  
ARMY CIVILIAN PERSONNEL STRENGTHS BY REGIONAL AREA AND BY COUNTRY  
MILITARY FUNCTIONS

MARCH 31, 1992

REGIONAL AREA/COUNTRY	TOTAL DIRECT HIRE	TOTAL FOREIGN NATIONALS	U.S. CITIZENS DIRECT HIRE	FOREIGN NATIONALS		FOREIGN NATIONALS INDIRECT HIRE
				DIRECT HIRE	INDIRECT HIRE	
LUXEMBOURG*	16	26	16	0	0	26
NETHERLANDS*	161	609	161	0	0	609
NORWAY*	4	0	4	0	0	0
PORTUGAL*	4	0	4	0	0	0
SPAIN*	5	0	5	0	0	0
TURKEY*	39	0	39	0	0	0
UNITED KINGDOM**	601	565	36	565	0	0
TOTAL-EUROPE	19,638	38,353	18,031	1,607	0	36,746
*NATO COUNTRIES						
EAST ASIA AND PACIFIC						
AUSTRALIA	1	0	1	0	0	0
JAPAN *	924	3,248	924	0	0	3,248
KOREA, REPUBLIC OF	10,232	11,430	1,568	8,664	2,766	2,766
THAILAND	150	146	4	146	0	0
TOTAL-EAST ASIA & PACIFIC	11,307	14,824	2,497	8,810	0	6,014
N. AFRICA, NEAR EAST AND SOUTH ASIA						
BAHRAIN	2	0	2	0	0	0
EGYPT	44	0	44	0	0	0
ISRAEL	7	0	7	0	0	0

Prepared by: Washington Headquarters Services  
Directorate for Information  
Operations and Reports

TABLE P309B

DEPARTMENT OF DEFENSE  
ARMY CIVILIAN PERSONNEL STRENGTHS BY REGIONAL AREA AND BY COUNTRY  
MILITARY FUNCTIONS

MARCH 31, 1992

REGIONAL AREA/COUNTRY	TOTAL DIRECT HIRE	TOTAL FOREIGN NATIONALS	U.S. CITIZENS DIRECT HIRE	FOREIGN NATIONALS	
				DIRECT HIRE	INDIRECT HIRE
KUWAIT	3	0	3	0	0
MOROCCO	3	0	3	0	0
PAKISTAN	1	0	1	0	0
SAUDI ARABIA	150	0	150	0	0
TUNISIA	3	0	3	0	0
UNITED ARAB EMIRATES	1	0	1	0	0
TOTAL-N. AFRICA, NEAR EAST & S. ASIA	214	0	214	0	0
SUB-SAHARAN AFRICA					
BOTSWANA	2	0	2	0	0
CAMEROON	1	0	1	0	0
KENYA	1	0	1	0	0
NIGERIA	1	0	1	0	0
SENEGAL	1	0	1	0	0
TOTAL - SUB-SAHARAN AFRICA	6	0	6	0	0
WESTERN HEMISPHERE					
ARGENTINA	2	0	2	0	0
BELIZE	1	0	1	0	0
BOLIVIA	4	0	4	0	0
BRAZIL	2	0	2	0	0
CANADA	1	0	1	0	0

Prepared by: Washington Headquarters Services  
Directorate for Information  
Operations and Reports

TABLE P309B

DEPARTMENT OF DEFENSE  
ARMY CIVILIAN PERSONNEL STRENGTHS BY REGIONAL AREA AND BY COUNTRY  
MILITARY FUNCTIONS

MARCH 31, 1982

REGIONAL AREA/COUNTRY	TOTAL DIRECT HIRE	TOTAL FOREIGN NATIONALS	U.S. CITIZENS DIRECT HIRE	FOREIGN NATIONALS	
				DIRECT HIRE	INDIRECT HIRE
COLOMBIA	4	0	4	0	0
COSTA RICA	1	0	1	0	0
EL SALVADOR	3	0	3	0	0
GUATEMALA	1	0	1	0	0
HONDURAS	7	0	7	0	0
MEXICO	5	0	5	0	0
PANAMA	3,622	2,350	1,272	2,350	0
PERU	1	0	1	0	0
VENEZUELA	2	0	2	0	0
TOTAL-WESTERN HEMISPHERE	3,656	2,350	1,306	2,350	0
TOTAL FOREIGN COUNTRIES	34,821	55,527	22,054	12,767	42,760
TOTAL WORLDWIDE	311,270	55,527	298,503	12,767	42,760

NOTE: EXCLUDES SPECIAL EMPLOYMENT CATEGORIES FOR STUDENTS AND DISADVANTAGED YOUTH.

Prepared by: Washington Headquarters Services  
Directorate for Information  
Operations and Reports

TABLE P309B

DEPARTMENT OF DEFENSE  
NAVY CIVILIAN PERSONNEL STRENGTHS BY REGIONAL AREA AND BY COUNTRY  
MILITARY FUNCTIONS

MARCH 31, 1992

REGIONAL AREA/COUNTRY	TOTAL DIRECT HIRE	TOTAL FOREIGN NATIONALS	U.S. CITIZENS DIRECT HIRE	FOREIGN NATIONALS DIRECT HIRE	FOREIGN NATIONALS INDIRECT HIRE
<b>U. S. TERRITORIES AND SPECIAL LOCATIONS</b>					
CONTINENTAL UNITED STATES (CONUS)	280,376	96	280,280	96	0
ALASKA	249	0	249	0	0
HAWAII	11,054	0	11,054	0	0
GUAM	3,751	13	3,742	9	4
PUERTO RICO	671	0	671	0	0
U. S. VIRGIN ISLANDS	1	0	1	0	0
TOTAL-U.S. TERR. AND SPECIAL LOCATIONS	296,102	109	295,997	105	4
<b>EUROPE</b>					
FRANCE*	1	0	1	0	0
GERMANY*	16	3	16	0	3
GREECE*	5	0	5	0	0
ICELAND*	852	741	111	741	0
ITALY*	1,607	998	609	998	0
PORTUGAL*	45	42	3	42	0
SPAIN*	259	1,055	259	0	1,055
SWITZERLAND	1	0	1	0	0
UNITED KINGDOM*	542	269	273	269	0
TOTAL-EUROPE	3,328	3,108	1,278	2,050	1,058

Prepared by: Washington Headquarters Services  
Directorate for Information  
Operations and Reports

TABLE P308B

DEPARTMENT OF DEFENSE  
NAVY CIVILIAN PERSONNEL STRENGTHS BY REGIONAL AREA AND BY COUNTRY  
MILITARY FUNCTIONS

MARCH 31, 1982

REGIONAL AREA/COUNTRY	TOTAL DIRECT HIRE	TOTAL FOREIGN NATIONALS	U.S. CITIZENS DIRECT HIRE	FOREIGN NATIONALS		FOREIGN NATIONALS INDIRECT HIRE
				DIRECT HIRE	INDIRECT HIRE	
<b>*NATO COUNTRIES</b>						
<b>EAST ASIA AND PACIFIC</b>						
AUSTRALIA	176	158	18	158	0	0
INDONESIA	71	70	1	70	0	0
JAPAN *	1,341	9,118	1,320	21	9,097	0
KOREA, REPUBLIC OF	37	0	37	0	0	0
MALAYSIA	1	0	1	0	0	0
NEW ZEALAND	14	2	12	2	0	0
PHILIPPINES	9,054	8,610	450	8,604	6	0
SINGAPORE	15	0	15	0	0	0
THAILAND	8	0	8	0	0	0
TOTAL-EAST ASIA & PACIFIC	10,717	17,958	1,862	8,855	9,103	0
<b>NEAR EAST AND SOUTH ASIA</b>						
BAHRAIN	14	0	14	0	0	0
DIEGO GARCIA	58	54	4	54	0	0
EGYPT	217	208	9	208	0	0
INDIA	2	0	2	0	0	0
ISRAEL	1	0	1	0	0	0
MOROCCO	1	0	1	0	0	0

Prepared by: Washington Headquarters Services  
Directorate for Information  
Operations and Reports



TABLE P309B

DEPARTMENT OF DEFENSE  
NAVY CIVILIAN PERSONNEL STRENGTHS BY REGIONAL AREA AND BY COUNTRY  
MILITARY FUNCTIONS

MARCH 31, 1992

REGIONAL AREA/COUNTRY	TOTAL		U.S.		FOREIGN	
	DIRECT HIRE	FOREIGN NATIONALS	CITIZENS DIRECT HIRE	NATIONALS DIRECT HIRE	FOREIGN NATIONALS DIRECT HIRE	FOREIGN NATIONALS INDIRECT HIRE
SAUDI ARABIA	5	0	5	0	0	0
SRI LANKA	41	41	0	41	0	0
TOTAL-AFRICA, NEAR EAST & S. ASIA	339	303	36	303	0	0
WESTERN HEMISPHERE						
ANTIGUA	1	0	1	0	0	0
BAHAMAS, THE	10	0	10	0	0	0
BERMUDA	311	80	231	80	0	0
CANADA	176	137	39	137	0	0
CHILE	1	1	0	1	0	0
CUBA (GUANTANAMO)	712	311	401	311	0	0
DOMINICAN REPUBLIC	3	3	0	3	0	0
HAITI	1	1	0	1	0	0
PANAMA	410	291	119	291	0	0
PERU	42	40	2	40	0	0
TOTAL-WESTERN HEMISPHERE	1,667	864	803	864	0	0
TOTAL FOREIGN COUNTRIES	16,051	22,233	3,979	12,072	10,161	
TOTAL WORLDWIDE	312,153	22,342	299,976	12,177	10,165	

NOTE: EXCLUDES SPECIAL EMPLOYMENT CATEGORIES FOR STUDENTS AND DISADVANTAGED YOUTH.

Prepared by: Washington Headquarters Services  
Directorate for Information  
Operations and Reports

TABLE P309B

DEPARTMENT OF DEFENSE  
 AIR FORCE CIVILIAN PERSONNEL STRENGTHS BY REGIONAL AREA AND BY COUNTRY  
 MILITARY FUNCTIONS

MARCH 31, 1992

REGIONAL AREA/COUNTRY	TOTAL DIRECT HIRE	TOTAL FOREIGN NATIONALS	U.S. CITIZENS DIRECT HIRE	FOREIGN NATIONALS		FOREIGN NATIONALS INDIRECT HIRE
				DIRECT HIRE	INDIRECT HIRE	
U. S. TERRITORIES AND SPECIAL LOCATIONS						
CONTINENTAL UNITED STATES (CONUS)	198,845	0	198,845	0	0	0
ALASKA	1,590	0	1,590	0	0	0
HAWAII	1,492	0	1,492	0	0	0
GUAM	569	2	567	2	0	0
PUERTO RICO	278	0	278	0	0	0
TOTAL-U.S. TERR. AND SPECIAL LOCATIONS	202,774	2	202,772	2	0	0
EUROPE						
BELGIUM*	6	2	6	0	2	2
DENMARK*	2	2	0	2	0	0
FRANCE*	3	0	3	0	0	0
GERMANY*	1,969	4,408	1,969	0	4,408	4,408
GREECE*	84	89	84	0	89	89
GREENLAND*	2	0	2	0	0	0
HUNGARY	2	0	2	0	0	0
ICELAND*	83	52	31	52	0	0
ITALY*	724	535	189	535	0	0
NETHERLANDS*	94	64	94	0	64	64
NORWAY*	23	23	0	23	0	0
PORTUGAL*	894	798	96	798	0	0
SPAIN*	258	622	258	0	622	622

Prepared by: Washington Headquarters Services  
 Directorate for Information  
 Operations and Reports

TABLE P309B

DEPARTMENT OF DEFENSE  
AIR FORCE CIVILIAN PERSONNEL STRENGTHS BY REGIONAL AREA AND BY COUNTRY  
MILITARY FUNCTIONS

MARCH 31, 1992

REGIONAL AREA/COUNTRY	TOTAL		TOTAL FOREIGN NATIONALS		U.S. CITIZENS		FOREIGN NATIONALS		FOREIGN NATIONALS	
	DIRECT HIRE	INDIRECT HIRE	DIRECT HIRE	INDIRECT HIRE	DIRECT HIRE	INDIRECT HIRE	DIRECT HIRE	INDIRECT HIRE	DIRECT HIRE	INDIRECT HIRE
TURKEY*	501	278	223	278	278	0	278	0	0	0
UNITED KINGDOM**	1,013	24	989	24	0	0	0	0	0	0
TOTAL-EUROPE	5,658	6,897	3,946	1,712	1,712	5,185	0	0	0	5,185
*NATO COUNTRIES										
EAST ASIA AND PACIFIC										
INDONESIA	2	0	2	0	0	0	0	0	0	0
JAPAN *	917	3,784	917	0	0	3,784	0	0	0	3,784
KOREA, REPUBLIC OF	1,163	1,013	150	1,013	1,013	0	0	0	0	0
PHILIPPINES	76	71	5	71	71	0	0	0	0	0
TOTAL-EAST ASIA & PACIFIC	2,158	4,868	1,074	1,084	1,084	3,784	0	0	0	3,784
N. AFRICA, NEAR EAST AND SOUTH ASIA										
BAHRAIN	1	0	1	0	0	0	0	0	0	0
EGYPT	35	18	17	18	18	0	0	0	0	0
JORDAN	2	0	2	0	0	0	0	0	0	0
KUWAIT	1	1	0	1	1	0	0	0	0	0
MOROCCO	1	0	1	0	0	0	0	0	0	0
OMAN	1	1	0	1	1	0	0	0	0	0
PAKISTAN	13	12	1	12	12	0	0	0	0	0
SAUDI ARABIA	138	18	120	18	18	0	0	0	0	0
UNITED ARAB EMIRATES	3	2	1	2	2	0	0	0	0	0

Prepared by: Washington Headquarters Services  
Directorate for Information  
Operations and Reports

TABLE P309B

DEPARTMENT OF DEFENSE  
 AIR FORCE CIVILIAN PERSONNEL STRENGTHS BY REGIONAL AREA AND BY COUNTRY  
 MILITARY FUNCTIONS

MARCH 31, 1992

REGIONAL AREA/COUNTRY	TOTAL DIRECT HIRE	TOTAL FOREIGN NATIONALS	U.S. CITIZENS DIRECT HIRE	FOREIGN NATIONALS		FOREIGN NATIONALS	
				DIRECT HIRE	INDIRECT HIRE	DIRECT HIRE	INDIRECT HIRE
YEMEN	3	3	0	3	0	3	0
TOTAL-N. AFRICA, NEAR EAST & S. ASIA	198	55	143	55	0	55	0
SUB-SAHARAN AFRICA							
KENYA	5	3	2	3	0	3	0
SOMALIA	3	3	0	3	0	3	0
SUDAN	2	2	0	2	0	2	0
TOTAL - SUB-SAHARAN AFRICA	10	8	2	8	0	8	0
WESTERN HEMISPHERE							
CANADA	10	0	10	0	0	0	0
PANAMA	627	424	203	424	0	424	0
TOTAL-WESTERN HEMISPHERE	637	424	213	424	0	424	0
TOTAL FOREIGN COUNTRIES	8,661	12,252	5,378	3,283	8,969	3,283	8,969
TOTAL WORLDWIDE	211,435	12,254	208,150	3,285	8,969	3,285	8,969

NOTE: EXCLUDES SPECIAL EMPLOYMENT CATEGORIES FOR STUDENTS AND DISADVANTAGED YOUTH.

Prepared by: Washington Headquarters Services  
 Directorate for Information  
 Operations and Reports

TABLE P308B

DEPARTMENT OF DEFENSE  
OTHER DOD ORGANIZATIONS  
CIVILIAN PERSONNEL STRENGTHS BY REGIONAL AREA AND BY COUNTRY  
MILITARY FUNCTIONS

MARCH 31, 1992

REGIONAL AREA/COUNTRY	TOTAL		U.S. CITIZENS		FOREIGN NATIONALS		FOREIGN NATIONALS	
	DIRECT HIRE	INDIRECT HIRE	DIRECT HIRE	INDIRECT HIRE	DIRECT HIRE	INDIRECT HIRE	DIRECT HIRE	INDIRECT HIRE
U. S. TERRITORIES AND SPECIAL LOCATIONS								
CONTINENTAL UNITED STATES (CONUS)	116,275	44	116,231	44	0	0	0	0
ALASKA	324	0	324	0	0	0	0	0
HAWAII	722	0	722	0	0	0	0	0
GUAM	167	0	167	0	0	0	0	0
MARSHALL ISLANDS	3	0	3	0	0	0	0	0
PUERTO RICO	936	0	936	0	0	0	0	0
TOTAL-U. S. TERR. AND SPECIAL LOCATIONS	118,427	44	118,383	44	0	0	0	0
EUROPE								
AUSTRIA	1	0	1	0	0	0	0	0
BELGIUM*	225	44	224	1	1	43	1	43
DENMARK*	3	3	0	3	3	0	3	0
FRANCE*	1	6	1	0	0	6	0	6
GERMANY*	8,887	1,912	8,878	9	9	1,903	9	1,903
GREECE*	135	29	135	0	0	29	0	29
ICELAND*	109	15	94	15	15	0	15	0
ITALY*	873	280	594	279	279	1	279	1
LUXEMBOURG*	1	0	1	0	0	0	0	0

Prepared by: Washington Headquarters Services  
Directorate for Information  
Operations and Reports

TABLE P309B

DEPARTMENT OF DEFENSE  
OTHER DOD ORGANIZATIONS  
CIVILIAN PERSONNEL STRENGTHS BY REGIONAL AREA AND BY COUNTRY  
MILITARY FUNCTIONS

REGIONAL AREA/COUNTRY	MARCH 31, 1992					
	TOTAL DIRECT HIRE	TOTAL FOREIGN NATIONALS	U.S. CITIZENS DIRECT HIRE	FOREIGN NATIONALS DIRECT HIRE	FOREIGN NATIONALS INDIRECT HIRE	FOREIGN NATIONALS INDIRECT HIRE
NETHERLANDS*	209	34	202	7	27	
NORWAY*	29	19	10	19	0	
PORTUGAL*	153	66	87	66	0	
SPAIN*	446	125	446	0	125	
SWITZERLAND	1	0	1	0	0	
TURKEY*	204	63	143	61	2	
UNITED KINGDOM**	1,375	183	1,280	95	88	
TOTAL-EUROPE	12,652	2,779	12,097	555	2,224	
*NATO COUNTRIES						
EAST ASIA AND PACIFIC						
AUSTRALIA	9	3	7	2	1	
JAPAN *	1,976	574	1,976	0	574	
KOREA, REPUBLIC OF	782	424	358	424	0	
MALAYSIA	0	3	0	0	3	
PHILIPPINES	385	162	226	159	3	
SINGAPORE	1	0	1	0	0	
THAILAND	1	1	0	1	0	

Prepared by: Washington Headquarters Services  
Directorate for Information  
Operations and Reports

**TABLE P309B**  
**DEPARTMENT OF DEFENSE**  
**OTHER DOD ORGANIZATIONS**  
**CIVILIAN PERSONNEL STRENGTHS BY REGIONAL AREA AND BY COUNTRY**  
**MILITARY FUNCTIONS**

REGIONAL AREA/COUNTRY	MARCH 31, 1992					
	TOTAL DIRECT HIRE	TOTAL FOREIGN NATIONALS	U.S. CITIZENS DIRECT HIRE	FOREIGN NATIONALS DIRECT HIRE	FOREIGN NATIONALS INDIRECT HIRE	FOREIGN NATIONALS INDIRECT HIRE
TOTAL-EAST ASIA & PACIFIC	3,154	1,167	2,568	586	581	
N. AFRICA, NEAR EAST AND SOUTH ASIA						
BAHRAIN	54	15	39	15	0	0
EGYPT	0	1	0	0	1	1
INDIA	0	1	0	0	1	1
ISRAEL	18	18	0	18	0	0
SAUDI ARABIA	3	0	3	0	0	0
TOTAL-N. AFRICA, NEAR EAST & S. ASIA	75	35	42	33	2	2
WESTERN HEMISPHERE						
ARGENTINA	2	1	1	1	0	0
BERMUDA	98	13	85	13	0	0
BOLIVIA	4	2	2	2	0	0
BRAZIL	3	2	1	2	0	0
CANADA	40	30	11	29	1	1
CHILE	2	1	1	1	0	0
COLOMBIA	3	2	1	2	0	0
COSTA RICA	2	1	1	1	0	0
CUBA (GUANTANAMO)	96	0	96	0	0	0

Prepared by: Washington Headquarters Services  
 Directorate for Information  
 Operations and Reports

TABLE P308B

DEPARTMENT OF DEFENSE  
OTHER DOD ORGANIZATIONS  
CIVILIAN PERSONNEL STRENGTHS BY REGIONAL AREA AND BY COUNTRY  
MILITARY FUNCTIONS

REGIONAL AREA/COUNTRY	MARCH 31, 1992					
	TOTAL DIRECT HIRE	TOTAL FOREIGN NATIONALS	U.S. CITIZENS DIRECT HIRE	FOREIGN NATIONALS DIRECT HIRE	FOREIGN NATIONALS DIRECT HIRE	FOREIGN NATIONALS INDIRECT HIRE
DOMINICAN REPUBLIC	3	2	1	2	2	0
EQUADOR	3	2	1	2	2	0
EL SALVADOR	1	0	1	0	0	0
GUATEMALA	3	1	2	1	1	0
HONDURAS	3	2	1	2	2	0
MEXICO	3	2	1	2	2	0
PANAMA	810	349	461	349	349	0
PARAGUAY	3	1	2	1	1	0
PERU	3	1	2	1	1	0
VENEZUELA	4	3	1	3	3	0
TOTAL-WESTERN HEMISPHERE	1,086	415	672	414	414	1
TOTAL FOREIGN COUNTRIES	16,967	4,396	15,379	1,588	1,588	2,808
TOTAL WORLDWIDE	135,394	4,440	133,762	1,632	1,632	2,808

NOTE: EXCLUDES SPECIAL EMPLOYMENT CATEGORIES FOR STUDENTS AND DISADVANTAGED YOUTH.

Prepared by: Washington Headquarters Services  
Directorate for Information Operations and Reports



**SECTION IV**

**DEPARTMENT OF DEFENSE  
DEPENDENTS OF  
MILITARY AND CIVILIAN PERSONNEL**

TABLE P 14

DEPARTMENT OF DEFENSE  
SUMMARY OF DEPENDENTS OF MILITARY & CIVILIAN PERSONNEL

MARCH 31, 1992

A. TYPE OF DEPENDENTS OF ACTIVE DUTY MILITARY PERSONNEL

DEPENDENT RELATIONSHIP	TOTAL DEPARTMENT OF DEFENSE				
	ARMY	NAVY	MARINE CORPS	AIR FORCE	
SPOUSES	399,240	308,359	90,353	333,176	
CHILDREN	601,297	423,863	123,620	447,845	
PARENTS	1,907	3,411	532	3,297	
ALL OTHER	3,199	0	0	0	
TOTAL DEPENDENTS	1,005,643	735,633	214,505	784,318	

B. LOCATION OF DEPENDENTS OF ACTIVE DUTY MILITARY PERSONNEL

LOCATION	TOTAL DEPARTMENT OF DEFENSE				
	ARMY	NAVY	MARINE CORPS	AIR FORCE	
CONTINENTAL U.S.	774,991	673,139	190,422	648,872	
ALASKA	10,927	1,746	63	16,739	
HAWAII	15,479	18,887	7,665	8,035	
U.S. TERRITORIES	1,016	8,655	281	3,505	
FOREIGN COUNTRIES	203,230	33,206	16,074	107,167	
WORLDWIDE	1,005,643	735,633	214,505	784,318	

TABLE P 14 (concluded)  
 DEPARTMENT OF DEFENSE  
 SUMMARY OF DEPENDENTS OF MILITARY & CIVILIAN PERSONNEL  
 MARCH 31, 1992

C. DEPENDENTS OF U.S. CITIZENS CIVILIAN EMPLOYEES A/

LOCATION	TOTAL DEPARTMENT OF DEFENSE	ARMY	NAVY	AIR FORCE	OTHER DOD ORGANIZATIONS
ALASKA	501	220	88	0	193
HAWAII	823	159	278	0	386
U.S. TERRITORIES	809	91	521	34	163
FOREIGN COUNTRIES	26,978	14,750	4,538	3,669	4,021
ALL LOCATIONS ABOVE	29,111	15,220	5,425	3,703	4,763

A/ FOR ALASKA, HAWAII, AND U.S. TERRITORIES, EXCLUDED ARE DEPENDENTS OF CITIZENS WHO ARE EMPLOYED IN THE STATE OR TERRITORY OF THEIR RESIDENCE.

Prepared by: Washington Headquarters Services  
 Directorate for Information  
 Operations and Reports

TABLE P309C

DEPARTMENT OF DEFENSE  
TOTAL MILITARY AND CIVILIAN EMPLOYEES  
DEPENDENT STRENGTHS BY REGIONAL AREA AND BY COUNTRY

MARCH 31, 1992

REGIONAL AREA/COUNTRY	TOTAL	ARMY	NAVY	MARINE CORPS	AIR FORCE	OTHER DOD ORGANIZATIONS
U. S. TERRITORIES AND SPECIAL LOCATIONS						
CONTINENTAL UNITED STATES (CONUS)	2,287,424	774,991	673,139	190,422	648,872	0
ALASKA	29,976	11,147	1,834	63	16,739	193
HAWAII	50,889	15,638	19,165	7,665	8,035	386
AMERICAN SAMOA	13	13	0	0	0	0
GUAM	9,910	68	6,147	162	3,462	71
JOHNSTON ATOLL	11	11	0	0	0	0
MARSHALL ISLANDS	59	59	0	0	0	0
MIDWAY ISLANDS	1	0	1	0	0	0
PUERTO RICO	4,254	938	3,028	119	77	92
U. S. VIRGIN ISLANDS	18	18	0	0	0	0
TOTAL-U. S. TERR. & SPECIAL LOCATIONS	2,382,555	802,883	703,314	198,431	677,185	742
EUROPE						
AUSTRIA	16	8	0	4	3	1
BELGIUM*	3,500	2,293	190	27	909	81
BULGARIA	7	2	0	4	1	0
CYPRUS	6	4	0	2	0	0
CZECHOSLOVAKIA	3	2	0	0	1	0
DENMARK*	65	2	22	5	36	0

Prepared by: Washington Headquarters Services  
Directorate for Information  
Operations and Reports

TABLE P 308C

DEPARTMENT OF DEFENSE  
TOTAL MILITARY AND CIVILIAN EMPLOYEES  
DEPENDENT STRENGTHS BY REGIONAL AREA AND BY COUNTRY

MARCH 31, 1992

REGIONAL AREA/COUNTRY	TOTAL	ARMY	NAVY	MARINE CORPS	AIR FORCE	OTHER DOD ORGANIZATIONS
FINLAND	13	13	0	0	0	0
FRANCE*	63	9	21	11	22	0
GERMANY*	231,903	191,470	481	140	38,640	1,172
GIBRALTAR	6	0	6	0	0	0
GREECE*	1,310	344	19	5	885	57
HUNGARY	11	8	0	3	0	0
ICELAND*	2,433	0	1,299	62	1,056	16
IRELAND	10	6	0	4	0	0
ITALY*	15,162	4,053	5,990	126	4,861	132
LUXEMBOURG*	14	8	0	2	0	4
NETHERLANDS*	3,349	918	35	13	2,364	19
NORWAY*	304	21	51	33	196	3
POLAND	7	7	0	0	0	0
PORTUGAL*	2,070	25	471	0	1,506	68
ROMANIA	5	3	0	2	0	0
SPAIN*	6,404	7	3,738	146	2,262	251
SWEDEN	14	1	0	3	10	0
SWITZERLAND	14	2	0	4	4	4
TURKEY*	3,880	543	15	2	3,186	134
UNITED KINGDOM*	33,415	264	3,837	321	28,157	836

Prepared by: Washington Headquarters Services  
Directorate for Information  
Operations and Reports

TABLE P309C

DEPARTMENT OF DEFENSE  
TOTAL MILITARY AND CIVILIAN EMPLOYEES  
DEPENDENT STRENGTHS BY REGIONAL AREA AND BY COUNTRY

MARCH 31, 1992

REGIONAL AREA/COUNTRY	TOTAL	ARMY	NAVY	MARINE CORPS	AIR FORCE	OTHER DOD ORGANIZATIONS
YUGOSLAVIA	12	6	2	0	4	0
TOTAL - EUROPE	303,996	200,019	16,177	919	84,103	2,778
*NATO COUNTRIES						
RUSSIA -- EURASIA						
RUSSIA	27	17	5	5	0	0
TAJIKISTAN	4	0	0	0	4	0
TOTAL - RUSSIA -- EURASIA	31	17	5	5	4	0
EAST ASIA AND PACIFIC						
AUSTRALIA	641	55	281	5	300	0
BURMA	10	8	0	0	2	0
CHINA	26	8	4	9	5	0
HONG KONG	32	14	7	0	11	0
INDONESIA	38	7	15	3	13	0
JAPAN *	50,642	3,092	11,858	14,473	20,404	815
KOREA, REPUBLIC OF	12,033	9,293	374	66	2,068	232
MALAYSIA	35	7	0	3	14	11
NEW ZEALAND	65	5	48	4	8	0
PHILIPPINES	4,481	12	4,193	190	40	46

Prepared by: Washington Headquarters Services  
Directorate for Information  
Operations and Reports

TABLE P309C

DEPARTMENT OF DEFENSE  
 TOTAL MILITARY AND CIVILIAN EMPLOYEES  
 DEPENDENT STRENGTHS BY REGIONAL AREA AND BY COUNTRY

MARCH 31, 1992

REGIONAL AREA/COUNTRY	TOTAL	ARMY	NAVY	MARINE CORPS	AIR FORCE	OTHER DOD ORGANIZATIONS
SINGAPORE	83	1	35	5	40	2
THAILAND	76	10	4	8	54	0
TOTAL-EAST ASIA & PACIFIC	68,162	12,512	16,819	14,766	22,959	1,106
N. AFRICA, NEAR EAST AND SOUTH ASIA						
ALGERIA	3	2	0	1	0	0
BAHRAIN	77	11	49	4	10	3
BANGLADESH	1	1	0	0	0	0
EGYPT	143	20	30	16	71	6
ETHIOPIA	2	0	0	2	0	0
INDIA	18	5	2	2	9	0
ISRAEL	134	10	1	3	69	51
JORDAN	15	12	0	0	3	0
MOROCCO	34	3	3	15	13	0
NEPAL	3	3	0	0	0	0
OMAN	4	0	0	3	1	0
PAKISTAN	23	11	0	7	5	0
SAUDI ARABIA	277	19	14	2	232	10
SEYHELLES	6	0	0	0	6	0
SRI LANKA	4	0	4	0	0	0

Prepared by: Washington Headquarters Services  
 Directorate for Information  
 Operations and Reports

TABLE P309C

DEPARTMENT OF DEFENSE  
 TOTAL MILITARY AND CIVILIAN EMPLOYEES  
 DEPENDENT STRENGTHS BY REGIONAL AREA AND BY COUNTRY

MARCH 31, 1992

REGIONAL AREA/COUNTRY	TOTAL	ARMY	NAVY	MARINE CORPS	AIR FORCE	OTHER DOD ORGANIZATIONS
SYRIA	1	1	0	0	0	0
TUNISIA	25	11	5	5	4	0
UNITED ARAB EMIRATES	5	0	0	0	5	0
YEMEN	6	6	0	0	0	0
TOTAL-N. AFRICA, NEAR EAST & S. ASIA	781	115	108	60	428	70
SUB-SAHARAN AFRICA						
BOTSWANA	1	0	0	1	0	0
BURUNDI	1	0	0	1	0	0
CAMEROON	11	11	0	0	0	0
CENTRAL AFRICAN REPUBLIC	1	0	0	1	0	0
CHAD	3	3	0	0	0	0
CONGO	4	1	0	3	0	0
GHANA	8	3	0	5	0	0
GUINEA	4	0	0	4	0	0
IVORY COAST	21	4	0	11	6	0
KENYA	19	0	3	12	4	0
MADAGASCAR	3	0	0	3	0	0
MALAWI	6	6	0	0	0	0
MAURITANIA	1	0	0	1	0	0

Prepared by: Washington Headquarters Services  
 Directorate for Information Operations and Reports



TABLE P309C  
 DEPARTMENT OF DEFENSE  
 TOTAL MILITARY AND CIVILIAN EMPLOYEES  
 DEPENDENT STRENGTHS BY REGIONAL AREA AND BY COUNTRY

MARCH 31, 1992

REGIONAL AREA/COUNTRY	TOTAL	ARMY	NAVY	MARINE CORPS	AIR FORCE	OTHER DOD ORGANIZATIONS
MAURITIUS	1	0	0	1	0	0
MOZAMBIQUE	6	6	0	0	0	0
NAMIBIA	5	5	0	0	0	0
NIGERIA	6	0	0	2	4	0
SENEGAL	3	0	0	3	0	0
SIERRA LEONE	1	0	0	1	0	0
SOMALIA	6	6	0	0	0	0
SOUTH AFRICA	7	2	0	3	2	0
ST. HELENA (INCLUDES ASCENSION ISLAND)	1	0	0	0	1	0
SUDAN	1	1	0	0	0	0
ZAIRE	11	9	0	0	2	0
ZIMBABWE	9	6	0	3	0	0
TOTAL - SUB-SAHARAN AFRICA	140	63	3	55	19	0
WESTERN HEMISPHERE						
ANTIGUA	55	0	55	0	0	0
ARGENTINA	28	3	6	3	14	2
BAHAMAS, THE	40	0	40	0	0	0
BARBADOS	8	6	2	0	0	0
BELIZE	8	8	0	0	0	0

Prepared by: Washington Headquarters Services  
 Directorate for Information  
 Operations and Reports

**TABLE P309C**  
**DEPARTMENT OF DEFENSE**  
**TOTAL MILITARY AND CIVILIAN EMPLOYEES**  
**DEPENDENT STRENGTHS BY REGIONAL AREA AND BY COUNTRY**

**MARCH 31, 1992**

REGIONAL AREA/COUNTRY	TOTAL	ARMY	NAVY	MARINE CORPS	AIR FORCE	OTHER DOD ORGANIZATIONS
BERMUDA	1,345	0	1,302	30	0	13
BOLIVIA	30	11	5	3	4	7
BRAZIL	34	12	11	5	5	1
CANADA	636	7	431	11	180	7
CHILE	31	10	4	7	5	5
COLOMBIA	15	8	2	0	5	0
COSTA RICA	8	4	0	3	0	1
CUBA (GUANTANAMO)	2,328	0	2,240	82	6	0
DOMINICAN REPUBLIC	11	2	0	4	2	3
ECUADOR	25	20	0	0	4	1
EL SALVADOR	20	9	0	4	4	3
GUATEMALA	26	18	0	3	0	5
GUYANA	3	0	0	3	0	0
HAITI	5	3	0	2	0	0
HONDURAS	26	8	0	1	14	3
JAMAICA	6	0	2	4	0	0
MEXICO	34	19	0	3	11	1
NICARAGUA	17	5	0	9	3	0
PANAMA	8,703	5,067	519	82	3,033	2
PARAGUAY	21	11	0	4	3	3

Prepared by: Washington Headquarters Services  
Directorate for Information  
Operations and Reports

TABLE P309C

DEPARTMENT OF DEFENSE  
 TOTAL MILITARY AND CIVILIAN EMPLOYEES  
 DEPENDENT STRENGTHS BY REGIONAL AREA AND BY COUNTRY

MARCH 31, 1992

REGIONAL AREA/COUNTRY	TOTAL	ARMY	NAVY	MARINE CORPS	AIR FORCE	OTHER DOD ORGANIZATIONS
PERU	29	4	11	3	4	7
SURINAME	3	3	0	0	0	0
TRINIDAD AND TOBAGO	3	0	0	3	0	0
URUGUAY	4	4	0	0	0	0
VENEZUELA	43	12	2	0	26	3
TOTAL-WESTERN HEMISPHERE	13,545	5,254	4,632	269	3,323	67
TOTAL FOREIGN COUNTRIES	386,655	217,980	37,744	16,074	110,836	4,021
TOTAL WORLDWIDE	2,769,210	1,020,863	741,058	214,505	788,021	4,763

NOTE: DEPENDENTS OF CIVILIAN EMPLOYEES EXCLUDES DEPENDENTS OF U.S. CITIZEN CIVILIANS IN ALASKA, HAWAII, AND U.S. TERRITORIES WHO ARE PERMANENT RESIDENTS AND EMPLOYED IN THE STATE OR TERRITORY OF THEIR RESIDENCE.

Prepared by: Washington Headquarters Services  
 Directorate for Information  
 Operations and Reports

TABLE P309C

DEPARTMENT OF DEFENSE  
ACTIVE DUTY MILITARY  
DEPENDENT STRENGTHS BY REGIONAL AREA AND BY COUNTRY

MARCH 31, 1992

REGIONAL AREA/COUNTRY	TOTAL	ARMY	NAVY	MARINE CORPS	AIR FORCE
U. S. TERRITORIES AND SPECIAL LOCATIONS					
CONTINENTAL UNITED STATES (CONUS)	2,287,424	774,991	673,139	190,422	648,872
ALASKA	29,475	10,927	1,746	63	16,739
HAWAII	50,066	15,479	18,887	7,665	8,035
AMERICAN SAMOA	13	13	0	0	0
GUAM	9,440	55	5,795	162	3,428
MARSHALL ISLANDS	3	3	0	0	0
MIDWAY ISLANDS	1	0	1	0	0
PUERTO RICO	3,983	928	2,859	119	77
U.S. VIRGIN ISLANDS	17	17	0	0	0
TOTAL-U.S. TERR. & SPECIAL LOCATIONS	2,380,422	802,413	702,427	198,431	677,151
EUROPE					
AUSTRIA	15	8	0	4	3
BELGIUM*	3,218	2,112	190	27	889
BULGARIA	7	2	0	4	1
CYPRUS	6	4	0	2	0
CZECHOSLOVAKIA	3	2	0	0	1
DENMARK*	65	2	22	5	36
FINLAND	13	13	0	0	0
FRANCE*	57	4	21	11	21
GERMANY*	220,105	182,168	460	140	37,337
GIBRALTAR	6	0	6	0	0
GREECE*	1,210	338	19	5	848

Prepared by: Washington Headquarters Services  
Directorate for Information  
Operations and Reports

TABLE P308C

DEPARTMENT OF DEFENSE  
ACTIVE DUTY MILITARY  
DEPENDENT STRENGTHS BY REGIONAL AREA AND BY COUNTRY

MARCH 31, 1992

REGIONAL AREA/COUNTRY	TOTAL	ARMY	NAVY	MARINE CORPS	AIR FORCE
HUNGARY	11	8	0	3	0
ICELAND*	2,373	0	1,255	62	1,056
IRELAND	10	6	0	4	0
ITALY*	14,072	3,867	5,339	126	4,740
LUXEMBOURG*	2	0	0	2	0
NETHERLANDS*	3,197	835	35	13	2,314
NORWAY*	301	21	51	33	196
POLAND	7	7	0	0	0
PORTUGAL*	1,929	25	461	0	1,443
ROMANIA	5	3	0	2	0
SPAIN*	5,576	7	3,371	146	2,052
SWEDEN	14	1	0	3	10
SWITZERLAND	10	2	0	4	4
TURKEY*	3,645	521	15	2	3,107
UNITED KINGDOM*	31,601	242	3,515	321	27,523
YUGOSLAVIA	12	6	2	0	4
TOTAL-EUROPE	287,470	190,204	14,762	919	81,585
*NATO COUNTRIES					
RUSSIA -- EURASIA					
RUSSIA	27	17	5	5	0
TAJIKISTAN	4	0	0	0	4
TOTAL -- RUSSIA -- EURASIA	31	17	5	5	4

Prepared by: Washington Headquarters Services  
Directorate for Information  
Operations and Reports

TABLE P308C

DEPARTMENT OF DEFENSE  
ACTIVE DUTY MILITARY  
DEPENDENT STRENGTHS BY REGIONAL AREA AND BY COUNTRY

MARCH 31, 1992

REGIONAL AREA/COUNTRY	TOTAL	ARMY	NAVY	MARINE CORPS	AIR FORCE
<b>EAST ASIA AND PACIFIC</b>					
AUSTRALIA	619	55	259	5	300
BURMA	10	8	0	0	2
CHINA	26	8	4	9	5
HONG KONG	32	14	7	0	11
INDONESIA	38	7	15	3	13
JAPAN *	46,847	2,221	10,420	14,473	19,733
KOREA, REPUBLIC OF	10,296	7,916	346	66	1,968
MALAYSIA	24	7	0	3	14
NEW ZEALAND	52	5	35	4	8
PHILIPPINES	3,609	9	3,370	190	40
SINGAPORE	67	1	21	5	40
THAILAND	75	9	4	8	54
<b>TOTAL-EAST ASIA &amp; PACIFIC</b>	<b>61,695</b>	<b>10,260</b>	<b>14,481</b>	<b>14,766</b>	<b>22,188</b>
<b>N. AFRICA, NEAR EAST AND SOUTH ASIA</b>					
ALGERIA	3	2	0	1	0
BAHRAIN	63	4	45	4	10
BANGLADESH	1	1	0	0	0
EGYPT	90	10	23	16	41
ETHIOPIA	2	0	0	2	0
INDIA	18	5	2	2	9
ISRAEL	36	10	0	3	23
JORDAN	15	12	0	0	3

Prepared by: Washington Headquarters Services  
Directorate for Information  
Operations and Reports

TABLE P309C

DEPARTMENT OF DEFENSE  
ACTIVE DUTY MILITARY  
DEPENDENT STRENGTHS BY REGIONAL AREA AND BY COUNTRY

MARCH 31, 1992

REGIONAL AREA/COUNTRY	TOTAL	ARMY	NAVY	MARINE CORPS	AIR FORCE
MOROCCO	31	0	3	15	13
NEPAL	3	3	0	0	0
OMAN	4	0	0	3	1
PAKISTAN	22	11	0	7	4
SAUDI ARABIA	134	8	13	2	111
SEYCHELLES	6	0	0	0	6
SRI LANKA	4	0	4	0	0
SYRIA	1	1	0	0	0
TUNISIA	24	10	5	5	4
UNITED ARAB EMIRATES	1	0	0	0	1
YEMEN	6	6	0	0	0
TOTAL-N. AFRICA, NEAR EAST & S. ASIA	464	83	95	60	226
SUB-SAHARAN AFRICA					
BOTSWANA	1	0	0	1	0
BURUNDI	1	0	0	1	0
CAMEROON	11	11	0	0	0
CENTRAL AFRICAN REPUBLIC	1	0	0	1	0
CHAD	3	3	0	0	0
CONGO	4	1	0	3	0
GHANA	8	3	0	5	0
GUINEA	4	0	0	4	0
IVORY COAST	21	4	0	11	6
KENYA	16	0	3	12	1

Prepared by: Washington Headquarters Services  
Directorate for Information  
Operations and Reports

TABLE P309C

DEPARTMENT OF DEFENSE  
ACTIVE DUTY MILITARY  
DEPENDENT STRENGTHS BY REGIONAL AREA AND BY COUNTRY

MARCH 31, 1992

REGIONAL AREA/COUNTRY	TOTAL	ARMY	NAVY	MARINE CORPS	AIR FORCE
MADAGASCAR	3	0	0	3	0
MALAWI	6	6	0	0	0
MAURITANIA	1	0	0	1	0
MAURITIUS	1	0	0	1	0
MOZAMBIQUE	6	6	0	0	0
NAMIBIA	5	5	0	0	0
NIGERIA	6	0	0	2	4
SENEGAL	3	0	0	3	0
SIERRA LEONE	1	0	0	1	0
SOMALIA	6	6	0	0	0
SOUTH AFRICA	7	2	0	3	2
ST. HELENA (INCLUDES ASCENSION ISLAND)	1	0	0	0	1
SUDAN	1	1	0	0	0
ZAIRE	11	9	0	0	2
ZIMBABWE	9	6	0	3	0
TOTAL - SUB-SAHARAN AFRICA	137	63	3	55	16
WESTERN HEMISPHERE					
ANTIGUA	55	0	55	0	0
ARGENTINA	25	2	6	3	14
BAHAMAS, THE	27	0	27	0	0
BARBADOS	8	6	2	0	0
BELIZE	6	6	0	0	0
BERMUDA	1,050	0	1,020	30	0

Prepared by: Washington Headquarters Services  
Directorate for Information  
Operations and Reports



TABLE P308C

DEPARTMENT OF DEFENSE  
ACTIVE DUTY MILITARY  
DEPENDENT STRENGTHS BY REGIONAL AREA AND BY COUNTRY

MARCH 31, 1992

REGIONAL AREA/COUNTRY	TOTAL	ARMY	NAVY	MARINE CORPS	AIR FORCE
BOLIVIA	19	7	5	3	4
BRAZIL	32	11	11	5	5
CANADA	588	7	392	11	178
CHILE	26	10	4	7	5
COLOMBIA	10	3	2	0	5
COSTA RICA	5	2	0	3	0
CUBA (GUANTANAMO)	1,973	0	1,885	82	6
DOMINICAN REPUBLIC	8	2	0	4	2
ECUADOR	13	9	0	0	4
EL SALVADOR	16	8	0	4	4
GUATEMALA	10	7	0	3	0
GUYANA	3	0	0	3	0
HAITI	5	3	0	2	0
HONDURAS	18	3	0	1	14
JAMAICA	6	0	2	4	0
MEXICO	33	19	0	3	11
NICARAGUA	17	5	0	9	3
PANAMA	5,854	2,476	436	82	2,860
PARAGUAY	10	3	0	4	3
PERU	22	4	11	3	4
SURINAME	3	3	0	0	0
TRINIDAD AND TOBAGO	3	0	0	3	0
URUGUAY	4	4	0	0	0
VENEZUELA	31	3	2	0	26
TOTAL-WESTERN HEMISPHERE	9,880	2,603	3,860	269	3,148

Prepared by: Washington Headquarters Services  
Directorate for Information  
Operations and Reports

TABLE P308C

DEPARTMENT OF DEFENSE  
ACTIVE DUTY MILITARY  
DEPENDENT STRENGTHS BY REGIONAL AREA AND BY COUNTRY

MARCH 31, 1992

REGIONAL AREA/COUNTRY	TOTAL	ARMY	NAVY	MARINE CORPS	AIR FORCE
TOTAL-FOREIGN COUNTRIES	359,677	203,230	33,206	16,074	107,167
TOTAL WORLDWIDE	2,740,099	1,005,643	735,633	214,505	784,318

Prepared by: Washington Headquarters Services  
Directorate for Information  
Operations and Reports

**TABLE P309C**  
**DEPARTMENT OF DEFENSE**  
**COMMAND SPONSORED DEPENDENT STRENGTHS**  
**OF ACTIVE DUTY MILITARY BY REGIONAL AREA AND BY COUNTRY**

**MARCH 31, 1992**

REGIONAL AREA/COUNTRY	TOTAL	ARMY	NAVY	MARINE CORPS	AIR FORCE
<b>U. S. TERRITORIES AND SPECIAL LOCATIONS</b>					
ALASKA	29,287	10,853	1,685	57	16,692
HAWAII	48,693	15,050	18,312	7,417	7,914
AMERICAN SAMOA	12	12	0	0	0
GUAM	9,333	53	5,720	157	3,403
MARSHALL ISLANDS	3	3	0	0	0
MIDWAY ISLANDS	1	0	1	0	0
PUERTO RICO	3,918	928	2,820	106	64
U.S. VIRGIN ISLANDS	17	17	0	0	0
TOTAL-U.S. TERR. & SPECIAL LOCATIONS	91,264	26,916	28,538	7,737	28,073
<b>EUROPE</b>					
AUSTRIA	15	8	0	4	3
BELGIUM*	3,195	2,099	190	22	884
BULGARIA	7	2	0	4	1
CYPRUS	6	4	0	2	0
CZECHOSLOVAKIA	3	2	0	0	1
DENMARK*	65	2	22	5	36
FINLAND	6	6	0	0	0
FRANCE*	56	4	21	10	21
GERMANY*	216,385	178,871	460	124	36,930
GIBRALTAR	6	0	6	0	0
GREECE*	1,176	321	15	5	835

Prepared by: Washington Headquarters Services  
 Directorate for Information  
 Operations and Reports

TABLE P 309C

DEPARTMENT OF DEFENSE  
 COMMAND SPONSORED DEPENDENT STRENGTHS  
 OF ACTIVE DUTY MILITARY BY REGIONAL AREA AND BY COUNTRY

MARCH 31, 1992

REGIONAL AREA/COUNTRY	TOTAL	ARMY	NAVY	MARINE CORPS	AIR FORCE
HUNGARY	11	8	0	3	0
ICELAND*	2,351	0	1,235	62	1,054
IRELAND	10	6	0	4	0
ITALY*	13,919	3,820	5,289	104	4,706
LUXEMBOURG*	2	0	0	2	0
NETHERLANDS*	3,163	827	35	13	2,288
NORWAY*	292	21	46	30	195
POLAND	7	7	0	0	0
PORTUGAL*	1,920	24	455	0	1,441
ROMANIA	5	3	0	2	0
SPAIN*	5,485	7	3,338	119	2,021
SWEDEN	14	1	0	3	10
SWITZERLAND	10	2	0	4	4
TURKEY*	3,618	512	15	2	3,089
UNITED KINGDOM*	31,166	241	3,400	313	27,212
YUGOSLAVIA	12	6	2	0	4
TOTAL - EUROPE	282,905	186,804	14,529	837	80,735
*NATO COUNTRIES					
RUSSIA -- EURASIA					
RUSSIA	27	17	5	5	0
TAJIKISTAN	4	0	0	0	4
TOTAL - RUSSIA -- EURASIA	31	17	5	5	4

Prepared by: Washington Headquarters Services  
 Directorate for Information  
 Operations and Reports

**TABLE P309C**  
**DEPARTMENT OF DEFENSE**  
**COMMAND SPONSORED DEPENDENT STRENGTHS**  
**OF ACTIVE DUTY MILITARY BY REGIONAL AREA AND BY COUNTRY**

MARCH 31, 1992

REGIONAL AREA/COUNTRY	TOTAL	ARMY	NAVY	MARINE CORPS	AIR FORCE
<b>EAST ASIA AND PACIFIC</b>					
AUSTRALIA	611	55	253	3	300
BURMA	10	8	0	0	2
CHINA	26	8	4	9	5
HONG KONG	32	14	7	0	11
INDONESIA	35	7	12	3	13
JAPAN *	41,289	2,221	10,290	9,338	19,440
KOREA, REPUBLIC OF	5,640	3,987	335	65	1,253
MALAYSIA	24	7	0	3	14
NEW ZEALAND	47	5	30	4	8
PHILIPPINES	3,393	8	3,230	116	39
SINGAPORE	65	1	21	3	40
THAILAND	75	9	4	8	54
<b>TOTAL-EAST ASIA &amp; PACIFIC</b>	<b>51,247</b>	<b>6,330</b>	<b>14,186</b>	<b>9,552</b>	<b>21,179</b>
<b>N. AFRICA, NEAR EAST AND SOUTH ASIA</b>					
ALGERIA	3	2	0	1	0
BAHRAIN	46	4	32	0	10
BANGLADESH	1	1	0	0	0
EGYPT	87	10	23	13	41
ETHIOPIA	2	0	0	2	0
INDIA	18	5	2	2	9
ISRAEL	36	10	0	3	23

Prepared by: Washington Headquarters Services  
 Directorate for Information  
 Operations and Reports

TABLE P309C

DEPARTMENT OF DEFENSE  
 COMMAND SPONSORED DEPENDENT STRENGTHS  
 OF ACTIVE DUTY MILITARY BY REGIONAL AREA AND BY COUNTRY

MARCH 31, 1992

REGIONAL AREA/COUNTRY	TOTAL	ARMY	NAVY	MARINE CORPS	AIR FORCE
JORDAN	15	12	0	0	3
MOROCCO	27	0	3	11	13
NEPAL	3	3	0	0	0
OMAN	4	0	0	3	1
PAKISTAN	22	11	0	7	4
SAUDI ARABIA	132	8	13	2	109
SEYCHELLES	6	0	0	0	6
SRI LANKA	4	0	4	0	0
SYRIA	1	1	0	0	0
TUNISIA	24	10	5	5	4
UNITED ARAB EMIRATES	1	0	0	0	1
YEMEN	6	6	0	0	0
TOTAL-N. AFRICA, NEAR EAST & S. ASIA	438	83	82	49	224
SUB-SAHARAN AFRICA					
BOTSWANA	1	0	0	1	0
BURUNDI	1	0	0	1	0
CAMEROON	11	11	0	0	0
CENTRAL AFRICAN REPUBLIC	1	0	0	1	0
CHAD	3	3	0	0	0
CONGO	4	1	0	3	0
GHANA	8	3	0	5	0
GUINEA	4	0	0	4	0
IVORY COAST	21	4	0	11	6

Prepared by: Washington Headquarters Services  
 Directorate for Information  
 Operations and Reports

TABLE P309C

DEPARTMENT OF DEFENSE  
COMMAND SPONSORED DEPENDENT STRENGTHS  
OF ACTIVE DUTY MILITARY BY REGIONAL AREA AND BY COUNTRY

MARCH 31, 1992

REGIONAL AREA/COUNTRY	TOTAL	ARMY	NAVY	MARINE CORPS	AIR FORCE
KENYA	16	0	3	12	1
MADAGASCAR	3	0	0	3	0
MALAWI	6	6	0	0	0
MAURITANIA	1	0	0	1	0
MAURITIUS	1	0	0	1	0
MOZAMBIQUE	6	6	0	0	0
NAMIBIA	5	5	0	0	0
NIGERIA	6	0	0	2	4
SENEGAL	3	0	0	3	0
SIERRA LEONE	1	0	0	1	0
SOMALIA	6	6	0	0	0
SOUTH AFRICA	7	2	0	3	2
ST. HELENA (INCLUDES ASCENSION ISLAND)	1	0	0	0	1
SUDAN	1	1	0	0	0
ZAIRE	11	9	0	0	2
ZIMBABWE	9	6	0	3	0
TOTAL - SUB-SAHARAN AFRICA	137	63	3	55	16
WESTERN HEMISPHERE					
ANTIGUA	55	0	55	0	0
ARGENTINA	24	2	6	3	13
BAHAMAS, THE	25	0	25	0	0
BARBADOS	8	6	2	0	0
BELIZE	6	6	0	0	0

Prepared by: Washington Headquarters Services  
Directorate for Information  
Operations and Reports

TABLE P308C

DEPARTMENT OF DEFENSE  
 COMMAND SPONSORED DEPENDENT STRENGTHS  
 OF ACTIVE DUTY MILITARY BY REGIONAL AREA AND BY COUNTRY

MARCH 31, 1992

REGIONAL AREA/COUNTRY	TOTAL	ARMY	NAVY	MARINE CORPS	AIR FORCE
BERMUDA	1,033	0	1,005	28	0
BOLIVIA	16	7	5	0	4
BRAZIL	32	11	11	5	5
CANADA	552	7	372	9	164
CHILE	19	10	4	3	2
COLOMBIA	10	3	2	0	5
COSTA RICA	5	2	0	3	0
CUBA (GUANTANAMO)	1,944	0	1,885	59	0
DOMINICAN REPUBLIC	8	2	0	4	2
ECUADOR	13	9	0	0	4
EL SALVADOR	16	8	0	4	4
GUATEMALA	10	7	0	3	0
GUYANA	3	0	0	3	0
HAITI	5	3	0	2	0
HONDURAS	18	3	0	1	14
JAMAICA	6	0	2	4	0
MEXICO	30	19	0	0	11
NICARAGUA	17	5	0	9	3
PANAMA	5,672	2,361	433	65	2,813
PARAGUAY	10	3	0	4	3
PERU	22	4	11	3	4
SURINAME	3	3	0	0	0
TRINIDAD AND TOBAGO	3	0	0	3	0

Prepared by: Washington Headquarters Services  
 Directorate for Information  
 Operations and Reports



TABLE P309C

DEPARTMENT OF DEFENSE  
 COMMAND SPONSORED DEPENDENT STRENGTHS  
 OF ACTIVE DUTY MILITARY BY REGIONAL AREA AND BY COUNTRY

MARCH 31, 1992

REGIONAL AREA/COUNTRY	TOTAL	ARMY	NAVY	MARINE CORPS	AIR FORCE
URUGUAY	4	4	0	0	0
VENEZUELA	28	3	2	0	23
TOTAL-WESTERN HEMISPHERE	9,597	2,488	3,820	215	3,074
TOTAL-FOREIGN COUNTRIES	344,355	195,785	32,625	10,713	105,232
TOTAL WORLDWIDE	435,619	222,701	61,163	18,450	133,305

Prepared by Washington Headquarters Services  
 Directorate for Information  
 Operations and Reports

TABLE P309C

DEPARTMENT OF DEFENSE  
NON COMMAND SPONSORED DEPENDENT STRENGTHS  
OF ACTIVE DUTY MILITARY BY REGIONAL AREA AND BY COUNTRY

MARCH 31, 1992

REGIONAL AREA/COUNTRY	TOTAL	ARMY	NAVY	MARINE CORPS	AIR FORCE
U. S. TERRITORIES AND SPECIAL LOCATIONS					
ALASKA	188	74	61	6	47
HAWAII	1,373	429	575	248	121
AMERICAN SAMOA	1	1	0	0	0
GUAM	107	2	75	5	25
PUERTO RICO	65	0	39	13	13
TOTAL-U.S. TERR. & SPECIAL LOCATIONS	1,734	506	750	272	206
EUROPE					
BELGIUM*	23	13	0	5	5
FINLAND	7	7	0	0	0
FRANCE*	1	0	0	1	0
GERMANY*	3,720	3,297	0	16	407
GREECE*	34	17	4	0	13
ICELAND*	22	0	20	0	2
ITALY*	153	47	50	22	34
NETHERLANDS*	34	8	0	0	26
NORWAY*	9	0	5	3	1
PORTUGAL*	9	1	6	0	2
SPAIN*	91	0	33	27	31
TURKEY*	27	9	0	0	18
UNITED KINGDOM*	435	1	115	8	311
TOTAL-EUROPE	4,565	3,400	233	82	850

Prepared by: Washington Headquarters Services  
Directorate for Information  
Operations and Reports

TABLE P309C

DEPARTMENT OF DEFENSE  
NON COMMAND SPONSORED DEPENDENT STRENGTHS  
OF ACTIVE DUTY MILITARY BY REGIONAL AREA AND BY COUNTRY

MARCH 31, 1992

REGIONAL AREA/COUNTRY	TOTAL	ARMY	NAVY	MARINE CORPS	AIR FORCE
*NATO COUNTRIES					
EAST ASIA AND PACIFIC					
AUSTRALIA	8	0	6	2	0
INDONESIA	3	0	3	0	0
JAPAN *	5,558	0	130	5,135	293
KOREA, REPUBLIC OF	4,656	3,929	11	1	715
NEW ZEALAND	5	0	5	0	0
PHILIPPINES	216	1	140	74	1
SINGAPORE	2	0	0	2	0
TOTAL-EAST ASIA & PACIFIC	10,448	3,930	295	5,214	1,009
N. AFRICA, NEAR EAST AND SOUTH ASIA					
BAHRAIN	17	0	13	4	0
EGYPT	3	0	0	3	0
MOROCCO	4	0	0	4	0
SAUDI ARABIA	2	0	0	0	2
TOTAL-N. AFRICA, NEAR EAST & S. ASIA	26	0	13	11	2
WESTERN HEMISPHERE					
ARGENTINA	1	0	0	0	1
BAHAMAS, THE	2	0	2	0	0
BERMUDA	17	0	15	2	0
BOLIVIA	3	0	0	3	0

Prepared by: Washington Headquarters Services  
Directorate for Information  
Operations and Reports

TABLE P309C

DEPARTMENT OF DEFENSE  
NON COMMAND SPONSORED DEPENDENT STRENGTHS  
OF ACTIVE DUTY MILITARY BY REGIONAL AREA AND BY COUNTRY

MARCH 31, 1992

REGIONAL AREA/COUNTRY	TOTAL	ARMY	NAVY	MARINE CORPS	AIR FORCE
CANADA	36	0	20	2	14
CHILE	7	0	0	4	3
CUBA (GUANTANAMO)	29	0	0	23	6
MEXICO	3	0	0	3	0
PANAMA	182	115	3	17	47
VENEZUELA	3	0	0	0	3
TOTAL-WESTERN HEMISPHERE	283	115	40	54	74
TOTAL-FOREIGN COUNTRIES	15,322	7,445	581	5,361	1,935
TOTAL WORLDWIDE	17,056	7,951	1,331	5,633	2,141

Prepared by: Washington Headquarters Services  
Directorate for Information  
Operations and Reports

**TABLE P309C**  
**DEPARTMENT OF DEFENSE**  
**U.S. CITIZEN CIVILIAN EMPLOYEES**  
**DEPENDENT STRENGTHS BY REGIONAL AREA AND BY COUNTRY**

MARCH 31, 1992

REGIONAL AREA/COUNTRY	TOTAL	ARMY	NAVY	AIR FORCE	OTHER DOD ORGANIZATIONS
<b>U. S. TERRITORIES AND SPECIAL LOCATIONS</b>					
ALASKA	501	220	88	0	193
HAWAII	823	159	278	0	386
GUAM	470	13	352	34	71
JOHNSTON ATOLL	11	11	0	0	0
MARSHALL ISLANDS	56	56	0	0	0
PUERTO RICO	271	10	169	0	92
U.S. VIRGIN ISLANDS	1	1	0	0	0
TOTAL-U.S. TERR. & SPECIAL LOCATIONS	2,133	470	887	34	742
<b>EUROPE</b>					
AUSTRIA	1	0	0	0	1
BELGIUM*	282	181	0	20	81
FRANCE*	6	5	0	1	0
GERMANY*	11,798	9,302	21	1,303	1,172
GREECE*	100	6	0	37	57
ICELAND*	60	0	44	0	16
ITALY*	1,090	186	651	121	132
LUXEMBOURG*	12	8	0	0	4
NETHERLANDS*	152	83	0	50	19

Prepared by: Washington Headquarters Services  
 Directorate for Information  
 Operations and Reports

TABLE P309C

DEPARTMENT OF DEFENSE  
U.S. CITIZEN CIVILIAN EMPLOYEES  
DEPENDENT STRENGTHS BY REGIONAL AREA AND BY COUNTRY

MARCH 31, 1992

REGIONAL AREA/COUNTRY	TOTAL	ARMY	NAVY	AIR FORCE	OTHER DOD ORGANIZATIONS
NORWAY*	3	0	0	0	3
PORTUGAL*	141	0	10	63	68
SPAIN*	828	0	367	210	251
SWITZERLAND	4	0	0	0	4
TURKEY*	235	22	0	79	134
UNITED KINGDOM*	1,814	22	322	634	836
TOTAL-EUROPE	16,526	9,815	1,415	2,518	2,778
*NATO COUNTRIES					
EAST ASIA AND PACIFIC					
AUSTRALIA	22	0	22	0	0
JAPAN *	3,795	871	1,438	671	815
KOREA, REPUBLIC OF	1,737	1,377	28	100	232
MALAYSIA	11	0	0	0	11
NEW ZEALAND	13	0	13	0	0
PHILIPPINES	872	3	823	0	46
SINGAPORE	16	0	14	0	2
THAILAND	1	1	0	0	0
TOTAL-EAST ASIA & PACIFIC	6,467	2,252	2,338	771	1,106

Prepared by: Washington Headquarters Services  
Directorate for Information Operations and Reports

TABLE P309C

DEPARTMENT OF DEFENSE  
U.S. CITIZEN CIVILIAN EMPLOYEES  
DEPENDENT STRENGTHS BY REGIONAL AREA AND BY COUNTRY

MARCH 31, 1992

REGIONAL AREA/COUNTRY	TOTAL	ARMY	NAVY	AIR FORCE	OTHER DOD ORGANIZATIONS
N. AFRICA, NEAR EAST AND SOUTH ASIA					
BAHRAIN	14	7	4	0	3
EGYPT	53	10	7	30	6
ISRAEL	98	0	1	46	51
MOROCCO	3	3	0	0	0
PAKISTAN	1	0	0	1	0
SAUDI ARABIA	143	11	1	121	10
TUNISIA	1	1	0	0	0
UNITED ARAB EMIRATES	4	0	0	4	0
TOTAL-N. AFRICA, NEAR EAST & S. ASIA	317	32	13	202	70
SUB-SAHARAN AFRICA					
KENYA	3	0	0	3	0
TOTAL - SUB-SAHARAN AFRICA	3	0	0	3	0
WESTERN HEMISPHERE					
ARGENTINA	3	1	0	0	2
BAHAMAS, THE	13	0	13	0	0
BELIZE	2	2	0	0	0

Prepared by: Washington Headquarters Services  
Directorate for Information  
Operations and Reports

TABLE P309C

DEPARTMENT OF DEFENSE  
 U.S. CITIZEN CIVILIAN EMPLOYEES  
 DEPENDENT STRENGTHS BY REGIONAL AREA AND BY COUNTRY

MARCH 31, 1992

REGIONAL AREA/COUNTRY	TOTAL	ARMY	NAVY	AIR FORCE	OTHER OOD ORGANIZATIONS
BERMUDA	295	0	282	0	13
BOLIVIA	11	4	0	0	7
BRAZIL	2	1	0	0	1
CANADA	48	0	39	2	7
CHILE	5	0	0	0	5
COLOMBIA	5	5	0	0	0
COSTA RICA	3	2	0	0	1
CUBA (GUANTANAMO)	355	0	355	0	0
DOMINICAN REPUBLIC	3	0	0	0	3
ECUADOR	12	11	0	0	1
EL SALVADOR	4	1	0	0	3
GUATEMALA	16	11	0	0	5
HONDURAS	8	5	0	0	3
MEXICO	1	0	0	0	1
PANAMA	2,849	2,591	83	173	2
PARAGUAY	11	8	0	0	3
PERU	7	0	0	0	7
VENEZUELA	12	9	0	0	3
TOTAL-WESTERN HEMISPHERE	3,665	2,651	772	175	67

Prepared by: Washington Headquarters Services  
 Directorate for Information  
 Operations and Reports



**TABLE P309C**  
**DEPARTMENT OF DEFENSE**  
**U.S. CITIZEN CIVILIAN EMPLOYEES**  
**DEPENDENT STRENGTHS BY REGIONAL AREA AND BY COUNTRY**

**MARCH 31, 1992**

REGIONAL AREA/COUNTRY	TOTAL	ARMY	NAVY	AIR FORCE	OTHER DOD ORGANIZATIONS
TOTAL FOREIGN COUNTRIES	26,978	14,750	4,538	3,669	4,021
TOTAL WORLDWIDE	29,111	15,220	5,425	3,703	4,763
-----					
NOTE: DEPENDENTS OF CIVILIAN EMPLOYEES EXCLUDES DEPENDENTS OF U.S. CITIZEN CIVILIANS IN ALASKA, HAWAII, AND U.S. TERRITORIES WHO ARE PERMANENT RESIDENTS AND EMPLOYED IN THE STATE OR TERRITORY OF THEIR RESIDENCE.					

Prepared by: Washington Headquarters Services  
 Directorate for Information  
 Operations and Reports

## GLOSSARY OF TERMS

Active Duty. Full-time duty in the active service, of a uniformed service including duty on the active list, full-time training duty, annual training duty, and attendance while in the active service at a school designated as a service school, or by law, or by the Secretary concerned.

Actual Strength. The number of personnel in, or projected to be in, an organization or account at a specified point in time.

Assigned Strength. Actual strength of an entire service, not necessarily equal to combined unit actual strengths since individuals may be assigned but not joined.

Authorized Strength. The total strength authorized by Congress (for internal Service applications only).

Continental United States. Unless otherwise qualified, means the 48 contiguous states and the District of Columbia.

Direct Hire Civilians. Employees hired directly by an agency of the Department of Defense (DoD). Included are foreign nationals hired by the Department of Defense to support DoD activities in their home countries.

Indirect Hire Civilians. Foreign nationals assigned to support U.S. forces through contracts or agreements with foreign governments (or agencies thereof). These personnel are employees of the foreign governments involved.

Military Afloat. Navy and Marine Corps military personnel aboard ship. Also includes Navy and Marine Corps military personnel who are assigned to afloat and mobile units, such as aircraft squadrons, construction battalions, and fleet and air command staffs, and who are aboard ship.

Military Functions. Activities normally associated with the uniformed services.

Military Temporarily Shore-Based. Navy and Marine Corps military personnel assigned to afloat and mobile units, such as aircraft squadrons, construction battalions, and fleet and air command staffs, and who are temporarily based ashore for a period that will exceed 30 days.

Operating Location. Operating location is defined as the geographic location where military or civilian employees of the Department of Defense are physically located for the performance of duties.

OTHER DEPARTMENT OF DEFENSE ORGANIZATIONS

\*Office of the Secretary of Defense (OSD)

\*Joint Chiefs of Staff (JCS)

Inspector General of the Department of Defense

Department of Defense Agencies:

\*Defense Advanced Research Projects Agency (DARPA)

Defense Commissary Agency (DeCA)

Defense Contract Audit Agency (DCAA)

Defense Finance and Accounting Service (DFAS)

Defense Information Services Agency (DISA)

Defense Investigative Service (DIS)

\*Defense Legal Services Agency (DLSA)

Defense Logistics Agency (DLA)

Defense Mapping Agency (DMA)

Defense Nuclear Agency (DNA)

\*Defense Security Assistance Agency (DSAA)

\*\*Defense Support Activity

On-Site Inspection Agency (OSIA)

\*Strategic Defense Initiative Organization (SDIO)

\*Organizations serviced by OSD.

\*\*Organization serviced by DLA.

Department of Defense Field Activities:

- \*American Forces Information Service (AFIS)
- \*Defense Medical Support Activity (DMSA)
- \*Defense Technology Security Administration (DTSA)  
Department of Defense Dependents Schools (DODDS)
- \*Office of Civilian Health and Medical Program  
for the Uniformed Services (OCHAMPUS)
- \*Office of Economic Adjustment (OEA)
- \*Washington Headquarters Services (WHS)

\*U.S. Court of Military Appeals

Uniformed Services University of the Health Sciences (USUHS)

Recorded Duty Station. Actual physical location where active duty military personnel perform duty on a permanent basis.

Transients. All military members who are available for duty while executing permanent change of station (PCS) orders. Transients shall comprise all military personnel in a travel, proceed, leave enroute, or temporary duty enroute status on PCS orders to execute an accession, separation, training, operational or rotational move.

\*Organizations serviced by OSD.