

# AMSAA



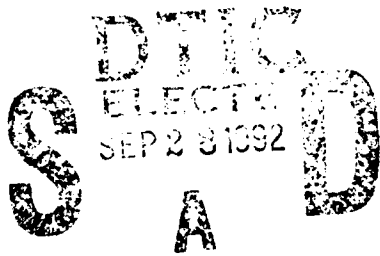
7

AD-A254 993



TECHNICAL REPORT NO. 524

OPERATING CHARACTERISTIC ANALYSIS FOR  
RELIABILITY GROWTH PROGRAMS



PAUL M. ELLNER  
ROBERT E. MIODUSKI

AUGUST 1992

APPROVED FOR PUBLIC RELEASE; DISTRIBUTION IS UNLIMITED.

82

607

DEFENSE TECHNICAL INFORMATION CENTER



9225885

U. S. ARMY MATERIEL SYSTEMS ANALYSIS ACTIVITY  
ABERDEEN PROVING GROUND, MARYLAND

## DISPOSITION

When this report is no longer needed, Department of the Army organizations will destroy it in accordance with the procedures given in AR 380-5. Navy and Air Force elements will destroy it in accordance with applicable directives. Department of Defense contractors will destroy the report according to the requirements of Section 14 of the Industrial Security Manual for Safe-guarding Classified Information. All others will return the report to the U.S. Army Materiel Systems Analysis Activity, Aberdeen Proving Ground, Maryland 21005-5071.

## DISCLAIMER

The findings in this report are not to be construed as an official Department of the Army position unless so specified by other official documentation.

## WARNING

Information and data contained in this document are based on the input available at the time of preparation. The results may be subject to change and should not be construed as representing the AMC position unless so specified.

## TRADE NAMES

The use of trade names in this report does not constitute an official endorsement or approval of the use of such commercial hardware or software. The report may not be cited for purposes of advertisement.

## REPORT DOCUMENTATION PAGE

Form Approved  
OMB No. 0704-0188

1a. REPORT SECURITY CLASSIFICATION <b>Unclassified</b>		1b. RESTRICTIVE MARKINGS	
2a. SECURITY CLASSIFICATION AUTHORITY		3. DISTRIBUTION/AVAILABILITY OF REPORT Approved for public release; distribution is unlimited.	
2b. DECLASSIFICATION/DOWNGRADING SCHEDULE		4. PERFORMING ORGANIZATION REPORT NUMBER(S)	
4. PERFORMING ORGANIZATION REPORT NUMBER(S)		5. MONITORING ORGANIZATION REPORT NUMBER(S)	
6a. NAME OF PERFORMING ORGANIZATION U.S. Army Materiel Systems Analysis Activity	6b. OFFICE SYMBOL (if applicable) AMXSY-RM	7a. NAME OF MONITORING ORGANIZATION	
6c. ADDRESS (City, State, and ZIP Code) Aberdeen Proving Ground, MD 21005-5071		7b. ADDRESS (City, State, and ZIP Code)	
8a. NAME OF FUNDING / SPONSORING ORGANIZATION USAMSA/RAMD	8b. OFFICE SYMBOL (if applicable) AMXSY-R	9. PROCUREMENT INSTRUMENT IDENTIFICATION NUMBER	
8c. ADDRESS (City, State, and ZIP Code) Aberdeen Proving Ground, MD 21005-5071		10. SOURCE OF FUNDING NUMBERS	
		PROGRAM ELEMENT NO.	PROJECT NO.
		TASK NO.	WORK UNIT ACCESSION NO.
11. TITLE (Include Security Classification) Operating Characteristic Analysis for Reliability Growth Programs			
12. PERSONAL AUTHOR(S) Paul M. Ellner and Robert E. Mioduski			
13a. TYPE OF REPORT Final	13b. TIME COVERED FROM _____ TO _____	14. DATE OF REPORT (Year, Month, Day) August 1992	15. PAGE COUNT 74
16. SUPPLEMENTARY NOTATION			
17. COSATI CODES		18. SUBJECT TERMS (Continue on reverse if necessary and identify by block number)	
FIELD	GROUP	Reliability Growth Program. Operating Characteristic Analysis. Consumer and Producer Statistical Risks.	
19. ABSTRACT (Continue on reverse if necessary and identify by block number) Operating characteristic (OC) analysis concepts are extended to the reliability growth setting. Consumer (Government) and producer (contractor) statistical risks are expressed in terms of the reliability growth curve parameters, test duration, and reliability requirement. For a given confidence level, these risks are shown to depend solely on the expected number of failures during the growth test and the ratio of the MTBF to be achieved at the end of the growth program to the MTBF technical requirement to be demonstrated with confidence. Formulas are developed for computing these risks as a function of the test duration and growth curve planning parameters.			
20. DISTRIBUTION/AVAILABILITY OF ABSTRACT <input checked="" type="checkbox"/> UNCLASSIFIED/UNLIMITED <input type="checkbox"/> SAME AS RPT. <input type="checkbox"/> DTIC USERS		21. ABSTRACT SECURITY CLASSIFICATION <b>Unclassified</b>	
22a. NAME OF RESPONSIBLE INDIVIDUAL		22b. TELEPHONE (Include Area Code)	22c. OFFICE SYMBOL

## ACKNOWLEDGEMENTS

The U.S. Army Materiel Systems Analysis Activity (AMSAA) recognizes the following individual for contributing to this report:

Peer Reviewer: Richard McGauley, Logistics and Readiness Analysis Division

The authors wish to thank the following individuals:

Douglas Parsons, Reliability, Availability, and Maintainability Division (RAMD), for writing the software program which generated the tables in Appendix A.

John Woodworth, RAMD, for providing Figures 1 through 4.

Marian Brooks, Management and Technical Support Division (MTSD), for typing support.

Accession For	
NTIS CRA&I	<input checked="" type="checkbox"/>
DTIC TAB	<input type="checkbox"/>
Unannounced	<input type="checkbox"/>
Justification	
By	
Distribution /	
Availability Codes	
Dist	Avail and/or Special
A-1	

DTIC QUALITY INSPECTED 3

## CONTENTS

	Page
ACKNOWLEDGEMENTS .....	iii
LIST OF FIGURES .....	vi
1. INTRODUCTION .....	1
2. BACKGROUND .....	1
3. RELIABILITY GROWTH OPERATING CHARACTERISTIC (OC) ANALYSIS..	5
4. APPLICATION .....	10
5. SUMMARY .....	14
REFERENCES .....	15
APPENDIX A - TABLES .....	17
TABLE FOR 70 PERCENT CONFIDENCE .....	21
TABLE FOR 80 PERCENT CONFIDENCE .....	35
TABLE FOR 90 PERCENT CONFIDENCE .....	49
APPENDIX B - DERIVATIONS .....	63
DISTRIBUTION LIST .....	71

LIST OF FIGURES

Figure No.	Title	Page
1	Example OC curve for Reliability Demonstration Test....	4
2	Idealized Reliability Growth Curve .....	10
3	Program and Alternate Idealized Reliability Growth Curves .....	11
4	Operating Characteristic (OC) Curve .....	12

## OPERATING CHARACTERISTIC ANALYSIS FOR RELIABILITY GROWTH PROGRAMS

### 1. INTRODUCTION

The Army Regulation AR-702-3 (Reference 1), entitled Army Materiel Systems Reliability, Availability, Maintainability, mandates that project managers and materiel developers formulate and use reliability growth plans for major and designated non-major developmental systems. These plans are to include reliability growth curves that have been coordinated with the technical independent evaluator.

A well thought out reliability growth plan can serve as a significant management tool in scoping out the required resources to enhance system reliability and demonstrate the system reliability requirement. The principal goal of the growth test is to enhance reliability by the iterative process of surfacing failure modes, analyzing them, implementing corrective actions (fixes), and testing the "improved" configuration to verify fixes and continue the growth process by surfacing remaining failure modes. If the growth test environment during engineering and manufacturing development (EMD) reasonably simulates the mission environment stresses then it may be feasible to use the growth test data to statistically demonstrate the technical, i.e., engineering, requirement (denoted by TR) for system reliability. Such use of the growth test data could eliminate the need to conduct a follow-on reliability demonstration test. The classical demonstration test requires that the system configuration be held constant throughout the test. This type of test is principally conducted to assess and demonstrate the reliability of the configuration under test.

Associated with the demonstration test are statistical consumer and producer risks. In our context, they are frequently termed the Government and contractor risks, respectively. In broad terms, the Government risk is the probability of accepting a system when the true technical reliability is below the TR and the contractor risk is the probability of rejecting a system when the true technical reliability is at least the contractor's target value (set above the TR). An extensive amount of test time may be required for the reliability demonstration test to suitably limit these statistical risks. Moreover, this allotted test time would be principally devoted to demonstrating the system TR associated with the configuration under test instead of to enhancing the system reliability through the reliability growth process of sequential configuration improvement. In today's austere budgetary environment, it is especially important to make maximum use of test resources. With proper planning, a reliability growth program can be an efficient procedure for demonstrating the system reliability requirement while reliability improvements are being achieved via the growth process.

### 2. BACKGROUND

During a reliability growth test phase, the system configuration is changing due to the activity of surfacing failure modes, analyzing the modes, and implementing fixes to the surfaced modes. It is often reasonable to portray this reliability growth in an idealized manner, i.e., by a smooth rising curve which

captures the overall pattern of growth. The curve relates a measure of system reliability, e.g., mean-time-between-failures (MTBF), to test duration (e.g., hours). The functional form used to express this relationship in MIL-HDBK-189 (Reference 2) is given by

$$M(t) = (M_I / (1 - \alpha)) (t / t_I)^\alpha \quad (1)$$

In this equation,  $M(t)$  typically denotes the MTBF achieved after  $t$  test hours. The exponent  $\alpha$  is termed the growth rate and represents the slope of the assumed linear relationship between  $\ln\{M(t)\}$  and  $\ln(t)$ , where  $\ln$  denotes the base  $e$  logarithm function. The parameters  $t_I$ ,  $M_I$  may be thought of as defining the initial conditions. In particular,  $M_I$  may be interpreted as the MTBF associated with the initial configuration entering the reliability growth test. In this interpretation,  $t_I$  would be the planned cumulative test time until one or more fixes are incorporated. An alternate and more general interpretation of  $M_I$  and  $t_I$  would be to regard  $M_I$  as the anticipated average MTBF over an initial test period  $t_I$ .

In the above discussion, we have referred to  $M(t)$  as the MTBF and have measured test duration by time units, e.g.,  $t$  hours. We will continue to refer to  $M(t)$  and test duration  $t$  in this fashion; however, more generally,  $M(t)$  may denote mean-miles-to-failure or mean-rounds-to-failure (for a large number of rounds). The corresponding measures of test duration would be test mileage or rounds expended, respectively.

As indicated in Section 1, we shall consider using the data generated during the reliability growth test phase to demonstrate the system reliability technical requirement (TR) at a specified confidence level  $\gamma$ . This paper addresses the case where the data consists of individual failure times  $0 < t_1 < t_2 < \dots < t_n \leq T$  for  $n$  observed mission reliability failures during test time  $T$ , where Equation (1) is assumed to hold for  $0 < t \leq T$ . Since the MIL-HDBK-189 growth model governed by Equation (1) is being assumed in this paper, we shall also require that the observed number of failures by test duration  $t$ , denoted by  $N(t)$ , be a non-homogeneous Poisson process with intensity function  $\rho(t) = \{M(t)\}^{-1}$ .

The growth curve planning parameters  $\alpha, t_I, M_I$ , and the test time  $T$  should be chosen to reasonably limit the consumer (Government) and producer (contractor) statistical risks referred to in Section 1. Prior to presenting the relationship between these risks and the above mentioned parameters, it is instructive to review the determination of these risks for the constant configuration reliability demonstration test.

The parameters defining the reliability demonstration test consist of the test duration  $T_{Dem}$ , and the allowable number of failures  $c$ . Define the random variable  $F_{obs}$  to be the number of failures that occur during the test time  $T_{Dem}$ . Denote the observed value of  $F_{obs}$  by  $f_{obs}$ . Then the "acceptance" or "passing" criterion is simply  $f_{obs} \leq c$ .



Let  $M$  denote the MTBF associated with the constant configuration under test. Then  $F_{obs}$  has the Poisson probability distribution given by

$$Prob (F_{obs} = i) = e^{-T_{Dem}/M} \frac{(T_{Dem}/M)^i}{i!} \quad (2)$$

Thus the probability of acceptance, denoted by  $Prob (A; M, c, T_{Dem})$ , as a function of  $M$ ,  $c$ , and  $T_{Dem}$  is given by

$$\begin{aligned} Prob(A; M, c, T_{Dem}) &= Prob (F_{obs} \leq c) = \sum_{i=0}^c Prob (F_{obs} = i) \\ &= \sum_{i=0}^c e^{-T_{Dem}/M} \frac{(T_{Dem}/M)^i}{i!} \end{aligned} \quad (3)$$

To ensure "passing the demonstration test" is equivalent to demonstrating the TR at confidence level  $\gamma$  (e.g.,  $\gamma = 0.80$  or  $\gamma = 0.90$ ), we must choose  $c$  such that

$$f_{obs} \leq c \Leftrightarrow TR \leq \ell_{\gamma} (f_{obs}) \quad (4)$$

where  $TR > 0$  and  $\ell_{\gamma} (f_{obs})$  denotes the value of the 100  $\gamma$  percent lower confidence bound when  $f_{obs}$  failures occur in the demonstration test of length  $T_{Dem}$ . Note that  $\ell_{\gamma} (f_{obs})$  is a lower confidence bound on the true (but unknown) MTBF of the configuration under test. It is well known (see Proposition 1 in Appendix B) that the following choice of  $c$  satisfies (4):

Choose  $c$  to be the largest non-negative integer  $k$  that satisfies the inequality

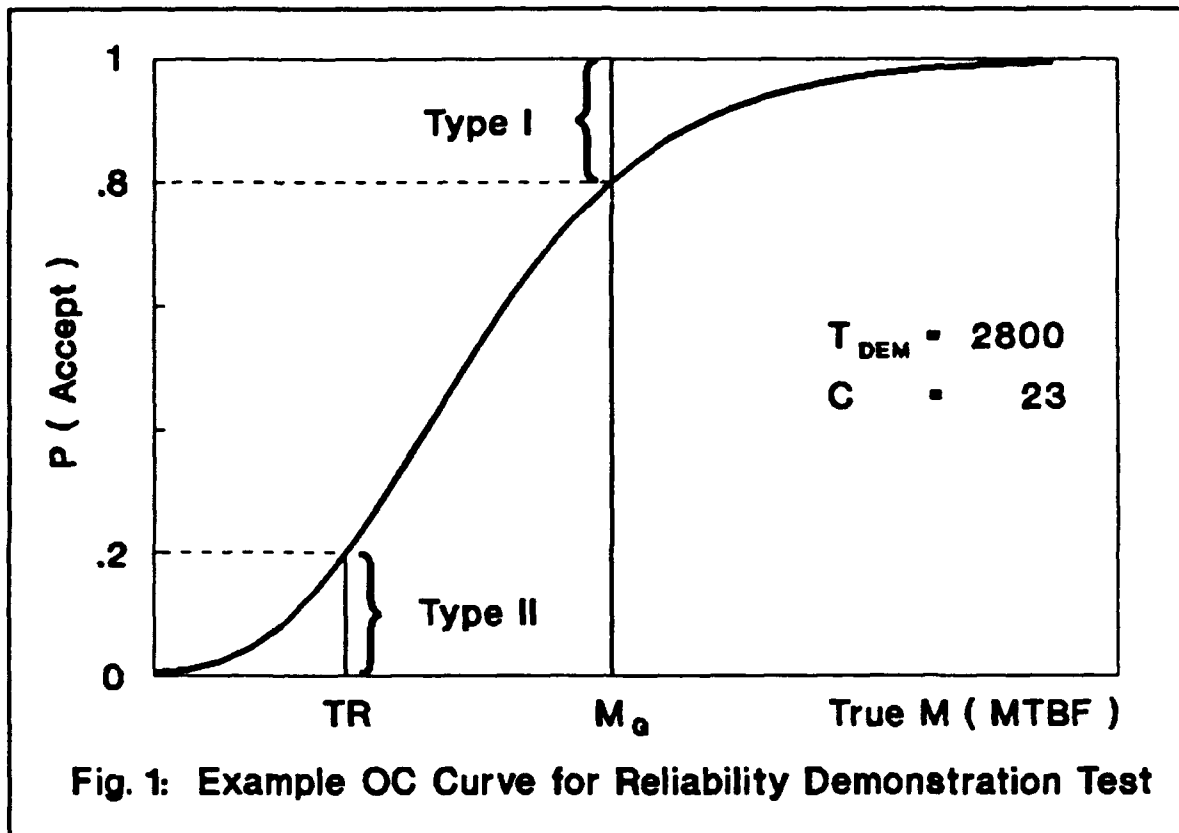
$$\sum_{i=0}^k e^{-T_{Dem}/TR} \frac{(T_{Dem}/TR)^i}{i!} \leq 1 - \gamma \quad (5)$$

Note  $c$  is well-defined provided

$$\exp (-T_{Dem}/TR) \leq 1 - \gamma \quad (6)$$

Throughout this section we shall assume (6) holds and that  $c$  is defined as above.

Recall that the operating characteristic (OC) curve associated with a reliability demonstration test is the graph of the probability of acceptance, i.e.,  $Prob (A; M, c, T_{Dem})$  given in Equation (3), as a function of the true but unknown constant MTBF  $M$  as depicted on Figure 1.



The Government or consumer risk associated with this curve, called the Type II risk, is defined by

$$\text{Type II} \triangleq \text{Prob}(A; TR, c, T_{Dem}) \quad (7)$$

Thus, by the choice of  $c$ ,

$$\text{Type II} \leq 1 - \gamma \quad (8)$$

For the contractor or producer to have a reasonable chance of demonstrating the TR with confidence  $\gamma$ , the system configuration entering the reliability demonstration test must often have a MTBF value, say  $M_G$  (the contractor's goal MTBF) that is considerably higher than the TR. The probability that the producer fails the demonstration test given the system under test has a true MTBF value of  $M_G$  is termed the producer (contractor) or Type I risk. Thus

$$\text{Type I} = 1 - \text{Prob}(A; M_G, c, T_{Dem}) \quad (9)$$

If the Type I risk is higher than desired, then either a higher value of  $M_G$  should be attained prior to entering the reliability demonstration test or  $T_{Dem}$  should be increased. If  $T_{Dem}$  is increased then  $c$  may have to be readjusted for the new value of  $T_{Dem}$  to remain the largest non-negative integer that satisfies inequality (5).

The above numbered equations and inequalities express the relationships between the reliability demonstration test parameters  $c$ ,  $T_{Dem}$ , the requirement parameters  $TR$ ,  $\gamma$ , and the associated risk parameters (the consumer and producer risks). These relationships are fundamental in conducting tradeoff analyses involving these parameters for planning reliability demonstration tests. In the next section we shall present relationships between the defining parameters for a reliability growth curve ( $M_1$ ,  $t_1$ ,  $\alpha$ , and  $T$ ), the requirement parameters ( $TR$  and  $\gamma$ ), and the associated statistical risk parameters (the consumer and producer risks). Once these relationships are in hand, tradeoffs between these parameters may be utilized to consider demonstrating the  $TR$  at confidence level  $\gamma$  by utilizing reliability growth test data.

### 3. RELIABILITY GROWTH OPERATING CHARACTERISTIC (OC) ANALYSIS

In the previous section, it was noted that for a reliability demonstration test, passing the test could be stated in terms of the allowable number of failures  $c$ . It was noted that if  $c$  is properly chosen, then passing the test is equivalent to demonstrating the  $TR$  at confidence level  $\gamma$ , i.e.,

$$f_{obs} \leq c \leftrightarrow TR \leq \ell\gamma (f_{obs})$$

In the presence of reliability growth, observing  $c$  or fewer failures is not equivalent to demonstrating the  $TR$  at a given confidence level. The cumulative times to failure as well as the number of failures must be considered when using reliability growth test data to demonstrate the  $TR$  at a specified confidence level  $\gamma$ . Thus, the "acceptance" or "passing" criterion must be stated directly in terms of the  $\gamma$  lower confidence bound on  $M(T)$  calculated from the reliability growth data. These data will be denoted by  $(n, s)$  where  $n$  is the number of failures occurring in the growth test of duration  $T$  and  $s = (t_1, t_2, \dots, t_n)$  is the vector of cumulative failure times. In particular,  $t_i$  denotes the cumulative test time to the  $i^{th}$  failure and  $0 < t_1 < t_2 < \dots < t_n < T$  for  $n \geq 1$ . We shall also refer to the random vector  $(N, S)$  which takes on values  $(n, s)$  for  $n \geq 1$ . Unless otherwise stated, throughout the remainder of this report  $(N, S)$  will be conditioned on  $N \geq 1$ .

Using the lower confidence bound methodology developed for reliability growth data by Crow in Reference 3, we shall define our acceptance criterion by the inequality

$$TR \leq \ell\gamma (n, s) \tag{10}$$

where  $\ell\gamma(n, s)$  is the  $\gamma$  statistical lower confidence bound on  $M(T)$ , calculated as in Reference 3 for  $n \geq 1$ . Thus, the probability of acceptance is given by

$$\text{Prob} (TR \leq L_\gamma (N, S)) \tag{11}$$

where the random variable  $L_\gamma (N, S)$  takes on the value  $\ell_\gamma(n, s)$  when  $(N, S)$  takes on the value  $(n, s)$ .

In accordance with Reference 3, for  $n \geq 1$ , we define

$$l_{\gamma}(n, s) \triangleq \left( \frac{2n}{z_{\gamma}(n)} \right)^2 \hat{M}_n(T) \quad (12)$$

where  $z_{\gamma}(n)$  is the unique positive value of  $z$  such that

$$(1/I_1(z)) \sum_{j=1}^n \frac{(z/2)^{2j-1}}{j!(j-1)!} = 1 - \gamma \quad (13)$$

In the above, the function  $I_1$  denotes the modified Bessel function of order one defined as follows:

$$I_1(z) \triangleq \sum_{j=1}^{\infty} \frac{(z/2)^{2j-1}}{j!(j-1)!} \quad (14)$$

In Equation (12),  $\hat{M}_n(T)$  denotes the maximum likelihood estimate (MLE) for  $M(T)$  given in MIL-HDBK-189 when  $n$  failures are observed. As discussed in MIL-HDBK-189,

$$\hat{M}_n(T) = T / (n\hat{\beta}_n) \quad (15)$$

where

$$\hat{\beta}_n = n / \left( \sum_{i=1}^n \ln(T/t_i) \right) \quad (16)$$

The distribution of  $(N, S)$  and hence that of  $L_{\gamma}(N, S)$  is completely determined by the test duration  $T$  together with any set of parameters that define a unique reliability growth curve of the form given by Equation (1) in Section 2. Thus, the value of a probability expression such as given in (11) also depends on  $T$  and the assumed underlying growth curve parameters. One such set of parameters, as seen directly from Equation (1), is  $t_1, M_1, \alpha$ , together with  $T$ . In this growth curve representation,  $t_1$  may be arbitrarily chosen subject to  $0 < t_1 < T$ . Alternately, scale parameter  $\lambda > 0$  and growth rate  $\alpha$ , together with  $T$ , can be used to define the growth curve by the equation

$$M(t) = 1 / (\lambda \beta t^{\beta-1}), 0 < t \leq T \quad (17)$$

where  $\beta = 1 - \alpha$ .

Note by Equation (17),

$$1/\lambda = (M(T)) \beta T^{\beta-1} \quad (18)$$

Thus, the growth curve can also be expressed as

$$M(t) = (M(T)) (t/T)^\alpha, \quad 0 < t \leq T \quad (19)$$

By Equation (19) we see that the distribution of  $(N,S)$  and hence that of  $L_\gamma(N,S)$  is determined by  $(\alpha, T, M(T))$ .

Unless otherwise stated, throughout the remainder of this report, the distributions for  $(N,S)$  and for random variables defined in terms of  $(N,S)$  will be with respect to a fixed but unspecified set of values for  $\alpha, T, M(T)$  subject only to  $\alpha < 1, T > 0$ , and  $M(T) > 0$ . The same considerations apply to any associated probability expressions. In particular, the probability of acceptance, i.e.,  $\text{Prob}(TR \leq L_\gamma(N,S))$ , is a function of  $(\alpha, T, M(T))$ .

To further consider the probability of acceptance, we must first consider several properties of the system of lower confidence bounds generated by  $L_\gamma(N,S)$  as specified via Equations (12) through (16). The statistical properties of this system of bounds directly follows from the properties of a set of conditional bounds derived by Crow in Reference 3. These latter bounds are conditioned on a sufficient statistic  $W$  which takes on the value

$$w = \sum_{i=1}^n \ln(T/t_i) \quad (20)$$

when  $(N,S)$  takes on the value  $(n,s)$ .

Let  $L_\gamma(N,S;w)$  denote the random variable  $L_\gamma(N,S)$  conditioned on  $W = w > 0$ . In Reference 3 Crow shows that  $L_\gamma(N,S;w)$  generates a system of  $\gamma$  lower confidence bounds on  $M(T)$ , i.e.,

$$\text{Prob}(L_\gamma(N,S;w) \leq M(T)) \geq \gamma \quad (21)$$

for each set of values  $(\alpha, T, M(T))$  subject to  $\alpha < 1, T > 0$ , and  $M(T) > 0$ . Note that the value of  $w$  is not known prior to conducting the reliability growth test. Thus, to calculate an OC curve for test planning, i.e., a priori, we wish to base our acceptance criterion on  $L_\gamma(N,S)$  as in (11) and not on the conditional random variable  $L_\gamma(N,S;w)$ . We can utilize Equation (21) to show (see Propositions 2, 3, and 4 in Appendix B) that the Type II or consumer risk for  $M(T) = TR$  is at most  $1-\gamma$  (for any  $\alpha < 1$  and  $T > 0$ ), analogous to the case in Section 2, i.e.,

$$\text{Type II} = \text{Prob}(TR \leq L_\gamma(N,S)) \leq 1-\gamma \quad (22)$$

for any  $\alpha < 1$  and  $T > 0$ , provided  $M(T) = TR$ .

To emphasize the functional dependence of the probability of acceptance on the underlying true growth curve parameters  $(\alpha, T, M(T))$ , we shall denote this probability by  $\text{Prob}(A; \alpha, T, M(T))$ . Thus,

$$\text{Prob}(A; \alpha, T, M(T)) \triangleq \text{Prob}(TR \leq L_\gamma(N, S)) \quad (23)$$

where the distribution of  $(N, S)$  and hence that of  $L_\gamma(N, S)$  is determined by  $(\alpha, T, M(T))$ . It can be shown that  $\text{Prob}(A; \alpha, T, M(T))$  only depends on the values of  $M(T)/TR$  (or equivalently  $M(T)$  for known  $TR$ ) and  $E(N)$ . The ratio  $M(T)/TR$  is analogous to the discrimination ratio for a constant configuration reliability demonstration test of the type considered in Section 2. Note  $E(N)$  denotes the expected number of failures associated with the growth curve determined by  $(\alpha, T, M(T))$ . More explicitly, the following equations can be derived (see Propositions 5 and 6 in Appendix B):

$$E(N) = T / \{ (1 - \alpha) M(T) \} \quad (24)$$

and

$$\text{Prob}(A; \alpha, T, M(T)) =$$

$$(1 - e^{-\mu})^{-1} \sum_{n=1}^{\infty} \left[ \text{Prob} \left( \frac{\chi_{2n}^2}{z_\gamma^2(n)} \geq \frac{1}{2\mu d} \right) \right] e^{-\mu} \left( \frac{\mu^n}{n!} \right) \quad (25)$$

where  $\mu \triangleq E(N)$  and  $d \triangleq M(T)/TR$ .

Note (25) shows that the probability of acceptance only depends on  $\mu$  and  $d$ . Thus, we shall subsequently denote the probability of acceptance by  $\text{Prob}(A; \mu, d)$ .

By (22),

$$\text{Type II} = \text{Prob}(A; \mu, 1) \leq 1 - \gamma \quad (26)$$

Thus, the actual value of the Government or consumer risk solely depends on  $\mu$  and is at most  $1 - \gamma$ . To consider the producer or contractor risk, Type I, let  $\alpha_G$  denote the contractor's target or goal growth rate. This growth rate should be a value the contractor feels he can achieve for the growth test. Let  $M_G$  denote the contractor's MTBF goal. This is the MTBF value the contractor plans to achieve at the conclusion of the growth test of duration  $T$ . Thus, if the true growth curve has the parameters  $\alpha_G$  and  $M_G$ , then the corresponding contractor risk of not demonstrating the  $TR$  at confidence level  $\gamma$  (utilizing the generated reliability growth test data) is given by

$$\text{Type I} = 1 - \text{Prob}(A; \mu_G, d_G) \quad (27)$$

where

$$d_G = M_G/TR \text{ and } \mu_G = T/((1-\alpha_G)M_G) \quad (28)$$

If the Type I risk is higher than desired, there are several ways to consider reducing this risk while maintaining the Type II risk at or below  $1-\gamma$ . Since  $\text{Prob}(A; \mu_G, d_G)$  is an increasing function of  $\mu_G$  and  $d_G$ , the Type I risk can be reduced by increasing one or both of these quantities, e.g., by increasing  $T$ .

To further consider how the Type I statistical risk can be influenced, we shall express  $d_G$  and  $\mu_G$  in terms of  $TR$ ,  $T$ ,  $\alpha_G$ , and the initial conditions  $(M_I, t_I)$ .

Using Equations (1) and (19) with  $\alpha = \alpha_G$  and  $M(T) = M_G$ , by (28) we can show

$$M_G/TR = d_G = \left\{ \frac{M_I}{(1-\alpha_G) t_I^{\alpha_G} TR} \right\} T^{\alpha_G} \quad (29)$$

and

$$E(N) = \mu_G = (t_I^{\alpha_G}/M_I) T^{1-\alpha_G} \quad (30)$$

Note for a given requirement  $TR$ , initial conditions  $(M_I, t_I)$ , and an assumed positive growth rate  $\alpha_G$ , the contractor risk is a decreasing function of  $T$  via Equations (27), (29), and (30). These equations can be used to solve for a test time  $T$  such that the contractor risk is a specified value. The corresponding Government risk will be at most  $1-\gamma$  and is given by Equation (26).

Section 4 contains two examples of an OC analysis for planning a reliability growth program. The first example illustrates the construction of an OC curve for given initial conditions  $(M_I, t_I)$  and requirement  $TR$ . The second example illustrates the iterative solution for the amount of test time  $T$  necessary to achieve a specified contractor (producer) risk, given initial conditions  $(M_I, t_I)$ , and requirement  $TR$ . These examples use Equations (29) and (30) rewritten as in Equations (1) and (24), respectively, i.e.,

$$M(T) = \left( \frac{M_I}{1-\alpha} \right) \left( \frac{T}{t_I} \right)^\alpha \text{ and } E(N) = \frac{T}{(1-\alpha) M(T)}$$

The quantities  $d = M(T)/TR$  and  $\mu = E(N)$  are then used to obtain an approximation to  $\text{Prob}(A; \mu, d)$ . Approximate values are provided in Appendix A for a range of values for  $\mu$  and  $d$ . The nature of this approximation is also discussed in Appendix A.

#### 4. APPLICATION

##### 4.1 Example 1.

Suppose we have a system under development which has a technical requirement (TR) MTBF of 100 hours to be demonstrated with 80 percent confidence. For the developmental program, a total of 2800 hours test time (T) at the system level has been predetermined for reliability growth purposes. Based on historical data for similar type systems and on lower level testing for the system under development, the initial MTBF ( $M_1$ ) averaged over the first 500 hours ( $t_1$ ) of system-level testing was expected to be 68 hours. Using these data, an idealized reliability growth curve was constructed such that if the tracking curve followed along the idealized growth curve, the TR MTBF of 100 hours would be demonstrated with 80 percent confidence. The growth rate ( $\alpha$ ) and the final MTBF ( $M(T)$ ) for the idealized growth curve were 0.23 and 130 hours, respectively. The idealized growth curve for this program is depicted on Figure 2.

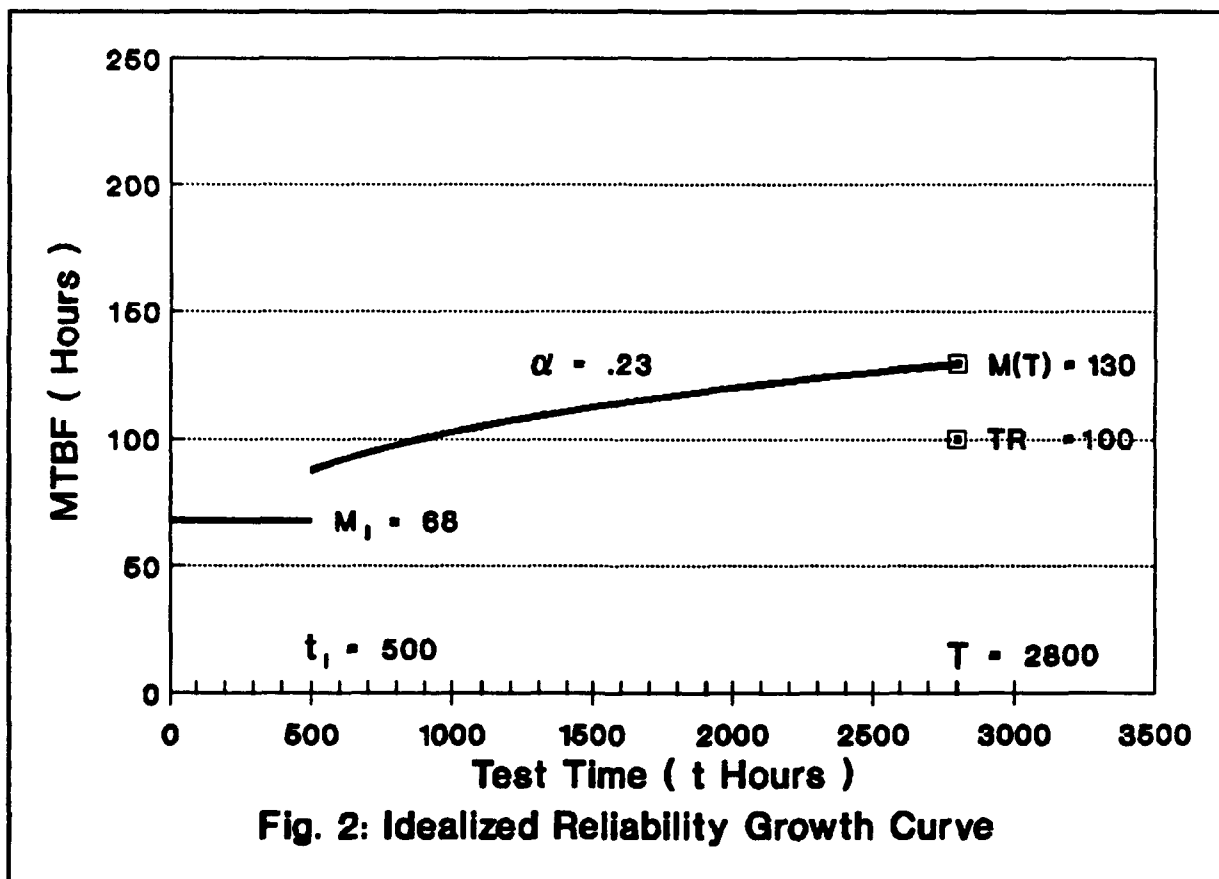
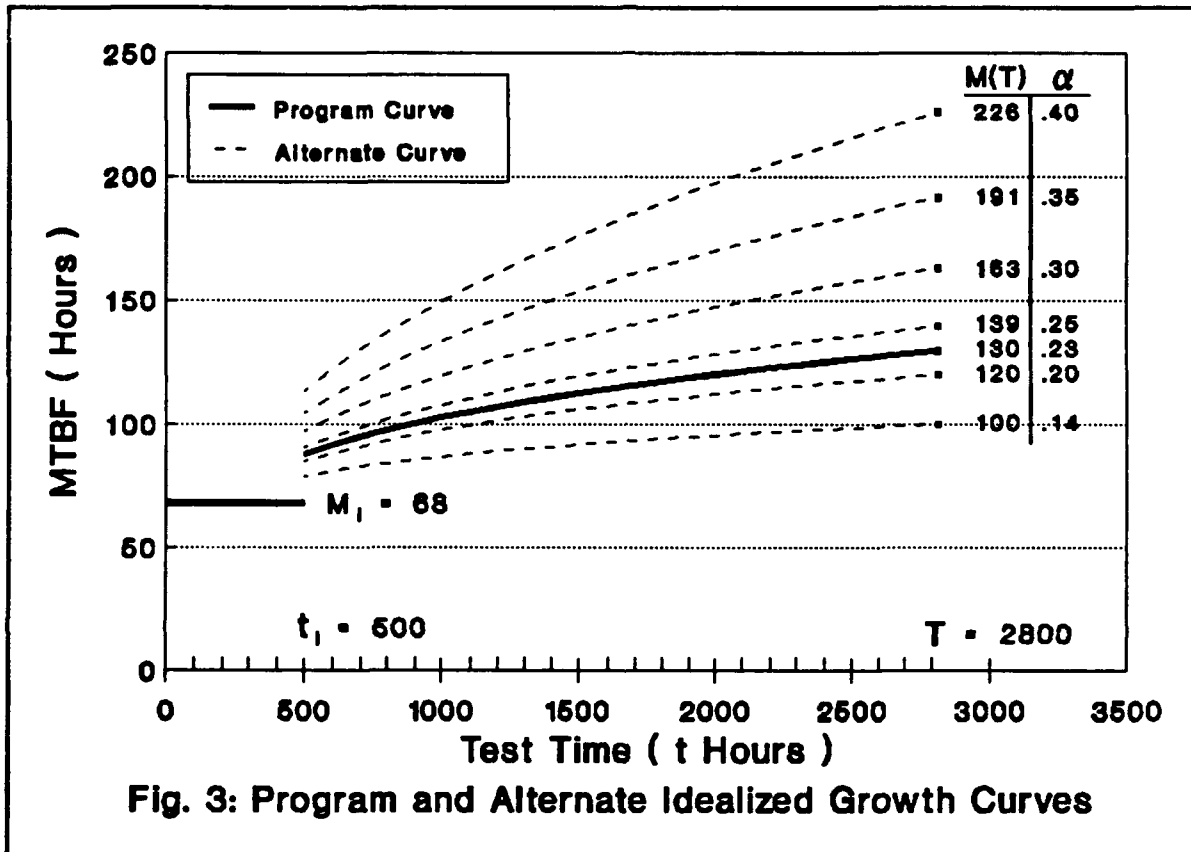


Fig. 2: Idealized Reliability Growth Curve

For this example, suppose we want to determine the operating characteristic (OC) curve for the program. For this, we need to consider alternate idealized growth curves where the  $M(T)$  vary but the  $M_1$  and  $t_1$  remain the same values as those for the program idealized growth curve; i.e.,  $M_1 = 68$  hours and  $t_1 = 500$  hours. In varying the  $M(T)$ , this is analogous to considering alternate values



of the true MTBF for a reliability demonstration test of a fixed configuration system. For this program, one alternate idealized growth curve was determined where  $M(T)$  equals the TR whereas the remaining alternate idealized growth curves were determined for different values of the growth rate  $\alpha$ . These alternate idealized growth curves along with the program idealized growth curve are depicted on Figure 3.

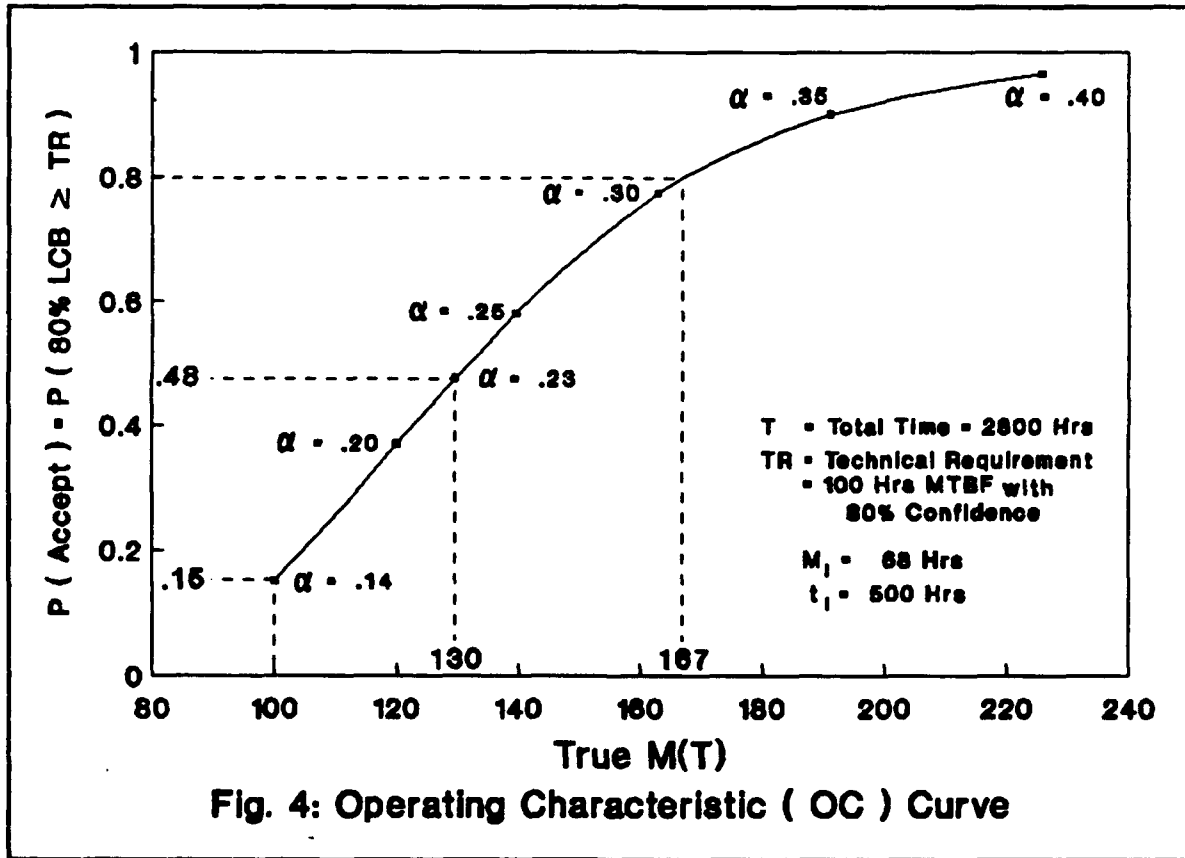


Now, for each idealized growth curve we find  $M(T)$  and the expected number of failures  $E(N)$  from the equations

$$M(T) = \frac{M_I}{(1-\alpha)} \left( \frac{T}{t_I} \right)^\alpha \text{ and } E(N) = \frac{T}{M(T) (1-\alpha)} .$$

Using the ratio  $M(T)/TR$  and  $E(N)$  as entries in the tables contained in Appendix A, we determine, by double linear interpolation, the probability of demonstrating the TR with 80 percent confidence. This probability is actually the probability that the 80 percent lower confidence bound (80 percent LCB) for  $M(T)$  will be greater than or equal to the TR. These probabilities represent the probability of acceptance ( $P(A)$ ) points on the OC curve for this program which is depicted on Figure 4. The  $M(T)$ ,  $\alpha$ ,  $E(N)$ , and  $P(A)$  for these idealized growth curves are summarized in the following table:

M(T)	$\alpha$	E(N)	P(A)
100	0.14	32.6	0.15
120	0.20	29.2	0.37
130	0.23	28.0	0.48
139	0.25	26.9	0.58
163	0.30	24.5	0.77
191	0.35	22.6	0.90
226	0.40	20.6	0.96



From the OC curve, the Type I or producer risk is 0.52 (1-0.48) which is based on the program idealized growth curve where  $M(T) = 130$ . Note that if the true growth curve were the program idealized growth curve, there is still a 0.52 probability of not demonstrating the TR with 80 percent confidence. This occurs even though the true reliability would grow to  $M(T) = 130$  which is considerably higher than the TR value of 100. The Type II or consumer risk, which is based on the alternate idealized growth curve where  $M(T) = TR = 100$ , is 0.15. As indicated on the OC curve, it should be noted that for this developmental program to have a producer risk of 0.20, the contractor would have to plan on an idealized growth curve with  $M(T) = 167$ .

#### 4.2 Example 2.

Consider a system under development which has a technical requirement (TR) MTBF of 100 hours to be demonstrated with 80 percent confidence, as in Example 1. The initial MTBF ( $M_I$ ) over the first 500 hours ( $t_I$ ) of system level testing for this system was estimated to be 48 hours which, again as in Example 1, was based on historical data for similar type systems and on lower level testing for the system under development. For this developmental program, it was assumed that a growth rate ( $\alpha$ ) of 0.30 would be appropriate for reliability growth purposes. Now, for this example, suppose we want to determine the total amount of system level test time ( $T$ ) such that the Type I or producer risk for the program idealized reliability growth curve is 0.20; i.e., the probability of not demonstrating the TR of 100 hours with 80 percent confidence is 0.20 for the final MTBF value ( $M(T)$ ) obtained from the program idealized growth curve. This probability corresponds to the probability of acceptance ( $P(A)$ ) point of 0.80 (1-0.20) on the operating characteristic (OC) curve for this program.

Now, to determine the test time  $T$  which will satisfy the Type I or producer risk of 0.20, we first select an initial value of  $T$  and, as in Example 1, find  $M(T)$  and the expected number of failures ( $E(N)$ ) from the equations

$$M(T) = \frac{M_I}{(1-\alpha)} \left( \frac{T}{t_I} \right)^\alpha \quad \text{and} \quad E(N) = \frac{T}{M(T) (1-\alpha)}$$

Then, again, using the ratio  $M(T)/TR$  and  $E(N)$  as entries in the tables contained in Appendix A, we determine, by double linear interpolation, the probability of demonstrating the TR with 80 percent confidence. An iterative procedure is then applied until the  $P(A)$  obtained from the table equals the desired 0.80 within some reasonable accuracy. For this example, suppose we selected 3000 hours as our initial estimate of  $T$  and obtained the following iterative results:

T	M(T)	E(N)	P(A)
3000	117.4	36.5	<0.412
4000	128.0	44.6	<0.610
5000	136.8	52.2	<0.793
5500	140.8	55.8	0.815
5400	140.0	55.1	0.804
5300	139.2	54.4	0.790
5350	139.6	54.7	0.796
5375	139.8	54.9	0.800

Based on these results, we determine  $T = 5375$  hours to be the required amount of system level test time such that the Type I or producer risk for the program idealized growth curve is 0.20.

## 5. SUMMARY

The concepts of an operating characteristic (OC) analysis have been extended to the reliability growth setting. Government (consumer) and contractor (producer) statistical risks have been expressed in terms of the underlying growth curve parameters, test duration, and reliability requirement. In particular, for a given confidence level, these risks have been shown to depend solely on the expected number of failures during the growth test and the ratio of the MTBF to be achieved at the end of the growth program to the MTBF technical requirement to be demonstrated with confidence. Formulas have been developed for computing these risks as a function of the test duration and growth curve planning parameters.

The methodology developed and illustrated in this report should be of interest to RAM analysts responsible for structuring realistic reliability growth programs to achieve and demonstrate program objectives with reasonable statistical risks. In particular, this methodology allows the RAM analysts to construct a reliability growth curve which considers both the Government and contractor risks prior to agreeing to a reliability growth program.

## REFERENCES

1. AR 702-3, "Army Materiel Systems Reliability, Availability, Maintainability," April 1989.
2. MIL-HDBK-189, "Reliability Growth Management," 13 February 1981.
3. Crow, Larry H., AMSAA TR-197, "Confidence Interval Procedures for Reliability Growth Analysis," June 1977.
4. Ziad, Tariq and Ellner, Paul, AMSAA TR-453, "Statistical Precision and Robustness of the AMSAA Continuous Reliability Growth Estimators," April 1988.



**APPENDIX A**  
**TABLES**

3



APPENDIX A  
TABLES

The following tables provide approximations to the probability of acceptance,  $\text{Prob}(A; \mu, d)$ , where  $\mu$  denotes the expected number of failures and  $d = M(T)/TR$ . The tabular entries were calculated using a modification to Equation (25). This modification entails (1) approximating  $z_\gamma^2(n)$  by  $4n\chi_{n+2, \gamma}^2$  and (2) conditioning on  $N \geq 2$  instead of  $N \geq 1$ . Thus, in Equation (25) the expression  $1 - e^{-\mu}$  is replaced by  $1 - P(N \leq 1) = 1 - e^{-\mu} - \mu e^{-\mu}$  and the summation is over  $N \geq 2$ .

The approximation used for  $z_\gamma^2(n)$  follows from the lower confidence bound approximation given by

$$l_\gamma(n, s) \approx (n/\chi_{n+2, \gamma}^2) \hat{M}_n \quad (31)$$

where  $\hat{M}_n$  is the MLE of  $M(T)$  calculated from the observed data  $s = (t_1, t_2, \dots, t_n)$ . Here  $t_i$  denotes the cumulative operating time to the  $i^{\text{th}}$  failure. This approximation was suggested by Dr. Larry Crow for conveniently approximating  $l_\gamma(n, s)$ . It has been our experience that the approximation in (31) results in slightly more conservative lower bounds on  $M(T)$  than  $l_\gamma(n, s)$ . This implies that use of the corresponding approximation to  $z_\gamma^2(n)$  would yield slightly smaller values of  $\text{Prob}(A; \mu, d)$  than one would obtain by utilizing  $z_\gamma^2(n)$ . Based on our experience with  $\text{Prob}(A; \mu, d)$  estimated by simulation, the approximating values appear to be within 0.01 of values obtained through simulation. We also observed that the approximation improves as  $n$  increases. The comparison between the lower confidence bound approximation given by (31) and the lower confidence bound using  $z_\gamma^2(n)$  was based on Table C-1 contained in Reference 2. Since the entries in this table were for  $n \geq 2$ , the probability of acceptance,  $\text{Prob}(A; \mu, d)$ , was conditioned on  $N \geq 2$ . In most cases of interest for the model discussed in this report,  $\text{Prob}(N \geq 2)$  will be close to one. In this situation, conditioning on  $N \geq 2$  yields values of  $\text{Prob}(A; \mu, d)$  that are, for practical purposes, essentially the same as those obtained by conditioning on  $N \geq 1$ .

The entries in these tables were calculated using the well-known relationship between the complement of a Chi-square distribution function and the cumulative Poisson sum. This relationship was applied to calculate

$$Prob \left( \chi_{2n}^2 \geq \frac{z_{\gamma}^2 (n)}{2\mu d} \right)$$

in the expression for Prob (A;μ,d) in Section 3 with  $z_{\gamma}^2 (n)$  replaced by its approximation, i.e.,  $4n\chi_{n+2,\gamma}^2$ . In terms of the cumulative Poisson sum, this yields

$$Prob \left( \chi_{2n}^2 \geq \frac{2(n\chi_{n+2,\gamma}^2)}{\mu d} \right) = \sum_{x=0}^{n-1} e^{-w} \frac{w^x}{x!} \quad (32)$$

where

$$w = (n\chi_{n+2,\gamma}^2) / (\mu d) .$$

With additional computational effort, one can more precisely calculate Prob(A;μ,d) by iteratively solving for  $z_{\gamma} (n)$  as the z-solution to Equation (13) of Section 3 over an appropriate range of n. Then Equation (32) can be utilized with  $2n\chi_{n+2,\gamma}^2$  replaced by  $z_{\gamma}^2 (n)/2$ .

The tables contained in this appendix are approximation values of Prob (A; μ, d) for three confidence levels; namely, for  $\gamma = 0.70$ ,  $\gamma = 0.80$ , and  $\gamma = 0.90$ .

**TABLE FOR  
70 PERCENT CONFIDENCE**

PROBABILITY OF DEMONSTRATING TECHNICAL REQUIREMENT  
WITH 70 PERCENT CONFIDENCE

M(T)/TR	EXPECTED NUMBER OF FAILURES							
	5	6	7	8	9	10	11	12
1.00	0.131	0.150	0.163	0.173	0.180	0.186	0.191	0.195
1.05	0.150	0.171	0.187	0.199	0.208	0.216	0.224	0.230
1.10	0.169	0.194	0.212	0.226	0.238	0.249	0.258	0.266
1.15	0.189	0.217	0.238	0.255	0.269	0.282	0.294	0.304
1.20	0.209	0.240	0.264	0.284	0.301	0.316	0.330	0.343
1.25	0.231	0.264	0.291	0.314	0.334	0.351	0.368	0.383
1.30	0.252	0.289	0.319	0.344	0.367	0.387	0.405	0.422
1.35	0.274	0.314	0.347	0.375	0.400	0.422	0.443	0.462
1.40	0.296	0.339	0.375	0.405	0.432	0.457	0.479	0.500
1.45	0.318	0.364	0.402	0.435	0.465	0.491	0.515	0.538
1.50	0.340	0.389	0.430	0.465	0.496	0.525	0.550	0.574
1.55	0.362	0.414	0.457	0.494	0.527	0.557	0.584	0.609
1.60	0.384	0.438	0.484	0.523	0.557	0.588	0.616	0.642
1.65	0.406	0.462	0.510	0.550	0.586	0.618	0.647	0.673
1.70	0.427	0.486	0.535	0.577	0.614	0.647	0.676	0.703
1.75	0.448	0.509	0.560	0.603	0.641	0.674	0.704	0.730
1.80	0.469	0.531	0.583	0.628	0.666	0.700	0.729	0.756
1.85	0.489	0.553	0.606	0.651	0.690	0.724	0.754	0.780
1.90	0.509	0.575	0.628	0.674	0.713	0.746	0.776	0.802
1.95	0.529	0.595	0.650	0.695	0.734	0.768	0.797	0.822
2.00	0.548	0.615	0.670	0.716	0.754	0.787	0.816	0.840
2.05	0.566	0.634	0.689	0.735	0.773	0.806	0.833	0.857
2.10	0.584	0.652	0.708	0.753	0.791	0.823	0.849	0.872
2.15	0.601	0.670	0.725	0.770	0.807	0.838	0.864	0.885
2.20	0.618	0.687	0.742	0.786	0.823	0.853	0.877	0.898
2.25	0.634	0.703	0.758	0.802	0.837	0.866	0.890	0.909
2.30	0.650	0.719	0.773	0.816	0.850	0.878	0.901	0.919
2.35	0.665	0.733	0.787	0.829	0.863	0.889	0.911	0.928
2.40	0.679	0.747	0.800	0.841	0.874	0.900	0.920	0.936
2.45	0.693	0.761	0.813	0.853	0.884	0.909	0.928	0.943
2.50	0.706	0.774	0.825	0.864	0.894	0.917	0.936	0.950
2.55	0.719	0.786	0.836	0.874	0.903	0.925	0.942	0.955
2.60	0.732	0.797	0.846	0.883	0.911	0.932	0.948	0.960
2.65	0.743	0.808	0.856	0.892	0.918	0.938	0.954	0.965
2.70	0.755	0.818	0.865	0.900	0.925	0.944	0.958	0.969
2.75	0.766	0.828	0.874	0.907	0.932	0.950	0.963	0.973
2.80	0.776	0.837	0.882	0.914	0.937	0.954	0.967	0.976
2.85	0.786	0.846	0.889	0.920	0.943	0.959	0.970	0.978
2.90	0.795	0.855	0.896	0.926	0.947	0.963	0.973	0.981
2.95	0.804	0.862	0.903	0.932	0.952	0.966	0.976	0.983
3.00	0.813	0.870	0.909	0.937	0.956	0.969	0.979	0.985

PROBABILITY OF DEMONSTRATING TECHNICAL REQUIREMENT  
WITH 70 PERCENT CONFIDENCE

M(T) / TR	EXPECTED NUMBER OF FAILURES							
	13	14	15	16	17	18	19	20
1.00	0.199	0.202	0.206	0.208	0.211	0.213	0.215	0.217
1.05	0.235	0.241	0.245	0.250	0.254	0.258	0.262	0.265
1.10	0.274	0.281	0.288	0.294	0.300	0.306	0.311	0.316
1.15	0.314	0.323	0.332	0.340	0.348	0.355	0.363	0.369
1.20	0.355	0.366	0.377	0.387	0.397	0.406	0.415	0.423
1.25	0.397	0.410	0.423	0.435	0.446	0.457	0.467	0.477
1.30	0.438	0.454	0.468	0.481	0.494	0.507	0.519	0.530
1.35	0.480	0.496	0.512	0.527	0.542	0.555	0.568	0.581
1.40	0.520	0.538	0.555	0.572	0.587	0.602	0.616	0.629
1.45	0.559	0.578	0.597	0.614	0.630	0.646	0.660	0.674
1.50	0.596	0.617	0.636	0.654	0.671	0.687	0.702	0.716
1.55	0.632	0.653	0.673	0.691	0.709	0.725	0.740	0.754
1.60	0.666	0.687	0.707	0.726	0.743	0.759	0.774	0.788
1.65	0.697	0.719	0.739	0.758	0.775	0.791	0.805	0.819
1.70	0.727	0.749	0.769	0.787	0.804	0.819	0.833	0.846
1.75	0.754	0.776	0.796	0.813	0.829	0.844	0.857	0.869
1.80	0.780	0.801	0.820	0.837	0.852	0.866	0.879	0.890
1.85	0.803	0.823	0.842	0.858	0.873	0.886	0.897	0.908
1.90	0.824	0.844	0.861	0.877	0.891	0.903	0.913	0.923
1.95	0.843	0.862	0.879	0.894	0.906	0.918	0.927	0.936
2.00	0.861	0.879	0.895	0.908	0.920	0.930	0.939	0.947
2.05	0.877	0.894	0.908	0.921	0.932	0.941	0.949	0.956
2.10	0.891	0.907	0.921	0.932	0.942	0.951	0.958	0.964
2.15	0.903	0.919	0.931	0.942	0.951	0.959	0.965	0.970
2.20	0.915	0.929	0.941	0.950	0.959	0.965	0.971	0.976
2.25	0.925	0.938	0.949	0.958	0.965	0.971	0.976	0.980
2.30	0.934	0.946	0.956	0.964	0.970	0.976	0.980	0.984
2.35	0.942	0.953	0.962	0.969	0.975	0.980	0.984	0.987
2.40	0.949	0.959	0.967	0.974	0.979	0.983	0.987	0.989
2.45	0.955	0.965	0.972	0.978	0.982	0.986	0.989	0.991
2.50	0.961	0.969	0.976	0.981	0.985	0.989	0.991	0.993
2.55	0.966	0.973	0.979	0.984	0.988	0.990	0.993	0.994
2.60	0.970	0.977	0.982	0.987	0.990	0.992	0.994	0.995
2.65	0.974	0.980	0.985	0.989	0.991	0.993	0.995	0.996
2.70	0.977	0.983	0.987	0.990	0.993	0.995	0.996	0.997
2.75	0.980	0.985	0.989	0.992	0.994	0.996	0.997	0.998
2.80	0.982	0.987	0.991	0.993	0.995	0.996	0.997	0.998
2.85	0.984	0.989	0.992	0.994	0.996	0.997	0.998	0.998
2.90	0.986	0.990	0.993	0.995	0.996	0.997	0.998	0.999
2.95	0.988	0.992	0.994	0.996	0.997	0.998	0.999	0.999
3.00	0.990	0.993	0.995	0.996	0.998	0.998	0.999	0.999

PROBABILITY OF DEMONSTRATING TECHNICAL REQUIREMENT  
WITH 70 PERCENT CONFIDENCE

M(T)/TR	EXPECTED NUMBER OF FAILURES							
	21	22	23	24	25	26	27	28
1.00	0.219	0.221	0.223	0.224	0.225	0.227	0.228	0.229
1.05	0.269	0.272	0.275	0.278	0.280	0.283	0.286	0.288
1.10	0.321	0.326	0.331	0.335	0.339	0.343	0.347	0.351
1.15	0.376	0.382	0.388	0.394	0.400	0.406	0.411	0.417
1.20	0.432	0.440	0.447	0.455	0.462	0.469	0.476	0.482
1.25	0.487	0.496	0.505	0.514	0.523	0.531	0.539	0.547
1.30	0.541	0.552	0.562	0.572	0.581	0.590	0.599	0.608
1.35	0.593	0.605	0.616	0.626	0.637	0.646	0.656	0.665
1.40	0.642	0.654	0.666	0.677	0.688	0.698	0.708	0.717
1.45	0.688	0.700	0.712	0.723	0.734	0.745	0.755	0.764
1.50	0.729	0.742	0.754	0.765	0.776	0.786	0.796	0.805
1.55	0.767	0.780	0.792	0.803	0.813	0.823	0.832	0.841
1.60	0.801	0.813	0.825	0.835	0.845	0.854	0.863	0.871
1.65	0.831	0.843	0.854	0.863	0.873	0.881	0.889	0.897
1.70	0.858	0.868	0.878	0.888	0.896	0.904	0.911	0.918
1.75	0.881	0.891	0.900	0.908	0.916	0.923	0.929	0.935
1.80	0.900	0.910	0.918	0.925	0.932	0.939	0.944	0.949
1.85	0.917	0.926	0.933	0.940	0.946	0.951	0.956	0.961
1.90	0.931	0.939	0.946	0.952	0.957	0.962	0.966	0.970
1.95	0.944	0.950	0.956	0.961	0.966	0.970	0.973	0.977
2.00	0.954	0.960	0.965	0.969	0.973	0.977	0.980	0.982
2.05	0.962	0.967	0.972	0.976	0.979	0.982	0.984	0.986
2.10	0.969	0.974	0.977	0.981	0.984	0.986	0.988	0.990
2.15	0.975	0.979	0.982	0.985	0.987	0.989	0.991	0.992
2.20	0.980	0.983	0.986	0.988	0.990	0.992	0.993	0.994
2.25	0.984	0.986	0.989	0.991	0.992	0.994	0.995	0.996
2.30	0.987	0.989	0.991	0.993	0.994	0.995	0.996	0.997
2.35	0.989	0.991	0.993	0.994	0.995	0.996	0.997	0.998
2.40	0.991	0.993	0.995	0.996	0.996	0.997	0.998	0.998
2.45	0.993	0.995	0.996	0.997	0.997	0.998	0.998	0.999
2.50	0.995	0.996	0.997	0.997	0.998	0.998	0.999	0.999
2.55	0.996	0.997	0.997	0.998	0.998	0.999	0.999	0.999
2.60	0.996	0.997	0.998	0.998	0.999	0.999	0.999	0.999
2.65	0.997	0.998	0.998	0.999	0.999	0.999	0.999	1.000
2.70	0.998	0.998	0.999	0.999	0.999	0.999	1.000	1.000
2.75	0.998	0.999	0.999	0.999	0.999	1.000	1.000	1.000
2.80	0.999	0.999	0.999	0.999	1.000	1.000	1.000	1.000
2.85	0.999	0.999	0.999	1.000	1.000	1.000	1.000	1.000
2.90	0.999	0.999	1.000	1.000	1.000	1.000	1.000	1.000
2.95	0.999	0.999	1.000	1.000	1.000	1.000	1.000	1.000
3.00	0.999	1.000	1.000	1.000	1.000	1.000	1.000	1.000

PROBABILITY OF DEMONSTRATING TECHNICAL REQUIREMENT  
WITH 70 PERCENT CONFIDENCE

M(T) / TR	EXPECTED NUMBER OF FAILURES							
	29	30	31	32	33	34	35	36
1.00	0.231	0.232	0.233	0.234	0.235	0.236	0.236	0.237
1.05	0.291	0.293	0.295	0.297	0.300	0.302	0.304	0.306
1.10	0.355	0.359	0.362	0.366	0.369	0.373	0.376	0.379
1.15	0.422	0.427	0.432	0.437	0.441	0.446	0.450	0.455
1.20	0.489	0.495	0.501	0.507	0.513	0.519	0.525	0.530
1.25	0.554	0.562	0.569	0.576	0.582	0.589	0.596	0.602
1.30	0.616	0.624	0.632	0.640	0.648	0.655	0.662	0.669
1.35	0.674	0.683	0.691	0.699	0.707	0.715	0.722	0.729
1.40	0.727	0.735	0.744	0.752	0.760	0.767	0.775	0.782
1.45	0.773	0.782	0.790	0.798	0.806	0.813	0.820	0.827
1.50	0.814	0.822	0.830	0.838	0.845	0.852	0.859	0.865
1.55	0.849	0.857	0.864	0.871	0.878	0.884	0.890	0.896
1.60	0.879	0.886	0.893	0.899	0.905	0.911	0.916	0.921
1.65	0.904	0.910	0.916	0.922	0.927	0.932	0.936	0.941
1.70	0.924	0.930	0.935	0.940	0.944	0.948	0.952	0.956
1.75	0.941	0.946	0.950	0.954	0.958	0.961	0.965	0.968
1.80	0.954	0.958	0.962	0.965	0.969	0.971	0.974	0.976
1.85	0.965	0.968	0.971	0.974	0.977	0.979	0.981	0.983
1.90	0.973	0.976	0.978	0.981	0.983	0.985	0.986	0.988
1.95	0.979	0.982	0.984	0.986	0.987	0.989	0.990	0.991
2.00	0.984	0.986	0.988	0.990	0.991	0.992	0.993	0.994
2.05	0.988	0.990	0.991	0.992	0.993	0.994	0.995	0.996
2.10	0.991	0.992	0.994	0.994	0.995	0.996	0.997	0.997
2.15	0.993	0.994	0.995	0.996	0.997	0.997	0.998	0.998
2.20	0.995	0.996	0.997	0.997	0.998	0.998	0.998	0.999
2.25	0.996	0.997	0.998	0.998	0.998	0.999	0.999	0.999
2.30	0.997	0.998	0.998	0.999	0.999	0.999	0.999	0.999
2.35	0.998	0.998	0.999	0.999	0.999	0.999	0.999	1.000
2.40	0.999	0.999	0.999	0.999	0.999	1.000	1.000	1.000
2.45	0.999	0.999	0.999	0.999	1.000	1.000	1.000	1.000
2.50	0.999	0.999	1.000	1.000	1.000	1.000	1.000	1.000
2.55	0.999	1.000	1.000	1.000	1.000	1.000	1.000	1.000
2.60	1.000	1.000	1.000	1.000	1.000	1.000	1.000	1.000
2.65	1.000	1.000	1.000	1.000	1.000	1.000	1.000	1.000
2.70	1.000	1.000	1.000	1.000	1.000	1.000	1.000	1.000
2.75	1.000	1.000	1.000	1.000	1.000	1.000	1.000	1.000
2.80	1.000	1.000	1.000	1.000	1.000	1.000	1.000	1.000
2.85	1.000	1.000	1.000	1.000	1.000	1.000	1.000	1.000
2.90	1.000	1.000	1.000	1.000	1.000	1.000	1.000	1.000
2.95	1.000	1.000	1.000	1.000	1.000	1.000	1.000	1.000
3.00	1.000	1.000	1.000	1.000	1.000	1.000	1.000	1.000

PROBABILITY OF DEMONSTRATING TECHNICAL REQUIREMENT  
WITH 70 PERCENT CONFIDENCE

M(T)/TR	EXPECTED NUMBER OF FAILURES							
	37	38	39	40	41	42	43	44
1.00	0.238	0.239	0.240	0.240	0.241	0.242	0.242	0.243
1.05	0.308	0.309	0.311	0.313	0.315	0.317	0.318	0.320
1.10	0.382	0.385	0.388	0.391	0.394	0.397	0.400	0.403
1.15	0.459	0.464	0.468	0.472	0.476	0.480	0.484	0.488
1.20	0.535	0.541	0.546	0.551	0.556	0.561	0.566	0.570
1.25	0.608	0.614	0.620	0.626	0.632	0.637	0.643	0.648
1.30	0.676	0.682	0.688	0.695	0.701	0.707	0.712	0.718
1.35	0.736	0.743	0.749	0.755	0.762	0.768	0.773	0.779
1.40	0.789	0.795	0.802	0.808	0.814	0.819	0.825	0.830
1.45	0.834	0.840	0.846	0.851	0.857	0.862	0.867	0.872
1.50	0.871	0.877	0.882	0.887	0.892	0.897	0.901	0.906
1.55	0.901	0.906	0.911	0.916	0.920	0.924	0.928	0.931
1.60	0.925	0.930	0.934	0.938	0.941	0.945	0.948	0.951
1.65	0.944	0.948	0.952	0.955	0.958	0.961	0.963	0.966
1.70	0.959	0.962	0.965	0.968	0.970	0.972	0.974	0.976
1.75	0.970	0.973	0.975	0.977	0.979	0.981	0.982	0.984
1.80	0.979	0.980	0.982	0.984	0.985	0.987	0.988	0.989
1.85	0.985	0.986	0.988	0.989	0.990	0.991	0.992	0.993
1.90	0.989	0.990	0.991	0.992	0.993	0.994	0.995	0.995
1.95	0.992	0.993	0.994	0.995	0.995	0.996	0.996	0.997
2.00	0.995	0.995	0.996	0.996	0.997	0.997	0.998	0.998
2.05	0.996	0.997	0.997	0.998	0.998	0.998	0.998	0.999
2.10	0.997	0.998	0.998	0.998	0.999	0.999	0.999	0.999
2.15	0.998	0.999	0.999	0.999	0.999	0.999	0.999	0.999
2.20	0.999	0.999	0.999	0.999	0.999	1.000	1.000	1.000
2.25	0.999	0.999	0.999	1.000	1.000	1.000	1.000	1.000
2.30	0.999	1.000	1.000	1.000	1.000	1.000	1.000	1.000
2.35	1.000	1.000	1.000	1.000	1.000	1.000	1.000	1.000
2.40	1.000	1.000	1.000	1.000	1.000	1.000	1.000	1.000
2.45	1.000	1.000	1.000	1.000	1.000	1.000	1.000	1.000
2.50	1.000	1.000	1.000	1.000	1.000	1.000	1.000	1.000
2.55	1.000	1.000	1.000	1.000	1.000	1.000	1.000	1.000
2.60	1.000	1.000	1.000	1.000	1.000	1.000	1.000	1.000
2.65	1.000	1.000	1.000	1.000	1.000	1.000	1.000	1.000
2.70	1.000	1.000	1.000	1.000	1.000	1.000	1.000	1.000
2.75	1.000	1.000	1.000	1.000	1.000	1.000	1.000	1.000
2.80	1.000	1.000	1.000	1.000	1.000	1.000	1.000	1.000
2.85	1.000	1.000	1.000	1.000	1.000	1.000	1.000	1.000
2.90	1.000	1.000	1.000	1.000	1.000	1.000	1.000	1.000
2.95	1.000	1.000	1.000	1.000	1.000	1.000	1.000	1.000
3.00	1.000	1.000	1.000	1.000	1.000	1.000	1.000	1.000



PROBABILITY OF DEMONSTRATING TECHNICAL REQUIREMENT  
WITH 70 PERCENT CONFIDENCE

M(T) / TR	EXPECTED NUMBER OF FAILURES							
	45	46	47	48	49	50	51	52
1.00	0.244	0.244	0.245	0.245	0.246	0.246	0.247	0.247
1.05	0.322	0.323	0.325	0.326	0.328	0.329	0.331	0.332
1.10	0.406	0.408	0.411	0.414	0.416	0.419	0.421	0.424
1.15	0.491	0.495	0.499	0.502	0.506	0.510	0.513	0.516
1.20	0.575	0.580	0.584	0.589	0.593	0.597	0.602	0.606
1.25	0.653	0.659	0.664	0.669	0.673	0.678	0.683	0.687
1.30	0.724	0.729	0.734	0.739	0.744	0.749	0.754	0.759
1.35	0.784	0.790	0.795	0.800	0.805	0.810	0.814	0.819
1.40	0.835	0.841	0.845	0.850	0.855	0.859	0.863	0.867
1.45	0.877	0.881	0.886	0.890	0.894	0.898	0.902	0.905
1.50	0.910	0.914	0.917	0.921	0.924	0.928	0.931	0.934
1.55	0.935	0.938	0.941	0.944	0.947	0.950	0.952	0.955
1.60	0.954	0.957	0.959	0.961	0.964	0.966	0.968	0.970
1.65	0.968	0.970	0.972	0.974	0.975	0.977	0.979	0.980
1.70	0.978	0.980	0.981	0.982	0.984	0.985	0.986	0.987
1.75	0.985	0.986	0.987	0.988	0.989	0.990	0.991	0.992
1.80	0.990	0.991	0.992	0.992	0.993	0.994	0.994	0.995
1.85	0.993	0.994	0.995	0.995	0.996	0.996	0.996	0.997
1.90	0.996	0.996	0.997	0.997	0.997	0.998	0.998	0.998
1.95	0.997	0.998	0.998	0.998	0.998	0.998	0.999	0.999
2.00	0.998	0.998	0.999	0.999	0.999	0.999	0.999	0.999
2.05	0.999	0.999	0.999	0.999	0.999	0.999	1.000	1.000
2.10	0.999	0.999	0.999	1.000	1.000	1.000	1.000	1.000
2.15	1.000	1.000	1.000	1.000	1.000	1.000	1.000	1.000
2.20	1.000	1.000	1.000	1.000	1.000	1.000	1.000	1.000
2.25	1.000	1.000	1.000	1.000	1.000	1.000	1.000	1.000
2.30	1.000	1.000	1.000	1.000	1.000	1.000	1.000	1.000
2.35	1.000	1.000	1.000	1.000	1.000	1.000	1.000	1.000
2.40	1.000	1.000	1.000	1.000	1.000	1.000	1.000	1.000
2.45	1.000	1.000	1.000	1.000	1.000	1.000	1.000	1.000
2.50	1.000	1.000	1.000	1.000	1.000	1.000	1.000	1.000
2.55	1.000	1.000	1.000	1.000	1.000	1.000	1.000	1.000
2.60	1.000	1.000	1.000	1.000	1.000	1.000	1.000	1.000
2.65	1.000	1.000	1.000	1.000	1.000	1.000	1.000	1.000
2.70	1.000	1.000	1.000	1.000	1.000	1.000	1.000	1.000
2.75	1.000	1.000	1.000	1.000	1.000	1.000	1.000	1.000
2.80	1.000	1.000	1.000	1.000	1.000	1.000	1.000	1.000
2.85	1.000	1.000	1.000	1.000	1.000	1.000	1.000	1.000
2.90	1.000	1.000	1.000	1.000	1.000	1.000	1.000	1.000
2.95	1.000	1.000	1.000	1.000	1.000	1.000	1.000	1.000
3.00	1.000	1.000	1.000	1.000	1.000	1.000	1.000	1.000

PROBABILITY OF DEMONSTRATING TECHNICAL REQUIREMENT  
WITH 70 PERCENT CONFIDENCE

M(T)/TR	EXPECTED NUMBER OF FAILURES							
	53	54	55	56	57	58	59	60
1.00	0.248	0.248	0.249	0.249	0.250	0.250	0.250	0.251
1.05	0.334	0.335	0.336	0.338	0.339	0.340	0.342	0.343
1.10	0.426	0.428	0.431	0.433	0.435	0.438	0.440	0.442
1.15	0.520	0.523	0.526	0.530	0.533	0.536	0.539	0.542
1.20	0.610	0.614	0.618	0.622	0.626	0.629	0.633	0.637
1.25	0.692	0.696	0.701	0.705	0.709	0.713	0.717	0.721
1.30	0.764	0.768	0.772	0.777	0.781	0.785	0.789	0.793
1.35	0.823	0.828	0.832	0.836	0.840	0.844	0.847	0.851
1.40	0.871	0.875	0.879	0.883	0.886	0.889	0.893	0.896
1.45	0.909	0.912	0.915	0.918	0.921	0.924	0.927	0.929
1.50	0.937	0.939	0.942	0.944	0.947	0.949	0.951	0.953
1.55	0.957	0.959	0.961	0.963	0.965	0.967	0.968	0.970
1.60	0.971	0.973	0.975	0.976	0.977	0.979	0.980	0.981
1.65	0.981	0.983	0.984	0.985	0.986	0.987	0.988	0.988
1.70	0.988	0.989	0.990	0.990	0.991	0.992	0.992	0.993
1.75	0.992	0.993	0.994	0.994	0.995	0.995	0.995	0.996
1.80	0.995	0.996	0.996	0.996	0.997	0.997	0.997	0.998
1.85	0.997	0.997	0.998	0.998	0.998	0.998	0.998	0.999
1.90	0.998	0.998	0.999	0.999	0.999	0.999	0.999	0.999
1.95	0.999	0.999	0.999	0.999	0.999	0.999	1.000	1.000
2.00	0.999	0.999	1.000	1.000	1.000	1.000	1.000	1.000
2.05	1.000	1.000	1.000	1.000	1.000	1.000	1.000	1.000
2.10	1.000	1.000	1.000	1.000	1.000	1.000	1.000	1.000
2.15	1.000	1.000	1.000	1.000	1.000	1.000	1.000	1.000
2.20	1.000	1.000	1.000	1.000	1.000	1.000	1.000	1.000
2.25	1.000	1.000	1.000	1.000	1.000	1.000	1.000	1.000
2.30	1.000	1.000	1.000	1.000	1.000	1.000	1.000	1.000
2.35	1.000	1.000	1.000	1.000	1.000	1.000	1.000	1.000
2.40	1.000	1.000	1.000	1.000	1.000	1.000	1.000	1.000
2.45	1.000	1.000	1.000	1.000	1.000	1.000	1.000	1.000
2.50	1.000	1.000	1.000	1.000	1.000	1.000	1.000	1.000
2.55	1.000	1.000	1.000	1.000	1.000	1.000	1.000	1.000
2.60	1.000	1.000	1.000	1.000	1.000	1.000	1.000	1.000
2.65	1.000	1.000	1.000	1.000	1.000	1.000	1.000	1.000
2.70	1.000	1.000	1.000	1.000	1.000	1.000	1.000	1.000
2.75	1.000	1.000	1.000	1.000	1.000	1.000	1.000	1.000
2.80	1.000	1.000	1.000	1.000	1.000	1.000	1.000	1.000
2.85	1.000	1.000	1.000	1.000	1.000	1.000	1.000	1.000
2.90	1.000	1.000	1.000	1.000	1.000	1.000	1.000	1.000
2.95	1.000	1.000	1.000	1.000	1.000	1.000	1.000	1.000
3.00	1.000	1.000	1.000	1.000	1.000	1.000	1.000	1.000

PROBABILITY OF DEMONSTRATING TECHNICAL REQUIREMENT  
WITH 70 PERCENT CONFIDENCE

M(T)/TR	EXPECTED NUMBER OF FAILURES							
	61	62	63	64	65	66	67	68
1.00	0.251	0.252	0.252	0.252	0.253	0.253	0.253	0.254
1.05	0.344	0.346	0.347	0.348	0.349	0.350	0.352	0.353
1.10	0.445	0.447	0.449	0.451	0.453	0.455	0.457	0.459
1.15	0.545	0.548	0.551	0.554	0.557	0.560	0.563	0.566
1.20	0.640	0.644	0.648	0.651	0.655	0.658	0.661	0.665
1.25	0.725	0.729	0.733	0.737	0.740	0.744	0.747	0.751
1.30	0.797	0.801	0.804	0.808	0.812	0.815	0.819	0.822
1.35	0.855	0.858	0.862	0.865	0.868	0.871	0.874	0.877
1.40	0.899	0.902	0.905	0.908	0.911	0.913	0.916	0.918
1.45	0.932	0.934	0.937	0.939	0.941	0.943	0.945	0.947
1.50	0.955	0.957	0.959	0.961	0.962	0.964	0.966	0.967
1.55	0.971	0.973	0.974	0.976	0.977	0.978	0.979	0.980
1.60	0.982	0.983	0.984	0.985	0.986	0.987	0.987	0.988
1.65	0.989	0.990	0.990	0.991	0.992	0.992	0.993	0.993
1.70	0.993	0.994	0.994	0.995	0.995	0.996	0.996	0.996
1.75	0.996	0.997	0.997	0.997	0.997	0.998	0.998	0.998
1.80	0.998	0.998	0.998	0.998	0.998	0.999	0.999	0.999
1.85	0.999	0.999	0.999	0.999	0.999	0.999	0.999	0.999
1.90	0.999	0.999	0.999	1.000	1.000	1.000	1.000	1.000
1.95	1.000	1.000	1.000	1.000	1.000	1.000	1.000	1.000
2.00	1.000	1.000	1.000	1.000	1.000	1.000	1.000	1.000
2.05	1.000	1.000	1.000	1.000	1.000	1.000	1.000	1.000
2.10	1.000	1.000	1.000	1.000	1.000	1.000	1.000	1.000
2.15	1.000	1.000	1.000	1.000	1.000	1.000	1.000	1.000
2.20	1.000	1.000	1.000	1.000	1.000	1.000	1.000	1.000
2.25	1.000	1.000	1.000	1.000	1.000	1.000	1.000	1.000
2.30	1.000	1.000	1.000	1.000	1.000	1.000	1.000	1.000
2.35	1.000	1.000	1.000	1.000	1.000	1.000	1.000	1.000
2.40	1.000	1.000	1.000	1.000	1.000	1.000	1.000	1.000
2.45	1.000	1.000	1.000	1.000	1.000	1.000	1.000	1.000
2.50	1.000	1.000	1.000	1.000	1.000	1.000	1.000	1.000
2.55	1.000	1.000	1.000	1.000	1.000	1.000	1.000	1.000
2.60	1.000	1.000	1.000	1.000	1.000	1.000	1.000	1.000
2.65	1.000	1.000	1.000	1.000	1.000	1.000	1.000	1.000
2.70	1.000	1.000	1.000	1.000	1.000	1.000	1.000	1.000
2.75	1.000	1.000	1.000	1.000	1.000	1.000	1.000	1.000
2.80	1.000	1.000	1.000	1.000	1.000	1.000	1.000	1.000
2.85	1.000	1.000	1.000	1.000	1.000	1.000	1.000	1.000
2.90	1.000	1.000	1.000	1.000	1.000	1.000	1.000	1.000
2.95	1.000	1.000	1.000	1.000	1.000	1.000	1.000	1.000
3.00	1.000	1.000	1.000	1.000	1.000	1.000	1.000	1.000

PROBABILITY OF DEMONSTRATING TECHNICAL REQUIREMENT  
WITH 70 PERCENT CONFIDENCE

M(T)/TR	EXPECTED NUMBER OF FAILURES							
	69	70	71	72	73	74	75	76
1.00	0.254	0.254	0.255	0.255	0.255	0.256	0.256	0.256
1.05	0.354	0.355	0.356	0.357	0.358	0.359	0.361	0.362
1.10	0.461	0.463	0.465	0.467	0.469	0.471	0.473	0.475
1.15	0.569	0.571	0.574	0.577	0.579	0.582	0.585	0.587
1.20	0.668	0.671	0.674	0.678	0.681	0.684	0.687	0.690
1.25	0.754	0.758	0.761	0.764	0.768	0.771	0.774	0.777
1.30	0.825	0.828	0.832	0.835	0.838	0.841	0.844	0.846
1.35	0.880	0.883	0.886	0.888	0.891	0.894	0.896	0.899
1.40	0.921	0.923	0.925	0.927	0.930	0.932	0.934	0.936
1.45	0.949	0.951	0.953	0.954	0.956	0.958	0.959	0.961
1.50	0.968	0.970	0.971	0.972	0.974	0.975	0.976	0.977
1.55	0.981	0.982	0.983	0.984	0.985	0.985	0.986	0.987
1.60	0.989	0.990	0.990	0.991	0.991	0.992	0.992	0.993
1.65	0.994	0.994	0.994	0.995	0.995	0.995	0.996	0.996
1.70	0.996	0.997	0.997	0.997	0.997	0.998	0.998	0.998
1.75	0.998	0.998	0.998	0.999	0.999	0.999	0.999	0.999
1.80	0.999	0.999	0.999	0.999	0.999	0.999	0.999	0.999
1.85	0.999	1.000	1.000	1.000	1.000	1.000	1.000	1.000
1.90	1.000	1.000	1.000	1.000	1.000	1.000	1.000	1.000
1.95	1.000	1.000	1.000	1.000	1.000	1.000	1.000	1.000
2.00	1.000	1.000	1.000	1.000	1.000	1.000	1.000	1.000
2.05	1.000	1.000	1.000	1.000	1.000	1.000	1.000	1.000
2.10	1.000	1.000	1.000	1.000	1.000	1.000	1.000	1.000
2.15	1.000	1.000	1.000	1.000	1.000	1.000	1.000	1.000
2.20	1.000	1.000	1.000	1.000	1.000	1.000	1.000	1.000
2.25	1.000	1.000	1.000	1.000	1.000	1.000	1.000	1.000
2.30	1.000	1.000	1.000	1.000	1.000	1.000	1.000	1.000
2.35	1.000	1.000	1.000	1.000	1.000	1.000	1.000	1.000
2.40	1.000	1.000	1.000	1.000	1.000	1.000	1.000	1.000
2.45	1.000	1.000	1.000	1.000	1.000	1.000	1.000	1.000
2.50	1.000	1.000	1.000	1.000	1.000	1.000	1.000	1.000
2.55	1.000	1.000	1.000	1.000	1.000	1.000	1.000	1.000
2.60	1.000	1.000	1.000	1.000	1.000	1.000	1.000	1.000
2.65	1.000	1.000	1.000	1.000	1.000	1.000	1.000	1.000
2.70	1.000	1.000	1.000	1.000	1.000	1.000	1.000	1.000
2.75	1.000	1.000	1.000	1.000	1.000	1.000	1.000	1.000
2.80	1.000	1.000	1.000	1.000	1.000	1.000	1.000	1.000
2.85	1.000	1.000	1.000	1.000	1.000	1.000	1.000	1.000
2.90	1.000	1.000	1.000	1.000	1.000	1.000	1.000	1.000
2.95	1.000	1.000	1.000	1.000	1.000	1.000	1.000	1.000
3.00	1.000	1.000	1.000	1.000	1.000	1.000	1.000	1.000

PROBABILITY OF DEMONSTRATING TECHNICAL REQUIREMENT  
WITH 70 PERCENT CONFIDENCE

M(T)/TR	EXPECTED NUMBER OF FAILURES							
	77	78	79	80	81	82	83	84
1.00	0.256	0.257	0.257	0.257	0.257	0.258	0.258	0.258
1.05	0.363	0.364	0.365	0.366	0.367	0.368	0.369	0.370
1.10	0.477	0.479	0.481	0.483	0.485	0.486	0.488	0.490
1.15	0.590	0.593	0.595	0.598	0.600	0.602	0.605	0.607
1.20	0.693	0.696	0.699	0.702	0.704	0.707	0.710	0.713
1.25	0.780	0.783	0.786	0.789	0.792	0.795	0.797	0.800
1.30	0.849	0.852	0.855	0.857	0.860	0.862	0.865	0.867
1.35	0.901	0.903	0.906	0.908	0.910	0.912	0.914	0.916
1.40	0.937	0.939	0.941	0.943	0.944	0.946	0.948	0.949
1.45	0.962	0.963	0.965	0.966	0.967	0.968	0.969	0.971
1.50	0.978	0.979	0.980	0.980	0.981	0.982	0.983	0.984
1.55	0.987	0.988	0.989	0.989	0.990	0.990	0.991	0.991
1.60	0.993	0.993	0.994	0.994	0.994	0.995	0.995	0.995
1.65	0.996	0.997	0.997	0.997	0.997	0.997	0.998	0.998
1.70	0.998	0.998	0.998	0.999	0.999	0.999	0.999	0.999
1.75	0.999	0.999	0.999	0.999	0.999	0.999	0.999	0.999
1.80	0.999	1.000	1.000	1.000	1.000	1.000	1.000	1.000
1.85	1.000	1.000	1.000	1.000	1.000	1.000	1.000	1.000
1.90	1.000	1.000	1.000	1.000	1.000	1.000	1.000	1.000
1.95	1.000	1.000	1.000	1.000	1.000	1.000	1.000	1.000
2.00	1.000	1.000	1.000	1.000	1.000	1.000	1.000	1.000
2.05	1.000	1.000	1.000	1.000	1.000	1.000	1.000	1.000
2.10	1.000	1.000	1.000	1.000	1.000	1.000	1.000	1.000
2.15	1.000	1.000	1.000	1.000	1.000	1.000	1.000	1.000
2.20	1.000	1.000	1.000	1.000	1.000	1.000	1.000	1.000
2.25	1.000	1.000	1.000	1.000	1.000	1.000	1.000	1.000
2.30	1.000	1.000	1.000	1.000	1.000	1.000	1.000	1.000
2.35	1.000	1.000	1.000	1.000	1.000	1.000	1.000	1.000
2.40	1.000	1.000	1.000	1.000	1.000	1.000	1.000	1.000
2.45	1.000	1.000	1.000	1.000	1.000	1.000	1.000	1.000
2.50	1.000	1.000	1.000	1.000	1.000	1.000	1.000	1.000
2.55	1.000	1.000	1.000	1.000	1.000	1.000	1.000	1.000
2.60	1.000	1.000	1.000	1.000	1.000	1.000	1.000	1.000
2.65	1.000	1.000	1.000	1.000	1.000	1.000	1.000	1.000
2.70	1.000	1.000	1.000	1.000	1.000	1.000	1.000	1.000
2.75	1.000	1.000	1.000	1.000	1.000	1.000	1.000	1.000
2.80	1.000	1.000	1.000	1.000	1.000	1.000	1.000	1.000
2.85	1.000	1.000	1.000	1.000	1.000	1.000	1.000	1.000
2.90	1.000	1.000	1.000	1.000	1.000	1.000	1.000	1.000
2.95	1.000	1.000	1.000	1.000	1.000	1.000	1.000	1.000
3.00	1.000	1.000	1.000	1.000	1.000	1.000	1.000	1.000

\$ alt

PROBABILITY OF DEMONSTRATING TECHNICAL REQUIREMENT  
WITH 70 PERCENT CONFIDENCE

M(T)/TR	EXPECTED NUMBER OF FAILURES							
	85	86	87	88	89	90	91	92
1.00	0.258	0.259	0.259	0.259	0.259	0.260	0.260	0.260
1.05	0.371	0.372	0.373	0.374	0.375	0.376	0.377	0.378
1.10	0.492	0.493	0.495	0.497	0.499	0.500	0.502	0.504
1.15	0.610	0.612	0.614	0.617	0.619	0.621	0.624	0.626
1.20	0.715	0.718	0.721	0.723	0.726	0.728	0.731	0.734
1.25	0.803	0.805	0.808	0.811	0.813	0.816	0.818	0.820
1.30	0.870	0.872	0.874	0.877	0.879	0.881	0.883	0.885
1.35	0.918	0.920	0.922	0.924	0.925	0.927	0.929	0.931
1.40	0.951	0.952	0.954	0.955	0.956	0.958	0.959	0.960
1.45	0.972	0.973	0.974	0.975	0.975	0.976	0.977	0.978
1.50	0.984	0.985	0.986	0.986	0.987	0.987	0.988	0.988
1.55	0.992	0.992	0.992	0.993	0.993	0.994	0.994	0.994
1.60	0.996	0.996	0.996	0.996	0.997	0.997	0.997	0.997
1.65	0.998	0.998	0.998	0.998	0.998	0.998	0.999	0.999
1.70	0.999	0.999	0.999	0.999	0.999	0.999	0.999	0.999
1.75	0.999	1.000	1.000	1.000	1.000	1.000	1.000	1.000
1.80	1.000	1.000	1.000	1.000	1.000	1.000	1.000	1.000
1.85	1.000	1.000	1.000	1.000	1.000	1.000	1.000	1.000
1.90	1.000	1.000	1.000	1.000	1.000	1.000	1.000	1.000
1.95	1.000	1.000	1.000	1.000	1.000	1.000	1.000	1.000
2.00	1.000	1.000	1.000	1.000	1.000	1.000	1.000	1.000
2.05	1.000	1.000	1.000	1.000	1.000	1.000	1.000	1.000
2.10	1.000	1.000	1.000	1.000	1.000	1.000	1.000	1.000
2.15	1.000	1.000	1.000	1.000	1.000	1.000	1.000	1.000
2.20	1.000	1.000	1.000	1.000	1.000	1.000	1.000	1.000
2.25	1.000	1.000	1.000	1.000	1.000	1.000	1.000	1.000
2.30	1.000	1.000	1.000	1.000	1.000	1.000	1.000	1.000
2.35	1.000	1.000	1.000	1.000	1.000	1.000	1.000	1.000
2.40	1.000	1.000	1.000	1.000	1.000	1.000	1.000	1.000
2.45	1.000	1.000	1.000	1.000	1.000	1.000	1.000	1.000
2.50	1.000	1.000	1.000	1.000	1.000	1.000	1.000	1.000
2.55	1.000	1.000	1.000	1.000	1.000	1.000	1.000	1.000
2.60	1.000	1.000	1.000	1.000	1.000	1.000	1.000	1.000
2.65	1.000	1.000	1.000	1.000	1.000	1.000	1.000	1.000
2.70	1.000	1.000	1.000	1.000	1.000	1.000	1.000	1.000
2.75	1.000	1.000	1.000	1.000	1.000	1.000	1.000	1.000
2.80	1.000	1.000	1.000	1.000	1.000	1.000	1.000	1.000
2.85	1.000	1.000	1.000	1.000	1.000	1.000	1.000	1.000
2.90	1.000	1.000	1.000	1.000	1.000	1.000	1.000	1.000
2.95	1.000	1.000	1.000	1.000	1.000	1.000	1.000	1.000
3.00	1.000	1.000	1.000	1.000	1.000	1.000	1.000	1.000

PROBABILITY OF DEMONSTRATING TECHNICAL REQUIREMENT  
WITH 70 PERCENT CONFIDENCE

M(T)/TR	EXPECTED NUMBER OF FAILURES							
	93	94	95	96	97	98	99	100
1.00	0.260	0.260	0.261	0.261	0.261	0.261	0.261	0.262
1.05	0.379	0.379	0.380	0.381	0.382	0.383	0.384	0.385
1.10	0.506	0.507	0.509	0.510	0.512	0.514	0.515	0.517
1.15	0.628	0.630	0.633	0.635	0.637	0.639	0.641	0.643
1.20	0.736	0.738	0.741	0.743	0.746	0.748	0.750	0.753
1.25	0.823	0.825	0.827	0.830	0.832	0.834	0.836	0.839
1.30	0.887	0.889	0.891	0.893	0.895	0.897	0.899	0.901
1.35	0.932	0.934	0.935	0.937	0.938	0.940	0.941	0.942
1.40	0.961	0.962	0.963	0.964	0.965	0.966	0.967	0.968
1.45	0.979	0.979	0.980	0.981	0.982	0.982	0.983	0.984
1.50	0.989	0.989	0.990	0.990	0.991	0.991	0.991	0.992
1.55	0.994	0.995	0.995	0.995	0.995	0.996	0.996	0.996
1.60	0.997	0.997	0.998	0.998	0.998	0.998	0.998	0.998
1.65	0.999	0.999	0.999	0.999	0.999	0.999	0.999	0.999
1.70	0.999	0.999	1.000	1.000	1.000	1.000	1.000	1.000
1.75	1.000	1.000	1.000	1.000	1.000	1.000	1.000	1.000
1.80	1.000	1.000	1.000	1.000	1.000	1.000	1.000	1.000
1.85	1.000	1.000	1.000	1.000	1.000	1.000	1.000	1.000
1.90	1.000	1.000	1.000	1.000	1.000	1.000	1.000	1.000
1.95	1.000	1.000	1.000	1.000	1.000	1.000	1.000	1.000
2.00	1.000	1.000	1.000	1.000	1.000	1.000	1.000	1.000
2.05	1.000	1.000	1.000	1.000	1.000	1.000	1.000	1.000
2.10	1.000	1.000	1.000	1.000	1.000	1.000	1.000	1.000
2.15	1.000	1.000	1.000	1.000	1.000	1.000	1.000	1.000
2.20	1.000	1.000	1.000	1.000	1.000	1.000	1.000	1.000
2.25	1.000	1.000	1.000	1.000	1.000	1.000	1.000	1.000
2.30	1.000	1.000	1.000	1.000	1.000	1.000	1.000	1.000
2.35	1.000	1.000	1.000	1.000	1.000	1.000	1.000	1.000
2.40	1.000	1.000	1.000	1.000	1.000	1.000	1.000	1.000
2.45	1.000	1.000	1.000	1.000	1.000	1.000	1.000	1.000
2.50	1.000	1.000	1.000	1.000	1.000	1.000	1.000	1.000
2.55	1.000	1.000	1.000	1.000	1.000	1.000	1.000	1.000
2.60	1.000	1.000	1.000	1.000	1.000	1.000	1.000	1.000
2.65	1.000	1.000	1.000	1.000	1.000	1.000	1.000	1.000
2.70	1.000	1.000	1.000	1.000	1.000	1.000	1.000	1.000
2.75	1.000	1.000	1.000	1.000	1.000	1.000	1.000	1.000
2.80	1.000	1.000	1.000	1.000	1.000	1.000	1.000	1.000
2.85	1.000	1.000	1.000	1.000	1.000	1.000	1.000	1.000
2.90	1.000	1.000	1.000	1.000	1.000	1.000	1.000	1.000
2.95	1.000	1.000	1.000	1.000	1.000	1.000	1.000	1.000
3.00	1.000	1.000	1.000	1.000	1.000	1.000	1.000	1.000

**TABLE FOR  
80 PERCENT CONFIDENCE**



PROBABILITY OF DEMONSTRATING TECHNICAL REQUIREMENT  
WITH 80 PERCENT CONFIDENCE

M(T)/TR	EXPECTED NUMBER OF FAILURES							
	5	6	7	8	9	10	11	12
1.00	0.079	0.093	0.102	0.109	0.114	0.118	0.121	0.124
1.05	0.092	0.108	0.119	0.128	0.135	0.140	0.145	0.150
1.10	0.105	0.124	0.138	0.148	0.157	0.165	0.172	0.178
1.15	0.120	0.141	0.157	0.170	0.181	0.191	0.200	0.208
1.20	0.135	0.159	0.178	0.193	0.207	0.219	0.230	0.240
1.25	0.151	0.178	0.200	0.218	0.234	0.248	0.261	0.274
1.30	0.168	0.198	0.222	0.243	0.261	0.278	0.294	0.309
1.35	0.185	0.218	0.245	0.269	0.290	0.309	0.327	0.344
1.40	0.203	0.239	0.269	0.295	0.319	0.341	0.361	0.381
1.45	0.221	0.260	0.293	0.322	0.348	0.373	0.395	0.417
1.50	0.240	0.282	0.318	0.349	0.378	0.405	0.429	0.453
1.55	0.259	0.304	0.342	0.377	0.408	0.436	0.463	0.488
1.60	0.278	0.326	0.367	0.404	0.437	0.468	0.496	0.523
1.65	0.297	0.348	0.392	0.431	0.466	0.499	0.529	0.556
1.70	0.316	0.370	0.417	0.458	0.495	0.529	0.560	0.589
1.75	0.336	0.392	0.441	0.484	0.523	0.558	0.590	0.620
1.80	0.355	0.414	0.465	0.510	0.550	0.586	0.620	0.650
1.85	0.374	0.436	0.488	0.535	0.576	0.614	0.647	0.678
1.90	0.393	0.457	0.511	0.559	0.602	0.640	0.674	0.705
1.95	0.412	0.478	0.534	0.583	0.626	0.665	0.699	0.730
2.00	0.431	0.498	0.556	0.606	0.650	0.688	0.723	0.753
2.05	0.449	0.519	0.577	0.628	0.672	0.711	0.745	0.775
2.10	0.468	0.538	0.598	0.649	0.694	0.732	0.766	0.796
2.15	0.485	0.557	0.618	0.669	0.714	0.752	0.786	0.814
2.20	0.503	0.576	0.637	0.689	0.733	0.771	0.804	0.832
2.25	0.520	0.594	0.656	0.708	0.751	0.789	0.821	0.848
2.30	0.537	0.612	0.674	0.725	0.769	0.805	0.836	0.862
2.35	0.553	0.629	0.691	0.742	0.785	0.821	0.851	0.876
2.40	0.569	0.645	0.707	0.758	0.800	0.835	0.864	0.888
2.45	0.585	0.661	0.723	0.773	0.814	0.848	0.876	0.899
2.50	0.600	0.676	0.738	0.787	0.828	0.861	0.887	0.909
2.55	0.614	0.691	0.752	0.801	0.840	0.872	0.898	0.918
2.60	0.629	0.705	0.765	0.814	0.852	0.883	0.907	0.926
2.65	0.642	0.718	0.778	0.826	0.863	0.892	0.916	0.934
2.70	0.656	0.731	0.791	0.837	0.873	0.901	0.923	0.941
2.75	0.669	0.744	0.802	0.847	0.882	0.910	0.931	0.947
2.80	0.681	0.756	0.813	0.857	0.891	0.917	0.937	0.952
2.85	0.693	0.767	0.824	0.867	0.899	0.924	0.943	0.957
2.90	0.705	0.778	0.834	0.875	0.907	0.931	0.948	0.962
2.95	0.716	0.789	0.843	0.884	0.914	0.936	0.953	0.966
3.00	0.727	0.799	0.852	0.891	0.920	0.942	0.958	0.969

PROBABILITY OF DEMONSTRATING TECHNICAL REQUIREMENT  
WITH 80 PERCENT CONFIDENCE

EXPECTED NUMBER OF FAILURES

M(T)/TR	13	14	15	16	17	18	19	20
1.00	0.127	0.129	0.131	0.133	0.135	0.136	0.138	0.139
1.05	0.154	0.158	0.161	0.164	0.168	0.171	0.173	0.176
1.10	0.184	0.189	0.194	0.199	0.204	0.208	0.213	0.217
1.15	0.216	0.223	0.230	0.237	0.243	0.250	0.255	0.261
1.20	0.250	0.260	0.268	0.277	0.285	0.293	0.301	0.308
1.25	0.286	0.297	0.308	0.319	0.329	0.339	0.348	0.357
1.30	0.323	0.336	0.349	0.362	0.374	0.386	0.397	0.408
1.35	0.361	0.376	0.391	0.406	0.419	0.433	0.446	0.458
1.40	0.399	0.416	0.433	0.449	0.465	0.479	0.494	0.508
1.45	0.437	0.456	0.475	0.492	0.509	0.525	0.541	0.556
1.50	0.475	0.496	0.516	0.534	0.553	0.570	0.586	0.602
1.55	0.512	0.534	0.555	0.575	0.594	0.612	0.630	0.646
1.60	0.548	0.571	0.593	0.614	0.634	0.653	0.670	0.687
1.65	0.583	0.607	0.630	0.651	0.671	0.690	0.708	0.725
1.70	0.616	0.641	0.664	0.686	0.706	0.725	0.743	0.760
1.75	0.648	0.673	0.697	0.719	0.739	0.757	0.775	0.791
1.80	0.678	0.703	0.727	0.749	0.769	0.787	0.804	0.819
1.85	0.706	0.732	0.755	0.776	0.796	0.813	0.830	0.844
1.90	0.733	0.758	0.781	0.802	0.820	0.837	0.853	0.867
1.95	0.758	0.782	0.805	0.825	0.843	0.859	0.873	0.886
2.00	0.781	0.805	0.826	0.845	0.863	0.878	0.891	0.903
2.05	0.802	0.825	0.846	0.864	0.880	0.895	0.907	0.918
2.10	0.821	0.844	0.864	0.881	0.896	0.909	0.921	0.931
2.15	0.839	0.861	0.880	0.896	0.910	0.922	0.933	0.942
2.20	0.856	0.876	0.894	0.909	0.922	0.933	0.943	0.951
2.25	0.871	0.890	0.907	0.921	0.933	0.943	0.952	0.959
2.30	0.884	0.903	0.918	0.931	0.942	0.952	0.959	0.966
2.35	0.896	0.914	0.928	0.940	0.951	0.959	0.966	0.972
2.40	0.907	0.924	0.937	0.948	0.958	0.965	0.971	0.977
2.45	0.917	0.933	0.945	0.955	0.964	0.971	0.976	0.981
2.50	0.926	0.941	0.952	0.961	0.969	0.975	0.980	0.984
2.55	0.935	0.948	0.958	0.967	0.974	0.979	0.983	0.987
2.60	0.942	0.954	0.964	0.971	0.977	0.982	0.986	0.989
2.65	0.948	0.960	0.968	0.975	0.981	0.985	0.988	0.991
2.70	0.954	0.964	0.973	0.979	0.984	0.987	0.990	0.993
2.75	0.959	0.969	0.976	0.982	0.986	0.989	0.992	0.994
2.80	0.964	0.973	0.979	0.984	0.988	0.991	0.993	0.995
2.85	0.968	0.976	0.982	0.987	0.990	0.993	0.994	0.996
2.90	0.972	0.979	0.984	0.988	0.991	0.994	0.995	0.997
2.95	0.975	0.982	0.986	0.990	0.993	0.995	0.996	0.997
3.00	0.978	0.984	0.988	0.992	0.994	0.996	0.997	0.998

PROBABILITY OF DEMONSTRATING TECHNICAL REQUIREMENT  
WITH 80 PERCENT CONFIDENCE

M(T)/TR	EXPECTED NUMBER OF FAILURES							
	21	22	23	24	25	26	27	28
1.00	0.141	0.142	0.143	0.144	0.145	0.146	0.147	0.148
1.05	0.178	0.181	0.183	0.185	0.187	0.190	0.192	0.193
1.10	0.221	0.225	0.228	0.232	0.235	0.239	0.242	0.245
1.15	0.267	0.272	0.277	0.282	0.287	0.292	0.297	0.302
1.20	0.316	0.323	0.330	0.336	0.343	0.349	0.355	0.361
1.25	0.366	0.375	0.384	0.392	0.400	0.408	0.416	0.423
1.30	0.418	0.429	0.439	0.448	0.458	0.467	0.476	0.485
1.35	0.470	0.482	0.493	0.504	0.515	0.525	0.535	0.545
1.40	0.521	0.534	0.546	0.558	0.570	0.582	0.593	0.603
1.45	0.570	0.584	0.598	0.610	0.623	0.635	0.646	0.658
1.50	0.617	0.632	0.646	0.659	0.672	0.684	0.696	0.708
1.55	0.662	0.677	0.691	0.704	0.717	0.730	0.741	0.753
1.60	0.703	0.718	0.732	0.746	0.758	0.770	0.782	0.793
1.65	0.741	0.755	0.769	0.783	0.795	0.807	0.818	0.828
1.70	0.775	0.789	0.803	0.816	0.828	0.839	0.849	0.859
1.75	0.806	0.820	0.833	0.845	0.856	0.866	0.876	0.885
1.80	0.834	0.847	0.859	0.870	0.880	0.890	0.899	0.907
1.85	0.858	0.870	0.882	0.892	0.901	0.910	0.918	0.925
1.90	0.879	0.891	0.901	0.911	0.919	0.927	0.934	0.940
1.95	0.898	0.909	0.918	0.926	0.934	0.941	0.947	0.953
2.00	0.914	0.924	0.932	0.940	0.947	0.953	0.958	0.963
2.05	0.928	0.937	0.944	0.951	0.957	0.962	0.967	0.971
2.10	0.940	0.948	0.954	0.960	0.965	0.970	0.974	0.977
2.15	0.950	0.957	0.963	0.968	0.972	0.976	0.979	0.982
2.20	0.958	0.964	0.970	0.974	0.978	0.981	0.984	0.986
2.25	0.966	0.971	0.975	0.979	0.982	0.985	0.987	0.989
2.30	0.972	0.976	0.980	0.983	0.986	0.988	0.990	0.992
2.35	0.977	0.981	0.984	0.987	0.989	0.991	0.992	0.994
2.40	0.981	0.984	0.987	0.989	0.991	0.993	0.994	0.995
2.45	0.984	0.987	0.990	0.992	0.993	0.994	0.996	0.996
2.50	0.987	0.990	0.992	0.993	0.995	0.996	0.997	0.997
2.55	0.989	0.992	0.993	0.995	0.996	0.997	0.997	0.998
2.60	0.991	0.993	0.995	0.996	0.997	0.997	0.998	0.998
2.65	0.993	0.995	0.996	0.997	0.997	0.998	0.998	0.999
2.70	0.994	0.996	0.997	0.997	0.998	0.998	0.999	0.999
2.75	0.995	0.996	0.997	0.998	0.998	0.999	0.999	0.999
2.80	0.996	0.997	0.998	0.998	0.999	0.999	0.999	0.999
2.85	0.997	0.998	0.998	0.999	0.999	0.999	0.999	1.000
2.90	0.997	0.998	0.999	0.999	0.999	0.999	1.000	1.000
2.95	0.998	0.999	0.999	0.999	0.999	1.000	1.000	1.000
3.00	0.998	0.999	0.999	0.999	1.000	1.000	1.000	1.000

PROBABILITY OF DEMONSTRATING TECHNICAL REQUIREMENT  
WITH 80 PERCENT CONFIDENCE

M(T) / TR	EXPECTED NUMBER OF FAILURES							
	29	30	31	32	33	34	35	36
1.00	0.149	0.149	0.150	0.151	0.151	0.152	0.153	0.153
1.05	0.195	0.197	0.199	0.201	0.202	0.204	0.206	0.207
1.10	0.248	0.251	0.254	0.257	0.260	0.263	0.266	0.269
1.15	0.306	0.311	0.315	0.319	0.324	0.328	0.332	0.336
1.20	0.367	0.373	0.379	0.385	0.390	0.396	0.401	0.407
1.25	0.430	0.438	0.445	0.452	0.459	0.465	0.472	0.478
1.30	0.494	0.502	0.510	0.518	0.526	0.534	0.542	0.549
1.35	0.555	0.564	0.574	0.582	0.591	0.600	0.608	0.616
1.40	0.614	0.624	0.633	0.643	0.652	0.661	0.670	0.678
1.45	0.668	0.679	0.689	0.699	0.708	0.717	0.726	0.735
1.50	0.718	0.729	0.739	0.749	0.758	0.767	0.776	0.784
1.55	0.764	0.774	0.784	0.793	0.802	0.811	0.819	0.827
1.60	0.803	0.813	0.823	0.832	0.840	0.848	0.856	0.863
1.65	0.838	0.847	0.856	0.864	0.872	0.879	0.886	0.893
1.70	0.868	0.876	0.884	0.892	0.899	0.905	0.911	0.917
1.75	0.893	0.901	0.908	0.915	0.921	0.926	0.932	0.937
1.80	0.914	0.921	0.927	0.933	0.938	0.943	0.948	0.952
1.85	0.932	0.938	0.943	0.948	0.953	0.957	0.961	0.964
1.90	0.946	0.951	0.956	0.960	0.964	0.967	0.971	0.973
1.95	0.957	0.962	0.966	0.969	0.973	0.976	0.978	0.980
2.00	0.967	0.971	0.974	0.977	0.979	0.982	0.984	0.986
2.05	0.974	0.977	0.980	0.983	0.985	0.987	0.988	0.990
2.10	0.980	0.983	0.985	0.987	0.989	0.990	0.991	0.993
2.15	0.985	0.987	0.989	0.990	0.992	0.993	0.994	0.995
2.20	0.988	0.990	0.991	0.993	0.994	0.995	0.996	0.996
2.25	0.991	0.992	0.994	0.995	0.995	0.996	0.997	0.997
2.30	0.993	0.994	0.995	0.996	0.997	0.997	0.998	0.998
2.35	0.995	0.996	0.997	0.997	0.998	0.998	0.998	0.999
2.40	0.996	0.997	0.997	0.998	0.998	0.999	0.999	0.999
2.45	0.997	0.998	0.998	0.998	0.999	0.999	0.999	0.999
2.50	0.998	0.998	0.999	0.999	0.999	0.999	0.999	1.000
2.55	0.998	0.999	0.999	0.999	0.999	1.000	1.000	1.000
2.60	0.999	0.999	0.999	0.999	1.000	1.000	1.000	1.000
2.65	0.999	0.999	0.999	1.000	1.000	1.000	1.000	1.000
2.70	0.999	0.999	1.000	1.000	1.000	1.000	1.000	1.000
2.75	0.999	1.000	1.000	1.000	1.000	1.000	1.000	1.000
2.80	1.000	1.000	1.000	1.000	1.000	1.000	1.000	1.000
2.85	1.000	1.000	1.000	1.000	1.000	1.000	1.000	1.000
2.90	1.000	1.000	1.000	1.000	1.000	1.000	1.000	1.000
2.95	1.000	1.000	1.000	1.000	1.000	1.000	1.000	1.000
3.00	1.000	1.000	1.000	1.000	1.000	1.000	1.000	1.000

PROBABILITY OF DEMONSTRATING TECHNICAL REQUIREMENT  
WITH 80 PERCENT CONFIDENCE

M(T) / TR	EXPECTED NUMBER OF FAILURES							
	37	38	39	40	41	42	43	44
1.00	0.154	0.154	0.155	0.156	0.156	0.157	0.157	0.157
1.05	0.209	0.210	0.212	0.213	0.214	0.216	0.217	0.218
1.10	0.271	0.274	0.276	0.279	0.281	0.284	0.286	0.289
1.15	0.340	0.344	0.347	0.351	0.355	0.359	0.362	0.366
1.20	0.412	0.417	0.422	0.427	0.432	0.437	0.441	0.446
1.25	0.485	0.491	0.497	0.503	0.509	0.515	0.521	0.526
1.30	0.556	0.563	0.570	0.577	0.584	0.591	0.597	0.604
1.35	0.624	0.632	0.639	0.647	0.654	0.661	0.668	0.675
1.40	0.687	0.695	0.703	0.710	0.718	0.725	0.732	0.739
1.45	0.743	0.751	0.759	0.766	0.773	0.781	0.787	0.794
1.50	0.792	0.800	0.807	0.814	0.821	0.828	0.834	0.841
1.55	0.834	0.842	0.848	0.855	0.861	0.867	0.873	0.879
1.60	0.870	0.876	0.883	0.888	0.894	0.899	0.905	0.909
1.65	0.899	0.905	0.910	0.915	0.920	0.925	0.929	0.933
1.70	0.923	0.928	0.932	0.937	0.941	0.945	0.948	0.952
1.75	0.941	0.946	0.949	0.953	0.957	0.960	0.963	0.965
1.80	0.956	0.960	0.963	0.966	0.969	0.971	0.973	0.976
1.85	0.967	0.970	0.973	0.975	0.977	0.979	0.981	0.983
1.90	0.976	0.978	0.980	0.982	0.984	0.986	0.987	0.988
1.95	0.982	0.984	0.986	0.987	0.989	0.990	0.991	0.992
2.00	0.987	0.989	0.990	0.991	0.992	0.993	0.994	0.995
2.05	0.991	0.992	0.993	0.994	0.995	0.995	0.996	0.996
2.10	0.994	0.994	0.995	0.996	0.996	0.997	0.997	0.998
2.15	0.995	0.996	0.997	0.997	0.997	0.998	0.998	0.998
2.20	0.997	0.997	0.998	0.998	0.998	0.999	0.999	0.999
2.25	0.998	0.998	0.998	0.999	0.999	0.999	0.999	0.999
2.30	0.998	0.999	0.999	0.999	0.999	0.999	0.999	1.000
2.35	0.999	0.999	0.999	0.999	0.999	1.000	1.000	1.000
2.40	0.999	0.999	0.999	1.000	1.000	1.000	1.000	1.000
2.45	0.999	1.000	1.000	1.000	1.000	1.000	1.000	1.000
2.50	1.000	1.000	1.000	1.000	1.000	1.000	1.000	1.000
2.55	1.000	1.000	1.000	1.000	1.000	1.000	1.000	1.000
2.60	1.000	1.000	1.000	1.000	1.000	1.000	1.000	1.000
2.65	1.000	1.000	1.000	1.000	1.000	1.000	1.000	1.000
2.70	1.000	1.000	1.000	1.000	1.000	1.000	1.000	1.000
2.75	1.000	1.000	1.000	1.000	1.000	1.000	1.000	1.000
2.80	1.000	1.000	1.000	1.000	1.000	1.000	1.000	1.000
2.85	1.000	1.000	1.000	1.000	1.000	1.000	1.000	1.000
2.90	1.000	1.000	1.000	1.000	1.000	1.000	1.000	1.000
2.95	1.000	1.000	1.000	1.000	1.000	1.000	1.000	1.000
3.00	1.000	1.000	1.000	1.000	1.000	1.000	1.000	1.000

PROBABILITY OF DEMONSTRATING TECHNICAL REQUIREMENT  
WITH 80 PERCENT CONFIDENCE

M(T)/TR	EXPECTED NUMBER OF FAILURES							
	45	46	47	48	49	50	51	52
1.00	0.158	0.158	0.159	0.159	0.160	0.160	0.160	0.161
1.05	0.220	0.221	0.222	0.224	0.225	0.226	0.227	0.228
1.10	0.291	0.294	0.296	0.298	0.300	0.303	0.305	0.307
1.15	0.369	0.373	0.376	0.380	0.383	0.386	0.390	0.393
1.20	0.451	0.455	0.460	0.464	0.469	0.473	0.478	0.482
1.25	0.532	0.538	0.543	0.548	0.554	0.559	0.564	0.569
1.30	0.610	0.616	0.622	0.628	0.634	0.640	0.645	0.651
1.35	0.681	0.688	0.694	0.701	0.707	0.713	0.718	0.724
1.40	0.745	0.752	0.758	0.764	0.770	0.776	0.782	0.787
1.45	0.800	0.807	0.813	0.818	0.824	0.829	0.835	0.840
1.50	0.846	0.852	0.858	0.863	0.868	0.873	0.878	0.882
1.55	0.884	0.889	0.894	0.899	0.903	0.907	0.911	0.915
1.60	0.914	0.918	0.922	0.926	0.930	0.934	0.937	0.940
1.65	0.937	0.941	0.944	0.947	0.950	0.953	0.956	0.959
1.70	0.955	0.958	0.960	0.963	0.965	0.968	0.970	0.972
1.75	0.968	0.970	0.972	0.974	0.976	0.978	0.980	0.981
1.80	0.978	0.979	0.981	0.983	0.984	0.985	0.986	0.988
1.85	0.984	0.986	0.987	0.988	0.989	0.990	0.991	0.992
1.90	0.989	0.990	0.991	0.992	0.993	0.994	0.994	0.995
1.95	0.993	0.994	0.994	0.995	0.995	0.996	0.996	0.997
2.00	0.995	0.996	0.996	0.997	0.997	0.997	0.998	0.998
2.05	0.997	0.997	0.998	0.998	0.998	0.998	0.999	0.999
2.10	0.998	0.998	0.998	0.999	0.999	0.999	0.999	0.999
2.15	0.999	0.999	0.999	0.999	0.999	0.999	0.999	1.000
2.20	0.999	0.999	0.999	0.999	1.000	1.000	1.000	1.000
2.25	0.999	1.000	1.000	1.000	1.000	1.000	1.000	1.000
2.30	1.000	1.000	1.000	1.000	1.000	1.000	1.000	1.000
2.35	1.000	1.000	1.000	1.000	1.000	1.000	1.000	1.000
2.40	1.000	1.000	1.000	1.000	1.000	1.000	1.000	1.000
2.45	1.000	1.000	1.000	1.000	1.000	1.000	1.000	1.000
2.50	1.000	1.000	1.000	1.000	1.000	1.000	1.000	1.000
2.55	1.000	1.000	1.000	1.000	1.000	1.000	1.000	1.000
2.60	1.000	1.000	1.000	1.000	1.000	1.000	1.000	1.000
2.65	1.000	1.000	1.000	1.000	1.000	1.000	1.000	1.000
2.70	1.000	1.000	1.000	1.000	1.000	1.000	1.000	1.000
2.75	1.000	1.000	1.000	1.000	1.000	1.000	1.000	1.000
2.80	1.000	1.000	1.000	1.000	1.000	1.000	1.000	1.000
2.85	1.000	1.000	1.000	1.000	1.000	1.000	1.000	1.000
2.90	1.000	1.000	1.000	1.000	1.000	1.000	1.000	1.000
2.95	1.000	1.000	1.000	1.000	1.000	1.000	1.000	1.000
3.00	1.000	1.000	1.000	1.000	1.000	1.000	1.000	1.000

PROBABILITY OF DEMONSTRATING TECHNICAL REQUIREMENT  
WITH 80 PERCENT CONFIDENCE

M(T)/TR	EXPECTED NUMBER OF FAILURES							
	53	54	55	56	57	58	59	60
1.00	0.161	0.161	0.162	0.162	0.162	0.163	0.163	0.163
1.05	0.230	0.231	0.232	0.233	0.234	0.235	0.236	0.237
1.10	0.309	0.311	0.313	0.316	0.318	0.320	0.322	0.324
1.15	0.396	0.399	0.403	0.406	0.409	0.412	0.415	0.418
1.20	0.486	0.490	0.494	0.498	0.502	0.506	0.510	0.514
1.25	0.574	0.579	0.584	0.589	0.593	0.598	0.603	0.607
1.30	0.656	0.662	0.667	0.672	0.677	0.682	0.687	0.692
1.35	0.730	0.735	0.740	0.746	0.751	0.756	0.761	0.766
1.40	0.793	0.798	0.803	0.808	0.813	0.818	0.822	0.827
1.45	0.845	0.850	0.854	0.859	0.863	0.867	0.872	0.876
1.50	0.887	0.891	0.895	0.899	0.902	0.906	0.910	0.913
1.55	0.919	0.922	0.926	0.929	0.932	0.935	0.938	0.941
1.60	0.943	0.946	0.949	0.951	0.954	0.956	0.958	0.961
1.65	0.961	0.963	0.965	0.967	0.969	0.971	0.973	0.974
1.70	0.974	0.975	0.977	0.979	0.980	0.981	0.982	0.984
1.75	0.983	0.984	0.985	0.986	0.987	0.988	0.989	0.990
1.80	0.989	0.990	0.990	0.991	0.992	0.993	0.993	0.994
1.85	0.993	0.993	0.994	0.994	0.995	0.995	0.996	0.996
1.90	0.995	0.996	0.996	0.997	0.997	0.997	0.998	0.998
1.95	0.997	0.997	0.998	0.998	0.998	0.998	0.999	0.999
2.00	0.998	0.998	0.999	0.999	0.999	0.999	0.999	0.999
2.05	0.999	0.999	0.999	0.999	0.999	0.999	1.000	1.000
2.10	0.999	0.999	1.000	1.000	1.000	1.000	1.000	1.000
2.15	1.000	1.000	1.000	1.000	1.000	1.000	1.000	1.000
2.20	1.000	1.000	1.000	1.000	1.000	1.000	1.000	1.000
2.25	1.000	1.000	1.000	1.000	1.000	1.000	1.000	1.000
2.30	1.000	1.000	1.000	1.000	1.000	1.000	1.000	1.000
2.35	1.000	1.000	1.000	1.000	1.000	1.000	1.000	1.000
2.40	1.000	1.000	1.000	1.000	1.000	1.000	1.000	1.000
2.45	1.000	1.000	1.000	1.000	1.000	1.000	1.000	1.000
2.50	1.000	1.000	1.000	1.000	1.000	1.000	1.000	1.000
2.55	1.000	1.000	1.000	1.000	1.000	1.000	1.000	1.000
2.60	1.000	1.000	1.000	1.000	1.000	1.000	1.000	1.000
2.65	1.000	1.000	1.000	1.000	1.000	1.000	1.000	1.000
2.70	1.000	1.000	1.000	1.000	1.000	1.000	1.000	1.000
2.75	1.000	1.000	1.000	1.000	1.000	1.000	1.000	1.000
2.80	1.000	1.000	1.000	1.000	1.000	1.000	1.000	1.000
2.85	1.000	1.000	1.000	1.000	1.000	1.000	1.000	1.000
2.90	1.000	1.000	1.000	1.000	1.000	1.000	1.000	1.000
2.95	1.000	1.000	1.000	1.000	1.000	1.000	1.000	1.000
3.00	1.000	1.000	1.000	1.000	1.000	1.000	1.000	1.000

PROBABILITY OF DEMONSTRATING TECHNICAL REQUIREMENT  
WITH 80 PERCENT CONFIDENCE

M(T) / TR	EXPECTED NUMBER OF FAILURES							
	61	62	63	64	65	66	67	68
1.00	0.163	0.164	0.164	0.164	0.164	0.165	0.165	0.165
1.05	0.238	0.239	0.240	0.241	0.242	0.243	0.244	0.245
1.10	0.326	0.328	0.330	0.332	0.334	0.335	0.337	0.339
1.15	0.421	0.424	0.427	0.430	0.433	0.435	0.438	0.441
1.20	0.518	0.522	0.526	0.529	0.533	0.537	0.540	0.544
1.25	0.612	0.616	0.620	0.625	0.629	0.633	0.637	0.641
1.30	0.697	0.701	0.706	0.710	0.715	0.719	0.724	0.728
1.35	0.770	0.775	0.779	0.784	0.788	0.792	0.797	0.801
1.40	0.831	0.835	0.840	0.844	0.848	0.851	0.855	0.859
1.45	0.879	0.883	0.887	0.890	0.894	0.897	0.900	0.903
1.50	0.916	0.919	0.922	0.925	0.928	0.931	0.933	0.936
1.55	0.943	0.946	0.948	0.950	0.953	0.955	0.957	0.959
1.60	0.963	0.964	0.966	0.968	0.970	0.971	0.973	0.974
1.65	0.976	0.977	0.979	0.980	0.981	0.982	0.983	0.984
1.70	0.985	0.986	0.987	0.988	0.988	0.989	0.990	0.991
1.75	0.991	0.991	0.992	0.992	0.993	0.994	0.994	0.994
1.80	0.994	0.995	0.995	0.996	0.996	0.996	0.997	0.997
1.85	0.997	0.997	0.997	0.997	0.998	0.998	0.998	0.998
1.90	0.998	0.998	0.998	0.999	0.999	0.999	0.999	0.999
1.95	0.999	0.999	0.999	0.999	0.999	0.999	0.999	0.999
2.00	0.999	0.999	0.999	1.000	1.000	1.000	1.000	1.000
2.05	1.000	1.000	1.000	1.000	1.000	1.000	1.000	1.000
2.10	1.000	1.000	1.000	1.000	1.000	1.000	1.000	1.000
2.15	1.000	1.000	1.000	1.000	1.000	1.000	1.000	1.000
2.20	1.000	1.000	1.000	1.000	1.000	1.000	1.000	1.000
2.25	1.000	1.000	1.000	1.000	1.000	1.000	1.000	1.000
2.30	1.000	1.000	1.000	1.000	1.000	1.000	1.000	1.000
2.35	1.000	1.000	1.000	1.000	1.000	1.000	1.000	1.000
2.40	1.000	1.000	1.000	1.000	1.000	1.000	1.000	1.000
2.45	1.000	1.000	1.000	1.000	1.000	1.000	1.000	1.000
2.50	1.000	1.000	1.000	1.000	1.000	1.000	1.000	1.000
2.55	1.000	1.000	1.000	1.000	1.000	1.000	1.000	1.000
2.60	1.000	1.000	1.000	1.000	1.000	1.000	1.000	1.000
2.65	1.000	1.000	1.000	1.000	1.000	1.000	1.000	1.000
2.70	1.000	1.000	1.000	1.000	1.000	1.000	1.000	1.000
2.75	1.000	1.000	1.000	1.000	1.000	1.000	1.000	1.000
2.80	1.000	1.000	1.000	1.000	1.000	1.000	1.000	1.000
2.85	1.000	1.000	1.000	1.000	1.000	1.000	1.000	1.000
2.90	1.000	1.000	1.000	1.000	1.000	1.000	1.000	1.000
2.95	1.000	1.000	1.000	1.000	1.000	1.000	1.000	1.000
3.00	1.000	1.000	1.000	1.000	1.000	1.000	1.000	1.000



PROBABILITY OF DEMONSTRATING TECHNICAL REQUIREMENT  
WITH 80 PERCENT CONFIDENCE

M(T)/TR	EXPECTED NUMBER OF FAILURES							
	69	70	71	72	73	74	75	76
1.00	0.165	0.166	0.166	0.166	0.166	0.167	0.167	0.167
1.05	0.246	0.247	0.248	0.249	0.250	0.251	0.252	0.253
1.10	0.341	0.343	0.345	0.347	0.348	0.350	0.352	0.354
1.15	0.444	0.447	0.449	0.452	0.455	0.457	0.460	0.463
1.20	0.548	0.551	0.555	0.558	0.561	0.565	0.568	0.571
1.25	0.645	0.649	0.653	0.657	0.661	0.665	0.668	0.672
1.30	0.732	0.736	0.740	0.744	0.748	0.752	0.756	0.759
1.35	0.805	0.809	0.812	0.816	0.820	0.823	0.827	0.830
1.40	0.862	0.866	0.869	0.873	0.876	0.879	0.882	0.885
1.45	0.906	0.909	0.912	0.915	0.917	0.920	0.923	0.925
1.50	0.938	0.940	0.943	0.945	0.947	0.949	0.951	0.953
1.55	0.960	0.962	0.964	0.965	0.967	0.968	0.970	0.971
1.60	0.975	0.977	0.978	0.979	0.980	0.981	0.982	0.983
1.65	0.985	0.986	0.987	0.988	0.988	0.989	0.990	0.990
1.70	0.991	0.992	0.992	0.993	0.993	0.994	0.994	0.995
1.75	0.995	0.995	0.996	0.996	0.996	0.997	0.997	0.997
1.80	0.997	0.997	0.998	0.998	0.998	0.998	0.998	0.998
1.85	0.998	0.999	0.999	0.999	0.999	0.999	0.999	0.999
1.90	0.999	0.999	0.999	0.999	0.999	0.999	1.000	1.000
1.95	1.000	1.000	1.000	1.000	1.000	1.000	1.000	1.000
2.00	1.000	1.000	1.000	1.000	1.000	1.000	1.000	1.000
2.05	1.000	1.000	1.000	1.000	1.000	1.000	1.000	1.000
2.10	1.000	1.000	1.000	1.000	1.000	1.000	1.000	1.000
2.15	1.000	1.000	1.000	1.000	1.000	1.000	1.000	1.000
2.20	1.000	1.000	1.000	1.000	1.000	1.000	1.000	1.000
2.25	1.000	1.000	1.000	1.000	1.000	1.000	1.000	1.000
2.30	1.000	1.000	1.000	1.000	1.000	1.000	1.000	1.000
2.35	1.000	1.000	1.000	1.000	1.000	1.000	1.000	1.000
2.40	1.000	1.000	1.000	1.000	1.000	1.000	1.000	1.000
2.45	1.000	1.000	1.000	1.000	1.000	1.000	1.000	1.000
2.50	1.000	1.000	1.000	1.000	1.000	1.000	1.000	1.000
2.55	1.000	1.000	1.000	1.000	1.000	1.000	1.000	1.000
2.60	1.000	1.000	1.000	1.000	1.000	1.000	1.000	1.000
2.65	1.000	1.000	1.000	1.000	1.000	1.000	1.000	1.000
2.70	1.000	1.000	1.000	1.000	1.000	1.000	1.000	1.000
2.75	1.000	1.000	1.000	1.000	1.000	1.000	1.000	1.000
2.80	1.000	1.000	1.000	1.000	1.000	1.000	1.000	1.000
2.85	1.000	1.000	1.000	1.000	1.000	1.000	1.000	1.000
2.90	1.000	1.000	1.000	1.000	1.000	1.000	1.000	1.000
2.95	1.000	1.000	1.000	1.000	1.000	1.000	1.000	1.000
3.00	1.000	1.000	1.000	1.000	1.000	1.000	1.000	1.000

PROBABILITY OF DEMONSTRATING TECHNICAL REQUIREMENT  
WITH 80 PERCENT CONFIDENCE

M(T)/TR	EXPECTED NUMBER OF FAILURES							
	77	78	79	80	81	82	83	84
1.00	0.167	0.167	0.168	0.168	0.168	0.168	0.168	0.169
1.05	0.254	0.254	0.255	0.256	0.257	0.258	0.259	0.260
1.10	0.355	0.357	0.359	0.361	0.362	0.364	0.366	0.367
1.15	0.465	0.468	0.471	0.473	0.476	0.478	0.481	0.483
1.20	0.575	0.578	0.581	0.584	0.588	0.591	0.594	0.597
1.25	0.676	0.679	0.683	0.687	0.690	0.693	0.697	0.700
1.30	0.763	0.767	0.770	0.774	0.777	0.781	0.784	0.787
1.35	0.834	0.837	0.840	0.844	0.847	0.850	0.853	0.856
1.40	0.888	0.891	0.894	0.896	0.899	0.901	0.904	0.906
1.45	0.927	0.930	0.932	0.934	0.936	0.938	0.940	0.942
1.50	0.954	0.956	0.958	0.959	0.961	0.962	0.964	0.965
1.55	0.972	0.974	0.975	0.976	0.977	0.978	0.979	0.980
1.60	0.984	0.985	0.985	0.986	0.987	0.988	0.988	0.989
1.65	0.991	0.991	0.992	0.992	0.993	0.993	0.994	0.994
1.70	0.995	0.995	0.996	0.996	0.996	0.996	0.997	0.997
1.75	0.997	0.997	0.998	0.998	0.998	0.998	0.998	0.998
1.80	0.999	0.999	0.999	0.999	0.999	0.999	0.999	0.999
1.85	0.999	0.999	0.999	0.999	0.999	1.000	1.000	1.000
1.90	1.000	1.000	1.000	1.000	1.000	1.000	1.000	1.000
1.95	1.000	1.000	1.000	1.000	1.000	1.000	1.000	1.000
2.00	1.000	1.000	1.000	1.000	1.000	1.000	1.000	1.000
2.05	1.000	1.000	1.000	1.000	1.000	1.000	1.000	1.000
2.10	1.000	1.000	1.000	1.000	1.000	1.000	1.000	1.000
2.15	1.000	1.000	1.000	1.000	1.000	1.000	1.000	1.000
2.20	1.000	1.000	1.000	1.000	1.000	1.000	1.000	1.000
2.25	1.000	1.000	1.000	1.000	1.000	1.000	1.000	1.000
2.30	1.000	1.000	1.000	1.000	1.000	1.000	1.000	1.000
2.35	1.000	1.000	1.000	1.000	1.000	1.000	1.000	1.000
2.40	1.000	1.000	1.000	1.000	1.000	1.000	1.000	1.000
2.45	1.000	1.000	1.000	1.000	1.000	1.000	1.000	1.000
2.50	1.000	1.000	1.000	1.000	1.000	1.000	1.000	1.000
2.55	1.000	1.000	1.000	1.000	1.000	1.000	1.000	1.000
2.60	1.000	1.000	1.000	1.000	1.000	1.000	1.000	1.000
2.65	1.000	1.000	1.000	1.000	1.000	1.000	1.000	1.000
2.70	1.000	1.000	1.000	1.000	1.000	1.000	1.000	1.000
2.75	1.000	1.000	1.000	1.000	1.000	1.000	1.000	1.000
2.80	1.000	1.000	1.000	1.000	1.000	1.000	1.000	1.000
2.85	1.000	1.000	1.000	1.000	1.000	1.000	1.000	1.000
2.90	1.000	1.000	1.000	1.000	1.000	1.000	1.000	1.000
2.95	1.000	1.000	1.000	1.000	1.000	1.000	1.000	1.000
3.00	1.000	1.000	1.000	1.000	1.000	1.000	1.000	1.000

PROBABILITY OF DEMONSTRATING TECHNICAL REQUIREMENT  
WITH 80 PERCENT CONFIDENCE

M(T) / TR	EXPECTED NUMBER OF FAILURES							
	85	86	87	88	89	90	91	92
1.00	0.169	0.169	0.169	0.169	0.169	0.170	0.170	0.170
1.05	0.260	0.261	0.262	0.263	0.264	0.265	0.265	0.266
1.10	0.369	0.371	0.372	0.374	0.376	0.377	0.379	0.380
1.15	0.486	0.488	0.491	0.493	0.495	0.498	0.500	0.502
1.20	0.600	0.603	0.606	0.609	0.612	0.615	0.618	0.621
1.25	0.704	0.707	0.710	0.713	0.716	0.720	0.723	0.726
1.30	0.790	0.794	0.797	0.800	0.803	0.806	0.809	0.812
1.35	0.859	0.861	0.864	0.867	0.870	0.872	0.875	0.877
1.40	0.909	0.911	0.913	0.916	0.918	0.920	0.922	0.924
1.45	0.944	0.945	0.947	0.949	0.950	0.952	0.953	0.955
1.50	0.966	0.968	0.969	0.970	0.971	0.972	0.973	0.974
1.55	0.981	0.982	0.982	0.983	0.984	0.985	0.985	0.986
1.60	0.989	0.990	0.990	0.991	0.991	0.992	0.992	0.993
1.65	0.994	0.995	0.995	0.995	0.996	0.996	0.996	0.996
1.70	0.997	0.997	0.997	0.998	0.998	0.998	0.998	0.998
1.75	0.999	0.999	0.999	0.999	0.999	0.999	0.999	0.999
1.80	0.999	0.999	0.999	0.999	0.999	1.000	1.000	1.000
1.85	1.000	1.000	1.000	1.000	1.000	1.000	1.000	1.000
1.90	1.000	1.000	1.000	1.000	1.000	1.000	1.000	1.000
1.95	1.000	1.000	1.000	1.000	1.000	1.000	1.000	1.000
2.00	1.000	1.000	1.000	1.000	1.000	1.000	1.000	1.000
2.05	1.000	1.000	1.000	1.000	1.000	1.000	1.000	1.000
2.10	1.000	1.000	1.000	1.000	1.000	1.000	1.000	1.000
2.15	1.000	1.000	1.000	1.000	1.000	1.000	1.000	1.000
2.20	1.000	1.000	1.000	1.000	1.000	1.000	1.000	1.000
2.25	1.000	1.000	1.000	1.000	1.000	1.000	1.000	1.000
2.30	1.000	1.000	1.000	1.000	1.000	1.000	1.000	1.000
2.35	1.000	1.000	1.000	1.000	1.000	1.000	1.000	1.000
2.40	1.000	1.000	1.000	1.000	1.000	1.000	1.000	1.000
2.45	1.000	1.000	1.000	1.000	1.000	1.000	1.000	1.000
2.50	1.000	1.000	1.000	1.000	1.000	1.000	1.000	1.000
2.55	1.000	1.000	1.000	1.000	1.000	1.000	1.000	1.000
2.60	1.000	1.000	1.000	1.000	1.000	1.000	1.000	1.000
2.65	1.000	1.000	1.000	1.000	1.000	1.000	1.000	1.000
2.70	1.000	1.000	1.000	1.000	1.000	1.000	1.000	1.000
2.75	1.000	1.000	1.000	1.000	1.000	1.000	1.000	1.000
2.80	1.000	1.000	1.000	1.000	1.000	1.000	1.000	1.000
2.85	1.000	1.000	1.000	1.000	1.000	1.000	1.000	1.000
2.90	1.000	1.000	1.000	1.000	1.000	1.000	1.000	1.000
2.95	1.000	1.000	1.000	1.000	1.000	1.000	1.000	1.000
3.00	1.000	1.000	1.000	1.000	1.000	1.000	1.000	1.000

PROBABILITY OF DEMONSTRATING TECHNICAL REQUIREMENT  
WITH 80 PERCENT CONFIDENCE

M(T)/TR	EXPECTED NUMBER OF FAILURES							
	93	94	95	96	97	98	99	100
1.00	0.170	0.170	0.170	0.170	0.171	0.171	0.171	0.171
1.05	0.267	0.268	0.269	0.269	0.270	0.271	0.272	0.272
1.10	0.382	0.384	0.385	0.387	0.388	0.390	0.391	0.393
1.15	0.505	0.507	0.509	0.512	0.514	0.516	0.519	0.521
1.20	0.624	0.626	0.629	0.632	0.635	0.638	0.640	0.643
1.25	0.729	0.732	0.735	0.738	0.741	0.743	0.746	0.749
1.30	0.815	0.818	0.820	0.823	0.826	0.828	0.831	0.834
1.35	0.880	0.882	0.885	0.887	0.889	0.891	0.893	0.896
1.40	0.926	0.928	0.929	0.931	0.933	0.935	0.936	0.938
1.45	0.956	0.958	0.959	0.960	0.961	0.963	0.964	0.965
1.50	0.975	0.976	0.977	0.978	0.979	0.980	0.980	0.981
1.55	0.987	0.987	0.988	0.988	0.989	0.989	0.990	0.990
1.60	0.993	0.993	0.994	0.994	0.994	0.995	0.995	0.995
1.65	0.997	0.997	0.997	0.997	0.997	0.997	0.998	0.998
1.70	0.998	0.998	0.999	0.999	0.999	0.999	0.999	0.999
1.75	0.999	0.999	0.999	0.999	0.999	0.999	1.000	1.000
1.80	1.000	1.000	1.000	1.000	1.000	1.000	1.000	1.000
1.85	1.000	1.000	1.000	1.000	1.000	1.000	1.000	1.000
1.90	1.000	1.000	1.000	1.000	1.000	1.000	1.000	1.000
1.95	1.000	1.000	1.000	1.000	1.000	1.000	1.000	1.000
2.00	1.000	1.000	1.000	1.000	1.000	1.000	1.000	1.000
2.05	1.000	1.000	1.000	1.000	1.000	1.000	1.000	1.000
2.10	1.000	1.000	1.000	1.000	1.000	1.000	1.000	1.000
2.15	1.000	1.000	1.000	1.000	1.000	1.000	1.000	1.000
2.20	1.000	1.000	1.000	1.000	1.000	1.000	1.000	1.000
2.25	1.000	1.000	1.000	1.000	1.000	1.000	1.000	1.000
2.30	1.000	1.000	1.000	1.000	1.000	1.000	1.000	1.000
2.35	1.000	1.000	1.000	1.000	1.000	1.000	1.000	1.000
2.40	1.000	1.000	1.000	1.000	1.000	1.000	1.000	1.000
2.45	1.000	1.000	1.000	1.000	1.000	1.000	1.000	1.000
2.50	1.000	1.000	1.000	1.000	1.000	1.000	1.000	1.000
2.55	1.000	1.000	1.000	1.000	1.000	1.000	1.000	1.000
2.60	1.000	1.000	1.000	1.000	1.000	1.000	1.000	1.000
2.65	1.000	1.000	1.000	1.000	1.000	1.000	1.000	1.000
2.70	1.000	1.000	1.000	1.000	1.000	1.000	1.000	1.000
2.75	1.000	1.000	1.000	1.000	1.000	1.000	1.000	1.000
2.80	1.000	1.000	1.000	1.000	1.000	1.000	1.000	1.000
2.85	1.000	1.000	1.000	1.000	1.000	1.000	1.000	1.000
2.90	1.000	1.000	1.000	1.000	1.000	1.000	1.000	1.000
2.95	1.000	1.000	1.000	1.000	1.000	1.000	1.000	1.000
3.00	1.000	1.000	1.000	1.000	1.000	1.000	1.000	1.000

**TABLE FOR  
90 PERCENT CONFIDENCE**

PROBABILITY OF DEMONSTRATING TECHNICAL REQUIREMENT  
WITH 90 PERCENT CONFIDENCE

M(T)/TR	EXPECTED NUMBER OF FAILURES							
	5	6	7	8	9	10	11	12
1.00	0.036	0.044	0.049	0.053	0.055	0.057	0.059	0.060
1.05	0.043	0.052	0.059	0.064	0.067	0.071	0.073	0.076
1.10	0.050	0.062	0.070	0.076	0.081	0.085	0.089	0.093
1.15	0.059	0.072	0.082	0.089	0.096	0.102	0.107	0.112
1.20	0.068	0.083	0.095	0.104	0.113	0.120	0.127	0.134
1.25	0.078	0.095	0.109	0.120	0.130	0.140	0.149	0.157
1.30	0.088	0.108	0.124	0.137	0.150	0.161	0.172	0.182
1.35	0.099	0.121	0.140	0.156	0.170	0.184	0.197	0.209
1.40	0.111	0.136	0.156	0.175	0.192	0.208	0.223	0.238
1.45	0.124	0.151	0.174	0.195	0.214	0.233	0.250	0.267
1.50	0.136	0.166	0.192	0.216	0.238	0.258	0.278	0.298
1.55	0.150	0.183	0.211	0.237	0.262	0.285	0.307	0.329
1.60	0.164	0.199	0.231	0.260	0.287	0.312	0.337	0.361
1.65	0.178	0.217	0.251	0.282	0.312	0.340	0.367	0.393
1.70	0.193	0.234	0.271	0.305	0.337	0.368	0.397	0.425
1.75	0.208	0.252	0.292	0.329	0.363	0.396	0.427	0.456
1.80	0.223	0.270	0.313	0.352	0.389	0.424	0.457	0.488
1.85	0.238	0.289	0.334	0.376	0.415	0.451	0.486	0.518
1.90	0.254	0.307	0.355	0.399	0.440	0.479	0.515	0.548
1.95	0.270	0.326	0.376	0.423	0.465	0.505	0.543	0.578
2.00	0.286	0.345	0.398	0.446	0.490	0.532	0.570	0.606
2.05	0.302	0.364	0.419	0.469	0.515	0.557	0.596	0.633
2.10	0.318	0.382	0.439	0.491	0.539	0.582	0.622	0.658
2.15	0.334	0.401	0.460	0.513	0.562	0.606	0.646	0.683
2.20	0.351	0.419	0.480	0.535	0.585	0.629	0.670	0.706
2.25	0.367	0.437	0.500	0.556	0.606	0.652	0.692	0.729
2.30	0.383	0.456	0.520	0.577	0.628	0.673	0.714	0.749
2.35	0.399	0.473	0.539	0.597	0.648	0.694	0.734	0.769
2.40	0.415	0.491	0.557	0.616	0.668	0.713	0.753	0.787
2.45	0.430	0.508	0.576	0.635	0.686	0.732	0.771	0.805
2.50	0.446	0.525	0.593	0.653	0.705	0.749	0.788	0.821
2.55	0.461	0.541	0.611	0.670	0.722	0.766	0.803	0.835
2.60	0.476	0.558	0.627	0.687	0.738	0.782	0.818	0.849
2.65	0.491	0.573	0.644	0.703	0.754	0.796	0.832	0.862
2.70	0.505	0.589	0.659	0.719	0.769	0.810	0.845	0.874
2.75	0.520	0.604	0.674	0.733	0.783	0.824	0.857	0.885
2.80	0.534	0.618	0.689	0.748	0.796	0.836	0.868	0.895
2.85	0.547	0.633	0.703	0.761	0.809	0.847	0.879	0.904
2.90	0.561	0.646	0.717	0.774	0.821	0.858	0.889	0.913
2.95	0.574	0.660	0.730	0.786	0.832	0.868	0.897	0.920
3.00	0.587	0.673	0.742	0.798	0.842	0.878	0.906	0.927

PROBABILITY OF DEMONSTRATING TECHNICAL REQUIREMENT  
WITH 90 PERCENT CONFIDENCE

M(T) / TR	EXPECTED NUMBER OF FAILURES							
	13	14	15	16	17	18	19	20
1.00	0.062	0.063	0.064	0.065	0.066	0.066	0.067	0.068
1.05	0.078	0.080	0.082	0.083	0.085	0.087	0.088	0.090
1.10	0.096	0.099	0.102	0.105	0.108	0.111	0.113	0.116
1.15	0.117	0.121	0.126	0.130	0.134	0.138	0.142	0.146
1.20	0.140	0.146	0.152	0.158	0.164	0.169	0.174	0.180
1.25	0.165	0.173	0.181	0.188	0.196	0.203	0.210	0.217
1.30	0.192	0.202	0.212	0.221	0.230	0.239	0.248	0.257
1.35	0.221	0.233	0.245	0.256	0.267	0.278	0.289	0.300
1.40	0.252	0.266	0.280	0.293	0.306	0.319	0.331	0.344
1.45	0.284	0.300	0.316	0.331	0.346	0.361	0.375	0.389
1.50	0.317	0.335	0.353	0.370	0.387	0.403	0.419	0.435
1.55	0.350	0.370	0.390	0.409	0.428	0.446	0.463	0.480
1.60	0.384	0.406	0.427	0.448	0.468	0.488	0.507	0.525
1.65	0.418	0.442	0.465	0.487	0.508	0.529	0.549	0.568
1.70	0.451	0.477	0.502	0.525	0.548	0.569	0.590	0.610
1.75	0.485	0.512	0.537	0.562	0.585	0.608	0.629	0.649
1.80	0.517	0.546	0.572	0.598	0.622	0.644	0.666	0.686
1.85	0.549	0.578	0.606	0.632	0.656	0.679	0.701	0.721
1.90	0.580	0.610	0.638	0.664	0.689	0.711	0.733	0.753
1.95	0.610	0.640	0.669	0.695	0.719	0.742	0.763	0.782
2.00	0.639	0.669	0.697	0.723	0.747	0.770	0.790	0.809
2.05	0.666	0.696	0.725	0.750	0.774	0.795	0.815	0.833
2.10	0.692	0.722	0.750	0.775	0.798	0.819	0.837	0.854
2.15	0.716	0.746	0.773	0.798	0.820	0.840	0.858	0.873
2.20	0.739	0.769	0.795	0.819	0.840	0.859	0.876	0.891
2.25	0.761	0.790	0.816	0.838	0.858	0.876	0.892	0.906
2.30	0.781	0.809	0.834	0.856	0.875	0.892	0.906	0.919
2.35	0.800	0.827	0.851	0.872	0.890	0.905	0.919	0.930
2.40	0.818	0.844	0.866	0.886	0.903	0.917	0.930	0.940
2.45	0.834	0.859	0.881	0.899	0.915	0.928	0.940	0.949
2.50	0.849	0.873	0.893	0.911	0.925	0.938	0.948	0.957
2.55	0.863	0.886	0.905	0.921	0.935	0.946	0.955	0.963
2.60	0.875	0.897	0.915	0.930	0.943	0.953	0.962	0.969
2.65	0.887	0.908	0.925	0.939	0.950	0.960	0.967	0.974
2.70	0.898	0.917	0.933	0.946	0.957	0.965	0.972	0.978
2.75	0.907	0.926	0.941	0.953	0.962	0.970	0.976	0.981
2.80	0.916	0.934	0.947	0.958	0.967	0.974	0.980	0.984
2.85	0.924	0.941	0.953	0.964	0.972	0.978	0.983	0.987
2.90	0.932	0.947	0.959	0.968	0.975	0.981	0.985	0.989
2.95	0.938	0.952	0.963	0.972	0.979	0.984	0.988	0.991
3.00	0.944	0.958	0.968	0.975	0.981	0.986	0.989	0.992

PROBABILITY OF DEMONSTRATING TECHNICAL REQUIREMENT  
WITH 90 PERCENT CONFIDENCE

M(T)/TR	EXPECTED NUMBER OF FAILURES							
	21	22	23	24	25	26	27	28
1.00	0.068	0.069	0.070	0.070	0.071	0.071	0.072	0.072
1.05	0.091	0.093	0.094	0.095	0.096	0.098	0.099	0.100
1.10	0.118	0.121	0.123	0.125	0.127	0.130	0.132	0.134
1.15	0.150	0.153	0.157	0.160	0.164	0.167	0.170	0.174
1.20	0.185	0.190	0.195	0.200	0.205	0.209	0.214	0.219
1.25	0.224	0.230	0.237	0.243	0.250	0.256	0.262	0.269
1.30	0.266	0.274	0.282	0.290	0.298	0.306	0.314	0.322
1.35	0.310	0.320	0.330	0.340	0.349	0.359	0.368	0.378
1.40	0.356	0.368	0.379	0.391	0.402	0.413	0.424	0.434
1.45	0.403	0.416	0.429	0.442	0.455	0.467	0.479	0.491
1.50	0.450	0.465	0.479	0.494	0.507	0.521	0.534	0.547
1.55	0.497	0.513	0.528	0.544	0.558	0.573	0.587	0.600
1.60	0.542	0.560	0.576	0.592	0.607	0.622	0.637	0.650
1.65	0.587	0.604	0.621	0.638	0.654	0.669	0.683	0.697
1.70	0.629	0.647	0.664	0.681	0.697	0.712	0.726	0.740
1.75	0.668	0.687	0.704	0.721	0.736	0.751	0.765	0.779
1.80	0.706	0.724	0.741	0.757	0.772	0.787	0.800	0.813
1.85	0.740	0.758	0.774	0.790	0.805	0.818	0.831	0.843
1.90	0.771	0.789	0.805	0.820	0.833	0.846	0.858	0.869
1.95	0.800	0.816	0.832	0.846	0.859	0.871	0.882	0.892
2.00	0.826	0.841	0.856	0.869	0.881	0.892	0.902	0.911
2.05	0.849	0.864	0.877	0.889	0.900	0.910	0.919	0.927
2.10	0.869	0.883	0.896	0.907	0.917	0.926	0.934	0.941
2.15	0.888	0.900	0.912	0.922	0.931	0.939	0.946	0.952
2.20	0.904	0.915	0.926	0.935	0.943	0.950	0.956	0.962
2.25	0.918	0.928	0.938	0.946	0.953	0.959	0.965	0.969
2.30	0.930	0.940	0.948	0.955	0.961	0.967	0.972	0.976
2.35	0.940	0.949	0.957	0.963	0.968	0.973	0.977	0.981
2.40	0.950	0.957	0.964	0.970	0.974	0.978	0.982	0.985
2.45	0.957	0.964	0.970	0.975	0.979	0.983	0.985	0.988
2.50	0.964	0.970	0.975	0.980	0.983	0.986	0.988	0.990
2.55	0.970	0.975	0.980	0.983	0.986	0.989	0.991	0.993
2.60	0.975	0.979	0.983	0.986	0.989	0.991	0.993	0.994
2.65	0.979	0.983	0.986	0.989	0.991	0.993	0.994	0.995
2.70	0.982	0.986	0.989	0.991	0.993	0.994	0.996	0.996
2.75	0.985	0.988	0.991	0.993	0.994	0.996	0.996	0.997
2.80	0.988	0.990	0.992	0.994	0.995	0.996	0.997	0.998
2.85	0.990	0.992	0.994	0.995	0.996	0.997	0.998	0.998
2.90	0.991	0.993	0.995	0.996	0.997	0.998	0.998	0.999
2.95	0.993	0.995	0.996	0.997	0.998	0.998	0.999	0.999
3.00	0.994	0.996	0.997	0.998	0.998	0.999	0.999	0.999



PROBABILITY OF DEMONSTRATING TECHNICAL REQUIREMENT  
WITH 90 PERCENT CONFIDENCE

M(T)/TR	EXPECTED NUMBER OF FAILURES							
	29	30	31	32	33	34	35	36
1.00	0.072	0.073	0.073	0.074	0.074	0.074	0.075	0.075
1.05	0.101	0.102	0.103	0.104	0.105	0.106	0.107	0.108
1.10	0.136	0.138	0.140	0.142	0.144	0.146	0.147	0.149
1.15	0.177	0.180	0.183	0.186	0.189	0.192	0.195	0.198
1.20	0.223	0.228	0.232	0.237	0.241	0.246	0.250	0.254
1.25	0.275	0.281	0.287	0.292	0.298	0.304	0.310	0.315
1.30	0.329	0.337	0.344	0.352	0.359	0.366	0.373	0.380
1.35	0.387	0.396	0.404	0.413	0.422	0.430	0.439	0.447
1.40	0.445	0.455	0.465	0.475	0.485	0.495	0.504	0.513
1.45	0.503	0.514	0.525	0.536	0.547	0.557	0.568	0.578
1.50	0.559	0.571	0.583	0.595	0.606	0.617	0.628	0.638
1.55	0.613	0.626	0.638	0.650	0.662	0.673	0.684	0.695
1.60	0.664	0.677	0.689	0.701	0.713	0.724	0.735	0.745
1.65	0.711	0.723	0.736	0.748	0.759	0.770	0.780	0.790
1.70	0.753	0.766	0.778	0.789	0.800	0.810	0.820	0.829
1.75	0.791	0.803	0.815	0.825	0.835	0.845	0.854	0.863
1.80	0.825	0.836	0.847	0.857	0.866	0.875	0.883	0.891
1.85	0.854	0.865	0.874	0.883	0.892	0.900	0.907	0.914
1.90	0.880	0.889	0.898	0.906	0.913	0.920	0.927	0.933
1.95	0.901	0.910	0.918	0.925	0.931	0.937	0.943	0.948
2.00	0.919	0.927	0.934	0.940	0.946	0.951	0.956	0.960
2.05	0.935	0.941	0.947	0.953	0.958	0.962	0.966	0.970
2.10	0.947	0.953	0.958	0.963	0.967	0.971	0.974	0.977
2.15	0.958	0.963	0.967	0.971	0.975	0.978	0.980	0.983
2.20	0.967	0.971	0.974	0.978	0.981	0.983	0.985	0.987
2.25	0.973	0.977	0.980	0.983	0.985	0.987	0.989	0.991
2.30	0.979	0.982	0.985	0.987	0.989	0.990	0.992	0.993
2.35	0.984	0.986	0.988	0.990	0.992	0.993	0.994	0.995
2.40	0.987	0.989	0.991	0.992	0.994	0.995	0.996	0.996
2.45	0.990	0.992	0.993	0.994	0.995	0.996	0.997	0.997
2.50	0.992	0.994	0.995	0.996	0.996	0.997	0.998	0.998
2.55	0.994	0.995	0.996	0.997	0.997	0.998	0.998	0.999
2.60	0.995	0.996	0.997	0.998	0.998	0.998	0.999	0.999
2.65	0.996	0.997	0.998	0.998	0.999	0.999	0.999	0.999
2.70	0.997	0.998	0.998	0.999	0.999	0.999	0.999	0.999
2.75	0.998	0.998	0.999	0.999	0.999	0.999	1.000	1.000
2.80	0.998	0.999	0.999	0.999	0.999	1.000	1.000	1.000
2.85	0.999	0.999	0.999	0.999	1.000	1.000	1.000	1.000
2.90	0.999	0.999	0.999	1.000	1.000	1.000	1.000	1.000
2.95	0.999	0.999	1.000	1.000	1.000	1.000	1.000	1.000
3.00	0.999	1.000	1.000	1.000	1.000	1.000	1.000	1.000

PROBABILITY OF DEMONSTRATING TECHNICAL REQUIREMENT  
WITH 90 PERCENT CONFIDENCE

EXPECTED NUMBER OF FAILURES

M(T) / TR	37	38	39	40	41	42	43	44
1.00	0.075	0.075	0.076	0.076	0.076	0.077	0.077	0.077
1.05	0.109	0.110	0.111	0.112	0.113	0.113	0.114	0.115
1.10	0.151	0.153	0.155	0.156	0.158	0.160	0.162	0.163
1.15	0.201	0.204	0.207	0.210	0.213	0.215	0.218	0.221
1.20	0.258	0.262	0.267	0.271	0.275	0.279	0.283	0.287
1.25	0.321	0.326	0.332	0.337	0.343	0.348	0.353	0.358
1.30	0.387	0.394	0.401	0.407	0.414	0.421	0.427	0.433
1.35	0.455	0.463	0.471	0.479	0.486	0.494	0.501	0.509
1.40	0.522	0.531	0.540	0.549	0.557	0.566	0.574	0.582
1.45	0.587	0.597	0.606	0.616	0.625	0.633	0.642	0.651
1.50	0.649	0.659	0.668	0.678	0.687	0.696	0.705	0.713
1.55	0.705	0.715	0.724	0.734	0.743	0.752	0.760	0.768
1.60	0.755	0.765	0.774	0.783	0.792	0.800	0.808	0.816
1.65	0.800	0.809	0.818	0.826	0.834	0.842	0.849	0.856
1.70	0.838	0.847	0.855	0.862	0.870	0.877	0.883	0.889
1.75	0.871	0.878	0.886	0.892	0.899	0.905	0.911	0.916
1.80	0.898	0.905	0.911	0.917	0.923	0.928	0.933	0.937
1.85	0.920	0.926	0.932	0.937	0.941	0.946	0.950	0.954
1.90	0.938	0.943	0.948	0.952	0.956	0.960	0.963	0.966
1.95	0.953	0.957	0.961	0.964	0.967	0.970	0.973	0.976
2.00	0.964	0.967	0.971	0.974	0.976	0.978	0.981	0.983
2.05	0.973	0.976	0.978	0.981	0.983	0.984	0.986	0.988
2.10	0.980	0.982	0.984	0.986	0.987	0.989	0.990	0.991
2.15	0.985	0.987	0.988	0.990	0.991	0.992	0.993	0.994
2.20	0.989	0.990	0.992	0.993	0.994	0.994	0.995	0.996
2.25	0.992	0.993	0.994	0.995	0.996	0.996	0.997	0.997
2.30	0.994	0.995	0.996	0.996	0.997	0.997	0.998	0.998
2.35	0.996	0.996	0.997	0.997	0.998	0.998	0.998	0.999
2.40	0.997	0.997	0.998	0.998	0.998	0.999	0.999	0.999
2.45	0.998	0.998	0.998	0.999	0.999	0.999	0.999	0.999
2.50	0.998	0.999	0.999	0.999	0.999	0.999	1.000	1.000
2.55	0.999	0.999	0.999	0.999	1.000	1.000	1.000	1.000
2.60	0.999	0.999	0.999	1.000	1.000	1.000	1.000	1.000
2.65	0.999	1.000	1.000	1.000	1.000	1.000	1.000	1.000
2.70	1.000	1.000	1.000	1.000	1.000	1.000	1.000	1.000
2.75	1.000	1.000	1.000	1.000	1.000	1.000	1.000	1.000
2.80	1.000	1.000	1.000	1.000	1.000	1.000	1.000	1.000
2.85	1.000	1.000	1.000	1.000	1.000	1.000	1.000	1.000
2.90	1.000	1.000	1.000	1.000	1.000	1.000	1.000	1.000
2.95	1.000	1.000	1.000	1.000	1.000	1.000	1.000	1.000
3.00	1.000	1.000	1.000	1.000	1.000	1.000	1.000	1.000

PROBABILITY OF DEMONSTRATING TECHNICAL REQUIREMENT  
WITH 90 PERCENT CONFIDENCE

M(T)/TR	EXPECTED NUMBER OF FAILURES							
	45	46	47	48	49	50	51	52
1.00	0.077	0.077	0.078	0.078	0.078	0.078	0.078	0.079
1.05	0.116	0.117	0.117	0.118	0.119	0.120	0.121	0.121
1.10	0.165	0.167	0.168	0.170	0.171	0.173	0.175	0.176
1.15	0.224	0.226	0.229	0.232	0.234	0.237	0.240	0.242
1.20	0.291	0.295	0.298	0.302	0.306	0.310	0.314	0.317
1.25	0.364	0.369	0.374	0.379	0.384	0.389	0.394	0.399
1.30	0.440	0.446	0.452	0.458	0.464	0.470	0.476	0.482
1.35	0.516	0.523	0.530	0.537	0.544	0.551	0.558	0.564
1.40	0.590	0.598	0.605	0.613	0.620	0.627	0.635	0.642
1.45	0.659	0.667	0.675	0.683	0.690	0.698	0.705	0.712
1.50	0.721	0.729	0.737	0.745	0.752	0.759	0.767	0.773
1.55	0.776	0.784	0.792	0.799	0.806	0.813	0.819	0.825
1.60	0.824	0.831	0.838	0.844	0.851	0.857	0.863	0.868
1.65	0.863	0.870	0.876	0.882	0.887	0.892	0.898	0.902
1.70	0.895	0.901	0.906	0.911	0.916	0.921	0.925	0.929
1.75	0.921	0.926	0.931	0.935	0.939	0.943	0.946	0.949
1.80	0.941	0.945	0.949	0.953	0.956	0.959	0.962	0.964
1.85	0.957	0.960	0.963	0.966	0.969	0.971	0.973	0.975
1.90	0.969	0.972	0.974	0.976	0.978	0.980	0.982	0.983
1.95	0.978	0.980	0.982	0.983	0.985	0.986	0.988	0.989
2.00	0.984	0.986	0.987	0.989	0.990	0.991	0.992	0.993
2.05	0.989	0.990	0.991	0.992	0.993	0.994	0.994	0.995
2.10	0.992	0.993	0.994	0.995	0.995	0.996	0.996	0.997
2.15	0.995	0.995	0.996	0.996	0.997	0.997	0.998	0.998
2.20	0.996	0.997	0.997	0.998	0.998	0.998	0.998	0.999
2.25	0.998	0.998	0.998	0.998	0.999	0.999	0.999	0.999
2.30	0.998	0.999	0.999	0.999	0.999	0.999	0.999	0.999
2.35	0.999	0.999	0.999	0.999	0.999	1.000	1.000	1.000
2.40	0.999	0.999	0.999	1.000	1.000	1.000	1.000	1.000
2.45	1.000	1.000	1.000	1.000	1.000	1.000	1.000	1.000
2.50	1.000	1.000	1.000	1.000	1.000	1.000	1.000	1.000
2.55	1.000	1.000	1.000	1.000	1.000	1.000	1.000	1.000
2.60	1.000	1.000	1.000	1.000	1.000	1.000	1.000	1.000
2.65	1.000	1.000	1.000	1.000	1.000	1.000	1.000	1.000
2.70	1.000	1.000	1.000	1.000	1.000	1.000	1.000	1.000
2.75	1.000	1.000	1.000	1.000	1.000	1.000	1.000	1.000
2.80	1.000	1.000	1.000	1.000	1.000	1.000	1.000	1.000
2.85	1.000	1.000	1.000	1.000	1.000	1.000	1.000	1.000
2.90	1.000	1.000	1.000	1.000	1.000	1.000	1.000	1.000
2.95	1.000	1.000	1.000	1.000	1.000	1.000	1.000	1.000
3.00	1.000	1.000	1.000	1.000	1.000	1.000	1.000	1.000

S

PROBABILITY OF DEMONSTRATING TECHNICAL REQUIREMENT  
WITH 90 PERCENT CONFIDENCE

M(T)/TR	EXPECTED NUMBER OF FAILURES							
	53	54	55	56	57	58	59	60
1.00	0.079	0.079	0.079	0.079	0.079	0.080	0.080	0.080
1.05	0.122	0.123	0.123	0.124	0.125	0.126	0.126	0.127
1.10	0.178	0.179	0.181	0.182	0.184	0.185	0.187	0.188
1.15	0.245	0.247	0.250	0.252	0.255	0.257	0.260	0.262
1.20	0.321	0.325	0.328	0.332	0.336	0.339	0.343	0.346
1.25	0.404	0.408	0.413	0.418	0.422	0.427	0.432	0.436
1.30	0.488	0.494	0.499	0.505	0.511	0.516	0.522	0.527
1.35	0.571	0.577	0.584	0.590	0.596	0.602	0.608	0.614
1.40	0.649	0.655	0.662	0.669	0.675	0.681	0.687	0.694
1.45	0.719	0.726	0.732	0.739	0.745	0.751	0.757	0.763
1.50	0.780	0.786	0.793	0.799	0.805	0.811	0.816	0.822
1.55	0.832	0.838	0.843	0.849	0.854	0.859	0.864	0.869
1.60	0.874	0.879	0.884	0.889	0.893	0.898	0.902	0.906
1.65	0.907	0.912	0.916	0.920	0.924	0.927	0.931	0.934
1.70	0.933	0.937	0.940	0.943	0.947	0.950	0.952	0.955
1.75	0.953	0.955	0.958	0.961	0.963	0.966	0.968	0.970
1.80	0.967	0.969	0.971	0.973	0.975	0.977	0.979	0.980
1.85	0.977	0.979	0.981	0.982	0.984	0.985	0.986	0.987
1.90	0.985	0.986	0.987	0.988	0.989	0.990	0.991	0.992
1.95	0.990	0.991	0.992	0.992	0.993	0.994	0.994	0.995
2.00	0.993	0.994	0.995	0.995	0.996	0.996	0.996	0.997
2.05	0.996	0.996	0.997	0.997	0.997	0.998	0.998	0.998
2.10	0.997	0.998	0.998	0.998	0.998	0.999	0.999	0.999
2.15	0.998	0.998	0.999	0.999	0.999	0.999	0.999	0.999
2.20	0.999	0.999	0.999	0.999	0.999	0.999	1.000	1.000
2.25	0.999	0.999	0.999	1.000	1.000	1.000	1.000	1.000
2.30	1.000	1.000	1.000	1.000	1.000	1.000	1.000	1.000
2.35	1.000	1.000	1.000	1.000	1.000	1.000	1.000	1.000
2.40	1.000	1.000	1.000	1.000	1.000	1.000	1.000	1.000
2.45	1.000	1.000	1.000	1.000	1.000	1.000	1.000	1.000
2.50	1.000	1.000	1.000	1.000	1.000	1.000	1.000	1.000
2.55	1.000	1.000	1.000	1.000	1.000	1.000	1.000	1.000
2.60	1.000	1.000	1.000	1.000	1.000	1.000	1.000	1.000
2.65	1.000	1.000	1.000	1.000	1.000	1.000	1.000	1.000
2.70	1.000	1.000	1.000	1.000	1.000	1.000	1.000	1.000
2.75	1.000	1.000	1.000	1.000	1.000	1.000	1.000	1.000
2.80	1.000	1.000	1.000	1.000	1.000	1.000	1.000	1.000
2.85	1.000	1.000	1.000	1.000	1.000	1.000	1.000	1.000
2.90	1.000	1.000	1.000	1.000	1.000	1.000	1.000	1.000
2.95	1.000	1.000	1.000	1.000	1.000	1.000	1.000	1.000
3.00	1.000	1.000	1.000	1.000	1.000	1.000	1.000	1.000

\$

PROBABILITY OF DEMONSTRATING TECHNICAL REQUIREMENT  
WITH 90 PERCENT CONFIDENCE

M(T)/TR	EXPECTED NUMBER OF FAILURES							
	61	62	63	64	65	66	67	68
1.00	0.080	0.080	0.080	0.081	0.081	0.081	0.081	0.081
1.05	0.128	0.128	0.129	0.130	0.130	0.131	0.131	0.132
1.10	0.190	0.191	0.192	0.194	0.195	0.197	0.198	0.200
1.15	0.265	0.267	0.270	0.272	0.274	0.277	0.279	0.281
1.20	0.350	0.353	0.357	0.360	0.364	0.367	0.371	0.374
1.25	0.441	0.445	0.450	0.454	0.459	0.463	0.467	0.472
1.30	0.532	0.538	0.543	0.548	0.553	0.558	0.563	0.568
1.35	0.620	0.626	0.631	0.637	0.642	0.648	0.653	0.659
1.40	0.700	0.705	0.711	0.717	0.722	0.728	0.733	0.739
1.45	0.769	0.775	0.780	0.786	0.791	0.796	0.801	0.806
1.50	0.827	0.832	0.837	0.842	0.847	0.852	0.856	0.860
1.55	0.874	0.878	0.883	0.887	0.891	0.895	0.899	0.902
1.60	0.910	0.914	0.918	0.921	0.924	0.928	0.931	0.934
1.65	0.938	0.941	0.944	0.946	0.949	0.951	0.954	0.956
1.70	0.958	0.960	0.962	0.964	0.966	0.968	0.970	0.972
1.75	0.972	0.974	0.975	0.977	0.978	0.980	0.981	0.982
1.80	0.982	0.983	0.984	0.985	0.986	0.987	0.988	0.989
1.85	0.988	0.989	0.990	0.991	0.991	0.992	0.993	0.993
1.90	0.993	0.993	0.994	0.994	0.995	0.995	0.996	0.996
1.95	0.995	0.996	0.996	0.997	0.997	0.997	0.997	0.998
2.00	0.997	0.997	0.998	0.998	0.998	0.998	0.999	0.999
2.05	0.998	0.998	0.999	0.999	0.999	0.999	0.999	0.999
2.10	0.999	0.999	0.999	0.999	0.999	0.999	1.000	1.000
2.15	0.999	0.999	1.000	1.000	1.000	1.000	1.000	1.000
2.20	1.000	1.000	1.000	1.000	1.000	1.000	1.000	1.000
2.25	1.000	1.000	1.000	1.000	1.000	1.000	1.000	1.000
2.30	1.000	1.000	1.000	1.000	1.000	1.000	1.000	1.000
2.35	1.000	1.000	1.000	1.000	1.000	1.000	1.000	1.000
2.40	1.000	1.000	1.000	1.000	1.000	1.000	1.000	1.000
2.45	1.000	1.000	1.000	1.000	1.000	1.000	1.000	1.000
2.50	1.000	1.000	1.000	1.000	1.000	1.000	1.000	1.000
2.55	1.000	1.000	1.000	1.000	1.000	1.000	1.000	1.000
2.60	1.000	1.000	1.000	1.000	1.000	1.000	1.000	1.000
2.65	1.000	1.000	1.000	1.000	1.000	1.000	1.000	1.000
2.70	1.000	1.000	1.000	1.000	1.000	1.000	1.000	1.000
2.75	1.000	1.000	1.000	1.000	1.000	1.000	1.000	1.000
2.80	1.000	1.000	1.000	1.000	1.000	1.000	1.000	1.000
2.85	1.000	1.000	1.000	1.000	1.000	1.000	1.000	1.000
2.90	1.000	1.000	1.000	1.000	1.000	1.000	1.000	1.000
2.95	1.000	1.000	1.000	1.000	1.000	1.000	1.000	1.000
3.00	1.000	1.000	1.000	1.000	1.000	1.000	1.000	1.000

PROBABILITY OF DEMONSTRATING TECHNICAL REQUIREMENT  
WITH 90 PERCENT CONFIDENCE

M(T)/TR	EXPECTED NUMBER OF FAILURES							
	69	70	71	72	73	74	75	76
1.00	0.081	0.081	0.081	0.082	0.082	0.082	0.082	0.082
1.05	0.133	0.133	0.134	0.135	0.135	0.136	0.136	0.137
1.10	0.201	0.202	0.204	0.205	0.206	0.208	0.209	0.210
1.15	0.284	0.286	0.289	0.291	0.293	0.295	0.298	0.300
1.20	0.377	0.381	0.384	0.387	0.391	0.394	0.397	0.400
1.25	0.476	0.480	0.484	0.488	0.493	0.497	0.501	0.505
1.30	0.573	0.578	0.583	0.588	0.592	0.597	0.602	0.606
1.35	0.664	0.669	0.674	0.679	0.684	0.689	0.694	0.698
1.40	0.744	0.749	0.754	0.759	0.763	0.768	0.773	0.777
1.45	0.811	0.816	0.820	0.825	0.829	0.833	0.837	0.842
1.50	0.865	0.869	0.873	0.877	0.880	0.884	0.888	0.891
1.55	0.906	0.909	0.913	0.916	0.919	0.922	0.925	0.928
1.60	0.937	0.939	0.942	0.944	0.947	0.949	0.951	0.953
1.65	0.958	0.960	0.962	0.964	0.966	0.968	0.969	0.971
1.70	0.973	0.975	0.976	0.978	0.979	0.980	0.981	0.982
1.75	0.983	0.984	0.985	0.986	0.987	0.988	0.989	0.990
1.80	0.990	0.991	0.991	0.992	0.992	0.993	0.993	0.994
1.85	0.994	0.994	0.995	0.995	0.996	0.996	0.996	0.997
1.90	0.996	0.997	0.997	0.997	0.998	0.998	0.998	0.998
1.95	0.998	0.998	0.998	0.998	0.999	0.999	0.999	0.999
2.00	0.999	0.999	0.999	0.999	0.999	0.999	0.999	0.999
2.05	0.999	0.999	0.999	1.000	1.000	1.000	1.000	1.000
2.10	1.000	1.000	1.000	1.000	1.000	1.000	1.000	1.000
2.15	1.000	1.000	1.000	1.000	1.000	1.000	1.000	1.000
2.20	1.000	1.000	1.000	1.000	1.000	1.000	1.000	1.000
2.25	1.000	1.000	1.000	1.000	1.000	1.000	1.000	1.000
2.30	1.000	1.000	1.000	1.000	1.000	1.000	1.000	1.000
2.35	1.000	1.000	1.000	1.000	1.000	1.000	1.000	1.000
2.40	1.000	1.000	1.000	1.000	1.000	1.000	1.000	1.000
2.45	1.000	1.000	1.000	1.000	1.000	1.000	1.000	1.000
2.50	1.000	1.000	1.000	1.000	1.000	1.000	1.000	1.000
2.55	1.000	1.000	1.000	1.000	1.000	1.000	1.000	1.000
2.60	1.000	1.000	1.000	1.000	1.000	1.000	1.000	1.000
2.65	1.000	1.000	1.000	1.000	1.000	1.000	1.000	1.000
2.70	1.000	1.000	1.000	1.000	1.000	1.000	1.000	1.000
2.75	1.000	1.000	1.000	1.000	1.000	1.000	1.000	1.000
2.80	1.000	1.000	1.000	1.000	1.000	1.000	1.000	1.000
2.85	1.000	1.000	1.000	1.000	1.000	1.000	1.000	1.000
2.90	1.000	1.000	1.000	1.000	1.000	1.000	1.000	1.000
2.95	1.000	1.000	1.000	1.000	1.000	1.000	1.000	1.000
3.00	1.000	1.000	1.000	1.000	1.000	1.000	1.000	1.000

PROBABILITY OF DEMONSTRATING TECHNICAL REQUIREMENT  
WITH 90 PERCENT CONFIDENCE

M(T)/TR	EXPECTED NUMBER OF FAILURES							
	77	78	79	80	81	82	83	84
1.00	0.082	0.082	0.082	0.082	0.082	0.083	0.083	0.083
1.05	0.138	0.138	0.139	0.139	0.140	0.141	0.141	0.142
1.10	0.212	0.213	0.214	0.216	0.217	0.218	0.220	0.221
1.15	0.302	0.304	0.307	0.309	0.311	0.313	0.316	0.318
1.20	0.404	0.407	0.410	0.413	0.416	0.419	0.422	0.426
1.25	0.509	0.513	0.517	0.521	0.525	0.528	0.532	0.536
1.30	0.611	0.615	0.620	0.624	0.628	0.633	0.637	0.641
1.35	0.703	0.708	0.712	0.717	0.721	0.725	0.730	0.734
1.40	0.782	0.786	0.790	0.795	0.799	0.803	0.807	0.811
1.45	0.845	0.849	0.853	0.857	0.860	0.864	0.867	0.871
1.50	0.894	0.898	0.901	0.904	0.907	0.910	0.913	0.915
1.55	0.930	0.933	0.935	0.938	0.940	0.942	0.944	0.946
1.60	0.955	0.957	0.959	0.961	0.963	0.964	0.966	0.967
1.65	0.972	0.974	0.975	0.976	0.977	0.979	0.980	0.981
1.70	0.983	0.984	0.985	0.986	0.987	0.988	0.988	0.989
1.75	0.990	0.991	0.991	0.992	0.993	0.993	0.993	0.994
1.80	0.994	0.995	0.995	0.996	0.996	0.996	0.996	0.997
1.85	0.997	0.997	0.997	0.998	0.998	0.998	0.998	0.998
1.90	0.998	0.998	0.999	0.999	0.999	0.999	0.999	0.999
1.95	0.999	0.999	0.999	0.999	0.999	0.999	0.999	1.000
2.00	0.999	1.000	1.000	1.000	1.000	1.000	1.000	1.000
2.05	1.000	1.000	1.000	1.000	1.000	1.000	1.000	1.000
2.10	1.000	1.000	1.000	1.000	1.000	1.000	1.000	1.000
2.15	1.000	1.000	1.000	1.000	1.000	1.000	1.000	1.000
2.20	1.000	1.000	1.000	1.000	1.000	1.000	1.000	1.000
2.25	1.000	1.000	1.000	1.000	1.000	1.000	1.000	1.000
2.30	1.000	1.000	1.000	1.000	1.000	1.000	1.000	1.000
2.35	1.000	1.000	1.000	1.000	1.000	1.000	1.000	1.000
2.40	1.000	1.000	1.000	1.000	1.000	1.000	1.000	1.000
2.45	1.000	1.000	1.000	1.000	1.000	1.000	1.000	1.000
2.50	1.000	1.000	1.000	1.000	1.000	1.000	1.000	1.000
2.55	1.000	1.000	1.000	1.000	1.000	1.000	1.000	1.000
2.60	1.000	1.000	1.000	1.000	1.000	1.000	1.000	1.000
2.65	1.000	1.000	1.000	1.000	1.000	1.000	1.000	1.000
2.70	1.000	1.000	1.000	1.000	1.000	1.000	1.000	1.000
2.75	1.000	1.000	1.000	1.000	1.000	1.000	1.000	1.000
2.80	1.000	1.000	1.000	1.000	1.000	1.000	1.000	1.000
2.85	1.000	1.000	1.000	1.000	1.000	1.000	1.000	1.000
2.90	1.000	1.000	1.000	1.000	1.000	1.000	1.000	1.000
2.95	1.000	1.000	1.000	1.000	1.000	1.000	1.000	1.000
3.00	1.000	1.000	1.000	1.000	1.000	1.000	1.000	1.000

PROBABILITY OF DEMONSTRATING TECHNICAL REQUIREMENT  
WITH 90 PERCENT CONFIDENCE

M(T)/TR	EXPECTED NUMBER OF FAILURES							
	85	86	87	88	89	90	91	92
1.00	0.083	0.083	0.083	0.083	0.083	0.083	0.083	0.083
1.05	0.142	0.143	0.143	0.144	0.144	0.145	0.146	0.146
1.10	0.222	0.224	0.225	0.226	0.227	0.229	0.230	0.231
1.15	0.320	0.322	0.324	0.326	0.329	0.331	0.333	0.335
1.20	0.429	0.432	0.435	0.438	0.441	0.444	0.447	0.450
1.25	0.540	0.544	0.547	0.551	0.555	0.558	0.562	0.565
1.30	0.645	0.649	0.653	0.657	0.661	0.665	0.669	0.673
1.35	0.738	0.742	0.746	0.750	0.754	0.758	0.762	0.765
1.40	0.815	0.818	0.822	0.826	0.829	0.833	0.836	0.840
1.45	0.874	0.877	0.880	0.884	0.887	0.889	0.892	0.895
1.50	0.918	0.920	0.923	0.925	0.928	0.930	0.932	0.934
1.55	0.948	0.950	0.952	0.954	0.956	0.957	0.959	0.961
1.60	0.969	0.970	0.971	0.973	0.974	0.975	0.976	0.977
1.65	0.982	0.983	0.984	0.984	0.985	0.986	0.987	0.987
1.70	0.990	0.990	0.991	0.991	0.992	0.992	0.993	0.993
1.75	0.994	0.995	0.995	0.995	0.996	0.996	0.996	0.997
1.80	0.997	0.997	0.997	0.998	0.998	0.998	0.998	0.998
1.85	0.998	0.999	0.999	0.999	0.999	0.999	0.999	0.999
1.90	0.999	0.999	0.999	0.999	0.999	1.000	1.000	1.000
1.95	1.000	1.000	1.000	1.000	1.000	1.000	1.000	1.000
2.00	1.000	1.000	1.000	1.000	1.000	1.000	1.000	1.000
2.05	1.000	1.000	1.000	1.000	1.000	1.000	1.000	1.000
2.10	1.000	1.000	1.000	1.000	1.000	1.000	1.000	1.000
2.15	1.000	1.000	1.000	1.000	1.000	1.000	1.000	1.000
2.20	1.000	1.000	1.000	1.000	1.000	1.000	1.000	1.000
2.25	1.000	1.000	1.000	1.000	1.000	1.000	1.000	1.000
2.30	1.000	1.000	1.000	1.000	1.000	1.000	1.000	1.000
2.35	1.000	1.000	1.000	1.000	1.000	1.000	1.000	1.000
2.40	1.000	1.000	1.000	1.000	1.000	1.000	1.000	1.000
2.45	1.000	1.000	1.000	1.000	1.000	1.000	1.000	1.000
2.50	1.000	1.000	1.000	1.000	1.000	1.000	1.000	1.000
2.55	1.000	1.000	1.000	1.000	1.000	1.000	1.000	1.000
2.60	1.000	1.000	1.000	1.000	1.000	1.000	1.000	1.000
2.65	1.000	1.000	1.000	1.000	1.000	1.000	1.000	1.000
2.70	1.000	1.000	1.000	1.000	1.000	1.000	1.000	1.000
2.75	1.000	1.000	1.000	1.000	1.000	1.000	1.000	1.000
2.80	1.000	1.000	1.000	1.000	1.000	1.000	1.000	1.000
2.85	1.000	1.000	1.000	1.000	1.000	1.000	1.000	1.000
2.90	1.000	1.000	1.000	1.000	1.000	1.000	1.000	1.000
2.95	1.000	1.000	1.000	1.000	1.000	1.000	1.000	1.000
3.00	1.000	1.000	1.000	1.000	1.000	1.000	1.000	1.000



PROBABILITY OF DEMONSTRATING TECHNICAL REQUIREMENT  
WITH 90 PERCENT CONFIDENCE

M(T)/TR	EXPECTED NUMBER OF FAILURES							
	93	94	95	96	97	98	99	100
1.00	0.084	0.084	0.084	0.084	0.084	0.084	0.084	0.084
1.05	0.147	0.147	0.148	0.148	0.149	0.149	0.150	0.150
1.10	0.232	0.234	0.235	0.236	0.237	0.239	0.240	0.241
1.15	0.337	0.339	0.341	0.343	0.345	0.348	0.350	0.352
1.20	0.453	0.456	0.458	0.461	0.464	0.467	0.470	0.473
1.25	0.569	0.573	0.576	0.580	0.583	0.586	0.590	0.593
1.30	0.677	0.681	0.684	0.688	0.692	0.695	0.699	0.702
1.35	0.769	0.773	0.776	0.780	0.783	0.787	0.790	0.794
1.40	0.843	0.846	0.849	0.852	0.855	0.858	0.861	0.864
1.45	0.898	0.900	0.903	0.905	0.908	0.910	0.913	0.915
1.50	0.936	0.938	0.940	0.942	0.944	0.946	0.948	0.949
1.55	0.962	0.964	0.965	0.966	0.968	0.969	0.970	0.971
1.60	0.978	0.979	0.980	0.981	0.982	0.983	0.983	0.984
1.65	0.988	0.989	0.989	0.990	0.990	0.991	0.991	0.992
1.70	0.994	0.994	0.994	0.995	0.995	0.995	0.996	0.996
1.75	0.997	0.997	0.997	0.997	0.998	0.998	0.998	0.998
1.80	0.998	0.998	0.999	0.999	0.999	0.999	0.999	0.999
1.85	0.999	0.999	0.999	0.999	0.999	1.000	1.000	1.000
1.90	1.000	1.000	1.000	1.000	1.000	1.000	1.000	1.000
1.95	1.000	1.000	1.000	1.000	1.000	1.000	1.000	1.000
2.00	1.000	1.000	1.000	1.000	1.000	1.000	1.000	1.000
2.05	1.000	1.000	1.000	1.000	1.000	1.000	1.000	1.000
2.10	1.000	1.000	1.000	1.000	1.000	1.000	1.000	1.000
2.15	1.000	1.000	1.000	1.000	1.000	1.000	1.000	1.000
2.20	1.000	1.000	1.000	1.000	1.000	1.000	1.000	1.000
2.25	1.000	1.000	1.000	1.000	1.000	1.000	1.000	1.000
2.30	1.000	1.000	1.000	1.000	1.000	1.000	1.000	1.000
2.35	1.000	1.000	1.000	1.000	1.000	1.000	1.000	1.000
2.40	1.000	1.000	1.000	1.000	1.000	1.000	1.000	1.000
2.45	1.000	1.000	1.000	1.000	1.000	1.000	1.000	1.000
2.50	1.000	1.000	1.000	1.000	1.000	1.000	1.000	1.000
2.55	1.000	1.000	1.000	1.000	1.000	1.000	1.000	1.000
2.60	1.000	1.000	1.000	1.000	1.000	1.000	1.000	1.000
2.65	1.000	1.000	1.000	1.000	1.000	1.000	1.000	1.000
2.70	1.000	1.000	1.000	1.000	1.000	1.000	1.000	1.000
2.75	1.000	1.000	1.000	1.000	1.000	1.000	1.000	1.000
2.80	1.000	1.000	1.000	1.000	1.000	1.000	1.000	1.000
2.85	1.000	1.000	1.000	1.000	1.000	1.000	1.000	1.000
2.90	1.000	1.000	1.000	1.000	1.000	1.000	1.000	1.000
2.95	1.000	1.000	1.000	1.000	1.000	1.000	1.000	1.000
3.00	1.000	1.000	1.000	1.000	1.000	1.000	1.000	1.000

**APPENDIX B**  
**DERIVATIONS**

APPENDIX B  
DERIVATIONS

Proposition 1.

$$f_{obs} \leq c \Rightarrow TR \leq \ell_\gamma(f_{obs})$$

Proof.

To prove this relation, we use the equation below which follows directly from the definition of a 100  $\gamma$  percent lower confidence bound when  $f_{obs}$  failures occur in a demonstration test of length  $T_{Dem}$ :

$$\sum_{i=0}^{f_{obs}} e^{-T_{Dem}/\ell} \frac{(T_{Dem}/\ell)^i}{i!} = 1 - \gamma$$

where

$$\ell \triangleq \ell_\gamma(f_{obs}).$$

Let  $g$  be the function of  $x > 0$  defined by the left hand side of the equation above with  $\ell$  replaced by  $x$ . Note  $g$  is a strictly increasing function of  $x > 0$  since  $g(x)$  is the probability of obtaining  $f_{obs}$  or fewer failures when the constant configuration under test has MTBF  $x$ .

I. First we shall show  $f_{obs} \leq c \Rightarrow TR \leq \ell$ .

Thus, let  $f_{obs} \leq c$ . Suppose  $\ell < TR$ . Then

$$\begin{aligned} g(\ell) < g(TR) &= \sum_{i=0}^{f_{obs}} e^{-T_{Dem}/TR} \frac{(T_{Dem}/TR)^i}{i!} \\ &\leq \sum_{i=0}^c e^{-T_{Dem}/TR} \frac{(T_{Dem}/TR)^i}{i!} \end{aligned}$$

$\leq 1 - \gamma$ , which is a contradiction since  $g(\ell) = 1 - \gamma$ . Thus,  $TR \leq \ell$ .

II. Next we shall show  $TR \leq \ell \Rightarrow f_{obs} \leq c$ . Thus, let  $TR \leq \ell$ . Suppose  $f_{obs} > c$ . Then

$$\sum_{i=0}^{f_{obs}} e^{-T_{Dem}/TR} \frac{(T_{Dem}/TR)^i}{i!} = g(TR) \leq g(t) = 1 - \gamma.$$

Since  $f_{obs} > c$ , this contradicts the definition of  $c$  (see Equation (5) in Section 2). Thus  $f_{obs} \leq c$ .

Proposition 2.

For each  $\alpha < 1$ ,  $T > 0$ , and  $M(T) > 0$ , the corresponding distribution function of  $L_\gamma(N, S)$  satisfies the inequality

$$\text{Prob}(L_\gamma(N, S) \leq M(T)) \geq \gamma$$

Proof

Let  $f_W$  denote the density function of  $W$  (defined by Equation (20) in Section 3) corresponding to  $\alpha < 1$ ,  $T > 0$ ,  $M(T) > 0$ . By inequality (21) in Section 3,

$$\begin{aligned} & \text{Prob}(L_\gamma(N, S) \leq M(T)) \\ &= \int_0^\infty \{\text{Prob}L_\gamma(N, S; w) \leq M(T)\} f_W(w) dw \\ &\geq \gamma \int_0^\infty f_W(w) dw = \gamma \end{aligned}$$

Proposition 3.

For each  $\alpha < 1$ ,  $T > 0$ , and  $M(T) > 0$ ,

$$\text{Prob}(L_\gamma(N, S) = x) = 0$$

for all real  $x$ .

Proof

Let  $\alpha < 0$ ,  $T > 0$ , and  $M(T) > 0$ . Clearly  $L_\gamma(N, S) \geq 0$ . Thus, we need to consider  $x \geq 0$ .

Let  $L_\gamma(n, S)$  denote  $L_\gamma(N, S)$  conditioned on  $N=n$ . As shown in Appendix A of Reference 4,

$$\frac{\hat{M}_n(T)}{M(T)} \sim \left( \frac{\lambda T^\beta}{2n^2} \right) \chi_{2n}^2$$

where  $\chi_v^2$  is the chi-square random variable with  $v$  degrees of freedom.

Thus,

$$\begin{aligned} \hat{M}_n(T) &\sim \left( \frac{1}{\lambda \beta T^{\beta-1}} \right) \left( \frac{\lambda T^\beta}{2n^2} \right) \chi_{2n}^2 \\ &= \left( \frac{T}{2\beta n^2} \right) \chi_{2n}^2 \end{aligned}$$

Then, by (12) in Section 3,

$$L_\gamma(n, S) \sim \left( \frac{2n}{z_\gamma(n)} \right)^2 \left( \frac{T}{2\beta n^2} \right) \chi_{2n}^2,$$

i.e.,

$$L_\gamma(n, S) \sim \left( \frac{2T}{\beta} \right) \left( \frac{\chi_{2n}^2}{z_\gamma^2(n)} \right) \quad (33)$$

Thus,

$$\text{Prob}(L_\gamma(n, S) = x) = \text{Prob}\left(\chi_{2n}^2 = \frac{\beta z_\gamma^2(n) x}{2T}\right) = 0$$

It then follows that,

$$\begin{aligned} \text{Prob}(L_\gamma(N, S) = x) &= \\ &[\text{Prob}(N=0)]^{-1} \sum_{n=1}^{\infty} [\text{Prob}(L_\gamma(n, S) = x) \text{Prob}(N=n)] \\ &= 0, \text{ since } \text{Prob}(N=0) > 0. \end{aligned}$$

Proposition 4.

Type II =  $\text{Prob} (TR \leq L_\gamma (N, S)) \leq 1 - \gamma$  for each  $\alpha < 1$  and  $T > 0$  where  $M(T) = TR$ .

Proof

Let  $\alpha < 1$  and  $T > 0$  with  $M(T) = TR$ .

Then

$$\text{Prob} (TR \leq L_\gamma (N, S)) =$$

$$\text{Prob} (L_\gamma (N, S) = TR) + \text{Prob} (TR < L_\gamma (N, S))$$

$$= \text{Prob} (TR < L_\gamma (N, S)), \text{ by Proposition 3,}$$

$$= 1 - \text{Prob} (L_\gamma (N, S) \leq TR) \leq 1 - \gamma, \text{ by Proposition 2.}$$

Proposition 5.

For a growth curve with parameters  $(\alpha, T, M(T))$ , the expected number of failures  $(E(N))$  can be determined by

$$E(N) = \frac{T}{(1-\alpha) M(T)}$$

Proof

The observed number of failures by test duration  $t$ , denoted by  $N(t)$ , is a non-homogeneous Poisson process with  $N(T) = N$  and intensity function

$$\rho(t) = \frac{1}{M(t)} = \lambda \beta t^{\beta-1}$$

This implies that  $N$  is Poisson distributed with expected value

$$E(N) = \int_0^T \rho(t) dt = \lambda T^\beta$$

By Equation (18) in Section 3,

$$E(N) = \frac{T^\beta}{(M(T)) \beta T^{\beta-1}}$$

This yields

$$E(N) = \frac{T}{\beta M(T)} = \frac{T}{(1-\alpha) M(T)}.$$

Proposition 6.

For a growth curve with parameters  $(\alpha, T, M(T))$ ,

$$\text{Prob}(A; \alpha, T, M(T)) =$$

$$(1 - e^{-\mu})^{-1} \sum_{n=1}^{\infty} \left[ \text{Prob} \left( \frac{\chi_{2n}^2}{z_\gamma^2(n)} \geq \frac{1}{2\mu d} \right) \right] e^{-\mu} \left( \frac{\mu^n}{n!} \right)$$

where  $\mu \triangleq E(N)$  and  $d \triangleq M(T)/TR$ .

Proof

From (23) in Section 3 and (33),

$$\begin{aligned} \text{Prob}(A; \alpha, T, M(T)) &= \text{Prob}(L_\gamma(N, S) \geq TR) \\ &= [1 - \text{Prob}(N=0)]^{-1} \sum_{n=1}^{\infty} [\text{Prob}(L_\gamma(n, S) \geq TR)] \text{Prob}(N=n) \\ &= [1 - \text{Prob}(N=0)]^{-1} \sum_{n=1}^{\infty} \left[ \text{Prob} \left( \left( \frac{2T}{\beta} \right) \left( \frac{\chi_{2n}^2}{z_\gamma^2(n)} \right) \geq TR \right) \right] \text{Prob}(N=n) \\ &= [1 - \text{Prob}(N=0)]^{-1} \sum_{n=1}^{\infty} \left[ \text{Prob} \left( \frac{\chi_{2n}^2}{z_\gamma^2(x)} \geq \frac{\beta(TR)}{2T} \right) \right] \text{Prob}(N=n) \end{aligned}$$

Letting  $\mu \triangleq E(N)$  and  $d \triangleq M(T)/TR$ ,

$$\text{Prob}(A; \alpha, T, M(T)) =$$

$$\begin{aligned} & (1 - e^{-\mu})^{-1} \sum_{n=1}^{\infty} \left[ \text{Prob} \left( \frac{\chi_{2n}^2}{z_{\gamma}^2(n)} \geq (1/2) \left( \frac{\beta M(T)}{T} \left( \frac{TR}{M(T)} \right) \right) \right) \right] e^{-\mu} \left( \frac{\mu^n}{n!} \right) \\ & = (1 - e^{-\mu})^{-1} \sum_{n=1}^{\infty} \left[ \text{Prob} \left( \frac{\chi_{2n}^2}{z_{\gamma}^2(n)} \geq \frac{1}{2\mu d} \right) \right] e^{-\mu} \left( \frac{\mu^n}{n!} \right). \end{aligned}$$



DISTRIBUTION LIST

<u>No. of Copies</u>	<u>Organization</u>	<u>No. of Copies</u>	<u>Organization</u>
7	Commander Defense Technical Information Center ATTN: DTIC-FDAC Cameron Station, Bldg 5 Alexandria, VA 22304-6145	1	Commander Harry Diamond Lab, Vista Office ATTN: SI CHD-D-PM-V (S Kovel) 2800 Powder Mill Road Adelphi, MD 20783-1197
8	Commander U.S. Army Materiel Command ATTN: AMCRM AMCMI AMCDE AMCDE-Q AMCRD AMCAE 5001 Eisenhower Avenue Alexandria, VA 22333-0001	2	Commander U.S. Army Tank-Automotive Command ATTN: AMSTA-TSL AMSTA-V (R. Feury) Warren, MI 48397-5000
2	Director U.S. Army Armament RD&E Center ATTN: SMCAR-TSS Picatinny Arsenal, NJ 07806-5000	1	Commander U.S. Army Aviation Systems Command Directorate for Plans and Analysis ATTN: AMSAV-BC 4300 Goodfellow Blvd., St. Louis, MO 63120-1798
2	Commander HQ AMCCOM ATTN: AMSMC-IMP-L AMSMC-SA (R. Fisher) Rock Island, IL 61299-6000	1	Commander U.S. Army Natick RD&E Center ATTN: STRNC-0 Natick, MA 0176--5000
2	Director U.S. Army TRADOC Analysis Activity ATTN: ATOR-TSL ATOR-T White Sands Missile Range, NM 88002-5502	2	Commander U.S. Army Concepts Analysis Agency ATTN: CSCA-MSI-L CSCA-MV-M 8120 Woodmont Avenue Bethesda, MD 20814-2797
2	Commander U.S. Army Missile Command ATTN: AMSMI-OR (D. White) AMSMI-QA-QT-RT (R. Nutt) Redstone Arsenal, AL 35898-5060	1	Commandant U.S. Army Infantry School ATTN: ATSH-CD-CS-OR Fort Benning, GA 31905-5400
2	Commander U.S. Army Troop Support Command ATTN: AMSTR-B AMSTR-RN (J. Toler) 4300 Goodfellow Blvd. St. Louis, MO 63120-1798	1	Pentagon Library ATTN: ANR-AL-RS (Army Studies) Pentagon, Rm 1A518 Washington, DC 20310

**DISTRIBUTION LIST (Continued)**

<u>No. of Copies</u>	<u>Organization</u>	<u>No. of Copies</u>	<u>Organization</u>
3	Chief Defense Logistics Studies Information Exchange U.S. Army Logistics Management Center ATTN: AMXCM-D (2 copies) AMXCM-ACM (Mr. Fowler) Fort Lee, VA 23801-6043	1	Commander USAREUR & 7th Army ATTN: AEAG-X-OR APO New York 09403
1	Director Combat Data Information Center AFWAL/FIES/CDIC Wright-Patterson AFB, OH 45433-5000	1	Commander U.S. Army Communications- Electronics Command ATTN: AMSEL-PE (E. Thomas) Fort Monmouth, NJ 07703-5027
1	Commander U.S. Army Armament Research, Development and Engineering Center U.S. Army Armament, Munitions & Chemical Command ATTN: SMCAR-ASH (L. Ostuni) Picatinny Arsenal, NJ 07801-50001	1	Commander U.S. Army Belvoir Research, Development & Engineering Center ATTN: STRBE-HP (E. Lynch/Mr. Hambric) Fort Belvoir, VA 22060-5606
1	Commander U.S. Army Aviation Systems Command ATTN: AMSAV-BA (T. Kassos) 4300 Goodfellow Boulevard St. Louis, MO 63120-1798	1	Commander U.S. Army Natick Research, Development & Engineering Center ATTN: STRNC-AA (D. Malabarba) Natick, MA 01760-5015
1	Commander U.S. Army Aviation Systems Command ATTN: AMSAV-BB (T. Mailey) 4300 Goodfellow Boulevard St. Louis, MO 63120-1798	1	Commander U.S. Army Laboratory Command ATTN: AMCLD-TP (S. Van Nostrand) Adelphi, MD 20783-1145
1	Commander U.S. Army Communications- Electronics Command ATTN: AMSEL-PE-SA (B. Price) Fort Monmouth, NJ 07703-5027	1	Commander U.S. Army Materiel Readiness Support Activity ATTN: AMXMD-EL (W. Stratton) Lexington, KY 40511-5101
		1	Program Executive Officer Air Defense ATTN: SFAE-AD Redstone Arsenal, AL 35898-5750

DISTRIBUTION LIST (Continued)

<u>No. of Copies</u>	<u>Organization</u>	<u>No. of Copies</u>	<u>Organization</u>
1	Program Executive Officer Armaments ATTN: SFAE-AR Picatinny Arsenal, NJ 078706-5000	1	Program Executive Officer Standard Army Management Information Systems ATTN: SFAEA-PS STOP C-3 Fort Belvoir, VA 22060-5895
1	Program Executive Officer Armored Systems Modernization ATTN: SFAAE-ASM Warren, MI 48397-5000	1	Program Executive Officer Strategic Defense ATTN: SFAE-SD U.S. Army Strategic Defense Command P.O. Box 15280 Arlington, VA 22215-0280
1	Program Executive Officer Aviation ATTN: SFAE-AV 4300 Goodfellow Boulevard St. Louis, MO 63120-1798	1	Program Executive Officer Cruise Missiles Project and Unmanned Aerial Vehicles Joint Project ATTN: PEO-CU Washington, DC 20361-1014
1	Program Executive Officer Combat Support ATTN: SFAE-CS Warren, MI 48397-5000	1	Program Executive Officer Defense Systems Support ATTN: JA 701 S. Courthouse Road Arlington, VA 22204-2199
1	Program Executive Officer Command and Control Systems ATTN: SFAE-CC Fort Monmouth, NJ 07703-5000	1	Program Executive Officer Intelligence and Electronic Warfare ATTN: SFAE-IEW Building P-197 Vint Hill Farms Station Warrenton, VA 22186-5115
1	Program Executive Officer Communications Systems ATTN: SFAE-CM Fort Monmouth, NJ 07703-5000		
1	Program Executive Officer Tactical Missiles ATTN: SFAE-MSL Redstone Arsenal, AL 35898-8000		

DISTRIBUTION LIST (Continued)

<u>No. of Copies</u>	<u>Organization</u>	<u>No. of Copies</u>	<u>Organization</u>
<u>Aberdeen Proving Ground</u>			
4	Cdr, USATECOM ATTN: AMSTE-AD AMSTE-TO-F AMSTE-CL (MAJ Stewart) AMSTE-TA (E. Stauch) Ryan Bldg APG, MD 21005-5055	1	Dir, BRL ATTN: SLCBR-OD-ST Bldg: 305 APG, MD 21005-5066
1	Dir, BRL, Bldg: 328 ATTN: SLCBR-D APG, MD 21005-5066	1	Dir, BRL ATTN: SLCBR-SE-P (J. Thomas) Bldg 394 APG, MD 21005-5066
4	Dir, AMSAA ATTN: AMXSY-R (P. Ellner) AMXSY-PA (3 cys)	1	Dir, HEL ATTN: SLCHE-FS (Dr. M. Hofmann) Bldg: 459 APG, MD 21005-5001
1	Cdr, USACRDEC ATTN: SMCCR-OPA (J. Seigh) APG, MD 21010-5423		

AMXSU-RM

**STUDY GIST**

**SUBJECT:** Technical Report No. XXX, Operating Characteristic Analysis for Reliability Growth Programs.

**PRINCIPAL FINDINGS:** The consumer and producer statistical risks associated with the MIL-HDBK-189 idealized growth curve can be determined from the expected number of failures and the ratio of the MTBF achieved at the end of test to the technical requirement to be demonstrated with confidence at the end of test.

**MAIN ASSUMPTIONS:** The system true reliability grows in accordance with the MIL-HDBK-189 idealized growth curve and the cumulative failure times are observed.

**PRINCIPAL LIMITATIONS:** The above assumptions are satisfied and the growth test is time-truncated.

**SCOPE OF THE EFFORT:** Methodology was developed to determine the a priori consumer and producer statistical risks of a reliability growth program.

**OBJECTIVE:** Extend concepts of an operating characteristic (OC) analysis for a reliability demonstration test to a reliability growth setting.

**BASIC APPROACH:** Obtain the probability distribution of the lower confidence bound for the system true reliability based on growth test data.

**REASON FOR PERFORMING THE STUDY OR ANALYSIS:** Develop methodology for assessing Government (consumer) and contractor (producer) statistical risks associated with a reliability growth program.

**IMPACT OF THE STUDY:** Allows analysts to perform trade-offs between test duration, consumer and producer statistical risks, and reliability growth parameters (i.e., growth rate and initial MTBF over initial test time period).

**SPONSOR:** AMSAA, RAM Division

**PRINCIPAL INVESTIGATOR:** Paul Ellner, AMSAA

**NAME/ADDRESS/PHONE NUMBER WHERE COMMENTS & QUESTIONS CAN BE SENT:**

Director  
US Army Materiel Systems Analysis Activity  
ATTN: AMXSJ-RM  
Aberdeen Proving Ground, MD 21005-5071  
DSN 298-2090 r Commercial: (410) 278-2090

**DEFENSE TECHNICAL INFORMATION CENTER (DTIC) ACCESSION NUMBER OF FINAL REPORT:**

**OTHER THAN SPONSOR, WHO COULD BENEFIT FROM THIS STUDY/INFORMATION?**

DOD contractors and Government RAM analysts.