

AD-A218 395

1.1 COPY

4

AD

TECHNICAL REPORT ARCCB-TR-90001

**WIDE RANGE STRESS INTENSITY
FACTOR AND CRACK-MOUTH-OPENING
DISPLACEMENT EXPRESSIONS SUITABLE
FOR SHORT CRACK FRACTURE TESTING
WITH ARC BEND-CHORD SUPPORT SAMPLES**

J. A. KAPP

JANUARY 1990

DTIC
ELECTE
FEB 23 1990
S B D



**US ARMY ARMAMENT RESEARCH,
DEVELOPMENT AND ENGINEERING CENTER
CLOSE COMBAT ARMAMENTS CENTER
BENÉT LABORATORIES
WATERVLIET, N.Y. 12189-4050**



APPROVED FOR PUBLIC RELEASE; DISTRIBUTION UNLIMITED

90 02 22 006

DISCLAIMER

The findings in this report are not to be construed as an official Department of the Army position unless so designated by other authorized documents.

The use of trade name(s) and/or manufacturer(s) does not constitute an official indorsement or approval.

DESTRUCTION NOTICE

For classified documents, follow the procedures in DoD 5200.22-M, Industrial Security Manual, Section II-19 or DoD 5200.1-R, Information Security Program Regulation, Chapter IX.

For unclassified, limited documents, destroy by any method that will prevent disclosure of contents or reconstruction of the document.

For unclassified, unlimited documents, destroy when the report is no longer needed. Do not return it to the originator.

REPORT DOCUMENTATION PAGE		READ INSTRUCTIONS BEFORE COMPLETING FORM
1. REPORT NUMBER ARCCB-TR-90001	2. GOVT ACCESSION NO.	3. RECIPIENT'S CATALOG NUMBER
4. TITLE (and Subtitle) WIDE RANGE STRESS INTENSITY FACTOR AND CRACK- MOUTH-OPENING DISPLACEMENT EXPRESSIONS SUITABLE FOR SHORT CRACK FRACTURE TESTING WITH ARC BEND- CHORD SUPPORT SAMPLES		5. TYPE OF REPORT & PERIOD COVERED Final
7. AUTHOR(s) J. A. Kapp		6. PERFORMING ORG. REPORT NUMBER
9. PERFORMING ORGANIZATION NAME AND ADDRESS U.S. Army ARDEC Benet Laboratories, SMCAR-CCB-TL Watervliet, NY 12189-4050		8. CONTRACT OR GRANT NUMBER(s)
11. CONTROLLING OFFICE NAME AND ADDRESS U.S. Army ARDEC Close Combat Armaments Center Picatinny Arsenal, NJ 07806-5000		10. PROGRAM ELEMENT, PROJECT, TASK AREA & WORK UNIT NUMBERS AMCMS No. 6111.02.H610.011 PRON No. 1A82Z8CANMSC
14. MONITORING AGENCY NAME & ADDRESS (if different from Controlling Office)		12. REPORT DATE January 1990
		13. NUMBER OF PAGES 13
		15. SECURITY CLASS. (of this report) UNCLASSIFIED
		15a. DECLASSIFICATION/DOWNGRADING SCHEDULE
16. DISTRIBUTION STATEMENT (of this Report) Approved for public release; distribution unlimited.		
17. DISTRIBUTION STATEMENT (of the abstract entered in Block 20, if different from Report)		
18. SUPPLEMENTARY NOTES Submitted to <u>International Journal of Fracture</u> .		
19. KEY WORDS (Continue on reverse side if necessary and identify by block number) Wide Range Expressions Fracture Mechanics Fracture Testing Fracture Specimens		
20. ABSTRACT (Continue on reverse side if necessary and identify by block number) / The correct short crack limit solutions for both the stress intensity factor and the crack-mouth-opening displacement are derived for the arc bend-chord support specimen. The short crack limit, along with the deep crack limit, is used to develop wide range interpolating polynomials to estimate the stress intensity factor and crack-mouth-opening displacement over a wide range of possible specimen configurations and crack lengths. The polynomials are developed such that the limit for short cracks is the most accurate. More accurate (CONT'D ON REVERSE)		

20. ABSTRACT (Cont'd)

expressions can be found elsewhere for crack lengths and specimen geometries more commonly used in fracture toughness determination or fatigue crack propagation.

Revised 1/1/71
for [unclear] (R)

TABLE OF CONTENTS

	<u>Page</u>
INTRODUCTION	1
ANALYSIS	1
CONCLUSIONS	5
REFERENCES	7

TABLES

I. COMPARISON OF NORMALIZED STRESS INTENSITY FACTORS FOR S/W = 4	8
II. COMPARISON OF NORMALIZED STRESS INTENSITY FACTORS FOR S/W = 3	9
III. COMPARISON OF NORMALIZED CRACK-MOUTH-OPENING DISPLACEMENTS FOR S/W = 4	10
IV. COMPARISON OF NORMALIZED CRACK-MOUTH-OPENING DISPLACEMENTS FOR S/W = 3	11

LIST OF ILLUSTRATIONS

1. Schematic of the arc bend-chord support specimen	12
---	----



Accession For	
NTIS GRA&I	<input checked="" type="checkbox"/>
DTIC TAB	<input type="checkbox"/>
Unannounced	<input type="checkbox"/>
Justification	
By _____	
Distribution/	
Availability Codes	
Dist	Avail and/or Special
A-1	

INTRODUCTION

The arc bend-chord support sample has been proposed for standardization with ASTM (ref 1). This specimen is an arc-shaped specimen loaded in three-point bending with the support loads resting on a chordal cut of a cylinder. Figure 1 is a schematic of the arc bend-chord support specimen. The stress intensity factor, crack-mouth-opening displacement, and load-line displacement have been developed for this specimen (ref 2). Wide range expressions for the stress intensity factor and crack-mouth-opening displacement have also been developed (ref 2). These expressions are valid in the range of $a/W \geq 0.2$, however, this restriction is not an inconvenience when performing fracture toughness or fatigue crack propagation tests.

A group within ASTM's committee E-24 has been formed to study the behavior of short cracks. One of the specimens being considered is the arc bend-chord support sample, since many of the components tested are tubular products. To use the arc bend-chord support sample for short crack testing, a new wide range expression is necessary that is applicable for short crack lengths for both the stress intensity factor and for the crack-mouth-opening displacement.

ANALYSIS

To develop the short crack limits for the stress intensity factor and the crack-mouth-opening displacement for any two-dimensional crack problem, the Wigglesworth stress intensity factor solution (ref 3) and the Paris application of Castigliano's theorem (ref 4) are used. For the stress intensity factor, the limit is

$$\lim_{a \rightarrow 0} K = 1.12 \sigma \sqrt{\pi a} \quad (1)$$

where K is the stress intensity factor, a is the crack length, and σ is the value of the normal stress at the surface. For crack-mouth-opening displacement, the limit is

$$\lim_{a \rightarrow 0} \Delta = 5.83 \frac{\sigma a}{E'} \quad (2)$$

where Δ is the crack-mouth-opening displacement, E' is the elastic modulus (E) for plane-stress or $E/(1-\nu^2)$ for plane-strain, and ν is Poisson's ratio. Similarly, the limits for the stress intensity factor and crack-mouth-opening displacement can also be determined for the case of the crack approaching a through-thickness crack. The limit for the stress intensity factor is from Wilson's solution (ref 5), and the crack-mouth-opening displacement can be determined using the Paris treatment (ref 4) once again.

The deep crack limit for the stress intensity factor is

$$\lim_{a \rightarrow W} K = 3.975 \frac{M}{(W-a)^{3/2}} \quad (3)$$

where M is the applied moment per unit thickness (B) and W is the specimen width. For the crack-mouth-opening displacement, the deep crack limit is

$$\lim_{a \rightarrow W} \Delta = 15.8 \frac{M}{E' (W-a)^2} \quad (4)$$

Using Eqs. (1), (2), (3), and (4) and some algebraic manipulation, we develop nondimensional forms of both the stress intensity factor and the crack-mouth-opening displacements that approach both the short crack and the deep crack limits correctly. The numerically determined stress intensity factor and crack-mouth-opening displacement can then be normalized using the proper forms developed and interpolating polynomials can be fitted to the numerical solutions as well as the limiting solutions.

For the arc bend specimen, there are two other variables that must be accounted for. These are the span (S) used and the effects of curvature as represented by the radius ratio (r_1/r_2). As shown in Reference 2, the effects of span cannot be accounted for simply with the limiting solutions. Therefore, two separate expressions were fit to the two proposed standard spans (span to width ratio (S/W) of 3 or 4) for either the stress intensity factor or the crack-mouth-opening displacement. The same expressions are also used in this report. The curvature effect is accounted for by the short crack limit solutions that involve the surface stress. At mid-span, the arc bend specimen is subjected to loading such that the surface stress is a pure bending stress. The shear stress at the surface is zero. Using the solutions for a curved beam subjected to pure bending, this surface stress can be determined as (ref 6)

$$\sigma = \frac{P(S/W)(1-r_1/r_2)^2(1-r_1^2/r_2^2-2\ln(r_2/r_1))}{BW((1-r_1/r_2)^2-4r_1^2/r_2^2\ln^2(r_2/r_1))} \quad (5)$$

Using Eqs. (1), (3), and (5), the normalized form of the stress intensity factor that has finite limits as the crack approaches both zero length and through-thickness is

$$\frac{KB\sqrt{W}(1-a/W)^{3/2}}{P(S/W)\sqrt{a/W}} = [1 + g(r_1/r_2)h(a/W)]f(a/W) \quad (6)$$

The numerical stress intensity factor results from Reference 2, the limit solutions outlined above, and the numerical results for the three-point bend specimen ($r_1/r_2 = 1$) (ref 7) are presented in Table I for S/W = 4. Table II gives the stress intensity factor results from Reference 2 and the above limit solutions for S/W = 3. The normalized solutions in the tables lead to the right-hand side of Eq. (6). The strongest effect of r_1/r_2 occurs when the cracks are very short. This curvature effect decays to zero when the cracks

approach through-thickness. Decreasing r_1/r_2 from the three-point bend case, ($r_1/r_2 = 1$), has a tendency to increase the stress intensity factor a relatively small amount that increases as the specimen becomes more curved. Therefore, the form of the interpolating polynomials (Eq. (6)) was chosen. With this form, $g(r_1/r_2)$ was fit to account for the maximum curvature effect ($a/W=0$), and $h(a/W)$ had a maximum value of one at $a/W = 0$ and a minimum value of zero at $a/W = 1$. Both of these polynomials can be obtained by least squares fitting to the data reported in the tables.

For $S/W = 4$, the three interpolating polynomials are

$$\begin{aligned} g(r_1/r_2) &= 0.832 - 1.376 r_1/r_2 + 0.544(r_1/r_2)^2 \\ h(a/W) &= 1.003 - 4.680 a/W + 9.953(a/W)^2 - 10.030(a/W)^3 + 3.754(a/W)^4 \\ f(a/W) &= 2.978 - 8.240 a/W + 17.157(a/W)^2 - 18.073(a/W)^3 + 7.174(a/W)^4 \end{aligned} \quad (7)$$

For $S/W = 3$, the interpolating polynomials are

$$\begin{aligned} g(r_1/r_2) &= 1.035 - 3.238 r_1/r_2 + 2.938(r_1/r_2)^2 - 1.005(r_1/r_2)^3 \\ h(a/W) &= 1.000 - 6.740 a/W + 22.224(a/W)^2 - 36.295(a/W)^3 \\ &\quad + 27.630(a/W)^4 - 7.820(a/W)^5 \\ f(a/W) &= 2.978 - 10.366 a/W + 32.196(a/W)^2 - 59.232(a/W)^3 \\ &\quad + 55.797(a/W)^4 - 20.378(a/W)^5 \end{aligned} \quad (8)$$

The accuracy of these polynomials is as follows: for $S/W = 4$, better than ± 0.1 percent at $a/W = 0$ and ± 0.9 percent for any a/W and $1 \leq r_1/r_2 \leq 0.6$; for $S/W = 3$, better than ± 0.1 percent at $a/W = 0$ and ± 3.2 percent for any a/W and $1 \leq r_1/r_2 \leq 0.4$, and ± 1.2 percent for any a/W and $1 \leq r_1/r_2 \leq 0.6$.

For crack-mouth-opening displacement, the normalized form that has finite limits as the crack approaches both zero length and through-thickness length is

$$\frac{E' B \Delta (1-a/W)^2}{P(S/W)(a/W)} = [1 + g(r_1/r_2)h(a/W)]f(a/W) \quad (9)$$

The numerical results from References 2 and 7 and the limits are normalized in accordance with Eq. (9) and are listed in Table III for $S/W = 4$, and the results from Reference 2 along with the limits for $S/W = 3$ are listed in Table IV. For the same reasons as presented above for the stress intensity factor solutions, the form of Eq. (9) was chosen. The interpolating polynomials for the crack-mouth-opening displacement were determined in the same manner as the stress intensity factor. They are

For $S/W = 4$:

$$\begin{aligned} g(r_1/r_2) &= 0.832 - 1.376 r_1/r_2 + 0.544(r_1/r_2)^2 \\ h(a/W) &= 1.007 - 3.249 a/W + 4.517(a/W)^2 - 2.275(a/W)^3 \\ f(a/W) &= 8.747 - 25.576 a/W + 66.722(a/W)^2 - 93.010(a/W)^3 \\ &\quad + 63.579(a/W)^4 - 16.509(a/W)^5 \end{aligned} \quad (10)$$

For $S/W = 3$:

$$\begin{aligned} g(r_1/r_2) &= 1.035 - 3.238 r_1/r_2 + 2.938(r_1/r_2)^2 - 1.005(r_1/r_2)^3 \\ h(a/W) &= 1.001 - 4.974 a/W + 10.425(a/W)^2 - 8.340(a/W)^3 + 1.885(a/W)^4 \\ f(a/W) &= 8.741 - 28.100 a/W + 75.198(a/W)^2 - 93.686(a/W)^3 + 41.800(a/W)^4 \end{aligned}$$

The accuracy of these polynomials is as follows: for $S/W = 4$, better than ± 0.1 percent at $a/W = 0$ and ± 1.5 percent for any a/W and $1 \leq r_1/r_2 \leq 0.6$; for $S/W = 3$, better than ± 0.1 percent at $a/W = 0$ and ± 3.8 percent for any a/W and $1 \leq r_1/r_2 \leq 0.4$.

CONCLUSIONS

The short crack limit solutions for the stress intensity factor and crack-mouth-opening displacement for the arc bend-chord support specimen have been derived. This limit, along with the deep crack limit and the numerically determined values of these same parameters, was used to develop interpolating

polynomials for a wide range of specimen configurations. These polynomials were specifically developed to ensure that the short crack limits were as accurate as possible. Interpolating polynomials for this specimen for crack lengths customarily used for fracture toughness testing and fatigue crack growth testing can be found elsewhere.

REFERENCES

1. J. H. Underwood, J. A. Kapp, and M. D. Withere11, "Fracture Testing With Arc-Bend Specimens," Fracture Mechanics: Seventeenth Volume, ASTM STP 905, (J. H. Underwood, et al., eds.), American Society for Testing and Materials, Philadelphia, PA, 1986, pp. 279-296.
2. J. A. Kapp, "Stress Intensity Factors and Displacements for Arc-Bend Specimens Using Collocation," Fracture Mechanics: Eighteenth Symposium, ASTM STP 945, (D. T. Read and R. P. Reed, eds.), American Society for Testing and Materials, Philadelphia, PA, 1988, pp. 285-300; also ARCCB-TR-89014, U.S. Army ARDEC, Benet Laboratories, Watervliet, NY, June 1989.
3. L. A. Wigglesworth, "Stress Distribution in a Notched Plate," Mathematica, Vol. 4, 1957, p. 76.
4. P. C. Paris, "The Mechanics of Fracture Propagation and Solution to Fracture Arrestor Problems," Document D2-2195, The Boeing Company, 1957 (as referenced in H. Tada, P. Paris, and G. Irwin, The Stress Analysis of Cracks Handbook, Del Research Corporation, Hellertown, PA, 1973).
5. W. K. Wilson, "Stress Intensity Factors for Deep Cracks in Bending and Compact Tension Specimens," Engineering Fracture Mechanics, Vol. 2, 1970, p. 169.
6. A. C. Ugural and S. K. Fenster, Advanced Strength and Applied Elasticity, American Elsevier Publishing Co., New York, 1975.
7. J. E. Srawley and B. Gross, "Stress Intensity Factors for Bend and Compact Specimens," Engineering Fracture Mechanics, Vol. 4, 1972, p. 587.

TABLE I. COMPARISON OF NORMALIZED STRESS INTENSITY FACTORS FOR $S/W = 4$

$r_1 r_2$	a/W	0	0.2	0.3	0.4	0.5	0.6	0.7	1
1.0	K' (ref 7)	2.978	1.880	1.625	1.457	1.331	1.233	1.150	0.995
	K' (Eq. 7)	2.978	1.883	1.620	1.454	1.337	1.237	1.140	0.996
	Error	-0.0001	-0.0017	0.0031	0.0019	-0.0039	-0.0028	0.0084	-0.0010
0.8	K' (ref 2)	3.217	1.944	1.665	1.475	1.346			0.995
	K' (Eq. 7)	3.214	1.941	1.653	1.474	1.350			0.996
	Error	0.0009	0.0015	0.0077	0.0006	-0.0029			-0.0008
0.7	K' (ref 2)	3.378	1.976	1.679	1.490	1.360			0.995
	K' (Eq. 7)	3.381	1.981	1.675	1.488	1.360			0.996
	Error	-0.0009	-0.0026	0.0020	0.0010	0.0001			-0.0006
0.6	K' (ref 2)	3.582	2.012	1.708	1.506	1.360			0.995
	K' (Eq. 7)	3.580	2.031	1.703	1.505	1.371			0.995
	Error	0.0005	-0.0094	0.0032	0.0006	-0.0084			-0.0004

TABLE II. COMPARISON OF NORMALIZED STRESS INTENSITY FACTORS FOR S/W = 3

$\Gamma_1 r_2$	a/w	0.2 0.3 0.4 0.5 0.6 1								
		0	0.2	0.3	0.4	0.5	0.6	1		
1.0	K' (ref 2)	2.978	1.813	1.579	1.416	1.293	1.204	0.995		
	K' (Eq. 8)	2.978	1.802	1.569	1.412	1.291	1.202	0.995		
	Error	-0.0001	0.0065	0.0063	0.0028	0.0022	0.0021	0.0000		
0.8	K' (ref 2)	3.217	1.867	1.615	1.438	1.310	1.215	0.995		
	K' (Eq. 8)	3.217	1.844	1.595	1.430	1.304	1.210	0.995		
	Error	-0.0001	0.0122	0.0124	0.0051	0.0045	0.0039	0.0001		
0.6	K' (ref 2)	3.582	1.931	1.650	1.465	1.330	1.228	0.995		
	K' (Eq. 8)	3.582	1.908	1.634	1.459	1.325	1.223	0.995		
	Error	0.0000	0.0116	0.0101	0.0041	0.0038	0.0038	0.0002		
0.4	K' (ref 2)	4.216	1.957	1.654	1.487	1.348	1.233	0.995		
	K' (Eq. 8)	4.216	2.020	1.701	1.508	1.361	1.246	0.995		
	Error	0.0000	-0.0322	-0.0288	-0.0144	-0.0095	-0.0104	0.0004		

$$K' = \frac{KB\sqrt{W}(1-a/W)^{3/2}}{P(S/W)\sqrt{a/W}}$$

$$\text{Error} = \frac{K'(\text{ref}) - K'(Eg)}{K'(\text{ref})}$$

TABLE III. COMPARISON OF NORMALIZED CRACK-MOUTH-OPENING DISPLACEMENTS FOR $S/W = 4$

$r_1 r_2$	a/W	0	0.2	0.3	0.4	0.5	0.6	0.7	1
		Δ' (ref 7)	8.745	5.656	5.047	4.687	4.459	4.268	4.136
1.0	Δ' (Eq. 10)	8.747	5.653	5.043	4.698	4.447	4.287	4.126	3.953
	Error	-0.0002	0.0005	0.0008	-0.0024	0.0026	-0.0045	0.0023	-0.0008
	Δ' (ref 2)	9.448	5.976	5.161	4.788	4.511			3.950
0.8	Δ' (Eq. 10)	9.441	5.883	5.191	4.802	4.549			3.951
	Error	0.0007	0.0156	-0.0058	-0.0028	-0.0084			-0.0002
	Δ' (ref 2)	9.921	6.032	5.263	4.880	4.598			3.950
0.7	Δ' (Eq. 10)	9.931	6.045	5.296	4.875	4.604			3.949
	Error	-0.0010	-0.0022	-0.0061	0.0012	-0.0015			0.0002
	Δ' (ref 2)	10.519	6.176	5.415	5.042	4.719			3.950
0.6	Δ' (Eq. 10)	10.516	6.239	5.421	4.962	4.670			3.947
	Error	0.0003	-0.0102	-0.0011	0.0160	0.0103			0.0007

TABLE IV. COMPARISON OF NORMALIZED CRACK-MOUTH-OPENING DISPLACEMENTS FOR S/W = 3

$r_1 r_2$	a/w	Δ'								
		0	0.2	0.3	0.4	0.5	0.6	1		
1.0	Δ' (ref 2)	8.745	5.376	4.949	4.596	4.345	4.178	3.950		
	Δ' (Eq. 11)	8.741	5.446	4.888	4.607	4.392	4.133	3.953		
	Error	0.0005	-0.0131	0.0124	-0.0024	-0.0109	0.0106	-0.0008		
0.8	Δ' (ref 2)	9.448	5.536	4.905	4.692	4.437	4.253	3.950		
	Δ' (Eq. 11)	9.443	5.603	4.981	4.678	4.461	4.204	3.952		
	Error	0.0005	-0.0121	-0.0153	0.0029	-0.0055	0.0117	-0.0004		
0.6	Δ' (ref 2)	10.519	5.899	5.325	4.842	4.552	4.356	3.950		
	Δ' (Eq. 11)	10.514	5.842	5.122	4.787	4.566	4.311	3.950		
	Error	0.0006	0.0096	0.0381	0.0113	-0.0031	0.0105	0.0001		
0.4	Δ' (Ref 2)	12.381	6.165	5.450	4.902	4.627	4.462	3.950		
	Δ' (Eq. 11)	12.373	6.258	5.368	4.976	4.747	4.497	3.946		
	Error	0.0006	-0.0150	0.0151	-0.0151	-0.0261	-0.0077	0.0009		

$$\Delta' = \frac{E'BA(1-a/W)^2}{P(S/W)(a/W)}$$

$$\text{Error} = \frac{\Delta'(\text{ref}) - \Delta'(\text{Eq})}{\Delta'(\text{ref})}$$

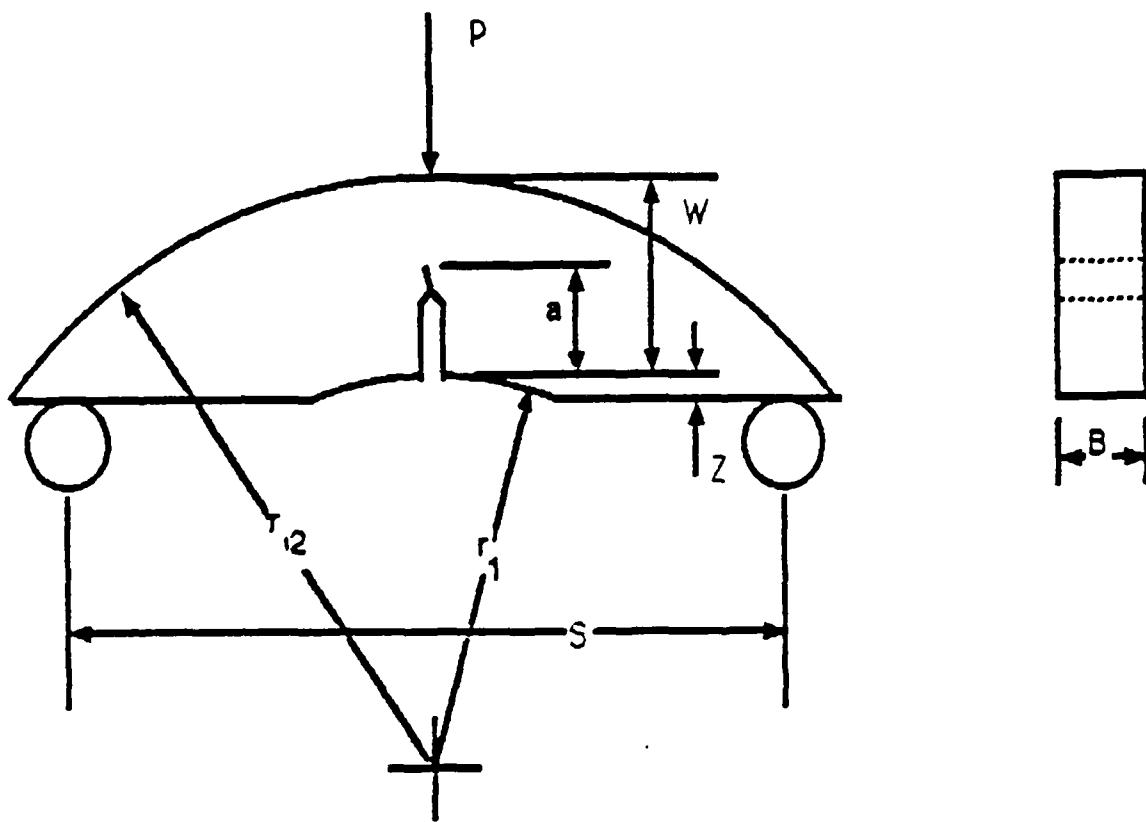


Figure 1. Schematic of the arc bend-chord support specimen

TECHNICAL REPORT INTERNAL DISTRIBUTION LIST

	<u>NO. OF COPIES</u>
CHIEF, DEVELOPMENT ENGINEERING DIVISION	
ATTN: SMCAR-CCB-D	1
-DA	1
-DC	1
-DM	1
-DP	1
-DR	1
-DS (SYSTEMS)	1
CHIEF, ENGINEERING SUPPORT DIVISION	
ATTN: SMCAR-CCB-S	1
-SE	1
CHIEF, RESEARCH DIVISION	
ATTN: SMCAR-CCB-R	2
-RA	1
-RM	1
-RP	1
-RT	1
TECHNICAL LIBRARY	5
ATTN: SMCAR-CCB-TL	
TECHNICAL PUBLICATIONS & EDITING SECTION	3
ATTN: SMCAR-CCB-TL	
DIRECTOR, OPERATIONS DIRECTORATE	1
ATTN: SMCWV-OD	
DIRECTOR, PROCUREMENT DIRECTORATE	1
ATTN: SMCWV-PP	
DIRECTOR, PRODUCT ASSURANCE DIRECTORATE	1
ATTN: SMCWV-QA	

NOTE: PLEASE NOTIFY DIRECTOR, BENET LABORATORIES, ATTN: SMCAR-CCB-TL, OF ANY ADDRESS CHANGES.

TECHNICAL REPORT EXTERNAL DISTRIBUTION LIST

	<u>NO. OF COPIES</u>		<u>NO. OF COPIES</u>
ASST SEC OF THE ARMY RESEARCH AND DEVELOPMENT ATTN: DEPT FOR SCI AND TECH THE PENTAGON WASHINGTON, D.C. 20310-0103	1	COMMANDER ROCK ISLAND ARSENAL ATTN: SMCRI-ENM ROCK ISLAND, IL 61299-5000	1
ADMINISTRATOR DEFENSE TECHNICAL INFO CENTER ATTN: DTIC-FDAC CAMERON STATION ALEXANDRIA, VA 22304-6145	12	DIRECTOR US ARMY INDUSTRIAL BASE ENGR ACTV ATTN: AMXIB-P ROCK ISLAND, IL 61299-7260	1
COMMANDER US ARMY ARDEC ATTN: SMCAR-AEE	1	COMMANDER US ARMY TANK-AUTMV R&D COMMAND ATTN: AMSTA-DDL (TECH LIB) WARREN, MI 48397-5000	1
SMCAR-AES, BLDG. 321	1	COMMANDER	
SMCAR-AET-O, BLDG. 351N	1	US MILITARY ACADEMY	1
SMCAR-CC	1	ATTN: DEPARTMENT OF MECHANICS	
SMCAR-CCP-A	1	WEST POINT, NY 10996-1792	
SMCAR-FSA	1		
SMCAR-FSM-E	1	US ARMY MISSILE COMMAND	
SMCAR-FSS-D, BLDG. 94	1	REDSTONE SCIENTIFIC INFO CTR	2
SMCAR-IMI-I (STINFO) BLDG. 59	2	ATTN: DOCUMENTS SECT, BLDG. 4484	
PICATINNY ARSENAL, NJ 07806-5000		REDSTONE ARSENAL, AL 35898-5241	
DIRECTOR US ARMY BALLISTIC RESEARCH LABORATORY ATTN: SLCBR-DD-T, BLDG. 305	1	COMMANDER US ARMY FGN SCIENCE AND TECH CTR ATTN: DRXST-SD	1
ABERDEEN PROVING GROUND, MD 21005-5066		220 7TH STREET, N.E. CHARLOTTESVILLE, VA 22901	
DIRECTOR US ARMY MATERIEL SYSTEMS ANALYSIS ACTV ATTN: AMXSY-MP	1	COMMANDER US ARMY LABCOM	
ABERDEEN PROVING GROUND, MD 21005-5071		MATERIALS TECHNOLOGY LAB ATTN: SLCMT-IML (TECH LIB)	2
COMMANDER HQ, AMCCOM ATTN: AMSMC-IMP-L	1	WATERTOWN, MA 02172-0001	
ROCK ISLAND, IL 61299-6000			

NOTE: PLEASE NOTIFY COMMANDER, ARMAMENT RESEARCH, DEVELOPMENT, AND ENGINEERING CENTER, US ARMY AMCCOM, ATTN: BENET LABORATORIES, SMCAR-CCB-TL, WATERVLIET, NY 12189-4050, OF ANY ADDRESS CHANGES.

TECHNICAL REPORT EXTERNAL DISTRIBUTION LIST (CONT'D)

	<u>NO. OF COPIES</u>		<u>NO. OF COPIES</u>
COMMANDER US ARMY LABCOM, ISA ATTN: SLCIS-IM-TL 2800 POWDER MILL ROAD ADELPHI, MD 20783-1145	1	COMMANDER AIR FORCE ARMAMENT LABORATORY ATTN: AFATL/MN EGLIN AFB, FL 32542-5434	1
COMMANDER US ARMY RESEARCH OFFICE ATTN: CHIEF, IPO P.O. BOX 12211 RESEARCH TRIANGLE PARK, NC 27709-2211	1	COMMANDER AIR FORCE ARMAMENT LABORATORY ATTN: AFATL/MNF EGLIN AFB, FL 32542-5434	1
DIRECTOR US NAVAL RESEARCH LAB ATTN: MATERIALS SCI & TECH DIVISION CODE 26-27 (DOC LIB) WASHINGTON, D.C. 20375	1 1	METALS AND CERAMICS INFO CTR BATTELLE COLUMBUS DIVISION 505 KING AVENUE COLUMBUS, OH 43201-2693	1

NOTE: PLEASE NOTIFY COMMANDER, ARMAMENT RESEARCH, DEVELOPMENT, AND ENGINEERING CENTER, US ARMY AMCCOM, ATTN: BENET LABORATORIES, SMCAR-CCB-TL, WATERVLIET, NY 12189-4050, OF ANY ADDRESS CHANGES.