

DTIC FILE TAG

REPORT SD-TR-89-37

4

AD-A210 768

A General-Purpose Computer Program for the Volterra-Series Analysis of Nonlinear Microwave Circuits

S. A. MAAS
Electronics Research Laboratory
Laboratory Operations
The Aerospace Corporation
El Segundo, CA 90245

3 July 1989

Prepared for
SPACE SYSTEMS DIVISION
AIR FORCE SYSTEMS COMMAND
Los Angeles Air Force Base
P.O. Box 92960
Los Angeles, CA 90009-2960

APPROVED FOR PUBLIC RELEASE;
DISTRIBUTION UNLIMITED

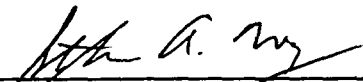
DTIC
ELECTE
AUG 1 1989
S B D

This report was submitted by The Aerospace Corporation, El Segundo, CA 90245, under Contract No. F04701-85-C-0086-P00016 with the Space Systems Division, P.O. Box 92960, Los Angeles, CA 90009-2960. It was reviewed and approved for The Aerospace Corporation by M. J. Daugherty, Director, Electronics Research Laboratory.

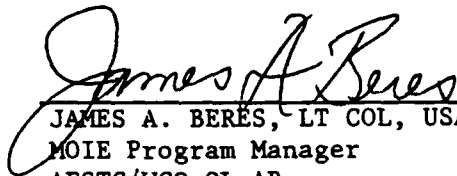
Lt Steve Way was the project officer for the Mission-Oriented Investigation and Experimentation (MOIE) Program.

This report has been reviewed by the Public Affairs Office (PAS) and is releasable to the National Technical Information Service (NTIS). At NTIS, it will be available to the general public, including foreign nationals.

This technical report has been reviewed and is approved for publication. Publication of this report does not constitute Air Force approval of the report's findings or conclusions. It is published only for the exchange and stimulation of ideas.



STEVE A. WAY, LT, USAF
MOIE Project Officer
AFSTC/WCO OL-AB



JAMES A. BERES, LT COL, USAF
MOIE Program Manager
AFSTC/WCO OL-AB

UNCLASSIFIED

SECURITY CLASSIFICATION OF THIS PAGE

REPORT DOCUMENTATION PAGE

1a. REPORT SECURITY CLASSIFICATION Unclassified			1b. RESTRICTIVE MARKINGS			
2a. SECURITY CLASSIFICATION AUTHORITY			3. DISTRIBUTION / AVAILABILITY OF REPORT Approved for public release; distribution unlimited.			
2b. DECLASSIFICATION / DOWNGRADING SCHEDULE						
4. PERFORMING ORGANIZATION REPORT NUMBER(S) TR-0086A(2925-02)-5			5. MONITORING ORGANIZATION REPORT NUMBER(S) SD-TR-89-37			
6a. NAME OF PERFORMING ORGANIZATION The Aerospace Corporation Laboratory Operations		6b. OFFICE SYMBOL (if applicable)	7a. NAME OF MONITORING ORGANIZATION Space Systems Division			
6c. ADDRESS (City, State, and ZIP Code) El Segundo, CA 90245			7b. ADDRESS (City, State, and ZIP Code) Los Angeles Air Force Base Los Angeles, CA 90009-2960			
8a. NAME OF FUNDING / SPONSORING ORGANIZATION		8b. OFFICE SYMBOL (if applicable)	9. PROCUREMENT INSTRUMENT IDENTIFICATION NUMBER F04701-85-C-0086-P00016			
8c. ADDRESS (City, State, and ZIP Code)			10. SOURCE OF FUNDING NUMBERS			
			PROGRAM ELEMENT NO.	PROJECT NO.	TASK NO.	WORK UNIT ACCESSION NO.
11. TITLE (Include Security Classification) A General-Purpose Computer Program for the Volterra-Series Analysis of Nonlinear Microwave Circuits						
12. PERSONAL AUTHOR(S) Maas, S. A.						
13a. TYPE OF REPORT		13b. TIME COVERED FROM _____ TO _____		14. DATE OF REPORT (Year, Month, Day) 1989 July 3		15. PAGE COUNT 13
16. SUPPLEMENTARY NOTATION						
17. COSATI CODES			18. SUBJECT TERMS (Continue on reverse if necessary and identify by block number)			
FIELD	GROUP	SUB-GROUP	Computer-aided design Volterra-series analysis			
			Intermodulation distortion			
			Nonlinear circuits			
19. ABSTRACT (Continue on reverse if necessary and identify by block number)						
This report describes a computer program that performs a Volterra-series analysis of a weakly nonlinear microwave circuit having an arbitrary topology. It uses the method of nonlinear currents and a nodal formulation. When special algorithms are used to evaluate only the minimum necessary set of mixing products, the computational efficiency is very great.						
20. DISTRIBUTION / AVAILABILITY OF ABSTRACT <input checked="" type="checkbox"/> UNCLASSIFIED/UNLIMITED <input type="checkbox"/> SAME AS RPT. <input type="checkbox"/> DTIC USERS			21. ABSTRACT SECURITY CLASSIFICATION Unclassified			
22a. NAME OF RESPONSIBLE INDIVIDUAL			22b. TELEPHONE (Include Area Code)		22c. OFFICE SYMBOL	

DD FORM 1473, 84 MAR

83 APR edition may be used until exhausted.
All other editions are obsolete.SECURITY CLASSIFICATION OF THIS PAGE
UNCLASSIFIED

CONTENTS

I. INTRODUCTION..... 3

II. THE NONLINEAR-CURRENT METHOD..... 5

III. PROGRAM DESCRIPTION..... 7

REFERENCES..... 13

Accession For	
NTIS GRA&I	<input checked="" type="checkbox"/>
DTIC TAB	<input type="checkbox"/>
Unannounced	<input type="checkbox"/>
Justification	
By _____	
Distribution/	
Availability Codes	
Dist	Avail and/or Special
A-1	



FIGURES

1.	Program Flowchart.....	8
2.	FET Amplifier Equivalent Circuit.....	9
3.	Data File.....	10
4.	Output Listing.....	11

I. INTRODUCTION

Volterra-series, or nonlinear transfer-function analysis,¹⁻³ is an efficient and highly effective method for analyzing weakly nonlinear circuits under small-signal excitation. It has been used to analyze nonlinear effects in a wide variety of circuits, and is particularly useful for calculating intermodulation levels in MESFET amplifiers.^{4,5} Volterra-series techniques have also been used to analyze time-varying circuits such as mixers⁶ and parametric upconverters.⁷ However, the large amount of algebraic effort necessary to generate analytical forms of the Volterra kernels of even simple circuits has prevented the wide application of Volterra-series analysis. This analytical complexity has forced many experimenters to employ simplifying assumptions, especially in the topology of the equivalent circuits of solid-state devices;^{4,8} these approximations limit the accuracy of the analysis.

This report describes a general-purpose computer program that performs a Volterra-series analysis of a weakly nonlinear circuit. The program is intended primarily for use in the design of microwave circuits; its catalog of circuit elements includes the distributed elements necessary for such work. Because the program formulates and solves the circuit equations numerically, the user need not simplify either the circuit or the model of the solid-state device, or make any of the other common simplifying assumptions often found in Volterra-series analyses (e.g., that the input frequencies in a two-tone excitation are nearly identical).

II. THE NONLINEAR-CURRENT METHOD

The program uses the nonlinear-current method^{1-3,9} and a nodal formulation of the circuit equations. In this approach each nonlinear circuit element is described as a linear element that is in parallel with a set of current sources; each current source represents a single order (greater than 1) of the mixing products, and its current is a nonlinear function of the node-voltage components at lower-order mixing frequencies. The weakly nonlinear circuit is reduced to a linear circuit, one that contains the linear elements and the linear parts of the nonlinear elements, as well as a set of excitation sources.

The first-order response is simply the response of the linear circuit. The source currents at second-order mixing frequencies are found from the first-order node voltages. For example, in the case of a simple voltage-controlled conductance having the small-signal I/V characteristic,

$$i = g_1 v + g_2 v^2 + g_3 v^3 + \dots \quad (1)$$

where the first-order terminal voltage $v(t)$ is

$$v(t) = \frac{1}{2} \sum_{q=-Q}^Q v_{s,q} \exp(j\omega_q t) \quad (2)$$

and the second-order current^{3,9} is

$$\begin{aligned} i_2(t) &= g_2 v_1^2(t) \\ &= \frac{g_2}{4} \sum_{q_1=-Q}^Q \sum_{q_2=-Q}^Q v_{1,q_1} v_{1,q_2} \exp[j(\omega_{q_1} + \omega_{q_2})t] \end{aligned} \quad (3)$$

In the case of a capacitor having the charge/voltage characteristic

$$q = C_1 v + C_2 v^2 + C_3 v^3 + \dots \quad (4)$$

the second-order current $i_2(t)$ is

$$i_2(t) = C_2 \frac{d[v_1^2(t)]}{dt} \\ = \frac{C_2}{4} \sum_{q_1=-Q}^Q \sum_{q_2=-Q}^Q j(\omega_{q_1} + \omega_{q_2}) V_{1,q_1} V_{1,q_2} \exp[j(\omega_{q_1} + \omega_{q_2})t] \quad (5)$$

One can find the second-order node voltages by solving the linear network's admittance equations with the second-order sources used as excitations. The process is repeated to find the third- and higher-order node voltages.

Volterra-series analysis is considerably more efficient than generalized harmonic-balance analysis, because it requires neither Fourier transformation nor iteration: when the nonlinear-current method is used, the source currents are found directly in the frequency domain. One need not evaluate all the mixing products implied by Eqs. (3) or (5); it is necessary to evaluate only the small set of products that contribute to the distortion products of interest. Thus, if only the minimum number of significant products are retained, the calculation of the mixing products can be performed very rapidly. However, Volterra-series analysis is limited to circuits having relatively weak nonlinearities; circuits having strong nonlinearities are best analyzed by means of harmonic-balance techniques.

III. PROGRAM DESCRIPTION

The program is written in Turbo Pascal for use on the IBM PC or PC-AT microcomputer. The program is menu driven, and can be used interactively to generate output in several different forms. The element catalog includes the same types of elements found in most linear-analysis programs: linear resistors, capacitors, inductors, controlled sources, transmission lines, stubs, and arbitrary impedances; and nonlinear resistors, capacitors, and controlled sources. At present the program is limited to nonlinear elements that can be defined as voltage controlled (i.e., whose incremental currents are single-valued functions of voltage). The program has a modular structure that allows additional types of circuit elements or additional capabilities to be added easily.

Figure 1 shows the program's flow chart. After reading the data file, the program generates the frequency-mix vectors³ of only the desired and contributory mixing frequencies; i.e., it ignores mixing components of the input tones that do not contribute to the distortion product of interest. The program then finds the source currents and node voltages at each mixing frequency, beginning with the first-order voltages and continuing through the order of the mixing product of interest. At each order the program first identifies the significant lower-order mixing vectors and the corresponding voltages, calculates the excitation currents, generates the nodal equations, and finally calculates the node voltages.

Figures 2 through 4 illustrate a sample calculation. Figure 2 shows an equivalent circuit, while Figs. 3 and 4 show the data file and output history, respectively; the file describes a single-stage, narrowband, 9.5-GHz GaAs MESFET amplifier. The amplifier's source and load impedances are defined by tabular data in the files ZSFET.DAT and ZLFET.DAT, respectively (the program interpolates these tables if they do not contain data at precisely the correct frequency). The FET equivalent circuit includes the three nonlinear elements that are normally dominant in establishing the

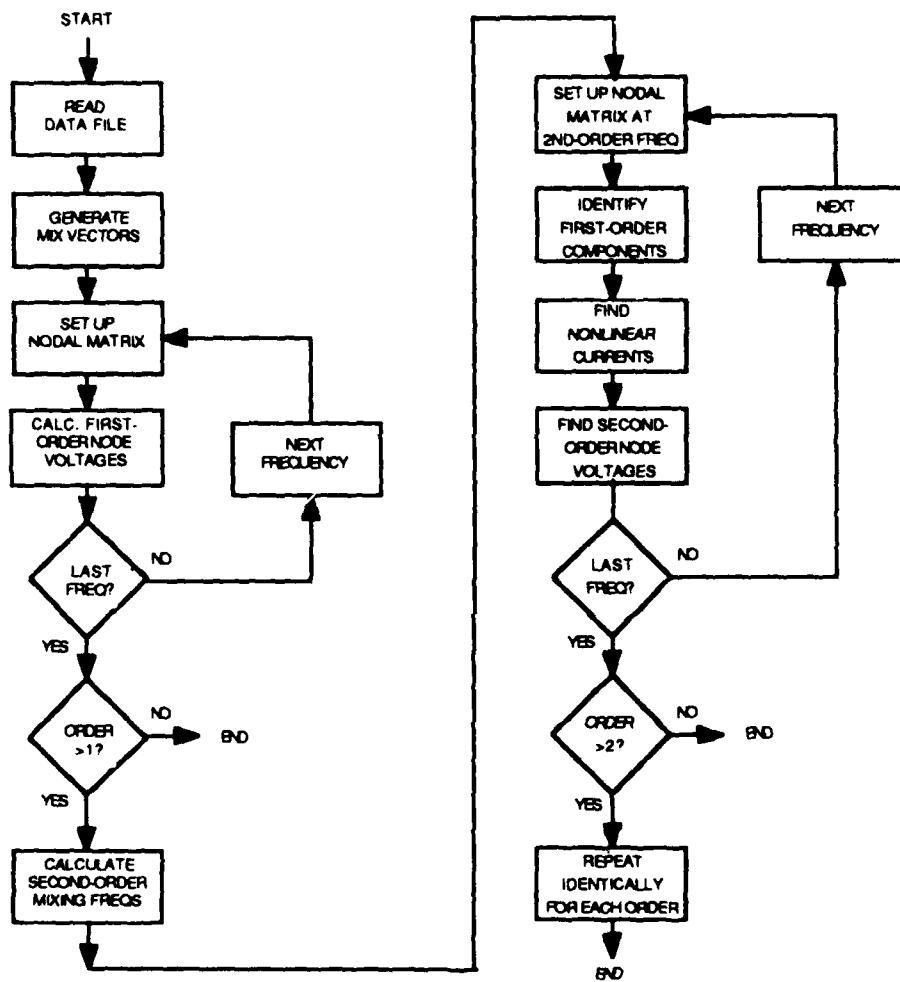


Fig. 1. Program Flowchart

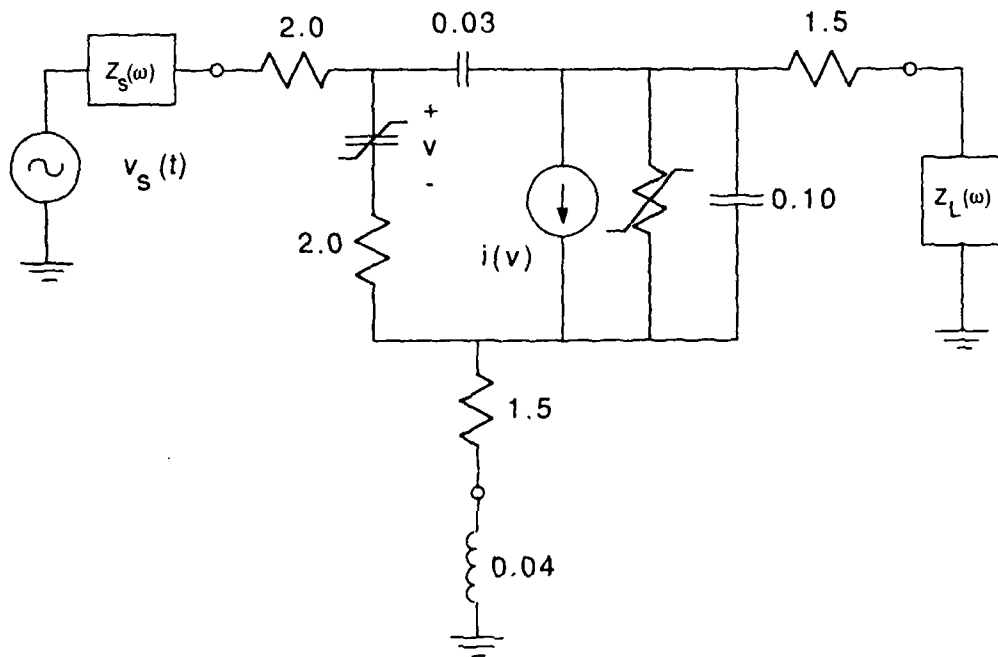


Fig. 2. FET Amplifier Equivalent Circuit

```

*****
***** FET IM STUDY *****
*****
!
FREQS   9.0E9       9.01E9
dBm     0.0         0.0
COEFS   -1          2
!
CKT
ZS      1  ZSFET.DAT
ZL      7  ZLFET.DAT
RES     1 2  2.0
RES     3 5  2.0
RES     5 6  1.5
RES     4 7  1.5
IND     6 0  0.04E-9
CAP     2 4  0.030E-12
CAP     4 5  0.1E-12
VCN     2 3 4 5  0.03311   0.00401  -0.00426  0 0
DIODEC  2 3  0.45e-12   0.7    0.500   -1.5
GNL     4 5  0.00367  -0.000370  0.000144  0 0
END

```

Fig. 3. Data File

VERMIN

ver. 1.2
06/25/88

File Name: fetxx.dat

Initial Input Freqs and powers
Component Freq. Power(dBm)

```
-----  
f1 9.0E+009 0.0000  
f2 9.0E+009 0.0000
```

Frequency of IM product: fIM = 2f2 - f1

Order of IM product = 2

INPUT FREQUENCIES, GHz					F1 OUTPUT PARAMS					IM FREQ, GHz IM OUTPUT PARAMS			
f1	f2	f3	f4	f5	Re(Zs)	Im(Zs)	Re(ZL)	Im(ZL)	Pout	fIM	Re(ZL)	Im(ZL)	Pout
9.000000	9.010000	0.00	0.00	0.00	10.30	45.60	100.00	6.00	10.27	9.020000	100.00	6.00	-17.53
9.100000	9.110000	0.00	0.00	0.00	10.30	45.60	100.00	6.00	10.23	9.120000	100.00	6.00	-17.70
9.200000	9.210000	0.00	0.00	0.00	10.30	45.60	100.00	6.00	10.18	9.220000	100.00	6.00	-17.88
9.300000	9.310000	0.00	0.00	0.00	10.30	45.60	100.00	6.00	10.13	9.320000	100.00	6.00	-18.06
9.400000	9.410000	0.00	0.00	0.00	10.30	45.60	100.00	6.00	10.07	9.420000	100.00	6.00	-18.26
9.500000	9.510000	0.00	0.00	0.00	10.30	45.60	100.00	6.00	10.01	9.520000	100.00	6.00	-18.46
9.600000	9.610000	0.00	0.00	0.00	10.30	45.60	100.00	6.00	9.94	9.620000	100.00	6.00	-18.67
9.700000	9.710000	0.00	0.00	0.00	10.30	45.60	100.00	6.00	9.87	9.720000	100.00	6.00	-18.88
9.800000	9.810000	0.00	0.00	0.00	10.30	45.60	100.00	6.00	9.80	9.820000	100.00	6.00	-19.10
9.900000	9.910000	0.00	0.00	0.00	10.30	45.60	100.00	6.00	9.72	9.920000	100.00	6.00	-19.32
10.000000	10.010000	0.00	0.00	0.00	10.30	45.60	100.00	6.00	9.64	10.020000	100.00	6.00	-19.54

Fig. 4. Output Listing

device's intermodulation (IM) characteristics: the gate/source capacitance, the transconductance, and the drain/source resistance.

The data file lists the excitation frequencies, the power levels, and the coefficients of the IM product of interest, followed by the circuit description. The elements VCN, GNL, and DIODEC are nonlinear; VCN and GNL, the controlled current source and drain/source conductance, are described by the power-series coefficients of their incremental I/V characteristics. DIODEC, representing the gate/source capacitance, is the capacitance of an ideal, uniformly doped p-n junction. The capacitance is described by its junction parameters (C_{j0} , ϕ , and γ) and bias voltage; the program calculates the coefficients of its charge/voltage characteristic from these data.

Figure 4 shows the results of a two-tone sweep across the amplifier's passband: it lists output powers of the linear responses at the excitation frequencies f_1 and f_2 , as well as third-order IM products at the mixing frequency $2f_2 - f_1$. The output listing includes the source and load impedances at the input and IM frequencies. Computation speed is limited primarily by the solution of the admittance equations, and is almost independent of the number of nonlinear elements; thus, many more elements could be treated as nonlinear ones without a significant increase in calculation time. The data in Fig. 4 require only 2.5 seconds of computer time per line.

REFERENCES

1. S. Bussgang, L. Ehrman, and J. Graham, "Analysis of nonlinear systems with multiple inputs," Proc. IEEE 62, 1089-1119 (August 1974).
2. J. Graham and L. Ehrman, "Nonlinear system analysis and modeling with applications to communications receivers," Rome Air Development Center, Technical Report No. RADC-TR-73-178 (June 1973).
3. D. D. Weiner and J. E. Spina, Sinusoidal Analysis and Modeling of Weakly Nonlinear Circuits (New York: Van Nostrand, 1980).
4. R. A. Minasian, "Intermodulation distortion analysis of MESFET amplifiers using the Volterra series representation," IEEE Trans. Microwave Theory Tech. MTT-28, 1-8 (January 1980).
5. G. M. Lambrianou and C. S. Aitchison, "Optimization of third-order intermodulation product and output power from an X-band MESFET amplifier using Volterra series analysis," IEEE Trans. Microwave Theory Tech. MTT-33, 1395-1403 (December 1985).
6. S. A. Maas, "Two-tone intermodulation in diode mixers," IEEE Trans. Microwave Theory Tech. MTT-35, 307-314 (March 1987).
7. R. B. Swerdlow, "Analysis of intermodulation noise in frequency converters by Volterra series," IEEE Trans. Microwave Theory Tech. MTT-26, 305-313 (April 1978).
8. R. Tucker, "Third-order intermodulation distortion and gain compression in GaAs FETs," IEEE Trans. Microwave Theory Tech. MTT-27, 400-408 (May 1979).
9. S. A. Maas, Nonlinear Microwave Circuits (Norwood, Mass.: Artech House, 1988).

LABORATORY OPERATIONS

The Aerospace Corporation functions as an "architect-engineer" for national security projects, specializing in advanced military space systems. Providing research support, the corporation's Laboratory Operations conducts experimental and theoretical investigations that focus on the application of scientific and technical advances to such systems. Vital to the success of these investigations is the technical staff's wide-ranging expertise and its ability to stay current with new developments. This expertise is enhanced by a research program aimed at dealing with the many problems associated with rapidly evolving space systems. Contributing their capabilities to the research effort are these individual laboratories:

Aerophysics Laboratory: Launch vehicle and reentry fluid mechanics, heat transfer and flight dynamics; chemical and electric propulsion, propellant chemistry, chemical dynamics, environmental chemistry, trace detection; spacecraft structural mechanics, contamination, thermal and structural control; high temperature thermomechanics, gas kinetics and radiation; cw and pulsed chemical and excimer laser development including chemical kinetics, spectroscopy, optical resonators, beam control, atmospheric propagation, laser effects and countermeasures.

Chemistry and Physics Laboratory: Atmospheric chemical reactions, atmospheric optics, light scattering, state-specific chemical reactions and radiative signatures of missile plumes, sensor out-of-field-of-view rejection; applied laser spectroscopy, laser chemistry, laser optoelectronics, solar cell physics, battery electrochemistry, space vacuum and radiation effects on materials, lubrication and surface phenomena, thermionic emission, photo-sensitive materials and detectors, atomic frequency standards, and environmental chemistry.

Computer Science Laboratory: Program verification, program translation, performance-sensitive system design, distributed architectures for spaceborne computers, fault-tolerant computer systems, artificial intelligence, micro-electronics applications, communication protocols, and computer security.

Electronics Research Laboratory: Microelectronics, solid-state device physics, compound semiconductors, radiation hardening; electro-optics, quantum electronics, solid-state lasers, optical propagation and communications; microwave semiconductor devices, microwave/millimeter wave measurements, diagnostics and radiometry, microwave/millimeter wave thermionic devices; atomic time and frequency standards; antennas, rf systems, electromagnetic propagation phenomena, space communication systems.

Materials Sciences Laboratory: Development of new materials: metals, alloys, ceramics, polymers and their composites, and new forms of carbon; non-destructive evaluation, component failure analysis and reliability; fracture mechanics and stress corrosion; analysis and evaluation of materials at cryogenic and elevated temperatures as well as in space and enemy-induced environments.

Space Sciences Laboratory: Magnetospheric, auroral and cosmic ray physics, wave-particle interactions, magnetospheric plasma waves; atmospheric and ionospheric physics, density and composition of the upper atmosphere, remote sensing using atmospheric radiation; solar physics, infrared astronomy, infrared signature analysis; effects of solar activity, magnetic storms and nuclear explosions on the earth's atmosphere, ionosphere and magnetosphere; effects of electromagnetic and particulate radiations on space systems; space instrumentation.