

AD-A210 521

# IFD: Interfaced With Harvard Open Ocean Model Forecasts

George Botseas  
Ding Lee  
Environmental and Tactical Support Department

William L. Siegmann  
Rensselaer Polytechnic Institute



DTIC  
ELECTE  
JUL 24 1989  
S B D  
[Handwritten signature]

**Naval Underwater Systems Center**  
Newport, Rhode Island / New London, Connecticut

Approved for public release; distribution is unlimited.

89 7 24 098

## Preface

This report was prepared jointly under the following three projects:

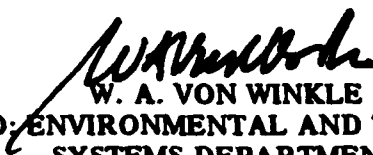
NUSC Project No. A65020, "Numerical Solutions to Acoustic Wave Propagation," Principal Investigator, Dr. D. Lee (Code 3122). The sponsoring activity was DNL, Program Manager, G. W. Morton (Code 05), Program Element 61152N, Navy Subproject/Task ZR00000101, Inhouse Laboratory Independent Research.

NUSC Project Nos. A65022 and A65023, "New Methods in Computational Ocean Acoustics," Principal Investigator, Dr. D. Lee (Code 3122). The sponsoring activity was ONR (Grant No. N0014-87-WX-24234), Program Managers, Dr. Richard L. Lau, Robert Obrochta, and Dr. Raymond Fitzgerald.

RPI Project No. S8756, "Critical Issues for Interfacing Mesoscale Ocean Prediction and Parabolic Acoustic Propagation Models," Principal Investigator, Prof. William L. Siegmann (RPI). The sponsoring activity was INO (Grant No. 66604-87-M-H619), Program Manager, Mr. Robert Willems.

The technical reviewer for this report was D. Browning (Code 304).

Reviewed and Approved: 30 May 1989

  
W. A. VON WINKLE  
HEAD, ENVIRONMENTAL AND TACTICAL  
SYSTEMS DEPARTMENT

UNCLASSIFIED

SECURITY CLASSIFICATION OF THIS PAGE

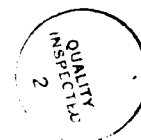
## REPORT DOCUMENTATION PAGE

1a REPORT SECURITY CLASSIFICATION UNCLASSIFIED		1b RESTRICTIVE MARKINGS	
2a SECURITY CLASSIFICATION AUTHORITY		3 DISTRIBUTION/AVAILABILITY OF REPORT Approved for public release; distribution is unlimited.	
2b DECLASSIFICATION/DOWNGRADING SCHEDULE			
4 PERFORMING ORGANIZATION REPORT NUMBER(S) NUSC TR 8367		5. MONITORING ORGANIZATION REPORT NUMBER(S)	
6a NAME OF PERFORMING ORGANIZATION Naval Underwater Systems Center	6b OFFICE SYMBOL (If applicable) 3122	7a. NAME OF MONITORING ORGANIZATION	
6c ADDRESS (City, State, and ZIP Code) New London Laboratory New London, CT 06320		7b. ADDRESS (City, State, and ZIP Code)	
8a. NAME OF FUNDING/SPONSORING ORGANIZATION DNL/ONR/INO (RPI)	8b. OFFICE SYMBOL (If applicable)	9. PROCUREMENT INSTRUMENT IDENTIFICATION NUMBER	
8c. ADDRESS (City, State, and ZIP Code)		10. SOURCE OF FUNDING NUMBERS	
		PROGRAM ELEMENT NO.	PROJECT NO. A65020
		TASK NO.	WORK UNIT ACCESSION NO.
11 TITLE (Include Security Classification) IFD: INTERFACED WITH HARVARD OPEN OCEAN MODEL FORECASTS			
12 PERSONAL AUTHOR(S) George Botseas, Ding Lee, and William L. Siegmann (RPI)			
13a. TYPE OF REPORT Summary	13b. TIME COVERED FROM _____ TO _____	14. DATE OF REPORT (Year, Month, Day) 1989 May 30	15. PAGE COUNT 22
16 SUPPLEMENTARY NOTATION			
17 COSATI CODES		18. SUBJECT TERMS (Continue on reverse if necessary and identify by block number)	
FIELD	GROUP	SUB-GROUP	
			Cold-Core Eddy
			IFD
			Gulf Stream
			Mesoscale forecasts
			Harvard Open Ocean Model
			Warm-Core-Eddy
19 ABSTRACT (Continue on reverse if necessary and identify by block number)			
<p>The capability to interface the implicit finite difference (IFD) computer model with mesoscale forecasts generated by the Harvard Open Ocean Model is announced. Given the latitude and longitude of the source location, the IFD model extracts from the 3-dimensional Harvard data set sound speed profiles encountered in the direction of propagation. Contour plots are presented of sound speed and temperature variability through a typical Harvard data set containing both warm- and cold-core eddies in the vicinity of the Gulf Stream. Acoustic propagation loss through a cold-core eddy is presented. A listing of the subroutine that links IFD with the Harvard data set is included.</p>			
20 DISTRIBUTION/AVAILABILITY OF ABSTRACT <input type="checkbox"/> UNCLASSIFIED/UNLIMITED <input checked="" type="checkbox"/> SAME AS RPT. <input type="checkbox"/> DTIC USERS		21. ABSTRACT SECURITY CLASSIFICATION UNCLASSIFIED	
22a NAME OF RESPONSIBLE INDIVIDUAL George Botseas		22b TELEPHONE (Include Area Code) (203) 440-4916	22c OFFICE SYMBOL 3122

TABLE OF CONTENTS

	Page
LIST OF ILLUSTRATIONS . . . . .	ii
INTRODUCTION. . . . .	1
HARVARD OCEANIC DESCRIPTIVE PREDICTIVE SYSTEM (ODPS). . . . .	2
INTERFACING IFD AND THE HARVARD DATA SET. . . . .	8
SUBROUTINE USVP. . . . .	8
INITIALIZATION FOR 16 AUGUST 1986 FORECAST . . . . .	8
ACOUSTIC PROPAGATION THROUGH A COLD-CORE EDDY . . . . .	11
INITIALIZATION OF USER VARIABLES . . . . .	11
INPUT RUNSTREAM. . . . .	11
ACOUSTIC PREDICTION. . . . .	12
CONCLUSIONS . . . . .	14
REFERENCES. . . . .	15
APPENDIX -- COMPUTER LISTING OF SUBROUTINE USVP . . . . .	17

<b>Accession For</b>	
NTIS GRA&I	<input checked="" type="checkbox"/>
DTIC TAB	<input type="checkbox"/>
Unannounced	<input type="checkbox"/>
Justification	
By	
Distribution/	
Availability Codes	
Dist	Avail and/or Special
A-1	



LIST OF ILLUSTRATIONS

Figure		Page
1	Harvard University Gulfcast, 16 August 1986, Sound Speed at 100 Meters . . . . .	3
2	Harvard University Gulfcast, 16 August 1986, Sound Speed in the Vertical Plane . . . . .	4
3	Harvard University Gulfcast, 16 August 1986, Temperature at 100 Meters . . . . .	5
4	Harvard University Gulfcast, 16 August 1986, Temperature in the Vertical Plane . . . . .	6
5	Sound Speed Profiles Along the Transect ABCDE. . . . .	7
6	Flowchart of USVP Logic. . . . .	10
7	Propagation Loss Through a Cold-Core Eddy. . . . .	13

## IFD: INTERFACED WITH HARVARD OPEN OCEAN MODEL FORECASTS

## INTRODUCTION

In 1982, the implicit finite difference (IFD) computer model<sup>1,2,3</sup> was developed by Lee and Botseas at the Naval Underwater Systems Center (NUSC) for solving the parabolic wave equation (PE).<sup>4,5</sup> The IFD model was designed to predict acoustic propagation in both range-dependent and range-independent undersea environments. Given an environment, the IFD model marches the acoustics solution in the water column forward, step-by-step, until maximum range has been reached.

The environmental data input into the IFD model are generally based on previously measured data compiled by season for the geographic region of interest. If the region of interest is quiescent, then the data are typical and may be perfectly valid. However, if the environment is constantly undergoing dynamic change, the archival data alone are not sufficient and should not be solely relied on when planning for future military or scientific missions. A reliable system that is capable of nowcasting and forecasting accurate undersea environmental data in real-time would be extremely valuable. One system that is being refined for that purpose is the Oceanic Descriptive Predictive System (ODPS) developed at Harvard University by the Harvard Open Ocean Modeling Group.<sup>6,7,8,9</sup>

This report presents a brief description of the ODPS and a discussion on subroutine USVP, which links the sound speed forecasts generated by the Harvard Open Ocean Model<sup>8</sup> with IFD. Also included is the input runstream and initialization of USVP for a propagation loss prediction through a cold-core eddy. The discussion is aimed at experienced IFD users interested in linking with the Harvard data set and users who may have a need to modify USVP.

A listing of subroutine USVP can be found in the appendix.

## THE HARVARD OCEANIC DESCRIPTIVE PREDICTIVE SYSTEM (ODPS)

One strategy for predicting the location and evolution of mesoscale phenomena in the ocean is the ODPS developed at Harvard University. Historical and telemetered real-time observations, collected by remotely located and in situ sensors, are combined by optimal estimation theory with estimates of undersea dynamics generated by statistical and dynamic models in a supercomputer. Theoretically, the expected error of the combined estimate is lower than the expected error of each individual estimate.<sup>9</sup>

One dynamic model, the Harvard Open Ocean Model,<sup>8</sup> is currently employed in a predictive system that is nowcasting and forecasting, in real time, the basic physical fields of velocity, pressure, density, temperature, and salinity in the Gulf Stream region (GULFCASTING). Once predictions for the basic physical fields have been obtained, associated fields such as sound speed can also be predicted.

A typical data set generated by ODPS is the sound speed forecast shown in figure 1.<sup>10</sup> The Gulf Stream, as it meandered west to east, gave birth to five distinct eddies. The three warm-core eddies north of the Gulf Stream trapped the warmer water from the Sargasso Sea, while the two cold-core eddies south of the stream contained colder slope water. The data domain shown in the figure is centered at 37° 30' N and 66° 48' W. The 810 km square domain is rotated 20° counterclockwise. This particular data set consists of 55 x 55 data points for a total of 3025 points per depth plane. Six depth planes (100, 300, 700, 1100, 2200, and 3900 m) were forecast. Distance between data points on any given plane is 15 km. Each plane of data is arranged in a separate array in an order such that points 1, 55, 2971, and 3025 represent the SW, SE, NW, and NE corners of the domain.

A contour plot of sound speed in the vertical plane is illustrated in figure 2. The transect (ABCDE) along which these data were obtained passes through, in order, a cold-core eddy, the Gulf Stream, and a warm-core eddy, as shown in figure 1.

Figures 3 and 4 are contour plots of temperature corresponding to the sound speed plots shown in figures 1 and 2.

Sound speed profiles extracted at points A, B, C, D, and E along the transect shown in figure 1 are compared in figure 5.

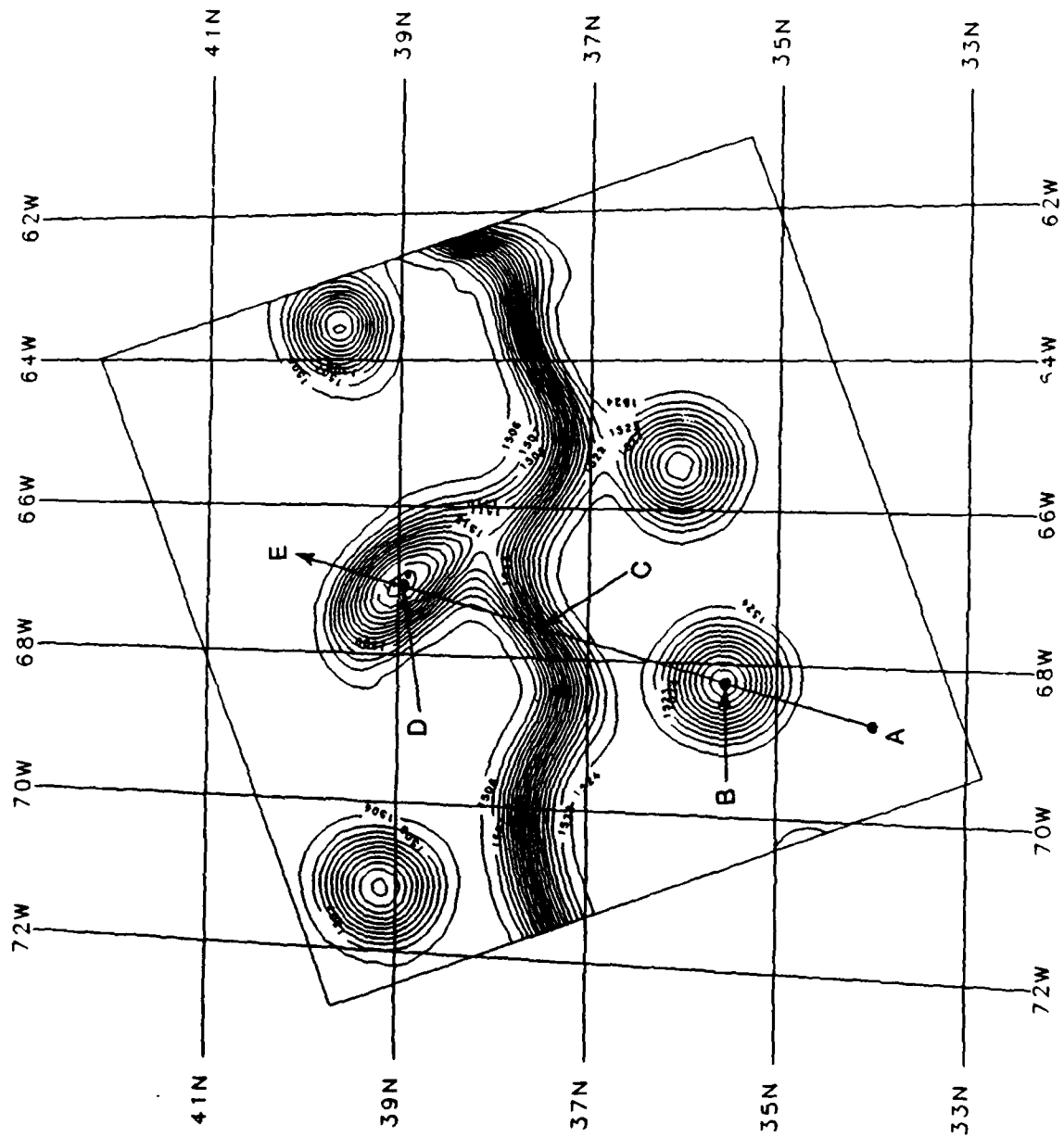


Figure 1. Harvard University Gulfcast, 16 August 1986, Sound Speed at 100 Meters



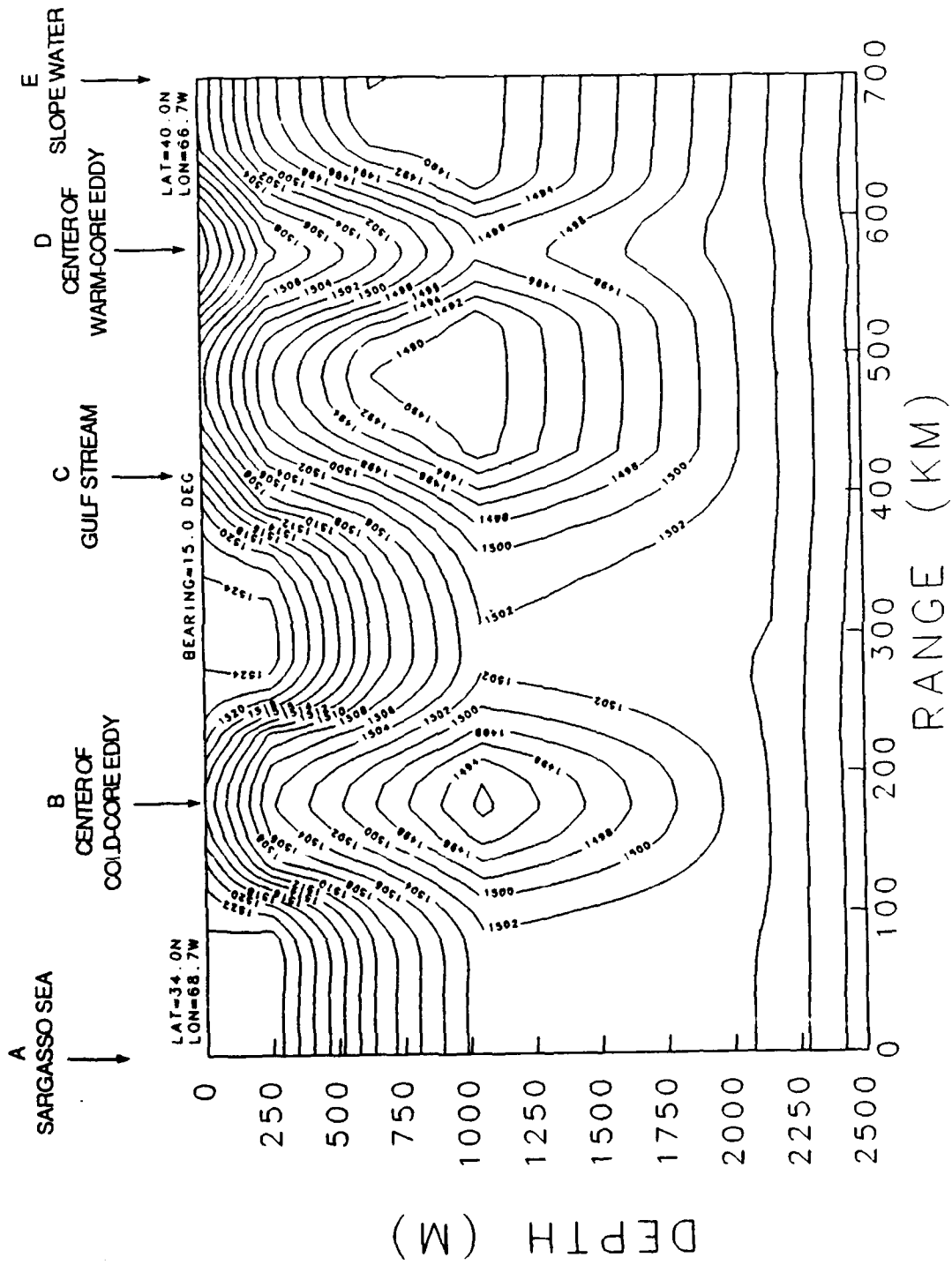


Figure 2. Harvard University Gulfcast, 16 August 1986, Sound Speed in the Vertical Plane

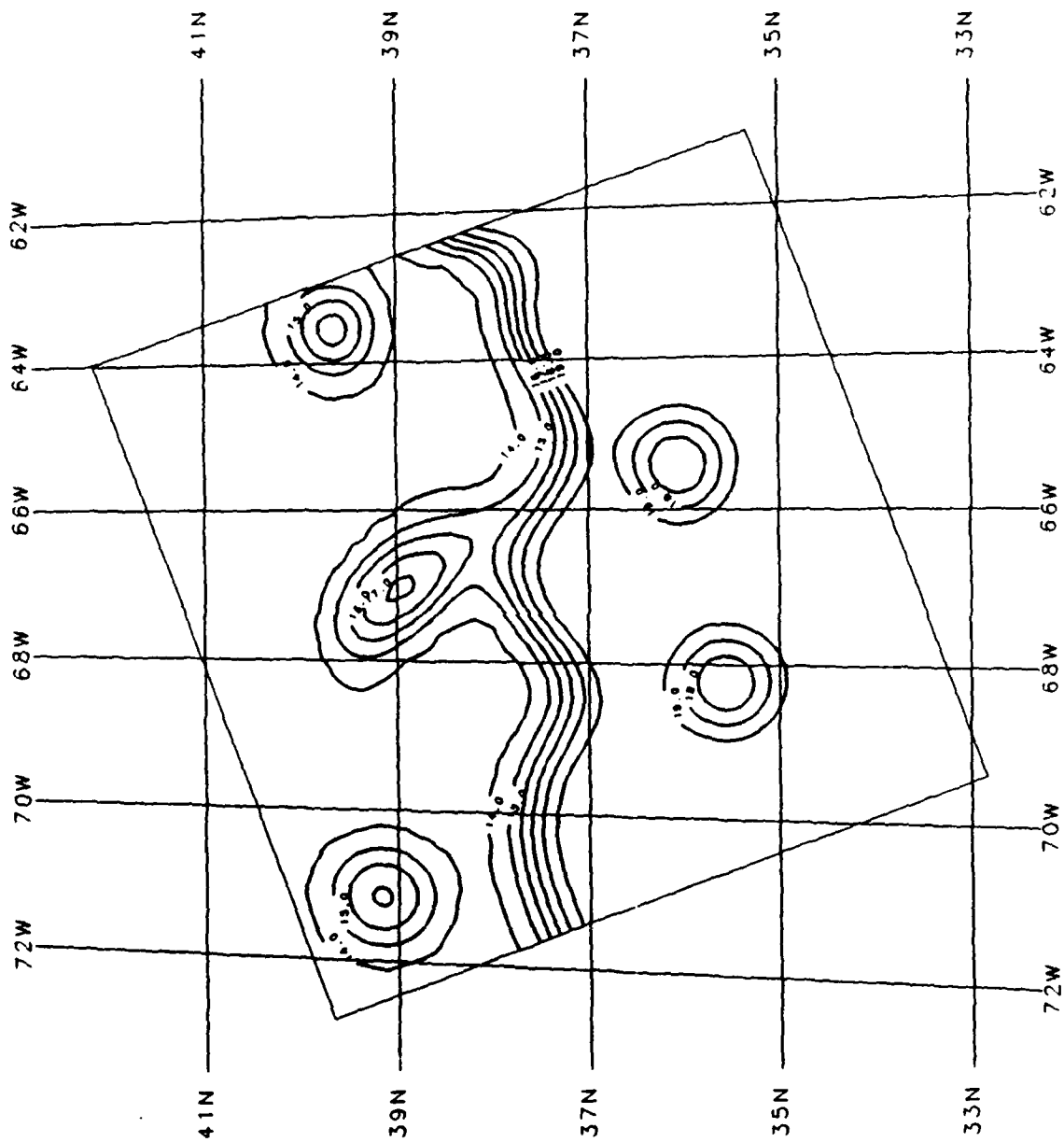


Figure 3. Harvard University Gulfcast, 16 August 1986, Temperature at 100 Meters

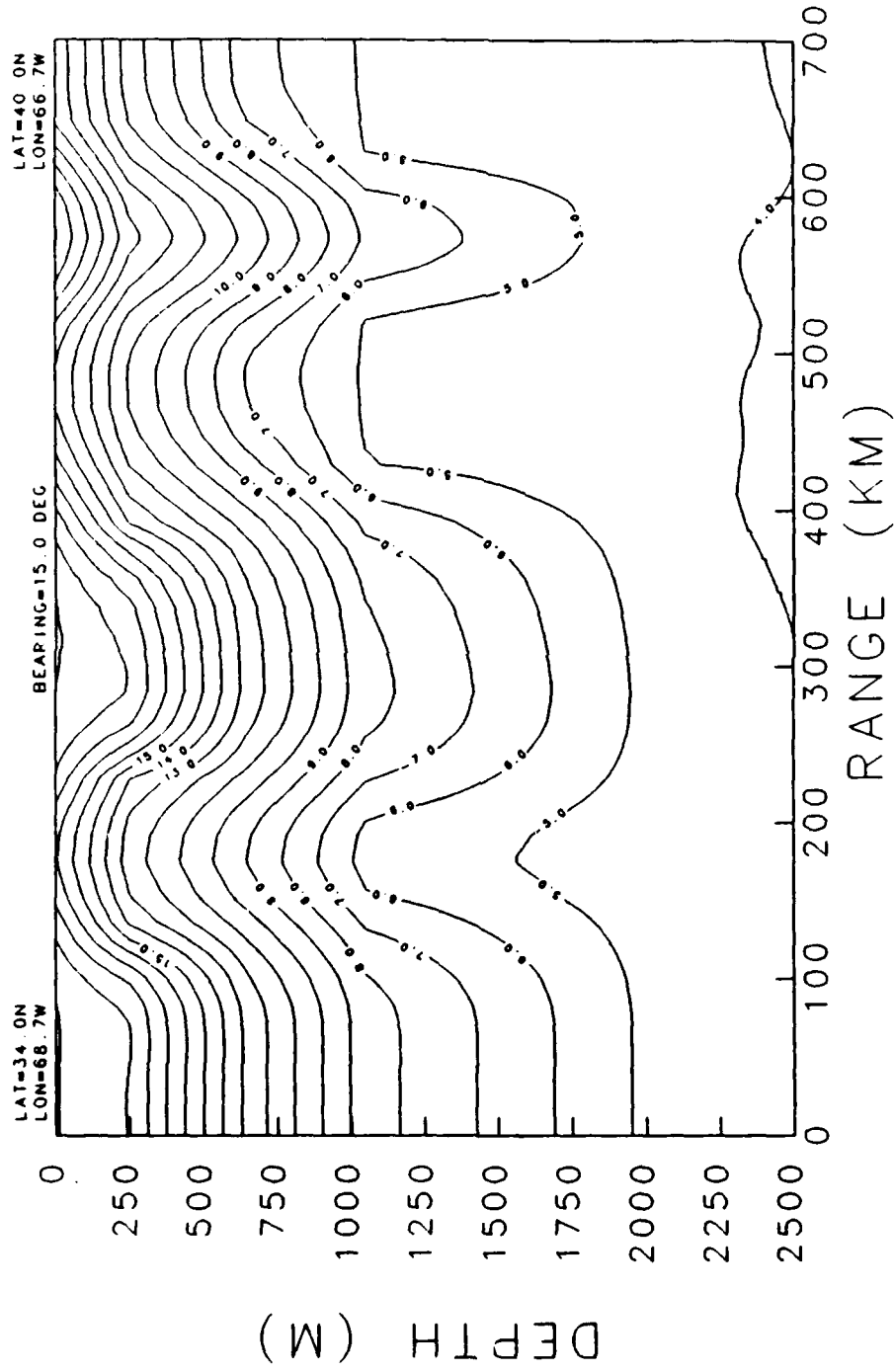


Figure 4. Harvard University Gulfcast, 16 August 1986, Temperature in the Vertical Plane

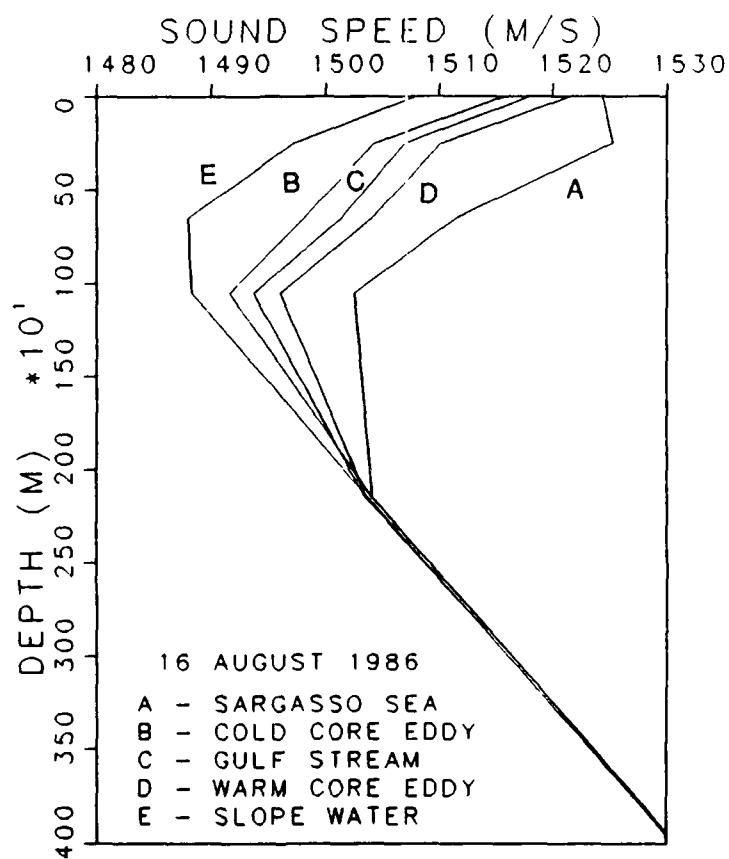


Figure 5. Sound Speed Profiles Along the Transect ABCDE

## INTERFACING IFD AND THE HARVARD DATA SET

In order to interface IFD with the Harvard data set without altering the present structure of the input runstream or modifying the IFD model, a data-dependent subroutine, USVP, was written and stored in a file named HVDSVP2D.FOR. A variety of predictions through the Harvard data set may be generated by modifying USVP.

## SUBROUTINE USVP

As previously reported,<sup>2</sup> IFD calls on user-prepared subroutine USVP whenever the input sound speed flag, KSVP, is not set to zero. When called, subroutine USVP locates the position of the next solution to be obtained, enters the Harvard data set, and extracts the sound speed profile at that location. A flow chart of USVP logic appears in figure 6.

Since USVP is data dependent and not general purpose, the user must edit USVP in order to initialize the parameters and variables declared in the flowchart (figure 6). The subroutine is then compiled and linked with the IFD model.

Commands for compiling and linking are as follows:

```
$ FOR IFD,DIAG,CRNK,TRID,HNKL,SVP,SFIELD,HVDSVP2D,UFIELD,BCON,SCON
$ LINK IFD,DIAG,CRNK,TRID,HNKL,SVP,SFIELD,HVDSVP2D,UFIELD,BCON,SCON
```

Note that subroutine USVP is contained in file HVDSVP2D.FOR.

## INITIALIZATION FOR 16 AUGUST 1986 FORECAST

Data-Dependent Parameters and Variables

The variables and parameters that must be initialized for the 16 August 1986 data set are as follows:

- Parameter NLEV = 6 - Number of depth levels.
- Data ZLEV/100,300,700,1100,2200,3900/ - Depth levels (meters).
- DLATO = 37°30' - Latitude of domain center.
- DLNGO = 66°48' - Longitude of domain center.
- CCW = 20° - Counterclockwise rotation of domain.
- NX = 55 - Number of data points along "x" axis.

- DX = 1500 - Distance between data points (meters).
- NY = 55 - Number of data points along "y" axis.
- DY = 15000 - Distance between data points (meters).
- AUG16.SPD - File name of data set to be assigned.

Once initialized, these data-dependent parameters and variables remain fixed; whereas, certain user variables must be modified to reflect the geometry of the run.

#### User-Supplied Variables

User variables that direct the IFD model to propagate along a specific track in the Harvard data domain are as follows:

- SLATO = Latitude of source location.
- SLNGO = Longitude of source location.
- PHI = Direction of propagation.
- XZSVP = Maximum depth to extrapolate (meters).

In the next section, these variables are initialized for a test run through a cold-core eddy.

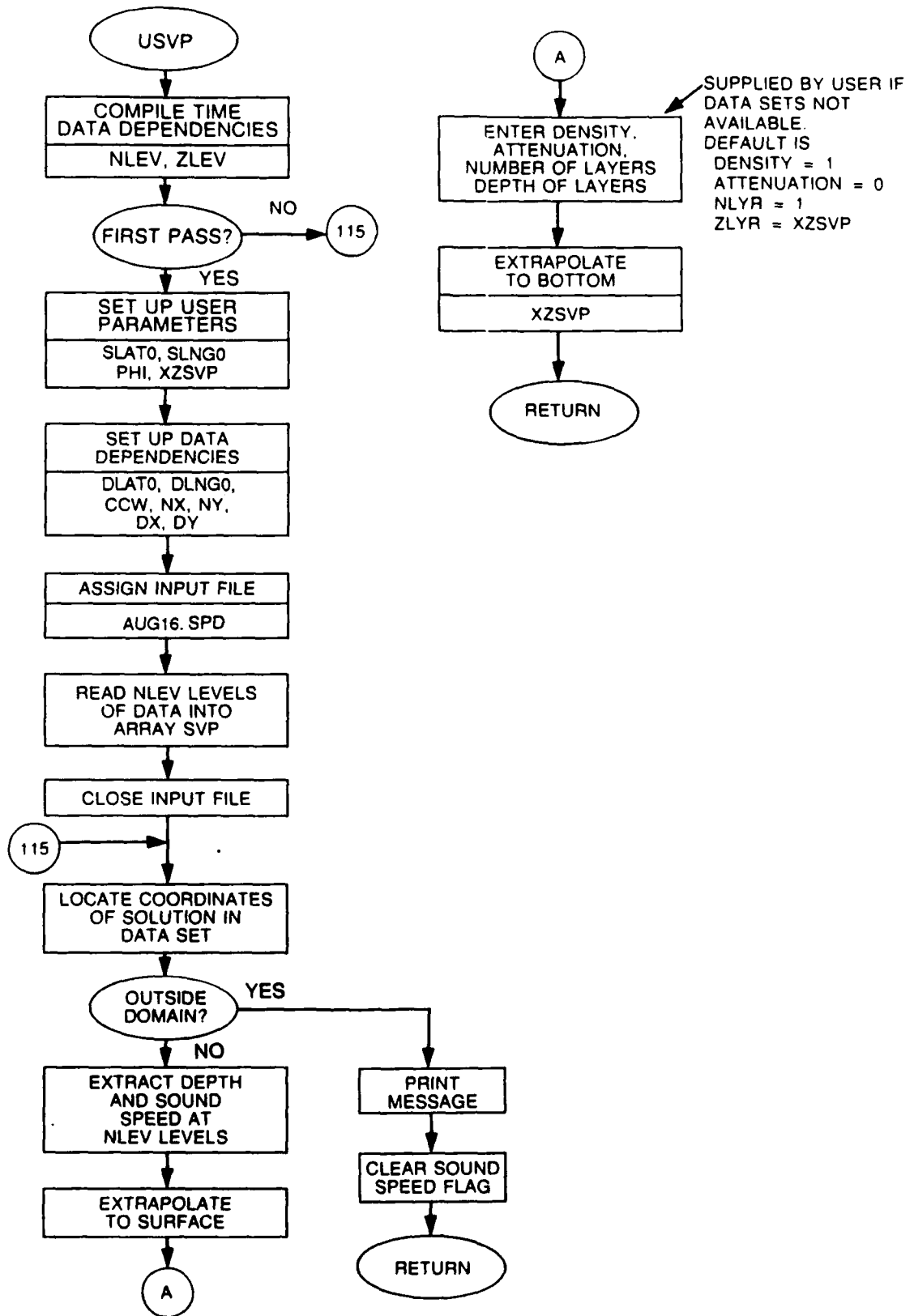


Figure 6. Flowchart of USVP Logic

## ACOUSTIC PROPAGATION THROUGH A COLD-CORE EDDY

In this section, the procedure for generating a prediction through a cold-core eddy is included as reference material for IFD users who may have need for generating predictions through Harvard Gulfcasts. Selection of the cold-core eddy was arbitrary.

## INITIALIZATION OF USER VARIABLES

In order to propagate through the cold-core eddy located within the first 300 km of the transect ABCDE shown in figure 1, the user must edit USVP in order to assign values to the following variables:

SLATO = 34.0° - Latitude of source location (degrees).

SLNGO = 68.7° - Longitude of source location (degrees).

PHI = 015° - Direction of propagation (degrees).

XZSVP = 5000 - Maximum depth to extrapolate (meters).

Subroutine USVP is then compiled and linked with the IFD model. A listing of subroutine USVP is included in the appendix.

## INPUT RUNSTREAM

Once USVP has been linked with IFD, the input runstream (IFD.IN) must be prepared. Explicit instructions for preparing IFD.IN may be found in references 2 and 3 and will not be repeated here.

Parameters for this sample problem are

Frequency = 25 Hz,  
Source depth = 100 m,  
Water depth = 5000 m,  
Sound speed = extracted from Harvard data,  
Density in water = 1.0 g/cubic cm,  
Density in bottom = 1.0 g/cubic cm,  
Attenuation in water = 0,  
Bottom attenuation = 0,  
Artificial absorbing bottom from 5000 - 6000 m,  
Bottom sound speed = sound speed at 5000 m,  
Maximum range = 300 km.



The input runstream located in file IFD.IN is prepared as follows:

```
25 100 0 0 0 6000 600 0 3 0
300000 20 50 50 100000 500 0 0 0
1 .75 1 .25
0 5000
300000 5000
-1,-1
0
1
```

#### ACOUSTIC PREDICTION

The final step in generating a prediction through the eddy is to run the IFD program. Then output from the model may be plotted with a program such as that listed in reference 2. A plot of propagation loss through the cold-core eddy at 100 meters in depth is shown in figure 7.

In summary, the procedure for generating predictions through the Harvard data set is as follows:

1. Edit USVP to enter data-dependent and user-supplied variables,
2. Compile USVP,
3. Link USVP with the IFD model,
4. Prepare input runstream IFD.IN,
5. RUN IFD, and
6. Plot the contents of IFD.OUT.

```

IFD SOLUTION
INITIAL PARAMETERS
FRQ = 25.0 HZ
ZS = 100.0 M
CO = 1517.8 M/SEC
RO = 0.0 M
ZO = 6000.0 M
N = 600
DR = 20.0 M
WDR = 50.0 M
RMAX = 300000.0 M
DZ = 10.00 M
WDZ = 50.00 M
ISF = 0
IHNK = 0
ITYPES = 0
ITYPEB = 3
LYR  DEPTH(M)  RHO    BETA(DB/WL)
1     5000.0    1.00    0.000
2     6000.0    1.00    0.000
AVG = 50 M
RECEIVER DEPTH = 100.0 M

```

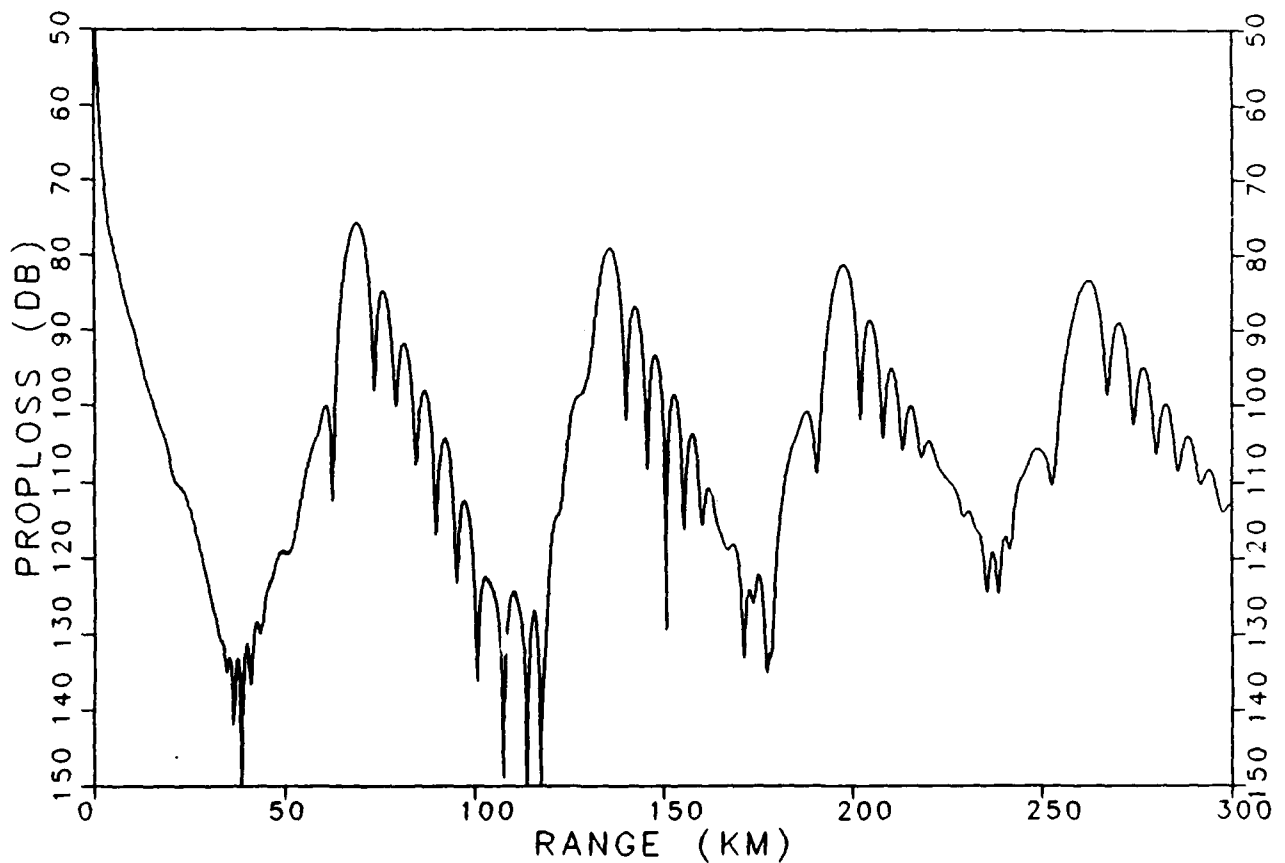


Figure 7. Propagation Loss Through a Cold-Core Eddy

## CONCLUSIONS

The IFD computer model has been interfaced with mesoscale sound speed forecasts generated by the Harvard Open Ocean Model. Acoustic propagation predictions through a variety of dynamic undersea environments may now be easily obtained. Sufficient detail has been presented such that the IFD user will be able to modify the interface subroutine, USVP, to accommodate new forecasts. Additional data sets containing density and bottom topography within the domain of interest will be incorporated into USVP in the near future.

Mesoscale forecasts generated by the Harvard Open Ocean Model have also been interfaced with FOR3D,<sup>11,12</sup> a computer model for solving the LSS three-dimensional, wide angle wave equation. That report will appear at a later date.

## REFERENCES

1. D. Lee, G. Botseas, and J. S. Papadakis, "Finite-Difference Solutions to the Parabolic Wave Equation," Journal of the Acoustical Society of America, vol. 70, no. 3, 1981, pp. 795-800.
2. D. Lee and G. Botseas, IFD: An Implicit Finite-Difference Computer Model for Solving the Parabolic Equation, NUSC Technical Report 6659, Naval Underwater Systems Center, New London, CT, 27 May 1982.
3. G. Botseas, D. Lee, and K. E. Gilbert, IFD: Wide Angle Capability, NUSC Technical Report 6905, Naval Underwater Systems Center, New London, CT, 28 October 1983.
4. F. D. Tappert and R. H. Hardin, "Computer Simulation of Long-Range Ocean Acoustic Propagation Using the Parabolic Equation Method," Eighth International Congress on Acoustics, London, England, 1974, p. 452.
5. F. D. Tappert, "The Parabolic Approximation Method, Wave Propagation and Underwater Acoustics," edited by J. B. Keller and J. S. Papadakis, Lecture Notes in Physics, vol. 70, Springer-Verlag, Heidelberg, 1977.
6. R. N. Miller, A. R. Robinson, and D. B. Haidvogel, "A Baroclinic Quasigeostrophic Open Ocean Model," Journal of Computational Physics, vol. 50, no. 1, 1983, pp. 38-70.
7. A. R. Robinson and W. G. Leslie, "Estimation and Prediction of Oceanic Eddy Fields," Prof. Oceanog., vol. 14, 1985, pp. 485-510.
8. A. R. Robinson and L. J. Walsted, "The Harvard Open Ocean Model: Calibration and Application to Dynamical Process, Forecasting, and Data Assimilation Studies," J. Appl. Numer. Math 3, 1987.
9. A. R. Robinson, "Predicting Open Ocean Currents, Fronts and Eddies," Three-Dimensional Models of Marine and Estuarine Dynamics, edited by J.C.J. Nihoul and B. M. Jamart, Elsevier, Amsterdam, 1987, pp. 89-112.
10. Harvard Open Ocean Model forecasts and relevant programs were obtained from Drs. Wayne Leslie and Scott Glenn of Harvard University.
11. D. Lee, Y. Saad, and M. H. Schultz, An Efficient Method for Solving the Three-Dimensional Wide Angle Wave Equation, Research Report YALEU/DCS/RR-643, Yale University, New Haven, CT, Oct 1986.
12. G. Botseas, D. Lee, and D. King, FOR3D: A Computer Model for Solving the LSS Three-Dimensional, Wide Angle Wave Equation, NUSC Technical Report 7943, Naval Underwater Systems Center, New London, CT, 14 August 1987.

APPENDIX  
COMPUTER LISTING OF SUBROUTINE USVP

```

SUBROUTINE USVP
C *****
C * THIS ROUTINE SERVES AS AN INTERFACE BETWEEN THE IFD MODEL AND
C * THE HARVARD OPEN OCEAN MODEL. GIVEN THE LATITUDE AND LONGITUDE
C * OF THE SOURCE AND DIRECTION OF PROPAGATION, THIS ROUTINE EXTRACTS
C * SOUND VELOCITY PROFILES FROM A 3-DIMENSIONAL DATA SET GENERATED
C * BY THE HARVARD MODEL. THIS ROUTINE IS DATA DEPENDENT AND NOT
C * GENERAL PURPOSE. DATA AND RELEVANT PROGRAMS WERE OBTAINED FROM
C * DRS. SCOTT GLENN AND WAYNE LESLIE OF HARVARD UNIVERSITY.
C *****
C *****
PARAMETER HU=3,MXY=10000
PARAMETER MXLYR=101,MXN=10000,MXSVP=101,MXTRK=101,NIU=1,
C      NOU=2,NPU=6
COMPLEX ACOFX,ACOFY,BCOF,BOTX,BOTY,BTA,HNK,HNKL,SURX,SURY,TEMP,
C      U,X,Y
COMMON /IFDCOM/ACOFX,ACOFY,ALPHA,BCOF,BETA(MXLYR),BOTX,BOTY,
C      BTA(MXN),C0,CSVP(MXSVP),DR,DR1,DZ,FRQ,IHNK,ISF,ITYPEB,
C      IYPES,IXSVP(MXLYR),KSVP,N,N1,NLYR,NSVP,NWSVP,R12(MXN),RA,
C      RHO(MXLYR),RSVP,SURX,SURY,THETA,TRACK(MXTRK,2),U(MXN),
C      X(MXN),XK0,Y(MXN),ZA,ZLYR(MXLYR),ZP,ZS,ZSVP(MXSVP)
DATA PI/3.141592654/,DEG/57.29578/
C *** NLEV IS NUMBER OF SOUND SPEED DEPTHS IN HARVARD DATA SET
PARAMETER NLEV=6
DIMENSION SVP(MXY,NLEV),ZLEV(NLEV)
DATA ZLEV/100,300,700,1100,2200,3900/
C *** ZLEV IS DATA DEPENDENT. ZLEV CONTAINS NLEV SOUND SPEED DEPTHS.
DATA IPASS/0/
DATA RAD/6378400/ ! RADIUS OF EARTH IN METERS
GO TO (100,200,300,400) ,KSVP
NSVP=0
RETURN
100 CONTINUE
IF(IPASS.EQ.1) GO TO 115
C *** INSERT USER PARAMETERS HERE
SLAT0=34.0 ! LATITUDE OF SOURCE
SLNG0=68.7 ! LONGITUDE OF SOURCE
PHI=015.0 ! DIRECTION OF PROPAGATION IN DEGREES
C *** EXTRAPOLATE PROFILE FROM MAX DEPTH GIVEN IN HARVARD DATA SET
C *** TO XZSVP METERS.
XZSVP=5000.0
C *** END OF USER PARAMETERS
SLAT=SLAT0
SLNG=SLNG0
PHI=PHI*PI/180.0
C *** COMPUTE METERS PER DEGREE OF LATITUDE
CONVLAT=2*PI*RAD/360.0
C *** FOLLOWING PARAMETERS ARE FOR HARVARD DATA SET
DLAT0=37.5 ! LATITUDE OF DOMAIN CENTER
DLNG0=66.0+48.0/60.0 ! LONGITUDE OF DOMAIN CENTER
CCW=20.0*PI/180.0 ! COUNTER-CLOCKWISE ROTATION OF DOMAIN IN RADIAN
NX=55 ! NUMBER OF POINTS ALONG X-AXIS
NY=55 ! NUMBER OF POINTS ALONG Y-AXIS
NXY=NX*NY ! TOTAL NUMBER OF DATA POINTS PER DEPTH LEVEL

```

```

DX=15000 ! RESOLUTION IN METERS
DY=15000 ! RESOLUTION IN METERS
CALL ASSIGN(HU,'AUG16.SPD') ! ASSIGN HARVARD DATA FILE
C *** READ HARVARD DATA SET
DO 110 L=1,NLEV
READ(HU,END=192)NN,T,ITYP,K,TMP1,TMP2
C *** NN = NUMBER OF POINTS IN HORIZONTAL PLANE.
IF(NN.NE.NXY)GO TO 190
READ(HU)(SVP(I,L),I=1,NXY)
110 CONTINUE
CALL CLOSE(HU)
C *** END OF HARVARD INPUTS
CONVLNG2=RAD*COS(PI*DLAT0/180.)*2*PI/360.0
XBASIN=(NX-1)*DX
YBASIN=(NY-1)*DY
ANGLE=CCW+ATAN2(YBASIN,XBASIN)
DCENTER=SQRT((XBASIN/2)**2+(YBASIN/2)**2)
RAOLD=RA
IPASS=1
115 CONTINUE
CONVLNG=RAD*COS(PI*SLAT/180.)*2*PI/360.0
C *** LOCATE COORDINATES IN DATA SET
STHETA=90.0*PI/180.0-PHI
SLAT=SLAT0+RA*SIN(STHETA)/CONVLAT
SLNG=SLNG-(RA-RAOLD)*COS(STHETA)/CONVLNG
RAOLD=RA
C WRITE(6,*)'LAT = ',SLAT,' LON = ',SLNG
A1=((DLNG0+DCENTER*COS(ANGLE)/CONVLNG2)-SLNG)*CONVLNG2
B1=(SLAT-(DLAT0-DCENTER*SIN(ANGLE)/CONVLAT))*CONVLAT
C1=SQRT(A1**2+B1**2)
PSI=ATAN2(B1,A1)-CCW
IS=INT(C1*COS(PSI)/(DX))+1
IF(IS.GT.NX) THEN
WRITE(NPU,194)
KSVP=0
RETURN
ELSE
ENDIF
JS=INT(C1*SIN(PSI)/(DY))+1
IF(JS.GE.NY) THEN
WRITE(NPU,195)
KSVP=0
RETURN
ELSE
ENDIF
IF(IS.LT.1) THEN
WRITE(NPU,194)
KSVP=0
RETURN
ELSE
ENDIF
IF(JS.LT.1) THEN
WRITE(NPU,195)
KSVP=0

```

```

RETURN
ELSE
ENDIF
XIP=C1*COS(PSI)
YJP=C1*SIN(PSI)
A2=DX*(IS-1)
B2=DX*(JS-1)
C2=SQRT(A2**2+B2**2)
PSI2=ATAN2(B2,A2)
XIS=C2*COS(PSI2)
YJS=C2*SIN(PSI2)
XOFF=(XIP-XIS)/(DX)
YOFF=(YJP-YJS)/(DY)
C *** INTERPOLATE
DO 120 LEV=1,NLEV
I1=(JS-1)*NX+IS
I2=I1+1
I3=I1+NX
I4=I1+NX+1
P1=SVP(I1,LEV)
P2=SVP(I2,LEV)
P3=SVP(I3,LEV)
P4=SVP(I4,LEV)
A=(YOFF*P3+(1.0-YOFF)*P1)
B=(YOFF*P4+(1.0-YOFF)*P2)
CSVP(LEV+1)=(A*(1.0-XOFF)+B*XOFF)
ZSVP(LEV+1)=ZLEV(LEV)
120 CONTINUE
ZSVP(1)=0.0
C *** SPEED AT SURFACE NOT SUPPLIED. USE SPEED AT SHALLOWEST DEPTH OR
C CSVP(1)=CSVP(2)
C *** EXTRAPOLATE TO SURFACE.
CSVP(1)=CSVP(3)-(CSVP(3)-CSVP(2))*(ZSVP(3))/
C(ZSVP(3)-ZSVP(2))
ZLYR(1)=XZSVP
RHO(1)=1.0
BETA(1)=0.0
IXSVP(1)=NLEV+2
NLYR=1
NSVP=NLEV+2
180 CONTINUE
C *** EXTRAPOLATE TO BOTTOM DEPTH XZSVP
ZSVP(NLEV+2)=XZSVP
CSVP(NLEV+2)=CSVP(NLEV)+(CSVP(NLEV+1)-CSVP(NLEV))*(ZSVP(NLEV+2)-
CZSVP(NLEV))/(ZSVP(NLEV+1)-ZSVP(NLEV))
RETURN
190 CONTINUE
WRITE(NFU,191)
191 FORMAT(1X,'DATA MISMATCH. NX*NY DOES NOT EQUAL NN.')
```

```

NSVP=0
RETURN
192 WRITE(NFU,193)
193 FORMAT(1X,'READ ERROR. CHECK INPUT SOUND SPEED FILE.')
```

```

NSVP=0
```



```
RETURN
194  FORMAT(1X,'LONGITUDE OUTSIDE LIMITS OF SOUND SPEED DOMAIN.')
195  FORMAT(1X,'LATITUDE OUTSIDE LIMITS OF SOUND SPEED DOMAIN.')
196  FORMAT(1X,'LAT = ',F6.1,' LON = ',F6.2)
200  CONTINUE
300  CONTINUE
400  CONTINUE
      NSVP=0
      RETURN
      END
```

## DISTRIBUTION LIST

Addressee	No. of Copies
SACLANT ASW Research Center (Dr. R. L. Martin, Dr. F. C. Jensen)	2
NRL (Dr. Ralph Baer, Code 5160; Orest Diachok; Dr. John S. Perkins, Code 5160; Dr. W. A. Kuperman; Dr. Michael Porter)	5
NOSC (Code 8302; Dr. Homer Bucker, Code 5311B; David Gordon; M. A. Pedersen)	4
NORDA (Dr. Stanley Chin-Bing; Dr. M. F. Werby; R. W. McGirr (24); G. Morris (6); Edward Chaika (6); Dr. David King)	39
NCSC (Dr. Larry Green, Code 4120)	1
CNO (OP-952)	1
NAVSEASYSKOM (SEA-003, -06R, -63D, -63R, -63R-1, -63R-13, -53RA)	7
NAVAIRDEVCOM	1
DTIC	2
CNA	1
Defense Research Establishment, Pacific (Dr. David Thomson, Dr. Gary Brooke, Dr. N. Ross Chapman)	3
Defense Research Establishment, Atlantic (Dr. Dale D. Ellis, Dr. D. Chapman)	2
NOAA/ERL/WDL (Michael Jones)	2
NOAA/AOML/OAL (Dr. David Palmer, Code 5122; Dr. John Tsai)	2
NOO, NSTL Station (Nils Paz, Code 7332; Dr. Lloyd R. Breslau, Code 9000; Dr. William Jobst)	3
ONR, Arlington (Robert Obrochta, Dr. Richard Lau, Dr. Marshall Orr, Dr. Raymond Fitzgerald)	4
ONR (Codes 100, 200, 220, 222, 400, 422, 425AC, 480, 486)	9
OCEANAV	1
NAVOCEANO	2
Weapons System Research Laboratory (Dr. D. Kewley)	1
Georgia Institute of Technology (Prof. William F. Ames, Prof. Allan D. Pierce)	2
University of Miami (Prof. Harry DeFarrai, Prof. Frederick D. Tappert)	2
Colorado School of Mine (Dr. John A. DeSanto; Prof. L. Fishman (Center for Wave Phenomena, Dept of Math; Golden, CO 80401)	2
Science Applications, Inc. (Dr. Lewis Dozier, Dr. John Hanna, Dr. C. W. Spofford)	3
University of Toronto, Canada (Prof. Kenneth R. Jackson)	4
ODSI Defense System Inc. (Paul Etter)	1
APL/University of Texas (Prof. Robert A. Koch, Susan Payne)	2
APL/Penn State (Dr. S. T. McDaniel, Prof. Allan D. Pierce)	2
Northwestern University (Prof. G. Kriegsmann)	4
Columbia University (Prof. John T. Kuo, Dr. Yu-Chiung Teng)	2
Admiralty Underwater Weapons Establishment (Dr. Roy G. Levers)	1
University of Rhode Island (Dr. Larry Mayer, Prof. G. R. Verma)	2
University of New Orleans (Prof. J. E. Murphy)	1
Daubin Systems Corp. (Dr. Lan Nghiem-Phu)	1
Bell Telephone Laboratory (Richard S. Patton, Denni Seals)	2
Polytechnic in Westchester (Prof. S. Preiser)	1
Yale University (Prof. Martin H. Schultz)	4

DISTRIBUTION LIST (Cont'd)

Rensselaer Polytechnic Institute (Prof. W. L. Siegmann, Prof. M. J. Jacobson)	6
University of Massachusetts (Prof. Donald F. St. Mary)	6
Rutgers University (Prof. Robert Vichnevetsky)	1
Iowa State University (Dr. James Coronos)	1
FLOPETROL, SCHLUMBERGER, France	1
Forschungsanstalt der Bundeswehr fuer Wasserschall un Geophysik (Prof. G. Ziehm)	1
University of Crete, Greece (Prof. John S. Papadakis)	1
Harvard University (Prof. Allan R. Robinson, Dr. Wayne Leslie, Dr. Scott Glenn, LT Jesse Carmen)	4
Massachusetts Institute of Technology (Prof. A. B. Baggeroer)	1
INO (Dr. Christopher Mooers, Dr. David Adamec, Dr. Michele Rienecker, Robert Willems, Dr. Ching-Sang Chui)	5
The Catholic University of America (Prof. J. J. McCoy)	1
The Florida State University (Prof. E. C. Young, Prof. C. Tam)	2
Dr. Michael J. Buckingham (Royal Aircraft Establishment Farnborough Hants GU14 6TD ENGLAND)	1