

NO-A191 936 FEDERAL FUNDING: INFORMATION ON SELECTED
BENEFIT/MANDATORY SPENDING PROGRAMS(U) GENERAL
ACCOUNTING OFFICE WASHINGTON DC ACCOUNTING AND FINANC..
UNCLASSIFIED 27 JAN 88 GAO/AFMD-88-31F5 F/G 5/1

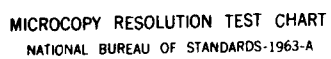
FEDERAL FUNDING: INFORMATION ON SELECTED
BENEFIT/MANDATORY SPENDING PROGRAMS(U) GENERAL
ACCOUNTING OFFICE WASHINGTON DC ACCOUNTING AND FINANC..
27 JAN 88 GAO/AFMD-88-31FS F/G 5/1

1/2

UNCLASSIFIED

F/G 5/1

▲



MICROCOPY RESOLUTION TEST CHART
NATIONAL BUREAU OF STANDARDS-1963-A

①

Chairman, Committee
on Operations, House of

FILE COPY

AL FUNDING

ON
/

DTIC
ELECTRONIC
WRITER
S D
A E

88 3 10 010

SECRET



United States
General Accounting Office
Washington, D.C. 20548

Accounting and Financial
Management Division

B-221204

January 27, 1988

The Honorable Jack Brooks
Chairman, Committee on
Government Operations
House of Representatives

Dear Mr. Chairman:

The federal government annually budgets and spends billions of dollars for entitlement, benefit payment, and mandatory spending programs ranging from unemployment compensation to social service grants. Your April 20, 1987, letter requested that we review fund accountability for such programs at selected agencies.

Our report to you entitled, Fund Accountability: Procedures Used for Selected Benefit/Mandatory Spending Programs Are Adequate (GAO/AFMD-88-30, January 27, 1988), discusses fund accountability procedures for certain of these programs at selected agencies. It also provides information on funding flexibility provided by the Congress for several of the entitlement, benefit payment, and mandatory spending programs included in appendix II of this report.

During our survey, we identified over 100 programs throughout the government dealing with entitlements, benefit payments, and mandatory spending. When we briefed your staff on the results of our survey, we were asked to provide a separate report with additional information on these programs. Data requested included descriptions of the programs and the appropriation authority and expenditures each had for the past several fiscal years. This information is in appendix II.

As discussed with your staff, the scope of our survey was not intended to ensure that all programs of this nature had been identified. There may, therefore, be other government entitlement, benefit payment, and mandatory spending programs which this report does not cover. While we are unaware of any other such major programs, information on certain programs identified in the survey was not included because those programs primarily related to salary expenses.

Accession For

NTIS GRA&I ☒

DTIC TAB ☐

Unannounced ☐

Justification

By

Distribution/

Availability Codes

Dist

Avail and/or
Special

A-1



This document has been approved
for public release and sale; its
distribution is unlimited.

B-221204

Preceding the data sheets is a user's guide (appendix I). This guide provides information helpful for understanding each element in the data sheets and cites the sources used to prepare the material. We are also providing two indexes which can be used as cross-references to the material in appendix II. Since the data sheets are arranged alphabetically by department or agency, references are included for programs both by overall alphabetical order (appendix III) and by budget number (appendix IV).

Unless you publicly announce the contents of this report earlier, we will not distribute copies of it until 30 days after it is issued. At that time we will send copies to the Director of the Office of Management and Budget, interested congressional committees, and other interested parties. Copies will also be made available to others upon request. If you or your staff have any questions about the results of our work, please call me on 275-9454.

Sincerely yours,


Jeffrey C. Steinhoff
Associate Director

C o n t e n t s

	<u>Page</u>
LETTER	1
APPENDIXES	
I USER'S GUIDE	5
II DATA SHEETS ON SELECTED ENTITLEMENT, BENEFIT PAYMENT, AND MANDATORY SPENDING PROGRAMS	11
Department of Agriculture	11
Department of Defense	18
Department of Education	24
Department of Energy	32
Federal Deposit Insurance Corporation	33
Federal Home Loan Bank Board	34
Federal Retirement Thrift Investment Board	35
Health and Human Services	36
Department of the Interior	54
Judiciary Trust Funds	64
Department of Justice	65
Department of Labor	66
National Credit Union Administration	73
Office of Personnel Management	74
Railroad Retirement Board	79
Securities and Exchange Commission	82
Department of State	83
Department of Transportation	84
Department of the Treasury	89
U.S. Tax Court	98
Veterans Administration	99
III INDEX BY PROGRAM	116
IV INDEX BY BUDGET NUMBER	122

ABBREVIATIONS

FDIC	Federal Deposit Insurance Corporation
FSLIC	Federal Savings and Loan Insurance Corporation
GAO	General Accounting Office
GSL	Guaranteed Student Loans
HHS	Health and Human Services

IRS	Internal Revenue Service
LIHEA	Low Income Home Energy Assistance
OASI	Old Age and Survivors Insurance
PBGC	Pension Benefit Guaranty Corporation
SIPC	Securities Investor Protection Corporation
SSI	Supplemental Security Income
VA	Veterans Administration
WIC	Women, Infants, and Children

*General Accounting Office*USER'S GUIDE

This report provides information on entitlement, benefit payment, and mandatory spending programs identified during our survey. We used the following sources to identify these programs:

1) House Budget Committee and Senate Budget Committee lists of entitlement programs;

2) Congressional Budget Office's list of entitlement programs;

3) GAO reports, particularly, Implementing FY 1986 Reductions: Balanced Budget and Emergency Deficit Control Act of 1985 (GAO/OCG-86-3, June 30, 1986) and Budget Issues: Inventory of Accounts With Spending Authority and Permanent Appropriations, 1987 (GAO/AFMD-87-44A, July 17, 1987); and

4) Information obtained from the Budget of the United States Government, 1988--Appendix.

The data sheets provided in appendix II are organized by agency. Information is provided for fiscal years 1982 through 1988. Each sheet contains numerous elements such as trust fund assets, caseload data, and type(s) of special appropriation authority. A sample sheet and explanation of each element follows.

We did not verify the amounts and information shown on the data sheets with the agencies or trace them to agency records. Information shown on spending ceilings and special funding characteristics was based on information contained in the budget and has not been verified by independent examination of pertinent statutes.

APPENDIX I

APPENDIX I

SAMPLE DATA SHEET

Agency:

Program:

Common Name:

Budget Number:

Program Type:

Program Description:

Fiscal Year Data (in thousands):

	<u>Authorization</u>	<u>Net Outlays</u>	<u>Trust Fund Assets</u>	<u>Caseload</u>
1988			(Note: These columns are not shown on the data sheets if the information for <u>all</u> years was either not available or not applicable.)	
1987				
1986				
1985				
1984				
1983				
1982				

Caseload Units:

Special Funding Characteristics:

Spending Ceiling:

Formula Grant:

EXPLANATION OF ITEMS INCLUDED IN
PROGRAM LISTING

1. **Program, Common Name, and Program Description:** This information was obtained from various sources. The primary sources are the Budget of the United States Government, 1988--Appendix and a GAO report entitled, Budget Issues: Inventory of Accounts With Spending Authority and Permanent Appropriations, 1987 (GAO/AFMD-87-44A, July 17, 1987).

2. **Budget Number:** The budget number was derived from the Budget of the United States Government, 1988--Appendix. The first two digits represent the agency code assigned by Treasury. The next four show the appropriation number. The seventh shows the timing of budget estimates, while the eighth shows the type of fund. The last three positions show the function code (program type).

3. **Program Type:** Thirteen program types were developed based on the Office of Management and Budget (OMB) function codes, program descriptions included in the Budget of the United States Government, 1988--Appendix, and on our judgement. (Examples of program types include social welfare, education, and revenue sharing.)

4. **Authorization, Net Outlays, and Trust Fund Assets:** For fiscal years 1982 through 1986, we used the information published by the Department of the Treasury in the Appendix to the Treasury Annual Report. The amounts shown for fiscal year 1987 were based on Treasury's preliminary information as of November 30, 1987. The estimates shown for fiscal year 1988 were obtained from the Budget of the United States Government, 1988--Appendix. We did not include the estimated outlays and trust fund balances.

An "NA" appears for several programs and means that the information is not applicable. Such situations were usually caused by acceptable differences between Treasury's accounting for a program and OMB's presentation in the Budget. For example, the Veterans' Compensation, Pensions, and Burial Benefits and Miscellaneous Assistance programs are combined in Treasury's reports, while the Budget shows three programs. (See appendix II.) We also used "NA" to indicate when programs were created, modified, or abolished during the time period covered by the data sheets. For example, a trust fund for the Military Retirement Fund was created in 1985. Unique characteristics of the sections are discussed below.

Net Outlays

An agency's net outlays are composed of its gross outlays less its receipts. In several cases, the net outlay amount for a fiscal year exceeds the authorized amount. This can be caused by several acceptable conditions. Examples include the following:

- An agency is allowed to use the funds it collects to pay for its operations and no appropriations or additional borrowing authority is granted. An example of this is the Federal Deposit Insurance Corporation for fiscal years 1982 through 1986.
- An agency obligates funds in one year but does not make the outlays until the following year. An example of this is the State and Local Government Fiscal Assistance Trust Fund (Revenue Sharing Act).

In addition, the net outlay column may show a credit balance. This occurs when the agency's receipts exceed its outlays. Again, the Federal Deposit Insurance Corporation is an example of this condition.

Trust Fund Assets

Trust fund assets are composed of uninvested funds, Treasury securities, other government securities, and accounts receivable. Trust Fund Assets do not include the balances of the public enterprise funds such as the Federal Savings and Loan Insurance Corporation.

5. Caseload and Caseload Units: These items provide nonmonetary descriptions of the program, such as the number of insurance policies issued or number of enrollees. The caseload information was generally obtained from various budget appendixes and the 1987 Statistical Abstract of the United States published by the Commerce Department. When caseload information was not available from the sources used, no information is shown. When this information was available for some but not all years, "NRA" identifies the year(s) for which information was not readily available.

In some cases, the caseload information is associated only with a major subprogram because information was not readily available and/or not comparable between the subprograms. In these cases, the units associated with the most meaningful (usually the largest) subprogram were selected.

6. Special Funding Characteristics: This information resulted from a judgment based on the program description, actual fiscal

year 1987 authorizing language found in the budget, and other available information. If a program contained any of the following provisions, we considered it to have special funding characteristics.

- The Congress allows an agency to obligate the funds appropriated over 2 or more years (multiple year funding) or until the funds are expended (no-year funding).
- Authority to borrow funds from the Treasury and/or the public (borrowing authority).
- The Congress provided funds in the current fiscal year for the first quarter of the next fiscal year (advance funding).
- Authorization to obligate whatever funds are necessary to cover program costs (indefinite authority).

7. Spending Ceiling: This information resulted from a judgment based on our review of the proposed authorizing/appropriation language found in the Budget of the United States Government, 1988--Appendix. Only programs having permanent, indefinite appropriation authority can be said not to have a spending ceiling. Examples include appropriations for Claims, Judgments, and Relief Acts as well as appropriations for Interest on the Public Debt. Programs with no-year, indefinite appropriation authority have spending ceilings if the Congress has otherwise limited the use of such authority. This occurs since the Congress specifies such items as the amount of funds that can be obligated, amount available for loans, or amounts that can be borrowed. Examples of such programs include payments to States Under Mineral Leasing Act, College Housing Loans, and the Federal Deposit Insurance Corporation.

Although entitlement programs can legally incur obligations in excess of the amounts appropriated, an agency cannot disburse funds to pay for the obligations without additional appropriation authority and, therefore, in a literal sense, have a spending ceiling. However, for purposes of this fact sheet, we considered that such programs did not have a spending ceiling since the agency has the authority to obligate the amounts necessary.

8. Formula Grant: We considered a program to be a formula grant program if it had a spending ceiling and the amount a grantee would receive was based on a formula. The information used for making this determination was based on information contained in the Budget of the United States Government, 1988--Appendix and a GAO report entitled Grant Formulas: A Catalog of Federal Aid to States and

Localities (GAO/HRD-87-28, March 23, 1987). For example, if a program was given \$1 billion for educational assistance to handicapped children and the funds were to be distributed based on the number of handicapped children, it was considered a formula grant program.

However, if a program had funds distributed based on a formula but did not have a spending ceiling, we did not consider it a formula grant program. An agency might, for example, be allowed to spend the amount of funds necessary to pay eligible medical costs for low income individuals, with the federal share of those expenses being based on the grantee's economic condition. This program is not considered a formula grant program for this report because the amount grantees receive for the same type of reimbursement may vary.

Several programs shown as formula grant programs have one or more subprograms which may not be formula-based. In this situation, if a major subprogram was formula-based, we considered the entire program to be formula-based.

Legend:

CR - Credit balance

NA - Not applicable

NRA - Not readily available

APPENDIX II

APPENDIX II

Agency: AGRICULTURE

Program: CASH AND COMMODITIES FOR SELECTED GROUPS

Common Name: FOOD DONATIONS PROGRAMS

Budget Number: 12 3503 0 1 605

Program Type: SOCIAL WELFARE

Program Description: Programs provide (1) nutritious commodities for needy persons on Indian reservations and the Island of Palau, (2) payments to assist distributing agencies in meeting the expenses of operating food distribution programs, and (3) cash and commodity subsidies for meals served to the elderly.

Fiscal Year Data (in thousands):

	<u>Authorization</u>	<u>Net Outlays</u>
1988	\$193,203 est.	--
1987	193,589	\$188,254
1986	193,589	183,371
1985	139,546	166,718
1984	166,936	171,724
1983	172,266	145,765
1982	141,420	121,162

Caseload Units: NOT AVAILABLE FROM SOURCES USED

Special Funding Characteristics: NO

Spending Ceiling: YES

Formula Grant: NO

APPENDIX II

APPENDIX II

Agency: AGRICULTURE**Program:** CHILD NUTRITION PROGRAM**Common Name:** SCHOOL LUNCH AND BREAKFAST, SUMMER FOOD**Budget Number:** 12-3539 0 1 605**Program Type:** SOCIAL WELFARE

Program Description: Program provides cash and commodity meal subsidies through the school lunch, school breakfast, summer food service, and child care food programs. Federal funds are also made available for nutrition studies and state administrative expenses.

Fiscal Year Data (in thousands):

	<u>Authorization</u>	<u>Net Outlays</u>	<u>Caseload</u>
1988	\$4,475,226 est.	--	NRA
1987	4,360,860	\$4,044,830	NRA
1986	3,873,047	3,819,734	NRA
1985	3,804,680	3,664,561	29,500
1984	3,558,758	3,536,378	29,100
1983	3,296,000	3,278,133	28,700
1982	2,846,838	3,019,724	28,500

Caseload Units: PARTICIPANTS**Special Funding Characteristics:** NO**Spending Ceiling:** YES**Formula Grant:** NO

APPENDIX II

APPENDIX II

Agency: AGRICULTURE

Program: COMMODITY CREDIT CORPORATION

Common Name: CCC

Budget Number: 12 4336 0 3 351

Program Type: AGRICULTURE

Program Description: This corporation stabilizes, supports, and protects farm income and prices; helps maintain balanced and adequate supplies of agricultural commodities, their products, foods, and fibers; and helps in their orderly distribution. The corporation also may make available materials and facilities required in connection with the production and marketing of agricultural commodities.

Fiscal Year Data (in thousands):

	<u>Authorization</u>	<u>Net Outlays</u>
1988	\$ NA est.	--
1987	50,846,591	\$22,294,737
1986	57,061,920	25,561,303
1985	30,611,853	17,556,227
1984	24,712,484	7,258,881
1983	39,988,590	18,814,886
1982	25,094,116	11,581,540

Caseload Units: NOT AVAILABLE FROM SOURCES USED

Special Funding Characteristics: YES - BORROWING AUTHORITY

Spending Ceiling: NO

Formula Grant: NO

APPENDIX II

APPENDIX II

Agency: AGRICULTURE

Program: FOOD STAMP PROGRAM

Common Name: NONE

Budget Number: 12 3505 0 1 605

Program Type: SOCIAL WELFARE

Program Description: Program increases the food purchasing power of eligible low income households when recipients purchase food at retail stores with food stamp coupons.

Fiscal Year Data (in thousands):

	<u>Authorization</u>	<u>Net Outlays</u>	<u>Caseload</u>
1988	\$11,962,550 est.	--	NRA
1987	12,646,038	\$12,405,200	NRA
1986	11,762,316	11,619,439	NRA
1985	11,751,527	11,701,174	19,900
1984	11,722,914	11,561,023	20,900
1983	11,989,688	11,839,239	21,600
1982	11,285,841	11,014,140	21,700

Caseload Units: PARTICIPANTS

Special Funding Characteristics: NO

Spending Ceiling: YES

Formula Grant: NO

APPENDIX II

APPENDIX II

Agency: AGRICULTURE

Program: FOREST SERVICE PERMANENT APPROPRIATIONS

Common Name: NONE

Budget Number: 12 9921 0 2 852

Program Type: REVENUE SHARING

Program Description: These funds are used to make payments to various counties and states. For example, (1) counties in which National Grasslands are located receive 25 percent of the revenue received from the use of those National Grasslands to fund their local school and road development projects and (2) with minor exceptions, 25 percent of the money received by the National Forests is also paid to the states in which these forests are located for funding their local schools and roads.

Fiscal Year Data (in thousands):

	<u>Authorization</u>	<u>Net Outlays</u>
1988	\$296,145 est.	--
1987	23,341	\$303,397
1986	685,333	399,487
1985	235,699	235,699
1984	203,331	203,331
1983	143,640	143,640
1982	243,313	243,313

Caseload Units: NOT AVAILABLE FROM SOURCES USED

Special Funding Characteristics: YES - NO-YEAR, INDEFINITE

Spending Ceiling: YES

Formula Grant: NO

APPENDIX II

APPENDIX II

Agency: AGRICULTURE

Program: SPECIAL MILK PROGRAM

Common Name: NONE

Budget Number: 12 3502 0 1 605

Program Type: SOCIAL WELFARE

Program Description: Program subsidizes schools and institutions that do not participate in other federally funded meal programs for milk served to students and also subsidizes milk served to students in split-session kindergartens who do not have access to the school's meal service program.

Fiscal Year Data (in thousands):

	<u>Authorization</u>	<u>Net Outlays</u>	<u>Caseload</u>
1988	\$33,974 est.	--	NRA
1987	18,295	\$15,446	NRA
1986	11,500	15,267	NRA
1985	17,600	15,993	167,000
1984	11,920	16,000	174,000
1983	20,100	14,912	189,000
1982	28,100	22,884	202,000

Caseload Units: HALF-PINTS MILK REIMBURSED

Special Funding Characteristics: NO

Spending Ceiling: YES

Formula Grant: NO

APPENDIX II

APPENDIX II

Agency: AGRICULTURE

Program: SUPPLEMENTAL NUTRITION ASSISTANCE - WOMEN, INFANTS, AND CHILDREN

Common Name: WIC

Budget Number: 12 3510 0 1 605

Program Type: SOCIAL WELFARE

Program Description: Program gives grants to states to provide nutritious foods to low income pregnant, postpartum, and breast-feeding women and to infants and children who are at nutritional risk.

Fiscal Year Data (in thousands):

	<u>Authorization</u>	<u>Net Outlays</u>	<u>Caseload</u>
1988	\$1,687,541 est.	--	NRA
1987	1,663,497	\$1,669,593	NRA
1986	1,580,494	1,577,523	NRA
1985	1,500,000	1,494,735	3,300
1984	1,360,000	1,367,293	3,200
1983	1,160,000	1,126,088	2,600
1982	934,080	929,757	2,300

Caseload Units: PARTICIPANTS

Special Funding Characteristics: NO

Spending Ceiling: YES

Formula Grant: NO

APPENDIX II

APPENDIX II

Agency: DEFENSE

Program: CLAIMS, DEFENSE

Common Name: NONE

Budget Number: 97 0102 0 1 051

Program Type: GENERAL GOVERNMENT

Program Description: This appropriation is used for the payment of claims authorized by law to be paid by the Department of Defense. Claims include damages arising from training contracts with carriers, and repayment of amounts determined to have been erroneously collected from military and civilian personnel of the Department of Defense, or from states, territories, the District of Columbia, and members of the National Guard units.

Fiscal Year Data (in thousands):

	<u>Authorization</u>	<u>Net Outlays</u>
1988	\$273,574 est.	--
1987	144,400	\$145,691
1986	143,300	142,187
1985	146,500	130,413
1984	160,400	123,804
1983	144,400	130,089
1982	155,700	163,464

Caseload Units: NOT AVAILABLE FROM SOURCES USED

Special Funding Characteristics: NO

Spending Ceiling: YES

Formula Grant: NO

APPENDIX II

APPENDIX II

Agency: DEFENSE

Program: CORPS OF ENGINEERS - PERMANENT APPROPRIATIONS

Common Name: NONE

Budget Number: 96 9921 0 2 999

Program Type: REVENUE SHARING

Program Description: This appropriation provides funding for (1) a hydraulic mining debris fund in California, (2) maintenance and operation of dams and other improvements of navigable waters, and (3) payments to the applicable states for public schools, roads, and other expenses of county government.

Fiscal Year Data (in thousands):

	<u>Authorization</u>	<u>Net Outlays</u>
1988	\$ 9,000 est.	--
1987	14,950	\$17,150
1986	14,626	12,950
1985	13,065	9,912
1984	9,779	9,495
1983	9,524	12,222
1982	12,191	6,771

Caseload Units: NOT AVAILABLE FROM SOURCES USED

Special Funding Characteristics: YES - NO-YEAR, INDEFINITE

Spending Ceiling: YES

Formula Grant: NO

APPENDIX II

APPENDIX II

Agency: DEFENSE

Program: EDUCATION BENEFITS FUND

Common Name: NONE

Budget Number: 97 8098 0 7 702

Program Type: VETERANS' BENEFITS AND SERVICES

Program Description: This appropriation provides for accrual funding for certain new education benefits to be provided to active duty military personnel and to selected reserve personnel. The fund, established in 1985, receives a permanent appropriation consisting of government contributions and interest on investments.

Fiscal Year Data (in thousands):

	<u>Authorization</u>	<u>Net Outlays</u>	<u>Trust Fund Assets</u>
1988	\$234,300 est.	--	--
1987	281,520	\$43,253	\$511,575
1986	208,055	28,760	236,783
1985	52,931	4,557 CR	57,488
1984	NA	NA	NA
1983	NA	NA	NA
1982	NA	NA	NA

Caseload Units: NOT AVAILABLE FROM SOURCES USED

Special Funding Characteristics: YES - NO-YEAR, INDEFINITE

Spending Ceiling: YES

Formula Grant: NO

APPENDIX II

APPENDIX II

Agency: DEFENSE

Program: HOMEOWNERS ASSISTANCE FUND, DEFENSE

Common Name: NONE

Budget Number: 97 4090 0 3 051

Program Type: SALARIES AND BENEFITS

Program Description: This program provides financial assistance to military personnel and civilian employees incident to the disposition of their one or two family dwellings when military installations are closed. The government buys or assumes the mortgage from the homeowner (takes title) and sells the property. Proceeds of the sale are intended to replenish the fund and to maintain it as a revolving fund. The fund has authority to borrow and may use offsetting collections.

Fiscal Year Data (in thousands):

	<u>Authorization</u>	<u>Net Outlays</u>
1988	\$5,800 est.	--
1987	2,000	\$6,080
1986	0	3,364
1985	0	2,000
1984	0	609
1983	2,000	256
1982	2,000	2,283

Caseload Units: NOT AVAILABLE FROM SOURCES USED

Special Funding Characteristics: YES - NO-YEAR,
BORROWING AUTHORITY

Spending Ceiling: NO

Formula Grant: NO

Agency: DEFENSE

Program: MILITARY RETIREMENT FUND

Common Name: NONE

Budget Number: 97 8097 0 7 602

Program Type: PENSIONS AND WORKERS' SECURITY

Program Description: This trust fund was established in 1985 and provides for the accrual funding of the military retirement system (previously the system was funded by annual appropriations). The trust fund is financed by (1) federal contributions for retired pay and retirement pay of military personnel, (2) federal contributions consisting of a normal cost accrual percentage applied to basic pay amounts contained in the military personnel appropriations, and (3) interest on investments.

Fiscal Year Data (in thousands):

	<u>Authorization</u>	<u>Net Outlays</u>	<u>Trust Fund Assets</u>	<u>Caseload</u>
1988	\$33,409,000 est.	--	--	NRA
1987	32,031,297	\$18,061,223	\$37,522,093	NRA
1986	26,844,252	17,610,521	20,878,053	NRA
1985	27,425,859	15,788,764	11,637,695	2,239
1984	16,511,600	16,470,522	NA	2,224
1983	16,154,800	15,944,644	NA	2,251
1982	14,986,000	14,937,897	NA	2,230

Caseload Units: NUMBER OF RETIRED MILITARY PERSONNEL

Special Funding Characteristics: YES - NO-YEAR, INDEFINITE

Spending Ceiling: YES

Formula Grant: NO

APPENDIX II

APPENDIX II

Agency: DEFENSE

Program: PAYMENT OF CLAIMS

Common Name: NONE

Budget Number: 84 8930 0 7 705

Program Type: GENERAL GOVERNMENT

Program Description: Program provides refunds for court martial fines and other charges erroneously deducted from the pay of enlisted Army and Air Force members after adjudication of claims by the General Accounting Office. The fund consists of receipts from fines, forfeitures, and stoppages of pay of regular enlisted personnel of the Army and Air Force.

Fiscal Year Data (in thousands):

	<u>Authorization</u>	<u>Net Outlays</u>
1988	\$5 est.	--
1987	7	\$7
1986	0	0
1985	0	0
1984	0	0
1983	0	0
1982	0	0

Caseload Units: NOT AVAILABLE FROM SOURCES USED

Special Funding Characteristics: YES - NO-YEAR, INDEFINITE

Spending Ceiling: NO

Formula Grant: NO

APPENDIX II

APPENDIX II

Agency: EDUCATION

Program: COLLEGE HOUSING LOANS

Common Name: NONE

Budget Number: 91 4250 0 3 502

Program Type: EDUCATION

Program Description: Program provides direct loans to colleges and universities for the construction or acquisition of housing facilities. The program sells participation certificates from the Government National Mortgage Association, uses offsetting collections, and has authority to borrow.

Fiscal Year Data (in thousands):

	<u>Authorization</u>	<u>Net Outlays</u>	<u>Caseload</u>
1988	\$ 0 est.	--	\$ 80,807
1987	60,000	\$558,178 CR	83,968
1986	0	73,992 CR	84,350
1985	0	164,061 CR	84,456
1984	0	238,818 CR	105,561
1983	40	16,510 CR	114,700
1982	232	36,531	124,750

Caseload Units: DEFAULTED LOANS OUTSTANDING IN DOLLARS

Special Funding Characteristics: YES - NO-YEAR, INDEFINITE

Spending Ceiling: YES

Formula Grant: NO

APPENDIX II

APPENDIX II

Agency: EDUCATION

Program: COMPENSATORY EDUCATION FOR THE DISADVANTAGED

Common Name: GRANTS TO LOCAL EDUCATIONAL AGENCIES

Budget Number: 91 0900 0 1 501

Program Type: EDUCATION

Program Description: This general fund provides grants and financial assistance to local and state educational agencies for supplementary compensatory programs for disadvantaged, migrant, handicapped, and delinquent children.

Fiscal Year Data (in thousands):

	<u>Authorization</u>	<u>Net Outlays</u>
1988	\$4,144,163 est.	--
1987	3,951,663	\$3,414,311
1986	3,536,749	3,402,777
1985	3,695,663	4,209,566
1984	3,488,250	3,029,077
1983	3,167,894	2,205,675
1982	3,040,980	143,291

Caseload Units: NOT AVAILABLE FROM SOURCES USED

Special Funding Characteristics: NO

Spending Ceiling: YES

Formula Grant: YES

Agency: EDUCATION

Program: EDUCATION FOR THE HANDICAPPED

Common Name: PRESCHOOL GRANTS, BARRIER REMOVAL

Budget Number: 91 0300 0 1 501

Program Type: EDUCATION

Program Description: Program provides formula grants to and contracts with states to assist them in providing free appropriate public education and related services for all handicapped children. Grants are provided for activities such as preschools, research and technology, training and information, the removal of architectural barriers, and for special populations of severely handicapped children.

Fiscal Year Data (in thousands):

	<u>Authorization</u>	<u>Net Outlays</u>
1988	\$1,488,181 est.	--
1987	1,741,900	\$1,339,241
1986	1,350,336	1,627,894
1985	1,321,270	1,017,964
1984	1,240,645	952,778
1983	1,199,402	1,289,710
1982	1,068,580	1,141,444

Caseload Units: NOT AVAILABLE FROM SOURCES USED

Special Funding Characteristics: NO

Spending Ceiling: YES

Formula Grant: YES

APPENDIX II

APPENDIX II

Agency: EDUCATION

Program: GUARANTEED STUDENT LOANS

Common Name: GSL

Budget Number: 91 0230 0 1 502

Program Type: EDUCATION

Program Description: This general fund provides guaranteed student loans to help students meet the cost of postsecondary education. The program provides federal subsidy payments and federal reinsurance against default. Three types of loans are available: (1) highly subsidized student loans, (2) less subsidized loans for parents, and (3) less subsidized loans for students.

Fiscal Year Data (in thousands):

	<u>Authorization</u>	<u>Net Outlays</u>	<u>Caseload</u>
1988	\$ 889,574 est.	--	3,554
1987	2,717,000	\$2,548,179	3,730
1986	3,265,941	3,352,734	3,433
1985	3,799,823	3,534,795	3,663
1984	2,256,500	3,245,226	3,266
1983	3,100,500	2,555,539	2,943
1982	3,073,846	3,023,463	2,646

Caseload Units: NUMBER OF LOANS GUARANTEED

Special Funding Characteristics: YES - NO-YEAR

Spending Ceiling: YES

Formula Grant: NO

APPENDIX II

APPENDIX II

Agency: EDUCATION

Program: HIGHER EDUCATION FACILITIES LOAN AND INSURANCE

Common Name: NONE

Budget Number: 91 0240 0 1 502

Program Type: EDUCATION

Program Description: This revolving loan fund provides direct loans to colleges and universities for the construction and renovation of academic facilities. Interest and principal payments on loans and any other moneys, property, or assets derived from program activities are deposited in the fund.

Fiscal Year Data (in thousands):

	<u>Authorization</u>	<u>Net Outlays</u>	<u>Caseload</u>
1988	\$ 0 est.	--	\$29,236
1987	19,205	\$84,866 CR	30,204
1986	17,991	1,920	30,309
1985	14,194	5,307	29,971
1984	19,846	945 CR	27,874
1983	20,277	21,148	36,000
1982	48,879	25,201	38,690

Caseload Units: DEFAULTED LOANS OUTSTANDING IN DOLLARS

Special Funding Characteristics: YES - NO-YEAR

Spending Ceiling: YES

Formula Grant: NO

Agency: EDUCATION

Program: REHABILITATION SERVICES AND HANDICAPPED RESEARCH

Common Name: INDEPENDENT LIVING, HELEN KELLER CENTER

Budget Number: 91 0301 0 1 506

Program Type: EDUCATION

Program Description: Program provides grants to state vocational rehabilitative agencies to assist physically and mentally handicapped individuals to become gainfully employed. Services provided include counseling, vocational evaluation, work adjustment, mental and physical restoration, educational and vocational training, job placement, and post-employment services. Also, several formula grants are available to states to assist them in developing programs with public and nonprofit organizations leading to employment for persons with severe disabilities.

Fiscal Year Data (in thousands):

	<u>Authorization</u>	<u>Net Outlays</u>	<u>Caseload</u>
1988	\$1,401,123 est.	--	925
1987	1,484,758	\$1,405,357	924
1986	1,309,761	1,311,485	924
1985	1,234,015	798,298	932
1984	1,155,100	1,414,396	936
1983	1,045,347	948,650	939
1982	952,171	779,699	975

Caseload Units: HANDICAPPED INDIVIDUALS SERVED

Special Funding Characteristics: NO

Spending Ceiling: YES

Formula Grant: YES

APPENDIX II

APPENDIX II

Agency: EDUCATION

Program: SPECIAL PROGRAMS

Common Name: DRUG FREE SCHOOLS, MAGNET SCHOOL ASSISTANCE

Budget Number: 91 1000 0 1 501

Program Type: EDUCATION

Program Description: Program provides funds for drug free schools and communities, magnet school assistance, and improvement of school programs. Under the drug free program, states receive funds to assist in combating drug and alcohol use by the nation's school-age population. Magnet school assistance is provided to local educational agencies for use in magnet school programs that are part of approved desegregation plans.

Fiscal Year Data (in thousands):

	<u>Authorization</u>	<u>Net Outlays</u>
1988	\$175,000 est.	--
1987	357,813	\$883,282
1986	674,789	142,317
1985	653,109	522,990
1984	528,367	632,313
1983	534,500	438,667
1982	536,880	57,568

Caseload Units: NOT AVAILABLE FROM SOURCES USED

Special Funding Characteristics: NO

Spending Ceiling: YES

Formula Grant: YES

APPENDIX II

APPENDIX II

Agency: EDUCATION

Program: VOCATIONAL AND ADULT EDUCATION

Common Name: ADULT EDUCATION, JOHNSTOWN DEMONSTRATION

Budget Number: 91 0400 0 1 501

Program Type: EDUCATION

Program Description: Program provides grants to states for vocational educational expansion, innovation, and improvement, and for providing greater access to vocational education for underserved populations. Funds under the Indian and Hawaiian natives programs are awarded to federally recognized Indian tribes and to organizations primarily serving and representing Hawaiian natives. Also covered are community based organizations, consumer and homemaker education, state councils, research, data systems, demonstration programs, bilingual vocational training, and adult education.

Fiscal Year Data (in thousands):

	<u>Authorization</u>	<u>Net Outlays</u>
1988	\$137,148 est.	--
1987	994,848	\$1,230,448
1986	907,472	1,034,657
1985	940,425	648,598
1984	839,045	742,357
1983	823,661	744,526
1982	742,186	842,956

Caseload Units: NOT AVAILABLE FROM SOURCES USED

Special Funding Characteristics: NO

Spending Ceiling: YES

Formula Grant: YES

Agency: ENERGY

Program: PAYMENTS TO STATES UNDER THE FEDERAL POWER ACT

Common Name: NONE

Budget Number: 89 5105 0 2 852

Program Type: REVENUE SHARING

Program Description: This special fund pays states, for the use of national forests and public lands within their boundaries, 37.5 percent of the receipts from licenses issued by the Federal Energy Regulatory Commission.

Fiscal Year Data (in thousands):

	<u>Authorization</u>	<u>Net Outlays</u>
1988	\$ 727 est.	--
1987	912	\$ 603
1986	629	403
1985	1,052	729
1984	732	164
1983	164	1,045
1982	1,039	385

Caseload Units: NOT AVAILABLE FROM SOURCES USED

Special Funding Characteristics: YES - NO-YEAR, INDEFINITE

Spending Ceiling: YES

Formula Grant: NO

APPENDIX II

APPENDIX II

Agency: FEDERAL DEPOSIT INSURANCE CORPORATION

Program: FEDERAL DEPOSIT INSURANCE CORPORATION

Common Name: FDIC

Budget Number: 51 8419 0 8 371

Program Type: DEPOSIT INSURANCE

Program Description: Provides protection for bank depositors and fosters sound banking practices. The trust fund represents the accumulated net income of the corporation and is reserved for the protection of depositors in insured banks and for the payment of administrative and insurance expenses. The fund is supported by an authorization to borrow up to \$3 billion from the Treasury. The authorization amounts shown below represent notes issued as part of assistance agreements to acquirers of failing banks.

Fiscal Year Data (in thousands):

	<u>Authorization</u>	<u>Net Outlays</u>	<u>Trust Fund Assets</u>
1988	\$2,903,000 est.	--	--
1987	1,341,593	\$1,437,849 CR	\$17,560,757
1986	0	262,178	16,521,402
1985	0	1,942,067 CR	16,620,017
1984	0	247,674 CR	14,785,891
1983	0	613,186 CR	14,535,541
1982	0	1,440,095 CR	13,593,956

Caseload Units: NOT AVAILABLE FROM SOURCES USED

Special Funding Characteristics: YES - NO-YEAR, INDEFINITE,
BORROWING AUTHORITY

Spending Ceiling: YES

Formula Grant: NO

Agency: FEDERAL HOME LOAN BANK BOARD

Program: FEDERAL SAVINGS AND LOAN INSURANCE CORPORATION
FUND

Common Name: FSLIC

Budget Number: 82 4037 0 3 371

Program Type: DEPOSIT INSURANCE

Program Description: This fund is used by the Corporation to insure savings in all federal savings and loan associations. The insurance protection may be provided either through the prevention of default or the payment of insurance to savings accounts holders in the event of liquidation. Also, the Corporation is authorized to make loans to institutions in financial difficulty. The authorization amounts shown below (\$4.6 billion) represent borrowing authority from the Federal Home Loan Banks.

Fiscal Year Data (in thousands):

	<u>Authorization</u>	<u>Net Outlays</u>
1988	\$ 0 est.	--
1987	1,600,000	\$3,847,363
1986	3,000,000	1,060,449
1985	0	414,490
1984	0	561,551 CR
1983	0	451,896 CR
1982	0	591,223 CR

Caseload Units: NOT AVAILABLE FROM SOURCES USED

Special Funding Characteristics: YES - NO-YEAR, INDEFINITE,
BORROWING AUTHORITY

Spending Ceiling: YES

Formula Grant: NO

APPENDIX II

APPENDIX II

Agency: FEDERAL RETIREMENT THRIFT INVESTMENT BOARD

Program: THRIFT SAVINGS FUND

Common Name: NONE

Budget Number: 26 8141 0 7 602

Program Type: PENSIONS AND WORKERS' SECURITY

Program Description: This fund is managed by the Federal Retirement Thrift Investment Board. The thrift savings fund is a special tax deferred savings plan for federal employees established by the Federal Employees Retirement System Act of 1986. The fund comprises individual accounts maintained by the Board on behalf of the employees who have contributed to the fund. As we stated in our May 29, 1987, letter to Congressman Willis D. Gradison, Jr., this program should not be shown in the budget.

Fiscal Year Data (in thousands):

	<u>Authorization</u>	<u>Net Outlays</u>	<u>Trust Fund Assets</u>
1988	\$3,662,704 est.	--	--
1987	737,083	\$927	\$736,156
1986	NA	NA	NA
1985	NA	NA	NA
1984	NA	NA	NA
1983	NA	NA	NA
1982	NA	NA	NA

Caseload Units: NOT AVAILABLE FROM SOURCES USED

NOTE: FUND ESTABLISHED IN 1986

Special Funding Characteristics: YES - NO-YEAR, INDEFINITE

Spending Ceiling: YES

Formula Grant: NO

APPENDIX II

APPENDIX II

Agency: HEALTH AND HUMAN SERVICES

Program: FAMILY SOCIAL SERVICES

Common Name: FOSTER CARE, ADOPTION ASSISTANCE

Budget Number: 75 1645 0 1 506

Program Type: SOCIAL WELFARE

Program Description: Program provides foster care for children who must be placed outside the home and adoption assistance for families adopting children with special needs. Program was not operated in 1982.

Fiscal Year Data (in thousands):

	<u>Authorization</u>	<u>Net Outlays</u>	<u>Caseload</u>
1988	\$ 682,040 est.	--	110
1987	1,061,211	\$801,811	102
1986	760,830	808,205	100
1985	770,397	749,094	98
1984	685,905	658,576	98
1983	572,669	410,138	NRA
1982	NA	NA	NRA

Caseload Units: ESTIMATED MONTHLY AVERAGE FOSTER CARE CHILDREN

Special Funding Characteristics: NO

Spending Ceiling: YES

Formula Grant: YES

APPENDIX II

APPENDIX II

Agency: HEALTH AND HUMAN SERVICES

Program: FAMILY SUPPORT PAYMENTS TO STATES

Common Name: AFDC, CHILD SUPPORT ENFORCEMENT

Budget Number: 75 1501 0 1 609

Program Type: SOCIAL WELFARE

Program Description: Program makes grants to states for the federal share of state expenditures for aid to families with dependent children (AFDC), child support enforcement, and related activities.

Fiscal Year Data (in thousands):

	<u>Authorization</u>	<u>Net Outlays</u>	<u>Caseload</u>
1988	\$10,243,668 est.	--	11,012
1987	10,460,167	\$10,538,107	11,010
1986	9,966,857	9,933,115	10,973
1985	9,206,795	9,223,862	10,794
1984	8,936,004	8,854,290	10,835
1983	8,400,416	8,391,374	10,641
1982	6,006,179	7,989,656	10,424

Caseload Units: AVERAGE AFDC INDIVIDUALS PER MONTH

Special Funding Characteristics: YES - NO-YEAR, INDEFINITE, ADVANCE

Spending Ceiling: NO

Formula Grant: NO

APPENDIX II

APPENDIX II

Agency: HEALTH AND HUMAN SERVICES

Program: FEDERAL DISABILITY INSURANCE TRUST FUND

Common Name: DISABILITY INSURANCE

Budget Number: 20 8007 8 7 651

Program Type: SOCIAL SECURITY AND MEDICARE

Program Description: Program provides income to insured disabled workers and their dependents. The program is financed by payroll taxes paid by workers, employers, and self-employed individuals.

Fiscal Year Data (in thousands):

	<u>Authorization</u>	<u>Net Outlays</u>	<u>Trust Fund Assets</u>	<u>Caseload</u>
1988	\$22,759,000 est.	--	--	NRA
1987	20,114,849	\$21,290,281	\$7,584,967	NRA
1986	20,177,187	20,243,141	8,763,146	NRA
1985	18,062,215	19,372,263	6,307,296	NRA
1984	17,812,276	18,459,324	4,985,279	3,808
1983	21,894,126	18,278,684	5,573,495	3,875
1982	21,398,044	18,035,351	7,065,778	4,174

Caseload Units: AVERAGE MONTHLY BENEFICIARIES

Special Funding Characteristics: YES - NO-YEAR, INDEFINITE

Spending Ceiling: YES

Formula Grant: NO

Agency: HEALTH AND HUMAN SERVICES

Program: FEDERAL HOSPITAL INSURANCE TRUST FUND

Common Name: MEDICARE PART A

Budget Number: 20 8005 0 7 571

Program Type: SOCIAL SECURITY AND MEDICARE

Program Description: This trust fund is used by the Hospital Insurance program to fund the costs of hospital and related care for most individuals age 65 or older and for disabled people.

Fiscal Year Data (in thousands):

	<u>Authorization</u>	<u>Net Outlays</u>	<u>Trust Fund Assets</u>	<u>Caseload</u>
1988	\$67,841,000 est.	--	--	NRA
1987	62,734,640	\$50,803,029	\$50,609,433	NRA
1986	56,424,119	49,685,171	38,676,793	NRA
1985	50,928,104	48,667,278	21,351,456	30,589
1984	45,731,854	42,294,943	17,249,711	29,996
1983	43,922,138	38,524,204	13,800,692	29,587
1982	37,610,687	34,864,031	20,840,246	26,069

Caseload Units: ENROLLEES

Special Funding Characteristics: YES - NO-YEAR, INDEFINITE

Spending Ceiling: YES

Formula Grant: NO

APPENDIX II

APPENDIX II

Agency: HEALTH AND HUMAN SERVICES

Program: FEDERAL OLD AGE AND SURVIVORS INSURANCE

Common Name: OASI

Budget Number: 20 8006 8 7 651

Program Type: SOCIAL SECURITY AND MEDICARE

Program Description: This program provides income to retired workers, their dependents, and survivors. The program is financed by payroll taxes paid by employers, employees, and self-employed individuals. Benefits are based on average taxable earnings and are indexed for inflation.

Fiscal Year Data (in thousands):

	<u>Authorization</u>	<u>Net Outlays</u>	<u>Trust Fund Assets</u>	<u>Caseload</u>
1988	\$236,399,351 est.	--	--	NRA
1987	207,525,114	\$185,407,822	\$58,921,320	NRA
1986	196,368,175	178,144,630	38,214,883	NRA
1985	182,286,789	170,192,520	34,615,869	NRA
1984	163,315,390	160,953,340	28,653,448	32,433
1983	150,488,998	152,439,990	27,391,502	32,059
1982	126,629,045	136,593,955	13,235,042	31,583

Caseload Units: AVERAGE MONTHLY BENEFICIARIES

Special Funding Characteristics: YES - NO-YEAR, INDEFINITE

Spending Ceiling: YES

Formula Grant: NO

Agency: HEALTH AND HUMAN SERVICES

Program: FEDERAL SUPPLEMENTARY MEDICAL INSURANCE TRUST FUND

Common Name: MEDICARE PART B

Budget Number: 20 8004 0 7 571

Program Type: SOCIAL SECURITY AND MEDICARE

Program Description: This program provides protection against the costs of physician and certain other medical services. The program also covers treatment of end-stage renal diseases for eligible enrollees. The supplementary medical insurance costs are financed by premium payments from enrollees and contributions from general revenues.

Fiscal Year Data (in thousands):

	<u>Authorization</u>	<u>Net Outlays</u>	<u>Trust Fund Assets</u>	<u>Caseload</u>
1988	\$34,183,000 est.	--	--	NRA
1987	27,797,439	\$30,836,809	\$ 6,423,109	NRA
1986	25,003,570	26,217,473	9,431,764	NRA
1985	24,576,220	22,730,414	10,737,158	29,989
1984	22,525,541	20,371,954	8,799,865	29,415
1983	19,147,096	18,310,807	6,646,304	28,975
1982	17,626,989	15,559,735	5,810,137	28,412

Caseload Units: ENROLLEES

Special Funding Characteristics: YES - NO-YEAR, INDEFINITE

Spending Ceiling: YES

Formula Grant: NO

APPENDIX II

APPENDIX II

Agency: HEALTH AND HUMAN SERVICES

Program: GRANTS TO STATES FOR MEDICAID

Common Name: MEDICAID

Budget Number: 75 0512 0 1 551

Program Type: SOCIAL WELFARE

Program Description: Program assists states in providing medical care to their low income populations by granting federal matching payments to states with approved plans.

Fiscal Year Data (in thousands):

	<u>Authorization</u>	<u>Net Outlays</u>	<u>Caseload</u>
1988	\$28,120,000 est.	--	NRA
1987	27,612,360	\$27,435,204	NRA
1986	24,579,234	24,995,451	NRA
1985	21,845,491	22,654,604	21,808
1984	20,673,708	20,060,943	21,557
1983	14,794,512	18,985,244	21,554
1982	17,988,242	17,390,734	21,603

Caseload Units: RECIPIENTS

Special Funding Characteristics: YES - NO-YEAR, INDEFINITE, ADVANCE

Spending Ceiling: NO

Formula Grant: NO

APPENDIX II

APPENDIX II

Agency: HEALTH AND HUMAN SERVICES

Program: HEALTH EDUCATION LOANS

Common Name: NONE

Budget Number: 75 4307 0 3 553

Program Type: EDUCATION

Program Description: Program provides a revolving fund from which health professions schools could borrow in order to provide loans to their students. The program does not need annual appropriations since offsetting collections are sufficient to cover operating costs. This program has not generated any new loans since 1970. However, as shown below, some of the loans are being repaid.

Fiscal Year Data (in thousands):

	<u>Authorization</u>	<u>Net Outlays</u>	<u>Caseload</u>
1988	\$0 est.	--	\$2,511
1987	0	\$ 556 CR	2,865
1986	0	355 CR	3,396
1985	0	1,191 CR	4,028
1984	0	2,501 CR	4,902
1983	0	2,947 CR	7,112
1982	0	3,176 CR	9,621

Caseload Units: DOLLAR VALUE OF LOANS OUTSTANDING AT END OF YEAR

Special Funding Characteristics: NO

Spending Ceiling: NO

Formula Grant: NO

APPENDIX II

APPENDIX II

Agency: HEALTH AND HUMAN SERVICES

Program: HEALTH PROFESSIONS GRADUATE STUDENT LOAN INSURANCE FUND

Common Name: NONE

Budget Number: 75 4305 0 3 553

Program Type: EDUCATION

Program Description: The health education assistance loan program enables students to borrow from private lenders to help pay for the cost of their training at health professions schools. The program is designed to use offsetting collections to finance its obligations.

Fiscal Year Data (in thousands):

	<u>Authorization</u>	<u>Net Outlays</u>	<u>Caseload</u>
1988	\$0 est.	--	10
1987	0	\$3,547 CR	34
1986	0	2,086 CR	32
1985	0	5,400 CR	27
1984	0	2,979 CR	31
1983	0	2,107 CR	21
1982	0	208 CR	27

Caseload Units: STUDENTS

Special Funding Characteristics: NO

Spending Ceiling: NO

Formula Grant: NO

APPENDIX II

APPENDIX II

Agency: HEALTH AND HUMAN SERVICES

Program: LOW INCOME HOME ENERGY ASSISTANCE

Common Name: LIHEA

Budget Number: 75 1502 0 1 609

Program Type: SOCIAL WELFARE

Program Description: Program makes grants to states and Indian tribes which in turn aid low income households with high energy costs through payments to eligible households, energy suppliers, and building operators.

Fiscal Year Data (in thousands):

	<u>Authorization</u>	<u>Net Outlays</u>
1988	\$1,237,000 est.	--
1987	1,822,265	\$1,829,038
1986	2,009,700	2,048,086
1985	2,100,000	2,141,254
1984	2,075,000	2,025,707
1983	1,975,000	1,993,408
1982	1,875,000	1,687,147

Caseload Units: NOT AVAILABLE FROM SOURCES USED

Special Funding Characteristics: NO

Spending Ceiling: YES

Formula Grant: YES

APPENDIX II

APPENDIX II

Agency: HEALTH AND HUMAN SERVICES

Program: MEDICAL FACILITIES GUARANTEE AND LOAN FUND

Common Name: NONE

Budget Number: 75 4430 0 3 551

Program Type: RESOURCE AND COMMUNITY DEVELOPMENT

Program Description: Program establishes a loan and loan guarantee fund for medical facilities with a maximum amount allowable for the government's liability. Direct loans are made available for public facilities and guaranteed loans for private nonprofit facilities.

Fiscal Year Data (in thousands):

	<u>Authorization</u>	<u>Net Outlays</u>	<u>Caseload</u>
1988	\$22,000 est.	--	\$ 600,992
1987	20,000	\$14,153	732,492
1986	25,000	28,946	875,694
1985	26,500	25,006	994,927
1984	32,000	31,510	1,089,671
1983	32,000	28,682	1,167,397
1982	22,000	35,002	1,041,508

Caseload Units: DOLLAR VALUE OF LOANS GUARANTEED AT YEAR-END

Special Funding Characteristics: YES - NO-YEAR

Spending Ceiling: YES

Formula Grant: NO

APPENDIX II

APPENDIX II

Agency: HEALTH AND HUMAN SERVICES

Program: NURSE TRAINING FUND

Common Name: NONE

Budget Number: 75 4306 0 3 553

Program Type: EDUCATION

Program Description: Program provides a revolving fund from which schools of nursing could borrow in order to provide loans to their students. Program has not generated new loans since 1970. However, as shown below, some of the loans are being repaid.

Fiscal Year Data (in thousands):

	<u>Authorization</u>	<u>Net Outlays</u>	<u>Caseload</u>
1988	\$0 est.	--	\$1,195
1987	0	\$167 CR	1,992
1986	0	497 CR	3,064
1985	0	186 CR	3,181
1984	0	253 CR	3,394
1983	0	742 CR	3,630
1982	0	380 CR	9,623

Caseload Units: DOLLAR VALUE OF LOANS OUTSTANDING AT END OF YEAR

Special Funding Characteristics: NO

Spending Ceiling: YES

Formula Grant: NO

APPENDIX II

APPENDIX II

Agency: HEALTH AND HUMAN SERVICES

Program: PAYMENTS TO STATES FROM RECEIPTS FOR CHILD SUPPORT

Common Name: NONE

Budget Number: 75 5734 0 2 609

Program Type: REVENUE SHARING

Program Description: Program makes payments to states for their share of amounts collected on their behalf by the Internal Revenue Service under the provisions of the child support enforcement program.

Fiscal Year Data (in thousands):

	<u>Authorization</u>	<u>Net Outlays</u>
1988	\$450 est.	--
1987	401	\$415
1986	472	432
1985	349	404
1984	417	450
1983	566	520
1982	571	526

Caseload Units: NOT AVAILABLE FROM SOURCES USED

Special Funding Characteristics: YES - NO-YEAR

Spending Ceiling: NO

Formula Grant: NO

APPENDIX II

APPENDIX II

Agency: HEALTH AND HUMAN SERVICES

Program: REFUGEE AND ENTRANT ASSISTANCE

Common Name: AFDC, MEDICAID SUPPORT FOR REFUGEES

Budget Number: 75 1503 0 1 609

Program Type: SOCIAL WELFARE

Program Description: Program provides federal funds for the settlement of refugees in the United States. Services include cash and medical assistance, English and vocational training, and health screening.

Fiscal Year Data (in thousands):

	<u>Authorization</u>	<u>Net Outlays</u>
1988	\$253,329 est.	--
1987	339,597	\$387,465
1986	409,463	441,178
1985	405,346	441,544
1984	541,761	580,861
1983	585,000	490,654
1982	580,430	750,813

Caseload Units: NOT AVAILABLE FROM SOURCES USED

Special Funding Characteristics: NO

Spending Ceiling: YES

Formula Grant: NO

Agency: HEALTH AND HUMAN SERVICES

Program: RETIREMENT PAY AND MEDICAL BENEFITS FOR COMMISSIONED OFFICERS

Common Name: RETIREMENT PAY

Budget Number: 75 0379 0 1 551

Program Type: PENSIONS AND WORKERS' SECURITY

Program Description: Program funds annuities for retired Public Health Service commissioned officers and their survivors; and medical care for active duty Public Health Service commissioned officers, retirees, and their dependents.

Fiscal Year Data (in thousands):

	<u>Authorization</u>	<u>Net Outlays</u>
1988	\$ 94,176 est.	--
1987	84,330	\$83,477
1986	80,449	79,927
1985	71,774	70,345
1984	73,750	72,113
1983	71,325	74,462
1982	105,941	98,600

Caseload Units: NOT AVAILABLE FROM SOURCES USED

Special Funding Characteristics: YES - INDEFINITE

Spending Ceiling: NO

Formula Grant: NO

APPENDIX II

APPENDIX II

Agency: HEALTH AND HUMAN SERVICES

Program: SOCIAL SERVICES BLOCK GRANT

Common Name: NONE

Budget Number: 75 1634 0 1 506

Program Type: SOCIAL WELFARE

Program Description: Program provides grants to states to (1) prevent, reduce, or eliminate dependency, (2) prevent neglect, abuse, or exploitation of children and adults, (3) prevent or reduce inappropriate institutional care, (4) secure admission or referral for institutional care when other forms of care are not appropriate, and (5) provide services to individuals in institutions.

Fiscal Year Data (in thousands):

	<u>Authorization</u>	<u>Net Outlays</u>
1988	\$2,700,000 est.	--
1987	2,700,000	\$2,687,799
1986	2,583,900	2,670,677
1985	2,725,000	2,742,835
1984	2,700,000	2,788,978
1983	2,675,000	2,507,818
1982	2,400,000	2,567,499

Caseload Units: NOT AVAILABLE FROM SOURCES USED

Special Funding Characteristics: NO

Spending Ceiling: YES

Formula Grant: YES

APPENDIX II

APPENDIX II

Agency: HEALTH AND HUMAN SERVICES

Program: SPECIAL BENEFITS FOR DISABLED COAL MINERS

Common Name: BLACK LUNG (PRE-1974 CLAIMS)

Budget Number: 75 0409 0 1 601

Program Type: PENSIONS AND WORKERS' SECURITY

Program Description: Program provides monthly benefits to coal miners disabled from pneumoconiosis (black lung disease) and to surviving widows and dependents.

Fiscal Year Data (in thousands):

	<u>Authorization</u>	<u>Net Outlays</u>	<u>Caseload</u>
1988	\$ 903,902 est.	--	253
1987	963,437	\$ 955,230	271
1986	986,154	993,568	290
1985	1,035,861	1,039,607	309
1984	1,068,000	1,056,697	329
1983	1,093,000	1,078,759	348
1982	1,099,065	1,091,774	372

Caseload Units: BENEFICIARIES AT MIDPOINT OF FISCAL YEAR

Special Funding Characteristics: YES - NO-YEAR, INDEFINITE

Spending Ceiling: NO

Formula Grant: NO

APPENDIX II

APPENDIX II

Agency: HEALTH AND HUMAN SERVICES

Program: SUPPLEMENTAL SECURITY INCOME PROGRAM

Common Name: SSI

Budget Number: 75 0406 0 1 609

Program Type: SOCIAL WELFARE

Program Description: Program provides a minimum income of \$340 per month for eligible individuals and \$510 per month for eligible couples. Benefit recipients are generally aged, disabled, or blind.

Fiscal Year Data (in thousands):

	<u>Authorization</u>	<u>Net Outlays</u>	<u>Caseload</u>
1988	\$12,302,933 est.	--	4,388
1987	10,968,498	\$10,909,274	4,280
1986	10,143,343	10,344,721	4,172
1985	9,637,014	9,606,378	4,035
1984	8,650,832	8,497,629	3,926
1983	8,560,402	8,723,567	3,873
1982	7,772,388	7,676,650	3,978

Caseload Units: AVERAGE MONTHLY RECIPIENTS

Special Funding Characteristics: YES - NO-YEAR, INDEFINITE

Spending Ceiling: NO

Formula Grant: NO

Agency: INTERIOR

Program: BUREAU OF INDIAN AFFAIRS MISCELLANEOUS TRUST FUND

Common Name: NONE

Budget Number: 14 9973 0 7 999

Program Type: GENERAL GOVERNMENT

Program Description: This trust fund receives an appropriation consisting of gas, oil, and coal revenues; rents; grazing fees; and other collections. These funds are available to Indian tribes for purposes determined by the tribes.

Fiscal Year Data (in thousands):

	<u>Authorization</u>	<u>Net Outlays</u>	<u>Trust Fund Assets</u>
1988	\$398,070 est.	--	--
1987	307,222	\$311,370	\$1,170,607
1986	310,177	307,883	1,174,749
1985	424,431	347,846	1,173,293
1984	378,118	433,951	1,097,047
1983	434,444	457,808	1,152,951
1982	511,202	425,537	1,176,457

Caseload Units: NOT AVAILABLE FROM SOURCES USED

Special Funding Characteristics: YES - NO-YEAR, INDEFINITE

Spending Ceiling: YES

Formula Grant: NO

APPENDIX II

APPENDIX II

Agency: INTERIOR

Program: BUREAU OF LAND MANAGEMENT MISCELLANEOUS PERMANENT
APPROPRIATIONS

Common Name: NONE

Budget Number: 14 9921 0 2 999

Program Type: REVENUE SHARING

Program Description: This special fund receives a permanent appropriation consisting of fees, royalties, and taxes from which payments are made to states and counties under established programs. Payments are calculated as a percentage of receipts. The fiscal year 1988 budget request provided for 11 programs.

Fiscal Year Data (in thousands):

	<u>Authorization</u>	<u>Net Outlays</u>
1988	\$ 55,648 est.	--
1987	8,467	\$ 84,571
1986	91,093	24,927
1985	140,950	139,938
1984	65,612	62,666
1983	84,958	82,740
1982	105,306	103,566

Caseload Units: NOT AVAILABLE FROM SOURCES USED

Special Funding Characteristics: YES - NO-YEAR, INDEFINITE

Spending Ceiling: YES

Formula Grant: NO

APPENDIX II

APPENDIX II

Agency: INTERIOR

Program: BUREAU OF LAND MANAGEMENT MISCELLANEOUS TRUST FUNDS

Common Name: NONE

Budget Number: 14 9971 0 7 999

Program Type: RESOURCE AND COMMUNITY DEVELOPMENT

Program Description: Program receives fees from land survey services, contributions made for the benefit of the off-road vehicle program, and the sale of Alaskan town lots. These funds are used to pay for expenses incurred in the operation of these programs.

Fiscal Year Data (in thousands):

	<u>Authorization</u>	<u>Net Outlays</u>	<u>Trust Fund Assets</u>
1988	\$ 700 est.	--	--
1987	7,240	\$2,913	\$7,481
1986	3,333	2,986	3,153
1985	3,667	2,616	2,805
1984	1,583	1,446	1,757
1983	1,301	1,423	1,627
1982	1,222	936	1,749

Caseload Units: NOT AVAILABLE FROM SOURCES USED

Special Funding Characteristics: YES - NO-YEAR, INDEFINITE

Spending Ceiling: YES

Formula Grant: NO

Agency: INTERIOR

Program: BUREAU OF LAND MANAGEMENT RANGE IMPROVEMENTS

Common Name: NONE

Budget Number: 14 5132 0 2 302

Program Type: RESOURCE AND COMMUNITY DEVELOPMENT

Program Description: Program obtains its funding from a percentage of receipts received from grazing of livestock on public lands and from grazing and mineral leasing receipts on Bankhead-Jones Farm Tenant Act lands. On public lands, the fee from grazing includes a range improvement fee, which is available for the construction and development of range improvements when appropriated.

Fiscal Year Data (in thousands):

	<u>Authorization</u>	<u>Net Outlays</u>
1988	\$ 8,506 est.	--
1987	8,046	\$ 9,949
1986	7,977	10,309
1985	8,463	10,273
1984	9,401	10,882
1983	11,200	10,516
1982	13,226	11,864

Caseload Units: NOT AVAILABLE FROM SOURCES USED

Special Funding Characteristics: YES - INDEFINITE

Spending Ceiling: YES

Formula Grant: NO

Agency: INTERIOR

Program: BUREAU OF RECLAMATION MISCELLANEOUS PERMANENT
APPROPRIATIONS

Common Name: NONE

Budget Number: 14 9922 0 2 999

Program Type: REVENUE SHARING

Program Description: Program provides funding for the following Bureau of Reclamation projects: operation, maintenance, and replacement of North Platte project works, payments to the Farmers' Irrigation District in the North Platte project, payment to local counties in the Klamath reclamation area, and operation and maintenance of quarters for the Fort Simcoe Job Corps Center.

Fiscal Year Data (in thousands):

	<u>Authorization</u>	<u>Net Outlays</u>
1988	\$287 est.	--
1987	274	\$361
1986	249	263
1985	272	287
1984	254	231
1983	238	201
1982	236	190

Caseload Units: NOT AVAILABLE FROM SOURCES USED

Special Funding Characteristics: YES - NO-YEAR, INDEFINITE

Spending Ceiling: YES

Formula Grant: NO

APPENDIX II

APPENDIX II

Agency: INTERIOR

Program: COMPACT OF FREE ASSOCIATION

Common Name: NONE

Budget Number: 14 0415 0 1 806

Program Type: GENERAL GOVERNMENT

Program Description: This appropriation, which was established by the Compact of Free Association Act of 1985, provides funds to the Marshall Islands and the Federated States of Micronesia. This financial assistance will aid those states to be successful in their development as sovereign states.

Fiscal Year Data (in thousands):

	<u>Authorization</u>	<u>Net Outlays</u>
1988	\$144,270 est.	--
1987	394,672	\$295,961
1986	211,532	10,032
1985	NA	NA
1984	NA	NA
1983	NA	NA
1982	NA	NA

Caseload Units: NOT AVAILABLE FROM SOURCES USED

Special Funding Characteristics: YES - NO-YEAR, INDEFINITE

Spending Ceiling: YES

Formula Grant: NO

APPENDIX II

APPENDIX II

Agency: INTERIOR

Program: NATIONAL WILDLIFE REFUGE FUND

Common Name: NONE

Budget Number: 14 5091 0 2 852

Program Type: REVENUE SHARING

Program Description: Program provides for the distribution of net revenues from the sale of products from Fish and Wildlife Service facilities. Revenues are allocated to counties in which the service lands are located as payments in lieu of taxes.

Fiscal Year Data (in thousands):

	<u>Authorization</u>	<u>Net Outlays</u>
1988	\$12,685 est.	--
1987	5,447	\$ 5,646
1986	5,471	6,751
1985	7,425	12,815
1984	7,057	12,657
1983	5,480	12,329
1982	7,054	11,579

Caseload Units: NOT AVAILABLE FROM SOURCES USED

Special Funding Characteristics: YES - NO-YEAR, INDEFINITE

Spending Ceiling: YES

Formula Grant: NO

APPENDIX II

APPENDIX II

Agency: INTERIOR

Program: OREGON AND CALIFORNIA GRANT LANDS

Common Name: NONE

Budget Number: 14 1116 0 1 302

Program Type: RESOURCE AND COMMUNITY DEVELOPMENT

Program Description: This program provides funds for the management, development, and protection of 2.1 million acres of railroad and wagon road lands in western Oregon. The primary purpose of the program is to encourage permanent forest production under the principle of sustained yield.

Fiscal Year Data (in thousands):

	<u>Authorization</u>	<u>Net Outlays</u>
1988	\$53,937 est.	--
1987	55,818	\$54,573
1986	53,379	54,590
1985	56,939	51,721
1984	48,536	52,222
1983	57,620	53,344
1982	52,788	43,381

Caseload Units: NOT AVAILABLE FROM SOURCES USED

Special Funding Characteristics: YES - NO-YEAR

Spending Ceiling: YES

Formula Grant: NO

APPENDIX II

APPENDIX II

Agency: INTERIOR

Program: PAYMENTS TO STATES UNDER MINERAL LEASING ACT

Common Name: NONE

Budget Number: 14 5003 0 2 852

Program Type: REVENUE SHARING

Program Description: Program allows Alaska to receive 90 percent and other states 50 percent, of the receipts (from bonuses, royalties, and rentals) resulting from the development of mineral resources and from leases of potash deposits on public lands in those states.

Fiscal Year Data (in thousands):

	<u>Authorization</u>	<u>Net Outlays</u>
1988	\$390,620 est.	--
1987	375,439	\$375,439
1986	422,559	422,559
1985	538,574	538,574
1984	735,891	735,943
1983	499,454	499,413
1982	536,101	536,093

Caseload Units: NOT AVAILABLE FROM SOURCES USED

Special Funding Characteristics: YES - NO-YEAR, INDEFINITE

Spending Ceiling: YES

Formula Grant: NO

APPENDIX II

APPENDIX II

Agency: INTERIOR

Program: PAYMENTS TO U.S. TERRITORIES, FISCAL ASSISTANCE

Common Name: NONE

Budget Number: 14 0418 0 1 852

Program Type: REVENUE SHARING

Program Description: Program provides advance payments to Guam for estimated U.S. income tax collections and advance payments to the Virgin Islands for estimated excise tax collections. Public Law 95-348 requires that these revenues be paid prior to the start of the fiscal year of collection.

Fiscal Year Data (in thousands):

	<u>Authorization</u>	<u>Net Outlays</u>
1988	\$70,000 est.	--
1987	69,384	\$71,264
1986	79,915	78,132
1985	53,351	53,351
1984	65,258	65,161
1983	55,563	58,722
1982	66,094	66,094

Caseload Units: NOT AVAILABLE FROM SOURCES USED

Special Funding Characteristics: YES - NO-YEAR, INDEFINITE

Spending Ceiling: NO

Formula Grant: NO

APPENDIX II

APPENDIX II

Agency: JUDICIARY TRUST FUNDS

Program: JUDICIAL SURVIVORS' ANNUITIES FUND

Common Name: NONE

Budget Number: 10 8110 0 7 602

Program Type: PENSIONS AND WORKERS' SECURITY

Program Description: This fund provides an annuity for each participant's surviving spouse and dependent children. The fund was established to receive sums withheld from salaries of justices, judges, and other judicial officials who elected to be covered.

Fiscal Year Data (in thousands):

	<u>Authorization</u>	<u>Net Outlays</u>	<u>Trust Fund Assets</u>
1988	\$15,096 est.	--	--
1987	13,425	\$7,283	\$119,127
1986	14,082	3,077	112,988
1985	14,276	3,729	101,984
1984	12,802	3,148	91,437
1983	11,800	3,613	81,783
1982	10,200	4,068	73,595

Caseload Units: NOT AVAILABLE FROM SOURCES USED

Special Funding Characteristics: YES - NO-YEAR, INDEFINITE

Spending Ceiling: NO

Formula Grant: NO

APPENDIX II

APPENDIX II

Agency: JUSTICE

Program: FEES AND EXPENSES OF WITNESSES

Common Name: WITNESS PROTECTION PROGRAM

Budget Number: 15 0311 0 1 752

Program Type: GENERAL GOVERNMENT

Program Description: This program establishes a general fund which finances expenses including mileage, compensation, travel, and per diem of witnesses who appear on behalf of the government in cases where the U.S. is a party. The account also funds the expenses of mental competency exams, witness protection, and the victim compensation fund.

Fiscal Year Data (in thousands):

	<u>Authorization</u>	<u>Net Outlays</u>	<u>Caseload</u>
1988	\$37,359 est.	--	.39
1987	52,087	\$39,314	.34
1986	45,212	35,668	.22
1985	42,591	36,661	.19
1984	37,883	34,617	.29
1983	35,700	29,809	.32
1982	32,671	28,794	.32

Caseload Units: NUMBER OF NEW WITNESSES IN PROGRAM

Special Funding Characteristics: YES - NO-YEAR

Spending Ceiling: YES

Formula Grant: NO

Agency: LABOR

Program: ADVANCES TO THE UNEMPLOYMENT INSURANCE TRUST FUND AND
OTHER FUNDS

Common Name: NONE

Budget Number: 16 0327 0 1 600

Program Type: PENSIONS AND WORKERS' SECURITY

Program Description: This account provides advances to several other accounts for the purpose of paying unemployment compensation to eligible individuals under various federal and state unemployment compensation laws whenever the balances in the funds prove insufficient.

Fiscal Year Data (in thousands):

	<u>Authorization</u>	<u>Net Outlays</u>
1988	\$ 30,000 est.	--
1987	0	\$ 168,276
1986	464,785	163,271
1985	0	1,585,545
1984	7,109,000	4,182,363
1983	11,059,000	12,043,473
1982	4,318,000	2,957,002

Caseload Units: NOT AVAILABLE FROM SOURCES USED

Special Funding Characteristics: NO

Spending Ceiling: YES

Formula Grant: NO

Agency: LABOR

Program: BLACK LUNG DISABILITY TRUST FUND

Common Name: BLACK LUNG BENEFITS/OPERATOR NOT IDENTIFIED

Budget Number: 20 8144 0 7 601

Program Type: PENSIONS AND WORKERS' SECURITY

Program Description: This trust fund consists of all moneys collected from the coal mining industry under the provisions of the Black Lung Benefits Revenue Act of 1981. These funds are used to pay compensation, medical, and survivor benefits to eligible miners and their survivors. In addition, the fund pays all administrative costs incurred in the operation of the Black Lung program.

Fiscal Year Data (in thousands):

	<u>Authorization</u>	<u>Net Outlays</u>	<u>Trust Fund Assets</u>	<u>Caseload</u>
1988	\$687,000 est.	--	--	84
1987	642,386	\$642,774	\$ 2,608	86
1986	600,116	618,378	2,996	89
1985	917,509	898,401	21,258	90
1984	864,978	865,267	2,150	92
1983	851,778	851,338	2,440	93
1982	779,428	889,544	2,000	85

Caseload Units: CLAIMS IN PAYMENT STATUS

Special Funding Characteristics: YES - ADVANCE, INDEFINITE

Spending Ceiling: NO

Formula Grant: NO

APPENDIX II

APPENDIX II

Agency: LABOR

Program: FEDERAL UNEMPLOYMENT BENEFITS AND ALLOWANCES

Common Name: TRADE ADJUSTMENT ASSISTANCE

Budget Number: 16 0326 0 1 603

Program Type: PENSIONS AND WORKERS' SECURITY

Program Description: Program provides adjustment assistance allowances to workers as authorized by the Trade Act of 1974. Benefits are also paid to workers adversely affected by expansion of the Redwood National Park under P.L. 95-250.

Fiscal Year Data (in thousands):

	<u>Authorization</u>	<u>Net Outlays</u>
1988	\$141,000 est.	--
1987	118,000	\$108,208
1986	10,000	14,236
1985	75,000	51,139
1984	12,000	33,756
1983	230,000	232,856
1982	306,000	314,833

Caseload Units: NOT AVAILABLE FROM SOURCES USED

Special Funding Characteristics: YES - ADVANCE

Spending Ceiling: YES

Formula Grant: NO

APPENDIX II

APPENDIX II

Agency: LABOR

Program: PENSION BENEFIT GUARANTY CORPORATION FUND

Common Name: PBGC

Budget Number: 16 4204 0 3 601

Program Type: PENSIONS AND WORKERS' SECURITY

Program Description: This wholly owned government corporation administers programs of mandatory insurance to prevent loss of pension benefits under covered private, defined-benefit pension plans if single-employer plans terminate or if multi-employer plans are unable to pay benefits.

Fiscal Year Data (in thousands):

	<u>Authorization</u>	<u>Net Outlays</u>	<u>Caseload</u>
1988	\$0 est.	--	177
1987	0	\$ 71,987 CR	153
1986	0	105,890 CR	94
1985	0	19,114 CR	75
1984	0	9,921 CR	39
1983	0	9,515 CR	33
1982	0	66,910 CR	28

Caseload Units: PAYEES RECEIVING BENEFITS

Special Funding Characteristics: YES - NO-YEAR, INDEFINITE,
BORROWING AUTHORITY

Spending Ceiling: YES

Formula Grant: NO

APPENDIX II

APPENDIX II

Agency: LABOR

Program: SPECIAL BENEFITS

Common Name: LONGSHORE AND HARBOR WORKERS' COMPENSATION ACT

Budget Number: 16 1521 0 1 600

Program Type: PENSIONS AND WORKERS' SECURITY

Program Description: Program provides for compensation benefits for job related injuries, diseases or deaths as specified in the Federal Employees' Compensation Act. Pertinent medical bills are paid for compensable injuries. Compensation benefits are paid when the injury causes the loss of job time.

Fiscal Year Data (in thousands):

	<u>Authorization</u>	<u>Net Outlays</u>	<u>Caseload</u>
1988	\$174,000 est.	--	49
1987	263,600	\$209,882	49
1986	270,463	270,438	49
1985	211,400	201,065	48
1984	220,100	222,794	47
1983	339,600	186,156	46
1982	348,892	268,105	48

Caseload Units: LONG-TERM CASES

Special Funding Characteristics: YES - ADVANCE

Spending Ceiling: NO

Formula Grant: NO

Agency: LABOR

Program: SPECIAL WORKERS' COMPENSATION EXPENSES

Common Name: LONGSHORE AND HARBOR WORKERS' COMPENSATION ACT

Budget Number: 16 9971 0 7 601

Program Type: PENSIONS AND WORKERS' SECURITY

Program Description: This trust fund consists of amounts received from employers for (1) the death of an employee where no person is entitled to compensation for such death and (2) fines and penalty payments. The funds are available for payments of additional compensation to disabled employees for second injuries. When a second injury results in increased permanent, partial, or total disability or death, additional compensation is provided from this fund.

Fiscal Year Data (in thousands):

	<u>Authorization</u>	<u>Net Outlays</u>	<u>Trust Fund Assets</u>
1988	\$94,000 est.	--	--
1987	74,794	\$71,984	\$37,606
1986	66,713	64,445	36,062
1985	60,495	56,604	32,528
1984	48,429	44,161	28,637
1983	37,971	36,089	24,369
1982	36,063	28,009	22,487

Caseload Units: NOT AVAILABLE FROM SOURCES USED

Special Funding Characteristics: YES - NO-YEAR, INDEFINITE

Spending Ceiling: YES

Formula Grant: NO

APPENDIX II

APPENDIX II

Agency: LABOR

Program: UNEMPLOYMENT TRUST FUND

Common Name: UNEMPLOYMENT INSURANCE

Budget Number: 20 8042 0 7 999

Program Type: PENSIONS AND WORKERS' SECURITY

Program Description: This fund receives Federal and State unemployment tax receipts which are then invested in government securities until needed for unemployment benefit payments or administrative costs. States may receive repayable advances from the fund when their balances are insufficient to pay benefits.

Fiscal Year Data (in thousands):

	<u>Authorization</u>	<u>Net Outlays</u>	<u>Trust Fund Assets</u>
1988	\$24,200,000 est.	--	--
1987	27,612,542	\$20,393,261	\$27,982,896
1986	26,072,585	21,818,632	23,004,838
1985	28,591,773	23,825,732	18,742,874
1984	29,892,328	26,088,764	13,973,687
1983	31,619,748	32,655,083	10,029,496
1982	20,124,918	24,282,280	10,794,993

Caseload Units: NOT AVAILABLE FROM SOURCES USED

Special Funding Characteristics: YES - NO-YEAR, INDEFINITE,
BORROWING AUTHORITY

Spending Ceiling: NO

Formula Grant: NO

Agency: NATIONAL CREDIT UNION ADMINISTRATION

Program: CREDIT UNION SHARE INSURANCE FUND

Common Name: NONE

Budget Number: 25 4468 0 3 371

Program Type: DEPOSIT INSURANCE

Program Description: The insurance fund is used to finance an insurance program for member accounts in Federal credit unions and State-chartered credit unions. Activities consist of (1) providing member account insurance, (2) formulating standards and requirements for insured credit unions, and (3) providing for liquidation or disposition of assets and liabilities of solvent and insolvent insured credit unions. The fund has \$100 million in borrowing authority from the Treasury.

Fiscal Year Data (in thousands):

	<u>Authorization</u>	<u>Net Outlays</u>	<u>Caseload</u>
1988	\$0 est.	--	14
1987	0	\$197,641 CR	15
1986	0	248,101 CR	15
1985	0	814,651 CR	15
1984	0	33,615 CR	15
1983	0	80,267 CR	19
1982	0	40,427 CR	17

Caseload Units: INSURED CREDIT UNIONS

Special Funding Characteristics: YES - NO-YEAR, INDEFINITE,
BORROWING AUTHORITY

Spending Ceiling: YES

Formula Grant: NO

APPENDIX II

APPENDIX II

Agency: OFFICE OF PERSONNEL MANAGEMENT

Program: CIVIL SERVICE RETIREMENT AND DISABILITY FUND

Common Name: NONE

Budget Number: 24 8135 0 7 602

Program Type: PENSIONS AND WORKERS' SECURITY

Program Description: This fund is used to pay annuities to retired employees or their survivors; to make refunds to former employees for amounts withheld and to beneficiaries of employees who died before retirement or before the annuities equaled the amounts withheld; and to pay expenses of administering the program.

Fiscal Year Data (in thousands):

	<u>Authorization</u>	<u>Net Outlays</u>	<u>Trust Fund Assets</u>	<u>Caseload</u>
1988	\$45,524,240 est.	--	--	2,101
1987	43,248,827	\$25,798,311	\$176,929,890	2,054
1986	42,600,215	24,023,368	159,479,375	2,007
1985	40,193,782	23,091,872	140,902,528	1,971
1984	36,115,726	21,890,542	123,800,618	1,910
1983	34,310,932	20,795,873	109,575,433	1,870
1982	31,475,800	19,485,229	96,060,375	1,830

Caseload Units: ANNUITANTS

Special Funding Characteristics: YES - NO-YEAR, INDEFINITE

Spending Ceiling: NO

Formula Grant: NO

APPENDIX II

APPENDIX II

Agency: OFFICE OF PERSONNEL MANAGEMENT

Program: EMPLOYEES HEALTH BENEFITS FUND

Common Name: NONE

Budget Number: 24 8440 0 8 551

Program Type: SALARIES AND BENEFITS

Program Description: Program provides cost of health care benefits for: (1) active employees, (2) retired employees or their survivors, (3) transferring annuitants from the retired federal employee health benefits program, and (4) related OPM administrative costs.

Fiscal Year Data (in thousands):

	<u>Authorization</u>	<u>Net Outlays</u>	<u>Trust Fund Assets</u>	<u>Caseload</u>
1988	\$0 est.	--	--	3,927
1987	0	\$204,443	\$1,733,722	3,887
1986	0	238,607 CR	1,772,767	3,847
1985	0	260,306 CR	1,603,063	3,768
1984	0	49,694 CR	1,335,815	3,689
1983	0	195,749 CR	1,207,814	3,641
1982	0	39,959 CR	969,165	3,729

Caseload Units: PARTICIPANTS

Special Funding Characteristics: YES - NO-YEAR, INDEFINITE

Spending Ceiling: YES

Formula Grant: NO

APPENDIX II

APPENDIX II

Agency: OFFICE OF PERSONNEL MANAGEMENT

Program: EMPLOYEES LIFE INSURANCE FUND

Common Name: NONE

Budget Number: 24 8424 0 8 602

Program Type: SALARIES AND BENEFITS

Program Description: This program finances (1) insurance premiums paid to private insurance companies for federal employees' group life insurance and (2) administration expenses incurred by the Office of Personnel Management.

Fiscal Year Data (in thousands):

	<u>Authorization</u>	<u>Net Outlays</u>	<u>Trust Fund Assets</u>	<u>Caseload</u>
1988	\$0 est.	--	--	4,053
1987	0	\$702,311 CR	\$8,333,095	4,023
1986	0	760,005 CR	7,599,759	3,993
1985	0	674,469 CR	6,885,874	3,845
1984	0	703,979 CR	6,195,107	3,745
1983	0	580,276 CR	5,447,935	3,779
1982	0	492,268 CR	4,847,257	3,980

Caseload Units: PARTICIPANTS

Special Funding Characteristics: YES - NO-YEAR, INDEFINITE

Spending Ceiling: YES

Formula Grant: NO

APPENDIX II

APPENDIX II

Agency: OFFICE OF PERSONNEL MANAGEMENT

Program: GOVERNMENT PAYMENT FOR ANNUITANTS, EMPLOYEE HEALTH BENEFITS

Common Name: ANNUITANTS HEALTH BENEFITS

Budget Number: 24 0206 0 1 551

Program Type: PENSIONS AND WORKERS' SECURITY

Program Description: This program provides for the federal government's share of the cost of health insurance for annuitants and for the payment of program administration expenses incurred by the Office of Personnel Management.

Fiscal Year Data (in thousands):

	<u>Authorization</u>	<u>Net Outlays</u>	<u>Caseload</u>
1988	\$1,788,931 est.	--	NRA
1987	1,459,000	\$1,591,707	NRA
1986	1,537,100	876,448	1,573
1985	1,341,553	1,485,119	1,493
1984	1,506,339	1,391,547	1,456
1983	1,342,610	1,215,004	1,430
1982	982,247	969,164	1,360

Caseload Units: ANNUITANTS AT YEAR-END

Special Funding Characteristics: YES - NO-YEAR

Spending Ceiling: YES

Formula Grant: NO

APPENDIX II

APPENDIX II

Agency: OFFICE OF PERSONNEL MANAGEMENT

Program: RETIRED EMPLOYEES HEALTH BENEFITS FUND

Common Name: NONE

Budget Number: 24 8445 0 8 551

Program Type: PENSIONS AND WORKERS' SECURITY

Program Description: Program receives government contributions and provides for the costs of health benefits and administrative costs of health benefit programs for retired employees and survivors.

Fiscal Year Data (in thousands):

	<u>Authorization</u>	<u>Net Outlays</u>	<u>Trust Fund Assets</u>	<u>Caseload</u>
1988	\$0 est.	--	--	35
1987	0	\$2,392	\$2,594	40
1986	0	153 CR	5,078	45
1985	0	3,775 CR	4,739	51
1984	0	116 CR	1,012	57
1983	0	84 CR	1,002	64
1982	0	824	1,143	71

Caseload Units: PARTICIPANTS

Special Funding Characteristics: YES - NO-YEAR, INDEFINITE

Spending Ceiling: YES

Formula Grant: NO

APPENDIX II

APPENDIX II

Agency: RAILROAD RETIREMENT BOARD

Program: RAIL INDUSTRY PENSION FUND

Common Name: NONE

Budget Number: 60 8011 0 7 601

Program Type: PENSIONS AND WORKERS' SECURITY

Program Description: This fund maintains pension fund revenues that are derived from pension contributions by railroad employers and employees, investments, subsidies, and disability insurance trust funds. The fund provides retirement, disability, and survivor benefit payments.

Fiscal Year Data (in thousands):

	<u>Authorization</u>	<u>Net Outlays</u>	<u>Trust Fund Assets</u>	<u>Caseload</u>
1988	\$2,725,000 est.	--	--	NRA
1987	2,743,422	\$2,194,624	\$6,686,596	NRA
1986	2,899,003	2,076,975	6,134,144	NRA
1985	2,546,716	2,100,550	5,045,743	1,024
1984	6,040,915	5,561,766	4,341,527	1,040
1983	5,000,596	5,483,152	2,510,805	1,056
1982	4,725,353	5,224,449	3,327,533	1,067

Caseload Units: RECIPIENTS

Special Funding Characteristics: YES - NO-YEAR, INDEFINITE

Spending Ceiling: NO

Formula Grant: NO

APPENDIX II

APPENDIX II

Agency: RAILROAD RETIREMENT BOARD

Program: RAILROAD SOCIAL SECURITY EQUIVALENT BENEFIT ACCOUNT

Common Name: NONE

Budget Number: 60 8010 0 7 601

Program Type: PENSIONS AND WORKERS' SECURITY

Program Description: Railroad retirees receive the equivalent of a Social Security benefit and may receive other benefits, including rail industry pension payments, windfall payments, and supplemental annuities. This program was started in 1985.

Fiscal Year Data (in thousands):

	<u>Authorization</u>	<u>Net Outlays</u>	<u>Trust Fund Assets</u>
1988	\$6,601,000 est.	--	--
1987	3,776,528	\$3,834,427	\$3,073,183
1986	3,818,309	3,783,271	2,930,834
1985	3,552,791	3,595,516	2,706,839
1984	NA	NA	NA
1983	NA	NA	NA
1982	NA	NA	NA

Caseload Units: NOT AVAILABLE FROM SOURCES USED

Special Funding Characteristics: YES - NO-YEAR, INDEFINITE

Spending Ceiling: NO

Formula Grant: NO

APPENDIX II

APPENDIX II

Agency: RAILROAD RETIREMENT BOARD

Program: SUPPLEMENTAL ANNUITY PENSION FUND

Common Name: NONE

Budget Number: 60 8012 0 7 601

Program Type: PENSIONS AND WORKERS' SECURITY

Program Description: This fund maintains money to pay for supplemental annuities to rail workers retiring at age 60 with 30 years of creditable rail service or at age 65 with 25-29 years of creditable service.

Fiscal Year Data (in thousands):

	<u>Authorization</u>	<u>Net Outlays</u>	<u>Trust Fund Assets</u>
1988	\$120,000 est.	--	--
1987	126,754	\$115,663	\$ 61,709
1986	68,949	115,986	51,814
1985	171,673	120,653	101,157
1984	121,347	122,341	41,327
1983	123,139	123,380	43,172
1982	129,165	123,474	43,672

Caseload Units: NOT AVAILABLE FROM SOURCES USED

Special Funding Characteristics: YES - NO-YEAR, INDEFINITE

Spending Ceiling: NO

Formula Grant: NO

Agency: SECURITIES AND EXCHANGE COMMISSION

Program: INVESTMENT IN SECURITIES INVESTOR PROTECTION
CORPORATION

Common Name: SIPC

Budget Number: 50 4068 0 3 376

Program Type: DEPOSIT INSURANCE

Program Description: This program allows the Securities and Exchange Commission to make loans (\$1 billion) to the Securities Investor Protection Corporation in the event that the fund maintained by SIPC is insufficient to satisfy the claims of customers of failing brokerage firms. As of September 30, 1987, SIPC has not used this borrowing authority.

Fiscal Year Data (in thousands):

	<u>Authorization</u>	<u>Net Outlays</u>
1988	\$0 est.	--
1987	0	\$0
1986	0	0
1985	0	0
1984	0	0
1983	0	0
1982	0	0

Caseload Units: NOT AVAILABLE FROM SOURCES USED

Special Funding Characteristics: YES - BORROWING AUTHORITY

Spending Ceiling: YES

Formula Grant: NO

APPENDIX II

APPENDIX II

Agency: STATE

Program: FOREIGN SERVICE RETIREMENT AND DISABILITY FUND

Common Name: NONE

Budget Number: 19 8186 0 7 602

Program Type: PENSIONS AND WORKERS' SECURITY

Program Description: Program provides retirement benefits to retired or disabled foreign service personnel. Contributions by participants and the government along with interest on investments are the sources of funds for the program.

Fiscal Year Data (in thousands):

	<u>Authorization</u>	<u>Net Outlays</u>	<u>Trust Fund Assets</u>	<u>Caseload</u>
1988	\$739,733 est.	--	--	10
1987	766,844	\$240,371	\$3,474,822	10
1986	715,616	244,571	2,948,349	9
1985	702,391	209,671	2,477,304	8
1984	634,827	211,504	1,984,584	8
1983	566,794	198,363	561,261	8
1982	491,289	183,609	1,193,330	8

Caseload Units: ANNUITANTS

Special Funding Characteristics: YES - NO-YEAR, INDEFINITE

Spending Ceiling: NO

Formula Grant: NO

APPENDIX II

APPENDIX II

Agency: TRANSPORTATION

Program: AIRPORT AND AIRWAY TRUST FUND

Common Name: NONE

Budget Number: 00 0000 0 0 000

Program Type: RESOURCE AND COMMUNITY DEVELOPMENT

Program Description: The trust fund receives revenues from user taxes and finances programs under other appropriations such as: a portion of FAA operations, grants-in-aid for airports, facilities and equipment, and research engineering and development. The authorization amount shown below relates to income received by the fund. The funds expended by this program are noncash transfers to other appropriations which show the actual disbursements. Outlays relating to this fund were not readily available using Treasury's reports. The budget does not show a budget number for this program.

Fiscal Year Data (in thousands):

	<u>Authorization</u>	<u>Net Outlays</u>	<u>Trust Fund Assets</u>
1988	\$4,200,500 est.	--	--
1987	3,940,242	NA	\$9,937,273
1986	3,565,053	NA	8,548,436
1985	3,597,636	NA	7,410,219
1984	3,045,158	NA	6,433,702
1983	2,697,597	NA	4,793,524
1982	674,330	NA	3,868,323

Caseload Units: NOT AVAILABLE FROM SOURCES USED

Special Funding Characteristics: YES - NO-YEAR, INDEFINITE

Spending Ceiling: YES

Formula Grant: NO

APPENDIX II

APPENDIX II

Agency: TRANSPORTATION

Program: CONRAIL LABOR PROTECTION

Common Name: NONE

Budget Number: 69 0707 0 1 603

Program Type: OTHER

Program Description: Program provides protection to Conrail employees deprived of employment because of actions taken under the Northeast Rail Service Act of 1981. No funds are requested because Conrail is being returned to the private sector.

Fiscal Year Data (in thousands):

	<u>Authorization</u>	<u>Net Outlays</u>
1988	\$0 est.	--
1987	0	\$ 315 CR
1986	0	0
1985	0	4,000
1984	0	0
1983	0	2,549 CR
1982	0	25,000

Caseload Units: NOT AVAILABLE FROM SOURCES USED

Special Funding Characteristics: NO

Spending Ceiling: YES

Formula Grant: NO

Agency: TRANSPORTATION

Program: HIGHWAY TRUST FUND

Common Name: NONE

Budget Number: 00 0000 0 0 000

Program Type: RESOURCE AND COMMUNITY DEVELOPMENT

Program Description: This fund receives revenues from the motor fuel tax and other taxes paid by highway users. Appropriated funds are authorized from this fund to meet expenditures for federal aid to highways. The authorization amount shown for 1988 represents expected revenues. The budget does not show a budget number since the fund is used for a variety of programs.

Fiscal Year Data (in thousands):

	<u>Authorization</u>	<u>Net Outlays</u>	<u>Trust Fund Assets</u>
1988	\$16,273,000 est.	--	--
1987	14,659,159	\$12,607,253	\$13,655,896
1986	16,207,925	13,951,284	12,852,032
1985	16,435,673	12,584,323	12,950,574
1984	15,315,572	10,226,764	11,894,237
1983	13,555,431	8,718,244	9,622,416
1982	8,239,518	7,788,589	9,087,516

Caseload Units: NOT AVAILABLE FROM SOURCES USED

Special Funding Characteristics: YES - NO-YEAR, INDEFINITE

Spending Ceiling: YES

Formula Grant: NO

APPENDIX II

APPENDIX II

Agency: TRANSPORTATION

Program: PAYMENTS TO AIR CARRIERS

Common Name: NONE

Budget Number: 69 0150 0 1 402

Program Type: RESOURCE AND COMMUNITY DEVELOPMENT

Program Description: Subsidies under this program are paid to commuter airline carriers. No funds are requested in fiscal year 1988.

Fiscal Year Data (in thousands):

	<u>Authorization</u>	<u>Net Outlays</u>
1988	\$ 0 est.	--
1987	30,000	\$26,408
1986	26,796	24,231
1985	41,419	27,066
1984	50,800	40,920
1983	52,144	53,868
1982	86,058	84,305

Caseload Units: NOT AVAILABLE FROM SOURCES USED

Special Funding Characteristics: YES - NO-YEAR

Spending Ceiling: YES

Formula Grant: NO

APPENDIX II

APPENDIX II

Agency: TRANSPORTATION

Program: RETIRED PAY

Common Name: COAST GUARD RETIRED PAY

Budget Number: 69 0241 0 1 403

Program Type: PENSIONS AND WORKERS' SECURITY

Program Description: Program provides for the retired pay of military personnel of the Coast Guard and Coast Guard Reserve, members of the former Lighthouse Service, and for annuities payable to beneficiaries of retired military personnel under the retired serviceman's family protection plan.

Fiscal Year Data (in thousands):

	<u>Authorization</u>	<u>Net Outlays</u>	<u>Caseload</u>
1988	\$386,700 est.	--	25
1987	364,000	\$349,944	26
1986	339,489	336,496	24
1985	330,800	298,781	25
1984	328,750	310,728	23
1983	309,350	292,238	23
1982	265,000	257,849	23

Caseload Units: RETIRED PERSONNEL

Special Funding Characteristics: NO

Spending Ceiling: YES

Formula Grant: NO

APPENDIX II

APPENDIX II

Agency: TREASURY

Program: CLAIMS, JUDGMENTS, AND RELIEF ACTS

Common Name: NONE

Budget Number: 20 1895 0 1 806

Program Type: GENERAL GOVERNMENT

Program Description: Program provides for the payment of claims and interest for damages not chargeable to appropriations or individual agencies and for the payment of private and public relief acts.

Fiscal Year Data (in thousands):

	<u>Authorization</u>	<u>Net Outlays</u>
1988	\$339,020 est.	--
1987	360,824	\$360,742
1986	277,071	277,105
1985	313,956	313,924
1984	235,453	235,516
1983	562,714	562,806
1982	284,810	284,718

Caseload Units: NOT AVAILABLE FROM SOURCES USED

Special Funding Characteristics: YES - PERMANENT, INDEFINITE

Spending Ceiling: NO

Formula Grant: NO

APPENDIX II

APPENDIX II

Agency: TREASURY

Program: CUSTOMS MISCELLANEOUS PERMANENT APPROPRIATION

Common Name: NONE

Budget Number: 20 9922 0 2 852

Program Type: REVENUE SHARING

Program Description: This program holds Customs duties, taxes, and fees collected in Puerto Rico. After providing for the expenses of administering Customs activities in Puerto Rico, the remaining amounts are transferred to Puerto Rico.

Fiscal Year Data (in thousands):

	<u>Authorization</u>	<u>Net Outlays</u>
1988	\$111,343 est.	--
1987	106,779	\$ 96,880
1986	96,792	100,223
1985	96,828	105,112
1984	92,952	76,853
1983	71,963	75,788
1982	62,911	69,257

Caseload Units: NOT AVAILABLE FROM SOURCES USED

Special Funding Characteristics: YES - NO-YEAR, INDEFINITE

Spending Ceiling: YES

Formula Grant: NO

APPENDIX II

APPENDIX II

Agency: TREASURY

Program: INTEREST ON THE PUBLIC DEBT

Common Name: NONE

Budget Number: 20 0550 0 1 901

Program Type: GENERAL GOVERNMENT

Program Description: Program provides the financial resources to pay interest each year on the federal government's public debt.

Fiscal Year Data (in thousands):

	<u>Authorization</u>	<u>Net Outlays</u>
1988	\$198,399,300 est.	--
1987	195,389,961	\$195,389,961
1986	187,117,346	187,117,346
1985	178,945,049	178,945,049
1984	153,837,683	153,837,683
1983	128,813,078	128,813,078
1982	117,351,592	117,351,592

Caseload Units: NOT AVAILABLE FROM SOURCES USED

Special Funding Characteristics: YES - PERMANENT, INDEFINITE

Spending Ceiling: NO

Formula Grant: NO

APPENDIX II

APPENDIX II

Agency: TREASURY

Program: INTERNAL REVENUE COLLECTIONS - PUERTO RICO

Common Name: NONE

Budget Number: 20 5737 0 2 852

Program Type: REVENUE SHARING

Program Description: This special fund pays to Puerto Rico excise taxes collected under internal revenue laws on articles produced in Puerto Rico.

Fiscal Year Data (in thousands):

	<u>Authorization</u>	<u>Net Outlays</u>
1988	\$205,000 est.	--
1987	185,044	\$224,671
1986	204,593	205,294
1985	327,420	335,501
1984	370,137	365,142
1983	326,429	316,419
1982	239,403	245,069

Caseload Units: NOT AVAILABLE FROM SOURCES USED

Special Funding Characteristics: YES - NO-YEAR, INDEFINITE

Spending Ceiling: YES

Formula Grant: NO

APPENDIX II

APPENDIX II

Agency: TREASURY

Program: PAYMENT WHERE EARNED INCOME CREDIT EXCEEDS
LIABILITY FOR TAX

Common Name: EARNED INCOME CREDIT

Budget Number: 20 0906 0 1 609

Program Type: SOCIAL WELFARE

Program Description: Program provides income tax refunds to the taxpayer when the earned income credit exceeds the amount of the tax liability.

Fiscal Year Data (in thousands):

	<u>Authorization</u>	<u>Net Outlays</u>
1988	\$2,910,000 est.	--
1987	1,409,932	\$1,409,932
1986	1,414,990	1,414,990
1985	1,099,776	1,099,776
1984	1,192,901	1,192,901
1983	1,213,292	1,213,292
1982	1,201,494	1,201,494

Caseload Units: NOT AVAILABLE FROM SOURCES USED

Special Funding Characteristics: YES - NO-YEAR, INDEFINITE

Spending Ceiling: NO

Formula Grant: NO

APPENDIX II

APPENDIX II

Agency: TREASURY

Program: PRESIDENTIAL ELECTION CAMPAIGN FUND

Common Name: NONE

Budget Number: 20 5081 0 2 806

Program Type: OTHER

Program Description: This special fund provides matching funds to presidential candidates, payments to the parties' nominating committees, and other related reimbursements.

Fiscal Year Data (in thousands):

	<u>Authorization</u>	<u>Net Outlays</u>
1988	\$37,000 est.	--
1987	33,179	\$ 17,384
1986	35,933	18 CR
1985	34,788	3,420
1984	34,770	117,829
1983	35,527	11,720
1982	39,030	132 CR

Caseload Units: NOT AVAILABLE FROM SOURCES USED

Special Funding Characteristics: YES - NO-YEAR, INDEFINITE

Spending Ceiling: YES

Formula Grant: NO

Agency: TREASURY

Program: REFUNDING INTERNAL REVENUE SERVICE (IRS) COLLECTIONS,
INTEREST

Common Name: INTEREST ON IRS REFUNDS

Budget Number: 20 0904 0 1 908

Program Type: GENERAL GOVERNMENT

Program Description: Program provides funding for interest due on Internal Revenue Service collections which must be refunded.

Fiscal Year Data (in thousands):

	<u>Authorization</u>	<u>Net Outlays</u>
1988	\$1,621,000 est.	--
1987	1,941,323	\$1,941,323
1986	1,813,836	1,813,836
1985	1,749,533	1,749,533
1984	1,301,370	1,301,370
1983	1,953,820	1,953,820
1982	1,788,871	1,788,871

Caseload Units: NOT AVAILABLE FROM SOURCES USED

Special Funding Characteristics: YES - NO-YEAR, INDEFINITE

Spending Ceiling: NO

Formula Grant: NO

AO-A191 936

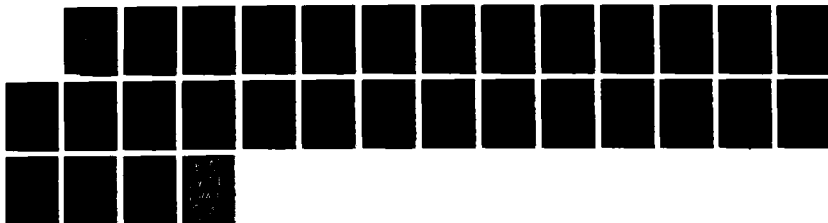
FEDERAL FUNDING: INFORMATION ON SELECTED
BENEFIT/MANDATORY SPENDING PROGRAMS(U) GENERAL
ACCOUNTING OFFICE WASHINGTON DC ACCOUNTING AND FINANC..
27 JAN 88 GAO/AFMD-88-31FS

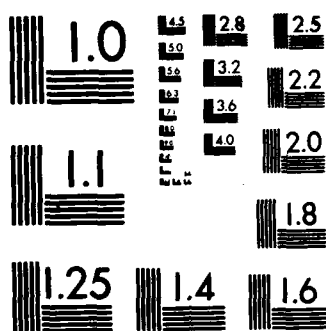
2/2

UNCLASSIFIED

F/G 5/1

NL





MICROCOPY RESOLUTION TEST CHART
NATIONAL BUREAU OF STANDARDS-1963-A

APPENDIX II

APPENDIX II

Agency: TREASURY

Program: SECRET SERVICE CONTRIBUTION FOR ANNUITY BENEFITS

Common Name: NONE

Budget Number: 20 1407 0 1 751

Program Type: PENSIONS AND WORKERS' SECURITY

Program Description: This program is used to reimburse the District of Columbia for benefit payments made to or for members of the Secret Service Uniformed Division who are covered by the District of Columbia pension plan.

Fiscal Year Data (in thousands):

	<u>Authorization</u>	<u>Net Outlays</u>
1988	\$12,000 est.	--
1987	16,959	\$19,750
1986	8,433	8,433
1985	11,000	11,000
1984	8,455	8,455
1983	9,000	9,940
1982	8,765	7,855

Caseload Units: NOT AVAILABLE FROM SOURCES USED

Special Funding Characteristics: YES - NO-YEAR, INDEFINITE

Spending Ceiling: NO

Formula Grant: NO

APPENDIX II

APPENDIX II

Agency: TREASURY

Program: STATE/LOCAL GOVERNMENT FISCAL ASSISTANCE TRUST FUND

Common Name: REVENUE SHARING ACT

Budget Number: 20 8111 0 7 851

Program Type: REVENUE SHARING

Program Description: This program is a trust fund activity under the Revenue Sharing Act. This program was not reauthorized at the end of 1986.

Fiscal Year Data (in thousands):

	<u>Authorization</u>	<u>Net Outlays</u>	<u>Trust Fund Assets</u>
1988	\$ NA	--	--
1987	NA	\$ 76,346	\$ 182,888
1986	4,185,000	5,114,179	259,234
1985	4,566,700	4,583,734	1,188,413
1984	4,566,700	4,566,588	1,205,447
1983	4,566,700	4,614,383	1,205,336
1982	4,566,700	4,568,627	1,253,019

Caseload Units: NOT AVAILABLE FROM SOURCES USED

Special Funding Characteristics: NO

Spending Ceiling: YES

Formula Grant: YES

APPENDIX II

APPENDIX II

Agency: U.S. TAX COURT

Program: TAX COURT JUDGES SURVIVORS ANNUITY FUND

Common Name: NONE

Budget Number: 23 8115 0 7 602

Program Type: PENSIONS AND WORKERS' SECURITY

Program Description: This fund provides survivorship benefits to eligible surviving spouses and dependent children of deceased judges of the U.S. Tax Court. Participating judges pay 3.5 percent of their salaries or retired pay into the fund to cover creditable service. Additional funds are provided through the annual appropriation to the U.S. Tax Court.

Fiscal Year Data (in thousands):

	<u>Authorization</u>	<u>Net Outlays</u>	<u>Trust Fund Assets</u>
1988	\$377 est.	--	--
1987	394	\$60	\$2,187
1986	340	53	1,852
1985	289	26	1,565
1984	253	85	1,302
1983	199	59	1,134
1982	187	39	994

Caseload Units: AS OF 9/30/86, 3 ANNUITANTS AND 26 PARTICIPANTS

Special Funding Characteristics: YES - NO-YEAR, INDEFINITE

Spending Ceiling: NO

Formula Grant: NO

APPENDIX II

APPENDIX II

Agency: VETERANS ADMINISTRATION

Program: EDUCATION LOAN FUND

Common Name: NONE

Budget Number: 36 4118 0 3 702

Program Type: VETERANS' BENEFITS AND SERVICES

Program Description: This fund, using offsetting collections from loan repayments, interest on loans, and defaulted loan collections, provides loans of up to \$2,500 to veterans who will soon be eligible for training benefits and who are without funds to meet education expenses.

Fiscal Year Data (in thousands):

	<u>Authorization</u>	<u>Net Outlays</u>	<u>Caseload</u>
1988	\$0 est.	--	.04
1987	0	\$9,871 CR	.04
1986	0	6,248 CR	.05
1985	0	6,325 CR	.06
1984	0	6,780 CR	.06
1983	0	6,577 CR	.14
1982	0	5,187 CR	1.44

Caseload Units: NUMBER OF LOANS MADE

Special Funding Characteristics: YES - NO-YEAR, INDEFINITE

Spending Ceiling: NO

Formula Grant: NO

APPENDIX II

APPENDIX II

Agency: VETERANS ADMINISTRATION

Program: LOAN GUARANTY REVOLVING FUND

Common Name: VA HOME LOAN GUARANTY FUND

Budget Number: 36 4025 0 3 704

Program Type: VETERANS' BENEFITS AND SERVICES

Program Description: This public enterprise fund provides VA home loan guarantees to private lenders to facilitate the extension of mortgage credit on favorable terms to eligible veterans. It is funded largely by offsetting collections from the sale of vendee loans, the sale of acquired homes, and interest on loans. Acquisition of homes is the largest program cost.

Fiscal Year Data (in thousands):

	<u>Authorization</u>	<u>Net Outlays</u>	<u>Caseload</u>
1988	\$389,800 est.	--	\$72,017,659
1987	100,000	\$382,059	67,695,038
1986	200,000	162,769	62,766,721
1985	306,600	278,462	60,079,678
1984	100,000	369,847	57,501,655
1983	0	239,268	53,849,887
1982	0	183,027	48,798,359

Caseload Units: DOLLAR VALUE OF LOANS GUARANTEED

Special Funding Characteristics: YES - INDEFINITE

Spending Ceiling: NO

Formula Grant: NO

APPENDIX II

APPENDIX II

Agency: VETERANS ADMINISTRATION

Program: MEDICAL CARE

Common Name: VA HOSPITALS

Budget Number: 36 0160 0 1 703

Program Type: VETERANS' BENEFITS AND SERVICES

Program Description: Program provides for the payment of veterans' expenses for the maintenance and operation of hospitals, nursing homes, domiciliary facilities, and other inpatient and outpatient care.

Fiscal Year Data (in thousands):

	<u>Authorization</u>	<u>Net Outlays</u>	<u>Caseload</u>
1988	\$9,967,608 est.	--	54
1987	9,753,052	\$9,499,750	55
1986	9,154,816	9,095,306	57
1985	8,941,169	8,721,690	59
1984	8,244,414	8,123,794	63
1983	7,773,254	7,602,087	65
1982	7,113,726	6,851,668	65

Caseload Units: AVERAGE NUMBER OF PATIENTS PER DAY (EXCLUDES OTHER CARE)

Special Funding Characteristics: NO

Spending Ceiling: YES

Formula Grant: YES

APPENDIX II

APPENDIX II

Agency: VETERANS ADMINISTRATION

Program: NATIONAL SERVICE LIFE INSURANCE FUND

Common Name: WORLD WAR II SERVICEMEN'S AND VETERANS' INSURANCE

Budget Number: 36 8132 0 7 701

Program Type: VETERANS' BENEFITS AND SERVICES

Program Description: This trust fund provides life insurance for World War II veterans. The fund receives income from premium receipts, interest on investments, and transfers from the veterans' insurance and indemnities appropriation.

Fiscal Year Data (in thousands):

	<u>Authorization</u>	<u>Net Outlays</u>	<u>Trust Fund Assets</u>	<u>Caseload</u>
1988	\$1,375,100 est.	--	--	2,829
1987	1,390,515	\$1,034,060	\$10,157,399	2,918
1986	1,367,013	1,037,408	9,803,135	3,008
1985	1,304,888	955,965	9,474,785	3,106
1984	1,248,781	922,003	9,126,747	3,195
1983	1,202,072	890,928	8,800,320	3,283
1982	1,163,633	925,291	8,489,713	3,373

Caseload Units: NUMBER OF POLICIES

Special Funding Characteristics: YES - NO-YEAR, INDEFINITE

Spending Ceiling: NO

Formula Grant: NO

APPENDIX II

APPENDIX II

Agency: VETERANS ADMINISTRATION

Program: POST-VIETNAM ERA VETERANS EDUCATION ACCOUNT

Common Name: NEW GI BILL

Budget Number: 36 8133 0 7 702

Program Type: VETERANS' BENEFITS AND SERVICES

Program Description: This trust fund provides educational assistance to various eligible servicemen and servicewomen. The account is funded by a permanent appropriation consisting of voluntary contributions by service personnel and matching contributions from the Department of Defense.

Fiscal Year Data (in thousands):

	<u>Authorization</u>	<u>Net Outlays</u>	<u>Trust Fund Assets</u>	<u>Caseload</u>
1988	\$201,860 est.	--	--	74
1987	233,106	\$283,607	\$608,903	71
1986	323,875	225,251	657,004	63
1985	290,399	182,458	557,105	48
1984	215,852	155,996	448,152	38
1983	222,315	140,329	387,637	30
1982	161,057	107,453	304,858	11

Caseload Units: PARTICIPANTS RECEIVING ASSISTANCE

Special Funding Characteristics: YES - NO-YEAR, INDEFINITE

Spending Ceiling: YES

Formula Grant: NO

APPENDIX II

APPENDIX II

Agency: VETERANS ADMINISTRATION

Program: READJUSTMENT BENEFITS

Common Name: GI BILL

Budget Number: 36 0137 0 1 702

Program Type: VETERANS' BENEFITS AND SERVICES

Program Description: Program finances readjustment and rehabilitation benefits for veterans. Benefits consist of education and training, special assistance to disabled veterans, and volunteer force educational assistance.

Fiscal Year Data (in thousands):

	<u>Authorization</u>	<u>Net Outlays</u>	<u>Caseload</u>
1988	\$ 625,700 est.	--	226
1987	763,250	\$ 776,401	282
1986	895,569	918,056	362
1985	1,130,800	1,173,667	464
1984	1,603,200	1,408,267	600
1983	1,666,800	1,713,702	724
1982	1,964,100	2,005,365	875

Caseload Units: TRAINEES (EXCLUDING SPECIAL ASSISTANCE)

Special Funding Characteristics: YES - NO-YEAR

Spending Ceiling: NO

Formula Grant: NO

APPENDIX II

APPENDIX II

Agency: VETERANS ADMINISTRATION

Program: REINSTATED ENTITLEMENT PROGRAM FOR SURVIVORS UNDER
PUBLIC LAW 97-377

Common Name: SOCIAL SECURITY BENEFITS TO SURVIVORS

Budget Number: 36 0200 0 1 701

Program Type: VETERANS' BENEFITS AND SERVICES

Program Description: This program was initiated in 1983 to provide for the restoration of Social Security benefits to certain surviving spouses or children of veterans who died of service-connected causes. Prior to fiscal year 1984, this account was under the Post-Vietnam Era Veterans' Education account and fiscal year data was not readily available. Financing is provided in the form of offsetting collections from the Department of Defense.

Fiscal Year Data (in thousands):

	<u>Authorization</u>	<u>Net Outlays</u>	<u>Caseload</u>
1988	\$ 0 est.	--	7
1987	0	\$ 2,845 CR	7
1986	0	9,856	7
1985	0	15,326 CR	7
1984	51,000	44,802	9
1983	0	0	9
1982	NA	NA	NRA

Caseload Units: BENEFICIARIES

Special Funding Characteristics: NO

Spending Ceiling: NO

Formula Grant: NO

APPENDIX II

APPENDIX II

Agency: VETERANS ADMINISTRATION

Program: SERVICE-DISABLED VETERANS INSURANCE FUND

Common Name: NONE

Budget Number: 36 4012 0 3 701

Program Type: VETERANS' BENEFITS AND SERVICES

Program Description: This public enterprise fund finances the payment of claims on nonparticipating life insurance policies issued and is open for new issues to veterans having service-connected disabilities.

Fiscal Year Data (in thousands):

	<u>Authorization</u>	<u>Net Outlays</u>	<u>Caseload</u>
1988	\$0 est.	--	179
1987	0	\$1,984	182
1986	0	2,533 CR	184
1985	0	3,168 CR	187
1984	0	395 CR	189
1983	0	432	191
1982	0	2,563 CR	192

Caseload Units: NUMBER OF INSURANCE POLICIES

Special Funding Characteristics: YES - NO-YEAR, INDEFINITE

Spending Ceiling: NO

Formula Grant: NO

APPENDIX II

APPENDIX II

Agency: VETERANS ADMINISTRATION

Program: SERVICEMEN'S GROUP LIFE INSURANCE FUND

Common Name: GROUP LIFE

Budget Number: 56 4009 0 3 701

Program Type: VETERANS' BENEFITS AND SERVICES

Program Description: Program finances the payment of group life insurance premiums to private insurance companies under the Servicemen's Group Life Insurance Act of 1965, as amended.

Fiscal Year Data (in thousands):

	<u>Authorization</u>	<u>Net Outlays</u>
1988	\$0 est.	--
1987	0	\$12,879 CR
1986	0	5,726 CR
1985	0	19,750 CR
1984	0	27,010 CR
1983	0	39,751 CR
1982	0	39,998 CR

Caseload Units: NOT AVAILABLE FROM SOURCES USED

Special Funding Characteristics: YES - NO-YEAR, INDEFINITE

Spending Ceiling: YES

Formula Grant: NO

APPENDIX II

APPENDIX II

Agency: VETERANS ADMINISTRATION

Program: U.S. GOVERNMENT LIFE INSURANCE FUND

Common Name: WAR RISK INSURANCE

Budget Number: 36 8150 0 7 701

Program Type: VETERANS' BENEFITS AND SERVICES

Program Description: This trust fund receives premiums and pays claims on insurance issued under the War Risk Insurance Act. Funding is derived from premiums, interest on investments, and payments from the veterans' insurance and indemnities appropriation. This account receives a permanent appropriation and uses offsetting collections.

Fiscal Year Data (in thousands):

	<u>Authorization</u>	<u>Net Outlays</u>	<u>Trust Fund Assets</u>	<u>Caseload</u>
1988	\$15,520 est.	--	--	47
1987	17,552	\$40,325	\$222,612	52
1986	19,644	44,739	245,752	58
1985	21,556	45,698	270,928	64
1984	23,279	51,879	295,151	70
1983	26,268	59,851	323,811	77
1982	31,209	64,332	357,477	84

Caseload Units: NUMBER OF INSURANCE POLICIES

Special Funding Characteristics: YES - NO-YEAR, INDEFINITE

Spending Ceiling: NO

Formula Grant: NO

APPENDIX II

APPENDIX II

Agency: VETERANS ADMINISTRATION

Program: VETERANS INSURANCE AND INDEMNITIES

Common Name: NATIONAL SERVICE LIFE, MILITARY AND NAVAL INSURANCE

Budget Number: 36 0120 0 1 701

Program Type: VETERANS' BENEFITS AND SERVICES

Program Description: This program provides certain veterans with military and naval insurance, national service life insurance, serviceman's indemnities, and service-disabled veterans' insurance.

Fiscal Year Data (in thousands):

	<u>Authorization</u>	<u>Net Outlays</u>	<u>Caseload</u>
1988	\$14,290 est.	--	3
1987	4,770	\$ 4,856	3
1986	9,745	9,936	3
1985	11,000	10,916	3
1984	7,400	7,167	3
1983	6,400	6,629	3
1982	9,350	9,255	4

Caseload Units: NUMBER OF INSURANCE POLICIES

Special Funding Characteristics: YES - NO-YEAR

Spending Ceiling: NO

Formula Grant: NO

APPENDIX II

APPENDIX II

Agency: VETERANS ADMINISTRATION

Program: VETERANS REOPENED INSURANCE FUND

Common Name: NONE

Budget Number: 36 4010 0 3 701

Program Type: VETERANS' BENEFITS AND SERVICES

Program Description: Program pays claims and administrative costs on participating life insurance policies issued under the service-disabled standard insurance, service-disabled rated insurance, and nonservice disabled insurance programs.

Fiscal Year Data (in thousands):

	<u>Authorization</u>	<u>Net Outlays</u>	<u>Caseload</u>
1988	\$0 est.	--	126
1987	0	\$ 7,580 CR	129
1986	0	40,123	133
1985	0	11,417	144
1984	0	15,864 CR	152
1983	0	22,475 CR	156
1982	0	18,659 CR	160

Caseload Units: NUMBER OF INSURANCE POLICIES

Special Funding Characteristics: YES - NO-YEAR, INDEFINITE

Spending Ceiling: NO

Formula Grant: NO

APPENDIX II

APPENDIX II

Agency: VETERANS ADMINISTRATION

Program: VETERANS SPECIAL LIFE INSURANCE FUND

Common Name: NONE

Budget Number: 36 8455 0 8 701

Program Type: VETERANS' BENEFITS AND SERVICES

Program Description: This revolving trust fund pays claims on life insurance policies issued before January 3, 1957, to veterans who served in the armed forces subsequent to April 1, 1951. No new policies can be issued. Funding is primarily derived from offsetting collections consisting of premium receipts and interest on investments.

Fiscal Year Data (in thousands):

	<u>Authorization</u>	<u>Net Outlays</u>	<u>Trust Fund Assets</u>	<u>Caseload</u>
1988	\$0 est.	--	--	320
1987	0	\$78,213 CR	\$1,121,434	338
1986	0	72,156 CR	1,040,905	357
1985	0	66,823 CR	966,212	367
1984	0	57,992 CR	896,889	383
1983	0	56,486 CR	836,698	477
1982	0	50,510 CR	778,044	505

Caseload Units: NUMBER OF INSURANCE POLICIES

Special Funding Characteristics: YES - NO-YEAR, INDEFINITE

Spending Ceiling: YES

Formula Grant: NO

APPENDIX II

APPENDIX II

Agency: VETERANS ADMINISTRATION

Program: VETERANS' COMPENSATION

Common Name: DEATH AND INDEMNITY COMPENSATION

Budget Number: 36 0153 0 1 701

Program Type: VETERANS' BENEFITS AND SERVICES

Program Description: Program provides for the payment of compensation benefits to veterans and survivors. Compensation is paid to veterans for disabilities incurred in, or aggravated during, active military service. (Note: Includes authorization and outlay amounts for Veterans' Pension and Burial Benefits programs as presented in the Treasury Annual Report although the FY 1988 budget proposed separation of these programs. See pages 113 and 114.)

Fiscal Year Data (in thousands):

	<u>Authorization</u>	<u>Net Outlays</u>	<u>Caseload</u>
1988	\$14,334,287 est.	--	2,525
1987	14,422,500	\$14,426,283	2,546
1986	14,408,999	14,412,478	2,565
1985	14,174,900	14,217,481	2,583
1984	13,996,900	13,918,349	2,600
1983	13,429,800	13,860,003	2,616
1982	13,778,150	13,295,885	2,629

Caseload Units: AVERAGE NUMBER OF BENEFICIARIES

Special Funding Characteristics: YES - NO-YEAR

Spending Ceiling: NO

Formula Grant: NO

APPENDIX II

APPENDIX II

Agency: VETERANS ADMINISTRATION

Program: BURIAL BENEFITS AND MISCELLANEOUS ASSISTANCE

Common Name: BURIAL ALLOWANCE

Budget Number: 36 0155 0 1 701

Program Type: VETERANS' BENEFITS AND SERVICES

Program Description: Program provides for the payment of burial and other miscellaneous benefits to certain veterans and their survivors. (Note: The budget proposed separation of the Compensation, Pension, and Burial Benefits programs in FY 1988. However, Treasury continues to report them under one account. See page 112.)

Fiscal Year Data (in thousands):

	<u>Authorization</u>	<u>Net Outlays</u>	<u>Caseload</u>
1988	NA	--	1,140
1987	NA	NA	1,111
1986	NA	NA	1,043
1985	NA	NA	1,093
1984	NA	NA	1,057
1983	NA	NA	1,016
1982	NA	NA	1,026

Caseload Units: TOTAL BURIAL BENEFITS - COMBINES 6 BENEFIT ITEMS
SUCH AS HEADSTONES AND FLAGS (MISCELLANEOUS ITEMS EXCLUDED)

Special Funding Characteristics: NA

Spending Ceiling: NA

Formula Grant: NO

APPENDIX II

APPENDIX II

Agency: VETERANS ADMINISTRATION

Program: VETERANS' PENSIONS

Common Name: NONE

Budget Number: 36 0154 0 1 701

Program Type: VETERANS' BENEFITS AND SERVICES

Program Description: Program provides for the payment of pension benefits to veterans and survivors. Automatic cost-of-living increases are provided for those pensioners in the improved program and to parents receiving dependency and indemnity compensation. (Note: The budget proposed separation of the Compensation, Pension, and Burial Benefits programs in FY 1988. However, Treasury continues to report them under one account. See page 112.)

Fiscal Year Data (in thousands):

	<u>Authorization</u>	<u>Net Outlays</u>	<u>Caseload</u>
1988	NA	--	1,235
1987	NA	NA	1,304
1986	NA	NA	1,385
1985	NA	NA	1,474
1984	NA	NA	1,596
1983	NA	NA	1,723
1982	NA	NA	1,835

Caseload Units: AVERAGE NUMBER OF PENSION CASES

Special Funding Characteristics: NA

Spending Ceiling: NA

Formula Grant: NO

APPENDIX II

APPENDIX II

Agency: VETERANS ADMINISTRATION

Program: VOCATIONAL REHABILITATION REVOLVING FUND

Common Name: VOCATIONAL REHABILITATION CASH LOANS

Budget Number: 36 4114 0 3 702

Program Type: VETERANS' BENEFITS AND SERVICES

Program Description: This fund, using offsetting collections from loan repayments, provides loans of up to \$620 to veterans enrolled in vocational rehabilitation who are temporarily in need of funds to meet expenses. The loans are repaid over a period of 10 months.

Fiscal Year Data (in thousands):

	<u>Authorization</u>	<u>Net Outlays</u>	<u>Caseload</u>
1988	\$0 est.	--	4
1987	0	\$13 CR	4
1986	0	61 CR	4
1985	0	41 CR	5
1984	0	24	7
1983	0	21 CR	6
1982	0	59	6

Caseload Units: NUMBER OF LOANS MADE

Special Funding Characteristics: YES - NO-YEAR, INDEFINITE

Spending Ceiling: NO

Formula Grant: NO

INDEX BY PROGRAM

<u>Program</u> (Federal agency in parenthesis)	<u>Page</u>
Advances to the Unemployment Insurance Trust Fund and Other Funds (Labor)	66
Airport and Airway Trust Fund (Transportation)	84
Black Lung Disability Trust Fund (Labor)	67
Bureau of Indian Affairs Miscellaneous Trust Fund (Interior)	54
Bureau of Land Management Miscellaneous Permanent Appropriations (Interior)	55
Bureau of Land Management Miscellaneous Trust Funds (Interior)	56
Bureau of Land Management Range Improvements (Interior)	57
Bureau of Reclamation Miscellaneous Permanent Appropriations (Interior)	58
Burial Benefits and Miscellaneous Assistance (Veterans Administration)	113
Cash and Commodities for Selected Groups (Agriculture)	11
Child Nutrition Program (Agriculture)	12
Civil Service Retirement and Disability Fund (Office of Personnel Management)	74
Claims, Defense (Defense)	18
Claims, Judgments, and Relief Acts (Treasury)	89
College Housing Loans (Education)	24
Commodity Credit Corporation (Agriculture)	13
Compact of Free Association (Interior)	59
Compensatory Education for the Disadvantaged (Education)	25
Conrail Labor Protection (Transportation)	85

APPENDIX III

APPENDIX III

<u>Program</u> (Federal agency in parenthesis)	<u>Page</u>
Corps of Engineers - Permanent Appropriations (Defense)	19
Credit Union Share Insurance Fund (National Credit Union Administration)	73
Customs Miscellaneous Permanent Appropriation (Treasury)	90
Education Benefits Fund (Defense)	20
Education for the Handicapped (Education)	26
Education Loan Fund (Veterans Administration)	99
Employees Health Benefits Fund (Office of Personnel Management)	75
Employees Life Insurance Fund (Office of Personnel Management)	76
Family Social Services (Health and Human Services)	36
Family Support Payments to States (Health and Human Services)	37
Federal Deposit Insurance Corporation (Federal Deposit Insurance Corporation)	33
Federal Disability Insurance Trust Fund (Health and Human Services)	38
Federal Hospital Insurance Trust Fund (Health and Human Services)	39
Federal Old Age and Survivors Insurance (Health and Human Services)	40
Federal Savings and Loan Insurance Corporation Fund (Federal Home Loan Bank Board)	34
Federal Supplementary Medical Insurance Trust Fund (Health and Human Services)	41
Federal Unemployment Benefits and Allowances (Labor)	68
Fees and Expenses of Witnesses (Justice)	65

APPENDIX III

APPENDIX III

<u>Program</u> (Federal agency in parenthesis)	<u>Page</u>
Food Stamp Program (Agriculture)	14
Foreign Service Retirement and Disability Fund (State)	83
Forest Service Permanent Appropriations (Agriculture)	15
Government Payment for Annuitants, Employee Health Benefits (Office of Personnel Management)	77
Grants to States for Medicaid (Health and Human Services)	42
Guaranteed Student Loans (Education)	27
Health Education Loans (Health and Human Services)	43
Health Professions Graduate Student Loan Insurance Fund (Health and Human Services)	44
Higher Education Facilities Loan and Insurance (Education)	28
Highway Trust Fund (Transportation)	86
Homeowners Assistance Fund Defense (Defense)	21
Interest on the Public Debt (Treasury)	91
Internal Revenue Collections - Puerto Rico (Treasury)	92
Investment in Securities Investor Protection Corporation (Securities and Exchange Commission)	82
Judicial Survivors' Annuities Fund (Judiciary Trust Funds)	64
Loan Guaranty Revolving Fund (Veterans Administration)	100
Low Income Home Energy Assistance (Health and Human Services)	45
Medical Care (Veterans Administration)	101
Medical Facilities Guarantee and Loan Fund (Health and Human Services)	46
Military Retirement Fund (Defense)	22

APPENDIX III

APPENDIX III

<u>Program</u> (Federal agency in parenthesis)	<u>Page</u>
National Service Life Insurance Fund (Veterans Administration)	102
National Wildlife Refuge Fund (Interior)	60
Nurse Training Fund (Health and Human Services)	47
Oregon and California Grant Lands (Interior)	61
Payment of Claims (Defense)	23
Payment Where Earned Income Credit Exceeds Liability for Tax (Treasury)	93
Payments to Air Carriers (Transportation)	87
Payments to States from Receipts for Child Support (Health and Human Services)	48
Payments to States Under Mineral Leasing Act (Interior)	62
Payments to States Under the Federal Power Act (Energy)	32
Payments to U. S. Territories, Fiscal Assistance (Interior)	63
Pension Benefit Guaranty Corporation Fund (Labor)	69
Post-Vietnam Era Veterans Education Account (Veterans Administration)	103
Presidential Election Campaign Fund (Treasury)	94
Rail Industry Pension Fund (Railroad Retirement Board)	79
Railroad Social Security Equivalent Benefit Account (Railroad Retirement Board)	80
Readjustment Benefits (Veterans Administration)	104
Refugee and Entrant Assistance (Health and Human Services)	49
Refunding Internal Revenue Service (IRS) Collections, Interest (Treasury)	95
Rehabilitation Services and Handicapped Research (Education)	29

<u>Program</u> (Federal agency in parenthesis)	<u>Page</u>
Reinstated Entitlement Program for Survivors Under Public Law 97-377 (Veterans Administration)	105
Retired Employees Health Benefits Fund (Office of Personnel Management)	78
Retired Pay (Transportation)	88
Retirement Pay and Medical Benefits for Commissioned Officers (Health and Human Services)	50
Secret Service Contribution for Annuity Benefits (Treasury)	96
Service-Disabled Veterans Insurance Fund (Veterans Administration)	106
Servicemen's Group Life Insurance Fund (Veterans Administration)	107
Social Services Block Grant (Health and Human Services)	51
Special Benefits (Labor)	70
Special Benefits for Disabled Coal Miners (Health and Human Services)	52
Special Milk Program (Agriculture)	16
Special Programs (Education)	30
Special Workers' Compensation Expenses (Labor)	71
State/Local Government Fiscal Assistance Trust Fund (Treasury)	97
Supplemental Annuity Pension Fund (Railroad Retirement Board)	81
Supplemental Nutrition Assistance - Women, Infants, and Children (Agriculture)	17
Supplemental Security Income Program (Health and Human Services)	53
Tax Court Judges Survivors Annuity Fund (U.S. Tax Court)	98

APPENDIX III

APPENDIX III

<u>Program</u> (Federal agency in parenthesis)	<u>Page</u>
Thrift Savings Fund (Federal Retirement Thrift Investment Board)	35
U.S. Government Life Insurance Fund (Veterans Administration)	108
Unemployment Trust Fund (Labor)	72
Veterans Insurance and Indemnities (Veterans Administration)	109
Veterans Reopened Insurance Fund (Veterans Administration)	110
Veterans Special Life Insurance Fund (Veterans Administration)	111
Veterans' Compensation (Veterans Administration)	112
Veterans' Pensions (Veterans Administration)	114
Vocational and Adult Education (Education)	31
Vocational Rehabilitation Revolving Fund (Veterans Administration)	115

APPENDIX IV

APPENDIX IV

INDEX BY BUDGET NUMBER

<u>Budget number</u>	<u>Page</u>	<u>Budget number</u>	<u>Page</u>
00 0000 0 0 000	84	16 1521 0 1 600	70
00 0000 0 0 000	86	16 4204 0 3 601	69
10 8110 0 7 602	64	16 9971 0 7 601	71
12 3502 0 1 605	16	19 8186 0 7 602	83
12 3503 0 1 605	11	20 0550 0 1 901	91
12 3505 0 1 605	14	20 0904 0 1 908	95
12 3510 0 1 605	17	20 0906 0 1 609	93
12 3539 0 1 605	12	20 1407 0 1 751	96
12 4336 0 3 351	13	20 1895 0 1 806	89
12 9921 0 2 852	15	20 5081 0 2 806	94
14 0415 0 1 806	59	20 5737 0 2 852	92
14 0418 0 1 852	63	20 8004 0 7 571	41
14 1116 0 1 302	61	20 8005 0 7 571	39
14 5003 0 2 852	62	20 8006 8 7 651	40
14 5091 0 2 852	60	20 8007 8 7 651	38
14 5132 0 2 302	57	20 8042 0 7 999	72
14 9921 0 2 999	55	20 8111 0 7 851	97
14 9922 0 2 999	58	20 8144 0 7 601	67
14 9971 0 7 999	56	20 9922 0 2 852	90
14 9973 0 7 999	54	23 8115 0 7 602	98
15 0311 0 1 752	65	24 0206 0 1 551	77
16 0326 0 1 603	68	24 8135 0 7 602	74
16 0327 0 1 600	66	24 8424 0 8 602	76

APPENDIX IV

<u>Budget number</u>	<u>Page</u>
24 8440 0 8 551	75
24 8445 0 8 551	78
25 4468 0 3 371	73
26 8141 0 7 602	35
36 0120 0 1 701	109
36 0137 0 1 702	104
36 0153 0 1 701	112
36 0154 0 1 701	114
36 0155 0 1 701	113
36 0160 0 1 703	101
36 0200 0 1 701	105
36 4009 0 3 701	107
36 4010 0 3 701	110
36 4012 0 3 701	106
36 4025 0 3 704	100
36 4114 0 3 702	115
36 4118 0 3 702	99
36 8132 0 7 701	102
36 8133 0 7 702	103
36 8150 0 7 701	108
36 8455 0 8 701	111
50 4068 0 3 376	82
51 8419 0 8 371	33

APPENDIX IV

<u>Budget number</u>	<u>Page</u>
60 8010 0 7 601	80
60 8011 0 7 601	79
60 8012 0 7 601	81
69 0150 0 1 402	87
69 0241 0 1 403	88
69 0707 0 1 603	85
75 0379 0 1 551	50
75 0406 0 1 609	53
75 0409 0 1 601	52
75 0512 0 1 551	42
75 1501 0 1 609	37
75 1502 0 1 609	45
75 1503 0 1 609	49
75 1634 0 1 506	51
75 1645 0 1 506	36
75 4305 0 3 553	44
75 4306 0 3 553	47
75 4307 0 3 553	43
75 4430 0 3 551	46
75 5734 0 2 609	48
82 4037 0 3 371	34
84 8930 0 7 705	23
89 5105 0 2 852	32

APPENDIX IV

APPENDIX IV

<u>Budget number</u>	<u>Page</u>
91 0230 0 1 502	27
91 0240 0 1 502	28
91 0300 0 1 501	26
91 0301 0 1 506	29
91 0400 0 1 501	31
91 0900 0 1 501	25
91 1000 0 1 501	30
91 4250 0 3 502	24
96 9921 0 2 999	19
97 0102 0 1 051	18
97 4090 0 3 051	21
97 8097 0 7 602	22
97 8098 0 7 702	20

(905111)

END

DATE

FILMED

5-88
DTIC