

AD-A191 214

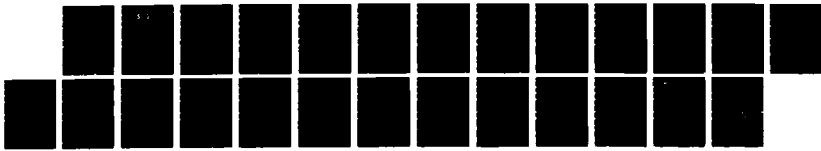
AUTOANALYZER SUPPORT FOR USNS LYNCH CRUISE 702-88(U)  
TEXAS A AND MUMIV COLLEGE STATION DEPT OF OCEANOGRAPHY  
M A SPEARS ET AL 16 DEC 87 N00014-88-J-6002

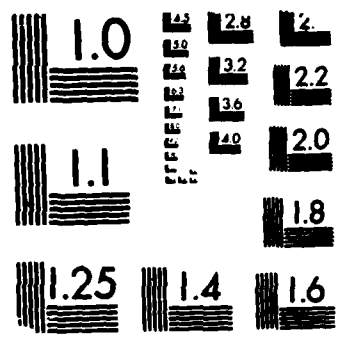
1/1

UNCLASSIFIED

F/G 8/3

NL





MICROCOPY RESOLUTION TEST CHART  
NATIONAL BUREAU OF STANDARDS-1963-A

AD-A191 214

REPORT DOCUMENTATION PAGE

DTIC FILE COPY

1

DTIC  
SELECTED  
FEB 18 1989  
D

1a. REPORT SECURITY CLASSIFICATION UNCLASSIFIED		1b. RESTRICTIVE MARKINGS	
2a. SECURITY CLASSIFICATION AUTHORITY		3. DISTRIBUTION AVAILABILITY OF REPORT UNLIMITED	
2b. DECLASSIFICATION DOWNGRADING SCHEDULE		5. MONITORING ORGANIZATION REPORT NUMBER(S)	
4. PERFORMING ORGANIZATION REPORT NUMBER(S)		7a. NAME OF MONITORING ORGANIZATION Texas A&M Research Foundation	
6a. NAME OF PERFORMING ORGANIZATION Department of Oceanography Texas A&M University	6b. OFFICE SYMBOL (if applicable)	7b. ADDRESS (City, State, and ZIP Code) Box 3578 College Station, Texas 77843	
6c. ADDRESS (City, State, and ZIP Code) College Station, Texas 77843		9. PROCUREMENT INSTRUMENT IDENTIFICATION NUMBER N00014-88-J-6002	
8a. NAME OF FUNDING/SPONSORING ORGANIZATION Naval Ocean R&D Activity (NORDA)	8b. OFFICE SYMBOL (if applicable)	10. SOURCE OF FUNDING NUMBERS	
8c. ADDRESS (City, State, and ZIP Code) Code 334 NSTL, Mississippi 39529		PROGRAM ELEMENT NO	PROJECT NO
		TASK NO	WORK UNIT ACCESSION NO
11. TITLE (Include Security Classification) Autoanalyzer Support for USNS LYNCH Cruise 702-88			
12. PERSONAL AUTHOR(S) M.A. Spears, R.G. Casey & D.C. Biggs			
13a. TYPE OF REPORT TECHNICAL	13b. TIME COVERED FROM 11/1/87 TO 12/31/87	14. DATE OF REPORT (Year, Month, Day) 87-12-16	15. PAGE COUNT
16. SUPPLEMENTARY NOTATION			
17. COSATI CODES		18. SUBJECT TERMS (Continue on reverse if necessary and identify by block number)	
FIELD	GROUP	Chemical Oceanography; Nutrient Analyses; Mediterranean Sea; Oceanic Fronts; Chemical Variability in Upper O	
19. ABSTRACT (Continue on reverse if necessary and identify by block number)			
<p>Two Marine Technicians from the Technical Support Services group of the Department of Oceanography at Texas A&amp;M University provided on board autoanalyzer analyses for nitrate, nitrite, phosphate, and silicate on seawater samples collected during Operation DEJA VU, cruise 702-88 of the USNS LYNCH (14 November - 2 December 1987).</p> <p>838 samples from 33 CTD stations were analyzed on board with a Technicon model AA-II four-channel autoanalyzer provided by Texas A&amp;M University.</p>			
20. DISTRIBUTION/AVAILABILITY OF ABSTRACT <input type="checkbox"/> UNCLASSIFIED/UNLIMITED <input checked="" type="checkbox"/> SAME AS RPT <input type="checkbox"/> DTIC USERS		21. ABSTRACT SECURITY CLASSIFICATION UNCLASSIFIED	
22a. NAME OF RESPONSIBLE INDIVIDUAL Dr. Denis Wiesenburg		22b. TELEPHONE (Include Area Code) 601-688-4600	22c. OFFICE SYMBOL

*W. J. ... of TAMU*

## **DISCLAIMER NOTICE**

**THIS DOCUMENT IS BEST QUALITY PRACTICABLE. THE COPY FURNISHED TO DTIC CONTAINED A SIGNIFICANT NUMBER OF PAGES WHICH DO NOT REPRODUCE LEGIBLY.**

## SUMMARY OF TECHNICAL SUPPORT SERVICES PROVIDED

Marine Technicians Mark Spears and Glenn Casey of the Department of Oceanography at Texas A&M University flew from Houston, Texas, to Rota, Spain, on 7 November 1987 to provide autoanalyzer support for USNS LYNCH cruise 702-88. Organized by scientists from the Oceanography division of NORDA at Bay St. Louis, Mississippi, this cruise investigated ocean frontal processes in the western Mediterranean Sea, with emphasis on the Almeria and Oran fronts.

Pre-cruise staging and other preparation began in Rota 8 November, and LYNCH embarked Rota on 14 November. From 15 November - 1 December, 41 CTD stations were occupied and four-channel autoanalyzer nutrient analyses were run at 33 of these. Duplicate water samples for analysis of silicate, phosphate, nitrate, and nitrite were drawn at a series of depths from the sample stream from a submersible pump attached to the CTD. Autoanalyzer sampling generally began around 120m and proceeded at roughly 10m intervals to the surface. In all, 419 pairs of water samples were analyzed for nutrients on board LYNCH during cruise 702-88.

## SUMMARY OF ANALYTICAL TECHNIQUES

The autoanalyzer used to support LYNCH cruise 702-88 was a 4-channel Technicon AA-II, which was standardized by running 2-3 working standards of all four nutrients prior to and after each station. All samples were analyzed within two hours of collection; analysis rate was 20 samples per hour. Peak heights picked off the strip chart recorder output of each autoanalyzer channel were converted to nutrient concentration in ug-at/liter by linear interpolation from absorbance relative to the working standards, using a shipboard computer.

Silicate was determined by ammonium molybdate + tartaric acid + stannous chloride method; phosphate by ammonium molybdate + hydrazine method; and nitrate by sulfanilamide + NEDA method, after reduction to nitrite with a cadmium reduction column. All analyses except phosphate, which was heated in a 70 C bath, were carried out at room temperature. Colorimeter interference filters utilized were 660 nm (silicate), 880 nm (phosphate) and 550 nm (nitrate + nitrite).

To evaluate precision and accuracy of the analytical methods, 15 replicate analyses of each of the highest working standards were run after completing the last station of the cruise. The standard deviation in ug-at/liter for a 6.0 ug-at/liter silicate standard was 0.05 (cv=1%); 0.005 for a 0.50 ug-at/liter phosphate standard (cv= 1%); 0.05 for a 6.5 ug-at/liter nitrate standard (cv=1%); and 0.005 for a 0.50 ug-at/liter nitrite standard (cv=1%).

PHYSICAL DATA

CRUISE 87L88 STATION B87L88\*01\*1

WIRE LENGTH METERS	PO4 um/l	Si(OH)4 um/l	NO3 um/l	NO2 um/l
110	.21	5.80	8.91	100.
100	.21	5.30	6.76	100.
80	.18	3.60	6.60	.02
70	.16	3.00	6.30	.12
60	.12	2.40	5.70	.12
50	.10	1.60	4.13	.19
45	.10	2.20	3.43	.19
40	.05	.50	.55	.03
30	100.	.30	.26	.02
20	.01	.20	.42	.02
10	.02	.10	.65	.01
3	100.	0.00	.40	100.

CRUISE 87L88 STATION B87L88\*02\*1

WIRE LENGTH METERS	PO4 um/l	Si(OH)4 um/l	NO3 um/l	NO2 um/l
100	.22	5.10	8.69	.05
90	.22	4.90	9.20	.04
80	.19	4.10	7.24	.05
70	.18	3.80	7.19	.04
60	.17	2.90	5.64	.14
50	.04	.80	4.01	.07
40	.01	.30	.20	.03
30	.01	.20	.20	.01
20	100.	.10	.10	.02
10	.01	.10	.2	.02
0	.03	.20	.77	.03

Accession For	
NTIS CRA&I	CO
DTIC TAB	
Unannounced	
Justification	
by	
on	
Authority Code	
Accession Number	
Date	
Specimen	
A-1 23	

CRUISE 87L88 STATION B87L88\*03\*1

WIRE LENGTH	P04	Si(OH)4	N03	N02
METERS	UM/1	UM/1	UM/1	UM/1
90	.24	2.50	5.12	.05
80	.21	1.70	4.49	.05
70	.19	1.60	3.93	.07
60	.12	.90	2.58	.03
55	.10	.90	2.08	.05
50	.07	.70	1.89	.05
45	.06	.80	1.68	.03
40	.06	1.00	1.56	.03
32	.04	.70	1.58	.02
20	.02	.30	1.45	.01
10	.02	.30	1.37	.01
0	.02	.10	1.24	100.

CRUISE 87L88 STATION B87L88\*04\*1

WIRE LENGTH	P04	Si(OH)4	N03	N02
METERS	UM/1	UM/1	UM/1	UM/1
100	.29	3.80	7.24	100.
90	.37	5.00	8.66	100.
80	.35	4.80	8.42	100.
70	.32	4.10	7.55	100.
60	.25	2.70	5.53	100.
50	.20	2.00	4.47	.02
45	.16	3.30	3.41	.16
40	.13	1.20	2.61	.19
30	.01	.10	.12	.14
20	.01	.10	.64	100.
10	.02	.20	.33	100.
0	.01	.20	.30	100.

CRUISE 87L88 STATION 887L88\*05\*1

WIRE LENGTH	PO4	Si(OH)4	NO3	NO2
METERS	UM/I	UM/I	UM/I	UM/I
100	.30	6.00	6.61	100.
80	.22	4.60	7.01	100.
70	.29	4.40	6.40	.12
60	.24	4.00	5.53	.24
55	.16	2.80	4.33	.44
50	.19	2.60	3.80	.43
45	.05	1.10	.48	.17
40	.01	.60	.09	.04
30	.08	.70	.18	.06
20	.02	.80	.27	.07
10	.01	.70	.09	.08
0	.03	.60	.04	.18

CRUISE 87L88 STATION 887L88\*06\*1

WIRE LENGTH	PO4	Si(OH)4	NO3	NO2
METERS	UM/I	UM/I	UM/I	UM/I
100	.35	3.20	8.70	100.
80	.33	2.50	7.68	.01
70	.46	2.20	6.92	.02
60	.32	2.00	6.44	.02
50	.26	1.50	5.68	.09
40	.20	1.20	4.49	.25
35	.20	1.30	4.64	.09
30	.09	.50	1.96	.30
25	100.	99.99	.05	.02
20	100.	99.99	99.99	100.
10	100.	.10	.24	100.
0	.02	.10	.25	.01



CRUISE 87L88 STATION B67L88\*07\*1

WIRE LENGTH METERS	PO4 um/l	SI(OH)4 um/l	NO3 um/l	NO2 um/l
95	.33	3.90	8.36	.01
80	.51	3.10	7.39	.02
70	.26	2.10	5.98	.11
60	.24	2.30	5.47	.15
50	.10	1.10	1.98	.21
40	.06	.80	1.14	.17
35	.03	.60	.72	.12
30	.04	.50	.69	.11
25	.02	.50	.52	.08
20	100.	.40	.21	.03
10	100.	99.99	99.99	100.
0	100.	99.99	99.99	100.

CRUISE 87L88 STATION B67L88\*15\*1

WIRE LENGTH METERS	PO4 um/l	SI(OH)4 um/l	NO3 um/l	NO2 um/l
100	.23	1.50	4.94	.63
90	.21	1.60	4.32	.05
80	.14	1.00	2.74	.05
70	.11	.80	2.10	.07
60	.07	.60	1.00	.37
50	.01	.30	.05	.20
40	.01	.10	99.99	.01
30	100.	.10	99.99	100.
20	100.	.10	99.99	100.
10	100.	.10	.17	100.
0	100.	99.99	.31	100.

CRUISE 87L88 STATION B87L88\*16\*1

WIRE LENGTH	PO4	Si(OH)4	NO3	NO2
METERS	um/l	um/l	um/l	um/l
97	.30	3.40	7.16	.03
90	.24	2.60	4.81	.07
80	.27	2.90	5.54	.10
70	.04	.80	.22	.19
60	.01	.60	.01	.06
50	.01	.40	.06	.05
40	.01	.40	.06	.05
30	.02	.50	.06	.06
20	.01	.30	.01	.05
10	100.	99.99	.09	100.
0	.01	.30	.44	100.

CRUISE 87L88 STATION B87L88\*17\*1

WIRE LENGTH	PO4	Si(OH)4	NO3	NO2
METERS	um/l	um/l	um/l	um/l
100	.09	2.50	2.90	.04
90	.13	1.50	3.75	.14
85	.14	1.40	3.55	.20
80	.20	2.00	4.74	.26
70	.07	1.20	1.39	.27
60	.05	.90	.78	.50
50	.02	.50	.24	.52
40	.01	.10	.04	.03
30	.01	.10	.04	.02
20	.02	.10	.12	.02
10	.01	.10	.04	.01
0	.01	.10	.05	.01

CRUISE 87L88 STATION B87L88\*18\*1

WIRE LENGTH	PO4	Si(OH)4	NO3	NO2
METERS	um/l	um/l	um/l	um/l
100	.14	1.70	4.34	.05
90	.13	1.60	3.72	.08
80	.16	1.60	3.99	.16
70	.13	1.60	2.75	.12
60	.08	1.40	1.32	.28
50	.03	1.20	1.39	.40
40	.04	.80	.60	.51
30	.02	.40	.14	.09
20	.02	.20	.17	.03
15	.01	.30	.14	.04
10	.04	.30	.46	.11
0	.01	99.99	.09	.03

CRUISE 87L88 STATION B87L88\*19\*1

WIRE LENGTH	PO4	Si(OH)4	NO3	NO2
METERS	um/l	um/l	um/l	um/l
108	.27	3.50	7.22	.03
90	.27	3.00	7.02	.04
80	.24	2.80	6.53	.06
75	.25	2.60	6.50	.06
70	.25	2.60	6.32	.09
60	.13	1.80	4.77	.25
50	.03	.90	.83	.25
40	.03	.70	.07	.20
35	.02	1.00	.06	.05
30	.02	.60	.04	.02
20	100.	.20	.11	.01
10	.03	.20	.22	.02
0	.01	.30	.07	.02

CRUISE 87L88 STATION B87L88\*21\*1

WIRE LENGTH	PO4	Si(OH)4	NO3	NO2
METERS	um/l	um/l	um/l	um/l
108	.27	3.30	7.49	.02
90	.27	2.90	7.08	.03
80	.23	2.30	6.61	.05
75	.15	1.50	5.85	.05
70	.09	1.10	2.38	.06
60	.08	1.60	2.06	.06
50	.08	1.80	1.81	.06
40	.07	1.98	1.51	.07
35	.07	1.20	1.55	.29
30	.04	1.30	.66	.22
20	.01	.99	.10	.01
10	.02	.10	.08	.01
0	.03	.10	.26	.03

CRUISE 87L88 STATION B87L88\*22\*1

WIRE LENGTH	PO4	Si(OH)4	NO3	NO2
METERS	um/l	um/l	um/l	um/l
107	.15	2.80	4.34	.02
90	.16	2.40	4.63	.03
75	.16	2.40	4.35	.03
60	.12	2.00	2.93	.04
50	.18	2.40	4.04	.06
45	.09	1.80	1.87	.10
40	.09	1.80	1.94	.15
35	.05	1.40	.73	.29
30	.02	.70	.57	.11
25	.02	.50	.54	.03
20	.01	.40	.54	.06
10	.01	.20	.20	.02
0	.01	.10	.19	.02

CRUISE 87L88 STATION B87L88\*23\*1

WIRE LENGTH	PO4	Si(OH)4	NO3	NO2
METERS	um/l	um/l	um/l	um/l
108	.22	2.70	6.17	.03
90	.20	2.20	6.02	.03
70	.20	2.30	5.06	.04
60	.17	2.40	3.88	.05
55	.13	1.90	2.70	.07
50	.21	2.20	4.43	.09
40	.18	2.00	3.55	.12
35	.15	1.80	2.88	.25
30	.05	.80	.65	.16
25	100.	.10	.05	.02
20	100.	99.99	.03	.01
10	100.	99.99	.15	.01
0	100.	99.99	.04	.01

CRUISE 87L88 STATION B87L88\*24\*1

WIRE LENGTH	PO4	Si(OH)4	NO3	NO2
METERS	um/l	um/l	um/l	um/l
105	.20	2.70	6.30	.04
95	.18	2.20	5.26	.13
90	.08	1.20	2.35	.35
85	.13	1.20	3.39	.17
80	.16	1.30	3.22	.20
70	.14	1.40	3.06	.34
60	.15	1.60	2.96	.54
50	.21	2.00	4.35	.13
40	.19	1.70	3.86	.12
30	.11	.90	2.05	.15
20	.01	.10	.05	.03
10	100.	.10	.04	.02
0	.01	99.99	99.99	.03

CRUISE 87L88 STATION B87L88\*25\*1

WIRE LENGTH	PO4	Si(OH)4	NO3	NO2
METERS	um/l	um/l	um/l	um/l
105	.28	3.20	6.65	100.
100	.26	2.80	5.41	.01
90	.23	2.00	4.99	.01
80	.20	1.60	4.04	.02
70	.17	1.30	3.44	.06
60	.11	.70	1.98	.14
50	.02	99.99	.16	.13
45	.02	99.99	.15	.12
40	.02	.20	.16	.12
30	.02	.10	.15	.10
20	.01	.10	.17	.10
10	.01	.10	.06	.10
0	.01	.10	.14	.11

CRUISE 87L88 STATION B87L88\*26\*1

WIRE LENGTH	PO4	Si(OH)4	NO3	NO2
METERS	um/l	um/l	um/l	um/l
104	.11	2.20	3.74	100.
100	.13	1.70	3.86	.01
90	.31	3.70	7.44	.01
80	.33	3.90	7.45	100.
75	.27	2.90	5.46	.04
70	.32	3.20	6.65	100.
60	.27	2.20	5.21	.01
50	.25	1.90	4.74	100.
40	.14	1.10	2.35	.14
30	.03	.10	.18	.08
20	.01	99.99	.12	.06
10	.02	.10	99.99	.05
0	.03	.10	.06	.06

CRUISE 87L88 STATION B87L88\*27\*1

WIRE LENGTH	PO4	Si(OH)4	NO3	NO2
METERS	um/l	um/l	um/l	um/l
104	.13	2.20	3.87	100.
90	.11	2.30	2.81	.04
80	.09	2.30	2.54	.05
65	.29	3.70	6.62	.07
60	.32	3.50	6.16	.11
50	.29	2.90	5.39	.09
40	.25	2.60	4.54	.12
35	.20	1.90	3.42	.23
30	.08	.80	.82	.25
20	.04	.40	.13	.17
10	.03	.20	99.99	.13
0	.01	.30	99.99	.12

CRUISE 87L88 STATION B87L88\*28\*1

WIRE LENGTH	PO4	Si(OH)4	NO3	NO2
METERS	um/l	um/l	um/l	um/l
109	.27	3.60	6.79	.01
90	.30	3.20	6.73	.01
80	.28	2.80	6.53	.02
70	.27	2.60	6.24	.02
60	.25	2.40	5.32	.02
50	.11	1.20	2.36	.04
40	.24	2.30	4.94	.12
35	.19	2.00	3.60	.12
30	.16	1.90	1.97	.09
25	.01	.30	99.99	.02
20	100.	.10	99.99	100.
10	100.	.10	99.99	100.
0	100.	.10	99.99	100.

CRUISE 87L88 STATION B87L88\*29\*1

WIRE LENGTH	PO4	SI(OH)4	NO3	NO2
METERS	um/l	um/l	um/l	um/l
105	.28	2.80	6.67	.03
95	.28	2.70	6.45	.04
90	.29	2.90	6.59	.03
80	.29	2.80	6.54	.04
70	.28	2.70	6.35	.05
60	.25	2.30	5.65	.05
55	.11	1.80	3.60	.07
50	.04	1.00	1.44	.12
45	.03	.30	.02	.01
40	.03	.10	.01	.01
35	.02	.20	.02	100.
30	.02	.20	.04	.01
20	.02	.20	.04	.01
10	.03	.20	.04	.01
0	.01	.20	.04	.01

CRUISE 87L88 STATION B87L88\*30\*1

WIRE LENGTH	PO4	SI(OH)4	NO3	NO2
METERS	um/l	um/l	um/l	um/l
109	.18	1.80	3.35	.01
100	.33	2.70	5.15	100.
90	.33	2.80	5.03	.01
80	.31	2.20	4.37	.01
70	.29	1.90	3.95	.01
60	.25	1.50	3.22	.02
55	.22	1.30	3.01	.02
50	.21	1.20	2.75	.03
45	.18	1.10	2.36	.03
40	.12	.70	1.55	.12
35	.03	.30	.31	.09
20	.01	.10	.07	.03
10	.01	.20	.07	.03
0	.01	.20	.06	.03



CRUISE 87L88 STATION B87L88\*31\*1

WIRE LENGTH	PO4	Si(OH)4	NO3	NO2
METERS	um/l	um/l	um/l	um/l
107	.24	2.10	4.77	.02
100	.24	2.10	4.57	.02
90	.29	2.40	5.02	.02
80	.31	2.50	5.09	.02
70	.30	2.20	4.59	.02
60	.27	2.30	4.21	.02
50	.18	1.40	2.74	.07
45	.19	1.00	1.61	.08
40	.05	.30	.31	.06
35	.05	.20	.10	.04
30	.02	.10	.01	.02
20	.02	.10	.03	.01
10	.02	.10	.02	.01
0	.01	99.99	.02	.01

CRUISE 87L88 STATION B87L88\*32\*1

WIRE LENGTH	PO4	Si(OH)4	NO3	NO2
METERS	um/l	um/l	um/l	um/l
107	.10	2.60	5.31	.03
90	.14	2.50	4.33	.03
80	.13	2.50	3.64	.03
70	.08	2.30	2.00	.04
63	.06	1.80	.95	.05
60	.04	1.30	.32	.08
55	.07	1.40	1.37	.15
54	.09	1.40	1.82	.15
50	.03	.80	.11	.10
45	.08	1.40	1.55	.11
40	.03	.70	.15	.08
30	.02	.20	.02	.01
20	.02	.10	99.99	100.
10	.01	.10	99.99	100.
0	100.	99.99	.02	.01

CRUISE 87L88 STATION B87L88\*33\*1

WIRE LENGTH	PO4	Si(OH)4	NO3	NO2
METERS	um/l	um/l	um/l	um/l
108	.26	2.70	6.68	.04
90	.24	2.30	6.36	.05
80	.23	2.00	5.66	.06
70	.21	1.60	5.06	.08
60	.23	2.20	5.25	.07
55	.24	2.40	5.14	.06
50	.15	1.70	2.80	.07
45	.13	1.40	2.11	.08
40	.16	1.70	2.58	.09
30	.01	.10	99.99	.01
20	.02	.10	99.99	.01
10	.02	.10	99.99	.01
0	.01	.10	99.99	.01

CRUISE 87L88 STATION B87L88\*34\*1

WIRE LENGTH	PO4	Si(OH)4	NO3	NO2
METERS	um/l	um/l	um/l	um/l
105	.18	2.40	5.35	.03
90	.18	2.10	4.76	.03
80	.11	2.40	2.22	.03
70	.09	2.20	1.32	.04
60	.12	1.70	1.53	.08
55	.11	1.40	1.04	.10
50	.10	1.00	.37	.10
45	.03	.10	.07	.03
35	.03	.10	.06	.03
25	.04	.30	.13	.04
20	.05	.20	.09	.03
10	.04	99.99	99.99	.01
0	.02	99.99	99.99	.01

CRUISE 87L88 STATION B87L88\*35\*1

WIRE LENGTH	PO4	Si(OH)4	NO3	NO2
METERS	um/l	um/l	um/l	um/l
109	.24	3.30	7.16	.05
100	.26	3.30	7.12	.05
90	.28	3.10	7.06	.05
80	.28	2.90	6.91	.05
70	.26	2.70	6.43	.06
60	.24	2.40	5.78	.07
50	.20	2.00	4.99	.12
40	.14	1.40	3.06	.23
35	.06	.60	.33	.23
30	.04	.20	99.99	.20
25	.03	.40	.01	.10
20	.01	.10	.06	.01
10	.01	.10	.06	.01
0	.01	.10	.06	.01

CRUISE 87L88 STATION B87L88\*36\*1

WIRE LENGTH	PO4	Si(OH)4	NO3	NO2
METERS	um/l	um/l	um/l	um/l
107	.11	1.80	2.65	.10
100	.28	3.50	6.21	.09
90	.44	4.60	7.81	.09
80	.45	4.00	6.87	.08
70	.46	3.60	6.16	.08
60	.33	2.40	3.64	.12
50	.10	1.20	.30	.08
45	.08	.80	.16	.06
40	.07	.40	.04	.03
30	.08	.50	.03	.02
20	.05	.50	.02	.02
10	.06	.50	.05	.03
0	.06	.50	.04	.03

CRUISE 87L88 STATION B87L88\*37\*1

WIRE LENGTH	PO4	SI(OH)4	NO3	NO2
METERS	um/l	um/l	um/l	um/l
107	.14	1.80	3.33	.05
90	.27	2.70	5.97	.04
80	.29	2.90	6.02	.03
70	.24	2.30	4.78	.03
60	.26	2.60	4.72	.04
50	.07	.70	.19	.06
40	.04	.40	.02	.03
30	.03	.30	99.99	.02
20	.02	.30	99.99	.02
10	.02	.30	99.99	.02
0	.02	.30	99.99	.02

CRUISE 87L88 STATION B87L88\*36\*1

WIRE LENGTH	PO4	SI(OH)4	NO3	NO2
METERS	um/l	um/l	um/l	um/l
108	.23	2.80	6.87	.07
95	.21	2.90	4.59	.06
85	.19	2.30	2.84	.09
80	.15	1.90	1.58	.11
70	.05	.70	99.99	.20
60	100.	.10	99.99	.04
50	100.	.10	99.99	.04
40	.01	.10	99.99	.04
35	.01	.10	99.99	.04
30	.02	.30	99.99	.04
20	.02	.20	.01	.05
10	.02	.20	.01	.04
0	.01	.20	.01	.03

CRUISE 87L88 STATION B87L89\*39\*1

WIRE LENGTH	PO4	Si(OH)4	NO3	NO2
METERS	um/l	um/l	um/l	um/l
109	.14	2.20	4.26	.06
95	.11	2.40	2.01	.05
85	.09	2.60	.74	.04
80	.19	2.40	3.60	.04
70	.12	2.30	.65	.04
60	.13	2.40	.72	.07
55	.02	1.00	.01	.03
50	.01	.30	99.99	.03
40	100.	.30	99.99	.03
30	100.	.30	99.99	.03
20	100.	.20	99.99	.02
10	100.	.10	99.99	.02
0	100.	.30	99.99	.03

CRUISE 87L88 STATION B87L88\*40\*1

WIRE LENGTH	PO4	Si(OH)4	NO3	NO2
METERS	um/l	um/l	um/l	um/l
110	.24	3.00	7.31	.08
100	.25	2.90	7.15	.08
90	.24	2.70	6.50	.08
80	.22	2.10	5.27	.07
70	.23	2.30	4.45	.07
65	.15	1.60	1.95	.05
60	.14	1.70	.90	.08
55	.10	1.20	.50	.10
50	.06	.80	.18	.08
40	.04	.40	.01	.07
30	.06	.20	.02	.03
20	.05	.20	.02	.02
10	.03	99.99	99.99	.01
0	.02	.10	99.99	.01

CRUISE 87L88 STATION B87L88\*41\*1

WIRE LENGTH	PO4	Si(OH)4	NO3	NO2
METERS	UM/I	UM/I	UM/I	UM/I
109	.06	2.60	1.03	.06
95	.08	2.50	1.37	.06
85	.06	2.00	.47	.05
80	.06	1.90	.50	.05
70	.04	.80	.33	.19
60	100.	.10	99.99	.02
50	.01	.10	99.99	.02
40	.02	.10	99.99	.01
30	.02	.10	99.99	.02
20	.01	.10	99.99	.01
10	.01	.10	99.99	.01
0	100.	.10	99.99	.01

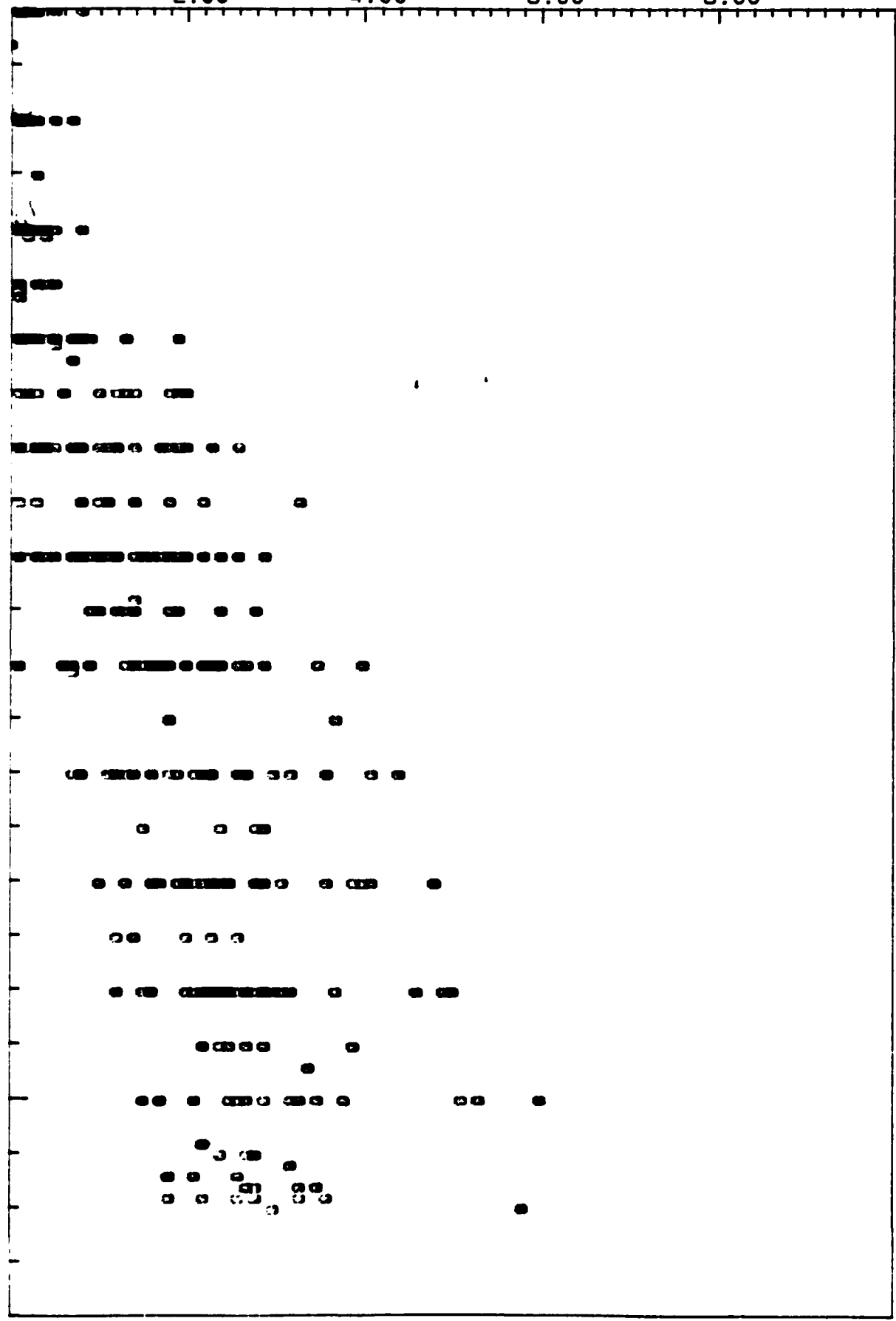
SILICA UM/1

2.00 4.00 6.00 8.00

D  
E  
P  
T  
H  
  
I  
N  
  
M  
E  
T  
E  
R  
S

50.0

100



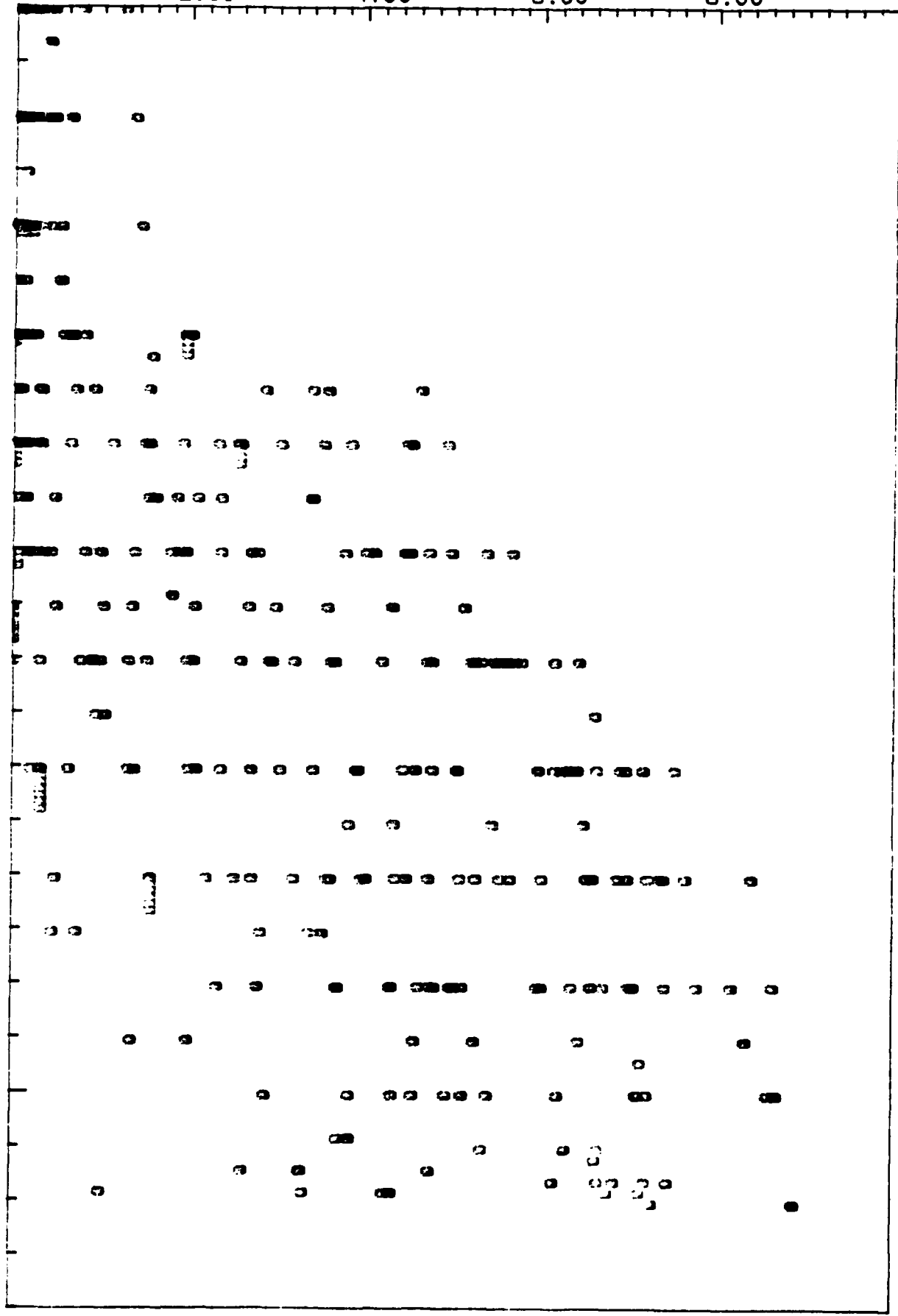
D  
E  
P  
T  
H  
  
I  
N  
  
M  
E  
T  
E  
R  
S

50.0

100

2.00      4.00      6.00      8.00

NITRATE  $\mu\text{M}/\text{l}$





PHOSPHATE  $\mu\text{M}/\text{l}$

.200

.400

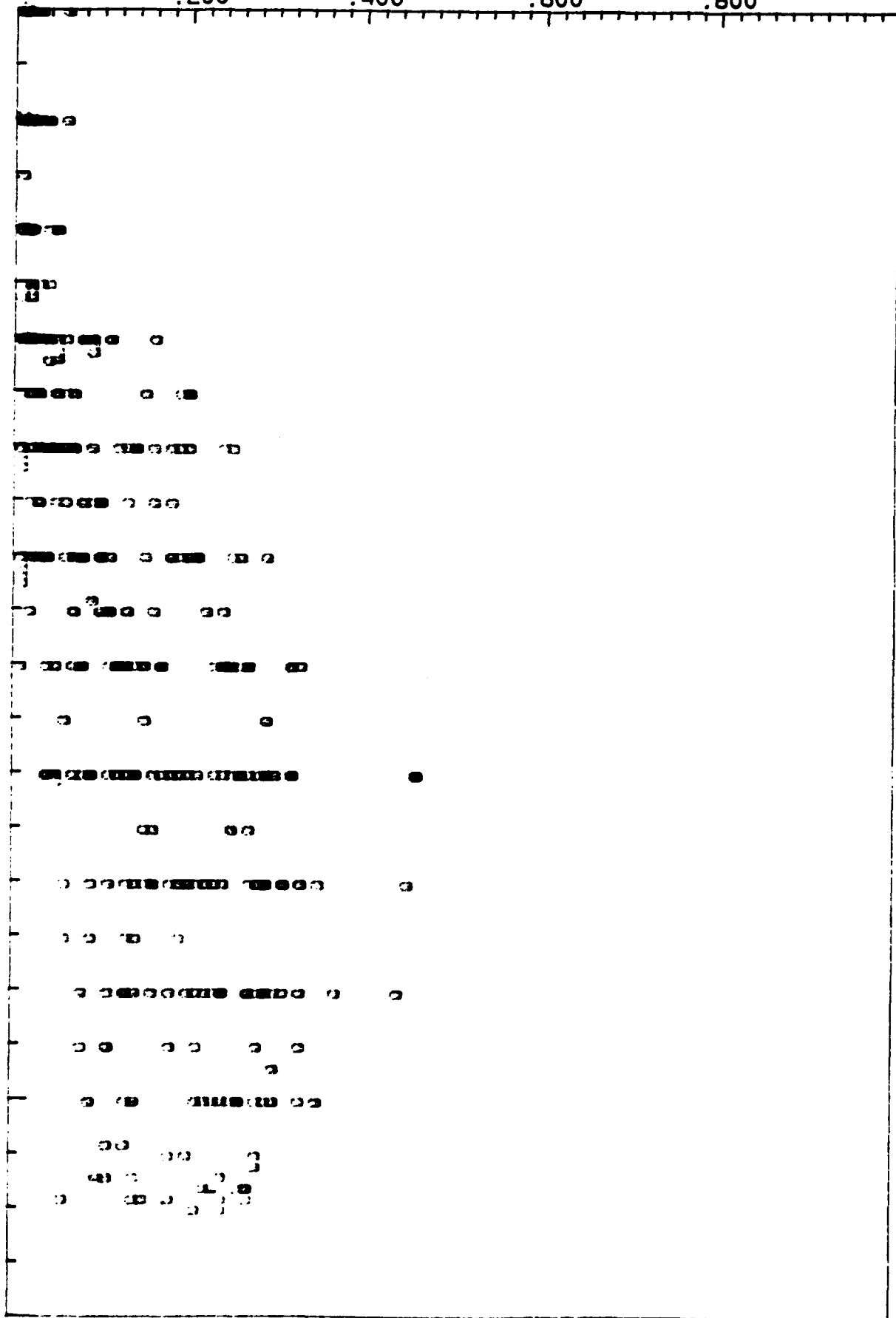
.600

.800

D  
E  
P  
T  
H  
  
I  
N  
  
M  
E  
T  
E  
R  
S

50.0

100



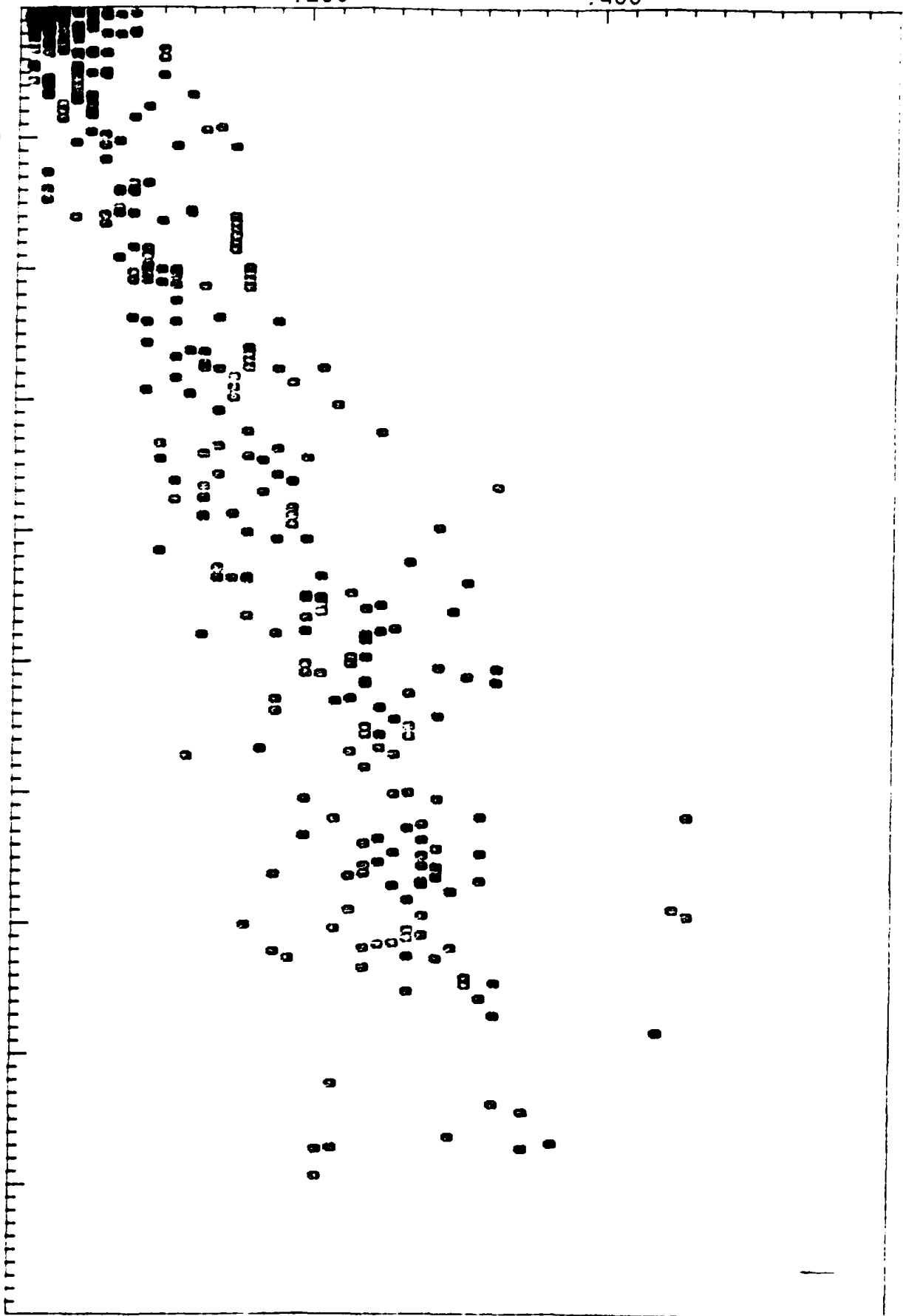
PHOSPHATE UM, 1

.200

.400

NITRATE  
UM / 1

1.0  
2.0  
3.0  
4.0  
5.0  
6.0  
7.0  
8.0  
9.0



END

DATE

FILMED

5-88

DTIC