

AD-A191 192

AN ARCHEOLOGICAL SURVEY OF TWO PROPOSED RESERVOIR AREAS
ROCKY RIVER BASIN. (U) WAKE FOREST UNIV WINSTON-SALEM
NC ARCHEOLOGICAL LAB L E ABBOTT ET AL. AUG 87

1/1

UNCLASSIFIED

DACN54-85-R-0034

F/G 5/6

ML



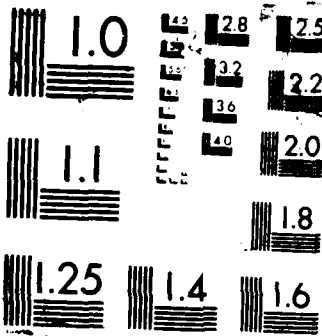


Table A.1: Site Locations, Rocky River Basin Survey

Site #	Northing	Easting
31An53	3868900	563610
31Ca81	3921565	552575
31Ca82	3920700	552820
31Ca83**	3920690	552160
31Ca84	3920670	552100
31Ca85**	3920090	551980
31Ca86	3920910	552100
31Ca87**	3921030	551960
31Ca88	3921230	551890
31Ca89	3920930	551820
31Ca90	3920980	552200
31Ca91	3921110	551860
31Ca92	3921100	551680
31Ca93	3921230	551650
31Ca94	3921060	552510
31Ca95	3921080	552580
31Ca96	3921260	552455
31Ca97**	3921450	550425
31Ca98	3921650	551140
31Ca99	3921900	551400
31Ca100	3920980	551200
31Ca101	3927550	543790
31Ca102	3921800	550550
Ca406	3921710	550620
CaP35	3920640	553680
St5	3908928	561015
St6	3909640	560980
31St67	3909685	560550
31St68	3909675	560960
31St69	3909675	560690
31St70	3909520	560470
31St71**	3909380	560400
31St73	3909890	560040
31St74	3910300	560090
31St75	3910180	560220
31St76	3910300	560370
31St77	3910420	560400
31St78	3910480	560300
31St78**	3910480	560280
31St79	3911380	550500
31St80	3910720	559240
31St81	3912240	559130
31St82	3910780	559168
31St83	3910670	559750
31St84	3910520	559630

Table A.1: Site Locations, Rocky River Basin Survey (cont.)

Site #	Northing	Easting
31St85	3910960	559540
31St86	3912190	558890
31St87	3912370	559040
31St88	3913000	558880
31St89	3913490	559145
31St90	3914390	559150
31St91	3915080	559580
31St93**	3910020	560560
31St94**	3910360	560350
31St95**	3913940	559240
31St96**	3910460	560240
31Un57	3869330	562830
31Un58**	3869570	562780
31Un59	3869700	562940
31Un60	3869620	563820
31Un61**	3869530	562910
31Un62	3870100	562700
31Un63	3869690	563280
31Un64**	3869450	563400
31Un65	3869200	563160
31Un66	3869080	563300
31Un66**	3869040	563380
31Un67**	3870040	563390
31Un68**	3869940	563408
31Un69	3869990	562940
31Un70**	3868625	563115
31Un71**	3868385	563095
31Un72	3867860	563110
31Un73	3867860	562740
31Un74**	3867720	562540
31Un75**	3867350	562000
31Un76**	3868150	560080
31Un77**	3868240	562950
31Un78**	3863640	560280
31Un79**	3863630	560310
31Un80	3863270	560060
31Un81	3867500	562380
31Un82	3868050	563000
31Un83	3867270	563640
31Un84	3867300	562740
31Un85	3868900	563240
31Un86	3863620	560070
31Un87	3863540	559740
31Un88	3863410	559970
31Un89	3863210	560060

Table A.1: Site Locations, Rocky River Basin Survey (cont.)

Site #	Northing	Easting
31Un90	3863290	559710
31Un91	3863240	558660
31Un92	3864680	560390
31Un97	3869580	563640
31Un155**	3869540	563200

** Historic Sites or Components

END

DATE

FILMED

5-88

DTIC