

NO-A190 335

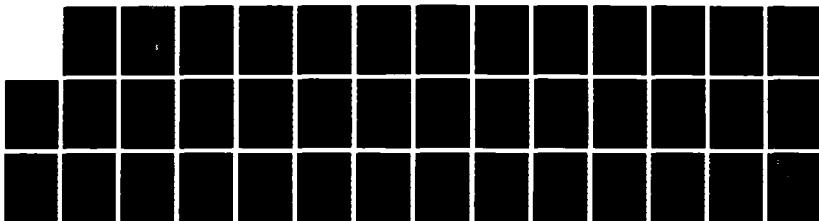
ADA (TRADE NAME) COMPILER VALIDATION SUMMARY REPORT:  
INTERMETRICS INC INT. (U) INFORMATION SYSTEMS AND  
TECHNOLOGY CENTER W-P AFB OH ADA VALI.. 30 APR 87

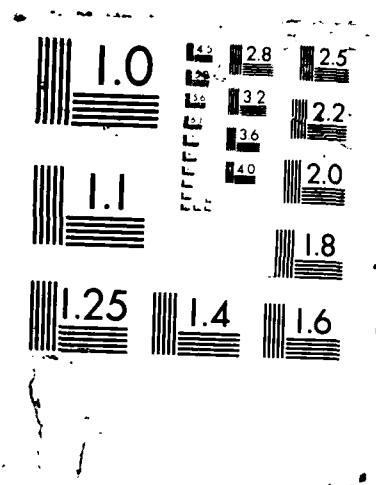
1/1

UNCLASSIFIED

F/G 12/5

ML





DTIC FILE COPY

2

SECUR

AD-A190 335

PAGE

1. F	2. GOVT ACCESSION NO.	3. RECIPIENT'S CATALOG NUMBER
4. TITLE (and Subtitle) Ada Compiler Validation Summary Report: Intermetrics, Inc 1750A Ada Real-Time Comp.201.16c, IBM 3083 host, Hughes JOVIAL/1750A Debugger, Rel.004D Targ		5. TYPE OF REPORT & PERIOD COVERED 30 Apr 1987 to 30 Apr 1988
7. AUTHOR(s) Wright-Patterson AFB		6. PERFORMING ORG. REPORT NUMBER
9. PERFORMING ORGANIZATION AND ADDRESS Ada Validation Facility ASD/SIOL Wright-Patterson AFB OH 45433-6503		8. CONTRACT OR GRANT NUMBER(s)
11. CONTROLLING OFFICE NAME AND ADDRESS Ada Joint Program Office United States Department of Defense Washington, DC 20301-3081		10. PROGRAM ELEMENT, PROJECT, TASK AREA & WORK UNIT NUMBERS
14. MONITORING AGENCY NAME & ADDRESS (if different from Controlling Office) Wright-Patterson		12. REPORT DATE 30 Apr 1987
		13. NUMBER OF PAGES 37
		15. SECURITY CLASS (of this report) UNCLASSIFIED
		15a. DECLASSIFICATION/DOWNGRADING SCHEDULE N/A
16. DISTRIBUTION STATEMENT (of this Report)  Approved for public release; distribution unlimited.		
17. DISTRIBUTION STATEMENT (of the abstract entered in Block 20. If different from Report)  UNCLASSIFIED		
18. SUPPLEMENTARY NOTES		
19. KEYWORDS (Continue on reverse side if necessary and identify by block number)  Ada Programming language, Ada Compiler Validation Summary Report, Ada Compiler Validation Capability, ACVC, Validation Testing, Ada Validation Office, AVO, Ada Validation Facility, AVF, ANSI/MIL-STD- 1815A, Ada Joint Program Office, AJPO		
20. ABSTRACT (Continue on reverse side if necessary and identify by block number)  See Attached		

DTIC  
ELECTE  
JAN 06 1988  
S  
D

DD FORM 1473

1 JAN 73

EDITION OF 1 NOV 65 IS OBSOLETE

S/N 0102-LF-014-6601

UNCLASSIFIED

SECURITY CLASSIFICATION OF THIS PAGE (When Data Entered)

## EXECUTIVE SUMMARY

This Validation Summary Report (VSR) summarizes the results and conclusions of validation testing performed on the Intermetrics 1750A Ada Real-Time Compiler, Version 201.16c, using Version 1.8 of the Ada<sup>®</sup> Compiler Validation Capability (ACVC). The Intermetrics 1750A Ada Real-Time Compiler is hosted on an IBM 3083 operating under VM/HPO (using CMS), Release 4.2. Programs processed by this compiler may be executed on a Hughes JOVIAL/1750A Debugger, Release 004D having no operating system. The Hughes JOVIAL/1750A Debugger simulates a MIL-STD-1750A Instruction Set Architecture with console I/O and no other optional features.

On-site testing was performed 27 April 87 through 30 April 1987 at Cambridge, MA, under the direction of the Ada Validation Facility (AVF), according to Ada Validation Organization (AVO) policies and procedures. The AVF identified 1938 of the 2399 tests in ACVC Version 1.8 to be processed during on-site testing of the compiler. The 19 tests withdrawn at the time of validation testing were not processed; the 278 executable tests that make use of floating-point precision exceeding that supported by the implementation were not processed; and the 164 executable tests that require the creation of external files were not processed. After the 1938 tests were processed, results for Class A, C, D, and E tests were examined for correct execution. Compilation listings for Class B tests were analyzed for correct diagnosis of syntax and semantic errors. Compilation and link results of Class L tests were analyzed for correct detection of errors. There were 29 of the processed tests determined to be inapplicable. The remaining 1909 tests were passed. ←

The results of validation are summarized in the following table:

RESULT	CHAPTER												TOTAL
	2	3	4	5	6	7	8	9	10	11	12	14	
Passed	93	204	280	235	159	97	134	262	128	32	218	67	1909
Failed	0	0	0	0	0	0	0	0	0	0	0	0	0
Inapplicable	23	121	140	12	2	0	5	0	2	0	0	166	471
Withdrawn	0	5	5	0	0	1	1	2	4	0	1	0	19
TOTAL	116	330	425	247	161	98	140	264	134	32	219	233	2399

The AVF concludes that these results demonstrate acceptable conformity to ANSI/MIL-STD-1815A Ada.

---

<sup>®</sup>Ada is a registered trademark of the United States Government  
(Ada Joint Program Office).

AVF Control Number: AVF-VSR-71.0487  
87-01-15-INT

Ada<sup>®</sup> COMPILER  
VALIDATION SUMMARY REPORT:  
Intermetrics, Inc.  
Intermetrics 1750A Ada Real-Time Compiler, Version 201.16c  
IBM 3083 host,  
Hughes JOVIAL/1750A Debugger, Release 004D Target

Completion of On-Site Testing:  
30 April 1987

Prepared By:  
Ada Validation Facility  
ASD/SCOL  
Wright-Patterson AFB OH 45433-6503

Prepared For:  
Ada Joint Program Office  
United States Department of Defense  
Washington, D.C.

Accession For	
NTIS CRA&I	<input checked="checked" type="checkbox"/>
DTIC TAB	<input type="checkbox"/>
Unannounced	<input type="checkbox"/>
Justification	
By	
Distribution	
Availability Codes	
Dist	Avail. and/or Special
A-1	

<sup>®</sup>Ada is a registered trademark of the United States Government  
(Ada Joint Program Office).

+++++  
+  
+ Place NTIS form here +  
+  
+++++

Ada<sup>®</sup> Compiler Validation Summary Report:

Compiler Name: Intermetrics 1750A Ada Real-Time Compiler, Version 201.16c

Host:


IBM 3083 under  
VM/HPO (using CMS), Release 4.2

Target:

Hughes JOVIAL/1750A Debugger,  
Release 004D

Testing Completed 30 April 1987 Using ACVC 1.8

This report has been reviewed and is approved.



Ada Validation Facility

Georgeanne Chitwood

ASD/SCOL

Wright-Patterson AFB OH 45433-6503

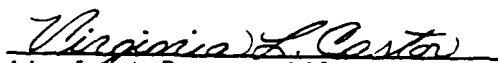


Ada Validation Organization

Dr. John F. Kramer

Institute for Defense Analyses

Alexandria VA



Ada Joint Program Office

Virginia L. Castor

Director

Department of Defense

Washington DC

<sup>®</sup>Ada is a registered trademark of the United States Government  
(Ada Joint Program Office).

## EXECUTIVE SUMMARY

This Validation Summary Report (VSR) summarizes the results and conclusions of validation testing performed on the Intermetrics 1750A Ada Real-Time Compiler, Version 201.16c, using Version 1.8 of the Ada<sup>®</sup> Compiler Validation Capability (ACVC). The Intermetrics 1750A Ada Real-Time Compiler is hosted on an IBM 3083 operating under VM/HPO (using CMS), Release 4.2. Programs processed by this compiler may be executed on a Hughes JOVIAL/1750A Debugger, Release 004D having no operating system. The Hughes JOVIAL/1750A Debugger simulates a MIL-STD-1750A Instruction Set Architecture with console I/O and no other optional features.

On-site testing was performed 27 April 87 through 30 April 1987 at Cambridge, MA, under the direction of the Ada Validation Facility (AVF), according to Ada Validation Organization (AVO) policies and procedures. The AVF identified 1938 of the 2399 tests in ACVC Version 1.8 to be processed during on-site testing of the compiler. The 19 tests withdrawn at the time of validation testing were not processed; the 278 executable tests that make use of floating-point precision exceeding that supported by the implementation were not processed; and the 164 executable tests that require the creation of external files were not processed. After the 1938 tests were processed, results for Class A, C, D, and E tests were examined for correct execution. Compilation listings for Class B tests were analyzed for correct diagnosis of syntax and semantic errors. Compilation and link results of Class L tests were analyzed for correct detection of errors. There were 29 of the processed tests determined to be inapplicable. The remaining 1909 tests were passed.

The results of validation are summarized in the following table:

RESULT	CHAPTER													TOTAL
	2	3	4	5	6	7	8	9	10	11	12	14		
Passed	93	204	280	235	159	97	134	262	128	32	218	67		1909
Failed	0	0	0	0	0	0	0	0	0	0	0	0		0
Inapplicable	23	121	140	12	2	0	5	0	2	0	0	166		471
Withdrawn	0	5	5	0	0	1	1	2	4	0	1	0		19
TOTAL	116	330	425	247	161	98	140	264	134	32	219	233		2399

The AVF concludes that these results demonstrate acceptable conformity to ANSI/MIL-STD-1815A Ada.

---

<sup>®</sup>Ada is a registered trademark of the United States Government  
(Ada Joint Program Office).



## TABLE OF CONTENTS

CHAPTER 1	INTRODUCTION	
1.1	PURPOSE OF THIS VALIDATION SUMMARY REPORT . . . . .	1-2
1.2	USE OF THIS VALIDATION SUMMARY REPORT . . . . .	1-2
1.3	REFERENCES . . . . .	1-3
1.4	DEFINITION OF TERMS . . . . .	1-3
1.5	ACVC TEST CLASSES . . . . .	1-4
CHAPTER 2	CONFIGURATION INFORMATION	
2.1	CONFIGURATION TESTED . . . . .	2-1
2.2	IMPLEMENTATION CHARACTERISTICS . . . . .	2-2
CHAPTER 3	TEST INFORMATION	
3.1	TEST RESULTS . . . . .	3-1
3.2	SUMMARY OF TEST RESULTS BY CLASS . . . . .	3-1
3.3	SUMMARY OF TEST RESULTS BY CHAPTER . . . . .	3-2
3.4	WITHDRAWN TESTS . . . . .	3-2
3.5	INAPPLICABLE TESTS . . . . .	3-2
3.6	SPLIT TESTS . . . . .	3-4
3.7	ADDITIONAL TESTING INFORMATION . . . . .	3-4
3.7.1	Prevalidation . . . . .	3-5
3.7.2	Test Method . . . . .	3-5
3.7.3	Test Site . . . . .	3-5
APPENDIX A	DECLARATION OF CONFORMANCE	
APPENDIX B	APPENDIX F OF THE Ada STANDARD	
APPENDIX C	TEST PARAMETERS	
APPENDIX D	WITHDRAWN TESTS	

## CHAPTER 1

### INTRODUCTION

This Validation Summary Report (VSR) describes the extent to which a specific Ada compiler conforms to the Ada Standard, ANSI/MIL-STD-1815A. This report explains all technical terms used within it and thoroughly reports the results of testing this compiler using the Ada Compiler Validation Capability (ACVC). An Ada compiler must be implemented according to the Ada Standard, and any implementation-dependent features must conform to the requirements of the Ada Standard. The Ada Standard must be implemented in its entirety, and nothing can be implemented that is not in the Standard.

Even though all validated Ada compilers conform to the Ada Standard, it must be understood that some differences do exist between implementations. The Ada Standard permits some implementation dependencies--for example, the maximum length of identifiers or the maximum values of integer types. Other differences between compilers result from characteristics of particular operating systems, hardware, or implementation strategies. All of the dependencies observed during the process of testing this compiler are given in this report.

The information in this report is derived from the test results produced during validation testing. The validation process includes submitting a suite of standardized tests, the ACVC, as inputs to an Ada compiler and evaluating the results. The purpose of validating is to ensure conformity of the compiler to the Ada Standard by testing that the compiler properly implements legal language constructs and that it identifies and rejects illegal language constructs. The testing also identifies behavior that is implementation dependent but permitted by the Ada Standard. Six classes of tests are used. These tests are designed to perform checks at compile time, at link time, and during execution.

## INTRODUCTION

### 1.1 PURPOSE OF THIS VALIDATION SUMMARY REPORT

This VSR documents the results of the validation testing performed on an Ada compiler. Testing was carried out for the following purposes:

- . To attempt to identify any language constructs supported by the compiler that do not conform to the Ada Standard
- . To attempt to identify any unsupported language constructs required by the Ada Standard
- . To determine that the implementation-dependent behavior is allowed by the Ada Standard

Testing of this compiler was conducted by SofTech, Inc., under the direction of the AVF according to policies and procedures established by the Ada Validation Organization (AVO). On-site testing was conducted from 27 April 87 through 30 April 1987 at Cambridge, MA.

### 1.2 USE OF THIS VALIDATION SUMMARY REPORT

Consistent with the national laws of the originating country, the AVO may make full and free public disclosure of this report. In the United States, this is provided in accordance with the "Freedom of Information Act" (5 U.S.C. #552). The results of this validation apply only to the computers, operating systems, and compiler versions identified in this report.

The organizations represented on the signature page of this report do not represent or warrant that all statements set forth in this report are accurate and complete, or that the subject compiler has no nonconformities to the Ada Standard other than those presented. Copies of this report are available to the public from:

Ada Information Clearinghouse  
Ada Joint Program Office  
OUSDRE  
The Pentagon, Rm 3D-139 (Fern Street)  
Washington DC 20301-3081

or from:

Ada Validation Facility  
ASD/SCOL  
Wright-Patterson AFB OH 45433-6503

Questions regarding this report or the validation test results should be directed to the AVF listed above or to:

Ada Validation Organization  
Institute for Defense Analyses  
1801 North Beauregard Street  
Alexandria VA 22311

### 1.3 REFERENCES

1. Reference Manual for the Ada Programming Language, ANSI/MIL-STD-1815A, FEB 1983.
2. Ada Validation Organization: Procedures and Guidelines, Ada Joint Program Office, 1 JAN 1987.
3. Ada Compiler Validation Capability Implementers' Guide, SofTech, Inc., DEC 1984.

### 1.4 DEFINITION OF TERMS

ACVC	The Ada Compiler Validation Capability. A set of programs that evaluates the conformity of a compiler to the Ada language specification, ANSI/MIL-STD-1815A.
Ada Standard	ANSI/MIL-STD-1815A, February 1983.
Applicant	The agency requesting validation.
AVF	The Ada Validation Facility. In the context of this report, the AVF is responsible for conducting compiler validations according to established policies and procedures.
AVO	The Ada Validation Organization. In the context of this report, the AVO is responsible for setting procedures for compiler validations.
Compiler	A processor for the Ada language. In the context of this report, a compiler is any language processor, including cross-compilers, translators, and interpreters.
Failed test	A test for which the compiler generates a result that demonstrates nonconformity to the Ada Standard.
Host	The computer on which the compiler resides.

## INTRODUCTION

Inapplicable test	A test that uses features of the language that a compiler is not required to support or may legitimately support in a way other than the one expected by the test.
Passed test	A test for which a compiler generates the expected result.
Target	The computer for which a compiler generates code.
Test	A program that checks a compiler's conformity regarding a particular feature or features to the Ada Standard. In the context of this report, the term is used to designate a single test, which may comprise one or more files.
Withdrawn test	A test found to be incorrect and not used to check conformity to the Ada language specification. A test may be incorrect because it has an invalid test objective, fails to meet its test objective, or contains illegal or erroneous use of the language.

### 1.5 ACVC TEST CLASSES

Conformity to the Ada Standard is measured using the ACVC. The ACVC contains both legal and illegal Ada programs structured into six test classes: A, B, C, D, E, and L. The first letter of a test name identifies the class to which it belongs. Class A, C, D, and E tests are executable, and special program units are used to report their results during execution. Class B tests are expected to produce compilation errors. Class L tests are expected to produce link errors.

Class A tests check that legal Ada programs can be successfully compiled and executed. However, no checks are performed during execution to see if the test objective has been met. For example, a Class A test checks that reserved words of another language (other than those already reserved in the Ada language) are not treated as reserved words by an Ada compiler. A Class A test is passed if no errors are detected at compile time and the program executes to produce a PASSED message.

Class B tests check that a compiler detects illegal language usage. Class B tests are not executable. Each test in this class is compiled and the resulting compilation listing is examined to verify that every syntax or semantic error in the test is detected. A Class B test is passed if every illegal construct that it contains is detected by the compiler.

Class C tests check that legal Ada programs can be correctly compiled and executed. Each Class C test is self-checking and produces a PASSED, FAILED, or NOT APPLICABLE message indicating the result when it is executed.

Class D tests check the compilation and execution capacities of a compiler. Since there are no capacity requirements placed on a compiler by the Ada Standard for some parameters--for example, the number of identifiers

permitted in a compilation or the number of units in a library--a compiler may refuse to compile a Class D test and still be a conforming compiler. Therefore, if a Class D test fails to compile because the capacity of the compiler is exceeded, the test is classified as inapplicable. If a Class D test compiles successfully, it is self-checking and produces a PASSED or FAILED message during execution.

Each Class E test is self-checking and produces a NOT APPLICABLE, PASSED, or FAILED message when it is compiled and executed. However, the Ada Standard permits an implementation to reject programs containing some features addressed by Class E tests during compilation. Therefore, a Class E test is passed by a compiler if it is compiled successfully and executes to produce a PASSED message, or if it is rejected by the compiler for an allowable reason.

Class L tests check that incomplete or illegal Ada programs involving multiple, separately compiled units are detected and not allowed to execute. Class L tests are compiled separately and execution is attempted. A Class L test passes if it is rejected at link time--that is, an attempt to execute the main program must generate an error message before any declarations in the main program or any units referenced by the main program are elaborated.

Two library units, the package REPORT and the procedure CHECK\_FILE, support the self-checking features of the executable tests. The package REPORT provides the mechanism by which executable tests report PASSED, FAILED, or NOT APPLICABLE results. It also provides a set of identity functions used to defeat some compiler optimizations allowed by the Ada Standard that would circumvent a test objective. The procedure CHECK\_FILE is used to check the contents of text files written by some of the Class C tests for chapter 14 of the Ada Standard. The operation of these units is checked by a set of executable tests. These tests produce messages that are examined to verify that the units are operating correctly. If these units are not operating correctly, then the validation is not attempted.

The text of the tests in the ACVC follow conventions that are intended to ensure that the tests are reasonably portable without modification. For example, the tests make use of only the basic set of 55 characters, contain lines with a maximum length of 72 characters, use small numeric values, and place features that may not be supported by all implementations in separate tests. However, some tests contain values that require the test to be customized according to implementation-specific values--for example, an illegal file name. A list of the values used for this validation is provided in Appendix C.

A compiler must correctly process each of the tests in the suite and demonstrate conformity to the Ada Standard by either meeting the pass criteria given for the test or by showing that the test is inapplicable to the implementation. Any test that was determined to contain an illegal language construct or an erroneous language construct is withdrawn from the ACVC and, therefore, is not used in testing a compiler. The tests withdrawn at the time of validation are given in Appendix D.

CHAPTER 2  
CONFIGURATION INFORMATION

2.1 CONFIGURATION TESTED

The candidate compilation system for this validation was tested under the following configuration:

Compiler: Intermetrics 1750A Ada Real-Time Compiler, Version 201.16c

ACVC Version: 1.8

Certificate Expiration Date: 28 May 1988

Host Computer:

Machine: IBM 3083

Operating System: VM/HPO (using CMS), Release 4.2

Memory Size: 24 megabytes

Target Computer:

Machine: Hughes JOVIAL/1750A Debugger,  
Release 004D

Operating System: None

Memory Size: 65536 words

## CONFIGURATION INFORMATION

### 2.2 IMPLEMENTATION CHARACTERISTICS

One of the purposes of validating compilers is to determine the behavior of a compiler in those areas of the Ada Standard that permit implementations to differ. Class D and E tests specifically check for such implementation differences. However, tests in other classes also characterize an implementation. This compiler is characterized by the following interpretations of the Ada Standard:

- . Capacities.

The compiler correctly processes tests containing loop statements nested to 17 levels and recursive procedures separately compiled as subunits nested to 6 levels. The compiler could not process block statements nested to 65 levels. It correctly processes a compilation containing 723 variables in the same declarative part. (See tests D55A03A..H (8 tests), D56001B, D64005E..G (3 tests), and D29002K.)

- . Universal integer calculations.

An implementation is allowed to reject universal integer calculations having values that exceed `SYSTEM.MAX_INT`. This implementation does not reject such calculations and processes them correctly. (See tests D4A002A, D4A002B, D4A004A, and D4A004B.)

- . Predefined types.

This implementation does not support additional predefined types in the package `STANDARD`. (See tests B86001C and B86001D.)

- . Based literals.

An implementation is allowed to reject a based literal with a value exceeding `SYSTEM.MAX_INT` during compilation, or it may raise `NUMERIC_ERROR` or `CONSTRAINT_ERROR` during execution. This implementation raises `NUMERIC_ERROR` during execution. (See test E24101A.)

- . Array types.

An implementation is allowed to raise `NUMERIC_ERROR` or `CONSTRAINT_ERROR` for an array having a `'LENGTH` that exceeds `STANDARD.INTEGER'LAST` and/or `SYSTEM.MAX_INT`.



## CONFIGURATION INFORMATION

A packed BOOLEAN array having a 'LENGTH exceeding INTEGER'LAST raises NUMERIC\_ERROR when the array type is declared. (See test C52103X.)

A packed two-dimensional BOOLEAN array with more than INTEGER'LAST components raises NUMERIC\_ERROR when the array subtype is declared. (See test C52104Y.)

A null array with one dimension of length greater than INTEGER'LAST may raise NUMERIC\_ERROR or CONSTRAINT\_ERROR either when declared or assigned. Alternatively, an implementation may accept the declaration. However, lengths must match in array slice assignments. This implementation raises NUMERIC\_ERROR when the array type is declared. (See test E52103Y.)

In assigning one-dimensional and two-dimensional array types, the expression does not appear to be evaluated in its entirety before CONSTRAINT\_ERROR is raised when checking whether the expression's subtype is compatible with the target's subtype. (See test C52013A.)

### . Discriminated types.

During compilation, an implementation is allowed to either accept or reject an incomplete type with discriminants that is used in an access type definition with a compatible discriminant constraint. This implementation accepts such subtype indications. (See test E38104A.)

In assigning record types with discriminants, the expression does not appear to be evaluated in its entirety before CONSTRAINT\_ERROR is raised when checking whether the expression's subtype is compatible with the target's subtype. (See test C52013A.)

### . Aggregates.

In the evaluation of a multi-dimensional aggregate, all choices appear to be evaluated before checking against the index type. (See tests C43207A and C43207B.)

In the evaluation of an aggregate containing subaggregates, all choices are not evaluated before being checked for identical bounds. (See test E43212B.)

All choices are evaluated before CONSTRAINT\_ERROR is raised if a bound in a nonnull range of a nonnull aggregate does not belong to an index subtype. (See test E43211B.)

## CONFIGURATION INFORMATION

- Functions.

An implementation may allow the declaration of a parameterless function and an enumeration literal having the same profile in the same immediate scope, or it may reject the function declaration. If it accepts the function declaration, the use of the enumeration literal's identifier denotes the function. This implementation rejects the declaration. (See test E66001D.)

- Representation clauses.

The Ada Standard does not require an implementation to support representation clauses. If a representation clause is not supported, then the implementation must reject it. While the operation of representation clauses is not checked by Version 1.8 of the ACVC, they are used in testing other language features. This implementation rejects 'SIZE and 'STORAGE\_SIZE for tasks, 'STORAGE\_SIZE for collections, 'SMALL clauses, and enumeration representation clauses. (See tests C55B16A, C87B62A, C87B62B, C87B62C, and BC1002A.)

- Pragmas.

The pragma `INLINE` is supported for functions and procedures. (See tests CA3004E and CA3004F.)

- Input/output.

This implementation supports only the package `TEXT_IO` for file operations on `STANDARD_INPUT` and `STANDARD_OUTPUT`.

The package `SEQUENTIAL_IO` cannot be instantiated with unconstrained array types and record types with discriminants without defaults. The package `DIRECT_IO` cannot be instantiated with unconstrained array types and record types with discriminants without defaults. (See tests AE2101C, AE2101H, CE2201D, CE2201E, and CE2401D.)

- Generics.

Body and subunits of a generic unit must be in the same compilation as the specification if instantiations precede them. (See tests CA2009C and CA2009F.)

CHAPTER 3  
TEST INFORMATION

3.1 TEST RESULTS

Version 1.8 of the ACVC contains 2399 tests. When validation testing of Intermetrics 1750A Ada Real-Time Compiler was performed, 19 tests had been withdrawn. The remaining 2380 tests were potentially applicable to this validation. The AVF determined that 471 tests were inapplicable to this implementation, and that the 1909 applicable tests were passed by the implementation.

The AVF concludes that the testing results demonstrate acceptable conformity to the Ada Standard.

3.2 SUMMARY OF TEST RESULTS BY CLASS

RESULT	TEST CLASS						TOTAL
	A	B	C	D	E	L	
Passed	66	862	913	10	12	46	1909
Failed	0	0	0	0	0	0	0
Inapplicable	3	5	455	7	1	0	471
Withdrawn	0	7	12	0	0	0	19
TOTAL	69	874	1380	17	13	46	2399

## TEST INFORMATION

### 3.3 SUMMARY OF TEST RESULTS BY CHAPTER

RESULT	CHAPTER												TOTAL
	2	3	4	5	6	7	8	9	10	11	12	14	
Passed	93	204	280	235	159	97	134	262	128	32	218	67	1909
Failed	0	0	0	0	0	0	0	0	0	0	0	0	0
Inapplicable	23	121	140	12	2	0	5	0	2	0	0	166	471
Withdrawn	0	5	5	0	0	1	1	2	4	0	1	0	19
TOTAL	116	330	425	247	161	98	140	264	134	32	219	233	2399

### 3.4 WITHDRAWN TESTS

The following 19 tests were withdrawn from ACVC Version 1.8 at the time of this validation:

C32114A	C41404A	B74101B
B33203C	B45116A	C87B50A
C34018A	C48008A	C92005A
C35904A	B49006A	C940ACA
B37401A	B4A010C	CA3005A..D (4 tests)
		BC3204C

See Appendix D for the reason that each of these tests was withdrawn.

### 3.5 INAPPLICABLE TESTS

Some tests do not apply to all compilers because they make use of features that a compiler is not required by the Ada Standard to support. Others may depend on the result of another test that is either inapplicable or withdrawn. For this validation attempt, 471 tests were inapplicable for the reasons indicated:

- . C34001D, B52004E, B55B09D, and C55B07B use SHORT\_INTEGER which is not supported by this compiler.
- . C34001E, B52004D, B55B09C, and C55B07A use LONG\_INTEGER which is not supported by this compiler.
- . C34001F and C35702A use SHORT\_FLOAT which is not supported by this compiler.

## TEST INFORMATION

- . C34001G and C35702B use LONG\_FLOAT which is not supported by this compiler.
- . C55B16A makes use of an enumeration representation clause containing noncontiguous values which is not supported by this compiler.
- . D55A03E..H (4 tests) contain loops nested to 31 or more levels which exceed the supported maximum of 24 nested loops.
- . D56001B contains blocks nested to 65 levels which exceed the compiler's capacity.
- . D64005F and D64005G make use of nested procedures as subunits to a level of 10. These tests compile and link correctly, but result in STORAGE\_ERROR being raised during execution.
- . B86001D requires a predefined numeric type other than those defined by the Ada language in package STANDARD. There is no such type for this implementation.
- . C86001F redefines package SYSTEM, but TEXT\_IO is made obsolete by this new definition in this implementation and the test cannot be executed since the package REPORT is dependent on the package TEXT\_IO.
- . C87B62A..C (3 tests) use length clauses which are not supported by this compiler. The length clauses are rejected during compilation.
- . CA2009C and CA2009F compile the body and subunits of a generic unit in separate compilation files. Separate compilation of generic specifications and bodies is not supported by this compiler unless instantiations follow compilation of the corresponding body.
- . AE2101C uses an instantiation of package SEQUENTIAL\_IO with unconstrained array types which is not supported by this compiler.
- . AE2101H uses an instantiation of package DIRECT\_IO with unconstrained array types which is not supported by this compiler.
- . The following 278 tests require a floating-point accuracy that exceeds the maximum of 6 supported by the implementation:  
  
C24113C..Y (23 tests) C35708C..Y (23 tests) C45421C..Y (23 tests)  
C35705C..Y (23 tests) C35802C..Y (23 tests) C45424C..Y (23 tests)  
C35706C..Y (23 tests) C45241C..Y (23 tests) C45521C..Z (24 tests)  
C35707C..Y (23 tests) C45321C..Y (23 tests) C45621C..Z (24 tests)

## TEST INFORMATION

- The following 164 tests require the use of external files. This implementation supports only the files STANDARD\_INPUT and STANDARD\_OUTPUT:

CE2102C	CE3104A	CE3411A
CE2102G	CE3107A	CE3412A
CE2104A..D (4 tests)	CE3108A..B (2 tests)	CE3413A
CE2105A	CE3109A	CE3413C
CE2106A	CE3110A	CE3602A..D (4 tests)
CE2107A..F (6 tests)	CE3111A..E (5 tests)	CE3603A
CE2108A..D (4 tests)	CE3112A..B (2 tests)	CE3604A
CE2109A	CE3114A..B (2 tests)	CE3605A..E (5 tests)
CE2110A..C (3 tests)	CE3115A	CE3606A..B (2 tests)
CE2111A..E (5 tests)	CE3203A	CE3704A..B (2 tests)
CE2111G..H (2 tests)	CE3208A	CE3704D..F (3 tests)
CE2201A..F (6 tests)	CE3301A..C (3 tests)	CE3704M..O (3 tests)
CE2204A..B (2 tests)	CE3302A	CE3706D
CE2210A	CE3305A	CE3706F
CE2401A..F (6 tests)	CE3402A..D (4 tests)	CE3804A..E (5 tests)
CE2404A	CE3403A..C (3 tests)	CE3804G
CE2405B	CE3403E..F (2 tests)	CE3804I
CE2406A	CE3404A..C (3 tests)	CE3804K
CE2407A	CE3405A..D (4 tests)	CE3804M
CE2408A	CE3406A..D (4 tests)	CE3805A..B (2 tests)
CE2409A	CE3407A..C (3 tests)	CE3806A
CE2410A	CE3408A..C (3 tests)	CE3806D..E (2 tests)
AE3101A	CE3409A	CE3905A..C (3 tests)
CE3102B	CE3409C..F (4 tests)	CE3905L
EE3102C	CE3410A	CE3906A..C (3 tests)
CE3103A	CE3410C..F (4 tests)	CE3906E..F (2 tests)

### 3.6 SPLIT TESTS

If one or more errors do not appear to have been detected in a Class B test because of compiler error recovery, then the test is split into a set of smaller tests that contain the undetected errors. These splits are then compiled and examined. The splitting process continues until all errors are detected by the compiler or until there is exactly one error per split. Any Class A, Class C, or Class E test that cannot be compiled and executed because of its size is split into a set of smaller subtests that can be processed.

Splits were required for two Class B tests, BA1101C and BC3204D.

### 3.7 ADDITIONAL TESTING INFORMATION

### 3.7.1 Prevalidation

Prior to validation, a set of test results for ACVC Version 1.8 produced by the Intermetrics 1750A Ada Real-Time Compiler was submitted to the AVF by the applicant for review. Analysis of these results demonstrated that the compiler successfully passed all applicable tests, and that the compiler exhibited the expected behavior on all inapplicable tests.

### 3.7.2 Test Method

Testing of the Intermetrics 1750A Ada Real-Time Compiler using ACVC Version 1.8 was conducted on-site by a validation team from the AVF. The configuration consisted of an IBM 3083 host operating under VM/HPO (using CMS), Release 4.2, and a Hughes JOVIAL/1750A Debugger, Release 004D target having no operating system. The Hughes JOVIAL/1750A Debugger simulates a MIL-STD-1750A Instruction Set Architecture with console I/O and no other optional features.

A magnetic tape containing all tests except for 19 withdrawn tests, 278 tests requiring unsupported floating-point precisions, and 164 tests requiring the creation or opening of external files was taken on-site by the validation team for processing. Tests that make use of implementation-specific values were customized before being written to the magnetic tape. Tests requiring splits during the prevalidation testing were included in their split form on the magnetic tape.

The contents of the magnetic tape were loaded directly onto the host computer. After the test files were loaded to disk, the full set of tests was compiled and linked on the IBM 3083, and all executable tests were run on the Hughes JOVIAL/1750A Debugger. The Hughes JOVIAL/1750A Debugger produced output as one hexadecimal character per line. This output was captured and run through a program to produce human-readable output, which was then transferred to a UTS machine and printed.

The compiler was tested using command scripts provided by Intermetrics, Inc. and reviewed by the validation team.

Tests were compiled, linked, and executed using a single computer. Test output, compilation listings, and job logs were captured on magnetic tape and archived at the AVF. The listings examined on-site by the validation team were also archived.

### 3.7.3 Test Site

The validation team arrived at Cambridge, MA on 27 April 87, and departed after testing was completed on 30 April 1987.

APPENDIX A

DECLARATION OF CONFORMANCE

Intermetrics, Inc. has submitted the following  
declaration of conformance concerning the Intermetrics  
1750A Ada Real-Time Compiler.



## DECLARATION OF CONFORMANCE

Compiler Implementor: Intermetrics, Inc.  
Ada Validation Facility: ASD/SCOL, Wright-Patterson AFB, OH  
Ada Compiler Validation Capability (ACVC) Version: 1.3

### Base Configuration

Base Compiler Name: Intermetrics 1750A Ada Real-Time Compiler Version: 201.16c  
Host Architecture ISA: IBM 3083 OS&VER #: VM/HPO (using CMS), Release 4.2  
Target Architecture ISA: Hughes JOVIAL/1750A Debugger OS&VER #: bare  
Release 004D

### Implementor's Declaration

I, the undersigned, representing Intermetrics, Inc., have implemented no deliberate extensions to the Ada Language Standard ANSI/MIL-STD-1815A in the compiler listed in this declaration. I declare that Intermetrics, Inc. is the owner of record of the Ada language compiler listed above and, as such, is responsible for maintaining said compiler in conformance to ANSI/MIL-STD-1815A. All certificates and registrations for Ada language compiler listed in this declaration shall be made only in the owner's corporate name.

  
Intermetrics, Inc.

Date: 5/1/87

Dennis D. Struble, Ada Compilers Manager

### Owner's Declaration

I, the undersigned, representing Intermetrics, Inc., take full responsibility for implementation and maintenance of the Ada compiler listed above, and agree to the public disclosure of the final Validation Summary Report. I further agree to continue to comply with the Ada trademark policy, as defined by the Ada Joint Program Office. I declare that all of the Ada language compilers listed, and their host/target performance are in compliance with the Ada Language Standard ANSI/MIL-STD-1815A. I have reviewed the Validation Summary Report for the compiler and concur with the contents.

  
Intermetrics, Inc.

Date: 5/1/87

Dennis D. Struble, Ada Compilers Manager

<sup>1</sup>Ada is a registered trademark of the United States Government  
(Ada Joint Program Office).

## APPENDIX B

### APPENDIX F OF THE Ada STANDARD

The only allowed implementation dependencies correspond to implementation-dependent pragmas, to certain machine-dependent conventions as mentioned in chapter 13 of MIL-STD-1815A, and to certain allowed restrictions on representation clauses. The implementation-dependent characteristics of the Intermetrics 1750A Ada Real-Time Compiler, Version 201.16c, are described in the following sections which discuss topics in Appendix F of the Ada Language Reference Manual (ANSI/MIL-STD-1815A). Implementation-specific portions of the package STANDARD are also included in this appendix.

package STANDARD is

...

type INTEGER is range -32768 .. 32767;

type FLOAT is digits 6 range -2#1.0#e127 ..  
2#0.11111111111111111111111111111111#e127;

type DURATION is delta 2.0 \*\* (-14) range -86400.0 .. 86400.0;  
-- DURATION'SMALL = 2.0 \*\* (-14)

...

end STANDARD;

## Appendix F. IMPLEMENTATION DEPENDENCIES

This section constitutes Appendix F of the Ada LRM for this implementation. The following quotations are from the standard LRM Appendix F:

*The Ada language allows for certain machine-dependencies in a controlled manner. No machine-dependent syntax or semantic extensions or restrictions are allowed. The only allowed implementation-dependencies correspond to implementation-dependent pragmas and attributes, certain machine-dependent conventions as mentioned in Chapter 13, and certain allowed restrictions on representation clauses.*

*The reference manual of each Ada implementation must include an appendix (called Appendix F) that describes all implementation-dependent characteristics. The Appendix F for a given implementation must list in particular:*

- 1. The form, allowed places, and effect of every implementation-dependent pragma.*
- 2. The name and the type of every implementation-dependent attribute.*
- 3. The specification of the package SYSTEM (see 13.7).*
- 4. The list of all restrictions on representation clauses (see 13.1).*
- 5. The conventions used for any implementation-generated name denoting implementation-dependent components (see 13.4).*
- 6. The interpretation of expressions that appear in address clauses, including those for interrupts (see 13.5).*
- 7. Any restriction on unchecked conversions (see 13.10.2).*
- 8. Any implementation-dependent characteristics of the input-output packages (see 14).*

### F.1 Pragmas

This section describes the form, allowed places, and effect of every implementation-dependent pragma.

#### *F.1.1 Pragmas LIST, OPTIMIZE, PAGE, PACK, SHARED, SUPPRESS*

Pragmas LIST, OPTIMIZE, PAGE, PACK, SHARED, and SUPPRESS are not implemented.

#### *F.1.2 Pragmas PRIORITY and ELABORATE*

The pragmas PRIORITY and ELABORATE are supported exactly in the form, in the allowed places, and with the effect as described in the LRM.

### *F.1.3 Pragma INLINE*

Form: Pragma INLINE ( SubprogramNameCommaList )

Allowed Places: As specified in LRM B(4) : INLINE

Effect: If the subprogram body is available, and the subprogram is not recursive, the code is expanded in-line at every call site and is subject to all optimizations.

The stack-frame needed for the elaboration of the inline subprogram will be allocated as a temporary in the frame of the containing code.

Parameters will be passed properly, by value or by reference, as for non-inline subprograms. Register-saving and the like will be suppressed. Parameters may be stored in the local stack-frame or held in registers, as global code generation allows.

Exception-handlers for the INLINE subprogram will be handled as for block-statements.

Use: This pragma is used either when it is believed that the time required for a call to the specified routine will in general be excessive (this for frequently called subprograms) or when the average expected size of expanded code is thought to be comparable to that of a call.

### *F.1.4 Pragma INTERFACE*

Form: Pragma INTERFACE ( language\_name, subprogram\_name )  
where the language\_name must be an enumeration value of the type SYSTEM.Supported\_Language\_Name (see Package SYSTEM below).

Allowed Place: As specified in LRM B(5) : INTERFACE.

Effect: Specifies that a subprogram will be provided outside the Ada program library and will be callable with a specified calling interface. Neither an Ada body nor an Ada body\_stub may be provided for a subprogram for which INTERFACE has been specified.

Use: Use with a subprogram being provided via another programming language and for which no body will be given in any Ada program. See also the LINK\_NAME pragma.

A unit containing a pragma INTERFACE must also "with" package SYSTEM.

### *F.1.5 Pragma LINK\_NAME*

Form: Pragma LINK\_NAME ( subprogram\_name, link\_name )

Allowed Places: As specified in LRM B(5) for pragma INTERFACE.

Effect: Associates with subprogram `subprogram_name` the name `link_name` as its entry point name.

Use: To allow Ada programs, with help from INTERFACE pragma, to reference non-Ada subprograms. Also allows non-Ada programs to call specified Ada subprograms.

### *F.1.6 Pragma CONTROLLED*

Form: Pragma CONTROLLED ( AccessTypeName )

Allowed Places: As specified in LRM B(2) : CONTROLLED.

Effect: Means that heap objects are not automatically reclaimed but are explicitly reclaimable by use of `unchecked_deallocation`.

### *F.1.7 Pragmas SYSTEM\_NAME, STORAGE\_UNIT, MEMORY\_SIZE*

These pragmas are not supported and are ignored.

## **F.2 Implementation-dependent Attributes**

This section describes the name and the type of every implementation-dependent attribute.

There are no implementation defined attributes. These are the values for certain language-defined, implementation-dependent attributes:

Type INTEGER.

INTEGER'SIZE	= 16 -- bits.
INTEGER'FIRST	= - (2**15)
INTEGER'LAST	= (2**31-1)

Type FLOAT.

FLOAT'SIZE	= 32 -- bits.
FLOAT'DIGITS	= 6
FLOAT'MANTISSA	= 21
FLOAT'EMAX	= 84
FLOAT'EPSILON	= 2.0**(-20)

FLOAT'SMALL	= 2.0**(-85)
FLOAT'LARGE	= (2.0**84)*(1.0-2.0**(-21))
FLOAT'MACHINE_ROUNDS	= false
FLOAT'MACHINE_RADIX	= 2
FLOAT'MACHINE_MANTISSA	= 24
FLOAT'MACHINE_EMAX	= 127
FLOAT'MACHINE_EMIN	= -128
FLOAT'MACHINE_OVERFLOWS	= true
FLOAT'SAFE_EMAX	= 127
FLOAT'SAFE_SMALL	= 2#0.10000000000000000000000000000000#E-127
FLOAT'SAFE_LARGE	= 2#0.1111111111111111111111111111110#E127

Type DURATION.

DURATION'DELTA	= 2.0**(-14) -- seconds
DURATION'FIRST	= - 86,400
DURATION'LAST	= 86,400
DURATION'SMALL	= 2.0**(-14)

Type PRIORITY.

PRIORITY'FIRST	= -127
PRIORITY'LAST	= 127

### F.3 PACKAGE SYSTEM

package SYSTEM is

type ADDRESS is private; -- "=" , "/" = " defined implicitly;  
 type NAME is (UTS, MVS, CMS, Prime50, Sperry1100, MIL\_STD\_1750A);

SYSTEM\_NAME : constant NAME := MIL\_STD\_1750A;

STORAGE\_UNIT : constant := 16;

MEMORY\_SIZE : constant := 2\*\*16;

-- In storage units

-- System-Dependent Named Numbers:

MIN\_INT : constant := INTEGER'POS(INTEGER'FIRST);

MAX\_INT : constant := INTEGER'POS(INTEGER'LAST);

MAX\_DIGITS : constant := 6;

MAX\_MANTISSA : constant := 31; -- bal 7/25/86

FINE\_DELTA : constant := 2.0\*\*(-31); -- bal 7/25/86

-- MAX\_MANTISSA : constant := 15;

-- FINE\_DELTA : constant := 2.0\*\*(-15);

TICK : constant := 0.0001; --bal real clock tick 4/18/86 1.0;

```

-- Other System-Dependent Declarations

subtype PRIORITY is INTEGER range -127..127;

-----
-- Implementation-dependent additions to package SYSTEM --
-----

NULL_ADDRESS : constant ADDRESS;
  - Same bit pattern as "null" access value
  - This is the value of 'ADDRESS for named numbers.
  - The 'ADDRESS of any object which occupies storage
  - is NOT equal to this value.

ADDRESS_SIZE : constant := 16;
  - Number of bits in ADDRESS objects, = ADDRESS'SIZE, but static.

-- ADDRESS_SEGMENT_SIZE : constant := 2**16;
  - Number of storage units in address segment

type ADDRESS_OFFSET is new INTEGER; -- Used for address arithmetic
type ADDRESS_SEGMENT is new INTEGER; -- Always zero on targets with
  - unsegmented address space.

subtype NORMALIZED_ADDRESS_OFFSET is
  ADDRESS_OFFSET; --bal range 0 .. ADDRESS_SEGMENT_SIZE - 1;
  - Range of address offsets returned by OFFSET_OF

function "+"(addr : ADDRESS; offset : ADDRESS_OFFSET) return ADDRESS;
function "+"(offset : ADDRESS_OFFSET; addr : ADDRESS) return ADDRESS;
  - Provide addition between addresses and
  - offsets. May cross segment boundaries on targets where
  - objects may span segments.
  - On other targets, CONSTRAINT_ERROR will be raised when
  - OFFSET_OF(addr) + offset not in NORMALIZED_ADDRESS_OFFSET.

function "-"(left, right : ADDRESS) return ADDRESS_OFFSET;
  - May exceed SEGMENT_SIZE on targets where objects may
  - span segments.
  - On other targets, CONSTRAINT_ERROR
  - will be raised if SEGMENT_OF(left) /= SEGMENT_OF(right).

function "-"(addr : ADDRESS; offset : ADDRESS_OFFSET) return
  ADDRESS;
  - Provide subtraction of addresses and offsets.

```

```

-- May cross segment boundaries on targets where
-- objects may span segments.
-- On other targets, CONSTRAINT_ERROR will be raised when
-- OFFSET_OF(addr) - offset not in NORMALIZED_ADDRESS_OFFSET.

function OFFSET_OF (addr : ADDRESS) return NORMALIZED_ADDRESS_OFFSET;
-- Extract offset part of ADDRESS
-- Always in range 0..seg_size - 1

function SEGMENT_OF (addr : ADDRESS) return ADDRESS_SEGMENT;
-- Extract segment
-- part of ADDRESS
-- (zero on targets with
-- unsegmented address space)

function MAKE_ADDRESS (offset : ADDRESS_OFFSET;
                      segment : ADDRESS_SEGMENT := 0) return ADDRESS;
-- build address given offset and segment.
-- Offset may be > seg_size on targets where
-- objects may span segments, in which case it is equiv
-- to "MAKE_ADDRESS(0,segment) + offset".
-- On other targets, CONSTRAINT_ERROR will be raised when
-- offset not in NORMALIZED_ADDRESS_OFFSET

type Supported_Language_Name is ( -- Target dependent
-- The following are "foreign" languages:

    AIE_ASSEMBLER, -- NOT a "foreign" language - uses AIE RTS
    UNSPECIFIED_LANGUAGE
);

-- Most/least accurate built-in integer and float types

subtype LONGEST_INTEGER is STANDARD.INTEGER;
subtype SHORTEST_INTEGER is STANDARD.INTEGER;

subtype LONGEST_FLOAT is STANDARD.FLOAT;
subtype SHORTEST_FLOAT is STANDARD.FLOAT;

private

type ADDRESS is access INTEGER;
-- type ADDRESS is new INTEGER;
-- Note: The designated type here (INTEGER) is irrelevant.
-- ADDRESS is made an access type simply to guarantee it has
-- the same size as access values, which are single addresses.

```



```
--    Allocators of type ADDRESS are NOT meaningful.  
  
NULL_ADDRESS : constant ADDRESS := null;  
  
end SYSTEM ;
```

## F.4 Representation Clauses

This section describes the list of all restrictions on representation clauses.

"NOTE: An implementation may limit its acceptance of representation clauses to those that can be handled simply by the underlying hardware.... If a program contains a representation clause that is not accepted [by the compiler], then the program is illegal." (LRM 13.1(10)). There are no restrictions except as follows.

- A. Length clauses are not allowed.
- B. Address-clauses are not supported.
- C. No representation clause will be accepted on a record type having any
- D. dynamic-sized component.
- E. Record-representation-clause:

Within a record-representation-clause, the object being represented must be no larger than one 16-bit word.

The range of bits specified must be in the range of 0..15.

Record components, including those generated implicitly by the compiler, whose locations are not given by the representation-clause, are layed out by the compiler following all the components whose locations are given by the representation-clause. Such components of the invariant part of the record are allocated to follow the user-specified components of the invariant part, and such components in any given variant part are allocated to follow the user-specified components of that variant part.

## F.5 Implementation-dependent Components

This section describes the conventions used for any implementation-generated name denoting implementation-dependent components.

There are no implementation-generated names denoting implementation-dependent (record) components, although there are, indeed, such components. Hence, there is no convention (or possibility) of naming them and, therefore, no way to offer a representation clause for a record containing such components.

NOTE: Records containing dynamic-sized components will contain (generally) unnamed offset components which will "point" to the dynamic-sized components stored later in the record. CMS/1750 offers no means to specify the representation of such components.

## F.6 Address Clauses

This section describes the interpretation of expressions that appear in address clauses, including those for interrupts.

Address clauses are not allowed.

## F.7 Unchecked Conversions

This section describes any restrictions on unchecked conversions.

The source and target values must both be of an integer, enumeration, or access type.

## F.8 Input-Output

This section describes implementation-dependent characteristics of the input-output packages.

The 1750A is assumed to operate without an operating system and without other external I/O devices than the console device which supports `text_io` for `STANDARD_INPUT` and `STANDARD_OUTPUT`. The predefined exception `USE_ERROR` will be raised if an attempt is made to open any external file or use the console for other than `text_io`.

- (a) Where are I/O exceptions raised beyond what is described in Chapter 14? [14.1(11)]  
None.
- (b) What are the standard input and standard output files? [14.3(5)]  
These files both map onto the 1750A console device.
- (c) What are the forms of line terminators and page terminators? [14.3(7)]  
Line terminator is `ASCII.LF` (line feed);  
Page terminator is `ASCII.FF` (form feed)
- (d) Effect of instantiating `ENUMERATION_IO` for an integer type? [14.3.9(15)]  
The instantiated `Put` will work properly, but the instantiated `Get` will raise `Data_Error`
- (e) Specification of package `Low_Level_IO`? [14.6]  
`Low_Level_IO` is not provided.

## F.9 Tasking

This section describes implementation-dependent characteristics of the tasking run-time packages.

Even though a main program completes and terminates (its dependent tasks, if any, having terminated), the execution of the program as a whole continues until each task dependent upon a library unit package has either terminated or reached an open terminate alternative. See LRM 9.4(13).

## F.10 Other Matters

This section describes other implementation-dependent characteristics of the system.

- a. Restrictions on SHARED variables (LRM 9.11):  
Must be of a scalar or access type.
- b. Package Machine\_Code  
Will not be provided.
- c. Order of compilation of generic bodies and subunits (LRM) 10.30:9):  
Body and subunits of generic must be in the same compilation as the specification if instantiations precede them (see AI-00257/02).

## F.11 Compiler Limitations

- (a) Maximum length of source line?  
255 characters.
- (b) Maximum number of "use" scopes?  
Limit is 50, set arbitrarily by SEMANTICS as maximum number of distinct packages actively "used."
- (c) Maximum length of identifier?  
255 characters.
- (d) Maximum number of nested loops?  
24 nested loops.

APPENDIX C  
TEST PARAMETERS

Certain tests in the ACVC make use of implementation-dependent values, such as the maximum length of an input line and invalid file names. A test that makes use of such values is identified by the extension .TST in its file name. Actual values to be substituted are represented by names that begin with a dollar sign. A value must be substituted for each of these names before the test is run. The values used for this validation are given below.

<u>Name and Meaning</u>	<u>Value</u>
<u>\$BIG_ID1</u> Identifier the size of the maximum input line length with varying last character.	(1..254 => 'A', 255 => '1')
<u>\$BIG_ID2</u> Identifier the size of the maximum input line length with varying last character.	(1..254 => 'A', 255 => '2')
<u>\$BIG_ID3</u> Identifier the size of the maximum input line length with varying middle character.	(1..127 => 'A', 128 => '3', 129..255 => 'A')
<u>\$BIG_ID4</u> Identifier the size of the maximum input line length with varying middle character.	(1..127 => 'A', 128 => '4', 129..255 => 'A')
<u>\$BIG_INT_LIT</u> An integer literal of value 298 with enough leading zeroes so that it is the size of the maximum line length.	(1..252 => '0', 253..255 => "298")

# TEST PARAMETERS

<u>Name and Meaning</u>	<u>Value</u>
<p><b>\$BIG_REAL_LIT</b>  A real literal that can be either of floating- or fixed-point type, has value 690.0, and has enough leading zeroes to be the size of the maximum line length.</p>	(1..249 => '0', 250..255 => "69.0E1")
<p><b>\$BLANKS</b>  A sequence of blanks twenty characters fewer than the size of the maximum line length.</p>	(1..235 => ' ')
<p><b>\$COUNT_LAST</b>  A universal integer literal whose value is TEXT_IO.COUNT'LAST.</p>	32767
<p><b>\$EXTENDED_ASCII_CHARS</b>  A string literal containing all the ASCII characters with printable graphics that are not in the basic 55 Ada character set.</p>	"abcdefghijklmnopqrstuvwxyz!\$%?@[\\]^`{}~"
<p><b>\$FIELD_LAST</b>  A universal integer literal whose value is TEXT_IO.FIELD'LAST.</p>	32767
<p><b>\$FILE_NAME_WITH_BAD_CHARS</b>  An illegal external file name that either contains invalid characters, or is too long if no invalid characters exist.</p>	NO_FILES
<p><b>\$FILE_NAME_WITH_WILD_CARD_CHAR</b>  An external file name that either contains a wild card character, or is too long if no wild card character exists.</p>	NO_FILES
<p><b>\$GREATER_THAN_DURATION</b>  A universal real value that lies between DURATION'BASE'LAST and DURATION'LAST if any, otherwise any value in the range of DURATION.</p>	90_000.0
<p><b>\$GREATER_THAN_DURATION_BASE_LAST</b>  The universal real value that is greater than DURATION'BASE'LAST, if such a value exists.</p>	10_000_000.0

## TEST PARAMETERS

<u>Name and Meaning</u>	<u>Value</u>
<code>\$ILLEGAL_EXTERNAL_FILE_NAME1</code> An illegal external file name.	NO_FILES
<code>\$ILLEGAL_EXTERNAL_FILE_NAME2</code> An illegal external file name that is different from <code>\$ILLEGAL_EXTERNAL_FILE_NAME1</code> .	NO_FILES
<code>\$INTEGER_FIRST</code> The universal integer literal expression whose value is INTEGER'FIRST.	-32768
<code>\$INTEGER_LAST</code> The universal integer literal expression whose value is INTEGER'LAST.	32767
<code>\$LESS_THAN_DURATION</code> A universal real value that lies between DURATION'BASE'FIRST and DURATION'FIRST if any, otherwise any value in the range of DURATION.	-90_000.0
<code>\$LESS_THAN_DURATION_BASE_FIRST</code> The universal real value that is less than DURATION'BASE'FIRST, if such a value exists.	-10_000_000.0
<code>\$MAX_DIGITS</code> The universal integer literal whose value is the maximum digits supported for floating-point types.	6
<code>\$MAX_IN_LEN</code> The universal integer literal whose value is the maximum input line length permitted by the implementation.	255
<code>\$MAX_INT</code> The universal integer literal whose value is SYSTEM.MAX_INT.	32767

## TEST PARAMETERS

<u>Name and Meaning</u>	<u>Value</u>
<p><b>\$NAME</b> A name of a predefined numeric type other than FLOAT, INTEGER, SHORT_FLOAT, SHORT_INTEGER, LONG_FLOAT, or LONG_INTEGER if one exists, otherwise any undefined name.</p>	<p>NO_OTHER_PREDEF_NUM_TYPE</p>
<p><b>\$NEG_BASED_INT</b> A based integer literal whose highest order nonzero bit falls in the sign bit position of the representation for SYSTEM.MAX_INT.</p>	<p>8#177776#</p>
<p><b>\$NON_ASCII_CHAR_TYPE</b> An enumerated type definition for a character type whose literals are the identifier NON_NULL and all non-ASCII characters with printable graphics.</p>	<p>(NON_NULL)</p>

APPENDIX D  
WITHDRAWN TESTS

Some tests are withdrawn from the ACVC because they do not conform to the Ada Standard. The following 19 tests had been withdrawn at the time of validation testing for the reasons indicated. A reference of the form "AI-ddddd" is to an Ada Commentary.

- . C32114A: An unterminated string literal occurs at line 62.
- . B33203C: The reserved word "IS" is misspelled at line 45.
- . C34018A: The call of function G at line 114 is ambiguous in the presence of implicit conversions.
- . C35904A: The elaboration of subtype declarations SFX3 and SFX4 may raise NUMERIC\_ERROR instead of CONSTRAINT\_ERROR as expected in the test.
- . B37401A: The object declarations at lines 126 through 135 follow subprogram bodies declared in the same declarative part.
- . C41404A: The values of 'LAST and 'LENGTH are incorrect in the if statements from line 74 to the end of the test.
- . B45116A: ARRPRIBL1 and ARRPRIBL2 are initialized with a value of the wrong type--PRIBOOL\_TYPE instead of ARRPRIBOOL\_TYPE--at line 41.
- . C48008A: The assumption that evaluation of default initial values occurs when an exception is raised by an allocator is incorrect according to AI-00397.
- . B49006A: Object declarations at lines 41 and 50 are terminated incorrectly with colons, and end case; is missing from line 42.
- . B4A010C: The object declaration in line 18 follows a subprogram body of the same declarative part.



## WITHDRAWN TESTS

- . B74101B: The begin at line 9 causes a declarative part to be treated as a sequence of statements.
- . C87B50A: The call of "/"= at line 31 requires a use clause for package A.
- . C92005A: The "/"= for type PACK.BIG\_INT at line 40 is not visible without a use clause for the package PACK.
- . C940ACA: The assumption that allocated task TT1 will run prior to the main program, and thus assign SPYNUMB the value checked for by the main program, is erroneous.
- . CA3005A..D (4 tests): No valid elaboration order exists for these tests.
- . BC3204C: The body of BC3204C0 is missing.

END  
DATE  
FILMED

4-88  
DTIC