

AD-A184 336

CIVILIAN MANPOWER STATISTICS QUARTER ENDING JUNE 30  
1987 (U) WASHINGTON HEADQUARTERS SERVICES (DOD) DC  
DIRECTORATE FOR INFORMATION OPERATIONS AND REPORTS  
30 JUN 87 DIOR/M04-87/03

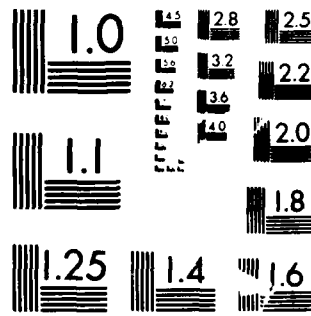
1/1

UNCLASSIFIED

F/G 5/9

NL

END  
DATE  
FORMED  
9 87



MICROCOPY RESOLUTION TEST CHART  
NATIONAL BUREAU OF STANDARDS-1963-A

DTIC FILE COPY

(12)

M04

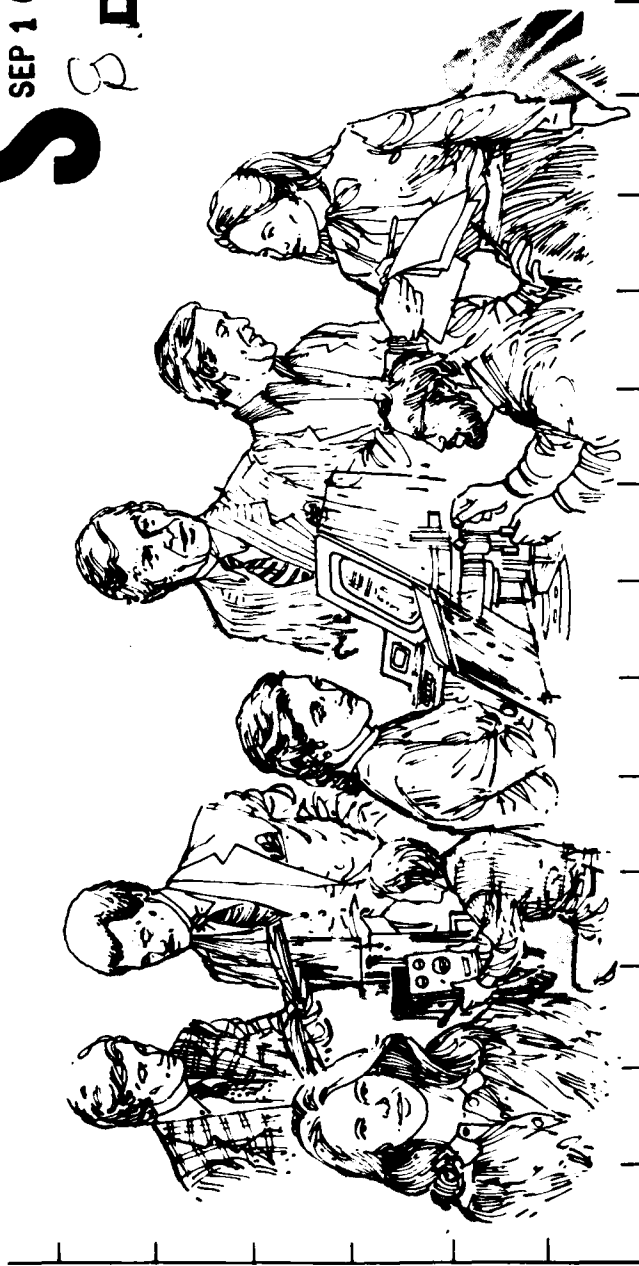
Department of Defense

# CIVILIAN MANPOWER STATISTICS

Quarter Ending June 30, 1987

AD-A184 336

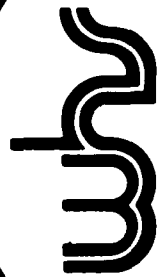
DTIC  
ELECTE  
SEP 1 0 1987  
S R D



DISTRIBUTION STATEMENT A

Approved for public release  
Distribution Unlimited

DIRECTORATE FOR INFORMATION  
OPERATIONS AND REPORTS (DIOR)



OSD

U S H - N G O N I W E R G O R T E R S S E R V I C E S

Department of Defense

# CIVILIAN MANPOWER STATISTICS

June 30, 1987

Issued Quarterly by  
Washington Headquarters Services  
Directorate for Information  
Operations and Reports (DIOR)



Accession For	NTIS	CR&I	<input checked="" type="checkbox"/>
	DTIC	TAS	<input type="checkbox"/>
	Unannounced		<input type="checkbox"/>
	Justification:		
By	Distribution 1		
Availability Codes			
Dist	A-1		
Availability Codes for Special			

FOR SALE BY THE SUPERINTENDENT OF DOCUMENTS  
U.S. GOVERNMENT PRINTING OFFICE  
WASHINGTON, D.C. 20540

DTIC and NTIS identification number for this publication is DIOR/M04-87/03.

## FOREWORD

*Civilian Manpower Statistics (CMS)* is a quarterly publication prepared by the Washington Headquarters Services, Directorate for Information Operations and Reports (WHS/DIOR) of the Office of the Secretary of Defense.

CMS provides statistical information on the civilian work force of the Department of Defense (DoD), with the exception of personnel of the National Security Agency, the Defense Intelligence Agency, and personnel paid from nonappropriated funds. It is produced primarily from a computerized data base developed and maintained by WHS/DIOR from monthly information provided to the Office of Personnel Management on SF 113-A, Monthly Report of Federal Civilian Employment.

## TABLE OF CONTENTS

	<u>Page</u>
Table 1	DoD Civilian Employment, by Function and Employment Status, According to Defense Component: June 30, 1987..... 1
Table 2	Trends in DoD Civilian Employment Subject to OMB Ceiling, by Function, Employment Status and Defense Component ..... 2
Figure 1	Trends in DoD Civilian Employment/FY84 - FY87, Military and Civil Functions, Direct Hires ..... 3
Figure 2	Trends in DoD Civilian Employment/FY84 - FY87, Military and Civil Functions, Indirect Hires ..... 5
Table 3	DoD Direct Hire Civilian Personnel Subject to OMB Ceiling, by Function and Defense Component ..... 6
Figure 3	DoD Direct Hire Civilian Personnel Subject to OMB Ceiling, by Function & Defense Component, Total Employment ..... 7
Table 4	DoD Direct and Indirect Hire Civilian Personnel, by Component (Excluding the Military Departments), According to Type: June 30, 1987 ..... 8
Figure 4	DoD Direct and Indirect Hire Civilian Employment by Component: June 30, 1987 .....9
Table 5	DoD Direct Hire Civilian Personnel, by Type, According to Defense Component: June 30, 1987 ..... 10
Table 6	DoD Civilian Personnel, by Location and Type, According to Defense Component: June 30, 1987 ..... 11

Table 7	DoD Indirect Hire Civilian Personnel, by Country, According Defense Component: June 30, 1987 .....	12
GLOSSARY .....		13

**TABLE 1**

**DoD Civilian Employment by Function and Employment Status,  
According to Defense Component - June 30, 1987**

<b>FUNCTION/EMPLOYMENT STATUS</b>	<b>TOTAL DoD a/</b>	<b>ARMY</b>	<b>NAVY b/</b>	<b>AIR FORCE</b>	<b>OTHER DoD ORGS. c/</b>
<b>MILITARY FUNCTIONS</b>					
OMB CEILING EMPLOYMENT	1,135,164	426,466	349,296	271,431	87,971
DIRECT HIRE	1,050,969	366,566	338,950	259,065	86,388
INDIRECT HIRE	84,195	59,900	10,346	12,366	1,583
<b>TOTAL EMPLOYMENT</b>	<b>1,147,511</b>	<b>429,969</b>	<b>354,293</b>	<b>273,854</b>	<b>89,395</b>
DIRECT HIRE	1,063,316	370,069	343,947	261,488	87,812
INDIRECT HIRE	84,195	59,900	10,346	12,366	1,583
<b>CIVIL FUNCTIONS (ALL DIRECT HIRE)</b>					
OMB CEILING EMPLOYMENT	29,901	29,899	0	2	0
<b>TOTAL EMPLOYMENT</b>	<b>32,630</b>	<b>32,628</b>	<b>0</b>	<b>2</b>	<b>0</b>
<b>TOTAL MILITARY AND CIVIL FUNCTIONS</b>					
OMB CEILING EMPLOYMENT	1,165,065	456,365	349,296	271,433	87,971
DIRECT HIRE	1,080,870	396,465	338,950	259,067	86,388
INDIRECT HIRE	84,195	59,900	10,346	12,366	1,583
<b>TOTAL EMPLOYMENT</b>	<b>1,180,141</b>	<b>462,597</b>	<b>354,293</b>	<b>273,856</b>	<b>89,395</b>
DIRECT HIRE	1,095,946	402,697	343,947	261,490	87,812
INDIRECT HIRE	84,195	59,900	10,346	12,366	1,583

a/Included in Total Employment but excluded from Office of Management and Budget (OMB) Ceiling Employment are employees exempt from OMB ceiling control. Refer to Office of Personnel Management Federal Personnel Manual System Supplement 298-2, Subchapter 5.3, for a delineation of employment exempt from ceiling control.  
b/Includes Marine Corps civilian personnel.  
c/See Glossary for a list of Other DoD Organizations.



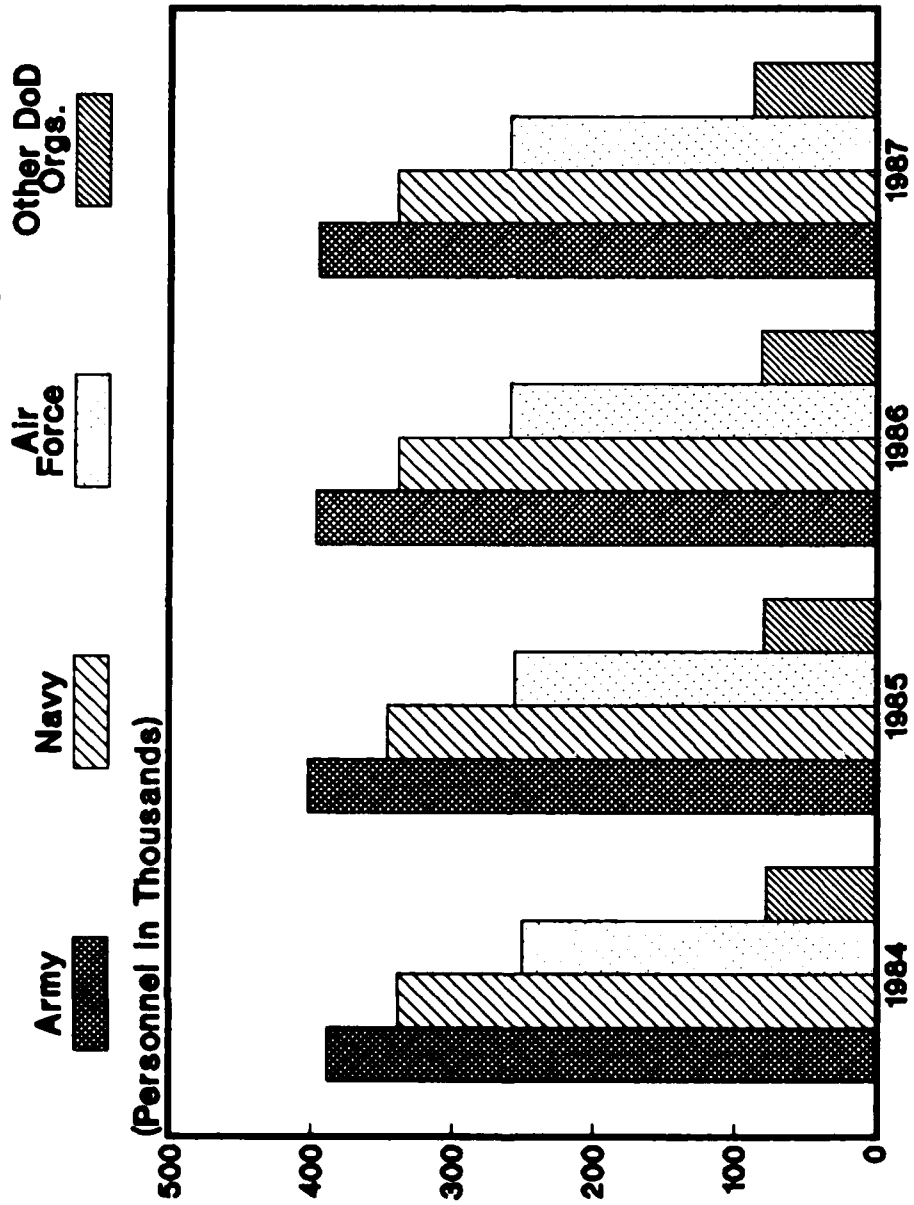
**TABLE 2**

**Trends in DoD Civilian Employment Subject to OMB Ceiling,  
By Function, Employment Status, and Defense Component**

FUNCTION/COMPONENT EMPLOYMENT STATUS	END STRENGTHS, LAST 4 FISCAL YEARS				LAST 3 MONTHS		
	30 SEP 83	30 SEP 84	30 SEP 85	30 SEP 86	30 APR 87	31 MAY 87	30 JUN 87
MILITARY FUNCTIONS	1,067,824	1,089,585	1,129,745	1,112,901	1,122,183	1,126,883	1,135,164
DIRECT HIRE a/	983,644	1,004,488	1,043,240	1,027,866	1,038,491	1,042,810	1,050,969
INDIRECT HIRE b/	84,180	85,097	86,505	85,035	83,692	84,073	84,195
ARMY	392,346	405,084	421,780	414,774	418,077	421,002	426,466
DIRECT HIRE	333,722	345,194	360,887	355,343	358,397	361,104	366,566
INDIRECT HIRE	58,624	59,890	60,893	59,431	59,680	59,898	59,900
NAVY	339,552	342,851	353,501	342,727	345,816	347,241	349,296
DIRECT HIRE	328,907	332,468	343,061	332,363	335,720	336,998	338,950
INDIRECT HIRE	10,645	10,383	10,440	10,364	10,096	10,243	10,346
AIR FORCE	252,330	253,884	265,018	264,299	265,566	265,957	271,431
DIRECT HIRE	239,367	240,903	251,550	250,655	253,240	253,610	259,065
INDIRECT HIRE	12,963	12,981	13,468	13,644	12,326	12,347	12,366
OTHER DoD ORGANIZATIONS c/	83,596	87,766	89,446	91,101	92,724	92,683	87,971
DIRECT HIRE	81,648	85,923	87,742	89,505	91,134	91,098	86,388
INDIRECT HIRE	1,948	1,843	1,704	1,596	1,590	1,585	1,583
CIVIL FUNCTIONS a/							
(ALL DIRECT HIRE)	32,823	28,974	30,029	30,817	28,504	29,321	29,901
ARMY	32,819	28,972	30,026	30,814	28,501	29,318	29,899
AIR FORCE	4	2	3	3	3	3	2
TOTAL MILITARY AND CIVIL FUNCTIONS	1,100,647	1,118,559	1,159,774	1,143,718	1,150,687	1,156,204	1,165,065
DIRECT HIRE a/	1,016,467	1,033,462	1,073,269	1,058,683	1,066,995	1,072,131	1,080,870
INDIRECT HIRE b/	84,180	85,097	86,505	85,035	83,692	84,073	84,195

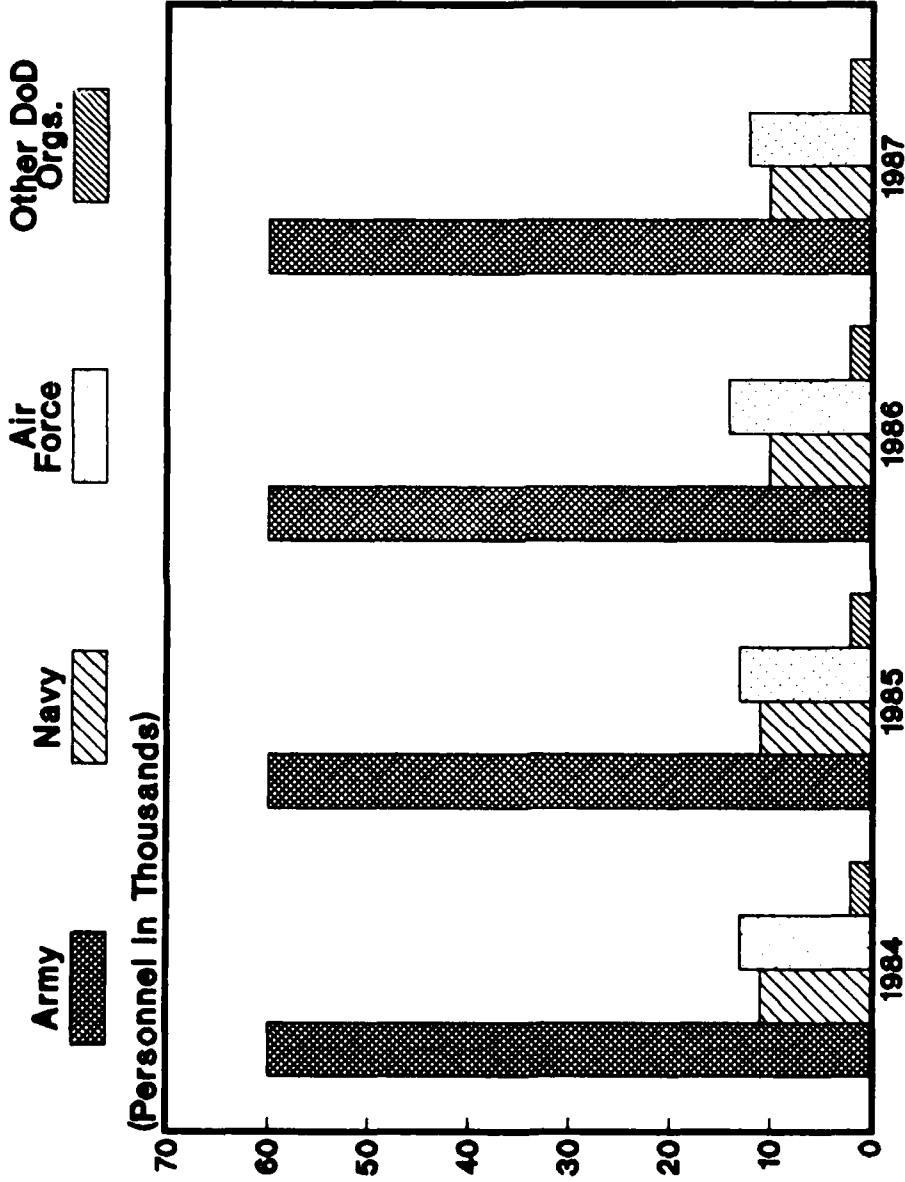
a/As reported officially to the Office of Personnel Management  
b/Foreign Nationals supporting U.S. Military Forces overseas under contracts  
or agreements with foreign governments  
c/See Glossary for a list of Other DoD Organizations

**TRENDS IN DoD CIVILIAN EMPLOYMENT/FY84 - FY87**  
**MILITARY AND CIVIL FUNCTIONS**



**Figure 1 - Direct Hires**

**TRENDS IN DoD CIVILIAN EMPLOYMENT/FY84 - FY87**  
**MILITARY AND CIVIL FUNCTIONS**



**Figure 2 - Indirect Hires**

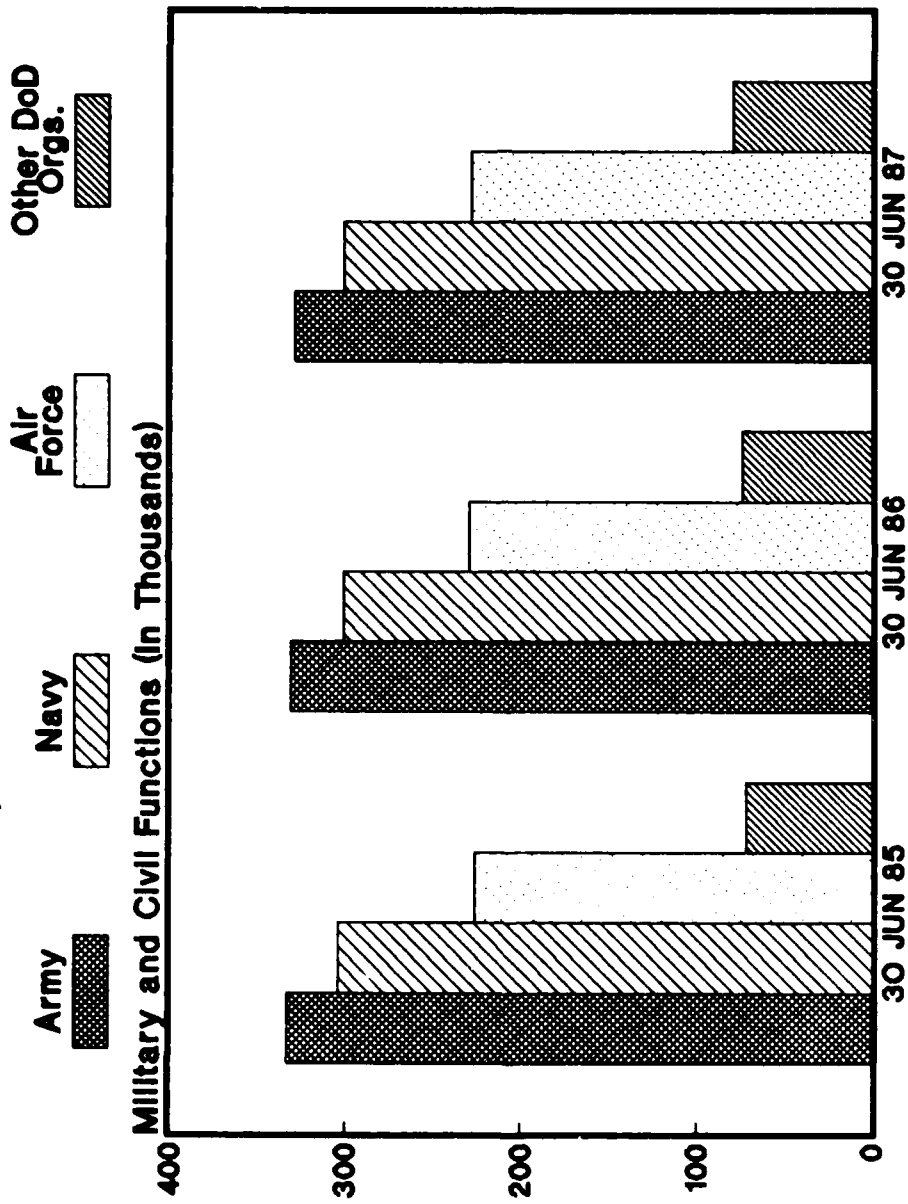
TABLE 3

DoD Direct Hire Civilian Personnel Subject to OMB Ceiling,  
By Function and Defense Component

FUNCTION/COMPONENT	TOTAL EMPLOYMENT				PROGRAMMED STRENGTH	FULL-TIME WITH PERMANENT APPOINTMENTS		
	30 APR 87	31 MAY 87	30 JUN 87	30 SEP 87		30 APR 87	31 MAY 87	30 JUN 87
	MILITARY FUNCTIONS	1,038,491	1,042,810	1,050,969		1,031,999	912,827	912,655
ARMY	358,397	361,104	366,566	350,555	302,984	302,930	302,862	
NAVY	335,720	336,998	338,950	338,402	299,301	299,817	300,517	
AIR FORCE	253,240	253,610	259,069	250,266	227,851	227,248	227,521	
OSD & ORGANIZATIONS SERVICED BY OSD a/	4,427	4,434	4,394	4,820	4,241	4,230	4,139	
DEFENSE COMMUNICATIONS AGENCY	2,131	2,119	2,126	2,072	2,030	2,097	2,047	
DEFENSE CONTRACT AUDIT AGENCY	5,354	5,454	5,760	6,056	5,266	5,366	5,648	
DEFENSE INVESTIGATIVE SERVICE	4,116	4,149	4,204	4,497	3,661	3,744	3,831	
DEFENSE LOGISTICS AGENCY	51,676	51,571	52,319	52,007	49,118	48,972	49,099	
DEFENSE MAPPING AGENCY	8,753	8,738	8,726	9,094	8,568	8,532	8,503	
DEFENSE NUCLEAR AGENCY	783	798	796	887	690	697	691	
DEPARTMENT OF DEFENSE DEPENDENTS SCHOOLS	12,853	12,789	7,001	12,288	8,258	8,163	3,779	
JOINT TACTICAL COMMAND, CONTROL & COMMUNICATIONS AGENCY	208	213	216	245	201	206	208	
UNIFORMED SERVICES UNIVERSITY OF THE HEALTH SCIENCES	833	833	846	810	658	653	654	
CIVIL FUNCTIONS	28,504	29,321	29,901	N/A	26,400	26,543	26,630	
ARMY	28,501	29,318	29,899		26,397	26,540	26,628	
AIR FORCE	3	3	2		3	3	2	
TOTAL MILITARY AND CIVIL FUNCTIONS	1,066,995	1,072,131	1,080,870	N/A	939,227	939,198	936,129	

a/ See the Glossary for a list of OSD and Organizations Serviced by OSD.

**DOD DIRECT HIRE CIVILIAN PERSONNEL SUBJECT TO  
OMB CEILING, BY FUNCTION & DEFENSE COMPONENT**



**Figure 3 - Total Employment**

**TABLE 4**

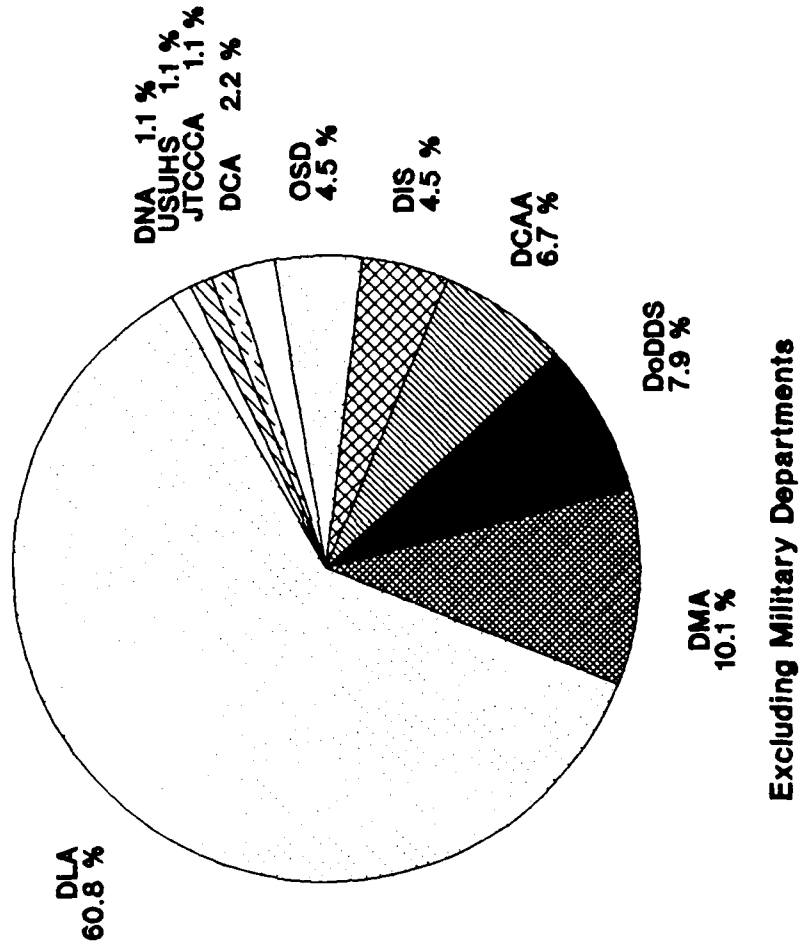
**DoD Direct and Indirect Hire Civilian Personnel by Component,  
According to Type (Excluding the Military Departments) - June 30, 1987**

<b>DEFENSE COMPONENTS</b>	<b>TOTAL</b>	<b>DIRECT HIRE CIVILIANS</b>	<b>INDIRECT HIRE CIVILIANS</b>
TOTAL	89,395	87,812	1,583
OSD AND ORGANIZATIONS SERVICED BY OSD a/	4,455	4,438	17
DEFENSE COMMUNICATIONS AGENCY	2,335	2,324	11
DEFENSE CONTRACT AUDIT AGENCY	5,790	5,785	5
DEFENSE INVESTIGATIVE SERVICE	4,249	4,249	0
DEFENSE LOGISTICS AGENCY	54,255	53,343	912
DEFENSE MAPPING AGENCY	8,811	8,810	1
DEFENSE NUCLEAR AGENCY	800	800	0
DEPARTMENT OF DEFENSE DEPENDENTS SCHOOLS	7,638	7,001	637
JOINT TACTICAL COMMAND, CONTROL & COMMUNICATIONS AGENCY	216	216	0
UNIFORMED SERVICES UNIVERSITY OF THE HEALTH SCIENCES	846	846	0

a/See the Glossary for a list of OSD and Organizations serviced by OSD.

FIGURE 4

**DOD DIRECT AND INDIRECT HIRE CIVILIAN  
EMPLOYMENT BY COMPONENT - JUNE 30, 1987**



**TABLE 5**

**DoD Direct Hire Civilian Personnel, by Type  
According to Defense Component - June 30, 1987 a/**

LOCATION/TYPE OF PERSONNEL	TOTAL DoD	ARMY	NAVY	AIR FORCE	OTHER DoD ORGS. b/
TOTAL	1,095,946	402,697	343,947	261,490	87,812
BY STATUS					
FULL-TIME	1,065,021	390,300	337,263	253,594	83,864
PART-TIME	26,169	10,537	5,839	6,200	3,593
INTERMITTENT	4,756	1,860	845	1,696	355
BY CAREER SERVICE CATEGORY					
COMPETITIVE	910,810	319,023	303,352	212,566	75,869
EXCEPTED AND SES	185,136	83,674	40,595	48,924	11,943
BY TYPE OF APPOINTMENT					
PERMANENT	947,964	334,308	303,747	230,227	79,682
TEMPORARY/INDEFINITE	147,982	58,389	40,200	31,263	8,130
BY CITIZENSHIP					
U.S. CITIZENS	1,053,749	385,728	327,412	253,409	87,200
NON-CITIZENS	42,197	16,969	16,535	8,081	612
BY LABOR CATEGORY					
SALARIED	749,738	287,055	213,936	172,103	76,644
WAGE BOARD	346,208	115,642	130,011	89,387	11,168

a/Includes personnel not subject to OMB ceiling control.  
b/See the Glossary for a list of Other DoD Organizations.



**TABLE 6**

**DoD Direct Hire Civilian Personnel, by Location/Type,  
According to Defense Component - June 30, 1987 a/**

LOCATION/TYPE OF PERSONNEL	TOTAL DoD a/	ARMY	NAVY	AIR FORCE	OTHER DoD ORGS. b/
WORLDWIDE TOTAL	1,095,946	402,697	343,947	261,490	87,812
UNITED STATES	993,613	353,150	318,409	241,907	80,147
BY LOCATION					
WASHINGTON, D.C., SMSA c/	89,732	29,247	38,388	6,809	15,288
REMAINDER OF U. S.	903,881	323,903	280,021	235,098	64,859
BY LABOR CATEGORY					
SALARIED	685,783	260,838	201,977	153,841	69,127
WAGE BOARD	307,830	92,312	116,432	88,066	11,020
BY CITIZENSHIP					
U. S. CITIZENS	992,948	352,736	318,272	241,872	80,068
NON-CITIZENS	665	414	137	35	79
U. S. TERRITORIES	7,692	1,298	5,357	952	85
BY LABOR CATEGORY					
SALARIED	3,919	894	2,539	410	76
WAGE BOARD	3,773	404	2,818	542	9
BY CITIZENSHIP					
U. S. CITIZENS	7,655	1,297	5,323	950	85
NON-CITIZENS	37	1	34	2	0
FOREIGN COUNTRIES	94,641	48,249	20,181	18,631	7,580
BY LABOR CATEGORY					
SALARIED	60,036	25,323	9,420	17,852	7,441
WAGE BOARD	34,605	22,926	10,761	779	139
BY CITIZENSHIP					
U. S. CITIZENS	53,146	31,695	3,817	10,587	7,047
NON-CITIZENS	41,495	16,554	16,364	8,044	533

a/Includes personnel not subject to OMB ceiling control.  
b/See the Glossary for a list of the Other DoD Organizations.  
c/The Washington, D.C., Standard Metropolitan Statistical Area (SMSA) consists of the District of Columbia; Montgomery, Prince Georges, Charles, Calvert, and Frederick counties in Maryland; Alexandria, Fairfax, Falls Church, Manassas, and Manassas Park cities, and Arlington, Fairfax, Loudoun, Stafford, and Prince William counties in Virginia.

**TABLE 7**

**DoD Indirect Hire Civilian Personnel, by Country,  
According to Defense Component - June 30, 1987**

COUNTRY	TOTAL DoD	ARMY	NAVY	AIR FORCE	OTHER DoD ORGS. a/
TOTAL	84,195	59,900	10,346	12,366	1,583
BELGIUM	1,012	865	0	125	22
GERMANY	59,680	52,087	0	6,418	1,175
GREECE	528	2	128	383	15
GUAM	4	0	4	0	0
ITALY	2	0	2	0	0
JAPAN	17,160	3,345	9,157	4,487	171
KOREA	3,235	3,235	0	0	0
NETHERLANDS	475	366	0	100	9
PHILIPPINES	6	0	6	0	0
SPAIN	2,000	0	1,049	853	98
UNITED KINGDOM	93	0	0	0	93

a/See the Glossary for a list of Other DoD Organizations.

## GLOSSARY

Civilian Functions. Functions primarily associated with the civil works program of the Army Corps of Engineers. This program encompasses planning, programming, designing, constructing, and operating Federal water resource projects for navigation, flood control, hydroelectric power, water supply, recreation, and related activities. Civil functions also includes comaterial workers (Army) and several conservation management employees (Air Force).

Competitive Service. All civil service positions in the Executive Branch, except:

1. Positions which are specifically exempted from the competitive service by or under statute;
2. Positions which appointments are made by nomination for confirmation by the Senate, unless the Senate otherwise directs or when specifically included in the competitive service by statute;
3. Positions in the Senior Executive Service.

Also includes civil service positions not in the Executive Branch which are specifically included in the competitive service by statute.

Direct Hire Civilians. Employees hired directly by an agency of the Department of Defense (DoD). Included are foreign nationals hired by DoD to support DoD activities in their home countries.

DoD. Department of Defense.

Excepted Service. All positions in the Executive Branch of the Federal government (except Senior Executive Service positions) which are specifically excepted from the competitive service by or pursuant to a statute, the President, the Office of Personnel Management.

Full-Time Employees. Employees who are regularly scheduled to work the number of hours and days in the administrative work week for their employment group or class. (Usually 5 days of 8 hours each.)

Indirect Hire Civilians. Foreign nationals assigned to support U.S. forces through contracts or agreements with foreign governments (or agencies thereof). These personnel are employees of the foreign governments involved.

Intermittent Employees. Employees who are employed with no prescheduled tour of duty (i.e., employed on irregular or occasional basis).

Military Functions. Activities normally associated with the uniformed services.

OMB Ceiling Employment. Employees subject to the Office of Management and Budget (OMB) ceilings established to administer Presidential employment ceiling limitations. Refer to the Office of Personnel Management System Supplement 298-2, Subchapter 53, for a delineation of employment exempt from ceiling control.

#### OTHER DoD ORGANIZATIONS

- \*Office of the Secretary of Defense (OSD)
- \*Joint Chiefs of Staff (JCS)
- \*Inspector General of the Department of Defense

#### Department of Defense Agencies:

- \*Defense Advanced Research Projects Agency (DARPA)
- Defense Communications Agency (DCA)
- Defense Contract Audit Agency (DCAA)
- Defense Investigative Service (DIS)
- \*Defense Legal Services Agency (DLSA)
- Defense Logistics Agency (DLA)
- Defense Mapping Agency (DMA)
- Defense Nuclear Agency (DNA)
- \*Defense Security Assistance Agency (DSAA)
- Joint Tactical Command, Control & Communications Agency (JTCCCA)
- \*Strategic Defense Initiative Organization

NOTE \*Organizations serviced by OSD.

Department of Defense Field Activities:

- \*American Forces Information Service (AFIS)
- \*Defense Information Services Activity (DISA)
- \*Defense Medical Systems Support Center (DMSSC)
- \*Defense Technology Security Administration (DTSA)
- \*Department of Defense Dependents Schools  
(DODDS) (Headquarters Only)
- \*Office of Civilian Health and Medical Program  
Office (OCE/AMFUS)
- \*Office of Economic Adjustment (OEA)
- \*Washington Headquarters Services (WHS)

\*U.S. Court of Military Appeals

Uniformed Services University of the Health Sciences (USUHS)

**Part-Time Employees.** Employees who are regularly scheduled for a prearranged tour of duty which is less than the specified number of hours or days worked by full-time employees in the same employment group or class.

**Permanent Appointments.** Permanent appointments are defined within each type of service as follows:

1. **COMPETITIVE SERVICE** - Employees serving under career appointments who are serving or who have completed their initial appointment probation or who are not required to serve an initial appointment probation. Also includes employees with career-conditional appointments.
2. **EXCEPTED SERVICE** - Employees whose appointments carry no restrictions or conditions, such as conditional appointments, indefinite, or specific time limitations, or trial periods. Based on tenure, can include employees serving trial periods or those whose tenure is equivalent to career-conditional in the competitive service.

NOTE \*Organizations serviced by OSD

3. SENIOR EXECUTIVE SERVICE (SES) - All SES employees except those serving under "limited term" and "limited emergency" appointments.

Salaried Employees. Primarily employees occupying positions subject to the Classification Act of 1949, as amended, and a limited number of other employees whose compensation is established by other legislation, Executive Order, or administrative determination.

Senior Executive Service (SES). Positions in an agency with grade 16, 17, or 18 of the General Schedule or Level IV or V of the Executive Schedule (unless exempted). Also includes equivalent positions which need not be filled by appointment by the President and confirmation by the Senate and which have not been specifically excluded from the SES.

Total Paid Civilian Employment. Total direct and indirect hire civilian employment. For direct hires, includes, with some exceptions, all direct hire employees who had not officially separated as of the reporting period or were on paid leave.

Wage System Employees. Employees whose basic rates of pay are fixed in accordance with locally prevailing rates or by wage boards or similar administrative authority. Includes prevailing rate employees. (Prevailing rate employees are those employed by an agency in a recognized trade or craft; other skilled mechanical craft; or an unskilled, semiskilled, or skilled manual labor occupation. Also includes any other person, including a foreman or supervisor, in a position where trade, craft, or labor experience and knowledge is a paramount requirement.)

MED  
-8