

AD-A183 058

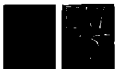
MACROCYCLES CONTAINING TIN THROUGH SPACE COOPERATIVE  
BINDING AND HIGH SIZ. (U) TEXAS A AND M UNIV COLLEGE  
STATION DEPT OF CHEMISTRY M NEWCOMB ET AL. 27 JUL 87  
TR-18 N00014-79-C-0584

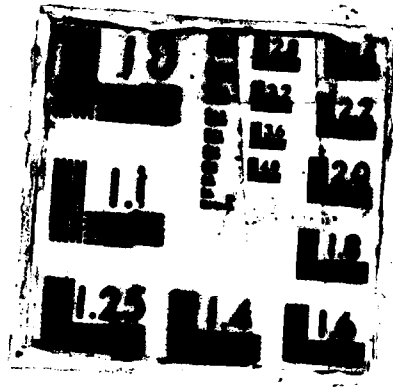
1/1

UNCLASSIFIED

F/G 7/2

NL





Unclassified

SECURITY CLASSIFICATION OF THIS PAGE

REPORT DOCUMENTATION PAGE

1a. REPORT SECURITY CLASSIFICATION <b>Unclassified</b>		1b. RESTRICTIVE MARKINGS	
<b>AD-A183 058</b>		3. DISTRIBUTION / AVAILABILITY OF REPORT Approved for Public Release Distribution Unlimited	
		5. MONITORING ORGANIZATION REPORT NUMBER(S)	
6a. NAME OF PERFORMING ORGANIZATION Texas A&M University	6b. OFFICE SYMBOL (if applicable)	7a. NAME OF MONITORING ORGANIZATION Office of Naval Research	
6c. ADDRESS (City, State, and ZIP Code) Department of Chemistry College Station, TX 77843		7b. ADDRESS (City, State, and ZIP Code) Department of the Navy Arlington, VA 22217	
8a. NAME OF FUNDING / SPONSORING ORGANIZATION	8b. OFFICE SYMBOL (if applicable)	9. PROCUREMENT INSTRUMENT IDENTIFICATION NUMBER N00014-79-C-0584	
9c. ADDRESS (City, State, and ZIP Code)		10. SOURCE OF FUNDING NUMBERS	
		PROGRAM ELEMENT NO	PROJECT NO
			TASK NO NR053-714
		WORK UNIT ACCESSION NO	
11. TITLE (Include Security Classification) (Unclassified) Macrocycles Containing Tin. Through Space Cooperative Binding and High Size Selectivity in the Complexation of Chloride Ion by Lewis Acidic Macrocyclic Hosts			
12. PERSONAL AUTHOR(S) Martin Newcomb, John H. Horner, Michael T. Blanda			
13a. TYPE OF REPORT Technical Report	13b. TIME COVERED FROM TO	14. DATE OF REPORT (Year, Month, Day) 1987, July 27	15. PAGE COUNT 12
16. SUPPLEMENTARY NOTATION			
17. COSATI CODES		18. SUBJECT TERMS (Continue on reverse if necessary and identify by block number)	
FIELD	GROUP	tin, macrocycle, macrobicyclic, complexation, size-selective, Lewis acid, chloride, NMR kinetics	
19. ABSTRACT (Continue on reverse if necessary and identify by block number)			
<p>The preparation of macrobicyclic hosts 1,8-dichloro-1,8-distannabicyclo[6.6.6]eicosane (1a), 1,10-dichloro-1,10-distannabicyclo[8.6.8]hexacosane (1b), 1,12-dichloro-1,12-distannabicyclo[10.10.10]dotriacontane (1c) and 1,12-dichloro-1,12-distannabicyclo[12.12.12]octatriacontane (1d) are reported. Complexation of chloride ion in <math>CDCl_3</math> solutions by these hosts was studied by Sn-119 NMR spectroscopy, and kinetics and equilibrium constants for 1b-d were determined by line shape analysis. Selective chloride binding was observed; hosts 1b and 1c bind chloride more strongly than does host 1d, and host 1a does not bind chloride.</p> <p><i>(Keywords:)</i></p>			
20. DISTRIBUTION AVAILABILITY OF ABSTRACT <input checked="" type="checkbox"/> UNCLASSIFIED/UNLIMITED <input checked="" type="checkbox"/> SAME AS RPT <input type="checkbox"/> DTIC USERS		21. ABSTRACT SECURITY CLASSIFICATION Unclassified	
22a. NAME OF RESPONSIBLE INDIVIDUAL		22b. TELEPHONE (Include Area Code)	22c. OFFICE SYMBOL

DTIC ELECTE  
AUG 05 1987

OFFICE OF NAVAL RESEARCH

Contract N00014-79-C-0584

R & T Code 413a001-000-01

TECHNICAL REPORT NO. 10

Macrocycles Containing Tin. Through Space Cooperative Binding  
and High Size Selectivity in the Complexation  
of Chloride Ion by Lewis Acidic Macrobicyclic Hosts

by

Martin Newcomb\*, John H. Horner, Michael T. Blanda

Department of Chemistry  
Texas A&M University  
College Station, Texas 77843

July 27, 1987

Prepared for publication in  
the Journal of the American Chemical Society

Reproduction in whole or in part is permitted for  
any purpose of the United States Government

\* This document has been approved for public release  
and sale; its distribution is unlimited

\* This statement should also appear in Item 3 of Document Control Data  
- DD Form 1473. Copies of form available from cognizant contract  
administrator.

87 7 31 117

**Macrocycles Containing Tin. Through Space Cooperative Binding  
and High Size Selectivity in the Complexation  
of Chloride Ion by Lewis Acidic Macrobicyclic Hosts**

Martin Newcomb\*, John H. Horner, Michael T. Blanda

Department of Chemistry

Texas A&M University

College Station, Texas 77843

**Abstract:** The preparation of macrobicyclic hosts 1,8-dichloro-1,8-distanna-bicyclo[6.6.6]eicosane (1a), 1,10-dichloro-1,10-distannabicyclo[8.8.8]hexacosane (1b), 1,12-dichloro-1,12-distannabicyclo[10.10.10]dotriacontane (1c) and 1,14-dichloro-1,14-distannabicyclo[12.12.12]octatriacontane (1d) are reported. Complexation of chloride ion in  $CDCl_3$  solutions by these hosts was studied by  $^{119}Sn$  NMR spectroscopy, and kinetics and equilibrium constants for 1b-d were determined by line shape analysis. Selective chloride binding was observed; hosts 1b and 1c bind chloride more strongly than does host 1d, and host 1a does not bind chloride.

Accession For	
NTIS GRA&I	<input checked="" type="checkbox"/>
DTIC TAB	<input type="checkbox"/>
Unannounced	<input type="checkbox"/>
Justification	
By	
Distribution/	
Availability Codes	
Dist	Avail and/or Special
A-1	

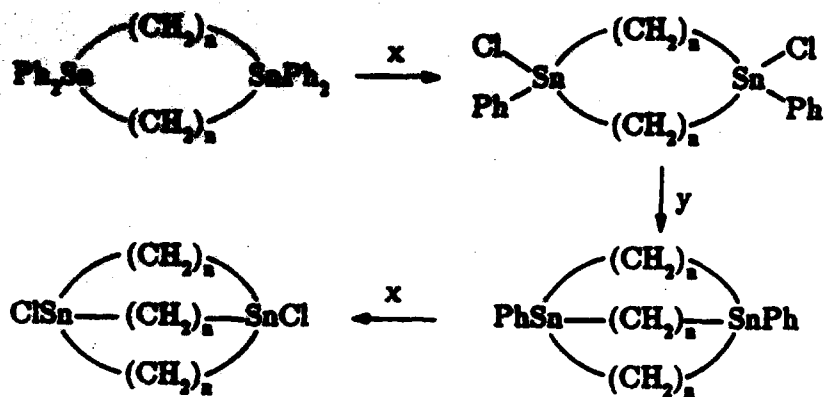


**Macrocycles Containing Tin. Through Space Cooperative Binding  
and High Size Selectivity in the Complexation  
of Chloride Ion by Lewis Acidic Macrobicyclic Hosts**

The interaction of basic macrocyclic and macrobicyclic hosts with cationic guests has been studied intensively in recent years. In contrast, the analogous complexation of anionic guests by acidic polydentate or macrocyclic hosts has received little attention.<sup>1</sup> Recently, we found low selectivity in binding of chloride ion in organic solvents by a series of macrocyclic hosts containing two Lewis acidic tin atoms.<sup>2</sup> We anticipated that the addition of more binding sites to or the incorporation of structural rigidity into our Lewis acidic macrocyclic hosts would result in more selective anion complexation. Creation of macrobicycles appeared to be one way to build up binding site rigidity rapidly since Lewis acidic tin atoms containing one electron withdrawing group will complex donors in a trigonal bipyramidal structure with the donor and withdrawing groups in the axial positions.<sup>3</sup> In this communication we report Lewis acidic macrobicycles in which both the dynamics and energetics of binding of chloride anion are highly size dependent; this apparently represents selective binding of chloride within the host cavity in a manner directly analogous to the binding of cations by cryptands.<sup>4</sup>

The reaction sequence for preparation of macrobicyclic hosts **1** from macrocycles is shown in the Scheme. The starting macrocycles have been reported<sup>5</sup> as has the immediate precursor of **1b**.<sup>6</sup> The macrobicyclization reactions were effected in 20-30% yields for the precursors to **1b-1d** but only in 4% yield for the (apparently) strained precursor to **1a**. The final HCl cleavage reactions were virtually quantitative. Sharp melting products **1** were characterized by <sup>1</sup>H, <sup>13</sup>C and <sup>119</sup>Sn NMR spectroscopy.

Scheme

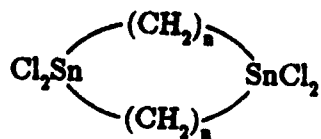


1

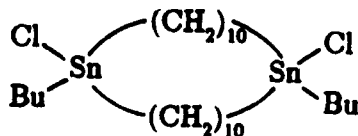
(a:  $n = 6$ , b:  $n = 8$ , c:  $n = 10$ , d:  $n = 12$ )

Reagents: x, HCl in  $\text{CH}_2\text{Cl}_2$ ; y,  $\text{BrMg}(\text{CH}_2)_n\text{MgBr}$  in THF.

The complexation of chloride by hosts 1 was studied by  $^{119}\text{Sn}$  NMR spectroscopy.<sup>7</sup> Previously, we observed that macrocyclic hosts 2 exchanged chloride fast on the  $^{119}\text{Sn}$  NMR time scale and that the first and second binding constants for hosts 2 were nearly the same for each host and varied little between hosts.<sup>2</sup> In this work, similar behavior was observed for macrocyclic model 3 in the binding of chloride in  $\text{CDCl}_3$  solution; addition of increments of tetrahexylammonium chloride to a solution of 3 resulted in a smooth shift for the single sharp peak from +150 ppm (tetra-coordinate) to -50 ppm (penta-coordinate). Thus, model 3 (like hosts 2) binds two chloride ions strongly and equilibrates rapidly ( $k > 5 \times 10^6 \text{ s}^{-1}$ ).



2 ( $n = 8, 10, 12$ )



3

The  $^{119}\text{Sn}$  NMR spectra of bicyclic hosts 1 showed dramatic differences in comparison to those of their macrocyclic counterparts when chloride ion was present. Unlike macrocycles 2 and 3, bicyclic hosts 1b-d in the presence of excess chloride bound only one chloride per host; the limiting chemical shifts were at about the mid-point of the tetra- and penta-coordinate tin shifts (one signal for the two tin atoms arises either from fast exchange within the complex or complexation of chloride by both tin atoms simultaneously). There was no indication that any host 1 bound a second chloride anion. Thus, since the tin atoms are insulated from one another by hydrocarbon chains, there is a through space cooperative binding effect in 1b-d mandated by the structure.

The rates of binding of chloride by hosts 1 were substantially slower than those for cycles 2 and 3. In the presence of 0.5 equivalents of chloride ion per host, the  $^{119}\text{Sn}$  NMR spectra of C-12 host 1d at room temperature consisted of one broad signal that increased in broadness at lower temperatures. The spectrum of the C-10 host 1c (plus 0.5 equiv of  $\text{Cl}^-$ ) at room temperature contained one very broad signal, but at  $-50^\circ\text{C}$  broad signals at  $+150$  ppm (uncomplexed) and  $+40$  ppm (1:1 complex) were observed. The spectrum of the slower exchanging C-8 host 1b (with 0.5 equiv of  $\text{Cl}^-$ ) contained two sharp signals at  $-50^\circ\text{C}$  that broadened on warming (Figure).



The binding of chloride by 1b-d is described by the simple model in equation 1. Line shape analyses of the spectra containing hosts 1b-d and chloride gave kinetic results,<sup>8</sup> some of which are listed in the Table. The rates of complexation and decomplexation were slowed appreciably as the chain length decreased; we presume that this reflects steric interactions as the chloride squeezes between two chains to enter or exit the cavities. For host 1b,



studies of solutions of varying concentration indicated that decomplexation ( $k_p$ ) was rate limiting; an Arrhenius treatment for this first order decomplexation of chloride from the  $(lb \cdot Cl)^-$  complex gave an  $E_a$  of  $9.1 \pm 0.5$  kcal/mol. The binding constants of hosts lb and lc at  $-20$  °C were nearly an order of magnitude greater than that for host ld; apparently the best cavity size for chloride occurs between hosts lb and lc.

A more dramatic demonstration of size selectivity was found when the C-6 bicycle la was studied. At room temperature the  $^{119}Sn$  NMR spectrum of la (+148 ppm) was unaltered by the addition of excess chloride. The absence of line broadening or a second signal in the +30-40 ppm region in the spectra of la showed that no complexation occurred to the limit of our detection capabilities. With the conservative estimate that even in the most difficult to detect case (slow exchange limit) we would have observed 5% complex if it was present, we can set a limit on  $K_{eq}$  for la of  $< 1 M^{-1}$ . Host la is not Lewis acidic towards chloride!

We have shown that highly selective anion binding in organic solvents is possible with appropriately constructed Lewis acidic hosts even when only two binding sites are available. The selectivity can result from either the exclusion of the guest from an under-sized cavity or the poor fit of the guest within an over-sized cavity. The replacement of chloride on bicycles 1 with a non-labile electron withdrawing group should be expected to give hosts that complex a variety of anionic and neutral basic guests selectively.

**Acknowledgment.** This work was supported by the Office of Naval Research.

### References and Notes

1. For leading references to multidentate Lewis acid binding of anions and neutral donors see: Katz, H. E. *Organometallics* 1987, 6, 1134-1136. Austin, M.; Gebreyes, K.; Kuivila, H. G.; Swami, K.; Zubieta, J. A. *Ibid.* 1987, 6, 834-842. Beauchamp, A. L.; Olivier, M. J.; Wuest, J. D.; Zacharie, B. *Ibid.* 1987, 6, 153-156. Gielen, M.; Jurkschat, K.; Mahieu, B.; Apers, D. *J. Organomet. Chem.* 1985, 286, 145-151.
2. Newcomb, M.; Madonik, A. M.; Blanda, M. T.; Judice, J. K. *Organometallics* 1987, 6, 145-150.
3. Nicholson, J. W.; Douek, J. A., Crowe, A. J. *J. Organomet. Chem.* 1981, 219, 309-316. Nadvornik, M.; Holecek, J.; Handlir, K.; Lycka, A. *Ibid.* 1984, 275, 43-51.
4. Dietrich, B. in "Inclusion Compounds", vol 2, Atwood, J. L.; Davies, J. E. D.; MacNicol, D. D. (eds), Academic Press, London, 1984, pp 337-405.
5. Azuma, Y.; Newcomb, M. *Organometallics* 1984, 3, 9-14.
6. Newcomb, M.; Blanda, M. T.; Azuma, Y.; Delord, T. J. *J. Chem. Soc., Chem. Commun.* 1984, 1159-1160.
7.  $^{119}\text{Sn}$  NMR spectra of  $\text{CDCl}_3$  solutions were recorded on Varian XL-200 (74.6 MHz and XL-400 (149.2 MHz) spectrometers. Gated decoupling was used to suppress NOE. Chemical shifts were measured against internal  $\text{Me}_4\text{Sn}$ .
8. Smith, P. J.; Tupciauskas, A. P. *Ann. Rep. NMR Spectrosc.* 1978, 8, 291-370. Petrosyan, V. S. *Prog. NMR Spectrosc.* 1977, 11, 115-148. Wrackmeyer, B. *Ann. Rep. NMR Spectrosc.* 1985, 16, 73-186.
9. A two site exchange model was used.<sup>10</sup> The  $T_2$  values used in simulations were determined experimentally (Varian's CPMGT2 sequence) for host 1b at 149.2 MHz (0.05 s for the uncomplexed and 0.003 s for the complexed signal).
10. Sandstrom, J. "Dynamic NMR Spectroscopy", Academic Press, London, 1982.

Table. Rates and Equilibrium Constants for Binding Chloride Ion by Hosts 1.<sup>a</sup>

Host	Temp (°C)	$k_r$ (s <sup>-1</sup> )	$k_f$ (M <sup>-1</sup> , s <sup>-1</sup> ) <sup>b</sup>	$K_{eq}$ (M <sup>-1</sup> )
1b <sup>c</sup>	-50	$2.0 \times 10^2$	$8.9 \times 10^3$	44
	-40	$3.6 \times 10^2$	$2.2 \times 10^4$	61
	-30	$8.4 \times 10^2$	$3.7 \times 10^4$	44
	-20	$2.0 \times 10^3$	$6.6 \times 10^4$	33
	-10	$4.3 \times 10^3$	$1.2 \times 10^5$	28
1c	-20	$3.0 \times 10^4$	$1.0 \times 10^5$	36
1d	-50	$5.6 \times 10^4$	$3.1 \times 10^5$	5.5
	-20	$3.2 \times 10^5$	$1.9 \times 10^6$	5.9
	20	$2.7 \times 10^6$	$1.2 \times 10^7$	4.4

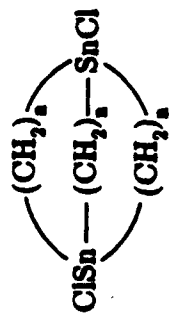
<sup>a</sup> Results from line shape analyses of spectra of CDCl<sub>3</sub> solutions containing hosts and tetrahexylammonium chloride.

<sup>b</sup>  $k_f$  was calculated from the  $k_f'$  of the simulation and the concentration of free chloride; values are less accurate than those of  $k_r$ , especially in the low temperature studies with 1b where most of the chloride was complexed.

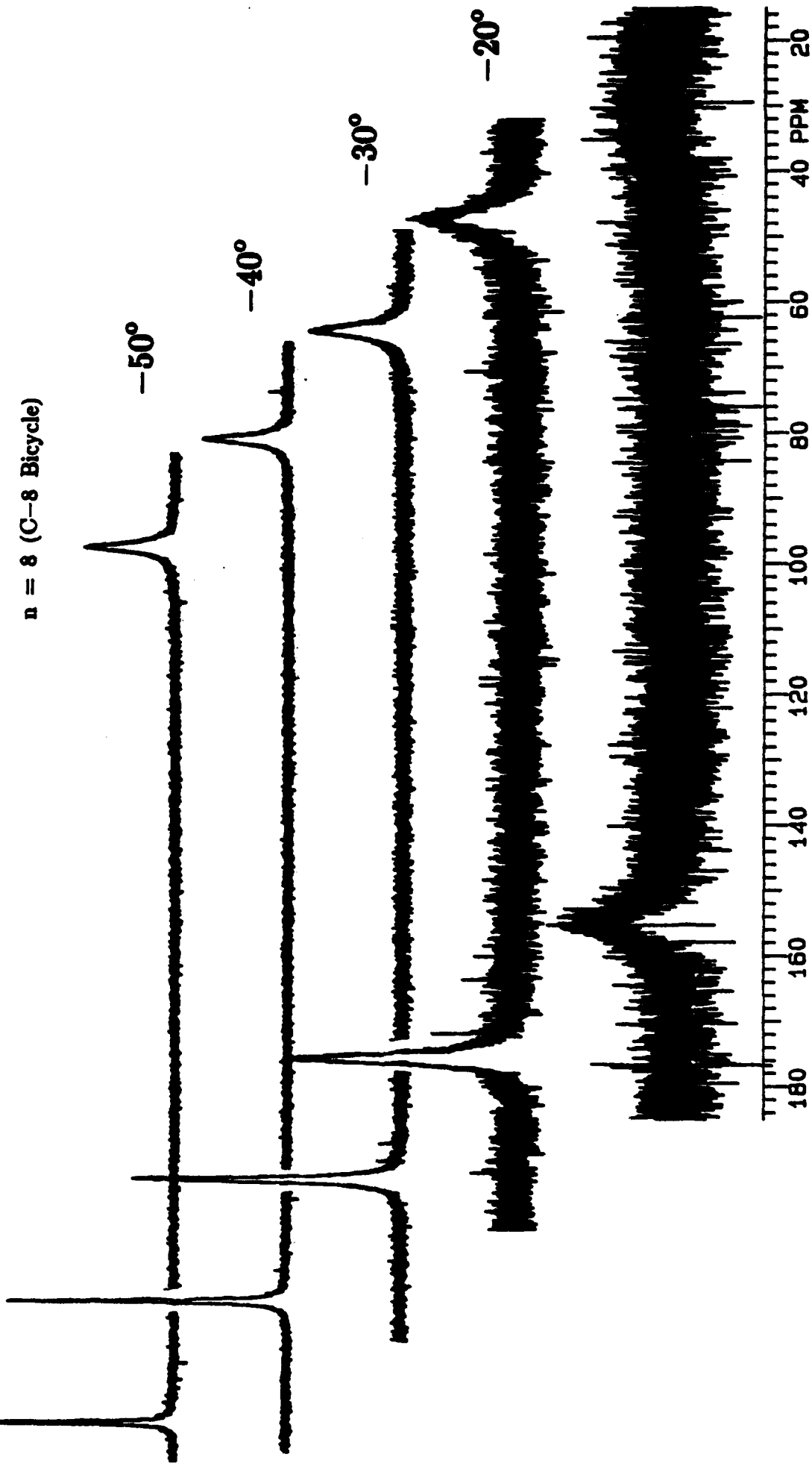
<sup>c</sup> Averages of four values for -50 to -30 °C and three values for -20 °C.

Figure  $^{119}\text{Sn}$  NMR spectra (149.2 MHz) of a  $\text{CDCl}_3$  solution containing host 1b and 0.5 equiv of tetrahexylammonium chloride.

# C-8 Bicycle with Chloride (<sup>119</sup>Sn NMR, 149 MHz)



n = 8 (C-8 Bicycle)



TECHNICAL REPORT DISTRIBUTION LIST, GEN

	<u>No. Copies</u>		<u>No. Copies</u>
Office of Naval Research Attn: Code 1113 800 N. Quincy Street Arlington, Virginia 22217-5000	2	Dr. David Young Code 334 NORDA NSTL, Mississippi 39529	1
Dr. Bernard Doua Naval Weapons Support Center Code 50C Crane, Indiana 47522-5050	1	Naval Weapons Center Attn: Dr. Ron Atkins Chemistry Division China Lake, California 93555	1
Naval Civil Engineering Laboratory Attn: Dr. R. W. Drisko, Code L52 Port Hueneme, California 93401	1	Scientific Advisor Commandant of the Marine Corps Code RD-1 Washington, D.C. 20380	1
Defense Technical Information Center Building 5, Cameron Station Alexandria, Virginia 22314	12 high quality	U.S. Army Research Office Attn: CRD-AA-IP P.O. Box 12211 Research Triangle Park, NC 27709	1
DTNSRDC Attn: Dr. H. Singerman Applied Chemistry Division Annapolis, Maryland 21401	1	Mr. John Boyle Materials Branch Naval Ship Engineering Center Philadelphia, Pennsylvania 19112	1
Dr. William Tolles Superintendent Chemistry Division, Code 6100 Naval Research Laboratory Washington, D.C. 20375-5000	1	Naval Ocean Systems Center Attn: Dr. S. Yamamoto Marine Sciences Division San Diego, California 91232	1

ABSTRACTS DISTRIBUTION LIST 053

Dr. M. F. Hawthorne  
Department of Chemistry  
University of California  
Los Angeles, California 90024

Professor O. T. Beachley  
Department of Chemistry  
State University of New York  
Buffalo, New York 14214

Dr. W. Hatfield  
Department of Chemistry  
University of North Carolina  
Chapel Hill, North Carolina 27514

Professor R. Wells  
Department of Chemistry  
Duke University  
Durham, North Carolina 27706

Professor K. Neidenzu  
Department of Chemistry  
University of Kentucky  
Lexington, Kentucky 40506

Dr. Herbert C. Brown  
Department of Chemistry  
Purdue University  
West Lafayette, IN 47907

Dr. J. Zuckerman  
Department of Chemistry  
University of Oklahoma  
Norman, Oklahoma 73019

Professor R. Neilson  
Department of Chemistry  
Texas Christian University  
Fort Worth, Texas 76129

Professor M. Newcomb  
Department of Chemistry  
Texas A&M University  
College Station, Texas 77843

Professor L. Miller  
Department of Chemistry  
University of Minnesota  
Minneapolis, Minnesota 55455

Professor K. O. Christe  
Rockwell International  
Canoga Park, California 91304

Dr. Margaret C. Etter  
Department of Chemistry  
University of Minnesota  
Minneapolis, MN 55455

END

9-87

Dtic