

4D-A181 975

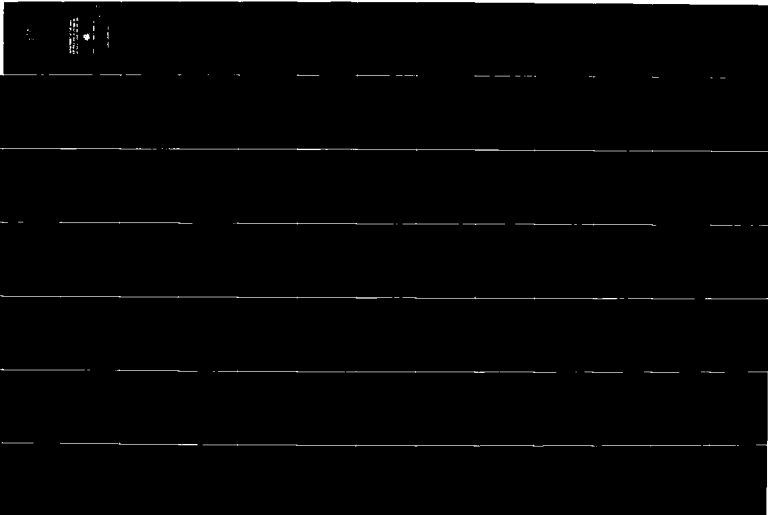
DEPARTMENT OF THE NAVY JUSTIFICATION OF ESTIMATES FOR  
FISCAL YEAR 1988/19 (U) OFFICE OF THE COMPTROLLER  
(NAVY) WASHINGTON DC JAN 87

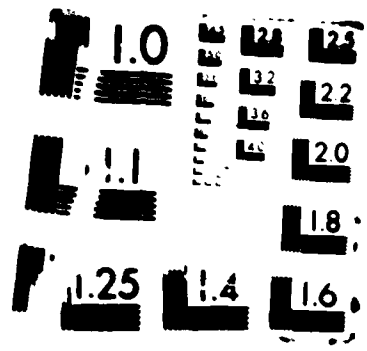
1/2

UNCLASSIFIED

F/G 5/1

NL





DTIC FILE COPY

**DEPARTMENT OF THE NAVY  
JUSTIFICATION OF ESTIMATES  
FOR FISCAL YEARS 1988 AND 1989**



AD-A181 975

**SUBMITTED TO CONGRESS JANUARY 1987**

**SELECTED**  
JUL 03 1987  
**S A D**

**RESERVE PERSONNEL, NAVY**

This document is approved  
for public release and  
distribution.

DEPARTMENT OF THE NAVY  
RESERVE PERSONNEL, NAVY

JUSTIFICATION OF ESTIMATES FOR FISCAL YEARS 1988 AND 1989

TABLE OF CONTENTS

	<u>Page</u>
Section 1 - Summary of Requirements by Budget Program.....	2
Section 2 - Introduction .....	4
Section 3 - Summary Tables	
Summary of Personnel in Paid Status .....	6
Reserve Component Personnel on Tours of Active Duty .....	8
Monthly Personnel Strength Plan	
FY 1989 .....	9
FY 1988 .....	10
FY 1987 .....	11
FY 1986 .....	12
Schedule of Gains and Losses to Selected Reserve Strengths .....	13
Summary of Entitlements by Activity and Subactivity .....	15
Analysis of Appropriation Changes and Supplemental Requirements .....	19
Summary of Basic Pay and Retired Pay Accrual .....	23
Summary of Basic Allowance for Quarters and Variable Housing Allowance Costs .....	26
Summary of Travel Costs .....	28
Schedule of Increases and Decreases .....	30
Section 4 - Detail of Military Personnel Entitlements	
Budget Activity One: Unit and Individual Training .....	33
Pay Group A .....	43
Pay Group F .....	50
Pay Group D - Individual Mob. Augmentees .....	50

DEPARTMENT OF THE NAVY  
RESERVE PERSONNEL, NAVY

JUSTIFICATION OF ESTIMATES FOR FISCAL YEARS 1988 AND 1989

TABLE OF CONTENTS

	<u>Page</u>
Budget Activity Two: Other Training and Support	
Mobilization Training	57
School Training	65
Special Training	70
Administration and Support	76
Education Benefits	90
Senior ROTC	91
Scholarship ROTC	97
ROC and AVROC Programs	104
Health Professions Scholarship Program	108
Junior ROTC	112
Section 5 - Special Analyses	
Reserve Officer Candidates (ROTC Enrollment)	116
Reserve Officer Candidates (ROTC) Program	117
Reserve Officer Candidates (ROC/AVROC Enrollment)	118

SECTION 1 - SUMMARY OF REQUIREMENTS BY BUDGET PROGRAM

Accession For	
NTIS GRANT	<input checked="" type="checkbox"/>
DTIC TAB	
Unannounced	
Justification	
BY -	
DATE	

A1



RESERVE PERSONNEL, NAVY

SUMMARY OF REQUIREMENTS BY BUDGET PROGRAM  
(Amount in Thousands)

Budget Activity	FY 1986 (Actual)	FY 1987 (Estimate)	FY 1988 (Estimate)	FY 1989 (Estimate)
<b>DIRECT PROGRAM</b>				
Unit and Individual Training	668,325	612,785	663,286	693,285
Other Training and Support	668,991	784,235	852,894	877,915
<b>TOTAL Direct Program</b>	<b>\$1,329,316</b>	<b>\$1,397,020</b>	<b>\$1,516,180</b>	<b>\$1,571,200</b>
<b>REIMBURSABLE PROGRAM</b>				
Unit and Individual Training	\$389	\$400	\$400	\$400
Other Training and Support	\$389	\$400	\$400	\$400
<b>TOTAL Reimbursable Program</b>	<b>\$778</b>	<b>\$800</b>	<b>\$800</b>	<b>\$800</b>
Unit and Individual Training	668,634	613,185	663,686	693,685
Other Training and Support	668,991	784,235	852,894	877,915
<b>TOTAL Program</b>	<b>\$1,329,625</b>	<b>\$1,397,420</b>	<b>\$1,516,580</b>	<b>\$1,571,600</b>

Note: FY 1987 column includes \$2,128 thousand requested in the program supplemental.

SECTION 2 - INTRODUCTION



## Reserve Personnel, Navy

### Introduction

The purpose of the Naval Reserve components is to provide trained units and qualified personnel for active duty in the armed forces in time of war, or national emergency, and at such other times as the national security requires. These components also fill the needs of the armed forces whenever more units and persons are needed than are in the regular components to achieve the planned mobilization. The major management objectives used in developing the manpower program, which is the basis for computing the Reserve Personnel, Navy appropriation are as follows:

- a. Provide a Naval Reserve component, as a part of a total force of the U.S. Navy, which is to be prepared to conduct prompt and sustained combat operations at sea in support of U.S. National interests and to assure continued wartime superiority for the United States. That function prescribed in the U.S. Navy's mission for sustained combat operations at sea becomes the responsibility of the Reserve Forces to enhance the total force to provide the capacity for sustained operations.
- b. Adequately man the approved force structure with properly trained personnel, keeping operating strength deviations (over/undermanning) within manageable levels.
- c. Achieve and maintain the officer and enlisted grade structures necessary to support force structure requirements while meeting personnel management goals.
- d. Improve retention, increase re-enlistments and optimize prior service enlistments.

The FY 1988 Reserve Personnel, Navy budget of \$1,516,100 thousand will support a selected reserve strength of 157,400 personnel in a paid status.

The FY 1989 Reserve Personnel, Navy budget of \$1,571,200 thousand will support a selected reserve end strength of 161,700 personnel in a paid status.

SECTION 3 - SUMMARY TABLES

SUMMARY OF PERSONNEL  
RESERVE PERSONNEL, NAVY

PERSONNEL IN PAID STATUS	NO. OF ACQUITRA DRILLS DAYS	NO. OF	FY 1986 (ACTUAL)		FY 1987 (ESTIMATE)		FY 1988 (ESTIMATE)		FY 1989 (ESTIMATE)	
			AVG	END	AVG	END	AVG	END	AVG	END
Unit and Individual Training										
Pay Group A - Officers	14	14	21,818	22,810	23,201	24,900	25,554	26,620	26,671	26,748
Pay Group A - Enlisted	14	14	90,500	94,283	96,232	98,920	101,153	103,345	104,093	106,250
Subtotal Pay Group A			<u>112,398</u>	<u>117,093</u>	<u>119,433</u>	<u>123,820</u>	<u>126,707</u>	<u>129,965</u>	<u>130,764</u>	<u>132,998</u>
Pay Group D-IMA - Officers	14	14	112	112	314	314	406	406	308	308
Pay Group D-IMA - Enlisted	14	14	0	0	50	50	50	50	50	50
Subtotal Pay Group D-IMA			<u>112</u>	<u>112</u>	<u>374</u>	<u>374</u>	<u>456</u>	<u>456</u>	<u>448</u>	<u>448</u>
Pay Group F - Officers			105	113	209	323	557	690	763	815
Pay Group F - Enlisted			3,785	5,795	3,166	3,493	3,156	3,774	3,121	3,774
Subtotal Pay Group F			<u>3,890</u>	<u>5,908 *</u>	<u>3,375</u>	<u>3,816</u>	<u>3,713</u>	<u>4,464</u>	<u>3,824</u>	<u>4,589</u>
Subtotal Paid Drill/Individual Training			<u>116,400</u>	<u>123,113</u>	<u>123,182</u>	<u>128,010</u>	<u>130,866</u>	<u>134,895</u>	<u>135,036</u>	<u>138,035</u>
Full-time Active Duty										
Officers			1,843	1,942	2,103	2,276	2,335	2,330	2,382	2,349
Enlisted			15,397	16,449	17,744	19,200	19,575	20,175	20,636	21,316
Subtotal Full-time			<u>17,240</u>	<u>18,391</u>	<u>19,847</u>	<u>21,476</u>	<u>21,910</u>	<u>22,505</u>	<u>23,018</u>	<u>23,665</u>
Total Selected Reserve			<u>133,640</u>	<u>141,504</u>	<u>143,029</u>	<u>149,486</u>	<u>152,796</u>	<u>157,400</u>	<u>158,054</u>	<u>161,700</u>

\* FY 1986 PAY GROUP F END STRENGTH SHOWN IN THE RESERVE COMPONENT COMMON PERSONNEL DATA SYSTEM (RCCPDS) WAS 5,908  
RCCPDS INCORRECTLY INCLUDED ALL PAY GROUP F OFFICERS WITHIN THE PAY GROUP F ENLISTED TOTAL.

SUMMARY OF PERSONNEL  
RESERVE PERSONNEL, NAVY

PERSONNEL IN PAID STATUS	NO. OF ACQUITRA DRILLS DAYS	NO. OF	FY 1986 (ACTUAL)		FY 1987 (ESTIMATE)		FY 1988 (ESTIMATE)		FY 1989 (ESTIMATE)	
			AVG	END	AVG	END	AVG	END	AVG	END
Pre-trained Personnel										
Individual Ready Reserve										
Officers			17,086	17,086	19,010	19,010	20,825	20,825	23,050	23,050
Enlisted			56,728	56,728	66,775	66,775	75,875	75,875	84,160	84,160
Subtotal Pre-trained Personnel			73,814	73,814	85,785	85,785	96,700	96,700	107,210	107,210
Total Naval Reserve			207,454	215,318	228,814	235,271	249,496	254,100	265,264	268,910

RESERVE PERSONNEL, NAVY  
RESERVE COMPONENT PERSONNEL, ON TOURS OF ACTIVE DUTY  
STRENGTH BY GRADE

	FY 1986		FY 1987		FY 1988		FY 1989	
	AVG	END	AVG	END	AVG	END	AVG	END
OFFICERS								
O-8 Rear Admrl.	1	2	2	2	1	1	1	1
O-7 Rear Admrl.	2	2	1	1	1	1	2	2
O-6 Captain	154	147	153	152	173	165	186	177
O-5 Commander	404	367	374	366	377	368	386	362
O-4 Lt. Commander	524	654	708	743	790	809	852	864
O-3 Lieutenant	553	677	761	834	861	881	848	822
O-2 Lieutenant (jg)	86	73	62	68	82	73	76	75
O-1 Ensign	16	18	8	22	23	23	22	23
	1	0	1	1	1	1	1	1
	1	0	1	1	1	1	1	1
	1	1	1	1	1	1	1	1
TOTAL OFFICER PERSONNEL ON ACTIVE DUTY	1,843	1,942	2,103	2,276	2,335	2,330	2,382	2,349

	FY 1986		FY 1987		FY 1988		FY 1989	
	AVG	END	AVG	END	AVG	END	AVG	END
ENLISTED								
E-9	142	146	144	157	156	160	165	170
E-8	339	360	382	384	385	389	399	410
E-7	1,412	1,467	1,562	1,675	1,709	1,760	1,820	1,879
E-6	4,128	4,413	4,603	4,715	4,765	4,901	5,046	5,208
E-5	4,562	4,657	4,874	5,115	5,178	5,263	5,343	5,460
E-4	1,654	1,616	1,901	2,301	2,287	2,441	2,564	2,699
E-3	1,365	1,638	1,975	2,396	2,563	2,671	2,618	2,668
E-2	892	1,103	1,295	1,331	1,497	1,488	1,567	1,608
E-1	903	1,049	1,008	1,126	1,035	1,102	1,114	1,214
TOTAL ENLISTED PERSONNEL ON ACTIVE DUTY	15,397	16,449	17,744	19,200	19,575	20,175	20,636	21,316

FY 1989 STRENGTH PLAN

	PAY GROUP A/Q		PAY GROUP F/U		PAY GROUP D-1MA		TOTAL SELECTED RESERVE
	OFFICERS	ENLISTED	OFFICERS	ENLISTED	OFFICERS	ENLISTED	
30 SEP	26,620	103,345	690	3,774	406	60	157,400
31 OCT	26,615	102,906	684	3,484	388	60	156,706
30 NOV	26,626	102,685	678	2,970	388	60	156,015
31 DEC	26,636	102,964	672	2,774	388	60	156,147
31 JAN	26,648	103,329	666	2,628	388	60	156,475
28 FEB	26,663	103,822	660	2,589	388	60	157,063
31 MAR	26,671	104,100	654	2,479	388	60	157,386
30 APR	26,680	104,402	648	2,433	388	60	157,779
31 MAY	26,690	104,603	700	2,633	388	60	158,296
30 JUN	26,700	104,716	735	4,030	388	60	160,009
31 JUL	26,713	105,178	762	4,141	388	60	160,726
30 AUG	26,726	105,615	789	3,515	388	60	160,626
30 SEP	26,748	106,250	815	3,774	388	60	161,700
AVERAGE	26,671	104,093	703	3,121	388	60	158,054

FY 1988 STRENGTH PLAN

	PAY GROUP A/D		PAY GROUP F/U		PAY GROUP D-IMA		TOTAL	FULL-TIME ACTIVE DUTY	TOTAL SELECTED RESERVE
	OFFICERS	ENLISTED	OFFICERS	ENLISTED	OFFICERS	ENLISTED			
30 SEP	24,900	90,920	323	3,493	3,816	314	374	21,476	149,486
31 OCT	24,700	99,280	370	3,270	3,640	406	466	21,523	149,617
30 NOV	24,000	99,661	417	2,940	3,357	406	466	21,554	149,838
31 DEC	24,982	100,034	464	2,867	3,331	406	466	21,582	150,395
31 JAN	25,164	100,407	511	2,785	3,296	406	466	21,682	151,015
29 FEB	25,346	100,780	558	2,763	3,321	406	466	21,789	151,702
31 MAR	25,528	101,153	605	2,483	3,088	406	466	21,927	152,162
30 APR	25,710	101,526	620	2,461	3,081	406	466	22,011	152,794
31 MAY	25,892	101,899	635	2,684	3,319	406	466	22,079	153,655
30 JUN	26,074	102,284	650	4,110	4,760	406	466	22,225	155,009
31 JUL	26,256	102,657	665	4,239	4,904	406	466	22,313	156,596
30 AUG	26,436	103,018	680	3,637	4,317	406	466	22,369	156,686
30 SEP	26,620	103,345	690	3,774	4,464	406	466	22,505	157,400
AVERAGE	25,554	101,153	557	3,156	3,713	406	466	21,910	152,796

FY 1967 STRENGTH PLAN \*

	PAY GROUP A/B		PAY GROUP F/U		PAY GROUP D-1MA		TOTAL		SUBTOTAL	OFFICERS		TOTAL		FULL-TIME ACTIVE DUTY	TOTAL SELECTED RESERVE
	OFFICERS	ENLISTED	OFFICERS	ENLISTED	OFFICERS	ENLISTED	OFFICERS	ENLISTED		OFFICERS	ENLISTED	OFFICERS	ENLISTED		
30 SEP	22,810	94,283	113	5,795	5,908	112	112	123,001	112	0	112	18,391	141,304		
31 OCT	22,468	94,413	115	5,261	5,376	116	117	122,257	116	1	117	18,641	141,015		
30 NOV	22,557	94,911	114	4,878	4,904	124	125	122,452	124	1	125	18,823	141,408		
31 DEC	22,653	95,582	124	4,581	4,625	124	125	122,868	124	1	125	18,921	141,822		
31 JAN	22,712	95,181	135	2,987	3,062	314	374	121,935	314	68	374	19,231	141,568		
28 FEB	22,698	95,895	187	1,522	1,789	314	374	121,294	314	68	374	19,514	141,182		
31 MAR	22,849	95,861	178	1,531	1,789	314	374	120,619	314	68	374	19,848	140,833		
30 APR	23,198	95,336	189	1,532	1,721	314	374	121,247	314	68	374	20,123	141,744		
31 MAY	23,465	95,413	241	1,865	2,106	314	374	121,904	314	68	374	20,361	142,719		
30 JUN	23,656	95,229	326	3,122	3,448	314	374	123,373	314	68	374	20,691	144,438		
31 JUL	23,874	95,987	332	3,341	3,673	314	374	124,454	314	68	374	20,961	145,789		
30 AUG	24,483	94,235	329	2,897	3,226	314	374	125,884	314	68	374	21,174	147,432		
30 SEP	24,988	94,928	323	3,493	3,816	314	374	127,636	314	68	374	21,476	149,486		
AVERAGE	23,281	95,232	289	3,166	3,375	314	374	122,888	314	68	374	19,847	143,829		

\* Reflects actual data through 31 December 1966



FY 1986 STRENGTH PLAN

	PAY GROUP A/O		PAY GROUP F/U		SUBTOTAL	OFFICERS	PAY GROUP D-IMA	FULL-TIME	TOTAL	SELECTED
	OFFICERS	ENLISTED	OFFICERS	ENLISTED						
30 SEP	21,591	85,358	72	3,831	114,892	121	0	15,012	121	138,825
31 OCT	21,143	85,655	88	3,982	114,909	112	0	16,016	112	131,828
30 NOV	21,088	85,976	104	3,797	114,875	112	0	16,244	112	131,231
31 DEC	21,212	88,211	185	3,589	115,837	112	0	16,468	112	131,617
31 JAN	21,488	89,871	181	3,598	114,962	112	0	16,698	112	131,772
29 FEB	21,626	89,893	185	3,785	115,329	112	0	17,165	112	132,686
31 MAR	21,881	90,086	98	3,345	115,259	112	0	17,385	112	132,747
30 APR	21,953	90,126	182	3,226	115,487	112	0	17,710	112	133,229
31 MAY	22,879	90,354	118	3,288	115,839	112	0	17,917	112	133,858
30 JUN	22,331	90,884	114	3,919	117,168	112	0	18,826	112	135,386
31 JUL	22,429	91,249	122	4,387	118,187	112	0	18,167	112	136,466
30 AUG	22,557	92,927	115	3,955	119,554	112	0	18,334	112	138,889
30 SEP	22,810	94,283	113	5,795	123,881	112	0	18,391	112	141,584
AVERAGE	21,818	90,588	185	3,785	116,288	112	0	17,240	112	133,648

**SCHEDULE OF GAINS AND LOSSES TO PAID SELECTED RESERVE STRENGTH**

OFFICERS

	<u>FY 1986 (Actual)</u>	<u>FY 1987 (Estimate)</u>	<u>FY 1988 (Estimate)</u>	<u>FY 1989 (Estimate)</u>
Beginning Strength:	21,663	22,923	25,223	27,310
<b>GAINS:</b>				
Nonprior Service Personnel: (ADTC Graduates included)				
Male	1,092	965	1,263	1,495
Female	163	135	172	205
Prior Service Personnel:				
Civilian Life	106	150	146	92
Active Component	144	204	198	125
Enlisted Commissioning Programs	192	272	263	166
Other Reserve Status/Component	3,634	5,094	4,939	3,110
<b>TOTAL Gains</b>	<b>5,331</b>	<b>6,820</b>	<b>6,981</b>	<b>5,193</b>
<b>LOSSES:</b>				
Civilian Life	52	57	62	63
Active Component	125	139	150	152
Retired Reserve	42	47	51	51
Other Reserve Status/Component	3,852	4,277	4,631	4,674
<b>TOTAL Losses</b>	<b>4,071</b>	<b>4,520</b>	<b>4,894</b>	<b>4,940</b>
<b>END STRENGTH</b>	<b>22,923</b>	<b>25,223</b>	<b>27,310</b>	<b>27,563</b>

SCHEDULE OF GAINS AND LOSSES TO PAID SELECTED RESERVE STRENGTH

ENLISTED

	<u>FY 1986 (Actual)</u>	<u>FY 1987 (Estimate)</u>	<u>FY 1988 (Estimate)</u>	<u>FY 1989 (Estimate)</u>
Beginning Strength:	93,229	100,078	102,413	107,119
<b>GAINS:</b>				
Nonprior Service Personnel:				
Male	6,600	5,418	5,418	5,418
Female	2,200	1,582	1,582	1,582
Prior Service Personnel:				
Civilian Life	5,318	6,364	7,283	7,862
Active Component	4,018	4,799	5,491	5,325
Other Reserve Status/Component	13,113	15,626	17,838	17,316
Reenlistment/Extension	16,439	17,225	17,824	18,473
<b>TOTAL Gains</b>	<b>47,600</b>	<b>51,014</b>	<b>55,436</b>	<b>55,176</b>
<b>LOSSES:</b>				
Expiration of Selected Reserve Service:				
Active Component	2,110	2,721	2,846	2,924
To Officer Status	167	215	225	231
Reenlistment/Extensions	16,439	17,225	17,824	18,473
Retired Reserve	200	258	270	277
Other Reserve Status/Component	15,788	20,359	21,299	21,876
Attrition	6,127	7,981	8,266	8,498
<b>TOTAL Losses</b>	<b>40,631</b>	<b>48,679</b>	<b>50,730</b>	<b>52,271</b>
<b>END STRENGTH</b>	<b>100,078</b>	<b>102,413</b>	<b>107,119</b>	<b>110,824</b>

**SUMMARY OF ENTITLEMENTS BY ACTIVITY AND SUBJECTIVITY**  
(Amount in Thousands)

	FY 1986 (Actual)		FY 1987 (Estimate)		FY 1988 (Estimate)		FY 1989 (Estimate)	
	Officer	Enlisted	Officer	Enlisted	Officer	Enlisted	Officer	Enlisted
<b>UNIT AND INDIVIDUAL TRAINING</b>								
<b>AW GROUP A TRAINING</b>								
Active Duty Training	949,739	971,005	948,005	965,010	911,023	952,688	954,005	971,002
Inactive Duty Training	169,694	225,382	151,905	207,642	359,547	166,578	172,327	224,047
Unit Training Assemblies	145,921	219,555	137,644	202,351	348,205	159,017	155,056	219,182
Flight Training	13,472	2,622	13,097	2,479	15,576	14,469	15,123	2,696
Training Preparation	1,211	2,005	1,164	2,002	3,766	1,232	1,348	2,959
Civil Disturbance								
Jump Proficiency								
Clothing	564	11,355	598	6,605	7,203	668	688	7,733
Subsistence of Enl. Personnel		7,246		7,788		8,735		9,341
Travel	22,672	62,546	25,129	66,399	71,629	28,238	39,121	53,282
<b>TOTAL DIRECT OBLIGATIONS</b>	<b>1233,570</b>	<b>1358,334</b>	<b>1225,628</b>	<b>1333,353</b>	<b>1659,181</b>	<b>1248,156</b>	<b>1258,021</b>	<b>1366,255</b>
<b>AW GROUP F TRAINING</b>								
Active Duty Training	92,997	651,639	94,799	635,062	648,661	612,667	615,949	635,278
Clothing	81	4,511	128	4,268	4,388	356	451	5,000
Subsistence of Enl. Personnel	57	3,301	68	2,982	2,970	135	248	3,039
Travel	284	3,913	1,153	3,273	4,426	3,179	4,153	3,457
<b>TOTAL DIRECT OBLIGATIONS</b>	<b>93,419</b>	<b>663,464</b>	<b>96,148</b>	<b>646,297</b>	<b>652,445</b>	<b>616,337</b>	<b>620,061</b>	<b>646,774</b>
<b>AW GROUP B-DIA TRAINING</b>								
Active Duty Training	91,094	9132	9035	966	991	91,182	91,038	967
Clothing	7	6	16	7	23	18	18	7
Subsistence of Enl. Personnel		3		3	3	3	3	3
Travel	248	28	217	15	232	284	274	15
<b>TOTAL DIRECT OBLIGATIONS</b>	<b>91,349</b>	<b>9169</b>	<b>91,068</b>	<b>991</b>	<b>91,159</b>	<b>91,484</b>	<b>91,342</b>	<b>992</b>
<b>TOTAL UNIT AND INDIVIDUAL TRAINING</b>	<b>1238,378</b>	<b>1421,947</b>	<b>1222,844</b>	<b>1337,941</b>	<b>1612,765</b>	<b>1235,897</b>	<b>1239,164</b>	<b>1413,121</b>
<b>INDIVIDUAL TRAINING</b>								
<b>TOTAL DIRECT OBLIGATIONS</b>								
<b>TOTAL UNIT AND INDIVIDUAL TRAINING</b>								

**SUMMARY OF ENTITLEMENTS BY ACTIVITY AND SUBJECTIVITY**  
(Amount in Thousands)

	FY 1985 (Actual)		FY 1987 (Estimate)		FY 1988 (Estimate)		FY 1989 (Estimate)	
	Officer	Total	Officer	Total	Officer	Total	Officer	Total
<b>OTHER TRAINING AND SUPPORT</b>								
<b>MOBILIZATION TRAINING</b>								
Active Duty Training	92,679	93,344	92,575	94,329	92,592	97,776	92,732	94,835
Clothing	39	65	17	34	17	36	18	53
Substance of Enl. Personnel	21	21	29	29	31	31	46	46
Trevel	613	655	679	2,146	689	4,251	735	4,399
Merchant Marine Training	1,000	1,000	1,002	1,002	1,000	1,000	1,004	1,004
<b>TOTAL DIRECT ENTITLEMENTS</b>	<b>95,201</b>	<b>95,173</b>	<b>95,114</b>	<b>96,529</b>	<b>95,177</b>	<b>912,694</b>	<b>95,399</b>	<b>912,514</b>
<b>SCHOOL TRAINING</b>								
Initial Skill Acquisition	91,600	91,600	91,757	91,757	91,681	91,681	91,677	91,677
Refresher and Proficiency	1,601	3,042	2,739	3,004	2,964	3,254	2,987	3,379
Career Development	206	1,409	1,191	1,212	1,263	1,311	1,289	1,356
Unit Commensal	237	533	400	397	438	431	436	447
Continuing Medical Education	994	994	1,072	1,072	2,168	588	2,445	512
<b>TOTAL DIRECT ENTITLEMENTS</b>	<b>95,808</b>	<b>98,328</b>	<b>97,957</b>	<b>94,613</b>	<b>94,734</b>	<b>95,594</b>	<b>99,834</b>	<b>95,694</b>
<b>SPECIAL TRAINING</b>								
Exercises	63,369	94,951	91,056	9761	91,214	9810	91,243	9877
Conferences and Visits	1,277	1,468	838	133	945	126	939	139
Operational Training	4,644	6,345	2,534	1,353	2,659	1,484	2,824	1,685
Management Support	3,769	5,517	2,728	1,477	2,879	1,687	3,104	1,779
Service Rotation/Rotation Support	6,283	9,638	3,409	2,738	3,831	2,925	3,798	3,168
Competitive Events	541	694	342	143	386	151	383	163
Unit Conversion Training	841	1,128	531	256	683	287	598	295
Additional RECAP/REU/Extended RECAP/REU		1,079		1,042		1,114		1,207
<b>TOTAL DIRECT ENTITLEMENTS</b>	<b>82,894</b>	<b>110,121</b>	<b>111,421</b>	<b>97,953</b>	<b>112,717</b>	<b>98,594</b>	<b>112,881</b>	<b>99,225</b>
<b>TOTAL</b>	<b>178,005</b>	<b>195,501</b>	<b>206,535</b>	<b>194,482</b>	<b>207,894</b>	<b>197,288</b>	<b>212,115</b>	<b>194,919</b>

**SUMMARY OF ENTITLEMENTS BY ACTIVITY AND SUBJECTIVITY**  
(Amount in Thousands)

	FY 1986 (Actual)		FY 1987 (Estimate)		FY 1988 (Estimate)		FY 1989 (Estimate)	
	Officer	Total	Officer	Total	Officer	Total	Officer	Total
<b>ADMINISTRATION AND SUPPORT</b>								
Active Duty	128,683	948,878	111,284	9478,953	1155,544	9524,374	9549,783	9788,829
Subsistence	27,461	27,461	32,445	32,445	36,281	36,281	38,287	38,287
Travel	4,234	12,888	5,467	15,289	5,535	14,854	6,262	17,232
Health Gratuities/ Disability and Hospitalization Benefits	424	982	285	621	388	732	486	784
Reserve Incentives	716	7,139	1,148	9,428	1,112	10,876	1,188	14,388
<b>TOTAL DIRECT OBLIGATIONS</b>	<b>116,857</b>	<b>942,188</b>	<b>118,176</b>	<b>953,656</b>	<b>1162,579</b>	<b>9587,117</b>	<b>9628,894</b>	<b>9787,128</b>
<b>EDUCATION BENEFITS-G. I. BILL</b>								
Benefits Accrual		118,377		119,828		114,548		114,548
<b>SENIOR ROTC</b>								
Subsistence Allowance	944	944	9475	9475	9484	9484	9489	9489
Uniforms, Issue-In-Kind	986	986	917	917	846	846	848	848
Uniforms, Commutation	238	238	251	251	251	251	251	251
Pay & Allowances (Summer Trg)	361	361	372	372	376	376	379	379
Travel	258	258	274	274	283	283	293	293
<b>TOTAL DIRECT OBLIGATIONS</b>	<b>92,227</b>	<b>92,227</b>	<b>92,289</b>	<b>92,289</b>	<b>92,168</b>	<b>92,168</b>	<b>92,188</b>	<b>92,188</b>
<b>SCHOLARSHIP ROTC</b>								
Subsistence Allowance	97,215	97,215	97,473	97,473	97,447	97,447	97,447	97,447
Uniforms, Issue-In-Kind	2,166	2,166	2,293	2,293	2,388	2,388	2,472	2,472
Uniforms, Commutation	334	334	312	312	312	312	312	312
Pay & Allowances (Summer Trg)	3,742	3,742	3,819	3,819	3,881	3,881	3,878	3,878
Travel	3,797	3,797	3,839	3,839	4,086	4,086	4,124	4,124
<b>TOTAL DIRECT OBLIGATIONS</b>	<b>917,254</b>	<b>917,254</b>	<b>917,736</b>	<b>917,736</b>	<b>918,826</b>	<b>918,826</b>	<b>918,225</b>	<b>918,225</b>

**SUMMARY OF ENTITLEMENTS BY ACTIVITY AND SUBJECTIVITY**  
(Amount in Thousands)

	FY 1986 (Actual)		FY 1987 (Estimate)		FY 1988 (Estimate)		FY 1989 (Estimate)	
	Officer	Total	Officer	Total	Officer	Total	Officer	Total
<b>REC/AMIC PROGRAM</b>								
Uniforms, Issuer-In-Kind			9128	9128	9132	9132	9137	9137
Pay & Allowances (Summer Trng)			782	782	777	777	771	771
Subsistence			46	46	49	49	51	51
Travel			136	136	141	141	146	146
<b>TOTAL DIRECT OBLIGATIONS</b>			<b>91,092</b>	<b>91,092</b>	<b>91,099</b>	<b>91,099</b>	<b>91,105</b>	<b>91,105</b>
<b>ARMED FORCES HEALTH PROFESSIONS SCHOLARSHIP PROGRAM</b>								
Stipend	96,742	96,742	96,599	96,599	96,379	96,379	96,275	96,275
Uniform Allowance	61	61	65	65	61	61	60	60
Active Duty Training	4,198	4,198	3,679	3,679	3,627	3,627	3,604	3,604
Travel	1,811	1,811	1,965	1,965	1,968	1,968	1,977	1,977
<b>TOTAL DIRECT OBLIGATIONS</b>	<b>102,604</b>	<b>102,604</b>	<b>102,428</b>	<b>102,428</b>	<b>102,035</b>	<b>102,035</b>	<b>101,916</b>	<b>101,916</b>
<b>JUNIOR ROTC</b>								
Uniforms, Issuer-In-Kind	92,568	92,568	92,441	92,441	92,328	92,328	92,614	92,614
<b>TOTAL OTHER TRAINING &amp; SUPPORT</b>	<b>9191,893</b>	<b>9477,898</b>	<b>9298,664</b>	<b>9575,571</b>	<b>9225,653</b>	<b>9627,839</b>	<b>9647,667</b>	<b>9877,915</b>
<b>TOTAL DIRECT PROGRAM</b>	<b>9438,271</b>	<b>9899,845</b>	<b>9441,588</b>	<b>9953,512</b>	<b>9498,952</b>	<b>91,025,148</b>	<b>9318,412</b>	<b>91,868,788</b>
								<b>91,571,288</b>

**ANALYSIS OF APPROPRIATION CHANGES AND SUPPLEMENTAL REQUIREMENTS  
RESERVE PERSONNEL, NAVY  
FY 1987**

(\$ in Thousands)

Unit and Individual Training	FY 1987 President's Budget	Congres- sional Action	Pay Raise Approp.	Appropriation	Internal Realignment/ Reprogramming	Subtotal	Prog. Supp. Pay Raise	FY 1987 Column FY 1988-89 President's Budget
<b>Pay Group A</b>								
Active Duty Training	132,100	-19,854	2,314	114,560	-1,699	112,861	162	113,023
Inactive Duty Training	425,075	-75,337	9,721	359,459	-595	358,864	683	359,547
Unit Training Assemblies	402,611	-70,570	9,244	341,285	-1,729	339,556	649	340,205
Flight Training	18,043	-3,775	379	14,647	+502	15,549	27	15,576
Training Preparation	4,421	-992	98	3,527	+232	3,759	7	3,766
Clothing	9,377	-119		9,258	-2,055	7,203		7,203
Subsistence of Enlisted Personnel	7,896	-127		7,769	+19	7,788		7,788
Travel	68,294	-1,479		66,815	+4,805	71,620		71,620
<b>TOTAL DIRECT OBLIGATIONS</b>	<b>642,742</b>	<b>-96,916</b>	<b>12,035</b>	<b>557,861</b>	<b>+475</b>	<b>558,336</b>	<b>845</b>	<b>559,181</b>
<b>Pay Group F</b>								
Active Duty Training	61,344	-13,259	1,020	49,105	-6,516	40,589	72	40,661
Clothing	6,272	-59		6,213	-1,625	4,368		4,368
Subsistence of Enlisted Personnel	3,798	-30		3,768	-798	2,970		2,970
Travel	6,467	-687		5,780	-1,354	4,426		4,426
<b>TOTAL DIRECT OBLIGATIONS</b>	<b>77,881</b>	<b>-14,035</b>	<b>1,020</b>	<b>64,866</b>	<b>-12,493</b>	<b>52,373</b>	<b>72</b>	<b>52,445</b>
<b>Pay Group D-IMA</b>								
Active Duty Training	1,101	-553	20	568	+333	901		901
Clothing	22	-9		13	+10	23		23
Subsistence of Enlisted Personnel	3	-2		1	+2	3		3
Travel	206	-75		131	+101	232		232
<b>TOTAL DIRECT OBLIGATIONS</b>	<b>1,332</b>	<b>-639</b>	<b>20</b>	<b>713</b>	<b>+446</b>	<b>1,159</b>		<b>1,159</b>
<b>TOTAL UNIT AND INDIVIDUAL TRAINING</b>	<b>721,955</b>	<b>-111,590</b>	<b>13,075</b>	<b>623,440</b>	<b>-11,572</b>	<b>611,868</b>	<b>917</b>	<b>612,785</b>



**ANALYSIS OF APPROPRIATION CHANGES AND SUPPLEMENTAL REQUIREMENTS  
RESERVE PERSONNEL, NAVY  
FY 1987  
(\$ in Thousands)**

	FY 1987 President's Budget	Congres- sional Action	Pay Raise Approp.	Appropriation	Internal Realignment/ Reprogramming	Subtotal	Prog. Supp. Pay Raise	FY 1987 Column FY 1988-89 President's Budget
<b>Other Training and Support</b>								
Mobilization Training	5,207	-3,088	77	2,196	+760	2,956	4	2,960
Active Duty Training	64	-16		48	+3	51		51
Clothing								
Subsistence of Enlisted Personnel	14	-4		10	+19	29		29
Travel	1,155	-407		748	+217	965		965
Merchant Marine Training of IRR Personnel	2,037	-645	31	1,423	+429	1,852		1,852
	10,413	-7,783	32	2,662	+3,124	5,786		5,786
<b>TOTAL DIRECT OBLIGATIONS</b>	<b>18,890</b>	<b>-11,943</b>	<b>140</b>	<b>7,087</b>	<b>+4,552</b>	<b>11,639</b>	<b>4</b>	<b>11,643</b>
<b>School Training</b>								
<b>INITIAL SKILL Acquisi- tion Training</b>	1,905	-130	27	1,802	-45	1,757		1,757
Refresher and Proficiency	7,039	-1,329	162	5,872	-152	5,720	23	5,743
Career Development Training	2,942	-559	74	2,457	-58	2,399	4	2,403
Unit Conversion	983	-187	18	814	-9	805		805
Continuing Medical Education	2,297	-433	41	1,905	-33	1,872		1,872
<b>TOTAL DIRECT OBLIGATIONS</b>	<b>15,166</b>	<b>-2,638</b>	<b>322</b>	<b>12,850</b>	<b>-297</b>	<b>12,553</b>	<b>27</b>	<b>12,580</b>
<b>Special Training</b>								
<b>Exercises</b>	3,905	-2,046	40	1,899	-82	1,817		1,817
Conferences and Visits	1,040	-141	21	920	+51	971		971
Operational Training	4,213	-513	103	3,803	+108	3,911	16	3,927
Management Support	4,573	-488	119	4,204	-23	4,181	16	4,197
Service Mission/Support	6,602	-609	184	5,977	+141	6,118	20	6,138
Competitive Events	522	-63	11	470	+15	485		485
Unit Conversion Training	858	-106	18	770	+27	797		797
Additional/Extended ACDUTRA	1,107	-130	23	1,000	+42	1,042		1,042
<b>TOTAL DIRECT OBLIGATIONS</b>	<b>22,820</b>	<b>-4,296</b>	<b>519</b>	<b>19,043</b>	<b>+279</b>	<b>19,322</b>	<b>52</b>	<b>19,374</b>

ANALYSIS OF APPROPRIATION CHANGES AND SUPPLEMENTAL REQUIREMENTS  
RESERVE PERSONNEL, NAVY  
FY 1987  
(\$ in Thousands)

	FY 1987 President's Budget	Congres- sional Action	Pay Raise Approp.	Appropriation	Internal Realignment/ Reprogramming	Subtotal	Prog. Supp. Pay Raise	FY 1987 Column FY 1988-89 President's Budget
<u>Other Training and Support</u>								
<u>Administration and Support</u>								
Active Duty	625,274	-27,119	14,344	612,499	+6,636	619,135	1,102	620,237
Subsistence of Enlisted	33,541	-1,729	689	32,501	-56	32,445		32,445
Personnel	22,921	-2,245		20,676	-	20,676		20,676
Travel								
Death Gratuities.								
Disability and Hospit- alization Benefits	1,506			1,506	-600	906		906
Reserve Incentives	12,081			12,081	-1,513	10,568		10,568
<b>TOTAL DIRECT OBLIGATIONS</b>	<b>695,323</b>	<b>-31,093</b>	<b>15,033</b>	<b>679,263</b>	<b>+4,467</b>	<b>683,730</b>	<b>1,102</b>	<b>684,832</b>
<u>Education Benefits - GI Bill</u>								
Benefits Accrued	17,080			17,080	+2,740	19,820		19,820
<u>Senior ROTC</u>								
Subsistence Allowance	525			525	-50	475		475
Uniforms, Issue-In-Kind	1,065			1,065	-148	917		917
Uniforms, Commutation	474			474	-223	251		251
Pay & Allowances (Summer Training)	363		9	372	-68	304		304
Subsistence-In-Kind	71			71	-3	68		68
Travel	320			320	-46	274		274
<b>TOTAL DIRECT OBLIGATIONS</b>	<b>2,818</b>		<b>9</b>	<b>2,827</b>	<b>-538</b>	<b>2,289</b>		<b>2,289</b>
<u>Scholarship ROTC</u>								
Subsistence Allowance	7,619			7,619	-146	7,473		7,473
Uniforms, Issue-In-Kind	2,439			2,439	-146	2,293		2,293
Uniforms, Commutation	245			245	+67	312		312
Pay & Allowances (Summer Training)	2,962		84	3,046	+98	3,144	8	3,152
Subsistence-In-Kind	507			507	+160	667		667
Travel	3,874			3,874	-35	3,839		3,839
<b>TOTAL DIRECT OBLIGATIONS</b>	<b>17,646</b>		<b>84</b>	<b>17,730</b>	<b>-2</b>	<b>17,728</b>	<b>8</b>	<b>17,736</b>

ANALYSIS OF APPROPRIATION CHANGES AND SUPPLEMENTAL REQUIREMENTS  
RESERVE PERSONNEL, NAVY  
FY 1987  
(\$ in Thousands)

	FY 1987 President's Budget	Congres- sional Action	Pay Raise Approp.	Appropriation	Internal Realignment/ Reprogramming	Subtotal	Prog. Supp. Pay Raise	FY 1987 Column FY 1988-89 President's Budget
<u>Other Training and Support</u>								
Junior ROTC Uniforms, Issue-In-Kind	3,083			3,083	-642	2,441		2,441
ROC/AVROC Uniforms, Issue-In-Kind					+128	128		128
Pay & Allowances (Summer Training)					+782	782		782
Subsistence-In-Kind					+46	46		46
Travel					+136	136		136
<b>TOTAL DIRECT OBLIGATIONS</b>					+1,092	1,092		1,092
<u>Armed Forces Health Pro- fessions Scholarship Program Stipend</u>	6,638		177	6,815	-134	6,681	18	6,699
Uniform Allowance	65			65		65		65
Active Duty Training	4,131	-587	80	3,624	+55	3,679		3,679
Travel	1,985			1,985		1,985		1,985
<b>TOTAL DIRECT OBLIGATIONS</b>	12,819	-587	257	12,489	-79	12,410	18	12,428
<b>TOTAL OTHER TRAINING AND SUPPORT</b>	805,645	-50,557	16,364	771,452	+11,572	783,024	1,211	784,235
<b>TOTAL DIRECT PROGRAM</b>	1,527,600	-162,147	29,439	1,394,892	-	1,394,892	2,128	1,397,020
Amounts Applied to Finance Increased Costs								
Supplemental Request							2,128	

RESERVE PERSONNEL, NAVY  
SUMMARY OF BASIC PAY AND RETIRED PAY ACCRUAL COSTS  
(Amount in Thousands)

	FY 1986 (Actual)		FY 1987 (Estimate)		FY 1988 (Estimate)		FY 1989 (Estimate)	
	Basic	Retired	Basic	Retired	Basic	Retired	Basic	Retired
<b>Pay Group A</b>								
Officer	\$132,159	\$64,789	\$149,992	\$39,598	\$168,694	\$41,942	\$167,826	\$42,923
Enlisted	\$198,914	\$92,863	\$288,397	\$55,817	\$214,131	\$55,887	\$223,298	\$57,391
Subtotal	\$323,873	\$157,652	\$358,389	\$94,615	\$374,825	\$97,829	\$390,324	\$100,314
<b>Pay Group F</b>								
Officer	\$1,788	\$829	\$3,137	\$828	\$7,853	\$2,858	\$9,922	\$2,551
Enlisted	\$38,583	\$14,797	\$26,878	\$6,885	\$25,698	\$6,787	\$25,273	\$6,494
Subtotal	\$32,211	\$15,626	\$29,215	\$7,713	\$33,551	\$8,757	\$35,195	\$9,045
<b>Pay Group D</b>								
Officer	\$627	\$387	\$582	\$154	\$726	\$198	\$694	\$178
Enlisted	\$74	\$36	\$42	\$11	\$42	\$11	\$42	\$11
Subtotal	\$701	\$343	\$624	\$165	\$768	\$201	\$736	\$189
<b>Mobilization Training</b>								
Officer	\$2,389	\$1,166	\$2,566	\$677	\$2,585	\$674	\$2,692	\$693
Enlisted	\$369	\$188	\$4,348	\$1,148	\$5,873	\$1,324	\$5,248	\$1,349
Subtotal	\$2,678	\$1,346	\$6,914	\$1,825	\$7,658	\$1,998	\$7,940	\$2,042
<b>School Training</b>								
Officer	\$1,998	\$979	\$3,797	\$1,883	\$4,186	\$1,893	\$4,328	\$1,110
Enlisted	\$1,341	\$659	\$2,144	\$566	\$2,598	\$676	\$2,634	\$677
Subtotal	\$3,331	\$1,638	\$5,941	\$1,569	\$6,776	\$1,769	\$6,954	\$1,787

RESERVE PERSONNEL, NAVY  
SUMMARY OF BASIC PAY AND RETIRED PAY ACCRUAL COSTS  
(Amount in Thousands)

	FY 1986 (Actual)		FY 1987 (Estimate)		FY 1988 (Estimate)		FY 1989 (Estimate)	
	Basic	Retired	Basic	Retired	Basic	Retired	Basic	Retired
<b>Special Training</b>								
Officer	\$8,624	\$4,239	\$5,642	\$1,489	\$6,262	\$1,634	\$6,348	\$1,632
Enlisted	\$3,793	\$1,863	\$3,883	\$1,825	\$4,868	\$1,862	\$4,298	\$1,183
Subtotal	\$12,417	\$6,102	\$9,525	\$2,514	\$11,130	\$2,696	\$10,638	\$2,735
<b>Administration and Support</b>								
Officer	\$63,270	\$31,192	\$72,518	\$37,855	\$80,262	\$41,894	\$82,414	\$41,372
Enlisted	\$213,175	\$184,989	\$249,181	\$138,831	\$271,457	\$138,986	\$286,195	\$143,669
Subtotal	\$276,445	\$136,181	\$321,619	\$167,886	\$351,719	\$180,880	\$368,609	\$185,041
<b>ROTC</b>								
Senior ROTC								
Scholarship ROTC			\$485	\$128	\$487	\$127	\$486	\$125
ROC/RVROC								
Health Professions								
Scholarship	\$2,342	\$1,891	\$2,275	\$688	\$2,252	\$588	\$2,243	\$577
Subtotal	\$2,342	\$1,891	\$2,760	\$728	\$2,739	\$715	\$2,729	\$782
<b>Total Program</b>								
Officer	\$218,687	\$103,501	\$238,234	\$81,684	\$262,568	\$88,677	\$273,416	\$98,459
Enlisted	\$448,169	\$215,387	\$493,993	\$194,683	\$523,859	\$284,653	\$546,988	\$218,694
ROTC/Other	\$2,342	\$1,891	\$2,760	\$728	\$2,739	\$715	\$2,729	\$782
Total	\$653,198	\$319,979	\$734,987	\$277,015	\$788,366	\$294,045	\$823,125	\$301,855

RESERVE PERSONNEL, NAVY  
SUMMARY OF BASIC PAY AND RETIRED PAY ACCRUAL COSTS  
(Amount in Thousands)

	FY 1986 (Actual)		FY 1987 (Estimate)		FY 1988 (Estimate)		FY 1989 (Estimate)	
	Basic	Retired	Basic	Retired	Basic	Retired	Basic	Retired
<b>Total Reimbursable Program</b>								
Officer	\$168	992	\$235	962	\$238	962	\$237	961
Enlisted	99	99	99	99	99	99	99	99
<b>Total</b>	<b>\$168</b>	<b>992</b>	<b>\$235</b>	<b>962</b>	<b>\$238</b>	<b>962</b>	<b>\$237</b>	<b>961</b>
<b>Total Program</b>								
Officer	\$210,853	\$183,993	\$238,469	\$81,666	\$262,886	\$88,739	\$273,653	\$99,529
Enlisted	\$448,169	\$215,387	\$493,993	\$194,683	\$523,859	\$294,653	\$546,988	\$218,694
ROTC/Other	\$2,342	\$1,891	\$2,768	\$728	\$2,739	\$715	\$2,729	\$782
	\$653,366	\$329,071	\$735,222	\$277,077	\$788,604	\$294,107	\$823,362	\$301,916

RESERVE PERSONNEL, NAVY  
 SUMMARY OF BASIC ALLOWANCE FOR QUARTERS (BQ) AND VARIABLE HOUSING ALLOWANCE (VHA) COSTS  
 (Amounts in Thousands)

	FY 1986 (Actual)		FY 1987 (Estimate)		FY 1988 (Estimate)		FY 1989 (Estimate)	
	BQ	VHA	BQ	VHA	BQ	VHA	BQ	VHA
<b>Pay Group A</b>								
Officer	94,483		93,406		95,514		95,764	
Enlisted	98,574		94,987		99,228		99,645	
Subtotal	913,857		98,393		914,734		915,409	
<b>Pay Group F</b>								
Officer	9147	942	9265	972	9922	9235	91,158	9328
Enlisted	91,508		9377		9564		9328	
Subtotal	91,647	942	9642	972	91,486	9235	91,686	9328
<b>Pay Group D</b>								
Officer	998		958		9110		9186	
Enlisted	917		918		910		918	
Subtotal	9115		969		9128		9116	
<b>Mobilization Training</b>								
Officer	9488		9458		9465		9486	
Enlisted	994		9499		9112		9156	
Subtotal	9582		9949		9577		9642	
<b>School Training</b>								
Officer	9313		9534		9583		9635	
Enlisted	9354		9322		9644		9675	
Subtotal	9667		91,856		91,227		91,310	

RESERVE PERSONNEL, NAVY  
SUMMARY OF BASIC ALLOWANCE FOR QUARTERS (BAQ) AND VARIABLE HOUSING ALLOWANCE (VHA) COSTS  
(Amounts in Thousands)

	FY 1986 (Actual)		FY 1987 (Estimate)		FY 1988 (Estimate)		FY 1989 (Estimate)	
	BAQ	VHA	BAQ	VHA	BAQ	VHA	BAQ	VHA
Special Training								
Officer	\$1,577		\$956		\$1,081		\$1,100	
Enlisted	\$1,030		\$923		\$1,004		\$1,064	
Subtotal	\$2,615		\$1,879		\$2,085		\$2,164	
Admin & Support								
Officer	\$9,517	\$3,502	\$11,125	\$4,167	\$12,482	\$4,001	\$12,051	\$5,116
Enlisted	\$40,633	\$16,469	\$40,073	\$19,591	\$53,293	\$22,300	\$54,915	\$24,027
Subtotal	\$50,150	\$19,971	\$59,198	\$23,758	\$65,775	\$27,189	\$67,766	\$29,143
ROTC								
Senior ROTC								
Scholarship ROTC								
Health Professions								
Scholarship	\$400		\$459		\$430		\$437	
ROTC/ARJOC			\$00		\$00		\$79	
Subtotal	\$400		\$539		\$518		\$516	
Total Program	\$16,543	\$3,544	\$16,706	\$4,239	\$21,157	\$5,056	\$22,100	\$5,436
Officer	\$2,210	\$16,469	\$55,391	\$19,591	\$64,047	\$22,300	\$67,013	\$24,027
Enlisted	\$400		\$539		\$518		\$516	
ROTC/Other								
GRAND TOTAL	\$69,161	\$20,013	\$72,716	\$23,030	\$86,522	\$27,444	\$89,629	\$29,463



RESERVE PERSONNEL, NAVY  
SUMMARY OF TRAVEL COSTS  
(Amount in Thousands)

	FY 1986 (Actual)	FY 1987 (Estimate)	FY 1988 (Estimate)	FY 1989 (Estimate)
<b>Pay Group A</b>				
Officer	\$22,672	\$25,120	\$26,230	\$30,121
Enlisted	\$42,546	\$46,500	\$49,878	\$53,282
Subtotal	\$65,218	\$71,620	\$76,116	\$83,403
<b>Pay Group F</b>				
Officer	\$324	\$1,153	\$3,179	\$4,153
Enlisted	\$3,913	\$3,273	\$3,377	\$3,457
Subtotal	\$4,237	\$4,426	\$6,556	\$7,610
<b>Pay Group D-199</b>				
Officer	\$248	\$217	\$284	\$274
Enlisted	\$28	\$15	\$15	\$15
Subtotal	\$276	\$232	\$299	\$289
<b>Mobilization Training</b>				
Officer	\$1,025	\$1,118	\$1,138	\$1,200
Enlisted	\$242	\$2,146	\$3,891	\$4,028
Subtotal	\$1,267	\$3,264	\$5,029	\$5,228
<b>School Training</b>				
Officer	\$1,209	\$1,684	\$1,929	\$2,020
Enlisted	\$1,126	\$1,576	\$1,798	\$1,851
Subtotal	\$2,335	\$3,260	\$3,727	\$3,871

**SUMMARY OF TRAVEL COSTS**  
(Amount in Thousands)

	FY 1986 (Actual)	FY 1987 (Estimate)	FY 1988 (Estimate)	FY 1989 (Estimate)
<b>Special Training</b>				
Officer	\$3,621	\$2,153	\$2,400	\$2,536
Enlisted	\$4,130	\$2,286	\$2,520	\$2,831
Subtotal	\$7,751	\$4,439	\$4,920	\$5,367
<b>Administration and Support</b>				
Officer	\$4,234	\$5,467	\$5,535	\$6,262
Enlisted	\$12,000	\$15,209	\$14,854	\$17,232
Subtotal	\$17,042	\$20,676	\$20,389	\$23,494
<b>ROTC</b>				
Senior ROTC	\$258	\$274	\$283	\$293
Scholarship ROTC	\$3,797	\$3,839	\$4,006	\$4,124
ROTC/RA/ROTC		\$136	\$141	\$146
Health Professions Scholarship	\$1,011	\$1,985	\$1,968	\$1,977
Subtotal	\$5,066	\$6,234	\$6,398	\$6,540
<b>TOTAL TRAVEL</b>				
Officer	\$33,333	\$36,912	\$42,703	\$46,566
Enlisted	\$64,793	\$71,005	\$76,333	\$82,688
ROTC/Other	\$5,866	\$6,234	\$6,398	\$6,540
Total	\$103,992	\$114,151	\$125,434	\$135,794

Reserve Personnel, Navy  
 SCHEDULE OF INCREASES AND DECREASES  
 (Amount in Thousands)

\$1,397,020

FY 1987 DIRECT PROGRAM

Increases:

Program Growth in Pay Groups A, F and D-IMA	+44,624
IRR Test (Annual Screening)	+ 5,548
Increase in School/Special Training Tours (21,001 Mandays)	+ 3,236
Increase in Full-Time Support Program due, primarily, to average strength increase (2,063)	+59,544
Increase in FICA Percentage Rate and FICA Base	+ 941
Increase in Reserve Incentives	+ 1,420
Increase in Death Gratuities/Disability & Hospitalization Benefits	+ 242
Increase in NROTC and ROC/AVROC Requirements	+ 168
Increase in JNROTC Clothing Rates	+ 87
Increase due to the Annualization of the Military Pay Raise effective 1 January 1987	+ 9,175
Increase in costs associated with Inflation	+ 4,542

Decreases:

Decrease in MAC Travel costs	- 89
Decrease in Normal Cost Percentage used to calculate Retired Pay Accrual costs	- 4,511
Decrease in Education Benefits - GI Bill (Number of Eligibles decrease)	- 5,280
Reduction in Student Load - Armed Forces Health Professional Scholarship Program	- 567

\$1,516,100

FY 1988 DIRECT PROGRAM

Reserve Personnel, Navy  
 SCHEDULE OF INCREASES AND DECREASES  
 (Amount in Thousands)

FY 1988 DIRECT PROGRAM

\$1,516,100

Increases:

Program Growth associated with Pay Groups A, F and D-IMA	+28,255
Increase in number of paid IRR Active Duty for Training Periods (1,871)	+ 641
Increase in School/Special Training Tours (8,680 Maudays)	+ 1,270
Increase in Full-Time Support Program associated, primarily, with increase in average strength (1,108)	+35,010
Increase in Death Gratuities/Disability and Hospitalization Benefits	+ 70
Increase in Reserve Incentives	+ 3,432
Increase in FICA Percentage Rate and FICA Base	+ 333
Increase in costs associated with the NROTC and the ROC/AVROC Programs	+ 225
Increase in JNROTC Clothing Rates	+ 86
Increase in costs associated with Inflation	+ 5,779

Decreases:

Decrease in Normal Cost Percentage used to calculate Retired Pay Accrual costs	- 5,317
Education Benefits-GI Bill expires on 30 June 1988	-14,540
Decrease in IRR Test (Annual Screening) requirement	- 17
Decrease in Armed Forces Health Scholarship Program (Student Load Decreases)	- 127

FY 1989 DIRECT PROGRAM

\$1,571,200

SECTION 4 - DETAIL OF MILITARY PERSONNEL AND ENTITLEMENTS

Appropriation: Reserve Personnel, Navy  
Budget Program 1: Unit and Individual Training  
Budget Activity 1-A: Training, Pay Group A/Q

(Actual)	(Estimate)	(Estimate)	(Estimate)
FY 1986	FY 1987	FY 1988	FY 1989
\$591,904	\$559,181	\$598,615	\$624,276

#### Part I - Purpose and Scope

This budget activity provides for the total costs of training officers and enlisted personnel of the Naval Reserve in Pay Groups A and Q. Members in Pay Group A are required to perform training duty of two weeks duration and perform a minimum of 48 drills per year. Members in Pay Group Q are Sea and Air Mariners enrolled in a Split Tour Initial Active Duty for Training program who are required to perform four drills per month for pay while in that status. In addition, personnel in the combat component of the surface reserve and in selected aviation groups are authorized to participate in specified additional training in order to maintain proficiency. Included in this activity are the costs of basic pay, basic allowance for quarters, basic allowance for subsistence, the government's contribution to Social Security and retirement accrual, individual clothing and uniform gratuities for officers and enlisted personnel, subsistence-in-kind for enlisted personnel, travel to and from active duty for training, travel to and from alternate Inactive Duty Training sites (Weekend Away Training). The rates for all costs are determined by applicable provisions of law and regulations.

Pay Group A/D  
**SCHEDULE OF INCREASES AND DECREASES**  
 (Amount in Thousands)

FY 1987 DIRECT PROGRAM \$559,181

**Increases:**

**Program Growth**

Strength: Fiscal Year 1988 strength increase is another step toward meeting the Naval Reserve Wartime requirements. The increase in funded man-year average is 2,351 officer and 4,921 enlisted personnel.

+34,459

**Price Escalation:**

Pay Raise: Pay and allowance rates reflect annualization of 3% pay raise effective 1 January 1987.

+ 3,668

Subsistence-in-kind: Average rate for subsistence-in-kind for members performing inactive duty training increases from \$5.09 to \$5.27. Average rate for members performing ACJUTRA increases from \$3.79 to \$4.00.

+ 361

Clothing Issues: The average cost of clothing issues increases for enlisted Reservists.

+ 359

Travel: Inflation rate of 3.5% increases the average cost of commercial transportation.

+ 1,003

**Decreases:**

MOC travel inflation.

- 89

Retired Pay Accrual: Normal cost percentage for retirement pay accrual decreases from 26.4% to 26.1% of basic pay.

- 1,127

FY 1988 DIRECT PROGRAM \$598,615

Pay Group A/D  
**SCHEDULE OF INCREASES AND DECREASES**  
 (Amount in Thousands)

\$598,615

**FY 1988 DIRECT PROGRAM**

**Increases:**

**Program Growth**

Strength: Fiscal Year 1989 strength increase is another step toward meeting the Naval Reserve Wartime requirements. The increase in funded manyear average is 1,117 officer and 2,948 enlisted personnel.

+24,666

**Price Escalation:**

Subsistence-in-kind: Average rate for subsistence-in-kind for members performing inactive duty training increases from \$5.27 to \$5.46. Average rate for members performing ADULTRA increases from \$4.00 to \$4.15.

+ 338

Clothing Issues: The average cost of clothing issues increases for enlisted Reservists.

+ 199

Travel: Inflation rate of 3.5% increases the average cost of commercial transportation.

+ 1,981

MHC travel inflation.

+ 46

**Decreases:**

Retired Pay Accrual: Normal cost percentage for retirement pay accrual decreases from 26.1% to 25.7% of basic pay.

- 1,561

**FY 1989 DIRECT PROGRAM**

\$624,276



Pay and Allowances, Active Duty Training, Officers: These funds are requested to provide for pay and allowances of officers attending active duty for training. The rates used in computing requirements include basic pay, government's Social Security contribution, basic allowance for subsistence, quarters allowances, special and incentive pay as authorized and retirement accrual:

(Amount in Thousands)

	FY 1986 (Actual)		FY 1987 (Estimate)		FY 1988 (Estimate)		FY 1989 (Estimate)	
	Strength	Rate	Strength	Rate	Strength	Rate	Strength	Rate
Average Strength	21,818		23,281		25,354		26,671	
Participation Rate	99%		99%		99%		99%	
Paid Participants	21,615	\$2,388.72	23,015	\$2,885.81	25,336	\$2,879.25	26,457	\$2,874.58
								\$54,885

Pay and Allowances, Active Duty for Training, Enlisted Personnel: These funds are requested to provide for pay and allowances for enlisted personnel attending active duty for training. The rates used in computing requirements include basic pay, government's Social Security contribution, basic allowance for subsistence, quarters allowances, special and incentive pay as authorized and retirement accrual:

(Amount in Thousands)

	FY 1986 (Actual)		FY 1987 (Estimate)		FY 1988 (Estimate)		FY 1989 (Estimate)	
	Strength	Rate	Strength	Rate	Strength	Rate	Strength	Rate
Average Strength	90,588		96,232		101,153		104,893	
Participation Rate	81%		81%		81%		81%	
Paid Participants	73,834	\$972.52	78,485	\$829.25	81,438	\$835.92	84,829	\$837.59
								\$71,852

Pay, Inactive Duty Training, Officers: These funds are requested to provide for pay of officers attending inactive duty for training including unit training assemblies and additional training assemblies. The rate used in computing the requirement includes basic pay, incentive pay when authorized and retirement accrual:

(Amount in Thousands)

	FY 1986 (Actual)		FY 1987 (Estimate)		FY 1988 (Estimate)		FY 1989 (Estimate)	
	Strength/ Assemblies	Rate	Strength/ Assemblies	Rate	Strength/ Assemblies	Rate	Strength/ Assemblies	Rate
Unit Training								
Average Strength	21,818		23,201		25,554		26,671	
Participation Rate	99%		99%		99%		99%	
Paid Participants	21,710	\$6,721.36	23,051	\$5,977.62	25,400	\$5,937.68	26,498	\$5,881.80
		\$145,921		\$137,790		\$150,817		\$155,856
Additional Training Assemblies								
Flight Training	91,410	\$147.38	100,253	\$130.64	110,577	\$130.85	115,507	\$130.93
Jump Proficiency								
Trng Preparation	9,367	\$129.28	10,270	\$113.34	11,340	\$113.93	11,840	\$113.85
		\$1,211		\$1,164		\$1,292		\$1,348
SUBTOTAL	100,777	\$14,683	110,523	\$14,261	121,917	\$15,761	127,347	\$16,471
TOTAL		\$160,604		\$152,051		\$166,570		\$172,327

Pay, Inactive Duty Training, Enlisted Personnel: These funds are requested to provide for pay of enlisted personnel attending inactive duty for training including unit training assemblies and additional training assemblies. The rate used in computing the requirement includes basic pay, incentive pay when authorized and retirement accrual:

(Amount in Thousands)

	FY 1986 (Actual)		FY 1987 (Estimate)		FY 1988 (Estimate)		FY 1989 (Estimate)		
	Strength/ Assemblies	Rate	Amount	Strength/ Assemblies	Rate	Amount	Strength/ Assemblies	Rate	Amount
Unit Training									
Average Strength	90,580		96,232	101,153			104,093		
Participation Rate	90%		90%	90%			90%		
Paid Participants	81,972	\$2,683.29	\$219,955	87,000	\$2,326.15	\$202,561	94,194	\$2,326.93	\$219,182
Additional Training Assemblies									
Flight Training	35,000	\$73.00	\$2,622	38,048	\$65.15	\$2,479	40,072	\$64.33	\$2,578
Jump Proficiency	45,595	\$61.52	\$2,805	48,345	\$53.82	\$2,602	50,950	\$55.76	\$2,841
Trng Preparation	81,475		\$5,427	86,393		\$5,081	91,022		\$5,419
SUBTOTAL			\$225,382			\$207,642			\$216,497
TOTAL									\$224,847

Individual Clothing and Uniform Allowances, Officers: These funds are requested to provide payment for initial and supplemental clothing allowances under the provisions of 37 U.S.C. 415 and 416 to officers for purchase of required uniforms:

	(Amount in Thousands)											
	FY 1986 (Actual)		FY 1987 (Estimate)		FY 1988 (Estimate)		FY 1989 (Estimate)					
	Number	Rate	Number	Rate	Number	Rate	Number	Rate	Number	Rate	Amount	Amount
Initial Uniform Allowance	1,314	\$200.00	1,396	\$200.00	1,540	\$200.00	1,606	\$200.00			\$321	\$321
Additional Uniform Allowance											\$319	\$357
											\$564	\$668

Individual Clothing and Uniform Allowances, Enlisted Personnel: These funds are requested to provide prescribed clothing for enlisted personnel as authorized by the Secretary of Defense under the provisions of 37 U.S.C. 418:

	(Amount in Thousands)											
	FY 1986 (Actual)		FY 1987 (Estimate)		FY 1988 (Estimate)		FY 1989 (Estimate)					
	Number	Rate	Number	Rate	Number	Rate	Number	Rate	Number	Rate	Amount	Amount
Initial (Partial) Issue to Prior Service Personnel	15,745	\$229.83	16,700	\$236.17	17,552	\$247.84	18,142	\$255.15			\$4,629	\$4,629
Replacement Issue											\$2,581	\$2,751
Special Issue	44,933	\$36.38	91,700									
Cash Allowances	9,995	\$38.92	10,559	\$38.87	11,212	\$38.50	11,461	\$38.00			\$342	\$353
TOTAL											\$6,605	\$7,273
TOTAL CLOTHING											\$7,283	\$8,421

Subsistence of Enlisted Personnel: These funds are requested to provide for subsistence-in-kind for personnel on active duty training and inactive duty for training periods of eight hours or more in one calendar day:

(Amount in Thousands)

	FY 1986 (Actual)		FY 1987 (Estimate)		FY 1988 (Estimate)		FY 1989 (Estimate)	
	Number	Rate	Number	Rate	Number	Rate	Number	Rate
Active Duty for Training Requirements:	90,590		96,232		101,153		104,893	
Subsistence-in-kind								
Total Enlisted Mandays Less Provided for Elsewhere:								
On Monetary Allowance								
Operational Rations								
Travel								
Total Enlisted to be Subsidized	73,813		78,486		81,438		84,829	
% Present	75%		75%		75%		75%	
Total	55,360		58,865		61,079		63,622	
Subsistence-in-kind								
Operational Rations								
Basic Allowance for Subsistence								
Total Active Duty Requirements	813,973	\$3.65	823,278	\$3.79	855,186	\$4.00	890,788	\$4.15
Inactive Duty Periods of Eight Hours or more	855,284	\$4.94	917,146	\$5.09	1,008,539	\$5.27	1,033,883	\$5.46
TOTAL		\$7,246		\$7,788		\$8,735		\$9,341

Travel, Active Duty for Training Officers: These funds are requested to provide travel and per diem allowances for officers performing active duty training:

(Amount in Thousands)

	FY 1986 (Actual)		FY 1987 (Estimate)		FY 1988 (Estimate)		FY 1989 (Estimate)	
	Number	Rate	Number	Rate	Number	Rate	Number	Rate
Commercial	18,963	\$295.36	20,124	\$304.51	22,154	\$315.16	23,134	\$326.23
Military Airlift Command (MHC)	1,640	\$548.78	1,735	\$577.21	2,026	\$578.58	2,166	\$575.25
Per Diem	18,960	\$492.99	20,121	\$492.92	22,150	\$492.91	23,130	\$492.95
TOTAL Travel	21,615	\$733.19	23,015	\$741.21	25,336	\$752.13	26,457	\$763.31

Travel, Active Duty for Training Enlisted Personnel: These funds are requested to provide travel and per diem allowances for enlisted personnel performing active duty training:

(Amount in Thousands)

	FY 1986 (Actual)		FY 1987 (Estimate)		FY 1988 (Estimate)		FY 1989 (Estimate)	
	Number	Rate	Number	Rate	Number	Rate	Number	Rate
Commercial	72,561	\$278.35	77,076	\$278.74	80,057	\$288.49	83,398	\$298.58
Military Airlift Command (MHC)	5,958	\$549.81	6,318	\$588.48	6,916	\$577.58	7,374	\$582.32
Per Diem	62,668	\$111.78	66,633	\$111.66	69,210	\$111.39	72,022	\$111.48
TOTAL Travel	73,834	\$404.87	78,406	\$416.32	81,438	\$427.31	84,829	\$438.01

Travel, Inactive Duty for Training Officers: These funds are requested to provide travel and per diem for officers performing inactive duty for training. Rates reflect one round trip to training site and return. Travel is comprised of weekend away training to fleet sites for designated units.

(Amount in Thousands)

	FY 1986 (Actual)		FY 1987 (Estimate)		FY 1988 (Estimate)		FY 1989 (Estimate)	
	Number	Rate	Number	Rate	Number	Rate	Number	Rate
Commercial	65,932	\$103.50	75,539	\$106.71	83,200	\$110.36	86,837	\$114.31
		\$6,824		\$8,061		\$9,182		\$9,926

Travel, Inactive Duty for Training Enlisted Personnel: These funds are requested to provide travel and per diem for enlisted personnel performing inactive duty for training. Rates reflect one round trip to training site and return. Travel is comprised of weekend away training to fleet sites for designated units.

(Amount in Thousands)

	FY 1986 (Actual)		FY 1987 (Estimate)		FY 1988 (Estimate)		FY 1989 (Estimate)	
	Number	Rate	Number	Rate	Number	Rate	Number	Rate
Commercial	203,785	\$62.09	216,496	\$64.01	227,567	\$66.26	234,181	\$68.57
		\$12,653		\$13,858		\$15,079		\$16,058
Total: Training Pay Group A (Direct)		\$591,904		\$559,181		\$598,615		\$624,276
Reimbursable Requirements:								
Pay and allowances including travel of Reserve officers assigned to the Selective Service		309		400		400		400
Other Reimbursable Services		0		0		0		0
Total Reimbursable Requirements		309		400		400		400
TOTAL: Training, Pay Group A		\$592,213		\$559,581		\$599,015		\$624,676

Appropriation: Reserve Personnel, Navy  
Budget Program 1: Unit and Individual Training  
Budget Activity 1-f: Training, Pay Group F/U

(Actual)	(Estimate)	(Estimate)	(Estimate)
FY 1986	FY 1987	FY 1988	FY 1989
966,903	952,445	963,096	967,575

#### Part 1 - Purpose and Scope

This budget activity provides the funds for Initial Active Duty for Training (IADT) for enlisted Sea and Air Mariners (SAM) and Officer Sea and Air Mariners (OSAM). SAM and OSAM personnel are non-prior service accessions into the Naval Reserve who, upon attainment of designator/military occupational skills (MOS), are assigned to Junior-rated Selected Reserve billets in a drilling (Training Category A) status. These billets are a critical part of the total Naval Reserve manpower objective which is scheduled to be attained by FY 1990. Pay Group U members are SAMs attending the second phase of the split training program, as described below.

OSAMs are derived from two sources: voluntary conversion from ROTC training to OSAM and, by direct accession. ROTC conversion personnel become OSAM after college graduation and commissioning; direct accession personnel are OSAMs upon enlistment and must attend Officer's Candidate School (OCS) or Officer's Indoctrination Course (OIC) to earn a commission. OSAM designators include Surface Line, Naval Flight Officer, Special Warfare, Engineering duty, Aviation Maintenance, Cryptology, Intelligence and Staff Corps. Initial Active Duty for Training after commissioning can last from a few weeks to over two years, depending on the designator.

SAMs attend one of four training programs. The regular program consists of eight weeks Recruit Training followed immediately by a variable length "A" School. The advanced training program provides eight weeks Recruit Training and four weeks advanced training. The split training program provides for the member to attend eight weeks Recruit Training during the summer after completion of the junior year in high school. Upon graduation, the member returns to complete "A" School. The Vocational Technical (VOTEDH) training program consists of eight weeks Recruit Training and four weeks advance training. Upon completion of Initial Active Duty for Training, the members report to their mobilization assignment in an inactive (paid drill) status. VOTEDH SAMs are required to complete, without compensation, an approved course of instruction at a private institution to acquire rate skills. The VOTEDH program is a temporary solution to meet the shortage of "A" schools in critical ratings.

The rates used in computing requirements include basic pay, government's contribution to Social Security, subsistence-in-kind, quarters allowance, variable housing allowances, individual clothing and uniform gratuities, travel to and from active duty for training, separation leave pay and retirement accrual. The rates of all costs are determined by applicable provisions of law and regulations.



Pay Group F/U  
**SCHEDULE OF INCREASES AND DECREASES**  
 (Amount in Thousands)

<b>FY 1987 DIRECT PROGRAM</b>		<b>\$52,445</b>
<b>Increases:</b>		
Program Growth: FY 1988 manyear average increases 348 officers and decreases 18 enlisted personnel and continues the goal to attain a fully trained mobilization ready Selected Reserve force.	+ 9,848	
Price Escalation:		
Pay Raise: Pay and allowance rates reflect annualization of 3% pay raise effective 1 January 1987.	+ 354	
Clothing Issues: The average cost of clothing issues increases for enlisted Reservists.	+ 174	
Travel: Inflation rate of 3.5% increases the average cost of transportation.	+ 228	
Subsistence-in-kind: The average rate for members performing ADULTIRA increases from \$3.79 to \$4.00.	+ 163	
<b>Decreases:</b>		
Retired Pay Accrual: Normal cost percentage for retirement pay accrual decreases from 26.4% to 26.1% of basic pay.	- 100	
<b>FY 1988 DIRECT PROGRAM</b>		<b>\$63,096</b>

Pay Group F/U  
**SCHEDULE OF INCREASES AND DECREASES**  
 (Amount in Thousands)

963,096

FY 1968 DIRECT PROGRAM

Increases:

Program Growth: FY 1969 manyear average increases 146 officers and decreases 35 enlisted personnel and continues the goal to attain a fully trained mobilization ready Selected Reserve force.

+ 3,651

Price Escalation:

Subsistence-in-kind: The average rate for members performing ADUTRA increases from \$4.00 to \$4.15.

+ 119

Clothing Issues: The average cost of clothing issues increases for enlisted Reservists.

+ 532

Travel: Inflation rate of 3.5% increases the average cost of transportation.

+ 258

Decreases:

Retired Pay Accrual: Normal cost percentage for retirement pay accrual decreases from 26.1% to 25.7% of basic pay.

- 141

FY 1969 DIRECT PROGRAM

967,575

Pay and Allowances, Active Duty for Training. Officers: These funds are requested to provide for pay and allowances of personnel attending initial active duty for training. The rate used in computing requirements includes basic pay, government's contribution for Social Security, basic allowance for subsistence and quarters allowances as authorized and retirement accrual.

(Amount in Thousands)

Avg Strength	FY 1986 (Actual)		FY 1987 (Estimate)		FY 1988 (Estimate)		FY 1989 (Estimate)				
	Rate	Amount	Avg Strength	Rate	Amount	Avg Strength	Rate	Amount			
165	\$28,542.86	\$2,997	289	\$22,961.72	\$4,799	557	\$22,741.47	\$12,667	703	\$22,687.05	\$15,949

Pay and Allowances, Active Duty for Training. Enlisted Personnel: These funds are requested to provide for pay and allowances of personnel attending initial active duty for training. The rate used in computing requirements includes basic pay, government's contribution for Social Security, basic allowance for subsistence and quarters allowances as authorized and retirement accrual.

(Amount in Thousands)

Avg Strength	FY 1986 (Actual)		FY 1987 (Estimate)		FY 1988 (Estimate)		FY 1989 (Estimate)				
	Rate	Amount	Avg Strength	Rate	Amount	Avg Strength	Rate	Amount			
3,785	\$13,643.06	\$51,639	3,166	\$11,327.23	\$35,862	3,156	\$11,404.94	\$35,994	3,121	\$11,300.87	\$35,270

Individual Clothing and Uniform Allowance, Officer: These funds are requested to provide for clothing and uniforms for officer personnel attending initial active duty for training.

(Amount in Thousands)

	FY 1986 (Actual)		FY 1987 (Estimate)		FY 1988 (Estimate)		FY 1989 (Estimate)	
	Number	Rate	Number	Rate	Number	Rate	Number	Rate
Initial Uniform Allowance	49	\$308.00	157	\$308.00	426	\$308.00	587	\$308.00
Initial Issue	132	\$522.73	149	\$543.62	484	\$564.36	512	\$583.98
				\$47		\$128		\$152
				\$81		\$228		\$299

Individual Clothing and Uniform Allowance, Enlisted Personnel: These funds are requested to provide for clothing and uniforms for enlisted personnel attending initial active duty for training.

(Amount in Thousands)

	FY 1986 (Actual)		FY 1987 (Estimate)		FY 1988 (Estimate)		FY 1989 (Estimate)	
	Number	Rate	Number	Rate	Number	Rate	Number	Rate
Initial Issue	7,800	\$578.33	7,000	\$688.57	7,000	\$632.29	7,000	\$715.43
		\$4,511		\$4,260		\$4,426		\$5,008

Subsistence, Enlisted Personnel: These funds are requested to provide subsistence-in-kind for enlisted personnel attending initial active duty for training. Included is the subsistence-in-kind requirement for OCS attending DCS who are in an E-5 paygrade status.

	(Amount in Thousands)											
	FY 1986 (Actual)		FY 1987 (Estimate)		FY 1988 (Estimate)		FY 1989 (Estimate)					
	Number	Rate	Number	Rate	Number	Rate	Number	Rate	Number	Rate	Number	Rate
Subsistence-in-Kind												
Total Mandays	1,366,560		1,155,598		1,151,940		1,139,165					
Less Provided for Elsewhere:												
On Monetary Allowance	14,989		12,607		12,567		12,428					
Travel												
Total Enlisted to be Subsidized:	1,351,571		1,142,991		1,139,373		1,126,737					
% Present	68%		67%		65%		65%					
Total Subsistence-in-kind												
Subtotal Enlisted Mandays for Subsistence	926,301	\$3.65	765,799	\$3.79	740,592	\$4.00	732,379	\$4.15				\$3,039
Subtotal OCS Mandays for Subsistence	15,616	\$3.65	17,838	\$3.79	33,784	\$4.00	59,730	\$4.15				\$248
TOTAL			\$3,438		\$2,970		\$3,097					\$3,287

Travel, Active Duty for Training, Officer: These funds are requested to provide travel and per diem allowances for officer personnel performing initial active duty training.

(Amount in Thousands)

FY 1986 (Actual)		FY 1987 (Estimate)		FY 1988 (Estimate)		FY 1989 (Estimate)	
Number	Rate	Number	Rate	Number	Rate	Number	Rate
105	\$3,005.71	209	\$5,516.75	557	\$5,707.36	703	\$5,907.54
	\$324		\$1,153		\$3,179		\$4,153

Travel, Active Duty for Training, Enlisted Personnel: These funds are requested to provide travel and per diem allowances for enlisted personnel performing initial active duty training.

(Amount in Thousands)

FY 1986 (Actual)		FY 1987 (Estimate)		FY 1988 (Estimate)		FY 1989 (Estimate)	
Number	Rate	Number	Rate	Number	Rate	Number	Rate
3,785	\$1,033.82	3,166	\$1,033.80	3,156	\$1,070.03	3,121	\$1,107.66
	\$3,913		\$3,273		\$3,377		\$3,457

TOTAL Training, Pay Group F - Direct Program \$66,903 \$52,445 \$63,036 \$67,575

	(Amount in Thousands)			
(Actual)	(Estimate)	(Estimate)	(Estimate)	
FY 1986	FY 1987	FY 1988	FY 1989	
\$1,518	\$1,159	\$1,495	\$1,434	

Appropriation: Reserve Personnel, Navy  
 Budget Program 1: Unit & Individual Training  
 Budget Activity 1-0 Training, Pay Group D - 1M4

Part I - Purpose and Scope

This budget activity provides for the total costs of training officers and enlisted personnel of the Naval Reserve in Pay Group D. These personnel are individuals who are assigned Individual Mobilization Augmentation positions and are required to perform two weeks Annual Active Duty Training. These Reservists will fill active force shortages during the early phase of mobilization.

Included in this activity are the costs of basic pay, individual clothing and uniform gratuities for officers and enlisted personnel, subsistence-in-kind for enlisted personnel, travel to and from active duty for training, basic allowance for quarters, basic allowance for subsistence, the government's contribution to Social Security and retirement accrual. The rates of all costs are determined by applicable provisions of law and regulations.

Pay Group D - Individual Mobilization Augmentees  
 SCHEDULE OF INCREASES AND DECREASES  
 (Amount in Thousands)

\$1,159

FY 1987 DIRECT PROGRAM

Increases:

Program Growth:

Strength: FY 1988 strength increase is another step toward meeting the Naval Reserve Wartime requirements. The increase in funded manyear average is 92 officer personnel. + 325

Price Escalation:

Pay Raise: Pay and allowance rates reflect annualization of 3% pay raise effective 1 January 1987. + 9

Travel: Inflation rate of 3.5% increases the average cost of transportation. + 4

Decreases:

Retired Pay Accrual: Normal cost percentage for retirement pay accrual decreases from 26.4% to 26.1% of basic pay. - 2

\$1,495

FY 1988 DIRECT PROGRAM



Pay Group D - Individual Mobilization Augmentees  
**SCHEDULE OF INCREASES AND DECREASES**  
 (Amount in Thousands)

<b>FY 1988 DIRECT PROGRAM</b>				\$1,495
<b>Increases:</b>				
Price Escalation:				
Travel: Inflation rate of 3.5% increases the average cost of transportation.			+ 4	
<b>Decreases:</b>				
The number of officer personnel decreases by 18.			- 62	
Retired Pay Accrual: Normal cost percentage for retirement pay accrual decreases from 26.1% to 25.7% of basic pay.			- 3	
<b>FY 1989 DIRECT PROGRAM</b>				\$1,434

Pay and Allowances, Active Duty for Training, Officers: These funds are requested to provide pay and allowances for officers attending active duty for training. The rates used in computing requirements include basic pay, government's Social Security contribution, basic allowance for subsistence and quarters allowances, and special and incentive pay as authorized and retirement accrual.

(Amount in Thousands)

	FY 1986 (Actual)		FY 1987 (Estimate)		FY 1988 (Estimate)		FY 1989 (Estimate)	
	Strength	Rate	Strength	Rate	Strength	Rate	Strength	Rate
Average Strength	-	-	314	-	406	-	388	-
Participation Rate	-	-	100%	-	100%	-	100%	-
Paid Participants	363	\$3,013.77	\$1,094	\$2,659.24	\$835	\$2,714.29	\$1,102	\$2,786.19
								\$1,050

Pay and Allowances, Active Duty for Training, Enlisted Personnel: These funds are requested to provide pay and allowances of enlisted personnel attending active duty for training. The rates used in computing requirements include basic pay, government's Social Security contribution, quarters allowances, special and incentive pay as authorized and retirement accrual:

(Amount in Thousands)

	FY 1986 (Actual)		FY 1987 (Estimate)		FY 1988 (Estimate)		FY 1989 (Estimate)	
	Strength	Rate	Strength	Rate	Strength	Rate	Strength	Rate
Average Strength	-	-	60	-	60	-	60	-
Participation Rate	-	-	100%	-	100%	-	100%	-
Paid Participants	110	\$1,200.00	\$132	\$1,100.00	\$66	\$1,116.67	\$67	\$1,116.67
								\$67

Individual Clothing and Uniform Allowances, Officers: These funds are requested to provide payment for initial and supplemental clothing allowances under the provisions of 37 U.S.C. 415 and 416 to officers for purchase of required uniforms:

(Amount in Thousands)

	FY 1986 (Actual)		FY 1987 (Estimate)		FY 1988 (Estimate)		FY 1989 (Estimate)	
	Number	Rate	Number	Rate	Number	Rate	Number	Rate
Initial Uniform Allowance	29	\$200.00	38	\$200.00	47	\$200.00	45	\$200.00
Additional Uniform Allowance			63	\$8		\$8		\$9
<b>TOTAL</b>			97	\$16		\$16		\$18

Individual Clothing and Uniform Allowances, Enlisted Personnel: These funds are requested to provide prescribed clothing for enlisted personnel as authorized by the Secretary of Defense under the provisions of 37 U.S.C. 416:

(Amount in Thousands)

	FY 1986 (Actual)		FY 1987 (Estimate)		FY 1988 (Estimate)		FY 1989 (Estimate)	
	Number	Rate	Number	Rate	Number	Rate	Number	Rate
Initial (Partial) Issue to Prior Service Personnel	19	\$315.79	28	\$328.74	19	\$341.56	19	\$352.83
Replacement Issue								
Special Issues								
Cash Allowances								
<b>TOTAL</b>								
<b>TOTAL Clothing</b>								

Subsistence of Enlisted Personnel: These funds are requested to provide subsistence-in-kind for personnel on active duty for training.

(Amount in Thousands)

	FY 1986 (Actual)		FY 1987 (Estimate)		FY 1988 (Estimate)		FY 1989 (Estimate)	
	Number	Rate	Number	Rate	Number	Rate	Number	Rate
Active Duty Requirement:								
Subsistence-in-kind								
Total Enlisted Mandays	60		60		60		60	
Less Provided for								
Elsewhere:								
On Monetary Allowance								
Operational Rations								
Travel								
Total Enlisted to be	60		60		60		60	
Subsisted								
% Present	82%		82%		82%		82%	
Total Subsistence-in-kind	49		49		49		49	
Operational Rations								
Basic Allowance for								
Subsistence								
Total Active Duty	700	\$3.65	686	\$3.79	686	\$4.00	686	\$4.15
Requirements		\$3		\$3		\$3		\$3
Inactive Duty Periods of								
Eight hours or more								
TOTAL		\$3		\$3		\$3		\$3

Travel, Active Duty for Training, Officers: These funds are requested to provide travel and per diem allowances for officers performing active duty training.

(Amount in Thousands)

	FY 1986 (Actual)		FY 1987 (Estimate)		FY 1988 (Estimate)		FY 1989 (Estimate)	
	Number	Rate	Number	Rate	Number	Rate	Number	Rate
Commercial	363	\$225.90	314	\$232.48	406	\$241.38	388	\$258.00
Per Diem	363	\$457.30	314	\$458.60	406	\$458.13	388	\$456.19
<b>TOTAL Travel</b>	363	\$683.20	314	\$691.08	406	\$699.51	388	\$706.19

Travel, Active Duty for Training, Enlisted Personnel: These funds are requested to provide travel and per diem allowances for enlisted personnel performing active duty training.

(Amount in Thousands)

	FY 1986 (Actual)		FY 1987 (Estimate)		FY 1988 (Estimate)		FY 1989 (Estimate)	
	Number	Rate	Number	Rate	Number	Rate	Number	Rate
Commercial	110	\$127.27	60	\$131.22	60	\$135.81	60	\$140.56
Per Diem	94	\$148.94	56	\$125.00	56	\$125.00	56	\$125.00
<b>TOTAL Travel</b>	110	\$254.55	60	\$259.00	60	\$259.00	60	\$258.00
<b>Total: Training Pay Group D-IMA</b>		\$1,518		\$1,159		\$1,495		\$1,434

Appropriation: Reserve Personnel, Navy  
Budget Program 2: Other Training and Support  
Budget Activity 2-E Mobilization Training

	(Amount in Thousands)		
(Actual)	(Estimate)	(Estimate)	(Estimate)
FY 1986	FY 1987	FY 1988	FY 1989
\$6,173	\$11,643	\$17,271	\$17,912

Part I - Purpose and Scope

This budget activity provides for the total costs of training officers and enlisted personnel of the Individual Ready Reserve (IRR). Included are members of Voluntary Training Units (VTU) who perform non-pay regular drills and annual active duty for training for pay, within available funds; Merchant Marine officers on federal subsidy ships; and, other inactive Naval Reservists who have remaining military service obligation, or who elect to remain in the IRR, and who are not assigned to Naval Reserve units.

Included in this budget activity are the costs of basic pay, individual clothing and uniform gratuities for officers and enlisted personnel, subsistence in kind for enlisted personnel, travel to and from active duty for training, basic allowance for quarters, basic allowance for subsistence, the government's contribution to Social Security and retirement accrual. The rates of all costs are determined by applicable provisions of law and regulations.

During FY 1987, a one day screening of the Individual Ready Reserve (IRR) will be initiated. IRR members will subsequently be required to serve at least one day of active duty each year to accomplish annual screening requirements.

Mobilization Training  
**SCHEDULE OF INCREASES AND DECREASES**  
 (Amount in Thousands)

<b>FY 1987 DIRECT PROGRAM</b>		<b>\$11,643</b>
<b>Increases:</b>		
<b>Price Escalation:</b>		
Pay Raise: Pay and allowance rates reflect annualization of 3% pay raise effective 1 January 1987.	+ 60	
Subsistence-in-kind: The average rate for members performing ACOUTRA increases from \$3.79 to \$4.00.	+ 2	
Travel: Inflation rate of 3.5% increases the average cost of transportation.	+ 26	
Clothing: The average cost of clothing issues increases for enlisted Reservists.	+ 1	
IMR Test (Annual Screening):	+ 5,548	
<b>Decreases:</b>		
Retired Pay Accrual: Normal cost percentage for retirement pay accrual decreases from 26.4% to 26.1% of basic pay.	- 9	
<b>FY 1988 DIRECT PROGRAM</b>		<b>\$17,271</b>

**Mobilization Training**  
**SCHEDULE OF INCREASES AND DECREASES**  
 (Amount in Thousands)

\$17,271

**FY 1988 DIRECT PROGRAM**

**Increases:**

**Program Growth:**

The number of paid active duty for training periods for members in VTU units increased by 71 officers and 327 enlisted personnel. Individual Ready Reserve enlisted personnel to support medical and construction battalion programs are increased by 1,447. The Merchant Marine program is increased by 26 officers.

+ 641

**Price Escalation:**

**Subsistence-in-kind:** The average rate for members performing ACQUITRA increases from \$4.00 to \$4.15.

+ 2

**Travel:** Inflation rate of 3.5% increases the average cost of transportation.

+ 27

**Clothing:** The average cost of clothing issues increases for enlisted Reservists.

+ 2

**Decreases:**

**Retired Pay Accrual:** Normal cost percentage for retirement pay accrual decreases from 26.1% to 25.7% of basic pay.

- 13

**Decrease in IRR Test (Annual Screening).**

- 17

\$17,913

**FY 1989 DIRECT PROGRAM**



Pay and Allowances, Active Duty Training, Officers: These funds are requested to provide for pay and allowances of officers attending active duty for training. The rates used in computing requirements include basic pay, government's Social Security contribution, basic allowance for subsistence, quarters allowances, special and incentive pay as authorized and retirement accrual:

(Amount in Thousands)

	FY 1986 (Actual)		FY 1987 (Estimate)		FY 1988 (Estimate)		FY 1989 (Estimate)	
	Strength	Rate	Strength	Rate	Strength	Rate	Strength	Rate
Average Strength	17,086		19,010		20,825		23,050	
Participation Rate	6%		6%		5%		5%	
Paid Participants	1,036	\$2,577.22	1,116	\$2,307.35	1,116	\$2,322.58	1,187	\$2,318.45
		\$2,670		\$2,575		\$2,592		\$2,752

Pay and Allowances, Active Duty for Training, Enlisted Personnel: These funds are requested to provide for pay and allowances for enlisted personnel attending active duty for training. The rates used in computing requirements include basic pay, government's Social Security contribution, quarters allowances, special and incentive pay as authorized and retirement accrual:

(Amount in Thousands)

	FY 1986 (Actual)		FY 1987 (Estimate)		FY 1988 (Estimate)		FY 1989 (Estimate)	
	Strength	Rate	Strength	Rate	Strength	Rate	Strength	Rate
Average Strength	56,728		66,775		75,875		84,160	
Participation Rate	1%		1%		1%		1%	
Paid Participants	684	\$985.38	821	\$847.75	821	\$856.27	1,148	\$852.79
		\$674		\$696		\$783		\$979
IRR Test				\$5,475		\$11,823		\$11,886

Individual Clothing and Uniform Allowances, Officers: These funds are requested to provide payment for initial and supplemental clothing allowances under the provisions of 37 U.S.C. 415 and 416 to officers for purchase of required uniforms:

(Amount in Thousands)

	FY 1986 (Actual)		FY 1987 (Estimate)		FY 1988 (Estimate)		FY 1989 (Estimate)	
	Number	Rate	Number	Rate	Number	Rate	Number	Rate
Initial Uniform Allowance	75	\$200.00	46	\$200.00	46	\$200.00	49	\$200.00
Additional Uniform Allowance		\$15		\$8		\$8		\$8
TOTAL		\$30		\$17		\$17		\$18

Individual Clothing and Uniform Allowances, Enlisted Personnel: These funds are requested to provide prescribed clothing for enlisted personnel as authorized by the Secretary of Defense under the provisions of 37 U.S.C. 418:

(Amount in Thousands)

	FY 1986 (Actual)		FY 1987 (Estimate)		FY 1988 (Estimate)		FY 1989 (Estimate)	
	Number	Rate	Number	Rate	Number	Rate	Number	Rate
Initial (Partial) Issue to Prior Service Personnel	112	\$312.50	107	\$322.19	107	\$333.46	153	\$345.14
Replacement Issue		\$35		\$34		\$36		\$53
Special Issue								
Cash Allowances								
TOTAL		\$35		\$34		\$36		\$53
TOTAL CLOTHING		\$65		\$61		\$63		\$71

Subsistence of Enlisted Personnel: These funds are requested to provide subsistence-in-kind for personnel on active duty for training.

(Amount in Thousands)

	FY 1986 (Actual)		FY 1987 (Estimate)		FY 1988 (Estimate)		FY 1989 (Estimate)	
	Number	Rate	Number	Rate	Number	Rate	Number	Rate
Active Duty Requirement:								
Subsistence-in-kind								
Total Enlisted Mandays								
Less Provided for								
Elsewhere:								
On Monetary Allowance								
Operational Rations								
Travel								
Total Enlisted to be								
Subsisted	604		821		821		1,148	
% Present	79%		78%		78%		80%	
Total Subsistence-in-kind	478		642		642		918	
Operational Rations								
Basic Allowance for Subsistence								
Total Active Duty	5,736	\$3.65	7,706	\$3.79	7,706	\$4.00	11,017	\$4.15
Requirements		\$21		\$29		\$31		\$46
TOTAL		\$21		\$29		\$31		\$46

**Mobilization Training**

**Travel, Active Duty for Training, Officers:** These funds are requested to provide travel and per diem allowances for officers performing active duty training:

(Amount in Thousands)

	FY 1986 (Actual)		FY 1987 (Estimate)		FY 1988 (Estimate)		FY 1989 (Estimate)	
	Number	Rate	Number	Rate	Number	Rate	Number	Rate
Commercial	1,036	\$266.41	1,116	\$275.09	1,116	\$284.05	1,187	\$294.02
Per Diem	1,036	\$325.29	1,116	\$325.27	1,116	\$325.27	1,187	\$325.19
<b>TOTAL Travel</b>	<b>1,036</b>	<b>\$591.70</b>	<b>1,116</b>	<b>\$600.36</b>	<b>1,116</b>	<b>\$609.32</b>	<b>1,187</b>	<b>\$619.21</b>

**Travel, Active Duty for Training, Enlisted Personnel:** These funds are requested to provide travel and per diem allowances for enlisted personnel performing active duty training:

(Amount in Thousands)

	FY 1986 (Actual)		FY 1987 (Estimate)		FY 1988 (Estimate)		FY 1989 (Estimate)	
	Number	Rate	Number	Rate	Number	Rate	Number	Rate
Commercial	684	\$197.37	821	\$203.41	821	\$210.72	1,148	\$217.77
Per Diem	684	\$156.43	821	\$155.91	821	\$155.91	1,148	\$156.79
<b>TOTAL Travel</b>	<b>684</b>	<b>\$353.80</b>	<b>821</b>	<b>\$359.32</b>	<b>821</b>	<b>\$366.63</b>	<b>1,148</b>	<b>\$374.56</b>

Merchant Marine Training: These funds are requested to provide pay and allowances, travel and per diem and retirement accrual for officers of the Merchant Marine. The Merchant Marine Act of 1936 requires all merchant officers on subsidy ships to be members of the Naval Reserve. Training provides naval science training required for all officers.

(Amount in Thousands)

	FY 1986 (Actual)		FY 1987 (Estimate)		FY 1988 (Estimate)		FY 1989 (Estimate)	
	Number	Rate	Number	Rate	Number	Rate	Number	Rate
Officers								
Active Duty Manday Costs	13,126	\$112.45	12,894	\$108.89	12,894	\$110.90	12,894	\$110.83
Travel	816	\$219.36	876	\$226.83	876	\$237.44	876	\$245.43
Per Diem	13,126	\$17.75	12,894	\$19.39	12,894	\$19.39	12,894	\$19.39
Subtotal								
		\$1,476		\$1,404		\$1,430		\$1,429
		\$179		\$198		\$208		\$215
		\$233		\$250		\$250		\$250
TOTAL		\$1,888		\$1,852		\$1,888		\$1,894
Total Mobilization Training - Direct		\$6,173		\$11,643		\$17,271		\$17,913

Appropriation: Reserve Personnel, Navy  
Budget Program 2: Other Training and Support  
Budget Activity 2-R: School Training

(Amount in Thousands)			
(Actual)	(Estimate)	(Estimate)	(Estimate)
FY 1986	FY 1987	FY 1988	FY 1989
\$8,528	\$12,580	\$14,318	\$14,728

Part 1 - Purpose and Scope

This budget activity provides for the total costs of training qualified officers and enlisted personnel participating in selected school programs. This training is designed to increase mobilization potential and to provide increased proficiency in high priority skills which cannot be achieved solely by regular drills and active duty for training. Examples are the Naval War College, Senior Officer Course, Defense Strategy Seminar, Engineering Watch Officer and ASM Operator. Included in this activity are the costs of basic pay, subsistence-in-kind for enlisted personnel, travel to and from active duty for training, basic allowance for quarters, basic allowance for subsistence, the government's contribution to social Security and retirement accrual. The rates of all costs are determined by applicable provisions of law and regulation.

School Training  
**SCHEDULE OF INCREASES AND DECREASES**  
 (Amount in Thousands)

\$12,500

**FY 1987 DIRECT PROGRAM**

**Increases:**

**Program Growth:**

An additional 11,406 mandays are programmed to support the overall Selected Reserve growth.

+1,685

**Price Escalation:**

Pay Raise: Pay and allowance rates reflect annualization of 3% pay raise effective 1 January 1987.

+ 101

Travel: Inflation rate of 3.5% increases the average cost of transportation.

+ 52

**Decreases:**

Retired Pay Accrual: Normal cost percentage for retirement pay accrual decreases from 26.4% to 26.1% of basic pay.

- 20

**FY 1988 DIRECT PROGRAM**

\$14,318

School Training  
 SCHEDULE OF INCREASES AND DECREASES  
 (Amount in Thousands)

FY 1988 DIRECT PROGRAM		\$14,318
Increases:		
Program Growth:		
An additional 1,761 man-days are programmed to support the overall Selected Reserve growth.	+ 387	
Price Escalation:		
Travel: Inflation rate of 3.5% increases the average cost of transportation.	+ 51	
Decreases:		
Retired Pay Accrual: Normal cost percentage for retirement pay accrual decreases from 25.1% to 23.7% of basic pay.	- 28	
FY 1989 DIRECT PROGRAM		\$14,728



**DETAIL OF REQUIREMENTS SCHOOL TRAINING**  
(Amount in Thousands)

	FY 1958 (Actual)				FY 1959 (Estimate)				FY 1960 (Estimate)					
	Partic- ipants	Length (days)	Rate (day)	Amount	Partic- ipants	Length (days)	Rate (day)	Amount	Partic- ipants	Length (days)	Rate (day)	Amount		
Reserve Personnel, Navy	328	63.4	14,283	915.29	316	64.8	16,391	917.19	376	64.6	17,651	916.34		
School Training	79	6.9	5,449	975.82	81,001	1,479	6.9	10,141	8278.09	82,739	1,575	6.9	10,865	8272.89
	1,612	11.4	18,375	9121.95	92,241	2,287	11.4	26,533	9113.22	93,084	2,494	11.4	28,433	9114.44
	2,402	23.02	23,824	63,042	3,797	35,674	65,743	4,069	39,298	66,218	4,169	40,399	66,266	

**Initial Skill Acquisition Training:** Provides Pay and Allowances and Travel for Naval Reserve Officers attending the Duplain Instructon Program for inactive Reserve candidates to prepare for mobilization and provide religious assistance in a military environment; the Lee Officer Instructon Program designed to aid the newly commissioned officer in adjusting to military life; the Medical Clinical Clerkship Program providing On-The-Job Training (OJT) in a clinical or research service of a Naval Hospital Medical Research Facility; and the Dental Clerkship and Instructon Program offering formal classroom and field training for newly commissioned officers.

Officers 328 63.4 14,283 915.29 316 64.8 16,391 917.19 376 64.6 17,651 916.34 91,877

**Refresher & Proficiency Skills:** Provides that training necessary to attain the required level of proficiency in a specific military specialty for which a member has been initially qualified. It includes advanced technical training and qualification training in various naval warfare, administrative, and management areas to meet specific mobilization billet requirements.

Officers 79 6.9 5,449 975.82 81,001 1,479 6.9 10,141 8278.09 82,739 1,575 6.9 10,865 8272.89 82,907

Enlisted 1,612 11.4 18,375 9121.95 92,241 2,287 11.4 26,533 9113.22 93,084 2,494 11.4 28,433 9114.44 93,379

Subtotal 2,402 23.02 23,824 63,042 3,797 35,674 65,743 4,069 39,298 66,218 4,169 40,399 66,266

**Career Development Training:** Provides professional military training conducted at National War College, Armed Forces Staff College, Naval War College and other naval training activities. Experience has dictated greater reliance on formal schools, rather than correspondence courses and OJT for this type training.

Officers 159 10.5 2,043 8265.83 6286 429 10.5 4,267 8264.26 91,191 459 10.5 4,816 8264.40 91,283 461 10.5 4,840 8264.22 91,299

Enlisted 647 11.1 7,102 9125.73 9903 925 11.1 10,374 9116.83 91,212 999 11.1 11,093 9118.10 91,311 1,022 11.1 11,459 9118.33 91,326

Subtotal 806 9.25 9,145 9148.56 16,289 1,484 14,881 92,403 1,458 15,909 92,594 1,493 16,299 92,645

Reserve Personnel, Navy  
School Training

DETAIL OF REQUIREMENTS - SCHOOL TRAINING  
(Amount in Thousands)

	FY 1986 (Actual)				FY 1987 (Estimate)				FY 1988 (Estimate)				FY 1989 (Estimate)								
	Partic- ipants	Length (Avg)	Man- days	Rate (Avg)	Amount	Partic- ipants	Length (Avg)	Man- days	Rate (Avg)	Amount	Partic- ipants	Length (Avg)	Man- days	Rate (Avg)	Amount	Partic- ipants	Length (Avg)	Man- days	Rate (Avg)	Amount	
Officers Enlisted	64	14.4	924	\$236.49	\$237	119	14.4	1,728	\$237.21	\$468	127	14.4	1,829	\$239.48	\$438	128	14.4	1,836	\$237.47	\$436	
	198	12.9	2,548	\$116.17	\$296	284	12.9	3,666	\$108.29	\$357	385	12.9	3,948	\$109.39	\$431	316	12.9	4,072	\$109.77	\$447	
Subtotal	262		3,472		\$533	483		5,386		\$865	432		5,769		\$869	444		5,908		\$883	
Unit/Individual Conversion Training: Provides that training required as the result of a change in the type of unit, a change in unit mission, or new equipment.																					
Continuing Medical Education: Provides that training necessary for health professionals to maintain their proficiency/expertise through continuing education, as required by the medical professional bodies, as a mandate to maintain their professional standing.																					
Officers Enlisted	476	6.0	2,858	\$344.38	\$984	964	6.0	5,782	\$323.76	\$1,872	1,129	6.0	6,776	\$319.95	\$2,168	1,271	6.0	7,628	\$328.53	\$2,445	
Subtotal	476		2,858		\$984	964		5,782		\$1,872	1,578		11,693		\$2,756	1,663		12,114		\$2,957	
Grand Total																					
Officers Enlisted	1,861	7.4	25,857	\$196.77	\$5,888	3,348	7.4	38,541	\$286.71	\$7,967	3,686	7.4	41,937	\$288.26	\$9,734	3,839	7.4	42,881	\$218.68	\$9,834	
TOTAL	4,318		55,962		\$9,528	6,894		79,114		\$12,588	7,933		98,529		\$14,318	8,158		92,281		\$14,728	
Total: School Training					\$8,528					\$12,588					\$14,318					\$14,728	

Appropriation: Reserve Personnel, Navy  
Budget Program 2: Other Training and Support  
Budget Activity 2-6: Special Training

(Amount in Thousands)  
(Actual) (Estimate) (Estimate) (Estimate)  
FY 1986 FY 1987 FY 1988 FY 1989  
\$38,815 \$19,374 \$21,221 \$22,186

Part I - Purpose and Scope

This budget activity provides additional training opportunities for Naval Reserve officers and enlisted personnel participating in special programs, and for mutual support to active Navy commands. The special active duty for training program is critical to the readiness of Reservists, management of Reserve programs and to certain fleet operations. These training periods often provide mutual support to both the fleet and the Naval Reservist. Peak fleet requirements, such as during fleet exercises, are filled by Reservists performing short periods of special active duty for training. War Gaming Seminars, MFF Ship transfers and operations, Fleet Exercise Support and MFD Transitional Training are other special programs. This training is designed to enable personnel to achieve immediate readiness standards that cannot be met by other means and for support of other requirements. Included in this activity are the costs of basic pay, subsistence-in-kind for enlisted personnel, travel to and from training, basic allowance for quarters, basic allowance for subsistence, the government's contribution to Social Security and retirement accrual. The rates of all costs are determined by applicable provisions of law and regulations.

Special Training  
**SCHEDULE OF INCREASES AND DECREASES**  
 (Amount in Thousands)

\$19,374

**FY 1987 DIRECT PROGRAM**

**Increases:**

**Program Growth:**

An additional 9,595 mandays are programmed to support the overall Selected Reserve growth. +1,631

**Price Escalation:**

Pay Raise: Pay and allowance rates reflect annualization of 3% pay raise effective 1 January 1987. + 156

Travel: Inflation rate of 3.5% increases the average cost of transportation. + 100

**Decreases:**

Retired Pay Accrual: Normal cost percentage for retirement pay accrual decreases from 26.4% to 26.1% of basic pay. - 34

**FY 1988 DIRECT PROGRAM**

\$21,221

Special Training  
**SCHEDULE OF INCREASES AND DECREASES**  
 (Amount in Thousands)

<b>FY 1988 DIRECT PROGRAM</b>			<b>\$21,221</b>
<b>Increases:</b>			
<b>Program Growth:</b>			
An additional 6,919 mandays are programmed to support the overall Selected Reserve growth.	+	683	
<b>Price Escalation:</b>			
Travel: Inflation rate of 3.5% increases the average cost of transportation.	+	48	
<b>Decreases:</b>			
Retired Pay Accrual: Normal cost percentage for retirement pay accrual decreases from 26.1% to 25.7% of basic pay.	-	46	
<b>FY 1989 DIRECT PROGRAM</b>			<b>\$22,106</b>

Reserve Personnel, Navy  
Special Training

DETAIL OF REQUIREMENTS - SPECIAL TRAINING  
(Amount in Thousands)

	FY 1986 (Actual)			FY 1987 (Estimate)			FY 1988 (Estimate)			FY 1989 (Estimate)			
	Partic- ipants	Length (Avg)	Man- days (Avg)	Partic- ipants	Length (Avg)	Man- days (Avg)	Partic- ipants	Length (Avg)	Man- days (Avg)	Partic- ipants	Length (Avg)	Man- days (Avg)	Amount
Officers	1,354	9.6	13,095	479	9.6	4,601	529	9.6	5,078	541	9.6	5,199	\$1,243
Enlisted	1,282	9.6	12,386	669	9.6	6,428	699	9.6	6,708	758	9.6	7,276	\$1,283
Subtotal	2,646		25,481	1,148		11,029	1,228		11,786	1,300		12,475	\$2,526

Exercises: Provides for Naval Reserve participation in Fleet Exercises and support of Fleet Training. The Reserve members are integrated with the active forces and provide required expertise.

Officers	1,354	9.6	13,095	479	9.6	4,601	529	9.6	5,078	541	9.6	5,199	\$1,243
Enlisted	1,282	9.6	12,386	669	9.6	6,428	699	9.6	6,708	758	9.6	7,276	\$1,283
Subtotal	2,646		25,481	1,148		11,029	1,228		11,786	1,300		12,475	\$2,526

Conferences and Visits: Provides for pre-cruise planning and scheduling conferences in support of mobilization readiness training. These tours also enable Reserve personnel to participate in the administration and management of their programs.

Officers	882	3.8	3,351	687	3.8	2,606	679	3.8	2,579	671	3.8	2,558	\$368.24
Enlisted	165	3.3	545	167	3.3	552	176	3.3	582	186	3.3	614	\$255.38
Subtotal	1,047		3,896	774		2,858	855		3,161	857		3,164	\$623.62

Operational Training: Provides training directly related to the member's mobilization billet. This additional training is necessary in order to maintain parity with comparable active force units and specialized billet functions.

Officers	2,382	8.4	21,687	1,329	8.4	12,845	1,787	8.4	14,341	1,685	8.4	14,155	\$199.51
Enlisted	1,857	8.6	15,973	1,641	8.6	14,114	1,735	8.6	14,918	1,859	8.6	16,078	\$99.88
Subtotal	4,239		37,660	3,170		26,959	3,442		29,259	3,554		38,225	\$299.39

Reserve Personnel, Navy  
Special Training

DETAIL OF REQUIREMENTS - SPECIAL TRAINING  
(Amount in Thousands)

	FY 1986 (Actual)			FY 1987 (Estimate)			FY 1988 (Estimate)			FY 1989 (Estimate)							
	Partic- ipants	Length (Avg) days	Man- Rate (Avg)	Partic- ipants	Length (Avg) days	Man- Rate (Avg)	Partic- ipants	Length (Avg) days	Man- Rate (Avg)	Partic- ipants	Length (Avg) days	Man- Rate (Avg)					
Officers	1,068	13.2	14,129	626.76	772	14.0	10,065	625.74	82,728	622	13.8	11,378	623.83	842	14.6	12,259	623.28
Enlisted	1,301	11.7	15,259	914.48	1,162	11.9	13,833	916.77	91,477	1,232	11.9	14,668	916.62	1,335	12.0	16,027	911.00
Subtotal	2,369		29,398		1,934		24,898		184,205	2,464		26,046		2,670		28,286	

Management Support: Provides Reserve members with the opportunity to participate in policy boards, special studies and projects that have a direct effect on the total Naval Reserve program planning. Additionally, management assistance teams provide support to active force units.

Officers	1,068	13.2	14,129	626.76	772	14.0	10,065	625.74	82,728	622	13.8	11,378	623.83	842	14.6	12,259	623.28
Enlisted	1,301	11.7	15,259	914.48	1,162	11.9	13,833	916.77	91,477	1,232	11.9	14,668	916.62	1,335	12.0	16,027	911.00
Subtotal	2,369		29,398		1,934		24,898		184,205	2,464		26,046		2,670		28,286	

Ser. Mission/Mission Sup: Provides for direct Reserve support of the active forces such as US/AF Translant- Transpac services and assistance to Naval Intelligence Command activities. Also included in this category are Ferry Aircraft Services and Aircraft Accident/Incident Investigations.

Officers	3,665	7.0	26,594	6217.01	6,283	2,159	7.0	16,760	6262.77	93,400	2,400	7.0	18,717	6294.66	3,831	2,370	7.0	18,405	6285.63
Enlisted	5,968	3.9	23,274	9148.45	5,136	3.9	20,832	9136.66	92,738	5,432	3.9	21,185	9138.07	62,925	5,653	3.9	22,825	9138.44	
Subtotal	9,633		51,868		11,419		37,592		186,138	14,862		39,892		146,326	8,484		41,310		

Competitive Events: Provides for Naval Reserve participation in bombing derbies and air combat maneuvering events.

Officers	270	8.3	2,217	6241.04	6541	185	8.3	1,539	6222.22	8342	288	8.3	1,725	6223.77	8386	285	8.3	1,782	6225.83
Enlisted	144	9.0	1,413	9180.28	9153	147	9.0	1,442	959.17	9143	156	9.0	1,538	958.69	9151	163	9.0	1,681	9181.81
Subtotal	414		3,630		6694	332	2,981		17,485	1485	364	3,263		17,537	368		3,463		

Reserve Personnel, Navy  
Special Training

DETAIL OF REQUIREMENTS - SPECIAL TRAINING  
(Amount in Thousands)

	FY 1986 (Actual)			FY 1987 (Estimate)			FY 1988 (Estimate)			FY 1989 (Estimate)		
	Partic- ipants	Length (Avg)	Man- Rate days (Avg)	Partic- ipants	Length (Avg)	Man- Rate days (Avg)	Partic- ipants	Length (Avg)	Man- Rate days (Avg)	Partic- ipants	Length (Avg)	Man- Rate days (Avg)

Unit Conversion Training: Provides for Pilot, Instructor and Aircrew Transition Training, Pilot/WFO Qualifications and Aircraft Familiarization.

Officers	328	11.0	3,613 \$232.77	604	225	11.0	2,408 \$213.42	653	253	11.0	2,781 \$216.83	663	238	11.0	2,747 \$217.69	679
Enlisted	235	10.0	2,351 \$108.94	627	252	10.0	2,619 \$101.57	626	277	10.0	2,771 \$103.57	627	265	10.0	2,647 \$103.62	625
Subtotal	564		6,174	1,231	488		5,107	1,279	530		5,552	1,290	503		5,394	1,304

Additional ACJTRM/Extended ACJTRM: Provides extended active duty/additional ACJTRM for mandatory obligors who fail to maintain satisfactory participation. These actions are authorized by law (10 U.S.C. 673a and 10 U.S.C. 278). These are administrative in nature, and are taken to satisfy military training obligations and to correct deficiencies arising from unsatisfactory performance.

Officers	591	29.0	17,145 \$62.41	617	29.0	17,894 \$68.23	614	652	29.0	18,908 \$68.94	614	704	29.0	20,415 \$69.12	617	
Enlisted	591		17,145	617		17,894	614	652		18,908	614	704		20,415	617	
Subtotal	1,182		34,290	1,234		35,788	1,228	1,306		37,816	1,228	1,408		40,830	1,234	
Grand Total																

Officers	16,159	6.2	86,656 \$238.70	624,694	5,948	6.2	51,352 \$222.41	611,421	6,598	6.2	56,599 \$224.69	612,717	6,564	6.2	57,097 \$225.68	612,881
Enlisted	11,564	7.7	88,486 \$14.38	116,121	9,681	7.9	76,966 \$103.41	97,953	18,359	7.9	81,254 \$104.66	96,394	11,152	7.9	87,675 \$105.22	99,225
TOTAL	27,723		175,142	740,815	15,749		128,258	709,374	16,957		137,853	709,111	17,716		144,772	712,106

Total: Special Training			638,615				619,374				621,221				622,186	
-------------------------	--	--	---------	--	--	--	---------	--	--	--	---------	--	--	--	---------	--



Appropriation: Reserve Personnel, Navy  
Budget Program 2: Other Training and Support  
Budget Activity 2-7: Administration and Support

(Actual)	(Estimate)	(Estimate)	(Estimate)
FY 1986	FY 1987	FY 1988	FY 1989
\$578,245	\$684,832	\$749,696	\$787,128

#### Part I - Purpose and Scope

The funds requested are to provide for pay and allowances and permanent change of station costs for Naval Reserve Full-time Support (FTS) personnel. The majority of the FTS personnel are assigned to active duty in the Training and Administration of Reserves (TAR) program, as authorized by 10 U.S.C. 255 and 678. The purpose of the TAR program is to provide a community of professionals to administer Naval Reserve programs. TAR personnel are assigned to Naval Reserve shore activities (Naval Air Reserve Units, Naval Air Stations/Facilities, Naval Reserve Centers, Naval Reserve Readiness Commands, etc.), Naval Air Squadrons, Naval Reserve Force (NRF) ships and headquarters staffs such as Chief of Naval Operations and Chief of Naval Personnel. A small percent of the TAR officers also serve on a rotational basis with fleet or regular Navy activities to maintain/acquire proficiency in operational procedures. The pay and allowances and travel expenses for Temporary Active Duty (TEAD) FTS personnel, who support Reserve programs, are also included. Most TEAD personnel are assigned to Naval Reserve Convasser-Recruiter billets and a very small number provide short-term support in Naval Reserve management headquarters.

Funds requested also provide for Death Gratuities/Disability and Hospitalization Benefits, Reserve Incentive Programs, and the NROTC Nuclear Accession Bonus Program.

ADMINISTRATION AND SUPPORT  
 SCHEDULE OF INCREASES AND DECREASES  
 Amount in Thousands

\$684,832

FY 1987 DIRECT PROGRAM

Increases:

Increase workyear average (2,063) associated with authorized increase in end strength	+58,797
Increase in numbers entitled to Aviation Incentive Pay related to increased numbers of squadrons and in-flight billets	+ 165
Increase in numbers entitled to Career Sea Pay and Family Separation Allowances related to the increased Navy Reserve Anti-Submarine Warfare Force Levels	+ 747
Increase in number of entitled to Separation Payments	+ 436
Increase in FICA rates from an average of 7.15% to 7.42%	+ 922
Increase in FICA base from \$43,800 to \$46,200	+ 19
Increase in number of personnel eligible for Special Duty Assignment Pay	+ 41
Increase in clothing issues and maintenance rates due to inflation	+ 212
Increase due to Annualization of 3.0% Pay Raise effective 1 January 1987	+ 4,673
Increase in Overseas Station Allowances due to inflation	+ 40
Increase in subsistence-in-kind rate from \$3.74 to \$4.00	+ 46
Increase in VHA due to increase in housing costs	+ 962
Increase in leap year	+ 92
Increase in Death, Disability and Hospitalization Benefits	+ 242
Increase in Reserve Incentives	+ 1,420
<b>Total Increases</b>	<b>+68,814</b>

Decreases:

Decrease in number of officers entitled to Aviation Officer Continuation Payments	- 72
Decrease in number of personnel entitled to clothing allowances	- 347
Decrease due to change in the NCP used to calculate Retired Pay Accrual from 52.2% to 51.2%	- 3,216
Decrease in PCS costs due to decline in program requirements partially offset by authorized rate increase	- 287
Decrease of 7 participants in the NROTC Vocational Bonus Program	- 28
<b>Total Decreases</b>	<b>-3,950</b>

FY 1988 DIRECT PROGRAM

\$744,696

ADMINISTRATIVE EXPENSES AND SUPPORT  
 SCHEDULE OF INCREASES AND DECREASES  
 Air Force Thousands

FY 1988 DIRECT PROGRAM

\$749,690

Increases:

Increased workyear average (1,106) associated with authorized increase in end strength (Full-time Support)	+ 33,951
Increase in numbers entitled to Aviation Incentive pay related to increased numbers of squadrons and in-flight billets	+ 34
Increase in number of officers entitled to Aviation Officer Continuation Payments	+ 216
Increase in numbers entitled to Career Sea Pay and Family Separation Allowances related to the increased Navy Reserve Anti-Submarine Warfare Force Levels	+ 498
Increase in number of entitled to Separation Payments	+ 148
Increase in FICA rates from an average of 7.42% to 7.51%	+ 298
Increase in FICA base from \$46,200 to \$49,200	+ 35
Increase in number of personnel eligible for Special Duty Assignment Pay	+ 40
Increase in clothing issues and maintenance rates due to inflation	+ 353
Increase in number of clothing issues associated with authorized increase in end strength	+ 239
Increase in Overseas Station Allowances due to inflation	+ 59
Increase in Death, Disability and Hospitalization Benefits	+ 71
Increase in Reserve Incentives	+ 3,432
Increase in VHA due to increase in housing costs	+ 1,752

Total Increases

+41,145

Decreases:

Decrease due to change in NCP used to calculate Retired Pay Accrual from 51.2% to 50.2%	- 3,518
Decrease in number of officers entitled to Separation Payments	- 91
Decrease for non-leap year	- 92
Decrease of 3 participants in the NROTC Nuclear Bonus Program	- 12

Total Decreases

-3,713

FY 1989 DIRECT PROGRAM

\$787,128

**Section 265. Policies and regulations: participation of reserve officers in preparation and administration of Reserve Affairs.**

"Within such numbers and in such grades and assignments as the Secretary concerned may prescribe, each armed force shall have officers of its reserve component on active duty (other than for training) at the seat of government, and at headquarters responsible for reserve affairs, to participate in preparing and administering the policies and regulations affecting those reserve components. While so serving, such officer is an additional number of any staff with which he is serving."

	FY 1986		FY 1987		FY 1988		FY 1989	
	BEGIN	END	BEGIN	END	BEGIN	END	BEGIN	END
Officers	210	215	226	232	232	233	233	233

**Section 678. Reserves: for organizing, administering, etc., reserve components.**

"A Reserve ordered to active duty under Section 672(d) of this title in connection with organizing, administering, recruiting, instructing or training the reserve component."

	FY 1986		FY 1987		FY 1988		FY 1989	
	BEGIN	END	BEGIN	END	BEGIN	END	BEGIN	END
Officers	1,502	1,628	1,727	1,877	2,044	2,103	2,097	2,149
Enlisted	13,300	15,397	16,449	17,744	19,200	19,575	20,175	20,636
Total	14,802	17,025	18,176	19,621	21,244	21,678	22,272	22,785

Year	Population	Area	Value	Percentage	Rate
1960	14,284	2,335	155,544	2,382	15,9126
1961	14,284	2,335	155,544	2,382	15,9126
1962	14,284	2,335	155,544	2,382	15,9126
1963	14,284	2,335	155,544	2,382	15,9126
1964	14,284	2,335	155,544	2,382	15,9126
1965	14,284	2,335	155,544	2,382	15,9126
1966	14,284	2,335	155,544	2,382	15,9126
1967	14,284	2,335	155,544	2,382	15,9126
1968	14,284	2,335	155,544	2,382	15,9126
1969	14,284	2,335	155,544	2,382	15,9126
1970	14,284	2,335	155,544	2,382	15,9126
1971	14,284	2,335	155,544	2,382	15,9126
1972	14,284	2,335	155,544	2,382	15,9126
1973	14,284	2,335	155,544	2,382	15,9126
1974	14,284	2,335	155,544	2,382	15,9126
1975	14,284	2,335	155,544	2,382	15,9126
1976	14,284	2,335	155,544	2,382	15,9126
1977	14,284	2,335	155,544	2,382	15,9126
1978	14,284	2,335	155,544	2,382	15,9126
1979	14,284	2,335	155,544	2,382	15,9126
1980	14,284	2,335	155,544	2,382	15,9126

Pay and Allowances of Incited: These funds provide for pay, allowances, retired pay accrual and FICA costs for Reserve Initiated personnel serving on active duty in the Training and Administration of Reserves (TAR) Program.

(Amounts in Thousands)

	FY 1986			FY 1987			FY 1988			FY 1989		
	Number	Rate	Amount	Number	Rate	Amount	Number	Rate	Amount	Number	Rate	Amount
E-9	42	\$50,254.95	\$7,136	144	\$52,463.02	\$7,555	156	\$52,762.85	\$8,231	165	\$52,587.53	\$8,677
E-8	339	2,736.30	\$14,386	382	44,553.45	\$17,019	385	45,146.64	\$17,381	399	45,042.15	\$17,972
E-7	1,412	36,366.64	\$52,056	1,562	38,778.47	\$60,478	1,709	38,807.88	\$66,323	1,820	38,697.72	\$70,430
E-6	7,128	31,454.46	\$129,844	4,603	32,858.90	\$151,250	4,765	33,363.51	\$158,977	5,046	32,933.31	\$166,181
E-5	4,562	25,650.09	\$117,016	4,874	26,937.39	\$131,293	5,178	27,144.28	\$140,553	5,343	27,046.61	\$144,510
E-4	1,654	21,068.12	\$34,847	1,901	22,127.25	\$42,064	2,287	22,014.56	\$50,347	2,564	21,772.24	\$55,824
E-3	1,365	17,010.84	\$23,220	1,975	17,901.01	\$35,354	2,563	17,620.37	\$45,161	2,618	17,804.81	\$46,613
E-2	892	14,953.24	\$13,338	1,295	15,631.56	\$20,243	1,497	15,628.23	\$23,395	1,567	15,587.43	\$24,426
E-1	903	13,327.62	\$12,035	1,008	13,588.02	\$13,697	1,035	13,532.15	\$14,006	1,114	13,528.18	\$15,070
	15,397		\$403,878	17,744		\$478,953	19,575		\$524,374	20,636		\$549,703

Substance of Eligated Personnel: Funds are requested to provide for the payment of basic allowance for subsistence and to provide for subsistence-kind for personnel serving on active duty in the Training and Administration of Reserves program.

(Amounts in Thousands)

	FY 1986			FY 1987			FY 1988			FY 1989						
	NYA	Rate	Amount	NYA	Rate	Amount	NYA	Rate	Amount	NYA	Rate	Amount				
	M/D			M/D			M/D			M/D						
<b>Basic Allowance for Subsistence</b>																
(1) When authorized to meet emergency	10,686	3,900	\$5.21	\$20,321	12,316	4,495,340	\$5.33	\$23,960	13,523	4,949,418	\$5.37	\$26,578	14,246	5,199,790	\$5.37	27,923
(2) When area is not available	2,566	929,290	5.89	5,474	2,926	1,067,990	6.03	6,440	3,220	1,178,520	6.07	7,154	3,333	1,216,545	6.07	7,384
<b>Total BAS</b>	13,252	4,829,680		25,795	15,242	5,563,330		30,400	16,743	6,127,938		33,732	17,579	6,416,335		35,307
<b>Substance-un-filed</b>																
Eligated Strength Less: entitled to basic allowance	15,397			17,744				19,575					20,636			
Total entitled to be subsidized	13,232			15,242				16,743					17,579			
(1) Above	2,165			2,502				2,832					3,057			
Entitled & Entire Net subsidized	1,156			1,208				1,094					1,045			
(2) Below	0,462			0,462				0,462					0,462			
Entitled & Entire Net subsidized	534	194,910	3.65	711	558	203,670	3.79	772	505	184,830	4.00	739	483	176,295	4.15	732
(2) Above	1,009			1,294				1,738					2,012			
Entitled & Entire Net subsidized	0,711			0,711				0,711					0,711			
Total SII	717	261,705	3.65	955	920	335,800	3.79	1,273	1,236	452,376	4.00	1,810	1,431	522,315	4.15	2,168
Total SII	1,251	456,615		1,666	1,478	539,470		2,045	1,741	637,206		2,549	1,914	698,610		2,900
Total Substance	5,286,295			27,461	6,102,800			32,445	6,765,144				36,281	7,114,945		38,207

Permanent Change of Station Travel for Officers: These funds provide travel costs for permanent change of station for Reserve Officers serving on active duty in the TAR program.

(Amounts in Thousands)

FY 1986		FY 1987		FY 1988		FY 1989					
Number	Rate	Amount	Number	Rate	Amount	Number	Rate				
962	\$4,401.25	\$4,234	1,343	\$4,070.74	\$5,467	1,260	\$4,392.86	\$5,535	1,292	\$4,846.75	\$6,262

Permanent Change of Station Travel for Enlisted: These funds provide travel costs for permanent change of station for Reserve enlisted serving on active duty in the TAR program.

(Amounts in Thousands)

FY 1986		FY 1987		FY 1988		FY 1989					
Number	Rate	Amount	Number	Rate	Amount	Number	Rate				
7,750	\$1,652.65	\$12,808	9,474	\$1,605.34	\$15,209	8,672	\$1,712.87	\$14,854	9,301	\$1,852.70	\$17,232

FY 1986 Amount      FY 1987 Amount      FY 1988 Amount      FY 1989 Amount

Total Direct Program  
Training and  
Administration of  
Reserves (TAR)      \$569,064      \$673,358      \$736,588      \$770,530



Death Gratuities/Disability and Hospitalization Benefits: These funds are requested to provide for the payment of death gratuities to beneficiaries of deceased military personnel as authorized by law. Death gratuities are equal to six months basic pay, incentive and special pay if authorized, the sum of which is not to exceed \$3,000. Also, members of the Naval Reserve who suffer injury or disability or contract disease in line of duty, active or inactive, are entitled to hospitalization and pay allowances during hospitalization which results from injury while on active or inactive duty for training.

(Amount in Thousands)

	FY 1986 (Actual)		FY 1987 (Estimate)		FY 1988 (Estimate)		FY 1989 (Estimate)					
	Number	Rate	Amount	Rate	Number	Rate	Number	Rate				
Officers	61	\$6,852.46	\$418	41	\$6,884.88	\$279	54	\$7,074.07	\$382	56	\$7,142.86	\$400
Enlisted	235	\$3,431.37	\$875	170	\$3,441.18	\$585	197	\$3,532.99	\$696	211	\$3,545.02	\$748
Total			\$1,293		\$664		\$1,078		\$1,148			

NROTC Nuclear Bonus: Funds requested are to provide Nuclear Officer Accession Bonus (NOAB) payments established by Section 312b of Title 37, U.S.C., as amended, to certain selected NROTC students.

increased recruiting emphasis and opportunity for responsibility provided by Navy is anticipated to result in NROTC students participating in the NOAB Program. Upon acceptance into the program by the Secretary of the Navy, selected students receive a \$4,000 bonus payment for their agreement to enter a nuclear power training program. In the event an individual who has received the NOAB fails to commence, or satisfactorily complete, the nuclear power training specified in the agreement, recoupment provisions are in effect. Successful completion of active duty nuclear power training will qualify individuals for additional bonus payments covered in the Military Personnel, Navy (NPM) appropriation. The following is a comparison by fiscal years of the program data and associated costs included in this estimate.

(Amounts in Thousands)

	FY 1986		FY 1987		FY 1988		FY 1989	
	Number	Rate	Number	Rate	Number	Rate	Number	Rate
NROTC Bonus Costs	79	\$4,000.00	285	\$4,000.00	278	\$4,000.00	275	\$4,000.00
		\$716		\$1,140		\$1,112		\$1,100

Reserve Incentive Program: These funds are requested to provide for payment of bonuses as authorized by Title 37 U.S. Code Section 306. Bonuses are required to control accessions and losses of Selected Reservists. An incentive is only offered in ratings where critical shortages exist. Shortages are determined by measuring the existing rating authorization against the on board personnel inventory by rating. In FY 1986, Congress authorized increased maximum payment amounts for the Reenlistment Bonus, Affiliation Bonus and the IRR Bonus and authorized a new Prior Service Enlistment Bonus.

Selected Reserve Bonuses

Reenlistment Bonus: A Reenlistment Bonus is offered to members in critical ratings who have no more than nine years total military service at time of normal expiration of obligated service, and who agree to reenlist or extend their enlistment. Beginning in FY 1986, a two level bonus schedule is established. Personnel in the most critical ratings receive an initial payment of \$1,200 and annual anniversary payments of \$300 for six years or a \$600 initial payment and \$200 anniversary payments for three years. Other personnel in critical ratings receive an initial payment of \$900 and \$150 anniversary payments for six years or an initial payment of \$450 and \$150 anniversary payments for three years.

(Amount in Thousands)

	FY 1986 (Actual)		FY 1987 (Estimate)		FY 1988 (Estimate)		FY 1989 (Estimate)	
	Number	Rate	Number	Rate	Number	Rate	Number	Rate
New Payments	1,338	\$887.89	2,453	\$914.88	2,564	\$992.98	1,966	\$1,027.98
Anniversary Payments	10,197	\$137.79	12,066	\$153.32	12,388	\$161.77	12,616	\$178.42
<b>SUBTOTAL Reenlistment Bonus</b>								
		\$2,593		\$4,094		\$4,558		\$4,272

**Reserve Incentive Program**

**Affiliation Bonus:** The Affiliation Bonus is designed to provide an incentive for personnel released from active duty who have some military service obligation (MSO) remaining, to affiliate with Selected Reserve for the remainder of their initial military service obligation. Beginning in FY 1986, a two level bonus schedule is established. Personnel in the most critical ratings are paid \$50 per month of MSO at enlistment if MSO is 18 months or less, or one-half at enlistment and the remainder at the fifth anniversary for more than 18 months MSO remaining. Other critical rating personnel receive payment based on \$25 per month of MSO remaining.

(Amount in Thousands)

	FY 1986 (Actual)		FY 1987 (Estimate)		FY 1988 (Estimate)		FY 1989 (Estimate)	
	Number	Rate	Number	Rate	Number	Rate	Number	Rate
New Payments	1,213	\$304.20	1,204	\$303.16	1,324	\$316.47	1,435	\$326.83
Anniversary Payments	359	\$200.57	238	\$294.12	256	\$232.97	329	\$346.50
<b>SUBTOTAL Affiliation Bonus</b>								
		\$470		\$435		\$494		\$583

**Non-Prior Service Enlistment Bonus:** The Non-Prior Service Enlistment Bonus is designed to provide an incentive for non-prior service personnel to enlist in the Ready Reserve with a drilling obligation upon completion of initial active duty for training. The \$2,000 total bonus includes an initial payment of \$1,000 with the remainder paid in the fourth and sixth years.

(Amount in Thousands)

	FY 1986 (Actual)		FY 1987 (Estimate)		FY 1988 (Estimate)		FY 1989 (Estimate)	
	Number	Rate	Number	Rate	Number	Rate	Number	Rate
New Payments	2,957	\$1,000.00	2,915	\$1,000.00	2,075	\$1,000.00	2,120	\$1,000.00
Anniversary Payments		\$2,957		\$2,075	436	\$500.00	1,999	\$500.25
<b>SUBTOTAL Non-Prior Service Enlistment Bonus</b>		\$2,957		\$2,075		\$2,233		\$3,120

Reserve Incentive Program

Prior Service Enlistment Bonus: The Prior Service Enlistment Bonus is offered to personnel in critical ratings who have completed their military service obligation and have less than 10 years total military service. A two level bonus schedule has been established. Personnel in the most critical ratings receive an initial payment of \$1,200 and annual anniversary payments of \$300 for six years or a \$600 initial payment and \$300 anniversary payments for three years. Other personnel in critical ratings receive an initial payment of \$900 and \$150 anniversary payments for six years or an initial payment of \$450 and \$150 anniversary for three years.

(Amount in Thousands)

	FY 1986 (Actual)		FY 1987 (Estimate)		FY 1988 (Estimate)		FY 1989 (Estimate)	
	Number	Rate	Number	Rate	Number	Rate	Number	Rate
New Payments	231	\$943.72	449	\$948.78	555	\$949.55	548	\$948.91
Anniversary Payments		\$218	231	\$229.44	680	\$227.94	1,235	\$226.72
<b>SUBTOTAL Prior Service Enlistment Bonus</b>		\$218		\$479		\$682		\$800

Educational Assistance: This program was established for Non-Prior Service personnel who enlist for six years in critical skill ratings. It is payable at a rate of up to \$1,000 per year; \$4,000 maximum. This program was discontinued effective 1 July 1985. \*New Payments\* shown in FY 1986 reflect obligation timing at the completion of an eligible member's initial active duty for training.

(Amount in Thousands)

	FY 1986 (Actual)		FY 1987 (Estimate)		FY 1988 (Estimate)		FY 1989 (Estimate)	
	Number	Rate	Number	Rate	Number	Rate	Number	Rate
New Payments	200	\$1,000.00						
Anniversary Payments	654	\$1,000.00	584	\$1,000.00	584	\$1,000.00	584	\$1,000.00
<b>SUBTOTAL Educational Assistance</b>		\$854		\$584		\$584		\$584

Reserve Incentive

IRR Bonus: The IRR bonus is designed to encourage enlistment, reenlistment or voluntary extension in the IRR. In 1985, the bonus was paid incrementally, based on a total 3 year entitlement of \$900. Beginning in FY 1986, the incremental payments are based on a total 3 year entitlement of \$750.

(Amount in Thousands)

	FY 1986 (Actual)		FY 1987 (Estimate)		FY 1988 (Estimate)		FY 1989 (Estimate)	
	Number	Rate	Number	Rate	Number	Rate	Number	Rate
New Payments	84	\$285.71	1,223	\$250.20	1,223	\$250.20	1,225	\$249.00
Anniversary Payments	43	\$348.84	1,573	\$289.26	1,003	\$266.20	3,772	\$250.00
<b>SUBTOTAL IRR Bonus</b>		\$39		\$761		\$573		\$1,249

Medical Recruiting Incentives: Provides funding for a new SELRES STIPEND Program as well as the Medical Education Loan Repayment Program. These funds are to enhance Reserve component recruiting programs for nurses and physicians with critical skills required in wartime.

(Amount in Thousands)

	FY 1986 (Actual)		FY 1987 (Estimate)		FY 1988 (Estimate)		FY 1989 (Estimate)	
	Number	Rate	Number	Rate	Number	Rate	Number	Rate
Loan Repayments/STIPEND		\$0		\$1,000		\$1,700		\$3,700
<b>TOTAL Reserve Incentives</b>		\$7,139		\$9,428		\$10,876		\$14,306
<b>TOTAL Administration and Support</b>		\$570,245		\$684,832		\$749,696		\$787,128

Appropriation: Reserve Personnel, Navy  
 Budget Program 2: Other Training and Support  
 Budget Activity 2U: Education Benefits-6. I. BILL

(Actual)	(Amount in Thousands)	(Estimate)	(Estimate)
FY 1986	FY 1987	FY 1988	FY 1989
\$10,377	\$19,820	\$14,540	\$0

PART I - PURPOSE AND SCOPE

Funds are for the payment to the Department of Defense Education Benefits Fund, a trust fund. The program is governed by Title 10 U.S.C., Chapter 106. This program will fund educational benefit payments in their entirety for eligible individuals in the Selected Reserve. This program is budgeted on an accrual basis. Actual payments to individuals are made by the Veterans Administration from funds transferred from the trust account.

PART II - JUSTIFICATION OF FUNDS REQUESTED

All individuals enlisting, reenlisting, or extending for not less than six years in the Selected Reserve between July 1, 1985 and June 30, 1988 except those who have received a commission from a Service academy or completed an ROTC scholarship program are eligible to receive educational assistance unless they are entitled to assistance under Chapter 30 of Title 38 U.S.C.. The individuals must also meet initial training and high school diploma or equivalency requirements. Cost estimates are actuarially based and reflect eligibility estimates adjusted by an estimate of ultimate benefit utilization and partially offset by an estimate of interest earned on investments of the Education Benefits Fund. The program will provide for funds adequate to allow for one of three levels of assistance. These levels of \$140.00 per month for full-time educational pursuit, \$105.00 for three quarter-time pursuit and \$70.00 for half-time pursuit. The maximum total benefit that can be paid is \$5,040.

	(Amount in Thousands)			
	FY 1986 (Actual)	FY 1987 (Estimate)	FY 1988 (Estimate)	FY 1989 (Estimate)
Eligibles	Amount	Eligibles	Amount	Eligibles
Navy Reserve	17,769	24,837	\$19,820	\$14,540
				0
				\$0

APPROPRIATION: RESERVE PERSONNEL, NAVY  
 -----  
 BUDGET PROGRAM 2: RESERVE OFFICER CANDIDATES  
 BUDGET ACTIVITY 2A: SENIOR ROTC

(DOLLARS IN THOUSANDS)

ACTUAL	ESTIMATE	ESTIMATE	ESTIMATE
FISCAL YEAR 1986	FISCAL YEAR 1987	FISCAL YEAR 1988	FISCAL YEAR 1989
\$2,227	\$2,289	\$2,160	\$2,180

PART I - PURPOSE AND SCOPE  
 -----

THE FUNDS REQUESTED WILL PROVIDE FOR MILITARY PERSONNEL COSTS FOR STUDENTS ENROLLED IN THE SENIOR NAVAL RESERVE OFFICERS' TRAINING CORPS. THE ESTIMATE INCLUDES FUNDS FOR A SUBSISTENCE ALLOWANCE, UNIFORMS, PAY AND ALLOWANCES, SUBSISTENCE-IN-KIND, AND TRAVEL WHILE PERFORMING ACTIVE DUTY FOR TRAINING. FUNDS ARE ALSO INCLUDED FOR THE COSTS OF PAY, SUBSISTENCE-IN-KIND, UNIFORMS AND TRAVEL OF DESIGNATED APPLICANTS FOR THE SENIOR NAVAL RESERVE OFFICERS' TRAINING CORPS. THESE APPLICANTS PERFORM SUMMER TRAINING AT A NAVY INSTALLATION AND RECEIVE INDOCTRINATION IN VARIOUS NAVAL SCIENCE COURSES TO ENABLE THEM TO ENTER THE NROTC PROGRAM IN THE FALL. THE AUTHORITY FOR THE SENIOR NROTC PROGRAM IS FOUND IN 10 U.S.C. 2101-2111.

ACTIVE DUTY TRAINING COSTS VARY BETWEEN YEARS DUE TO THE LENGTH OF TRAINING AND SITES AT WHICH TRAINING IS PERFORMED. NROTC MEMBERS AND DESIGNATED APPLICANTS RECEIVE THE SAME RATE OF PAY AS U.S. NAVAL ACADEMY MIDSHIPMEN.



SENIOR ROIC  
SCHEDULE OF INCREASES AND DECREASES  
(IN THOUSANDS OF DOLLARS)

\$2,289

FY 1987 DIRECT PROGRAM

INCREASES

SUMMER TRAINING

IN SUPPORT OF SUMMER TRAINING, THE FOLLOWING INCREASES ARE INCLUDED:

FOR PAY AND ALLOWANCES A SLIGHT INCREASE IN THE FICA RATE TO SUPPORT 17,200 MANDAYS CAUSED THE OVERALL RATE TO CHANGE BY \$1K.

ALTHOUGH THE NUMBER OF MANDAYS DECREASES BY 320, THE SUBSISTENCE-IN-KIND RATES FOR MEMBERS PARTICIPATING IN SUMMER TRAINING REQUIRES AN OVERALL INCREASE OF \$3K.

WHILE THE NUMBER OF MIDSHIPMEN REQUIRING TRAVEL FUNDS DOES NOT INCREASE, AN OVERALL INCREASE IN THE RATES FOR TRAVEL SUPPORTS THE NEED FOR AN ADDITIONAL \$9K.

THE NUMBER OF MIDSHIPMEN REQUIRING SUMMER TRAINING UNIFORMS DOES NOT INCREASE; HOWEVER THE COST PER ITEM INCREASES AT THE ALLOWED RATE OF INFLATION.

+13

DECREASES

SUBSISTENCE ALLOWANCE

THE AVERAGE NUMBER OF STUDENTS IS EXPECTED TO DECREASE IN THE JUNIOR YEAR BY 43 AND IN THE SENIOR YEAR BY 26 WHICH WILL LOWER THE NUMBER OF MIDSHIPMEN RECEIVING STIPEND PAYMENTS.

-71

CLOTHING

A. INITIAL ISSUES - THE NUMBER OF MIDSHIPMEN RECEIVING INITIAL ISSUES IS EXPECTED TO DECREASE BY 32 REQUIRING \$53K LESS FOR THE INITIAL UNIFORMS.

B. ALTERATION/RENOVATION COSTS - BASED ON THE NUMBER OF INITIAL ISSUES, THE NUMBER OF UNIFORMS TO BE ALTERED DECREASES PROPORTIONATELY.

SENIOR ROTC  
 SCHEDULE OF INCREASES AND DECREASES  
 (IN THOUSANDS OF DOLLARS)

C. REPLACEMENT - ITEMS SUCH AS BRIDGE COATS AND PEAK COATS PURCHASED IN FY87 WILL NOT BE REPLACED IN FY88 DUE TO THE SHORT UTILITY TIME AND LONG-WEAR VALUE OF THE ITEMS. -71

2,160

FY 1988 DIRECT PROGRAM

INCREASES

SUMMER TRAINING

ALTHOUGH THE NUMBER OF MIDSHIPMEN PARTICIPATING IN SUMMER TRAINING IS NOT EXPECTED TO INCREASE, THE TRAVEL RATES AND MESS RATES HAVE INCREASED AT THE ALLOWED RATE OF INFLATION. +13

SUBSISTENCE ALLOWANCE

THE NUMBER OF JUNIORS IS EXPECTED TO INCREASE BY FOUR WHICH WILL REQUIRE ADDITIONAL STIPEND FUNDING. +5

CLOTHING

REPLACEMENT - ITEMS SUCH AS COATS, HATS, AND RIBBONS WILL REQUIRE REPLACEMENT. ROUTINE INVENTORIES INDICATE THAT SUCH ITEMS REQUIRE CYCLIC REPLACEMENT WHICH DOES NOT REQUIRE ANNUAL ONE-FOR-ONE REPLACEMENT. +12

DECREASES

INITIAL PURCHASE AND ALTERATIONS - A PROJECTED DECREASE OF APPROXIMATELY 83 NEW UNIFORMS WILL BE REQUIRED WHICH WILL, LIKEWISE, REDUCE THE NUMBER OF UNIFORMS TO BE ALTERED. -10

2,180

FY 1989 DIRECT PROGRAM

AD-A181 975

DEPARTMENT OF THE NAVY JUSTIFICATION OF ESTIMATES FOR  
FISCAL YEAR 1988/1989 (U) OFFICE OF THE COMPTROLLER  
(NAVY) WASHINGTON DC JAN 87

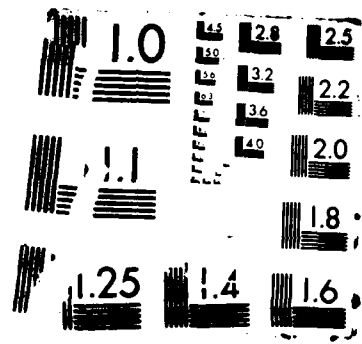
2/2

UNCLASSIFIED

F/G 5/1

NL

END  
DATE  
FILMED  
87



SUBSISTENCE ALLOWANCE: THE FUNDS REQUESTED ARE TO PROVIDE AN ALLOWANCE OF \$100 PER MONTH FOR STUDENTS ENROLLED IN MS III AND IV COURSES IN ACCORDANCE WITH THE PROVISIONS OF 37 U.S.C. 209.

(DOLLARS IN THOUSANDS)

	FISCAL YEAR 1986			FISCAL YEAR 1987			FISCAL YEAR 1988			FISCAL YEAR 1989		
	AVE. NO. STUDENTS	RATE	AMT	AVE. NO. STUDENTS	RATE	AMT	AVE. NO. STUDENTS	RATE	AMT	AVE. NO. STUDENTS	RATE	AMT
MS III	253	\$1,100.00	\$278	247	\$1,100.00	\$272	204	\$1,100.00	\$224	208	\$1,100.00	\$229
MS IV	207	900.00	186	226	900.00	203	200	900.00	180	200	900.00	180
TOTAL	460		\$464	473		\$475	404		\$404	408		\$409

UNIFORMS, ISSUE-IN-KIND: THE FUNDS REQUESTED ARE TO PROVIDE UNIFORM ISSUES, INCLUDING REPLACEMENT ITEMS.

(DOLLARS IN THOUSANDS)

	FISCAL YEAR 1986			FISCAL YEAR 1987			FISCAL YEAR 1988			FISCAL YEAR 1989		
	NUMBER	RATE	AMT	NUMBER	RATE	AMT	NUMBER	RATE	AMT	NUMBER	RATE	AMT
NON-MILITARY SCHOOLS	2,009	\$407.48	\$819	1,969	\$420.37	\$828	1,754	\$435.08	\$763	1,671	\$450.31	\$752
FIELD TRAINING REPLACEMENT	483	99.80	48	490	104.86	51	490	108.53	53	470	113.86	54
			39			38			30			42
TOTAL	2,492		\$906	2,459		\$917	2,244		\$846	2,141		\$848

UNIFORMS, COMMUTATION IN LIEU: THE FUNDS REQUESTED ARE TO PROVIDE FOR COMMUTATION IN LIEU OF UNIFORMS. INSTITUTION  
 MAY ELECT TO RECEIVE MONETARY ALLOWANCE IN LIEU OF RECEIVING UNIFORMS-IN-KIND AND  
 PROCURE SUCH UNIFORMS FROM THE SERVICES OR OTHER SOURCES AND ISSUE SUCH UNIFORMS TO  
 THE STUDENTS.

(DOLLARS IN THOUSANDS)

CLASS	FISCAL YEAR 1986			FISCAL YEAR 1987			FISCAL YEAR 1988			FISCAL YEAR 1989		
	NUMBER	RATE	AMT	NUMBER	RATE	AMT	NUMBER	RATE	AMT	NUMBER	RATE	AMT
JUNIORS	82	\$953.15	\$ 78	104	\$965.37	\$100	104	\$965.37	\$100	104	\$965.37	\$100
FRESHMEN/SOPHOMORES	514	311.30	160	482	312.98	151	482	312.98	151	482	312.98	151
TOTAL	596		\$238	586		\$251	586		\$251	586		\$251

PAY AND ALLOWANCES (SUMMER TRAINING): FUNDS REQUESTED ARE TO PROVIDE BASIC PAY AND SOCIAL SECURITY PAYMENT TO  
 MEMBERS ATTENDING SUMMER TRAINING.

(DOLLARS IN THOUSANDS)

CLASS	FISCAL YEAR 1986			FISCAL YEAR 1987			FISCAL YEAR 1988			FISCAL YEAR 1989		
	MANDAYS	RATE	AMT	MANDAYS	RATE	AMT	MANDAYS	RATE	AMT	MANDAYS	RATE	AMT
NROTC	7523	\$17.14	\$129	7200	\$17.66	\$127	7200	\$17.72	\$128	7200	\$17.72	\$128
DESIGNATED APPLI- CANTS	9837	17.14	169	10000	17.66	177	10000	17.72	177	10000	17.72	177
TOTAL	17360		\$298	17200		\$304	17200		\$305	17200		\$305

SUBSISTENCE OF RESERVE OFFICER CANDIDATES: THE FUNDS REQUESTED ARE TO PROVIDE SUBSISTENCE FOR MEMBERS PARTICIPATING  
 IN SUMMER CAMP TRAINING PROGRAMS

(DOLLARS IN THOUSANDS)

	FISCAL YEAR 1986		FISCAL YEAR 1987		FISCAL YEAR 1988		FISCAL YEAR 1989					
	MANDAYS	RATE	AMT	MANDAYS	RATE	AMT	MANDAYS	RATE	AMT			
NROTC	8075	\$3.65	\$29	8000	\$3.79	\$30	7680	\$4.00	\$31	7680	\$4.15	\$32
DESIGNATED APPLI- CANTS	9282	3.65	34	10000	3.79	38	10000	4.00	40	10000	4.15	42
TOTAL	17357		\$63	18000		\$68	17680		\$71	17680		\$74

TRAVEL OF RESERVE OFFICER CANDIDATES: THE FUNDS REQUESTED ARE TO PROVIDE FOR TRAVEL OF MEMBERS TO AND FROM SUMMER  
 CAMP TRAINING.

(DOLLARS IN THOUSANDS)

	FISCAL YEAR 1986		FISCAL YEAR 1987		FISCAL YEAR 1988		FISCAL YEAR 1989					
	NUMBER	RATE	AMT	NUMBER	RATE	AMT	NUMBER	RATE	AMT			
NROTC	251	\$426.46	\$107	240	\$439.70	\$106	240	\$455.09	\$109	240	\$471.02	\$113
DESIGNATED APPLI- CANTS	232	\$652.30	\$151	250	\$672.52	\$168	250	\$696.06	\$174	250	\$720.42	\$180
TOTAL	483		\$258	490		\$274	490		\$283	490		\$293

TOTAL SENIOR ROTC-- \$2,227 \$2,289 \$2,160 \$2,180

APPROPRIATION: RESERVE PERSONNEL, NAVY  
 -----  
 BUDGET PROGRAM 2: RESERVE OFFICER CANDIDATES  
 BUDGET ACTIVITY 2A: SCHOLARSHIP PROGRAM

(DOLLARS IN THOUSANDS)

ACTUAL	ESTIMATE	ESTIMATE	ESTIMATE
FISCAL YEAR 1986	FISCAL YEAR 1987	FISCAL YEAR 1988	FISCAL YEAR 1989
\$17,254	\$17,736	\$18,026	\$18,225

PART I - PURPOSE AND SCOPE  
 -----

THE FUNDS REQUESTED WILL PROVIDE FOR MILITARY PERSONNEL COSTS FOR STUDENTS ENROLLED IN THE NAVAL RESERVE OFFICERS' TRAINING CORPS SCHOLARSHIP PROGRAM AUTHORIZED BY PUBLIC LAW 88-647. THE ESTIMATE INCLUDES FUNDS FOR A SUBSISTENCE ALLOWANCE, UNIFORMS, PAY AND ALLOWANCES, SUBSISTENCE-IN-KIND, AND TRAVEL WHILE PERFORMING ACTIVE DUTY FOR TRAINING. THE TRAVEL AUTHORIZATION COVERS INITIAL TRAVEL TO THE EDUCATIONAL INSTITUTION IN WHICH MATRICULATED, TRAVEL TO AND FROM TRAINING, AND TRAVEL ON DISCHARGE. DURING FISCAL YEAR, SCHOLARSHIPS WILL BE OFFERED TO SELECTED STUDENTS AS AUTHORIZED BY PUBLIC LAW 92-166 (10 USC, 2107).



SCHOLARSHIP PROGRAM  
SCHEDULE OF INCREASES AND DECREASES  
(IN THOUSANDS OF DOLLARS)

FY 1987 DIRECT PROGRAM

\$17,736

INCREASES

SUMMER TRAINING

IN ORDER TO ACCOMMODATE GREATER PARTICIPATION IN THE SUMMER TRAINING PROGRAM, THE FOLLOWING INCREASES ARE INCLUDED:

FOR PAY AND ALLOWANCES, AN INCREASE IN THE NUMBER OF 143 MIDSHIPMEN AND THE ASSOCIATED INCREASE OF 816 MANDAYS PLUS AN INCREASE IN THE FICA RATE REQUIRE ADDITIONAL FUNDING OF \$25K.

THE NUMBER OF MANDAYS ASSOCIATED WITH MIDSHIPMEN RECEIVING SUBSISTENCE-IN-KIND IS NOT EXPECTED TO INCREASE. A SLIGHT RATE INCREASE SUPPORTS THE NEED FOR \$37K TO MAINTAIN THE ANTICIPATED USE OF MESSING.

SUMMER TRAINING TRAVEL IS EXPECTED TO INCREASE BY \$159K BASED ON A RISE IN THE NUMBER OF MIDSHIPMEN TRAVELING (+49) AND AN INCREASED RATE IN TRAVEL COSTS.

ORGANIZATIONAL CLOTHING ASSOCIATED WITH SUMMER TRAINING TO SUPPORT THE INCREASE IN PARTICIPATION BY 49 AND AN INCREASED COSTS AT THE ALLOWABLE INFLATION RATES SUPPORT THE NEED FOR AN ADDITIONAL \$27K.

+248

CLOTHING

INITIAL CLOTHING PURCHASES AND UNIFORM ALTERATIONS COSTS WILL RISE BASED ON AN INCREASED NUMBER OF 17 MIDSHIPMEN TO BE OUTFITTED AND AN INCREASE IN THE ASSOCIATED RATES PER UNIFORM.

+69

INITIAL/DISCHARGE TRAVEL

INITIAL TRAVEL COSTS WILL RISE BASED ON A PROJECTED INCREASE IN USAGE FOR 14 ADDITIONAL MIDSHIPMEN AND INCREASES IN TRAVEL RATES ASSOCIATED WITH TRAVEL AT THE APPROVED RATE OF INFLATION.

+8

SCHOLARSHIP PROGRAM  
SCHEDULE OF INCREASES AND DECREASES  
(IN THOUSANDS OF DOLLARS)

DECREASES

SUBSISTENCE ALLOWANCE

A DECREASE IN THE UPPER MIDSHIPMEN WILL REDUCE THE AMOUNT REQUIRED FOR STIPEND PAYMENTS.  
THE OVERALL REDUCTION IN MIDSHIPMEN RECEIVING SUBSISTENCE WILL BE REDUCED BY 23.

-26

CLOTHING

THE NEED FOR REPLACEMENT CLOTHING IS ANTICIPATED TO DECREASE SINCE MANY ITEMS SUCH AS BRIDGE/  
PEA COATS WILL NOT REQUIRE ANNUAL REPLACEMENT. SUCH ITEMS REMAIN IN INVENTORY LONGER THAN  
MANY ITEMS WHICH MUST BE REPLACED ANNUALLY.

-9

FY 1988 DIRECT PROGRAM

18,026

INCREASES

SUMMER TRAINING

ALTHOUGH THE NUMBER OF MIDSHIPMEN IS EXPECTED TO DECREASE BY 32, OVERALL TRAVEL COSTS  
FOR SUMMER TRAINING WILL INCREASE AT THE ALLOWABLE RATE OF INFLATION AND AN ADDITIONAL  
\$112K WILL BE REQUIRED.

THE NUMBER OF MANDAYS FOR WHICH SUBSISTENCE-IN-KIND WILL BE REQUIRED IS EXPECTED TO  
REMAIN LEVEL. THE COST OF MESSING WILL INCREASE BASED ON THE ALLOWABLE RATE OF INFLATION  
AND AN ADDITIONAL \$26K WILL BE REQUIRED.

ORGANIZATIONAL CLOTHING REQUIRED FOR SUMMER TRAINING WILL BE REQUIRED FOR 32 FEWER  
MIDSHIPMEN, OFFSET WILL BE AN INCREASE IN COST FOR SUCH APPAREL AT THE ALLOWABLE RATE  
OF INFLATION. AN ADDITIONAL \$19K WILL BE REQUIRED.

+157

SCHOLARSHIP PROGRAM  
SCHEDULE OF INCREASES AND DECREASES  
(IN THOUSANDS OF DOLLARS)

CLOTHING

THE TOTAL NUMBER OF MIDSHIPMEN REQUIRING INITIAL ISSUE OF UNIFORMS AND ALTERATIONS WILL DECREASE BY APPROXIMATELY 5, OFFSET BY THE INCREASE IN COSTS PER UNIFORM AND ALTERATIONS CHARGES AT THE APPROVED RATE OF INFLATION. +54

THE REQUIREMENT FOR REPLACEMENT CLOTHING IS EXPECTED TO RISE BASED ON THE CYCLIC REPLACEMENT OF LONG-WEARING ITEMS SUCH AS OVERCOATS AND ALL-WEATHER COATS. +19

INITIAL/DISCHARGE TRAVEL

TRAVEL COSTS WILL RISE BASED ON A PROJECTED INCREASE IN TRAVEL RATES. THE ACTUAL NUMBER OF MIDSHIPMEN TRAVELING IS EXPECTED TO DECREASE SLIGHTLY. +6

DECREASES

SUMMER TRAINING

THE NUMBER OF MIDSHIPMEN RECEIVING PAY AND ALLOWANCES FOR SUMMER TRAINING IS PROJECTED TO DECREASE BY APPROXIMATELY 94. -37

FY 1989 DIRECT PROGRAM

18,225

SUBSISTENCE ALLOWANCE: THE FUNDS REQUESTED ARE TO PROVIDE AN ALLOWANCE OF \$100 PER MONTH FOR STUDENTS ENROLLED IN MS I THRU IV COURSES IN ACCORDANCE WITH THE PROVISIONS OF 37 U.S.C. 209.

(DOLLARS IN THOUSANDS)

	FISCAL YEAR 1986		FISCAL YEAR 1987		FISCAL YEAR 1988		FISCAL YEAR 1989	
	AVE. NO. STUDENTS	RATE	AVE. NO. STUDENTS	RATE	AVE. NO. STUDENTS	RATE	AVE. NO. STUDENTS	RATE
MS I	1,954	\$925.00	2,185	\$925.00	2,191	\$925.00	2,191	\$925.00
MS II	1,831	925.00	1,867	925.00	1,948	925.00	1,948	925.00
MS III	1,850	1,100.00	1,873	1,100.00	1,833	1,100.00	1,833	1,100.00
MS IV	1,864	900.00	1,850	900.00	1,780	900.00	1,780	900.00
TOTAL	7,499	\$7,215	7,775	\$7,473	7,752	\$7,447	7,752	\$7,447

UNIFORMS, ISSUE-IN-KIND: THE FUNDS REQUESTED ARE TO PROVIDE UNIFORM ISSUES, INCLUDING REPLACEMENT ITEMS.

(DOLLARS IN THOUSANDS)

	FISCAL YEAR 1986		FISCAL YEAR 1987		FISCAL YEAR 1988		FISCAL YEAR 1989	
	NUMBER	RATE	NUMBER	RATE	NUMBER	RATE	NUMBER	RATE
NON-MILITARY SCHOOLS	2,000	\$733.85	2,075	\$763.89	2,143	\$771.75	2,143	\$796.87
FIELD TRAINING	5,978	102.61	5,858	105.79	5,907	109.49	5,875	113.32
REPLACEMENT			85		88		79	
TOTAL	7,978	2,166	7,933	\$2,293	8,050	\$2,380	8,018	\$2,472



SUBSISTENCE OF RESERVE OFFICER CANDIDATES: THE FUNDS REQUESTED ARE TO PROVIDE SUBSISTENCE FOR MEMBERS PARTICIPATING  
 IN SUMMER CAMP TRAINING PROGRAMS

(DOLLARS IN THOUSANDS)

FISCAL YEAR 1986		FISCAL YEAR 1987		FISCAL YEAR 1988		FISCAL YEAR 1989				
MANDAYS	RATE	AMT	RATE	AMT	MANDAYS	RATE	AMT			
171054	\$3.65	\$624	\$3.79	\$667	176000	\$4.00	\$704	176000	\$4.15	\$730

TRAVEL OF RESERVE OFFICER CANDIDATES: THE FUNDS REQUESTED ARE TO PROVIDE FOR TRAVEL OF MEMBERS TO AND FROM SUMMER  
 CAMP TRAINING.

(DOLLARS IN THOUSANDS)

FISCAL YEAR 1986		FISCAL YEAR 1987		FISCAL YEAR 1988		FISCAL YEAR 1989					
NUMBER	RATE	AMT	NUMBER	RATE	AMT	NUMBER	RATE	AMT			
5978	\$602.25	\$3600	5858	\$620.92	\$3637	5907	\$642.66	\$3796	5875	\$665.14	\$3908
2334	\$84.58	\$197	2311	\$87.20	\$202	2325	\$90.25	\$210	2315	\$93.41	\$216
TOTAL		\$3797	8169		\$3839	8232		\$4006	8190		\$4124

TOTAL SCHOLARSHIP PROGRAM - \$17,254 \$17,736 \$18,026 \$18,225



RESERVE OFFICER CANDIDATE/AVIATION RESERVE OFFICER CANDIDATE PROGRAM  
SCHEDULE OF INCREASES AND DECREASES  
(IN THOUSANDS OF DOLLARS)

FY 1987 DIRECT PROGRAM

1,092

THE PROGRAMS BEGIN IN FY87 AND REMAIN LEVEL THROUGH FY89. FOR TRAVEL, ORGANIZATIONAL  
CLOTHING ISSUES AND PAY AND ALLOWANCES, THE ALLOWED RATES OF INFLATION HAVE BEEN APPLIED.

+7

FY 1988 DIRECT PROGRAM

1,099

FUNDING FOR TRAVEL, ORGANIZATIONAL CLOTHING ISSUES AND PAY AND ALLOWANCES IS INCREASED  
BY THE ALLOWED RATES OF INFLATION.

+6

FY 1989 DIRECT PROGRAM

1,105



UNIFORMS, ISSUE-IN-KIND: THE FUNDS REQUESTED ARE TO PROVIDE FOR ORGANIZATIONAL ISSUES OF CLOTHING FOR STUDENTS BEGINNING THEIR INITIAL SUMMER TRAINING PERIOD.

(DOLLARS IN THOUSANDS)

FISCAL YEAR 1986		FISCAL YEAR 1987		FISCAL YEAR 1988		FISCAL YEAR 1989	
NUMBER	RATE	NUMBER	RATE	NUMBER	RATE	NUMBER	RATE
0	\$0.00	266	\$480.00	266	\$496.80	266	\$514.19
	AMT		AMT		AMT		AMT
			\$128		\$132		\$137

PAY AND ALLOWANCES (SUMMER TRAINING): FUNDS REQUESTED ARE TO PROVIDE BASIC PAY, BASIC ALLOWANCE FOR QUARTERS, AND SOCIAL SECURITY PAYMENTS FOR STUDENTS ATTENDING SUMMER TRAINING.

(DOLLARS IN THOUSANDS)

FISCAL YEAR 1986		FISCAL YEAR 1987		FISCAL YEAR 1988		FISCAL YEAR 1989	
NUMBER	RATE	NUMBER	RATE	NUMBER	RATE	NUMBER	RATE
0	\$0.00	266	\$2,935.65	266	\$2,922.28	266	\$2,896.94
	AMT		AMT		AMT		AMT
			\$782		\$777		\$771

SUBSISTENCE OF RESERVE OFFICER CANDIDATES: FUNDS REQUESTED ARE TO PROVIDE SUBSISTENCE FOR STUDENTS WHILE ATTENDING SUMMER TRAINING.

(DOLLARS IN THOUSANDS)

FISCAL YEAR 1986		FISCAL YEAR 1987		FISCAL YEAR 1988		FISCAL YEAR 1989	
MANDAYS	RATE	MANDAYS	RATE	MANDAYS	RATE	MANDAYS	RATE
0	\$0.00	12,215	\$3.79	12,215	\$4.00	12,215	\$4.15
	AMT		AMT		AMT		AMT
	\$0		\$46		\$49		\$51

TRAVEL OF RESERVE OFFICER CANDIDATES: THE FUNDS REQUESTED WILL PROVIDE FOR TRANSPORTATION COSTS FOR STUDENTS TRAVELING TO AND FROM THEIR SUMMER TRAINING SITES.

(DOLLARS IN THOUSANDS)

FISCAL YEAR 1986		FISCAL YEAR 1987		FISCAL YEAR 1988		FISCAL YEAR 1989	
NUMBER	RATE	NUMBER	RATE	NUMBER	RATE	NUMBER	RATE
0	\$0.00	266	\$512.50	266	\$530.44	266	\$549.01
	AMT		AMT		AMT		AMT
	\$0		\$136		\$141		\$146

TOTAL RESERVE OFFICER CANDIDATES - \$-0-

\$1,099

\$1,092

\$1,105

Appropriation: Reserve Personnel, Navy  
 Budget Program 2: Other Training and Support  
 Budget Activity 2E: Armed Forces Health Professions Scholarship Program

(In Thousands of Dollars)

<u>Actual</u>	<u>Estimate</u>	<u>Estimate</u>	<u>Estimate</u>
FY 1986	FY 1987	FY 1988	FY 1989
12,804	12,428	12,035	11,916

Part I - Purpose and Scope

The funds requested will provide for military personnel costs for Naval Reserve Officers enrolled in the Armed Forces Health Professions Scholarship Program established by 10 U.S.C. 2120-2127. These officers are enrolled in approved colleges and universities throughout the United States. Participants serve on active duty for training in the grade of O-1 for a period of forty-five days annually. The estimate includes funds for a monthly stipend while attending school, uniform gratuities, pay and allowance, and travel while attending active duty training.

ARMED FORCES HEALTH PROFESSIONS SCHOLARSHIP PROGRAM  
 RESERVE PERSONNEL, NAVY  
 SCHEDULE OF INCREASES AND DECREASES  
 (In Thousands of Dollars)

	<u>Amount</u>
Fiscal Year 1987 Direct Program	\$12,428
Increases:	
Price increase for transportation portion of travel	+17
Annualizes the Pay and Allowances and Stipend costs of the FY 1987 military pay increase and reflects the effect on Pay and Allowances of the FICA rate change to 7.51% in FY 1988	+160
Total Increases:	+177
Decreases:	
Cost decrease due to change in Retired Pay Accrual Rate to 26.1% of base pay in FY 1988	-3
Cost decrease due to reduction in student load commensurate with Medical Department requirements and retention rates	-567
Total Decreases:	-570
Fiscal Year 1988 Direct Program	\$12,035

ARMED FORCES HEALTH PROFESSIONS SCHOLARSHIP PROGRAM  
RESERVE PERSONNEL, NAVY  
SCHEDULE OF INCREASES AND DECREASES  
(In Thousands of Dollars)

	<u>Amount</u> \$12,035
Fiscal Year 1988 Direct Program	
Increases:	
Price increase for transportation portion of travel	+15
Total Increases:	+15
Decreases:	
Cost decrease due to change in Retired Pay Accrual Rate to 25.7% of base pay in FY 1989	-7
Cost decrease due to reduction in student load commensurate with Medical Department requirements and retention rates	-127
Total Decreases:	-134
Fiscal Year 1989 Direct Program	\$11,916

ARMED FORCES HEALTH PROFESSIONS SCHOLARSHIP PROGRAM  
RESERVE PERSONNEL, NAVY  
(Amount In Thousands of Dollars)

Stipend: The funds requested are to provide for a monthly stipend to members participating in the program.

FY 1986		FY 1987		FY 1988		FY 1989	
NUMBER	RATE	NUMBER	RATE	NUMBER	RATE	NUMBER	RATE
1,018	\$6,623	982	\$6,822	915	\$6,972	900	\$6,972
	\$6,742		\$6,699		\$6,379		\$6,275

Individual Clothing and Uniform Allowances: These funds will provide for the initial payment and supplemental allowances under the provisions of 37 U.S.C. 415 and 416 to officers for required uniforms.

FY 1986		FY 1987		FY 1988		FY 1989	
NUMBER	RATE	NUMBER	RATE	NUMBER	RATE	NUMBER	RATE
305	\$200	324	\$200	306	\$200	299	\$200
	\$61		\$65		\$61		\$60

Pay and Allowances, Active Duty for Training, Officers: The funds requested are to provide for pay and allowances for officers attending active duty for training for a period of 45 days annually. The rate used in computing the requirement includes basic pay, government contribution for social security, subsistence and quarters allowances, separation leave pay and family separation allowance when authorized.

FY 1986		FY 1987		FY 1988		FY 1989	
NUMBER	RATE	NUMBER	RATE	NUMBER	RATE	NUMBER	RATE
1,116	\$2,777	1,081	\$2,846	1,063	\$2,859	1,059	\$2,859
	\$3,099		\$3,079		\$3,039		\$3,027

Travel, Active Duty for Training, Officers: The funds are to provide for travel and per diem of officers attending active duty training.

FY 1986		FY 1987		FY 1988		FY 1989	
NUMBER	RATE	NUMBER	RATE	NUMBER	RATE	NUMBER	RATE
760	\$2,384	826	\$2,402	812	\$2,423	809	\$2,444
	\$1,811		\$1,985		\$1,968		\$1,977

<u>Retirement Pay Accrual</u>	\$1,091		\$600		\$588		\$577
<u>Total</u>	\$12,604	\$12,428	\$12,035	\$11,916			

APPROPRIATION: RESERVE PERSONNEL, NAVY

BUDGET PROGRAM 2: RESERVE OFFICER CANDIDATES  
 BUDGET ACTIVITY 2A: JUNIOR ROTC

(DOLLARS IN THOUSANDS)

ACTUAL	ESTIMATE	ESTIMATE	ESTIMATE
FISCAL YEAR 1986	FISCAL YEAR 1987	FISCAL YEAR 1988	FISCAL YEAR 1989
\$2,568	\$2,441	\$2,528	\$2,614

PART I - PURPOSE AND SCOPE

THE FUNDS REQUESTED WILL PROVIDE FOR ISSUE-IN-KIND UNIFORMS AND ALTERATION/RENOVATION THEREOF, FOR STUDENTS ENROLLED IN THE JUNIOR ROTC PROGRAM AT SECONDARY EDUCATION INSTITUTIONS AS PROVIDED FOR IN 10 U.S.C. 2031.

NJROTC  
SCHEDULE OF INCREASES AND DECREASES  
( IN THOUSANDS OF DOLLARS )

FY 1987 DIRECT PROGRAM

2,441

INCREASES

ALTHOUGH THE NUMBER OF CADETS RECEIVING REPLACEMENT UNIFORMS IS EXPECTED TO REMAIN CONSTANT, THE REPLACEMENT COSTS AS WELL AS ALTERATIONS COSTS WILL INCREASE BY THE ALLOWABLE RATES OF INFLATION.

+87

FY 1988 DIRECT PROGRAM

2,528

INCREASES

THE PROGRAM WILL REMAIN LEVEL AND INCREASES REPRESENT INCREASED REPLACEMENT AND UNIFORM ALTERATION COSTS.

+86

FY 1989 DIRECT PROGRAM

2,614



RESERVE PERSONNEL, NAVY  
 -----  
 JUNIOR ROTC (CONTINUED)

PART II - JUSTIFICATION OF FUNDS REQUESTED  
 -----

THE FOLLOWING IS A COMPARISON BY FISCAL YEARS OF THE PROGRAM DATA AND COSTS INCLUDED IN THIS ESTIMATE.

	FISCAL YEAR 1986 ESTIMATE	FISCAL YEAR 1987 ESTIMATE	FISCAL YEAR 1988 ESTIMATE	FISCAL YEAR 1989 ESTIMATE
AVERAGE STUDENT ENROLLMENT	28,390	29,918	29,918	29,918

UNIFORMS, ISSUE-IN-KIND: THESE FUNDS ARE REQUIRED TO PROVIDE UNIFORMS TO MEMBERS OF THE JUNIOR ROTC PROGRAM  
 -----  
 AS REQUIRED.

(DOLLARS IN THOUSANDS)

	FISCAL YEAR 1986		FISCAL YEAR 1987		FISCAL YEAR 1988		FISCAL YEAR 1989	
	NUMBER	RATE	NUMBER	RATE	NUMBER	RATE	NUMBER	RATE
INITIAL ISSUE	960	\$339.25	0	\$0.00	0	\$0.00	0	\$0.00
REPLACEMENT	7,098	284.56	7,480	294.06	7,480	304.54	7,480	314.91
ALTERATION/ RENOVATION	28,390	7.82	29,918	8.05	29,918	8.34	29,918	8.63
TOTAL		\$2,568		\$2,441		\$2,528		\$2,614

TOTAL JUNIOR ROTC - \$2,568 \$2,441 \$2,528 \$2,614

SECTION 5 - SPECIAL ANALYSES

RESERVE PERSONNEL, NAVY

RESERVE OFFICER CANDIDATES (ROTC) ENROLLMENT

	FY 1986 ACTUAL			FY 1987 ESTIMATE			FY 1988 ESTIMATE			FY 1989 ESTIMATE		
	BEGIN	AVE.	END	BEGIN	AVE.	END	BEGIN	AVE.	END	BEGIN	AVE.	END
SENIOR ROTC PROGRAM (EXCLUDING SCHOLARSHIP)												
FIRST YEAR	1109	1619	2129	1544	1622	1700	1440	1460	1480	1230	1315	1400
SECOND YEAR	458	484	508	480	490	500	400	470	540	500	520	540
TOTAL BASIC ROTC	(1567)	(2103)	(2637)	(2024)	(2112)	(2200)	(1840)	(1930)	(2020)	(1730)	(1835)	(1940)
THIRD YEAR	259	297	334	330	290	250	240	240	240	250	245	240
FOURTH & FIFTH YEAR	205	227	249	246	248	250	220	220	220	220	220	220
TOTAL ADVANCED ROTC	(464)	(524)	(583)	(576)	(538)	(500)	(460)	(460)	(460)	(470)	(465)	(460)
TOTAL SENIOR ROTC ENROLLMENT	2031	2627	3220	2600	2650	2700	2300	2390	2480	2200	2300	2400

SCHOLARSHIP PROGRAM

FIRST YEAR	2000	2036	2073	2255	2277	2300	2265	2282	2300	2265	2282	2300
SECOND YEAR	2042	1906	1768	1890	1945	2000	2060	2030	2000	2060	2030	2000
TOTAL BASIC ROTC	(4042)	(3942)	(3841)	(4145)	(4222)	(4300)	(4325)	(4312)	(4300)	(4325)	(4312)	(4300)
THIRD YEAR	1982	2027	2073	1845	1873	1900	1865	1833	1900	1865	1833	1900
FOURTH & FIFTH YEAR	1642	1864	2086	1900	1850	1800	1760	1780	1800	1760	1780	1800
TOTAL ADVANCED ROTC	(3624)	(3891)	(4159)	(3745)	(3723)	(3700)	(3625)	(3613)	(3700)	(3625)	(3613)	(3700)
TOTAL SCHOLARSHIP ENROLLMENT	7666	7833	8000	7890	7945	8000	7950	7925	8000	7950	7925	8000

TOTAL ENROLLMENT

FIRST YEAR	3109	3655	4202	3799	3899	4000	3705	3742	3780	3495	3597	3700
SECOND YEAR	2500	2390	2276	2370	2435	2500	2460	2500	2540	2560	2550	2540
TOTAL BASIC ROTC	(5609)	(6045)	(6478)	(6169)	(6334)	(6500)	(6165)	(6242)	(6320)	(6055)	(6147)	(6240)
THIRD YEAR	2241	2324	2407	2175	2163	2150	2105	2073	2140	2115	2078	2140
FOURTH & FIFTH YEAR	1847	2091	2335	2146	2098	2050	1980	2000	2020	1980	2000	2020
TOTAL ADVANCED ROTC	(4088)	(4415)	(4742)	(4321)	(4261)	(4200)	(4085)	(4073)	(4160)	(4095)	(4078)	(4160)
TOTAL ROTC ENROLLMENT	9697	10460	11220	10490	10595	10700	10250	10315	10480	10150	10225	10400

COMPLETED ROTC AND COMMISSIONED

	1666		1880		1880		1880
--	------	--	------	--	------	--	------

RESERVE PERSONNEL, NAVY  
-----

RESERVE OFFICER CANDIDATES (ROTC) PROGRAM  
-----

NUMBERS OF SCHOOLS, CIVILIAN AND MILITARY PERSONNEL ASSOCIATED WITH THE NAVY ROTC PROGRAM FOLLOW:

	FISCAL YEAR 1986 (ACTUAL YEAR)	FISCAL YEAR 1987 (CURRENT YEAR)	FISCAL YEAR 1988 (BUDGET YEAR)	FISCAL YEAR 1989 (BUDGET YEAR + 1)
SCHOOLS	64	64	64	64
CIVILIAN PERSONNEL (END STRENGTH)	83	93	93	93
MILITARY PERSONNEL (END STRENGTH)	574	551	542	542

NOTE: THESE PERSONNEL ARE NOT PAID BY RESERVE PERSONNEL APPROPRIATION. THEY ARE FUNDED UNDER O&M AND MILITARY PERSONNEL APPROPRIATIONS.

RESERVE PERSONNEL, NAVY

NAVY RESERVE OFFICER CANDIDATES \*

	FISCAL YEAR 1987		FISCAL YEAR 1988		FISCAL YEAR 1989	
	BEGIN	END	BEGIN	END	BEGIN	END
NAVY RESERVE OFFICER CANDIDATES	131	100	131	100	131	100
AVIATION RESERVE OFFICER CANDIDATES	135	100	135	100	135	100
TOTAL RESERVE OFFICER CANDIDATES	266	200	266	200	266	200

\* THESE PERSONNEL ARE COLLEGE STUDENTS WHO ATTEND RESERVE OFFICER CANDIDATE CLASSES CONSISTING OF EIGHT WEEKS SUMMER TRAINING

ATE  
LMED  
-88