

AD-A181 648

PRIME CONTRACT AWARDS BY STATE FIRST HALF FISCAL YEAR
1987(U) WASHINGTON HEADQUARTERS SERVICES (DOD) DC
DIRECTORATE FOR INFORMATION OPERATIONS AND REPORTS
1987 DIOR/P09-87/01

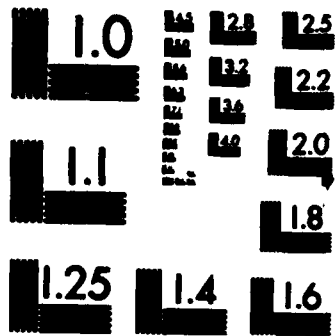
1/1

UNCLASSIFIED

F/G 15/5

NL





MICROCOPY RESOLUTION TEST CHART
NATIONAL BUREAU OF STANDARDS-1963-A

DTIC FILE COPY

P09

(12)



Department of Defense
**PRIME CONTRACT AWARDS
BY STATE**

First Half Fiscal Year 1987

AD-A181 648

DTIC
SELECTED
JUN 25 1987
S D

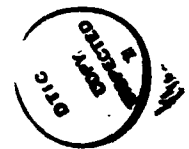


DISTRIBUTION STATEMENT A
Approved for public release
Distribution Unlimited

87 6 23 017

PRIME CONTRACT AWARDS BY STATE

First Half Fiscal Year 1987



Accession For	
NTIS CRA&I	<input checked="" type="checkbox"/>
DTIC TAB	<input type="checkbox"/>
Unannounced	<input type="checkbox"/>
Justification:	
By	
Distribution: /	
Availability Codes	
Dist	Avail and/or Special
A-1	

Department of Defense
Washington Headquarters Services
Directorate for Information
Operations and Reports

~~For sale by the Superintendent of Documents, U.S. Government Printing Office, Washington, D.C. 20409~~

DTIC and NTIS identification number for this publication is DIOR/P09-87/01

FOREWORD

Prime Contract Awards by State is published semiannually.

This report provides information on Department of Defense procurement actions. Data are broken down into three categories:

- 1) Total U.S. Actions;
- 2) Actions Not Distributed by State; and
- 3) Total State Actions, which is further divided into separate totals for each state.

TABLE OF CONTENTS

Introduction. 1

Tables:

Table 1. Net Value and Percent Distribution of DoD Procurement
Actions, by State: First Half FY 1987, First Half FY 1986,
and Second Quarters FY 1987 and FY 1986 3

Table 2. Net Value and Percent Distribution of DoD Military
Procurement Actions, by State: First Half FY 1987, First Half
FY 1986, and Second Quarters FY 1987 and FY 1986. 4

Table 3. Net Value and Percent Distribution of DoD Military
Procurement Actions, by State, According to Defense Component:
First Half FY 1987. 5



INTRODUCTION

This document

~~Prime Contract Awards by State~~ provides a wide variety of information on all Department of Defense (DoD) procurement actions. Both military and civil functions (i.e., Army Corps of Engineers--Civil Works) procurements are represented. The data are presented by state and include the net value of procurements awarded to each state as well as each state's percentage of the total for all state procurements.

The total net value of procurement actions for the first half of Fiscal Year (FY) 1987 and FY 1986 are shown for all of DoD in Table 1 and for its military components only in Table 2. These tables also provide, for comparison purposes, data for the second quarters of FY 1987 and FY 1986. The total net value of military procurement actions for the first half of FY 1987 (presented in Table 2) are displayed according to defense component in Table 3.

NOTES ON COVERAGE

Data in this report reflect the net value of debit and credit procurement actions over \$25,000, i.e., terminations, price changes, or other downward adjustments which are deducted from a contractor's total award amount, while modifications and other positive adjustments are treated as increases. Procurement actions include definitive contracts; the obligated portions of letter contracts; and job orders, task orders, delivery orders, or any other orders against existing contracts. Contracts for research and development, services, construction, and supplies and equipment are included. Contracts awarded by DoD to other Government agencies as intragovernmental orders and foreign military sales (reimbursable sales to foreign governments) are also included.

The data base from which information for this report is collected does not include data on those parts of indefinite quantity contracts (except for petroleum products) that have not been translated into specific orders to businesses, those contracts that have not yet become mutually binding agreements between the Government and the contractor, or prime contracts awarded by other U.S. government agencies and financed with DoD funds.

The previous first half figures appearing in this publication differ from the originally published figures. This is due to changes received during the second half of the fiscal year for records originally submitted in the first half and represents the most accurate data available for the previous first half.

Totals

The United States total in the tables includes all contracts awarded for work performed in the United States. The United States as used here includes the 50 states, the District of Columbia, U.S. possessions, the Commonwealth of Puerto Rico, the Trust Territories of the Pacific, and other areas subject to complete U.S. sovereignty.

The subtotal "Not Distributed by State" includes all contract actions of \$25,000 or less for performance in the United States. This subtotal also includes all contract actions, regardless of size, for performance in the U.S. possessions, the Commonwealth of Puerto Rico, the Trust Territories of the Pacific, and other areas subject to complete U.S. sovereignty, and all contract actions for performance in classified locations.

State subtotals include the net value of procurement actions over \$25,000 awarded to each state and the District of Columbia.

Location of Contracts

Contract work is not necessarily performed in the state where the contract is awarded. Most manufacturing contracts have been attributed to the contractor's location where the product will be processed and assembled. When contract work has been performed at more than one plant, the contract has been attributed to the location where the largest dollar amount of work was produced. Both construction and service contracts have been attributed to the state where the work is to be performed. Contracts for transportation and communications services have been attributed to the state where the contractor's home office is located. For purchases from wholesale or other distribution firms, the location is the contractor's business address.

HIGHLIGHTS

The total United States prime contract awards for the first half of Fiscal Year 1987 totaled \$67,157.6 million, a decrease of \$5,136.8 million or -7.1 percent less than the first half of Fiscal Year 1986. The state that showed the largest dollar amount of change was California with a decrease of \$4,909.1 million or -30.9 percent. The state with the second largest dollar amount of change was Virginia with an increase of \$1,446.1 million or 64.9 percent. It should be noted that Virginia had a decrease of \$764.7 million or -12.4 percent from Fiscal Year 1985 to Fiscal Year 1986.

Thirty one states (including the District of Columbia) showed a decrease with a median of -\$122.2 million while twenty states showed an increase with a median of \$59.7 million. The average change for all the states was -\$100.7 million with a median of -\$47.4 million. The ten states showing the largest amount of procurement award dollar change for the first half of FY 1987 as compared to the first half of FY 1986 are as follows:

(AMOUNTS IN THOUSANDS OF DOLLARS)

STATE	FIRST HALF FY 1987 AMOUNT	AMOUNT OF INCREASE OR DECREASE FROM FIRST HALF FY 1986	PERCENT OF CHANGE FROM FIRST HALF FY 1986
CALIFORNIA	\$ 10,971,550	\$ -4,909,083	-30.9
VIRGINIA	3,673,955	+1,446,141	+64.9
ARIZONA	1,692,080	+1,127,276	+199.6
COLORADO	1,544,861	+955,003	+161.9
OHIO	1,789,225	-740,094	-29.3
GEORGIA	2,317,358	-598,347	-20.5
MICHIGAN	706,198	-459,424	-39.4
KANSAS	548,442	-386,701	-41.4
MAINE	78,041	-348,239	-81.7
INDIANA	1,137,289	+334,466	+41.7

Table 1. Net Value and Percent Distribution of DoD Procurement Actions, by State: First Half FY 1987, First Half FY 1986, and Second Quarters FY 1987 and FY 1986^{1,2}

(Amounts in Thousands)

STATE	FISCAL YEAR TO DATE				THREE MONTH PERIOD			
	1987 (OCT 86-MAR 87)		1986 (OCT 85-MAR 86)		FISCAL YEAR 1987 (JAN-MAR 1987)		FISCAL YEAR 1986 (JAN-MAR 1986)	
	AMOUNT	PERCENT	AMOUNT	PERCENT	AMOUNT	PERCENT	AMOUNT	PERCENT
TOTAL, U.S.	\$87,157,589		\$72,284,402		\$38,809,887		\$40,192,892	
NOT DISTRIBUTED BY STATE	5,526,820		5,524,133		3,214,840		3,176,299	
STATE TOTALS	81,630,669	100.0	66,770,269	100.0	35,595,047	100.0	37,016,693	100.0
Alabama	733,913	1.2	699,531	1.0	382,439	1.1	367,080	1.0
Alaska	238,301	0.4	285,726	0.4	113,388	0.3	80,943	0.2
Arizona	1,892,080	2.7	564,804	0.8	517,730	1.5	365,125	1.0
Arkansas	554,404	0.9	710,641	1.1	262,475	0.7	304,987	0.8
California	10,871,550	17.8	15,880,633	23.8	6,820,355	19.2	8,038,854	21.7
Colorado	1,544,861	2.5	589,858	0.9	928,420	2.6	249,574	0.7
Connecticut	2,252,810	3.7	2,458,984	3.7	1,357,304	3.8	1,870,957	4.5
Delaware	49,482	0.1	38,867	0.1	13,858	*	18,482	*
District of Columbia	487,261	0.8	548,314	0.8	175,115	0.5	363,760	1.0
Florida	2,868,144	4.7	2,970,378	4.4	1,054,021	3.0	1,610,091	4.3
Georgia	2,317,358	3.8	2,815,705	4.4	1,633,990	4.6	511,165	1.4
Hawaii	182,180	0.3	256,695	0.4	85,483	0.3	76,358	0.2
Idaho	28,506	*	28,595	*	8,628	*	9,817	*
Illinois	792,112	1.3	732,837	1.1	443,189	1.2	324,281	0.9
Indiana	1,137,289	1.8	802,823	1.2	854,427	2.4	457,179	1.2
Iowa	102,838	0.2	217,370	0.3	84,894	0.2	130,188	0.4
Kansas	548,442	0.9	935,148	1.4	161,504	0.5	481,165	1.3
Kentucky	188,228	0.3	321,734	0.5	82,302	0.2	81,178	0.2
Louisiana	730,554	1.2	888,732	1.3	526,378	1.5	638,109	1.7
Maine	78,041	0.1	426,280	0.6	49,162	0.1	405,823	1.1
Maryland	1,828,686	3.1	1,808,737	2.4	1,140,982	3.2	856,665	2.3
Massachusetts	5,378,266	8.7	5,308,055	8.0	3,688,068	10.4	3,388,775	9.2
Michigan	708,188	1.1	1,165,822	1.7	458,028	1.3	860,757	2.3
Minnesota	812,385	1.3	797,764	1.2	570,898	1.6	508,283	1.4
Mississippi	416,608	0.7	584,525	0.9	282,801	0.8	325,700	0.9
Missouri	2,084,189	3.4	2,231,885	3.3	738,294	2.1	1,614,588	4.4
Montana	27,614	*	27,498	*	8,220	*	8,113	*
Nebraska	105,088	0.2	104,856	0.2	42,078	0.1	53,742	0.1
Nevada	112,475	0.2	88,724	0.1	53,234	0.1	12,894	*
New Hampshire	121,788	0.2	122,823	0.2	89,174	0.2	81,302	0.2
New Jersey	1,137,463	1.8	1,259,687	1.9	673,321	1.9	755,168	2.0
New Mexico	267,559	0.4	328,833	0.5	159,789	0.4	160,110	0.4
New York	4,871,014	7.9	5,110,245	7.7	2,713,199	7.6	3,033,124	8.2
North Carolina	472,560	0.8	388,522	0.6	251,466	0.7	214,797	0.6
North Dakota	58,501	0.1	106,507	0.2	35,035	0.1	57,121	0.2
Ohio	1,788,225	2.9	2,528,318	3.8	1,352,431	3.8	1,797,899	4.8
Oklahoma	273,982	0.4	351,005	0.5	86,838	0.2	138,184	0.4
Oregon	128,537	0.2	104,375	0.2	55,088	0.2	58,836	0.2
Pennsylvania	2,131,388	3.5	2,118,879	3.2	1,045,811	2.9	1,447,934	3.9
Rhode Island	201,254	0.3	138,798	0.2	118,303	0.3	83,949	0.2
South Carolina	262,005	0.4	201,947	0.3	152,814	0.4	95,060	0.3
South Dakota	15,858	*	89,823	0.1	8,723	*	80,017	0.2
Tennessee	489,528	0.8	678,222	1.0	314,106	0.9	417,077	1.1
Texas	4,167,495	6.8	4,448,902	6.7	2,069,104	5.8	2,159,530	5.8
Utah	365,312	0.6	330,201	0.5	239,207	0.7	99,902	0.3
Vermont	32,880	0.1	39,388	0.1	23,128	0.1	17,125	*
Virginia	3,878,855	6.0	2,227,814	3.3	2,681,783	7.5	1,380,485	3.7
Washington	1,755,884	2.8	1,624,580	2.4	771,755	2.2	752,265	2.0
West Virginia	51,935	0.1	54,588	0.1	31,005	0.1	31,942	0.1
Wisconsin	283,308	0.5	312,788	0.5	208,287	0.6	238,786	0.6
Wyoming	-4,877	*	51,337	0.1	-9,654	*	24,159	0.1

¹ For clarification on the limitations and conditions of coverage, see the introduction.

² All figures include civil functions procurement actions.

Note: An asterisk in the percent column represents a figure of less than 0.05 percent. Percentages may not add up due to rounding.

Table 2. Net Value and Percent Distribution of DoD Military Procurement Actions, by State: First Half FY 1987, First Half FY 1986, and Second Quarters FY 1987 and FY 1986¹

(Amounts in Thousands)

STATE	FISCAL YEAR TO DATE				THREE MONTH PERIOD			
	1987 (OCT 86-MAR 87)		1986 (OCT 85-MAR 86)		FISCAL YEAR 1987 (JAN-MAR 1987)		FISCAL YEAR 1986 (JAN-MAR 1986)	
	AMOUNT	PERCENT	AMOUNT	PERCENT	AMOUNT	PERCENT	AMOUNT	PERCENT
TOTAL, U.S.	566,216,923		\$71,488,471		\$38,288,053		\$38,739,156	
NOT DISTRIBUTED BY STATE	5,394,313		5,435,294		3,152,812		3,105,964	
STATE TOTALS	60,822,810	100.0	66,063,177	100.0	35,146,241	100.0	36,633,192	100.0
Alabama	715,095	1.2	671,256	1.0	369,630	1.1	351,018	1.0
Alaska	225,862	0.4	281,784	0.4	112,857	0.3	78,971	0.2
Arizona	1,686,918	2.8	564,778	0.9	517,481	1.5	365,099	1.0
Arkansas	533,848	0.9	893,988	1.1	254,609	0.7	298,705	0.8
California	10,942,421	18.0	15,855,507	24.0	6,810,488	19.4	8,021,993	21.9
Colorado	1,544,319	2.5	587,801	0.9	928,131	2.6	249,034	0.7
Connecticut	2,252,817	3.7	2,457,497	3.7	1,357,278	3.9	1,668,734	4.6
Delaware	41,248	0.1	38,560	0.1	12,050	*	16,175	*
District of Columbia	458,980	0.8	540,890	0.8	173,530	0.5	361,478	1.0
Florida	2,840,487	4.7	2,847,249	4.5	1,039,195	3.0	1,593,993	4.4
Georgia	2,287,195	3.8	2,904,744	4.4	1,620,963	4.6	508,716	1.4
Hawaii	182,134	0.3	258,253	0.4	95,518	0.3	78,200	0.2
Idaho	15,227	*	21,618	*	8,223	*	6,710	*
Illinois	748,195	1.2	852,041	1.0	414,877	1.2	312,177	0.9
Indiana	1,136,817	1.9	801,467	1.2	654,466	2.4	457,048	1.2
Iowa	100,770	0.2	211,835	0.3	84,164	0.2	127,057	0.3
Kansas	545,414	0.9	933,521	1.4	160,754	0.5	480,886	1.3
Kentucky	175,008	0.3	289,509	0.4	78,445	0.2	70,125	0.2
Louisiana	615,821	1.0	717,875	1.1	473,876	1.3	527,854	1.4
Maine	77,651	0.1	425,806	0.6	48,772	0.1	405,636	1.1
Maryland	1,927,175	3.2	1,599,820	2.4	1,136,856	3.2	853,502	2.3
Massachusetts	5,372,319	8.8	5,306,383	8.0	3,683,217	10.5	3,387,218	9.2
Michigan	698,899	1.2	1,153,598	1.7	455,495	1.3	953,427	2.6
Minnesota	801,174	1.3	786,511	1.2	566,210	1.6	500,399	1.4
Mississippi	387,011	0.6	547,888	0.8	268,358	0.8	314,424	0.9
Missouri	2,071,819	3.4	2,216,457	3.4	724,673	2.1	1,611,929	4.4
Montana	27,284	*	28,029	*	8,182	*	7,053	*
Nebraska	108,528	0.2	101,081	0.2	41,049	0.1	51,967	0.1
Nevada	112,380	0.2	68,958	0.1	53,224	0.2	12,828	*
New Hampshire	121,868	0.2	122,758	0.2	89,174	0.2	81,235	0.2
New Jersey	1,084,862	1.7	1,257,013	1.9	542,913	1.5	752,799	2.1
New Mexico	283,812	0.4	327,961	0.5	158,085	0.4	159,949	0.4
New York	4,888,298	8.0	5,108,530	7.7	2,710,988	7.7	3,031,528	8.3
North Carolina	464,128	0.8	374,920	0.6	249,646	0.7	205,159	0.6
North Dakota	55,526	0.1	105,685	0.2	34,383	0.1	56,938	0.2
Ohio	1,772,733	2.9	2,518,864	3.8	1,340,761	3.8	1,782,801	4.9
Oklahoma	264,284	0.4	338,047	0.5	84,258	0.2	126,352	0.3
Oregon	84,814	0.2	88,619	0.1	35,494	0.1	30,187	0.1
Pennsylvania	2,107,116	3.5	2,193,334	3.2	1,035,271	2.9	1,441,827	3.9
Rhode Island	200,984	0.3	138,348	0.2	116,232	0.3	83,488	0.2
South Carolina	258,405	0.4	184,703	0.3	151,745	0.4	88,145	0.2
South Dakota	14,233	*	87,482	0.1	6,652	*	78,570	0.2
Tennessee	488,119	0.8	867,789	1.0	306,145	0.9	413,271	1.1
Texas	4,123,482	6.8	4,382,627	6.7	2,043,362	5.8	2,132,045	5.8
Utah	385,312	0.6	328,686	0.5	239,207	0.7	99,694	0.3
Vermont	32,893	0.1	38,981	0.1	23,087	0.1	17,056	*
Virginia	3,841,151	6.0	2,219,455	3.4	2,652,426	7.5	1,353,748	3.7
Washington	1,719,794	2.8	1,600,593	2.4	766,514	2.2	735,831	2.0
West Virginia	44,516	0.1	34,264	0.1	28,276	0.1	18,292	*
Wisconsin	285,880	0.5	308,774	0.5	208,906	0.6	237,741	0.6
Wyoming	-5,501	*	51,183	0.1	-8,873	*	24,158	0.1

¹ For clarification on the limitations and conditions of coverage, see the introduction.

Note: An asterisk in the percent column represents a figure of less than 0.05 percent. Percentages may not add up due to rounding.

Table 3. Net Value and Percent Distribution of DoD Military Procurement Actions, by State, According to Defense Component: First Half FY 1987¹

(Amounts in Thousands)

STATE	TOTAL ²		ARMY	NAVY	AIR FORCE	DEFENSE LOGISTICS AGENCY
	AMOUNT	PERCENT				
TOTAL, U.S.	\$66,216,923		\$15,776,936	\$22,567,018	\$22,063,407	\$4,034,100
NOT DISTRIBUTED BY STATE	5,394,313		1,673,718	1,128,242	1,438,556	1,074,704
STATE TOTALS	60,822,610	100.0	14,103,218	21,438,776	20,624,851	2,959,396
Alabama	715,085	1.2	449,557	89,465	132,660	51,700
Alaska	225,862	0.4	32,915	68,064	97,589	13,187
Arizona	1,688,818	2.8	1,003,041	240,752	384,975	12,025
Arkansas	533,848	0.9	292,900	183,991	29,478	27,479
California	10,842,421	18.0	1,366,364	4,824,666	4,219,411	218,713
Colorado	1,544,319	2.5	78,439	51,584	1,373,703	3,943
Connecticut	2,252,817	3.7	842,851	944,326	424,171	39,619
Delaware	41,248	0.1	23,534	2,163	7,765	7,786
District of Columbia	458,880	0.8	34,628	291,532	24,108	1,557
Florida	2,840,487	4.7	560,478	545,362	1,655,793	41,314
Georgia	2,287,195	3.8	198,990	41,768	2,014,513	39,957
Hawaii	182,134	0.3	47,634	84,467	34,814	8,854
Idaho	15,227	*	1,159	630	6,918	6,520
Illinois	748,195	1.2	235,978	98,036	276,192	97,914
Indiana	1,136,917	1.9	727,832	195,477	158,054	57,140
Iowa	100,770	0.2	-41,907	69,017	32,996	40,509
Kansas	545,414	0.9	110,693	31,523	394,795	7,738
Kentucky	175,008	0.3	77,860	4,015	13,420	79,631
Louisiana	615,821	1.0	104,330	272,539	14,267	224,885
Maine	77,651	0.1	11,366	55,143	3,640	7,502
Maryland	1,927,175	3.2	209,781	826,286	501,076	27,734
Massachusetts	5,272,319	8.8	2,657,013	1,186,077	1,396,745	56,976
Michigan	699,890	1.2	348,998	119,398	150,171	76,137
Minnesota	801,174	1.3	274,457	350,816	114,357	31,368
Mississippi	387,011	0.6	171,852	94,172	33,261	87,540
Missouri	2,071,919	3.4	376,656	1,094,618	552,151	36,459
Montana	27,284	*	19,244	181	7,227	867
Nebraska	109,526	0.2	8,353	4,770	69,856	18,732
Nevada	112,380	0.2	20,270	38,478	45,648	2,711
New Hampshire	121,666	0.2	24,657	49,912	39,547	5,883
New Jersey	1,804,862	1.7	272,196	401,270	172,453	117,419
New Mexico	263,912	0.4	80,959	15,941	153,165	944
New York	4,866,296	8.0	332,705	3,287,766	872,832	175,620
North Carolina	484,128	0.8	113,347	199,970	39,711	76,467
North Dakota	55,526	0.1	19,979	137	22,445	12,572
Ohio	1,772,733	2.9	191,929	400,603	1,075,778	101,191
Oklahoma	284,284	0.4	110,195	9,451	101,886	42,726
Oregon	94,014	0.2	45,818	10,052	23,072	11,793
Pennsylvania	2,107,116	3.5	748,433	793,011	355,052	176,842
Rhode Island	200,894	0.3	4,028	162,245	13,150	13,537
South Carolina	258,405	0.4	70,322	71,640	19,935	91,668
South Dakota	14,233	*	2,775	44	9,481	1,933
Tennessee	488,118	0.8	231,237	24,155	177,600	54,838
Texas	4,122,482	6.8	659,346	695,559	2,177,391	582,448
Utah	365,312	0.6	37,695	31,588	256,406	8,277
Vermont	32,893	0.1	5,149	6,511	19,064	2,169
Virginia	3,841,151	6.0	510,152	2,584,233	258,874	82,565
Washington	1,719,784	2.8	193,821	860,343	634,939	24,992
West Virginia	44,516	0.1	27,460	4,010	2,512	10,506
Wisconsin	295,880	0.5	174,772	30,848	26,052	49,545
Wyoming	-5,501	*	1,057	172	4,752	-11,526

¹ For clarification on the limitations and conditions of coverage, see the introduction.

² Total includes all departments shown, plus other Defense agencies.

Note: An asterisk in the percent column represents a figure of less than 0.05 percent. Percentages may not add up due to rounding.

ENO

7-87

Dtic