

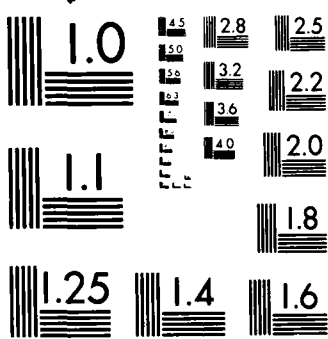
AD-A181 198

SYMPOSIUM AND WORKSHOP SUPPORT IN MOLECULAR BIOLOGY AND 1/1
BIOTECHNOLOGY (ST (U) PENNSYLVANIA STATE UNIV
UNIVERSITY PARK COOPERATIVE PROGRAM I S E STEVENS
29 APR 87 AFOSR-TR-87-8714 AFOSR-85-8338 F/G 6/2 NL

UNCLASSIFIED



END
1/1
1/1



SECURITY

DOCUMENTATION PAGE

AD-A181 190

1a. REPC Unc		1b. RESTRICTIVE MARKINGS	
2a. SECL		3. DISTRIBUTION / AVAILABILITY OF REPORT Approved for public release; Distribution unlimited	
2b. DECLASSIFICATION / DOWNGRADING SCHEDULE		4. PERFORMING ORGANIZATION REPORT NUMBER(S)	
4. PERFORMING ORGANIZATION REPORT NUMBER(S)		5. MONITORING ORGANIZATION REPORT NUMBER(S) AFOSR-TR-87-0714	
6a. NAME OF PERFORMING ORGANIZATION Pennsylvania State University Cooperative Program in Biotech.	6b. OFFICE SYMBOL (if applicable) NL	7a. NAME OF MONITORING ORGANIZATION Air Force Office of Scientific Research/NL	
6c. ADDRESS (City, State, and ZIP Code) 101 S. Frear Building University Park, PA 16802		7b. ADDRESS (City, State, and ZIP Code) Building 410 Bolling AFB D.C. 20332-6448	
8a. NAME OF FUNDING / SPONSORING ORGANIZATION AFOSR	8b. OFFICE SYMBOL (if applicable) NL	9. PROCUREMENT INSTRUMENT IDENTIFICATION NUMBER AFOSR-85-0338	
8c. ADDRESS (City, State, and ZIP Code) Building 410 Bolling AFB, DC 20332-6448		10. SOURCE OF FUNDING NUMBERS	
		PROGRAM ELEMENT NO.	PROJECT NO. 2312
		TASK NO. A6	WORK UNIT ACCESSION NO.
11. TITLE (Include Security Classification) Symposium and Workshop Support in Molecular Biology and Biotechnology			
12. PERSONAL AUTHOR(S) S. Edward Stevens, Jr.			
13a. TYPE OF REPORT Final Technical Report	13b. TIME COVERED FROM 9/1/85 TO 2/28/87	14. DATE OF REPORT (Year, Month, Day) April 29, 1987	15. PAGE COUNT
16. SUPPLEMENTARY NOTATION			
17. COSATI CODES		18. SUBJECT TERMS (Continue on reverse if necessary and identify by block number)	
FIELD	GROUP	SUB-GROUP	
		Symposium; workshop; molecular biology; biotechnology	
19. ABSTRACT (Continue on reverse if necessary and identify by block number) The Cooperative Program in Biotechnology (formally, The Cooperative Program in Recombinant DNA Technology) held the Fifth Winter Workshop, the Fifth Summer Symposium in Molecular Biology and will present the Sixth Summer Symposium in Molecular Biology in 1987 under the auspices of the AFOSR. The Fifth Winter Workshop was an open meeting without registration and was attended by about 200 people. There were 391 paid registrants at the Fifth Summer Symposium and a total of 435 participants, including guests. The Sixth Summer Symposium will be held at Penn State, July 29 - 31, 1987.			
20. DISTRIBUTION / AVAILABILITY OF ABSTRACT <input checked="" type="checkbox"/> UNCLASSIFIED/UNLIMITED <input type="checkbox"/> SAME AS RPT. <input type="checkbox"/> DTIC USERS		21. ABSTRACT SECURITY CLASSIFICATION Unclassified D	
22a. NAME OF RESPONSIBLE INDIVIDUAL Dr. William O. Berry		22b. TELEPHONE (Include Area Code) (202) 767-4278	22c. OFFICE SYMBOL NL

DTIC ELECTED JUN 08 1987

55 07 MAY 1987 H+63

The Cooperative Program in Biotechnology began in January 1982 under the name The Cooperative Program in Recombinant DNA Technology. The program was inaugurated as a vehicle for exchange of information between a group of Penn State faculty members and biotechnology related industries. The charter faculty associates of the program were molecular biologists from the Department of Molecular and Cell Biology. Subsequently joining the program were two members each from the Department of Chemistry, the Department of Chemical Engineering, and the Department of Biological Chemistry at Penn State's Milton S. Hershey Medical Center. As presently constituted, members of the faculty group are: Stephen J. Benkovic, Evan Pugh Professor, Chemistry; Donald A. Bryant, Associate Professor, Microbiology; Alfred Carlson, Assistant Professor, Chemical Engineering; Reginald A. Deering, Professor, Biophysics; Richard J. Frisque, Assistant Professor, Microbiology; Ross Hardison, Associate Professor, Biochemistry; Anita K. Hopper, Associate Professor, Biological Chemistry; James E. Hopper, Associate Professor, Biological Chemistry; Kenneth Johnson, Associate Professor, Biochemistry; C. Robert Matthews, Associate Professor, Chemistry; Stanley R. Person, Professor, Biophysics; Ronald D. Porter, Associate Professor, Microbiology; Robert A. Schlegel, Associate Professor, Microbiology; David I. Shalloway, Assistant Professor, Molecular and Cell Biology; Wallace Snipes, Professor, Biophysics; S. Edward Stevens, Jr., Associate Professor, Microbiology; William D. Taylor, Professor, Biophysics; and David Tu, Associate Professor, Biochemistry.

The group's expertise includes, but also transcends the area of recombinant DNA technology, enabling the program to address the domain of biotechnology generally. Member industries who have been affiliated with the program include: AMAX Research & Development, Inc.; Bethlehem Steel Corporation; GIBCO/BRL Laboratories; Gulf Research & Development Company; International Business Machines Corporation; The Procter & Gamble Company; Miami Valley Laboratories; Schering Corporation; U.S. Air Force Office of Scientific Research; Universal Foods Corporation; Westinghouse Electric Corporation; and Wyeth Laboratories.

In support of the program, members provide funds in the form of a tax-deductible grant-in-aid to the University. These funds are expended primarily for the operating expenses of the program, including the Winter Workshop and the Summer Symposium. Residual funds are expended for deserving research purposes in associated faculty laboratories. Services provided include seminars and workshops to acquaint industry representatives with the current state of biotechnology, annual visits to industrial affiliates by appropriate faculty, maintenance of a program office to respond to inquiries relevant to program objectives. Also sponsored by the program is the annual Penn State Summer Symposium in Molecular Biology, which not only serves as an information transfer function for member organizations, but also attracts an international audience of scientists from universities, research institutions, and industrial research laboratories. Already a leading molecular biology meeting, it has significant impact on the scientific community in general, and represents a major contribution to the intellectual life of Penn State. The program has been particularly fortunate in having Drs. Alexander Rich, Charles Yanofsky, Joseph Gall and Nobel Laureates Drs. David Baltimore and Paul Berg present the keynote addresses from 1982



<input type="checkbox"/>	<input type="checkbox"/>
<input type="checkbox"/>	<input type="checkbox"/>
Codes	
for	
al	

M-1

through 1986. Nobel Laureate, Dr. Seymour Benzer will present the keynote address at the 1987 Summer Symposium.

The Cooperative Program in Recombinant DNA Technology voted to change its name to the Cooperative Program in Biotechnology in January, 1986. This was done to more correctly reflect the interests of faculty and member organizations. We undertook three primary activities under sponsorship of the Air Force Office of Scientific Research. These were presentation of the Fifth Winter Workshop, presentation of the Fifth Summer Symposium in Molecular Biology, and organization of the Sixth Summer Symposium in Molecular Biology.

Winter Workshop - Professors Stanley Person and Alfred Carlson with aid from Dee Reeves and the Director presented the Fifth Winter Workshop on February 5, 1986. Seven lectures and a roundtable discussion were presented. The topics were: "Fundamental Research in Agricultural Sciences: an Industrial Perspective" by Robert T. Giaquinta of DuPont; "Enzymatic Lignin Degradation" by Ming Tien of Penn State; "Applications of Plant Genetic Engineering" by Stephen G. Rogers of Monsanto; "Molecular Modeling of Proteins" by Richard J. Feldmann of the National Institutes of Health; "Recombinant-Derived Hepatitis B Vaccine--a Prototype for Future Vaccines" by Ronald W. Ellis of Merck; "The Application of Nuclear Magnetic Resonance Imaging and Spectroscopy to Biochemical Analysis" by David L. Foxall of Varian; and, "Efficient Expression of Functional Gene Products in Bacteria" by Martin Rosenberg of Smith Kline-Beckman. Participants (about 200) at the Workshop were from Penn State and other academic institutions, industry (local, state, national, and international), and government.

Summer Symposium, 1986 - Professors James and Anita Hopper, Chairpersons, and Professors Robert Matthews and David Shalloway, local arrangements, with the aid of Dee Reeves, the Director, and Conference Center Coordinator Chuck Herd presented the Fifth Summer Symposium on Molecular Biology from July 30 through August 1, 1986. Professor Joseph Gall of the Carnegie Institute was the Keynote Speaker. Lectures were presented by Drs. Ricardo Benavente (German Cancer Research Center), Gunter Blobel (Rockefeller), John Carbon (California), Donald S. Caffey (Johns Hopkins), Colin Dingwall (Cambridge), Carl M. Feldherr (Florida), Douglass Forbes (California), Barbara Hamkalo (California), Lee Hartwell (Washington), Marc Kirschner (California), Kim Nasmyth (MRC), John Newport (California), Bruce Roberts (Integrative Genetics), Robert Schlegel (Penn State), John Sedat (California, and Virginia Zakian (Fred Hutchinson Cancer Research Center). In addition, fifty-five poster presentations were made. Twenty commercial exhibits were presented by the following corporations: Applied Biosystems, Beckman Instruments, BioMed Instruments, Curtin Matheson Scientific, E. I. DuPont de Nemours & Company, Edwards High Vacuum, Fisher Scientific, Gelman, Gibco/BRL, Hoefer, International Biotechnologies, Labrepco, Lab-Line Instruments, LKB, Media Tech, Olympus/Hitech Instruments, Optical Apparatus Company, Pharmacia, Schleicher & Shuell, and VWR. Three hundred ninety-one people from industry, government, and academia attended the three-day symposium.

Summer Symposium, 1987 - Professor Ross Hardison was appointed Chairperson for the Sixth Summer Symposium in Molecular Biology. He has been assisted by Professors David Shalloway and William Taylor (local

arrangements committee), Dee Reeves (Cooperative Program Coordinator), Chuck Herd (Conference Center Coordinator), and the Director. The Symposium will be presented on July 29 through 31, 1987, on the University Park campus of the Pennsylvania State University. Dr. Seymour Benzer of Cal Tech will deliver the Keynote Address. Drs. Robert Horvitz (MIT), David Hogness (Stanford), Matthew Scott (Colorado), and Michael Levine (Columbia) will speak under the session heading of "Cell Fates and Homeosis." Drs. Kevin Struhl (Harvard), Carl Parker (California/Pasadena), Robert Roeder (Rockefeller), and Pierre Chambon (France), will give lectures on "Transcriptional Regulatory Factors." Drs. Corey Goodman (Stanford), Spyros Artavanis-Tsakonas (Yale), Richard Scheller (Stanford) and Barry Ganetzky (Wisconsin) will speak on "Neurobiology." Drs. Alexander Johnson (California/San Francisco), Melvin Simon (California/Pasadena), Robert Haselkorn (Chicago), and Lucy Shapiro (Columbia) will speak on "Differentiation in Microorganisms." We anticipate 500 - 700 participants at this symposium. We also expect about 20 commercial exhibits.

WORKSHOP IN BIOTECHNOLOGY

OPEN TO THE PUBLIC

Wednesday, February 5, 1986
8:30 AM - 6:00 PM

312 Keller Conference Center
The Pennsylvania State University

Fundamental Research in Agricultural Sciences: An Industrial Perspective

ROBERT T. GIAQUINTA 8:30-9:15 am
Dupont

Enzymatic Lignin Degradation

MING TIEN 9:15-10:00 am
Penn State

Applications of Plant Genetic Engineering

STEPHEN G. ROGERS 10:30-11:15 am
Monsanto

Molecular Modeling and Protein

RICHARD J. FELDMANN 11:15-12:00 pm
NIH

Recombinant-Derived Hepatitis B Vaccine — A Prototype for Future Vaccines

RONALD W. ELLIS 1:30-2:15 pm
Merck

The Application of Nuclear Magnetic Resonance Imaging and Spectroscopy to Biochemical Analysis

DAVID L. FOXALL 2:15-3:00 pm
Varian

Efficient Expression of Functional Gene Products in Bacteria

MARTIN ROSENBERG 3:15-4:00 pm
Smithkline-Beckman

Roundtable Discussion

4:00-6:00 pm

Support for these lectures is provided by industrial affiliates of the Cooperative Program in Biotechnology by The Pennsylvania State University and by the Ben Franklin Partnership Challenge Grant Program for Technological Innovation. The Cooperative Program is an industry/University program of information exchange, and its contributing industrial members include BETHLEHEM STEEL CORPORATION, INTERNATIONAL BUSINESS MACHINES CORPORATION and UNITED STATES AIR FORCE OFFICE OF SCIENTIFIC RESEARCH.

FIFTH SUMMER SYMPOSIUM IN MOLECULAR BIOLOGY*

THE NUCLEUS

JULY 30 - AUGUST 1, 1986

THE PENNSYLVANIA STATE UNIVERSITY UNIVERSITY PARK, PA 16802

Tuesday, July 29

7:00 PM - 10:30 PM Registration Schwab Auditorium

Wednesday, July 30

8:00 AM - 9:30 AM Registration Schwab Auditorium

9:30 AM - 1:00 PM NUCLEAR STRUCTURE AND ASSEMBLY Schwab Auditorium

*Gunter Blobel, Rockefeller
Donald Coffey, Johns Hopkins*

*John Newport, California/San Diego
Werner Franke, Cancer Research Center
Heidelberg, Germany*

3:00 PM KEYNOTE ADDRESS Schwab Auditorium

Joseph Gall, Carnegie Institute

4:15 PM Presentation of the Paul Berg Prize in Molecular Biology

5:00 PM - 11:30 PM POSTER PRESENTATIONS

Thursday, July 31

8:30 AM - 12:00 noon NUCLEAR STRUCTURE AND FUNCTION Schwab Auditorium

*Lee Hartwell, Washington
John Sedat, California/San Francisco*

*Marc Kirschner, California/San Francisco
Robert Schlegel, Penn State*

2:00 PM - 5:30 PM CHROMOSOME STRUCTURE AND EXPRESSION Schwab Auditorium

*Elizabeth Blackburn, California/Berkeley
John Carbon, California/Santa Barbara*

*Barbara Hamkalo, California/Irvine
Kim Nasmyth, Cambridge, England*

7:30 PM - 11:30 PM POSTER PRESENTATIONS

Friday, August 1

8:30 AM - 12:00 noon NUCLEAR TRANSPORT Schwab Auditorium

*Douglass Forbes, California/San Diego
Alan Smith, Integrative Genetics*

*Colin Dingwall, Cambridge, England
Carl Feldherr, Florida*

*A biotechnology cooperative program between The Pennsylvania State University and biotechnology-related industries began in January, 1982. The major objective of the program is to provide information transfer between molecular biologists at universities and representatives from industries. This symposium is supported by the following industrial affiliates:

BETHLEHEM STEEL CORPORATION
INTERNATIONAL BUSINESS MACHINES CORPORATION
U.S. AIR FORCE OFFICE OF SCIENTIFIC RESEARCH
BEN FRANKLIN PARTNERSHIP PROGRAM, ATC/CNP, INC.

Contact: Dee Reeves, Symposium Program Coordinator, Fifth Summer Symposium in Molecular Biology, 208 South Frear Laboratory, The Pennsylvania State University, University Park, PA 16802, Telephone: (814) 863-3696.

or Dr. S. Edward Stevens, Jr., Director, Cooperative Program in Biotechnology, 209 South Frear Laboratory, The Pennsylvania State University, University Park, PA 16802, Telephone: (814) 865-1294.

REGISTRATION

Advance registration is necessary since the number of people who can be accommodated is limited. Registrations will be honored in the order in which they are received. If it is necessary to cancel your registration, please notify us. A refund of the registration fee will be made if notification is received by June 2, 1986. Upon receipt of advance registration a confirmation along with additional information will be sent to you. The registration fees are: Graduate students \$30.00; Post-doctoral scientists \$75.00; Faculty and others \$150.00.

POSTERS

There will be a poster session Wednesday evening from 4:30 to 11:30 pm, and Thursday from 7:30 to 11:30 pm. Abstracts will be refereed, and the deadline for submission is June 2. Authors can expect to receive from us a card confirming abstract receipt, and by June 16 we will mail notification regarding poster presentation acceptance. It is not necessary that the abstract accompany the registration form; since registration is on a first-come-first-served basis, you may not want to delay forwarding your registration materials.

ACCOMMODATIONS

Housing is available in university residence halls for the nights of July 29 through August 1. Double rooms with twin beds are available for those attending, including spouses and children. A very limited number of single rooms are also available. There are no private baths, but modern bathrooms are located near the rooms. The cost of a room in the residence halls is \$10.50 per person per night for a double room and \$14.75 per night for a single room payable at the time of check-in. The university will not accept credit cards for housing. For those desiring other accommodations, a list of nearby hotels and motels will be provided.

HOW TO REACH THE UNIVERSITY

Penn State is in State College, Pennsylvania, near the geographical center of the state, on Routes 26 and 322 and near I-80. USAir/Allegheny Commuter Service provides six daily flights into University Park Airport via Pittsburgh. Several flights also arrive daily from New York, Baltimore and Washington, D.C., via Harrisburg. The airport is located five miles from campus with limousine service available for all flights. Please check with your travel agent for schedule.

FIFTH SUMMER SYMPOSIUM IN MOLECULAR BIOLOGY

July 29 - August 1, 1986

The Pennsylvania State University
University Park, Pennsylvania

PRE-REGISTRATION LIST

ALLEN, JERRY LYNN
University of Texas
Health Science Center
5323 Harry Hines Blvd.
Dallas, TX 75235-9038

AMLA, DEVINDRA V.
Penn State University
S101 Frear Building
University Park, PA 16802

ARIS, JOHN P.
Rockefeller University
PO Box 292, 1230 York Ave.
New York, NY 10021

ARONSON, NATHAN N.
Penn State University
Dept. of Biochemistry
108A Althouse Lab
University Park, PA 16802

ATKINSON, N. S.
Penn State University
Dept. of Biological Chemistry
Hershey Medical Center
Hershey, PA 17033

AU, LO-CHUN
Johns Hopkins University
Div. of Biophysics
School of Hygiene
Baltimore, MD 21205

BACIU, PETER C.
West Virginia University
Dept. of Biochemistry
Basic Science Bldg.
Morgantown, WV 26506

BAJWA, WAJEEH
Penn State University
Biological Chemistry
Hershey Medical Center
Hershey, Pa 17033

BAKER, CAROL S.
Penn State University
230 S. Frear Building
University Park, PA 16802

BEER, JANUSZ Z.
Center for Devices & Radiological
Health
Radiation Biology Branch
HFZ-114 5600 Fishers Lane
Rockville, MD 20857

BENKOVIC, STEPHEN
Penn State University
319 Chandlee
University Park, PA 16802

BERAN, RITA K.
E.I. DuPont
CR & D Exp. Station 328/B40
Wilmington, DE 19898

BERLIN, VIVIAN M.
Whitehead Institute
9 Cambridge Center
Cambridge, MA 02142

BERNLOHR, ROBERT W.
Penn State University
Dept. of Biochemistry
208 Althouse Lab
University Park, PA 16802

BLACKBURN, ELIZABETH H.
University of California
Dept. of Molecular Biol.
Berkeley, CA 94720

BLOBEL, GUNTER
The Rockefeller University
1230 York Avenue
New York, NY 10021

BOOR, ROBERT D.
Penn State University
Room 211 S. Frear Bldg.
University Park, PA 16802

BRYANT, DONALD A.
Penn State University
Microbiology
231 S. Frear Lab
University Park, PA 16802

BURGLIN, THOMAS R.
Univ. of CA - Los Angeles
Dept. of Biological Chemistry
School of Medicine
Los Angeles, CA 90024

BUZBY, JEFFREY S.
Penn State University
Pesticide Research Lab.
University Park, PA 16802

CANNELLA, MARIA
Penn State University
435 S. Frear
University Park, PA 16802

CANTRELL, AMANDA S.
Penn State University
232 S. Frear Building
University Park, PA 16802

CARBON, JOHN A.
University of California
Dept. of Biological Sci.
Santa Barbara, CA 93106

CARLSON, ALFRED
Penn State University
118B Fenske
University Park, PA 16802

CARSWELL, SUSAN
University of Pennsylvania
Dept. of Microbiology
School of Medicine
Philadelphia, PA 19104-6076

CARTER, JEFFREY R.
Penn State University
333 S. Frear Building
University Park, PA 16802

CASIDA, L. E.
Penn State University
Dept. of Microbiology
202 S. Frear
University Park, PA 16802

CHAI, LEE S.
Roswell Park Memorial Institute
666 Elm Street
Buffalo, NY 14263

CHATTERJEE, BISHWANATH
University of Pennsylvania
Biology Department
Biology Building G5
Philadelphia, PA 19104

CHAUDHARY, NILABH
Rockefeller University
Laboratory of Cell Biology
Box 292, 1230 York Avenue
New York, NY 10021

CHELSKY, DANIEL
DuPont Central Research
Experimental Sta., DuPont E328/346
Wilmington, DE 19898

CHEN, JIANN-HWA
Penn State University
333 S. Frear Building
University Park, PA 16802

CHEN, SHIMING
SUNY Health Sci. Center at
Syracuse
Dept. of Biochemistry & Mol. Bio.
Syracuse, NY 13210

CHENG, JAN-FANG
Penn State University
206 Althouse Lab.
University Park, PA 16802

CHILCOTE, TAMIE J.
Penn State University
Dept. of Molecular & Cell Bio.
108 Althouse Laboratory
University Park, PA 16802

CHUKE, WEI-FONG
Penn State University
435 S. Frear Lab.
University Park, PA 16802

CLARK, ANDREW G.
Penn State University
208 Mueller
University Park, PA 16802

CLARKE, EDNA
SUNY Health Science Center
766 Irving Avenue
Syracuse, NY 13210

CLUTTER, DANIEL B.
Penn State University
301 Althouse Laboratory
University Park, PA 16802

COPELAND, CONNIE
Yale University School of Medicine
Dept. of Cell Biology
333 Cedar Street
New Haven, CT 06511

CYR, HOWARD
Center for Devices & Radiological
Health
Radiation Biology Branch
HFZ-114 5600 Fishers Lane
Rockville, MD 20857

DANIEL, DONALD L.
Albright College
Box 15234
Reading, PA 19612-5234

DAVIS, LAURA I.
Rockefeller University
Blobel Laboratory
Box 232, 1230 York Avenue
New York, NY 10021

DEBROY, CHITRITA
Penn State University
618 Mueller Lab
University Park, PA 16802

DEERING, REGINALD A.
Penn State University
201 Althouse Lab
University Park, PA 16802

DEL BUONO, BRIAN J.
Penn State University
Dept of Molecular & Cell Biol.
S-101 Frear Building
University Park, PA 16802

DEMERS, G. WILLIAM
Penn State University
206 Althouse Lab.
University Park, PA 16802

DENG, TILIANG
Ohio State University
Department of Biochemistry
484 W. 12th Avenue
Columbus, OH 43210

DETMER, KRISTINA M.
Massachusetts Inst. of Technology
Dept. of Biology
Room 16-730
Cambridge, MA 02139

DE BEUS, ELIZABETH Z.
Rockefeller University
Box 191, 1230 York Avenue
New York, NY 10021

de BRUYN KOPS, ANNE
Harvard Medical School
Dept. of Microbiology
c/o David Knipe 25 Shattuck St.
Boston, MA 02115

DE JONG, JEFF L.
Penn State University
Box 188 Althouse Lab.
University Park, PA 16802

DE WILLE, JAMES W.
Ohio State University
Dept. of Biochemistry
484 W. Twelfth
Columbus, OH 43210

DIEHL, JACK D.
Penn State University
331 S. Frear
University Park, PA 16802

DIJKWEL, PIETER A.
University of Virginia
Dept. of Biochemistry
Jordan Hall, Box 440
Charlottesville, VA 22308

DINGWALL, COLIN
Cancer Research Campaign
Zoology Department
Downing Street
Cambridge CB2 3EJ, ENGLAND

DOCHERTY, JOHN J.
Penn State University
Dept. of Microbiology
310 S. Frear
University Park, PA 16802

DOMANICO, PAUL L.
E.I. Du Pont & Co.
Central Research and Development
Experimental Station 328/B40
Wilmington, DE 19898

DREHER, KEVIN L.
West Virginia University
Department of Biochemistry
School of Medicine
Morgantown, WV 26506

DRIVAS, GEORGE T.
New York University
Dept. of Biochemistry
550 First Avenue
New York, NY 10016

DUBBS, JAMES M.
Penn State University
101 S. Frear Building
University Park, PA 16802

DUNN-COLEMAN, JANET E.
University of Virginia
Dept. of Biology
Gilmer Hall
Charlottesville, VA 22901

DUNPHY, WILLIAM GERALD
John Newport laboratory
Dept. of Biology
B-022
LaJolla, CA 92093

EDGAR, DIANNE M.
Univ. of Rochester Medical Ctr.
Cancer Center
601 Elmwood Avenue
Rochester, NY 14642

EPSTEIN, EILEEN M.
Cornell University
Section of Biochemistry
Wing Hall
Ithaca, NY 14853

ESKEW, MARY LOU
Penn State University
102 Henning Building
University Park, PA 16802

ESSICH, EBERHARD
Penn State University
210 S. Frear Lab
University Park, PA 16802

FABISZ-KIJOWSUA, ANNA A.
Penn State University
Dept. of Mol. and Cell Biol.
430 S. Frear Building
University Park, PA 16802

FACEMYER, KEVIN C.
Penn State University
301 Althouse Laboratory
University Park, PA 16802

FARRANCE, IJUN K.
University of Georgia
Genetics Department
Athens, GA 30602

FEATHERSTONE, CAROL
Johns Hopkins Univ. School of
Medicine
Dept. of Cell Biology and Anatomy
725 N. Wolfe Street
Baltimore, MD 21205

FELDHERR, CARL M.
Univ. of Florida Coll. of Medicine
Dept. of Anatomy and Cell Biol.
Box J-235 JHMC
Gainesville, FL 32610

FIELDS, ALAN P.
Johns Hopkins University
School of Medicine
600 North Wolfe Street
ONCOLOGY-1-127
Baltimore, MD 21205

FINLAY, DEBORAH R.
U.C.S.D.
B-022
LaJolla, CA 92093

FINLEY, RUSSELL L.
SUNY Health Sci. Center at
Syracuse
Dept. of Biochemistry and Mol.
Bio.
Syracuse, NY 13210

FISHER, DANIEL Z.
The Rockefeller University
Laboratory of Cell Biology
Box 292, 1230 York Avenue
New York, NY 10021

FISHER, EDWARD A.
Childrens Hospital of Phila.
Genetics Division
34th and Civic Ctr. Blvd.
Philadelphia, PA 19104

FLOOD, WILLIAM A.
Penn State University
Microbiology Dept.
405 S. Frear Laboratory
University Park, PA 16802

FORBES, DOUGLAS J.
University of Calif. at San Diego
Department of Biology
LaJolla, CA 92093

FRIED, HOWARD M
University of North Carolina
Department of Biochemistry
Faculty Lab. Office Bldg. 231H
Chapel Hill, NC 27514

FUJIMAGARI, MICHAEL
Penn State University
430 S. Frear
University Park, PA 16802

FURLOW, DAVID
University of Wisconsin-Madison
Department of Biochemistry
420 Henry Mall
Madison, WI 53706

GAFFNEY, EDWIN V.
Penn State University
Dept. of Cell Biology
306 S. Frear
University Park, PA 16802

GALL, JOSEPH G.
Carnegie Institution
115 W. University Parkway
Baltimore, MD 21210

GARLISI, CHARLES G.
Penn State University
329 South Frear Lab.
University Park, PA 16802

GASKELL, MICHAEL J.
University of Pennsylvania
Dept. of Human Genetics
Howard Hughes Med. Inst.
Philadelphia, PA 19104

GASPARICH, GAIL E.
Penn State University
S-232 Frear Building
University Park, PA 16802

GAWLIK, STANLEY R.
St. John Fisher College
Biology Department
3690 East Avenue
Rochester, NY 14618

GAY, CAROL V.
Penn State University
Dept. of Molecular and Cell Bio.
508 Mueller Building
University Park, PA 16802

GILLMAN, EDWARD C.
Penn State University
Dept. of Biological Chemistry
Hershey Medical Chemistry
Hershey, PA 17033

GRAHAM, EARL
Penn State University
120 Fenske
University Park, PA 16802

GRIER, CARLES E.
Penn State University
Microbiology Program
329 S. Frear
University Park, PA 16802

GROVE, DEBORAH S.
Penn State University
432 S. Frear Building
University Park, PA 16802

GRUN, PAUL
Penn State University
Cytology and Cytogenetics
208 Mueller Lab
University Park, PA 16802

GU, BAOHUA
Penn State University
618 Mueller Lab
University Park, PA 16802

HALLECK, MARGARET S.
U. of Texas Med. School at Houston
Box 20708
Houston, TX 77225

HAMKALO, BARBARA A.
University of California
Dept. of Molecular Biol.
Irvine, CA 92717

HAMMERSTEDT, ROY H.
Penn State University
Dept. of Biochemistry
406 Althouse Lab
University Park, PA 16802

HARDISON, ROSS C.
Penn State University
Dept. of Biochemistry
206 Althouse Lab.
University Park, PA 16802

HARTL, PHILIPPE
Univ. of CA - San Diego
Dept. of Biology
UCSD
LaJolla, CA 92023

HARTWELL, LELAND
Univ. of Washington
Dept. of Genetics-SK50
Seattle, WA 98195

HENRIQUEZ, RUBEN
Rockefeller University
1230 York Avenue
New York, NY 10021

HERNANDEZ, WILFREDO
Penn State University
101 S. Frear Building
University Park, PA 16802

HOLZBAUR, ERIKA L.F.
Penn State University
301 Althouse Laboratory
University Park, PA 16802

HOPPER, ANITA K.
Penn State University
Dept. of Biol. Chemistry
Hershey Medical Center
Hershey, PA 17703

HOPPER, JAMES E.
Penn State University
Dept. of Bio. Chem.
Milton Hershey Medical Center
Hershey, PA 17033

HOROWITZ, TERRY S.
Massachusetts Inst. of Technology
Dept. of Biology
Room 16-739
Cambridge, MA 02139

HOWLAND, DAVID S.
Penn State University
106 Althouse Laboratory
University Park, PA 16802

HUGHES, JOANNE E.
Utah State University
Biology Department
Logan, UT 84322-5500

HUMPHREY, GLEN W.
National Cancer Institute
Nat'l Inst. of Health
Bldg. 37, 4m. 4A09
Bethesda, MD 20892

IBANEZ, CARLOS
UC San Diego School of Medicine
Department of Pathology
M-012
LaJolla, CA 92093

IYER, RAMASWAMY K.
University of Delaware
School of Life and Health Sci.
Newark, DE 19716

JOHNSON, KENNETH A.
Penn State University
301 Althouse Laboratory
University Park, PA 16802

JOHNSON, PAUL J.
Penn State University
405 S. Frear Building
University Park, PA 16802

KANKI, JOHN P.
Univ. of Calif., San Diego
Dept. of Biology
B-022 UCSD
LaJolla, CA 92093

KANTOR, GEORGE J.
Wright State University
Dept. of Biological Sci.
Dayton, OH 45435

KATSUMATA, MAKOTO
University of Pennsylvania
Biology Dept.
G5
Philadelphia, PA 19104

KAYNE, FREDRICK J.
Hahnemann University
Path. & Lab Medicine
Broad & Vine Sts. M.S. 435
Philadelphia, PA 19067

KEDAM, THYAGARAJU
Penn State University
Agriculture College
226 Fenske Lab
University Park, PA 16802

KEIL, RALPH L.
Penn State University
Dept. of Biochemistry
Hershey Medical Center B 511
Hershey, PA 17033

KENAN, DAN
Duke University
PO Box 3020 DUMC
Durham, NC 27710

KING, DIANE M.
Penn State University
435 S. Frear
University Park, PA 16802

KMIFCIK, THOMAS E.
Penn State University
405 S. Frear
University Park, PA 16802

KOLB, TOM E.
Penn State University
Forestry Department
Forest Resource Lab.
University Park, PA 16802

KOSTWA, MATTHEW J.
Cold Spring Harbor Laboratories
PO Box 100
Cold Spring Harbor, NY 11724

KRANE, DAN E.
Penn State University
206 Althouse Lab.
University Park, PA 16802

LAFFERTY, MARK A.
University of Delaware
257 McKinley Lab
Newark, DE 19716

LAMB, MARY ROSE
University of Puget Sound
Biology Dept.
1500 N. Warner
Tacoma, WA 98416

LAZ, HUI-CHEN JEAN
Penn State University
006 Althouse Lab
University Park, PA 16802

LEE, WOAN-HWA
The Wistar Institute
The 36th at Spruce
Philadelphia, PA 19104

LI, DAWEI
Ohio State University
Dept. of Biochemistry
484 W. 12th Avenue
Columbus, OH 43210

LI, XIAO-CHING
Princeton University
Dept. of Molecular Biology
Princeton, NJ 08544

LILL, NANCY L.
Penn State University
Department of Microbiology B-604
Hershey Medical Center
Hershey, PA 17033

LIN, YU-HUEI
Penn State University
Department of Biological Chemistry
Hershey Medical Center
Hershey, PA 17033

LU, YIN
Penn State University
Microbiology Department
Hershey Medical Center
Hershey, PA 17033

LUDWIG, MARTHA
McGill University
1205 Ave. Docteur Penfield
Montreal, Quebec, Canada H3A1B1

LUMLEY-SAPANSKI, KATHERINE L.
Penn State University
S430 Frear Building
University Park, PA 16802

LUND, ELSEBET
University of Wisconsin
Dept. of Physiological Chem.
1300 University Avenue
Madison, WI 53706

LUSCHER, BERNARD
FHCRC
1124 Columbia Street
Seattle, WA 98104

LYNCH, KEVIN J.
Penn State University
435 S. Frear
University Park, PA 16802

MAC KEEN, PATRICIA C.
Penn State University
607 Mueller Lab
University Park, PA 16802

MADDOX, CAROL W.
Penn State University
Dept. of Microbiology
106 Henning Building
University Park, PA 16802

MAGDALENA, JAMES D.
Penn State University
MCB Department
206 Althouse Lab.
University Park, PA 16802

MAHAN, DENNIS W.
Penn State University
Rm. 405 South Frear
University Park, PA 16802

MARCELO, REMEDIOS M.
West Virginia University
Dept. of Biochemistry
Basic Science Bldg.
Morgantown, WV 26506

MARCHESE-RAGONA, SILVIO P.
Penn State University
301 Althouse Laboratory
University Park, PA 16802

MARGOT, JEAN B.
Penn State University
206 Althouse Lab.
University Park, PA 16802

MASTRO, ANDREA
Penn State University
431 S. Frear
University Park, PA 16802

MATTHEWS, BOB
Penn State University
222 Chandlee
University Park, PA 16802

MAUL, GERD G.
The Wistar Institute
36th and Spruce Street
Philadelphia, PA 19404

MAULDIN, STANLEY
Penn State University
201 Althouse Lab
University Park, PA 16802

MC CLAIN, DAVID E.
Armed Forces Radiobiology Research
Inst.
Biochemistry Dept.
NMCNCR
Bethesda, MD 20814-5145

MC EVOY, LESLIE M.
Penn State University
101 S. Frear Building
University Park, PA 16802

MC LEAN, BARBARA GAIL
University of Georgia
Genetics Dept.
Athens, GA 30602

MEIKRANTZ, WILLIAM J.
Penn State University
430 S. Frear
University Park, PA 16802

MELHEM, RANDA F.
University of Pittsburgh
A 535 Langley Hall
Pittsburgh, PA 15260

MICHAELS, GEORGE S.
NIH/NICHD
Lab. of Molecular Genetics
Bldg 6/Room 322
Bethesda, MD 20894

MILLER, LAUREN S.
Penn State University
106 Althouse
University Park, PA 16802

MILLS, JASON C.
Penn State University
508 Mueller Lab
University Park, PA 16802

MISRA, RAVI P.
NYU Med. Center
Sckler Inst., Dept. of Biochem.
550 First Avenue
New York, NY 10016

MORELAND, ROBERT B.
Harvard Medical School
Dept. of Microbiology
Room 10380, 44 Binney Street
Boston, MA 02115

MORITZ, MICHELLE
Carnegie-Mellon University
616 Mellon Institute
4400 Fifth Avenue
Pittsburgh, PA 15213

MORRISON, ALAN
University of Rochester
School of Medicine
Rochester, NY 14642

MORRISON, WILLIAM
Shippensburg University
Department of Biology
Shippensburg, PA 17257

MUDGETT, JOHN S.
Penn State University
106 Althouse Lab
University Park, PA 16802

MUMMA, RALPH Q.
Penn State University
Dept. of Entomology
111 Pesticides Research Lab.
University Park, PA 16802

MURPHY, RANDY C.
Penn State University
232 S. Frear
University Park, PA 16802

MUSCARELLA, DONNA E.
Cornell University
Dept. of Biochemistry
Wing Hall
Ithaca, NY 14853

MYLIN, LARRY M.
Penn State University
M.S. Hershey Medical Center
University Drive
Hershey, PA 17033

NAN-QIAN, LI
Penn State University
006 Althouse Lab
University Park, PA 16802

NASMYTH, KIM SAHLEY
MRC Lab. of Molecular Biol.
Hills Road
Cambridge CB2 2QM, ENGLAND

NEBES, VICK L.
University of Pittsburgh
School of Medicine
552 Scaife Hall
Pittsburgh, PA 15261

NEWITT, JOHN A.
Johns-Hopkins Med. School
Oncology 1-127
600 N. Wolfe Street
Baltimore, MD 21205

NEUMEYER, DONALD D.
U.C. San Diego
Dept. of Biology
B-022
LaJolla, CA 92093

NEWPORT, JOHN W.
Univ. of Calif. at San Diego
Dept of Biology B-022
LaJolla, CA 92093

NORRIS, DAVID N.
Harvard Medical School
44 Binney Street
Boston, MA 02115

OH, DAHLKYUN
Penn State University
Hershey Medical Center
Hershey, PA 17033

O'CONNOR, J. PATRICK
University of Pittsburgh
318 Langley Hall
Pittsburgh, PA 15260

O'REILLY, MARINA M.
Univ. of Virginia
Dept. of Biology
Gilmer Hall
Charlottesville, VA 22901

PADDY, MICHAEL R.
UC-San Francisco
Dept. of Biochemistry & Biophysics
HSE 1556, UCSF
San Francisco, CA 94143

PARKER, ROY R.
Univ. of Calif. at San Diego
Dept. of Biochemistry
Univ. of Calif. at San Francisco
San Francisco, CA 94143

PARTIN, ALLAN W.
Johns Hopkins Univ. School of
Medicine
Dept. of Pharmacology
600 N. Wolfe St., 113 Marburg
Bldg.
Baltimore, MD 21205

PAZUR, JOHN H.
Penn State University
Dept. of Biochemistry
103 Althouse Lab
University Park, PA 16802

PENCEK, MARGARET S.
Penn State University
Dept. of Biological Chem.
Hershey Medical Center
Hershey, PA 17033

PERSON, STAN
Penn State University
607 Mueller
University Park, PA 16802

PHILLIPS, ALLEN T.
Penn State University
Dept. of Biochemistry
408 Althouse Lab
University Park, PA 16802

PILON, APRILE L.
Penn State University
MCB Department
333 S. Frear Bldg.
University Park, PA 16802

PLATT, TERRY
Univ. Rochester Medical Ctr.
Dept. of Biochemistry
601 Elmwood Avenue
Rochester, NY 14642

PORTER, RONALD D.
Penn State University
332 South Frear
University Park, PA 16802

QUERY, CHARLES C.
Duke University
PO Box 3020 DUMC
Durham, NC 27710

RASHID, KHURRAM
M.D. Anderson Hosp. & Cancer
Research Ins.
UTSCC, Biomth.
Box 237, 6723 Beriner
Houston, TX 77030

RAY, JHARNA
Univ. of PA School of Medicine
Dept. of Human Genetics
195 Med Labs, 37th and Hamilton
Walk
Philadelphia, PA 19104-6072

RAY, KUNAL
Univ. of PA School of Medicine
Dept. of Human Genetics
195 Med Labs, 37th and Hamilton
Walk
Philadelphia, PA 19104-6072

REDDY, A. P.
Penn State University
Dept. Molecular and Cell Biol.
232 Fenske Lab.
University Park, PA 16802

REDDY, SITA
Penn State University
405 S. Frear
University Park, PA 16802

REILLY, JOHN D.
University of Pittsburgh
Dept. Biological Sciences
Pittsburgh, PA 15260

RICHARDS-SMITH, BEVERLY A.
Roswell Park, SUNY/Buffalo
Dept. of Cellular & Molec. Biol.
377 Joe McCarthy Drive
Tonawanda, NY 14150

ROBBERTSON, DONALD L.
Dept. of Genetics
M.D. Anderson Hospital
6723 Bertner Avenue
Houston, TX 77030

ROGERSON, ALLEN C.
St. Lawrence University
Canton, NY 13617

RUPAR, MARK J.
University of Delaware
150 Wolf Hall
Newark, DE 19716

RUPERT, CLAUD S.
University of Texas at Dallas
PO Box 830688
Richardson, TX 75083-0688

SADOSKY, ALESIN B.
Penn State Univ.
Dept. of Biological Chem.
Hershey Medical Center
Hershey, PA 17033

SALEM, JERRY
Penn State University
152 Davey Lab. #89
University Park, PA 16802

SCHLEGEL, ROBERT A.
Penn State University
428 South Frear
University Park, PA 16802

SCHREINER, ROGER P.
Penn State University
Plant Physiology Dept.
230 S. Frear Building
University Park, PA 16802

SCHULICK, RICHARD D.
Johns Hopkins Univ. School of
Medicine
Department of Pharmacology
600 N. Wolfe St., 113 Marburg
Bldg.
Baltimore, MD 21205

SEDAT, JOHN W.
University of California
Dept. Biochemistry & Biophysics
HSE 1556
San Francisco, CA 94143-0554

SELVAKUMAR, DHAYAKANI
Penn State University
Dept. of Biological Chemistry
The Milton S. Hershey Medical
Center
Hershey, PA 17033

SEQUEIRA, WILMA M.
Penn State University
Dept. of Biochemistry
Hershey Medical Center
Hershey, PA 17033

SHALLOWAY, DAVID I.
Penn State University
Room 406 S. Frear
University Park, PA 16802

SHIGLEY, JAMES W.
Penn State University
Dept. of Biochemistry
103 S. Frear
University Park, PA 16802

SHIH, ANDY
NYU Medical School
Sackler Institute
550 1st Ave. MSB 329
New York, NY 10016

SHOWMAN, RICHARD M.
University of South Carolina
Dept. of Biology
Columbia, SC 29208

SMILEY, JEAN K.
Princeton University
Lewis Thomas Lab
Washington Road
Princeton, NJ 08544

SMITH, ALAN E.
Integrated Genetics Inc.
31 New York Avenue
Framingham, MA 01701

SMITH, JENNIFER
Penn State University
Collegian
126 Carnegie Building
University Park, PA 16802

SMITH, RANDY VON
State Univ. of NY at Buffalo
377 Joe McCarthy Drive
Tonawanda, NY 14150

SNIPES, WALLACE C.
Penn State University
516 Mueller
University Park, PA 16802

SPANN, TIMOTHY P.
Univ. of Calif. San Diego
Dept. of Biology
B-022
LaJolla, CA 92093

SRINIVAS, VICKRAM
Penn State University
Dept. of Biological Chem.
Hershey Medical Center
Hershey, PA 17033

STARR, CHRISTOPHER M.
SUNY Upstate Medical Center
766 Irving Ave.
Syracuse, NY 13210

STEGLICH, CAROLYN S.
E. Carolina Univ. School of
Medicine
Dept. of Microbiol. & Immunology
Greenville, NC 27834-4354

STERE, ATHLEEN J.
Penn State University
Altoona Campus
Altoona, PA 16601

STEVENS, EDWARD S.
Penn State University
209 South Frear
University Park, PA 16802

STIREWLT, VICKI L.
Penn State University
101 S. Frear
University Park, PA 16802

SZAUTER, PAUL G.
Penn State University
Dept. of Biological Chemistry
Hershey Medical Center
Hershey, PA 17033

SZYMKOWSKI, DAVID EDMUND
Penn State University
618 Mueller lab.
University Park, PA 16802

TAKAHASHI, MARK T.
Rutgers Medical School
Dept. of Physiology & Biophysics
PO Box 101
Piscataway, NJ 08854

TAVIS, JOHN E.
Penn State University
435 S. Frear
University Park, PA 16802

TAYLOR, WILLIAM D.
Penn State University
106 Althouse Lab.
University Park, PA 16802

TEMPLE, MATTHEW J.
Nazareth College of Rochester
Department of Biology
4245 East Avenue
Rochester, NY 14610

TERSIAK, DANIEL R.
Penn State University
Microbiology & Molecular Biology
101 S. Frear
University Park, PA 16802

THOMPSON, JOHN R.
Carnegie-Mellon University
Dept. of Biological Sciences
4400 Fifth Avenue
Pittsburgh, PA 15217

THOMPSON, ROBERT J.
Vanderbilt University
Dept. of Mol. Biol.
PO Box 1820 Sta. B
Nashville, TN 37203

TIMMERMAN, KURT P.
Penn State University
108 Althouse Lab
University Park, PA 16802

TORCHIA, TIMOTHY E.
Penn State University
Dept. of Biological Chemistry
Hershey Medical Center
Hershey, PA

TRAGLIA, HELEN MARIE
Penn State University
Dept. of Biological Chemistry
Hershey Medical Center
Hershey, PA 17033

TURNER, RUSSELL T.
Loma Linda University
VA Hospital Research Service
(151)
11201 Benton Street
Loma Linda, CA 92354

UCHIDA, TSUYOSHI
Osaka University
Inst. for Molecular & Cellular
Biology
1-3 Yamada-oka, Suita
Osaka, JAPAN 565

UMBRICHT, CHRISTOPHER B.
Johns Hopkins Hospital
600 N. Wolfe Street
Baltimore, MD 21205

UNDERWOOD, MARK R.
University of North Carolina
Chapel Hill
335 FLOB 231 H
Chapel Hill, NC 27510

VANDENBERGH, DAVID J.
Penn State University
206 Althouse Lab
University Park, PA 16802

VIZARD, DOUGLAS L.
M.D. Anderson Hospital
Dept. Biochemistry & Molec. Biol.
Box 117
Houston, TX 77030

VOCKLEY, JOSEPH G.
A.I. duPont Institute
Research Dept.
PO Box 269
Wilmington, DE 19899

WAGNER, LISA ANNE.
Penn State University
230 South Frear Bldg.
University Park, PA 16802

WAGNER, STEPHEN J.
Penn State University
210 South Frear
University Park, PA 16802

WANG, SHIRLEY S.
Penn State University
Dept. of Biological Chemistry
Hershey Medical Center
Hershey, PA 17033

WARD, GARY E.
University of California
Biochemistry & Biophysics
San Francisco, CA 94143

WARD, WILLIAM S.
Johns Hopkins Univ. School of
Medicine
Department of Oncology
600 N. Wolfe St., 113 Marburg
Bldg.
Baltimore, MD 21205

WARE, VASSIE C.
Lehigh University
Dept. of Biology
Williams Hall #31
Bethlehem, PA 18015

WATSON, THERESA E.
Penn State University
108 Althouse Lab.
University Park, PA 16802

WEISS, INGRID M.
University of Pennsylvania
Med. Labs. 195 63
Philadelphia, PA 19104

WELKER, DENNIS L.
Utah State University
Biology Department
Logan, UT 84322-5500

WELLER, PATRICIA K.
Shippensburg University
FSC 219
Shippensburg, PA 17257

WEYTER, FREDERICK W.
Colgate University
202 The Oaks
Chapel Hill, NC 27514

WILSON, KATHERINE L.
Univ. of Calif. San Diego
Dept. of Biology B-022
John Newport Laboratory
LaJolla, CA 92093

WILT, SUSAN G.
Penn State University
Biological Chemistry
R506 Hershey Medical Center
Hershey, PA 17033

WOOLFORD, JOHN L.
Carnegie-Mellon University
Dept. of Biological Sciences
616 Mellon Institute, 4400 Fifth
Ave.
Pittsburgh, PA 15213

WOZNIAK, RICHARD W.
The Rockefeller University
Laboratory of Cell Biol.
1230 York Avenue
New York, NY 10021

YACIUK, PETER
Penn State University
618 Mueller Lab.
University Park, PA 16802

YAMAMOTO, TOSHIO
Penn State University
508 Mueller Building
University Park, PA 16802

YANG, UENG-CHENG
Princeton University
Dept. of Molecular Biology
Princeton, NJ 08544

YI-FANG, TSAY
Carnegie-Mellon University
Dept. of Biological Sciences
616 Mellon Institute, 4400 Fifth
Ave.
Pittsburgh, PA 15213

YOUNG, CHARLES C.
Penn State University
6 Althouse Lab.
University Park, PA 16802

YUAN, JEFFREY
The Rockefeller University
Box 52, 1230 York Avenue
New York, NY 10021

ZAGORSKI, JOSEPH S.
Penn State University
Department of Horticulture
103 Tyson Building
University Park, PA 16802

ZHOU, JIANHUI
Penn State University
618 Mueller Lab
University Park, PA 16802

ZIMMERER, ROBERT P.
Juniata College
Biology Dept.
Huntingdon, PA 16652

SIXTH SUMMER SYMPOSIUM IN MOLECULAR BIOLOGY*

DEVELOPMENTAL GENE REGULATION

JULY 29 - 31, 1987

THE PENNSYLVANIA STATE UNIVERSITY UNIVERSITY PARK, PA 16802

Tuesday, July 28

7:00 PM - 10:30 PM Registration Schwab Auditorium

Wednesday, July 29

8:00 AM - 9:00 AM Registration Schwab Auditorium

9:00 AM - 12:30 PM CELL FATES AND HOMEOSIS Schwab Auditorium

Robert Horvitz, MIT

David Hogness, Stanford

Matthew Scott, Colorado

Michael Levine, Columbia

2:30 PM KEYNOTE ADDRESS Schwab Auditorium

Seymour Benzer, California Institute of Technology

6:30 PM - 10:00 PM POSTER PRESENTATIONS Hub Ballroom

Thursday, July 30

8:30 AM - 12:00 noon TRANSCRIPTIONAL REGULATORY FACTORS Schwab Auditorium

Kevin Struhl, Harvard

Carl Parker, California/Pasadena

Robert Roeder, Rockefeller

Pierre Chambon, France

2:00 PM - 5:30 PM NEUROBIOLOGY Schwab Auditorium

Corey Goodman, Stanford

Spyros Artavanis-Tsakonas, Yale

Richard Scheller, Stanford

Barry Ganetzky, Wisconsin

6:00 PM - 7:30 PM LAWN PARTY

7:30 PM - 11:30 PM POSTER PRESENTATIONS Hub Ballroom

Friday, July 31

8:30 AM - 12:00 noon DIFFERENTIATION IN MICROORGANISMS Schwab Auditorium

Alexander Johnson, California/San Francisco

Robert Haskelkorn, Chicago

Melvin Simon, California/Pasadena

Lucy Shapiro, Columbia

*A biotechnology cooperative program between The Pennsylvania State University and biotechnology-related industries began in January, 1982. The major objective of the program is to provide information transfer between molecular biologists at universities and representatives from industries. This symposium is supported by the following industrial affiliates:

INTERNATIONAL BUSINESS MACHINES CORPORATION
U.S. AIR FORCE OFFICE OF SCIENTIFIC RESEARCH
BEN FRANKLIN PARTNERSHIP PROGRAM, ATC/CNP, INC.

Contact: Dee Reeves, Symposium Program Coordinator, Sixth Summer Symposium in Molecular Biology, 208 South Frear Laboratory, The Pennsylvania State University, University Park, PA 16802, Telephone: (814) 863-3696

or Dr. Ross Hardison, Chairman, Sixth Summer Symposium in Molecular Biology, 208 South Frear Laboratory, The Pennsylvania State University, University Park, PA 16802, Telephone: (814) 863-3696.

REGISTRATION

Advance registration is necessary since the number of people who can be accommodated is limited. Registrations will be honored in the order in which they are received. If it is necessary to cancel your registration, please notify us. A refund of the registration fee will be made if notification is received by June 1, 1987. Upon receipt of advance registration a confirmation along with additional information will be sent to you. The registration fees are: Graduate students \$30.00; Post-doctoral scientists \$75.00; Faculty and others \$150.00.

POSTERS

There will be a poster session Wednesday evening from 6:30 to 10:00 pm, and Thursday from 7:30 to 11:30 pm. Abstracts will be refereed, and the deadline for submission is June 1. We will mail notification regarding poster presentation acceptance by June 15. It is not necessary that the abstract accompany the registration form; since registration is on a first-come-first-served basis, you may not want to delay forwarding your registration materials.

LAWN PARTY

A Lawn Party is planned for Thursday evening at a cost of \$5.00 per person. Please indicate on the registration form the number of tickets you wish to reserve and include payment with your registration fee.

ACCOMMODATIONS

Housing is available in university residence halls for the nights of July 28 through July 31. Double rooms with twin beds are available for those attending, including spouses and children. A very limited number of single rooms are also available. There are no private baths, but modern bathrooms are located near the rooms. The cost of a room in the residence halls is \$10.75 per person per night for a double room and \$15.00 per night for a single room payable at the time of check-in. The university will not accept credit cards for housing. For those desiring other accommodations, a list of nearby hotels and motels will be provided.

HOW TO REACH THE UNIVERSITY

Penn State is in State College, Pennsylvania, near the geographical center of the state, on Routes 26 and 322 and near I-80. USAir/Allegheny Commuter Service provides seven daily flights into University Park Airport via Pittsburgh. Several flights also arrive daily from New York, Baltimore and Washington, D.C., via Harrisburg. The airport is located five miles from campus with limousine service available for all flights. Please check with your travel agent for schedule.

Approved for public release
Distribution is unlimited

AIR FORCE OFFICE OF SCIENTIFIC RESEARCH (AFSC)
NOTICE OF TRANSMITTAL TO DTIC
This technical report has been reviewed and is
approved for public release and is
Distribution is unlimited.
MATT HEW J. KERRER
Chief, Technical Information Division

END

7-87

DTIC