

AD-A181 874

ATROPINE AND HUMAN CONTRAST SENSITIVITY FUNCTION(U)  
LETTERMAN ARMY INST OF RESEARCH PRESIDIO OF SAN  
FRANCISCO CA D M PENETAR ET AL APR 87 LAIR-236

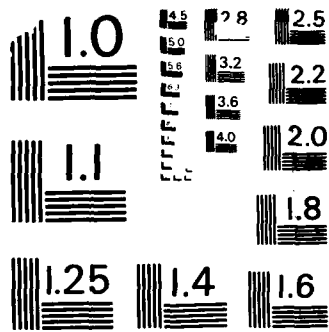
1/1

UNCLASSIFIED

F/G 6/5

NL





MICROCOPY RESOLUTION TEST CHART  
NATIONAL BUREAU OF STANDARDS-1963-A



2

OTIC FILE COPY

INSTITUTE REPORT NO. 236

ATROPINE AND HUMAN CONTRAST SENSITIVITY FUNCTION

AD-A181 074

David M. Penetar, PhD, MAJ, MS  
John J. Kearney, COL, MC

Division of Ocular Hazards  
Letterman Army Institute of Research

THE INFORMATION CONTAINED  
HEREIN IS UNCLASSIFIED  
DATE 08-01-2001 BY 60322

April 1987

LETTERMAN ARMY INSTITUTE OF RESEARCH  
PRESIDIO OF SAN FRANCISCO, CALIFORNIA 94129

APR 15 1987

Atropine and human contrast sensitivity function--Penetar and Kearney

Reproduction of this document in whole or in part is prohibited except with the permission of the Commander, Letterman Army Institute of Research, Presidio of San Francisco, California 94129. However, the Defense Technical Information Center is authorized to reproduce the document for United States Government purposes.

Destroy this report when it is no longer needed. Do not return it to the originator.

Citation of trade names in this report does not constitute an official endorsement or approval of the use of such items.

Human Subjects participated in these studies after giving their free and informed voluntary consent. Investigators adhered to AR 70-25 and USAMRDC Reg 50-25 on the use of volunteers in research.

This material has been reviewed by Letterman Army Institute of Research and there is no objection to its presentation and/or publication. The opinions or assertions contained herein are the private views of the author(s) and are not to be construed as official or as reflecting the views of the Department of the Army or the Department of Defense. (AR 360-5)

*Edum S. Seathur* 24 Apr 87

(Signature and date)

This document has been approved for public release and sale; its distribution is unlimited.

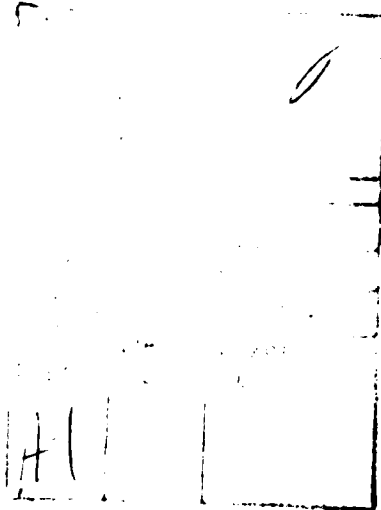
REPORT DOCUMENTATION PAGE				Form Approved OMB No 0704-0188 Exp Date Jun 30, 1986		
1a. REPORT SECURITY CLASSIFICATION UNCLASSIFIED		1b. RESTRICTIVE MARKINGS				
2a. SECURITY CLASSIFICATION AUTHORITY		3. DISTRIBUTION/AVAILABILITY OF REPORT Approved for public release; distribution is unlimited.				
2b. DECLASSIFICATION/DOWNGRADING SCHEDULE						
4. PERFORMING ORGANIZATION REPORT NUMBER(S)		5. MONITORING ORGANIZATION REPORT NUMBER(S)				
6a. NAME OF PERFORMING ORGANIZATION Division of Ocular Hazards Letterman Army Institute of Research		6b. OFFICE SYMBOL (if applicable) SGRD-UL-OH	7a. NAME OF MONITORING ORGANIZATION Letterman Army Institute of Research			
6c. ADDRESS (City, State, and ZIP Code) Letterman Army Institute of Research Presidio of San Francisco, CA 94129-6800		7b. ADDRESS (City, State, and ZIP Code) Presidio of San Francisco, CA 94129-6800				
8a. NAME OF FUNDING/SPONSORING ORGANIZATION USAMRDC		8b. OFFICE SYMBOL (if applicable) SGRD	9. PROCUREMENT INSTRUMENT IDENTIFICATION NUMBER			
8c. ADDRESS (City, State, and ZIP Code) Fort Detrick Frederick, MD 21701-5012		10. SOURCE OF FUNDING NUMBERS	PROGRAM ELEMENT NO. 62777A	PROJECT NO. 3E16277 7A878✓	TASK NO. BA	WORK UNIT ACCESSION NO. 860H005
11. TITLE (Include Security Classification)  Atropine and Human Contrast Sensitivity Function						
12. PERSONAL AUTHOR(S) DM Penetar and JJ Kearney						
13a. TYPE OF REPORT Institute Report		13b. TIME COVERED FROM Jul 86 to Oct 87	14. DATE OF REPORT (Year, Month, Day) 1987 April		15. PAGE COUNT 7	
16. SUPPLEMENTARY NOTATION Institute Report No. 236						
17. COSATI CODES			18. SUBJECT TERMS (Continue on reverse if necessary and identify by block number)  Atropine, Humans, Contrast Sensitivity, Visual Function			
FIELD	GROUP	SUB-GROUP				
19. ABSTRACT (Continue on reverse if necessary and identify by block number)  The effects of one and two autoinjector equivalents of atropine sulfate (2 and 4 mg/70 kg im) on contrast sensitivity were measured in eight male volunteers, ages 22 to 39 yr. Using an automated contrast sensitivity machine, volunteers were required to detect sinusoidal gratings of 0.5, 1.0, 3.0, 6.0, 11.4, and 22.8 cycles per degree. At two hr after injection, no atropine effect was observed for any frequency.						
20. DISTRIBUTION/AVAILABILITY OF ABSTRACT <input checked="" type="checkbox"/> UNCLASSIFIED/UNLIMITED <input type="checkbox"/> SAME AS RPT <input type="checkbox"/> DTIC USERS			21. ABSTRACT SECURITY CLASSIFICATION Unclassified			
22a. NAME OF RESPONSIBLE INDIVIDUAL MAJ David Penetar		22b. TELEPHONE (Include Area Code) (415) 561-3479		22c. OFFICE SYMBOL SGRD-UL-OH		

## PREFACE

We express appreciation to physicians CPT Peter Maningas, MAJ Donald Marks, and MAJ William Bickell, whose assistance was crucial to the completion of this experiment and to the health and safety of the volunteers. We thank SGT Sally Ruiz and SGT Helen Ford for their skillful technical assistance, and Dr. Virginia Gildengorin and Mr. Jerome Molchany for their assistance with the statistical analysis of the data. Most of all, we express appreciation to the volunteers who willingly bore the atropine effects.

**ABSTRACT**

The effects of one and two autoinjector equivalents of atropine sulfate (2 and 4 mg/70 kg im) on contrast sensitivity were measured in eight male volunteers, ages 22 to 39 yr. Using an automated contrast sensitivity machine, volunteers were required to detect sinusoidal gratings of 0.5, 1.0, 3.0, 6.0, 11.4, and 22.8 cycles per degree. At two hr after injection, no atropine effect was observed for any frequency.



## INTRODUCTION

Atropine is a potent and long-lasting anticholinergic agent. Its mydriatic and cycloplegic effects on visual acuity and accommodation have been studied. Recently Baker (1) and Jampolsky (2) and colleagues reported that following injections of 2 and 4 mg of atropine per 70 kg of body weight there was no effect on either high or low contrast visual acuity at a distance of 20 feet. On the other hand, low-contrast visual acuity at 40 cm is affected by 4 mg atropine per 70 kg. These visual effects had a relatively slow onset and were long-lasting, beginning about 4 hours after injection and persisting for at least 7 hours after injection. Recovery was observed the following day.

Visual acuity may be closely correlated with the ability to resolve targets of high spatial frequency. Measurements of visual acuity do not provide information on the ability to resolve low and mid-range spatial frequency details. Many military tasks, such as detection and tracking of vehicles, require resolution in these spatial frequency ranges.

The contrast sensitivity function measures at a fixed luminance the minimum amount of contrast between target and background required for discrimination of targets across the spatial frequency spectrum. It is the reciprocal of the threshold contrast. Measurement of the contrast sensitivity function makes it possible to characterize a broad range of visual functions rather than define only the upper boundary of spatial resolution.

Measurement of the contrast sensitivity function has been employed in studies on the effects of 2 and 4 mg/70 kg doses of atropine in humans. Four hours after a 2 mg/70 kg dose of atropine, a small but consistent loss in sensitivity was found at all spatial frequencies, when tested at a distance of 40 cm. Significant decrements were found only for spatial frequencies of 5 and 20 cycles per degree (1). In another study frequencies between 3 and 7 cycles per degree were not affected by a dose of 4 mg/70 kg (3).

Although these studies show that atropine affects contrast sensitivity when tested at reading distances (40 cm), they do not address the question of atropine effects on distance (ie 20 ft and beyond) contrast sensitivity. The nature of the contrast sensitivity function after atropine for distances beyond 40 cm has important military consequences as soldiers are required to resolve targets at distances well beyond this distance.



It has been observed that atropine's maximum effect on pursuit tracking performance occurs in parallel to its maximum effect on pupil size and accommodation and does not correspond to this drug's maximum cardiovascular effects (3). The tracking task is done at optical infinity and the reasons for the observed tracking decrements are unlikely to be due to pupil and accommodative changes alone. Changes in distance contrast sensitivity may be a factor. Therefore, during a recent field evaluation of atropine's effects on tracking (4), we also measured distance contrast sensitivity on a broader range of spatial frequencies than previously reported.

#### METHODS

Participants: Eight male volunteers between the ages of 22 and 39 were selected for this study. All were in excellent health. They all had either uncorrected visual acuity of 20/20, or were correctable to 20/20 with spectacle lenses. Most were emmetropic or had an error of refraction within 1 diopter of emmetropia. One volunteer had a refractive error of 3 diopters myopia. Ophthalmoscopy, tonometry and slit lamp examination were normal. Corrective spectacles were worn by those volunteers whose distance visual acuity was less than 20/20.

Procedures: The contrast sensitivity function was measured using a Nicolet CS-2000 test system. Threshold determinations were made for six frequencies: 0.5, 1.0, 3.0, 6.0, 11.4, and 22.8 cycles per degree. The test was conducted in a bright interior environment, with no direct sunlight. Volunteers viewed a 13 inch black and white TV monitor from a distance of 10 feet. The display contrast began at 0 and increased under computer control. Volunteers were required to press a button when they detected the appearance of a sinusoidal grating. Each frequency was presented five times and the mean log threshold contrast was recorded. This method is similar to an ascending method of limits psychophysical procedure.

Contrast sensitivity functions were generated for each individual for four drug conditions: 1) baseline (no drug), 2) saline placebo, 3) 2 mg/70 kg, and 4) 4 mg/70 kg atropine sulfate. Injections were given intramuscularly 2 hours before testing in a double masked fashion. Order was counterbalanced across volunteers. Data were analyzed by means of a 2-way repeated measures analysis of variance (RMPP-2V) (5). Separate ANOVAs were performed on the data for each spatial frequency.

RESULTS

Contrast sensitivity function for each injection condition across the frequencies tested is shown (Figure). The shape of the function observed under baseline condition is typical of normal human functioning. Differences across frequencies are highly significant ( $F=10.27$ ,  $df=5,35$ ,  $p<0.0000$ ), confirming the fact that humans are differentially sensitive to frequencies within the range tested. Peak sensitivity occurs within the 5 to 8 cycles/degree range with considerable less sensitivity at frequencies higher or lower.

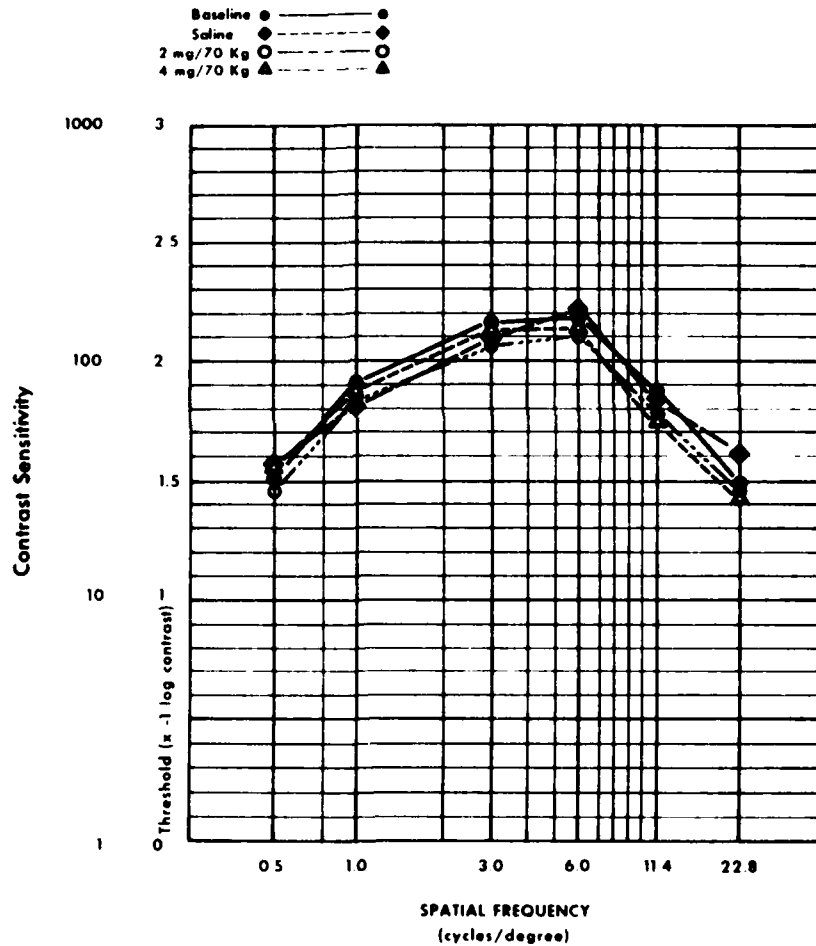


Figure. Contrast sensitivity functions for four drug conditions 2 hr after injection.

Inspection of the figure suggests differences among the injection conditions, especially at frequencies 3 cycles per degree and above. The largest differences were observed at 22 cycles per degree. All observed differences were small and nonsignificant, however ( $F=0.77$ ,  $df=3,21$ ,  $p<0.5258$ ).

#### DISCUSSION

Previous reports have shown anticholinergic effects on contrast sensitivity using other tests (1,3,6). Other researchers using the same apparatus found a significant effect with 4 mg/70 kg atropine. Behar reported a reduction of up to 50% in sensitivity at frequencies of 3, 9, and 16 cycles/degree (7). These findings are not in conformity with our results, and additional research is indicated to explain this discrepancy.

The effects of atropine on vision may be due to a decrease in the amplitude of accommodation or to the reduced optical quality of the image seen through an enlarged pupil. The loss in visual function due to reduced accommodation is most apparent for near vision and in the case of uncorrected hyperopia. Three hours after a dose of 4 mg/70 kg of atropine, one would expect an accommodative loss of almost 3.5 diopters (2). Recovery of accommodation is incomplete at 24 hours. Full recovery is not seen until 48 hours following injection.

One should not expect a reduction in distance visual function in subjects who either are emmetropic or are rendered emmetropic by the use of spectacles, or who are uncorrected myopes. The amount of accommodation required at our test distance is approximately 0.33 diopters, a very small amount, and one not expected to produce a significant visual loss.

Atropine-induced visual loss at our experimental distances is secondary to optical aberrations accompanying mydriasis. These include the veiling glare effect of the increased light transmitted to the retina, increased scatter as more light passes through the crystalline lens, and decrease in the point spread function. These aberrations are secondary to the imperfections of the crystalline lens as an optical medium. Other mechanisms include effects on the neural pathways of vision and the overall malaise experienced by persons who receive moderate to high dosages of anticholinergic drugs.

Our results indicate that under these conditions the visual system remains essentially intact. Perhaps a significant loss would be encountered under different conditions, such as performance of the test outdoors in bright sunlight or in an environment where glare from additional sources is present.

The contrast sensitivity function measures overall visual function. It is useful in assessing drug and other physiological and environmental effects. Altered thresholds may affect a soldier's ability to perform adequately in the field when required to detect and identify landmarks or camouflaged targets. If the growing threat of chemical weapons is to be countered with drugs such as atropine, an in-depth analysis of this and other anticholinergic drugs' effects on vision must proceed in both the laboratory and the field.

REFERENCES

1. Baker R, Brown B, Adams A, Haeqerstrom-Portnoy G, Jampolsky A, Jones R. Effects of atropine on visual performance. *Milit Med* 1983;148:530-535.
2. Jampolsky A, Haeqerstrom-Portnoy G, Adams A, Jones R. Effects of atropine and 2-PAM Cl on vision and performance. Fort Detrick, MD: USAMRDC Contract # DAMD17-83-C-3198 1986 Final Report.
3. Haeqerstrom-Portnoy G, Jones R, Adams A, Jampolsky A. Effects of atropine and 2-PAM chloride on vision and performance in humans. *Aviat Space Environ Med* 1987;58:47-53.
4. Penetar DM, Stamper DA, Molchany JW. Atropine effects on TOW missile launcher operation. Presidio of San Francisco, CA: Letterman Army Institute of Research, 1987 in press.
5. Dixon NJ (ed). BMDP statistical software. Los Angeles, CA: University of California Press, 1985.
6. Brown B, Haeqerstrom-Portnoy G, Adams A, Jones R, Jampolsky A. Effects of an anticholinergic drug, benactyzine hydrochloride, on vision and vision performance. *Aviat Space Environ Med*, 1982;53:759-765.
7. Behar I. Visual contrast sensitivity. In: Aviator performance: Effects of CW antidotes (atropine). Ft. Rucker, AL: USA Aeromedical Research Laboratory Report, 1987 in press.

OFFICIAL DISTRIBUTION LIST

Commander  
US Army Medical Research  
and Development Command  
ATTN: SGRD--RMS/Mrs. Madigan  
Fort Detrick, MD 21701-5012

Defense Technical Information Center  
ATTN: DTIC/DDAB (2 copies)  
Cameron Station  
Alexandria, VA 22304-6145

Office of Under Secretary of Defense  
Research and Engineering  
ATTN: R&AT (E&LS), Room 3D129  
The Pentagon  
Washington, DC 20301-3080

The Surgeon General  
ATTN: DASG--TLO  
Washington, DC 20310

HQ DA (DASG--ZXA)  
WASH DC 20310-2300

Commandant  
Academy of Health Sciences  
US Army  
ATTN: HSHA--CDM  
Fort Sam Houston, TX 78234-6100

Uniformed Services University  
of Health Sciences  
Office of Grants Management  
4301 Jones Bridge Road  
Bethesda, MD 20814-4799

US Army Research Office  
ATTN: Chemical and Biological  
Sciences Division  
PO Box 12211  
Research Triangle Park, NC 27709-2211

Director  
ATTN: SGRD--UWZ--L  
Walter Reed Army Institute  
of Research  
Washington, DC 20307-5100

Commander  
US Army Medical Research Institute  
of Infectious Diseases  
ATTN: SGRD--ULZ--A  
Fort Detrick, MD 21701-5011

Commander  
US Army Medical Bioengineering  
Research & Development Laboratory  
ATTN: SGRD--UBG--M  
Fort Detrick, Bldg 568  
Frederick, MD 21701-5010

Commander  
US Army Medical Bioengineering  
Research & Development Laboratory  
ATTN: Library  
Fort Detrick, Bldg 568  
Frederick, MD 21701-5010

Commander  
US Army Research Institute  
of Environmental Medicine  
ATTN: SGRD--UE--RSA  
Kansas Street  
Natick, MA 01760-5007

Commander  
US Army Institute of Surgical Research  
Fort Sam Houston, TX 78234-6200

Commander  
US Army Research Institute  
of Chemical Defense  
ATTN: SGRD--UV--AJ  
Aberdeen Proving Ground, MD 21010-5425

Commander  
US Army Aeromedical Research Laboratory  
Fort Rucker, AL 36362-5000

AIR FORCE Office of Scientific  
Research (NL)  
Building 410, Room A217  
Bolling Air Force Base, DC 20332-6448

Commander  
USAFSAM, TSZ  
Brooks Air Force Base, TX 78235-5000

Head, Biological Sciences Division  
OFFICE OF NAVAL RESEARCH  
800 North Quincy Street  
Arlington, VA 22217-5000

END

6-87

DTIC