

70-0179 126

EXTREME VALUE THEORY FOR SUPREMA OF RANDOM VARIABLES
WITH REGULARLY VARYING (U) NORTH CAROLINA UNIV AT CHAPEL
HILL CENTER FOR STOCHASTIC PROC. T HSING JUL 86

1/1

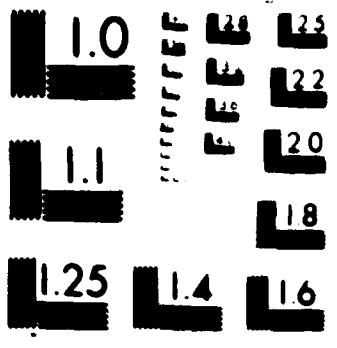
UNCLASSIFIED

TR-140 AFOSR-TR-87-8319 F49620-82-C-0009

F/G 12/1

NL





RESOLUTION TEST CHART

TRC FILE COPY

2

AD-A179 126

REPORT DOCUMENTATION PAGE

UNCLASSIFIED

ELECTE

10. RESTRICTIVE MARKINGS

25 SECURITY CLASSIFICATION AND DATE: UNCLASSIFIED APR 16 1987

3 DISTRIBUTION AVAILABILITY OF REPORT
Approved for Public Release; Distribution Unlimited

26 DECLASSIFICATION DOWNGRADING SCHEDULE
NA

4 PERFORMING ORGANIZATION REPORT NUMBER(S)
Technical Report No. 140

5 MONITORING ORGANIZATION REPORT NUMBER(S)
AFOSR-TM 87-0319

6a NAME OF PERFORMING ORGANIZATION
University of North Carolina

6b OFFICE SYMBOL
If applicable:

7a NAME OF MONITORING ORGANIZATION
AFOSR/NM

6c ADDRESS (City, State and ZIP Code)
Center for Stochastic Processes, Statistics Department, Phillips Hall 039-A, Chapel Hill, NC 27514

7b ADDRESS (City, State and ZIP Code)
Bldg. 410, Bolling AFB, DC 20332-6448

6d NAME OF FUNDING/SPONSORING ORGANIZATION
AFOSR

6e OFFICE SYMBOL
If applicable:

8 PROCUREMENT INSTRUMENT IDENTIFICATION NUMBER
F49620 82 C 0009

6f ADDRESS (City, State and ZIP Code)
Bldg. 410, Bolling AFB, DC

10 SOURCE OF FUNDING NOS.			
PROGRAM ELEMENT NO	PROJECT NO	TASK NO	WORK UNIT NO
6.11102F	2304		

11 TITLE (Include Security Classification)
Extreme value theory for suprema of random variables with regularly varying tail probabilities.

12 PERSONAL AUTHOR(S)
Hsing, T.

13a TYPE OF REPORT
technical

13b TIME COVERED
FROM 81 TO 85

14 DATE OF REPORT (Yr. Mo. Day)
July 1986

15 SUPPLEMENTARY NOTATION
short title: The extremes of suprema of random variables.

17 COSATI CODES		
FIELD	GROUP	SUB GR

18 SUBJECT TERMS (Continue on reverse if necessary and identify by block number)
Keywords: extreme values, point processes, regular variation, weak limits.

19 ABSTRACT (Continue on reverse if necessary and identify by block number)
Consider a stationary sequence $X_n = \sup_{1 \leq j \leq n} c_{nj}^{-1} Z_j$, $n \geq 1$, where c_{nj} is a sequence of constants, and Z_j is a sequence of i.i.d. random variables with regularly varying tail probabilities. For suitable normalizing functions v_1, v_2, \dots , the limit form of the two dimensional point process with points $(n, v_n^{-1} X_n)$, $n \geq 1$, is derived. The implications of the convergence are briefly discussed, while the distribution of the joint exceedances at high levels by X_n is explicitly obtained as a corollary.

20 DISTRIBUTION AVAILABILITY OF ABSTRACT
UNCLASSIFIED UNLIMITED SAME AS RPT DTIC USERS

21 ABSTRACT SECURITY CLASSIFICATION
UNCLASSIFIED

22a NAME OF RESPONSIBLE INDIVIDUAL
Peggy Ravitch

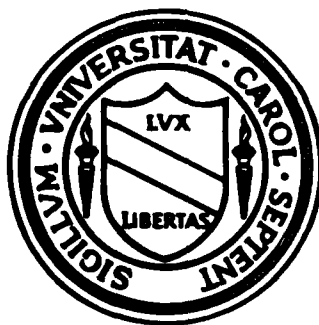
22b TELEPHONE NUMBER (Include Area Code)
919-962-2307

22c OFFICE SYMBOL
AFOSR/NM

CENTER FOR STOCHASTIC PROCESSES

AFOSR-TR-87-0319

Department of Statistics
University of North Carolina
Chapel Hill, North Carolina



EXTREME VALUE THEORY FOR SUPREMA OF RANDOM VARIABLES
WITH REGULARLY VARYING TAIL PROBABILITIES

by

T. Hsing

Technical Report No. 140

July 1986

EXTREME VALUE THEORY FOR SUPREMA OF RANDOM VARIABLES
WITH REGULARLY VARYING TAIL PROBABILITIES

BY TAILEN HSING

University of Texas at Arlington

Consider a stationary sequence $X_j = \sup_i c_i Z_{j-i}$, $j \in I$, where $\{c_i\}$ is a sequence of constants, and $\{Z_i\}$ a sequence of i.i.d. random variables with regularly varying tail probabilities. For suitable normalizing functions v_1, v_2, \dots , the limit form of the two dimensional point process with points $(j/n, v_n^{-1}(X_j))$, $j \in I$, is derived. The implications of the convergence are briefly discussed, while the distribution of the joint exceedances of high levels by $\{X_j\}$ is explicitly obtained as a corollary.

Short title: The extremes of suprema of random variables.

AMS 1980 subject classification: Primary 60F05, Secondary: 60F17, 60G55.

Key words: extreme values, point processes, regular variation, weak limits.

Research supported by the Air Force Office of Scientific Research Grant

No. AFOSR-F49620 82 C 0009

1. Introduction

Extreme value theory concerns the joint tail behavior and related problems of random variables (r.v.'s). Recent emphasis has been the extension of the classical theory, which considers independent and identically distributed (i.i.d.) r.v.'s to the more general setting of stationarity. Progress has been made on topics such as notions of asymptotic independence, general extremal types theorems, studies of related point processes, etc. See [13] for a comprehensive account of the subject.

We are interested in the extremal properties of stationary sequences whose members are certain functions of i.i.d. r.v.'s. In this direction, [1, 4, 15] investigated moving average sequences under various assumptions. Through the particular structure of the sequences, these studies provided invaluable insights into the theory in general. In this paper, we consider a stationary sequence $\{X_j\}$ consisting of the weighted suprema -- instead of sums as in the case of moving averages -- of certain i.i.d. r.v.'s whose tail probabilities are regularly varying. A sequence with this structure may be used to model random exchanges (cf. [7, 8]), and is a useful tool in studying multivariate extreme value theory (cf. [5]).

In Section 2 we introduce some general results concerning the asymptotic tail behavior of the supremum of independent r.v.'s, and consider the marginal of $\{X_j\}$ as a special case. Section 3 contains a main result Theorem 3.2, which is a limit theorem of certain point processes defined for $\{X_j\}$. Section 4 discusses the application of Theorem 3.2, and its connection with some related results. The distribution of the joint exceedances of high levels by $\{X_j\}$ is also derived.



Author's Index
Page No. of
Serial
A-1

2. Framework

We first summarize some relevant facts concerning the tail behavior of the supremum of independent r.v.'s. Unless otherwise stated, assume that each sequence mentioned, random or nonrandom, is indexed by the set of integers I .

Theorem 2.1. Let $\{Y_i\}$ be a sequence of independent r.v.'s. Then $\sup Y_i < \infty$ a.s., or $= \infty$ a.s. Furthermore, $\sup Y_i < \infty$ a.s. if and only if $\sum_i P\{Y_i > x\} < \infty$ for some $x < \infty$.

Proof. As is shown in [3], Theorem 1, the claims follow readily from the zero-one law, and the Borel-Cantelli Lemma. \square

Lemma 2.2. Let $\{Y_i\}$ be a sequence of independent r.v.'s. Suppose that $\sup Y_i$ converges to X a.s., and that $P\{X < x_0\} = 1$ where $x_0 = \sup\{u: P\{X \leq u\} < 1\}$. Then $P\{X > u\} \sim \sum_i P\{Y_i > u\}$ as $u \uparrow x_0$.

Proof. Write $f(y) = -\log(1-y)-y$, $y \in [0,1)$. It is simply seen that $f(y) \geq 0$, and $f(y) \sim y^2/2$ as $y \rightarrow 0$. The assumption $P\{X < x_0\} = 1$ implies that there exists an x such that $0 < P\{X > u\} < 1$, $u \in [x, x_0)$, and therefore that $P\{Y_i > u\} < 1$, $u \in [x, x_0)$, $i \in I$. Hence

$$\begin{aligned} \sum_i P\{Y_i > u\} &\leq -\sum_i \log P\{Y_i \leq u\} = -\log P\{X \leq u\} \\ &= P\{X > u\} + f(P\{X > u\}), \quad u \in [x, x_0). \end{aligned}$$

By this and Boole's inequality,

$$0 \leq \sum_i P\{Y_i > u\} - P\{X > u\} \leq f(P\{X > u\}), \quad u \in [x, x_0).$$

Since x_0 is not an atom, $P\{X > u\} \rightarrow 0$ as $u \uparrow x_0$. This concludes the proof. \square

Let $\{Z_i\}$ be a sequence of i.i.d. r.v.'s whose tail probabilities are

regularly varying at ∞ with index $-\alpha$, $\alpha > 0$; i.e. $P[Z_1 > z] = z^{-\alpha}L(z)$, $z > 0$, where L is slowly varying (cf. [6]). To avoid trivialities, assume that the Z_i are positive and unbounded above. The following result is similar to [2], Lemma 2.2 (ii).

Theorem 2.3. Let $\{c_i\}$ be a sequence of nonnegative constants with $\sup c_i > 0$. Then $\sup c_i Z_i < \infty$ if and only if $\sum_1 c_i^\alpha L(c_i^{-1}) < \infty$, where $c^\alpha L(c^{-1})$ denotes zero if $c = 0$. Moreover,

$$P[\sup c_i Z_i > x] \sim x^{-\alpha} L(x) \sum_1 c_i^\alpha, \text{ as } x \rightarrow \infty, \quad (2.1)$$

if there exist a constant $\delta > 0$, and a sequence of constants $\{a_i\}$ such that $\sum_1 a_i < \infty$, and $c_i^\alpha L(c_i^{-1}x)/L(x) \leq a_i$ for all $x > \delta$, $i \in I$. In particular, (2.1) holds if either of the following holds:

- (a) $\sum_1 c_i^\epsilon < \infty$ for some $\epsilon \in (0, \alpha)$;
- (b) $\sum_1 c_i^\alpha < \infty$ and $L(tx)/L(x)$ is uniformly bounded for all $t > \rho$, $x > \delta$, where ρ and δ are positive constants.

Proof. We first show that $\sup c_i Z_i < \infty$ a.s. if and only if $\sum_1 c_i^\alpha L(c_i^{-1}) < \infty$. It is obvious that in either case $c_i \rightarrow 0$ as $|i| \rightarrow \infty$. Thus for each $x > 0$, $\sum_1 P[c_i Z_i > x] = \sum_1 c_i^\alpha L(c_i^{-1}x) < \infty$ if and only if $\sum_1 c_i^\alpha L(c_i^{-1}) < \infty$ by the limit comparison test for series. The claim now follows from Theorem 2.1. Next assume the existence of δ and $\{a_i\}$ as described. Then by Lemma 2.2 and dominated convergence,

$$\lim_{x \rightarrow \infty} \frac{P[\sup c_i Z_i > x]}{x^{-\alpha} L(x) \sum_1 c_i^\alpha} = \lim_{x \rightarrow \infty} \frac{\sum_1 c_i^\alpha L(c_i^{-1}x)}{L(x) \sum_1 c_i^\alpha} = 1,$$

proving (2.1). Suppose now (a) holds. Then it is obvious that c_i^{-1} is bounded away from zero, and thus there exist positive constants δ and k such that $L(c_i^{-1}x)/L(x) \leq k c_i^{\epsilon-\alpha}$ for each $x \geq \delta$ and $i \in I$. The conclusion

follows since one can take a_i to be kc_i^ϵ . (b) can be shown similarly, concluding the theorem. \square

For $\{Z_i\}$ and a sequence of nonnegative constants $\{c_i\}$ satisfying either (a) or (b) in Theorem 2.3, define a stationary sequence $\{X_j\}$ by $X_j = \sup_i c_i Z_{j-i}$, $j \in I$. $\{X_j\}$ is similar in appearance to a moving average sequence, and we shall see that the parallels in extremal properties between the two are also interesting. It is worth noting that in some cases it may be profitable to represent $\{X_j\}$ in an "autoregressive form" (much as in the case of regular moving average). For example, if $c_i = \rho^i$, $i \geq 1$, where $\rho \in (0,1)$ is a constant, then $\{X_j\}$ can be defined recursively: $X_j = \max(Z_j, \rho X_{j-1})$.

3. Point Process Convergence

In this and the following section, some theory of point processes is required. The reader is referred to [12] for details.

It follows from [13], Theorem 1.6.2 that there exist constants $a_n > 0$ such that $P^n[Z_1 \leq a_n^{-1}x] \rightarrow \exp(-x^{-\alpha})$, $x > 0$. Write $v_n(\tau) = a_n^{-1} \tau^{-1/\alpha}$, $\tau > 0$, $n \geq 1$, and denote by v_n^{-1} the inverse of v_n . It is simply seen that for each $\tau > 0$, $P[Z > v_n(\tau)] \sim \tau/n$ as $n \rightarrow \infty$.

For each $n \geq 1$, define a point process N_n on $\mathbb{R} \times \mathbb{R}_+^1 = (-\infty, \infty) \times (0, \infty)$ by $N_n = \sum_j \delta_{(j/n, v_n^{-1}(X_j))}$, where $\delta_{(x,y)}$ is the measure with a single unit mass at (x,y) . For simplicity of presentation, the normalization v_n is used instead of the more traditional linear normalization so that (as we shall see) N_n converges weakly to a homogeneous limit.

Closely related to N_n are the point processes $N, N^{(k)}$, $k \geq 1$, defined by $N = \sum_i \sum_j \delta_{(S_i, c_j^{-\alpha} T_i)}$, $N^{(k)} = \sum_i \sum_{|j| \leq k} \delta_{(S_i, c_j^{-\alpha} T_i)}$ where the (S_i, T_i) are

the points of a homogeneous Poisson process on $\mathbb{R} \times \mathbb{R}'_+$ with mean one, and, as a convention, the inner summations extend over the set of j for which $c_j \neq 0$. It is clear that $N^{(k)}$ converges to N a.s., and hence in distribution.

Lemma 3.1. For $n, k \geq 1$, denote by $N_n^{(k)}$ the point process with points $(j/n, v_n^{-1}(\max_{|i| \leq k} c_i Z_{j-i}))$, $j \in I$. Then for each fixed k , $N_n^{(k)}$ converges in distribution to $N^{(k)}$ as n tends to infinity.

Proof. Let k be fixed. Write h for the mapping $h\mu = \sum_i \sum_{|j| \leq k} \delta_{(x_i, c_j^{-\alpha} y_i)}$ if $\mu = \sum_i \delta_{(x_i, y_i)}$ is a locally finite counting measure on $\mathbb{R} \times \mathbb{R}'_+$. h is a continuous mapping on the space of locally finite counting measures on $\mathbb{R} \times \mathbb{R}'_+$ to itself. For $n \geq 1$, denote by η_n the point process $\sum_i \delta_{(j/n, v_n^{-1}(Z_j))}$. It is well known (cf. [13], Theorem 5.7.1) that η_n converges in distribution to a homogeneous Poisson process on $\mathbb{R} \times \mathbb{R}'_+$ with mean one. By the continuous mapping theorem (cf. [12], 15.4.2), $h\eta_n \xrightarrow{d} N^{(k)}$. Therefore it suffices to show that $N_n^{(k)}$ and $h\eta_n$ have the same limit, or, by Theorem 4.2 of [12], to show that

$$\lim_{n \rightarrow \infty} \{P[N_n^{(k)} B_m = i_m, 1 \leq m \leq \ell] - P[(h\eta_n) B_m = i_m, 1 \leq m \leq \ell]\} = 0$$

for each choice of $\ell \geq 1$, $i_m \geq 0$, $B_m \in \mathcal{P}$ where \mathcal{P} denotes the semiring of sets of the form $[a, b) \times [c, d)$ in $\mathbb{R} \times \mathbb{R}'_+$. Since

$$\begin{aligned} & |P[N_n^{(k)} B_m = i_m, 1 \leq m \leq \ell] - P[(h\eta_n) B_m = i_m, 1 \leq m \leq \ell]| \\ & \leq \sum_{m=1}^{\ell} P[N_n^{(k)} B_m \neq (h\eta_n) B_m], \end{aligned}$$

it suffices to show that $\lim_{n \rightarrow \infty} P[N_n^{(k)} B \neq (h\eta_n) B] = 0$ for each B in \mathcal{P} . Let $B = [a, b) \times [c, d)$ be a set in \mathcal{P} . Since $v_n^{-1}(cx) = c^{-\alpha} v_n^{-1}(x)$ for $c, x > 0$, the event $[N_n^{(k)} B \neq (h\eta_n) B]$ occurs only if at least one of the

following events $E_{n,1}, E_{n,2}, E_{n,3}$ occurs:

$$E_{n,1} = [c(1)Z_j > v_n(d) \text{ for some } j \text{ in } ([na]-k, [na]-k+1, \dots, [na]+k)],$$

$$E_{n,2} = [c(1)Z_j > v_n(d) \text{ for some } j \text{ in } ([nb]-k, [nb]-k+1, \dots, [nb]+k)],$$

$$E_{n,3} = [c(1)Z_i > v_n(d) \text{ and } c(1)Z_j > v_n(d) \text{ for some pair } i, j \text{ in} \\ ([na], \dots, [nb]) \text{ such that } |i-j| \leq 2k],$$

where $c(1) = \max c_j$, and $[x]$ denotes the integer part of x . By Boole's inequality and the fact that $P[c(1)Z_1 > v_n(d)] \sim (c(1))^{d/n}$, we have

$$\lim_{n \rightarrow \infty} \{P(E_{n,1}) + P(E_{n,2})\} \leq 2(2k+1) \lim_{n \rightarrow \infty} P[c(1)Z_1 > v_n(d)] = 0,$$

$$\lim_{n \rightarrow \infty} P(E_{n,3}) \leq \lim_{n \rightarrow \infty} \sum_{m=[na]}^{[nb]} P[c(1)Z_i > v_n(d), c(1)Z_j > v_n(d) \text{ for some pair} \\ i \neq j \text{ in } (m, m+1, \dots, m+2k-1)] \\ \leq \lim_{n \rightarrow \infty} ([nb]-[na]+1) k(2k-1) P^2[c(1)Z_1 > v_n(d)] = 0.$$

The conclusion follows. \square

The main result of this section is the following.

Theorem 3.2. N_n converges in distribution to N as n tends to infinity.

Proof. Let $N_n^{(k)}$ and P be as in Lemma 3.1. We have shown earlier that $N_n^{(k)} \not\rightarrow N^{(k)}$ as $n \rightarrow \infty$ for $k = 1, 2, \dots$, and that $N^{(k)} \not\rightarrow N$ as $k \rightarrow \infty$.

By [12], Theorem 4.2, it suffices to show that

$$\lim_{k \rightarrow \infty} \lim_{n \rightarrow \infty} \{P[N_n B_m = i_m, 1 \leq m \leq \ell] - P[N_n^{(k)} B_m = i_m, 1 \leq m \leq \ell]\} = 0$$

for each choice of $\ell \geq 1$, $i_m \geq 0$, $B_m \in P$, or as in Lemma 3.1, that

$$\lim_{k \rightarrow \infty} \lim_{n \rightarrow \infty} P[N_n B \neq N_n^{(k)} B] = 0 \text{ for each } B \text{ in } P. \quad (3.1)$$

Suppose $B = [a, b) \times [c, d)$ is a set in P . The event $[N_n B \neq N_n^{(k)} B]$ occurs only if the event $[c_i Z_{j-i} > v_n(d) \text{ for some } i, j \text{ such that } |i| > k, \text{ and} \\ [na] \leq j \leq [nb]]$ occurs, the probability of the latter event being bounded

by $([nb] - [na] + 1) \sum_{|i| > k} P[c_i Z_1 > v_n(d)]$. As $n \rightarrow \infty$, the expression tends to $(b-a)d \sum_{|i| > k} c_i^\alpha$, which tends to zero as k tends to infinity by the choice of $\{c_i\}$. This proves (3.1). \square

4. Applications and Remarks

In general settings, the problems concerning weak convergence of point processes similar to N_n have been studied extensively. See, for example, [10,13,14].

Applying the continuous mapping theorem, a number of conclusions regarding the extremes of $\{X_j\}$ follow readily from Theorem 3.2. [4] demonstrates in detail the manner in which this is done. Since no new ideas are involved, the reader is referred there for details. However, the following is of some special interest to us.

It can be shown easily that the Laplace transform functional (cf. [12]) of N is $L_N(f) = \exp\{-\int_{\mathbb{R} \times \mathbb{R}_+} [1 - \exp(-\sum_j f(s, c_j^{-\alpha} t))] ds dt\}$ where f is a nonnegative and compactly supported function on $\mathbb{R} \times \mathbb{R}_+$. This is consistent with the representation in [10], Theorem 4.7. For $\tau > 0$, the exceedance point process $\Lambda_n^{(\tau)}$ on \mathbb{R} studied in [11,15] consists of the set of points $\{j/n: j \in I, X_j > u_n(\tau)\}$. Note that $\Lambda_n^{(\tau)}(B) = N_n(B \times (0, \tau))$ for each Borel set B in \mathbb{R} . Using arguments similar to those in Section 3 of [4], it is straightforward to show that for any choice of $\tau_1 > \tau_2 > \dots > \tau_k$, $(\Lambda_n^{(\tau_1)}, \dots, \Lambda_n^{(\tau_k)})$ converges in distribution to $(N(\cdot \times (0, \tau_1)), \dots, N(\cdot \times (0, \tau_k)))$, where the vectors are regarded as random elements in the product space of spaces of locally finite counting measures on \mathbb{R} . The distribution of $(N(\cdot \times (0, \tau_1)), \dots, N(\cdot \times (0, \tau_k)))$ may be conveniently described (cf. [9]) by the functional

$$L(f_1, \dots, f_k) = E \exp\left[-\int_{\mathbb{R}} \sum_{j=1}^k f_j dN(\cdot \times [0, \tau_j])\right]$$

$$= E \exp[-\int_{\mathbb{R} \times \mathbb{R}_+} \sum_{j=1}^k f_j(s) 1(t < \tau_j) dN]$$

where f_1, \dots, f_k are nonnegative compactly supported functions on \mathbb{R} .

Using the Laplace transform of N obtained earlier, it is seen that

$$L(f_1, \dots, f_k) = \exp[-\int_{\mathbb{R}} \sum_{j=1}^k [1 - \exp(-\sum_{j=1}^k f_j(s) i_j)] \pi(i_1, \dots, i_k) ds]$$

where the first summation extends over the set $\{(i_1, \dots, i_k) : i_1 \geq i_2 \geq \dots \geq i_k \geq 0, i_1 < 1\}$,

$\pi(i_1, \dots, i_k) = \max[0, \min_{1 \leq j \leq k} \tau_j^\alpha(i_j) - \max_{1 \leq j \leq k} \tau_j^\alpha(i_{j+1})]$, and $\{c(i)\}$ is a

rearrangement of $\{c_j\}$ with $c(1) \geq c(2) \geq \dots$. If $k = 1$, L simply

reduces to the Laplace transform of a compound Poisson process on \mathbb{R} .

The following comparison is interesting. Consider the moving average

$Y_j = \sum_{i=1}^j c_i Z_{j-i}$, $j \in I$, where the Z_i are as before, and the c_i are now

constrained by $\sum_{i=1}^{\infty} c_i^\epsilon < \infty$ for some $\epsilon < \min(1, \alpha)$ so that Y_1 is a.s.

finite (cf. [4]). Then, as shown by [4], the point process $\tilde{N}_n \stackrel{\text{def}}{=} \sum_{j=1}^n \delta_{(j/n, v_n^{-1}(Y_j))}$

converges in distribution to the same limit as N_n does.

It would be interesting to see whether this parallel extends to more general

situations, for example, where the Z_i have subexponential distributions

(cf. [16]).

References

- [1] Chernick, M.R.: A limit theorem for the maximum of autoregressive processes with uniform marginal distributions. *Ann. Probab.* 9, 145-149 (1981).
- [2] Cline, D.B.H.: Infinite series of random variables with regularly varying tails. Technical Report No. 83-24, University of British Columbia (1983).
- [3] Daley, D.J. and Hall, P.: Limit laws for the maximum of weighted and shifted I.I.D. random variables. *Ann. Probab.* 12, 571-587 (1984).
- [4] Davis, R. and Resnick, S.: Limit theory for moving averages of random variables with regularly varying tail probabilities. *Ann. Probab.* 13, 179-195 (1985).
- [5] Deheuvels, P.: Point processes and multivariate extreme value theory. *J. Multivariate Anal.* 13, 257-272 (1983).
- [6] Feller, W.: An Introduction to Probability Theory and its Applications, Vol. 2, New York: Wiley (1971).
- [7] Gade, H.G.: Deep water exchanges in a sill fjord: a stochastic process. *J. Phys. Oceanography* 3, 312-219 (1973).
- [8] Helland, I. and Nilsen, T.: On a general random exchange model. *J. Appl. Prob.* 13, 781-790 (1976).
- [9] Hsing, T.: Point processes associated with extreme value theory. Ph.D. Dissertation, University of North Carolina at Chapel Hill (1984).
- [10] Hsing, T.: On the characterization of certain point processes. Technical Report, Department of Mathematics, University of Texas at Arlington (1985).
- [11] Hsing, T. and Leadbetter, M.R.: On the exceedance point process for a stationary sequence. Center for Stoch. Proc. Report 89, Statistics Dept. University of NC (1985).
- [12] Kallenberg, O. Random Measures. Berlin: Akademie-Verlag, London-New York: Academic Press (1983).
- [13] Leadbetter, M.R., Lindgren, G., Rootzén, H.: Extremes and related properties of random sequences and processes. Springer Statistics Series. Berlin-Heidelberg-New York: Springer (1983).
- [14] Mori, T.: Limit distributions of two-dimensional point processes generated by strong mixing sequences. *Yokohama Math. J.* 25, 155-168 (1977).

- [15] Rootzén, H.: Extremes of moving averages of stable processes. Ann. Probab. 6, 847-869 (1978).
- [16] Teugels, T.: The class of subexponential distributions. Ann. Probab. 3, 1000-1011 (1975).

Department of Mathematics
The University of Texas at Arlington
P.O.Box 19408
Arlington, Texas 76019
U. S. A.

END

5-87

DTIC