

NO-A179 090

BLOOD LACTATE AS A PROGNOSTICATOR OF SURVIVAL FOLLOWING
HEMORRHAGE IN CONSCIOUS SWINE(U) LETTERMAN ARMY INST OF
RESEARCH PRESIDIO OF SAN FRANCISCO CA C E WADE ET AL.

1/1

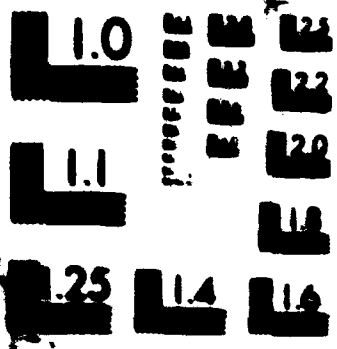
UNCLASSIFIED

JAN 86 LAIR-87-68

F/G 2/5

NL

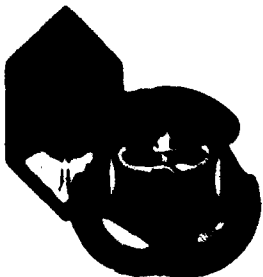




RESOLUTION

RESOLUTION TEST CHART

2



DTIC FILE COPY

LABORATORY NOTE NO. 87-68

AD-A179 090

**BLOOD LACTATE AS A PROGNOSTICATOR OF SURVIVAL FOLLOWING
HEMORRHAGE IN CONSCIOUS SWINE**

**CHARLES E. WADE, PhD
DIANE S. TRAIL, BS
VIRGINIA L. GILDENGIN, PhD
and
JOHN P. HANNON, PhD**

**DIVISION OF MILITARY TRAUMA RESEARCH AND
INFORMATION MANAGEMENT BRANCH**

JANUARY 1986

**DTIC
ELECTE
APR 09 1987
S E D**

**LETTERMAN ARMY INSTITUTE OF RESEARCH
PRESIDIO OF SAN FRANCISCO, CALIFORNIA 94129**

**This document has been approved
for public release and sale in
distribution is unlimited.**

87

4 0 1 0

ABSTRACT

Arterial blood lactate concentration at the end of hemorrhage was evaluated as a predictor of survival following fixed volume hemorrhage in unmedicated chronically instrumented immature swine. Following hemorrhage lactate was elevated compared to basal values, 8.4 ± 4.5 mg/dl ($\bar{x} \pm SD$) ($n=52$). Animals lived ($n=71$) with a lactate of 43.9 ± 37.1 mg/dl compared to 106.5 ± 40.4 mg/dl for animals that died ($n=66$). Lactate concentration at the end of hemorrhage successfully predicted survival (80.3%).

Hypovolemia and resultant hypotension, whether induced by fixed pressure (Wiggers model) or fixed volume hemorrhage, can lead to death. The incidence of death, however, can be highly variable, both within and between studies. This variability, furthermore, occurs in spite of apparent consistency in the design of experiments, unless the experiments are designed to assure either 100% survival or 100% lethality (1). Presumably, the diversity of response reflects differences in the capacity of individual animals to compensate for the functional consequences of hypovolemia.

Although a vast amount of information is available on the pathophysiologic changes that might contribute to death, a definitive explanation has not been identified (2). At the present time, therefore, no functional change has been identified as a predictor of survival or nonsurvival. In this report, we have pooled the arterial lactate values collected in a series of experiments with conscious pigs subjected to various degrees of fixed volume hemorrhage (3-5). Some of the animals survived the insult, others died. The intent of this effort was to determine whether arterial lactate level, measured at the end of hemorrhage, was an accurate predictor of outcome.

METHOD

Immature swine (18 to 30 kg) of either sex were studied, ($n=52$ controls; $n=137$ hemorrhaged; total $n=189$). Five to ten days before the study the animals were surgically prepared with arterial catheters to facilitate hemorrhage and to obtain blood samples. Some animals were splenectomized and others had additional catheters or flow probes implanted. Hemorrhage was initiated when the animals ($n=137$) were in the conscious resting state, and blood volume losses ranged from 15 to 54 ml/kg over periods of 10 to 60 minutes. Animals were enrolled in the study only if they received no medications and

TABLE 1

Blood lactate concentration for various groups of swine

	Control	Hemorrhaged Lived	Hemorrhaged Died
n	52	71	66
Lactate (mg/dl)			
x	8.38	43.98*	106.54+
SD	4.52	37.14	40.43
range	1.2-24.9	2.6-161.0	25.8-230.4

*Significantly different ($P < 0.05$) from control animals.

+Significantly different ($P < 0.05$) from control and hemorrhage-lived animals.

TABLE 2

Evaluation of predictive outcome by classification

	Predicted		Percent Correct
	Die	Live	
Died	55	11	83.3
Lived	16	55	77.5
Total	71	66	80.3

COMMENT

blood lactate level has been suggested as a prognosticator for survival in trauma patients (6-9). However, the prognostic significance of lactate concentration has had to be determined specifically for each disease (9). We have evaluated plasma lactate concentrations obtained at the end of hemorrhage as a predictor of survival or death in conscious swine. While 80% effective in predicting survival in the swine hemorrhage model, blood lactate may not be the sole factor determining outcome. The use of blood lactate may in part replace the 100% lethal exsanguination swine model allowing a more mechanistic evaluation of shock therapies.

Accession For	
NTIS GRA&I	<input checked="" type="checkbox"/>
DTIC TAB	<input type="checkbox"/>
Unannounced	<input type="checkbox"/>
Justification	
By _____	
Distribution/	
Availability Codes	
Dist	Avail and/or Special
A-1	



END

5-87

DTIC