

NO-A177 959

WETLANDS RESEARCH PROGRAM CORPS OF ENGINEERS WETLANDS

1/1

DELINEATION MANUAL (U) ARMY ENGINEER WATERWAYS

EXPERIMENT STATION VICKSBURG MS ENVIR. JAN 87

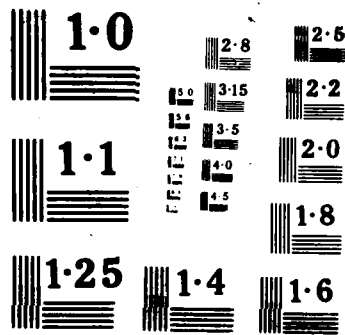
UNCLASSIFIED

WES/TR/Y-87-1-APP-C-SECT-1/2

F/G 6/3

NL

										1/1			



2

WETLANDS RESEARCH PROGRAM

TECHNICAL REPORT Y-87-1

**CORPS OF ENGINEERS WETLANDS
DELINEATION MANUAL**

APPENDIX C

SECTIONS 1 AND 2

REGION 2 — SOUTHEAST

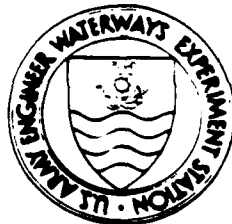
by

Environmental Laboratory

**DEPARTMENT OF THE ARMY
US Army Engineer Waterways Experiment Station
PO Box 631, Vicksburg, Mississippi 39180-0631**

AD-A177 959

DTIC FILE COPY



15 1987

January 1987

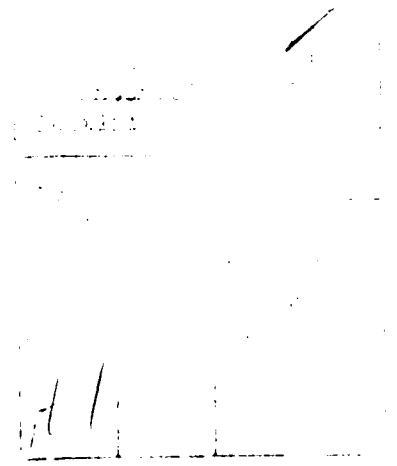
Final Report

Approved For Public Release: Distribution Unlimited

Prepared for **DEPARTMENT OF THE ARMY
US Army Corps of Engineers
Washington, DC 20314-1000**

37 3

APPENDIX C
SECTION 1
NATIONAL LIST OF PLANT SPECIES
THAT OCCUR IN WETLANDS
REGION 2 - SOUTHEAST



NATIONAL LIST OF PLANT SPECIES THAT OCCUR IN WETLANDS
REGION 2 - SOUTHEAST

The following is a subset of the National List of Plant Species That Occur In Wetlands of the southeast region of the United States. This area includes Louisiana, Arkansas, Mississippi, Alabama, Tennessee, Florida, Georgia, South Carolina, and North Carolina.

The list was initiated by the US Fish and Wildlife Service, National Wetland Inventory (NWI). A candidate national list of more than 5000 species was developed and, using information from more than 250 taxonomic references, the NWI assigned a tentative wetland indicator status to many of the species. The indicator status categories, which define the estimated probability of a species occurring in wetlands, are as follows:

<u>Category</u>	<u>Symbol</u>	<u>Definition</u>
OBLIGATE WETLAND PLANTS	OBL	Plants that occur almost always (estimated probability >.99%) in wetlands under natural conditions.
FACULTATIVE WETLAND PLANTS	FACW	Plants that occur usually (estimated probability >67 to 99%) in wetlands, but also occur (estimated probability 1% to 33%) in nonwetlands.
FACULTATIVE PLANTS	FAC	Plants with a similar likelihood (estimated probability 33% to 67%) of occurring in both wetlands and nonwetlands.
FACULTATIVE UPLAND PLANTS	FACU	Plants that occur sometimes (estimated probability 1% to 33%) in wetlands, but occur more often (estimated probability >67% to 99%) in nonwetlands.
OBLIGATE UPLAND PLANTS	UPL	Plants that occur rarely (estimated probability <1%) in wetlands, but occur almost always (estimated probability >99%) in nonwetlands under natural conditions.

For purposes of this manual, any plant species not appearing on the plant list was assumed to be an upland species unless a strong technical rationale could be developed for adding it to the list.

In 1982, the NWI invited other Federal agencies to participate in a review of the NWI plant list. A national review panel was established,

comprised of representatives from the Fish and Wildlife Service, Environmental Protection Agency, Soil Conservation Service, and Corps of Engineers. The national panel developed guidelines for the review process and established regional panels composed of a representative from each agency. The regional panels reviewed the plant list for their region and provided the national review panel with the results. The list that follows represents a subset of the reviewed list for Region 2. Note: Although additional work by the regional panel will be required, the current status of the list is considered to be adequate for use in this manual. The list will be updated as further revisions are made.

Nomenclature used in the list is based on the National List of Scientific Plant Names (USDA-SCS 1982). The generic name is listed only once, and species within a genus are alphabetized.

Symbols

Symbols appearing in the list under the indicator status column are as follows:

- + : A "+" sign following an indicator status denotes that the species generally has a greater estimated probability of occurring in wetlands than species having the general indicator status, but a lesser estimated probability of occurring in wetlands than those having the next highest general indicator. For example, a species with an indicator status of FAC+ occurs in wetlands more often than a species designated as FAC, but less often than a species having a FACW status.
- : A "-" sign following an indicator status (e.g. FACW-) denotes that the species generally has a lesser estimated probability of occurring in wetlands than species having the general indicator status, but a greater estimated probability of occurring in wetlands than those having the next lowest general indicator. For example, a species with an indicator status of FACW- occurs in wetlands less often than a species with a FACW status, but more often than a species having a FAC+ status.

DRA: This symbol indicates that the species normally occurs at the indicated estimated probability in wetlands, but only during periods when standing water is absent.

-: A dash without an associated indicator status signifies that no review comments were received, usually because the species is rare in the region or its taxonomic status is questioned.

An X prior to the species name in the scientific name column denotes a hybrid. For purposes of this manual, all species appearing on the regional plant list as FAC-, FACU+, FACU, or FACU- have been deleted from the list because they do not contribute toward hydrophytic vegetation.

THIS LIST SHOULD BE USED IN ACCORDANCE WITH INSTRUCTIONS PROVIDED IN PART IV OF THE MANUAL.

<u>Scientific Name</u>	<u>Common Name</u>	<u>Indicator Status</u>
<i>Abildgaardia ovata</i> (Burm. f.) Kral.	Abildgaardia	FACW+
<i>Acer negundo</i> L.	Box elder	FACW
<i>A. rubrum</i> L.	Red maple	FAC
<i>A. rubrum</i> var. <i>drummondii</i>	Drummond red maple	OBL
<i>A. saccharinum</i> L.	Silver maple	FACW
<i>Accoloraphe wrightii</i> (Griseb. & Wendl.) Wendl. ex. Becc.	Paurotis palm	OBL
<i>Acorus calamus</i> L.	Sweetflag	OBL
<i>Acrostichum aureum</i> L.	Coast leather fern	OBL
<i>A. daraeifolium</i> Langsd. & Fisch.	Leather fern	OBL
<i>Actinostachys germanii</i> Fee	Actinostachys	FAC
<i>Adiantum melanoaleucum</i> Willd.	Fragrant maidenhair fern	-
<i>A. tenerum</i> Swartz	Maidenhair fern	FAC
<i>Aegopodium podagraria</i> L.	Goutweed	FACW
<i>Aeschynomene americana</i> L.	Shy-leaf	FAC
<i>A. indica</i> L.	Joint vetch	FACW
<i>A. pratensis</i> Small	Netted shy-leaf	OBL
<i>A. virginica</i> (L.) B.S.P.	Sensitive joint vetch	FACW
<i>Aesculus pavia</i> L.	Red buckeye	FAC
<i>A. sylvatica</i> Bartr.	Painted buckeye	FAC
<i>Agalinis aphylla</i> (Nutt.) Raf.	Agalinis	FACW
<i>A. fasciculata</i> (Elliott) Raf.	Fascicled false-foxtail	FACW
<i>A. filiculis</i> (Benth.) Pennell	Agalinis	FAC+
<i>A. harperi</i> Pennell	Agalinis	FACW
<i>A. linifolia</i> (Nutt.) Britton	Flat leaf pimpernel	FACW
<i>A. maritima</i> Raf.	Seaside gerardia	OBL
<i>A. obtusifolia</i> (Raf.) Pennell	Ten-lobed agalinis	FAC
<i>A. oligophylla</i> Pennell	False-leaved false-foxtail	FAC
<i>A. paupercula</i> (Gray) Britton	Small-flowered agalinis	OBL
<i>A. pulchella</i> Pennell	Agalinis	FACW-
<i>A. purpurea</i> (L.) Raf.	Purple gerardia	FACW

<u>Scientific Name</u>	<u>Common Name</u>	<u>Indicator Status</u>
<i>A. virgata</i> Raf.	Pinebarrens gerardia	FAC
<i>Agarista populifolia</i> Ait.	Leucothoe	OBL
<i>Agastache nepetoides</i> (L.) Kuntze	Yellow giant hyssop	FAC
<i>Agrimonia parviflora</i> Soland in Ait.	Small flowered agrimony	FAC
<i>A. rostellata</i> Wallr.	Agrimony	FAC
<i>Agropyron trachycaulum</i> (Link) Malte	Slender wheatgrass	FAC
<i>Agrostis alba</i> L.	Redtop	FACW
<i>A. hiemalis</i> (Walter) B.S.P.	Winter bent	FAC
<i>A. scabra</i> Willd.	Rough bentgrass	FAC
<i>A. stolonifera</i> L.	Carpet bentgrass	FACW
<i>Aletris aurea</i> Walter	Golden stargrass	FACW+
<i>A. farinosa</i> L.	Whitetube stargrass	FAC+
<i>A. lutea</i> Small	Yellow stargrass	FACW+
<i>A. obovata</i> Nash	Obovate stargrass	FAC
<i>Alisma subcordatum</i> Raf.	Subcordate waterplantain	OBL
<i>Alliaria petiolata</i> (M. Bieb.) Cavara & Grande	Alliaria	FACW
<i>Allium bivalve</i> (L.) Kuntze	Two-valved onion	FAC
<i>A. tricoccum</i> Ait.	Wild leek	FAC
<i>Alnus crispa</i> (Dryand. in Ait.) Pursh	Green alder	FAC
<i>A. rugosa</i> (Du Roi) Spreng.	Speckled alder	FACW
<i>A. serrulata</i> (Ait.) Willd.	Hazel alder	FACW+
<i>Alopecurus carolinianus</i> Walter	Carolina foxtail	FACW
<i>A. geniculatus</i> L.	Water foxtail	OBL
<i>A. myosuroides</i> Huds.	Mouse foxtail	FACW-
<i>A. pratensis</i> L.	Meadow foxtail	FAC
<i>Altermanthera philoxeroides</i> Griseb.	Alligatorweed	OBL
<i>Amaranthus australis</i> (Gray) Saur.	Amaranthus	OBL
<i>A. blitoides</i> S. Wats.	Amaranth	FAC
<i>A. cannabinus</i> (L.) Sauer	Tidmarsh waterhemp	OBL
<i>A. crassipes</i> Schlecht.	Amaranth	FAC DRA
<i>A. floridanus</i> (Wats.) Sauer	Florida amaranth	OBL
<i>A. pumilus</i> Raf.	Seabeach amaranth	FACW
<i>A. rudis</i> Sauer	Amaranth	FAC
<i>A. tuberculatus</i> (Moq.) Sauer	Tuberculate amaranth	FACW+
<i>Ambrosia psilostachya</i> DC.	Western ragweed	FAC
<i>A. trifida</i> L.	Annual ragweed	FAC
<i>Amelanchier canadensis</i> (L.) Medik.	Canada serviceberry	FAC
<i>A. X intermedia</i> Spach	Swamp shadbush	FACW
<i>A. obovalis</i> (Michx.) Ashe	Serviceberry	FACW
<i>Amianthium muscaetoxicum</i> (Walter) Gray	Common crowpoison	FAC
<i>Ammannia auriculata</i> Willd.	Ammannia	OBL
<i>A. coccinea</i> Rottb.	Purple ammannia	FACW+
<i>A. latifolia</i> L.	Ammania	OBL
<i>Ammoselinum butleri</i> (Engelm) Coult. & Rose	Butler sandparsley	FAC
<i>Amorpha fruticosa</i> L.	Dull-leaf indigo	FACW
<i>A. georgiana</i> Wilbur	Amorpha	FACW
<i>A. herbacea</i> Walter	Clusterspike amorpha	FAC
<i>A. nitens</i> Boynton	Georgia amorpha	FAC
<i>A. paniculata</i> Torr. and Gray	Panicled amorpha	FACW
<i>Ampelamus albius</i> (Nutt.) Britton	Common honeyvine	FAC

<u>Scientific Name</u>	<u>Common Name</u>	<u>Indicator Status</u>
<i>Ampelopsis arborea</i> (L.) Koehne	Peppervine	FAC+
<i>A. cordata</i> Michx.	Raccoon grape	FAC+
<i>Amphianthus pusillus</i> Torr.	Amphianthus	OBL
<i>Amphicarpaea bracteata</i> (L.) Fernald	Amphicarpaea	FAC
<i>Amphicarpum muhlenbergianum</i> (Schult.) Hitchc.	Perennial goobergrass	FACW
<i>A. purshii</i> Kunth	Annual goobergrass	FACW
<i>Amsonia glaberrima</i> Woods	Slimpod	OBL
<i>A. ludoviciana</i> Vail	Amsonia	FAC
<i>A. rigida</i> Shuttlew.	Amsonia	FACW
<i>A. tabernaemontana</i> Walter	Willow amsonia	FACW
<i>Anagallis pumila</i> Swartz	Anagallis	FACW-
<i>Anãromeda glaucophylla</i> Link	Downy bogrosemary	OBL
<i>Anãropogon brachystachys</i> Chapm.	Shortspike bluestem	FACW
<i>A. gerardii</i> Vitman	Big bluestem	FAC
<i>A. glomeratus</i> (Walter) B.S.P.	Bushy beard bluestem	FACW+
<i>A. mohrii</i> Hack.	Mohrs bluestem	OBL
<i>A. perangustatus</i> Nash	Slim bluestem	OBL
<i>Anemone canadensis</i> L.	Canada anemone	FAC
<i>Angelica atropurpurea</i> L.	Purplestem angelica	OBL
<i>A. triquinata</i> Michx.	Angelica	FAC
<i>Annona glabra</i> L.	Pond apple	OBL
<i>Anoda cristata</i> (L.) Schlecht.	Spurred anoda	FAC
<i>Apios americana</i> Medik.	American potato bean	FACW
<i>Apium graveolens</i> L.	Wild celery	FAC
<i>Aplectrum hyemale</i> (Muhl. ex. Willd.) Torr.	Putty-root	FAC+
<i>Apteria aphylla</i> (Nutt.) Barnhart	Apteria	FACW
<i>Aralia spinosa</i> L.	Hercules club	FAC
<i>Arenaria lanuginosa</i> (Michx.) Rohrb.	Sandwort	FAC
<i>A. serpyllifolia</i> L.	Thymeleaf sandwort	FAC
<i>Arethusa bulbosa</i> L.	Dragon's mouth	OBL
<i>Arisaema dracontium</i> (L.) Schott	Greendragon indianturnip	FACW
<i>A. triphyllum</i> (L.) Schott	Indian jack-in-the-pulpit	FACW-
<i>Aristida affinis</i> (Schult.) Kunth	Longleaf threeawn	OBL
<i>A. patula</i>	Threeawn	FAC+
<i>A. spiciformis</i> Elliott	Bottlebrush threeawn	FAC
<i>A. tenuispica</i> Hitchc.	Hillsboro threeawn	FAC
<i>A. virgata</i> Trin.	Trinius threeawn	FACW-
<i>Aristolochia tomentosa</i> Sims.	Woolly pipevine	FAC
<i>Armoracia aquatica</i> (Eat.) Wiegand	Lake cress	OBL
<i>Arnica acaulis</i> (Walter) B.S.P.	Leopard's-bane	FAC
<i>Arnoglossum diversifolium</i> (Torr. & Gray) H. Rob.	Arnoglossum	FACW-
<i>A. ovatum</i> (Walter) H. Rob.	Ovate arnoglossum	FAC
<i>A. sulcatum</i> (Fernald) H. Rob.	Arnoglossum	OBL
<i>Aronia arbutifolia</i> (L.) Elliott	Red chokecherry	FACW
<i>A. melanocarpa</i> (Michx.) Elliott	Black chokecherry	FAC
<i>A. prunifolia</i> (Marshall) Rehder	Purple chokecherry	FACW
<i>Artemisia biennis</i> Willd.	Biennial wormwood	FAC
<i>Arundinaria gigantea</i> (Walter) Muhl.	Giant cane	FACW

<u>Scientific Name</u>	<u>Common Name</u>	<u>Indicator Status</u>
<i>Arundo donax</i> L.	Giantreed	FACW
<i>Asclepias cinerea</i> Walter	Milkweed	FAC
<i>A. connivens</i> Baldw.	Milkweed	OBL
<i>A. curassavica</i> L.	Bloodflower milkweed	FAC
<i>A. incarnata</i> L.	Swamp milkweed	OBL
<i>A. lanceolata</i> Walter	Coast milkweed	OBL
<i>A. longifolia</i> Michx.	Longleaf milkweed	FACW+
<i>A. michauxii</i> Decne.	Milkweed	FAC+
<i>A. pedicellata</i> Walter	Pediceled milkweed	FACW+
<i>A. perennis</i> Walter	Shore milkweed	OBL
<i>A. rubra</i> L.	Red milkweed	OBL
<i>A. viridula</i> Chapm.	Milkweed	FACW-
<i>Ascyrum edisonianum</i> Small	Edison St. Andrews cross	OBL
<i>A. hypericoides</i> L.	St. Andrews cross	FAC
<i>A. stans</i> Michx.	Atlantic St. Peterswort	FACW-
<i>Asimina reticulata</i> Shuttlaw. ex. Chapm.	Pawpaw	FAC
<i>Asimina triloba</i> (L.) Dunal	Common pawpaw	FAC
<i>Aster carolinianus</i> Walter	Carolina aster	OBL
<i>A. chapmanii</i> Torr. & Gray	Savannah aster	FAC
<i>A. dumosus</i> L.	Bush aster	FAC
<i>A. elliotii</i> T. & G.	Elliot aster	OBL
<i>A. eryngiifolius</i> Torr. & Gray	Aster	OBL
<i>A. lateriflorus</i> (L.) Britton	Calico aster	FAC
<i>A. novae-angliae</i> L.	New England aster	FACW
<i>A. novi-belgii</i> L.	New York aster	OBL
<i>A. ontarionis</i> Wiegand	Ontario aster	FAC
<i>A. paludosus</i> Aiton	Singlestem aster	FACW
<i>A. pinifolius</i> E. J. Alex.	Pale-violet aster	-
<i>A. praealtus</i> Poir.	Aster	FACW-
<i>A. prenanthoides</i> Muhl.	Crooked-stemmed aster	FAC
<i>A. puniceus</i> L.	Swamp aster	OBL
<i>A. racemosus</i> Elliott	Racemed aster	FACW
<i>A. reticulatus</i> Pursh	Aster	FAC
<i>A. simplex</i> Willd.	Lowland white aster	FACW
<i>A. spinosus</i> Benth.	Devilweed aster	FACW
<i>A. spinulosus</i> Chapm.	Aster	FACW+
<i>A. squarrosus</i> Walter	Aster	FAC
<i>A. subulatus</i> Michx.	Annual saltmarsh aster	OBL
<i>A. tenuifolius</i> L.	Perennial saltmarsh aster	OBL
<i>A. tradescanti</i> L.	Tradescant aster	FAC+
<i>A. umbellatus</i> Mill.	Flattop aster	FACW
<i>A. vimineus</i> Lam.	Fairy aster	FAC
<i>Astragalus canadensis</i> L.	Canada milkvetch	FAC
<i>Athyrium filix-femina</i> (L.) Roth	Southern lady fern	FAC
<i>A. pycnocarpon</i> (Spreng.) Tidest.	Narrowleaf ladyfern	FAC
<i>A. thelypteroides</i> (Michx.) Desv.	Silvery ladyfern	FAC
<i>Atriplex arenaria</i> Nutt.	Saltweed	FAC
<i>A. patula</i> L.	Fat-hen saltweed	FACW
<i>A. triangularis</i> Willd.	Triangled-stem saltweed	FACW
<i>Avicennia germinans</i> (L.) L.	Black-mangrove	OBL
<i>Axonopus affinis</i> Chase	Carpetgrass	FACW-

<u>Scientific Name</u>	<u>Common Name</u>	<u>Indicator Status</u>
<i>A. compressus</i> (Swartz) Beauv.	Tropical carpetgrass	FACW-
<i>A. furcatus</i> (Fluegge) Hitchc.	Big carpetgrass	OBL
<i>Azolla caroliniana</i> Willd.	Mosquito fern	OBL
<i>A. mexicana</i> Presl.	Mexican azolla	OBL
<i>Baccharis angustifolia</i> Michaux	Narrowleaf baccharis	FACW+
<i>B. dioica</i> Vahl	Baccharis	FACW
<i>B. glomeruliflora</i> Persoon	Southern baccharis	FACW
<i>B. halimifolia</i> L.	Eastern baccharis	FAC
<i>Bacopa caroliniana</i> (Walter) Robins.	Lemon bacopa	OBL
<i>B. cyclophylla</i> Fernald	Bacopa	OBL
<i>B. egensis</i> (Poeppig) Penn.	Brazilian bacopa	OBL
<i>B. innominata</i> (Gomez Maza) Alain	Bacopa	OBL
<i>B. monnieri</i> (L.) Wettst.	Coast bacopa	OBL
<i>B. repens</i> (Swartz) Wettst.	Creeping bacopa	OBL
<i>B. rotundifolia</i> (Michx.) Wettst.	Roundleaf bacopa	OBL
<i>Balduina atropurpurea</i> Harper	Balduina	FACW
<i>B. uniflora</i> Nutt.	One-flowered balduina	FACW
<i>Baptisia lactea</i> (Raf.) Thieret	Baptisia	FAC
<i>Barbarea vulgaris</i> R. Br.	Bitter wintercress	FAC
<i>Bartonia paniculata</i> (Michx.) Muhl.	Bartonia	OBL
<i>B. verna</i> (Michx.) Muhl.	Spring bartonia	OBL
<i>B. virginica</i> (L.) B.S.P.	Virginia bartonia	FACW
<i>Batis maritima</i> L.	Saltwort	OBL
<i>Berchemia scandens</i> (Hill) D. Koch.	Rattan vine	FACW
<i>Bergia texana</i> (Hook.) Seubert	Texas bergia	OBL
<i>Betula nigra</i> L.	River birch	OBL
<i>B. populifolia</i> Marshall	Gray birch	FAC
<i>Bidens aristosa</i> (Michx.) Britton	Bearded beggarticks	FACW
<i>B. bipinnata</i> L.	Spanishneedles beggarticks	FAC
<i>B. cernua</i> L.	Nodding beggarticks	OBL
<i>B. comosa</i> (Gray) Wiegand	Leafbract beggarticks	FACW DRA
<i>B. connata</i> Muhl. ex Willd.	Swamp beggarticks	OBL
<i>B. coronata</i> (L.) Britton	Tickseed sunflower	OBL
<i>B. discoidea</i> (T. & G.) Britton	Discoid beggarticks	FACW
<i>B. frondosa</i> L.	Devils beggarticks	FACW
<i>B. laevis</i> (L.) B.S.P.	Brook sunflower	OBL
<i>B. mitis</i> (Michx.) Sherff.	Beggarticks	OBL
<i>B. pilosa</i> L.	Spanishneedles	FACW-
<i>B. polylepis</i> Blake	Awnless beggarticks	FACW
<i>B. tripartita</i> L.	Bur beggarticks	OBL
<i>Bigelovia nudata</i> (Michx.) DC.	Bigelovia	FACW
<i>Bignonia capreolata</i> L.	Cross-vine	FAC
<i>Blechnum serrulatum</i> Rich.	Sawfern blechnum	FACW+
<i>Blechnum brownii</i> Juss.	Brown blechnum	FACW
<i>Bletia purpurea</i> (Lam.) DC.	Pine-pink	FAC
<i>Blyxa aubertii</i> Rich.	Blyxa	OBL
<i>Boehmeria cylindrica</i> (L.) Swartz	Smallspike false-nettle	FACW+
<i>Boltonia asteroides</i> (L.) L'Her.	Star boltonia	FACW
<i>B. caroliniana</i> (Walter) Fernald	Carolina boltonia	FACW
<i>B. diffusa</i> Elliott	Smallhead boltonia	FAC
<i>Borreria brachysepala</i> Urban	Buttonweed	FACW
<i>Borrhchia arborescens</i> (L.) DC.	Tree seaoxeye	FACW

<u>Scientific Name</u>	<u>Common Name</u>	<u>Indicator Status</u>
<i>B. frutescens</i> (L.) DC.	Bushy seaoxeye	OBL
<i>Botrychium bitermatum</i> (Sav.) Underwood	Grapefern	FAC
<i>B. dissectum</i> Spreng.	Cutleaf grapefern	FAC
<i>B. multifidum</i> (Gmel.) Rupr.	Broadleaf grapefern	FAC
<i>Bowlesia incana</i> Ruiz & Pavon	Bowlesia	FAC+
<i>Boykinia aconitifolia</i> Nutt.	Boykinia	FACW
<i>Brachiaria mutica</i> (Forssk.) Stapf	California grass	FACW
<i>B. plantaginea</i> (Link) A. Hitchc.	Alexander grass	FAC
<i>B. platyphylla</i> (Griseb.) Nash	Broadleaf signal grass	FAC+
<i>B. purpurascens</i> (Raddi) Henr.	Purple brachiaria	FACW
<i>Brasenia schreberi</i> Gmel.	Watershield	OBL
<i>Briza minor</i> L.	Little quakinggrass	FAC
<i>Bromus ciliatus</i> L.	Fringed brome	FACW
<i>B. latiglumis</i> (Shear) Hitchc.	Earleaf brome	FACW+
<i>Brunnichia cirrhosa</i> Gaertn.	Buckwheat vine	FACW
<i>Buchnera americana</i> L.	American bupleurum	FAC
<i>B. floridana</i> Gandoger	Florida bupleurum	FACW-
<i>Bucida buceras</i> L.	Oxhorn bucida	FACW
<i>Bulbostylis capillaris</i> (L.) C. B. Clarke	Threadleaf beakseed	FAC
<i>Bumelia lycioides</i> (L.) Pers.	Buckthorn bumelia	FACW
<i>B. reclinata</i> (Michx.) Ventenat	Bumelia	FAC
<i>Burmannia biflora</i> L.	Two-flowered burmannia	OBL
<i>B. capitata</i> (Walter ex J. F. Gmel.) Mart.	Southern burmannia	OBL
<i>Burmannia biflora</i> L.	Two-flowered burmania	OBL
<i>B. flava</i> Mort.	Burmania	OBL
<i>Cabomba caroliniana</i> Gray	Fanwort	OBL
<i>Cakile geniculata</i> (Robins.) Millsp.	Gulf searocket	FAC
<i>C. lanceolata</i> (Willd.) O. E. Schulz	Sea rocket	FAC
<i>C. maritima</i> Scop.	European searocket	FAC
<i>Calamagrostis canadensis</i> (Michx.) Beauv.	Bluejoint reedgrass	OBL
<i>C. cinoides</i> (Muhl.) Barton	Hairyseed reedgrass	OBL
<i>Calamovilfa arcuata</i> K. Rogers	Sandreed	FACW
<i>C. brevipilis</i> (Torr.) Scribn.	Riverbank sandreed	OBL
<i>C. quartissii</i> (Vasey) Scribn.	Curtis sandreed	FAC
<i>Callitriche deflexa</i> A. Braun	Waterstarwort	FACW
<i>C. hermaphroditica</i> L.	Secret waterstarwort	OBL
<i>C. heterophylla</i> Pursh	Larger waterstarwort	OBL DRA
<i>C. nuttallii</i> Torr.	Nuttall waterstarwort	FACW+
<i>C. peploides</i> Nutt.	Waterstarwort	OBL
<i>C. verna</i> L.	Green waterstarwort	OBL
<i>Calopogon barbatus</i> (Walter) Ames	Barbed calopogon	FACW+
<i>C. multiflorus</i> Lindl.	Many flowered calopogon	FACW
<i>C. pallidus</i> Chapm.	Pale calopogon	OBL
<i>C. tuberosus</i> (L.) B.S.P.	Calopogon	OBL
<i>Caltha palustris</i> L.	Marsh marigold	OBL
<i>Calycozarpum lyonii</i> (Pursh) Gray	Lyon cupseed	FACW-
<i>Calyptocarpus vialis</i> Less.	Calyptocarpus	FAC
<i>Calystegia sepium</i> (L.) R. Br.	Wild morning-glory	FAC
<i>Camassia scilloides</i> (Raf.) Cory	Atlantic camass	FACW

<u>Scientific Name</u>	<u>Common Name</u>	<u>Indicator Status</u>
<i>Camelina sativa</i> (L.) Crantz	Cultivated falseflax	FAC
<i>Campanula americana</i> L.	Bellflower	FAC
<i>C. aparinoides</i> Pursh	Bedstraw bellflower	OBL
<i>C. floridana</i> S. Wats. ex Gray	Florida bellflower	OBL
<i>Campsis radicans</i> (L.) Seem.	Common trumpet creeper	FAC
<i>Campyloneurum angustifolium</i> (Swartz) Fee	Camplyoneurum	FACW
<i>C. costatum</i> (Kunze) K. Presl	Camplyoneurum	FACW
<i>C. latum</i> T. Moore	Camplyoneurum	FACW
<i>C. phyllitidis</i> (L.) K. Presl	Camplyoneurum	FACW-
<i>Canna flaccida</i> Salisb.	Golden canna	OBL
<i>C. X generalis</i> L. H. Bailey	Common garden canna	OBL
<i>C. glauca</i> L.	Louisiana canna	OBL
<i>C. indica</i> L.	Indian shot	OBL
<i>Caperonia palustris</i> (L.) St. Hil.	Caperonia	FACW
<i>Capraria biflora</i> L.	Twin-flower	FACW
<i>Cardamine angustata</i> O. Schulz	Bittercress	FAC+
<i>C. bulbosa</i> (Schreb.) B.S.P.	Bulb bittercress	OBL
<i>C. clematitis</i> Shuttlew.	Clematis bittercress	OBL
<i>C. douglassii</i> (Torr.) Britton	Douglass bittercress	OBL
<i>C. hirsuta</i> L.	Hairy bittercress	FAC
<i>C. micranthera</i> Roll.	Bittercress	FAC
<i>C. pennsylvanica</i> Muhl. ex Willd.	Pennsylvania bittercress	FACW+
<i>C. rotundifolia</i> Michx.	Round-leaved bittercress	OBL
<i>Cardiospermum halicacabum</i> L.	Balloonvine heartseed	FAC
<i>Carex abscondita</i> Mackenz.	Sedge	FACW
<i>C. alata</i> Torr. & Gray	Wingseed sedge	OBL
<i>C. albolutescens</i> Schw.	Sedge	FAC+
<i>C. amphibola</i> Steud.	Sedge	FACW
<i>C. annectens</i> (Bickn.) Bickn.	Sedge	FACW
<i>C. atlantica</i> L. H. Bailey	Eastern sedge	FACW
<i>C. baileyi</i> Britton	Bailey sedge	FACW
<i>C. barrattii</i> Schweinitz & Torr.	Barratt sedge	OBL
<i>C. brevior</i> (Dewey) Mackenz. Lunnell	Brevior sedge	OBL
<i>C. bromoides</i> Schkuhr	Grassy sedge	FACW
<i>C. brunnescens</i> (Pers.) Poir.	Brownish sedge	FAC
<i>C. bullata</i> Schkuhr	Button sedge	OBL
<i>C. bushii</i> Mackenz.	Bush sedge	FACW
<i>C. buxbaumii</i> Wahlenb.	Buxbaum sedge	OBL
<i>C. canescens</i> L.	Silvery sedge	OBL
<i>C. caroliniana</i> Schweinitz	Carolina sedge	FACW
<i>C. cephalophora</i> Muhl.	Woodbank sedge	FAC
<i>C. chapmanii</i> Steud.	Chapman sedge	FACW
<i>C. cherokeensis</i> Schweinitz	Cherokee sedge	FACW-
<i>C. collinsii</i> Nutt.	Collins sedge	OBL
<i>C. comosa</i> Boott	Longhair sedge	OBL
<i>C. complanata</i> Torr. & Hook.	Blue sedge	FAC+
<i>C. conoidea</i> Schkuhr	Sedge	FACW+
<i>C. crawei</i> Dewey	Crawe sedge	OBL
<i>C. crebriflora</i> Wiegand	Sedge	FACW-
<i>C. crinita</i> Lam.	Fringed sedge	FACW+
<i>C. crus-corni</i> Shuttlew.	Sedge	OBL

<u>Scientific Name</u>	<u>Common Name</u>	<u>Indicator Status</u>
<i>C. davisii</i> Schweinitz & Torr.	Davis sedge	FAC
<i>C. debilis</i> Michx.	Sedge	FACW
<i>C. decomposita</i> Muhl.	Sedge	OBL
<i>C. divisa</i> Huds.	Sedge	OBL
<i>C. echinata</i> Murr.	Prickly sedge	OBL
<i>C. elliotii</i> Schweinitz & Torr.	Elliott sedge	OBL
<i>C. emoryi</i> Dewey	Emory sedge	OBL
<i>C. exilis</i> Dewey	Sedge	OBL
<i>C. festucacea</i> Schkuhr	Fescue sedge	FACW
<i>C. fissa</i> Mackenz.	Sedge	FACW+
<i>C. flaccosperma</i> Dewey	Sedge	FAC+
<i>C. frankii</i> Kuntz	Frank sedge	OBL
<i>C. gigantea</i> Rudge	Giant sedge	OBL
<i>C. glaucescens</i> Elliott	Sedge	OBL
<i>C. granularis</i> Muhl.	Grany sedge	FACW
<i>C. grayii</i> Carey	Gray sedge	FACW
<i>C. howei</i> Mackenz.	Howe sedge	OBL
<i>C. hyalina</i> Boott	Whitesheath sedge	FACW
<i>C. hyalinolepis</i> Steudel	Lake sedge	OBL
<i>C. hystericina</i> Muhl. ex Willd.	Porcupine sedge	OBL
<i>C. interior</i> L. H. Bailey	Inland sedge	OBL
<i>C. intumescens</i> Rudge	Sedge	FACW
<i>C. joorii</i> L. H. Bailey	Joor sedge	OBL
<i>C. lacustris</i> Willd.	River sedge	OBL
<i>C. laevivaginata</i> (Kuekenh.) Mackenz.	Wooly sedge	OBL
<i>C. lanuginosa</i> Michx.	Wooly sedge	OBL
<i>C. lasiocarpa</i> Ehrh.	Woolfruit sedge	OBL
<i>C. leporina</i> L.	Leporina sedge	FAC
<i>C. leptalea</i> Wahlenb.	Bristlestalked sedge	OBL
<i>C. leptoneuria</i> Fernald	Sedge	FACW
<i>C. limosa</i> L.	Mud sedge	OBL
<i>C. lonchocarpa</i> Willd.	Sedge	OBL
<i>C. longii</i> Mackenz.	Long sedge	OBL
<i>C. louisianica</i> L. H. Bailey	Louisiana sedge	OBL
<i>C. lupuliformis</i> Sartw.	Hoplike sedge	OBL
<i>C. lupulina</i> Muhl.	Hop sedge	OBL
<i>C. lurida</i> Wahlenb.	Lurid sedge	OBL
<i>C. meadii</i> Dewey	Mead sedge	FAC
<i>C. microrhonda</i> Torr. & Hook.	Sedge	FACW
<i>C. muricata</i> L.	Muricat sedge	OBL
<i>C. normalis</i> Mackenz.	Normal sedge	FACW-
<i>C. oxycarpa</i> Holm	Sedge	-
<i>C. oxylepis</i> Torr. & Hook.	Sedge	FACW-
<i>C. prasina</i> Wahlenb.	Sedge	OBL
<i>C. projecta</i> Machenz.	Beaded broom sedge	FACW+
<i>C. reniformis</i> (L. H. Bailey) Small	Sedge	FACW
<i>C. rostrata</i> J. Stokes	Beaked sedge	OBL
<i>C. scabrata</i> Schweinitz	Sedge	OBL
<i>C. schweinitzii</i> Dewey	Schweinitz sedge	OBL
<i>C. scoparia</i> Schk.	Broom sedge	FACW
<i>C. seorsa</i> Howe	Sedge	FACW
<i>C. shortiana</i>	Sedge	FACW

<u>Scientific Name</u>	<u>Common Name</u>	<u>Indicator Status</u>
<i>C. sparganioides</i> Muhl. ex Willd.	Bur-reed sedge	FAC+
<i>C. squarrosa</i> L.	Sedge	FACW
<i>C. stipata</i> Muhl. ex Willd.	Sawbeak sedge	OBL
<i>C. straminea</i> Willd.	Straw sedge	OBL
<i>C. stricta</i> Lam.	Sedge	OBL
<i>C. styloflexa</i> Buckl.	Sedge	FACW
<i>C. tenera</i> Dewey	Sedge	FACW
<i>C. tetanica</i> Schkuhr	Wood's sedge	FACW
<i>C. torta</i> Boott	Sedge	OBL
<i>C. triangularis</i> Boeckler	Sedge	FACW
<i>C. tribuloides</i> Wahlenb.	Bristlebract sedge	FACW+
<i>C. trichocarpa</i> Muhl.	Slough sedge	OBL
<i>C. trisperma</i> Dewey	Threeseeded sedge	OBL
<i>C. turgescens</i> Torr.	Sedge	OBL
<i>C. typhina</i> Michx.	Sedge	OBL
<i>C. venusta</i> Dewey	Sedge	FACW+
<i>C. verrucosa</i> Muhl.	Warty sedge	OBL
<i>C. vulpinoidea</i> Michx.	Fox sedge	OBL
<i>C. walteriana</i> L. H. Bailey	Walter sedge	OBL
<i>C. willdenowii</i> Schkuhr	Sedge	FACW
<i>C. X oklahomensis</i> Mackenz.	Oklahoma sedge	OBL
<i>Carphephorus pseudo-liatris</i> Cass.	False liatris	OBL
<i>C. tomentosus</i> (Michx.) T. & G.	Carphephorus	FACW
<i>Carpinus caroliniana</i> Walter	American hornbeam	FAC
<i>Carya aquatica</i> (Michx. f.) Nutt.	Water hickory	OBL
<i>C. cordiformis</i> (Wangenh.) K. Koch	Bitternut hickory	FAC
<i>C. illinoensis</i> (Wangenh.) K. Koch	Pecan	FAC+
<i>C. laciniosa</i> (Michx. f.) Loud.	Shellbark hickory	FACW-
<i>C. X lecontei</i> Little	Leconte hickory	OBL
<i>C. muristiciformis</i> (Michx. f.) Nutt.	Nutmeg hickory	FACW-
<i>Cassia hebecarpa</i> Fernald	Wild senna	FAC+
<i>C. marylandica</i> L.	Maryland senna	FAC
<i>Castilleja coccinea</i> (L.) Spreng.	Scarlet indian paintbrush	FAC
<i>Casuarina glauca</i> Siebold ex Spreng.	Australian pine	FAC
<i>Cayaponia grandifolia</i> (Torr. & Gray) Small	Cayaponia	FAC
<i>C. quinqueloba</i> (Raf.) Shinnars	Boykin's bryony	FACW-
<i>Celtis laevigata</i> Willd.	Sugarberry	FACW
<i>Centella asiatica</i> (L.) Urban	Spadeleaf	FACW
<i>C. erecta</i> (L.f.) Fernald	Coinwort	FACW
<i>Centrogenium setaceum</i> (Lindl.) Schlecht.	Spurred neottia	OBL
<i>Centunculus minimus</i> L.	Chaffweed	FACW+
<i>Cephalanthus occidentalis</i> L.	Common buttonbush	OBL
<i>Ceratophyllum demersum</i> L.	Coontail	OBL
<i>C. muricatum</i> Cham.	Coontail	OBL
<i>C. submersum</i> L.	Coontail	OBL
<i>Ceratopteris pteridoides</i> (Hook.) Hieron.	American waterfern	OBL
<i>C. richardii</i> Brongn.	Richard waterfern	OBL
<i>C. thalictroides</i> (L.) Brongn.	Oriental waterfern	OBL

<u>Scientific Name</u>	<u>Common Name</u>	<u>Indicator Status</u>
<i>Chaerophyllum procumbens</i> (L.) Crantz	Spreading chervil	FACW
<i>C. tainturieri</i> Hook.	Chervil	FAC
<i>Chamaecyparis thyoides</i> (L.) B.S.P.	Atlantic white-cedar	OBL
<i>Chamaedaphne calyculata</i> (L.) Moench	Leatherleaf	OBL
<i>Chamaesyce serpens</i> (H. B. K.) Small	Round-leaved spurge	FAC+
<i>Chaptalia tomentosa</i> Vent.	Chaptalia	FACW
<i>Chasmanthium laxum</i> (L.) H. Yates	Chasmanthium	FACW-
<i>C. nitidum</i> (Baldw.) H. Yates	Chasmanthium	FACW+
<i>C. ornithorhynchum</i> (Steud.) H. Yates	Chasmanthium	FACW
<i>C. sessiliflorum</i> (Poir.) H. Yates	Chasmanthium	FAC+
<i>Cheiroglossa palmata</i> (L.) K. Presl.	Hand fern	FAC+
<i>Chelone cuthbertii</i> Small	Cuthbert's turtlehead	OBL
<i>C. glabra</i> L.	White turtlehead	OBL
<i>C. lyonii</i> Pursh	Pink turtlehead	FACW+
<i>C. obliqua</i> L.	Red turtlehead	OBL
<i>Chrysobalanus icaco</i> L.	Icaco cocoplum	FACW
<i>Chrysosplenium americanum</i> Schweinitz	Golden saxifrage	OBL
<i>Ciclospermum leptophyllum</i> (Pers.) Sprague ex Britton	Ciclospermum	FAC+
<i>Cicuta maculata</i> L.	Common waterhemlock	OBL
<i>C. mexicana</i> C. & R.	Mexican waterhemlock	OBL
<i>Cinna arundinacea</i> L.	Stout woodreed	FACW
<i>C. latifolia</i> (Trevir.) Griseb.	Drooping woodreed	FACW+
<i>Circaea alpina</i> L.	Alpine circaea	FACW
<i>Cirsium horridulum</i> Michx.	Plumeless thistle	FAC+
<i>C. lecontei</i> Torr. & Gray	Thistle	FACW-
<i>C. muticum</i> Michx.	Swamp thistle	OBL
<i>C. nuttallii</i> DC.	Nuttall thistle	FAC
<i>C. virginianum</i> (L.) Michx.	Virginia thistle	OBL
<i>C. vulgare</i> (Savi) Tenore	Bull thistle	FAC
<i>Cissus incisa</i> Des Moul	Ivy treebine	FAC
<i>Cladium jamaicense</i> Crantz	Jamaica sawgrass	OBL
<i>C. mariscoides</i> (Muhl.) Torr.	Twig-rush	OBL
<i>Cleistes divaricata</i> (L.) Ames	Cleistes	FAC+
<i>Clematis baldwinii</i> Torr. & Gary	Pine-hyacinth	FACW-
<i>C. catesbyana</i> Pursh	Satin-curls	FAC+
<i>C. crispa</i> L.	Curly clematis	FACW+
<i>C. ligusticifolia</i> Nutt.	Virginsbower	FACW
<i>C. virginiana</i> L.	Virginsbower clematis	FAC+
<i>Clethra alnifolia</i> L.	Summersweet clethra	FACW
<i>Cliftonia monophylla</i> (Lam.) Britton	Buckwheat-tree	OBL
<i>Coccoloba uvifera</i> (L.) L.	Seagrape	FAC
<i>Cocculus carolinensis</i> (L.) DC.	Snailseed	FAC
<i>Coeloglossum viride</i> (L.) Hartm.	Long bracted orchid	FAC
<i>Coelorachis cylindrica</i> (Michx.) Nash	Coelorachis	FAC
<i>C. rugosa</i> (Nutt.) Nash	Coelorachis	OBL
<i>C. tessellata</i> (Steud.) Nash	Coelorachis	FACW
<i>C. tuberculata</i> (Nash) Nash	Coelorachis	OBL
<i>Coelostylis loganioides</i> Torr. & Gray	Pink-root	FACW
<i>Coix lacryma-jobi</i> L.	Job's tears	FACW
<i>Collinsia verna</i> Nutt.	Common blue-eyed Mary	FAC
<i>Collinsia canadensis</i> L.	Horse-balm	FAC

<u>Scientific Name</u>	<u>Common Name</u>	<u>Indicator Status</u>
<i>Colocasia antiquorum</i> Schott	Taro	OBL
<i>C. esculenta</i> (L.) Schott	Elephant ear	FACW
<i>Colubrina asiatica</i> (L.) Brongn.	Colubrina	FACW
<i>Commelina caroliniana</i> Walter	Carolina dayflower	FAC
<i>C. communis</i> L.	Common dayflower	FAC
<i>C. diffusa</i> Burn. f.	Spreading dayflower	FACW
<i>C. virginica</i> L.	Virginia dayflower	FACW
<i>Conioselinum chinense</i> (L.) B.S.P.	Appalachian hemlockparsley	FACW
<i>Conium maculatum</i> L.	Poison hemlock	FACW
<i>Conocarpus erectus</i> L.	Button-mangrove	FACW+
<i>Conoclinium coelestinum</i> (L.) DC.	Mistflower	FAC
<i>Conradina verticillata</i> Jennison	Whorled-leaved rosemary	FACW-
<i>Conyza coulteri</i> Gray	Coulter's conyza	FACW-
<i>Coptis trifolia</i> (L.) Salisb.	Goldthread	FACW
<i>Coralorrhiza wisteriana</i> Conrad	Spring coralroot	FAC
<i>Coreopsis falcata</i> F. E. Boynton	Coreopsis	FACW
<i>C. floridana</i> E. B. Smith	Coreopsis	OBL
<i>C. gladiata</i> Walter	Smooth coreopsis	FACW
<i>C. integrifolia</i> Porr.	Coreopsis	FACW
<i>C. leavenworthii</i> Torr. & Gray	Coreopsis	FACW
<i>C. linifolia</i> Nutt.	Narrow-leaf coreopsis	FACW
<i>C. nudata</i> Nutt.	Swamp coreopsis	FACW+
<i>C. rosea</i> Nutt.	Rose coreopsis	FACW
<i>C. tinctoria</i> Nutt.	Tickseed coreopsis	FAC
<i>C. tripteris</i> L.	Tall coreopsis	FAC
<i>Cornus amomum</i> Mill.	Silky dogwood	FACW+
<i>C. asperifolia</i> Michaux	Roughleaf dogwood	FACW-
<i>C. drummondii</i> C. A. Meyer	Roughleaf dogwood	FAC
<i>C. foemina</i> Mill.	Gray dogwood	FACW-
<i>C. stolonifera</i> Michx.	Redosier dogwood	FACW
<i>Cranichis muscosa</i> Swartz	Cranichis	-
<i>Crassula aquatica</i> (L.) Schoenl.	Crassula	OBL DRA
<i>Crataegus aestivalis</i> (Walter) Torr. & Gray	May hawthorn	OBL
<i>C. berberifolia</i> Torr. & Gray	Barberry hawthorn	FAC
<i>C. brachyacantha</i> Sarg. & Engelm.	Blueberry hawthorn	OBL
<i>C. marshallii</i> Egglest.	Parsley hawthorn	FAC
<i>C. mollis</i> Scheele	Downy hawthorn	FAC
<i>C. K nitida</i> (Engelm.) Sarg.	Glossy hawthorn	FAC+
<i>C. opaca</i> Hook. & Arn.	Riverflat hawthorn	OBL
<i>C. paludosa</i> Sarg.	Swamp haw	OBL
<i>C. pulcherrima</i> Ashe	Beautiful hawthorn	FAC
<i>C. spathulata</i> Michx.	Littlehip hawthorn	FAC
<i>C. texana</i> Buckley	Texas hawthorn	-
<i>C. viridis</i> L.	Green hawthorn	FACW
<i>Cnium americanum</i> L.	Swamp-lily	OBL
<i>Croton elliotii</i>	Croton	FACW+
<i>Cryptotaenia canadensis</i> (L.) DC.	Honewort	FAC+
<i>Ctenitis submarginalis</i> (Langsd. & Fisch.) Copeland	Ctenitis	FACW
<i>Ctenium aromaticum</i> (Walter) Wood	Toothache grass	FACW
<i>C. floridanum</i> (Hitchc.) Hitchc.	Orange grass	FACW

<u>Scientific Name</u>	<u>Common Name</u>	<u>Indicator Status</u>
<i>Cuphea aspera</i> Chapm.	Tropical waxweed	OBL
<i>C. carthagenensis</i> (Jacq.) Macbr.	Tarweed cuphea	FACW
<i>Cumodocea filiformis</i> (Kuetz.) Correll	Manateeegrass	OBL
<i>Cynanchum angustifolium</i> Pers.	Marsh swallow-wort	FACW
<i>Cynosciadium digitatum</i> DC.	Finger dogshade	FACW
<i>Cynoctonum mitreola</i> (L.) Britton	Lax hornpod	FACW+
<i>C. sessilifolium</i> (Walter) J. F. Gmel.	Wand hornpod	FACW+
<i>Cyperus acuminatus</i> Torr. & Hook	Taperleaf flatsedge	OBL
<i>C. albomarginatus</i> Mart. & Schrader	Whiteedge flatsedge	FAC
<i>C. altermifolius</i> L.	Umbrella sedge	OBL
<i>C. aristatus</i> Rottb.	Bearded flatsedge	OBL
<i>C. articulatus</i> L.	Jointed flatsedge	OBL
<i>C. brevifolius</i> (Rottb.) Hassk.	Kyllinga	FACW
<i>C. compressus</i> L.	Flat cyperus	FACW
<i>C. cuspidatus</i> H.B.K.	Flatsedge	FACW-
<i>C. dentatus</i> Torr.	Toothleaf flatsedge	OBL
<i>C. diandrus</i> Torr.	Low flatsedge	FACW
<i>C. difformis</i> L.	Smallflower flatsedge	OBL
<i>C. distans</i> L. f.	Flatsedge	OBL
<i>C. distinctus</i> Steud.	Flatsedge	FACW
<i>C. elegans</i> L.	Sticky flatsedge	FACW
<i>C. engelmanni</i> Steud.	Engelmann flatsedge	OBL
<i>C. eragrostis</i> Lam.	Tall flatsedge	FACW
<i>C. erythrorhizos</i> Muhl.	Redroot cyperus	OBL
<i>C. esculentus</i> L.	Chufa	FAC
<i>C. ferax</i> L. C. Rich.	Coarse cyperus	FACW
<i>C. ferruginescens</i> Boeckl.	Cyperus	FAC
<i>C. filicinus</i> Vahl	Nuttall's cyperus	OBL
<i>C. flavescens</i> L.	Yellow cyperus	OBL
<i>C. flavus</i> (Vahl) Vahl ex Nees.	Cyperus	FAC
<i>C. giganteus</i> Vahl	Giant flatsedge	OBL
<i>C. globulosus</i> Aubl.	Baldwin's flatsedge	FAC
<i>C. granitiphilus</i> Mcvaugh	Flatsedge	OBL
<i>C. haspan</i> L.	Sheathed cyperus	OBL
<i>C. hermaphroditus</i> (Jacq.) Standl.	Sand flatsedge	FAC
<i>C. huarmensis</i> (H.B.K.) M. C. Johnst.	Flatsedge	-
<i>C. iria</i> L.	Rice flatsedge	FACW
<i>C. laevigatus</i> L.	Smooth flatsedge	FACW
<i>C. lancastriensis</i> T. Porter ex Gray	Lancaster cyperus	FAC
<i>C. lanceolatus</i> Poir.	Lanceleaved cyperus	FACW
<i>C. lecontei</i> Torr.	Leconte's cyperus	FACW
<i>C. ligularis</i> L.	Cyperus	FACW
<i>C. ochraceus</i> Vahl	Flatsedge	FACW
<i>C. odoratus</i> L.	Fragrant flatsedge	FACW
<i>C. ovularis</i> (Michx.) Torr.	Pine barren cyperus	FAC
<i>C. oxylepis</i> Nees. ex. Steud.	Sharpscale flatsedge	FACW
<i>C. papyrus</i> L.	Papyrus	OBL
<i>C. pilosus</i> Vahl	Flatsedge	-
<i>C. planifolius</i> Rich.	Flatsedge	FAC
<i>C. polystachyos</i> Roth	Many-spiked flatsedge	FACW
<i>C. pseudovegetus</i> Steud.	Green flatsedge	FACW
<i>C. pumilus</i> L.	Flatsedge	FACW

<u>Scientific Name</u>	<u>Common Name</u>	<u>Indicator Status</u>
<i>C. rivularis</i> Kunth	Shining cyperus	FACW
<i>C. sesquiflorus</i> (Torr.) Matif. & Kukenth.	Fragrant kyllinga	FACW
<i>C. stenolepis</i> Torr.	Pale marsh cyperus	OBL
<i>C. strigosus</i> L.	Straw-colored cyperus	FACW
<i>C. surinamensis</i> Rottb.	Tropical flatsedge	FACW
<i>C. tenuifolius</i> (Steud.) Dandy	Low kyllinga	FACW
<i>C. tetragonus</i> Elliott	Piedmont flatsedge	FAC+
<i>C. virens</i> Michx.	Green flatsedge	FACW
<i>Cypripedium acaule</i> Ait.	Moccasin flower	FAC
<i>C. reginae</i> Walter	Showy lady's slipper	FACW-
<i>Cypselea humifusa</i> Turpin	Cypselea	FACW
<i>Cyrilla racemiflora</i> L.	Swamp cyrilla	FACW
<i>Cystopteris bulbifera</i> (L.) Bernh.	Berry bladderfern	FAC
<i>Dalbergia brounei</i> (Jacq.) Urban	Dalbergia	FACW
<i>D. ecastophyllum</i> (L.) Benth.	Dalbergia	FACW+
<i>Dalea carnea</i> (Michx.) Poir.	Dalea	FACW
<i>Dalibarda repens</i> L.	Dewdrop	FACW+
<i>Dasistoma macrophylla</i> (Nutt.) Raf.	Largeleaf dasistoma	FAC
<i>Decodon verticillatus</i> (L.) Elliott	Water willow	OBL DRA
<i>Decumaria barbara</i> L.	Climbinghydrangea decumariavine	FACW
<i>Deeringothamnus pulchellus</i> Small	Deeringothamnus	FAC
<i>D. rugelii</i> (B. Rob.) Small	Deeringothamnus	FACW
<i>Deschampsia cespitosa</i> (L.) Beauv.	Tufted hairgrass	FAC
<i>Desmanthus illinoiense</i> (Michx.) Macmil. ex B. Rob. & Fernald	Illinois bundleflower	FAC
<i>Diamorpha smallii</i> Britton	Small diamorpha	FACW+
<i>Dichanthelium acuminatum</i> (Swartz) Gold and C. A. Clarke	Pacific panicum	FAC
<i>D. clandestinum</i> (L.) Gould	Deertongue dichanthelium	FACW
<i>D. commutatum</i> (J. A. Schultes) Gould	Variable dichanthelium	FAC
<i>D. consanguineum</i> (Kunth) Gould & C. A. Clarke	Deam panic	FAC
<i>D. dichotomum</i> (L.) Gould	Forked panicum	FAC
<i>D. erectifolium</i> (Nash) Gould & C. A. Clarke	Erect panicum	OBL
<i>D. laxiflorum</i> (L.) Gould	Openflower dichanthelium	FAC
<i>D. leucoblepharis</i> (Trin.) Gould & C. A. Clarke	Little panicum	FAC
<i>D. scarbriusculum</i> (Elliott) Gould & C. A. Clarke	Velvet panicum	OBL
<i>D. scoparium</i> (Lam.) Gould	Velvet panicum	FACW
<i>Dichondra caroliniensis</i> Michaux	Carolina dichondra	FACW-
<i>Dichromena colorata</i> (L.) Hitchc.	Whitetop	FACW
<i>D. floridensis</i> Britton	Everglades whitetopsedge	FACW+
<i>D. latifolia</i> Baldwin	Sandswamp whitetopsedge	FACW+
<i>Dicliptera brachiata</i> (Pursh) Spreng.	Dicliptera	FACW
<i>Didiplis diandra</i> (Nutt.) Wood	Water-purslane	OBL
<i>Digitaria serotina</i> (Walter) Michx.	Blanket fingergrass	FAC DRA

<u>Scientific Name</u>	<u>Common Name</u>	<u>Indicator Status</u>
<i>Dioclea multiflora</i> (Torr. & Gray) Mohr	Boykin clusterpea	FAC+
<i>Diodia virginiana</i> L.	Virginia buttonweed	FACW
<i>Dionaea muscipula</i> Ellis	Common venusflytrap	FACW
<i>Dioscorea hirticaulis</i> Bartlett	Yam	OBL
<i>D. quaternata</i> (Walter) J. F. Gmel.	Wild yam	FAC
<i>D. villosa</i> L.	Atlantic yam	FAC
<i>Diospyros virginiana</i> L.	Common persimmon	FAC
<i>Distichlis spicata</i> (L.) Greene	Seashore saltgrass	FACW+
<i>Dopatrium junceum</i> (Roxb.) Buch.-Ham.	Dopatrium	OBL
<i>Dracopis amplexicaulis</i> (Vahl) Cass.	Dracopis	FAC
<i>Drosera brevifolia</i> Pursh	Sundew	OBL
<i>D. capillaris</i> Poir.	Pink sundew	OBL
<i>D. filiformis</i> Raf.	Dew-thread	OBL
<i>D. intermedia</i> Hayne	Spatulate-leaved sundew	OBL
<i>D. rotundifolia</i> L.	Round-leaved sundew	OBL
<i>Drymaria cordata</i> (L.) Willd. ex J. A. Schultes	Drymaria	FAC
<i>Dryopteris X australis</i> (Wherry) Small	Southern wood fern	FACW
<i>D. celsa</i> (W. Palmer) Small	Log fern	FAC+
<i>D. cristata</i> (L.) Gray	Crested shieldfern	OBL
<i>D. dilatata</i> (Hoffm.) Gray	Mountain woodfern	FAC
<i>D. ludoviciana</i> (Kunze) Small	Louisiana woodfern	FACW
<i>D. spinulosa</i> (O. F. Muell.) Watt.	Spinulose shieldfern	FACW
<i>D. X uliginosa</i> (A. Braun ex. Dowell) Druce	Oviedo woodfern	FAC
<i>Eulichium arundinaceum</i> (L.) Britton	Three-way sedge	OBL
<i>Dyschoriste angusta</i> (Gray) Small	Dyschoriste	FAC
<i>E. humistrata</i> (Michx.) Kuntze	Dyschoriste	FACW
<i>Echinochloa colona</i> (L.) Link	Jungle-rice	FACW
<i>E. crusgali</i> (L.) Beauv.	Barnyard grass	FACW DRA
<i>E. crus-pavonis</i> (H.B.K.) J. A. Schultes	Alkali barnyardgrass	OBL
<i>E. muricata</i> (Beauv.) Fernald	Barnyard grass	FAC DRA
<i>E. paludigena</i> Wiegand	Florida cockspur	OBL
<i>E. polystachya</i> (H.B.K.) A. Hitchc.	Caribgrass	OBL
<i>E. walteri</i> (Pursh) A. Heller	Walter millet	OBL DRA
<i>Echinocystis lobata</i> (Michaux) T. & G.	Wild cucumber	FACW-
<i>Echinodorus cordifolius</i> (L.) Griseb.	Creeping burhead	OBL
<i>E. parvulus</i> Engelm.	Burhead	OBL
<i>E. rostratus</i> (Nutt.) Engelm.	Burhead	OBL
<i>E. tenellus</i> (Mart.) Buch.	Slender burhead	OBL
<i>Eclipta alba</i> (L.) Hassk.	Common yerbadetajo	FACW-
<i>Egeria densa</i> Planch.	Brazilian elodea	OBL
<i>Eichhornia crassipes</i> (Mart.) Solms.	Common waterhyacinth	OBL
<i>Elaeagnus angustifolia</i> L.	Russian olive	FAC
<i>Elatine americana</i> (Pursh) Arn.	American waterwort	OBL
<i>E. brachysperma</i> Gray	Shortseed waterwort	OBL
<i>E. gracilis</i> Mason	Waterwort	OBL
<i>E. triandra</i> Schk.	Matted waterwort	OBL
<i>Eleocharis acicularis</i> (L.) R. & S.	Slender spikerush	OBL
<i>E. albida</i> Torr.	Saltmarsh spikerush	OBL
<i>E. atropurpurea</i> (Retz.) J. & K. Presl	Purple spikerush	FACW

<u>Scientific Name</u>	<u>Common Name</u>	<u>Indicator Status</u>
<i>E. baldwinii</i> (Torr.) Chapm.	Baldwin's spikerush	FACW+
<i>E. caribaea</i> (Rottb.) Blake	Canada spikesedge	FACW
<i>E. cellulosa</i> Torr.	Gulfcoast spikerush	OBL
<i>E. compressa</i> Sulliv.	Flat-stemmed spike-rush	FACW+
<i>E. elongata</i> Chapm.	Water spikerush	OBL
<i>E. engelmanni</i> Steud.	Engelmann's spikerush	FACW
<i>E. equisetoides</i> (Elliott) Torr.	Northern jointed spikerush	OBL
<i>E. erythropoda</i> Steud.	Creeping spikerush	OBL
<i>E. fallax</i> Weatherby	Creeping spike-rush	OBL
<i>E. flavescens</i> (Poir.) Urban	Yellow spikerush	OBL
<i>E. geniculata</i> (L.) R. & S.	Spikerush	FACW+
<i>E. halophila</i> Fernald & Brack.	Salt-marsh spike-rush	OBL
<i>E. intermedia</i> Schult.	Matted spike-rush	FACW
<i>E. interstincta</i> (Vahl) R. & S.	Southern jointed spikerush	OBL
<i>E. lanceolata</i> Fernald	Lanceleaf spikerush	FACW
<i>E. macrostachya</i> Britton	Creeping spikerush	OBL
<i>E. melanocarpa</i> Torr.	Black-fruited spike-rush	FACW
<i>E. microcarpa</i> Torr.	Torrey's spikerush	OBL
<i>E. minima</i> Kunth	Small spikesedge	OBL
<i>E. montana</i> H.B.K.	Mountain spikesedge	OBL
<i>E. montevidensis</i> Kunth	Sand spikesedge	FACW+
<i>E. nana</i> Kunth	Hairlike spike-rush	OBL
<i>E. nigrescens</i> (Nees.) Steud.	Black spike-rush	FACW
<i>E. obtusa</i> (Willd.) Schult.	Blunt spikesedge	OBL
<i>E. olivacea</i> Torr.	Olive spikerush	OBL
<i>E. ovata</i> (Roth) R. & S.	Ovate spikerush	OBL
<i>E. palustris</i> (L.) R. & S.	Common spikesedge	OBL
<i>E. parrula</i> (R. & S.) Link	Dwarf spikerush	OBL
<i>E. quadrangulata</i> (Michx.) R & S.	Squarestem spikerush	OBL
<i>E. radicans</i> (A. Dietr.) Kunth	Slender spikerush	OBL
<i>E. retroflexa</i> (Poir.) Urban	Few-flowered spike-rush	OBL
<i>E. robbinsii</i> Oakes	Trianglestem spikerush	OBL
<i>E. rostellata</i> Torr.	Beaked spikerush	OBL
<i>E. smallii</i> Britton	Small's spikerush	OBL
<i>E. tenuis</i> (Willd.) Schult.	Slender spikerush	FACW
<i>E. tortilis</i> (Link) Schult.	Twisted spikerush	FACW
<i>E. tricostata</i> Torr.	Three-ribbed spike-rush	FACW+
<i>E. tuberculosa</i> (Michx.) R. & S.	Large tubercled spike-rush	FACW+
<i>E. tuberosa</i> Schult.	Spikerush	OBL
<i>E. vivipara</i> Link	Viviparous spike rush	OBL
<i>E. wolfii</i> Gray	Wolf's spikerush	OBL
<i>Elephantopus carolinianus</i> Raeusch.	Elephant's foot	FAC
<i>E. nudatus</i> Gray	Elephant's foot	FAC
<i>Ellisia nyctelea</i> L.	False babyblueeyes	FAC
<i>Elodea canadensis</i> Michx.	Common waterweed	OBL
<i>E. linearis</i> H. St. John	Nashville waterweed	OBL
<i>E. nuttallii</i> (Planch.) St. John	Nuttall waterweed	OBL
<i>Elymus canadensis</i> L.	Canada wildrye	FAC
<i>E. riparius</i> Wiegand	Riverbank wildrye	FACW
<i>E. virginicus</i> L.	Virginia wildrye	FAC

<u>Scientific Name</u>	<u>Common Name</u>	<u>Indicator Status</u>
<i>Elyonurus tripsacoides</i> Humb. & Bonpl. ex Willd.	Balsamscale	FACW-
<i>Elytraria caroliniensis</i> (J. F. Gmelin) Persoon	Canada waterweed	FACW
<i>Enemion bitermatum</i> Raf.	Enemion	FACW
<i>Epilobium coloratum</i> Beihler	Purpleleaf willowweed	OBL
<i>E. leptophyllum</i> Raf.	Willowweed	OBL
<i>E. palustre</i> L.	Dwarf willowweed	OBL
<i>Equisetum arvense</i> L.	Field horsetail	FAC
<i>E. X ferrissii</i> Clute	Ferriss horsetail	FACW
<i>E. hyemale</i> L.	Scouringrush horsetail	FAC+
<i>E. laevigatum</i> A. Brawn	Smooth horsetail	FAC
<i>Eragrostis atrovirens</i> (Desf.) Trin.	Thalia lovegrass	FAC
<i>E. bahiensis</i> Schrad.	Bahia lovegrass	FAC
<i>E. elliottii</i> S. Wats.	Elliott lovegrass	FACW
<i>E. frankii</i> C. A. Meyer	Frank's lovegrass	FACW
<i>E. glomerata</i> (Walter) L. Dewey	Pond lovegrass	OBL
<i>E. hypnoides</i> (Lam.) B.S.P.	Teal lovegrass	OBL DRA
<i>E. pectinacea</i> (Michx.) Nees.	Carolina lovegrass	FAC
<i>E. prolifera</i> (Swartz) Steud.	Prolific lovegrass	-
<i>E. refracta</i> (Chapm.) Scribn.	Coastal lovegrass	FACW
<i>E. reptans</i> (Michx.) Nees.	Creeping lovegrass	OBL
<i>E. unioloides</i> (Retz.) Nees.	Chinese lovegrass	OBL
<i>Erianthus alopecuroides</i> (L.) Elliott	Silver plumegrass	FAC
<i>E. brevibarbis</i> Michx.	Brown plumegrass	FACW
<i>E. contortus</i> Baldw.	Bent-awn plumegrass	FAC
<i>E. giganteus</i> (Walter) F. T. Hubb. non Muhl.	Sugarcane plumegrass	FACW
<i>E. ravennae</i> (L.) Beauv.	Ravenna grass	FAC
<i>E. strictus</i> Baldw.	Narrow plumegrass	OBL
<i>Erigeron myrionactis</i> Small	Corpus Christi fleabane	FAC
<i>E. philadelphicus</i> L.	Philadelphia fleabane	FAC
<i>E. quercifolius</i> Lam.	Southern fleabane	FAC+
<i>E. strigosus</i> Muhl. ex Willd.	Daisy fleabane	FAC
<i>E. vernus</i> (L.) Torr. & Gray	Early whitetop fleabane	OBL
<i>Eriocaulon cinereum</i> R. Br.	Pipewort	OBL
<i>E. compressum</i> Lam.	Compressed pipewort	OBL
<i>E. decangulare</i> L.	Tenangle pipewort	OBL
<i>E. kormickianum</i> Van Heurck & Muell. Arg.	Small-headed pipewort	OBL
<i>E. lineare</i> Small	Pipewort	OBL
<i>E. ravenelii</i> Chapm.	Ravenel pipewort	OBL
<i>E. septangulare</i> With.	Pipewort	OBL
<i>E. texense</i> Koern.	Texas pipewort	OBL
<i>Eriochloa contracta</i> Hitchc.	Prairie cupgrass	FAC
<i>E. gracilis</i> (Fourn.) Hitchc.	Southwestern cupgrass	FAC
<i>E. michauxii</i> (Poir.) Hitchc.	Longleaf cupgrass	FACW-
<i>E. punctata</i> (L.) Desv.	Louisiana cupgrass	FACW
<i>Eriophorum virginicum</i> L.	Virginia cottonsedge	OBL
<i>Eryngium aquaticum</i> L.	Buttonsnakeroot eryngo	OBL
<i>E. aromaticum</i> Baldw.	Fragrant eryngium	FACW
<i>E. baldwinii</i> Spreng.	Baldwin's eryngium	FACW+

<u>Scientific Name</u>	<u>Common Name</u>	<u>Indicator Status</u>
<i>E. hookeri</i> Walp.	Hooker eryngo	FACW
<i>E. integrifolium</i> Walter	Eryngo	FACW
<i>E. prostratum</i> Nutt.	Creeping eryngo	FACW
<i>E. yuccifolium</i> Michx.	Button snakeroot	FAC
<i>Erythrodes querceticola</i> (Lindl.) Ames	Low erythrodes	FACW
<i>Erythronium umbilicatum</i> C. R. Parks & J. S. Hardin	Trout lily	FAC
<i>Eulalia viminea</i> (Trin.) Kuntze	Eulalia	FAC+
<i>Eulophia alta</i> (L.) Fawc. & Rendle	Wild coco	FACW
<i>Euonymus atropurpureus</i> Jacq.	Easternwahoo euonymus	FAC
<i>Eupatoriadelphus dubius</i> (Willd. ex Poir.) R. M. King & H. Rob.	Joe-pye	FACW
<i>E. fistulosus</i> (Barratt ex Hook.) R. M. King & H. Rob.	Joe-pye weed	FAC+
<i>E. maculatus</i> (L.) R. M. King & H. Rob.	Joe-pyeweed	FACW-
<i>E. purpureus</i> (L.) R. M. King & H. Rob.	Joe-pyeweed	FAC
<i>Eupatorium anomalum</i> Nash	Eupatorium	FAC+
<i>E. leptophyllum</i> DC.	Fennel	FAC+
<i>E. leucolepis</i> (DC.) Torr. & Gray	White bracted thoroughwort	FACW+
<i>E. mikanioides</i> Chapm.	Semaphore eupatorium	FACW
<i>E. perfoliatum</i> L.	Boneset	FACW+
<i>E. pilosum</i> Walter	Hairy thoroughwort	FACW
<i>E. recurvans</i> Small	Recurved eupatorium	FACW-
<i>E. resinatum</i> Torr.	Resin boneset	OBL
<i>E. rotundifolium</i> L.	Roundleaf joe-pye weed	FAC
<i>E. semiserratum</i> DC.	Small-flowered eupatorium	FACW
<i>E. serotinum</i> Michx.	Late eupatorium	FAC
<i>Euphorbia commutata</i> Engelm.	Euphorbia	FAC
<i>E. curtissii</i> Engelm	Euphorbia	FAC
<i>E. heterophylla</i> L.	Painted spurge	FAC
<i>E. humistrata</i> Engelm.	Euphorbia	FACW
<i>E. hyssopifolia</i>	Hyssop spurge	FAC
<i>E. inundata</i> Torr. ex Chapm.	Euphorbia	FACW
<i>E. obtusata</i> Pursh	Euphorbia	FAC
<i>E. purpurea</i> Raf.	Wolf's-milk	FACW
<i>E. serpens</i> H.B.K.	Euphorbia	FAC+
<i>Eustachya glauca</i> Chapm.	Eustachys	FACW
<i>Eustoma exaltatum</i> (L.) Griseb.	Eustoma	FACW+
<i>Euthamia carporum</i> Greene	Bushy golden-rod	FAC
<i>E. galetorum</i> Greene	Narrow-leaf euthamia	FAC
<i>E. graminifolia</i> (L.) Nutt.	Grass-leaved goldenrod	FACW-
<i>E. leptocephalia</i> (Torr. & Gray) Greene	Western bushy golden-rod	FACW-
<i>E. minor</i> (Michx.) Greene	Narrow-leaved bushy goldenrod	FAC
<i>E. tenuifolia</i> (Pursh) Greene	Euthemia	FAC+
<i>Evolvulus sericeus</i> Swartz	Evolvulus	FACW
<i>Ficus aurea</i> Nutt.	Strangler fig	FACW
<i>F. citrifolia</i> Mill.	Shortleaf fig	FAC
<i>Filaginella uliginosa</i> (L.) Opiz	Filaginella	-
<i>Filipendula rubra</i> (Hill) Robins.	Prairie meadowsweet	OBL

<u>Scientific Name</u>	<u>Common Name</u>	<u>Indicator Status</u>
<i>Fimbristylis annua</i> (All.) Roem. & J. A. Schultes	Annual fimbristylis	FACW
<i>F. autumnalis</i> (L.) R. & S.	Slender fimbristylis	OBL
<i>F. caroliniana</i> (Lam.) Fernald	Carolina fimbristylis	FACW+
<i>F. castanea</i> (Michx.) Vahl	Saltmarsh fimbristylis	OBL
<i>F. decipiens</i> Kral	Fimbristylis	FACW
<i>F. dichotoma</i> (L.) Vahl	Tall fringe rush	OBL
<i>F. miliacea</i> (L.) Vahl	Millet rush	OBL
<i>F. perpusilla</i> R. M. Harper ex Small & Britton	Vahl's fimbristylis	FACW+ DRA
<i>F. puberula</i> (Michx.) Vahl	Fimbristylis	OBL
<i>F. schoenoides</i> (Retz.) Vahl	Fimbristylis	FACW
<i>F. spadicea</i> (L.) Vahl	Saltmarsh fimbristylis	OBL
<i>F. spathacea</i> Roth.	Spathe fimbristylis	FACW+
<i>F. tomentosa</i> Vahl	Fimbristylis	FACW
<i>F. vahlii</i> (Lam.) Link	Vahl fimbristylis	OBL DRA
<i>Flaveria floridana</i> J. R. Johnst.	Flaveria	FACW
<i>F. linearis</i> Lag.	Yellowtop	FACW
<i>Floerkea proserpinacoides</i> Willd.	Falsemermaid	FACW-
<i>Forestiera acuminata</i> (Michx.) Poir.	Swamp-privet	OBL
<i>F. ligustrina</i> (Michx.) Poir.	Forestiera	FAC
<i>Fothergilla gardenii</i> Murray	Fothergilla	FACW
<i>Fraxinus caroliniana</i> Mill.	Water ash	OBL
<i>F. pennsylvanica</i> Marshall	Green ash	FACW
<i>F. profunda</i> (Bush) Bush	Pumpkin ash	OBL
<i>Fuirena breviseta</i> Cov.	Rush fuirena	OBL
<i>F. longa</i> Chapm.	Fuirena	OBL
<i>F. pumila</i> Torr.	Fuirena	OBL
<i>F. scirpoidea</i> Michx.	Rush fuirena	OBL
<i>F. simplex</i> Vahl	Western umbrellagrass	OBL
<i>F. squarrosa</i> Michx.	Hairy umbrella-sedge	OBL
<i>Galium asprellum</i> Michx.	Rough bedstraw	FACW+
<i>G. boreale</i> L.	Northern bedstraw	FAC
<i>G. obtusum</i> Bigel.	Bluntleaf bedstraw	FACW-
<i>G. tinctorium</i> L.	Dye bedstraw	FACW
<i>Gaultheria hispidula</i> (L.) Muhl.	Creeping wintergreen	FACW
<i>Gaylussacia dumosa</i> (Andr.) T. & G.	Dwarf huckleberry	FAC
<i>G. frondosa</i> (L.) T. & G.	Dangle huckleberry	FAC
<i>G. mosieri</i> Small	Huckleberry	FACW
<i>Gelsemium rankinii</i> Small	Rankin gelsemium	FACW+
<i>G. sempervirens</i> (L.) Ait. f.	Carolina jessamine	FAC
<i>Gentiana andrewsii</i> Griseb.	Closed gentian	FACW+
<i>G. autumnalis</i> L.	Pine barren gentian	FACW+
<i>G. catesbaei</i> Walter	Sampson's snakeroot	OBL
<i>G. clausa</i> Raf.	Closed gentian	FAC
<i>G. linearis</i> Froel.	Narrow-leaved gentian	OBL
<i>G. pennelliana</i> Fernald	Wiregrass gentian	FACW
<i>G. saponaria</i> L.	Soapwort gentian	FACW-
<i>Gentianella quinquefolia</i> (L.) Small	Stiff gentian	FACW-
<i>Gentianopsis crinita</i> (Froel.) Ma	Fringed gentian	FACW+
<i>Geum aleppicum</i> Jacq.	Allepo avens	FACW+
<i>G. canadense</i> Jacq.	White avens	FAC

<u>Scientific Name</u>	<u>Common Name</u>	<u>Indicator Status</u>
<i>G. laciniatum</i> Murray	Rough avens	FACW
<i>G. macrophyllum</i> Willd.	Big-leaf avens	-
<i>G. vernum</i> (Raf.) T. & G.	Spring avens	FAC
<i>G. virginianum</i> L.	Virginia avens	FACW-
<i>Gleditsia aquatica</i> Marshall	Waterlocust	OBL
<i>Glinus lotoides</i> L.	Glinus	FACW
<i>G. radiata</i> (Ruiz & Pavon) Rohrb.	Glinus	FACW
<i>Glyceria acutiflora</i> Torr.	Sharpsdale mannagrass	OBL
<i>G. canadensis</i> (Michx.) Trin.	Rattlesnake grass	OBL
<i>G. fluitans</i> (L.) R. Br.	Mannagrass	OBL
<i>G. maxima</i> (Hartm.) Holmb.	American mannagrass	OBL
<i>G. melicaria</i> (Michx.) F. T. Hubb.	Slender manna-grass	OBL
<i>G. nubigena</i> W. A. Anders.	Smokymountain mannagrass	OBL
<i>G. obtusa</i> (Muhl.) Trin.	Blunt manna-grass	OBL
<i>G. septentrionalis</i> A. Hitchc.	Eastern mannagrass	OBL
<i>G. striata</i> (Lam.) A. Hitchc.	Fowl mannagrass	OBL
<i>Glycyrrhiza lepidota</i> Pursh	Wild licorice	-
<i>Gordonia lasianthus</i> (L.) J. Ellis	Loblolly bay	FACW
<i>Gratiola aurea</i> Pursh	Hedgehyssop	OBL
<i>G. brevifolia</i> Raf.	Sticky hedge-hyssop	FACW+
<i>G. flava</i> Leavenw.	Golden hedge-hyssop	FACW
<i>G. floridana</i> Nutt.	Florida hedgehyssop	OBL
<i>G. neglecta</i> Torr.	Neglected hedgehyssop	OBL DRA
<i>G. pilosa</i> Michx.	Shaggy hedgehyssop	FACW-
<i>G. ramosa</i> Walter	Hedgehyssop	FACW
<i>G. subulata</i> Baldw. ex Benth.	Hedgehyssop	FAC
<i>G. virginiana</i> L.	Virginia hedgehyssop	OBL
<i>G. viscidula</i> Pennell	Clammy hedgehyssop	OBL
<i>Habenaria distans</i> Griseb.	Habenaria	FACW
<i>H. quinqueata</i> (Michx.) Swartz	Long-horned habenaria	FACW
<i>H. repens</i> Nutt.	Water-spider orchid	OBL
<i>H. strictissima</i> Reichb. f.	Toothed habenaria	FACW
<i>Hackelia virginiana</i> (L.) Johnst.	Stickseed	FAC
<i>Halesia diptera</i> Ellis	Twowing silverbell	FAC
<i>H. parviflora</i> Michx.	Florida silverbell	FAC
<i>Halodule beaudettei</i> (Den Hartog) Den Hartog	Shoalgrass	OBL
<i>H. wrightii</i> Aschers.	Halodule	OBL
<i>Halophila baillonis</i> Aschers.	Baillon halophila	OBL
<i>H. engelmannii</i> Aschers.	Gulf halophila	OBL
<i>H. johnsonii</i> Eiseman	Johnson's halophila	OBL
<i>Harperocalis flava</i> S. McDaniel	Yellow petaled Harper's beauty	OBL
<i>Hartwrightia floridana</i> Gray	Florida hartwrightia	OBL
<i>Hasteola suaveolens</i> (L.) Pojack.	Hasteola	FACW
<i>Hedychium coronarium</i> J. Koenig	White ginger	OBL
<i>Hedysarum alpinum</i> L.	Alpine hedysarum	-
<i>Helenium autumnale</i> L.	Common sneezeweed	FACW
<i>H. brevifolium</i> (Nutt.) Wood	Shortleaf sneezeweed	OBL
<i>H. carpestre</i> Small	Sneezeweed	FAC
<i>H. drummondii</i> H. Rock	Fringed sneezeweed	OBL
<i>H. flexuosum</i> Raf.	Purplehead sneezeweed	FACW

<u>Scientific Name</u>	<u>Common Name</u>	<u>Indicator Status</u>
<i>H. pinnatifidum</i> (Nuttall) Rydberg	Sneezeweed	OBL
<i>H. vernale</i> Walter	Spring sneezeweed	FACW+
<i>Helianthus agrestis</i> Pollard	Sunflower	FACW+
<i>H. angustifolius</i> L.	Swamp sunflower	FAC+
<i>H. carnosus</i> Small	Lake-side sunflower	FACW+
<i>H. debilis</i> Nutt.	Cucumberleaf sunflower	FAC
<i>H. floridanus</i> Gray	Florida sunflower	FACW
<i>H. giganteus</i> L.	Giant sunflower	FACW
<i>H. grosseserratus</i> Martens	Sawtooth sunflower	FAC+
<i>H. heterophyllus</i> Nuttall	Naked-stemmed sunflower	OBL
<i>H. longifolius</i> Pursh	Long leaved sunflower	FAC
<i>H. radula</i> (Pursh.) Torr. & Gray	Rayless sunflower	FACW-
<i>H. simulans</i> E. E. Wats.	Sunflower	FACW
<i>H. tuberosus</i> L.	Jerusalem artichoke	FAC
<i>H. verticillatus</i> Small	Sunflower	OBL
<i>Heliotropium curassavicum</i> L.	Seaside heliotrope	OBL DRA
<i>H. indicum</i> L.	Indian heliotrope	FAC+
<i>H. polyphyllum</i> Lehm.	Pineland heliotrope	FAC
<i>H. procumbens</i> Mill.	Fourspike heliotrope	FACW
<i>Helonias bullata</i> L.	Common swamppink	OBL
<i>Hemianthus micranthemoides</i> Nutt.	Hemianthus	OBL
<i>Hemicarpha aristulata</i> (Coville)	Awned hemicarpha	FACW+
B. B. Smyth		
<i>H. drummondii</i> Nees.	Drummond hemicarpha	OBL DRA
<i>H. micrantha</i> (Vahl) Britton	Common hemicarpha	OBL DRA
<i>Heracleum lanatum</i> Michx.	Common cowparsnip	FAC
<i>Heteranthera liebmannii</i> (Buch.) Shinnars	Liebmann mudplantain	OBL
<i>H. limosa</i> (Swartz) Willd.	Longleaf mudplantain	OBL
<i>H. reniformis</i> R. & P.	Roundleaf mudplantain	OBL
<i>Heterotheca oligantha</i> (Chapm.) V. L. Harms	Large-flowered golden aster	FAC
<i>Hibiscus aculeatus</i> Walter	Rough rosemallow	FACW
<i>H. coccineus</i> (Medik.) Walter	Scarlet rosemallow	OBL
<i>H. furcellatus</i> Lam.	Native pink hibiscus	FAC
<i>H. grandiflorus</i> Michx.	Swamp hibiscus	OBL
<i>H. laevis</i> All.	Halberd-leaved rose-mallow	OBL
<i>H. moscheutos</i> L.	Rose mallow	OBL
<i>H. siliaceus</i> L.	Sea hibiscus	FACW
<i>Hippocratea volubilis</i> L.	Medicine vine	FACW
<i>Hordeum brachyantherum</i> Nevskii	Meadow barley	FACW-
<i>H. jubatum</i> L.	Foxtail barley	FAC
<i>Hottonia inflata</i> Elliott	Featherfoil	OBL
<i>Houstonia caerulea</i> L.	Innocence	FAC
<i>H. serpyllifolia</i> Michx.	Thyme-leaved bluets	FACW
<i>Hydrilla verticillata</i> Royle	Hydrilla	OBL
<i>Hydrochloa carolinensis</i> Beauv.	Watergrass	OBL
<i>Hydrocleys nymphoides</i> (Humb. & Bonpl. ex Willd.) Buchenau	Waterpoppy	OBL
<i>Hydrocotyle americana</i> L.	Marsh pennywort	OBL
<i>H. bonariensis</i> Lam.	Largeleaf pennywort	FACW

<u>Scientific Name</u>	<u>Common Name</u>	<u>Indicator Status</u>
<i>H. ranunculoides</i> L.f.	Floating pennywort	OBL
<i>H. umbellata</i> L.	Umbrella pennywort	OBL
<i>H. verticillata</i> Thunb.	Whorled pennywort	OBL
<i>Hydrolea corymbosa</i> J. F. Macbr. ex. Elliott	Hydrolea	OBL
<i>H. ovata</i> Nutt.	Hairy hydrolea	OBL
<i>H. quadrivalvis</i> Walter	Four-valved hydrolea	OBL
<i>H. spinosa</i> L.	Spiny hydrolea	OBL
<i>H. uniflora</i> Raf.	Smooth hydrolea	OBL
<i>Hydrophyllum canadense</i> L.	Canada waterleaf	FACW
<i>H. virginianum</i> L.	Virginia waterleaf	FACW-
<i>Sagittaria lacustris</i> (Schlecht. & Cham.) Nees.	Starthorn	OBL
<i>H. polysperma</i> (Roxb.) T. Anderson	Starthorn	OBL
<i>Hymenachne amplexicaulis</i> (Rudge) Nees	Hymenachne	OBL
<i>Hymenocallis caroliniana</i> (L.) Herb.	Carolina spiderlily	FACW
<i>H. coronaria</i> (Leconte) Kunth	Stream-bank spiderlily	OBL
<i>H. crassifolia</i> Herb.	Thick-leaf spiderlily	OBL
<i>H. eulae</i> Shinnery	Eula spiderlily	OBL
<i>H. floridana</i> (Raf.) Morton	Florida spiderlily	OBL
<i>H. kimballiae</i> Small	Kimball spiderlily	OBL
<i>H. laciniata</i> Small	Spiderlily	OBL
<i>H. latifolia</i> (Herb.) M. Roem.	Mangrove spiderlily	FACW
<i>H. liriosme</i> (Raf.) Shinnery	Spiderlily	OBL
<i>H. occidentalis</i> (Leconte) Kunth	Spiderlily	OBL
<i>H. palmeri</i> S. Wats.	Alligator lily	OBL
<i>H. rotatum</i> Leconte	Green spiderlily	OBL
<i>Hypericum adpressum</i> Bart.	Creeping St. Johnswort	OBL
<i>H. apocynifolium</i> Small	Dogbane St. Johnswort	FACW
<i>H. brachyphyllum</i> (Spach.) Steud.	St. Johnswort	FACW
<i>H. buckleyi</i> M. A. Curtis	Blueridge St. Johnswort	FAC
<i>H. canadense</i> L.	Canada St. Johnswort	FACW
<i>H. chapmanii</i> P. Adams	Chapman's St. Johnswort	OBL
<i>H. distifolium</i> Lam.	Rockroseleaved St. Johnswort	FACW
<i>H. erux-andreae</i> (L.) Crantz	St. Johnswort	FACW
<i>H. densiflorum</i> Pursh	Dense St. Johnswort	FACW-
<i>H. denticulatum</i> Walter	Coppery St. Johnswort	FACW
<i>H. ellipticum</i> Hook.	Pale St. Johnswort	OBL
<i>H. erile</i> P. Adams	St. Johnswort	FACW
<i>H. fasciculatum</i> Lam.	Sandbush St. Johnswort	FACW+
<i>H. galloides</i> Lam.	Bedstraw St. Johnswort	OBL
<i>H. gymnanthum</i> Engelm. & Gray	Clasping-leaved St. Johnswort	FACW
<i>H. hissochloides</i> P. Adams	Smooth-barked St. Johnswort	OBL
<i>H. microsepalum</i> (Torr. & Gray) Gray ex Wats.	Small sepal St. Johnswort	FAC
<i>H. mitchellianum</i> Rydb.	Mitchell St. Johnswort	FACW
<i>H. nuttallii</i> L.	Dwarf St. Johnswort	FACW
<i>H. myrsinifolium</i> Lam.	Myrtle St. Johnswort	FACW
<i>H. nitidum</i> Lam.	St. Johnswort	OBL

<u>Scientific Name</u>	<u>Common Name</u>	<u>Indicator Status</u>
<i>H. nudiflorum</i> Michx.	Naked St. Johnswort	FACW
<i>H. punctatum</i> Lam.	Spotted St. Johnswort	FAC
<i>H. setosum</i> L.	Hairy St. Johnswort	FACW
<i>H. tetrapetalum</i> Lam.	Four petal St. Johnswort	FACW
<i>Hypolepis repens</i> (L.) K. Presl	Trailing hypolepis	FACW
<i>Hypoxis hirsuta</i> (L.) Coville	Star grass	FAC
<i>H. juncea</i> L.	Yellow star grass	FACW-
<i>H. leptocarpa</i> (Engelm. & G.) Engelm. & G. ex Small	Clubpod goldstar	FACW
<i>H. micrantha</i> Pollard	Bristleseed goldstar	FACW
<i>H. rigida</i> Chapm.	Fibrous goldstar	FACW
<i>Hyptis alata</i> (Raf.) Shinnery	Musky mint	OBL
<i>H. mutabilis</i> (A. Rich) Briq.	Hyptis	FAC
<i>Ilex amelanchier</i> M. A. Curtis	Serviceberry holly	OBL
<i>I. cassine</i> L.	Dahoon	FACW
<i>I. coriacea</i> (Pursh) Chapm.	Large gallberry	FACW
<i>I. decidua</i> Walter	Possumhaw holly	FACW-
<i>I. glabra</i> (L.) Gray	Inkberry	FACW
<i>I. laevigata</i> (Pursh) A. Gray	Smooth winterberry	FACW+
<i>I. longipes</i> Chapm.	Georgia holly	FAC
<i>I. lucida</i> T. & G.	Shining inkberry	FACW
<i>I. myrtifolia</i> Walter	Myrtle dahoon	FACW
<i>I. verticillata</i> (L.) A. Gray	Winterberry	FACW
<i>I. vomitoria</i> Ait.	Yaupon	FAC
<i>Illicium floridanum</i> J. Ellis	Florida anise-tree	FACW
<i>I. parviflorum</i> Ventenat	Yellow anise-tree	OBL
<i>Impatiens capensis</i> Meerb.	Spotted touch-me-not	FACW
<i>I. pallida</i> Nutt.	Pale touch-me-not	FACW
<i>Ipomoea pinnatifida</i> (Michx.) Steud.	Purple rocket	FACW
<i>Ipomoea alba</i> L.	Moon flower	FAC
<i>I. coccinea</i> L.	Scarlet morningglory	FAC
<i>I. hederifolia</i> L.	Morning-glory	FACW
<i>I. indica</i> (N. L. Burn.) Merrill	West Indian morningglory	FAC
<i>I. lacunosa</i> L.	Morningglory	FAC+
<i>I. pes-caprae</i> (L.) R. Br.	Beach morningglory	FAC
<i>I. sagittata</i> Poir.	Arrow-leaf morningglory	FACW
<i>I. violacea</i> L.	Violet morningglory	FACW-
<i>I. wrightii</i> Gray	Wright morningglory	FACW-
<i>Iresine rhizomatosa</i> Standl.	Rootstock bloodleaf	FACW-
<i>Iris brevicaulis</i> Raf.	Shortstem iris	OBL
<i>I. fulva</i> Ker	Copper iris	OBL
<i>I. giganticaerulea</i> Small	Iris	OBL
<i>I. hexagona</i> Walter	Iris	OBL
<i>I. kimballiae</i> Small	Kimball iris	OBL
<i>I. prismatica</i> Pursh	Iris	OBL
<i>I. pseudacorus</i> L.	Yellow iris	OBL
<i>I. shrevei</i> Small	Shreve iris	OBL
<i>I. tridentata</i> Pursh	Three tooth iris	OBL
<i>I. versicolor</i> L.	Blue flag	OBL
<i>I. vinicolor</i> Small	Iris	OBL
<i>I. virginica</i> L.	Virginia iris	OBL
<i>Isoetes butleri</i> Engelm.	Butler's quillwort	OBL

<u>Scientific Name</u>	<u>Common Name</u>	<u>Indicator Status</u>
<i>I. chapmanii</i> (Englem.) Small	Chapman's quillwort	OBL
<i>I. engelmannii</i> A. Braun	Engelmann's quillwort	OBL
<i>I. flaccida</i> Shuttlew.	Florida quillwort	OBL
<i>I. louisianensis</i> Thieret	Louisiana quillwort	OBL
<i>I. melanopoda</i> Gay & Durieu.	Blackfoot quillwort	OBL
<i>I. melanospora</i> Engelm.	Black-spored quillwort	OBL
<i>I. piedmontana</i> (N. E. Pfeiffer) C. F. Reed	Piedmont quillwort	OBL
<i>I. riparia</i> Engelm.	Riverbank quillwort	OBL
<i>I. tegetiformans</i> Rury	Mat-forming quillwort	OBL
<i>Itea virginica</i> L.	Virginia sweetspire	FACW+
<i>Iva annua</i> L.	Marsh elder	FAC
<i>I. frutescens</i> L.	Marsh elder	FACW+
<i>I. imbricata</i> Walter	Dune sumpweed	FACW
<i>I. microcephala</i> Nuttall	Piedmont marshelder	FACW
<i>Jaborosa integrifolia</i> Lam.	Jabarosa	FAC
<i>Jamesianthus alabamensis</i> Blake & Sherff	Alabama jamesthianus	OBL
<i>Juncus abortivus</i> Chapm.	Rush	OBL
<i>J. acuminatus</i> Michx.	Tapertip rush	OBL
<i>J. articulatus</i> L.	Jointed rush	OBL
<i>J. biflorus</i> Elliott	Turnflower rush	FACW
<i>J. brachycarpus</i> Engelm.	Short-fruited rush	FACW
<i>J. brachycephalus</i> (Engelm.) Buch.	Small-headed rush	OBL
<i>J. brevicaudatus</i> Anon.	Canada rush	OBL
<i>J. bufonius</i> L.	Toad rush	FACW DRA
<i>J. canadensis</i> J. Gay.	Canada rush	OBL
<i>J. coriaceus</i> Mackenz.	Leathery rush	FACW
<i>J. debilis</i> Gray	Weak rush	OBL
<i>J. dichotomus</i> Elliott	Forked rush	FACW
<i>J. diffusissimus</i> Buckl.	Diffuse rush	FACW
<i>J. effusus</i> L.	Soft rush	FACW+
<i>J. elliottii</i> Chapm.	Bog rush	OBL
<i>J. filipendulus</i> Buckl.	Plain's rush	FAC+
<i>J. gerardii</i> Loisel.	Black grass	OBL
<i>J. gymnocarpus</i> Cov.	Coville's rush	OBL
<i>J. longii</i> Fernald	Long rush	OBL
<i>J. marginatus</i> Rostk.	Shore rush	FACW
<i>J. megacephalus</i> M. A. Curtis	Largeheaded rush	OBL
<i>J. nodatus</i> Cov.	Stout rush	OBL
<i>J. polycephalus</i> Michx.	Many-headed rush	OBL
<i>J. repens</i> Michx.	Creeping rush	OBL
<i>J. roemerianus</i> Scheele	Black needlerush	OBL
<i>J. scirpoides</i> Lam.	Needlepod rush	FACW+
<i>J. secundus</i> Beauv.	Secund rush	FAC
<i>J. subcaudatus</i> (Engelm.) Cov. & Blake	Rush	FAC
<i>J. tenuis</i> Willd.	Poverty rush	FAC
<i>J. torreyi</i> Cov.	Torrey's rush	FACW
<i>J. trigonocarpus</i> Steud.	Triangular-fruited rush	OBL
<i>J. validus</i> Cov.	Roundhead rush	FACW+

<u>Scientific Name</u>	<u>Common Name</u>	<u>Indicator Status</u>
<i>Juniperus silicicola</i> (Small) L. H. Bailey	Southern redcedar	FAC
<i>Justicia americana</i> (L.) Vahl	Waterwillow	OBL
<i>J. cooleyi</i> Monach. & E. Leonard	Cooley's water willow	FACW
<i>J. crassifolia</i> (Chapm.) Chapm. ex. Small	Thick-leaved water-willow	OBL
<i>J. ovata</i> Walter	Round-leaved water-willow	OBL
<i>Kalmia carolina</i> Small	Southern sheep laurel	FACW
<i>K. cuneata</i> Michaux	Whitewicky kalmia	FACW+
<i>K. hirsuta</i> Walter	Hairy laurel	FACW-
<i>Kosteletakya althaeifolia</i> (Chapm.) Gray	Salt marsh-mallow	OBL
<i>K. depressa</i> (L.) Blanch., Fryx. & D. M. Bates	White fenrose	FACW
<i>K. smilacifolia</i> Gray	Seashore marsh-mallow	OBL
<i>K. virginica</i> (L.) Presl	Seashore-mallow	OBL
<i>Lachnanthes caroliniana</i> (Lam.) Dandy	Redroot	OBL
<i>Lachnocaulon anceps</i> (Walter) Morong	Hairypipewort	OBL
<i>L. beyrichianum</i> Spordled.	Beyrich hairypipewort	OBL
<i>L. digynum</i> Koern.	Hairypipewort	FACW+
<i>L. engleri</i> Ruhl.	Engler hairypipewort	FACW+
<i>L. minus</i> (Chapm.) Small	Hairypipewort	OBL
<i>Lactuca serriola</i> L.	Prickly lettuce	FAC
<i>Laguncularia racemosa</i> (L.) Gaertn. f.	White mangrove	FACW+
<i>Laportea canadensis</i> (L.) Wedd.	Canada woodnettle	FACW
<i>Lathyrus palustris</i> L.	Slenderstem peavine	OBL
<i>L. pusillus</i> Elliott	Low peavine	FACW-
<i>L. venosus</i> Muhl.	Veiny peavine	FAC
<i>Leavenworthia aurea</i> Torr.	Golden-flowered leavenworthia	FACW
<i>Leersia hexandra</i> Swartz	Southern cutgrass	OBL
<i>L. lenticularis</i> Michx.	Catchfly grass	OBL
<i>L. monandra</i> Swartz	Bunch cutgrass	FACW
<i>L. oryzoides</i> (L.) Swartz	Rice cutgrass	OBL
<i>L. virginica</i> Willd.	Whitegrass	FACW
<i>Leitneria floridana</i> Chapm.	Florida corkwood	OBL
<i>Lemna gibba</i> L.	Swollen duckweed	OBL
<i>L. minima</i> Humb. ex Philippi	Least duckweed	OBL
<i>L. minor</i> L.	Common duckweed	OBL
<i>L. obscura</i> (Aust.) Daubs	Obscure duckweed	OBL
<i>L. perpusilla</i> Torr.	Minute duckweed	OBL
<i>L. trinervis</i> (Aust.) Small	Three nerved duckweed	OBL
<i>L. trisulca</i> L.	Star duckweed	OBL
<i>L. valdiviana</i> Philippi	Valdivia duckweed	OBL
<i>Leptochloa fascicularis</i> (Lam.) Gray	Bearded sprangletop	FACW+ DBA
<i>L. filiformis</i> (Lam.) Beauv.	Red sprangletop	FACW
<i>L. nealleyi</i> Vasey	Nealley sprangletop	OBL
<i>L. panicoides</i> (Presl) Hitchc.	Amazon sprangletop	FACW
<i>L. scabra</i> Nees.	Rough sprangletop	FACW
<i>L. winervia</i> (Presl) Hitchc. & Chase	Mexican sprangletop	FACW
<i>Lepuropetalon spathulatum</i> (Muhl.) Elliott	Lepuropetalon	FACW-

<u>Scientific Name</u>	<u>Common Name</u>	<u>Indicator Status</u>
<i>Leucospora multifida</i> (Michx.) Nutt.	Leucospora	OBL
<i>Leucothoe axillaris</i> (Lam.) D. Don	Downy leucothoe	FACW
<i>L. racemosa</i> (L.) Gray	Swamp leucothoe	FACW
<i>Liatris acidota</i> Englem. & Gray	Slender gayfeather	FACW
<i>L. garberi</i> Gray	Garber's gayfeather	FACW
<i>Ligusticum canadense</i> (L.) Britton	Canada ligusticum	FAC
<i>Ligustrum sinense</i> Louceiro	Privet	FAC
<i>Lilaeopsis attenuata</i> (H. & A.) Fernald	Lilaeopsis	FACW
<i>L. chinensis</i> (L.) Kuntze	Eastern lilaeopsis	OBL
<i>Lilium canadense</i> L.	Turk's-cap lily	FAC
<i>L. catesbaei</i> Walter	Pine lily	FAC+
<i>L. superbum</i> L.	Turk's-cap lily	FACW
<i>Limnobiium spongia</i> (Bosc.) Steud.	American frogbit	OBL
<i>Limnocharis flava</i> (L.) Buck.	Limnocharis	OBL
<i>Limnophila X ludoviciana</i> Thieret	Limnophila	OBL
<i>L. sessiliflora</i> (Vahl) Blume	Sessile flowered limnophila	OBL
<i>Limnoscium pinnatum</i> (DC.) Math. & Const.	Feathery limnoscium	FACW-
<i>L. pumilum</i> (Englem. & Gray) Mathias & Constance	Dog-sunshade	OBL
<i>Limonium carolinianum</i> (Walter) Britton	Marsh rosemary	OBL
<i>L. nashii</i> Small	Sea-lavender	OBL
<i>L. vulgare</i> P. Mill.	Mediterranean sea-lavender	OBL
<i>Limnoscilla subulata</i> Ives	Mudwort	OBL
<i>Lindera benzoin</i> (L.) Blume	Spicebush	FACW
<i>L. melissifolia</i> (Walter) Blume	Jove's-fruit	OBL
<i>Lindernia anagallidea</i> (Michx.) Pennell.	Clasping falsepimpernel	FACW+ DRA
<i>L. dubia</i> (L.) Pennell.	Yellowseed falsepimpernel	OBL
<i>L. grandiflora</i> Nutt.	Large flowered falsepimpernel	OBL
<i>L. monticola</i> Nutt.	Mountain falsepimpernel	OBL
<i>L. saxicola</i> M. A. Curtis	Falsepimpernel	OBL
<i>Linum arenicola</i> (Small) Winkler	Sand flax	OBL
<i>L. carteri</i> Small	Carter's flax	FACW
<i>L. floridanum</i> (Planch.) Trelease	Florida flax	FAC
<i>L. medium</i> (Planch.) Britton	Stiff yellow flax	FAC
<i>L. striatum</i> Walter	Flax	FACW-
<i>L. westii</i> B. M. Rogers	West's flax	OBL
<i>L. virginianum</i> L.	Virginia flax	FAC+
<i>Liparis elata</i> Lindl.	Liparis	OBL
<i>L. loeselii</i> (L.) Rich.	Loesel liparis	FACW-
<i>Lipocarpus maculata</i> (Michx.) Torr.	American lipocarpus	OBL
<i>L. microcephala</i> Kunth	Small headed lipocarpus	FAC
<i>Lippia alba</i> (Mill.) N.E. Br.	Bushy lippia	FAC+
<i>Liquidambar styraciflua</i> L.	Sweetgum	FAC+
<i>Liriodendron tulipifera</i> L.	Yellow-poplar	FAC
<i>Listera australis</i> Lindl.	Listera	FACW
<i>L. convallarioides</i> (Swartz) Nutt. ex Elliott	Twayblade listera	FACW
<i>L. cordata</i> (L.) R. Br.	Heartleaf listera	FACW
<i>L. smallii</i> Wiegand	Small listera	FACW-

<u>Scientific Name</u>	<u>Common Name</u>	<u>Indicator Status</u>
<i>Litrisa carmosa</i> Small	Litrisa	FACW+
<i>Litsea aestivalis</i> (L.) Fernald	Litsea	OBL
<i>Lobelia amoena</i> Michx.	Lobelia	OBL
<i>L. appendiculata</i> A. DC.	Lobelia	FAC
<i>L. boykinii</i> T. & G.	Boykin lobelia	OBL
<i>L. brevifolia</i> Nutt.	Short-leaf lobelia	FAC+
<i>L. canbyi</i> Gray	Canby lobelia	OBL
<i>L. cardinalis</i> L.	Cardinal flower	FACW+
<i>L. cliffortiana</i> L.	Cliffort lobelia	FAC
<i>L. elongata</i> Small	Elongate lobelia	OBL
<i>L. feayana</i> Gray	Bay lobelia	FACW-
<i>L. flaccidifolia</i> Small	Softleaf lobelia	OBL
<i>L. floridana</i> Chapm.	Florida lobelia	OBL
<i>L. georgiana</i> McVaugh	Georgia lobelia	FACW
<i>L. glandulosa</i> Walter	Glandular lobelia	OBL
<i>L. homophylla</i> F. Wimm.	Lobelia	FAC
<i>L. inflata</i> L.	Lobelia	FAC
<i>L. nuttallii</i> R. & S.	Nuttall lobelia	FACW
<i>L. paludosa</i> Nutt.	Pale lobelia	OBL
<i>L. puberula</i> Michx.	Downy lobelia	FACW-
<i>L. siphilitica</i> L.	Great lobelia	OBL
<i>L. spicata</i> Lam.	Pale spike lobelia	FAC
<i>Lonicera sempervirens</i> L.	Trumpet honeysuckle	FAC
<i>Lophiola americana</i> (Pursh) Wood	Golden crest	OBL
<i>Ludwigia alata</i> Elliott	Wing-stemmed ludwigia	OBL
<i>L. altermifolia</i> L.	Seed-box	OBL
<i>L. arcuata</i> Walter	Long-stalked ludwigia	OBL
<i>L. bonariensis</i> (Micheli) H. Hara	Golden waterprimrose	FACW+
<i>L. brevipes</i> (Long) Eames	False loosestrife	OBL
<i>L. curtissii</i> Chapm.	Curtiss waterprimrose	FACW+
<i>L. decurrens</i> Walter	Primrose-willow	OBL
<i>L. erecta</i> (L.) Hara	Erect waterprimrose	OBL
<i>L. glandulosa</i> Walter	Cylindric-fruited seed-box	OBL
<i>L. hirtella</i> Raf.	Spindle-root	FACW+
<i>L. lanceolata</i> Elliott	Wing-stemmed ludwigia	OBL
<i>L. leptocarpa</i> (Nutt.) H. Hara	Anglestem waterprimrose	OBL
<i>L. linearis</i> Walter	Narrowleaf seed-box	OBL
<i>L. linifolia</i> Poir.	Flax-leaf ludwigia	OBL
<i>L. maritima</i> F. Harper	Seashore ludwigia	FACW
<i>L. microcarpa</i> Michx.	Small fruited waterprimrose	OBL
<i>L. octovalvis</i> (Jacq.) Raven	Shrubby waterprimrose	OBL
<i>L. palustris</i> (L.) Elliott	Water purslane	OBL DRA
<i>L. peploides</i> (H.B.K.) Raven	Perennial waterprimrose	OBL
<i>L. peruviana</i> (L.) Hara	Primrose willow	OBL
<i>L. pilosa</i> Walter	Hairy seed-box	OBL
<i>L. polycarpa</i> Short & Peter	False loosestrife	OBL
<i>L. repens</i> J. Forst.	Marsh purslane	OBL
<i>L. spathulata</i> T. & G.	Spatulate purslane	OBL DRA
<i>L. sphaerocarpa</i> Elliott	Spherical-fruited seed-box	OBL
<i>L. suffruticosa</i> Walter	Floating waterprimrose	OBL
<i>L. uruguayensis</i> (Cambess.) H. Hara	Uruguay waterprimrose	OBL
<i>L. virgata</i> Michx.	Slender-stemmed ludwigia	OBL

<u>Scientific Name</u>	<u>Common Name</u>	<u>Indicator Status</u>
<i>Luziola bahiensis</i> (Steud.) Hitchc.	Brazilian luziola	OBL
<i>L. peruviana</i> Gmel.	Peruvian luziola	OBL
<i>Luzula echinata</i> (Small) F. J. Herm.	Woodrush	FAC
<i>Lycium carolinianum</i> Walter	Carolina wolfberry	FACW
<i>Lycopodium alopecuroides</i> L.	Foxtail clubmoss	OBL
<i>L. appressum</i> (Chapman) Lloyd & Underwood	Southern clubmoss	OBL
<i>L. carolinianum</i> L.	Carolina clubmoss	OBL
<i>L. cernuum</i> L.	Staghorn clubmoss	FACW
<i>L. X chapmanii</i> Underw. ex Maxon	Chapman clubmoss	OBL
<i>L. clavatum</i> L.	Acidsoil clubmoss	FAC
<i>L. dendroideum</i> Michx.	Tree-like clubmoss	-
<i>L. inundatum</i> L.	Inundated clubmoss	OBL
<i>L. lucidulum</i> Michx.	Shining clubmoss	FACW
<i>L. prostratum</i> R. M. Harper	Creeping foxtail clubmoss	OBL
<i>Lycopus americanus</i> Muhl.	Water horehound	OBL
<i>L. amplexans</i> Raf.	Bugleweed	OBL
<i>L. cokeri</i> Anles	Coker bugleweed	OBL
<i>L. europaeus</i> L.	European bugleweed	OBL
<i>L. rubellus</i> Moench	Waterhorehound	OBL
<i>L. uniflorus</i> Michx.	Oneflower bugleweed	OBL
<i>L. velutinus</i> Rydb.	Black bugleweed	OBL
<i>L. virginicus</i> L.	Bugleweed	OBL
<i>Lygodium japonicum</i> (Thunb.) Swartz	Japanese clumbing fern	FAC
<i>L. palmatum</i> (Bernh.) Swartz	Hartford-fern	FACW-
<i>Lyonia fruticosa</i> (Michx.) G. S. Torr.	Lyonia	FAC
<i>L. ligustrina</i> (L.) DC.	Male-berry	FACW
<i>L. lucida</i> (Lam.) K. Koch	Fetterbush	FACW
<i>L. mariana</i> (L.) D. Don	Staggerbush	FAC
<i>L. palustris</i> (Pursh) Small	Lyonia	FAC
<i>Lysimachia asperulifolia</i> Poiret	Loosestrife	OBL
<i>L. ciliata</i> L.	Fringed loosestrife	FACW-
<i>L. fraseri</i> Duby	Loosestrife	FAC
<i>L. hybrida</i> Michx.	Lanceleaf loosestrife	OBL
<i>L. lanceolata</i> Walter	Lanceleaf loosestrife	FAC
<i>L. loomisii</i> Torrey	Loomis loosestrife	OBL
<i>L. nummularia</i> L.	Creeping loosestrife	FACW+
<i>L. quadriflora</i> Sims.	Fourleaf loosestrife	OBL
<i>L. radians</i> Hook.	Creeping loosestrife	OBL
<i>L. terrestris</i> (L.) B.S.P.	Earth loosestrife	OBL
<i>Lythrum alatum</i> Pursh	Winged lythrum	FACW+
<i>L. curtissii</i> Fernald	Curtiss lythrum	OBL
<i>L. flagellare</i> Shuttlw.	Lythrum	OBL
<i>L. lineare</i> L.	Saltmarsh loosestrife	OBL
<i>L. salicaria</i> L.	Purple lossestrife	OBL
<i>Macbridea alba</i> Chap.	White birds-in-a-nest	FACW+
<i>M. caroliniana</i> (Walter) Blake	Carolina birds-in-a-nest	OBL
<i>Machaeranthera phyllocephala</i> (DC.) Shinnars	Machaeranthera	-
<i>Macranthera flarnea</i> (W. Bartram) Pennell	Macranthera	OBL
<i>Macrothelypteris torresiana</i> (Gaud.) Ching	Torres macrothelypody	OBL

<u>Scientific Name</u>	<u>Common Name</u>	<u>Indicator Status</u>
<i>Magnolia fraseri</i> Walter	Fraser magnolia	FAC
<i>M. grandiflora</i> L.	Southern magnolia	FAC+
<i>M. tripetala</i> L.	Umbrella magnolia	FAC
<i>M. virginiana</i> L.	Sweetbay	FACW+
<i>Malaxis spicata</i> Swartz	Malaxis	OBL
<i>M. unifolia</i> Michx.	Oneleaf addermouth orchid	FAC+
<i>Marshallia caespitosa</i> Nutt. ex DC.	Seep marshallia	OBL
<i>M. graminifolia</i> (Walter) Small	Grasslike barbara's-buttons	OBL
<i>M. grandiflora</i> Beadle & F. Boynt.	Large flowered barbara's-buttons	FAC
<i>M. mohrii</i> Beadle & F. Boynt.	Mohr's barbara's-buttons	FACW
<i>M. tenuifolia</i> Raf.	Marshallia	FAC
<i>Marsilea quadrifolia</i> L.	European marsilea	OBL
<i>M. uncinata</i> A. Brown	Hooked pepperwort	OBL
<i>M. vestita</i> Hook. & Grev.	Hairy pepperwort	OBL
<i>Matelea suberosa</i> (L.) Shinners	Matelea	FACW
<i>Matricaria maritima</i> L.	Dogcamomile mayweed	FAC
<i>Mazillaria crassifolia</i> (Lindl.) Reich B.F.	Hidden orchid	OBL
<i>Mayaca aubletii</i> Michaux	Mayaca	OBL
<i>M. fluviatilis</i> Aublet	Mayaca	OBL
<i>Mazus japonicus</i> (Thumb.) Kuntze	Japanese mazus	FAC
<i>Mecardonia acuminata</i> (Walter) Small	Purple mecardonia	FACW
<i>Melaleuca quinquenervia</i> (Cav.) Blake	Punk tree	FAC
<i>Melanthera angustifolia</i> A. Rich.	Melanthera	FACW-
<i>Melanthium virginicum</i> L.	Common bunchflower	OBL
<i>Melochia corchorifolia</i> L.	Chocolate-weed	FAC
<i>M. pyramidata</i> L.	Common pyramidbush	FAC
<i>Melothria pendula</i> L.	Melothria	FACW-
<i>Mentha arvensis</i> L.	Field mint	FACW
<i>M. cardiaca</i> Baker	Littleleaf mint	FAC
<i>M. citrata</i> Ehrh.	Bergamot mint	FACW
<i>M. longifolia</i> L.	Horse mint	-
<i>M. X piperita</i> L.	Peppermint	FACW
<i>M. rotundifolia</i> (L.) Huds.	Apple mint	FAC
<i>M. spicata</i> L.	Spearmint	FACW+
<i>Mertensia virginica</i> (L.) Pers.	Virginia bluebells	FAC+
<i>Micranthemum glomeratum</i> (Chapm.) Shinners	Micranthemum	OBL
<i>M. umbrosum</i> (Walter) Blake	Shade mud-flower	OBL
<i>Mikania cordifolia</i> (L.F.) Willd.	Heart-leaf hempweed	FACW
<i>M. scandens</i> (L.) Willd.	Climbing hemp-weed	FACW+
<i>Mimosa strigillosa</i> Tom & Gray	Herbaceous mimosa	FAC
<i>Mimulus alatus</i> Ait.	Sharp-winged monkeyflower	OBL
<i>M. floribundus</i> Lindl.	Floriferous monkeyflower	-
<i>M. moschatus</i> Dougl. ex Lindl.	Muskflower	-
<i>M. ringens</i> L.	Monkey-flower	OBL
<i>Minuartia alabamensis</i> J. F. McCormick, J. R. Bozeman, & S. Spongberg	Alabama minuartia	FACW+
<i>M. glabra</i> (Michx.) Mattf.	Smooth minuartia	FACW+
<i>M. godfreyi</i> (Shinners) McNeill	Minuartia	FACW+
<i>M. uniflora</i> (Walter) Mattf.	One-flowered minuartia	FACW+

<u>Scientific Name</u>	<u>Common Name</u>	<u>Indicator Status</u>
<i>Mollugo verticillata</i> L.	Carpetweed	FAC
<i>Monanthochloe littoralis</i> Engelm.	Saltflat-grass	OBL
<i>Monarda didyma</i> L.	Oswego beebalm	FAC
<i>M. punctata</i> L.	Spotted beebalm	FAC
<i>Morus rubra</i> L.	Red mulberry	FAC
<i>Muhlenbergia expansa</i> (DC.) Trin.	Cutover muhly	FACW-
<i>M. frondosa</i> (Poir.) Fernald	Wirestem muhly	FAC+
<i>M. glomerata</i> (Willd.) Trin.	Bristly muhly	FACW+
<i>M. mexicana</i> (L.) Trin.	Mexican muhly	FAC
<i>M. racemosa</i> (Michx.) B.S.P.	Marsh muhly	FAC
<i>M. schreberi</i> Gmel.	Nimblewill muhly	FAC
<i>M. sylvatica</i> Torr. ex Gray	Forest muhly	FACW
<i>M. torreyana</i> (Schult.) Hitchc.	New Jersey muhly	FACW
<i>Murdannia keisak</i> (Kassk.) Hand.-Mazz.	Marsh dayflower	OBL
<i>M. nudiflora</i> (L.) Brenan	Murdannia	FAC
<i>Musa acuminata</i> Colla	Dwarf banana	OBL
<i>M. paradisiaca</i> L.	Banana	-
<i>Myosotis irvensis</i> (L.) J. Hill	Field scorpion-grass	FAC+
<i>M. laxa</i> Lehm.	Smaller forget-me-not	OBL
<i>M. macrosperma</i> Engelm.	White forget-me-not	FAC
<i>M. scorpioides</i> L.	True forget-me-not	OBL
<i>M. sylvatica</i> Hoffm.	Garden forget-me-not	-
<i>Myosoton aquaticum</i> (L.) Moench	Myosoton	FACW+
<i>Myosurus minimus</i> L.	Tiny mousetail	FACW-
<i>Myrica perifera</i> L.	Wax myrtle	FAC+
<i>M. gale</i> L.	Sweetgale	OBL
<i>M. heterophylla</i> Raf.	Evergreen bayberry	FACW
<i>M. inodora</i> Bartr.	Odorless bayberry	OBL
<i>M. pennsylvanica</i> Loisel.	Northern bayberry	FAC
<i>M. pusilla</i> Raf.	Dwarf waxmyrtle	FAC
<i>Myriophyllum brasiliense</i> Comb.	Brazilian watermilfoil	OBL
<i>M. heterophyllum</i> Michx.	Variableleaf watermilfoil	OBL
<i>M. hippuroides</i> Nutt.	Western milfoil	OBL
<i>M. latum</i> Shuttlew.	Watermilfoil	OBL
<i>M. pinnatum</i> (Walter) B.S.P.	Eastern watermilfoil	OBL
<i>M. spicatum</i> L.	Eurasian watermilfoil	OBL
<i>M. verticillatum</i> L.	Needleleaf watermilfoil	OBL
<i>Najas androstrocarpa</i> Magnus	Waternymph	OBL
<i>N. flexilis</i> (Willd.) Rostk. & Schmidt	Slender naiad	OBL
<i>N. gracillima</i> (A. Braun) Magnus	Waternymph	OBL
<i>N. guadalupensis</i> (Spreng.) Magnus	Southern waternymph	OBL
<i>N. marina</i> L.	Spiny naiad	OBL
<i>N. minor</i> All.	Waternymph	OBL
<i>N. wrightiana</i> A. Braun	Wright's naiad	OBL
<i>Nantheclum americanum</i> Ker	New Jersey bogasphodel	FACW+
<i>Nasturtium microphyllum</i> Boenn.	Watercress	OBL
<i>N. officinale</i> R. Br.	Watercress	OBL
<i>Nelumbo lutea</i> (Willd.) Pers.	American lotus	OBL
<i>N. nucifera</i> Gaertn.	Indian lotus	OBL
<i>Nemophila aphylla</i> (L.) Brummitt	Nemophila	FACW
<i>Nephrolepis biserrata</i> (Swartz) Schott	Nephrolepis	FACW-

<u>Scientific Name</u>	<u>Common Name</u>	<u>Indicator Status</u>
<i>Neptunia pubescens</i> Benth.	Tropical neptunia	FAC
<i>Neyraudia reynaldiana</i> (Kunth) Keng	Silk reed	FAC
<i>Nicotiana glauca</i> R. Grah.	Tree tobacco	FAC
<i>N. repanda</i> Willd.	Wild tobacco	FAC
<i>Nolina atopocarpa</i> Bartlett	Florida beargrass	FAC
<i>Nuphar luteum</i> (L.) Sibth. & J. E. Smith	European cowlily	OBL
<i>Nymphaea ampla</i> (Salisb.) DC.	Dotleaf waterlily	OBL
<i>N. blanda</i> Meyer	Sleeping beauty waterlily	OBL
<i>N. capensis</i> Thunb.	Cape waterlily	OBL
<i>N. elegans</i> Hook.	Blue waterlily	OBL
<i>N. jamesoniana</i> Planch.	Jameson waterlily	OBL
<i>N. lotus</i> L.	White Egyptian lotus	OBL
<i>N. mexicana</i> Zuccar.	Banana waterlily	OBL
<i>N. odorata</i> Ait.	White waterlily	OBL
<i>N. tuberosa</i> Paine	White waterlily	OBL
<i>Nymphoides aquatica</i> (Walter) Kuntze	Big floatingheart	OBL
<i>N. cordata</i> (Elliott) Fernald	Little floatingheart	OBL
<i>N. peltata</i> (Gmel.) O. Kuntze	Floating hearts	OBL
<i>Nyssa aquatica</i> L.	Water tupelo	OBL
<i>N. ogeche</i> W. Bartram ex Marshall	Ogeechee gum	OBL
<i>N. sylvatica</i> Marshall	Black-gum	FAC
<i>N. sylvatica</i> var. <i>biflora</i> (Walt.) Sarg.	Swamp blackgum	OBL
<i>Oldenlandia boscii</i> (DC.) Chapm.	Bosc oldenlandia	FACW- DRA
<i>O. corymbosa</i> L.	Corymbose oldenlandia	FAC+
<i>O. uniflora</i> L.	One flowered oldenlandia	FACW-
<i>Onclea sensibilis</i> L.	Sensitive fern	FACW
<i>Ophioglossum nudicaule</i> L.f.	Adderstongue	FAC
<i>O. petiolatum</i> Hooker	Petioled adderstongue	FAC
<i>O. vulgatum</i> L.	Common adderstongue	FACW
<i>Orontium aquaticum</i> L.	Goldenclub	OBL
<i>Oryza sativa</i> L.	Rice	OBL
<i>Osmanthus americanus</i> (L.) Benth. & Hook. f.	Devilwood	FAC
<i>Osmorhiza longistylis</i> (Torr.) DC.	Longstyle sweetroot	FAC
<i>Osmunda cinnamomea</i> L.	Cinnamon fern	FACW+
<i>O. clypeolata</i> L.	Interrupted-fern	FAC
<i>O. regalis</i> L.	Royal fern	OBL
<i>Ottelia alismoides</i> (L.) Pers.	Ducklettuce	OBL
<i>Oxypolis canbyi</i> (Coult. & Rose) Fernald	Canby oxypolis	OBL
<i>O. filiformis</i> (Walter) Britton	Leafless cowbane	FACW+
<i>O. greenmanii</i> Mathias & Constance	Giant water-dropwort	OBL
<i>O. rigidior</i> (L.) Raf.	Stiff cowbane	OBL
<i>O. ternata</i> (Nutt.) Heller	Cowbane	OBL
<i>Panicum abscessum</i> Swallen	Cutthroat grass	FACW
<i>P. amarum</i> Elliott	Bitter panicum	FAC
<i>P. anceps</i> Michx.	Beaked panicum	?
<i>P. bartowense</i> Scribn. & Merrill	Bartow panicum	FACW
<i>P. brachyanthum</i> Steud.	Pimple panicum	FAC
<i>P. capillare</i> L.	Witchgrass	FAC DRA
<i>P. ischotomiflorum</i> Michx.	Fall panicum	FACW

<u>Scientific Name</u>	<u>Common Name</u>	<u>Indicator Status</u>
<i>P. flexile</i> (Gatt.) Scribner	Wiry witchgrass	FAC+
<i>P. gattingeri</i> Nash	Gattinger panic	FAC
<i>P. hemitomon</i> Schult.	Maidencane	OBL
<i>P. lacustre</i> A. Hitchc. & E. L. Ekman	Lake panicum	OBL
<i>P. longifolium</i> Torr.	Long-leaved panic-grass	OBL
<i>P. obtusum</i> H.B.K.	Vine-mesquite	FACW DRA
<i>P. repens</i> L.	Torpedograss	FACW-
<i>P. rigidulum</i> Bosc. ex Nees.	Redtop panicum	FACW
<i>P. stenodes</i> Griseb.	Southeastern panic-grass	FACW
<i>P. tenerum</i> Beyr.	Bluejoint panicum	FACW
<i>P. verrucosum</i> Muhl.	Warty panicum	FACW DRA
<i>P. virgatum</i> L.	Switchgrass	FACW-
<i>Parapholis incurva</i> (L.) C. E. Hubb.	Sicklegrass	FAC
<i>Parietaria practermissa</i> B. D. Hinton	Parietaria	FAC
<i>Parkinsonia aculeata</i> L.	Jerusalem-thorn	FAC
<i>Parnassia asarifolia</i> Ventenat	Brook parnassia	OBL
<i>P. caroliniana</i> Michx.	Carolina grass-of-parnassus	OBL
<i>P. grandifolia</i> DC.	Bigleaf grass-of-parnassus	OBL
<i>Parthenocissus quinquefolia</i> (L.) Planch.	Virginia creeper	FAC
<i>Paspalidium geminatum</i> (Forssk.) Stapf	Water panicum	OBL
<i>Paspalum acuminatum</i> Raddi	Brook paspalum	OBL
<i>P. bifidum</i> (Bertol.) Nash	Pitchfork paspalum	FACW
<i>P. blodgettii</i> Chapm.	Coral paspalum	FAC+
<i>P. boschianum</i> Fluegge	Bull paspalum	FACW
<i>P. caespitosum</i> Fluegge	Blue paspalum	FAC
<i>P. confugatum</i> Berg.	Sour paspalum	FAC
<i>P. difforme</i> Leconte	Thickspike knotgrass	FACW
<i>P. dilatatum</i> Poir.	Dallisgrass	FAC+
<i>P. dissectum</i> (L.) L.	Mudbank paspalum	OBL DRA
<i>P. distichum</i> L.	Knotgrass	OBL
<i>P. fibriatum</i> H.B.K.	Panama paspalum	FAC
<i>P. floridanum</i> Michx.	Florida paspalum	FACW-
<i>P. fluitans</i> (Elliott) Kunth	Water paspalum	OBL
<i>P. giganteum</i> Baldw.	Giant paspalum	FACW
<i>P. hydrophilum</i> Henr.	Waterleaf paspalum	OBL
<i>P. laeve</i> Michx.	Field paspalum	FACW-
<i>P. lividum</i> Trin.	Longtom	OBL
<i>P. monostachyum</i> Vasey	Gulfdune paspalum	FACW
<i>P. plicatulum</i> Michx.	Brownseed paspalum	FAC
<i>P. praecox</i> Walter	Early paspalum	OBL
<i>P. pubiflorum</i> Rupr.	Hairyseed paspalum	FACW
<i>P. repens</i> Bergius	Water paspalum	OBL
<i>P. setaceum</i> Michx.	Thin paspalum	FAC
<i>P. urvillei</i> Steud.	Vaseygrass	FAC
<i>P. vaginatum</i> Swartz	Seashore paspalum	OBL
<i>P. virgatum</i> L.	Talquezal	FACW
<i>Pavonia spicata</i> Cav.	Mangrove mallow	OBL
<i>Pedicularis lanceolata</i> Michx.	Swamp lousewort	FACW
<i>Peltandra luteospatha</i> Fernald	Arrow-arum	OBL
<i>P. sagittifolia</i> (Michx.) Morong	Arrow-arum	OBL
<i>P. virginica</i> (L.) Kunth	Common arrow-arum	OBL

<u>Scientific Name</u>	<u>Common Name</u>	<u>Indicator Status</u>
<i>Penstemon alluviorum</i> Pennell	Mississippi penstemon	FACW
<i>P. digitalis</i> Nutt.	Talus slope penstemon	FAC
<i>P. laevigatus</i> Soland.	Smooth penstenion	FAC
<i>P. tenuis</i> Small	Sharpsepal penstenron	FACW+
<i>Penthorum sedoides</i> L.	Ditch-stonecrop	OBL
<i>Pentodon pentandrus</i> (Schum. & Thonn.) Vatke	Pentodon	OBL
<i>Perilla frutescens</i> (L.) Britton	Perilla	FAC
<i>Persea borbonia</i> (L.) Spreng.	Red bay	FACW
<i>Petunia parviflora</i> Juss.	Payette penstemon	FAC DRA
<i>Phacelia ranunculacea</i> (Nutt.) Const.	Buttercup phacelia	FACW
<i>Phalaris angusta</i> Nees. ex Trin.	Timothy canarygrass	FACW+
<i>P. arundinacea</i> L.	Reed canarygrass	OBL
<i>P. caroliniana</i> Walter	Carolina canarygrass	FACW
<i>Phanopyrum gymnocarpon</i> (Elliott) Nash	Phanopyrum	OBL DRA
<i>Philoxerus vermicularis</i> (L.) R. Br.	Silverhead	FACW+
<i>Phlox glaberrima</i> L.	Smooth phlox	FAC+
<i>P. maculata</i> L.	Meadow phlox	FAC
<i>Phragmites australis</i> (Cav.) Trin. ex Steud.	Giant cane	FACW
<i>Phyla incisa</i> Small	Texas frog-fruit	FAC
<i>P. lanceolata</i> (Michx.) Greene	Northern frog-fruit	FACW+
<i>P. nodiflora</i> Michx.	Common frog-fruit	FACW DRA
<i>P. strobilifera</i> (L.) Small	Frog-fruit	FACW+
<i>P. strigulosa</i> (M. Martens & Galestti) Moldenke	Diamond-leaf frog-fruit	FAC
<i>Phyllanthus carolinensis</i> Walter	Carolina phyllanthus	FAC+
<i>P. Liebmannianus</i> Muell.-Arg.	Liebmann phyllanthus	FACW
<i>P. pudens</i> L. C. Wheeler	Phyllanthus	FACW
<i>P. urinaria</i> L.	Phyllanthus	FAC
<i>Physalis angulata</i> L.	Cutleaf groundcherry	FAC
<i>Physostegia angustifolia</i> Fernald	False dragon-head	FACW
<i>P. correllii</i> (Lundell) Shinnars	Correll's dragon head	OBL
<i>P. digitalis</i> Small	Obedient plant	FAC
<i>P. godfreyi</i> P. D. Cantino	Godfrey's dragon-head	OBL
<i>P. intermedia</i> (Nutt.) Gray	Physostegia	FACW-
<i>P. leptophylla</i> Small	Physostegia	OBL
<i>P. praemorsa</i> Shinnars	Blunt dragon-head	FACW
<i>P. pulchella</i> Lundell	Snowy dragon-head	OBL
<i>P. purpurea</i> (Walter) Blake	Purple physostegia	FACW
<i>P. virginiana</i> (L.) Benth.	Virginia physostegia	FACW
<i>Piaropus paniculatus</i> (Spreng.) Small	Piaropus	OBL
<i>Pieris phyllireifolia</i> (Hook.) DC.	Climbing pieris	FACW+
<i>Pilea fontana</i> (Lunell) Rydb.	Clearweed	FACW+
<i>P. pumila</i> (L.) Gray	Clearweed	FACW
<i>Pilularia americana</i> A. Braun	American pilularia	OBL
<i>Pinckneya pubens</i> Michx.	Pinckneya	OBL
<i>Pinguicula caerulea</i> Walter	Violet butterwort	OBL
<i>P. tonantha</i> Godfrey	Violet-flowered butterwort	OBL
<i>P. lutea</i> Walter	Yellow butterwort	FACW+
<i>P. planifolia</i> Cham.	Chapman's butterwort	OBL
<i>P. primuliflora</i> Wood & Godfrey	Southern butterwort	OBL

<u>Scientific Name</u>	<u>Common Name</u>	<u>Indicator Status</u>
<i>P. pumila</i> Michx.	Small butterwort	OBL
<i>Pinus elliottii</i> Engelm	Slash pine	FACW
<i>P. glabra</i> Walter	Spruce pine	FACW
<i>P. serotina</i> Michx.	Pone pine	FACW+
<i>P. taeda</i> L.	Loblolly pine	FAC
<i>Pistia stratiotes</i> L.	Water lettuce	OBL
<i>Pithecellobium saman</i> (Jacq.) Benth.	Pithecellobium	-
<i>Pityrogramma trifoliata</i> (L.) Tryon	Pityrogramma	-
<i>Plagiobothrys figuratus</i> (Piper) I. Johnst.	Fragrant popcorn-flower	OBL DRA
<i>Planera aquatica</i> Gmel.	Planertree	OBL
<i>Plantago cordata</i> Lam.	Heartleaf plantain	OBL
<i>P. coronopus</i> L.	Crowfoot plantain	-
<i>P. elongata</i> Pursh	Slender plantain	FACW+
<i>P. heterophylla</i> Nutt.	Slender plantain	FACW- DRA
<i>P. lanceolata</i> L.	English plantain	FAC
<i>P. major</i> L.	Common plantain	FAC+
<i>P. rugelii</i> Decne.	Rugel's plantain	FAC
<i>P. sparsiflora</i> Michx.	Sparse-flowered plantain	OBL
<i>Platanthera X andrewsii</i> (M. White) Luer	Andrew's rein orchid	FAC
<i>P. blephariglottis</i> (Willd.) Lindl.	White fringed orchid	OBL
<i>P. X chapmanii</i> (Small) Luer	Chapman fringed orchid	FACW
<i>P. ciliaris</i> (L.) Lindl.	Yellow fringed orchid	FACW
<i>P. X clavellata</i> (Michx.) Luer	Green rein-orchid	OBL
<i>P. cristata</i> (Michx.) Lindl.	Crested fringed orchid	OBL
<i>P. flava</i> (L.) Lindl.	Tubercled orchid	FACW
<i>P. grandiflora</i> (Bigel.) Lindl.	Large purple fringed orchid	FACW
<i>P. integra</i> (Nutt.) Gray ex Beck	Yellow fringeless orchid	OBL
<i>P. integrilabia</i> (Correll) Luer	Fringed orchid	OBL
<i>P. lacera</i> (Michx.) G. Don	Ragged fringed orchid	FACW
<i>P. leucophaea</i> (Nutt.) Lindl.	Prairie fringed orchid	OBL
<i>P. nivea</i> (Nutt.) Luer	Snowy orchid	FACW
<i>P. peramoena</i> Gray	Purple fringeless orchid	FACW
<i>P. psycodes</i> (L.) Lindl.	Small purple fringed orchid	FACW-
<i>P. stricta</i> Lindl.	Slender bog-orchid	FACW
<i>Platanus occidentalis</i> L.	American sycamore	FACW-
<i>Pilea tenuifolia</i> Michaux	Pilea	OBL
<i>Pluchea adnata</i> (H. & B.) C. Mohr.	Fleabane	-
<i>P. camphorata</i> (L.) DC.	Salt-marsh fleabane	FACW
<i>P. foetida</i> (L.) DC.	Stinking-fleabane	OBL
<i>P. longifolia</i> Nash	Longleaf fleabane	OBL
<i>P. odorata</i> (L.) Cass.	Sour bush pluchea	FACW
<i>P. purpurascens</i> (Swartz) DC.	Saltmarsh pluchea	FACW+
<i>P. rosea</i> Godfrey	Purple pluchea	FACW
<i>P. suaveolens</i> (Vell.) Kuntze	Pluchea	OBL
<i>Poa annua</i> L.	Annual bluegrass	FAC
<i>P. autumnalis</i> Muhl. ex Elliott	Autumn bluegrass	FACW-
<i>P. glaucifolia</i> Scribn. & Will.	Bloomleaf bluegrass	-
<i>P. juncifolia</i> Scribn.	Alkali bluegrass	-
<i>P. palustris</i> L.	Fowl bluegrass	FAC
<i>P. sylvestris</i> Gray	Woodland bluegrass	FAC+

<u>Scientific Name</u>	<u>Common Name</u>	<u>Indicator Status</u>
<i>P. trivialis</i> L.	Rough bluegrass	FACW
<i>Podostemum ceratophyllum</i> Michx.	Hornleaf riverweed	OBL
<i>Pogonia ophioglossoides</i> (L.) Ker	Rose pogonia	OBL
<i>Polemonium reptans</i> L.	Creeping polemonium	FAC
<i>Polygala baldwinii</i> Nutt.	White bachelor's button	OBL
<i>P. brevifolia</i> Nutt.	Short-leaved milkwort	OBL
<i>P. carteri</i> Small	Carter's milkwort	FACW
<i>P. chapmanii</i> Torr. & Gray	Chapman's milkwort	OBL
<i>P. crenata</i> C. W. James	Milkwort	FACW
<i>P. cruciata</i> L.	Cross-leaved milkwort	OBL
<i>P. cymosa</i> Walter	Tall pine-barren milkwort	OBL
<i>P. hookeri</i> Torr. & Gray	Hooker's milkwort	FACW+
<i>P. leptocaulis</i> Torr. & Gray	Swamp milkwort	FACW+
<i>P. lutea</i> L.	Yellow polygala	FACW+
<i>P. mariana</i> Mill.	Maryland milkwort	FACW
<i>P. nana</i> (Michx.) DC.	Bachelor's-button	FAC+
<i>P. nuttallii</i> Torr. & Gray	Nuttall's milkwort	FAC
<i>P. ramosa</i> Elliott	Low pinebarren milkwort	OBL
<i>P. rugelli</i> Shuttlew. ex. Chapm.	Yellow bachelor's button	FACW
<i>P. setacea</i> Michx.	Milkwort	FAC+
<i>Polygonatum commutatum</i> (J. A. & J. H. Schultes) A. Dietr.	Great solomonseal	FAC
<i>Polygonum amphibium</i> L.	Water knotweed	OBL
<i>P. argyrocoleon</i> Steud.	Persian wireweed	OBL
<i>P. arifolium</i> L.	Halberdleaf tear-thumb	OBL
<i>P. careyi</i> Olney	Carey smartweed	FACW
<i>P. caespitosum</i> Blume	Cespitose knotweed	FACW-
<i>P. densiflorum</i> Meissn.	Southern smartweed	OBL
<i>P. hirsutum</i> (Walter) Small	Hairy smartweed	OBL
<i>P. hydropiper</i> L.	Marshpepper knotweed	OBL
<i>P. hydropiperoides</i> Michx.	Swamp knotweed	OBL
<i>P. lapathifolium</i> L.	Smartweed	FACW
<i>P. meisnerianum</i> Cham. & Schlecht.	Mexican tear-thumb	OBL
<i>P. opelousanum</i> Riddell ex. Small	Opelousas smartweed	OBL
<i>P. pennsylvanicum</i> L.	Pennsylvania smartweed	FACW
<i>P. persicaria</i> L.	Ladysthumb smartweed	FACW
<i>P. punctatum</i> Elliott	Dotted smartweed	FACW+
<i>P. robustius</i> (Small) Fernald	Stout smartweed	OBL
<i>P. sagittatum</i> L.	Arrow-leaved tearthumb	OBL
<i>P. setaceum</i> Baldw.	Bristly smartweed	FACW
<i>P. virginianum</i> L.	Virginia smartweed	FAC
<i>Polypodium scolopendria</i> N. L. Burm.	Polypody	-
<i>Polypogon interruptus</i> H.B.K.	Ditch polypogon	OBL
<i>P. maritimus</i> Willd.	Mediterranean polypogon	OBL
<i>P. monspeliensis</i> (L.) Desf.	Rabbitfootgrass	FACW DRA
<i>Polystichum acrostichoides</i> (Michx.) Schott	Christmas fern	FAC
<i>Pontederia cordata</i> L.	Pickerelweed	OBL
<i>Ponthieva racemosa</i> (Walter) Mohr	Ponthieva	FACW+
<i>Populus balsamifera</i> L.	Balsam poplar	FAC
<i>P. deltoides</i> W. Bartram ex. Marshall	Eastern cottonwood	FAC+
<i>P. heterophylla</i> L.	Swamp cottonwood	OBL

<u>Scientific Name</u>	<u>Common Name</u>	<u>Indicator Status</u>
<i>Portulaca umbraticola</i> H.B.K.	Purslane	FAC
<i>Potamogeton amplifolius</i> Tuckerm.	Largeleaf pondweed	OBL
<i>P. bicupulatus</i> Fernald	Snailseed pondweed	OBL
<i>P. confervoides</i> Reichenb.	Tuckerman's pondweed	OBL
<i>P. crispus</i> L.	Curly pondweed	OBL
<i>P. diversifolius</i> Raf.	Waterthread pondweed	OBL
<i>P. epiphydrus</i> Raf.	Ribbonleaf pondweed	OBL
<i>P. floridanus</i> Small	Florida pondweed	OBL
<i>P. foliosus</i> Raf.	Leafy pondweed	OBL
<i>P. illinoensis</i> Morong	Illinois pondweed	OBL
<i>P. natans</i> L.	Floatingleaf pondweed	OBL
<i>P. nodosus</i> Poir.	Longleaf pondweed	OBL
<i>P. pectinatus</i> L.	Sago pondweed	OBL
<i>P. perfoliatus</i> L.	Thoruort pondweed	OBL
<i>P. praelongus</i> Wulfen	Whitestem pondweed	OBL
<i>P. pulcher</i> Tuckerm.	Heartleaf pondweed	OBL
<i>P. pusillus</i> L.	Baby pondweed	OBL
<i>P. tennesseensis</i> Fernald	Tennessee pondweed	OBL
<i>Prenanthes autumnalis</i> Walter	Pine barren rattlesnakeroot	FAC
<i>Proserpinaca intermedia</i> Mackenz.	Mermaid weed	OBL
<i>P. palustris</i> L.	Marsh mermaid weed	OBL
<i>P. pectinata</i> Lam.	Cutleaf mermaid weed	OBL
<i>Psilocarya nitens</i> (Vahl) Wood	Short-baked bald rush	OBL
<i>P. schiedeana</i> (Nees.) Liebm.	Bald rush	OBL
<i>P. setipoides</i> Torr.	Long-beaked bald-rush	OBL
<i>Psoralea simplex</i> Nutt. ex Torr. & Gray	Psoralea	FAC
<i>Stelen trifoliata</i> L.	Common hoptree	FAC
<i>Stelis tripartita</i> (Swartz) K. Presl.	Brakefern	FACW
<i>Stilidium capillaceum</i> (Michx.) Raf.	Mock-bishopweed	OBL
<i>S. costatum</i> (Elliott) Raf.	Ribbed mock-bishopweed	FACW
<i>S. fluviatile</i> (Rose) Mathias	Mock-bishopweed	FACW+
<i>S. nodosum</i> (Rose) Mathias	Mock-bishopweed	OBL
<i>S. nuttallii</i> (DC.) Britton	Nuttall mock-bishopweed	FAC+
<i>Fuccinellia pallida</i> (Torr.) R. T. Clausen	Pale manna-grass	OBL
<i>Pycnantherum albescens</i> Torr. & Gray	White-leaved mountain-mint	FAC
<i>P. nuttatum</i> (Michx.) Pers.	Mountain mint	FAC
<i>P. nudum</i> Nutt.	Bare-stemrod horsemint	FACW-
<i>P. setosum</i> Nutt.	Awned mountain-mint	FAC
<i>P. virginianum</i> (L.) Durand & Jackson	Virginia basil	FAC
<i>Pyridanthera barbulate</i> Michx.	Piximoss	FAC
<i>Quercus K beadlei</i> Trelease	Beadle oak	FACW
<i>Q. bicolor</i> Willd.	Swamp white oak	FACW+
<i>Q. falcata</i> var. <i>pagodifolia</i> Elliott	Cherrybark red oak	FACW
<i>Q. laurifolia</i> Michx.	Laurel oak	FACW
<i>Q. lyrata</i> Walter	Overcup oak	OBL
<i>Q. K ramabiana</i> Sudw.	McNab oak	-
<i>Q. macrocarpa</i> Michx.	Bur oak	FAC
<i>Q. michauxii</i> Nutt.	Swamp chestnut oak	FACW-
<i>Q. nigra</i> L.	Water oak	FAC
<i>Q. nuttallii</i> Palmer	Nuttall oak	OBL
<i>Q. palustris</i> Muench.	Pin oak	FACW

<u>Scientific Name</u>	<u>Common Name</u>	<u>Indicator Status</u>
<i>Q. phellos</i> L.	Willow oak	FACW-
<i>Q. shumardii</i> Buckley	Shumard oak	FACW
<i>Q. stellata</i> var. <i>Mississippiensis</i>	Swamp post oak	FACW
<i>Ranunculus abortivus</i> L.	Subalpine buttercup	FAC
<i>R. acris</i> L.	Tall buttercup	FACW
<i>R. ambigens</i> Wats.	Spearwort	OBL
<i>R. aquatilis</i> L.	Water buttercup	OBL
<i>R. arvensis</i> L.	Corn buttercup	FAC
<i>R. bulbosus</i> L.	Bulbous buttercup	FAC+
<i>R. fascicularis</i> Muhl. ex Benth.	Tufted buttercup	FAC
<i>R. flabellaris</i> Raf.	Yellow-water crowfoot	OBL
<i>R. hederaceus</i> L.	Ivy buttercup	OBL
<i>R. hispidus</i> Michx.	Bristly buttercup	FAC
<i>R. laxicaulis</i> (Torr. & Gray) Darby	Spearwort	OBL
<i>R. longirostris</i> Godr.	White water-crowfoot	OBL
<i>R. muricatus</i> L.	Spiny buttercup	FACW
<i>R. parviflorus</i> L.	Sticktight buttercup	FAC
<i>R. pennsylvanicus</i> L.f.	Pennsylvania buttercup	OBL
<i>R. platensis</i> Spreng.	Flat buttercup	FAC+
<i>R. pusillus</i> Poir.	Dwarf buttercup	FACW+
<i>R. recurvatus</i> Poir.	Hooked buttercup	FAC
<i>R. repens</i> L.	Creeping buttercup	FAC
<i>R. sardous</i> Crantz	Sardous buttercup	FAC+
<i>R. sceleratus</i> L.	Celeryleaf buttercup	OBL
<i>R. septentrionalis</i> Poir.	Swamp buttercup	OBL
<i>R. subcordatus</i> E. O. Beal	Subcordate buttercup	OBL
<i>R. trichophyllus</i> D. Chaix	White water-crowfoot	OBL
<i>R. trilobus</i> Desf.	Three-lobed buttercup	FACW
<i>Rapanea punctata</i> (Lam.) Lundell	Badula	FAC
<i>Pectanosthica oligostachya</i> (Munro) Hitchc.	Reimargrass	OBL
<i>Rhabdadenia biflora</i> (Jacq.) Muell. Arg.	Rhabdadenia	FACW+
<i>Rhamnus alnifolia</i> L'Her.	Alder buckthorn	OBL
<i>R. frangula</i> L.	Alder buckthorn	FACW
<i>Rhapidoxyllum hystrix</i> (Pursh) H. Wendl. & Drude	Needlepalm	FACW
<i>Pheia alifanus</i> Walter	Meadow beauty	FACW
<i>P. aristosa</i> Britton	Awn-petaled meadow-beauty	OBL
<i>P. cubensis</i> Griseb.	Florida meadow beauty	FACW+
<i>P. glabella</i> Michx.	Deer grass	FACW+
<i>P. lutea</i> Walter	Yellow meadowbeauty	FACW+
<i>P. mariana</i> L.	Meadow beauty	FACW+
<i>P. nashii</i> Small	Nash meadowbeauty	FACW+
<i>P. nuttallii</i> C. W. James	Nuttall's meadow-beauty	FACW+
<i>P. parviflora</i> Chapm.	White meadowbeauty	OBL
<i>P. petiolata</i> Walter	Ciliate meadowbeauty	FACW+
<i>P. salicifolia</i> Kral & Bostick	Panhandle meadow-beauty	OBL
<i>P. virginica</i> L.	Meadow beauty	FACW+
<i>Rhizophora mangle</i> L.	Red mangrove	OBL
<i>Rhododendron arborescens</i> (Pursh) Torr.	Treelike rhododendron	FACW-
<i>R. atlanticum</i> (Ashe) Rehd.	Atlantic rhododendron	FAC+

<u>Scientific Name</u>	<u>Common Name</u>	<u>Indicator Status</u>
<i>R. canescens</i> (Michx.) Sweet	Piedmont azalea	FACW-
<i>R. chapmanii</i> Gray	Chapman rhododendron	FACW+
<i>R. oblongifolium</i> (Small) Millais	Texas azalea	FACW
<i>R. periclymenoides</i> (Michx.) Shinners	Rhodendron	FAC
<i>R. prinophyllum</i> (Small) Millais	Rhodendron	FAC
<i>R. serrulatum</i> (Small) Millais	Wild azalea	OBL
<i>R. viscosum</i> (L.) Torr.	Swamp azalea	FACW+
<i>Rhynchospora alba</i> (L.) Vahl	Whitebeaked rush	OBL
<i>R. baldwinii</i> Gray	Baldwin's beaked rush	OBL
<i>R. breviseta</i> (Gale) Channell	Piedmont beaked-rush	OBL
<i>R. caduca</i> Elliott	Bald rhynchospora	OBL
<i>R. capillacea</i> Torr.	Capillary beaked-rush	OBL
<i>R. capitellata</i> (Michx.) Vahl	False bog rush	OBL
<i>R. careyana</i> Fernald	Horned-rush	OBL
<i>R. cephalantha</i> Gray	Capitate beaked rush	OBL
<i>R. chalarocephala</i> Fernald & Gale	Loose-headed beaked-rush	OBL
<i>R. chapmanii</i> M. A. Curtis	Chapman's beaked rush	OBL
<i>R. ciliaris</i> (Michx.) C. Mohr.	Hairy beaked rush	OBL
<i>R. compressa</i> J. Carey ex. Chapm.	Flat-fruited beaked rush	OBL
<i>R. corniculata</i> (Lam.) Gray	Horned rush	OBL
<i>R. crinipes</i> Gale	Beaked-rush	OBL
<i>R. culix</i> Gale	Beaked-rush	OBL
<i>R. curtissii</i> Britton	Curtiss beaked-rush	OBL
<i>R. decurrans</i> Chapm.	Trailing beaked rush	OBL
<i>R. distans</i> (Michx.) Vahl	Brown beaked rush	FACW
<i>R. divergens</i> M. A. Curtis	Spreading beakrush	OBL
<i>R. elliotii</i> A. Dietr.	Elliott's beaked rush	FACW
<i>R. fascicularis</i> (Michx.) Vahl	Stout beak rush	FACW+
<i>R. fernaldii</i> S. Gale	Fernald's rhynchospora	FAC
<i>R. filifolia</i> Gray	Bristle-leaved beaked-rush	FACW-
<i>R. fusca</i> (L.) W. T. Ait.	Brown beaked-rush	OBL
<i>R. globularis</i> (Chapm.) Small	Pinehill beakrush	FACW
<i>R. glomerata</i> (L.) Vahl	Clustered beaked-rush	OBL
<i>R. gracilentia</i> Gray	Slender beaked-rush	OBL
<i>R. harperi</i> Small	Harper's beaked-rush	OBL
<i>R. harveyi</i> W. Boott.	Harvey's beaked-rush	FAC
<i>R. inexpansa</i> (Michx.) Vahl	Nodding beakrush	FACW
<i>R. intermedia</i> (Chapm.) Britton	Pine-barren beaked-rush	FACW
<i>R. intermixta</i> C. Wright	Humble beaked rush	OBL
<i>R. inundata</i> (Oakes) Fernald	Water rhynchospora	OBL DRA
<i>R. macra</i> (Clarke) Small	Large beakrush	OBL
<i>R. macrostachya</i> Torr.	Horned rush	OBL DRA
<i>R. microcarpa</i> Baldw. ex Gray	Littleseed beakrush	FACW+
<i>R. microcephala</i> (Britton) Britton	Small-headed beaked-rush	OBL
<i>R. miliacea</i> (Lam.) Gray	Millet beaked-rush	OBL
<i>R. mixta</i> Britton	Mingled beaked-rush	OBL
<i>R. odorata</i> C. Wright ex. Griseb.	Fragrant beaked-rush	OBL
<i>R. oligantha</i> Gray	Few-flowered beaked-rush	OBL
<i>R. pallida</i> M. A. Curt.	Pale beaked-rush	OBL
<i>R. perplexa</i> Britton	Beaked rush	OBL
<i>R. plumosa</i> Elliott	Plumed beakrush	FACW
<i>R. punctata</i> Elliott	Pine-land beaked-rush	OBL

<u>Scientific Name</u>	<u>Common Name</u>	<u>Indicator Status</u>
<i>R. pusilla</i> Chapm. ex. M. A. Curtis	Little beakrush	FACW
<i>R. rariflora</i> (Michx.) Elliott	Thread-beakrush	OBL
<i>R. saxicola</i> Small	Beaked-rush	FACW
<i>R. smallii</i> Britton	Small's beaked-rush	OBL
<i>R. solitaria</i> R. M. Harper	Beaked-rush	OBL
<i>R. stenophylla</i> Chapm.	Chapman's beaked-rush	FACW
<i>R. sulcata</i> S. Gale	Beaked-rush	OBL
<i>R. torreyana</i> Gray	Torrey's beaked-rush	OBL
<i>R. tracyi</i> Britton	Tracey's horned rush	OBL
<i>R. wrightiana</i> Boeck.	Wright beaked-rush	OBL
<i>Ribes americanum</i> Mill.	Black currant	FAC
<i>R. glandulosum</i> Grauer	Skunk currant	FACW
<i>Rorippa palustris</i> (L.) Besser	Marsh yellowcress	OBL DRA
<i>R. sessiliflora</i> (Nutt.) A. Hitchc.	Sessile-flowered cress	FACW+ DRA
<i>R. sinuata</i> (Nutt.) A. Hitchc.	Spreading yellowcress	FACW
<i>R. sylvestris</i> (L.) Besser	Creeping yellowcress	OBL
<i>R. teres</i> (Michx.) Stuckey	Marsh cress	FACW
<i>Rosa palustris</i> Marshall	Swamp rose	OBL
<i>R. virginiana</i> Mill.	Virginia rose	FAC
<i>Rotala indica</i> (Willd.) Koehne	India tooth-cup	OBL
<i>R. ramosior</i> (L.) Koehne	Tooth-cup	OBL DRA
<i>Roystonea elata</i> (W. Bartram) F. Harper	Florida royal palm	FAC
<i>R. regia</i> (H.B.K.) O. F. Cook	Cuban royal palm	FACW
<i>Rubus akermanii</i> Fernald	Akerman blackberry	-
<i>R. alumnus</i> L. H. Bailey	Blackberry	-
<i>R. ambigens</i> Fernald	Blackberry	-
<i>R. betulifolius</i> Small	Birch leaf blackberry	FAC
<i>R. hispidus</i> L.	Swamp blackberry	FACW
<i>R. longii</i> Fernald	Blackberry	-
<i>R. louisianus</i> Berger	Louisiana blackberry	FAC
<i>R. probabilis</i> L. H. Bailey	Tree blackberry	FAC
<i>R. strigosus</i> Michx.	Blackberry	FACW
<i>R. vigil</i> L. H. Bailey	Blackberry	-
<i>Rudbeckia auriculata</i> (Pend.) Kral	Eared coneflower	FACW
<i>R. fulgida</i> Ait.	Orange coneflower	FAC+
<i>R. graminifolia</i> (Torr. & Gray) C. Boynt. & Beadle	Grass-leaved coneflower	FACW
<i>R. laciniata</i> L.	Cutleaf coneflower	FACW
<i>R. maxima</i> Nutt.	Great coneflower	FAC+
<i>R. mohrii</i> Gray	Mohr coneflower	FACW+
<i>R. nitida</i> Nutt.	Shiny coneflower	FACW-
<i>R. subtomentosa</i> Pursh	Sweet coneflower	FAC+
<i>Ruellia brittoniana</i> E. Leonard	Britton's ruellia	FAC
<i>R. noctiflora</i> (Nees) Gray	Night flowering ruellia	FACW
<i>Rumex altissimus</i> Wood	Pale dock	FACW
<i>R. brittanica</i> L.	Great water dock	OBL
<i>R. chrysocarpus</i> Moris	Anamastla	FACW
<i>R. conglomeratus</i> Murray	Clustered dock	FACW-
<i>R. crispus</i> L.	Curled dock	FAC
<i>R. densiflorus</i> Osterh.	Denseflowered dock	FAC
<i>R. fascicularis</i> Small	Fascicled dock	OBL
<i>R. floridanus</i> Meissn.	Florida dock	FACW

<u>Scientific Name</u>	<u>Common Name</u>	<u>Indicator Status</u>
<i>R. maritimus</i> L.	Golden dock	FACW+
<i>R. mexicanus</i> Meisn.	Narrowleaf dock	FAC
<i>R. obovatus</i> Danser	Dock	OBL
<i>R. obtusifolius</i> L.	Bitter dock	FACW-
<i>R. orbiculatus</i> Gray	Great water dock	OBL
<i>R. paraguayensis</i> Parodi	Paraguayan dock	FACW-
<i>R. pulcher</i> L.	Fiddle dock	FACW DRA
<i>R. spiralis</i> Small	Spiral dock	-
<i>R. verticillatus</i> L.	Swamp dock	FACW+
<i>Puccia maritima</i> L.	Widgeongrass	OBL
<i>Sabal minor</i> (Jacq.) Pers.	Dwarf palmetto	FACW
<i>S. palmetto</i> (Walter) Lodd.	Cabbage palmetto	FAC
<i>Sabatia angularis</i> (L.) Pursh	Sabatia	FAC
<i>S. bartramii</i> Wilbur	Bartram sabatia	FACW+
<i>S. brachiata</i> Elliott	Sabatia	FAC
<i>S. brevifolia</i> Raf.	Small leaved sabatia	FACW
<i>S. calycina</i> (Lam.) Heller.	Coast rose-gentian	OBL
<i>S. campanulata</i> (L.) Torr.	Bell shaped sabatia	FACW
<i>S. difformis</i> (L.) Druce	Lance-leaved sabatia	OBL
<i>S. dodecandra</i> (L.) B.S.P.	Big sea-pink	OBL
<i>S. gentianoides</i> Elliott	Gentian sabatia	OBL
<i>S. grandiflora</i> (Gray) Small	Bigflowered sabatia	FACW+
<i>S. kennedyana</i> Fernald	Kennedy's sabatia	OBL
<i>S. macrophylla</i> Hook	Largeleaf sabatia	FACW+
<i>S. quadrangula</i> Wilbur	Four angle sabatia	FAC
<i>S. stellaris</i> Pursh	Little sea-pink	OBL
<i>Sacciolepis indica</i> (L.) Chase	Glenwoodgrass	FAC
<i>S. striata</i> (L.) Nash	American cupscale	OBL
<i>Sagina decumbens</i> (Elliott) T. & G.	Trailing pearlwort	FAC+
<i>Sagittaria ambigua</i> J. G. Smith	Lance-leaved arrowhead	OBL
<i>S. calycina</i> Engelm.	Hooded arrowhead	OBL
<i>S. engelmanniana</i> J. G. Smith	Engelmann arrowhead	OBL
<i>S. falcata</i> Pursh	Coastal arrowhead	OBL
<i>S. fasciculata</i> E. O. Beal	Bunched arrowhead	OBL
<i>S. graminea</i> Michx.	Grassy arrowhead	OBL
<i>S. guyanensis</i> H.B.K.	Guyana arrowhead	OBL
<i>S. isoetiformis</i> Small	Quillwort arrowhead	OBL
<i>S. kurziana</i> Glueck	Kurz arrowhead	OBL
<i>S. lanceifolia</i> L.	Bulltongue	OBL
<i>S. latifolia</i> Willd.	Broadleaf arrowhead	OBL
<i>S. montevidensis</i> Cham. & Schlecht.	Hooded arrowhead	OBL
<i>S. papillosa</i> Buchenau	Nipplebract arrowhead	OBL
<i>S. platurhylla</i> (Engelm.) J. G. Smith	Delta duckpotato	OBL
<i>S. rigida</i> Pursh	Stiff arrowhead	OBL
<i>S. stagnorum</i> Small	Arrowhead	OBL
<i>S. subulata</i> (L.) Buck.	Owlleaf arrowhead	OBL
<i>Salicornia bigelovii</i> Torr.	Bigelow glasswort	OBL
<i>S. europaea</i> L.	European swampfire	OBL
<i>S. perennis</i> Mill.	Woody glasswort	OBL
<i>S. virginica</i> L.	Virginia swampfire	OBL
<i>Salix alba</i> L.	White willow	FACW-

<u>Scientific Name</u>	<u>Common Name</u>	<u>Indicator Status</u>
<i>S. amygdaloides</i> Anderss.	Peachleaf willow	FACW
<i>S. babylonica</i> L.	Weeping willow	FACW
<i>S. caroliniana</i> Michx.	Coastal plain willow	OBL
<i>S. cordata</i> Michx.	Heart-leaved willow	FAC
<i>S. discolor</i> Muhl.	Pussy willow	FACW
<i>S. eriocephala</i> Michx.	Heart-leaved willow	FACW
<i>S. exigua</i> Nutt.	Sandbar willow	OBL DRA
<i>S. floridana</i> Chapm.	Florida willow	FACW+
<i>S. nigra</i> Marshall	Black willow	OBL
<i>S. petiolaris</i> J. E. Smith	Meadow willow	OBL
<i>S. purpurea</i> L.	Purpleosier willow	FACW
<i>S. rigida</i> Muhl.	Mackenzie willow	OBL
<i>S. sericea</i> Marshall	Silky willow	OBL
<i>Salvinia auriculata</i> Aubl.	Salvinia	OBL
<i>S. minima</i> Baker	Salvinia	OBL
<i>Sambucus canadensis</i> L.	Common elder	FACW-
<i>Samolus ebracteatus</i> H.B.K.	Waterpimpernel	OBL
<i>S. parviflorus</i> Raf.	Waterpimpernel	OBL
<i>Sanguisorba canadensis</i> L.	American burnet	FACW+
<i>S. minor</i> Scop.	Small burnet	FAC
<i>Sanicula gregaria</i> Bickn.	Sanicula	FAC
<i>Sapium sebiferum</i> (L.) Roxb.	Chinese tallow tree	FAC
<i>Sarcostemma clausum</i> (Jacq.) J. A. Schultes	Sarcostemma	FACW
<i>Sarracenia alata</i> Wood	Yellow trumpets	OBL
<i>S. flava</i> L.	Trumpets	OBL
<i>S. leucophylla</i> Raf.	White-trumpet	OBL
<i>S. minor</i> Walter	Hooded pitcher plant	OBL
<i>S. oreophila</i> (Kearney) Wherry	Green pitcher plant	OBL
<i>S. psittacina</i> Michx.	Parrot pitcherplant	OBL
<i>S. purpurea</i> L.	Pitcher-plant	OBL
<i>S. rubra</i> Walter	Sweet pitcherplant	OBL
<i>Satureja arkansana</i> (Nutt.) Briq.	Arkansas satureja	FACW
<i>S. brownei</i> (Swantz) Briq.	Brown's satureja	OBL
<i>Saururus cernuus</i> L.	Lizard's tail	OBL
<i>Saxifraga careyana</i> Gray	Carey saxifrage	FAC
<i>S. michauxii</i> Britton	Michaux saxifrage	FACW-
<i>S. micranthidifolia</i> (Haw.) Steud.	Lettuce saxifrage	FACW+
<i>S. pennsylvanica</i> L.	Pennsylvania saxifrage	OBL
<i>Scaevola plumieri</i> (L.) Vahl	Half eaten flower	FAC
<i>Schinus terebinthifolius</i> Raddi	Brazilian pepper	FAC
<i>Schizachyrium maritimum</i> (Chapm.) Nash	Seaside schizachyrium	FAC+
<i>S. rhizomatum</i> (Swallen) Gould	Schizachyrium	FACW-
<i>Schoenolirion proceum</i> (Michaux) Gray	Schoenolirion	OBL
<i>S. elliotii</i> Gray	Elliott schoenolirion	OBL
<i>S. texanum</i> (Scheele) Gray	Texas schoenolirion	OBL
<i>Schoenus nigricans</i> L.	Black sedge	OBL
<i>Schwalbea americana</i> L.	Chaffseed	FAC
<i>Scirpus acutus</i> Muhl. ex. Bigel.	Hardstem bulrush	OBL
<i>S. americanus</i> Pers.	American bulrush	OBL
<i>S. atrovirens</i> Willd.	Green bulrush	OBL
<i>S. californicus</i> (C. A. Meyer) Steud.	California bulrush	OBL

<u>Scientific Name</u>	<u>Common Name</u>	<u>Indicator Status</u>
<i>S. cernuus</i> Vahl	Low clubrush	OBL
<i>S. cespitosus</i> L.	Cespitose bulrush	OBL
<i>S. cubensis</i> Poepp. & Kunth	Cuban bulrush	OBL
<i>S. cylindricus</i> (Torr.) Britton	Swamp bulrush	OBL
<i>S. cyperinus</i> (L.) Kunth	Wool-grass	OBL
<i>S. deltatum</i> Schuyler	Delta threesquare	FACW+
<i>S. divaricatus</i> Elliott	Spreading bulrush	OBL
<i>S. erectus</i> Poir.	Sharpscale bulrush	OBL
<i>S. etuberculatus</i> (Steud.) Kuntze	Swamp bulrush	OBL
<i>S. expansus</i> Fernald	Woodland bulrush	OBL
<i>S. flaccidifolius</i> (Fernald) Schuyler	Reclining bulrush	OBL
<i>S. fluviatilis</i> (Torr.) Gray	River bulrush	OBL
<i>S. georgianus</i> R. M. Harper	Black bulrush	OBL
<i>S. hallii</i> Gray	Halls bulrush	OBL
<i>S. hattorianus</i> Makino	Hattorus bulrush	OBL
<i>S. koilolepis</i> (Steud.) Gleason	Keeled bulrush	FACW+ DRA
<i>S. longii</i> Fernald	Long's wool-grass	OBL
<i>S. microcarpus</i> J. & K. Presl	Panicled bulrush	OBL
<i>S. molestus</i> M. Johnst.	Bulrush	OBL
<i>S. pendulus</i> Muhl.	Reddish bulrush	OBL
<i>S. polyphyllus</i> Vahl	Leafy bulrush	OBL
<i>S. pungens</i> Vahl	Three-square	OBL
<i>S. purshianus</i> Fernald	Weak bulrush	OBL
<i>S. robustus</i> Pursh	Saltmarsh bulrush	OBL
<i>S. subterminalis</i> Torr.	Water bulrush	OBL
<i>S. valicus</i> Vahl	Softstem bulrush	OBL
<i>Scleria baldwinii</i> (Torrey) Steudel	Baldwin razorsedge	FACW+
<i>S. ciliata</i> Michx.	Fringed razorsedge	FAC
<i>S. flaccida</i> Steud.	Nut rush	FACW
<i>S. georgiana</i> Core	Georgia nut rush	FACW
<i>S. hirtella</i> Swartz	Michaux's nut rush	FACW-
<i>S. lithosperma</i> (L.) Swartz	Hardseeded nut rush	FACW-
<i>S. minor</i> (Britton) W. Stone	Slender nut rush	FACW
<i>S. pauciflora</i> Muhl.	Few flower razorsedge	FAC+
<i>S. reticularis</i> Michx.	Netted razorsedge	OBL
<i>S. setacea</i> Poir.	Torrey's nut rush	FAC
<i>S. verticillata</i> Muhl.	Low nut-grass	OBL
<i>Sclerolepis uniflora</i> (Walter) B.S.P.	One-flowered sclerolepis	OBL
<i>Scoparia dulcis</i> L.	Sweet broomwort	FAC
<i>Scutellaria arenicola</i> Small	Skullcap	FAC
<i>S. cardiophylla</i> Engelm. & Gray	Heartleaf skullcap	FAC
<i>S. floridanus</i> Chapm.	Florida skullcap	OBL
<i>S. galericulata</i> L.	Common skullcap	OBL
<i>S. integrifolia</i> L.	Rough skullcap	FAC
<i>S. lateriflora</i> L.	Blue skullcap	FACW+
<i>S. nervosa</i> Pursh	Veined skullcap	FAC
<i>S. racemosa</i> Pers.	Skullcap	OBL
<i>S. thieretti</i> Skinners	Thieret's skullcap	FACW
<i>Sebastiania fruticosa</i> (Bartr.) Fernald	Sebastiania	FACW
<i>S. pusillum</i> Michx.	Sedum	FAC
<i>Selaginella apoda</i> (L.) Spring	Basket selaginella	FACW+

<u>Scientific Name</u>	<u>Common Name</u>	<u>Indicator Status</u>
<i>S. ludoviciana</i> A. Brown	Gulf spikemoss	FACW
<i>S. uncinata</i> Spring	Blue spikemoss	OBL
<i>Senecio aureus</i> L.	Golden groundsel	FACW
<i>S. glabellus</i> Poir.	Butterweed	FACW+
<i>S. imparinnatus</i> Klott	Threadleaf groundsel	FACW+
<i>S. pauperculus</i> Michx.	Balsam groundsel	FACW
<i>S. schweinitzianus</i> Nutt.	Schweinitz groundsel	FACW
<i>Sesbania drummondii</i> (Rydb.) Cory	Rattlebush	FACW
<i>S. exaltata</i> (Raf.) Rydb.	Wild-coffee	FACW-
<i>S. punicea</i> (Cav.) Benth.	Sesbania	FAC+
<i>S. vesicaria</i> (Jacq.) Elliott	Bladderpod	FAC+
<i>Sesuvium maritimum</i> (Walter) B.S.P.	Sea purslane	FACW
<i>S. portulacastrum</i> (L.) L.	Sea purslane	FACW
<i>S. sessile</i> Pers.	Lowland purslane	FAC
<i>S. verrucosum</i> Raf.	Sea-purslane	FACW
<i>Setaria geniculata</i> (Lam.) Beauv.	Knotroot bristlegrass	FAC
<i>S. glauca</i> (L.) Beauv.	Yellow foxtail	FAC
<i>S. macrosperma</i> (Scribn. & Merrill) K. Schum.	Coral bristlegrass	FAC
<i>S. magna</i> Griseb.	Giant bristlegrass	FACW+
<i>S. verticillata</i> (L.) Beauv.	Bur bristlegrass	FAC
<i>Seymeria cassioides</i> (Walter) Blake	Seymeria	FAC
<i>Sibara virginica</i> (L.) Rollins	Trelease	FAC
<i>Sicyos angulatus</i> L.	Common burcucumber	FACW-
<i>Silene nivea</i> (Nutt.) Oth.	Silene	FAC
<i>Silphium perfoliatum</i> L.	Cupplant rosinweed	FAC+
<i>Sisyrinchium angustifolium</i> Mill.	Stout blue-eyed grass	FAC
<i>S. atlanticum</i> Bickn.	Atlantic blue-eyed grass	FACW-
<i>S. bellum</i> S. Wats.	Western blue-eyed grass	FAC
<i>S. biforme</i> Bicknell	Wiry blue-eyed grass	FAC
<i>S. capillare</i> Bickn.	Blue-eyed grass	OBL
<i>S. exile</i> Bickn.	Yellow blue-eyed grass	FAC
<i>S. implicatum</i> Bickn.	Blue-eyed grass	-
<i>S. montanum</i> Greene	Colorado blue-eyed grass	-
<i>S. mucronatum</i> Michx.	Michaux's blue-eyed grass	FACW-
<i>S. rosulatum</i> Bickn.	Annual blue-eyed grass	FAC
<i>S. sagittiferum</i> Bicknell	Spear-bract blue-eyed grass	FAC
<i>S. tracyi</i> Bickn.	Tracy blue-eyed grass	OBL
<i>Sium floridanum</i> Small	Florida water parsnip	OBL
<i>S. suave</i> Walter	Common waterparsnip	OBL
<i>Smilacina stellata</i> (L.) Desf.	Starry falsesolomonseal	FAC+
<i>Smilax bona-nox</i> L.	Saw greenbrier	FAC
<i>S. glauca</i> Walter	Cat greenbrier	FAC
<i>S. herbacea</i> L.	Carrion flower	FAC
<i>S. hispida</i> Muhl.	Bristly greenbrier	FAC+
<i>S. laurifolia</i> L.	Bamboo-vine	FACW+
<i>S. pseudochina</i> L.	Greenbrier	FAC
<i>S. pulverulenta</i> Michx.	Carrion flower	FAC
<i>S. rotundifolia</i> L.	Common greenbrier	FAC
<i>S. tannoides</i> L.	China-root	FAC+
<i>S. walteri</i> Pursh	Walter's greenbrier	OBL
<i>Solanum dulcamara</i> L.	Bittersweet	FAC

<u>Scientific Name</u>	<u>Common Name</u>	<u>Indicator Status</u>
<i>Solidago austrina</i> Small	Goldenrod	OBL
<i>S. edisoniana</i> Mackenz.	Edison goldenrod	FACW+
<i>S. elliotii</i> Torr. & Gray	Elliott's goldenrod	OBL
<i>S. fistulosa</i> Mill.	Pinebarren goldenrod	FAC+
<i>S. flavovirens</i> Chapm.	Goldenrod	OBL
<i>S. gigantea</i> Ait.	Late goldenrod	FACW
<i>S. glomerata</i> Michx.	Cluster goldenrod	FAC
<i>S. gracillima</i> Torr. & Gray	Goldenrod	OBL
<i>S. leavenworthii</i> Torr. & Gray	Leavenworth goldenrod	FAC+
<i>S. mirabilis</i> Small	Goldenrod	OBL
<i>S. nuttallii</i> Greene	Nuttall goldenrod	FAC
<i>S. patula</i> Muhl. ex Willd.	Roughleaf goldenrod	OBL
<i>S. riddellii</i> Frank	Riddell goldenrod	OBL
<i>S. rugosa</i> Mill.	Wrinkled goldenrod	FAC
<i>S. salicina</i> Elliott	Willow goldenrod	OBL
<i>S. sempervirens</i> L.	Seaside goldenrod	FACW
<i>S. stricta</i> Ait.	Willowleaf goldenrod	OBL
<i>S. uliginosa</i> Nutt.	Bog goldenrod	OBL
<i>S. verna</i> M. A. Curtis	Spring goldenrod	OBL
<i>Sonchus asper</i> (L.) J. Hill	Prickly sowthistle	FAC+
<i>Sorghum verticilliflorum</i> (Steud.) Stoph	Whorled sorghum	FAC
<i>Sparganium americanum</i> Nutt.	Eastern burreed	OBL
<i>S. androcladum</i> (Engelm.) Morong	Branching bur-reed	OBL
<i>S. chlorocarpum</i> Rydb.	Greenfruit burreed	OBL
<i>S. erectum</i> L.	Exotic bur-reed	OBL
<i>Spartina alterniflora</i> Loisel.	Smooth cordgrass	OBL
<i>S. bakeri</i> Merr.	Sand cordgrass	FACW+
<i>S. cynosuroides</i> (L.) Roth.	Big cordgrass	OBL
<i>S. patens</i> (Ait.) Muhl.	Marshhay cordgrass	FACW
<i>S. pectinata</i> Link	Prairie cordgrass	OBL
<i>S. spartinae</i> (Trin.) Merr.	Gulf cordgrass	OBL
<i>Spergularia achinosperma</i> (Celak.) Celak.	Bristleseed sandspurry	OBL
<i>S. marina</i> (L.) Griseb.	Saltmarsh sandspurry	OBL DRA
<i>S. rubra</i> (L.) J. & C. Presl.	Red sandspurry	-
<i>Spermacoe glabra</i> Michx.	Smooth buttonweed	FACW DRA
<i>S. tenuior</i> (L.) Lam.	Buttonweed	FACW
<i>Sphenoclea zeylanica</i> Gaertn.	Gooseweed	OBL
<i>Sphenopholis obtusata</i> (Michx.) Scribn.	Prairie wedgegrass	FAC+
<i>S. pennsylvanica</i> (L.) A. Hitchc.	Swamp-oats	OBL
<i>S. X pallens</i> (Bichler) Scribn.	Slender wedgegrass	FACW
<i>Sphenostigma coelestinum</i> (W. Bartram) R. C. Fost	Sphenostigma	FACW
<i>Spiranthes americana</i> (Mutis) Hieron.	Creeping spot-flower	FACW
<i>Spiraea alba</i> Du Roi	Meadow-sweet	FACW+
<i>S. douglasii</i> Hook.	Douglas spiraea	-
<i>S. latifolia</i> (Ait.) Borkh.	Broadleaf meadowsweet spiraea	FACW
<i>S. salicifolia</i> L.	Meadow-sweet	FACW
<i>S. tomentosa</i> L.	Hardhack	FACW
<i>S. virginiana</i> Britton	Virginia spiraea	FACW
<i>Spiranthes brevilabris</i> Lindl.	Spiranthes	FACW-

<u>Scientific Name</u>	<u>Common Name</u>	<u>Indicator Status</u>
<i>S. cernua</i> (L.) Rich	Nodding ladiestresses	FACW
<i>S. lacera</i> (Raf.) Raf.	Spiranthes	FAC
<i>S. laciniata</i> (Small) Ames	Spiranthes	FACW+
<i>S. lanceolata</i> (Aubl.) Leon	Leafless beak-orchid	FAC
<i>S. longilabris</i> Lindl.	Spiranthes	FACW
<i>S. odorata</i> (Nutt.) Lindl.	Fragrant ladies-tresses	OBL
<i>S. ovalis</i> Lindl.	Lesser ladies-tresses	FAC
<i>S. praecox</i> (Walter) Wats.	Southern ladiestresses	FACW
<i>S. vermalis</i> Engelm. & Gray	Upland ladiestresses	FACW-
<i>Spirodela oligorrhiza</i> (Kurz) Hegelm.	Giant duckweed	OBL
<i>S. polyrhiza</i> (L.) Schleiden	Greater duckweed	OBL
<i>S. punctata</i> C. H. Thomps	Duckweed	OBL
<i>Sporobolus asper</i> var. <i>Macer</i> (Trin.) (Shinners)	Tall dropseed	OBL
<i>S. floridanus</i> Chapm.	Florida dropseed	FAC
<i>S. pyramidatus</i> (Lam.) Hitchc.	Whorled dropseed	FAC
<i>S. teretifolius</i> Harper	Wireleaf dropseed	FACW
<i>S. virginicus</i> (L.) Kunth	Seashore dropseed	FACW+ DRA
<i>Stachys aspera</i> Michx.	Roughnettle betony	FAC+
<i>S. cordata</i> Riddell	Nuttall's hedge-nettle	FAC
<i>S. eplingii</i> J. Nels.	Epling's hedge-nettle	FAC
<i>S. floridana</i> Shuttlew.	Florida betony	FAC
<i>S. hispida</i> Pursh	Betony	OBL
<i>S. hyssopifolia</i> Michx.	Hyssop hedge-nettle	OBL
<i>S. latidens</i> Small	Betony	FAC
<i>S. lythroides</i> Small	Betony	FACW
<i>S. tenuifolia</i> Willd.	Hedge-nettle	FACW-
<i>Staphylea trifolia</i> L.	American bladdernut	FAC
<i>Steinchisma hians</i> (Elliott) Nash	Steinchisma	OBL
<i>Stellaria alsine</i> J.F.C. Grimm	Bog starwort	OBL
<i>S. fontinalis</i> (Short & Peter) Robins.	Starwort	OBL
<i>S. graminea</i> L.	Common stitchwort	FAC
<i>S. longifolia</i> Muhl.	Longleaf starwort	FACW-
<i>Stenandrium floridanum</i> (Gray) Small	Florida stenandrium	OBL
<i>Stenanthium gramineum</i> (Ker) Morong	Grassleaf stenanthium	FAC
<i>Stenotaphrum secundatum</i> (Walter) Kuntze	Common St. Augustine Grass	FAC
<i>Stillingia aquatica</i> Chapm.	Stillingia	OBL
<i>Stokesia laevis</i> (J. Hill) Greene	Stokesia	FAC
<i>Streptopus roseus</i> (Michx.)	Twisted stalk	FAC
<i>Strophostyles helveola</i> (L.) Elliott	Trailing wildbean	FAC
<i>Stylisma aquatica</i> (Walter) Raf.	Stylisma	FACW+
<i>Styrax americana</i> Lam.	American snowbell	FACW
<i>Suaeda linearis</i> (Elliott) Moq.	Annual seepweed	OBL
<i>S. maritima</i> (L.) Dum.	Sea seepweed	OBL
<i>Suaeda macrophylla</i> King	Honduras mahogany	-
<i>Symplocarpus foetidus</i> (L.) Nutt.	Common skunkcabbage	OBL
<i>Symplocos tinctoria</i> (L.) L'Her.	Sweetleaf	FAC
<i>Syngonanthus flavidulus</i> (Michx.) Ruhl.	Syngonanthus	FACW+
<i>Tamarix gallica</i> L.	French tamarisk	FACW DRA
<i>Taxodium distichum</i> (L.) Rich	Common baldcypress	OBL
<i>Tetrazygia bicolor</i> (Mill.) Cogn.	Florida tetrazygia	FAC

<u>Scientific Name</u>	<u>Common Name</u>	<u>Indicator Status</u>
<i>Teucrium canadense</i> L.	Canada germander	FACW-
<i>Thalassia testudinum</i> Konig	Turtlegrass	OBL
<i>Thalia dealbata</i> Bosc.	Powdery thalia	OBL
<i>T. geniculata</i> L.	Thalia	OBL
<i>Thalictrum clavatum</i> DC.	Meadowrue	FACW
<i>T. confine</i> Fernald	Critical meadowrue	-
<i>T. cooleyi</i> Ahles	Cooley meadowrue	FACW+
<i>T. dasycarpum</i> Fisch. & Ave-Lall.	Daisyseed meadowrue	FAC+
<i>T. debile</i> Buckley	Southern meadowrue	FAC
<i>T. dioicum</i> L.	Early meadowrue	FAC
<i>T. macrostylum</i> Small & A. Heller	Largestyle meadowrue	FAC+
<i>T. mirabile</i> Small	Meadowrue	OBL
<i>T. pubescens</i> Pursh	Pubescent meadowrue	FACW+
<i>T. revolutum</i> DC.	Waxy-leaved meadowrue	FAC+
<i>Thelypteris dentata</i> (Forsk.) E. St. John	Toothed thelypteris	FACW
<i>T. interrupta</i> (Decne) Reed	Thelypteris	FAC+
<i>T. kunthii</i> (Desv.) Morton	Thelypteris	FACW
<i>T. noveboracensis</i> (L.) Nieuwl.	New York fern	FAC+
<i>T. resinifera</i> Proctor	Thelypteris	FACW
<i>T. reticulata</i> (L.) Proctor	Thelypteris	FACW
<i>T. serrata</i> (Cav.) Alston	Thelypteris	FACW+
<i>T. thelypteroides</i> (Michx.) J. Holub	Thelypteris	FACW+
<i>Tofieldia glabra</i> Nutt.	Smooth tofieldia	FACW
<i>T. glutinosa</i> (Michx.) Pers.	Tall tofieldia	OBL
<i>T. racemosa</i> (Walter) B.S.P.	Sticky tofieldia	OBL
<i>Toxicodendron radicans</i> (L.) O. Kuntze	Poison-ivy	FAC
<i>T. rydbergii</i> (Small ex Rydb.) Green	Rydberg's poison ivy	-
<i>T. vernix</i> (L.) Kuntze	Poison-sumac	OBL
<i>Trachelospermum difforme</i> (Walter) Gray	Starjasmine	FACW
<i>Tradescantia fluminensis</i> Vell.	Wandering jew	FAC+
<i>Trautvetteria carolinensis</i> (Walter) Vail	Carolina buabane	FACW+
<i>Trepocarpus aethusae</i> Nutt.	Trepocarpus	FACW
<i>Triadenum tubulosum</i> (Walter) Gleason	Triadenum	OBL
<i>T. virginicum</i> (L.) Raf.	Marsh St. Johnswort	OBL
<i>T. walteri</i> (Gmel.) Gleason	Marsh St. Johnswort	OBL
<i>Trianthe x portulacastrum</i> L.	Desert horsepurslane	FACW
<i>Trichomanes boschianum</i> Sturm.	Bosch trichomanes	OBL
<i>T. holopterum</i> Kunze	Trichomanes	OBL
<i>T. petersii</i> Gray	Dwarf filmy-fern	FAC
<i>Tridens ambiguus</i> (Elliott) Schult.	Pinebarren tridens	FACW+
<i>T. striatus</i> (Nutt.) Nash	Longspike tridens	FACW
<i>Tridentaria borealis</i> Raf.	Starflower	FAC
<i>Triglochin striatum</i> Ruiz & Pavon	Arrow-grass	OBL
<i>Trilisa odoratissima</i> (Walter) Cassini	Trilisa	FACW
<i>T. paniculata</i> (Walter) Cassini	Panicled trilisa	FACW-
<i>Trillium cernuum</i> L.	Nodding trillium	FACW-
<i>T. pusillum</i> Michx.	Least trillium	FACW
<i>Triphora trianthophora</i> (Swartz) Rydb.	Three-birds orchid	FACW-
<i>Tripsacum dactyloides</i> (L.) L.	Eastern gamagrass	FAC+
<i>Trisetum pensylvanicum</i> (L.) Beauv.	Swamp trisetum	OBL

<u>Scientific Name</u>	<u>Common Name</u>	<u>Indicator Status</u>
<i>Typha angustifolia</i> L.	Narrow-leaved cattail	OBL
<i>T. domingensis</i> Pers.	Southern cattail	OBL
<i>T. X glauca</i> Godr.	Blue cattail	OBL
<i>T. latifolia</i> L.	Common cattail	OBL
<i>Ulmus americana</i> L.	American elm	FACW
<i>U. crassifolia</i> Nutt.	Cedar elm	FAC
<i>U. rubra</i> Muhl.	Slippery elm	FAC
<i>U. thomasii</i> Sarg.	Rock elm	FAC
<i>Urechites lutea</i> (L.) Britton	Rubber-vine	OBL
<i>Urtica dioica</i> L.	Slimsting nettle	FAC+
<i>Utricularia amethystina</i> Salzm. ex St.-Hil & F. De Girard	Amethyst bladderwort	FACW
<i>U. biflora</i> Lam.	Bladderwort	OBL
<i>U. cornuta</i> Michx.	Horned bladderwort	OBL
<i>U. fibrosa</i> Walter	Fibrous bladderwort	OBL
<i>U. floridana</i> Nash	Florida bladderwort	OBL
<i>U. foliosa</i> L.	Leafy bladderwort	OBL
<i>U. geminiscapa</i> Benj.	Hidden-flower bladderwort	OBL
<i>U. gibba</i> L.	Humped bladderwort	OBL
<i>U. inflata</i> Walter	Floating bladderwort	OBL
<i>U. intermedia</i> Hayne	Flat leaved bladderwort	OBL
<i>U. juncea</i> Vahl	Rush bladderwort	OBL
<i>U. macrorhiza</i> Leconte	Common bladderwort	OBL
<i>U. olivacea</i> C. Wright ex Griseb.	Dwarf bladderwort	OBL
<i>U. purpurea</i> Walter	Purple bladderwort	OBL
<i>U. radiata</i> Small	Little floating bladderwort	OBL
<i>U. resupinata</i> B. Greene	Lavender bladderwort	OBL
<i>U. simulans</i> Pilg.	Bladderwort	OBL
<i>U. subulata</i> L.	Zigzag bladderwort	OBL
<i>Uvularia floridana</i> Chapm.	Florida uvularia	FACW
<i>U. sessilifolia</i> L.	Wildoats bellwort	FAC+
<i>Vaccinium australe</i> Small	Highbush blueberry	FAC+
<i>V. caesium</i> Greene	Deerberry	FAC
<i>V. constablaei</i> Gray	Mountain blueberry	FAC
<i>V. corymbosum</i> L.	Highbush blueberry	FACW
<i>V. crassifolium</i> Andr.	Creeping blueberry	FAC+
<i>V. elliotii</i> Chapm.	Elliott blueberry	FAC+
<i>V. erythrocarpum</i> Michx.	Southern mountain cranberry	FAC
<i>V. fuscatum</i> Ait.	Fuscous blueberry	FAC+
<i>V. macrocarpon</i> Ait.	Large cranberry	OBL
<i>V. marianum</i> S. Wats.	Highbush blueberry	OBL
<i>V. simulatum</i> Small	Highbush blueberry	FAC
<i>Valeriana pauciflora</i> Michx.	Large-flowered valerian	FAC
<i>V. scandus</i> L.	Valerian	FAC
<i>Valerianella stenocarpa</i> (Englem) Krok	Narrow-celled corn salad	FACW
<i>V. umbilicata</i> (Sullivant) A. Wood	Corn salad	FAC
<i>V. woodsiana</i> (Torr. & Gray) Walpers	Wood's corn salad	FACW-
<i>Vallisneria americana</i> Michx.	Wild celery	OBL
<i>Veratrum viride</i> Ait.	Northern falsehellebore	FAC+
<i>Verbena bonariensis</i> L.	Tall verbena	FAC+
<i>V. hastata</i> L.	Blue verbena	FAC
<i>V. riparia</i> Raf.	Verbena	FAC

<u>Scientific Name</u>	<u>Common Name</u>	<u>Indicator Status</u>
<i>V. scabra</i> Vahl	Verbena	FACW+
<i>V. urticifolia</i> L.	White verbena	FAC+
<i>Verbesina alternifolia</i> (L.) Britton	Alternate leaved verbesina	FAC
<i>V. chapmanii</i> J. R. Coleman	Chapman verbesina	FACW+
<i>V. encelioides</i> (Cav.) Benth. & Hook.	Golden crownbeard	FAC
<i>V. heterophylla</i> (Chapm.) Gray	Variable leaved verbesina	FACW
<i>Vermonia arkansana</i> DC.	Arkansas ironweed	FAC
<i>V. blodgettii</i> Small	Florida ironweed	FACW-
<i>V. fasciculata</i> Michx.	Ironweed	FACW
<i>V. gigantea</i> (Walter) Trel.	Giant ironweed	FAC+
<i>V. lettermannii</i> Engelm.	Letterman ironweed	FACW
<i>V. missurica</i> Raf.	Missouri ironweed	FAC+
<i>V. novaboracensis</i> (L.) Michx.	New York ironweed	FAC+
<i>Veronica americana</i> (Raf.) Schw.	American speedwell	OBL
<i>V. anagallis-aquatica</i> L.	Water speedwell	OBL
<i>V. catenata</i> Pennell	Chain speedwell	OBL
<i>V. peregrina</i> L.	Purslane speedwell	FAC+
<i>V. scutellata</i> L.	Marsh speedwell	OBL
<i>V. serpyllifolia</i> L.	Thymeleaf speedwell	FAC+
<i>Veronicastrum virginicum</i> (L.) Farw.	Common culversphysic	FACW
<i>Viburnum cassinoides</i> L.	White-rod	FACW
<i>V. dentatum</i> L.	Arrow-wood	FAC
<i>V. lantanoides</i> Michx.	Hobblebush	FAC
<i>V. lentago</i> L.	Nannyberry	FAC
<i>V. nashii</i> Small	Nashs viburnum	OBL
<i>V. nudum</i> L.	Possumhaw viburnum	FACW+
<i>V. obtusatum</i> Walter	Walter viburnum	FACW+
<i>V. recognitum</i> Fernald	Arrow-wood	FACW
<i>V. semitomentosum</i> (Michx.) Rehd.	Southern arrow-wood	OBL
<i>Viola acutifolia</i> Elliott	Fourleaf vetch	FACW+
<i>V. floridana</i> S. Wats.	Florida vetch	FACW
<i>V. minutiflora</i> D. Dietr.	Smallflower vetch	FAC
<i>V. ocalensis</i> Godfrey & Kral	Ocala vetch	OBL
<i>Vigna luteola</i> (Jacq.) Benth.	Yellow cowpea	FACW
<i>V. marina</i> (N. L. Burm.) Merrill	Beach pea	-
<i>Viola affinis</i> Leconte	Leconte violet	FACW
<i>V. bicolor</i> Pursh	Field-pansy	FAC
<i>V. blanda</i> Willd.	Sweet white violet	FACW-
<i>V. brittoniana</i> Pollard	Britton violet	FAC
<i>V. conspersa</i> Reichenb.	American dog violet	FACW-
<i>V. cucullata</i> Ait.	Marsh blue violet	OBL
<i>V. esculenta</i> Elliott	Edible violet	FACW-
<i>V. floridana</i> Brainerd	Florida violet	FACW-
<i>V. incognita</i> Brainerd	Large-leaved white violet	-
<i>V. lanceolata</i> L.	Lance-leaved violet	OBL
<i>V. longloisii</i> Greene	Bayou violet	FACW-
<i>V. missouriensis</i> Greene	Missouri violet	FAC+
<i>V. nephrophylla</i> Greene	Northern bog-violet	FACW
<i>V. pallens</i> (Banks) Brainerd	Northern white violet	OBL
<i>V. papilionacea</i> Pursh	Confederate violet	FAC
<i>V. pennsylvanica</i> Michx.	Smooth yellow violet	FACW
<i>V. primulifolia</i> L.	Primrose-leaved violet	FACW

<u>Scientific Name</u>	<u>Common Name</u>	<u>Indicator Status</u>
<i>V. renifolia</i> Gray	Kidney-leaved violet	FAC
<i>V. rotundifolia</i> Michx.	Round-leaved violet	FAC
<i>V. sagittata</i> Ait.	Arrowleaf violet	FACW-
<i>V. septemloba</i> Leconte	Southern coast violet	FAC+
<i>V. striata</i> Ait.	Cream violet	FACW-
<i>Vitis cinerea</i> Engelm.	Grape	FAC+
<i>V. labrusca</i> L. H. Bailey	Fox grape	FAC+
<i>V. palmata</i> Vahl	Catgrape	FACW-
<i>V. riparia</i> Michx.	Riverbank grape	FACW
<i>V. rotundifolia</i> Michx.	Muscadine grape	FAC
<i>V. shuttleworthii</i> House	Calusa grape	FAC
<i>V. vulpina</i> L.	Riverbank grape	FAC+
<i>Vittaria lineata</i> (L.) J. E. Smith	Vittaria	FAC
<i>Vulpia bromoides</i> (L.) S. F. Gray	Barren sixweeksgrass	-
<i>Websteria submersa</i> (Sauvaille) Britton	Websteria	OBL
<i>Wisteria frutescens</i> (L.) Poir.	American wisteria	FACW
<i>W. macrostachya</i> (Torr. & Gray) Nutt. ex B. Rob. & Fernald	Kentucky wisteria	FACW
<i>Wolffia columbiana</i> Karst.	Columbia watermeal	OBL
<i>W. papulifera</i> Thompson	Water-meal	OBL
<i>W. punctata</i> Griseb.	Watermeal	OBL
<i>Wolffiella floridana</i> (Smith) Thompson	Eastern wolffiella	OBL
<i>W. gladiata</i> (Hegelm.) Hegelm.	Wolffiella	OBL
<i>W. lingulata</i> (Hegelm.) Hegelm.	Tongue-shaped wolffiella	OBL
<i>W. oblonga</i> (Philippi) Hegelm.	Oblong wolffiella	OBL
<i>Woodwardia areolata</i> (L.) T. Moore	Netted chainfern	OBL
<i>W. radicans</i> (L.) J. E. Small	Chainfern	FACW
<i>W. virginica</i> (L.) Smith	Virginia chainfern	OBL
<i>Xanthium strumarium</i> L.	Cocklebur	FAC DRA
<i>Xanthorrhiza simplicissima</i> Marshall	Yellow root	FACW-
<i>Xyris ambigua</i> Beyr.	Yelloweyegrass	OBL
<i>X. baldwiniana</i> Schult.	Baldwin yelloweyegrass	OBL
<i>X. brevifolia</i> Michx.	Yelloweyegrass	OBL
<i>X. caroliniana</i> Walter	Carolina yelloweyegrass	FACW+
<i>X. difformis</i> Chapm.	Southern yelloweyegrass	OBL
<i>X. drummondii</i> Malme	Drummond yelloweyegrass	OBL
<i>X. elliotii</i> Chapm.	Elliott yelloweyegrass	OBL
<i>X. fimbriata</i> Elliott	Fringed yelloweyegrass	OBL
<i>X. flabelliformis</i> Chapm.	Yelloweyegrass	OBL
<i>X. iridifolia</i> Chapm.	Irisleaf yelloweyegrass	OBL
<i>X. iscetiifolia</i> Kral	Quillwort yelloweyegrass	OBL
<i>X. juricati</i> L. C. Rich.	Yelloweyegrass	OBL
<i>X. longisepala</i> Kral	Long sepaled yelloweyegrass	OBL
<i>X. platylepis</i> Chapm.	Yelloweyegrass	OBL
<i>X. scabrifolia</i> Harper	Yelloweyegrass	OBL
<i>X. serotina</i> Chapm.	Yelloweyegrass	OBL
<i>X. smalliana</i> Nash	Small's yelloweyegrass	OBL
<i>X. stricta</i> Chapm.	Yelloweyegrass	OBL
<i>X. torta</i> J. E. Smith	Twisted yelloweyegrass	OBL
<i>Yeatesia viridiflora</i> (Nees.) Small	Green-flowered yeatesia	FACW-
<i>Yucca gloriosa</i> L.	Moundlily yucca	FAC
<i>Zannichellia palustris</i> L.	Horned pondweed	OBL

<u>Scientific Name</u>	<u>Common Name</u>	<u>Indicator Status</u>
<i>Xanthoxylum clava-herculis</i> L.	Herculesclub pricklyash	FAC
<i>Zenobia pulverulenta</i> (Bart.) Pollard	Zenobia	OBL
<i>Zephyranthes atamasco</i> (L.) Herb.	Atamasco zephyrlily	FACW
<i>Z. simpsonii</i> Chapm.	Rainlily	FAC
<i>Z. treatiae</i> S. Wats.	Easter-lily	FAC
<i>Zigadenus densus</i> (Desr.) Fernald	Deathcamas	FACW+
<i>Z. glaberrimus</i> Michx.	Atlantic deathcamas	FACW+
<i>Z. glaucus</i> Nutt.	Glaucus deathcamas	FAC
<i>Z. leimanthoides</i> Gray	Pinebarren deathcamas	FACW
<i>Zizania aquatica</i> L.	Annual wildrice	OBL
<i>Zizaniopsis miliacea</i> (Michx.) Doell & Aschers.	Southern wildrice	OBL
<i>Zizia aurea</i> (L.) Koch	Golden alexanders	FAC+
<i>Zostera marina</i> L.	Eelgrass	OBL
<i>Zosterella dubia</i> (Jacq.) Small	Zosterella	OBL

APPENDIX C

SECTION 2

LIST OF PLANT SPECIES THAT COMMONLY
OCCUR IN WETLANDS

REGION 2 - SOUTHEAST

Region 2 - Southeast

1. Following is a list of plant species that commonly occur as dominant species in wetlands of the southeastern United States. This region includes Arkansas, Louisiana, Mississippi, Alabama, Georgia, Florida, Tennessee, South Carolina, and North Carolina.

2. The list is a subset of the list provided in Section 1. Only species that commonly occur as dominant species in wetland types of the region are listed. All included species have an indicator status (see Section 1 for definitions of indicator status categories) of OBL, FACW, or FAC*. These species are considered to be typically adapted for life in anaerobic soil conditions. Thus, the vegetation parameter is satisfied when more than 50 percent of the dominant species in a community type appear on this list. In such cases, it is unnecessary to use the list provided in Section 1. However, many other species listed in Section 1 as OBL, FACW, or FAC may be dominant at a given location. Therefore, use the list provided in Section 1 when more than 50 percent of the dominant species in a community type are not included in Section 2. *CAUTION: THIS LIST IS NOT INTENDED TO INCLUDE ALL OF THE SPECIES IN THE REGION THAT ARE TYPICALLY ADAPTED FOR LIFE IN ANAEROBIC SOIL CONDITIONS.*

3. In some cases, only the generic name is listed. When only one indicator status is shown for a genus, all species of the genus that are listed in Section 1 have the designated indicator status. When a range of indicator statuses is shown (e.g., OBL-FAC), the species listed in Section 1 have different indicator statuses. However, it is unnecessary to consult Section 1 when the range consists only of OBL, FACW, and/or FAC, since a species having any of these indicator statuses is considered to be typically adapted for life in anaerobic soil conditions. When the indicator status range of the genus includes FAC- or FACU, identify the species and consult Section 1 to determine the indicator status for that species. Species having a "?" in the indicator status column are thought to commonly occur in wetlands of the region, but no indicator status has been assigned to these species.

* No species having an indicator status of FAC- are included.

4. Scientific nomenclature follows that provided in Section 1. Common names sometimes vary from those provided in Section 1 because a species may have two or more common names. The indicator status for a given species is the same on both lists.

THIS LIST SHOULD BE USED ONLY IN ACCORDANCE WITH PROCEDURES DESCRIBED IN PART IV OF THE MANUAL.

Scientific Name	Common Name	Indicator Status
<i>Acer negundo</i>	Box elder	FACW
<i>A. rubrum</i>	Red maple	FAC
<i>A. rubrum</i> var. <i>drummondii</i>	Drummond red maple	FACW
<i>A. saccharinum</i>	Silver maple	FACW
<i>Acorus calamus</i>	Sweetflag	OBL
<i>Agalinus maritima</i>	Seaside gerardia	OBL
<i>Aletris aurea</i>	Yellow stargrass	FACW+
<i>A. lutea</i>	Stargrass	FACW+
<i>Alisma</i> spp.	Waterplaintain	OBL
<i>Alnus rugosa</i>	Speckled alder	FACW
<i>A. serrulata</i>	Hazel alder	FACW+
<i>Alopecurus geniculatus</i>	Water foxtail	OBL
<i>Alternanthera philoxeroides</i>	Alligatorweed	OBL
<i>Amaranthus cannabinus</i>	Tidemarsch waterhemp	OBL
<i>Ambrosia trifida</i>	Annual ragweed	FAC
<i>Ammania coccinea</i>	Purple ammania	FACW+
<i>Amorpha fruticosa</i>	Dull-leaf indigo	FACW
<i>Ampelopsis arborea</i>	Peppervine	FAC+
<i>Andropogon gerardii</i>	Big bluestem	FAC
<i>A. glomeratus</i>	Bushy beard bluestem	FACW+
<i>Annona glabra</i>	Pond apple	OBL
<i>Arisaema triphyllum</i>	Indian jack-in-the-pulpit	FACW-
<i>Armoracia aquatica</i>	Lake cress	OBL
<i>Arundinaria gigantea</i>	Giant cane	FACW
<i>Asclepias incarnata</i>	Swamp milkweed	OBL
<i>A. lanceolata</i>	Coast milkweed	OBL
<i>Aster puniceus</i>	Swamp aster	OBL
<i>A. simplex</i>	Lowland white aster	FACW
<i>A. subulatus</i>	Annual saltmarsh aster	OBL
<i>A. tenuifolius</i>	Perennial saltmarsh aster	OBL
<i>Athyrium</i> spp.	Ladyfern	FAC
<i>Atriplex patula</i>	Fat-hen saltweed	FACW
<i>Avicennia germinans</i>	Black mangrove	OBL
<i>Azolla</i> spp.	Azolla	OBL
<i>Baccharis angustifolia</i>	Narrowleaf baccharis	FACW+
<i>B. halimifolia</i>	Eastern baccharis	FAC
<i>Bacopa</i> spp.	Bacopa	OBL
<i>Batis maritima</i>	Saltwort	OBL
<i>Berchemia scandens</i>	Rattan vine	FACW
<i>Betula nigra</i>	River birch	OBL

Scientific Name	Common Name	Indicator Status
<i>Bidens</i> spp.	Beggarticks	OBL - FAC
<i>Blechnum serrulatum</i>	Sawfern blechnum	FACW+
<i>Boehmeria cylindrica</i>	Smallspike false-nettle	FACW+
<i>Borrhchia frutescens</i>	Bushy seaoxeye	OBL
<i>Botrychium multifidum</i>	Broadleaf grapefern	FAC
<i>Erasenia schreberi</i>	Watershield	OBL
<i>Eriza minor</i>	Little quakinggrass	FAC
<i>Bulbostylis capillaris</i>	Threadleaf beakseed	FAC
<i>Burmannia</i> spp.	Burmannia	OBL
<i>Bombia caroliniana</i>	Fanwort	OBL
<i>Sakile lanceolata</i>	Sea rocket	FAC
<i>Salamagrostis canadensis</i>	Bluejoint reedgrass	OBL
<i>Sabbicaria</i> spp.	Waterstarwort	OBL - FACW
<i>Salapogon</i> spp.	Calapogon	OBL - FACW
<i>Saltha palustris</i>	Marsh marigold	OBL
<i>Samassia scilloides</i>	Atlantic camass	FACW
<i>Campsis radicans</i>	Common trumpetcreeper	FAC
<i>Canna</i> spp.	Canna	OBL
<i>Cardamine bulbosa</i>	Bulb bittercress	OBL
<i>Cardiospermum halicacabum</i>	Balloonvine heartseed	FAC
<i>Carex albolutescens</i>	Sedge	FAC+
<i>C. chapmanii</i>	Chapman's sedge	FACW
<i>C. crux-corvi</i>	Sedge	OBL
<i>C. lurida</i>	Lurid sedge	OBL
<i>C. striata</i>	Sedge	OBL
<i>C. vulpinoidea</i>	Fox sedge	OBL
<i>C. walteriana</i>	Walter's sedge	OBL
<i>Carpinus caroliniana</i>	American hornbeam	FAC
<i>Carya aquatica</i>	Water hickory	OBL
<i>C. illinoensis</i>	Pecan	FAC+
<i>Cassia marylandica</i>	Maryland senna	FAC
<i>Celtis laevigata</i>	Sugarberry	FACW
<i>Centella asiatica</i>	Spadeleaf	FACW
<i>Cephalanthus occidentalis</i>	Buttonbush	OBL
<i>Ceratophyllum</i> spp.	Coontail	OBL
<i>Ceratopteris</i> spp.	Waterfern	OBL
<i>Chamaecyparis thuyoides</i>	Atlantic whitecedar	OBL
<i>Chamaedaphne calyculata</i>	Leatherleaf	OBL
<i>Chasmanthium</i> spp.	Chasmanthium	FACW+ - FAC+
<i>Cinna latifolia</i>	Drooping woodreed	FACW+
<i>Cirsium muticum</i>	Swamp thistle	OBL
<i>Cnidium jamaicense</i>	Jamaica sawgrass	OBL
<i>C. mariscoides</i>	Twig rush	OBL
<i>Clethra alnifolia</i>	Summersweet clethra	FACW
<i>Coccoloba uvifera</i>	Seagrape	FAC
<i>Colocasia</i> spp.	Elephant ear	OBL - FACW
<i>Conium maculatum</i>	Poison hemlock	FACW
<i>Conocarpus erectus</i>	Button-mangrove	FACW+
<i>Conoclinium coelestinum</i>	Mist flower	FAC
<i>Cornus amomum</i>	Silky dogwood	FACW+
<i>C. drummondii</i>	Roughleaf dogwood	FAC

Scientific Name	Common Name	Indicator Status
<i>C. foemina</i>	Gray dogwood	FACW-
<i>C. stolonifera</i>	Redosier dogwood	FACW
<i>Crataegus aestivalis</i>	May hawthorn	OBL
<i>C. marshalli</i>	Parsley hawthorn	FAC
<i>C. viridis</i>	Green hawthorn	FACW
<i>Crinum americanum</i>	Swamp lily	OBL
<i>Ctenium aromaticum</i>	Toothache grass	FACW
<i>Cuphea carthagenensis</i>	Tarweed cuphea	FACW
<i>Cymodocea filiformis</i>	Manateeegrass	OBL
<i>Cyperus</i> spp.	Flatsedge	OBL - FACU
<i>Cyrilla racemiflora</i>	Swamp cyrilla	FACW
<i>Secodon verticillatus</i>	Water willow	OBL DRA
<i>Dichanthelium clandestinum</i>	Deertongue dichanthelium	FACW
<i>D. erectifolium</i>	Erect panicum	OBL
<i>Dichromena</i> spp.	Whitetop	FACW+ - FACW
<i>Distichlis spicata</i>	Seashore saltgrass	FACW+
<i>Drosera</i> spp.	Sundew	OBL
<i>Dulichium arundinaceum</i>	Three-way sedge	OBL
<i>Echinochloa walteri</i>	Walter millet	OBL DRA
<i>Echinodorus</i> spp.	Burhead	OBL
<i>Eclipta alba</i>	Common yerbadetajo	FACW-
<i>Egeria densa</i>	Brazilian elodea	OBL
<i>Eichhornia crassipes</i>	Waterhyacinth	OBL
<i>Elatine</i> spp.	Waterwort	OBL
<i>Eleocharis</i> spp.	Spikerush	OBL - FACW
<i>Elodea</i> spp.	Waterweed	OBL
<i>Elymus virginicus</i>	Virginia wild rye	FAC
<i>Equisetum hyemale</i>	Scouring rush	FAC-
<i>Eragrostis hypnoides</i>	Teal lovegrass	OBL DRA
<i>E. refracta</i>	Coastal lovegrass	FACW
<i>Eriarthus giganteus</i>	Sugarcane plumegrass	FACW
<i>Erigeron philadelphicus</i>	Philadelphia fleabane	FAC
<i>E. vernus</i>	Early whitetop fleabane	OBL
<i>Eriocaulon</i> spp.	Pipewort	OBL
<i>Eriophorum virginicum</i>	Virginia cottonsedge	OBL
<i>Eryngium aquaticum</i>	Button snakeroot eryngo	OBL
<i>E. yuccifolium</i>	Button snakeroot	FAC
<i>Eupatoriadelphus maculatus</i>	Joe-pyeweed	FACW-
<i>Eupatorium perfoliatum</i>	Boneset	FACW+
<i>Euthamia</i> spp.	Goldenrod	FACW- - FAC
<i>Fimbristylis autumnalis</i>	Slender fimbristylis	OBL
<i>F. castanea</i>	Saltmarsh fimbristylis	OBL
<i>F. puberula</i>	Fimbristylis	OBL
<i>Forestiera acuminata</i>	Swamp privet	OBL
<i>Frazinus caroliniana</i>	Water ash	OBL
<i>F. pennsylvanica</i>	Green ash	FACW
<i>F. profunda</i>	Pumpkin ash	OBL
<i>Fuirena</i> spp.	Fuirena	OBL
<i>Galium tinctorium</i>	Dye bedstraw	FACW
<i>Jelsemium rankinii</i>	Swamp yellow jessamine	FACW+

Scientific Name	Common Name	Indicator Status
<i>Geum canadense</i>	White avens	FAC
<i>Gleditsia aquatica</i>	Water locust	OBL
<i>Glyceria</i> spp.	Mannagrass	OBL
<i>Gordonia lasianthus</i>	Loblolly bay	FACW
<i>Gratiola</i> spp.	Hedgehyssop	OBL - FACW-
<i>Habenaria</i> spp.	Habenaria	OBL - FACW
<i>Halodule beaudettei</i>	Shoalgrass	OBL
<i>H. wrightii</i>	Wright's shoalgrass	OBL
<i>Halophila</i> spp.	Halophila	OBL
<i>Helenium autumnale</i>	Common sneezeweed	FACW
<i>H. vermale</i>	Spring sneezeweed	FACW+
<i>Helianthus floridanus</i>	Florida sunflower	FACW
<i>H. heterophyllus</i>	Naked-stemmed sunflower	OBL
<i>Heliotropium curassavicum</i>	Seaside heliotrope	OBL DRA
<i>Hemicarpha micrantha</i>	Common hemicarpha	OBL DRA
<i>Heraclium lanatum</i>	Common cowparsnip	FAC
<i>Heteranthera</i> spp.	Mudplaintain	OBL
<i>Hibiscus aculeatus</i>	Rough rosemallow	FACW
<i>H. grandiflorus</i>	Swamp hibiscus	OBL
<i>H. moscheutos</i>	Rose mallow	OBL
<i>Hottonia inflata</i>	Featherfoil	OBL
<i>Hydrilla verticillata</i>	Hydrilla	OBL
<i>Hydrochloa caroliniensis</i>	Watergrass	OBL
<i>Hydrocotyle ranunculoides</i>	Floating pennywort	OBL
<i>H. verticillata</i>	Whorled pennywort	OBL
<i>Hydrolea quadrivalvis</i>	Hydrolea	OBL
<i>Hymenocallis</i> spp.	Spiderlily	OBL - FACW
<i>Hypericum adpressum</i>	Creeping St. Johnswort	OBL
<i>H. nitidum</i>	St. Johnswort	OBL
<i>H. setosum</i>	Hairy St. Johnswort	FACW
<i>Hyptis alata</i>	Musky mint	OBL
<i>Ilex cassine</i>	Dahoon	FACW
<i>I. decidua</i>	Possumhaw holly	FACW-
<i>I. glabra</i>	Inkberry	FACW
<i>I. vomitoria</i>	Yaupon	FAC
<i>Impatiens capensis</i>	Spotted touch-me-not	FACW
<i>Ipomoea pes-caprae</i>	Beach morningglory	FAC
<i>I. wrightii</i>	Wright's morningglory	FACW-
<i>Iris</i> spp.	Iris, flags	OBL
<i>Iscetes</i> spp.	Quillwort	OBL
<i>Itea virginica</i>	Virginia sweetspire	FACW+
<i>Jva</i> spp.	Marshelder	FACW+ - FAC
<i>Juncus acuminatus</i>	Tapertip rush	OBL
<i>J. bufonius</i>	Toad rush	FACW DRA
<i>J. effusus</i>	Soft rush	FACW+
<i>J. gerardii</i>	Black grass	OBL
<i>J. repens</i>	Creeping rush	OBL
<i>J. roemerianus</i>	Black needlerush	OBL
<i>Justicia</i> spp.	Waterwillow	OBL
<i>Kosteletzkya</i> spp.	Marsh mallow	OBL

Scientific Name	Common Name	Indicator Status
<i>Lachnanthes caroliniana</i>	Redroot	OBL
<i>Lachnocaulon</i> spp.	Pipewort	OBL - FACW+
<i>Laguncularia racemosa</i>	White mangrove	FACW+
<i>Leersia oryzoides</i>	Rice cutgrass	OBL
<i>L. virginica</i>	Whitegrass	FACW
<i>Leitneria floridana</i>	Florida corkwood	OBL
<i>Lemma</i> spp.	Duckweed	OBL
<i>Leptochloa fascicularis</i>	Bearded sprangletop	FACW+ DRA
<i>Leucothoe racemosa</i>	Swamp leucothoe	FACW
<i>Lilaeopsis</i> spp.	Lilaeopsis	OBL - FACW
<i>Limnium spongia</i>	American frogbit	OBL
<i>Limnophila sessiliflora</i>	Limnophila	OBL
<i>Limonium carolinianum</i>	Marsh rosemary	OBL
<i>L. nashii</i>	Sea-lavender	OBL
<i>Limosella subulata</i>	Mudwort	OBL
<i>Lindera benzoin</i>	Spicebush	FACW
<i>Lindernia</i> spp.	Falsepimpernel	OBL - FACW+ DRA
<i>Lipocarpa</i> spp.	Lipocarpa	OBL - FAC
<i>Liquidambar styraciflua</i>	Sweetgum	FAC+
<i>Lobelia cardinalis</i>	Cardinal flower	FACW+
<i>L. siphilitica</i>	Great lobelia	OBL
<i>Ludwigia</i> spp.	Waterpurslane	OBL DRA - FACW
<i>Luziola</i> spp.	Luziola	OBL
<i>Lycopodium alopecuroides</i>	Foxtail clubmoss	OBL
<i>L. appressum</i>	Southern clubmoss	OBL
<i>Lycopus</i> spp.	Water horehound	OBL
<i>Lygodium japonicum</i>	Japanese climbingfern	FAC
<i>Lyonia lucida</i>	Fetterbush	FACW
<i>Lysimachia</i> spp.	Loosestrife	OBL - FAC
<i>Lycium</i> spp.	Saltmarsh loosestrife	OBL - FACW+
<i>Magnolia virginiana</i>	Sweetbay	FACW+
<i>Mayaca</i> spp.	Mayaca	OBL
<i>Melaleuca quinquenervia</i>	Melaleuca	FAC
<i>Melothria pendula</i>	Melonette	FACW-
<i>Mentha</i> spp.	Mint	FACW+ - FAC
<i>Micranthemum</i> spp.	Mudflower	OBL
<i>Mikania scandens</i>	Climbing hempweed	FACW+
<i>Mimulus ringens</i>	Monkey flower	OBL
<i>Monanthochloe littoralis</i>	Saltflat grass	OBL
<i>Muhlenbergia expansa</i>	Cutover muhly	FACW-
<i>M. schreberi</i>	Nimblewill muhly	FAC
<i>Murdannia nudiflora</i>	Dayflower	FAC
<i>Nyosotis</i> spp.	Scorpion-grass	OBL - FAC-
<i>Nyrica cerifera</i>	Wax myrtle	FAC+
<i>N. gale</i>	Sweetgale	OBL
<i>N. heterophylla</i>	Evergreen bayberry	FACW
<i>Nyriophyllum</i> spp.	Watermilfoil	OBL
<i>Najas</i> spp.	Naiad	OBL
<i>Nasturtium officinale</i>	Watercress	ORL
<i>Nelumbo lutea</i>	American lotus	OBL

Scientific Name	Common Name	Indicator Status
<i>Nuphar luteum</i>	European cowlily	OBL
<i>Nymphaea</i> spp.	Waterlily	OBL
<i>Nymphoides</i> spp.	Floatingheart	OBL
<i>Nyssa aquatica</i>	Water tupelo	OBL
<i>N. ogeche</i>	Ogeche gum	OBL
<i>N. sylvatica</i> var. <i>biflora</i>	Swamp black gum	OBL
<i>Oncoclea sensibilis</i>	Sensitive fern	FACW
<i>Oxontium aquaticum</i>	Goldenclub	OBL
<i>Osmunda regalis</i>	Royal fern	OBL
<i>Oxypolis</i> spp.	Cowbane	OBL - FACW+
<i>Panicum hemitomom</i>	Maidencane	OBL
<i>P. virgatum</i>	Switchgrass	FACW-
<i>Parnassia</i> spp.	Grass-of-parnassus	OBL
<i>Parthenocissus quinquefolia</i>	Virginia creeper	FAC
<i>Paspalidium geminatum</i>	Water panicum	OBL
<i>Paspalum fluitans</i>	Water paspalum	OBL
<i>P. repens</i>	Water paspalum	OBL
<i>Peltandra</i> spp.	Arrow arum	OBL
<i>Penthorum sedoides</i>	Ditch-stonecrop	OBL
<i>Persea borbonia</i>	Red bay	FACW
<i>Phalaris arundinacea</i>	Reed canarygrass	OBL
<i>Philoxerus vermicularis</i>	Silverhead	FACW+
<i>Phragmites australis</i>	Giant cane	FACW
<i>Phyla</i> spp.	Frog-fruit	FACW+ - FACW DRA
<i>Phyllanthus carolinensis</i>	Phyllanthus	FAC+
<i>Physostegia intermedia</i>	Physostegia	FACW-
<i>Pitularia americana</i>	Pitularia	OBL
<i>Pinguicula</i> spp.	Butterwort	OBL - FACW+
<i>Pinus elliotii</i>	Slash pine	FACW
<i>P. serotina</i>	Pond pine	FACW+
<i>P. taeda</i>	Loblolly pine	FAC
<i>Pistia stratiotes</i>	Water lettuce	OBL
<i>Planera aquatica</i>	Water elm	OBL
<i>Plantago cordata</i>	Heartleaf plaintain	OBL
<i>Platanthera</i> spp.	Fringed orchid	OBL - FACU
<i>Platanus occidentalis</i>	American sycamore	FACW-
<i>Pluchea camphorata</i>	Saltmarsh fleabane	FACW
<i>P. foetida</i>	Stinking fleabane	OBL
<i>P. odorata</i>	Sourbush pluchea	FACW
<i>P. rosea</i>	Pluchea	FACW
<i>Poa palustris</i>	Fowl bluegrass	FAC
<i>Podostemum ceratophyllum</i>	Hornleaf riverweed	OBL
<i>Polygala leptocaulis</i>	Swamp milkwort	FACW+
<i>P. lutea</i>	Yellow polygala	FACW+
<i>P. nana</i>	Bachelor's-button	FAC+
<i>P. ramosa</i>	Low pinebarren milkwort	OBL
<i>Polygonum amphibium</i>	Water knotweed	OBL
<i>P. hydropiper</i>	Marshpepper smartweed	OBL
<i>P. hydropiperoides</i>	Swamp knotweed	OBL
<i>P. pennsylvanicum</i>	Pennsylvania smartweed	FACW

Scientific Name	Common Name	Indicator Status
<i>Pontederia cordata</i>	Pickeralweed	OBL
<i>Populus deltoides</i>	Eastern cottonwood	FAC+
<i>P. heterophylla</i>	Swamp cottonwood	OBL
<i>Potamogeton</i> spp.	Pondweed	OBL
<i>Proserpinaca</i> spp.	Mermaid weed	OBL
<i>Psilocarya</i> spp.	Bald rush	OBL
<i>Ptilirium</i> spp.	Mock-bishopweed	OBL - FAC+
<i>Quercus bicolor</i>	Swamp white oak	FACW+
<i>Q. falcata</i> var. <i>pagodifolia</i>	Cherry bark red oak	FACW
<i>Q. laurifolia</i>	Laurel oak	FACW
<i>Q. lyrata</i>	Overcup oak	OBL
<i>Q. michauxii</i>	Swamp chestnut oak	FACW-
<i>Q. nigra</i>	Water oak	FAC
<i>Q. nuttallii</i>	Nuttall oak	OBL
<i>Q. phellos</i>	Willow oak	FACW-
<i>Ranunculus flabellaris</i>	Yellow watercrowfoot	OBL
<i>R. septentrionalis</i>	Swamp buttercup	OBL
<i>Rhexia alifanus</i>	Meadow beauty	FACW
<i>R. mariana</i>	Meadow beauty	FACW+
<i>Rhizophora mangle</i>	Red mangrove	OBL
<i>Rhododendron arborescens</i>	Tree azalea	FACW-
<i>R. canescens</i>	Piedmont azalea	FACW-
<i>R. serrulatum</i>	Azalea	OBL
<i>R. viscosum</i>	Swamp azalea	FACW+
<i>Rhynchospora</i> spp.	Beaked rush	OBL - FACU-
<i>Rorippa</i> spp.	Yellowcress	OBL DRA - FACW
<i>Rosa palustris</i>	Swamp rose	OBL
<i>Rotala</i> spp.	Tooth-cup	OBL
<i>Rudbeckia laciniata</i>	Cutleaf coneflower	FACW
<i>R. mohrii</i>	Mohr's coneflower	FACW+
<i>Rumex crispus</i>	Curly dock	FAC
<i>R. verticillatus</i>	Swamp dock	FACW+
<i>Ruppia maritima</i>	Widgeongrass	OBL
<i>Sabal minor</i>	Dwarf palmetto	FACW
<i>S. palmetto</i>	Cabbage palmetto	FAC
<i>Sabatia dodecandra</i>	Big sea-pink	OBL
<i>Sacciolepis striata</i>	American cupscale	OBL
<i>Sagittaria</i> spp.	Arrowhead	OBL
<i>Salicornia</i> spp.	Glasswort	OBL
<i>Salix amygdaloides</i>	Peachleaf willow	FACW
<i>S. caroliniana</i>	Coastal plain willow	OBL
<i>S. exigua</i>	Sandbar willow	OBL DRA
<i>S. nigra</i>	Black willow	OBL
<i>Salvinia</i> spp.	Salvinia	OBL
<i>Sambucus canadensis</i>	Common elder	FACW-
<i>Sarcobolus parviflorus</i>	Waterpimpernel	OBL
<i>Sarracenia</i> spp.	Pitcher plant	OBL
<i>Saururus cernuus</i>	Lizard tail	OBL
<i>Schinus terebinthifolius</i>	Brazilian pepper	FAC
<i>Schoenus nigrans</i>	Black sedge	OBL
<i>Scirpus</i> spp.	Bulrush	OBL - FACW+

Scientific Name	Common Name	Indicator Status
<i>Scleria</i> spp.	Razorsedge	OBL - FACU
<i>Scutellaria integrifolia</i>	Rough skullcap	FAC
<i>S. lateriflora</i>	Blue skullcap	FACW+
<i>Senecio glabellus</i>	Butterweed	FACW+
<i>Sesbania exaltata</i>	Wild-coffee	FACW-
<i>Sesuvium portulacastrum</i>	Sea purslane	FACW
<i>Setaria geniculata</i>	Knotroot bristlegrass	FAC
<i>S. magna</i>	Giant bristlegrass	FACW+
<i>Sisyrinchium atlanticum</i>	Atlantic blue-eyed grass	FACW-
<i>S. capillare</i>	Blue-eyed grass	OBL
<i>S. exile</i>	Yellow blue-eyed grass	FAC
<i>S. mucronatum</i>	Michaux's blue-eyed grass	FACW-
<i>Sium suave</i>	Common waterparsnip	OBL
<i>Smilax bona-nox</i>	Saw greenbrier	FAC
<i>S. hispida</i>	Bristly greenbrier	FAC+
<i>S. laurifolia</i>	Bamboo-vine	FACW+
<i>S. rotundifolia</i>	Common greenbrier	FAC
<i>S. walteri</i>	Walter's greenbrier	OBL
<i>Solidago gracillima</i>	Goldenrod	OBL
<i>S. mirabilis</i>	Goldenrod	OBL
<i>S. rugosa</i>	Wrinkled goldenrod	FAC
<i>S. uliginosa</i>	Bog goldenrod	OBL
<i>Sparganium</i> spp.	Burreed	OBL
<i>Spartina alterniflora</i>	Smooth cordgrass	OBL
<i>S. cynosuroides</i>	Big cordgrass	OBL
<i>S. patens</i>	Marshhay cordgrass	FACW
<i>Spermacoce glabra</i>	Smooth buttonweed	FACW DRA
<i>Spiraea alba</i>	Meadow-sweet	FACW+
<i>Spiranthes</i> spp.	Ladies-tresses	FACW+ - FAC
<i>Spirodela</i> spp.	Giant duckweed	OBL
<i>Stachys floridana</i>	Florida betony	FAC
<i>S. hyssopifolia</i>	Hyssop hedge nettle	OBL
<i>S. latidens</i>	Hedge nettle	FAC
<i>S. tenuifolia</i>	Hedge nettle	FACW-
<i>Stillingia aquatica</i>	Stillingia	OBL
<i>Styrax americana</i>	American snowbell	FACW
<i>Suaeda</i> spp.	Seepweed	OBL
<i>Symplocarpus foetidus</i>	Skunkcabbage	OBL
<i>Symplocos tinctoria</i>	Sweetleaf	FAC
<i>Tamarix gallica</i>	French tamarisk	FACW DRA
<i>Taxodium aquaticum</i>	Pond cypress	OBL
<i>T. distichum</i>	Bald cypress	OBL
<i>Thalassia testudinum</i>	Turtle grass	OBL
<i>Thalia</i> spp.	Thalia	OBL
<i>Thelypteris reticulata</i>	Wood fern	FACW
<i>T. serrata</i>	Wood fern	FACW+
<i>Tofieldia glutinosa</i>	Tall tofieldia	OBL
<i>T. racemosa</i>	Sticky tofieldia	OBL
<i>Toxicodendron radicans</i>	Poison ivy	FAC

Scientific Name	Common Name	Indicator Status
<i>T. vernix</i>	Poison sumac	OBL
<i>Trachelospermum difforme</i>	Starjasmine	FACW
<i>Triadenum virginicum</i>	Marsh St. Johnswort	OBL
<i>Triglochin striatum</i>	Arrow grass	OBL
<i>Typha</i> spp.	Cat-tail	OBL
<i>Ulmus americana</i>	American elm	FACW
<i>U. crassifolia</i>	Cedar elm	FAC
<i>U. rubra</i>	Slippery elm	FAC
<i>Urtica dioica</i>	Slimsting nettle	FAC+
<i>Utricularia</i> spp.	Bladderwort	OBL - FACW
<i>Vaccinium corymbosum</i>	Highbush blueberry	FACW
<i>Vallisneria americana</i>	Wild celery	OBL
<i>Verbena bonariensis</i>	Tall verbena	FAC+
<i>V. hastata</i>	Blue verbena	FAC
<i>V. scabra</i>	Verbena	FACW+
<i>Veronica americana</i>	American speedwell	OBL
<i>V. anagallis-aquatica</i>	Water speedwell	OBL
<i>Viola cucullata</i>	Marsh blue violet	OBL
<i>V. floridana</i>	Florida violet	FACW-
<i>V. lanceolata</i>	Lance-leaved violet	OBL
<i>V. missouriensis</i>	Missouri violet	FAC+
<i>V. pennsylvanica</i>	Smooth yellow violet	FACW
<i>V. rotundifolia</i>	Roundleaved violet	FAC
<i>Vitis palmata</i>	Red grape	FACW-
<i>V. riparia</i>	Riverbank grape	FACW
<i>V. rotundifolia</i>	Muscadine grape	FAC
<i>Wolffia</i> spp.	Watermeal	OBL
<i>Wolffiella</i> spp.	Wolffiella	OBL
<i>Woodwardia virginica</i>	Virginia chainfern	OBL
<i>Xyris</i> spp.	Yelloweyegrass	OBL - FACW+
<i>Zarnichellia palustris</i>	Horned pondweed	OBL
<i>Zizania aquatica</i>	Annual wildrice	OBL
<i>Zizaniopsis miliacea</i>	Southern wildrice	OBL
<i>Zostera marina</i>	Eelgrass	OBL
<i>Zosterella dubia</i>	Mudplantain	OBL

END

4-87

DTIC