

AD-A177 958

WETLANDS RESEARCH PROGRAM CORPS OF ENGINEERS WETLANDS  
DELINEATION MANUAL (U) ARMY ENGINEER WATERWAYS  
EXPERIMENT STATION VICKSBURG MS ENVIR. JAN 87  
WES/TR/Y-87-1-APP-C-SECT-1

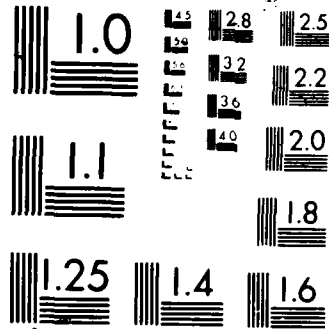
1/1

UNCLASSIFIED

F/G 6/3

NL

											INT		
											4		
											DU		



XERO COPY RESOLUTION TEST CHART

**WETLANDS RESEARCH PROGRAM**

2

TECHNICAL REPORT Y-87-1

**CORPS OF ENGINEERS WETLANDS  
DELINEATION MANUAL**

APPENDIX C

SECTION 1

REGION 0 — CALIFORNIA

by

Environmental Laboratory

DEPARTMENT OF THE ARMY  
US Army Engineer Waterways Experiment Station  
PO Box 631, Vicksburg, Mississippi 39180-0631

AD-A177 958



January 1987  
Final Report

Approved For Public Release; Distribution Unlimited

SDTIC  
ELECTE  
MAR 11 1987  
A

Prepared for DEPARTMENT OF THE ARMY  
US Army Corps of Engineers  
Washington, DC 20314-1000

DTIC FILE COPY

97 3 11 033

APPENDIX C  
SECTION 1  
NATIONAL LIST OF PLANT SPECIES  
THAT OCCUR IN WETLANDS  
REGION 0 - CALIFORNIA

QUALITY  
INSPECTED  
4

1980  
1981  
1982  
1983  
1984  
1985  
1986  
1987  
1988  
1989  
1990  
1991  
1992  
1993  
1994  
1995  
1996  
1997  
1998  
1999  
2000  
2001  
2002  
2003  
2004  
2005  
2006  
2007  
2008  
2009  
2010  
2011  
2012  
2013  
2014  
2015  
2016  
2017  
2018  
2019  
2020

NATIONAL LIST OF PLANT SPECIES THAT OCCUR IN WETLANDS  
REGION 0 - CALIFORNIA

The following is a subset of the National List of Plant Species That Occur In Wetlands of California.

The list was initiated by the US Fish and Wildlife Service, National Wetland Inventory (NWI). A candidate national list of more than 5000 species was developed and, using information from more than 250 taxonomic references, the NWI assigned a tentative wetland indicator status to many of the species. The indicator status categories, which define the estimated probability of a species occurring in wetlands, are as follows:

<u>Category</u>	<u>Symbol</u>	<u>Definition</u>
OBLIGATE WETLAND PLANTS	OBL	Plants that occur almost always (estimated probability >.99%) in wetlands under natural conditions.
FACULTATIVE WETLAND PLANTS	FACW	Plants that occur usually (estimated probability >67 to 99%) in wetlands, but also occur (estimated probability 1% to 33%) in nonwetlands.
FACULTATIVE PLANTS	FAC	Plants with a similar likelihood (estimated probability 33% to 67%) of occurring in both wetlands and nonwetlands.
FACULTATIVE UPLAND PLANTS	FACU	Plants that occur sometimes (estimated probability 1% to 33%) in wetlands, but occur more often (estimated probability >67% to 99%) in nonwetlands.
OBLIGATE UPLAND PLANTS	UPL	Plants that occur rarely (estimated probability ≤1%) in wetlands, but occur almost always (estimated probability ≥99%) in nonwetlands under natural conditions.

For purposes of this manual, any plant species not appearing on the plant list was assumed to be an upland species unless a strong technical rationale could be developed for adding it to the list.

In 1982, the NWI invited other Federal agencies to participate in a review of the NWI plant list. A national review panel was established, comprised of representatives from the Fish and Wildlife Service, Environmental Protection Agency, Soil Conservation Service, and Corps of Engineers. The national panel

developed guidelines for the review process and established twelve regional panels composed of a representative from each agency. The regional panels reviewed the plant list for their region and provided the national review panel with the results. The list that follows represents a subset of the reviewed list for Region 2. Note: Although additional work by the regional panel will be required, the current status of the list is considered to be adequate for use in this manual. The list will be updated as further revisions are made.

Nomenclature used in the list is based on the National List of Scientific Plant Names (USDA-SCS 1982). The generic name is listed only once, and species within a genus are alphabetized.

### Symbols

Symbols appearing in the list under the indicator status column are as follows:

- + : A "+" sign following an indicator status denotes that the species generally has a greater estimated probability of occurring more often in wetlands than species having the general indicator status, but a lesser estimated probability of occurring in wetlands than those having the next highest general indicator. For example, a species with an indicator status of FAC+ occurs in wetlands more often than a species designated as FAC, but less often than a species having a FACW status.
- : A "-" sign following an indicator status (e.g. FACW-) denotes that the species generally has a lesser estimated probability of occurring in wetlands than species having the general indicator status, but a greater estimated probability of occurring in wetlands than those having the next lowest general indicator. For example, a species with an indicator status of FACW- occurs in wetlands less often than a species with a FACW status, but more often than a species having a FAC+ status.
- DRA: This symbol indicates that the species normally occurs at the indicated estimated probability in wetlands, but only during periods when standing water is absent.
- ? : A "?" indicates that the species was reviewed by the regional panel, but no decision has been made regarding the appropriate indicator status.

-: A dash without an associated indicator status signifies that no review comments were received, usually because the species is rare in the region or its taxonomic status is questioned.

An X prior to the species name in the scientific name column denotes a hybrid. For purposes of this manual, all species appearing on the regional plant list as FAC-, FACU+, FACU, or FACU- have been deleted from the list because they do not contribute toward hydrophytic vegetation.

THIS LIST SHOULD BE USED IN ACCORDANCE WITH INSTRUCTIONS PROVIDED IN PART IV OF THE MANUAL.

<u>Scientific Name</u>	<u>Common Name</u>	<u>Indicator Status</u>
<i>Abies amabilis</i> (Dougl.) Forbes	Pacific silver fir	-
<i>A. lasiocarpa</i> (Hook.) Nutt.	Subalpine fir	FAC
<i>Acer circinatum</i> Pursh	Vine maple	FAC
<i>A. glabrum</i> Torr.	Rocky Mountain maple	FAC
<i>A. macrophyllum</i> Pursh	Bigleaf maple	FAC
<i>A. negundo</i> L.	Box elder	FACW
<i>Acorus calamus</i> L.	Sweetflag	OBL
<i>Adiantum capillus-veneris</i> L.	Venus-hair fern	-
<i>A. pedatum</i> L.	Maidenhair fern	FAC
<i>Agoseris aurantiaca</i> (Hook.) Greene	Orange agoseris	-
<i>A. elata</i> (Nutt.) Greene	Tall agoseris	FAC
<i>A. glauca</i> (Pursh) D. Dietr.	Pale agoseris	FAC
<i>A. gracilens</i> (Gray) Kuntze	Slender agoseris	-
<i>Agrimonia gryposepala</i> Wallr.	Agrimony	-
<i>Agrohordeum X macounii</i> (Vasey) Lepage	Macoun wildrye	-
<i>Agropyron dasystachyum</i> (Fisch. ex Link) J. A. Schultes	Wheatgrass	-
<i>A. trachycaulum</i> (Link) Malte	Slender wheatgrass	-
<i>Agrostis alba</i> L.	Redtop	FACW
<i>A. exarata</i> Trin.	Spike bentgrass	FACW
<i>A. idahoensis</i> Nash	Idaho bentgrass	-
<i>A. longiligula</i> Hitchc.	Long-tongue bentgrass	OBL
<i>A. oregonensis</i> Vasey	Oregon bentgrass	-
<i>A. scabra</i> Willd.	Rough bentgrass	-
<i>A. semiperticillata</i> C. Christ	Water bentgrass	OBL
<i>A. tardiflora</i> (O. Ktze.) Parodi	Bentgrass	-
<i>Alhagi camelorum</i> Fisch.	Camelthorn	FAC
<i>Alisma gramineum</i> Gmel.	Grasslike waterplantain	OBL
<i>Alisma lanceolatum</i> With.	Lanceleaf waterplantain	OBL
<i>A. plantago-aquatica</i> L.	Common waterplantain	OBL
<i>Allenrolfea occidentalis</i> (S. Wats.) Kuntze	Iodinebush	FACW+
<i>Allium biscepturn</i> Wats.	Twincrest onion	FAC
<i>A. hickmanii</i> Eastw.	Hickman onion	-
<i>A. hyalinum</i> Curran	Onion	-

<u>Scientific Name</u>	<u>Common Name</u>	<u>Indicator Status</u>
<i>A. validum</i> Wats.	Pacific onion	OBL
<i>Allophyllum gilioides</i> (Benth.) A. D. Grant & V. Grant	Allophyllum	-
<i>Alnus rhombifolia</i> Nutt.	White alder	FACW
<i>A. rubra</i> Bong.	Red alder	FACW
<i>A. sinuata</i> (Reg.) Rydb.	Sitka alder	FACW
<i>A. tenuifolia</i> Nutt.	Thinleaf alder	FACW
<i>Alopecurus aequalis</i> Sobol.	Shortawn foxtail	OBL
<i>A. alpinus</i> J. E. Smith	Alpine foxtail	-
<i>A. carolinianus</i> Walter	Carolina foxtail	FACW
<i>A. geniculatus</i> L.	Water foxtail	OBL
<i>A. howellii</i> Vasey	Howell foxtail	FACW+ DRA
<i>A. myosuroides</i> Huds.	Mouse foxtail	-
<i>A. saccatus</i> Vasey	Marsh foxtail	OBL DRA
<i>Alternanthera philoxeroides</i> Griseb.	Alligatorweed	OBL
<i>Amaranthus blitoides</i> S. Wats.	Amaranth	FACW
<i>A. californicus</i> (Moq.) S. Wats.	California amaranth	FACW DRA
<i>A. retroflexus</i> L.	Redroot amaranth	-
<i>Amblyopappus pusillus</i> H. & A.	Amblyopappus	FACW-
<i>Ambrosia psilostachya</i> DC.	Western ragweed	FAC
<i>A. trifida</i> L.	Annual ragweed	-
<i>Ammannia coccinea</i> Rottb.	Purple ammannia	OBL DRA
<i>Anagallis arvensis</i> L.	Pimpernel	FAC
<i>Andropogon glomeratus</i> (Walter) B.S.P.	Bushy beard bluestem	FACW
<i>A. virginicus</i> L.	Broomsedge bluestem	FAC
<i>Anemone oregana</i> Gray	Oregon anemone	-
<i>Anemopsis californica</i> (Nutt.) Hook. & Arn.	Yerba mansa	OBL
<i>Angelica arguta</i> Nutt.	Lyall angelica	-
<i>A. genuflexa</i> Nutt.	Kneeling angelica	-
<i>A. lucida</i> L.	Seawatch angelica	FAC
<i>Anoda cristata</i> (L.) Schlecht.	Spurred anoda	FAC
<i>Antennaria corymbosa</i> E. Nels.	Flattop pussytoes	FAC
<i>A. umbrinella</i> Rydb.	Umbrinella pussytoes	-
<i>Apargidium boreale</i> (Bong.) T. & G.	Common apargidium	OBL
<i>Apocynum cannabinum</i> L.	Indianhemp dogbane	FAC
<i>A. sibiricum</i> Jacq.	Prairie dogbane	-
<i>Aquilegia eximia</i> Van Houtte	Columbine	-
<i>A. formosa</i> Fisch.	Sitka columbine	FAC
<i>A. shockleyi</i> Eastw.	Shockley columbine	-
<i>Arabis hirsuta</i> (L.) Scop.	Hairy rockcress	-
<i>A. holboellii</i> Hornem.	Holboell rockcress	-
<i>A. Lemmonii</i> Watson	Lemmon rockcress	-
<i>Arnica californica</i> Wats.	Prairie sagewort	FACW
<i>Arenaria paludicola</i> Rob.	Sandwort	OBL
<i>A. serpyllifolia</i> L.	Thymeleaf sandwort	-
<i>Arnica amplexicaulis</i> Nutt.	Clasping arnica	FACW
<i>A. chamissonis</i> Less.	Chamisso arnica	FACW
<i>A. diversifolia</i> Greene	Rayless arnica	-
<i>A. latifolia</i> Bong.	Broadleaf arnica	FAC
<i>A. longifolia</i> D.C. Eat.	Longleaf arnica	FACW-



<u>Scientific Name</u>	<u>Common Name</u>	<u>Indicator Status</u>
<i>A. mollis</i> Hook.	Hairy arnica	-
<i>Artemisia biennis</i> Willd.	Biennial wormwood	FAC DRA
<i>A. cana</i> Pursh	Silver sage	FACW
<i>A. douglasiana</i> Bess.	Douglas mugwort	FACW
<i>Aruncus dioicus</i> (Walter) Fernald	Aruncus	-
<i>Arundo donax</i> L.	Giantreed	FACW
<i>Asarum lemmonii</i> Wats.	Lemmon wildginger	OBL
<i>Asclepias curassavica</i> L.	Bloodflower milkweed	FAC
<i>A. fascicularis</i> Decne.	Mexicanwhorled milkweed	FAC
<i>A. speciosa</i> Torr.	Showy milkweed	FAC
<i>Asplenium trichomanes-ramosum</i> L.	Asplenium	-
<i>Aster alpigenus</i> (Torr. & Gray) Gray	Anderson aster	OBL
<i>A. bernardinus</i> Hall	Bernard aster	OBL
<i>A. chilensis</i> Nees.	Pacific aster	FAC
<i>A. eatonii</i> (Gray) Howell	Eaton aster	-
<i>A. elatus</i> (Greene) Cronq.	Aster	-
<i>A. falcatus</i> Lindl.	Small aster	FAC
<i>A. foliaceus</i> Lindl.	Alpine aster	-
<i>A. frondosus</i> (Nutt.) T. & G.	Leafy aster	OBL
<i>A. hesperius</i> Gray	Siskiyou aster	OBL
<i>A. intricatus</i> (A. Gray) Blake	Shrubby alkali aster	-
<i>A. occidentalis</i> (Nutt.) T. & G.	Western aster	FAC
<i>A. pauciflorus</i> Nutt.	Marsh alkali aster	FACW
<i>A. spinosus</i> Benth.	Devilweed aster	FACW
<i>A. subspicatus</i> Nees.	Aster	FAC
<i>Astragalus agrestis</i> Dougl.	Everywhere milkvetch	-
<i>A. canadensis</i> L.	Canada milkvetch	FAC
<i>A. eucosmus</i> Robins.	Subalpine milkvetch	-
<i>A. lemmoni</i> A. Gray	Lemmon milkvetch	FACW
<i>A. pycnostachyus</i> A. Gray	Brine milkvetch	OBL
<i>A. tener</i> A. Gray.	Alkali milkvetch	-
<i>Athyrium distentifolium</i> Tausch ex Opiz	Deepcut ladyfern	FAC
<i>A. filix-femina</i> (L.) Roth	Southern lady fern	FAC
<i>Atriplex argentea</i> Nutt.	Silver saltbush	FAC
<i>A. californica</i> Moq.	California saltbush	FAC
<i>A. condulata</i> Jeps.	Saltbush	FAC
<i>A. coronata</i> Wats.	Saltbush	-
<i>A. coulteri</i> (Moq.) D. Dietr.	Coulter saltbush	?
<i>A. foliata</i> (M. E. Jones) Standl.	Saltbush	-
<i>A. fruticulosa</i> Jeps.	Valley saltbush	-
<i>A. hortensis</i> L.	Garden orach saltweed	FACW-
<i>A. lentiformis</i> (Torr.) S. Wats.	Big saltbush	FAC
<i>A. pacifica</i> Nels.	Pacific saltbush	-
<i>A. parishii</i> Wats.	Parish saltbush	-
<i>A. parryi</i> S. Wats.	Parry saltbush	-
<i>A. patula</i> L.	Fat-hen saltweed	FACW
<i>A. polylostepia</i> (Torr.) S. Wats.	Leafclover saltweed	FACW
<i>A. pusilla</i> (Torr.) Wats.	Smaller saltweed	FAC DRA
<i>A. semibaccata</i> R. Br.	Australian saltbush	FAC
<i>A. serena</i> A. Nels.	Saltbush	FAC
<i>A. spinifera</i> MacBr.	Spinescale saltbush	FAC

<u>Scientific Name</u>	<u>Common Name</u>	<u>Indicator Status</u>
<i>A. torreyi</i> (S. Wats.) S. Wats.	Watersage saltbush	FAC
<i>A. triangularis</i> Willd.	Triangular saltbush	FAC
<i>A. truncata</i> (Torrey) Gray	Wedgescale saltweed	FAC
<i>A. tularensis</i> Cov.	Saltbush	FAC
<i>A. vallicola</i> Hoov.	Saltbush	FACW DRA
<i>A. watsonii</i> A. Nels.	Watson saltbush	FACW+
<i>Azolla filiculoides</i> Lam.	Pacific azolla	OBL
<i>A. mexicana</i> Presl	Mexican azolla	OBL
<i>Baccharis douglasii</i> DC.	Saltmarsh baccharis	OBL
<i>B. emoryi</i> A. Gray	Emory baccharis	FACW
<i>B. glutinosa</i> Pers.	Seepwillow baccharis	FACW
<i>B. sarothroides</i> Gray	Desertbroom baccharis	FAC
<i>B. sergiloides</i> A. Gray	Squaw waterweed baccharis	FAC
<i>B. viminea</i> DC.	Mule fat	FACW
<i>Bacopa eisenii</i> (Kell.) Penn.	Eisen bacopa	OBL
<i>B. nobisiana</i> Mason	Bacopa	OBL
<i>Barbarea orthoceras</i> Ledeb.	Erectpod wintercress	?
<i>B. vulgaris</i> R. Br.	Bitter wintercress	FACW
<i>Bassia hyssopifolia</i> (Pallas) Kuntze	Fivehook bassia	FAC
<i>Batis maritima</i> L.	Saltwort	OBL
<i>Beckmannia eruciformis</i> (L.) Host	Sloughgrass	OBL
<i>B. syzigachne</i> (Steud.) Fernald	American sloughgrass	OBL
<i>Bergia texana</i> (Hook.) Seubert	Texas bergia	OBL DRA
<i>B. erecta</i> (Huds.) Cov.	Cut-leaved water parsnip	OBL
<i>Betula glandulosa</i> Michx.	Bog birch	OBL
<i>B. occidentalis</i> Hook.	Water birch	FACW
<i>Bidens cernua</i> L.	Nodding beggarticks	OBL
<i>B. connata</i> Muhl. ex Willd.	Swamp beggarticks	OBL
<i>B. frondosa</i> L.	Devils beggarticks	FACW
<i>B. laevis</i> (L.) B.S.P.	Brook sunflower	OBL
<i>B. pilosa</i> L.	Spanishneedles	FACW
<i>Eleocharis acicularis</i> (L.) With.	Deer fern	-
<i>Blennosperma bakeri</i> Heiser	Baker's blennosperma	OBL DRA
<i>B. nanum</i> (Hook.) Blake	Dwarf blennosperma	OBL DRA
<i>Boisduvalia cleistogama</i> Curran	Cleistogamous spikeprimrose	OBL DRA
<i>B. densiflora</i> (Lindl.) Wats.	Dense spikeprimrose	-
<i>B. glabella</i> (Nutt.) Walpers	Smooth spikeprimrose	OBL DRA
<i>B. macrantha</i> Heller	Spikeprimrose	-
<i>B. stricta</i> (Gray) Greene	Brook spikeprimrose	-
<i>Bolandra californica</i> Gray	California bolandra	-
<i>Botrychium lanceolatum</i> (Gmel.) Rupr.	Lanceleaf grapefern	FACW
<i>B. lunaria</i> (L.) Swartz	Moonwort grapefern	-
<i>B. multifidum</i> (Gmel.) Rupr.	Broadleaf grapefern	-
<i>B. simplex</i> E. Hitchc.	Little grapefern	-
<i>Boykinia elata</i> (Nutt.) Greene	Santa Lucia boykinia	FACW
<i>B. major</i> Gray	Stream boykinia	FACW
<i>B. rotundifolia</i> Parry	San Gabriel boykinia	FACW
<i>Brasenia schreberi</i> Gmel.	Watershield	OBL
<i>Brickellia californica</i> (T. & G.) Gray	California brickellbush	-
<i>B. greenii</i> Gray	Greene brickellbush	FAC
<i>Briza media</i> L.	Perennial quakinggrass	FAC

<u>Scientific Name</u>	<u>Common Name</u>	<u>Indicator Status</u>
<i>B. minor</i> L.	Little quakinggrass	FACW
<i>Brodiaea orcuttii</i> (Greene) Baker	Orcutt's brodiaea	-
<i>B. peduncularis</i> (Lindl.) Wats.	Longstalk brodiaea	-
<i>Bromus ciliatus</i> L.	Fringed brome	FAC
<i>Bulbostylis capillaris</i> (L.) C.B. Clarke	Threadleaf beakseed	-
<i>Cakile maritima</i> Scop.	European searocket	FACW
<i>Calamagrostis bolanderi</i> Thurb.	Bolander reedgrass	FACW
<i>C. canadensis</i> (Michx.) Beauv.	Bluejoint reedgrass	OBL
<i>C. crassiglumis</i> Thurb.	Reedgrass	OBL
<i>C. inexpansa</i> A. Gray	Northern reedgrass	-
<i>C. nutkaensis</i> (Presl) Steud.	Pacific reedgrass	FACW
<i>Calandrinia ambigua</i> (Wats.) Howell	Calandrinia	-
<i>Callitriche hermaphroditica</i> L.	Secret waterstarwort	OBL
<i>C. heterophylla</i> Pursh	Larger waterstarwort	OBL DRA
<i>C. longipedunculata</i> Morong.	Longstalked waterstarwort	OBL DRA
<i>C. marginata</i> Torr.	Waterstarwort	OBL DRA
<i>C. peploides</i> Nutt.	Waterstarwort	OBL
<i>C. trochlearis</i> Fassett	Waterstarwort	OBL
<i>C. verna</i> L.	Green waterstarwort	OBL
<i>Calochortus nudus</i> Wats.	Sierra mariposalily	-
<i>C. palmeri</i> Wats.	Palmer's mariposalily	FACW
<i>C. striatus</i> Parish	Striate mariposalily	-
<i>C. uniflorus</i> Hook. & Arn.	Large-flowered star tulip	-
<i>Caltha leptosepala</i> DC.	Elk slip marshmarigold	OBL
<i>Calycanthus occidentalis</i> Hook. & Arn.	Sweet bush	-
<i>Calypso bulbosa</i> (L.) Oakes	Fairy slipper orchid	FACW
<i>Calyptridium roseum</i> S. Wats.	Rosy calyptridium	-
<i>Calystegia sepium</i> (L.) R.Br.	Wild morning-glory	-
<i>Camassia leichtlinii</i> (Baker) Wats.	Leichtlin camass	FACW
<i>C. quamash</i> (Pursh) Greene	Common camass	FACW
<i>Camissonia subacaulis</i> (Pursh) Raven	Camissonia	-
<i>Campanula californica</i> (Kell.) Heller	California bellflower	OBL
<i>C. linnaeifolia</i> Gray	Linnaeus bellflower	OBL
<i>C. rotundifolia</i> L.	American bellflower	FAC
<i>C. wilkinsiana</i> Greene	Wilkins' harebell	-
<i>Capsella bursa-pastoris</i> (L.) Medik.	Shepherds purse	FAC
<i>Candamine angulata</i> Hook.	Angled bittercress	FACW
<i>C. bellidifolia</i> L.	Bell-leaved bittercress	-
<i>C. breweri</i> S. Wats.	Brewer bittercress	-
<i>C. californica</i> (Nutt.) Greene	California bittercress	-
<i>C. confertifolia</i> (Wats.) Nels. & MacBr.	Heartleaf bittercress	-
<i>C. gemmata</i> Greene	Bittercress	-
<i>C. integrifolia</i> (Nutt.) Greene	Bittercress	-
<i>C. lyallii</i> S. Wats.	Lyall bittercress	-
<i>C. occidentalis</i> (Wats.) Howell	Western bittercress	-
<i>C. oligocarpa</i> Nutt.	Idaho bittercress	FACW
<i>C. pennsylvanica</i> Muhl. ex Willd.	Pennsylvania bittercress	-
<i>Carex albida</i> L. H. Bailey	White sedge	OBL
<i>C. albionigna</i> Mackenz.	Blackandwhite sedge	-

<u>Scientific Name</u>	<u>Common Name</u>	<u>Indicator Status</u>
<i>C. alma</i> L.H. Bailey	Sedge	-
<i>C. amplifolia</i> Boott	Bigleaf sedge	-
<i>C. aquatilis</i> Wahlenb.	Water sedge	OBL
<i>C. arcta</i> Boott	Bear sedge	OBL
<i>C. atherodes</i> Spreng.	Slough sedge	OBL
<i>C. athrostachya</i> Olney	Slenderbeak sedge	FACW
<i>C. aurea</i> Nutt.	Golden sedge	OBL
<i>C. barbarae</i> Dewey	Santa Barbara sedge	FACW
<i>C. bolanderi</i> Olney	Bolander sedge	-
<i>C. breviligulata</i> Mackenz.	Sedge	-
<i>C. buxbawmii</i> Wahlenb.	Buxbaum sedge	OBL
<i>C. californica</i> L. H. Bailey	California sedge	-
<i>C. canescens</i> L.	Silvery sedge	OBL
<i>C. capitata</i> L.	Capitate sedge	FACW
<i>C. cephalophora</i> Muhl.	Woodbank sedge	-
<i>C. comosa</i> Boott	Longhair sedge	-
<i>C. cusickii</i> Mackenz.	Cusick sedge	OBL
<i>C. densa</i> (L. H. Bailey) L. H. Bailey	Dense sedge	OBL
<i>C. diandra</i> Schrank	Lesserpanicled sedge	OBL
<i>C. douglassii</i> Boott	Douglas sedge	-
<i>C. echinata</i> Murray	Prickly sedge	OBL
<i>C. eurycarpa</i> Holm	Wildfruit sedge	-
<i>C. exsiccata</i> L.H. Bailey	Columbia sedge	OBL
<i>C. feta</i> L.H. Bailey	Feta sedge	OBL
<i>C. fissuricola</i> Mackenz.	Sedge	-
<i>C. gynodynama</i> Olney	Sedge	-
<i>C. harfordii</i> Mackenz.	Harford sedge	OBL
<i>C. hassei</i> L.H. Bailey	Hasse sedge	FACW
<i>C. haydeniana</i> Olney	Cloud sedge	-
<i>C. heteroneura</i> W. Boott	Black sedge	FAC
<i>C. hindsii</i> Clarke	Hinds sedge	OBL
<i>C. hirtissima</i> W. Boott	Sedge	-
<i>C. hystericina</i> Muhl.	Bottlebrush sedge	OBL
<i>C. illota</i> L.H. Bailey	Sheet sedge	-
<i>C. interior</i> L. H. Bailey	Inland sedge	-
<i>C. jonesii</i> L.H. Bailey	Jones sedge	-
<i>C. kelloggii</i> W. Boott	Kellogg sedge	OBL
<i>C. laeviculmis</i> Meinsh.	Smoothstem sedge	-
<i>C. lanuginosa</i> Michx.	Wooly sedge	-
<i>C. lemmonii</i> W. Boott	Lemmon sedge	-
<i>C. lenticularis</i> Michx.	Tufted sedge	OBL
<i>C. leporina</i> L.	Leporina sedge	-
<i>C. leptalea</i> Wahlenb.	Bristlestalked sedge	OBL
<i>C. limosa</i> L.	Mud sedge	OBL
<i>C. livida</i> (Wahlenb.) Willd.	Livid sedge	OBL
<i>C. lurida</i> Wahlenb.	Lurid sedge	OBL
<i>C. luzulina</i> Olney	Woodrush sedge	OBL
<i>C. lvnqbyei</i> Hornem.	Lvnqbye sedge	OBL
<i>C. mendocinensis</i> Olney	Mendocino sedge	-
<i>C. mertensii</i> Prescott	Mertens sedge	FAC
<i>C. microptera</i> Mackenz.	Smallwing sedge	-

<u>Scientific Name</u>	<u>Common Name</u>	<u>Indicator Status</u>
<i>C. X molesta</i> Mackenz.	Sedge	-
<i>C. muricata</i> L.	Muricat sedge	-
<i>C. nebrascensis</i> Dewey	Nebraska sedge	OBL
<i>C. nervina</i> L.H. Bailey	Nerved sedge	-
<i>C. neurophora</i> Mackenz.	Alpinenerved sedge	-
<i>C. nigricans</i> C.A. Meyer	Black alpine sedge	-
<i>C. nudata</i> W. Boott	Naked sedge	-
<i>C. obispoensis</i> Stacey	Obispo sedge	-
<i>C. obnupta</i> L. H. Bailey	Coast sedge	OBL
<i>C. ormantha</i> (Fernald) Mackenz.	Sedge	OBL
<i>C. pachystachya</i> Cham.	Chamisso sedge	FACW
<i>C. phaeocephala</i> Piper	Dunhead sedge	-
<i>C. praeceptorum</i> Mackenz.	Early sedge	-
<i>C. praeegracilis</i> W. Boott	Clustered field sedge	FACW-
<i>C. praticola</i> Rydb.	Meadow sedge	-
<i>C. preslii</i> Steud.	Presl sedge	-
<i>C. pseudoscirpoidea</i> Rydb.	Sedge	-
<i>C. raynoldsii</i> Dewey	Raynolds sedge	-
<i>C. rostrata</i> Stokes	Beaked sedge	OBL
<i>C. saliniformis</i> Mackenz.	Saltsedge	-
<i>C. schottii</i> Dewey	Schott sedge	OBL
<i>C. scirpoidea</i> Michx.	Downy sedge	-
<i>C. scopulorum</i> Holm	Mountain sedge	FACW
<i>C. senta</i> Boott	Swamp carex	OBL
<i>C. serratodens</i> W. Boott	False-flax	-
<i>C. sheldonii</i> Mackenz.	Sheldon sedge	OBL
<i>C. simulata</i> Mackenz.	Alalogne sedge	-
<i>C. sitchensis</i> Prescott	Sitka sedge	OBL
<i>C. sonomensis</i> Stacey	Sonoma sedge	OBL
<i>C. spectabilis</i> Dewey	Showy sedge	-
<i>C. spissa</i> L. H. Bailey	San Diego sedge	-
<i>C. stipata</i> Muhl.	Sawbeak sedge	OBL
<i>C. subbracteata</i> Mackenz.	Sedge	-
<i>C. subnigricans</i> Stacey	Nearlyblack sedge	-
<i>C. unilateralis</i> Mackenz.	Lateral sedge	-
<i>C. vermacula</i> L.H. Bailey	Sedge	-
<i>C. vesicaria</i> L.	Inflated sedge	OBL
<i>C. vicaria</i> L. H. Bailey	Sedge	OBL
<i>C. viridula</i> Michx.	Green sedge	OBL
<i>Cassiope mertensiana</i> (Rong.) G. Don	White mountain heather	FACW
<i>Castilleja elata</i> Piper	Slender indian paintbrush	FACW
<i>C. exilis</i> A. Nels.	Small indian paintbrush	OBL
<i>C. lemmonii</i> Gray	Lemmon's indian paintbrush	FACW
<i>C. leschkeana</i> J.T. Howell	Point Reyes indian paintbrush	-
<i>C. miniata</i> Dougl. ex Hook.	Scarlet indian paintbrush	FACW
<i>C. minor</i> Gray	Lesser indian paintbrush	OBL
<i>C. stenantha</i> Gray	Large-flowered paintbrush	OBL
<i>C. uliginosa</i> Eastw.	Pitkin marsh indian paintbrush	-
<i>Ceanothus arboreus</i> Greene	Feltleaf ceanothus	-
<i>Celtis occidentalis</i> L.	Common hackberry	-
<i>Centaurea calycosum</i> (Buckl.) Fernald	Arizona centaury	-

<u>Scientific Name</u>	<u>Common Name</u>	<u>Indicator Status</u>
<i>C. exaltatum</i> (Griseb.) Wight	Exalted centaury	FACW
<i>C. floribundum</i> (Benth.) Rob.	Centaury	FACW
<i>C. trichanthum</i> (Griseb.) Rob.	Centaury	-
<i>C. umbellatum</i> Gilib.	Umbellate centaury	-
<i>Centunculus minimus</i> L.	Chaffweed	FACW DRA
<i>Cephalanthus occidentalis</i> L.	Common buttonbush	OBL
<i>Cerastium beeringianum</i> Cham. & Schlecht.	Bering cerastium	-
<i>C. nutans</i> Raf.	Common chickweed	-
<i>C. vulgatum</i> L.	Big chickweed	-
<i>Ceratophyllum demersum</i> L.	Coontail	OBL
<i>Chaetopappa fragilis</i> (Bdg.) Keck	Chaetopappa	-
<i>Chamaecyparis lawsoniana</i> (A. Murray) Parl.	Port-Orford-cedar	-
<i>C. nootkatensis</i> (D. Don) Spach	Alaska-cedar	-
<i>Chenopodium album</i> L.	Lamb's quarters	FAC
<i>C. ambrosioides</i> L.	Mexican-tea	FAC
<i>C. botrys</i> L.	Jerusalem-oak	-
<i>C. chenopodioides</i> (L.) Aellen	Buttered goosefoot	FACW DRA
<i>C. glaucum</i> L.	Oakleaf goosefoot	-
<i>C. humile</i> Hook.	Goosefoot	-
<i>C. leptophyllum</i> (Moq.) Nutt. ex S. Wats.	Narrowleaf goosefoot	-
<i>Chenopodium rubrum</i> L.	Red goosefoot	OBL
<i>Chrysosplenium glechomifolium</i> Nutt.	Pacific water carpet	OBL
<i>Ciclospermum leptophyllum</i> (Pers.) Sprague ex Britton	Ciclospermum	-
<i>Cicuta bolanderi</i> Wats.	Bolander waterhemlock	OBL
<i>C. douglasii</i> (DC.) Coult. & Rose	Douglas waterhemlock	OBL
<i>Cirna latifolia</i> (Trevir.) Griseb.	Drooping woodreed	-
<i>Circaea alpina</i> L.	Alpine circaea	FACW
<i>Cirsium andrewsii</i> (Gray) Jeps.	Andrews thistle	FACW
<i>C. arvense</i> (L.) Scop.	Canadian thistle	FAC
<i>C. breweri</i> (Gray) Jepson	Brewer thistle	OBL
<i>C. crassicaule</i> (Greene) Jeps	Thistle	OBL
<i>C. douglasii</i> DC.	Douglas thistle	OBL
<i>C. foliosum</i> (Hook.) DC.	Elk thistle	FAC
<i>C. fontinale</i> (Greene) Jeps.	Thistle	-
<i>C. heterophyllum</i> (Greene) Jeps.	Thistle	OBL
<i>C. lanchelepis</i> Petrak	Thistle	OBL
<i>C. undulatum</i> (Nutt.) Spreng.	Wavyleaf thistle	-
<i>Citrus aurantium</i> L.	Sour orange	-
<i>Cladonia confertifera</i> (S. Wats.) O'Neill	Sawgrass	OBL
<i>Clypeola confertifera</i> S. Wats.	Heartleaf springbeauty	FAC
<i>C. lanceolata</i> Pursh	Lanceleaf springbeauty	FAC
<i>C. minerslettuce</i> Donn ex Willd.	Minerslettuce springbeauty	FAC
<i>C. occidentalis</i> L.	Western springbeauty	-
<i>Clematis ligusticifolia</i> Nutt.	Virginsbower	FAC
<i>Cleome lutea</i> Hook.	Yellow beeplant	FAC
<i>C. serrulata</i> Pursh	Rocky mountain beeplant	FAC

<u>Scientific Name</u>	<u>Common Name</u>	<u>Indicator Status</u>
<i>Cleomella brevipes</i> S. Wats.	Cleomella	FACW
<i>Collinsia tinctoria</i> Hartw.	Brownstain blueeyedmary	-
<i>Conioselinum chinense</i> (L.) B.S.P.	Appalachian hemlockparsley	FACW
<i>C. gmelinii</i> (Cham. & Schlecht.) Steud.	Western hemlockparsley	-
<i>Conium maculatum</i> L.	Poison hemlock	FACW
<i>Conyza canadensis</i> (L.) Cronq.	Canada horseweed	FAC
<i>C. coulteri</i> Gray	Conyza	FAC+
<i>Coptis laciniata</i> Gray	Cutleaf goldthread	-
<i>Corallorhiza wisteriana</i> Conrad	Spring coralroot	-
<i>Cordylanthus bernardinus</i> Munz	Cordylanthus	-
<i>C. maritimus</i> Nutt.	Saltmarsh birdbeak	OBL
<i>C. mollis</i> Gray	Gray birdbeak	OBL
<i>C. ramosus</i> Nutt. ex Benth.	Bushy birdbeak	-
<i>Coreopsis tinctoria</i> Nutt.	Tickseed coreopsis	FAC
<i>Corispermum hyssopifolium</i> L.	Hyssopleaf bugseed	-
<i>Cornus canadensis</i> L.	Bunchberry dogwood	FAC
<i>C. glabrata</i> Benth.	Brown dogwood	FACW
<i>C. sessilis</i> Torr. ex E.M. Durand	Blackfruit dogwood	FAC
<i>C. stolonifera</i> Michx.	Redosier dogwood	FACW
<i>Corydalis caseana</i> Gray	Fitweed corydalis	-
<i>Cotula coronopifolia</i> L.	Brass buttons	FACW+ DRA
<i>Crassula aquatica</i> (L.) Schoenl.	Crassula	OBL
<i>C. erecta</i> (Hook & Arn.) Berger	Erect crassula	FAC
<i>C. tillaea</i> Lester-Garland	Crassula	-
<i>Crataegus douglasii</i> Lindl.	Black hawthorn	-
<i>Crepis runcinata</i> (James) T. & G.	Dandelion hawksbeard	FACW
<i>Cressa truxillensis</i> H.B.K.	Alkali weed	FACW DRA
<i>Crypsis niliaca</i> Fig. & Denot.	Nile pricklegrass	OBL
<i>C. schoenoides</i> (L.) Lam.	Pricklegrass	OBL DRA
<i>Cynosurus cristatus</i> L.	Crested dogtail	-
<i>Cyperus acuminatus</i> Torr. & Hook.	Taperleaf flatsedge	OBL
<i>C. alternifolius</i> L.	Umbrella sedge	OBL
<i>C. aristatus</i> Rottb.	Bearded flatsedge	OBL
<i>C. brevifolius</i> (Rottb.) Hassk.	Kyllinga	FACW
<i>C. difformis</i> L.	Smallflower flatsedge	OBL
<i>C. dioicus</i> I. M. Johnston	Cyperus	FACW
<i>C. elegans</i> L.	Sticky flatsedge	-
<i>C. eragrostis</i> Lam.	Tall flatsedge	FACW
<i>C. erythrorhizos</i> Muhl.	Redroot cyperus	OBL
<i>C. esculentus</i> L.	Chufa	FACW
<i>C. ferax</i> L. C. Rich.	Coarse cyperus	FACW
<i>C. fuscus</i> L.	Brown cyperus	-
<i>C. laevigatus</i> L.	Smooth flatsedge	FACW+
<i>C. niger</i> Ruiz & Pavon	Black flatsedge	FACW+
<i>C. odoratus</i> L.	Fragrant flatsedge	FACW
<i>C. parishii</i> Britton	Parish's cyperus	FACW
<i>C. rotundus</i> L.	Nutgrass	FAC
<i>C. sphaelatus</i> Rottb.	Cyperus	-
<i>C. strigosus</i> L.	Straw-colored cyperus	FACW
<i>C. tenuis</i> Swartz	Cyperus	-
<i>C. uniolooides</i> R. Br.	Uniola-like flatsedge	-

<u>Scientific Name</u>	<u>Common Name</u>	<u>Indicator Status</u>
<i>C. virens</i> Michx.	Green flatsedge	-
<i>Cypripedium californicum</i> Gray	California ladyslipper	OBL
<i>C. fasciculatum</i> Kellogg ex S. Wats.	Clustered ladyslipper	-
<i>C. montanum</i> Dougl. ex Lindl.	Mountain ladyslipper	FAC
<i>Cypselea humifusa</i> Turpin	Cypselea	FACW
<i>Danthonia californica</i> Boland.	California danthonia	FACW
<i>D. intermedia</i> Vasey	Timber danthonia	-
<i>Darlingtonia californica</i> Torr.	California pitcher plant	OBL
<i>Datisca glomerata</i> (Presl) Baill.	Datisca	FACW
<i>Delphinium californicum</i> T. & G.	California larkspur	-
<i>D. glaucum</i> Wats.	Sierra larkspur	FACW
<i>D. uliginosum</i> Curran.	Bog larkspur	-
<i>Deschampsia cespitosa</i> (L.) Beauv.	Tufted hairgrass	FACW
<i>D. danthonioides</i> (Trin.) Munro	Annual hairgrass	FACW DRA
<i>D. elongata</i> (Hook.) Munro	Slender hairgrass	-
<i>Dichanthelium acuminatum</i> (Swartz) Gould & C. A. Clarke	Pacific panicum	-
<i>D. oligosanthos</i> (J. A. Schultes) Gould	Scribner panicum	-
<i>Dirca occidentalis</i> Gray	San Francisco leatherwood	-
<i>Distichlis spicata</i> (L.) Greene	Seashore saltgrass	FACW
<i>Dodecatheon alpinum</i> (Gray) Greene	Alpine shooting star	OBL
<i>D. conjugens</i> Greene	Sailorcaps shootingstar	-
<i>D. jeffreyi</i> Van Houtte	Jeffrey shootingstar	FACW
<i>D. pauciflorum</i> (Dup.) Greene	Darkthroat shootingstar	-
<i>D. pulchellum</i> (Raf.) Merrill	Beautiful shootingstar	FACW
<i>D. redolens</i> (Hall) H. J. Thomps.	Shootingstar	OBL
<i>Dopatrium junceum</i> (Roxb.) Buch.-Ham.	Dopatrium	OBL
<i>Downingia bella</i> Hoov.	Downingia	OBL
<i>D. bicornutta</i> A. Gray	Twohorned downingia	OBL
<i>D. concolor</i> Greene	Downingia	OBL
<i>D. cuspidata</i> (Greene) Greene	Downingia	OBL
<i>D. elegans</i> (Dougl.) Torr.	Elegant downingia	OBL
<i>D. insignis</i> Greene	Downingia	OBL
<i>D. laeta</i> Greene	Pleasing downingia	OBL
<i>D. montana</i> Greene	Mountain downingia	OBL
<i>D. ornatissima</i> Greene	Downingia	OBL
<i>D. pulchella</i> (Lindl.) Torr.	Downingia	OBL
<i>D. pusilla</i> (G. Don) Torr	Downingia	OBL
<i>D. yina</i> Appleg.	Downingia	OBL
<i>Draba longhocarpa</i> Rydb.	Spearfruit draba	-
<i>D. praealta</i> Greene	Tall draba	-
<i>Drasacocephalum parviflorum</i> Nutt.	False dragonhead	FAC
<i>Drosera longifolia</i> L.	English sundew	OBL
<i>D. rotundifolia</i> L.	Round-leaved sundew	OBL
<i>Dryopteris dilatata</i> (Hoffm.) Gray	Mountain woodfern	FACW
<i>Euchesna indica</i> (Andrz.) Focke	India mockstrawberry	-
<i>Dugaldia hoopesii</i> (Gray) Rydb.	Hoopes dugaldia	-
<i>Eulichium arundinaceum</i> (L.) Britton	Three-way-sedge	OBL
<i>Echinochloa colona</i> (L.) Link	Jungle-rice	FACW
<i>E. crusgalli</i> (L.) Beauv.	Barnyard grass	FACW DRA



<u>Scientific Name</u>	<u>Common Name</u>	<u>Indicator Status</u>
<i>E. crus-pavonis</i> (H. B. K.) J. A. Schultes	Alkali barnyardgrass	OBL
<i>E. muricata</i> (Beauv.) Fernald	Barnyard grass	FACW DRA
<i>Echinodorus cordifolius</i> (L.) Griseb.	Creeping burhead	OBL
<i>E. rostratus</i> (Nutt.) Engelm.	Burhead	OBL
<i>Eclipta alba</i> (L.) Hassk.	Common yerbadetajo	FAC+
<i>Egeria densa</i> Planch.	South American elodea	OBL
<i>Eichhornia crassipes</i> (Mart.) Solms.	Common waterhyacinth	OBL
<i>Elaeagnus angustifolia</i> L.	Russian olive	FAC
<i>Elatine americana</i> (Pursh) Arn.	American waterwort	OBL
<i>E. ambigua</i> Wight	Waterwort	OBL
<i>E. brachysperma</i> Gray	Shortseed waterwort	FACW
<i>E. californica</i> Gray	California waterwort	OBL
<i>E. chilensis</i> Gray	Waterwort	OBL DRA
<i>E. gracilis</i> Mason	Waterwort	OBL
<i>E. heterandra</i> Mason	Waterwort	OBL
<i>E. obovata</i> (Fassett) Mason	Waterwort	OBL
<i>E. rubella</i> Rydb.	Waterwort	OBL
<i>E. triandra</i> Schkuhr.	Matted waterwort	OBL
<i>Eleocharis acicularis</i> (L.) R. & S.	Slender spikerush	OBL DRA
<i>E. atropurpurea</i> (Retz.) J. & K. Presl	Purple spikerush	FACW+
<i>E. bella</i> (Piper) Svenson	Beautiful spikerush	FACW
<i>E. bernardina</i> Munz & I. Johnst.	Bernard spikerush	FACW
<i>E. bolanderi</i> A. Gray	Bolander spikerush	FACW
<i>E. caribaea</i> (Rottb.) Blake	Canada spikesedge	FACW+
<i>E. coloradoensis</i> (Britton) Gilly	Dwarf spikerush	OBL DRA
<i>E. engelmanni</i> Steud.	Engelmann's spikerush	FACW+
<i>E. flavescens</i> (Poir.) Urban	Yellow spikerush	-
<i>E. geniculata</i> (L.) R. & S.	Spikerush	OBL
<i>E. macrostachya</i> Britton	Creeping spikerush	OBL
<i>E. mamillata</i> Lindl.	Common spikerush	-
<i>E. montevidensis</i> Kunth	Sand spikesedge	FACW
<i>E. obtusa</i> (Willd.) Schult.	Blunt spikesedge	OBL
<i>E. pachycarpa</i> Desv.	Spikesedge	OBL
<i>E. palustris</i> (L.) R. & S.	Common spikesedge	OBL
<i>E. parishii</i> Britton	Parish spikerush	FACW
<i>E. parvula</i> (R. & S.) Link	Dwarf spikerush	OBL
<i>E. pauciflora</i> (Lightf.) Link	Fewflowered spikerush	OBL
<i>E. quadrangulata</i> (Michx.) R. & S.	Squarestem spikerush	OBL
<i>E. radicans</i> (A. Dietr.) Kunth	Slender spikerush	OBL
<i>E. rostellata</i> Torr.	Beaked spikerush	OBL
<i>E. unglauca</i> (Link) Schult.	Creeping spikesedge	OBL
<i>Elodea canadensis</i> Michx.	Common waterweed	OBL
<i>E. nuttallii</i> (Planch.) St. John	Nuttall's waterweed	OBL
<i>Elymus canadensis</i> L.	Canada wildrye	-
<i>E. triticoides</i> Buckley	Creeping wildrye	FAC+ DRA
<i>Empetrum nigrum</i> L.	Black crowberry	-
<i>Epilobium angustifolium</i> Lam.	Willowweed	-
<i>E. angustifolium</i> L.	Fire willowweed	FAC
<i>E. ciliatum</i> Raf.	Hairy willowweed	-
<i>E. glaberrimum</i> Barbey	Smooth willowweed	-

<u>Scientific Name</u>	<u>Common Name</u>	<u>Indicator Status</u>
<i>E. hornemannii</i> Reichenb.	Hornemann willowweed	-
<i>E. latifolium</i> L.	Red willowweed	FACW
<i>E. obcordatum</i> A. Gray	Heart willowweed	-
<i>E. oreganum</i> Greene	Oregon willowweed	OBL
<i>E. siskiyouense</i>	Siskiyou willowweed	-
<i>Epipactis gigantea</i> Dougl.	Giant hellebore	OBL
<i>Equisetum arvense</i> L.	Field horsetail	FAC
<i>E. X ferrissii</i> Clute	Ferriss horsetail	-
<i>E. hyemale</i> L.	Scouringrush horsetail	FACW
<i>E. laevigatum</i> A. Braun	Smooth horsetail	FACW
<i>E. palustre</i> L.	Marsh horsetail	FACW
<i>E. telmateia</i> Ehrh.	Giant horsetail	OBL
<i>Eragrostis hypnoides</i> (Lam.) B.S.P.	Teal lovegrass	OBL DRA
<i>E. mexicana</i> (Hornem.) Link	Mexican lovegrass	-
<i>E. pectinacea</i> (Michx.) Nees.	Carolina lovegrass	FAC
<i>E. secundiflora</i> J. Presl	Red lovegrass	-
<i>Erianthus ravennae</i> (L.) Beauv.	Ravenna grass	FAC
<i>Erigeron acris</i> L.	Bitter fleabane	FAC
<i>E. annuus</i> (L.) Pers.	Daisy fleabane	-
<i>E. coulteri</i> Porter	Coulter fleabane	OBL
<i>E. lonchophyllus</i> Hook.	Spearleaf fleabane	-
<i>E. peregrinus</i> (Banks ex Pursh) Greene	Peregrine fleabane	-
<i>E. philadelphicus</i> L.	Philadelphia fleabane	FAC
<i>E. strigosus</i> Muhl. ex Willd.	Daisy fleabane	-
<i>Eriocaulon cinereum</i> R. Br.	Pipewort	-
<i>Eriochloa aristata</i> Vasey	Bearded cupgrass	-
<i>E. contracta</i> Hitchc.	Prairie cupgrass	-
<i>E. gracilis</i> (Fourn.) Hitchc.	Southwestern cupgrass	-
<i>Eriophorum crinigerum</i> (Gray) Beetle	Subalpine cottonsedge	-
<i>E. gracile</i> Koch	Slender cottonsedge	OBL
<i>Eryngium alismifolium</i> Greene	Inland eryngo	FACW
<i>E. aristulatum</i> Jeps.	Beethistle eryngo	OBL DRA
<i>E. armatum</i> (Wats.) Coult. & Rose	Snakeroot	FACW
<i>E. articulatum</i> Hook.	Beethistle eryngo	-
<i>E. pinnatisectum</i> Jeps.	Tuolumne eryngo	-
<i>E. racemosum</i> Jeps.	Delta eryngo	-
<i>E. vaseyi</i> Coult. & Rose	Coyote-thistle	FACW
<i>E. cheiranthoides</i> L.	Wormseed	-
<i>Erythronium grandiflorum</i> Pursh	Dogtooth violet	-
<i>E. revolutum</i> J. E. Smith	Fawnlilly	-
<i>Euphorbia hooveri</i> Wheeler		-
<i>Eustoma exaltatum</i> (L.) Griseb.	Eustoma	-
<i>Euthamia occidentalis</i> Nutt.	Euthamia	OBL
<i>Evax caulescens</i> (Benth.) Gray	Evax	-
<i>E. sparsiflora</i> (Gray) Jepson	Fewflowered evax	-
<i>Festuca californica</i> Vasey	California fescue	-
<i>F. rubra</i> L.	Red fescue	FAC
<i>Fimbristylis spadiacea</i> (L.) Vahl	Saltmarsh fimbristylis	OBL
<i>F. thermalis</i> S. Wats.	Fimbristylis	-
<i>F. vahlia</i> (Lam.) Link	Vahl fimbristylis	-
<i>Floerkea proserpinacoides</i> Willd.	Falsemermaid	-

<u>Scientific Name</u>	<u>Common Name</u>	<u>Indicator Status</u>
<i>Forestiera neomexicana</i> Gray	Desert olive	FAC
<i>Frankenia grandifolia</i> Cham. & Schlecht.	Alkali heath	FACW+
<i>F. palmeri</i> Wats.	Yerba reuma	OBL
<i>Fraxinus latifolia</i> Benth.	Oregon ash	FACW
<i>F. pennsylvanica</i> Marshall	Green ash	-
<i>F. velutina</i> Torr.	Velvet ash	-
<i>Galium boreale</i> L.	Northern bedstraw	-
<i>G. cymosum</i> Wiegand	Bedstraw	FACW
<i>G. mexicanum</i> H.B.K.	Rough bedstraw	-
<i>G. trifidum</i> L.	Small bedstraw	-
<i>Gamochaeta purpurea</i> (L.) Cabrera	Purple gamochaeta	-
<i>Gaultheria humifusa</i> (Grah.) Rydb.	Western wintergreen	-
<i>G. ovatifolia</i> Gray	Oregon wintergreen	FAC+
<i>Gentiana affinis</i> Griseb.	Oregon gentian	-
<i>G. aquatica</i> L.	Moss gentian	-
<i>G. calycosa</i> Griseb.	Explorer's gentian	-
<i>G. prostrata</i> Haenke	Moss gentian	-
<i>G. sceptrum</i> Griseb.	King's gentian	OBL
<i>G. setigera</i> Gray	Mendocino gentian	-
<i>Gentianella amarella</i> (L.) Boerner	Felwort	-
<i>G. tenella</i> (Rottb.) Boerner	Dane's gentian	-
<i>Gentianopsis holopetala</i> (Gray) Iltis	Sierra gentian	-
<i>G. simplex</i> (Gray) Iltis	Hiker's gentian	-
<i>Geranium richardsonii</i> Fisch. & Trautv.	Richardson geranium	-
<i>G. viscosissimum</i> Fisch. & C. A. Meyer	Sticky geranium	-
<i>Geum aleppicum</i> Jacq.	Allepo avens	-
<i>G. macrophyllum</i> Willd.	Big-leaf avens	-
<i>G. rivale</i> L.	Water avens	-
<i>G. triflorum</i> Pursh	Prairiesmoke avens	-
<i>Glaux maritima</i> L.	Sea milkwort	OBL
<i>Gleditsia triacanthos</i> L.	Honeylocust	FAC
<i>Glinus lotoides</i> L.	Glinus	OBL
<i>Glyceria borealis</i> (Nash) Batch.	Northern mannagrass	OBL
<i>G. elata</i> (Nash ex Rydb.) M. E. Jones	Tall mannagrass	OBL
<i>G. leptostachya</i> Buckley	Slimleaf mannagrass	OBL
<i>G. maxima</i> (Hartm.) Holmb.	American mannagrass	OBL
<i>G. occidentalis</i> (Piper) J. C. Nels.	Northwestern mannagrass	OBL
<i>G. striata</i> (Lam.) A. Hitchc.	Fowl mannagrass	OBL
<i>Glycyrrhiza lepidota</i> Pursh	Wild licorice	FAC+
<i>Gnaphalium luteo-album</i> L.	Cudweed	FACW-
<i>G. palustre</i> Nutt.	Lowland cudweed	FACW
<i>Gratiola ebracteata</i> Benth.	Bracted hedgehyssop	OBL
<i>G. heterosepala</i> Mason & Bacig.	Hedgehyssop	OBL
<i>G. neglecta</i> Torr.	Neglected hedgehyssop	OBL DRA
<i>Grindelia humilis</i> H. & A.	Marsh gumweed	OBL
<i>G. integrifolia</i> DC.	Pacific grindelia	OBL
<i>G. latifolia</i> Kellogg	Coastal gum plant	-
<i>G. nana</i> Nutt.	Low gumweed	-
<i>G. X paludosa</i> Greene	Gumweed	OBL
<i>G. procera</i> Greene	Tall grindelia	?

<u>Scientific Name</u>	<u>Common Name</u>	<u>Indicator Status</u>
<i>Hackelia floribunda</i> (Lehm.) Johnst.	Western sticktight	-
<i>Halodule wrightii</i> Aschers.	Halodule	OBL
<i>Haplopappus lanceolatus</i> (Hook.) T. & G.	Lanceleaf goldenweed	-
<i>H. racemosus</i> (Nutt.) Torr.	Cluster goldenweed	FAC+
<i>H. uniflorus</i> (Hook.) T. & G.	Plantain goldenweed	FACW-
<i>Helentium autumnale</i> L.	Common sneezeweed	OBL
<i>H. bigelovii</i> A. Gray	Bigelow sneezeweed	-
<i>H. bolanderi</i> Gray	Bolander sneezeweed	OBL
<i>H. puberulum</i> DC.	Sneezeweed	FACW
<i>Helianthus annuus</i> L.	Common sunflower	FAC
<i>H. bolanderi</i> Gray	Bolander's sunflower	FAC
<i>H. californicus</i> DC.	California sunflower	OBL
<i>H. ciliaris</i> DC.	Blueweed sunflower	-
<i>H. maximiliani</i> Schrader	Maximilian sunflower	-
<i>H. nuttallii</i> T. & G.	Nuttall sunflower	FACW
<i>Heliotropium curassavicum</i> L.	Seaside heliotrope	OBL DRA
<i>Hemicarpha aristulata</i> (Coville) B. B. Smyth	Awed hemicarpha	-
<i>H. micrantha</i> (Vahl) Britton	Common hemicarpha	-
<i>H. occidentalis</i> Gray	Western hemicarpha	-
<i>Hemizonia fasciculata</i> (DC.) Torr. & Gray	Fascicled hemizonia	-
<i>H. pungens</i> (H. & A.) T. & G.	Common spikeweed	FAC
<i>Hesperochiron californicus</i> (Benth.) S. Wats.	California hesperichiron	-
<i>Heterocodon rariflorum</i> Nutt.	Rareflower heterocodon	-
<i>Heuchera leptomeria</i> Greene	Heuchera	-
<i>H. rubescens</i> Torr.	Red alumroot	-
<i>Hibiscus moscheutos</i> L.	Rose mallow	OBL
<i>Hippuris vulgaris</i> L.	Marestail	OBL DRA
<i>Hoffmanseggia glauca</i> (Ort.) Eifert	Hoffmanseggia	-
<i>Holcus lanatus</i> L.	Common velvetgrass	FAC
<i>Holozonia filipes</i> (H. & A.) Greene	Holozonia	-
<i>Hordeum arizonicum</i> Covas	Arizona barley	-
<i>H. brachyantherum</i> Nevskii	Meadow barley	FACW
<i>H. hystrix</i> Roth	Mediterranean barley	FAC
<i>H. jubatum</i> L.	Foxtail barley	FAC+
<i>Hydrocotyle ranunculoides</i> L. f.	Floating pennywort	OBL
<i>H. umbellata</i> L.	Umbrella pennywort	OBL
<i>H. verticillata</i> Thunb.	Whorled pennywort	-
<i>Hydrophyllum fendleri</i> (Gray) Heller	Fendler waterleaf	-
<i>H. occidentale</i> (Wats.) Gray	Western waterleaf	-
<i>Hypericum fragalloides</i> Cham. & Schlecht.	Tinker's pennev	OBL
<i>H. formosum</i> H.B.K.	Southwestern St. Johnswort	-
<i>H. nuttallii</i> L.	Dwarf St. Johnswort	FACW
<i>Ipomoea coccinea</i> L.	Scarlet morningglory	-
<i>I. hederacea</i> (L.) Jacq.	Ivyleaf morningglory	-
<i>I. indica</i> (M. L. Burm.) Merrill	Morningglory	-
<i>Iris longipetala</i> Herb.	Coast iris	FACW

<u>Scientific Name</u>	<u>Common Name</u>	<u>Indicator Status</u>
<i>I. missouriensis</i> Nutt.	Rocky mountain iris	OBL
<i>I. nelsonii</i> Randolph	Nelson iris	-
<i>I. pseudacorus</i> L.	Yellow iris	OBL
<i>Isoetes bolanderi</i> Engelm.	Bolander quillwort	OBL
<i>I. echinospora</i> Durieu	Braun's quillwort	OBL
<i>I. howellii</i> Engelm.	Howell quillwort	OBL
<i>I. lacustris</i> L.	Western quillwort	OBL
<i>I. nuttallii</i> A. Braun	Nuttall quillwort	OBL
<i>I. orcuttii</i> A. A. Eat.	Orcutt's quillwort	OBL
<i>Iva acerosa</i> (Nutt.) R. C. Jacks.	Copper weed	-
<i>I. axillaris</i> Pursh	Poverty weed	FAC DRA
<i>I. hayesiana</i> Gray	San Diego povertyweed	FACW DRA
<i>Jamesia americana</i> T. & G.	Cliff jamesia	-
<i>Jaumea carmosa</i> (Less.) Gray	Fleshy jaumea	OBL
<i>Juncus abjectus</i> F. J. Herm.	Annual rush	OBL
<i>J. acuminatus</i> Michx.	Tapertip rush	OBL
<i>J. acutus</i> L.	Rush	FACW
<i>J. articulatus</i> L.	Jointed rush	OBL
<i>J. balticus</i> Willd.	Baltic rush	OBL
<i>J. bolanderi</i> Engelm.	Bolander rush	OBL
<i>J. bryoides</i> F. J. Herm.	Moss rush	-
<i>J. bufonius</i> L.	Toad rush	OBL
<i>J. bulbosus</i> L.	Bulbous rush	OBL
<i>J. confusus</i> Coville	Colorado rush	-
<i>J. cooperi</i> Engelm.	Cooper rush	FACW
<i>J. covillei</i> Piper	Coville rush	FACW
<i>J. drummondii</i> E. Meyer	Drummond rush	FACW
<i>J. dubius</i> Engelm.	Dubius rush	-
<i>J. effusus</i> L.	Soft rush	OBL
<i>J. ensifolius</i> Wikstr.	Swordleaf rush	FACW
<i>J. falcatus</i> E. Meyer	Sickle-leaved rush	FACW
<i>J. hemiendytus</i> F. J. Hermann	Blood rush	-
<i>J. kelloggii</i> Engelm.	Kellogg's rush	-
<i>J. lesueurii</i> Boland.	Salt rush	FACW
<i>J. longistylis</i> Torr.	Longstyle rush	-
<i>J. macrandus</i> Cov.	Long-anthered rush	-
<i>J. macrophyllus</i> Coville	Long leaved rush	-
<i>J. mertensianus</i> Bong.	Mertens rush	-
<i>J. mexicanus</i> Willd.	Mexican rush	FACW
<i>J. nevadensis</i> S. Wats.	Sierra rush	FACW
<i>J. nodosus</i> L.	Knotted rush	-
<i>J. orthophyllus</i> Cov.	Straightleaf rush	-
<i>J. oxymuris</i> Engelm.	Pointed rush	FACW
<i>J. parryi</i> Engelm.	Parry's rush	-
<i>J. patens</i> E. Meyer	Common rush	-
<i>J. phaecephalus</i> Engelm.	Brownhead rush	FACW
<i>J. regelii</i> Buch.	Regel rush	-
<i>J. rugulosus</i> Engelm.	Wrinkled rush	OBL
<i>J. saximontanus</i> A. Nels.	Rocky mountain rush	-
<i>J. supiniformis</i> Engelm.	Oregon rush	-
<i>J. textilis</i> Buch.	Basket rush	OBL

<u>Scientific Name</u>	<u>Common Name</u>	<u>Indicator Status</u>
<i>J. torreyi</i> Cov.	Torrey's rush	FACW+
<i>J. triformis</i> Engelm.	Dwarf rush	-
<i>J. uncialis</i> Greene	Twelfth Rush	-
<i>J. rhipioides</i> E. Meyer	Iris-leaved rush	OBL
<i>Kalmia microphylla</i> (Hook.) A. Heller	Alpine bog kalmia	OBL
<i>K. polifolia</i> Wengen.	Pale laurel	OBL
<i>Kickxia elatine</i> (L.) Dum.	Sharppoint fluvellin	-
<i>Kobresia myosuroides</i> (Villars) Fiori	Kobresia	-
<i>Kochia americana</i> S. Wats.	Green molly	FAC+
<i>K. californica</i> S. Wats.	Rusty molly kochia	FACW
<i>K. scoparia</i> (L.) Schrader	Summer cypress	-
<i>Lactuca pulchella</i> (Pursh) DC.	Chicory lettuce	-
<i>L. serriola</i> L.	Prickly lettuce	FAC
<i>Lantana camara</i> L.	Lantana	-
<i>Lasthenia burkei</i> (Greene) Greene	Gold-fields	-
<i>L. chrysostoma</i> (Fisch. & C. A. Meyer) Greene	Lasthenia	-
<i>L. conjugens</i> Greene	Lasthenia	FACW
<i>L. fremontii</i> (Torr. Ex Gray) Greene	Fremont lasthenia	OBL DRA
<i>L. glaberrima</i> DC.	Smooth lasthenia	OBL
<i>L. glabrata</i> Lindl.	Yellow-rayed lasthenia	FACW
<i>L. minor</i> (DC.) Ornduff	Lasthenia	FACW
<i>L. platycarpa</i> (Gray) Greene	Lasthenia	FACW
<i>Lathyrus jepsonii</i> Greene	Jepson peavine	OBL
<i>L. lanzwertii</i> Kellogg	Thickleaf peavine	-
<i>L. palustris</i> L.	Slenderstem peavine	OBL
<i>Layia chrysanthemoides</i> (DC.) Gray	Chrysanthemus tidytips	-
<i>L. heterotricha</i> (DC.) H. & A.	Layia	-
<i>L. munzii</i> Keck	Munz layia	-
<i>Ledum columbianum</i> Piper	Coastal labrador tea	-
<i>L. glandulosum</i> Nutt.	Labrador tea	OBL
<i>Leersia oryzoides</i> (L.) Swartz	Rice cutgrass	OBL
<i>Legenere limosa</i> (Greene) McVaugh	Legenere	-
<i>Lemma gibba</i> L.	Swollen duckweed	OBL
<i>L. minima</i> Philippi	Least duckweed	OBL
<i>L. minor</i> L.	Common duckweed	OBL
<i>L. obscura</i> (Aust.) Daubs	Obscure duckweed	OBL
<i>L. perpusilla</i> Torr.	Minute duckweed	OBL
<i>L. trisulca</i> L.	Star duckweed	OBL
<i>L. valdiviana</i> Philippi	Valdivia duckweed	OBL
<i>Leontodon leysseri</i> (Wallr.) G. Beck	Leysseri leontodon	-
<i>Lepidium densiflorum</i> Schrad.	Prairie pepperweed	FAC
<i>L. distyctum</i> Gray	Net pepperweed	OBL DRA
<i>L. latifolium</i> L.	Perennial pepperweed	-
<i>L. latipes</i> Hook.	Pepperweed	OBL DRA
<i>L. longicaule</i> T. & G.	Sharppodded pepperweed	OBL
<i>L. virginicum</i> L.	Virginia pepperweed	-
<i>Leptochloa fascicularis</i> (Lam.) Gray	Bearded sprangletop	OBL
<i>L. filiformis</i> (Lam.) Beauv.	Red Sprangletop	OBL
<i>L. uninerida</i> (Presl) Hitchc. & Chase	Mexican sprangletop	FACW
<i>Leucothoe daviesae</i> Torr.	Sierra laurel	OBL

<u>Scientific Name</u>	<u>Common Name</u>	<u>Indicator Status</u>
<i>Lewisia brachycalyx</i> Engelm.	Lewisia	-
<i>L. pygmaea</i> (Gray) Robins.	Least lewisia	-
<i>L. triphylla</i> (Wats.) Robins.	Threeleaf lewisia	-
<i>Lilaea scilloides</i> (Poir.) Hauman	Awlleaf lilaea	OBL
<i>Lilaeopsis occidentalis</i> Coult. & Rose	Western lilaeopsis	OBL
<i>Lilium bolanderi</i> Wats.	Bolander lily	FACW-
<i>L. canadense</i> L.	Turk's-cap lily	-
<i>L. kelleyanum</i> Lemmon	Kelley's lily	-
<i>L. kelloggii</i> Purdy	Kellogg lily	-
<i>L. maritimum</i> Kellogg	Coast lily	-
<i>L. occidentale</i> Purdy	Eureka lily	-
<i>L. pardalinum</i> Kellogg	Leopard lily	OBL
<i>L. parryi</i> Wats.	Lemmon lily	-
<i>L. parvum</i> Kellogg	Small tiger lily	OBL
<i>L. pitkinense</i> Beane & Vollmer	Pitki marsh lily	-
<i>L. vollmeri</i> Eastw.	Vollmer's lily	-
<i>Limnanthes alba</i> Hartw. ex Benth.	White limnanthes	OBL
<i>L. bakeri</i> Howell	Baker limnanthes	OBL
<i>L. douglasii</i> R. Br.	Douglas limnanthes	OBL
<i>L. floccosa</i> Howell	Limnanthes	OBL
<i>L. gracilis</i> Howell	Limnanthes	OBL
<i>L. montana</i> Jeps.	Mountain meadow foam	OBL
<i>L. striata</i> Jeps.	Striate limnanthes	OBL
<i>Limonium californicum</i> (Boiss.) Heller	California sea-lavender	OBL
<i>L. perfoliatum</i> (Karel. ex Boiss.) Kuntze	Thorowort sea-lavender	-
<i>Limonium sinuatum</i> (L.) Mill.	Littlespike sea-lavender	FACW
<i>Limosella acaulis</i> Ses. & Moc.	Owyhee mudwort	OBL
<i>L. aquatica</i> L.	Water mudwort	OBL
<i>L. subulata</i> Ives	Mudwort	OBL
<i>Linanthus nuttallii</i> (Gray) Greene ex Milliken	Nuttall linanthus	-
<i>Lindernia anagallidea</i> (Michx.) Pennell.	Clasping falsepimpernel	OBL
<i>L. dubia</i> (L.) Pennell.	Yellowseed falsepimpernel	OBL
<i>Sinnaea borealis</i> L.	American twinflower	-
<i>Liquidambar styraciflua</i> L.	Sweetgum	FACW
<i>Listera caurina</i> Piper	Northwestern listera	-
<i>L. convallariodes</i> (Swartz) Torr.	Twayblade listera	-
<i>L. cordata</i> (L.) R. Br.	Heartleaf listera	-
<i>Lobelia cardinalis</i> L.	Cardinal flower	OBL
<i>L. dunnii</i> Greene	Dunn lobelia	FACW-
<i>Logfia gallica</i> (L.) Coss. & Germ.	Logfia	-
<i>Lomatium bicolor</i> (S. Wats.) Coult. & Rose	Lomatium	-
<i>L. eximifolium</i> (H. & A.) C. & R.	Lomatium	-
<i>Lonicera caerulea</i> L.	Sweetberry honeysuckle	-
<i>L. confusalis</i> Kellogg	Double honeysuckle	FAC
<i>L. involucrata</i> (Richards.) Banks	Twinberry	FAC
<i>L. japonica</i> Thunb.	Japanese honeysuckle	-
<i>L. utahensis</i> Wats.	Utah honeysuckle	FAC

<u>Scientific Name</u>	<u>Common Name</u>	<u>Indicator Status</u>
<i>Lotus corniculatus</i> L.	Bird's-foot trefoil	FAC
<i>L. cupreus</i> Greene	Copper-flowered hosackia	OBL
<i>L. formosissimus</i> Greene	Seaside lotus	-
<i>Lotus oblongifolius</i> (Benth.) Greene	Stream lotus	OBL
<i>Lotus pinnatus</i> Hook.	Meadow birdsfoottrefoil	-
<i>Ludwigia palustris</i> (L.) Elliott	Water purslane	OBL DRA
<i>L. peploides</i> (H.B.K.) Raven	Perennial waterprimrose	OBL
<i>L. repens</i> J. Forst.	Marsh purslane	OBL
<i>L. uruguayensis</i> (Cambess.) H. Hara	Uruguay waterprimrose	OBL
<i>Luetkea pectinata</i> (Pursh) Kuntze	Luetkea	-
<i>Lupinus polyphyllus</i> Lindl.	Washington lupine	FACW
<i>L. rivularis</i> Dougl.	Stream lupine	FAC
<i>Luzula parviflora</i> (Ehrh.) Desv.	Small-flowered wood-rush	FAC
<i>L. spicata</i> (L.) DC.	Spiked wood-rush	FAC
<i>Lycopodium clavatum</i> L.	Acidsoil clubmoss	-
<i>L. inundatum</i> L.	Inundated clubmoss	OBL
<i>Lycopus americanus</i> Muhl.	Water horehound	OBL
<i>L. asper</i> Greene	Rough bugleweed	OBL
<i>L. uniflorus</i> Michx.	Oneflower bugleweed	OBL
<i>Lysichiton americanum</i> Hulten & St. John	American skunkcabbage	OBL
<i>Lysimachia nummularia</i> L.	Creeping loosetrife	OBL
<i>L. thyrsoflora</i> L.	Water loosestrife	OBL
<i>Lythrum californicum</i> Torr. & Gray	Common loosestrife	OBL
<i>L. hyssopifolia</i> L.	Hyssop lythrum	FACW
<i>L. tribracteatum</i> Salzm. ex Ten	Three bracted lythrum	OBL DRA
<i>Machaeranthera tephrodes</i> (Gray) Greene	Machaeranthera	-
<i>Machaerocarpus californicus</i> (Torr.) Small	California damasonium	OBL
<i>Malacothamnus abbottii</i> (Eastw.) Kearn.	Monterey globemallow	-
<i>Malaxis monophylla</i> (L.) Swartz	Addersmouth	-
<i>Malus fusca</i> (Raf.) C. K. Schneid.	Malus	-
<i>Malvella leprosa</i> (Ortega) Krapov.	Alkali sida	FAC DRA
<i>Marsilea vestita</i> Hook. & Grev.	Hairy pepperwort	OBL
<i>Marrubium vulgare</i> L.	Horehound	FAC
<i>Matricaria maritima</i> L.	Dogcamomile mayweed	-
<i>Medicago lupulina</i> L.	Black medic	FAC
<i>Melampodium perfoliatum</i> H.B.K.	Plains blackfoot	FAC
<i>Melica spectabilis</i> Scribn.	Purple oniongrass	FAC
<i>Melilotus alba</i> Desr.	White sweetclover	FAC+
<i>M. indica</i> (L.) All.	Annual yellow sweetclover	FAC DRA
<i>Mentha arvensis</i> L.	Field mint	FACW
<i>M. citrata</i> Ehrh.	Bergamot mint	OBL
<i>M. longifolia</i> L.	Horse mint	FACW
<i>M. X piperita</i> L.	Peppermint	OBL
<i>M. pulegium</i> L.	Pennyroyal	OBL
<i>M. rotundifolia</i> (L.) Huds.	Apple mint	FAC
<i>M. spicata</i> L.	Spearmint	OBL
<i>Menyanthes trifoliata</i> L.	Common buckbean	OBL
<i>Menziesia ferruginea</i> J. E. Smith	Rusty menziesia	-



<u>Scientific Name</u>	<u>Common Name</u>	<u>Indicator Status</u>
<i>Mertensia bella</i> Piper	Beautiful bluebells	-
<i>M. ciliata</i> (E. James ex Torr.) G. Don	Broadleaf bluebells	FACW+
<i>Microsteris gracilis</i> (Hook.) Greene	Slender false flox	-
<i>Mimetanthe pilosa</i> (Benth.) Greene	False monkeyflower	-
<i>Mimulus alsinoides</i> Dougl. ex Benth.	Chickweed monkey-flower	-
<i>M. angustatus</i> (Gray) Gray	Narrow-leaved pansy monkey-flower	-
<i>M. breviflorus</i> Piper	Short-flowered monkey-flower	-
<i>M. cardinalis</i> Dougl. ex Benth.	Crimson monkeyflower	OBL
<i>m. dentatus</i> Nutt.	Toothed-leaved monkey-flower	-
<i>M. douglasii</i> (Benth.) Gray	Purple mouse-ears	-
<i>M. filicaulis</i> S. Wats.	Slender-stemmed monkeyflower	-
<i>M. floribundus</i> Lindl.	Floriferous monkeyflower	OBL
<i>M. glabratus</i> H.B.K.	Yellow monkey-flower	-
<i>M. glaucescens</i> Greene	Green's monkeyflower	-
<i>M. guttatus</i> DC.	Common monkeyflower	OBL
<i>M. latidens</i> (Gray) Greene	Broad-toothed monkey-flower	-
<i>M. lewisii</i> Pursh	Lewis monkeyflower	OBL
<i>M. moschatus</i> Dougl. ex Lindl.	Muskflower	OBL
<i>M. nasutus</i> Greene	Nasut monkeyflower	OBL
<i>M. nudatus</i> Curran	Bare monkeyflower	-
<i>M. parishii</i> Greene	Parish's monkey-flower	-
<i>M. primuloides</i> Benth.	Primrose monkeyflower	OBL
<i>M. rubellus</i> Gray	Ciliolate-toothed monkeyflower	-
<i>M. suksdorfii</i> Gray	Suksdorf's monkey-flower	-
<i>M. tilingii</i> Regel	Tilings monkey flower	OBL
<i>M. tricolor</i> Hartw.	Tricolor monkeyflower	-
<i>Minuartia californica</i> (Gray) Mattf.	California sandwort	-
<i>M. rubella</i> (Wahlenb.) Hiern	Marble-sandwort	-
<i>Mitella breweri</i> A. Gray	Brewer miterwort	-
<i>M. diversifolia</i> (Greene) Rydb.	Variableleaf miterwort	-
<i>M. ovalis</i> Greene	Oval miterwort	OBL
<i>M. pentandra</i> Hook.	Fivestemmed miterwort	OBL
<i>Modiola caroliniana</i> (L.) G. Don	Carolina bristylmallow	-
<i>Mollugo verticillata</i> L.	Carpetweed	FAC
<i>Monanthochloa littoralis</i> Engelm.	Saltflat-grass	OBL
<i>Monerma cylindrica</i> (Willd.) Coss.& Dur.	Thintail	FACW+
<i>Monochoria vaginalis</i> (Burm. f.) Presl	Cordata monochoria	-
<i>Monolepis ruttalliana</i> (Schult.) Greene	Nuttall monolepis	FACW
<i>Montia chamissoi</i> (Ledeb.) Rob.&Fernald	Water minerslettuce	OBL
<i>M. dichotoma</i> (Nutt.) Howell	Dwarf minerslettuce	-
<i>M. fontana</i> L.	Annual water minerslettuce	OBL DRA
<i>M. funstonii</i> Rydb.	Funston minerslettuce	-
<i>M. hallii</i> (A. Gray) Greene	Hall minerslettuce	-
<i>M. howellii</i> Wats.	Howell minerslettuce	-
<i>M. parvifolia</i> Greene	Littleleaf minerslettuce	-
<i>Muhlenbergia arida</i> (Nutt.) Hitchc.	Foxtail muhly	-
<i>M. asperifolia</i> (Nees. & Meyer) Parodi	Alkali muhly	FACW
<i>M. californica</i> Vasey	California muhly	-
<i>M. filiformis</i> (Thurb.) Rydb.	Pullup muhly	FACW
<i>M. mexicana</i> (L.) Trin.	Mexican muhly	FACW

<u>Scientific Name</u>	<u>Common Name</u>	<u>Indicator Status</u>
<i>M. minutissima</i> (Steud.) Swallen	Annual muhly	-
<i>M. racemosa</i> (Michx.) B.S.P.	Green muhly	-
<i>M. richardsonis</i> (Trin.) Rydb.	Mat muhly	FAC
<i>M. rigens</i> (Benth.) A. Hitchc.	Deergrass	FACW
<i>M. squarrosa</i> (Trin.) Rydb.	Muhly	-
<i>M. utilis</i> (Torr.) Hitchc.	Aparejogress	-
<i>Myosotis discolor</i> Pers.	Yellow and blue scorpion grass	-
<i>M. laxa</i> Lehm.	Smaller forget-me-not	OBL
<i>M. scorpioides</i> L.	True forget-me-not	-
<i>M. sylvatica</i> Hoffm.	Garden forget-me-not	FACW
<i>M. verna</i> Nutt.	Early scorpion-grass	-
<i>Myosurus aristatus</i> Benth. ex. Hook.	Bristle mousetail	OBL DRA
<i>M. cupulatus</i> S. Wats.	Mousetail	FAC
<i>M. minimus</i> L.	Tiny mousetail	OBL
<i>Myrica californica</i> Cham.	Pacific bayberry	FAC+
<i>M. hartwegii</i> Wats.	Sierra waxmyrtle	FAC+
<i>Myriophyllum brasiliense</i> Comb.	Brazilian watermilfoil	OBL
<i>M. hippuroides</i> Nutt.	Western milfoil	OBL
<i>M. spicatum</i> L.	Eurasian watermilfoil	OBL
<i>M. verticillatum</i> L.	Needleleaf watermilfoil	OBL
<i>Najas flexilis</i> (Willd.) Rostk. & Schmidt	Nodding waternymph	OBL
<i>N. graminea</i> Raffeneau-Delile	Ricefield waternymph	OBL
<i>N. guadalupensis</i> (Spreng.) Magnus	Southern waternymph	OBL
<i>N. marina</i> L.	Holly-leaved waternymph	OBL
<i>Nama stenocarpum</i> Gray	Nama	-
<i>Nartheedum californicum</i> Baker	California bogasphodel	OBL
<i>Nasturtium gambellii</i> (S. Wats.) O. Schulz	Gambell's watercress	?
<i>N. microphyllum</i> Boenn.	Watercress	OBL
<i>N. officinale</i> R. Br.	Watercress	OBL
<i>Navarretia bakeri</i> Mason	Baker's navarretia	OBL
<i>N. cotulifolia</i> (Benth.) H. & A.	Cotula navarretia	OBL
<i>N. heterandra</i> Mason	Tehama navarretia	-
<i>N. intertexta</i> (Benth.) Hook.	Interwoven navarretia	-
<i>N. jepsonii</i> V. Bailey	Jepson's navarretia	-
<i>N. leucocephala</i> Benth.	Whitehead navarretia	OBL
<i>N. minima</i> Nutt.	Least navarretia	-
<i>N. pauciflora</i> Mason	Few-flowered navarretia	OBL
<i>N. pliantha</i> Mason	Many-flowered navarretia	OBL
<i>N. propinqua</i> Suksd.	Great basin navarretia	-
<i>N. prostrata</i> (Gray) Greene	Prostrate navarretia	OBL DRA
<i>Nepetifolia colusana</i> (Davy) Davy	Colusa grass	OBL
<i>Nicotiana attenuata</i> Torr.	Covote tobacco	FAC
<i>N. bigelovii</i> (Torr.) Wats.	Indian tobacco	FAC
<i>N. glauca</i> Graham	Tree tobacco	FAC
<i>N. trigonophylla</i> Dunal.	Desert tobacco	-
<i>Nitrophila mohavensis</i> Munz & Roos	Mohave nitrophila	-
<i>N. occidentalis</i> (Moq.) Wats.	Western miterwort	FACW
<i>Nuphar luteum</i> (L.) Sibth. & J. E. Smith	European cowlily	OBL
<i>Oenanthe sarmentosa</i> Presl	Water-parsley	OBL
<i>Oenothera elata</i> H.B.K.	Hooker eveningprimrose	FACW

<u>Scientific Name</u>	<u>Common Name</u>	<u>Indicator Status</u>
<i>O. flava</i> (A. Nels.) Garrett	Yellow eveningprimrose	-
<i>O. laciniata</i> J. Hill	Cut-leaved eveningprimrose	-
<i>O. longissima</i> Rydb.	Evening primrose	-
<i>O. rosea</i> L'Her. ex Ait.	Rose sundrops	-
<i>O. villosa</i> Thunb.	Evening primrose	-
<i>Ophioglossum lusitanicum</i> L.	Lusitania adderstongue	-
<i>O. vulgatum</i> L.	Common adders-tongue	FACW
<i>Orcuttia californica</i> Vasey	Orcutt-grass	OBL
<i>O. greenii</i> Vasey	Beardless orcuttia	OBL
<i>O. pilosa</i> Hoover	Orcuttia	OBL
<i>O. tenuis</i> Hitchc.	Slender orcuttia	OBL
<i>Orogenia fusiformis</i> Wats.	Orogenia	-
<i>Orthocarpus campestris</i> Benth.	Owl-clover	-
<i>O. castillejoideus</i> Benth.	Paintbrush owl-clover	OBL
<i>O. hispidus</i> Benth.	Bristle owlflower	-
<i>O. luteus</i> Nutt.	Yellow owl-clover	-
<i>Oryza sativa</i> L.	Rice	OBL
<i>Oxalis trillifolia</i> Hook.	Threeleaf oxalis	-
<i>Oxypolis occidentalis</i> C. & R.	Western cowbane	OBL
<i>Oxytheca luteola</i> Parry	Oxytheca	-
<i>Oxytropis deflexa</i> (Pallas) DC.	Hangpod crazyweed	-
<i>O. oreophila</i> Gray	Roundleaf crazyweed	-
<i>O. parryi</i> Gray	Parry crazyweed	-
<i>Palmerella debilis</i> Gray	Palmerella	-
<i>Panicum capillare</i> L.	Witch grass	FAC
<i>P. dichotomiflorum</i> Michx.	Fall panicum	FACW
<i>P. occidentale</i> Scribn.	Pacific panicum	FACW
<i>P. rigidulum</i> Bosc. ex Nees.	Redtop panicum	FACW
<i>Parapholis incurva</i> (L.) C. E. Hubb.	Sicklegrass	OBL
<i>Parentucellia viscosa</i> (L.) Caruel	Parentucellia	-
<i>Parietaria pennsylvanica</i> Muhl.	Pennsylvania pellitory	-
<i>Parkinsonia aculeata</i> L.	Jerusalem-thorn	-
<i>Parnassia cinnata</i> Piper	San Bernardino grass-of-parnassus	OBL
<i>P. fimbriata</i> K. D. Koenig	Fringed grass-of-parnassus	-
<i>P. palustris</i> L.	Northern grass-of-parnassus	OBL
<i>Parthenocissus vitacea</i> (Knerr) A. Hitchc.	Grape-leaf parthenocissus	-
<i>Paspalum dilatatum</i> Poir.	Dallisgrass	FAC
<i>P. distichum</i> L.	Knotgrass	OBL
<i>P. urvillei</i> Steud.	Vaseygrass	-
<i>Pediicularis attolens</i> Gray	Attol lousewort	-
<i>P. operculata</i> Benth.	Meadow lousewort	-
<i>P. grandifolia</i> Retz.	Elephanthead lousewort	OBL
<i>Peltiphyllum peltatum</i> (Torr.) Engl.	Peltiphyllum	OBL
<i>Pentstemon californicus</i> (Torr.) Nels. & MacBr.	California yampa	-
<i>P. gainardi</i> (Hook. & Arn.) Mathias	Common yampa	-
<i>P. howellii</i> (C. & R.) Mathias	Howell yampa	-
<i>P. parishii</i> (Coult. & Rose) Nels. & MacBr.	Parish yampa	-

<u>Scientific Name</u>	<u>Common Name</u>	<u>Indicator Status</u>
<i>Petasites frigidus</i> (L.) Fries	Coltsfoot	-
<i>P. palmatus</i> (Ait.) Gray	Sweet coltsfoot	-
<i>Petunia parviflora</i> Juss.	Payette penstemon	FACW+
<i>Phacelia inundata</i> J. T. Howell	Phacelia	-
<i>P. inyoensis</i> (MacBr.) J. T. Howell	Phacelia	-
<i>P. tetramera</i> J. T. Howell	Phacelia	-
<i>P. viscida</i> (Benth.) Torr.	Sticky phacelia	-
<i>Phalacroseris bolanderi</i> Gray	Bolander phalacroseris	OBL
<i>Phalaris angusta</i> Nees. ex Trin.	Timothy canarygrass	-
<i>P. aquatica</i> L.	Harding grass	FAC+
<i>P. arundinacea</i> L.	Reed canarygrass	OBL
<i>P. californica</i> Hook. & Arn.	California canarygrass	FAC
<i>P. caroliniana</i> Walter	Carolina canarygrass	FACW
<i>P. lemmonii</i> Vasey	Lemmon canarygrass	FACW-
<i>Phleum alpinum</i> L.	Mountain timothy	FACW
<i>Phragmites australis</i> (Cav.) Trin. ex Steud.	Giant cane	FACW
<i>Phyla incisa</i> Small	Frog-fruit	-
<i>P. lanceolata</i> (Michx.) Greene	Northern frog-fruit	FACW
<i>P. nodiflora</i> Michx.	Common frog-fruit	FACW
<i>Phyllodoce empetriformis</i> (J. E. Smith) G. Don.	Phyllodoce	-
<i>Phyllospadix scouleri</i> Hook.	Scouler surfgrass	OBL
<i>P. torreyi</i> Wats.	Torrey surfgrass	OBL
<i>Physalis angulata</i> L.	Cutleaf groundcherry	FAC
<i>P. lacocarpa</i> Brot.	Tomatillo	FAC
<i>Physocarpus capitatus</i> (Pursh) Kuntze	Lobed ninebark	-
<i>Picea sitchensis</i> (Bong.) Carr.	Sitka spruce	FAC
<i>Pilularia americana</i> A. Braun	Pilularia	OBL
<i>Pinguicula macroceras</i> Link	Bitterwort	-
<i>P. vulgaris</i> L.	Common butterwort	OBL
<i>Pinus contorta</i> Dougl.	Lodgepole pine	FAC
<i>Piperia unalascensis</i> (Spreng.) Rydb.	Alaska orchid	-
<i>Pistia stratiotes</i> L.	Water lettuce	OBL
<i>Plagiobothrys acanthocarpus</i> (Piper) I. Johnst.	Abobe allocarya	OBL DRA
<i>P. bracteatus</i> (Howell) I. Johnst.	Bracted allocarya	OBL DRA
<i>P. chorisianus</i> (Cham.) I. Johnst.	Artist's allocarya	OBL
<i>P. distantiflorus</i> (Piper) I. Johnst.	California popcorn-flower	OBL DRA
<i>P. glaber</i> (Gray) I. Johnst.	Glabrous allocarya	-
<i>P. glyptocarpus</i> (Piper) I. Johnst.	Sculptured allocarya	FACW
<i>P. greenii</i> (Gray) I. Johnst.	Greene's allocarya	-
<i>P. humistratus</i> (Greene) I. Johnst.	Dwarf allocarya	OBL DRA
<i>P. hystericulus</i> (Piper) I. Johnst.	Bearded allocarya	-
<i>P. leptocladus</i> (Greene) I. Johnst.	Finebranched popcorn-flower	-
<i>P. lithocaryus</i> (Greene ex Gray) I. Johnst.	Pacific popcorn-flower	-
<i>P. mollis</i> (Gray) I. Johnst.	Soft popcornflower	FACW
<i>P. nothofolius</i> (Gray) Gray	Popcorn flower	FAC DRA
<i>P. parishii</i> Johnst.	Cooper's allocarya	-
<i>P. reticulatus</i> (Piper) I. Johnst.	California allocarya	-

<u>Scientific Name</u>	<u>Common Name</u>	<u>Indicator Status</u>
<i>P. salus</i> (T. Brandeg.) I. Johnst.	Salty allocarya	FACW
<i>P. scouleri</i> (H. & H.) I. Johnst.	Scouler popcornflower	-
<i>P. stipitatus</i> (Greene) I. Johnst.	Slender popcornflower	-
<i>P. strictus</i> (Greene) I. Johnst.	Stiff popcornflower	-
<i>P. tenellus</i> (Nutt. ex Hook.) Gray	Slender popcorn-flower	-
<i>P. tener</i> (Greene) I. Johnst.	Slender allocarya	OBL
<i>P. trachycarpus</i> (Gray) I. Johnst.	Rough-fruited allocarya	-
<i>P. undulatus</i> (Piper) I. Johnst.	Coast allocarya	FACW+ DRA
<i>Plantago bigelovii</i> Gray	Annual coast plantain	OBL
<i>P. coronopus</i> L.	Crowfoot plantain	FAC
<i>P. elongata</i> Pursh	Slender plantain	-
<i>P. eriopoda</i> Torr.	Redwool plantain	-
<i>P. heterophylla</i> Nutt.	Slender plantain	FACW DRA
<i>P. hirtella</i> H.B.K.	Mexican plantain	FACW+
<i>P. lanceolata</i> L.	English plantain	FAC
<i>P. major</i> L.	Common plantain	FACW- DRA
<i>P. maritima</i> L.	Seaside plantain	FACW+
<i>P. patagonica</i> Jacq.	Wooly plantain	-
<i>P. rhodosperma</i> Decne.	Red-seeded plantain	-
<i>P. truncata</i> Cham.	Chile plantain	-
<i>P. virginica</i> L.	Dwarf plantain	-
<i>Platanthera dilatata</i> (Pursh) Lindl. ex Beck	Bog candle	-
<i>P. hyperborea</i> (L.) Lindl.	Northern green orchid	-
<i>P. sparsiflora</i> (S. Wats.) Schlechter	Sparsely-flowered bog-orchid	-
<i>P. stricta</i> Lindl.	Slender bog-orchid	-
<i>Platanus racemosa</i> Nutt.	California sycamore	FACW
<i>P. wrightii</i> S. Wats.	Arizona sycamore	-
<i>Plectritis ciliosa</i> (Greene) Jeps.	Plectritis	-
<i>P. congesta</i> (Lindl.) DC.	Congested plectritis	-
<i>P. macrocera</i> J. & G.	Longhorn plectritis	-
<i>Pleuropogon californicus</i> (Nees.) Benth.	Annual semaphoregrass	OBL
<i>P. davyi</i> Benson	Davy semaphoregrass	OBL
<i>P. hooverianus</i> (Benson) J. T. Howell	Hoover's semaphoregrass	-
<i>P. refractus</i> (A. Gray) Benth.	Nodding semaphoregrass	OBL
<i>Pluchea adnata</i> (H. & B.) C. Mohr.	Pluchea	-
<i>P. purpurascens</i> (Sw. rtz) DC.	Saltmarsh pluchea	OBL
<i>P. sericea</i> (Nutt.) Coville	Arrowweed pluchea	FACW
<i>Poa annua</i> L.	Annual bluegrass	FACW-
<i>P. arctica</i> R. Br.	Arctic bluegrass	-
<i>P. compressa</i> L.	Canada bluegrass	-
<i>P. douglasii</i> Nees.	Seashore bluegrass	-
<i>P. gracillima</i> Vasey	Slender bluegrass	-
<i>P. juncea</i> Scribn.	Alkali bluegrass	-
<i>P. leptocoma</i> Trin.	Bog bluegrass	-
<i>P. napensis</i> Beetle	Napa bluegrass	-
<i>P. nemoralis</i> L.	Wood bluegrass	-
<i>P. nervosa</i> (Hook.) Vasey	Wheeler bluegrass	-
<i>P. nevadensis</i> Vasey	Nevada bluegrass	-
<i>P. palustris</i> L.	Fowl bluegrass	-
<i>P. trivialis</i> L.	Rough bluegrass	FACW

<u>Scientific Name</u>	<u>Common Name</u>	<u>Indicator Status</u>
<i>Podagrostis thurberana</i> (A. Hitchc.) Hulten	Thurber podagrostis	OBL
<i>Pogogyne abramsii</i> J. T. Howell	San Diego pogogyne	-
<i>P. douglasii</i> Benth.	Douglas pogogyne	OBL
<i>P. nudiuscula</i> Gray	Pogogyne	OBL
<i>P. zizyphoroides</i> Benth.	Pogogyne	OBL
<i>Polemonium caeruleum</i> L.	Greekvalerian polemonium	-
<i>P. micranthum</i> Benth.	Littlebells polemonium	-
<i>P. occidentale</i> Greene	Western polemonium	OBL
<i>Polygonum amphibium</i> L.	Water knotweed	OBL
<i>P. argyrocoleon</i> Steud.	Persian wireweed	FAC+ DRA
<i>P. aviculare</i> L.	Prostrate knotweed	FAC
<i>P. bistortoides</i> Pursh	Bistort knotweed	OBL
<i>P. confertiflorum</i> Nutt.	Fruitleaf knotweed	-
<i>P. convolvulus</i> L.	Black bindweed	-
<i>P. douglasii</i> Greene	Douglas knotweed	-
<i>P. erectum</i> L.	Erect knotweed	-
<i>P. fowleri</i> Robins.	Fowler's knotweed	-
<i>P. hydropiper</i> L.	Marshpepper knotweed	OBL
<i>P. hydropiperoides</i> Michx.	Swamp knotweed	OBL
<i>P. kelloggii</i> Greene	Kellogg knotweed	-
<i>P. lapathifolium</i> L.	Smartweed	OBL
<i>P. parryi</i> Greene	Parry smartweed	-
<i>P. patulum</i> Bieb.	Smartweed	-
<i>P. persylvanicum</i> L.	Pennsylvania smartweed	OBL
<i>P. persicaria</i> L.	Ladysthumb smartweed	FACW
<i>P. phytolaccifolium</i> Meisn.	Poke-leaved smartweed	-
<i>P. polygaloides</i> Meisn.	Polygala knotweed	-
<i>P. polystachyum</i> Wall.	Cultivated knotweed	-
<i>P. punctatum</i> Elliott	Dotted smartweed	OBL
<i>P. ramosissimum</i> Michx.	Bushy knotweed	-
<i>Polypogon elongatus</i> H.B.K.	Rabbitfoot grass	OBL
<i>P. interruptus</i> H.B.K.	Ditch polypogon	OBL
<i>P. maritimus</i> Willd.	Mediterranean polypogon	OBL
<i>P. monspeliensis</i> (L.) Desf.	Rabbitfootgrass	FACW+
<i>Polystichum lonchitis</i> (L.) Roth	Hollyfern	-
<i>Populus X acuminata</i> Rydb.	Smooth-barked cottonwood	-
<i>P. angustifolia</i> E. James	Narrowleaf cottonwood	FACW
<i>P. balsamifera</i> L.	Balsam poplar	FACW
<i>P. fremontii</i> S. Wats.	Fremont cottonwood	FACW
<i>P. tremula</i> L.	European aspen	FAC
<i>Porterella carnosula</i> (H. & A.) Torr.	Fleshy porterella	OBL
<i>Portulaca oleracea</i> L.	Common purslane	FAC
<i>Potamogeton alpinus</i> Balbis	Alpine pondweed	OBL
<i>P. amplifolius</i> Tuckerm.	Largeleaf pondweed	OBL
<i>P. crispus</i> L.	Curly pondweed	OBL
<i>P. diversifolius</i> Raf.	Waterthread pondweed	OBL
<i>P. epiphydrus</i> Paf.	Ribbonleaf pondweed	OBL
<i>P. filiformis</i> Pers.	Fineleaf pondweed	OBL
<i>P. foliosus</i> Raf.	Leafy pondweed	OBL
<i>P. gramineus</i> L.	Variableleaf pondweed	OBL

<u>Scientific Name</u>	<u>Common Name</u>	<u>Indicator Status</u>
<i>P. illinoensis</i> Morong	Illinois pondweed	OBL
<i>P. latifolius</i> (J. W. Robbins) Morong	Broadleaf pondweed	OBL
<i>P. natans</i> L.	Floatingleaf pondweed	OBL
<i>P. nodosus</i> Poir.	Longleaf pondweed	OBL
<i>P. pectinatus</i> L.	Sago pondweed	OBL
<i>P. praelongus</i> Wulfen	Whitestem pondweed	OBL
<i>P. pusillus</i> L.	Baby pondweed	OBL
<i>P. richardsonii</i> (Benn.) Rybd.	Richardson pondweed	OBL
<i>P. robbinsii</i> Oakes	Robbins pondweed	OBL
<i>P. zosteriformis</i> Fernald	Flatstem pondweed	OBL
<i>Potentilla anserina</i> L.	Silverweed	OBL
<i>P. biennis</i> Greene	Biennial cinquefoil	-
<i>P. diversifolia</i> Lehm.	Varileaf cinquefoil	-
<i>P. drummondii</i> Lehm.	Drummond cinquefoil	-
<i>P. fruticosa</i> L.	Shrubby cinquefoil	FACW
<i>P. glandulosa</i> Lindl.	Gland cinquefoil	-
<i>P. gracilis</i> Dougl.	Northwest cinquefoil	-
<i>P. hickmanii</i> Eastw.	Hickman's cinquefoil	-
<i>P. millegrana</i> Engelm. ex Lehm.	Diffuse cinquefoil	OBL DRA
<i>P. multijuga</i> Lehm.	Coast cinquefoil	-
<i>P. newberryi</i> A. Gray	Newberry's cinquefoil	-
<i>P. norvegica</i> L.	Rough cinquefoil	-
<i>P. palustris</i> (L.) Scop.	Marsh cinquefoil	OBL DRA
<i>P. plattensis</i> Nutt.	Platte cinquefoil	-
<i>P. rivalis</i> Nutt.	Brook cinquefoil	-
<i>Prionopsis ciliata</i> (Nutt.) Nutt.	Fringed prionopsis	-
<i>Probooscidea louisianica</i> (Miller) Thellung	Louisiana devilsclaws	-
<i>Prosopis pubescens</i> Benth.	Screwbean mesquite	FAC
<i>Prunella vulgaris</i> L.	Common selfheal	-
<i>Prunus virginiana</i> L.	Common chokecherry	FAC
<i>Psilocarphus brevissimus</i> Nutt.	Short woolyhead	OBL DRA
<i>P. oregonus</i> Nutt.	Oregon woolyhead	OBL DRA
<i>P. tenellus</i> Nutt.	Tenellus woolyhead	FAC
<i>Psoralea macrostachya</i> DC.	Leather-root	OBL
<i>P. orbicularis</i> Lindl.	Leather-root	OBL
<i>Puccinellia airoides</i> (Nutt.) S. Wats. & Coult.	Nuttall alkaligrass	-
<i>P. californica</i> (A. A. Beetle) Munz	California alkali-grass	-
<i>P. distans</i> (L.) Parlat.	Weeping alkaligrass	OBL
<i>P. erecta</i> (A. Hitchc.) Munz	Few-flowered manna grass	OBL
<i>P. grandis</i> Swallen	Shining alkaligrass	OBL
<i>P. Lemmonii</i> (Vasey) Scribn.	Lemmon alkaligrass	-
<i>P. lucida</i> Fernald & Weatherby	Shining alkaligrass	-
<i>P. maritima</i> (Huds.) Parlat.	Seashore alkaligrass	OBL
<i>P. nutkaensis</i> (J. Presl) Fernald & Weatherby	Pacific alkaligrass	OBL
<i>P. nuttalliana</i> (J. A. Schultes) A. Hitchc.	Nuttall alkaligrass	OBL
<i>P. parishii</i> A. Hitchc.	Parish alkaligrass	OBL
<i>P. pauciflora</i> (J. Presl) Munz	Weak mannagrass	OBL

<u>Scientific Name</u>	<u>Common Name</u>	<u>Indicator Status</u>
<i>P. paupercula</i> Fernald & Weatherby	Alkali-grass	FACW
<i>P. simplex</i> Scribn.	California alkaligrass	-
<i>Pyrola asarifolia</i> Michx.	Alpine shinleaf	-
<i>P. minor</i> L.	Snowline shinleaf	-
<i>P. secunda</i> L.	Sidebells shinleaf	-
<i>Raillardella pringlei</i> Greene	Raillardella	OBL
<i>Ranunculus acris</i> L.	Tall buttercup	FACW
<i>R. alismifolius</i> Geyer ex Benth.	Dwarf buttercup	FACW
<i>R. alveolatus</i> Carter	Carter's buttercup	OBL
<i>R. aquatilis</i> L.	Water buttercup	OBL DRA
<i>R. arvensis</i> L.	Corn buttercup	-
<i>R. bulbosus</i> L.	Bulbous buttercup	-
<i>R. californicus</i> Benth.	California buttercup	FAC DRA
<i>R. canus</i> Benth.	Hoary buttercup	-
<i>R. eschscholtzii</i> Schlect.	Eschscholtz buttercup	-
<i>R. flabellaris</i> Raf.	Yellow-water crowfoot	OBL
<i>R. flammula</i> L.	Spearwort buttercup	FACW
<i>R. glaberrimus</i> Hook.	Sagebrush buttercup	-
<i>R. gormanii</i> Greene	Gorman's buttercup	FACW
<i>R. hydrocharoides</i> Gray	Buttercup	OBL
<i>R. hystriculus</i> Gray	Buttercup	-
<i>R. lobbii</i> (Hiern) Gray	Lobb buttercup	OBL
<i>P. macounii</i> Britton	Macoun's buttercup	-
<i>P. muricatus</i> L.	Spiny buttercup	FACW+
<i>R. occidentalis</i> Nutt.	Western buttercup	-
<i>R. orthorhynchus</i> Hook.	Straightbeak buttercup	-
<i>R. parviflorus</i> L.	Sticktight buttercup	-
<i>R. populago</i> Greene	Popular buttercup	-
<i>R. pusillus</i> Poir.	Dwarf buttercup	OBL
<i>R. repens</i> L.	Creeping buttercup	FACW
<i>R. sardous</i> Crantz	Buttercup	-
<i>R. sceleratus</i> L.	Celeryleaf buttercup	OBL
<i>R. subrigidus</i> W. Drew	Pond buttercup	-
<i>R. trilobus</i> Desf.	Three-lobed buttercup	-
<i>R. uncinatus</i> D. Don.	Hooked buttercup	-
<i>Rhamnus alnifolia</i> L'Her.	Alder buckthorn	-
<i>Rhododendron occidentale</i> (T. & G.) Gray	Western azalea	FAC
<i>Rhynchospora alba</i> (L.) Vahl	Whitebeaked rush	OBL
<i>R. californica</i> Gale	California rush	OBL
<i>R. capitellata</i> (Michx.) Vahl	False bog rush	OBL
<i>R. globularis</i> (Chapm.) Small	Pinehill beakrush	OBL
<i>Ribes aureum</i> Pursh	Golden currant	FACW
<i>R. divaricatum</i> Dougl.	Straggly gooseberry	FACW
<i>R. hudsonianum</i> Richards.	Hudson bay currant	-
<i>R. cereum</i> Rydb.	Whitestem currant	FAC+
<i>R. lacustre</i> (Pers.) Poir.	Prickly currant	FAC+
<i>Romanzoffia californica</i> Greene	California romanzoffia	-
<i>R. sitkensis</i> Bong.	Sitka romanzoffia	-
<i>Rorippa austriaca</i> (Crantz) Besser	Austrian watercress	-
<i>R. columbiae</i> Suksd. ex T. Howell	Columbia yellow-cress	-



<u>Scientific Name</u>	<u>Common Name</u>	<u>Indicator Status</u>
<i>R. curvipes</i> Greene	Rocky mountain yellow-cress	OBL DRA
<i>R. curvisiliqua</i> (Hook.) Bessey ex Britton	Curvepod yellowcress	OBL
<i>R. palustris</i> (L.) Besser	Marsh yellowcress	OBL DRA
<i>R. sinuata</i> (Nutt.) A. Hitchc.	Spreading yellowcress	FACW
<i>R. sphaerocarpa</i> (Gray) Britton	Round-fruited cress	-
<i>R. subumbellata</i> Rollins	Tahoe yellowcress	OBL
<i>R. tenerrima</i> Greene	Yellowcress	-
<i>R. teres</i> (Michx.) Stuckey	Marsh cress	-
<i>R. truncata</i> (Jeps.) Stuckey	Yellowcress	-
<i>Rosa californica</i> Cham. & Sch.	California wildrose	FAC+
<i>R. pisocarpa</i> Gray	Cluster rose	-
<i>Rotala catholica</i> (Cham. & Schlecht.) Van Leeuwen	Tooth-cup	-
<i>R. indica</i> (Willd.) Koehne	India tooth-cup	OBL
<i>R. ramosior</i> (L.) Koehne	Tooth-cup	OBL
<i>Rubus allegheniensis</i> T. Porter	Alleghany blackberry	-
<i>R. discolor</i> Weihe & Nees.	Blackberry	-
<i>R. idaeus</i> L.	Red raspberry	-
<i>R. spectabilis</i> Pursh	Salmonberry	FACW
<i>R. strigosus</i> Michx.	Blackberry	-
<i>Rudbeckia californica</i> Gray	California coneflower	FACW
<i>R. occidentalis</i> Nutt.	Western coneflower	FAC
<i>Rumex conglomeratus</i> Murray	Clustered dock	FACW
<i>R. crispus</i> L.	Curled dock	FACW-
<i>R. densiflorus</i> Osterh.	Denseflowered dock	-
<i>R. dentatus</i> L.	Toothed dock	-
<i>R. lacustris</i> Greene	Dock	-
<i>R. maritimus</i> L.	Golden dock	-
<i>R. obtusifolius</i> L.	Bitter dock	FACW
<i>R. occidentalis</i> S. Wats.	Western dock	OBL
<i>R. paucifolius</i> Nutt.	Mountain sorrel	OBL
<i>R. persicarioides</i> L.	Golden dock	OBL
<i>R. pulcher</i> L.	Fiddle dock	FAC+
<i>R. salicifolius</i> Weinm.	Willow dock	OBL
<i>R. stenophyllus</i> Ledeb.	Narrowleaved dock	-
<i>R. venosus</i> Pursh	Veiny dock	-
<i>R. violascens</i> Rech. f.	Violet-like dock	-
<i>Suppia cirrhaea</i> (Petagna) Grande	Widgeongrass	OBL
<i>S. maritima</i> L.	Widgeongrass	OBL
<i>Sagina apetala</i> L.	Dwarf pearlwort	FAC
<i>S. maxima</i> Gray	Stick-stemmed pearlwort	-
<i>S. procumbens</i> L.	Birdseye pearlwort	OBL
<i>S. saginoides</i> (L.) Karst.	Arctic pearlwort	OBL
<i>Sagittaria calyptra</i> Engelm.	Hooded arrowhead	OBL
<i>S. cuneata</i> Sheld.	Northern arrowhead	OBL
<i>S. greggii</i> J. G. Smith	Gregg arrowhead	OBL
<i>S. latifolia</i> Willd.	Broadleaf arrowhead	OBL
<i>S. longiloba</i> Engelm.	Long-barb arrowhead	OBL
<i>S. montevidensis</i> Cham. & Schlecht.	Hooded arrowhead	OBL
<i>S. sanfordii</i> Greene	Sanford arrowhead	OBL

<u>Scientific Name</u>	<u>Common Name</u>	<u>Indicator Status</u>
<i>Salicornia bigelovii</i> Torr.	Bigelow glasswort	OBL
<i>S. europaea</i> L.	European swampfire	OBL
<i>S. subterminalis</i> Parish	Common glasswort	OBL
<i>S. utahensis</i> Tides.	Utah swampfire	OBL
<i>S. virginica</i> L.	Virginia swampfire	OBL
<i>Salix arctica</i> Pallas	Alpine willow	FACW
<i>S. babylonica</i> L.	Weeping willow	FACW-
<i>S. bebbiana</i> Sarg.	Bebb willow	FACW
<i>S. bonplandiana</i> H.B.K.	Bonplant willow	FACW
<i>S. boothii</i> Dorn	Booth willow	-
<i>S. brachycarpa</i> Nutt.	Barrenground willow	-
<i>S. breweri</i> Bebb	Brewer willow	FAC
<i>S. commutata</i> Bebb	Undergreen willow	OBL
<i>S. X delnortensis</i> C. K. Schneid.	Brewer willow	-
<i>S. drummondiana</i> Barratt ex Hook.	Drummond willow	OBL
<i>S. eastwoodiae</i> Cockll. ex A. Heller	Eastwood willow	OBL
<i>S. eriocephala</i> Michx.	Heart-leaved willow	-
<i>S. exigua</i> Nutt.	Sandbar willow	OBL DRA
<i>S. geyeriana</i> Anderss.	Geyer willow	-
<i>S. glauca</i> L.	Grayleaf willow	-
<i>S. gooddingii</i> Ball	Goodding willow	OBL
<i>S. hookerana</i> Barratt ex Hook.	Hooker willow	FACW
<i>S. jepsonii</i> Schneid.	Jepson willow	OBL
<i>S. lasiandra</i> Benth.	Pacific willow	OBL
<i>S. lasiolepis</i> Benth.	Arroyo willow	FACW
<i>S. lemmonii</i> Bebb	Lemmons Willow	-
<i>S. lutea</i> Nutt.	Yellow willow	-
<i>S. melanopsis</i> Nutt.	Dusky willow	-
<i>S. nigra</i> Marshall	Black willow	OBL
<i>S. orestera</i> Schneid.	Sierra willow	-
<i>S. piperi</i> Bebb	Dune willow	-
<i>S. planifolia</i> Pursh	Mono willow	-
<i>S. rigida</i> Muhl.	MacKenzie willow	OBL
<i>S. scoulerana</i> Barratt ex Hook.	Scouler willow	FAC
<i>S. sessilifolia</i> Nutt.	Sand-bar willow	FACW
<i>S. sitchensis</i> Sanson ex Bong.	Sitka willow	-
<i>S. tracyi</i> Ball	Tracy willow	OBL
<i>Sambucus cerulea</i> Raf.	Blue elderberry	FAC
<i>S. melanocarpa</i> Gray	Blackbead elder	-
<i>S. mexicana</i> K. Presl ex DC.	Mexican elder	FAC
<i>S. racemosa</i> L.	Red-berried elder	-
<i>Samolus parviflorus</i> Raf.	Waterpimpernel	OBL
<i>Sanguisorba minor</i> Scop.	Small burnet	-
<i>S. officinalis</i> L.	Garden burnet	FACW
<i>Sandoula maritima</i> Kellogg	Snakeroot	-
<i>Saponaria officinalis</i> L.	Bouncingbet	-
<i>Sarcostemma cynanchoides</i> Decne.	Common climbingmilkweed	FAC
<i>Saxifraga aprica</i> Greene	Saxifrage	FACW
<i>S. arguta</i> D. Don	Brook saxifrage	-
<i>S. cespitosa</i> L.	Saxifrage	-
<i>S. debilis</i> Engelm.	Weak saxifrage	-

<u>Scientific Name</u>	<u>Common Name</u>	<u>Indicator Status</u>
<i>S. ferruginea</i> Grah.	Rustyhair saxifrage	-
<i>S. howellii</i> Greene	Howell saxifrage	-
<i>S. integrifolia</i> Hook.	Wholeleaf saxifrage	FACW
<i>S. marshallii</i> Greene	Marshall saxifrage	-
<i>S. mertensiana</i> Bong.	Mertens saxifrage	-
<i>S. nidifica</i> Greene	Saxifrage	-
<i>S. oregana</i> Howell	Oregon saxifrage	-
<i>S. punctata</i> L.	Dotted saxifrage	-
<i>S. virginiana</i> Michx.	Virginia saxifrage	-
<i>Scheuchzeria palustris</i> L.	Scheuchzeria	OBL
<i>Schoenolirion album</i> Durand	White schoenolirion	OBL
<i>S. bracteosum</i> (Wats.) Jeps.	Bracted schoenolirion	OBL
<i>Schoenus nigricans</i> L.	Black sedge	OBL
<i>Scirpus americanus</i> Pers.	American bulrush	OBL
<i>S. californicus</i> (C. A. Meyer) Steud.	California bulrush	OBL
<i>S. cernuus</i> Vahl	Low clubrush	OBL
<i>S. clementis</i> M. E. Jones	Jones's bulrush	FAC
<i>S. congdonii</i> Britton	Congdon's bulrush	-
<i>S. diffusus</i> Schuyler	Diffuse bulrush	-
<i>S. fluviatilis</i> (Torr.) Gray	River bulrush	OBL
<i>S. heterochaetus</i> Chase	Slender bulrush	-
<i>S. koilolepis</i> (Steud.) Gleason	Keeled bulrush	OBL
<i>S. maritimus</i> L.	Saltmarsh bulrush	OBL
<i>S. microcarpus</i> J. & K. Presl	Panicked bulrush	OBL
<i>S. mucronatus</i> L.	Roughseed bulrush	OBL
<i>S. nevadensis</i> S. Wats.	Nevada bulrush	OBL
<i>S. pendulus</i> Muhl.	Reddish bulrush	-
<i>S. pungens</i> Vahl	Three-square	OBL
<i>S. robustus</i> Pursh	Saltmarsh bulrush	OBL
<i>S. rollandii</i> Fernald	Rolland's bulrush	-
<i>S. saximontanus</i> Fernald	Rocky mountain bulrush	-
<i>S. setaceus</i> L.	Bulrush	-
<i>S. subterminalis</i> Torr.	Water bulrush	-
<i>S. tuberosus</i> Desf.	Tuberous bulrush	OBL
<i>S. validus</i> Vahl	Softstem bulrush	OBL
<i>Sclerolinon digynum</i> (Gray) C.M. Rogers	Sclerolinon	-
<i>Scrophularia californica</i> Cham. & Schlecht.	Figwort	FAC
<i>S. lanceolata</i> Pursh	Lanceleaf figwort	-
<i>Scutellaria bolanderi</i> Gray	Bolander's skullcap	-
<i>S. galericulata</i> L.	Common skullcap	OBL
<i>S. lateriflora</i> L.	Blue skullcap	-
<i>Sedella leucocarpa</i> H. Sharsm.	Sedella	-
<i>S. pumila</i> (Benth.) Britton & Rose	Sedella	-
<i>Sedum rosea</i> (L.) Scop.	Roseroot stonecrop	-
<i>Selenia jonesii</i> Cory	Jones selenia	-
<i>Senecio cymbalariaoides</i> H. Buek	Fewleaf groundsel	-
<i>S. foetidus</i> Howell	Evilsmelling groundsel	-
<i>S. hydrophilus</i> Nutt.	Water groundsel	OBL
<i>S. indorum</i> Greene	Elegant groundsel	-
<i>S. pseudoreus</i> Rydb.	Falsegold groundsel	-

<u>Scientific Name</u>	<u>Common Name</u>	<u>Indicator Status</u>
<i>S. streptanthifolius</i> Greene	Cleftleaf groundsel	-
<i>S. triangularis</i> Hook.	Arrowleaf groundsel	-
<i>Sesbania exaltata</i> (Raf.) Rydb.	Wild-coffee	FAC
<i>Jesuvium sessile</i> Pers.	Lowland purslane	FACW
<i>S. verrucosum</i> Raf.	Sea-purslane	FACW
<i>Setaria geniculata</i> (Lam.) Beauv.	Knotroot bristlegrass	FAC
<i>S. glauca</i> (L.) Beauv.	Yellow foxtail	FAC
<i>S. sphacelata</i> (K. Schum.) Stapf & Hubb.	Foxtail	-
<i>S. verticillata</i> (L.) Beauv.	Bur bristlegrass	-
<i>Sida rhombifolia</i> L.	Broomjute sida	-
<i>Sidalcea calycosa</i> M. E. Jones	Point Reyes sidalcea	-
<i>S. hirsuta</i> Gray	Hairy sidalcea	-
<i>S. neomexicana</i> Gray	New Mexico checkermallow	-
<i>S. oregana</i> (Nutt. ex Torr. & Gray) Gray	Oregon checkermallow	-
<i>S. pedata</i> Gray	Pedate sidalcea	-
<i>S. ranunculacea</i> Greene	Marsh sidalcea	-
<i>S. reptans</i> Greene	Creeping sidalcea	-
<i>Sieglingia decumbens</i> (L.) Bernh.	Common heathgrass	-
<i>Silene acaulis</i> L.	Moss silene	-
<i>Sisyrinchium angustifolium</i> Mill.	Common blue-eyed grass	FACW
<i>S. bellum</i> S. Wats.	Western blue-eyed grass	FAC
<i>S. californicum</i> (Ker-Gawl.) Dryand.	Golden blue-eyed grass	OBL
<i>S. douglasii</i> A. Dietr.	Purple-eyed grass	-
<i>S. eastwoodiae</i> Bickn.	Gully blue-eyed grass	-
<i>S. elmeri</i> Greene	Drew's golden-eyed grass	OBL
<i>S. halophilum</i> Greene	Nevada blue-eyed grass	-
<i>S. idahoense</i> Bickn.	Idaho blue-eyed grass	-
<i>S. minus</i> Engelm. & Gray	Least blue-eyed grass	-
<i>Sium suave</i> Walter	Common waterparsnip	OBL
<i>Smilaxina racemosa</i> (L.) Desf.	Falsesolomonseal	FAC
<i>S. stellata</i> (L.) Desf.	Starry falsesolomonseal	FAC
<i>Solanum americanum</i> Mill.	Nightshade	FAC
<i>S. douglasii</i> Dunal	Greenspot nightshade	FAC DRA
<i>S. dulcamara</i> L.	Bittersweet	-
<i>S. longiniss</i> A. Gray	Southern goldenrod	FAC
<i>S. elongata</i> Nutt.	Creek goldenrod	-
<i>S. multiradiata</i> Ait.	Alpine goldenrod	-
<i>S. spectabilis</i> (D. C. Eaton) A. Gray	Nevada goldenrod	FACW
<i>S. nobis acer</i> (L.) J. Hill	Prickly sowthistle	FAC
<i>Sisyrinchium emersum</i> Rehm.	Narrow-leaved burreed	OBL
<i>S. euryvolum</i> Engelm. ex Gray	Giant burreed	OBL
<i>S. minus</i> (Hartm.) Fries	Small burreed	OBL
<i>Spantina foliosa</i> Trin.	California cordgrass	OBL
<i>S. pruriens</i> Trin.	Alkali cordgrass	FACW
<i>Sparganium angustifolium</i> (Pers.) D. Don	Canada sandspurry	-
<i>S. microtheca</i> (Hornem.) Heynh.	Beach sandspurry	FAC+
<i>S. marina</i> (L.) Griseb.	Saltmarsh sandspurry	OBL DRA
<i>S. media</i> (L.) C. Presl	Media sandspurry	-
<i>S. platensis</i> (Camb.) Fenzl.	Sandspurry	-
<i>Sphaeromeria potentilloides</i> (Gray) A. Heller	Sphaeromeria	-

<u>Scientific Name</u>	<u>Common Name</u>	<u>Indicator Status</u>
<i>S. salsula</i> (Pallas) DC.	Sphaeromeria	-
<i>Sphenopholis obtusata</i> (Michx.) Scribn.	Prairie wedgegrass	-
<i>Sphenosciadium capitellatum</i> Gray	Woolyhead parsnip	OBL
<i>Spiraea douglasii</i> Hook.	Douglas spiraea	OBL
<i>Spiranthes romanzoffiana</i> Cham.	Continental ladyestresses	OBL
<i>Spirodela oligorrhiza</i> (Kurz) Hegelm.	Giant duckweed	OBL
<i>S. polyrhiza</i> (L.) Schleiden	Greater duckweed	OBL
<i>Sporobolus airoides</i> (Torr.) Torr.	Alkali sacaton	FAC+
<i>S. cryptandrus</i> (Torr.) Gray	Sand dropseed	-
<i>S. flexuosus</i> (Thurb.) Rydb.	Mesa dropseed	-
<i>Stachys ajugoides</i> Benth.	Ajuga hedgenettle	OBL
<i>S. albens</i> A. Gray	White hedgenettle	OBL
<i>S. charissonis</i> Benth.	Hedgenettle	OBL
<i>S. emersonii</i> Piper	Emerson hedgenettle	OBL
<i>S. palustris</i> L.	Marsh hedgenettle	OBL
<i>S. pyrenantha</i> Benth.	Hedgenettle	FACW
<i>S. rigida</i> Nutt.	Rigid hedgenettle	FACW+
<i>S. stricta</i> Greene	Hedgenettle	OBL
<i>Stellaria calycantha</i> (Ledeb.) Bongard	Northern starwort	-
<i>S. brassifolia</i> Ehrh.	Weakstem starwort	-
<i>S. littoralis</i> Torr.	Starwort	OBL
<i>S. longifolia</i> Muhl.	Longleaf starwort	-
<i>S. longipes</i> Goldie	Longstalk starwort	OBL
<i>S. obtusa</i> Engelm.	Blunt starwort	-
<i>S. sitkana</i> Steud.	Sitka starwort	-
<i>S. umbellata</i> Turcz.	Umbrella starwort	-
<i>Stemodia durantifolia</i> (L.) Swartz	Stemodia	-
<i>Stenanthium occidentale</i> Gray	Western stenanthium	-
<i>Stenotaphrum secundatum</i> (Walter) Kuntze	Common St. Augustine grass	-
<i>Stipa diegoensis</i> Swallen	San Diego needlegrass	-
<i>Streptopus amplexifolius</i> (L.) DC.	Claspleaf twistedstalk	-
<i>Suaeda californica</i> Wats.	California seepweed	FACW+
<i>S. depressa</i> (Pursh) Wats.	Pursh seepweed	FACW+
<i>S. occidentalis</i> S. Wats.	Western seepweed	FACW-
<i>S. torreyana</i> S. Wats.	Torrey seepweed	FAC+
<i>Subularia aquatica</i> L.	Water awlwort	OBL
<i>Suksdorfia ranunculifolia</i> (Hook.) Engl.	Buttercup suksdorfia	-
<i>Swertia perennis</i> L.	Alpinebog swertia	-
<i>Tamarix africana</i> Poir.	African tamarisk	-
<i>T. arbuscula</i> (L.) Karst.	Athel tamarisk	FACW-
<i>T. chinensis</i> Loureiro	Chinese tamarisk	-
<i>T. gallica</i> L.	French tamarisk	FACW
<i>T. parviflora</i> DC.	Smallflower tamarisk	FAC
<i>T. nana</i> Ledeb.	Saltcedar	FAC
<i>Teucrium rubens</i> Jacq.	Teucrium	-
<i>Thalictrum spandiflorum</i> Turcz.	Fewflower meadowrue	FAC
<i>Thelypodium arisanum</i> Greene	Crisp thelypody	-
<i>T. integrifolium</i> (Nutt.) Endl.	Entireleaved thelypody	FACW
<i>Thelypteris nevadensis</i> (Baker)	Nevada thelypteris	-
<i>Thuja ex Morton</i>		
<i>Thuja plicata</i> Donn	Western redcedar	FAC

<u>Scientific Name</u>	<u>Common Name</u>	<u>Indicator Status</u>
<i>Tofieldia glutinosa</i> (Michx.) Pers.	Tall tofieldia	OBL
<i>Tolmiea menziesii</i> (Pursh) T. & G.	Tolmiea	OBL
<i>Toxicodendron radicans</i> (L.) O. Kuntze	Poison-ivy	FACW
<i>Trautvetteria carolinensis</i> (Walter)Vail	Carolina busbane	-
<i>Trianthema portulacastrum</i> L.	Desert horsepurslane	FACW
<i>Trichocoronis wrightii</i> (T. & G.) Gray	Wright trichocoronis	-
<i>Trichostema micranthum</i> Gray	Trichostema	-
<i>Trientalis latifolia</i> Hook.	Trientalis	FAC
<i>Trifolium appendiculatum</i> Loja.	Lost clover	-
<i>T. barbigerum</i> Torr.	Clover	-
<i>T. bolanderi</i> A. Gray	Bolander clover	OBL
<i>T. cyathiferum</i> Lindl.	Cup clover	-
<i>T. fucatum</i> Lindl	Bull clover	-
<i>T. longipes</i> Nutt.	Longstalk clover	-
<i>T. macrocephalum</i> (Pursh) Poir.	Largehead clover	-
<i>T. monanthum</i> A. Gray	Carpet clover	-
<i>T. mucronatum</i> Willd.	Mucronate clover	-
<i>T. truncatum</i> (Greene) Greene	Clover	-
<i>T. variegatum</i> Nutt.	Whitetip clover	FACW
<i>T. wormskjoldii</i> Lehman	Cow clover	OBL
<i>Triglochin concinnum</i> J. B. Davy	Slender arrow-grass	OBL
<i>T. maritimum</i> L.	Seaside arrow-grass	OBL
<i>T. palustre</i> L.	Marsh arrow-grass	OBL
<i>T. striatum</i> Ruiz & Pavon	Arrow-grass	OBL
<i>Triodanis perfoliata</i> (L.) Nieuwl.	Pouchleaf triodanis	FAC
<i>Trisetum spicatum</i> (L.) Richt.	Spike trisetum	-
<i>T. wolfii</i> Vasey	Wolf trisetum	-
<i>Triteleia hyacinthina</i> (Lindl.) Greene	Triteleia	FACW
<i>Typha angustifolia</i> L.	Narrow-leaved cattail	OBL
<i>T. domingensis</i> Pers.	Southern cattail	OBL
<i>T. X glauca</i> Godr.	Blue cattail	OBL
<i>T. latifolia</i> L.	Common cattail	OBL
<i>Umbellularia californica</i> (Hook. & Arn.) Nutt.	California bay	FAC
<i>Utricularia fibrosa</i> Walter	Fibrous bladderwort	OBL
<i>U. gibba</i> L.	Humped bladderwort	OBL
<i>U. intermedia</i> Hayne	Flatleaved bladderwort	OBL
<i>U. macrorhiza</i> Leconte	Common bladderwort	OBL
<i>U. minor</i> L.	Lesser bladderwort	OBL
<i>Vaccinium cespitosum</i> Michx.	Dwarf bilberry	FACW
<i>V. macrocarpon</i> Ait.	Large cranberry	OBL
<i>V. occidentale</i> Gray	Western huckleberry	FACW
<i>V. cespitosum</i> Leiberg ex Coville	Huckleberry	-
<i>V. uliginosum</i> L.	Bog bilberry	OBL
<i>Vahlodea strobilifera</i> (Wahlenb.) Fr.	Vahlodea	-
<i>Valeriana occidentalis</i> Heller	Western valerian	-
<i>V. scouleri</i> Rydb.	Scouler valerian	-
<i>V. sitkensis</i> Bong.	Sitka valerian	-
<i>Veratrum californicum</i> Durand	California falsehellebore	OBL
<i>V. fimbriatum</i> Gray	Fringed falsehellebore	OBL
<i>Verbena bonariensis</i> L.	Tall verbena	FACW

<u>Scientific Name</u>	<u>Common Name</u>	<u>Indicator Status</u>
<i>V. bracteata</i> Lag. & Rodr.	Prostrate verbena	-
<i>V. brasiliensis</i> Vell.	Brasilian verbena	-
<i>V. hastata</i> L.	Blue verbena	-
<i>V. scabra</i> Vahl	Verbena	-
<i>Verbesina encelioides</i> (Cav.) Benth. & Hook.	Golden crownbeard	-
<i>Veronica americana</i> (Raf.) Schweinitz	American speedwell	OBL
<i>V. anagallis-aquatica</i> L.	Water speedwell	OBL
<i>V. beccabunga</i> L.	European brooklime	OBL
<i>V. catenata</i> Pennell	Chain speedwell	-
<i>V. cusickii</i> Gray	Cusick speedwell	FAC
<i>V. peregrina</i> L.	Purslane speedwell	OBL DRA
<i>V. scutellata</i> L.	Marsh speedwell	OBL
<i>V. serpyllifolia</i> L.	Thymeleaf speedwell	-
<i>V. wormskjoldii</i> Roem. & Schult.	Wormskjold speedwell	-
<i>Vicia sativa</i> L.	Spring vetch	-
<i>Viola adunca</i> J. E. Smith	Hook violet	-
<i>V. glabella</i> Nutt.	Stream violet	-
<i>V. hallii</i> Gray	Hall's violet	-
<i>V. lanceolata</i> L.	Lance-leaved violet	-
<i>V. langsдорffii</i> Fisch.	Alaska violet	-
<i>V. macloskeyi</i> Lloyd	Small white violet	OBL
<i>V. nephrophylla</i> Greene	Northern bog-violet	-
<i>V. pallens</i> (Banks) Brainerd	Northern white violet	-
<i>V. palustris</i> L.	Marsh violet	-
<i>Vitis californica</i> Benth.	California wild grape	FACW
<i>Vulpia bromoides</i> (L.) S. F. Gray	Barren sixweeksgrass	FACW
<i>V. myuros</i> (L.) C. C. Gmel.	Rattail sixweeksgrass	FACW
<i>Washingtonia filifera</i> (Linden ex Andre) H. Wendel.	Washington palm	FACW
<i>Wislizenia refracta</i> Engelm.	Jackass clover	-
<i>Wolffia columbiana</i> Karst.	Columbia watermeal	OBL
<i>W. cylindracea</i> Hegelm.	Watermeal	OBL
<i>Wolffiella gladiata</i> (Hegelm.) Hegelm.	Watermeal	OBL
<i>W. lingulata</i> (Hegelm.) Hegelm.	Tongue wolffiella	OBL
<i>W. oblonga</i> (Phil.) Hegelm.	Oblong wolffiella	OBL
<i>Woodwardia fimbriata</i> J. E. Smith	Western chainfern	FACW+
<i>Xanthium strumarium</i> L.	Cocklebur	FAC DRA
<i>Yabea microcarpa</i> (Hook. & Arn.) K. Pol.	Yabea	-
<i>Zannichellia palustris</i> L.	Horned pondweed	OBL
<i>Zantedeschia aethiopica</i> (L.) Spreng.	Callalily	OBL
<i>Zigadenus fontanus</i> Eastw.	Zigadenus	-
<i>Z. venenosus</i> Wats.	Meadow deathcamas	-
<i>Zizania aquatica</i> L.	Annual wildrice	OBL
<i>Zostera marina</i> L.	Eelgrass	OBL
<i>Zosterella dubia</i> (Jacq.) Small	Zosterella	OBL

END

4-87

DTIC