

NO-A175 970

COMPUTERIZATION OF THE PRELIMINARY POLLUTANT LIMIT
VALUE CONCEPT(U) CONSTRUCTION ENGINEERING RESEARCH LAB
(ARMY) CHAMPAIGN IL M MESSENGER ET AL JUN 86

1/1

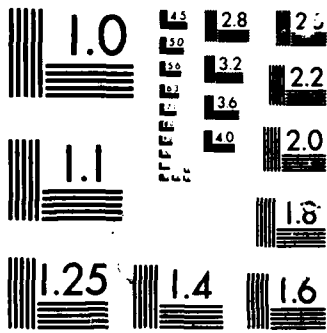
UNCLASSIFIED

CERL-TR-N-86/13

F/G 6/11

ML







US Army Corps
of Engineers
Construction Engineering

USA-CERL

TECHNICAL REPORT N-86/13
June 1986

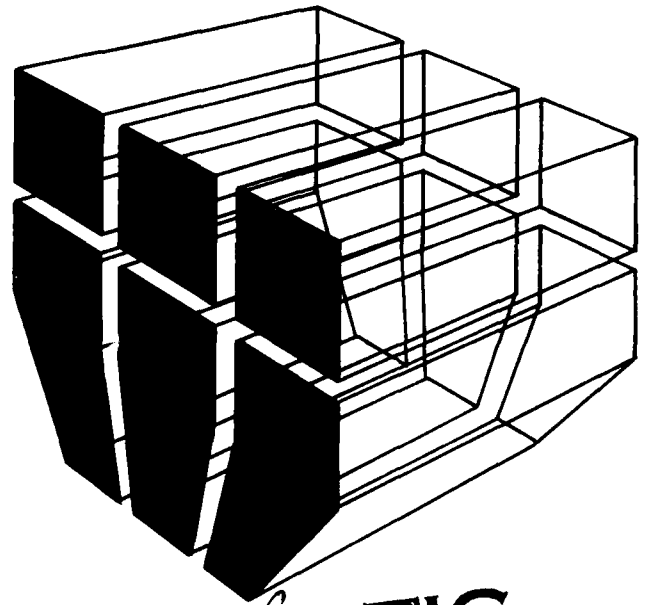
AD-A175 970

②

Computerization of the Preliminary Pollutant Limit Value Concept

by
Manette Messenger
Lester Pritchard
Halina Sleszynski
James Danley III
Marie Morgan
Michael Higgins

The Preliminary Pollutant Limit Value (PPLV) model developed by the U.S. Army Medical Bioengineering Research and Development Laboratory is an attempt to describe the environmental pathways through which humans may be exposed to toxic chemicals that have escaped into the environment. The model estimates the uptake/transformation of the compound at each step in each pathway, and arrives at a preliminary limit value in the environment for the compound of concern based on toxicological considerations. This report describes development of an interactive version of the PPLV model.



DTIC
ELECTE
JAN 14 1987
S D
E

DTIC FILE COPY

Approved for public release; distribution unlimited.

87 1 12 053

The contents of this report are not to be used for advertising, publication, or promotional purposes. Citation of trade names does not constitute an official indorsement or approval of the use of such commercial products. The findings of this report are not to be construed as an official Department of the Army position, unless so designated by other authorized documents.

*DESTROY THIS REPORT WHEN IT IS NO LONGER NEEDED
DO NOT RETURN IT TO THE ORIGINATOR*

SECURITY CLASSIFICATION OF THIS PAGE (When Data Entered)

REPORT DOCUMENTATION PAGE		READ INSTRUCTIONS BEFORE COMPLETING FORM
1. REPORT NUMBER CERL TR N-86/13	2. GOVT ACCESSION NO. AD-A175970	3. RECIPIENT'S CATALOG NUMBER
4. TITLE (and Subtitle) Computerization of the Preliminary Pollutant Limit Value Concept		5. TYPE OF REPORT & PERIOD COVERED Final
		6. PERFORMING ORG. REPORT NUMBER
7. AUTHOR(s) Manette Messenger James Danley III Lester Pritchard Marie Morgan Halina Sleszynski Michael Higgins		8. CONTRACT OR GRANT NUMBER(s) Project Order 84PP4857
9. PERFORMING ORGANIZATION NAME AND ADDRESS U.S. Army Construction Engr Research Laboratory P.O. Box 4005 Champaign, IL 61820-1305		10. PROGRAM ELEMENT, PROJECT, TASK AREA & WORK UNIT NUMBERS
11. CONTROLLING OFFICE NAME AND ADDRESS		12. REPORT DATE June 1986
		13. NUMBER OF PAGES 15
14. MONITORING AGENCY NAME & ADDRESS (if different from Controlling Office)		15. SECURITY CLASS. (of this report) Unclassified
		15a. DECLASSIFICATION/DOWNGRADING SCHEDULE
16. DISTRIBUTION STATEMENT (of this Report) Approved for public release; distribution unlimited.		
17. DISTRIBUTION STATEMENT (of the abstract entered in Block 20, if different from Report)		
18. SUPPLEMENTARY NOTES Copies are available from the National Technical Information Service Springfield, VA 22161		
19. KEY WORDS (Continue on reverse side if necessary and identify by block number) Preliminary Pollutant Limit Valve (PPLV) toxic agents computer programs toxic tolerance		
20. ABSTRACT (Continue on reverse side if necessary and identify by block number) The Preliminary Pollutant Limit Value (PPLV) model developed by the U.S. Army Medical Bioengineering Research and Development Laboratory is an attempt to describe the environmental pathways through which humans may be exposed to toxic chemicals that have escaped into the environment. The model estimates the uptake/transformation of the compound at each step in each pathway, and arrives at a preliminary limit value in the environment for the compound of concern based on toxicological considerations. This report describes development of an interactive version of the PPLV model.		

FOREWORD

This work was performed for the U.S. Army Medical Bioengineering Research and Development Laboratory (USAMBRDL) under Project Order 84PP4857. Dr. Mary Henry was the USAMBRDL Technical Monitor.

This research was performed by the Environmental Division (EN), U.S. Army Construction Engineering Research Laboratory (USA-CERL). Dr. R. K. Jain is Chief of EN. COL Paul J. Theuer is Commander and Director of USA-CERL, and Dr. L. R. Shaffer is Technical Director.

Accession For	
DTIC CS&I	<input checked="" type="checkbox"/>
DTIC TAB	<input type="checkbox"/>
Unannounced	<input type="checkbox"/>
Justification	
By _____	
Distribution/	
Availability Codes	
Avail and/or	
Special	
A-1	



CONTENTS

	Page
DD FORM 1473	1
FOREWORD	3
1 INTRODUCTION	5
Background	
Objective	
Approach	
2 THE PPLV INTERACTIVE PROGRAM	5
The Model	
The System	
Accessing ETIS	
Using the PPLV Subsystem	
Verification of the Model	
3 DATABASE DEVELOPMENT.	10
4 SUMMARY AND RECOMMENDATIONS	11
APPENDIX A: SPPPLV Equations	12
APPENDIX B: Notation	14
DISTRIBUTION	

COMPUTERIZATION OF THE PRELIMINARY POLLUTANT LIMIT VALUE CONCEPT

1 INTRODUCTION

Background

Regulatory limits for toxic chemicals in the environment are often set with respect to the level of the chemical that can be measured in the laboratory, rather than the actual toxicity of the compound. One reason for this practice is that making a connection between the acceptable daily dose to a human and the tolerable level in the environment is an extremely complex problem. This problem has been addressed in a theoretical model developed by the U.S. Army Medical Bioengineering Research and Development Laboratory (USAMBRDL). Called the Preliminary Pollutant Limit Value (PPLV) model, it is an attempt to describe the environmental pathways through which humans may be exposed to toxic chemicals that have escaped into the environment, estimate the uptake/transformation of the compound at each step in each pathway, and arrive at a preliminary limit value in the environment for the compound of concern based on toxicological considerations. This information is needed for responding to requirements of the Army Installation Restoration Program.

Objective

The objective of this effort was to provide an interactive version of the PPLV model, so that it can be easily tested and verified by a diverse Army user community. In addition, limited development of the data necessary to run the model was undertaken to aid in the model verification.

Approach

Data inputs required to run the model were defined and commercial chemical information systems were searched to obtain values for 303 chemicals of unique concern to the Army. Necessary characteristics of the interactive program were defined in conjunction with the sponsor, and software was designed to satisfy these requirements.

2 THE PPLV INTERACTIVE PROGRAM

The Model

USAMBRDL has developed and documented¹ the PPLV model to answer the following general question:

Soil or water (or both) are contaminated with a chemical. If the land or water is intended to be used for one or more functions, what concentration of the chemical should be allowed to remain?

The user is expected to approach the model with one or more scenarios in mind. Based upon these scenarios, one or more of the pathways by which humans may be exposed to the pollutant through ingestion or inhalation are chosen. These pathways can be written like this:

1. water → human
2. soil → water → human
3. water → fish → human
4. soil → water → fish → human
5. water → crops → human
6. soil → water → crops → human
7. water → crops → livestock → human
8. soil → water → crops → livestock → human
9. water → livestock → human
10. soil → water → livestock → human
11. soil → vegetables → human
12. soil → plants → livestock → human

¹Mitchell J. Small, *The Preliminary Pollutant Value Approach: Procedures and Database*. Technical Report 8210 (USAMBRDL, June 1984).

13. soil → plants → livestock → dairy products → human
14. soil → human
15. dust → human
16. soil → vapor → human

The pathways are treated as a series of environmental compartments, each containing the pollutant at equilibrium. The last compartment involves transfer of the pollutant to humans, which is considered to be a nonequilibrium process occurring at an assumed rate. The PPLV is the result of calculating back from the acceptable daily dose to the human in the last compartment through the previous compartments until the tolerable concentration of pollutant in the first compartment is reached.

After the appropriate pathways are chosen, the data required for computations must be identified. From these data, a value for each pathway is calculated separately; this is called the Single Pathway Preliminary Pollutant Limit Value or SPPLV. SPPLV equations have two general forms. If the chemical reaches humans without an intermediate compartment (such as direct ingestion of contaminated water), the form is

$$C_{xi} = IF_i \times Dt \quad [\text{Eq 1}]$$

where C_{xi} = the SPPLV for media X and pathway i
 IF_i = intake factor for pathway i
 Dt = acceptable daily dose to human.

If the pathway contains one or more intermediate compartments, the SPPLV equation takes the form:

$$C_{xi} = IF_i \times Dt / K_i \quad [\text{Eq 2}]$$

where K_i = composite partition coefficient for pollutant transfer.

Specific equations for C_{xi} and K_i for the 16 pathways described above are shown in Appendix A; a complete list of notation is given in Appendix B. More detailed explanations of the model can be found in:

1. Rosenblatt, D.H.; Dacre, J.C.; Cogley, D.R.: "An Environmental Fate Model Leading to Preliminary Pollutant Limit Values for Human Health Effects," *Environmental Risk Analysis for Chemicals*, R.J. Conway ed. (Van Nostrand Reinhold Co., 1980.)

2. Mitchell J. Small. *The Preliminary Pollutant Value Approach: Procedures and Database*, Technical Report 8210 (USAMBRDL, June 1984).

3. Rosenblatt et al., "Preliminary Pollutant Limit Values for Human Health Effects," *Environmental Science and Technology*, Vol 15, Number 7 (July 1980).

The System

A pilot system has been developed to grind through the pathway equations in Appendix A and to access and use the data stored on-line for a limited number of chemical compounds. The result is SPPLVs for each pathway chosen, and a final PPLV for the whole scenario, which is obtained by normalizing the SPPLVs. The PPLV pilot program is available as an experimental subsystem of the Environmental Technical Information System (ETIS).² ETIS can be accessed over WATS, Telenet, and commercial telephone lines by almost any kind of computer terminal. ETIS is an interactive, user-friendly system that can be used by people unfamiliar with computers.

Accessing ETIS

A user wishing to access the PPLV model after interactively entering ETIS need only transfer into the program. The following paragraphs provide instructions for accessing ETIS information by remote terminal.

After a log-in and a password have been acquired from USA-CERL's Environmental Division, ETIS can be accessed by following the directions in USA-CERL Technical Report N-56³, DA Pamphlet 200-2⁴, and USA-CERL Technical Report N-43⁵. After acquiring a remote terminal, a modem and a telephone line, dial the system's number (217/333-5067; WATS 800/637-0958). If there is no answer, the entire system is down

²R. D. Webster, et al., *Development of the Environmental Technical Information System*, Interim Report E-52/ADA 009668 (U.S. Army Construction Engineering Research Laboratory [USA-CERL], 1975).

³J. van Weringh, J. Patzer, R. Welsh, and R. Webster, *Computer-Aided Environmental Legislative Data System (CELDS) User Manual*, Technical Report N-56/ADA061126 (USA-CERL, 1978).

⁴*The Economic Impact Forecast System—Description and User Instructions*, DA PAM 200-2 (Department of the Army, December 1976).

⁵S. E. Thomas, et al., *Computer-Aided Environmental Impact Analysis for Industrial Procurement, and Research, Development, Test, and Evaluation Activities User Manual*, Technical Report N-43/ADA056997 (USA-CERL, June 1978).

for maintenance. Upon hearing a steady tone, connect the terminal/modem to the ETIS system as indicated in the manufacturer's instructions. After the correct name and password are entered, system messages will be displayed. Type "etis" at the prompt to start the system.

Keep several things in mind when using the system. The symbol <cr> used in some instructions means to depress the carriage return button. The instruction to type CTRL-d means to simultaneously depress the button marked CTRL and the letter d. An input error can be corrected by typing CTRL-h (hitting the CTRL and h buttons simultaneously) if the return button has not yet been depressed. This procedure will back the carriage up one space each time it is repeated. This can be done as many times as necessary. Every symbol which has been backspaced over has been removed from the terminal memory. Therefore, if the first digit of a six-digit number has been mistyped, you must depress CTRL-h six times and then retype all six digits. The corrected symbols will be overprinted on the paper or screen. To stop a long listing depress the button marked DEL (delete).

Using the PPLV Subsystem

When the system is started up, the following menu appears:

Options:

- [1] Select Pathways
- [2] Run Model
- [3] Exit Model

The user must first choose one or more pathways over which the model will be run. This is done by choosing option 1 and then designating the desired pathways, as described above, by their assigned numbers. When all relevant pathways have been selected, a blank line is input by pressing the return key to indicate that the selection process is complete.

At this point, the model can be run by choosing option 2. The program will prompt the user for the pieces of data necessary to calculate the pollutant partition coefficients (K_i) and the SPPPLVs (C_{xi}) for each pathway chosen in option 1. If a piece of input data is unknown, the user can type a question mark to search the on-line database. The program then prompts for the Chemical Abstracts Service (CAS) registry number of the pollutant to perform the search. The

database is exhaustively searched for all the occurrences of that CAS number, and all data values found are returned to the user along with the source of the data. At this point, the user can accept one of those values for use in continuing with the model run, or input a different value of his/her own choosing.

As the pollutant partition coefficients are calculated from the input data, they are shown to the user to be accepted or rejected. Acceptance is indicated by pressing the return key. Rejection is indicated by typing in a different value after the colon; this value is then used in all subsequent calculations. There is also a certain amount of default data built into the program for parameters such as body weight, weight of meat, fish, liquids taken per day, etc. Acceptance and rejection of this data is indicated the same way.

Once a particular piece of input data has been chosen or once a partition coefficient has been calculated, that value is used in all subsequent SPPPLV equations in which it occurs. This forces any one run of the model to be internally consistent. When all the necessary data has been collected from the user, the SPPPLVs are calculated and the equations are displayed for each pathway, and the final PPPLV is presented. The program then restarts itself at the option menu above.

While most of the program is menu-driven, with the user being prompted from step to step, there are three commands that can be used in response to each prompt. These are "?" to search the on-line database, "bye" to leave the system at any point, and "help" to see a short explanation of the data parameter being prompted for.

A sample session with the PPLV program over a few pathways is shown below. User responses are underlined.

Welcome to the PPLV Predictive Model

Options:

- [1] Select Pathways
- [2] Run Model
- [3] Exit Model

Pathways selected: none.

Enter Option Number: 1

Type in the number(s) of the pathway(s) you want to consider.

Type '?' to view pathways.

Type 'all' to consider all pathways.

Press <Return> key alone to stop selecting pathways.

pathway #: ?

The available pathways are:

1. water → human
2. soil → water → human
3. water → fish → human
4. soil → water → fish → human
5. water → crops → human
6. soil → water → crops → human
7. water → crops → livestock → human
8. soil → water → crops → livestock → human
9. water → livestock → human
10. soil → water → livestock → human
11. soil → vegetables → human
12. soil → plants → livestock → human
13. soil → plants → livestock → dairy products → human
14. soil → human
15. dust → human
16. soil → vapors → human

pathway #: 1

pathway #: 4

pathway #: 10

pathway #: (return key is pressed to indicate selection is complete)

You have selected:

Pathway 1: water → human

Pathway 4: soil → water → fish → human

Pathway 10: soil → water → livestock → human

Do you want to change this list? (y or n): n

Options:

[1] Select Pathways

[2] Run Model

[3] Exit Model

Pathways selected: 1 4 10

Enter Option Number: 2

Enter value for Dt in mg/kg/day: ?

Enter CAS Registry Number: 608-93-5

1. 0.016 EPA (est.by Small 1984 from NWQCD)
pentachlorobenzene

Do you want to use the above value for Dt in mg/kg/day? (y or n): y

Dt = 0.016 mg/kg/day

Adult body weight (Bw) = 70 kg: <cr>

Weight of fluids consumed = 1.6 liters/day: <cr>

Weight of fish consumed (Wf) = 0.02: .04

Foc is the fraction of organic carbon in soil.

Enter Foc: .21

There are 2 equations for estimation of soil organic carbon coefficient (Koc):

1. $Koc = \text{antilog}(-0.55 * \log Csol + 3.64)$
where Csol = Solubility of compound in water.
2. $Koc = \text{antilog}(0.544 * \log Kow + 1.38)$
where Kow = octanol/water partition coefficient.

Enter equation number: 1

Enter solubility of compound in water in mg/liter: 55

$$\begin{aligned} Koc &= \text{antilog}(-0.55 * \log Csol + 3.04) \\ &= \text{antilog}(-0.55 * \log 55 + 3.04) \\ &= 8.026917 \text{ mg/kg in soil organic carbon per mg/liter in water: } <cr> \end{aligned}$$

Ksw is the pollutant partition coefficient between soil & water.

$$\begin{aligned} Ksw &= 1/(Foc * Koc) \\ &= 1/(0.21 * 8.026917) \\ &= 0.593242 \text{ mg/liter in water per mg/kg in soil: } <cr> \end{aligned}$$

Kwf is pollutant partition coefficient between water & fish.

There are 2 equations for estimation of Kwf:

1. $Kwf = \text{Fish Bioconcentration Factor (BCF)}$
2. $Kwf = \text{antilog}(0.76 * \log Kow - 0.23)$
where: Kow = octanol/water partition coefficient.

Enter equation number: 2

Enter value for Kow: 4

$$\begin{aligned} Kwf &= \text{antilog}(0.76 * \log Kow - 0.23) \\ &= \text{antilog}(0.76 * \log 4 + 0.23) \\ &= 1.25554: <cr> \end{aligned}$$

Weight of human consumption of meat (Wa) = 0.21 kg/day: .11

Kwa is pollutant partition coefficient between water & bulk animal.

There are 2 equations for estimation of Kwa:

1. $Kwa = Fa * \text{antilog}(-1.476 + 0.495 \log Csol)$

2. $Kwa = Fa * \text{antilog}(-3.457 - 0.5 \log Kow)$
where: Fa = fraction of fat in livestock.
Csol = solubility of compound in water.
Kow = octanol/water partition coefficient.

Enter equation number: 1

Fraction of fat (Fa) in cattle = 0.3, in swine = 0.5

Enter value for Fa: .4

$$\begin{aligned} Kwa &= Fa * \text{antilog}(-1.476 + 0.495 \log Kwa) \\ &= 0.4 * \text{antilog}(-1.476 + 0.495 \log 55) \\ &= 0.21636 \text{ mg/kg in animal per mg/liter in water: } <cr> \end{aligned}$$

$$\begin{aligned} Cw1 &= (Bw/Ww) * Dt = 70 / 1.6 * 0.016 = 0.7 \\ Cs2 &= [(Bw/Wf) / (Ksw * Kwf)] * Dt = [(70/0.04) / (0.593242 * 1.25554)] * 0.016 = 37.592016 \\ Cs5 &= [(Bw/Wa) / (Ksw * Kwa)] * Dt \\ &= [(70/0.11) / (0.593242 * 0.21636)] * 0.016 \\ &= 79.326129 \end{aligned}$$

PPLV = 0.681301

<Return> key to continue

Options:

- [1] Select Pathways
- [2] Run Model
- [3] Exit Model

Pathways selected: 1 4 10

Enter Option Number: 3

Goodbye from the PPLV Predictive Model

Verification of the Model

As of this writing, the PPLV model has not been reviewed and accepted by the Surgeon General or the U.S. Environmental Protection Agency (USEPA). The interactive PPLV program provides a tool that makes the model easier to use and more accessible, but has in no way added to the theoretical basis of the model; the algorithms provided by the sponsor were not changed or refined. Acceptance of the model by the regulatory agencies will enhance the utility of the program to field personnel.

One matter for attention is calculation of the PPLV from the SPPPLVs. At present, both water and soil SPPPLVs are normalized into one final PPLV. The usefulness of this indicator in real field situations would be increased if the PPLV were calculated twice - once for water, normalizing all the water SPPPLVs and similarly for soil.

3 DATABASE DEVELOPMENT

Eight databases were developed to provide input to all 16 pathways of the model:

1. Dt—acceptable daily human dose, mg/kg/day
2. Kow—octanol/water partition coefficient, mg/liter in octanol per mg/liter in water
3. BCF—fish bioconcentration factor, mg/kg in fish per mg/kg in water
4. Csol—solubility of compound in water, mg/liter at 25 degrees C
5. SOC—soil organic carbon, grams/gram
6. MW—molecular weight, grams/gram-mole
7. Po—saturation vapor pressure, mm Hg at 25 degrees C
8. PBF—plant bioconcentration factor, mg/kg in plant per mg/kg in soil.

Four major commercial chemical information systems were searched for all the data fields listed above: HAZARDLINE, CIS (RTECS and OHMTADS), NLM (TDB and TOXLINE), and TOXNET. The results of these searches were downloaded to an IBM XT, reformatted, and uploaded to the Pyramid computer where the PPLV software resides. The pilot database consists of 303 compounds; 169 of these compounds were provided by USAMBRDL as being of prime concern. Another 134 compounds commonly used on Army installations were added to the original list.

Compounds for which no data whatsoever are available in these commercial systems include fog oil, infrared screening smoke, BDNPA-F, ball powder, NQ, nitrodiphenylamine, nitrosophenylamine, lead salicylate, lead resorcyate, TACOT, violet dye, red dye, green

dye, toluidene red toner, parlon, strontium oxalate, condensate water, a number of amino-nitrotoluenes and nitro-methylphenyls, 1,5-dimethyl-2,4-dinitrobenzene, 4-nitrobenzotrile, 4,6-dinitroaniline, 2,4-dinitrobenzoic acid, pink water, TAX, and 2-nitro-glycerol.

A number of issues were encountered in database development. The primary one was the vast amount of data available and its relevance to the specific scenarios that the PPLV model addresses. This was particularly true in developing values for Dt, which is a necessary parameter for all pathways of the model. Dt can be calculated from a number of different values, including:

1. The OSHA threshold limit value (TLV) or time weighted-average (TWA) which is based on inhalation of the chemical.
2. The FDA's acceptable daily intake (ADI), which refers to consumption of the material and has been developed mostly for food additives. (USEPA is in the process of developing these values for other chemical compounds.)
3. The LD50, which varies as to route of exposure depending upon the specific experimental conditions under which it was calculated.

Currently, the PPLV system displays all data available for a compound and requests the user to choose one or input his/her own value. The value of Dt that should be chosen in any particular run of the model varies according to the pathways (and the 3 routes of exposure the pathways describe) that the user has chosen for that run. Forcing the user to choose a Dt value from those available assumes use of the model by a user community sensitive to these issues. Other data that suffer from this problem of relevance, though to a lesser extent, are the PBF, BCF, and SOC values.

A related issue is that of data reliability. While future refinements to the model could include some judgment of the reliability of each datum that is supplied, and from this an estimate of reliability of the final PPLV could be calculated, this type of task is best undertaken by a panel of toxicological experts.

Finally, data coverage in the commercial information systems averages less than 50 percent for any one system, as shown below. The searches were performed by CAS number, which identifies a specific chemical

compound. The number of hits refers to the fact that *some* information was found, though it may not have been complete or relevant to the PPLV model. Again, while future refinements to the model could include an automatic login to one of these systems so that the user could search for values for compounds that are not included as part of the PPLV database, no one system appears to include complete coverage of the types of chemicals of concern to Army users.

Vendor/ Database	# Hits in 303 searches	Percentage Found
CIS OHMTADS	60	20
CIS RTECS	131	44
NLM RTECS	128	43
NLM TOXLINE	97	32
TOXNET	100	33
HAZARDLINE	104	35

4 SUMMARY AND RECOMMENDATIONS

The preliminary Pollutant Limit Value model has been made accessible to the Army environmental community through an interactive program that is part of the Environmental Technical Information System. The program can be used to arrive at a tolerable environmental limit for a pollutant in the soil or water, given that the acceptable daily dose of the pollutant to humans is known. A small database containing the input parameters for 303 compounds underlies the program.

It is recommended that the issues involved in provision of reliable input data to the users be addressed before further development or refinement of the model itself.

APPENDIX A:

SPPPLV EQUATIONS

Equations

Pathway 1: water → human

$$Cw1 = (Bw / Ww) * Dt$$

Pathway 2: soil → water → human

$$Cs1 = [(Bw / Ww) * Dt] / Ksw$$

$$Ksw = 1 / (Foc * Koc)$$

Pathway 3: water → fish → human

$$Cw2 = [(Bw / Wf) / Kwf] * Dt$$

$$Kwf = \text{Fish Bioconcentration Factor (BCF) -OR-}$$

$$Kwf = \text{antilog}(0.76 * \log Kow - 0.23)$$

Pathway 4: soil → water → fish → human

$$Cs2 = [(Bw / Wf) / (Ksw * Kwf)] * Dt$$

Pathway 5: water → crops → human

$$Cw3 = [(Bw / Wp) / Kwp] * Dt$$

$$Kwp = Ksp / Ksw$$

Pathway 6: soil → water → crops → human

$$Cs3 = [(Bw / Wp) / (Ksw * Kwp)] * Dt$$

Pathway 7: water → crops → livestock → human

$$Cw4 = [(Bw / Wa) / (Kwp * Kpa)] * Dt$$

$$Kpa = Fa * \text{antilog}(-1.476 + 0.495 \log Csol) -OR-$$

$$Kpa = Fa * \text{antilog}(-3.457 - 0.5 \log Kow)$$

Pathway 8: soil → water → crops → livestock → human

$$Cs4 = [(Bw / Wa) / (Ksw * Kwp * Kpa)] * Dt$$

Pathway 9: water → livestock → human

$$Cw5 = [(Bw / Wa) / Kwa] * Dt$$

$$Kwa = Fa * \text{antilog}(-1.476 + 0.495 \log Csol) -OR-$$

$$Kwa = Fa * \text{antilog}(-3.457 - 0.5 \log Kow)$$

Pathway 10: soil → water → livestock → human

$$Cwf = [(Bw / Wa) / (Ksw * Kwa)] * Dt$$

Pathway 11: soil → vegetables → human

$$Cs6 = [(Bw / Wp) / Ksp] * Dt$$

$$Ksp = 6 * PBF$$

Pathway 12: soil → plants → livestock → human

$$Cs7 = [(Bw / Wa) / (Ksp * Kpa)] * Dt$$

Pathway 13: soil → plants → livestock → dairy products → human

$$Cs8 = [(Bw / Wd) / (Ksp * Kpa * Kad)] * Dt$$

$$Kad = 1.44 \text{ for Arochlor}$$

$$Kad = 1 \text{ for all other compounds}$$

Pathway 14: soil → human

$$Cs9 = (Bwc / Wsc) * Dt$$

Pathway 15: dust → human

$$Cs10 = [(Bw * 10^6) / (Css * RB')] * (1.6 / Fw) * Dt$$

Pathway 16: soil → vapors → human

$$Cs11 = (Bw / RB') * (1 / Ksv) * Dt$$

$$Ksv = VDo * Ksw / Csol$$

$$Vdo = 1.64 * 10000 * Po * (MW / T);$$

Definition of Partition Coefficients

Ksw = pollutant partition coefficient between soil & water

Ksw = mg/liter in water per mg/kg in soil

$$= 1 / (Foc * Koc)$$

where Foc is the fraction of organic carbon in soil (dimensionless)

paths 2, 4, 6, 8, 10.

Koc = pollutant partition coefficient between soil organic carbon and water

Koc = mg/kg in soil organic carbon per mg/liter in water

$$2 \text{ equations: } 1. Koc = \text{antilog}(0.55 * \log Csol + 3.04)$$

$$2. Koc = \text{antilog}(0.544 * \log Kow + 1.38)$$

where Csol is the solubility of chemical in water, mg/liter and Kow is the octanol/water partition coefficient, mg/liter in octanol per mg/liter in water

paths 2, 4, 6, 8, 10

K_{wf} = pollutant coefficient between water & fish.

K_{wf} = mg/kg in fish per mg/liter in water.

2 equations 1. $K_{wf} = BCF$

BCF is the fish bioconcentration factor, mg/kg in mg/kg in fish per mg/liter in water

2. $K_{wf} = \text{antilog}(0.76 * \log K_{ow} - 0.23)$

paths 3, 4.

K_{pa} = pollutant partition coefficient between plant matter & bulk animal, mg/kg in animal per mg/kg in plant.

paths 7, 8.

K_{wa} = pollutant partition coefficient between water and bulk animal mg/kg in animal per mg/L in water.

paths 9, 10, 12, 13.

2 equations for K_{pa} & K_{wa} :

1. $K_{pa} = K_{wa} = F_a * \text{antilog}(-3.457 + 0.5 \log K_{ow})$

2. $K_{pa} = K_{wa} = F_a * \text{antilog}(-1.476 - 0.495 \log C_{sol})$

F_a = fraction of fat in livestock
= 0.3 cattle, 0.5 swine, .0037 cow's milk.

K_{ad} = pollutant partition coefficient between dairy product and bulk animal.
mg/L in dairy product per mg/kg bulk animal

path 13.

$K_{ad} = 1.44$ for Arochlor
= 1 for all other compounds

K_{sv} = pollutant partition coefficient between vapor & soil

mg/m³ in air per mg/kg in soil

path 16.

$K_{sv} = V_{Do} * K_{sw} / C_{sol}$

V_{Do} = saturation vapor density, mg/m³

$V_{Do} = 1.64 * 10^4 * P_o * MW/T$

P_o = vapor density, mmHg

MW = molecular weight, grams/gram-mole

T = temperature; default = 612 degrees Kelvin

K_{sp} = pollutant partition coefficient between soil and plant matter

mg/kg in plant per mg/kg in soil

paths 11, 12, 13.

$K_{sp} = 6 * PBF$

PBF = plant bioconcentration factor, mg/kg in plant per mg/kg in soil

K_{wp} = pollutant partition coefficient between water & plant matter

mg/kg in plant per mg/L in water.

paths 5, 6, 7, 8.

$K_{wp} = K_{sp}/K_{sw}$

APPENDIX B:

NOTATION

ADI	Acceptable Daily Intake, mg/kg/day	Kow	Octanol-water partition coefficient, mg/L in octanol per mg/L in water
BW	Adult human body weight, kg	Kpa	Pollutant partition coefficient between plant matter and bulk animal, mg/kg in animal per mg/kg in plant
BWc	Child body weight, kg	Ksp	Pollutant partition coefficient between soil and plant matter, mg/kg in plant per mg/kg in soil
BCF	Pollutant bioconcentration factor in fish, mg/kg fish per mg/L water	Ksv	Pollutant partition coefficient between soil and vapor in soil-pores, mg/m ³ in air per mg/kg in soil
Csf	Soil PPLV, mg/kg	Ksw	Pollutant partition coefficient between soil and water, mg/L in water per mg/kg in soil
Csi	Soil SPPPLV for pathway 1, mg/kg**	Kwa	Pollutant partition coefficient between water and bulk animal, mg/kg in animal per mg/L in water
Css	Dust concentration in air, mg/m ³	Kwf	Pollutant partition coefficient between water and fish, mg/kg in fish per mg/L in water
Cwf	Water PPLV mg/L	Kwp	Pollutant partition coefficient between water and plant matter, mg/kg in plant per mg/L in water
Cwi	Water SPPPLV for pathway i, mg/kg	Kwv	Pollutant partition coefficient between water and air, mg/m ³ air per mg/L water
Csol	Pollutant solubility limit in water, mg/L	LD50	Estimated one-time pollutant dose lethal to 50 percent of mammalian species, mg/kg
CAS	Chemical Abstracts Service	MW	Molecular weight, g/g-mole
Dt	Pollutant acceptable daily human dose, mg/kg/day	Po	Vapor pressure, mm Hg
EPA	Environmental Protection Agency	PBF	Plant bioconcentration factor of pollutant, mg/kg in plant per mg/kg in soil
Fa	Fraction of fat in livestock or dairy	PPLV	Preliminary Pollutant Limit Value, mg/kg soil or mg/L water
Ff	Fraction of lipids in fish		
Fw	Fraction of year during which dust can occur		
Foc	Fraction of organic carbon in soil		
Ki	Overall pollutant partition coefficient for pathway i, units vary		
Kad	Pollutant partition coefficient between dairy and bulk animal, mg/L per mg/kg		
Kih, Kjk	Nonspecified pollutant partition coefficients		
Koc	Organic carbon in soil-water partition coefficient, mg/kg in soil organic carbon per mg/L in water		

RB	Inhaled volume of air daily, m ³	VDo	Saturation vapor density, mg/m ³
RB'	Inhaled volume of air in 8 hours by workers, m ³	Wa	Human consumption of meat, kg/day
SOC	Soil organic carbon content, g/g	Wd	Human consumption of dairy, L/day
SPPPLV	Single pathway PPLV, mg/kg soil or mg/L water	Wf	Human consumption of fish, kg/day
T	Temperature, °K or °C	Wi	Human consumption of matter in pathway i**
TLV	Threshold Limit Value, mg/m ³	Wp	Human consumption of vegetables, kg/day
USAMBRDL	U.S. Army Medical Bioengineering Research and Development Laboratory	Wsc	Child ingestion of soil, kg/day
VD	Vapor density corresponding to Cw < Csol in equilibrium with Cs, mg/m ³	Ww	Human consumption of drinking water, L/day

USA-CERL DISTRIBUTION

Chief of Engineers
 ATTN: Tech Monitor
 ATTN: DAEN-IMS-L (2)
 ATTN: DAEN-CCP
 ATTN: DAEN-CW
 ATTN: DAEN-CWE
 ATTN: DAEN-CWM-R
 ATTN: DAEN-CWO
 ATTN: DAEN-CWP
 ATTN: DAEN-EC
 ATTN: DAEN-ECC
 ATTN: DAEN-ECE
 ATTN: DAEN-ECR
 ATTN: DAEN-RD
 ATTN: DAEN-RDC
 ATTN: DAEN-RDM
 ATTN: DAEN-RM
 ATTN: DAEN-ZCE
 ATTN: DAEN-ZCF
 ATTN: DAEN-ZCI
 ATTN: DAEN-ZCM
 ATTN: DAEN-ZCZ

PESA, ATTN: Library 22060
 ATTN: DET III 79906

US Army Engineer Districts
 ATTN: Library (41)

US Army Engineer Divisions
 ATTN: Library (14)

US Army Europe
 AEAEN-ODCS/Engr 09403
 ISAE 09081
 V Corps
 ATTN: DEH (11)
 VII Corps
 ATTN: DEH (15)
 21st Support Command
 ATTN: DEH (12)
 USA Berlin
 ATTN: DEH (11)
 USASSETAF
 ATTN: DEH (10)
 Allied Command Europe (ACE)
 ATTN: DEH (3)

8th USA, Korea (19)

USA Japan (USARJ)
 ATTN: AJEN-DEH 96343
 ATTN: DEH-Honshu 96343
 ATTN: DEH-Okinawa 96331

416th Engineer Command 60623
 ATTN: Facilities Engineer

US Military Academy 10966
 ATTN: Facilities Engineer
 ATTN: Dept of Geography &
 Computer Science
 ATTN: DSCPER/MAEN-A

AMRC, ATTN DRXMR-WE 02172

USA ABRCOM 61299
 ATTN: DRCIS-RI-I
 ATTN: DRSAR-IS

AMC - Dir., Inst., & Servc
 ATTN: DEH (23)

DLA ATTN: DLA-WI 22314

DNA ATTN: NADS 20305

FORSCOM
 FORSCOM Engr, ATTN: AFEN-DEH
 ATTN: DEH (23)

HSC
 ATTN: HSLO-F 78234
 ATTN: Facilities Engineer
 Fitzsimons AMC 80240
 Walter Reed AMC 20012

INSCOM - Ch, Instl. Div
 ATTN: Facilities Engineer (3)

ROK/US Combined Forces Command 96301
 ATTN: EUSA-HHC-CFC/Engr

MDW, ATTN: DEH (3)

MTMC
 ATTN: MTMC-SA 20315
 ATTN: Facilities Engineer (3)

NARADCOM, ATTN: DRDNA-P 01760

TARCOM, Fac. Div. 48090

TRADOC
 HQ, TRADOC, ATTN: ATEN-DEH
 ATTN: DEH (19)

TSARCOM, ATTN: STSAS-F 63120

USACC, ATTN: Facilities Engr (2)

WESTCOM
 ATTN: DEH, Ft. Shafter 96858
 ATTN: APEN-IM

SHAPE 09055
 ATTN: Surv. Section, CCB-OPS
 Infrastructure Branch, LAMDA

HQ USEUCOM 09128
 ATTN: ECJ 4/7-LOE

FORT BELVOIR, VA 22060 (7)
 ATTN: Canadian Lisison Officer
 ATTN: British Liaison Officer
 ATTN: Australian Liaison Officer
 ATTN: French Liaison Officer
 ATTN: German Liaison Officer
 ATTN: Water Resources Support Ctr
 ATTN: Engr Studies Center
 ATTN: Engr Topographic Lab.
 ATTN: ATZA-DTE-SU
 ATTN: ATZA-DTE-EM
 ATTN: R&D Command

CRREL, ATTN: Library 03755

WES, ATTN: Library 39180

HQ, XVIII Airborn Corps
 and Fort Bragg
 ATTN: AFZA-PE-EE 28307

Area Engineer, AEDC-Area Office
 Arnold Air Force Station, TN 37389

Chanute AFB, IL 61868
 3345 CES/DE, Stop 27

Norton AFB, CA 92409
 ATTN: AFRCE-MX/DEE

AFESC, Tyndall AFB, FL 32403

NAVFAC
 ATTN: Engineering Command (7)
 ATTN: Division Offices (6)
 ATTN: Naval Public Works Center (9)
 ATTN: Naval Civil Engr Lab. (3)

ATTN: Library, Code LOBA NCEL 93043

Defense Technical Info. Center 22314
 ATTN: DDA (2)

Engr Societies Library, NY 10017

Natl Guard Bureau Instl. Div 20310

US Govt Print Office 22304
 Receiving Sect/Depository Copies (2)

US Army Env. Hygiene Agency
 ATTN: HSHB-E 21010

National Bureau of Standards 20899

ENS Team Distribution

Chief of Engineers
ATTN: DAEN-ZCF-B
ATTN: DAEN-ZCF-U
ATTN: DAEN-ECB
ATTN: DAEN-ECZ-A

US Army Engineer District
New York 10007
ATTN: Chief, NANEN-E
ATTN: Chief, Design Br.
Pittsburgh 15222
ATTN: Chief, Engr Div
Philadelphia 19106
ATTN: Chief, NAPEN-E
Baltimore 21203
ATTN: Chief, Engr Div
Norfolk 23510
ATTN: Chief, NAEN-R
Huntington 25721
ATTN: Chief, ORHED-P
Wilmington 28401
ATTN: Chief, SANEN-PP
ATTN: Chief, SANEN-PM
ATTN: Chief, SANEN-E
Charleston 29402
ATTN: Chief, Engr Div
Savannah 31402
ATTN: Chief, SASAS-L
Jacksonville 32232
ATTN: Env. Res. Br.
Nashville 37202
ATTN: Chief, ORNED-P
Memphis 38103
ATTN: Chief, LMED-PR
Vicksburg 39180
ATTN: Chief, Engr Div
Louisville 40201
ATTN: Chief, Engr Div
St. Paul 55101
ATTN: Chief, ED-ER
Chicago 60604
ATTN: Chief, NCCPD-ER
ATTN: Chief, NCCPE-PES
St. Louis 63101
ATTN: Chief, ED-B
Kansas City 64106
ATTN: Chief, Engr Div
Omaha 68102
ATTN: Chief, Engr Div
Little Rock 72203
ATTN: Chief, Engr Div
Tulsa 74102
ATTN: Chief, Engr Div
Fort Worth 76102
ATTN: Chief, SWFED-PR
ATTN: Chief, SWFED-F
Galveston 77550
ATTN: Chief, SWGAS-L
ATTN: Chief, SWGCO-M
Albuquerque 87103
ATTN: Chief, Engr Div
Los Angeles 90053
ATTN: Chief, SPLED-E
San Francisco 94105
ATTN: Chief, Engr Div
Sacramento 95814
ATTN: Chief, SPKED-D
Far East 96301
ATTN: Chief, Engr Div
Seattle 98124
ATTN: Chief, NPSEN-PL-WC
ATTN: Chief, NPSEN-PL-ER
ATTN: Chief, NPSEN-PL-BP
Walla Walla 99362
ATTN: Chief, Engr Div
Alaska 99501
ATTN: Chief, NPASA-R

US Army Engineer Division
New England 02154
ATTN: Laboratory
ATTN: Chief, NEDED-E
South Atlantic 30303
ATTN: Chief, SADEN-E

US Army Engineer Division
Huntsville 35807
ATTN: Chief, HNEDED-CS
ATTN: Chief, HNEDED-M
Lower Mississippi Valley 39180
ATTN: Chief, PD-R
Ohio River 45201
ATTN: Chief, Engr Div
North Central 60605
ATTN: Chief, Engr. Planning Br.
Southwestern 75202
ATTN: Chief, SWDCO-O
South Pacific 94111
ATTN: Laboratory
Pacific Ocean 96858
ATTN: Chief, Engr Div
ATTN: Chief, PODED-P
North Pacific 97208
ATTN: Laboratory
ATTN: Chief, Engr Div

5th US Army 78234
ATTN: AKFB-LG-E

6th US Army 94129
ATTN: AFKC-EN

7th US Army 09407
ATTN: AETM-HRD-EHD

USA ARRADCOM
ATTN: ORDAR-LCA-OK

West Point, NY 10996
ATTN: Dept of Mechanics
ATTN: Library

Ft. Belvoir, VA 22060
ATTN: Learning Resources Center
ATTN: ATSE-TD-TL (2)
ATTN: British Liaison Officer (5)

Ft. Clayton Canal Zone 34004
ATTN: DFAE

Ft. Leavenworth, KS 66027
ATTN: ATZLCA-SA

Ft. Lee, VA 23801
ATTN: DRXMC-D (2)

Ft. McPherson, GA 30330
ATTN: AFEN-CD

Ft. Monroe, VA 23651
ATTN: ATEN-AD (3)
ATTN: ATEN-FE-E

Aberdeen Proving Ground, MD 21005
ATTN: AMXHE
ATTN: DAC-ARCE

Naval Facilities Engr Command 22332
ATTN: Code 04

US Naval Oceanographic Office 39522
ATTN: Library

Port Hueneme, CA 93043
ATTN: Morell Library

Kirtland AFB, NM 87117
ATTN: DEP

Little Rock AFB 72076
ATTN: 314/DEEE

Patrick AFB, FL 32925
ATTN: XRQ

AF/RDXT
WASH DC 20330

Tinker AFB, OK 73145
2854 ABG/DEEE

Tyndall AFB, FL 32403
AFESC/PRT

Building Research Advisory Board 20418

Dept. of Transportation
Tallahassee, FL 32304

Dept. of Transportation Library 20590

Transportation Research Board 20418

Airports and Const. Services Dir.
Ottawa, Ontario, Canada K1A 0M8

National Defense Headquarters
Ottawa, Ontario, Canada K1A 0K2

END

2-87

DTIC