

AD-A170 055

SELECTED MEDICAL CARE STATISTICS SECOND QUARTER FY-86

1/1

(U) WASHINGTON HEADQUARTERS SERVICES (DOD) DC

DIRECTORATE FOR INFORMATION OPERATIONS AND REPORTS

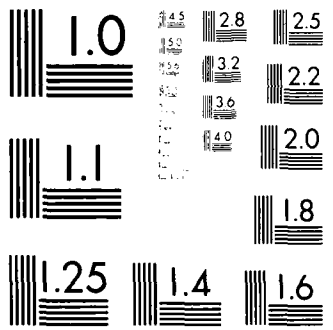
UNCLASSIFIED

31 MAR 86 DIOR/L02-86/02

F/G 6/5

NL





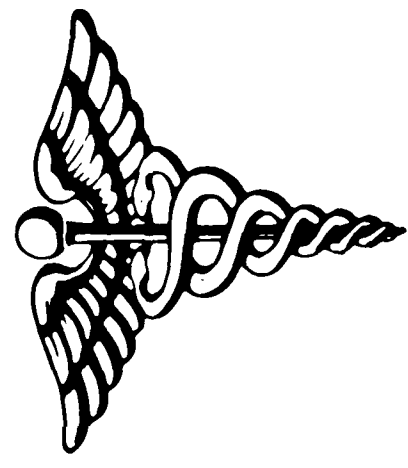
MICROCOPY RESOLUTION TEST CHART
 NATIONAL BUREAU OF STANDARDS-1963-A

12

L02

Department of Defense
SELECTED MEDICAL CARE STATISTICS

Quarter Ending March 31, 1986



DTIC
ELECTE
S D
JUL 24 1986

DISTRIBUTION STATEMENT A
Approved for public release
Distribution Unlimited

AD-A170 055

DTIC FILE COPY

86 2 25 00 5

Department of Defense Selected Medical Care Statistics

Quarter Ending March 31, 1986

*Washington Headquarters Services
Directorate for Information
Operations and Reports*

~~FOR SALE BY THE SUPERINTENDENT OF DOCUMENTS
U.S. GOVERNMENT PRINTING OFFICE
WASHINGTON, DC 20402~~

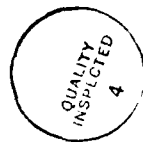
DTIC and NTIS identification number for this publication is D1OR/L02-86/02

FOREWORD

Selected Medical Care Statistics (SMCS) is a quarterly publication prepared by the Washington Headquarters Services, Directorate for Information Operations and Reports (WHS/DIOR) of the Office of the Secretary of Defense.

SMCS presents quarterly summary data concerning medical care provided at fixed military medical facilities located in (1) the United States and (2) outside the United States, in territories, possessions and foreign countries. This publication contains pie charts which are based on the percent of the worldwide DoD total for each of the categories. Admissions and beds occupied by dependents of other uniformed personnel (PHS, CG, NOAA) are less than one percent and are included in the other category.

This publication is generated from a computerized data base developed and maintained in consonance with Department of Defense Instruction (DoDI) 6015.14, November 14, 1977, under Reports Control Symbol DD-COMP(Q)1474 by the Manpower Management Information Division of WHS/DIOR.



Accession For	
NTIS	<input checked="" type="checkbox"/>
CRA&I	<input type="checkbox"/>
DTIC	<input type="checkbox"/>
TAB	<input type="checkbox"/>
Unannounced	<input type="checkbox"/>
Justification	
By	
Distribution:	
Availability Codes	
Dist	Available for Special
A-1	

TABLE OF CONTENTS

TABLE NUMBER		PAGE
Table 1.1	Operating Beds/Operating Bassinets/Beds Occupied - Worldwide.....	1
Figure 1.1	Beds Occupied - Percent of DoD Total Worldwide.....	2
Table 1.2	Operating Beds/Operating Bassinets/Beds Occupied - United States.....	3
Table 1.3	Operating Beds/Operating Bassinets/Beds Occupied - Outside United States.....	4
Table 2.1	Admissions - Worldwide.....	5
Figure 2.1	Admissions - Percent of DoD Total Worldwide.....	6
Table 2.2	Admissions - United States.....	7
Table 2.3	Admissions - Outside United States.....	8
Table 3.1	Outpatient Visits and Live Births - Worldwide.....	9
Figure 3.1	Outpatient Visits - Percent of Worldwide Total.....	10
Table 3.2	Outpatient Visits and Live Births - United States.....	11
Table 3.3	Outpatient Visits and Live Births - Outside United States.....	12
	GLOSSARY.....	13

TABLE 1.1
DEPARTMENT OF DEFENSE
SELECTED DATA CONCERNING MEDICAL CARE
PROVIDED AT FIXED MILITARY FACILITIES
FOR QUARTER ENDING
MARCH 1986

OPERATING BEDS - WORLDWIDE		DOD TOTAL	ARMY FACILITIES	NAVY FACILITIES	AIR FORCE FACILITIES
1.	NUMBER OF OPERATING BEDS - TOTAL	17,806	7,900	4,157	5,749
2.	NUMBER OF OPERATING BASSINETS - TOTAL	2,005	633	257	1,115
3.	NUMBER OF BEDS OCCUPIED (DAILY AVERAGE) - TOTAL	14,642	6,885	3,245	4,512
4.	BEDS OCCUPIED BY US ACTIVE DUTY UNIFORMED PERSONNEL - TOTAL	5,537	2,598	1,593	1,346
A.	MILITARY - TOTAL	5,482	2,584	1,563	1,335
	(1) ARMY	2,432	2,259	44	129
	(2) NAVY-MARINE CORPS	1,730	151	1,476	103
	(3) AIR FORCE	1,320	174	43	1,103
B.	OTHER UNIFORMED PERSONNEL (PHS.CG.NOAA) - TOTAL	55	14	30	11
5.	BEDS OCCUPIED BY RETIRED US UNIFORMED PERSONNEL - TOTAL	2,436	1,167	416	853
A.	RETIRED MILITARY - TOTAL	2,417	1,161	409	847
	(1) ARMY	1,037	781	81	175
	(2) NAVY-MARINE CORPS	541	135	280	126
	(3) AIR FORCE	839	245	48	546
B.	OTHER RETIRED UNIFORMED PERSONNEL (PHS.CG.NOAA) - TOTAL	19	6	7	6
6.	BEDS OCCUPIED BY DEPENDENTS OF US ACTIVE DUTY MILITARY PERSONNEL - TOTAL	4,065	1,811	*20	1,434
	(1) ARMY	1,625	1,454	34	137
	(2) NAVY-MARINE CORPS	999	144	733	122
	(3) AIR FORCE	1,441	213	53	1,175
7.	BEDS OCCUPIED BY DEPENDENTS OF RETIRED AND DECEASED US MILITARY PERSONNEL - TOTAL	2,009	882	339	788
	(1) ARMY	793	569	61	163
	(2) NAVY-MARINE CORPS	459	107	232	120
	(3) AIR FORCE	757	206	46	505
8.	BEDS OCCUPIED BY DEPENDENTS OF OTHER UNIFORMED PERSONNEL (PHS.CG.NOAA) - TOTAL	49	17	14	18
9.	BEDS OCCUPIED BY ALL OTHER BENEFICIARIES - TOTAL	546	410	63	73

FIGURE 1.1

BEDS OCCUPIED—PERCENT OF DOD TOTAL WORLDWIDE QUARTER ENDING MARCH 31, 1986

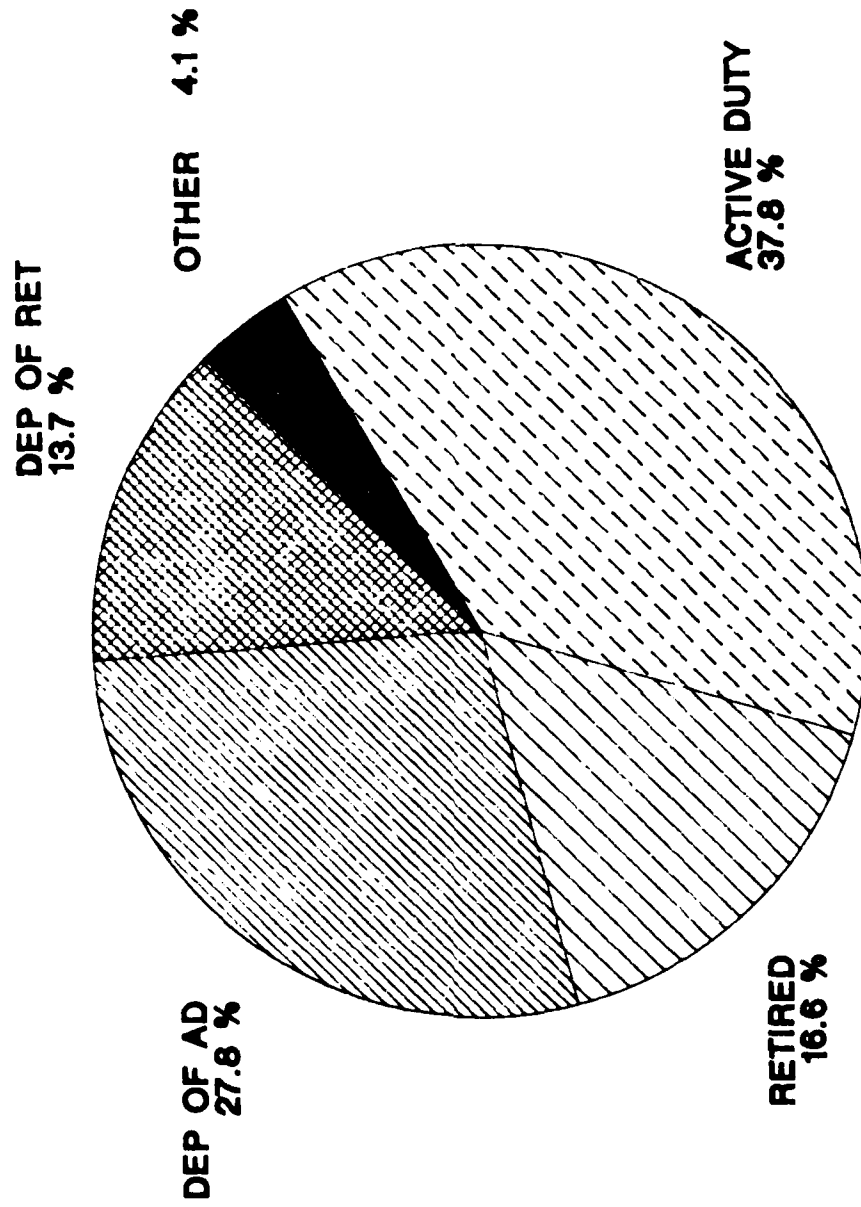


TABLE 1.2
DEPARTMENT OF DEFENSE
SELECTED DATA CONCERNING MEDICAL CARE
PROVIDED AT FIXED MILITARY FACILITIES
FOR QUARTER ENDING
MARCH 1986

OPERATING BEDS - UNITED STATES		DOD TOTAL	ARMY FACILITIES	NAVY FACILITIES	AIR FORCE FACILITIES
1.	NUMBER OF OPERATING BEDS	15,346	6,579	3,717	5,050
2.	NUMBER OF OPERATING BASSINETS	1,671	493	217	961
3.	NUMBER OF BEDS OCCUPIED (DAILY AVERAGE)	12,515	5,679	2,905	3,931
4.	BEDS OCCUPIED BY US ACTIVE DUTY UNIFORMED PERSONNEL	4,471	1,974	1,403	1,094
	A. MILITARY	4,416	1,960	1,373	1,083
	(1) ARMY	1,821	1,691	40	90
	(2) NAVY-MARINE CORPS	1,522	137	1,302	83
	(3) AIR FORCE	1,073	132	31	910
	B. OTHER UNIFORMED PERSONNEL (PHS,CG,NOAA)	55	14	30	11
5.	BEDS OCCUPIED BY RETIRED US UNIFORMED PERSONNEL	2,362	1,130	405	827
	A. RETIRED MILITARY	2,343	1,124	398	821
	(1) ARMY	995	751	76	168
	(2) NAVY-MARINE CORPS	529	134	274	121
	(3) AIR FORCE	819	239	48	532
	B. OTHER RETIRED UNIFORMED PERSONNEL (PHS,CG,NOAA)	19	6	7	6
6.	BEDS OCCUPIED BY DEPENDENTS OF US ACTIVE DUTY MILITARY PERSONNEL	3,219	1,353	699	1,167
	(1) ARMY	1,199	1,066	27	106
	(2) NAVY-MARINE CORPS	882	136	645	101
	(3) AIR FORCE	1,138	151	27	960
7.	BEDS OCCUPIED BY DEPENDENTS OF RETIRED AND DECEASED US MILITARY PERSONNEL	1,967	868	330	769
	(1) ARMY	775	559	56	160
	(2) NAVY-MARINE CORPS	450	106	228	116
	(3) AIR FORCE	742	203	46	493
8.	BEDS OCCUPIED BY DEPENDENTS OF OTHER UNIFORMED PERSONNEL (PHS,CG,NOAA)	49	17	14	18
9.	BEDS OCCUPIED BY ALL OTHER BENEFICIARIES	447	337	54	56

TABLE 1 3
 DEPARTMENT OF DEFENSE
 SELECTED DATA CONCERNING MEDICAL CARE
 PROVIDED AT FIXED MILITARY FACILITIES
 FOR QUARTER ENDING
 MARCH 1986

OPERATING BEDS - OUTSIDE UNITED STATES		DOD TOTAL	ARMY FACILITIES	NAVY FACILITIES	AIR FORCE FACILITIES
1	NUMBER OF OPERATING BEDS	2,460	1,321	440	699
2	NUMBER OF OPERATING BASSINETS	334	140	40	154
3	NUMBER OF BEDS OCCUPIED (DAILY AVERAGE)	2,127	1,206	340	581
4	BEDS OCCUPIED BY US ACTIVE DUTY UNIFORMED PERSONNEL	1,066	624	190	252
	A MILITARY	1,066	624	190	252
	(1) ARMY	611	568	4	39
	(2) NAVY-MARINE CORPS	208	14	174	20
	(3) AIR FORCE	247	42	12	193
	B OTHER UNIFORMED PERSONNEL (PHS, CG, NOAA)	0	0	0	0
5	BEDS OCCUPIED BY RETIRED US UNIFORMED PERSONNEL	74	37	11	26
	A RETIRED MILITARY	74	37	11	26
	(1) ARMY	42	30	5	7
	(2) NAVY-MARINE CORPS	12	1	6	5
	(3) AIR FORCE	20	6	0	14
	B OTHER RETIRED UNIFORMED PERSONNEL (PHS, CG, NOAA)	0	0	0	0
6	BEDS OCCUPIED BY DEPENDENTS OF US ACTIVE DUTY MILITARY PERSONNEL	846	458	121	267
	(1) ARMY	426	388	7	31
	(2) NAVY-MARINE CORPS	117	8	88	21
	(3) AIR FORCE	303	62	26	215
7	BEDS OCCUPIED BY DEPENDENTS OF RETIRED AND DECEASED US MILITARY PERSONNEL	42	14	9	19
	(1) ARMY	18	10	5	3
	(2) NAVY-MARINE CORPS	9	1	4	4
	(3) AIR FORCE	15	3	0	12
8	BEDS OCCUPIED BY DEPENDENTS OF OTHER UNIFORMED PERSONNEL (PHS, CG, NOAA)	0	0	0	0
9	BEDS OCCUPIED BY ALL OTHER BENEFICIARIES	99	73	9	17

TABLE 2 1
 DEPARTMENT OF DEFENSE
 SELECTED DATA CONCERNING MEDICAL CARE
 PROVIDED AT FIXED MILITARY FACILITIES
 FOR QUARTER ENDING
 MARCH 1986

ADMISSIONS - WORLDWIDE		DOD TOTAL	ARMY FACILITIES	NAVY FACILITIES	AIR FORCE FACILITIES
10	NUMBER OF ADMISSIONS	242,989	108,642	55,550	78,797
11	ADMISSIONS OF US ACTIVE DUTY UNIFORMED PERSONNEL	76,006	33,628	21,408	20,970
	A MILITARY	75,411	33,487	21,111	20,813
	(1) ARMY	31,805	29,783	554	1,468
	(2) NAVY-MARINE CORPS	22,541	1,642	19,805	1,094
	(3) AIR FORCE	21,065	2,062	752	18,251
	B OTHER UNIFORMED PERSONNEL (PHS,CG,NOAA)	595	141	297	157
12	ADMISSIONS OF RETIRED US UNIFORMED PERSONNEL	29,599	13,855	5,796	9,948
	A ADMISSIONS OF RETIRED MILITARY	29,326	13,774	5,673	9,879
	(1) ARMY	12,457	9,501	1,058	1,898
	(2) NAVY-MARINE CORPS	6,754	1,474	3,858	1,422
	(3) AIR FORCE	10,115	2,799	757	6,559
	B ADMISSIONS OF OTHER RETIRED UNIFORMED PERSONNEL (PHS,CG,NOAA)	273	81	123	69
13	ADMISSIONS OF DEPENDENTS OF US ACTIVE DUTY PERSONNEL (PHS,CG,NOAA)	99,198	42,904	21,538	34,756
	A ARMY	39,592	35,559	940	3,093
	B NAVY-MARINE CORPS	25,057	3,223	19,169	2,665
	C AIR FORCE	34,549	4,122	1,429	28,998
14	ADMISSIONS OF DEPENDENTS OF RETIRED AND DECEASED US MILITARY PERSONNEL	28,921	12,140	5,526	11,255
	A ARMY	11,262	8,142	941	2,179
	B NAVY-MARINE CORPS	6,810	1,395	3,756	1,659
	C AIR FORCE	10,849	2,603	829	7,417
15	ADMISSIONS OF DEPENDENTS OF OTHER UNIFORMED PERSONNEL (PHS,CG,NOAA)	1,062	339	394	329
16	ADMISSIONS OF ALL OTHER BENEFICIARIES	8,203	5,776	888	1,539

FIGURE 2-1

ADMISSIONS—PERCENT OF DOD TOTAL WORLDWIDE QUARTER ENDING MARCH 31, 1986

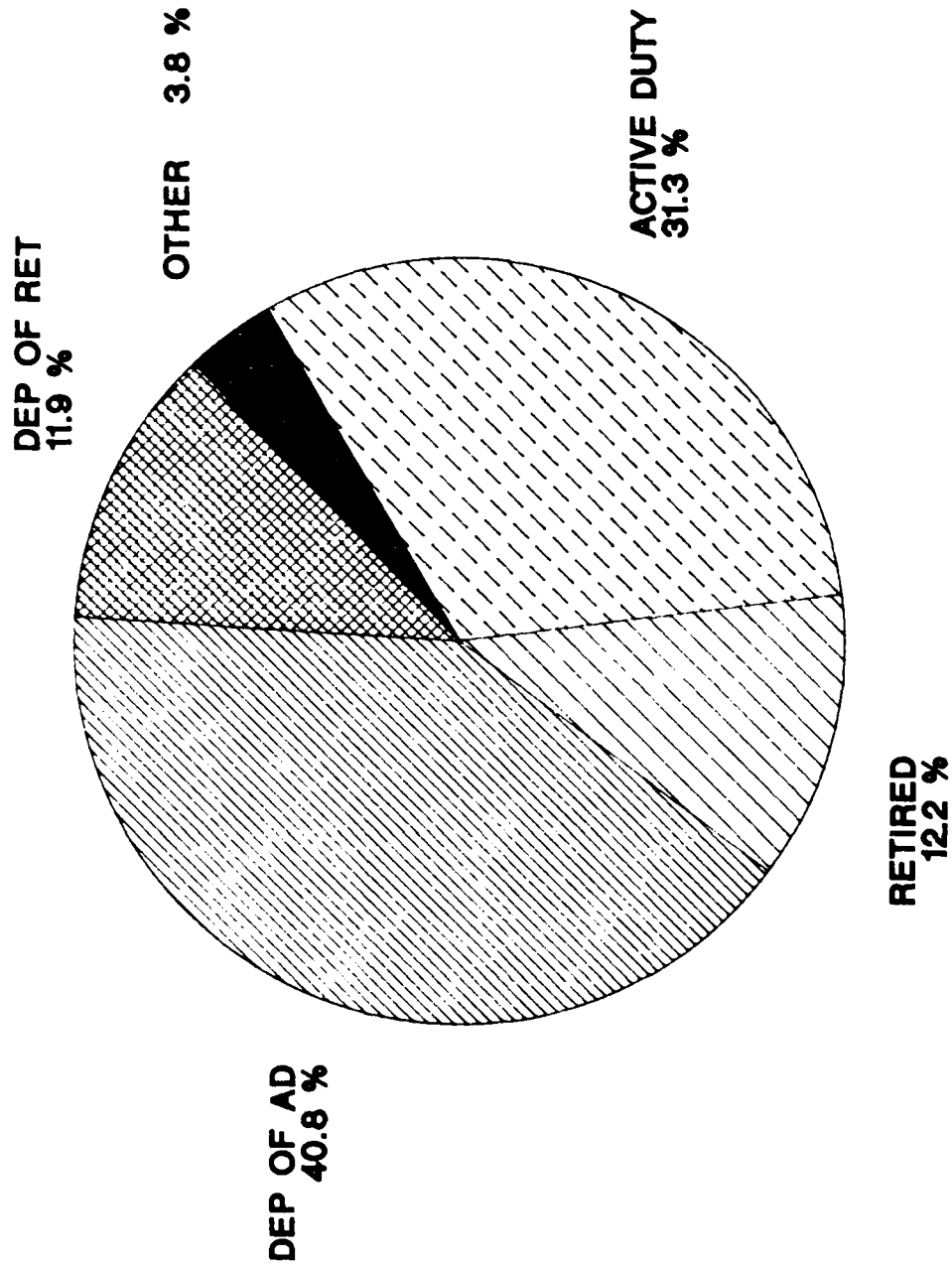


TABLE 2 2
 DEPARTMENT OF DEFENSE
 SELECTED DATA CONCERNING MEDICAL CARE
 PROVIDED AT FIXED MILITARY FACILITIES
 FOR QUARTER ENDING
 MARCH 1986

	ADMISSIONS - UNITED STATES	DOD TOTAL	ARMY FACILITIES	NAVY FACILITIES	AIR FORCE FACILITIES
10	NUMBER OF ADMISSIONS	204,125	87,746	48,540	67,839
11	ADMISSIONS OF US ACTIVE DUTY UNIFORMED PERSONNEL	60,889	25,581	18,413	16,895
	A MILITARY	60,312	25,443	18,130	16,739
	(1) ARMY	23,971	22,558	482	931
	(2) NAVY-MARINE CORPS	19,500	1,463	17,203	834
	(3) AIR FORCE	16,841	1,422	445	14,974
	B OTHER UNIFORMED PERSONNEL (PHS,CG,NOAA)	577	138	283	156
12	ADMISSIONS OF RETIRED US UNIFORMED PERSONNEL	28,685	13,423	5,601	9,661
	A ADMISSIONS OF RETIRED MILITARY	28,416	13,343	5,478	9,595
	(1) ARMY	11,967	9,171	975	1,821
	(2) NAVY-MARINE CORPS	6,582	1,448	3,771	1,363
	(3) AIR FORCE	9,867	2,724	732	6,411
	B ADMISSIONS OF OTHER RETIRED UNIFORMED PERSONNEL (PHS,CG,NOAA)	269	80	123	66
13	ADMISSIONS OF DEPENDENTS OF US ACTIVE DUTY PERSONNEL (PHS,CG,NOAA)	78,805	31,709	18,234	28,862
	A ARMY	28,925	25,855	730	2,340
	B NAVY-MARINE CORPS	22,303	3,072	16,843	2,388
	C AIR FORCE	27,577	2,782	661	24,134
14	ADMISSIONS OF DEPENDENTS OF RETIRED AND DECEASED US MILITARY PERSONNEL	28,241	11,930	5,294	11,017
	A ARMY	10,985	7,991	852	2,142
	B NAVY-MARINE CORPS	6,617	1,379	3,636	1,602
	C AIR FORCE	10,639	2,560	806	7,273
15	ADMISSIONS OF DEPENDENTS OF OTHER UNIFORMED PERSONNEL (PHS,CG,NOAA)	1,044	339	380	325
16	ADMISSIONS OF ALL OTHER BENEFICIARIES	6,461	4,764	618	1,079

TABLE 7-3
 DEPARTMENT OF DEFENSE
 SELECTED DATA CONCERNING MEDICAL CARE
 PROVIDED AT FIXED MILITARY FACILITIES
 FOR QUARTER ENDING
 MARCH 1986

	ADMISSIONS - OUTSIDE UNITED STATES	DOD TOTAL	ARMY FACILITIES	NAVY FACILITIES	AIR FORCE FACILITIES
10	NUMBER OF ADMISSIONS	38,864	20,896	7,910	10,958
11	ADMISSIONS OF US ACTIVE DUTY UNIFORMED PERSONNEL	15,117	8,047	2,995	4,075
	A MILITARY	15,099	8,044	2,981	4,074
	(1) ARMY	7,874	7,225	72	537
	(2) NAVY-MARINE CORPS	3,041	179	2,602	260
	(3) AIR FORCE	4,224	540	307	3,277
	B OTHER UNIFORMED PERSONNEL (PHS, CG, NOAA)	18	3	14	1
12	ADMISSIONS OF RETIRED US UNIFORMED PERSONNEL	914	432	195	287
	A ADMISSIONS OF RETIRED MILITARY	910	431	195	284
	(1) ARMY	490	330	83	77
	(2) NAVY-MARINE CORPS	172	26	87	59
	(3) AIR FORCE	248	75	25	148
	B ADMISSIONS OF OTHER RETIRED UNIFORMED PERSONNEL (PHS, CG, NOAA)	4	1	0	3
13	ADMISSIONS OF DEPENDENTS OF US ACTIVE DUTY PERSONNEL (PHS, CG, NOAA)	20,393	11,195	3,304	5,894
	A ARMY	10,667	9,704	210	753
	B NAVY-MARINE CORPS	2,754	151	2,326	277
	C AIR FORCE	6,972	1,340	768	4,864
14	ADMISSIONS OF DEPENDENTS OF RETIRED AND DECEASED US MILITARY PERSONNEL	680	210	232	238
	A ARMY	277	151	89	37
	B NAVY-MARINE CORPS	193	16	120	57
	C AIR FORCE	210	43	23	144
15	ADMISSIONS OF DEPENDENTS OF OTHER UNIFORMED PERSONNEL (PHS, CG, NOAA)	18	0	14	4
16	ADMISSIONS OF ALL OTHER BENEFICIARIES	1,742	1,012	270	460

TABLE 3 1
 DEPARTMENT OF DEFENSE
 SELECTED DATA CONCERNING MEDICAL CARE
 PROVIDED AT FIXED MILITARY FACILITIES
 FOR QUARTER ENDING
 MARCH 1986

OUTPATIENT VISITS - WORLDWIDE		DOD TOTAL	ARMY FACILITIES	NAVY FACILITIES	AIR FORCE FACILITIES
17	NUMBER OF OUTPATIENT VISITS	- TOTAL	5,203,411	2,730,285	4,155,741
18	OUTPATIENT VISITS BY US ACTIVE DUTY UNIFORMED PERSONNEL	- TOTAL	2,039,700	1,215,162	1,339,143
	A. MILITARY	- TOTAL	2,035,389	1,202,803	1,335,346
	(1) ARMY	2,000,115	1,934,971	19,652	45,492
	(2) NAVY-MARINE CORPS	1,242,520	46,085	1,167,558	28,877
	(3) AIR FORCE	1,330,903	54,333	15,593	1,260,977
	B. OTHER UNIFORMED PERSONNEL (PHS.CG.NOAA)	- TOTAL	4,311	12,359	3,797
19	OUTPATIENT VISITS BY RETIRED US UNIFORMED PERSONNEL	- TOTAL	487,987	214,044	431,260
20	OUTPATIENT VISITS BY DEPENDENTS OF US ACTIVE DUTY UNIFORMED PERSONNEL	- TOTAL	1,748,567	860,950	1,623,370
	A. DEPENDENTS OF MILITARY PERSONNEL	- TOTAL	1,741,574	849,166	1,612,820
	(1) ARMY	1,657,009	1,531,174	32,790	93,045
	(2) NAVY-MARINE CORPS	943,887	87,313	788,728	67,846
	(3) AIR FORCE	1,602,664	123,087	27,648	1,451,929
	B. DEPENDENTS OF OTHER UNIFORMED PERSONNEL (PHS.CG.NOAA)	- TOTAL	6,993	11,784	10,550
21	OUTPATIENT VISITS BY DEPENDENTS OF RETIRED AND DECEASED US UNIFORMED PERSONNEL	- TOTAL	576,713	247,622	634,986
22	OUTPATIENT VISITS BY ALL OTHER BENEFICIARIES	- TOTAL	350,444	192,507	126,982
23	NUMBER OF LIVE BIRTHS	- TOTAL	10,734	6,697	9,160

FIGURE 3.1

OUTPATIENT VISITS—PERCENT OF WORLDWIDE TOTAL QUARTER ENDING MARCH 31, 1986

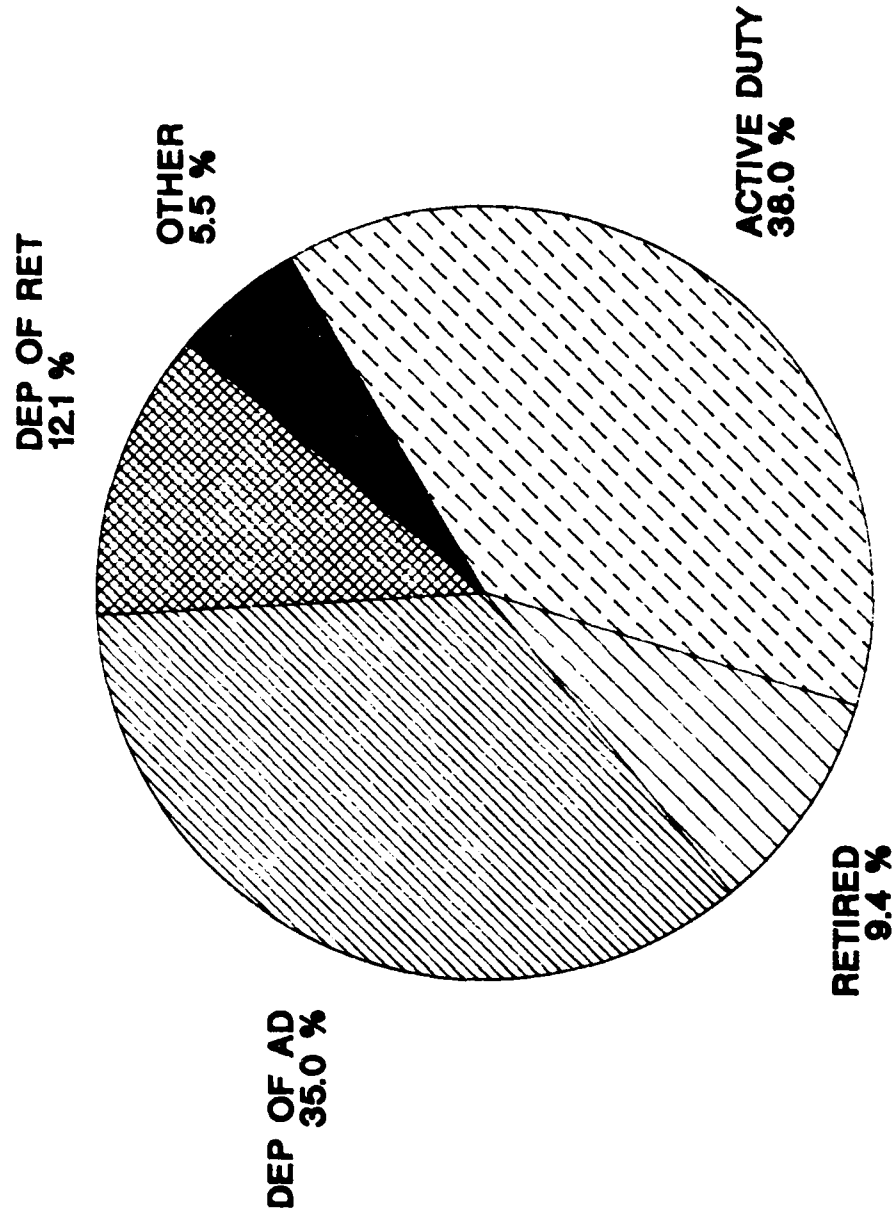


TABLE 3.2
DEPARTMENT OF DEFENSE
SELECTED DATA CONCERNING MEDICAL CARE
PROVIDED AT FIXED MILITARY FACILITIES
FOR QUARTER ENDING
MARCH 1986

OUTPATIENT VISITS - UNITED STATES		DOD TOTAL	ARMY FACILITIES	NAVY FACILITIES	AIR FORCE FACILITIES
17.	NUMBER OF OUTPATIENT VISITS	10,144,259	4,125,433	2,474,571	3,544,255
18.	OUTPATIENT VISITS BY US ACTIVE DUTY UNIFORMED PERSONNEL				
	- TOTAL	3,655,473	1,496,972	1,092,139	1,066,362
A.	MILITARY	3,635,786	1,492,677	1,080,430	1,062,678
	(1) ARMY	1,456,293	1,410,847	16,430	29,016
	(2) NAVY-MARINE CORPS	1,118,438	42,037	1,054,066	22,335
	(3) AIR FORCE	1,061,055	39,793	9,934	1,011,328
B.	OTHER UNIFORMED PERSONNEL (PHS,CG,NOAA)	19,687	4,295	11,709	3,683
19.	OUTPATIENT VISITS BY RETIRED US UNIFORMED PERSONNEL	1,104,626	475,179	206,818	422,629
20.	OUTPATIENT VISITS BY DEPENDENTS OF US ACTIVE DUTY UNIFORMED PERSONNEL				
	- TOTAL	3,378,917	1,285,315	772,670	1,320,932
A.	DEPENDENTS OF MILITARY PERSONNEL	3,350,755	1,278,333	761,555	1,310,867
	(1) ARMY	1,193,624	1,098,541	27,786	67,297
	(2) NAVY-MARINE CORPS	861,591	83,467	715,900	62,224
	(3) AIR FORCE	1,295,540	96,325	17,869	1,181,346
B.	DEPENDENTS OF OTHER UNIFORMED PERSONNEL (PHS,CG,NOAA)	28,162	6,982	11,115	10,065
21.	OUTPATIENT VISITS BY DEPENDENTS OF RETIRED AND DECEASED US UNIFORMED PERSONNEL	1,433,692	568,092	239,100	626,500
22.	OUTPATIENT VISITS BY ALL OTHER BENEFICIARIES	571,551	299,875	163,844	107,832
23.	NUMBER OF LIVE BIRTHS	21,383	7,899	5,695	7,789

TABLE 3 3
 DEPARTMENT OF DEFENSE
 SELECTED DATA CONCERNING MEDICAL CARE
 PROVIDED AT FIXED MILITARY FACILITIES
 FOR QUARTER ENDING
 MARCH 1986

OUTPATIENT VISITS - OUTSIDE UNITED STATES		DOD TOTAL	ARMY FACILITIES	NAVY FACILITIES	AIR FORCE FACILITIES
17.	NUMBER OF OUTPATIENT VISITS	- TOTAL	1,077,978	255,714	611,486
18.	OUTPATIENT VISITS BY US ACTIVE DUTY UNIFORMED PERSONNEL	- TOTAL	938,532	123,023	272,781
	A MILITARY	- TOTAL	937,752	122,373	272,667
	(1) ARMY		543,822	3,227	16,476
	(2) NAVY-MARINE CORPS		124,082	113,497	6,542
	(3) AIR FORCE		269,848	5,659	249,649
	B OTHER UNIFORMED PERSONNEL (PHS.CG.NOAA)	- TOTAL	780	650	114
19.	OUTPATIENT VISITS BY RETIRED US UNIFORMED PERSONNEL	- TOTAL	28,665	7,226	8,631
20.	OUTPATIENT VISITS BY DEPENDENTS OF US ACTIVE DUTY UNIFORMED PERSONNEL	- TOTAL	853,970	463,252	302,438
	A DEPENDENTS OF MILITARY PERSONNEL	- TOTAL	852,805	463,241	301,953
	(1) ARMY		463,385	5,004	25,748
	(2) NAVY-MARINE CORPS		82,296	72,828	5,622
	(3) AIR FORCE		307,124	9,779	270,583
	B DEPENDENTS OF OTHER UNIFORMED PERSONNEL (PHS.CG.NOAA)	- TOTAL	1,165	11	485
21.	OUTPATIENT VISITS BY DEPENDENTS OF RETIRED AND DECEASED US UNIFORMED PERSONNEL	- TOTAL	25,629	8,621	8,486
22.	OUTPATIENT VISITS BY ALL OTHER BENEFICIARIES	- TOTAL	98,382	50,569	19,150
23.	NUMBER OF LIVE BIRTHS	- TOTAL	5,208	2,835	1,371

GLOSSARY

Admission. An admission is the act of placing an individual under treatment or observation in a medical center or a hospital. The day of admission is the day on which the medical center or hospital makes a formal acceptance of the patient who is to be provided with room, board, and continuous nursing service in an area of the hospital where patients normally stay at least overnight. If both an admission and discharge occur on the same day, then that day is considered as a day of admission and shall be counted as one occupied bed day. The admission of a newborn is deemed to occur at time of birth.

Live Births. A live birth is the complete expulsion or extraction from its mother of a product of conception, irrespective of the duration of pregnancy which after such separation, breathes or shows any other evidence of life such as beating of the heart, pulsation of the umbilical cord, or definite movement of voluntary muscles, whether or not the umbilical cord has been cut, or the placenta is attached; each such product of such a birth is considered liveborn.

Occupied Bed. A bed assigned as of midnight to a patient, to include a patient on pass or liberty not in excess of 72 hours, and any bassinets assigned to a newborn infant whose mother has been discharged from the hospital. The definition excludes: any bed assigned to a patient subsisting out, on leave, or absent without leave, and any bed occupied by a transient patient.

Operating Bed. A bed that is currently set up and ready in all respects for the care of a patient. It must include supporting space, equipment and staff to operate under normal circumstances. Excluded are nursery bassinets and transient patients' beds.

Operating Bassinet. A bed designed for the care of an infant that is currently set up in the newborn nursery and ready in all respects for use. It must include support space, equipment and staff to operate under normal circumstances. Excluded are infant transporters.

Outpatient Visits. Visits made to each dispensary or separate, organized clinic of a fixed medical treatment facility for medical advice, examination, diagnosis, treatment, evaluation, consultation, or counseling, including visits by military patients who are excused from duty for medical reasons but who have not been admitted for inpatient care in a facility authorized beds for inpatient care and any visits made incident to complete physicals or flight physicals.

END

DTIC

8-86