

AD-A169 569

PRIME CONTRACT AWARDS BY STATE FIRST HALF FISCAL YEAR
1986(U) WASHINGTON HEADQUARTERS SERVICES (DOD) DC
DIRECTORATE FOR INFORMATION OPERATIONS AND REPORTS
1986 DIOR/P09-86/01

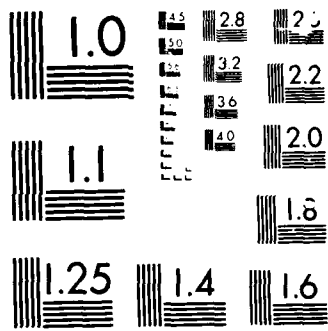
1/1

UNCLASSIFIED

F/G 15/5

NL





12

Department of Defense

PRIME CONTRACT AWARDS BY STATE

First Half Fiscal Year 1986

AD-A169 569



DTIC FILE COPY

This document has been approved for public release and sale; its distribution is unlimited.

DTIC ELECTE
S JUL 16 1986 D
A

PRIME CONTRACT AWARDS BY STATE

First Half Fiscal Year 1986

**Department of Defense
Washington Headquarters Services
Directorate for Information
Operations and Reports**

~~For sale by the Superintendent of Documents, U.S. Government Printing Office, Washington, D.C. 20402~~

DTIC and NTIS identification number for this publication is DIOR/P09-86/01

TABLE OF CONTENTS

Introduction. 1

Tables:

Table 1. Net Value and Percent Distribution of DoD Procurement
Actions, by State: First Half FY 1986, First Half FY 1985,
and Second Quarters FY 1986 and FY 1985 3

Table 2. Net Value and Percent Distribution of DoD Military
Procurement Actions, by State: First Half FY 1986, First Half
FY 1985, and Second Quarters FY 1986 and FY 1985. 4

Table 3. Net Value and Percent Distribution of DoD Military
Procurement Actions, by State, According to Defense Component:
First Half FY 1986. 5

INTRODUCTION

Prime Contract Awards by State provides a wide variety of information on all Department of Defense (DoD) procurement actions. Both military and civil functions (i.e., Army Corps of Engineers--Civil Works) procurements are represented. The data are presented by state and include the net value of procurements awarded to each state as well as each state's percentage of the total for all state procurements.

The total net value of procurement actions for the first half of Fiscal Year (FY) 1986 and FY 1985 are shown for all of DoD in Table 1 and for its military components only in Table 2. These tables also provide, for comparison purposes, data for the second quarters of FY 1986 and FY 1985. The total net value of military procurement actions for the first half of FY 1986 (presented in Table 2) are displayed according to defense component in Table 3.

NOTES ON COVERAGE

Data in this report reflect the net value of debit and credit procurement actions over \$25,000, i.e., terminations, price changes, or other downward adjustments which are deducted from a contractor's total award amount, while modifications and other positive adjustments are treated as increases. Procurement actions include definitive contracts; the obligated portions of letter contracts; and job orders, task orders, delivery orders, or any other orders against existing contracts. Contracts for research and development, services, construction, and supplies and equipment are included. Contracts awarded by DoD to other Government agencies as intragovernmental orders and foreign military sales (reimbursable sales to foreign governments) are also included.

The data base from which information for this report is collected does not include data on those parts of indefinite quantity contracts (except for petroleum products) that have not been translated into specific orders to businesses, those contracts that have not yet become mutually binding agreements between the Government and the contractor, or prime contracts awarded by other U.S. government agencies and financed with DoD funds.

The previous first half figures appearing in this publication differ from the originally published figures. This is due to changes received during the second half of the fiscal year for records originally submitted in the first half and represents the most accurate data available for the previous first half.

Totals

The United States total in the tables includes all contracts awarded for work performed in the United States. The United States as used here includes the 50 states, the District of Columbia, U.S. possessions, the Commonwealth of Puerto Rico, the Trust Territories of the Pacific, and other areas subject to complete U.S. sovereignty.

The subtotal "Not Distributed by State" includes all contract actions of \$25,000 or less for performance in the United States. This subtotal also includes all contract actions, regardless of size, for performance in the U.S. possessions, the Commonwealth of Puerto Rico, the Trust Territories of the Pacific, and other areas subject to complete U.S. sovereignty, and all contract actions for performance in classified locations.

State subtotals include the net value of procurement actions over \$25,000 awarded to each state and the District of Columbia.

Location of Contracts

Contract work is not necessarily performed in the state where the contract is awarded. Most manufacturing contracts have been attributed to the contractor's location where the product will be processed and assembled. When contract work has been performed at more than one plant, the contract has been attributed to the location where the largest dollar amount of work was produced. Both construction and service contracts have been attributed to the state where the work is to be performed. Contracts for transportation and communications services have been attributed to the state where the contractor's home office is located. For purchases from wholesale or other distribution firms, the location is the contractor's business address.

HIGHLIGHTS

Total prime contract awards in the United States for the first half of Fiscal Year 1986 totaled \$72,983.5 million, a decrease of \$5,455.4 million or -7.0 percent less than the first half of Fiscal Year 1985. The state that showed the largest dollar amount of change was Texas with a decrease of \$1,882.0 million or -29.8 percent. It should be noted that the two states with the largest dollar amount of decrease for the first half of FY 1986, Texas and Virginia, had increases of 20.7 percent and 33.9 percent respectively from Fiscal Year 1984 to Fiscal Year 1985.

Thirty states (including the District of Columbia) showed a decrease with a median of -\$160.4 million while twenty one states showed an increase with a median of \$51.3 million. The average change for all the states was -\$107.2 million with a median of -\$32.2 million. The ten states showing the largest amount of procurement award dollar change from the first half of FY 1985 to the first half of FY 1986 are as follows:

(AMOUNTS IN THOUSANDS OF DOLLARS)

STATE	FIRST HALF FY 1986 AMOUNT	AMOUNT OF INCREASE OR DECREASE FROM FIRST HALF FY 1985	PERCENT OF CHANGE FROM FIRST HALF FY 1985
TEXAS	4,443,703	-1,882,038	-29.8
VIRGINIA	2,213,567	-1,001,607	-31.2
MASSACHUSETTS	5,312,758	+631,126	+13.5
NEW YORK	5,160,913	+587,006	+12.8
CALIFORNIA	16,000,274	-531,477	-3.2
WASHINGTON	1,667,467	-504,626	-23.2
MINNESOTA	798,783	-491,480	-38.1
INDIANA	802,995	-439,514	-35.4
MISSOURI	2,255,308	-382,037	-14.5
KANSAS	935,323	-328,777	-26.0

Table 1. Net Value and Percent Distribution of DoD Procurement Actions, by State: First Half FY 1986, First Half FY 1985, and Second Quarters FY 1986 and FY 1985^{1,2}

(Amounts in Thousands)

STATE	FISCAL YEAR TO DATE				THREE MONTH PERIOD			
	1986 (OCT 85-MAR 86)		1985 (OCT 84-MAR 85)		FISCAL YEAR 1986 (JAN-MAR 1986)		FISCAL YEAR 1985 (JAN-MAR 1985)	
	AMOUNT	PERCENT	AMOUNT	PERCENT	AMOUNT	PERCENT	AMOUNT	PERCENT
TOTAL, U.S.	\$72,983,544		\$78,438,951		\$40,948,098		\$36,578,746	
NOT DISTRIBUTED BY STATE	5,911,186		5,897,296		3,563,184		3,193,882	
STATE TOTALS	67,072,358	100.0	72,541,655	100.0	37,384,914	100.0	33,384,864	100.0
Alabama	699,554	1.0	762,003	1.1	367,143	1.0	325,983	1.0
Alaska	286,536	0.4	269,358	0.4	81,012	0.2	94,178	0.3
Arizona	565,090	0.8	812,161	1.1	365,375	1.0	545,711	1.6
Arkansas	710,641	1.1	591,289	0.8	304,987	0.8	47,999	0.1
California	16,000,274	23.9	16,531,751	22.8	8,172,605	21.9	7,940,778	23.8
Colorado	592,347	0.9	727,385	1.0	252,063	0.7	328,074	1.0
Connecticut	2,459,598	3.7	2,559,978	3.5	1,671,271	4.5	1,335,417	4.0
Delaware	34,419	0.1	213,545	0.3	12,746	*	22,803	0.1
District of Columbia	550,440	0.8	733,672	1.0	365,733	1.0	330,906	1.0
Florida	2,882,028	4.3	2,617,296	3.6	1,584,562	4.2	1,175,817	3.5
Georgia	2,917,499	4.3	2,627,794	3.6	511,414	1.4	426,441	1.3
Hawaii	257,201	0.4	273,997	0.4	76,871	0.2	114,595	0.3
Idaho	28,595	*	23,341	*	9,917	*	9,291	*
Illinois	744,627	1.1	731,326	1.0	324,340	0.9	263,650	0.8
Indiana	802,995	1.2	1,242,509	1.7	457,307	1.2	611,716	1.8
Iowa	217,492	0.3	249,660	0.3	130,276	0.3	95,276	0.3
Kansas	935,323	1.4	1,264,100	1.7	481,234	1.3	421,239	1.3
Kentucky	322,041	0.5	270,706	0.4	81,178	0.2	59,313	0.2
Louisiana	868,821	1.3	1,078,975	1.5	638,198	1.7	243,388	0.7
Maine	426,166	0.6	477,889	0.7	405,914	1.1	55,054	0.2
Maryland	1,621,444	2.4	1,830,186	2.5	855,949	2.3	925,749	2.8
Massachusetts	5,312,758	7.9	4,681,632	6.5	3,391,153	9.1	2,682,249	8.0
Michigan	1,165,959	1.7	1,108,973	1.5	960,985	2.6	799,384	2.4
Minnesota	798,783	1.2	1,290,263	1.8	510,081	1.4	911,936	2.7
Mississippi	584,421	0.9	704,754	1.0	325,128	0.9	119,006	0.4
Missouri	2,255,308	3.4	2,637,345	3.6	1,630,015	4.4	1,141,115	3.4
Montana	27,498	*	66,880	0.1	8,113	*	32,757	0.1
Nebraska	104,856	0.2	70,117	0.1	53,742	0.1	20,245	0.1
Nevada	73,692	0.1	70,720	0.1	17,962	*	35,798	0.1
New Hampshire	122,901	0.2	344,669	0.5	81,380	0.2	140,174	0.4
New Jersey	1,266,879	1.9	1,504,066	2.1	760,628	2.0	961,171	2.9
New Mexico	328,811	0.5	223,588	0.3	160,110	0.4	107,813	0.3
New York	5,160,913	7.7	4,573,907	6.3	3,082,481	8.2	1,793,920	5.4
North Carolina	389,292	0.6	443,716	0.6	214,572	0.6	274,530	0.8
North Dakota	107,613	0.2	53,713	0.1	58,227	0.2	30,486	0.1
Ohio	2,529,389	3.8	2,655,342	3.7	1,797,467	4.8	1,034,884	3.1
Oklahoma	350,315	0.5	315,988	0.4	136,500	0.4	163,941	0.5
Oregon	104,375	0.2	91,912	0.1	56,936	0.2	37,814	0.1
Pennsylvania	2,121,578	3.2	2,263,168	3.1	1,453,483	3.9	996,475	3.0
Rhode Island	259,594	0.4	192,680	0.3	204,744	0.5	139,081	0.4
South Carolina	202,842	0.3	189,403	0.3	95,890	0.3	127,104	0.4
South Dakota	89,823	0.1	50,305	0.1	80,017	0.2	40,030	0.1
Tennessee	674,204	1.0	507,591	0.7	411,857	1.1	219,509	0.7
Texas	4,443,703	6.6	6,325,741	8.7	2,159,876	5.8	2,515,784	7.5
Utah	334,896	0.5	335,907	0.5	104,626	0.3	233,507	0.7
Vermont	39,369	0.1	48,070	0.1	17,125	*	41,133	0.1
Virginia	2,213,567	3.3	3,215,174	4.4	1,371,869	3.7	1,485,112	4.4
Washington	1,667,467	2.5	2,172,093	3.0	794,255	2.1	1,601,295	4.8
West Virginia	54,586	0.1	26,805	*	31,942	0.1	15,375	*
Wisconsin	312,498	0.5	425,189	0.6	239,496	0.6	300,368	0.9
Wyoming	51,337	0.1	62,923	0.1	24,159	0.1	9,490	*

¹ For clarification on the limitations and conditions of coverage, see the introduction.

² All figures include civil functions procurement actions.

Note: An asterisk in the percent column represents a figure of less than 0.05 percent. Percentages may not add up due to rounding.

Table 2. Net Value and Percent Distribution of DoD Military Procurement Actions, by State: First Half FY 1986, First Half FY 1985, and Second Quarters FY 1986 and FY 1985¹

(Amounts in Thousands)

STATE	FISCAL YEAR TO DATE				THREE MONTH PERIOD			
	1986 (OCT 85-MAR 86)		1985 (OCT 84-MAR 85)		FISCAL YEAR 1986 (JAN-MAR 1986)		FISCAL YEAR 1985 (JAN-MAR 1985)	
	AMOUNT	PERCENT	AMOUNT	PERCENT	AMOUNT	PERCENT	AMOUNT	PERCENT
TOTAL U.S.	\$72,185,992		\$77,601,816		\$40,493,966		\$36,172,392	
NOT DISTRIBUTED BY STATE	5,822,347		5,782,770		3,492,849		3,133,467	
STATE TOTALS	66,363,645	100.0	71,819,046	100.0	37,001,117	100.0	33,038,925	100.0
Alabama	671,279	1.0	737,335	1.0	351,081	0.9	310,757	0.9
Alaska	282,845	0.4	261,299	0.4	78,971	0.2	94,178	0.3
Arizona	565,084	0.9	839,565	1.1	365,349	1.0	544,291	1.6
Arkansas	652,938	1.0	577,960	0.8	298,705	0.8	45,890	0.1
California	15,975,148	24.1	16,515,940	23.0	8,155,744	22.0	7,932,020	24.0
Colorado	592,290	0.9	724,504	1.0	251,523	1.7	325,942	1.0
Connecticut	2,458,111	3.7	2,558,511	3.6	1,670,348	4.5	1,334,553	4.0
Delaware	34,110	0.1	212,698	0.3	12,439	*	21,956	0.1
District of Columbia	543,118	0.8	725,077	1.0	363,451	1.0	326,853	1.0
Florida	2,858,899	4.3	2,596,769	3.6	1,568,464	4.2	1,165,197	3.5
Georgia	2,908,538	4.4	2,597,655	3.6	508,965	1.4	400,158	1.2
Hawaii	256,769	0.4	266,247	0.4	76,713	0.2	111,148	0.3
Idaho	21,616	*	16,348	*	6,710	*	7,443	*
Illinois	683,831	1.0	683,870	1.0	312,236	0.8	256,212	0.8
Indiana	801,639	1.2	1,239,775	1.7	457,176	1.2	611,370	1.9
Iowa	211,957	0.3	244,385	0.3	127,135	0.3	93,616	0.3
Kansas	933,661	1.4	1,260,326	1.8	480,965	1.3	417,624	1.3
Kentucky	299,816	0.5	255,543	0.4	70,125	0.2	50,499	0.2
Louisiana	717,963	1.1	939,678	1.3	527,942	1.4	167,260	0.5
Maine	425,692	0.6	477,343	0.7	405,727	1.1	54,896	0.2
Maryland	1,612,565	2.4	1,818,757	2.5	852,753	2.3	922,387	2.8
Massachusetts	5,315,088	8.0	4,673,409	6.5	3,388,597	9.2	2,679,525	8.1
Michigan	1,159,936	1.7	1,102,388	1.5	953,655	2.6	798,036	2.4
Minnesota	783,530	1.2	1,279,537	1.8	501,217	1.4	903,469	2.7
Mississippi	547,366	0.8	669,573	0.9	313,802	0.8	108,834	0.3
Missouri	2,240,080	3.4	2,613,687	3.6	1,627,358	4.4	1,133,375	3.4
Montana	26,029	*	66,228	0.1	7,053	*	32,491	0.1
Nebraska	101,081	0.2	67,329	0.1	51,967	0.1	19,763	0.1
Nevada	73,526	0.1	70,693	0.1	17,796	*	35,771	0.1
New Hampshire	122,834	0.2	344,581	0.5	81,313	0.2	140,086	0.4
New Jersey	1,264,205	1.9	1,491,240	2.1	758,259	2.0	948,693	2.9
New Mexico	327,991	0.5	223,385	0.3	159,949	0.4	107,610	0.3
New York	5,159,198	7.8	4,561,448	6.4	3,080,885	8.3	1,790,310	5.4
North Carolina	374,690	0.6	420,731	0.6	204,934	0.6	267,011	0.8
North Dakota	106,791	0.2	52,908	0.1	58,044	0.2	29,840	0.1
Ohio	2,519,034	3.8	2,636,026	3.7	1,792,369	4.8	1,022,685	3.1
Oklahoma	336,262	0.5	306,499	0.4	126,573	0.3	154,592	0.5
Oregon	69,619	0.1	62,872	0.1	30,187	0.1	26,016	0.1
Pennsylvania	2,108,233	3.2	2,251,692	3.1	1,447,376	3.9	986,529	3.0
Rhode Island	259,143	0.4	192,680	0.3	204,293	0.6	139,081	0.4
South Carolina	195,598	0.3	171,755	0.2	88,975	0.2	116,870	0.4
South Dakota	67,482	0.1	48,755	0.1	79,570	0.2	39,355	0.1
Tennessee	662,751	1.0	490,481	0.7	408,051	1.1	214,853	0.7
Texas	4,388,380	6.6	6,268,054	8.7	2,132,343	5.8	2,497,458	7.6
Utah	334,381	0.5	335,215	0.5	104,418	0.3	233,247	0.7
Vermont	35,951	0.1	47,468	0.1	17,056	*	41,133	0.1
Virginia	2,072,209	3.1	3,207,371	4.5	1,365,132	3.7	1,476,143	4.5
Washington	1,643,480	2.5	2,138,759	3.0	777,821	2.1	1,585,338	4.8
West Virginia	34,764	0.1	16,763	*	18,292	*	5,563	*
Wisconsin	312,484	0.5	424,130	0.6	237,451	0.6	299,508	0.9
Wyoming	51,183	0.1	62,786	0.1	24,159	0.1	9,490	*

¹ For clarification on the limitations and conditions of coverage, see the introduction.
 Note: An asterisk in the percent column represents a figure of less than 0.05 percent. Percentages may not add up due to rounding.

Copyright © 1986 by the RAND Corporation
 All rights reserved. No part of this report may be reproduced without the permission of RAND.

Table 3. Net Value and Percent Distribution of DoD Military Procurement Actions, by State, According to Defense Component: First Half FY 1986¹

(Amounts in Thousands)

STATE	TOTAL ²		ARMY	NAVY	AIR FORCE	DEFENSE LOGISTICS AGENCY
	AMOUNT	PERCENT				
TOTAL, U.S.	\$72,185,992		\$14,554,882	\$21,613,874	\$27,243,024	\$7,763,566
NOT DISTRIBUTED BY STATE	5,822,347		1,565,188	1,457,095	1,379,275	1,333,777
STATE TOTALS	66,363,645	100.0	12,989,694	20,156,779	25,863,749	6,429,789
Alabama	671,279	1.0	391,904	47,714	158,090	67,836
Alaska	281,845	0.4	37,715	6,358	105,127	120,818
Arizona	555,064	0.9	154,706	144,430	249,688	16,157
Arkansas	693,988	1.0	417,495	225,663	27,023	23,807
California	15,975,148	24.1	1,613,567	4,661,799	8,006,317	1,523,982
Colorado	590,290	0.9	66,651	33,045	452,317	22,976
Connecticut	2,458,111	3.7	597,077	1,524,558	276,116	59,287
Delaware	34,112	0.1	9,240	3,376	9,489	12,007
District of Columbia	543,116	0.8	32,168	351,858	15,746	62,503
Florida	2,858,899	4.3	547,220	451,789	1,734,840	96,481
Georgia	2,906,538	4.4	247,146	211,265	2,353,491	93,445
Hawaii	256,769	0.4	56,416	40,481	32,719	117,839
Idaho	21,616	*	1,144	24	6,265	14,183
Illinois	663,831	1.0	128,594	98,537	211,687	191,075
Indiana	801,639	1.2	409,114	196,354	100,486	95,143
Iowa	211,957	0.3	73,886	25,961	90,977	21,133
Kansas	933,601	1.4	150,646	61,749	708,023	11,453
Kentucky	299,816	0.5	85,883	8,725	7,457	197,415
Louisiana	717,963	1.1	94,761	397,872	20,834	204,346
Maine	425,692	0.6	4,256	403,052	4,098	14,286
Maryland	1,612,565	2.4	302,729	778,484	444,151	52,741
Massachusetts	5,310,086	8.0	2,597,992	1,370,526	1,210,907	92,636
Michigan	1,153,936	1.7	916,913	73,865	98,124	62,581
Minnesota	787,530	1.2	129,958	461,629	159,204	33,292
Mississippi	547,366	0.8	35,938	382,138	38,569	90,108
Missouri	2,240,080	3.4	258,169	1,309,486	600,917	63,952
Montana	26,029	*	6,483	57	9,860	9,668
Nebraska	101,081	0.2	25,511	206	57,051	18,146
Nevada	73,526	0.1	13,337	2,131	52,682	2,928
New Hampshire	122,834	0.2	14,127	50,783	52,726	5,198
New Jersey	1,264,205	1.9	238,682	575,827	273,727	167,618
New Mexico	327,991	0.5	84,579	48,180	162,962	21,298
New York	5,159,198	7.8	219,520	2,750,536	1,683,256	317,623
North Carolina	374,690	0.6	83,611	165,780	35,303	81,207
North Dakota	106,791	0.2	59,527	140	23,056	24,002
Ohio	2,519,034	3.8	166,626	174,120	1,956,193	218,650
Oklahoma	338,262	0.5	47,884	13,979	134,234	141,854
Oregon	69,619	0.1	8,594	13,047	31,796	14,921
Pennsylvania	2,108,233	3.2	713,561	760,042	296,072	333,021
Rhode Island	259,143	0.4	-1,476	103,021	2,437	147,733
South Carolina	195,598	0.3	32,716	63,982	19,531	75,617
South Dakota	87,482	0.1	54,424	150	27,727	5,181
Tennessee	662,751	1.0	239,080	29,096	319,602	74,842
Texas	4,388,380	6.6	554,846	391,300	2,344,477	1,081,403
Utah	334,381	0.5	52,592	6,118	168,342	105,821
Vermont	38,961	0.1	2,759	39,846	-6,625	2,812
Virginia	2,205,208	3.3	609,100	1,055,235	271,129	73,534
Washington	1,643,480	2.5	227,639	593,351	748,182	60,338
West Virginia	34,264	0.1	6,556	6,952	2,004	18,752
Wisconsin	308,484	0.5	161,497	42,198	55,697	41,254
Wyoming	51,183	0.1	6,631	0	19,666	24,886

¹ For clarification on the limitations and conditions of coverage, see the introduction.

² Total includes all departments shown, plus other Defense agencies.

Note: An asterisk in the percent column represents a figure of less than 0.05 percent. Percentages may not add up due to rounding.

Copy available to DTIC does not permit fully legible reproduction

END

DTIC

8-86