

AD-A169 533

SURVIVAL ANALYSIS OF DEFECTIVE DENTAL SURFACES IN US
NAVAL PERSONNEL(U) NAVAL DENTAL RESEARCH INST GREAT
LAKES IL H E COHEN ET AL. APR 86 NDRI-PR-86-07

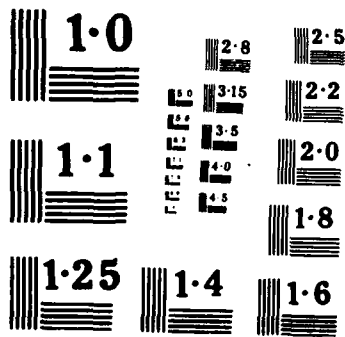
1/1

UNCLASSIFIED

F/G 6/5

NL





5

NDRI-PR 86-07
APRIL 1986



AD-A169 533

SURVIVAL ANALYSIS OF DEFECTIVE DENTAL SURFACES IN U.S. NAVAL PERSONNEL

M. E. COHEN
S. A. RALLS
R. G. ESQUIRE

DTIC
ELECTE
JUL 17 1986
S D

DTIC FILE COPY

DISTRIBUTION STATEMENT A
Approved for public release
Distribution Unlimited

NAVAL
DENTAL RESEARCH
INSTITUTE

Naval Medical Research and Development Command
Bethesda, Maryland

86 7 37 008

NAVAL DENTAL RESEARCH INSTITUTE
NAVAL TRAINING CENTER, BUILDING 1-H
GREAT LAKES, ILLINOIS 60088-5259

SURVIVAL ANALYSIS OF DEFECTIVE DENTAL SURFACES
IN U.S. NAVAL PERSONNEL

M. E. COHEN

S. A. RALLS

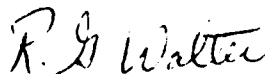
R. G. ESQUIRE

Research Progress Report NDRI-PR 86-07
Work Unit 63706N M0095003-3028
Naval Medical Research and Development Command
Naval Medical Command, National Capital Region
Bethesda, Maryland 20814-5044

The opinions expressed herein are those of the authors and cannot be construed as reflecting the views of the Navy Department or the Naval Service at large. The use of commercially available products does not imply endorsement of these products or preference to other similar products on the market.

This document has been approved for public release; its distribution is unlimited.

Approved and released by:



R. G. WALTER
Captain, Dental Corps
United States Navy
Commanding Officer

Results

The systematic sampling procedure yielded a sample size of 506 subject dental records, 385 of which (76.1 percent) indicated a need for restorative (operative) treatment. Persons requiring treatment had an average of 4.92 diseased teeth (SD = 3.83) and 8.42 diseased surfaces (SD = 7.30). The distributions of these variables are typical and are shown in Figures 1 and 2.

Of primary concern was the time elapsed to caries treatment. This can be conceptualized in terms of survival analysis (life tables) where "survival" is measured by the duration of the carious state and "death" is associated with treatment. Appropriate statistical techniques allow the estimation of survival functions despite differences in subjects' time under study and subjects' leaving the study prior to treatment (censored data) (6). The data were analyzed from the perspectives of the survival of all lesions in a mouth (mouth unit), and the survival of individual lesions. Censoring information and survival quantiles for mouths and different lesion types are shown in Table 2.

Cumulative survival of persons with one or more untreated lesions is presented in Figure 3. One-fourth of all persons with one or more lesions were treated to zero lesions in 4.03 months; 50 percent were treated by 33.38 months.

There were 1894 total lesions, and a survival curve of these is presented in Figure 4. Since the criterion of total mouth restoration is not imposed, substantially greater amounts of treatment are evident. After an estimated 1.05, 6.49, and 43.18 months, 25, 50, and 75 percent of the lesions were treated, respectively.

Survival curves for lesions of different depths are presented in Figure 5. This figure graphically demonstrates significant differences in cumulative survival functions associated with lesion depth ($p < .001$, note however, that since observations are not independent, this finding is only suggestive). In addition to being treated earlier, a relatively greater proportion of deep lesions are treated during the course of the study.

Of 3,242 original carious surfaces, 726 (22.4 percent) remained untreated. As shown in Figure 6, a small percentage of the sample contributed a large percentage of these. Ten percent of the sample having lesions (7.6 percent of all subjects) had 58.9 percent of the untreated surfaces. Twenty percent (15.2 percent of all subjects) had 78.9 percent of the untreated surfaces.

The phenomenon of a small percentage of subjects being responsible for most unmet treatment needs is also shown in Figure 7. The majority of persons are on the diagonal which represents complete treatment. Moving to the right and down,

proportionately fewer subjects have more untreated surfaces. The three subjects in the extreme lower right appear to represent a distinct subgroup that has not received treatment comparable to most other subjects.

Discussion

A limitation of this study was the inability to distinguish carious lesions from teeth with lost or defective restorations. The number of carious lesions identified in this study, therefore, was a slight overestimation of the number actually present, and data are more accurately associated with a need-for-restoration than caries. From a practical view, however, the management of either condition is essentially the same.

Inspection of the raw data suggests that there may be an overestimation of lesions requiring treatment because of diagnostic reversals. Small "lesions", which subsequent dental officers might decide to observe rather than restore, would prevent a mouth from being considered completely restored. The possibility of diagnostic reversals is also most likely for "A" lesions, but may extend to some "B" lesions as well. Neither lesion type is considered to be a primary decremental factor in operational efficiency.

The survival curves for the different lesion types presented in Figure 5 are most likely due to a clinical practice of restoring the most severe lesions first. Fifty percent of all lesions are treated in slightly more than 6 months, and this is consistent with earlier findings that 50 percent of amalgam restorations planned at enlistment are accomplished during the first six months (7). However, the survival curves for all lesions level off at about 20 months after initial examination (Fig. 4) with approximately 20 to 30 percent of lesions surviving. Even though a large amount of work is performed early, and on the most severe lesions, lesions persist with the potential for creating dental emergencies. Fifty percent of all "U" lesions were restored within 1 1/3 months and 75 percent were restored within 6 1/3 months, however 6.8 percent (n=3) persisted at least 18 months.

Of interest is the fact that nearly 80 percent of the untreated surfaces were found in only 15 percent of the total sample. The reasons for this are only speculative, but may be associated with a lack of dental services available at certain duty stations (i.e. isolated duty), with work restrictions limiting time available for dental appointments, or with an individual aversion to dental care. This information is consistent with the clinical suspicion that a small number of personnel are responsible for most caries-related dental emergencies. It has been previously shown that 40 percent of continuing caries activity is concentrated in 5 percent of the Navy population (8).

The results of this study suggest that efforts to minimize the impact of caries-related dental emergencies on military operations should be directed toward treating that small segment of the population that harbors a disproportionately large number of teeth requiring restoration. Definition of this population at each activity would be desirable. Once identified, special recall, education, anxiety reduction, and treatment programs could be targeted for this group, if not already in place. Efforts should emphasize both the beneficial aspects of a healthy dentition as well as the adverse sequelae of dental disease.

This study was retrospective in nature and may not, necessarily, describe the contemporary or future status of caries treatment. These findings, however, provide a comparative framework and methodology to evaluate the impact of changes in naval dental treatment procedures.

Acknowledgments

The assistance of DN Marcellus A. Lawhorn and DT3 Lorrie A. Rouse in data collection and entry is gratefully acknowledged.

References

1. COHEN ME, CECIL JC III, ROCHA T, MCCARTHY TP. Dental recall based on caries risk. Milit Med 1983; 148: 928-931.
2. LUDWICK WE, GENDRON EG, PAGES JA, WELDON AL. Dental emergencies occurring among navy-marine personnel serving in Vietnam. Milit Med 1974; 139: 121-123.
3. SHILLER WR. Incidence of dental problems and their management of FBM submarine patrols. BUMED-Navy Department Research Work Unit MR005.19-6024.10. Memorandum Report No. 67-4, 1967.
4. NICE DS. A Survey of U.S. Navy Medical Communications and Evacuations at Sea. Naval Health Research Center Report No. 84-22, 5 July 1984.
5. PAYNE TF, POSEY WR. Analysis of dental casualties in prolonged field training exercises. Milit Med 1981; 146: 265-271.
6. LEE ET. Statistical methods for survival data analysis. Belmont CA: Lifetime Learning Publications; 1980.
7. HYMAN JJ. Dental caries in the active duty Navy population. Milit Med 1983; 148: 514-517.
8. CECIL JC, WIRTHLIN MR, WALTER RG, MANDEL EJ. The health of naval recruits: Dental caries. Naval Dental Research Institute Progress Report, NDRI-PR 80-05, 1980.

TABLE 1
SCALE FOR ESTIMATING CARIES DEPTH

A - Caries not involving dentin
B - Caries less than one-fourth through dentin
C - Caries one-fourth to three-fourths through dentin
U - URGENT. Caries more than three-fourths through dentin.

TABLE 2
SUMMARY OF CASES AND SURVIVAL DISTRIBUTION QUANTILES
FOR INCOMPLETELY TREATED MOUTHS AND UNTREATED CARIOUS LESIONS
AND LESION TYPES

VARIABLE	TOTAL	CASES TREATED	CENSORED	QUANTILE* (months)		
				75th	50th	25th
Mouth Unit	385	212	173	4.03	33.38	-
Lesion Type**	1894	1433	461	1.05	6.49	43.18
A	955	695	260	1.05	8.03	58.49
B	675	526	149	1.31	6.66	39.48
C	220	171	49	0.95	4.03	23.44
U	44	41	3	0.82	1.28	6.33

* product-limit estimates

** survival distributions for the four lesion types differ at $P < .001$ (Mantel-Cox and Breslow tests)

Figure 3. Life table of cumulative survival of subjects (mouth units) with one or more untreated carious lesions.

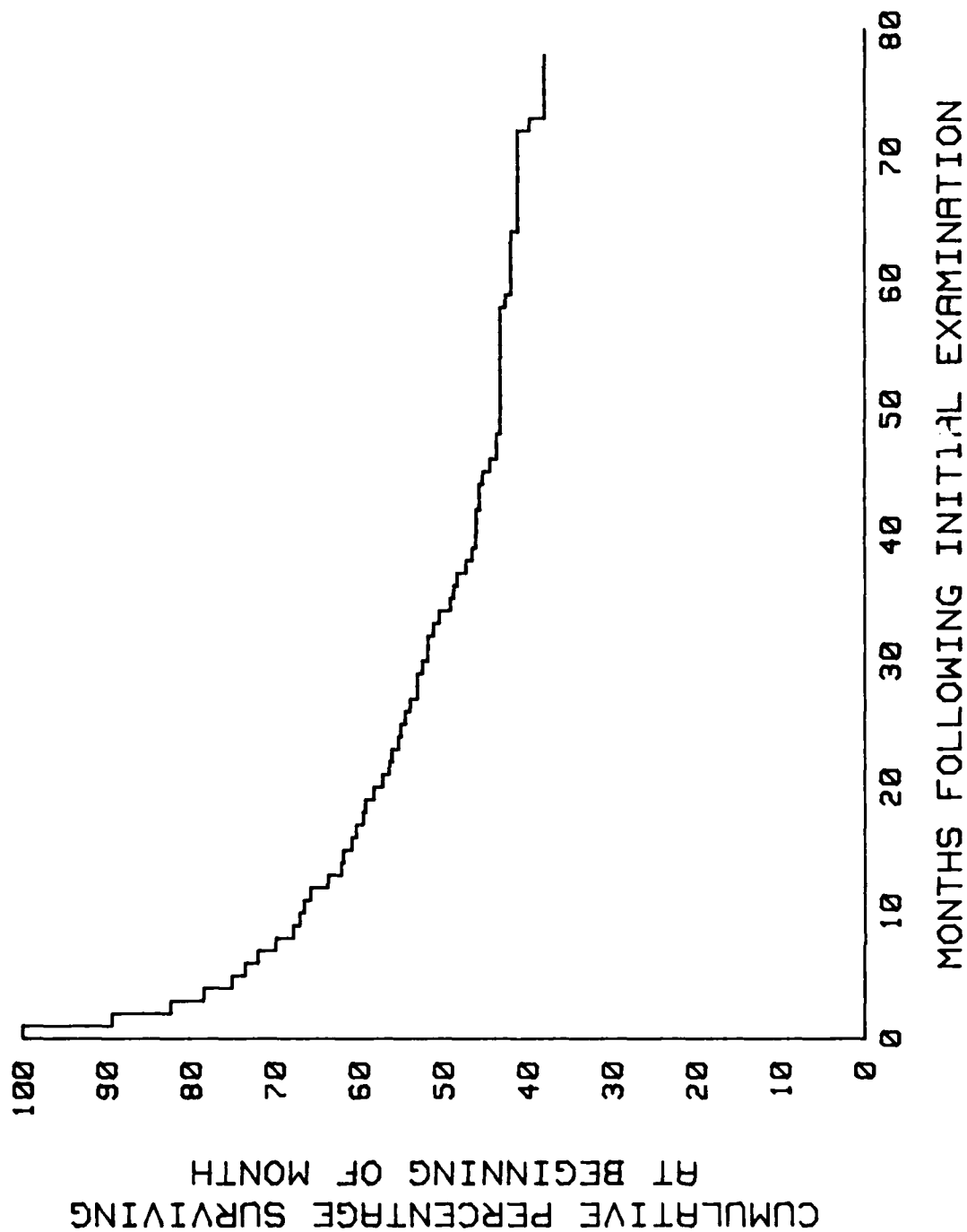


Figure 4. Life table of cumulative survival of 1894 individual carious lesions.

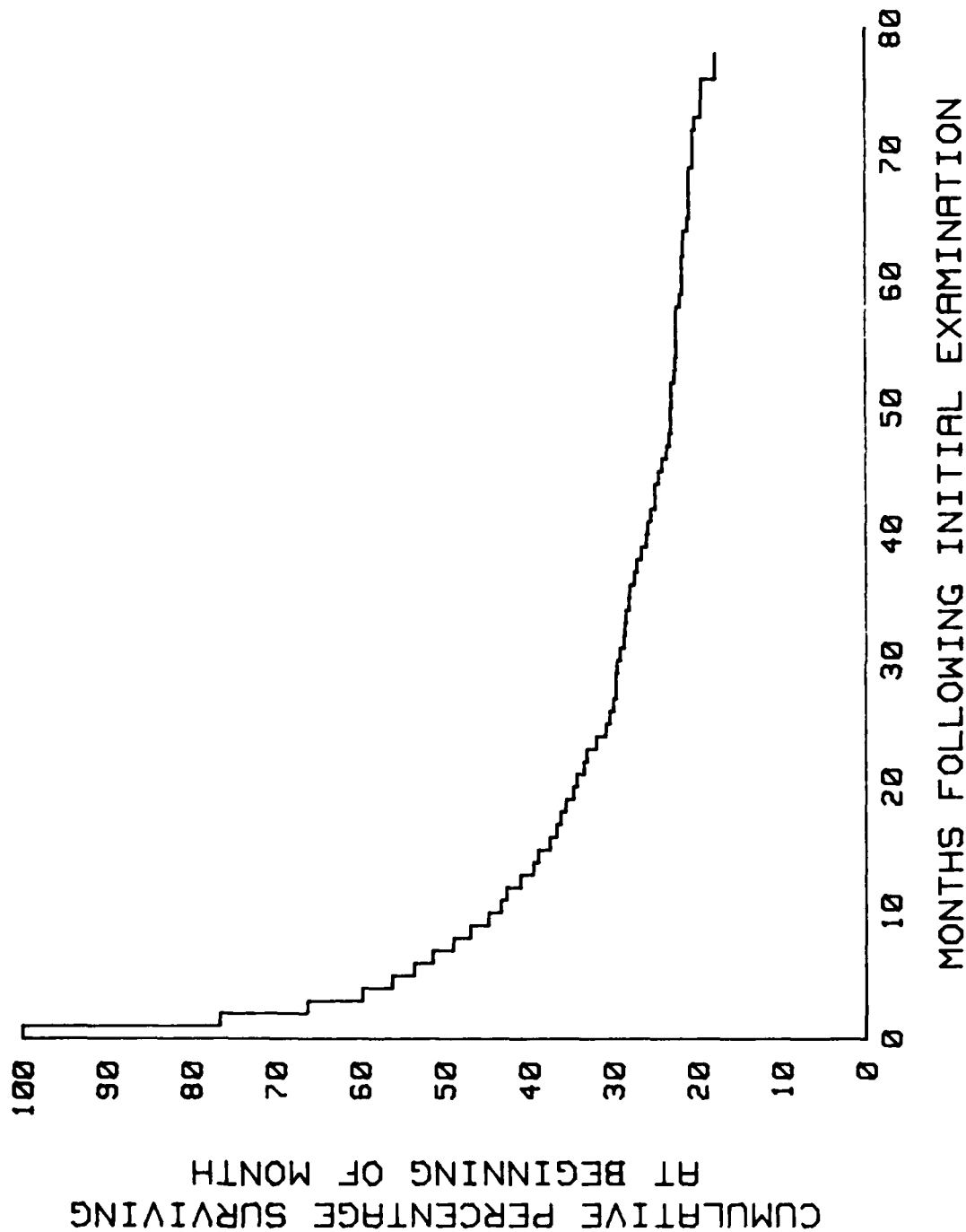


Figure 5. Life table of cumulative survival of 1984 individual lesions in four depth categories (see Table 1).

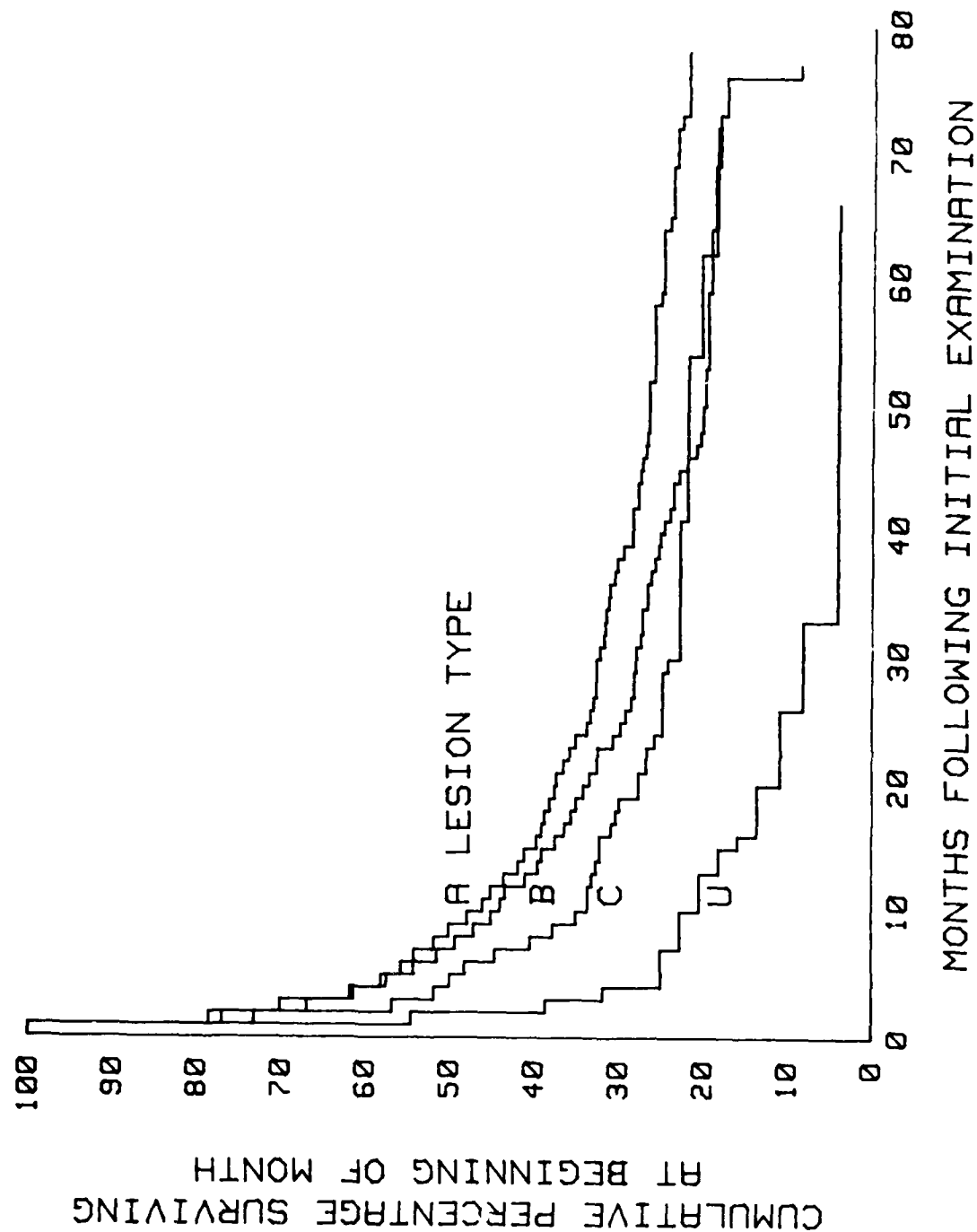


Figure 6. Cumulative percentage of untreated surfaces as a function of the percentage of subjects requiring treatment. Subjects were ordered by number of carious surfaces not treated and this was responsible, in part, for the regularity of the curve.

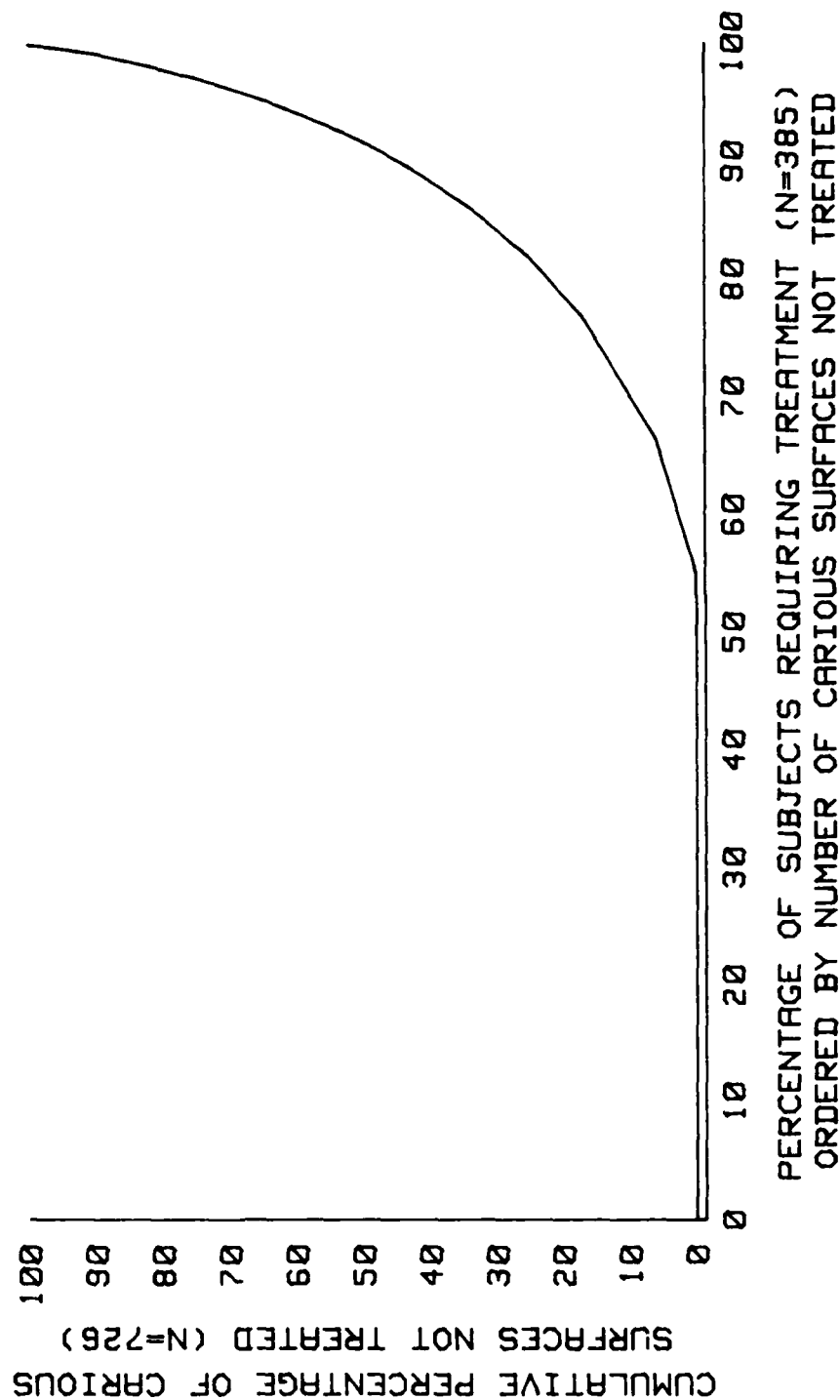
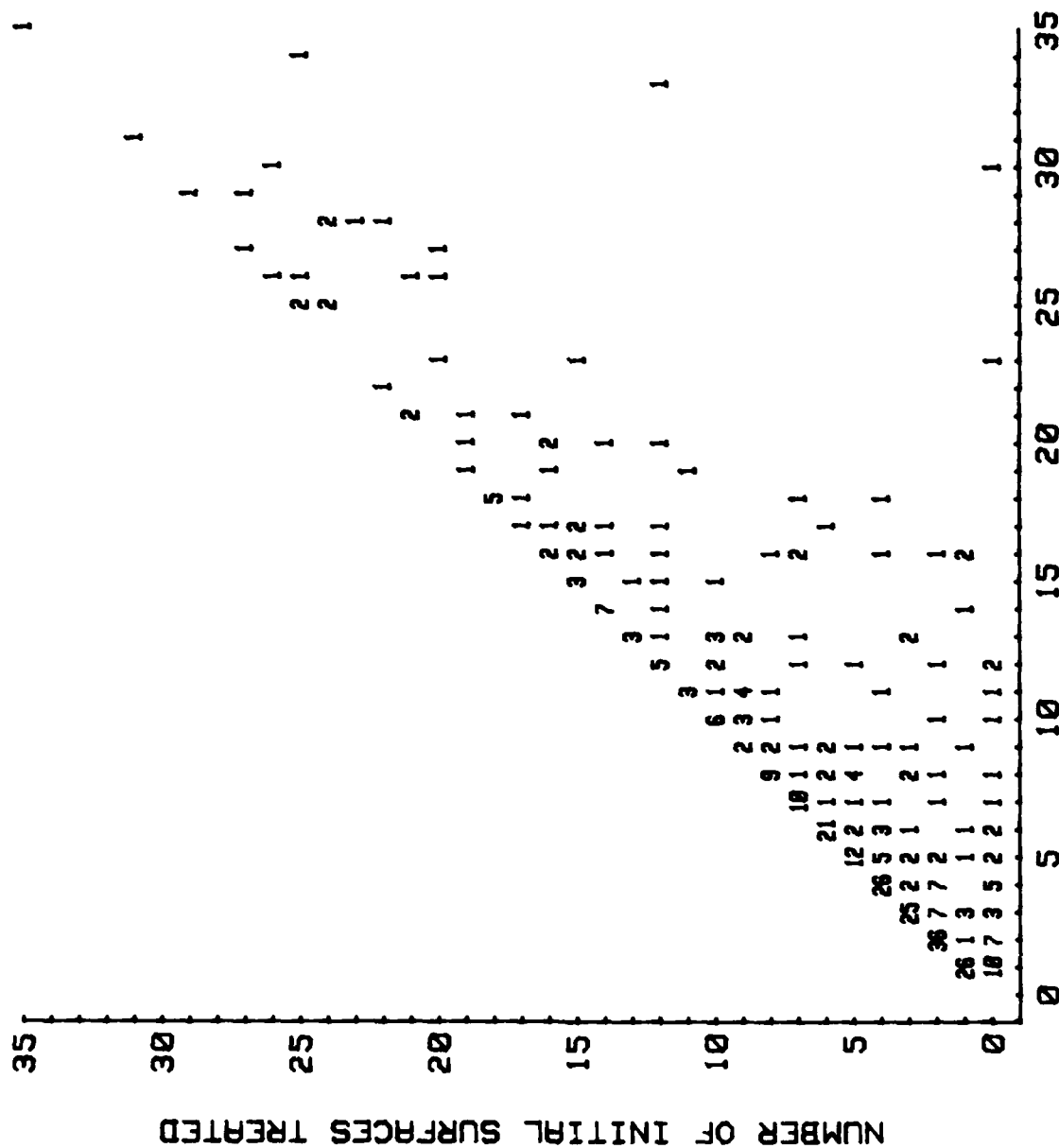


Figure 7. Scatter plot of number of initial surfaces requiring treatment versus number of initial surfaces treated for 385 subjects having at least 1 carious surface.



UNCLASSIFIED

SECURITY CLASSIFICATION OF THIS PAGE (When Data Entered)

REPORT DOCUMENTATION PAGE		READ INSTRUCTIONS BEFORE COMPLETING FORM
1. REPORT NUMBER	2. GOVT ACCESSION NO.	3. RECIPIENT'S CATALOG NUMBER
AD-A169533		
4. TITLE (and Subtitle) SURVIVAL ANALYSIS OF DEFECTIVE DENTAL SURFACES IN U.S. NAVAL PERSONNEL		5. TYPE OF REPORT & PERIOD COVERED
7. AUTHOR(s) M. E. COHEN, S. A. RALLS, and R. G. ESQUIRE		6. PERFORMING ORG. REPORT NUMBER NDRI-PR 86-07
9. PERFORMING ORGANIZATION NAME AND ADDRESS Naval Dental Research Institute Naval Training Center, Building 1-H Great Lakes, Illinois 60088-5259		8. CONTRACT OR GRANT NUMBER(s)
11. CONTROLLING OFFICE NAME AND ADDRESS Naval Medical Research and Development Command, Naval Medical Command, National Capital Region, Bethesda, MD 20814-5044		10. PROGRAM ELEMENT, PROJECT, TASK AREA & WORK UNIT NUMBERS 63706N M0095003-3028
14. MONITORING AGENCY NAME & ADDRESS (if different from Controlling Office) Commander, Naval Medical Command Navy Department Washington, D. C. 20372		12. REPORT DATE APRIL 1986
		13. NUMBER OF PAGES 14
		15. SECURITY CLASS. (of this report) UNCLASSIFIED
		15a. DECLASSIFICATION/DOWNGRADING SCHEDULE
16. DISTRIBUTION STATEMENT (of this Report) This document has been approved for public release; distribution unlimited.		
17. DISTRIBUTION STATEMENT (of the abstract entered in Block 20, if different from Report) This document has been approved for public release; distribution unlimited.		
18. SUPPLEMENTARY NOTES		
19. KEY WORDS (Continue on reverse side if necessary and identify by block number) Dental caries Dental care		
20. ABSTRACT (Continue on reverse side if necessary and identify by block number) Methods of survival analysis were used to evaluate the time required to treat caries (or defective dental restorations) identified at the initial examinations of 506 naval recruits. Nearly 80 percent of carious surfaces were treated during the 18 to 78 month observation period with half the treatment needs being met in the first 6.5 months of service. Deeper lesions were treated earlier and in proportionately greater numbers. Almost		

DD FORM 1473

EDITION OF 1 NOV 65 IS OBSOLETE

N 0102-LF-014-6601

UNCLASSIFIED

SECURITY CLASSIFICATION OF THIS PAGE (When Data Entered)

UNCLASSIFIED

SECURITY CLASSIFICATION OF THIS PAGE (When Data Entered)

80 percent of those surfaces which remained untreated were found in only 15 percent of the total population.

S N 0102- LF- 014- 6601

UNCLASSIFIED

SECURITY CLASSIFICATION OF THIS PAGE(When Data Entered)

END

DT/C

8-86