

AD-A167 452

INFLOW BOUNDARY CONDITIONS FOR STEADY FLOWS OF  
VISCOELASTIC FLUIDS WITH D. (U) WISCONSIN UNIV-MADISON  
MATHEMATICS RESEARCH CENTER M REWARDY FEB 867C 83882  
MRC-ISR-2916 DRAC29-86-C-0041

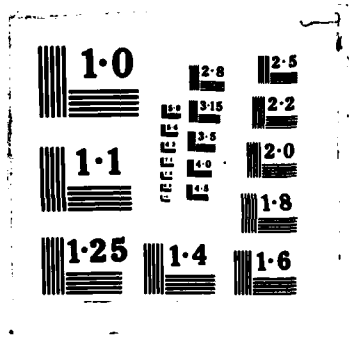
1/1

UNCLASSIFIED

F/C 2874

NL

END  
DATE  
FILMED  
6788  
DTIC



2

MRC Technical Summary Report #2916

INFLOW BOUNDARY CONDITIONS FOR STEADY  
FLOWS OF VISCOELASTIC FLUIDS WITH  
DIFFERENTIAL CONSTITUTIVE LAWS

Michael Renardy

AD-A167 452

Mathematics Research Center  
University of Wisconsin—Madison  
610 Walnut Street  
Madison, Wisconsin 53705

February 1986

(Received February 24, 1986)

DTIC FILE COPY

DTIC  
SELECTED  
MAY 23 1986  
S D

Approved for public release  
Distribution unlimited

Sponsored by

U. S. Army Research Office  
P. O. Box 12211  
Research Triangle Park  
North Carolina 27709

National Science Foundation  
Washington, DC 20550

86 5 20 137

UNIVERSITY OF WISCONSIN - MADISON  
MATHEMATICS RESEARCH CENTER

INFLOW BOUNDARY CONDITIONS FOR STEADY FLOWS  
OF VISCOELASTIC FLUIDS  
WITH DIFFERENTIAL CONSTITUTIVE LAWS

Michael Renardy

Technical Summary Report #2916  
February 1986

**ABSTRACT**

We prove an existence result for steady flows through a strip which can be regarded as a perturbation of rigid motion. The fluid is viscoelastic with a differential constitutive law, e.g. an upper convected Maxwell model. Particular emphasis is focussed on the question which boundary conditions need to be imposed at the inflow boundary to make the problem well-posed.

AMS (MOS) Subject Classifications: 35M05, 76A10

Key Words: Viscoelastic fluids, existence of steady flows, inflow boundary conditions

Work Unit Numbers 1 (Applied Analysis) and 2 (Physical Mathematics)

Sponsored by the United States Army under Contract No. DAAG29-80-C-0041 and supported by the National Science Foundation under Grant No. DMS-8451761.

## SIGNIFICANCE AND EXPLANATION

Steady flows of viscoelastic fluids can not be uniquely determined by imposing boundary conditions only for the velocities as in the Newtonian case. The reason for this is that the fluids have memory, and therefore the flow inside the domain is affected by what happened before the fluid entered the domain. This leads to the need for extra boundary conditions at an inflow boundary. The nature of these inflow boundary conditions has not been analyzed previously, and it is certainly dependent on the constitutive law. In this paper, we look at the special case of differential constitutive relations with a single relaxation mode. We consider steady transverse flows across a strip which are small perturbations of a flow with constant velocity. It turns out that in this case two extra inflow boundary conditions are required in two dimensions, and four in three dimensions. This is what would be expected from an analysis of characteristics, but it contradicts the belief of many rheologists that it is possible to prescribe the extra stress at an inflow boundary.

The problem studied here is of potential relevance for numerical simulations of steady flows. Many of the flows currently *simulated* are on infinite domains. Numerically, these domains are truncated, and on the inflow boundary of the truncated domain people usually prescribe the extra stress. According to the analysis in this paper, this is an overdetermined problem, and therefore errors must be expected from this procedure unless the artificial boundaries are chosen far enough out. *Keywords: Upper Convected & Maxwell Models*

Accession For	
NTIS CRA&I	<input checked="" type="checkbox"/>
DTIC TAB	<input type="checkbox"/>
Unannounced	<input type="checkbox"/>
Justification	
By	
Distribution /	
Availability Codes	
Dist	Avail and/or Special
A-1	



The responsibility for the wording and views expressed in this descriptive summary lies with MRC, and not with the author of this report.

INFLOW BOUNDARY CONDITIONS FOR STEADY FLOWS  
OF VISCOELASTIC FLUIDS  
WITH DIFFERENTIAL CONSTITUTIVE LAWS

Michael Renardy

1. Introduction

Steady flows of non-Newtonian fluids can not be uniquely determined by imposing boundary conditions only for the velocities as in the Newtonian case. The reason for this is that the fluids have memory, and therefore the flow inside the domain under consideration is affected by the fluid motion that occurred before the fluid entered the domain. This leads to the need for extra boundary conditions at inflow boundaries, which must contain some information about the flow history outside the domain. The precise nature of such inflow boundary conditions is not understood; it is certainly dependent on the constitutive law of the fluid.

In this paper, we consider differential constitutive models, which relate the extra stress tensor to the velocity gradient by an evolution equation along streamlines. For the sake of concreteness, we consider the special case of an upper convected Maxwell fluid, we emphasize, however, that the analysis in this paper does not depend on the special form of the nonlinearities and also applies to other differential models (for examples, see [3],[5],[7]). In a steady flow, the extra stress tensor  $\mathbf{T}$  in an upper convected Maxwell fluid satisfies the equation

$$(\mathbf{u} \cdot \nabla)\mathbf{T} - (\nabla\mathbf{u})\mathbf{T} - \mathbf{T}(\nabla\mathbf{u})^T + \lambda\mathbf{T} = \eta\lambda(\nabla\mathbf{u} + (\nabla\mathbf{u})^T). \quad (1)$$

Here  $\mathbf{u}$  is the velocity of the fluid, and  $\eta$  and  $\lambda$  are positive constants. The Newtonian fluid is recovered in the limiting case  $\lambda \rightarrow \infty$ . This equation for the stress is to be solved in conjunction with the equation of motion

$$\rho(\mathbf{u} \cdot \nabla)\mathbf{u} = \text{div } \mathbf{T} - \nabla p + \mathbf{f}, \quad (2)$$

$$\text{div } \mathbf{u} = 0.$$

The fact that (1) describes an evolution of the stress along streamlines may suggest that appropriate boundary conditions for (1) and (2) are given by prescribing  $\mathbf{T}$  at an inflow boundary, in addition to the Dirichlet conditions for the velocity which are required in the Newtonian case. In fact this seems to be what rheologists generally believe (see

---

Sponsored by the United States Army under Contract No. DAAG29-80-C-0041 and supported by the National Science Foundation under Grant No. DMS-8451761.

e.g. [2], p. 31). The study of characteristics [4],[6],[9], however, suggests otherwise. We may regard (1) and (2) as a first order system for  $p$  and the components of  $u$  and  $\mathbf{T}$ . In this system, it turns out that the streamlines of the flow are double characteristics in two dimensions and quadruple characteristics in three dimensions, while the number of independent components of the symmetric tensor  $\mathbf{T}$  is three and six, respectively. From this it appears that prescribing the stress at an inflow boundary may overdetermine the problem.

In an earlier paper [8], the author has proved an existence result for slow steady flows of differential non-Newtonian fluids. These flows were in a bounded domain with prescribed homogeneous Dirichlet conditions on the boundary. In this case, there are no inflow boundaries, and no extra boundary conditions are needed. The existence proof was based on an iteration scheme that alternates between solving an elliptic system and a hyperbolic system which has the streamlines as characteristics (a similar approach was recently used by Beirão da Veiga [1] to prove the existence of steady flows of compressible Newtonian fluids).

In the present paper, we consider transverse flows through a strip which are small perturbations of a flow with constant velocity and zero stress. If we want to use the iteration scheme of [8], we have to impose boundary conditions at inflow in order to be able to solve the hyperbolic part. If this is done, it turns out that in fact the iteration converges, but in general not to a solution of the equations (1) and (2). An extra condition has to be satisfied for this to be the case. We shall then modify the iteration scheme to accommodate this condition. If this is done, the number of inflow conditions required is as the analysis of characteristics suggests.

## 2. An iterative procedure for steady flows perturbing flow with constant velocity

We consider transverse flow through the strip  $0 \leq x \leq 1$  with periodic boundary conditions imposed in the  $y$ - and  $z$ -directions. The periods are denoted by  $L_y$  and  $L_z$ . For  $f = 0$ , a solution of (1) and (2) is given by a flow with constant velocity  $U > 0$ :  $u = (U, 0, 0)$ ,  $p = 0$ ,  $\mathbf{T} = 0$ . We are looking for flows which are a small perturbations of such a flow. I.e., we prescribe a small body force  $f$  and boundary conditions for the velocity which are small perturbations of the constant velocity:  $u(0, y, z) = (U, 0, 0) + v_1(y, z)$ ,  $u(1, y, z) = (U, 0, 0) + v_2(y, z)$ . These boundary conditions must be consistent with incompressibility,

$$\int_0^{L_z} \int_0^{L_y} e_z \cdot v_1(y, z) dy dz = \int_0^{L_z} \int_0^{L_y} e_z \cdot v_2(y, z) dy dz. \quad (3)$$

In addition, we shall need conditions on the stresses at the inflow boundary  $x = 0$ . The nature of these conditions will now be discussed.

Following [8], we apply the divergence operator to the constitutive equation (1), and obtain

$$(u \cdot \nabla) \operatorname{div} \mathbf{T} - (\nabla u) \operatorname{div} \mathbf{T} + \lambda \operatorname{div} \mathbf{T} = \mathbf{T} : \partial^2 u + \eta \lambda \Delta u. \quad (4)$$

Here we have set  $\mathbf{T} : \partial^2 = \sum_{j,k} \frac{\partial^2}{\partial y^j \partial y^k}$ . If we substitute  $\text{div } \mathbf{T}$  from the equation of motion, we find

$$\begin{aligned} & \nabla[(\mathbf{u} \cdot \nabla)p + \lambda p] - [\nabla \mathbf{u} + (\nabla \mathbf{u})^T] \nabla p - (\mathbf{u} \cdot \nabla)f + (\nabla \mathbf{u})f - \lambda f \\ & = \mathbf{T} : \partial^2 \mathbf{u} + \eta \lambda \Delta \mathbf{u} - \rho(\mathbf{u} \cdot \nabla)(\mathbf{u} \cdot \nabla) \mathbf{u} + \rho(\nabla \mathbf{u})(\mathbf{u} \cdot \nabla) \mathbf{u} - \lambda \rho(\mathbf{u} \cdot \nabla) \mathbf{u}. \end{aligned} \quad (5)$$

In [8], the construction of a solution was based on an iterative method, which alternates between solving a "Stokes-like" problem and a hyperbolic equation whose characteristics are streamlines. Similar iterations are in fact used in numerical calculations [2]. Since we are looking for small perturbations of the flow with constant velocity, we can take this flow as a starting point for the iteration. The iteration scheme of [8] is the following (we introduce the new variable  $q = (\mathbf{u} \cdot \nabla)p + \lambda p$ )

$$\mathbf{u}^0 = (U, 0, 0), \quad p^0 = q^0 = 0, \quad \mathbf{T}^0 = 0, \quad (6a)$$

$$\begin{aligned} \mathbf{T}^n : \partial^2 \mathbf{u}^{n+1} - \eta \lambda \Delta \mathbf{u}^{n+1} - \rho(\mathbf{u}^n \cdot \nabla)(\mathbf{u}^n \cdot \nabla) \mathbf{u}^{n+1} - \lambda \rho(\mathbf{u}^n \cdot \nabla) \mathbf{u}^{n+1} - \nabla q^{n+1} \\ = -[(\nabla \mathbf{u}^n) + (\nabla \mathbf{u}^n)^T] \nabla p^n - (\mathbf{u}^n \cdot \nabla)f + (\nabla \mathbf{u}^n)f - \lambda f - \rho(\nabla \mathbf{u}^n)(\mathbf{u}^n \cdot \nabla) \mathbf{u}^n, \\ \text{div } \mathbf{u}^{n+1} = 0, \quad \mathbf{u}^{n+1} = (U, 0, 0) + \mathbf{v}_1 \text{ on } x = 0, \quad \mathbf{u}^{n+1} = (U, 0, 0) + \mathbf{v}_2 \text{ on } x = 1, \end{aligned}$$

$$\int_0^1 \int_0^{L_x} \int_0^{L_z} q^{n+1} dz dy dx = 0, \quad (6b)$$

$$(\mathbf{u}^{n+1} \cdot \nabla) p^{n+1} + \lambda p^{n+1} = q^{n+1}, \quad (6c)$$

$$\begin{aligned} (\mathbf{u}^{n+1} \cdot \nabla) \mathbf{T}^{n+1} - (\nabla \mathbf{u}^{n+1}) \mathbf{T}^{n+1} - \mathbf{T}^{n+1} (\nabla \mathbf{u}^{n+1})^T + \lambda \mathbf{T}^{n+1} \\ = \eta \lambda [(\nabla \mathbf{u}^{n+1}) + (\nabla \mathbf{u}^{n+1})^T]. \end{aligned} \quad (6d)$$

In setting up this iteration, it is essential that the singularly perturbed operator  $(\mathbf{u} \cdot \nabla) + \lambda$  is inverted rather than evaluated. As long as  $U^2 < \lambda \eta / \rho$ , and  $\mathbf{u}^n$  and  $\mathbf{T}^n$  are small perturbations of  $(U, 0, 0)$  and  $\mathbf{0}$ , equation (6b) is an elliptic system for  $\mathbf{u}^{n+1}$  and  $q^{n+1}$ . If  $U^2 > \lambda \eta / \rho$ , a change of type occurs [4],[6],[10], and this case will not be considered here. Equations (6c) and (6d) are hyperbolic equations with the streamlines as characteristics. If there are no in- and outflow boundaries as in [8], characteristics do not cross the boundary, and (6c) and (6d) can be solved without any boundary conditions imposed. In the present situation, however, we have to prescribe  $p$  and  $\mathbf{T}$  at the inflow boundary  $x = 0$  in order to solve (6c) and (6d).

It can in fact be shown along lines similar to [8] that with such inflow boundary conditions the iteration will converge, provided that the data are sufficiently small. However, it will in general not converge to a solution of the original problem. The "solution" obtained from the iteration will satisfy (1) and (5), but the original problem is (1) and (2). Let us recall that (5) was obtained by substituting  $\rho(\mathbf{u} \cdot \nabla) \mathbf{u} + \nabla p - f = \text{div } \mathbf{T}$  into (4), and (4) was obtained by differentiating (1). Hence the fact that (5) is satisfied means the following: If we set

$$\rho(\mathbf{u} \cdot \nabla) \mathbf{u} + \nabla p - f - \text{div } \mathbf{T} = h, \quad (7)$$

then

$$(\mathbf{u} \cdot \nabla) h - (\nabla \mathbf{u}) h + \lambda h = 0. \quad (8)$$



If streamlines do not cross the boundary as in [8], then (8) does in fact lead to  $h = 0$ , but in the present case we need to know that  $h = 0$  at the inflow boundary in order to make that conclusion. This condition has to be viewed as a constraint on the possible inflow data for  $p$  and  $\mathbf{T}$ , and the iteration (6) has to be modified in order to accommodate this constraint. If we simply count numbers, we see that in three dimensions  $\mathbf{T}$  has six components,  $p$  has one and  $h$  has three, thus suggesting that four inflow boundary conditions can be prescribed. In two dimensions,  $\mathbf{T}$  has three components,  $p$  has one and  $h$  has two, suggesting that one needs two inflow boundary conditions. This is also suggested by the analysis of characteristics [4],[6],[9].

We want to restrict the choice of inflow boundary conditions in (6c),(6d) by the constraint

$$\operatorname{div} \mathbf{T}^{n+1} - \nabla p^{n+1} = \rho(u^{n+1} \cdot \nabla)u^{n+1} - f \text{ at } x = 0. \quad (9)$$

On the left hand side of (9), the  $x$ -derivatives of  $p^{n+1}$  and  $\mathbf{T}^{n+1}$  can be expressed using (6c) and (6d), e.g.

$$\frac{\partial p^{n+1}}{\partial x} = -\frac{\lambda}{U} p^{n+1} + \frac{q^{n+1}}{U} + \text{nonlinear terms.} \quad (10)$$

When doing this, (9) assumes the form

$$\begin{aligned} \frac{\lambda}{U} (p^{n+1} - T_{11}^{n+1}) + T_{12,y}^{n+1} + T_{13,z}^{n+1} &= \dots \\ -\frac{\lambda}{U} T_{12}^{n+1} + (T_{22}^{n+1} - p^{n+1})_y + T_{23,z}^{n+1} &= \dots \\ -\frac{\lambda}{U} T_{13}^{n+1} + T_{23,y}^{n+1} + (T_{33}^{n+1} - p^{n+1})_z &= \dots \end{aligned} \quad (11)$$

The right hand sides indicated by dots contain terms involving  $f$ ,  $u^{n+1}$ ,  $q^{n+1}$  and nonlinear terms which also involve  $\mathbf{T}^{n+1}$  and  $p^{n+1}$ .

We have to use equation (11) in order to express some stress components at  $x = 0$  in terms of others. To obtain a convergent iteration, we want to do this in such a way that no loss of regularity occurs when solving for the undetermined stress components. Unfortunately, this is not possible in such a way that certain components of stress are prescribed at inflow and others are left to be determined. Rather, we have to prescribe stress components partially. For example, we can do the following. Let each component of the stress be expanded in a Fourier series in  $y$  and  $z$ , e.g.

$$T_{11}(0, y, z) = \sum_{k,l} t_{11}^{kl} e^{2\pi i(ky/L_y + lz/L_z)}. \quad (12)$$

We can then prescribe the Fourier components of  $T_{11}$ ,  $T_{22}$ ,  $T_{13}$  and  $T_{33}$  for  $|k| \geq |l|$ ,  $k \neq 0$  and solve for those of  $p$ ,  $T_{12}$  and  $T_{23}$ . For  $|l| > |k|$ , we prescribe the Fourier components of  $T_{11}$ ,  $T_{12}$ ,  $T_{22}$  and  $T_{33}$  and solve for those of  $p$ ,  $T_{13}$  and  $T_{23}$ . For  $k = l = 0$ , we prescribe the Fourier components of  $T_{11}$ ,  $T_{22}$ ,  $T_{23}$  and  $T_{33}$  and solve for those of  $p$ ,  $T_{12}$  and  $T_{13}$ . In

the two-dimensional case, this amounts to prescribing  $T_{11}$  and  $T_{22}$  and solving for  $p$  and  $T_{12}$ .

The solution procedure is now as follows. We start the iteration with initial data (6a). Then at each step of the iteration we compute a new  $u$  and  $q$  using (6b). Then we compute a new  $p$  and  $\mathbf{T}$  from (6c) and (6d) with inflow boundary conditions which are in part prescribed and in part computed from (11) in the manner outlined above. We show in the next section that such an iteration converges under appropriate smallness conditions for the body force  $f$ , the velocity boundary data  $v_1$  and  $v_2$  and the prescribed part of the stress boundary data.

### 3. Proof of convergence

As usual, we denote by  $H^s$  the space of all functions on the strip  $0 \leq x \leq 1$ , which are periodic with periods  $L_y$  and  $L_z$  in the  $y$ - and  $z$ -directions and have  $s$  derivatives which are square integrable over one period. Sobolev spaces of periodic functions living on one of the boundaries  $x = 0$  or  $x = 1$  are denoted by  $H^{(s)}$ . The corresponding norms are denoted by  $\|\cdot\|_s$  and  $\|\cdot\|_{(s)}$ .

In the following, let  $s$  be any integer  $\geq 1$ . We assume that the body force and the velocity boundary data satisfy the bound

$$\|f\|_{s+1} \leq \gamma, \|v_1\|_{(s+3/2)} \leq \gamma, \|v_2\|_{(s+3/2)} \leq \gamma, \quad (13)$$

where  $\gamma$  is a positive number which will later be chosen small. The stress at the inflow boundary consists of a prescribed part  $\mathbf{T}_p$  and an unknown part  $\mathbf{T}_u$ , which must be determined from (11) at each stage of the iteration. We assume that

$$\|\mathbf{T}_p\|_{(s+1)} \leq \gamma. \quad (14)$$

The convergence proof consists of two parts: First we show that all iterates remain bounded in a certain norm, and then we use this fact to prove convergence in a weaker norm. This procedure is typical in dealing with hyperbolic problems, and the iteration (6) involves the hyperbolic part (6c),(6d). In order to carry out the first part, let us assume that

$$\|u^n - (U, 0, 0)\|_{s+2} \leq \epsilon, \|p^n\|_{s+1} \leq \epsilon, \|\mathbf{T}^n\|_{s+1} \leq \epsilon, \quad (15)$$

where  $\epsilon$  is small. As long as  $\rho U^2 < \eta \lambda$  and  $\epsilon$  is sufficiently small, (6b) is an elliptic system for  $u^{n+1}$  and  $q^{n+1}$ , and a standard argument shows that there is a constant  $C_1$  such that

$$\|u^{n+1} - (U, 0, 0)\|_{s+2} + \|q^{n+1}\|_{s+1} \leq C_1(\gamma + \epsilon^2) =: \delta. \quad (16)$$

In the next step,  $\mathbf{T}_u^{n+1}$  and  $p^{n+1}$  on the inflow boundary are determined from (11). Using the trace theorem, we see that  $q^{n+1}$  and  $\nabla u^{n+1}$  are in  $H^{(s+1/2)}$ . By using this in (11), it is easy to show that for small  $\delta$  there is a constant  $C_2$  such that

$$\|\mathbf{T}_u^{n+1}\|_{(s+1)} + \|p^{n+1}\|_{(s+1)} \leq C_2(\gamma + \delta) =: \sigma. \quad (17)$$

We now turn to the hyperbolic equations (6c) and (6d). The solution to these equations can be obtained by integrating along streamlines (since  $u^{n+1}$  is Lipschitz, streamlines exist and are unique). To obtain estimates for the solution, let us multiply equation (6c) by  $p$  and integrate over the domain. This yields

$$\int_0^1 \int_0^{L_y} \int_0^{L_z} p^{n+1} (u^{n+1} \cdot \nabla) p^{n+1} + \lambda (p^{n+1})^2 dz dy dx = \int_0^1 \int_0^{L_y} \int_0^{L_z} p^{n+1} q^{n+1} dz dy dx. \quad (18)$$

The left hand side is equal to

$$\begin{aligned} & \frac{1}{2} \int_0^1 \int_0^{L_y} \int_0^{L_z} e_x \cdot u^{n+1}(1, y, z) (p^{n+1}(1, y, z))^2 dz dy \\ & - \frac{1}{2} \int_0^1 \int_0^{L_y} \int_0^{L_z} e_x \cdot u^{n+1}(0, y, z) (p^{n+1}(0, y, z))^2 dz dy + \lambda \int_0^1 \int_0^{L_y} \int_0^{L_z} (p^{n+1})^2 dz dy dx. \end{aligned} \quad (19)$$

The first term in this is positive, and hence we obtain

$$\begin{aligned} & \lambda \int_0^1 \int_0^{L_y} \int_0^{L_z} (p^{n+1})^2 dz dy dx \\ & \leq \int_0^1 \int_0^{L_y} \int_0^{L_z} p^{n+1} q^{n+1} dz dy dx + \frac{1}{2} \int_0^1 \int_0^{L_y} \int_0^{L_z} e_x \cdot u^{n+1}(0, y, z) (p^{n+1}(0, y, z))^2 dz dy. \end{aligned} \quad (20)$$

That is, we have an estimate of the  $L^2$ -norm for  $p$  in terms of the  $L^2$ -norm of  $q$  and the  $L^2$ -norm of the inflow boundary data. By differentiating (6c) with respect to  $y$  or  $z$ , we can obtain estimates for derivatives of  $p$  in these directions, and estimates for  $x$ -derivatives can be obtained from the equation itself. Similarly, we can deal with (6d). If  $\delta$  is sufficiently small, this argument leads to estimates of the form

$$\|p^{n+1}\|_{s+1} + \|\mathbf{T}^{n+1}\|_{s+1} \leq C_3(\sigma + \gamma + \delta). \quad (21)$$

If we now choose  $\epsilon$  small enough and  $\gamma$  sufficiently small relative to  $\epsilon$ , we will have  $\delta \leq \epsilon$  and  $C_3(\sigma + \gamma + \delta) \leq \epsilon$ . This implies that (15) holds with  $n$  replaced by  $n+1$ . By induction, we see that (15) holds for all values of  $n$ .

The fact that all the iterates are bounded and in fact small can now be used to show convergence of the iteration in a weaker norm. More specifically, we can show that  $u^n$  converges in  $H^{s+1}$  and that  $p^n, q^n, \mathbf{T}^n$  converge in  $H^s$ . The argument is fairly routine, and we shall just show a typical step. Let us take (6c) at step  $n+1$  and step  $n$  and take the difference. We find

$$(u^{n+1} \cdot \nabla)(p^{n+1} - p^n) + \lambda(p^{n+1} - p^n) + ((u^{n+1} - u^n) \cdot \nabla)p^n = q^{n+1} - q^n. \quad (22)$$

From this we find

$$\|p^{n+1} - p^n\|_s \leq C(\|q^{n+1} - q^n\|_s + \|u^{n+1} - u^n\|_{s+1} \|p^n\|_{s+1} + \|p^{n+1} - p^n\|_{(s)}). \quad (23)$$

From above, we already have a bound on the term  $\|p^n\|_{s+1}$ . Similar arguments are applied to (6a), (6d) and (11). By putting the resulting estimates together, we obtain an inequality of the form

$$\begin{aligned} & \|u^{n+1} - u^n\|_{s+1} + \|q^{n+1} - q^n\|_s + \|p^{n+1} - p^n\|_s + \|\mathbf{T}^{n+1} - \mathbf{T}^n\|_s \\ & \leq K(\epsilon, \gamma) [\|u^n - u^{n-1}\|_{s+1} + \|q^n - q^{n-1}\|_s + \|p^n - p^{n-1}\|_s + \|\mathbf{T}^n - \mathbf{T}^{n-1}\|_s]. \end{aligned} \quad (24)$$

The constant  $K(\epsilon, \gamma)$  tends to zero as  $\gamma$  and  $\epsilon$  tend to zero. Hence a contraction is obtained if we choose  $\epsilon$  and  $\gamma$  sufficiently small.

### References

- [1] H. Beirão da Veiga, Stationary motions and incompressible limit for compressible viscous fluids, MRC Technical Summary Report #2883, University of Wisconsin, Madison 1985
- [2] M.J. Crochet, A.R. Davies and K. Walters, *Numerical Simulation of Non-Newtonian Flow*, Elsevier 1984
- [3] H. Giesekus, A unified approach to a variety of constitutive models for polymer fluids based on the concept of configuration dependent molecular mobility, *Rheol. Acta* **21** (1982), 366-375
- [4] D.D. Joseph, M. Renardy and J.C. Saut, Hyperbolicity and change of type in the flow of viscoelastic fluids, *Arch. Rational Mech. Anal.* **87** (1985), 213-251
- [5] A.I. Leonov, Nonequilibrium thermodynamics and rheology of viscoelastic polymer media, *Rheol. Acta* **15** (1976), 85-98
- [6] M. Luskin, On the classification of some model equations for viscoelasticity, *J. Non-Newtonian Fluid Mech.* **16** (1984), 3-11
- [7] J.G. Oldroyd, Non-Newtonian effects in steady motion of some idealized elasticoviscous fluids, *Proc. Roy. Soc. London A* **245** (1958), 278-297
- [8] M. Renardy, Existence of slow steady flows of viscoelastic fluids with differential constitutive equations, *Z. angew. Math. Mech.* **65** (1985), 449-451
- [9] I.M. Rutkevich, The propagation of small perturbations in a viscoelastic fluid, *J. Appl. Math. Mech.* **34** (1970), 35-50
- [10] J.S. Ultman and M.M. Denn, Anomalous heat transfer and a wave phenomenon in dilute polymer solutions, *Trans. Soc. Rheology* **14** (1970), 307-317

SECURITY CLASSIFICATION OF THIS PAGE (When Data Entered)

REPORT DOCUMENTATION PAGE		READ INSTRUCTIONS BEFORE COMPLETING FORM
1. REPORT NUMBER 2916	2. GOVT ACCESSION NO.	3. RECIPIENT'S CATALOG NUMBER
4. TITLE (and Subtitle) INFLOW BOUNDARY CONDITIONS FOR STEADY FLOWS OF VISCOELASTIC FLUIDS WITH DIFFERENTIAL CONSTITUTIVE LAWS		5. TYPE OF REPORT & PERIOD COVERED Summary Report - no specific reporting period
		6. PERFORMING ORG. REPORT NUMBER
7. AUTHOR(s) Michael Renardy		8. CONTRACT OR GRANT NUMBER(s) DAAG29-80-C-0041 DMS-8451761
9. PERFORMING ORGANIZATION NAME AND ADDRESS Mathematics Research Center, University of 610 Walnut Street Wisconsin Madison, Wisconsin 53705		10. PROGRAM ELEMENT, PROJECT, TASK AREA & WORK UNIT NUMBERS Work Unit Numbers 1 - Applied Analysis and 2 - Physical Mathematics
11. CONTROLLING OFFICE NAME AND ADDRESS See Item 18 below.		12. REPORT DATE February 1986
		13. NUMBER OF PAGES 7
14. MONITORING AGENCY NAME & ADDRESS (if different from Controlling Office)		15. SECURITY CLASS. (of this report) UNCLASSIFIED
		15a. DECLASSIFICATION/DOWNGRADING SCHEDULE
16. DISTRIBUTION STATEMENT (of this Report) Approved for public release; distribution unlimited.		
17. DISTRIBUTION STATEMENT (of the abstract entered in Block 20, if different from Report)		
18. SUPPLEMENTARY NOTES U. S. Army Research Office National Science Foundation P. O. Box 12211 Washington, DC 20550 Research Triangle Park North Carolina 27709		
19. KEY WORDS (Continue on reverse side if necessary and identify by block number) Viscoelastic fluids Existence of steady flows Inflow boundary conditions		
20. ABSTRACT (Continue on reverse side if necessary and identify by block number) We prove an existence result for steady flows through a strip which can be regarded as a perturbation of rigid motion. The fluid is viscoelastic with a differential constitutive law, e.g. an upper convected Maxwell model. Particular emphasis is focussed on the question which boundary conditions need to be imposed at the inflow boundary to make the problem well-posed.		

DD FORM 1473 1 JAN 73 EDITION OF 1 NOV 65 IS OBSOLETE

UNCLASSIFIED  
SECURITY CLASSIFICATION OF THIS PAGE (When Data Entered)

END

DATE  
FILMED

6 - 86

DT