

AD-A167 176

SUPERLATTICE OPTICAL BISTABILITY RESEARCH(U) HONEYWELL
SYSTEMS AND RESEARCH CENTER MINNEAPOLIS MN M M TEHRANI
30 SEP 85 AFOSR-TR-86-0165 F49620-84-C-0071

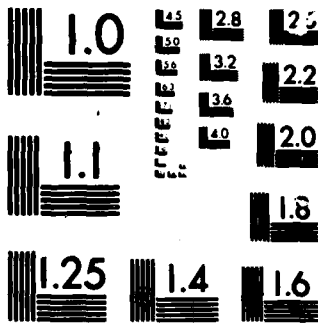
1/1

UNCLASSIFIED

F/G 13/8

NL





MICROCOPY

CHART

AFOSR-TR- 86 - 0 1 6 5

AD-A167 176

SUPERLATTICE OPTICAL BISTABILITY RESEARCH

QUARTERLY TECHNICAL REPORT

1 July 1985 through 30 September 1985

AIRFORCE OFFICE OF SCIENTIFIC RESEARCH

CONTRACT NO. F49620-84-C-0071

Dr. M. Tehrani
Dr. Mohammad M. Tehrani
Principal Investigator

Mr. James Lenz
Section Chief

HONEYWELL INC.
System & Research Center
2600 Ridgway Parkway
P.O. Box 312
Minneapolis, MN 55440

DTIC
ELECTE
APR 29 1986
S D D

DTIC FILE COPY

Approved for public release;
distribution unlimited.

REPORT DOCUMENTATION PAGE

Form Approved
OMB No 0704-0188
Exp Date Jun 30 1986

1a REPORT SECURITY CLASSIFICATION Unclassified		1b RESTRICTIVE MARKINGS None		
2a SECURITY CLASSIFICATION AUTHORITY N/A		3. DISTRIBUTION / AVAILABILITY OF REPORT Approved for public release! Unlimited distribution unlimited.		
2b DECLASSIFICATION / DOWNGRADING SCHEDULE N/A				
4 PERFORMING ORGANIZATION REPORT NUMBER(S) Quarterly Technical Report		5. MONITORING ORGANIZATION REPORT NUMBER(S) AFOSR-TR- 86 - 0165		
6a NAME OF PERFORMING ORGANIZATION Honeywell Inc.	6b OFFICE SYMBOL (If applicable)	7a NAME OF MONITORING ORGANIZATION AFOSR		
6c ADDRESS (City, State, and ZIP Code) Systems & Research Center, Honeywell 2600 Ridgway Pkwy, P.O. Box 312 Minneapolis, MN 55440		7b ADDRESS (City, State, and ZIP Code) Building 410 Bolling AFB, DC 20332-6448		
8a NAME OF FUNDING / SPONSORING ORGANIZATION Air Force Office of Scientific Research	8b OFFICE SYMBOL (If applicable) AFOSR	9. PROCUREMENT INSTRUMENT IDENTIFICATION NUMBER F49620-84-C-0071		
8c ADDRESS (City, State, and ZIP Code) AFOSR Bldg. 410 Bolling AFB, DC 20332-6448		10 SOURCE OF FUNDING NUMBERS		
		PROGRAM ELEMENT NO	PROJECT NO	TASK NO
11 TITLE (Include Security Classification) Superlattice Optical Bistability Research				
12 PERSONAL AUTHOR(S) Dr. Mohammad M. Tehrani				
13a TYPE OF REPORT Quarterly Technical	13b TIME COVERED FROM 7/1/85 TO 9/30/85	14 DATE OF REPORT (Year, Month, Day) Sept. 30, 1985	15 PAGE COUNT 2	
16 SUPPLEMENTARY NOTATION None				
17 COSAT CODES		18 SUBJECT TERMS (Continue on reverse if necessary and identify by block number)		
FIELD	GROUP			SUB-GROUP
19 ABSTRACT (Continue on reverse if necessary and identify by block number) This report summarizes our progress and results during this reporting period. Complete automation of the MBE system shutters was achieved and a number of superlattice samples of HgTe-CdTe were grown. Most of these samples, however, show polycrystallinity. Deposition parameters need to be optimized for better quality samples.				
20 DISTRIBUTION AVAILABILITY OF ABSTRACT <input checked="" type="checkbox"/> UNCLASSIFIED/UNLIMITED <input type="checkbox"/> SAME AS RPT <input type="checkbox"/> DTIC USERS		21 ABSTRACT SECURITY CLASSIFICATION Unclassified		
22a NAME OF RESPONSIBLE INDIVIDUAL Dr. Mohammad M. Tehrani		22b TELEPHONE (Include Area Code)	22c OFFICE SYMBOL	

PROGRAM PROGRESS

During this reporting period the automation of MBE system shutters was completed for the substrate and the Hg, CdTe, and Te sources. As reported earlier, the automated shutter operations allow for much more precise thickness control of the superlattice layers during the deposition. Also, from signal-to-noise considerations, performing the nonlinear optical experiments requires the use of thick ($> 2 \mu\text{m}$) superlattice samples which involve several hundred layers of HgTe and CdTe. This can best be accomplished by using an automated MBE system. The current superlattice design calls for alternate layers of HgTe and CdTe with thicknesses of 100-150 Å. A p-type sample with this structure is expected to yield a third order susceptibility ($\chi^{(3)}$) of 100 times larger than that of the bulk HgCdTe.

A number of test runs were carried out with the automated MBE system. These runs resulted in five superlattice samples of various thicknesses. Characteristics of these samples are shown in Table 1. Sample #4 is now being used in a preliminary experiment of optical phase conjugation to establish baseline data.

TABLE 1 CHARACTERISTICS OF HgCdTe FABRICATED SUPERLATTICES

SAMPLE #	# of PERIODS	TOTAL THICKNESS (μm)	THICKNESS OF HgTe	THICKNESS OF CdTe	CRYSTALLINITY
1	100	~8	~400 Å	~400 Å	Poor
2	100	~8	~424 Å	~424 Å	Poly crystalline
3	100	~2.4	~155 Å	~80 Å	Poly crystalline
4	70	~2.6	~300 Å	~100 Å	Crystalline
5	70	~2.6	~300 Å	~100 Å	Poor

These samples were less crystalline than the thinner samples that were previously made via manual control. The deposition parameters still require further optimization. The key parameters are associated with the deposition of the HgTe layer which have very tight tolerances for achieving crystallinity and stoichiometry. We are still in the early part of the learning curve for fabricating consistent, good quality superlattices.

FUTURE PLAN

Since the key issue is obtaining highly crystalline and stoichiometric superlattices, we will concentrate on fine tuning the deposition parameters of the constituent layers. Very thin (~100Å) layers of HgTe and CdTe will be analyzed respectively via in-situ RHEED as a function of deposition parameters (substrate temperature, Hg flux, deposition rates, etc) which would allow epitaxial deposition of the individual layers. From these results, an operable set of parameters will be used for the final deposition of HgTe-CdTe superlattices. The calibration runs are being conducted and the deposition of superlattices is scheduled in October.

After achieving the growth and fabrication of satisfactory superlattice samples which meet the thickness, layer integrity, and the overall quality requirements we will perform an optical phase conjugation (four-wave mixing) experiment to measure the superlattice's third order susceptibility ($\chi^{(3)}$) and compare it to that of the bulk HgCdTe. We will then perform a pulsed optical bistability experiment to measure the switching time as well as the critical intensity for the transition between the two bistable states.

FINANCIAL

As of September 22, 1985, \$93869 through price has been spent.

MT85 R024

Accession For	
NTIS CRA&I	<input checked="" type="checkbox"/>
DTIC TAB	<input type="checkbox"/>
Unannounced	<input type="checkbox"/>
Justification	
By	
Distribution /	
Availability Codes	
Dist	Avail and/or Special
A-1	

AVAILABILITY
COLLECTED
3

END

FILMED

DTIC

6-86