

AD-A167 098

HEALTH MANPOWER STATISTICS FISCAL YEAR 1985 (U)
WASHINGTON HEADQUARTERS SERVICES (DOD) DC DIRECTORATE
FOR INFORMATION OPERATIONS AND REPORTS 1985
DIOR/H06-85

1/2

UNCLASSIFIED

F/G 12/1

ML





1.0

2.8

2.5

3.15

2.2

1.1

3.6

2.0

4.0

4.5

1.8

1.25

1.4

1.6

12

M06

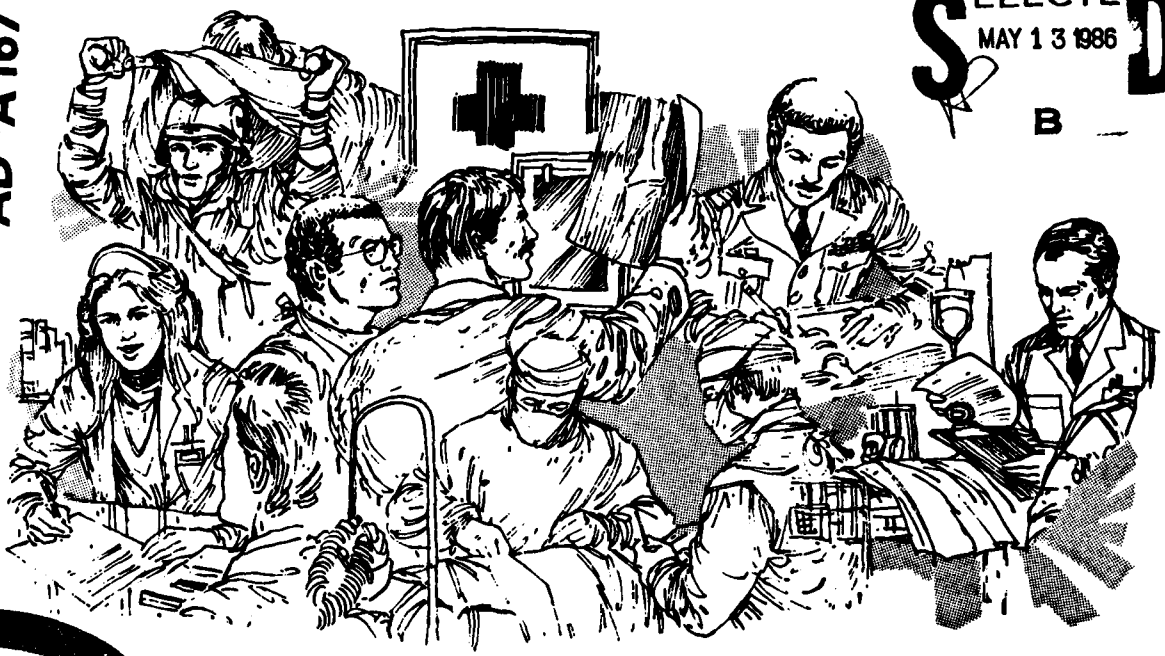


Department of Defense
HEALTH MANPOWER STATISTICS
Fiscal Year 1985.

DTIC
ELECTE
MAY 13 1986
S B D

AD-A167 098

DTIC FILE COPY



OSD
BRANCH OF HEADQUARTERS
WASHINGTON, D.C.



DIRECTORATE FOR INFORMATION
OPERATIONS AND REPORTS (DIOR)

DISTRIBUTION STATEMENT A
Approved for public release
Distribution Unlimited

Department of Defense
Health Manpower Statistics
Fiscal Year 1985

Prepared by
Department of Defense
Washington Headquarters Services
Directorate for Information
Operations and Reports

*FOR SALE BY THE SUPERINTENDENT OF DOCUMENTS
U.S. GOVERNMENT PRINTING OFFICE
WASHINGTON, D.C. 20540*

DTIC and NTIS identification number for this publication is DIOR/M06-85.

FOREWORD

Health Manpower Statistics (HMIS) is published annually by the Office of the Secretary of Defense, Washington Headquarters Services, Directorate for Information Operations and Reports (WHS/DIOR), in support of the Office of Medical Readiness, Office of the Assistant Secretary of Defense (Health Affairs). This report provides a consolidated reference document for responding to numerous questions from the Administration, Congress, and others. It provides input for long range personnel planning models for the military departments and Department of Defense personnel managers.

Specific questions on the data contained herein should be addressed to the Director of Manpower, Personnel and Training, Office of the Assistant Secretary of Defense (Health Affairs).

NOTE: The contents of this publication may be reprinted without permission.

Approved for	
NTIC	✓
DDIC	
DDM	
DDP	
DDI	
DDO	
DDA	
DDC	
DDF	
DDG	
DDH	
DDI	
DDJ	
DDK	
DDL	
DDM	
DDN	
DDO	
DDP	
DDQ	
DDR	
DDT	
DDU	
DDV	
DDW	
DDX	
DDY	
DDZ	
Dist	Special
A1	



TABLE OF CONTENTS

	<u>Page</u>
Introduction	1
Format 1 - Professional Health Manpower Personnel by Discipline and Sex.....	3
Figure 1 - Professional Health Manpower Personnel by Discipline and Sex.....	6
Figure 2 - Professional Health Manpower Personnel by Military Department and Sex.....	7
Format 2 - Health Manpower Requirements, Authorizations, and End Strengths.....	8
Format 3 - Health Manpower Requirements, Authorizations, and End Strengths by Corps Level.....	14
Format 4 - Year of Service Group Distribution for Selected Health Professions.....	16
Format 5 - Grade Distribution of Selected Health Manpower Personnel by Discipline.....	20
Format 6 - Civilian Health Care Personnel Strength	23
Format 7 - Civilian Health Care Personnel Strength (Local Nationals).....	25
Format 8 - Gains, Losses, and Authorizations by Discipline.....	26
Format 9 - Direct Accessions by Discipline by Year.....	30
Format 10 - Physicians in Administrative and Nonadministrative/ Nonpatient Care Billets.....	33
Format 11 - Physician Requirements, Authorizations, and End Strengths.....	39
Format 12 - Number of AFHPSP Students by Year in School.....	52
Format 13 - Physician Duty Specialties by Years of Service.....	53
Format 14 - Grade Distribution of Physicians by Primary Specialty.....	63
Format 15 - Grade Distribution of Physicians by Duty Specialty.....	69
Format 16 - Service Sponsored Graduate Medical Education (GME).....	75

Format 17 - Service Deferred (Not Sponsored) Graduate Medical Education	82
Format 18 - Active Duty Graduate Medical Education Programs	88
Format 19 - Authorized Specialty End Strengths by Fiscal Year	93
Format 20 - Physician Accessions by Pay Grade at Time of Report	99
Format 21 - Direct Accession Physicians by Pay Grade at Time of Report	101
Format 22 - Foreign Medical Graduate Physicians Currently on Active Duty by Citizenship	102
Format 23 - Dentists in Administrative and Nonadministrative/Nonpatient Care Billets	103
Format 24 - Dentist Requirements, Authorizations, and End Strength	105
Format 25 - Dentists Duty Specialties by Years of Service	108
Format 26 - Grade Distribution of Dentists by Primary Specialty	114
Format 27 - Grade Distribution of Dentists by Duty Specialty	117
Format 28 - Service Sponsored Graduate Dental Education	120
Format 29 - Reserved	
Format 30 - Currently Identified and Best Estimate of Health Manpower Accessions by Discipline and Year	123
Format 31 - FYGME Continuation and Early Returns to Residency	134
Format 32 - Enlisted Health Personnel	135
Glossary	137

INTRODUCTION

Health Manpower Statistics (HMIS) is an annual publication containing data on health medical personnel employed by the military departments within the Department of Defense (DoD). The publication is produced from a health manpower data base designed, established, and maintained by the Manpower Management Information Division of the Washington Headquarters Services/Directorate for Information Operations and Reports in support of the Office of the Assistant Secretary of Defense for Health Affairs.

Data are submitted annually, 1/ as of the end of the fiscal year, by the military departments in accordance with DoD Instruction 7730.36. ^{2/} Data submitted by the Army, Navy, and the Air Force on each of 32 different formats have been consolidated and are presented in this volume. Data include personnel (both officer and enlisted) and civilian personnel. 2/5

This report includes comparison data for the end of the fiscal year by requirements and authorizations and assignments by corps level and selected specialties. Other formats present recruiting summaries, gains by program source, force strength projections, and extensive displays of rank, years of service, and primary duty specialties for medical and dental officers. Education summaries show recruiting sources and projections for Armed Forces Health Professions Scholarship Program (AFHPSP) and graduate medical and dental education programs.

1/ Seven formats are required semiannually as of the end of March.

2/ Data about civilian personnel are displayed in Formats 6 and 7.

FORMAT 1: PROFESSIONAL HEALTH MANPOWER PERSONNEL BY DISCIPLINE AND SEX

FORMAT 01
PAGE 1
FY85

DISCIPLINE		MALE	FEMALE	TOTAL
PHYSICIAN				
	A	4739	635	5374
	N	3520	440	3960
	F	3483	405	3888
	TOTAL	11742	1480	13222
DENTIST				
	A	1629	98	1727
	N	1580	121	1701
	F	1502	91	1593
	TOTAL	4711	310	5021
VETERINARIAN				
	A	409	39	448
	F	27	3	30
	TOTAL	436	42	478
OPTOMETRIST				
	A	198	2	200
	N	112	5	117
	F	179	11	190
	TOTAL	489	18	507
PODIATRIST				
	A	34	3	37
	N	16	3	19
	F	33	3	36
	TOTAL	83	9	92

INCOMPLETE PAGE IMAGE-NOT FILMED

FORMAT 1: PROFESSIONAL HEALTH MANPOWER PERSONNEL BY DISCIPLINE AND SEX

FORMAT 01
PAGE 2
FY85

DISCIPLINE	MALE	FEMALE	TOTAL
PSYCHOLOGIST			
A	153	17	170
N	147	20	167
F	138	28	166
TOTAL	438	65	503
NURSE PRACTITIONER			
A	54	206	260
N	15	74	89
F	22	248	270
TOTAL	91	528	619
OTHER NURSES			
A	1153	2947	4100
N	782	2113	2875
F	1072	3589	4661
TOTAL	2987	8649	11636
PHYSICIAN ASSISTANT			
A	577	22	599
N	287	9	276
F	452	24	476
TOTAL	1296	55	1351

FORMAT 1: PROFESSIONAL HEALTH MANPOWER PERSONNEL BY DISCIPLINE AND SEX

FORMAT 01
PAGE 3
FY85

DISCIPLINE	MALE	FEMALE	TOTAL
ALL OTHER OFFICERS			
A	4230	828	5058
N	1681	254	1935
F	2193	415	2608
TOTAL	8104	1497	9601
GRAND TOTALS			
A	13176	4797	17973
N	8100	3039	11139
F	9101	4817	13918
TOTAL	30377	12653	43030

FIGURE 1
**PROFESSIONAL HEALTH MANPOWER PERSONNEL
 BY DISCIPLINE AND SEX**

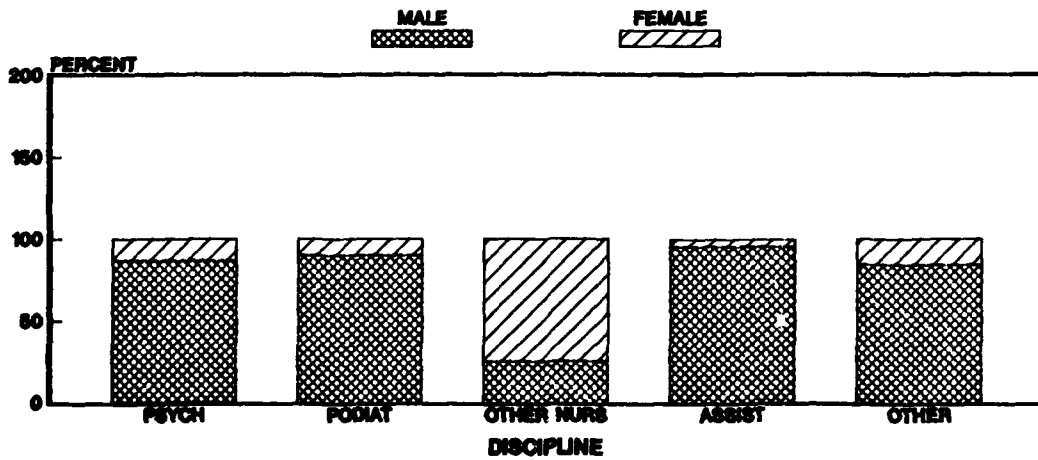
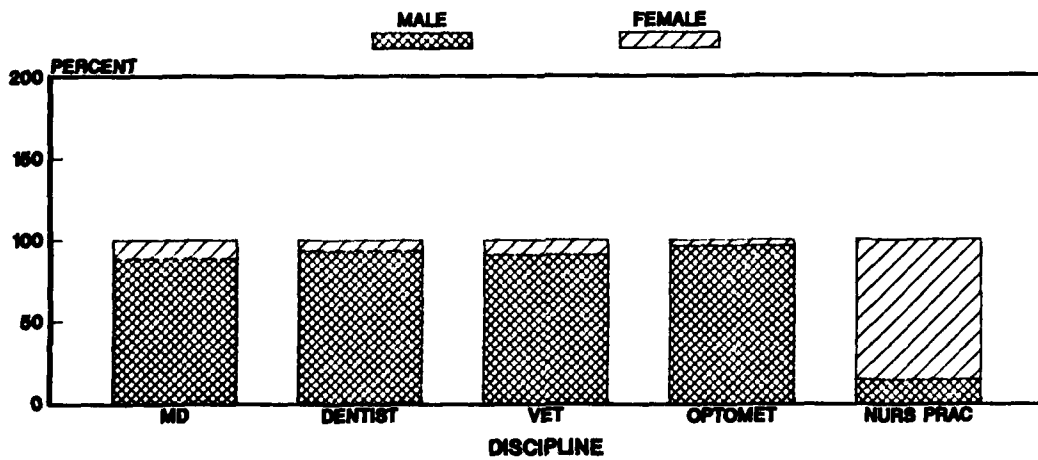
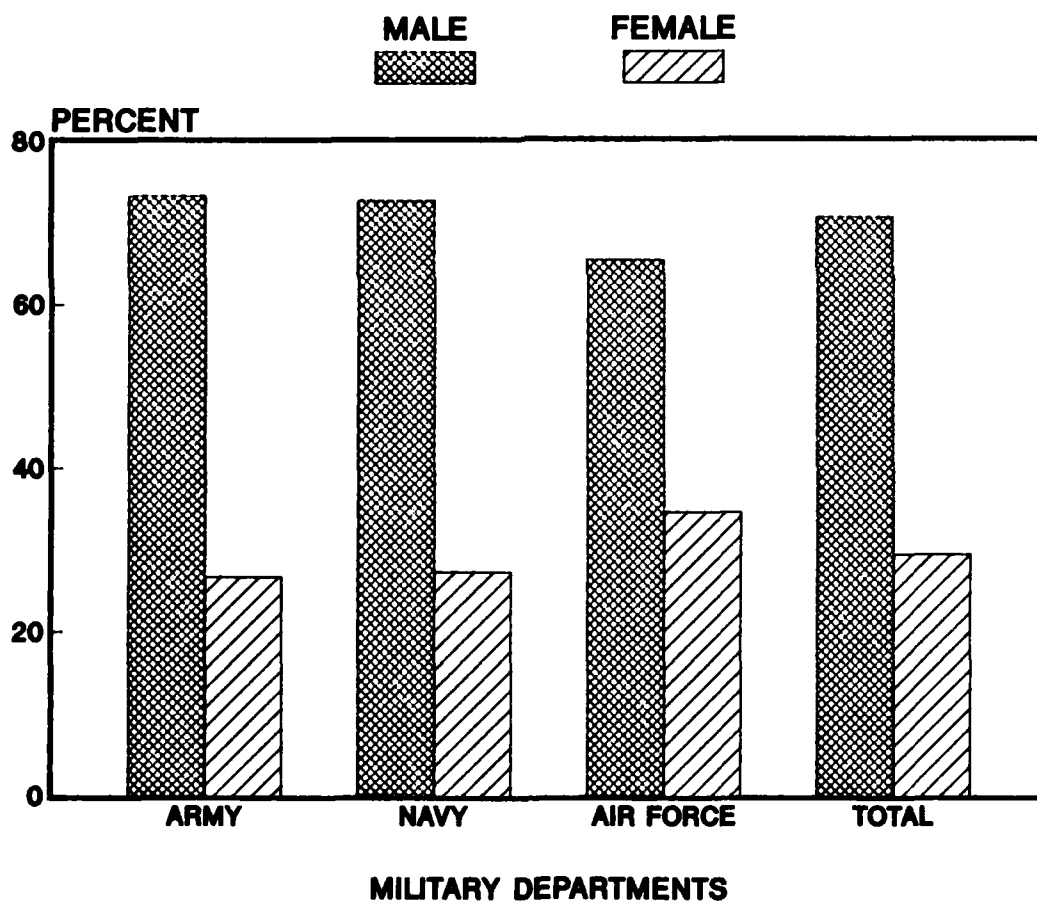


FIGURE 2

**PROFESSIONAL HEALTH MANPOWER PERSONNEL
FISCAL YEAR 1985**



FORMAT 2: HEALTH MANPOWER REQUIREMENTS, AUTHORIZATIONS, AND END STRENGTHS

FORMAT 02
PAGE 1
FY85

MEDICAL SPECIALTY		SERVICE REQUIREMENT	BUDGET AUTHORIZATION	END STRENGTH
AUDIOLOGIST	A	82	65	70
	N	10	11	10
	F	2	19	23
	TOTAL	94	95	103
BIOCHEMIST	A	109	81	88
	N	70	39	41
	F	41	19	20
	TOTAL	220	139	149
BIOENVIRONMENTAL ENGINEER	F	64	191	183
BIOENVIRONMENTAL ENGINEER, STAFF	F	60	90	85
BIOMEDICAL SCIENTIST, STAFF	F	3	37	57
BIOMEDICAL/MEDICAL SCIENTIST	F	2	9	8
CLINICAL LAB OFFICER	A	129	94	98
	F	28	19	18
	TOTAL	157	113	116
DIETITIAN	A	229	177	187
	N	22	43	53
	F	148	74	74
	TOTAL	399	294	314

FORMAT 2: HEALTH MANPOWER REQUIREMENTS, AUTHORIZATIONS, AND END STRENGTHS

FORMAT 02
PAGE 2
FY85

MEDICAL SPECIALTY		SERVICE REQUIREMENT	BUDGET AUTHORIZATION	END STRENGTH
ENTOMOLOGIST	A	106	75	78
	N	38	29	32
	F	12	12	12
	TOTAL	156	116	122
ENVIRONMENTAL SCIENCE OFFICER	A	156	149	139
	N	140	81	88
	F	189	112	97
	TOTAL	485	342	324
HEALTH ADMINISTRATOR	A	3269	3129	3099
	N	1178	1258	1118
	F	1657	1160	1144
	TOTAL	6104	5547	5360
HEALTH PHYSICIST	F	18	25	27
IMMUNOLOGIST	A	36	24	27
INDUSTRIAL HYGIENE OFFICER	N	96	96	77
	F	25	16	10
	TOTAL	121	112	87

FORMAT 2: HEALTH MANPOWER REQUIREMENTS, AUTHORIZATIONS, AND END STRENGTHS

FORMAT 02
PAGE 3
FY85

MEDICAL SPECIALTY		SERVICE REQUIREMENT	BUDGET AUTHORIZATION	END STRENGTH
MEDICAL TECHNOLOGIST	N	100	82	85
	F	104	132	137
	TOTAL	204	214	222
MICROBIOLOGIST	A	64	44	47
	N	68	46	51
	F	44	13	11
	TOTAL	176	103	109
NUCLEAR MEDICAL SCIENCE OFFICER	A	87	79	78
OPTOMETRIST	A	239	178	200
	N	111	143	117
	F	94	178	184
	TOTAL	444	499	501
PARASITOLOGIST	A	20	17	16
PHARMACIST	A	385	236	223
	N	130	144	136
	F	299	162	151
	TOTAL	814	542	510

FORMAT 2: HEALTH MANPOWER REQUIREMENTS, AUTHORIZATIONS, AND END STRENGTHS

FORMAT 02
PAGE 4
FY85

MEDICAL SPECIALTY		SERVICE REQUIREMENT	BUDGET AUTHORIZATION	END STRENGTH
PHYSICIAN ASSISTANT	A	524	499	599
	N	159	301	276
	F	664	507	475
	TOTAL	1347	1307	1350
PHYSIOLOGIST	A	35	30	30
	N	80	84	85
	F	11	68	62
	TOTAL	126	182	177
PODIATRIST	A	54	46	37
	N	44	26	19
	F	14	32	35
	TOTAL	112	104	91
PSYCHOLOGIST	A	199	176	170
	N	149	165	167
	F	345	148	143
	TOTAL	693	489	480
RADIATION HEALTH OFFICER	N	42	49	57

FORMAT 2: HEALTH MANPOWER REQUIREMENTS, AUTHORIZATIONS, AND END STRENGTHS

FORMAT 02
PAGE 5
FY85

MEDICAL SPECIALTY		SERVICE REQUIREMENT	BUDGET AUTHORIZATION	END STRENGTH
RADIATION SPECIALIST	N	28	30	21
SANITARY ENGINEER	A	119	107	101
	F	1	15	11
	TOTAL	120	122	112
SOCIAL WORK OFFICER	A	271	233	237
	N	6	17	15
	F	95	180	193
	TOTAL	372	430	445
SPEECH SPECIALIST	F	1	5	3
THERAPIST, OCCUPATIONAL	A	103	91	95
	N	6	5	8
	F	27	34	32
	TOTAL	136	130	135
THERAPIST, PHYSICAL	A	223	201	200
	N	40	66	58
	F	295	128	120
	TOTAL	558	395	378

FORMAT 2: HEALTH MANPOWER REQUIREMENTS, AUTHORIZATIONS, AND END STRNGTHS

FORMAT 02
PAGE 6
FY85

MEDICAL SPECIALTY		SERVICE REQUIREMENT	BUDGET AUTHORIZATION	END STRENGTH
VETERINARIAN	A	470	440	448
	F	0	31	29
	TOTAL	470	471	477
OTHER	A	0	240	240

FORMAT 3: HEALTH MANPOWER REQUIREMENTS, AUTHORIZATIONS, AND END STRENGTHS BY CORPS LEVEL

FORMAT 03
PAGE 1
FY85

CORPS		SERVICE REQUIREMENT			BUDGET AUTHORIZATION			END STRENGTH		
		DUTY FORCE	TRAINING	TOTAL	DUTY FORCE	TRAINING	TOTAL	DUTY FORCE	TRAINING	TOTAL
MEDICAL	A	6657	350	7007	3752	1565	5317	3652	1722	5374
	N	4292	269	4561	2628	1333	3961	2877	1083	3960
	F	4351	200	4551	3070	850	3920	3039	849	3888
	TOTAL	15300	819	16119	9450	3748	13198	9568	3654	13222
DENTAL	A	2016	171	2187	1588	178	1766	1555	172	1727
	N	1671	17	1688	1626	105	1731	1599	102	1701
	F	1569	52	1621	1445	161	1606	1437	156	1593
	TOTAL	5256	240	5496	4659	444	5103	4591	430	5021
NURSE	A	7082	0	7082	3782	511	4293	3840	520	4360
	N	4179	30	4209	2878	121	2999	2866	98	2964
	F	6670	0	6670	4700	234	4934	4648	283	4931
	TOTAL	17931	30	17961	11360	866	12226	11354	901	12255
VETERINARY	A	470	0	470	381	59	440	423	25	448
MEDICAL SERVICE	A	5360	0	5360	4272	725	4997	4241	742	4983
	N	2358	30	2388	2302	112	2414	2169	69	2238
	F	1657	0	1657	1160	52	1212	1144	45	1189
	TOTAL	9375	30	9405	7734	889	8623	7554	856	8410

FORMAT 3: HEALTH MANPOWER REQUIREMENTS, AUTHORIZATIONS, AND END STRENGTHS BY CORPS LEVEL

FORMAT 03
PAGE 2
FY85

CORPS	SERVICE REQUIREMENT			BUDGET AUTHORIZATION			END STRENGTH			
	DUTY FORCE	TRAINING	TOTAL	DUTY FORCE	TRAINING	TOTAL	DUTY FORCE	TRAINING	TOTAL	
BIOMEDICAL SCIENCES										
F	2586	0	2586	2256	119	2375	2200	117	2317	
MEDICAL SPECIALIST										
A	555	0	555	400	69	469	424	58	482	
GRAND TOTALS										
A	22140	521	22661	14175	3107	17282	14135	3239	17374	
N	12500	348	12848	9434	1671	11105	9511	1352	10863	
F	16833	252	17085	12631	1418	14047	12468	1450	13918	
TOTAL	51473	1119	52592	36240	6194	42434	36114	6041	42155	

FORMAT 4: YEAR OF SERVICE GROUP DISTRIBUTION FOR SELECTED HEALTH PROFESSIONS

FORMAT 04
PAGE 1A
FY85

DISCIPLINE	AT LEAST BUT LESS THAN	TOTAL ACTIVE FEDERAL SERVICE BY YEAR OF SERVICE GROUPS															
		1	2	3	4	5	6	7	8	9	10	11	12	13	14	15	16
VETERINARIAN																	
A		69	22	28	33	27	26	18	19	15	9	12	8	14	14	17	18
F		0	0	0	0	0	0	0	1	2	1	4	2	5	3	0	2
TOTAL		69	22	28	33	27	26	18	20	17	10	16	10	19	17	17	20
OPTOMETRIST																	
A		34	48	16	12	3	5	6	9	4	6	7	6	6	5	5	1
N		13	9	14	7	10	6	10	2	4	2	7	1	4	5	2	6
F		27	17	18	18	12	10	6	8	8	4	9	6	4	4	8	7
TOTAL		74	74	48	37	25	21	22	19	16	12	23	13	14	14	15	14
PODIATRIST																	
A		13	2	2	1	1	1	6	1	0	2	2	0	0	0	1	1
N		5	0	4	0	2	0	0	1	0	0	1	1	0	2	0	0
F		5	3	6	3	1	3	0	2	2	2	5	1	1	0	1	1
TOTAL		23	5	12	4	4	4	6	4	2	4	8	2	1	2	2	2
PSYCHOLOGIST																	
A		31	21	2	10	13	7	7	5	5	4	2	5	7	11	10	9
N		9	7	21	13	6	7	9	9	8	6	9	8	6	9	4	4
F		15	12	16	16	11	11	9	6	8	3	7	6	8	7	8	6
TOTAL		55	40	39	39	30	25	25	20	21	13	18	19	21	27	22	19
NURSE PRACTITIONER																	
A		0	0	0	6	13	12	14	10	19	19	16	12	23	17	18	16
N		4	0	5	2	5	2	1	1	2	2	3	4	3	9	3	9
F		1	0	0	4	2	7	11	15	12	12	13	14	12	22	17	22
TOTAL		5	0	5	12	20	21	26	26	33	33	32	30	38	48	38	47
OTHER NURSES																	
A		0	989	322	220	187	228	198	234	130	125	153	142	133	151	145	117
N		311	124	334	143	117	148	190	149	167	102	87	118	101	141	117	126
F		602	555	412	423	284	330	265	277	198	175	159	135	95	151	125	88
TOTAL		913	1668	1068	786	588	706	653	660	495	402	399	395	329	443	387	331

FORMAT 4: YEAR OF SERVICE GROUP DISTRIBUTION FOR SELECTED HEALTH PROFESSIONS

FORMAT 34
PAGE 18
FY85

DISCIPLINE	TOTAL ACTIVE FEDERAL SERVICE BY YEAR OF SERVICE GROUPS																TOTAL
	AT LEAST BUT LESS THAN	16	17	18	19	20	21	22	23	24	25	26	27	28	29	30	
VETERINARIAN																	
A	10	15	18	10	11	5	9	8	5	4	1	2	1	0	0	0	448
F	2	1	2	3	1	0	0	0	0	1	0	0	0	0	0	0	30
TOTAL	12	16	20	13	12	5	9	8	5	5	1	2	1	0	0	0	478
OPTOMETRIST																	
A	7	5	5	3	2	1	1	1	0	1	1	0	0	0	0	0	200
N	4	2	5	0	1	0	0	0	2	0	1	0	0	0	0	0	117
F	7	3	1	7	3	0	1	1	0	0	1	0	0	0	0	0	190
TOTAL	18	10	11	10	6	1	2	2	2	1	3	0	0	0	0	0	507
PODIATRIST																	
A	1	1	0	0	0	0	0	1	0	1	0	0	0	0	0	0	37
N	0	2	1	0	0	0	0	0	0	0	0	0	0	0	0	0	19
F	0	0	0	0	0	0	0	0	0	0	0	0	0	0	0	0	36
TOTAL	1	3	1	0	0	0	0	1	0	1	0	0	0	0	0	0	92
PSYCHOLOGIST																	
A	6	4	5	0	1	2	0	0	1	1	1	0	0	0	0	0	170
N	7	5	9	2	3	0	3	1	0	0	0	0	1	1	0	0	167
F	0	4	5	4	2	0	0	0	1	0	0	0	1	0	0	0	166
TOTAL	13	13	19	6	6	2	3	1	2	1	1	0	2	1	0	0	503
NURSE PRACTITIONER																	
A	16	13	8	12	7	7	1	0	1	0	0	0	0	0	0	0	260
N	2	10	3	7	3	2	2	2	0	2	0	1	0	0	0	0	89
F	21	26	22	23	2	0	1	3	3	2	3	0	0	0	0	0	270
TOTAL	39	49	33	42	12	9	4	5	4	4	3	1	0	0	0	0	619
OTHER NURSES																	
A	106	94	129	125	53	27	26	17	15	8	11	10	3	1	1	1	4100
N	100	67	55	70	30	20	13	11	10	10	5	5	0	2	2	2	2875
F	85	74	86	86	19	13	11	25	12	6	2	4	1	3	0	0	4661
TOTAL	271	235	250	281	102	60	50	53	37	24	18	19	4	6	3	3	11636

FORMAT 4: YEAR OF SERVICE GROUP DISTRIBUTION FOR SELECTED HEALTH PROFESSIONS

FORMAT 04
PAGE 2A
FY85

DISCIPLINE	TOTAL ACTIVE FEDERAL SERVICE BY YEAR OF SERVICE GROUPS																
	AT LEAST BUT LESS THAN	1	2	3	4	5	6	7	8	9	10	11	12	13	14	15	16
PHYSICIAN ASSISTANT																	
A	0	6	0	1	5	2	1	11	18	35	22	41	60	87	54	52	
N	0	2	1	0	0	2	2	2	2	3	8	4	1	12	21	38	
F	4	0	5	0	0	6	9	9	22	32	18	24	33	22	37	31	
TOTAL	4	8	6	1	5	10	12	22	42	70	48	68	94	101	112	121	

FORMAT 4: YEAR OF SERVICE GROUP DISTRIBUTION FOR SELECTED HEALTH PROFESSIONS

FORMAT 04
PAGE 28
FY85

		TOTAL ACTIVE FEDERAL SERVICE BY YEAR OF SERVICE GROUPS																
DISCIPLINE	AT LEAST	16	17	18	19	20	21	22	23	24	25	26	27	28	29	30	TOTAL	
	BUT LESS THAN	17	18	19	20	21	22	23	24	25	26	27	28	29	30	+		
PHYSICIAN ASSISTANT																		
A		42	51	35	29	21	9	5	8	7	7	4	4	1	1	0	599	
N		36	39	19	26	22	12	8	3	6	3	2	2	0	0	0	276	
F		37	27	24	23	11	14	22	11	11	16	10	6	4	2	5	476	
TOTAL		115	117	78	78	54	35	35	22	24	26	16	12	5	3	6	1351	

FORMAT 5: GRADE DISTRIBUTION OF SELECTED HEALTH MANPOWER PERSONNEL BY DISCIPLINE

FORMAT 05
PAGE 1
FY85

DISCIPLINE	0-9	0-8	0-7	0-6	0-5	0-4	0-3	0-2	0-1	W-4	W-3	W-2	W-1	TOTAL
PHYSICIAN														
A	1	6	8	666	587	1542	2564	0	0	0	0	0	0	5374
N	1	6	4	410	514	1217	1808	0	0	0	0	0	0	3960
F	1	3	8	450	500	1168	1758	0	0	0	0	0	0	3888
TOTAL	3	15	20	1526	1601	3927	6130	0	0	0	0	0	0	13222
DENTIST														
A	0	1	2	286	281	521	636	0	0	0	0	0	0	1727
N	0	1	2	279	285	343	791	0	0	0	0	0	0	1701
F	0	1	0	251	211	513	617	0	0	0	0	0	0	1593
TOTAL	0	3	4	816	777	1377	2044	0	0	0	0	0	0	5021
VETERINARIAN														
A	0	0	1	41	70	93	226	17	0	0	0	0	0	448
F	0	0	0	2	6	20	2	0	0	0	0	0	0	30
TOTAL	0	0	1	43	76	113	228	17	0	0	0	0	0	478
OPTOMETRIST														
A	0	0	0	3	19	24	151	3	0	0	0	0	0	200
N	0	0	0	4	16	25	72	0	0	0	0	0	0	117
F	0	0	0	2	14	36	137	1	0	0	0	0	0	190
TOTAL	0	0	0	9	49	85	360	4	0	0	0	0	0	507
PODIATRIST														
A	0	0	0	1	3	4	29	0	0	0	0	0	0	37
N	0	0	0	0	3	4	12	0	0	0	0	0	0	19
F	0	0	0	0	0	8	28	0	0	0	0	0	0	36
TOTAL	0	0	0	1	6	16	69	0	0	0	0	0	0	92

FORMAT 5: GRADE DISTRIBUTION OF SELECTED HEALTH MANPOWER PERSONNEL BY DISCIPLINE

FORMAT 05
PAGE 2
FY85

DISCIPLINE	0-9	0-8	0-7	0-6	0-5	0-4	0-3	0-2	0-1	W-4	W-3	W-2	W-1	TOTAL
PSYCHOLOGIST														
A	0	0	0	2	21	42	102	2	1	0	0	0	0	170
N	0	0	0	6	18	46	94	3	0	0	0	0	0	167
F	0	0	0	1	12	39	114	0	0	0	0	0	0	166
TOTAL	0	0	0	9	51	127	310	5	1	0	0	0	0	503
NURSE PRACTITIONER														
A	0	0	0	2	15	93	133	17	0	0	0	0	0	260
N	0	0	0	6	22	37	15	7	2	0	0	0	0	89
F	0	0	0	3	56	128	82	1	0	0	0	0	0	270
TOTAL	0	0	0	11	93	258	230	25	2	0	0	0	0	619
OTHER NURSES														
A	0	0	1	80	320	876	1454	530	839	0	0	0	0	4100
N	0	0	1	60	207	736	980	471	420	0	0	0	0	2875
F	0	0	1	62	202	644	1850	806	1096	0	0	0	0	4661
TOTAL	0	0	3	202	729	2256	4284	1807	2355	0	0	0	0	11636
PHYSICIAN ASSISTANT														
A	0	0	0	0	0	0	0	0	0	2	155	404	38	599
N	0	0	0	0	0	0	0	0	0	134	102	40	0	276
F	0	0	0	0	0	4	316	94	62	0	0	0	0	476
TOTAL	0	0	0	0	0	4	316	94	62	136	257	444	38	1351
BIOMEDICAL MAINTENANCE TECHNICIAN (ARMY)														
A	0	0	0	0	0	0	0	0	0	3	22	58	4	87

FORMAT 5: GRADE DISTRIBUTION OF SELECTED HEALTH MANPOWER PERSONNEL BY DISCIPLINE

FORMAT 05
PAGE 3
FY85

DISCIPLINE	0-9	0-8	0-7	0-6	0-5	0-4	0-3	0-2	0-1	W-4	W-3	W-2	W-1	TOTAL
VETERINARY FOOD TECHNICIAN (ARMY)														
A	0	0	0	0	0	0	0	0	0	0	0	52	0	52
ALL OTHER OFFICERS														
A	0	0	1	240	631	1005	2014	572	595	0	0	0	0	5058
N	0	0	1	65	252	482	666	326	143	0	0	0	0	1935
F	0	0	0	121	323	551	1090	319	204	0	0	0	0	2608
TOTAL	0	0	2	426	1206	2038	3770	1217	942	0	0	0	0	9601
GRAND TOTALS														
A	1	7	13	1321	1947	4200	7309	1141	1435	5	177	514	42	18112
N	1	7	8	830	1317	2890	4438	807	565	134	102	40	0	11139
F	1	4	9	892	1324	3111	5994	1221	1362	0	0	0	0	13918
TOTAL	3	18	30	3043	4588	10201	17741	3169	3362	139	279	554	42	43169

FORMAT 06: CIVILIAN HEALTH CARE PERSONNEL STRENGTH

FORMAT 06
PAGE 1
FY85

DISCIPLINE		NUMBER OF PERSONNEL				
		FULL TIME	PART TIME		TOTAL	
			NO.	FTE	NO.	FTE
PHYSICIAN	A	496.0	63.0	46.4	559.0	542.4
	N	108.0	7.0	0.0	113.0	106.0
	F	96.0	42.0	20.2	138.0	118.2
	TOTAL	698.0	112.0	66.6	810.0	764.6
DENTIST	A	38.0	0.0	0.0	38.0	38.0
	F	2.0	0.0	0.0	2.0	2.0
	TOTAL	40.0	0.0	0.0	40.0	40.0
VETERINARIAN	A	5.0	0.0	0.0	5.0	5.0
OPTOMETRIST	A	15.0	7.0	4.0	22.0	19.0
	N	11.0	0.0	0.0	11.0	11.0
	F	9.0	0.0	0.0	9.0	9.0
	TOTAL	35.0	7.0	4.0	42.0	39.0
PODIATRIST	A	8.0	0.0	0.0	8.0	8.0
PSYCHOLOGIST	A	63.0	2.0	0.3	65.0	63.3
	N	362.0	10.0	0.0	372.0	362.0
	F	8.0	0.0	0.0	8.0	8.0
	TOTAL	433.0	12.0	0.3	445.0	433.3

FORMAT 08: CIVILIAN HEALTH CARE PERSONNEL STRENGTH

FORMAT 06
PAGE 2
FY85

DISCIPLINE	NUMBER OF PERSONNEL					
	FULL TIME	PART TIME		TOTAL		
		NO.	FTE	NO.	FTE	
NURSE PRACTITIONER						
A	19.0	2.0	1.0	21.0	20.0	
F	10.0	1.0	0.5	11.0	10.5	
TOTAL	29.0	3.0	1.5	32.0	30.5	
OTHER NURSES						
A	2336.0	214.0	114.6	2550.0	2450.6	
N	905.0	34.0	0.0	939.0	905.0	
F	574.0	15.0	7.2	589.0	581.2	
TOTAL	3815.0	263.0	121.8	4078.0	3936.8	
PHYSICIAN ASSISTANT						
A	6.0	0.0	0.0	6.0	6.0	
N	29.0	0.0	0.0	29.0	29.0	
F	4.0	0.0	0.0	4.0	4.0	
TOTAL	39.0	0.0	0.0	39.0	39.0	
GRAND TOTALS						
A	2986.0	288.0	166.3	3274.0	3152.3	
N	1413.0	51.0	0.0	1464.0	1413.0	
F	703.0	58.0	27.9	761.0	730.9	
TOTAL	5102.0	397.0	194.2	5499.0	5296.2	

FORMAT 07: CIVILIAN HEALTH CARE PERSONNEL STRENGTH (LOCAL NATIONALS)

FORMAT 07
PAGE 1
FY85

DISCIPLINE	NUMBER OF PERSONNEL					
	FULL TIME	PART TIME		TOTAL		
		NO.	FTE	NO.	FTE	
PHYSICIAN						
A	153.0	9.0	3.0	162.0	156.0	
F	22.0	11.0	5.2	33.0	27.2	
TOTAL	175.0	20.0	8.2	195.0	183.2	
DENTIST						
A	21.0	0.0	0.0	21.0	21.0	
F	6.0	1.0	0.5	7.0	6.5	
TOTAL	27.0	1.0	0.5	28.0	27.5	
VETERINARIAN						
A	5.0	0.0	0.0	5.0	5.0	
F	1.0	0.0	0.0	1.0	1.0	
TOTAL	6.0	0.0	0.0	6.0	6.0	
OTHER NURSES						
A	120.0	4.0	2.5	124.0	122.5	
F	37.0	0.0	0.0	37.0	37.0	
TOTAL	157.0	4.0	2.5	161.0	159.5	
GRAND TOTALS						
A	299.0	13.0	5.5	312.0	304.5	
N	0.0	0.0	0.0	0.0	0.0	
F	66.0	12.0	5.7	78.0	71.7	
TOTAL	365.0	25.0	11.2	390.0	376.2	

NOTE: Navy does not maintain this information on its HQS civilian personnel data base.

FORMAT 8: GAINS, LOSSES, AND AUTHORIZATIONS BY DISCIPLINE

FORMAT 08
PAGE 1A
FY85

DISCIPLINE		CURRENT FY				FY + 1				FY + 2				FY + 3			
		BEGIN : STRENGTH	TOTAL : GAIN	TOTAL : LOSS	FYDP : AUTHORIZ	BEGIN : STRENGTH	TOTAL : GAIN	TOTAL : LOSS	FYDP : AUTHORIZ	BEGIN : STRENGTH	TOTAL : GAIN	TOTAL : LOSS	FYDP : AUTHORIZ	BEGIN : STRENGTH	TOTAL : GAIN	TOTAL : LOSS	FYDP : AUTHORIZ
PHYSICIAN	A	5214	630	470	5317	5374	520	577	5317	5317	461	461	5317	5317	503	503	5317
	N	3961	472	473	3961	3960	554	524	3990	3990	696	477	4209	4209	586	562	4233
	F	3763	599	474	3920	3888	568	463	3993	3993	519	488	4024	4024	549	502	4071
	TOTAL	12938	1701	1417	13198	13222	1642	1564	13300	13300	1676	1426	13550	13550	1638	1567	13621
DENTIST	A	1763	136	172	1766	1727	189	150	1766	1766	150	150	1766	1766	150	150	1766
	N	1654	263	216	1731	1701	226	188	1739	1739	251	193	1797	1797	192	192	1797
	F	1612	144	163	1606	1593	155	135	1613	1613	119	117	1615	1615	114	114	1615
	TOTAL	5029	543	551	5103	5021	570	473	5118	5118	520	460	5178	5178	456	456	5178
VETERINARIAN	A	434	46	32	440	448	35	43	440	440	45	45	440	440	45	45	440
	F	46	0	16	31	30	0	5	25	25	0	3	22	22	0	4	18
	TOTAL	480	46	48	471	478	35	48	465	465	45	48	462	462	45	49	458
OPTOMETRIST	A	229	11	40	178	200	18	34	184	184	13	12	185	185	14	12	187
	N	126	13	22	143	117	21	19	144	119	20	13	145	126	20	17	146
	F	183	31	24	178	190	32	29	186	193	27	29	189	191	27	29	189
	TOTAL	538	55	86	499	507	71	82	514	496	60	54	519	502	61	58	522
PODIATRIST	A	42	6	11	46	37	9	4	42	42	11	6	47	47	8	8	47
	N	16	4	1	26	19	10	5	26	24	6	4	26	26	5	5	26
	F	33	5	2	32	36	0	5	29	31	0	5	26	26	0	3	23
	TOTAL	91	15	14	104	92	19	14	97	97	17	15	99	99	13	16	96
PSYCHOLOGIST	A	157	18	5	176	170	22	19	173	173	17	15	175	175	19	19	175
	N	160	14	7	165	167	21	16	168	172	14	11	170	175	9	11	168
	F	166	17	17	148	166	28	20	142	174	20	20	142	174	20	20	142
	TOTAL	483	49	29	489	503	71	55	483	519	51	46	487	524	48	50	485

FORMAT 8: GAINS, LOSSES, AND AUTHORIZATIONS BY DISCIPLINE

FORMAT 08
PAGE 18
FV85

DISCIPLINE		FY + 4				FY + 5				FY + 6			
		BEGIN STRENGTH	TOTAL GAIN	TOTAL LOSS	FYDP AUTHORIZ	BEGIN STRENGTH	TOTAL GAIN	TOTAL LOSS	FYDP AUTHORIZ	BEGIN STRENGTH	TOTAL GAIN	TOTAL LOSS	FYDP AUTHORIZ
PHYSICIAN	A	5317	484	484	5317	5317	477	477	5317	5317	472	472	5317
	N	4233	611	478	4366	4366	555	498	4423	4423	563	480	4506
	F	4071	648	549	4170	4170	573	520	4223	4223	585	524	4284
	TOTAL	13621	1743	1511	13853	13853	1605	1495	13963	13963	1620	1476	14107
DENTIST	A	1766	150	150	1766	1766	150	150	1766	1766	150	150	1766
	N	1797	190	187	1800	1800	199	195	1804	1804	201	195	1810
	F	1615	116	115	1616	1616	124	115	1625	1625	116	113	1628
	TOTAL	5178	456	452	5182	5182	473	460	5195	5195	467	458	5204
VETERINARIAN	A	440	45	45	440	440	45	45	440	440	45	45	440
	F	18	0	2	16	16	0	2	14	14	0	0	14
	TOTAL	458	45	47	456	456	45	47	454	454	45	45	454
OPTOMETRIST	A	187	15	15	187	187	15	15	187	187	15	15	187
	N	129	20	18	148	131	20	18	148	133	18	18	148
	F	189	28	17	200	200	28	24	204	204	29	29	204
	TOTAL	505	63	50	535	518	63	57	539	524	62	62	539
PODIATRIST	A	47	8	8	47	47	8	8	47	47	8	8	47
	N	26	5	4	27	27	5	4	28	28	4	4	28
	F	23	0	3	20	20	0	3	17	17	0	3	14
	TOTAL	96	13	15	94	94	13	15	92	92	12	15	89
PSYCHOLOGIST	A	175	18	16	175	175	16	16	175	175	16	16	175
	N	173	12	10	170	175	10	10	170	175	10	10	170
	F	174	20	20	151	174	20	20	153	174	20	20	154
	TOTAL	522	48	46	496	524	46	46	498	524	46	46	499

FORMAT 8: GAINS, LOSSES, AND AUTHORIZATIONS BY DISCIPLINE

FORMAT 08
PAGE 2A
FY85

DISCIPLINE	CURRENT FY				FY + 1				FY + 2				FY + 3			
	BEGIN STRENGTH	TOTAL GAIN	TOTAL LOSS	FYDP AUTHORIZ	BEGIN STRENGTH	TOTAL GAIN	TOTAL LOSS	FYDP AUTHORIZ	BEGIN STRENGTH	TOTAL GAIN	TOTAL LOSS	FYDP AUTHORIZ	BEGIN STRENGTH	TOTAL GAIN	TOTAL LOSS	FYDP AUTHORIZ
NURSE PRACTITIONER																
A	132	128	0	143	260	12	20	252	252	12	18	246	246	10	17	239
N	86	5	2	100	89	3	4	100	88	3	3	101	88	3	4	101
F	275	3	8	289	270	0	4	266	266	0	0	267	266	0	0	263
TOTAL	493	136	10	532	619	15	28	618	606	15	21	614	600	13	21	603
OTHER NURSES																
A	4111	383	394	4150	4100	571	409	4262	4262	513	507	4268	4268	590	583	4275
N	2780	309	214	2899	2875	470	247	3151	3098	440	193	3332	3345	230	223	3338
F	4421	715	475	4645	4661	677	475	4863	4863	584	501	4945	4946	640	524	5065
TOTAL	11312	1407	1083	11694	11636	1718	1131	12276	12223	1537	1201	12545	12559	1460	1330	12678
PHYSICIAN ASSISTANT																
A	620	27	48	499	599	34	43	590	590	34	34	590	590	34	34	590
N	292	13	29	301	276	13	20	306	269	15	25	303	259	0	18	305
F	461	37	22	507	476	38	35	486	479	0	35	486	444	0	0	491
TOTAL	1373	77	99	1307	1351	85	98	1382	1338	49	94	1379	1293	34	52	1386

FORMAT 8: GAINS, LOSSES, AND AUTHORIZATIONS BY DISCIPLINE

FORMAT 08
PAGE 2B
FY85

DISCIPLINE		FY + 4			FY + 5			FY + 6					
		BEGIN : STRENGTH:	TOTAL : GAIN :	TOTAL : LOSS :	FYDP : AUTHORIZ:	BEGIN : STRENGTH:	TOTAL : GAIN :	TOTAL : LOSS :	FYDP : AUTHORIZ:	BEGIN : STRENGTH:	TOTAL : GAIN :	TOTAL : LOSS :	FYDP : AUTHORIZ:
NURSE PRACTITIONER													
	A	239	10	16	233	233	10	14	229	229	10	14	225
	N	87	3	4	104	86	3	3	106	86	3	3	106
	F	266	0	0	266	266	0	0	266	266	0	0	266
	TOTAL	592	13	20	603	585	13	17	601	581	13	17	597
OTHER NURSES													
	A	4275	590	584	4281	4281	515	511	4285	4285	515	511	4289
	N	3352	468	220	3582	3600	321	225	3676	3696	364	225	3815
	F	5062	684	531	5215	5215	628	525	5318	5318	669	544	5433
	TOTAL	12689	1742	1335	13078	13096	1464	1261	13279	13299	1548	1280	13537
PHYSICIAN ASSISTANT													
	A	590	34	34	590	590	34	34	590	590	34	34	590
	N	241	0	20	314	221	0	18	314	203	0	18	314
	F	409	0	35	493	374	0	35	493	339	0	35	493
	TOTAL	1240	34	89	1397	1185	34	87	1397	1132	34	87	1397

FORMAT 9: DIRECT ACCESSIONS BY DISCIPLINE BY YEAR

FORMAT 09
PAGE 1
FY85

DISCIPLINE	CURRENT FISCAL YEAR				
	GOAL	NO. OF APPLICANTS	NO. OF SELECTEES	NO. ENTERED ACTIVE DUTY	NO. DECLINED
PHYSICIAN					
A	106	158	132	106	25
N	53	216	59	33	19
F	170	456	256	175	78
TOTAL	329	830	447	314	122
DENTIST					
A	86	157	92	84	27
N	170	252	221	170	51
F	130	469	222	141	89
TOTAL	386	878	535	395	167
VETERINARIAN					
A	34	54	50	38	7
OPTOMETRIST					
A	0	0	0	1	0
N	20	23	19	9	10
F	26	47	36	31	5
TOTAL	46	70	55	41	15
PODIATRIST					
A	8	8	6	6	1
N	5	8	8	4	4
F	2	1	4	4	0
TOTAL	15	17	18	14	5

FORMAT 9: DIRECT ACCESSIONS BY DISCIPLINE BY YEAR

FORMAT 09
PAGE 2
FY85

DISCIPLINE	CURRENT FISCAL YEAR					
	GOAL	NO. OF APPLICANTS	NO. OF SELECTEES	NO. ENTERED ACTIVE DUTY	NO. DECLINED	
PSYCHOLOGIST						
A	6	7	6	1	2	
N	19	44	28	12	16	
F	18	45	19	17	2	
TOTAL	43	96	53	30	20	
NURSE PRACTITIONER						
N	0	4	4	4	0	
F	5	5	5	3	1	
TOTAL	5	9	9	7	1	
OTHER NURSES						
A	325	864	693	402	216	
N	308	426	353	304	49	
F	615	923	876	675	203	
TOTAL	1248	2213	1922	1381	468	
PHYSICIAN ASSISTANT						
N	15	0	15	13	2	
GRAND TOTALS						
A	565	1248	979	638	278	
N	590	973	707	549	151	
F	968	1946	1418	1046	378	
TOTAL	2121	4167	3104	2233	807	

FORMAT 9: DIRECT ACCESSIONS BY DISCIPLINE BY YEAR

FORMAT 09
PAGE 3
FY85

DISCIPLINE	GOAL	NO. OF APPLICANTS	NO. OF SELECTEES		NO. OF APPOINTEES	NO. DECLINED
			P	A		
AFHSP RECRUITMENT						
PHYSICIAN (AFHSP)						
A	350	1581	344	174	338	95
N	263	979	263	50	263	45
F	287	970	393	98	310	83
TOTAL	900	3530	1000	322	911	223

FORMAT 10: PHYSICIANS IN ADMINISTRATIVE AND NONADMINISTRATIVE/NONPATIENT CARE BILLETS

FORMAT 10
PAGE 1
FY85

MEDICAL SPECIALTY	NUMBER OF PHYSICIANS		
	ADMINISTRATIVE / MANAGEMENT	OTHER NONPATIENT CARE	TOTAL
ANESTHESIOLOGY			
A	0	2	2
N	3	3	6
F	0	1	1
TOTAL	3	6	9
AVIATION MEDICINE			
A	8	8	16
F	57	59	116
TOTAL	65	67	132
DERMATOLOGY			
A	1	1	2
N	1	1	2
F	1	0	1
TOTAL	3	2	5
EMERGENCY MEDICINE			
A	0	4	4
N	1	1	2
F	1	1	2
TOTAL	2	6	8
EXECUTIVE MEDICINE			
F	12	1	13
FAMILY PRACTICE			
A	14	16	30
N	14	7	21
F	16	9	25
TOTAL	44	32	76

FORMAT 10: PHYSICIANS IN ADMINISTRATIVE AND NONADMINISTRATIVE/NONPATIENT CARE BILLETS

FORMAT 10
PAGE 2
FY85

MEDICAL SPECIALTY	NUMBER OF PHYSICIANS		
	ADMINISTRATIVE / MANAGEMENT	OTHER NONPATIENT CARE	TOTAL
GENERAL MEDICAL OFFICER			
A	5	29	34
N	2	2	4
F	3	3	6
TOTAL	10	34	44
INTERNAL MEDICINE			
ALLERGY/IMMUNOLOGY			
A	1	2	3
N	1	0	1
F	2	0	2
TOTAL	4	2	6
CARDIOLOGY/CARDIOVASCULAR			
N	1	0	1
F	0	4	4
TOTAL	1	4	5
ENDOCRINOLOGY/METABOLISM			
A	2	4	6
N	2	0	2
TOTAL	4	4	8
GASTROENTEROLOGY			
A	0	1	1
N	1	0	1
F	0	1	1
TOTAL	1	2	3

FORMAT 10: PHYSICIANS IN ADMINISTRATIVE AND NONADMINISTRATIVE/NONPATIENT CARE BILLETS

FORMAT 10
PAGE 3
FY85

MEDICAL SPECIALTY	NUMBER OF PHYSICIANS		
	ADMINISTRATIVE / MANAGEMENT	OTHER NONPATIENT CARE	TOTAL
GENERAL/INTERNIST			
A	10	36	46
N	6	5	11
F	10	6	16
TOTAL	26	47	73
HEMATOLOGY/ONCOLOGY			
A	0	2	2
N	2	0	2
TOTAL	2	2	4
INFECTIOUS DISEASE			
N	0	1	1
F	0	1	1
TOTAL	0	2	2
NEPHROLOGY			
A	0	5	5
PULMONARY DISEASE			
A	0	3	3
F	0	1	1
TOTAL	0	4	4
RHEUMATOLOGY			
F	0	1	1
TROPICAL			
N	3	0	3
NEUROLOGY			
A	0	4	4
F	0	1	1
TOTAL	0	5	5

FORMAT 10: PHYSICIANS IN ADMINISTRATIVE AND NONADMINISTRATIVE/NONPATIENT CARE BILLETS

FORMAT 10
PAGE 4
FY85

MEDICAL SPECIALTY	NUMBER OF PHYSICIANS		
	ADMINISTRATIVE / MANAGEMENT	OTHER NONPATIENT CARE	TOTAL
NUCLEAR MEDICINE			
A	0	2	2
N	2	0	2
TOTAL	2	2	4
OBSTETRICS/GYNECOLOGY			
A	7	7	14
N	3	1	4
F	8	4	10
TOTAL	18	12	28
OPHTHALMOLOGY			
A	3	3	6
N	6	0	6
F	0	4	4
TOTAL	9	7	16
ORTHOPEDIC SURGERY			
A	4	0	4
N	3	1	4
F	0	1	1
TOTAL	7	2	9
OTORHINOLARYNGOLOGY			
A	2	1	3
N	3	0	3
TOTAL	5	1	6

FORMAT 10: PHYSICIANS IN ADMINISTRATIVE AND NONADMINISTRATIVE/NONPATIENT CARE BILLETS

FORMAT 10
PAGE 5
FY85

MEDICAL SPECIALTY	NUMBER OF PHYSICIANS		
	ADMINISTRATIVE / MANAGEMENT	OTHER NONPATIENT CARE	TOTAL
PATHOLOGY			
	A	6	32
	N	2	0
	F	1	14
	TOTAL	9	46
PEDIATRICS			
	A	9	15
	N	15	7
	F	13	6
	TOTAL	37	28
PREVENTIVE MEDICINE			
	A	6	23
	N	21	4
	F	1	5
	TOTAL	28	32
PSYCHIATRY			
	A	3	18
	N	5	2
	F	2	4
	TOTAL	10	24
RADIOLOGY			
	A	1	3
	N	4	0
	F	1	3
	TOTAL	6	6

FORMAT 10: PHYSICIANS IN ADMINISTRATIVE AND NONADMINISTRATIVE/NONPATIENT CARE BILLETS

FORMAT 10
PAGE 6
FY85

MEDICAL SPECIALTY	NUMBER OF PHYSICIANS		
	ADMINISTRATIVE / MANAGEMENT	OTHER NONPATIENT CARE	TOTAL
SURGERY			
CARDIAC			
	A	4	3
GENERAL			
	A	13	12
	N	5	4
	F	10	3
	TOTAL	28	19
PERIPHERAL VASCULAR			
	A	0	1
PLASTIC			
	A	2	0
UROLOGY			
	A	1	0
	N	2	1
	F	1	0
	TOTAL	4	1
OTHER			
	A	2	14
	N	1	0
	TOTAL	3	14
GRAND TOTALS			
	A	104	251
	N	109	40
	F	137	133
	TOTAL	350	424

FORMAT 11: PHYSICIAN REQUIREMENTS, AUTHORIZATIONS, AND END STRENGTHS

FORMAT 11
PAGE 1
FY85

MEDICAL SPECIALTY		SERVICE REQUIREMENT	BUDGET AUTHORIZATION	END STRENGTH
GME-1 (INTERNSHIP)	A	350	363	363
	N	269	267	271
	F	200	200	196
	TOTAL	819	830	830
OTHER GME	A	0	1202	1359
	N	0	769	745
	F	0	650	653
	TOTAL	0	2621	2757
ANESTHESIOLOGY	A	202	101	103
	N	266	104	113
	F	257	59	70
	TOTAL	725	264	286
AVIATION MEDICINE	A	132	126	118
	N	331	252	244
	F	751	437	479
	TOTAL	1214	815	841
CLINICAL PHARMACOLGY	A	4	4	0

FORMAT 11: PHYSICIAN REQUIREMENTS, AUTHORIZATIONS, AND END STRENGTHS

FORMAT 11
PAGE 2
FY85

MEDICAL SPECIALTY		SERVICE REQUIREMENT	BUDGET AUTHORIZATION	END STRENGTH
DERMATOLOGY	A	108	72	74
	N	35	36	41
	F	12	39	39
	TOTAL	155	147	54
EMERGENCY MEDICINE	A	353	86	70
	N	20	11	22
	F	45	31	32
	TOTAL	418	128	124
EXECUTIVE MEDICINE	A	259	163	169
	N	142	147	149
	F	87	42	42
	TOTAL	488	352	360
FAMILY PRACTICE	A	367	298	241
	N	248	138	184
	F	423	443	358
	TOTAL	1038	879	783
GENERAL MEDICINE	A	888	407	521
	N	1385	499	718
	F	0	34	257
	TOTAL	2073	940	1494

FORMAT 11: PHYSICIAN REQUIREMENTS, AUTHORIZATIONS, AND END STRENGTHS

FORMAT 11
PAGE 3
FY85

MEDICAL SPECIALTY		SERVICE REQUIREMENT	BUDGET AUTHORIZATION	END STRENGTH
INTERNAL MEDICINE	N	238	0	0
INTERNAL MEDICINE				
ALLERGY/IMMUNOLOGY	A	55	36	33
	N	0	2	3
	F	0	30	20
	TOTAL	55	68	56
CARDIOLOGY/CARDIOVASCULAR				
	A	103	74	63
	N	0	21	32
	F	0	42	27
	TOTAL	103	137	122
ENDOCRINOLOGY/METABOLISM				
	A	32	28	28
	N	0	8	17
	F	0	12	6
	TOTAL	32	48	51
GASTROENTEROLOGY				
	A	68	45	40
	N	0	13	16
	F	0	20	22
	TOTAL	68	78	78

FORMAT 11: PHYSICIAN REQUIREMENTS, AUTHORIZATIONS, AND END STRENGTHS

FORMAT 11
PAGE 4
FY85

MEDICAL SPECIALTY		SERVICE REQUIREMENT	BUDGET AUTHORIZATION	END STRENGTH
GENERAL/INTERNIST	A	654	259	255
	N	0	152	123
	F	200	205	205
	TOTAL	854	616	583
HEMATOLOGY/ONCOLOGY	A	74	43	51
	N	0	15	19
	F	0	20	21
	TOTAL	74	78	91
INFECTIOUS DISEASE	A	38	25	30
	N	0	7	14
	F	0	7	7
	TOTAL	38	39	51
NEPHROLOGY	A	32	22	24
	N	0	6	9
	F	0	13	11
	TOTAL	32	41	44
PULMONARY DISEASE	A	61	37	38
	N	0	13	21
	F	0	26	22
	TOTAL	61	76	81

FORMAT 11: PHYSICIAN REQUIREMENTS, AUTHORIZATIONS, AND END STRENGTHS

FORMAT 11
PAGE 5
FY85

MEDICAL SPECIALTY		SERVICE REQUIREMENT	BUDGET AUTHORIZATION	END STRENGTH
RHEUMATOLOGY	A	24	18	14
	N	0	3	8
	F	0	7	11
	TOTAL	24	28	33
TROPICAL	N	0	1	1
MEDICAL RESEARCH	A	0	8	7
	N	52	38	38
	TOTAL	52	44	45
NEUROLOGY	A	87	49	48
	N	22	27	26
	F	19	29	25
	TOTAL	128	105	99
NUCLEAR MEDICINE	A	44	28	34
	N	0	9	11
	F	0	7	8
	TOTAL	44	44	51
OBSTETRICS/GYNECOLOGY	A	327	214	203
	N	54	110	104
	F	44	177	181
	TOTAL	425	501	488

FORMAT 11: PHYSICIAN REQUIREMENTS, AUTHORIZATIONS, AND END STRENGTHS

FORMAT 11
PAGE 6
FY85

MEDICAL SPECIALTY		SERVICE REQUIREMENT	BUDGET AUTHORIZATION	END STRENGTH
ENDOCRINOLOGY	F	0	4	6
MATERNAL-FETAL PHYSIOLOGY	N	0	0	3
	F	0	5	6
	TOTAL	0	5	9
ONCOLOGY	N	0	4	6
	F	0	7	4
	TOTAL	0	11	10
PATHOLOGY	F	0	4	4
PERINATAL BIOLOGY	N	0	0	1
OPHTHALMOLOGY	A	125	81	78
	N	45	48	53
	F	88	52	42
	TOTAL	258	181	173
CATARACT SURGERY	N	0	0	1
RETINAL SURGERY	N	0	2	1
PEDIATRIC	N	0	0	1

FORMAT 11: PHYSICIAN REQUIREMENTS, AUTHORIZATIONS, AND END STRENGTHS

FORMAT 11
PAGE 7
FY85

MEDICAL SPECIALTY		SERVICE REQUIREMENT	BUDGET AUTHORIZATION	END STRENGTH
ORTHOPEDIC SURGERY	A	369	156	151
	N	208	81	87
	F	569	137	106
	TOTAL	1146	374	344
HAND	N	0	2	1
	F	0	5	2
	TOTAL	0	7	3
OTORHINOLARYNGOLOGY	A	118	60	56
	N	58	49	44
	F	62	53	43
	TOTAL	238	162	143
PATHOLOGY	A	237	167	163
	N	3	0	0
	F	104	87	82
	TOTAL	344	254	245
ANATOMICAL	N	0	3	2
ANATOMICAL/CLINICAL	N	46	71	67

FORMAT 11: PHYSICIAN REQUIREMENTS, AUTHORIZATIONS, AND END STRENGTHS

FORMAT 11
PAGE 8
FY85

MEDICAL SPECIALTY		SERVICE REQUIREMENT	BUDGET AUTHORIZATION	END STRENGTH
CLINICAL	N	0	5	3
FORENSIC	N	0	2	6
NEUROPATHOLOGY	N	0	0	0
	F	0	1	0
	TOTAL	0	1	0
PEDIATRICS	A	368	274	252
	N	30	148	164
	F	20	216	219
	TOTAL	418	638	635
ADOLESCENT MEDICINE	F	0	6	2
ALLERGY	N	0	2	3
CARDIOLOGY	A	11	9	10
	N	0	5	0
	F	0	4	2
	TOTAL	11	18	12
ENDOCRINOLOGY	F	0	3	2

FORMAT 11: PHYSICIAN REQUIREMENTS, AUTHORIZATIONS, AND END STRENGTHS

FORMAT 11
PAGE 9
FY85

MEDICAL SPECIALTY		SERVICE REQUIREMENT	BUDGET AUTHORIZATION	END STRENGTH
GASTROENTEROLOGY	F	0	1	3
HEMATOLOGY	F	0	5	3
INFECTIOUS DISEASE	F	0	5	5
MEDICAL GENETICS	F	0	2	2
NEONATOLOGY	N	0	8	8
	F	0	12	15
	TOTAL	0	20	23
NEPHROLOGY	N	0	2	2
	F	0	1	0
	TOTAL	0	3	2
NEUROLOGY	A	13	11	10
	F	0	4	4
	TOTAL	13	15	14
PHYSICAL MEDICINE	A	31	25	20
	N	0	1	1
	F	0	3	2
	TOTAL	31	29	23

FORMAT 11: PHYSICIAN REQUIREMENTS, AUTHORIZATIONS, AND END STRENGTHS

FORMAT 11
PAGE 10
FY85

MEDICAL SPECIALTY		SERVICE REQUIREMENT	BUDGET AUTHORIZATION	END STRENGTH
PREVENTIVE MEDICINE	A	104	65	62
	N	17	19	10
	TOTAL	121	84	72
AEROSPACE	N	50	43	18
	F	0	123	112
	TOTAL	50	166	130
OCCUPATIONAL	A	13	9	6
	N	28	28	10
	F	0	3	3
	TOTAL	41	40	19
PUBLIC HEALTH	N	9	0	2
PSYCHIATRY	A	258	174	153
	N	129	104	87
	F	212	129	94
	TOTAL	599	407	334
PEDIATRIC	A	40	44	32
	N	0	0	7
	F	0	7	8
	TOTAL	40	51	48

FORMAT 11: PHYSICIAN REQUIREMENTS, AUTHORIZATIONS, AND END STRENGTHS

FORMAT 11
PAGE 11
FY85

MEDICAL SPECIALTY		SERVICE REQUIREMENT	BUDGET AUTHORIZATION	END STRENGTH
RADIOLOGY				
DIAGNOSTIC				
	A	277	156	149
	N	94	90	105
	F	119	137	126
	TOTAL	490	383	380
NEURORADIOLOGY				
	F	0	4	3
PEDIATRIC				
	N	0	1	0
	F	0	1	0
	TOTAL	0	2	0
RADIOTHERAPY				
	F	0	9	8
SPECIAL PROCEDURES				
	F	0	5	1
THERAPEUTIC				
	A	18	14	10
	N	0	7	4
	TOTAL	18	21	14
SURGERY				
CARDIAC				
	F	0	6	3
CARDIAC/THORACIC				
	N	27	17	13
COLON/RECTAL				
	N	0	0	1
	F	0	8	5
	TOTAL	0	8	6

FORMAT 11: PHYSICIAN REQUIREMENTS, AUTHORIZATIONS, AND END STRENGTHS

FORMAT 11
PAGE 12
FY85

MEDICAL SPECIALTY		SERVICE REQUIREMENT	BUDGET AUTHORIZATION	END STRENGTH
GENERAL	A	681	192	175
	N	393	132	127
	F	769	250	194
	TOTAL	1843	574	496
NEUROLOGICAL	A	59	23	26
	N	49	13	8
	F	259	11	13
	TOTAL	367	47	47
PEDIATRIC	N	0	0	2
	F	0	5	2
	TOTAL	0	5	4
PERIPHERAL VASCULAR	A	11	12	11
	N	0	2	6
	F	38	7	6
	TOTAL	49	21	23
PLASTIC	A	32	21	25
	N	2	7	7
	F	15	9	10
	TOTAL	49	37	42

FORMAT 11: PHYSICIAN REQUIREMENTS, AUTHORIZATIONS, AND END STRENGTHS

FORMAT 11
PAGE 13
FY85

MEDICAL SPECIALTY		SERVICE REQUIREMENT	BUDGET AUTHORIZATION	END STRENGTH
RENAL TRANSPLANT	A	65	27	29
THORACIC	F	108	8	5
UNDERSEA MEDICINE	N	76	75	60
UROLOGY	A	115	64	64
	N	38	37	40
	F	150	51	50
	TOTAL	303	152	154
OTHER	A	0	25	8
	N	197	307	72
	TOTAL	197	332	78
GRAND TOTALS	A	7007	5317	5374
	N	4561	3961	3960
	F	4551	3920	3888
	TOTAL	16119	13198	13222

FORMAT 12: NUMBER OF AFHPSP STUDENTS BY YEAR IN SCHOOL

FORMAT 12
PAGE 1
FY85

DISCIPLINE	TOTAL NO. OF STUDENTS BY YEAR IN SCHOOL					
	FRESH	SOPH	JR	SR	TOTAL	
MEDICAL						
	A	211	324	344	341	1220
	N	50	343	397	341	1131
	F	253	340	364	379	1336
	TOTAL	514	1007	1105	1061	3687
OPTOMETRY						
	A	0	0	0	1	1
GRAND TOTALS						
	A	211	324	344	342	1221
	N	50	343	397	341	1131
	F	253	340	364	379	1336
	TOTAL	514	1007	1105	1062	3688

FORMAT 13: PHYSICIAN DUTY SPECIALTIES BY YEARS OF SERVICE

FORMAT 13
PAGE 1A
FY85

MEDICAL SPECIALTY	AT LEAST BUT LESS THAN	TOTAL ACTIVE FEDERAL SERVICE BY YEAR OF SERVICE GROUPS															
		1	2	3	4	5	6	7	8	9	10	11	12	13	14	15	16
GME-1 (INTERNSHIP)																	
A	103	91	159	6	4	0	0	0	0	0	0	0	0	0	0	0	0
N	206	4	1	4	39	5	4	4	1	2	0	1	0	0	0	0	0
F	167	8	4	4	7	0	3	1	2	0	0	0	0	0	0	0	0
TOTAL	476	103	164	14	50	5	7	5	3	2	0	1	0	0	0	0	0
OTHER GME																	
A	0	87	101	237	244	231	171	81	75	29	25	20	18	9	9	7	
N	8	44	133	147	106	87	61	41	35	29	3	10	12	9	6	2	
F	18	120	134	96	79	51	31	21	24	23	13	7	8	7	8	1	
TOTAL	26	251	368	480	429	369	263	143	134	81	41	37	38	25	23	10	
ANESTHESIOLOGY																	
A	8	7	8	5	7	11	16	6	3	5	1	3	3	6	1	2	
N	9	10	5	7	9	13	12	8	10	3	8	3	3	2	2	3	
F	9	12	1	8	6	10	4	2	2	3	4	2	3	0	0	2	
TOTAL	26	29	14	20	22	34	32	16	15	11	13	8	9	8	3	7	
AVIATION MEDICINE																	
A	21	24	10	15	8	10	5	4	3	2	3	2	2	1	3	2	
N	10	35	35	44	29	11	9	14	10	11	9	6	3	4	1	3	
F	59	50	52	41	18	29	7	18	23	21	19	17	16	10	16	10	
TOTAL	90	109	97	100	55	50	21	36	36	34	31	25	21	15	20	15	
DERMATOLOGY																	
A	0	0	0	3	5	4	7	8	7	5	2	3	2	4	3	1	
N	1	0	0	0	0	2	3	6	5	2	1	3	2	3	2	1	
F	3	0	2	0	2	3	1	3	4	2	1	0	3	1	1	0	
TOTAL	4	0	2	3	7	9	11	17	16	9	4	6	7	8	6	2	
EMERGENCY MEDICINE																	
A	2	1	2	10	7	7	10	3	11	4	2	3	0	1	2	0	
N	1	1	3	0	1	1	5	0	2	1	2	1	1	1	0	0	
F	5	8	4	5	1	0	3	0	0	0	0	1	0	1	2	0	
TOTAL	8	10	9	15	9	8	18	3	13	5	4	5	1	3	4	0	

FORMAT 13: PHYSICIAN DUTY SPECIALTIES BY YEARS OF SERVICE

FORMAT 13
PAGE 18
FV85

MEDICAL SPECIALTY	TOTAL ACTIVE FEDERAL SERVICE BY YEAR OF SERVICE GROUPS																TOTAL
	AT LEAST BUT LESS THAN	16 17	17 18	18 19	19 20	20 21	21 22	22 23	23 24	24 25	25 26	26 27	27 28	28 29	29 30	30 +	
GME-1 (INTERNSHIP)																	
A	0	0	0	0	0	0	0	0	0	0	0	0	0	0	0	0	363
N	0	0	0	0	0	0	0	0	0	0	0	0	0	0	0	0	271
F	0	0	0	0	0	0	0	0	0	0	0	0	0	0	0	0	196
TOTAL	0	0	0	0	0	0	0	0	0	0	0	0	0	0	0	0	830
OTHER GME																	
A	5	4	3	3	0	0	0	0	0	0	0	0	0	0	0	0	1359
N	5	1	2	2	1	0	0	0	0	0	0	0	0	1	0	0	745
F	6	2	2	1	0	0	0	1	0	0	0	0	0	0	0	0	653
TOTAL	16	7	7	6	1	0	0	1	0	0	0	0	0	1	0	0	2757
ANESTHESIOLOGY																	
A	1	3	1	2	1	3	0	0	0	0	0	0	0	0	0	0	103
N	3	1	1	0	0	0	0	1	0	0	0	0	0	0	0	0	113
F	1	0	0	1	0	0	0	0	0	0	0	0	0	0	0	0	70
TOTAL	5	4	2	3	1	3	0	1	0	0	0	0	0	0	0	0	286
AVIATION MEDICINE																	
A	0	0	1	0	1	1	0	0	0	0	0	0	0	0	0	0	118
N	3	2	1	2	0	1	0	0	0	0	0	1	0	0	0	0	244
F	7	14	9	8	5	8	7	4	2	2	1	1	1	0	4	4	479
TOTAL	10	16	11	10	6	10	7	4	2	2	1	2	1	0	4	4	841
DERMATOLOGY																	
A	3	3	5	5	0	1	0	0	1	1	0	1	0	0	0	0	74
N	0	2	2	3	0	1	0	0	1	0	1	0	0	0	0	0	41
F	1	3	6	2	0	0	0	0	0	0	0	1	0	0	0	0	39
TOTAL	4	8	13	10	0	2	0	0	2	1	1	2	0	0	0	0	154
EMERGENCY MEDICINE																	
A	0	1	2	0	1	1	0	0	0	0	0	0	0	0	0	0	70
N	1	0	1	0	0	0	0	0	0	0	0	0	0	0	0	0	22
F	0	1	1	0	0	0	0	0	0	0	0	0	0	0	0	0	32
TOTAL	1	2	4	0	1	1	0	0	0	0	0	0	0	0	0	0	124

FORMAT 13: PHYSICIAN DUTY SPECIALTIES BY YEARS OF SERVICE

FORMAT 13
PAGE 2A
FY85

MEDICAL SPECIALTY	AT LEAST BUT LESS THAN	TOTAL ACTIVE FEDERAL SERVICE BY YEAR OF SERVICE GROUPS															
		1	2	3	4	5	6	7	8	9	10	11	12	13	14	15	16
EXECUTIVE MEDICINE																	
A	0	0	0	0	0	0	5	4	3	6	6	5	7	8	10	14	
N	0	0	0	0	2	1	3	0	1	3	5	3	5	11	11	8	
F	0	0	0	0	0	1	0	0	1	0	0	0	2	1	2	0	
TOTAL	0	0	0	0	2	2	8	4	5	9	11	8	14	20	23	22	
FAMILY PRACTICE																	
A	0	10	9	31	27	31	29	22	14	14	12	9	11	3	6	3	
N	4	12	12	16	17	17	27	16	16	8	5	1	6	5	6	6	
F	58	37	37	47	34	25	21	22	11	10	8	10	13	4	5	5	
TOTAL	62	59	58	94	78	73	77	60	41	32	25	20	30	12	17	14	
GENERAL MEDICAL OFFICER																	
A	82	94	47	69	61	51	31	26	17	10	2	5	2	4	1	2	
N	83	220	136	68	35	40	29	19	22	14	15	10	7	1	6	2	
F	48	38	36	20	14	15	14	8	12	10	14	7	4	10	0	2	
TOTAL	213	352	219	157	111	106	74	53	51	34	31	22	13	15	7	8	
INTERNAL MEDICINE																	
A	24	50	25	30	33	52	39	31	22	26	17	16	21	21	18	20	
N	13	15	8	11	22	15	26	28	25	9	11	14	3	10	15	7	
F	36	24	9	58	33	25	29	16	18	9	11	10	18	7	9	7	
TOTAL	73	89	42	99	88	92	94	75	65	44	39	40	42	38	42	34	
MEDICAL RESEARCH																	
A	0	0	0	0	0	0	0	0	0	0	0	0	0	0	2	0	
N	2	1	3	1	5	3	3	3	1	1	2	2	1	3	0	2	
TOTAL	2	1	3	1	5	3	3	3	1	1	2	2	1	3	2	2	

FORMAT 13: PHYSICIAN DUTY SPECIALTIES BY YEARS OF SERVICE

FORMAT 13
PAGE 2B
FY85

		TOTAL ACTIVE FEDERAL SERVICE BY YEAR OF SERVICE GROUPS															
MEDICAL SPECIALTY	AT LEAST BUT LESS THAN	16	17	18	19	20	21	22	23	24	25	26	27	28	29	30	TOTAL
		17	18	19	20	21	22	23	24	25	26	27	28	29	30	+	
EXECUTIVE MEDICINE																	
	A	12	11	13	9	7	8	10	9	5	4	6	2	2	1	2	169
	N	8	11	8	15	9	7	4	6	3	5	8	4	5	1	2	149
	F	2	2	3	4	1	1	4	0	2	6	2	2	1	3	2	42
	TOTAL	22	24	24	28	17	16	18	15	10	15	16	8	8	5	6	360
FAMILY PRACTICE																	
	A	2	0	0	0	6	1	1	0	0	0	0	0	0	0	0	241
	N	5	2	2	1	0	0	0	0	0	0	0	0	0	0	0	184
	F	2	4	1	2	1	0	0	0	1	0	0	0	0	0	0	358
	TOTAL	9	6	3	3	7	1	1	0	1	0	0	0	0	0	0	783
GENERAL MEDICAL OFFICER																	
	A	3	2	3	2	0	2	2	0	0	0	0	1	2	0	0	521
	N	1	0	2	0	1	0	2	1	0	0	0	0	0	0	1	716
	F	3	1	1	0	0	0	0	0	0	0	0	0	0	0	0	257
	TOTAL	7	3	6	2	1	2	4	1	0	0	0	1	2	0	1	1494
INTERNAL MEDICINE																	
	A	15	17	14	15	5	6	4	9	10	8	8	5	5	5	5	576
	N	7	5	1	3	2	1	3	2	2	1	2	0	1	0	1	263
	F	9	10	6	3	0	0	2	1	0	0	0	0	0	1	1	352
	TOTAL	31	32	21	21	7	7	9	12	12	9	10	5	6	6	7	1191
MEDICAL RESEARCH																	
	A	2	1	1	1	0	0	0	0	0	0	0	0	0	0	0	7
	N	0	1	0	1	0	0	0	1	0	0	0	0	1	0	1	38
	TOTAL	2	2	1	2	0	0	0	1	0	0	0	0	1	0	1	45

FORMAT 13: PHYSICIAN DUTY SPECIALTIES BY YEARS OF SERVICE

FORMAT 13
PAGE 3A
FY85

MEDICAL SPECIALTY		TOTAL ACTIVE FEDERAL SERVICE BY YEAR OF SERVICE GROUPS															
		AT LEAST BUT LESS THAN	1	2	3	4	5	6	7	8	9	10	11	12	13	14	15
NEUROLOGY																	
	A	0	0	3	1	2	4	5	4	3	7	0	3	2	3	2	1
	N	2	1	1	1	2	3	2	3	0	2	1	0	0	1	2	1
	F	3	1	3	0	4	3	1	2	0	2	0	0	0	3	1	0
	TOTAL	5	2	7	2	8	10	8	9	3	11	1	3	2	7	5	2
NUCLEAR MEDICINE																	
	A	1	1	1	1	1	4	1	3	4	2	1	1	4	2	1	0
	N	0	2	1	0	0	1	1	1	0	0	1	0	0	1	0	0
	F	0	0	0	0	0	0	1	0	0	0	0	1	0	0	1	1
	TOTAL	1	3	2	1	1	5	3	4	4	2	2	2	4	3	2	1
OBSTETRICS/GYNECOLOGY																	
	A	0	3	5	7	13	32	17	23	17	11	6	7	4	5	8	12
	N	6	6	7	5	7	13	11	6	9	5	2	4	0	7	1	6
	F	21	21	17	13	25	12	12	11	3	5	5	6	7	6	3	6
	TOTAL	27	30	29	25	45	57	40	40	29	21	13	17	11	18	9	24
OPHTHALMOLOGY																	
	A	1	1	3	4	5	3	6	7	8	7	3	2	4	2	1	3
	N	2	1	0	0	0	3	8	5	3	4	4	1	1	6	4	0
	F	0	3	5	2	2	1	5	2	2	1	1	1	2	3	3	4
	TOTAL	3	5	8	6	7	7	19	14	13	12	8	4	7	11	8	7
ORTHOPEDIC SURGERY																	
	A	0	8	17	14	10	9	11	8	8	8	1	2	3	3	2	4
	N	9	8	4	1	2	1	9	8	10	5	3	2	1	1	4	4
	F	17	6	5	8	4	5	4	10	4	8	4	4	3	6	5	5
	TOTAL	26	22	26	23	16	15	24	26	22	21	8	8	7	10	11	13
OTORHINOLARYNGOLOGY																	
	A	4	3	2	5	3	3	3	4	0	5	3	1	4	1	3	1
	N	1	2	2	1	2	4	5	5	4	0	2	1	3	1	3	3
	F	5	5	4	3	0	2	2	1	1	3	2	1	4	1	1	2
	TOTAL	10	10	8	9	5	9	10	10	5	8	7	3	11	3	7	6

FORMAT 13: PHYSICIAN DUTY SPECIALTIES BY YEARS OF SERVICE

FORMAT 13
PAGE 3B
FY85

MEDICAL SPECIALTY	TOTAL ACTIVE FEDERAL SERVICE BY YEAR OF SERVICE GROUPS																TOTAL	
	AT LEAST BUT LESS THAN	16	17	18	19	20	21	22	23	24	25	26	27	28	29	30		+
NEUROLOGY																		
A	2	2	1	1	0	0	0	1	1	0	0	0	0	0	0	0	0	48
N	1	0	2	0	0	0	0	0	1	0	0	0	0	0	0	0	0	26
F	2	0	0	0	0	0	0	0	0	0	0	0	0	0	0	0	0	25
TOTAL	5	2	3	1	0	0	0	1	2	0	0	0	0	0	0	0	0	99
NUCLEAR MEDICINE																		
A	1	1	0	2	1	0	0	0	1	0	0	0	0	0	0	0	0	34
N	1	0	1	0	0	1	0	0	0	0	0	0	0	0	0	0	0	11
F	1	0	0	0	1	0	0	0	0	0	0	0	0	0	0	0	0	6
TOTAL	3	1	1	2	2	1	0	0	1	0	0	0	0	0	0	0	0	51
OBSTETRICS/GYNECOLOGY																		
A	9	7	6	4	1	2	2	2	1	1	1	0	0	0	0	0	0	203
N	3	3	3	3	2	0	2	1	1	0	0	1	0	0	0	0	0	114
F	4	6	8	5	1	3	1	0	0	0	0	0	0	0	0	0	0	201
TOTAL	16	16	17	12	4	5	5	3	2	1	1	1	0	0	0	0	0	518
OPHTHALMOLOGY																		
A	4	4	2	3	0	3	1	1	0	0	0	0	0	0	0	0	0	78
N	3	3	3	2	2	0	0	0	0	0	0	0	1	0	0	0	0	56
F	0	2	1	2	0	0	0	0	0	0	0	0	0	0	0	0	0	42
TOTAL	7	9	6	7	2	3	1	1	0	0	0	0	1	0	0	0	0	176
ORTHOPEDIC SURGERY																		
A	4	9	8	2	3	3	5	3	1	0	2	3	0	0	0	0	0	151
N	5	1	2	1	2	2	0	0	0	0	0	0	0	1	1	1	1	88
F	3	1	1	2	2	1	0	0	0	0	0	0	0	0	0	0	0	108
TOTAL	12	11	11	5	7	6	5	3	1	0	2	3	1	1	1	1	1	347
OTORHINOLARYNGOLOGY																		
A	1	2	0	1	5	2	0	0	0	0	0	0	0	0	0	0	0	56
N	0	2	1	0	1	0	0	1	0	0	0	0	0	0	0	0	0	44
F	1	2	0	2	0	1	0	0	0	0	0	0	0	0	0	0	0	43
TOTAL	2	6	1	3	6	3	0	1	0	0	0	0	0	0	0	0	0	143

FORMAT 13: PHYSICIAN DUTY SPECIALTIES BY YEARS OF SERVICE

FORMAT 13
PAGE 4A
FY85

MEDICAL SPECIALTY		TOTAL ACTIVE FEDERAL SERVICE BY YEAR OF SERVICE GROUPS																
		AT LEAST BUT LESS THAN	1	2	3	4	5	6	7	8	9	10	11	12	13	14	15	16
PATHOLOGY																		
	A	8	2	3	3	7	7	12	17	9	15	15	15	10	12	7	4	
	N	3	2	7	1	4	7	1	9	5	6	4	5	4	0	5	2	
	F	11	5	4	6	6	7	10	4	4	3	1	6	2	2	2	0	
	TOTAL	22	9	14	10	17	21	24	30	17	25	21	26	16	14	14	6	
PEDIATRICS																		
	A	6	6	12	6	20	11	29	26	20	18	18	14	20	8	11	9	
	N	3	5	10	12	11	23	12	10	6	11	12	13	4	7	9	6	
	F	11	19	19	29	16	22	15	20	25	18	12	10	7	8	4	3	
	TOTAL	20	30	41	47	48	56	56	56	51	47	42	37	31	23	24	18	
PHYSICAL MEDICINE																		
	A	0	0	0	2	4	3	1	3	1	0	0	0	2	0	1	1	
	N	0	0	0	0	0	0	0	0	0	0	0	0	0	1	0	0	
	F	0	0	1	1	0	0	0	0	0	0	0	0	0	0	0	0	
	TOTAL	0	0	1	3	4	3	1	3	1	0	0	0	2	1	1	1	
PREVENTIVE MEDICINE																		
	A	2	0	0	0	2	3	2	2	2	4	2	1	2	3	5	2	
	N	0	0	1	1	2	0	1	4	2	2	4	0	1	5	3	1	
	F	1	0	6	1	1	6	8	7	4	10	6	4	8	7	6	7	
	TOTAL	3	0	7	2	5	9	11	13	8	16	12	5	11	15	14	10	
PSYCHIATRY																		
	A	8	7	8	6	11	12	10	19	13	10	0	6	11	8	5	8	
	N	4	4	0	4	7	3	9	7	8	7	5	6	3	4	4	3	
	F	2	5	4	9	11	6	6	10	9	11	7	5	2	1	2	1	
	TOTAL	14	16	12	19	29	21	25	36	30	28	12	17	16	13	11	12	
RADIOLOGY																		
	A	0	2	14	6	10	7	6	9	19	16	10	5	5	6	8	9	
	N	10	10	4	2	4	11	10	10	13	6	3	2	1	4	4	3	
	F	18	10	13	10	8	9	8	11	10	4	4	4	5	4	4	2	
	TOTAL	28	22	31	18	22	27	24	30	42	26	17	11	11	14	16	14	

FORMAT 13: PHYSICIAN DUTY SPECIALTIES BY YEARS OF SERVICE

FORMAT 13
PAGE 48
FY85

		TOTAL ACTIVE FEDERAL SERVICE BY YEAR OF SERVICE GROUPS																
MEDICAL SPECIALTY	AT LEAST BUT LESS THAN	16	17	18	19	20	21	22	23	24	25	26	27	28	29	30	+	TOTAL
PATHOLOGY	A	3	1	2	4	1	1	2	1	0	0	0	0	0	0	0	0	163
	N	1	3	0	4	0	2	0	0	0	0	1	1	0	0	1	0	78
	F	2	1	3	1	0	0	0	0	1	0	1	0	0	0	0	0	82
	TOTAL	6	5	5	9	1	3	2	1	1	0	2	1	0	0	1	0	323
PEDIATRICS	A	12	3	5	5	4	3	4	1	1	0	0	0	0	0	0	0	272
	N	3	4	3	5	1	1	2	1	0	0	2	0	0	0	0	0	177
	F	7	7	4	0	1	0	0	0	0	0	0	0	0	0	0	0	257
	TOTAL	22	14	12	10	6	4	6	2	1	0	2	0	0	0	0	0	706
PHYSICAL MEDICINE	A	0	1	0	0	1	0	0	0	0	0	0	0	0	0	0	0	20
	N	0	0	0	0	0	0	0	0	0	0	0	0	0	0	0	0	1
	F	0	0	0	0	0	0	0	0	0	0	0	0	0	0	0	0	2
	TOTAL	0	1	0	0	1	0	0	0	0	0	0	0	0	0	0	0	23
PREVENTIVE MEDICINE	A	1	5	3	4	8	3	4	3	0	2	1	0	0	1	1	0	68
	N	1	1	2	3	0	1	2	1	1	1	0	0	0	0	0	0	40
	F	7	3	3	3	5	3	1	1	4	1	0	0	1	1	1	0	115
	TOTAL	9	9	8	10	13	7	7	5	5	4	1	0	1	2	1	0	223
PSYCHIATRY	A	9	8	3	3	3	7	2	2	2	1	1	1	1	0	0	0	185
	N	4	4	2	2	0	0	0	2	0	1	0	0	0	0	0	1	94
	F	2	3	4	2	0	0	0	0	0	1	0	0	0	0	0	0	103
	TOTAL	15	15	9	7	3	7	2	4	2	3	1	1	1	0	1	0	382
RADIOLOGY	A	6	7	9	3	1	0	0	1	0	0	0	0	0	0	0	0	159
	N	1	5	2	1	0	1	0	1	0	0	0	0	1	0	0	0	109
	F	4	4	1	2	1	0	1	0	0	0	1	0	0	0	0	0	138
	TOTAL	11	16	12	6	2	1	1	2	0	0	1	0	1	0	0	0	406

FORMAT 13: PHYSICIAN DUTY SPECIALTIES BY YEARS OF SERVICE

FORMAT 13
PAGE 5A
FY85

		TOTAL ACTIVE FEDERAL SERVICE BY YEAR OF SERVICE GROUPS															
MEDICAL SPECIALTY	AT LEAST BUT LESS THAN	-	1	2	3	4	5	6	7	8	9	10	11	12	13	14	15
		1	2	3	4	5	6	7	8	9	10	11	12	13	14	15	16
SURGERY																	
	A	6	19	14	20	16	10	11	22	15	12	7	8	5	7	8	7
	N	12	13	11	13	12	7	16	14	13	6	3	3	1	7	4	5
	F	24	20	15	18	14	14	28	19	8	11	9	4	10	9	8	5
	TOTAL	42	52	40	51	42	31	55	55	36	29	19	15	16	23	20	17
UNDERSEA MEDICINE																	
	N	6	1	9	10	7	5	3	6	3	2	1	2	0	1	0	0
UROLOGY																	
	A	1	1	3	3	2	3	3	4	5	3	2	1	2	3	4	2
	N	1	0	6	1	2	3	5	3	5	2	2	0	0	0	1	2
	F	2	2	5	3	1	3	3	2	2	8	4	2	2	0	2	0
	TOTAL	4	3	14	7	5	9	11	9	12	13	8	3	4	3	7	4
OTHER																	
	A	0	0	0	0	0	0	0	0	0	0	0	0	0	0	0	0
	N	14	37	3	1	0	9	0	1	1	1	0	0	1	1	1	1
	TOTAL	14	37	3	1	0	9	0	1	1	1	0	0	1	1	1	1
GRAND TOTALS																	
	A	277	417	446	484	502	508	431	336	278	220	139	132	144	120	118	114
	N	410	434	402	351	329	288	275	231	210	142	108	93	63	96	94	71
	F	518	394	380	382	286	249	216	190	169	162	125	102	119	91	85	63
	TOTAL	1205	1245	1228	1217	1117	1045	922	757	657	524	372	327	326	307	297	248

FORMAT 13: PHYSICIAN DUTY SPECIALTIES BY YEARS OF SERVICE

FORMAT 13
PAGE 5B
FY85

MEDICAL SPECIALTY	AT LEAST BUT LESS THAN	15	17	18	19	20	21	22	23	24	25	26	27	28	29	30	TOTAL
		16	18	19	20	21	22	23	24	25	26	27	28	29	30		
TOTAL ACTIVE FEDERAL SERVICE BY YEAR OF SERVICE GROUPS																	
SURGERY	A	7	7	5	8	6	5	7	6	3	5	4	3	4	6	3	265
	N	5	5	3	3	2	3	1	0	0	1	0	1	0	0	0	164
	F	5	5	4	2	0	1	2	1	1	1	0	0	0	0	0	238
	TOTAL	17	17	12	13	8	9	10	7	4	7	4	4	4	6	3	668
UNDERSEA MEDICINE	N	2	0	2	0	0	0	0	0	0	0	0	0	0	0	0	60
UROLOGY	A	3	2	3	4	0	0	3	1	3	1	0	1	1	0	0	64
	N	3	1	0	1	0	1	0	0	1	0	0	0	0	0	0	40
	F	5	1	1	1	0	1	0	0	0	0	0	0	0	0	0	50
	TOTAL	11	4	4	6	0	2	3	1	4	1	0	1	1	0	0	154
OTHER	A	0	0	0	2	2	2	0	0	0	0	0	0	0	0	0	6
	N	0	0	0	0	0	0	0	0	0	0	0	1	0	0	0	72
	TOTAL	0	0	0	2	2	2	0	0	0	0	0	1	0	0	0	78
GRAND TOTALS	A	105	101	90	83	57	54	47	40	29	23	23	17	15	13	11	5374
	N	66	57	46	52	23	22	16	18	10	9	14	10	9	3	8	3960
	F	74	72	59	43	18	19	18	8	11	11	5	4	3	5	7	3888
	TOTAL	245	230	195	178	98	95	81	66	50	43	42	31	27	21	26	13222

FORMAT 14: GRADE DISTRIBUTION OF PHYSICIANS BY PRIMARY SPECIALTY

FORMAT 14
PAGE 1
FY85

MEDICAL SPECIALTY		0-3	0-4	0-5	0-6	0-7	0-8	0-9	TOTAL
GME-1 (INTERNSHIP)									
	A	363	0	0	0	0	0	0	363
	N	269	2	0	0	0	0	0	271
	F	195	1	0	0	0	0	0	196
	TOTAL	827	3	0	0	0	0	0	830
OTHER GME									
	A	1023	287	34	15	0	0	0	1359
	N	447	257	33	8	0	0	0	745
	F	507	116	23	7	0	0	0	653
	TOTAL	1977	660	90	30	0	0	0	2757
ANESTHESIOLOGY									
	A	33	55	10	9	0	0	0	107
	N	42	50	14	12	1	0	0	119
	F	37	20	10	4	0	0	0	71
	TOTAL	112	125	34	25	1	0	0	297
AVIATION MEDICINE									
	A	48	30	19	27	0	0	0	124
	N	150	85	17	12	0	0	0	244
	F	187	85	44	75	0	0	0	381
	TOTAL	395	160	80	114	0	0	0	749
DERMATOLOGY									
	A	4	31	13	25	0	0	0	73
	N	1	19	9	13	0	1	0	43
	F	4	14	8	12	0	0	0	38
	TOTAL	9	64	30	50	0	1	0	154

FORMAT 14: GRADE DISTRIBUTION OF PHYSICIANS BY PRIMARY SPECIALTY

FORMAT 14
PAGE 2
FY85

MEDICAL SPECIALTY	0-3	0-4	0-5	0-6	0-7	0-8	0-9	TOTAL
EMERGENCY MEDICINE								
A	36	23	5	6	0	0	0	70
N	3	13	0	8	0	0	0	24
F	16	9	2	1	0	0	0	28
TOTAL	55	45	7	15	0	0	0	122
EXECUTIVE MEDICINE								
F	0	0	0	7	8	3	1	19
FAMILY PRACTICE								
A	133	90	25	21	0	0	0	269
N	50	106	34	15	0	0	0	205
F	243	108	34	29	0	0	0	414
TOTAL	426	304	93	65	0	0	0	888
GENERAL MEDICAL OFFICER								
A	473	72	15	9	0	0	0	569
N	591	85	37	6	0	1	0	720
F	162	51	23	13	0	0	0	249
TOTAL	1226	208	75	28	0	1	0	1538
INTERNAL MEDICINE								
A	127	247	105	104	1	0	0	584
N	40	116	73	54	0	2	0	285
F	113	169	48	42	0	0	0	372
TOTAL	280	532	226	200	1	2	0	1241

FORMAT 14: GRADE DISTRIBUTION OF PHYSICIANS BY PRIMARY SPECIALTY

FORMAT 14
PAGE 3
FY85

MEDICAL SPECIALTY		0-3	0-4	0-5	0-6	0-7	0-8	0-9	TOTAL
MEDICAL RESEARCH	N	5	15	10	10	0	0	0	40
NEUROLOGY	A	9	18	6	14	0	0	0	47
	N	2	13	7	4	0	0	0	26
	F	4	12	5	1	0	0	0	22
	TOTAL	15	43	18	19	0	0	0	95
NUCLEAR MEDICINE	A	1	11	10	12	0	0	0	34
	N	1	4	2	5	0	1	0	13
	F	0	3	4	3	0	0	0	10
	TOTAL	2	18	16	20	0	1	0	57
OBSTETRICS/GYNECOLOGY	A	60	87	29	43	0	1	0	220
	N	21	58	17	21	0	1	0	118
	F	60	85	30	31	0	0	0	206
	TOTAL	141	230	76	95	0	2	0	544
OPHTHALMOLOGY	A	13	36	13	21	0	0	0	83
	N	4	24	15	17	1	0	1	62
	F	5	23	13	6	0	0	0	47
	TOTAL	22	83	41	44	1	0	1	192

FORMAT 14: GRADE DISTRIBUTION OF PHYSICIANS BY PRIMARY SPECIALTY

FORMAT 14
PAGE 4
FY85

MEDICAL SPECIALTY		0-3	0-4	0-5	0-6	0-7	0-8	0-9	TOTAL
ORTHOPEDIC SURGERY	A	24	68	19	24	1	1	1	138
	N	11	46	11	24	0	0	0	92
	F	15	55	16	9	0	0	0	95
	TOTAL	50	169	46	57	1	1	1	325
OTORHINOLARYNGOLOGY	A	7	30	11	9	0	0	0	57
	N	4	24	9	10	0	0	0	47
	F	5	20	12	5	0	0	0	42
	TOTAL	16	74	32	24	0	0	0	146
PATHOLOGY	A	11	72	54	34	0	0	0	171
	N	3	38	25	14	0	0	0	80
	F	11	39	14	16	0	0	0	80
	TOTAL	25	149	93	64	0	0	0	331
PEDIATRICS	A	59	102	57	63	0	1	0	282
	N	28	63	71	36	0	0	0	198
	F	77	109	51	33	0	0	0	270
	TOTAL	164	274	179	132	0	1	0	750
PHYSICAL MEDICINE	A	5	8	5	5	0	0	0	23
	N	0	1	0	0	0	0	0	1
	F	1	1	0	0	0	0	0	2
	TOTAL	6	10	5	5	0	0	0	26

FORMAT 14: GRADE DISTRIBUTION OF PHYSICIANS BY PRIMARY SPECIALTY

FORMAT 14
PAGE 5
FY85

MEDICAL SPECIALTY		0-3	0-4	0-5	0-6	0-7	0-8	0-9	TOTAL
PREVENTIVE MEDICINE	A	8	17	11	35	0	0	0	71
	N	0	7	18	38	1	0	0	64
	F	10	32	33	68	0	0	0	143
	TOTAL	18	56	62	141	1	0	0	278
PSYCHIATRY	A	15	51	52	69	0	0	0	187
	N	7	33	30	30	1	0	0	101
	F	14	36	32	24	0	0	0	106
	TOTAL	36	120	114	123	1	0	0	394
RADIOLOGY	A	42	77	25	19	0	0	0	163
	N	20	53	24	16	0	0	0	113
	F	37	69	16	12	0	0	0	134
	TOTAL	98	199	65	47	0	0	0	410
SURGERY	A	63	103	58	82	6	3	0	315
	N	10	79	43	41	0	0	0	173
	F	39	109	69	44	0	0	0	261
	TOTAL	112	291	170	167	6	3	0	749
UNDERSEA MEDICINE	N	34	17	5	4	0	0	0	60

FORMAT 14: GRADE DISTRIBUTION OF PHYSICIANS BY PRIMARY SPECIALTY

FORMAT 14
PAGE 6
FY85

MEDICAL SPECIALTY	0-3	0-4	0-5	0-6	0-7	0-8	0-9	TOTAL
UROLOGY								
A	7	27	11	20	0	0	0	65
N	2	26	6	9	0	0	0	43
F	6	22	13	8	0	0	0	49
TOTAL	15	75	30	37	0	0	0	157
OTHER								
N	63	3	4	3	0	0	0	73
GRAND TOTALS								
A	2564	1542	587	666	8	6	1	5374
N	1808	1217	514	410	4	6	1	3960
F	1758	1168	500	450	8	3	1	3888
TOTAL	6130	3927	1601	1526	20	15	3	13222

FORMAT 15: GRADE DISTRIBUTION OF PHYSICIANS BY DUTY SPECIALTY

FORMAT 15
PAGE 1
FY85

SPECIALTY		0-3	0-4	0-5	0-6	0-7	0-8	0-9	TOTAL
GME-1 (INTERNSHIP)	A	363	0	0	0	0	0	0	363
	N	269	2	0	0	0	0	0	271
	F	195	1	0	0	0	0	0	196
	TOTAL	827	3	0	0	0	0	0	830
OTHER GME	A	1023	287	34	15	0	0	0	1359
	N	447	257	33	8	0	0	0	745
	F	507	116	23	7	0	0	0	653
	TOTAL	1977	680	90	30	0	0	0	2757
ANESTHESIOLOGY	A	27	59	11	6	0	0	0	103
	N	42	50	13	8	0	0	0	113
	F	37	19	10	4	0	0	0	70
	TOTAL	106	128	34	18	0	0	0	286
AVIATION MEDICINE	A	88	22	7	1	0	0	0	118
	N	150	65	17	12	0	0	0	244
	F	222	78	53	126	0	0	0	479
	TOTAL	460	165	77	139	0	0	0	841
DERMATOLOGY	A	3	33	16	22	0	0	0	74
	N	1	19	9	12	0	0	0	41
	F	4	15	9	11	0	0	0	39
	TOTAL	8	67	34	45	0	0	0	154

FORMAT 15: GRADE DISTRIBUTION OF PHYSICIANS BY DUTY SPECIALTY

FORMAT 15
PAGE 2
FY85

SPECIALTY		0-3	0-4	0-5	0-6	0-7	0-8	0-9	TOTAL
EMERGENCY MEDICINE									
	A	36	22	7	5	0	0	0	70
	N	3	13	0	6	0	0	0	22
	F	21	8	2	1	0	0	0	32
	TOTAL	60	43	9	12	0	0	0	124
EXECUTIVE MEDICINE									
	A	0	14	22	133	0	0	0	169
	N	0	3	21	114	4	6	1	149
	F	0	0	1	29	8	3	1	42
	TOTAL	0	17	44	276	12	9	2	360
FAMILY PRACTICE									
	A	134	80	15	12	0	0	0	241
	N	50	105	27	2	0	0	0	184
	F	231	89	29	9	0	0	0	358
	TOTAL	415	274	71	23	0	0	0	783
GENERAL MEDICAL OFFICER									
	A	426	48	27	20	0	0	0	521
	N	591	84	36	5	0	0	0	716
	F	161	50	26	20	0	0	0	257
	TOTAL	1178	182	89	45	0	0	0	1494
INTERNAL MEDICINE									
	A	138	262	93	82	1	0	0	576
	N	40	115	69	39	0	0	0	263
	F	103	166	48	35	0	0	0	352
	TOTAL	281	543	210	156	1	0	0	1191

FORMAT 15: GRADE DISTRIBUTION OF PHYSICIANS BY DUTY SPECIALTY

FORMAT 15
PAGE 3
FY85

SPECIALTY		0-3	0-4	0-5	0-6	0-7	0-8	0-9	TOTAL
MEDICAL RESEARCH									
	A	0	0	2	5	0	0	0	7
	N	5	15	10	8	0	0	0	38
	TOTAL	5	15	12	13	0	0	0	45
NEUROLOGY									
	A	11	20	5	12	0	0	0	48
	N	2	13	7	4	0	0	0	26
	F	5	14	5	1	0	0	0	25
	TOTAL	18	47	17	17	0	0	0	99
NUCLEAR MEDICINE									
	A	2	13	12	7	0	0	0	34
	N	1	4	2	4	0	0	0	11
	F	0	2	3	1	0	0	0	6
	TOTAL	3	19	17	12	0	0	0	51
OBSTETRICS/GYNECOLOGY									
	A	52	86	29	35	0	1	0	203
	N	21	58	17	18	0	0	0	114
	F	59	85	30	27	0	0	0	201
	TOTAL	132	229	76	80	0	1	0	518
OPHTHALMOLOGY									
	A	13	32	15	18	0	0	0	78
	N	4	24	15	13	0	0	0	56
	F	5	21	11	5	0	0	0	42
	TOTAL	22	77	41	36	0	0	0	176

FORMAT 15: GRADE DISTRIBUTION OF PHYSICIANS BY DUTY SPECIALTY

FORMAT 15
PAGE 4
FY85

SPECIALTY		0-3	0-4	0-5	0-6	0-7	0-8	0-9	TOTAL
ORTHOPEDIC SURGERY	A	32	74	19	23	1	1	1	151
	N	11	46	11	20	0	0	0	88
	F	22	58	19	9	0	0	0	108
	TOTAL	65	178	49	52	1	1	1	347
OTORHINOLARYNGOLOGY	A	8	31	10	7	0	0	0	56
	N	4	24	9	7	0	0	0	44
	F	6	21	11	5	0	0	0	43
	TOTAL	18	76	30	19	0	0	0	143
PATHOLOGY	A	22	68	49	24	0	0	0	163
	N	3	38	25	12	0	0	0	78
	F	12	43	13	14	0	0	0	82
	TOTAL	37	149	87	50	0	0	0	323
PEDIATRICS	A	80	92	48	51	0	1	0	272
	N	28	63	67	19	0	0	0	177
	F	76	108	49	24	0	0	0	257
	TOTAL	184	263	164	94	0	1	0	706
PHYSICAL MEDICINE	A	5	6	6	3	0	0	0	20
	N	0	1	0	0	0	0	0	1
	F	1	1	0	0	0	0	0	2
	TOTAL	6	8	6	3	0	0	0	23

FORMAT 15: GRADE DISTRIBUTION OF PHYSICIANS BY DUTY SPECIALTY

FORMAT 15
PAGE 5
FY85

SPECIALTY		0-3	0-4	0-5	0-6	0-7	0-8	0-9	TOTAL
PREVENTIVE MEDICINE									
	A	11	21	10	26	0	0	0	68
	N	0	7	15	18	0	0	0	40
	F	11	32	27	45	0	0	0	115
	TOTAL	22	60	52	89	0	0	0	223
PSYCHIATRY									
	A	18	53	53	61	0	0	0	185
	N	7	33	30	24	0	0	0	94
	F	13	37	32	21	0	0	0	103
	TOTAL	38	123	115	106	0	0	0	382
RADIOLOGY									
	A	38	81	26	14	0	0	0	159
	N	20	53	24	12	0	0	0	109
	F	38	71	18	11	0	0	0	138
	TOTAL	96	205	68	37	0	0	0	406
SURGERY									
	A	25	107	58	67	6	3	0	266
	N	10	79	43	32	0	0	0	164
	F	22	110	68	38	0	0	0	238
	TOTAL	57	296	169	137	6	3	0	668
UNDERSEA MEDICINE									
	N	34	17	5	4	0	0	0	60

FORMAT 15: GRADE DISTRIBUTION OF PHYSICIANS BY DUTY SPECIALTY

FORMAT 15
PAGE 6
FY85

SPECIALTY	0-3	0-4	0-5	0-6	0-7	0-8	0-9	TOTAL
UROLOGY								
A	7	29	13	15	0	0	0	64
N	2	26	6	6	0	0	0	40
F	7	23	13	7	0	0	0	50
TOTAL	16	78	32	28	0	0	0	154
OTHER								
A	2	2	0	2	0	0	0	6
N	63	3	4	2	0	0	0	72
TOTAL	65	5	4	4	0	0	0	78
GRAND TOTALS								
A	2564	1542	587	666	8	6	1	5374
N	1808	1217	515	409	4	6	1	3960
F	1758	1168	500	450	8	3	1	3888
TOTAL	6130	3927	1602	1525	20	15	3	13222

FORMAT 16: SERVICE SPONSORED GRADUATE MEDICAL EDUCATION (GME)

FORMAT 16
PAGE 1
FY85

MEDICAL SPECIALTY	LENGTH OF TRAINING	GME-1 INTERNSHIP	NUMBER OF STUDENTS BY YEAR OF COMPLETION DATE AND SOURCE OF TRAINING														GRAND TOTAL
			CURRENT FY + 1		CURRENT FY + 2		CURRENT FY + 3		CURRENT FY + 4		CURRENT FY + 5		OVER 5		TOTAL		
			MIL	CIV	MIL	CIV	MIL	CIV	MIL	CIV	MIL	CIV	MIL	CIV	MIL	CIV	
GME-1 (INTERNSHIP)																	
A	1	363	133	0	0	0	143	0	54	0	32	0	1	0	363	0	363
N	1	271	256	0	0	0	0	0	15	0	0	0	0	0	271	0	271
F	0	196	53	0	0	0	97	0	33	0	12	1	0	0	195	1	196
TOTAL		830	442	0	0	0	240	0	102	0	44	1	1	0	829	1	830
OTHER GME																	
A	2-6	0	469	44	488	20	226	4	103	3	1	0	1	0	1288	71	1359
N	0	0	236	28	224	16	163	10	58	2	5	1	1	1	687	58	745
F	0	0	216	55	194	44	78	12	40	13	0	1	0	0	528	125	653
TOTAL		0	921	127	906	80	467	26	201	18	6	2	2	1	2503	254	2757
ANESTHESIOLOGY - RESIDENCY																	
A	4	10	18	0	18	1	20	0	10	0	0	0	0	0	66	1	67
N	4	0	9	1	23	0	20	0	1	0	0	0	0	0	53	1	54
F	4	4	9	2	9	0	4	0	0	0	0	0	0	0	22	2	24
TOTAL		14	36	3	50	1	44	0	11	0	0	0	0	0	141	4	145
AVIATION MEDICINE - RESIDENCY																	
A	4	0	0	0	6	0	6	0	0	0	0	0	0	0	12	0	12
N	4	0	2	4	3	0	4	0	0	0	0	0	0	0	9	4	13
TOTAL		0	2	4	9	0	10	0	0	0	0	0	0	0	21	4	25
DERMATOLOGY - RESIDENCY																	
A	4	1	9	0	8	0	8	0	1	0	0	0	0	0	26	0	26
N	4	0	7	0	6	0	6	0	0	0	0	0	0	0	19	0	19
F	4	0	3	0	5	0	6	2	0	0	0	0	0	0	14	2	16
TOTAL		1	19	0	19	0	20	2	1	0	0	0	0	0	59	2	61
DERMATOLOGY - FELLOWSHIP																	
N	0	0	0	1	0	0	0	0	0	0	0	0	0	0	0	1	1
F	0	0	0	2	0	0	0	0	0	0	0	0	0	0	0	2	2
TOTAL		0	0	3	0	0	0	0	0	0	0	0	0	0	0	3	3

FORMAT 16: SERVICE SPONSORED GRADUATE MEDICAL EDUCATION (GME)

FORMAT 16
PAGE 2
FY85

MEDICAL SPECIALTY	LENGTH OF TRAINING	GME-1 INTERNSHIP	NUMBER OF STUDENTS BY YEAR OF COMPLETION DATE AND SOURCE OF TRAINING												TOTAL	GRAND TOTAL		
			CURRENT FY + 1		CURRENT FY + 2		CURRENT FY + 3		CURRENT FY + 4		CURRENT FY + 5		OVER 5					
			MIL	CIV	MIL	CIV	MIL	CIV	MIL	CIV	MIL	CIV	MIL	CIV			MIL	CIV
EMERGENCY MEDICAL - RESIDENCY																		
A	3	9	20	0	21	0	9	0	0	0	0	0	0	0	50	0	50	
N	3	0	4	0	4	3	0	0	0	0	0	0	0	0	8	3	11	
F	3	0	3	1	8	0	0	0	0	0	0	0	0	6	0	11	1	12
TOTAL		9	27	1	33	3	9	0	0	0	0	0	0	0	69	4	73	
FAMILY PRACTICE - RESIDENCY																		
A	3-4	37	45	0	48	0	37	0	0	0	0	0	0	0	130	0	130	
N	3	50	38	0	36	0	7	0	0	0	0	0	0	0	81	0	81	
F	3	38	38	0	42	0	38	0	0	0	0	0	0	0	118	0	118	
TOTAL		125	121	0	126	0	82	0	0	0	0	0	0	0	329	0	329	
GENERAL MEDICAL OFFICER																		
A	1	133	133	0	0	0	0	0	0	0	0	0	0	0	133	0	133	
N	1	0	256	0	0	0	0	0	0	0	0	0	0	0	256	0	256	
F	1	22	53	0	0	0	0	0	0	0	0	0	0	0	53	0	53	
TOTAL		155	442	0	0	0	0	0	0	0	0	0	0	0	442	0	442	
INTERNAL MEDICINE - RESIDENCY																		
A	3-4	64	72	0	83	0	64	0	0	0	0	0	0	0	219	0	219	
N	3	89	23	0	25	0	13	0	0	0	0	0	0	0	61	0	61	
F	3	42	34	0	28	0	34	0	0	0	0	0	0	0	96	0	96	
TOTAL		195	129	0	136	0	111	0	0	0	0	0	0	0	376	0	376	
INTERNAL MEDICINE - FELLOWSHIP																		
A	2	0	51	1	47	0	7	0	0	0	0	0	0	0	105	1	106	
N	5-6	0	21	0	24	0	0	0	0	0	0	0	0	0	45	0	45	
F	3	0	20	7	23	9	2	0	0	0	0	0	0	0	45	16	61	
TOTAL		0	92	8	94	9	9	0	0	0	0	0	0	0	195	17	212	

FORMAT 16: SERVICE SPONSORED GRADUATE MEDICAL EDUCATION (GME)

FORMAT 16
PAGE 3
FY85

MEDICAL SPECIALTY	LENGTH OF TRAINING	GME-1 INTERNSHIP	NUMBER OF STUDENTS BY YEAR OF COMPLETION DATE AND SOURCE OF TRAINING												TOTAL	GRAND TOTAL	
			CURRENT FY + 1		CURRENT FY + 2		CURRENT FY + 3		CURRENT FY + 4		CURRENT FY + 5		OVER 5				
			MIL	CIV	MIL	CIV	MIL	CIV	MIL	CIV	MIL	CIV	MIL	CIV			MIL
NEUROLOGY - RESIDENCY																	
A	4	4	5	0	7	0	7	0	4	0	0	0	0	0	23	0	23
N	4	0	2	0	2	0	2	0	0	0	0	0	0	6	0	6	
F	4	1	2	0	3	0	1	0	1	0	0	0	0	7	0	7	
TOTAL		5	9	0	12	0	10	0	5	0	0	0	0	36	0	36	
NEUROLOGY - FELLOWSHIP																	
A	3	0	1	0	1	0	1	0	0	0	0	0	0	3	0	3	
F	1	0	1	0	0	0	0	0	0	0	0	0	0	1	0	1	
TOTAL		0	2	0	1	0	1	0	0	0	0	0	0	4	0	4	
NUCLEAR MEDICINE - FELLOWSHIP																	
A	2	0	3	0	2	0	0	0	0	0	0	0	0	5	0	5	
N	4	0	2	0	1	0	0	0	0	0	0	0	0	3	0	3	
F	2	0	1	0	1	0	0	0	0	0	0	0	0	2	0	2	
TOTAL		0	6	0	4	0	0	0	0	0	0	0	0	10	0	10	
OBSTETRICS/GYNECOLOGY - RESIDENCY																	
A	4	23	27	1	28	0	31	0	23	0	0	0	0	109	1	110	
N	4	20	16	1	20	0	17	0	3	0	0	0	0	56	1	57	
F	4	14	10	2	13	0	14	0	14	0	0	0	0	51	2	53	
TOTAL		57	53	4	61	0	62	0	40	0	0	0	0	216	4	220	
OBSTETRICS/GYNECOLOGY - FELLOWSHIP																	
A	1-3	0	4	2	3	2	0	1	0	0	0	0	0	7	5	12	
N	6	0	0	2	0	0	0	1	0	0	0	0	0	0	3	3	
F	2	0	0	3	0	3	0	0	0	0	0	0	0	0	6	6	
TOTAL		0	4	7	3	5	0	2	0	0	0	0	0	7	14	21	
OPHTHALMOLOGY - RESIDENCY																	
A	4	0	11	0	11	0	10	0	0	0	0	0	0	32	0	32	
N	4	0	9	0	7	0	9	0	0	0	0	0	0	25	0	25	
F	4	0	5	0	3	0	4	0	0	0	0	0	0	12	0	12	
TOTAL		0	25	0	21	0	23	0	0	0	0	0	0	69	0	69	

FORMAT 16: SERVICE SPONSORED GRADUATE MEDICAL EDUCATION (GME)

FORMAT 16
PAGE 4
FY85

MEDICAL SPECIALTY	LENGTH OF TRAINING	GME-1 INTERNSHIP	NUMBER OF STUDENTS BY YEAR OF COMPLETION DATE AND SOURCE OF TRAINING												TOTAL	GRAND TOTAL			
			CURRENT FY + 1		CURRENT FY + 2		CURRENT FY + 3		CURRENT FY + 4		CURRENT FY + 5		OVER 5						
			MIL	CIV	MIL	CIV	MIL	CIV	MIL	CIV	MIL	CIV	MIL	CIV					
OPHTHALMOLOGY - FELLOWSHIP																			
A	1-2	0	0	3	0	0	0	0	0	0	0	0	0	0	0	0	3	3	
N	0	0	0	2	0	1	0	0	0	0	0	0	0	0	0	0	0	3	3
TOTAL		0	0	5	0	1	0	0	0	0	0	0	0	0	0	0	0	6	6
ORTHOPEDIC SURGERY - RESIDENCY																			
A	5	2	20	1	24	0	25	1	24	0	2	0	0	0	0	0	95	2	97
N	5	0	13	0	11	0	14	0	12	1	0	0	0	0	0	0	50	1	51
F	5	1	5	6	5	3	5	4	5	9	0	1	0	0	0	0	20	23	43
TOTAL		3	38	7	40	3	44	5	41	10	2	1	0	0	0	0	165	26	191
ORTHOPEDIC SURGERY - FELLOWSHIP																			
A	1	0	1	2	0	0	0	0	0	0	0	0	0	0	0	0	1	2	3
N	0	0	0	3	0	0	0	0	0	0	0	0	0	0	0	0	0	3	3
F	1	0	0	1	0	0	0	0	0	0	0	0	0	0	0	0	0	1	1
TOTAL		0	1	6	0	0	0	0	0	0	0	0	0	0	0	0	1	6	7
OTORHINOLARYNGOLOGY - RESIDENCY																			
A	5	1	11	2	9	0	10	0	10	0	1	0	0	0	0	0	41	2	43
N	5	0	11	0	10	0	10	0	6	0	1	0	0	0	0	0	38	0	38
F	5	0	3	3	2	1	2	0	3	1	0	0	0	0	0	0	10	5	15
TOTAL		1	25	5	21	1	22	0	19	1	2	0	0	0	0	0	89	7	96
OTORHINOLARYNGOLOGY - FELLOWSHIP																			
N	0	0	0	2	0	0	0	0	0	0	0	0	0	0	0	0	0	2	2
F	1	0	0	1	0	0	0	0	0	0	0	0	0	0	0	0	0	1	1
TOTAL		0	0	3	0	0	0	0	0	0	0	0	0	0	0	0	0	3	3
PATHOLOGY - RESIDENCY																			
A	5	8	15	0	17	0	18	0	11	0	8	0	0	0	0	0	69	0	69
N	5	8	7	0	5	0	12	0	5	0	2	0	0	0	0	0	31	0	31
F	5	5	2	0	3	0	4	0	5	0	0	0	0	0	0	0	14	0	14
TOTAL		19	24	0	25	0	34	0	21	0	10	0	0	0	0	0	114	0	114

FORMAT 16: SERVICE SPONSORED GRADUATE MEDICAL EDUCATION (GME)

FORMAT 16
PAGE 5
FV85

MEDICAL SPECIALTY	LENGTH OF TRAINING	GME-1 INTERNSHIP	NUMBER OF STUDENTS BY YEAR OF COMPLETION DATE AND SOURCE OF TRAINING												TOTAL	GRAND TOTAL		
			CURRENT FY + 1		CURRENT FY + 2		CURRENT FY + 3		CURRENT FY + 4		CURRENT FY + 5		OVER 5					
			MIL	CIV	MIL	CIV	MIL	CIV	MIL	CIV	MIL	CIV	MIL	CIV				
PATHOLOGY - FELLOWSHIP																		
A	1-3	0	2	1	0	0	0	0	0	0	0	0	0	0	0	2	1	3
N	6	0	2	0	0	0	0	0	0	0	0	0	0	0	0	2	0	2
F	2	0	0	2	0	0	0	0	0	0	0	0	0	0	0	0	2	2
TOTAL		0	4	3	0	0	0	0	0	0	0	0	0	0	0	4	3	7
PEDIATRICS - RESIDENCY																		
A	3	34	30	0	35	0	32	0	0	0	2	0	0	0	99	0	99	
N	3	16	18	0	15	0	2	0	8	0	0	0	0	0	43	0	43	
F	3	21	20	0	20	0	21	0	0	0	0	0	0	0	61	0	61	
TOTAL		71	68	0	70	0	55	0	8	0	2	0	0	0	203	0	203	
PEDIATRICS - FELLOWSHIP																		
A	1-2	0	13	5	15	2	0	0	0	0	0	0	0	0	28	7	35	
N	2	0	0	3	3	5	0	3	0	0	0	0	0	0	3	11	14	
F	3	0	3	3	3	3	0	2	0	0	0	0	0	0	6	8	14	
TOTAL		0	16	11	21	10	0	5	0	0	0	0	0	0	37	26	63	
PHYSICAL MEDICINE - RESIDENCY																		
A	4/1	0	2	1	3	0	4	0	0	0	0	0	0	0	9	1	10	
PREVENTIVE MEDICINE - RESIDENCY																		
A	3	1	13	0	0	8	1	0	0	0	0	0	0	0	14	8	22	
N	0	0	0	3	0	2	0	5	0	0	0	0	0	0	0	10	10	
F	3	0	14	4	0	13	0	0	0	0	0	0	0	0	14	17	31	
TOTAL		1	27	7	0	23	1	5	0	0	0	0	0	0	28	35	63	
PSYCHIATRY - RESIDENCY																		
A	4	15	18	0	19	0	19	0	15	0	0	0	0	0	71	0	71	
N	4	12	9	0	6	0	10	0	3	0	0	0	0	0	28	0	28	
F	4	13	13	2	10	1	12	0	13	0	0	0	0	0	48	3	51	
TOTAL		40	40	2	35	1	41	0	31	0	0	0	0	0	147	3	150	

FORMAT 16: SERVICE SPONSORED GRADUATE MEDICAL EDUCATION (GME)

FORMAT 16
PAGE 6
FY85

MEDICAL SPECIALTY	LENGTH OF TRAINING	GME-1 INTERNSHIP	NUMBER OF STUDENTS BY YEAR OF COMPLETION DATE AND SOURCE OF TRAINING												TOTAL		GRAND TOTAL	
			CURRENT FY + 1		CURRENT FY + 2		CURRENT FY + 3		CURRENT FY + 4		CURRENT FY + 5		OVER 5		MIL	CIV		
			MIL	CIV	MIL	CIV	MIL	CIV	MIL	CIV	MIL	CIV	MIL	CIV	MIL	CIV		
PSYCHIATRY - FELLOWSHIP																		
A	1-2	0	6	2	8	0	0	0	0	0	0	0	0	0	0	14	2	16
F	2	0	0	2	0	0	0	0	0	0	0	0	0	0	0	0	2	2
TOTAL		0	6	4	8	0	0	0	0	0	0	0	0	0	0	14	4	18
RADIOLOGY - RESIDENCY																		
A	4-5	10	5	2	16	2	26	0	26	0	10	0	0	0	83	4	87	
N	5	0	19	0	0	0	15	0	14	0	0	0	0	0	48	0	48	
F	5	0	13	1	0	1	13	1	14	2	0	0	0	0	40	5	45	
TOTAL		10	37	3	16	3	54	1	54	2	10	0	0	0	171	9	180	
RADIOLOGY - FELLOWSHIP																		
A	1-2	0	4	6	1	1	0	0	0	0	0	0	0	0	5	7	12	
N	6	0	2	1	1	0	0	0	0	0	0	0	0	0	3	1	4	
F	2	0	1	0	0	0	0	0	0	0	0	0	0	0	1	0	1	
TOTAL		0	7	7	2	1	0	0	0	0	0	0	0	0	9	8	17	
SURGERY - RESIDENCY																		
A	5	9	27	2	24	2	24	1	24	0	9	0	0	0	108	5	113	
N	5	57	14	0	12	0	13	0	15	0	0	0	0	0	54	0	54	
F	6	35	11	8	12	7	13	1	17	1	12	1	0	0	65	18	83	
TOTAL		101	52	10	48	9	50	2	56	1	21	1	0	0	227	23	250	
SURGERY - FELLOWSHIP																		
A	1	0	0	5	0	0	0	0	0	0	0	0	0	0	0	5	5	
N	7	0	0	0	0	1	0	0	0	0	0	0	0	0	0	1	1	
F	3	0	3	3	2	2	0	0	0	0	0	0	0	0	5	5	10	
TOTAL		0	3	8	2	3	0	0	0	0	0	0	0	0	5	11	16	
UROLOGY - RESIDENCY																		
A	5	0	7	0	7	0	7	0	6	0	0	0	0	0	27	0	27	
N	5	0	6	0	5	0	6	0	6	0	0	0	0	0	23	0	23	
F	5	0	2	2	2	1	2	2	1	0	0	0	0	0	7	5	12	
TOTAL		0	15	2	14	1	15	2	13	0	0	0	0	0	57	5	62	

FORMAT 16: SERVICE SPONSORED GRADUATE MEDICAL EDUCATION (GME)

FORMAT 16
PAGE 7
FY85

MEDICAL SPECIALTY	LENGTH OF TRAINING	GME-1 INTERNSHIP	NUMBER OF STUDENTS BY YEAR OF COMPLETION DATE AND SOURCE OF TRAINING												TOTAL	GRAND TOTAL	
			CURRENT FY + 1		CURRENT FY + 2		CURRENT FY + 3		CURRENT FY + 4		CURRENT FY + 5		OVER 5				
			MIL	CIV	MIL	CIV	MIL	CIV	MIL	CIV	MIL	CIV	MIL	CIV			MIL
OTHER																	
A	1-6	2	29	8	27	2	3	1	3	3	1	0	2	0	65	14	79
N	1-6	21	2	5	5	4	3	1	0	1	2	1	1	1	13	4	13
TOTAL		23	31	13	32	6	6	2	3	4	3	1	3	1	78	27	105
GRAND TOTALS																	
A		363	602	44	488	20	369	4	157	3	33	0	2	0	1651	71	1722
N		271	492	28	224	16	163	10	73	2	5	1	1	1	958	58	1016
F		196	269	55	194	44	175	12	73	13	12	2	0	0	723	126	849
TOTAL		830	1363	127	906	80	707	26	303	18	50	3	3	1	3332	255	3587

FORMAT 17: SERVICE DEFERRED (NOT SPONSORED) GRADUATE MEDICAL EDUCATION

FORMAT 17
PAGE 1
FY85

MEDICAL SPECIALTY	LENGTH OF TRAINING	GME-1 INTERNSHIP	NUMBER OF STUDENTS BY YEAR OF COMPLETION DATE AND SOURCE OF TRAINING							TOTAL
			CURRENT FY + 1	CURRENT FY + 2	CURRENT FY + 3	CURRENT FY + 4	CURRENT FY + 5	OVER 5		
GME-1 (INTERNSHIP)										
A	1	186	92	0	29	24	38	3	186	
N	1	57	53	0	1	2	1	0	57	
F	0	320	69	0	124	64	63	0	320	
TOTAL			214	0	154	90	102	3	563	
OTHER GME										
A	0	0	54	49	31	16	1	1	152	
N	0	0	68	104	127	88	79	12	478	
F	0	0	152	188	104	67	33	0	544	
TOTAL			274	341	262	171	113	13	1174	
ANESTHESIOLOGY - RESIDENCY										
A	4	8	1	4	5	8	0	0	18	
N	3	0	7	9	14	13	2	0	45	
F	4	14	14	19	7	14	0	0	54	
TOTAL			22	32	26	35	2	0	117	
DERMATOLOGY - RESIDENCY										
A	4	0	0	1	0	0	0	0	1	
N	3	0	0	0	1	0	0	0	1	
F	4	0	0	1	0	0	0	0	1	
TOTAL			0	2	1	0	0	0	3	
EMERGENCY MEDICAL - RESIDENCY										
A	3	5	5	1	5	0	0	0	11	
N	3	0	4	3	6	0	0	0	13	
F	3	1	0	2	5	1	0	0	8	
TOTAL			9	6	16	1	0	0	32	

FORMAT 17: SERVICE DEFERRED (NOT SPONSORED) GRADUATE MEDICAL EDUCATION

FORMAT 17
PAGE 2
FY85

MEDICAL SPECIALTY	LENGTH OF TRAINING	GME-1 INTERNSHIP	NUMBER OF STUDENTS BY YEAR OF COMPLETION DATE AND SOURCE OF TRAINING							TOTAL
			CURRENT FY + 1	CURRENT FY + 2	CURRENT FY + 3	CURRENT FY + 4	CURRENT FY + 5	OVER 5		
FAMILY PRACTICE - RESIDENCY										
A	3	9	20	9	9	0	0	0	0	38
N	3	5	6	4	19	1	0	0	0	30
F	3	49	24	37	49	0	0	0	0	110
TOTAL			50	50	77	1	0	0	0	178
GENERAL MEDICAL OFFICER										
A	1	92	92	0	0	0	0	0	0	92
N	1	32	53	0	0	0	0	0	0	53
F	1	69	69	0	0	0	0	0	0	69
TOTAL			214	0	0	0	0	0	0	214
INTERNAL MEDICINE - RESIDENCY										
A	3	6	4	7	6	0	0	0	0	17
N	3-4	15	11	25	26	3	2	0	0	67
F	3	54	32	27	54	1	0	0	0	114
TOTAL			47	59	86	4	2	0	0	198
INTERNAL MEDICINE - FELLOWSHIP										
N	1-2	0	0	0	0	3	3	0	0	6
F	3	0	3	5	5	7	1	0	0	21
TOTAL			3	5	5	10	4	0	0	27
NEUROLOGY - RESIDENCY										
A	4	0	0	0	1	0	0	0	0	1
N	3	0	2	2	9	0	0	0	0	13
F	4	6	2	2	3	6	0	0	0	13
TOTAL			4	4	13	6	0	0	0	27

FORMAT 17: SERVICE DEFERRED (NOT SPONSORED) GRADUATE MEDICAL EDUCATION

FORMAT 17
PAGE 3
FY85

MEDICAL SPECIALTY	LENGTH OF TRAINING	GME-1 INTERNSHIP	NUMBER OF STUDENTS BY YEAR OF COMPLETION DATE AND SOURCE OF TRAINING						OVER 5	TOTAL
			CURRENT FY + 1	CURRENT FY + 2	CURRENT FY + 3	CURRENT FY + 4	CURRENT FY + 5			
NUCLEAR MEDICINE - FELLOWSHIP										
F	2	0	3	0	1	0	0	0	0	4
OBSTETRICS/GYNECOLOGY - RESIDENCY										
A	4	5	1	5	4	5	0	0	0	15
N	3-4	0	6	3	9	3	0	0	0	21
F	4	30	17	23	13	30	0	0	0	83
TOTAL			24	31	26	38	0	0	0	119
OPHTHALMOLOGY - RESIDENCY										
A	4	2	2	0	2	2	0	0	0	6
N	4-5	0	2	1	2	5	1	0	0	11
F	4	3	2	7	1	3	0	0	0	13
TOTAL			6	8	5	10	1	0	0	30
OPHTHALMOLOGY - FELLOWSHIP										
F	1	0	2	0	1	0	0	0	0	3
ORTHOPEDIC SURGERY - RESIDENCY										
A	5	10	2	7	3	3	10	0	0	25
N	5	0	12	15	9	19	21	7	0	83
F	5	3	11	12	14	15	21	0	0	73
TOTAL			25	34	26	37	52	7	0	181
ORTHOPEDIC SURGERY - FELLOWSHIP										
F	1	0	1	2	1	0	0	0	0	4
OTORHINOLARYNGOLOGY - RESIDENCY										
A	5	2	2	0	0	1	2	0	0	5
N	4-5	0	0	0	1	1	4	1	0	7
F	5	1	2	1	4	0	8	0	0	15
TOTAL			4	1	5	2	14	1	0	27

FORMAT 17: SERVICE DEFERRED (NOT SPONSORED) GRADUATE MEDICAL EDUCATION

FORMAT 17
PAGE 4
FY85

MEDICAL SPECIALTY	LENGTH OF TRAINING	GME-1 INTERNSHIP	NUMBER OF STUDENTS BY YEAR OF COMPLETION DATE AND SOURCE OF TRAINING							TOTAL
			CURRENT FY + 1	CURRENT FY + 2	CURRENT FY + 3	CURRENT FY + 4	CURRENT FY + 5	OVER 5		
PATHOLOGY - RESIDENCY										
A	5	3	1	0	1	0	3	0	5	
N	4	0	1	0	0	2	1	0	4	
F	5	3	2	5	6	2	3	0	18	
TOTAL			4	5	7	4	7	0	27	
PATHOLOGY - FELLOWSHIP										
F	2	0	2	0	1	0	0	0	3	
PEDIATRICS - RESIDENCY										
A	3	9	3	1	9	0	0	0	13	
N	3-4	0	6	18	2	0	0	0	26	
F	3	20	6	16	20	0	0	0	42	
TOTAL			15	35	31	0	0	0	81	
PEDIATRICS - FELLOWSHIP										
F	3	0	1	0	0	2	0	0	3	
PHYSICAL MEDICINE - RESIDENCY										
A	4	2	1	1	0	2	0	0	4	
N	2	0	0	2	0	0	0	0	2	
F	3	1	1	0	1	0	0	0	2	
TOTAL			2	3	1	2	0	0	8	
PREVENTIVE MEDICINE - RESIDENCY										
N	4	0	0	0	0	1	1	0	2	
F	3	0	0	1	0	0	0	0	1	
TOTAL			0	1	0	1	1	0	3	

FORMAT 17: SERVICE DEFERRED (NOT SPONSORED) GRADUATE MEDICAL EDUCATION

FORMAT 17
PAGE 5
FY85

MEDICAL SPECIALTY	LENGTH OF TRAINING	GME-1 INTERNSHIP	NUMBER OF STUDENTS BY YEAR OF COMPLETION DATE AND SOURCE OF TRAINING							TOTAL
			CURRENT FY + 1	CURRENT FY + 2	CURRENT FY + 3	CURRENT FY + 4	CURRENT FY + 5	OVER 5		
PSYCHIATRY - RESIDENCY										
A	4	0	0	0	2	0	0	0	0	2
N	3-4	0	0	2	3	4	0	0	0	9
F	4	10	1	2	5	10	0	0	0	18
TOTAL			1	4	10	14	0	0	0	29
PSYCHIATRY - FELLOWSHIP										
F	2	0	1	2	0	0	0	0	0	3
RADIOLOGY - RESIDENCY										
A	4	7	5	3	5	7	1	0	0	21
N	4-5	0	4	2	6	9	4	0	0	25
F	5	10	6	4	9	11	10	0	0	40
TOTAL			15	9	20	27	15	0	0	86
RADIOLOGY - FELLOWSHIP										
N	1-2	0	0	2	1	0	0	0	0	3
F	2	0	2	0	0	0	0	0	0	2
TOTAL			2	2	1	0	0	0	0	5
SURGERY - RESIDENCY										
A	5	17	4	6	6	9	17	0	0	42
N	5-6	5	6	13	15	20	33	1	0	88
F	6	43	10	16	25	24	44	0	0	119
TOTAL			20	35	46	53	94	1	0	249
SURGERY - FELLOWSHIP										
F	3	0	4	0	1	2	0	0	0	7

FORMAT 17: SERVICE DEFERRED (NOT SPONSORED) GRADUATE MEDICAL EDUCATION

FORMAT 17
PAGE 6
FY85

MEDICAL SPECIALTY	LENGTH OF TRAINING	GME-1 INTERNSHIP	NUMBER OF STUDENTS BY YEAR OF COMPLETION DATE AND SOURCE OF TRAINING							TOTAL
			CURRENT FY + 1	CURRENT FY + 2	CURRENT FY + 3	CURRENT FY + 4	CURRENT FY + 5	OVER 5		
UROLOGY - RESIDENCY										
A	5-6	5	3	2	0	0	2	3	10	
N	0	0	1	1	1	4	4	1	12	
F	5	3	3	4	2	3	9	0	21	
TOTAL			7	7	3	7	15	4	43	
OTHER										
A	5-6	4	0	2	2	3	4	1	12	
N	5-7	0	0	2	4	2	4	2	14	
TOTAL			0	4	6	5	8	3	26	
GRAND TOTALS										
A		186	146	49	60	40	39	4	338	
N		57	121	104	128	90	80	12	535	
F		320	221	188	228	131	96	0	864	
TOTAL		563	488	341	416	261	215	16	1737	

FORMAT 18: ACTIVE DUTY GRADUATE MEDICAL EDUCATION PROGRAMS

FORMAT 18
PAGE 1
FY85

MEDICAL SPECIALTY	CURRENT FY		FY + 1	
	MINIMUM PROGRAM SIZE	MAXIMUM PROGRAM SIZE	MINIMUM PROGRAM SIZE	MAXIMUM PROGRAM SIZE
GME-1 (INTERNSHIP)				
A	292	449	292	449
N	271	271	271	271
F	173	232	173	232
TOTAL	736	952	736	952
ANESTHESIOLOGY				
A	27	66	27	66
N	66	66	66	66
F	28	33	28	33
TOTAL	121	165	121	165
AVIATION MEDICINE				
A	2	10	2	10
N	9	9	9	9
F	6	14	6	14
TOTAL	17	33	17	33
DERMATOLOGY				
A	24	36	24	36
N	18	18	18	18
F	9	9	9	9
TOTAL	51	63	51	63
EMERGENCY MEDICINE				
A	30	48	30	48
N	8	8	8	8
TOTAL	38	56	38	56

FORMAT 18: ACTIVE DUTY GRADUATE MEDICAL EDUCATION PROGRAMS

FORMAT 18
PAGE 2
FY85

MEDICAL SPECIALTY	CURRENT FY		FY + 1	
	MINIMUM PROGRAM SIZE	MAXIMUM PROGRAM SIZE	MINIMUM PROGRAM SIZE	MAXIMUM PROGRAM SIZE
FAMILY PRACTICE				
A	84	120	84	120
N	82	82	82	82
F	120	123	120	123
TOTAL	286	325	286	325
GENERAL MEDICAL OFFICER				
A	82	123	82	123
F	14	24	14	24
TOTAL	96	147	96	147
INTERNAL MEDICINE				
A	96	260	96	260
N	81	81	81	81
F	109	146	109	146
TOTAL	286	487	286	487
NEUROLOGY				
A	12	25	12	25
N	6	6	6	6
F	6	6	6	6
TOTAL	24	37	24	37
NUCLEAR MEDICINE				
A	7	16	7	16
N	6	6	6	6
F	1	2	1	2
TOTAL	14	24	14	24

FORMAT 18: ACTIVE DUTY GRADUATE MEDICAL EDUCATION PROGRAMS

FORMAT 18
PAGE 3
FY85

MEDICAL SPECIALTY	CURRENT FY		FY + 1	
	MINIMUM PROGRAM SIZE	MAXIMUM PROGRAM SIZE	MINIMUM PROGRAM SIZE	MAXIMUM PROGRAM SIZE
OBSTETRICS/GYNECOLOGY				
A	66	83	66	83
N	54	54	54	54
F	48	56	48	56
TOTAL	168	193	168	193
OPHTHALMOLOGY				
A	15	36	15	36
N	27	27	27	27
F	6	9	6	9
TOTAL	48	72	48	72
ORTHOPEDIC SURGERY				
A	56	97	56	97
N	52	52	52	52
F	20	20	20	20
TOTAL	128	169	128	169
OTORHINOLARYNGOLOGY				
A	20	44	40	44
N	32	40	32	40
F	8	8	8	8
TOTAL	60	92	80	92
PATHOLOGY				
A	59	76	59	76
N	32	32	32	32
F	10	15	10	15
TOTAL	101	123	101	123

FORMAT 18: ACTIVE DUTY GRADUATE MEDICAL EDUCATION PROGRAMS

FORMAT 18
PAGE 4
FY85

MEDICAL SPECIALTY		CURRENT FY		FY + 1	
		MINIMUM PROGRAM SIZE	MAXIMUM PROGRAM SIZE	MINIMUM PROGRAM SIZE	MAXIMUM PROGRAM SIZE
PEDIATRICS					
	A	56	96	56	96
	N	48	48	48	48
	F	57	75	57	75
	TOTAL	161	219	161	219
PHYSICAL MEDICINE					
	A	1	12	1	12
PREVENTIVE MEDICINE					
	A	2	10	2	10
PSYCHIATRY					
	A	48	76	48	76
	N	27	27	27	27
	F	32	52	32	52
	TOTAL	107	155	107	155
RADIOLOGY					
	A	30	108	30	108
	N	43	56	43	56
	F	50	52	50	52
	TOTAL	123	216	123	216
SURGERY					
	A	64	100	64	100
	N	56	56	56	56
	F	76	92	76	92
	TOTAL	196	248	196	248

FORMAT 18: ACTIVE DUTY GRADUATE MEDICAL EDUCATION PROGRAMS

FORMAT 18
PAGE 5
FY85

MEDICAL SPECIALTY	CURRENT FY		FY + 1		
	MINIMUM PROGRAM SIZE	MAXIMUM PROGRAM SIZE	MINIMUM PROGRAM SIZE	MAXIMUM PROGRAM SIZE	
UROLOGY					
	A	27	28	27	28
	N	24	24	24	24
	F	8	8	8	8
	TOTAL	59	60	59	60
OTHER					
	A	75	304	75	304
	N	6	6	6	6
	TOTAL	81	310	81	310
GRAND TOTALS					
	A	1175	2223	1195	2223
	N	948	969	948	969
	F	781	976	781	976
	TOTAL	2904	4168	2924	4168

AD-A167 098

HEALTH MANPOWER STATISTICS FISCAL YEAR 1985 (U)
WASHINGTON HEADQUARTERS SERVICES (DOD) DC DIRECTORATE
FOR INFORMATION OPERATIONS AND REPORTS 1985
DIOR/M06-85

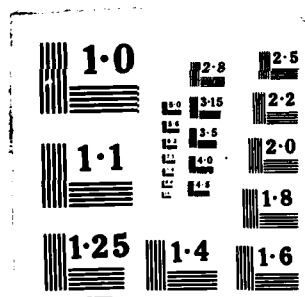
2/2

UNCLASSIFIED

F/G 12/1

NL

END
PAGE
6 OF 6



FORMAT 19: AUTHORIZED SPECIALTY END STRENGTH BY FISCAL YEAR

FORMAT 19
PAGE 1
FY85

MEDICAL SPECIALTY	CURRENT FY AUTHORIZED END STRENGTH	FY + 1 AUTHORIZED END STRENGTH	FY + 2 AUTHORIZED END STRENGTH	FY + 3 AUTHORIZED END STRENGTH	FY + 4 AUTHORIZED END STRENGTH	FY + 5 AUTHORIZED END STRENGTH	FY + 6 AUTHORIZED END STRENGTH
GME-1 (INTERNSHIP)							
A	363	347	347	347	347	347	347
N	267	267	267	267	267	267	267
F	200	200	200	200	200	200	200
TOTAL	830	814	814	814	814	814	814
OTHER GME							
A	1202	1401	1401	1401	1401	1401	1401
N	769	804	862	862	862	883	889
F	650	650	650	650	650	650	650
TOTAL	2621	2855	2913	2913	2913	2934	2940
ANESTHESIOLOGY							
A	101	95	95	95	95	95	95
N	104	107	130	132	139	140	140
F	59	59	60	60	60	60	60
TOTAL	264	261	285	287	294	295	295
AVIATION MEDICINE							
A	126	135	135	135	135	135	135
N	252	257	272	271	273	272	272
F	437	437	438	438	441	441	441
TOTAL	815	829	845	844	849	848	848
DERMATOLOGY							
A	72	70	70	70	70	70	70
N	38	34	37	37	40	41	41
F	39	39	39	43	52	54	55
TOTAL	147	143	146	150	162	165	166

FORMAT 19: AUTHORIZED SPECIALTY END STRENGTH BY FISCAL YEAR

FORMAT 19
PAGE 2
FY85

MEDICAL SPECIALTY	CURRENT FY AUTHORIZED END STRENGTH	FY + 1 AUTHORIZED END STRENGTH	FY + 2 AUTHORIZED END STRENGTH	FY + 3 AUTHORIZED END STRENGTH	FY + 4 AUTHORIZED END STRENGTH	FY + 5 AUTHORIZED END STRENGTH	FY + 6 AUTHORIZED END STRENGTH
EMERGENCY MEDICINE							
A	86	86	86	86	86	86	86
N	11	18	18	18	18	18	19
F	31	31	31	32	33	33	33
TOTAL	128	135	135	136	137	137	138
EXECUTIVE MEDICINE							
A	163	173	173	173	173	173	173
N	147	147	147	147	147	147	147
F	42	42	42	42	42	42	42
TOTAL	352	362	362	362	362	362	362
FAMILY PRACTICE							
A	298	268	268	268	268	268	268
N	138	154	160	163	165	175	175
F	443	443	447	447	447	447	455
TOTAL	879	865	875	878	880	890	898
GENERAL MEDICAL OFFICER							
A	407	472	472	472	472	472	472
N	499	515	525	545	589	610	626
F	34	34	34	35	36	46	56
TOTAL	940	1021	1031	1052	1097	1128	1154
INTERNAL MEDICINE							
A	587	544	544	544	544	544	544
N	241	225	241	242	247	248	248
F	382	406	411	432	460	472	479
TOTAL	1210	1175	1196	1218	1251	1264	1271

FORMAT 19: AUTHORIZED SPECIALTY END STRENGTH BY FISCAL YEAR

FORMAT 19
PAGE 3
FY85

MEDICAL SPECIALTY	CURRENT FY AUTHORIZED END STRENGTH	FY + 1 AUTHORIZED END STRENGTH	FY + 2 AUTHORIZED END STRENGTH	FY + 3 AUTHORIZED END STRENGTH	FY + 4 AUTHORIZED END STRENGTH	FY + 5 AUTHORIZED END STRENGTH	FY + 6 AUTHORIZED END STRENGTH
MEDICAL RESEARCH							
A	8	8	8	8	8	8	8
N	36	36	42	43	43	43	43
TOTAL	44	44	50	51	51	51	51
NEUROLOGY							
A	49	43	43	43	43	43	43
N	27	27	29	29	30	30	30
F	29	30	30	31	32	32	33
TOTAL	105	100	102	103	105	105	106
NUCLEAR MEDICINE							
A	28	27	27	27	27	27	27
N	9	9	9	9	9	9	9
F	7	7	7	7	8	8	8
TOTAL	44	43	43	43	44	44	44
OBSTETRICS/GYNECOLOGY							
A	214	185	185	185	185	185	185
N	114	115	133	134	136	137	137
F	197	203	205	210	211	212	224
TOTAL	525	503	523	529	532	534	546
OPHTHALMOLOGY							
A	81	75	75	75	75	75	75
N	50	50	52	52	54	55	55
F	52	52	53	53	53	53	53
TOTAL	183	177	180	180	182	183	183

FORMAT 19: AUTHORIZED SPECIALTY END STRENGTH BY FISCAL YEAR

FORMAT 19
PAGE 4
FY85

MEDICAL SPECIALTY	CURRENT FY AUTHORIZED END STRENGTH	FY + 1 AUTHORIZED END STRENGTH	FY + 2 AUTHORIZED END STRENGTH	FY + 3 AUTHORIZED END STRENGTH	FY + 4 AUTHORIZED END STRENGTH	FY + 5 AUTHORIZED END STRENGTH	FY + 6 AUTHORIZED END STRENGTH
ORTHOPEDIC SURGERY							
A	156	150	150	150	150	150	150
N	83	86	94	94	98	104	104
F	142	147	148	152	160	165	165
TOTAL	381	383	392	396	408	419	419
OTORHINOLARYNGOLOGY							
A	60	55	55	55	55	55	55
N	49	48	53	54	56	57	57
F	53	53	53	53	53	53	53
TOTAL	162	156	161	162	164	165	165
PATHOLOGY							
A	167	163	163	163	163	163	163
N	81	89	89	89	90	93	93
F	88	107	108	110	110	116	116
TOTAL	336	359	360	362	363	372	372
PEDIATRICS							
A	294	256	256	256	256	256	256
N	165	170	172	172	172	172	172
F	259	264	272	274	301	311	321
TOTAL	718	690	700	702	729	739	749
PHYSICAL MEDICINE							
A	25	19	19	19	19	19	19
N	1	0	0	0	0	0	0
F	3	3	3	3	3	3	3
TOTAL	29	22	22	22	22	22	22

FORMAT 19: AUTHORIZED SPECIALTY END STRENGTH BY FISCAL YEAR

FORMAT 19
PAGE 5
FY85

MEDICAL SPECIALTY	CURRENT FY	FY + 1	FY + 2	FY + 3	FY + 4	FY + 5	FY + 6
	AUTHORIZED END STRENGTH	AUTHORIZED END STRENGTH	AUTHORIZED END STRENGTH	AUTHORIZED END STRENGTH	AUTHORIZED END STRENGTH	AUTHORIZED END STRENGTH	AUTHORIZED END STRENGTH
PREVENTIVE MEDICINE							
A	74	70	70	70	70	70	70
N	90	92	97	98	99	100	100
F	126	128	128	128	128	128	128
TOTAL	290	290	295	296	297	298	298
PSYCHIATRY							
A	218	181	181	181	181	181	181
N	104	104	108	108	111	113	113
F	136	138	140	142	146	151	154
TOTAL	458	423	429	431	438	445	448
RADIOLOGY							
A	170	153	153	153	153	153	153
N	98	99	100	100	105	105	105
F	156	164	165	165	174	176	184
TOTAL	424	416	418	418	432	434	442
SURGERY							
A	275	245	245	245	245	245	245
N	171	173	195	196	208	213	213
F	304	305	308	311	316	316	317
TOTAL	750	723	748	752	769	774	775
UNDERSEA MEDICINE							
N	75	77	78	78	78	78	78

FORMAT 19: AUTHORIZED SPECIALTY END STRENGTH BY FISCAL YEAR

FORMAT 19
PAGE 6
FY85

MEDICAL SPECIALTY	CURRENT FY AUTHORIZED END STRENGTH	FY + 1 AUTHORIZED END STRENGTH	FY + 2 AUTHORIZED END STRENGTH	FY + 3 AUTHORIZED END STRENGTH	FY + 4 AUTHORIZED END STRENGTH	FY + 5 AUTHORIZED END STRENGTH	FY + 6 AUTHORIZED END STRENGTH
UROLOGY							
A	64	67	67	67	67	67	67
N	37	37	39	39	41	42	42
F	51	51	52	53	54	54	54
TOTAL	152	155	158	159	162	163	163
OTHER							
A	29	29	29	29	29	29	29
N	307	250	260	254	289	271	331
TOTAL	336	279	289	283	318	300	360
GRAND TOTALS							
A	5317	5317	5317	5317	5317	5317	5317
N	3961	3990	4209	4233	4366	4423	4506
F	3920	3993	4024	4071	4170	4223	4284
TOTAL	13198	13300	13550	13621	13853	13963	14107

FORMAT 20: PHYSICIAN ACCESSIONS BY PAY GRADE AT TIME OF REPORT

FORMAT 20
PAGE 1
FY85

SOURCE		PAY GRADE				TOTAL
		03	04	05	06	
AFHPSP	A	402	0	0	0	402
	N	384	0	0	0	384
	F	362	14	0	0	376
	TOTAL	1148	14	0	0	1162
USUHS	A	64	0	0	0	64
	N	44	0	0	0	44
	F	40	0	0	0	40
	TOTAL	148	0	0	0	148
ROTC ED DELAY	A	25	0	0	0	25
	F	8	0	0	0	8
	TOTAL	33	0	0	0	33
DIRECT ACCESSIONS	A	56	43	6	1	106
	N	19	14	0	0	33
	F	82	64	20	9	175
	TOTAL	157	121	26	10	314

FORMAT 20: PHYSICIAN ACCESSIONS BY PAY GRADE AT TIME OF REPORT

FORMAT 20
PAGE 2
FY85

SOURCE	PAY GRADE				TOTAL
	03	04	05	06	
OTHER					
A	4	13	8	8	33
N	4	4	3	0	11
TOTAL	8	17	11	8	44
GRAND TOTALS					
A	551	56	14	9	630
N	451	18	3	0	472
F	492	78	20	9	599
TOTAL	1494	152	37	18	1701

FORMAT 21: DIRECT ACCESSION PHYSICIANS BY PAY GRADE AT TIME OF REPORT

FORMAT 21
PAGE 1
FY85

PAY GRADE	FOREIGN MEDICAL GRADUATE (FMG) ACCESSIONS				AMERICAN MEDICAL GRADUATE ACCESSIONS	TOTAL DIRECT ACCESSIONS	
	NUMBER OF ALIENS	NUMBER OF U.S. CITIZENS		TOTAL FMG'S			
		NATIVE	NATURALIZED				
0-6	A	0	0	0	0	1	1
	F	0	0	2	2	7	9
	TOTAL	0	0	2	2	8	10
0-5	A	1	0	1	2	3	5
	F	0	1	2	3	17	20
	TOTAL	1	1	3	5	20	25
0-4	A	2	4	8	14	30	44
	N	0	0	0	0	14	14
	F	0	16	3	19	45	64
	TOTAL	2	20	11	33	89	122
0-3	A	6	14	7	27	29	56
	N	0	0	0	0	19	19
	F	3	26	3	32	50	82
	TOTAL	9	40	10	59	98	157
GRAND TOTALS	A	9	18	16	43	63	106
	N	0	0	0	0	33	33
	F	3	43	10	56	119	175
	TOTAL	12	61	26	99	215	314

FORMAT 22: FOREIGN MEDICAL GRADUATE (FMG) PHYSICIANS CURRENTLY ON ACTIVE DUTY BY CITIZENSHIP

FORMAT 22
PAGE 1
FY85

PAY GRADE	TOTAL FMG'S ON ACTIVE DUTY				TOTAL FMG'S
	NUMBER OF ALIENS	NUMBER OF U.S. CITIZENS			
		NATIVE	NATURALIZED		
0-6	A	6	24	58	88
	N	1	14	16	31
	F	0	18	33	51
	TOTAL	7	56	107	170
0-5	A	17	10	84	111
	N	13	19	81	113
	F	6	22	117	145
	TOTAL	36	51	282	369
0-4	A	24	22	99	145
	N	6	29	48	83
	F	22	52	74	148
	TOTAL	52	103	221	376
0-3	A	14	19	33	66
	N	0	14	1	15
	F	8	40	6	54
	TOTAL	22	73	40	135
GRAND TOTALS	A	61	75	274	410
	N	20	76	148	242
	F	36	132	230	398
	TOTAL	117	283	650	1050

FORMAT 23: DENTISTS IN ADMINISTRATIVE AND NONADMINISTRATIVE/NONPATIENT CARE BILLETS

FORMAT 23
PAGE 1
FY85

SPECIALTY	NUMBER OF DENTISTS			
	ADMINISTRATIVE / MANAGEMENT	OTHER NONPATIENT CARE	TOTAL	
ENDODONTIST				
	A	3	1	4
	N	7	1	8
	F	1	0	1
	TOTAL	11	2	13
GENERAL DENTAL OFFICER				
	A	35	11	46
	N	32	10	42
	F	16	6	22
	TOTAL	83	27	110
ORAL PATHOLOGIST				
	A	5	3	8
	N	2	1	3
	TOTAL	7	4	11
ORAL SURGEON				
	A	2	1	3
	N	7	2	9
	F	1	0	1
	TOTAL	10	3	13
ORTHODONTIST				
	A	5	0	5
PEDODONTIST				
	A	3	0	3

FORMAT 23: DENTISTS IN ADMINISTRATIVE AND NONADMINISTRATIVE/NONPATIENT CARE BILLETS

FORMAT 23
PAGE 2
FY85

SPECIALTY	NUMBER OF DENTISTS		
	ADMINISTRATIVE / MANAGEMENT	OTHER NONPATIENT CARE	TOTAL
PERIODONTIST			
A	5	2	7
N	3	3	6
F	1	0	1
TOTAL	9	5	14
PREVENTIVE DENTISTRY/PUBLIC HEALTH			
A	1	2	3
N	1	0	1
F	1	1	2
TOTAL	3	3	6
PROSTHODONTIST			
A	18	4	22
N	6	0	6
F	2	1	3
TOTAL	26	5	31
GRAND TOTALS			
A	77	24	101
N	58	17	75
F	22	8	30
TOTAL	157	49	206

FORMAT 24: DENTISTS REQUIREMENTS, AUTHORIZATIONS, AND END STRENGTHS

FORMAT 24
PAGE 1
FY85

MEDICAL SPECIALTY		SERVICE REQUIREMENT	BUDGET AUTHORIZATION	END STRENGTH
GRADUATE DENTAL EDUCATION	A	171	178	172
	N	17	105	102
	F	52	161	156
	TOTAL	240	444	430
ENDODONTIST	A	63	54	47
	N	57	58	48
	F	27	50	46
	TOTAL	147	162	141
EXECUTIVE DENTISTRY	A	82	76	72
	N	105	21	75
	F	43	24	23
	TOTAL	230	121	170
GENERAL DENTAL OFFICER	A	492	411	346
	N	759	1133	1139
	F	1092	1015	1076
	TOTAL	2343	2559	2561
MAXILLOFACIAL PROSTHETIST	N	9	5	10

FORMAT 24. DENTISTS REQUIREMENTS, AUTHORIZATIONS, AND END STRENGTHS

FORMAT 24
PAGE 2
FY85

MEDICAL SPECIALTY		SERVICE REQUIREMENT	BUDGET AUTHORIZATION	END STRENGTH
ORAL PATHOLOGIST	A	20	17	11
	N	3	5	6
	F	7	8	9
	TOTAL	30	30	26
ORAL SURGEON	A	136	90	84
	N	112	95	76
	F	155	91	73
	TOTAL	403	276	233
ORTHODONTIST	A	43	38	30
	N	7	10	9
	F	32	29	31
	TOTAL	82	77	70
PEDODONTIST	A	48	44	35
	N	0	8	5
	F	0	11	12
	TOTAL	48	63	52
PERIODONTIST	A	76	66	57
	N	65	65	59
	F	101	100	66
	TOTAL	242	231	182

FORMAT 24: DENTISTS REQUIREMENTS, AUTHORIZATIONS, AND END STRENGTHS

FORMAT 24
PAGE 3
FY85

MEDICAL SPECIALTY		SERVICE REQUIREMENT	BUDGET AUTHORIZATION	END STRENGTH
PREVENTIVE DENTISTRY/PUBLIC HEALTH				
	A	13	8	8
	N	0	12	11
	TOTAL	13	20	19
PROSTHODONTIST				
	A	192	162	133
	N	73	98	74
	F	112	117	101
	TOTAL	377	377	308
RESEARCH DENTIST				
	N	19	16	2
COMPREHENSIVE DENTIST				
	N	91	71	55
OPERATIVE DENTIST				
	N	11	12	17
ORAL DIAGNOSTICIAN				
	N	11	17	13
OTHER				
	A	851	622	732
	N	349	0	0
	TOTAL	1200	622	732
GRAND TOTALS				
	A	2187	1766	1727
	N	1688	1731	1701
	F	1621	1606	1593
	TOTAL	5496	5103	5021

FORMAT 25: DENTISTS DUTY SPECIALTIES BY YEARS OF SERVICE

FORMAT 25
PAGE 1A
FY85

SPECIALTY	TOTAL ACTIVE FEDERAL SERVICE BY YEAR OF SERVICE GROUPS																
	AT LEAST BUT LESS THAN:	1	2	3	4	5	6	7	8	9	10	11	12	13	14	15	16
GRADUATE DENTAL EDUCATION																	
R	46	0	0	0	4	6	27	25	19	15	8	10	7	1	2	1	
N	20	0	0	0	1	15	20	22	7	4	6	2	1	2	0	0	
F	45	0	0	3	5	22	17	14	10	12	10	4	5	2	1	1	
TOTAL	111	0	0	3	10	43	64	61	36	31	24	16	13	5	3	2	
ENDODONTIST																	
R	0	0	0	0	0	0	0	0	2	4	1	9	5	3	6	3	
N	1	0	0	0	0	0	0	0	1	6	4	0	2	5	5	3	
F	0	0	0	1	1	1	0	6	2	1	3	8	1	5	5	2	
TOTAL	1	0	0	1	1	1	0	6	5	11	8	17	8	13	16	8	
EXECUTIVE DENTISTRY																	
R	0	0	0	0	0	0	0	0	0	0	0	2	7	1	4	1	
N	0	0	1	0	0	2	0	1	1	2	0	1	1	2	1	3	
F	0	0	0	0	0	0	0	0	0	0	0	0	0	0	0	1	
TOTAL	0	0	1	0	0	2	0	1	1	2	0	3	8	3	5	5	
GENERAL DENTAL OFFICER																	
R	2	9	8	12	15	15	29	20	22	25	27	22	19	24	15	7	
N	220	110	111	124	88	51	39	36	27	33	31	16	19	38	23	15	
F	74	96	101	122	54	96	74	72	52	39	32	33	35	26	15	26	
TOTAL	296	215	220	258	157	162	142	128	101	97	90	71	73	88	53	48	
MAXILLOFACIAL PROSTHETIST																	
N	0	0	0	0	0	0	0	0	0	0	0	0	1	1	0	1	1
ORAL PATHOLOGIST																	
R	0	0	0	0	0	1	0	0	0	0	2	0	1	0	2	1	
N	0	0	0	0	0	0	0	0	0	0	0	1	0	3	0	0	
F	0	0	0	0	0	1	1	0	1	2	1	0	1	0	0	0	
TOTAL	0	0	0	0	0	2	1	0	1	2	3	1	2	3	2	1	

FORMAT 25: DENTISTS DUTY SPECIALTIES BY YEARS OF SERVICE

FORMAT 25
PAGE 18
FY85

SPECIALTY	TOTAL ACTIVE FEDERAL SERVICE BY YEAR OF SERVICE GROUPS																TOTAL
	AT LEAST BUT LESS THAN	16	17	18	19	20	21	22	23	24	25	26	27	28	29	30	
GRADUATE DENTAL EDUCATION																	
A	1	0	0	0	0	0	0	0	0	0	0	0	0	0	0	0	172
N	2	0	0	0	0	0	0	0	0	0	0	0	0	0	0	0	102
F	2	2	0	1	0	0	0	0	0	0	0	0	0	0	0	0	156
TOTAL	5	2	0	1	0	0	0	0	0	0	0	0	0	0	0	0	430
ENDODONTIST																	
A	3	2	5	0	0	2	1	0	0	0	0	1	0	0	0	0	47
N	3	2	1	2	1	3	2	1	2	1	2	0	1	0	0	0	48
F	2	2	1	0	0	1	0	3	1	0	0	0	0	0	0	0	46
TOTAL	8	6	7	2	1	6	3	4	3	1	2	1	1	0	0	0	141
EXECUTIVE DENTISTRY																	
A	1	4	3	5	5	7	10	7	2	4	3	1	2	2	1	1	72
N	1	3	3	3	6	4	6	4	9	7	3	5	2	0	4	4	75
F	3	1	0	3	1	0	2	3	2	1	2	1	0	2	1	1	23
TOTAL	5	8	6	11	12	11	18	14	13	12	8	7	4	4	6	6	170
GENERAL DENTAL OFFICER																	
A	12	8	4	8	14	5	4	2	5	1	4	3	3	2	0	0	346
N	28	16	10	8	9	15	18	10	8	9	5	6	5	9	3	3	1140
F	17	11	11	10	3	14	13	10	7	8	9	11	4	1	0	0	1076
TOTAL	57	35	25	26	26	34	35	22	20	18	18	20	12	12	3	3	2562
MAXILLOFACIAL PROSTHETIST																	
N	0	0	2	1	1	0	0	0	0	1	0	0	0	0	0	1	10
ORAL PATHOLOGIST																	
A	0	0	1	1	0	0	0	0	1	0	1	0	0	0	0	0	11
N	0	0	0	0	0	0	1	0	0	1	0	0	0	0	0	0	6
F	0	0	0	1	0	1	0	0	0	0	0	0	0	0	0	0	9
TOTAL	0	0	1	2	0	1	1	0	1	1	1	0	0	0	0	0	26

FORMAT 25: DENTISTS DUTY SPECIALTIES BY YEARS OF SERVICE

FORMAT 25
PAGE 2A
FY85

SPECIALTY	TOTAL ACTIVE FEDERAL SERVICE BY YEAR OF SERVICE GROUPS																
	AT LEAST BUT LESS THAN:	1	2	3	4	5	6	7	8	9	10	11	12	13	14	15	16
ORAL SURGEON																	
A	0	2	0	1	0	1	1	3	14	4	8	7	6	5	3	1	
N	3	0	1	0	0	1	0	1	5	2	6	5	6	5	3	8	
F	2	0	0	2	2	0	2	7	2	8	10	1	1	3	6	9	
TOTAL	5	2	1	3	2	2	3	11	21	14	24	13	13	13	12	18	
ORTHODONTIST																	
A	0	0	0	0	1	2	0	0	1	1	2	3	5	2	4	3	
N	0	1	0	0	0	1	0	1	0	1	0	0	1	1	0	0	
F	0	2	0	3	1	0	2	2	1	6	2	0	2	0	3	2	
TOTAL	0	3	0	3	2	3	2	3	2	8	4	3	8	3	7	5	
PEDODONTIST																	
A	0	1	0	0	1	3	3	2	1	3	1	4	2	5	0	3	
N	1	1	0	0	0	0	0	1	0	0	0	1	0	1	0	0	
F	0	0	1	1	1	1	3	1	0	0	1	0	0	1	1	0	
TOTAL	1	2	1	1	2	4	6	4	1	3	2	5	2	7	1	3	
PERIODONTIST																	
A	0	0	1	2	0	0	1	3	2	4	4	7	4	6	3	3	
N	0	0	2	2	0	1	1	3	5	0	2	4	5	6	3	0	
F	1	1	1	2	0	1	0	8	6	4	4	1	3	4	4	3	
TOTAL	1	1	4	6	0	2	2	14	13	8	10	12	12	16	10	6	
PREVENTIVE DENTISTRY/PUBLIC HEALTH																	
A	0	0	1	0	0	0	0	0	0	0	1	0	0	1	1	0	
N	0	0	0	1	0	0	0	1	0	0	1	0	0	1	2	1	
TOTAL	0	0	1	1	0	0	0	1	0	0	2	0	0	2	3	1	
PROSTHODONTIST																	
A	0	0	2	0	0	0	1	5	7	10	4	7	11	10	9	10	
N	0	1	1	1	0	0	3	0	2	4	5	2	6	4	7	5	
F	0	0	0	0	0	3	2	4	4	7	5	3	3	6	6	8	
TOTAL	0	1	3	1	0	3	6	9	13	21	14	12	20	20	22	21	

FORMAT 25: DENTISTS DUTY SPECIALTIES BY YEARS OF SERVICE

FORMAT 25
PAGE 2B
FY85

SPECIALTY	TOTAL ACTIVE FEDERAL SERVICE BY YEAR OF SERVICE GROUPS																TOTAL	
	AT LEAST BUT LESS THAN	16	17	18	19	20	21	22	23	24	25	26	27	28	29	30		*
ORAL SURGEON																		
	A	4	5	3	1	3	1	2	5	1	2	0	0	0	0	0	0	84
	N	3	6	3	3	0	2	2	1	2	2	0	3	0	1	1	1	75
	F	6	2	0	1	0	4	0	3	0	0	1	0	0	0	0	1	73
	TOTAL	13	14	6	5	3	7	4	9	3	4	1	3	0	1	2	232	
ORTHODONTIST																		
	A	2	0	1	0	2	0	0	1	0	0	0	0	0	0	0	0	30
	N	1	1	0	0	0	0	1	0	0	0	0	0	0	0	0	0	9
	F	2	0	0	0	1	0	1	0	1	0	0	0	0	0	0	0	31
	TOTAL	5	1	1	0	3	0	2	1	1	0	0	0	0	0	0	0	70
PEDODONTIST																		
	A	0	0	1	2	2	1	0	0	0	0	0	0	0	0	0	0	35
	N	0	0	0	0	0	0	0	0	0	0	0	0	0	0	0	0	5
	F	1	0	0	0	0	0	0	0	0	0	0	0	0	0	0	0	12
	TOTAL	1	0	1	2	2	1	0	0	0	0	0	0	0	0	0	0	52
PERIODONTIST																		
	A	3	2	4	3	3	0	1	0	1	0	0	0	0	0	0	0	57
	N	2	0	3	6	1	1	2	1	2	2	2	1	0	1	1	1	59
	F	7	1	2	3	2	2	1	2	1	1	0	0	1	0	0	0	66
	TOTAL	12	3	9	12	6	3	4	3	4	3	2	1	1	1	1	1	182
PREVENTIVE DENTISTRY/PUBLIC HEALTH																		
	A	1	0	1	0	1	0	0	1	0	0	0	0	0	0	0	0	8
	N	1	0	0	0	0	1	1	0	0	0	1	0	0	0	0	0	11
	TOTAL	2	0	1	0	1	1	1	1	0	0	1	0	0	0	0	0	19
PROSTHODONTIST																		
	A	10	6	9	5	3	2	4	9	3	2	0	2	0	2	0	0	133
	N	6	5	0	4	4	3	3	2	0	4	0	0	1	1	0	0	74
	F	5	4	4	5	3	4	5	4	5	5	1	2	2	2	1	1	101
	TOTAL	21	15	13	14	10	9	12	15	8	11	1	4	3	5	1	1	308

FORMAT 25: DENTISTS DUTY SPECIALTIES BY YEARS OF SERVICE

FORMAT 25
PAGE 3A
FY85

SPECIALTY	TOTAL ACTIVE FEDERAL SERVICE BY YEAR OF SERVICE GROUPS																
	AT LEAST BUT LESS THAN:	1	2	3	4	5	6	7	8	9	10	11	12	13	14	15	
RESEARCH DENTIST	N	0	0	0	0	0	0	0	0	0	0	0	0	0	0	1	0
COMPREHENSIVE DENTIST	N	0	0	0	0	0	0	0	1	1	2	1	9	6	2	8	5
OPERATIVE DENTIST	N	0	0	0	0	0	0	0	0	0	1	2	1	1	1	3	0
ORAL DIAGNOSTICIAN	N	0	0	0	0	0	0	0	0	1	0	2	0	0	2	1	2
OTHER	A	96	88	100	82	69	75	66	41	37	22	14	13	9	4	4	2
GRAND TOTALS	A	144	100	112	97	90	103	128	99	105	88	72	84	76	62	53	35
	N	245	113	116	128	89	71	63	67	50	55	60	43	49	73	58	43
	F	122	99	103	134	64	125	101	114	78	79	88	50	51	47	41	50
	TOTAL	511	312	331	359	243	299	292	280	233	222	200	177	176	182	152	128

FORMAT 25: DENTISTS DUTY SPECIALTIES BY YEARS OF SERVICE

FORMAT 25
PAGE 38
FY85

SPECIALTY	BIP	TOTAL ACTIVE FEDERAL SERVICE BY YEAR OF SERVICE GROUPS															TOTAL	
		16	17	18	19	20	21	22	23	24	25	26	27	28	29	30		+
RESEARCH DENTIST																		
	N	0	0	0	0	0	0	0	1	0	0	0	0	0	0	0	0	2
COMPREHENSIVE DENTIST																		
	N	6	6	4	1	2	0	0	0	1	0	0	0	0	0	0	0	55
OPERATIVE DENTIST																		
	N	1	4	0	0	0	0	1	1	0	0	1	0	0	0	0	0	17
ORAL DIAGNOSTICIAN																		
	N	0	0	0	0	0	2	0	1	0	1	0	0	1	0	0	0	13
OTHER																		
	A	2	0	3	3	1	0	1	0	0	0	0	0	0	0	0	0	732
GRAND TOTALS																		
	A	39	28	35	28	34	18	23	25	13	9	8	7	5	6	1	1727	
	N	54	43	26	28	24	31	37	22	24	28	14	15	10	12	10	1701	
	F	45	23	18	24	10	26	22	25	17	15	13	14	7	5	3	1593	
	TOTAL	138	94	79	80	68	75	82	72	54	52	35	36	22	23	14	5021	

FORMAT 26: GRADE DISTRIBUTION OF DENTISTS BY PRIMARY SPECIALTY

FORMAT 26
PAGE 1
FY85

SPECIALTY	0-3	0-4	0-5	0-6	0-7	0-8	0-9	TOTAL
GRADUATE DENTAL EDUCATION								
A	73	90	6	3	0	0	0	172
F	74	65	13	4	0	0	0	156
TOTAL	147	155	19	7	0	0	0	328
ENDODONTIST								
A	1	6	25	21	0	0	0	53
N	0	14	18	24	0	0	0	56
F	1	14	19	10	0	0	0	44
TOTAL	2	34	62	55	0	0	0	153
EXECUTIVE DENTISTRY								
A	0	0	0	4	2	1	0	7
F	0	0	0	17	0	1	0	18
TOTAL	0	0	0	21	2	2	0	25
GENERAL DENTAL OFFICER								
A	0	47	97	73	0	0	0	217
N	778	249	136	110	1	0	0	1274
F	528	328	111	122	0	0	0	1089
TOTAL	1306	624	344	305	1	0	0	2580
MAXILLOFACIAL PROSTHETIST								
N	0	0	4	7	0	0	0	11
ORAL PATHOLOGIST								
A	0	1	4	14	0	0	0	19
N	0	3	2	4	0	0	0	9
F	0	5	3	2	0	0	0	10
TOTAL	0	9	9	20	0	0	0	38

FORMAT 26: GRADE DISTRIBUTION OF DENTISTS BY PRIMARY SPECIALTY

FORMAT 26
PAGE 2
FY85

SPECIALTY	0-3	0-4	0-5	0-6	0-7	0-8	0-9	TOTAL
ORAL SURGEON								
A	2	6	28	26	0	0	0	62
N	1	24	23	34	1	1	0	84
F	3	27	21	18	0	0	0	69
TOTAL	6	57	72	78	1	1	0	215
ORTHODONTIST								
A	2	11	17	12	0	0	0	42
N	0	1	6	2	0	0	0	9
F	5	13	6	7	0	0	0	31
TOTAL	7	25	29	21	0	0	0	82
PEDODONTIST								
A	1	15	13	13	0	0	0	42
N	2	1	2	0	0	0	0	5
F	2	8	2	1	0	0	0	13
TOTAL	5	24	17	14	0	0	0	60
PERIODONTIST								
A	1	6	19	36	0	0	0	62
N	3	15	23	24	0	0	0	65
F	4	24	15	22	0	0	0	65
TOTAL	8	45	57	82	0	0	0	192
PREVENTIVE DENTISTRY/PUBLIC HEALTH								
A	0	0	1	8	0	0	0	9
N	1	3	5	3	0	0	0	12
TOTAL	1	3	6	11	0	0	0	21

FORMAT 26: GRADE DISTRIBUTION OF DENTISTS BY PRIMARY SPECIALTY

FORMAT 26
PAGE 3
FY85

SPECIALTY		0-3	0-4	0-5	0-6	0-7	0-8	0-9	TOTAL
PROSTHODONTIST	A	0	16	41	76	0	0	0	133
	N	6	13	26	35	0	0	0	80
	F	0	29	21	48	0	0	0	98
	TOTAL	6	58	88	159	0	0	0	311
RESEARCH DENTIST	N	0	0	1	2	0	0	0	3
COMPREHENSIVE DENTIST	N	0	10	34	12	0	0	0	56
OPERATIVE DENTIST	N	0	7	2	11	0	0	0	20
ORAL DIAGNOSTICIAN	N	0	3	4	10	0	0	0	17
OTHER	A	556	323	30	0	0	0	0	909
GRAND TOTALS	A	636	521	281	286	2	1	0	1727
	N	791	343	286	278	2	1	0	1701
	F	617	513	211	251	0	1	0	1593
	TOTAL	2044	1377	778	815	4	3	0	5021

FORMAT 27: GRADE DISTRIBUTION OF DENTISTS BY DUTY SPECIALTY

FORMAT 27
PAGE 1
FY85

SPECIALTY	0-3	0-4	0-5	0-6	0-7	0-8	0-9	TOTAL
GRADUATE DENTAL EDUCATION								
A	73	90	6	3	0	0	0	172
N	44	53	5	0	0	0	0	102
F	74	65	13	4	0	0	0	156
TOTAL	191	208	24	7	0	0	0	430
ENDODONTIST								
A	0	14	21	12	0	0	0	47
N	0	14	17	17	0	0	0	48
F	1	17	19	9	0	0	0	46
TOTAL	1	45	57	38	0	0	0	141
EXECUTIVE DENTISTRY								
A	0	0	8	61	2	1	0	72
N	4	3	6	59	2	1	0	75
F	0	0	0	22	0	1	0	23
TOTAL	4	3	14	142	4	3	0	170
GENERAL DENTAL OFFICER								
A	48	129	101	68	0	0	0	346
N	730	194	130	86	0	0	0	1140
F	527	319	111	119	0	0	0	1076
TOTAL	1305	642	342	273	0	0	0	2562
MAXILLOFACIAL PROSTHETIST								
N	0	0	4	6	0	0	0	10

FORMAT 27: GRADE DISTRIBUTION OF DENTISTS BY DUTY SPECIALTY

FORMAT 27
PAGE 2
FY85

SPECIALTY		0-3	0-4	0-5	0-6	0-7	0-8	0-9	TOTAL
ORAL PATHOLOGIST	A	0	2	2	7	0	0	0	11
	N	0	2	1	3	0	0	0	6
	F	0	4	3	2	0	0	0	9
	TOTAL	0	8	6	12	0	0	0	26
ORAL SURGEON	A	2	30	28	24	0	0	0	84
	N	1	24	22	28	0	0	0	75
	F	3	30	21	19	0	0	0	73
	TOTAL	6	84	71	71	0	0	0	232
ORTHODONTIST	A	2	11	10	7	0	0	0	30
	N	0	1	6	2	0	0	0	9
	F	5	16	5	5	0	0	0	31
	TOTAL	7	28	21	14	0	0	0	70
PEDODONTIST	A	2	15	9	9	0	0	0	35
	N	2	1	2	0	0	0	0	5
	F	2	8	2	0	0	0	0	12
	TOTAL	6	24	13	9	0	0	0	52
PERIODONTIST	A	2	19	13	23	0	0	0	57
	N	3	15	22	19	0	0	0	59
	F	5	25	15	21	0	0	0	66
	TOTAL	10	59	50	63	0	0	0	182

FORMAT 27: GRADE DISTRIBUTION OF DENTISTS BY DUTY SPECIALTY

FORMAT 27
PAGE 3
FY85

SPECIALTY	0-3	0-4	0-5	0-6	0-7	0-8	0-9	TOTAL
PREVENTIVE DENTISTRY/PUBLIC HEALTH								
A	1	0	2	5	0	0	0	8
N	1	3	5	2	0	0	0	11
TOTAL	2	3	7	7	0	0	0	19
PROSTHODONTIST								
A	2	38	37	56	0	0	0	133
N	6	13	26	29	0	0	0	74
F	0	29	22	50	0	0	0	101
TOTAL	8	80	85	135	0	0	0	308
RESEARCH DENTIST								
N	0	0	1	1	0	0	0	2
COMPREHENSIVE DENTIST								
N	0	10	33	12	0	0	0	55
OPERATIVE DENTIST								
N	0	7	2	8	0	0	0	17
ORAL DIAGNOSTICIAN								
N	0	3	4	6	0	0	0	13
OTHER								
A	504	173	44	11	0	0	0	732
GRAND TOTALS								
A	636	521	281	286	2	1	0	1727
N	791	343	286	278	2	1	0	1701
F	617	513	211	251	0	1	0	1593
TOTAL	2044	1377	778	815	4	3	0	5021

FORMAT 28: SERVICE SPONSORED GRADUATE DENTAL EDUCATION

FORMAT 28
PAGE 1
FY85

MEDICAL SPECIALTY	LENGTH OF TRAINING	GDE INTERNSHIP	NUMBER OF STUDENTS BY YEAR OF COMPLETION DATE AND SOURCE OF TRAINING										TOTAL	GRAND TOTAL		
			CURRENT FY + 1		CURRENT FY + 2		CURRENT FY + 3		CURRENT FY + 4		CURRENT FY + 5					
			MIL	CIV	MIL	CIV	MIL	CIV	MIL	CIV	MIL	CIV				
GRADUATE DENTAL EDUCATION																
A	0	46	100	8	46	11	7	0	0	0	0	0	0	153	19	172
N	0	23	57	8	25	5	6	1	0	0	0	0	0	88	14	102
F	1	98	79	20	25	17	6	9	0	0	0	0	0	110	46	156
TOTAL		167	236	36	96	33	19	10	0	0	0	0	0	351	79	430
ENDODONTIST																
A	2	0	5	0	5	0	0	0	0	0	0	0	0	10	0	10
N	2	0	3	1	3	1	0	0	0	0	0	0	0	6	2	8
F	2	2	2	2	2	0	0	0	0	0	0	0	0	4	2	6
TOTAL		2	10	3	10	1	0	0	0	0	0	0	0	20	4	24
GENERAL DENTAL OFFICER																
A	2	0	23	0	22	0	0	0	0	0	0	0	0	45	0	45
F	2	16	16	1	16	0	0	0	0	0	0	0	0	32	1	33
TOTAL		16	39	1	38	0	0	0	0	0	0	0	0	77	1	78
MAXILLOFACIAL PROSTHETIST																
F	1	1	1	0	0	0	0	0	0	0	0	0	0	1	0	1
ORAL SURGEON																
A	3	0	7	0	7	0	7	0	0	0	0	0	0	21	0	21
N	3	0	8	2	6	1	6	1	0	0	0	0	0	20	4	24
F	4	6	5	3	6	0	6	1	0	0	0	0	0	17	4	21
TOTAL		6	20	5	19	1	19	2	0	0	0	0	0	58	8	66
ORTHODONTIST																
A	2	0	2	3	0	5	0	0	0	0	0	0	0	2	8	10
F	2	7	0	3	0	7	0	0	0	0	0	0	0	0	10	10
TOTAL		7	2	6	0	12	0	0	0	0	0	0	0	2	18	20

FORMAT 28: SERVICE SPONSORED GRADUATE DENTAL EDUCATION

FORMAT 28
PAGE 2
FY85

MEDICAL SPECIALTY		LENGTH OF TRAINING	GDE INTERNSHIP	NUMBER OF STUDENTS BY YEAR OF COMPLETION DATE AND SOURCE OF TRAINING										GRAND TOTAL		
				CURRENT FY + 1		CURRENT FY + 2		CURRENT FY + 3		CURRENT FY + 4		CURRENT FY + 5			TOTAL	
				MIL	CIV	MIL	CIV	MIL	CIV	MIL	CIV	MIL	CIV		MIL	CIV
PEDODONTIST	A	2	0	0	4	0	4	0	0	0	0	0	0	0	8	8
	F	2	0	0	2	0	0	0	0	0	0	0	0	0	2	2
	TOTAL		0	0	6	0	4	0	0	0	0	0	0	0	10	10
PERIODONTIST	A	2	0	6	0	4	0	0	0	0	0	0	10	0	10	10
	N	2	0	4	2	3	1	0	0	0	0	0	7	3	10	14
	F	3	6	0	4	1	5	0	4	0	0	0	1	13	14	34
	TOTAL		6	10	6	8	6	0	4	0	0	0	18	16	34	
PREVENTIVE DENTISTRY/PUBLIC HEALTH	A	2	0	0	0	0	1	0	0	0	0	0	0	1	1	1
	F	2	0	0	1	0	0	0	0	0	0	0	0	1	1	1
	TOTAL		0	0	1	0	1	0	0	0	0	0	0	2	2	2
PROSTHODONTIST	A	2	0	10	0	8	0	0	0	0	0	0	18	0	18	18
	N	2	0	6	1	5	1	0	0	0	0	0	11	2	13	13
	F	3	5	0	4	0	5	0	4	0	0	0	0	13	13	44
	TOTAL		5	16	5	13	6	0	4	0	0	0	29	15	44	
COMPREHENSIVE DENTIST	N	1-2	0	11	0	6	0	0	0	0	0	0	17	0	17	17
OPERATIVE DENTIST	N	2	0	0	2	0	1	0	0	0	0	0	0	3	3	3
ORAL DIAGNOSTICIAN	N	2	0	2	0	2	0	0	0	0	0	0	4	0	4	4

FORMAT 28: SERVICE SPONSORED GRADUATE DENTAL EDUCATION

FORMAT 28
PAGE 3
FV85

MEDICAL SPECIALTY	LENGTH OF TRAINING	GDE INTERNSHIP	NUMBER OF STUDENTS BY YEAR OF COMPLETION DATE AND SOURCE OF TRAINING												GRAND TOTAL		
			CURRENT FY + 1		CURRENT FY + 2		CURRENT FY + 3		CURRENT FY + 4		CURRENT FY + 5		TOTAL				
			MIL	CIV	MIL	CIV	MIL	CIV	MIL	CIV	MIL	CIV	MIL	CIV			
OTHER																	
A	1-3	46	47	1	0	1	0	0	0	0	0	0	0	47	2	49	
N	0	23	23	0	0	0	0	0	0	0	0	0	0	23	0	23	
F	1	55	55	0	0	0	0	0	0	0	0	0	0	55	0	55	
TOTAL		124	125	1	0	1	0	0	0	0	0	0	0	125	2	127	
GRAND TOTALS																	
A		46	100	8	46	11	7	0	0	0	0	0	0	153	19	172	
N		23	57	8	25	5	6	1	0	0	0	0	0	88	14	102	
F		98	79	20	25	17	6	9	0	0	0	0	0	110	46	156	
TOTAL		167	236	36	96	33	19	10	0	0	0	0	0	351	79	430	

FORMAT 30: CURRENTLY IDENTIFIED AND BEST ESTIMATE OF HEALTH MANPOWER ACCESSIONS, BY DISCIPLINE AND YEAR

FORMAT 30
PAGE 1
FY85

SOURCE		CURRENT FY	FY + 1	FY + 2	FY + 3	FY + 4	FY + 5	FY + 6
		ACTUAL	BEST EST.	BEST EST.	BEST EST.	BEST EST.	BEST EST.	BEST EST.
		PHYSICIAN						
AFHPSP								
	A	402	346	300	341	325	317	312
DIRECT								
	A	288	272	270	270	270	270	270
	N	321	322	322	322	322	322	322
	F	137	121	120	120	120	120	120
	TOTAL	746	715	712	712	712	712	712
DEFERRED								
	A	114	76	30	71	55	47	42
	N	63	70	70	70	70	70	70
	F	239	236	260	273	270	271	245
	TOTAL	416	382	360	414	395	388	357
USUHS								
	A	64	63	61	61	60	60	60
	F	40	49	49	48	47	48	48
	TOTAL	104	112	110	110	107	108	108
DIRECT ACCESSIONS								
	A	106	62	60	60	60	60	60
	N	44	48	48	48	48	50	48
	TOTAL	150	110	108	108	108	110	108

FORMAT 30: CURRENTLY IDENTIFIED AND BEST ESTIMATE OF HEALTH MANPOWER ACCESSIONS, BY DISCIPLINE AND YEAR

FORMAT 30
PAGE 2
FY85

SOURCE	CURRENT FY	FY + 1	FY + 2	FY + 3	FY + 4	FY + 5	FY + 6
	ACTUAL	BEST EST.	BEST EST.	BEST EST.	BEST EST.	BEST EST.	BEST EST.
PHYSICIAN							
TO FYGME							
A	4	2	2	2	2	2	2
N	44	48	48	48	48	50	48
TOTAL	48	50	50	50	50	52	50
TO FULL RESIDENCY							
A	14	12	10	10	10	10	10
U.S. MED SCHOOL GRAD TO NOT IN TRAINING							
A	50	48	48	48	48	48	48
F	131	118	62	75	173	95	123
TOTAL	181	164	110	123	221	143	171
FOREIGN MED SCHOOL GRAD TO NOT IN TRAINING							
A	38	0	0	0	0	0	0
F	44	38	20	24	30	31	41
TOTAL	82	38	20	24	30	31	41
ROTC							
A	25	31	17	18	16	17	17
ED DELAY TO FYGME							
A	4	4	4	4	4	4	4
F	3	4	4	4	4	4	4
TOTAL	7	8	8	8	8	8	8
ED DELAY TO NOT IN TRAINING							
A	21	27	13	14	12	13	13
F	5	4	4	4	4	4	4
TOTAL	26	31	17	18	16	17	17

FORMAT 30: CURRENTLY IDENTIFIED AND BEST ESTIMATE OF HEALTH MANPOWER ACCESSIONS, BY DISCIPLINE AND YEAR

FORMAT 30
PAGE 3
FY85

SOURCE	CURRENT FY	FY + 1	FY + 2	FY + 3	FY + 4	FY + 5	FY + 6
	ACTUAL	BEST EST.	BEST EST.	BEST EST.	BEST EST.	BEST EST.	BEST EST.
PHYSICIAN							
OTHER TO FYGME							
A	3	3	3	3	3	3	3
OTHER TO NOT IN TRAINING							
A	30	15	20	20	20	20	20
N	44	114	256	146	171	113	123
TOTAL	74	129	276	166	191	133	143
TOTAL							
A	630	520	461	503	484	477	472
N	472	554	696	586	611	555	563
F	599	568	519	549	648	573	585
TOTAL	1701	1642	1676	1638	1743	1605	1620

FORMAT 30: CURRENTLY IDENTIFIED AND BEST ESTIMATE OF HEALTH MANPOWER ACCESSIONS, BY DISCIPLINE AND YEAR

FORMAT 30
PAGE 4
FY85

SOURCE	CURRENT FY	FY + 1	FY + 2	FY + 3	FY + 4	FY + 5	FY + 6
	ACTUAL	BEST EST.	BEST EST.	BEST EST.	BEST EST.	BEST EST.	BEST EST.
DENTIST							
DIRECT ACCESSIONS							
A	84	120	87	87	87	87	87
N	170	121	151	92	90	99	97
F	141	147	114	113	115	123	115
TOTAL	395	388	352	292	292	309	299
OTHER							
A	52	69	63	63	63	63	63
N	93	105	100	100	100	100	104
F	3	8	5	1	1	1	1
TOTAL	148	182	168	164	164	164	168
TOTAL							
A	136	189	150	150	150	150	150
N	263	226	251	192	190	199	201
F	144	155	119	114	116	124	116
TOTAL	543	570	520	456	456	473	467

FORMAT 30: CURRENTLY IDENTIFIED AND BEST ESTIMATE OF HEALTH MANPOWER ACCESSIONS, BY DISCIPLINE AND YEAR

FORMAT 30
PAGE 5
FY85

SOURCE		CURRENT FY	FY + 1	FY + 2	FY + 3	FY + 4	FY + 5	FY + 6
		ACTUAL	BEST EST.	BEST EST.	BEST EST.	BEST EST.	BEST EST.	BEST EST.
		VETERINARIAN						
DIRECT ACCESSIONS								
	A	38	31	33	33	33	33	33
OTHER								
	A	8	4	12	12	12	12	12
TOTAL								
	A	46	35	45	45	45	45	45

FORMAT 30: CURRENTLY IDENTIFIED AND BEST ESTIMATE OF HEALTH MANPOWER ACCESSIONS, BY DISCIPLINE AND YEAR

FORMAT 30
PAGE 6
FY85

SOURCE		CURRENT FY	FY + 1	FY + 2	FY + 3	FY + 4	FY + 5	FY + 6
		ACTUAL	BEST EST.	BEST EST.	BEST EST.	BEST EST.	BEST EST.	BEST EST.
OPTOMETRIST								
AFHPSP	A	7	1	0	0	0	0	0
DIRECT ACCESSIONS								
	A	1	10	10	10	15	15	15
	N	9	21	20	20	20	20	18
	F	31	32	27	27	28	28	29
	TOTAL	41	63	57	57	63	63	62
OTHER								
	A	3	7	3	4	0	0	0
	N	4	0	0	0	0	0	0
	TOTAL	7	7	3	4	0	0	0
TOTAL								
	A	11	18	13	14	15	15	15
	N	13	21	20	20	20	20	18
	F	31	32	27	27	28	28	29
	TOTAL	55	71	60	61	63	63	62

FORMAT 30: CURRENTLY IDENTIFIED AND BEST ESTIMATE OF HEALTH MANPOWER ACCESSIONS, BY DISCIPLINE AND YEAR

FORMAT 30
PAGE 7
FY85

SOURCE		CURRENT FY	FY + 1	FY + 2	FY + 3	FY + 4	FY + 5	FY + 6
		ACTUAL	BEST EST.	BEST EST.	BEST EST.	BEST EST.	BEST EST.	BEST EST.
PODIATRIST								
AFHPSP								
	F	1	0	0	0	0	0	0
DIRECT ACCESSIONS								
	A	6	6	6	5	5	5	5
	N	4	10	6	5	5	5	4
	F	4	0	0	0	0	0	0
	TOTAL	14	16	12	10	10	10	9
OTHER								
	A	0	3	5	3	3	3	3
TOTAL								
	A	6	9	11	8	8	8	8
	N	4	10	6	5	5	5	4
	F	5	0	0	0	0	0	0
	TOTAL	15	19	17	13	13	13	12

FORMAT 30: CURRENTLY IDENTIFIED AND BEST ESTIMATE OF HEALTH MANPOWER ACCESSIONS, BY DISCIPLINE AND YEAR

FORMAT 30
PAGE 8
FY85

SOURCE		CURRENT FY	FY + 1	FY + 2	FY + 3	FY + 4	FY + 5	FY + 6
		ACTUAL	BEST EST.	BEST EST.	BEST EST.	BEST EST.	BEST EST.	BEST EST.
PSYCHOLOGIST								
AFHPSP	A	2	1	0	0	0	0	0
DIRECT ACCESSIONS								
	A	1	4	0	0	0	0	0
	N	12	21	14	9	12	10	10
	F	17	28	20	20	20	20	20
	TOTAL	30	53	34	29	32	30	30
OTHER								
	A	15	17	17	19	16	16	16
	N	2	0	0	0	0	0	0
	TOTAL	17	17	17	19	16	16	16
TOTAL								
	A	18	22	17	19	16	16	16
	N	14	21	14	9	12	10	10
	F	17	28	20	20	20	20	20
	TOTAL	49	71	51	48	48	46	46

FORMAT 30: CURRENTLY IDENTIFIED AND BEST ESTIMATE OF HEALTH MANPOWER ACCESSIONS, BY DISCIPLINE AND YEAR

FORMAT 30
PAGE 8
FY85

SOURCE		CURRENT FY	FY + 1	FY + 2	FY + 3	FY + 4	FY + 5	FY + 6
		ACTUAL	BEST EST.	BEST EST.	BEST EST.	BEST EST.	BEST EST.	BEST EST.
NURSE PRACTITIONER								
DIRECT ACCESSIONS								
	N	4	2	2	2	2	2	2
	F	3	0	0	0	0	0	0
	TOTAL	7	2	2	2	2	2	2
OTHER								
	N	1	1	1	1	1	1	1
TOTAL								
	N	5	3	3	3	3	3	3
	F	3	0	0	0	0	0	0
	TOTAL	8	3	3	3	3	3	3

FORMAT 30: CURRENTLY IDENTIFIED AND BEST ESTIMATE OF HEALTH MANPOWER ACCESSIONS, BY DISCIPLINE AND YEAR

FORMAT 30
PAGE 10
FY85

SOURCE	CURRENT FY	FY + 1	FY + 2	FY + 3	FY + 4	FY + 5	FY + 6
	ACTUAL	BEST EST.	BEST EST.	BEST EST.	BEST EST.	BEST EST.	BEST EST.
OTHER NURSES							
DIRECT ACCESSIONS							
A	402	423	300	300	280	125	67
N	303	440	404	202	426	274	317
F	675	632	534	590	634	578	619
TOTAL	1380	1495	1238	1092	1340	977	1003
OTHER							
A	109	160	225	300	320	400	458
N	5	30	36	28	42	47	47
F	40	45	50	50	50	50	50
TOTAL	154	235	311	378	412	497	555
TOTAL							
A	511	583	525	600	600	525	525
N	308	470	440	230	468	321	364
F	715	677	584	640	684	628	669
TOTAL	1534	1730	1549	1470	1752	1474	1558

FORMAT 30: CURRENTLY IDENTIFIED AND BEST ESTIMATE OF HEALTH MANPOWER ACCESSIONS, BY DISCIPLINE AND YEAR

FORMAT 30
PAGE 11
FY85

SOURCE		CURRENT FY	FY + 1	FY + 2	FY + 3	FY + 4	FY + 5	FY + 6
		ACTUAL	BEST EST.	BEST EST.	BEST EST.	BEST EST.	BEST EST.	BEST EST.
		PHYSICIAN ASSISTANT						
OTHER	F	37	38	0	0	0	0	0
TOTAL	F	37	38	0	0	0	0	0

FORMAT 31: FYGME CONTINUATION AND EARLY RETURNS TO RESIDENCY

FORMAT 31
PAGE 1
FY85

EDUCATION CATEGORIES	AFHPSP		OTHER ACCESSIONS	
	CURRENT FY		CURRENT FY	
	CONTINUED TO RESIDENCY	TOTAL ELIGIBLE	CONTINUED TO RESIDENCY	TOTAL ELIGIBLE
ACTIVE DUTY CONTINUED TRAINING				
A	195	302	42	61
N	20	254	6	43
F	108	161	15	29
TOTAL	323	717	63	133
CIVILIAN DEFERRED CONTINUED TRAINING				
A	79	120	17	23
N	39	111	0	0
F	63	283	6	21
TOTAL	181	514	23	44
EARLY RETURNS TO RESIDENCY				
A	112		38	
N	211		0	
F	8		3	
TOTAL	331		41	
GRAND TOTALS				
A	386	422	97	84
N	270	365	6	43
F	179	444	24	50
TOTAL	835	1231	127	177

FORMAT 32: ENLISTED HEALTH PERSONNEL

FORMAT 32
PAGE 1
FY85

ACTIVITY		NUMBER OF PERSONNEL
HEADQUARTERS/SUPPORT	A	2749
	N	6177
	F	672
	TOTAL	9598
DIRECT PATIENT CARE	A	20819
	N	20707
	F	27517
	TOTAL	69043
FIELD MEDICAL	A	15713
	N	3593
	F	681
	TOTAL	19987
GRAND TOTALS	A	39281
	N	30477
	F	28870
	TOTAL	98628

GLOSSARY

Administrative/Management Positions for Dentists - A position with primary duty in administration or management; examples include: commanders, facility directors, and headquarter staff officers.

Administrative/Management Positions for Physicians - A position with primary duty in administration or management; examples include: commanders, facility directors, headquarter staff officers, major command surgeons, and corps surgeons.

AFHPSP - Armed Forces Health Professions Scholarship Program.

Applicants - Total number of applicants by specialty or corps level.

Budget Authorization - Reflects the number of billets for each specialty officially authorized on the last day of the reporting period.

Corps - A grouping of a health profession.

Discipline - A specific health profession.

Duty Specialty - The specialty to which an individual is actually assigned.

End Strength - Reflects the personnel actually assigned against the authorizations on the last day of the reporting period.

Field Medical - Personnel assigned to tactical medical units, air evacuation units, etc.

FMG - Foreign Medical Graduate.

FTE - Full-Time Equivalents. Total yearly number of hours performed by all part-time local hire employees divided by 2,080 (number of hours in a work year).

FYDP - Five Year Defense Program.

FYGME - First Year Graduate Medical Education.

Gains - Entrants to active duty during a given fiscal year.

GDE - Graduate Dental Education.

GME - Graduate Medical Education.

Goal - Recruiting goal for fiscal year.

Local Nationals - Individuals employed in the DoD health care system who are not United States citizens.

Losses - Those personnel who are no longer on active duty.

Maximum Program Size - Maximum total number of students allow in the specific training program in the given year (capacity of program).

Minimum Program Size - Minimum total number of students that must be in the specific training program to maintain accreditation.

Number Declined - Applicants who, following selection, chose not to enter active duty or a training program.

Number Entered Active Duty - Of the selectees, those who actually entered active duty or a training program.

Nurse Practitioners - Includes Obstetrics/Gynecology, Pediatrics, Primary Care, Family Practice, and Pulmonary Disease Nurse Specialties.

Other Nonpatient Care Positions for Dentists - A position with primary duty in nonpatient care areas such as, professional military students, nonclinical teacher, and research and development.

Other Nonpatient care Positions for Physicians - A position with primary duty in nonpatient care areas, such as, professional military education, faculty, research and development, project managers, review boards, and division, wing, and separate brigade surgeons. Specifically excluded are physicians assigned to patient facilities in the specialties of pathology, preventive medicine, occupational medicine, radiology, and nuclear medicine.

Primary Specialty - The specialty for which an individual is technically qualified.

ROTC ED - Reserve Officer Training Corps Education.

Selectees - Applicants who were accepted and approved to enter active duty or a training program.

Source - Procurement program from which an individual comes into the medical services.

Training - Reflects those personnel in an education status to achieve specialty qualification.

USUHS - Uniformed Services University of Health Sciences.

END

DATE
FILMED

6 - 86