

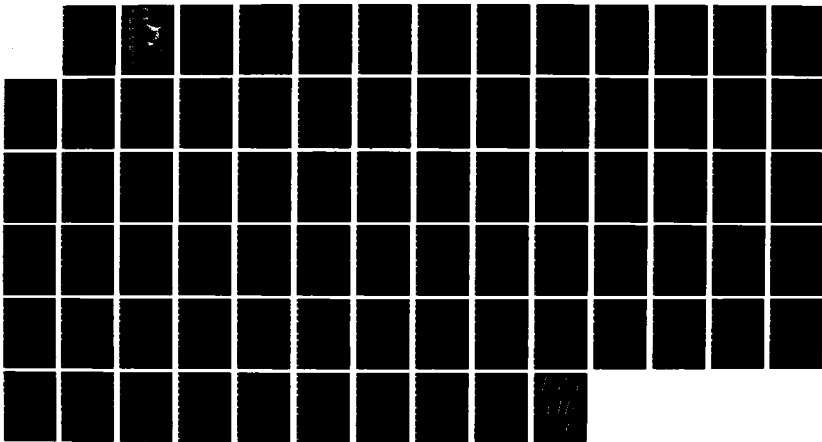
AD-A164 908

DISTRIBUTION OF PERSONNEL BY STATE AND BY SELECTED
LOCATIONS FISCAL YEAR 1985(U) WASHINGTON HEADQUARTERS
SERVICES (DOD) DC DIRECTORATE FOR INF... 30 SEP 85
DIOR/M02-85 F/G 5/9

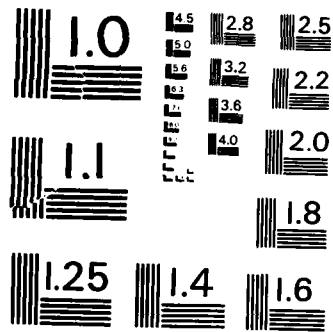
1/1

UNCLASSIFIED

NL



The table is a grid of approximately 14 columns and 7 rows. The cells are mostly blacked out, indicating redaction. There is a small dark mark in the top-left cell and some faint, illegible markings in the bottom-right cells.



MICROCOPY RESOLUTION TEST CHART
NATIONAL BUREAU OF STANDARDS - 1963 - A

M02

DIERS/M02-85

Department of Defense

DISTRIBUTION OF PERSONNEL BY STATE AND BY SELECTED LOCATIONS

September 30, 1985

FY 1985

ADA164908



S DTIC ELECTE **D**
MAR 06 1986
P

DISTRIBUTION STATEMENT A
Approved for public release
Distribution Unlimited

86 3 6 004

Department of Defense

DISTRIBUTION OF PERSONNEL BY STATE AND BY SELECTED LOCATIONS

September 30, 1985

*Issued Annually by
Washington Headquarters Services
Directorate for Information
Operations and Reports*

~~For Sale by the Superintendent of Documents
U.S. Government Printing Office, Washington, D.C. 20540~~

DTIC AND NTIS IDENTIFICATION NUMBER FOR THIS PUBLICATION IS DIOR/M02-85.

FOREWORD

Distribution of Personnel by State and by Selected Locations is published annually by the Office of the Secretary of Defense, Washington Headquarters Services, Directorate for Information Operations and Reports (WHS/DIOR).

This report provides information on Department of Defense (DoD) personnel by operating location as of September 30, 1985. This information is provided in two sections showing:

1. The percent distribution of DoD active duty military and direct hire civilian personnel, by state, according to Defense component; and
2. DoD active duty military and direct hire civilian personnel, by installation or selected city, according to Defense component.

TABLE OF CONTENTS

INTRODUCTION	1
SECTION 1. Percent Distribution of DoD Active Duty Military and Direct Hire Civilian Personnel, by State, According to Defense Component: September 30, 1985	3
SECTION 2. DoD Active Duty Military and Direct Hire Civilian Personnel, by Installation or City, According to Defense Component: September 30, 1985	11
Alabama	13
Alaska	14
Arizona	15
Arkansas	16
California	17
Colorado	21
Connecticut	22
Delaware	23
District of Columbia	24
Florida	25
Georgia	27
Hawaii	28
Idaho	30
Illinois	31
Indiana	32
Iowa	33
Kansas	34
Kentucky	35
Louisiana	36
Maine	37
Maryland	38

TABLE OF CONTENTS (Continued)

Massachusetts	40
Michigan	41
Minnesota	42
Mississippi	43
Missouri	44
Montana	45
Nebraska	46
Nevada	47
New Hampshire	48
New Jersey	49
New Mexico	50
New York	51
North Carolina	53
North Dakota	54
Ohio	55
Oklahoma	57
Oregon	58
Pennsylvania	59
Rhode Island	61
South Carolina	62
South Dakota	63
Tennessee	64
Texas	65
Utah	67
Vermont	68
Virginia	69
Washington	71
West Virginia	72
Wisconsin	73
Wyoming	74
Undistributed	75

INTRODUCTION

This publication is prepared from information submitted annually to Washington Headquarters Services, Directorate for Information Operations and Reports (WHS/DIOR) under Reports Control Symbol DD-COMP(A) 659. Information is reported to WHS/DIOR by the Office of the Secretary of Defense agencies. These data provide statistics on the number of active duty military and direct hire civilian personnel by operating location in the United States, with operating location defined as the geographic location where personnel are located for the performance of work.

This report is divided into two sections. In each, the information is presented according to Defense components, which include the Military Departments (Army, Navy, and Air Force) and the category "Other DoD Organizations." This latter classification includes the following DoD components: (1) Office of the Secretary of Defense (OSD) and organizations serviced by OSD I/; (2) Defense Audiovisual Agency, (3) Defense Communications Agency; (4) Defense Contract Audit Agency; (5) Defense Investigative Service; (6) Defense Logistics Agency; (7) Defense Mapping Agency; (8) Defense Nuclear Agency; (9) DoD Dependents Schools; and (10) Uniformed Services University of the Health Sciences.

In Section One, the total number of active duty military and direct hire civilian personnel as of September 30, 1985, are presented by state according to Defense component. Included is information on the percentage of each component's personnel located in each state. In Section Two, the active duty military and direct hire civilian personnel are shown for selected cities and installations in each state according to Defense component.

Special attention is directed to the following:

1/ OSD and organizations serviced by OSD includes the following: Office of the Secretary of Defense and Organization of the Joint Chiefs of Staff (OSD-JCS); American Forces Information Service (AFIS); Civilian Health and Medical Program of the Uniformed Services (CHAMPUS); Defense Advanced Research Projects Agency (DARPA); Defense Security Assistance Agency (DSAA); Tri-Service Medical Information System (TRIMIS); U.S. Court of Military Appeals (USCMA); Office of Economic Adjustment (OEA); Defense Legal Services (DLS); and Washington Headquarters Services (WHS).

1. In some instances, the Military Departments report personnel by parent installation rather than their operating location. Such variations tend to occur in metropolitan areas where military activities are scattered among many political jurisdictions. In addition, personnel on limited temporary duty (TDY) on September 30, 1985, may be reported at their assigned locations.
2. Military personnel in each department include a number of personnel in a transient status. These personnel are in a travel, proceed, leave, enroute, or temporary duty status while on permanent change of station (PCS) orders. The Marine Corps and Air Force report these personnel at their location prior to their arrival at their new permanent duty location. The Army and Navy include these personnel in one category entitled, "Undistributed," which may also include personnel for which an exact location is undetermined.
3. Excluded from the direct hire civilian personnel in this publication are those who are not subject to Office of Management and Budget (OMB) ceiling controls. This includes personnel such as some summer aids or employees in the Stay-in-School Federal Junior Fellowship, and Worker-Trainee Opportunity Programs and those covered by other official exemptions granted by OMB. As of September 30, 1985, the Department of Defense employed 11,260 nonceiling civilian employees in the United States.
4. Department of the Army civilian personnel include employees involved in civil functions in the United States. This consisted of 29,866 employees of the Army Corps of Engineers and 129 Army cemeiterial employees. Also included in this report are the three civil function personnel of the Air Force.
5. Department of the Navy military personnel include those in the military services of the Navy and Marine Corps. The Navy Department military totals consist of shore-based personnel and exclude those afloat and temporary shore-based.

Further information on DoD personnel can be found in the WHS/DIOR annual publication *Selected Manpower Statistics* and the quarterly publications *Worldwide Manpower Distribution by Geographical Area*, *Civilian Manpower Statistics*, and *Military Manpower Statistics*.

SECTION 1

PERCENT DISTRIBUTION OF DOD ACTIVE DUTY MILITARY AND DIRECT HIRE CIVILIAN PERSONNEL,

BY STATE, ACCORDING TO DEFENSE COMPONENT: SEPTEMBER 30, 1985

**PERCENT DISTRIBUTION OF DoD ACTIVE DUTY MILITARY AND DIRECT HIRE CIVILIAN PERSONNEL
BY STATE, ACCORDING TO DEFENSE COMPONENT: SEPTEMBER 30, 1985**

	1982*1 CENSUS		ARMY #2		NAVY #3		AIR FORCE		OTHER DoD ORGANIZATIONS		TOTAL DEPARTMENT OF DEFENSE	
	NUMBER	PCT. U.S.	NUMBER	PCT. USA	NUMBER	PCT. USN	NUMBER	PCT. USAF	NUMBER	PCT. ODA	NUMBER	PCT. DoD
Alabama	MILITARY CIVILIAN TOTAL	3,941,000 1.7	17,864 23,558 41,422	3.4 6.8 4.8	686 12 698	.1 .0 .0	4,546 3,241 7,787	1.0 1.3 1.1	506 506	.6 .6	23,096 27,317 50,413	1.6 2.7 2.1
Alaska	MILITARY CIVILIAN TOTAL	444,000 .1	7,795 2,935 10,730	1.5 .8 1.2	1,834 172 2,006	.4 .0 .2	10,746 1,845 12,591	2.4 .7 1.8	53 53	.0 .0	20,375 5,005 25,380	1.4 .5 1.0
Arizona	MILITARY CIVILIAN TOTAL	2,892,000 1.2	6,463 5,532 11,995	1.2 1.6 1.3	1,178 456 1,634	.2 .1 .2	13,063 3,988 17,051	2.9 1.6 2.5	389 389	.5 .5	20,704 10,365 31,069	1.5 1.0 1.3
Arkansas	MILITARY CIVILIAN TOTAL	2,307,000 .9	378 3,366 3,744	.0 .9 .4	200 8 208	.0 .0 .0	9,170 1,402 10,572	2.1 .5 1.5	69 69	.0 .0	9,748 4,845 14,593	.7 .4 .6
California	MILITARY CIVILIAN TOTAL	24,697,000 10.6	30,032 19,358 49,390	5.8 5.6 5.7	122,312 80,338 202,650	29.4 25.0 27.5	52,478 30,644 83,122	12.0 13.0 12.3	7,595 7,595	10.1 10.1	204,822 137,935 342,757	14.9 14.1 14.6
Colorado	MILITARY CIVILIAN TOTAL	3,071,000 1.3	22,771 5,599 28,370	4.4 1.6 3.2	748 13 761	.1 .0 .1	13,395 7,969 21,364	3.0 3.3 3.1	544 544	.7 .7	36,914 14,125 51,039	2.7 1.4 2.1
Connecticut	MILITARY CIVILIAN TOTAL	3,126,000 1.3	195 592 787	.0 .1 .0	6,271 3,067 9,338	1.5 .9 1.2	60 445 505	.0 .1 .0	850 850	1.1 1.1	6,526 4,954 11,480	.4 .5 .4
Delaware	MILITARY CIVILIAN TOTAL	600,000 .2	41 242 283	.0 .0 .0	22 1 23	.0 .0 .0	4,599 1,529 6,128	1.0 .6 .9	24 24	.0 .0	4,662 1,796 6,458	.3 .2 .2
District of Col	MILITARY CIVILIAN TOTAL	626,000 .2	5,480 6,624 12,104	1.0 1.9 1.4	4,058 8,370 12,428	.9 2.6 1.6	3,172 1,125 4,297	.7 .4 .6	742 742	.9 .9	12,710 16,861 29,571	.9 1.7 1.2
Florida	MILITARY CIVILIAN TOTAL	10,466,000 4.5	2,010 1,898 3,908	.3 .5 .4	40,257 20,580 60,837	9.6 6.4 8.2	30,873 9,343 40,216	7.0 3.9 5.9	1,208 1,208	1.6 1.6	73,140 33,029 106,169	5.3 3.3 4.5
Georgia	MILITARY CIVILIAN TOTAL	5,648,000 2.4	53,761 17,700 71,461	10.4 5.1 8.3	2,968 3,587 6,555	.7 1.1 .8	7,661 17,903 25,564	1.7 7.5 3.8	1,166 1,166	1.5 1.5	64,390 40,356 104,746	4.7 4.1 4.4

**PERCENT DISTRIBUTION OF DoD ACTIVE DUTY MILITARY AND DIRECT HIRE CIVILIAN PERSONNEL
BY STATE, ACCORDING TO DEFENSE COMPONENT: SEPTEMBER 30, 1985**

	1982*1 CENSUS		ARMY *2		NAVY *3		AIR FORCE		OTHER DoD ORGANIZATIONS		TOTAL DEPARTMENT OF DEFENSE	
	NUMBER	PCT. U.S.	NUMBER	PCT. USA	NUMBER	PCT. USN	NUMBER	PCT. USAF	NUMBER	PCT. ODA	NUMBER	PCT. DoD
Hawaii	MILITARY	18,516	3.5	21,760	5.2	6,697	1.5				46,973	3.4
	CIVILIAN	5,300	1.5	13,213	4.1	2,626	1.1			120	21,259	2.1
	TOTAL	23,816	2.7	34,973	4.7	9,323	1.3			120	68,232	2.9
Idaho	MILITARY	39	0	1,699	4	3,909	8				5,647	4
	CIVILIAN	433	1	30	0	796	3			12	1,271	1
	TOTAL	472	0	1,729	2	4,705	7			12	6,918	2
Illinois	MILITARY	2,426	4	25,655	6.1	12,793	2.9				40,874	2.9
	CIVILIAN	13,762	3.9	2,314	7	5,267	2.2			1,321	22,664	2.3
	TOTAL	16,188	1.8	27,969	3.7	18,060	2.6			1,321	63,538	2.7
Indiana	MILITARY	3,266	6	544	1	2,766	6				6,576	4
	CIVILIAN	6,827	1.9	6,911	2.1	1,237	5			461	15,436	1.5
	TOTAL	10,093	1.1	7,455	1.0	4,003	5			461	22,012	1.9
Iowa	MILITARY	220	0	122	0	57	0				399	0
	CIVILIAN	904	2	9	0	497	2			135	1,545	1
	TOTAL	1,124	1	131	0	554	0			135	1,944	0
Kansas	MILITARY	19,875	3.8	299	0	3,453	7				23,627	1.7
	CIVILIAN	5,318	1.5	183	0	1,329	5			198	7,028	7
	TOTAL	25,193	2.9	482	0	4,782	7			198	30,655	1.3
Kentucky	MILITARY	40,277	7.8	248	0	257	0				40,782	2.9
	CIVILIAN	11,613	3.3	2,551	7	260	1			369	14,793	1.5
	TOTAL	51,890	6.0	2,799	3	517	0			369	55,575	2.3
Louisiana	MILITARY	15,007	2.9	1,774	4	8,929	2.0				25,710	1.8
	CIVILIAN	4,942	1.4	1,836	5	2,233	9			295	9,306	9
	TOTAL	19,949	2.3	3,610	4	11,162	1.6			295	35,016	1.4
Maine	MILITARY	37	0	1,879	4	3,466	7				5,382	3
	CIVILIAN	316	0	9,391	2.9	817	3			77	10,601	1.0
	TOTAL	353	0	11,270	1.5	4,283	6			77	15,983	6
Maryland	MILITARY	12,120	2.3	14,831	3.5	8,736	2.0				35,687	2.6
	CIVILIAN	17,718	5.1	16,632	5.1	3,174	1.3			5,768	43,292	4.4
	TOTAL	29,838	3.4	31,463	4.2	11,910	1.7			5,768	78,979	3.3
Massachusetts	MILITARY	5,886	1.1	1,060	2	2,471	5				9,417	6
	CIVILIAN	5,400	1.5	981	3	4,120	1.7			1,831	12,332	1.2
	TOTAL	11,286	1.3	2,041	2	6,591	9			1,831	21,749	9

**PERCENT DISTRIBUTION OF DoD ACTIVE DUTY MILITARY AND DIRECT HIRE CIVILIAN PERSONNEL
BY STATE, ACCORDING TO DEFENSE COMPONENT: SEPTEMBER 30, 1985**

	1982*1 CENSUS		ARMY *2		NAVY *3		AIR FORCE		OTHER DoD ORGANIZATIONS		TOTAL DEPARTMENT OF DEFENSE	
	NUMBER	PCT. U.S.	NUMBER	PCT. USA	NUMBER	PCT. USN	NUMBER	PCT. USAF	NUMBER	PCT. ODA	NUMBER	PCT. DoD
Michigan	MILITARY CIVILIAN TOTAL	9,116,000 3.9	7,704 8,699	2.2 1.0	670 99 769	1 .0 .1	7,108 2,310 9,418	1.6 .9 1.4	2,085 2,085	2.7 2.7	8,773 12,198 20,971	6 1.2 .8
Minnesota	MILITARY CIVILIAN TOTAL	4,133,000 1.7	393 1,462 1,855	.0 .4 .2	340 121 461	0 .0 .0	126 865 991	0 .3 .1	392 392	.5 .5	859 2,840 3,699	0 .2 .1
Mississippi	MILITARY CIVILIAN TOTAL	2,569,000 1.1	338 5,013 5,351	.0 1.4 .6	3,761 2,876 6,637	9 .8 .9	11,930 3,513 15,443	2.7 1.4 2.3	156 156	.2 .2	16,029 11,558 27,587	1.1 1.1 1.1
Missouri	MILITARY CIVILIAN TOTAL	4,942,000 2.1	11,756 13,338 25,094	2.2 3.8 2.9	918 1,437 2,355	2 .4 .3	3,398 1,319 4,717	.7 .5 .7	4,897 4,897	6.5 6.5	16,072 20,991 37,063	1.1 2.1 1.5
Montana	MILITARY CIVILIAN TOTAL	805,000 .3	25 407 432	.0 1 .0	23 1 24	0 .0 .0	3,680 812 4,492	.8 .3 .6	16 16	.0 .0	3,728 1,236 4,964	.2 .1 .2
Nebraska	MILITARY CIVILIAN TOTAL	1,589,000 .6	280 1,766 2,046	.0 .5 .2	332 12 344	0 .0 .0	12,182 2,005 14,187	2.7 .8 2.1	44 44	.0 .0	12,794 3,827 16,621	.9 .3 .7
Nevada	MILITARY CIVILIAN TOTAL	876,000 .3	25 257 282	.0 .0 .0	925 345 1,270	2 .1 .1	8,794 1,448 10,242	2.0 .6 1.5	27 27	.0 .0	9,744 2,077 11,821	.7 .2 .5
New Hampshire	MILITARY CIVILIAN TOTAL	948,000 .4	136 549 685	.0 1 .0	366 366 732	0 1 0	3,620 749 4,369	.8 .3 .6	138 138	.1 .1	4,122 1,802 5,924	.3 .1 .2
New Jersey	MILITARY CIVILIAN TOTAL	7,427,000 3.2	12,284 18,988 31,272	2.3 5.5 3.6	2,015 6,638 8,653	.4 2.0 1.1	4,675 2,198 6,873	1.0 .9 1.0	1,137 1,137	1.5 1.5	18,974 28,961 47,935	1.3 2.9 2.0
New Mexico	MILITARY CIVILIAN TOTAL	1,367,000 .5	1,384 4,933 6,317	.2 1.4 .7	566 197 763	1 0 1	14,471 4,297 18,768	3.3 1.8 2.7	403 403	.5 .5	16,421 9,830 26,251	1.2 1.0 1.1
New York	MILITARY CIVILIAN TOTAL	17,567,000 7.5	9,262 11,178 20,440	1.7 3.2 2.3	3,814 1,072 4,886	.9 .3 .6	8,906 5,130 14,036	2.0 2.1 2.0	1,424 1,424	1.9 1.9	21,982 18,804 40,786	1.6 1.9 1.7

**PERCENT DISTRIBUTION OF DoD ACTIVE DUTY MILITARY AND DIRECT HIRE CIVILIAN PERSONNEL
BY STATE, ACCORDING TO DEFENSE COMPONENT: SEPTEMBER 30, 1985**

	1982*1 CENSUS		ARMY #2		NAVY #3		AIR FORCE		OTHER DoD ORGANIZATIONS		TOTAL DEPARTMENT OF DEFENSE	
	NUMBER	PCT. U.S.	NUMBER	PCT. USA	NUMBER	PCT. USN	NUMBER	PCT. USAF	NUMBER	PCT. ODA	NUMBER	PCT. DoD
North Carolina	MILITARY		41,051	7.9	48,830	11.7	8,821	2.0			98,702	7.2
	CIVILIAN		6,682	1.9	8,152	2.5	1,197	.5	281	.3	16,312	1.6
	TOTAL	6,019,000	47,733	5.5	56,982	7.7	10,018	1.4	281	.3	115,014	4.9
North Dakota	MILITARY		27	.0	11	.0	11,236	2.5			11,274	.8
	CIVILIAN		371	.1	1	.0	1,405	.5	28	.0	1,805	.1
	TOTAL	672,000	398	.0	12	.0	12,641	1.8	28	.0	13,079	.5
Ohio	MILITARY		846	.1	865	.2	12,104	2.7			13,815	1.0
	CIVILIAN		2,046	.5	1,646	.5	21,488	9.1	9,138	12.1	34,318	3.5
	TOTAL	10,772,000	2,892	.3	2,511	.3	33,592	5.0	9,138	12.1	48,133	2.0
Oklahoma	MILITARY		18,824	3.6	218	.0	12,073	2.7			31,115	2.2
	CIVILIAN		6,463	1.8	96	.0	20,064	8.5	217	.2	26,840	2.7
	TOTAL	3,226,000	25,287	2.9	314	.0	32,137	4.7	217	.2	57,955	2.4
Oregon	MILITARY		211	.0	506	.1	65	.0			782	.0
	CIVILIAN		2,425	.7	34	.0	606	.2	42	.0	3,107	.3
	TOTAL	2,668,000	2,636	.3	540	.0	671	.0	42	.0	3,889	.1
Pennsylvania	MILITARY		2,215	.4	4,123	.9	373	.0			6,711	.4
	CIVILIAN		18,882	5.4	25,848	8.0	1,537	.6	9,476	12.6	55,743	5.7
	TOTAL	11,879,000	21,097	2.4	29,971	4.0	1,910	.2	9,476	12.6	62,454	2.6
Rhode Island	MILITARY		103	.0	3,897	.9	37	.0			4,037	.2
	CIVILIAN		298	.0	3,863	1.2	259	.1	295	.3	4,715	.4
	TOTAL	953,000	401	.0	7,760	1.0	296	.0	295	.3	8,752	.3
South Carolina	MILITARY		11,449	2.2	19,435	4.6	13,489	3.0			44,373	3.2
	CIVILIAN		3,436	.9	14,391	4.4	2,599	1.1	119	.1	20,545	2.1
	TOTAL	3,227,000	14,885	1.7	33,826	4.5	16,088	2.3	119	.1	64,918	2.7
South Dakota	MILITARY		34	.0	8	.0	5,812	1.3			5,854	.4
	CIVILIAN		552	.1	834	.0	834	.3	15	.0	1,401	.1
	TOTAL	694,000	586	.0	8	.0	6,646	.9	15	.0	7,255	.3
Tennessee	MILITARY		358	.0	10,341	2.4	292	.0			10,991	.8
	CIVILIAN		2,422	.7	1,087	.3	951	.4	2,840	3.7	7,300	.7
	TOTAL	4,656,000	2,780	.3	11,428	1.5	1,243	.1	2,840	3.7	18,291	.7
Texas	MILITARY		64,938	12.6	7,016	1.6	55,222	12.6			127,176	9.3
	CIVILIAN		29,032	8.4	2,303	.7	32,895	13.9	2,419	3.2	66,649	6.8
	TOTAL	15,329,000	93,970	10.9	9,319	1.2	88,117	13.1	2,419	3.2	193,825	8.2

**PERCENT DISTRIBUTION OF DoD ACTIVE DUTY MILITARY AND DIRECT HIRE CIVILIAN PERSONNEL
BY STATE, ACCORDING TO DEFENSE COMPONENT: SEPTEMBER 30, 1985**

	1982*1 CENSUS		ARMY #2		NAVY #3		AIR FORCE		OTHER DoD ORGANIZATIONS		TOTAL DEPARTMENT OF DEFENSE		
	NUMBER	PCT. U.S.	NUMBER	PCT. USA	NUMBER	PCT. USN	NUMBER	PCT. USAF	NUMBER	PCT. ODA	NUMBER	PCT. DoD	
													NUMBER
Utah	MILITARY	811	.1	66	.0	5,295	1.2				6,172	.4	
	CIVILIAN	5,557	1.6	86	.0	15,784	6.6				23,641	2.4	
	TOTAL	6,368	.7	152	.0	21,079	3.1			2,214	2,214	29,813	1.2
Vermont	MILITARY	32	.0	11	.0	31	.0				74	.0	
	CIVILIAN	271	.0	4	.0	243	.1			88	88	606	.0
	TOTAL	303	.0	15	.0	274	.0			88	88	680	.0
Virginia	MILITARY	33,953	6.5	47,496	11.4	15,139	3.4				96,588	7.0	
	CIVILIAN	31,030	8.9	59,325	18.4	4,303	1.8			12,589	16.8	107,247	10.9
	TOTAL	64,983	7.5	106,821	14.5	19,442	2.8			12,589	16.8	203,835	8.6
Washington	MILITARY	25,554	4.9	8,363	2.0	9,752	2.2				43,669	3.1	
	CIVILIAN	6,350	1.8	19,999	6.2	2,736	1.1			424	5	29,509	3.0
	TOTAL	31,904	3.7	28,362	3.8	12,488	1.8			424	5	73,178	3.1
West Virginia	MILITARY	159	.0	240	.0	42	.0				441	.0	
	CIVILIAN	1,177	.3	43	.0	350	.1			29	.0	1,599	.1
	TOTAL	1,336	.1	283	.0	392	.0			29	.0	2,040	.0
Wisconsin	MILITARY	493	.0	321	.0	98	.0				912	.0	
	CIVILIAN	2,131	.6	67	.0	786	.3			168	.2	3,152	.3
	TOTAL	2,624	.3	388	.0	884	.1			168	.2	4,064	.1
Wyoming	MILITARY	13	.0	5	.0	3,729	.8				3,747	.2	
	CIVILIAN	215	.0		.0	774	.3			89	.1	1,078	.1
	TOTAL	228	.0	5	.0	4,503	.6			89	.1	4,825	.2
Undistributed	MILITARY	12,774	2.4		.0		.0				12,774	.9	
	CIVILIAN		.0		.0	349	.1				349	.0	
	TOTAL	12,774	1.4		.0	349	.0				13,123	.5	
UNITED STATES (INCL. ALASKA & HAWAII)	MILITARY	515,182	100.0	415,887	100.0	435,797	100.0				1,366,866	100.0	
	CIVILIAN	344,872	100.0	320,764	100.0	235,596	100.0			74,923	100.0	976,155	100.0
	TOTAL	860,054	100.0	736,651	100.0	671,393	100.0			74,923	100.0	2,343,021	100.0

*1 THE BUREAU OF CENSUS POPULATION DATA USED HEREIN ARE APRIL 1, 1982.
*2 ARMY INCLUDES CIVIL FUNCTIONS.
*3 NAVY EXCLUDES TEMPORARY SHORE BASED AND AFLOAT. INCLUDES MARINE CORPS.

SECTION 2

**DOD ACTIVE DUTY MILITARY AND DIRECT HIRE CIVILIAN PERSONNEL,
BY INSTALLATION OR CITY, ACCORDING TO DEFENSE COMPONENT: SEPTEMBER 30, 1985**

DoD Active Duty Military and Direct Hire Civilian Personnel
By Installation or City, According to Defense Component: September 30, 1985

Alabama

Installation/City	MILITARY PERSONNEL				CIVILIAN PERSONNEL					TOTAL DoD
	Army	Navy	Air Force	Sub Total	Army	Navy	Air Force	Other DoD Organizations	Sub Total	
Anniston	51		2	53	4,949			25	4,974	5,027
Auburn	21	66	10	97	7	2			9	106
Birmingham	100	197	38	335	186	3	285	235	709	1,044
Dothan		2	2	4	31		35	33	99	103
Fort McClellan	6,441	134	7	6,582	1,866				1,866	8,448
Fort Rucker	7,281	2	150	7,433	3,381	1	1	19	3,401	10,834
Gunter AFB	158		1,247	1,405	40	1	924	12	977	2,382
Huntsville	28	12	4	44	1,510		1	127	1,638	1,682
Maxwell AFB	8		3,019	3,027	11		1,676		1,687	4,714
Mobile	27	22	3	52	1,128			9	1,137	1,189
Montgomery	181	147	22	350	409	5	282	9	705	1,055
Redstone Arsenal	3,479	42	7	3,528	9,292		1	11	9,304	12,832
Tuscaloosa	14	6	9	29	93	1		1	95	124
Other	75	56	26	157	655		36	25	716	873
TOTAL	17,864	686	4,546	23,096	23,558	12	3,241	506	27,317	50,413

**DoD Active Duty Military and Direct Hire Civilian Personnel
By Installation or City, According to Defense Component: September 30, 1985**

Alaska

Installation/City	MILITARY PERSONNEL				CIVILIAN PERSONNEL				TOTAL DoD
	Army	Navy	Air Force	Sub Total	Army	Navy	Air Force Organizations	Sub Total	
Adak Station	1	1,776		1,777		171		171	1,948
Anchorage	48	56	5	109	85		165	252	361
Clear MSL Early Warn			122	122			64	64	186
Eielson AFB			3,389	3,389	4		362	366	3,755
Elmendorf AFB	11		6,023	6,034	487		1,203	1,723	7,757
Fairbanks	19		1	20	150			152	172
Fort Greely	866			866	276			276	1,142
Fort Richardson	4,284		37	4,321	609		2	611	4,932
Fort Wainwright	2,563		14	2,577	179		16	195	2,772
Galena			305	305	1			1	306
King Salmon			274	274			21	21	295
Richardson					773			773	773
Shemya AFB			575	575			24	24	599
Wainwright					290			290	290
Other	3	2	1	6	81	1	4	86	92
TOTAL	7,795	1,834	10,746	20,375	2,935	172	1,845	5,005	25,380

**DoD Active Duty Military and Direct Hire Civilian Personnel
By Installation or City, According to Defense Component: September 30, 1985**

Arizona

Installation/City	MILITARY PERSONNEL				CIVILIAN PERSONNEL				TOTAL DoD	
	Army	Navy	Air Force	Sub Total	Army	Navy	Air Force	Other DoD Organizations		Sub Total
Davis-Monthan AFB	2	2	4,401	4,405			1,353	27	1,380	5,785
Fort Huachuca	5,798	33	59	5,890	4,048	1	2	10	4,061	9,951
Gila Bend			172	172	2		78		80	252
Luke Air Force Base	4	1	5,150	5,155	4		1,013	14	1,031	6,186
Phoenix	204	113	20	337	373	6	233	216	828	1,165
Tucson	8	30	27	65	42	4	570	49	665	730
Williams AFB			3,128	3,128	1		684		685	3,813
Yuma	4	998		1,002	1	427	2	7	437	1,439
Yuma Proving Ground	419			419	955		48		1,003	1,422
Other	443	1	106	550	1,061	18	53	66	1,198	1,748
TOTAL	6,463	1,178	13,063	20,704	5,532	456	3,988	389	10,365	31,069

**DoD Active Duty Military and Direct Hire Civilian Personnel
By Installation or City, According to Defense Component: September 30, 1985**

Arkansas

Installation/City	MILITARY PERSONNEL				CIVILIAN PERSONNEL				TOTAL DoD	
	Army	Navy	Air Force	Sub Total	Army	Navy	Air Force	Other DoD Organizations		Sub Total
Blytheville AFB			2,889	2,889	1		315	2	318	3,207
Camp Jos T. Robinson					340		4		344	344
Fort Chaffee	27			27	225			1	226	253
Fort Smith		4	2	6	15		222		237	243
Hot Springs					86		16	1	103	103
Jacksonville			2	2			179		179	181
Little Rock	170	191		361	400	6	10	10	426	787
Little Rock AFB			6,264	6,264	9		656	9	674	6,938
Pine Bluff	106		1	107	1,485				1,485	1,592
Russellville	8		1	9	96				96	105
Other	67	5	11	83	709	2		46	757	840
TOTAL	378	200	9,170	9,748	3,366	8	1,402	69	4,845	14,593

**DoD Active Duty Military and Direct Hire Civilian Personnel
By Installation or City, According to Defense Component: September 30, 1985**

California

Installation/City	MILITARY PERSONNEL				CIVILIAN PERSONNEL				TOTAL DoD
	Army	Navy	Air Force	Sub Tot 1	Army	Navy	Air Force Organizations	Sub Total	
Alameda	231	1,542	2	1,775	49	5,962	351	6,362	8,137
Anaheim		4	13	17		37	118	278	295
Barstow	1	597		598	6	2,319	40	2,365	2,963
Beale AFB	2		4,201	4,203			547	550	4,753
Bell	7			7	38		62	100	107
Bridgeport		263		263		11		11	274
Burbank		12		12	4	96	36	139	151
Camp Pendleton	7	29,905		29,912	23	2,249	19	2,291	32,203
Camp Roberts	148			148	161			161	309
Castle AFB	2	1	5,138	5,141		4	431	440	5,581
China Lake NWC	1	916		917		5,376	4	5,380	6,297
Concord		598		598	1	1,129	15	1,145	1,743
Corona		1	1	2	1	764		765	767
Coronado	1	2,352	1	2,354		264		264	2,618
Culver City	6		4	10	90		3	166	176
Edwards AFB	65	2	4,243	4,310	140		2,286	2,432	6,742
El Centro		275	1	276	2	146		148	424
El Segundo			25	25	4	2	1,496	1,515	1,540
El Toro	2	1,341	1	1,344		1,053	20	1,073	2,417
Fallbrook		99		99		238		238	337

**DoD Active Duty Military and Direct Hire Civilian Personnel
By Installation or City, According to Defense Component: September 30, 1985**

California

Installation/City	MILITARY PERSONNEL				CIVILIAN PERSONNEL				TOTAL DoD	
	Army	Navy	Air Force	Sub Total	Army	Navy	Air Force	Other DoD Organizations		
Ferndale		282		282		21			21	303
Fort Baker	40	7		47	59				59	106
Fort Irwin	4,377		5	4,382	656				656	5,038
Fort Ord	17,204	1	60	17,265	2,740		14		2,754	20,019
Fresno	23	69	13	105	162	3	2		459	564
Fullerton	2	3	5	10	5		150		155	165
George AFB	1		5,501	5,502	5		522	1	528	6,030
Hawthorne		1	18	19			133	29	162	181
Imperial Beach		67		67		32	48		80	147
Inglewood		1	4	5	10		257		267	272
Jolon	100			100	144				144	244
Lathrop	45	1		46	1,404				1,404	1,450
Lemoore	1	3,133		3,134		821			821	3,955
Long Beach	12	2,045	16	2,073	125	7,641	65	90	7,921	9,994
Los Alamitos	124	9		133	316			3	319	452
Los Angeles	389	513	1,876	2,778	785	98	555	1,578	3,016	5,794
March Air Force Base	1	3	3,963	3,967	5		1,195		1,200	5,167
Mare Isl Nav Shipyd		1,736		1,736		10,188			10,188	11,924
Mather AFB		11	4,779	4,790	44	1	1,214		1,259	6,049
McClellan AFB	1		3,526	3,527	20		14,298	59	14,377	17,904

**DoD Active Duty Military and Direct Hire Civilian Personnel
By Installation or City, According to Defense Component: September 30, 1985**

California

Installation/City	MILITARY PERSONNEL				CIVILIAN PERSONNEL				TOTAL DoD
	Army	Navy	Air Force	Sub Total	Army	Navy	Air Force Organizations	Sub Total	
Miramar NAS		3,491	4	3,495		876		876	4,371
Moffett Field NAS	9	2,314	9	2,332	174	710	148	4	3,368
Monterey	2,009	1,936	567	4,512	1,002	970		54	6,538
Mountain View	10	2	1	13	24		1	71	109
North Island NAS		5,482		5,482		7,227		28	12,737
Norton AFB	8		5,361	5,369	18		2,593	32	8,012
Oakland	54	1,929	36	2,019	897	6,127	1	5	9,049
Oakland Army Base	712		10	722		1	6	7	729
Ontario		27	27	27	15		21	71	134
Oxnard AFB						240			240
Pasadena		27	4	31	5	35	1	88	160
Point Mugu PMTC		1,769	3	1,772		3,762			5,534
Pomona	1	21	4	26	4	440		44	514
Port Huereme	5	1,543		1,548	2	4,027		33	5,610
Presidio of SF	2,792			2,792	2,981			47	5,820
Rancho Cordova			3	3	1	1		97	102
Redondo Beach			18	18		110		29	157
Sacramento	838	253	55	1,146	4,732	5	23	39	5,945
San Bruno		30		30	3	908		180	1,121
San Clemente		150		150					150

**DoD Active Duty Military and Direct Hire Civilian Personnel
By Installation or City, According to Defense Component: September 30, 1985**

California

Installation/City	MILITARY PERSONNEL				CIVILIAN PERSONNEL				TOTAL DoD	
	Army	Navy	Air Force	Sub Total	Army	Navy	Air Force Organizations	Sub Total		
San Diego	81	36,603	21	36,705	32	12,396	1	484	12,913	49,618
San Francisco	30	1,863	32	1,925	404	813	42	68	1,327	3,252
San Jose	10	71	14	95	39	6	1	141	187	282
San Luis Obispo	6		2	8	157	1		2	160	168
San Nicolas Island		42		42		102			102	144
Santa Ana	180	11,865	7	12,052	18	54	1	219	292	12,344
Seal Beach		251		251		1,119		9	1,128	1,379
Sierra Army Depot					660			4	664	664
Sierra City	365			365						365
Skaggs Island NSG		301		301						301
Stockton		280	4	284	154	316	1	130	601	885
Sunnyvale	1	30	1,132	1,163	10	241	376	132	759	1,922
Tracy	18	3	3	24	40			1,572	1,612	1,636
Travis AFB	14	9	7,546	7,569	39	18	2,268	16	2,341	9,910
Twentynine Palms	2	5,837		5,839		599		2	601	6,440
Vallejo		124	2	126	6	604	1	12	623	749
Vandenberg AFB	1		3,956	3,957	65	1	1,477	29	1,572	5,529
Other	93	296	261	650	877	284	317	1,049	2,527	3,177
TOTAL	30,032	122,312	52,478	204,822	19,358	80,338	30,644	7,595	137,935	342,757

**DoD Active Duty Military and Direct Hire Civilian Personnel
By Installation or City, According to Defense Component: September 30, 1985**

Colorado

Installation/City	MILITARY PERSONNEL				CIVILIAN PERSONNEL				TOTAL DoD
	Army	Navy	Air Force	Sub Total	Army	Navy	Air Force Organizations	Sub Total	
Air Force Academy			2,695	2,695	1,738		1,738	1,738	4,433
Aurora	1,556	48	108	1,712	1,642		497	2,362	4,074
Broadmoor			1,530	1,530				107	1,530
Camp George West								107	107
Colorado Springs	9	46	931	986	62		508	617	1,603
Denver	225	597	45	867	93	11	9	229	1,096
Fort Carson	20,306		70	20,376	2,585			2,624	23,000
La Junta			105	105	1		2	3	108
Lowry Air Force Base	397	43	6,115	6,555	9		4,241	4,250	10,805
Peterson AFB	66		1,678	1,744			833	833	2,577
Pueblo	171	4	2	177	778			780	957
Rocky Mountain Ars	14		8	22	224			230	252
Waterton							117	131	131
Other	27	10	108	145	98	2	24	221	366
TOTAL	22,771	748	13,395	36,914	5,599	13	7,969	14,125	51,039

**DoD Active Duty Military and Direct Hire Civilian Personnel
By Installation or City, According to Defense Component: September 30, 1985**

Connecticut

Installation/City	MILITARY PERSONNEL				CIVILIAN PERSONNEL				TOTAL DoD	
	Army	Navy	Air Force	Sub Total	Army	Navy	Air Force	Other DoD Organizations		Sub Total
Bridgeport			6	6	3	9	1	131	144	150
East Granby							219	1	220	220
East Hartford			10	10		1	158	34	193	203
Groton		5,035		5,035	75	1,393		56	1,524	6,559
Hartford	17	79	5	101	119	2	5	179	305	406
New Haven	138	46	6	190	48	1		12	61	251
New London	4	430	1	435	14	1,472			1,486	1,921
Stratford	9	11	1	21	13	177		121	311	332
Windsor		658		658				3	3	661
Windsor Locks			2	2	131		4	78	213	215
Other	27	12	29	68	189	12	58	235	494	562
TOTAL	195	6,271	60	6,526	592	3,067	445	850	4,954	11,480

**DoD Active Duty Military and Direct Hire Civilian Personnel
By Installation or City, According to Defense Component: September 30, 1985**

Delaware

Installation/City	MILITARY PERSONNEL				CIVILIAN PERSONNEL				TOTAL DoD	
	Army	Navy	Air Force	Sub Total	Army	Navy	Air Force	Other DoD Organizations		Sub Total
Dover Air Force Base	19		4,592	4,611	27		1,356	12	1,395	6,006
New Castle					114		170		284	284
Other	22	22	7	51	101	1	3	12	117	168
TOTAL	41	22	4,599	4,662	242	1	1,529	24	1,796	6,458

**DoD Active Duty Military and Direct Hire Civilian Personnel
By Installation or City, According to Defense Component: September 30, 1985
District of Columbia**

Installation/City	MILITARY PERSONNEL				CIVILIAN PERSONNEL				TOTAL DoD	
	Army	Navy	Air Force	Sub Total	Army	Navy	Air Force	Other DoD Organizations		Sub Total
Bolling AFB			2,238	2,238			256		256	2,494
Washington	5,480	4,058	934	10,472	6,623	8,370	869	741	16,603	27,075
Other	5,480	4,058	934	10,472	6,624	8,370	869	742	16,605	27,077
TOTAL	5,480	4,058	3,172	12,710	6,624	8,370	1,125	742	15,861	29,571

**DoD Active Duty Military and Direct Hire Civilian Personnel
By Installation or City, According to Defense Component: September 30, 1985**

Florida

Installation/City	MILITARY PERSONNEL				CIVILIAN PERSONNEL				TOTAL DoD	
	Army	Navy	Air Force	Sub Total	Army	Navy	Air Force	Other DoD Organizations		Sub Total
Astor				108						108
Avon Park			221	221	17		84		101	322
Camp Blanding				135					135	135
Cape Canaveral	2	177	153	332	10	67	8	2	87	419
Cape Canaveral AFS		43		43	8	7	158		173	216
Cecil Field NAS		3,408	1	3,409		616			616	4,025
Crestview			296	296	1		304		305	601
Eglin Air Force Base	124	5	9,217	9,346	36	4	3,681	27	3,748	13,094
Eglin Aux Fld 9			3,073	3,073			269		269	3,342
Fort Lauderdale		23	2	25	2	56	1	24	83	108
Homestead	3	308		311	1	3	3		7	318
Homestead AFB			4,461	4,461	7	44	1,025	13	1,089	5,550
Jacksonville	268	5,919	14	6,201	651	6,318	264	65	7,298	13,499
Key West	50	1,519	89	1,658		628	1	8	637	2,295
MacDill AFB	889	239	5,274	6,402	14		940	9	963	7,365
Mayport		2,379		2,379		920		2	922	3,301
Melbourne	7		3	10	3	1	1	115	120	130
Miami	160	138	18	316	82	8	2	16	108	424
Milton		1,830		1,830	1	259			260	2,090
Orlando	42	13,968	24	14,034	216	2,162	1	365	2,744	16,778

**DoD Active Duty Military and Direct Hire Civilian Personnel
By Installation or City, According to Defense Component: September 30, 1985**

Florida

Installation/City	MILITARY PERSONNEL				CIVILIAN PERSONNEL				TOTAL DoD	
	Army	Navy	Air Force	Sub Total	Army	Navy	Air Force Organizations	Other DoD		
Panama City	5	547	1	553	48	1,184	3	1,235	1,788	
Patrick AFB	107	28	3,196	3,331	8	1,313	42	1,363	4,694	
Pensacola	120	9,432	6	9,558	29	8,227	3	8,303	17,861	
Saint Augustine	16			16	146		12	175	191	
Saint Petersburg		11	8	19	31		4	109	128	
Tallahassee	103	61	17	181	30	1	3	35	216	
Tampa	50	52	183	285	72	2	1	118	403	
Tyndall AFB	2	4	4,491	4,497	11		1,097	2	5,607	
West Palm Beach		12	13	25	22	50	109	36	242	
Other	62	46	112	220	317	23	61	298	919	
TOTAL	2,010	40,257	30,873	73,140	1,898	20,580	9,343	1,208	33,029	106,169

**DoD Active Duty Military and Direct Hire Civilian Personnel
By Installation or City, According to Defense Component: September 30, 1985**

Georgia

Installation/City	MILITARY PERSONNEL				CIVILIAN PERSONNEL				TOTAL DoD
	Army	Navy	Air Force	Sub Total	Army	Navy	Air Force Organizations	Sub Total	
Albany	3	1,077	14	1,094	15	2,861	9	2,885	3,979
Athens	14	318	11	343	10	78	1	89	432
Atlanta	822	183	76	1,081	557	28	51	738	1,819
Dobbins AFB			118	118	17	690		707	825
Forest Park	5		1	6	990		9	999	1,005
Fort Benning	22,211	4	59	22,274	5,473		20	5,493	27,767
Fort Gordon	12,094	208	67	12,369	3,821		7	3,828	16,197
Fort McPherson	1,548		21	1,569	2,266			2,266	3,835
Fort Stewart	13,515		43	13,558	2,331		15	2,346	15,904
Hunter Army Airfield	3,448		19	3,467	528		1	529	3,996
Macon	12	146	5	163	31	9	23	65	228
Marietta	2	411	14	427	105	164	394	1,517	1,944
Moody Air Force Base			3,368	3,368	1		491	498	3,866
Robins AFB	1	3	3,804	3,808	10		15,964	16,028	19,836
Saint Marys		577		577		441		441	1,018
Savannah	9	20	6	35	795	1	232	5	1,068
Other	77	21	35	133	750	5	57	894	1,027
TOTAL	53,761	2,968	7,661	64,390	17,700	3,587	17,903	40,356	104,746

**DoD Active Duty Military and Direct Hire Civilian Personnel
By Installation or City, According to Defense Component: September 30, 1985**

Hawaii

Installation/City	MILITARY PERSONNEL				CIVILIAN PERSONNEL				TOTAL DoD	
	Army	Navy	Air Force	Sub Total	Army	Navy	Air Force	Other DoD Organizations		
Aiea	274	118	342	734		233			233	967
Barbers Point NAS	4	1,964	6	1,974	22	426	8		456	2,430
Ford Island	146	251		397	1	41			42	439
Fort Shafter					1,988				1,988	1,988
Halawa Heights		310		310	6	34			40	350
Hickam AFB	1,412	2	5,145	6,559	42	1	2,251	21	2,315	8,874
Honolulu	1,575	112	40	1,727	274	284	13	55	626	2,353
Kaneohe		9,690	1	9,691	28	678			706	10,397
Kapalama	12			12	214				214	226
Kauai Island		130		130		72	11		83	213
Kunia	1,101	173		1,274	28				28	1,302
Lualualei		224		224	16	274			290	514
Pearl Harbor		7,352	2	7,354	36	10,959			10,995	18,349
Schofield Barracks	13,862		19	13,881	1,146				1,146	15,027
Tripler Army Med Ctr		3		3	1,047				1,047	1,050
Wahiawa		863		863	4	189			193	1,056
Waialua		553	14	567	28		9		37	604
Wheeler AFB	30	15	1,051	1,096	217		237	43	497	1,593
Other	130	15	1,128	1,273	420	22	334	44	820	2,093

**DoD Active Duty Military and Direct Hire Civilian Personnel
By Installation or City, According to Defense Component: September 30, 1985**

Hawaii

Installation/City	MILITARY PERSONNEL			CIVILIAN PERSONNEL				TOTAL DoD	
	Army	Navy	Air Force	Sub Total	Army	Navy	Air Force Organizations		Sub Total
	18,516	21,760	6,697	46,973	5,300	13,213	2,626	21,259	68,232
TOTAL									

**DoD Active Duty Military and Direct Hire Civilian Personnel
By Installation or City, According to Defense Component: September 30, 1985**

Idaho

Installation/City	MILITARY PERSONNEL				CIVILIAN PERSONNEL				TOTAL DoD	
	Army	Navy	Air Force	Sub Total	Army	Navy	Air Force Organizations	Sub Total		
Boise	22	23	13	58	294	1	268	5	568	626
Idaho Falls		1,621	1	1,622	8	9		2	19	1,641
Mountain Home AFB			3,885	3,885	3		528	4	535	4,420
Other	17	55	10	82	128	20		1	149	231
TOTAL	39	1,699	3,909	5,647	433	30	796	12	1,271	6,918

**DoD Active Duty Military and Direct Hire Civilian Personnel
By Installation or City, According to Defense Component: September 30, 1985**

Illinois

Installation/City	MILITARY PERSONNEL				CIVILIAN PERSONNEL				TOTAL DoD
	Army	Navy	Air Force	Sub Total	Army	Navy	Air Force Organizations	Sub Total	
Champaign	11	4	3	18	264		2	266	284
Chanute AFB	1	226	5,634	5,861	2		1,226	1,242	7,103
Chicago	96	211	50	357	542	20	670	2,057	2,414
Forest Park	69	12		81	39	3		42	123
Fort Sheridan	1,405	3	6	1,414	1,630		18	1,648	3,062
Glenview	31	683	2	716	58	237		295	1,011
Granite City	37		1	38	193		5	198	236
Great Lakes	140	24,374	33	24,547	5	2,048	17	2,070	26,617
North Chicago					105			105	105
Peoria	187	18	4	209	93		171	264	473
Rock Island	278	37	11	326	9,246	2		9,266	9,592
Savanna Army Depot	4			4	561		1	562	566
Scott Air Force Base	17	11	6,854	6,882	42		2,922	3,208	10,090
Springfield	81		7	88	213		272	488	576
Other	69	76	188	333	769	4	6	953	1,286
TOTAL	2,426	25,655	12,793	40,874	13,762	2,314	5,267	22,664	63,538

**DoD Active Duty Military and Direct Hire Civilian Personnel
By Installation or City, According to Defense Component: September 30, 1985**

Indiana

Installation/City	MILITARY PERSONNEL				CIVILIAN PERSONNEL				TOTAL DoD
	Army	Navy	Air Force	Sub Total	Army	Navy	Air Force Organizations	Sub Total	
Crane	2	49	1	52	848	3,856	20	4,724	4,776
Fort Wayne	1	16	8	25	22	254	87	363	388
Ft Benjamin Harrison	2,936	11	79	3,026	4,566		40	4,606	7,632
Grissom AFB			2,577	2,577	7		2	743	3,320
Indianapolis	248	388	37	673	347	3,051	14	3,577	4,250
Jefferson Prov Grnd	3			3	448		1	449	452
South Bend	9	16	5	30	32		1	118	148
Terre Haute	11	4	8	23	12		2	241	264
Other	56	60	51	167	545	4	7	615	782
TOTAL	3,266	544	2,766	6,576	6,827	6,911	1,237	15,436	22,012

**DoD Active Duty Military and Direct Hire Civilian Personnel
By Installation or City, According to Defense Component: September 30, 1985**

Iowa

Installation/City	MILITARY PERSONNEL				CIVILIAN PERSONNEL				TOTAL DoD
	Army	Navy	Air Force	Sub Total	Army	Navy	Air Force Organizations	Sub Total	
Camp Dodge					230	9		239	239
Cedar Rapids	2	5	1	8	19		116	135	143
Davenport			1	1	143		6	149	150
Des Moines	31	86	14	131	66	8	260	339	470
Fort Des Moines	158			158	22			22	180
Sioux City		2	3	5	24		226	250	255
Other	29	29	38	96	400	1	2	411	507
TOTAL	220	122	57	399	904	9	497	1,545	1,944

**DoD Active Duty Military and Direct Hire Civilian Personnel
By Installation or City, According to Defense Component: September 30, 1985**

Kansas

Installation/City	MILITARY PERSONNEL				CIVILIAN PERSONNEL				TOTAL DoD	
	Army	Navy	Air Force	Sub Total	Army	Navy	Air Force	Other DoD Organizations		Sub Total
Forbes Field			2	2	65		198		263	265
Fort Leavenworth	3,174	131	178	3,483	2,071			3	2,074	5,557
Fort Riley	16,582		61	16,643	2,445			21	2,466	19,109
Lawrence	11	59	9	79	21	2	1		24	103
McConnell AFB			3,150	3,150			930	3	933	4,083
Olathe	38	9		47	49	23			72	119
Overland Park		58	1	59		158			158	217
Topeka	29	12	2	43	196		12		208	251
Wichita	23	26	32	81	74		188	149	411	492
Other	18	4	18	40	397			22	419	459
TOTAL	19,875	299	3,453	23,627	5,318	183	1,329	198	7,028	30,655

**DoD Active Duty Military and Direct Hire Civilian Personnel
By Installation or City, According to Defense Component: September 30, 1985**

Kentucky

Installation/City	MILITARY PERSONNEL				CIVILIAN PERSONNEL				TOTAL DoD	
	Army	Navy	Air Force	Sub Total	Army	Navy	Air Force	Other DoD Organizations		Sub Total
Fort Campbell	22,463		99	22,562	2,784		2	19	2,805	25,367
Fort Knox	17,489	22	35	17,546	5,254		1	23	5,278	22,824
Frankfort	51			51	255		6		261	312
Lexington	71	16	18	105	1,444		1	12	1,457	1,562
Louisville	163	209	20	392	903		250	306	4,010	4,402
Richmond	13	1	73	87	458			2	460	547
Other	27		12	39	515			7	522	561
TOTAL	40,277	248	257	40,782	11,613	2,551	260	369	14,793	55,575

**DoD Active Duty Military and Direct Hire Civilian Personnel
By Installation or City, According to Defense Component: September 30, 1985**

Louisiana

Installation/City	MILITARY PERSONNEL				CIVILIAN PERSONNEL				TOTAL DoD	
	Army	Navy	Air Force	Sub Total	Army	Navy	Air Force	Other DoD Organizations		Sub Total
Barksdale AFB			5,711	5,711		6	1,189	6	1,201	6,912
Baton Rouge	34	26	13	73	29	1	1	4	35	108
Belle Chasse		526		526		240	255		495	1,021
Camp Beauregard	75			75	132				132	207
England AFB			3,076	3,076		1	472	1	474	3,550
Fort Polk	14,635		51	14,686	2,593		2	16	2,611	17,297
New Orleans	190	1,174	12	1,376	1,415	1,582	280	237	3,514	4,890
Shreveport	13	26	9	48	105		11	17	133	181
Other	60	22	57	139	668	6	23	14	711	850
TOTAL	15,007	1,774	8,929	25,710	4,942	1,836	2,233	295	9,306	35,016

**DoD Active Duty Military and Direct Hire Civilian Personnel
By Installation or City, According to Defense Component: September 30, 1985**

Maine

Installation/City	MILITARY PERSONNEL				CIVILIAN PERSONNEL				TOTAL DoD
	Army	Navy	Air Force	Sub Total	Army	Navy	Air Force Organizations	Sub Total	
Augusta	10	5	2	17	149	9	158	175	
Bangor		6	28	34	63	213	282	316	
Bath		43		43	283	19	302	345	
Brunswick		1,283		1,283	414	12	426	1,709	
Cutler		136		136	117	14	117	253	
Kittery					8,440	14	8,454	8,454	
Loring AFB	3		3,362	3,365	13	552	571	3,936	
Winter Harbor		373		373	60	6	60	433	
Other	24	33	74	131	91	43	231	362	
TOTAL	37	1,879	3,466	5,382	316	817	10,601	15,983	

**DoD Active Duty Military and Direct Hire Civilian Personnel
By Installation or City, According to Defense Component: September 30, 1985**

Maryland

Installation/City	MILITARY PERSONNEL				CIVILIAN PERSONNEL				TOTAL DoD
	Army	Navy	Air Force	Sub Total	Army	Navy	Air Force Organizations	Sub Total	
Aberdeen Prov Grnd	4,077	193	89	4,359	8,413		27	8,440	12,799
Adelphi	4		3	7	1,446	1		1,447	1,454
Andrews AFB	1	374	5,502	5,877	5	169	2,586	2,762	8,639
Annapolis	29	5,840	15	5,884	5	2,800	36	2,842	8,726
Baltimore	48	80	40	168	883	7	565	1,462	1,630
Bethesda	464	2,958	247	3,669	201	1,549	1,044	2,794	6,463
Brandywine			80	80			2	24	104
Brookmont	21		19	40			3,424	3,424	3,464
Carderock Springs		8		8		1,759		1,759	1,767
Cheltenham		129		129		202		202	331
Edgewood	453			453	65			65	518
Fort Detrick	856	8	36	900	1,208		21	1,238	2,138
Fort Meade	5,040	1,290	2,330	8,660	3,605	24	28	3,714	12,374
Fort Ritchie	1,012	29	110	1,151	963		6	974	2,125
Harmans							157	157	157
Havre de Grace					132			132	132
Hyattsville	3	133	1	137	7	9		16	153
Indian Head	52	325	148	525	6	2,832	1	2,839	3,364
Middle River					200		306	519	519
Patuxent River NATC	3	2,529	4	2,536		3,203	4	3,207	5,743

**DoD Active Duty Military and Direct Hire Civilian Personnel
By Installation or City, According to Defense Component: September 30, 1985**

Maryland

Installation/City	MILITARY PERSONNEL				CIVILIAN PERSONNEL				TOTAL DoD	
	Army	Navy	Air Force	Sub Total	Army	Navy	Air Force	Other DoD Organizations		Sub Total
Silver Spring		12		12	309	114		103	526	538
St. Inigoes		19		19		301			301	320
Suitland		582		582	5	1,403		2	1,410	1,992
Thurmont		99	5	104						104
Towson	2	2	3	7	4			297	301	308
White Oak		32		32	4	2,126			2,130	2,162
Other	55	189	104	348	257	133	24	193	607	955
TOTAL	12,120	14,831	8,736	35,687	17,718	16,632	3,174	5,768	43,292	78,979

**DoD Active Duty Military and Direct Hire Civilian Personnel
By Installation or City, According to Defense Component: September 30, 1985
Massachusetts**

Installation/City	MILITARY PERSONNEL				CIVILIAN PERSONNEL				TOTAL DoD	
	Army	Navy	Air Force	Sub Total	Army	Navy	Air Force	Other DoD Organizations		Sub Total
Ayer					131				131	131
Boston	349	426	28	803	186	428	1	1,070	1,685	2,488
Burlington	1	1	5	7			356	142	498	505
Cambridge	6	69	15	90	11	6	1	7	25	115
Chatham			171	171						171
Fort Devens	5,286	3	18	5,307	1,900			20	1,920	7,227
Laurence G. Hanscom	38		2,118	2,156	2		2,349		2,351	4,507
Lynn		6	2	8	6	133		60	199	207
Natick	164	3	2	169	1,407	54	5		1,466	1,635
Otis Air Force Base					50		370		420	420
Pittsfield		11	1	12	8	116		12	136	148
Waltham	6		3	9	458	1	12	138	609	618
Watertown					697			1	698	698
Westfield			4	4	14		207		221	225
Westover AFB		7		7	18	3	647	8	676	683
Weymouth		407		407	1	229		9	239	646
Other	36	127	104	267	511	11	172	364	1,058	1,325
TOTAL	5,886	1,060	2,471	9,417	5,400	981	4,120	1,831	12,332	21,749

**DoD Active Duty Military and Direct Hire Civilian Personnel
By Installation or City, According to Defense Component: September 30, 1985**

Michigan

Installation/City	MILITARY PERSONNEL				CIVILIAN PERSONNEL				TOTAL DoD
	Army	Navy	Air Force	Sub Total	Army	Navy	Air Force Organizations	Sub Total	
Battle Creek	10	13	10	33	11	1	659	2,120	2,153
Calumet			91	91	1		27	28	119
Detroit	589	352	19	960	481	14	250	745	1,705
Grand Rapids	2	17	2	21	16		1	114	135
K I Sawyer AFB	1		3,612	3,613	5		415	427	4,040
Lansing	233	97	5	335	282	1	10	298	633
Port Austin			78	78			25	25	103
Sault Ste Marie					185			185	185
Selfridge ANGB	93	108	87	288	155	76	768	1,014	1,302
Sterling Heights	1			1	433			445	446
Warren	3		1	4	5,560			5,576	5,580
Wurtsmith AFB	2		3,099	3,101	4		395	404	3,505
Other	61	83	104	248	571	7	10	817	1,065
TOTAL	995	670	7,108	8,773	7,704	99	2,310	12,198	20,971

DoD Active Duty Military and Direct Hire Civilian Personnel
By Installation or City, According to Defense Component: September 30, 1985

Minnesota

Installation/City	MILITARY PERSONNEL			CIVILIAN PERSONNEL				TOTAL DoD	
	Army	Navy	Air Force	Sub Total	Army	Navy	Air Force Organizations		Sub Total
Camp Ripley					273			273	273
Duluth		5	12	17	66		250	8	324
Ft. Snelling Mil Res	300		17	317	102				102
Minneapolis	39	319	46	404	83	26	366	190	665
St. Paul	30	16	14	60	575	7	240	137	959
Other	24		37	61	363	88	9	57	578
TOTAL	393	340	126	859	1,462	121	865	392	2,840

**DoD Active Duty Military and Direct Hire Civilian Personnel
By Installation or City, According to Defense Component: September 30, 1985**

Mississippi

Installation/City	MILITARY PERSONNEL				CIVILIAN PERSONNEL				TOTAL DoD	
	Army	Navy	Air Force	Sub Total	Army	Navy	Air Force	Other DoD Organizations		Sub Total
Bay St. Louis		92		92	6	1,302		38	1,346	1,438
Camp Shelby	6			6	257				257	263
Columbus			2,889	2,889	48				48	2,937
Columbus AFB					105		539	5	544	544
Flowood							198		303	303
Greenville			1	1	257			1	258	259
Gulfport	1	915	3	919	106	720	20	1	847	1,766
Jackson	206	26	15	247	184		8	17	209	456
Keesler AFB	7		8,975	8,982			2,493	24	2,517	11,499
Meridian	1	2,477	7	2,485	52	409	254	2	717	3,202
Oxford	9	173	2	184	1		1		2	186
Pascagoula			43	43	1	443		34	478	521
Vicksburg	35			35	3,368			1	3,369	3,404
Other	73	35	38	146	628	2		33	663	809
TOTAL	338	3,761	11,930	16,029	5,013	2,876	3,513	156	11,558	27,587

**DoD Active Duty Military and Direct Hire Civilian Personnel
By Installation or City, According to Defense Component: September 30, 1985**

Missouri

Installation/City	MILITARY PERSONNEL				CIVILIAN PERSONNEL				TOTAL DoD	
	Army	Navy	Air Force	Sub Total	Army	Navy	Air Force	Other DoD Organizations		Sub Total
Dresden									124	124
Fort Leonard Wood	10,562	29	104	10,695	2,349		3	14	2,366	13,061
Jefferson City	47		1	48	273		11		284	332
Kansas City	209	529	22	760	769	1,028	2	250	2,049	2,809
Overland			1	1	1,681				1,681	1,682
Richards-Gebaur AFB			6	6	10				306	312
Springfield	16	18	2	36	112			3	115	151
St. Ann									286	286
St. Joseph	7	6	3	16	17				183	199
St. Louis	848	315	82	1,245	7,341	386	9	4,439	12,175	13,420
Whiteman AFB	1		3,099	3,100	43			6	431	3,531
Other	66	21	78	165	743	23	40	185	991	1,156
TOTAL	11,756	918	3,398	16,072	13,338	1,437	1,319	4,897	20,991	37,063

**DoD Active Duty Military and Direct Hire Civilian Personnel
By Installation or City, According to Defense Component: September 30, 1985**

Montana

Installation/City	MILITARY PERSONNEL				CIVILIAN PERSONNEL				TOTAL DoD	
	Army	Navy	Air Force	Sub Total	Army	Navy	Air Force	Other DoD Organizations		Sub Total
Great Falls			3	3	18		296		314	317
Helena	1	4	1	6	207		9		216	222
Malmstrom AFB	1		3,656	3,657			506	8	514	4,171
Other	23	19	20	62	182	1	1	8	192	254
TOTAL	25	23	3,680	3,728	407	1	812	16	1,236	4,964

**DoD Active Duty Military and Direct Hire Civilian Personnel
By Installation or City, According to Defense Component: September 30, 1985**

Nebraska

Installation/City	MILITARY PERSONNEL				CIVILIAN PERSONNEL					TOTAL DoD
	Army	Navy	Air Force	Sub Total	Army	Navy	Air Force	Other DoD Organizations	Sub Total	
Lincoln	23	17	9	49	222	2	252	5	481	530
Offutt AFB	29	47	11,946	12,022	26		1,732	12	1,770	13,792
Omaha	218	268	22	508	1,388	10	8	26	1,432	1,940
Other	10		205	215	130		13	1	144	359
TOTAL	280	332	12,182	12,794	1,766	12	2,005	44	3,827	16,621

**DoD Active Duty Military and Direct Hire Civilian Personnel
By Installation or City, According to Defense Component: September 30, 1985**

Nevada

Installation/City	MILITARY PERSONNEL				CIVILIAN PERSONNEL				TOTAL DoD	
	Army	Navy	Air Force	Sub Total	Army	Navy	Air Force	Other DoD Organizations		Sub Total
Carson City	9			9	93		10		103	112
Fallon		876		876		315			315	1,191
Hawthorne	1	1	46	48	78	29	1		108	156
Indian Springs			314	314			50		50	364
Lake Mead Base			478	478						478
Las Vegas	6	25	131	162	21		53	0	80	242
Nellis AFB	2	4	7,801	7,807			1,104	9	1,113	8,920
Reno	7	19	6	32	5	1	230	2	238	270
Other			18	18	60			10	70	88
TOTAL	25	925	8,794	9,744	257	345	1,448	27	2,077	11,821

**DoD Active Duty Military and Direct Hire Civilian Personnel
By Installation or City, According to Defense Component: September 30, 1985
New Hampshire**

Installation/City	MILITARY PERSONNEL				CIVILIAN PERSONNEL				TOTAL DoD
	Army	Navy	Air Force	Sub Total	Army	Navy	Air Force Organizations	Sub Total	
Concord	115		1	116	130		6	137	253
Hanover	7		1	8	299			299	307
Manchester	7	74	7	88	61	2	1	75	163
New Boston			39	39			65	65	104
Pease Air Force Base			3,555	3,555			677	691	4,246
Portsmouth		290	1	291	5	363		368	659
Other	7	2	16	25	54	1		167	192
TOTAL	136	366	3,620	4,122	549	366	749	1,802	5,924

**DoD Active Duty Military and Direct Hire Civilian Personnel
By Installation or City, According to Defense Component: September 30, 1985**

New Jersey

Installation/City	MILITARY PERSONNEL				CIVILIAN PERSONNEL				TOTAL DoD	
	Army	Navy	Air Force	Sub Total	Army	Navy	Air Force Organizations	Other DoD		Sub Total
Bayonne	105	63	7	175	1,151	2,659	5	70	3,885	4,060
Camden		1		1	13	53		72	138	139
Colts Neck		468	1	469		764		15	779	1,248
Fort Dix	9,444			9,444	2,409				2,409	11,853
Fort Monmouth	2,405	24	24	2,453	8,531			15	8,546	10,999
Iselin		136		136		6			6	142
Lakehurst	32	961		993	27	2,410		24	2,461	3,454
McGuire AFB	13	5	4,563	4,581	6		1,906		1,912	6,493
Moorestown		183		183		26		59	85	268
Newark	16	90	10	116	41			28	69	185
Picatinny Arsenal	170			170	5,854			6	5,860	6,030
Pomona							261		261	261
Springfield	1	1	3	5				301	301	306
Trenton	36	26	2	64	231	712	14	7	964	1,028
Other	62	57	65	184	725	8	12	540	1,285	1,469
TOTAL	12,284	2,015	4,675	18,974	18,988	6,638	2,198	1,137	28,961	47,935

**DoD Active Duty Military and Direct Hire Civilian Personnel
By Installation or City, According to Defense Component: September 30, 1985
New Mexico**

Installation/City	MILITARY PERSONNEL				CIVILIAN PERSONNEL				TOTAL DoD	
	Army	Navy	Air Force	Sub Total	Army	Navy	Air Force Organizations	Sub Total		
Albuquerque	137	325	70	532	273	9	253	303	838	1,370
Cannon AFB	1	1	3,734	3,736	1		424	9	434	4,170
Dusty					128				128	128
Holloman AFB	2	1	6,222	6,225	111		1,050	31	1,192	7,417
Kirtland AFB		156	4,384	4,540	12	123	2,514	15	2,664	7,204
Santa Fe	7		1	8	150		8		158	166
White Sands Msl Rge	1,118	79	31	1,228	3,916	64	35	26	4,041	5,269
Other	119	4	29	152	342	1	13	19	375	527
TOTAL	1,384	566	14,471	16,421	4,933	197	4,297	403	9,830	26,251

**DoD Active Duty Military and Direct Hire Civilian Personnel
By Installation or City, According to Defense Component: September 30, 1985**

New York

Installation/City	MILITARY PERSONNEL				CIVILIAN PERSONNEL				TOTAL DoD
	Army	Navy	Air Force	Sub Total	Army	Navy	Air Force Organizations	Sub Total	
Albany	198	238	12	448	330	7	1	338	786
Ballston Spa		2,019		2,019					2,019
Bethpage		11	4	15	241			274	289
Blooming Grove	89			89	101			101	190
Buffalo	31	263	16	310	382	11	2	483	793
Deer Park			5	5			77	102	107
Fort Drum	961		2	963	1,370			1,370	2,333
Fort Hamilton	520	6	8	534	419			419	953
Fort Totten	73			73	94			94	167
Garden City	2	108	4	114		55		354	468
Great Neck		10		10	142			172	182
Griffiss AFB	3	5	4,514	4,522			2,837	2,859	7,381
Newburgh	168		23	191	45		229	281	472
Niagara Falls	4		9	13	90	2	665	766	779
North Syracuse					82		24	106	106
Owego		9	1	10		2		95	105
Peekskill					114			114	114
Plattsburgh					2		440	451	451
Plattsburgh AFB			3,912	3,912	2		1	6	3,918
Richmond	69	583	75	727	1,056	444	15	1,661	2,388

**DoD Active Duty Military and Direct Hire Civilian Personnel
By Installation or City, According to Defense Component: September 30, 1985**

New York

Installation/City	MILITARY PERSONNEL				CIVILIAN PERSONNEL				TOTAL DoD
	Army	Navy	Air Force	Sub Total	Army	Navy	Air Force Organizations	Sub Total	
Rochester	36	36	20	92	121	1	42	165	257
Romulus					1,069		2	1,071	1,071
Schenectady		11	4	15	30	4	18	239	254
Scotia		77		77		63	11	74	151
Seneca Falls	574			574					574
Syracuse	212	105	48	365	55	4	147	497	862
Watervliet	13			13	2,731		7	2,738	2,751
West Point Mil Res	6,220	6		6,226	2,505	2		2,507	8,733
Westhampton Beach						169		169	169
Other	89	327	249	665	580	94	433	1,298	1,963
TOTAL	9,262	3,814	8,906	21,982	11,178	1,072	1,424	18,804	40,786

**DoD Active Duty Military and Direct Hire Civilian Personnel
By Installation or City, According to Defense Component: September 30, 1985
North Carolina**

Installation/City	MILITARY PERSONNEL				CIVILIAN PERSONNEL				TOTAL DoD	
	Army	Navy	Air Force	Sub Total	Army	Navy	Air Force Organizations	Sub Total		
Asheville		10	3	13	13	4	73	6	96	109
Camp Lejeune		37,046		37,046	2,850			24	2,874	39,920
Charlotte	142	37	21	200	107	1	186	18	312	512
Cherry Point MCAS		10,698		10,698	5,121			29	5,150	15,848
Durham	11	16	18	45	139	1		1	141	186
Fort Bragg	40,581	6	174	40,761	5,058			26	5,084	45,845
Fort Fisher AFS		107		107			29		29	136
Greensboro	16	29	4	49	20		1	56	77	126
Jacksonville		696	1	697	3	153			156	853
Pope Air Force Base			3,884	3,884			346		346	4,230
Raleigh	223	259	35	517	286	10	8	13	317	834
Seymour Johnson AFB		1	4,541	4,542	3		533	4	540	5,082
Sunny Point MOT	15			15	287	1			288	303
Wilmington	4	8		12	354			2	356	368
Other	59	24	33	116	412	11	21	102	546	662
TOTAL	41,051	48,830	8,821	98,702	6,682	8,152	1,197	281	16,312	115,014

**DoD Active Duty Military and Direct Hire Civilian Personnel
By Installation or City, According to Defense Component: September 30, 1985
North Dakota**

Installation/City	MILITARY PERSONNEL				CIVILIAN PERSONNEL				TOTAL DoD	
	Army	Navy	Air Force	Sub Total	Army	Navy	Air Force	Other DoD Organizations		Sub Total
Bismarck	7		63	70	144		7		151	221
Fargo	13	11	19	43	24	1	271	1	297	340
Grand Forks AFB			5,222	5,222	4		516	8	528	5,750
Minot Air Force Base			5,888	5,888	8		541	10	559	6,447
Other	7		44	51	191		70	9	270	321
TOTAL	27	11	11,236	11,274	371	1	1,405	28	1,805	13,079

**DoD Active Duty Military and Direct Hire Civilian Personnel
By Installation or City, According to Defense Component: September 30, 1985**

Ohio

Installation/City	MILITARY PERSONNEL				CIVILIAN PERSONNEL				TOTAL DoD
	Army	Navy	Air Force	Sub Total	Army	Navy	Air Force Organizations	Sub Total	
Akron	9	19	15	43	14		116	130	173
Bratenahl						168		168	168
Cincinnati	182	120	32	334	252	7	1	339	673
Cleveland	265	343	21	629	95	1,407	5	2,355	2,984
Columbus	294	254	118	666	404	24	86	1,028	1,694
Dayton	23	47	238	308	10	10	50	110	418
Evendale			1	1			140	161	162
Heath			1	1			2,581	2,582	2,583
Kettering					17		34	2,861	2,912
Lima	7		4	11	121		22	143	154
Mansfield		5	6	11	7		169	184	195
Mariemont					124			124	124
Newark			31	31	112		1	119	150
Rickenbacker AFB			31	31			607	607	638
Springfield			12	12	23		246	276	288
Swanton							216	216	216
Toledo	5	18	10	33	29	2	2	93	126
Vienna							352	354	354
Whitehall					12		4,397	4,409	4,409
Wright Patterson AFB	15	25	11,472	11,512	46	3	16,930	17,009	28,521

**DoD Active Duty Military and Direct Hire Civilian Personnel
By Installation or City, According to Defense Component: September 30, 1985**

Ohio

Installation/City	MILITARY PERSONNEL			CIVILIAN PERSONNEL				TOTAL DoD		
	Army	Navy	Air Force	Sub Total	Army	Navy	Air Force		Other DoD Organizations	
Other	46	34	112	192	780	25	68	126	999	1,191
TOTAL	846	865	12,104	13,815	2,046	1,646	21,488	9,138	34,318	48,133

**DoD Active Duty Military and Direct Hire Civilian Personnel
By Installation or City, According to Defense Component: September 30, 1985**

Oklahoma

Installation/City	MILITARY PERSONNEL				CIVILIAN PERSONNEL				TOTAL DoD
	Army	Navy	Air Force	Sub Total	Army	Navy	Air Force Organizations	Sub Total	
Altus AFB			3,554	3,554	4		609	613	4,167
Fort Sill	18,540	75	12	18,627	3,655	7	18	3,680	22,307
McAlester	7	10	2	19	1,018	88	14	1,120	1,139
Norman	7	14	35	56	114			114	170
Oklahoma City	205	94	19	318	225	7	604	891	1,209
Tinker AFB	2		7,088	7,090	25		18,489	18,551	25,641
Tulsa	8	18	13	39	736		230	1,042	1,081
Vance Air Force Base			1,328	1,328	1		122	124	1,452
Other	55	7	22	84	685	1	3	705	789
TOTAL	18,824	218	12,073	31,115	6,463	96	20,064	26,840	57,955

**DoD Active Duty Military and Direct Hire Civilian Personnel
By Installation or City, According to Defense Component: September 30, 1985**

Oregon

Installation/City	MILITARY PERSONNEL				CIVILIAN PERSONNEL				TOTAL DoD	
	Army	Navy	Air Force	Sub Total	Army	Navy	Air Force	Other DoD Organizations		Sub Total
Bonneville					131				131	131
Clackamas					103				103	103
Coos Bay		118		118	5				5	123
Hermiston					258			1	259	259
Portland	155	259	22	436	1,215	16	528	31	1,790	2,226
Salem	21	17	9	47	209	1	14		224	271
Other	35	112	34	181	504	17	64	10	595	776
TOTAL	211	506	65	782	2,425	34	606	42	3,107	3,889

**DoD Active Duty Military and Direct Hire Civilian Personnel
By Installation or City, According to Defense Component: September 30, 1985**

Pennsylvania

Installation/City	MILITARY PERSONNEL				CIVILIAN PERSONNEL				TOTAL DoD
	Army	Navy	Air Force	Sub Total	Army	Navy	Air Force Organizations	Sub Total	
Carlisle Barracks	531	2	20	553	618			618	1,171
Coraopolis			5	5	22		364	388	393
Fairfield					140			140	140
Harrisburg	242	226	4	472	47	6	2	74	546
Horsham					11		263	278	278
Indiantown Gap	120		6	126	1,214		68	1,282	1,408
Letterkenny Army Dep	125			125	5,460			5,460	5,585
Mechanicsburg	26	137	6	169	3	5,697		7,467	7,636
Middletown		1	2	3			214	221	224
New Cumberland	88		28	116	26		3	35	151
New Cumberland Depot					3,964			3,964	3,964
Oakdale	126			126	267			267	393
Philadelphia	339	2,641	116	3,096	728	17,126	32	24,851	27,947
Pittsburgh	256	268	55	579	480	15	3	646	1,225
Pittsburgh Int A/P			23	23			357	357	380
Reading	2	17	3	22	20			96	118
State College	26	32	10	68	5	3	21	42	110
Tobyhanna	56			56	4,540			4,553	4,609
Warminster		262		262		2,744		2,746	3,008
Willow Grove	35	383		418	85	244	142	493	911

**DoD Active Duty Military and Direct Hire Civilian Personnel
By Installation or City, According to Defense Component: September 30, 1985
Pennsylvania**

Installation/City	MILITARY PERSONNEL			CIVILIAN PERSONNEL				TOTAL DoD	
	Army	Navy	Air Force	Sub Total	Army	Navy	Air Force		Other DoD Organizations
Other	243	154	95	492	1,252	13	68	432	2,257
TOTAL	2,215	4,123	373	6,711	18,882	25,848	1,537	9,476	62,454

**DoD Active Duty Military and Direct Hire Civilian Personnel
By Installation or City, According to Defense Component: September 30, 1985**

Rhode Island

Installation/City	MILITARY PERSONNEL				CIVILIAN PERSONNEL				TOTAL DoD
	Army	Navy	Air Force	Sub Total	Army	Navy	Air Force Organizations	Sub Total	
Davisville		16		16		240	13	253	269
Newport	8	3,838	14	3,860		3,607	11	3,618	7,478
Providence	86	42	10	138	143	2	10	161	299
Saunderstown			5	5			166	166	171
West Warwick			1	1			212	212	213
Other	9	1	7	17	155	14	83	305	322
TOTAL	103	3,897	37	4,037	298	3,863	259	4,715	8,752

**DoD Active Duty Military and Direct Hire Civilian Personnel
By Installation or City, According to Defense Component: September 30, 1985
South Carolina**

Installation/City	MILITARY PERSONNEL				CIVILIAN PERSONNEL				TOTAL DoD	
	Army	Navy	Air Force	Sub Total	Army	Navy	Air Force	Other DoD Organizations		Sub Total
Beaufort		4,203	2	4,205	1	631		1	633	4,838
Charleston	49	5,401		5,450	171	13,124	1	60	13,356	18,806
Charleston AFB			4,067	4,067	8		1,301		1,309	5,376
Columbia	175	184	27	386	290	8	4	11	313	699
Eastover			4	4	95		243		338	342
Fort Jackson	11,106	14	9	11,129	2,381			24	2,405	13,534
Myrtle Beach AFB			3,184	3,184			460	2	462	3,646
Parris Island MCRD	1	9,616		9,617		625		2	627	10,244
Shaw Air Force Base	40		6,166	6,206		2	583	6	591	6,797
Other	78	17	30	125	490	1	7	13	511	636
TOTAL	11,449	19,435	13,489	44,373	3,436	14,391	2,599	119	20,545	64,918

DoD Active Duty Military and Direct Hire Civilian Personnel
By Installation or City, According to Defense Component: September 30, 1985
South Dakota

Installation/City	MILITARY PERSONNEL				CIVILIAN PERSONNEL				TOTAL DoD
	Army	Navy	Air Force	Sub Total	Army	Navy	Air Force Organizations	Sub Total	
Ellsworth AFB	2		5,793	5,795	17		611	639	6,434
Rapid City	8		3	11	164		1	165	176
Sioux Falls	6	8	12	26	20		222	246	272
Other	18		4	22	351			351	373
TOTAL	34	8	5,812	5,854	552	15	834	1,401	7,255

**DoD Active Duty Military and Direct Hire Civilian Personnel
By Installation or City, According to Defense Component: September 30, 1985**

Tennessee

Installation/City	MILITARY PERSONNEL				CIVILIAN PERSONNEL				TOTAL DoD	
	Army	Navy	Air Force	Sub Total	Army	Navy	Air Force	Other DoD Organizations		Sub Total
Arnold AFS			145	145			222	2	224	369
Chattanooga	10	18	2	30	50		16	7	73	103
Knoxville	48	28	42	118	97	1	221	13	332	450
Memphis	55	154	27	236	811	89	172	2,683	3,755	3,991
Millington	4	9,891		9,895		988			988	10,883
Nashville	198	237	50	485	710	9	290	92	1,101	1,586
Other	43	13	26	82	754		30	43	827	909
TOTAL	358	10,341	292	10,991	2,422	1,087	951	2,840	7,300	18,291

**DoD Active Duty Military and Direct Hire Civilian Personnel
By Installation or City, According to Defense Component: September 30, 1985**

Texas

Installation/City	MILITARY PERSONNEL				CIVILIAN PERSONNEL					TOTAL DoD
	Army	Navy	Air Force	Sub Total	Army	Navy	Air Force	Other DoD Organizations	Sub Total	
Amarillo	9	23	5	37	65	2	3	70	107	
Austin	145	75	106	326	86	3	1	90	180	
Beeville	2	1,342		1,344	444			444	1,788	
Bergstrom AFB	42		4,738	4,780	7		1,005	1	1,013	
Brooks AFB	143		1,596	1,739			1,131		1,131	
Camp Mabry					309		10		319	
Carswell AFB			4,931	4,931	24		968	7	999	
College Station	22	20	100	142	5	3			8	
Corpus Christi	38	1,877	4	1,919	4,526	1,015	12	19	5,572	
Dallas	269	761	67	1,097	412	370	234	842	1,858	
Dyess Air Force Base	1		5,418	5,419	16		467	4	487	
El Paso	19	33	14	66	1,070		2	21	1,093	
Ellington AFB			8	8	25		285		310	
Fort Bliss	17,705	38	32	17,775	3,909		6	22	3,937	
Fort Hood	37,734		158	37,892	4,642		9	38	4,689	
Fort Sam Houston	7,269	133	141	7,543	4,357		487	316	5,160	
Fort Worth	32	5	54	91	1,231		279	261	1,771	
Galveston	4	18	2	24	327				329	
Gatesville					136				136	
Goodfellow AFB	492		1,404	1,896	6	1	335		342	

**DoD Active Duty Military and Direct Hire Civilian Personnel
By Installation or City, According to Defense Component: September 30, 1985**

Texas

Installation/City	MILITARY PERSONNEL				CIVILIAN PERSONNEL				TOTAL DoD
	Army	Navy	Air Force	Sub Total	Army	Navy	Air Force Organizations	Sub Total	
Grand Prairie			1	1	69	1	47	117	118
Houston	206	281	280	767	95	26	124	270	1,037
Kelly Air Force Base	41		4,401	4,442	17	18,729	69	18,815	23,257
Kingsville	9	1,644		1,653	2	407		409	2,062
Lackland AFB	62		11,168	11,230	64			2,555	13,785
Laughlin AFB			2,916	2,916	1	524	1	526	3,442
Medina			770	770					770
Randolph AFB		11	4,943	4,954	5	15	2,794	2,814	7,768
Red River Army Depot	68			68	6,355			6,384	6,452
Reese Air Force Base			2,697	2,697		587	2	589	3,286
San Angelo		250	8	258	8		2	10	268
San Antonio	494	348	277	1,119	426	8	1,000	1,608	2,727
Sheppard AFB/Wichita	9		8,794	8,803	3		1,426	1,439	10,242
Other	123	157	189	469	834	9	85	1,265	1,734
TOTAL	64,938	7,016	55,222	127,176	29,032	2,303	32,895	66,649	193,825

**DoD Active Duty Military and Direct Hire Civilian Personnel
By Installation or City, According to Defense Component: September 30, 1985**

Utah

Installation/City	MILITARY PERSONNEL				CIVILIAN PERSONNEL				TOTAL DoD	
	Army	Navy	Air Force	Sub Total	Army	Navy	Air Force Organizations	Sub Total		
Brigham City			4	4		7	118	11	136	140
Dugway Prove Grnd	209		9	218	832		17		849	1,067
Fort Douglas	190		23	213	172				172	385
Hill Air Force Base	2		5,173	5,175	121		15,304	58	15,483	20,658
Ogden	175	4	5	184	20	2		1,954	1,976	2,160
Salt Lake City	154	56	42	252	221	5	248	85	559	811
Tooele Army Depot	66			66	4,047				4,047	4,113
Other	15	6	39	60	144	72	97	106	419	479
TOTAL	811	66	5,295	6,172	5,557	86	15,784	2,214	23,641	29,813

**DoD Active Duty Military and Direct Hire Civilian Personnel
By Installation or City, According to Defense Component: September 30, 1985**

Vermont

Installation/City	MILITARY PERSONNEL				CIVILIAN PERSONNEL				TOTAL DoD	
	Army	Navy	Air Force	Sub Total	Army	Navy	Air Force	Other DoD Organizations		Sub Total
Burlington	10	4	14	28	3		234	72	309	337
Winooski	6			6	140		8		148	154
Other	16	7	17	40	128	4	1	16	149	189
TOTAL	32	11	31	74	271	4	243	88	606	680

**DoD Active Duty Military and Direct Hire Civilian Personnel
By Installation or City, According to Defense Component: September 30, 1985**

Virginia

Installation/City	MILITARY PERSONNEL				CIVILIAN PERSONNEL				TOTAL DoD	
	Army	Navy	Air Force	Sub Total	Army	Navy	Air Force Organizations	Other DoD Sub Total		
Alexandria	2,754	224	184	3,162	5,344	732	3	3,301	9,380	12,542
Arlington	5,677	8,660	4,944	19,281	4,513	16,888	2,147	4,115	27,663	46,944
Baileys Crossroads	215		20	235	979	120		32	1,131	1,366
Berryville					118				118	118
Cameron Station	168			168	689		17		706	874
Camp Pickett	58			58	415				415	473
Charlottesville	169	21	19	209	523	2		14	539	748
Chesapeake		446	2	448	13	71		1	85	533
Dahlgren		180		180		3,309		2	3,311	3,491
Falls Church	471	27	7	505	579	3	21	182	785	1,290
Fort Belvoir	5,637	72	288	5,997	5,462	1	51	203	5,717	11,714
Fort Eustis	6,816	1	10	6,827	3,006				3,006	9,833
Fort Hill	232			232	166				166	398
Fort Lee	5,463	64	4	5,531	3,872				3,872	9,403
Fort Myer	1,845		68	1,913	784		2		786	2,699
Fort Story		98		98	79	45		2	126	224
Hampton	1,132	8	98	1,238	1,920	15	5	22	1,962	3,200
Hybla Valley								274	274	274
Langley AFB	13	17	9,078	9,108		1	1,790	2	1,793	10,901
Little Plymouth	781		1	782						782

**DoD Active Duty Military and Direct Hire Civilian Personnel
By Installation or City, According to Defense Component: September 30, 1985**

Virginia

Installation/City	MILITARY PERSONNEL				CIVILIAN PERSONNEL				TOTAL DoD
	Army	Navy	Air Force	Sub Total	Army	Navy	Air Force	Other DoD Organizations	
McLean	17	16	32	65	43	24	13	80	145
Newport News	12	86	5	103	22	463	60	545	648
Norfolk	306	15,399	171	15,876	466	16,862	1	119	17,448
Portsmouth	1	3,195	1	3,197	27	14,764	11	14,802	17,999
Quantico	6	6,778	8	6,792	1,711		14	1,725	8,517
Radford	8	1	1	10	160		13	173	183
Reston			35	35			206	206	241
Richmond	307	161	45	513	303	10	5	3,734	4,565
Sandston			4	4	84	231		315	319
Vinton	704			704					704
Virginia Beach	1,030	10,831	57	11,918	5	2,048	2	45	2,100
Warrenton	2			2	872		10	882	884
Williamsburg	26	194		220	5	186	42	233	453
Winchester	3	1		4	180			180	184
Woodbridge					105			105	105
Yorktown		925		925		2,071		2,071	2,996
Other	100	91	57	248	296	23	4	172	495
TOTAL	33,953	47,496	15,139	96,588	31,030	59,325	4,303	12,589	107,247

**DoD Active Duty Military and Direct Hire Civilian Personnel
By Installation or City, According to Defense Component: September 30, 1985**

Washington

Installation/City	MILITARY PERSONNEL				CIVILIAN PERSONNEL				TOTAL DoD
	Army	Navy	Air Force	Sub Total	Army	Navy	Air Force Organizations	Sub Total	
Bangor		2,121		2,121		1,524		1,524	3,645
Bremerton	4	1,441	2	1,447	13,274		9	13,283	14,730
Fairchild AFB	2		4,224	4,226	1		819	825	5,051
Fort Lawton	36			36	66			66	102
Fort Lewis	23,666		197	23,863	3,289		39	3,392	27,255
Hadlock					115			115	115
Keyport		263		263	2,940			2,940	3,203
Littlerock	122			122	1			1	123
McCord AFB	11	4	5,109	5,124	5		1,458	1,463	6,587
Pacific Beach		118		118	15			15	133
Seattle	236	830	157	1,223	831	617	306	1,987	3,210
Silverdale		132		132	463			463	595
Spokane	15	34	9	58	73	6	1	91	149
Tacoma	1,330	31	14	1,375	952	9	1	964	2,339
Walla Walla	7		1	8	386			387	395
Whidbey Island NAS	1	3,266		3,267	885		7	892	4,159
Yakima	75	12		87	174		2	176	263
Other	49	111	39	199	572	151	112	925	1,124
TOTAL	25,554	8,363	9,752	43,669	6,350	19,999	2,736	29,509	73,178

**DoD Active Duty Military and Direct Hire Civilian Personnel
By Installation or City, According to Defense Component: September 30, 1985
West Virginia**

Installation/City	MILITARY PERSONNEL				CIVILIAN PERSONNEL				TOTAL DoD	
	Army	Navy	Air Force	Sub Total	Army	Navy	Air Force	Other DoD Organizations		Sub Total
Beckley	120	6	8	134	27				27	161
Charleston	5		7	12	38	1	174	7	220	232
Huntington	14	4	3	21	549	3		2	554	575
Martinsburg			2	2	4		174		178	180
Sugar Grove		155		155		33			33	188
Other	20	75	22	117	559	6	2	20	587	704
TOTAL	159	240	42	441	1,177	43	350	29	1,599	2,040

**DoD Active Duty Military and Direct Hire Civilian Personnel
By Installation or City, According to Defense Component: September 30, 1985**

Wisconsin

Installation/City	MILITARY PERSONNEL			CIVILIAN PERSONNEL					TOTAL DoD	
	Army	Navy	Air Force	Sub Total	Army	Navy	Air Force Organizations	Sub Total		Other DoD
Camp Williams					156			156		156
Fort McCoy	155			155	1,091		9	1,100		1,255
Fountain City					123			123		123
Madison	33	29	16	78	142	1	220	365	2	443
Milwaukee	251	241	53	545	144	11	564	834	115	1,379
Other	54	51	29	134	475	55	2	574	42	708
TOTAL	493	321	98	912	2,131	67	786	3,152	168	4,064

**DoD Active Duty Military and Direct Hire Civilian Personnel
By Installation or City, According to Defense Component: September 30, 1985**

Wyoming

Installation/City	MILITARY PERSONNEL			CIVILIAN PERSONNEL				TOTAL DoD
	Army	Navy	Air Force	Sub Total	Army	Navy	Air Force	
Cheyenne		4	8	12	104	176	280	292
Francis E Warren AFB	5		3,640	3,645	29	595	713	4,358
Other	8	1	81	90	82	3	85	175
TOTAL	13	5	3,729	3,747	215	774	1,078	4,825

**DoD Active Duty Military and Direct Hire Civilian Personnel
By Installation or City, According to Defense Component: September 30, 1985
Undistributed**

Installation/City	MILITARY PERSONNEL			CIVILIAN PERSONNEL				TOTAL DoD	
	Army	Navy	Air Force	Sub Total	Army	Navy	Air Force Organizations		Sub Total
Various	12,774			12,774			349	349	13,123
Other	12,774			12,774			349	349	13,123
TOTAL	12,774			12,774			349	349	13,123

ENID

Dtjic

5-86