

AD-A162 961 AN ALGORITHM FOR MONTE CARLO RESTORATION OF BINARY
IMAGES(U) ARMY BALLISTIC RESEARCH LAB ABERDEEN PROVING
GROUND MD B R FRIEDEN ET AL. NOV 85 BRL-TR-2690

AN ALGORITHM FOR MONTE CARLO RESTORATION OF BINARY
IMAGES(U) ARMY BALLISTIC RESEARCH LAB ABERDEEN PROVING
GROUND MD B R FRIEDEN ET AL. NOV 85 BRL-TR-2690

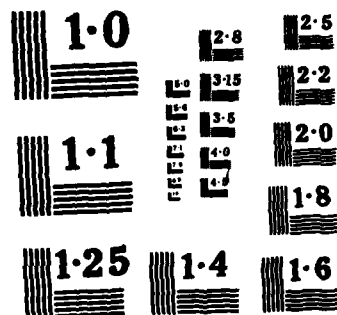
MI

UNCLASSIFIED

F/G 9/2

END

APPLIED



NATIONAL BUREAU OF STANDARDS
MICROCOPY RESOLUTION TEST CHART

AD-A162 961

12

AD



US ARMY
MATERIEL
COMMAND

TECHNICAL REPORT BRL-TR-2690

AN ALGORITHM FOR MONTE CARLO RESTORATION OF BINARY IMAGES

B. Roy Frieden
Csaba K. Zoltani

November 1985

DTIC
FLECTE
S DEC 18 1985 D
D

FILE COPY

APPROVED FOR PUBLIC RELEASE; DISTRIBUTION UNLIMITED.

US ARMY BALLISTIC RESEARCH LABORATORY
ABERDEEN PROVING GROUND, MARYLAND

85 100

Destroy this report when it is no longer needed.
Do not return it to the originator.

Additional copies of this report may be obtained
from the National Technical Information Service,
U. S. Department of Commerce, Springfield, Virginia
22161.

The findings in this report are not to be construed as an official
Department of the Army position, unless so designated by other
authorized documents.

The use of trade names or manufacturers' names in this report
does not constitute indorsement of any commercial product.

UNCLASSIFIED

SECURITY CLASSIFICATION OF THIS PAGE (When Data Entered)

REPORT DOCUMENTATION PAGE		READ INSTRUCTIONS BEFORE COMPLETING FORM
1. REPORT NUMBER Technical Report BRL-TR-2690	2. GOVT ACCESSION NO. AD-A162961	3. RECIPIENT'S CATALOG NUMBER
4. TITLE (and Subtitle) AN ALGORITHM FOR MONTE CARLO RESTORATION OF BINARY IMAGES		5. TYPE OF REPORT & PERIOD COVERED Final
7. AUTHOR(s) B. Roy Frieden* Csaba K. Zoltani		6. PERFORMING ORG. REPORT NUMBER
9. PERFORMING ORGANIZATION NAME AND ADDRESS US Army Ballistic Research Laboratory ATTN: SLCBR-IB Aberdeen Proving Ground, MD 21005-5066		8. CONTRACT OR GRANT NUMBER(s)
11. CONTROLLING OFFICE NAME AND ADDRESS U.S. Army Ballistic Research Laboratory ATTN: SLCBR-DD-T Aberdeen Proving Ground, MD 21005-5066		10. PROGRAM ELEMENT, PROJECT, TASK AREA & WORK UNIT NUMBERS 1L162618AH80
14. MONITORING AGENCY NAME & ADDRESS (if different from Controlling Office)		12. REPORT DATE November 1985
		13. NUMBER OF PAGES 22
		15. SECURITY CLASS. (of this report) Unclassified
		15a. DECLASSIFICATION/DOWNGRADING SCHEDULE NA
16. DISTRIBUTION STATEMENT (of this Report) Approved for Public Release; Distribution Unlimited.		
17. DISTRIBUTION STATEMENT (of the abstract entered in Block 20, if different from Report)		
18. SUPPLEMENTARY NOTES *Optical Sciences Center, University of Arizona, Tucson, AZ 85721		
19. KEY WORDS (Continue on reverse side if necessary and identify by block number) Image Restoration Binary Object Monte Carlo Method		
20. ABSTRACT (Continue on reverse side if necessary and identify by block number) meg A new algorithm for the restoration of binary objects is presented. By optimal use of a priori information and the Monte Carlo technique, considerable image enhancement can be achieved. An example illustrates the results.		

UNCLASSIFIED

SECURITY CLASSIFICATION OF THIS PAGE (When Data Entered)

TABLE OF CONTENTS

	<u>Page</u>
I. INTRODUCTION.....	5
II. SCENARIO.....	5
III. APPROACH.....	6
IV. RESULTS.....	10
ACKNOWLEDGMENT.....	11
DISTRIBUTION LIST.....	13

Accession For		
NTIS	CRA&I	<input checked="" type="checkbox"/>
DTIC	TAB	<input type="checkbox"/>
Unannounced		<input type="checkbox"/>
Justification		
By		
Distribution /		
Availability Codes		
Dist	Avail and / or Special	
A-1		

I. INTRODUCTION

Binary objects arise commonly as the subjects of man-made construction. Examples are a page of print and its variants (handwritten message, license plate on a "getaway" car, etc.), pictures in dot matrix format viewed in closeup, and industrial rods of known material viewed in a tomographic setup.* Alternatively, a user might want to reconstruct a multilevel object as a binary object in order to exaggerate certain features such as edge details.

That an object is binary represents a tremendous amount of a priori information, something that greatly aids in its restoration. A further aid is that often the user knows as well minimal sizes for constituent shapes in the object scene. For example, if many industrial rods (of whatever shape) comprise the object, each might be known to have an area at least as large as value A. If such knowledge can be built into the restoration method, it must also improve the output estimate. Finally, if the method can recognize strangely located points on the periphery of the object's constituent shapes, and place them in more regular positions, this also will help. We report next on an approach that incorporates these kinds of prior knowledge.

II. SCENARIO

We adopt the notation that image data

$$\text{Data}_{ij}, \begin{matrix} i=1, \dots, N_{\text{field}}; \\ j=1, \dots, N_{\text{field}} \end{matrix}$$

are given, and that the point spread function $s(i,j)$ is known to a good approximation. For simplicity, the space Δx between rows of data is made unity, as is Δy . Quantity i is, in our notation, both a row number and an x -value, and j is a column number and y -value. The image is assumed to be formed from the unknown object Obj_{ij} , $i=1, \dots, N_{\text{field}}$; $j=1, \dots, N_{\text{field}}$ via a convolution

$$\text{Data}(i,j) = \sum_{k=1}^{N_{\text{field}}} \sum_{m=1}^{N_{\text{field}}} \text{Obj}(k,m)s(i-k, j-m) + \text{Noise}(i,j) \quad (1)$$

for all (i,j) . The objective is to retrieve the $\text{Obj}(k,m)$ from this data. Every value $\text{Obj}(k,m) = 0$ or 1 , since the object is binary. We picture the object scene, then, as consisting of "grains" of intensity 1 placed within a field of 0 s. How can the grains be properly placed in order to effect a restoration?

*B.R. Frieden and C.K. Zoltani, "Maximum Bounded Entropy: Application to Tomographic Reconstruction," Applied Optics, Vol. 24, p. 201, 1985.

III. APPROACH

Denote the grain positions as $(X_{1i}, X_{2i}, i=1, \dots, N_{\text{parts}})$ where i denotes grain number, X_{1i} is that grain's row position, and X_{2i} is that grain's column position. For shorthand, denote these X -values as \bar{X} where

$$\bar{X} = \{(X_i, Y_i)\}_{i=1}^{N_{\text{parts}}}.$$

The total number of grains N_{parts} may be estimated, from (1) as

$$N_{\text{parts}} = \sum_{i=1}^{N_{\text{field}}} \sum_{j=1}^{N_{\text{field}}} \text{Data}(i,j) \quad (2)$$

since, by normalization of spread function s , the right-hand side sums to

$$\sum_{k=1}^{N_{\text{field}}} \sum_{m=1}^{N_{\text{field}}} \text{Obj}(k,m) + \sum_{i=1}^{N_{\text{field}}} \sum_{j=1}^{N_{\text{field}}} \text{Noise}(i,j). \quad (3)$$

Of these two sums, the first is exactly N_{parts} , while the second should tend to be small compared to the first if the noise is zero-mean. In simulations using Poisson noise, it was found that the estimated N_{parts} value very well approximated the true value.

With N_{parts} known, the following algorithm was found, after much experimentation, to work fairly well on restoring the correct \bar{X} (grain position) values. Start with an initial guess at \bar{X} . A good guess, e.g., is the N_{parts} highest intensity values in the $\text{Data}(i,j)$. Since the object is binary, this is often a very good guess. For example, if no noise were present, an object consisting of a single round shape would be perfectly restored by this initial guess! (Such is the power of the binary assumption.)

Next, perturb each grain position independently and uniformly randomly \pm Excurs , where Excurs is an integer input number. Motion is allowed in both coordinate directions. For example, we used $\text{Excurs} = 20$ when the image size was $N_{\text{field}} = 64$. Accept the new grain position if (a) it was unoccupied (keeping the object binary), and (b) image inconsistency (defined below) is reduced, and (c) a "clump" penalty is satisfied (as defined below) if the penalty is turned on.

Image inconsistency Y is defined as

$$Y = \sum_{i=1}^{N_{\text{field}}} \sum_{j=1}^{N_{\text{field}}} [\text{Run}(i,j) - \text{Data}(i,j)]^2, \quad (4a)$$

where $\text{Run}(i,j)$ is the running image defined as convolution of the running object $\text{Abj}(k,m)$ with the point spread function

$$\text{Run}(i,j) = \sum_{k=1}^{N_{\text{field}}} \sum_{m=1}^{N_{\text{field}}} \text{Abj}(k,m)s(i-k, j-m). \quad (4b)$$

The running object Abj is the updated object formed from \bar{X} with the possibly perturbed grain position incorporated.

Thus, if Y is decreased, this means that the grain in question was placed in a position that is more consistent with the image data, and hence, probably a correct object position. Therefore, the test position is accepted, and \bar{X} is updated. Next, particle number i is incremented, and a new particle is perturbed in position, the next Y again tested, etc.

If a particle fails one of the tests (a)-(c), it is left at its given \bar{X} position, and the next particle is considered, etc. Once particle number $i = Nparts$ is attained, a new cycle with $i=1$ begins, etc.

The algorithm seeks merely to minimize Y for half its allotted cycles. The clump penalty is turned off during these trials. The reason is that small object shapes will usually not be present in the initial object estimate, as they may be too weak in intensity to be counted in the $Nparts$ highest image values. Therefore, the role of these first cycles is to get particles out to where these smaller shapes exist. But since the particles are perturbed one-by-one, they will (at first) be isolated at the new positions required. Isolated particles violate the clump penalty. Hence, it must be turned off during these cycles.

The clump penalty is defined as

$$C = \sum_{i=1}^{Nparts} c_i, \quad (5)$$

where

$$c_i = \begin{cases} 1 & \text{if particle } i \text{ has less than } Nclump \text{ nearest neighbors} \\ 0 & \text{if particle } i \text{ has at least } Nclump \text{ nearest neighbors.} \end{cases}$$

The nearest neighbor positions for a particle at position (x,y) are all nine positions $(x \pm \Delta x, y \pm \Delta y)$; $\Delta x = 0,1$, $\Delta y = 0,1$. $Nclump$ is an input parameter governing the size of the minimal object shape. A value $Nclump = 1$ effectively turns off the clump penalty since any particle has at least itself as a nearest-neighbor. When the clump penalty was turned on, values $Nclump = 3$ or 4 were used, depending upon the stage of the cycle number. This is described next.

After half the specified number of cycles are complete, the running object usually is fairly well approximated. Even the smaller shapes have particles in their vicinity. However, some particles will be pushed out randomly to near the margin regions, and in general, many isolated particles will exist. At this point, a "merge" operation is performed whereby each particle that is isolated is merged with its nearest object clump, thereby satisfying the clump constraint. The operation is as follows: (1) each particle is tagged as being either isolated or "clumped"; (2) the closest "clumped" particle to a given isolated particle is found; (3) all unoccupied nearest-neighbor sites to the clumped particle are found; (4) the candidate unoccupied location that would reduce Y the most is found; and (5) the

isolated particle is placed in that position. The particle is now no longer isolated. The next isolated particle is considered, etc.

The cycling as above now proceeds anew using $N_{clump} = 3$ and $Excurs = 5$ (reduced) for the next remaining 1/4 cycles. $Excurs$ is reduced because at this stage the particles are presumed fairly near their correct positions. The total penalty used is now $Y+C$. Again, only particle positions are accepted which reduce the total penalty. This keeps the particles in clumps of at least size 3, as required, while further reducing image inconsistency.

Next, during the last 1/4 cycles, values $N_{clump} = 3$ (as before) and $Excurs = 3$ (reduced) are used. $Excurs$ is so reduced because the particles are presumed even closer to their correct positions at this stage.

Finally, after the last cycle, a "creep" or "touchup" step is performed. This step is meant to move irregularly placed particles on the contour of the object shapes to more regular positions. Although these particles already obey the $N_{clump} = 3$ constraint, they are in positions which give the contour a very high degree of irregularity locally. An example is shown in Figure 1, where point A is a candidate for "creep." Intuitively, it seems instead to belong at the unoccupied (black) site to its lower left, completing the triangle. Interestingly, this intuition can be quantified. In its present position, point A satisfies $N_{clump} = 3$ (just) but not $N_{clump} = 4$. On the other hand, all other particles shown satisfy $N_{clump} = 4$ except for particle B. Therefore, particles A and B are made candidates for "creep." This operation moves the particle to the neighborhood of the closed "clumped" particle obeying $N_{clump} = 4$, and then, into the nearest neighbor unoccupied site to the clumped particle that reduces Y the most. If Y can only be increased by making the move, it is not made. The effect upon Figure 1 is as follows. If the object had the triangular shape shown, then moving particle A into the black site would reduce image inconsistency. Hence, "creep" will perform this move. However, no move of particle B would reduce image inconsistency. It already is in the right place. Hence, "creep" leaves B where it was (correctly).

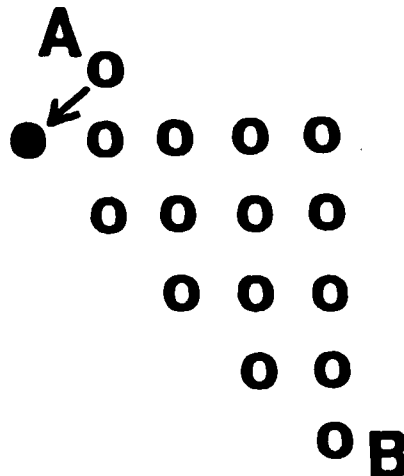


Figure 1. Binary Object Representation and Particle Movement.

A flow diagram of the total algorithm is shown in Figure 2.

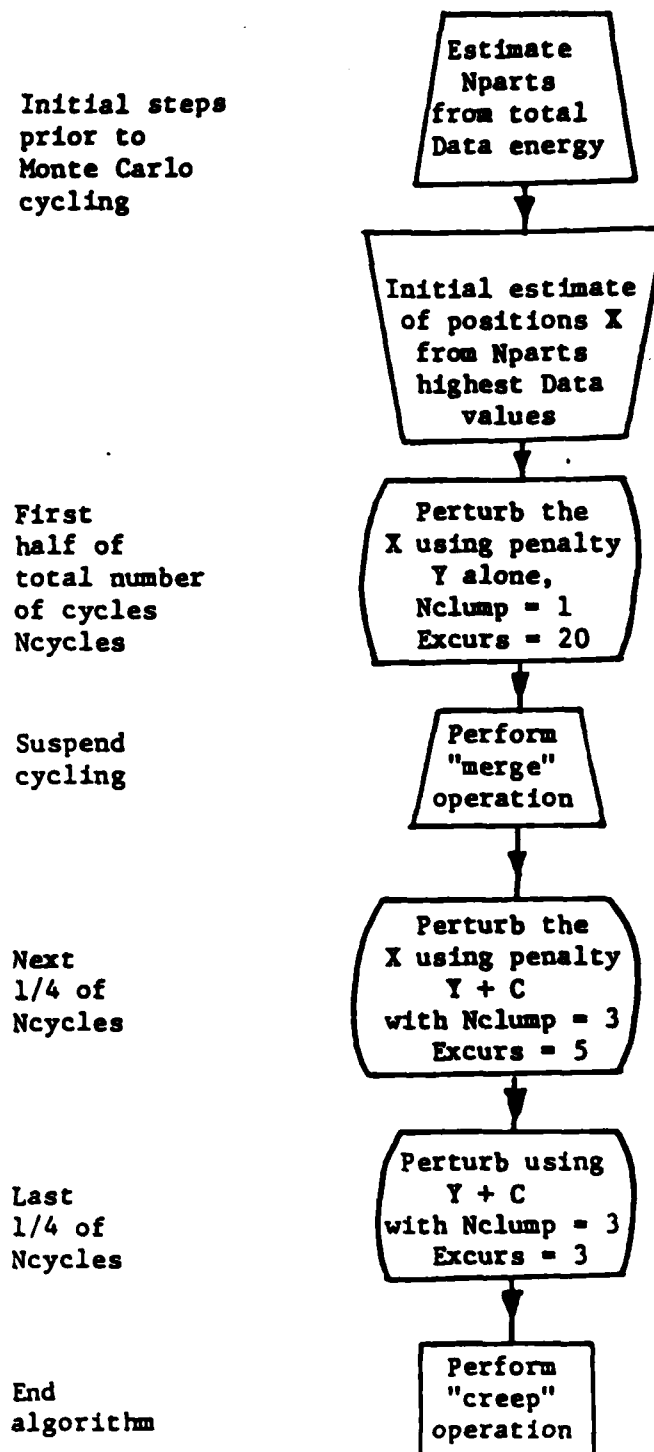


Figure 2. Flow Diagram of the Deblurring Algorithm.

IV. RESULTS

The power and the limitations of the algorithm is illustrated in Figure 3. There, in the top left panel, the original image is shown. Below, the "blurred" image is displayed in binary form. The signal to noise ratio in the image data is 100. The succeeding panels on the right show the image improvement after 100 and 600 computational cycles. A noticeable improvement in the image definition is apparent. Work is underway to extend the technique to multi-grey level images, as well as where large pixel numbers must be considered. Typical running time on a CDC Cyber 76, for an image field consisting of 4096 pixels, is currently 1056 CPU seconds.



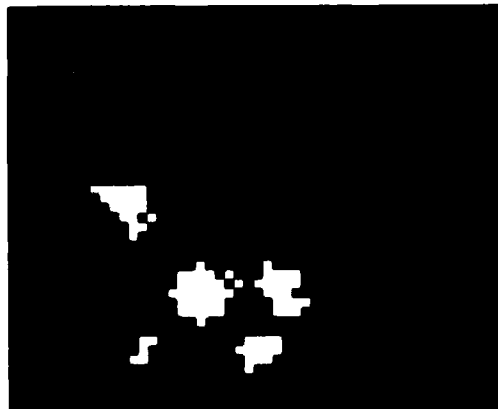
a. Original Image



c. Image After 100 Iterations



b. Blurred, i.e., Original Convolved
With a PSF



d. Image after 600 Iterations

Figure 3. Deblurring an Object with Sharp Corners.

ACKNOWLEDGMENT

It is a pleasure to thank Mr. Monte Coleman for his help in producing the graphical display of the results.

DISTRIBUTION LIST

<u>No. Of Copies</u>	<u>Organization</u>	<u>No. Of Copies</u>	<u>Organization</u>
12	Administrator Defense Technical Info Center ATTN: DTIC-DDA Cameron Station Alexandria, VA 22304-6145	1	Director USA Air Mobility Research and Development Laboratory Ames Research Center Moffett Field, CA 94035
1	HQ DA DAMA-ART-M Washington, DC 20310	6	Commander US Army Research Office ATTN: R. Ghirardelli D. Mann R. Singleton R. Shaw S. Chandra F. Oertel P.O. Box 12211 Research Triangle Park, NC 27709-2211
1	Commander US Army Materiel Command ATTN: AMCDRA-ST 5001 Eisenhower Avenue Alexandria, VA 22333-0001	1	Commander USA AMCCOM ATTN: SMCAR-TSS Dover, NJ 07801
1	Commander Armament R&D Center USA AMCCOM ATTN: SMCAR-TSS Dover, NJ 07801	1	Commander USA Communications - Electronics Command ATTN: AMSEL-ED Fort Monmouth, NJ 07703
2	Commander Armament R&D Center USA AMCCOM ATTN: SMCAR-TDC Dover, NJ 07801	1	Commander ERADCOM Technical Library ATTN: DELSD-L, Reports Section Fort Monmouth, NJ 07703-5301
1	Director Benet Weapons Laboratory Armament R&D Center USA AMCCOM ATTN: SMCAR-LCB-TL Watervliet, NY 12189	2	Commander USA AMCCOM ATTN: SMCAR-LCA-G, D.S. Downs J.A. Lannon Dover, NJ 07801
1	Commander US Army Armament, Munitions and Chemical Command ATTN: SMCAR-ESP-L Rock Island, IL 61299	1	Commander USA AMCCOM ATTN: SMCAR-LC-G, S. Harris Dover, NJ 07801
1	Commander USA Aviation Research and Development Command ATTN: AMSAV-E 4300 Goodfellow Blvd. St. Louis, MO 63120	1	Commander USA AMCCOM ATTN: SMCAR-SCA-T, L. Stiefel Dover, NJ 07801

DISTRIBUTION LIST

<u>No. Of Copies</u>	<u>Organization</u>	<u>No. Of Copies</u>	<u>Organization</u>
1	Commander, U.S. Army Missile Command, Research, Development & Engineering Center ATTN: AMSMI-RD Redstone Arsenal, AL 35898	1	Office of Naval Research Department of the Navy ATTN: R.S. Miller, Code 432 800 N. Quincy Street Arlington, VA 22217
1	Director, U.S. Army Missile & Space Intelligence Center ATTN: AIAMS-YDL Redstone Arsenal, AL 35898-5500	1	Navy Strategic Systems Program Office ATTN: SP 2731 Washington, DC 20376
2	Commander USA Missile Command ATTN: AMSMI-RK, D.J. Ifshin W. Wharton Redstone Arsenal, AL 35898	1	Commander Naval Air Systems Command ATTN: J. Ramnarace, AIR-54111C Washington, DC 20360
1	Commander USA Tank Automotive Command ATTN: AMSTA-TSL Warren, MI 48090	2	Commander Naval Ordnance Station ATTN: C. Irish P.L. Stang, Code 515 Indian Head, MD 20640
1	Director USA TRADOC Systems Analysis Activity ATTN: ATAA-SL White Sands Missile Range, NM 88002	2	Commander Naval Ordnance Station ATTN: Code 3023A Dr. C. Dale, 5251F Indian Head, MD 20640
1	Commander White Sands Missile Range ATTN: STEWS-HP-T White Sands Missile Range, NM 88002	1	Commander Naval Surface Weapons Center ATTN: J.L. East, Jr., G-23 Dahlgren, VA 22448
2	Commandant US Army Infantry School ATTN: ATSH-CD-CSO-OR Fort Benning, GA 31905	2	Commander Naval Surface Weapons Center ATTN: R. Bernecker, R-13 G.B. Wilmot, R-16 Silver Spring, MD 20910
1	Commander USA Army Development and Employment Agency ATTN: MODE-TED-SAB Fort Lewis, WA 98433	4	Commander Naval Weapons Center ATTN: R.L. Derr, Code 389 China Lake, CA 93555

DISTRIBUTION LIST

<u>No. Of Copies</u>	<u>Organization</u>	<u>No. Of Copies</u>	<u>Organization</u>
2	Commander Naval Weapons Center ATTN: Code 3891, T. Boggs K.J. Graham China Lake, CA 93555	1	AFWL/SUL Kirtland AFB, NM 87117
5	Commander Naval Research Laboratory ATTN: L. Harvey J. McDonald E. Oran J. Shnur R.J. Doyle, Code 6110 Washington, DC 20375	2	Commander US Army Materiel Command ATTN: AMSMC-QAS-A J. Moskowitz J.M. Argento Dover, NJ 07801
1	Commanding Officer Naval Underwater Systems Center Weapons Dept. ATTN: R.S. Lazar/Code 36301 Newport, RI 02840	1	NASA Langley Research Center ATTN: G.B. Northam/MS 168 Langley Station Hampton, VA 23365
1	Superintendent Naval Postgraduate School Dept. of Aeronautics ATTN: D.W. Netzer Monterey, CA 93940	6	National Bureau of Standards ATTN: J. Hastie M. Jacox T. Kashiwagi H. Semerjian S. Ray A. Carasso US Department of Commerce Washington, DC 20234
3	Headquarters Ballistic Missile Office ATTN: K.F. Hodge L.C. Farnell D. Lengenfelder Norton Air Force Base San Bernadino, CA 92409	1	Advanced Research and Applications Corporation ATTN: A.G. Lason 8150 Leesburg Pike Vienna, VA 22190
6	AFFTC (DRSC) ATTN: R. Geisler D. George B. Goshgarian J. Levine W. Roe D. Weaver Edwards AFB, CA 93523-5000	1	Aerojet Solid Propulsion Co. ATTN: P. Micheli Sacramento, CA 95813
2	AFOSR ATTN: L.H. Caveny J.M. Tishkoff Bolling Air Force Base Washington, DC 20332	1	Air Force Armament Laboratory ATTN: AFATL/DLODL Eglin AFB, FL 32542-5000
		1	American Science and Engineers, Inc. ATTN: R.C. Chase 33-37 Broadway Arlington, VA 02174

DISTRIBUTION LIST

<u>No. Of Copies</u>	<u>Organization</u>	<u>No. Of Copies</u>	<u>Organization</u>
1	Applied Combustion Technology, Inc. ATTN: A.M. Varney P.O. Box 17885 Orlando, FL 32860	2	Bell Laboratories ATTN: M. Sondhi F. Shepp Murray Hill, NJ 07971
1	Argonne National Laboratory Materials Science and Technology Division ATTN: W.A. Ellingson 9700 South Cass Avenue Argonne, IL 60439	2	Boeing Aerospace Co. Physics Technology Department ATTN: K.D. Friddell A.R. Lowrey Box 3999, M.S. 8C-23 Seattle, WA 98124
2	Applied Mechanics Reviews The American Society of Mechanical Engineers ATTN: R.E. White A.B. Wenzel 345 E. 47th Street New York, NY 10017	2	Exxon Research & Eng. Co. ATTN: A. Dean M. Chou P.O. Box 45 Linden, NJ 07036
2	Atlantic Research Corp. ATTN: M.K. King 5390 Cherokee Avenue Alexandria, VA 22314	1	Ford Aerospace and Communications Corp. DIVAD Division Div. Hq., Irvine ATTN: D. Williams Main Street & Ford Road Newport Beach, CA 92663
1	Atlantic Research Corp. ATTN: R.H.W. Waesche 7511 Wellington Road Gainesville, VA 22065	1	General Electric Armament & Electrical Systems ATTN: M.J. Bulman Lakeside Avenue Burlington, VT 05401
1	AVCO Everett Rsch. Lab. Div. ATTN: D. Stickler 2385 Revere Beach Parkway Everett, MA 02149	1	General Electric Company ATTN: Alan Wait Rd 3, Plains Road Ballston Spa, N.Y. 12020
1	Battelle Memorial Institute Tactical Technology Center ATTN: J. Huggins 505 King Avenue Columbus, OH 43201	1	General Electric Computer Research Medical Diagnostics Systems Program ATTN: T. Kincaid Schenectady, NY 12345
1	BDM Corp. ATTN: T.P. Goddard 2600 Cearden Road North Bldg. Monterey, CA 93940	1	General Electric Ordnance Systems ATTN: J. Mandzy 100 Plastics Avenue Pittsfield, MA 01203

DISTRIBUTION LIST

<u>No. Of Copies</u>	<u>Organization</u>	<u>No. Of Copies</u>	<u>Organization</u>
1	General Motors Rsch Labs Physics Department ATTN: R. Teets Warren, MI 48090	1	IBM Corporation ATTN: A.C. Tam Research Division 5600 Cottle Road San Jose, CA 95193
1	Harry Diamond Laboratories ATTN: DELHD-RT-RD, P.J. Emmerman 2800 Powder Mill Road Adelphi, MD 20738	1	Industrial Quality, Inc. ATTN: H. Berger P.O. Box 2397 Gaithersburg, MD 20879
1	The Harshaw Chemical Company Crystal and Electronic Products Department ATTN: M.R. Farukhi C. Rozsa Solon, OH 44139	1	Director Lawrence Livermore National Laboratory ATTN: C. Westbrook P.O. Box 808 Livermore, CA 94550
3	Hercules, Inc. Allegany Ballistics Lab. ATTN: R.R. Miller P.O. Box 210 Cumberland, MD 21501	1	Director Lawrence Livermore National Laboratory ATTN: M. Costantino P.O. Box 808 Livermore, CA 94550
3	Hercules, Inc. Bacchus Works ATTN: K.P. McCarty P.O. Box 98 Magna, UT 84044	1	Director Lawrence Livermore National Laboratory ATTN: A. Buckingham P.O. Box 808 Livermore, CA 94550
3	Hewlett-Packard Corp. ATTN: F. Charbonnier L. Bailey A. Kennedy 1700 South Baker Street McMinnville, OR 97128	1	Director Lawrence Livermore National Laboratory ATTN: Library P.O. Box 808 Livermore, CA 94550
1	Honeywell, Inc. Defense Systems Division ATTN: D.E. Broden/ MS MN50-2000 600 2nd Street NE Hopkins, MN 55343	1	Lockheed Missiles & Space Co. ATTN: George Lo 3251 Hanover Street Dept. 52-35/B204/2 Palo Alto, CA 94304
1	Hughes Aircraft Company ATTN: T.E. Ward 8433 Fallbrook Avenue Canoga Park, CA 91303		

DISTRIBUTION LIST

<u>No. Of Copies</u>	<u>Organization</u>	<u>No. Of Copies</u>	<u>Organization</u>
3	Los Alamos National Lab ATTN: B. Nichols T7, MS-B284 C. Mader K. Hanson P.O. Box 1663 Los Alamos, NM 87545	2	Princeton Combustion Research Laboratories, Inc. ATTN: M. Summerfield N.A. Messina 475 US Highway One Monmouth Junction, NJ 08852
1	Massachusetts Institute of Technology Laboratory for Information and Decision Systems ATTN: A.S. Willsky Cambridge, MA 02139	1	Princeton Scientific Instruments, Inc. ATTN: J.L. Lowrance P.O. Box 252 Kingston, NJ 08528
2	Mathematics Research Center ATTN: B. Noble J. Nohel 610 Walnut Street Madison, WI 53706	1	Rockwell International Corp. Rocketdyne Division ATTN: J.E. Flanagan/HB02 6633 Canoga Avenue Canoga Park, CA 91304
3	Mayo Clinic Biodynamics Research Unit ATTN: E.L. Ritman J.H. Kinsey R.A. Robb 200 First Street, S.W. Rochester, MN 55902	1	SAI ATTN: N. Banks 626 Town Ct. Dr. Joppa, MD 21085
1	MCI Optonix, Inc. ATTN: G. Zweig Horsehill Road P.O. Box 1 Cedar Knolls, NJ 07927	3	Sandia National Laboratories Combustion Sciences Dept. ATTN: R. Cattolica D. Stephenson P. Mattern Livermore, CA 94550
1	Mirror Electronics Company ATTN: R.P. Espejo P.O. Box 206 Gaston, OR 97119-0206	1	Science Applications, Inc. ATTN: R.B. Edelman 23146 Cumorah Crest Woodland Hills, CA 91364
1	Naval Coastal Systems Center Code 2210-C ATTN: J. Mittleman Panama City, FL 32407	1	Science Applications, Inc. ATTN: H.S. Pergament 1100 State Road, Bldg. N Princeton, NJ 08540
1	Paul Gough Associates, Inc. ATTN: P.S. Gough 1048 South Street Portsmouth, NH 03801	1	Scientific Research Associates, Inc. ATTN: H. McDonald P.O. Box 498 Glastonbury, CT 06033

DISTRIBUTION LIST

<u>No. Of Copies</u>	<u>Organization</u>	<u>No. Of Copies</u>	<u>Organization</u>
1	Shell Development Oil Co. ATTN: Dr. H. Vinegar P.O. Box 481 Houston, TX 77001	2	Chemical Systems Director United Technologies ATTN: R.S. Brown R.O. McLaren P.O. Box 358 Sunnyvale, CA 94086
3	SRI International ATTN: G. Smith D. Crosley D. Golden 333 Ravenswood Avenue Menlo Park, CA 94025	1	Universal Propulsion Company ATTN: H.J. McSpadden Black Canyon Stage 1 Box 1140 Phoenix, AZ 85029
1	Stevens Institute of Tech. Davidson Laboratory ATTN: R. McAlevy, III Hoboken, NJ 07030	1	Veritay Technology, Inc. ATTN: E.B. Fisher 4845 Millersport Highway P.O. Box 305 East Amherst, NY 14051-0305
1	Teledyne McCormack-Selph ATTN: C. Leveritt 3601 Union Road Hollister, CA 95023	1	University of Arizona Optical Sciences Center ATTN: B. Roy Frieden Tucson, AZ 85721
1	Thiokol Corporation Elkton Division ATTN: W.N. Brundige P.O. Box 241 Elkton, MD 21921	1	Brigham Young University Dept. of Chemical Engineering ATTN: M.W. Beckstead Provo, UT 84601
3	Thiokol Corporation Huntsville Division ATTN: R. Glick Huntsville, AL 35807	1	California Institute of Tech. Jet Propulsion Laboratory ATTN: MS 125/159 4800 Oak Grove Drive Pasadena, CA 91103
1	Thiokol Corporation Wasatch Division P.O. Box 524 Brigham City, UT 84302	1	California Institute of Technology ATTN: F.E.C. Culick/ MC 301-46 204 Karman Lab. Pasadena, CA 91125
1	Thorn EMI Gencom, Inc. ATTN: L.M. Lieberman 80 Express Street Plainview, NY 11803	1	University of California, Berkeley Mechanical Engineering Dept. ATTN: J. Daily Berkeley, CA 94720
1	United Technologies ATTN: A.C. Eckbreth East Hartford, CT 06108		

DISTRIBUTION LIST

<u>No. Of Copies</u>	<u>Organization</u>	<u>No. Of Copies</u>	<u>Organization</u>
1	University of California Donner Laboratory ATTN: T.F. Budinger Berkeley, CA 94720	1	University of Florida Dept. of Chemistry ATTN: J. Winefordner Gainesville, FL 32611
1	University of California Los Alamos National Lab. ATTN: T.D. Butler P.O. Box 1663, Mail Stop B216 Los Alamos, NM 87545	1	George Washington University School of Engineering and Applied Science ATTN: R. Goulard Washington, DC 20052
1	University of California, San Diego Energy Center and Dep. Applied Mechanics ATTN: S.S. Penner La Jolla, CA 92037	3	Georgia Institute of Technology School of Aerospace Engineering ATTN: E. Price W.C. Strahle B.T. Zinn Atlanta, GA 30332
2	University of California, Santa Barbara Quantum Institute ATTN: K. Schofield M. Steinberg Santa Barbara, CA 93106	2	University of Illinois Dept. of Mech. Eng. ATTN: H. Krier S.L. Soo 1206 W. Green St. Urbana, IL 61801
1	University of Southern California Dept. of Chemistry ATTN: S. Benson Los Angeles, CA 90007	1	Johns Hopkins University/APL Chemical Propulsion Information Agency ATTN: T.W. Christian Johns Hopkins Road Laurel, MD 20707
1	Case Western Reserve Univ. Div. of Aerospace Sciences ATTN: J. Tien Cleveland, OH 44135	1	University of Michigan Department of Mechanical Engineering ATTN: C.M. Vest Ann Arbor, MI 48104
1	Cornell University Department of Chemistry ATTN: E. Grant Baker Laboratory Ithaca, NY 14853	1	University of Minnesota Dept. of Mechanical Engineering ATTN: E. Fletcher Minneapolis, MN 55455
1	Univ. of Dayton Resch Inst. ATTN: D. Campbell AFRPL/PAP Stop 24 Edwards AFB, CA 93523		

DISTRIBUTION LIST

<u>No. Of Copies</u>	<u>Organization</u>	<u>No. Of Copies</u>	<u>Organization</u>
1	University of North Carolina Bio-Medical Engineering Department ATTN: F.A. DiBianca Chapel Hill, NC 27514	1	Purdue University School of Aeronautics and Astronautics ATTN: J.R. Osborn Grissom Hall West Lafayette, IN 47906
1	Oregon State University Department of Mathematics ATTN: K. Smith Corvallis, OR 97331	2	Purdue University School of Mechanical Engineering ATTN: N.M. Laurendeau S.N.B. Murthy TSPC Chaffee Hall West Lafayette, IN 47906
1	Hospital of the University of Pennsylvania Department of Radiology ATTN: G.T. Herman 3400 Spruce Street Philadelphia, PA 19104	1	Rensselaer Polytechnic Inst. Dept. of Chemical Engineering ATTN: A. Fontijn Troy, NY 12181
3	Pennsylvania State University Applied Research Laboratory ATTN: K.K. Kuo H. Palmer M. Micci University Park, PA 16802	1	Stanford University Dept. of Mechanical Engineering ATTN: R. Hanson Stanford, CA 94305
1	University of Pittsburgh ATTN: D. Sashin Pittsburgh, PA 15261	1	Stanford University Department of Physics ATTN: A. Macovski Palo Alto, CA 94305
1	Polytechnic Institute of NY ATTN: S. Lederman Route 110 Farmingdale, NY 11735	1	University of Texas Dept. of Chemistry ATTN: W. Gardiner Austin, TX 78712
2	Princeton University Forrestal Campus Library ATTN: K. Brezinsky I. Glassman P.O. Box 710 Princeton, NJ 08540	1	University of Utah Dept. of Chemical Engineering ATTN: G. Flandro Salt Lake City, UT 84112
1	Princeton University MAE Dept. ATTN: F.A. Williams Princeton, NJ 08544	1	University of Utah Department of Mathematics ATTN: F. Stenger Salt Lake City, UT 84112

DISTRIBUTION LIST

<u>No. Of Copies</u>	<u>Organization</u>	<u>No. Of Copies</u>	<u>Organization</u>
2	Virginia Polytechnic Institute and State University ATTN: J.A. Schetz R.T. Smith Blacksburg, VA 24061		<u>Aberdeen Proving Ground</u> Dir, USAMSAA ATTN: AMXSY-D AMXSY-MP, H. Cohen Cdr, USATECOM ATTN: AMSTE-TO-F Cdr, CRDC, AMCCOM ATTN: SMCCR-RSP-A SMCCR-MU SMCCR-SPS-IL
1	Washington University Mallinckrodt Institute of Radiology ATTN: M.W. Vannier 510 S. Kings Highway St. Louis, MO 63110		
10	Central Intelligence Agency Office of Central Reference Dissemination Branch Room GE-47 HQS Washington, D.C. 20502		

USER EVALUATION SHEET/CHANGE OF ADDRESS

This Laboratory undertakes a continuing effort to improve the quality of the reports it publishes. Your comments/answers to the items/questions below will aid us in our efforts.

1. BRL Report Number _____ Date of Report _____
2. Date Report Received _____
3. Does this report satisfy a need? (Comment on purpose, related project, or other area of interest for which the report will be used.) _____

4. How specifically, is the report being used? (Information source, design data, procedure, source of ideas, etc.) _____

5. Has the information in this report led to any quantitative savings as far as man-hours or dollars saved, operating costs avoided or efficiencies achieved, etc? If so, please elaborate. _____

6. General Comments. What do you think should be changed to improve future reports? (Indicate changes to organization, technical content, format, etc.) _____

CURRENT ADDRESS	_____
	Name

	Organization

	Address

	City, State, Zip

7. If indicating a Change of Address or Address Correction, please provide the New or Correct Address in Block 6 above and the Old or Incorrect address below.

OLD ADDRESS	_____
	Name

	Organization

	Address

	City, State, Zip

(Remove this sheet along the perforation, fold as indicated, staple or tape closed, and mail.)

----- FOLD HERE -----

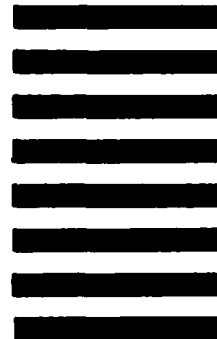
Director
U.S. Army Ballistic Research Laboratory
ATTN: SLCBR-DD-T
Aberdeen Proving Ground, MD 21005-5066



NO POSTAGE
NECESSARY
IF MAILED
IN THE
UNITED STATES

OFFICIAL BUSINESS
PENALTY FOR PRIVATE USE, \$300

BUSINESS REPLY MAIL
FIRST CLASS PERMIT NO 12062 WASHINGTON, DC
POSTAGE WILL BE PAID BY DEPARTMENT OF THE ARMY



Director
U.S. Army Ballistic Research Laboratory
ATTN: SLCBR-DD-T
Aberdeen Proving Ground, MD 21005-9989

----- FOLD HERE -----

END

FILMED

2-86

DTIC